



Shoreline Survey of Current Conditions

Cowichan Bay and Southern Gulf Islands, British Columbia

June 30 to July 6, 2023

Environment and Climate Change Canada's Emergencies Science and Technology Section is an internationally recognized research team with an established oil spill research and development program focused on addressing shoreline issues.

Under the Oceans Protection Plan, these scientists are carrying out a number of studies to gather current data about the conditions of Canada's shorelines. This work is important because shorelines are environmentally sensitive and need protection in the event of a spill.

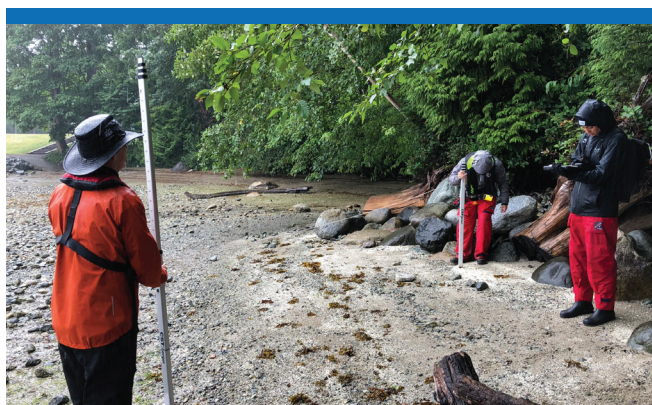
In British Columbia, from June 30 to July 6, 2023, Environment and Climate Change Canada's shoreline specialists will be conducting a scientific survey of selected shorelines throughout the priority coastline of the Cowichan Bay and the Southern Gulf Islands.

This work follows extensive planning with Indigenous communities, Fisheries and Oceans Canada, the Province of British Columbia, and industry. Environment and Climate Change Canada is collaborating with many agencies to collect as much data as possible across all scientific fields.



The survey will include measuring the slope of the shoreline, taking photos, digging a few test pits to determine the types and depth of sediments and taking sediment samples. All surveys are being done at low tide so that scientists can study the exposed shoreline zones.

The environmental data from these studies will be used to strengthen our science-based decision-making and will help protect our marine environments and communities from the potential effects of spills and day-to-day vessel operations.



Ground surveys will take place at specific sites around Cowichan Bay and the Southern Gulf Islands.			
June 30	Kil-Pah-Las	July 3	Octopus Point
July 1	Cowichan Bay (site 1-2-3)	July 4	Musgrave Landing (site 1-2)
July 2	Maple Bay (site 1)	July 5	Fulford Harbour
July 2	Cherry Point	July 5	Separation Point
July 3	Maple Bay (site 2)	July 6	Mayne Island

Coastline surveyed to date include:

British Columbia: Saanich Inlet and Southern Gulf Islands, the Fraser River Delta, Burrard Inlet, in the Port of Vancouver area and Indian Arm, the Douglas Channel, Grenville Channel and a number of islands along the eastern side of Hecate Strait British Columbia, including Haida Gwaii Island

Nova Scotia: Port Hawkesbury and the Straits of Canso

New Brunswick: Saint John and the Bay of Fundy

Quebec: Parc National du Bic, near the community of Baie du Ha Ha!

For additional information please contact:

Emergencies Science and Technology Section
 Environment and Climate Change Canada
 Ottawa, ON
 Tel.: 613-998-9622

Cat. No.: En4-336/2-2023E-PDF
 ISBN: 978-0-660-48684-0
 EC23113

For information regarding reproduction rights, please contact Environment and Climate Change Canada's Public Inquiries Centre at 1-800-668-6767 (in Canada only) or 819-938-3860 or email to enviroinfo@ec.gc.ca.

Photos: © Environment and Climate Change Canada

© His Majesty the King in Right of Canada, represented by the Minister of Environment and Climate Change, 2023

Aussi disponible en français