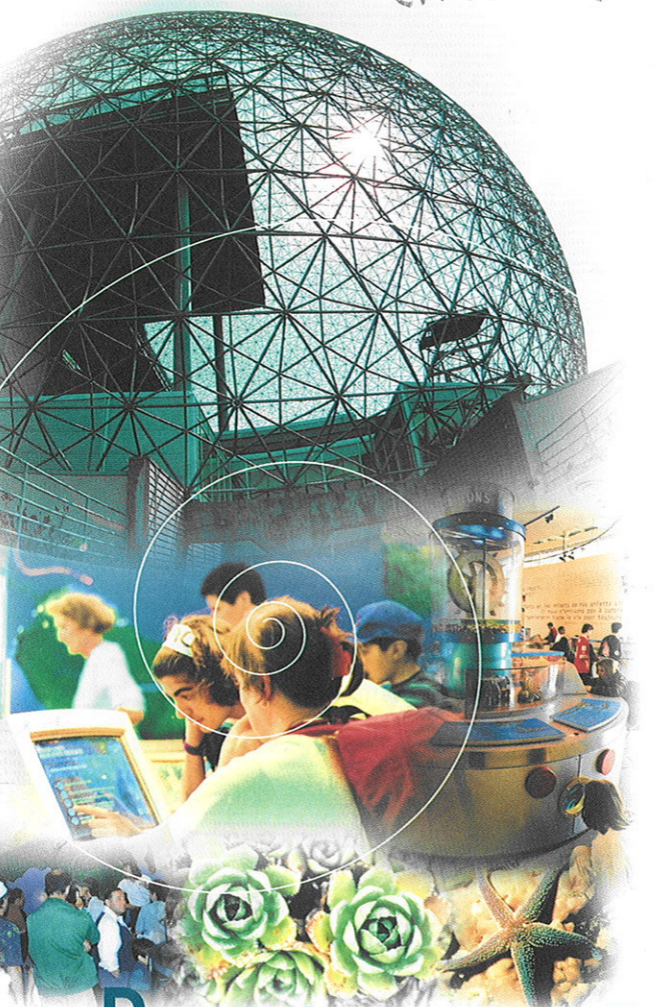


EAU012e
(1997-98)



The BIOSPHERE

ECOWATCH
CENTRE

All about Water, from
the St. Lawrence River
to the Great Lakes

19⁹⁷/₉₈

Canada

Québec Biblio. Env. Canada Library



38 504 128

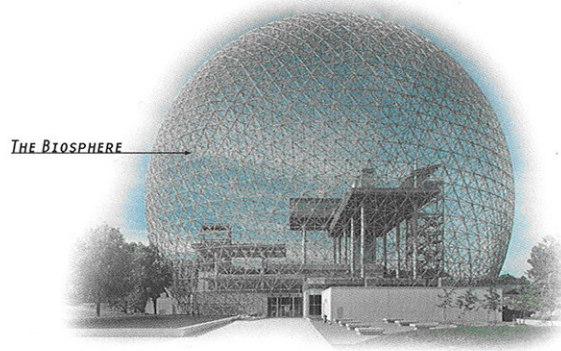


BIOSPHERE

As Canada's first Ecowatch Centre, the Biosphere is a forum to share information and one of the best documented centres on water and major aquatic ecosystems, in particular the St. Lawrence River and the Great Lakes. A hub of environmental excellence, the Biosphere's mission is to encourage its visitors and others who come seeking information on how to protect water resources.

THE BIOSPHERE IS:

- ◊ An awareness of water's vital importance;
- ◊ Four large exhibition halls and customized tours;
- ◊ An experienced team of guides;
- ◊ A diversified network of ecowatchers;
- ◊ A leading-edge, action-oriented information centre;
- ◊ A forum for discussion and an interactive educational facility.



THE BIOSPHERE

BRIEF BACKGROUND

The masterpiece of American architect R. Buckminster Fuller that served as the US pavilion at the 1967 World's Fair, the Biosphere was partially destroyed by fire in 1976. On the occasion of Montreal's 350th anniversary, Environment Canada teamed up with the City to give it a new role, that of promoting the protection of water in the drainage basin formed by the St. Lawrence River and the Great Lakes and showing the public how to use water more wisely.

EXHIBITS AND ACTIVITIES

- ◊ Discover water's importance for life on earth in the Discovery Hall;
- ◊ *The St. Lawrence River: Handle with Care!* exhibit shows the many aspects of our mighty river and the Great Lakes;
- ◊ Get an aerial view of the River in the Visions Hall;
- ◊ Come sail away in the Connections Hall, which has six circular moving screens, and learn about the Biosphere's Ecowatch Network;

- ◊ Explore water with your children through games, experiments and shows;
- ◊ In the Water Theatre, let yourself be captivated by Michel Garneau's mythological tale describing the adventures of the goddess of water;
- ◊ Enjoy the splendid view of Montreal and the surrounding area from the Lookout.



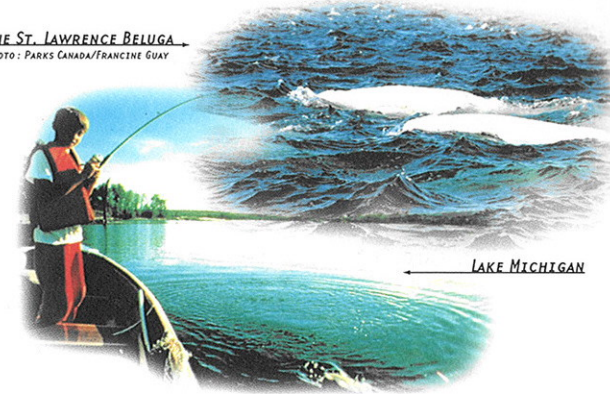
SNOW GOOSE FROM CAP TOURMENTE

THE ECOWATCH NETWORK

The Ecowatch Network is one of the Biosphere's most original initiatives and one of its main sources of information:

- ◊ Bringing together individuals, community organizations, municipalities, schools and research centres;
- ◊ Constantly creating and adding to databases on water, the St. Lawrence River and the Great Lakes;
- ◊ Pooling scientific research and experiments carried out by the public;
- ◊ Sharing ideas and solutions to environmental problems.

THE ST. LAWRENCE BELUGA PHOTO: PARKS CANADA/FRANCINE GOUY

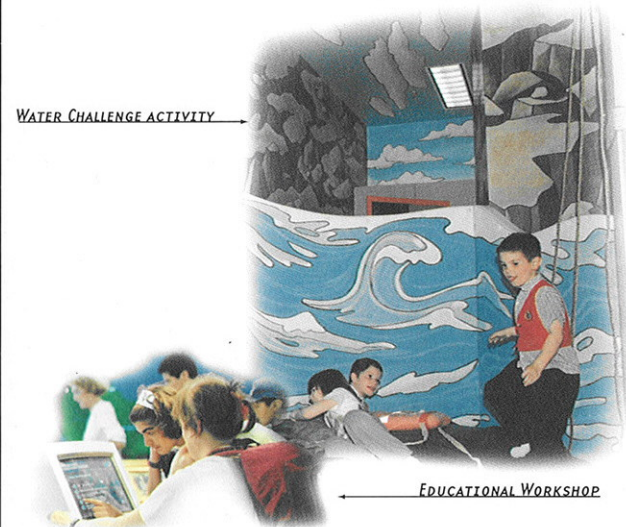


LAKE MICHIGAN

INFORMATION AND ACTION

At the Biosphere's Eco-action Centre, you can:

- ◊ Learn about the Biosphere Ecowatch Network, its members and their activities;
- ◊ Undertake concrete action in favour of the environment;
- ◊ Have access to a range of documents (books, videos, films, etc.) and Internet web sites on water, aquatic ecosystems and the environment;
- ◊ Demonstrate your commitment to ecology and sustainable development.



EDUCATIONAL WORKSHOP



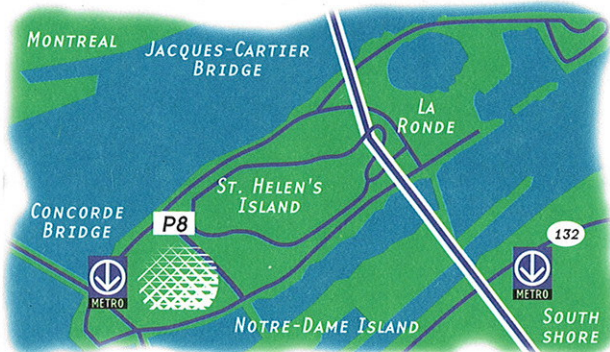
DISCOVERY HALL

GENERAL INFORMATION

The Biosphere
160 Chemin Tour de l'Isle
St. Helen's Island, parc des Îles
Montreal, Quebec, Canada H3C 4G8

Telephone: (514) 283-5000
Fax: (514) 283-5021
The Biosphere's web site:
<http://www.wul.qc.doe.ca/biospher>

Group reservations and room rentals:
(514) 496-8282



HOW TO GET THERE

By Car:

Jacques-Cartier Bridge, parc des Îles exit.
Limited parking near the Biosphere.
Additional paid parking at La Ronde (P8)
in the summer.

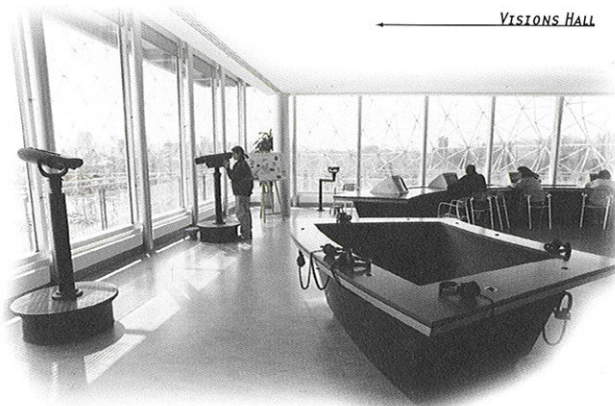
Public Transit:

Île Sainte-Hélène metro station.
10% discount off your entrance fee with proof
of public transit use.

River Shuttle (in season):

Old Port of Montreal to St. Helen's Island.

(CETTE PUBLICATION EST ÉGALEMENT DISPONIBLE EN FRANÇAIS)



OPENING HOURS

Summer schedule (June 24 to September 1, 1997):

10:00 am to 6:00 pm daily.

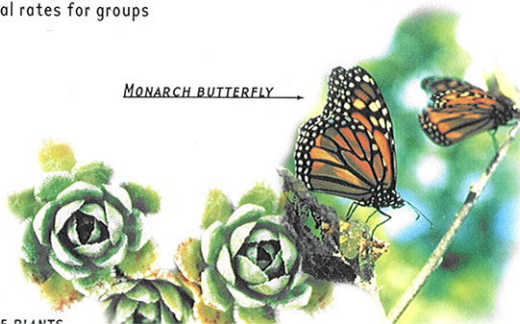
Fall-winter schedule:

10:00 am to 5:00 pm. Closed Mondays as well as
December 25 and 26, 1997 and January 1, 1998.

ADMISSION

Adults:	\$6.50
Students and seniors (with ID):	\$5.00
Youths, 7-17 years:	\$4.00
Children 6 and under:	free
Family rate*:	\$16.00

* 2 adults, 2 children or 1 adult, 3 children
Member of Carte Accès Montréal
Special rates for groups



CUSTOM-MADE SERVICES

- ♦ School programs designed for primary- and secondary-school students:
 - two-hour workshops attract more than 25,000 children per year,
 - pre-visit material available;
- ♦ A 90-minute Youth Rally for up to 160 youngsters;
- ♦ A workshop specially designed for seniors;
- ♦ Custom-made tours for all ages, followed by a mini-conference, if required, or a question-and-answer period with a scientific adviser.



OTHER SERVICES

- ♦ For your special events, the Biosphere rents its rooms, including, upon request, the services of technicians, a caterer, etc.
- ♦ Restaurant open year-round with an outdoor terrace in the summer.