

HD9529
.P52
C35

c. 1 aa

Metal Pipe and Tube from Canada



Canada. Dept. of Industry, Trade and Commerce. Resource Industries Branch.



Metal Pipe and Tube from Canada

Prepared by: Resource Industries Branch
Department of Industry, Trade and Commerce
235 Queen Street
Ottawa, Ontario, Canada
K1A 0H5

1978 Edition

CONTENTS

	Page
Introduction	5
Alcan Canada Products Limited	
Mill Products Division	6
The Algoma Steel Corporation, Limited	
Tube Division	7
Anaconda Canada Limited	8
Associated Tube Industries Limited	9
Barton Tubes Limited	10
Canadian Phoenix Steel Products Ltd.	11
Canron Limited	
Pipe Division	12
Cappco Tubular Products Limited	13
Douglas Bros	
A Division of The Robert Mitchell Company Limited	14
Granges Nyby Canada Limited	15
Interprovincial Steel and Pipe Corporation Ltd.	16
Noranda Metal Industries Ltd.	17
Prudential Steel Ltd.	18
Pyrotanax of Canada Limited	19
Reynolds Extrusion Company Limited	20
Sidbec-Dosco Limited	21
Sonco Steel Tube Limited	
A Jannock Company	22
Stanton Pipes Limited	23
The Steel Company of Canada, Limited (Stelco)	24
Wolverine Division	
UOP Manufacturing Limited	25
Canadian Metal Pipe and Tube Producers	26



INTRODUCTION

Canada's metal pipe and tube industry — a major contributor to the rapid expansion of the nation's manufacturing capabilities and its increasing sophistication as an industrial producer — has earned worldwide recognition for its many pioneering roles. Because its products are a vital part of almost every industrial activity, the industry has been subjected to many exacting demands. It has met them — and surpassed them.

For Canada's ever-expanding oil and gas industry for example, it has provided high-volume, quality production. Oil and gas pipeline transportation facilities now span Canada from western oilfields to the eastern markets and to points on the Canada-United States border. The next expansion is to the Arctic.

Worldwide interest in massive desalinization projects for domestic, industrial and agricultural purposes has accelerated in many countries. The Canadian metal pipe and tube industry has demonstrated its capacity and capabilities to be a major supplier in this field.

With exploding urban populations and modernization of rural areas, water distribution facilities of all types will figure prominently in the growth of the industry.

Generally, the industry grows in direct relationship to the rate of construction, and the development of the automotive, chemical, food and beverage processing industries, and hydro-electric transmission facilities.

Canada's leading role in the development of nuclear power has also brought with it an expertise in microprecision pipe production by highly qualified technical personnel. And Canadian pipe manufacturers are constantly engaged in researching new product development to meet the stringent piping needs of Canada's chemical industry.

Modern fabrication facilities and continuous improvement of processes and techniques have equipped the Canadian metal pipe and tube industry to offer a vitally important facility in manufacturing to customer specifications in new and specialized fields. Along with a high capability for volume production, the industry offers traditional Canadian craftsmanship, competitive pricing and firm delivery dates.

This booklet, produced by the Canadian Department of Industry, Trade and Commerce in co-operation with the companies listed, is designed to assist buyers to locate reliable sources of supply.

A reference chart has been included to show at a glance the specialties offered by leading companies. Further information on their capabilities and products is available from the Regional or Canadian Trade Commissioner office in your area.

Alcan Canada Products Limited

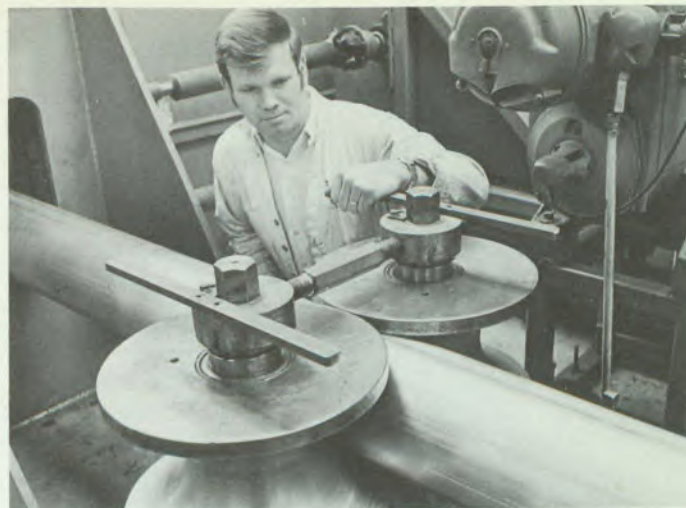
Mill Products Division

P.O. Box 269
Toronto-Dominion Centre
Toronto, Ontario, Canada
M5K 1K1

Contact: C. Gregor-Pearse
National Manager, Marketing and Sales
Rolled Products Division

Alan H. Brown
National Manager, Marketing and Sales
Extrusion Division

Tel: (416) 366-7211
Telex: 06-22641
Cable: ALCAN TORONTO



Alcan has had some 40 years' experience in extrusion, processing and tubing manufacture. Equipment includes 14 extrusion presses, draw benches, and seam welding equipment operating in seven locations across Canada. Aluminum tubing products are produced for commercial, electrical and industrial applications. Service is supported by strong research and technical groups offering expert assistance to the customer in design, corrosion and fabricating information.

TYPES OF PRODUCTS

Pipe and tubing for oil field, gas pipeline systems, industrial, water, irrigation, highway railing and lighting, structural, furniture tubing, cable sheathing, conduit, tubular bus, refrigerator tubing, scaffolding, heat exchanger and other clad tubing.



Alcan has sales outlets from coast to coast, and seven regional plants.

SALES OFFICES

Moncton, New Brunswick
Tel: (506) 855-0492

Laval, Quebec
Tel: (514) 667-8330

Aurora, Ontario
Tel: (416) 727-4238

Winnipeg, Manitoba
Tel: (204) 667-6185

Calgary, Alberta
Tel: (403) 262-6106

Vernon, British Columbia
Tel: (604) 545-2265

Vancouver, British Columbia
Tel: (604) 736-8311

PLANT LOCATIONS

Alcan Canada Products Limited:
Laval, Quebec; Kingston and
Aurora, Ontario; Winnipeg, Man-
itoba; Calgary, Alberta; Vancouver
and Vernon, British Columbia.

INTERNATIONAL SALES AFFILIATES

Alcan has worldwide sales affiliates to give speedy service in all markets. You are invited to enquire at the Toronto address given above or at your nearest Alcan trading unit.

Alcan Aluminum Corporation
P.O. Box 6619
Cleveland, OH 44101, U.S.A.
Tel: (216) 523-6803
Telex: 0098-5324

Alcan Aluminio America
Latina S.A.

P.O. Box 33.015
Rio de Janeiro ZC72
R. J. Brazil
Tel: 294-4859
Telex: 021-21591 REAL BR

Alcan Aluminium (U.K.) Limited
Alcan House, 30 Berkeley Square
London, England W1X 6DP
Tel: 01-493-1618
Telex: 261911

Alcan S.A.
Case postale,
CH-8022 Zurich, Switzerland
Tel: 01/47 87 00
Telex: 52295 a alca ch

Alcan Metall GmbH
Bockenheimer Landstrasse 10
D-6000 Frankfurt am Main 1
West Germany
Tel: Frank (0611) 72 03 31
Telex: 414294 alcan d

Alcan Asia Limited
G.P.O. Box 2121, Hong Kong
Tel: 5-223001
Telex: 73260 ALCAN HX

The Algoma Steel Corporation, Limited

Tube Division

P.O. Box 1400
Sault Ste. Marie, Ontario, Canada
P6A 5P2

Contact: R. M. McCracken
General Manager, Tubular Products

Tel: (705) 945-3495
Telex: 06-777168

The Tube Division of Algoma Steel is Canada's largest producer of seamless oil country tubular goods. Seamless products include casing, line and standard pipe and mechanical tubing. As a division of a fully integrated steelworks, with production capability of some four million tons of raw steel, the tube manufacturing facility receives specially prepared tube rounds for the production of seamless products.

Operating since 1956, this division has a rated capacity of 250,000 tons of finished pipe. Located at the hub of the Great Lakes, Algoma's Tube Division transports its product to North American and world markets by rail, truck and vessel.

Specially developed, heat-treated grades of casing include Modified N-80 and Soo-90 to resist H₂S environments. High strength Soo-95, Soo-125, Soo-140 and Soo-155 casing has also been developed.

PLANT LOCATION

Sault Ste. Marie, Ontario
Contact: L. E. Franceschina
General Manager

TYPES OF PRODUCTS

Seamless oil well casing, line and standard pipe, mechanical tubing

COMPOSITION

Carbon and alloy steels to AISI specifications — all steels fully killed and made to fine grained practice

MANUFACTURING PROCESS

Hot rolled, hot finished by the Mannesmann rotary piercing process

SIZE RANGE

4¹/₂" to 12³/₄" OD
0.200" to 1.600" wall thickness
48' max. length

MANUFACTURING SPECIFICATIONS

API; AISI; ASTM; ASME; CSA; SAE; government and military standards

SPECIAL FACILITIES AND SERVICES

Hydrostatic testing to 13,000 psi; stress relieving; normalizing; quench and tempering

TESTING FACILITIES

Magnetic particle, electromagnetic and ultrasonic inspection; hardness; impact; physical testing and metallurgical laboratory facilities

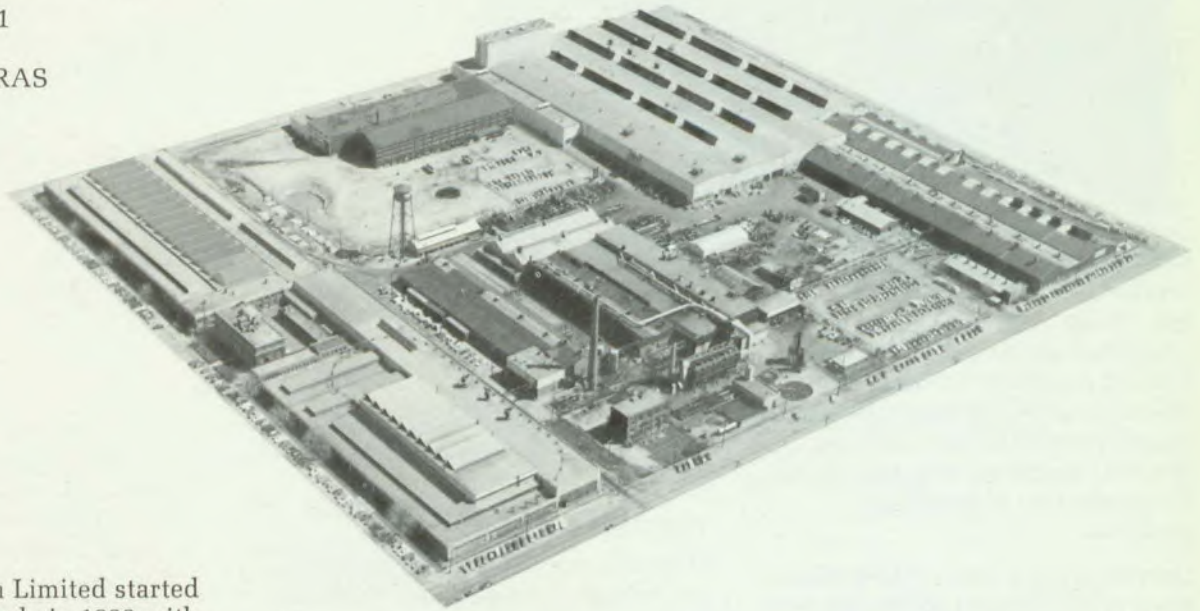


Anaconda Canada Limited

260 Eighth Street
Toronto, Ontario, Canada
M8V 3E1

Contact: André Nykamp
Export Sales Manager

Tel: (416) 259-6611
Telex: 60-967643
Cable: COPPERBRAS



Anaconda Canada Limited started operations in Canada in 1922 with the purchase of a small brass rolling mill in New Toronto. Until the end of World War II it was the only copper and copper alloy mill in Canada. Since its establishment, the firm has made major investments in building new facilities and in increasing both the area of its plant and the range of its equipment. Anaconda has expanded to meet growing Canadian demands and has built up an export business which has served more than 60 countries. Principal divisions comprise: casting shop, tube mill, rolling mill, rod mill, and engineering and metallurgical departments.

PLANT LOCATION

Anaconda Canada Limited
260 Eighth Street
Toronto, Ontario
M8V 3E1

TYPES OF PRODUCTS

Copper water and drainage tube; heat exchanger and condenser tube; refrigeration and air-conditioning tube; capillary and restrictor tube; bus conductor tube and pipe; electrical; industrial; automotive; round; square and irregular shapes

COMPOSITION

Copper; copper alloys

MANUFACTURING PROCESS

Seamless cold drawn

SIZE RANGE

Copper 1/16" O.D. to 8⁵/₈" O.D. in a wide range of gauges and lengths; alloys, minimum and maximum dimensions vary by alloy and trade requirements

MANUFACTURING SPECIFICATIONS

ASTM; ASME; SAE; Canadian and U.S. Government; Military; customer specifications

SPECIAL FACILITIES AND SERVICES

Multiple drawing, annealing, extrusion, piercing and straightening equipment; automatic bundling; carpenter and packaging facilities; company transporting

TESTING FACILITIES

Chemical; metallurgical; spectrographic; air flow; hydrostatic; eddy current

Associated Tube Industries Limited

7455 Woodbine Avenue
Markham, Ontario, Canada
L3R 1A7

Contact: G. D. McRae, General Manager
F. J. Mills, Sales and Marketing Manager

Tel: (416) 495-6464
Telex: 06-217644
Cable: ATICANCO (TORONTO)

Associated Tube Industries Limited (A.T.I.) was founded in 1955. It is located in the suburbs of Toronto at Markham, Ontario in a modern plant covering more than 100,000 square feet on a nine-acre site.

In the United States, A.T.I.'s interests are also served through its subsidiary, Tube Manufacturing Company, Inc. in Somerville, New Jersey.

Associated Tube Industries is the largest Canadian manufacturer of nickel alloy and stainless steel tubing. A substantial portion of its output is exported throughout the world.

TYPES OF PRODUCTS

Element Tubing

Welded nickel alloy and stainless steel tubing for electrical heating elements used in domestic ranges and heating devices; normally supplied in random or cut lengths with plain cut, bead or dimple ends.

Small Diameter As-Welded Tubing

Welded nickel alloy and stainless steel tubing used for food, liquid and beverage equipment; instrumentation tubing used for chemical, petrochemical, power generation industries; thermocouple, ornamental and mechanical applications.



Specification Tubing and Pipe

Welded and cold worked to meet specifications including ASTM A-249, A-269, A-270, A-312, A-450, ASME, SA 249, etc. for heat exchangers, condensers, feedwater heaters, evaporators, used in the power generation, heavy water, pulp and paper, petrochemical, sanitary and general process industries.

Mechanical and Ornamental

As-welded tube for food handling, hospital and kitchen, transportation industries; tube furnished with mill, grit, or polished finish.

Fabricated Parts

Formed parts made from stainless and nickel alloy tubing for the automotive and appliance industries. Fabricating process included beading, forming, expanding, staking, upsetting, and joining. Typical applications are exhaust gas recirculation, air injection, choke assemblies, and structural elements.

COMPOSITION

Most common alloys are Incoloy 800, 840, AISI T304, 304L, 309, 316, 316L, 321, 409, Inconel 600, and titanium alloys; other grades upon request

SIZE RANGE

As-welded element and small diameter tubing $3/16''$ to $3/4''$ diameter in wall sizes of $.018''$ to $.065''$. The specification, mechanical and ornamental tubing, is available in $3/16''$ to $2\frac{1}{2}''$ diameter in wall sizes of $.020''$ to $.120''$

TESTING FACILITIES

Corrosion testing to ASTM A262-70T, tensile testing, metallographic investigations, non-destructive and destructive testing as required to meet customer specifications

Barton Tubes Limited

Burlington, Ontario, Canada
L7K 3Y2

Contact: C. G. Crawford, President

Tel: (416) 637-8261

Telex: 021-738

Cable: BARTONTUBE

Barton Tubes Limited has carried out a continuous expansion and diversification program since it was formed in 1952 and is now one of Canada's largest suppliers of high quality welded steel tubing. Barton has done considerable work in the automotive and industrial fields and is geared to give rapid deliveries of large or small steel tube orders. The plant, located in the centre of Canada's steel producing area, has immediate access to large quantities of steel and can quickly fill large volume orders on short notice.

PLANT LOCATION

Barton Tubes Limited
2170 Queensway Drive
Burlington, Ontario

TYPES OF PRODUCTS

Mechanical, electrical, conduit and agricultural

COMPOSITION

Steel

MANUFACTURING PROCESS

Welded

SIZE RANGE

$1\frac{1}{2}'' \times .028''$ to $3\frac{1}{2}'' \times .165''$

MANUFACTURING SPECIFICATIONS

ASTM

SPECIAL FACILITIES AND SERVICES

Bending and fabricating

TESTING FACILITIES

Full metallurgical



Canadian Phoenix Steel Products Ltd.

289 Horner Avenue
Toronto, Ontario, Canada
M8Z 4Y4

Contact: I. S. MacDonald, Vice-President

Tel: (416) 259-1113

Telex: 06-967775

Canadian Phoenix Steel Products Ltd., a 100 per cent Canadian-owned company, manufactures a wide range of quality products from its Toronto-based operation.

Three production lines provide tremendous versatility enabling Canadian Phoenix to accommodate a variety of requirements simultaneously.

TYPES OF PRODUCTS

Spiral welded steel pipe in diameters ranging from 6⁵/₈" OD to 62" OD for pressure transmission pipelines, foundation piling, structural members

MANUFACTURING PROCESS

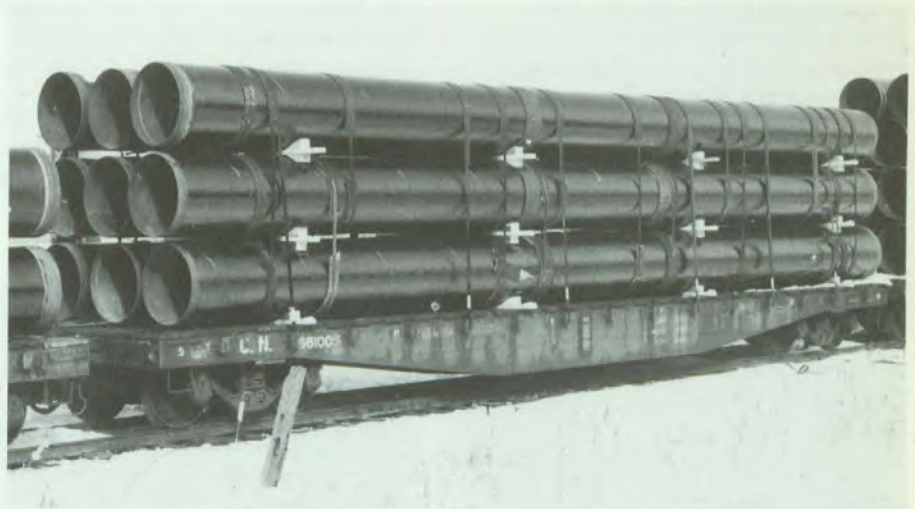
Double submerged arc

MANUFACTURING SPECIFICATIONS

ASTM A252, grades 1, 2, and 3

A139, grades A, B, C,

AWWA C200



Canron Limited

Pipe Division

2120 Sherbrooke Street East
Montréal (Québec) Canada
H2K 1C3

Contact: Roger Duval
Manager, Export Sales

Tel: (514) 527-3121
Telex: 05-24262
Cable: CANIRON

Canron Limited, a Canadian-owned and managed corporation, has grown from what was basically an iron pipe and foundry operation to an international manufacturer of iron, concrete and plastic pipe, foundry products, machinery for heavy industry and railway track maintenance equipment. The company is also a fabricator and erector of structural steel.

SALES OFFICES

639 Windmill Road
Dartmouth, Nova Scotia
B3B 1B6
Tel: (902) 469-8181

1375 Boulevard Charest West
Suite 31
Quebec, Quebec
Tel: (418) 688-8336

227 St. Maurice
Trois-Rivières, Quebec
G9A 3N8
Tel: (819) 378-4801

10350 Ray Lawson Boulevard
Ville d'Anjou, Quebec
H1J 1M2
Tel: (514) 352-6600

P.O. Box 9206
R.R. No. 6
Hawthorne Road
Ottawa, Ontario
K1G 3T6
Tel: (613) 521-5653-54-55

169 Eastern Avenue
Toronto, Ontario
M5A 1H7
Tel: (416) 363-8801

1550 Dublin Avenue
Winnipeg, Manitoba
R3E 0L4
Tel: (204) 786-8746

310 Mayfair Place
6707 Elbow Drive South West
Calgary, Alberta
T2V 0E5
Tel: (403) 252-1172

1550 Alberni Street
Suite 401
Vancouver, British Columbia
V6G 1A5
Tel: (604) 682-4631

TYPES OF PRODUCTS

Ductile iron pipe and prestressed concrete pressure pipe for water transmission, fittings, hydrants.

Wear-resistant pipe (WR) — a highly abrasion-resistant iron alloy for various applications including slurry pipelines transporting fly ash, mine tailings, smelter slag, etc.

SIZE RANGE

Ductile iron — 4" nom. diameter and up
Concrete — 14" nom. diameter and up
Wear-resistant — 4" to 24" nom. diameter

MANUFACTURING SPECIFICATIONS

ASTM, AWWA, ANSI, CSA, ISO



Cappco Tubular Products Limited

P.O. Box 70
Hamilton, Ontario, Canada
L8N 3B4

Contact: Charles Coughlan

Tel: (416) 528-1191

Cable: COMINT 061-8620

Cappco Tubular Products Limited is a wholly owned subsidiary of Intermetco Limited. It has been engaged in the tubular steel pipe business for more than 35 years. Currently, the company is exclusive distributor for one of the largest steel mills in Canada for steel pipe piling and hollow structural sections. It also exports substantial quantities of secondary steel products generated by domestic mills.

LOCATION

Head Office —
1 James Street North
Lloyd D. Jackson Square
Hamilton, Ontario

BRANCH OFFICES AND STORAGE LOCATIONS

Vancouver, British Columbia
Montreal, Quebec
Buffalo, New York

TYPES OF PRODUCTS

Hollow Structural Sections — Hot formed range 1" square up to 4" square with corresponding rectangles. Cold formed range 5" square up to 12" square with corresponding rectangles. Grades A500, A501, Stelcoloy (Corten) and R.O.P.S.

Tubular Steel Piling — 6⁵/₈" OD up to 48" OD, electric resistance weld and submerged arc weld process. Grade ASTM A252 from Grade 2 up to and including 50,000 minimum yield

Steel Products — Surplus and secondary steel and tubular products produced by Canadian mills



Douglas Bros

A Division of The Robert Mitchell Company Limited

350 Décarie Boulevard
Montréal (Québec) Canada
H9W 4T9

Contact: P. E. Dostie

Tel: (514) 747-2471

Telex: 05-825854

Founded in 1875, Douglas Bros, a division of The Robert Mitchell Co. Limited, pioneered in the introduction of stainless steel pipe and fittings to the pulp and paper industry.

The complete line of metalworking facilities in its Canadian and United States plants permit production of pipe of standard and non-standard sizes and wall thicknesses to satisfy special needs of industries such as chemical, petrochemical, atomic energy, water-treatment food and others.

More than 300,000 square feet of manufacturing area served by overhead cranes is available.

PLANT, SALES AND WAREHOUSE LOCATIONS

705-A Boundary Road
Cornwall, Ontario, Canada
Tel: (613) 933-5741

5350 Maingate Drive
Mississauga, Ontario, Canada
L4W 1R8
Tel: (416) 625-8334
Telex: 06-961416

245 Fell Avenue
North Vancouver, British Columbia,
Canada
V7P 2K1
Tel: (604) 986-4613
Telex: 04-352676

Riverside Industrial Park
Portland, Maine, 04104, U.S.A.
Tel: (207) 797-6771
Telex: 0094-4412

TYPES OF PRODUCTS

Pipe and fittings manufactured in ID, OD and IPS sizes. Fabrication of piping spools to customer drawings and specifications

COMPOSITION

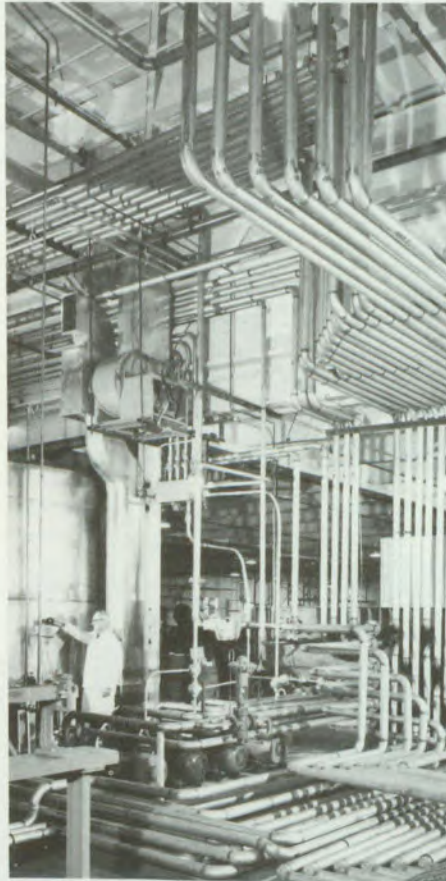
Various grades of stainless steel and other alloys

MANUFACTURING PROCESS

Pipes and fittings are carefully die-formed and rolled true to dimensions and round within standard commercial tolerance. Longitudinal seams of pipe and fittings as well as spiral weld on pipe are automatically welded by Tungsten Inert Gas (T.I.G.) or Metal Inert Gas (M.I.G.) process

SIZE RANGE

1½" diameter and up



SPECIAL FACILITIES AND SERVICES

Well staffed and equipped to handle piping projects of any size and complexity. Offers complete spooling services by itemizing cus-

tomers' piping layouts into conveniently handled and easily identified pipe spools

In co-operation with other divisions of the group, Douglas Bros offers economical industrial piping packages, combining stainless steel with carbon steel and alloy pipe or any other material specified

Piping spools will carry U.A. label if required

TESTING FACILITIES

Hydrostatic, pneumatic, X-ray, gamma ray, ultrasonic, magnaflux, spectrograph, magnetic particle, tensile, brinnell, etc.

Granges Nyby Canada Limited

P.O. Box 756
150 California Avenue
Brockville, Ontario, Canada
K6V 5W1

Contact: George Martin, "As Welded" Pipe
Don Walton, Specification Pipe

Tel: (613) 342-8471
Telex: 066-36539
Cable: NYBYCAN

Situated in the heart of the Thousand Islands in Brockville, Ontario, Granges Nyby Canada Limited (NYBY) has one of the most modern mills of its kind in North America for the manufacture of "As Welded" and ASTM A312/A358 stainless steel pipe. Since opening in 1970, NYBY has provided pipe and fittings for the rapidly growing pulp and paper industry and was one of the first in Canada to manufacture A312 pipe for use in the petrochemical industry. NYBY currently exports to the United States and is looking forward to expanding its market to customers around the world.

PLANT LOCATION

Granges Nyby Canada Limited
150 California Avenue
Brockville, Ontario, Canada
K6V 5W1
Tel: (613) 342-8471

TYPES OF PRODUCTS

Stainless steel pipe and fittings

MANUFACTURING PROCESSES

Sheared, cold formed, straight seam welded, annealed, pickled and passivated

SIZE RANGE

"As Welded"
3" to 50", OD, ID, IPS.
Wall Range — .078" to .312"

A312/A358

3" to 12", Sch 5, Sch 10 and Sch 20
3" to 8", Sch 40
Larger sizes to 24" available in
A358 or A409

MANUFACTURING SPECIFICATIONS

ASTM — A312/A358
TAPPI, CPPA — "As Welded"

TESTING FACILITIES

Hydrostatic, tensile, reverse bends and flattening, hardness



Interprovincial Steel and Pipe Corporation Ltd.

P.O. Box 1670
Regina, Saskatchewan, Canada
S4P 3C7

Contact: Bruce Yeo, Vice-President, Research and Development

Tel: (306) 543-4530
Telex: 071-2269
Cable: IPSCO

Interprovincial Steel and Pipe Corporation Ltd. (IPSCO) was incorporated in 1956 and is an integrated steel and pipe manufacturer. For the past 20 years it has provided pipe primarily to the Canadian oil and gas industry, with a growing percentage of sales of tubular products to export markets. IPSCO offers the widest range of line pipe sizes in Canada, from $1/2''$ to 80'' diameter for use in high-pressure pipeline applications, produced to API specifications. In addition to line pipe, IPSCO produces oil and gas well casing and structural tubing. IPSCO is interested in increasing exports and is prepared to serve customers anywhere.



PLANT LOCATION

Interprovincial Steel and Pipe Corporation Ltd.
P.O. Box 1670
Regina, Saskatchewan
S4P 3C7
Tel: (306) 525-4530

TYPES OF PRODUCTS

Steel line pipe; oil, gas and water well casing and tubing, pressure tubing, water line pipe; structural tubing; large diameter spiral weld pipe

COMPOSITION

IPSCO can supply steel pipe to all recognized specifications within size and gauge ranges produced and has developed steels to meet specifications designed for Arctic pipeline construction. A complete list of specifications will be supplied on request

MANUFACTURING PROCESSES

Electric furnace steel; hot rolled skelp; continuous cold forming and electric resistance welding; spiral



weld large diameter double submerged arc

SIZE RANGE

$1/2''$ -16'' OD (ERW); spiral weld, 18''-80'' OD double submerged arc, pressure tubing $1/2''$ -2 $3/8''$ diameter

MANUFACTURING SPECIFICATIONS

API; ASTM; AWWA; CSA

SPECIAL FACILITIES AND SERVICES

Normalizing and ultrasonic inspection of weld and surface area

TESTING FACILITIES

Tensile; impact; hardness; photometric; ultrasonic; complete chemical testing

Noranda Metal Industries Ltd.

P.O. Box 1158, Station "A"
Montréal (Québec) Canada
H3C 2Y4

Contact: J. Vander Kuyp, Manager, International Marketing and Sales

Tel: (514) 645-8741
Telex: 05-828776
Cable: NORMILLS

Noranda Metal Industries Ltd., a wholly-owned subsidiary of Noranda Mines, Limited, forms the final link in the mine-to-market chain of the Noranda group of companies. This completely integrated operation consists of plants in Montreal, Quebec, and New Westminster, British Columbia. Quality control from mine through smelter, refinery and mill has benefited tube buyers throughout the world. Established in 1963, the Noranda Research Centre at Pointe Claire, near Montreal, provides fundamental and applied research facilities for the Noranda group of companies. Metallurgy is the underlying theme in much of the work carried out at the centre.

PLANT LOCATIONS

Noranda Metal Industries Ltd.
Durocher and Sherbrooke Streets
Montreal East, (Quebec)
Tel: (514) 645-8741
Telex: 05-828776

Noranda Metal Industries Ltd.
Annacis Island
920 Derwent Way
New Westminster, British Columbia
Tel: (604) 526-3661
Teletype: NMINWE

Noranda Metal Industries Inc.
Prospect Drive
Newton, Connecticut 06470, U.S.A.
Tel: (203) 426-4431
Telex: 00969631

TYPES OF PRODUCTS

Copper water and drainage tube; refrigeration and air-conditioning, condenser and heat exchanger tube; fuel, automotive and general purpose tubing; tube for fabrication; bus pipe, etc.

COMPOSITION

Copper and copper base alloys

MANUFACTURING PROCESSES

Seamless — extruded, drawn and pilgered

SIZE RANGE

1/4" x .018" to 4 1/8" OD x .165"

MANUFACTURING SPECIFICATIONS

ASTM; CSA; BSS; DIN; Canadian government and customers' specifications

TESTING FACILITIES

Complete physical and chemical facilities for in-process control and final tests

Prudential Steel Ltd.

P.O. Box 1510
Calgary, Alberta, Canada
T2P 2L6

Contact: Lee S. Thompson
Vice-President

Tel: (403) 263-7820

Prudential Steel Ltd. began operations in December 1966 in a plant which is ranked among the world's most modern pipe making, structural steel and fabricating facilities. The 70-acre complex supplies steel pipe and tube used extensively in the oil industry. Backed by highly qualified staff and by specialized production techniques, the firm is a leading manufacturer of pipe for a broad range of applications.

SALES AND ADMINISTRATION OFFICES

Prudential Steel Ltd.
444 - Fifth Avenue Southwest
1900 Daon Building
Calgary, Alberta
Tel: (403) 263-7820

PLANT LOCATION

Prudential Steel Ltd.
8919 Barlow Trail Southeast
Calgary, Alberta

TYPES OF PRODUCTS

Plain or bevelled-end line pipe; standard, refinery and structural pipe; pipe for transmission of gases, fluids, or solids, and for use with corrosives. Structural steel squares and rectangles for the manufacturing and building industries. Extensive fabrication facilities, utilizing company products permit undertaking of any fabrication project.

COMPOSITION

Steel and steel alloys

MANUFACTURING PROCESSES

High frequency resistance weld using a VT 280 Thermatool Welder; post-weld heat treat

SIZE RANGE

2³/₈"-8⁵/₈" x .064"-.500"; lengths to 60' without circumferential weld

MANUFACTURING SPECIFICATIONS
API; ASTM; AWWA

SPECIAL FACILITIES AND SERVICES

External pipe coating

TESTING FACILITIES

Complete physical and chemical testing; ultrasonic; ring-gauging; flattening; hydrostatic; optical



Pyrotenax of Canada Limited

250 West Street
Trenton, Ontario, Canada
K8V 5S2

Tel: (613) 392-6571
Telex: 06-62259

Pyrotenax of Canada Ltd. began manufacture of welded stainless steel tubing in 1976. Equipped with the most modern facilities it produces high quality pressure tubing to ASTM A249 specification together with tubing for mechanical and ornamental purposes.

PLANT LOCATION:

Pyrotenax of Canada Limited
250 West Street
Trenton, Ontario, Canada
K8V 5S2
Tel: (613) 392-6571

TYPES OF PRODUCT:

Stainless steel tubing to ASTM A249, A269, A554 and various ornamental categories

MANUFACTURING PROCESSES:

TIG weld mill with bead hammer unit, draw bench, bright annealing furnace straightening, passivation tanks.

SIZE RANGE:

Dia: $\frac{1}{2}$ " OD — 2" OD
Wall Thickness: up to .083"

TESTING FACILITIES:

Eddy current and mechanical testing per A249.
Laboratory facilities for metallurgical evaluation.



Reynolds Extrusion Company Limited

500 Edward Avenue
Richmond Hill, Ontario, Canada
L4C 4Y9

Contact: R. C. M. Beresford
General Sales Manager

Tel: (416) 884-9161
Cable: REXALUMIN

Reynolds Extrusion Company Limited is a member of an international organization, the third largest in the world, engaged in the production and fabrication of aluminum and aluminum alloys. The company was formed in 1962 with the amalgamation of three well-established Canadian aluminum fabrication companies producing aluminum alloy tube and other extrusions. With two plants, one in Ontario and the other in Quebec, it is in an excellent position to serve all export markets.

PLANT LOCATIONS

Reynolds Extrusion Company Limited
Richmond Hill, Ontario
Tel: (416) 884-9161

Reynolds Extrusion Company Limited
Ste. Thérèse, Quebec
Tel: (514) 435-6551

TYPES OF PRODUCTS

Extruded tube and pipe; drawn tube for mechanical and water applications; conduit, architectural and refrigeration tubing

COMPOSITION

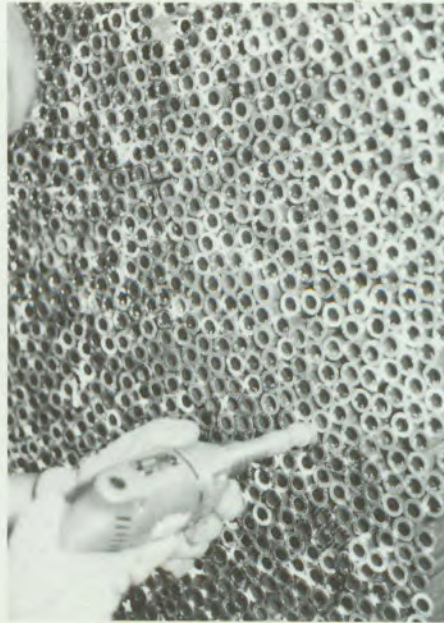
Aluminum alloys

MANUFACTURING PROCESSES

Extrusion — hot pressure welded, tube drawing, electrostatic painting

SIZE RANGE

Extruded tube, 1/4"-6" OD; drawn tube, 3/8"-2" OD



MANUFACTURING SPECIFICATIONS

CSA; ASTM; Lloyd's Register; Canadian Government

SPECIAL FACILITIES AND SERVICES

Stretching, bending, heat treat, polishing, painting and fabrication

TESTING FACILITIES

Spectrographic analysis, tensile and hardness, electrical conductivity



Sidbec-Dosco Limited

P.O. Box 249
Montréal (Québec) Canada
H3C 2H6

Contact: J. R. Archer

Tel: (514) 392-7622

Sidbec-Dosco Limited has been manufacturing steel pipe since 1910 and is one of Canada's leading suppliers to the oil and gas, plumbing and heating, industrial construction and electrical conduit industries. The firm is represented across the country. An integrated steel organization, Sidbec-Dosco is a major producer of pipe products. Using the continuous weld process, installed in 1960, Sidbec-Dosco has earned a high reputation throughout the world for the excellence of its products.

PLANT LOCATION

Sidbec-Dosco Limited
Montreal Works
5870 St. Patrick Street
Montreal, Quebec

TYPES OF PRODUCTS

Standard, water, agricultural, conduit, line and structural pipe

COMPOSITION

Steel

MANUFACTURING PROCESS

Continuous butt weld

SIZE RANGE

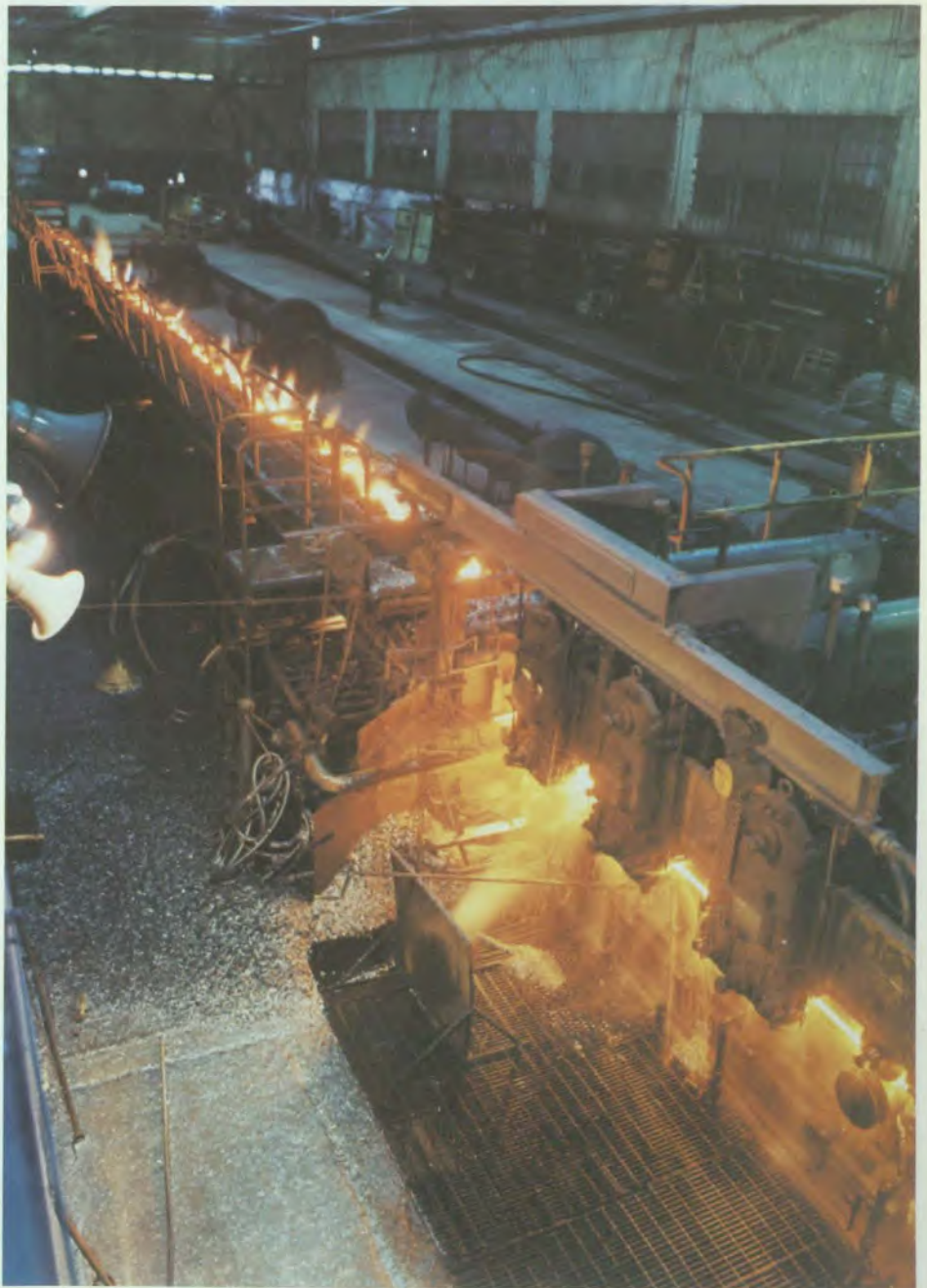
1/2"-4" IPS, standard weight, schedule 40; 1/2"-3" IPS, extra strong, schedule 80

MANUFACTURING SPECIFICATIONS

ASTM — A120, A53; API — 5L Class 1 type A
CSA — B63

TESTING FACILITIES

Hydrostatic, all pipe tested to 1,300 psi



Sonco Steel Tube Limited

A Jannock Company

14 Holtby Avenue
Brampton, Ontario, Canada
L6X 2M1

Contact: D. G. Sinclair, President

Tel: (416) 451-2400

Sonco Steel Tube Limited, a vigorous young company manufacturing tubing for a wide variety of applications, sells its products across Canada. The firm has also established a growing export market. Industrial uses for Sonco's products range from construction scaffolding to earth-moving equipment to bicycles. The firm operates out of a 12,000-square-foot plant and does the bulk of its business directly with the manufacturer.

PLANT LOCATION

Sonco Steel Tube Limited
A Jannock Company
14 Holtby Avenue
Brampton, Ontario
L6X 2M1
Tel: (416) 451-2400

TYPES OF PRODUCTS

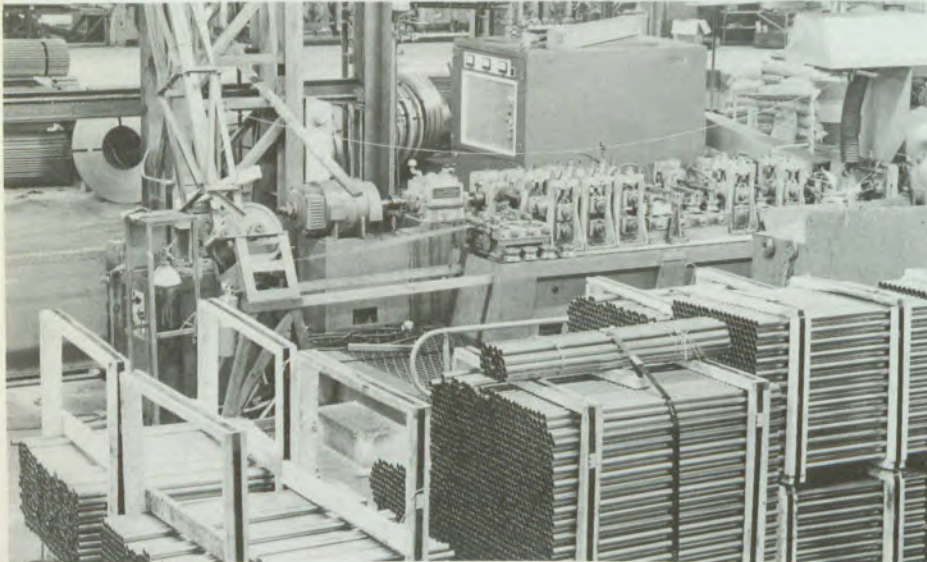
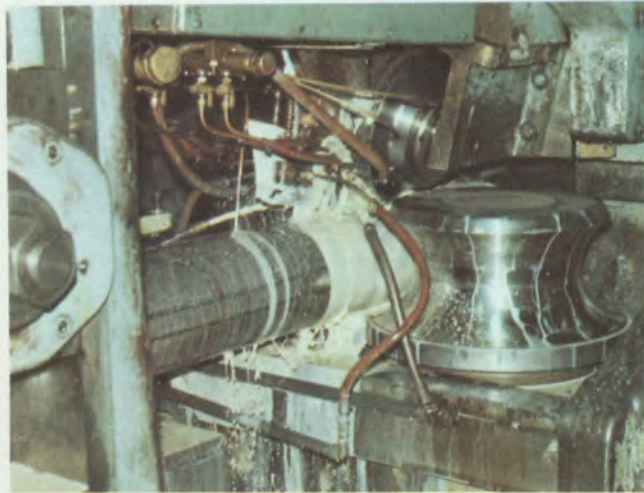
Electrically welded mechanical tube, and electrically welded structural steel tube

COMPOSITION

Steel

MANUFACTURING PROCESSES

High frequency electric welded;
electric resistance welded



SIZE RANGE

$\frac{3}{8}$ " to 7" round inclusive; square and rectangular hollow structural up to and including 7" by 7" square and 4" by 10" rectangular

MANUFACTURING SPECIFICATIONS

ASTM; Welded Steel Institute of America

TESTING FACILITIES

Metallurgical; chemical; product certification

Stanton Pipes Limited

P.O. Box 849
Hamilton, Ontario, Canada
L8N 3N9

Contact: J. H. Miller, General Sales Manager

Tel: (416) 547-3251
Telex: 061-8654
Cable: SPUNPIPE

Stanton Pipes Limited opened its spun iron plant in 1961 and three years later installed a spiral weld pipe machine. The firm now supplies ductile spun iron pipe and steel pipe piling to major Canadian municipalities and contractors. The company's convenient location in Hamilton, Ontario — heart of the Canadian iron and steel industry — assures ready availability of raw materials. Excellent transportation facilities provide speedy service to markets in the United States and overseas.

PLANT LOCATION

Stanton Pipes Limited
Kenilworth Avenue North
Hamilton, Ontario
Tel: (416) 547-3251

TYPES OF PRODUCTS

Ductile spun iron pipe and grey cast iron fittings for watermain and sewer force mains with tyton, mechanical or flanged joints; spiral weld steel pipe for piling and general construction purposes, glass-lined cast iron pipe and fittings and glass-lined steel pipe and fittings, custom ductile iron pipe for treatment plants

COMPOSITION

Ductile iron; steel

MANUFACTURING PROCESSES

DeLavaud ductile spun iron pipe;
submerged arc spiral welding

SIZE RANGE

Ductile spun iron pipe 4"-24" ID;
spiral weld steel pipe 10³/₄"-40" OD
x .188"-.50"

MANUFACTURING SPECIFICATIONS

ANSI A21.51; ASTM A252

TESTING FACILITIES

Full physical and chemical facilities for testing to above specifications



The Steel Company of Canada, Limited (Stelco)

P.O. Box 2030, Station "A"
Hamilton, Ontario, Canada
L8N 3T1

Contact: H. Plumb, Marketing Manager

Tel: (416) 528-2511 ext. 3101

Telex: 061-8626

Cable: STELCO, HAMILTON



Established in 1910, The Steel Company of Canada, Limited, better known as Stelco, is Canada's leading steel producer (ninth in North America) with total sales in 1976 of \$1.35 billion and steelmaking production of 5.7 million tons. Stelco is currently building a plant on the north shore of Lake Erie. This, the largest expansion venture undertaken by the Canadian steel industry, will double Stelco's production capacity. At present, the company has 19 manufacturing plants in four provinces. At Welland, Ontario, Stelco has an innovative pipe plant that features a new, high wall spiral welded pipe to API specifications. Company researchers provide a wide range of analytical data to help maintain Stelco's position as a leading innovator in steelmaking. At Burlington, Ontario, the company operates a research centre which is considered to be one of the most advanced in the world.

PLANT LOCATIONS

Contrecoeur, Quebec
Welland, Ontario
Camrose, Alberta

TYPES OF PRODUCTS

Oil country tubular goods, water and process pipe, API line pipe, mechanical tubing, electrical conduit, boiler and pressure tubing, piling pipe, hollow structural sections

COMPOSITION

Steel

MANUFACTURING PROCESSES

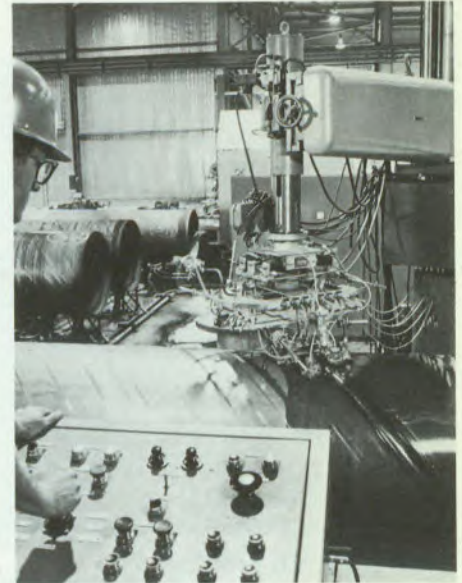
Continuous weld, electrical resistance weld, submerged arc weld (U & O and spiral), seamless.

SIZE RANGE

1/8" nom to 60" OD

MANUFACTURING SPECIFICATIONS

API, ASTM, AWWA, BSS, CSA

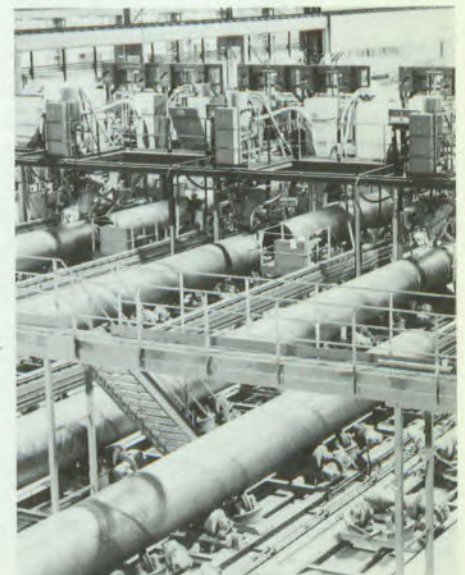


SPECIAL FACILITIES AND SERVICES

Hydraulic expansion, bending, fabricating, heat treating

TESTING FACILITIES

Full chemical and metallurgical



**Wolverine Division
UOP Manufacturing Limited**

P.O. Box 6515, Station "D"
London, Ontario, Canada
N5V 3E6

Contact: L. H. Kerr

Tel: (519) 455-0770

Telex: 064-5880

Cable: WOLCAN LONDON

Wolverine Division, UOP Manufacturing Limited, was established in 1958 as a primary copper and brass seamless tube mill. Using the most modern tube making equipment available, the mill produces several million pounds of tubing a month, most of which is from high quality Canadian electrolytic cathode copper. Electric casting furnaces and a 3,000-ton extrusion press are used for converting copper and alloys into seamless tube. High-speed finishing equipment, electronic testing, and modern laboratory equipment guarantee an excellent quality product in volumes of several million pounds a month. Shipments are worldwide, and finished goods are stocked in Toronto, Ontario; and Vancouver, British Columbia, as well as at the plant.



PLANT LOCATION

Wolverine Division
1920 Cheapside Street
London, Ontario
Tel: (519) 455-0770

TYPES OF PRODUCTS

Copper water tube and drainage tube in types K, L, M and DWV; commercial copper tubing for air conditioning, baseboard heating, plumbing, electrical and automotive applications; condenser tubing to ASTM specifications for heat exchangers; high quality copper-nickel tubing for nuclear applications

COMPOSITION

Copper and copper base alloys

MANUFACTURING PROCESSES

Casting in electric furnaces; extrusion of copper billets into a seamless tube; cold drawing on straight chain drawbenches and high-speed drawblocks with floating plugs

SIZE RANGE

4 1/2" OD down to less than 1/8",
capillary tubing down to .062"

SPECIAL FACILITIES AND SERVICES

Standard seamless tubing in straight lengths and coils; specialized fabrication; experimental contracts in special extrusions; special drawing and special applications, including nuclear

TESTING FACILITIES

Tensile equipment; chemical separation; photomicrograph equipment; spectrometer; full modern non-ferrous laboratory facilities



Government
of Canada

Gouvernement
du Canada

Industry, Trade
and Commerce

Industrie
et Commerce