



Fisheries and Oceans
Canada

Pêches et Océans
Canada

Canadian
Coast Guard

Garde côtière
canadienne

Notices to Mariners

Edition No. 10/2023
October 27, 2023



Safety First, Service Always

Monthly Eastern Edition

Canada 

Notices to Mariners – Monthly Eastern Edition
Edition No. 10/2023

Aussi disponible en français :
Avis aux navigateurs – Édition mensuelle de l'Est
Édition n° 10/2023

Published under the Authority of:

Canadian Coast Guard Programs
Aids to Navigation and Waterways
Fisheries and Oceans Canada
Montreal, QC H2Y 2E7

For more information, contact DFO.Notmar-Notmar.MPO@dfo-mpo.gc.ca.

© His Majesty the King in Right of Canada,
as represented by the Minister of Fisheries, Oceans
and the Canadian Coast Guard, 2023.

Cat. No. Fs152-8E-PDF (Electronic PDF, English)
ISSN 2817-0075

Cat. No. Fs152-8F-PDF (Electronic PDF, French)
ISSN 2817-0083

A web version is available here:

<https://www.notmar.gc.ca/monthly> (English)

<https://www.notmar.gc.ca/mensuel> (French)

Explanatory Notes – Notices to Mariners (NOTMAR)

Geographical positions refer directly to the graduations of the largest scale Canadian Hydrographic Service chart (unless otherwise indicated).

Bearings refer to the true compass and are measured clockwise from 000° (North) clockwise to 359°; those relating to lights are from seaward.

Visibility of lights is that in clear weather.

Depths - The units used for soundings (metres, fathoms or feet) are stated in the title of each chart.

Elevations are normally given above Higher High Water, Large Tide (unless otherwise indicated).

Distances may be calculated as follows:

- 1 nautical mile = 1,852 metres (6,076.1 feet)
- 1 statute mile = 1,609.3 metres (5,280 feet)
- 1 metre = 3.28 feet

Temporary and Preliminary Notices to Mariners – Section 1A of *Notices to Mariners*

These notices are indicated by a (T) or a (P), respectively. Please note that nautical charts are not amended by the Canadian Hydrographic Service for temporary (T) and preliminary (P) notices. It is recommended that mariners chart these corrections in pencil. For the list of charts affected by (T) & (P) notices, please refer to the current [Notices to Mariners - Monthly Summary of Temporary and Preliminary Notices](#) publication.

Suggestions and Corrections Form

This form is specifically for suggestions and corrections to Notices to Mariners publications. It is available [online](#) and also in [fillable PDF format](#) included with the monthly publication ZIP file.

To submit comments and suggestions on possible improvements to the various publications and services: DFO.Notmar-Notmar.MPO@dfo-mpo.gc.ca.

To report chart discrepancies and/or corrections to the *Canadian Sailing Directions* booklets: Fill out the [Marine Information Reporting Form](#) and/or email chsinfo@dfo-mpo.gc.ca.

To report emergencies or navigational hazards: [Contact your nearest MCTS centre](#)

- VHF channel 16 (156.8 MHz)
- MF/HF frequency 2182 kHz/4125 kHz (where available)
- *16 on a cellphone (where available)

NOTMAR Website – Monthly Editions, Chart Corrections and Chart Patches

The NOTMAR website allows users to access the [monthly publications](#), [chart corrections](#), and [chart patches](#).

Users can subscribe for free to the [email notification service](#) to receive notifications when charts of interest are updated, including their patches, as well as when a new Monthly Edition of *Notices to Mariners* is published.

In addition, the monthly publication and related files to download, such as chart patches, can be obtained all together through the download of a single ZIP file.

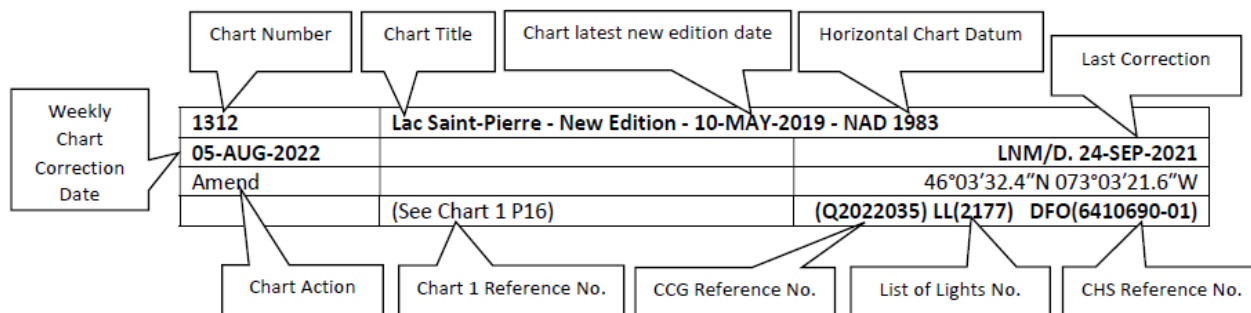
Explanatory Notes – Canadian Hydrographic Service (CHS)

Chart Corrections – Section 2 of *Notices to Mariners*

Corrections to nautical charts will be listed in numerical order by chart number. Each chart correction listed applies only to that particular chart. Related charts, if any, will have their own specific correction listed separately.

Users should also refer to CHS *Chart 1: Symbols, Abbreviations and Terms* for additional information pertaining to the correction of charts.

The illustration below describes the elements that will comprise a typical Section 2 chart correction:



The last correction number is identified with the **LNMD** or **Last Notice to Mariners Number / Date**.

Mariners are advised that only the most critical changes that directly affect safety to navigation are issued in “Section 2 – Chart Corrections.” This limitation is required to ensure that charts remain as clear and easy to read as possible. As a result, mariners may see minor discrepancies of a non-critical nature between information in official publications. For example, a small change in the nominal range or focal height of a light may not result in the production of a chart correction in *Notices to Mariners*, but may result in a correction in the [List of Lights, Buoys and Fog Signals](#) publication.

Note: In the case of a discrepancy between information provided on CHS charts relating to aids to navigation, and the *List of Lights, Buoys and Fog Signals* publication, the latter shall be deemed as containing the most up-to-date information.

Canadian Nautical Charts & Publications

A source list of Canadian nautical charts and publications is published in Notice No. 14 of the *Notices to Mariners Annual Edition 2023*. The source supply and the prices effective at the time of printing are listed. For current chart edition dates, please refer to the following website: <https://www.charts.gc.ca/charts-cartes/paper-papier/papertable-tablepapier-eng.asp>.

Explanatory Notes – Marine Communications and Traffic Services (MCTS)

Navigational Warnings / Notices to Shipping

The Canadian Coast Guard (CCG) is implementing a number of changes to the aids to navigation system in Canada.

These changes are advertised as Navigational Warnings, formerly called Notices to Shipping¹, that are broadcast by the CCG, and are then followed up with Notices to Mariners, then charts are updated by hand correction, reprints or new editions.

Mariners are advised that all relevant Navigational Warnings (NAVWARN) should be kept until superseded by Notices to Mariners or through revised charts issued by the Canadian Hydrographic Service (CHS).

NAVWARN are accessible on the applicable regional page on the CCG Navigational Warnings website at <http://nis.ccg-gcc.gc.ca>.

CHS is reviewing the impact of these changes with CCG and together are preparing an action plan on the issuing of chart revisions.

For further information, contact your regional NAVWARN Issuing Desk.

<p>Atlantic Region (North) *Port aux Basques MCTS Centre</p> <p>“N” Series NAVWARN</p> <p>Canadian Coast Guard 49 Stadium Rd. P.O. Box 99 Port aux Basques, NL A0M 1C0</p> <p>Telephone: 709-695-2168 or 1-800-563-9089 Facsimile: 709-695-7784</p> <p>Email: NAVWARN.MCTSPortAuxBasques@innav.gc.ca</p>	<p>Central Region *Prescott MCTS Centre</p> <p>“Q” and “C” Series NAVWARN</p> <p>Canadian Coast Guard 401 King Street West P.O. Box 1000 Prescott, ON K0E 1T0</p> <p>Telephone: 613-925-0666 Facsimile: 613-925-4519</p> <p>Email: NAVWARN.MCTSPrescott@innav.gc.ca</p>
<p>Atlantic Region (South) *Sydney MCTS Centre</p> <p>“M” Series NAVWARN</p> <p>Canadian Coast Guard 1190 Westmount Road Sydney, NS B1R 2J6</p> <p>Telephone: 902-564-7751 or 1-800-686-8676 Facsimile: 902-564-7662</p> <p>Email: NAVWARN.MCTSSydney@innav.gc.ca</p>	<p>Arctic Region *Iqaluit MCTS Centre</p> <p><i>Operational from approximately mid-May until late December.</i></p> <p>“A” Series NAVWARN</p> <p>Canadian Coast Guard P.O. Box 189 Iqaluit, NU X0A 0H0</p> <p>Telephone: 867-979-5269 Facsimile: 867-979-4264</p> <p>Email: NAVWARN.MCTSIqaluit@innav.gc.ca</p>

*Service available in English and in French.

¹ The expression “Notice to Shipping” was changed to “Navigational Warning” in January 2019.

Table of Contents

Section 1: General and Safety Information	1
*1207/22 Canadian Coast Guard – Waterway information.....	1
*407/23 Saguenay–St. Lawrence Marine Park and Surrounding Waters – Whale Protection	1
*408/23 Saguenay–St. Lawrence Marine Park - Beluga Whale Protection: Slowdown Area at the Mouth of the Saguenay Fjord and Area Closure at Baie Sainte-Marguerite	2
*505/23 Canadian Hydrographic Service – Magnetic Declination Calculations.....	5
*507/23 Protecting the North Atlantic Right Whale: Speed Restriction Measures in the Gulf of St. Lawrence	5
*807/23 Canadian Hydrographic Service – Inappropriate Geographical Names Review Process...	13
*1001/23 Canadian Hydrographic Service – Nautical Charts.....	13
*1002/23 Canadian Hydrographic Service – Electronic Navigational Charts.....	13
*1003/23 Transport Canada – Ship Safety Bulletins #18, #19, #20, #21 and #22/2023	14
*1005/23 Summerland Group to/à Grindstone Island – Unlit Buoy Repositioned.....	15
*1006/23 Rivière des Prairies – Unlit Buoy Permanently Discontinued	15
*1007/23 Chats Falls à/to Chenaux – Unlit Buoy Permanently Established	15
*1008/23 Port Dalhousie – Unlit Buoy Repositioned	15
*1009/23 Oshawa Harbour – Unlit Buoy Repositioned.....	15
*1010/23 Harbours in Lake Erie/Havres dans le lac Érié – Unlit Buoys Repositioned.....	16
*1011/23 Entrée à / Entrance to Miramichi River – Daybeacons Permanently Discontinued.....	16
*1012/23 Kilometre/Kilomètre 1580 - 1645 including/y compris East Channel, Inuvik to/à Kilometre/Kilomètre 1645 – Fixed Aid to Navigation Permanently Discontinued	16
Section 1A: Temporary and Preliminary Notices	17
Reminder – Comment Period for Active Preliminary Notices	17
*1014(P)/23 Little Bay Arm and Approaches / et les approches – Aid to Navigation to be Discontinued.....	18
Section 2: Chart Corrections	19
Section 3: Radio Aids to Marine Navigation Corrections	35
*1015/23 Radio Aids to Marine Navigation 2023 (Atlantic, St. Lawrence, Great Lakes, Lake Winnipeg, Arctic and Pacific).....	35
Section 4: Canadian Sailing Directions Corrections	38
Section 5: List of Lights, Buoys and Fog Signals Corrections	39

Numerical Index of Canadian Charts Affected

This numerical index lists all nautical charts mentioned in this monthly edition of Notices to Mariners. Only charts appearing in Section 2 of this publication require a chart correction. The appearance of charts in all other sections, particularly those related to the correction of other nautical publications, is included here for reference.

Chart No.	Pages	Chart No.	Pages	Chart No.	Pages
1311	19	4842	23		
1312	19, 44	4850	23		
1320	20	4851	42		
1437	15, 20	4852	17, 42		
1509	15, 20	4855	42		
1510	20, 45	4856	42		
1551	15	4857	24		
2044	15, 20	4858	24		
2050	15, 45	4862	41, 42		
2059	44	4863	40, 41		
2077	20	4866	40		
2181	16	4909	44		
2245	17	4911	16		
2274	45	4920	44		
3809	13	4921	24, 25		
3886	13	4935	25		
4237	17	4938	25, 26, 27		
4335	17	4940	27		
4381	17	4954	27, 28, 29, 30, 31		
4404	20	4967	31		
4456	21	4971	31, 32		
4466	21	5033	39		
4468	44	5080	39		
4483	43	6217	45		
4491	43	6242	32, 33, 34		
4518	39	6249	45		
4523	18	6267	45		
4530	42	6429	16		
4682	21, 22	7661	34		
4702	39	8015	34		
4728	40	14853 (U.S.)	1		
4820	22	14882 (U.S.)	1		
4839	39	14883 (U.S.)	1		
4841	23	14884 (U.S.)	1		

Section 1: General and Safety Information

*1207/22 Canadian Coast Guard – Waterway information

(Recurrent publication of notice *1207/22, originally published in the *Notices to Mariners – Monthly Eastern Edition 12/2022* publication.)

Reference chart: 14853 (U.S.), 14882 (U.S.), 14883 (U.S.), 14884 (U.S.)

Updated shoaling conditions for the navigational channels in the Great Lakes are available on the Canadian Coast Guard websites:

[CCG e-Nav - Shoals in the Detroit River \(canada.ca\)](#)
[CCG e-Nav - Shoals in the St. Clair River \(canada.ca\)](#)
[CCG e-Nav - Shoals in the St. Mary's River \(canada.ca\)](#)

Great Lakes Waterways Channel Bottom Conditions and Active Shoals are available at the website:

[GCC - e-Nav Portal - Central - Great Lakes Waterways - Channel Bottom Conditions \(canada.ca\)](#)

Areas		
Detroit River	North Channel	St. Clair River
Great Lakes	Lake Huron	St. Marys River
Lake Erie	Lake St. Clair	Whitefish Bay

(NW-C-2130-22)

*407/23 Saguenay–St. Lawrence Marine Park and Surrounding Waters – Whale Protection

(Recurrent publication of notice *407/23, originally published in the *Notices to Mariners – Monthly Eastern Edition 04/2023* publication.)

The waters in and around the Saguenay–St. Lawrence Marine Park are well known for the resident endangered beluga population and the wide diversity of whales that migrate there to feed, particularly between April and November.

Regulatory protection measures

All whale species that are found in the St. Lawrence are protected under the *Marine Mammal Regulations*, pursuant to the *Fisheries Act*. Within the boundaries of the Marine Park, specific measures are set out in the *Marine Activities in the Saguenay–St. Lawrence Marine Park Regulations*, pursuant to the establishment of the *Saguenay–St. Lawrence Marine Park Act*. Any collision with a marine mammal within the Marine Park must immediately be reported to a park warden at 1-866-508-9888. For collisions that occur outside the Marine Park or for any situation involving a marine mammal that is dead or in trouble, contact the emergency network at 1-877-722-5346 or on VHF channel 16.

For more information on the Saguenay–St. Lawrence Marine Park, see notice 5C of the *Notices to Mariners Annual Edition 2023*.

Voluntary protection measures

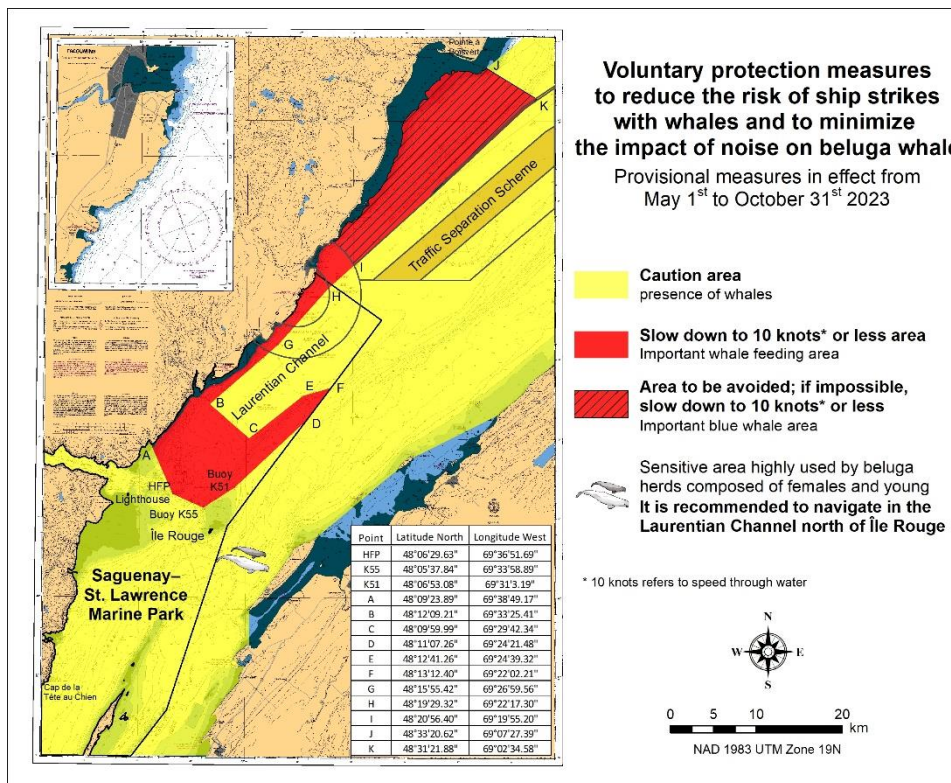
Provisional measures in effect from May 1 to October 31, 2023. See map at the end of this notice.

These measures apply to merchant vessels and cruise ships between Pointe à Boisvert and Cap de la Tête au Chien to prevent collisions with whales. These measures should only be taken when they will not jeopardize navigational safety.

Caution area (yellow area): To reduce the risk of collisions with whales that can be present anywhere in this area, heightened vigilance of navigators is critical. Posting a lookout is recommended in order to increase the chances of seeing the whales and thus taking necessary measures to avoid them. If bypassing the whales is not possible, slow down and wait for the animals to move away to a distance greater than 400 metres (0.215 nautical miles) before resuming original speed. It is more difficult to see the animals at night therefore increased caution is recommended.

Slow down to 10 knots or less area (red area): To reduce the risk of collisions with whales in this feeding area, it is recommended that vessels slow down to a maximum speed through the water of 10 knots and post a lookout. It is further recommended to remain in the Laurentian Channel to the north of Île Rouge to minimize the impact of noise in a sensitive area south of this island, which is highly frequented by herds of beluga whales composed of females and young.

Area to be avoided (hatched red area): To reduce noise and the risk of collisions with whales, vessels should avoid transiting through this area which is highly frequented by blue whales, an endangered species. If the area cannot be avoided, slow down to a speed through the water of 10 knots or less.



***408/23 Saguenay–St. Lawrence Marine Park - Beluga Whale Protection: Slowdown Area at the Mouth of the Saguenay Fjord and Area Closure at Baie Sainte-Marguerite**

(Recurrent publication of notice *408/23, originally published in the *Notices to Mariners – Monthly Eastern Edition 04/2023* publication.)

The Saguenay–St. Lawrence Marine Park and its surrounding area are at the heart of endangered beluga whale critical summer habitat. Marine mammal protection measures have been put in place in accordance with the *Marine Activities in the Saguenay–St. Lawrence Marine Park Regulations* within the limits of the Marine Park.

However, important feeding, calving and rearing areas for beluga whales require greater protection to ensure the recovery of the species. The portion of the Saguenay situated between the mouth of the Fjord and Baie Sainte-Marguerite is one of the areas most used by females and their young from May to October. The mouth of the Saguenay is known as a feeding ground and Baie Sainte-Marguerite as a calving and rearing area.

In order to prevent collisions with beluga whales, a compulsory 15-knot slowdown area is in effect from May 1st to October 31st at the mouth of the Saguenay. To ensure tranquility for female belugas and their young during the critical calving period, access to Baie Sainte-Marguerite is prohibited to all vessels from June 21st to September 21st, except for special authorizations (see description below).

For safety reasons, *the slowdown area measure at the mouth of the Saguenay Fjord does not apply* to cargo ships (see the monthly edition of *Notice to Mariners* from May to October for voluntary protection measures in the St. Lawrence Estuary). An enhanced vigilance is, however, recommended to all navigators between the mouth of the Saguenay Fjord and Baie Sainte-Marguerite for the protection of beluga whales.

For more information on the Saguenay–St. Lawrence Marine Park, see notice 5C of the *Notices to Mariners Annual Edition 2023* or visit marinepark.qc.ca.

REGULATORY PROTECTION MEASURES — BELUGA WHALE

Entire Marine Park Territory:

- When beluga whales are less than half a nautical mile (926 metres) from a motorized vessel, the vessel must maintain a steady speed of between 5 and 10 knots.
- All vessels, including human-powered vessels (kayaks and canoes), must continue to move forward and maintain their heading.
- All vessels must maintain a minimum distance of 400 metres from beluga whales at all times.

For more information concerning the regulations, consult: marinepark.ca/protect/.

Mouth of the Saguenay Fjord (Figure 1) — Slowdown Area (area crosshatched in red):

- Maximum speed at the mouth of the Saguenay between buoys S7 and S8 and the ferry docks between Baie-Sainte-Catherine and Tadoussac is 15 knots from May 1st to October 31st.

Baie Sainte-Marguerite (Figure 2) — Area Closure (red area):

- From June 21st to September 21st, vessels must not enter the red area, which follows a line between Cap Nord-Ouest and Cap Sainte-Marguerite.
- Special authorizations are granted only for kayaks, canoes and recreational fishermen who must travel without stopping along a corridor within 10 metres of the shore or in shallow areas.

VOLUNTARY PROTECTION MEASURES

Baie Sainte-Marguerite sector (Figure 2) — Transit Area (area crosshatched in yellow):

- From June 21st to September 21st, navigation in this area is recommended at a speed of between 5 and 10 knots without stopping.

The purpose of this transit area is to favour respect of *the Marine Activities in the Saguenay–St. Lawrence Marine Park Regulations*, since beluga whales are often present in the Baie Sainte-Marguerite sector.

Information

All incidents, including collisions with whales, must be reported without delay by calling 1-866-508-9888. For any other situation concerning a marine mammal that is either dead or in trouble, contact the Marine Mammal Emergency Response Network at 1-877-722-5346, or use VHF channel 16.

Figure 1

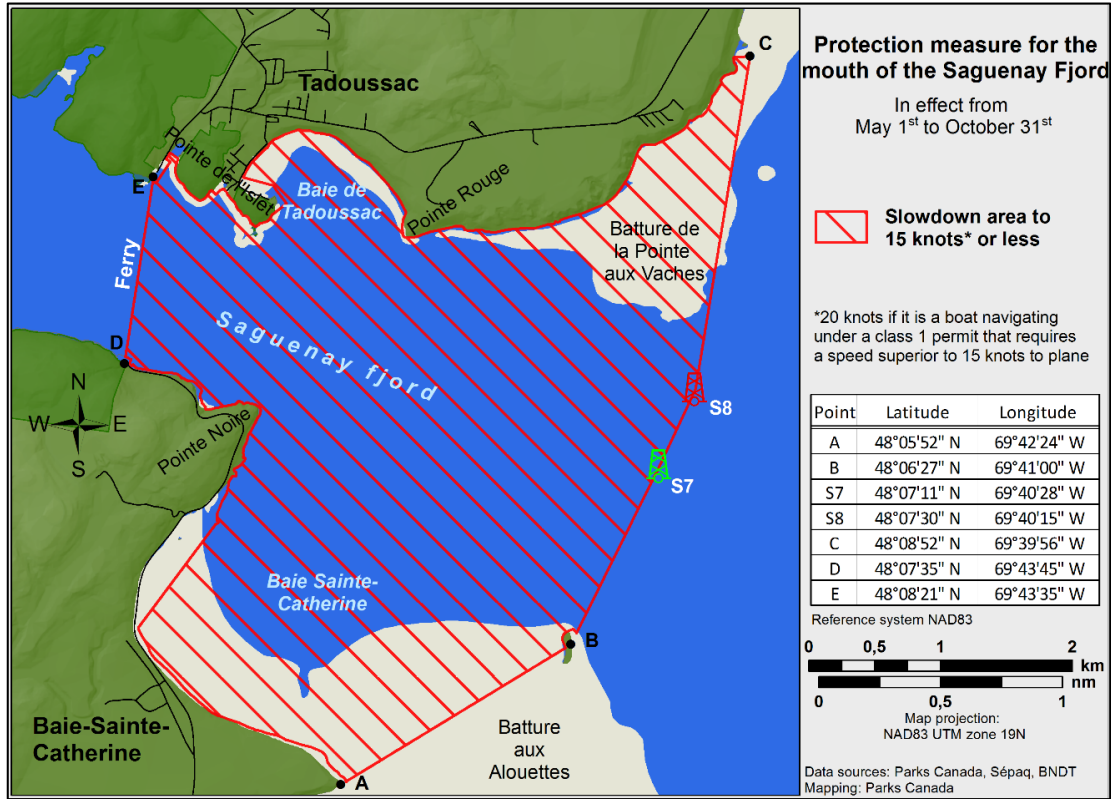
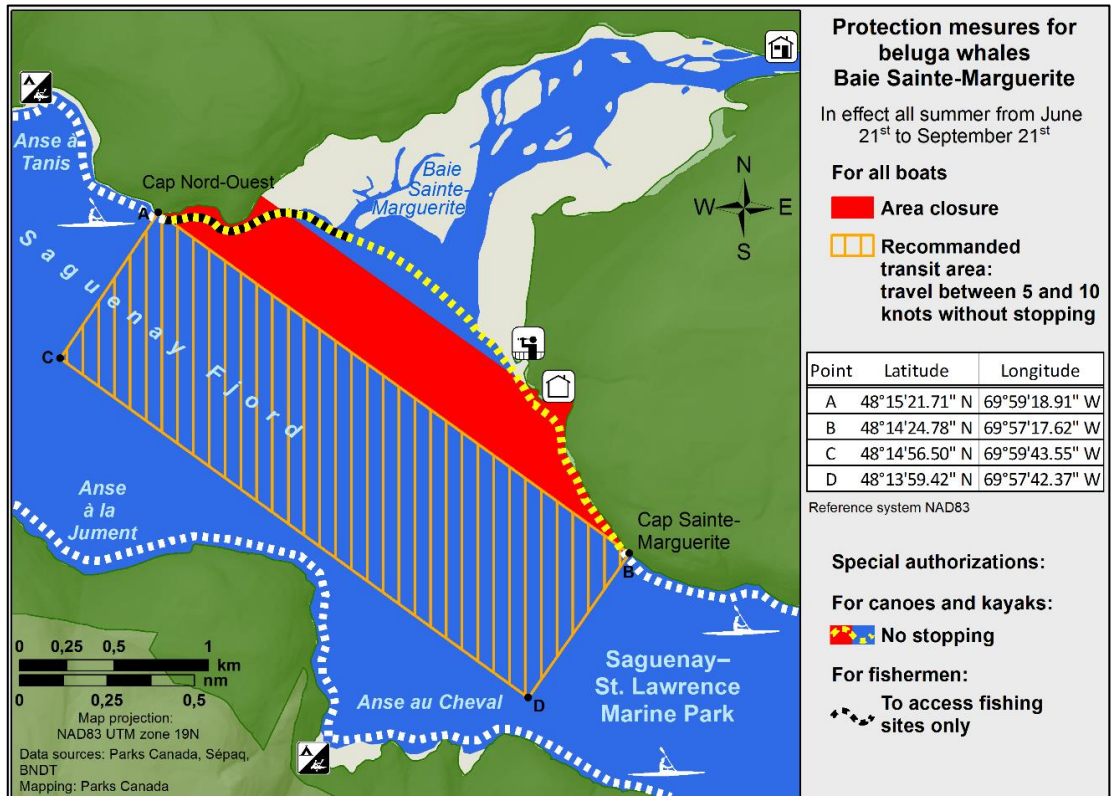


Figure 2



***505/23 Canadian Hydrographic Service – Magnetic Declination Calculations**

(Recurrent publication of notice *505/23, originally published in the *Notices to Mariners – Monthly Eastern Edition 05/2023* publication.)

Mariners are advised that CHS has adopted the harmonized World Magnetic Model (WMM), as found on the NCEI/NOAA website. Old compass rose declination information on CHS navigational products can be updated using this website: <https://www.ngdc.noaa.gov/geomag/calculators/magcalc.shtml#declination>. While the differences in the model declinations are small each year, they can become more significant over a large period of time.

***507/23 Protecting the North Atlantic Right Whale: Speed Restriction Measures in the Gulf of St. Lawrence**

(Recurrent publication of notice *507/23, originally published in the *Notices to Mariners – Monthly Eastern Edition 05/2023* publication.)

Reference: Notice *401/23 is cancelled.

PURPOSE

This notice describes the speed restriction zones that vessels must follow in the Gulf of St. Lawrence.

The Government of Canada has established these zones to reduce the risk of vessel colliding with North Atlantic right whales (NARW).

BACKGROUND

Due to changing migration patterns of North Atlantic right whales and their increased presence in the Gulf of St. Lawrence, the Government of Canada has set seasonal speed restrictions in specific zones. These speed restrictions zones are defined as “static zones”, “dynamic shipping zones”, “seasonal management areas”, a “voluntary seasonal slowdown zone” and a “restricted area”. [See the map below for details.](#)

Note: Vessels must follow Navigational Warnings outlining the speed restrictions. The Interim Order for the Protection of North Atlantic Right Whales (*Eubalaena Glacialis*) in the Gulf of St. Lawrence, 2023 enables the issuance of Navigational Warnings (NAVWARNs) imposing speed restrictions and navigation restrictions.

Speed restriction zones are described in monthly Notices to Mariners (NOTMARs), which are published by the Canadian Coast Guard. The status of these zones is broadcasted through NAVWARNs, which are published by the Coast Guard’s Marine Communications and Traffic Services Centres.

CHANGES TO SPEED RESTRICTION ZONES AND MEASURES

Based on consultations with industry and on scientific data, changes to the speed restriction zones will be effective from April 19th, 2023, while the restricted area will be implemented based on whale presence:

- A voluntary seasonal slowdown of 10.0 knots over the ground spanning from Cabot Strait (a line running from Cape North NS to Cape Ray NL) to the eastern edge of dynamic shipping zone E will be implemented at the beginning and end of the North Atlantic right whale season.

Please check the latest NAVWARN for all speed restrictions currently in effect.

SPEED RESTRICTION MEASURES FOR 2023

These restrictions will be in effect from **April 19 to November 15, 2023.**

Exceptions

The following exception will apply to **all** measures:

- a) a vessel in distress or providing assistance to a person or a vessel in distress;
- b) a government vessel being used
 - (i) for law enforcement activities;
 - (ii) for search and rescue operations; or
 - (iii) to ensure the competency of the crew or the operational readiness of the vessel or crew with respect to such activities or operations.

STATIC ZONES

In the static zones, **all** vessels above **13 m** in length overall (LOA) must proceed at a speed of not more than 10.0 knots over the ground.

Exceptions

Air cushion vessels operated by or on behalf of the Government of Canada that are engaged in ice-clearing activities from April to June in and around Chaleur Bay are exempted when in operation.

36.57 m (20-fathom) shallow water protocol

Vessels engaged in any commercial fishing activity may proceed at a safe operational speed in waters not more than 36.57 m (20 fathom) deep.

If a notice to fish harvesters and a NAVWARN state that at least one right whale has been detected within the static zone in waters that are not more than 36.57 m deep, the 10 knots speed limit will apply to all vessels above 13 m in length overall (LOA) for 15 days after the day on which the whale was detected.

If a new notice to fish harvesters and a new NAVWARN are published or broadcast during the last seven days of the 15-day period, the speed limit will continue to apply for a further 15 days after the day on which the new detection took place.

Coordinates for the northern static zone:

- 50° 20' N, 065° 00' W
- 49° 13' N, 065° 00' W
- 48° 40' N, 064° 13' W
- 48° 40' N, 062° 40' W
- 48° 03' N, 061° 07.5' W
- 47° 58.1' N, 061° 03.5' W
- 48° 00' N, 061° 00' W
- 49° 04' N, 061° 00' W
- 49° 04' N, 062° 00' W
- 49° 43' N, 063° 00' W
- 50° 20' N, 063° 00' W

Coordinates for the southern static zone:

- 48° 40' N, 065° 00' W
- 48° 40' N, 062° 40' W
- 48° 03' N, 061° 07.5' W
- 47° 58.1' N, 061° 03.5' W
- 47° 10' N, 062° 30' W
- 47° 10' N, 065° 00' W

DYNAMIC SHIPPING ZONES

There are five dynamic shipping zones (DSZ) located in the routeing systems north and south of Anticosti Island: A, B, C, D and E.

Coordinates for the dynamic shipping zones:

Zone A

- 49° 41' N, 065° 00' W
- 49° 20' N, 065° 00' W
- 49° 11' N, 064° 00' W
- 49° 22' N, 064° 00' W

Zone B

- 49° 22' N, 064° 00' W
- 49° 11' N, 064° 00' W
- 48° 48' N, 063° 00' W
- 49° 00' N, 063° 00' W

Zone C

- 49° 00' N, 063° 00' W
- 48° 48' N, 063° 00' W
- 48° 24' N, 062° 00' W
- 48° 35' N, 062° 00' W

Zone D

- 50° 16' N, 064° 00' W
- 50° 00' N, 064° 00' W
- 49° 56' N, 063° 00' W
- 50° 16' N, 063° 00' W

Zone E

- 48° 35' N, 062° 00' W
- 48° 24' N, 062° 00' W
- 48° 03' N, 061° 07.5' W
- 47° 58.1' N, 061° 03.5' W
- 48° 00' N, 061° 00' W
- 48° 10.5' N, 061° 00' W

When a North Atlantic right whale is detected in a dynamic shipping zone:

- All vessels will be notified via a NAVWARN; and
- Vessels above **13 m** in length overall (LOA) must proceed at a speed of not more than 10.0 knots over the ground within that zone.

Even though dynamic shipping zones overlap with static zones, vessels can travel at a safe operational speed in dynamic shipping zones when they are not under speed restriction. Mariners must also keep in mind that North Atlantic right whales may be nearby.

Speed restrictions in the dynamic shipping zones

The detection of North Atlantic right whales in one or more dynamic shipping zone(s), will trigger a speed restriction in the concerned zone(s). The speed restriction in the dynamic shipping zone(s) will be in effect for 15 days from the date of detection. In the event of a new North Atlantic right whale detection occurring in the last 7 days of the 15-day slowdown period, the speed restriction will be extended for an additional 15 days from the date of the new detection. This would continue until no NARW are detected.

When a NAVWARN is issued implementing a speed restriction in one or more dynamic shipping zone(s), vessels above **13 m** in length (LOA) must not exceed a speed of 10.0 knots over the ground. Within any dynamic zone that is not subject to a speed restriction, mariners may proceed at a safe operational speed. Mariners are encouraged to take into consideration the potential for their vessel striking North Atlantic right whales when considering a “safe operational speed” during navigation.

SEASONAL MANAGEMENT AREAS

Seasonal management area 1 (SMA-1) and seasonal management area 2 (SMA-2) are speed restriction areas located north and south of dynamic shipping zone E, respectively.

Within seasonal management areas, vessels above **13 m** in length (LOA):

- must restrict their speed so as not to exceed 10.0 knots over the ground from April 19th to June 27th, 2023; **and**
- are allowed to proceed at a safe operational speed from June 28th to November 15th, 2023, unless a North Atlantic right whale is detected. If a whale is detected, a speed restriction of 10.0 knots over the ground will be triggered for 15 days from the date of detection. In the event of a new North Atlantic right whale detection occurring in the last 7 days of the 15-day slowdown period, the speed restriction will be extended for an additional 15 days from the date of the new detection. This would continue until no North Atlantic right whales are detected.

Coordinates for the SMA-1:

- 49° 04' N, 062° 00' W
- 49° 04' N, 061° 00' W
- 48° 10.5' N, 061° 00' W
- 48° 35' N, 062° 00' W

Coordinates for the SMA-2:

- 48° 24' N, 062° 00' W
- 48° 03' N, 061° 07.5' W
- 47° 58.1' N, 061° 03.5' W
- 47° 26.69' N, 062° 00' W

RESTRICTED AREA

In the summer months, an important proportion of the total North Atlantic right whale population gathers for feeding and surface activity near the [Shediac Valley](#). Since this makes the North Atlantic right whale more susceptible to vessel collisions, a mandatory restricted area will be implemented in and near the [Shediac Valley](#) and will come into force once 80% of the restricted area is closed to fishing for the season as per [the Department of Fisheries and Oceans's right whale closure protocol](#). The restricted area will be lifted once the North Atlantic right whale detections decrease in the restricted area.

The size and location of the area are determined based on historical detection data of North Atlantic right whales. All necessary details can be found in the *Interim Order for the Protection of North Atlantic Right Whales (Eubalaena Glacialis) in the Gulf of St. Lawrence, 2023*. Triggering and lifting of the restricted area will be communicated to mariners through a NAVWARN and notice to fish harvesters.

Vessels above **13 m** in length (LOA) will be required to:

- avoid the area unless they are part of the exceptions listed in the *Interim Order for the Protection of North Atlantic Right Whales (Eubalaena Glacialis) in the Gulf of St. Lawrence, 2023*;
- transit the area at a speed not exceeding 8.0 knots over the ground if they are part of the exceptions.

The following exceptions will apply to the restricted area. The following listed vessels can travel through the area at not more than 8.0 knots over the ground:

- A vessel being used for commercial fishing;
- A vessel being used for fishing under the authority of a licence issued under the *Aboriginal Communal Fishing Licences Regulations*;
- A vessel being used for research purposes on behalf of the Government of Canada;
- A vessel being used as part of the Department of Fisheries and Oceans' Marine Mammal Response Program to assist a marine mammal or sea turtle in distress or to access or retrieve a deceased marine mammal or sea turtle;
- A vessel authorized by the Government of Canada to retrieve or identify the location of abandoned or lost fishing gear;
- A vessel involved in pollution response operations;
- A vessel avoiding immediate or unforeseen danger;
- A vessel involved in research relating to right whales as part of a project that has received funding from the Government of Canada.

The following vessels can travel through the restricted area at a speed over 8.0 knots, but below 10.0 knots over the ground as required by the static speed restriction zone:

- A vessel being used by an employee of the Government of Canada or peace officer who is performing their duties.

Coordinates for the restricted area:

- 48°31.8' N, 063°39.6' W
- 48°24.72' N, 063°17.88' W
- 47°18.84' N, 064°10.8' W
- 47°27.18' N, 064°30.72' W

Inclement weather exception

Mariners will be notified in advance via a NAVWARN should the speed restriction status change in any zone or area, due to inclement weather.

Within any zone or area that is no longer subject to a speed restriction due to adverse weather conditions, mariners may proceed at a safe operational speed. Mariners are however encouraged to take into consideration the potential for their vessel striking North Atlantic right whales when considering a “safe operational speed” during navigation.

*Non-expected vessels are still prohibited from transiting through the restricted area.

VOLUNTARY SEASONAL SLOWDOWN IN CABOT STRAIT

To coincide with the North Atlantic right whales entering and exiting the Gulf of St. Lawrence in large numbers, a voluntary seasonal slowdown is being put in place in Cabot Strait from April 19th to June 27th, 2023, and from September 27th to November 15th, 2023.

- During these periods, vessels above **13 m** in length (LOA) are requested to voluntarily reduce their speed as to not exceed 10.0 knots over the ground.

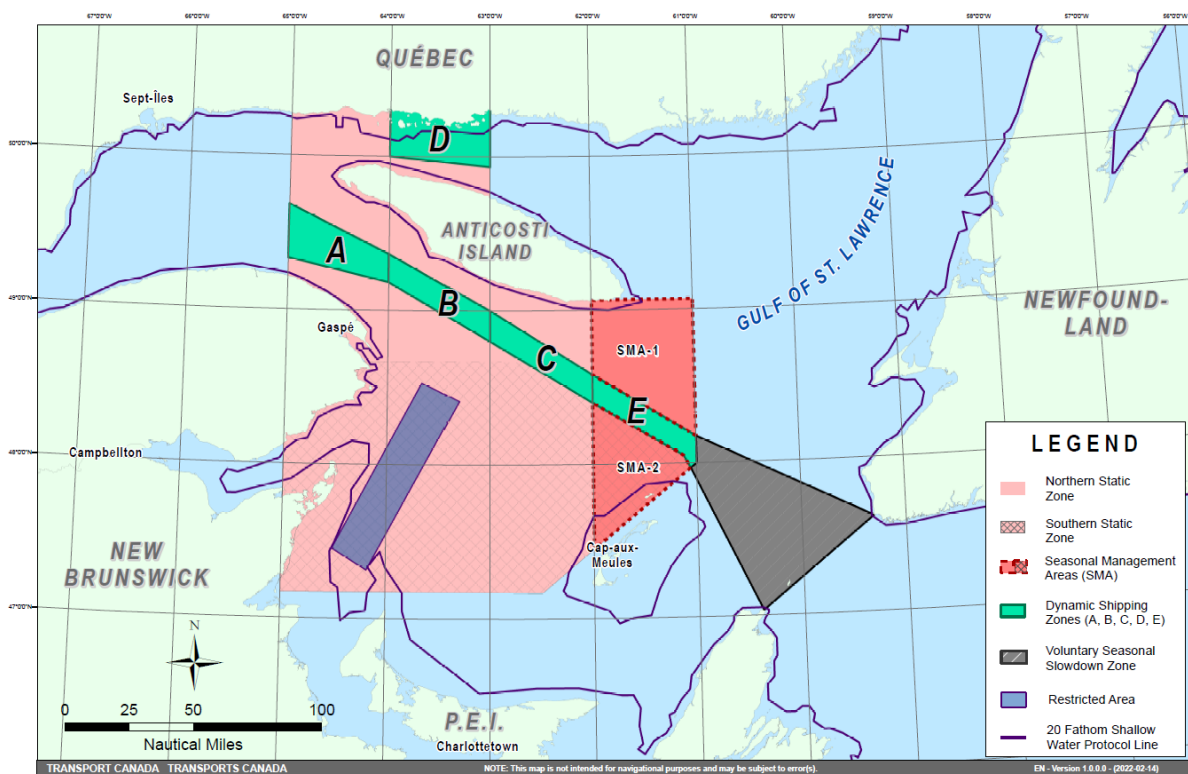
Voluntary seasonal slowdown zone coordinates:

- 48° 10.5' N, 061° 00' W
- 47° 37.2' N, 059° 18.5' W
- 47° 02' N, 060° 23.7' W
- 47° 58.1' N, 061° 03.5' W
- 48° 00' N, 061° 00' W

MAP OF THE GULF OF ST. LAWRENCE

The following map shows

- the static zones (north and south), in pink;
- the dynamic shipping zones (A, B, C, D and E), in green;
- the seasonal management areas, in dark pink;
- the voluntary seasonal slowdown zone, in grey;
- the restricted area, in dark blue; and
- the 36.57 m (20 fathom) shallow water protocol line.



This map is for visual representation only and is not to be used for navigation or enforcement.

Roseway Basin – Area to be Avoided

The Roseway Basin, located approximately 20 nautical miles south of Cape Sable Island, Nova Scotia, is a critical habitat for North Atlantic right whales, which have been observed to gather in the area on a seasonal basis in Canadian waters. This critical habitat is also located near key shipping routes. In 2007, Canada, with the support of many groups with varied interests, proposed to the International Maritime Organization (IMO) the establishment of a seasonal Area to be Avoided in the Roseway Basin to protect North Atlantic right whales, which IMO accepted and adopted.

To reduce the risk of vessels colliding with North Atlantic right whales, it is recommended that vessels of 300 gross tonnages and more, in transit during the period of June 1 through December 31, avoid the Roseway Basin area. Smaller vessels are also encouraged to avoid passage through this area. If passage is necessary within the Area to be Avoided, it is recommended that all mariners decrease their vessel speed to no more than 10 knots, when safe to do so.

Roseway Basin coordinates:

- 43° 16' N 064° 55' W
- 42° 47' N 064° 59' W
- 42° 39' N 065° 31' W
- 42° 52' N 066° 05' W

NAVWARN BROADCASTS

The Canadian Coast Guard issues NAVWARNs:

- by radio broadcast; and
- online at [Canada's Maritime Information Portal](#) and its [Navigational Warnings](#) site.

Mariners must ensure they have accurate and up-to-date information about the protection of the North Atlantic right whale, as in all applicable NOTMARs and NAVWARNs.

For the North Atlantic right whale speed restrictions, the NAVWARN(s) currently in effect will be provided to vessels subject to the *Vessel Traffic Services Zone Regulations* or the *Eastern Canada Vessel Traffic Services Zone Regulations*:

Outbound vessels will receive NAVWARNs

- at Calling-in-Point 10 (St-Laurent); or
- upon a departure downstream from the Quebec pilot station (including the Saguenay River, Chaleur Bay, Miramichi Bay, etc.)

Inbound vessels will receive NAVWARNs

- when a clearance to enter Canadian waters is granted

Vessels in transit will receive NAVWARNs

- at the last reporting point prior to entering the mandatory speed restriction zones; and/or
- at 10 nautical miles before they enter the mandatory speed restriction zones

For those vessels not subject to the above-mentioned regulations, vessel operators are required to monitor broadcasts by the Canadian Coast Guard's Marine Communications and Traffic Services network for the most up-to-date information. For marine radio frequencies and broadcast times, information may be found in the [Radio Aids to Marine Navigation](#) publication.

AIDS TO NAVIGATION

The Canadian Coast Guard is currently testing virtual Automatic Identification System (AIS) aids to navigation (AIS AtoN) in specific areas. These aids notify mariners of a dynamic shipping zone and/or a seasonal management area subject to a speed restriction.

Each zone is delimited by four to six virtual AIS AtoN, which can be displayed on a ship's navigation equipment, such as

- Electronic Chart Display and Information System (ECDIS);
- Electronic Chart System (ECS);
- RADAR;
- Minimum Keyboard Display (MKD); and
- Electronic Nautical Chart (ENC).

The Canadian Coast Guard broadcasts the virtual AIS AtoN only when a speed restriction is in effect in one or more testing zones.

Mariners must select the virtual AIS AtoN symbol to view a message such as "SectA1 Spd Lim 10 kt." This message refers to a speed restriction in effect for a specific zone.

Note: This system is not the primary method of communicating this information.

COMPLIANCE AND ENFORCEMENT

Vessels must comply with the Interim Orders made pursuant to the *Canada Shipping Act, 2001*, and any NAVWARNs broadcasted and published by the Canadian Coast Guard relating to the Interim Orders, aimed at regulating the navigation for the purposes of protecting the North Atlantic right whales.

If a vessel does not comply with the Interim Orders or instructions in the NAVWARNs related to the Interim Orders, the vessel could face:

- administrative monetary penalties up to a maximum of CAN \$250,000; and/or
- penal sanctions under the Canada Shipping Act, 2001 is liable on summary conviction to a fine of not more than CAN \$1,000,000 or to imprisonment for a term of not more than 18 months, or to both.

If a vessel appears to have violated the speed restriction, Transport Canada Marine Safety inspectors will review all information provided through AIS and seek an explanation from the master.

No exemptions to the speed restriction will be granted in advance. However, if a deviation from the speed restrictions is necessary for safety reasons, the following information must be entered into the bridge logbook:

- reason(s) for deviation;
- speed at which vessel is operated;
- latitude and longitude at time of deviation;
- time and duration of deviation; and
- master of the vessel shall sign and date the bridge logbook entry.

For any deviation, Transport Canada will review and consider reasons such as:

- navigating to ensure vessel safety;
- weather conditions;
- force majeure (unforeseeable circumstances); and
- responding to emergencies.

REPORT A NORTH ATLANTIC RIGHT WHALE SIGHTING

If you see **live, free-swimming whales**:

- Email: DFO.GLFWholes-BaleinesGLF.MPO@dfo-mpo.gc.ca
- When reporting near sightings of North Atlantic right whales, you must include: GPS location (latitude and longitude), date and time of sighting, number of animals, photograph(s)/video(s) collected and if possible behavior of animals observed (ex., feeding, travelling, diving).

If you see a North Atlantic right whale (and all other marine mammals) **entangled, injured or dead**, please document and report it immediately to the regional Response Network.

- When documenting you should collect: GPS location (latitude and longitude), date and time of sighting, number of animals, photograph(s)/video(s), and description of the incident to provide to the Response Network.

Southern part of the Gulf of St. Lawrence (New Brunswick, Nova Scotia & Prince Edward Island)

Marine Animal Response Society
Telephone: 1-866-567-6277

Newfoundland and Labrador

Whale Release and Strandings Newfoundland and Labrador (Tangly Whales Inc.)
Telephone: 1-888-895-3003 or 1-709-895-3003

Quebec

Baleines en direct (GREMM)
Telephone: 1-877-722-5346

Report a marine mammal or sea turtle incident or sighting:

For more information on reporting other marine mammal or sea turtle sighting and incidents:

<https://www.dfo-mpo.gc.ca/species-especes/mammals-mammiferes/report-rapport/page01-eng.html>

Please consult Whale Insight for the latest right whale observations:

<https://gisp.dfo-mpo.gc.ca/apps/WhaleInsight/eng/?locale=en>

***807/23 Canadian Hydrographic Service – Inappropriate Geographical Names Review Process**

The records of the Canadian Hydrographic Service could contain geographical names that may be considered racist, offensive and derogatory. Geographical naming authorities are in the process of addressing many offensive place names, but the work is still ongoing. For more information, about inappropriate geographical names, please contact chsinfo@dfm-mpo.gc.ca.

***1001/23 Canadian Hydrographic Service – Nautical Charts**

Charts	Main Title	Scale	Edition Date	Published	Cat#	Price
New Charts						
3886	Carpenter Bay to/à Burnaby Island	1:45 000	2023-09-15	2023-10-27	2	\$20.00
Charts Permanently Withdrawn						
3809	Carpenter Bay to/à Burnaby Island	Cancelled by 3886				

***1002/23 Canadian Hydrographic Service – Electronic Navigational Charts**

S-57 ENC Number	Chart Title	ENC Compilation Scale	Published
New Charts			
CA471174 (Edn 1.000)	CA471174	1:90 000	2023-10-06
CA471175 (Edn 1.000)	CA471175	1:90 000	2023-10-06
CA471178 (Edn 1.000)	CA471178	1:22 500	2023-10-06
CA471179 (Edn 1.000)	CA471179	1:22 500	2023-10-06
CA471180 (Edn 1.000)	CA471180	1:22 500	2023-10-06
CA471181 (Edn 1.000)	CA471181	1:22 500	2023-10-06
CA471184 (Edn 1.000)	CA471184	1:22 500	2023-10-06
CA471185 (Edn 1.000)	CA471185	1:22 500	2023-10-06
New Editions			
CA370257 (Edn 5.000)	Knight Inlet	1:40 000	2023-10-20
CA370424 (Edn 5.000)	Nootka Sound to/à Quatsino Sound (part 1 of 2)	1:75 000	2023-10-06
CA376371 (Edn 6.000)	Indian Bay to/à Wadham Islands	1:30 000	2023-10-06
CA470310 (Edn 7.000)	Broughton Strait (Part 1 of 2)	1:20 000	2023-10-06
CA470312 (Edn 8.000)	Queen Charlotte Strait Eastern Portion/Partie Est (Part 1 of 2)	1:40 000	2023-10-06
CA470434 (Edn 4.000)	Checleset Bay	1:18 247	2023-10-06
CA476023 (Edn 2.000)	Seal Cove and Approaches/et les approches	1:12 500	2023-10-20
CA570073 (Edn 15.000)	Vancouver Harbour Western Portion/Partie Ouest	1:5 000	2023-10-20
CA571001 (Edn 2.000)	Parry Passage (Part 1 of 4)	1:11 000	2023-10-13
CA571002 (Edn 2.000)	Parry Passage (Part 2 of 4)	1:11 000	2023-10-13
CA571003 (Edn 2.000)	Parry Passage (Part 3 of 4)	1:11 000	2023-10-13

S-57 ENC Number	Chart Title	ENC Compilation Scale	Published
CA571004 (Edn 2.000)	Parry Passage (Part 4 of 4)	1:11 000	2023-10-13
Charts Permanently Withdrawn			
CA370109	Cape Scott to Cape Calvert		
CA370165	Quatsino Sound to/à Queen Charlotte Strait		
CA470031	Queen Charlotte Strait, Central Portion/Partie Centrale		
CA470042	Quatsino Sound		
CA470306	Queen Charlotte Strait Western Portion/Partie Ouest (Part 1 of 2)		
CA470307	Queen Charlotte Strait Western Portion/Partie Ouest (Part 2 of 2)		
CA470359	Kyuquot Sound (Part 1 of 2)		
CA470415	Seymour Inlet and/et Belize Inlet		
CA470431	Brooks Bay		

***1003/23 Transport Canada – Ship Safety Bulletins #18, #19, #20, #21 and #22/2023**

New and updated **Ship Safety Bulletins** have recently been posted on the [Transport Canada website](#).

To view or download these bulletins, please click on the links below:

[SSB#18/2023](#) – Central Registry of Seafarer’s Documentation (**Update**)
RDIMS# 19685693

[SSB#19/2023](#) – Updated application process to obtain a Canadian endorsement (**September 2023**)
RDIMS# 19742469

[SSB#20/2023](#) – How to Meet STCW Requirements for Masters, Deck Officers and Other Crew Members of Certain Canadian Ships Operating in Polar Waters
RDIMS# 19789021

[SSB#21/2023](#) – Changes to the Radio inspection certification due to the termination of the Agreement Between Canada and the United States of America for Promotion of Safety on the Great Lakes by Means of Radio, 1973.
RDIMS# 19619805

[SSB#22/2023](#) – Inspections of Vessel Personnel Certificates and Endorsements
RDIMS# 19789174

Sign up for [e-Bulletin](#) to receive an e-mail notice each time a new Ship Safety Bulletin is published on our website.

Contact us at marinesafety-securitemaritime@tc.gc.ca or 1-855-859-3123 (Toll Free).

***1005/23 Summerland Group to/à Grindstone Island – Unlit Buoy Repositioned**

Reference chart: 1437

The following unlit buoy has been repositioned to the following coordinates:

Aid Name	LL #	Position
Buoy H17	7491	44° 20' 58.1"N 076° 00' 20.1"W

(B2023-029)

***1006/23 Rivière des Prairies – Unlit Buoy Permanently Discontinued**

Reference chart: 1509

The following unlit buoy has been permanently discontinued:

Aid Name	LL #	Position
Île Paton buoy HC17	6183.5	45° 31' 19.8"N 073° 44' 41.6"W

(Q2023-086)

***1007/23 Chats Falls à/to Chenaux – Unlit Buoy Permanently Established**

Reference chart: 1551

The following unlit buoy has been permanently established at the following coordinates:

Aid Name	LL #	Position
Ottawa River buoy K21/1	7606.5	45° 27' 02.2"N 076° 21' 06.6"W

(B2023-024)

***1008/23 Port Dalhousie – Unlit Buoy Repositioned**

Reference chart: 2044

The following unlit buoy has been repositioned to the following coordinates:

Aid Name	LL #	Position
Buoy MJ1	7434	43° 12' 35.0"N 079° 15' 11.8"W

(B2023-028)

***1009/23 Oshawa Harbour – Unlit Buoy Repositioned**

Reference chart: 2050

The following unlit buoy has been repositioned to the following coordinates:

Aid Name	LL #	Position
Buoy MV6	7464	43° 51' 49.9"N 078° 49' 12.5"W

(B2023-031)

***1010/23 Harbours in Lake Erie/Havres dans le lac Érié – Unlit Buoys Repositioned**

Reference chart: 2181

The following unlit buoys have been repositioned to the following coordinates:

Aid Name	LL #	Position
Buoy EW3	7183.1	42° 03' 34.5"N 082° 27' 47.0"W
Buoy EW4	7183.2	42° 03' 34.6"N 082° 27' 46.0"W

(B2023-025, 026)

***1011/23 Entrée à / Entrance to Miramichi River – Daybeacons Permanently Discontinued**

Reference chart: 4911

The following daybeacons have been permanently discontinued:

Aid Name	LL #	Position
Portage Island Reach 23B Daybeacon 1	6180.61	47° 09' 12.1"N 065° 02' 24.5"W
Portage Island Reach 25 Daybeacon 1	6173.61	47° 09' 28.8"N 065° 02' 00.0"W

(G2023-094, 095)

***1012/23 Kilometre/Kilomètre 1580 - 1645 including/y compris East Channel, Inuvik to/à
Kilometre/Kilomètre 1645 – Fixed Aid to Navigation Permanently Discontinued**

Reference chart: 6429

The following fixed aid to navigation has been permanently discontinued:

Aid Name	LL #	Position
Mile 1022.0 front range	4281	68° 45' 00.4"N 134° 29' 00.7"W

(A2023-002)

Section 1A: Temporary and Preliminary Notices

Reminder – Comment Period for Active Preliminary Notices

This is a reminder that the comment period is still open for the following active Preliminary notices:

Notice #	Reference Chart #	Aids Affected (LL #)	Intent of Notice
Newfoundland and Labrador Coast			
812(P)/23	4852	466.3, 466.4	Aids to Navigation to be Discontinued
Atlantic Coast			
813(P)/23	4237	514	Light Buoy to be Repositioned
814(P)/23	4381	LIST	Notice of Proposed Changes
916(P)/23	4335	5685	Daybeacon to be Discontinued
Inland Waters			
918(P)/23	2245	984	Aid to Navigation to be Discontinued

Please refer to the [Notices to Mariners - Monthly Summary of Temporary and Preliminary Notices](#) publication for details.

Newfoundland and Labrador Coast

Temporary Notices

No notices applicable for this edition.

Preliminary Notices

Atlantic Region

Comment Submission

Comments on proposed changes in preliminary (P) notices are solicited from mariners and other interested parties within three months of the initial publication date. Following this date, the notices will be cancelled. Any objections raised must state the facts on which they are based and should include supporting information on safety, commerce and public benefit.

Comments should be directed to the following:

Superintendent,
Aids to Navigation & Waterways
Canadian Coast Guard, Atlantic Region
P.O. Box 1000
50 Discovery Drive
Dartmouth, NS B2Y 3Z8
Telephone: (506) 636-4708
Email: DFO.CCGATLaidstoNavDiscont-AidesalanavSupprATLGCC.MPO@dfo-mpo.gc.ca

***1014(P)/23 Little Bay Arm and Approaches / et les approches – Aid to Navigation to be Discontinued**

Reference chart: 4523

The Canadian Coast Guard proposes to permanently discontinue the following aid to navigation:

Aid Name	LL #	Position
Shoal Arm Wharf	336.28	49° 35' 26.2"N 055° 56' 07.9"W

Initial publication date: Friday, October 27, 2023

[Comment submission deadline](#): Thursday, January 25, 2024

(N2023-146)

Atlantic Coast

Temporary Notices

No notices applicable for this edition.

Preliminary Notices

No notices applicable for this edition.

Inland Waters

Temporary Notices

No notices applicable for this edition.

Preliminary Notices

No notices applicable for this edition.

Section 2: Chart Corrections

1311 - Sorel-Tracy à/to Varennes - New Edition - 17-MAY-2019 - NAD 1983 13-OCT-2023

LNМ/D. 28-JUL-2023

Delete	depth of 8,3 metres (See Chart 1, I10)	46°03'38.5"N 073°05'58.0"W <i>DFO(6410833-01)</i>
Add	depth of 8 metres (See Chart 1, I10)	46°03'38.8"N 073°05'54.0"W <i>DFO(6410833-02)</i>

1312 - Lac Saint-Pierre - New Edition - 10-MAY-2019 - NAD 1983 13-OCT-2023

LNМ/D. 12-AUG-2022

Amend	F G 13m14M to read F G 13m12M against the front leading light (See Chart 1, P16)	46°03'58.3"N 073°01'29.6"W <i>(Q2023025) LL(2180) DFO(6410804-01)</i>
Amend	F G 27m14M to read F G 27m12M against rear leading light (See Chart 1, P16)	46°04'00.4"N 073°01'07.1"W <i>(Q2023026) LL(2181) DFO(6410805-01)</i>
Amend	F G 11m13M to read F G 11m12M against front leading light (See Chart 1, P16)	46°05'15.3"N 072°59'41.8"W <i>(Q2023027) LL(2168) DFO(6410806-01)</i>
Amend	F G 29m13M to read F G 29m12M against rear leading light (See Chart 1, P16)	46°05'03.1"N 072°59'55.7"W <i>(Q2023028) LL(2169) DFO(6410807-01)</i>
Delete	depth of 8,3 metres (See Chart 1, I10)	46°03'38.5"N 073°05'58.0"W <i>DFO(6410833-01)</i>
Add	depth of 8 metres (See Chart 1, I10)	46°03'38.8"N 073°05'54.0"W <i>DFO(6410833-02)</i>

1312 - Port de Sorel-Tracy - New Edition - 10-MAY-2019 - NAD 1983 13-OCT-2023

LNМ/D. 12-AUG-2022

Delete	depth of 8,3 metres (See Chart 1, I10)	46°03'38.5"N 073°05'58.0"W <i>DFO(6410833-01)</i>
Add	depth of 8 metres (See Chart 1, I10)	46°03'38.8"N 073°05'54.0"W <i>DFO(6410833-02)</i>
Add	depth of 11,1 metres (See Chart 1, I10)	46°03'24.6"N 073°07'06.2"W <i>DFO(6410833-03)</i>
Delete	depth of 13,3 metres (See Chart 1, I10)	46°02'54.6"N 073°08'28.7"W <i>DFO(6410833-04)</i>
Add	depth of 13 metres (See Chart 1, I10)	46°02'54.7"N 073°08'28.6"W <i>DFO(6410833-05)</i>

1320 - Île du Bic au/to Cap de la Tête au Chien - New Chart - 26-AUG-2011 - NAD 1983

06-OCT-2023

LNM/D. 02-JUN-2023

Add obstruction, depth unknown
(See Chart 1, K40)

48°15'16.2"N 069°07'48.6"W

This notice affects Electronic Navigational Chart: CA379232

DFO(6410822-01)

1437 - Summerland Group to/à Grindstone Island - New Edition - 27-JUL-2018 - World Geodetic System 1984

13-OCT-2023

LNM/D. 04-MAR-2022

Reposition green port hand spar buoy, marked H17
(See Chart 1, Qc)

from 44°20'59.1"N 076°00'19.0"W
to 44°20'58.1"N 076°00'20.1"W

This notice affects Electronic Navigational Chart: CA473034

(B2023029) DFO(6605155-01)

1509 - Rapides de la Rivière des Prairies - Sheet/Feuille 2 - New Edition - 15-NOV-2019 - NAD 1983

20-OCT-2023

Add underwater rock of unknown depth, dangerous to surface navigation,
Rep (2021)
(See Chart 1, K13, I3.2)

45°39'49.8"N 073°34'04.2"W

DFO(6410831-01)

1510 - Lac Saint-Louis à/to Carillon - B-C - Sheet/Feuille 1 - New Edition - 25-OCT-2019 - NAD 1983

20-OCT-2023

LNM/D. 05-AUG-2022

Delete private light Iso R 2s11m4M(Priv)
(See Chart 1, P1)

45°29'37.7"N 074°10'45.7"W

This notice affects Electronic Navigational Chart: CA479202

(Q2023001) LL(1245) DFO(6410778-01)

2044 - Port Dalhousie - Sheet/Feuille 1 - New Chart - 28-FEB-1997 - NAD 1983

13-OCT-2023

LNM/D. 04-AUG-2023

Reposition green port hand spar buoy, marked MJ1
(See Chart 1, Qc)

from 43°12'39.5"N 079°15'12.2"W
to 43°12'35.0"N 079°15'11.8"W

(B2023028) DFO(6605153-01)

2077 - Lake Ontario/Lac Ontario (Western Portion/Partie Ouest) - New Edition - 17-JUL-2020 - NAD 1983

13-OCT-2023

LNM/D. 04-AUG-2023

Reposition green port hand spar buoy, marked MJ1
(See Chart 1, Qc)

from 43°12'39.5"N 079°15'12.2"W
to 43°12'35.0"N 079°15'11.8"W

This notice affects Electronic Navigational Chart: CA373091

(B2023028) DFO(6605153-02)

4404 - Cape George to / à Pictou - New Edition - 28-FEB-2014 - NAD 1983

27-OCT-2023

LNM/D. 13-MAY-2022

Add depth of 7.9 metres
(See Chart 1, I10)

45°40'26.7"N 062°41'55.7"W

This notice affects Electronic Navigational Chart: CA376691, CA476610, CA576246

DFO(6310881-05)

Replace depth of 10.7 metres with depth of 10 metres
(See Chart 1, I10)

45°40'44.4"N 062°41'16.6"W

This notice affects Electronic Navigational Chart: CA376691

DFO(6310881-15)

4456 - Baie Piashti à/to Petite Île au Marteau - New Edition - 12-DEC-2022 - NAD 1983

27-OCT-2023

Delete green port hand lighted pillar buoy, FI G , marked C81 50°16'50.0"N 062°48'22.2"W
(See Chart 1, Qc)
(Q2020231) DFO(6410942-02)

4466 - Hillsborough Bay - New Edition - 21-MAR-2003 - NAD 1983

06-OCT-2023

Reposition red starboard hand lighted spar buoy Q R, marked NV4 50°16'50.0"N 062°48'22.2"W
(See Chart 1, Qc) from 46°02'42.4"N 062°57'15.5"W
This notice affects Electronic Navigational Chart: CA476179 to 46°02'46.2"N 062°57'15.5"W
(G2023049) LL(980.5) DFO(6310752-01)

Reposition green port hand spar buoy, marked NV7 50°16'50.0"N 062°48'22.2"W
(See Chart 1, Qc) from 46°03'24.4"N 062°55'52.4"W
This notice affects Electronic Navigational Chart: CA476179 to 46°03'24.4"N 062°55'44.9"W
(G2023050) DFO(6310753-01)

4682 - Codroy Harbour - New Edition - 27-JUN-2003 - NAD 1983

20-OCT-2023

Delete sounding of 5 feet 47°53'00.8"N 059°24'13.7"W
(See Chart 1, I10) DFO(6310668-01)

Delete depth of 19 feet 47°52'50.6"N 059°24'11.1"W
(See Chart 1, I10) DFO(6310668-02)

Delete depth of 10 feet 47°52'56.3"N 059°24'09.3"W
(See Chart 1, I10) DFO(6310668-03)

Delete depth of 2 feet 47°52'59.9"N 059°24'08.9"W
(See Chart 1, I10) DFO(6310668-04)

Add drying height of 1 foot 47°53'01.0"N 059°24'13.3"W
(See Chart 1, I15) DFO(6310668-05)

Add drying height of 2 feet 47°52'59.8"N 059°24'13.2"W
(See Chart 1, I15) DFO(6310668-06)

Add drying height of 2 feet 47°52'59.1"N 059°24'13.1"W
(See Chart 1, I15) DFO(6310668-07)

Replace depth of 7 feet with depth of 2 feet 47°52'58.4"N 059°24'13.2"W
(See Chart 1, I10) DFO(6310668-08)

Add drying height of 2 feet 47°52'57.6"N 059°24'13.3"W
(See Chart 1, I15) DFO(6310668-09)

Add depth of 4 feet 47°52'54.3"N 059°24'13.7"W
(See Chart 1, I10) DFO(6310668-10)

Replace	depth of 9 feet with depth of 4 feet (See Chart 1, I10)	47°52'53.1"N 059°24'14.0"W <i>DFO(6310668-11)</i>
Add	depth of 14 feet (See Chart 1, I10)	47°52'50.9"N 059°24'10.7"W <i>DFO(6310668-12)</i>
Replace	depth of 19 feet with depth of 2 feet (See Chart 1, I10)	47°52'52.2"N 059°24'11.0"W <i>DFO(6310668-13)</i>
Add	drying height of 0 feet (See Chart 1, I15)	47°52'53.7"N 059°24'10.6"W <i>DFO(6310668-14)</i>
Replace	depth of 17 feet with depth of 2 feet (See Chart 1, I10)	47°52'55.0"N 059°24'10.1"W <i>DFO(6310668-15)</i>
Add	drying height of 0 feet (See Chart 1, I15)	47°52'55.8"N 059°24'09.5"W <i>DFO(6310668-16)</i>
Add	drying height of 0 feet (See Chart 1, I15)	47°53'00.2"N 059°24'09.3"W <i>DFO(6310668-17)</i>

4682 - Larkin Point to / à Cape Anguille - New Edition - 27-JUN-2003 - NAD 1983
20-OCT-2023

LNMD. 19-SEP-2014

Replace	depth of 9 feet with depth of 4 feet (See Chart 1, I10)	47°52'53.1"N 059°24'14.0"W <i>DFO(6310668-11)</i>
---------	--	--

4820 - Cape Freels to / à Exploits Islands - New Chart - 01-JUL-2005 - NAD 1983
06-OCT-2023

LNMD. 11-NOV-2022

Amend	Fl 3s23m6M to read Fl 5s23m5M against light (See Chart 1, P16) This notice affects Electronic Navigational Chart: CA276092, CA376371	49°15'23.4"N 053°25'46.3"W <i>(N2023102) LL(408) DFO(6310851-01)</i>
Amend	Fl to read Fl 5s against light (See Chart 1, P16) This notice affects Electronic Navigational Chart: CA376371	49°12'58.1"N 053°28'24.7"W <i>(N2023114) LL(410) DFO(6310854-01)</i>
Amend	Fl G to read Fl G 5s against light (See Chart 1, P16) This notice affects Electronic Navigational Chart: CA376371	49°12'09.6"N 053°30'31.1"W <i>(N2023116) LL(415.3) DFO(6310855-01)</i>
Amend	Fl R to read Fl R 5s9m4M against light (See Chart 1, P16) This notice affects Electronic Navigational Chart: CA376371	49°10'42.7"N 053°30'45.1"W <i>(N2023103) LL(415) DFO(6310858-01)</i>

4841 - Cape St Mary's to / à Argentinia - New Edition - 29-MAY-2015 - NAD 1983

20-OCT-2023

LNMD. 08-SEP-2023

Amend FI 3s to read FI 5s against light 46°55'04.8"N 054°10'40.1"W
(See Chart 1, P16)
This notice affects Electronic Navigational Chart: CA376135, CA576297
(N2023127) LL(14.6) DFO(6310872-01)

4841 - St. Bride's - New Edition - 29-MAY-2015 - NAD 1983

20-OCT-2023

LNMD. 08-SEP-2023

Amend FI R 3s to read FI R 5s against light 46°55'05.5"N 054°10'37.0"W
(See Chart 1, P16)
This notice affects Electronic Navigational Chart: CA576297
(N2023125) LL(14.8) DFO(6310871-01)

Amend FI 3s to read FI 5s against light 46°55'05.0"N 054°10'40.0"W
(See Chart 1, P16)
This notice affects Electronic Navigational Chart: CA376135, CA576297
(N2023127) LL(14.6) DFO(6310872-01)

Amend FI G to read FI Y 5s against light 46°55'02.4"N 054°10'37.0"W
(See Chart 1, P16)
This notice affects Electronic Navigational Chart: CA576297
(N2023128) LL(14.56) DFO(6310873-01)

4842 - Cape Pine to / au Cape St Mary's - New Edition - 27-OCT-2000 - NAD 1983

20-OCT-2023

LNMD. 28-APR-2023

Amend FIR to read FI R 5s against light 46°55'05.8"N 054°10'35.6"W
(See Chart 1, P16)
This notice affects Electronic Navigational Chart: CA576297
(N2023125) LL(14.8) DFO(6310871-01)

Amend FI to read FI 5s against light 46°55'05.2"N 054°10'38.5"W
(See Chart 1, P16)
This notice affects Electronic Navigational Chart: CA376135, CA576297
(N2023127) LL(14.6) DFO(6310872-01)

4850 - Cape St Francis to / à Baccalieu Island and / et Heart's Content - New Chart - 11-MAY-1990 - NAD 1983

06-OCT-2023

LNMD. 28-JUL-2023

Amend FIG to read FI G 5s against light 47°54'45.7"N 053°03'59.8"W
(See Chart 1, P16)
This notice affects Electronic Navigational Chart: CA376146
(N2023121) LL(475.1) DFO(6310867-01)

Amend FI R to read FI R 5s against light 48°04'59.6"N 052°54'02.9"W
(See Chart 1, P16)
This notice affects Electronic Navigational Chart: CA376146, CA676646
(N2023122) LL(474.4) DFO(6310868-01)

Amend FI G to read FI G 5s against light 48°05'02.1"N 052°54'00.1"W
(See Chart 1, P16)
This notice affects Electronic Navigational Chart: CA376146, CA676646
(N2023123) LL(474.3) DFO(6310869-01)

4857 - Indian Bay to / à Wadham Islands - New Chart - 29-OCT-1999 - NAD 1983

06-OCT-2023

LNMD. 10-MAR-2023

- Amend FI 3s 24m 5M to read FI 5s23m5M against light 49°15'23.4"N 053°25'46.2"W
(See Chart 1, P16)
This notice affects Electronic Navigational Chart: CA276092, CA376371
(N2023102) LL(408) DFO(6310851-01)
- Amend FI to read FI 5s against light 49°12'59.2"N 053°28'24.8"W
(See Chart 1, P16)
This notice affects Electronic Navigational Chart: CA376371
(N2023114) LL(410) DFO(6310854-01)
- Amend FIG to read FI G 5s against light 49°12'09.6"N 053°30'31.0"W
(See Chart 1, P16)
This notice affects Electronic Navigational Chart: CA376371
(N2023116) LL(415.3) DFO(6310855-01)
- Amend FIR to read FI R 5s9m4M against light 49°10'42.6"N 053°30'44.9"W
(See Chart 1, P16)
This notice affects Electronic Navigational Chart: CA376371
(N2023103) LL(415) DFO(6310858-01)

4858 - Greenspond Harbour to / à Pound Cove - New Chart - 25-DEC-1998 - NAD 1983

06-OCT-2023

LNMD. 15-SEP-2023

- Amend FIR to read FI R 5s9m4M against light 49°10'42.6"N 053°30'45.1"W
(See Chart 1, P16)
This notice affects Electronic Navigational Chart: CA376371
(N2023103) LL(415) DFO(6310858-01)

4921 - Bonaventure - New Edition - 02-DEC-2016 - NAD 1983

20-OCT-2023

LNMD. 09-JUN-2023

- Affix patch 48°02'01.1"N 065°28'54.9"W
Download Patch - https://www.notmar.gc.ca/chsftp/patches/4921_6410757_1_202309061459.pdf
DFO(6410757-01)

4921 - L'Anse-à-Beaufils - New Edition - 02-DEC-2016 - NAD 1983

20-OCT-2023

LNMD. 09-JUN-2023

- Add depth of 2,9 metres 48°28'19.6"N 064°18'17.1"W
(See Chart 1, I10)
DFO(6410946-01)
- Amend 3,0 m to read 2,9 m (2023) 48°28'20.0"N 064°18'20.1"W
(See Chart 1, I22)
DFO(6410946-02)
- Amend 2,6 m to read 2,2 m (2023) 48°28'18.7"N 064°18'26.3"W
(See Chart 1, I22)
DFO(6410946-03)
- Amend 1,5 m to read 1,1 m (2023) 48°28'17.1"N 064°18'26.0"W
(See Chart 1, I22)
DFO(6410946-04)
- Amend 1,6 m to read 1,3 m (2023) 48°28'20.4"N 064°18'31.7"W
(See Chart 1, I22)
DFO(6410946-05)

Amend	1,2 m to read 0,9 m (2023) (See Chart 1, I22)	48°28'21.2"N 064°18'34.3"W <i>DFO(6410946-06)</i>
Add	depth of 0,4 metres (See Chart 1, I10)	48°28'15.7"N 064°18'24.9"W <i>DFO(6410946-07)</i>
4935 - Georgetown - New Chart - 18-JAN-2019 - NAD 1983		
06-OCT-2023		LNMD. 07-APR-2023
Reposition	red starboard hand lighted spar buoy FI R, marked NH14 (See Chart 1, Qb) This notice affects Electronic Navigational Chart: CA476490, CA576491	from 46°10'32.1"N 062°32'26.6"W to 46°10'33.3"N 062°32'25.7"W <i>(G2023045) LL(956.15) DFO(6310746-01)</i>
4935 - Murray Harbour to/a Boughton Bay - New Chart - 18-JAN-2019 - NAD 1983		
06-OCT-2023		LNMD. 07-APR-2023
Reposition	green port hand lighted spar buoy Q G, marked NH43 (See Chart 1, Qc) This notice affects Electronic Navigational Chart: CA476490	from 46°10'01.2"N 062°38'19.7"W to 46°10'02.1"N 062°38'14.8"W <i>(G2023046) LL(957.8) DFO(6310748-01)</i>
4938 - East River of Pictou - New Chart - 25-JAN-2019 - World Geodetic System 1984		
27-OCT-2023		LNMD. 04-AUG-2023
Reposition	red starboard hand spar buoy, marked SJ46 (See Chart 1, Qb) This notice affects Electronic Navigational Chart: CA576447	from 45°36'49.1"N 062°38'46.8"W to 45°36'50.5"N 062°38'47.9"W <i>(G2023051) DFO(6310754-01)</i>
4938 - Pictou Harbour - New Chart - 25-JAN-2019 - World Geodetic System 1984		
27-OCT-2023		LNMD. 04-AUG-2023
Delete	depth of 10.4 metres (See Chart 1, I10) This notice affects Electronic Navigational Chart: CA476610, CA576246	45°40'16.5"N 062°42'23.9"W <i>DFO(6310881-01)</i>
Add	depth of 10 metres (See Chart 1, I10) This notice affects Electronic Navigational Chart: CA476610, CA576246	45°40'17.1"N 062°42'21.6"W <i>DFO(6310881-02)</i>
Replace	depth of 9.1 metres with depth of 8.8 metres (See Chart 1, I10) This notice affects Electronic Navigational Chart: CA476610, CA576246	45°40'28.5"N 062°41'59.2"W <i>DFO(6310881-03)</i>
Delete	depth of 8.7 metres (See Chart 1, I10) This notice affects Electronic Navigational Chart: CA576246	45°40'24.5"N 062°41'56.7"W <i>DFO(6310881-04)</i>
Add	depth of 7.9 metres (See Chart 1, I10) This notice affects Electronic Navigational Chart: CA376691, CA476610, CA576246	45°40'26.7"N 062°41'55.7"W <i>DFO(6310881-05)</i>

Add	depth of 9.9 metres (See Chart 1, I10) This notice affects Electronic Navigational Chart: CA576246	45°40'37.0"N 062°41'33.6"W <i>DFO(6310881-06)</i>
Add	depth of 9.9 metres (See Chart 1, I10) This notice affects Electronic Navigational Chart: CA576246	45°40'38.2"N 062°41'30.4"W <i>DFO(6310881-07)</i>
Delete	depth of 10.3 metres (See Chart 1, I10) This notice affects Electronic Navigational Chart: CA476610, CA576246	45°40'43.5"N 062°41'20.6"W <i>DFO(6310881-08)</i>
Add	depth of 10 metres (See Chart 1, I10) This notice affects Electronic Navigational Chart: CA276286, CA476610, CA576246	45°40'44.4"N 062°41'16.6"W <i>DFO(6310881-09)</i>
Replace	depth of 15.1 metres with depth of 14.8 metres (See Chart 1, I10) This notice affects Electronic Navigational Chart: CA476610, CA576246	45°40'58.5"N 062°40'41.6"W <i>DFO(6310881-10)</i>
Add	depth of 9.4 metres (See Chart 1, I10) This notice affects Electronic Navigational Chart: CA576246	45°41'05.4"N 062°40'28.1"W <i>DFO(6310881-11)</i>
Replace	depth of 12 metres with depth of 11.5 metres (See Chart 1, I10) This notice affects Electronic Navigational Chart: CA576246	45°41'17.0"N 062°40'09.3"W <i>DFO(6310881-12)</i>
Add	depth of 1.5 metres (See Chart 1, I10) This notice affects Electronic Navigational Chart: CA476610, CA576246	45°41'20.1"N 062°39'46.4"W <i>DFO(6310881-13)</i>
Add	depth of 1.8 metres (See Chart 1, I10) This notice affects Electronic Navigational Chart: CA476610, CA576246	45°41'21.1"N 062°39'40.8"W <i>DFO(6310881-14)</i>
4938 - Pictou Wharves - New Chart - 25-JAN-2019 - World Geodetic System 1984		
27-OCT-2023		LNM/D. 04-AUG-2023
Delete	depth of 10.4 metres (See Chart 1, I10) This notice affects Electronic Navigational Chart: CA476610, CA576246	45°40'16.6"N 062°42'24.0"W <i>DFO(6310881-01)</i>
Add	depth of 10 metres (See Chart 1, I10) This notice affects Electronic Navigational Chart: CA476610, CA576246	45°40'17.1"N 062°42'21.6"W <i>DFO(6310881-02)</i>
Replace	depth of 9.1 metres with depth of 8.8 metres (See Chart 1, I10) This notice affects Electronic Navigational Chart: CA476610, CA576246	45°40'28.5"N 062°41'59.2"W <i>DFO(6310881-03)</i>

Add depth of 7.9 metres 45°40'26.7"N 062°41'55.7"W
(See Chart 1, I10)
This notice affects Electronic Navigational Chart: CA376691, CA476610, CA576246
DFO(6310881-05)

4940 - Approaches to Caribou and Pictou - New Chart - 24-SEP-2021 - NAD 1983
27-OCT-2023

LNMD. 29-SEP-2023

Delete depth of 10.4 metres 45°40'16.6"N 062°42'24.0"W
(See Chart 1, I10)
This notice affects Electronic Navigational Chart: CA476610, CA576246
DFO(6310881-01)

Add depth of 10 metres 45°40'17.1"N 062°42'21.6"W
(See Chart 1, I10)
This notice affects Electronic Navigational Chart: CA476610, CA576246
DFO(6310881-02)

Replace depth of 9.1 metres with depth of 8.8 metres 45°40'28.0"N 062°41'59.0"W
(See Chart 1, I10)
This notice affects Electronic Navigational Chart: CA476610, CA576246
DFO(6310881-03)

Add depth of 7.9 metres 45°40'26.7"N 062°41'55.7"W
(See Chart 1, I10)
This notice affects Electronic Navigational Chart: CA376691, CA476610, CA576246
DFO(6310881-05)

Add depth of 9.9 metres 45°40'38.3"N 062°41'30.4"W
(See Chart 1, I10)
This notice affects Electronic Navigational Chart: CA576246
DFO(6310881-07)

Delete depth of 10.3 metres 45°40'43.5"N 062°41'20.6"W
(See Chart 1, I10)
This notice affects Electronic Navigational Chart: CA476610, CA576246
DFO(6310881-08)

Add depth of 10 metres 45°40'44.4"N 062°41'16.6"W
(See Chart 1, I10)
This notice affects Electronic Navigational Chart: CA276286, CA476610, CA576246
DFO(6310881-09)

Replace depth of 15.1 metres with depth of 14.8 metres 45°40'58.5"N 062°40'41.6"W
(See Chart 1, I10)
This notice affects Electronic Navigational Chart: CA476610, CA576246
DFO(6310881-10)

Add depth of 1.8 metres 45°41'21.1"N 062°39'40.9"W
(See Chart 1, I10)
This notice affects Electronic Navigational Chart: CA476610, CA576246
DFO(6310881-14)

4954 - Chenal du Havre de la Grande Entrée - New Edition - 18-MAR-2016 - NAD 1983
13-OCT-2023

LNMD. 16-DEC-2022

Amend 7,0 m (2016) to read 7,0 m (2022) 47°34'50.1"N 061°32'32.9"W
(See Chart 1, I22)
This notice affects Electronic Navigational Chart: CA579084
DFO(6410832-01)

Amend	7,0 m (2016) to read 7,0 m (2022) (See Chart 1, I22) This notice affects Electronic Navigational Chart: CA579084	47°36'29.2"N 061°33'21.9"W <i>DFO(6410832-02)</i>
Add	depth of 4,9 metres (See Chart 1, I10) This notice affects Electronic Navigational Chart: CA579084	47°36'35.1"N 061°33'17.2"W <i>DFO(6410832-04)</i>
Amend	7,0 m (2016) to read 7,0 m (2022) (See Chart 1, I22)	47°32'31.9"N 061°34'19.5"W <i>DFO(6410832-05)</i>
Add	depth of 1,5 metres (See Chart 1, I10) This notice affects Electronic Navigational Chart: CA579084	47°33'24.9"N 061°33'37.8"W <i>DFO(6410832-07)</i>
Delete	depth of 6,3 metres (See Chart 1, I10) This notice affects Electronic Navigational Chart: CA579084	47°33'00.1"N 061°34'02.0"W <i>DFO(6410832-08)</i>
Add	depth of 4,6 metres (See Chart 1, I10) This notice affects Electronic Navigational Chart: CA579084	47°33'00.2"N 061°34'01.6"W <i>DFO(6410832-09)</i>
Delete	depth of 4,8 metres (See Chart 1, I10) This notice affects Electronic Navigational Chart: CA579084	47°33'07.2"N 061°34'00.1"W <i>DFO(6410832-10)</i>
Add	depth of 3,9 metres (See Chart 1, I10) This notice affects Electronic Navigational Chart: CA579084	47°33'07.4"N 061°33'59.9"W <i>DFO(6410832-11)</i>
Delete	depth of 3 metres (See Chart 1, I10) This notice affects Electronic Navigational Chart: CA579084	47°33'12.2"N 061°33'57.3"W <i>DFO(6410832-12)</i>
Add	depth of 2,4 metres (See Chart 1, I10) This notice affects Electronic Navigational Chart: CA579084	47°33'12.1"N 061°33'57.5"W <i>DFO(6410832-13)</i>
Delete	depth of 5,2 metres (See Chart 1, I10) This notice affects Electronic Navigational Chart: CA579084	47°35'10.4"N 061°32'08.2"W <i>DFO(6410832-14)</i>
Add	depth of 4,9 metres (See Chart 1, I10) This notice affects Electronic Navigational Chart: CA579084	47°35'09.5"N 061°32'08.8"W <i>DFO(6410832-15)</i>

Delete	depth of 6 metres (See Chart 1, I10) This notice affects Electronic Navigational Chart: CA579084	47°33'19.6"N 061°33'53.6"W <i>DFO(6410832-16)</i>
Add	depth of 3,6 metres (See Chart 1, I10) This notice affects Electronic Navigational Chart: CA579084	47°33'19.4"N 061°33'53.2"W <i>DFO(6410832-17)</i>
Delete	depth of 5 metres (See Chart 1, I10) This notice affects Electronic Navigational Chart: CA579084	47°33'20.4"N 061°33'52.4"W <i>DFO(6410832-18)</i>
Add	depth of 3,1 metres (See Chart 1, I10) This notice affects Electronic Navigational Chart: CA579084	47°33'20.8"N 061°33'51.7"W <i>DFO(6410832-19)</i>
Delete	depth of 8,9 metres (See Chart 1, I10) This notice affects Electronic Navigational Chart: CA579084	47°33'26.3"N 061°33'48.3"W <i>DFO(6410832-20)</i>
Add	depth of 8,3 metres (See Chart 1, I10) This notice affects Electronic Navigational Chart: CA579084	47°33'26.2"N 061°33'48.3"W <i>DFO(6410832-21)</i>
Delete	depth of 4,7 metres (See Chart 1, I10) This notice affects Electronic Navigational Chart: CA579084	47°34'01.9"N 061°33'16.7"W <i>DFO(6410832-22)</i>
Add	depth of 3,6 metres (See Chart 1, I10) This notice affects Electronic Navigational Chart: CA579084	47°34'02.3"N 061°33'16.2"W <i>DFO(6410832-23)</i>
Delete	depth of 5,2 metres (See Chart 1, I10) This notice affects Electronic Navigational Chart: CA579084	47°35'13.5"N 061°32'14.5"W <i>DFO(6410832-26)</i>
Add	depth of 4,9 metres (See Chart 1, I10) This notice affects Electronic Navigational Chart: CA579084	47°35'13.6"N 061°32'14.5"W <i>DFO(6410832-27)</i>
Delete	depth of 7,1 metres (See Chart 1, I10) This notice affects Electronic Navigational Chart: CA579084	47°36'00.6"N 061°32'11.9"W <i>DFO(6410832-28)</i>
Add	depth of 6,7 metres (See Chart 1, I10) This notice affects Electronic Navigational Chart: CA579084	47°36'00.4"N 061°32'11.6"W <i>DFO(6410832-29)</i>

Delete	depth of 7,7 metres (See Chart 1, I10) This notice affects Electronic Navigational Chart: CA579084	47°36'04.8"N 061°32'22.8"W <i>DFO(6410832-30)</i>
Add	depth of 7,3 metres (See Chart 1, I10) This notice affects Electronic Navigational Chart: CA579084	47°36'04.4"N 061°32'22.4"W <i>DFO(6410832-31)</i>
Delete	depth of 4,6 metres (See Chart 1, I10) This notice affects Electronic Navigational Chart: CA579084	47°36'32.6"N 061°33'11.3"W <i>DFO(6410832-32)</i>
Add	depth of 4,2 metres (See Chart 1, I10) This notice affects Electronic Navigational Chart: CA579084	47°36'32.9"N 061°33'11.7"W <i>DFO(6410832-33)</i>
Add	depth of 4,7 metres (See Chart 1, I10) This notice affects Electronic Navigational Chart: CA579084	47°33'51.4"N 061°33'35.5"W <i>DFO(6410832-40)</i>
4954 - Quai / Wharf Mines Seleine - New Edition - 18-MAR-2016 - NAD 1983		
13-OCT-2023		LNM/D. 16-DEC-2022
Amend	7,0 m (2016) to read 7,0 m (2022) (See Chart 1, I22) This notice affects Electronic Navigational Chart: CA579084	47°36'31.4"N 061°33'20.8"W <i>DFO(6410832-02)</i>
Delete	depth of 6,1 metres (See Chart 1, I10) This notice affects Electronic Navigational Chart: CA579084	47°36'35.3"N 061°33'16.8"W <i>DFO(6410832-03)</i>
Add	depth of 4,9 metres (See Chart 1, I10) This notice affects Electronic Navigational Chart: CA579084	47°36'35.1"N 061°33'17.2"W <i>DFO(6410832-04)</i>
Delete	depth of 4,6 metres (See Chart 1, I10) This notice affects Electronic Navigational Chart: CA579084	47°36'32.6"N 061°33'11.4"W <i>DFO(6410832-32)</i>
Add	depth of 4,2 metres (See Chart 1, I10) This notice affects Electronic Navigational Chart: CA579084	47°36'32.9"N 061°33'11.7"W <i>DFO(6410832-33)</i>
Delete	depth of 6,3 metres (See Chart 1, I10) This notice affects Electronic Navigational Chart: CA579084	47°36'28.7"N 061°33'28.5"W <i>DFO(6410832-38)</i>
Add	depth of 4,5 metres (See Chart 1, I10) This notice affects Electronic Navigational Chart: CA579084	47°36'29.3"N 061°33'28.9"W <i>DFO(6410832-39)</i>

Delete depth of 6,3 metres 47°36'36.5"N 061°33'20.0"W
(See Chart 1, I10)
This notice affects Electronic Navigational Chart: CA579084
DFO(6410832-41)

Add depth of 5,3 metres 47°36'36.3"N 061°33'20.0"W
(See Chart 1, I10)
This notice affects Electronic Navigational Chart: CA579084
DFO(6410832-42)

4967 - La Tabatière à/to Île du Petit Mécatina - New Chart - 09-APR-2021 - NAD 1983
06-OCT-2023

Affix patch 50°42'18.6"N 058°55'03.8"W
Download Patch - https://www.notmar.gc.ca/chsftp/patches/4967_6410829_1_202306221259.pdf
This notice affects Electronic Navigational Chart: CA479265
DFO(6410829-01)

4971 - Blanc Sablon à/to Baie de Bonne-Espérance - New Chart - 10-NOV-2017 - NAD 1983
20-OCT-2023

LNM/D. 07-MAY-2021

Add depth of 3,1 metres 51°22'44.2"N 057°12'13.7"W
(See Chart 1, I10)
This notice affects Electronic Navigational Chart: CA479247
DFO(6410834-03)

Delete depth of 6,4 metres 51°23'13.8"N 057°09'03.3"W
(See Chart 1, I10)
This notice affects Electronic Navigational Chart: CA479247
DFO(6410834-04)

Add depth of 4,7 metres 51°23'15.0"N 057°09'04.3"W
(See Chart 1, I10)
This notice affects Electronic Navigational Chart: CA479247
DFO(6410834-05)

Add depth of 4,5 metres 51°23'43.8"N 057°08'04.6"W
(See Chart 1, I10)
This notice affects Electronic Navigational Chart: CA479247
DFO(6410834-06)

Delete depth of 6,1 metres 51°23'36.1"N 057°07'29.0"W
(See Chart 1, I10)
This notice affects Electronic Navigational Chart: CA479247
DFO(6410834-07)

Add depth of 4,9 metres 51°23'35.9"N 057°07'29.9"W
(See Chart 1, I10)
This notice affects Electronic Navigational Chart: CA479247
DFO(6410834-08)

Delete depth of 2,4 metres 51°23'11.6"N 057°07'14.6"W
(See Chart 1, I10)
This notice affects Electronic Navigational Chart: CA479247
DFO(6410834-09)

Add drying height of 0,4 metres 51°23'13.2"N 057°07'13.3"W
(See Chart 1, I15)
This notice affects Electronic Navigational Chart: CA479247
DFO(6410834-10)

Add	depth of 1,7 metres (See Chart 1, I10) This notice affects Electronic Navigational Chart: CA479247	51°23'07.7"N 057°07'14.5"W <i>DFO(6410834-11)</i>
4971 - Blanc-Sablon - New Chart - 10-NOV-2017 - NAD 1983		
20-OCT-2023		LNМ/D. 07-MAY-2021
Add	depth of 1,1 metres (See Chart 1, I10) This notice affects Electronic Navigational Chart: CA579248	51°24'27.4"N 057°10'51.6"W <i>DFO(6410834-01)</i>
Add	drying height of 0,7 metres (See Chart 1, I15) This notice affects Electronic Navigational Chart: CA579248	51°25'27.4"N 057°07'56.9"W <i>DFO(6410834-02)</i>
Add	depth of 1,7 metres (See Chart 1, I10) This notice affects Electronic Navigational Chart: CA579248	51°23'43.7"N 057°09'15.8"W <i>DFO(6410834-12)</i>
Add	drying height of 1,0 metres (See Chart 1, I15) This notice affects Electronic Navigational Chart: CA579248	51°23'49.7"N 057°09'23.5"W <i>DFO(6410834-13)</i>
4971 - Quai/Wharf Blanc-Sablon - New Chart - 10-NOV-2017 - NAD 1983		
20-OCT-2023		LNМ/D. 07-MAY-2021
Add	depth of 6,4 metres (See Chart 1, I10) This notice affects Electronic Navigational Chart: CA579248	51°24'55.1"N 057°09'01.8"W <i>DFO(6410835-01)</i>
Delete	depth of 7,4 metres (See Chart 1, I10) This notice affects Electronic Navigational Chart: CA579248	51°24'53.6"N 057°09'00.6"W <i>DFO(6410835-02)</i>
Add	depth of 7,1 metres (See Chart 1, I10) This notice affects Electronic Navigational Chart: CA579248	51°24'53.7"N 057°09'00.3"W <i>DFO(6410835-03)</i>
Delete	depth of 3,9 metres (See Chart 1, I10) This notice affects Electronic Navigational Chart: CA579248	51°24'59.9"N 057°09'02.2"W <i>DFO(6410835-04)</i>
Add	depth of 2,6 metres (See Chart 1, I10) This notice affects Electronic Navigational Chart: CA579248	51°24'59.9"N 057°09'02.4"W <i>DFO(6410835-05)</i>
6242 - Winnipeg to Selkirk - Sheet/Feuille 1 - New Edition - 01-JUN-2007 - NAD 1983		
13-OCT-2023		LNМ/D. 18-AUG-2023
Add	green port hand spar buoy, marked X31 (See Chart 1, Qc)	50°06'57.0"N 096°54'45.2"W <i>DFO(6605133-01)</i>

Notices to Mariners – Monthly Eastern Edition
Section 2: Chart Corrections

Add	green port hand spar buoy, marked X33 (See Chart 1, Qc)	50°06'56.3"N 096°55'01.9"W <i>DFO(6605134-01)</i>
Add	green port hand spar buoy, marked X37 (See Chart 1, Qc)	50°06'11.7"N 096°56'09.0"W <i>DFO(6605135-01)</i>
Add	red starboard hand spar buoy, marked X44 (See Chart 1, Qb)	50°05'40.5"N 096°56'23.4"W <i>DFO(6605136-01)</i>
Add	red starboard hand spar buoy, marked X46 (See Chart 1, Qb)	50°05'33.2"N 096°56'20.8"W <i>DFO(6605137-01)</i>
Add	red starboard hand spar buoy, marked X48 (See Chart 1, Qb)	50°05'27.0"N 096°56'19.0"W <i>DFO(6605138-01)</i>
Add	red starboard hand spar buoy, marked X58 (See Chart 1, Qb)	50°01'25.6"N 097°02'10.7"W <i>DFO(6605139-01)</i>
Reposition	green port hand spar buoy, marked X25 (See Chart 1, Qc)	from 50°07'32.0"N 096°51'24.3"W to 50°07'29.8"N 096°51'39.8"W <i>DFO(6605142-01)</i>
Reposition	green port hand spar buoy, marked X27 (See Chart 1, Qc)	from 50°07'28.0"N 096°51'35.7"W to 50°07'35.4"N 096°52'42.8"W <i>DFO(6605143-01)</i>
Reposition	green port hand spar buoy, marked X29 (See Chart 1, Qc)	from 50°07'26.8"N 096°51'44.9"W to 50°06'55.4"N 096°54'32.4"W <i>DFO(6605144-01)</i>
Reposition	green port hand spar buoy, marked X35 (See Chart 1, Qc)	from 50°06'55.8"N 096°54'41.2"W to 50°06'52.3"N 096°55'22.3"W <i>DFO(6605145-01)</i>
Reposition	green port hand spar buoy, marked X39 (See Chart 1, Qc)	from 50°06'54.2"N 096°55'13.5"W to 50°06'07.5"N 096°56'13.5"W <i>DFO(6605146-01)</i>
Delete	depth of 10 feet (See Chart 1, I10)	50°06'07.5"N 096°56'13.9"W <i>DFO(6605146-02)</i>
Reposition	red starboard hand spar buoy, marked X42 (See Chart 1, Qb)	from 50°06'11.2"N 096°56'13.3"W to 50°05'47.4"N 096°56'25.5"W <i>DFO(6605147-01)</i>
Reposition	green port hand lighted can buoy Q G, marked X49 (See Chart 1, Qc)	from 50°05'21.3"N 096°56'13.3"W to 50°05'21.7"N 096°56'14.4"W <i>LL(1559) DFO(6605148-01)</i>
Reposition	red starboard hand spar buoy, marked X50 (See Chart 1, Qb)	from 50°05'20.4"N 096°56'17.1"W to 50°05'19.7"N 096°56'17.3"W <i>DFO(6605149-01)</i>

Reposition red starboard hand spar buoy, marked X60
(See Chart 1, Qb) from 50°01'21.7"N 097°02'15.6"W
to 50°01'19.6"N 097°02'17.1"W
DFO(6605150-01)

Reposition red starboard hand spar buoy, marked X64
(See Chart 1, Qb) from 50°01'16.2"N 097°02'27.4"W
to 50°01'16.8"N 097°02'23.3"W
DFO(6605151-01)

6242 - Selkirk to Lake Winnipeg - Sheet/Feuille 2 - New Edition - 01-JUN-2007 - NAD 1983

13-OCT-2023

LNMD. 18-AUG-2023

Reposition green port hand spar buoy, marked X23
(See Chart 1, Qc) from 50°11'22.6"N 096°50'31.5"W
to 50°11'14.2"N 096°50'30.8"W
DFO(6605141-01)

Reposition green port hand spar buoy, marked X25
(See Chart 1, Qc) from 50°07'32.0"N 096°51'24.4"W
to 50°07'29.8"N 096°51'39.8"W
DFO(6605142-01)

Reposition green port hand spar buoy, marked X27
(See Chart 1, Qc) from 50°07'28.0"N 096°51'35.7"W
to 50°07'35.4"N 096°52'42.8"W
DFO(6605143-01)

7661 - Workboat Passage - New Chart - 14-MAR-1986 - NAD 1927

20-OCT-2023

LNMD. 01-MAY-2015

Reposition front leading beacon
(See Chart 1, Q120) from 69°31'35.4"N 139°06'08.9"W
to 69°31'50.4"N 139°08'10.5"W
DFO(6605119-01)

Amend 114° to read 110° against leading beacons
(See Chart 1, P16) 69°32'13.4"N 139°11'12.4"W
DFO(6605119-02)

8015 - Funk Island and Approaches / et les approches - New Edition - 16-NOV-2001 - NAD 1983

06-OCT-2023

LNMD. 29-APR-2022

Amend Fl 3s23m5M to read Fl 5s23m5M against light
(See Chart 1, P16) 49°15'23.3"N 053°25'46.3"W
This notice affects Electronic Navigational Chart: CA276092, CA376371
(N2023102) LL(408) DFO(6310851-01)

Section 3: Radio Aids to Marine Navigation Corrections

*1015/23 Radio Aids to Marine Navigation 2023 (Atlantic, St. Lawrence, Great Lakes, Lake Winnipeg, Arctic and Pacific)

Page 4-74, 4-75

AMEND AS FOLLOWS:

4.3.11 Inspection of Radio Apparatus

...

Validity Period of a Radio Inspection Certificate issued under the Navigation Safety Regulations, 2020

~~Starting January 1, 2023 the Ship Radio Inspection Program will be moving towards longer validity periods for certain Radio Inspection Certificates issued under the Navigation Safety Regulations, 2020. This change only applies to vessels operating exclusively within the inland waters of Canada or Sea Area A1. Vessels operating exclusively within designated Sheltered Waters will continue to be eligible for 48 month certificates.~~

~~This change will not impact certificates issued under Agreement between Canada and the United States of America for Promotion of Safety on the Great Lakes by Means of Radio, 1973 (GLA 1973) which continue to have a maximum validity of 13 months.~~

~~The program will be phasing in progressively longer certificate durations according the following schedule:~~

- ~~• Certificates issued from January 1st, 2023 to March 31st, 2023 will have a maximum duration of 1 year.~~
- ~~• Certificates issued from April 1st, 2023 to May 31st, 2023 will have a maximum duration of 2 years.~~
- ~~• Certificates issued from June 1st, 2023 to July 31st, 2023 will have a maximum duration of 3 years.~~
- ~~• Certificates issued on or after August 1st will have a maximum duration of 4 years.~~

Validity Period of a Radio Inspection Certificates issued under the Navigation Safety Regulations, 2020

The following vessels are eligible for radio inspection certificates with a maximum duration of 4 years:

- Vessels operating exclusively in Sheltered Waters;
- Vessels operating exclusively within the Inland Waters of Canada; or
- Vessels operating exclusively within Sea Area A1 as defined by the Navigation Safety Regulations, 2020

Vessels operating outside the above areas are eligible for radio inspection certificates with a maximum duration of 1 year.

Vessels Inspected under the [Agreement Between Canada and the United States of America for Promotion of Safety on the Great Lakes by Means of Radio, 1973 \(GLA 1973\)](#).

As of November 2, 2023, the *GLA 1973* will be terminated. After this, vessels that were previously inspected under the *GLA 1973* will no longer need a radio inspection every 13 months. Instead, these vessels will need to follow the radio inspection timeline set out in the policy on the [Validity period of a Radio Inspection Certificate issued under the Navigation Safety Regulations, 2020](#)

After November 2, 2023, Canadian vessels operating in the Great Lakes, that are subject to radio inspections, will be eligible for a radio inspection certificate with a validity of up to 4 years.

This is outlined in section 240 of the [Navigation Safety Regulations, 2020 \(NSR 2020\)](#) and the [Policy on the Validity period of a Radio Inspection Certificate issued under the Navigation Safety Regulations, 2020](#)

Carriage requirements are not changing. Vessels must still comply with [Sections 205 and 253 \(5\) of the NSR 2020](#).

The new certificates will be phased in according to the table below.

Any inspection conducted on or after June 1, 2024, will be subject to a new certificate with a validity of up to 4 years.

Great Lakes radio inspection certificates issued before November 2, 2023, will remain valid until their expiration dates.

Timeline for implementing new validity period

Inspection conducted between	Certificate valid for up to
November 2 to December 31, 2023	13 Months
January 1 to March 31, 2024	2 years
April 1 to May 31, 2024	3 years
On or after June 1, 2024	4 years

Applications for radio inspections of Non-Delegated Canadian ships should be filed with the Canadian Coast Guard. The form entitled: [Application for Radio Inspection, Compulsory Fitted Ships \(FP-5286-E\)](#) should be used for this purpose. Such request by owners, agents or masters should be received by the Canadian Coast Guard at least three working days in advance of the date requested for inspection.

The owners, agents or masters of Canadian ships requiring radio inspection while outside of Canada should make application by fax or letter to:

Transport Canada
Director General
Marine Safety Directorate
Tower C, Place de Ville
330 Sparks Street
Ottawa, ON K1A 0N8

Telephone: 613-998-0610
Facsimile: 613-954-1032

Non-Canadian ships (except Liberian ships) may obtain a cargo Ship Safety Radio Certificate (GMDSS) in Canada. Applications should originate with the owners, ship agents or masters of the ships concerned and be supported by confirmation from the Consul or other official representative of the country in which the ship is registered. Confirmation shall be in writing. It is the responsibility of the owner, agent or master to contact the Consul or official representative and arrange to submit the necessary confirmation to the local Canadian Coast Guard inspection office. Where time is limited, a verbal request for an inspection may be accepted from the Consul or official representative (a person who has a document from an Administration giving them the official power to act on their behalf), provided that the confirmation is submitted later.

Applications for radio inspections of Canadian ships wintering in US Great Lakes ports should be made by the owners, agents or masters on FCC form 809 and filed directly with the FCC Field Engineering office nearest to the port of which the inspections are desired. Copies of form 809 are available from any of the FCC offices serving the Great Lakes.

Section 4: Canadian Sailing Directions Corrections

The following **Canadian Sailing Directions** volumes have recently been updated on the [Canadian Hydrographic Service website](#).

No.	Title
Atlantic Coast	
ATL101	Newfoundland, Northeast and East Coasts
ATL102	Newfoundland, East and South Coasts
ATL103	Newfoundland, Southwest Coast
ATL106	Gulf of Maine and Bay of Fundy
ATL108	Gulf of St. Lawrence (Southwest Portion)
ATL110	St. Lawrence River, Cap Whittle / Cap Gaspé to Les Escoumins and Anticosti Island
ATL112	St. Lawrence River, Cap-Rouge to Montréal and Rivière Richelieu

Each volume includes a section entitled “Record of Changes” which lists all updates that are incorporated during the current calendar year.

Section 5: List of Lights, Buoys and Fog Signals Corrections

The amendments are highlighted and deletions are crossed out. For general and region-specific information on the List of Lights, click on the following links: [Newfoundland and Labrador Coast](#), [Atlantic Coast](#), [Inland Waters](#) and [Pacific Coast](#).

No.	Name	Position ----- Latitude N. Longitude W.	Light Characteristics	Focal Height in m. above water	Nomi- nal Range	Description ----- Height in meters above ground	Remarks ----- Fog Signals
-----	------	--	--------------------------	--	-----------------------	--	---------------------------------

NEWFOUNDLAND AND LABRADOR COAST

PLACENTIA BAY (LL 14.4 – 79)

40 H0390	North Harbour Point Light	North Harbour. 47 49 14.0 054 05 52.7	FI W 5s	11.8	5	Square skeleton tower, red and white rectangular daymark. 4.3	Flash 1 s; eclipse 4 s. Seasonal. Chart:4839 Edn 10/23 (N23-132)
-------------	------------------------------	---	---------	------	---	--	---

WHITE BAY (LL 235 – 269.3)

246 H0726	Main Brook Wharf Light	Harbour. 51 10 10.2 055 59 48.1	FI R 5s	5.0	4	Cylindrical Mast. 2.4	Flash 1 s; eclipse 4 s. Seasonal. Chart:4518 Edn 10/23 (N23-144)
--------------	---------------------------	---------------------------------------	---------	-----	---	--------------------------	---

NEWFOUNDLAND AND LABRADOR COAST (LL 269.99 – 325.23)

280.009	Ambush Rock South Cardinal light buoy ND	53 01 17.0 055 45 37.4	Q(6)+ W 15s LF	Yellow and black, marked "ND".	Operates 24 h. Seasonal. Chart:5033 Edn 10/23 (N23-153)
280.013	Squasho South North Cardinal light buoy NEE	53 05 38.0 055 50 51.0	VQ W 0.5s	Black and yellow, marked "NEE".	Operates 24 h. Seasonal. Chart:5033 Edn 10/23 (N23-150)
280.015	Locks Rock light buoy NK2	53 07 01.6 055 46 33.8	FI R 4s	Red, marked "NK2".	Operates 24 h. Seasonal. Chart:5033 Edn 10/23 (N23-151)
280.04	The Pippies South Cardinal light buoy NLP	53 11 36.5 055 41 32.5	Q(6)+ W 15s LF	Yellow and black, marked "NLP".	Seasonal. Chart:4702 Edn 10/23 (N23-145)
280.05 H0085.7	Fish Island Light	53 12 45.4 055 43 13.7	FI W 5s	17.7	5	Square skeleton tower, red, rectangular daymark with white horizontal band. 4.8	Flash 1 s; eclipse 4 s. Seasonal. Chart:5080 Edn 10/23 (N22-243)
280.09	Squasho Run light buoy NE5	53 02 58.2 055 53 40.1	FI G 4s	Green spar, marked "NE5".	Operates 24 h. Seasonal. Chart:5033 Edn 10/23 (N23-149)
280.17	Outer Sandy Islands light buoy NLL	53 20 17.8 055 38 50.6	FI(2) W 5s	Black, red and black, marked "NLL".	Operates 24 h. Seasonal. Chart:5033 Edn 10/23 (N23-152)

Notices to Mariners – Monthly Eastern Edition
Section 5: List of Lights, Buoys and Fog Signals Corrections

No.	Name	Position ----- Latitude N. Longitude W.	Light Characteristics	Focal Height in m. above water	Nomi- nal Range	Description ----- Height in meters above ground	Remarks ----- Fog Signals
297.52	Carter Basin Outside light buoy HC2	53 30 02.2 059 53 10.1	Fl R 4s	Red spar, marked "HC2".	Seasonal. Chart:4728 Edn 10/23 (N23-148)
NOTRE DAME BAY (LL 326 – 395)							
350.12	Point of Bay Shoal light buoy DPB	49 15 43.3 055 14 25.9	Fl(2) W 10s	Black, red and black spar, marked "DPB".	Seasonal. Chart:4866 Edn 10/23 (N23-129)
355.072 355.073	Dildo Run light buoy DY3	49 31 54.4 054 41 04.4	Fl G 4s	Green spar, marked "DY3".	Seasonal. Chart:4863 Edn 10/23 (N23-165)
355.073 355.072	Dildo Run light buoy DY4	49 31 42.4 054 41 22.9	Fl R 4s	Red spar, marked "DY4".	Seasonal. Chart:4863 Edn 10/23 (N23-166)
355.076	Dildo Run light buoy DY7	49 31 05.7 054 42 07.2	Fl G 4s	Green spar, marked "DY7".	Seasonal. Chart:4863 Edn 10/23 (N23-167)
355.077 355.084	Sloping Rock light buoy DY8	Dildo Run. 49 30 54.4 054 42 17.0	Fl R 4s	Red spar, marked "DY8".	Seasonal. Chart:4863 Edn 10/23 (N23-162)
355.078 355.096	Dildo Run light buoy DY9	49 30 29.2 054 42 42.9	Fl G 4s	Green spar, marked "DY9".	Seasonal. Chart:4863 Edn 10/23 (N23-168)
355.08 355.078	Dildo Run light buoy DY12	49 30 10.4 054 42 59.2	Fl R 4s	Red spar, marked "DY12".	Seasonal. Chart:4863 Edn 10/23 (N23-155)
355.081 355.094	Jermey Rock light buoy DY13	Dildo Run. 49 30 08.2 054 42 57.0	Fl G 4s	Green spar, marked "DY13".	Seasonal. Chart:4863 Edn 10/23 (N23-157)
355.082 355.093 H0651.5	Hare Island Light	Dildo Run. 49 29 55.1 054 43 05.1	Fl R 5s	4.4	2	Mast. 2.6	Flash 1 s; eclipse 4 s. Seasonal. Chart:4863 Edn 10/23 (N23-173)
355.083 355.092	Tanners Rock light buoy DY15	Dildo Run. 49 29 38.3 054 43 17.8	Fl G 4s	Green spar, marked "DY15".	Seasonal. Chart:4863 Edn 10/23 (N23-170)
355.084 355.094	Dildo Run light buoy DY17	49 29 27.5 054 43 24.8	Fl G 4s	Green spar, marked "DY17".	Seasonal. Chart:4863 Edn 10/23 (N23-161)
355.085 355.09 H0651.55	Tea Kettle Island Light	Dildo Run. 49 29 01.6 054 43 49.7	Fl R 5s	4.2	2	Mast. 2.6	Flash 1 s; eclipse 4 s. Seasonal. Chart:4863 Edn 10/23 (N23-175)

Notices to Mariners – Monthly Eastern Edition
Section 5: List of Lights, Buoys and Fog Signals Corrections

No.	Name	Position ----- Latitude N. Longitude W.	Light Characteristics	Focal Height in m. above water	Nomi- nal Range	Description ----- Height in meters above ground	Remarks ----- Fog Signals
355.086 355.089	Curtis Causeway Outer light buoy DY19	Dildo Run. 49 28 58.1 054 43 48.1	Fl G 4s	Green spar, marked "DY19".	Seasonal. Chart:4863 Edn 10/23 (N23-159)
355.087 355.088	Curtis Causeway Outer light buoy DY21	Dildo Run. 49 28 35.9 054 44 20.0	Fl G 4s	Green spar, marked "DY21".	Seasonal. Chart:4863 Edn 10/23 (N23-163)
355.088 355.087	Curtis Causeway Inner light buoy DY23	Dildo Run. 49 27 59.7 054 45 27.4	Fl G 4s	Green spar, marked "DY23".	Seasonal. Chart:4863 Edn 10/23 (N23-164)
355.089 355.084	South Downkist light buoy DY24	Dildo Run. 49 27 51.0 054 45 54.3	Fl R 4s	Red spar, marked "DY24".	Seasonal. Chart:4863 Edn 10/23 (N23-158)
355.09 355.086	Curtis Causeway Inner light buoy DY25	Dildo Run. 49 27 33.9 054 46 21.3	Fl G 4s	Green spar, marked "DY25".	Seasonal. Chart:4863 Edn 10/23 (N23-160)
355.091 355.085	Dildo Channel light buoy DY27	Dildo Run. 49 27 24.2 054 46 53.8	Fl G 4s	Green spar, marked "DY27".	Seasonal. Chart:4863 Edn 10/23 (N23-174)
355.092 355.095	Dildo Run light buoy DY28	49 27 21.5 054 47 09.4	Fl R 4s	Red spar, marked "DY28".	Seasonal. Chart:4863 Edn 10/23 (N23-171)
355.093 355.083	Butterfly Rock light buoy DY29	Dildo Run. 49 27 17.9 054 47 12.8	Fl G 4s	Green spar, marked "DY29".	Seasonal. Chart:4863 Edn 10/23 (N23-169)
355.094 355.082 H0651.7	Butterfly Island Light	Dildo Run. 49 27 21.3 054 47 29.5	Fl R 5s	6.5	2	Mast. 2.6	Flash 1 s; eclipse 4 s. Seasonal. Chart:4863 Edn 10/23 (N23-172)
355.095 355.08	Solid Island light buoy DY30	Dildo Run. 49 27 23.9 054 48 17.8	Fl R 4s	Red spar, marked "DY30".	Seasonal. Chart:4863 Edn 10/23 (N23-154)
360.48	Virgin Arm light buoy DVA3	49 32 10.8 054 45 47.3	Fl G 4s	Green spar, marked "DVA3".	Seasonal. Chart:4863 Edn 10/23 (N23-176)
375 H0634	Dram Island Light	W. of New World Island. 49 35 14.8 054 31 47.6	Fl W 5s	10.1	5	Square skeleton tower, red and white rectangular daymark. 4.3	Flash 1 s; eclipse 4 s. Seasonal. Chart:4862 Edn 10/23 (N23-137)
377 H0632	Smoker Island Light	W. of Change Island. 49 36 41.8 054 27 09.6	Fl W 5s	10.7	5	Square skeleton tower, red and white rectangular daymark. 5.3	Flash 1 s; eclipse 4 s. Year round. Chart:4862 Edn 10/23 (N23-138)

Notices to Mariners – Monthly Eastern Edition
Section 5: List of Lights, Buoys and Fog Signals Corrections

No.	Name	Position ----- Latitude N. Longitude W.	Light Characteristics	Focal Height in m. above water	Nomi- nal Range	Description ----- Height in meters above ground	Remarks ----- Fog Signals
385 H0624	Steering Island Light	SW. of middle of Dog Bay. 49 31 00.7 054 27 35.9	Fl W 5s	11.6	4	Square skeleton tower, red and white rectangular daymark, white vertical stripe. 4.3	Flash 1 s; eclipse 4 s. Year round. Chart:4862 Edn 10/23 (N23-139)
388.2	Noggin Cove light buoy DN4	49 25 00.0 054 18 40.2	Fl R 4s	Red spar, marked "DN4".	Seasonal. Chart:4862 Edn 10/23 (N23-131)
388.3	Noggin Cove light buoy DN5	49 25 00.6 054 18 36.0	Fl G 4s	Green spar, marked "DN5".	Seasonal. Chart:4862 Edn 10/23 (N23-130)
393.5	Ladle Cove Outer light buoy JA1	49 28 34.8 054 02 58.2	Fl G 4s	Green spar, marked "JA1".	Seasonal. Chart:4530 Edn 10/23 (N23-136)
393.6	Ladle Cove Inner light buoy JA2	49 28 28.2 054 03 12.0	Fl R 4s	Red spar, marked "JA2".	Seasonal. Chart:4530 Edn 10/23 (N23-147)
BONAVISTA BAY (LL 396 – 449.5)							
396 H0584	Offer Wadham Island Light	NE. end of island. 49 35 36.3 053 45 46.1	Fl W 5s	30.5	5	Square skeleton tower, red and white rectangular daymark. 7.1	Flash 1 s; eclipse 4 s. Seasonal. Chart:4530 Edn 10/23 (N23-140)
401 H0596	Muddy Shag Island Light	49 29 27.0 053 56 36.9	Fl W 5s	7.9	5	Square skeleton tower, red and white rectangular daymark. 4.3	Flash 1 s; eclipse 4 s. Year round. Chart:4530 Edn 10/23 (N23-141)
432 H0554	Fair Islands Light	On Grindstone Head. 48 59 10.7 053 43 05.8	Fl W 5s	20.7	6	Square skeleton tower, red and white rectangular daymark. 4.6	Flash 1 s; eclipse 4 s. Seasonal. Chart:4856 Edn 10/23 (N23-142)
441.2 H0545	Happy Adventure West Wharf Light	Seaward end of wharf. 48 37 53.4 053 46 05.0	Fl Y 5s	4.0	2	Mast.	Flash 1 s; eclipse 4 s. Seasonal. Chart:4855 Edn 10/23 (N23-143)
TRINITY BAY (LL 450.1 – 471.51)							
464.6	Indian Rock West Cardinal light buoy TRP	48 12 32.4 053 31 52.7	VQ(9) W 10s	Yellow, black and yellow spar, marked "TRP".	Seasonal. Chart:4852 Edn 10/23 (N23-133)
465.9 H0513.7	Lower Harbour Point Light	48 05 38.0 053 43 42.0	Fl R 4s	7.3	4	Square skeleton tower, red and white rectangular daymark. 4.5	Flash 1 s; eclipse 3 s. Seasonal. Chart:4851 Edn 10/23 (N23-156)

Notices to Mariners – Monthly Eastern Edition
Section 5: List of Lights, Buoys and Fog Signals Corrections

No.	Name	Position ----- Latitude N. Longitude W.	Light Characteristics	Focal Height in m. above water	Nomi- nal Range	Description ----- Height in meters above ground	Remarks ----- Fog Signals
-----	------	--	--------------------------	--	-----------------------	--	---------------------------------

ATLANTIC COAST

NORTHUMBERLAND STRAIT – EAST (LL 883.2 – 940.3)

899 H1237	Pictou Island South	On SW. coast of island. 45 48 13.6 062 35 08.1	Iso W 4s	10.8	6	White pyramid tower with red top. 8.1	Seasonal. Chart:4483 Edn 10/23 (G23-141)
--------------	------------------------	---	----------	------	----------	---	---

PRINCE EDWARD ISLAND (LL 942 – 1084.7)

1071.35	Hardys Channel Fairway light buoy JS	NW. of inlet. 46 39 15.4 063 51 18.1	Mo(A) W 6s	Red and white vertical striped spar, marked "JS".	Buoy may be repositioned due to shifting channel. Seasonal. Chart:4491 Edn 10/23 (G23-146)
1071.39	Hardys Channel light buoy JS2	46 39 12.5 063 51 26.0	Fl R 4s	Red spar, marked "JS2".	Buoy may be repositioned due to shifting channel. Seasonal. Chart:4491 Edn 10/23 (G23-147)
1071.41	Hardys Channel light buoy JS3	46 39 11.3 063 51 23.9	Q G 1s	Green spar, marked "JS3".	Buoy may be repositioned due to shifting channel. Seasonal. Chart:4491 Edn 10/23 (G23-148)
1071.42	Hardys Channel light buoy JS4	46 39 07.9 063 51 30.5	Fl R 4s	Red spar, marked "JS4".	Buoy may be repositioned due to shifting channel. Seasonal. Chart:4491 Edn 10/23 (G23-149)
1071.45	Hardys Channel light buoy JS5	46 39 06.9 063 51 29.3	Fl G 4s	Green spar, marked "JS5".	Buoy may be repositioned due to shifting channel. Seasonal. Chart:4491 Edn 10/23 (G23-150)
1071.5	Hardys Channel light buoy JS7	46 39 05.3 063 51 35.5	Fl G 4s	Green spar, marked "JS7".	Buoy may be repositioned due to shifting channel. Seasonal. Chart:4491 Edn 10/23 (G23-151)
1071.52	Hardys Channel light buoy JS8	46 39 00.0 063 51 49.5	Fl R 4s	Red spar, marked "JS8".	Buoy may be repositioned due to shifting channel. Seasonal. Chart:4491 Edn 10/23 (G23-152)
1071.89	Hardys Channel light buoy JS12	46 38 56.6 063 52 00.6	Fl R 4s	Red, marked "JS12".	Buoy may be repositioned due to shifting channel. Seasonal. Chart:4491 Edn 10/23 (G23-145)

Notices to Mariners – Monthly Eastern Edition
Section 5: List of Lights, Buoys and Fog Signals Corrections

No.	Name	Position ----- Latitude N. Longitude W.	Light Characteristics	Focal Height in m. above water	Nomi- nal Range	Description ----- Height in meters above ground	Remarks ----- Fog Signals
-----	------	--	--------------------------	--	-----------------------	--	---------------------------------

NORTHUMBERLAND STRAIT – WEST (LL 1085 – 1165.9)

1110.5	Pointe-du-Chêne Wharf Light	On W. end of pier, NW. of Pointe-du- Chêne. 46 14 30.0 064 31 48.4	LFI Y 6s	7	Square skeleton tower, red rectangular daymark with white stripe. 5.1	Flash 2 s; eclipse 4 s. Seasonal. Chart:4909 Edn 10/23 (G23-142)
1111.1 H1329	Pointe-du-Chêne Breakwater	On outer end of breakwater. 46 14 29.2 064 31 40.4	Fl R 5s	6.0	4	Cylindrical mast, red triangular daymark. 3.5	Flash 1 s; eclipse 4 s. Seasonal. Chart:4909 Edn 10/23 (G23-143)
1111.5 H1334	Shediac Bay Yacht Club Breakwater	46 13 41.2 064 32 49.5	Fl G 5s	5.2	4	Pipe swing pole, two green, white and black square daymarks. 3.7	Flash 1 s; eclipse 4 s. Operates at night only. Seasonal. Chart:4909 Edn 10/23 (G23-144)

GASPÉ – CHALEUR BAY (LL 1169.1 – 1426)

1296.1 H1574	Lamèque Wharf Light	47 47 25.9 064 39 32.6	Fl R 5s	5	Tower, red and white rectangular daymark.	Flash 1 s; eclipse 4 s. Seasonal. Chart:4920 Edn 10/23 (G23-154)
1301 H1571	Lamèque Breakwater Light	On SE. corner of wharf. 47 47 25.7 064 39 35.7	Fl (2+1) G 6s	7.3	5	Tower, red and white rectangular daymark with red diamond and green square in the centre.	Visible in line of range. Seasonal. Chart:4920 Edn 10/23 (G23-155)

GULF OF ST. LAWRENCE (LL 1477.5 – 1617)

1559.5 H1901.5	Harrington Harbour	At the end of the wharf. 50 29 46.9 059 28 31.9	Fl Y 6s	8.7	7	Pipe swing pole. 8.0	Flash 1 s; eclipse 5 s. Year round. Chart:4468 Edn 10/23 (Q23-140)
-------------------	--------------------	--	---------	-----	---	-------------------------	---

ST. LAWRENCE RIVER, RIVIÈRE DU LOUP – SOREL (LL 1823.8 – 2185.1)

2168 H2416	Route de l'Île des Barques range	On NE. end of island. 46 05 15.3 072 59 41.8	F G	11.4	12	Square block tower, orange daymark with black vertical stripe. 4.0	Visible in line of range. Operates 24 h. Emergency mode. Year round.
2169 H2416.1		218°25' 479.6 m from front.	F G	28.5	12	Square skeleton tower, orange daymark with black vertical stripe. 20.0	Visible in line of range. Operates 24 h. Emergency mode. Year round. Chart:1312 Edn 10/23 (Q23-027, 028)

INLAND WATERS

LAKE ONTARIO (LL 403.4 – 551)

491	Scotch Bonnet Island	On small island, SW. of Nicholson Island. 43 53 58.2 077 32 32.8	Fl W 4s	14.5	4	Triangular skeleton tower. 9.1	Seasonal. Chart:2059 Edn 10/23 (B23-027)
-----	-------------------------	--	---------	------	---	-----------------------------------	--

Notices to Mariners – Monthly Eastern Edition
Section 5: List of Lights, Buoys and Fog Signals Corrections

No.	Name	Position ----- Latitude N. Longitude W.	Light Characteristics	Focal Height in m. above water	Nomi- nal Range	Description ----- Height in meters above ground	Remarks ----- Fog Signals
-----	------	--	--------------------------	--	-----------------------	--	---------------------------------

501.2	Oshawa Harbour light spar buoy MV4	43 51 44.9 078 49 07.1	Fl R 4s	Red spar, marked "MV4".	Seasonal (in place year round). (Seasonally maintained.) Chart:2050 Edn 10/23 (B23-030)
-------	--	---------------------------	---------	-------	-------	-------------------------	--

GEORGIAN BAY (LL 814 – 982)

817							Delete from list.
818	Otter Islands (Georgian Bay) range	45 17 32.0 081 41 13.7	F W Fl W 4s	15.5	14	Cylindrical mast, white trapezoidal daymark with orange vertical stripe. 6.2	Operates 24 h. Seasonal (in place year round). Chart:2274 Edn 10/23 (D23-029, 032)

RIVIÈRE DES PRAIRIES AND LAC DES DEUX MONTAGNES (LL 1227 – 1245.5)

1245	Pointe aux Anglais						Delete from list. Chart:1510 Edn 10/23 (Q23-001)
------	--------------------	--	--	--	--	--	--

RESTOULE RIVER (LL 1408)

1408	Restoule River Entrance						Delete from list. Chart:N/A Edn 10/23 (D23-028)
------	----------------------------	--	--	--	--	--	---

LAKE OF THE WOODS (LL 1470 – 1514.9)

1494.6	McCallum light buoy WB1						Delete from list. Chart:6217 Edn 10/23 (D23-031)
--------	----------------------------	--	--	--	--	--	--

LAKE WINNIPEG (LL 1563.1 – 1625)

1580	Hecla Breakwater	Near outer end of breakwater. 51 07 59.9 096 39 46.0	Fl G 4s	7.4	5	Square skeleton tower, green and white daymark.	Seasonal. Chart:6249 Edn 10/23 (P23-091)
1591	Matheson Island	On breakwater. 51 44 29.1 096 55 12.1	Fl G 4s	7.5	5	Square skeleton tower, green and white daymark.	Seasonal. Chart:6267 Edn 10/23 (P23-092)