



Fisheries and Oceans
Canada

Pêches et Océans
Canada

Canadian
Coast Guard

Garde côtière
canadienne

Notices to Mariners

Edition No. 05/2023
May 26, 2023



Safety First, Service Always

Monthly Eastern Edition

Canada 

Notices to Mariners – Monthly Eastern Edition
Edition No. 05/2023

Aussi disponible en français :
Avis aux navigateurs – Édition mensuelle de l'Est
Édition n° 05/2023

Published under the Authority of:

Canadian Coast Guard Programs
Aids to Navigation and Waterways
Fisheries and Oceans Canada
Montreal, QC H2Y 2E7

For more information, contact Notmar.XNCR@dfo-mpo.gc.ca.

© His Majesty the King in Right of Canada,
as represented by the Minister of Fisheries, Oceans
and the Canadian Coast Guard, 2023.

Cat. No. Fs152-8E-PDF (Electronic PDF, English)
ISSN 2817-0075

Cat. No. Fs152-8F-PDF (Electronic PDF, French)
ISSN 2817-0083

A web version is available here:

<https://www.notmar.gc.ca/monthly> (English)

<https://www.notmar.gc.ca/mensuel> (French)

Explanatory Notes – Notices to Mariners (NOTMAR)

Geographical positions refer directly to the graduations of the largest scale Canadian Hydrographic Service chart (unless otherwise indicated).

Bearings refer to the true compass and are measured clockwise from 000° (North) clockwise to 359°; those relating to lights are from seaward.

Visibility of lights is that in clear weather.

Depths - The units used for soundings (metres, fathoms or feet) are stated in the title of each chart.

Elevations are normally given above Higher High Water, Large Tide (unless otherwise indicated).

Distances may be calculated as follows:

- 1 nautical mile = 1,852 metres (6,076.1 feet)
- 1 statute mile = 1,609.3 metres (5,280 feet)
- 1 metre = 3.28 feet

Temporary and Preliminary Notices to Mariners – Section 1A of *Notices to Mariners*

These notices are indicated by a (T) or a (P), respectively. Please note that nautical charts are not amended by the Canadian Hydrographic Service for temporary (T) and preliminary (P) notices. It is recommended that mariners chart these corrections in pencil. For the list of charts affected by (T) & (P) notices, please refer to the current [Notices to Mariners - Monthly Summary of Temporary and Preliminary Notices](#) publication.

Suggestions and Corrections Form

This form is specifically for suggestions and corrections to Notices to Mariners publications. It is available [online](#) and also in [fillable PDF format](#) included with the monthly publication ZIP file.

To submit comments and suggestions on possible improvements to the various publications and services: Notmar.XNCR@dfo-mpo.gc.ca.

To report chart discrepancies and/or corrections to the *Canadian Sailing Directions* booklets: Fill out the [Marine Information Reporting Form](#) and/or email chsinfo@dfo-mpo.gc.ca.

To report emergencies or navigational hazards: [Contact your nearest MCTS centre](#)

- VHF channel 16 (156.8 MHz)
- MF/HF frequency 2182 kHz/4125 kHz (where available)
- *16 on a cellphone (where available)

NOTMAR Website – Monthly Editions, Chart Corrections and Chart Patches

The NOTMAR website allows users to access the [monthly publications](#), [chart corrections](#), and [chart patches](#).

Users can subscribe for free to the [email notification service](#) to receive notifications when charts of interest are updated, including their patches, as well as when a new Monthly Edition of *Notices to Mariners* is published.

In addition, the monthly publication and related files to download, such as chart patches, can be obtained all together through the download of a single ZIP file.

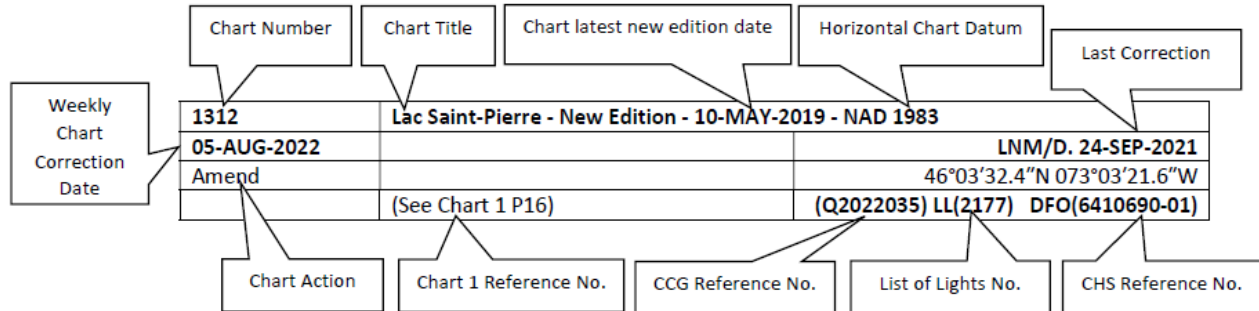
Explanatory Notes – Canadian Hydrographic Service (CHS)

Chart Corrections – Section 2 of *Notices to Mariners*

Corrections to nautical charts will be listed in numerical order by chart number. Each chart correction listed applies only to that particular chart. Related charts, if any, will have their own specific correction listed separately.

Users should also refer to CHS *Chart 1: Symbols, Abbreviations and Terms* for additional information pertaining to the correction of charts.

The illustration below describes the elements that will comprise a typical Section 2 chart correction:



The last correction number is identified with the **LN/D** or **Last Notice to Mariners Number / Date**.

Mariners are advised that only the most critical changes that directly affect safety to navigation are issued in “Section 2 – Chart Corrections.” This limitation is required to ensure that charts remain as clear and easy to read as possible. As a result, mariners may see minor discrepancies of a non-critical nature between information in official publications. For example, a small change in the nominal range or focal height of a light may not result in the production of a chart correction in *Notices to Mariners*, but may result in a correction in the [List of Lights, Buoys and Fog Signals](#) publication.

Note: In the case of a discrepancy between information provided on CHS charts relating to aids to navigation, and the *List of Lights, Buoys and Fog Signals* publication, the latter shall be deemed as containing the most up-to-date information.

Canadian Nautical Charts & Publications

A source list of Canadian nautical charts and publications is published in Notice No. 14 of the *Notices to Mariners Annual Edition 2023*. The source supply and the prices effective at the time of printing are listed. For current chart edition dates, please refer to the following website: www.chs-shc.gc.ca/charts-cartes/paper-papier/index-eng.asp.

Explanatory Notes – Marine Communications and Traffic Services (MCTS)

Navigational Warnings / Notices to Shipping

The Canadian Coast Guard (CCG) is implementing a number of changes to the aids to navigation system in Canada.

These changes are advertised as Navigational Warnings, formerly called Notices to Shipping¹, that are broadcast by the CCG, and are then followed up with Notices to Mariners, then charts are updated by hand correction, reprints or new editions.

Mariners are advised that all relevant Navigational Warnings (NAVWARN) should be kept until superseded by Notices to Mariners or through revised charts issued by the Canadian Hydrographic Service (CHS).

NAVWARN are accessible on the applicable regional page on the CCG Navigational Warnings website at <http://nis.ccg-gcc.gc.ca>.

CHS is reviewing the impact of these changes with CCG and together are preparing an action plan on the issuing of chart revisions.

For further information, contact your regional NAVWARN Issuing Desk.

<p>Atlantic Region (North) *Port aux Basques MCTS Centre</p> <p>“N” Series NAVWARN</p> <p>Canadian Coast Guard 49 Stadium Rd. P.O. Box 99 Port aux Basques, NL A0M 1C0</p> <p>Telephone: 709-695-2168 or 1-800-563-9089 Facsimile: 709-695-7784</p> <p>Email: NAVWARN.MCTSPortAuxBasques@innav.gc.ca</p>	<p>Central Region *Prescott MCTS Centre</p> <p>“Q” and “C” Series NAVWARN</p> <p>Canadian Coast Guard 401 King Street West P.O. Box 1000 Prescott, ON K0E 1T0</p> <p>Telephone: 613-925-0666 Facsimile: 613-925-4519</p> <p>Email: NAVWARN.MCTSPrescott@innav.gc.ca</p>
<p>Atlantic Region (South) *Sydney MCTS Centre</p> <p>“M” Series NAVWARN</p> <p>Canadian Coast Guard 1190 Westmount Road Sydney, NS B1R 2J6</p> <p>Telephone: 902-564-7751 or 1-800-686-8676 Facsimile: 902-564-7662</p> <p>Email: NAVWARN.MCTSSydney@innav.gc.ca</p>	<p>Arctic Region *Iqaluit MCTS Centre</p> <p><i>Operational from approximately mid-May until late December.</i></p> <p>“A” and “H” Series NAVWARN</p> <p>Canadian Coast Guard P.O. Box 189 Iqaluit, NU X0A 0H0</p> <p><u>“A” Series NAVWARN</u> Telephone: 867-979-5269</p> <p><u>“H” Series NAVWARN</u> Telephone: 867-979-0310 Facsimile: 867-979-4264</p> <p>Email: NAVWARN.MCTSIqaluit@innav.gc.ca</p>

*Service available in English and in French.

¹ The expression “Notice to Shipping” was changed to “Navigational Warning” in January 2019.

Table of Contents

Section 1: General and Safety Information		1
*1207/22	Canadian Coast Guard – Waterway information.....	1
*204/23	Canadian Coast Guard – Cessation of Rectangular Broadcasting in NAVAREA / METAREAs XVII and XVIII.....	1
*310/23	Canadian Coast Guard – Differential Global Positioning System (DGPS) in Canada	2
*407/23	Saguenay–St. Lawrence Marine Park and Surrounding Waters – Whale Protection	2
*408/23	Saguenay–St. Lawrence Marine Park - Beluga Whale Protection: Slowdown Area at the Mouth of the Saguenay Fjord and Area Closure at Baie Sainte-Marguerite	3
*501/23	Canadian Hydrographic Service – Nautical Charts.....	6
*502/23	Canadian Hydrographic Service – Electronic Navigational Charts.....	6
*503/23	Transport Canada – Ship Safety Bulletins #06, #07, #08 and #09/2023.....	7
*504/23	Canadian Coast Guard Publication – Amendments to <i>Notices to Mariners Annual Edition 2023</i> - Section A2, Notice 5A: General Regulatory Requirements for all Oceans Act Marine Protected Areas	7
*505/23	Canadian Hydrographic Service – Magnetic Declination Calculations.....	9
*507/23	Protecting the North Atlantic Right Whale: Speed Restriction Measures in the Gulf of St. Lawrence	10
Section 1A: Temporary and Preliminary Notices		18
Reminder – Comment Period for Active Preliminary Notices		18
*509(T)/23	St. Marys Bay – Obstruction : Wreck.....	18
*510/23	Rivière Ristigouche / Restigouche River – Miguasha Federal Wharf Permanently Closed to Navigation	18
*511/23	Plans, Baie des Chaleurs/Chaleur Bay (côte nord/North Shore) – Paspébiac Federal Wharf Permanently Closed to Navigation	19
*512(T)/23	Toronto Harbour – Construction Operations.....	19
*513/23	Port Dalhousie – East and West Piers: Access Re-established	20
Section 2: Chart Corrections		21
Section 3: Radio Aids to Marine Navigation Corrections		28
*514/23	Radio Aids to Marine Navigation 2023 (Atlantic, St. Lawrence, Great Lakes, Lake Winnipeg, Arctic and Pacific).....	28
Section 4: Canadian Sailing Directions Corrections		30
No corrections for this section.		30
Section 5: List of Lights, Buoys and Fog Signals Corrections		31

Numerical Index of Canadian Charts Affected

This numerical index lists all nautical charts mentioned in this monthly edition of Notices to Mariners. Only charts appearing in Section 2 of this publication require a chart correction. The appearance of charts in all other sections, particularly those related to the correction of other nautical publications, is included here for reference.

Chart No.	Pages	Chart No.	Pages	Chart No.	Pages
1433	21	4849	26		
1514	32	4851	26		
1515	33	4913	18		
2042	21	4920	18		
2044	20	4921	19		
2085	19	4950	27, 31		
2235	21	5467	27		
2257	32	6267	33		
2266	21, 32	14853 (U.S.)	1		
2274	22, 32	14882 (U.S.)	1		
2283	32	14883 (U.S.)	1		
2291	22, 31, 32	14884 (U.S.)	1		
2292	22, 32				
2298	22				
2302	23				
2312	23, 24				
2326	32				
3813	6				
4021	24, 31				
4022	24				
4024	24				
4118	18				
4328	24, 25				
4381	6				
4384	25				
4426	18				
4453	6				
4486	18				
4522	18				
4624	25, 31				
4625	25, 31				
4640	25				
4641	26				
4823	26				

Section 1: General and Safety Information

*1207/22 Canadian Coast Guard – Waterway information

(Recurrent publication of notice *1207/22, originally published in the *Notices to Mariners – Monthly Eastern Edition 12/2022* publication.)

Reference chart: 14853 (U.S.), 14882 (U.S.), 14883 (U.S.), 14884 (U.S.)

Updated shoaling conditions for the navigational channels in the Great Lakes are available on the Canadian Coast Guard websites:

[CCG e-Nav - Shoals in the Detroit River \(canada.ca\)](#)
[CCG e-Nav - Shoals in the St. Clair River \(canada.ca\)](#)
[CCG e-Nav - Shoals in the St. Mary's River \(canada.ca\)](#)

Great Lakes Waterways Channel Bottom Conditions and Active Shoals are available at the website:

[GCC - e-Nav Portal - Central - Great Lakes Waterways - Channel Bottom Conditions \(canada.ca\)](#)

Areas		
Detroit River	North Channel	St. Clair River
Great Lakes	Lake Huron	St. Marys River
Lake Erie	Lake St. Clair	Whitefish Bay

(NW-C-2130-22)

*204/23 Canadian Coast Guard – Cessation of Rectangular Broadcasting in NAVAREA / METAREAs XVII and XVIII

(Recurrent publication of notice *204/23, originally published in the *Notices to Mariners – Monthly Eastern Edition 02/2023* publication.)

Since 2010, the five Arctic NAVAREA/METAREAs have promulgated warnings and forecasts to their areas of responsibility using INMARSAT-C's rectangular area addressing capability. At that time, it was not possible to code older Inmarsat-C receivers to receive warnings and forecasts directly addressed to the Arctic NAVAREA/METAREAs.

All Inmarsat-C and Mini-C receivers available for purchase today are able to receive warnings and forecasts addressed to the Arctic NAVAREA/METAREAs, and have been for more than a decade.

Effective on January 1st, 2024, the Arctic NAVAREA/METAREAs will commence broadcasting their warnings and forecasts using their unique numeric identifier and will cease using rectangular addressing.

During 2023, the Arctic NAVAREA/METAREAs will transmit test messages using the numeric NAVAREA/METAREA identifier to allow mariners to verify reception on their Inmarsat-C or Mini-C receivers.

Mariners navigating in Arctic waters must ensure that their Inmarsat-C or Mini-C receiver detects the new encoding prior to January 1st, 2024 to continue receiving Arctic NAVAREA/METAREA warnings and forecasts.

***310/23 Canadian Coast Guard – Differential Global Positioning System (DGPS) in Canada**

(Recurrent publication of notice *310/23, originally published in the *Notices to Mariners – Monthly Eastern Edition 03/2023* publication.)

Reference: Notice *1206/22 is cancelled.

On December 15th, 2022, the Canadian Coast Guard (CCG) permanently discontinued the provision of its DGPS service across Canada.

Today's GPS meets the needs of international Position, Navigation and Timing (PNT) requirements for maritime navigation. Further, for mariners in Canadian waters, there is no carriage requirement for ground - or space - based augmentation capability onboard vessels for Global Navigation Satellite Systems (GNSS).

Mariners should note that CCG DGPS sites may broadcast corrections on occasion for technology testing. During these testing, the DGPS corrections broadcasted should not be considered reliable for marine navigation.

***407/23 Saguenay–St. Lawrence Marine Park and Surrounding Waters – Whale Protection**

(Recurrent publication of notice *407/23, originally published in the *Notices to Mariners – Monthly Eastern Edition 04/2023* publication.)

The waters in and around the Saguenay–St. Lawrence Marine Park are well known for the resident endangered beluga population and the wide diversity of whales that migrate there to feed, particularly between April and November.

Regulatory protection measures

All whale species that are found in the St. Lawrence are protected under the *Marine Mammal Regulations*, pursuant to the *Fisheries Act*. Within the boundaries of the Marine Park, specific measures are set out in the *Marine Activities in the Saguenay–St. Lawrence Marine Park Regulations*, pursuant to the establishment of the *Saguenay–St. Lawrence Marine Park Act*. Any collision with a marine mammal within the Marine Park must immediately be reported to a park warden at 1-866-508-9888. For collisions that occur outside the Marine Park or for any situation involving a marine mammal that is dead or in trouble, contact the emergency network at 1-877-722-5346 or on VHF channel 16.

For more information on the Saguenay–St. Lawrence Marine Park, see notice 5C of the *Notices to Mariners Annual Edition 2023*.

Voluntary protection measures

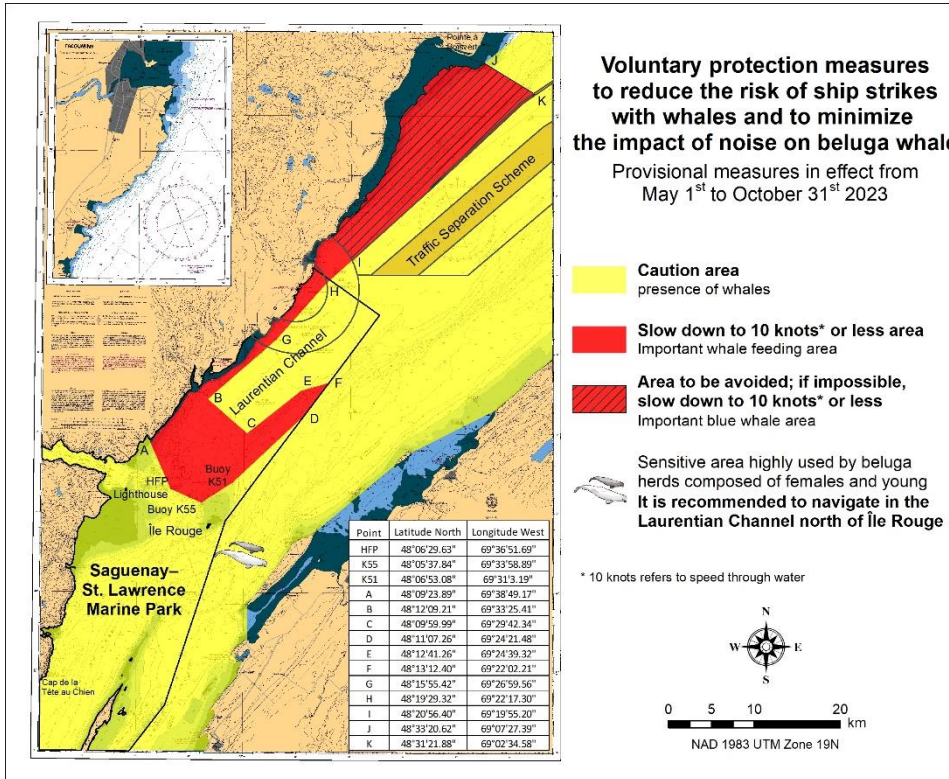
Provisional measures in effect from May 1 to October 31, 2023. See map at the end of this notice.

These measures apply to merchant vessels and cruise ships between Pointe à Boisvert and Cap de la Tête au Chien to prevent collisions with whales. These measures should only be taken when they will not jeopardize navigational safety.

Caution area (yellow area): To reduce the risk of collisions with whales that can be present anywhere in this area, heightened vigilance of navigators is critical. Posting a lookout is recommended in order to increase the chances of seeing the whales and thus taking necessary measures to avoid them. If bypassing the whales is not possible, slow down and wait for the animals to move away to a distance greater than 400 metres (0.215 nautical miles) before resuming original speed. It is more difficult to see the animals at night therefore increased caution is recommended.

Slow down to 10 knots or less area (red area): To reduce the risk of collisions with whales in this feeding area, it is recommended that vessels slow down to a maximum speed through the water of 10 knots and post a lookout. It is further recommended to remain in the Laurentian Channel to the north of Île Rouge to minimize the impact of noise in a sensitive area south of this island, which is highly frequented by herds of beluga whales composed of females and young.

Area to be avoided (hatched red area): To reduce noise and the risk of collisions with whales, vessels should avoid transiting through this area which is highly frequented by blue whales, an endangered species. If the area cannot be avoided, slow down to a speed through the water of 10 knots or less.



***408/23 Saguenay–St. Lawrence Marine Park - Beluga Whale Protection: Slowdown Area at the Mouth of the Saguenay Fjord and Area Closure at Baie Sainte-Marguerite**

(Recurrent publication of notice *408/23, originally published in the *Notices to Mariners – Monthly Eastern Edition 04/2023* publication.)

The Saguenay–St. Lawrence Marine Park and its surrounding area are at the heart of endangered beluga whale critical summer habitat. Marine mammal protection measures have been put in place in accordance with the *Marine Activities in the Saguenay–St. Lawrence Marine Park Regulations* within the limits of the Marine Park.

However, important feeding, calving and rearing areas for beluga whales require greater protection to ensure the recovery of the species. The portion of the Saguenay situated between the mouth of the Fjord and Baie Sainte-Marguerite is one of the areas most used by females and their young from May to October. The mouth of the Saguenay is known as a feeding ground and Baie Sainte-Marguerite as a calving and rearing area.

In order to prevent collisions with beluga whales, a compulsory 15-knot slowdown area is in effect from May 1st to October 31st at the mouth of the Saguenay. To ensure tranquility for female belugas and their young during the critical calving period, access to Baie Sainte-Marguerite is prohibited to all vessels from June 21st to September 21st, except for special authorizations (see description below).

For safety reasons, *the slowdown area measure at the mouth of the Saguenay Fjord does not apply* to cargo ships (see the monthly edition of *Notice to Mariners* from May to October for voluntary protection measures in the St. Lawrence Estuary). An enhanced vigilance is, however, recommended to all navigators between the mouth of the Saguenay Fjord and Baie Sainte-Marguerite for the protection of beluga whales.

For more information on the Saguenay–St. Lawrence Marine Park, see notice 5C of the *Notices to Mariners Annual Edition 2023* or visit marinepark.qc.ca.

REGULATORY PROTECTION MEASURES — BELUGA WHALE

- **Entire Marine Park Territory:**
 - When beluga whales are less than half a nautical mile (926 metres) from a motorized vessel, the vessel must maintain a steady speed of between 5 and 10 knots.
 - All vessels, including human-powered vessels (kayaks and canoes), must continue to move forward and maintain their heading.
 - All vessels must maintain a minimum distance of 400 metres from beluga whales at all times.

For more information concerning the regulations, consult: marinepark.ca/protect/.

Mouth of the Saguenay Fjord (Figure 1) — Slowdown Area (area crosshatched in red):

- Maximum speed at the mouth of the Saguenay between buoys S7 and S8 and the ferry docks between Baie-Sainte-Catherine and Tadoussac is 15 knots from May 1st to October 31st.

Baie Sainte-Marguerite (Figure 2) — Area Closure (red area):

- From June 21st to September 21st, vessels must not enter the red area, which follows a line between Cap Nord-Ouest and Cap Sainte-Marguerite.
- Special authorizations are granted only for kayaks, canoes and recreational fishermen who must travel without stopping along a corridor within 10 metres of the shore or in shallow areas.

VOLUNTARY PROTECTION MEASURES

Baie Sainte-Marguerite sector (Figure 2) — Transit Area (area crosshatched in yellow):

- From June 21st to September 21st, navigation in this area is recommended at a speed of between 5 and 10 knots without stopping.

The purpose of this transit area is to favour respect of *the Marine Activities in the Saguenay–St. Lawrence Marine Park Regulations*, since beluga whales are often present in the Baie Sainte-Marguerite sector.

- **Information**

All incidents, including collisions with whales, must be reported without delay by calling 1-866-508-9888. For any other situation concerning a marine mammal that is either dead or in trouble, contact the Marine Mammal Emergency Response Network at 1-877-722-5346, or use VHF channel 16.

Figure 1

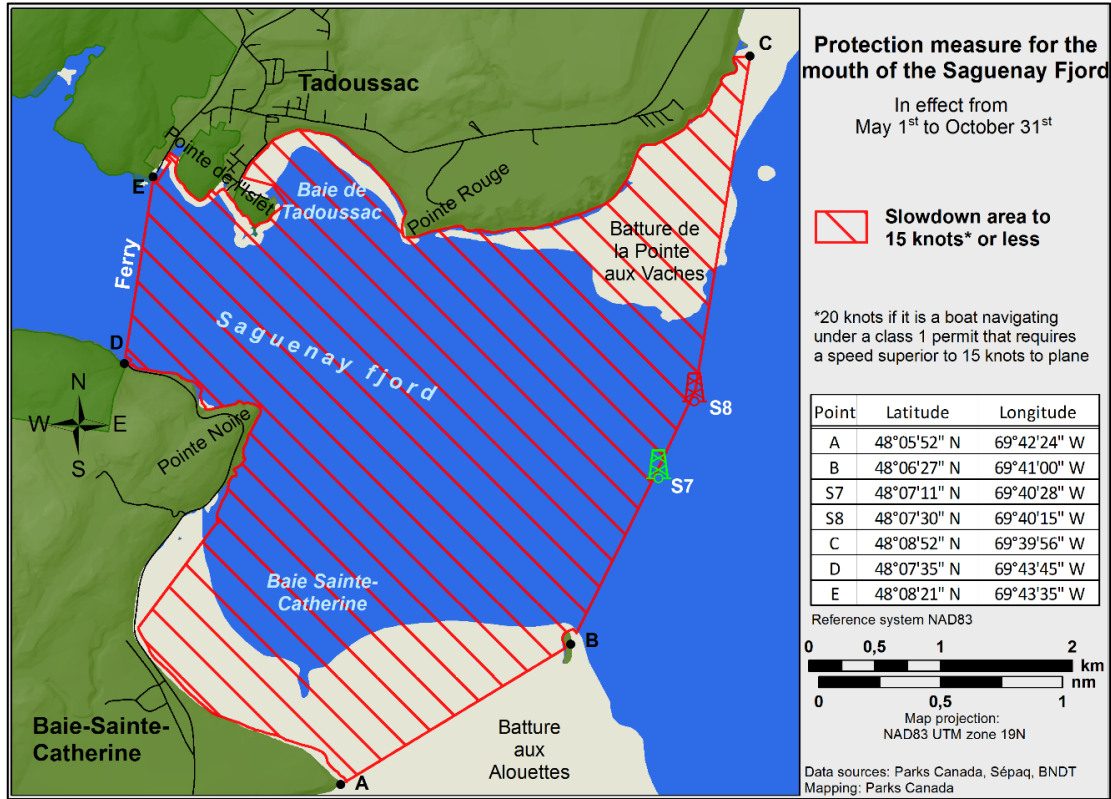
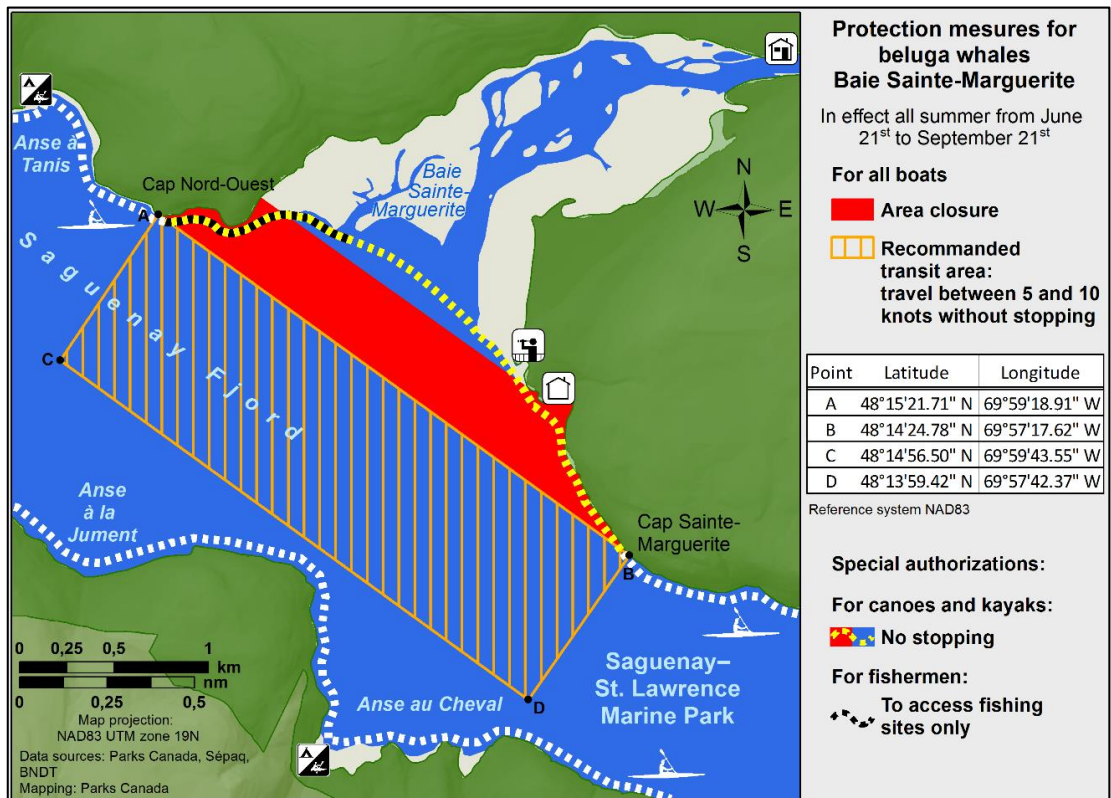


Figure 2



***501/23 Canadian Hydrographic Service – Nautical Charts**

Charts	Main Title	Scale	Edition Date	Published	Cat#	Price
New Charts						
3813	Port Louis and Otard Bay	1:12 000	2023-05-19	2023-05-26	2	\$20.00
New Editions						
4381	Mahone Bay	1:40 000	2023-04-28	2023-05-05	1	\$20.00
4453	Île à la Brume à/to Pointe Curlew	1:70 000	2023-04-28	2023-05-12	1	\$20.00

***502/23 Canadian Hydrographic Service – Electronic Navigational Charts**

S-57 ENC Number	Chart Title	ENC Compilation Scale	Published
New Charts			
CA43MMHA (Edn 1.000)	CA43MMHA	1:11 000	2023-05-26
CA43XMHA (Edn 1.000)	CA43XMHA	1:11 000	2023-05-26
CA540MRA (Edn 1.000)	CA540MRA	1:2 000	2023-05-26
CA55LS9A (Edn 1.000)	Port5050N5730W	1:11 000	2023-05-12
CA55MS8A (Edn 1.000)	Port5060N5740W	1:11 000	2023-05-12
CA55MS9A (Edn 1.000)	Port5060N5730W	1:11 000	2023-05-12
CA571156 (Edn 1.000)	Windy Bay	1:11 000	2023-05-12
CA571157 (Edn 1.000)	Windy Bay	1:11 000	2023-05-12
CA571159 (Edn 1.000)	Tasu Sound	1:11 000	2023-05-19
CA571160 (Edn 1.000)	Tasu Sound	1:11 000	2023-05-19
CA571161 (Edn 1.000)	Tasu Sound	1:11 000	2023-05-19
CA571162 (Edn 1.000)	Tasu Sound	1:11 000	2023-05-19
CA571163 (Edn 1.000)	Tasu Sound	1:11 000	2023-05-19
CA576860 (Edn 1.000)	Deep Cove	1:5 000	2023-05-05
New Editions			
CA376032 (Edn 3.000)	Traffic Zone into Halifax	1:72 500	2023-05-12
CA376153 (Edn 5.000)	Trinity Bay - Southern Portion/Partie Sud	1:30 000	2023-05-26
CA476199 (Edn 6.000)	Mahone Bay	1:20 000	2023-05-05
CA4B71TA (Edn 2.000)	CA4B71TA	1:90 000	2023-05-19
CA576200 (Edn 9.000)	Chester Harbour	1:7 500	2023-05-05
CA576201 (Edn 6.000)	Mahone Harbour	1:7 500	2023-05-05
CA576741 (Edn 2.000)	Martins Point	1:7 500	2023-05-05
Charts Permanently Withdrawn			
CA479239	Lac Memphrémagog A-B	Cancelled by CA43XMHA	
CA479240	Lac Memphrémagog B-C	Cancelled by CA43XMHA,CA43MMHA	
CA576857	Port Saunders	Cancelled by CA55MS9A	
CA579241	Magog	Cancelled by CA540MRA	

***503/23 Transport Canada – Ship Safety Bulletins #06, #07, #08 and #09/2023**

New **Ship Safety Bulletins** have recently been posted on the [Transport Canada website](#).

To view or download these bulletins, please click on the links below:

[SSB#06/2023](#) – Temporary Measures Regarding Marine Medical Certificates, April 2023
RDIMS# 19413369

[SSB#07/2023](#) – Temporary Measures Regarding Marine Personnel Certificates– Excluding Marine Medical Certificates
RDIMS# 19413449

[SSB#08/2023](#) – Enhanced environmental measures for the 2023 cruise season
RDIMS# 19329417

[SSB#09/2023](#) – New Greenhouse Gas Reporting Requirements
RDIMS# 19125977

Sign up for [e-Bulletin](#) to receive an e-mail notice each time a new Ship Safety Bulletin is published on our website.

Contact us at marinesafety-securitemaritime@tc.gc.ca or 1-855-859-3123 (Toll Free).

***504/23 Canadian Coast Guard Publication – Amendments to *Notices to Mariners Annual Edition 2023* - Section A2, Notice 5A: General Regulatory Requirements for all Oceans Act Marine Protected Areas**

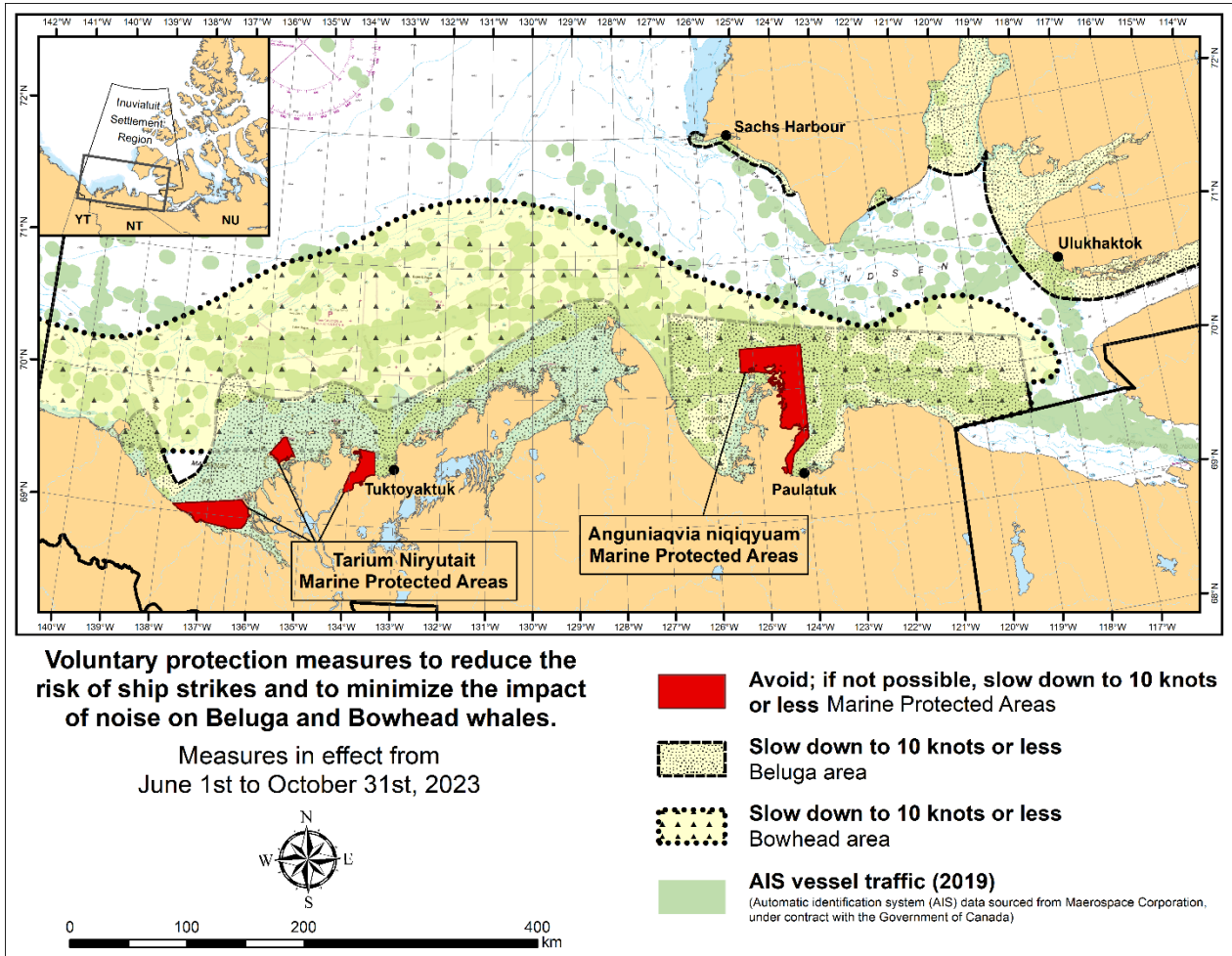
Page 28

DELETE AS FOLLOWS:

Slow down to 10 knots or less (yellow area): To reduce the risk of underwater noise disturbance and collisions with whales within this area, it is recommended that vessels should slow down to a maximum speed through the water of 10 knots, remain in the ~~navigation and~~ marked community supply channels and post a lookout.

Page 29

REPLACE IMAGE WITH THE FOLLOWING:

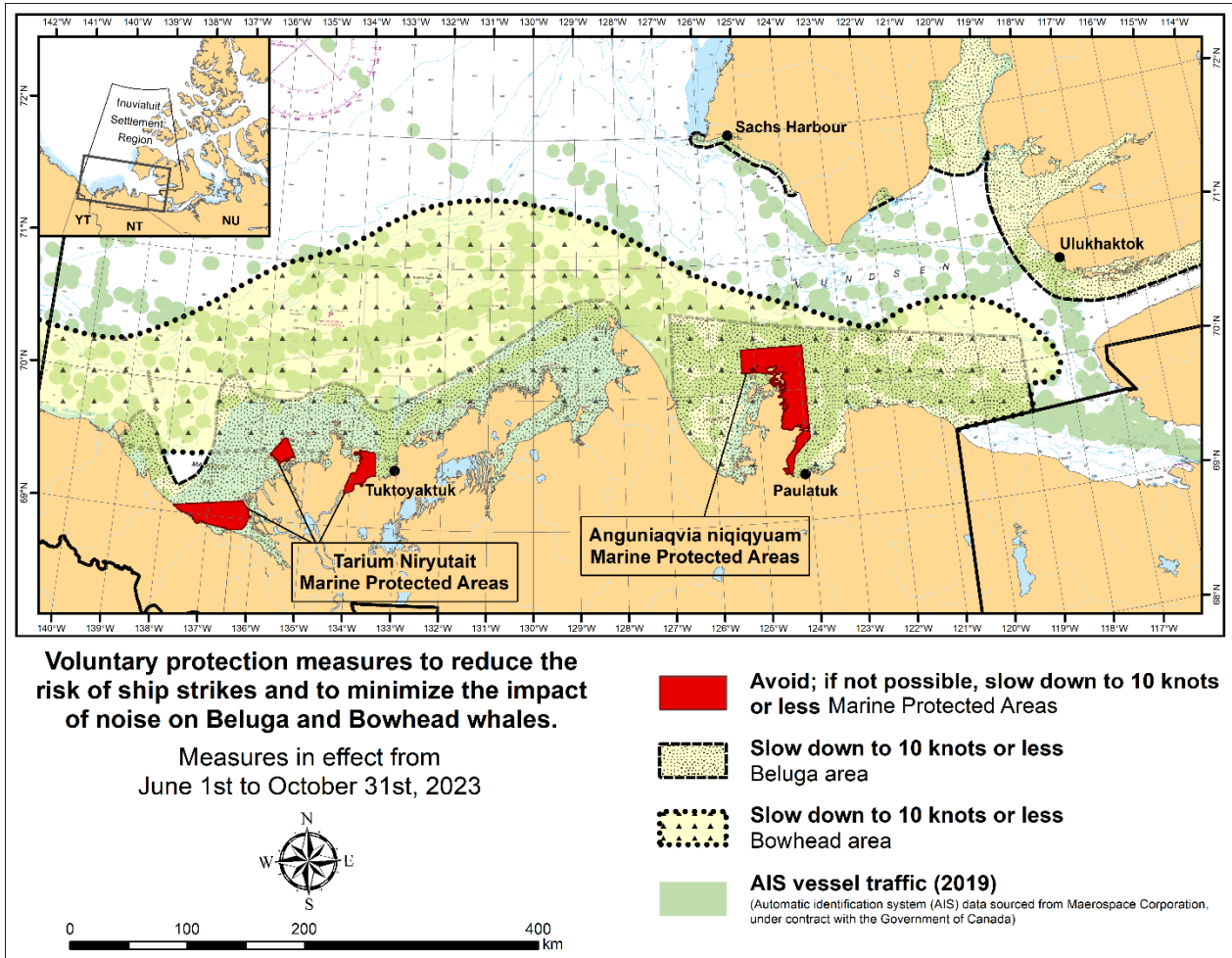


Page 32

DELETE AS FOLLOWS:

Slow down to 10 knots or less (yellow area): To reduce the risk of underwater noise disturbance and collisions with whales within this area, it is recommended that vessels should slow down to a maximum speed through the water of 10 knots, remain in the ~~navigation and~~ marked community supply channels and post a lookout.

REPLACE IMAGE WITH THE FOLLOWING:



***505/23 Canadian Hydrographic Service – Magnetic Declination Calculations**

Mariners are advised that CHS has adopted the harmonized World Magnetic Model (WMM), as found on the NCEI/NOAA website. Old compass rose declination information on CHS navigational products can be updated using this website: <https://www.ngdc.noaa.gov/geomag/calculators/magcalc.shtml#declination>. While the differences in the model declinations are small each year, they can become more significant over a large period of time.

***507/23 Protecting the North Atlantic Right Whale: Speed Restriction Measures in the Gulf of St. Lawrence**

Reference: Notice *401/23 is cancelled.

PURPOSE

This notice describes the speed restriction zones that vessels must follow in the Gulf of St. Lawrence.

The Government of Canada has established these zones to reduce the risk of vessel colliding with North Atlantic right whales (NARW).

BACKGROUND

Due to changing migration patterns of North Atlantic right whales and their increased presence in the Gulf of St. Lawrence, the Government of Canada has set seasonal speed restrictions in specific zones. These speed restrictions zones are defined as “static zones”, “dynamic shipping zones”, “seasonal management areas”, a “voluntary seasonal slowdown zone” and a “restricted area”. [See the map below for details.](#)

Note: Vessels must follow Navigational Warnings outlining the speed restrictions. The Interim Order for the Protection of North Atlantic Right Whales (*Eubalaena Glacialis*) in the Gulf of St. Lawrence, 2023 enables the issuance of Navigational Warnings (NAVWARNs) imposing speed restrictions and navigation restrictions.

Speed restriction zones are described in monthly Notices to Mariners (NOTMARs), which are published by the Canadian Coast Guard. The status of these zones is broadcasted through NAVWARNs, which are published by the Coast Guard’s Marine Communications and Traffic Services Centres.

CHANGES TO SPEED RESTRICTION ZONES AND MEASURES

Based on consultations with industry and on scientific data, changes to the speed restriction zones will be effective from April 19th, 2023, while the restricted area will be implemented based on whale presence:

- A voluntary seasonal slowdown of 10.0 knots over the ground spanning from Cabot Strait (a line running from Cape North NS to Cape Ray NL) to the eastern edge of dynamic shipping zone E will be implemented at the beginning and end of the North Atlantic right whale season.

Please check the latest NAVWARN for all speed restrictions currently in effect.

SPEED RESTRICTION MEASURES FOR 2023

These restrictions will be in effect from **April 19 to November 15, 2023.**

Exceptions

The following exception will apply to **all** measures:

- a) a vessel in distress or providing assistance to a person or a vessel in distress;
- b) a government vessel being used
 - (i) for law enforcement activities;
 - (ii) for search and rescue operations; or
 - (iii) to ensure the competency of the crew or the operational readiness of the vessel or crew with respect to such activities or operations.

STATIC ZONES

In the static zones, **all** vessels above **13 m** in length overall (LOA) must proceed at a speed of not more than 10.0 knots over the ground.

Exceptions

Air cushion vessels operated by or on behalf of the Government of Canada that are engaged in ice-clearing activities from April to June in and around Chaleur Bay are exempted when in operation.

36.57 m (20-fathom) shallow water protocol

Vessels engaged in any commercial fishing activity may proceed at a safe operational speed in waters not more than 36.57 m (20 fathom) deep.

If a notice to fish harvesters and a NAVWARN state that at least one right whale has been detected within the static zone in waters that are not more than 36.57 m deep, the 10 knots speed limit will apply to all vessels above 13 m in length overall (LOA) for 15 days after the day on which the whale was detected.

If a new notice to fish harvesters and a new NAVWARN are published or broadcast during the last seven days of the 15-day period, the speed limit will continue to apply for a further 15 days after the day on which the new detection took place.

Coordinates for the northern static zone:

- 50° 20' N, 065° 00' W
- 49° 13' N, 065° 00' W
- 48° 40' N, 064° 13' W
- 48° 40' N, 062° 40' W
- 48° 03' N, 061° 07.5' W
- 47° 58.1' N, 061° 03.5' W
- 48° 00' N, 061° 00' W
- 49° 04' N, 061° 00' W
- 49° 04' N, 062° 00' W
- 49° 43' N, 063° 00' W
- 50° 20' N, 063° 00' W

Coordinates for the southern static zone:

- 48° 40' N, 065° 00' W
- 48° 40' N, 062° 40' W
- 48° 03' N, 061° 07.5' W
- 47° 58.1' N, 061° 03.5' W
- 47° 10' N, 062° 30' W
- 47° 10' N, 065° 00' W

DYNAMIC SHIPPING ZONES

There are five dynamic shipping zones (DSZ) located in the routing systems north and south of Anticosti Island: A, B, C, D and E.

Coordinates for the dynamic shipping zones:

Zone A

- 49° 41' N, 065° 00' W
- 49° 20' N, 065° 00' W
- 49° 11' N, 064° 00' W
- 49° 22' N, 064° 00' W

Zone B

- 49° 22' N, 064° 00' W
- 49° 11' N, 064° 00' W
- 48° 48' N, 063° 00' W
- 49° 00' N, 063° 00' W

Zone C

- 49° 00' N, 063° 00' W
- 48° 48' N, 063° 00' W
- 48° 24' N, 062° 00' W
- 48° 35' N, 062° 00' W

Zone D

- 50° 16' N, 064° 00' W
- 50° 00' N, 064° 00' W
- 49° 56' N, 063° 00' W
- 50° 16' N, 063° 00' W

Zone E

- 48° 35' N, 062° 00' W
- 48° 24' N, 062° 00' W
- 48° 03' N, 061° 07.5' W
- 47° 58.1' N, 061° 03.5' W
- 48° 00' N, 061° 00' W
- 48° 10.5' N, 061° 00' W

When a North Atlantic right whale is detected in a dynamic shipping zone:

- All vessels will be notified via a NAVWARN; and
- Vessels above **13 m** in length overall (LOA) must proceed at a speed of not more than 10.0 knots over the ground within that zone.

Even though dynamic shipping zones overlap with static zones, vessels can travel at a safe operational speed in dynamic shipping zones when they are not under speed restriction. Mariners must also keep in mind that North Atlantic right whales may be nearby.

Speed restrictions in the dynamic shipping zones

The detection of North Atlantic right whales in one or more dynamic shipping zone(s), will trigger a speed restriction in the concerned zone(s). The speed restriction in the dynamic shipping zone(s) will be in effect for 15 days from the date of detection. In the event of a new North Atlantic right whale detection occurring in the last 7 days of the 15-day slowdown period, the speed restriction will be extended for an additional 15 days from the date of the new detection. This would continue until no NARW are detected.

When a NAVWARN is issued implementing a speed restriction in one or more dynamic shipping zone(s), vessels above **13 m** in length (LOA) must not exceed a speed of 10.0 knots over the ground. Within any dynamic zone that is not subject to a speed restriction, mariners may proceed at a safe operational speed. Mariners are encouraged to take into consideration the potential for their vessel striking North Atlantic right whales when considering a “safe operational speed” during navigation.

SEASONAL MANAGEMENT AREAS

Seasonal management area 1 (SMA-1) and seasonal management area 2 (SMA-2) are speed restriction areas located north and south of dynamic shipping zone E, respectively.

Within seasonal management areas, vessels above **13 m** in length (LOA):

- must restrict their speed so as not to exceed 10.0 knots over the ground from April 19th to June 27th, 2023; **and**
- are allowed to proceed at a safe operational speed from June 28th to November 15th, 2023, unless a North Atlantic right whale is detected. If a whale is detected, a speed restriction of 10.0 knots over the ground will be triggered for 15 days from the date of detection. In the event of a new North Atlantic right whale detection occurring in the last 7 days of the 15-day slowdown period, the speed restriction will be extended for an additional 15 days from the date of the new detection. This would continue until no North Atlantic right whales are detected.

Coordinates for the SMA-1:

- 49° 04' N, 062° 00' W
- 49° 04' N, 061° 00' W
- 48° 10.5' N, 061° 00' W
- 48° 35' N, 062° 00' W

Coordinates for the SMA-2:

- 48° 24' N, 062° 00' W
- 48° 03' N, 061° 07.5' W
- 47° 58.1' N, 061° 03.5' W
- 47° 26.69' N, 062° 00' W

RESTRICTED AREA

In the summer months, an important proportion of the total North Atlantic right whale population gathers for feeding and surface activity near the [Shediac Valley](#). Since this makes the North Atlantic right whale more susceptible to vessel collisions, a mandatory restricted area will be implemented in and near the [Shediac Valley](#) and will come into force once 80% of the restricted area is closed to fishing for the season as per [the Department of Fisheries and Oceans's right whale closure protocol](#). The restricted area will be lifted once the North Atlantic right whale detections decrease in the restricted area.

The size and location of the area are determined based on historical detection data of North Atlantic right whales. All necessary details can be found in the *Interim Order for the Protection of North Atlantic Right Whales (Eubalaena Glacialis) in the Gulf of St. Lawrence, 2023*. Triggering and lifting of the restricted area will be communicated to mariners through a NAVWARN and notice to fish harvesters.

Vessels above **13 m** in length (LOA) will be required to:

- avoid the area unless they are part of the exceptions listed in the *Interim Order for the Protection of North Atlantic Right Whales (Eubalaena Glacialis) in the Gulf of St. Lawrence, 2023*;
- transit the area at a speed not exceeding 8.0 knots over the ground if they are part of the exceptions.

The following exceptions will apply to the restricted area. The following listed vessels can travel through the area at not more than 8.0 knots over the ground:

- A vessel being used for commercial fishing;
- A vessel being used for fishing under the authority of a licence issued under the *Aboriginal Communal Fishing Licences Regulations*;
- A vessel being used for research purposes on behalf of the Government of Canada;
- A vessel being used as part of the Department of Fisheries and Oceans' Marine Mammal Response Program to assist a marine mammal or sea turtle in distress or to access or retrieve a deceased marine mammal or sea turtle;
- A vessel authorized by the Government of Canada to retrieve or identify the location of abandoned or lost fishing gear;
- A vessel involved in pollution response operations;
- A vessel avoiding immediate or unforeseen danger;
- A vessel involved in research relating to right whales as part of a project that has received funding from the Government of Canada.

The following vessels can travel through the restricted area at a speed over 8.0 knots, but below 10.0 knots over the ground as required by the static speed restriction zone:

- A vessel being used by an employee of the Government of Canada or peace officer who is performing their duties.

Coordinates for the restricted area:

- 48°31.8' N, 063°39.6' W
- 48°24.72' N, 063°17.88' W
- 47°18.84' N, 064°10.8' W
- 47°27.18' N, 064°30.72' W

Inclement weather exception

Mariners will be notified in advance via a NAVWARN should the speed restriction status change in any zone or area, due to inclement weather.

Within any zone or area that is no longer subject to a speed restriction due to adverse weather conditions, mariners may proceed at a safe operational speed. Mariners are however encouraged to take into consideration the potential for their vessel striking North Atlantic right whales when considering a "safe operational speed" during navigation.

*Non-expected vessels are still prohibited from transiting through the restricted area.

VOLUNTARY SEASONAL SLOWDOWN IN CABOT STRAIT

To coincide with the North Atlantic right whales entering and exiting the Gulf of St. Lawrence in large numbers, a voluntary seasonal slowdown is being put in place in Cabot Strait from April 19th to June 27th, 2023, and from September 27th to November 15th, 2023.

- During these periods, vessels above **13 m** in length (LOA) are requested to voluntarily reduce their speed as to not exceed 10.0 knots over the ground.

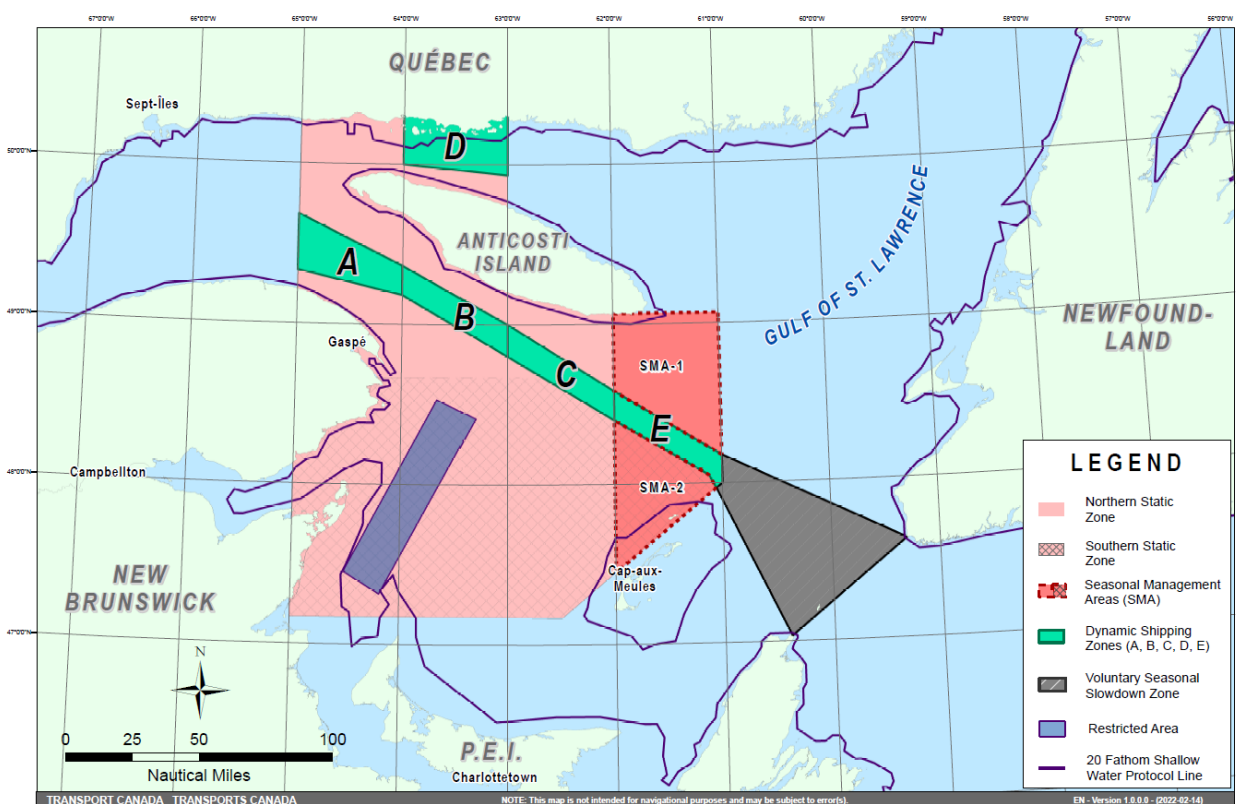
Voluntary seasonal slowdown zone coordinates:

- 48° 10.5' N, 061° 00' W
- 47° 37.2' N, 059° 18.5' W
- 47° 02' N, 060° 23.7' W
- 47° 58.1' N, 061° 03.5' W
- 48° 00' N, 061° 00' W

MAP OF THE GULF OF ST. LAWRENCE

The following map shows

- the static zones (north and south), in pink;
- the dynamic shipping zones (A, B, C, D and E), in green;
- the seasonal management areas, in dark pink;
- the voluntary seasonal slowdown zone, in grey;
- the restricted area, in dark blue; and
- the 36.57 m (20 fathom) shallow water protocol line.



This map is for visual representation only and is not to be used for navigation or enforcement.

Roseway Basin – Area to be Avoided

The Roseway Basin, located approximately 20 nautical miles south of Cape Sable Island, Nova Scotia, is a critical habitat for North Atlantic right whales, which have been observed to gather in the area on a seasonal basis in Canadian waters. This critical habitat is also located near key shipping routes. In 2007, Canada, with the support of many groups with varied interests, proposed to the International Maritime Organization (IMO) the establishment of a seasonal Area to be Avoided in the Roseway Basin to protect North Atlantic right whales, which IMO accepted and adopted.

To reduce the risk of vessels colliding with North Atlantic right whales, it is recommended that vessels of 300 gross tonnages and more, in transit during the period of June 1 through December 31, avoid the Roseway Basin area. Smaller vessels are also encouraged to avoid passage through this area. If passage is necessary within the Area to be Avoided, it is recommended that all mariners decrease their vessel speed to no more than 10 knots, when safe to do so.

Roseway Basin coordinates:

- 43° 16' N 064° 55' W
- 42° 47' N 064° 59' W
- 42° 39' N 065° 31' W
- 42° 52' N 066° 05' W

NAVWARN BROADCASTS

The Canadian Coast Guard issues NAVWARNs:

- by radio broadcast; and
- online at [Canada's Maritime Information Portal](#) and its [Navigational Warnings](#) site.

Mariners must ensure they have accurate and up-to-date information about the protection of the North Atlantic right whale, as in all applicable NOTMARs and NAVWARNs.

For the North Atlantic right whale speed restrictions, the NAVWARN(s) currently in effect will be provided to vessels subject to the *Vessel Traffic Services Zone Regulations* or the *Eastern Canada Vessel Traffic Services Zone Regulations*:

Outbound vessels will receive NAVWARNs

- at Calling-in-Point 10 (St-Laurent); or
- upon a departure downstream from the Quebec pilot station (including the Saguenay River, Chaleur Bay, Miramichi Bay, etc.)

Inbound vessels will receive NAVWARNs

- when a clearance to enter Canadian waters is granted

Vessels in transit will receive NAVWARNs

- at the last reporting point prior to entering the mandatory speed restriction zones; and/or
- at 10 nautical miles before they enter the mandatory speed restriction zones

For those vessels not subject to the above-mentioned regulations, vessel operators are required to monitor broadcasts by the Canadian Coast Guard's Marine Communications and Traffic Services network for the most up-to-date information. For marine radio frequencies and broadcast times, information may be found in the [Radio Aids to Marine Navigation](#) publication.

AIDS TO NAVIGATION

The Canadian Coast Guard is currently testing virtual Automatic Identification System (AIS) aids to navigation (AIS AtoN) in specific areas. These aids notify mariners of a dynamic shipping zone and/or a seasonal management area subject to a speed restriction.

Each zone is delimited by four to six virtual AIS AtoN, which can be displayed on a ship's navigation equipment, such as

- Electronic Chart Display and Information System (ECDIS);
- Electronic Chart System (ECS);
- RADAR;
- Minimum Keyboard Display (MKD); and
- Electronic Nautical Chart (ENC).

The Canadian Coast Guard broadcasts the virtual AIS AtoN only when a speed restriction is in effect in one or more testing zones.

Mariners must select the virtual AIS AtoN symbol to view a message such as "SectA1 Spd Lim 10 kt." This message refers to a speed restriction in effect for a specific zone.

Note: This system is not the primary method of communicating this information.

COMPLIANCE AND ENFORCEMENT

Vessels must comply with the Interim Orders made pursuant to the *Canada Shipping Act, 2001*, and any NAVWARNs broadcasted and published by the Canadian Coast Guard relating to the Interim Orders, aimed at regulating the navigation for the purposes of protecting the North Atlantic right whales.

If a vessel does not comply with the Interim Orders or instructions in the NAVWARNs related to the Interim Orders, the vessel could face:

- administrative monetary penalties up to a maximum of CAN \$250,000; and/or
- penal sanctions under the Canada Shipping Act, 2001 is liable on summary conviction to a fine of not more than CAN \$1,000,000 or to imprisonment for a term of not more than 18 months, or to both.

If a vessel appears to have violated the speed restriction, Transport Canada Marine Safety inspectors will review all information provided through AIS and seek an explanation from the master.

No exemptions to the speed restriction will be granted in advance. However, if a deviation from the speed restrictions is necessary for safety reasons, the following information must be entered into the bridge logbook:

- reason(s) for deviation;
- speed at which vessel is operated;
- latitude and longitude at time of deviation;
- time and duration of deviation; and
- master of the vessel shall sign and date the bridge logbook entry.

For any deviation, Transport Canada will review and consider reasons such as:

- navigating to ensure vessel safety;
- weather conditions;
- force majeure (unforeseeable circumstances); and
- responding to emergencies.

REPORT A NORTH ATLANTIC RIGHT WHALE SIGHTING

If you see **live, free-swimming whales**:

- Email: DFO.GLFWhales-BaleinesGLF.MPO@dfo-mpo.gc.ca
- When reporting near sightings of North Atlantic right whales, you must include: GPS location (latitude and longitude), date and time of sighting, number of animals, photograph(s)/video(s) collected and if possible behavior of animals observed (ex., feeding, travelling, diving).

If you see a North Atlantic right whale (and all other marine mammals) **entangled, injured or dead**, please document and report it immediately to the regional Response Network.

- When documenting you should collect: GPS location (latitude and longitude), date and time of sighting, number of animals, photograph(s)/video(s), and description of the incident to provide to the Response Network.

Southern part of the Gulf of St. Lawrence (New Brunswick, Nova Scotia & Prince Edward Island)

Marine Animal Response Society
Telephone: 1-866-567-6277

Newfoundland and Labrador

Whale Release and Strandings Newfoundland and Labrador (Tangly Whales Inc.)
Telephone: 1-888-895-3003 or 1-709-895-3003

Quebec

Baleines en direct (GREMM)
Telephone: 1-877-722-5346

Report a marine mammal or sea turtle incident or sighting:

For more information on reporting other marine mammal or sea turtle sighting and incidents:

<https://www.dfo-mpo.gc.ca/species-especes/mammals-mammiferes/report-rapport/page01-eng.html>

Please consult Whale Insight for the latest right whale observations:

<https://gisp.dfo-mpo.gc.ca/apps/WhaleInsight/eng/?locale=en>

Section 1A: Temporary and Preliminary Notices

Reminder – Comment Period for Active Preliminary Notices

This is a reminder that the comment period is still open for the following active Preliminary notices:

Notice #	Reference Chart #	Aids Affected (LL #)	Intent of Notice
Newfoundland and Labrador Coast			
410(P)/23	4522	267.2	Aid to Navigation to be Discontinued
Atlantic Coast			
412(P)/23	4486	1325, 1325.1, 1325.4, 1325.5	Notice of Proposed Changes
413(P)/23	4913	1322, 1324	Notice of Proposed Changes
414(P)/23	4920	1339, 1339.2, 1339.5	Notice of Proposed Changes

Please refer to the [Notices to Mariners - Monthly Summary of Temporary and Preliminary Notices](#) publication for details.

Newfoundland and Labrador Coast

Temporary Notices

No notices applicable for this edition.

Preliminary Notices

No notices applicable for this edition.

Atlantic Coast

Temporary Notices

***509(T)/23 St. Marys Bay – Obstruction : Wreck**

Reference chart: 4118

Sunken 30 by 90 feet barge with 500 feet of tow line still attached at the following position:
44° 16' 24.9"N 066° 28' 44.9"W Caution.

(NW-M-0529-23)

***510/23 Rivière Ristigouche / Restigouche River – Miguasha Federal Wharf Permanently Closed to Navigation**

Reference: Notice 209(T)/22 is cancelled (Chart 4426).

The federal wharf in Miguasha is permanently closed to navigation. Information regarding this closure can be found in the booklet ATL 108 of the [Canadian Sailing Directions](#).

***511/23 Plans, Baie des Chaleurs/Chaleur Bay (côte nord/North Shore) – Paspébiac
Federal Wharf Permanently Closed to Navigation**

Reference: Notice 513(T)/22 is cancelled (Chart 4921).

The federal wharf in Paspébiac is permanently closed to navigation. Information regarding this closure can be found in the booklet ATL 108 of the [Canadian Sailing Directions](#).

Preliminary Notices

No notices applicable for this edition.

Inland Waters

Temporary Notices

***512(T)/23 Toronto Harbour – Construction Operations**

Reference chart: 2085

Construction is taking place at Ashbridge's Bay and consists of the construction of two breakwaters and of a landform. A variety of equipment are being used, including tug boats and barges. Temporary aids to navigation are on site during construction. The operations are scheduled to take at the following positions:

Breakwater construction operations

43° 39' 20.7"N 079° 18' 48.1"W

Phase 1: Completed

Phase 2: 2021-04-01 through 2024-12-31

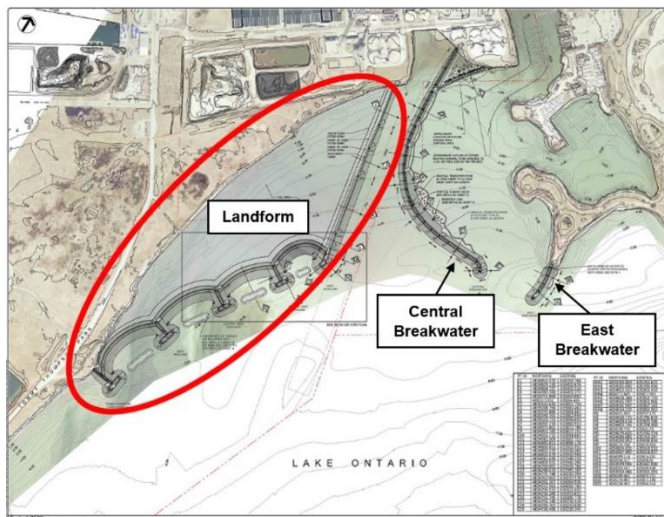
Phase 3: 2021-04-01 through 2024-12-31

Landform construction operations

43° 39' 01.4"N 079° 19' 01.9"W

Implementation of the shoreline infill area is expected to take approximately five years.

Mariners are requested to keep out of the construction zone.



***513/23 Port Dalhousie – East and West Piers: Access Re-established**

Reference: Notice 1005(T)/15 is cancelled (Chart 2044).

The rehabilitation work taking place on the East and West Pier of Port Dalhousie is completed. Access to the piers is re-established.

Preliminary Notices

No notices applicable for this edition.

Section 2: Chart Corrections

1433 - Île St-Régis to/à Croil Islands B-C - New Edition - 26-DEC-2014 - World Geodetic System 1984

05-MAY-2023

LNMD. 03-JUN-2022

Delete depth of 17.2 metres
(See Chart 1, I10) 45°00'35.5"N 074°52'22.6"W

DFO(6605051-01)

Add wreck WK with known depth of 13.9 metres
(See Chart 1, K26)
This notice affects Electronic Navigational Chart: CA473232

45°00'36.5"N 074°52'23.9"W

DFO(6605051-02)

Delete obstruction, depth unknown
(See Chart 1, K40)
This notice affects Electronic Navigational Chart: CA473232

45°01'33.3"N 074°50'02.6"W

DFO(6605051-03)

2042 - A à/to B - New Edition - 28-NOV-2003 - NAD 1983

12-MAY-2023

LNMD. 10-JUN-2022

Affix patch
Download Patch - https://www.notmar.gc.ca/chsftp/patches/2042_6605032_1_202304141508.pdf
This notice affects Electronic Navigational Chart: CA573010

43°12'47.2"N 079°12'38.9"W

DFO(6605032-01)

2042 - C à/to D - New Edition - 28-NOV-2003 - NAD 1983

26-MAY-2023

LNMD. 12-MAY-2023

Add obstruction with known depth of 4.2 metres
(See Chart 1, K41)
This notice affects Electronic Navigational Chart: CA573010

42°58'09.9"N 079°13'37.7"W

DFO(6605067-01)

Add obstruction with known depth of 6.1 metres
(See Chart 1, K41)
This notice affects Electronic Navigational Chart: CA573010

42°58'10.7"N 079°13'37.3"W

DFO(6605067-02)

2235 - Cape Hurd to/à Lonely Island - New Edition - 01-OCT-2021 - World Geodetic System 1984

19-MAY-2023

Amend red starboard hand spar buoy, marked TA8 to read
red starboard hand lighted spar buoy Q R, marked TA8
(See Chart 1, Qb)

45°15'59.1"N 081°43'00.5"W

This notice affects Electronic Navigational Chart: CA373281, CA573005

(D2023013) LL(800.7) DFO(6605062-01)

Amend red starboard hand spar buoy, marked TA6 to read
red starboard hand lighted spar buoy FI R, marked TA6
(See Chart 1, Qb)

45°15'24.7"N 081°43'45.8"W

This notice affects Electronic Navigational Chart: CA373281, CA573005

(D2023014) LL(800.5) DFO(6605063-01)

2266 - Michael's Bay to/à Great Duck Island - Sheet/Feuille 1 - New Chart - 22-JUN-1984 - NAD 1927

12-MAY-2023

LNMD. 12-DEC-2008

Amend F 14m to read F 15m 5M against light
(See Chart 1, P16)

45°39'04.2"N 082°16'31.8"W

(D2023003) LL(810) DFO(6605052-01)

2274 - Cape Hurd to/à Tobermory and/et Cove Island - New Edition - 08-NOV-2019 - World Geodetic System 1984

19-MAY-2023

LNMD. 20-MAR-2020

Amend red starboard hand spar buoy, marked TA8 to read 45°15'59.1"N 081°43'00.5"W
red starboard hand lighted spar buoy Q R, marked TA8
(See Chart 1, Qb)
This notice affects Electronic Navigational Chart: CA373281, CA573005
(D2023013) LL(800.7) DFO(6605062-01)

Amend red starboard hand spar buoy, marked TA6 to read 45°15'24.7"N 081°43'45.8"W
red starboard hand lighted spar buoy FI R, marked TA6
(See Chart 1, Qb)
This notice affects Electronic Navigational Chart: CA373281, CA573005
(D2023014) LL(800.5) DFO(6605063-01)

2291 - Kincardine - New Edition - 31-MAR-2000 - NAD 1983

12-MAY-2023

LNMD. 10-SEP-2021

Add private red light FI R (Priv) 44°10'40.1"N 081°38'36.2"W
(See Chart 1, P1)
This notice affects Electronic Navigational Chart: CA573242
(D2023007) LL(782.25) DFO(6605056-01)

Add private red light FI R (Priv) 44°10'40.1"N 081°38'34.0"W
(See Chart 1, P1)
This notice affects Electronic Navigational Chart: CA573242
(D2023008) LL(782.5) DFO(6605057-01)

Add private green light FI G (Priv) 44°10'41.2"N 081°38'36.2"W
(See Chart 1, P1)
This notice affects Electronic Navigational Chart: CA573242
(D2023009) LL(782.75) DFO(6605058-01)

2292 - Chantry Island to Cove Island - New Edition - 31-JAN-2020 - NAD 1983

19-MAY-2023

LNMD. 20-JAN-2023

Amend red starboard hand spar buoy, marked TA8 to read 45°15'59.1"N 081°43'00.5"W
red starboard hand lighted spar buoy Q R, marked TA8
(See Chart 1, Qb)
This notice affects Electronic Navigational Chart: CA373281, CA573005
(D2023013) LL(800.7) DFO(6605062-01)

Amend red starboard hand spar buoy, marked TA6 to read 45°15'24.7"N 081°43'45.8"W
red starboard hand lighted spar buoy FI R, marked TA6
(See Chart 1, Qb)
This notice affects Electronic Navigational Chart: CA373281, CA573005
(D2023014) LL(800.5) DFO(6605063-01)

2292 - Southampton Harbour - New Edition - 31-JAN-2020 - NAD 1983

19-MAY-2023

LNMD. 20-JAN-2023

Amend FI 30m 7M to read FI 29m 8M against light 44°29'21.8"N 081°24'06.1"W
(See Chart 1, P16)
(D2023010) LL(788) DFO(6605059-01)

2298 - Cove Island to Duck Islands - New Edition - 25-MAR-2016 - Unknown

12-MAY-2023

LNMD. 02-APR-2021

Amend F 49ft to read F 50ft 5M against light 45°39'04.1"N 082°16'32.1"W
(See Chart 1, P16)
(D2023003) LL(810) DFO(6605052-01)

2302 - St. Ignace Island to à Passage Island - New Edition - 02-AUG-1985 - US Standard Datum

19-MAY-2023

LNMD. 07-APR-2023

Add	depth of 4½ fathoms (See Chart 1, I10) This notice affects Electronic Navigational Chart: CA373291	48°41'00.7"N 088°06'20.5"W	<i>DFO(6605049-01)</i>
Delete	depth of 12 fathoms (See Chart 1, I10) This notice affects Electronic Navigational Chart: CA373291	48°39'33.0"N 088°07'27.3"W	<i>DFO(6605049-02)</i>
Add	depth of 5¼ fathoms (See Chart 1, I10) This notice affects Electronic Navigational Chart: CA373291	48°39'32.5"N 088°07'23.1"W	<i>DFO(6605049-03)</i>
Delete	depth of 12 fathoms (See Chart 1, I10) This notice affects Electronic Navigational Chart: CA373291	48°37'44.3"N 088°07'09.4"W	<i>DFO(6605049-04)</i>
Add	depth of 5¾ fathoms (See Chart 1, I10) This notice affects Electronic Navigational Chart: CA373291	48°37'40.5"N 088°07'10.3"W	<i>DFO(6605049-06)</i>
Delete	depth of 6½ fathoms (See Chart 1, I10) This notice affects Electronic Navigational Chart: CA373291	48°45'38.9"N 088°05'04.1"W	<i>DFO(6605049-07)</i>
Add	depth of 4 fathoms (See Chart 1, I10) This notice affects Electronic Navigational Chart: CA373291	48°45'37.3"N 088°05'03.6"W	<i>DFO(6605049-08)</i>

2312 - Nipigon Bay and Approaches/et les approches - New Edition - 31-MAY-2002 - NAD 1983

19-MAY-2023

LNMD. 07-APR-2023

Add	depth of 4 fathoms 5 feet (See Chart 1, I10) This notice affects Electronic Navigational Chart: CA373291	48°41'00.7"N 088°06'20.5"W	<i>DFO(6605049-01)</i>
Delete	depth of 12 fathoms (See Chart 1, I10) This notice affects Electronic Navigational Chart: CA373291	48°39'32.5"N 088°07'23.5"W	<i>DFO(6605049-02)</i>
Add	depth of 5 fathoms 3 feet (See Chart 1, I10) This notice affects Electronic Navigational Chart: CA373291	48°39'32.5"N 088°07'23.1"W	<i>DFO(6605049-03)</i>
Delete	depth of 12 fathoms (See Chart 1, I10) This notice affects Electronic Navigational Chart: CA373291	48°37'43.6"N 088°07'09.4"W	<i>DFO(6605049-04)</i>

Add	depth of 5 fathoms 5 feet (See Chart 1, I10) This notice affects Electronic Navigational Chart: CA373291	48°37'40.5"N 088°07'10.3"W <i>DFO(6605049-06)</i>
Delete	depth of 6 fathoms 2 feet (See Chart 1, I10) This notice affects Electronic Navigational Chart: CA373291	48°45'47.8"N 088°05'04.1"W <i>DFO(6605049-07)</i>
Add	depth of 4 fathoms (See Chart 1, I10) This notice affects Electronic Navigational Chart: CA373291	48°45'37.3"N 088°05'03.6"W <i>DFO(6605049-08)</i>
4021 - Lower Cove - New Edition - 01-NOV-2002 - NAD 1983		
05-MAY-2023		LNM/D. 26-AUG-2022
Amend	Fl(2)5s to read Fl(2) 10s against black, red and black isolated danger lighted pillar buoy, marked XLC (See Chart 1, Q130.4) This notice affects Electronic Navigational Chart: CA276138, CA576825	48°30'57.4"N 059°01'21.4"W <i>(N2023046) LL(183.7) DFO(6310645-01)</i>
4021 - Pointe Amour à / to Cape Whittle et / and Cape George - New Edition - 01-NOV-2002 - NAD 1983		
05-MAY-2023		LNM/D. 26-AUG-2022
Amend	Fl(2)5s to read Fl(2) 10s against black, red and black isolated danger lighted pillar buoy, marked XLC (See Chart 1, Q130.4) This notice affects Electronic Navigational Chart: CA276138, CA576825	48°31'00.0"N 059°01'19.0"W <i>(N2023046) LL(183.7) DFO(6310645-01)</i>
4022 - Cabot Strait and approaches / Détroit de Cabot et les approches - New Edition - 17-JAN-2003 - NAD 1983		
05-MAY-2023		LNM/D. 16-DEC-2022
Amend	Fl(2)5s to read Fl(2) 10s against black, red and black isolated danger lighted pillar buoy, marked XLC (See Chart 1, Q130.4) This notice affects Electronic Navigational Chart: CA276138, CA576825	48°30'59.6"N 059°01'23.2"W <i>(N2023046) LL(183.7) DFO(6310645-01)</i>
4024 - Baie des Chaleurs/Chaleur Bay aux/to Îles de la Madeleine - New Edition - 06-MAR-2015 - NAD 1983		
05-MAY-2023		LNM/D. 23-DEC-2022
Add	yellow SADO/ODAS lighted super-buoy Fl(5) Y, marked IML-15 (See Chart 1, Q58) This notice affects Electronic Navigational Chart: CA279075	48°05'00.0"N 061°55'54.0"W <i>(Q2022091) LL(1512.4) DFO(6410777-01)</i>
4328 - Lunenburg Harbour - New Edition - 10-JUL-1998 - NAD 1983		
26-MAY-2023		LNM/D. 26-FEB-2021
Delete	depth of 2 fathoms, 5 feet (See Chart 1, I10)	44°22'20.2"N 064°18'23.7"W <i>DFO(6310663-01)</i>
Add	depth of 2 fathoms, 4 feet (See Chart 1, I10)	44°22'20.1"N 064°18'23.1"W <i>DFO(6310663-02)</i>

Delete	depth of 1 fathom, 2 feet (See Chart 1, I10)	44°22'32.8"N 064°18'50.1"W <i>DFO(6310663-03)</i>
Add	depth of 0 fathoms, 5 feet (See Chart 1, I10)	44°22'32.6"N 064°18'50.4"W <i>DFO(6310663-04)</i>
Delete	depth of 0 fathoms, 5 feet (See Chart 1, I10) This notice affects Electronic Navigational Chart: CA476664	44°22'33.0"N 064°18'52.8"W <i>DFO(6310663-05)</i>
Add	depth of 0 fathoms, 4 feet (See Chart 1, I10) This notice affects Electronic Navigational Chart: CA476664	44°22'32.9"N 064°18'52.8"W <i>DFO(6310663-06)</i>
4384 - Pearl Island to / à Cape La Have - New Edition - 10-JAN-2003 - NAD 1983		
26-MAY-2023		LNM/D. 03-DEC-2021
Delete	depth of 4.9 metres (See Chart 1, I10) This notice affects Electronic Navigational Chart: CA476664	44°22'33.5"N 064°18'54.7"W <i>DFO(6310663-05)</i>
Add	depth of 1.2 metres (See Chart 1, I10) This notice affects Electronic Navigational Chart: CA476664	44°22'32.9"N 064°18'52.8"W <i>DFO(6310663-06)</i>
4624 - Long Island to / à St. Lawrence Harbours - New Edition - 07-JAN-2000 - NAD 1983		
05-MAY-2023		LNM/D. 21-APR-2023
Add	green port hand lighted spar buoy FI G, marked PF3 (See Chart 1, Qc) This notice affects Electronic Navigational Chart: CA376176	47°15'59.4"N 054°56'23.8"W <i>(N2023049) LL(60.3) DFO(6310648-01)</i>
4625 - Burin Peninsula to / à Saint-Pierre - New Edition - 24-JAN-2003 - NAD 1983		
05-MAY-2023		LNM/D. 14-APR-2023
Amend	FI3s190ft to read FI 5s190ft against light (See Chart 1, P16) This notice affects Electronic Navigational Chart: CA276091, CA376164	46°54'19.4"N 055°33'37.9"W <i>(N2023038) LL(74) DFO(6310637-01)</i>
4640 - Isle aux Morts and Approaches / et les approches - New Edition - 27-AUG-1999 - NAD 1983		
05-MAY-2023		LNM/D. 23-DEC-2022
Add	private yellow ODAS/SADO lighted pillar FI(5) Y 20s, Priv (See Chart 1, Q58)	47°33'00.9"N 059°04'27.7"W <i>DFO(6310660-02)</i>

4641 - Port aux Basques - New Edition - 31-OCT-2014 - NAD 1983

05-MAY-2023

LNMD. 25-MAR-2022

Reposition private yellow ODAS/SADO lighted pillar Fl(5) Y 20s, Priv
(See Chart 1, Q58)
This notice affects Electronic Navigational Chart: CA376625, CA576304

from 47°33'46.2"N 059°06'01.2"W
to 47°33'00.9"N 059°04'27.7"W

DFO(6310660-01)

4823 - Cape Ray to / à Garia Bay - New Chart - 16-JAN-2004 - NAD 1983

05-MAY-2023

LNMD. 16-DEC-2022

Reposition private yellow ODAS/SADO lighted pillar Fl(5) Y 20s, Priv
(See Chart 1, Q58)
This notice affects Electronic Navigational Chart: CA376625, CA576304

from 47°33'46.2"N 059°06'01.1"W
to 47°33'00.9"N 059°04'27.7"W

DFO(6310660-01)

4849 - Public Wharf / Quai - New Chart - 30-DEC-1988 - NAD 1983

26-MAY-2023

LNMD. 09-SEP-2022

Delete depth of 1.2 metres
(See Chart 1, I10)
This notice affects Electronic Navigational Chart: CA576416

47°44'17.2"N 053°13'26.2"W

DFO(6310662-01)

Add depth of 0.5 metres
(See Chart 1, I10)
This notice affects Electronic Navigational Chart: CA576416

47°44'17.3"N 053°13'26.0"W

DFO(6310662-02)

Add depth of 1.7 metres
(See Chart 1, I10)
This notice affects Electronic Navigational Chart: CA576416

47°44'17.0"N 053°13'26.4"W

DFO(6310662-03)

4851 - Trinity Bay: Southern Portion / Partie Sud - New Edition - 30-SEP-2016 - World Geodetic System 1984

26-MAY-2023

LNMD. 14-APR-2023

Delete depth of 3.4 metres
(See Chart 1, I10)
This notice affects Electronic Navigational Chart: CA376153

47°35'35.9"N 053°33'17.5"W

DFO(6310634-01)

Add depth of 2 metres
(See Chart 1, I10)
This notice affects Electronic Navigational Chart: CA376153

47°35'32.5"N 053°33'16.5"W

DFO(6310634-02)

Add depth of 4.6 metres
(See Chart 1, I10)
This notice affects Electronic Navigational Chart: CA376153

47°35'34.3"N 053°33'00.4"W

DFO(6310634-03)

4950 - La Passe - New Edition - 19-JUL-2013 - NAD 1983

12-MAY-2023

LN/D. 17-JUN-2022

Add sector light F RWG 9m. Visible through an arc of 7°, red from 59° to 61°, white from 61° to 64° and green from 64° to 66°
(See Chart 1, P40.1)
This notice affects Electronic Navigational Chart: CA379216, CA579168
47°16'41.9"N 061°43'01.6"W
(Q2022086) LL(1510.5) DFO(6410769-01)

5467 - Baie aux feuilles / Leaf Bay et les Approches / and Approaches - New Edition - 05-DEC-2003 - NAD 1983

19-MAY-2023

LN/D. 16-MAR-2018

Add depth of 20 fathoms
(See Chart 1, I10)
58°56'22.3"N 069°07'35.0"W
DFO(6605050-01)

Delete depth of 25 fathoms
(See Chart 1, I10)
58°56'33.7"N 069°06'18.7"W
DFO(6605050-02)

Add depth of 19 fathoms
(See Chart 1, I10)
58°56'33.2"N 069°06'20.9"W
DFO(6605050-03)

Section 3: Radio Aids to Marine Navigation Corrections

*514/23 Radio Aids to Marine Navigation 2023 (Atlantic, St. Lawrence, Great Lakes, Lake Winnipeg, Arctic and Pacific)

Page 1-2

ADD AS FOLLOWS:

1.1.6 Elimination of the H Series in the NAVWARN Issuing System

As of July 1, 2023, Navigational Warnings (NAVWARNs) for the Mackenzie River will be issued under the A series rather than the H series. Existing H series NAVWARNs will remain available on the website. Current subscribers to the NAVWARN subscription service will continue to receive NAVWARNs for all geographic areas that match the user defined criteria. No action will be required on the part of the user.

Page 4-71

DELETE THE FOLLOWING SECTION:

4.3.8.5 Quarantine Messages

REPLACE WITH:

4.3.8.5 Quarantine Messages

1. In the following circumstances, and per the *Quarantine Act*, the person in charge of a vessel shall inform a quarantine officer prior to entering or exiting Canada where, in the course of the voyage:
 - A. 1. A person on board meets the syndromal case definition:
 - a) has a fever of 38°C or greater **or** 2 or more signs of fever, such as:
 - shivering
 - flushed skin
 - excessive sweating
 - complaints of feeling feverish
 - b) **and** has 1 or more of the following symptoms:
 - difficulty breathing
 - repeated cough
 - diarrhea
 - headache
 - recent confusion
 - skin rash
 - bruising or bleeding without previous injury
 2. Appears obviously unwell or coughs with blood
- B. There is a death on board.
- C. Human remains are on board

2. To inform a quarantine officer, the person in charge of a vessel shall submit a Maritime Declaration of Health (MDH) 24-48 hours before the first port of arrival in Canada and as soon as possible before departing the last port in Canada. If it is not possible to submit a MDH, the person in charge of a vessel can inform a quarantine officer by emailing the Public Health Agency of Canada (PHAC) Central Notification System (CNS) at cns-snc@phac-aspc.gc.ca or by calling the PHAC CNS at 1-833-615-2384. Should there be any change in the situation being reported, an updated report must be sent. Please visit [Guidance for marine operators: Reporting Illness on board](#) for information.
3. All notifications (new or updated) submitted 24 hours or less prior to arrival must be accompanied by a call to CNS at 1-833-615-2384.
4. The person in charge of a vessel who wishes to change their port of destination after receiving instructions from a quarantine officer shall notify the quarantine officer of such a change and request new instructions.

Section 4: Canadian Sailing Directions Corrections

No corrections for this section.

Section 5: List of Lights, Buoys and Fog Signals Corrections

The amendments are highlighted and deletions are crossed out. For general and region-specific information on the List of Lights, click on the following links: [Newfoundland and Labrador Coast](#), [Atlantic Coast](#), [Inland Waters](#) and [Pacific Coast](#).

No.	Name	Position ----- Latitude N. Longitude W.	Light Characteristics	Focal Height in m. above water	Nomi- nal Range	Description ----- Height in meters above ground	Remarks ----- Fog Signals
-----	------	--	--------------------------	--	-----------------------	--	---------------------------------

NEWFOUNDLAND AND LABRADOR COAST

PLACENTIA BAY (LL 14.4 – 79)

60.3	Flat Island Harbour light buoy PF3	47 15 59.4 054 56 23.8	Fl G 4s	Green spar, marked "PF3".	Operates 24 h. Year round. Chart:4624 Edn 05/23 (N23-049)
74 H0356	Black Head Light	Great Lawn Harbour. 46 54 18.0 055 33 39.0	Fl W 5s	57.9	5	Square skeleton tower, red and white daymark. 4.6	Flash 1 s; eclipse 4 s. Year round. Chart:4625 Edn 05/23 (N23-038)

WEST COAST (LL 173 – 208.2)

183.7	Lower Cove Isolated Danger light buoy XLC	Pigeon Head. 48 30 57.1 059 01 21.1	Fl(2) W 10s	Black, red and black, marked "XLC".	Seasonal. Chart:4021 Edn 05/23 (N23-046)
-------	---	---	-------------	-------	-------	--	--

ATLANTIC COAST

GULF OF ST. LAWRENCE (LL 1169.1 – 1426, 1477.5 – 1584)

1510.5	Île d'Entrée Sector Light	47 16 41.9 061 43 01.6	F R W G	9.0	11 Skeleton tower, white rectangular daymark with red horizontal bands. 5.1	Operates 24 h. Visible on an arc of 7°; red from 059° to 061°; white from 061° to 064°; green from 064° to 066°. Year round. Chart:4950 Edn 05/23 (Q22-086)
--------	------------------------------	---------------------------	---------------	-------	-----	---	--

INLAND WATERS

LAKE HURON (LL 768 – 813)

782.25	Kincardine South Pier West	On W. side of S. pier. 44 10 40.1 081 38 36.2	Fl R 4s	Red cylindrical mast. 1.5	Private aid. Maintained by the Municipality of Kincardine. Seasonal. Chart:2291 Edn 05/23 (D23-007)
782.5	Kincardine South Pier East	On E. side of S. pier. 44 10 40.1 081 38 34.0	Fl R 4s	Red cylindrical mast. 1.5	Private aid. Maintained by the Municipality of Kincardine. Seasonal. Chart:2291 Edn 05/23 (D23-008)

Notices to Mariners – Monthly Eastern Edition
Section 5: List of Lights, Buoys and Fog Signals Corrections

No.	Name	Position ----- Latitude N. Longitude W.	Light Characteristics	Focal Height in m. above water	Nomi- nal Range	Description ----- Height in meters above ground	Remarks ----- Fog Signals
782.75	Kincardine North Pier	On W. side of N. pier. 44 10 41.2 081 38 36.2	Fl G 4s	Green cylindrical mast. 1.5	Private aid. Maintained by the Municipality of Kincardine. Seasonal. Chart:2291 Edn 05/23 (D23-009)
788	Chantry Island	On E. side of island W. of Saugeen. 44 29 21.8 081 24 06.1	Fl W 4s	29.5	7	White cylindrical tower with red top. 28.0	Seasonal (in place year round). Chart:2292 Edn 05/23 (D23-010)
800.5	Devil Island light buoy TA6	W. of bank. 45 15 24.7 081 43 45.8	Fl R 4s	Red spar, marked "TA6".	Seasonal. Chart:2274 Edn 05/23 (D23-014)
800.7	Russel Reef light buoy TA8	W. of reef. 45 15 59.1 081 43 00.5	Q R 1s	Red spar, marked "TA8".	Seasonal. Chart:2274 Edn 05/23 (D23-013)
810	Providence Bay	On extremity of Providence Point, Manitoulin Island. 45 39 04.2 082 16 31.8	F W	15.4	5	Skeleton tower, rectangular daymark with red and white horizontal stripes on 3 seaward faces. 13.0	Seasonal (in place year round). Chart:2266 Edn 05/23 (D23-003)
GEORGIAN BAY (LL 814 – 982)							
834	Hibou light buoy T9	W. of shoal. 44 37 01.4 080 55 07.4	Fl G 4s	Green spar, marked "T9".	(Winter spar.) Seasonal (in place year round). Chart:2283 Edn 05/23 (D23-011)
NORTH CHANNEL – LAKE HURON (LL 983 – 1041)							
1023	Gore Bay	On Janet Head. 45 56 45.0 082 28 48.6	Oc W 5s	15.0	7	White square tower with red upper portion. 10.6	Flash 3 s; eclipse 2 s. Seasonal (in place year round). Chart:2257 Edn 05/23 (D23-004)
LAKE SUPERIOR (LL 1082 – 1161)							
1131	Thunder Cape	W. side of cape. 48 18 06.4 088 56 17.3	Fl W 4s	10.7	5	Cylindrical mast, red and white rectangular daymark. 6.5	Seasonal. Chart:2326 Edn 05/23 (D23-012)
OTTAWA RIVER (LL 1255 – 1322)							
1266	Canal de Grenville light buoy H245	45 37 25.2 074 36 30.6	Fl G 4s	Green, marked "H245".	(Winter spar.) Seasonal. Chart:1514 Edn 05/23
1268	Canal de Grenville light buoy H247	45 37 24.2 074 37 05.7	Fl G 4s	Green, marked "H247".	(Winter spar.) Seasonal. Chart:1514 Edn 05/23

Notices to Mariners – Monthly Eastern Edition
Section 5: List of Lights, Buoys and Fog Signals Corrections

No.	Name	Position ----- Latitude N. Longitude W.	Light Characteristics	Focal Height in m. above water	Nomi- nal Range	Description ----- Height in meters above ground	Remarks ----- Fog Signals
-----	------	--	--------------------------	--	-----------------------	--	---------------------------------

1293.9	<i>Battures Way light buoy H424</i>	45 30 07.2 075 31 01.2	<i>Fl R 4s</i>	<i>Red spar, marked "H424".</i>	<i>Seasonal.</i>
							Chart:1515 Edn 05/23 (Q23-011)

1295.1	<i>Battures Green light buoy H435</i>	45 28 22.2 075 35 40.8	<i>Fl G 4s</i>	<i>Green spar, marked "H435".</i>	<i>Seasonal.</i>
							Chart:1515 Edn 05/23 (Q23-012)

LAKE WINNIPEG (LL 1563.1 – 1625)

1593	Bloodvein River Entrance range	At mouth of river. 51 47 21.5 096 43 36.8	<i>F G</i>	9.0	15	<i>Square skeleton tower, white daymark with red vertical stripe.</i>	Visible in line of range. Seasonal.
			<i>Fl W 4s</i>	9.7	<i>6.7</i>	
1593.2		109°27' 756.4 m from front.	<i>F G</i>	11.0	<i>Square skeleton tower, white daymark with red vertical stripe.</i>	Visible in line of range. Seasonal.
							Chart:6267 Edn 05/23 (P23-001, 002)	