

SEM MAG: 559 x

WD: 14.94 mm



MIRA3 TESCAN

View field: 495 μ m

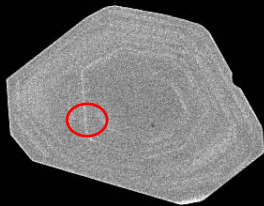
Det: BSE Low Energy

100 μ m

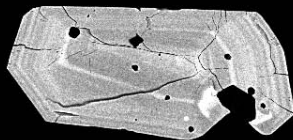
Date(m/d/y): 07/11/17

NRCan LMS GSC



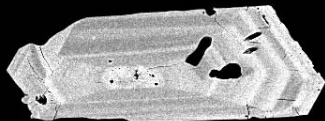


5



6

7



8



SEM MAG: 551 x

WD: 14.94 mm

View field: 502 μ m

Det: BSE Low Energy

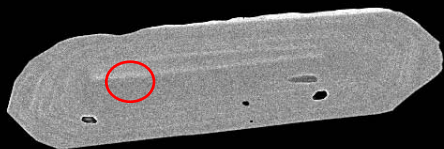
100 μ m

11878-02

Date(m/d/y): 07/11/17

MIRA3 TESCAN

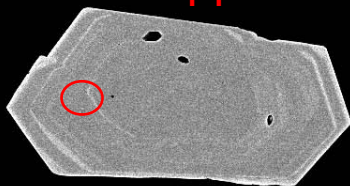
NRCan LMS GSC



9



10



11



12

SEM MAG: 552 x

WD: 14.94 mm

View field: 501 μ m

Det: BSE Low Energy

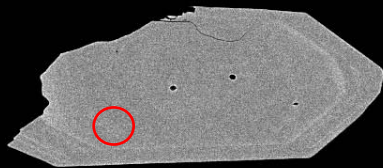
100 μ m

11878-03

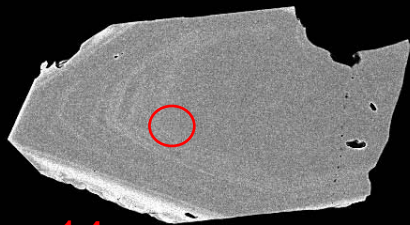
Date(m/d/y): 07/11/17

MIRA3 TESCAN

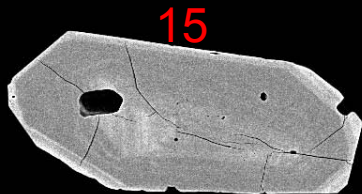
NRCan LMS GSC



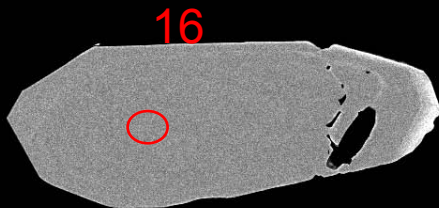
13



14



15



16

SEM MAG: 557 x

WD: 14.94 mm

View field: 497 μ m

Det: BSE Low Energy

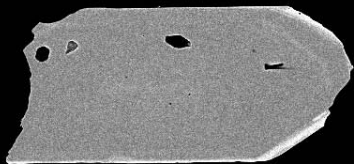
100 μ m

11878-04

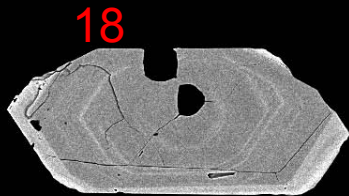
Date(m/d/y): 07/11/17

MIRA3 TESCAN

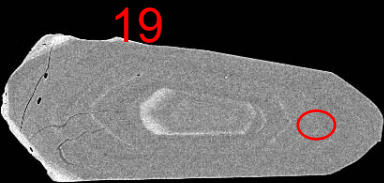
NRCan LMS GSC



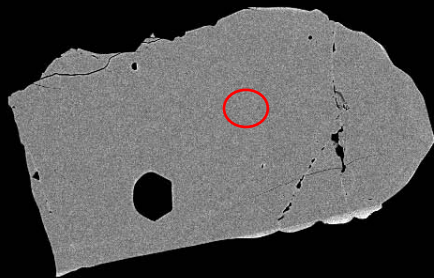
17



18



19



20

SEM MAG: 460 x

WD: 14.94 mm

View field: 602 µm

Det: BSE Low Energy

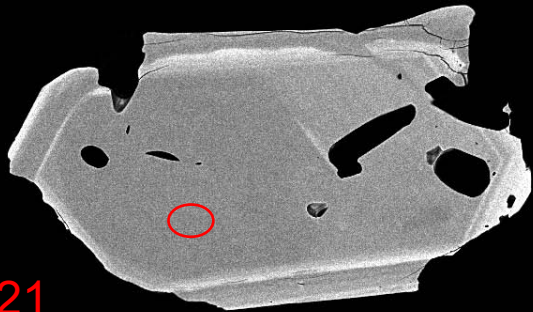
11878-05

Date(m/d/y): 07/11/17

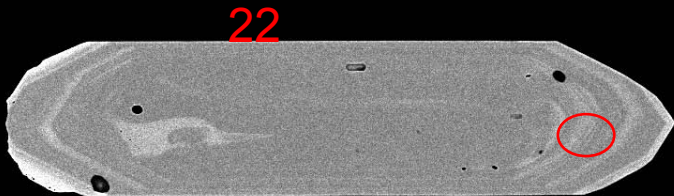
100 µm

MIRA3 TESCAN

NRCan LMS GSC



21



22

SEM MAG: 588 x

WD: 14.94 mm



MIRA3 TESCAN

View field: 471 μ m

Det: BSE Low Energy

100 μ m

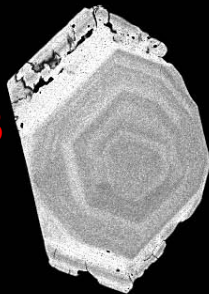
11878-06

Date(m/d/y): 07/11/17

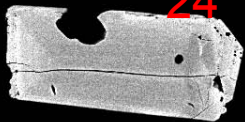
NRCan LMS GSC



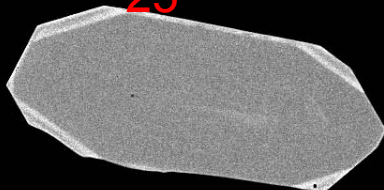
23



24



25



SEM MAG: 632 x

WD: 14.94 mm

MIRA3 TESCAN

View field: 438 μ m

Det: BSE Low Energy

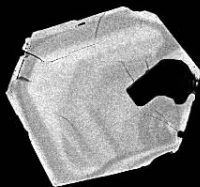
100 μ m

11878-07

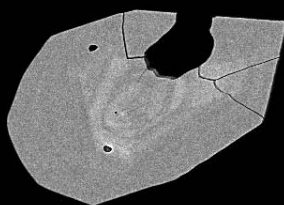
Date(m/d/y): 07/11/17

NRCan LMS GSC

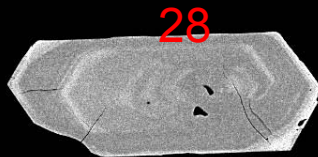




26



27



28



29

SEM MAG: 569 x

WD: 14.94 mm

View field: 487 μ m

Det: BSE Low Energy

100 μ m

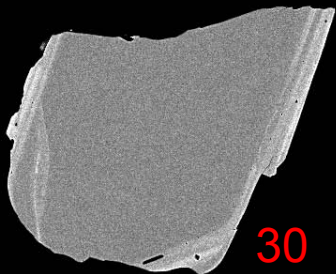
11878-08

Date(m/d/y): 07/11/17

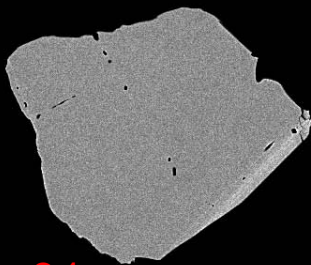
MIRA3 TESCAN

NRCan LMS GSC

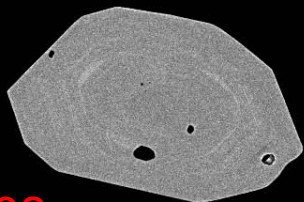




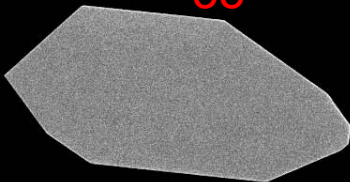
30



31



32



33

SEM MAG: 549 x

WD: 14.94 mm

View field: 505 μ m

Det: BSE Low Energy

100 μ m

11878-09

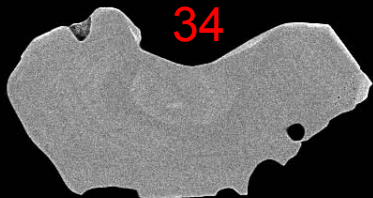
Date(m/d/y): 07/11/17

MIRA3 TESCAN

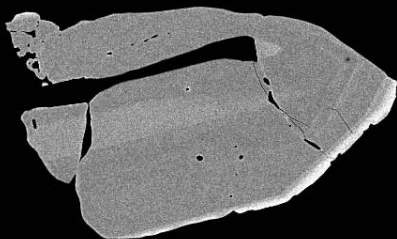
NRCan LMS GSC



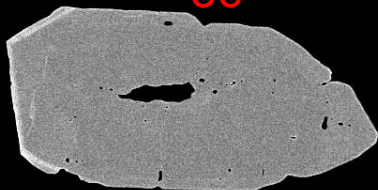
34



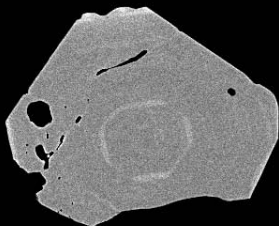
35



36



37



SEM MAG: 561 x

WD: 14.94 mm

View field: 493 μ m

Det: BSE Low Energy

100 μ m

11878-10

Date(m/d/y): 07/11/17

MIRA3 TESCAN

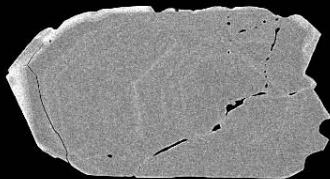
NRCan LMS GSC



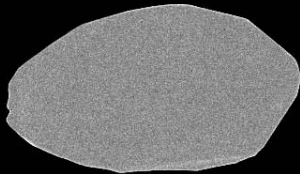
38



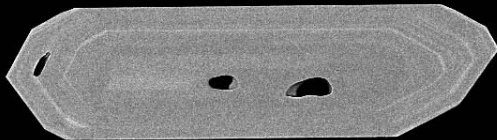
39



40



41



SEM MAG: 430 x

WD: 14.94 mm

MIRA3 TESCAN

View field: 644 µm

Det: BSE Low Energy

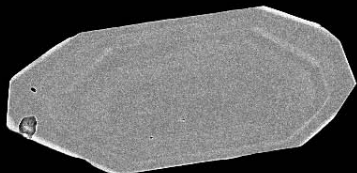
200 µm

11878-11

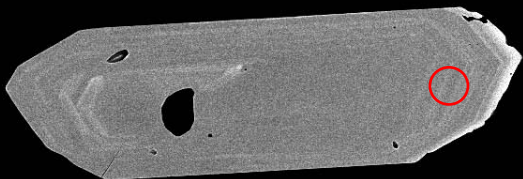
Date(m/d/y): 07/11/17

NRCan LMS GSC

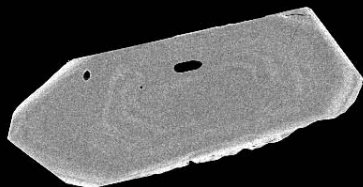




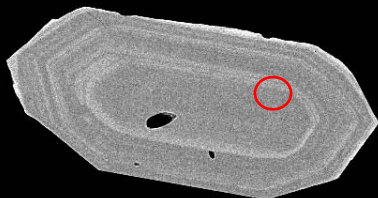
42



43



44



45

SEM MAG: 393 x

WD: 14.94 mm

View field: 705 μ m

Det: BSE Low Energy

200 μ m

MIRA3 TESCAN

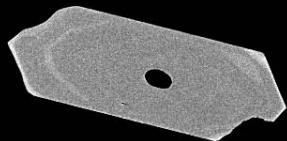
11878-12

Date(m/d/y): 07/11/17

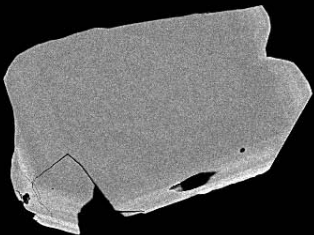
NRCan LMS GSC



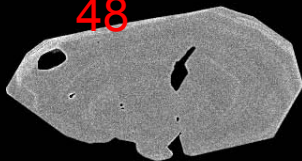
46



47



48



SEM MAG: 564 x

WD: 14.94 mm



MIRA3 TESCAN

View field: 491 μ m

Det: BSE Low Energy

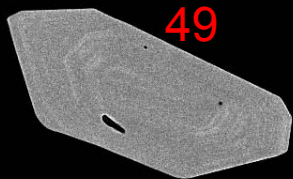
100 μ m

11878-13

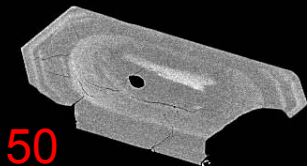
Date(m/d/y): 07/11/17

NRCan LMS GSC

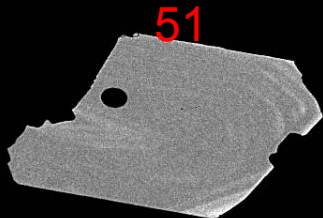




49

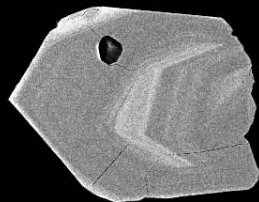


50



51

52



SEM MAG: 561 x

WD: 14.94 mm



MIRA3 TESCAN

View field: 494 μ m

Det: BSE Low Energy

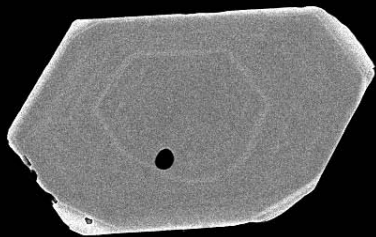
100 μ m

11878-14

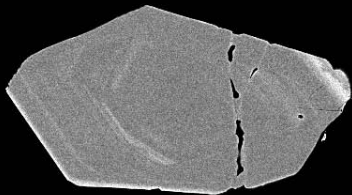
Date(m/d/y): 07/11/17

NRCan LMS GSC

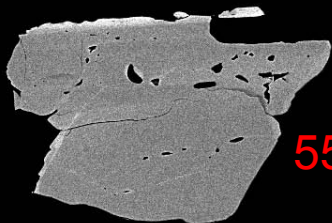




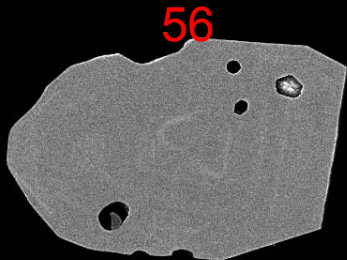
53



54



55



56

SEM MAG: 559 x

WD: 14.94 mm

View field: 495 µm

Det: BSE Low Energy

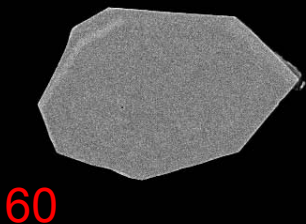
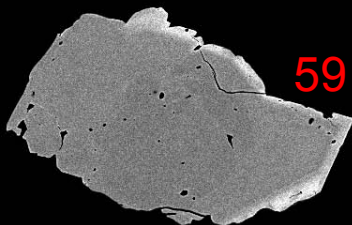
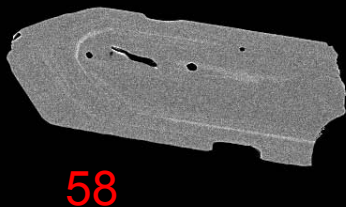
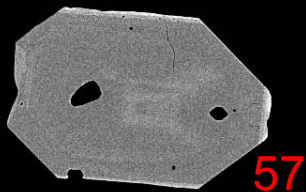
100 µm

MIRA3 TESCAN

11878-15

Date(m/d/y): 07/11/17

NRCan LMS GSC



SEM MAG: 515 x

WD: 14.94 mm

View field: 537 μ m

Det: BSE Low Energy

100 μ m

11878-16

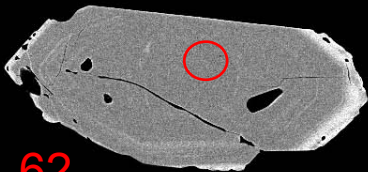
Date(m/d/y): 07/11/17

MIRA3 TESCAN

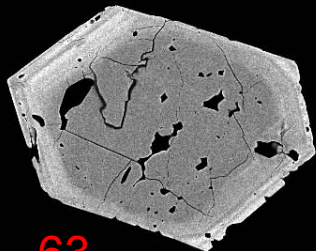
NRCan LMS GSC



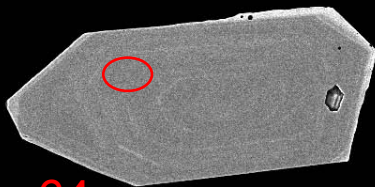
61



62



63



64

SEM MAG: 476 x

WD: 14.94 mm



MIRA3 TESCAN

View field: 581 μ m

Det: BSE Low Energy

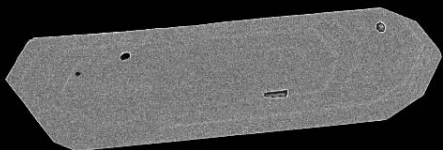
100 μ m

11878-17

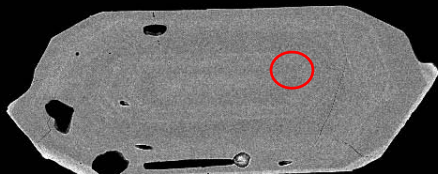
Date(m/d/y): 07/11/17

NRCan LMS GSC

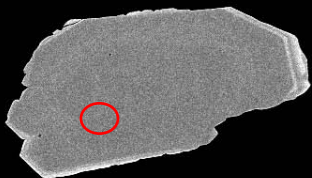




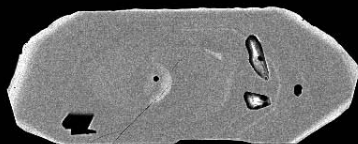
65



66



67



68

SEM MAG: 379 x

WD: 14.94 mm

View field: 730 μ m

Det: BSE Low Energy

200 μ m

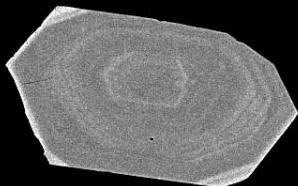
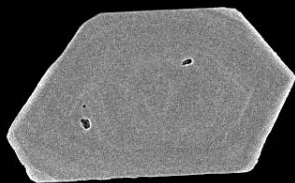
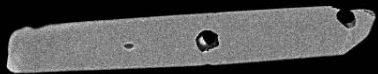
MIRA3 TESCAN

11878-18

Date(m/d/y): 07/11/17

NRCan LMS GSC





SEM MAG: 613 x

WD: 14.94 mm

View field: 451 μ m

Det: BSE Low Energy

100 μ m

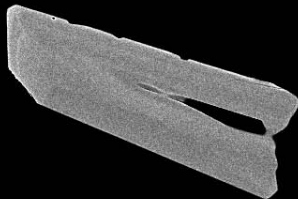
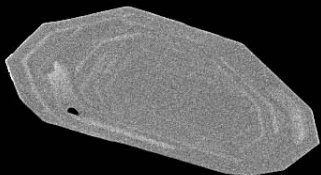
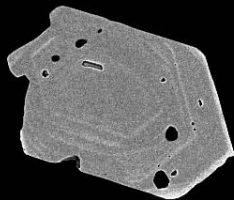
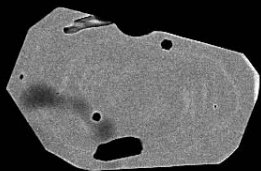
MIRA3 TESCAN

11878-19

Date(m/d/y): 07/11/17

NRCan LMS GSC





SEM MAG: 508 x

WD: 14.94 mm



MIRA3 TESCAN

View field: 545 μ m

Det: BSE Low Energy

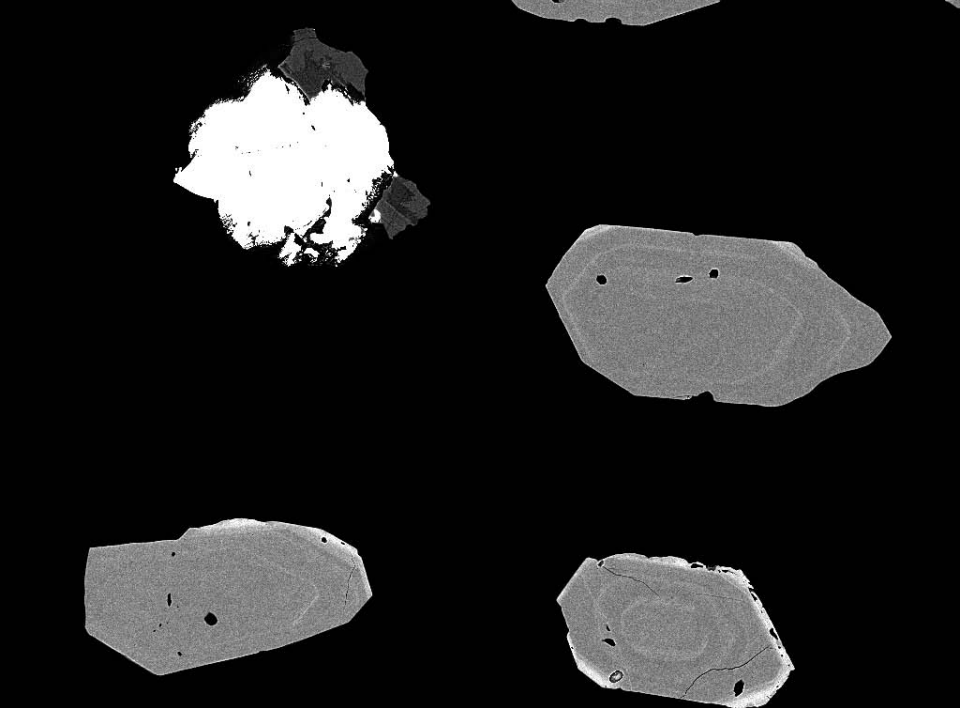
100 μ m

11878-20

Date(m/d/y): 07/11/17

NRCan LMS GSC





SEM MAG: 428 x

WD: 14.94 mm

MIRA3 TESCAN

View field: 647 μ m

Det: BSE Low Energy

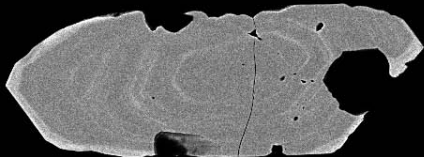
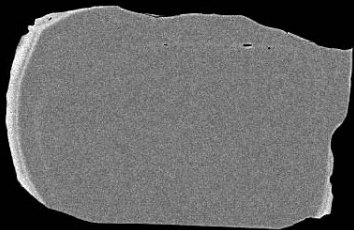
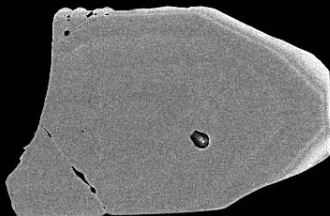
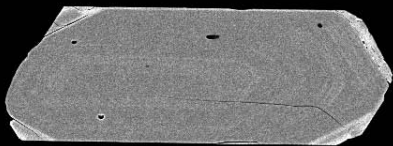
200 μ m

11878-21

Date(m/d/y): 07/11/17

NRCan LMS GSC





SEM MAG: 546 x

WD: 14.94 mm



MIRA3 TESCAN

View field: 507 μ m

Det: BSE Low Energy

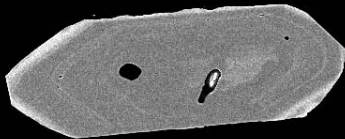
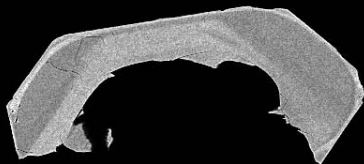
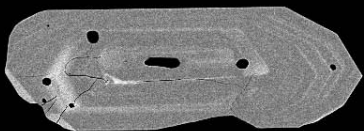
100 μ m

11878-22

Date(m/d/y): 07/11/17

NRCan LMS GSC





SEM MAG: 422 x

WD: 14.94 mm

MIRA3 TESCAN

View field: 657 μ m

Det: BSE Low Energy

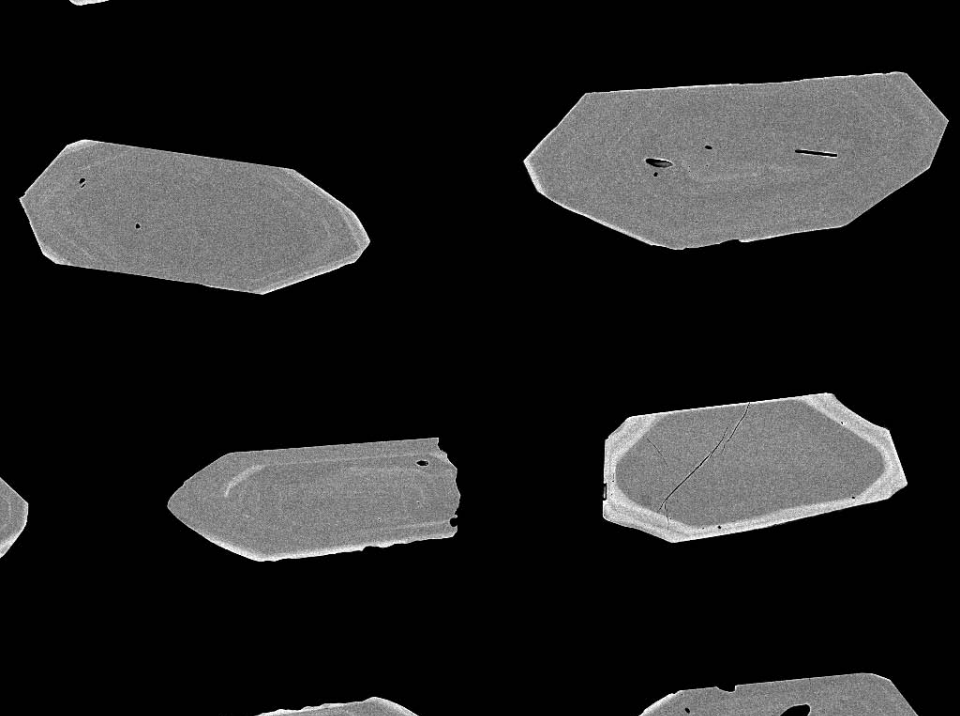
200 μ m

11878-23

Date(m/d/y): 07/11/17

NRCan LMS GSC





SEM MAG: 389 x

WD: 14.94 mm

MIRA3 TESCAN

View field: 711 μ m

Det: BSE Low Energy

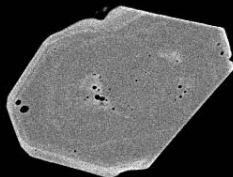
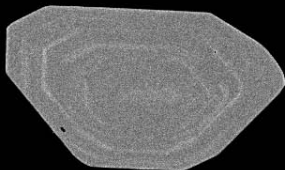
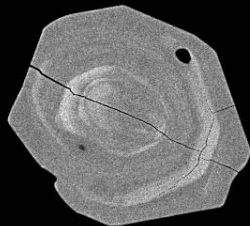
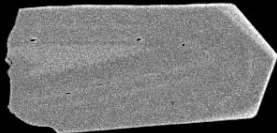
200 μ m

11878-24

Date(m/d/y): 07/11/17

NRCan LMS GSC





SEM MAG: 711 x

WD: 14.94 mm

View field: 389 μ m

Det: BSE Low Energy

100 μ m

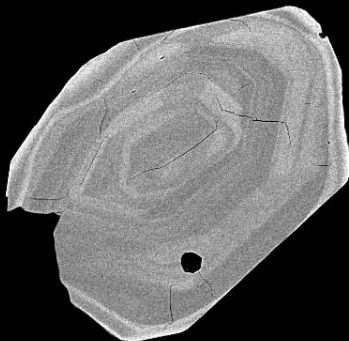
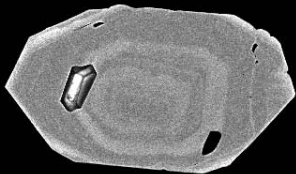
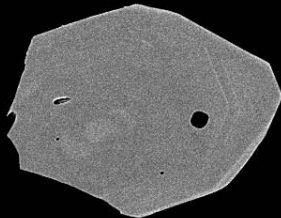
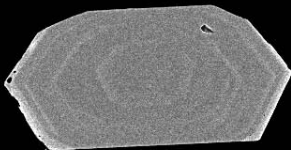
MIRA3 TESCAN

11878-25

Date(m/d/y): 07/11/17

NRCan LMS GSC





SEM MAG: 541 x

WD: 14.94 mm



MIRA3 TESCAN

View field: 511 μ m

Det: BSE Low Energy

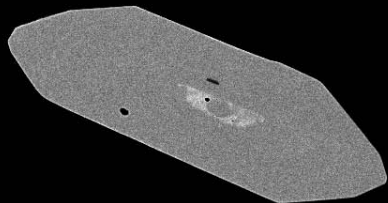
100 μ m

11878-26

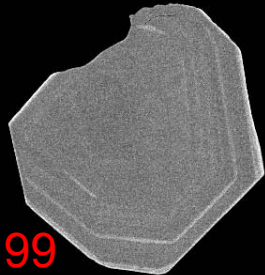
Date(m/d/y): 07/11/17

NRCan LMS GSC



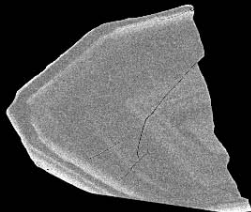


98

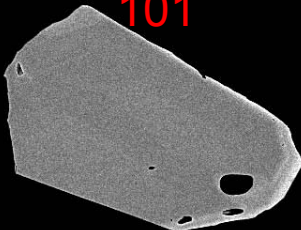


99

100



101



SEM MAG: 499 x

WD: 14.94 mm



MIRA3 TESCAN

View field: 555 μ m

Det: BSE Low Energy

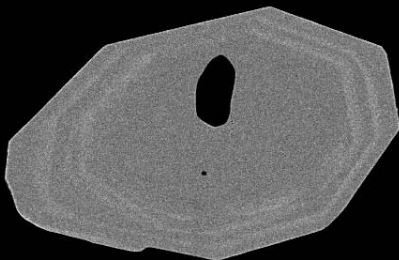
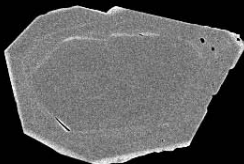
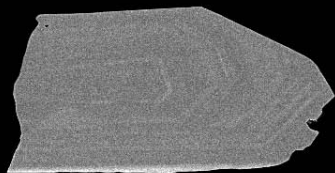
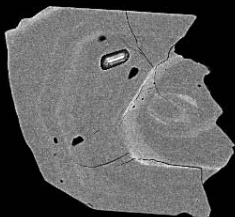
100 μ m

11878-27

Date(m/d/y): 07/11/17

NRCan LMS GSC





SEM MAG: 495 x

WD: 14.94 mm



MIRA3 TESCAN

View field: 559 μ m

Det: BSE Low Energy

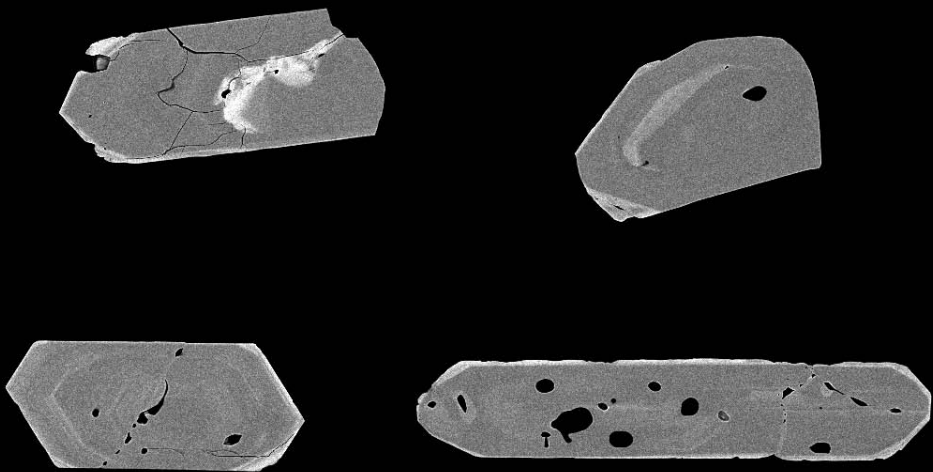
100 μ m

11878-28

Date(m/d/y): 07/11/17

NRCan LMS GSC





SEM MAG: 408 x

WD: 14.94 mm

MIRA3 TESCAN

View field: 678 μ m

Det: BSE Low Energy

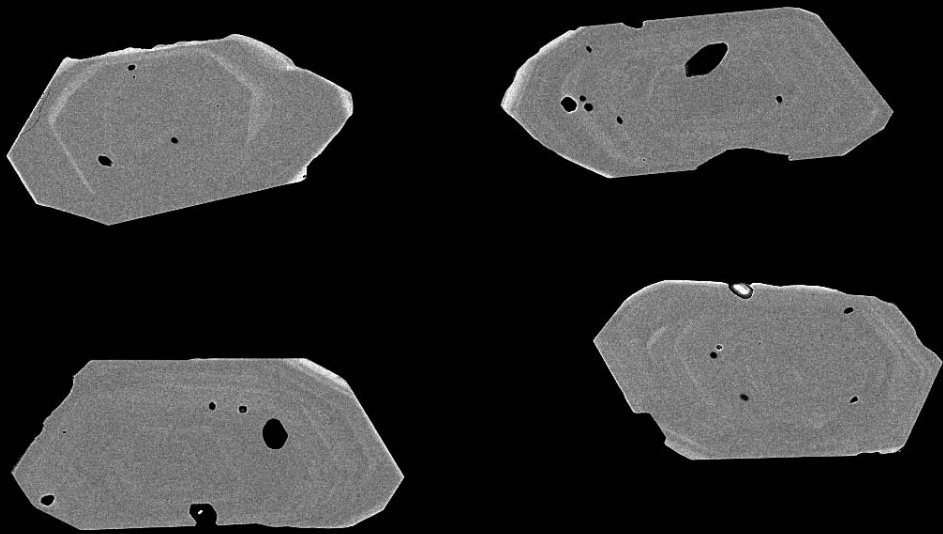
200 μ m

11878-29

Date(m/d/y): 07/11/17

NRCan LMS GSC





SEM MAG: 439 x

WD: 14.94 mm

MIRA3 TESCAN

View field: 630 μ m

Det: BSE Low Energy

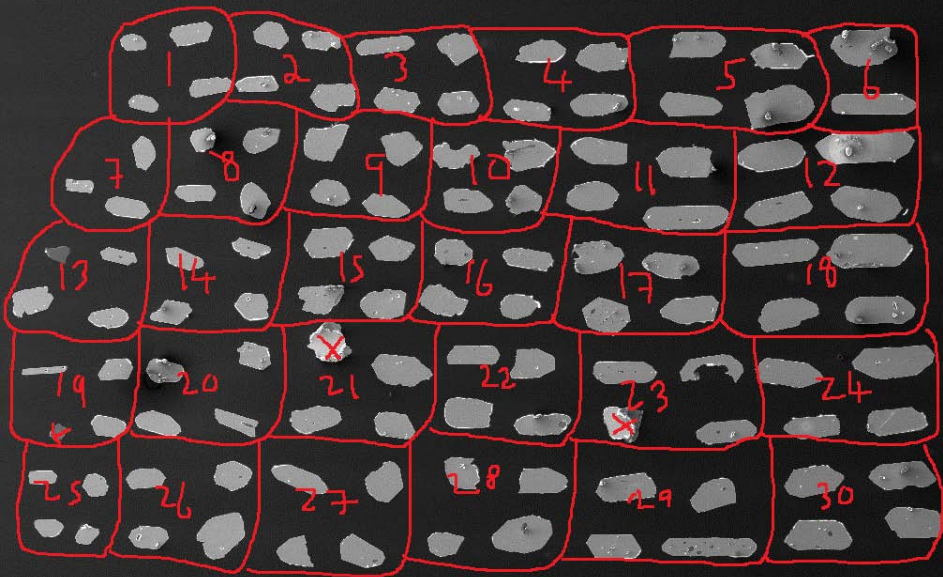
200 μ m

11878-30

Date(m/d/y): 07/11/17

NRCan LMS GSC





SEM MAG: 75 x

WD: 14.92 mm

MIRA3 TESCAN

View field: 3.67 mm

Det: SE

1 mm

11878-map

Date(m/d/y): 07/11/17

NRCan LMS GSC