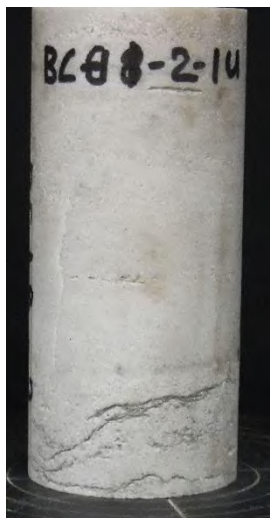
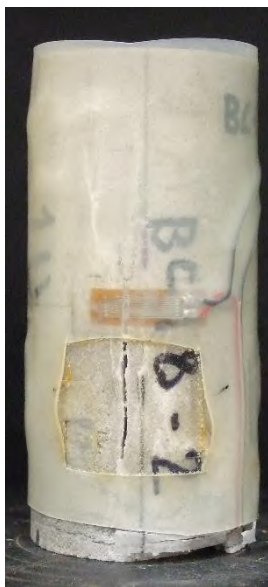


**Attachment C -
Photographs of UCS and TCS Test Specimens**

BC-81-2-1U
(uniaxial compression)



Pre-test



Post-test

BC-81-2-2T
(triaxial compression)

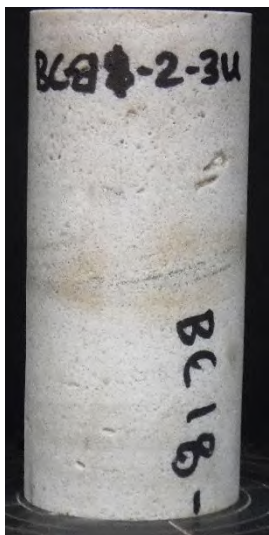


Pre-test



Post-test

BC-81-2-3U
(uniaxial compression)

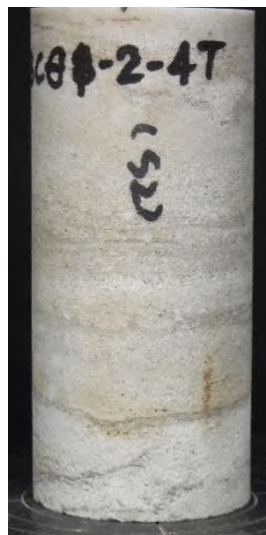


Pre-test



Post-test

BC-81-2-4T
(triaxial compression)



Pre-test

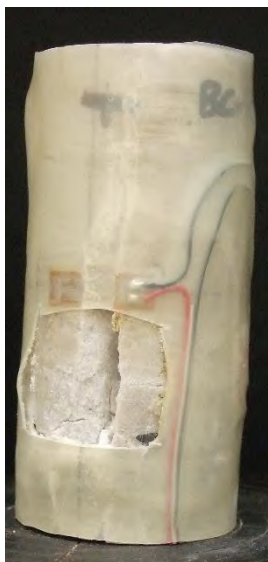


Post-test

BC-81-2-5U
(uniaxial compression)



Pre-test

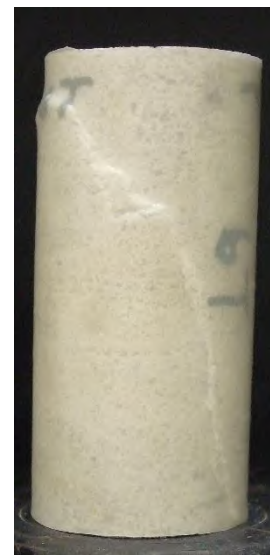


Post-test

BC-81-2-6T
(triaxial compression)



Pre-test



Post-test

BC-81-2-66.71-U
(uniaxial compression)



Pre-test

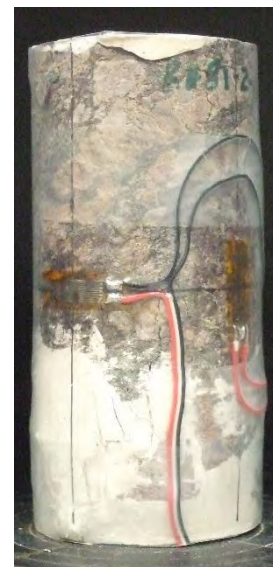


Post-test

BC-81-2-66.99-U
(uniaxial compression)



Pre-test



Post-test

BC-81-2-70.94-U
(uniaxial compression)



Pre-test



Post-test

BC-81-2-71.09-T
(triaxial compression)



Pre-test



Post-test

BC-81-2-71.20-U
(uniaxial compression)



Pre-test



Post-test

BC-81-2-75.87-U
(uniaxial compression)



Pre-test

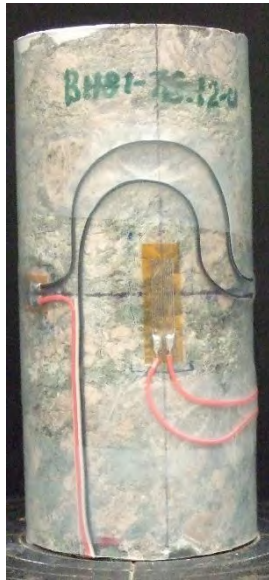


Post-test

BC-81-2-76.12-U
(uniaxial compression)



Pre-test



Post-test

BC-81-2-76.23-T
(triaxial compression)

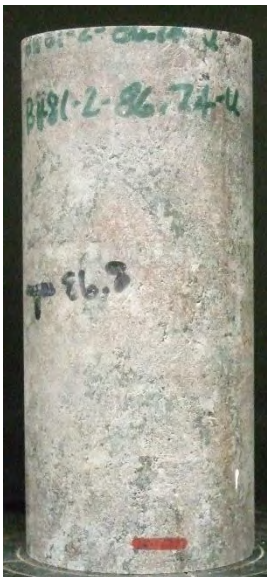


Pre-test



Post-test

BC-81-2-86.74-U
(uniaxial compression)

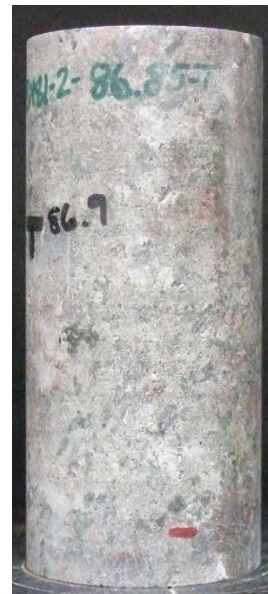


Pre-test



Post-test

BC-81-2-86.85-T
(triaxial compression)



Pre-test

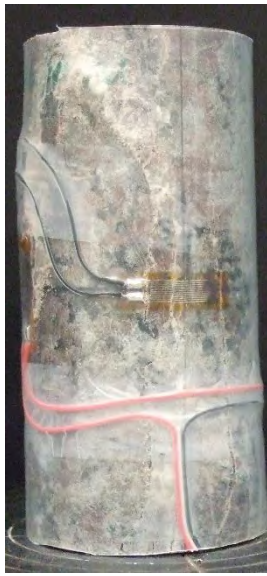


Post-test

BC-81-2-86.96-U
(uniaxial compression)



Pre-test



Post-test

BC-81-2-87.07-T
(triaxial compression)



Pre-test



Post-test

BC-81-2-93.92-U
(uniaxial compression)



Pre-test



Post-test

BC-81-2-99.17-U
(uniaxial compression)



Pre-test



Post-test

BC-81-2-99.28-U
(uniaxial compression)



Pre-test



Post-test

BC-81-2-109.01-U
(uniaxial compression)



Pre-test



Post-test

BC-81-2-109.12-T
(triaxial compression)



Pre-test



Post-test

BC-81-2-109.23-T
(triaxial compression)



Pre-test



Post-test