

L = SE1
EHT = 20.0 KV
WD = 25 mm
MAG = X 44.1
PHOTO = 294
SP. CURRENT = 135 pA LOCK
500 µm |

1P286

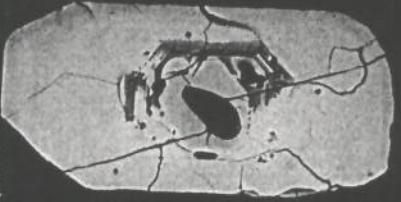
27482

EHT = 20.0 KV WD = 25 mm
100 μ m

MAG = X 211.

PHOTO = 313

R = BSD



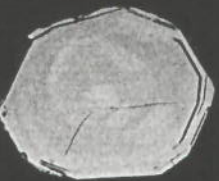
104



105



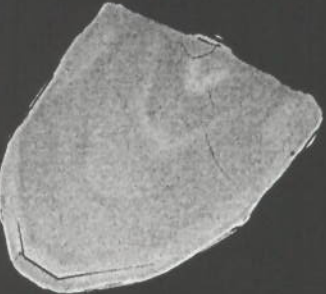
106



110



107



108



109

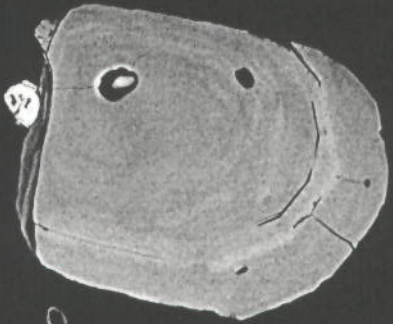
7482-18

EHT = 20.0 KV WD = 25 mm
100 μ m |

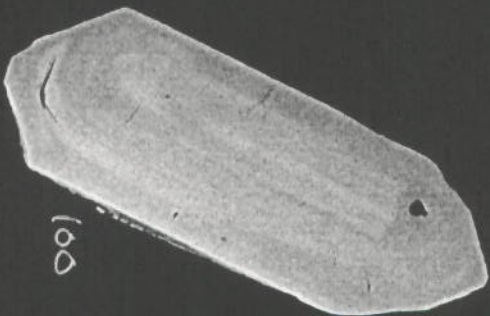
MAG = X 272.

PHOTO = 312

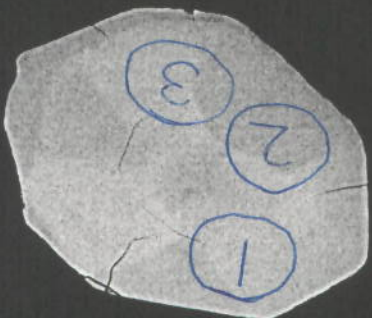
R = BSD



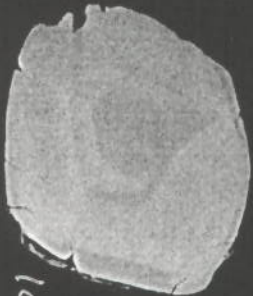
99



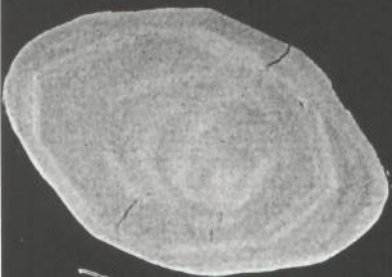
100



101

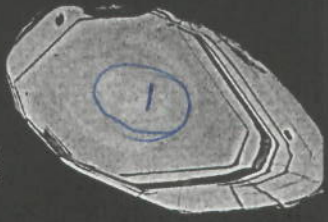


102

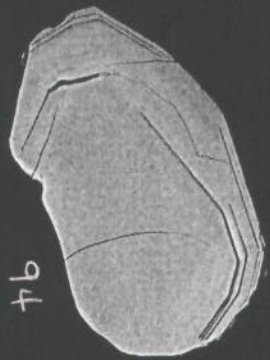


103

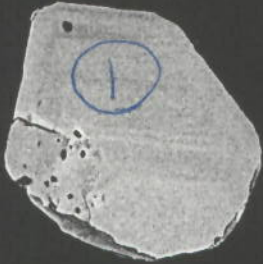
EHT = 20.0 KV MD = 25 mm MAG = X 209. PHOTO = 311 R = BSD
200 μm |



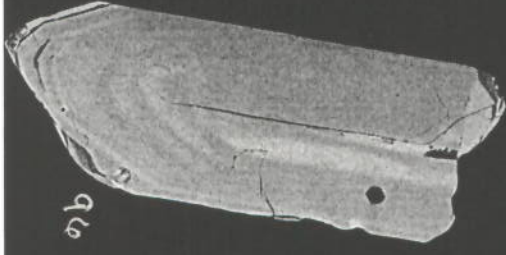
93



94



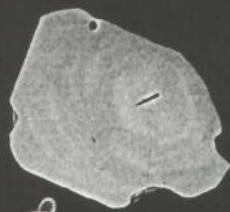
95



96



97



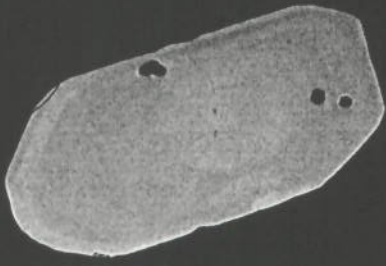
98



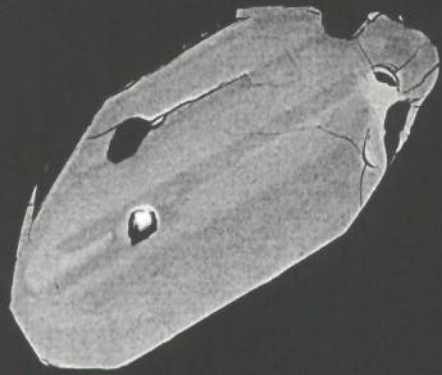
99

7482-16

EHT = 20.0 KV WD = 25 mm MAG = X 205. PHOTO = 310 R = BSD
200 μ m



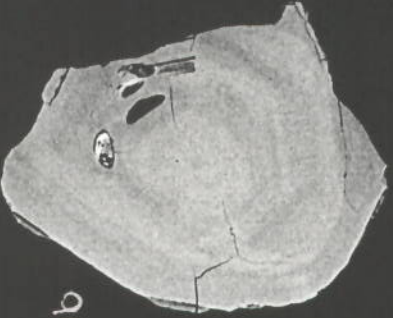
87



88



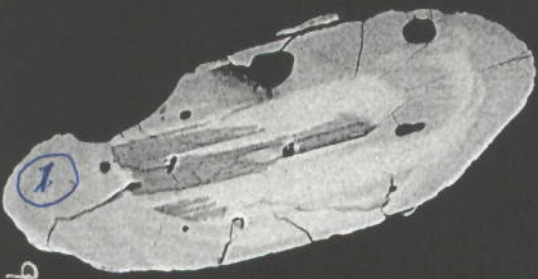
90



91

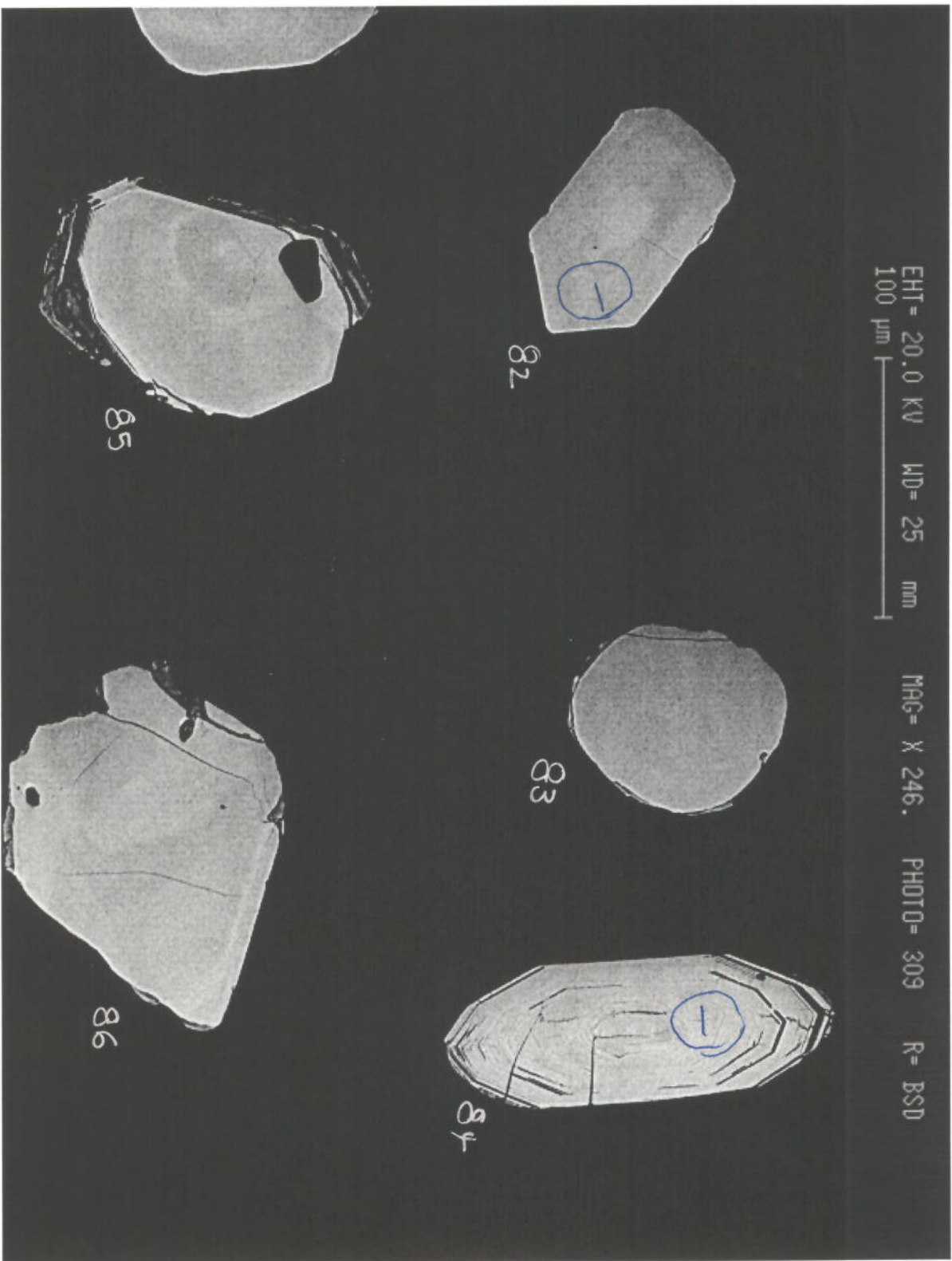


89



92

7482-15



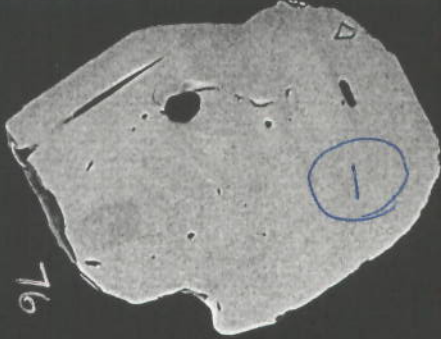
7482-14

EHT = 20.0 KV WD = 25 mm
100 μm |

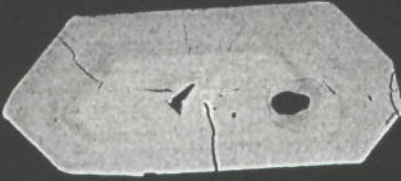
MAG = X 225.

PHOTO = 308

R = BSD



76



77



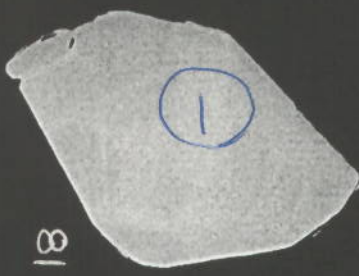
79



80



78



81

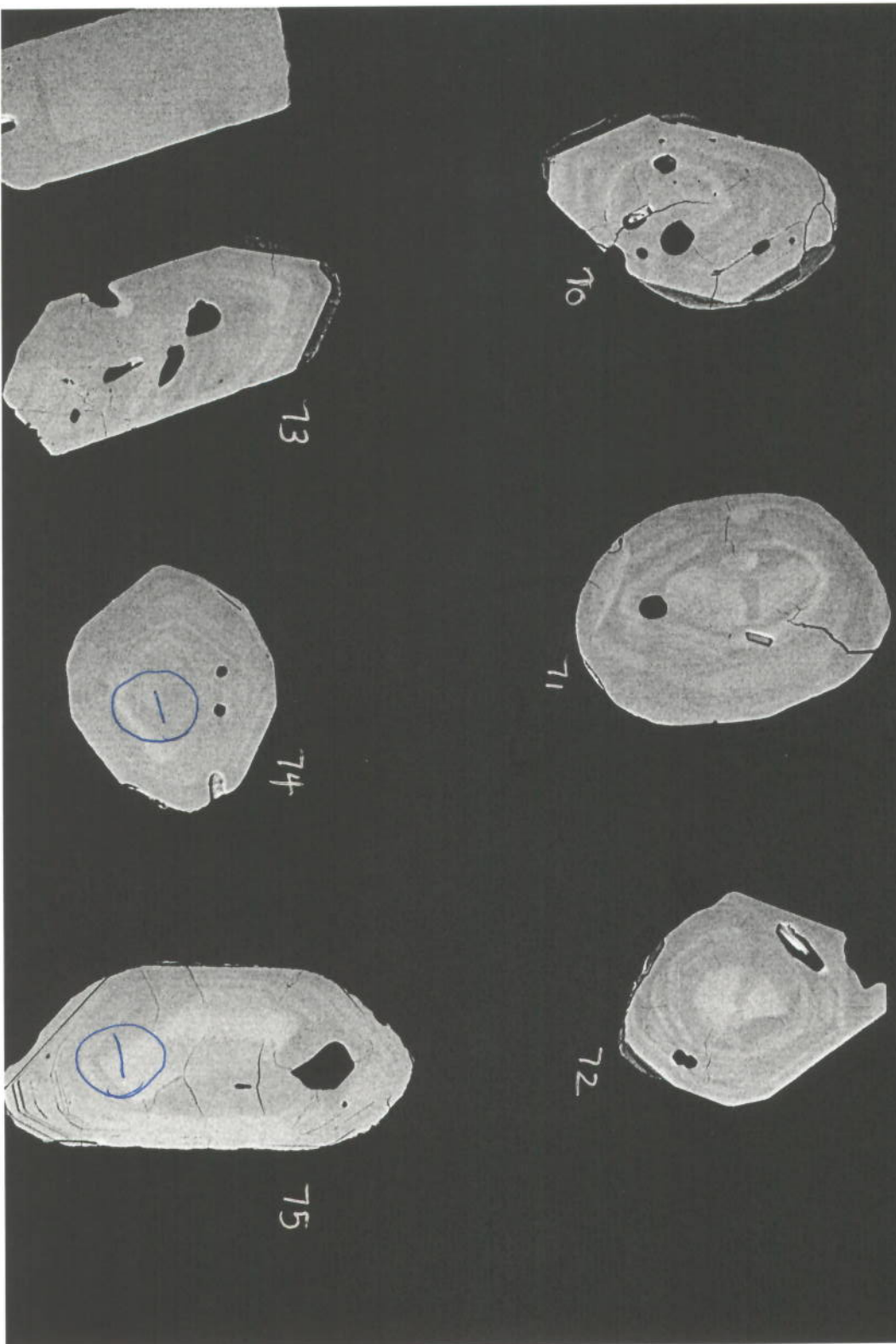
7402-13

EHT = 20.0 KV WD = 25 mm
100 μm |-----|

MAG = X 210.

PHOTO = 307

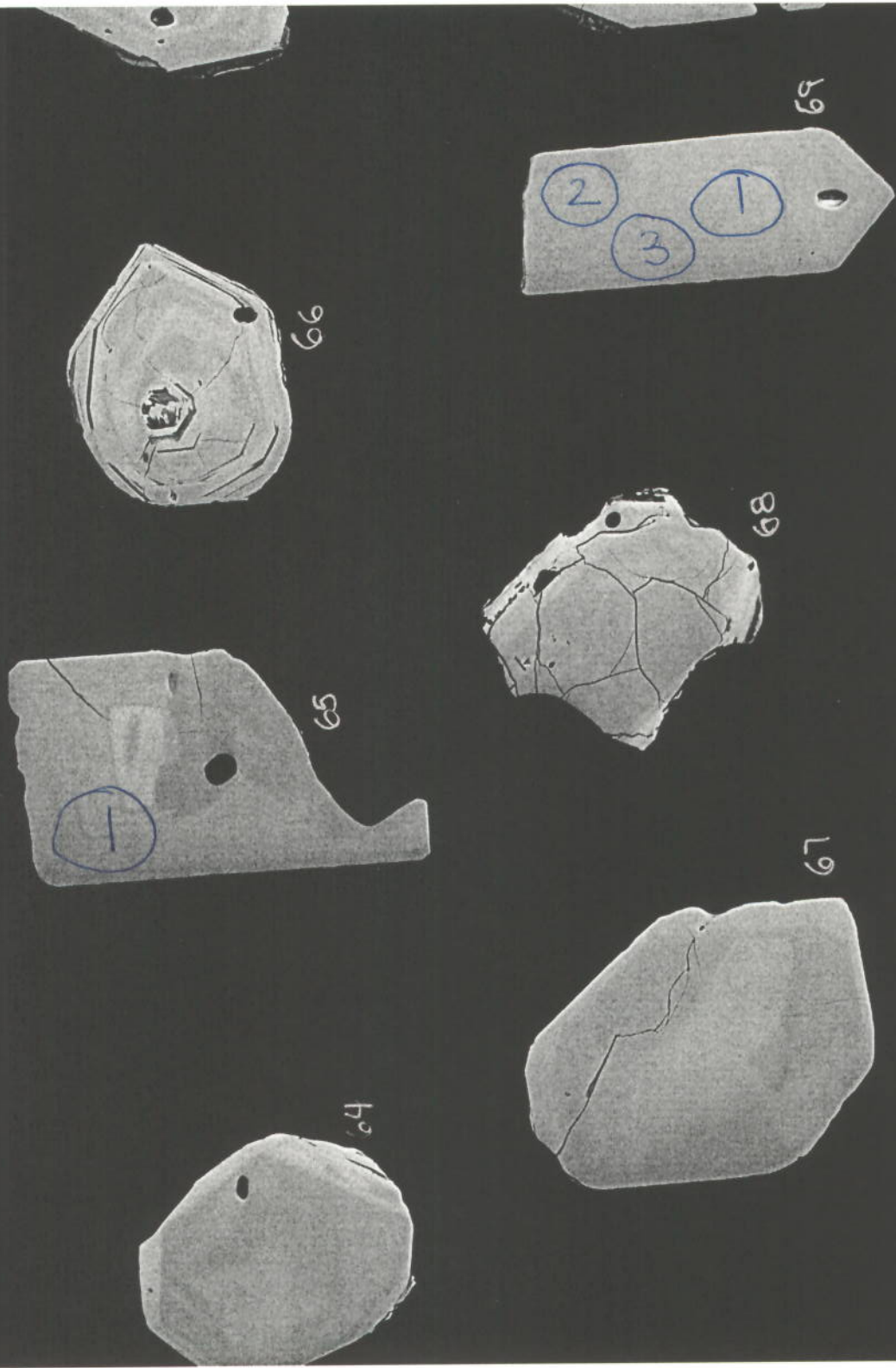
R = BSD



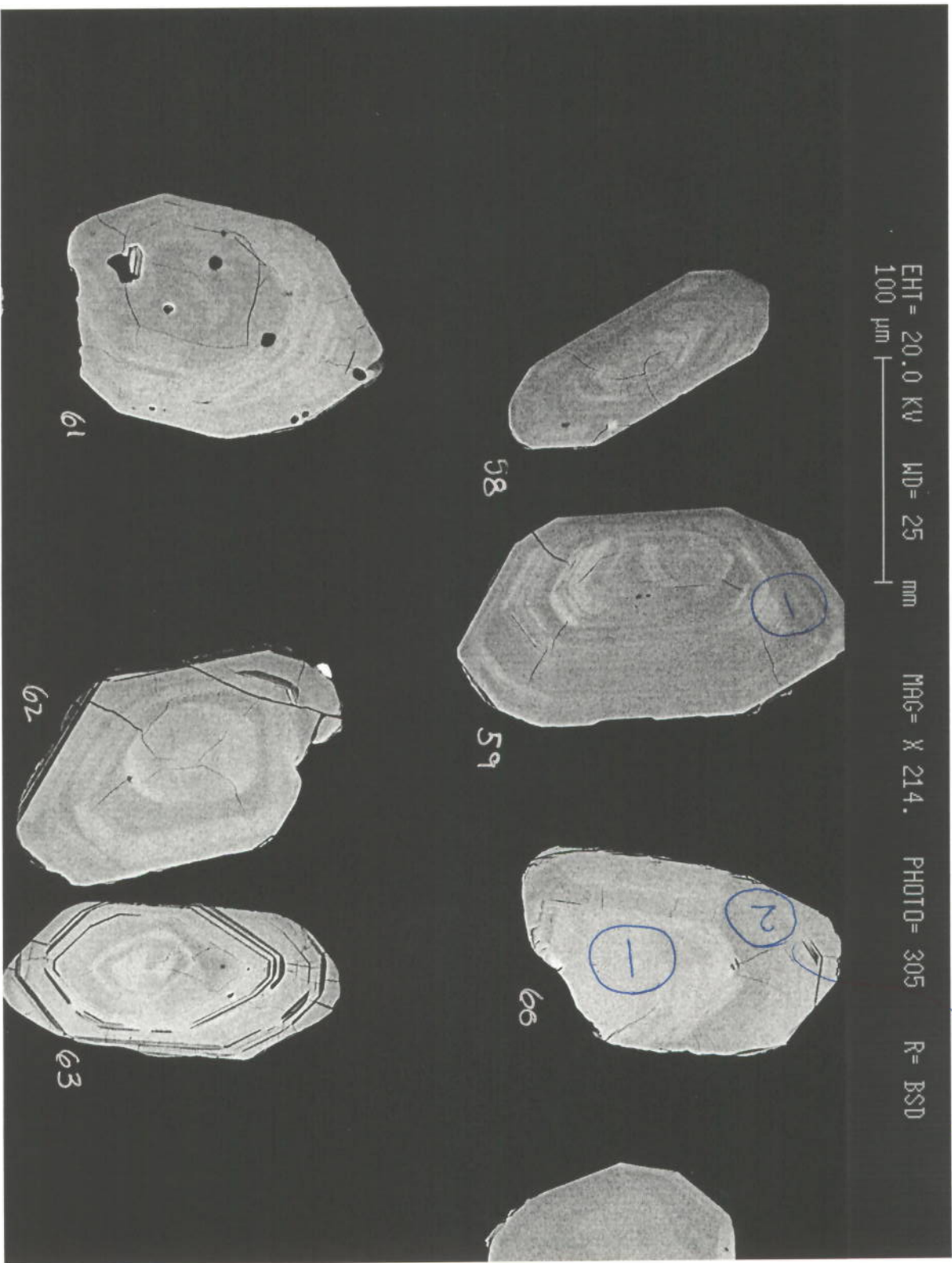
7482-12

EHT = 20.0 KV WD = 25 mm MAG = X 217. PHOTO = 306 R = BSD

100 μm



7482-11



EHT = 20.0 KV WD = 25 mm
100 μm |

MAG = X 214.

PHOTO = 305

R = BSD

aborted high 209
1st scan 7/16/09
ca. 2500

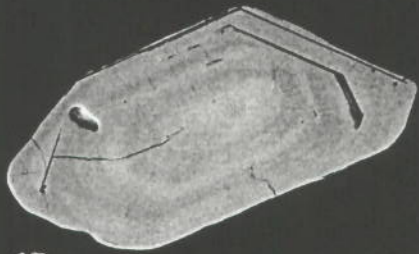
7482-16

EHT = 20.0 KV WD = 25 mm
100 μ m |

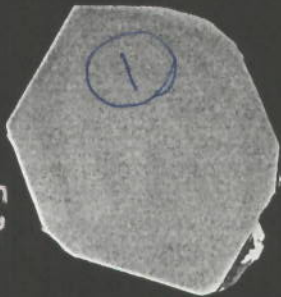
MAG = X 227.

PHOTO = 304

R = BSD



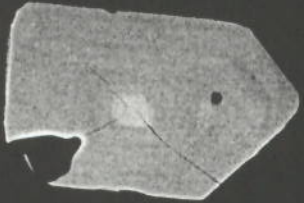
52



53



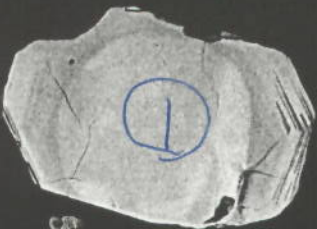
54



55



56



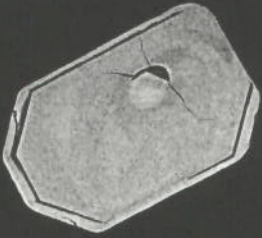
57

7482-9

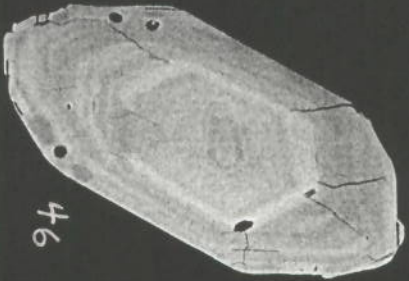
EHT = 20.0 KV MD = 25 mm MAG = X 203. PHOTO = 303 R = BSD
200 μ m |



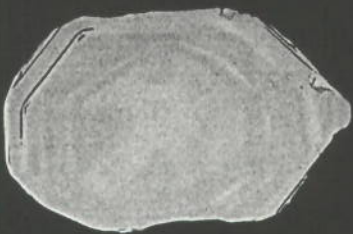
44



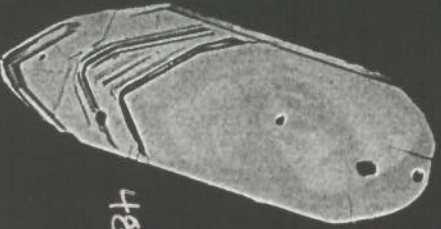
45



46



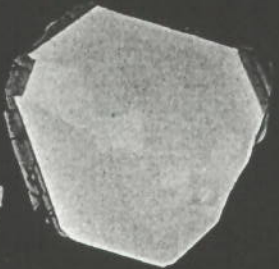
47



48



49



50



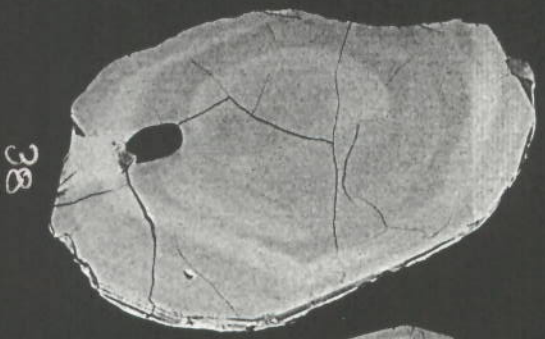
51

EHT = 20.0 KV WD = 25 mm
100 μ m

MAG = X 227.

PHOTO = 302

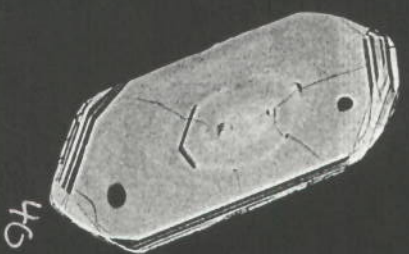
R = BSD



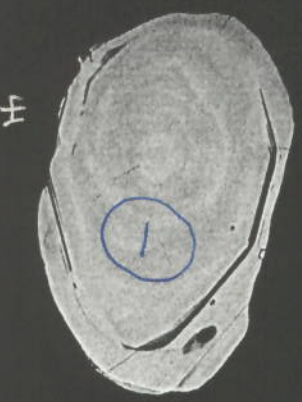
38



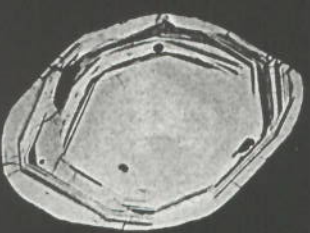
39



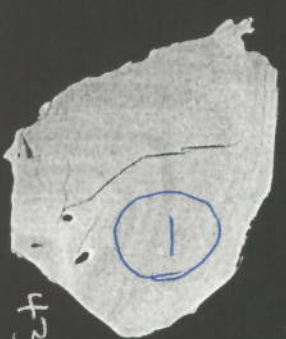
40



41

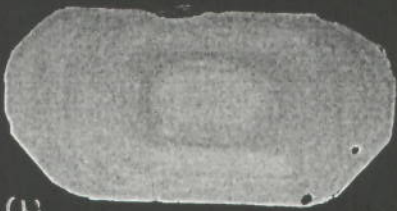


42



43

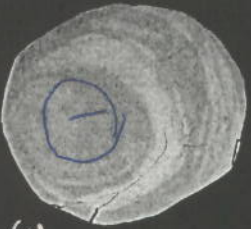
EHT = 20.0 KV MD = 25 mm MAG = X 183. PHOTO = 301 R = BSD
200 μ m |



34



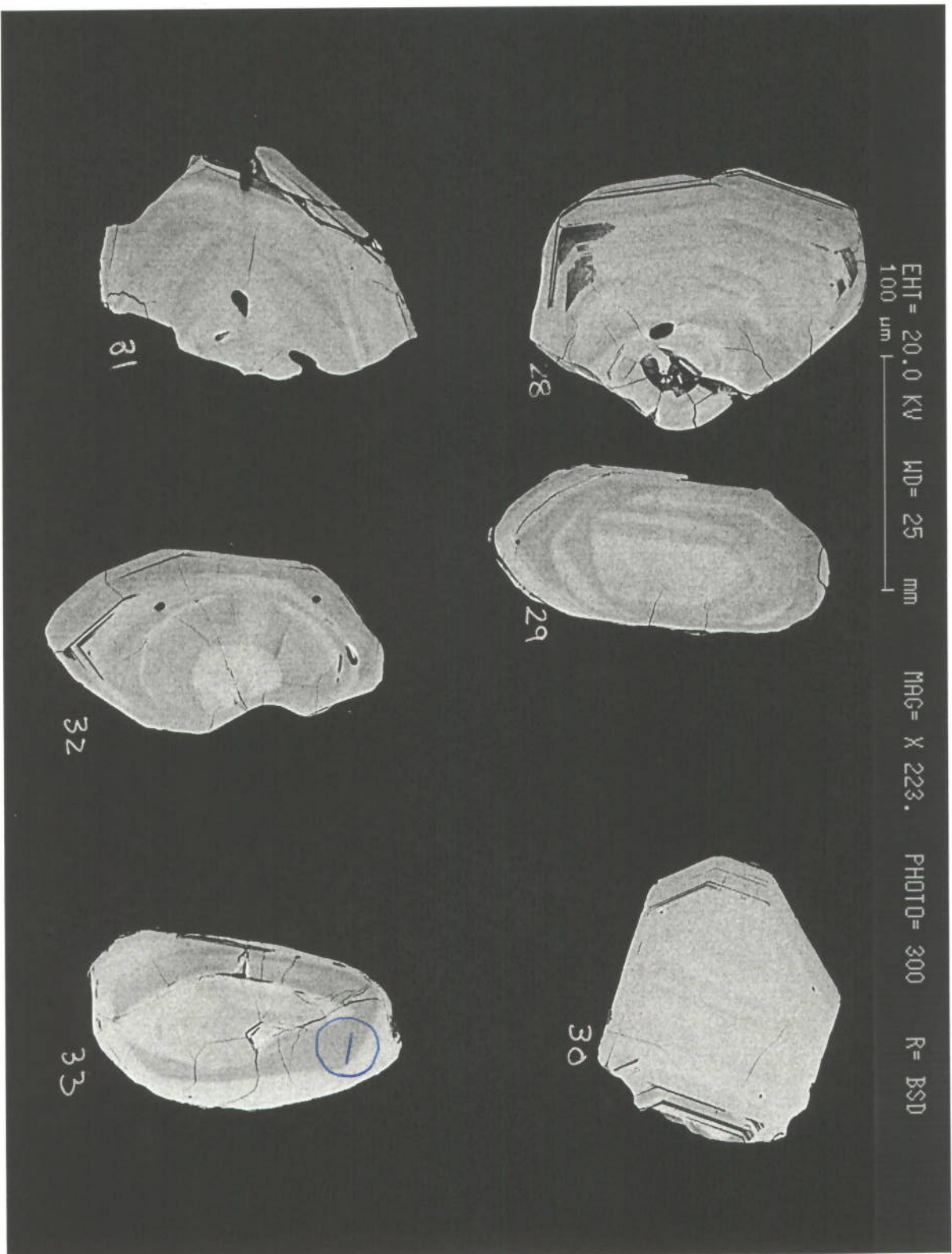
35



36



37



7482-5

EHT = 20.0 KV MD = 25 mm MAG = X 206. PHOTO = 299 R = BSD
200 μm |



Printer on SEM glitch - not real

EHT = 20.0 KV MD = 25 mm MAG = X 181. PHOTO = 298 R = BSD
200 μm |



12



13



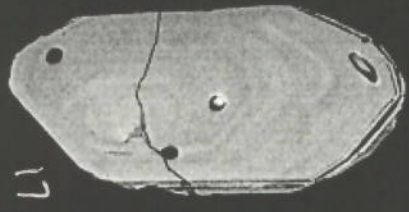
14



15



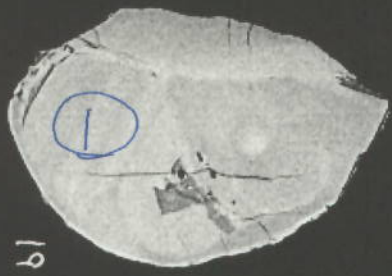
16



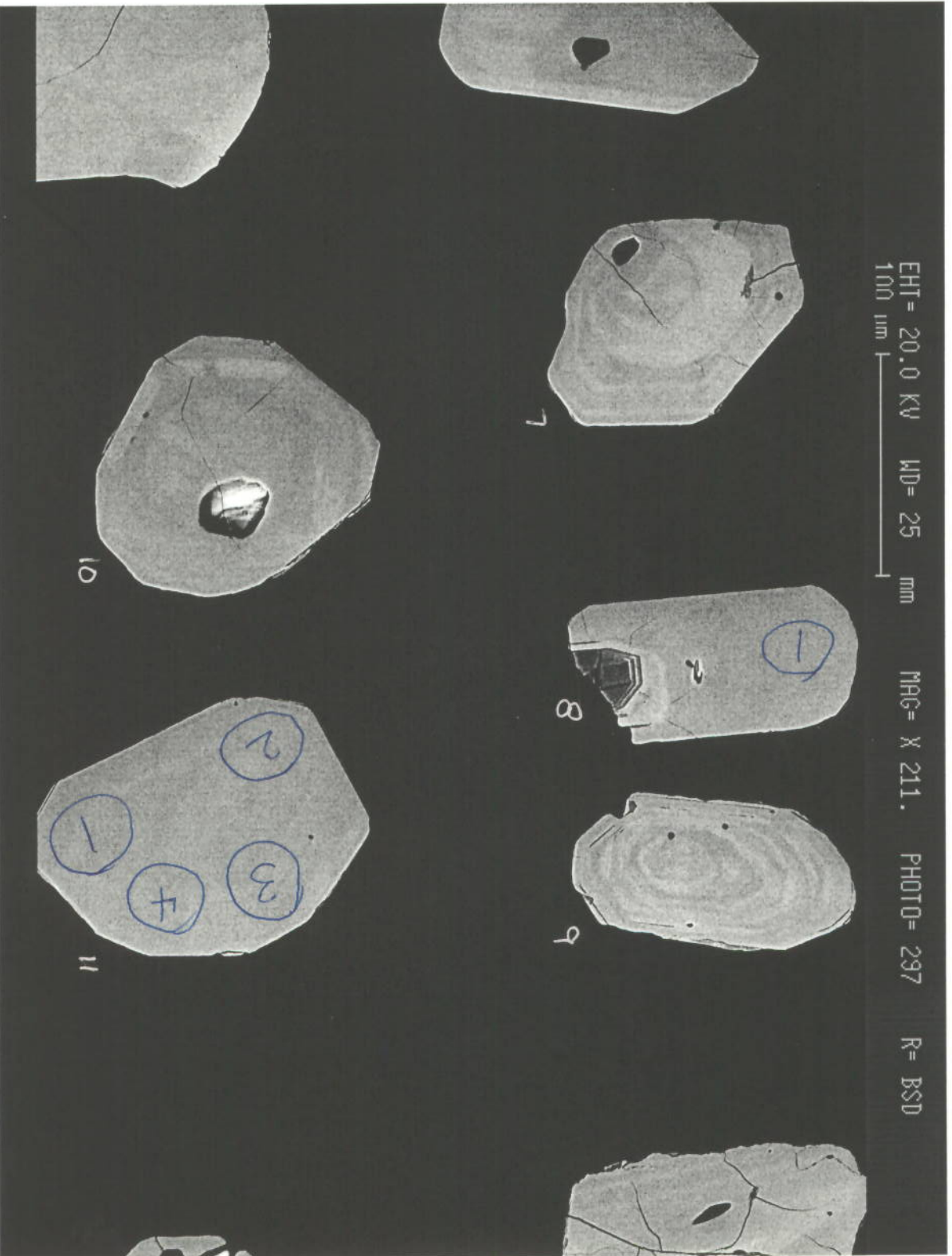
17



18

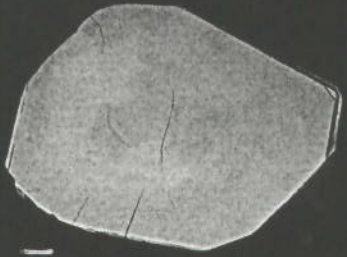


19

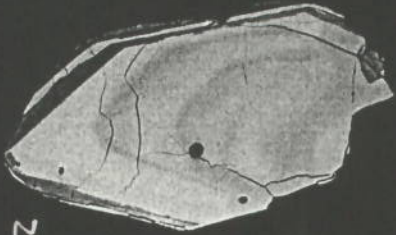


7402-2

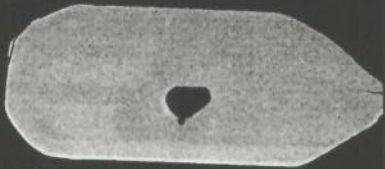
EHT = 20.0 KV WD = 25 mm MAG = X 202. PHOTO = 296 R = BSD
200 μ m |



1



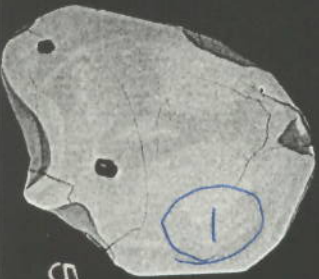
2



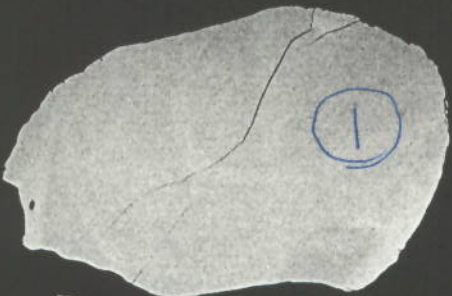
3



4



5



6

7482-1