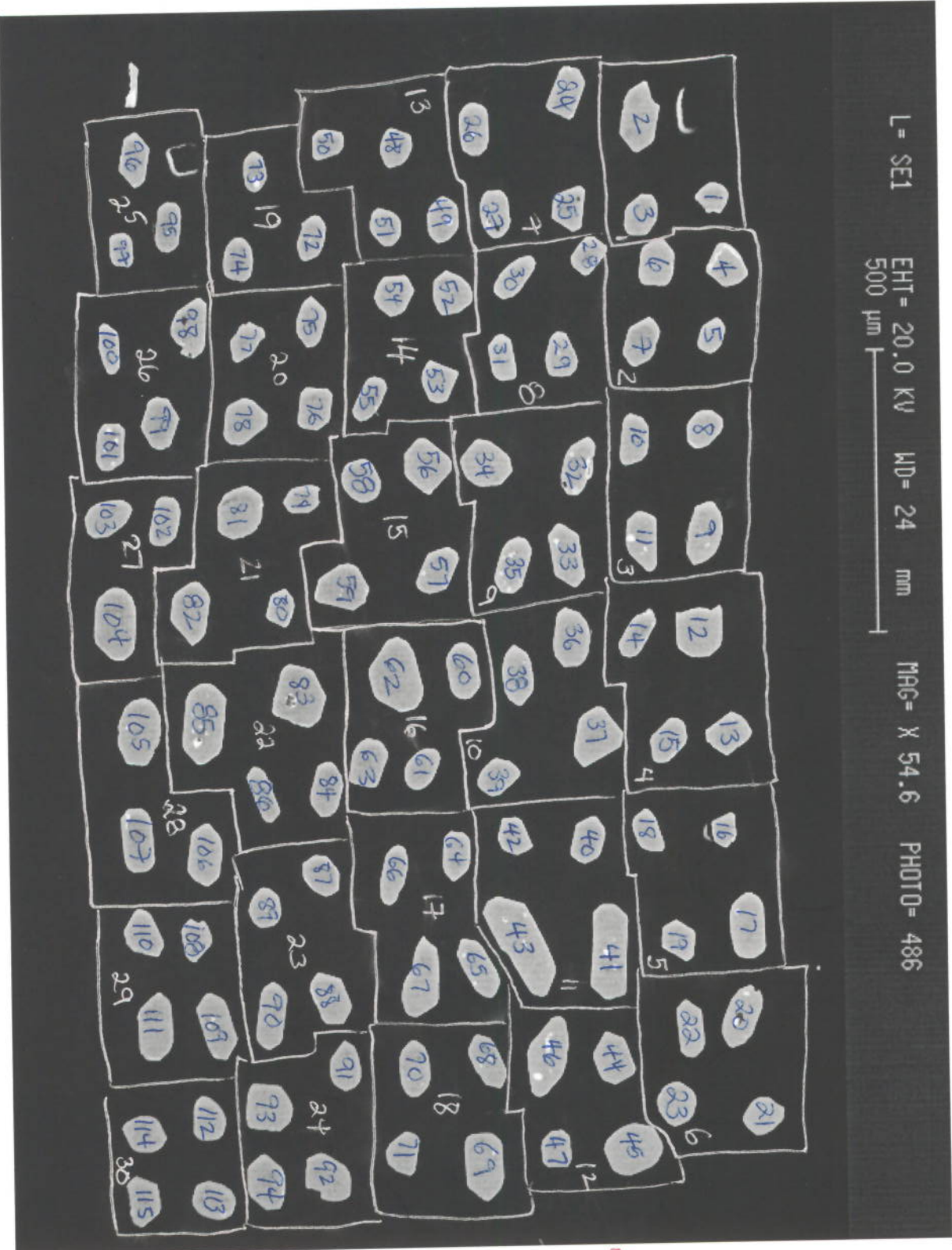


1P286 Z - 1552

L = SEI EHT = 20.0 KV WD = 24 mm MAG = X 54.6 PHOTO = 486
500 μ m



Chuck
10-16

no
image
#12

7552 map

EHT = 20.0 KV MD = 24 mm
50.0µm |

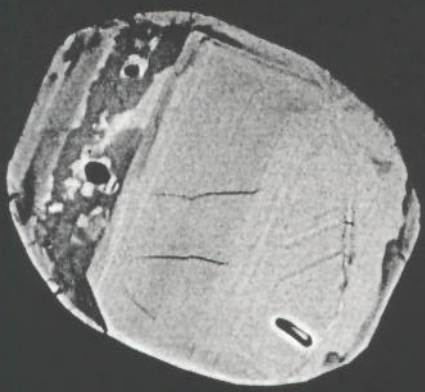
MAG = X 426.

PHOTO = 21

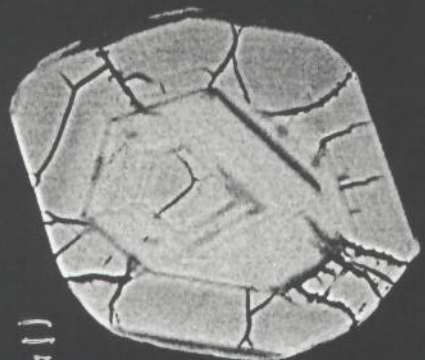
R = BSD



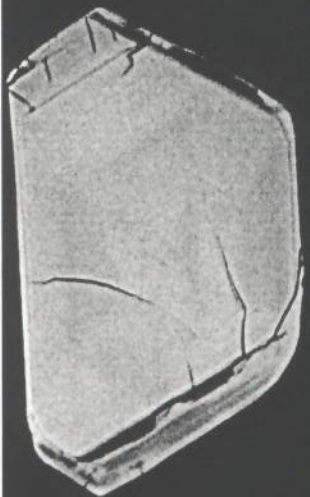
112



113



114



115

7552-30

EHT = 20.0 KV WD = 24 mm MAG = X 409. PHOTO = 20 R = BSD
100 μm



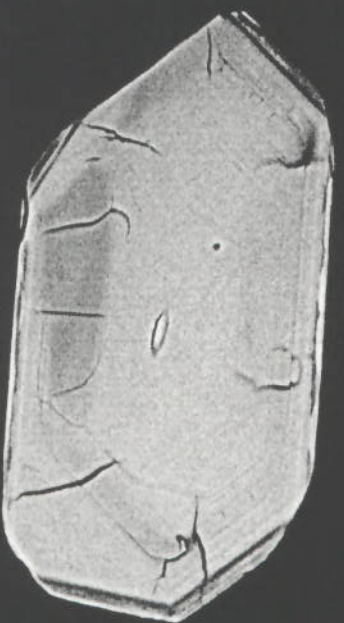
108



109



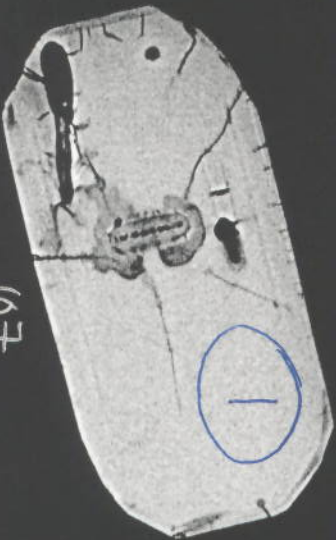
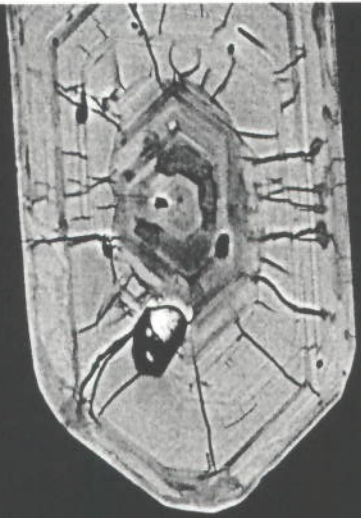
110



111

1552-29

EHT = 20.0 KV MD = 24 mm MAG = X 366. PHOTO = 19 R = BSD
100 μm |

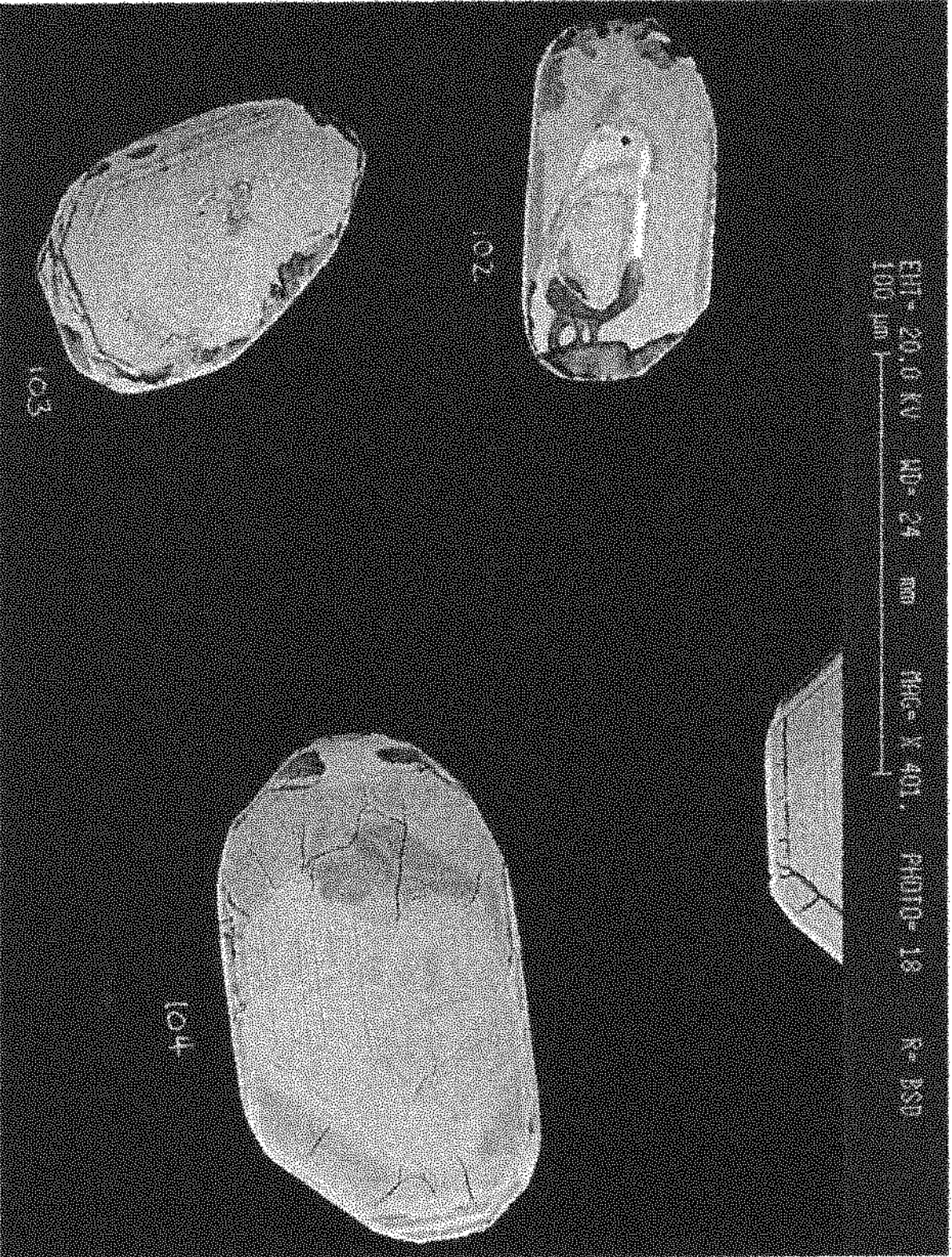


105

106

107

1552-28



7532-14

EHT = 20.0 KV MD = 24 mm MAG = X 360. PHOTO = 17 R = BSD
100 μm |



98



99



100



101

7552-26

EHT = 20.0 KV WD = 24 mm
50.0µm |-----|

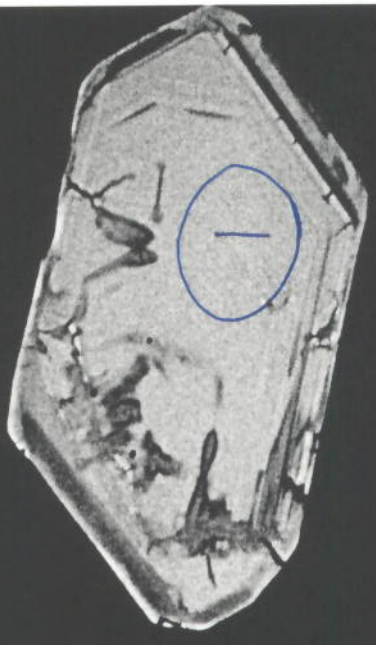
MAG = X 514.

PHOTO = 16

R = BSD



95



96



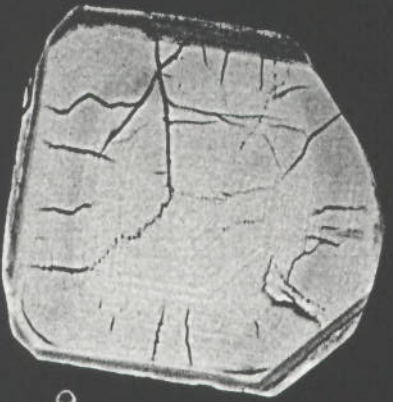
97

7552-25

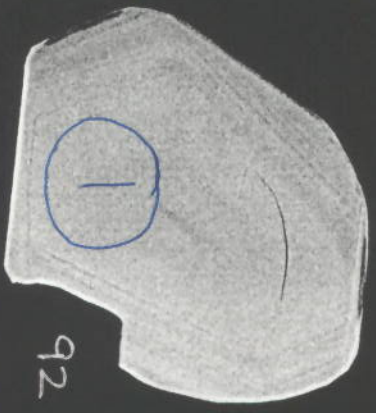
EHT = 20.0 KV MD = 24 mm MAG = X 359. PHOTO = 15 R = BSD
100 μm



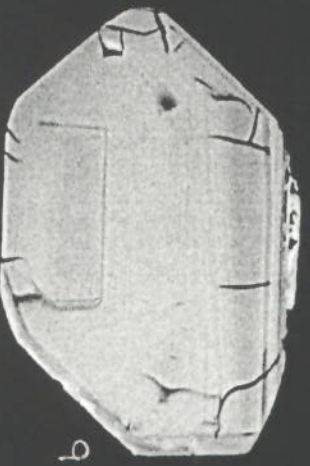
q1



q3

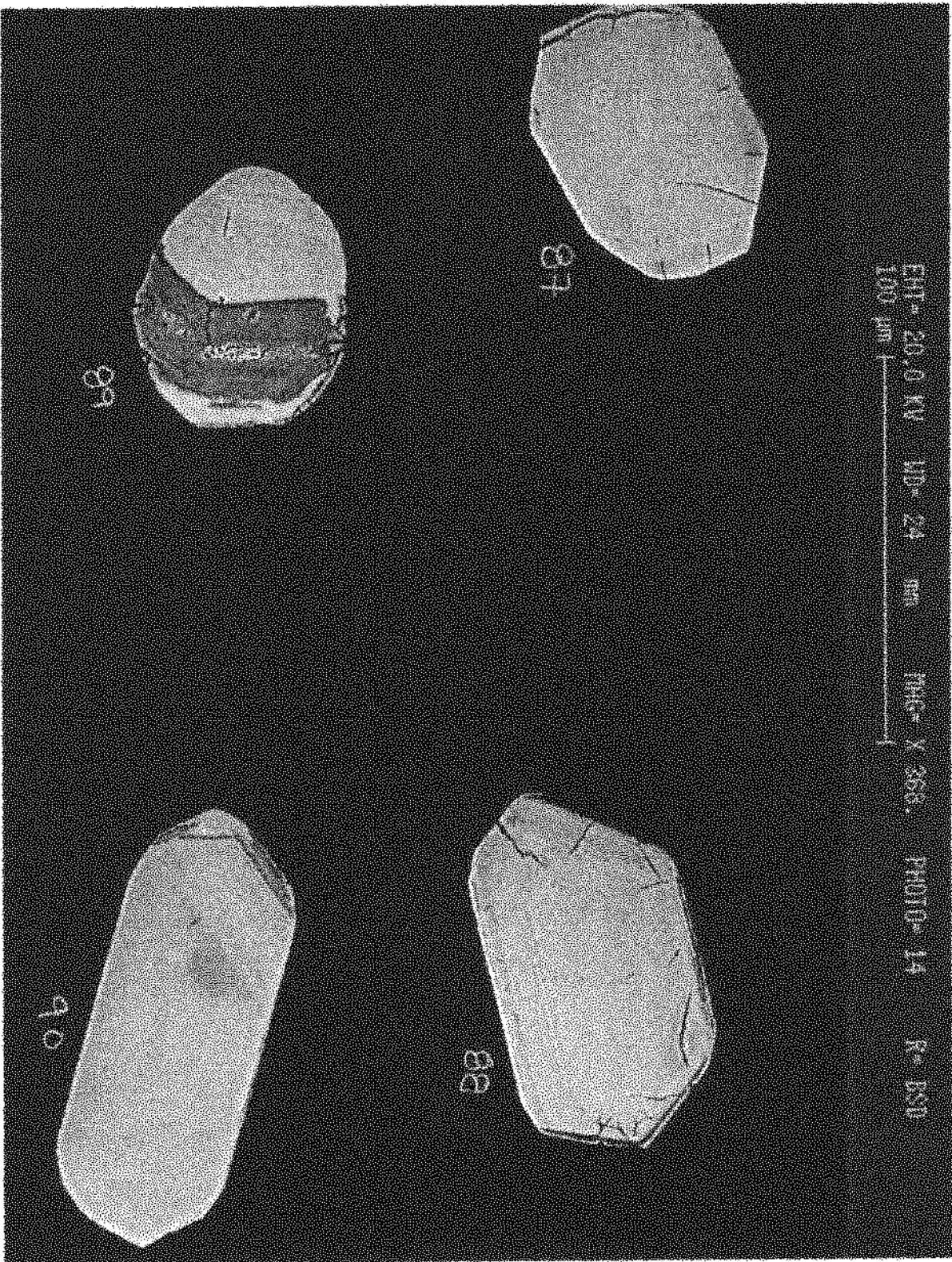


q2

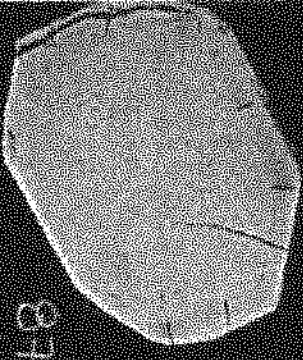


q4

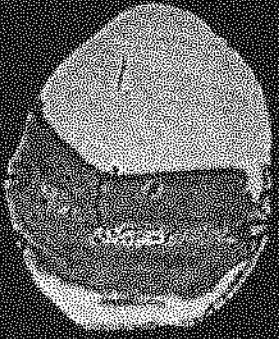
7652-24



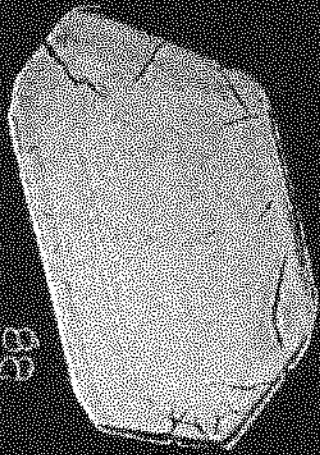
EHF- 20.0 KV HD- 24 mm MAG- X 358. PHOTO- 14 R- PSD
100 µm



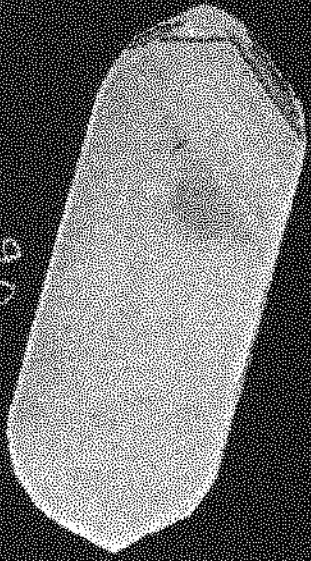
87



89



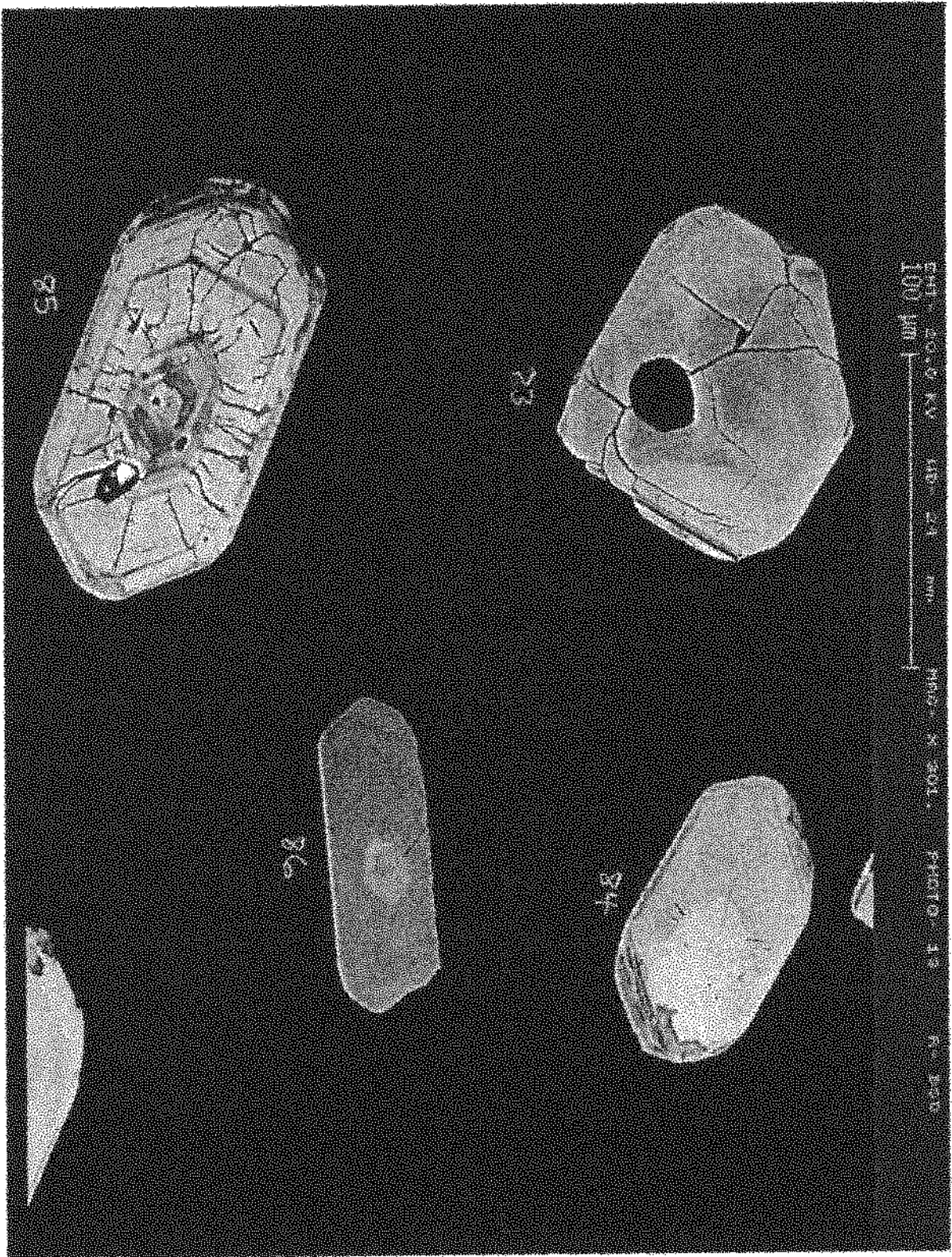
88



90

1992-23

1982-22



EHT = 20.0 KV WD = 24 mm MAG = X 363. PHOTO = 12 R = BSD
100 μm |



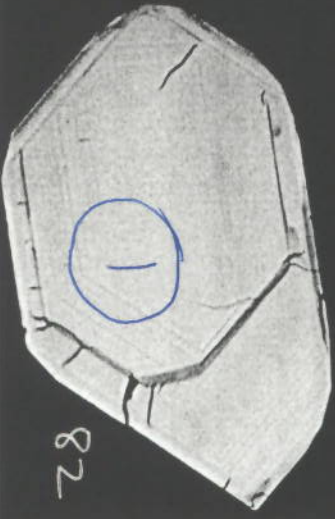
79



81



80



82

7552-21

EHT = 20.0 KV MD = 24 mm MAG = X 411. PHOTO = 11 R = BSD
100 μm |



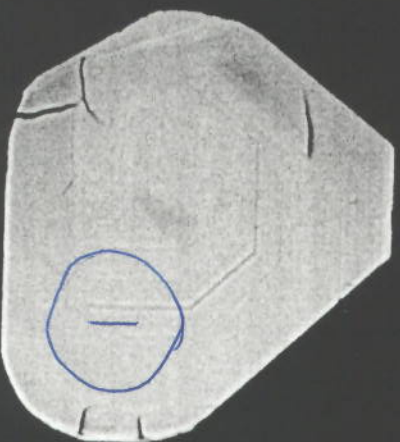
75



76



77



78

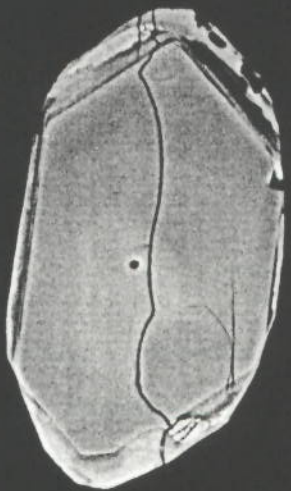
7552-29

EHT = 20.0 KV WD = 24 mm
50.0µm |

MAG = X 466.

PHOTO = 10

R = BSD



72

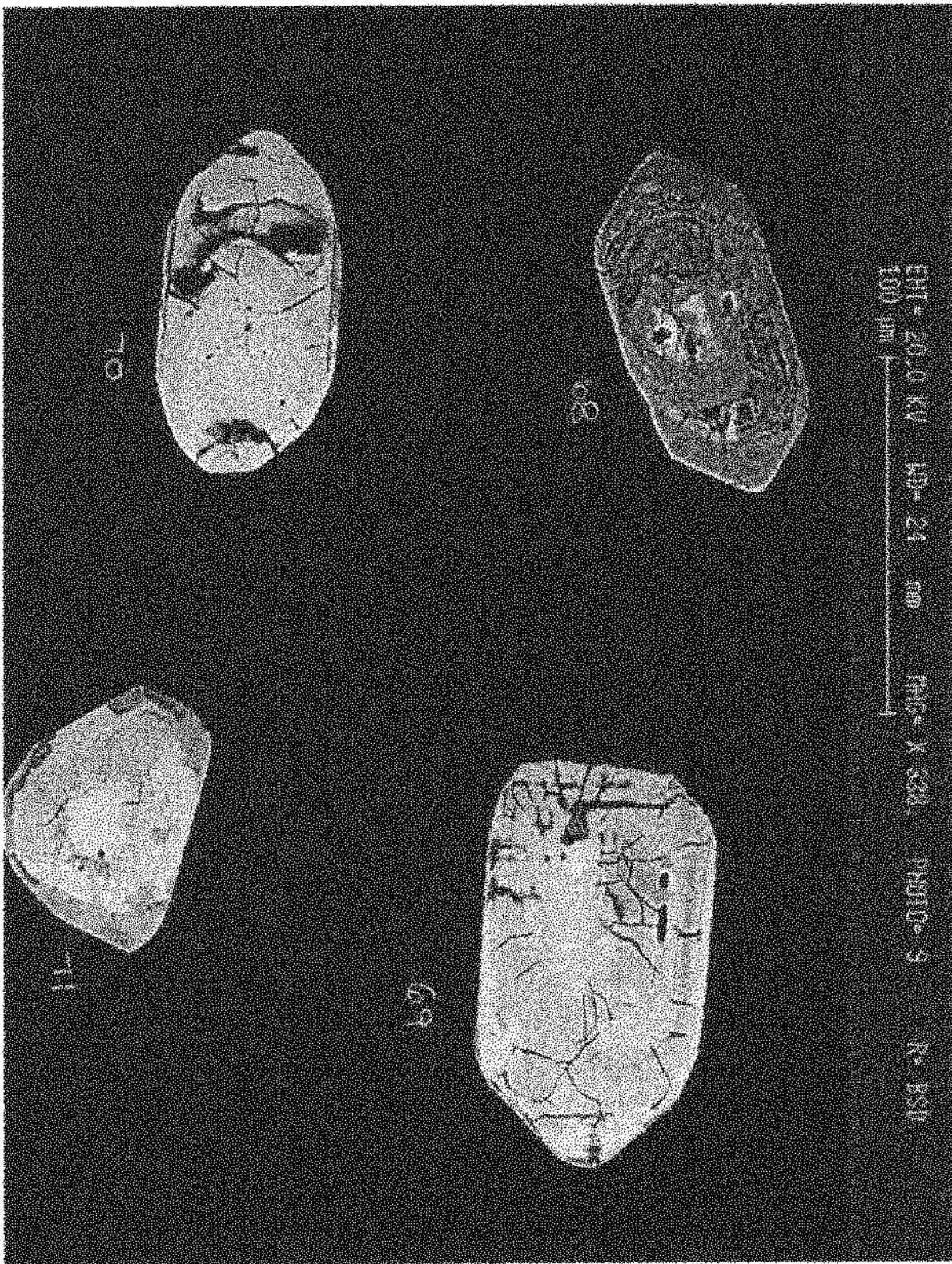


73



74

7552-19



7552-10

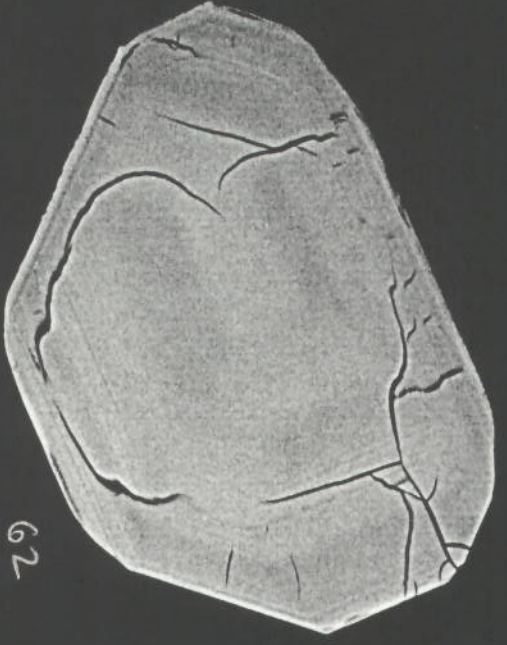


1992-107

EHT = 20.0 KV WD = 24 mm MAG = X 380. PHOTO = 7 R = BSD
100 μm |



60



62



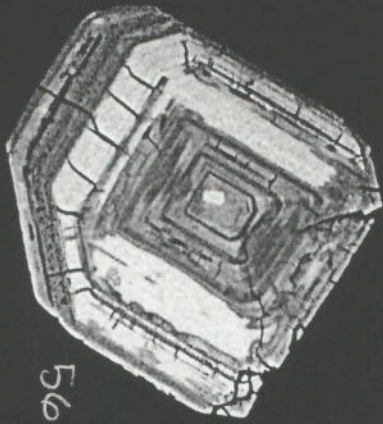
61



63

1552-16

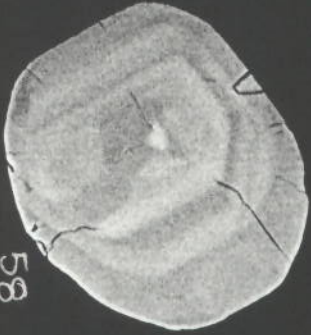
EHT = 20.0 KV WD = 24 mm MAG = X 337. PHOTO = 6 R = BSD
100 μm |



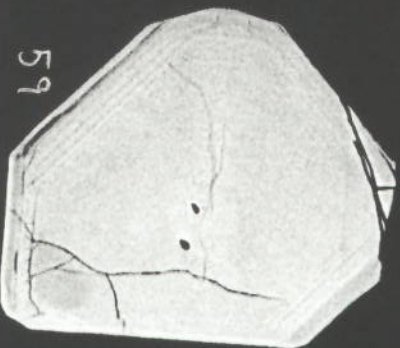
56



57



58



59

15
7552-44

EHT = 20.0 KV MD = 24 mm MAG = X 421. PHOTO = 5 R = BSD
100 μ m |



52



53



54



55

14
7552-~~14~~ 103

EHT = 20.0 KV MD = 24 mm
50.0µm |

MAG = X 425.

PHOTO = 4

R = BSD



48



49



50



51

7552-13

EHT = 20.0 KV MD = 24 mm MAG = X 320. PHOTO = 3 R = BSD
100 μm |



40



42

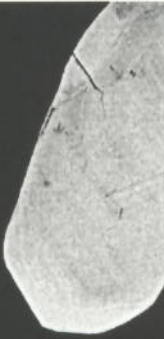


41



43

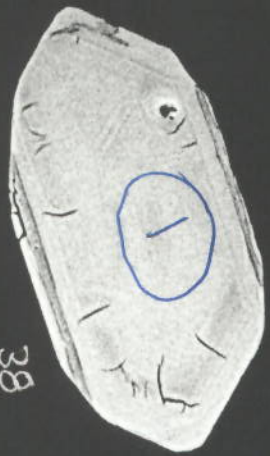
EHT = 20.0 KV MD = 24 mm MAG = X 335. PHOTO = 2 R = BSD
100 μm |



36



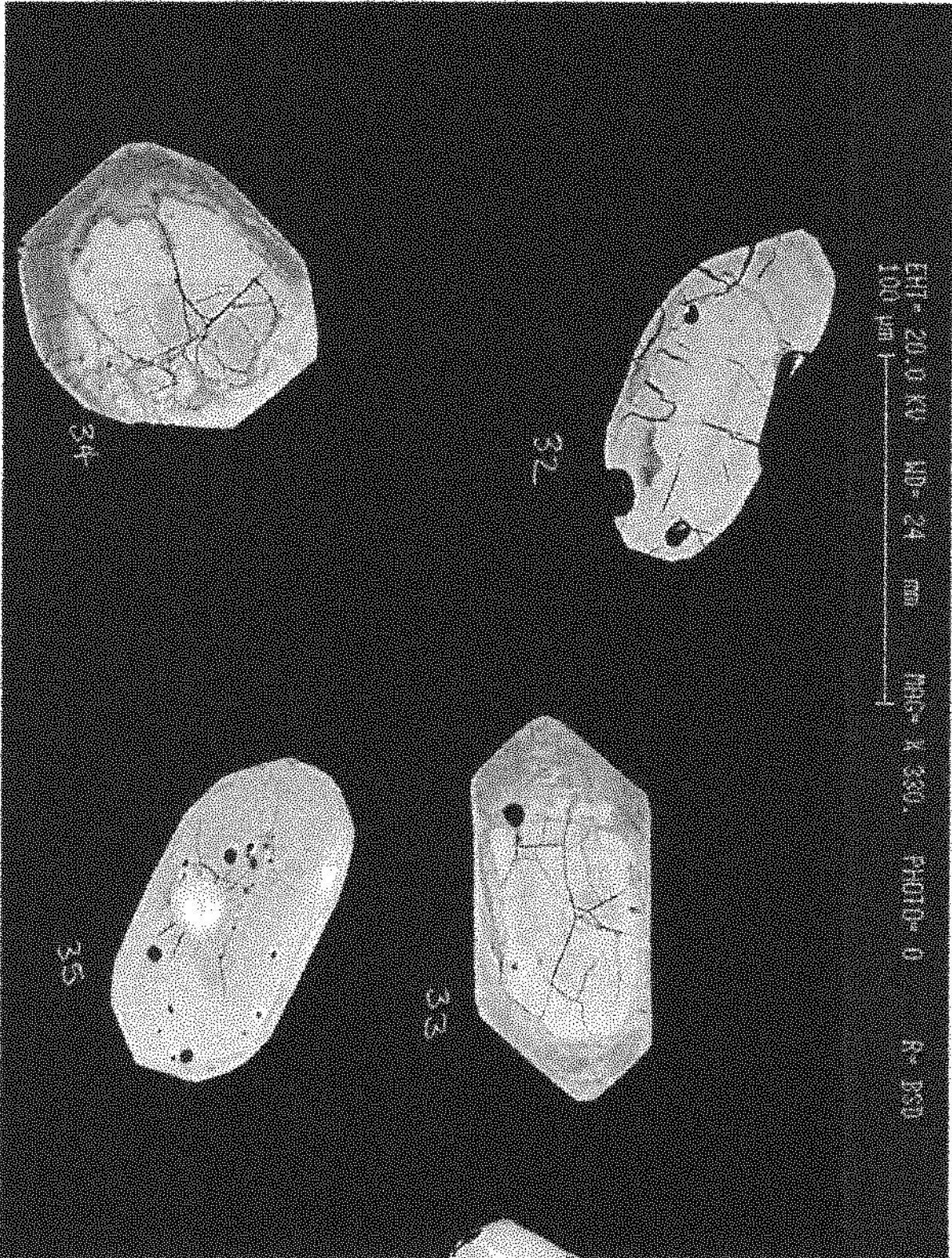
37



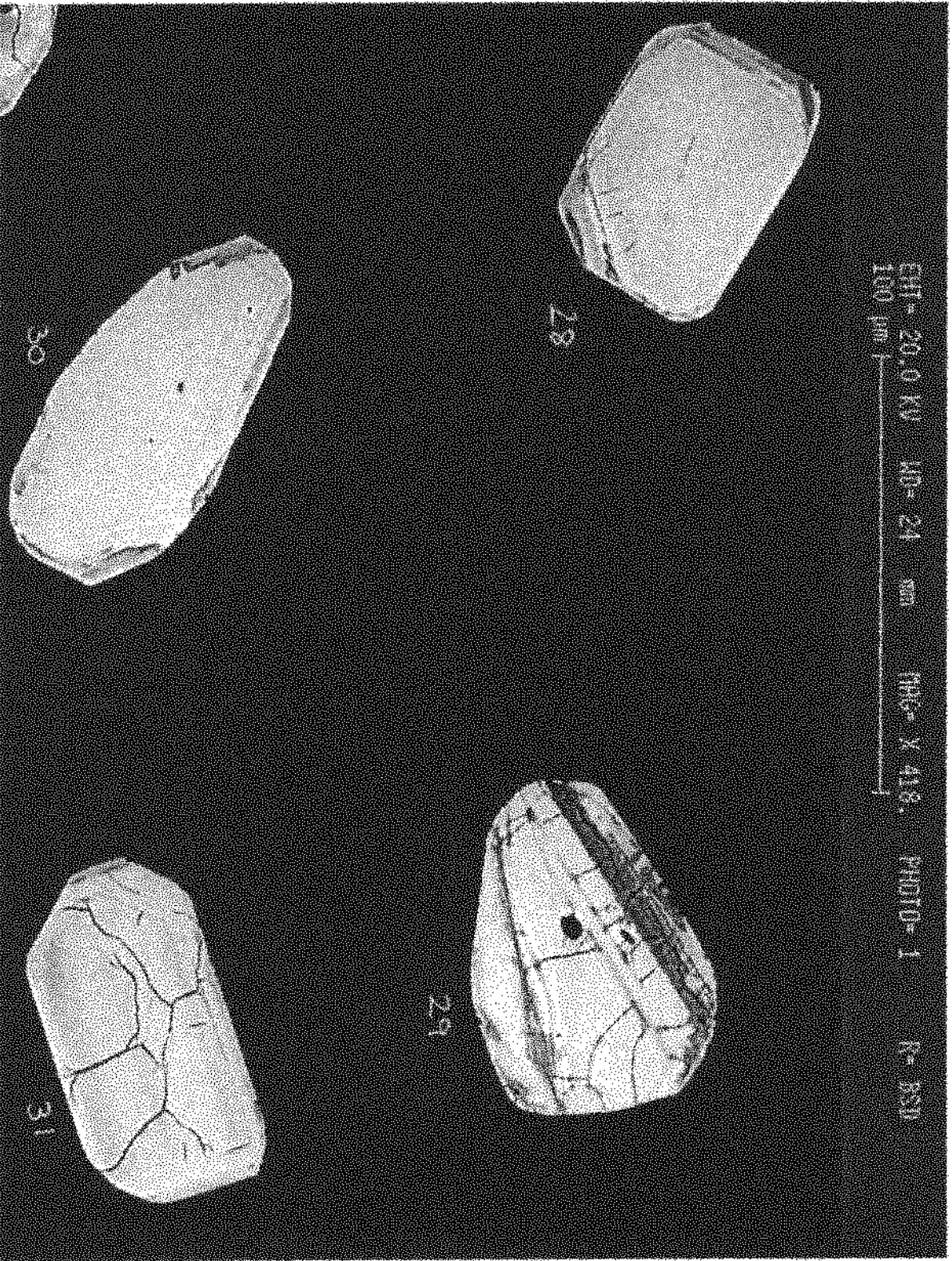
38



39



7952-09



7852-4

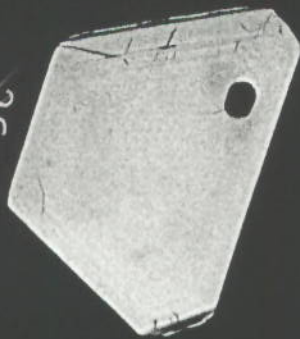
EHT = 20.0 KV WD = 24 mm MAG = X 334. PHOTO = 493 R = BSD
100 μ m



a4



a6



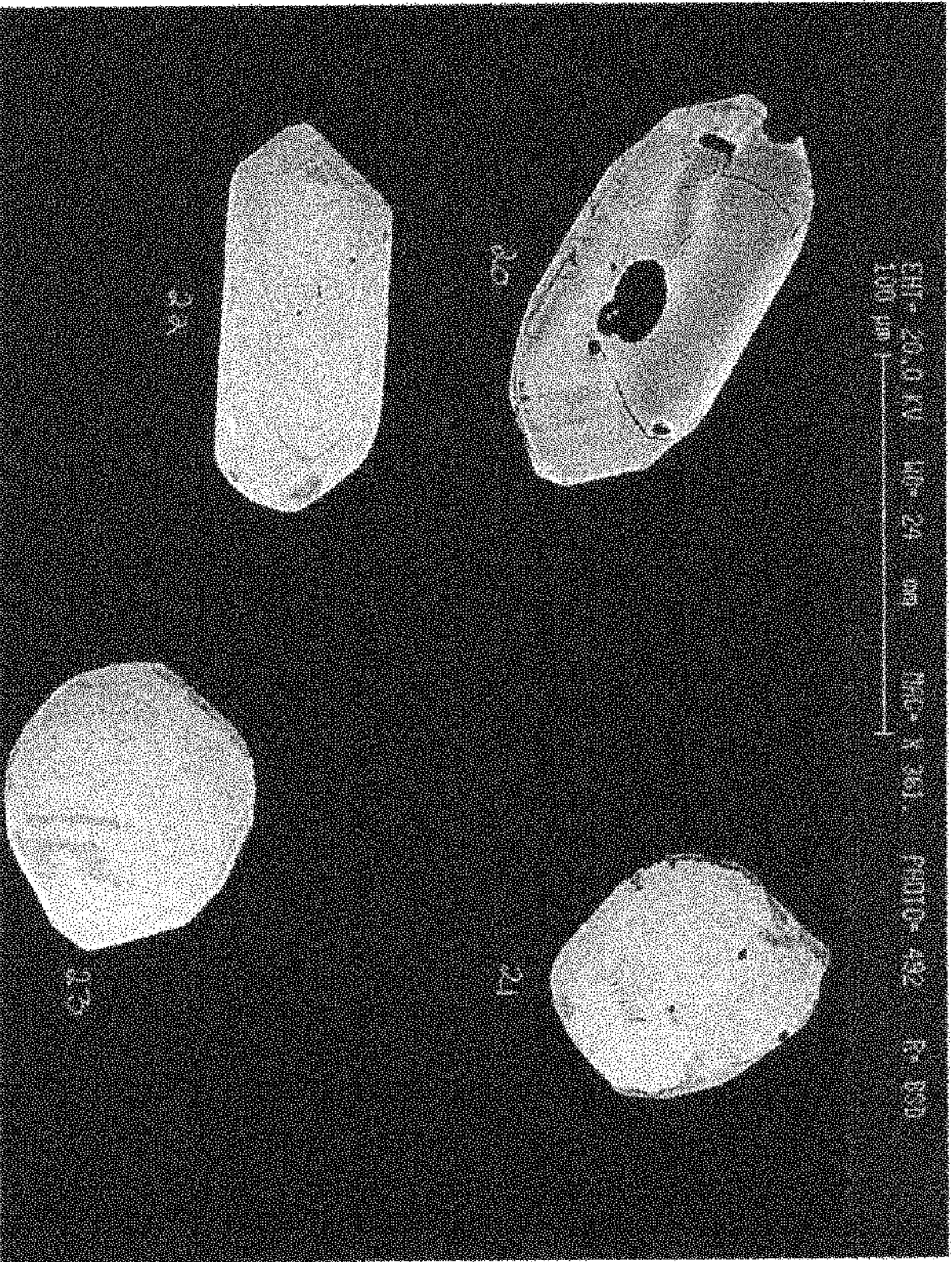
a5

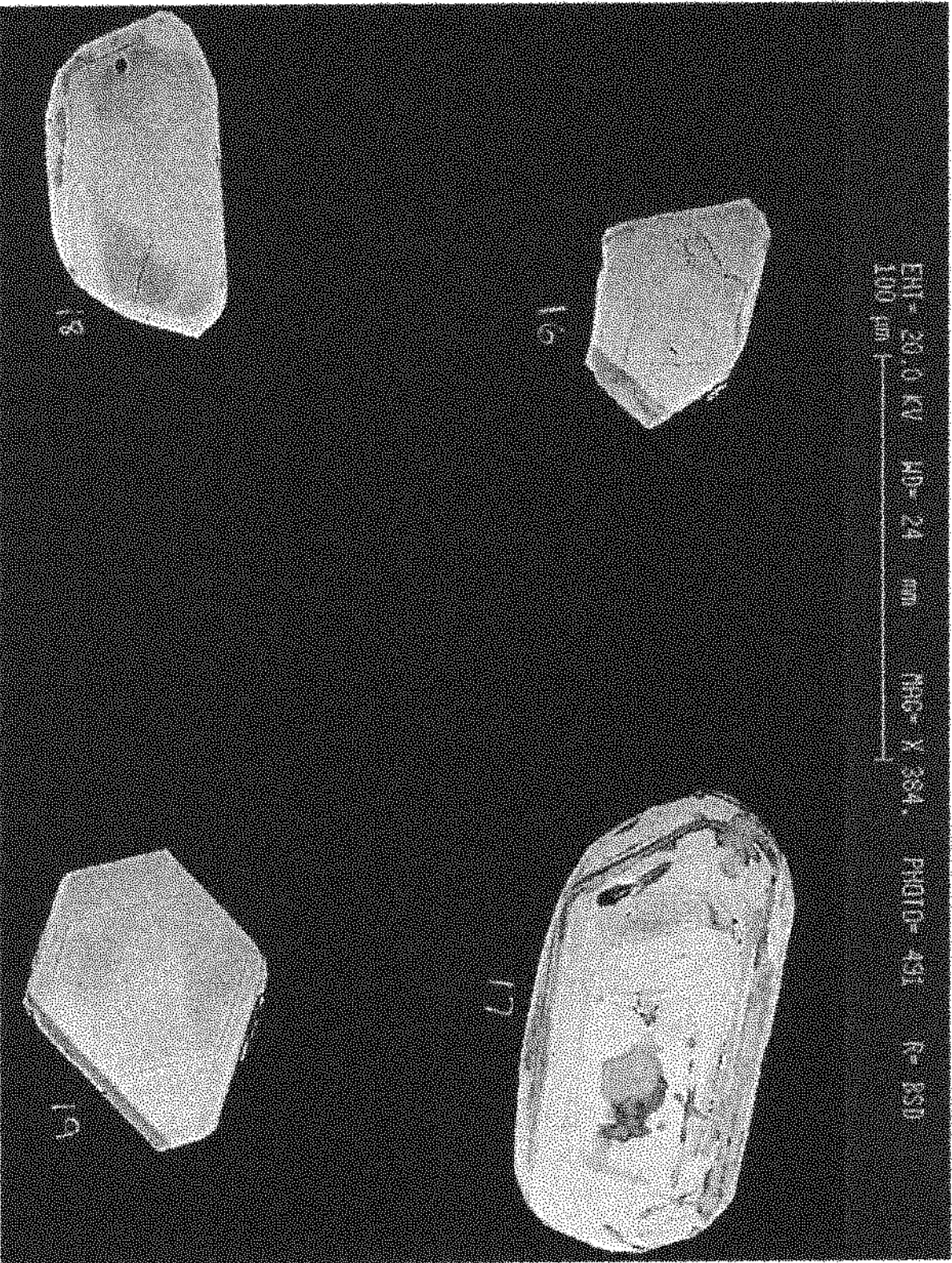


a7



7552-7



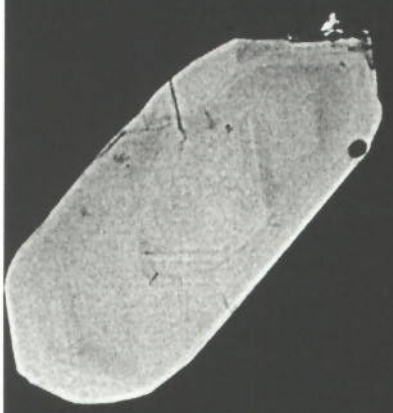


7552-5

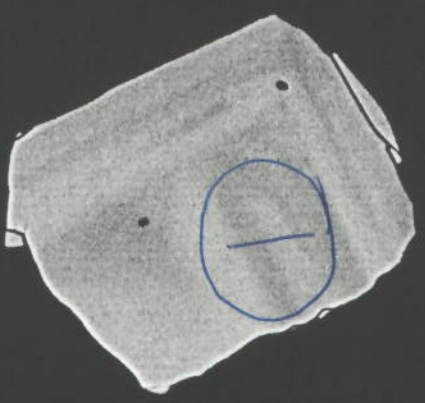
EHT = 20.0 KV WD = 24 mm MAG = X 393. PHOTO = 490 R = BSD
100 μm |



12



14

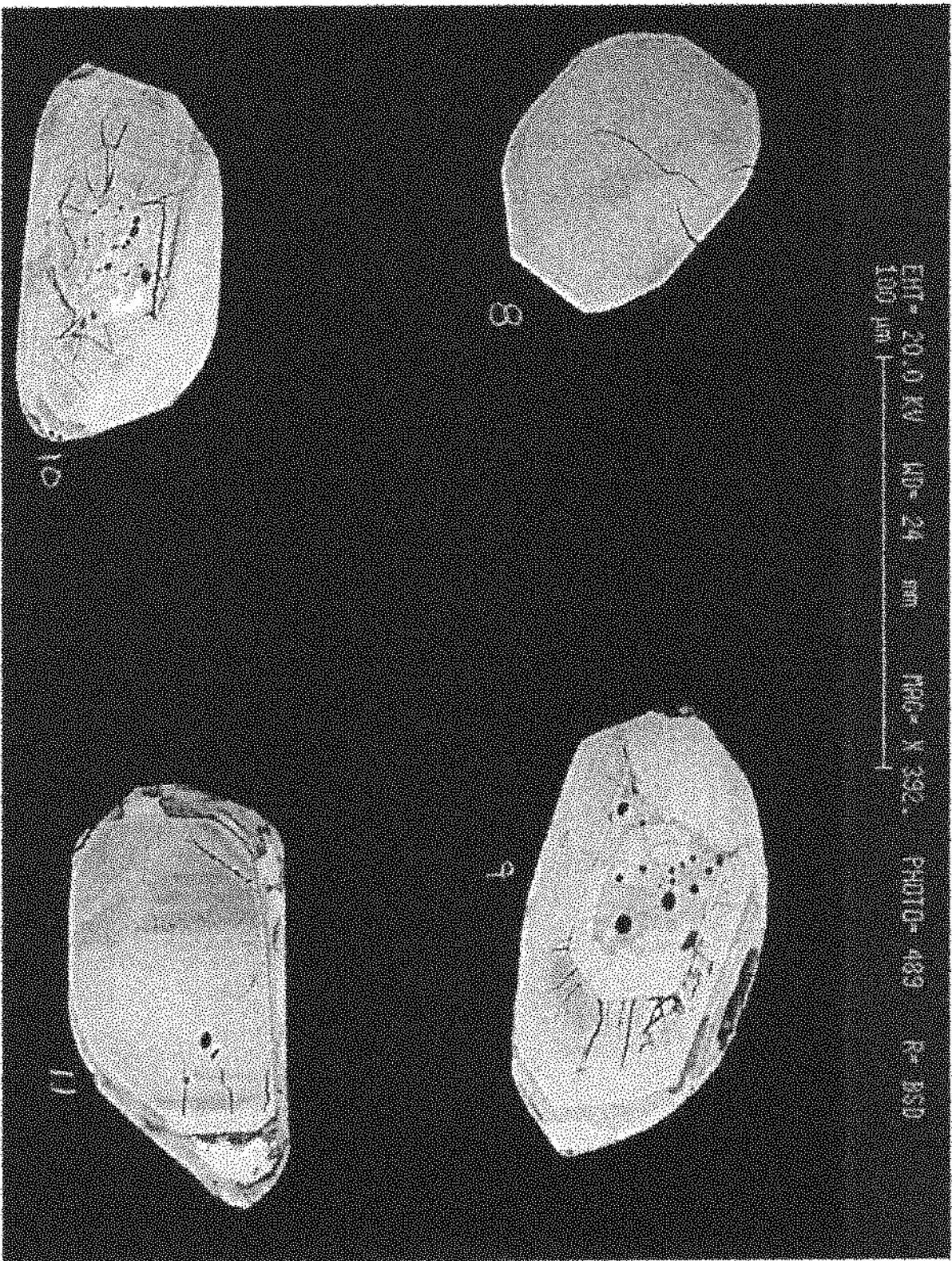


13



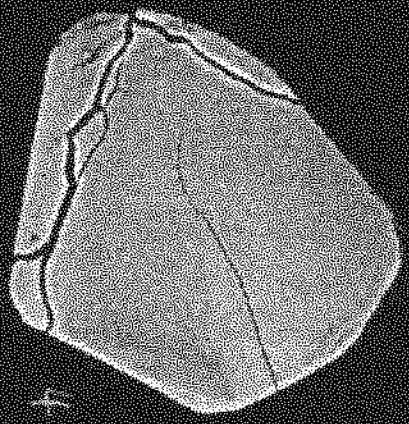
15

7552-4

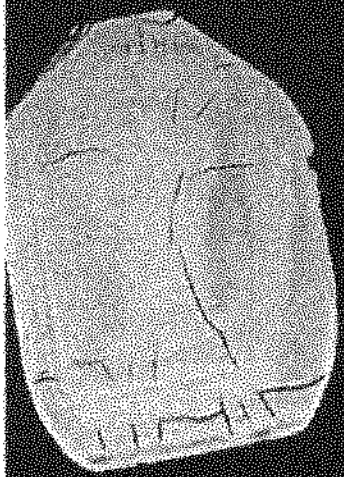
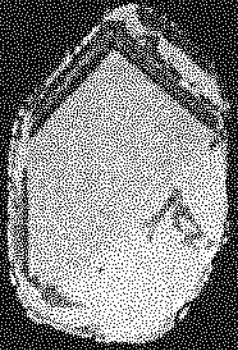


7562-3

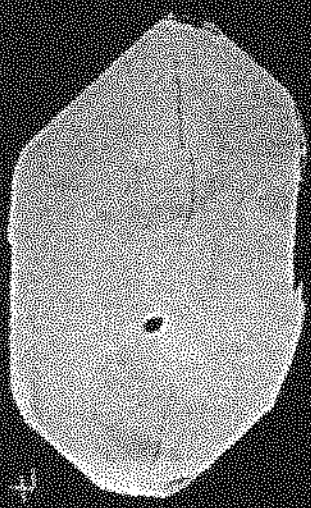
EHT = 20.0 KV WD = 24 mm MAG = X 415. PHOTO = 489 R = NSD
100 μm



4

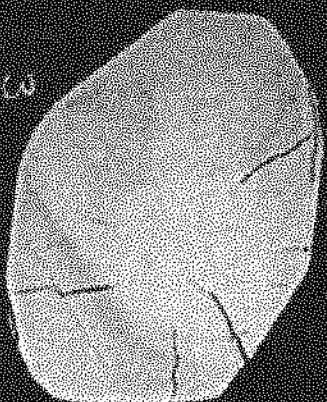
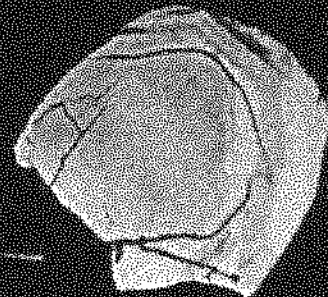
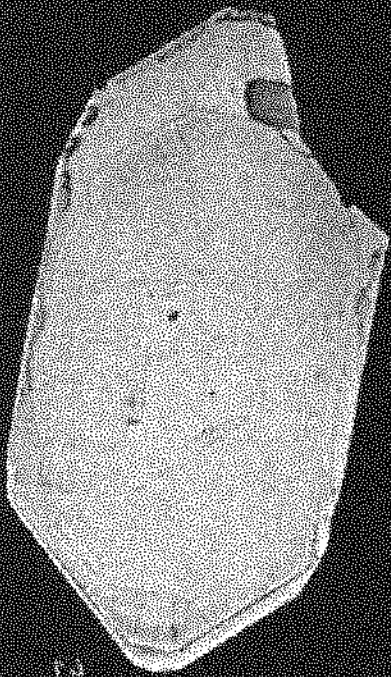


6



7

EHT- 20.0 KV WD- 24 mm MAG- X 417. PHOTO- 487 R- PSD
100 μ m



7552-1
2009