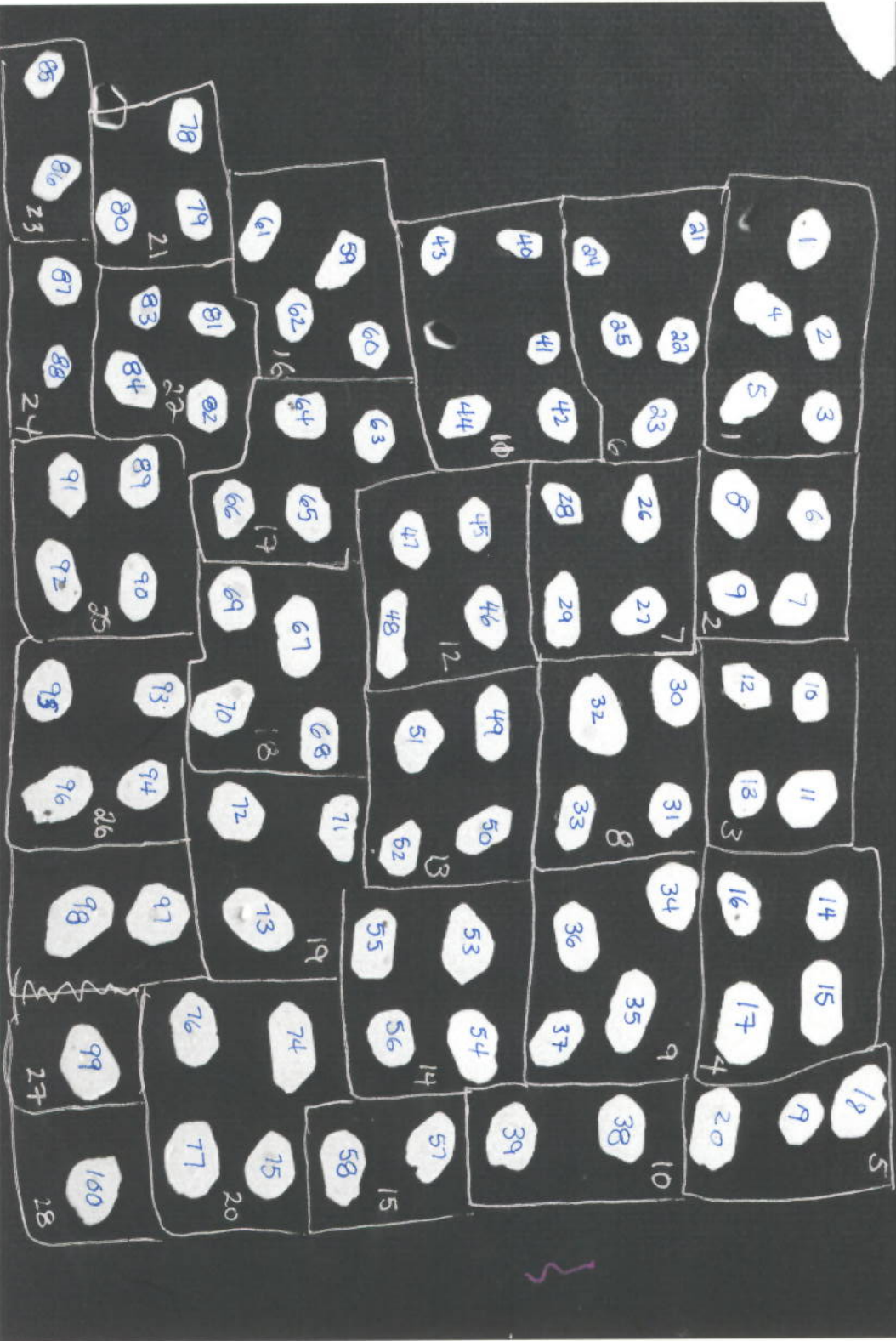
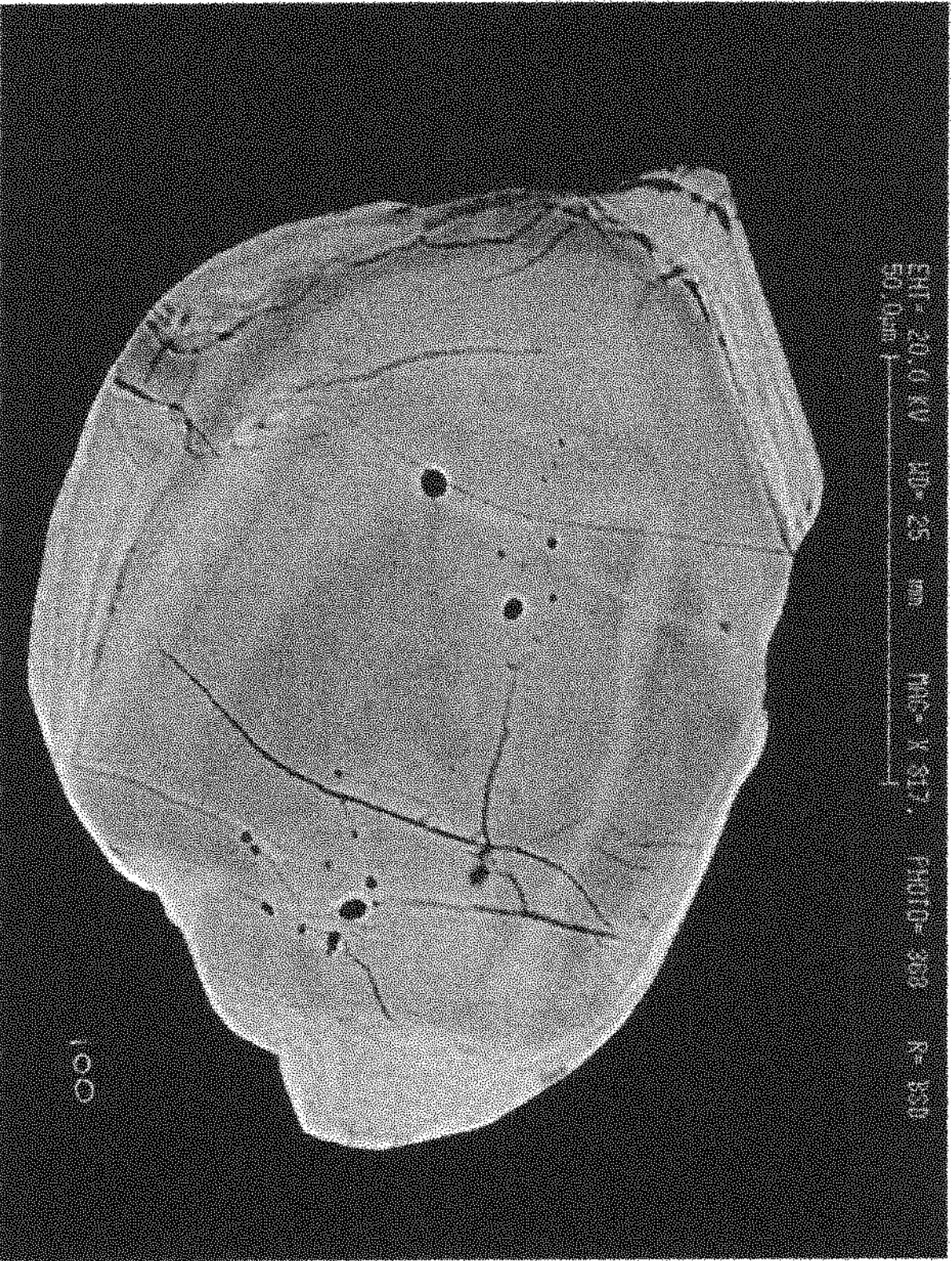


IP 286  
Z - 7554

L = SEI    EHT = 20.0 KV    WD = 25 mm    MAG = X 52.4    PHOTO = 340  
500  $\mu$ m



7554map

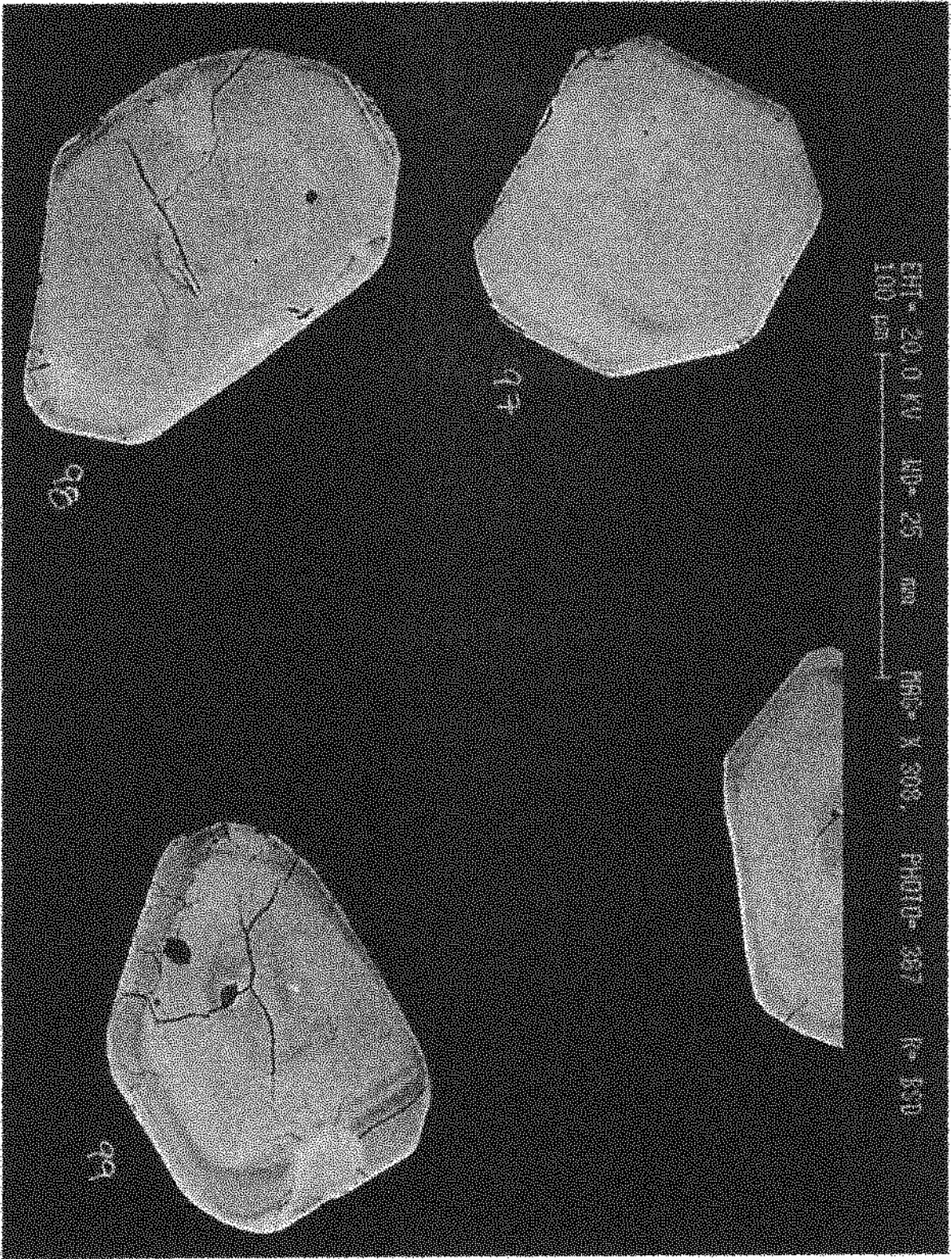


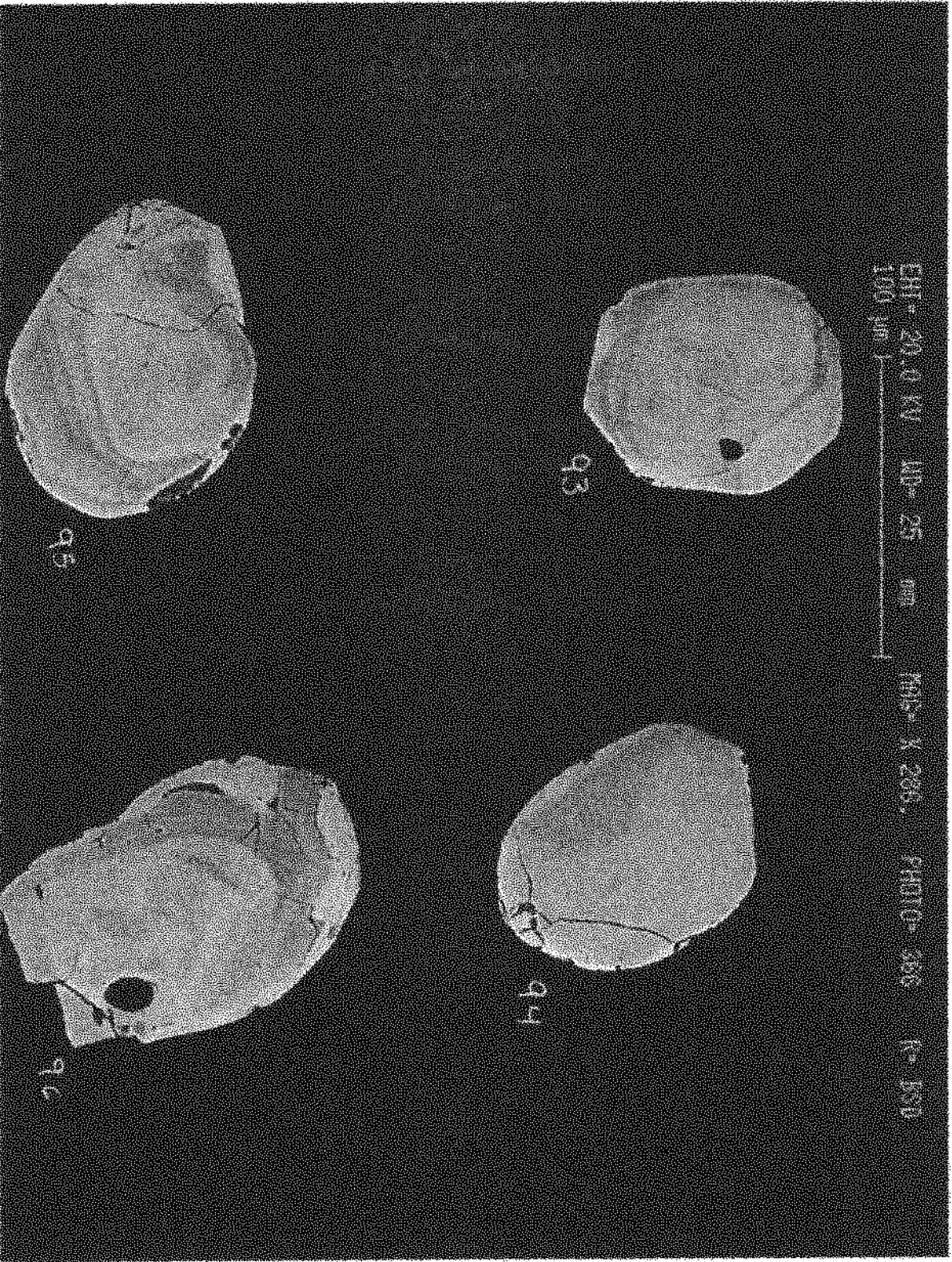
EMU - 20.0 KV ED - 25 mm MAG - 1.5X PHOTO - 300 R - BSI  
50 mm

100

7554-29

7554-27



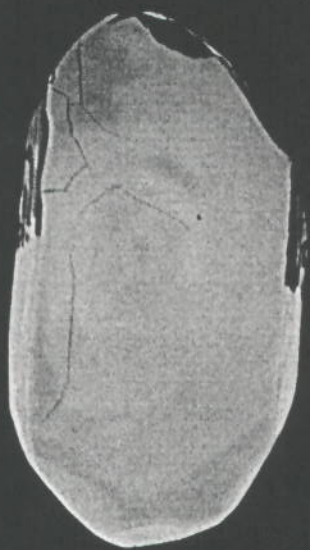


7554-26

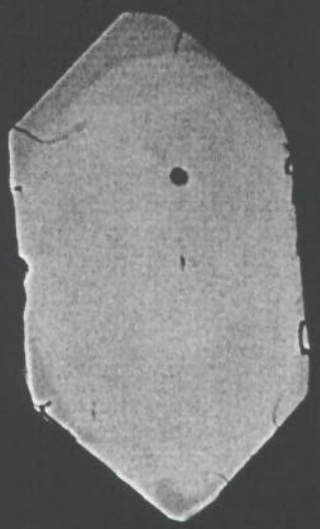
EHT = 20.0 KV WD = 25 mm MAG = X 361. PHOTO = 365 R = BSD  
100 μm |



89



90



91



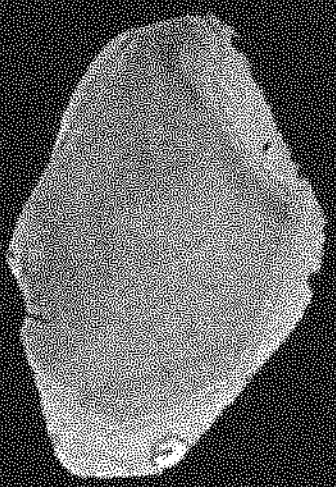
92

EHT = 20.0 KV WD = 25 mm  
50.0um |

MGC = X 495. PHOTO = 364 P = 150



87



88

7994-24

EHT = 20.0 KV WD = 25 mm  
50.0µm |-----|

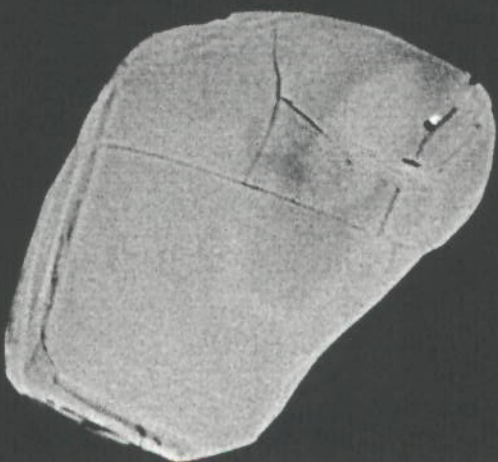
MAG = X 451.

PHOTO = 363

R = BSD



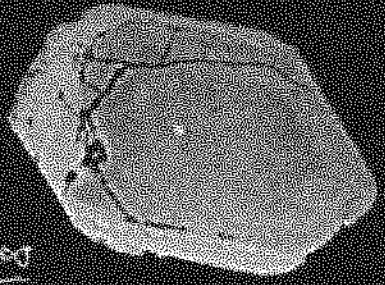
85



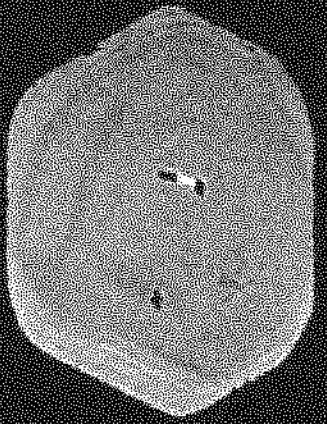
86

7554-23

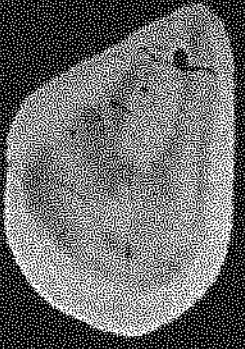
ERT - 20.0 KV MO-25 mm MAG X 252 PHOTO- 662 P- 830  
100 μm



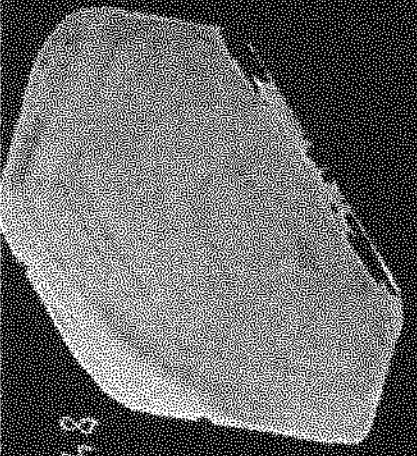
81



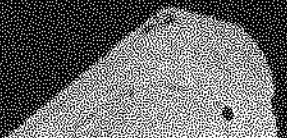
82



83

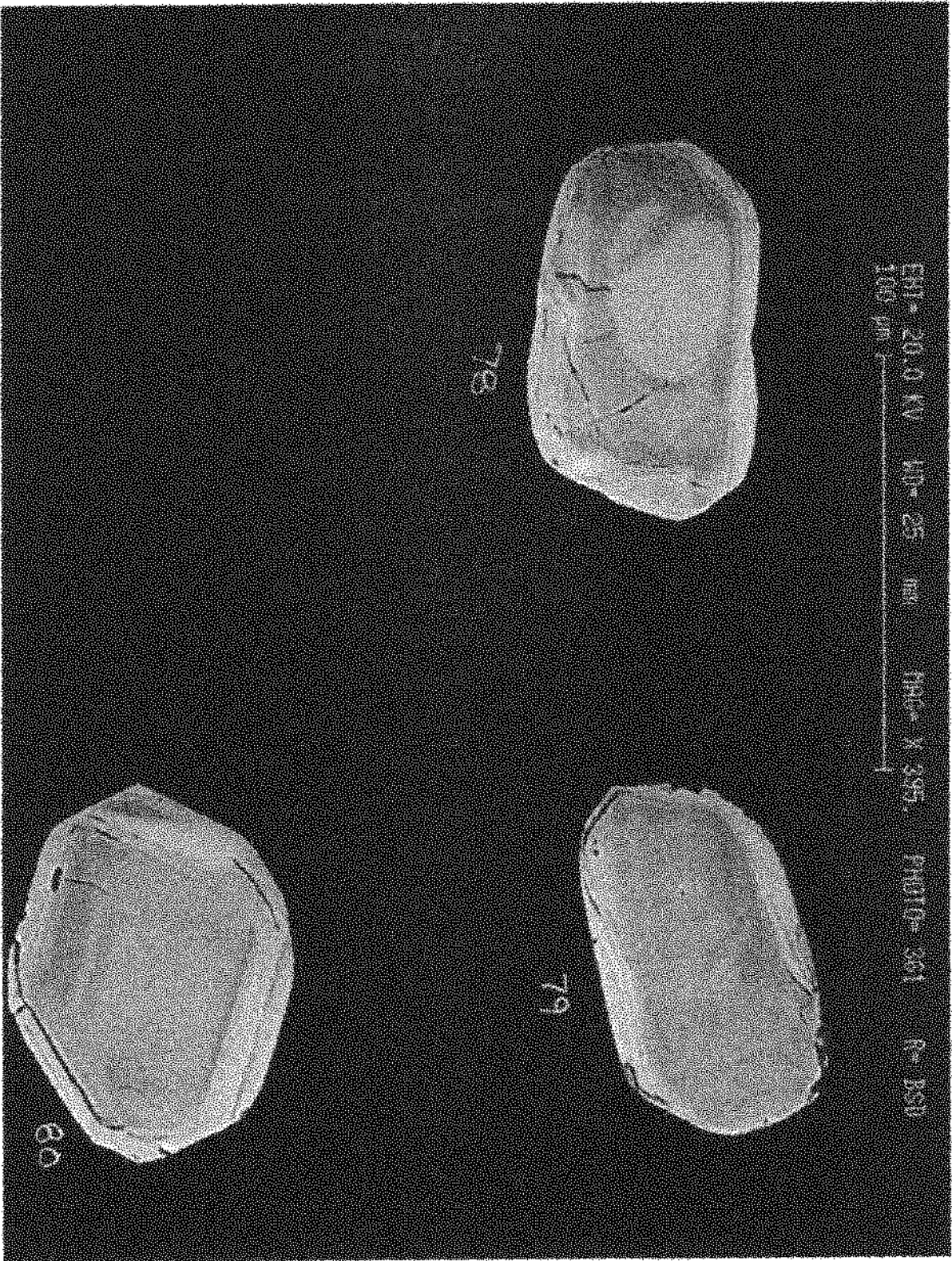


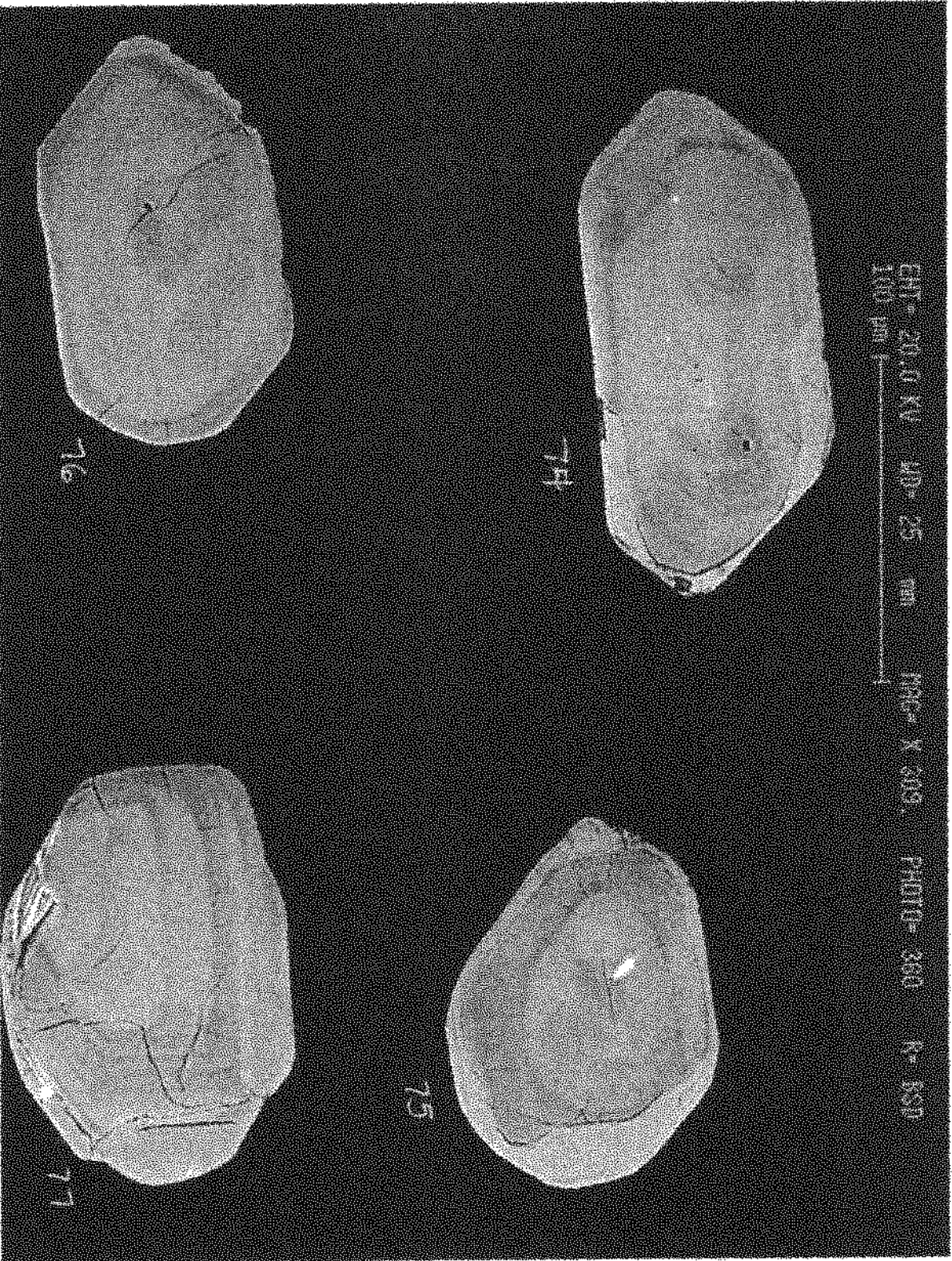
84



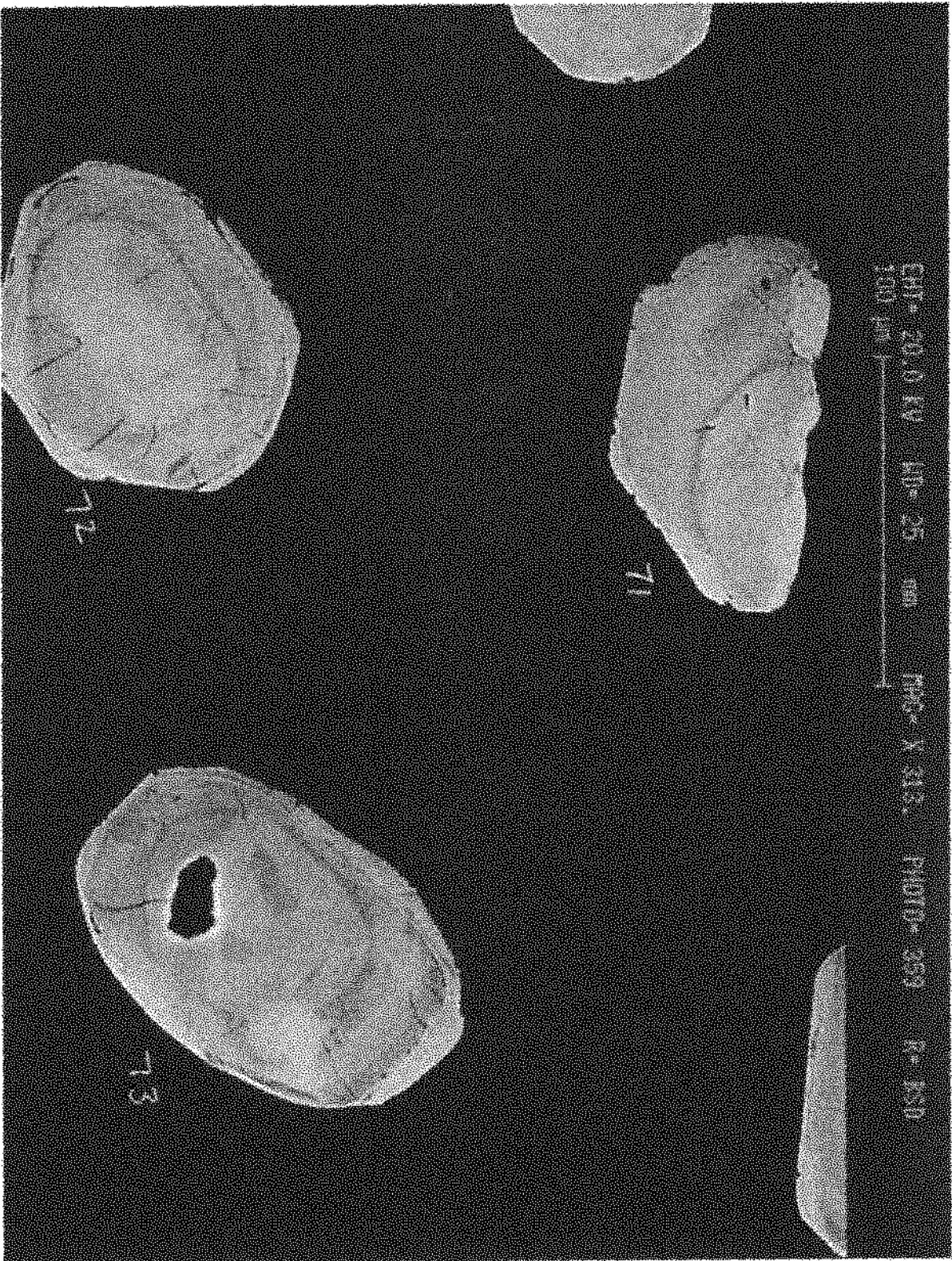


7554-24





7554-20

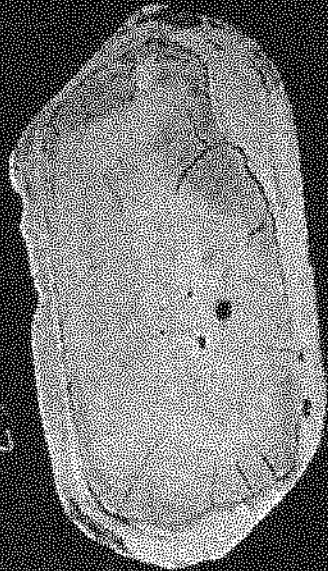


7594-19

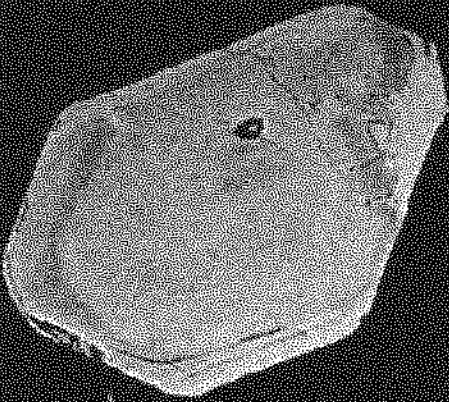
EMU - 20.0 KV    40x 25 mm    MAG - X 310.    PHOTO - 355    P - 830  
100 µm



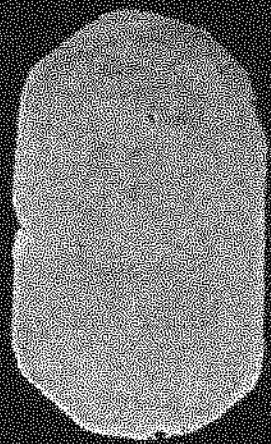
69



67



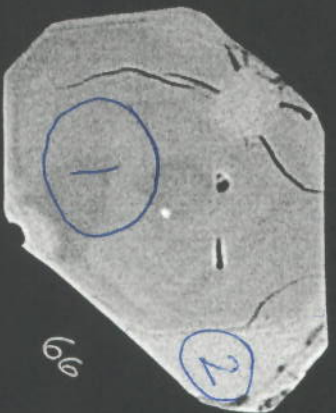
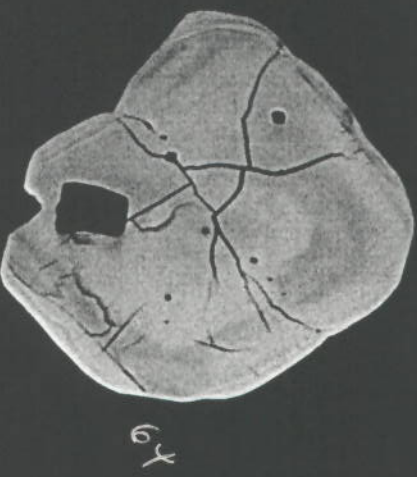
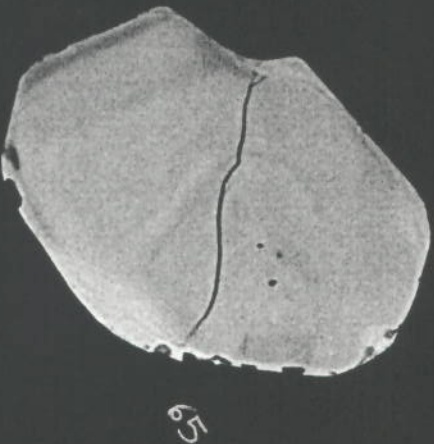
70



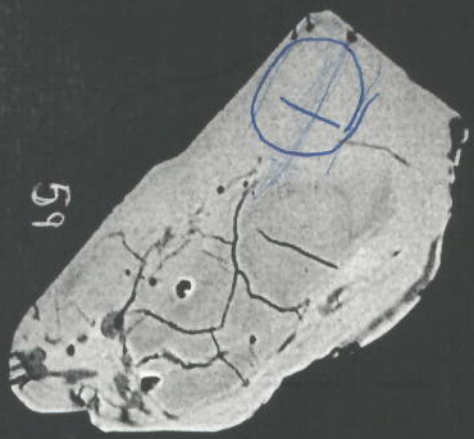
68

97 - 145 566

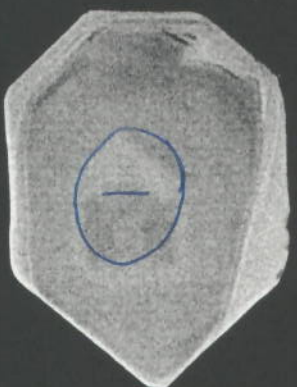
EHT = 20.0 KV WD = 25 mm MAG = X 341. PHOTO = 357 R = BSD  
100 μm



EHT = 20.0 KV MD = 25 mm MAG = X 354. PHOTO = 356 R = BSD  
100  $\mu$ m



59



60

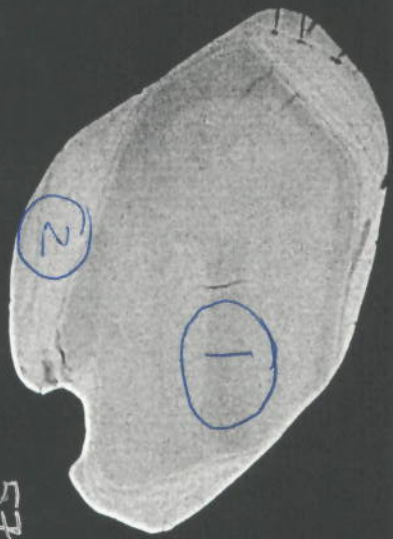


61

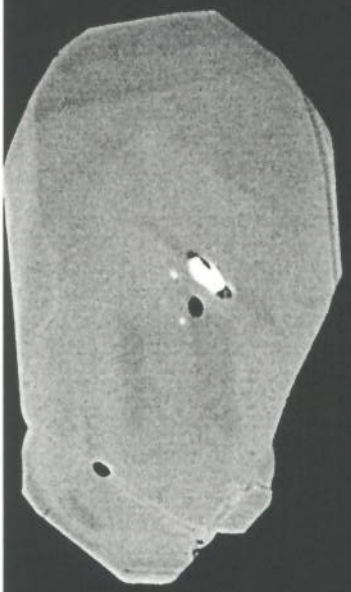


62

EHT = 20.0 KV WD = 25 mm MAG = X 344. PHOTO = 355 R = BSD  
100  $\mu$ m



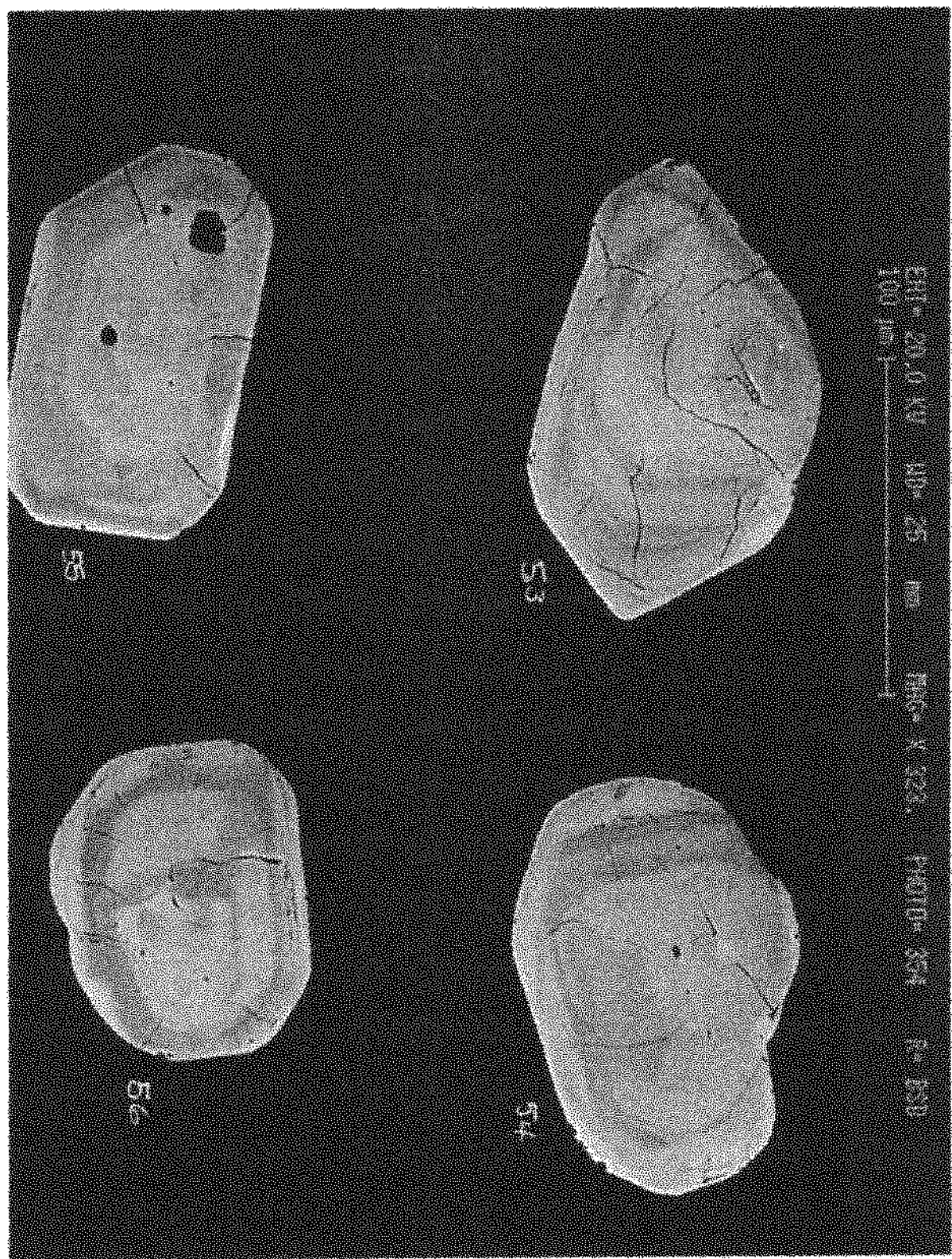
57



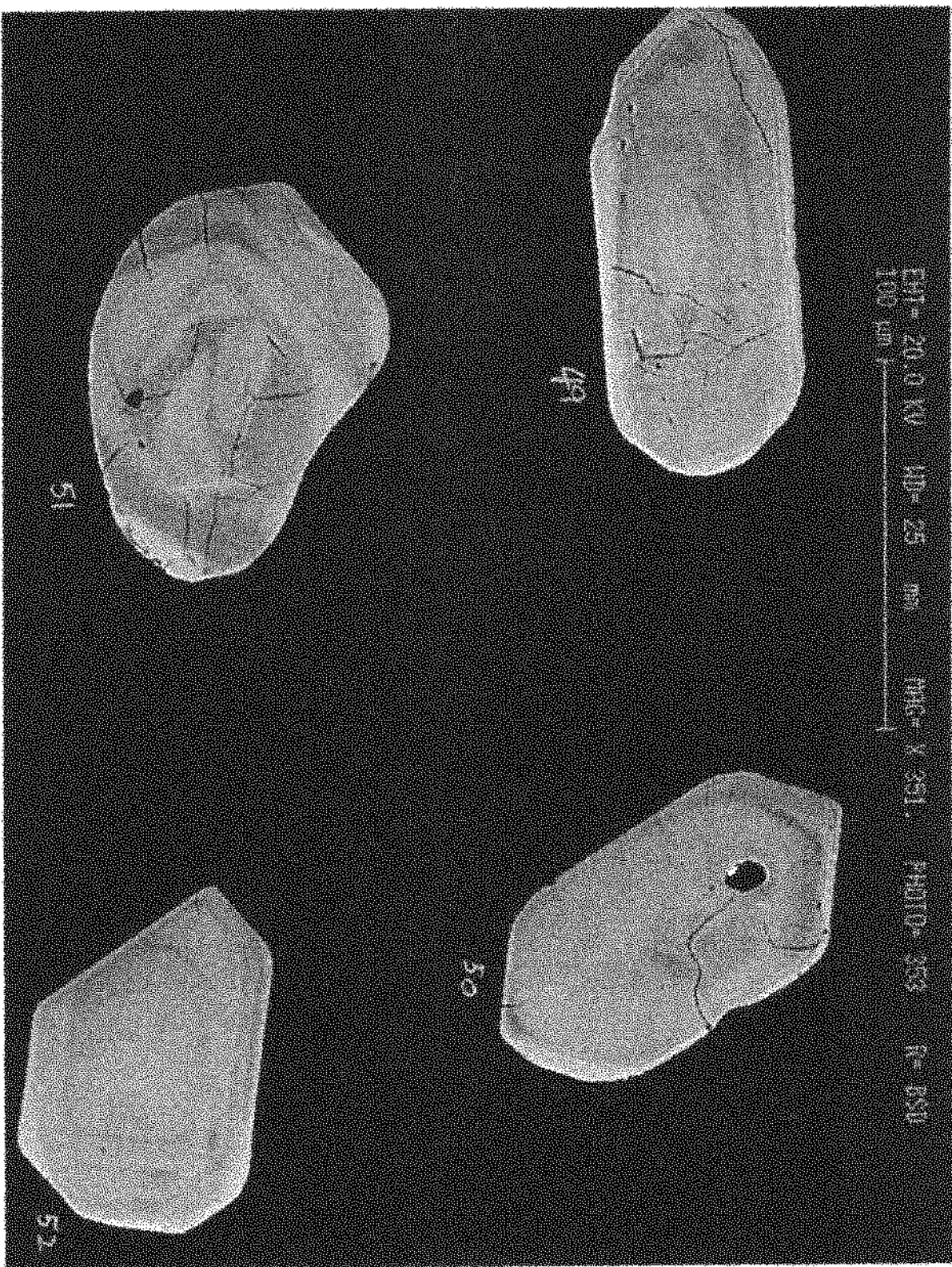
58

7554-15

7854-14







49

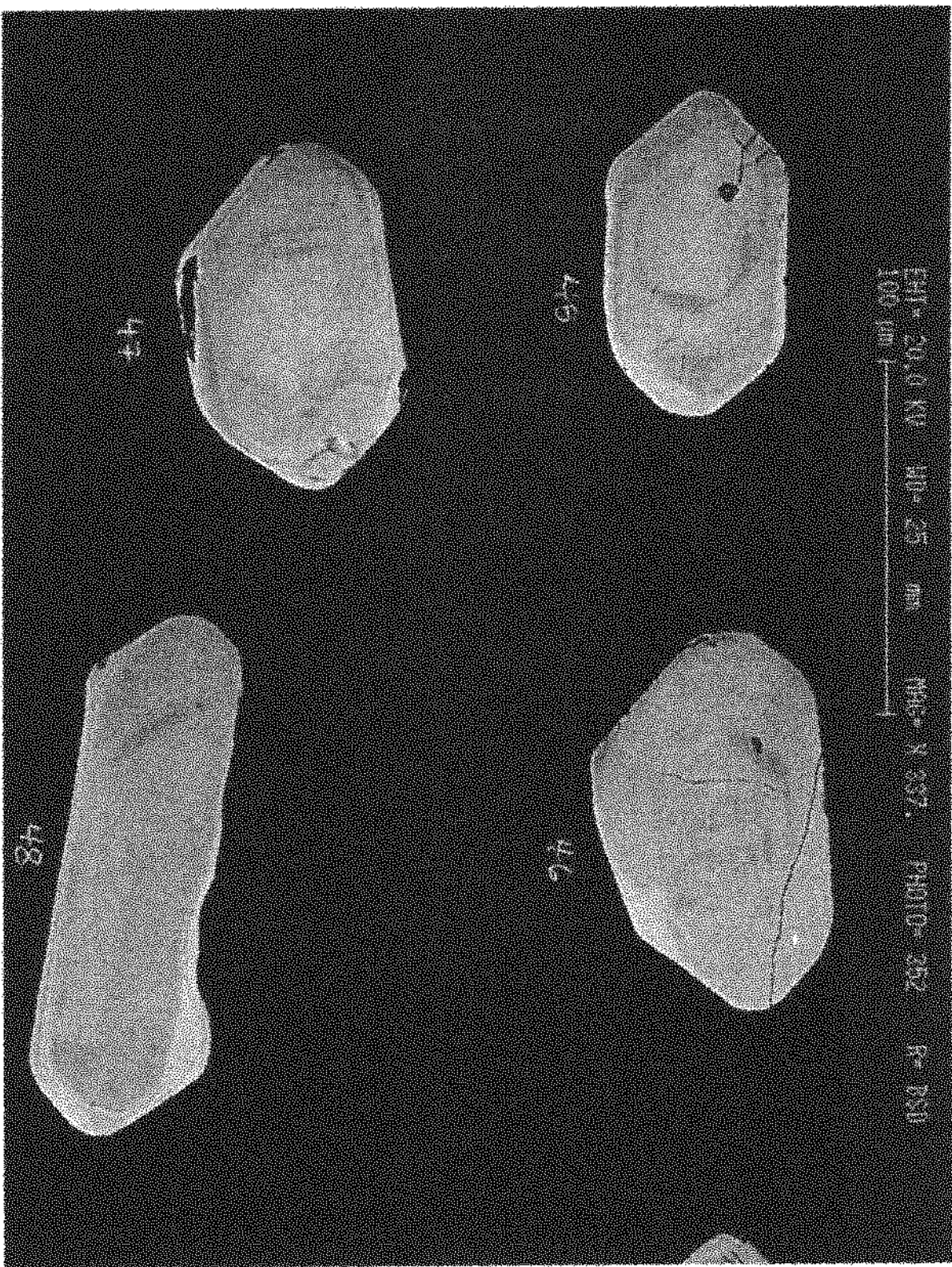
50

51

52

E91 - 20.0 KV AD - 25 mm MAG - X 351. PHOTO - 253 R - 250  
100 μm

7994-13

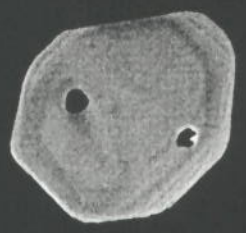


7554-12

EHT = 20.0 KV MD = 25 mm MAG = X 303. PHOTO = 351 R = BSD  
100 μm |



40



41



42



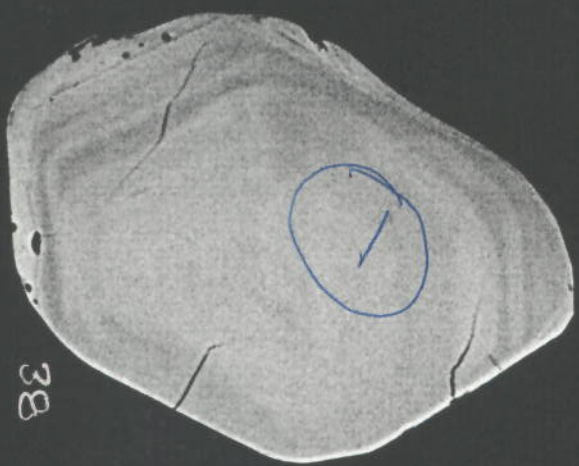
43



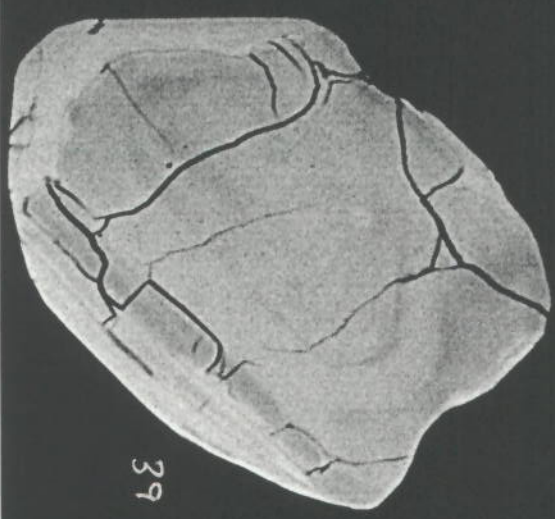
44

Z7554-11

EHT = 20.0 KV WD = 25 mm MAG = X 383. PHOTO = 350 R = BSD  
100 μm |



38



39

7554-10

EHT = 20.0 KV MD = 25 mm MAG = X 309. PHOTO = 349 R = BSD  
100 μm |



34



35



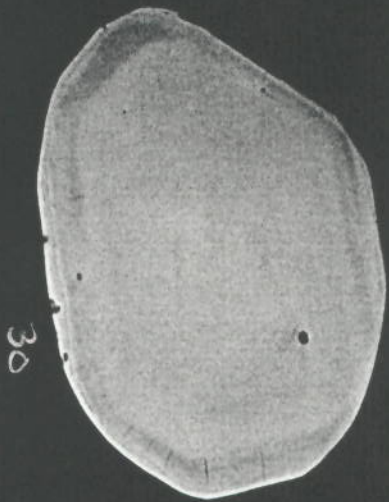
36



37

7554-9

EHT = 20.0 KV WD = 25 mm MAG = X 324. PHOTO = 348 R = BSD  
100 μm |



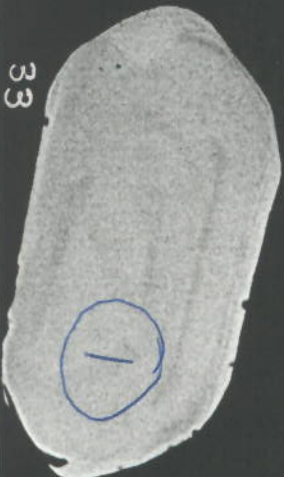
30



31

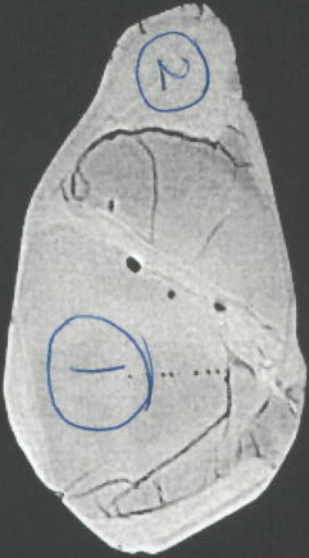


32



33

EHT = 20.0 KV MD = 25 mm MAG = X 362. PHOTO = 347 R = BSD  
100  $\mu$ m



26



27



28



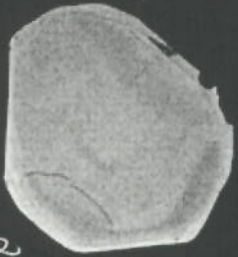
29

7554-7

EHT = 20.0 KV MD = 25 mm MAG = X 287. PHOTO = 346 R = BSD  
100 μm



21



24



22



25



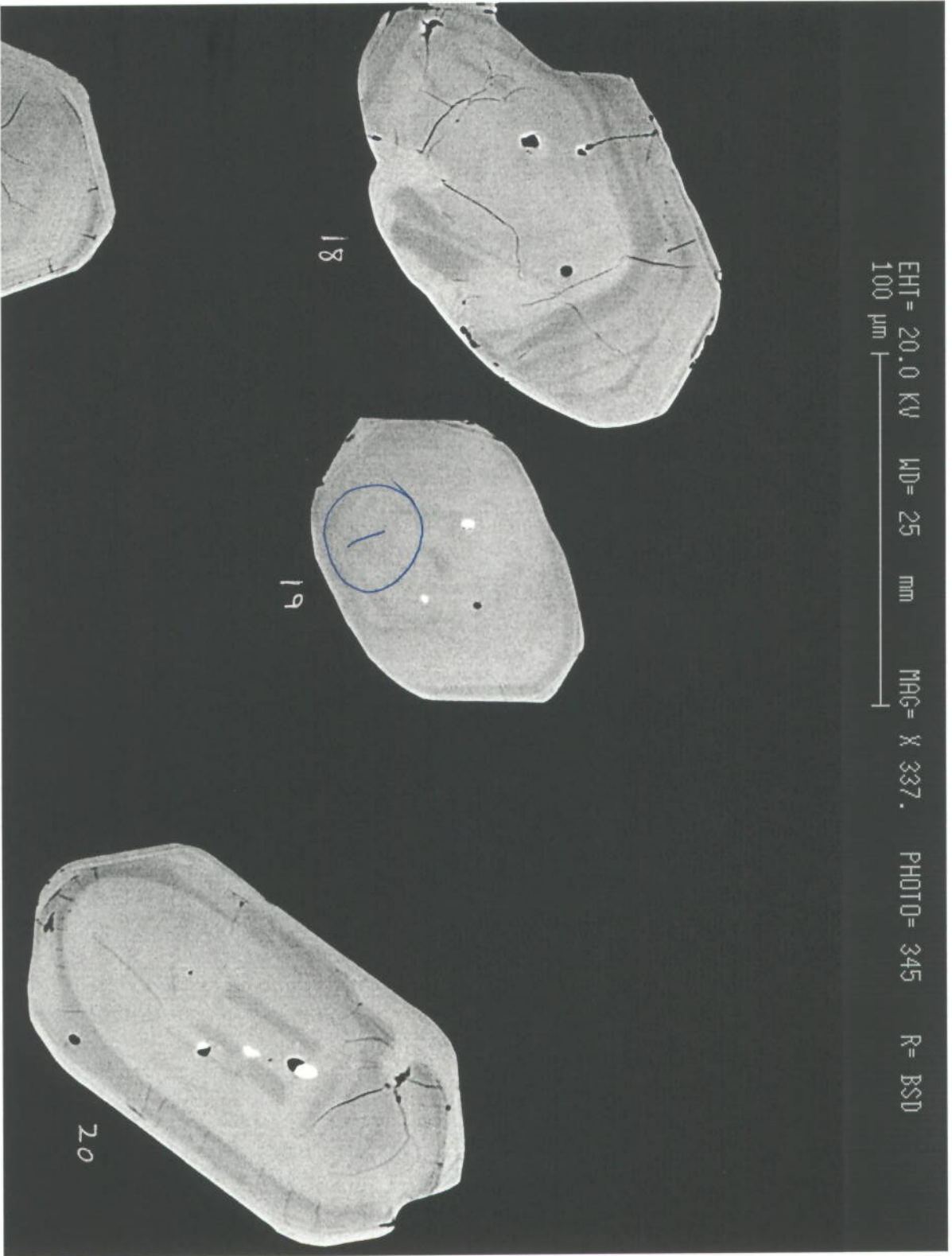
23



7554-6



EHT = 20.0 KV MD = 25 mm MRG = X 337. PHOTO = 345 R = BSD  
100 μm |

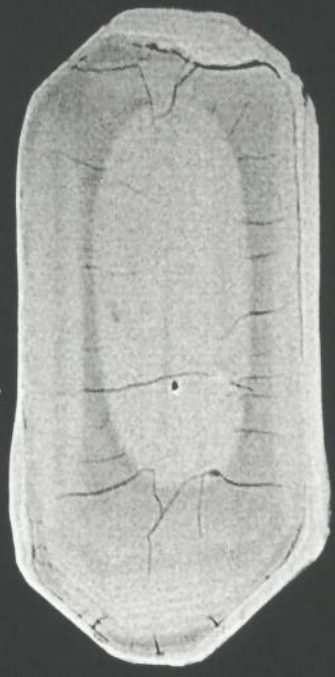


TS54-5

EHT = 20.0 KV MD = 25 mm MAG = X 350. PHOTO = 344 R = BSD  
100 μm |



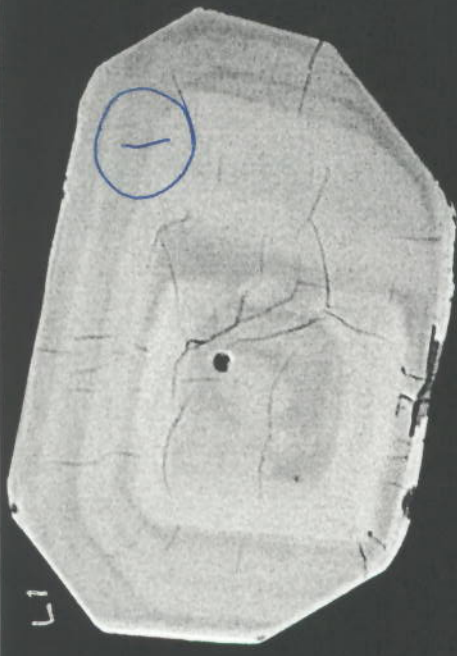
14



15



16



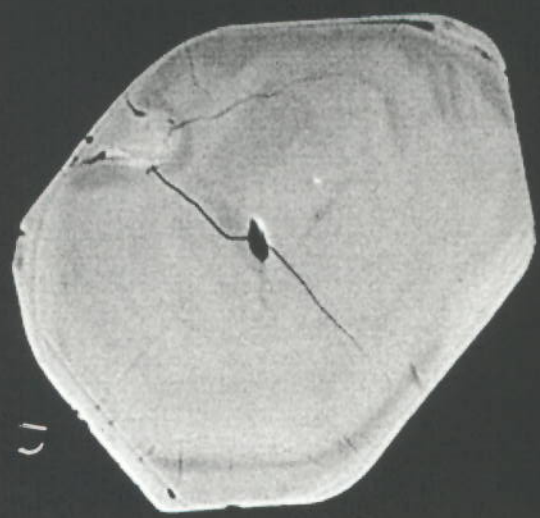
17

7554-4

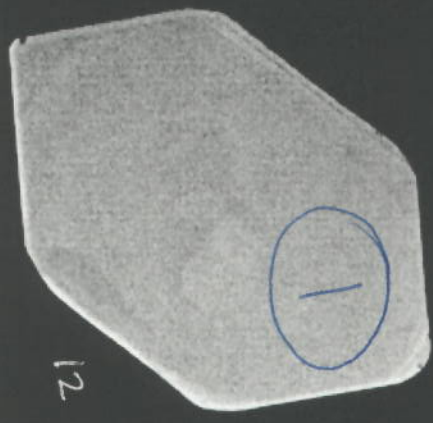
EHT = 20.0 KV WD = 25 mm MAG = X 387. PHOTO = 343 R = BSD  
100 μm |



10



11



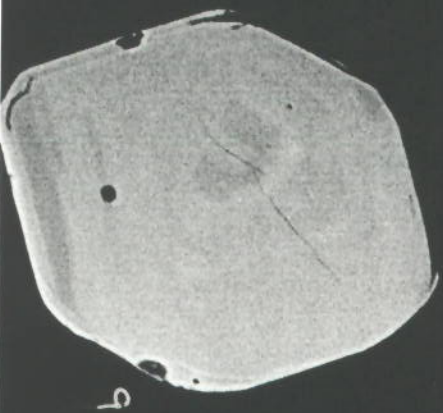
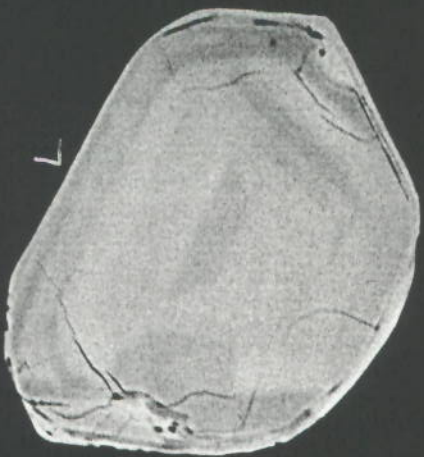
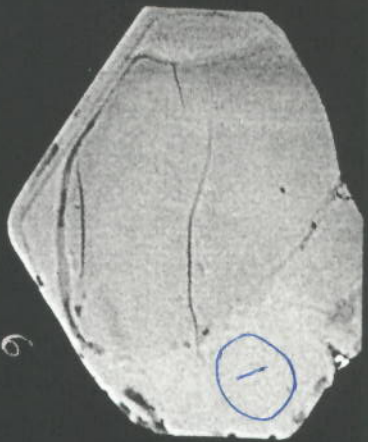
12



13

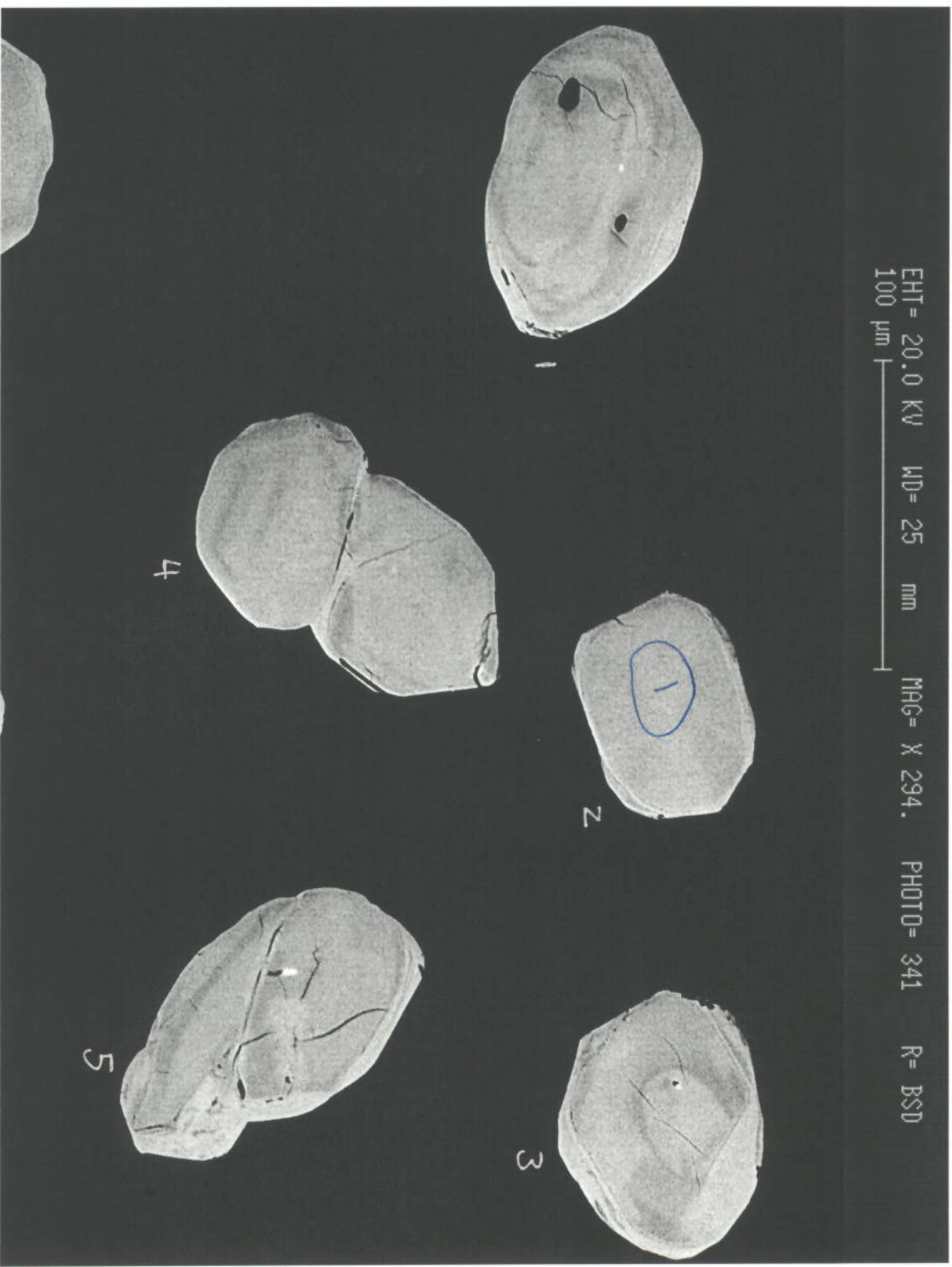
7554-3

EHT = 20.0 KV MD = 25 mm MAG = X 389. PHOTO = 342 R = BSD  
100  $\mu$ m |



7554-2

EHT = 20.0 KV WD = 25 mm MAG = X 294. PHOTO = 341 R = BSD  
100 μm |



7554-1