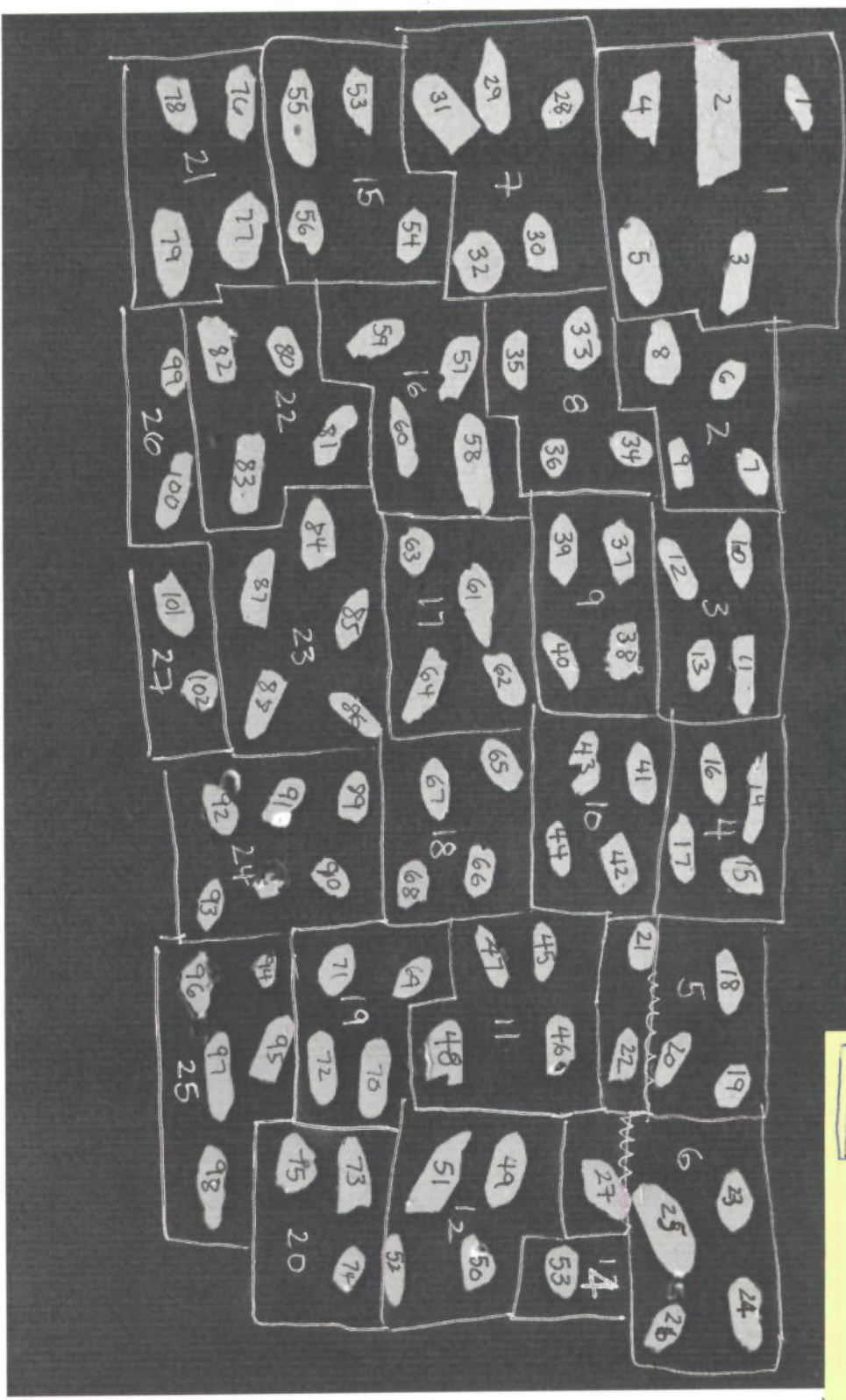


2

L = SEI EHT = 20.0 KV MD = 23 mm MAG = X 53.7 PHOTO = SP. CURRE = 500 μm



Some where b/w
 7-13 there is a
 miss named (or #1 image
 files in 21. (different names.)
 5229827

IP 312

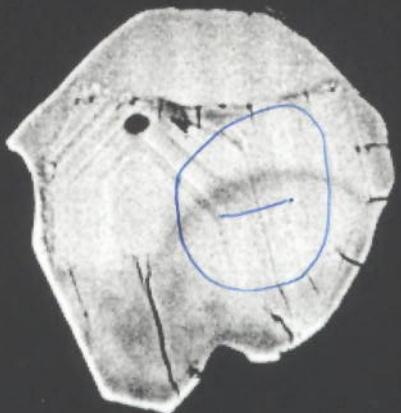
7494 map
CXA 02-D20

EHT = 20.0 KV AD = 23 mm
50.0µm |

MAG = X 503. PHOTO = 1671 R = BSD
SP. CURRENT = 2.75nA LOCK



101



102

7494-27

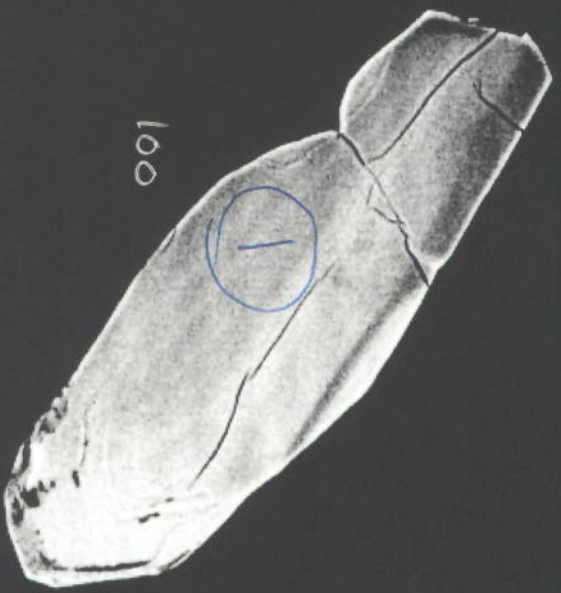
EHT = 20.0 KV MD = 23 mm
50.0um |

MAG = X 440.

PHOTO = 1670 R = BSD
SP. CURRENT = 2.76nA LOCK



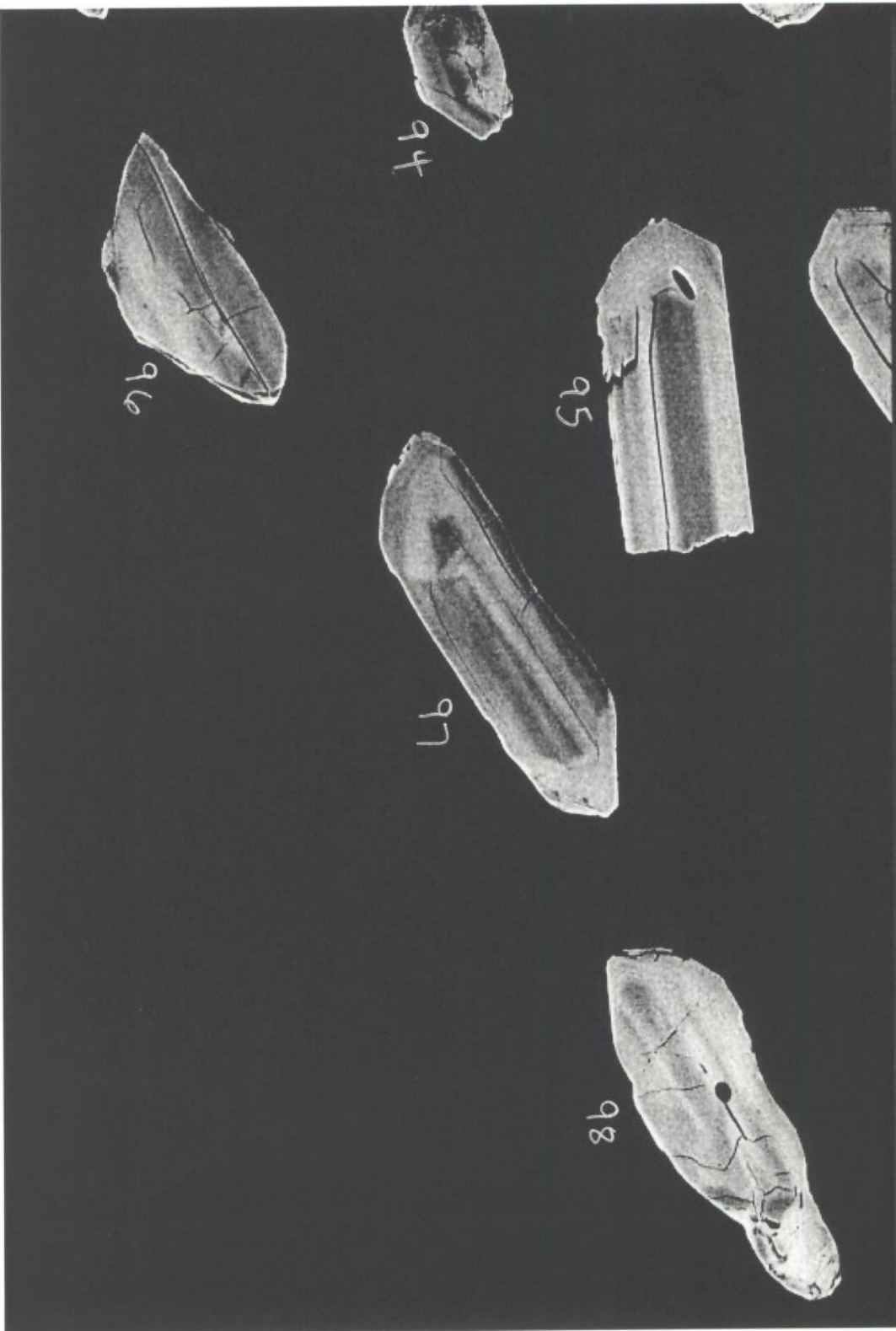
99



100

7494-26

EHT = 20.0 KV MD = 23 mm MAG = X 272. PHOTO = 1669 R = BSD
100 µm | SP. CURRENT = 2.70nA LOCK

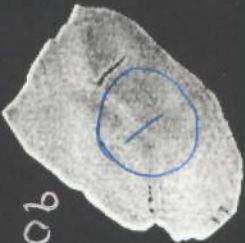


7494-25

EHT = 20.0 KV MD = 23 mm MAG = X 297. PHOTO = 1668 R = BSD
100 μm | SP. CURRENT = 2.75mA LOCK



89



90



91



92



93

7494-24

EHT = 20.0 KV MD = 23 mm MAG = X 297. PHOTO = 1667 R = BSD
100 µm | SP. CURRENT = 2.81nA LOCK



84



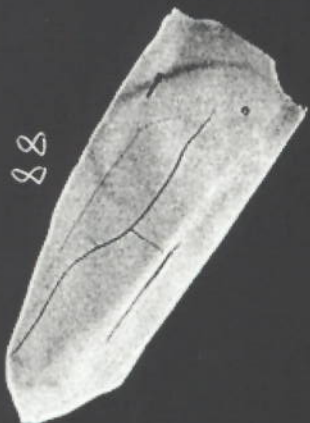
85



86



87



88

7494-23

EHT = 20.0 KV MD = 23 mm MAG = X 340. PHOTO = 1666 R = BSD
100 μ m SP. CURRENT = 2.77nA LOCK



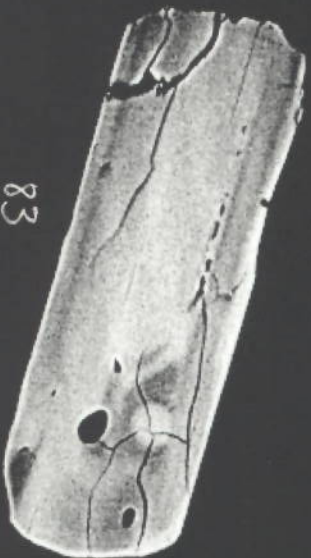
80



81



82



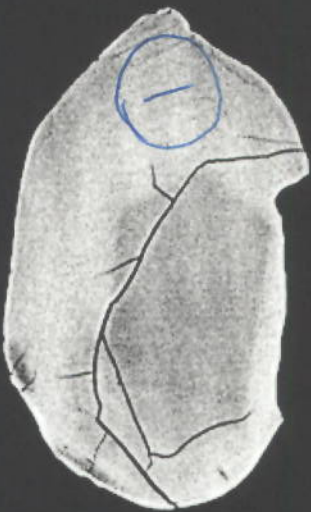
83

7494-22

EHT = 20.0 KV MD = 23 mm MAG = X 313. PHOTO = 1665 R = BSD
100 µm | SP. CURRENT = 2.59nA LOCK



76



77



78



79

7494-21

EHT = 20.0 KV MD = 23 mm
50.0µm |-----|
MAG = X 454. PHOTO = 1664 R = BSD
SP. CURRENT = 2.77nA LOCK



73



74



75

7494-20

EHT = 20.0 KV MD = 23 mm MAG = X 404. PHOTO = 1663 R = BSD
100 μm SP. CURRENT = 2.69nA LOCK



69



70



71



72

7494-19

EHT = 20.0 KV MD = 23 mm MAG = X 393. PHOTO = 1662 R = BSD
100 µm SP. CURRENT = 2.73nA LOCK



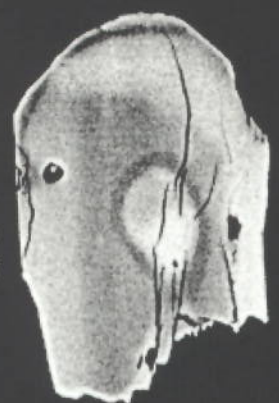
65



67



66



68

7494-18

EHT = 20.0 KV MD = 23 mm MAG = X 370. PHOTO = 1661 R = BSD
100 μ m SP. CURRENT = 2.72nA LOCK



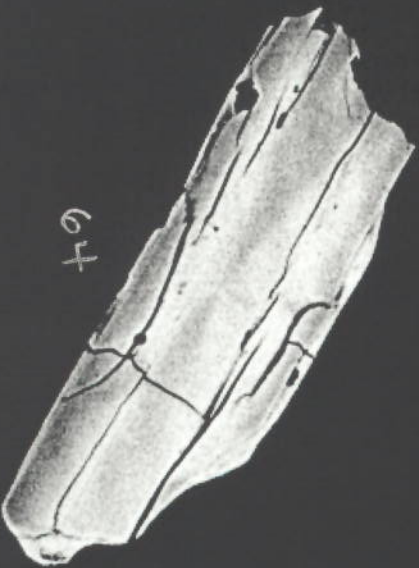
61



62



63



64

7494-17

EHT = 20.0 KV MD = 23 mm MAG = X 343. PHOTO = 1660 R = BSD
100 μm SP. CURRENT = 2.58nA LOCK



57



58

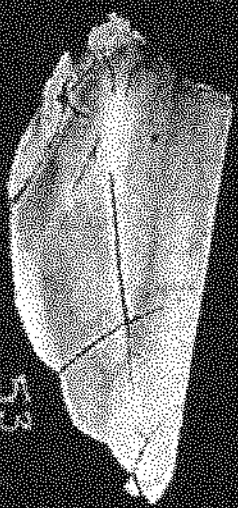


60



59

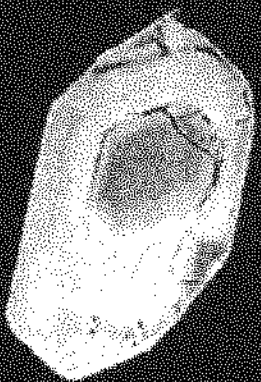
EPI - 20.0 KV 40x 23 mm MAG - X 341. PHOTO - 1953 F. PSD
100 mic | SP. ICHREMI - 2.70cm LIND



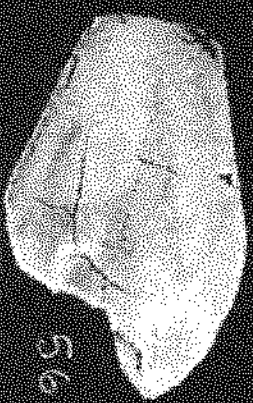
53



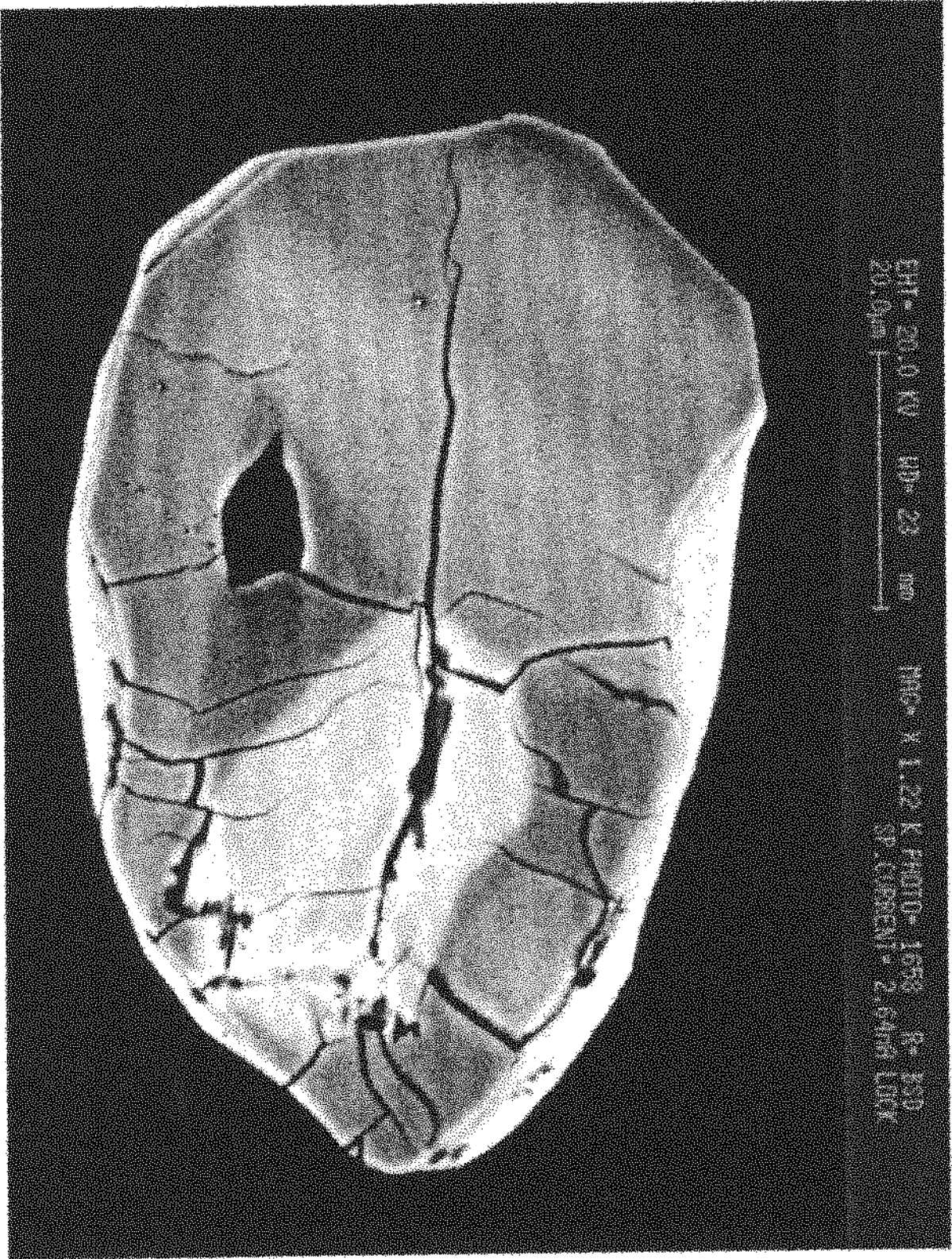
55



54



56



EMU - 2010 KV 40 - 23 mm HMC - X 1.25 K PHOTO - 1673 P. 150
20.0mm SP. COSENTE - 2.64M L004

2491-14

EHT = 20.0 KV MD = 23 mm MAG = X 361. PHOTO = 1657 R = BSD
100 μm | SP. CURRENT = 2.89nA LOCK



49



50



51



52

7494-12

EHT = 20.0 KV MD = 23 mm MAG = X 329. PHOTO = 1656 R = BSD
100 μm SP. CURRENT = 2.82mA LOCK



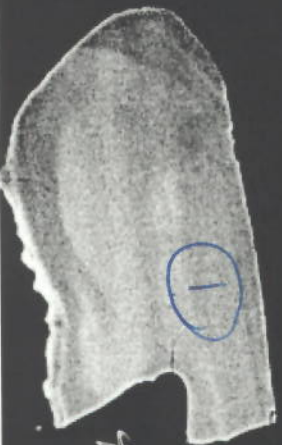
45



47



46



48

7494-11

EHT = 20.0 kV WD = 23 mm
50.0µm |-----|

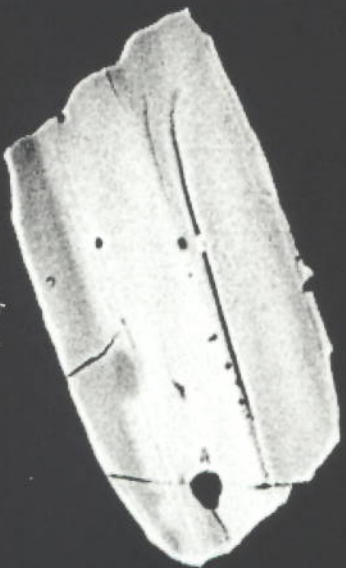
MAG = X 427. PHOTO = 1655 R = BSD
SP. CURRENT = 2.78nA LOCK



41



43



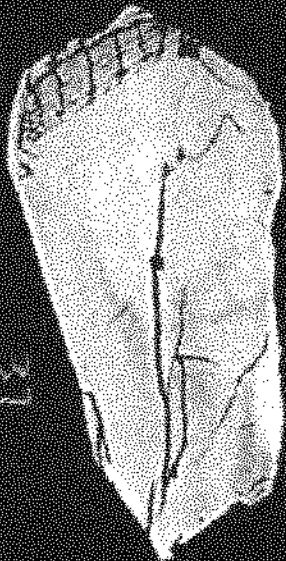
42



44

7494-10

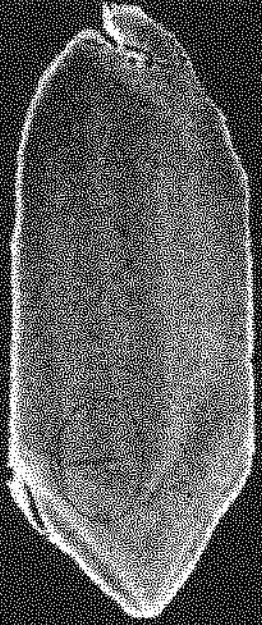
ENT - 20.0 EV AD - 23 AD PRO - X 413 PHOTO - 1634 P. KSD
100 per SP. CURRENT - 2.9784 L000



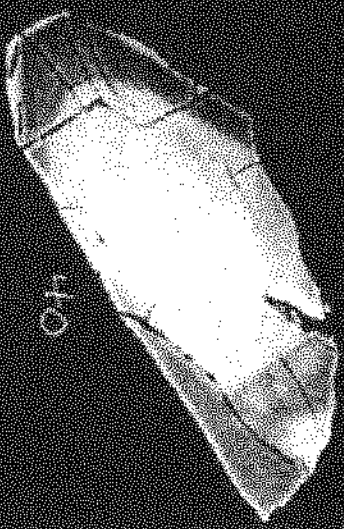
37



37



37



37

7444-1

EHT = 20.0 KV MD = 23 mm MAG = X 408. PHOTD = 1653 R = BSD
100 μm | SP. CURRENT = 2.73nA LOCK



33



35



34



36

7494-8

EHT = 20.0 KV MD = 23 mm MAG = X 288. PHOTO = 1652 R = BSD
100 μm | SP. CURRENT = 2.73nA LOCK



28



29



31



30



32

7494-7

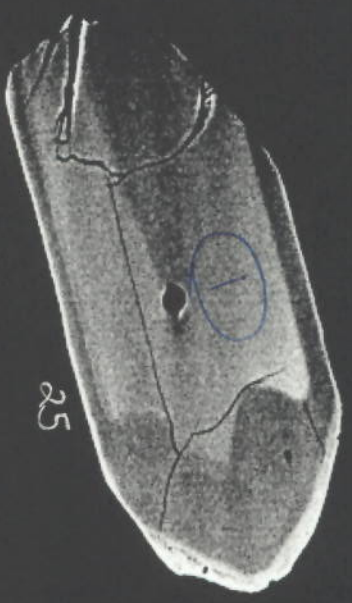
EHT = 20.0 KV WD = 23 mm MAG = X 289. PHOTO = 1651 R = BSD
100 μm | SP. CURRENT = 2.80nA LOCK



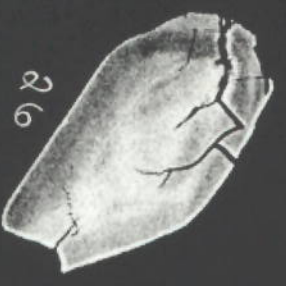
23



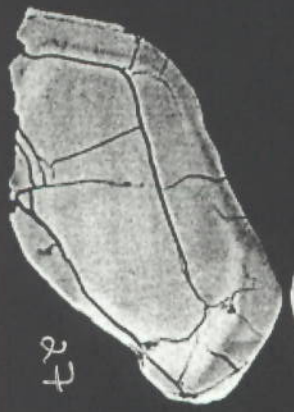
24



25



26



27

7494-6

EHT = 20.0 KV MD = 23 mm MAG = X 335. PHOTO = 1650 R = BSD
100 μ m | SP. CURRENT = 2.77nA LOCK



18



19



20



21



22

7494-5

EHT = 20.0 KV WD = 23 mm
50.0µm |-----|

MAG = X 463.

PHOTO = 1649 R = BSD
SP. CURRENT = 2.74µA LOCK



14



15



16



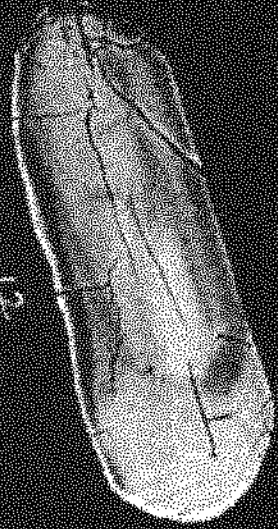
17

7494-4

EHI - 2010 KV AD - 23 gm HRC - Y 387. PHOTO - 1548 P - 150
100 µm |-----| SP. CORRENT - 2.76mm LOCK



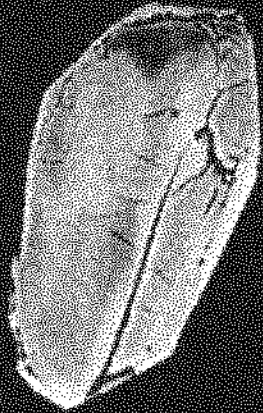
12



12



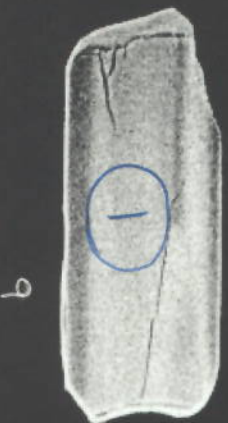
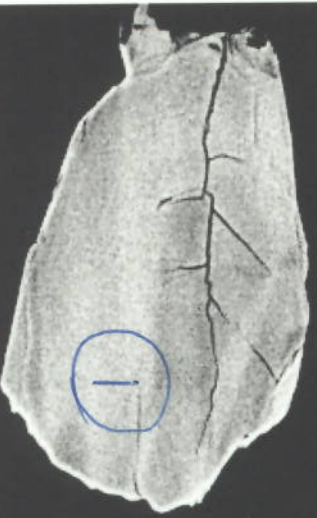
11



13

1494-3

EHT = 20.0 KV MD = 23 mm MAG = X 387. PHOTO = 1647 R = BSD
100 μm | SP. CURRENT = 2.60nA LOCK



7494-2

EHT = 20.0 KV MD = 23 mm
100 μ m

MAG = X 253. PHOTO = 1646 R = BSD
SP. CURRENT = 2.62mA LOCK



1



2



4



3



5

7494-1