



Natural Resources
Canada

Ressources naturelles
Canada

**GEOLOGICAL SURVEY OF CANADA
OPEN FILE 8963**

**Canada west coast topo-bathymetric digital elevation model,
British Columbia**

Version 2021

R. Kung, K. Douglas, and C.D. Stacey

2023

Canada

**GEOLOGICAL SURVEY OF CANADA
OPEN FILE 8963**

**Canada west coast topo-bathymetric digital elevation model,
British Columbia**

Version 2021

R. Kung, K. Douglas, and C.D. Stacey

2023

© His Majesty the King in Right of Canada, as represented by the Minister of Natural Resources, 2023

Information contained in this publication or product may be reproduced, in part or in whole, and by any means, for personal or public non-commercial purposes, without charge or further permission, unless otherwise specified.

You are asked to:

- exercise due diligence in ensuring the accuracy of the materials reproduced;
 - indicate the complete title of the materials reproduced, and the name of the author organization; and
 - indicate that the reproduction is a copy of an official work that is published by Natural Resources Canada (NRCan) and that the reproduction has not been produced in affiliation with, or with the endorsement of, NRCan.
- Commercial reproduction and distribution is prohibited except with written permission from NRCan. For more information, contact NRCan at copyright-droitdauteur@nrcan-rncan.gc.ca.

Permanent link: <https://doi.org/10.4095/331539>

This publication is available for free download through GEOSCAN (<https://geoscan.nrcan.gc.ca/>).

Recommended citation

Kung, R., Douglas, K., and Stacey, C.D., 2023. Canada west coast topo-bathymetric digital elevation model, British Columbia; Geological Survey of Canada, Open File 8963 (ver. 2021), 80 p. <https://doi.org/10.4095/331539>

Publications in this series have not been edited; they are released as submitted by the author.

TABLE OF CONTENTS

Page

Abstract	3
Introduction	3
DEM Specifications	4
Data Sources and Processing	7
Data Limitations	10
Future Improvements	11
Acknowledgements	11
References	12
Appendix A	13

ABSTRACT

The joint Natural Resources Canada/Department of Fisheries and Oceans Marine Spatial Planning Program requires the highest resolution bathymetric elevation data and adjacent land-based topographic elevation data that are available. This digital elevation model of Canada's west coast compiles the best data available from multiple government agencies to create a regional model gridded at 10 metre spacing. The transitions between the marine and terrestrial areas are near-seamless creating a surface of elevations for non-navigational scientific research, cartographic, and general marine spatial planning use.

The product is available on the Federal Geospatial Platform at:

<https://open.canada.ca/data/en/dataset/e6e11b99-f0cc-44f7-f5eb-3b995fb1637e>

INTRODUCTION

The Marine Geoscience for Marine Spatial Planning Program was established to address the seabed geoscience component of marine spatial planning initiatives in Canada. The West Coast of Canada is divided into four bioregions for marine spatial planning purposes: The Strait of Georgia, the BC South Coast, the BC North Coast and the Offshore (Figure 1). The BC North Coast region and part of the BC South Coast bioregion (the Salish Sea, comprising of the Strait of Georgia and Juan de Fuca Strait) are being addressed under the current program. Four main deliverables are being produced, of which a West Coast Digital Elevation model presented here is the first. The others are surficial geology, morphology, and grainsize/texture. In future, Seabed shear stress may be added as well under this program. This compilation addresses the need for a high resolution marine-based digital elevation model that encompasses the seabed bathymetry, coastal topography and available intertidal LIDAR from multiple government agencies.

Coverage includes the coast out to the continental slope and provides at least 5000 m horizontal distance inland from the coastline, integrating coastal topography and bathymetry. This coverage comprises the BC North Coast, BC South Coast, Vancouver Island, and Haida Gwaii. This publication presents the specifications, methods, data sources, and known issues to support the dataset. The extent covers the entire west coast of Canada's marine continental shelf including adjacent parts of Washington State in the Salish Sea.

The intent of this dataset is to provide a detailed and clean elevation surface for mapping at many scales from the entire Canadian west coast to large scale localities. It is meant to be used for scientific research including seafloor mapping, coastal hazards, and habitat identification. It can also be used as a basic mapping tool to assist in marine spatial planning in the coastal and marine environments. The dataset is not for navigational use. This product does not meet the requirements of the *Navigation Safety Regulations, 2020* under the *Canada Shipping Act, 2001*.

Official charts and publications, corrected and up-to-date, must be used to meet the requirements of those regulations.

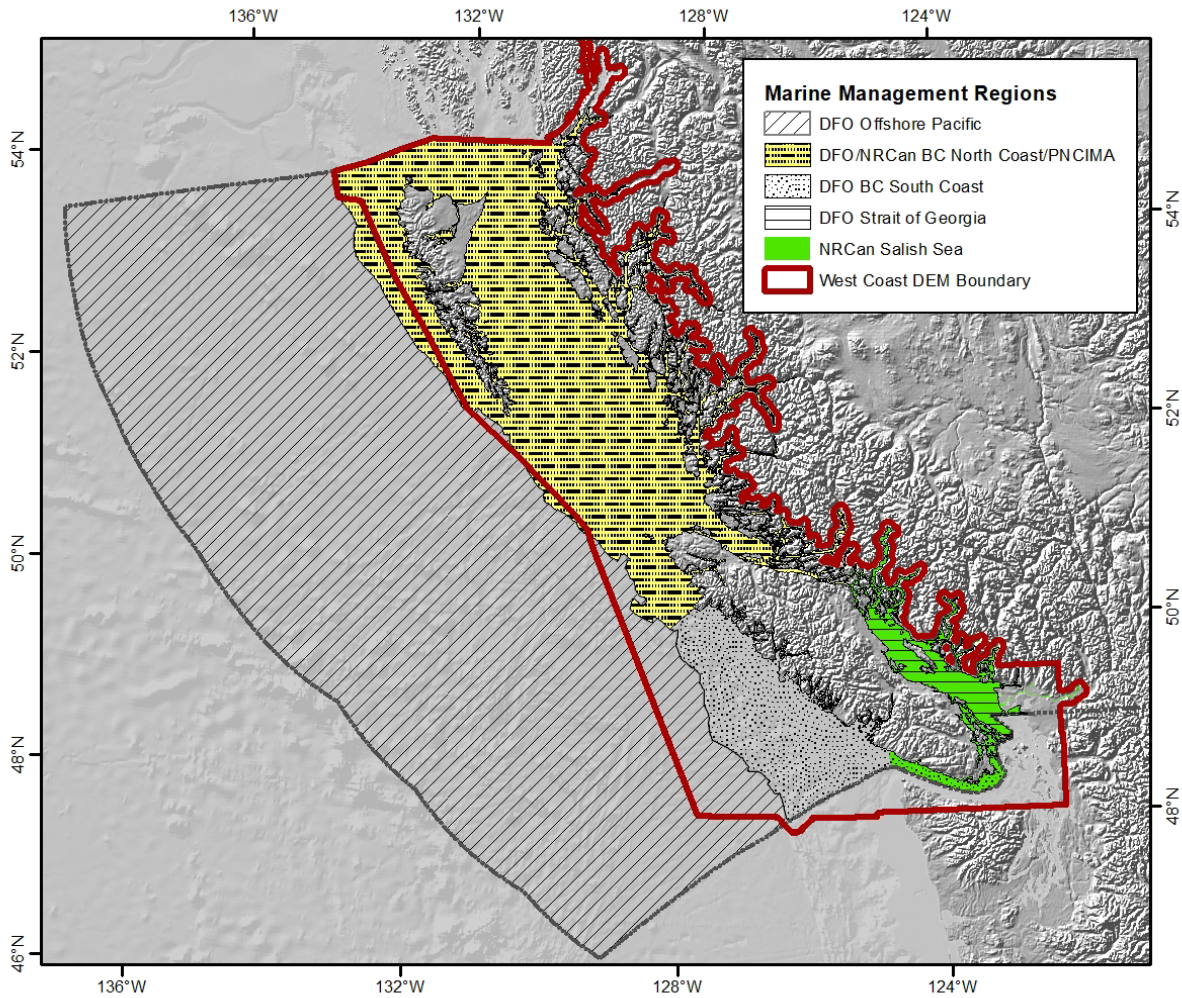


Figure 1. Map of Canadian Pacific Coastline with Marine Geoscience for Marine Spatial Planning (MGMS) bioregions in current program highlighted in yellow (BC North Coast/PNCIMA) and green (Salish Sea). DFO bioregions are presented with polygon overlays. The footprint of the West Coast DEM is outlined in red. Base map by Ryan et al. (2009).

DEM SPECIFICATIONS

The West Coast DEM (Figure 2) was built to the specifications listed in Table 1. The inset in Figure 2 shows the extent boundary in red. The best available digital datasets were obtained by Natural Resources Canada and shifted to common horizontal and vertical datums: North American Datum 1983 BC Environment Albers and Chart Datum (lowest low water large tide (LLWLT) in tidal waters based on

local tide gauges (Canadian Hydrographic Service, 2022)). Data sources, methods, and assessment are described in the next sections.

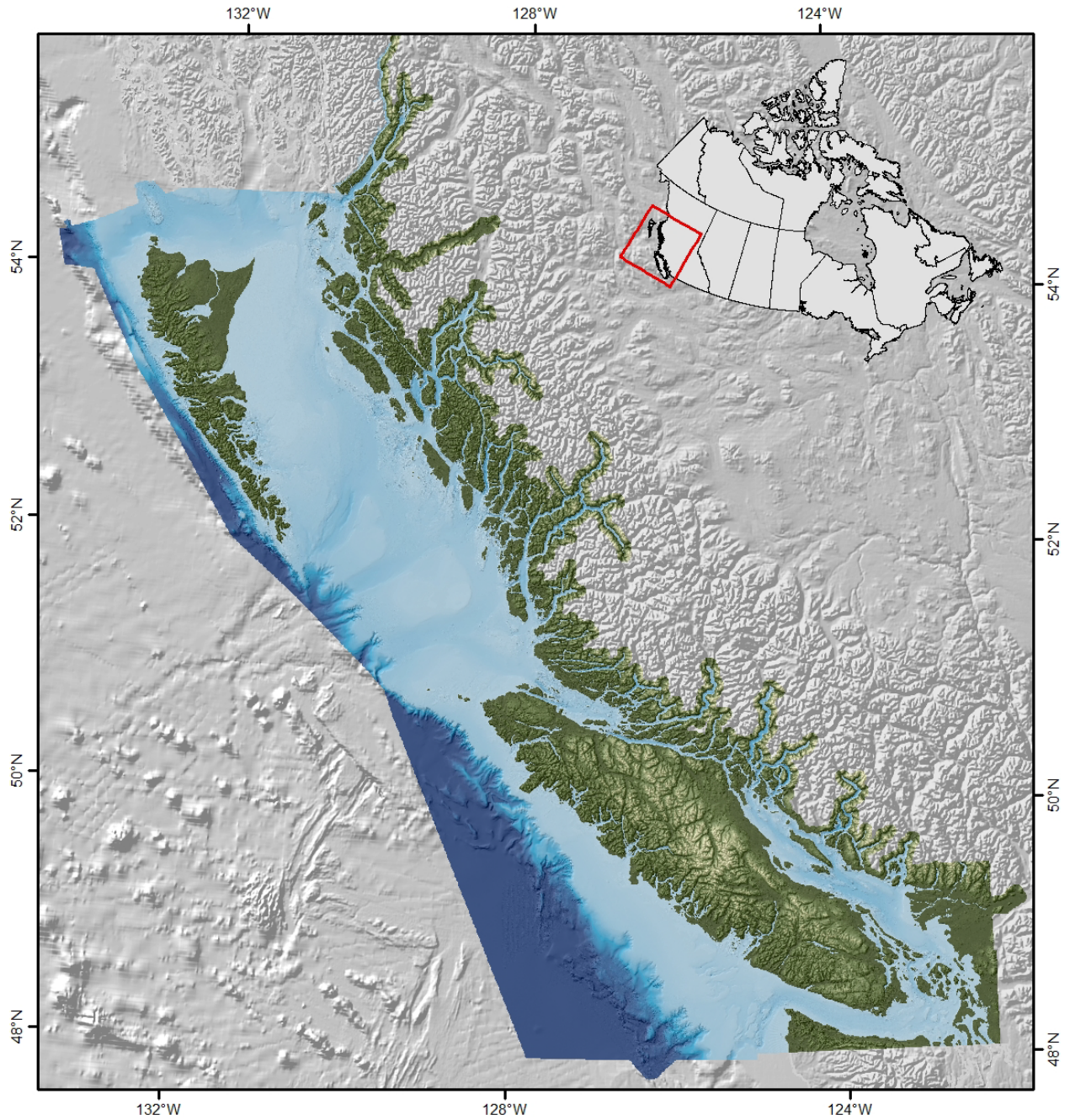


Figure 2. Digital Elevation Model shown in colour on top of lower resolution Global Multi-resolution Topography (Ryan et al, 2009). Extent shown over map of Canada in red.

Table 1. Specifications for the West Coast, Canada DEM.

Grid Area	West Coast Canada to North American Continental Shelf
Coverage Area	120.95° to 134.81° W, 47.50° to 56.24° N
Coordinate System	Projected
Horizontal Datum	NAD83 BC Albers
Vertical Datum	CHS Chart Datum (LLWLT)
Vertical Units	Metres
Cell Size	10 m
Raster Format	ESRI File Geodatabase Raster Dataset, WMS and ArcServer web services

DATA SOURCES AND PROCESSING

Data Sources

Original data sourced for this model include multibeam echo sounder data, hydrographic field sheet soundings, hydrographic depth contours, airborne LiDAR data, and photogrammetry derived topography. The footprints of the input datasets are shown in Figure 3 and sources are described in Table 2.

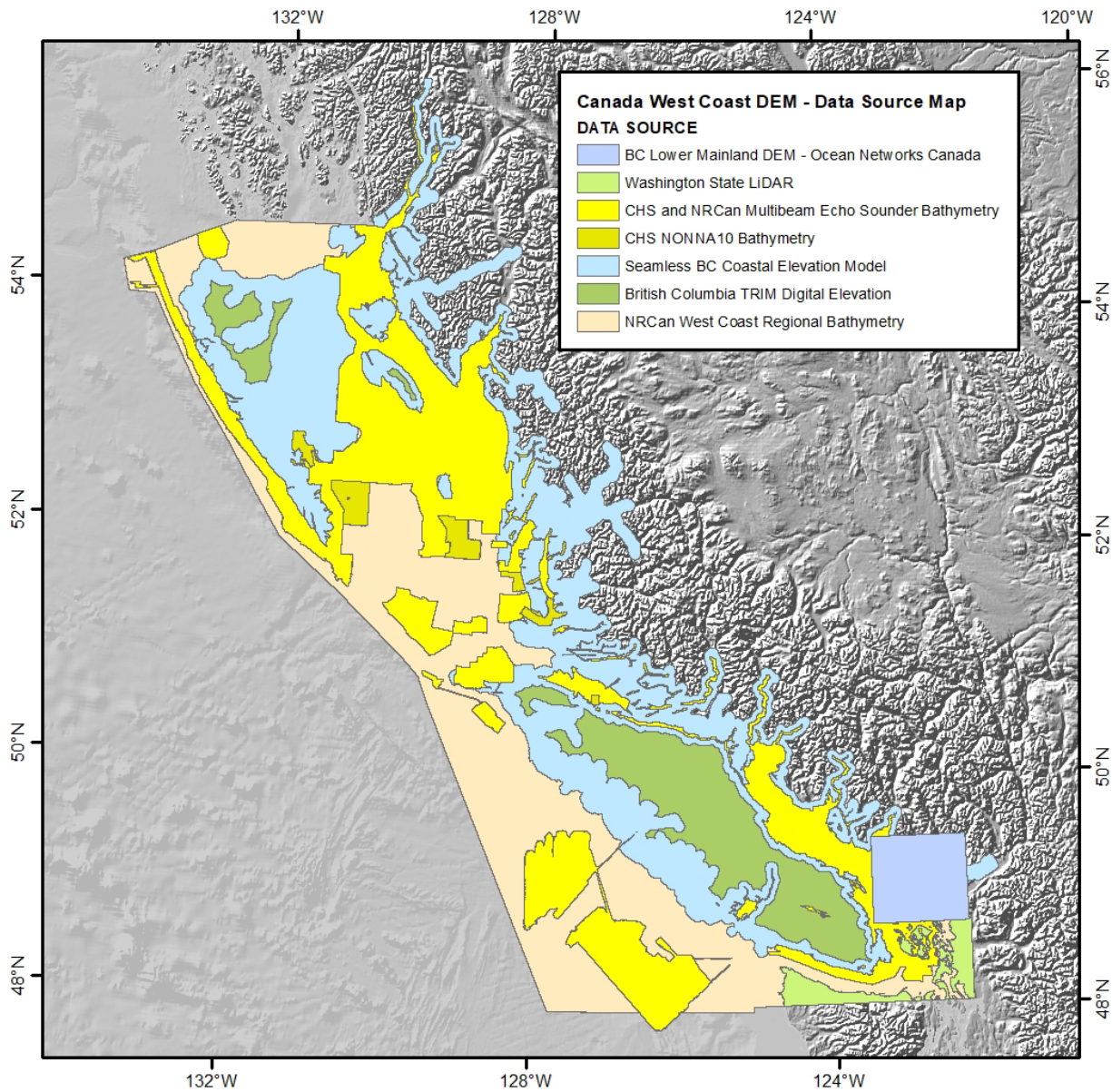


Figure 3. Polygons showing the input data source of the various areas of the digital elevation model. Basemap is from the Global Multi-resolution Topography (Ryan et al., 2009). More details on the data sources are available in Table 2.

Table 2. Bathymetric and Topographic Data Sources used in compiling the West Coast DEM.

Source/Title	Date	Data Type	Resolution	Horizontal Datum	Vertical Datum
CHS and NRCan/ Multibeam Echo Sounder Bathymetry	1994-2021	Gridded Bathymetry	1-5 m	EPSG 4326	Chart Datum (Lowest Low Tide (LLWLT))
Washington State/ LiDAR	2020	LiDAR	8 m	EPSG 2927/2926	NAVD88 vertical datum
DFO/ Seamless BC Coastal Elevation Model	2019	Gridded bathymetry and topography	20 m	EPSG 4326	Chart Datum (LLWLT)
Ocean Networks Canada/ BC Lower Mainland DEM	2019	Digital Elevation Model	3 m	EPSG 4326	CGVD 2013
CHS/ NONNA10 Bathymetry	2018	Gridded Bathymetry	10 m	EPSG 4326	Mostly Chart Datum (see linked metadata from source)
Government of British Columbia/ TRIM Digital Elevation	1999	Gridded Topography	25 m	EPSG 4269	Mean Sea Level
NRCan West Coast Regional Bathymetry	1999	Gridded bathymetry from chart contours	75 m	EPSG 4269	Chart Datum (LLWLT)

CHS and NRCan Multibeam Echo Sounder Bathymetry were collected between 1994 and 2021 at resolutions ranging from 1 to 5 metres. These data were acquired and processed by the Canadian Hydrographic Service under a memorandum of understanding with Natural Resources Canada (2021-0505-1260-NRCAN). A detailed list of surveys included is provided in Appendix A. The data were provided clean and corrected for sound velocity, tides, navigation and vessel offsets to International Hydrographic Organization (IHO) standards.

A coastal digital elevation model from Fisheries and Oceans Canada integrates ocean bathymetry and land topography described in Davies et al. (2019) at 20 m resolution. This compilation covers the data-sparse intertidal areas using field sheet data.

A regional digital elevation model from Natural Resources Canada developed from published CHS navigational chart contour data in 1999 is included at a resolution of 75 m. Contours were transformed to point depth data and then a triangulated irregular network was formed connecting these points to model the elevation. This compilation further transformed to a raster is used to fill in areas where high resolution data are not available.

A seamless digital elevation model of the British Columbia lower mainland, developed by Ocean Networks Canada during a workshop in Sept/Oct 2019 uses Greater Vancouver municipal LiDAR datasets, NRCan regional multibeam mosaics developed from CHS multibeam survey data, and airborne bathymetric LiDAR. This compilation provides high resolution continuous data for the lower mainland and southern Salish Sea. LiDAR data were downloaded and included from the Washington State Department of Natural Resources Lidar Portal at <https://lidarportal.dnr.wa.gov/#48.50159:-122.92946:10>. These data supplement the topography for the Washington State areas of the digital elevation model.

Shoreline

The Canadian Hydrographic Service (2007) provided a high-resolution coastline dataset at Higher High Water Large Tide (HHWLT) datum to determine the shoreline for this digital elevation model.

Methods

The datasets listed in table 2 were downloaded and compiled from their original data sources in their original formats and resolutions. All processing of the data was performed in ArcGIS 10.7 in a Windows Server 2012 Windows O/S / Oracle 11 Release 2 environment.

All data were projected into a common map projection, in this case a NAD83 BC Albers (EPSG 3005) with a central meridian of -126. As described by Klinkinberg (1995), this projection uses a central meridian located in British Columbia that is more central to this dataset than other national projections that tilt British Columbia as its westernmost province. The DEM data cross UTM Zones, but the area represented is close for NAD83 BC Albers, making this larger projection useful. Lastly, the projection provides uniform map display with little distortion for the British Columbia coast and province (Klinkinberg, 1995). This projection is also consistent with that used by the British Columbia Government.

All data were up sampled or down sampled to a common resolution of 10 meters, using appropriate resampling algorithms. Up sampling used a bilinear algorithm, and down sampling used a cubic convolution algorithm. Default settings were used in all algorithms. Origin of the point centre is the centroid of each cell.

Where necessary, data elevations were re-calculated to the vertical chart datum used by the Canadian Hydrographic Service. A continuous vertical datum model surface produced by CHS provides conversion to chart datum from CGVD2013 datum. As most source datasets were

already in chart datum, the decision was made to use chart datum as the vertical datum. The aim was to mitigate the introduction of additional errors in conversion by converting only the remaining datasets using the continuous vertical datum model. A future version may include transformation to CGVD2013 or another more commonly ellipsoidal-based datum. The terrestrial LiDAR from Washington State has not been converted from NAD88 at this time. As this dataset is primarily for use in marine applications and the footprint is comparatively small, this multi-step conversion process has not been prioritized. This may be done in a future iteration of the dataset.

Data were merged into a continuous elevation surface of 10 m. Priority was assigned by resolution with coarsest on the bottom and finest on the top. The compilation starts with NRCan regional scale data followed by TRIM topography, CHS NONNA bathymetry, DFO's seamless coastal elevation model for the transition from bathymetry to topography, then CHS multibeam mosaics, ONC's DEM, and finally LIDAR. The individual CHS bathymetry survey datasets were mosaicked into 5 m grids before integration. All datasets were merged as rasters rather than points for computational ease.

The output continuous elevation surface was hill-shaded using ArcGIS to create a shaded relief layer from a Northwest azimuth (315 degrees) at a 45 degree inclination with a vertical exaggeration of 2X to accentuate the relief. A source map was compiled from the vectorized polygons of the original data extents. Metadata were compiled using the NRCan Laboratoire de Cartographie Numérique et de Photogrammétrie (LCNP) online metadata editor ISO 19115:2003 NAP profile and are available with the dataset or by direct link:

<http://csw.open.canada.ca/geonetwork/srv/csw?service=CSW&version=2.0.2&request=GetRecordById&outputSchema=csw:IsoRecord&ElementSetName=full&id=e6e11b99-f0cc-44f7-f5eb-3b995fb1637e>

Quality control of the continuous elevation surface was done visually. Data were inspected for anomalies such as terracing, and irregular seams after merging of datasets.

DATA LIMITATIONS

The continuous elevation surface has an appropriate use scale of 1:50,000, and may be usable for some locations at 1:20,000 where data density allows. The data are intended to be used for scientific non-navigational or cartographic use at a bioregional or regional scale. The surface is not intended nor recommended for engineering or targeted scale projects. The data are not to be used for navigation.

As with all models, there are inaccuracies to be expected, in particular where source data are sparse. The NRCan 75 m regional bathymetric dataset is produced from chart contours with low data density and as such the vertical and horizontal uncertainty is high in the areas where this dataset is used. Bathymetry datasets, and in particular older datasets collected with less sophisticated sonars, are prone to artefacts such as those from NADIR lines and sound velocity

curves at edges of swaths. Intertidal data have been interpolated from field sheet data and use interpolation algorithms such as TIN and nearest neighbour. Low data density in these areas may cause small-scale bathymetric features to be missed. The highest uncertainty is expected in the intertidal areas where bathy LiDAR is not available and in the offshore.

Other than conversion of datums and resolution, datasets are used ‘as is’ from sources. As this new DEM merges multiple existing models, we acknowledge that any existing errors in original source material will be present in the new DEM.

FUTURE IMPROVEMENTS

This DEM is intended as an evergreen product that will be updated periodically as new data become available. At the time of publication, the map is hosted on the Federal Geospatial Platform (<https://open.canada.ca/data/en/dataset/e6e11b99-f0cc-44f7-f5eb-3b995fb1637e>) and future improvements are intended to remain hosted here. Future improvements will include adding new multibeam bathymetry collected since 2020, further LiDAR and bathy-LIDAR surveys for intertidal areas, and vertical LIDAR for steep slopes. The LiDAR for Washington State could be converted from NAVD88 to CGVD2018 using VDatum models and then converted to Chart Datum using the CHS grid to bring all datasets into a common vertical datum in the terrestrial regions. Alternatively, an ellipsoidal-based vertical datum may be used for all.

ACKNOWLEDGEMENTS

We thank those who produced the input datasets: Fisheries and Oceans Canada, Canadian Hydrographic Service, Ocean Networks Canada, and Washington State Department of Natural Resources. We thank the Canadian Hydrographic Service for their continued partnership and quality collection of bathymetric data. In particular, we thank Marlene Jeffries for her assistance with the continuous vertical datum model. This dataset is produced by Natural Resources Canada and incorporates Canadian Hydrographic Service data, pursuant to CHS MOU# 2021-0505-1260-NRCAN for illustrative, non-navigational purposes only. The incorporation of data sourced from CHS in this product shall not be construed as constituting an endorsement by CHS of this product. We thank Paul Fraser for reviewing this publication.

REFERENCES

Canadian Hydrographic Service, 2007. High water line dataset. Provided by request
chsinfo@dfo-mpo.gc.ca

Canadian Hydrographic Service, 2022. Vertical datum chart references: about chart datum.
<https://tides.gc.ca/en/vertical-datum-chart-references>

Davies, S.C., Gregr, E.J., Bureau, D. and Wills, P., 2019. *Coastal digital elevation models integrating ocean bathymetry and land topography for marine ecological analyses in Pacific Canadian waters*. Canadian Technical Report of Fisheries and Aquatic Sciences 3321

Kinkinberg, B. 1995. BC Environment Standard Projection. Course Notes 1995-07-31.
University of British Columbia. <https://ibis.geog.ubc.ca/~brian/Course.Notes/bceprojection.html>

Ryan, W. B. F., S.M. Carbotte, J. Coplan, S. O'Hara, A. Melkonian, R. Arko, R.A. Weissel, V. Ferrini, A. Goodwillie, F. Nitsche, J. Bonczkowski, and R. Zemsky (2009), Global Multi-Resolution Topography (GMRT) synthesis data set, *Geochem. Geophys. Geosyst.*, 10, Q03014, doi:[10.1029/2008GC002332](https://doi.org/10.1029/2008GC002332).

APPENDIX A

Table 1. Canadian Hydrographic Service Multibeam sonar bathymetric surveys collected between 1994 and 2020 Included in the Digital Elevation Model

Name	Year	System	Vessel	Cell Size (m)	Area (km ²)	Perimeter (km)	Locale	Region
1994ForeslopeHills	1994	EM3000	Puffin	3	76.8	68.2	Foreslope Hills	Salish Sea
1994MalaspinaStrait	1994	EM3000	Puffin	3	36.6	45.9	Malaspina Strait	Salish Sea
1994RobertsBank	1994	EM3000	Puffin	3	75.5	59.2	Roberts Bank	Salish Sea
1994SabineChannel	1994	EM3000	Puffin	3	24.4	40.6	Sabine Channel	Salish Sea
1996RobertsBank	1996	EM3000	Puffin	2	5.3	33.5	Roberts Bank	Salish Sea
1997JuanPerezSound_BurnabyStrait_1301628	1997	EM3000	Puffin	2	40.0	69.8	Juan Perez Sound	Haida Gwaii
1997JuanPerezSound_RamsayPassage_1301629	1997	EM3000	Revisor	5	24.6	66.3	Ramsay Passage	Haida Gwaii
1997JuanPerezSound_RamsayPassage_1301629	1997	EM3000	Puffin	5	12.9	42.7	Juan Perez Sound	Haida Gwaii
1997Nanaimo_5027011	1997	EM3000	Puffin	1	11.0	41.1	Nanaimo	Salish Sea
1997Nanose Harbour_5027010	1997	EM3000	Puffin	2	7.2	19.9	Nanose Bay	Salish Sea
1998CatalaMoody_5026107	1998	EM3000	Revisor	5	51.8	82.1	Laredo	British Columbia North Coast
1998DicksonIsland_5020245	1998	EM3000	Revisor	2	0.0	1.2	Wells Passage	British Columbia Central Coast
1998DuncanBay_5027277	1998	EM3000	Revisor	2	0.6	7.1	Duncan Bay	British Columbia Central Coast
1998Esquimalt_5027454	1998	EM3000	Revisor	2	22.0	48.9	Victoria	Salish Sea
1998PorteauCove_5020242	1998	EM3000	Revisor	1	0.1	1.7	Porteau Cove	Salish Sea
1998Squamish_5020243	1998	EM3000	Revisor	2	0.2	10.1	Howe Sound	Salish Sea
1998TrialIsland_5026126	1998	EM3000	Revisor	2	37.7	69.7	Trial Island	Salish Sea
1999ColburneIroquoisPassage_5028176	1999	EM3000	Revisor	2	19.5	81.1	Colburne - Iroquois Passage	Salish Sea
1999FrenchCreek_5027081	1999	EM3000	Revisor	1	8.6	18.3	Qualicum Beach	Salish Sea

1999Gabriola_5026110	1999	EM3000	Revisor	3	26.6	85.6	Howe Sound	Salish Sea
1999KyuquotSound_MBES_5026982	1999	EM3000	Revisor	2	25.6	129.9	Kyuquot Sound	West coast Vancouver Island
1999PatriciaBay_5026111	1999	EM3000	Revisor	2	9.3	31.0	Patricia Bay	Salish Sea
1999RaceRocks_5024987	1999	EM3000	Revisor	1	18.1	24.2	Race Rocks	Salish Sea
1999Sidney	1999	EM3000	Revisor	2	88.1	183.5	Sidney	Salish Sea
1999SidneyApproches_South_5028177	1999	EM3000	Revisor	2	31.3	104.7	Haro Strait	Salish Sea
1999Victoria_5026112	1999	EM3000	Revisor	2	11.5	58.8	Victoria	Salish Sea
2000Admiralty_5026137	2000	EM1002	RBYoung	5	139.5	111.5	Admiralty Inlet	Puget Sound
2000ApproachesToMalakopeInlet_5029368	2000	EM3000	Revisor	2	29.6	150.7	Kyuquot Sound	West coast Vancouver Island
2000Bowie_1301669	2000	Elac1050D	Rainier	10	1045.1	282.0	Bowie Seamounts	Northeast Pacific Ocean
2000CapeMudge	2000	EM1002	RBYoung	5	10.8	16.5	Cape Mudge	Salish Sea
2000GeorgiaBasin_5025236	2000	EM1002	RBYoung	5	814.0	189.1	Georgia Basin	Salish Sea
2000HaroStrait	2000	Reson8101	MacGintie	5	90.9	241.0	Haro Strait	Salish Sea
2000JuanDeFuca_5025705	2000	EM1002	RBYoung	5	177.7	116.7	Juan de Fuca Strait	Salish Sea
2000JuandeFuca_DND	2000	EM1002	RBYoung	5	340.2	427.7	Juan de Fuca Strait	West coast Vancouver Island
2000KyuquotSound	2000	EM3000	Revisor	5	204.6	253.8	Kyuquot Sound	West coast Vancouver Island
2000Nanaimo_5023597	2000	EM3000	Revisor	2	0.1	2.4	Nanaimo	Salish Sea
2000Northumberland_5024999	2000	EM3002	Otter Bay	2	3.5	22.2	Northumberland Channel	Salish Sea
2000PointGrey_5027013	2000	EM3000	Revisor	2	8.5	47.6	Point Grey	Salish Sea
2000PortAlice_1301664	2000	EM3000	Revisor	1	0.2	2.8	Port Alice	West coast Vancouver Island
2000PrinceRupert_5025003	2000	EM3000	Revisor	5	6.5	37.6	Prince Rupert	British Columbia North Coast
2000SatelliteChannel_5026114	2000	EM3000	Revisor	2	12.8	112.0	Satellite Channel	Salish Sea
2000SidneyHarbour	2000	EM3000	Revisor	2	0.1	2.0	Sidney Harbour	Salish Sea
2000SimoomSound_5026098	2000	EM3000	Revisor	2	6.8	42.8	Simoom Sound	British Columbia

								Central Coast
2000Steveston	2000	EM3000	Revisor	2	1.6	24.1	Steveston	Salish Sea
2000Stewart	2000	EM3000	RB Young	10	8.0	29.9	Stewart Harbour	British Columbia North Coast
2000StraitofGeorgia_WG_5025296	2000	EM1002	RBYoung	5	243.6	81.2	Bellanas Channel	Salish Sea
2001DeepCove_5023238;5023238.asc.gz	2001	EM3000	Revisor	1	0.2	2.6	Deep Cove	Salish Sea
2001Georgia_5025249	2001	EM1002	RBYoung	5	488.5	183.1	Georgia Basin	Salish Sea
2001JuandeFuca_DN_D_5026118	2001	EM1002	RBYoung	5	238.9	473.1	Juan de Fuca Strait	West coast Vancouver Island
2001KanishBay_5026128	2001	EM3000	Revisor	2	5.3	27.0	Kanish Bay	British Columbia Central Coast
2001Nanaimo_5m_5026959_Final	2001	EM1002	RBYoung	2	109.3	69.4	Nanaimo	Salish Sea
2001Nootka_5024329	2001	Hydrosweep	Thompson	40	5327.8	1583.8	Cascadia Margin	Continental Slope
2001PortElizabeth_5026129	2001	EM3000	Revisor	1	3.1	31.9	Port Elizabeth	British Columbia Central Coast
2001Qualicum_5027082	2001	EM1002	RBYoung	5	108.9	101.1	Qualicum Beach	Salish Sea
2001RbyBoundary	2001	EM1002	RBYoung	5	251.8	151.5	Boundary Passage	Salish Sea
2001Roberts&SturgeonBanks_5025005	2001	EM3000	Revisor	2	72.8	285.4	Roberts Bank	Salish Sea
2001SnakeIsland_1301671	2001	EM3000	Revisor	1	0.2	3.6	Snake Island	Salish Sea
2001Tumbo_1301674	2001	EM1002	RBYoung	5	147.5	74.8	Tumbo Island	Salish Sea
2001Vancouver	2001	EM3000	Revisor	1	29.2	50.2	Sturgeon Bank	Salish Sea
2002CanoePassage	2002	EM3000	Revisor	1	0.7	6.4	Canoe Passage	Salish Sea
2002ClioChannel_5026130	2002	EM3000	Revisor	2	15.0	64.7	Clio Channel	British Columbia Central Coast
2002EnglishBay_5025418	2002	EM3000	Revisor	2	24.6	85.2	English Bay	Salish Sea
2002ExplorerRidge_5026783	2002	EM300	Thompson	50	2513.9	3010.4	Explorer Ridge	West coast Vancouver Island
2002GeorgiaBasin	2002	EM1002	Vector	5	626.7	290.8	Georgia Basin	Salish Sea
2002GriffinShoal_5026719	2002	EM3000	Revisor	2	0.0	1.0	Griffin Shoal	British Columbia

								North Coast
2002GulfIslands_5025729	2002	EM3000	Revisor	5	66.6	230.0	Gulf Islands	Salish Sea
2002GunboatPassage	2002	Unknown	Unknown	2	0.2	3.2	Gunboat Passage	British Columbia North Coast
2002HaroStrait_5025353	2002	EM1002	Vector	2	403.1	257.8	Haro Strait	Salish Sea
2002LadyDouglas_5026720	2002	EM3000	Revisor	2	0.1	5.5	Lady Douglas Island	British Columbia North Coast
2002MiddleBank_5026260	2002	EM1002	Vector	5	113.1	65.3	Middle Bank - San Juan Islands	Salish Sea
2002NascallBay_1301692	2002	EM3000	Revisor	2	0.5	6.5	Nascall Bay	British Columbia North Coast
2002PorpoiseHbr_1301696	2002	EM3000	Revisor	2	0.6	12.4	Porpoise Harbour	British Columbia North Coast
2002PrinceRupertHarbour_5026141	2002	EM3000	Revisor	2	0.5	6.1	Prince Rupert	British Columbia North Coast
2002SaanichInlet_5026185	2002	EM1002	Vector	5	55.3	60.3	Saanich Inlet	Salish Sea
2002SkidegateNarrows_1301701	2002	EM3000	Revisor	1	0.2	9.4	Skidegate Narrows	Haida Gwaii
2002StraitofGeorgia_Ballenas_5025762	2002	EM1002	Vector	5	240.2	535.5	Ballenas Channel	Salish Sea
2002StraitofGeorgia_McCall_5026701	2002	EM1002	Vector	5	360.2	139.2	Strait of Georgia McCall Bank	Salish Sea
2002Swanson_5026132	2002	EM1002	Vector	5	23.2	58.7	Swanson Channel	Salish Sea
2002TrailBay_5026133	2002	EM3000	Revisor	2	5.6	18.4	Trail Bay	Salish Sea
2002Trincomali_5026920	2002	EM3000	Revisor	5	8.2	21.5	Trincomali Channel	Salish Sea
2002VennPass_1301695	2002	EM3000	Revisor	2	0.3	10.6	Venn Passage	British Columbia North Coast
2002WighamCove	2002	EM3000	Revisor	2	0.1	3.3	Wigham Cove	British Columbia North Coast
2003BatePassage_5026103	2003	EM1002	Vector	5	10.1	27.3	Bate Passage	Queen Charlotte Sound

2003BaynesSound_5026102	2003	EM1002	Vector	2	11.7	29.1	Bazan Bay	Salish Sea
2003BoundaryBay_DND	2003	EM1002	Vector	5	110.8	58.2	Boundary Bay	Salish Sea
2003BoundaryPassage	2003	EM3000	Revisor	2	6.8	12.2	Boundary Passage	Salish Sea
2003BoundaryPassage	2003	EM3000	Revisor	2	35.9	169.0	Boundary Passage	Salish Sea
2003BrentwoodBay_5026143	2003	EM3000	Revisor	1	0.2	5.5	Saanich Inlet	Salish Sea
2003CanoePassage	2003	EM3000	Revisor	1	0.7	6.3	Canoe Passage	Salish Sea
2003DeepCove_5026144	2003	EM3000	Revisor	1	2.5	13.8	Deep Cove	Salish Sea
2003EnglishBay_5026712	2003	EM3000	Revisor	2	32.5	92.9	English Bay	Salish Sea
2003FalseCreek_2m_5025511	2003	EM3000	Revisor	2	0.2	6.4	False Creek	Salish Sea
2003GriefPoint_5026135	2003	EM1002	Vector	5	16.7	19.6	Grief Point	Salish Sea
2003HaroStrait_5025647	2003	EM3000	Revisor	2	82.9	166.6	Haro Strait	Salish Sea
2003Hornby_5026745	2003	EM1002	Vector	5	579.8	190.4	Hornby Island	Salish Sea
2003JuandeFuca	2003	EM1002	Vector	5	59.9	205.0	Juan de Fuca Strait	West coast Vancouver Island
2003JuandeFuca_DND_5026650	2003	EM1002	Vector	5	45.2	209.7	Juan de Fuca Strait	West coast Vancouver Island
2003Kunghit_5026079	2003	EM1002	Vector	5	270.1	881.2	Kunghit Island	Haida Gwaii
2003LittleRiver_5026115	2003	EM1002	Vector	5	455.8	199.6	Little River	Salish Sea
2003MillBay_5025894	2003	EM3000	Revisor	1	4.0	27.0	Saanich Inlet	Salish Sea
2003NorthSponge_5026921	2003	EM1002	Vector	5	566.3	157.1	Sponge Reef	Hecate Strait
2003Oil&Gas_5026117	2003	EM1002	Vector	5	714.2	151.9	Oil and Gas	Hecate Strait
2003PresidentChannel	2003	EM3000	Revisor	2	39.9	109.9	President Channel	Salish Sea
2003RippleRock_5026080	2003	EM1002	Vector	5	8.3	49.8	Ripple Rock	British Columbia Central Coast
2003RosarioStrait	2003	EM1002	Vector	5	475.7	255.2	Rosario Strait	Salish Sea
2003Sandheads	2003	EM3002	Otter Bay	5	5.1	13.0	Sandheads	Salish Sea
2003SeymourBelizeInlets_5026078	2003	EM1002	Vector	5	211.7	515.4	Seymour Belize Inlet	British Columbia Central Coast
2003SouthSponge	2003	EM1002	Vector	5	228.5	78.7	Sponge Reef	Hecate Strait

2003Trincomali_5026740	2003	EM3000	Revisor	2	54.8	62.1	Trincomali Channel	Salish Sea
2004Agamemnon_5026070	2004	EM1002	Vector	5	15.2	44.4	Agamemnon Channel	Salish Sea
2004BarkleyCanyon_5026659	2004	EM300	Thompson	20	6329.5	1240.5	Barkley Canyon	Continental Slope
2004BoundaryBay_5026069	2004	EM1002	Vector	5	56.0	36.1	Boundary Bay	Salish Sea
2004BoundaryPass	2004	EM1002	Vector	5	10.7	25.7	Boundary Passage	Salish Sea
2004CapeFreeman_5026067	2004	EM1002	Vector	5	199.4	861.7	Cape Freeman	Haida Gwaii
2004ConstanceBank_5026147	2004	EM1002	Vector	5	41.4	41.0	Constance Bank	Salish Sea
2004EnglishBay_5026088	2004	EM1002	Vector	5	13.6	24.1	English Bay	Salish Sea
2004FridayHarbour	2004	EM3002	Otter Bay	2	6.9	21.9	Friday Harbour	Salish Sea
2004HoustonStewart_5026066	2004	EM1002	Vector	5	5.4	59.9	Houston Channel	Haida Gwaii
2004HoweSound	2004	EM1002	Vector	5	43.4	100.6	Howe Sound	Salish Sea
2004JPEntrance_5026065	2004	EM1002	Vector	5	110.9	113.6	Juan Perez Sound	Hecate Strait
2004JuanDeFuca_5026124	2004	EM1002	Vector	5	276.2	243.1	Juan de Fuca Strait	West coast Vancouver Island
2004JuanPerez_502646	2004	EM1002	Vector	5	233.7	322.0	Juan Perez Sound	Haida Gwaii
2004LaredoInlet_5026072	2004	EM1002	Vector	5	52.1	144.5	Laredo	British Columbia North Coast
2004MalaspinaMiddle	2004	EM1002	Vector	5	259.8	138.8	Malaspina Strait	Salish Sea
2004MalaspinaStrait_5026074	2004	EM1002	Vector	5	135.9	133.8	Malaspina Strait	Salish Sea
2004MiddleReefNorth_5026064	2004	EM1002	Vector	5	254.8	155.8	Sponge Reef	Hecate Strait
2004MiddleReefSouth_5026063	2004	EM1002	Vector	5	575.6	155.6	Sponge Reef	Hecate Strait
2004North_Sponge_5026122	2004	EM1002	Vector	5	31.3	72.4	Sponge Reef	Hecate Strait
2004NorthGeorgiaBasin_5026061	2004	EM1002	Vector	5	545.6	263.9	Georgia Basin	Salish Sea
2004Oil&Gas_5026689	2004	EM1002	Vector	5	127.2.1	292.0	Oil and Gas	Hecate Strait
2004OrcasIsland	2004	EM3002	Otter Bay	2	34.8	84.7	Orcas Island	Salish Sea
2004PendrellSound_5026106	2004	EM1002	Vector	5	20.4	55.4	Pendrell Sound	Salish Sea
2004PowellRiver	2004	EM1002	Vector	5	91.7	56.4	Powell River	Salish Sea
2004RippleRock_5026081	2004	EM1002	Vector	5	5.1	25.6	Ripple Rock	British Columbia Central Coast

2004SalteryBay; 5026074	2004	EM1002	Vector	5	45.3	47.0	Saltery Bay	Salish Sea
2004SansumNarrows 5026060	2004	EM1002	Vector	3	67.6	87.6	Sansum Narrows	Salish Sea
2004Scuttle_Bay_50 26059	2004	EM1002	Vector	5	28.1	56.3	Scuttle Bay	Salish Sea
2004SmithInlet_5026 086	2004	EM1002	Vector	5	68.3	198.4	Juan de Fuca Strait	British Columbia Central Coast
2004South_Malaspina 5026057	2004	EM1002	Vector	5	127. 4	99.8	Malaspina Strait	Salish Sea
2004StraitofGeorgia_ WF 5026095	2004	EM1002	Vector	3	124. 2	66.0	Bellanas Channel	Salish Sea
2004StuartChannel	2004	EM1002	Vector	5	29.5	55.3	Stuart Channel	Salish Sea
2004WaspPassage	2004	EM3002	Otter Bay	2	1.3	14.4	Wasp Passage	Salish Sea
2004WellsCove_502 6105	2004	EM1002	Vector	5	151. 3	138.5	Wells Cove	Haida Gwaii
2004WrightPassage_ 5026054	2004	EM1002	Vector	5	10.8	53.9	Wright Passage	Hecate Strait
2005AlberniInlet	2005	EM1002	Vector	5	31.8	129.1	Alberni Inlet	West coast Vancouver Island
2005BeaumontShoal 5025805	2005	EM3002	Otter Bay	5	3.3	14.7	Beaumont Shoal	Salish Sea
2005CanoePassEntrance 5025675	2005	EM3002	Otter Bay	1	3.4	23.3	Canoe Passage	Salish Sea
2005CanoePassEntrance 5025675	2005	EM3002	Otter Bay	1	0.4	6.0	Canoe Passage	Salish Sea
2005Clayoquot_5026 923	2005	EM1002	Vector	5	15.0	135.6	Clayoquot	West coast Vancouver Island
2005ColesBay_5025 885	2005	EM3002	Otter Bay	2	6.6	33.6	Coles Bay	Salish Sea
2005ConstanceBank_ 5025799	2005	EM3002	Otter Bay	5	11.7	20.2	Constance Bank	Salish Sea
2005Cowichan_5025 881	2005	EM3002	Otter Bay	2	26.2	138.3	Cowichan Bay	Salish Sea
2005Cumshewa_Inlet 5025903	2005	EM1002	Vector	5	27.4	76.7	Cumshewa Inlet	Haida Gwaii
2005DesolationSound 5025909	2005	EM1002	Vector	5	101. 9	80.6	Desolation Sound	Salish Sea
2005EffinghamInlet	2005	EM1002	Vector	5	11.5	42.0	Effingham Inlet	West coast Vancouver Island
2005EsquimaltJettyF 5025779	2005	EM3002	Otter Bay	2	0.2	3.5	Esquimalt Harbour	Salish Sea
2005FitzHugh_50260 53	2005	EM1002	Vector	5	71.9	71.7	Fitz Hugh Sound	British Columbia North Coast
2005Goldstream_502 5879	2005	EM3002	Otter Bay	2	1.0	17.4	Saanich Inlet	Salish Sea

2005GrenvilleChannel_5025901	2005	EM1002	Vector	5	120.2	224.9	Grenville Channel	British Columbia North Coast
2005GriffinBay	2005	EM3002	Otter Bay	2	18.0	62.1	Griffin Bay	Salish Sea
2005HansonIsland_5025870	2005	EM1002	Vector	5	12.4	72.0	Hanson Island	British Columbia Central Coast
2005HarneyChannel	2005	EM3002	Otter Bay	2	6.2	49.2	Harney Channel	Salish Sea
2005HerringBay_5025869	2005	EM3002	Otter Bay	2	0.1	4.7	Herring Bay	Salish Sea
2005HoweSound_5025782	2005	EM1002	Vector	5	236.4	213.4	Howe Sound	Salish Sea
2005Juan_Perez_Entrance	2005	EM1002	Vector	5	85.8	76.5	Juan Perez Sound	Hecate Strait
2005KnightInletEast_5025887	2005	EM1002	Vector	5	177.4	210.3	Knight Inlet	British Columbia Central Coast
2005KnightInletWest_5025880	2005	EM1002	Vector	5	71.8	294.0	Knight Inlet	British Columbia Central Coast
2005LawnPoint_5026125	2005	EM1002	Vector	5	10.0	50.8	Lawn Point	Haida Gwaii
2005Lopez_Central	2005	EM3002	Otter Bay	2	7.9	23.3	Lopez Island	Salish Sea
2005Lopez_North	2005	EM3002	Otter Bay	2	14.2	33.4	Lopez Island	Salish Sea
2005LuxanaBay	2005	EM1002	Vector	3	0.4	3.5	Luxana Bay	Haida Gwaii
2005MansonPassage_5025907	2005	EM1002	Vector	5	283.1	103.6	Manson Passage	Salish Sea
2005MiddleSpongeNorth_5025905	2005	EM1002	Vector	5	145.6	118.6	Sponge Reef	Hecate Strait
2005MiddleSpongeSouth_5025904	2005	EM1002	Vector	5	52.5	84.2	Sponge Reef	Hecate Strait
2005MoresbyPassage_5025896	2005	EM3002	Otter Bay	2	13.5	42.3	Moresby Passage	Salish Sea
2005NanaimoApproaches_OtterBay_5025876	2005	EM1002	Vector	5	7.8	16.3	Nanaimo	Salish Sea
2005NanaimoApproaches_Vector_5025876	2005	EM3002	Otter Bay	2	36.9	99.0	Nanaimo	Salish Sea
2005North_Sponge_5026121	2005	EM1002	Vector	5	98.5	131.5	Sponge Reef	Hecate Strait
2005Oceans_5026049	2005	EM1002	Vector	5	488.9	493.7	Cape St. James	Haida Gwaii
2005Oil&Gas_5025655	2005	EM1002	Vector	5	1440.8	380.3	Oil and Gas	Hecate Strait
2005ParksBay	2005	EM3002	Otter Bay	2	1.7	12.4	Parks Bay	Salish Sea
2005ParryBay_5025802	2005	EM3002	Otter Bay	2	9.7	34.7	Parry Bay	Salish Sea

2005PedderBay_5025803	2005	EM3002	Otter Bay	5	0.6	5.0	Pedder Bay	Salish Sea
2005PetrelChannel_5026048	2005	EM1002	Vector	5	90.6	246.9	Petrel Channel	British Columbia North Coast
2005PrinceRupert_5025867	2005	EM1002	Vector	5	38.4	123.6	Prince Rupert	British Columbia North Coast
2005RippleRock_5026082	2005	EM1002	Vector	5	9.0	60.6	Ripple Rock	British Columbia Central Coast
2005SalmonBank	2005	EM3002	Otter Bay	2	14.9	42.8	Salmon Bank	Salish Sea
2005Sandheads	2005	EM3002	Otter Bay	1	5.9	25.9	Sandheads	Salish Sea
2005SatelliteEast_5025878	2005	EM3002	Otter Bay	2	13.7	32.8	Satellite Channel	Salish Sea
2005Selwyn_Inlet_5026047	2005	EM1002	Vector	5	48.1	91.8	Selwyn Inlet	Haida Gwaii
2005SidneyApproaches_5025784	2005	EM3002	Otter Bay	2	4.6	18.2	Sidney	Salish Sea
2005SidneyChannel_5025900	2005	EM3002	Otter Bay	2	4.1	22.4	Sidney	Salish Sea
2005Sooke_5025780	2005	EM3002	Otter Bay	2	1.0	25.3	Sooke	West coast Vancouver Island
2005South_Sponge_5026046	2005	EM1002	Vector	5	25.3	171.0	Sponge Reef	Hecate Strait
2005SurfInlet_5025902	2005	EM1002	Vector	5	21.1	69.3	Surf Inlet	British Columbia North Coast
2005SutilChannel_5025906	2005	EM1002	Vector	5	141.5	109.6	Sutil Channel	Salish Sea
2005UprightChannel	2005	EM3002	Otter Bay	2	9.9	53.2	Upright Channel	Salish Sea
2005Vancouver_Dundarave_5026716	2005	EM3002	Otter Bay	2	10.8	36.4	Vancouver Harbour	Salish Sea
2005VancouverHarbour_5025781	2005	EM3002	Otter Bay	1	6.8	49.7	Vancouver Harbour	Salish Sea
2005VictoriaApproaches_5025783	2005	EM1002	Vector	5	152.2	105.2	Victoria	Salish Sea
2005WaspIsland	2005	EM3002	Otter Bay	2	3.6	36.9	Wasp Island	Salish Sea
2006Ambleside_5026314	2006	EM3002	Otter Bay	2	0.8	8.1	Ambleside	Salish Sea
2006Aristazabal_Shoals_5026262	2006	EM3002	Otter Bay	2	2.7	43.4	Aristazabal Shoals	Hecate Strait
2006AtliInlet_502628	2006	EM3002	Otter Bay	2	7.4	33.4	Atli Inlet	Haida Gwaii
2006BazanBay	2006	EM3002	Otter Bay	2	0.1	3.0	Bazan Bay	Salish Sea
2006BeaverPassage_5026295	2006	EM3002	Otter Bay	2	27.4	192.6	Beaver Passage	British Columbia

								North Coast
2006BedwellHarbour_5026198	2006	EM3002	Otter Bay	2	3.6	22.8	Bedwell Harbour	Salish Sea
2006BoundaryPassage	2006	EM1002	Vector	5	7.4	21.8	Boundary Passage	Salish Sea
2006BritanniaBeach_5026221	2006	EM3002	Otter Bay	2	1.4	9.2	Howe Sound	Salish Sea
2006BrowningEntrance_5026034	2006	EM3002	Otter Bay	2	43.7	66.7	Browning Entrance	Hecate Strait
2006BurrardInletEast_5026315	2006	EM3002	Otter Bay	2	10.2	33.2	Burrard Inlet	Salish Sea
2006CaamanoTankerRoute_OtterBay_5026029	2006	EM3002	Otter Bay	2	5.1	39.9	Caamano Sound	Hecate Strait
2006CaamanoTankerRoute_Vector_5026029	2006	EM1002	Vector	5	216.7	120.2	Caamano Sound	Hecate Strait
2006CaptainPassage_5026159	2006	EM3002	Otter Bay	2	9.1	42.0	Captain Passage	Salish Sea
2006CecilPatch_5026373	2006	EM3002	Otter Bay	2	0.5	4.4	Cecil Patch	British Columbia North Coast
2006CherryIslets_5026302	2006	EM3002	Otter Bay	2	0.4	6.0	Cherry Islets	British Columbia North Coast
2006CookBank_5026017	2006	EM1002	Vector	5	356.6	129.7	Cook Bank	Queen Charlotte Sound
2006Copeland_5026429	2006	EM3002	Otter Bay	2	0.1	2.0	Copeland Islands	Salish Sea
2006DanaInlet_5026329	2006	EM1002	Vector	5	19.8	41.2	Dana Inlet	Haida Gwaii
2006DeepWaterBaywrecksearch_5026254	2006	EM3002	Otter Bay	2	1.7	8.2	Deepwater Bay	British Columbia Central Coast
2006DiscoveryPassageNorth_5026324	2006	EM1002	Vector	5	44.6	71.3	Discovery Passage	British Columbia Central Coast
2006DiscoveryPassageSouth_5026323	2006	EM1002	Vector	5	17.7	78.4	Discovery Passage	British Columbia Central Coast
2006EastFinIsland_5026303	2006	EM3002	Otter Bay	2	2.8	42.1	East Fin Island	British Columbia North Coast
2006EastThurlow_5026368	2006	EM1002	Vector	5	90.5	170.6	Thurlow Island	British Columbia Central Coast

2006EstevanSoundRk_5026375	2006	EM3002	Otter Bay	2	0.1	1.7	Estevan Sound	British Columbia North Coast
2006EstevanSouth_5026355	2006	EM3002	Otter Bay	5	39.9	101.1	Estevan Sound	British Columbia North Coast
2006FishEgg_5026425	2006	EM3002	Otter Bay	2	0.0	0.5	Fish Egg Inlet	British Columbia North Coast
2006FitzHugh_5026038	2006	EM1002	Vector	5	178.6	182.6	Fitz Hugh Sound	British Columbia North Coast
2006ForrestIsland_5026108	2006	EM3002	Otter Bay	2	3.1	18.0	Forrest Island	Salish Sea
2006FreemanPassage_5026301	2006	EM3002	Otter Bay	2	5.0	32.2	Freeman Passage	British Columbia North Coast
2006FulfordHarbour_5026055	2006	EM3002	Otter Bay	2	7.4	20.5	Fulford Harbour	Salish Sea
2006GBChurchPortlandIsland_5026199	2006	EM3002	Otter Bay	2	0.0	1.0	Portland Island	Salish Sea
2006GeorgesonIsland_5026258	2006	EM3002	Otter Bay	2	0.2	3.3	Georgeson Island	Salish Sea
2006GoletasChannel_5026290	2006	EM1002	Vector	5	100.4	130.8	Goletas Channel	Queen Charlotte Sound
2006GossePassage_5026085	2006	EM3002	Otter Bay	2	0.3	3.9	Gosse Passage	Salish Sea
2006GriffinBay_Sandwaves	2006	EM3002	Otter Bay	2	2.8	9.9	Griffin Bay	Salish Sea
2006HardyBay_5026289	2006	EM1002	Vector	5	13.4	29.0	Hardy Bay	Queen Charlotte Sound
2006HarneyChannel_Sandwaves_5026305	2006	EM3002	Otter Bay	1	0.9	4.8	Harney Channel	Salish Sea
2006Hecate_103B09_5026028	2006	EM1002	Vector	5	346.7	113.1	Hecate	Hecate Strait
2006Hecate_103B16_5026030	2006	EM1002	Vector	5	337.9	97.1	Hecate	Hecate Strait
2006Hecate_103B16_5026030	2006	EM1002	Vector	5	307.2	163.8	Hecate	Hecate Strait
2006HoweSoundEastSide_5026351	2006	EM1002	Vector	5	9.7	181.0	Howe Sound	Salish Sea
2006HoweSoundEastSide_5026351	2006	EM1002	Vector	5	42.1	68.7	Howe Sound	Salish Sea
2006IndianArmNorth_5026340	2006	EM3002	Otter Bay	2	11.7	101.7	Indian Arm	Salish Sea
2006IndianArmSouth_5026341	2006	EM3002	Otter Bay	2	8.2	27.9	Indian Arm	Salish Sea

2006JervisInlet_5026568	2006	EM1002	Vector	5	188.9	258.3	Jervis Inlet	Salish Sea
2006JohnstoneStrait_5026366	2006	EM1002	Vector	5	154.5	135.1	Johnstone Strait	British Columbia Central Coast
2006JuandeFuca_5026408	2006	EM1002	Vector	5	303.0	395.3	Juan de Fuca Strait	West coast Vancouver Island
2006KitkatlaInletShoal_5026334	2006	EM3002	Otter Bay	2	0.1	1.5	Kitkatla Inlet	British Columbia North Coast
2006KitkatlaIslands_5026292	2006	EM3002	Otter Bay	5	5.0	25.3	Kitkatla Islands	British Columbia North Coast
2006LaskeekBank_OtterBay_5026027	2006	EM3002	Otter Bay	2	74.8	100.9	Laskeek Bay	Hecate Strait
2006LaskeekBank_Vector_5026027	2006	EM1002	Vector	5	5.9	24.6	Laskeek Bank	Hecate Strait
2006LittleGroup_5026083	2006	EM3002	Otter Bay	2	3.5	11.2	Little Group Islands	Salish Sea
2006LyellIsland	2006	EM1002	Vector	5	79.8	108.1	Lyell Island	Hecate Strait
2006MalcolmIsland_5026045	2006	EM1002	Vector	5	47.0	37.1	Malcolm Island	Queen Charlotte Sound
2006Nanakwa_5026331	2006	EM3002	Otter Bay	2	2.2	18.0	Nanakwa	British Columbia North Coast
2006NepeanSound_OtterBay_5026369	2006	EM3002	Otter Bay	2	30.0	172.4	Nepean Sound	British Columbia North Coast
2006NepeanSound_Vector_5026369	2006	EM1002	Vector	5	182.7	138.9	Nepean Sound	British Columbia North Coast
2006ObstructionIsland_1m_5026306	2006	EM3002	Otter Bay	2	7.6	25.3	Obstruction Island	Salish Sea
2006OgdenChannel_5026300	2006	EM1002	Vector	5	42.6	56.8	Ogden Channel	British Columbia North Coast
2006PointGeorge_2m_5026327	2006	EM3002	Otter Bay	2	0.3	4.7	Point George	Salish Sea
2006PorcherIslandE_5026299	2006	EM1002	Vector	5	40.2	59.4	Porcher Island	British Columbia North Coast
2006PorpoiseChannelWreck_5026320	2006	EM3002	Otter Bay	2	0.0	0.7	Porpoise Channel	British Columbia

								North Coast
2006PortMoody_5026342	2006	EM3002	Otter Bay	2	3.8	19.6	Port Moody	Salish Sea
2006PragerIslandShoal_5026917	2006	EM3002	Otter Bay	2	1.9	9.0	Prager Island Shoal	Hecate Strait
2006PrinceRupert_5026294	2006	EM3002	Otter Bay	5	6.5	39.9	Prince Rupert	British Columbia North Coast
2006PrincipeNorth_OtterBay_5026293	2006	EM3002	Otter Bay	2	13.1	177.6	Principe Channel	British Columbia North Coast
2006PrincipeNorth_Vector_5026293	2006	EM1002	Vector	5	151.8	171.5	Principe Channel	British Columbia North Coast
2006PrincipeSouth_OtterBay_5026318	2006	EM3002	Otter Bay	2	11.3	149.2	Principe Channel	British Columbia North Coast
2006PrincipeSouth_Vector_5026318	2006	EM1002	Vector	5	189.8	153.6	Principe Channel	British Columbia North Coast
2006RaymondPassage_5026537	2006	EM1002	Vector	5	18.9	47.4	Bellanas Channel	British Columbia North Coast
2006RiverInletInvestigation_5026261	2006	EM3002	Otter Bay	2	0.1	1.8	River Inlet	British Columbia Central Coast
2006Sandheads_May	2006	EM3002	Otter Bay	2	7.8	27.1	Sandheads	Salish Sea
2006Sandheads_Sept	2006	EM3002	Otter Bay	2	6.5	20.5	Sandheads	Salish Sea
2006SchoonerPassage_5026313	2006	EM3002	Otter Bay	2	5.7	25.2	Schooner Passage	British Columbia North Coast
2006SeepSites1_5026019	2006	EM1002	Vector	5	3.4	8.9	Seep Site	Hecate Strait
2006SeepSites2_5026019	2006	EM1002	Vector	5	2.9	8.5	Seep Site	Hecate Strait
2006ShelfBreak_5026018	2006	EM1002	Vector	20	155.7	481.8	Shelf Break	Continental Slope
2006SquamishHarbour_5026226	2006	EM3002	Otter Bay	2	6.8	25.4	Squamish Harbour	Salish Sea
2006SquamishHarbourCruise2_5026337	2006	EM3002	Otter Bay	2	6.3	33.3	Squamish Harbour	Salish Sea
2006SquittyBay_5026227	2006	EM3002	Otter Bay	2	0.5	5.3	Squitty Bay	Salish Sea

2006StADSites_5026036	2006	EM1002	Vector	5	83.2	229.8	STAD	West coast Vancouver Island
2006Steveston	2006	EM3002	Otter Bay	2	0.3	4.6	Steveston	Salish Sea
2006StevestonJetty	2006	EM3002	Otter Bay	1	1.2	37.2	Steveston	Salish Sea
2006SuciaIsland_2m5026308	2006	EM3002	Otter Bay	2	13.7	64.0	Sucia Island	Salish Sea
2006SuciaIslandNOAA	2006	EM3002	Otter Bay	5	71.4	168.0	Sucia Island	Salish Sea
2006SwansonChannel_5026134	2006	EM3002	Otter Bay	2	15.5	24.4	Swanson Channel	Salish Sea
2006TaylorBay_5026374	2006	EM3002	Otter Bay	2	0.0	0.6	Taylor Bay	British Columbia North Coast
2006ThatcherPass_5026307	2006	EM3002	Otter Bay	2	10.9	33.5	Thatcher Passage	Salish Sea
2006ThurstonHarbour_5026330	2006	EM3002	Otter Bay	2	2.0	11.3	Thurston Harbour	Haida Gwaii
2006TrialIslandSandwaves_5026352	2006	EM1002	Vector	5	7.2	14.9	Trial Island	Salish Sea
2006TsehumHarbour_5026196	2006	EM3002	Otter Bay	2	0.9	17.1	Tsehum Harbour	Salish Sea
2006TuwartzNarrows_5026304	2006	EM3002	Otter Bay	2	0.1	4.1	Tuwartz Narrows	British Columbia North Coast
2006VancouverHarbour	2006	EM3002	Otter Bay	1	0.5	8.1	Vancouver Harbour	Salish Sea
2006WellHead	2006	EM1002	Vector	5	0.3	3.1	Well Head	Hecate Strait
2006WilsonInlet_5026209	2008	EM3002	Otter Bay	2	0.1	1.5	Wilson Inlet	British Columbia North Coast
2006WoodFibre_5026197	2006	EM3002	Otter Bay	2	0.8	7.3	Howe Sound	Salish Sea
2006WrightSound_5026335	2006	EM1002	Vector	5	33.4	82.5	Wright Sound	British Columbia North Coast
2007AgassizBanks_5026505	2007	EM1002	Vector	5	133.7	91.6	Agassiz Bank	Hecate Strait
2007Bamberton_5026435	2007	EM3002	Otter Bay	2	1.1	10.8	Bamberton	Salish Sea
2007BarnardHarbour_5026631	2007	EM3002	Otter Bay	2	5.1	42.9	Barnard Harbour	British Columbia North Coast
2007BazanBay_5026473	2007	EM3002	Otter Bay	2	0.0	0.4	Bazan Bay	Salish Sea
2007BorrowmanBay_5026622	2007	EM3002	Otter Bay	2	9.2	58.3	Borrowman Bay	Hecate Strait

2007BroughtonStrait_Shoals_5026553	2007	EM3002	Otter Bay	2	1.6	10.3	Broughton Strait	British Columbia Central Coast
2007BrowningEntrance_5026037	2007	EM1002	Vector	5	66.7	66.7	Browning Entrance	Hecate Strait
2007CaptainCove_5026607	2007	EM3002	Otter Bay	2	1.9	16.6	Captain Cove	British Columbia North Coast
2007CheclesetBay_Shoals_5026608	2007	EM3002	Otter Bay	2	0.9	32.1	Kyuquot Sound	West coast Vancouver Island
2007ChristensenPtWreck_5026660	2007	EM3002	Otter Bay	2	0.3	4.0	Christensen Point	Queen Charlotte Sound
2007CoghlanAnchorage_5026615	2007	EM3002	Otter Bay	2	6.5	41.9	Coghlan Anchorage	British Columbia North Coast
2007ComoxBar_5026565	2007	EM3002	Otter Bay	2	28.8	57.0	Comox	Salish Sea
2007ComoxHarbour_5026569	2007	EM3002	Otter Bay	2	23.6	51.2	Comox	Salish Sea
2007CookBank_5026499	2007	EM1002	Vector	5	323.6	96.2	Cook Bank	Queen Charlotte Sound
2007DianaIsland	2007	EM3002	Otter Bay	1	0.8	9.6	Barkley Sound	West coast Vancouver Island
2007DianaIsland_2m_5026551	2007	EM1002	Vector	5	0.8	9.6	Diana Island	West coast Vancouver Island
2007DouglasChannel_5026614	2007	EM1002	Vector	5	218.8	205.5	Douglas Channel	British Columbia North Coast
2007DuffinPassage_Hera_5026661	2007	R2Sonic 2022	Shoal Seeker	1	0.1	1.8	Duffin Passage	West coast Vancouver Island
2007EstevanSound_5026554	2007	EM1002	Vector	5	39.1	83.3	Estevan Sound	Hecate Strait
2007GibsonsHarbour_5026623	2007	EM3002	Otter Bay	2	4.2	14.8	Gibsons	Salish Sea
2007GillenHarbour_5026633	2007	EM3002	Otter Bay	2	10.9	48.5	Gillen Harbour	Hecate Strait
2007GriffinBay_Sandwaves_1m_5026721	2007	EM3002	Otter Bay	1	2.0	21.6	Griffin Bay	Salish Sea
2007HannaChannel_Obstruction_5026662	2007	EM3002	Otter Bay	2	0.3	3.8	Nootka Sound	West coast Vancouver Island
2007HaroStrait_ChatamIslands_5026489	2007	EM3002	Otter Bay	2	14.9	32.5	Haro Strait	Salish Sea
2007HaroStrait_DiscoveyIsland_5026490	2007	EM3002	Otter Bay	2	28.0	34.2	Haro Strait	Salish Sea

2007HaroStrait_GordonHead_5026477	2007	EM3002	Otter Bay	2	15.2	26.3	Haro Strait	Salish Sea
2007HecateGoschen_5026032	2007	EM1002	Vector	5	253.9	87.0	Hecate	Hecate Strait
2007HecateHorseShoe_5026509	2007	EM1002	Vector	5	21.3	22.5	Hecate	Hecate Strait
2007HecateNWBonilla_5026563	2007	EM1002	Vector	5	231.8	104.5	Hecate	Hecate Strait
2007HecateOvalBank_5026033	2007	EM1002	Vector	5	236.0	101.6	Hecate	Hecate Strait
2007HecateSWBonilla_5026507	2007	EM1002	Vector	5	355.3	121.8	Hecate	Hecate Strait
2007HecateWestBonilla_5026562	2007	EM1002	Vector	5	211.5	78.3	Hecate	Hecate Strait
2007HoweSoundEastSide_5026381	2007	EM3002	Otter Bay	2	2.6	27.8	Howe Sound	Salish Sea
2007ImperialEagleChannel_5026551	2007	EM1002/ EM3002	Vector/Otter Bay	5	3.4	22.5	Imperial Eagle Channel	West coast Vancouver Island
2007JuanDeFuca_5026494	2007	EM3002	Otter Bay	2	15.7	25.1	Juan de Fuca Strait	Salish Sea
2007LangdaleFerryTerminal_5026317	2007	EM3002	Otter Bay	2	0.5	4.2	Langdale	Salish Sea
2007Lopez_SouthWest_UTM10N_5026686	2007	EM3002	Otter Bay	2	10.4	66.8	Lopez Island	Salish Sea
2007LopezIsland_SouthEast_2m_UTM10N_5026685	2007	EM3002	Otter Bay	2	10.0	59.0	Lopez Island	Salish Sea
2007MalaccaArthurPassages_5026561	2007	EM1002	Vector	5	63.0	91.3	Malacca Passage	British Columbia North Coast
2007MarcusPassage_5026564	2007	EM1002	Vector	5	6.4	20.0	Marcus Passage	British Columbia North Coast
2007MiddleSponges_5026502	2007	EM1002	Vector	5	321.9	123.6	Sponge Reef	Hecate Strait
2007MuchalatInlet_5026516	2007	EM1002	Vector	5	55.0	163.9	Muchalat Inlet	West coast Vancouver Island
2007NanaimoPBSWharf_5026621	2007	EM3002	Otter Bay	1	0.0	1.1	Nanaimo	Salish Sea
2007OakBay_5026495	2007	EM3002	Otter Bay	2	11.5	40.9	Oak Bay	Salish Sea
2007OakBay_Approaches_5026475	2007	EM3002	Otter Bay	2	14.2	24.0	Oak Bay	Salish Sea
2007PassageIsland_5026638	2007	EM3002	Otter Bay	2	6.0	15.8	Passage Island	Salish Sea
2007PortHardy_Wrecks_5026663	2007	EM3002	Otter Bay	2	0.3	7.4	Port Hardy	Queen Charlotte Sound
2007PriceIsland_5026668	2007	EM3002	Otter Bay	2	0.3	8.8	Price Island	Hecate Strait

2007PrinceRupertHarbour_5026664	2007	EM3002	Otter Bay	2	2.9	36.6	Prince Rupert	British Columbia North Coast
2007QueenCharlotteChannel_EastSide_5026624	2007	EM3002	Otter Bay	2	4.7	36.8	Howe Sound	Salish Sea
2007QueenCharlotteChannel_WestSide_5026637	2007	EM3002	Otter Bay	2	2.2	18.9	Howe Sound	Salish Sea
2007RobertsBank_5026601	2007	EM3002	Otter Bay	2	6.0	32.4	Roberts Bank	Salish Sea
2007RobsonBight_5026230	2007	EM1002	Vector	5	4.3	14.7	Robson Bight	British Columbia Central Coast
2007Sandheads_2m_5026316	2007	EM3002	Otter Bay	2	8.5	19.6	Sandheads	Salish Sea
2007SandHeads_Cruise2_5026616	2007	EM3002	Otter Bay	2	9.0	20.7	Sandheads	Salish Sea
2007ShelfBreak_5026503	2007	EM1002	Vector	20	120.0	363.4	Shelf Break	Continental Slope
2007SombrioPt_5026011	2007	EM3002	Otter Bay	2	13.9	99.6	Juan de Fuca Strait	West coast Vancouver Island
2007SpiedenChannel_2m_UTM10N_5026687	2007	EM3002	Otter Bay	2	5.2	43.0	Spieden Channel	Salish Sea
2007SquallyChannel_5026031	2007	EM1002	Vector	5	364.5	264.2	Squally Channel	British Columbia North Coast
2007SquamishHarbour_2m_5026376	2007	EM3002	Otter Bay	2	7.3	16.2	Squamish Harbour	Salish Sea
2007SquamishHarbour_Cruise2_5026617	2007	EM3002	Otter Bay	2	7.4	15.4	Squamish Harbour	Salish Sea
2007StevestonHarbour_Chevron_5026600	2007	EM3002	Otter Bay	1	0.0	1.2	Steveston	Salish Sea
2007SuciaIsland_2m_UTM10N_5026684	2007	EM3002	Otter Bay	2	5.2	48.0	Sucia Island	Salish Sea
2007SurfInlet_Hazard_2m_5026665	2007	EM3002	Otter Bay	2	2.4	12.9	Surf Inlet	British Columbia North Coast
2007SwansonChannel_5026627	2007	EM3002	Otter Bay	2	19.0	57.0	Swanson Channel	Salish Sea
2007TinyGroup_Hazard_5026667	2007	EM3002	Otter Bay	2	0.1	1.7	Barkley Sound	West coast Vancouver Island
2007TolmieChannel_Vector_5026560	2007	EM1002	Vector	5	47.3	108.8	Tolmie Channel	British Columbia North Coast
2007TolmieChannel_Vector_5026560	2007	EM3002	Otter Bay	2	8.3	255.3	Tolmie Channel	British Columbia

								North Coast
2007TrialIslands_5026476	2007	EM3002	Otter Bay	2	4.1	18.8	Trial Island	Salish Sea
2007TuckInlet_Hazard_5026666	2007	EM3002	Otter Bay	2	0.1	1.7	Tuck Inlet	British Columbia North Coast
2007WestBay_5026639	2007	EM3002	Otter Bay	2	1.4	9.7	Howe Sound	Salish Sea
2007WhaleChannel_5026504	2007	EM1002	Vector	5	176.7	157.1	Whale Channel	British Columbia North Coast
2008ActivePass_5026775	2008	EM3002	Otter Bay	2	15.4	52.6	Active Pass	Salish Sea
2008Addenbroke_North_5026840	2008	EM1002	Vector	5	12.3	44.8	Addenbroke Island	British Columbia North Coast
2008Beauchemin_Channel_5026854	2008	EM1002	Vector	5	173.4	144.7	Beauchemin Channel	Hecate Strait
2008BoundaryPassage_5026741	2008	EM1002	Vector	5	7.5	19.5	Boundary Passage	Salish Sea
2008BritanniaBeach_Wreck_5026789	2008	EM3002	Otter Bay	2	0.2	2.5	Howe Sound	Salish Sea
2008BrownPassageDumpSite_5026906	2008	EM1002	Vector	5	5.8	10.6	Brown Passage	British Columbia North Coast
2008Bute_Inlet_5026742	2008	EM1002	Vector	5	272.2	242.1	Bute Inlet	British Columbia Central Coast
2008Caamano_Sound_5026853	2008	EM1002	Vector	5	266.2	102.2	Caamano Sound	Hecate Strait
2008CampaniaIsland_5026901	2008	EM3002	Otter Bay	2	9.4	96.1	Canoe Passage	British Columbia North Coast
2008CaptainPassage_5026756	2008	EM3002	Otter Bay	2	5.2	18.8	Captain Passage	Salish Sea
2008ChappleInlet_5026704	2008	EM3002	Otter Bay	2	10.8	77.4	Chapple Inlet	British Columbia North Coast
2008ClarkeIsland_5026954	2008	EM3002	Otter Bay	2	7.0	27.8	Clarke Island	Salish Sea
2008CoalHarbour_5026734	2008	EM3002	Otter Bay	2	0.9	15.8	Coal Harbour	Salish Sea
2008DanaInlet_5026909	2008	EM1002	Vector	5	9.8	39.9	Dana Inlet	Haida Gwaii
2008DeerHarbour_5026978	2008	EM3002	Otter Bay	2	0.2	6.6	Deer Harbour	Salish Sea

2008DeltaPort_CRA_5027265	2008	EM3002	Otter Bay	1	0.2	3.8	Delta Port	Salish Sea
2008DouglasChannel_5026880	2008	EM1002	Vector	5	70.6	115.7	Douglas Channel	British Columbia North Coast
2008EchoBay_5026979	2008	EM3002	Otter Bay	2	0.1	4.1	Echo Bay	Salish Sea
2008Evinrude_Helmcken_Inlets_5026707	2008	EM3002	Otter Bay	2	12.2	62.6	Evinrude Helmcken Inlets	Hecate Strait
2008FalseCreek_EnglishBay_5026860	2008	EM3002	Otter Bay	2	5.3	32.6	False Creek	Salish Sea
2008FinlaysonChannel_5026966	2008	EM1002	Vector	5	45.2	55.7	Finlayson Channel	British Columbia North Coast
2008FirstNarrows_5026733	2008	EM3002	Otter Bay	2	2.0	11.3	First Narrows	Salish Sea
2008FitzHugh_5m_Final_5026843	2008	EM1002	Vector	5	41.1	60.3	Fitz Hugh Sound	British Columbia North Coast
2008GambierIsland_5026770	2008	EM3002	Otter Bay	2	9.5	55.2	Howe Sound	Salish Sea
2008GardnerCanal_5026930	2008	EM1002	Vector	5	6.6	16.4	Gardner Canal	British Columbia North Coast
2008Griffinbay_Sandwaves_5026955	2008	EM3002	Otter Bay	2	2.3	8.1	Griffin Bay	Salish Sea
2008HecateCarpenter_5026911	2008	EM1002	Vector	5	209.1	100.3	Carpenter Bay	Hecate Strait
2008HecateHouston_5026912	2008	EM1002	Vector	5	169.4	67.8	Houston Channel	Hecate Strait
2008HecateJames_5026913_5m_Final	2008	EM1002	Vector	5	202.3	75.0	Cape St. James	Haida Gwaii
2008HecateJoyceRocks_5026914	2008	EM1002	Vector	5	171.2	82.6	Luxana Bay	Hecate Strait
2008HecateJoyceRocks_5026914	2008	EM1002	Vector	5	68.4	77.5	Joyce Rocks	Hecate Strait
2008HecateMoresby_5026916	2008	EM1002	Vector	5	164.5	118.5	Moresby Island	Hecate Strait
2008HecateStrait_BurnabyIsland_5026771	2008	EM3002	Otter Bay	2	68.3	47.6	Juan Perez Sound	Hecate Strait
2008HothamSound_5026743	2008	EM1002	Vector	5	50.0	82.2	Hotham Sound	Salish Sea
2008HoweSound_WestSide_5026791	2008	EM3002	Otter Bay	2	10.4	62.6	Howe Sound	Salish Sea
2008IndianArm_5026849	2008	EM1002	Vector	5	9.5	32.7	Indian Arm	Salish Sea
2008JohnstoneStrait_5026889	2008	EM1002	Vector	5	57.9	67.5	Johnstone Strait	British Columbia Central Coast

2008JuandeFuca_5026989	2008	EM1002	Vector	5	58.9	85.6	Juan de Fuca Strait	West coast Vancouver Island
2008JuanPerez_Entrance_5026898	2008	EM3002	Otter Bay	2	27.4	44.2	Juan Perez Sound	Haida Gwaii
2008JuanPerez_HuxleyIsland_5026899	2008	EM3002	Otter Bay	2	11.1	28.5	Juan Perez Sound	Haida Gwaii
2008KentInlet_5026703	2008	EM3002	Otter Bay	2	2.2	24.8	Kent Inlet	British Columbia North Coast
2008KlemtuPassage_5026902	2008	EM3002	Otter Bay	2	5.8	55.2	Klemtu Passage	British Columbia North Coast
2008KnightInlet_Zone10_5026846	2008	EM1002	Vector	5	41.5	67.3	Knight Inlet	British Columbia Central Coast
2008KoskimoBay_5026794	2008	EM1002	Vector	5	12.6	29.4	Koskimo Bay	West coast Vancouver Island
2008LamaPassage_5026850_5m_Final	2008	EM1002	Vector	5	5.5	22.8	Lama Passage	British Columbia North Coast
2008LearmonthExterior_5026758	2008	EM1002	Vector	5	778.7	273.0	Learmonth Bank	Dixon Entrance
2008LearmonthNorth_5026798	2008	EM1002	Vector	5	108.5	97.2	Learmonth Bank	Dixon Entrance
2008LearmonthSouth_5026759	2008	EM1002	Vector	5	191.5	331.1	Learmonth Bank	Dixon Entrance
2008LongHarbour_5026718	2008	EM3002	Otter Bay	2	3.3	23.4	Long Harbour	Salish Sea
2008MalcolmIsland_5026926	2008	EM1002	Vector	5	80.6	49.8	Malcolm Island	British Columbia Central Coast
2008MatiaIsland_5026956	2008	EM3002	Otter Bay	2	3.7	25.9	Matia Island	Salish Sea
2008McLeanFraser	2008	EM1002	Vector	5	199.9	663.6	McLean Fraser Point	Haida Gwaii
2008MeyersNarrows_5026903	2008	EM3002	Otter Bay	2	0.5	8.7	Meyers Narrows	British Columbia North Coast
2008MitchellChannel_5026980	2008	EM3002	Otter Bay	1	0.3	11.6	Fraser River	Salish Sea
2008NaikunWindSite_5m; 5027785	2008	EM3002	Otter Bay	5	143.5	676.9	Naikun Wind Farm	British Columbia North Coast
2008NanaimoShipyard_5026931	2009	EM3002	Otter Bay	2	0.0	0.9	Nanaimo	Salish Sea

2008Nanoose_5026717	2008	EM3002	Otter Bay	2	26.7	63.9	Nanoose Bay	Salish Sea
2008NeptuneBank_5026730	2008	EM3002	Otter Bay	2	2.8	16.1	Neptune Bank	Salish Sea
2008Patosisland_5026957	2008	EM3002	Otter Bay	2	3.7	23.9	Patos Island	Salish Sea
2008PedderParryBays_5026749	2008	EM3002	Otter Bay	2	20.1	100.7	Juan de Fuca Strait	Salish Sea
2008PlumperSound_North_5026833	2008	EM3002	Otter Bay	2	14.5	31.7	Plumper Sound	Salish Sea
2008PortElizabeth_ClamBed_5026862	2008	EM3002	Otter Bay	2	1.2	11.8	Port Elizabeth	British Columbia Central Coast
2008PortHardy_5026900	2008	EM3002	Otter Bay	2	6.0	38.8	Port Hardy	Queen Charlotte Sound
2008PortlandCanal_5026856	2008	EM1002	Vector	5	200.5	292.8	Portland Canal	British Columbia North Coast
2008QueensSound_5026965	2008	EM710	Vector	5	55.6	43.0	Queens Sound	Hecate Strait
2008RockyBay_5026958	2008	EM3002	Otter Bay	2	4.2	14.3	San Juan Island	Salish Sea
2008RosarioStrait_Orcas_5026861	2008	EM3002	Otter Bay	2	12.1	31.8	Rosario Strait	Salish Sea
2008SandHeads_5026769(2)	2008	EM3002	Otter Bay	2	0.1	1.4	Sandheads	Salish Sea
2008SandHeads_5026769_2m	2008	EM3002	Otter Bay	2	19.9	27.5	Sandheads	Salish Sea
2008SeaforthChannel_5026934	2008	EM1002	Vector	5	27.4	50.8	Seaforth Channel	British Columbia North Coast
2008SedgwickBay_5026910	2008	EM1002	Vector	5	25.4	42.4	Sedgwick Bay	Haida Gwaii
2008ShelfBreak_5026907	2008	EM1002	Vector	10	94.6	483.3	Shelf Break	Continental Slope
2008SquamishHarbour_5026768	2008	EM3002	Otter Bay	2	8.9	22.0	Squamish Harbour	Salish Sea
2008SuciaIsland_5026976	2008	EM3002	Otter Bay	2	3.3	12.4	Sucia Island	Salish Sea
2008SwansonChannel_5026796	2008	EM3002	Otter Bay	2	14.1	39.3	Swanson Channel	Salish Sea
2008ThatcherBay_5026977	2008	EM3002	Otter Bay	2	0.6	8.7	Thatcher Bay	Salish Sea
2008ThompsonBay_5026983	2008	EM1002	Vector	5	7.0	23.1	Thompson Bay	Hecate Strait
2008TobaInlet_5026744	2008	EM1002	Vector	5	88.7	121.5	Toba Inlet	British Columbia Central Coast
2008Ursula_Channel_5026855	2008	EM1002	Vector	5	77.3	132.9	Ursula Channel	British Columbia

								North Coast
2008VancouverHarbour North_5026731	2008	EM3002	Otter Bay	2	1.7	16.0	Vancouver Harbour	Salish Sea
2008VancouverHarbour South_5026732	2008	EM3002	Otter Bay	2	3.3	17.5	Vancouver Harbour	Salish Sea
2008VerneyPassageShelf_5026888	2008	EM1002	Vector	5	5.0	20.9	Verney Passage	British Columbia North Coast
2008VillageChannel_ClamBed_5026863	2008	EM3002	Otter Bay	2	0.3	5.3	Village Channel	British Columbia Central Coast
2008WeeteamBay_5026706	2008	EM3002	Otter Bay	2	8.1	40.8	Weeteam Bay	Hecate Strait
2008WestCoastMoresby_5026908	2008	EM1002	Vector	5	128.2	113.5	West Queen Charlotte Islands	Haida Gwaii
2009AnnievilleDyke_5027207	2009	R2Sonic 2022	Shoal Seeker	1	0.2	8.7	Fraser River	Salish Sea
2009AnvilIsland_5027223	2009	EM1002	Vector	5	8.4	54.2	Anvil Island	Salish Sea
2009Ballenas_5027084	2009	EM3002	Otter Bay	2	28.1	90.5	Ballenas Channel	Salish Sea
2009BellaCoola_5027178	2009	EM3002	Otter Bay	2	0.2	5.5	Bella Coola	British Columbia North Coast
2009BlueHeronBay_5027166	2009	EM3002	Otter Bay	2	4.7	28.2	Blue Heron Bay	Haida Gwaii
2009BottleInlet_Rock_5027218	2009	EM3002	Otter Bay	2	0.8	9.6	Bottle Rock	Haida Gwaii
2009BowenIsland_5026887	2009	EM3002	Otter Bay	2	6.3	35.8	Bowen Island	Salish Sea
2009BowyerIsland_5027103	2009	EM3002	Otter Bay	2	2.2	18.1	Bowyer Island	Salish Sea
2009BuckChannel_Rock_5027217	2009	EM3002	Otter Bay	2	2.0	25.1	Buck Channel Rock	Haida Gwaii
2009Butedale_5027096	2009	EM3002	Otter Bay	2	0.3	3.2	Butedale	British Columbia North Coast
2009Deltaport_CRA_5027266	2009	EM3002	Otter Bay	2	0.9	7.0	Fraser River Delta	Salish Sea
2009DeltaPort_CRA Contractor	2009	EM3002	Otter Bay	1	0.4	7.0	Delta Port	Salish Sea
2009DevastationChannel_5027106	2009	EM710	Vector	5	92.0	119.7	Devastation Channel	British Columbia North Coast
2009Dundas_5027112	2009	EM710	Vector	5	36.2	59.0	Dundas Island	British Columbia North Coast

2009EdeyPassage_5027237	2009	EM710	Vector	5	144.9	126.5	Edye Passage	British Columbia North Coast
2009EM710SAT_BoundaryPassSandwaves_5027127	2009	EM710	Vector	5	9.2	20.2	Boundary Passage	Salish Sea
2009EM710SAT_GBChurch_5027126	2009	R2Sonic 2022	Shoal Seeker	0	0.0	0.3	Gulf Islands	Salish Sea
2009EM710SAT_HoweSound_5027128	2009	EM710	Vector	5	35.0	51.0	Howe Sound	Salish Sea
2009EM710SAT_JuandeFuca_5027129	2009	EM710	Vector	5	20.9	48.4	Juan de Fuca	Salish Sea
2009EM710SAT_OffshoreWestCoast_5027130	2009	EM710	Vector	20	139.3	276.9	Offshore West Coast	West coast Vancouver Island
2009EM710SAT_SavaryIsland_5027131	2009	EM710	Vector	5	6.0	24.7	Savary Island	Salish Sea
2009EM710SAT_TrialIslandSandwaves_5027132	2009	EM710	Vector	2	13.3	25.6	Trial Island	Salish Sea
2009EnglefieldBay_5027174	2009	EM710	Vector	5	26.0	95.1	Englefield Bay	Haida Gwaii
2009EstevanSound_Campania_5027098	2009	EM3002	Otter Bay	2	11.9	62.6	Estevan Sound	British Columbia North Coast
2009EstevanSound_Trutch_5027099	2009	EM3002	Otter Bay	2	11.2	87.6	Estevan Sound	British Columbia North Coast
2009GambierIsland_5027225	2009	EM3002	Otter Bay	2	4.6	37.3	Howe Sound	Salish Sea
2009HastingsArm_5027113	2009	EM710	Vector	5	50.7	134.9	Hastings Arm	British Columbia North Coast
2009Khutzeymateen_5027114	2009	EM710	Vector	5	27.6	102.5	Khutzeymateen	British Columbia North Coast
2009KitimatArm_5027105	2009	EM710	Vector	5	137.4	208.6	Kitimat Arm	British Columbia North Coast
2009LaredoChannel_5027107	2009	EM710	Vector	5	72.3	98.8	Laredo Channel	British Columbia North Coast
2009LaredoSound_5027108	2009	EM710	Vector	5	158.6	92.9	Laredo Sound	British Columbia North Coast
2009LorettaChannel_5027238	2009	EM710	Vector	5	27.8	105.6	Loretta Channel	British Columbia

								North Coast
2009LT369_5027210	2009	R2Sonic 2022	Shoal Seeker	1	0.0	0.8	Fraser River	Salish Sea
2009MarcusPassage_5027124	2009	EM710	Vector	5	86.7	74.6	Marcus Passage	British Columbia North Coast
2009MasseyTunnel_5027206	2009	R2Sonic 2022	Shoal Seeker	1	0.2	2.6	Fraser River	Salish Sea
2009OrcasIsland_North_5027176	2009	EM3002	Otter Bay	2	7.2	28.4	Orcas Island	Salish Sea
2009OtterPassage_TrapIslands_5027097	2009	EM3002	Otter Bay	2	5.7	32.3	Otter Passage	Hecate Strait
2009PlumperSound_5026821	2009	EM3002	Otter Bay	2	30.3	78.6	Plumper Sound	Salish Sea
2009QueenoftheNorth_5027239	2009	EM710	Vector	5	3.5	13.2	Wright Sound	British Columbia North Coast
2009QueensSound_5027240	2009	EM710	Vector	5	130.4	200.4	Queens Sound	British Columbia North Coast
2009RobertsBank_DeltaPort_5026700	2009	EM3002	Otter Bay	2	0.9	7.0	Roberts Bank	Salish Sea
2009SandHeads_5027214	2009	EM3002	Otter Bay	2	2.9	9.6	Sandheads	Salish Sea
2009SapertonDyke_5027211	2009	R2Sonic 2022	Shoal Seeker	1	0.1	2.4	Sapperton Channel	Salish Sea
2009ShelfBreak_5027175	2009	EM710	Vector	20	273.6	402.0	Shelf Break	Continental Slope
2009SkyBridge_5027209	2009	EM3002	Otter Bay	1	0.1	2.5	Fraser River	Salish Sea
2009SpiedenIsland_South_5027177	2009	EM3002	Otter Bay	2	4.4	45.6	Spieden Channel	Salish Sea
2009StevestonJetty_5027204	2009	EM3002	Otter Bay	1	1.7	26.1	Steveston	Salish Sea
2009Sunday_PocketInlets_5027165	2009	EM3002	Otter Bay	2	11.4	80.6	Sunday Pocket Inlet	Haida Gwaii
2009TasuSound_Vector_5027173	2009	EM3002	Otter Bay	2	20.4	65.5	Tasu Sound	Haida Gwaii
2009TasuSound_Vector_5027173	2009	EM3002	Otter Bay	2	40.9	200.8	Tasu Sound	Haida Gwaii
2009VerneyPassage_5026326	2009	EM710	Vector	5	56.2	89.1	Verney Passage	British Columbia North Coast
2009WarriorRocks_5027241	2009	EM710	Vector	5	91.2	64.8	Warrior Rocks	Hecate Strait
2009Welwood_5027208	2009	EM3002	Otter Bay	1	0.2	7.8	Fraser River	Salish Sea
2009WestCoastQCI_Anthony_5027169	2009	EM710	Vector	5	437.6	431.3	West Queen Charlotte Islands	Haida Gwaii

2009WestCoastQCI_Barry_5027170	2009	EM710	Vector	5	187.7	281.1	West Queen Charlotte Islands	Haida Gwaii
2009WestCoastQCI_Gowgaia_5027171	2009	EM710	Vector	5	411.0	533.0	West Queen Charlotte Islands	Haida Gwaii
2009WestCoastQCI_Portland_5027172	2009	EM710	Vector	5	413.2	482.1	West Queen Charlotte Islands	Haida Gwaii
2009WestSkidegateNarrows_Boulder_5027216	2009	R2Sonic 2022	Shoal Seeker	1	0.0	0.6	Skidegate Narrows	Haida Gwaii
2009WoodwardWall_5027205	2009	R2Sonic 2022	Shoal Seeker	1	0.4	10.1	Fraser River	Salish Sea
2010Ahousat_5027564	2010	R2Sonic 2022	Shoal Seeker	1	0.5	11.6	Ahousat	West coast Vancouver Island
2010AlertBay_5027570	2010	R2Sonic 2022	Shoal Seeker	1	1.1	6.3	Alert Bay	British Columbia Central Coast
2010Bamfield_5027565	2010	R2Sonic 2022	Shoal Seeker	1	0.7	9.1	Bamfield	West coast Vancouver Island
2010BanksIslandWest_5027534	2010	EM710	Vector	5	52.0	84.8	Banks Island	Hecate Strait
2010Barry_MikeInlets_5027508	2010	EM3002	Otter Bay	2	9.6	65.5	Barry Inlet ; Mike Inlet	Haida Gwaii
2010BaynesSound_5027294	2010	EM3002	Otter Bay	2	10.0	22.9	Baynes Sound	Salish Sea
2010Brown_Passage_5027541	2010	EM710	Vector	5	36.6	65.2	Brown Passage	British Columbia North Coast
2010BrowningWreckROV_5027540	2010	EM710	Vector	5	0.3	2.8	Browning Entrance	Hecate Strait
2010BurnabyIslandsouth_5027543	2010	EM710	Vector	5	19.7	31.3	Burnaby Island	Hecate Strait
2010BurnabyStrait_5027514	2010	EM3002	Otter Bay	2	13.3	48.8	Burnaby Strait	Haida Gwaii
2010ButeInlet_5027643	2010	EM710	Vector	5	112.1	74.7	Bute Inlet	British Columbia Central Coast
2010Caamano_5027544	2010	EM710	Vector	5	41.4	40.1	Caamano Sound	Hecate Strait
2010CameleonHarbour_5027387	2010	EM3002	Otter Bay	2	1.1	8.9	Cameleon Harbour	British Columbia Central Coast
2010CapeMudge_5027741	2010	R2Sonic 2022	Shoal Seeker	1	1.1	7.2	Cape Mudge	Salish Sea
2010CartwrightSound_5027457	2010	EM710	Vector	5	642.1	251.3	Cartwright Sound	Haida Gwaii

2010ClarkeCove_5027285	2010	EM3002	Otter Bay	2	0.2	4.1	Clarke Cove	British Columbia North Coast
2010ComoxHarbour_5027989	2010	R2Sonic 2022	Shoal Seeker	1	0.2	9.9	Comox Harbour	Salish Sea
2010CookBank_5027545	2010	EM710	Vector	5	38.1	73.6	Cook Bank	Queen Charlotte Sound
2010CormorantIsland_5027753	2010	EM710	Vector	5	78.9	200.9	Cormorant Island	British Columbia Central Coast
2010DesolationSound_5027583	2010	EM710	Vector	5	285.2	560.0	Desolation Sound	British Columbia Central Coast
2010Disposal_At_Sea_5027538	2010	EM710	Vector	5	331.0	132.6	Sandheads	Salish Sea
2010DouglasChannel_Kitimat_5027279	2010	EM3002	Otter Bay	2	9.4	95.1	Douglas Channel	British Columbia North Coast
2010DundasIsland_5027732	2010	EM3002	Otter Bay	2	18.0	126.4	Dundas Island	British Columbia North Coast
2010DundasIslandSouth_5027547	2010	EM710	Vector	5	104.6	93.3	Dundas Island	Dixon Entrance
2010EdyePass_5027548	2010	EM710	Vector	5	28.2	29.8	Edye Passage	Hecate Strait
2010Egmont_5027961	2010	R2Sonic 2022	Shoal Seeker	1	0.9	7.5	Egmont	Salish Sea
2010Englefield_5027268	2010	EM710	Vector	5	504.3	253.1	Englefield Bay	Haida Gwaii
2010EsquimaltHarbour_GravingDock_5027292	2010	EM3002	Otter Bay	1	0.2	2.5	Esquimalt Harbour	Salish Sea
2010EsquimaltHarbour_JettyF_5027291	2010	EM3002	Otter Bay	1	0.3	2.7	Esquimalt Harbour	Salish Sea
2010FannyBay_5027995	2010	R2Sonic 2022	Shoal Seeker	1	0.4	6.7	Fanny Bay	Salish Sea
2010FordCove_5027969	2010	R2Sonic 2022	Shoal Seeker	1	1.0	8.3	Ford Cove	Salish Sea
2010GarrisonBay_5027606 1m Final	2010	EM3002	Otter Bay	2	0.6	18.0	Garrison Bay	Salish Sea
2010Gibsons_5027990	2010	R2Sonic 2022	Shoal Seeker	1	0.3	5.9	Gibsons	Salish Sea
2010GorgeHarbour_5027743	2010	R2Sonic 2022	Shoal Seeker	1	1.0	8.2	Gorge Harbour	Salish Sea
2010GowgaiaBay_5027573	2010	EM3002	Otter Bay	2	2.9	16.0	Gowgaia Bay	Haida Gwaii
2010GreenIsland_5027456	2010	EM3002	Otter Bay	2	9.8	32.6	Green Island	British Columbia

								North Coast
2010GriffinBay_5027607_2m_Final	2010	EM3002	Otter Bay	2	0.4	20.3	Griffin Bay	Salish Sea
2010GriffinBay_Sandwaves_5027608_2m_Final	2010	EM3002	Otter Bay	1	2.6	8.8	Griffin Bay	Salish Sea
2010HasewellBay_5027517	2010	EM3002	Otter Bay	2	0.1	1.5	Hasewell Bay	Haida Gwaii
2010HeriotBay_5027913	2010	R2Sonic 2022	Shoal Seeker	1	0.9	8.7	Heriot Bay	British Columbia Central Coast
2010IceBerg_Point_5027609_1m_Final	2010	EM3002	Otter Bay	2	0.8	4.1	Iceberg Point	Salish Sea
2010IceBerg_Point_5027609_1m_Final	2010	EM3002	Otter Bay	2	0.8	4.1	Iceberg Point	Salish Sea
2010JaffreyRock_5027276	2010	EM3002	Otter Bay	2	6.9	312.2	Jaffrey Island	Hecate Strait
2010JuanPerez_Gogit_5027443	2010	EM710	Vector	5	7.4	26.7	Juan Perez Sound	Haida Gwaii
2010JuanPerez_Werner_5027272	2010	EM710	Vector	5	11.5	35.8	Juan Perez Sound	Haida Gwaii
2010KnightInlet_5026670	2010	EM710	Vector	5	61.0	142.4	Knight Inlet	British Columbia Central Coast
2010LangfordShoals_5027497	2010	EM710	Vector	2	3.3	19.5	Langford Shoals	Haida Gwaii
2010LaskeekBay_5027499	2010	EM710	Vector	2	28.8	61.6	Laskeek Bay	Haida Gwaii
2010LopezSound_North_5027610_1m_Final	2010	EM3002	Otter Bay	2	4.1	15.3	Lopez Island	Salish Sea
2010Lund_5027914	2010	R2Sonic 2022	Shoal Seeker	1	0.7	8.2	Lund	Salish Sea
2010MansonsLanding_5027749	2010	R2Sonic 2022	Shoal Seeker	1	0.8	10.2	Mansons Landing	Salish Sea
2010MathiesonChannel_Central_5027464	2010	EM710	Vector	5	70.4	93.6	Mathieson Channel	British Columbia North Coast
2010MathiesonChannel_Entrance_5027275	2010	EM710	Vector	5	37.7	76.7	Mathieson Channel	British Columbia North Coast
2010MathiesonChannel_Nothing_5027467	2010	EM710	Vector	5	45.2	141.5	Mathieson Channel	British Columbia North Coast
2010MelvilleIsland_5028127	2010	EM3002	Otter Bay	2	0.0	1.0	Melville Island	British Columbia North Coast

2010MilbankeSound_5027273	2010	EM710	Vector	5	19.9	52.0	Milbanke Sound	British Columbia North Coast
2010MilbankeSound_5027273	2010	EM710	Vector	5	119.0	103.5	Milbanke Sound	British Columbia North Coast
2010MossPassage_AureliaRock_5027289	2010	EM3002	Otter Bay	2	0.5	5.1	Moss Passage	British Columbia North Coast
2010OrcasIsland_North_5027614_1m_Final	2010	EM3002	Otter Bay	2	3.8	42.4	Orcas Island	Salish Sea
2010PatBay_5027267	2010	EM3002	Otter Bay	2	1.0	6.6	Patricia Bay	Salish Sea
2010PenderHarbour_5027991	2010	R2Sonic 2022	Shoal Seeker	1	2.6	30.8	Pender Island	Salish Sea
2010PocketInlet_Entrance_5027509	2010	EM3002	Otter Bay	2	6.8	80.8	Pocket Inlet Entrance	Haida Gwaii
2010PorpoiseBay_5027992	2010	R2Sonic 2022	Shoal Seeker	1	1.0	6.5	Porpoise Bay	Salish Sea
2010PortHardy_5027286	2010	EM3002	Otter Bay	2	0.1	1.9	Port Hardy	Queen Charlotte Sound
2010PowellRiver_5027993	2010	R2Sonic 2022	Shoal Seeker	1	1.4	9.8	Powell River	Salish Sea
2010PrinceRupert_5027518	2010	EM3002	Otter Bay	2	2.2	23.6	Prince Rupert	British Columbia North Coast
2010PuffinCove_IronBallsBay_5027510	2010	EM3002	Otter Bay	2	11.6	93.6	Puffin Cove	Haida Gwaii
2010QuathiaskiCove_5027742	2010	R2Sonic 2022	Shoal Seeker	1	1.1	9.8	Quathiaski Cove	British Columbia Central Coast
2010QueensSound_5027552	2010	EM710	Vector	5	97.3	208.8	Queens Sound	British Columbia North Coast
2010RacePassageSandwaves_5027748	2010	EM710	Vector	5	11.2	20.4	Johnstone Strait	Salish Sea
2010RaceyInlet_5027283	2010	EM3002	Otter Bay	2	8.5	71.4	Racy Inlet	British Columbia North Coast
2010RamsayPassageApproaches_5027498	2010	EM710	Vector	5	12.2	23.8	Ramsay Passage	Haida Gwaii
2010RetreatPassage_5027295	2010	EM3002	Otter Bay	2	2.9	14.6	Retreat Passage	British Columbia Central Coast

2010SalmonBank_5027611_1m_Final	2010	EM3002	Otter Bay	2	5.0	126.9	Salmon Bank	Salish Sea
2010SalteryBay_5027972	2010	R2Sonic2022	Shoal Seeker	1	0.4	6.4	Saltery Bay	Salish Sea
2010SecretCove_5027994	2010	R2Sonic2022	Shoal Seeker	1	0.5	13.1	Secret Cove	Salish Sea
2010SheepPassage_MusselInlet_5027469	2010	EM710	Vector	5	55.4	170.0	Sheep Passage Mussel Inlet	British Columbia North Coast
2010SheepPassage_MusselInlet_5027469	2010	EM710	Vector	5	55.3	132.0	Sheep Passage	British Columbia North Coast
2010SkaatHarbour_5027515	2010	EM3002	Otter Bay	2	6.9	24.1	Skaat Harbour	Haida Gwaii
2010SookeHarbour_5027523	2010	R2Sonic2022	Shoal Seeker	1	0.4	12.5	Sooke Harbour	West coast Vancouver Island
2010SpringRetreatPassage_5027504	2010	EM3002	Otter Bay	2	9.5	40.7	Spring Passage	British Columbia Central Coast
2010SquallyChannel_5027284	2010	EM3002	Otter Bay	2	10.7	59.2	Squally Channel	British Columbia North Coast
2010SuciaIsland_5027612_1m_Final	2010	EM3002	Otter Bay	2	3.2	154.6	Sucia Island	Salish Sea
2010SuciaIsland_Sandwaves_5027613_1m_Final	2010	EM3002	Otter Bay	1	0.4	3.0	Sucia Island	Salish Sea
2010SurfInlet_5027281	2010	EM3002	Otter Bay	2	9.3	94.8	Surf Inlet	British Columbia North Coast
2010TanuIsland_5027549	2010	EM710	Vector	5	79.9	213.9	Tanu Island	Haida Gwaii
2010TobaInlet_5027631	2010	EM710	Vector	5	35.5	53.8	Toba Inlet	British Columbia Central Coast
2010Tofino	2010	R2Sonic2022	Shoal Seeker	1	1.0	17.7	Tofino	West coast Vancouver Island
2010TofinoBasin_5027560	2010	EM710	Vector	5	530.8	283.1	Tofino Basin	West coast Vancouver Island
2010TreeKnob_5027553	2010	EM710	Vector	5	69.9	156.9	Tree Knob Group Islands	British Columbia North Coast
2010TriangleIsland_5027546	2010	EM710	Vector	5	109.5	98.8	Triangle Island	Queen Charlotte Sound

2010TsehumHarbour_5027522	2010	R2Sonic 2022	Shoal Seeker	1	0.3	11.1	Tsehum Harbour	Salish Sea
2010Ucluelet_5027567	2010	R2Sonic 2022	Shoal Seeker	1	1.6	18.2	Ucluelet	West coast Vancouver Island
2010WestCoast_MoresbyIsland; 5027477 Fairweather	2010	EM710	Vector	5	308.6	469.6	Moresby Island	Haida Gwaii
2010WhaletownBay_5027299	2010	EM3002	Otter Bay	2	1.7	10.1	Whaletown Bay	British Columbia Central Coast
2010WinterHarbour_5027568	2010	R2Sonic 2022	Shoal Seeker	1	0.8	6.4	Winter Harbour	West coast Vancouver Island
2010Zeballos_5027569	2010	R2Sonic 2022	Shoal Seeker	1	1.2	7.2	Zeballos	West coast Vancouver Island
2011AlberniInlet_5m_5028081	2011	EM710	Vector	5	65.9	217.9	Alberni Inlet	West coast Vancouver Island
2011AlberniSandWave_NahmitBay_5028612	2011	R2Sonic 2022	Shoal Seeker	1	2.5	8.9	Alberni Inlet Nahmit Bay	West coast Vancouver Island
2011AlbertHead	2011	EM710	Vector	5	9.5	14.5	Albert Head	Salish Sea
2011BanksIsland_West 5027974	2011	EM710	Vector	5	11.8	42.4	Banks Island	Hecate Strait
2011BarkleySound	2011	EM710	Vector	5	151.9	223.5	Barkley Sound	West coast Vancouver Island
2011BischofIsland_5028074	2011	EM3002	Otter Bay	2	0.0	2.1	Bischof Island	Haida Gwaii
2011BoundaryPass_5028064	2011	EM710	Vector	5	11.1	15.8	Boundary Passage	Salish Sea
2011BrokenGroup_Vector_5028613	2011	EM710	Vector	5	2.0	28.5	Broken Group Islands	West coast Vancouver Island
2011BrooksBay_5028037	2011	EM710	Vector	5	19.4	48.8	Brooks Bay	West coast Vancouver Island
2011BrownPassage_5027968	2011	EM710	Vector	5	81.7	66.7	Brown Passage	British Columbia North Coast
2011BurnabyStrait_5028048	2011	EM3002	Otter Bay	2	2.9	39.0	Burnaby Strait	Haida Gwaii
2011Call_Inlet_5028093	2011	EM710	Vector	5	18.7	47.3	Call Inlet	British Columbia Central Coast
2011Camaano_5027975	2011	EM710	Vector	5	27.9	75.9	Caamano Sound	Hecate Strait
2011ChathamSound_5028033	2011	EM710	Vector	5	43.3	51.7	Chatham Sound	British Columbia

								North Coast
2011CheclesetBay_5028038	2011	EM710	Vector	5	16.8	30.4	Checleset Bay	West coast Vancouver Island
2011CumshewaInlet	2011	EM710	Vector	5	10.5	55.1	Cumshewa Inlet	Haida Gwaii
2011CumshewaInlet_5028016	2011	EM710	Vector	5	10.8	56.7	Cumshewa Inlet	Haida Gwaii
2011DegnenBay_5027765	2011	R2Sonic 2022	Shoal Seeker	1	0.4	8.3	Degnen Bay	Salish Sea
2011EsquimaltHarbour_5027752	2011	EM3002	Otter Bay	2	1.9	17.1	Esquimalt Harbour	Salish Sea
2011FalseCreek_5027733	2011	R2Sonic 2022	Shoal Seeker	1	0.4	9.5	False Creek	Salish Sea
2011FannyBay_5028021	2011	EM3002	Otter Bay	2	2.5	10.5	Fanny Bay	Salish Sea
2011FifeSound_5028010	2011	EM710	Vector	5	16.8	37.9	Fife Sound	Salish Sea
2011FinlaysonChannel_5028083	2011	EM710	Vector	5	36.7	224.7	Finlayson Channel	British Columbia North Coast
2011FishEgg_5028011	2011	EM710	Vector	5	21.5	59.0	Fishegg Inlet	British Columbia North Coast
2011FolgerNodes_5028615	2011	EM710	Vector	5	4.3	12.3	Barkley Sound	West coast Vancouver Island
2011FrenchCreek_5027763	2011	R2Sonic 2022	Shoal Seeker	1	0.5	8.6	French Creek	Salish Sea
2011FulfordHarbour_5027766	2011	R2Sonic 2022	Shoal Seeker	1	0.3	7.1	Fulford Harbour	Salish Sea
2011GBChurchEM2040_0.3m	2011	R2Sonic 2022	Shoal Seeker	0	0.0	0.7	Moresby Passage	Salish Sea
2011GordonChannel_5028050	2011	EM710	Vector	5	98.8	183.9	Gordon Channel	British Columbia Central Coast
2011HaddingtonPassage_5028031	2011	EM3002	Otter Bay	2	6.0	15.5	Haddington Passage	British Columbia Central Coast
2011HMCS_Mackenzie_EM2040_5028173	2011	R2Sonic 2022	Shoal Seeker	1	0.0	0.7	Haro Strait	Salish Sea
2011JervisInlet_EM2040_5028161	2011	EM710	Vector	5	3.4	29.8	Jervis Inlet	Salish Sea
2011Kunghit-West_5028054	2011	EM710	Vector	5	17.6	68.0	Kunghit Island	Haida Gwaii
2011Kwakshua-FitzHugh_5028018	2011	EM710	Vector	5	32.1	66.9	Kwakshua Channel	British Columbia North Coast

2011Kyuquot_5028084	2011	EM710	Vector	5	47.4	117.7	Kyuquot Sound	West coast Vancouver Island
2011LamaPassageEvansInlet_5028012	2011	EM710	Vector	5	20.3	73.5	Lama Passage Evans Inlet	British Columbia North Coast
2011LaredoSound_5027976	2011	EM710	Vector	5	61.7	78.8	Laredo Sound	British Columbia North Coast
2011LaskeekBay_5028056	2011	EM710	Vector	5	23.7	93.5	Laskeek Bank	Haida Gwaii
2011LawnPt_Jewells_5028013	2011	EM710	Vector	5	21.3	57.6	Lawn Point	Haida Gwaii
2011LyllHarbour_5027768	2011	R2Sonic 2022	Shoal Seeker	1	1.2	8.0	Lyll Harbour	Salish Sea
2011McMillanIsland_5027734	2011	R2Sonic 2022	Shoal Seeker	1	1.7	10.9	McMillan Island	Salish Sea
2011MilbankeSound_5028017	2011	EM710	Vector	5	19.9	52.0	Milbanke Sound	British Columbia North Coast
2011MilbankeSound_West_5028090	2011	EM710	Vector	5	47.5	75.8	Milbanke Sound	British Columbia North Coast
2011Mission_5027736	2011	R2Sonic 2022	Shoal Seeker	1	0.8	6.4	Mission	Salish Sea
2011NanaimoCruiseShipTerminal_5027958	2011	EM3002	Otter Bay	1	0.1	2.6	Nanaimo	Salish Sea
2011NodalesChannel_OtterBay	2011	EM3002	Otter Bay	2	4.2	37.7	Nodales Channel	British Columbia Central Coast
2011NodalesChannel_Vector_5028045	2011	EM710	Vector	5	32.5	61.6	Nodales Channel	British Columbia Central Coast
2011OkisolloChannel_OtterBay	2011	EM3002	Otter Bay	2	12.1	50.2	Okisollo Channel	British Columbia Central Coast
2011OkisolloChannel_Vector_5028066	2011	EM710	Vector	5	13.9	44.9	Okisollo Channel	British Columbia Central Coast
2011PenroseIs_North_5027996	2011	EM710	Vector	5	16.5	38.7	Penrose Island	British Columbia North Coast
2011PortAlberni_5027764	2011	R2Sonic 2022	Shoal Seeker	1	1.1	8.7	Port Alberni	West coast Vancouver Island

2011QuascillaBay_5027997	2011	EM710	Vector	5	1.7	12.5	Quascilla Bay	British Columbia Central Coast
2011QuatsinoSound_5028006	2011	EM710	Vector	5	21.7	52.9	Quatsino Sound	West coast Vancouver Island
2011QueenCharlotteStrait_5028014	2011	EM710	Vector	5	47.6	86.9	Queen Charlotte Strait	British Columbia Central Coast
2011QueensSound_5028087	2011	EM710	Vector	5	125.9	163.5	Queens Sound	British Columbia North Coast
2011RaceRocks_5028088	2011	EM710	Vector	2	12.6	32.5	Race Rocks	West coast Vancouver Island
2011RaceRocks_EM2040_5028159	2011	EM3002	Otter Bay	1	2.1	7.4	Race Rocks	Salish Sea
2011RamsayIsland_East_5028055	2011	EM710	Vector	5	30.3	77.4	Ramsay Island	Haida Gwaii
2011SandHead_EM2040_5028162	2011	EM3002	Otter Bay	2	1.8	8.7	Fraser Delta	Salish Sea
2011Sandheads_5028063	2011	EM3002	Otter Bay	2	23.9	45.7	Sandheads	Salish Sea
2011ScottChannel_5028052	2011	EM710	Vector	2	16.9	95.5	Cook Bank	Queen Charlotte Sound
2011SeaforthChannel_East_5028015	2011	EM710	Vector	5	18.7	45.0	Seaforth Channel	British Columbia North Coast
2011SecheltInlet_5027966	2011	EM710	Vector	5	70.9	191.3	Sechelt Inlet	Salish Sea
2011SkincuttleNorth_5027981	2011	EM3002	Otter Bay	2	12.0	46.2	Skincuttle Inlet	Haida Gwaii
2011SkincuttleSouth_5028047	2011	EM3002	Otter Bay	2	18.2	57.6	Skincuttle Inlet	Haida Gwaii
2011SmithSound_5028009	2011	EM710	Vector	5	24.8	64.3	Smith Sound	British Columbia Central Coast
2011SookeBasin_5028049	2011	R2Sonic 2022	Shoal Seeker	1	8.7	35.5	Sooke Basin	West coast Vancouver Island
2011Squamish_5027737	2011	R2Sonic 2022	Shoal Seeker	1	0.3	9.1	Squamish Harbour	Salish Sea
2011Squamish_EM2040_5028160	2011	R2Sonic 2022	Shoal Seeker	1	6.0	21.9	Squamish Harbour	Salish Sea
2011ThompsonBay_5028089	2011	EM710	Vector	5	16.1	40.6	Thompson Bay	British Columbia North Coast

2011TofinoBasin_5028091	2011	EM710	Vector	5	539.7	424.8	Tofino Basin	West coast Vancouver Island
2011Topknot_5028053	2011	EM710	Vector	5	24.0	37.6	Topknot	West coast Vancouver Island
2011TranquilInlet_5028619	2011	EM710	Vector	5	3.7	17.8	Clayoquot Sound	West coast Vancouver Island
2011TranquilInlet_5028619	2011	EM710	Vector	5	3.7	17.8	Tranquil Inlet	West coast Vancouver Island
2011TrevorChannel_5028618	2011	EM710	Vector	5	19.3	80.7	Trevor Channel	West coast Vancouver Island
2011TrevorChannel_5028618	2011	EM710	Vector	5	19.3	80.7	Barkley Sound	West coast Vancouver Island
2011Trialisland_SandWaves_EM2040_5028158	2011	EM3002	Otter Bay	1	2.5	9.6	Trial Island	Salish Sea
2011Triangle_5028051	2011	EM710	Vector	5	39.2	79.7	Cook Bank	Queen Charlotte Sound
2011TribuneChannel_5028094	2011	EM710	Vector	5	18.8	40.5	Tribune Channel	British Columbia Central Coast
2011Ucluelet_5028617	2011	EM3002	Otter Bay	1	10.0	82.7	Ucluelet	West coast Vancouver Island
2011Ucluelet_5028617	2011	EM710	Vector	5	10.0	82.7	Barkley Sound	West coast Vancouver Island
2011VictoriaHarbourGorge_5027864	2011	R2Sonic 2022	Shoal Seeker	1	3.0	45.1	Victoria Harbour	Salish Sea
2011VictoriaHarbour_Outer_5027863	2011	EM3002/R2Sonic 2022	Otter Bay/Shoal Seeker	1	1.8	21.9	Victoria Harbour	Salish Sea
2011WaddingtonChannel_5028095	2011	EM710	Vector	5	14.1	48.4	Waddington Channel	British Columbia Central Coast
2011WeeteamBayApproach_5027977	2011	EM710	Vector	5	6.3	23.6	Weeteam Bay	Hecate Strait
2011WhalerBay_5027767	2011	R2Sonic 2022	Shoal Seeker	1	0.7	11.8	Whaler Bay	Salish Sea
2011Whonnock_5027735	2011	R2Sonic 2022	Shoal Seeker	1	0.6	4.5	Whonnock	Salish Sea
2011WindyBay_5028032	2011	EM3002	Otter Bay	1	0.1	2.2	Windy Bay	Haida Gwaii
2012_Laredo_Inlet	2012	EM3002	Otter Bay	1	11.0	382.2	Laredo Inlet	British Columbia North Coast

2012AgassizBanks_5028262_2m_Final	2012	EM710	Vector	5	119.2	362.6	Agassiz Bank	Hecate Strait
2012AgnewBank_5028275_2m_Final	2012	EM710	Vector	5	0.5	6.0	Agnew Bank	British Columbia North Coast
2012CaamanoSound North_5028267	2012	EM710	Vector	5	446.5	154.0	Caamano Sound	Hecate Strait
2012CaamanoSound South_5028296_5m	2012	EM710	Vector	5	329.3	176.6	Caamano Sound	Hecate Strait
2012ChathamSound_5028272_2m_Final	2012	EM710	Vector	5	98.9	83.6	Chatham Sound	British Columbia North Coast
2012Dogfish_North_5028268	2012	EM710	Vector	5	303.6	250.5	Dogfish Bank	Hecate Strait
2012DogfishSouth_5028269_2m_Final	2012	EM710	Vector	5	168.1	77.3	Dogfish Bank	Hecate Strait
2012DouglasChannel_FaultLine_5028279	2012	EM3002	Otter Bay	1	1.6	20.7	Douglas Channel	British Columbia North Coast
2012DouglasChannel_Kitimat_5028259_2m_Final	2012	EM3002	Otter Bay	2	5.3	64.7	Douglas Channel	British Columbia North Coast
2012EstevanSound_Campania	2012	EM3002	Otter Bay	2	8.4	67.9	Estevan Sound	British Columbia North Coast
2012HecateStrait_ArchibaldIslands_5028227	2012	EM3002	Otter Bay	2	5.5	40.3	Archibald Islands	Hecate Strait
2012HecateStrait_TreeNobEast_5028225	2012	EM3002	Otter Bay	2	3.0	41.1	Tree Nob East	British Columbia North Coast
2012PorpoiseHarbour_5028226_2m_Final	2012	EM3002	Otter Bay	2	2.3	17.0	Porpoise Harbour	British Columbia North Coast
2012PortSimpson_5028260_30cm_Final	2012	R2Sonic 2022	Shoal Seeker	0	0.5	6.5	Port Simpson	British Columbia North Coast
2012QlawdzeetAnchorage_5028224	2012	EM3002	Otter Bay	2	13.1	53.5	Qlawdzeet Anchorage	British Columbia North Coast
2012SaltspringIsland_5028293_2m_Final	2012	EM3002	Otter Bay	2	1.1	12.5	Saltspring Island	Salish Sea
2012Squamish_5028378_1m	2012	EM3002	Otter Bay	1	1.0	9.5	Squamish Harbour	Salish Sea
2012Stenhouse_Shoal_5028264_5m	2012	EM710	Vector	5	121.3	126.0	Stenhouse Shoal	British Columbia

								North Coast
2012Steveston_5028278_1m_Final	2012	EM3002	Otter Bay	1	0.9	22.6	Steveston	Salish Sea
2012VancouverHarbour_PWGSC_5028861	2012	R2Sonic	Unknown	1	4.1	30.1	Vancouver Harbour	Salish Sea
2012VennPassage_5028263_2m_Final	2012	EM3002	Otter Bay	2	1.5	24.3	Venn Passage	British Columbia North Coast
2012WrightSound_GillIsland_5028280_2m_Final	2012	EM3002	Otter Bay	2	2.6	40.4	Wright Sound	British Columbia North Coast
2013AgassizBanks_5028457	2013	EM710	Vector	5	199.9	119.6	Agassiz Bank	Hecate Strait
2013AgnewBank_5028538	2013	EM710	Vector	5	3.8	27.3	Agnew Bank	British Columbia North Coast
2013AristazaballIslandSW_5028493	2013	EM3002	Otter Bay	2	121.6	166.6	Aristazaball Island	Hecate Strait
2013BanksIsland_West_5028458	2013	EM710	Vector	5	288.4	172.3	Banks Island	Hecate Strait
2013BarrierIslands_5028464	2013	EM710	Vector	5	18.4	41.8	Barrier Islands	West coast Vancouver Island
2013BarrierIslands_5028464	2013	EM710	Vector	1	18.4	41.0	Kyuquot Sound	West coast Vancouver Island
2013BetteridgeInlet_5028478	2013	EM3002	Otter Bay	2	2.8	56.2	Betteridge Inlet	British Columbia North Coast
2013BlindChannel_PostDredge_5028686	2013	R2Sonic 2022	Shoal Seeker	2	0.0	2.0	Blind Channel	Salish Sea
2013BlockIslands_5028465	2013	EM710	Vector	5	8.0	55.2	Block Islands	British Columbia North Coast
2013BrooksBay_5028433	2013	EM710	Vector	5	9.1	21.2	Brooks Bay	West coast Vancouver Island
2013CaamanoSound_AlexanderIsland_5028476	2013	EM710	Vector	5	9.2	52.2	Caamano Sound	British Columbia North Coast
2013CaamanoSoundShoals_5028495	2013	EM3002	Otter Bay	2	3.6	35.8	Caamano Sound	Hecate Strait
2013CaamanoSoundSouth_5028491	2013	EM710	Vector	2	526.2	298.0	Caamano Sound	Hecate Strait
2013CampaniaSound_DuckersIslands_5028539	2013	EM710	Vector	5	5.1	33.6	Caamano Sound	British Columbia

								North Coast
2013Checleset_5028434	2013	EM710	Vector	2	30.1	97.1	Checleset Inlet	West coast Vancouver Island
2013ClioBay_5028544	2013	EM3002	Otter Bay	2	1.4	9.5	Clio Bay	British Columbia North Coast
2013CookBank_5028459	2013	EM710	Vector	5	118.6	155.2	Cook Bank	Queen Charlotte Sound
2013CowichanLake_5028371	2013	R2Sonic 2022	Shoal Seeker	2	57.9	138.9	Cowichan	Vancouver Island
2013DouglasChannel_Coste_Island_5028545	2013	EM3002	Otter Bay	2	8.3	143.7	Douglas Channel	British Columbia North Coast
2013EstevanGroup_5028460	2013	EM710	Vector	5	3.6	21.0	Estevan Sound	Hecate Strait
2013EstevanGroupWest_5028489	2013	EM710	Vector	5	57.2	122.5	Estevan Sound	Hecate Strait
2013EstevanSound_Campania_5028475	2013	EM3002	Otter Bay	2	3.7	25.1	Estevan Sound	British Columbia North Coast
2013EstevanSound_CartwrightRocks_5028469	2013	EM3002	Otter Bay	2	7.0	27.6	Estevan Sound	British Columbia North Coast
2013EstevanSound_DupontIsland_5028484	2013	EM710	Vector	5	20.3	41.2	Estevan Sound	British Columbia North Coast
2013EstevanSound_EstevanReef_5028550	2013	EM3002	Otter Bay	2	5.4	46.7	Estevan Sound	British Columbia North Coast
2013GillamIslands_5028466	2013	EM710	Vector	2	14.9	56.6	Gillam Islands	West coast Vancouver Island
2013Gilttoeyes_and_Miskatla_Inlets_5028546	2013	EM710	Vector	2	19.1	82.9	Gittoeyes and Miskatla Inlets	British Columbia North Coast
2013GoldRiver_5028323	2013	R2Sonic 2022	Shoal Seeker	1	0.4	7.3	Gold River	West coast Vancouver Island
2013GowgaiaBay_5028428	2013	EM3002	Otter Bay	5	5.4	28.1	Gowgaia Bay	Haida Gwaii
2013GrenvilleChannel_GeneralZalinski_5028445	2013	R2Sonic 2022	Shoal Seeker	1	0.2	6.0	Grenville Channel	British Columbia North Coast

2013HaidaGwaii_fault_north_UTM8N	2013	EM710	Vector	20	210.2	448.8	Haida Gwaii	Haida Gwaii
2013HaidaGwaii_fault_south_UTM9N	2013	EM710	Vector	20	239.6	484.1	Haida Gwaii	Haida Gwaii
2013HecateStrait_5028461	2013	EM710	Vector	2	265.1	297.2	Hecate Strait	Hecate Strait
2013HoweSound_PortMellon_5028403	2013	R2Sonic 2022	Shoal Seeker	1	3.6	22.1	Howe Sound	Salish Sea
2013KitasuBay_5028499	2013	EM3002	Otter Bay	2	1.5	28.1	Kitasu Bay	British Columbia North Coast
2013KitimatArm_5028560	2013	EM710	Vector	2	18.3	32.5	Kitimat Harbour	British Columbia North Coast
2013Kyuquot_5028468	2013	EM710	Vector	5	33.6	108.8	Kyuquot	West coast Vancouver Island
2013LangleyPassage_5028422	2013	EM710	Vector	2	11.4	87.9	Langley Passage	Hecate Strait
2013LaredoSound_5028494	2013	EM710	Vector	5	132.3	129.7	Laredo Sound	Hecate Strait
2013LaredoSound_5028494	2013	EM710	Vector	5	132.1	127.9	Laredo Sound	Hecate Strait
2013LaskeekBay_5028430	2013	EM710	Vector	5	43.0	60.3	Laskeek Bay	Haida Gwaii
2013LucyIslands_5028509	2013	EM710	Vector	2	8.3	37.0	Lucy Islands	British Columbia North Coast
2013McMickingInlet_5028423	2013	EM3002	Otter Bay	2	5.2	39.2	McMicking Inlet	British Columbia North Coast
2013PortAlberni_5028386	2013	R2Sonic 2022	Shoal Seeker	1	1.8	11.0	Port Alberni	Vancouver Island
2013PortAlberni_5028386	2013	R2Sonic 2022	Shoal Seeker	1	1.8	11.0	Alberni Inlet	Vancouver Island
2013PortChanal_Hippa_5028426	2013	EM710	Vector	5	20.2	119.9	Port Chanal	Haida Gwaii
2013PortHardy_Pipeline_5028405	2013	EM3002	Otter Bay	1	0.5	7.2	Port Hardy	British Columbia Central Coast
2013PowellRiver_WestView_5028404	2013	R2Sonic 2022	Shoal Seeker	1	4.6	26.7	Powell River	Salish Sea
2013PrinceRupert_Anchorage_5028540	2013	EM3002	Otter Bay	1	3.5	24.5	Prince Rupert	British Columbia North Coast
2013PrinceRupert_BarrettRk_CharlesPt_5028506	2013	EM3002	Otter Bay	2	1.6	21.3	Prince Rupert	British Columbia North Coast

2013PrincipeChannel_PortStephens_5028552	2013	EM3002	Otter Bay	2	3.5	32.1	Principe Channel	British Columbia North Coast
2013Quasino_Nerout_sos_5028467	2013	EM710	Vector	2	40.4	118.3	Quatsino	West coast Vancouver Island
2013RachaelIslands_5028508	2013	EM710	Vector	2	17.3	57.5	Rachael Islands	British Columbia North Coast
2013SealCove_5028547	2013	EM3002	Otter Bay	2	0.7	6.7	Prince Rupert	British Columbia North Coast
2013SquamishHarbour_5028533	2013	EM3002	Otter Bay	2	3.0	25.9	Howe Sound	Salish Sea
2013StenhouseStoal_5028507	2013	R2Sonic 2022	Shoal Seeker	2	1.7	10.0	Chatham Sound	British Columbia North Coast
2013Tahsis_5028388	2013	R2Sonic 2022	Shoal Seeker	1	0.2	2.6	Tahsis	West coast Vancouver Island
2013ThunderbirdMarina_PostDredge_5028650	2013	EM3002	Otter Bay	2	0.0	0.8	Howe Sound	Salish Sea
2013TsowwinNarrows_5028387	2013	R2Sonic 2022	Shoal Seeker	1	1.0	7.3	Tsowwin Narrows	West coast Vancouver Island
2013TsowwinNarrows_5028387	2013	R2Sonic 2022	Shoal Seeker	1	1.0	7.3	Nootka Sound	West coast Vancouver Island
2013TuwartzInlet_5028551	2013	EM3002	Otter Bay	2	12.0	69.7	Tuwartz Inlet	British Columbia North Coast
2013UnionPassage_5028490	2013	EM710	Vector	2	21.1	77.1	Union Passage	British Columbia North Coast
2013UnionPassage_MarinePark_5028444	2013	EM3002	Otter Bay	2	7.9	78.5	Union Passage	British Columbia North Coast
2013VancouverEast_PWGSC_5028859	2013	R2Sonic	Unknown	1	6.1	29.5	Vancouver Harbour	Salish Sea
2013VancouverEast_PWGSC_5028859	2013	Unknown	Unknown	1	3.9	27.3	Vancouver Harbour	Salish Sea
2013WelcomeBay_5028541	2013	EM3002	Otter Bay	2	1.3	10.3	Welcome Bay	Salish Sea
2013WilsonRock_ShoalSeeker_5028498	2013	R2Sonic 2022	Shoal Seeker	2	1.0	6.4	Laredo Sound	British Columbia North Coast

2013WilsonRock_Ve ctor_5028470	2013	EM710	Vector	2	1.8	16.0	Laredo Sound	British Columbia North Coast
2013WrightPassage_ 5028500	2013	EM710	Vector	2	4.8	29.5	Wright Passage	Hecate Strait
2014_PrinceRupert_ RidleyIsland_502881 1	2014	R2 Sonic 2022	Shoal Seeker	2	1.2	12.5	Chatham Sound	British Columbia North Coast
2014AberlourBay_50 28769	2014	EM2040C	Otter Bay	2	11.8	44.8	Aberlour Bay	Hecate Strait
2014AmakusaShoal_ 5028797	2014	EM2040C	Otter Bay	1	2.4	12.6	Chatham Sound	British Columbia North Coast
2014AndersonIslands 5028753	2014	R2 Sonic 2022	Shoal Seeker	1	22.3	171.7	Anderson Islands	Hecate Strait
2014AngerAnchorage_ 5028835	2014	EM2040C	Otter Bay	2	13.1	99.7	Evinrude Passage	British Columbia North Coast
2014Aristazabal_Lem priereBank_502877 8	2014	EM710	Vector	2	82.8	101.0	Lempriere Bank	Hecate Strait
2014AristazabalEast_ 5028779	2014	R2Sonic 2022	Shoal Seeker	2	3.8	51.7	Laredo Sound	British Columbia North Coast
2014AristazabalSW_ 5028780	2014	EM710	Vector	2	190. 3	94.8	Aristazabal Island	Hecate Strait
2014BeaucheminCha nnel_Shoals_502875 4	2014	R2 Sonic 2022	Shoal Seeker	1	2.7	20.4	Beauchamin Channel	Hecate Strait
2014BellaBella_5028 747	2014	R2 Sonic 2022	Shoal Seeker	1	8.7	44.7	Bella Bella	British Columbia North Coast
2014BlandRocks_50 28799	2014	EM2040C	Otter Bay	2	5.0	18.4	Bland Rocks	Hecate Strait
2014BonillaIsland_M cHargBank_5028781	2014	EM710	Vector	2	189. 9	157.8	McHarg Bank	Hecate Strait
2014BorrowmanBay 5028752	2014	R2 Sonic 2022	Shoal Seeker	1	0.2	6.4	Aristazabal Island	Hecate Strait
2014CaamanoSound South_5028782	2014	EM710	Vector	5	359. 3	91.5	Caamano Sound	Hecate Strait
2014CampbellRiver_ 5028704	2014	EM2040C	Otter Bay	1	3.4	17.2	Campbell River	Salish Sea
2014ChathamSound_ 5028768	2014	EM2040C	Otter Bay	2	25.5	44.2	Chatham Sound	British Columbia North Coast
2014ChathamSound_ AlfordReefs_502881 3	2014	R2 Sonic 2022	Shoal Seeker	1	0.6	4.0	Chatham Sound	British Columbia

								North Coast
2014ChathamSound_East_5028814	2014	EM2040C	Otter Bay	2	10.5	22.5	Chatham Sound	British Columbia North Coast
2014ChathamSound_LucyIslands_5028809	2014	R2Sonic 2022	Shoal Seeker	2	9.4	22.1	Chatham Sound	British Columbia North Coast
2014ChemainusBay_5028682	2014	R2Sonic 2022	Shoal Seeker	1	0.6	9.9	Chemainus Bay	Salish Sea
2014ChemainusBayBarge_5028501	2013	R2Sonic 2022	Shoal Seeker	1	0.3	4.0	Chemainus Bay	Salish Sea
2014CowichanBay_5028693	2014	EM2040C	Otter Bay	1	0.2	5.4	Cowichan Bay	Salish Sea
2014Crofton_5028683	2014	R2Sonic 2022	Shoal Seeker	1	1.0	8.9	Crofton	Salish Sea
2014DewdneyIsland_5028783	2014	R2Sonic 2022	Shoal Seeker	1	1.9	17.5	Dewdney Island	Hecate Strait
2014DigbyIsland_West_5028824	2014	R2Sonic 2022	Shoal Seeker	2	19.1	70.3	Digby Island	British Columbia North Coast
2014EdyePassage_5028838	2014	EM2040C	Otter Bay	2	11.8	88.3	Edye Passage	British Columbia North Coast
2014EvelynRocks_5028803	2014	EM2040C	Otter Bay	2	9.0	29.0	Evelyn Rocks	Hecate Strait
2014Ganges_5028570	2014	R2Sonic 2022	Shoal Seeker	1	1.9	21.9	Ganges Harbour	Salish Sea
2014GlideIsland_5028801	2014	EM2040C	Otter Bay	2	9.3	41.2	Glide Island	British Columbia North Coast
2014GullRocks_5028822	2014	R2Sonic 2022	Shoal Seeker	2	3.5	28.4	Chatham Sound	British Columbia North Coast
2014HarveyIsland_5028784	2014	EM710	Vector	2	30.4	41.4	Harvey Island	Hecate Strait
2014Hecate_Aristazabal_5028785	2014	EM710	Vector	2	158.0	64.2	Aristazabal Island	Hecate Strait
2014Hecate_BanksIslandNW_5028786	2014	EM710	Vector	2	4.6	21.7	Hecate Strait	Hecate Strait
2014HecateStrait_ArchibaldIslands_5028815	2014	R2Sonic 2022	Shoal Seeker	1	0.6	8.6	Archibald Islands	Hecate Strait
2014HecateStrait_MarchantRocks_5028771	2014	EM2040C	Otter Bay	2	10.4	21.8	Marchant Rocks	Hecate Strait
2014IOS_Wharfs_5028638	2014	R2Sonic 2022	Shoal Seeker	1	0.1	1.3	Saanich Inlet	Salish Sea

2014JohnstonBay_5028808	2014	EM2040C	Otter Bay	2	0.6	8.1	Rivers Inlet	British Columbia North Coast
2014KettleInlet_5028764	2014	EM2040C	Otter Bay	2	5.0	54.4	Kettle Inlet	Hecate Strait
2014KettleInlet_South_5028755	2014	R2Sonic 2022	Shoal Seeker	1	0.8	23.1	Kettle Inlet	Hecate Strait
2014LaredoSound_5028787	2014	EM710	Vector	2	6.5	65.0	Laredo Sound	British Columbia North Coast
2014LempriereBank_5028789	2014	EM710	Vector	1	5.2	19.4	Laredo Sound	British Columbia North Coast
2014LombardRocks_5028762	2014	EM2040C	Otter Bay	2	8.5	21.8	Lombard Rocks	Hecate Strait
2014MasonShoal_5028790	2014	R2Sonic 2022	Shoal Seeker	1	0.1	2.4	Hecate Strait	Hecate Strait
2014McHargBank_5028791	2014	EM710	Vector	2	68.2	48.9	McHarg Bank	Hecate Strait
2014MooreIslands_5028792	2014	R2Sonic 2022	Shoal Seeker	2	11.7	90.4	Moore Islands	Hecate Strait
2014OswaldBay_5028800	2014	EM2040C	Otter Bay	2	3.9	19.8	Oswald Bay	Hecate Strait
2014OswaldBay_Vector_5028793	2014	EM710	Vector	2	21.0	38.9	Oswald Bay	Hecate Strait
2014OtterPassage_5028772	2014	EM2040C	Otter Bay	2	12.0	46.7	Otter Passage	Hecate Strait
2014Price_Laredo_5028794	2014	EM710	Vector	5	265.6	145.3	Price Island	Hecate Strait
2014PrinceRupert_5028825	2014	R2Sonic 2022	Shoal Seeker	1	8.8	115.8	Prince Rupert	British Columbia North Coast
2014PrinceRupert_DigbyIsland_5028810	2014	R2Sonic 2022	Shoal Seeker	2	7.4	22.6	Digby Island	British Columbia North Coast
2014PrinceRupert_RidleyIsland_5028811	2014	R2Sonic 2022	Shoal Seeker	2	1.2	12.5	Prince Rupert	British Columbia North Coast
2014PrinceRupertHarbour_WoodPelletTerminal_5028816	2014	R2Sonic 2022	Shoal Seeker	2	0.3	3.9	Prince Rupert	British Columbia North Coast
2014PrincessRoyalChannel_5028795	2014	EM710	Vector	5	71.9	186.4	Princess Royal Channel	British Columbia North Coast
2014RennisonIsland_5028763	2014	EM2040C	Otter Bay	2	21.1	132.8	Rennison Island	Hecate Strait

2014ThreeNobGroup_5028812	2014	R2Sonic 2022	Shoal Seeker	2	2.0	12.7	Three Nob Group	British Columbia North Coast
2014TroublePassage_5028773	2014	EM2040C	Otter Bay	2	0.2	8.9	Trouble P	British Columbia North Coast
2014Vancouver_CentermBerths_PWGS_5029064	2014	R2Sonic 2022	Czotter	1	0.2	4.9	Vancouver Harbour	Salish Sea
2014VancouverHarbour_LynntermWestgate_PWGS_5029068	2014	Unknown	Unknown	1	0.0	1.3	Vancouver Harbour	Salish Sea
2014VancouverHarbour_Vanterm_PWGS_5029069	2014	Unknown	Unknown	1	0.1	4.0	Vancouver Harbour	Salish Sea
2014VancouverHarbourEast_PWGS_5029066	2014	Unknown	Unknown	1	2.2	13.1	Vancouver Harbour	Salish Sea
2014VancouverHarbourWest_PWGS_5029067	2014	Unknown	Unknown	1	2.7	13.5	Vancouver Harbour	Salish Sea
2014WarriorRocks_5028804	2014	EM2040C	Otter Bay	2	19.1	30.0	Warrior Rocks	Hecate Strait
2014WillisPassage_5028796	2014	EM710	Vector	2	51.7	98.5	Willis Passage	Hecate Strait
2014WrightPassage_5028788	2014	EM710	Vector	2	62.9	86.6	Wright Passage	Hecate Strait
2015AgnewBank_5029130	2015	R2Sonic 2022	Shoal Seeker	1	6.7	44.8	Chatham Sound	British Columbia North Coast
2015Aristazabal_5028987	2015	R2Sonic 2022	Shoal Seeker	1	2.9	56.6	Aristazabal Island	Hecate Strait
2015BakerPoint_5029001	2015	EM2040C	Otter Bay	1	1.9	22.5	Caamano Sound	British Columbia North Coast
2015BischofIsland_5029187	2015	R2Sonic 2022	Shoal Seeker	1	0.8	9.1	east Moresby Island	Hecate Strait
2015BuchanInlet_5029087	2015	EM2040C	Otter Bay	1	1.8	30.5	Principe Channel	British Columbia North Coast
2015BurrardInlet_WestVanLabs_5029122	2015	R2Sonic 2022	Shoal Seeker	1	0.3	3.3	West Vancouver	Salish Sea
2015ButeInletTalweg_502954	2015	EM710	Vector	5	84.0	182.5	Bute Inlet	Salish Sea
2015ButzeRapids_5029039	2015	R2Sonic 2022	Shoal Seeker	1	0.5	6.8	Butze Rapids	British Columbia North Coast

2015ChathamSound_DigbyIslandWest_5029038	2015	EM2040C	Otter Bay	1	2.6	23.0	Chatham Sound	British Columbia North Coast
2015Chemainus_Wharf_5029077	2015	R2Sonic 2022	Shoal Seeker	0	0.0	1.7	Chemainus Bay	Salish Sea
2015Conexus_2ndNarrows_PWGS_5029052	2015	R2Sonic 2022	Shoal Seeker	1	0.5	6.1	Burrard Inlet	Salish Sea
2015CortesBay_5028938	2015	R2Sonic 2022	Shoal Seeker	1	0.9	15.3	Cortes Bay	Salish Sea
2015CreakIslands_5028990	2015	EM2040C	Otter Bay	1	6.0	33.6	Creak Islands	British Columbia North Coast
2015CreakIslands_5028990	2015	EM2040C	Otter Bay	1	6.0	34.1	Creak Islands	British Columbia North Coast
2015DepartureBay	2015	R2Sonic 2022	Shoal Seeker	1	0.3	8.5	Nanaimo	Salish Sea
2015DepartureBay_PBS_5029057	2015	R2Sonic 2022	Shoal Seeker	0	0.3	8.6	Departure Bay	Salish Sea
2015DewdneyIslandSE_5029101	2015	EM2040C	Otter Bay	1	5.2	40.4	Dewdney Island	British Columbia North Coast
2015DewdneyIslandSE_5029101	2015	EM2040C	Otter Bay	2	5.1	39.8	Dewdney Island	British Columbia North Coast
2015DewdneySW_5029081	2015	EM2040C	Otter Bay	2	17.1	39.6	Dewdney Island	Hecate Strait
2015DouglasChannelSlide	2015	EM2040C	Otter Bay	2	3.4	19.1	Douglas Channel	British Columbia North Coast
2015DuncanBayWrecks_5029142	2015	EM2040C	Otter Bay	1	1.3	7.9	Campbell River	Salish Sea
2015FinlaysonChannel_5029022	2015	EM710	Vector	5	68.8	64.5	Finlayson Channel	British Columbia North Coast
2015FrenchCreek_5028945	2015	R2Sonic 2022	Shoal Seeker	1	0.3	7.5	French Creek	Salish Sea
2015GalianoIsland_5029082	2015	R2Sonic 2022	Shoal Seeker	1	4.7	30.6	Montague Harbour	Salish Sea
2015GibsonGroup_5028951	2015	EM2040C	Otter Bay	2	9.5	18.0	Porcher Island	British Columbia North Coast
2015HalkettBay_AnnapolisWreck_5028980	2015	R2Sonic 2022	Shoal Seeker	0	0.0	0.6	Halkett Bay	Salish Sea

2015HanmerRocks_5029036	2015	R2Sonic 2022	Shoal Seeker	1	13.1	37.2	Hanmer Rocks	British Columbia North Coast
2015HarrietHarbour_5029033	2015	EM2040	Otter Bay	1	10.8	30.7	East coast Moresby Island	Haida Gwaii
2015Hawkesbury_5028952	2015	EM2040C	Otter Bay	2	9.9	90.7	Douglas Channel	British Columbia North Coast
2015Hecate_GertrudeRk South	2015	EM710	Vector	2	170.1	73.5	Hecate Strait	Hecate Strait
2015Hecate_GertrudeRk SW	2015	EM710	Vector	2	116.5	87.0	Hecate Strait	Hecate Strait
2015Hecate_GertrudeRk West	2015	EM710	Vector	2	170.2	98.4	Hecate Strait	Hecate Strait
2015Hecate_Laredo_SW	2015	EM710	Vector	2	85.8	72.7	Laredo Sound	Hecate Strait
2015HorseYBank_5029037	2015	R2Sonic 2022	Shoal Seeker	1	2.7	10.0	Chatham Sound	British Columbia North Coast
2015HoustonStewart_5029165	2015	EM2040C	Otter Bay	1	6.3	33.6	Houston Channel	Haida Gwaii
2015KitimatArm_5028953	2015	EM710	Vector	2	24.6	55.1	Kitimat Arm	British Columbia North Coast
2015KitsonIslandWest_5029011	2015	EM2040C	Otter Bay	1	4.2	13.6	Kitson Island	British Columbia North Coast
2015KitsonIslandWest_5029011	2015	EM2040C	Otter Bay	1	4.2	13.4	Chatham Sound	British Columbia North Coast
2015KuchhNaiBay_5028969	2015	EM2040C	Otter Bay	1	2.8	25.4	Kuchhna Bay	Hecate Strait
2015KunghitIsland_5029195	2015	EM2040C	Otter Bay	1	10.7	45.2	Kunghit Island	Haida Gwaii
2015LangleyPassage_5029080	2015	EM2040C	Otter Bay	1	0.1	4.2	Langley Passage	British Columbia North Coast
2015Lasqueti_Island_5028917	2015	EM2040C	Otter Bay	1	13.1	100.5	Lasqueti Island	Salish Sea
2015MathiesonChannel_ArthurIsland_5028950	2015	EM2040C	Otter Bay	2	1.0	9.9	Mathieson Channel	British Columbia North Coast
2015McKenneyIslands_5029000	2015	EM2040C	Otter Bay	1	21.8	96.0	McKenney Islands	Hecate Strait

2015MilbankeSound_SW_5029027	2015	EM710	Vector	2	214.7	173.2	Milbanke Sound	Queen Charlotte Sound
2015MinkTrapBay_5029085	2015	EM2040C	Otter Bay	1	4.8	41.2	Principe Channel	British Columbia North Coast
2015MinnisBay_5028968	2015	EM2040C	Otter Bay	1	5.8	60.7	Minnis Bay	Salish Sea
2015MooreIsland_5029095	2015	R2Sonic 2022	Shoal Seeker	1	4.9	112.0	Moore Islands	Hecate Strait
2015Nanaimo_5028875	2015	EM2040C	Otter Bay	1	3.9	31.2	Nanaimo	Salish Sea
2015NeptuneTerminals_PWGS_5029051	2015	R2Sonic 2022	Shoal Seeker	1	0.1	2.8	Burrard Inlet	Salish Sea
2015OswaldBay_5029074	2015	EM2040C	Otter Bay	2	0.8	9.0	Oswald Bay	British Columbia North Coast
2015PatriciaBay_IOS_5029054	2015	R2Sonic 2022	Shoal Seeker	1	0.4	4.8	Saanich Inlet	Salish Sea
2015PattersonInlet_5029084	2015	EM2040C	Otter Bay	1	2.3	26.6	Principe Channel	British Columbia North Coast
2015PrescottPassage_5028997	2015	EM2040C	Otter Bay	1	1.2	15.0	Prescott Passage	British Columbia North Coast
2015PrideauxHaven_5028939	2015	EM2040C	Otter Bay	1	2.1	42.6	Desolation sound	Salish Sea
2015PrinceRupert_GenevaBank_5028993	2015	R2 Sonic 2022	Shoal Seeker	1	2.6	20.1	Prince Rupert	British Columbia North Coast
2015PrinceRupert_GenevaBank_5028993	2015	R2Sonic 2022	Shoal Seeker	1	2.6	20.2	Chatham Sound	British Columbia North Coast
2015PrinceRupert_HollandRock_5028992	2015	EM2040C	Otter Bay	1	1.8	13.6	Prince Rupert	British Columbia North Coast
2015PrinceRupert_PetrelRock_5028986	2015	EM2040C	Otter Bay	1	11.9	52.5	Prince Rupert	British Columbia North Coast
2015RefugeBay_5028996	2015	EM2040C	Otter Bay	1	3.2	29.6	Refuge Bay	British Columbia North Coast
2015RefugeCove_5028940	2015	EM2040C	Otter Bay	2	2.2	20.5	Refuge Cove	Salish Sea
2015RoscoeBay_5028941	2015	EM2040C	Otter Bay	2	0.6	9.7	Roscoe Bay	Salish Sea

2015RoseInlet_5029163	2015	R2Sonic 2022	Shoal Seeker	1	6.9	31.3	Moresby Island	Haida Gwaii
2015Sandspit_SAR_5029103	2015	R2Sonic 2022	Shoal Seeker	1	0.4	5.8	East coast Moresby Island	Haida Gwaii
2015SatelliteChannel_PateyRock_5028949	2015	EM2040C	Otter Bay	2	2.0	8.8	Saanich Inlet	Salish Sea
2015SkidegateLanding_5029041	2015	R2Sonic 2022	Shoal Seeker	1	0.5	5.2	Skidegate Landing	Haida Gwaii
2015SkincuttleInlet_CopperIslands_5029035	2015	EM2040C	Otter Bay	1	17.6	34.6	Skincuttle Inlet	Haida Gwaii
2015SourdoughBay_5028991	2015	R2Sonic 2022	Shoal Seeker	1	0.3	5.2	Sourdough Bay	British Columbia North Coast
2015SquirrelCove_5028942	2015	EM2040C	Otter Bay	1	3.8	42.5	Squirrel Cove	Salish Sea
2015Stewart_5029007	2015	R2Sonic 2022	Shoal Seeker	2	1.7	9.9	Stewart	British Columbia North Coast
2015SwanBay_5029034	2015	EM2040C	Otter Bay	1	11.7	32.4	Swan Bay	Haida Gwaii
2015TenedosBay_5028943	2015	EM2040C	Otter Bay	1	3.7	36.9	Tenedos Bay	Salish Sea
2015ThetisIsland_5029093	2015	EM2040C	Otter Bay	1	13.5	61.7	Thetis Island	Salish Sea
2015TobInlet_502955	2015	EM710	Vector	2	29.1	69.6	Toba Inlet	Salish Sea
2015TseHumHarbour_5029111	2015	R2Sonic 2022	Shoal Seeker	1	0.0	1.8	Tsehum Harbour	Salish Sea
2015Vancouver_Wharves_5029044	2015	R2Sonic 2022	Shoal Seeker	1	0.2	4.7	Burrard Inlet	Salish Sea
2015WalshCove_5028944	2015	EM2040C	Otter Bay	2	0.9	10.4	Walsh Cove	Salish Sea
2015WelcomeHarbour_5028994	2015	EM2040C	Otter Bay	1	4.5	52.8	Welcome Harbour	British Columbia North Coast
2015Wells_SchramRocks_5029153	2015	R2Sonic 2022	Shoal Seeker	1	13.3	112.4	Wells Schram Rocks	Hecate Strait
2016AgglomerateIslands_5029269	2016	EM2040C	Otter Bay	1	5.3	26.1	east Moresby Island	Hecate Strait
2016AlexandraBank_5029265	2016	EM710	Vector	2	39.4	38.2	Chatham Sound	British Columbia North Coast
2016Bischof_Beresford_5029563	2016	EM2040C	Otter Bay	1	6.0	51.1	east Moresby Island	Hecate Strait
2016BurnabyIsland_East_5029302	2016	EM710	Vector	1	68.3	103.5	East coast Moresby Island	Hecate Strait

2016BurrardInlet_East_5029457	2016	R2Sonic 2022	Shoal Seeker	1	3.5	19.6	Vancouver Harbour	Salish Sea
2016ButeInlet_5029315_June	2016	EM710	Vector	2	70.4	163.3	Bute Inlet	Salish Sea
2016ButeInlet_5029315_October	2016	EM710	Vector	2	75.0	124.2	Bute Inlet	Salish Sea
2016CentralChatham_East_5029295	2016	EM710	Vector	2	133.5	63.1	Chatham Sound	British Columbia North Coast
2016CentralChatham_West_5029296	2016	EM710	Vector	2	73.6	43.6	Chatham Sound	British Columbia North Coast
2016ChathamSound_HodgsonReefs_5029281	2016	EM710	Vector	2	13.9	31.4	Chatham Sound	British Columbia North Coast
2016ChathamSound_TugwellIsland_5029223	2016	EM710	Vector	2	19.0	24.8	Chatham Sound	British Columbia North Coast
2016Crofton_5029278	2016	R2Sonic 2022	Shoal Seeker	1	1.2	3.1	Crofton	Salish Sea
2016DeLaBeche_5029502	2016	EM2040C	Otter Bay	1	11.5	33.9	west Moresby Island	Haida Gwaii
2016Dixon_DundasIsland_5029297	2016	EM710	Vector	2	202.2	126.4	Chatham Sound	British Columbia North Coast
2016DixonHecate_North_5029298	2016	EM710	Vector	2	131.1	96.0	Dixon Entrance	Hecate Strait
2016DixonHecate_South_5029299	2016	EM710	Vector	2	76.6	61.8	Dixon Entrance	Hecate Strait
2016DuncanBay_5029224	2016	EM2040C	Otter Bay	1	6.0	29.3	Duncan Bay	British Columbia North Coast
2016FaradayPassage_5029270	2016	EM2040C	Otter Bay	1	9.5	45.9	Faraday Passage	Haida Gwaii
2016GangesHarbour_5029240	2016	R2Sonic 2022	Shoal Seeker	1	4.1	32.8	Ganges Harbour	Salish Sea
2016GogitPassage_5029272	2016	EM2040C	Otter Bay	1	8.2	27.3	Gogit Passage	Haida Gwaii
2016HalfmoonBay_5029359	2016	EM2040C	Otter Bay	1	20.9	48.3	Halfmoon Bay	Salish Sea
2016HudsonBayPassage_5029300	2016	EM710	Vector	2	69.1	113.5	Chatham Sound	British Columbia North Coast
2016HuttonInlet_5029503	2016	EM2040C	Otter Bay	1	17.6	71.1	Hutton Inlet	Haida Gwaii
2016InvernessPassage_5029282	2016	EM2040C	Otter Bay	1	2.0	15.9	Chatham Sound	British Columbia

								North Coast
2016KuperIsland_5029311	2016	R2Sonic 2022	Shoal Seeker	1	7.9	25.5	Penelakut Island	Salish Sea
2016LasquetiIsland_South_5029318	2016	EM2040C	Otter Bay	1	18.4	149.6	Lasqueti Island	Salish Sea
2016LasquetiIslandNorth_5029319	2016	EM2040C	Otter Bay	1	26.4	151.7	Lasqueti Island	Salish Sea
2016LyellIsland_FlatfishBank_5029303	2016	EM710	Vector	1	176.6	165.6	Lyell Island	Hecate Strait
2016MalaccaPassage_LawyerIslands_5029268	2016	EM2040C	Otter Bay	1	0.1	2.0	Malacca Passage	British Columbia North Coast
2016MarcusPassage_5029226	2016	EM2040C	Otter Bay	1	6.9	34.0	Chatham Sound	British Columbia North Coast
2016MarshallMatheson_5029561	2016	EM2040C	Otter Bay	1	2.0	18.4	Marshall Inlet Mathieson Inlet	Haida Gwaii
2016NorthChatham_5029301	2016	EM710	Vector	2	167.4	277.9	Chatham Sound	British Columbia North Coast
2016OsbornBay_5029357	2016	EM2040C	Otter Bay	1	8.0	44.2	Osborn Bay	Salish Sea
2016PenderHarbour_5029509	2016	R2Sonic 2022	Shoal Seeker	1	11.5	77.3	Malaspina Strait	Salish Sea
2016PorcherIsland_5029283	2016	EM2040C	Otter Bay	1	8.5	126.4	Porcher Island	British Columbia North Coast
2016PorpoiseHarbour_5029285	2016	EM2040C	Otter Bay	1	1.0	10.7	Chatham Sound	British Columbia North Coast
2016PortBrowning_5029234	2016	R2Sonic 2022	Shoal Seeker	1	1.7	26.1	Pender Island	Salish Sea
2016RamsayIsland_5029562	2016	EM2040C	Otter Bay	1	11.5	53.3	Ramsay Island	Haida Gwaii
2016RamsayRocks_5029271	2016	EM2040C	Otter Bay	1	2.7	17.6	Ramsay Island	Haida Gwaii
2016RobertsBank_5029365_DeltaPort	2016	EM2040C	Otter Bay	1	21.5	43.5	southern Strait of Georgia	Salish Sea
2016RobertsBank_5029365_SandHeads	2016	EM2040C	Otter Bay	1	4.6	18.4	southern Strait of Georgia	Salish Sea
2016SamuelIsland_5029233	2016	R2Sonic 2022	Shoal Seeker	1	5.3	42.4	Samuel Island	Salish Sea
2016SkidegateNarrows_PWGSC_5029714	2016	R2Sonic 2022	Shoal Seeker	1	4.1	39.1	western Graham Island	Haida Gwaii
2016SouthChatham_5029265	2016	EM710	Vector	2	124.9	82.9	Chatham Sound	British Columbia

								North Coast
2016Squamish_5029320 June	2016	EM2040C	Otter Bay	2	31.4	94.0	Howe Sound	Salish Sea
2016Squamish_5029320 Oct	2016	EM2040C	Otter Bay	2	16.8	55.5	Howe Sound	Salish Sea
2016StuartChannel_5029222	2016	EM2040C	Otter Bay	1	5.0	16.3	Stuart Channel	Salish Sea
2016StuartChannel_West_5029276	2016	R2Sonic 2022	Shoal Seeker	1	3.3	13.7	Stuart Channel	Salish Sea
2016SturtBay_5029321	2016	EM2040C	Otter Bay	1	0.6	8.3	Texada Island	Salish Sea
2016TarIslands_5029273	2016	EM2040C	Otter Bay	1	11.0	38.6	Tar Islands	Haida Gwaii
2016TodInlet_5029194	2016	EM2040C	Otter Bay	1	1.2	13.1	Saanich Inlet	Salish Sea
2016TriangleIsland_5029304	2016	EM710	Vector	2	91.1	82.1	Cook Bank	Queen Charlotte Sound
2016TriangleIsland_North_5029305	2016	EM710	Vector	2	85.0	49.0	Cook Bank	Queen Charlotte Sound
2016VancouverHarbour_BurnabyShoal_PWGSC_5030387	2016	R2Sonic	Unknown	1	0.5	6.6	Vancouver Harbour	Salish Sea
2016VancouverHarbour_Neptune_5029260	2016	R2Sonic	Unknown	1	0.2	4.1	Vancouver Harbour	Salish Sea
2016VancouverHarbour_Neptune_5029260	2016	R2Sonic	Unknown	1	0.0	3.5	Vancouver Harbour	Salish Sea
2016VancouverHarbour_North_5029475	2016	R2Sonic 2022	Czotter	1	3.3	22.2	Vancouver Harbour	Salish Sea
2016VancouverWharves_5029478	2016	R2Sonic	Unknown	1	0.3	4.8	Vancouver Harbour	Salish Sea
2016VennPassage_5029225	2016	EM2040C	Otter Bay	1	1.1	19.8	Chatham Sound	British Columbia North Coast
2016WelcomeHarbour_5029286	2016	EM2040C	Otter Bay	1	2.1	34.8	Welcome Harbour	British Columbia North Coast
2016WelcomePassage_5029356	2016	EM2040C	Otter Bay	1	9.5	62.5	Malaspina Strait	Salish Sea
2016WelcomePassage_5029356	2016	EM2040C	Otter Bay	1	9.4	138.2	Strait of Georgia	Salish Sea
2017AgamemnonChannel_5029674	2017	EM2040C	Otter Bay	1	6.1	60.6	Agamemnon Channel	Salish Sea
2017BaynesSound_5029565	2017	EM2040C	Otter Bay	1	21.9	62.0	Baynes Sound	Salish Sea
2017ButeInlet_5029586	2017	EM710	Vector	5	56.0	127.4	Bute Inlet	Salish Sea

2017ChinaCreek_5029555	2017	R2Sonic 2022	Shoal Seeker	1	0.6	20.0	Alberni Inlet	West coast Vancouver Island
2017CookBankEast_5029634	2017	EM710	Vector	2	155.2	67.9	Cook Bank	Queen Charlotte Sound
2017CopperIsland_5029594	2017	EM2040C	Otter Bay	1	3.9	31.2	East coast Moresby Island	Haida Gwaii
2017DunsmuirPt_5029692	2017	R2Sonic 2022	Shoal Seeker	1	0.4	6.2	Alberni Inlet	West coast Vancouver Island
2017EnglishBay_5029576	2017	R2Sonic 2022	Shoal Seeker	1	2.3	18.3	English Bay	Salish Sea
2017FernPassage_5029607	2017	EM2040C	Otter Bay	1	0.8	7.6	Fern Passage	British Columbia North Coast
2017FrancisBay_5029595	2017	EM2040C	Otter Bay	1	4.3	30.5	Francis Bay	Haida Gwaii
2017GordonRiver_5029677	2017	EM2040C	Otter Bay	1	6.7	36.1	Juan de Fuca Strait	Salish Sea
2017HartleyBay_5029631	2017	EM2040C	Otter Bay	1	2.2	14.0	Douglas Channel	British Columbia North Coast
2017Hawkesbury_5029691	2017	EM2040C	Otter Bay	2	29.6	150.7	Douglas Channel	British Columbia North Coast
2017Hecate_LaredoSound_South_5030169	2017	EM710	Vector	2	204.2	84.4	Laredo Sound	Queen Charlotte Sound
2017Hecate_MilbankeSouthWest-20210311T204415Z	2017	EM710	Vector	5	139.9	54.1	Milbanke Sound	Queen Charlotte Sound
2017HoughtonIslands	2017	EM710	Vector	2	17.3	26.4	Houghton Islands	Queen Charlotte Sound
2017KitamaatArm_5029690	2017	EM2040C	Otter Bay	1	18.6	28.8	Kitimat Harbour	British Columbia North Coast
2017KostanInlet_5029629	2017	EM2040C	Otter Bay	1	3.0	23.3	Kostan Inlet	Haida Gwaii
2017KuperIsland_South_5029601	2017	R2Sonic 2022	Shoal Seeker	1	2.7	10.9	Penelakut Island	Salish Sea
2017LadysmithHarbour_5029574	2017	R2Sonic 2022	Shoal Seeker	1	1.6	21.1	Ladysmith	Salish Sea
2017LadysmithHarbour_Entrance_5029573	2017	R2Sonic 2022	Shoal Seeker	1	4.1	20.0	Ladysmith	Salish Sea
2017LambertChannel_5029566	2017	EM2040C	Otter Bay	1	58.3	93.1	Lambert Channel	Salish Sea

2017LancelotInlet_5029648	2017	EM2040C	Otter Bay	1	6.4	34.5	Lancelot Inlet	Salish Sea
2017MalaspinaInlet_5029647	2017	EM2040C	Otter Bay	1	4.8	45.4	Malaspina Inlet	Salish Sea
2017MathiesonChannel_OscarPassage_5030081	2017	EM710	Vector	2	54.8	119.1	Mathieson Channel - Oscar Passage	British Columbia North Coast
2017MilbankeSound_5029635	2017	EM710	Vector	2	135.0	117.7	Milbanke Sound	British Columbia North Coast
2017MilbankeSound_VancouverRock_5030072	2017	EM710	Vector	1	19.4	72.6	Milbanke Sound	British Columbia North Coast
2017MilbankeSound South-20210311T205654Z	2017	EM710	Vector	2	109.4	86.4	Milbanke Sound	Queen Charlotte Sound
2017MilbankeSouth_TingleyRock_9029758	2017	EM710	Vector	2	93.9	55.8	Tingley Rock	Hecate Strait
2017MorseBasin_5029592	2017	EM2040C	Otter Bay	1	8.5	39.5	Morse Basin	British Columbia North Coast
2017Mutine_5029688	2017	EM2040C	Otter Bay	1	1.4	18.5	Barkley Sound	West coast Vancouver Island
2017Nahmint_Hook Bay_5029693	2017	R2Sonic 2022	Shoal Seeker	1	2.5	36.4	Alberni Inlet	West coast Vancouver Island
2017OffshoreHaidaGwaiiExploring	2017	EM710	Vector	10	78.1	107.6	offshore Graham Island	Haida Gwaii
2017OkeoverNorth_5029646	2017	EM2040C	Otter Bay	1	4.6	19.3	Okeover Arm	Salish Sea
2017OkeoverSouth_5029645	2017	EM2040C	Otter Bay	1	4.3	20.5	Okeover Arm	Salish Sea
2017PooleInlet_5029596	2017	Unknown	Unknown	1	9.7	69.5	East coast Moresby Island	Haida Gwaii
2017PorlierPass_5029310	2017	R2Sonic 2022	Shoal Seeker	1	3.4	20.4	Porlier Passage	Salish Sea
2017PortAlberni_5029513	2017	R2Sonic 2022	Shoal Seeker	1	1.3	27.1	Alberni Inletr	Vancouver Island
2017PortChanal_5029762	2017	EM710	Vector	1	26.2	136.3	west Graham Island	Haida Gwaii
2017PortSanJuan_5029675	2017	EM2040C	Otter Bay	1	12.1	45.2	Juan de Fuca Strait	West coast Vancouver Island
2017PrinceRupert_5029615	2017	EM2040C	Otter Bay	1	0.1	1.6	Prince Rupert	British Columbia North Coast

2017PrincessLouisaInlet_5029673	2017	EM2040C	Otter Bay	1	6.4	36.9	Princess Louisa Inlet	Salish Sea
2017QueenCharlotteFairweatherFault	2017	EM710	Vector	5	1048.7	590.9	offshore Graham Island	Haida Gwaii
2017QueenCharlotteFault_Volcano	2017	EM710	Vector	5	103.2	149.1	offshore Graham Island	Haida Gwaii
2017QueenCharlotteSound_5030070	2017	EM710	Vector	2	76.6	51.2	Queen Charlotte Sound	Queen Charlotte Sound
2017RainyBay_5029667	2017	EM2040C	Otter Bay	1	3.4	46.6	Barkley Sound	West coast Vancouver Island
2017ReturnChannel_5029763	2017	EM710	Vector	2	19.0	56.1	Return Channel	British Columbia North Coast
2017RobertsBank_5029587	2017	EM2040C	Otter Bay	1	2.2	10.8	southern Strait of Georgia	Salish Sea
2017RobertsBank_5029587_DDL	2017	EM2040C	Otter Bay	2	18.5	37.7	southern Strait of Georgia	Salish Sea
2017SacBay_5029630	2017	EM2040C	Otter Bay	1	2.1	23.7	Sac Bay	Haida Gwaii
2017SaltSpring_Island_5029684	2017	R2Sonic 2022	Czotter	1	4.9	17.4	Saltspring Island	Salish Sea
2017SanJuanRiver_5029678	2017	EM2040C	Otter Bay	1	2.0	9.1	Juan de Fuca Strait	Salish Sea
2017SedgwickBay_5029628	2017	EM2040C	Otter Bay	1	6.8	49.6	Sedgwick Bay	Haida Gwaii
2017ShuttleIsland_5029597	2017	EM2040C	Otter Bay	1	11.1	53.0	Shuttle Passage	Haida Gwaii
2017SkookumchuckNarrows_5029672	2017	EM2040C	Otter Bay	1	8.4	50.0	Sechelt Inlet	Salish Sea
2017SpillerChannel_5029633	2015	EM710	Vector	2	68.3	134.3	Spiller Channel	British Columbia North Coast
2017SproatNarrows_5029556	2017	R2Sonic 2022	Shoal Seeker	1	0.7	12.6	Alberni Inlet	West coast Vancouver Island
2017Squamish_5029689	2017	EM2040C	Otter Bay	1	11.2	44.0	Howe Sound	Salish Sea
2017StampNarrows_5029554	2017	R2Sonic 2022	Shoal Seeker	1	1.4	10.5	Alberni Inlet	West coast Vancouver Island
2017StarPt_5029694	2017	R2Sonic 2022	Shoal Seeker	1	0.6	13.7	Alberni Inlet	West coast Vancouver Island
2017Stewart_5029590	2017	EM2040C	Otter Bay	2	16.6	38.4	Portland Canal	British Columbia North Coast
2017StuartChannel_CoffinIsland_5029603	2017	R2Sonic 2022	Shoal Seeker	1	5.8	28.8	Stuart Channel	Salish Sea

2017StuartChannel_FalseReef_5028553	2017	EM2040C	Otter Bay	1	5.5	27.7	Stuart Channel	Salish Sea
2017TenMilePt_5029695	2017	R2Sonic 2022	Shoal Seeker	1	1.6	25.6	Alberni Inlet	West coast Vancouver Island
2017ThulinPassage_5029669	2017	R2Sonic 2022	Shoal Seeker	1	13.5	95.6	Thulin Passage	Salish Sea
2017Uchucklesit_5029687	2017	EM2040C	Otter Bay	1	7.2	44.0	Uchucklesit Inlet	West coast Vancouver Island
2017UselessInlet_5029668	2017	EM2040C	Otter Bay	1	4.3	64.9	Useless Inlet	West coast Vancouver Island
2017VancouverWharves_VanPile_5029506	2017	Unknown	Unknown	1	0.0	2.8	Vancouver Harbour	Salish Sea
2017WindyBay_5029626	2017	EM2040C	Otter Bay	1	29.3	45.4	Windy Bay	Haida Gwaii
2018AlertBay_5029854	2018	R2Sonic 2022	Shoal Seeker	1	5.1	39.7	Queen Charlotte Strait	British Columbia Central Coast
2018AthlowBay_5029793	2018	Unknown	Unknown	2	30.4	88.6	Athlow Bay	Haida Gwaii
2018AtkinsReef_5029892	2018	R2Sonic 2022	Czotter	1	2.9	14.7	Atkins Reef	Salish Sea
2018BroughtonStrait_5029967	2018	EM2040C	Otter Bay	1	8.3	21.7	Queen Charlotte Strait	British Columbia Central Coast
2018BroughtonStrait_AlertBay_5029874	2018	EM2040C	Otter Bay	1	4.7	17.0	Queen Charlotte Strait	British Columbia Central Coast
2018BroughtonStrait_AlertBay_5029874	2018	EM2040C	Otter Bay	1	1.7	9.7	Queen Charlotte Strait	British Columbia Central Coast
2018ButeInlet_5029853	2018	EM710	Vector	2	104.5	201.5	Bute Inlet	Salish Sea
2018ButeInlet_5029853	2018	EM710	Vector	2	75.5	193.4	Bute Inlet	Salish Sea
2018ButeInlet_5029853	2018	EM710	Vector	2	104.6	186.2	Bute Inlet	Salish Sea
2018CalvertIsland_West_5030038	2018	EM710	Vector	2	52.7	64.2	Calvert Island	Queen Charlotte Sound
2018CapeMudge_5029993	2018	R2Sonic 2022	Czotter	1	3.4	17.8	Cape Mudge	Salish Sea
2018CarpenterBay_South_5029986	2018	EM710	Vector	1	8.9	43.9	East coast Moresby Island	Haida Gwaii
2018ChaatlIsland_5029808	2018	Unknown	Unknown	2	13.4	44.9	Chaatl Island	Haida Gwaii

2018DawsonHarbour_5029807	2018	Unknown	Unknown	2	9.2	39.6	Dawson Harbour	Haida Gwaii
2018DeCourcy_502965	2018	R2Sonic 2022	Czotter	1	12.6	64.7	DeCourcy Island	Salish Sea
2018DeLaBeche_5029924	2018	Unknown	Unknown	1	7.0	55.7	East coast Moresby Island	Haida Gwaii
2018DesolationSound_5029841	2018	EM2040C	Otter Bay	1	9.3	81.7	Desolation Sound	Salish Sea
2018DoddsNarrows_5029896	2018	R2Sonic 2022	Czotter	1	2.9	14.5	Dodds Narrows	Salish Sea
2018DuncanBay_5029989	2018	R2Sonic 2022	Shoal Seeker	1	3.5	18.3	Duncan Bay	Salish Sea
2018ExperimentBight_5029957	2018	EM710	Vector	1	3.6	12.0	Cape Scott	Queen Charlotte Sound
2018FitzHughSound_5029811	2018	Teledyne Reson Seabat T50P	Pachena	2	235.6	177.7	Fitz Hugh Sound	British Columbia North Coast
2018FrederickIsland_BeaufortExplorer_5029797	2018	Unknown	Unknown	1	40.5	71.5	Frederick Island	Haida Gwaii
2018FrederickIsland_CanadianShore_5029917	2018	Unknown	Unknown	1	2.2	40.5	Frederick Island	Haida Gwaii
2018GalleyBay_5029839	2018	EM2040C	Otter Bay	1	7.3	68.7	Galley Bay	Salish Sea
2018Gambier_5029851	2018	EM2040C	Otter Bay	1	2.7	45.4	Howe Sound	Salish Sea
2018GooseIslandBank_5030042	2018	EM710	Vector	2	213.2	75.2	Goose Island	Queen Charlotte Sound
2018GospelIsland_5029918	2018	Unknown	Unknown	2	58.0	59.4	Gospel Island	Haida Gwaii
2018GowllandHarbour_5029949	2018	R2Sonic 2022	Czotter	1	1.1	10.8	Gowlland Harbour	Salish Sea
2018GranvilleIslands_5029951	2018	EM2040C	Otter Bay	1	10.5	67.2	Granville Islands	British Columbia North Coast
2018HecateLangtry_5029997	2018	Unknown	Unknown	1	0.8	10.2	East coast Moresby Island	Haida Gwaii
2018HecateStraitEast_1_5029813	2018	Teledyne Reson Seabat T50P	Pachena	5	325.1	133.6	Hecate Strait	Hecate Strait
2018HecateStraitEast_2_5029814	2018	Teledyne Reson Seabat T50P	Pachena	5	265.7	141.9	Hecate Strait	Hecate Strait
2018HecateStraitEast_3_5029815	2018	Teledyne Reson	Pachena	5	547.4	188.4	Hecate Strait	Hecate Strait

		Seabat T50P						
2018HecateStraitWest1_5029816	2018	EM710	Vector	5	297.8	98.4	Hecate Strait	Hecate Strait
2018HecateStraitWest2_5029817	2018	EM710	Vector	5	389.8	124.6	Hecate Strait	Hecate Strait
2018HecateStraitWest3_5029818	2018	EM710	Vector	5	380.7	120.5	Hecate Strait	Hecate Strait
2018HecateStraitWest4_5029819	2018	EM710	Vector	5	370.0	126.6	Hecate Strait	Hecate Strait
2018HippaIsland_5029795	2018	Unknown	Unknown	2	19.3	80.2	Hippa Island	Haida Gwaii
2018HomfrayChannel1_5029838	2018	EM2040C	Otter Bay	1	15.3	165.7	Homfray Channel	Salish Sea
2018HoustounPassageNorth_5029895	2018	R2Sonic 2022	Czotter	1	5.0	21.3	Houstoun Passage	Salish Sea
2018HoustounPassageSouth_5029894	2018	R2Sonic 2022	Czotter	1	8.2	29.6	Houstoun Passage	Salish Sea
2018HunterChannel_5029872	2018	EM2040C	Otter Bay	1	5.1	71.0	Hunter Channel	British Columbia North Coast
2018IngrahamBay_BeaufortExplorer_5029796	2018	Unknown	Unknown	1	65.3	64.6	Ingraham Bay	Haida Gwaii
2018IngrahamBay_CanadianShore_5029916	2018	Unknown	Unknown	1	3.1	51.7	Ingraham Bay	Haida Gwaii
2018KanoInlet_5029804	2018	Unknown	Unknown	2	58.6	87.3	Kano Inlet	Haida Gwaii
2018Kildidt_Sound_5029983	2018	EM710	Vector	2	128.9	246.9	Kildidt Sound	Queen Charlotte Sound
2018KnightInlet	2018	EM710	Vector	2	150.2	283.6	Knight Inlet	Salish Sea
2018Langara_1m_Final_5029798	2018	Unknown	Unknown	1	141.5	264.2	Langara Island	Haida Gwaii
2018LillooetPassage_5029953	2018	EM2040C	Otter Bay	1	5.7	47.3	Lillooet Passage	British Columbia North Coast
2018Masset_5029789	2018	Unknown	Unknown	1	0.9	7.0	Masset	Haida Gwaii
2018MaudIslandSouth_5029999	2018	R2Sonic 2022	Czotter	1	1.8	9.5	Maud Island	Salish Sea
2018McNaughtonGroup_5030051	2018	EM2040C	Otter Bay	1	13.7	106.7	McNaughton Group	British Columbia North Coast
2018McNaughtonGroup_5030051	2018	EM2040C	Otter Bay	1	13.7	107.7	Queens Sound	British Columbia North Coast
2018NalauIsland_5029998	2018	R2Sonic 2022	Shoal Seeker	1	14.0	201.1	Nalau Island	British Columbia

								North Coast
2018NalauIsland_5029998	2018	R2Sonic 2022	Shoal Seeker	1	4.2	29.3	Nalau Passage	British Columbia North Coast
2018NorthPassage_5029812	2018	Teledyne Reson Seabat T50P	Pachena	2	189.7	185.6	Calvert Island	Queen Charlotte Sound
2018PenelakutIsland East_5029781	2018	R2Sonic 2022	Czotter	1	8.3	22.6	Penelakut Island	Salish Sea
2018PidcockCreek_5029944	2018	R2Sonic 2022	Czotter	1	0.7	8.2	Pidcock Creek	Salish Sea
2018PortChanal_5029791	2018	Unknown	Unknown	1	3.2	28.6	Port Chanal	Haida Gwaii
2018PortHardy_5029968	2018	Unknown	Unknown	1	0.3	8.4	Queen Charlotte Strait	British Columbia Central Coast
2018PortLouis_5029790	2018	Unknown	Unknown	2	45.0	115.4	Port Louis	Haida Gwaii
2018PortMcNeill_5029855	2018	R2Sonic 2022	Shoal Seeker	1	2.2	25.2	Port McNeill	British Columbia Central Coast
2018PrideauxHaven_5029837	2018	EM2040C	Otter Bay	1	6.7	57.9	Prideaux Haven	Salish Sea
2018QueenCharlotte_Sound_5030050	2018	EM710	Vector	1	246.7	985.1	Queen Charlotte Sound	Queen Charlotte Sound
2018QueenCharlotte Strait_5029935	2018	EM710	Vector	2	70.4	48.2	Queen Charlotte Strait	British Columbia Central Coast
2018QueenCharlotte Strait_West_5030084	2018	EM710	Vector	1	11.1	24.0	Queen Charlotte Strait	British Columbia Central Coast
2018RennellSound_5029803	2018	Unknown	Unknown	2	65.3	194.6	Rennell Sound	Haida Gwaii
2018RetreatCove_5029891	2018	R2Sonic 2022	Czotter	1	8.2	29.3	Retreat Cove	Salish Sea
2018RiversInlet_5030126	2018	EM710	Vector	2	48.6	105.5	Rivers Inlet	Queen Charlotte Sound
2018SaanichInlet_No v	2018	EM710	Vector	1	28.6	40.0	Saanich Inlet	Salish Sea
2018SalvesenIsland_BeaufortExplorer_5029794	2018	Unknown	Unknown	2	20.6	119.9	Salvesen Island	Haida Gwaii
2018SalvesenIsland_CanadianShore_5029915_50cm	2018	Unknown	Unknown	1	4.3	63.6	Salvesen Island	Haida Gwaii

2018ScottIslands_5030053	2018	EM710	Vector	1	113.4	77.9	Scott Islands	Queen Charlotte Sound
2018SealInlet_5029802	2018	Unknown	Unknown	1	12.0	51.6	Seal Inlet	Haida Gwaii
2018ShieldsBay_5029799	2018	Unknown	Unknown	1	22.6	57.6	Shields Bay	Haida Gwaii
2018SimondsGroup_5030049	2018	EM2040C	Otter Bay	1	8.0	64.1	Simonds Group	British Columbia North Coast
2018SimondsGroup_West_5029952	2018	EM2040C	Otter Bay	1	8.4	56.8	Simonds Group	British Columbia North Coast
2018Skeena	2018	EM710	Vector	1	25.1	158.2	Skeena Delta	British Columbia North Coast
2018SkeluBay_5029792	2018	Unknown	Unknown	2	39.1	83.0	Skelu Bay	Haida Gwaii
2018SteepIsland_5029933	2018	R2Sonic 2022	Czotter	1	8.3	50.2	Steep Island	Salish Sea
2018TanaBay_5029806	2018	Unknown	Unknown	2	21.0	48.4	Tana Bay	Haida Gwaii
2018TartuInlet_5029801	2018	Unknown	Unknown	1	5.3	23.1	Tartu Inlet	Haida Gwaii
2018TartuPoint_5029800	2018	Unknown	Unknown	2	50.9	72.5	Tartu Point	Haida Gwaii
2018TeakerneArm_5029843	2018	EM2040C	Otter Bay	1	5.5	68.8	Teakerne Arm	Salish Sea
2018TwinIslands_5029963	2018	EM2040C	Otter Bay	1	8.4	62.1	Twin Islands	Salish Sea
2018VanInlet_5029805	2018	Unknown	Unknown	2	60.4	95.3	Van Inlet	Haida Gwaii
2018WaddingtonChannel_5029840	2018	EM2040C	Otter Bay	2	15.6	183.0	Waddington Channel	Salish Sea
2018WarspiteRock_5029920	2018	R2Sonic 2022	Czotter	1	4.6	16.6	Warspite Rock	Salish Sea
2018WilbyShoal_5029995	2018	R2Sonic 2022	Czotter	1	13.1	29.9	Wilby Shoal	Salish Sea
2018YacultaBank_5029996	2018	R2Sonic 2022	Czotter	1	3.4	15.9	Yaculta Bank	Salish Sea
2019BeaverHarbour_5030262	2019	R2Sonic 2022	Shoal Seeker	1	4.0	20.2	Queen Charlotte Strait	British Columbia Central Coast
2019BedwellSound_Final_5030116	2019	EM2040C	Otter Bay	1	43.0	197.3	Bedwell Sound	West coast Vancouver Island
2019BeresfordBay_9001209	2019	Unknown	Unknown	2	59.5	156.2	Beresford Bay	Haida Gwaii
2019BrabantChannel_5030122	2019	Unknown	Unknown	1	66.6	190.2	Clayoquot Sound	West coast Vancouver Island

2019CalvertIsland_FitzRoyReef	2019	EM 710	Vector	2	299.2	140.4	Fitz Roy Reef	Queen Charlotte Sound
2019CalvertIslandWest_5030234	2019	R2Sonic 2022	Shoal Seeker	1	9.8	102.9	Calvert Island	British Columbia North Coast
2019CapeStJames_5030220	2019	EM710	Vector	1	3.0	38.9	East coast Moresby Island	Haida Gwaii
2019ClaytonPassage_5030340	2019	EM2040C	Otter Bay	1	0.0	0.9	Clayton Passage	British Columbia North Coast
2019CloakBay_9001208	2019	Unknown	Unknown	1	15.3	40.0	Cloak bay	Haida Gwaii
2019CortesIsland_South_5030102	2019	R2Sonic 2022	Czotter	1	28.7	75.4	Cortes Island	Salish Sea
2019Cypress Bay	2019	EM2040C	Otter Bay	1	39.9	157.0	Clayoquot Sound	West coast Vancouver Island
2019DeCourcy_5030156	2019	R2Sonic 2022	Czotter	1	2.0	34.9	DeCourcy Island	Salish Sea
2019DepartureBay_5030153	2019	R2Sonic 2022	Shoal Seeker	1	5.6	28.1	Nanaimo	Salish Sea
2019EvansBay_5030134	2019	EM2040C	Otter Bay	1	7.2	61.4	Evans Bay	Salish Sea
2019FitzHughSound	2019	EM 710	Vector	2	17.1	69.6	Fitz Hugh Sound	Queen Charlotte Sound
2019FlatTopIslands_North_5030158	2019	R2Sonic 2022	Shoal Seeker	1	1.4	17.1	Flattop Islands	Salish Sea
2019FlatTopIslands_South_5030159	2019	R2Sonic 2022	Shoal Seeker	1	2.7	26.6	Flattop Islands	Salish Sea
2019FougnerBay_5030287	2019	EM2040C	Otter Bay	1	1.6	17.6	Fougner Bay	British Columbia North Coast
2019GabriolaReefs_5030157	2019	R2Sonic 2022	Shoal Seeker	1	2.6	12.9	Offshore Gabriola Island	Salish Sea
2019GarcinRocks_5030250	2019	EM2040C	Otter Bay	1	13.8	84.0	East coast Moresby Island	Haida Gwaii
2019GooseIsland_South	2019	EM 710	Vector	2	79.4	47.6	Goose Island	Queen Charlotte Sound
2019GooseIslandAnchororage_5030236	2019	R2Sonic 2022	Shoal Seeker	1	3.3	19.4	Goose Island	British Columbia North Coast
2019GorgeHarbour_5030101	2019	R2Sonic 2022	Czotter	1	2.3	21.5	Gorge Harbour	Salish Sea

2019GullBanks_5030296	2019	EM2040C	Otter Bay	1	9.4	35.8	East coast Moresby Island	Haida Gwaii
2019Hayden Passage_5030183	2019	Unknown	Unknown	1	1.9	23.0	Clayoquot Sound	West coast Vancouver Island
2019HerbertInlet_5030177	2019	EM2040C	Otter Bay	1	32.6	84.4	Herbert Inlet	West coast Vancouver Island
2019HesquiatHarbour_5030178	2019	Unknown	Unknown	1	47.3	109.1	Clayoquot Sound	West coast Vancouver Island
2019HoskynChannel_5030132	2019	EM2040C	Otter Bay	1	22.1	81.9	Hoskyn Channel	Salish Sea
2019HotSpringsCove_5030184	2019	Unknown	Unknown	1	4.1	33.5	Clayoquot Sound	West coast Vancouver Island
2019HoustonStewart_5030295	2019	EM2040C	Otter Bay	1	2.8	37.0	East coast Moresby Island	Haida Gwaii
2019HoweBay_5030294	2019	Unknown	Unknown	1	7.1	53.0	East coast Moresby Island	Haida Gwaii
2019HunterIslandWest_5030238	2019	R2Sonic 2022	Shoal Seeker	1	0.4	6.9	Queens Sound	British Columbia North Coast
2019HyacintheBay_5030133	2019	EM2040C	Otter Bay	1	14.7	71.9	Hyacinthe Bay	Salish Sea
2019JoassaChannel_Horsfall_Island_5030258	2019	EM2040C	Otter Bay	1	8.6	74.2	Joassa Channel	British Columbia North Coast
2019KingcomeInlet_5030334	2019	EM710	Vector	2	71.7	153.4	Kingcome Inlet	British Columbia Central Coast
2019KisameetBay_5030320	2019	EM2040C	Otter Bay	1	2.0	17.1	Kisameet Bay	British Columbia North Coast
2019KunghitEast_5030293	2019	EM2040C	Otter Bay	1	4.6	32.7	East coast Moresby Island	Haida Gwaii
2019LaboucherePassage_5030228	2019	EM 710	Vector	2	22.6	34.8	Queen Charlotte Strait	Queen Charlotte Sound
2019LemmensInlet_1m_Final_5030118	2019	EM2040C	Otter Bay	1	6.4	45.2	Lemmens Inlet	West coast Vancouver Island
2019LoughboroughInlet_5030335	2019	EM710	Vector	1	72.7	180.3	Loughborough Inlet	British Columbia Central Coast

2019LuxanaBay_5030292	2019	EM2040C	Otter Bay	1	9.7	50.9	East coast Moresby Island	Haida Gwaii
2019Marktosis_05m_Final_5030185	2019	Unknown	Unknown	1	0.5	12.1	Clayoquot Sound	West coast Vancouver Island
2019MillarChannel_5030179	2019	EM2040C	Otter Bay	1	34.1	97.7	Millar Channel	West coast Vancouver Island
2019NumasIslands_5030333	2019	EM710	Vector	2	24.7	49.3	Queen Charlotte Strait	British Columbia Central Coast
2019PruthBay_5030239	2019	R2Sonic 2022	Shoal Seeker	1	1.7	20.3	Pruth Bay	British Columbia North Coast
2019PyladesChannel_5030130	2019	EM2040C	Otter Bay	1	7.1	19.5	Pylades Channel	Salish Sea
2019QueenCharlotteSound_1_5030214	2019	EM 710	Vector	2	159.0	67.7	QCS Outer Shelf	Queen Charlotte Sound
2019QueenCharlotteSound_2_5030215	2019	EM 710	Vector	2	131.1	60.3	QCS Outer Shelf	Queen Charlotte Sound
2019QueenCharlotteSound_3_5030216	2019	EM 710	Vector	2	248.8	88.2	QCS Outer Shelf	Queen Charlotte Sound
2019QueenCharlotteSound_4_5030217	2019	EM 710	Vector	2	209.8	93.6	QCS Outer Shelf	Queen Charlotte Sound
2019QueenCharlotteSound_5_5030225	2019	EM 710	Vector	2	306.1	105.4	QCS Outer Shelf	Queen Charlotte Sound
2019QueenCharlotteSound_6_5030227	2019	EM 710	Vector	2	286.6	99.1	QCS Outer Shelf	Queen Charlotte Sound
2019QueenCharlotteSound_7_5030229	2019	EM 710	Vector	2	341.5	98.0	QCS Outer Shelf	Queen Charlotte Sound
2019QueenCharlotteSound_8_503XXXX	2019	EM 710	Vector	2	207.6	70.5	QCS Outer Shelf	Queen Charlotte Sound
2019QueenCharlotteStrait_5030XXX	2019	EM 710	Vector	2	152.3	76.2	Queen Charlotte Strait	Queen Charlotte Sound
2019QueenCharlotteStrait_TaylorBank_5030213	2019	EM 710	Vector	2	176.6	153.8	Queen Charlotte Strait	Queen Charlotte Sound
2019QueenSound_CalvertIsland_5030XXX	2019	EM 710	Vector	2	393.5	109.4	Calvert Island	Queen Charlotte Sound
2019QueenSound_CampbellIsland_5030319	2019	EM2040C	Otter Bay	1	9.1	96.5	Queen Sound	British Columbia

								North Coast
2019QueenSound_McMullinGroup_5030318	2019	EM2040C	Otter Bay	1	4.4	33.4	Queen Sound	British Columbia North Coast
2019QueenSound_PiddingtonIsland_5030257	2019	EM2040C	Otter Bay	1	16.0	226.8	Queen Sound	British Columbia North Coast
2019QueenSound_PiddingtonIsland_5030257	2019	EM2040C	Otter Bay	1	18.8	202.9	Queen Sound	British Columbia North Coast
2019QueenSound_PiddingtonIsland_5030257	2019	EM2040C	Otter Bay	1	16.0	224.9	Queens Sound	British Columbia North Coast
2019QueensSound-TribalGroup_5030317	2019	EM2040C	Otter Bay	1	17.0	138.8	Queen Sound	British Columbia North Coast
2019RichardsChannel_5030224	2019	EM 710	Vector	2	12.7	37.2	Queen Charlotte Strait	Queen Charlotte Sound
2019RoundIsland_5030155	2019	R2Sonic 2022	Shoal Seeker	1	1.8	18.8	Round Island	Salish Sea
2019RussellChannel_5030180	2019	EM2040C	Otter Bay	1	51.1	115.9	Clayoquot Sound	West coast Vancouver Island
2019SandHeads_North_5030336	2019	EM710	Vector	1	4.4	14.6	Fraser Delta	Salish Sea
2019ScottIslands_5030XXX	2019	EM 710	Vector	2	202.4	106.2	Scott Islands	Queen Charlotte Sound
2019SeaforthChannel_WellingtonRock_5030261	2019	EM2040C	Otter Bay	1	6.9	62.4	Seaforth Wellington Rock	British Columbia North Coast
2019ShelterInlet_5030181	2019	R2Sonic 2022	Shoal Seeker	1	26.4	99.2	Clayoquot Sound	West coast Vancouver Island
2019SouthMoresby_5030291	2019	EM2040C	Otter Bay	1	4.2	21.5	East coast Moresby Island	Haida Gwaii
2019StuartChannel_5030129	2019	EM2040C	Otter Bay	1	15.1	41.2	Stuart Channel	Salish Sea
2019SutilPoint_TwinIslands_5030105	2019	R2Sonic 2022	Czotter	1	10.2	57.4	Twin Islands	Salish Sea
2019SydneyInlet_5030182	2019	R2Sonic 2022	Shoal Seeker	1	45.5	182.3	Clayoquot Sound	West coast Vancouver Island
2019ThrasherRock_5030131	2019	EM2040C	Otter Bay	1	11.4	35.3	Thrasher Rock	Salish Sea

2019Tofino_5030093_1m_Final	2019	EM2040C	Otter Bay	1	63.5	304.2	Clayoquot Sound	West coast Vancouver Island
2019TofinoInlet_1m_Final_5030114	2019	EM2040C	Otter Bay	1	40.3	242.6	Tofino Inlet	West coast Vancouver Island
2019TrincomaliChannel_5030332	2019	EM710	Vector	1	36.7	60.0	Gulf Islands	Salish Sea
2019Ucluelet_5030186	2019	EM2040C	Otter Bay	1	16.4	94.1	Ucluelet	West coast Vancouver Island
2019VancouverTerminal_5030347	2019	R2Sonic 2022	Czotter	1	0.2	2.6	Vancouver Harbour	Salish Sea
2019VonDonopInlet_5030322	2019	EM2040C	Otter Bay	1	1.7	20.5	VonDonop Inlet	Salish Sea
2019WeeolkPassage_5030321	2019	EM2040C	Otter Bay	1	3.4	20.1	Weeolk Passage	British Columbia North Coast
2019WoodruffBay_5030219	2019	EM2040C	Otter Bay	1	2.8	14.8	East coast Moresby Island	Haida Gwaii
2020BryantIslands_9000184	2020	EM2040C	Otter Bay	1	2.9	16.8	Barkley Sound	West coast Vancouver Island
2020ButeInlet_9000203	2020	EM710	Vector	5	122.6	163.6	Bute Inlet	Salish Sea
2020CalvertIsland_South_9000308	2020	EM710	Vector	1	39.1	71.4	Calvert Island	Queen Charlotte Sound
2020DeepBay_9000207	2020	EM710	Vector	1	4.4	14.6	Deep Bay	Salish Sea
2020DeepBayWrecks_9000471	2020	EM2040C	Otter Bay	1	1.0	10.8	Baynes Sound	Salish Sea
2020DouglasChannel	2020	EM710	Vector	1	34.3	59.3	Douglas Channel	British Columbia North Coast
2020EnglishBay_9000209	2020	EM710	Vector	1	10.0	41.9	English Bay	Salish Sea
2020FisherChannel_9000309	2020	EM710	Vector	1	103.3	135.2	Fisher Channel	British Columbia North Coast
2020FlorencaBay_1m_5030190	2020	EM2040C	Otter Bay	1	2.3	13.9	Florenca Bay	West coast Vancouver Island
2020GalianoIsland_NW_9000372	2020	EM2040C	Otter Bay	1	0.8	10.9	Trincomali Channel	Salish Sea
2020GooseIslandWest	2020	EM710	Vector	1	77.4	52.1	Goose Island	Queen Charlotte Sound
2020HoweSound	2020	EM710	Vector	1	20.3	46.9	Howe Sound	Salish Sea

2020LaboucherePassage_9000310	2020	EM710	Vector	1	145.8	134.9	Queen Charlotte Strait	British Columbia Central Coast
2020MamquamChannel_9000516	2020	R2Sonic 2022	Shoal Seeker	1	0.6	11.1	Squamish Harbour	Salish Sea
2020NettleIsland_9000299	2020	EM2040C	Otter Bay	1	1.5	21.1	Barkley Sound	West coast Vancouver Island
2020NewcombeChannel_5030188	2020	EM2040C	Otter Bay	1	57.9	75.3	Barkley Sound	West coast Vancouver Island
2020NicholsonCove_9000316	2020	EM2040C	Otter Bay	1	6.8	45.7	Nicholson Cove	Salish Sea
2020NorthCove_9000318	2020	EM2040C	Otter Bay	1	807.1177.0	35.9	North Cove	Salish Sea
2020Pisces Canyon	2020	EM710	Vector	2	431.6	171.0	Pisces Canyon	Queen Charlotte Sound
2020Queen Charlotte Sound	2020	EM710	Vector	2	364.2	153.8	Queen Charlotte Sound	Queen Charlotte Sound
2020QueenCharlotteStrait_NumasIslands_9000311	2020	EM710	Vector	2	51.4	50.4	Queen Charlotte Strait	British Columbia Central Coast
2020Sandheads_9000202	2020	EM710	Vector	1	38.2	42.3	Fraser Delta	Salish Sea
2020SeaOtterGroup	2020	EM710	Vector	1	207.9	117.1	Sea Otter Group	Queen Charlotte Sound
2020SeapoolRocks_9000298	2020	EM2040C	Otter Bay	1	11.9	79.2	Barkley Sound	West coast Vancouver Island
2020SidneySpit_LiDAR_Reference_9000605	2020	R2Sonic 2022	Shoal Seeker	1	5.7	28.6	Sidney Island	Salish Sea
2020Squamish_9000515_PWGSC	2020	EM3002	Unknown	1	3.2	13.2	Squamish Harbour	Salish Sea
2020Stuart Channel	2020	EM710	Vector	1	28.4	54.7	Stuart Channel	Salish Sea
2020StuartChannel_9000201	2020	EM2040C	Otter Bay	1	28.8	53.8	Stuart Channel	Salish Sea
2020StuartChannel_DangerReefs_9000321	2020	EM2040C	Otter Bay	1	2.1	11.0	Stuart Channel	Salish Sea
2020Toba Inlet	2020	EM710	Vector	1	71.0	203.2	Toba Inlet	Salish Sea
2020ToquahtBay_9000183	2020	EM2040C	Otter Bay	1	14.4	69.1	Barkley Sound	West coast Vancouver Island
2020TzartusIsland_9000185	2020	EM2040C	Otter Bay	1	26.0	203.4	Barkley Sound	West coast Vancouver Island

2020UcluthPeninsula_5030187	2020	EM2040C	Otter Bay	1	33.3	43.5	Ucluelet	West coast Vancouver Island
2020ValdesIsland_Southwest_9000383	2020	EM2040C	Otter Bay	1	2.4	23.3	Valdes Island west	Salish Sea
2020VancouverHarbour_G3_Terminal_5030394	2020	Unknown	Unknown	1	0.1	1.8	Vancouver Harbour	Salish Sea
2020VancouverHarbour_Neptune_Terminal_9001112	2020	R2Sonic	Unknown	1	0.1	2.9	Vancouver Harbour	Salish Sea
2020VancouverHarbour_NeptuneBank_9001113	2020	R2Sonic	Unknown	1	1.1	5.7	Vancouver Harbour	Salish Sea
2020WhaleboatPassage_9000322	2020	EM2040C	Otter Bay	1	2.7	20.6	Whaleboat Passage	Salish Sea
2020WickaninnishBay_1m_9000240	2020	EM2040C	Otter Bay	1	7.0	33.7	Wickaninnish Bay	West coast Vancouver Island
2020WorkChannel_9000364	2020	EM710	Vector	2	65.8	178.3	Work Channel	British Columbia North Coast
2021ButeInlet_October	2021	EM710	Vector	2	149.2	249.4	Bute Inlet	Salish Sea
2021GardnerCanal_2	2021	EM710	Vector	1	72.5	132.6	Gardner Canal	British Columbia North Coast
2021Kennedy_Island_Gibson_Group	2021	EM710	Vector	1	24.9	36.8	Gibson Group Islands	British Columbia North Coast
2021Kitimat_DAS	2021	EM710	Vector	1	26.6	43.5	Kitimat Arm	British Columbia North Coast
2021MalaccaPassage	2021	EM710	Vector	1	13.4	29.3	Malacca Passage	British Columbia North Coast
2021MalcolmIsland	2021	EM710	Vector	1	44.8	110.9	Queen Charlotte Strait	British Columbia Central Coast
2021PortlandInlet_9001747	2021	EM710	Vector	1	78.0	92.5	Portland Inlet	British Columbia North Coast
2021PortlandInlet_Pearse_Island	2021	EM710	Vector	1	13.0	27.7	Portland Inlet	British Columbia North Coast

2021QueenCharlotte_Sound	2021	EM710	Vector	1	142.8	167.6	Queen Charlotte Sound	Queen Charlotte Sound
2021QueenCharlotte_Strait_NorthShore	2021	EM710	Vector	1	22.6	65.7	Queen Charlotte Strait	British Columbia Central Coast
2021QueenCharlotte_Sound_Block2	2021	EM710	Vector	1	205.6	108.1	Queen Charlotte Sound	Queen Charlotte Sound
2021QueenCharlotte_Sound_Block3	2021	EM710	Vector	1	420.0	138.7	Queen Charlotte Sound	Queen Charlotte Sound
2021QueenCharlotte_Sound_Block4	2021	EM710	Vector	1	494.5	120.3	Queen Charlotte Sound	Queen Charlotte Sound
2021QueenCharlotte_Sound_Block5	2021	EM710	Vector	1	252.4	134.6	Queen Charlotte Sound	Queen Charlotte Sound
2021QueenCharlotte_Sound_Block6	2021	EM710	Vector	1	141.6	73.4	Queen Charlotte Sound	Queen Charlotte Sound
2021QueenCharlotte_Strait_NowellChannel1	2021	EM710	Vector	1	72.8	96.1	Nowell Channel	British Columbia Central Coast
2021QueenCharlotte_Strait_SalmonChannel1	2021	EM710	Vector	1	65.2	93.6	Salmon Channel	British Columbia Central Coast
2021RipplePassage_GordonChannel	2021	EM710	Vector	1	83.4	90.0	Queen Charlotte Strait	British Columbia Central Coast
2021VancouverHarbourNeptuneTerminal2021	2021	R2Sonic	Unknown	1	0.1	2.8	Vancouver Harbour	Salish Sea
2021WaddingtonHarbour9000728	2021	R2Sonic2022	Czotter	1	16.4	32.9	Waddington Harbour	Salish Sea
5029575_2018StuartChannel_CoffinIsland	2018	EM2040C	Otter Bay	1	12.9	51.7	Stuart Channel	Salish Sea
5029898_2018DepartureBayPBS	2018	R2Sonic2022	Shoal Seeker	1	0.1	1.4	Nanaimo	Salish Sea
5029922_2018CarpenterBay	2018	EM710	Vector	1	8.4	41.2	East coast Moresby Island	Haida Gwaii
5029923_2018CarpenterBay_North	2018	EM710	Vector	1	11.3	121.3	East coast Moresby Island	Haida Gwaii
5029926_2018IkedaCollison	2018	Unknown	Unknown	1	7.7	41.9	East coast Moresby Island	Haida Gwaii
5029945_2018BurkeChannel	2018	Unknown	Unknown	2	64.5	111.1	Burke Channel	British Columbia

								North Coast
9000362_2020PortlandInlet	2020	EM710	Vector	2	293.1	300.2	Portland Inlet	British Columbia North Coast
9000364_2020WorkChannel	2020	EM710	Vector	2	66.1	172.3	Work Channel	British Columbia North Coast
9000365_2020ObservatoryInlet	2020	EM710	Vector	2	160.0	250.1	Observatory Inlet	British Columbia North Coast
9000377_2020PlumperIslands	2020	EM2040C	Otter Bay	1	11.1	82.0	Queen Charlotte Strait	British Columbia Central Coast
9000380-2020Sointula	2020	EM2040C	Otter Bay	1	4.6	13.1	Queen Charlotte Strait	British Columbia Central Coast
9000419_2020DevastationChannel	2020	EM710	Vector	2	61.7	89.8	Devastation Channel	British Columbia North Coast
9000423_2020GardnerCanal	2020	EM710	Vector	1	58.4	89.3	Gardner Canal	British Columbia North Coast
9000966_2021_GardnerCanal	2021	EM710	Vector	1	17.3	47.3	Gardner Canal	British Columbia North Coast
Cape Felix (Alaska)	2015	Unknown	USGS	2	139.8	90.4	Cape Felix	Southeast Alaska
Devils Mountain Fault 2007	2007	EM1002	Unknown	10	400.3	122.2	Juan de Fuca Strait	Salish Sea
Ocean Drilling Program Site 889	1996	Hydrosweep	Sonne	25	375.8	175.7	Barkley Canyon	Continental Slope
Sandheads April 2017	2017	EM710	Heron	2	16.7	115.5	Fraser Delta	Salish Sea
Sandheads June 2015	2015	EM710	Heron	2	9.4	89.3	Fraser Delta	Salish Sea
Sandheads October 2017	2017	EM710	Heron	2	5.0	39.9	Fraser Delta	Salish Sea
Strange Island 2020	2020	Reson 7125	Doppler	1	9.4	76.6	Nootka Sound	West coast Vancouver Island
Tahsis 2020	2020	Reson 7125	Doppler	1	1.5	9.5	Tahsis Harbour	West coast Vancouver Island
Zeballos 2020 - Eastern Section	2020	Reson 7125	Doppler	1	2.2	10.7	Zeballos Inlet	West coast Vancouver Island

Zeballos 2020 - Western Section	2020	Reson 7125	Doppler	1	1.0	6.1	Zeballos Inlet	West coast Vancouver Island
------------------------------------	------	---------------	---------	---	-----	-----	----------------	-----------------------------------