

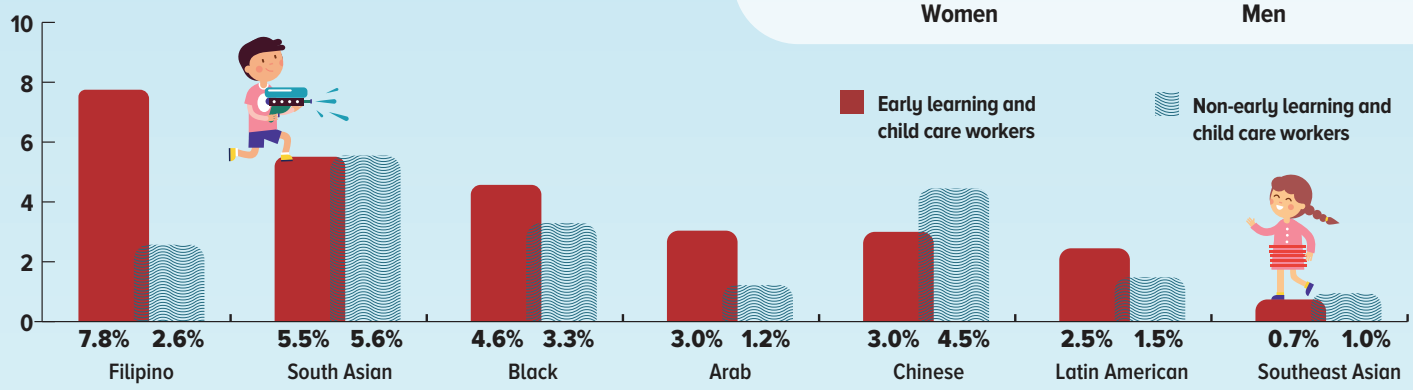


Diversity and retention of early learning and child care workers in Canada

ELCC : Early learning and child care workers include **early childhood educators and assistants and home child care providers.**

In 2016, **70%** of ELCC workers were **White**, compared with **78%** of non-ELCC workers.

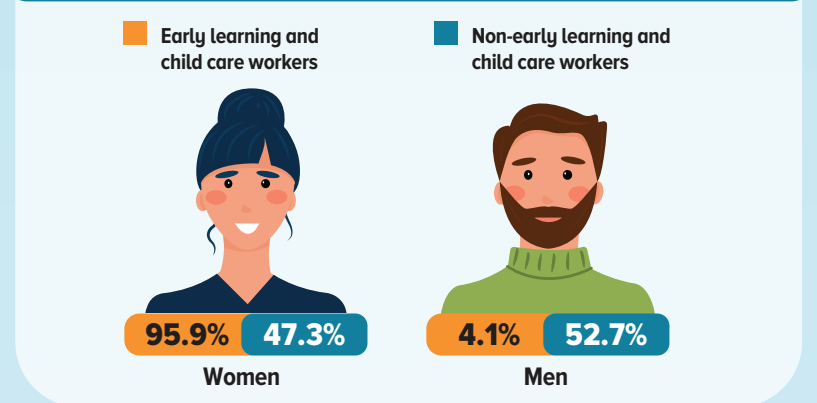
Percentage of ELCC workers and non-ELCC workers, by POPULATION GROUP



3 IN 10 ELCC WORKERS (31%) had a non-official language as their mother tongue, a higher proportion than non-ELCC workers (23%).

62% of those who were working as early childhood educators or assistants in 2011 were still in an ELCC occupation after five years, versus **38%** of home child care providers.

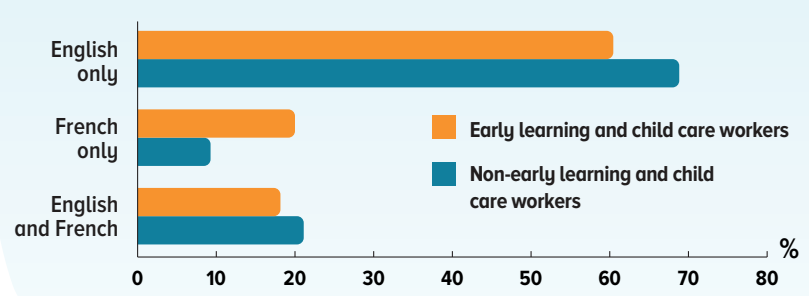
Percentage of ELCC workers and non-ELCC workers, by SEX



8% of ELCC workers and **37%** of home child care providers in private households were **Filipino**.

South Asian and Black people accounted for the **two largest population groups** among early childhood educators and assistants, after White people.

Percentage of ELCC workers and non-ELCC workers, by KNOWLEDGE OF OFFICIAL LANGUAGES



Sources: Statistics Canada, Census of Population, 2011 and 2016; Choi, Y. 2022. "Gender differences in sociodemographic and economic characteristics of early learning child care workers." *Economic and Social Reports*, 2(1). DOI: <https://doi.org/10.25318/36280001202200100001-eng>
 © His Majesty the King in Right of Canada, as represented by the Minister of Industry, 2023 Catalogue number: 11-627-M | ISBN: 978-0-660-47122-8