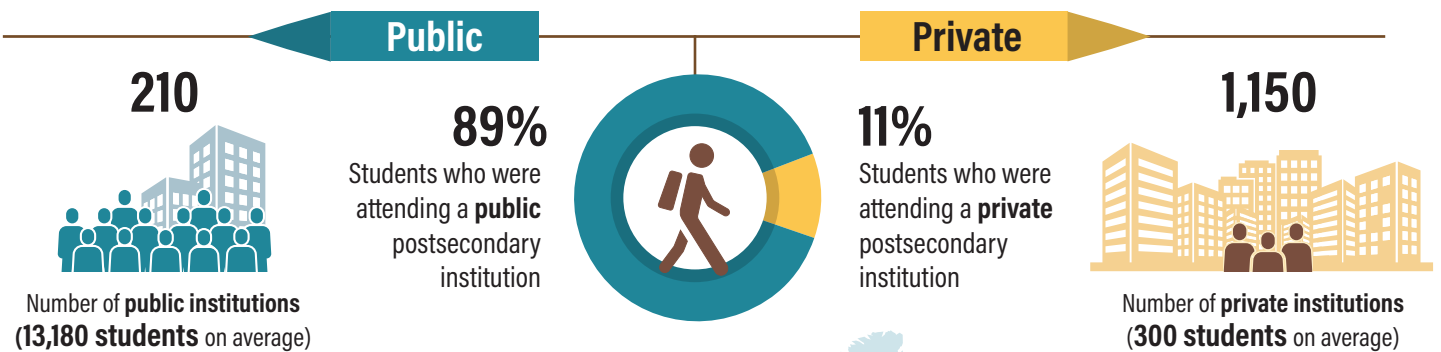


STUDENTS IN PRIVATE POSTSECONDARY EDUCATION: RESULTS OF A FEASIBILITY STUDY

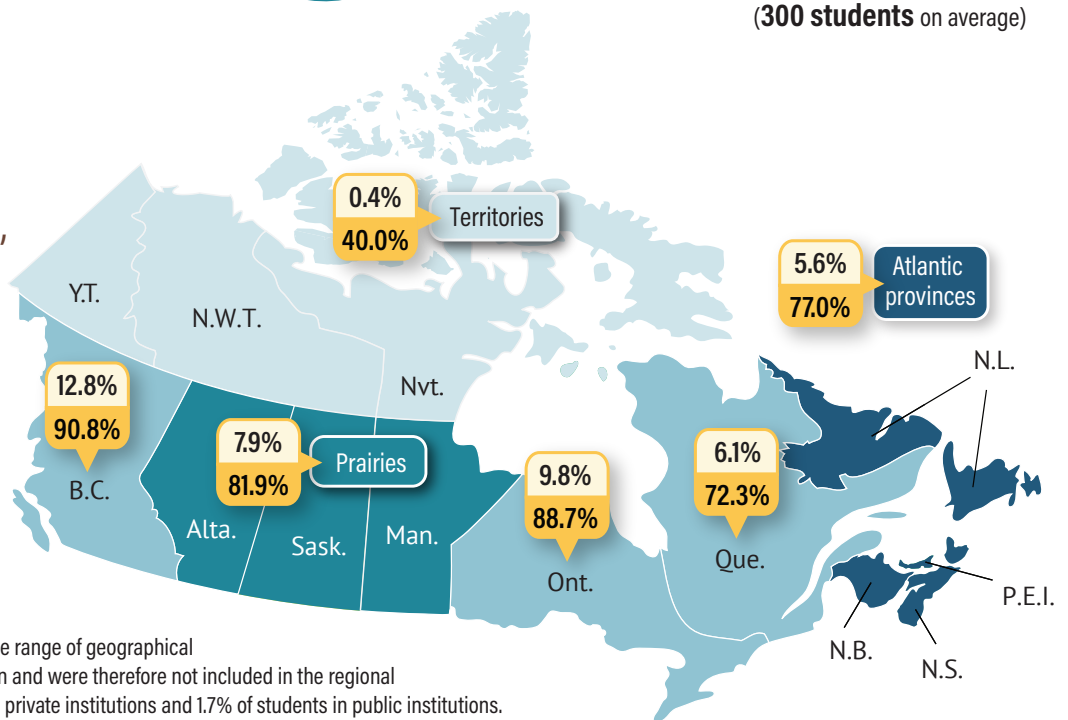
2020

The vast majority of postsecondary students (**89.0%**) were attending a **public** institution, yet most postsecondary institutions (**84.5%**) were **private**.¹



Private postsecondary enrolments and institutions, by region

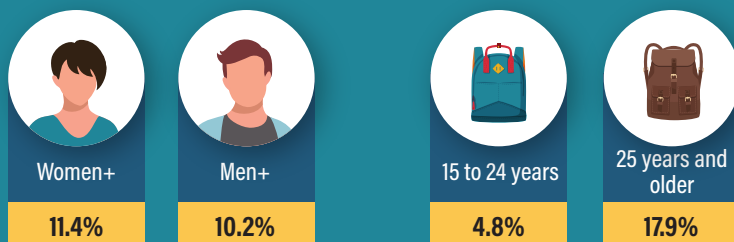
- Percentage of students who were attending a private institution, by region
- Percentage of private institutions among all postsecondary institutions, by region



Note: Some institutions, with students from a wide range of geographical locations, could not be assigned to a single region and were therefore not included in the regional analysis. They accounted for 20.8% of students in private institutions and 1.7% of students in public institutions.

Men and women attended private institutions at similar rates

Percentage of students who were attending a private institution, by gender² and age group³



Among all students who attended private institutions, the majority were aged 25 or older.

76.3% of students who were attending a **private** institution were at least 25 years of age, compared with **42.8%** of students at **public** institutions.



1. See "Students in private postsecondary education, 2020: A feasibility study" for the methodology and definitions.
 2. The category "Women+" includes women, as well as some non-binary persons, while the category "Men+" includes men, as well as some non-binary persons. For more information on these categories, please consult "Students in private postsecondary education, 2020: A feasibility study".
 3. Individuals who did not complete the 2021 Census were excluded from the gender and age analysis.

Sources: Statistics Canada, Postsecondary Student Information System, 2019/2020 and 2020/2021, Census of Population, 2021, and T2202 file – Tuition and Enrolment Certificate, 2020; E. Fecteau and M. Van Bussel, 2023, "Students in private postsecondary education, 2020: A feasibility study," Technical Reference Guides for the Education and Labour Market Longitudinal Platform (ELMLP), Statistics Canada Catalogue no. 37-20-0001.