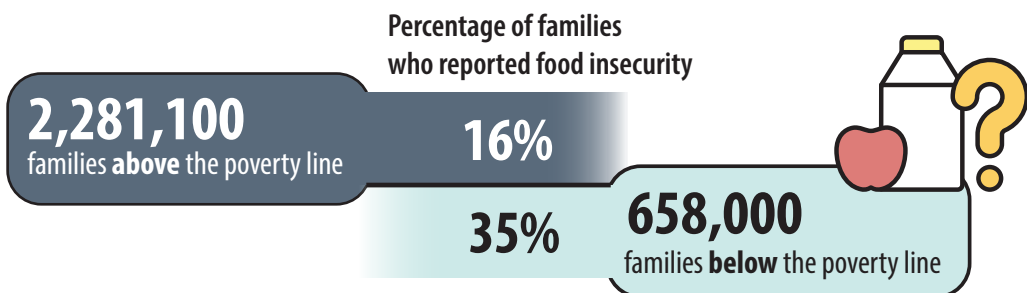


Food INSECURITY

AMONG CANADIAN FAMILIES

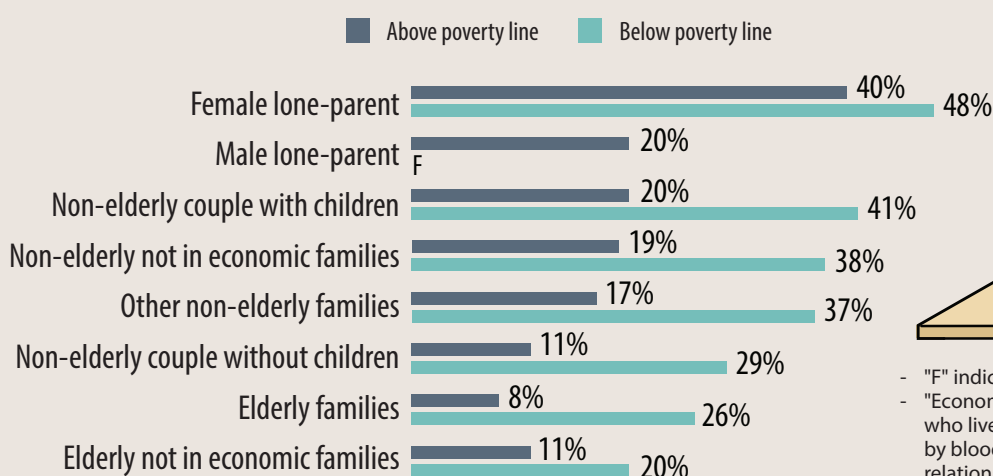
Which families are THE MOST VULNERABLE?

In 2022, **18% of Canadian families** reported experiencing **food insecurity** in the previous 12 months.

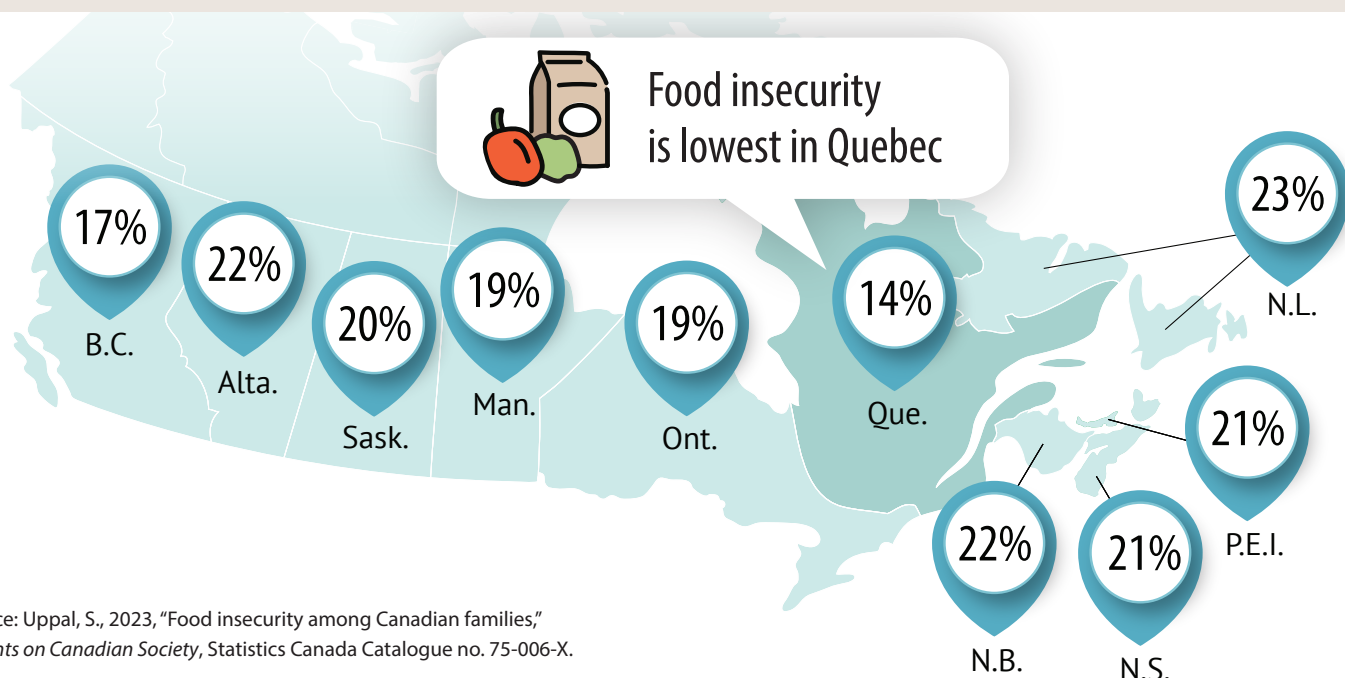


Families below the poverty line are more than twice as likely as those above the poverty line to experience food insecurity.

Female lone-parent families are among the most likely to experience food insecurity



- "F" indicates that the data are too unreliable to be published.
- "Economic families" refers to a group of two or more persons who live in the same dwelling and are related to each other by blood, marriage, common-law union, adoption or a foster relationship.



Source: Uppal, S., 2023, "Food insecurity among Canadian families," Insights on Canadian Society, Statistics Canada Catalogue no. 75-006-X.