



Fisheries and Environment
Canada

Pêches et Environnement
Canada

0035061I

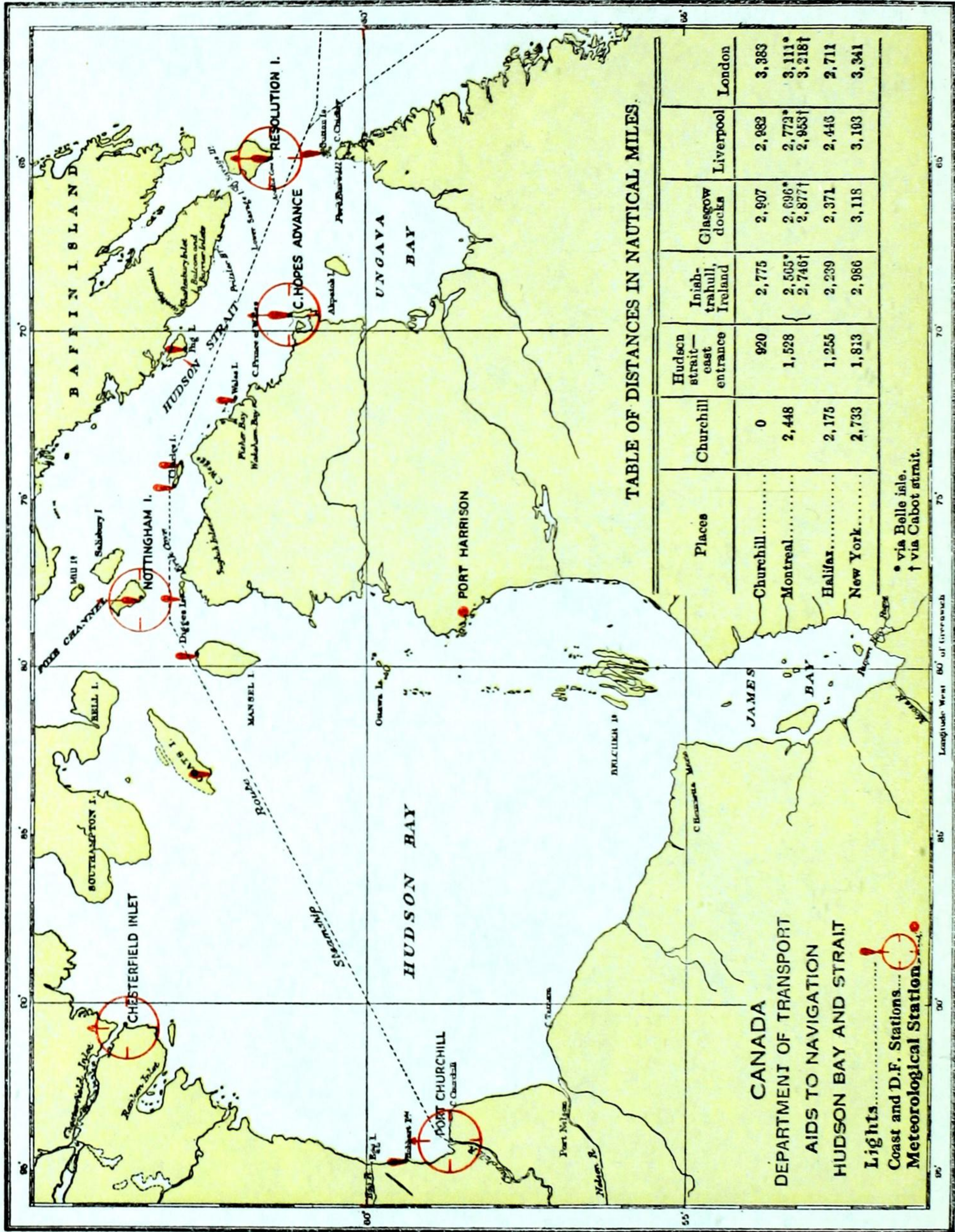
CANADA
NSPORT

DEPARTMENT OF TRA

ANNUAL R

EPORT





CANADA
DEPARTMENT OF TRANSPORT
AIDS TO NAVIGATION
HUDSON BAY AND STRAIT
 Lights.....
 Coast and D.F. Stations.....
 Meteorological Station.....



ELEVENTH ANNUAL REPORT

Navigation Conditions on the Hudson Bay
Route from the Atlantic Seaboard
to the Port of Churchill

SEASON OF NAVIGATION

1939

DEPARTMENT OF TRANSPORT

HON. C. D. HOWE, Minister

OTTAWA

J. O. PATENAUDE, I.S.O.

PRINTER TO THE KING'S MOST EXCELLENT MAJESTY

1940

CONFIDENTIAL

CONTENTS

	PAGE
Letter of Transmittal.....	4
Synopsis—	
Opening of Navigation.....	5
Close of Navigation.....	5
Foxe Channel Ice.....	6
Fog.....	6
Aids to Navigation.....	6
Shipping.....	7
Ships' Reports—	
C.G.S. <i>N. B. McLean</i>	8
R.M.S. <i>Nascopie</i>	11
S.S. <i>Wentworth</i>	12
S.S. <i>Troutpool</i>	15
Port of Churchill—	
Mercantile Marine Vessels Berthed.....	16
Imports and Exports.....	16
Traffic.....	16
Hydrographic Information.....	17
Meteorological Reports—	
C.G.S. <i>N. B. McLean</i>	18
Resolution Island.....	20
Cape Hopes Advance.....	24
Nottingham Island.....	26
Churchill.....	32
Chesterfield Inlet.....	38
Port Harrison.....	42
Aids to Navigation—	
Radio Stations.....	48
Patrol Ship.....	49
Navigation Lights.....	49
C.G.S. <i>N. B. McLean</i> —Dimensions and Equipment.....	50
Glossary of Ice Navigation Terms.....	51

ILLUSTRATIONS

Chart of Hudson Bay and Strait.....	<i>Frontispiece</i>
Beacon Light, Churchill Elevator.....	<i>Facing page</i> 16
M.V. <i>Charles L-D</i> Approaching Dock, Churchill.....	“ “ 16
S.S. <i>Ashworth</i> Turning at Dock, Churchill.....	“ “ 16

CONTENTS

Letter of Transmittal.....

Synopsis—

Opening of Navigation.....

Close of Navigation.....

Foxe Channel Ice.....

Fog.....

Aids to Navigation.....

Shipping.....

Ships' Reports—

C.S.S. V. B. McLean.....

R.M.S. Nascopie.....

S.S. Westport.....

S.S. Torbay.....

Port of Churchill.....

V. I. SMART, Esq.,
 Deputy Minister, Department of Transport,
 Ottawa, Ontario.

SIR—I have the honour to submit the Eleventh Annual Report on Navigation Conditions on the Hudson Bay Route from the Atlantic Seaboard to the Port of Churchill. This report covers the season of navigation, 1939.

The report is compiled from information received from the Department of Transport vessel *N. B. McLean*, the Hudson's Bay Company R.M.S. *Nascopie*, the National Harbours Board, the Meteorological and Radio Services of the Department of Transport, and Mercantile Marine vessels plying on the route.

Yours respectfully,

C. P. EDWARDS,
Chief of Air Services.

DEPARTMENT OF TRANSPORT,
 OTTAWA, March 26, 1940.

ILLUSTRATIONS

Chart of Hudson Bay and Strait.....

Beacon Light, Churchill Elevator.....

M.V. Charles J-D Approaching Dock, Churchill.....

S.S. Ashworth Turning at Dock, Churchill.....

Eleventh Annual Report

Navigation Conditions on the Hudson Bay Route from the Atlantic Seaboard to the Port of Churchill, Season of Navigation, 1939

Synopsis of Report

OPENING OF NAVIGATION

The change from winter conditions extended, as usual, over a period of several weeks and during that time the quantity and state of drifting ice varied from day to day according to the influence of winds and currents.

The dates of the final disappearance of ice from the vicinity of the reporting stations were as follows:—

Hudson Strait, East End

Resolution Island.....August 5

Hudson Strait, Central

Cape Hopes Advance.....August 16

Hudson Strait, West End

Nottingham Island.....August 8

Hudson Strait, General—The only ice observed by the C.G.S. *N. B. McLean* on her passage through the Strait was a narrow strip 50 miles NNW of Hopes Advance on the night of August 4.

Hudson Bay

Churchill.....July 16

Chesterfield Inlet.....July 15

Port Harrison.....July 15

CLOSE OF NAVIGATION

Hudson Bay

Port Harrison—Only occasional slob ice reported up to November 30.

Chesterfield Inlet—Considerable amount of slob ice reported between October 19 and November 12; no ice visible between latter date and end of month.

Churchill—Ice first reported in River on October 13. From that date conditions were very variable until November 30 when there were only few patches open water in Bay.

Hudson Strait

Nottingham Island—Ice beginning to appear November 18 and at end of month there was scattered ice to westward.

Cape Hopes Advance—Station closed for season September 30. No ice.

Resolution Island—No ice reported until end of November when there was "scattered ice in all directions." Bergs and growlers were fairly numerous here all season.

Full information regarding ice conditions will be found under Meteorological Reports, pages 18-47.

FOX E CHANNEL ICE

No information regarding ice debouching through Foxe Channel into the route of navigation was received during the season under review.

FOG

The hours of fog reported during the season were as follows:—

—	July	Aug.	Sept.	Oct.	Nov.	Totals	
						1939	1938
Resolution.....	163	58	155	45	32	453	652
Cape Hopes Advance*.....		9	52				
Nottingham Island.....	209	62	78	0	7	356	221
Churchill.....	30	54	32	0	31	147	175
Chesterfield.....	22	76	0	2	8	108	160
Port Harrison.....	149	1	107	17	6	280	243

* Reopened for season August 3; closed September 30.

AIDS TO NAVIGATION

Radio

There are five radio direction finding stations on the Hudson Bay Route. Four were in operation during the whole year, the exception being Cape Hopes Advance station which opened on August 3 and closed down September 30.

The stations at Resolution, Cape Hopes Advance and Nottingham were recalibrated by the C.G.S. *N. B. McLean* and the correction tables modified in accordance with results.

Detailed information regarding Radio Aids to Navigation will be found on page 48.

Hydrography

No additional charting or other operations were carried out during the past season. Publications of the Hydrographic Service, Department of Mines and Resources, relating to the Hudson Bay and Strait are listed on page 17.

Lights

There were no additions to the lights the numbers remaining at two watched and ten unwatched, a total of twelve lights, a list of which will be found on page 49.

Fog Signals

The explosive bomb signal which was installed at Resolution in 1935 is still in operation. It can be heard at a distance of between five and six miles and is fired at intervals of ten minutes on request by ships approaching Acadia Cove.

SHIPPING

Five cargo boats, one of which the *Wentworth* made a double trip, entered the Port of Churchill during the season and cleared with wheat cargoes.

This compares with three cargo boats using the Port last season.

The first boat to arrive was the *Wentworth* which docked on August 12 and cleared on August 17.

The last boat to arrive was also the *Wentworth*, arriving on her second trip on September 19 and leaving on September 21.

The Department of Transport patrol boat *N. B. McLean* arrived off Resolution on July 30 and proceeded through Hudson Strait to Cary's Swan Nest, Coats Island, landing relief wireless operators at different points, servicing beacon lights and performing other duties en route. She also established contact with the several cargo boats as they entered the Strait and sailed from Resolution for Quebec, P.Q., on October 2. See Report on page 8.

No incident of note occurred during the season and navigation proceeded normally.

C. P. EDWARDS,

Chief of Air Services.

C.G.S. *N. B. McLEAN*, CAPTAIN W. J. BALCOM, MASTER,
VOYAGE TO HUDSON STRAIT AND BAY, 1939

MASTER'S REPORT

GENERAL

The C.G.S. *N. B. McLean* sailed from Quebec at 4.20 a.m. July 25, making her tenth annual voyage to Hudson bay and Strait. She carried a radio engineer, relief operators, supplies for the various wireless stations and lighthouses, medical officer and supplies for the season's work in Hudson strait.

Good progress was made down the river and the ship arrived off Father point at 7.10 p.m. where we landed Mr. R. Newman of the Canadian Marconi Company, who had been installing and calibrating the new Direction Finder MDF-3. He was taken off by the SS. *Citadel* and the ship then carried on her voyage, arriving off West point, Anticosti island, at 9 a.m. July 26, where a stop was made for several hours while swinging the ship and making a calibration chart for the new Direction Finder. This was completed at 1.00 p.m., ship then resuming her course. Fog was met in the vicinity of Greenly island and continued throughout the strait of Belle Isle. We passed through Belle Isle strait at 1.00 a.m. July 28, in dense fog and were unable to make the usual survey of bergs in that vicinity so headed north and at noon were at latitude 52.45 north, longitude 55.07 west. Fog continued throughout the following day, cleared at 6.00 a.m. July 29 and remained clear until our arrival off Resolution island at 10.15 p.m. July 30, when the fog became thick again and we laid off Resolution island until 8.00 a.m. the next morning, July 31, and then dropped anchor in Acadia cove.

Landing of supplies and relief operators was begun immediately and carried on until 8.00 a.m. August 1, when the radio station being ready for calibration a start was made outwards to begin this work. Calibration was finished at 3.00 p.m. and the ship returned to harbour, picked up the radio engineer and work party and departed for cape Hopes Advance at 6.00 p.m. No pan ice was sighted but bergs were quite numerous and the ship arrived off the radio station at cape Hopes Advance at 10.15 p.m. August 2. Boats were immediately lowered and supplies and personnel were landed ashore and began to work to place in operation the radio station which had been closed since October 12, 1938. Good progress was made with this work and station was ready for operation and calibration at 12.30 p.m. August 3. The ship left anchorage for calibrating the station and this was completed satisfactorily at 5.40 p.m. August 3. The ship then returned to anchorage, picked up the radio engineer and work party and sailed for Nottingham island at 8.00 p.m. August 4. On August 5 a stop was made at Wales island to service and put in operation the light. This was completed at 10.00 p.m. and the ship continued westward to cape Moses Oates, Charles Island, where similar work was performed and also at the west end of Charles island, this being finished at 9.00 p.m. August 6. The *McLean* then headed towards the radio station at Nottingham island, arriving there at 6.35 a.m. August 7. Operators and supplies were landed at the station, direction finding equipment calibrated and ship left for Eric cove at 7.20 p.m. August 8, arriving at the anchorage there at 9.45 p.m. August 8.

The ship remained at Eric cove until 10.00 p.m. August 9 when we left to meet the SS. *Wentworth*, having in the meantime boated twenty surf-boat loads of fresh water. We met the *Wentworth* at 10.30 p.m. that evening and went

along with her to Coates island where we left her and headed into Cary's Swan Nest where the light was serviced and put into operation, leaving from there at 6.00 p.m. for Mansel island. We met the SS. *Troutpool* at 5.00 a.m. August 11 off Mansel island after which we returned to the beacon, overhauled and lighted same and left at 10.15 a.m. August 11 for Digges island passage where we stayed until August 14, leaving for Nottingham island to complete landing of supplies and rigging of masts. We remained at Nottingham until August 16 when the wind came strong from the south, increasing to gale force. We left for shelter at the harbour at Nuvuk and anchored there until 5.30 p.m. August 17, when we sailed for Digges island passage to obtain fresh water and remained there boating fresh water until 2.30 a.m. August 20, sailing outwards to meet the SS. *Wentworth* who was bringing mail and packages for crew and stations. After securing same we proceeded to Nottingham island, where mail for the personnel was landed, and took aboard Radio Engineer McLean and two assistants and departed for cape Hopes Advance, stopping on the way to service the light at Ashe inlet and going from there to Wakeham bay where the MV *Nouveau Quebec* was awaiting our arrival to supply her with some fuel oil but, on our arrival, found that she had departed.

The ship departed from Wakeham bay and a short call was made at cape Hopes Advance to land mail and thence across to Resolution island, arriving there at noon August 24. The *McLean* remained at Acadia cove, Resolution island, where the balance of the coal was discharged and the crew worked continuously on rigging until September 2, when radio engineer and crew were again taken on board and the ship returned to cape Hopes Advance. On our arrival Engineer McLean and two men of the crew stayed to continue work on the rigging there, ship proceeding to Wakeham bay where tanks were filled with fresh water and ship was painted battleship grey, leaving there on the evening of September 6 for the western end of the Strait. On September 8 we were at Igugivik and from that port sailed outwards to meet the SS. *Ainderby* who had mail for us. The mail was transferred to us and the *McLean* sailed to Nottingham where mail and packages were landed for the radio station, leaving Nottingham to a rendezvous with the SS. *Charles LD* who passed outwards off Digges island at 8.00 p.m. September 11. The *McLean* remained in this vicinity until September 17 having very bad weather meanwhile which necessitated our changing anchorage to obtain shelter, so on the 17th we headed towards Sugluk harbour where there is a good anchorage. We left Sugluk on the evening of the 23rd to meet the SS. *Wentworth* carrying mail and packages. This was transferred and the *McLean* returned to Sugluk on the 24th.

Having received orders to proceed to Quebec a departure was made from Sugluk on September 28, and we sailed for Eric cove. From Eric cove the ship passed over to Nottingham island and Operators E. Clare and C. Davies were taken aboard. Leaving Nottingham for cape Hopes Advance a short stop was made at Wakeham bay and we arrived at the cape at 12.30 a.m. October 1. Conditions being favourable we took off Radio Engineer McLean and personnel of staff; the wireless station was closed for the season and we departed for Resolution island anchoring there at 12.45 p.m. October 1. Boats were lowered and commenced to land coal and other supplies after which Operators W. Hopkins and E. Ginn were taken on the ship. The landing of supplies was finished that night and the *McLean* left at daylight the following morning, October 2, for Quebec.

We made a fast passage down the Labrador shore with strong northwest winds and following sea. Owing to snow and poor visibility we were unable to observe the coastline coming down and arrived off the north end of Belle isle at 3.00 a.m. October 4, having made the passage in 44 hours. Strong head winds were encountered from Belle isle westward to cape Whittle but from there to Father point conditions were favourable and without further incident ship docked at Kings Wharf, Quebec, at 10.00 a.m. October 6.

ICE CONDITIONS

Ice conditions in Hudson bay and Strait were very good during the official season of navigation and all ships passed inwards and outwards without assistance from the *N. B. McLean* other than direction. Ice did not make its appearance off Wolstenholme until the latter part of November 1938 and the harbour did not freeze until November 30, clearing out this year on July 2, but some ice was observed in the Strait until July 19.

On our passage up the Labrador coast and through the Strait no pan ice was sighted until fifty miles northnorthwest of cape Hopes Advance when a long narrow strip of ice was met with its southern edge ten to fifteen miles off the south coast. This looked quite formidable at first but on investigation proved to be only a narrow strip and quickly disappeared. Bergs were quite numerous in the early part of the season, especially in the eastern end of the Strait, between Resolution island and cape Hopes Advance, but quickly thinned out and towards the end of the season were widely scattered.

The route across the Bay was quite clear all through the season except in the early part ships had to steer to a position latitude 59.57 north, longitude 91.21 west to clear north edge of ice field; but this quickly passed southward and ships could then steer direct for Churchill.

The weather conditions were very good until September 20 when snow began to fall and was very prevalent during the remainder of the season.

SHIPPING

Six large cargo boats with a gross tonnage of 25,452 tons passed inwards and outwards through Hudson strait this season. The ships, in the order of their arrival, were the steamships *Wentworth*, *Troutpool*, *Ashworth*, *Ainderby*, the motor vessel *Charles LD* and the *Wentworth* who made a second trip. Only one of these ships carried inward cargo, the *Wentworth* who on her first voyage, brought approximately 984 tons of general cargo and 300 tons of coal but outward cargo amounted to approximately 1,777,000 bushels wheat. All ships made good passages and had little difficulty from ice.

Other ships on this route this year were the Hudson's Bay Company SS. *Nascopie*; the Roman Catholic Mission MV. *Marie Therese*. the MV. *Nouveau Quebec* and the motor schooner *Agnes D. McLashen*. None of these ships experienced any difficulty in making their respective voyages.

RADIO STATIONS

All the Radio Stations in Hudson strait this year were calibrated by the *N. B. McLean* in co-operation with Mr. H. H. McLean, Radio Engineer, and gave excellent results. During our stay at each station much repair and general overhaul was given to the masts and rigging by the crew of the *N. B. McLean* and J. Vigneau and assistant were loaned to Mr. McLean at each station for quite long periods of time to assist him in this work. Good co-operation was given and received from Mr. McLean during the whole season.

W. J. BALCOM,
Master.

R.M.S. NASCOPIE, CAPTAIN T. F. SMELLIE, MASTER,
HUDSON BAY AND STRAIT, 1939

EXTRACTS FROM LOG

Date	Wind		Noon Position		Course	Distance Run	Remarks
	Dir.	Force	Lat. N.	Long. W.			
July 19	NNW.	2	60° 28'	64° 35'	Various	170	Smooth sea, various speeds through heavy ice. 5.00 p.m. arrived Port Burwell.
" 20	SW.	4	61° 15'	66° 52'	N 47 W	80	Moderate sea, overcast and clear.
" 21	WNW.	1	62° 29'	69° 40'	Various	108	Smooth sea, thick fog, several bergs and heavy close packed ice crossing Strait.
" 22	SSE.	3	62° 29'	69° 40'	Smooth sea, thick fog. Stopped for 24 hours in heavy ice. 5.25 p.m. arrived Lake Harbour, full heavy close packed ice.
" 23	SE.	3	Lake Harbour		4.00 p.m. left Lake harbour.
" 24	SE.	3	62° 02'	71° 25'	76	Smooth sea, thick fog. Various speeds through heavy ice. 7.30 p.m. arrived Wakeham bay.
" 25	W.	4	62° 25'	73° 06'	64	Moderate sea, overcast and clear. 7.35 p.m. arrived Sugluk.
" 26	NE.	4	Sugluk		Overcast and clear. 8.00 p.m. left Sugluk.
" 27	E.by S.	2	63° 40'	73° 00'	90	Smooth sea, overcast and hazy. Various speeds through loose ice. 5.27 p.m. arrived cape Dorset.
" 28	W.	4	63° 32'	76° 01'	30	Slight sea, overcast and clear. Various speeds through loose ice. 8.02 p.m. arrived Wolstenholme.
" 29	W by N	4	62° 58'	79° 48'	N 71 W.	75	Slight sea, fine and clear.
" 30	N.	2	Southampton Island		6.36 a.m. arrived Southampton island.
" 31	WNW.	2	63° 10'	82° 10'	Various	83	Fine and clear. 4.00 a.m. left Southampton island.
Aug. 1	W.	2	Cape Smith		192	Fine and clear. 7.16 a.m. arrived cape Smith.
" 2	ESE.	3	58° 18'	79° 33'	196	Slight sea, fine and clear. Various speeds through heavy ice. 4.03 p.m. arrived Port Harrison.
" 3	NE.	2	Port Harrison		Fine and clear.
" 4	E.	1	58° 24'	80° 16'	N 87 W.	58	Overcast with fog. 6.00 a.m. left Port Harrison.
" 5	N.	4	58° 56'	87° 57'	N 81 W.	240	Moderate sea, thick fog.
" 6	SE.	2	59° 26'	92° 10'	Various	142	Smooth sea, thick fog. Various speeds through heavy ice. 9.52 p.m. arrived Churchill.
" 7	SE.	3	Churchill		Fine and cloudy.
" 8	E.	4	59° 29'	93° 26'	N 33 E.	48	Moderate sea, fine and cloudy.
" 9	N.	4	61° 28'	91° 05'	N 30 E.	140	Occasional fog, some heavy ice, slight sea.
" 10	WNW.	2	Chesterfield Inlet		Various	134	Fine and clear. 6.27 a.m. arrived Chesterfield.
" 11	SE.	2	Cloudy and clear.
" 12	W.	1	62° 46'	87° 56'	S 66 E.	82	Moderate swell, fine and clear. 4.00 a.m. left Chesterfield.
" 13	N.	3	62° 32'	79° 11'	Various	258	Moderate sea, fine and clear. 4.45 p.m. arrived Wolstenholme.
" 14	NNW.	2	62° 48'	75° 05'	60	Slight swell, fine and clear. 6.00 a.m. left Wolstenholme.
" 15	W.	3	Lake Harbour		161	Fine and clear. 6.21 a.m. arrived Lake harbour. Heavy loose ice in Strait.
" 16	S.	2	60° 37'	65° 29'	194	Slight swell, fine and clear. 2.40 p.m. arrived Port Burwell.
" 17	WSW.	3	62° 24'	61° 58'	163	Moderate sea, fine and clear. A few bergs and growlers.

SS. WENTWORTH, CAPTAIN J. GRAVES, MASTER
EXTRACTS FROM LOG, RESOLUTION ISLAND TO CHURCHILL, 1939

Date	Time	Position		Course by Gyro	Barometer	Temp. °F.		Wind		Weather and General Remarks
		Lat. N.	Long. W.			Air	Sea	Dir.	Force	
1939 Aug. 8.	Noon	60° 55'	64° 28'	280	30.13	46	37	WNW.	2	Passed 17 bergs and several growlers from 87 miles ESE. of Resolution island to entrance Hudson strait. 1.20 p.m. Resolution island abeam distant 23 miles. Smooth sea and excellent visibility. Passing numerous bergs and growlers in Strait. Ice sighted at good distance during hours of darkness, lookouts doubled and full speed maintained. 11.50 p.m. Cape Hopes Advance 210° distant 16 miles, a/c 301.
	4 p.m.			280	30.15	47	36	W.	2	
	8 p.m.			280	30.15	45	40	W.	2	
	12 p.m.			301	30.10	45	40	W.	2	
Aug. 9.	4 a.m.			301	30.07	41	39	W.	2	Passing scattered pan ice between longitudes 69° 55' and 70° 48'. 7.15 a.m. Wales island light abeam distant 9 miles. Noon. Outer island abeam distant 1½ miles, a/c 287. 1.00 p.m. Cape Weggs abeam distant 1½ miles, a/c 274, 8.50 p.m. to 9.20 p.m. Stopped off Eric cove to pick up mails from C.G.S. N. B. McLean. 11.00 p.m. Digges island light abeam distant 3½ miles, a/c 270. Midnight. Snelgrove rock abeam, a/c 263. Smooth sea and fine clear weather throughout the day.
	8 a.m.			301	30.08	45	40	Calm		
	Noon		73° 14'	287	30.00	50	39	N.	1	
	4 p.m.			274	30.00	50	44	NW.	1	
	8 p.m.			274	30.00	45	45	W.	2	
	12 p.m.			263	29.97	41	45	NW.	3	
Aug. 10.	4 a.m.			244	29.99	41	43	N.	2	To NW. of Mansel island, a/c 244. Smooth sea and fine clear weather throughout the day.
	8 a.m.			244	30.04	49	45	N.	1	
	Noon		83° 23'	244	30.02	54	46	Calm		
	4 p.m.			246	30.05	49	43	W.	2	
	8 p.m.			246	30.08	44	43	Calm		
	12 p.m.			246	30.07	45	45	S.	1	
	4 a.m.			246	30.00	43	41	SSE.	3	
	8 a.m.			246	29.95	43	42	E.	3	
	Noon		92° 22'	Various	29.90	48	44	Var.	1	
	4 p.m.			208	29.88	45	41	Var.	1	
	8 p.m.			Various	29.87	42	42	NE.	2	
	12 p.m.			Anchored	29.87	42	42	E.	2	
Aug. 12.	4 a.m.			Anchored	29.87	42	41	N.	2	Met icefield in 59-57 N. 91-21 W. Skirted round northern edge to 59-58 N. 91-56 W. thence to 59-45 N. 93-12 W. where ice was cleared and course 208° set for Churchill. A.M. Slight sea, overcast gloomy weather. P.M. Slight sea and hazy weather. Visibility deteriorating towards evening. 7.45 p.m. Dense fog approaching Churchill. Engines eased down. Churchill D.F. 010½°. Sounding 17 fathoms (sand). 8.10 p.m. Sounding 14 fathoms (sand). 8.30 p.m. Stopped and swung to anchorage off port in 9 fathoms (sand and mud). Anchored with Churchill D.F. 024°, approx. 2-3 miles distant. Awaiting weather clearing. 5.10 a.m. With clearing weather pilot boarded, weighed anchor and proceed into port. 6.10 a.m. Vessel moored in discharging berth. 7.30 a.m. Commenced discharging Newcastle and Antwerp cargo.

Resolution Island to Churchill 920 miles. Steaming time on passage 3 days 8 hours 18 mins. Average speed 11.46 miles per hour.

SS. WENTWORTH, CAPTAIN J. GRAVES, MASTER
EXTRACTS FROM LOG, CHURCHILL TO RESOLUTION ISLAND. 1939

Date	Time	Position		Course by Gyro	Baro-meter	Temp. °F.		Wind		Weather and General Remarks
		Lat. N.	Long. W.			Air	Sea	Dir.	Force	
1939 Aug. 17.	12 p.m.			023	30.04	45	45	ESE.	3	8.30 p.m. Completed loading for Birkenhead. 8.40 p.m. Cleared berth and proceeded seawards. 9.15 p.m. Discharged pilot and full away on passage. Slight sea and fine clear weather. Course 023 set to westward of icefield passed inward bound on Aug. 11.
Aug. 18.	4 a.m.			066	29.97	43	45	SSE.	4	3 a.m. In position 59.43 N. 93.25 W., no ice sighted, a/c 066. Moderate beam sea, overcast gloomy weather throughout day.
	8 a.m.			066	29.98	44	44	SSE.	4	
	Noon	60° 20'	90° 41'	066	29.97	42	43	SSE.	4	
	4 p.m.			066	29.97	42	43	SSE.	4	
	8 p.m.			066	29.97	45	45	SSE.	4	
	12 p.m.			066	29.97	45	46	SSE.	4	
Aug. 19.	4 a.m.			066	29.95	44	44	SE.	4	A.M. Moderate sea; overcast and clear weather. 10.55 a.m. Carys Swan Nest abeam distant 7 miles. Noon, a/c 074. P.M. Moderate sea and continuous drizzle. Very poor visibility.
	8 a.m.			066	29.85	46	45	SE.	4	
	Noon	62° 07'	82° 45'	066	29.79	46	44	SE.	4	
	4 p.m.			074	29.71	44	44	SE.	4	
	8 p.m.			074	29.71	46	45	S.	5	
	12 p.m.			074	29.68	44	43	S.	4	
Aug. 20.	4 a.m.			096	29.65	45	38	S.	4	12.15 a.m. Nottingham island D.F. bearing 024° distant 27 miles, a/c 090 to intercept N. B. McLean. 3.05 a.m. to 3.35 a.m. Reduced speed off Eric cove and transferred mails to N. B. McLean, thence set course 096 to southward of Charles island. A.M. Moderate sea, cloudy and clear weather. 1.00 p.m. Cape Weggs abeam, distant 2 miles, a/c 100. 2.00 p.m. Outer island abeam distant 2½ miles, a/c 114. P.M. Slight sea and fine clear weather.
	8 a.m.			096	29.69	48	43	SW.	3	
	Noon	62° 28'	74° 08'	096	29.70	50	40	W.	2	
	4 p.m.			114	29.77	47	38	W.	2	
	8 p.m.			114	29.83	43	39	NW.	3	
	12 p.m.			114	29.81	39	39	NW.	3	
Aug. 21.	4 a.m.			107	29.86	37	37	NW.	1	2.30 a.m. Off Hopes Advance, a/c 107. A.M. Slight sea and fine clear weather. Passing numerous bergs and growlers in Hudson strait. Visibility excellent. Lookouts doubled during hours of darkness and full speed maintained. 2.00 p.m. Resolution island abeam distant 28 miles. Course 102 set towards south of Greenland. Fine clear weather continues throughout day.
	8 a.m.			107	29.88	39	37	WNW.	2	
	Noon	60° 57'	65° 38'	107	29.88	53	37	WNW.	2	
	4 p.m.			102	29.89	50	37	W.	2	

Churchill to Resolution Island 920 miles. Steaming time on passage 3 days 14 hours 47 mins. Average speed 10.6 miles per hr.

SS. WENTWORTH

MASTER'S REPORT

SUMMARY

Ice Conditions.—Numerous bergs and growlers were met both inwards and outwards between Charles island and 90 miles E.S.E. of Resolution island. The bergs were larger and much more numerous than in previous years. There was considerable field ice to northward of Wales island on inward passage but, following advice of Captain Balcom of *N. B. McLean* and keeping to south side of Strait, this was avoided. About 80 miles northeast of Churchill on August 11 field ice was encountered but after skirting northern edge and making gradually to southwest for about 5 hours this field was cleared and course resumed for the port. Fine clear weather was experienced both inwards and outwards and steamer made excellent passages.

Compass.—The Browns gyro compass worked perfectly throughout the voyage. This gyro has given excellent results on *Wentworth* in all latitudes for past four years. The magnetic compasses acted similarly to previous years, being quite useless for safe and speedy navigation. No doubt all concerned have now realized that a gyro compass is very essential for navigating in these waters.

Lights.—On inward passage the fixed light on cape Hopes Advance was sighted at a distance of 27 miles in clear weather.

When leaving Churchill on the night of August 17 I reported to Mr. Twolon, Port Manager, on the visibility of the new light which has been established on top of the Churchill elevator. The light was visible only seven miles under perfect conditions. It was very faint after a distance of five miles from the port. The town lights were in sight for a considerable time later. I would suggest that the power be increased similar to the Digges Island light.

C.G.S. N. B. McLean.—I cannot speak too highly again of the very valuable assistance given by Captain Balcom of the *N. B. McLean*. Prior to our arrival off Resolution island he had investigated conditions to westward and was in continuous radio communication with the steamer giving position of ice sighted and advising best route to take.

Radio Bearings.—All radio bearings have been very reliable and operators on all stations have been most obliging and attentive at all times. Bearings from Churchill on August 11 were perfect, vessel proceeding to anchorage off Churchill on D.F. bearings and soundings in dense fog.

J. GRAVES,
Master.

SS. TROUTPOOL, CAPTAIN T. H. MUITT, MASTER
EXTRACTS FROM LOG, RESOLUTION ISLAND TO CHURCHILL, 1939

Date	Time	Course	Position		Wind		Baro- meter	Temp. °F.		State of Weather and General Remarks
			Lat. N.	Long. W.	Dir.	Force		Air	Sea	
1939 Aug. 9..	12 p.m.	308	Wly.	3	29.81	40	39	2.10 a.m. Resolution island abeam, distance 3 miles, a/c 274. Numerous large bergs and growlers approaching and leaving Acadia point until 25 miles before reaching cape Hopes Advance. Moderate breeze, smooth sea, fine clear weather. Passing through heavy pan ice throughout the watch. 8.24 a.m. slowed and stopped with speeds various during watch on account of thick fog and ice. Visability at times $\frac{1}{4}$ mile. Vessel stopped from midnight until 3.30 a.m. when clear of ice. Course reset. 3.35 a.m. Wales island abeam, distance 8 miles. Course 318, then steering various courses clearing pan ice. 7.50 a.m. Wegges island abeam, distance 5 miles, a/c 295. 10.00 a.m. cape Weggs abeam distance 1 $\frac{1}{2}$ miles, a/c 275. 10.23 p.m. Digges point light abeam, distance 4 $\frac{1}{2}$ miles. 11.30 p.m. a/c 254. Gentle breeze, smooth sea, fine clear weather. 3.35 a.m. Mansel island light abeam. Moderate wind and swell, overcast clear weather. Moderate wind, smooth sea, patchy fog, no ice. Light beam wind, smooth sea, overcast and clear. Similar weather and sea. Gentle following breeze, smooth sea, drizzling rain, no ice. Moderate following wind, moderate sea, overcast and clear, vessel rolling heavily. 8.00 a.m. a/c 259. Gentle following breeze, moderate swell, overcast and clear, No ice. Light beam wind, moderate sea, overcast and clear. No ice. 10.00 p.m. a/c 188. Variable breeze, smooth sea, fine clear weather. No ice.
	4 a.m.	274	Wly.	3	29.81	39	39	
	8 a.m.	274	NW.	4	29.78	43	40	
	Noon	274	68° 30'	Wly.	3	29.75	46	40	
	4 p.m.	304	W.	4	29.72	47	41	
	8 p.m.	304	W.	4	29.70	47	42	
	Mid- night	318	NW.	3	29.70	42	41	
	4 a.m.	318	NW.	3	29.67	42	41	
	8 a.m.	295	NW.	3	29.70	42	42	
	Noon	275	74° 12'	NW.	3	29.68	48	43	
4 p.m.	275	NW.	3	29.69	49	43		
8 p.m.	275	NW.	3	29.79	50	43		
Mid- night.	254	NW.	3	29.80	50	44		
4 a.m.	254	NW.	3	29.80	48	46		
8 a.m.	242	SW.	4	29.82	49	47		
Noon	242	82° 20'	WSW.	4	29.82	49	50		
4 p.m.	242	WSW.	3	29.82	53	51		
8 p.m.	242	SE.	3	29.78	53	51		
Mid- night.	242	E.	2	29.72	49	50		
4 a.m.	242	E.	4	29.67	47	53		
8 a.m.	242	Var.	3	29.64	51	53		
Noon	259	90° 20'	NE.	2	29.63	53	53		
4 p.m.	259	Nly.	3	29.63	55	53		
8 p.m.	259	Nly.	2	29.65	55	53		
Mid- night	188	Var. Airs		29.66	50	52		
4 a.m.	188	In port	Var.	1	29.66	46	50		
8 a.m.			Var.	1	29.65	44	49		

Resolution Island to Churchill 956 miles. Time on passage 4 days 4 hours 55 mins. Average speed 9.45 knots.

7.00 a.m. made fast in berth alongside elevator at Churchill.

CHURCHILL
MERCANTILE MARINE VESSELS BERTHED

SS. <i>Wentworth</i>	Arrived August 12	Departed August 17
SS. <i>Troutpool</i>	“ “ 13	“ “ 16
SS. <i>Ashworth</i>	“ “ 30	“ Sept. 1
SS. <i>Ainderby</i>	“ Sept. 4	“ “ 7
MV. <i>Charles L-D</i>	“ “ 6	“ “ 7
SS. <i>Wentworth</i>	“ “ 19	“ “ 21

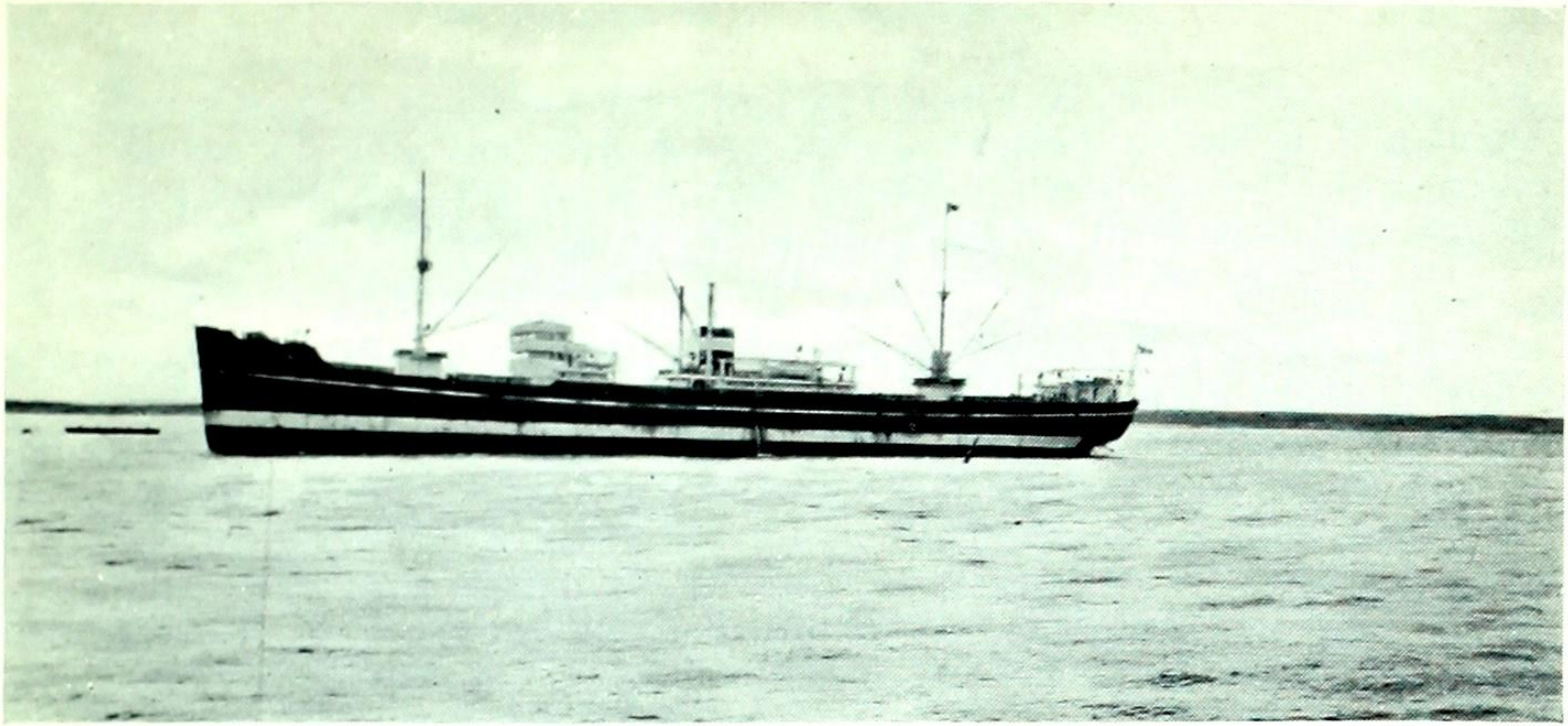
IMPORTS AND EXPORTS

Imported	Exported
General Cargo..... 984 tons	Wheat..... 1,777,000 bushels
Coal..... 300 “	

TRAFFIC

Shipping	1939	1938
Arrivals:—		
Number of vessels.....	20	25
Net registered tonnage.....	20,813	13,480
Departures:—		
Number of vessels.....	20	26
Net registered tonnage.....	20,813	14,194
Total Arrivals and Departures:—		
Number of vessels.....	40	51
Net registered tonnage.....	41,626	27,674
Water Borne Cargo Tonnage (Tons = 2,000 lbs. weight or measure)		
Inward.....	1,620	52*
Outward.....	53,743	28,780
Total.....	55,363	28,832

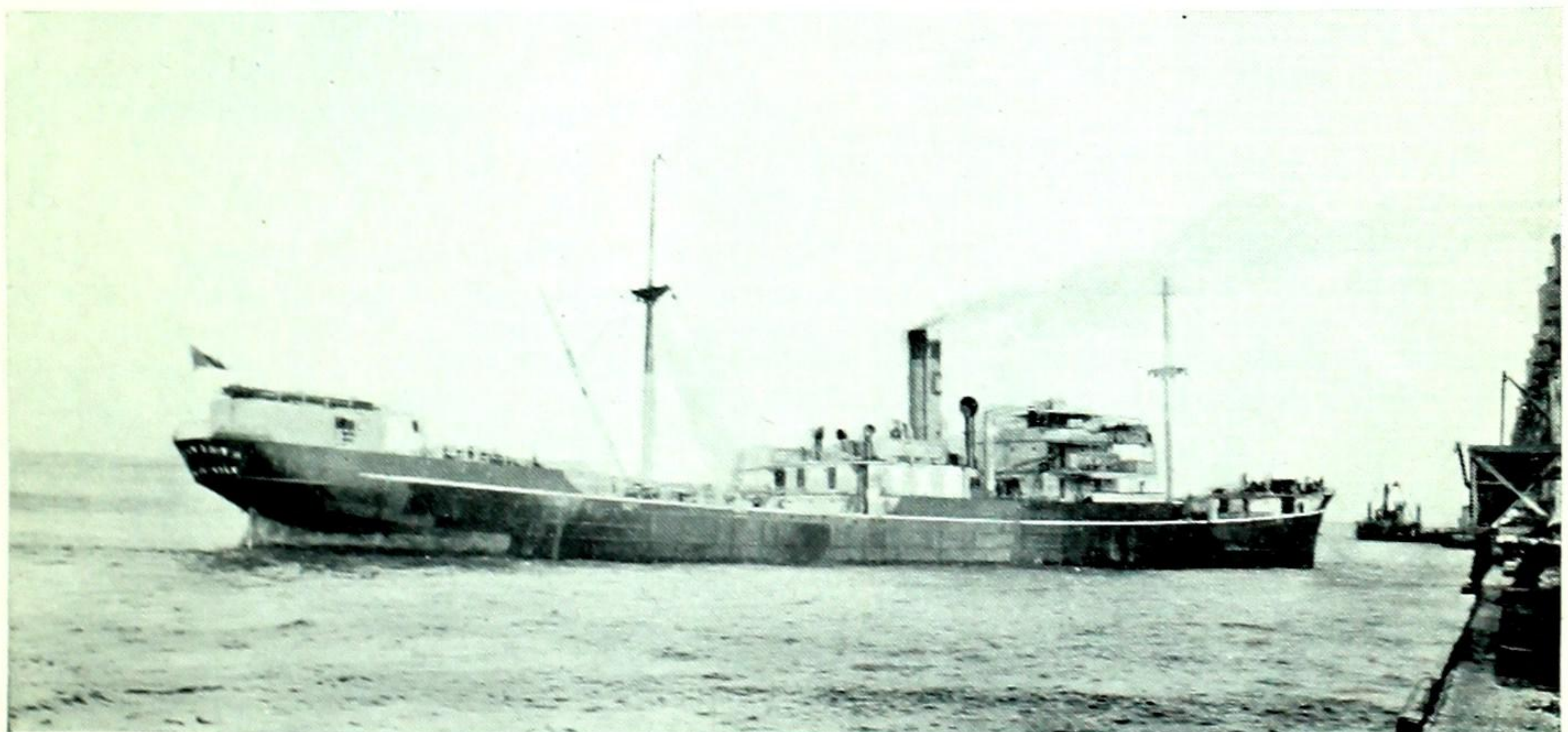
* Revised figures.



Top:—MV *Charles L-D* approaching dock, Churchill.

Centre:—Beacon light, on Churchill elevator.

Bottom:—SS. *Ashworth* turning at dock, Churchill.



Hydrographic Information

The Hydrographic and Map Service, Department of Mines and Resources, publish a series of navigation charts and also a volume of Sailing Directions covering the Hudson Bay Route from the Atlantic entrance of Hudson strait to Churchill. These are kept up to date and added to from time to time as new information becomes available.

The "Tide Tables for the Atlantic Coast of Canada," published by the Tidal and Current Survey Division of the same Service, contain predictions for the port of Churchill and for Moosonee in James bay. Tables in leaflet form are available for port Nelson. Tidal differences for twelve localities in Hudson strait and for six localities in James bay afford the times of high and low waters in these areas. The time of the turn of the tidal streams in the southern offing of Resolution and Nottingham islands is also given. The automatic tide gauge is kept in operation each season at Churchill for the extension of the tidal records by which the predictions are improved.

HYDROGRAPHIC PUBLICATIONS—HUDSON BAY AND STRAIT

Charts—

- | | |
|---|---|
| 401 Churchill harbour. | P1409 Churchill harbour to Hubbart point. |
| 402 Nelson roads. | P1502 James bay. |
| 403 Approaches to Nelson river. | P1503 Pritzler harbour to cape Weymouth. |
| 404 Anchorages in Hudson strait. | Balcom and Barrier inlets. |
| Sugluk inlet. | Shaftesbury inlet. |
| Port Burwell. | P1504 Mouth of Moose river. |
| Button islands. | P1505 Rupert bay. |
| 405 Hudson bay and strait. | P1506 Mouth of Rupert river. |
| 406 Cape Tatnam to Port Nelson. | P1507 Lower Savage islands to Pritzler harbour. |
| 407 Anchorages in Hudson strait. | Pritzler harbour. |
| Charles inlet. | P1508 Erik cove to Nuvuk harbour including |
| Savage harbour. | Digges islands. |
| Acadia cove. | Erik cove. |
| 408 Cape Churchill to Churchill harbour. | Port de Laperriere. |
| 500 Cape Churchill to Egg river. | Nuvuk harbour. |
| 501 Wakeham and Fisher bays and approaches. | Digges harbour. |
| Wakeham bay. | |
| Fisher bay. | |
| 502 C. Prince of Wales to C. Weggs. | |
| Douglas harbour. | |

Sailing Directions—

Sailing Directions for the Hudson Bay Route.

Tide Tables—

Tide Tables for the Atlantic Coast of Canada.

NOTE.—Copies of the above publications are available at the office of the High Commissioner for Canada, Canada House, London, England, for reference only. Charts and Sailing Directions are issued at 50 cents and Tide Tables at 25 cents per copy and may be obtained from the Hydrographic Service, Department of Mines and Resources, Ottawa, or from the National Harbours Board Office, Churchill, Manitoba. All orders must be accompanied by postal or express money order, for the full amount, payable to the Receiver General for Canada.

C.G.S. N. B. McLEAN METEOROLOGICAL REPORT, 1939

Date	Noon Position	Barometer			Temperature		Wind				Fog Hours	Remarks			
		8 a.m.	4 p.m.	12 p.m.	Air		8 a.m.		4 p.m.			12 p.m.		A.M.	P.M.
					Max.	Min.	Dir.	F.	Dir.	F.		Dir.	F.		
1939 July 31	Acadia Cove.....	29.60	29.61	29.64	42	34	36	NW.	3	NW.	2	Calm	0	Gentle breeze..... Cloudy and clear.	Gentle breeze. Cloudy and clear.
Aug. 1	"	29.69	29.78	29.81	44	34	36	NE.	5	NE.	4	W.	3	Occasional fog..... Fine and clear.	Fine and clear. "
" 2	Diana Bay.....	29.88	29.80	29.76	44	38	40	WNW.	4	WNW.	3	W.	2	"	"
" 3	"	29.74	29.70	29.69	54	43	40	Calm	0	ENE.	3	Calm	0	"	"
" 4	"	29.66	29.64	29.67	55	42	41	E.	5	SE.	4	SE.	5	"	"
" 5	Wales Island.....	29.71	29.81	29.86	48	38	40	ENE.	3	SE.	2	E.	2	Cloudy and clear. Fine and clear.	Cloudy and clear. Fine and clear.
" 6	Charles Island.....	29.94	30.00	30.02	57	43	42	Calm	0	SE.	2	WNW.	2	"	"
" 7	Nottingham Isl'd.	30.08	30.10	30.14	65	44	37	SW.	2	Calm	0	Calm	0	"	"
" 8	"	30.14	30.10	30.07	54	48	46	Calm	0	W.	2	SSE.	2	"	"
" 9	Eric Cove.....	30.00	29.92	29.87	57	43	43	Calm	0	NW.	2	N.	4	Cloudy and clear. Foggy.	Foggy.
" 10	62.08N 82.30W...	29.88	29.92	29.96	47	44	47	N.	3	SW.	2	SW.	2	Overcast and clear. Fine and clear.	Overcast and clear. Fine and clear.
" 11	62.37N 70.02W...	29.98	29.99	29.92	50	44	47	S.	1	S.	2	SE.	2	"	"
" 12	Digges Passage...	29.96	29.75	29.68	48	42	45	S.	3	S.	2	S.	2	Foggy.....	Cloudy and clear.
" 13	"	29.64	29.63	29.66	58	43	41	NE.	5	NNE.	4	NNW.	4	Overcast and rain.	Fine and clear.
" 14	Nottingham Isl'd.	29.71	29.75	29.79	46	38	37	NW.	4	NW.	4	NW.	1	Fine and clear.	"
" 15	"	29.85	29.90	29.90	45	41	34	SW.	1	SW.	1	SW.	3	"	"
" 16	62.38N 77.50W...	29.85	29.80	29.76	48	37	36	S.	5	SSW.	6	SSW.	5	Overcast with rain.	Cloudy and clear. Fog with rain.
" 17	Novuk.....	29.75	29.74	29.80	54	38	38	S.	2	NE.	4	N.	5	Fog with rain.....	"
" 18	Digges Passage...	29.91	29.98	30.10	57	57	36	NW.	2	NW.	2	N.	1	Fine and clear.	Fine and clear.
" 19	"	29.97	29.83	29.66	56	39	35	NE.	1	S.	4	S.	6	Fog with rain.....	Overcast with rain
" 20	Eric Cove.....	29.56	29.70	29.97	55	38	37	SW.	6	NW.	4	W.	4	Overcast with fog.	Cloudy with rain.
" 21	62.27N 74.49W...	29.85	29.88	29.90	62	37	39	W.	4	W.	3	NW.	3	"	"
" 22	62.28N 77.44W...	30.00	30.02	30.01	56	35	38	W.	3	W.	2	S.	1	Fog.....	Fine and clear.
" 23	Wakeham Bay...	29.98	29.94	29.98	53	38	41	SE.	1	E.	3	E.	2	Cloudy and clear.	Cloudy and clear.
" 24	Acadia Cove.....	30.02	30.04	30.04	49	38	41	SSW.	1	W.	2	Calm	0	"	"
" 25	"	29.98	29.79	29.59	57	39	34	NW.	3	SE.	3	S.	2	Fine and clear.	Overcast with rain
" 26	"	29.58	29.63	29.66	52	36	34	NW.	3	W.	3	NW.	4	Fog.....	Cloudy and clear.
" 27	"	29.72	29.80	29.88	40	34	34	NNW.	5	N.	3	W.	3	Overcast and clear	"
" 28	"	29.90	29.90	29.87	52	34	34	Calm	0	WNW.	3	Calm	0	Fine and clear.	Fine and clear.
" 29	"	29.81	29.80	29.90	38	34	34	NW.	1	NW.	3	NW.	3	Overcast and clear.	Cloudy and clear.
" 30	"	30.00	30.05	30.00	43	34	34	NW.	3	NW.	3	WSW.	3	Fine and clear.	Overcast and clear
" 31	"	29.72	29.35	29.42	39	33	34	S.	6	WNW.	6	WNW.	7	Overcast with rain.	Fog and rain.
Sept. 1	"	29.80	29.97	29.95	38	30	34	WNW.	4	WNW.	4	WSW.	2	Moderate breeze,	Light breeze, fog.
" 2	61.18N 66.20W...	29.89	29.75	29.78	43	30	34	ESE.	2	SSW.	4	S.	1	Moderate breeze,	" clear.

3..	Wakeham Bay...	29-56	29-54	29-48	64	30	39	S.	5	Calm	0	E.	3	4	Light breeze, fog clear.	"	fog.	
4..	"	29-28	29-21	29-24	50	39	39	Calm	0	SE.	2	N.	9	4	Light breeze, fog and rain.	Moderate gale, clear.		
5..	"	29-45	29-65	29-82	45	36	39	NNW.	6	NW.	5	W.	4	0	Strong breeze, cloudy and clear.	Moderate breeze, fine and clear.		
6..	"	30-02	30-06	30-02	51	38	39	Calm	0	SE.	4	SSE.	3	0	Gentle breeze, fine and clear.	Gentle breeze, fine and clear.		
7..	62-42N 76-03W...	29-75	29-62	29-60	46	36	39	S.	6	SW.	5	S.	5	4	Strong breeze, rain	Fresh breeze, rain and fog.		
8..	Eric Cove.....	29-63	29-71	29-81	50	37	37	SE.	4	SW.	4	S.	2	3	Moderate breeze, fog.	Cloudy, fog banks.		
9..	Digges Passage...	29-84	29-84	29-78	48	34	38	SE.	1	W.	2	NE.	6	11	Overcast and fog.	Overcast, fog banks.		
10..	Nottingham Island.	29-77	29-74	29-78	41	34	34	NE.	4	NE.	4	N.	4	0	Overcast, snow flurrier.	Overcast, snow squalls.		
11..	"	29-92	30-05	30-10	43	30	34	NNE.	4	E.	3	NE.	2	0	Cloudy and clear.	Fine and clear.		
12..	Digges Passage...	30-14	30-15	30-08	43	32	36	Calm	0	E.	4	E.	5	0	Overcast	"		
13..	"	29-95	29-72	29-64	40	34	33	SE.	5	E.	6	E.	5	0	Overcast, snow	Overcast, snow.		
14..	"	29-64	29-74	29-83	42	34	33	E.	2	N.	2	S.	2	4	Overcast, snow squalls.	"		
15..	"	29-82	29-57	29-44	42	32	33	SSE.	5	SSW.	7	SW.	7	0	Overcast, rain squalls.	Rain and snow.		
16..	"	29-54	29-72	29-90	37	32	33	NNW.	7	NNW.	6	NNW.	7	0	Overcast, snow squalls.	Overcast, snow squalls.		
17..	62-30N 76-10W...	30-02	30-01	29-92	38	30	34	NW.	4	WNW.	3	SW.	4	0	Overcast, snow squalls.	Fine and clear.		
18..	Sugluk Inlet.....	29-68	29-49	29-46	42	34	35	SSW.	6	SW.	6	Calm	0	0	Overcast, rain....	Overcast, snow squalls.		
19..	"	29-49	29-59	29-70	46	38	35	Calm	0	N.	3	E.	3	8	"	fog....	Overcast, fog banks.	
20..	"	29-78	29-80	29-74	46	34	35	N.	4	NW.	2	SW.	5	4	Overcast, fog banks.	Fine and clear.		
21..	"	29-68	29-69	29-60	39	30	35	SW.	5	NE.	5	N.	6	0	Overcast, snow squalls.	Overcast, snow squalls.		
22..	"	29-45	29-47	29-50	39	28	35	N.	8	N.	6	NW.	5	0	Overcast, snow storms.	Overcast, snow squalls.		
23..	"	29-48	29-69	29-60	34	28	34	W.	4	NE.	5	N.	6	0	Overcast, snow squalls.	Overcast, snow squalls.		
24..	"	29-23	29-40	29-56	38	32	34	W.	6	NW.	4	W.	6	0	Overcast, snow squalls.	Overcast, snow squalls.		
25..	"	29-66	29-70	29-59	41	33	34	SSW.	5	SW.	3	W.	1	0	Fine and clear.	Cloudy and clear.		
26..	"	29-45	29-42	29-33	35	31	34	NE.	3	NE.	5	N.	6	0	Overcast, snow squalls.	Overcast, snow squalls.		
27..	"	29-38	29-28	29-44	35	31	33	WNW.	5	WNW.	5	WSW.	6	0	"	"	"	
28..	62-37N 75-50W...	29-50	29-40	29-50	36	31	34	SSW.	6	SSE.	5	SW.	5	0	"	"	"	
29..	Nottingham	29-52	29-54	29-57	34	31	33	S.	5	SSW.	4	SSE.	5	0	"	"	Overcast, clear.	
30..	Wakeham Bay...	29-51	29-52	29-52	36	30	33	W.	4	SW.	3	SW.	5	0	Cloudy and clear.	Cloudy and clear.		
Oct. 1..	61-20N 65-11W...	29-63	29-70	29-68	35	30	33	SSW.	6	SSW.	3	S.	5	0	Overcast, snow squalls.	Overcast, snow squalls.		

RESOLUTION ISLAND METEOROLOGICAL REPORT, 1939

Date	Mean Barometer	Air Temp.		Wind, 8 a.m.		Wind, 8 p.m.		Hours of Fog	Precipitation	
		Max.	Min.	Dir.	Vel.	Dir.	Vel.		Rain or Snow	
									8 a.m.	8 p.m.
1939 July										
1.....	29.63	49	31	E.	18	E.	32	7
2.....	29.47	39	34	E.	19	S.	16	18	.28
3.....	29.67	40	33	S.	8	E.	2201
4.....	29.44	40	34	E.	10	W.	2	2	.26	.76
5.....	29.57	38	31	W.	10	W.	1230
6.....	29.58	45	32	W.	18	E.	803
7.....	29.72	42	30	W.	10	W.	2	13
8.....	29.49	43	32	E.	18	SE.	4	5	.12
9.....	29.47	37	32	W.	6	SW.	8	14
10.....	29.50	42	34	S.	5	E.	17	1	.24
11.....	29.27	42	34	NE.	14	SW.	10	12	.10
12.....	29.69	38	32	S.	10	S.	10
13.....	29.82	48	34	E.	6	E.	12	1
14.....	29.77	42	33	NE.	17	NE.	22	13
15.....	29.91	46	36	NE.	16	E.	16
16.....	29.89	44	38	E.	22	NE.	19
17.....	29.82	49	40	NE.	12	W.	4
18.....	29.89	52	41	W.	18	W.	8
19.....	30.13	43	34	W.	10	W.	14
20.....	29.92	44	34	W.	2	S.	14
21.....	29.56	43	36	SW.	14	W.	3	12	.02
22.....	29.49	54	36	W.	5	SW.	2	6	.24
23.....	29.54	57	37	S.	10	W.	4
24.....	29.55	46	36	E.	24	E.	28	14
25.....	29.81	40	34	SW.	25	W.	14	8	.20
26.....	29.72	45	34	SW.	2	E.	16
27.....	29.36	46	34	E.	10	S.	22	5	.32
28.....	29.52	38	35	S.	24	S.	18	Trace
29.....	29.56	38	34	S.	10	S.	10	10	.06
30.....	29.59	39	34	W.	10	W.	5	13
31.....	29.54	43	32	W.	8	W.	6	9	.06
August										
1.....	29.67	42	33	NE.	14	E.	12	1
2.....	29.58	48	39	NW.	6	SW.	2
3.....	29.61	48	40	NW.	5	W.	5
4.....	29.63	45	36	E.	11	E.	18
5.....	29.70	45	39	E.	18	E.	26
6.....	29.89	49	41	E.	18	E.	10
7.....	29.98	50	40	W.	6	E.	6
8.....	29.95	50	36	W.	10	W.	12
9.....	29.75	53	34	SW.	6	E.	15
10.....	29.59	53	41	ENE.	20	NE.	18
11.....	29.81	49	41	Calm	W.	8
12.....	29.68	41	34	W.	12	N.	18
13.....	29.40	46	34	W.	10	W.	18	4
14.....	29.46	46	31	W.	18	W.	10	6
15.....	29.80	41	33	WNW.	18	W.	12
16.....	29.85	45	35	W.	12	W.	6
17.....	29.68	48	37	W.	10	WSW.	1
18.....	29.62	52	38	NE.	12	E.	607
19.....	30.00	46	35	NNE.	1	SW.	6
20.....	29.71	46	34	E.	11	W.	16	105
21.....	29.70	39	32	W.	30	W.	14	9
22.....	29.92	39	32	W.	10	SW.	2	3
23.....	29.93	42	34	E.	18	E.	12	3
24.....	29.98	42	34	SW.	4	W.	6	4
25.....	29.72	43	36	SE.	6	E.	12	302
26.....	29.53	40	34	W.	21	W.	18	8	.28
27.....	29.70	37	34	W.	24	W.	13	7
28.....	29.82	42	33	Calm	W.	12
29.....	29.73	42	33	W.	6	WSW.	7
30.....	29.92	36	33	W.	12	W.	12
31.....	29.36	36	32	E.	32	WSW.	50	927

RESOLUTION ISLAND METEOROLOGICAL REPORT, 1939

Date	General Weather	Visibility	Ice Conditions
		Miles	
1939 July			
1	Clear during A.M. Foggy during P.M.	1 - 20	Scattered ice, mostly open water.....
2	Fog, clearing during P.M.....	$\frac{1}{2}$ - 20	Scattered ice all directions with several bergs and growlers.
3	Overcast with rain.....	5 - 35	Loose open ice all directions.....
4	Rain all day.....	$\frac{1}{2}$ - 10	Scattered ice all directions, several bergs and growlers
5	Clear.....	20	Loose ice, several bergs and growlers.....
6	Overcast to partly cloudy with showers.	10 - 20	Open ice, five bergs and several growlers.....
7	Fog during A.M., clear during P.M.	0 - 35	Scattered ice to west with open water to east, several bergs.
8	Rain and fog.....	35 - 0	Scattered pieces ice all directions, six bergs, numerous growlers.
9	Clear to partly cloudy, showers..	0 - 35	Very scattered ice to west, open water to east, several bergs.
10	Partly cloudy to clear.....	2 - 35	Scattered ice to westward, four bergs.....
11	Clear to cloudy, fog early A.M....	0 - 30	Scattered ice to west, several bergs.....
12	Overcast to clear.....	20 - 35	Small string ice inshore then open, two bergs and two growlers.....
13	Clear to cloudy.....	35 - $\frac{1}{2}$	Three bergs eastward.....
14	Partly cloudy to overcast.....	$\frac{1}{4}$ - 20	Few scattered pieces of ice, three bergs and two growlers.
15	Clear.....	20	Scattered ice to westward, three bergs.....
16	Partly cloudy to overcast.....	20	Scattered ice, one small berg.....
17	Light variable winds.....	35	Three bergs, few scattered pieces of ice.....
18	Clear.....	35	Scattered pieces of ice, two bergs.....
19	Clear.....	35	Scattered ice to west, open water, six bergs.....
20	Partly cloudy.....	30	Scattered pieces ice all directions, three bergs.....
21	Rain and fog.....	0	No ice in sight.....
22	Light fog during A.M., then clear.	20	Four bergs.....
23	Partly clear.....	20 - 0	Scattered ice, four bergs.....
24	Fourteen hours fog.....	$\frac{1}{2}$ - 5	Few scattered pieces ice.....
25	Overcast to partly cloudy.....	0 - 6	Two bergs, scattered ice.....
26	Overcast with rain.....	35 - 2	Scattered ice, three bergs.....
27	Overcast.....	1 - 12	No ice in sight.....
28	Overcast with showers.....	2 - 5	Few pieces of ice.....
29	Ten hours fog.....	6 - $\frac{1}{4}$	Few pieces ice to southwest.....
30	Overcast with showers.....	2 - 10	Three bergs, some small ice.....
31	Overcast.....	8 - 15	Four bergs, several pieces ice.....
Aug.			
1	Partly cloudy.....	0 - 20	Two bergs, some scattered ice.
2	Clear to partly cloudy.....	30	Three bergs, several pieces scattered ice.
3	Clear.....	30	Two bergs, some scattered ice.
4	Clear to partly cloudy.....	15 - 30	Numerous small pieces ice, two bergs.
5	Overcast.....	20	Some scattered ice, two bergs.
6	Clear.....	25	Two bergs.
7	Partly cloudy.....	30	Three bergs.
8	Partly cloudy to clear.....	35	Four bergs.
9	Clear to cloudy.....	30 - 15	Two bergs.
10	Partly cloudy.....	20	No ice in sight.
11	Partly cloudy.....	20	Five bergs.
12	Partly cloudy.....	20	Three bergs.
13	Cloudy to clear.....	0	Two bergs.
14	Partly cloudy to clear.....	3 - 20	Two bergs.
15	Partly cloudy to clear.....	10 - 30	Three bergs.
16	Cloudy.....	30	Five bergs.
17	Partly cloudy to overcast.....	35	Several bergs, growlers and scattered ice.
18	Overcast to partly cloudy.....	8-30	Six bergs, few growlers.
19	Cloudy.....	12 - 20	Four bergs.
20	Cloudy to overcast with rain.....	1 - 7	Three bergs.
21	Overcast to clear.....	1 - 10	Four bergs.
22	Some fog during night.....	30	Four bergs.
23	Partly cloudy to overcast.....	$\frac{1}{2}$ -20	Two bergs.
24	Clear.....	30	Eight bergs.
25	Cloudy to overcast, rain.....	30 - $\frac{1}{2}$	Seven bergs.
26	Partly cloudy.....	$\frac{1}{2}$ - 15	No ice in sight.
27	Overcast.....	0 - 4	Five bergs.
28	Partly cloudy.....	15 - 30	Several bergs and growlers.
29	Overcast to partly cloudy.....	15	Several bergs and growlers.
30	Partly cloudy to overcast.....	10 - 20	Three bergs.
31	Overcast with rain.....	$\frac{1}{2}$ - 12	Few bergs and growlers.

RESOLUTION ISLAND METEOROLOGICAL REPORT, 1939—Cont.

Date	Mean Barometer	Air Temp.		Wind, 8 a.m.		Wind, 8 p.m.		Hours of Fog	Precipitation	
		Max.	Min.	Dir.	Vel.	Dir.	Vel.		Rain or Snow	
									8 a.m.	8 p.m.
1939										
September										
1.....	29.80	38	31	W.	28	W.	16	4	.27
2.....	29.73	40	30	E.	9
3.....	29.61	49	36	E.	22
4.....	29.19	46	39	E.	22	E.	16	17
5.....	29.24	37	34	W.	22	W.	16	6	.97
6.....	29.87	44	34	NW.	16	W.	10
7.....	29.86	41	40	NE.	6	S.	10	3
8.....	29.69	42	30	SE.	6	E.	10	6
9.....	29.72	42	31	E.	2	NW.	6	10
10.....	29.75	39	30	W.	6	W.	2	7
11.....	29.78	37	30	E.	10	E.	206
12.....	30.00	39	34	NE.	6	NE.	922
13.....	29.84	38	33	N.	10	N.	22
14.....	29.57	37	33	NE.	22	N.	1001
15.....	29.77	36	32	W.	10	S.	4	3
16.....	29.36	36	32	E.	10	NE.	22	802
17.....	29.59	37	31	NW	16	NW.	1012
18.....	29.66	37	30	NW.	28	SW.	16
19.....	29.36	35	33	S.	22	W.	22	12	.25	.04
20.....	29.62	33	30	W.	28	W.	10	24
21.....	29.70	34	29	W.	6	SE.	6	16
22.....	29.31	37	31	NE.	22	SE.	6	7
23.....	29.09	36	32	E.	6	W.	10	1608
24.....	29.57	34	29	SW.	2215
25.....	29.67	36	32	W.	6
26.....	29.23	36	31	E.	28
27.....	29.14	33	30	W.	6	SW.	22	7	.09	.04
28.....	29.72	35	32	S.	10	E.	1605
29.....	29.61	34	32	SW.	6	SE.	2203	.03
30.....	29.35	33	31	W.	2	SW.	22	9
October										
1.....	29.58	34	32	SW.	10	S.	16
2.....	29.61	35	31	NW.	10	W.	2810	.01
3.....	29.74	33	28	SW.	22	W.	3491	.03
4.....	29.84	31	27	W.	22	N.	14
5.....	30.00	30	26	W.	10	NW.	1001
6.....	30.01	30	27	NW.	16	NW.	16	Trace
7.....	29.69	31	25	Calm	E.	28
8.....	29.09	33	31	SE.	16	SW.	50	6	.04	.17
9.....	29.49	33	30	SW.	16	NW.	1601
10.....	29.69	33	29	SW.	10
11.....	29.48	32	29	W.	6	W.	16
12.....	29.56	32	25	NW.	6	SE.	16
13.....	29.65	33	30	E.	28	E.	28
14.....	29.40	35	30	N.	22	NE.	22	6	.05	.05
15.....	29.39	31	28	W.	28	NW.	22	3	.10
16.....	29.29	31	28	W.	22	NW.	1601	.01
17.....	29.33	30	27	W.	22	NW.	22
18.....	29.29	29	25	SW.	28	W.	1601	.06
19.....	29.27	28	23	NW.	16	W.	34
20.....	29.54	28	25	W.	34	W.	2201
21.....	29.37	29	26	SW.	16	SE.	1602
22.....	29.27	33	29	S.	9	SW.	9
23.....	29.35	33	25	N.	6
24.....	29.81	34	23	NE.	50	NE.	28	610
25.....	29.70	34	30	NE.	9	NW.	22	24	.05	.06
26.....	29.41	34	23	W.	42	W.	4201
27.....	29.57	27	20	NW.	6	NE.	6
28.....	29.35	24	21	NE.	16	NE.	16
29.....	29.33	24	18	NE.	9	NW.	42
30.....	29.64	27	12	W.	16	W.	22
31.....	29.78	26	22	S.	16	N.	4

RESOLUTION ISLAND METEOROLOGICAL REPORT, 1939—Cont.

Date	General Weather	Visibility	Ice Conditions
1939		Miles	
Sept.			
1	Clear to overcast.....	15 - $\frac{1}{2}$	No ice in sight.
2	Partly cloudy to cloudy.....	20	Four bergs.
3	Mostly cloudy.....	10 - 15	Four bergs.
4	Foggy with rain.....	$\frac{1}{2}$ - 5	No ice in sight.
5	Rain and fog, then clear to cloudy.	$\frac{1}{2}$ - 5	Three bergs.
6	Partly cloudy to clear.....	10 - 20	Four bergs.
7	Clear to cloudy.....	$\frac{1}{8}$ - 0	Several bergs and growlers.
8	Clear to partly cloudy.....	30 - $\frac{1}{8}$	Three bergs.
9	Partly cloudy.....	10 - 15	Four bergs.
10	Clear to partly cloudy.....	35	Several bergs and growlers.
11	Overcast, drizzle.....	18 - 4	Two bergs and few growlers.
12	Overcast.....	8 - 15	Three bergs.
13	Overcast.....	10	Four bergs, several growlers and pieces of ice.
14	Cloudy to overcast, snowflurries.	$\frac{1}{2}$ - 10	Three bergs.
15	Partly cloudy to cloudy.....	15 - $\frac{1}{8}$	Several bergs, growlers and small pieces of ice.
16	Overcast rain and snow.....	7 - $\frac{1}{8}$	Few bergs and growlers.
17	Overcast to clear, snow flurries and rain at night.	8 - 20	Three bergs.
18	Mostly overcast.....	10 - 15	Four large bergs and several growlers.
19	Drizzle with fog all day.....	$\frac{1}{8}$ - 2	No ice in sight.
20	Twenty four hours fog.....	$\frac{1}{8}$ - $\frac{1}{4}$	No ice in sight.
21	Fine during A.M., fog during P.M.	15 - $\frac{1}{2}$	Seven bergs, several growlers.
22	Overcast with rain and fog.....	1 - 4	Two bergs.
23	Overcast, rain and snow.....	0 - 5	No ice in sight.
24	Snow flurries during night.....	4 - 20	Three bergs.
25	Partly cloudy to overcast.....	5 - 15	Three bergs.
26	Overcast with snow and rain.....	2 - 18	Three bergs.
27	Overcast with snow and rain.....	$\frac{1}{2}$ - 10	No ice in sight.
28	Partly cloudy to overcast.....	5 - 10	Several bergs.
29	Partly cloudy to overcast, snow and rain.	8 - 18	Four bergs.
30	Overcast to partly cloudy.....	10 - 20	Four bergs.
Oct.			
1	Cloudy to overcast.....	8 - 15	Two bergs.
2	Overcast, snow during night.....	$\frac{1}{4}$ - 30	Three bergs.
3	Partly cloudy to overcast, snow flurries.	$\frac{1}{8}$ - 30	Two bergs.
4	Cloudy to partly cloudy.....	20 - 30	Two bergs.
5	Cloudy to overcast, light snow in P.M.	30 - 2	Two growlers.
6	Overcast to clear.....	30	Five growlers.
7	Partly cloudy to overcast.....	30 - 15	Few growlers.
8	Overcast, rain and snow.....	0 - 30	No ice in sight.
9	Partly cloudy to clear, snow flurries.	3 - 30	Some small ice.
10	Overcast to partly cloudy.....	25	No ice in sight.
11	Partly cloudy to clear.....	30	Two growlers.
12	Partly cloudy to overcast.....	30	Two bergs.
13	Fine and clear.....	15	Two bergs.
14	Snow and rain.....	$\frac{1}{2}$ - 10	No ice in sight.
15	Partly cloudy to overcast, snow during night.	$\frac{1}{4}$ - 15	No ice in sight.
16	Overcast, snow flurries.....	$\frac{1}{4}$ - 15	Three bergs.
17	Overcast, snow flurries.....	$\frac{1}{4}$ - 25	Five bergs.
18	Overcast with snow flurries to partly cloudy.	$\frac{1}{8}$ - 2	Two bergs.
19	Partly cloudy to overcast.....	30 - 10	Three bergs.
20	Overcast with snow flurries.....	0 - 20	One berg.
21	Overcast, light snow.....	20 - $\frac{1}{4}$	Three bergs.
22	Overcast to partly cloudy.....	6 - 20	Two bergs.
23	Overcast, heavy drifting snow....	15 - 0	Two bergs.
24	Drifting snow.....	$\frac{1}{8}$ - 2	One berg.
25	Drizzle during night, snow all day.	$\frac{1}{2}$ - 2	No ice in sight.
26	Overcast to partly cloudy.....	25	Two bergs.
27	Overcast to partly cloudy.....	20 - 30	Two bergs.
28	Partly cloudy to overcast.....	25	One berg.
29	Overcast to partly cloudy.....	10 - 30	One berg.
30	Partly cloudy to overcast.....	20	One growler.
31	Overcast with snow flurries to partly cloudy.	1 - 20	Two growlers.

RESOLUTION ISLAND METEOROLOGICAL REPORT, 1939—*Conc.*

Date	Mean Barometer	Air Temp.		Wind, 8 a.m.		Wind, 8 p.m.		Hours of Fog	Precipitation	
		Max.	Min.	Dir.	Vel.	Dir.	Vel.		Rain or Snow	
									8 a.m.	8 p.m.
1939 November										
1.....	29.82	24	14	NE.	9	NW.	1605	.01
2.....	29.33	26	15	NW.	16	N.	1610
3.....	29.53	25	19	N.	28	NW.	28
4.....	29.47	26	19	NW.	28	NW.	22
5.....	29.62	30	23	NE.	4	SW.	16
6.....	29.85	31	29	SW.	16	Calm
7.....	29.53	32	29	NE.	28	NW.	6
8.....	29.22	31	29	NE.	28	NE.	28	7	.04
9.....	29.46	34	30	NE.	22	E.	16	12	.13	.10
10.....	29.71	34	31	E.	16	E.	601	.01
11.....	29.56	29	25	E.	16	NE.	16
12.....	29.69	35	28	NE.	22	NE.	901
13.....	29.93	28	25	NE.	9	N.	4
14.....	30.03	26	23
15.....	29.90	25	20	NE.	6	E.	6
16.....	29.74	27	22	NE.	16	1301
17.....	29.74	29	22	NE.	2207
18.....	29.71	27	22	NE.	22	NE.	28
19.....	29.72	27	18	N.	22
20.....	29.78	23	14	N.	901
21.....	29.81	23	15	W.	34	SW.	1602
22.....	29.40	24	21	W.	9	NE.	604	.10
23.....	29.41	24	17	SW.	16	N.	1601	.07
24.....	29.62	20	12	N.	16	NW.	2801
25.....	29.50	27	11	W.	42	SW.	16	Trace
26.....	29.29	28	21	N.	3410
27.....	29.46	25	15	N.	9	NW.	908
28.....	29.25	18	16	N.	9	N.	611	.01
29.....	29.06	23	13	NW.	16	S.	2803
30.....	29.98	14	10	SW.	42	SW.	3402

CAPE HOPES ADVANCE METEOROLOGICAL REPORT, 1939

Date	Mean Barometer	Air Temp.		Wind, 8 a.m.		Wind, 8 p.m.		Hours of Fog	Precipitation	
		Max.	Min.	Dir.	Vel.	Dir.	Vel.		Rain or Snow	
									8 a.m.	8 p.m.
1939 August										
6.....	30.03	45	38	E.	9	N.	7
7.....	30.13	49	38	NW.	22	NW.	26
8.....	30.15	52	40	NW.	22	NW.	20
9.....	29.92	52	43	NW.	30	NW.	12
10.....	29.60	47	38	NW.	24	NW.	25
11.....	30.00	47	37	WNW.	25	NW.	20
12.....	29.65	59	37	SW.	16	S.	10
13.....	29.40	58	39	NW.	12	NW.	23
14.....	29.73	46	36	NW.	35	NW.	24	6
15.....	29.98	52	35	SW.	18	W.	4
16.....	29.75	66	47	SW.	12	S.	20
17.....	29.57	64	48	NW.	16	SE.	1206
18.....	29.84	61	37	WNW.	27	W.	3002
19.....	29.94	54	36	NW.	16	SE.	29
20.....	29.60	57	38	S.	21	NW.	1201
21.....	29.93	59	38	WNW.	20	NW.	17
22.....	29.91	48	36	NW.	12	W.	8
23.....	30.04	46	35	E.	10	SE.	6
24.....	30.08	63	35	SSW.	20	S.	24
25.....	29.55	72	40	SSE.	26	SSW.	15	1

RESOLUTION ISLAND METEOROLOGICAL REPORT, 1939—*Conc.*

Date	General Weather	Visibility	Ice Conditions
		Miles	
Nov. 1	Overcast, snow flurries.....	1 - 18	Two growlers.
2	Partly cloudy to overcast with snow.....	$\frac{1}{2}$ - 20	Few growlers.
3	Partly cloudy to clear.....	30	No ice in sight.
4	Overcast to clear.....	20 - 30	No ice in sight.
5	Overcast.....	25	Two bergs.
6	Partly cloudy.....	25	One berg.
7	Overcast, drifting snow.....	25 - 5	One growler.
8	Overcast.....	1 - 20	One berg.
9	Snow and rain.....	$\frac{1}{2}$ - 2	No ice in sight.
10	Overcast to partly cloudy, showers	10 - 20	One berg.
11	Overcast, light snow.....	25	No ice in sight.
12	Overcast to clear.....	10 - 30	No ice in sight.
13	Overcast, hazy.....	5	No ice in sight.
14	Overcast to partly cloudy.....	25	One growler.
15	Clear to overcast.....	30 - 10	Slob ice visible.
16	Overcast, snow.....	0 - 10	No ice in sight.
17	Partly cloudy to overcast with snow.	$\frac{1}{2}$ - 25	No ice in sight.
18	Overcast, drifting snow.....	$\frac{1}{2}$ - 6	No ice in sight.
19	Partly cloudy, snow.....	4 - 25	No ice in sight.
20	Overcast to clear.....	30	No ice in sight.
21	Overcast, snow flurries.....	$\frac{1}{2}$ - 10	One berg.
22	Overcast, light snow.....	0 - 1	No ice in sight.
23	Overcast, light snow.....	1 - 20	Slob ice to south.
24	Overcast to clear, light snow flurries.	2	One berg.
25	Overcast, snow flurries.....	25	Three bergs.
26	Overcast with snow.....	$\frac{1}{8}$ - 10	No ice in sight.
27	Clear to overcast.....	1 - 30	Scattered ice all directions.
28	Overcast with snow.....	$\frac{1}{2}$ - 15	Scattered strings of ice.
29	Overcast, snow flurries.....	$\frac{1}{2}$ - 20	Scattered strings of ice.
30	Overcast, snow flurries.....	0 - 20	No ice in sight.

CAPE HOPES ADVANCE METEOROLOGICAL REPORT, 1939

Date	General Weather	Visibility	Ice Conditions
		Miles	
1939 Aug. 6	Clear.....	20	Seven bergs.
7	Partly cloudy.....	20	Seven bergs.
8	Fine and clear.....	20	Six bergs.
9	Cloudy.....	20	Five bergs.
10	Cloudy to clear.....	10	No ice in sight.
11	Cloudy.....	30	Three large and several small bergs, scattered ice.
12	Clear.....	30	Scattered heavy broken ice east and west.
13	Fine and clear.....	30	Three bergs and some scattered broken ice.
14	Fog during A.M.....	10	Two bergs, scattered ice.
15	Clear.....	30	Five large bergs, numerous growlers and small pieces all directions.
16	Clear.....	30	Nine bergs, numerous pieces and several strings loose scattered heavy ice passing eastward.
17	Overcast.....	30	Several bergs and pieces of ice.
18	Drizzle during A.M.....	1 - 30	No ice in sight.
19	Clear.....	30	No ice in sight.
20	Clear.....	30	Three bergs.
21	Fine and clear.....	30	Two bergs eastward, few scattered pieces ice.
22	Fine and clear.....	30	One berg.
23	Cloudy, distant fog.....	10	Three large bergs.
24	Fine and clear.....	30	Five bergs.
25	Overcast, heavy rain afternoon, clearing during P.M.	$\frac{1}{4}$	Three bergs.

CAPE HOPES ADVANCE METEOROLOGICAL REPORT, 1939—*Conc.*

Date	Mean Baro- meter	Air Temp.		Wind, 8 a.m.		Wind, 8 p.m.		Hours of Fog	Precipitation	
		Max.	Min.	Dir.	Vel.	Dir.	Vel.		Rain or Snow	
									8 a.m.	8 p.m.
1939 August										
26.....	29.75	63	39	W.	20	NW.	18	1	1.40	Tr.
27.....	29.96	47	31	NW.	50	NW.	39			.05
28.....	29.84	50	32	NW.	18	S.	12			
29.....	29.96	44	33	NW.	18	NW.	36			
30.....	30.10	39	32	WNW.	24	S.	23	1		
31.....	29.46	48	34	SE.	24	WNW.	70		.02	.43
September										
1.....	29.76	44	33	NW.	32	S.	24			
2.....	29.76	59	32	S.	20	NE.	4			
3.....	29.46	60	42	S.	12	SE.	31	4		
4.....	29.42	61	36	SE.	40	NW.	30	4		
5.....	29.51	51	34	NW.	50	NW.	52	3		
6.....	29.91	45	32	NW.	32	NW.	18			
7.....	29.97	49	32	S.	12	SE.	34			
8.....	29.77	62	29	S.	17	NW.	13			
9.....	29.74	52	35	NW.	12	S.	5	3		
10.....	29.80	50	37	SW.	17	S.	15			
11.....	29.94	51	32	NW.	12	NW.	25		.11	.01
12.....	30.01	43	31	NW.	25	NW.	26			
13.....	29.92	41	31	SE.	15	SE.	25			.20
14.....	29.73	37	31	E.	36	N.	3		.10	.02
15.....	29.76	43	34	SW.	10	SE.	16		.01	
16.....	29.45	43	32	S.	14	NW.	20			
17.....	29.85	38	30	NW.	20	NW.	50		.02	.01
18.....	29.59	40	30	SW.	12	S.	23		.05	
19.....	29.50	41	34	W.	18	NW.	20	4		
20.....	29.63	41	31	NW.	36	NW.	12			
21.....	29.60	42	30	S.	12	SE.	18	3		
22.....	29.47	42	29	SE.	31	SE.	2	17		
23.....	29.29	34	29	NW.	27	NW.	44	12		
24.....	29.33	36	29	SW.	24	S.	24			
25.....	29.79	38	31	SW.	17	E.	8			
26.....	29.24	38	30	E.	40	E.	17	2		.20
27.....	29.09	38	30	NW.	18	W.	37			.01
28.....	29.72	38	29	SE.	15	SE.	25			.01
29.....	29.74	38	26	SW.	15	NE.	12			.01
30.....	29.27	34	29							

NOTTINGHAM ISLAND METEOROLOGICAL REPORT, 1939

Date	Mean Baro- meter	Air Temp.		Wind, 8 a.m.		Wind, 8 p.m.		Hours of Fog	Precipitation	
		Max.	Min.	Dir.	Vel.	Dir.	Vel.		Rain or Snow	
									8 a.m.	8 p.m.
1939 July										
1.....	29.43	43	28	E.	14	E.	22			.12
2.....	29.18	40	33	E.	14	W.	20	10	.24	.14
3.....	29.46	49	32	S.	20	S.	16			
4.....	29.64	42	32	S.	10	W.	12			
5.....	29.60	54	36	S.	14	SE.	8			.13
6.....	29.64	41	32	W.	11	S.	18	12	.20	
7.....	29.55	38	33	S.	20	SW.	12	10	.04	.08
8.....	29.45	36	32	S.	12	W.	7	24		.15
9.....	29.48	37	31	NW.	10	W.	10	18		
10.....	29.49	38	28	W.	4	W.	5	18	.08	
11.....	29.48	42	33	Calm		W.	10	18		.02

CAPE HOPES ADVANCE METEOROLOGICAL REPORT, 1939—*Conc.*

Date	General Weather	Visibility	Ice Conditions
		Miles	
1939 Aug.			
26	Overcast with rain.....	$\frac{1}{4}$	Three bergs.
27	Overcast, light snow flurries.....	15 - 1	No ice in sight.
28	Partly cloudy and clear.....	30	No ice in sight.
29	Overcast.....	20	Three bergs.
30	Cloudy to clear.....	20 - 30	No ice in sight.
31	Heavy rain during A.M.....	$\frac{1}{8}$	No ice in sight.
Sept.			
1	Cloudy to clear.....	20	Four bergs.
2	Partly cloudy to cloudy.....	20	Three bergs.
3	Heavy fog during afternoon, clear in the evening.	5	No ice in sight.
4	Distant fog all day.....	2	Ice unobserved.
5	Clear to partly cloudy.....	1 - 10	No ice in sight.
6	Fine and clear.....	30	No ice in sight.
7	Cloudy and clear.....	30	One small berg.
8	Cloudy and clear.....	30	No ice in sight.
9	Cloudy to clear.....	30	No ice in sight.
10	Cloudy.....	30	No ice in sight.
11	Cloudy, light showers.....	0 - 10	No ice in sight.
12	Fine and clear.....	30	Five bergs.
13	Rain and snow.....	20	Two bergs.
14	Cloudy, snow during A.M.....	1 - 10	No ice in sight.
15	Fine and clear.....	25	Two bergs.
16	Scattered showers, then clear....	30	Three bergs.
17	Cloudy to clear, scattered snow flurries.	12 - 20	Four bergs.
18	Overcast, occasional fog.....	12	No ice in sight.
19	Fog during P.M., showers at night.	0 - 15	No ice in sight.
20	Overcast to clear.....	12 - 20	Two bergs.
21	Partly cloudy to overcast, clear during P.M.	30	One berg.
22	Dense fog all day.....	0 - 30	No ice in sight.
23	Overcast with snow.....	0 - 7	No ice in sight.
24	Cloudy to clear.....	30	No ice in sight.
25	Clear all day.....	30	One berg sighted.
26	Overcast, snow and fog during P.M.	0 - 10	One berg sighted.
27	Light intermittent snow.....	5 - 30	No ice in sight.
28	Cloudy to clear, snow late P.M..	30 - 0	No ice in sight.
29	Partly cloudy, light snow.....	10 - 1	No ice in sight.
30	Fine and clear.....	30	No ice in sight.

NOTTINGHAM ISLAND METEOROLOGICAL REPORT, 1939

Date	General Weather	Visibility	Ice Conditions
		Miles	
1939 July			
1	Overcast, rain most of day.....	2 - 10	Heavy ice to west with leads in shore.
2	Rain until 3 P.M., then partly cloudy.	$\frac{1}{2}$ - 20	No ice in sight.
3	Overcast to clear.....	25	Close packed ice all directions.
4	Overcast.....	35	Close packed ice to horizon.
5	Clear to overcast.....	40 - 2	Heavy ice with lead inshore.
6	Overcast.....	$\frac{1}{2}$ - 25	Close packed ice to horizon.
7	Overcast with rain.....	$\frac{1}{4}$ - 10	Packed ice, small lead inshore.
8	Fog for twenty-four hours, drizzle and snow in P.M.	$\frac{1}{2}$	Cove full loose open ice.
9	Overcast, fog all day.....	0 - 6	Cove full loose open ice.
10	Overcast with fog.....	$\frac{1}{2}$ - 25	Loose ice in cove, close packed ice outside.
11	Mostly overcast.....	0 - 25	Loose heavy ice to horizon.

NOTTINGHAM ISLAND METEOROLOGICAL REPORT, 1939—*Cont.*

Date	Mean Barometer	Air Temp.		Wind, 8 a.m.		Wind, 8 p.m.		Hours of Fog	Precipitation	
		Max.	Min.	Dir.	Vel.	Dir.	Vel.		Rain or Snow	
									8 a.m.	8 p.m.
1939										
July										
12.....	29.64	39	33	NW.	8	W.	5	6		
13.....	29.80	49	34	W.	5	SE.	11			
14.....	29.99	56	36	E.	6	W.	5			
15.....	30.16	52	32	E.	8	SE.	9			
16.....	30.12	56	37	Calm		S.	4			
17.....	30.10	59	33	Calm		W.	6			
18.....	30.17	52	36	E.	8	W.	7			
19.....	30.12	50	37	SW.	12	S.	16			.02
20.....	29.68	49	36	S.	20	SW.	18	12	.02	
21.....	29.51	44	12	W.	8	E.	8	12	.01	
22.....	29.33	43	33	W.	5	W.	4	10	.06	.02
23.....	29.53	40	35	S.	14	S.	15	10		
24.....	29.49	52	35	E.	8	E.	6	5		
25.....	29.71	43	36	W.	8	SW.	16	12	.11	
26.....	29.56	46	37	E.	12	E.	38		.17	
27.....	29.17	44	34	E.	4	W.	16	12	.32	
28.....	29.51	38	33	NW.	16	W.	10	15	.14	.04
29.....	29.67	46	34	NW.	6	W.	8			
30.....	29.71	54	34	W.	5	N.	10	5		
31.....	29.82	51	34	W.	4	NW.	10			
August										
1.....	30.02	54	34	N.	8	E.	8			
2.....	29.84	53	39	E.	5	E.	10			
3.....	29.70	53	41	E.	16	E.	24			
4.....	29.66	53	40	E.	18	E.	25			
5.....	29.81	54	40	E.	18	E.	14			
6.....	30.02	61	44	E.	10	E.	8			
7.....	30.17	52	47	E.	6	W.	4			
8.....	30.15	60	41	N.	4	W.	7			
9.....	29.98	51	43	E.	2	N.	12			
10.....	29.88	51	40	N.	9	NW.	10			
11.....	30.05	53	36	W.	4	W.	7	10		
12.....	29.76	51	39	W.	10	W.	10	2		
13.....	29.73	51	38	SW.	3	N.	16			
14.....	29.84	52	34	N.	7	NW.	12			
15.....	29.90	52	37	W.	6	W.	10			
16.....	29.83	44	39	SW.	18	NW.	10	10		.08
17.....	29.73	47	40	W.	5	N.	14	14	.02	Trace
18.....	29.99	50	33	N.	5	N.	8			
19.....	29.94	49	36	E.	12	S.	12			.06
20.....	29.61	45	37	SW.	20	W.	5	6	.16	Trace
21.....	29.91	50	37	W.	6	W.	8	3	.01	
22.....	30.03	46	33	N.	4	W.	12	4	.01	
23.....	29.89	50	40	S.	9	S.	9			
24.....	29.84	51	39	S.	8	S.	14			
25.....	29.65	47	40	S.	16	S.	20	9	Trace	.04
26.....	29.74	41	36	NW.	20	N.	20	1	.01	
27.....	30.08	46	33	NW.	15	W.	10			
28.....	29.86	41	36	S.	20	N.	18	3		
29.....	30.06	40	31	N.	9	NW.	12			
30.....	29.92	39	34	S.	19	S.	14			.14
31.....	29.76	39	34	N.	24	N.	16		.13	
September										
1.....	29.83	38	32	S.	6	SW.	34			.08
2.....	29.63	44	31	N.	6	Calm		6	.10	.62
3.....	29.64	44	33	N.	6	NE.	16		.10	
4.....	29.50	40	33	NE.	28	N.	34			
5.....	29.79	40	30	N.	22	W.	10			
6.....	30.08	40	30	W.	6	S.	22	2		
7.....	29.83	41	36	S.	16	S.	16	8	.12	
8.....	29.76	39	35	N.	10	NW.	2	24	.01	
9.....	29.90	40	33	NW.	6	E.	6	16	.01	.01
10.....	29.76	40	33	E.	10	N.	6			.17
11.....	30.05	37	29	Calm		SE.	2		.17	
12.....	30.24	39	28	NE.	2	NE.	9			

NOTTINGHAM ISLAND METEOROLOGICAL REPORT, 1939—Cont.

Date	General Weather	Visibility	Ice Conditions
		Miles	
1939			
July			
12	Overcast.....	0 - 20	Heavy ice to horizon, lead inshore.
13	Overcast to clear.....	35	Loose packed ice to horizon.
14	Cloudy to clear.....	30	Close packed ice to horizon.
15	Clear to partly cloudy.....	35	Loose packed ice to horizon.
16	Partly cloudy to clear.....	35	Close packed ice all directions.
17	Clear to cloudy.....	35	Loose ice with open leads.
18	Overcast to clear.....	35	Loose ice south and west, several leads.
19	Overcast, light rain.....	15 - 35	Loose open ice to south, close packed ice northwest.
20	Overcast to foggy.....	15 - $\frac{1}{4}$	Close packed ice in cove and to horizon.
21	Overcast with drizzle.....	$\frac{1}{4}$	No ice in sight.
22	Overcast, fog.....	3 - 25	Strings of ice midchannel.
23	Overcast with intermittent fog.....	0 - 15	Mostly open water, strings scattered ice.
24	Cloudy to foggy.....	20 - $\frac{1}{4}$	Loose packed ice moving with tide.
25	Overcast, fog.....	15 - 0	Scattered ice.
26	Overcast with rain.....	10 - 2	Strings ice to west.
27	Fog and drizzle all day.....	$\frac{1}{2}$	No ice in sight.
28	Overcast with drizzle.....	$\frac{1}{2}$ - 10	Strings of ice to west.
29	Mostly overcast.....	30	Ice inshore to southwest elsewhere open water.
30	Partly cloudy.....	$\frac{1}{2}$ - 35	Strings ice to west.
31	Mostly to partly cloudy.....	30	Shore ice to southwest.
Aug.			
1	Clear to cloudy.....	35	Few scattered strings ice.
2	Clear to partly cloudy.....	35	Few pieces ice at entrance and in cove.
3	Partly cloudy to cloudy.....	35	Loose strings ice to west.
4	Fine and clear.....	35	Few strings ice mid channel.
5	Mostly clear all day.....	35	Loose ice to west and southwest.
6	Clear.....	35	Few strings ice mid channel.
7	Clear.....	35	Some strings ice mid channel.
8	Mostly clear.....	35	No ice in sight
9	Partly cloudy.....	35	" "
10	Overcast to clear.....	30	" "
11	Mostly clear all day, fog.....	0 - 25	" "
12	Fog during A.M., clear during P.M.	0 - 20	" "
13	Partly cloudy to clear.....	31	" "
14	Clear.....	35	" "
15	Clear to overcast.....	30	" "
16	Overcast with rain and fog.....	$\frac{1}{2}$	" "
17	Overcast, fog and drizzle.....	$\frac{1}{4}$ - 25	" "
18	Fine and clear.....	30	" "
19	Overcast with rain.....	8	" "
20	Overcast, trace of rain.....	0 - 20	" "
21	Light rain.....	$\frac{1}{2}$ - 15	" "
22	Overcast, drizzle, clear during P.M.	2 - 30	" "
23	Overcast all day.....	35	" "
24	Overcast to clear.....	30	" "
25	Overcast with rain and fog.....	2 - 10	" "
26	Fog and drizzle to overcast.....	$\frac{1}{2}$ - 10	" "
27	Clear to cloudy.....	35	" "
28	Overcast to partly cloudy.....	10	" "
29	Overcast, all day.....	10 - 35	" "
30	Overcast, rain and sleet.....	2 - 6	" "
31	Overcast, rain in early A.M.....	5 - 35	" "
Sept.			
1	Intermittent rain.....	30 - $\frac{1}{2}$	No ice in sight.
2	Overcast with drizzle.....	$\frac{1}{2}$ - 10	" "
3	Overcast, rain and snow during night.	$\frac{1}{2}$ - 12	" "
4	Partly overcast.....	12	" "
5	Mostly clear.....	35	" "
6	Overcast.....	1 - 35	" "
7	Overcast, rain and fog.....	10 - $\frac{1}{4}$	" "
8	Twenty-four hours fog.....	0 - $\frac{1}{2}$	" "
9	Fog and occasional drizzle.....	$\frac{1}{8}$ - 10	" "
10	Overcast, snow flurries during P.M.	$\frac{1}{2}$ - 15	" "
11	Overcast to clear.....	30	" "
12	Partly cloudy.....	30	" "

NOTTINGHAM ISLAND METEOROLOGICAL REPORT, 1939—Cont.

Date	Mean Barometer	Air Temp.		Wind, 8 a.m.		Wind, 8 p.m.		Hours of Fog	Precipitation	
		Max.	Min.	Dir.	Vel.	Dir.	Vel.		Rain or Snow	
									8 a.m.	8 p.m.
1939										
September										
13.....	29.86	39	33	SE.	16	E.	16			
14.....	29.73	37	32	E.	10	E.	6		.05	.11
15.....	29.65	37	30	SE.	10	SW.	22		.63	
16.....	29.76	37	32	NW.	2	N.	28		.11	.48
17.....	29.96	35	28	NW.	16	W.	10			Trace
18.....	29.45	36	32	SW.	22	S.	2	6	.02	.02
19.....	29.60	42	33	NE.	6	NW.	16	10		
20.....	29.83	42	31	NW.	16	SW.	16			
21.....	29.79	36	28	N.	16	N.	16		.07	
22.....	29.59	32	26	N.	16	SE.	6		.01	
23.....	29.42	33	28	NW.	10	NW.	16			.05
24.....	29.37	34	30	N.	2			6	.18	
25.....	29.63	37	31			S.	16			.09
26.....	29.48	38	28	NE.	6	NE.	10		.01	
27.....	29.36	36	29	N.	10	NW.	16		Trace	.04
28.....	29.44	33	29	SW.	28	SE.	10		.05	.09
29.....	29.56	33	29	N.	10	S.	16		.10	.04
30.....	29.47	32	29	S.	16	E.	10		.04	
October										
1.....	29.56	38	23	E.	6	N.	6			
2.....	29.79	38	26	W.	6	NW.	16			.03
3.....	29.95	33	27	NW.	16	NW.	10		.07	
4.....	30.07	32	23	N.	10	N.	5			
5.....	30.15	33	19	S.	4	S.	16			
6.....	30.06	33	26	SW.	50	SE.	10			
7.....	29.46	33	28	SE.	28	SE.	16			.12
8.....	29.14	34	31	S.	28	SW.	45		.02	.10
9.....	29.46	33	29	W.	28	W.	28		.10	.18
10.....	29.71	32	28	W.	16	W.	16			.05
11.....	29.79	34	21	W.	6	Calm			.18	
12.....	29.90	34	20	N.	6	N.	4			
13.....	29.93	29	15	NE.	4	N.	9			
14.....	29.88	28	14	N.	4	N.	4		.01	
15.....	29.72	29	17	N.	4	N.	6			.03
16.....	29.35	30	23	SE.	16	NW.	22		.17	.05
17.....	29.42	31	22	NW.	9	N.	6		.06	Trace
18.....	29.53	31	23	NW.	16	NW.	16		.03	
19.....	29.59	27	19	NW.	9	NW.	16			.08
20.....	29.60	27	19	NW.	16	S.	6			
21.....	29.23	30	23	S.	28	E.	6		.20	
22.....	29.54	30	17	NE.	22	N.	22			.06
23.....	29.94	24	17	N.	16				.01	
24.....	29.95	20	16	NE.	16	N.	22		.01	.05
25.....	29.51	22	17	N.	28	NW.	28		.01	
26.....	29.75	24	15	N.W.	22	S.W.	28			.02
27.....	29.70	27	16			N.	22			.01
28.....	29.67	22	9	NE.	9	E.	9			
29.....	29.85	25	10	SW.	16	SW.	28			
30.....	29.74	26	16	N.	9	NE.	16		.05	
31.....	30.07	23	9	NE.	6	N.	9			
November										
1.....	30.07	23	9	N.	9	NW.	22			.01
2.....	29.70	23	9	NE.	16	N.	16		.08	.04
3.....	29.92	27	13	N.	4	SW.	28		.01	.01
4.....	29.62	29	25	S.	16	S.	16		.05	.03
5.....	29.55	30	28	SW.	16	W.	28	7	.01	.04
6.....	30.04	30	10			E.	6			
7.....	29.73	27	12	SE.	22	E.	22			.02
8.....	29.39	29	26	E.	22	S.	16		.08	.11
9.....	29.67	30	24	SW.	16	SW.	28			

NOTTINGHAM ISLAND METEOROLOGICAL REPORT, 1939—Cont.

Date	General Weather	Visibility	Ice Conditions
		Miles	
1939 Sept.			
13	Partly cloudy to overcast, snow late P.M.	25 - 5	No ice in sight.
14	Overcast to partly cloudy, intermittent snow.	$\frac{1}{2}$ - 8	" "
15	Overcast, rain during A.M.	$\frac{1}{4}$ - 12	Few pieces scattered ice.
16	Overcast.	20	No ice in sight.
17	Overcast, snowflurries.	10 - 20	" "
18	Overcast, sleet turning to drizzle during afternoon.	$\frac{1}{8}$ - 2	" "
19	Mostly overcast.	20	" "
20	Overcast.	20 - 10	" "
21	Overcast, rain and snow.	8 - 20	" "
22	Overcast.	20	" "
23	Snow flurries.	15 - 0	" "
24	Overcast, snow and rain.	$\frac{1}{8}$ - 8	" "
25	Overcast to partly cloudy, snow flurries during A.M.	1 - 20	" "
26	Overcast.	20 - 10	" "
27	Overcast to partly cloudy, light snow during A.M.	$\frac{1}{2}$ - 12	" "
28	Snow all day.	$\frac{3}{4}$	" "
29	Overcast with snow to partly cloudy.	$\frac{1}{4}$ - 20	" "
30	Overcast all day.	30	" "
Oct.			
1	Cloudy and fine.	30	" "
2	Overcast, intermittent snow.	$\frac{1}{2}$ - 30	" "
3	Clear.	30	" "
4	Fine and clear.	30	" "
5	Overcast.	30	" "
6	Cloudy to partly cloudy.	30	" "
7	Overcast with snow.	$\frac{1}{2}$ - 6	" "
8	Overcast, intermittent snow and drift.	$\frac{1}{2}$ - 5	" "
9	Snow.	$\frac{1}{2}$	" "
10	Overcast, snow.	1 - 10	" "
11	Overcast to partly cloudy, snow during night.	30	" "
12	Overcast to partly cloudy.	35	" "
13	Partly cloudy to overcast.	30	" "
14	Overcast, snow flurries.	10 - 35	" "
15	Overcast, snow flurries.	30 - 1	" "
16	Cloudy to overcast, light snow.	2 - 25	" "
17	Overcast, scattered snow flurries.	25 - 15	" "
18	Overcast, trace of snow.	2 - 25	" "
19	Overcast.	25	" "
20	Overcast, moderate snow.	$\frac{1}{2}$ - 20	" "
21	Overcast.	25	Slob ice in cove.
22	Overcast, with light snow.	$\frac{1}{2}$ - 5	No ice in sight.
23	Overcast, with occasional snow flurries.	25 - 15	" "
24	Overcast, intermittent snow.	$\frac{1}{2}$ - 6	" "
25	Overcast, slight ground drift.	6 - 12	" "
26	Overcast, with snow.	15	" "
27	Partly cloudy to overcast, snow.	30 - 1	" "
28	Clear to overcast.	35	Slob ice along shore.
29	Overcast with snow.	30 - 0	No ice in sight.
30	Overcast all day.	25	Cove frozen over.
31	Partly cloudy to clear.	25 - 30	No ice in sight.
Nov.			
1	Overcast, moderate snow.	5 - 25	No ice in sight.
2	Scattered snow flurries.	12 - $\frac{1}{2}$	" "
3	Snow and light drift.	$\frac{1}{2}$ - 25	" "
4	Overcast, drizzle during day.	25 - 1	" "
5	Drizzle and snow.	6 - $\frac{1}{8}$	" "
6	Overcast to partly cloudy.	25	" "
7	Overcast with drizzle and snow.	2 - 15	" "
8	Snow during day.	$\frac{1}{2}$ - 6	" "
9	Overcast all day.	15	" "

NOTTINGHAM ISLAND METEOROLOGICAL REPORT, 1939—*Cont.*

Date	Mean Baro- meter	Air Temp.		Wind, 8 a.m.		Wind, 8 p.m.		Hours of Fog	Precipitation	
		Max.	Min.	Dir.	Vel.	Dir.	Vel.		Rain or Snow	
									8 a.m.	8 p.m.
1939 November										
10.....	29.91	29	22	SW.	22	S.	9			.01
11.....	29.70	29	18	S.	6	SE.	16		.04	.03
12.....	29.75	30	27	E.	22	E.	9		.02	.02
13.....	29.95	31	25	E.	9	SW.	22			
14.....	30.16	31	20	W.	22	W.	22			.04
15.....	30.04	23	15			SE.	9			.06
16.....	30.00	20	14	NE.	22	E.	22		.10	.02
17.....	29.96	17	10	NE.	16				.01	
18.....	29.98	14	5	NE.	9					
19.....	30.19	15	3	N.	6					
20.....	30.15	19	-4	N.	6	SW.	9			
21.....	29.82	22	19	S.	22	E.	9			.05
22.....	29.83	22	-1	N.	6	N.	6			
23.....	30.17	12	-3	N.	22	N.	22		.01	
24.....	30.16	14	-3	NW.	22	W.	22			
25.....	29.52	25	14	SW.	22	W.	28			
26.....	29.84	25	8	N.	28	NW.	9			
27.....	29.70	20	4	W.	16	NW.	9			.03
28.....	29.63	19	2	N.	16	N.	6		.01	
29.....	28.91	22	-11			NW.	50			.03
30.....	28.97	22	-10	N.	34	N.	50		.03	

CHURCHILL METEOROLOGICAL REPORT, 1939

Date	Mean Baro- meter	Air Temp.		Wind, 8 a.m.		Wind, 8 p.m.		Hours of Fog	Precipitation	
		Max.	Min.	Dir.	Vel.	Dir.	Vel.		Rain or Snow	
									8 a.m.	8 p.m.
1939 July										
1.....	29.73	54	38	N.	14	E.	6			
2.....	29.53	55	41	W.	12	NE.	14			
3.....	29.49	65	42	W.	14	SE.	14			
4.....	29.36	77	53	SW.	28	NE.	10			
5.....	29.54	65	45	NW.	20	NW.	10		.01	
6.....	29.68	66	49	SW.	16	NW.	16			
7.....	29.84	66	45	W.	12	E.	2			
8.....	29.92	58	45	NW.	16	E.	18			
9.....	29.77	66	47	W.	10	N.	12			
10.....	29.83	63	47	NW.	16	NE.	1			
11.....	29.95	59	48	NW.	12	E.	14			.53
12.....	29.50	62	38	SE.	16	E.	20	2	.02	
13.....	29.88	48	36	W.	24	NE.	2			
14.....	30.17	60	41	NW.	4	E.	14			
15.....	30.09	76	41	S.	12	S.	20			
16.....	30.03	72	50	SE.	12	SE.	15		.04	
17.....	30.01	62	42	SE.	18	E.	24		.01	
18.....	29.80	62	39	SE.	8	S.	12		.34	
19.....	29.70	70	40	S.	10	SW.	6		.37	
20.....	29.72	68	47	SE.	4	E.	14		.01	
21.....	29.64	61	45	N.	8	E.	3			.38
22.....	29.47	59	48	W.	14	NW.	14		.02	
23.....	29.87	58	46	W.	10	NW.	6		.07	
24.....	29.77	58	44	W.	8	E.	12		.10	
25.....	29.85	55	42	S.	18	N.	20	6	.07	
26.....	29.75	65	42	N.	12	NW.	10	6		
27.....	30.00	67	46	NW.	12	NW.	8			

NOTTINGHAM ISLAND METEOROLOGICAL REPORT, 1939—*Conc.*

Date	General Weather	Visibility	Ice Conditions
		Miles	
1939 Nov.			
10	Overcast, intermittent snow.....	25 - 6	No ice in sight.
11	Overcast, light snow.....	5	" "
12	Overcast.....	6 - 25	" "
13	Overcast to partly cloudy.....	5 - 35	" "
14	Intermittent snow.....	25 - 1	" "
15	Intermittent snow.....	25 - 3	" "
16	Intermittent snow.....	25 - 1	" "
17	Overcast.....	5 - 25	" "
18	Partly cloudy.....	30	Some slob ice in cove.
19	Overcast to clear, trace of snow...	5 - 25	No ice in sight.
20	Clear to overcast, snow during P.M.	1 - 10	Light ice to westward.
21	Overcast to partly cloudy.....	2 - 10	String ice to west..
22	Partly cloudy, snow.....	20 - 2	String ice to west.
23	Fine and clear.....	25	String ice to west.
24	Overcast.....	15	String ice to west.
25	Overcast, light ground drift.....	2 - 15	Field ice to west, few leads.
26	Fine and clear.....	25	Field ice to west, few leads.
27	Overcast, snow and drizzle most of day.	2 - 10	Loose scattered ice to west.
28	Partly cloudy to overcast.....	20	Scattered strings ice to west.
29	Heavy drift.....	2 - 0	Scattered strings ice to west.
30	Overcast with heavy ground drift, to partly cloudy.	12 - 0	Scattered strings ice to west.

CHURCHILL METEOROLOGICAL REPORT, 1939

Date	General Weather	Visibility	Ice Conditions
		Miles	
1939 July			
1	Partly cloudy.....	15	Loose scattered ice to horizon.
2	Mostly cloudy.....	15	" "
3	Partly cloudy.....	15	Loose ice to horizon.
4	Cloudy with thunderstorm.....	15	Scattered pieces ice to horizon.
5	Showers.....	15	Loose scattered ice to horizon.
6	Clear to partly cloudy.....	15	" "
7	Mostly cloudy.....	15	" "
8	Partly cloudy.....	15	" "
9	Cloudy.....	15	" "
10	Partly cloudy.....	15	" "
11	Clear to cloudy.....	15	" "
12	Overcast with rain.....	0 - 10	Scattered ice to horizon.
13	Partly cloudy.....	15	Loose packed ice in shore.
14	Clear.....	20	Loose scattered ice extends about two miles off, thence close packed to horizon. Some ice moving in and out river with tide.
15	Partly cloudy.....	15	Few scattered strings ice, mostly open water.
16	Partly cloudy.....	15	Few pieces scattered ice.
17	Cloudy, rain during P.M.....	10	No ice in sight.
18	Rain during day, lightning and thunderstorm during P.M.	5 - 10	" "
19	Rain and thunderstorm.....	15	" "
20	Partly cloudy.....	15	" "
21	Rain and thunderstorm.....	0 - 15	" "
22	Partly cloudy.....	15	Few pieces ice on N.E. horizon.
23	Cloudy with rain.....	15	No ice in sight.
24	Partly cloudy.....	15	Few pieces ice in distance to northeast.
25	Cloudy, light drizzle all day.....	0 - 10	No ice in sight.
26	Cloudy, fog during A.M.....	0 - 15	Scattered ice to northeast.
27	Partly cloudy.....	15	No ice in sight.

CHURCHILL METEOROLOGICAL REPORT, 1939—Cont.

Date	Mean Barometer	Air Temp.		Wind, 8 a.m.		Wind, 8 p.m.		Hours of Fog	Precipitation	
		Max.	Min.	Dir.	Vel.	Dir.	Vel.		Rain or Snow	
									8 a.m.	8 p.m.
1939										
July										
28.....	29.83	79	51	SW.	10	S.	2		.01	
29.....	29.67	69	53	S.	6	E.	14		.02	
30.....	29.86	49	42	N.	24	NE.	16	16		
31.....	30.08	65	42	E.	5	SE.	18			
August										
1.....	29.71	69	48	SE.	16	SE.	24			.01
2.....	29.25	61	48	SW.	12	NW.	28	4		.25
3.....	29.50	55	48	W.	24	NW.	24			Trace
4.....	29.72	54	47	NW.	22	NW.	10			
5.....	29.82	54	41	NW.	10	E.	16			
6.....	29.89	60	41	SE.	16	SE.	18			
7.....	29.98	66	43	SE.	12	SE.	20			
8.....	30.05	55	41	SE.	8	E.	16			
9.....	30.10	47	39	NE.	15	NE.	10	10		
10.....	29.95	63	42	E.	2	SE.	10	4		.01
11.....	29.83	58	42	NE.	9	NE.	16	10		
12.....	29.86	47	42	NE.	20	NE.	8	11		
13.....	29.75	61	42	S.	4	SE.	18			
14.....	29.75	48	42	E.	20	NE.	5	1		.08
15.....	29.92	77	38	S.	6	SW.	14			
16.....	29.85	71	54	NE.	12	Calm				.11
17.....	30.05	62	47	N.	22	E.	8			
18.....	29.87	54	41	S.	24	SE.	10			
19.....	29.74	64	47	SW.	8	NE.	12	2		.23
20.....	29.86	67	43	W.	4	S.	12			
21.....	29.63	73	56	S.	14	S.	11			
22.....	29.70	65	51	SE.	7	N.	14	4		
23.....	29.86	55	48	N.	10	E.	8			.20
24.....	29.82	68	48	SW.	12	NE.	8			
25.....	29.13	59	50	NW.	10	NE.	10			
26.....	30.24	77	42	NW.	5	SE.	10			Trace
27.....	29.96	50	39	SE.	14	S.	4			.03
28.....	30.11	52	42	N.	28	E.	4			.03
29.....	30.09	53	32	S.	13	SE.	20	4		
30.....	29.74	54	44	SW.	16	NE.	28	4		.81
31.....	30.05	52	40	NW.	6	S.	18			
September										
1.....	29.70	60	43	NW.	6	S.	18			
2.....	29.58	45	39	E.	19	NE.	36	14	.45	
3.....	29.80	44	38	NE.	34	NE.	36			
4.....	30.07	40	36	N.	18	NE.	4			
5.....	29.87	50	31	S.	12	SE.	24		.01	
6.....	29.60	58	41	S.	14	NW.	18		.34	
7.....	29.83	56	40	W.	21	N.	6			
8.....	29.70	58	36	SE.	15	NE.	30			
9.....	30.08	43	34	N.	22	N.	10			
10.....	30.01	47	33	NW.	6	S.	10		Trace	
11.....	29.80	44	35	SE.	22	SE.	10			
12.....	29.82	45	41	ESE.	6	NW.	6	10	.11	
13.....	29.91	45	35	NW.	15	NW.	12	8		
14.....	29.79	58	34	N.	12	SW.	10			
15.....	29.86	45	39	W.	7	N.	12			
16.....	30.20	43	35	SE.	9	SW.	10			
17.....	29.89	65	34	S.	22	SW.	22			
18.....	29.63	63	48	NW.	12	NW.	8			
19.....	29.98	56	43	NW.	14	N.	4			
20.....	29.98	56	37	S.	10	N.	30		.05	
21.....	30.12	42	34	NW.	18	W.	14			
22.....	29.92	38	30	NW.	29	NW.	42			
23.....	29.98	34	27	NW.	29	NW.	22		.10	
24.....	30.05	31	28	NE.	14	NW.	12		.05	
25.....	29.90	32	25	NW.	26	NW.	19		.02	
26.....	29.77	33	26	W.	15	SW.	6		.02	
27.....	29.73	34	27	NW.	12	NW.	17		.02	
28.....	29.71	33	26	NW.	17	NW.	18			
29.....	29.49	35	28	W.	30	W.	18			.01
30.....	29.56	33	28	NW.	26	NW.	18		.01	

CHURCHILL METEOROLOGICAL REPORT, 1939—Cont.

Date	General Weather	Visibility	Ice Conditions
1939		Miles	
July			
28	Mostly cloudy, heavy thunder during P.M.	12	No ice in sight.
29	Clear to cloudy.....	15	" "
30	Partly cloudy.....	0 - 15	" "
31	Partly cloudy.....	15	" "
Aug.			
1	Cloudy, rain during P.M.....	15	No ice in sight.
2	Overcast with rain.....	0 - 8	" "
3	Cloudy, trace of rain.....	15	" "
4	Partly cloudy.....	15	" "
5	Clear to cloudy.....	5	" "
6	Clear.....	15	" "
7	Clear to partly cloudy.....	15	" "
8	Clear.....	15	" "
9	Overcast.....	0 - 15	" "
10	Cloudy.....	$\frac{1}{2}$ - 15	" "
11	Cloudy.....	2 - 15	" "
12	Overcast.....	0 - 15	" "
13	Cloudy all day.....	15	" "
14	Partly cloudy.....	4 - 20	" "
15	Cloudy.....	15	" "
16	Cloudy, rain during P.M.....	5 - 15	" "
17	Cloudy to partly cloudy.....	15	" "
18	Overcast with rain.....	5 - 15	" "
19	Cloudy, showers.....	0 - 15	" "
20	Cloudy.....	15	" "
21	Partly cloudy.....	15 - 20	" "
22	Overcast.....	1 - 15	" "
23	Partly cloudy to clear.....	15	" "
24	Partly cloudy.....	15	" "
25	Partly cloudy.....	20	" "
26	Trace of rain.....	15	" "
27	Overcast, rain in P.M.....	10	" "
28	Cloudy all day.....	15	" "
29	Cloudy.....	2 - 15	" "
30	Overcast, heavy rain during night.	1 - 10	" "
31	Partly cloudy.....	20	" "
Sept.			
1	Light rain during A.M.....	15	No ice in sight.
2	Overcast, rain and dense fog.....	0 - 4	" "
3	Overcast.....	5 - 10	" "
4	Cloudy all day.....	15	" "
5	Overcast all day.....	15	" "
6	Overcast to partly cloudy.....	15	" "
7	Clear to partly cloudy.....	15	" "
8	Cloudy.....	15	" "
9	Overcast, snow flurries.....	1 - 15	" "
10	Cloudy.....	15	" "
11	Rain during night.....	15	" "
12	Overcast, foggy.....	1 - 5	" "
13	Cloudy.....	1 - 15	" "
14	Cloudy.....	15	" "
15	Cloudy.....	15	" "
16	Overcast.....	15	" "
17	Cloudy to partly cloudy.....	15	" "
18	Cloudy.....	15	" "
19	Partly cloudy with showers.....	15	" "
20	Cloudy.....	15	" "
21	Cloudy.....	15	" "
22	Cloudy, heavy driving snowstorm	10 - 0	" "
23	Overcast, snow squalls.....	0 - 20	" "
24	Overcast, snow flurries.....	10	" "
25	Overcast, snow flurries.....	3 - 15	" "
26	Overcast.....	15	" "
27	Partly cloudy to overcast.....	15	" "
28	Overcast.....	15	" "
29	Overcast, with snow squalls.....	1 - 15	" "
30	Overcast, heavy snow.....	0 - 15	" "

CHURCHILL METEOROLOGICAL REPORT, 1939—*Conc.*

Date	Mean Baro- meter	Air Temp.		Wind, 8 a.m.		Wind, 8 p.m.		Hours of Fog	Precipitation	
		Max.	Min.	Dir.	Vel.	Dir.	Vel.		Rain or Snow	
									8 a.m.	8 p.m.
1939 Oct.										
1.....	29.96	32	28	NW.	28	NW.	16		.02
2.....	30.11	40	25	S.	4	W.	10			Trace
3.....	30.07	39	27	W.	4	S.	10		.02
4.....	29.86	43	26	S.	16	S.	22		
5.....	29.74	45	38	SW.	16	S.	10		
6.....	29.50	40	33	E.	10	S.	10	3		.01
7.....	29.48	31	27	NW.	42	NW.	34		.01
8.....	29.88	33	25	NW.	16	W.	16		
9.....	29.96	35	22	NE.	10	SE.	4			.01
10.....	29.90	31	26	NE.	28	NW.	16		.10
11.....	30.07	29	24	NW.	16	NW.	22		.02
12.....	30.24	25	17	NW.	22	NW.	22		Trace	.15
13.....	30.34	23	20	N.	22	W.	16		.03
14.....	30.11	23	17	SE.	10	NW.	16			.10
15.....	30.09	27	16	NE.	22	NW.	42		.05
16.....	30.27	16	7	NW.	28	NW.	28		.02
17.....	30.17	22	12	NW.	16	SW.	10		
18.....	29.96	23	5	SE.	4	E.	4		
19.....	29.78	28	18	SE.	10	SE.	22		
20.....	29.41	36	29	SW.	16	NW.	16		
21.....	29.75	31	8	N.	34	NW.	28		.02	.08
22.....	30.08	11	5	NW.	28	NW.	22		.04	.04
23.....	30.05	21	3	SW.	10	SW.	10		.03	Trace
24.....	30.12	20	9	NW.	10	NW.	16		.03
25.....	30.22	7	0	NW.	22	W.	16		
26.....	30.00	13	5	SW.	4	NW.	10		.03
27.....	30.03	18	6	W.	10	NW.	16			.02
28.....	29.61	23	4	S.	10	S.	16		.01
29.....	29.78	26	17	SW.	2	NW.	28			.02
30.....	29.78	17	6	NE.	16	SE.	10		.03
31.....	30.13	28	15	NE.	16	N.	22		.05	.01
November										
1.....	30.05	27	12	NW.	22	S.	10		.12
2.....	30.03	33	14	SW.	16	SW.	10		
3.....	29.79	33	21	SW.	16	S.	16		
4.....	29.67	37	20	W.	16	W.	10		
5.....	29.90	30	20	NW.	16	NW.	10		
6.....	29.77	30	20	E.	22	N.	28		.15	.14
7.....	29.89	22	0	NW.	28	NW.	42		.06
8.....	30.01	-2	-10	NW.	34	NW.	48		
9.....	30.00	-6	-13	NW.	22	NW.	16		
10.....	30.02	-5	-10	NW.	10	NW.	16		
11.....	30.04	3	-5	S.	3	NW.	16		
12.....	30.22	1	-6	NW.	16	NW.	16		
13.....	30.27	3	-5	Calm		Calm				.03
14.....	30.12	19	3	E.	5	NW.	28			.05
15.....	29.82	23	13	Calm		NW.	34		.01	.10
16.....	30.23	5	0	NW.	10	Calm				.01
17.....	29.88	13	2	Calm		NW.	34		.19	.02
18.....	30.39	19	-3	NW.	28	NW.	4		
19.....	30.41	9	-17	Calm		SW.	6		
20.....	29.81	23	10	S.	20	SW.	5		
21.....	29.89	23	14	NW.	28	N.	16		.03
22.....	30.06	16	8	NW.	8	SE.	6	8	
23.....	30.26	18	10	E.	10	E.	6	10	
24.....	30.36	21	8	S.	6	S.	16		
25.....	30.11	33	24	W.	22	W.	26		
26.....	30.16	26	19	SW.	6	SW.	8	10	
27.....	30.11	27	19	NW.	10	NW.	22		
28.....	29.72	26	-3	NW.	6	N.	22	3	
29.....	29.84	18	-3	N.	28	N.	6		
30.....	29.93	-1	-14	NW.	10	Calm			.06

CHURCHILL METEOROLOGICAL REPORT, 1939—*Cont.*

Date	General Weather	Visibility	Ice Conditions
1939		Miles	
Oct.			
1	Overcast.....	20	No ice in sight.
2	Overcast, light snow.....	2 - 15	" "
3	Partly cloudy.....	20	" "
4	Overcast.....	15	" "
5	Overcast.....	15	" "
6	Overcast, light drizzle.....	1 - 15	" "
7	Partly cloudy.....	10 - 20	" "
8	Partly cloudy to clear.....	15	" "
9	Partly cloudy to overcast, inter- mittent snow.	5 - 15	" "
10	Overcast.....	15	" "
11	Overcast, slight freezing drizzle during A.M.	12	Slushy ice coming down river and forming along shore.
12	Overcast, ground drift.....	$\frac{1}{2}$ - 10	No ice in sight.
13	Cloudy, snow during A.M.....	12	River full slob ice.
14	Overcast with snow.....	5 - 10	Slob ice in river.
15	Cloudy, ground drift.....	0 - 15	No ice in sight.
16	Cloudy.....	10	Slob ice in river.
17	Partly cloudy to clear.....	15	Slob ice forming river bay.
18	Overcast.....	10	No ice in sight.
19	Overcast to partly cloudy.....	12	River full of slob ice.
20	Overcast.....	10	No ice in sight.
21	Overcast, snow squalls.....	0 - 3	River full broken ice.
22	Snow squalls and light drift.....	1 - 10	No ice in sight.
23	Cloudy with snow flurries.....	12	River full broken ice.
24	Overcast.....	10	River frozen and field ice on horizon.
25	Partly cloudy to overcast.....	15	River and bay full broken ice.
26	Partly cloudy with snow.....	10	River and bay full of ice.
27	Overcast with snow flurries.....	12	River and bay full of broken ice.
28	Cloudy, snow during night.....	10	Ice in river.
29	Overcast, snow squalls.....	0 - 6	No ice in sight.
30	Cloudy with snow.....	1 - 10	" "
31	Cloudy, snow flurries.....	10	" "
Nov.			
1	Cloudy to clear, snow during night.	10	No ice in sight.
2	Clear.....	20	No ice in sight.
3	Clear.....	15	Ice in river and bay.
4	Clear to cloudy.....	15	River frozen over two miles inland, ice along shore and in bay.
5	Cloudy.....	10	River covered, brozen ice.
6	Overcast with snow.....	$\frac{1}{2}$	No ice in sight.
7	Cloudy, heavy ground drift.....	0	" "
8	Clear sky, heavy ground drift.....	0	" "
9	Clear to cloudy.....	10	No open water in sight.
10	Clear to partly cloudy.....	15	" "
11	Cloudy to clear.....	10	" "
12	Clear to partly cloudy.....	15	" "
13	Light snow all day.....	10	" "
14	Snow.....	1 - 10	Open lead to river, no ice in bay.
15	Overcast, snow and ground drift.	0	No ice in sight.
16	Snow during P.M.....	10	No open water.
17	Ground drift.....	0	" "
18	Snow during A.M.....	0 - 15	" "
19	Partly cloudy to overcast.....	10	" "
20	Cloudy with snow.....	12	Scattered ice in bay.
21	Overcast, moderate ground drift.	10	Drift field ice in bay.
22	Foggy most of day.....	2 - 5	No ice in sight.
23	Clear to foggy.....	$\frac{1}{2}$ - 10	Heavy ice in river, floating ice in bay.
24	Partly cloudy to clear.....	15	No ice visible in bay.
25	Clear to partly cloudy.....	15	River frozen, no ice in bay.
26	Dense fog.....	$\frac{1}{2}$ - 10	River solid, bay floating ice.
27	Cloudy.....	10	Field ice in bay.
28	Overcast.....	1 - 15	Scattered ice in bay.
29	Cloudy with snow.....	10	Few leads in bay ice.
30	Overcast.....	12	Few patches open water in bay.

CHESTERFIELD INLET METEOROLOGICAL REPORT, 1939

Date	Mean Barometer	Air Temp.		Wind, 8 a.m.		Wind, 8 p.m.		Hours of Fog	Precipitation	
		Max.	Min.	Dir.	Vel.	Dir.	Vel.		Rain or Snow	
									8 a.m.	8 p.m.
1939 July										
1.....	29.53	50	36	NW.	18	NW.	16		.04	
2.....	29.19	47	36	NW.	14	NW.	28			.01
3.....	29.10	46	35	W.	24	W.	28		.02	
4.....	29.31	46	33	Calm		S.	10		.02	.14
5.....	29.19	54	33	SW.	20	W.	18		.43	Trace
6.....	29.32	48	38	SW.	14	N.	4		.01	.03
7.....	29.56	54	39	NW.	14	NW.	18		.03	.04
8.....	29.67	56	42	NW.	18	NW.	18			
9.....	29.56	56	45	N.	6	NW.	14			.03
10.....	29.64	58	40	NE.	10	NW.	16		.03	.02
11.....	29.78	57	43	NW.	20	NW.	16			
12.....	29.62	58	42	NW.	12	S.	14			
13.....	29.86	53	39	S.	2	S.	10		.06	
14.....	30.10	54	43	N.	10	S.	14		.01	
15.....	30.11	60	42	SW.	12	S.	14		Trace	
16.....	30.08	68	40	SW.	10	SW.	16			
17.....	30.18	66	44	Calm		W.	8			
18.....	30.07	64	41	W.	2	SE.	14		.03	
19.....	29.65	43	40	S.	14	S.	10	9	.01	
20.....	29.55	66	40	W.	16	W.	16			
21.....	29.46	66	50	NW.	16	W.	22		Trace	
22.....	29.20	55	41	W.	16	S.	8	1		
23.....	29.36	56	41	NW.	20	NW.	16		.03	
24.....	29.56	54	42	NW.	18	NW.	18			
25.....	29.69	54	40	W.	6	S.	16			
26.....	29.66	46	38	E.	4	E.	4	12	Trace	
27.....	29.71	60	40	NW.	18	N.W.	20			
28.....	29.72	64	48	NW.	6	NW.	12		.06	
29.....	29.75	62	42	E.	4	E.	12		.01	.35
30.....	29.89	61	30	NE.	14	N.	14			
31.....	30.02	62	48	NW.	14	S.	14			
Aug.										
1.....	29.88	56	41	S.	10	S.	22			
2.....	29.48	45	40	SE.	22	SE.	18			.21
3.....	29.41	42	39	NE.	8	E.	12	16	.16	.08
4.....	29.61	46	39	E.	10	E.	6	8	.06	.01
5.....	29.82	52	39	N.	6	SE.	12			
6.....	30.00	43	38	SE.	8	S.	22	7		
7.....	30.11	59	40	S.	16	SW.	12	8		
8.....	30.18	50	40	S.	8	S.	6			
9.....	30.16	60	44	NE.	10	S.	10		.05	
10.....	29.98	63	49	NW.	10	W.	12			
11.....	30.01	52	43	SE.	6	SW.	10	4		
12.....	29.86	63	44	Calm		SW.	6			
13.....	29.75	63	46	NW.	10	E.	10			
14.....	29.84	52	43	E.	8	S.	14			
15.....	29.76	58	43	S.	20	S.	14		.05	
16.....	29.73	68	46	W.	10	N.	16			
17.....	29.98	67	44	NE.	8	S.	14			
18.....	29.93	55	39	S.	12	S.	24			.03
19.....	29.76	46	39	S.	12	E.	8		.02	.19
20.....	29.80	45	39	Calm		S	6	5		.01
21.....	29.90	45	38	SE.	10	SE.	14	20		
22.....	29.78	45	41	E.	18	NE.	8		.53	.55
23.....	29.81	46	40	NE.	8	SE.	8	2	.03	
24.....	29.60	64	38	SW.	20	W.	20	6	.08	
25.....	29.75	59	41	NW.	30	NW.	36			
26.....	30.10	50	34	NW.	26	NW.	18			
27.....	29.92	50	37	SW.	14	SW.	32			Trace
28.....	29.99	46	35	N.	32	NW.	18		.18	
29.....	30.08	46	39	W.	6	S.	16			.08
30.....	29.81	43	39	E.	14	NE.	20		.52	.05
31.....	29.94	42	32	NW.	8	SW.	24			Trace
September										
1.....	29.46	43	38	S.	6	NW.	22			.03
2.....	29.68	43	33	NW.	16	NW.	9			
3.....	29.90	43	33	N.	9	NE.	9			
4.....	29.97	42	33	N.	6	NW.	9			

CHESTERFIELD INLET METEOROLOGICAL REPORT, 1939

Date	General Weather	Visibility	Ice Conditions
1939			
July		Miles	
1	Overcast.....	7	Floe edge one mile off shore few strings outside.
2	Overcast, with intermittent rain..	5	Open water one mile off shore.
3	Overcast, with intermittent rain..	3 - 7	Open water one mile off shore.
4	Overcast, with intermittent rain..	5	Several open leads in floe.
5	Cloudy with showers.....	4 - 7	Cove ice breaking up, water in bay with few strings ice.
6	Cloudy, intermittent rain.....	7	Ice in cove and to horizon.
7	Cloudy, with showers.....	7	Scattered loose ice to horizon.
8	Cloudy.....	7	Few strings loose ice off shore.
9	Overcast with showers.....	7	Loose scattered ice to horizon.
10	Cloudy with showers.....	7	Few pieces loose ice.
11	Cloudy.....	7	No ice in sight.
12	Cloudy to clear.....	7	Few pieces loose ice.
13	Cloudy with rain.....	7	Few pieces loose ice.
14	Clear.....	7	Few pieces loose ice.
15	Clear to cloudy.....	7	No ice in sight.
16	Clear.....	7	" "
17	Clear.....	7	" "
18	Clear to cloudy.....	7	" "
19	Cloudy.....	0 - 7	" "
20	Cloudy.....	7	" "
21	Cloudy.....	7	" "
22	Overcast with intermittent rain..	1 - 7	" "
23	Cloudy, trace of rain.....	7	" "
24	Cloudy.....	7	" "
25	Partly cloudy.....	7	" "
26	Cloudy with fog.....	0 - 7	" "
27	Cloudy, trace of rain.....	7	" "
28	Partly cloudy.....	7	" "
29	Cloudy, rain all day.....	3 - 7	" "
30	Clear to cloudy.....	7	" "
31	Partly cloudy.....	7	" "
Aug.			
1	Overcast.....	7	No ice in sight.
2	Overcast, rain.....	7 - 20	" "
3	Overcast, rain and fog.....	2	" "
4	Overcast, rain and fog.....	2 - 7	" "
5	Partly cloudy.....	7	" "
6	Intermittent fog.....	2 - 7	" "
7	Overcast, intermittent fog.....	1 - 7	" "
8	Partly cloudy.....	7	" "
9	Partly cloudy.....	7	" "
10	Cloudy.....	7	" "
11	Cloudy.....	0 - 7	" "
12	Cloudy.....	7	" "
13	Cloudy.....	7	" "
14	Cloudy.....	7	" "
15	Overcast, rain during night.....	5	" "
16	Rain during night, clear during day.	7	" "
17	Clear.....	7	" "
18	Overcast, intermittent rain.....	5	" "
19	Overcast with rain to cloudy.....	3 - 7	" "
20	Overcast with rain to cloudy.....	$\frac{1}{4}$ - 7	" "
21	Overcast.....	1 - 5	" "
22	Rain all day.....	3	" "
23	Overcast, rain during night.....	$\frac{1}{2}$ - 7	" "
24	Cloudy, rain and fog during night.	1 - 7	" "
25	Overcast to clear.....	7	" "
26	Clear.....	7	" "
27	Clear to overcast.....	7	" "
28	Clear.....	7	" "
29	Cloudy, rain during P.M.....	7 - 3	" "
30	Cloudy, intermittent rain.....	5	" "
31	Overcast, intermittent rain.....	7	" "
Sept.			
1	Partly cloudy, rain during night.	7	No ice in sight.
2	Cloudy.....	7	" "
3	Cloudy.....	7	" "
4	Cloudy.....	7	" "

CHESTERFIELD INLET METEOROLOGICAL REPORT, 1939—Cont.

Date	Mean Barometer	Air Temp.		Wind, 8 a.m.		Wind, 8 p.m.		Hours of Fog	Precipitation	
		Max.	Min.	Dir.	Vel.	Dir.	Vel.		Rain or Snow	
									8 a.m.	8 p.m.
1939										
September										
5.....	29.91	44	34	W.	9	SW.	16			Trace
6.....	29.56	41	32	S.	28	S.	16		.08	.11
7.....	29.40	49	38	SW.	16	NW.	16			Trace
8.....	29.76	42	33	NW.	16	NW.	16		Trace	
9.....	29.99	42	32	N.	9	N.	16		Trace	Trace
10.....	29.99	36	32	NE.	9	W.	3		Trace	Trace
11.....	30.07	39	31	E.	6	SE.	9			
12.....	30.06	40	33	SE.	16	E.	22		.02	.05
13.....	29.84	39	35	E.	9	E.	6		.30	Trace
14.....	29.69	42	35	N.	6	S.	22		Trace	.02
15.....	29.74	42	32	W.	22	NE.	22			
16.....	30.14	42	29	NW.	6	W.	6			
17.....	29.74	40	36			S.	16			.40
18.....	29.53	47	39	N.	6	N.	9		.01	
19.....	29.85	45	38	NE.	6	N.	9			
20.....	29.78	45	33	SW.	22	NW.	22		.01	.01
21.....	29.85	38	24	W.	16					
22.....	29.62	32	21	N.	9	N.	6		.01	Trace
23.....	29.79	32	25	NE.	28	N.	34		Trace	
24.....	29.77	28	24	NW.	28					
25.....	29.72	28	23			NW.	22			
26.....	29.61	28	22			NW.	9			
27.....	29.59	28	25	NE.	9	N.	16		Trace	Trace
28.....	29.32	30	23	NW.	22	NW.	16		Trace	.01
29.....	29.22	32	22	SW.	9	SE.	9		.02	
30.....	29.39	34	29	NE.	9	NE.	16		.02	.20
October										
1.....	29.70	34	25	N.	16	NW.	22		22	Trace
2.....	29.97	29	21	NW.	16	W.	10		Trace	
3.....	30.00	29	17	N.	10	S.	10			
4.....	29.88	35	18	S.	22	S.	28		.01	Trace
5.....	29.62	37	31	S.	34	S.	22	2	.06	.04
6.....	29.69	36	28	N.	16	S.	16			.02
7.....	29.14	36	33	SE.	22	N.	16		.05	.10
8.....	29.32	35	21	NW.	40	NW.	42		.06	
9.....	29.68	29	18	NW.	34	NW.	28			
10.....	29.76	28	19	NW.	16	N.	16			.08
11.....	30.00	23	18	N.	10	NW.	16			.02
12.....	30.11	23	15	N.	16	N.	16			
13.....	30.18	16	10	NE.	16	N.	10			
14.....	30.10	19	14	NE.	10	N.	8			
15.....	30.00	22	10	N.	16	NE.	16		.10	.10
16.....	29.94	22	5	NW.	22	NW.	34		.04	
17.....	29.86	15	10	NW.	34	NW.	22			
18.....	29.82	12	5	NW.	22	N.	16			Trace
19.....	29.73	11	0	NW.	16	W.	4			
20.....	29.52	22	8	NE.	16	NE.	22		.10	.15
21.....	29.69	14	1	N.	28	N.	28			
22.....	30.03	7	1	N.	28	N.	10			
23.....	30.04	22	-4	W.	4	SW.	3			.02
24.....	29.95	25	0	W.	4	W.	6		.20	.14
25.....	29.88	8	-2	NW.	22	NW.	16			
26.....	29.88	6	-8	NW.	22	NW.	6			
27.....	29.82	11	-4	SW.	10	NW.	16			
28.....	29.59	24	-5	SW.	10	S.	16			
29.....	29.80	26	15	S.	10	NE.	22		.04	.04
30.....	29.83	20	6	NE.	10	E.	16			Trace
31.....	30.28	9	-2	NE.	16	Calm				
November										
1.....	30.27	15	-3	W.	10	W.	16			
2.....	29.86	24	13	NE.	10	SE.	16			
3.....	29.65	29	23	SW.	22	S.	10			
4.....	29.46	28	23	SW.	6	NW.	10			
5.....	29.59	23	4	W.	22	NW.	22			
6.....	30.02	11	6	NW.	10	NE.	16			.02
7.....	29.59	29	9	S.	16	NW.	10		.18	.30

CHESTERFIELD INLET METEOROLOGICAL REPORT, 1939—Cont.

Date	General Weather	Visibility	Ice Conditions
1939		Miles	
Sept.			
5	Cloudy, trace of snow during A.M.	7	No ice in sight.
6	Overcast with rain.....	3	" "
7	Cloudy, trace of rain.....	7	" "
8	Partly cloudy.....	7	" "
9	Cloudy, snow flurries.....	5	" "
10	Overcast, snow flurries.....	7	" "
11	Overcast, trace of snow.....	7	" "
12	Overcast, intermittent rain.....	5	" "
13	Overcast, intermittent rain.....	5	" "
14	Overcast, rain.....	5	" "
15	Overcast to clear.....	7	" "
16	Cloudy.....	7	" "
17	Intermittent rain, overcast.....	5	" "
18	Cloudy.....	7	" "
19	Cloudy.....	7	" "
20	Cloudy, intermittent rain and snow.	7	" "
21	Partly cloudy, trace of snow.....	7	" "
22	Partly cloudy, snow flurries.....	7	" "
23	Partly cloudy.....	7	" "
24	Overcast, trace of snow.....	7	" "
25	Overcast.....	7	" "
26	Overcast.....	7	Ponds frozen over.
27	Overcast, intermittent snow.....	7	No ice in sight.
28	Overcast, intermittent snow.....	7	" "
29	Cloudy, snow during night.....	7	" "
30	Overcast, snow.....	2	" "
Oct.			
1	Cloudy with snow.....	5	No ice in sight.
2	Cloudy.....	7	" "
3	Partly cloudy.....	7	" "
4	Overcast, rain and snow during night.	7	" "
5	Overcast, intermittent rain.....	3 - 5	" "
6	Overcast with snow and rain.....	5	" "
7	Rain and snow.....	5	" "
8	Overcast, slight drift.....	1 - 5	" "
9	Overcast.....	7	" "
10	Intermittent snow.....	5	" "
11	Cloudy, snow during night.....	7	" "
12	Cloudy, snow during P.M.....	7	Slob ice along shore.
13	Cloudy.....	7	Slob ice along shore.
14	Overcast with snow.....	5	No ice in sight.
15	Overcast with snow.....	7 - 3	Slob ice along shore.
16	Overcast, gale during P.M. snow at night.	5 - ½	No ice in sight.
17	Cloudy, drift all day.....	½ - 7	" "
18	Cloudy, trace of snow.....	7	" "
19	Overcast.....	7	Cove half full slob ice.
20	Overcast, intermittent snow.....	3	No ice in sight.
21	Snow at night.....	7	Slob ice along shore.
22	Clear.....	7	No ice in sight.
23	Overcast, intermittent snow.....	5	No ice in sight.
24	Overcast.....	5	Loose slob ice to horizon.
25	Cloudy, snow at night.....	1 - 5	No ice in sight.
26	Overcast.....	7	No ice in sight.
27	Cloudy, trace of snow.....	5	Loose slob ice to horizon.
28	Overcast.....	7	Slob ice in cove.
29	Intermittent snow.....	5	Coves full slob ice.
30	Cloudy with snow.....	5	Slob ice in cove.
31	Partly cloudy.....	7	Loose ice to horizon.
Nov.			
1	Overcast.....	7	No ice in sight.
2	Overcast.....	7	Cove full slob ice.
3	Overcast, trace of snow.....	7	Cove full slob ice.
4	Overcast.....	7	Cove full of ice.
5	Overcast to clear.....	½ - 5	Ice along shore.
6	Clear to overcast with snow.....	1 - 7	Ice along shore.
7	Overcast with snow.....	2	Loose ice in cove.

CHESTERFIELD INLET METEOROLOGICAL REPORT, 1939—*Cont.*

Date	Mean Barometer	Air Temp.		Wind, 8 a.m.		Wind, 8 p.m.		Hours of Fog	Precipitation	
		Max.	Min.	Dir.	Vel.	Dir.	Vel.		Rain or Snow	
									8 a.m.	8 p.m.
1939 November										
8.....	29.59	18	8	E.	28	NW.	28			
9.....	29.62	18	-2	NW.	22	NW.	28			
10.....	29.78	3	-18	NW.	10	NW.	16			
11.....	29.88	-9	-24	NW.	10	NW.	10			
12.....	30.00	-12	-22	NW.	10	NW.	24			
13.....	30.06	-10	-18	NW.	22	NW.	22			
14.....	30.26	0	-13	NW.	16	N.	16			
15.....	30.08	8	-10	NE.	16	NE.	22			.06
16.....	30.27	7	-9	N.	16	NE.	10			
17.....	30.02	11	-6	SE.	22	E.	22			
18.....	30.36	-7	-16	NE.	10	NW.	16			
19.....	30.35	-4	-19	NW.	10	S.	6			
20.....	29.89	19	-4	S.	22	SE.	22			.04
21.....	29.93	20	3	NE.	28	NE.	16		.03	
22.....	30.11	5	-10	N.	10	N.	6	8		
23.....	30.34	-11	-17	N.	6	Calm				
24.....	30.07	19	-15	S.	6	SW.	10			Trace
25.....	29.63	28	17	W.	16	NW.	34		Trace	
26.....	30.16	27	3	N.	22	NW.	10			
27.....	29.74	17	8	SW.	10	NW.	28			.02
28.....	29.43	15	-1	W.	3	S.	28			
29.....	29.41	15	-25	NW.	34	NW.	42			
30.....	29.66	-17	-23	NW.	34	NW.	28			

PORT HARRISON METEOROLOGICAL REPORT, 1939

Date	Mean Barometer	Air Temp.		Wind, 8 a.m.		Wind, 8 p.m.		Hours of Fog	Precipitation	
		Max.	Min.	Dir.	Vel.	Dir.	Vel.		Rain or Snow	
									8 a.m.	8 p.m.
1939 July										
1.....	29.92	64	41	N.	12	N.	30			.14
2.....	29.54	42	33	W.	24	S.	14	6	.33	
3.....	29.60	50	34	W.	12	NW.	14	6	.11	
4.....	29.83	48	35	N.	5	SW.	5			
5.....	29.71	46	39	S.	20	S.	10			.05
6.....	29.85	53	34	N.	6	S.	8	15	.01	
7.....	29.80	45	35	S.	22	W.	8	4		.01
8.....	29.76	41	34	W.	6	SW.	10	24		
9.....	29.75	41	33	W.	14	SW.	20	18		.08
10.....	29.60	44	35	SW.	16	N.	6	6	.09	.02
11.....	29.75	40	34	W.	10	W.	8	18	Trace	Trace
12.....	29.92	44	34	SW.	8	S.	12	8	.03	.01
13.....	29.67	52	48	SE.	20	E.	22		.01	.13
14.....	29.71	64	48	NE.	26	NE.	8		.13	Trace
15.....	29.94	61	46	NE.	26	NE.	18			
16.....	29.97	63	49	NE.	23	N.	24			
17.....	30.09	64	47	NE.	20	N.	18			
18.....	30.16	69	46	NE.	8	N.	10			
19.....	30.22	66	46	S.	6	S.	16			
20.....	29.97	56	41	S.	24	S.	14			.09
21.....	29.70	51	45	S.	20	S.	18		.09	.02
22.....	29.46	55	45	S.	14	SW.	18		Trace	.04
23.....	29.69	46	39	SW.	14	S.	6	6	.02	
24.....	29.68	46	35	S.	6	W.	26	10	.01	.17
25.....	29.96	48	34	W.	18	SE.	12	7	.04	.20
26.....	29.55	57	36	SE.	30	SW.	30	10		
27.....	29.63	40	37	W.	26	W.	14	8	Trace	
28.....	29.89	44	36	W.	12	SW.	14			.04
29.....	29.88	47	38	W.	5	S.	12	3		
30.....	29.75	50	40	S.	24	S.	5			.15
31.....	29.78	58	48	NE.	20	N.	24			

CHESTERFIELD INLET METEOROLOGICAL REPORT, 1939—*Conc.*

Date	General Weather	Visibility	Ice Conditions
1939		Miles	
Nov.			
8	Overcast with drift.....	$\frac{1}{2}$ - 5	Loose ice in cove.
9	Overcast with drift.....	1 - 3	No ice in sight.
10	Clear.....	7	Cove full of ice.
11	Clear.....	7	Ice extends two miles off shore.
12	Partly cloudy.....	7	Ice extends two miles off shore.
13	Partly cloudy, light drift.....	2	No ice in sight.
14	Partly cloudy.....	7	" "
15	Snow.....	2	" "
16	Clear to overcast.....	7	" "
17	Overcast.....	5	" "
18	Clear.....	7	" "
19	Clear to cloudy.....	7	" "
20	Overcast, intermittent snow.....	2	" "
21	Clear, snow during P.M.....	7	" "
22	Cloudy to clear.....	2 - 5	" "
23	Partly cloudy.....	7	" "
24	Cloudy with snow.....	5	" "
25	Clear to overcast.....	$\frac{1}{2}$ - 7	" "
26	Overcast.....	2 - 7	" "
27	Overcast, to clear, with snow, heavy drift.....	2 - 5	" "
28	Overcast.....	1 - 5	" "
29	Heavy drift.....	0	" "
30	Heavy drift.....	0	" "

PORT HARRISON METEOROLOGICAL REPORT, 1939

Date	General Weather	Visibility	Ice Conditions
1939		Miles	
July			
1	Mostly overcast, rain during A.M.	6	Ice moving out of river, loose packed from inshore to horizon in bay.
2	Rain at night.....	$\frac{1}{2}$ - 8	River mouth blocked with ice, no ice in bay.
3	Rain at night.....	$\frac{1}{2}$ - 8	Loose ice in harbour channel and bay.
4	Clear to partly cloudy.....	10	Loose packed ice in harbour and channel, bay ice extending about 6 miles from shore.
5	Cloudy to overcast.....	2 - 15	Harbour channel clear, bay ice close inshore.
6	Rain, fog early A.M.....	$\frac{1}{2}$ - 10	Loose ice in channel, distant in bay.
7	Rain during A.M. fog during P.M.	$\frac{1}{4}$ - 8	Ice unchanged.
8	Twenty-four hours fog.....	$\frac{1}{2}$	Loose packed ice in channel, bay invisible.
9	Cloudy with fog and rain.....	$\frac{1}{2}$ - 8	Loose packed ice in harbour, channel and bay.
10	Overcast, rain during P.M.....	$\frac{1}{2}$ - 4	Loose ice in channel, bay invisible.
11	Overcast, showers.....	$\frac{1}{2}$ - 2	Scattered ice in channel.
12	Overcast with rain.....	$\frac{1}{2}$ - 8	Scattered ice in channel, close packed in bay.
13	Rain all day.....	4	Scattered ice in channel, loose packed in bay.
14	Mostly overcast.....	4 - 8	Bay ice off shore, river and harbour clear.
15	Mostly cloudy.....	8	No ice in sight.
16	Partly cloudy.....	12	" "
17	Partly cloudy.....	15	" "
18	Clear.....	20	" "
19	Cloudy.....	10	" "
20	Mostly overcast, thunderstorm with heavy rain.....	6	" "
21	Cloudy, thunder and rain.....	5	" "
22	Mostly overcast with rain.....	1 - 4	Bay invisible.
23	Overcast all day.....	$\frac{1}{2}$ - 8	No ice in sight.
24	Overcast with fog.....	$\frac{1}{2}$ - 8	" "
25	Overcast.....	$\frac{1}{2}$ - 8	" "
26	Rain with fog to overcast.....	$\frac{1}{4}$ - 4	" "
27	Overcast with rain.....	$\frac{1}{4}$ - 4	" "
28	Overcast with rain.....	6	" "
29	Overcast.....	$\frac{1}{8}$ - 8	" "
30	Overcast with rain.....	$\frac{1}{2}$ - 6	" "
31	Overcast to slightly cloudy.....	12	" "

PORT HARRISON METEOROLOGICAL REPORT, 1939—Cont.

Date	Mean Barometer	Air Temp.		Wind, 8 a.m.		Wind, 8 p.m.		Hours of Fog	Precipitation	
		Max.	Min.	Dir.	Vel.	Dir.	Vel.		Rain or Snow	
									8 a.m.	8 p.m.
1939 August										
1	30.01	57	39	N.	9	N.	9			
2	29.89	54	35	Calm		S.	16			
3	29.48	64	45	E.	16	E.	9			.02
4	29.40	48	40	E.	16	S.	16			
5	29.84	58	46	S.	22	S.	5		.13	
6	29.56	66	39	N.	9					
7	30.10	61	40	NE.	16					
8	30.08	72	46	E.	9					
9	29.90	77	46	NE.	4	N.	22			
10	29.90	62	50			N.	22			
11	29.90	60	42							
12	29.75	66	50	E.	9	S.	4			
13	29.60	68	55	NE.	5	NW.	16		.06	
14	29.83	57	45	NE.	4	SW.	5		.02	
15	29.96	68	38			N.	16			
16	30.01	69	45	NE.	9	W.	10			
17	29.79	60	48	S.	9	S.	16			Trace
18	29.87	62	43	N.	22	E.	9		.05	Trace
19	30.00	60	45	S.	9	SE.	16		.01	
20	29.90	57	45	W.	6	NW.	9	1	.02	
21	29.95	62	44	NE.	16	NE.	9			
22	29.96	65	46			E.	9			
23	29.92	60	46	NE.	9	NE.	6			
24	29.96	62	42	SE.	3	SW.	6			
25	29.90	62	48	NW.	6	W.	9			
26	30.12	57	41	NW.	22	NW.	16		.01	.01
27	30.24	51	38	W.	22	NE.	6		.01	
28	29.91	60	36	SE.	22	N.	9			
29	30.15	60	42	N.	32	N.	16			
30	29.97	48	34	SE.	9	SE.	28			
31	29.90	49	42	NW.	22	N.	9		.16	
Sept.										
1	30.00	49	33	SE.	6	S.	16			
2	29.77	46	37	S.	16	SE.	22	20		
3	29.46	55	44	S.	22	S.	22	24		.12
4	29.33	55	38	NW.	3	NW.	28	20	.39	.01
5	29.81	47	36	N.	28	N.	16		.02	
6	30.10	47	27	NE.	3	S.	9	4		
7	29.88	47	41	S.	22	S.	3	4		.24
8	29.89	46	38	NW.	9				.31	
9	29.80	46	37	S.	28	SE.	16		.05	.08
10	29.80	44	42	S.	9	NW.	16	3	.14	.08
11	30.01	46	36	NW.	9	N.	9		.01	Trace
12	30.16	47	30	NE.	6	SE.	9			
13	29.79	47	39	SE.	22	W.	9	11	.14	.02
14	29.85	45	38	NW.	16	NW.	9		.04	Trace
15	29.90	45	38	S.	9	SE.	6	4	.02	
16	29.82	41	34	N.	28	N.	28			.01
17	30.13	41	33	N.	16	SW.	16		.02	Trace
18	29.85	41	33			S.	22			
19	29.69	44	40	SW.	6	NW.	16	12	.13	
20	29.93	44	36	N.	3	SW.	9	5		
21	29.80	44	34	SE.	9	N.	40		.10	.12
22	29.74	44	30	N.	9					
23	29.59	39	29	W.	6					
24	29.70	39	26	SW.	16				Trace	
25	29.66	38	32							
26	29.42	38	32	N.	28				.08	.16
27	29.63	37	30	NW.	16	SW.	16		.09	.11
28	29.63	38	32	S.	28	W.	9		.23	.07
29	29.72	38	30	SW.	9	SW.	16		.01	.04
30	29.56	38	30	SW.	16	SW.	22			.09

PORT HARRISON METEOROLOGICAL REPORT, 1939—Cont.

Date	General Weather	Visibility	Ice Conditions
		Miles	
1939 Aug.			
1	Clear.....	15	No ice in sight.
2	Partly cloudy.....	12	"
3	Overcast with rain.....	10	"
4	Overcast with rain.....	4	"
5	Cloudy.....	8	"
6	Fine and clear.....	12	"
7	Fine and clear.....	15	"
8	Fine and clear.....	25	"
9	Partly cloudy.....	15	"
10	Partly cloudy.....	15	"
11	Cloudy.....	10	"
12	Overcast.....	10	"
13	Cloudy.....	10	"
14	Overcast with rain.....	6	"
15	Fine and clear.....	20	"
16	Partly cloudy.....	20	"
17	Cloudy to overcast.....	4 - 8	"
18	Overcast, rain during night.....	2 - 8	"
19	Overcast to partly cloudy.....	1 - 8	"
20	Overcast to partly cloudy.....	1/2 - 8	"
21	Fine and clear.....	20	"
22	Partly cloudy.....	20	"
23	Partly cloudy.....	20	"
24	Partly cloudy.....	12	"
25	Partly cloudy to overcast, drizzle.....	2 - 12	"
26	Cloudy to overcast, rain.....	6 - 10	"
27	Partly cloudy to clear.....	10 - 20	"
28	Partly cloudy to overcast.....	12	"
29	Clear to partly cloudy.....	20	"
30	Overcast.....	8 - 15	"
31	Cloudy to overcast, rain during night.....	4 - 10	"
Sept.			
1	Partly cloudy.....	12	No ice in sight.
2	Overcast, drizzle.....	1/2 - 4	"
3	Overcast, rain and fog.....	1/2 - 1	"
4	Overcast, rain and fog.....	1/2 - 3	"
5	Overcast to clear, rain during night.....	2 - 15	"
6	Clear to partly cloudy.....	1/4 - 15	"
7	Overcast, rain.....	1 - 8	"
8	Partly cloudy to overcast.....	1 - 10	"
9	Rain during night and A.M.....	5	"
10	Overcast with rain.....	1/2 - 4	"
11	Partly cloudy to overcast, occasional light rain.....	4 - 15	"
12	Partly cloudy to overcast.....	10	"
13	Overcast, intermittent rain.....	1/4 - 4	"
14	Cloudy to overcast.....	2 - 6	"
15	Cloudy to overcast.....	1/2 - 10	"
16	Overcast, intermittent rain and snow.....	4 - 8	"
17	Partly cloudy to overcast.....	8	"
18	Overcast.....	2 - 6	"
19	Overcast, rain during A.M.....	1/4 - 6	"
20	Partly cloudy to overcast.....	1/2 - 10	"
21	Overcast with rain.....	4 - 8	"
22	Partly cloudy to overcast.....	1/2 - 10	"
23	Partly cloudy to overcast, snow during night.....	1/2 - 15	"
24	Partly cloudy to overcast, intermittent snow and rain.....	1 - 8	"
25	Cloudy to overcast, snow.....	2 - 8	"
26	Overcast.....	1 - 6	"
27	Partly cloudy to overcast, snow.....	2 - 8	"
28	Overcast, intermittent rain and snow.....	2 - 10	"
29	Snow during night.....	8 - 20	"
30	Partly cloudy to overcast.....	2 - 12	"

PORT HARRISON METEOROLOGICAL REPORT, 1939—*Conc.*

Date	Mean Barometer	Air Temp.		Wind, 8 a.m.		Wind, 8 p.m.		Hours of Fog	Precipitation	
		Max.	Min.	Dir.	Vel.	Dir.	Vel.		Rain or Snow	
									8 a.m.	8 p.m.
1939										
October										
1.....	29.65	39	30	SW.	16	NW.	10		.17	.05
2.....	30.02	38	31	NE.	16	NE.	16			.05
3.....	30.14	39	30	NW.	4	NW.	4		.02	.04
4.....	30.11	39	23	NW.	3	NE.	10		.84	
5.....	30.18	39	22	NE.	10	E.	16			
6.....	29.94	38	28	SE.	22	SE.	16			
7.....	29.53	39	34	S.	16	SW.	16	5	.02	.08
8.....	29.67	39	32	W.	2	SW.	28		.08	
9.....	29.92	36	30	W.	16	W.	16		.01	.01
10.....	29.90	35	30	NW.	4	SE.	3			
11.....	29.88	35	28	SE.	10	NW.	6		.02	.07
12.....	29.77	35	27	NW.	10	N.	4		.07	
13.....	29.90	35	26	N.	16	NW.	10			
14.....	29.98	35	26	N.	22	NW.	10			.04
15.....	29.89	34	22	W.	3	SW.	3		.02	.01
16.....	29.68	34	19	NE.	4	NW.	16			.06
17.....	29.77	32	24	NW.	22	NW.	16		.08	.10
18.....	29.80	30	22	NW.	22	NW.	10		.08	.05
19.....	29.79	29	20	W.	10	NW.	10		.08	.16
20.....	29.77	32	25	SW.	16	S.	22		.20	.09
21.....	29.22	34	25	E.	22	NW.	16		.13	.10
22.....	29.42	34	25	NW.	3	N.	22			.04
23.....	29.77	30	18	N.	28	N.	34		.10	
24.....	29.88	26	17	N.	28	N.	22			
25.....	29.77	29	23	NW.	16	W.	10		Trace	.02
26.....	29.94	28	24	W.	10	SE.	4		.02	.09
27.....	29.74	28	17	NE.	10	N.	10		.25	.15
28.....	29.78	25	-4	N.	3	NE.	4	12		
29.....	29.91	11	-9	N.	10	N.	5			
30.....	29.86	30	6	S.	6	SE.	16		.95	.03
31.....	29.90	30	21	SW.	3	NE.	10		.06	.04
November										
1.....	30.20	28	1	N.	10	Calm		6		
2.....	29.96	30	5	W.	28	NW.	16		.01	.06
3.....	29.99	30	5	NE.	6	S.	22			
4.....	29.77	35	27	SW.	16	SW.	16		.02	
5.....	29.85	35	30	SW.	22	SW.	10			.01
6.....	30.02	34	27	NW.	16	NE.	16		.07	
7.....	29.64	32	27	NE.	16	NE.	10		.04	.06
8.....	29.49	32	27	W.	3	NW.	26		.06	
9.....	29.81	31	19	W.	16	SW.	16		.09	.02
10.....	29.81	26	10	S.	22	E.	22		.09	.02
11.....	29.54	28	14	NE.	16	N.	28		.15	.08
12.....	29.62	30	24	NW.	28	NW.	22		.10	.07
13.....	30.05	28	22	NW.	16	W.	5		.06	.04
14.....	30.32	26	12	NE.	3	N.	3		.04	.15
15.....	30.05	26	-3	SE.	10	NE.	28		.02	.03
16.....	29.68	18	15	E.	28	NE.	28		.21	.05
17.....	29.79	21	13	NE.	10	E.	16		.01	
18.....	29.74	21	7	NE.	16	NE.	22			.02
19.....	30.11	25	15	N.	22	N.	16		.04	.01
20.....	30.31	24	18	NW.	6	SW.	22		.02	.03
21.....	29.86	30	18	S.	34	S.	28		.09	.11
22.....	29.73	31	12	N.	6	NE.	16			Trace
23.....	30.11	21	8	NE.	3	NE.	3		.02	.01
24.....	30.46	24	5	NW.	10	SW.	16			Trace
25.....	30.02	31	24	SW.	34	SW.	34			
26.....	29.96	31	23	NW.	34	NW.	16			
27.....	29.88	29	21	SW.	6	W.	16			
28.....	29.71	29	20	N.	16	SW.	10		.07	.02
29.....	29.40	29	5	SE.	28	NW.	22		.03	.02
30.....	29.55	11	4	W.	28	NW.	28		.02	Trace

PORT HARRISON METEOROLOGICAL REPORT, 1939—*Conc.*

Date	General Weather	Visibility	Ice Conditions
1939		Miles	
Oct.			
1	Cloudy to overcast, occasional snow and showers.	2 - 10	No ice in sight.
2	Partly cloudy to overcast, occasional snow.	4 - 10	" "
3	Partly cloudy to overcast, snow.	4 - 10	" "
4	Partly cloudy.....	20	" "
5	Partly cloudy.....	20	" "
6	Cloudy to clear.....	20	" "
7	Overcast.....	$\frac{1}{2}$ - 8	" "
8	Overcast, rain and snow.....	4 - 10	" "
9	Overcast, scattered snow.....	4 - 8	" "
10	Overcast, snow.....	8	" "
11	Intermittent snow.....	4 - 8	" "
12	Overcast.....	6 - 10	" "
13	Overcast.....	6 - 10	" "
14	Cloudy, snow flurries.....	10	" "
15	Overcast, scattered snow.....	8 - 20	Slob ice in river cove and along banks.
16	Cloudy to overcast, snow.....	6 - 15	No ice in sight.
17	Partly cloudy to overcast, snow throughout the day.	2 - 10	" "
18	Cloudy, snow.....	4 - 12	" "
19	Intermittent snow.....	1 - 6	" "
20	Snow during night.....	2 - 8	" "
21	Snow and rain.....	1 - 6	" "
22	Overcast, light snow.....	4 - 8	" "
23	Light snow.....	2 - 8	" "
24	Partly cloudy to overcast.....	6 - 10	" "
25	Partly cloudy to overcast, scattered snow.	4 - 8	" "
26	Light snow.....	2 - 8	Cove frozen and slob ice in river.
27	Overcast with snow.....	2 - 8	" " "
28	Partly cloudy to overcast.....	$\frac{1}{2}$ - 6	No ice in sight.
29	Partly cloudy.....	2 - 15	" "
30	Light snow.....	4 - 8	" "
31	Light snow.....	3 - 8	" "
Nov.			
1	Clear to partly cloudy.....	$\frac{1}{2}$ - 20	No ice in sight.
2	Light snow.....	2 - 8	" "
3	Clear to overcast.....	6 - 20	" "
4	Overcast to clear, light snow.....	4 - 10	" "
5	Overcast, snow and rain.....	2 - 10	" "
6	Overcast.....	8	" "
7	Light snow during day.....	2 - 6	" "
8	Intermittent snow.....	3 - 8	" "
9	Snow.....	4 - 8	" "
10	Overcast, moderate snow.....	1 - 8	" "
11	Light snow with high drift.....	$\frac{1}{2}$ - 4	River frozen.
12	Light snow with high drift.....	$\frac{1}{2}$ - 3	River partly frozen.
13	Intermittent snow, overcast.....	2 - 8	No ice in sight.
14	Intermittent snow and showers...	2 - 8	" "
15	Scattered snow.....	2 - 8	" "
16	Intermittent snow, overcast.....	$\frac{1}{2}$ - 8	" "
17	Overcast, light snow.....	4 - 12	" "
18	Cloudy to overcast with light snow.	3 - 12	" "
19	Cloudy with light snow.....	3 - 8	" "
20	Light snow.....	8	" "
21	Moderate snow.....	$\frac{1}{2}$ - 6	" "
22	Overcast.....	4 - 10	" "
23	Intermittent snow.....	8	" "
24	Overcast, light intermittent snow	8	" "
25	Overcast.....	6	" "
26	Overcast.....	2 - 8	" "
27	Overcast, intermittent snow.....	3 - 8	" "
28	Overcast, intermittent snow and sleet.	6	" "
29	Intermittent snow, heavy ground drift.	$\frac{1}{4}$ - 8	" "
30	Cloudy with intermittent snow...	1 - 8	" "

AIDS TO NAVIGATION IN HUDSON BAY AND STRAIT

RADIO COAST AND DIRECTION FINDING STATIONS

Station	Call Sign	Calling Wave		Working Wave		Position		Hours of Service	Weather Forecast Broadcast (a)	Coast Charge (b)
		(See footnote) K/cs.	Metres	K/cs.	Metres	Latitude N.	Longitude W.			
Port Churchill.....	V A P	500	600	500	600	58° 46' 32"	94° 10' 31"	Continuous during season of navigation.	11.00 a.m. and 11.00 p.m. E.S.T.	6c. per word
Chesterfield Inlet.....	V B Z	500	600	500	600	63° 20' 05"	90° 42' 33"	Continuous during season of navigation.	6c. per word
Nottingham Island.....	V C B	500	600	500	600	63° 06' 48"	77° 56' 18"	Continuous during season of navigation.	6c. per word
Cape Hopes Advance.....	V A Y	500	600	500	600	61° 05' 12"	69° 33' 24"	Continuous during season of navigation.	6c. per word
Resolution Island.....	V A W	500	600	500	600	61° 18' 30"	64° 53' 24"	Continuous during season of navigation.	11.20 a.m. and 11.20 p.m., E.S.T.	6c. per word

All stations maintain watch on 500 K/cs. (600 metres) and with the exception of Resolution island, take and transmit bearings on 375 K/cs. (800 metres) after communication has been established on 500 K/cs. (600 metres). Resolution island takes bearings on 500 K/cs. (600 metres) and transmits bearings on 375 K/cs (800 metres).

(a) Forecast covers area of Hudson bay, Hudson strait and that portion of the North Atlantic adjacent thereto.

(b) All messages relative to navigation are handled free of charge. The six-cent per word coast charge applies to all other traffic. For forwarding charges beyond Port Churchill apply to any of above stations or see Canada Rate Sheet, International List of Coast and Ship Stations.

RADIO METEOROLOGICAL REPORTING STATION

Station	Call Sign	Calling Wave		Working Wave		Position		Hours of Service	Coast Charge
		K/cs.	Metres	K/cs.	Metres	Latitude N.	Longitude W.		
Port Harrison.....	V A L	500	600	420	714	58° 27' 17"	78° 08' 29"	Keeps watch on 500 K/cs. (600 metres) for fifteen minute periods commencing at every odd hour from 7.00 a.m. to 7.00 p.m. E.S.T. inclusive, during season of navigation.	6c. per word See note (b) above.

PATROL SHIP

Station	Call Sign	Calling Wave		Working Wave		Hours of Service	Remarks
		K/cs.	Metres	K/cs.	Metres		
C.G.S. N. B. <i>McLean</i>	C G S N	500	600	425	706	Continuous during season of navigation.	This vessel patrols Hudson strait during the season of navigation. Information in regard to her position may be obtained from any Radio Station in the Strait.

LIGHTS

Location	Position		Character	Elevation	Remarks
	Latitude N.	Longitude W.			
†Goodwin island, Button islands group.	60° 41' 31"	64° 40' 22"	Flashing.....	250 ft.	On unpainted wooden pole.
Resolution island.....	61° 18' 28"	64° 53' 16"	Flashing.....	129 ft.	White square, wooden lantern on wooden skeleton base. One flash every 10 seconds.
Cape Hopes Advance.....	61° 05' 14"	69° 33' 23"	Fixed.....	270 ft.	On unpainted wooden pole.
†Wales island.....	61° 51' 37"	71° 58' 19"	Flashing.....	150 ft.	On unpainted wooden pole.
†Ashe inlet.....	60° 31' 40"	70° 33' 27"	Flashing.....	191 ft.	On unpainted wooden pole.
†East end of Charles Island.....	62° 36' 40"	73° 56' 09"	Flashing.....	150 ft.	On unpainted wooden pole.
†West end of Charles island.....	62° 42' 30"	74° 40' 00"	Flashing.....	40 ft.	On unpainted wooden pole.
†Nottingham island.....	63° 05' 48"	77° 56' 55"	Flashing.....	50 ft.	On unpainted wooden pole.
†Digges island.....	62° 35' 20"	78° 06' 42"	Flashing.....	65 ft.	On unpainted wooden pole.
†Mansel island.....	62° 27' 00"	79° 38' 00"	Flashing.....	41 ft.	On unpainted wooden pole.
†Coats island.....	62° 10' 00"	83° 08' 00"	Flashing.....	40 ft.	On unpainted wooden pole, surrounded by white lattice.
†Hubbart point.....	59° 21' 00"	94° 40' 00"	Flashing.....	50 ft.	On unpainted wooden pole.

† Unwatched.

C.G.S. *N. B. McLEAN*—HUDSON STRAIT PATROL SHIP
GENERAL DIMENSIONS AND EQUIPMENT

The C.G.S. *N. B. McLean* is a twin screw ice breaking steamer of 6,500 indicated horse-power and with the following leading dimensions:—

Length (B.P.).....	260 feet
Breadth (moulded).....	60 “
Depth (moulded).....	31 “
Gross tonnage.....	3,253 tons
Fuel oil capacity.....	1,596 “

The vessel is equipped with a patent towing winch furnished with both steel wire and manila towing hawsers, a powerful search light, two 7-ton derricks and two motor launches.

She also carries a diver and complete diving apparatus and the following salvage gear:—

- 1 Drake centrifugal pump, 10 inch.
- 1 Smart Turner centrifugal pump, 8 inch.
- 1 Duplex pump, 6 inch.

These pumps are completely equipped with flexible suction and discharge pipes, foot valves, syphons, etc., and all necessary auxiliaries.

One hundred and fifty feet of bronze flexible steam hose with connections, patching gear, shores, turnbuckles and all necessary tools are also provided.

The vessel is provided with a gyro compass and a recording echo sounder and radiotelegraph and radiotelephone apparatus are installed.

The *N. B. McLean* will be in Hudson Strait from the opening to the close of navigation each year and will maintain constant watch on 500 K/cs. (600 metres), call sign CGSN.

GLOSSARY OF TERMS USED IN ICE NAVIGATION

-
- Floe.....A large mass of floating ice.
- Pan.....A small floe or piece of ice that can be forced aside or
slewed.
- A field.....A large body of ice that may be seen around.
- Land floe.....Ice frozen fast to the shore.
- Packed ice.....Small pieces of ice closed together and held by the pressure
of ice and currents.
- Ice blink.....A peculiar pale yellow reflection on the sky indicating the
presence of ice in the distance.
- The ice pack.....A large body of solid ice extending across the whole sea
and through which it is impossible to advance.
- Slack or open ice....Detached ice that can be worked through. Ice is said to
be slacking when it begins to open up so as to be navigable.
- A lead.....A strip of navigable water opening into the pack.
- Hummocky ice.....Rough, uneven or thick ice.
- Slob.....Snow afloat and forming into ice.
- Water sky.....A dark or bluish appearance of the sky indicating open
water beyond the ice pack.
- Rafting.....Occurs when two pans meet with force either by the action
of winds or currents, the edges are broken off and either
rise on top of or pass under the body of the other.
- Growler.....A more or less washed and rounded lump of ice which rolls
about in the water; formed from broken up bergs or
detached pieces of heavy old Arctic floe ice.
- Collar ice.....The margin of ice frozen fast to an island or shore, present-
ing an abrupt wall against which the floating ice rises
and falls with the tide.