



Fisheries and Environment
Canada

Pêches et Environnement
Canada

0035061 I

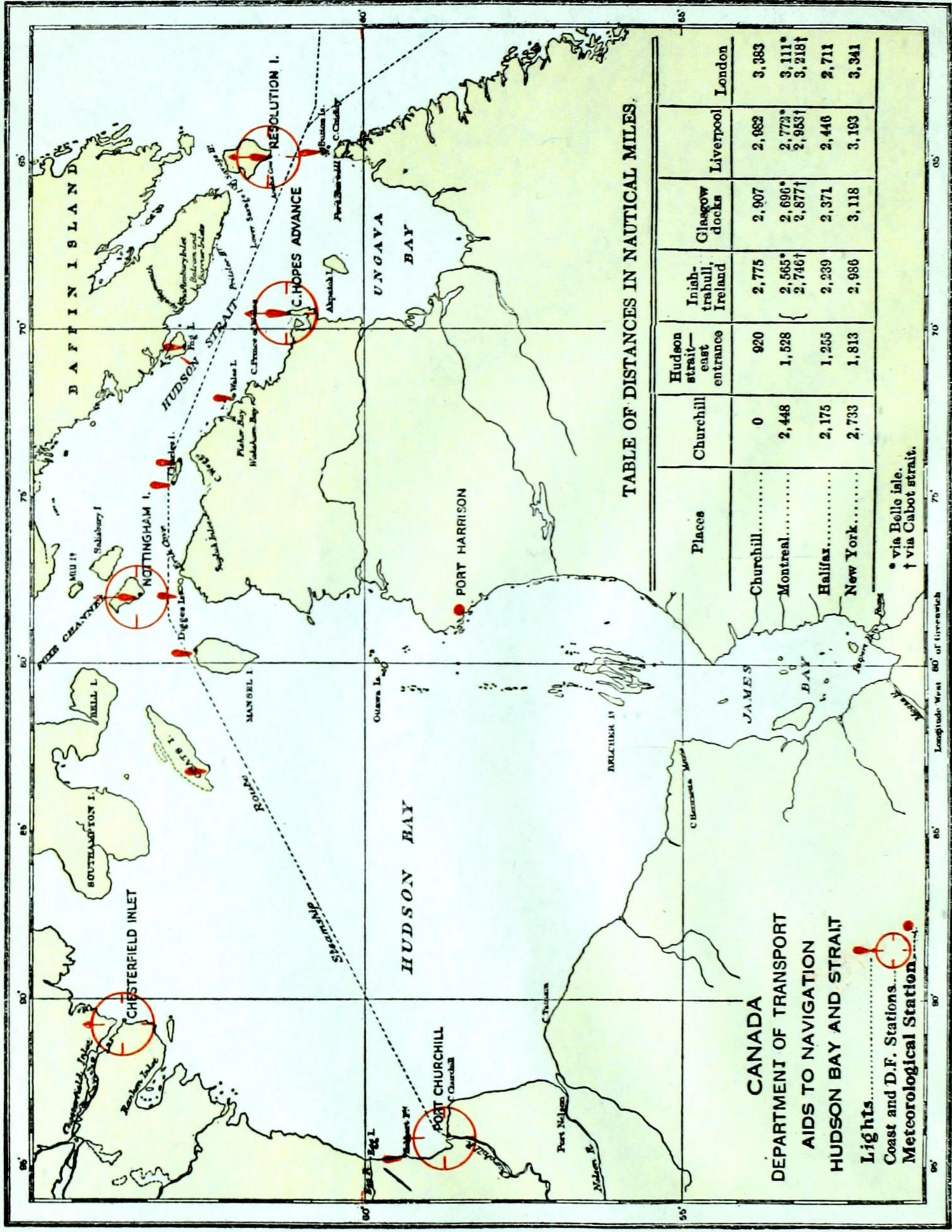
CANADA
NSPORT

DEPARTMENT OF TRA

ANNUAL R

REPORT







CANADA

TWELFTH ANNUAL REPORT

Navigation Conditions on the Hudson Bay Route from the Atlantic Seaboard to the Port of Churchill

SEASON OF NAVIGATION

1940

DEPARTMENT OF TRANSPORT

HON. C. D. HOWE, Minister

OTTAWA
EDMOND CLOUTIER
PRINTER TO THE KING'S MOST EXCELLENT MAJESTY
1941

CONFIDENTIAL

CONTENTS

| | PAGE |
|---|------|
| Letter of Transmittal..... | 4 |
| Synopsis— | |
| Opening of Navigation..... | 5 |
| Close of Navigation..... | 5 |
| Foxe Channel Ice..... | 6 |
| Fog..... | 6 |
| Aids to Navigation..... | 6 |
| Shipping..... | 6 |
| Ships' Reports— | |
| R.M.S. <i>Nascopie</i> | 7 |
| Port of Churchill— | |
| Traffic..... | 8 |
| Hydrographic Information..... | 9 |
| Meteorological Reports— | |
| Resolution Island..... | 10 |
| Nottingham Island..... | 16 |
| Churchill..... | 22 |
| Chesterfield Inlet..... | 28 |
| Port Harrison..... | 34 |
| Aids to Navigation— | |
| Radio Stations..... | 42 |
| Patrol Ship..... | 43 |
| Navigation Lights..... | 43 |
| C.G.S. <i>N. B. McLean</i> —Dimensions and Equipment..... | 44 |
| Glossary of Ice Navigation Terms..... | 45 |

ILLUSTRATIONS

| | |
|-------------------------------------|----------------------|
| Chart of Hudson Bay and Strait..... | <i>Frontispiece</i> |
| Entrance to harbour, Churchill..... | <i>Facing page</i> 6 |
| Radio station, Churchill..... | " " 8 |
| Entrance to harbour, Churchill..... | " " 42 |

CONTENTS

| | |
|----|--------------------------|
| 1 | Letter of Transmittal |
| 2 | Synopsis |
| 3 | Opening of Navigation |
| 4 | Close of Navigation |
| 5 | Foreshore Channel Ice |
| 6 | Ice |
| 7 | Aids to Navigation |
| 8 | Shipping |
| 9 | Ship Reports |
| 10 | R.M.S. <i>Nascopie</i> |
| 11 | Port of Churchill |
| 12 | Traffic |
| 13 | Hydrographic Information |

C. P. EDWARDS, Esq.,
 Deputy Minister,
 Department of Transport,
 Ottawa, Ontario.

SIR—I have the honour to submit the Twelfth Annual Report on Navigation Conditions on the Hudson Bay Route from the Atlantic Seaboard to the Port of Churchill. This report covers the season of navigation, 1940.

The report is compiled from information received from the Hudson's Bay Company Vessel R.M.S. *Nascopie*, the National Harbours Board, and the Meteorological and Radio Services of the Department of Transport.

Yours respectfully,

W. A. RUSH,
Controller of Radio.

DEPARTMENT OF TRANSPORT,
 OTTAWA, February 18, 1941.

ILLUSTRATIONS

| | |
|---|--------------------------------|
| 1 | Chart of Hudson Bay and Strait |
| 2 | Entrance to Harbour, Churchill |
| 3 | Radio Station, Churchill |
| 4 | Entrance to Harbour, Churchill |

Twelfth Annual Report

Navigation Conditions on the Hudson Bay Route from the Atlantic Seaboard to the Port of Churchill, Season of Navigation, 1940

Synopsis of Report

OPENING OF NAVIGATION

The change from winter conditions extended, as usual, over a period of several weeks and during that time the quantity and state of drifting ice varied from day to day according to the influence of winds and currents.

The dates of the final disappearance of ice from the vicinity of the reporting stations were as follows:—

Hudson Strait, East End

Resolution Island.....August 1

Hudson Strait, Central

Cape Hopes Advance. Station closed throughout season.

Hudson Strait, West End

Nottingham Island.....July 30

Hudson Strait, General—The R.M.S. *Nascopie* reported having steamed through heavy ice between Hebron and Resolution Island for ten hours July 27, and for eight hours through heavy loose field ice July 28 approaching Lake Harbour, and five hours through heavy ice July 30 leaving Lake Harbour. No ice reported after these dates.

Hudson Bay

Churchill.....July 2

CLOSE OF NAVIGATION

Hudson Bay

Chesterfield Inlet—Considerable amount of slob ice reported between October 16 and November 8; ice gradually extending all directions to horizon between latter date and November 30.

Churchill—Ice first reported in River on November 6. From that date to November 30 conditions were variable from close packed to light ice.

Hudson Strait

Nottingham Island—Ice beginning to appear November 12 and at end of month there was close packed ice to eastward and westward to horizon.

Cape Hopes Advance—Station closed throughout season.

Resolution Island—No ice reported until end of November when there was "scattered ice in all directions." Bergs and growlers were fairly numerous here all season.

Full information regarding ice conditions will be found under Meteorological Reports, pages 10-41.

FOX E CHANNEL ICE

No information regarding ice debouching through Foxe Channel into the route of navigation was received during the season under review.

FOG

The hours of fog reported during the season were as follows:—

| Station | July | Aug. | Sept. | Oct. | Nov. | Totals | |
|-------------------------|------|------|-------|------|------|--------|------|
| | | | | | | 1940 | 1939 |
| Resolution Island..... | 282 | 186 | 54 | 0 | 0 | 523 | 453 |
| Nottingham Island..... | 141 | 185 | 32 | 0 | 0 | 358 | 356 |
| Churchill..... | 10 | 25 | 9 | 40 | 55 | 139 | 147 |
| Chesterfield Inlet..... | 35 | 36 | 18 | 0 | 0 | 99 | 108 |
| Port Harrison..... | 66 | 20 | 31 | 0 | 8 | 125 | 280 |

AIDS TO NAVIGATION

Radio

There are five radio direction finding stations on the Hudson Bay Route. Four were in operation during the whole year, the exception being Cape Hopes Advance station which remained closed during the season of 1940.

Detailed information regarding Radio Aids to Navigation will be found on page 42.

Hydrography

No additional charting or other operations were carried out during the past season. Publications of the Hydrographic Service, Department of Mines and Resources, relating to the Hudson Bay and Strait are listed on page 9.

Lights

There were no additions to the lights the numbers remaining at two watched and ten unwatched, a total of twelve lights, a list of which will be found on page 43.

Fog Signals

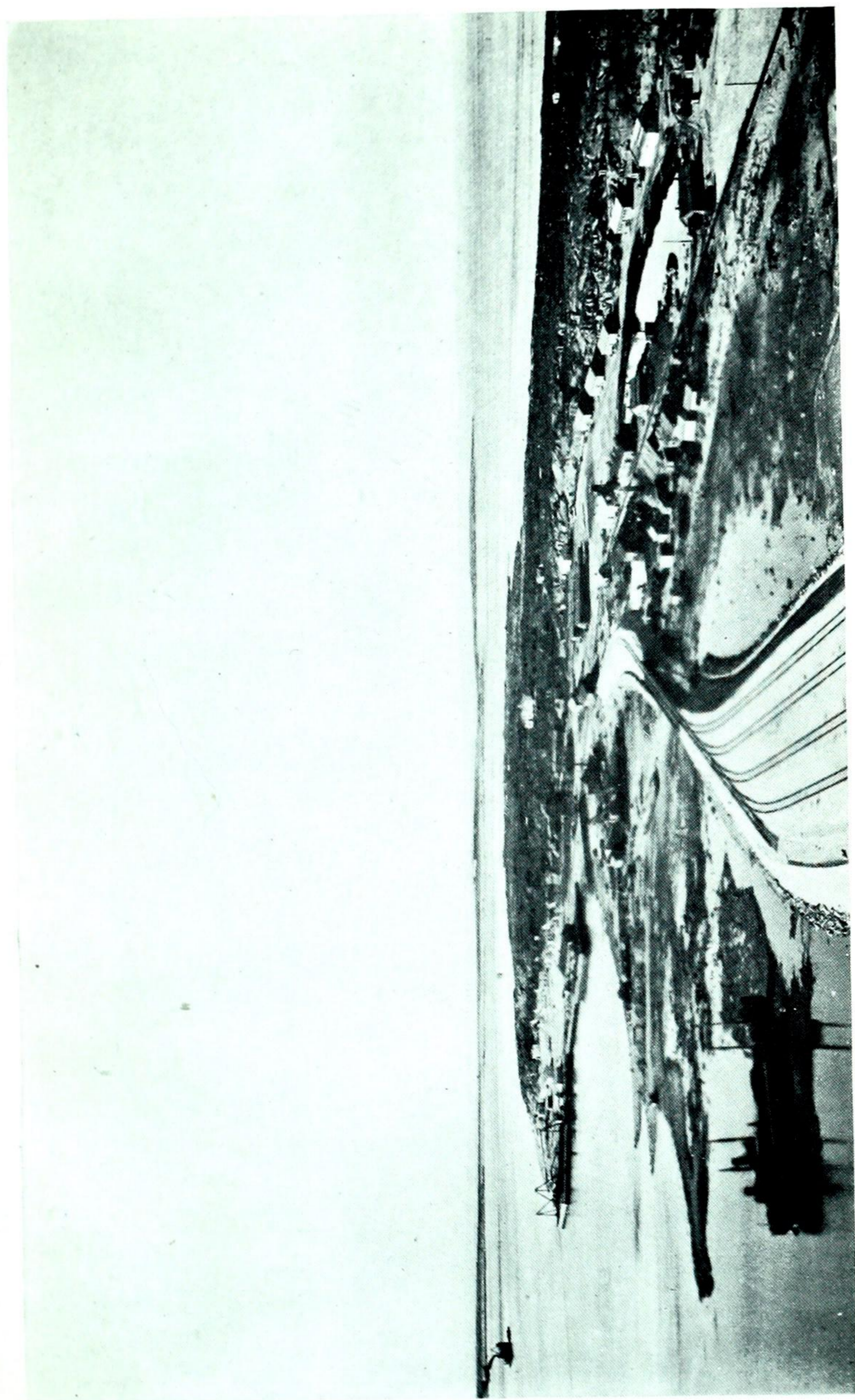
The explosive bomb signal which was installed at Resolution in 1935 is still in operation. It can be heard at a distance of between five and six miles and is fired at intervals of ten minutes on request by ships approaching Acadia Cove.

SHIPPING

Owing to war-time restrictions the movements of vessels using the Hudson Bay route were not reported.

No incident of note occurred during the season and navigation proceeded normally.

W. A. RUSH,
Controller of Radio.



Entrance to Harbour, Churchill.

R.M.S. NASCOPIE, CAPTAIN T. F. SMELLIE, MASTER,
HUDSON BAY AND STRAIT, 1940

EXTRACTS FROM LOG

| Date | Wind | | Noon Position | | Course | Distance Run | Remarks |
|---------|----------|-------|---------------|----------|---------|--------------|--|
| | Dir. | Force | Lat. N. | Long. W. | | | |
| July 26 | Variable | 1 | 59° 27' | 62° 45' | Various | 83 | Fine and clear, moderate easterly swell. 3.58 a.m. left Hebron. |
| " 27 | Calm | | 61° 30' | 66° 02' | " | 165 | Fine and overcast. 7.03 a.m. arrived Resolution island. Steamed 10 hours through heavy close packed ice. 8.15 a.m. left Resolution island. |
| " 28 | N. | 3 | Lake Harbour | | " | 150 | Fine and overcast. 10.28 a.m. arrived Lake Harbour. Steamed 8 hours through heavy loose field ice. |
| " 29 | WNW. | 2 | | | | | Fine and cloudy. 4.05 p.m. left Lake Harbour. |
| " 30 | N. | 4 | Wakeham Bay | | S 60 W. | 106 | Fine and clear. 3.50 a.m. arrived Wakeham bay. Steamed 5 hours through heavy ice. |
| " 31 | W. | 2 | 61° 55' | 71° 59' | Various | 19 | Fine and clear. 10.18 a.m. left Wakeham bay. |
| Aug. 1 | SSW. | 6 | Sugluk | | " | 149 | Fine and cloudy. 4.50 a.m. arrived Sugluk. 6.00 p.m. wind increased to gale force, good holding ground. |
| " 2 | N. | 3 | | | | | Fine and cloudy. 9.03 p.m. left Sugluk. |
| " 3 | SSE. | 4 | Wolstenholme | | " | 65 | Fine and overcast. 4.25 a.m. arrived Wolstenholme. |
| " 4 | NW. | 7 | 63° 30' | 76° 17' | " | 70 | Overcast and rain. 3.11 a.m. left Wolstenholme. 5.17 arrived cape Dorset. |
| " 5 | W. | 4 | Cape Dorset | | " | 50 | Overcast and foggy. |
| " 6 | S. | 2 | 63° 35' | 76° 14' | " | 40 | Fine and clear. 7.56 a.m. left cape Dorset. |
| " 7 | W. | 4 | Cape Smith | | " | 215 | Fine and cloudy. 9.25 a.m. arrived cape Smith. 11.58 p.m. left cape Smith. |
| " 8 | NW. | 4 | 59° 14' | 80° 49' | " | 122 | Fine and cloudy, moderate swell. |
| " 9 | W. | 4 | Port Harrison | | " | 133 | Fine and overcast. 5.04 a.m. arrived Port Harrison. |
| " 10 | S. | 6 | | | | | Fine and overcast. |
| " 11 | W. | 3 | | | | | Fine and clear. |
| " 12 | W. | 7 | 58° 21' | 79° 00' | W. | 26 | Fine and overcast, rough head sea. 6.00 a.m. left Port Harrison. |
| " 13 | W. | 4 | 58° 41' | 81° 22' | Various | 79 | Fine and clear. |
| " 14 | S. | 4 | 59° 14' | 88° 53' | " | 230 | Overcast and rain. Heavy south-east swell. |
| " 15 | Calm | | Churchill | | " | 178 | Fine and cloudy. 6.14 a.m. arrived at Churchill. |
| " 16 | ENE. | 2 | | | | | Overcast and rain. |
| " 17 | NE. | 5 | | | | | Fine and overcast. |
| " 18 | N. | 2 | | | | | Fine and clear. |
| " 19 | SE. | 2 | | | | | Fine and overcast. 3.43 p.m. left Churchill. |
| " 20 | NNE. | 3 | 61° 33' | 90° 43' | N 33 E. | 196 | Fine and cloudy. |
| " 21 | NW. | 2 | Chesterfield | | Various | 126 | Overcast and rain. 5.22 a.m. arrived at Chesterfield. |
| " 22 | Calm | | | | | | Overcast and occasional showers. |
| " 23 | ESE. | 3 | | | | | Fine, occasional fog banks. |
| " 24 | S. | 5 | 63° 09' | 89° 30' | S 74 E. | 32 | Fine and overcast. 8.46 a.m. left Chesterfield. |
| " 25 | SW. | 2 | 64° 04' | 83° 12' | Various | 218 | Fine and overcast. 1.14 p.m. arrived Southampton island. |
| " 26 | SSW. | 4 | 63° 30' | 83° 16' | " | 60 | Fine and overcast. 7.46 a.m. left Southampton. |

R.M.S. NASCOPIE, CAPTAIN T. F. SMELLIE, MASTER,
HUDSON BAY AND STRAIT, 1940

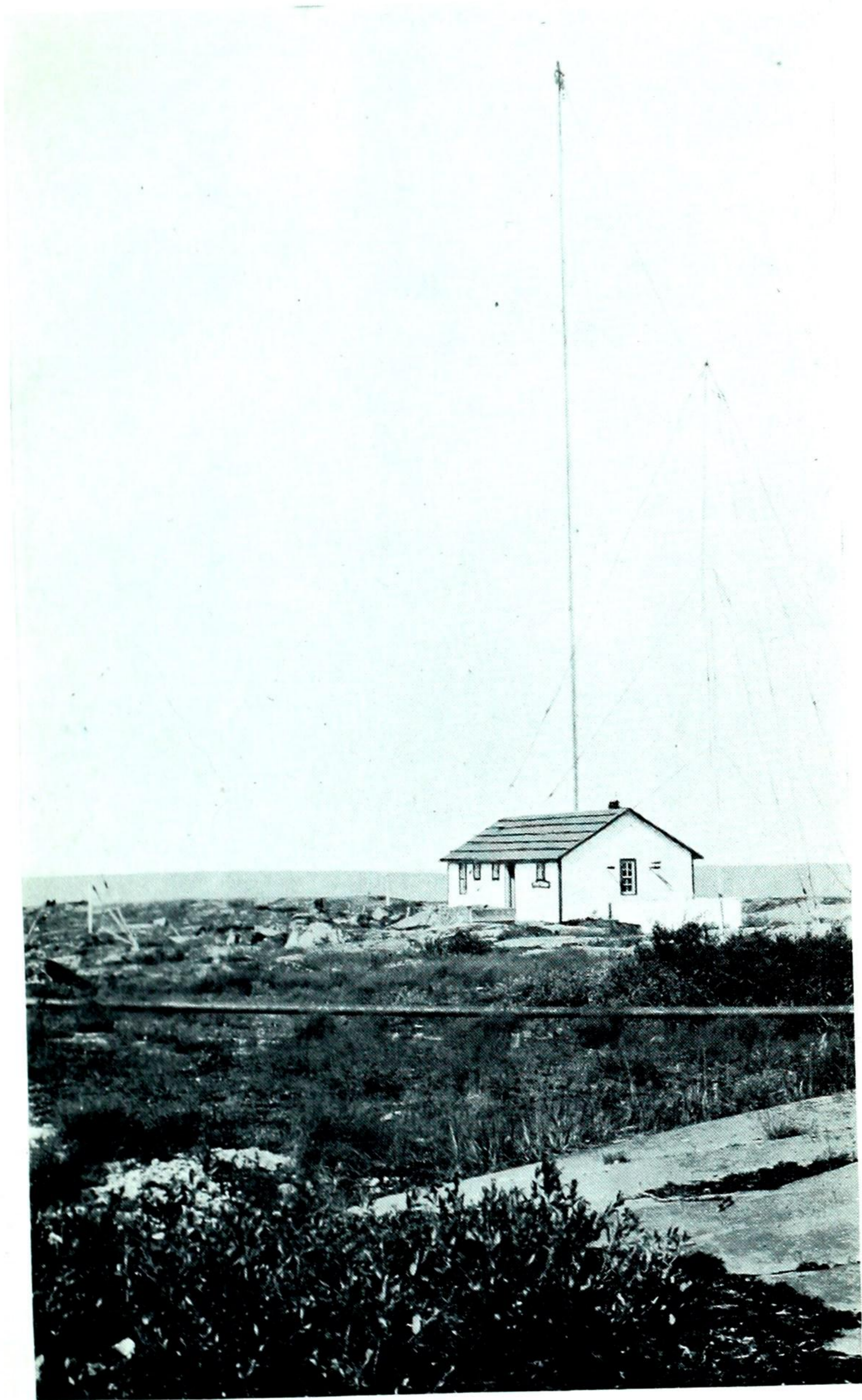
EXTRACTS FROM LOG

| Date | Wind | | Noon Position | | Course | Distance Run | Remarks |
|---------|--------------|-------|---------------|----------|---------|--------------|---|
| | Dir. | Force | Lat. N. | Long. W. | | | |
| Aug. 27 | SSE. | 5 | Wolstenholme | | Various | 179 | Fine and overcast. 7.03 a.m. arrived at Wolstenholme. |
| " 28 | S. | 4 | 62° 47' | 75° 20' | N 78 E. | 60 | Overcast and rain. 6.20 a.m. left Wolstenholme. |
| " 29 | NW. | 4 | 62° 30' | 69° 50' | Various | 144 | Overcast and foggy. 5.16 p.m. arrived Lake Harbour. |
| " 30 | WNW. | 3 | 62° 10' | 68° 58' | " | 72 | Fine and clear. 6.41 a.m. left Lake Harbour. |
| " 31 | NE. by E. | 5 | Port Burwell | | " | 164 | Overcast and rain. 5.45 a.m. arrived at Burwell. |

CHURCHILL

TRAFFIC

| Shipping | 1940 | 1939 |
|---|------------|---------------|
| Arrivals:— | | |
| Number of vessels..... | 17 | 20 |
| Net registered tonnage..... | 2,271 | 20,813 |
| Departures:— | | |
| Number of vessels..... | 17 | 20 |
| Net registered tonnage..... | 2,271 | 20,813 |
| Total Arrivals and Departures:— | | |
| Number of vessels..... | 34 | 40 |
| Net registered tonnage..... | 4,542 | 41,626 |
| Water Borne Cargo Tonnage (Tons = 2,000 lbs. weight or measure) | | |
| Inward..... | 67 | 1,620 |
| Outward..... | 459 | 53,743 |
| Total..... | 526 | 55,363 |



Radio Station, Churchill.

Hydrographic Information

The Hydrographic and Map Service, Department of Mines and Resources, publish a series of navigation charts and also a volume of Sailing Directions covering the Hudson Bay Route from the Atlantic entrance of Hudson strait to Churchill. These are kept up to date and added to from time to time as new information becomes available.

The "Tide Tables for the Atlantic Coast of Canada," published by the Tidal and Current Survey Division of the same Service, contain predictions for the port of Churchill and for Moosonee in James bay. Tables in leaflet form are available for port Nelson. Tidal differences for twelve localities in Hudson strait and for seven localities in James bay afford the times of high and low waters in these areas. The time of the turn of the tidal streams in the southern offing of Resolution and Nottingham islands, and information on the currents in Digges sound is also given. The automatic tide gauge is kept in operation each season at Churchill for the extension of the tidal records by which the predictions are improved.

HYDROGRAPHIC PUBLICATIONS—HUDSON BAY AND STRAIT

Charts—

- | | |
|---|---|
| 401 Churchill harbour. | P1409 Churchill harbour to Hubbart point. |
| 402 Nelson roads. | P1502 James bay. |
| 403 Approaches to Nelson river. | P1503 Pritzler harbour to cape Weymouth. |
| 404 Anchorages in Hudson strait. | Balcom and Barrier inlets. |
| Sugluk inlet. | Shaftesbury inlet. |
| Port Burwell. | |
| Button islands. | P1504 Mouth of Moose river. |
| 405 Hudson bay and strait. | P1505 Rupert bay. |
| 406 Cape Tatnam to Port Nelson. | P1506 Mouth of Rupert river. |
| 407 Anchorages in Hudson strait. | P1507 Lower Savage islands to Pritzler harbour. |
| Charles inlet. | Pritzler harbour. |
| Savage harbour. | P1508 Erik cove to Nuvuk harbour including |
| Acadia cove. | Digges islands. |
| 408 Cape Churchill to Churchill harbour. | Erik cove. |
| 500 Cape Churchill to Egg river. | Port de Laperriere. |
| 501 Wakeham and Fisher bays and approaches. | Nuvuk harbour. |
| Wakeham bay. | Digges harbour. |
| Fisher bay. | |
| 502 C. Prince of Wales to C. Weggs. | |
| Douglas harbour. | |

Sailing Directions—

Sailing Directions for the Hudson Bay Route.

Tide Tables—

Tide Tables for the Atlantic Coast of Canada.

NOTE.—Copies of the above publications are available at the office of the High Commissioner for Canada, Canada House, London, England, for reference only. Charts and Sailing Directions are issued at 50 cents and Tide Tables at 25 cents per copy and may be obtained from the Hydrographic Service, Department of Mines and Resources, Ottawa, or from the National Harbours Board Office, Churchill, Manitoba. All orders must be accompanied by postal or express money order, for the full amount, payable to the Receiver General for Canada.

RESOLUTION ISLAND METEOROLOGICAL REPORT, 1940

| Date | Mean Barometer | Air. Temp. | | Wind, 8 a.m. | | Wind, 8 p.m. | | Hours of Fog | Precipitation | |
|-----------|----------------|------------|------|--------------|------|--------------|------|--------------|---------------|--------|
| | | Max. | Min. | Dir. | Vel. | Dir. | Vel. | | Rain or Snow | |
| | | | | | | | | | 8 a.m. | 8 p.m. |
| 1940 July | | | | | | | | | | |
| 1..... | 29.43 | 37 | 32 | NE. | 33 | SE. | 6 | 2 | | .09 |
| 2..... | 29.56 | 37 | 31 | S. | 3 | E. | 18 | 2 | .42 | |
| 3..... | 29.67 | 37 | 31 | E. | 18 | E. | 8 | 13 | | Trace |
| 4..... | 29.87 | 39 | 30 | E. | 3 | W. | 4 | 3 | | |
| 5..... | 29.85 | 39 | 32 | NW. | 6 | W. | 13 | 1 | | |
| 6..... | 29.93 | 41 | 31 | W. | 3 | E. | 8 | 7 | | |
| 7..... | 29.69 | 39 | 31 | E. | 27 | E. | 36 | 2 | | |
| 8..... | 29.58 | 39 | 34 | E. | 30 | E. | 30 | 3 | .03 | |
| 9..... | 29.52 | 35 | 31 | SE. | 6 | W. | 18 | 24 | .39 | .01 |
| 10..... | 29.59 | 38 | 30 | E. | 12 | S. | 3 | 24 | .01 | |
| 11..... | 29.64 | 40 | 33 | E. | 8 | Calm | | | .07 | .03 |
| 12..... | 29.54 | 40 | 36 | NE. | 21 | NE. | 27 | 3 | .11 | .04 |
| 13..... | 29.55 | 39 | 34 | N. | 21 | NE. | 18 | 10 | .13 | .01 |
| 14..... | 29.54 | 38 | 32 | W. | 3 | NW. | 15 | 8 | .01 | |
| 15..... | 29.53 | 39 | 31 | NW. | 9 | E. | 12 | 7 | | |
| 16..... | 29.56 | 37 | 32 | E. | 24 | E. | 15 | 14 | | .10 |
| 17..... | 29.64 | 47 | 32 | S. | 3 | E. | 8 | 7 | .07 | |
| 18..... | 29.72 | 42 | 33 | W. | 1 | W. | 1 | 3 | | |
| 19..... | 29.86 | 39 | 32 | SW. | 6 | SW. | 8 | 24 | | |
| 20..... | 29.99 | 40 | 32 | E. | 12 | E. | 15 | 1½ | | |
| 21..... | 30.05 | 41 | 32 | E. | 18 | E. | 18 | 24 | | |
| 22..... | 29.88 | 36 | 32 | E. | 18 | E. | 21 | 24 | | |
| 23..... | 29.54 | 36 | 30 | E. | 21 | E. | 27 | 24 | | |
| 24..... | 29.51 | 36 | 32 | E. | 18 | W. | 18 | 24 | .28 | |
| 25..... | 29.55 | 39 | 33 | SE. | 5 | E. | 24 | 13 | | |
| 26..... | 29.25 | 41 | 34 | E. | 33 | SW. | 12 | 5 | .07 | |
| 27..... | 29.16 | 43 | 35 | NE. | 12 | NW. | 6 | | .07 | |
| 28..... | 29.30 | 37 | 33 | NW. | 6 | NE. | 9 | 10 | .20 | .01 |
| 29..... | 29.63 | 38 | 32 | NW. | 8 | W. | 12 | | | |
| 30..... | 29.60 | 43 | 33 | NW. | 12 | NW. | 10 | | | |
| 31..... | 29.77 | 48 | 36 | E. | 6 | Calm | | | | |
| August | | | | | | | | | | |
| 1..... | 29.78 | 41 | 33 | W. | 15 | W. | 9 | | | |
| 2..... | 29.60 | 43 | 35 | NW. | 6 | W. | 15 | 5½ | .01 | |
| 3..... | 29.80 | 47 | 33 | NW. | 15 | E. | 15 | 1 | | |
| 4..... | 29.25 | 42 | 35 | E. | 18 | WSW. | 30 | 11½ | | .02 |
| 5..... | 29.54 | 44 | 35 | W. | 30 | W. | 6 | | .40 | |
| 6..... | 29.57 | 45 | 34 | S. | 2 | SE. | 6 | 11½ | | |
| 7..... | 29.44 | 37 | 32 | SE. | 15 | SW. | 3 | 15 | | .02 |
| 8..... | 29.44 | 43 | 30 | W. | 2 | NW. | 9 | 6½ | .02 | .16 |
| 9..... | 29.62 | 37 | 32 | W. | 15 | NW. | 18 | 5½ | | .02 |
| 10..... | 29.90 | 36 | 30 | NW. | 18 | WNW. | 12 | 16½ | | |
| 11..... | 29.45 | 43 | 33 | SW. | 8 | SW. | 21 | 2 | .04 | Trace |
| 12..... | 29.18 | 38 | 34 | WSW. | 9 | SW. | 12 | 8 | .01 | .02 |
| 13..... | 29.35 | 44 | 34 | Calm | | N. | 9 | | .05 | |
| 14..... | 29.59 | 47 | 36 | N. | 15 | W. | 6 | | .03 | |
| 15..... | 29.56 | 41 | 33 | SW. | 9 | SE. | 12 | 4 | | .01 |
| 16..... | 29.47 | 36 | 33 | W. | 15 | W. | 10 | 24 | .02 | |
| 17..... | 29.77 | 42 | 32 | NW. | 6 | SE. | 2 | 5 | .01 | |
| 18..... | 29.90 | 43 | 35 | Calm | | W. | 6 | | | |
| 19..... | 29.98 | 38 | 33 | E. | 9 | ENE. | 15 | 9 | | |
| 20..... | 29.74 | 37 | 32 | NE. | 24 | NE. | 30 | 4 | | .26 |
| 21..... | 29.78 | 37 | 32 | NE. | 27 | NE. | 33 | 1 | .02 | |
| 22..... | 29.68 | 36 | 31 | W. | 15 | W. | 24 | | 1.0 | |
| 23..... | 29.98 | 42 | 34 | W. | 9 | E. | 15 | | | |
| 24..... | 29.95 | 40 | 38 | E. | 24 | ENE. | 21 | 18 | | |
| 25..... | 29.97 | 40 | 33 | E. | 21 | NE. | 24 | 2½ | .01 | |
| 26..... | 29.94 | 44 | 30 | N. | 12 | E. | 18 | | | |
| 27..... | 29.94 | 38 | 28 | NW. | 6 | W. | 12 | 13½ | | |
| 28..... | 29.89 | 40 | 30 | W. | 6 | SW. | 6 | 4 | | Trace |
| 29..... | 29.50 | 40 | 29 | SW. | 21 | W. | 36 | 2½ | .03 | |
| 30..... | 29.65 | 47 | 32 | NW. | 21 | E. | 7 | 4 | .01 | |
| 31..... | 29.69 | 43 | 36 | E. | 21 | NE. | 8 | 12 | | .05 |

RESOLUTION ISLAND METEOROLOGICAL REPORT, 1940

| Date | General Weather | Visibility | Ice Conditions |
|------|---|--------------------------------|---|
| 1940 | | Miles | |
| July | | | |
| 1 | Overcast with light rain during night. | $\frac{1}{2}$ - $\frac{1}{4}$ | Scattered ice pans on horizon. |
| 2 | Foggy to fog at distance..... | 0 - 6 | Scattered ice pans, three bergs. |
| 3 | Foggy, slight rain..... | $\frac{1}{4}$ - 2 | Few scattered pans. |
| 4 | Overcast..... | 6 - 10 | " " " , one berg. |
| 5 | Fog to cloudy..... | 0 - 12 | " " " , three bergs. |
| 6 | Fog at distance, cloudy..... | 12 - 30 | " " " , four bergs. |
| 7 | Thick fog to cloudy..... | 6 - 3 | Scattered ice inshore. |
| 8 | Overcast with light rain during night. | $\frac{1}{2}$ - $\frac{1}{4}$ | No observation. |
| 9 | Rain, fog 24 hours..... | $\frac{1}{3}$ - 0 | " " |
| 10 | Fog 24 hours..... | $\frac{1}{3}$ - 0 | " " |
| 11 | Slight rain and fog..... | $\frac{1}{2}$ - 30 | One berg. |
| 12 | Overcast with intermittent rain and drizzle. | $1\frac{1}{2}$ - $\frac{1}{4}$ | No ice in sight. |
| 13 | Partly cloudy with rain A.M..... | 1 - 5 | Two bergs. |
| 14 | Overcast, light rain in A.M..... | 10 - 20 | Two bergs. |
| 15 | Overcast to partly cloudy..... | 35 - $\frac{1}{8}$ | Three bergs. |
| 16 | Overcast with rain..... | $\frac{1}{8}$ - 10 | One growler. |
| 17 | Overcast with rain..... | $\frac{1}{3}$ - 20 | Three bergs, string of ice on horizon west to south. |
| 18 | Overcast to partly cloudy..... | $\frac{1}{8}$ - 30 | Three bergs. |
| 19 | Overcast, fog 16 hours..... | 15 - $\frac{1}{8}$ | One berg. |
| 20 | Partly cloudy to cloudy..... | $\frac{1}{8}$ - 40 | Four bergs. |
| 21 | Fog 24 hours..... | 0 - $\frac{1}{2}$ | One berg inshore. |
| 22 | Fog 24 hours..... | $\frac{1}{4}$ - 0 | |
| 23 | Fog 24 hours..... | $\frac{1}{8}$ | |
| 24 | Rain A.M. fog 20 hours..... | 0 - 20 | Large field of ice to west and northwest, scattered strings and pans elsewhere. |
| 25 | Cloudy, fog 13 hours..... | 25 - 0 | Five bergs, scattered ice all directions. |
| 26 | Overcast to partly cloudy..... | $\frac{1}{2}$ - 25 | Three bergs, open ice all directions. |
| 27 | Partly cloudy to overcast..... | 10 - 25 | Two bergs, open ice all directions. |
| 28 | Overcast with rain..... | $\frac{1}{2}$ - 10 | Three bergs, scattered ice all directions. |
| 29 | Overcast to partly cloudy..... | 15 - 25 | Four bergs, " " " |
| 30 | Cloudy to partly cloudy..... | 3 - 25 | Three bergs, " " " |
| 31 | Partly cloudy..... | 15 - 40 | Six bergs, scattered ice to northwest. |
| Aug. | | | |
| 1 | Partly cloudy to overcast..... | 15 - 25 | Four bergs. |
| 2 | Partly cloudy to overcast, light rain. | 10 - $\frac{1}{8}$ | Two bergs. |
| 3 | Partly cloudy to overcast..... | 10 - 20 | One berg. |
| 4 | Rain during night, overcast with showers P.M. | 0 - 10 | " |
| 5 | Partly cloudy to cloudy..... | $\frac{1}{2}$ - 10 | Three bergs. |
| 6 | Clear..... | 15 | Five bergs. |
| 7 | Fog 18 hours..... | 0 - 10 | Two bergs. |
| 8 | Overcast, rain during P.M..... | 2 - 15 | Three bergs. |
| 9 | Partly cloudy to overcast, showers, rain and snow P.M. | $\frac{1}{2}$ - 20 | Two bergs. |
| 10 | Cloudy..... | $\frac{1}{8}$ - 20 | Three bergs. |
| 11 | Overcast with showers, light thunder shower during morning. | 2 - 5 | Two bergs. |
| 12 | Overcast with showers..... | $\frac{1}{4}$ - 5 | No ice observed. |
| 13 | Cloudy to overcast, rain during night. | 1 - 20 | Two bergs. |
| 14 | Overcast to partly cloudy, showers during night. | 1 - 40 | Four bergs. |
| 15 | Cloudy to overcast with showers. | 20 - 2 | Two bergs. |
| 16 | Overcast, showers during night... | $\frac{1}{8}$ - 10 | No ice observed. |
| 17 | Overcast, drizzle during night.... | $\frac{1}{8}$ - 15 | Two bergs. |
| 18 | Partly cloudy..... | 6 - 12 | " |
| 19 | Overcast..... | $\frac{1}{2}$ - 10 | One berg. |
| 20 | Overcast with rain and snow..... | $\frac{1}{2}$ - 10 | " |
| 21 | Overcast, snow during night..... | 6 - 10 | Five bergs. |
| 22 | Overcast, snow during night..... | 5 - 12 | Three bergs. |
| 23 | Clear to partly cloudy..... | 20 - 35 | " |
| 24 | Overcast. Fog..... | 0 - $\frac{1}{2}$ | No ice observation. |
| 25 | Overcast, drizzle..... | $\frac{1}{8}$ - 15 | Two bergs. |
| 26 | Clear..... | 1 - 20 | One berg. |
| 27 | Partly cloudy..... | $\frac{1}{8}$ - 40 | " |
| 28 | Cloudy to overcast, light rain.... | $\frac{1}{8}$ - 20 | Three bergs. |
| 29 | Overcast with rain..... | $\frac{1}{4}$ - 10 | " |
| 30 | Overcast to cloudy, drizzle..... | $\frac{1}{8}$ - 25 | Four bergs. |
| 31 | Overcast to cloudy, rain..... | 2 - 10 | Five bergs. |

RESOLUTION ISLAND METEOROLOGICAL REPORT, 1940—Cont.

| Date | Mean Barometer | Air Temp. | | Wind, 8 a.m. | | Wind, 8 p.m. | | Hours of Fog | Precipitation | |
|-----------|----------------|-----------|------|--------------|------|--------------|------|--------------|---------------|--------|
| | | Max. | Min. | Dir. | Vel. | Dir. | Vel. | | Rain or Snow | |
| | | | | | | | | | 8 a.m. | 8 p.m. |
| 1940 | | | | | | | | | | |
| September | | | | | | | | | | |
| 1..... | 29.75 | 36 | 34 | W. | 6 | SW. | 4 | 6 | .08 | |
| 2..... | 29.06 | 39 | 33 | W. | 3 | W. | 16 | 12 | | |
| 3..... | 29.51 | 43 | 36 | S. | 6 | NE. | 5 | | | |
| 4..... | 29.53 | 35 | 32 | NW. | 22 | W. | 22 | 4 | Trace | |
| 5..... | 29.98 | 45 | 33 | NW. | 10 | W. | 6 | | | |
| 6..... | 30.23 | | 31 | W. | 16 | | | | | |
| 7..... | 29.65 | 42 | 24 | | | SW. | 28 | | | |
| 8..... | 29.80 | 38 | 34 | | | NE. | 28 | 2 | | .09 |
| 9..... | 29.72 | 37 | 34 | NE. | 28 | NE. | 22 | 3 | .07 | |
| 10..... | 29.80 | 35 | 34 | NE. | 28 | NE. | 10 | | | |
| 11..... | 29.92 | 37 | 32 | NE. | 4 | E. | 22 | | | |
| 12..... | 29.65 | 39 | 35 | E. | 28 | E. | 16 | 5 | | |
| 13..... | 29.73 | 35 | 34 | W. | 10 | W. | 16 | 6 | | |
| 14..... | 29.97 | | 32 | NW. | 16 | | | | | |
| 15..... | 29.21 | 39 | 33 | | | SW. | 22 | | | |
| 16..... | 29.59 | 37 | 34 | NW. | 22 | NW. | 28 | | 2.2 | |
| 17..... | 30.03 | 37 | 33 | W. | 12 | SE. | 6 | | | |
| 18..... | 29.76 | 38 | 34 | SE. | 22 | W. | 6 | 9 | Trace | .05 |
| 19..... | 29.82 | 35 | 34 | NW. | 6 | W. | 18 | 4 | 0.5 | |
| 20..... | 29.68 | 37 | 32 | | | SE. | 6 | | | |
| 21..... | 29.50 | 37 | 34 | W. | 6 | SE. | 18 | 3 | 0.4 | .34 |
| 22..... | 29.05 | 54 | 32 | W. | 18 | N. | 4 | | 3.4 | 0.9 |
| 23..... | 29.25 | 37 | 33 | Calm | | NW. | 16 | | | |
| 24..... | 29.21 | 37 | 32 | NW. | 12 | NW. | 16 | | 0.3 | |
| 25..... | 29.51 | 36 | 30 | W. | 22 | W. | 12 | | | |
| 26..... | 29.61 | 35 | 31 | W. | 6 | W. | 12 | | | |
| 27..... | 29.53 | 36 | 30 | N. | 4 | SE. | 6 | | | |
| 28..... | 29.80 | 37 | 31 | NE. | 6 | W. | 22 | | | |
| 29..... | 29.71 | 34 | 29 | NW. | 16 | W. | 18 | | | |
| 30..... | 29.66 | 30 | 28 | E. | 6 | E. | 16 | | | |
| October | | | | | | | | | | |
| 1..... | 29.09 | 32 | 28 | NE. | 10 | NE. | 10 | | | |
| 2..... | 29.83 | 32 | 29 | NE. | 10 | NW. | 16 | | | |
| 3..... | 29.78 | | 28 | NW. | 22 | | | | Trace | |
| 4..... | 29.46 | 34 | 32 | NW. | 28 | NW. | 34 | | .03 | |
| 5..... | 29.78 | 29 | 25 | N. | 16 | NW. | 34 | | | |
| 6..... | 29.88 | 29 | 25 | NW. | 22 | NW. | 3 | | | |
| 7..... | 29.80 | 30 | 19 | E. | 5 | E. | 22 | | | |
| 8..... | 29.37 | 32 | 28 | E. | 34 | NE. | 34 | | | |
| 9..... | 29.57 | 28 | 27 | NE. | 28 | NE. | 5 | | 3.5 | |
| 10..... | 29.62 | 28 | 23 | NW. | 22 | W. | 16 | | | |
| 11..... | 29.46 | 32 | 27 | SW. | 5 | W. | 3 | | | Trace |
| 12..... | 29.51 | 32 | 23 | Calm | | SW. | 16 | | Trace | |
| 13..... | 29.54 | 25 | 23 | N. | 6 | E. | 22 | | | |
| 14..... | 29.55 | 27 | 26 | NE. | 22 | NW. | 16 | | | 0.1 |
| 15..... | 29.45 | 28 | 21 | E. | 10 | SW. | 16 | | 0.3 | 0.1 |
| 16..... | 29.35 | 29 | 21 | N. | 3 | NE. | 22 | | | 2.3 |
| 17..... | 29.55 | 28 | 26 | Calm | | SW. | 28 | | | |
| 18..... | 29.71 | 30 | 27 | S. | 22 | S. | 22 | | | |
| 19..... | 29.72 | 27 | 24 | SW. | 10 | N. | 16 | | | Trace |
| 20..... | 29.03 | 37 | 23 | W. | 28 | W. | 16 | | 2.6 | 0.1 |
| 21..... | 29.28 | 29 | 26 | S. | 28 | SE. | 22 | | 0.3 | 0.1 |
| 22..... | 29.28 | 30 | 25 | NW. | 28 | SW. | 10 | | 0.1 | 0.2 |

RESOLUTION ISLAND METEOROLOGICAL REPORT, 1940—Cont.

| Date | General Weather | Visibility | Ice Conditions |
|-------|--|-------------------------------|-----------------------------------|
| | | Miles | |
| 1940 | | | |
| Sept. | | | |
| 1 | Overcast, heavy rain A.M. | | No ice in sight. |
| 2 | Fog, overcast. | | " " |
| 3 | Overcast. | 2 - 12 | " " |
| 4 | Intermittent slight snow, overcast | $\frac{1}{8}$ | " " |
| 5 | Partly cloudy to cloudless. | 12 | " " |
| 6 | | | " " |
| 7 | Overcast. | 30 | Three bergs. |
| 8 | Continuous heavy rain. | $\frac{1}{2}$ | One berg. |
| 9 | Continuous moderate snow to overcast P.M. | $\frac{1}{4}$ - $\frac{1}{2}$ | Growlers. |
| 10 | Overcast to cloudless. | 2 - 30 | No ice in sight. |
| 11 | Partly cloudy. | 12 - 30 | " " |
| 12 | Overcast. | 6 - 2 | One berg. |
| 13 | Overcast to partly cloudy. | $\frac{1}{8}$ - 6 | No ice in sight. |
| 14 | Partly cloudy. | 12 | Two bergs. |
| 15 | Overcast. | 6 - 2 | No ice in sight. |
| 16 | Moderate snow A.M. cloudy P.M. | 6 - 12 | " " |
| 17 | Overcast. | 2 - 12 | Two bergs, growlers. |
| 18 | Slight snow A.M. rain P.M. | 6 | No ice in sight. |
| 19 | Moderate snow A.M. overcast P.M. | $\frac{1}{2}$ - 6 | " " |
| 20 | Cloudy. | 6 | One berg. |
| 21 | Moderate rain A.M. moderate snow P.M. | | No ice in sight. |
| 22 | Moderate snow 24 hours. | $\frac{1}{2}$ - 6 | " " |
| 23 | Cloudy. | 12 | Two bergs, growlers. |
| 24 | Moderate snow A.M. | 6 | Seven bergs, growlers. |
| 25 | Cloudy. | 12 | Three bergs. |
| 26 | Cloudy. | 12 - 6 | Two bergs, growlers. |
| 27 | Cloudy. | 12 - 30 | Four bergs, growlers. |
| 28 | Overcast. | 6 | Three bergs, growlers. |
| 29 | Cloudy. | 6 | Seven bergs. |
| 30 | Overcast. | 30 | Four bergs. |
| Oct. | | | |
| 1 | Partly cloudy. | 18 | Four bergs. |
| 2 | Partly cloudy. | 18 | Three bergs, growlers. |
| 3 | Partly cloudy in A.M. | 18 - $\frac{1}{8}$ | Two bergs, cove frozen. |
| 4 | Continuous slight rain in A.M. Partly cloudy in P.M. | 4 - 18 | No ice in sight. |
| 5 | Overcast in A.M., clear in P.M. | 18 - 4 | One berg. |
| 6 | Clear in A.M., partly cloudy in P.M. | 18 | Three bergs, growlers. |
| 7 | Partly cloudy in A.M., overcast in P.M. | 18 - 8 | Six bergs. |
| 8 | Overcast in A.M., continuous slight snow in P.M. | 1 $\frac{1}{2}$ - 4 | No ice in sight. |
| 9 | Continuous moderate snow in A.M., overcast in P.M. | $\frac{1}{4}$ - 18 | " " |
| 10 | Overcast. | 40 - 8 | Eight bergs. |
| 11 | Overcast A.M., intermittent slight snow in P.M. | 18 - $\frac{1}{2}$ | Seven bergs, growlers. |
| 12 | Intermittent slight snow in A.M., overcast in P.M. | 8 - 8 | Growlers, many bergs. |
| 13 | Partly cloudy. | 18 - 8 | Seven bergs, horizon seven miles. |
| 14 | Overcast in A.M., continuous slight snow in P.M. | 18 - 8 | Seven bergs, growlers. |
| 15 | Overcast in A.M., continuous slight snow in P.M. | 18 - 8 | No ice in sight. |
| 16 | Partly cloudy A.M., continuous heavy snow in P.M. | 18 - 1 $\frac{1}{2}$ | " " |
| 17 | Overcast. | 18 - 4 | Six bergs. |
| 18 | Partly cloudy in A.M., overcast in P.M. | 8 - 18 | Three bergs. |
| 19 | Overcast in A.M., intermittent slight snow in P.M. | 18 - $\frac{1}{2}$ | Two bergs. |
| 20 | Continuous slight snow. | $\frac{3}{4}$ - $\frac{1}{2}$ | One berg. |
| 21 | Continuous slight snow. | 4 - 8 | Two bergs. |
| 22 | Continuous slight snow. | $\frac{1}{8}$ - 4 | No ice in sight. |

RESOLUTION ISLAND METEOROLOGICAL REPORT, 1940—*Conc.*

| Date | Mean Barometer | Air Temp. | | Wind, 8 a.m. | | Wind, 8 p.m. | | Hours of Fog | Precipitation | |
|----------|----------------|-----------|------|--------------|------|--------------|------|--------------|---------------|--------|
| | | Max. | Min. | Dir. | Vel. | Dir. | Vel. | | Rain or Snow | |
| | | | | | | | | | 8 a.m. | 8 p.m. |
| 1940 | | | | | | | | | | |
| October | | | | | | | | | | |
| 23..... | 29.58 | 30 | 28 | SW. | 22 | E. | 6 | | | |
| 24..... | 29.58 | 28 | 26 | N. | 10 | NW. | 16 | | | |
| 25..... | 29.43 | 37 | 25 | NW. | 34 | E. | 34 | | 1.5 | |
| 26..... | 29.77 | 36 | 35 | E. | 22 | NW. | 28 | | .02 | |
| 27..... | 29.85 | 28 | 23 | NE. | 23 | NE. | 10 | | 1.2 | |
| 28..... | 30.11 | 29 | 27 | NW. | 16 | NW. | 22 | | | |
| 29..... | 29.90 | 29 | 26 | N. | 6 | N. | 6 | | | |
| 30..... | 29.73 | 32 | 24 | NW. | 28 | NW. | 28 | | | |
| 31..... | 29.61 | 30 | 30 | NW. | 28 | NW. | 34 | | | |
| November | | | | | | | | | | |
| 1..... | 29.75 | 34 | 29 | NW. | 28 | W. | 28 | | | |
| 2..... | 29.88 | 33 | 31 | W. | 16 | W. | 10 | | | |
| 3..... | 29.50 | 32 | 29 | W. | 10 | E. | 16 | | | |
| 4..... | 29.80 | 32 | 31 | E. | 22 | NE. | 34 | | 0.6 | 1.2 |
| 5..... | 29.87 | 33 | 29 | NE. | 22 | SE. | 16 | | 2.0 | 8.5 |
| 6..... | 29.80 | 32 | 31 | E. | 10 | W. | 22 | | | 1.8 |
| 7..... | 30.04 | 27 | 26 | SW. | 22 | W. | 10 | | | |
| 8..... | 29.96 | 30 | 25 | S. | 10 | SE. | 34 | | | |
| 9..... | 29.27 | 29 | 29 | NE. | 10 | NW. | 42 | | 1.0 | |
| 10..... | 29.03 | 26 | 24 | W. | 34 | W. | 42 | | 0.6 | 0.1 |
| 11..... | 29.84 | 22 | 21 | NW. | 50 | NW. | 16 | | | 0.3 |
| 12..... | 29.59 | 28 | 16 | S. | 16 | SE. | 42 | | | 0.6 |
| 13..... | 29.06 | 32 | 28 | SW. | 22 | NW. | 42 | | | 0.2 |
| 14..... | 29.38 | 24 | 20 | W. | 60 | NW. | 34 | | | 0.5 |
| 15..... | 29.31 | 25 | 20 | SW. | 34 | SW. | 22 | | | 0.2 |
| 16..... | 29.26 | 23 | 22 | NW. | 22 | W. | 22 | | | |
| 17..... | 29.29 | 24 | 20 | N. | 6 | N. | 16 | | 0.1 | 0.1 |
| 18..... | 29.41 | 24 | 18 | NW. | 6 | N. | 16 | | | 0.2 |
| 19..... | 29.58 | 12 | 11 | N. | 6 | SW. | 22 | | | |
| 20..... | 29.06 | 25 | 20 | SW. | 16 | N. | 6 | | Trace | 0.3 |
| 21..... | 29.31 | 14 | 6 | N. | 16 | NW. | 28 | | 1.2 | 0.4 |
| 22..... | 29.54 | 20 | 7 | N. | 16 | NW. | 42 | | 0.2 | 0.2 |
| 23..... | 29.71 | 23 | 4 | NW. | 16 | N. | 10 | | Trace | 0.2 |
| 24..... | 29.57 | 23 | 21 | W. | 22 | W. | 16 | | 0.2 | |
| 25..... | 29.58 | 23 | 19 | SE. | 10 | E. | 6 | | 0.2 | 0.2 |
| 26..... | 29.89 | 20 | 18 | SW. | 16 | NW. | 16 | | 0.2 | 0.1 |
| 27..... | 29.67 | 16 | 13 | NW. | 22 | NW. | 28 | | | |
| 28..... | 29.52 | 18 | 14 | NW. | 16 | N. | 10 | | | |
| 29..... | 29.43 | 18 | 11 | W. | 4 | NW. | 22 | | | 0.4 |
| 30..... | 29.40 | 19 | 14 | W. | 22 | NW. | 40 | | | |

RESOLUTION ISLAND METEOROLOGICAL REPORT, 1940—*Conc.*

| Date | General Weather | Visibility | Ice Conditions |
|---------|---|--------------------------------|---|
| 1940 | | Miles | |
| Oct. 23 | Partly cloudy in A.M., clear in P.M. | 18 | Four bergs. |
| 24 | Partly cloudy in A.M., overcast in P.M. | 8 | No ice in sight. |
| 25 | Continuous moderate snow in A.M., overcast in P.M. | $\frac{3}{4}$ - 8 | One berg. |
| 26 | Fog in A.M., overcast in P.M. | 4 | No ice in sight. |
| 27 | Continuous moderate snow in A.M., overcast in P.M. | 4 | " " |
| 28 | Clear in A.M., partly cloudy in P.M. | 18 | " " |
| 29 | Partly cloudy in A.M., overcast in P.M. | 18 - 8 | " " |
| 30 | Overcast in A.M., partly cloudy in P.M. | 8 - 18 | " " |
| 31 | Partly cloudy in A.M., overcast in P.M. | 18 - 8 | Three bergs. |
| Nov. 1 | Overcast in A.M., partly cloudy in P.M. | 8 | No ice in sight. |
| 2 | Overcast all day | 18 - $\frac{1}{2}$ | One berg, growlers. |
| 3 | Overcast all day | 8 | Two bergs, growlers. |
| 4 | Continuous slight snow in flakes in A.M., moderate in P.M. | $\frac{3}{4}$ | No ice in sight. |
| 5 | Continuous moderate snow in flakes in A.M., partly cloudy in P.M. | $\frac{2}{5}$ - 4 | " " |
| 6 | Overcast in A.M., continuous moderate snow in flakes in P.M. | $\frac{1}{10}$ - $\frac{3}{4}$ | " " |
| 7 | Partly cloudy in A.M., overcast in P.M. | 8 | Five bergs. |
| 8 | Overcast | 8 | Four bergs. |
| 9 | Continuous slight snow in flakes in A.M., overcast in P.M. | $\frac{1}{2}$ - 8 | No ice in sight. |
| 10 | Continuous slight snow in flakes | $\frac{2}{5}$ | " " |
| 11 | Overcast | $1\frac{1}{2}$ - 4 | " " |
| 12 | Overcast | 8 - 4 | One berg. |
| 13 | Overcast | 4 | No ice in sight. |
| 14 | Overcast | 8 - 8 | " " |
| 15 | Overcast | $\frac{3}{4}$ - 4 | " " |
| 16 | Overcast | 8 | No bergs. |
| 17 | Overcast | 8 - 18 | Two bergs, growlers. |
| 18 | Partly cloudy in A.M., overcast in P.M. | 8 - 18 | One berg, growlers. |
| 19 | Partly cloudy in A.M., overcast in P.M. | 18 - 4 | Two bergs. |
| 20 | Continuous slight snow in flakes | $1\frac{1}{2}$ - $\frac{2}{5}$ | One berg. |
| 21 | Partly cloudy in A.M., overcast in P.M. | 18 | Two bergs. |
| 22 | Overcast | 8 - 4 | Four bergs. |
| 23 | Continuous slight snow in flakes | $1\frac{1}{2}$ | One berg. |
| 24 | Continuous slight snow in flakes in A.M., overcast in P.M. | $\frac{3}{4}$ | No ice in sight. |
| 25 | Continuous slight snow in flakes | 8 - 18 | " " |
| 26 | Overcast | 8 | Two bergs, growlers, scattered drift all directions. |
| 27 | Overcast | 18 | Five bergs. |
| 28 | Overcast | 18 | One berg. |
| 29 | Overcast in A.M., continuous slight snow in flakes in P.M. | $\frac{3}{4}$ - $\frac{2}{5}$ | One berg, scattered floes all directions, ice extends one mile. |
| 30 | Overcast | $1\frac{1}{2}$ - 8 | Two bergs, scattered floes all directions. |

NOTTINGHAM ISLAND METEOROLOGICAL REPORT, 1940

| Date | Mean Barometer | Air Temp. | | Wind, 8 a.m. | | Wind, 8 p.m. | | Hours of Fog | Precipitation | |
|-----------|----------------|-----------|------|--------------|------|--------------|------|--------------|---------------|--------|
| | | Max. | Min. | Dir. | Vel. | Dir. | Vel. | | Rain or Snow | |
| | | | | | | | | | 8 a.m. | 8 p.m. |
| 1940 July | | | | | | | | | | |
| 1..... | 29.88 | 55 | 32 | E. | 1 | W. | 6 | | | |
| 2..... | 29.86 | 51 | 35 | NW. | 7 | SW. | 3 | | | |
| 3..... | 29.91 | 55 | 41 | N. | 9 | NW. | 14 | | .01 | |
| 4..... | 30.05 | 54 | 33 | NW. | 14 | NW. | 9 | | | |
| 5..... | 30.04 | 45 | 31 | W. | 5 | SW. | 9 | | | |
| 6..... | 29.76 | 43 | 33 | SE. | 15 | E. | 18 | | | .18 |
| 7..... | 29.62 | 46 | 38 | E. | 12 | E. | 13 | | | |
| 8..... | 29.67 | 47 | 34 | E. | 1 | E. | 16 | 18 | .02 | |
| 9..... | 29.76 | 49 | 37 | E. | 17 | Calm | | | .01 | |
| 10..... | 29.81 | 60 | 37 | N. | 14 | NW. | 15 | | | |
| 11..... | 29.86 | 51 | 36 | NW. | 7 | NW. | 13 | | | |
| 12..... | 29.95 | 52 | 36 | NE. | 4 | E. | 12 | | | |
| 13..... | 29.92 | 60 | 31 | NE. | 11 | NE. | 15 | | | |
| 14..... | 29.77 | 53 | 41 | NE. | 1 | W. | 7 | | | |
| 15..... | 29.54 | 42 | 35 | SW. | 10 | S. | 9 | 20 | | .08 |
| 16..... | 29.44 | 41 | 34 | E. | 8 | W. | 17 | 9½ | .51 | .09 |
| 17..... | 29.61 | 44 | 31 | SE. | 11 | S. | 10 | 6 | | Trace |
| 18..... | 29.91 | 40 | 31 | SW. | 6 | SW. | 8 | | | |
| 19..... | 29.99 | 38 | 34 | S. | 7 | E. | 12 | 12 | | |
| 20..... | 29.88 | 42 | 35 | E. | 8 | SW. | 13 | 14 | | .31 |
| 21..... | 29.75 | 45 | 37 | SE. | 14 | E. | 12 | 6 | 1.11 | .02 |
| 22..... | 29.76 | 41 | 34 | SW. | 5 | W. | 5 | 11 | .03 | |
| 23..... | 29.64 | 44 | 33 | SE. | 2 | W. | 11 | 6 | | |
| 24..... | 29.61 | 40 | 34 | W. | 4 | SW. | 5 | 24 | | .07 |
| 25..... | 29.61 | 46 | 34 | SW. | 6 | SE. | 10 | 10 | .03 | |
| 26..... | 29.36 | 49 | 38 | NE. | 13 | N. | 16 | | | .11 |
| 27..... | 29.46 | 56 | 42 | NE. | 18 | N. | 14 | | .03 | |
| 28..... | 29.76 | 57 | 35 | NW. | 10 | NW. | 16 | | | |
| 29..... | 29.84 | 51 | 34 | W. | 7 | W. | 8 | | | |
| 30..... | 29.87 | 44 | 36 | W. | 4 | SW. | 4 | | | .01 |
| 31..... | 29.95 | 55 | 35 | E. | 7 | SW. | 7 | | | |
| August | | | | | | | | | | |
| 1..... | 29.72 | 51 | 39 | SW. | 16 | SW. | 21 | 7 | | .14 |
| 2..... | 29.86 | 47 | 36 | NW. | 14 | W. | 8 | 4 | | |
| 3..... | 29.74 | 48 | 38 | SE. | 10 | E. | 19 | | | .60 |
| 4..... | 29.49 | 45 | 37 | N. | 21 | NW. | 13 | 4 | | Trace |
| 5..... | 29.61 | 39 | 35 | SW. | 10 | SW. | 10 | 22 | | .08 |
| 6..... | 29.55 | 46 | 35 | W. | 7 | SW. | 12 | 8 | Trace | |
| 7..... | 29.48 | 43 | 36 | SW. | 12 | W. | 14 | 2 | Trace | |
| 8..... | 29.61 | 44 | 34 | W. | 8 | W. | 13 | 5½ | | .06 |
| 9..... | 29.93 | 45 | 36 | NW. | 15 | NW. | 14 | | | |
| 10..... | 29.93 | 52 | 35 | SW. | 12 | N. | 16 | 2½ | | |
| 11..... | 29.19 | 49 | 40 | SW. | 35 | SW. | 27 | 15 | | .12 |
| 12..... | 29.03 | 45 | 36 | SW. | 28 | NE. | 16 | 10 | .16 | .03 |
| 13..... | 29.74 | 52 | 38 | NE. | 13 | NW. | 16 | | | |
| 14..... | 29.84 | 46 | 35 | N. | 6 | S. | 13 | 2 | | |
| 15..... | 29.48 | 44 | 37 | SW. | 21 | NW. | 18 | 13½ | .26 | .01 |
| 16..... | 29.80 | 50 | 35 | NW. | 7 | NW. | 11 | 6 | | |
| 17..... | 30.00 | 45 | 34 | W. | 2 | W. | 3 | | | |
| 18..... | 30.18 | 47 | 35 | Calm | | E. | 14 | | | |
| 19..... | 30.14 | 48 | 34 | NE. | 10 | NE. | 8 | | | |
| 20..... | 30.21 | 46 | 35 | NE. | 11 | NE. | 16 | | | |
| 21..... | 30.20 | 47 | 36 | NE. | 10 | N. | 10 | | | |
| 22..... | 30.08 | 44 | 31 | NW. | 12 | NW. | 11 | 5 | .01 | |
| 23..... | 30.24 | 45 | 31 | N. | 5 | SW. | 7 | | | |
| 24..... | 30.18 | 44 | 32 | S. | 2 | SE. | 3 | | | |
| 25..... | 30.13 | 43 | 37 | E. | 7 | E. | 6 | 6 | | |
| 26..... | 30.18 | 46 | 36 | NW. | 7 | W. | 7 | 5 | | |
| 27..... | 30.02 | 44 | 35 | SW. | 13 | SE. | 16 | 12 | Trace | .01 |
| 28..... | 29.76 | 46 | 41 | SW. | 23 | S. | 23 | 24 | .60 | .13 |
| 29..... | 29.67 | 43 | 37 | W. | 14 | W. | 3 | 24 | .12 | Trace |
| 30..... | 29.87 | 46 | 34 | E. | 4 | E. | 13 | 4 | | |
| 31..... | 29.88 | 46 | 35 | N. | 4 | SW. | 6 | 4 | | |

NOTTINGHAM ISLAND METEOROLOGICAL REPORT, 1940

| Date | General Weather | Visibility | Ice Conditions |
|------|---|--------------------|---|
| 1940 | | Miles | |
| July | | | |
| 1 | Cloudless..... | 30 | Ice all directions, few leads. |
| 2 | Overcast to cloudy..... | 12 - 30 | Loose ice in strait, open water to west. |
| 3 | Cloudy..... | 25 | Loose, packed with large leads. |
| 4 | Cloudless..... | 30 | Slack ice all directions, open leads. |
| 5 | Cloudy..... | 25 | Loose packed ice to horizon. |
| 6 | Overcast, intermittent light rain. | 12 - 6 | Loose ice, scattered leads. |
| 7 | Fog and drizzle..... | 1 - $\frac{1}{8}$ | " " " " |
| 8 | Fog to overcast..... | 1 - 10 | Loose ice, few leads. |
| 9 | Overcast to cloudy..... | 25 | Loose-packed, few leads. |
| 10 | Partly cloudy to fine..... | 35 | String ice with open water. |
| 11 | Cloudy..... | 25 | Loose ice, large leads. |
| 12 | Fine and clear..... | 35 | Loose ice in straits, open water to west. |
| 13 | Overcast..... | 25 | String ice with open water. |
| 14 | Cloudy..... | 35 | Loose ice in straits and west, open water beyond. |
| 15 | Rain and fog from late A.M..... | 1 - $\frac{1}{2}$ | Ice unobserved. |
| 16 | Fog and drizzle..... | 0 - 35 | Loose ice all directions with open leads. |
| 17 | Overcast, drizzle and fog..... | 20 - $\frac{1}{4}$ | Loose ice, open leads. |
| 18 | Fog and drizzle, overcast..... | 1 - 20 | Loose scattered ice all directions. |
| 19 | Fog till late P.M. then overcast. | $\frac{1}{2}$ - 15 | " " " " |
| 20 | Overcast, heavy rain all day..... | 25 - 2 | Loose, scattered ice, plenty of water. |
| 21 | Overcast, rain late P.M..... | 20 | Ice loose packed to horizon, open lead along shore. |
| 22 | Fog and rain to distant fog..... | $\frac{1}{4}$ - 5 | Loose shore ice with open water. |
| 23 | Fog A.M. Overcast. Fog P.M.. | 20 - $\frac{1}{2}$ | Ice loose packed with open leads. |
| 24 | Fog and intermittent rain all day. | $\frac{1}{2}$ | |
| 25 | Fog, cloudy P.M..... | $\frac{1}{2}$ - 20 | Ice loose packed with large leads open water. |
| 26 | Overcast, intermittent rain..... | 10 | Loose ice all directions. |
| 27 | Generally overcast..... | 25 | String ice much open water. |
| 28 | Fine and clear..... | 35 | Open water everywhere, scattered pieces of ice. |
| 29 | Clear..... | 30 | Open water, few scattered pieces of ice. |
| 30 | Overcast, shower P.M..... | 25 | Open water to horizon. |
| 31 | Fine, clear, to overcast..... | 25 | Open water all directions. |
| Aug. | | | |
| 1 | Overcast, fog, rain P.M..... | 25 - $\frac{1}{8}$ | Open water all directions. |
| 2 | Overcast A.M. to clear P.M..... | 12 - 25 | No ice in sight. |
| 3 | Overcast, rain during night..... | 30 - 7 | " " |
| 4 | Overcast to part cloudy..... | 20 - $\frac{1}{4}$ | " " |
| 5 | Fog, clearing P.M. to overcast.... | $\frac{1}{4}$ - 10 | " " |
| 6 | Fog A.M. to overcast P.M..... | $\frac{1}{8}$ - 20 | " " |
| 7 | Fog and drizzle A.M. to partly cloudy P.M. | 25 | " " |
| 8 | Fog A.M. to cloudy P.M. Showers during night. | $\frac{1}{2}$ - 20 | " " |
| 9 | Overcast A.M. to clear..... | 10 - 25 | " " |
| 10 | Fog A.M. to overcast P.M..... | $\frac{1}{2}$ - 15 | " " |
| 11 | Overcast, fog, rain P.M..... | $\frac{1}{4}$ | " " |
| 12 | Intermittent rain and fog during night and early morning. | $\frac{1}{2}$ - 20 | " " |
| 13 | Overcast to fine and clear..... | 30 | " " |
| 14 | Overcast P.M. part cloudy A.M.. | 25 | " " |
| 15 | Fog and drizzle..... | 0 - 5 | " " |
| 16 | Overcast all day, fog during night. | 20 | " " |
| 17 | Fine and clear..... | 30 | " " |
| 18 | Overcast all day..... | 25 | " " |
| 19 | Part cloudy and clear..... | 35 | " " |
| 20 | Fine and clear to part cloudy..... | 30 | " " |
| 21 | Fine and clear to overcast P.M.. | 36 | " " |
| 22 | Shower during night. Fog A.M. to overcast P.M. | $\frac{1}{2}$ - 20 | " " |
| 23 | Part cloudy to fine and clear..... | 35 | " " |
| 24 | Cloudy to part cloudy..... | 25 | " " |
| 25 | Fog during night and early A.M. then overcast. | $\frac{3}{4}$ - 20 | " " |
| 26 | Fog to overcast late P.M..... | $\frac{1}{2}$ - 20 | " " |
| 27 | Intermittent light rain, fog, clear A.M. | 1 - 6 | " " |
| 28 | Rain and fog all day..... | $\frac{1}{2}$ - 1 | " " |
| 29 | Fog all day, rain in night..... | 1 - 5 | " " |
| 30 | Cloudy, fog during night..... | 25 | " " |
| 31 | Fine and clear A.M. to overcast.. | 35 | " " |

NOTTINGHAM ISLAND METEOROLOGICAL REPORT, 1940—Cont.

| Date | Mean Barometer | Air. Temp. | | Wind, 8 a.m. | | Wind, 8 p.m. | | Hours of Fog | Precipitation | |
|-----------|----------------|------------|------|--------------|------|--------------|------|--------------|---------------|--------|
| | | Max. | Min. | Dir. | Vel. | Dir. | Vel. | | Rain or Snow | |
| | | | | | | | | | 8 a.m. | 8 p.m. |
| 1940 | | | | | | | | | | |
| September | | | | | | | | | | |
| 1..... | 29.66 | 44 | 39 | S. | 6 | SE. | 16 | 8 | .22 | |
| 2..... | 29.63 | 47 | 40 | SW. | 10 | W. | 22 | 5 | | |
| 3..... | 29.69 | 43 | 39 | W. | 16 | NW. | 4 | | | |
| 4..... | 29.96 | 40 | 35 | NW. | 16 | NW. | 12 | | | |
| 5..... | 30.20 | 46 | 31 | NW. | 4 | SE. | 12 | | | |
| 6..... | 29.84 | | 33 | NE. | 22 | | | | | |
| 7..... | 29.90 | 46 | 41 | | | W. | 22 | | | .03 |
| 8..... | 30.14 | 44 | 35 | NE. | 22 | SW. | 22 | | | |
| 9..... | 30.00 | 45 | 33 | NE. | 22 | NE. | 22 | | | |
| 10..... | 30.07 | 45 | 33 | NE. | 10 | N. | 10 | | | |
| 11..... | 29.95 | 46 | 31 | SW. | 6 | SW. | 10 | | | |
| 12..... | 29.78 | 42 | 33 | SW. | 4 | N. | 6 | | | |
| 13..... | 30.02 | 43 | 28 | NW. | 10 | NW. | 12 | 3 | | |
| 14..... | 29.92 | 41 | 36 | SW. | 16 | SW. | 28 | | | .05 |
| 15..... | 29.38 | 40 | 39 | SW. | 28 | NW. | 28 | 7 | .20 | .07 |
| 16..... | 30.02 | 37 | 30 | NW. | 10 | W. | 10 | | | |
| 17..... | 29.84 | 42 | 32 | E. | 16 | E. | 10 | | | |
| 18..... | 29.88 | 47 | 37 | Calm | | W. | 6 | | | |
| 19..... | 30.02 | 44 | 36 | W. | 6 | NW. | 6 | | .01 | |
| 20..... | | | | | | | | | | |
| 21..... | 29.47 | 40 | 35 | W. | 4 | N. | 10 | 9 | 0.3 | |
| 22..... | 29.62 | 40 | 32 | N. | 22 | N. | 6 | | | |
| 23..... | 29.59 | 35 | 29 | N. | 6 | N. | 16 | | | |
| 24..... | 29.56 | 34 | 24 | N. | 6 | N. | 16 | | | |
| 25..... | 29.68 | | 29 | N. | 6 | W. | 10 | | 0.4 | |
| 26..... | 29.52 | 46 | 34 | SW. | 6 | NE. | 6 | | Trace | 0.2 |
| 27..... | 29.71 | 37 | 30 | NE. | 18 | N. | 12 | | | |
| 28..... | 30.03 | 44 | 38 | NW. | 6 | NW. | 16 | | | |
| 29..... | 30.02 | 33 | 27 | NW. | 6 | SE. | 12 | | 0.1 | |
| 30..... | 29.75 | 34 | 30 | S. | 16 | E. | 16 | | | |
| October | | | | | | | | | | |
| 1..... | 29.81 | 36 | 30 | E. | 10 | E. | 16 | | | |
| 2..... | 30.08 | 35 | 35 | NW. | 16 | SE. | 10 | | | Trace |
| 3..... | 29.78 | 36 | 28 | SE. | 34 | E. | 10 | | .02 | |
| 4..... | 30.02 | 34 | 31 | N. | 16 | N. | 5 | | .09 | |
| 5..... | 30.12 | 31 | 24 | N. | 5 | E. | 10 | | | |
| 6..... | 29.92 | 32 | 24 | NE. | 16 | S. | 22 | | | |
| 7..... | 29.93 | 32 | 24 | E. | 28 | NE. | 22 | | | 0.1 |
| 8..... | 29.93 | 27 | 23 | NE. | 22 | NE. | 16 | | 0.1 | |
| 9..... | 29.84 | 27 | 23 | E. | 6 | S. | 16 | | | |
| 10..... | 29.67 | 34 | 27 | SW. | 16 | N. | 5 | | Trace | |
| 11..... | 29.68 | 34 | 25 | N. | 3 | NW. | 5 | | | |
| 12..... | 29.55 | 33 | 25 | SW. | 16 | N. | 10 | | 3.0 | |
| 13..... | 29.80 | 23 | 18 | N. | 6 | NE. | 10 | | | |
| 14..... | 29.67 | 25 | 15 | NW. | 6 | E. | 10 | | | |
| 15..... | 29.71 | 27 | 12 | N. | 6 | N. | 3 | | | |
| 16..... | 29.70 | 25 | 11 | N. | 6 | S. | 16 | | | |
| 17..... | 29.61 | 25 | 20 | N. | 22 | NE. | 22 | | | 0.5 |
| 18..... | 29.66 | 26 | 20 | NE. | 22 | N. | 22 | | 5.0 | |

NOTTINGHAM ISLAND METEOROLOGICAL REPORT, 1940—Cont.

| Date | General Weather | Visibility | Ice Conditions |
|-------|---|--------------------|------------------|
| 1940 | | Miles | |
| Sept. | | | |
| 1 | Rain during night, intermittent drizzle, fog A.M. to overcast in evening. | $\frac{1}{4}$ - 20 | No ice in sight. |
| 2 | Foggy A.M. to clear P.M. Fog in distance. | $\frac{1}{2}$ - 5 | " " |
| 3 | Overcast to part cloudy. Shower P.M. Hazy to clear. | 2 - 20 | " " |
| 4 | Cloudy to clear..... | 25 | " " |
| 5 | Clear to partly cloudy. Severe frost during night. | 30 | " " |
| 6 | Overcast..... | 12 | " " |
| 7 | Continuous heavy rain..... | 20 | " " |
| 8 | Overcast to cloudy..... | 20 - 30 | " " |
| 9 | Cloudy to partly cloudy..... | 20 | " " |
| 10 | Partly cloudy..... | 30 | " " |
| 11 | Partly cloudy..... | 6 - 30 | " " |
| 12 | Partly cloudy to overcast..... | 12 - 30 | " " |
| 13 | Overcast..... | 20 | " " |
| 14 | Cloudy, continuous moderate rain. | 12 - 6 | " " |
| 15 | Continuous heavy to moderate rain. | 2 - 10 | " " |
| 16 | Partly cloudy to overcast..... | 20 | " " |
| 17 | Cloudy to overcast..... | 20 | " " |
| 18 | Cloudy to overcast..... | 20 - 6 | " " |
| 19 | Continuous moderate rain, overcast. | 0 - $\frac{1}{8}$ | " " |
| 20 | | | " " |
| 21 | Continuous heavy snow, overcast. | 0 - 12 | " " |
| 22 | Overcast to partly cloudy..... | 1 - 12 | " " |
| 23 | Cloudy..... | 20 | " " |
| 24 | Overcast..... | 12 | " " |
| 25 | Continuous heavy snow, overcast. | 6 | " " |
| 26 | Overcast, continuous moderate snow. | 0 | " " |
| 27 | Partly cloudy to overcast..... | 6 - 12 | " " |
| 28 | Overcast..... | 20 | " " |
| 29 | Overcast..... | 10 | " " |
| 30 | Overcast..... | 10 | " " |
| Oct. | | | |
| 1 | Overcast..... | 8 - 4 | No ice in sight. |
| 2 | Intermittent slight snow..... | $1\frac{1}{2}$ | " " |
| 3 | Continuous slight rain in A.M., overcast in P.M. | $\frac{3}{4}$ | " " |
| 4 | Partly cloudy..... | 8 - 40 | " " |
| 5 | Partly cloudy..... | 18 - 4 | " " |
| 6 | Partly cloudy in A.M., cloudy in P.M. | 18 - 8 | " " |
| 7 | Overcast in A.M., continuous slight snow in P.M. | 8 - $\frac{2}{8}$ | " " |
| 8 | Overcast..... | 8 | " " |
| 9 | Overcast..... | 8 - 40 | " " |
| 10 | Intermittent slight snow in A.M., overcast in P.M. | $\frac{3}{4}$ - 8 | " " |
| 11 | Partly cloudy in A.M., overcast in P.M. | 8 - 4 | " " |
| 12 | Continuous moderate snow in A.M., overcast in P.M. | 8 | " " |
| 13 | Overcast..... | 8 | " " |
| 14 | Overcast..... | 18 - 8 | " " |
| 15 | Overcast in A.M., partly cloudy in P.M. | 8 - 4 | " " |
| 16 | Partly cloudy in A.M., overcast in P.M. | 8 - 40 | " " |
| 17 | Overcast in A.M., continuous moderate snow in P.M. | 8 - $\frac{1}{2}$ | " " |
| 18 | Continuous heavy snow in A.M., continuous slight snow in P.M. | $1\frac{1}{2}$ - 8 | " " |

NOTTINGHAM ISLAND METEOROLOGICAL REPORT, 1940—*Cont.*

| Date | Mean Baro- meter | Air. Temp. | | Wind, 8 a.m. | | Wind, 8 p.m. | | Hours of Fog | Precipitation | |
|-----------------|------------------------|------------|------|--------------|-------|--------------|-------|--------------------|---------------|--------|
| | | Max. | Min. | Dir. | Vel. | Dir. | Vel. | | Rain or Snow | |
| | | | | | | | | | 8 a.m. | 8 p.m. |
| 1940 | | | | | | | | | | |
| October | | | | | | | | | | |
| 19..... | 29.76 | 23 | 15 | W. | 16 | SW. | 10 | | 1.0 | |
| 20..... | 29.81 | 25 | 19 | NE. | 6 | N. | 34 | | | 1.0 |
| 21..... | 29.56 | 34 | 21 | N. | 16 | NW. | 10 | | 0.3 | |
| 22..... | 29.61 | 29 | 21 | SW. | 3 | N. | 6 | | | |
| 23..... | 29.58 | 29 | 20 | NW. | 10 | N. | 10 | | | 0.9 |
| 24..... | 29.78 | 28 | 21 | W. | 3 | SW. | 10 | | 0.8 | |
| 25..... | 29.87 | 28 | 17 | NW. | 3 | N. | 16 | | | |
| 26..... | 30.10 | 36 | 24 | N. | 22 | NE. | 16 | | | |
| 27..... | 30.37 | 33 | 25 | NE. | 10 | N. | 10 | | | |
| 28..... | 30.55 | 33 | 18 | N. | 6 | NW. | 6 | | | |
| 29..... | 30.51 | 33 | 18 | NW. | 10 | NW. | 10 | | | |
| 30..... | 30.27 | 33 | 25 | NW. | 3 | W. | 16 | | | |
| 31..... | 29.93 | 32 | 25 | NW. | 22 | SW. | 22 | | | |
| November | | | | | | | | | | |
| 1..... | 29.88 | 32 | 31 | Calm | | W. | 10 | | | |
| 2..... | 29.94 | 32 | 30 | SW. | 6 | S. | 6 | | | |
| 3..... | 30.02 | 30 | 28 | NE. | 6 | N. | 10 | | | |
| 4..... | 30.29 | 22 | 11 | N. | 6 | NE. | 10 | | | |
| 5..... | 29.92 | 28 | 16 | E. | 28 | SE. | 16 | | | 0.5 |
| 6..... | 29.61 | 29 | 16 | S. | 28 | W. | 42 | | 2.0 | 3.0 |
| 7..... | 29.93 | 22 | 19 | SW. | 42 | W. | 34 | | 3.0 | 1.5 |
| 8..... | 29.91 | 23 | 20 | S. | 4 | E. | 16 | | 0.5 | 1.0 |
| 9..... | 29.27 | 25 | 19 | E. | 10 | N. | 28 | | 2.0 | 1.0 |
| 10..... | 29.42 | 21 | 18 | NW. | 28 | NW. | 28 | | 4.0 | 0.5 |
| 11..... | 30.13 | 16 | 9 | NW. | 22 | W. | 16 | | 1.0 | |
| 12..... | 29.75 | 20 | 7 | E. | 6 | NE. | 22 | | | 1.5 |
| 13..... | 29.39 | 20 | 13 | N. | 22 | NW. | 42 | | 0.5 | 2.2 |
| 14..... | 29.51 | 22 | 10 | NW. | 22 | W. | 28 | | | 0.5 |
| 15..... | 29.35 | 20 | 10 | NW. | 10 | NW. | 10 | | 0.5 | |
| 16..... | 29.65 | 13 | 7 | | | N. | 10 | | | |
| 17..... | 29.72 | 14 | 7 | N. | 10 | N. | 10 | | | |
| 18..... | 29.87 | 11 | 7 | N. | 10 | W. | 16 | | | |
| 19..... | 29.52 | 24 | 8 | SW. | 34 | NW. | 22 | | 0.5 | |
| 20..... | 29.25 | -1 | -7 | NW. | 20 | NW. | 22 | | | |
| 21..... | 29.60 | 8 | -2 | NW. | 22 | N. | 28 | | | 0.5 |
| 22..... | 29.96 | 9 | -5 | N. | 10 | NW. | 28 | | | |
| 23..... | 29.75 | 16 | 8 | W. | 10 | NW. | | | 0.5 | 0.3 |
| 24..... | 29.66 | 10 | 3 | NW. | 4 | W. | 10 | | | |
| 25..... | 29.86 | 2 | -5 | NE. | 16 | N. | 6 | | | |
| 26..... | 30.06 | 1 | -9 | SW. | 10 | SW. | 4 | | | |
| 27..... | 29.72 | 6 | -1 | NW. | 20 | Calm | | | | |
| 28..... | 29.74 | 8 | -1 | SE. | 10 | SW. | 16 | | | |
| 29..... | 29.88 | -1 | -2 | SW. | 10 | W. | 6 | | 0.3 | |
| 30..... | 29.83 | -4 | -9 | N. | 10 | N. | 6 | | | |

NOTTINGHAM ISLAND METEOROLOGICAL REPORT, 1940—*Conc.*

| Date | General Weather | Visibility | Ice Conditions |
|--------------|---|--------------------|--|
| | | Miles | |
| 1940 Oct. | | | |
| 19 | Continuous moderate snow in A.M., overcast in P.M. | $\frac{3}{4}$ - 8 | No ice in sight. |
| 20 | Overcast in A.M., continuous moderate snow in P.M. | 18 - $\frac{1}{2}$ | " " |
| 21 | Continuous slight snow in A.M., partly cloudy in P.M. | $\frac{1}{10}$ - 8 | " " |
| 22 | Partly cloudy..... | 18 | " " |
| 23 | Overcast in A.M., continuous moderate snow in P.M. | 4 - $\frac{3}{4}$ | " " |
| 24 | Overcast in A.M., cloudy in P.M. | 18 | " " |
| 25 | Cloudy in A.M., partly cloudy in P.M. | 18 - 8 | " " |
| 26 | Cloudy in A.M., partly cloudy in P.M. | 18 | " " |
| 27 | Partly cloudy..... | 8 - 18 | " " |
| 28 | Clear..... | 18 | " " |
| 29 | Partly cloudy in A.M., overcast in P.M. | 18 - 8 | " " |
| 30 | Partly cloudy in A.M., overcast in P.M. | 18 - 8 | " " |
| 31 | Overcast..... | 8 | " " |
| Nov. | | | |
| 1 | Overcast..... | 8 | No ice in sight. |
| 2 | Overcast..... | 8 - 18 | " " |
| 3 | Overcast in A.M., partly cloudy in P.M. | 18 | " " |
| 4 | Overcast..... | 8 | " " |
| 5 | Overcast in A.M., continuous slight snow in P.M. | 18 - $\frac{1}{2}$ | " " |
| 6 | Overcast in A.M., continuous slight snow in P.M. | $\frac{1}{10}$ - 4 | " " |
| 7 | Continuous moderate snow..... | $1\frac{1}{2}$ | " " |
| 8 | Overcast..... | 4 | " " |
| 9 | Overcast in A.M., continuous moderate snow in P.M. | 40 - $\frac{1}{2}$ | " " |
| 10 | Continuous moderate snow in A.M., overcast in P.M. | $\frac{3}{4}$ | " " |
| 11 | Continuous moderate snow in A.M., overcast in P.M. | 4 - 8 | " " |
| 12 | Overcast in A.M., continuous moderate snow in P.M. | 8 - 4 | Cove frozen. |
| 13 | Continuous moderate snow..... | $\frac{1}{2}$ | " " |
| 14 | Overcast in A.M., continuous slight snow in P.M. | 4 - $\frac{1}{10}$ | " " |
| 15 | Overcast..... | 18 | " " |
| 16 | Partly cloudy in P.M..... | 4 - 18 | " " |
| 17 | Overcast..... | 18 | " " |
| 18 | Overcast..... | 8 - 4 | " " |
| 19 | Continuous slight snow in A.M., partly cloudy in P.M. | $1\frac{1}{2}$ - 8 | " " |
| 20 | Overcast in A.M., cloudless in P.M. | 18 | " " |
| 21 | Partly cloudy in A.M., overcast in P.M. | 18 | " " |
| 22 | Partly cloudy in A.M., overcast in P.M. | 8 | " " |
| 23 | Continuous moderate snow in A.M., overcast in P.M. | 4 - 8 | " " |
| 24 | Overcast..... | 4 | " " |
| 25 | Partly cloudy..... | 8 - 18 | Loose drift. |
| 26 | Cloudless in A.M., overcast in P.M. | 4 - 18 | Loose ice two miles off shore. |
| 27 | Overcast..... | 18 | Loose ice two miles to horizon. |
| 28 | Overcast..... | 4 | Loose ice two miles off shore. |
| 29 | Continuous moderate snow in A.M., overcast in P.M. | $\frac{3}{4}$ - 8 | " " " |
| 30 | Overcast in A.M., cloudless in P.M. | 4 - 8 | Ice loose packed southwest to horizon. Close packed ice to east, west to horizon. |

CHURCHILL METEOROLOGICAL REPORT, 1940

| Date | Mean Barometer | Air. Temp. | | Wind, 8 a.m. | | Wind, 8 p.m. | | Hours of Fog | Precipitation | |
|------------------|----------------|------------|------|--------------|------|--------------|------|--------------|---------------|--------|
| | | Max. | Min. | Dir. | Vel. | Dir. | Vel. | | Rain or Snow | |
| | | | | | | | | | 8 a.m. | 8 p.m. |
| 1940 July | | | | | | | | | | |
| 1..... | 30.16 | 63 | 45 | N. | 10 | E. | 6 | | | |
| 2..... | 30.14 | 71 | 45 | SW. | 4 | NE. | 12 | | | |
| 3..... | 30.12 | 65 | 43 | S. | 9 | SE. | 20 | | | |
| 4..... | 29.89 | 73 | 45 | SE. | 18 | SE. | 18 | 2½ | | |
| 5..... | 29.69 | 70 | 59 | S. | 12 | E. | 6 | 3 | | |
| 6..... | 29.68 | 67 | 54 | W. | 14 | W. | 1 | | | |
| 7..... | 29.72 | 50 | 47 | NW. | 8 | NW. | 10 | | | |
| 8..... | 29.93 | 57 | 45 | NW. | 17 | N. | 5 | | | .06 |
| 9..... | 30.09 | 56 | 49 | NW. | 20 | N. | 9 | | Trace | |
| 10..... | 30.23 | 60 | 49 | NW. | 14 | E. | 3 | | | |
| 11..... | 30.17 | 69 | 48 | NW. | 10 | E. | 12 | | | |
| 12..... | 29.90 | 67 | 56 | S. | 10 | SW. | 10 | | | .36 |
| 13..... | 29.68 | 46 | 42 | E. | 14 | NE. | 36 | 5 | .18 | |
| 14..... | 29.99 | 67 | 43 | N. | 10 | Calm | | | | |
| 15..... | 29.77 | 56 | 44 | W. | 17 | E. | 4 | | | .09 |
| 16..... | 29.75 | 56 | 44 | NW. | 12 | W. | 15 | | | .08 |
| 17..... | 29.95 | 58 | 46 | W. | 18 | NW. | 15 | | | .01 |
| 18..... | 30.09 | 61 | 50 | W. | 12 | E. | 8 | | | .11 |
| 19..... | 29.96 | 75 | 52 | S. | 14 | S. | 14 | | | |
| 20..... | 29.67 | 77 | 56 | S. | 10 | E. | 6 | | | |
| 21..... | 29.76 | 70 | 59 | NW. | 18 | E. | 7 | | | |
| 22..... | 29.70 | 69 | 56 | S. | 6 | E. | 6 | | | .14 |
| 23..... | 29.74 | 66 | 52 | N. | 2 | NW. | 8 | | | |
| 24..... | 29.66 | 62 | 52 | NW. | 8 | N. | 12 | | | |
| 25..... | 29.63 | 58 | 51 | NW. | 17 | NW. | 13 | | | .08 |
| 26..... | 29.72 | 64 | 49 | NW. | 10 | NW. | 1 | | | |
| 27..... | 29.88 | 59 | 51 | NW. | 12 | NE. | 8 | | | |
| 28..... | 30.01 | 68 | 45 | SW. | 6 | E. | 12 | | | |
| 29..... | 29.93 | 69 | 50 | S. | 6 | E. | 12 | | | |
| 30..... | 29.90 | 74 | 46 | S. | 8 | E. | 1 | | | |
| 31..... | 29.73 | 77 | 53 | S. | 10 | S. | 24 | | | .22 |
| August | | | | | | | | | | |
| 1..... | 29.71 | 69 | 57 | SW. | 20 | NW. | 20 | | | |
| 2..... | 29.95 | 64 | 42 | S. | 4 | SE. | 22 | | | .07 |
| 3..... | 29.60 | 55 | 46 | N. | 30 | E. | 8 | | .47 | |
| 4..... | 29.74 | 64 | 50 | E. | 6 | E. | 10 | 7 | | |
| 5..... | 29.69 | 61 | 53 | W. | 15 | E. | 18 | | | |
| 6..... | 29.58 | 55 | 48 | NW. | 19 | E. | 12 | | .01 | |
| 7..... | 29.69 | 50 | 47 | E. | 4 | NE. | 18 | | | .45 |
| 8..... | 29.97 | 62 | 43 | W. | 12 | E. | 24 | | | .30 |
| 9..... | 29.87 | 77 | 48 | E. | 8 | SE. | 20 | | Trace | .40 |
| 10..... | 29.54 | 84 | 64 | S. | 18 | NW. | 15 | | | |
| 11..... | 29.70 | 61 | 53 | W. | 27 | W. | 30 | | | |
| 12..... | 30.00 | 62 | 49 | W. | 30 | NW. | 15 | | | |
| 13..... | 30.02 | 69 | 41 | S. | 6 | SE. | 15 | 3 | | |
| 14..... | 29.62 | 69 | 52 | SW. | 12 | W. | 5 | 10 | .33 | |
| 15..... | 29.64 | 65 | 52 | SW. | 10 | W. | 5 | | | |
| 16..... | 29.75 | 46 | 45 | NE. | 24 | NE. | 14 | 5 | | .44 |
| 17..... | 30.07 | 47 | 44 | N. | 28 | N. | 12 | | | .54 |
| 18..... | 30.29 | 50 | 44 | N. | 14 | NE. | 6 | | | |
| 19..... | 30.20 | 47 | 37 | SE. | 4 | SE. | 20 | | | .30 |
| 20..... | 30.20 | 45 | 41 | E. | 24 | NE. | 24 | | .39 | |
| 21..... | 30.37 | 50 | 42 | NE. | 21 | Calm | | | | |
| 22..... | 30.23 | 60 | 41 | W. | 12 | NW. | 12 | | | |
| 23..... | 30.18 | 55 | 44 | Calm | | E. | 12 | | | |
| 24..... | 30.11 | 65 | 39 | S. | 8 | S. | 12 | | | |

CHURCHILL METEOROLOGICAL REPORT, 1940

| Date | General Weather | Visibility | Ice Conditions |
|------|--|---------------------|---------------------------|
| 1940 | | Miles | |
| July | | | |
| 1 | Cloudy..... | 18 - 40 | Scattered ice on horizon. |
| 2 | Cloudless to partly cloudy..... | 40 | No ice in sight. |
| 3 | Partly cloudy..... | 40 | " " |
| 4 | Cloudy..... | 18 | " " |
| 5 | Overcast to partly cloudy..... | 18 | " " |
| 6 | Cloudless to cloudy..... | 18 | " " |
| 7 | Rain and fog, drizzle..... | $\frac{3}{4}$ - 18 | " " |
| 8 | Cloudy..... | 40 | " " |
| 9 | Cloudless to overcast..... | 40 - 18 | " " |
| 10 | Cloudless..... | 40 | " " |
| 11 | Cloudless to partly cloudy..... | 40 | " " |
| 12 | Overcast to cloudy..... | 18 | " " |
| 13 | Rain showers, overcast..... | 18 | " " |
| 14 | Cloudy to overcast..... | 18 | " " |
| 15 | Overcast to cloudy..... | 18 | " " |
| 16 | Rain showers, partly cloudy..... | 18 - 40 | " " |
| 17 | Partly cloudy to overcast..... | 18 | " " |
| 18 | Overcast to cloudy..... | 18 - 40 | " " |
| 19 | Overcast..... | 18 | " " |
| 20 | Cloudy to partly cloudy..... | 18 | " " |
| 21 | Cloudless to cloudy..... | 18 | " " |
| 22 | Cloudy to partly cloudy..... | 18 - 40 | " " |
| 23 | Partly cloudy..... | 18 - 40 | " " |
| 24 | Cloudy to overcast..... | 18 | " " |
| 25 | Partly cloudy, rain showers..... | 18 | " " |
| 26 | Partly cloudy..... | 40 | " " |
| 27 | Cloudless..... | 18 - 40 | " " |
| 28 | Cloudless to partly cloudy..... | 40 | " " |
| 29 | Overcast to cloudy..... | 18 | " " |
| 30 | Cloudless..... | 40 | " " |
| 31 | Overcast..... | 18 | " " |
| Aug. | | | |
| 1 | Cloudy to overcast..... | 18 | No ice in sight. |
| 2 | Cloudy to overcast..... | 18 | " " |
| 3 | Continuous moderate rain A.M., cloudy P.M. | 18 - 40 | " " |
| 4 | Fog at distance A.M., partly cloudy P.M. | 6 - 18 | " " |
| 5 | Partly cloudy..... | 40 - 18 | " " |
| 6 | Intermittent moderate rain A.M., overcast P.M. | 18 | " " |
| 7 | Intermittent slight rain A.M., slight rain and drizzle P.M. | 18 | " " |
| 8 | Overcast A.M., to intermittent slight rain P.M. | 18 - 8 | " " |
| 9 | Overcast P.M., partly cloudy with rain P.M. | 18 | " " |
| 10 | Overcast..... | 18 | " " |
| 11 | Overcast..... | 18 | " " |
| 12 | Overcast A.M., cloudless P.M.... | 18 - 40 | " " |
| 13 | Fog A.M., intermittent slight rain P.M. | $\frac{1}{2}$ - 8 | " " |
| 14 | Continuous moderate rain A.M., overcast P.M. | $1\frac{1}{2}$ - 8 | " " |
| 15 | Overcast..... | 8 - 4 | " " |
| 16 | Continuous to intermittent slight rain. | 4 - 8 | " " |
| 17 | Intermittent moderate rain A.M., overcast P.M. | 8 - 18 | " " |
| 18 | Cloudy to cloudless..... | 18 - 40 | " " |
| 19 | Partly cloudy A.M., intermittent slight rain P.M. | 18 - 4 | " " |
| 20 | Intermittent slight rain A.M., cloudy P.M. | 18 - 40 | " " |
| 21 | Overcast..... | 18 | " " |
| 22 | Partly cloudy to cloudy..... | 40 - $1\frac{1}{2}$ | " " |
| 23 | Cloudy A.M. cloudless P.M..... | 18 | " " |
| 24 | Overcast..... | 18 | " " |

CHURCHILL METEOROLOGICAL REPORT, 1940—Cont.

| Date | Mean Baro- meter | Air. Temp. | | Wind, 8 a.m. | | Wind, 8 p.m. | | Hours of Fog | Precipitation | |
|-----------|------------------------|------------|------|--------------|------|--------------|------|--------------------|---------------|--------|
| | | Max. | Min. | Dir. | Vel. | Dir. | Vel. | | Rain or Snow | |
| | | | | | | | | | 8 a.m. | 8 p.m. |
| 1940 | | | | | | | | | | |
| August | | | | | | | | | | |
| 25..... | 29.92 | 71 | 49 | S. | 12 | S. | 15 | | | |
| 26..... | 29.74 | 74 | 55 | S. | 14 | SW. | 22 | | | |
| 27..... | 29.64 | 72 | 58 | S. | 12 | SW. | 17 | | | |
| 28..... | 29.63 | 67 | 60 | S. | 6 | SE. | 4 | | .09 | |
| 29..... | 29.84 | 56 | 53 | NW. | 5 | E. | 6 | | | |
| 30..... | 29.95 | 67 | 53 | NE. | 12 | S. | 12 | | .06 | |
| 31..... | 29.77 | 73 | 56 | SW. | 14 | SW. | 26 | | | |
| September | | | | | | | | | | |
| 1..... | 29.68 | 67 | 60 | S. | 22 | W. | 6 | | | |
| 2..... | 29.95 | 71 | 50 | | | N. | 4 | | | |
| 3..... | 30.01 | 67 | 47 | SW. | 6 | S. | 10 | | | |
| 4..... | 30.02 | 73 | 48 | SE. | 12 | E. | 6 | | | |
| 5..... | 29.75 | 84 | 55 | SE. | 16 | S. | 22 | | | |
| 6..... | 29.67 | 54 | 54 | N. | 5 | NW. | 12 | 5½ | | 1.02 |
| 7..... | 30.30 | 49 | 45 | NE. | 28 | NE. | 28 | | .02 | |
| 8..... | 30.33 | 45 | 44 | NE. | 16 | NE. | 22 | | | |
| 9..... | 30.25 | 49 | 42 | NW. | 28 | N. | 16 | | | |
| 10..... | 30.21 | 53 | 44 | N. | 16 | SE. | 10 | | | |
| 11..... | 29.80 | 64 | 38 | SW. | 16 | SW. | 22 | | | |
| 12..... | 29.78 | 48 | 47 | NW. | 22 | N. | 35 | | .22 | .15 |
| 13..... | 30.09 | 48 | 42 | NE. | 16 | SE. | 12 | | .18 | |
| 14..... | 29.77 | 60 | 42 | SW. | 28 | W. | 22 | | | .06 |
| 15..... | 29.95 | 50 | 48 | NW. | 16 | E. | 10 | | | |
| 16..... | 29.73 | 48 | 37 | SE. | 10 | SE. | 16 | | | |
| 17..... | 29.68 | 74 | 47 | SW. | 12 | E. | 4 | 4 | Trace | |
| 18..... | 29.88 | 61 | 49 | N. | 6 | N. | 6 | | | |
| 19..... | 29.89 | 64 | 52 | SE. | 6 | S. | 12 | | .04 | |
| 20..... | 29.81 | 65 | 49 | | | S. | 8 | | | |
| 21..... | 29.88 | 62 | 53 | W. | 22 | NW. | 22 | | | |
| 22..... | 29.94 | 50 | 47 | NW. | 16 | E. | 28 | | | .03 |
| 23..... | 30.07 | 42 | 39 | NE. | 26 | N. | 34 | | .34 | |
| 24..... | 30.13 | 45 | 34 | NW. | 36 | NW. | 28 | | 0.2 | Trace |
| 25..... | 29.90 | 48 | 38 | W. | 12 | SE. | 6 | | | |
| 26..... | 29.71 | 51 | 34 | SE. | 6 | N. | 18 | | | |
| 27..... | 30.08 | 46 | 39 | NE. | 12 | NE. | 12 | | | |
| 28..... | 30.22 | 55 | 42 | NW. | 6 | SW. | 18 | | | |
| 29..... | 29.92 | 58 | 43 | SW. | 16 | SW. | 12 | | | |
| 30..... | 30.03 | 48 | 48 | NW. | 16 | N. | 16 | | | |
| October | | | | | | | | | | |
| 1..... | 30.39 | 40 | 36 | NE. | 16 | NE. | 10 | | | |
| 2..... | 30.35 | 44 | 31 | W. | 4 | S. | 16 | | | |
| 3..... | 30.05 | 49 | 34 | SW. | 16 | SW. | 10 | | | |
| 4..... | 29.90 | 41 | 36 | SW. | 16 | W. | 4 | 4 | | |
| 5..... | 29.76 | 44 | 39 | NE. | 16 | NE. | 16 | 10 | Trace | .20 |
| 6..... | 29.73 | 48 | 41 | NW. | 10 | NW. | 16 | | .38 | .17 |
| 7..... | 29.93 | 41 | 39 | NE. | 22 | NE. | 28 | | .01 | |
| 8..... | 29.84 | 39 | 34 | S. | 5 | S. | 22 | | .01 | |
| 9..... | 29.69 | 41 | 33 | SW. | 4 | E. | 5 | | | |
| 10..... | 29.76 | 41 | 37 | N. | 10 | N. | 16 | | .04 | .01 |
| 11..... | 29.67 | 41 | 35 | S. | 5 | S. | 5 | | | |
| 12..... | 29.68 | 40 | 38 | NW. | 10 | NE. | 34 | | .10 | .37 |
| 13..... | 30.00 | 26 | 26 | NW. | 22 | NW. | 10 | | .02 | Trace |
| 14..... | 30.24 | 24 | 19 | NW. | 28 | NW. | 28 | | 0.5 | |

CHURCHILL METEOROLOGICAL REPORT, 1940—Cont.

| Date | General Weather | Visibility | Ice Conditions |
|-------|--|---------------------|------------------|
| 1940 | | Miles | |
| Aug. | | | |
| 25 | Cloudy..... | 18 | No ice in sight. |
| 26 | Partly cloudy to overcast..... | 18 | " " |
| 27 | Partly cloudy A.M., slight rain showers P.M. | 18 | " " |
| 28 | Overcast..... | 18 | " " |
| 29 | Overcast..... | 18 | " " |
| 30 | Overcast..... | 18 | " " |
| 31 | Partly cloudy to cloudy..... | 18 | " " |
| Sept. | | | |
| 1 | Cloudless to overcast..... | 18 | No ice in sight. |
| 2 | Cloudless..... | 18 | " " |
| 3 | Partly cloudy to overcast..... | 18 | " " |
| 4 | Overcast to cloudy..... | 18 | " " |
| 5 | Partly cloudy..... | 18 - 4 | " " |
| 6 | Overcast A.M., continuous moderate rain P.M. | 8 | " " |
| 7 | Continuous slight rain A.M., overcast P.M. | 18 | " " |
| 8 | Overcast..... | 18 | " " |
| 9 | Partly cloudy to cloudless..... | 18 - 40 | " " |
| 10 | Partly cloudy to cloudless..... | 18 | " " |
| 11 | Partly cloudy to overcast..... | 8 - 18 | " " |
| 12 | Continuous moderate rain..... | $\frac{3}{4}$ - 4 | " " |
| 13 | Continuous moderate rain A.M., overcast P.M. | 8 - 18 | " " |
| 14 | Overcast A.M., continuous moderate rain P.M. | 18 | " " |
| 15 | Cloudy to partly cloudy..... | 8 - 40 | " " |
| 16 | Overcast..... | 18 - 8 | " " |
| 17 | Continuous slight rain A.M., partly cloudy P.M. | 18 | " " |
| 18 | Partly cloudy to cloudy..... | 18 | " " |
| 19 | Continuous moderate rain A.M., partly cloudy P.M. | 18 | " " |
| 20 | Partly cloudy..... | 18 | " " |
| 21 | Partly cloudy..... | 40 | " " |
| 22 | Overcast A.M., continuous moderate rain P.M. | 18 - 4 | " " |
| 23 | Continuous moderate rain A.M., cloudy P.M. | $1\frac{1}{2}$ - 18 | " " |
| 24 | Continuous slight snow..... | 18 | " " |
| 25 | Cloudy to overcast..... | 18 | " " |
| 26 | Cloudless..... | 18 - 40 | " " |
| 27 | Cloudy to cloudless..... | 18 | " " |
| 28 | Overcast to partly cloudy..... | 18 | " " |
| 29 | Overcast..... | 18 | " " |
| 30 | Partly cloudy..... | 18 | " " |
| Oct. | | | |
| 1 | Partly cloudy..... | 18 | No ice in sight. |
| 2 | Clear in A.M., partly cloudy in P.M. | 18 | " " |
| 3 | Partly cloudy..... | 18 | " " |
| 4 | Overcast..... | 8 - $1\frac{1}{2}$ | " " |
| 5 | Continuous slight rain in A.M., continuous moderate rain in P.M. | $\frac{3}{4}$ - 8 | " " |
| 6 | Continuous moderate rain in A.M., continuous slight rain in P.M. | 4 - $\frac{3}{4}$ | " " |
| 7 | Overcast..... | 18 - 8 | " " |
| 8 | Overcast..... | 8 - 18 | " " |
| 9 | Clear in A.M., overcast in P.M. | 18 | " " |
| 10 | Continuous slight rain..... | 18 - 40 | " " |
| 11 | Overcast..... | 18 | " " |
| 12 | Continuous slight rain in A.M., continuous moderate rain in P.M. | 18 - $1\frac{1}{2}$ | " " |
| 13 | Overcast A.M., intermittent slight rain P.M. | 18 - $1\frac{1}{2}$ | " " |
| 14 | Overcast..... | 18 | " " |

CHURCHILL METEOROLOGICAL REPORT, 1940—*Cont.*

| Date | Mean Baro- meter | Air Temp. | | Wind, 8 a.m. | | Wind, 8 p.m. | | Hours of Fog | Precipitation | |
|----------|------------------------|-----------|------|--------------|-------|--------------|------|--------------------|---------------|--------|
| | | Max. | Min. | Dir. | Vel. | Dir. | Vel. | | Rain or Snow | |
| | | | | | | | | | 8 a.m. | 8 p.m. |
| 1940 | | | | | | | | | | |
| October | | | | | | | | | | |
| 15..... | 29.98 | 30 | 21 | NW. | 10 | S. | 22 | | Trace | |
| 16..... | 29.71 | 36 | 29 | N. | 28 | NW. | 40 | | .05 | Trace |
| 17..... | 30.30 | 19 | 17 | NW. | 28 | NW. | 16 | | | |
| 18..... | 30.22 | 23 | 11 | W. | 10 | W. | 10 | 6 | | |
| 19..... | 30.22 | 18 | 18 | NW. | 22 | N. | 28 | | 0.2 | |
| 20..... | 30.37 | 24 | 11 | NW. | 22 | NE. | 10 | | Trace | Trace |
| 21..... | 29.96 | 23 | 16 | S. | 10 | SE. | 22 | | 1.0 | 7.0 |
| 22..... | 29.39 | 33 | 23 | SE. | 16 | E. | 34 | 3 | .01 | 3.7 |
| 23..... | 29.84 | 34 | 32 | NE. | 16 | NW. | 10 | 1 | 0.4 | |
| 24..... | 30.04 | 29 | 28 | W. | 6 | NW. | 22 | 3 | 0.1 | Trace |
| 25..... | 30.39 | 28 | 11 | NW. | 10 | N. | 10 | 2 | | Trace |
| 26..... | 30.40 | 22 | 10 | SW. | 6 | S. | 6 | 11 | | |
| 27..... | 30.48 | 28 | 16 | SE. | 6 | SE. | 6 | | | |
| 28..... | 30.40 | 32 | 20 | SE. | 10 | SE. | 22 | | 0.1 | |
| 29..... | 30.13 | 33 | 31 | SE. | 22 | SE. | 22 | | | |
| 30..... | 30.01 | 33 | 20 | SE. | 16 | S. | 10 | | | Trace |
| 31..... | 29.97 | 35 | 33 | W. | 10 | SW. | 6 | | | |
| November | | | | | | | | | | |
| 1..... | 29.92 | 31 | 28 | S. | 10 | NW. | 6 | 24 | | |
| 2..... | 30.09 | 27 | 26 | N. | 28 | NW. | 22 | 6 | 0.1 | |
| 3..... | 30.24 | 23 | 13 | NW. | 10 | NE. | 6 | 7 | | |
| 4..... | 30.11 | 28 | 23 | N. | 4 | NW. | 28 | | 0.5 | 1.4 |
| 5..... | 30.30 | 9 | 5 | NW. | 34 | NW. | 28 | | 0.2 | |
| 6..... | 30.39 | Zero | -5 | W. | 16 | NW. | 16 | | | |
| 7..... | 30.39 | -3 | -6 | W. | 22 | W. | 22 | | | |
| 8..... | 30.36 | 2 | -5 | NW. | 28 | N. | 28 | | | |
| 9..... | 30.37 | 6 | -5 | NW. | 22 | NW. | 16 | | | |
| 10..... | 30.41 | -2 | -5 | NW. | 10 | NW. | 22 | | | |
| 11..... | 30.34 | -1 | -6 | NW. | 16 | NW. | 16 | | | |
| 12..... | 30.11 | 4 | -6 | NE. | 28 | NW. | 28 | | | |
| 13..... | 30.22 | 1 | -10 | NW. | 22 | W. | 10 | | | |
| 14..... | 29.69 | 19 | 1 | NW. | 16 | SW. | 16 | | | |
| 15..... | 29.49 | 23 | 18 | N. | 10 | NW. | 6 | 12 | | |
| 16..... | 29.53 | 28 | 23 | Calm | | NE. | 10 | 3 | | Trace |
| 17..... | 29.99 | 16 | 16 | NW. | 22 | NW. | 16 | | | |
| 18..... | 30.07 | 10 | -5 | SW. | 6 | S. | 16 | | | |
| 19..... | 29.83 | 19 | 13 | NW. | 6 | SE. | 6 | | | Trace |
| 20..... | 30.01 | -1 | -3 | NW. | 22 | NW. | 16 | | 1.5 | |
| 21..... | 30.30 | -8 | -15 | NW. | 22 | NW. | 10 | | | |
| 22..... | 30.29 | 5 | -16 | SW. | 16 | SW. | 16 | | | |
| 23..... | 30.01 | 15 | 5 | SW. | 16 | NW. | 28 | | | 0.5 |
| 24..... | 30.25 | -3 | -5 | NW. | 22 | NW. | 28 | 3 | 0.5 | |
| 25..... | 30.34 | -6 | -10 | NW. | 16 | W. | 10 | | | |
| 26..... | 30.27 | -11 | -15 | NW. | 20 | NW. | 28 | | | Trace |
| 27..... | 30.15 | -15 | -17 | NW. | 16 | NW. | 16 | | | |
| 28..... | 29.92 | -6 | -22 | W. | 6 | W. | 10 | | | Trace |
| 29..... | 29.85 | -15 | -18 | NW. | 16 | NW. | 16 | | | |
| 30..... | 29.94 | -12 | -21 | W. | 16 | W. | 22 | | | 1.2 |

CHURCHILL METEOROLOGICAL REPORT, 1940—*Conc.*

| Date | General Weather | Visibility | Ice Conditions |
|---------|--|------------|--|
| 1940 | | Miles | |
| Oct. 15 | Intermittent slight snow in A.M., overcast P.M. | 18 | No ice in sight. |
| 16 | Continuous slight rain in A.M., intermittent slight snow in P.M. | 18 - 8 | " " |
| 17 | Overcast..... | 18 | " " |
| 18 | Clear in A.M., overcast in P.M.... | 18 - 40 | " " |
| 19 | Continuous slight snow in A.M., overcast P.M. | 1½ - 18 | " " |
| 20 | Intermittent slight snow..... | 8 - 18 | " " |
| 21 | Continuous moderate snow in A.M., continuous heavy snow in P.M. | 1½ - 8 | " " |
| 22 | Snow or sleet in A.M., continuous heavy snow in P.M. | 8 - 4 | " " |
| 23 | Continuous slight snow..... | 4 - 8 | " " |
| 24 | Continuous slight snow in A.M., intermittent slight snow in P.M. | 8 - 18 | " " |
| 25 | Fog..... | 4 | " " |
| 26 | Fog..... | ½ - 8 | " " |
| 27 | Overcast..... | 18 | " " |
| 28 | Continuous slight snow in A.M., overcast P.M. | 4 - 8 | " " |
| 29 | Clear in A.M., partly cloudy in P.M. | 8 - 18 | " " |
| 30 | Clear in A.M., continuous slight rain P.M. | 18 - 8 | " " |
| 31 | Overcast..... | 18 - 8 | " " |
| Nov. 1 | Overcast..... | 8 | No ice in sight. |
| 2 | Continuous slight snow in A.M., overcast P.M. | 8 - ½ | " " |
| 3 | Overcast..... | 4 - 8 | " " |
| 4 | Continuous slight snow in A.M., continuous moderate snow in P.M. | ½ - 4 | " " |
| 5 | Partly cloudy..... | 18 | " " |
| 6 | Clear in A.M., partly cloudy in P.M. | 18 | Ice beginning to form along river banks. |
| 7 | Clear..... | 18 | |
| 8 | Clear in A.M., overcast in P.M.... | 18 - 8 | Drift ice in bay, loose, much open water. |
| 9 | Clear in A.M., overcast in P.M.... | 18 | Ice in bay close packed. Very little open water visible. |
| 10 | Clear in A.M., overcast in P.M.... | 18 | Ice remains close packed. |
| 11 | Clear..... | 18 | " " |
| 12 | Overcast..... | 8 - 18 | " " |
| 13 | Clear in A.M., overcast in P.M.... | 18 | " " |
| 14 | Overcast in A.M., partly cloudy in P.M. | 18 | " " |
| 15 | Overcast..... | 18 - 2 | " " |
| 16 | Overcast in A.M., continuous slight snow in P.M. | 18 - 8 | " " |
| 17 | Overcast in A.M., clear in P.M.... | 8 - 18 | " " |
| 18 | Partly cloudy in A.M., overcast in P.M. | 18 - 1 | " " |
| 19 | Cloudy in A.M., continuous slight snow in P.M. | 8 - 1½ | " " |
| 20 | Continuous moderate snow in A.M., clear in P.M. | ¾ - 18 | " " |
| 21 | Clear..... | 40 - 18 | " " |
| 22 | Clear in A.M., overcast in P.M.... | 40 - 18 | " " |
| 23 | Overcast in A.M., continuous slight snow P.M. | 1½ | " " |
| 24 | Partly cloudy..... | 18 | Light ice. |
| 25 | Clear..... | 18 | " " |
| 26 | Cloudy in A.M., continuous slight snow P.M. | ¾ | " " |
| 27 | Clear..... | 18 | " " |
| 28 | Clear in A.M., partly cloudy in P.M. | 40 - 18 | " " |
| 29 | Clear..... | 18 | " " |
| 30 | Overcast in A.M., clear in P.M.... | 18 | " " |

CHESTERFIELD INLET METEOROLOGICAL REPORT, 1940

| Date | Mean Baro- meter | Air Temp. | | Wind, 8 a.m. | | Wind, 8 p.m. | | Hours of Fog | Precipitation | |
|--------------|------------------------|-----------|------|--------------|------|--------------|------|--------------------|---------------|--------|
| | | Max. | Min. | Dir. | Vel. | Dir. | Vel. | | Rain or Snow | |
| | | | | | | | | | 8 a.m. | 8 p.m. |
| 1940 July | | | | | | | | | | |
| 1..... | 30.04 | 58 | 40 | N. | 14 | NW. | 12 | | | |
| 2..... | 30.09 | 59 | 39 | NW. | 12 | N. | 16 | | | |
| 3..... | 30.12 | 57 | 39 | N. | 12 | S. | 18 | | | |
| 4..... | 30.09 | 50 | 36 | SW. | 2 | SE. | 12 | | | |
| 5..... | 29.70 | 37 | 34 | E. | 22 | SE. | 8 | 5 | .24 | .60 |
| 6..... | 29.58 | 41 | 33 | NE. | 6 | NE. | 8 | 12 | | |
| 7..... | 29.65 | 43 | 36 | N. | 8 | N. | 12 | 10 | Trace | .12 |
| 8..... | 29.77 | 49 | 39 | N. | 14 | N. | 14 | | " | Trace |
| 9..... | 29.99 | 53 | 40 | N. | 10 | S. | 4 | | .02 | " |
| 10..... | 30.11 | 62 | 43 | N. | 6 | NW. | 14 | | | |
| 11..... | 30.02 | 70 | 45 | NW. | 12 | SW. | 20 | | | |
| 12..... | 29.88 | 58 | 40 | NW. | 6 | SE. | 8 | | | Trace |
| 13..... | 30.01 | 43 | 35 | NE. | 10 | Calm | | | | |
| 14..... | 29.79 | 61 | 38 | Calm | | W. | 16 | | | |
| 15..... | 29.58 | 49 | 39 | N. | 20 | NW. | 18 | | Trace | .01 |
| 16..... | 29.53 | 49 | 37 | NW. | 6 | N. | 8 | | .03 | .02 |
| 17..... | 29.66 | 52 | 43 | NW. | 2 | S. | 4 | | .12 | Trace |
| 18..... | 29.88 | 59 | 40 | NW. | 6 | S. | 12 | | .01 | .01 |
| 19..... | 29.90 | 64 | 43 | W. | 8 | S. | 12 | | | Trace |
| 20..... | 29.66 | 44 | 38 | SE. | 12 | NE. | 18 | 6 | | |
| 21..... | 29.68 | 44 | 34 | NE. | 18 | S. | 12 | | | .01 |
| 22..... | 29.63 | 56 | 37 | S. | 12 | NW. | 12 | | .02 | .03 |
| 23..... | 29.59 | 47 | 41 | SW. | 6 | S. | 16 | | | Trace |
| 24..... | 29.54 | 45 | 35 | NE. | 2 | NE. | 8 | 2 | .01 | " |
| 25..... | 29.58 | 49 | 37 | N. | 4 | SE. | 4 | | .01 | " |
| 26..... | 29.60 | 58 | 39 | S. | 6 | S. | 8 | | .05 | |
| 27..... | 29.78 | 68 | 41 | NW. | 8 | NW. | 12 | | | |
| 28..... | 29.86 | 75 | 47 | NW. | 10 | NW. | 8 | | | |
| 29..... | 29.78 | 79 | 51 | W. | 6 | SW. | 18 | | | |
| 30..... | 29.77 | 78 | 47 | N. | 2 | SW. | 14 | | | |
| 31..... | 29.71 | 63 | 45 | SE. | 8 | SE. | 16 | | | .15 |
| August | | | | | | | | | | |
| 1..... | 29.62 | | 45 | SE. | 16 | | | | | |
| 2..... | | | | | | | | | | |
| 3..... | 29.66 | | 43 | S. | 16 | | | | Trace | |
| 4..... | 29.58 | 63 | 41 | W. | 6 | W. | 10 | | .14 | |
| 5..... | 29.53 | 54 | 41 | | | W. | 22 | | | |
| 6..... | 29.45 | 55 | 40 | NW. | 16 | W. | 16 | | | |
| 7..... | 29.76 | | 40 | NW. | 6 | | | | | |
| 8..... | 29.80 | 55 | 42 | NW. | 16 | NW. | 16 | | | |
| 9..... | 30.05 | 50 | 39 | NW. | 6 | SE. | 10 | | | |
| 10..... | 29.47 | 49 | 39 | SE. | 10 | SE. | 6 | | | |
| 11..... | 29.12 | 59 | 38 | W. | 22 | NW. | 50 | | | |
| 12..... | 29.59 | 55 | 37 | NW. | 42 | NW. | 16 | | | |
| 13..... | 29.97 | 56 | 40 | NW. | 10 | SW. | 10 | | | |
| 14..... | 29.32 | 44 | 30 | | | NW. | 10 | | | .02 |
| 15..... | 29.65 | 50 | 41 | NW. | 10 | SE. | 3 | | | |
| 16..... | 29.90 | 47 | 40 | E. | 6 | S. | 7 | | | |
| 17..... | 30.04 | 52 | 40 | | | SE. | 6 | | | |
| 18..... | 30.24 | 44 | 38 | NE. | 11 | SE. | 4 | | .07 | .01 |
| 19..... | 30.27 | 51 | 35 | SW. | 10 | S. | 10 | | | |
| 20..... | 30.32 | 53 | 35 | NW. | 12 | N. | 12 | | | |
| 21..... | 30.21 | 53 | 49 | NW. | 12 | NW. | 12 | | | .02 |
| 22..... | 30.10 | 51 | 40 | NW. | 12 | SE. | 12 | 6 | .05 | .06 |
| 23..... | 30.22 | 43 | 34 | NE. | 6 | S. | 16 | 12 | Trace | |
| 24..... | 30.18 | 43 | 35 | SW. | 22 | S. | 16 | | | |
| 25..... | 29.94 | 44 | 40 | S. | 22 | SE. | 22 | | | |
| 26..... | 29.86 | 44 | 40 | S. | 16 | S. | 22 | | | .41 |
| 27..... | 29.62 | 40 | 38 | S. | 16 | S. | 12 | | .05 | |
| 28..... | 29.42 | 46 | 40 | N. | 12 | NE. | 12 | 18 | | |
| 29..... | 29.80 | 47 | 40 | Calm | | E. | 6 | | | |
| 30..... | 29.90 | 44 | 38 | S. | 12 | S. | 6 | | | |
| 31..... | 29.68 | 56 | 40 | S. | 16 | NE. | 6 | | | |

CHESTERFIELD INLET METEOROLOGICAL REPORT, 1940

| Date | General Weather | Visibility | Ice Conditions |
|------|---|-------------------------------|---------------------------------------|
| 1940 | | Miles | |
| July | | | |
| 1 | Cloudless to cloudy..... | 8 | Cove ice solid, string ice outside. |
| 2 | Cloudless to partly cloudy..... | 8 | Ice unchanged. |
| 3 | Cloudless to partly cloudy..... | 8 | " " |
| 4 | Overcast..... | 8 | " " |
| 5 | Continuous heavy rain, overcast.. | 4 | Close packed ice to horizon. |
| 6 | Fog, overcast..... | $\frac{1}{2}$ - 4 | Cove clear, scattered ice on horizon. |
| 7 | Fog, overcast..... | $\frac{1}{2}$ - 7 | " " , loose packed elsewhere. |
| 8 | Continuous moderate drizzle, overcast. | 4 - 8 | Not reported. |
| 9 | Intermittent slight drizzle, partly cloudy. | 4 - 8 | " " |
| 10 | Cloudless..... | 8 | " " |
| 11 | Partly cloudy..... | 8 | " " |
| 12 | Overcast..... | 8 | " " |
| 13 | Partly cloudy to overcast..... | 8 | " " |
| 14 | Cloudy to overcast..... | 8 | " " |
| 15 | Cloudy..... | 8 | " " |
| 16 | Showers moderate rain, partly cloudy. | 8 | " " |
| 17 | Overcast to cloudy..... | 8 | " " |
| 18 | Overcast to partly cloudy..... | 8 | " " |
| 19 | Cloudy to partly cloudy..... | 8 | " " |
| 20 | Overcast to light fog..... | 8 - $\frac{3}{4}$ | " " |
| 21 | Overcast to partly cloudy..... | 8 | " " |
| 22 | Overcast to partly cloudy..... | 8 | " " |
| 23 | Cloudy..... | 8 | " " |
| 24 | Fog and drizzle..... | $\frac{1}{2}$ - $\frac{2}{5}$ | " " |
| 25 | Intermittent light rain, fog at distance. | 8 | " " |
| 26 | Cloudy to partly cloudy..... | 8 | " " |
| 27 | Partly cloudy..... | 8 | " " |
| 28 | Cloudless to partly cloudy..... | 8 | " " |
| 29 | Cloudy to overcast..... | 8 | " " |
| 30 | Overcast, visibility reduced by smoke. | 8 | " " |
| 31 | Cloudless to cloudy..... | 8 | " " |
| Aug. | | | |
| 1 | Continuous moderate rain..... | 4 | Not reported. |
| 2 | | | " " |
| 3 | Intermittent light rain..... | $\frac{1}{10}$ | " " |
| 4 | Intermittent moderate rain to cloudy. | 8 - 18 | " " |
| 5 | Partly cloudy..... | 18 | " " |
| 6 | Cloudy..... | 18 | " " |
| 7 | Cloudless..... | 18 | " " |
| 8 | Overcast to partly cloudy..... | 18 | " " |
| 9 | Cloudless to cloudy..... | 18 | " " |
| 10 | Cloudy to fog..... | 4 - 8 | " " |
| 11 | Cloudy to overcast..... | 8 - 18 | " " |
| 12 | Overcast..... | 8 - 18 | " " |
| 13 | Cloudless to overcast..... | 18 | " " |
| 14 | Drizzle..... | 8 | " " |
| 15 | Overcast to partly cloudy..... | 8 - 18 | " " |
| 16 | Cloudy to overcast..... | 18 | " " |
| 17 | Overcast..... | 18 | " " |
| 18 | Continuous moderate rain to partly cloudy. | 4 - 18 | " " |
| 19 | Cloudless to cloudy..... | 18 | " " |
| 20 | Overcast to cloudy..... | 18 | " " |
| 21 | Overcast, rain P.M..... | 18 | " " |
| 22 | Drizzle, rain, fog..... | 7 - $\frac{3}{4}$ | " " |
| 23 | Rain and fog to cloudless..... | $\frac{2}{3}$ - 18 | " " |
| 24 | Overcast..... | 8 | " " |
| 25 | Overcast to cloudy..... | 8 | " " |
| 26 | Fog and rain..... | 8 | " " |
| 27 | Overcast to cloudy, rain P.M..... | 8 - 18 | " " |
| 28 | Fog 18 hours..... | $\frac{1}{2}$ | " " |
| 29 | Fog to overcast..... | $\frac{1}{2}$ - 8 | " " |
| 30 | Overcast..... | 8 | " " |
| 31 | Low fog to cloudy..... | 8 - 18 | " " |

CHESTERFIELD INLET METEOROLOGICAL REPORT, 1940—Cont.

| Date | Mean Baro- meter | Air Temp. | | Wind, 8 a.m. | | Wind, 8 p.m. | | Hours of Fog | Precipitation | |
|-------------------|------------------------|-----------|------|--------------|------|--------------|------|--------------------|---------------|--------|
| | | Max. | Min. | Dir. | Vel. | Dir. | Vel. | | Rain or Snow | |
| | | | | | | | | | 8 a.m. | 8 p.m. |
| 1940 September | | | | | | | | | | |
| 1..... | 29.48 | 60 | 38 | E. | 16 | NW. | 6 | | | |
| 2..... | 29.59 | 58 | 42 | W. | 16 | NW. | 35 | | | |
| 3..... | 29.89 | | 40 | NW. | 22 | | | | | |
| 4..... | 30.00 | 50 | 40 | Calm | | SE. | 6 | | | |
| 5..... | 29.91 | 42 | 37 | S. | 12 | SE. | 12 | 7 | | .02 |
| 6..... | 29.62 | 56 | 39 | NW. | 12 | N. | 16 | | .24 | .01 |
| 7..... | 30.38 | 68 | 37 | NE. | 16 | NE. | 12 | | | |
| 8..... | 30.37 | 46 | 37 | NE. | 16 | Calm | | | | |
| 9..... | 30.24 | 44 | 34 | NW. | 6 | S. | 6 | | | |
| 10..... | 30.09 | 57 | 32 | Calm | | S. | 10 | | | |
| 11..... | 29.76 | | 42 | SW. | 16 | | | | | |
| 12..... | 29.87 | 46 | 20 | N. | 16 | SE. | 5 | | | |
| 13..... | 30.02 | 53 | 33 | NW. | 10 | S. | 16 | | | |
| 14..... | 29.45 | 49 | 40 | S. | 16 | S. | 16 | | .05 | |
| 15..... | 29.77 | 46 | 37 | N. | 28 | NW. | 10 | | | |
| 16..... | 29.83 | 44 | 33 | SE. | 6 | S. | 10 | | | |
| 17..... | 29.61 | 49 | 38 | S. | 12 | SW. | 6 | | .64 | .02 |
| 18..... | 29.83 | 56 | 38 | S. | 16 | N. | 16 | 5 | | |
| 19..... | 29.92 | 49 | 38 | E. | 12 | S. | 16 | | | |
| 20..... | 29.68 | 54 | 40 | | | SW. | 6 | | | |
| 21..... | 29.84 | 49 | 38 | S. | 4 | NW. | 18 | | | .14 |
| 22..... | 29.86 | 39 | 37 | NE. | 12 | Calm | | | Trace | .02 |
| 23..... | 29.88 | 49 | 34 | N. | 28 | NW. | 22 | | 0.4 | 0.2 |
| 24..... | 29.90 | 38 | 28 | NW. | 28 | NW. | 28 | | | |
| 25..... | 29.79 | 47 | 26 | W. | 12 | W. | 4 | | | |
| 26..... | 29.72 | 41 | 34 | NW. | 12 | N. | 6 | | | |
| 27..... | 29.98 | 41 | 32 | N. | 12 | NW. | 18 | | | |
| 28..... | 30.12 | 36 | 30 | NW. | 6 | S. | 12 | | | |
| 29..... | 29.76 | 40 | 35 | SE. | 22 | Calm | 6 | | | |
| 30..... | 29.74 | 38 | 35 | W. | 16 | NW. | 28 | | | |
| October | | | | | | | | | | |
| 1..... | 30.21 | 36 | 30 | NW. | 34 | NW. | 16 | | | |
| 2..... | 30.10 | 41 | 25 | W. | 10 | SW. | 22 | | | |
| 3..... | 29.83 | 47 | 35 | W. | 10 | NW. | 6 | | | |
| 4..... | 29.98 | 37 | 36 | E. | 16 | E. | 16 | | .02 | 2.8 |
| 5..... | 29.93 | 37 | 33 | E. | 22 | SE. | 16 | | .25 | .06 |
| 6..... | 29.82 | 38 | 35 | SE. | 10 | E. | 16 | | | .53 |
| 7..... | 30.09 | 27 | | NE. | 16 | NE. | 16 | | 0.3 | 0.5 |
| 8..... | 29.91 | 33 | 27 | SE. | 10 | S. | 28 | | .20 | |
| 9..... | 29.60 | 35 | 27 | S. | 4 | N. | 16 | | | |
| 10..... | 29.81 | 27 | 23 | N. | 10 | NW. | 10 | | | |
| 11..... | 29.66 | 30 | 24 | W. | 5 | NE. | 22 | | | 0.4 |
| 12..... | 29.82 | 18 | 17 | N. | 10 | NW. | 16 | | | |
| 13..... | 29.87 | 17 | 15 | NW. | 10 | NW. | 16 | | | |
| 14..... | 29.94 | 18 | 2 | NW. | 28 | NW. | 28 | | | |
| 15..... | 29.93 | 17 | 9 | NW. | 22 | NW. | 6 | | | 0.3 |
| 16..... | 29.77 | 17 | 12 | N. | 10 | N. | 22 | | 0.2 | 1.0 |
| 17..... | 30.08 | 15 | 10 | NW. | 16 | W. | 10 | | 0.3 | |
| 18..... | 30.03 | 16 | 10 | NW. | 16 | N. | 16 | | | |
| 19..... | 30.05 | 15 | 10 | NW. | 34 | NW. | 22 | | | |
| 20..... | 30.31 | 12 | 7 | NW. | 22 | N. | 10 | | Trace | |
| 21..... | 30.07 | 9 | 3 | NW. | 16 | N. | 6 | | | |

CHESTERFIELD INLET METEOROLOGICAL REPORT, 1940—Cont.

| Date | General Weather | Visibility | Ice Conditions |
|-------|--|------------|--------------------|
| 1940 | | Miles | |
| Sept. | | | |
| 1 | Partly cloudy..... | 18 | Not reported. |
| 2 | Partly cloudy..... | 18 | " " |
| 3 | Cloudless..... | 18 | " " |
| 4 | Cloudless to cloudy..... | 18 - 8 | " " |
| 5 | Overcast, continuous moderate rain. | 1½ | " " |
| 6 | Continuous heavy to moderate rain P.M. | 1½ | " " |
| 7 | Partly cloudy to overcast..... | 18 | " " |
| 8 | Overcast to partly cloudy..... | 18 | " " |
| 9 | Cloudless..... | 18 | " " |
| 10 | Cloudless to cloudy..... | 18 | " " |
| 11 | Cloudy..... | 8 - 18 | " " |
| 12 | Partly cloudy to cloudless..... | 18 | " " |
| 13 | Partly cloudy to cloudy..... | 18 | " " |
| 14 | Continuous heavy rain A.M. to overcast P.M. | 4 | " " |
| 15 | Partly cloudy to cloudless..... | 18 | " " |
| 16 | Overcast..... | 8 | " " |
| 17 | Continuous heavy rain A.M., continuous moderate rain P.M. | 4 - 18 | " " |
| 18 | Overcast..... | 18 | " " |
| 19 | Cloudy to overcast..... | 8 | " " |
| 20 | Cloudy..... | | " " |
| 21 | Cloudy A.M., continuous heavy rain P.M. | 8 - 4 | " " |
| 22 | Overcast..... | 18 - 1/8 | " " |
| 23 | Continuous heavy snow..... | 1½ - 8 | " " |
| 24 | Overcast..... | 18 | " " |
| 25 | Cloudless A.M. to overcast P.M. | 18 | " " |
| 26 | Cloudy A.M. to cloudless P.M.... | 18 | " " |
| 27 | Overcast A.M. to cloudy P.M.... | 8 - 18 | " " |
| 28 | Overcast..... | 18 | " " |
| 29 | Overcast..... | | " " |
| 30 | Overcast..... | 8 | " " |
| Oct. | | | |
| 1 | Partly cloudy..... | 18 | No ice in sight. |
| 2 | Clear A.M., overcast P.M..... | 18 - 8 | " " |
| 3 | Overcast..... | 8 | " " |
| 4 | Continuous slight rain A.M., continuous moderate snow P.M. | 1½ | " " |
| 5 | Snow or sleet..... | 1½ - 4 | " " |
| 6 | Overcast in A.M., continuous moderate rain in P.M. | 1½ | " " |
| 7 | Continuous slight snow in A.M., overcast in P.M. | 1½ - 8 | " " |
| 8 | Overcast..... | 8 | " " |
| 9 | Overcast..... | 8 | " " |
| 10 | Overcast in A.M., partly cloudy P.M. | 8 - 18 | " " |
| 11 | Overcast in A.M., continuous slight snow in P.M. | 8 - 1/8 | " " |
| 12 | Overcast..... | 8 | " " |
| 13 | Overcast..... | 8 - 40 | " " |
| 14 | Partly cloudy in A.M., overcast P.M. | 8 | " " |
| 15 | Overcast in A.M., continuous slight snow in P.M. | 8 | " " |
| 16 | Overcast in A.M., continuous moderate snow in P.M. | 18 - 1½ | Slob ice in shore. |
| 17 | Continuous slight snow in A.M., overcast in P.M. | 18 | " " |
| 18 | Overcast..... | 8 | " " |
| 19 | Overcast in A.M., clear in P.M.... | 8 - 18 | " " |
| 20 | Intermittent slight snow in A.M., partly cloudy in P.M. | 8 - 18 | " " |
| 21 | Clear..... | 18 | " " |

CHESTERFIELD INLET METEOROLOGICAL REPORT, 1940—*Conc.*

| Date | Mean Baro- meter | Air. Temp. | | Wind, 8 a.m. | | Wind, 8 p.m. | | Hours of Fog | Precipitation | |
|----------|------------------------|------------|------|--------------|------|--------------|------|--------------------|---------------|--------|
| | | Max. | Min. | Dir. | Vel. | Dir. | Vel. | | Rain or Snow | |
| | | | | | | | | | 8 a.m. | 8 p.m. |
| 1940 | | | | | | | | | | |
| October | | | | | | | | | | |
| 22..... | 29.79 | 28 | 2 | NE. | 10 | NE. | 16 | | | 0.8 |
| 23..... | 29.97 | 22 | 21 | N. | 10 | N. | 10 | | 0.2 | |
| 24..... | 29.99 | 22 | 10 | N. | 10 | N. | 10 | | | |
| 25..... | 30.38 | 21 | 13 | NW. | 10 | N. | 6 | | | |
| 26..... | 30.42 | 20 | 14 | N. | 10 | N. | 6 | | | |
| 27..... | 30.50 | 32 | 17 | NE. | 6 | E. | 6 | | | |
| 28..... | 30.58 | 33 | 24 | Calm | | SE. | 10 | | | |
| 29..... | 30.39 | 33 | 24 | SE. | 16 | SE. | 16 | | | |
| 30..... | 30.02 | 32 | 30 | S. | 16 | S. | 16 | | | |
| 31..... | 29.81 | 34 | 30 | SW. | 10 | W. | 16 | | | |
| November | | | | | | | | | | |
| 1..... | 29.84 | 33 | 27 | NW. | 6 | SW. | 6 | | | |
| 2..... | 30.00 | 24 | 21 | NW. | 16 | NW. | 28 | | | |
| 3..... | 30.25 | 5 | -3 | W. | 6 | Calm | | | | |
| 4..... | 30.20 | 26 | Zero | NE. | 10 | SE. | 16 | | 0.4 | 4.0 |
| 5..... | 29.88 | 28 | 14 | E. | 16 | N. | 16 | | 1.0 | |
| 6..... | 29.95 | Zero | -3 | N. | 22 | W. | 28 | | | |
| 7..... | 30.01 | 4 | -6 | NW. | 28 | NW. | 28 | | | |
| 8..... | 30.12 | 16 | -8 | NW. | 22 | NW. | 34 | | | |
| 9..... | 30.04 | -8 | -14 | NW. | 22 | NW. | 16 | | | |
| 10..... | 30.14 | -8 | -15 | NW. | 16 | NW. | 22 | | | |
| 11..... | 30.18 | -6 | -12 | W. | 16 | W. | 6 | | | |
| 12..... | 30.04 | 36 | -12 | NW. | 6 | NW. | 10 | | | |
| 13..... | 29.93 | -3 | -14 | NW. | 16 | W. | 6 | | | |
| 14..... | 29.52 | -3 | -15 | SW. | 16 | N. | 6 | | | 1.2 |
| 15..... | 29.52 | 12 | -2 | NW. | 10 | Calm | | | | |
| 16..... | 29.55 | 21 | 10 | S. | 6 | S. | 6 | | 0.5 | 1.0 |
| 17..... | 29.83 | 18 | 14 | NE. | 22 | NW. | 16 | | 1.0 | 1.0 |
| 18..... | 29.91 | 10 | -13 | W. | 6 | W. | 10 | | 1.0 | 1.4 |
| 19..... | 29.78 | -11 | -11 | NW. | 22 | NW. | 6 | | 0.6 | |
| 20..... | 29.78 | -18 | -18 | NW. | 28 | NW. | 34 | | | |
| 21..... | 30.02 | -15 | -21 | NW. | 22 | NW. | 28 | | | |
| 22..... | 30.02 | Zero | -22 | W. | 6 | Calm | | | | |
| 23..... | 29.83 | 2 | -2 | NW. | 10 | NW. | 16 | | | |
| 24..... | 29.96 | -10 | -13 | NW. | 22 | NW. | 22 | | | |
| 25..... | 30.08 | -15 | -20 | NW. | 16 | NW. | 16 | | | |
| 26..... | 30.05 | -17 | -20 | NW. | 16 | N. | 10 | | | |
| 27..... | 30.01 | -21 | -24 | NW. | 10 | NW. | 10 | | | |
| 28..... | 29.78 | -24 | -30 | NW. | 16 | NW. | 10 | | | |
| 29..... | 29.70 | -8 | -25 | NW. | 10 | S. | 6 | | | |
| 30..... | 29.85 | -7 | -9 | N. | 10 | N. | 10 | | | |

CHESTERFIELD INLET METEOROLOGICAL REPORT, 1940—*Conc.*

| Date | General Weather | Visibility | Ice Conditions |
|------|--|------------|----------------------------|
| | | Miles | |
| 1940 | | | |
| Oct. | | | |
| 22 | Overcast in A.M., continuous moderate snow in P.M. | 4 - 8 | Slob ice in shore. |
| 23 | Continuous slight snow in A.M., overcast in P.M. | 8 | No ice in sight. |
| 24 | Clear..... | 18 | " " |
| 25 | Clear in A.M., overcast in P.M.... | 18 - 40 | " " |
| 26 | Clear in P.M., cloudy in P.M..... | 18 - 8 | " " |
| 27 | Overcast in A.M., cloudy in P.M. | 4 - 18 | " " |
| 28 | Overcast..... | 8 - 4 | " " |
| 29 | Overcast in A.M., partly cloudy P.M. | 8 - 18 | " " |
| 30 | Overcast in A.M., partly cloudy P.M. | 8 - 18 | " " |
| 31 | Overcast..... | 8 | " " |
| Nov. | | | |
| 1 | Overcast..... | 18 | No ice in sight. |
| 2 | Overcast in A.M., then cloudless. | 8 - 8 | " " |
| 3 | Clear in A.M., partly cloudy in P.M. | 18 | Cove frozen. |
| 4 | Continuous slight snow in flakes A.M., continuous moderate snow in flakes P.M. | 1½ - 8 | " |
| 5 | Overcast in A.M., partly cloudy in P.M. | 8 | " |
| 6 | Cloudy in A.M., overcast in P.M. | 8 | " |
| 7 | Overcast in A.M., partly cloudy in P.M. | 1½ | " |
| 8 | Cloudless..... | 8 - 18 | Slob ice extends one mile. |
| 9 | Cloudless in A.M., partly cloudy in P.M. | 4 - 18 | " " |
| 10 | Clear..... | 18 | " " |
| 11 | Clear in A.M., overcast in P.M.... | 18 - 8 | " " |
| 12 | Overcast in A.M., then partly cloudy in P.M. | 8 - 18 | Ice to east 3 miles. |
| 13 | Partly cloudy..... | 18 | Ice extends 7 miles. |
| 14 | Overcast..... | 4 - 8 | " " |
| 15 | Overcast..... | 8 | " " |
| 16 | Continuous moderate snow in flakes. | 8 | " " |
| 17 | Continuous moderate snow in flakes A.M., overcast P.M. | 4 - 8 | " " |
| 18 | Partly cloudy A.M., continuous moderate snow in flakes in P.M. | 18 - 4 | " " |
| 19 | Clear in A.M., overcast in P.M.... | 18 - 8 | " " |
| 20 | Clear..... | 8 - ½ | " " |
| 21 | Clear in A.M., becoming overcast in P.M. | 18 | " " |
| 22 | Overcast..... | 18 | " " |
| 23 | Overcast in A.M., clear in P.M.... | 8 | " " |
| 24 | Cloudless..... | 40 - 4 | " " |
| 25 | Cloudless..... | 18 | " " |
| 26 | Cloudless, then partly cloudy in P.M. | 8 - 18 | " " |
| 27 | Clear..... | 18 | All directions to horizon. |
| 28 | Clear..... | 18 | " " |
| 29 | Clear..... | 18 | " " |
| 30 | Clear..... | 18 - 40 | " " |

PORT HARRISON METEOROLOGICAL REPORT, 1940

| Date | Mean Barometer | Air. Temp. | | Wind, 8 a.m. | | Wind, 8 p.m. | | Hours of Fog | Precipitation | |
|-----------|----------------|------------|------|--------------|------|--------------|------|--------------|---------------|--------|
| | | Max. | Min. | Dir. | Vel. | Dir. | Vel. | | Rain or Snow | |
| | | | | | | | | | 8 a.m. | 8 p.m. |
| 1940 July | | | | | | | | | | |
| 1..... | 29.84 | 57 | 36 | SW. | 1 | NW. | 19 | | | |
| 2..... | 29.92 | 55 | 39 | NW. | 12 | NW. | 16 | | | |
| 3..... | 29.93 | 50 | 39 | NW. | 12 | NW. | 18 | | .01 | Trace |
| 4..... | 30.16 | 53 | 38 | NW. | 12 | NW. | 15 | | | |
| 5..... | 30.12 | 51 | 38 | W. | 8 | SE. | 18 | | | |
| 6..... | 29.70 | 50 | 43 | SE. | 24 | SW. | 7 | 3 | .29 | |
| 7..... | 29.68 | 61 | 42 | N. | 9 | SW. | 12 | 12 | .07 | |
| 8..... | 29.69 | 49 | 40 | S. | 9 | W. | 12 | 14 | | Trace |
| 9..... | 29.74 | 45 | 37 | SW. | 12 | SW. | 7 | 7 | .02 | .03 |
| 10..... | 29.81 | 56 | 38 | NW. | 15 | N. | 21 | 3 | .06 | |
| 11..... | 29.94 | 56 | 40 | NW. | 16 | NW. | 14 | | Trace | |
| 12..... | 29.95 | 61 | 40 | NW. | 12 | NW. | 14 | | | Trace |
| 13..... | 29.87 | 54 | 42 | NW. | 8 | W. | 10 | | | |
| 14..... | 29.65 | 65 | 39 | NE. | 12 | NE. | 18 | | | |
| 15..... | 29.64 | 61 | 44 | N. | 10 | SW. | 18 | | | |
| 16..... | 29.68 | 49 | 41 | NW. | 15 | SW. | 12 | | .27 | |
| 17..... | 29.76 | 44 | 39 | W. | 15 | SW. | 19 | | | .02 |
| 18..... | 30.05 | 45 | 39 | NW. | 9 | SW. | 15 | 3 | .10 | |
| 19..... | 30.09 | 51 | 38 | W. | 7 | W. | 12 | 1 | Trace | .01 |
| 20..... | 30.01 | 55 | 44 | S. | 9 | S. | 6 | | .01 | |
| 21..... | 29.82 | 58 | 48 | SE. | 14 | S. | 15 | | | .08 |
| 22..... | 29.75 | 56 | 43 | NW. | 3 | SW. | 8 | 13 | .02 | .22 |
| 23..... | 29.69 | 53 | 45 | NW. | 13 | NW. | 12 | 6 | | |
| 24..... | 29.71 | 50 | 40 | SW. | 8 | SW. | 3 | 4 | .06 | Trace |
| 25..... | 29.51 | 53 | 44 | NE. | 16 | N. | 20 | | | .33 |
| 26..... | 29.48 | 49 | 43 | W. | 12 | NW. | 18 | ½ | .25 | Trace |
| 27..... | 29.54 | 46 | 42 | NW. | 24 | NW. | 19 | | | .01 |
| 28..... | 29.90 | 55 | 42 | NW. | 19 | NW. | 15 | | | |
| 29..... | 30.05 | 55 | 41 | W. | 12 | W. | 1 | | | |
| 30..... | 29.87 | 64 | 41 | NE. | 12 | N. | 22 | | | |
| 31..... | 29.99 | 63 | 46 | NW. | 9 | NW. | 7 | | | |
| August | | | | | | | | | | |
| 1..... | 29.88 | 75 | 44 | | | S. | 10 | | | .01 |
| 2..... | | | | | | | | | | |
| 3..... | 29.66 | 55 | 38 | SE. | 16 | S. | 16 | | | .46 |
| 4..... | 29.80 | 50 | 44 | NW. | 22 | SW. | 10 | | .16 | |
| 5..... | 29.66 | 60 | 41 | | | N. | 10 | | | |
| 6..... | 29.78 | | 43 | SW. | 12 | | | | Trace | |
| 7..... | 29.76 | 49 | | | | NE. | 6 | | | |
| 8..... | 29.74 | 50 | 42 | N. | 22 | NW. | 16 | | .41 | .01 |
| 9..... | 30.22 | 44 | 43 | | | W. | 14 | | | |
| 10..... | 30.21 | | 43 | S. | 16 | | | | | |
| 11..... | 29.75 | 54 | 46 | | | SW. | 18 | | | .25 |
| 12..... | | | | | | | | | | |
| 13..... | 29.94 | 59 | | | | NW. | 22 | | | |
| 14..... | | | | | | | | | | |
| 15..... | 29.80 | 47 | 30 | | | NW. | 35 | | | |
| 16..... | 29.74 | | 44 | NE. | 18 | | | 3 | | |
| 17..... | 29.86 | | 41 | NE. | 6 | | | | | |
| 18..... | 30.09 | 51 | 40 | NE. | 6 | NE. | 6 | 6 | | .38 |
| 19..... | 29.94 | 57 | 44 | NE. | 10 | NE. | 16 | 6 | .08 | |
| 20..... | 30.00 | 58 | 43 | NE. | 12 | N. | 12 | | | |

PORT HARRISON METEOROLOGICAL REPORT, 1940

| Date | General Weather | Visibility | Ice Conditions |
|------|--|------------|----------------|
| 1940 | | Miles | |
| July | | | |
| 1 | Cloudless to partly cloudy..... | 18 | Not reported. |
| 2 | Cloudless to cloudy..... | 18 | " " |
| 3 | Overcast..... | 4 - 18 | " " |
| 4 | Partly cloudy..... | 18 | " " |
| 5 | Cloudy to overcast..... | 8 - 18 | " " |
| 6 | Continuous moderate rain A.M., overcast P.M. | 8 - 4 | " " |
| 7 | Intermittent moderate rain A.M., overcast P.M. | 2½ - ¼ | " " |
| 8 | Overcast..... | 2 - 8 | " " |
| 9 | Intermittent moderate rain all day. | ¼ - 4 | " " |
| 10 | Continuous moderate rain A.M., overcast P.M. | ¼ - 18 | " " |
| 11 | Partly cloudy..... | 18 - 8 | " " |
| 12 | Partly cloudy to cloudless..... | 18 | " " |
| 13 | Cloudless..... | 8 - 18 | " " |
| 14 | Cloudless to partly cloudy..... | 18 | " " |
| 15 | Partly cloudy..... | 18 - 8 | " " |
| 16 | Continuous moderate rain A.M. to cloudy P.M. | 8 | " " |
| 17 | Overcast to intermittent moder- ate rain P.M. | 8 | " " |
| 18 | Overcast..... | 8 | " " |
| 19 | Intermittent moderate rain, over- cast. | 4 - 8 | " " |
| 20 | Cloudy, light rain A.M..... | 8 - 18 | " " |
| 21 | Cloudy to partly cloudy..... | 18 - 8 | " " |
| 22 | Continuous moderate rain, partly cloudy. | 2½ - 1½ | " " |
| 23 | Partly cloudy to cloudy..... | 4 - 8 | " " |
| 24 | Overcast to cloudy, rain..... | 4 | " " |
| 25 | Overcast, continuous moderate rain P.M. | 8 | " " |
| 26 | Intermittent moderate rain A.M. cloudy P.M. | ¾ - 8 | " " |
| 27 | Overcast..... | 4 - 1½ | " " |
| 28 | Cloudy to partly cloudy..... | 8 | " " |
| 29 | Partly cloudy to cloudy..... | 8 - 18 | " " |
| 30 | Cloudy to partly cloudy..... | 18 | " " |
| 31 | Partly cloudy to cloudy..... | 18 - 8 | " " |
| Aug. | | | |
| 1 | Overcast, intermittent moderate rain P.M. | 6 - 1½ | Not reported. |
| 2 | | | " " |
| 3 | Overcast, intermittent moderate rain P.M. | 6 - 1½ | " " |
| 4 | Intermittent moderate rain A.M., partly cloudy P.M. | 6 | " " |
| 5 | Partly cloudy..... | 6 | " " |
| 6 | Intermittent slight drizzle..... | 1½ | " " |
| 7 | Partly cloudy..... | 30 | " " |
| 8 | Intermittent moderate rain, cloudy. | 6 | " " |
| 9 | Partly cloudy..... | 6 | " " |
| 10 | Cloudy..... | 6 | " " |
| 11 | Intermittent slight rain..... | 2½ | " " |
| 12 | | | " " |
| 13 | Overcast..... | 6 | " " |
| 14 | | | " " |
| 15 | Overcast..... | 12 | " " |
| 16 | Distant fog..... | 6 | " " |
| 17 | Overcast..... | 12 | " " |
| 18 | Overcast A.M., intermittent mod- erate rain P.M. | 6 | " " |
| 19 | Distant fog, overcast..... | 6 - 12 | " " |
| 20 | Fog to overcast..... | 12 - 6 | " " |

PORT HARRISON METEOROLOGICAL REPORT, 1940—Cont.

| Date | Mean Barometer | Air Temp. | | Wind, 8 a.m. | | Wind, 8 p.m. | | Hours of Fog | Precipitation | |
|--------------------|----------------|-----------|------|--------------|------|--------------|------|--------------|---------------|--------|
| | | Max. | Min. | Dir. | Vel. | Dir. | Vel. | | Rain or Snow | |
| | | | | | | | | | 8 a.m. | 8 p.m. |
| 1940 August | | | | | | | | | | |
| 21..... | 30.07 | 50 | 36 | NE. | 6 | NE. | 12 | | | |
| 22..... | 30.12 | 51 | 34 | N. | 6 | N. | 16 | | | |
| 23..... | 30.19 | 51 | 31 | NE. | 4 | N. | 16 | | | |
| 24..... | 30.13 | | 38 | NW. | 16 | | | | | |
| 25..... | 30.10 | 51 | 38 | NW. | 12 | NW. | 10 | | .05 | |
| 26..... | 30.18 | 53 | 38 | N. | 10 | NE. | 10 | | | |
| 27..... | 30.15 | 47 | 39 | SW. | 12 | S. | 22 | | | |
| 28..... | 29.98 | 53 | 46 | SE. | 16 | SE. | 22 | | | |
| 29..... | 29.83 | 53 | 48 | SW. | 10 | SW. | 12 | | | |
| 30..... | 29.74 | 58 | 49 | S. | 12 | NW. | 10 | 5 | .14 | .22 |
| 31..... | 29.97 | 55 | 45 | NW. | 16 | N. | 12 | | | |
| September | | | | | | | | | | |
| 1..... | 29.98 | 55 | 43 | S. | 22 | S. | 12 | | | |
| 2..... | 29.84 | 55 | 48 | S. | 6 | W. | 6 | | | |
| 3..... | 29.93 | 55 | 46 | NW. | 16 | NW. | 16 | | .06 | |
| 4..... | 30.10 | 56 | 40 | NW. | 10 | W. | 12 | | | |
| 5..... | 30.22 | 53 | 45 | SW. | 6 | SE. | 16 | 5 | | |
| 6..... | | | | | | | | | | |
| 7..... | 29.86 | 51 | 49 | S. | 22 | S. | 10 | 4 | .55 | .02 |
| 8..... | 29.69 | 56 | 37 | NE. | 22 | S. | 10 | | .40 | .28 |
| 9..... | 29.57 | 49 | 46 | S. | 10 | SE. | 4 | | .19 | .24 |
| 10..... | 29.80 | 49 | 43 | NE. | 22 | NE. | 22 | | .07 | |
| 11..... | 29.86 | 49 | 37 | NE. | 22 | NE. | 10 | | | |
| 12..... | 29.78 | 55 | 34 | NE. | 10 | N. | 10 | | | |
| 13..... | 30.04 | 51 | 30 | Calm | | N. | 10 | | | |
| 14..... | 30.09 | 47 | 30 | Calm | | S. | 22 | 8 | | .01 |
| 15..... | 29.74 | 50 | 44 | SW. | 22 | NW. | 22 | | .05 | .05 |
| 16..... | 30.09 | 47 | 33 | NW. | 16 | S. | 12 | | 0.7 | |
| 17..... | 29.80 | 51 | 38 | SE. | 35 | SW. | 16 | 2 | Trace | |
| 18..... | 29.98 | 49 | 42 | NW. | 6 | NE. | 6 | | .02 | |
| 19..... | 30.04 | 52 | 42 | NE. | 12 | NE. | 10 | 3 | .02 | |
| 20..... | | | | | | | | | | |
| 21..... | 29.53 | 51 | 48 | SW. | 22 | NW. | 22 | 5 | | |
| 22..... | 29.69 | 46 | 43 | NW. | 22 | N. | 22 | | .11 | .06 |
| 23..... | 29.67 | 44 | 36 | N. | 4 | N. | 16 | | | |
| 24..... | 29.56 | 39 | 33 | NW. | 4 | NE. | 12 | | Trace | .05 |
| 25..... | 29.70 | 42 | 25 | N. | 4 | NW. | 12 | | | |
| 26..... | 29.68 | 42 | 27 | Calm | | SW. | 16 | | 0.3 | .04 |
| 27..... | 29.60 | 44 | 33 | NW. | 18 | N. | 18 | | 1.1 | .05 |
| 28..... | 30.14 | 42 | 35 | NW. | 12 | SW. | 16 | | 0.1 | .02 |
| 29..... | 30.07 | 43 | 35 | NW. | 6 | S. | 10 | | 0.6 | .03 |
| 30..... | 29.72 | 42 | 39 | NW. | 12 | SW. | 12 | 4 | | .01 |
| October | | | | | | | | | | |
| 1..... | 29.91 | 40 | 27 | N. | 16 | N. | 22 | | .05 | 0.6 |
| 2..... | 30.13 | 41 | 33 | NW. | 22 | N. | 10 | | .08 | .04 |
| 3..... | 30.16 | 40 | 32 | W. | 10 | SW. | 5 | | | .02 |
| 4..... | 30.04 | 40 | 37 | W. | 16 | W. | 4 | | | |
| 5..... | 29.95 | 47 | 38 | SE. | 4 | NE. | 10 | | .01 | |
| 6..... | 29.70 | 45 | 37 | E. | 28 | E. | 34 | | | |
| 7..... | 29.46 | 40 | 38 | E. | 28 | NE. | 16 | | Trace | .20 |
| 8..... | 29.44 | 31 | | N. | 34 | N. | 22 | | 4.3 | |
| 9..... | 29.86 | 33 | 21 | NE. | 10 | NE. | 3 | | .13 | Trace |

PORT HARRISON METEOROLOGICAL REPORT, 1940—Cont.

| Date | General Weather | Visibility | Ice Conditions |
|-------|--|------------|----------------|
| | | Miles | |
| 1940 | | | |
| Aug. | | | |
| 21 | Overcast..... | 12 | Not reported. |
| 22 | Cloudless to partly cloudy..... | 12 | " " |
| 23 | Partly cloudy to overcast..... | 12 | " " |
| 24 | Overcast..... | 6 | " " |
| 25 | Rain A.M., to partly cloudy P.M. | 12 | " " |
| 26 | Fog to overcast..... | 2½ | " " |
| 27 | Overcast to cloudy..... | 2½ - 6 | " " |
| 28 | Overcast to cloudy..... | 6 | " " |
| 29 | Cloudless to low fog..... | 6 | " " |
| 30 | Continuous moderate to heavy rain. | 1½ | " " |
| 31 | Partly cloudy..... | 6 | " " |
| Sept. | | | |
| 1 | Overcast..... | 8 | Not reported. |
| 2 | Overcast..... | 18 | " " |
| 3 | Continuous moderate rain A.M., cloudless P.M. | 8 - 18 | " " |
| 4 | Overcast..... | 4 - 8 | " " |
| 5 | Overcast to partly cloudy..... | ½ - 8 | " " |
| 6 | | | " " |
| 7 | Continuous moderate to slight rain. | 18 - 1½ | " " |
| 8 | Continuous moderate rain..... | 8 - 1½ | " " |
| 9 | Continuous moderate rain..... | 1½ - 8 | " " |
| 10 | Continuous moderate rain A.M., to overcast P.M. | 8 | " " |
| 11 | Partly cloudy..... | 18 | " " |
| 12 | Overcast to partly cloudy..... | 4 - 18 | " " |
| 13 | Cloudy..... | ¾ - 18 | " " |
| 14 | Overcast A.M. to continuous slight rain P.M. | 0 - 8 | " " |
| 15 | Continuous moderate rain..... | 1½ - 4 | " " |
| 16 | Continuous moderate snow A.M. to cloudy P.M. | 8 - 18 | " " |
| 17 | Continuous light rain A.M. to overcast P.M. | 8 - ½ | " " |
| 18 | Continuous light rain A.M. to cloudy P.M. | 1½ - 8 | " " |
| 19 | Continuous slight rain A.M. to partly cloudy P.M. | ½ - 8 | " " |
| 20 | | | " " |
| 21 | Overcast..... | 8 | " " |
| 22 | Continuous moderate rain..... | 4 - 8 | " " |
| 23 | Overcast to cloudy..... | 8 | " " |
| 24 | Overcast, rain P.M..... | 8 | " " |
| 25 | Cloudy..... | 8 - 18 | " " |
| 26 | Overcast, rain..... | 8 | " " |
| 27 | Overcast, rain..... | 4 - 8 | " " |
| 28 | Cloudy to overcast, rain..... | 8 | " " |
| 29 | Overcast, rain..... | 4 - 8 | " " |
| 30 | Overcast, rain P.M..... | 4 - 8 | " " |
| Oct. | | | |
| 1 | Continuous slight rain A.M., continuous slight snow P.M. | 4 - 1½ | Not reported. |
| 2 | Overcast in A.M., snow or sleet in P.M. | 1½ - 8 | " " |
| 3 | Overcast..... | 8 | " " |
| 4 | Overcast..... | 1½ - ½ | " " |
| 5 | Overcast in A.M., partly cloudy in P.M. | 4 - 8 | " " |
| 6 | Overcast..... | 8 - 18 | " " |
| 7 | Continuous slight rain in A.M., continuous moderate rain in P.M. | 8 - 1½ | " " |
| 8 | Continuous heavy snow..... | ¾ - 4 | " " |
| 9 | Continuous slight rain..... | 8 | " " |

PORT HARRISON METEOROLOGICAL REPORT, 1940—Cont.

| Date | Mean Barometer | Air. Temp. | | Wind, 8 a.m. | | Wind, 8 p.m. | | Hours of Fog | Precipitation | |
|----------|----------------|------------|------|--------------|------|--------------|------|--------------|---------------|--------|
| | | Max. | Min. | Dir. | Vel. | Dir. | Vel. | | Rain or Snow | |
| | | | | | | | | | 8 a.m. | 8 p.m. |
| 1940 | | | | | | | | | | |
| October | | | | | | | | | | |
| 10..... | 29.75 | 38 | 32 | S. | 10 | S. | 10 | | | .08 |
| 11..... | 29.68 | 39 | 32 | NW. | 16 | N. | 5 | | .24 | .03 |
| 12..... | 29.68 | 39 | 28 | SW. | 3 | NE. | 3 | | .03 | .02 |
| 13..... | 29.73 | 29 | 27 | NE. | 22 | NW. | 16 | | | |
| 14..... | 29.77 | 33 | 27 | W. | 3 | NW. | 28 | | .03 | 1.2 |
| 15..... | 29.78 | 28 | 22 | NW. | 22 | NW. | 16 | | | 0.4 |
| 16..... | 29.62 | 33 | 19 | Calm | | SE. | 16 | | 1.0 | 1.2 |
| 17..... | 29.36 | 33 | 31 | NW. | 40 | NW. | 34 | | 3.3 | 3.0 |
| 18..... | 29.89 | 26 | 21 | NW. | 22 | NW. | 22 | | 2.3 | |
| 19..... | 29.88 | 37 | 16 | N. | 3 | NE. | 6 | | 2.7 | 0.6 |
| 20..... | 29.80 | | 0 | N. | 3 | NW. | 32 | | | |
| 21..... | 29.66 | 30 | 22 | NW. | 28 | NW. | 28 | | 0.9 | 1.2 |
| 22..... | 29.65 | 33 | 29 | NW. | 16 | W. | 10 | | 1.4 | 0.5 |
| 23..... | 29.62 | 30 | 25 | E. | 10 | NE. | 3 | | 0.1 | |
| 24..... | 29.91 | 32 | 11 | Calm | | NW. | 3 | | | 0.5 |
| 25..... | 30.05 | 32 | 22 | SW. | 3 | NW. | 6 | | | |
| 26..... | 30.05 | 31 | 14 | NW. | 10 | N. | 16 | | 0.9 | 0.2 |
| 27..... | 30.27 | 31 | 14 | NE. | 16 | NE. | 6 | | 0.1 | |
| 28..... | 30.52 | 24 | 6 | NE. | 6 | N. | 6 | | | |
| 29..... | 30.52 | 30 | 22 | NE. | 10 | NE. | 3 | | | |
| 30..... | 30.37 | 31 | 11 | NE. | 6 | SW. | 6 | | | 0.1 |
| 31..... | 30.21 | 36 | 30 | SW. | 10 | SW. | 16 | | | |
| November | | | | | | | | | | |
| 1..... | 30.08 | 37 | 32 | W. | 16 | S. | 10 | | | |
| 2..... | 29.88 | 36 | 32 | S. | 10 | NE. | 22 | | | |
| 3..... | 29.84 | 29 | 25 | NE. | 16 | N. | 22 | | | 0.3 |
| 4..... | 30.12 | 29 | 27 | N. | 28 | NE. | 6 | | | |
| 5..... | 29.91 | 33 | 14 | NE. | 4 | W. | 22 | | | 0.6 |
| 6..... | 30.04 | 32 | 31 | SW. | 16 | NW. | 16 | | 1.3 | 0.8 |
| 7..... | 30.25 | 29 | 24 | SW. | 16 | SW. | 10 | | 0.2 | 0.4 |
| 8..... | 29.86 | 28 | 13 | Calm | | NW. | 16 | | 0.6 | 1.1 |
| 9..... | 29.80 | 25 | 16 | W. | 28 | SW. | 22 | | 0.8 | 1.8 |
| 10..... | 29.96 | 24 | 20 | NW. | 28 | NW. | 22 | | 1.5 | 0.6 |
| 11..... | 30.24 | 27 | 22 | W. | 16 | E. | 16 | | 0.7 | Trace |
| 12..... | 29.19 | 34 | 12 | E. | 40 | SW. | 28 | | 1.0 | 2.2 |
| 13..... | 29.63 | 23 | 15 | NW. | 28 | NW. | 28 | | 0.8 | 1.0 |
| 14..... | 29.85 | 24 | 14 | N. | 3 | SW. | 34 | | 0.8 | 1.8 |
| 15..... | 29.50 | 28 | 23 | SW. | 28 | SE. | 6 | | 0.2 | 1.1 |
| 16..... | 29.47 | 27 | 25 | SE. | 10 | E. | 16 | | 0.4 | 0.3 |

PORT HARRISON METEOROLOGICAL REPORT, 1940—Cont.

| Date | General Weather | Visibility | Ice Conditions |
|---------|--|------------|----------------|
| 1940 | | Miles | |
| Oct. 10 | Overcast in A.M., continuous slight rain in P.M. | 8 - 4 | Not reported. |
| 11 | Continuous moderate rain in A.M., continuous slight rain in P.M. | 4 - 8 | " " |
| 12 | Continuous slight rain..... | 1½ - 8 | " " |
| 13 | Partly cloudy in A.M., overcast in P.M. | 8 | " " |
| 14 | Continuous slight rain in A.M., snow or sleet in P.M. | 8 - ½ | " " |
| 15 | Overcast in A.M., cloudy in P.M. | 8 | " " |
| 16 | Continuous moderate snow..... | 8 - ¾ | " " |
| 17 | Continuous moderate snow in A.M., continuous heavy snow in P.M. | 4 - ⅝ | " " |
| 18 | Continuous in flakes in A.M., overcast in P.M. | 4 | " " |
| 19 | Continuous slight snow in A.M., continuous moderate snow in P.M. | 8 | " " |
| 20 | Overcast..... | 4 - 1½ | " " |
| 21 | Continuous slight snow in A.M., continuous moderate snow in P.M. | ¾ | " " |
| 22 | Continuous moderate snow in A.M., continuous slight snow in P.M. | 4 | " " |
| 23 | Continuous slight snow in A.M., cloudless in P.M. | 8 - 18 | " " |
| 24 | Cloudy in A.M., continuous slight snow in P.M. | 8 | " " |
| 25 | Overcast in A.M., partly cloudy P.M. | 8 - 4 | " " |
| 26 | Continuous slight snow..... | 8 | " " |
| 27 | Continuous slight snow in A.M., overcast in P.M. | 18 | " " |
| 28 | Cloudy in A.M., overcast in P.M. | 4 - 18 | " " |
| 29 | Overcast in A.M., partly cloudy P.M. | 8 - 18 | " " |
| 30 | Partly cloudy in A.M., snow or sleet in P.M. | 40 - 8 | " " |
| 31 | Overcast in A.M., cloudless in P.M. | 4 - 40 | " " |
| Nov. 1 | Overcast..... | 8 - 4 | Not reported. |
| 2 | Overcast in A.M., partly cloudy in P.M. | 8 - 18 | " " |
| 3 | Overcast in A.M., partly cloudy in P.M. | 18 - 8 | " " |
| 4 | Overcast in A.M., clear in P.M.... | 18 | " " |
| 5 | Overcast in A.M., continuous slight snow in P.M. | 8 - ¾ | " " |
| 6 | Continuous moderate snow in A.M., overcast in P.M. | 8 | " " |
| 7 | Overcast..... | 8 | " " |
| 8 | Overcast in A.M., partly cloudy in P.M. | 8 - 4 | " " |
| 9 | Overcast..... | ¾ | " " |
| 10 | Overcast..... | ¾ | " " |
| 11 | Overcast..... | 1½ - 8 | " " |
| 12 | Overcast in A.M., continuous moderate snow in P.M. | 4 - 1½ | " " |
| 13 | Overcast in A.M., continuous moderate snow in P.M. | ¾ - 1½ | " " |
| 14 | Overcast..... | ¾ - ⅓ | " " |
| 15 | Continuous slight snow in A.M., overcast in P.M. | 4 | " " |
| 16 | Continuous slight snow in A.M., overcast in P.M. | 8 | " " |

PORT HARRISON METEOROLOGICAL REPORT, 1940—*Conc.*

| Date | Mean Baro- meter | Air Temp. | | Wind, 8 a.m. | | Wind, 8 p.m. | | Hours of Fog | Precipitation | |
|------------------|------------------------|-----------|------|--------------|------|--------------|------|--------------------|---------------|--------|
| | | Max. | Min. | Dir. | Vel. | Dir. | Vel. | | Rain or Snow | |
| | | | | | | | | | 8 a.m. | 8 p.m. |
| 1940 November | | | | | | | | | | |
| 17..... | 29.66 | 17 | 14 | NE. | 22 | NE. | 10 | | | Trace |
| 18..... | 29.98 | 28 | 9 | SE. | 10 | NE. | 4 | | 0.1 | 0.5 |
| 19..... | 29.65 | 29 | 13 | SW. | 22 | W. | 16 | | | 0.1 |
| 20..... | 29.33 | 19 | 17 | NE. | 10 | NW. | 22 | | 1.5 | 0.9 |
| 21..... | 29.78 | 15 | 14 | NW. | 16 | NW. | 10 | | 1.3 | 0.5 |
| 22..... | 30.17 | 23 | 11 | N. | 10 | NW. | 16 | | 0.4 | 0.4 |
| 23..... | 30.04 | 25 | 22 | W. | 28 | SW. | 28 | | 0.4 | 0.5 |
| 24..... | 29.72 | 25 | 19 | NW. | 10 | NW. | 16 | | 0.7 | 0.7 |
| 25..... | 29.96 | 21 | 9 | NW. | 16 | SE. | 6 | | 0.7 | 0.3 |
| 26..... | 30.10 | 12 | -6 | NE. | 6 | SE. | 16 | | 0.6 | |
| 27..... | 29.82 | 19 | 9 | SW. | 28 | N. | 10 | 8 | 2.0 | 1.6 |
| 28..... | 29.75 | 5 | -1 | NE. | 10 | NE. | 6 | | | 0.4 |
| 29..... | 29.78 | 3 | -14 | NE. | 6 | E. | 22 | | 0.7 | |
| 30..... | 29.67 | 13 | -6 | SW. | 10 | SW. | 16 | | 1.7 | 2.5 |

PORT HARRISON METEOROLOGICAL REPORT, 1940—*Conc.*

| Date | General Weather | Visibility | Ice Conditions |
|--------------|---|---------------------------------|----------------|
| 1940 Nov. | | Miles | |
| 17 | Overcast in A.M., continuous slight snow in P.M. | 18 - 8 | Not reported. |
| 18 | Continuous slight snow..... | $\frac{1}{2}$ - 4 | " " |
| 19 | Overcast in A.M., continuous slight snow in P.M. | 1 $\frac{1}{2}$ | " " |
| 20 | Continuous moderate snow in A.M., overcast in P.M. | 1 $\frac{1}{2}$ - $\frac{3}{4}$ | " " |
| 21 | Overcast..... | 8 - 4 | " " |
| 22 | Overcast in A.M., continuous slight snow in P.M. | 8 - 4 | " " |
| 23 | Continuous slight snow..... | 4 - 18 | " " |
| 24 | Overcast in A.M., continuous moderate snow in P.M. | 1 $\frac{1}{2}$ | " " |
| 25 | Continuous moderate snow in A.M., cloudless in P.M. | 4 - 8 | " " |
| 26 | Continuous moderate snow in A.M., partly cloudy in P.M. | 4 - 8 | " " |
| 27 | Overcast in A.M., continuous moderate snow in P.M. | 1 $\frac{1}{2}$ | " " |
| 28 | Partly cloudy in A.M., continuous slight snow in P.M. | 1 $\frac{1}{2}$ - $\frac{3}{4}$ | " " |
| 29 | Partly cloudy..... | 4 - 1 $\frac{1}{2}$ | " " |
| 30 | Continuous slight snow in A.M., partly cloudy in P.M. | 1 $\frac{1}{2}$ - 4 | " " |

AIDS TO NAVIGATION IN HUDSON BAY AND STRAIT

RADIO COAST AND DIRECTION FINDING STATIONS

| Station | Call Sign | Calling Wave | | Working Wave | | Position | | Hours of Service | Weather Forecast Broadcast (a) | Coast Charge (b) |
|-------------------------|-----------|----------------------|--------|--------------|--------|-------------|--------------|---|-----------------------------------|------------------|
| | | (See footnote) K/cs. | Metres | K/cs. | Metres | Latitude N. | Longitude W. | | | |
| Port Churchill..... | V A P | 500 | 600 | 500 | 600 | 58° 46' 32" | 94° 10' 31" | Continuous during season of navigation. | 11.00 a.m. and 11.00 p.m., E.S.T. | 6c. per word |
| Chesterfield Inlet..... | V B Z | 500 | 600 | 500 | 600 | 63° 20' 05" | 90° 42' 33" | Continuous during season of navigation. | | 6c. per word |
| Nottingham Island..... | V C B | 500 | 600 | 500 | 600 | 63° 06' 48" | 77° 56' 18" | Continuous during season of navigation. | | 6c. per word |
| Cape Hopes Advance..... | V A Y | 500 | 600 | 500 | 600 | 61° 05' 12" | 69° 33' 24" | Continuous during season of navigation. | | 6c. per word |
| Resolution Island..... | V A W | 500 | 600 | 500 | 600 | 61° 18' 30" | 64° 53' 24" | Continuous during season of navigation. | 11.20 a.m. and 11.20 p.m., E.S.T. | 6c. per word |

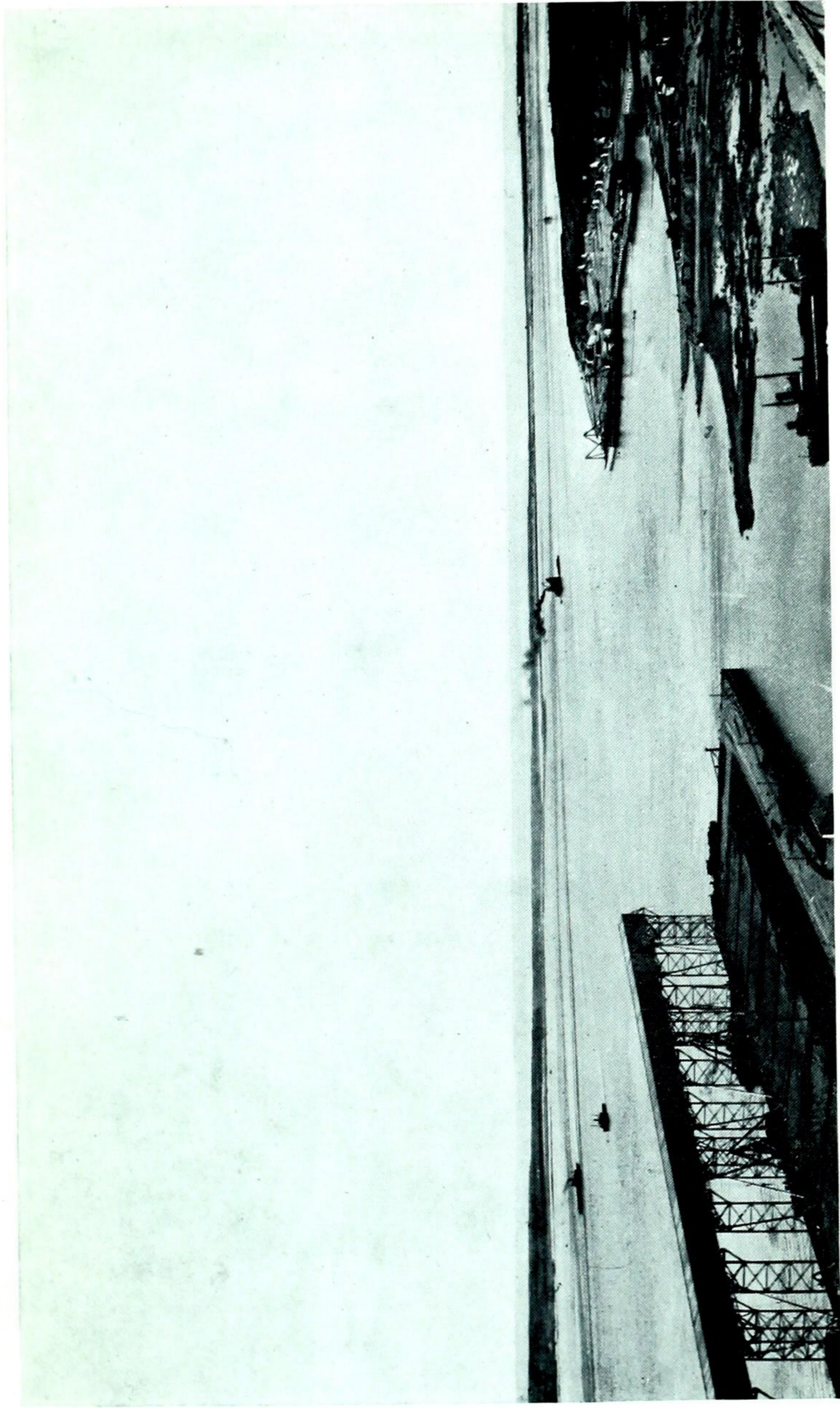
All stations maintain watch on 500 K/cs. (600 metres) and with the exception of Resolution island, take and transmit bearings on 375 K/cs. (800 metres) after communication has been established on 500 K/cs. (600 metres). Resolution island takes bearings on 500 K/cs. (600 metres) and transmits bearings on 375 K/cs. (800 metres).

(a) Forecast covers area of Hudson bay, Hudson strait and that portion of the North Atlantic adjacent thereto.

(b) All messages relative to navigation are handled free of charge. The six-cent per word coast charge applies to all other traffic. For forwarding charges beyond Port Churchill apply to any of above stations or see Canada Rate Sheet, International List of Coast and Ship Stations.

RADIO METEOROLOGICAL REPORTING STATION

| Station | Call Sign | Calling Wave | | Working Wave | | Position | | Hours of Service | Coast Charge |
|--------------------|-----------|--------------|--------|--------------|--------|-------------|--------------|--|-------------------------------------|
| | | K/cs. | Metres | K/cs. | Metres | Latitude N. | Longitude W. | | |
| Port Harrison..... | V A L | 500 | 600 | 420 | 714 | 58° 27' 17" | 78° 08' 29" | Keeps watch on 500 K/cs. (600 metres) for fifteen minute periods commencing at every odd hour from 7.00 a.m. to 7.00 p.m. E.S.T. inclusive, during season of navigation. | 6c. per word See note (b) above. |



Entrance to Harbour, Churchill.

PATROL SHIP

| Station | Call Sign | Calling Wave | | Working Wave | | Hours of Service | Remarks |
|----------------------------------|-----------|--------------|--------|--------------|--------|---|--|
| | | K/cs. | Metres | K/cs. | Metres | | |
| C.G.S. N. B. <i>McLean</i> | C G S N | 500 | 600 | 425 | 706 | Continuous during season of navigation. | Normally, this vessel patrols Hudson strait during the season of navigation. Information in regard to her position may be obtained from any Radio Station in the Strait. |

LIGHTS*

| Location | Position | | Character | Elevation | Remarks |
|--|-------------|--------------|---------------|-----------|---|
| | Latitude N. | Longitude W. | | | |
| †Goodwin island, Button islands group. | 60° 41' 31" | 64° 40' 22" | Flashing..... | 250 ft. | On unpainted wooden pole. |
| Resolution island..... | 61° 18' 28" | 64° 53' 16" | Flashing..... | 129 ft. | White square, wooden lantern on wooden skeleton base. One flash every 10 seconds. |
| Cape Hopes Advance..... | 61° 05' 14" | 69° 33' 23" | Fixed..... | 270 ft. | On unpainted wooden pole. |
| †Wales island..... | 61° 51' 37" | 71° 58' 19" | Flashing..... | 150 ft. | On unpainted wooden pole. |
| †Ashe inlet..... | 60° 31' 40" | 70° 33' 27" | Flashing..... | 191 ft. | On unpainted wooden pole. |
| †East end of Charles island..... | 62° 36' 40" | 73° 56' 09" | Flashing..... | 150 ft. | On unpainted wooden pole. |
| †West end of Charles island..... | 62° 42' 30" | 74° 40' 00" | Flashing..... | 40 ft. | On unpainted wooden pole. |
| †Nottingham island..... | 63° 05' 48" | 77° 56' 55" | Flashing..... | 50 ft. | On unpainted wooden pole. |
| †Digges island..... | 62° 35' 20" | 78° 06' 42" | Flashing..... | 65 ft. | On unpainted wooden pole. |
| †Mansel island..... | 62° 27' 00" | 79° 38' 00" | Flashing..... | 41 ft. | On unpainted wooden pole. |
| †Coats island..... | 62° 10' 00" | 83° 08' 00" | Flashing..... | 40 ft. | On unpainted wooden pole, surrounded by white lattice. |
| †Hubbart point..... | 59° 21' 00" | 94° 40' 00" | Flashing..... | 50 ft. | On unpainted wooden pole. |

* These lights may, or may not, be in operation, also, the port Authorities may exhibit one or more lights at Churchill.
 † Unwatched.

C.G.S. *N. B. McLEAN*—HUDSON STRAIT PATROL SHIP
GENERAL DIMENSIONS AND EQUIPMENT

The C.G.S. *N. B. McLean* is a twin-screw ice breaking steamer of 6,500 indicated horse-power and with the following leading dimensions:—

| | |
|------------------------|------------|
| Length (B.P.)..... | 260 feet |
| Breadth (moulded)..... | 60 “ |
| Depth (moulded)..... | 31 “ |
| Gross tonnage..... | 3,253 tons |
| Fuel oil capacity..... | 1,596 “ |

The vessel is equipped with a patent towing winch furnished with both steel wire and manila towing hawsers, a powerful search light, two 7-ton derricks and two motor launches.

She also carries a diver and complete diving apparatus and the following salvage gear:—

- 1 Drake centrifugal pump, 10 inch.
- 1 Smart Turner centrifugal pump, 8 inch.
- 1 Duplex pump, 6 inch.

These pumps are completely equipped with flexible suction and discharge pipes, foot valves, syphons, etc., and all necessary auxiliaries.

One hundred and fifty feet of bronze flexible steam hose with connections, patching gear, shores, turnbuckles and all necessary tools are also provided.

The vessel is provided with a gyro compass and a recording echo sounder and radiotelegraph and radiotelephone apparatus are installed.

The *N. B. McLean* will be in Hudson Strait from the opening to the close of navigation each year and will maintain constant watch on 500 K/cs. (600 metres), call sign CGSN.

GLOSSARY OF TERMS USED IN ICE NAVIGATION

- Floe.....A large mass of floating ice.
- Pan.....A small floe or piece of ice that can be forced aside or
slewed.
- A field.....A large body of ice that may be seen around.
- Land floe.....Ice frozen fast to the shore.
- Packed ice.....Small pieces of ice closed together and held by the pressure
of ice and currents.
- Ice blink.....A peculiar pale yellow reflection on the sky indicating the
presence of ice in the distance.
- The ice pack.....A large body of solid ice extending across the whole sea
and through which it is impossible to advance.
- Slack or open ice...Detached ice that can be worked through. Ice is said to
be slacking when it begins to open up so as to be navigable.
- A lead.....A strip of navigable water opening into the pack.
- Hummocky ice....Rough, uneven or thick ice.
- Slob.....Snow afloat and forming into ice.
- Water sky.....A dark or bluish appearance of the sky indicating open
water beyond the ice pack.
- Rafting.....Occurs when two pans meet with force either by the action
of winds or currents, the edges are broken off and either
rise on top of or pass under the body of the other.
- Growler.....A more or less washed and rounded lump of ice which rolls
about in the water; formed from broken up bergs or
detached pieces of heavy old Arctic floe ice.
- Collar ice.....The margin of ice frozen fast to an island or shore, present-
ing an abrupt wall against which the floating ice rises
and falls with the tide.