



Fisheries and Environment
Canada

Pêches et Environnement
Canada

0035061 I

CANADA
NSPORT

DEPARTMENT OF TRA

ANNUAL R

REPORT



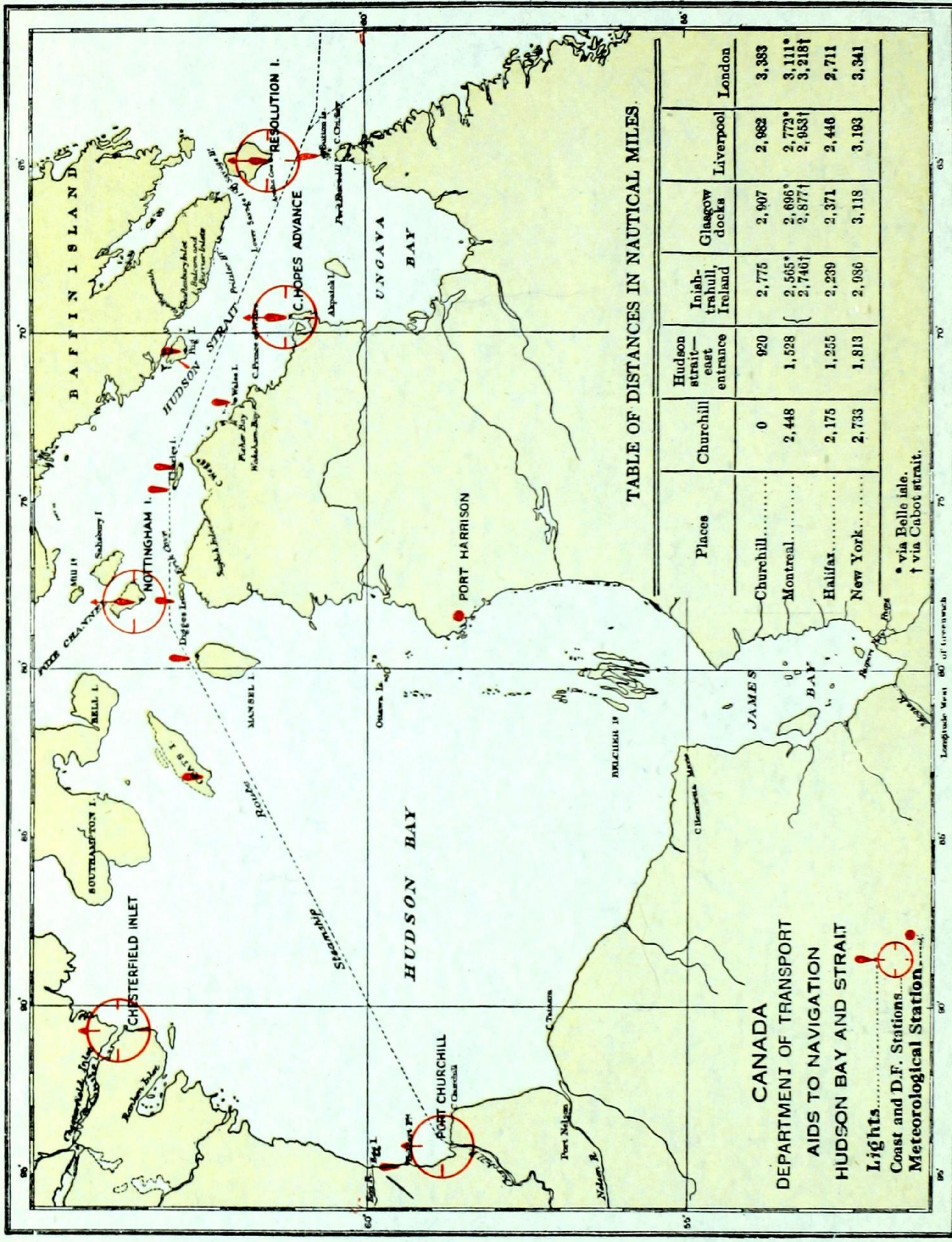


TABLE OF DISTANCES IN NAUTICAL MILES.

Places	Churchill	Hudson strait—east entrance	Inish-trahull, Ireland	Glasgow docks	Liverpool	London
Churchill.....	0	920	2,775	2,907	2,982	3,383
Montreal.....	2,448	1,528	2,565* 2,740†	2,696* 2,877†	2,773* 2,953†	3,111* 3,218†
Halifax.....	2,175	1,255	2,239	2,371	2,446	2,711
New York.....	2,733	1,813	2,086	3,118	3,193	3,341

* via Belle Isle.
† via Cabot strait.

CANADA
DEPARTMENT OF TRANSPORT
AIDS TO NAVIGATION
HUDSON BAY AND STRAIT
Lights.....
Coast and D.F. Stations.....
Meteorological Station.....

Longitude West 80° of Greenwich



CANADA

FOURTEENTH ANNUAL REPORT

Navigation Conditions on the Hudson Bay Route from the Atlantic Seaboard to the Port of Churchill

SEASON OF NAVIGATION

1942

DEPARTMENT OF TRANSPORT

HON. J. E. MICHAUD, Minister

OTTAWA

EDMOND CLOUTIER

PRINTER TO THE KING'S MOST EXCELLENT MAJESTY

1943

CONTENTS

	PAGE
Letter of Transmittal.....	4
Synopsis—	
Opening of Navigation.....	5
Close of Navigation.....	5
Foxe Channel Ice.....	6
Fog.....	6
Aids to Navigation.....	7
Shipping.....	7
Ships' Reports—	
C.G.S. <i>N. B. McLean</i>	8
R.M.S. <i>Nascopie</i>	11
Port of Churchill—	
Mercantile Marine Vessels Berthed.....	14
Imports and Exports.....	14
Traffic.....	14
Hydrographic Information.....	15
Meteorological Reports—	
C.G.S. <i>N. B. McLean</i>	16
Resolution Island.....	20
Cape Hopes Advance.....	26
Nottingham Island.....	30
Churchill.....	36
Chesterfield Inlet.....	42
Port Harrison.....	48
Aids to Navigation—	
Radio Stations.....	54
Patrol Ship.....	55
Navigation Lights.....	55
C.G.S. <i>N. B. McLean</i> —Dimensions and Equipment.....	56
Glossary of Ice Navigation Terms.....	57

ILLUSTRATIONS

Chart of Hudson Bay and Strait.....	<i>Frontispiece</i>
Churchill: <i>M.V. Jean L.D.</i> leaving port.....	facing page 14
Churchill: View from Northwest showing <i>Drakepool</i> at anchorage, <i>Brandon</i> and <i>Louis L.D.</i> at wharf.....	facing page 54

CONTENTS

C. P. EDWARDS, Esq.,
Deputy Minister,
Department of Transport,
Ottawa, Ontario.

SIR—I have the honour to submit the Fourteenth Annual Report on Navigation Conditions on the Hudson Bay Route from the Atlantic Seaboard to the Port of Churchill. This report covers the season of navigation, 1942.

The report is compiled from information received from the Hudson's Bay Company Vessel *R.M.S. Nascopie*, C.G.S. *N. B. McLean*, the National Harbours Board, and the Meteorological and Radio Services of the Department of Transport.

Yours respectfully,

WALTER A. RUSH,
Controller of Radio.

DEPARTMENT OF TRANSPORT,
OTTAWA, February 27, 1943.

FOURTEENTH ANNUAL REPORT

Navigation Conditions on the Hudson Bay Route from the Atlantic Seaboard to the Port of Churchill Season of Navigation, 1942

Synopsis of Report

OPENING OF NAVIGATION

The change from winter conditions extended, as usual, over a period of several weeks and during that time the quantity and state of drifting ice varied from day to day according to the influence of winds and currents.

The dates of the final disappearance of ice from the vicinity of the reporting stations were as follows:—

Hudson Strait, East End

Resolution Island.....July 26

Hudson Strait, Central

Cape Hopes Advance. No Report. Station reopened August 11.

Hudson Strait, West End

Nottingham Island.....July 29

Hudson Strait, General—The R.M.S. *Nascopie*, working in the Straits from July 22 to September 8, encountered scattered to heavy field ice between Resolution and Wolstenholme. No ice was encountered between Nottingham and Southampton I. on August 2-3. No ice was reported on the return trip between Nottingham Island and Cape Hopes Advance between August 31 and September 3, nor any between Cape Hopes Advance and Resolution Island September 7-8.

With the exception of a few bergs and growlers the C.G.S. *N.B. McLean* in the Straits between July 31 and August 31 reported no ice from the entrance to the Straits to Coral Harbour.

Hudson Bay

Churchill.....July 10

Chesterfield Inlet.....July 26

Port Harrison.....July 7

CLOSE OF NAVIGATION

Hudson Bay

Chesterfield Inlet—Ice in all directions was reported on October 18 with some slob ice in cove on October 28. The bay was frozen for two miles on November 4 with close packed ice extending to the horizon on November 21.

Churchill—Ice first reported on October 24. Increasing amounts of ice reported daily with river solid on November 6 and with varying amounts of heavy pack ice in bay after November 10.

Hudson Strait

Nottingham Island—Drift ice was reported at intervals during October with the bay frozen on November 7.

Cape Hopes Advance—Loose ice first appeared November 13 with ice in all directions to horizon on November 22.

Resolution Island—Slob ice first reported November 19, with slob ice in all directions on November 25. Bergs and growlers were fairly numerous all season.

Full information regarding ice conditions will be found under Meteorological Reports, pages 16 to 53.

FOXES CHANNEL ICE

Some ice was reported debouching through Foxe Channel into the route of navigation September 22 to September 26.

FOG

The number of days on which fog was reported were as follows:—

—	July	Aug.	Sept.	Oct.	Nov.	Totals	
						1942	1941
Resolution.....	21	23	12	5	2	63	18
Cape Hopes Advance*.....		6	6	3	1	16
Nottingham Island.....	3	8	6	1	0	18	29
Churchill.....	7	6	2	5	1	21	6
Chesterfield.....	5	7	1	3	8	24	3
Port Harrison.....	15	7	6	1	0	29	18

*Reopened August 11th; weather reports resumed August 12th.

AIDS TO NAVIGATION

Radio

There are five radio direction finding stations on the Hudson Bay Route. Four were in operation during the whole year, the exception being Cape Hopes Advance station which re-opened August 11.

Detailed information regarding Radio Aids to Navigation will be found on page 54.

Hydrography

During the season of 1942, hydrographers of the Canadian Hydrographic Service, attached to the C.G.S. *N.B. McLean* made observations on magnetic variation values in Hudson Strait, ran a number of ship-sounding lines through uncharted waters, and made some resurveys of anchorages and harbours for revision of the navigation charts.

Lights

There were no additions to the lights the numbers remaining at two watched and ten unwatched, a total of twelve lights, a list of which will be found on page 55.

Fog Signals

The explosive bomb signal which was installed at Resolution in 1935 is still in operation. It can be heard at a distance of between five and six miles and is fired at intervals of ten minutes on request by ships approaching Acadia Cove.

SHIPPING

Owing to war-time restrictions the movements of vessels using the Hudson Bay route were not reported.

No incident of note occurred during the season and navigation proceeded normally.

WALTER A. RUSH,

Controller of Radio.

C.G.S. *N.B. McLEAN*, CAPTAIN W. J. BALCOM, MASTER
 VOYAGE TO HUDSON BAY AND STRAITS, 1942

GENERAL

The C.G.S. *N.B. McLean* left Quebec on July 24 and arrived Resolution 9.30 p.m. July 30. Two operators were landed and two taken on board for ship's work. The light was put in operation and the ship left for Cape Hopes Advance. Operators and supplies were landed here, the station put in order, and a temporary light was put in operation until the staff could get their batteries charged for the permanent light. Owing to dense fog at the Cape, the work, was not completed until August 4.

On August 5 the light at Whales Island was put in operation, and those at the east and west end of Charles Island and Digges Island were serviced and lighted on August 6 and 7. We arrived Nottingham Island on August 8, operators and equipment were landed, the light serviced, and we proceeded to Southampton Island at midnight on August 9. Left Southampton at 5.30 a.m. August 12 for the eastern end of the Straits, calling at Nottingham Island where we picked up the radio engineer and rigger for transfer to Cape Hopes Advance.

En route a stop was made at Eric Cove where we loaded 100 tons of fresh water, and at Ashe Inlet on August 14 where we put the light in operation.

After landing the radio engineer and rigger at Cape Hopes Advance we proceeded to Acadia Cove, Resolution Island, which we made on August 17 at 1.40 p.m. and where we made repairs to the concrete blocks of the lighthouse, painted the beacons, loaded empty drums and coal bags.

The *McLean* left Resolution on August 25 and arrived Southampton Island August 25 where we remained until September 7 surveying and placing buoys in South Bay.

On September 7 we proceeded to the north end of Coats Island to check the position of Cape Pembroke which was found to differ by 20 miles from the position previously charted. The surveyors were landed to carry on their work and the *McLean* proceeded to Cary's Swan Nest but a gale blew up forcing our return to Cape Pembroke, and the surveyors having completed their work were taken on board, and we proceeded to Digges Island, arriving September 9 6.30 p.m. Two days were spent in filling our tanks with fresh water, and two days lost by heavy gales. Ship arrived Mansel Island on September 14 where the light was serviced and put in operation. On the following day, the swell having gone down, a landing was made at Cary's Swan Nest where the light was serviced and put in operation.

The *McLean* then proceeded toward the entrance to the Koaksoak River on Ungava Bay, calling at Cape Hope's Advance en route and arrived off the entrance to the river at 2.00 p.m. on September 18 and after completing our work returned to Southampton on September 26 where we remained till September 30.

Proceeded to Nottingham Island to pick up an operator who was reported seriously ill, then left for Churchill to refill and place the operator in hospital. Arrived at Churchill October 5, took on board 1,000 tons of fuel and left on October 10. Arrived at the entrance to Southampton Harbour 4 p.m. October 12 but had to anchor outside until the following morning on account of dense fog. Our cargo was discharged on October 15 and as ice was beginning to make we removed the spar buoys in the harbour on October 16 and left on the morning of the 17th, proceeded to Eric Cove where we anchored at 5.00 p.m. October 19. We remained in the vicinity of Eric Cove and Digges Island keeping a check on the ice and awaiting a change in conditions to land at Nottingham Island. An attempt was made on the 21st, but on approaching the Island, ice was found to be tightly packed and we were unable to land. During October 22 and 23 a very

heavy gale blew from the south east and east, breaking up these ice fields and driving them to the north and west and a landing was made with great difficulty on October 24. We landed the operator and some supplies about two miles from the station, the harbour and bay being blocked with broken ice.

The *McLean* returned to Cape Hopes Advance where we landed mail and took off supplies for Resolution Island, arriving Acadia Cove 7.00 a.m. October 27. We left Resolution Island October 31 arriving Quebec November 22 after a busy and successful season.

ICE CONDITIONS

The C.G.S. *N.B. McLean* entered Hudson Straits July 30, passed through to Southampton Island on August 9, and sighted no ice and remarkably few bergs in Hudson Straits. In fact I have never seen so few bergs in these waters since I have been observing ice conditions there, or of such small dimensions.

Conditions remained excellent until about September 25, when ice began moving south to north end of Coats Island and over to Nottingham. A large portion of this ice was local that should have passed out in the spring, but was driven north and grounded in the shoal water on south-east coast of Southampton Island, where it hung around until about September 10, when increased by heavier ice from Foxe Channel it began moving south and on the 25th the *McLean* passed around south-west edge fifteen miles 115 degrees from Cape Pembroke. On October 5, it was down in strings and isolated pans to about fifteen miles north of Digges Island and southward into Digges Sound, but was well open. Two ships passed through it on the 15th without much difficulty. The Hudson Bay Company manager reported no ice in sight at Eric Cove on October 15, but on the 17th, no open water in sight except a small lead towards Nottingham Island.

The *McLean* passed through this area from Southampton on October 19 and met ice about ten miles north of Mansel Island and had ice in strings and large patches to seventeen miles, 44 degrees, from Cape Wolstenholme. From there eastward all clear. Conditions remained about the same until October 22, when very heavy southeast gales broke up these ice fields, drove them to the north and west and cleared the route. No ice was visible from Nottingham Radio Station on October 24. The *McLean* left the western end of the Straits on October 25, and the eastern end of the 31st. No further ice was seen in the Straits or south along the Labrador coast to Hamilton Inlet. Records from Nottingham will show when ice again made its appearance off there.

Air temperatures remained higher than usual in Hudson Bay and Straits, and little local ice was formed until November, particularly at Churchill, where the season was very opened. Gales were prevalent in Hudson Straits during the month of October particularly in the eastern end of Straits where some of them were very heavy. A meteorological record was kept on the *McLean* and is being forwarded.

RADIO

All the Radio Stations in Hudson Straits and Bay were in operation throughout the season, and contributed greatly to the safe navigation of these waters. Although these stations have not been calibrated for some years, bearings were remarkably correct.

The Beacon schedules worked out well, but should be more frequent. Most of the ships navigating the waters had magnetic compasses only, and their own D.F. bearings could not be relied on in some cases, so there were many calls for bearings. The *McLean* fitted with Gyros, used the beacons, keeping the calls for shore bearings to a minimum, and found them very valuable. Before leaving Quebec we were supplied with codes and we were able to copy the weather as sent out by the various shore stations, and make a satisfactory forecast and give it to ships in company by Aldis Lamp.

HYDROGRAPHIC SURVEY

The *McLean* carried two Hydrographers and their launch fitted with echo sounder belonging to the Hydrographic Branch, Department of Mines and Resources, and considerable work was done this season, particularly at South Bay and Coral Harbour, Southampton Island, where a complete chart of this harbour was plotted and sounded and several lines of sounding run from Cape Pembroke to Walrus Island and South Bay. Many observations for variation were taken at various points. The position and coast line of Coats Island and the small islands to the northwest of Coats Island were found to be very much in error. The position of Cape Southampton, south end of Coats Island was also determined. Lines of soundings were run in Ungava Bay to the mouth of Koaksoak River. Ashe Inlet in Big Island was sounded out. In fact, many lines of soundings were made in various places, whenever we had the opportunity. The echo sounder gave good results.

LIGHTS AND AIDS TO NAVIGATION

All existings lights in Hudson Straits and Bay from Resolution to Cary's Swans Nests at South Point of Coats Island were serviced and put in operation this season, with the exception of Button Islands. All these lights functioned properly during our stay in Hudson Straits, with the exception of the light on Digges Island, which failed to function in the latter part of the season, evidently due to a leaky pipe, and was not lighted again. A temporary light, to be used until the permanent light at Cape Hopes Advance was in order, was also erected there. The *McLean* was to have removed this on her last voyage out, but unfortunately on arrival there, the weather was too rough to carry out this work, and lantern, pole and tank had to be left behind. A black spar buoy to mark the rock at the eastern end of the anchorage in Acadia Cove was placed this year.

W. J. BALCOM,
Master

R.M.S. *NASCOPIE*, CAPTAIN T. F. SMELLIE, MASTER
VOYAGE TO HUDSON STRAIT AND BAY, 1942

Master's Report

GENERAL

Leaving Montreal prompt at 10.00 a.m. July 8 we proceeded down the St. Lawrence and arrived at Quebec at 2.00 a.m. on the 9th instant, from which port we sailed at noon on the 11th July, and arrived at Hebron at 8.15 p.m. on the 17th. We left Hebron at 9.00 a.m. on the 21st and arrived at Burwell at 9.00 a.m. on the 22nd. Leaving again at 11.00 a.m. we crossed the Hudson Straits and arrived at Resolution Island at 5.30 p.m. the same day. A motor boat and a new operator had to be landed, which was accomplished in a very strong tideway and we proceeded on our passage at 8.00 p.m.

Whilst proceeding through the Straits scattered field ice was passed through and we arrived at Lake Harbour at 3.00 p.m. on the 23rd July. Discharging was commenced as soon as the tide was suitable and was completed at 6.00 p.m. on the 24th, and we sailed at 8.00 p.m. Scattered field ice was again passed through and we arrived at Sugluk 3.00 p.m. on the 25th. Landing of supplies was commenced as soon as the tide was suitable and was completed at 8.00 p.m. on July 26 when we sailed.

Crossing the Straits we again passed through heavy field ice and arrived at Cape Dorset at noon on the 27th July. Owing to stormy weather a day was lost in landing supplies. All supplies were landed and we sailed at 4.00 p.m. on the 29th. Crossing the Straits we again passed through scattered field ice and we arrived at Wolstenholme at 4.00 a.m. 30th July. All supplies were landed and we left at 2.00 a.m. on the 31st. Dense fog was experienced after leaving and we did not arrive at Nottingham Island until 4.00 p.m. This is an open anchorage. Fortunately the weather was moderate and although the sea rough for loaded scows we managed to remain and land the supplies without much delay. All supplies were landed and we sailed at 4.00 a.m. on the 2nd August.

No ice was met after leaving Nottingham and we arrived at Southampton Island at 11.00 a.m. on the 3rd instant. After landing supplies we left at noon on the 4th. Proceeding on our voyage we arrived at Cape Smith at 5.00 p.m. on the 5th August, landed supplies and sailed at noon on the 6th. Port Harrison was reached at 4.45 p.m. on the 7th, supplies landed and we left at 6.00 a.m. on the 10th. Fine weather prevailed during the crossing of the Bay and we arrived at Churchill at 2.00 p.m. on the 12th August.

After completing the bunker coal we moved and commenced loading supplies, boats and an excessive quantity of gas and coal oil. Loading was completed at 10.00 p.m. on the 23rd August and we sailed from Churchill at 6.30 a.m. on the 24th.

The passage to Chesterfield was without incident and we arrived at Chesterfield at 5.00 p.m. on the 25th August. The weather was stormy upon arrival and continued to be the whole of the 26th, making it impossible to land supplies. We commenced landing supplies as soon as the tide was suitable on the 27th and all supplies were landed by 9.30 p.m. on the 28th August.

We arrived at Nottingham Island 8.00 a.m. on the 31st August, which makes our second call. Fortunately the sea was smooth and we were able to land upon arrival. All supplies were landed and we sailed at 7.44 p.m. the same day.

Wolstenholme was reached for the second call at 5.00 a.m. on 1st September, supplies landed and we sailed at 11.00 a.m.

Lake Harbour was reached at noon on the 2nd September, supplies landed and we sailed with the M.V. *Nanook* in tow at 6.00 a.m. on the 3rd September.

We arrived at Cape Hopes Advance at 6.30 p.m. but could not find an anchorage close in shore. We therefore steamed a couple of miles to the west and south of the Cape and anchored between the islands. This meant that the supplies for the radio station had to be transported by our scows in the open sea for a couple of miles each trip. Landing of supplies commenced at daybreak; This being the 4th September. After landing a couple of scow loads the weather became too bad and made the anchorage unsafe. At 6.00 p.m. we left the anchorage and proceeded to sea, where we cruised until 4 p.m. on the 5th when we returned to the same anchorage. There was too much swell to land freight. No freight was landed on the 6th owing to the swell on the beach. On the 7th the swell was still rolling on the beach of the station. Having only 15 tons of coal on board for this station, I located a suitable spot close to the anchorage and landed this remaining 15 tons. Before doing so, I arranged with the Eskimos to move same with the boats to the radio station as soon as the weather was suitable. We sailed from here at 11.50 p.m. on the 7th September.

Crossing the Straits we arrived at Resolution Island at 2.55 p.m. on the 8th September. The landing of supplies was done when the tide was suitable and all supplies were landed at 11.00 a.m. on the 10th September. On the 13th September a strong gale was blowing with blinding snow which made it impossible to sail. The weather moderated during the night and we sailed at 5.30 a.m. on the 14th September. On the passage North numerous icebergs and growlers were passed and some field ice was worked through off Cape Dyer.

Entering Prince Regent Inlet we worked along the Eastern shore through heavy old and new ice until we came to a solid block. This solid mass of ice was kept close aboard until we were 10 miles off the Western shore.

Working to the southward through miles of new ice and between old ice, we arrived at a position where the ice was a solid mass to the shore and no water visible ahead. The ship was stopped and the track we had made had closed up tight and solid. Our position was now only a few miles north of Batty Bay and 110 miles from Fort Ross. After giving careful consideration to the present conditions and the possibilities of having the ship caught in the ice between our present position and Fort Ross I decided not to take the risk so the ship was turned round and the attempt to reach Fort Ross this season was abandoned. Damage to the hull had already been done by attempting to force her between old ice.

Having turned round we were able to follow our inward track for several miles by a white line of ice made when we were cutting through.

The whole distance across Admiralty Inlet was closed and frozen over with old and new ice, which we cut through.

Arctic Bay was free of ice, although the shore line ice was making and we arrived at noon on the 22nd September. The landing of supplies was immediately commenced and with fine weather during our stay everything was landed and we sailed at 11.00 a.m. on the 24th September. Heavy ice was passed through when passing out of the Lancaster Sound. Although ice was making we had no difficulty in reaching Pond Inlet at noon on the 26th September.

Fine weather prevailed during our stay at Pond Inlet and all supplies were landed and we sailed at 3.30 p.m. on the 27th September. Snow fell continuously between Pond Inlet and Clyde River which was reached at 5.30 p.m. on the 28th September. Here the temperature was 24 degrees, everything snow covered, supplies were landed and we sailed at 6.00 a.m. on the 30th September. Strong winds with snow and high seas were experienced on this passage and we reached Pangnirtung at noon on the 3rd October.

Fine weather prevailed during our stay at Pangnirtung which made the landing of supplies easier. All supplies were on shore at 5.30 a.m. on the 6th October and we sailed at 7.30 a.m. the same day.

Strong winds and rough seas were experienced whilst crossing over to Greenland, where we called at Ekaluit Bay, Invigtut and Julianehaab. We sailed from Julianehaab at noon on the 3rd November and having previously received instructions that I should have to call at Cartwright I decided to cut out the call at Hebron and to land the cargo scows and motor boat at Cartwright.

From Invigtut to Cartwright we had a succession of westerly and north-westerly gales with heavy seas which would not allow us to make a direct course. At sunset on the 8th November I anchored in Domino Run, which is 60 miles from Cartwright and stayed the night, for which the passengers and crew were extremely grateful, after the five days of rolling and pitching around. The average speed was 6.1 knots.

We arrived at Cartwright at 2.30 p.m. on the 9th and left at 7.00 a.m. on the 15th November. The passage from Cartwright to Port Alfred was made without incident and we arrived at Port Alfred at 9.00 a.m. on the 19th.

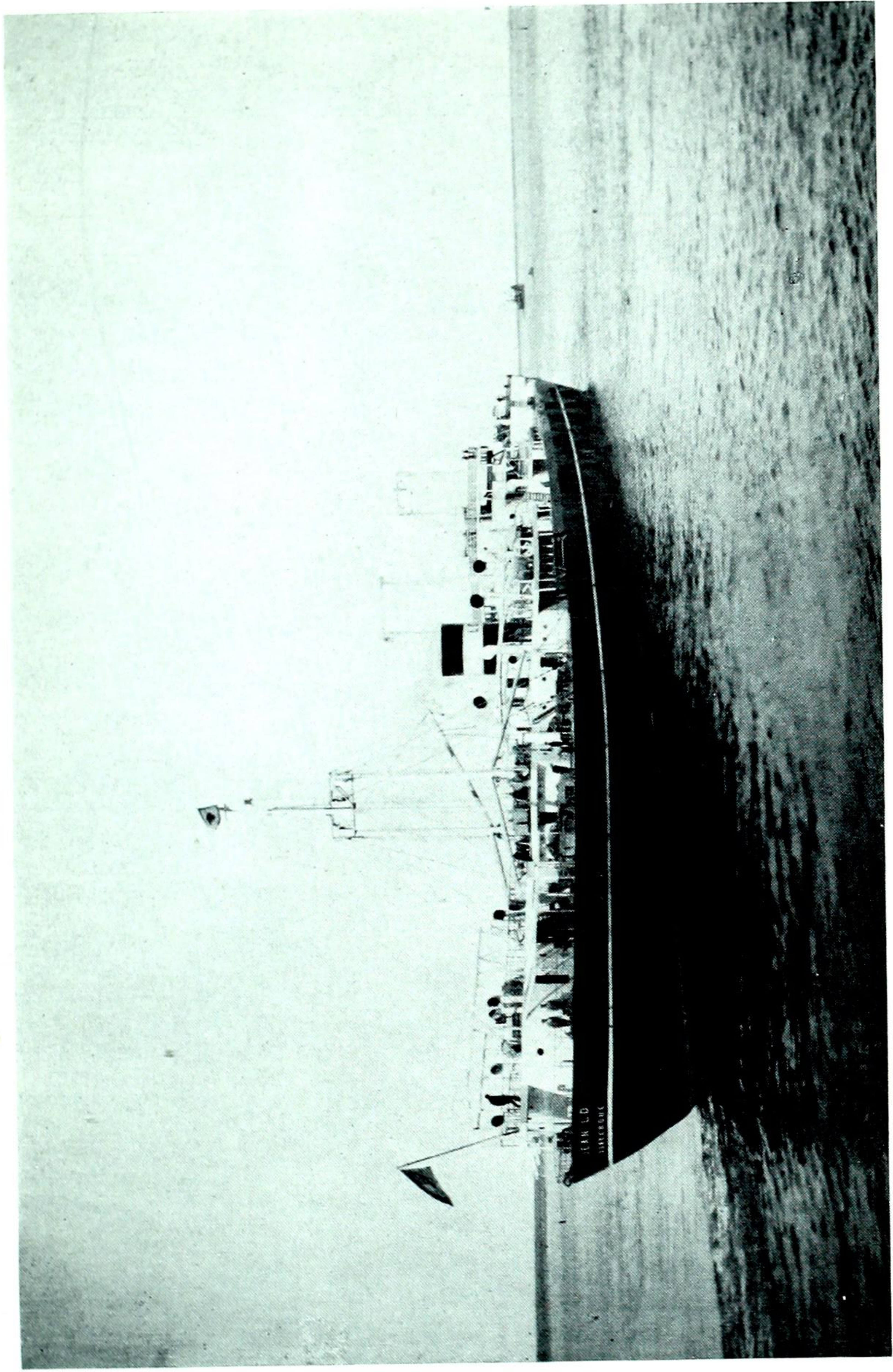
By arriving at Port Alfred after a voyage of four months and eleven days it made the longest voyage the *Nascopie* ever made to the Eastern Arctic.

T. F. SMELLIE,
Master.

CHURCHILL

TRAFFIC

Shipping	1942	1941
Arrivals:—		
Number of vessels.....	34	19
Net registered tonnage.....	26,315	2,027
Departures:—		
Number of vessels.....	34	19
Net registered tonnage.....	26,254	2,027
Total Arrivals and Departures:—		
Number of vessels.....	68	38
Net registered tonnage.....	52,569	4,054
Water Borne Cargo Tonnage (Tons=2,000 lbs. weight or measure)		
Inward.....	122	91
Outward.....	26,563	762
Total.....	26,685	853



Churchill: M.V. *Jean L.D.* leaving port

Hydrographic Information

The Hydrographic and Map Service, Surveys and Engineering Branch, Department of Mines and Resources, publishes a series of navigation charts and also a volume of Sailing Directions covering the Hudson Bay Route. These are kept up to date and added to from time to time as new information becomes available.

The "Tide Tables for the Atlantic Coast of Canada," published by the Tidal and Current Survey Division of the same Service, contain predictions for the port of Churchill and for Moosonee in James Bay. Commencing with the 1944 edition, the Churchill Tide Tables will give the predictions for height as well as times of tide. Tables in leaflet form are available for Port Nelson. Tidal differences for fourteen localities in Hudson Strait and for eight localities in James Bay afford the times of high and low waters in these areas. The time of the turn of the tidal streams in the southern offing of Resolution and Nottingham Islands, and information on the currents in Digges Sound is also given. The automatic tide gauge is kept in operation each season at Churchill for the extension of the tidal records by which the predictions are improved.

HYDROGRAPHIC PUBLICATIONS—HUDSON BAY AND STRAIT

Charts—

- | | |
|--|---|
| 401 Churchill Harbour. | 409 Churchill Harbour to Hubbart Point. |
| 403 Approaches to Nelson River. | 503 Pritzler Harbour to Cape Weymouth. |
| 404 Anchorages in Hudson Strait. | Balcom and Barrier Inlets. |
| Sugluk Inlet. | Shaftesbury Inlet. |
| Port Burwell. | P1504 Mouth of Moose River. |
| Button Islands. | P1505 Rupert Bay. |
| 405 Hudson Bay and Strait. | P1506 Mouth of Rupert River. |
| 406 Cape Tatnam to Port Nelson. | P1507 Lower Savage Islands to Pritzler Harbour. |
| 407 Anchorages in | Pritzler Harbour. |
| Charles Inlet. | P1508 Erik Cove to Nuvuk Harbour including |
| Savage Harbour. | Digges Islands. |
| Acadia Cove. | Erik Cove. |
| 408 Cape Churchill to Churchill Harbour. | Port de Laperriere. |
| 500 Cape Churchill to Egg River. | Nuvuk Harbour. |
| 501 Wakeham and Fisher Bays and | Digges Harbour. |
| Approaches | |
| Wakeham Bay. | |
| Fisher Bay. | |
| 502 C. Prince of Wales to C. Weggs. | |
| Douglas Harbour. | |

Sailing Directions—

- Sailing Directions for the Hudson Bay Route.

Tide Tables—

- Tide Tables for the Atlantic Coast of Canada.

NOTE.—Copies of the above publications are available at the office of the High Commissioner for Canada, Canada House, London, England, for reference only. Charts and Sailing Directions are issued at 50 cents and Tide Tables at 25 cents per copy and may be obtained from the Hydrographic Service, Surveys and Engineering Branch, Department of Mines and Resources, Ottawa, or from the National Harbours Board Office, Churchill, Manitoba. All orders must be accompanied by postal or express money order, for the full amount, payable to the Receiver General for Canada.

C.G.S. N.B. McLEAN METEOROLOGICAL REPORT

Date	Noon Position	Barometer			Temperature °F			Wind True				Fog	Remarks		Vsby.		
		8 a.m.	4 p.m.	12 p.m.	Air		Sea	8 a.m.		4 p.m.			12 p.m.	Hour		a.m.	p.m.
					Max.	Min.		Dir.	F.	Dir.	F.						
1942 July 30.....	60°28'N 61°35'W.....	27.72	29.80	29.82	43	32	30	NNW	4	WNW	3	1	1	Overcast, light rain fog, bergs, growlers.....	3	4	
31.....	61°13'N 66°32'W.....	29.84	29.83	29.80	40	36	31	NW.	2	NE.	3	3	0	Overcast, showers numerous bergs, growlers.....	4	4	
August 1.....	10 Miles off C. Hope Adv. B205.....	29.76	29.76	29.72	42	35	32	NE.	5	NE.	3	3	24	O'cast, rain, fog, no ice in sight.....	3	3	
2.....	18 miles off C. Hope Adv. B.225.....	29.70	29.65	29.66	39	34	32	E.	5	E.	4	3	24	O'cast, rain, thick fog, a few bergs.....	1	2	
3.....	Diana Bay.....	29.66	29.63	29.66	44	36	32	SE.	1	SE.	2	0	16	Overcast, thick fog.....	1	0	
4.....	Diana Bay.....	29.72	29.80	29.88	39	35	32	N.	2	NNW.	3	3	24	Fog.....	3	2	
5.....	61.28N 70.03W.....	29.91	29.82	29.81	50	38	33	W.	1	NW.	1	5	9	Thick fog, berg and growlers.....	2	8	
6.....	62.35N 73.30''.....	29.82	29.95	30.02	40	37	31	NW.	2	NW.	4	3	8	Thick fog, no ice in sight.....	2	4	
7.....	West end of Charles Isle	30.02	29.93	29.76	46	37	32	W.	2	NNW.	2	2	3	Fine and clear, no ice.....	8	7	
8.....	Digges Isl. Hbr.....	29.62	29.63	29.66	44	37	29	Calm	0	NW	3	3	15	Thick fog.....	2	7	
9.....	63.12N 82.20W.....	29.68	29.73	29.78	47	34	34	NW.	5	WNW.	3	2	0	Fine and clear, no ice in sight.....	8	7	
10.....	South Bay	29.80	29.81	29.88	49	38	31	NW.	1	W.	1	0	0	Fine and clear.....	8	8	
11.....	Southampton Isl.....	29.95	29.92	29.94	52	35	33	NW.	1	NW.	1	3	0	Cloudy and clear.....	7	8	
12.....	64.01N 83.25''.....	29.98	29.99	29.98	41	32	32	WNW.	3	SW.	5	2	8	Overcast and fog.....	3	4	
13.....	Nottingham Isl.....	29.98	29.91	29.90	42	37	29	WSW	3	SW.	5	3	11	Thick fog.....	2	4	
14.....	Eric Cove.....	29.88	29.87	29.86	44	40	33	WNW	1	NE.	1	2	12	Overcast, moderate fog.....	3	7	
15.....	62.42N 72.42W.....	29.86	29.88	29.90	51	35	31	N.	3	N.	2	2	10	Overcast 7 fog, berg and growlers on north shore.....	2	8	

C.G.S. N.B. McLEAN METEOROLOGICAL REPORT

Date	Noon Position	Barometer			Temperature °F				Wind True		Fog Hour	Remarks				
		8 a.m.	4 p.m.	12 p.m.	Air		Sea		4 p.m.			12 p.m.		a.m.	p.m.	Vsby.
					Max.	Min.	Temp	Dir.	F.	Dir.	F.	Dir.	F.			
1942 Aug.																
16.....	61-17N 69-45W.....	29.95	29.98	29.92	31	46	30	ENE.	1	E.	2	4	13	Dense fog.....	1	A few bergs, thick fog.....
17.....	61-16N 64-56W.....	29.88	29.80	29.72	34	38	30	E.	5	E.	5	6	6	Cloudy and haze.....	4	Cloudy and haze.....
18.....	Acadia Cove.....	29.66	29.62	29.63	39	49	30	ENE.	7	ENE.	5	4	0	Overcast and rain.....	7	Overcast and rain.....
19.....	".....	29.68	29.70	29.71	34	49	30	ENE.	3	N.	2	3	0	Cloudy and clear.....	8	Cloudy and clear.....
20.....	".....	29.68	29.65	29.60	31	38	29	NE.	4	NE.	6	7	20	Overcast and fog.....	3	Overcast and fog.....
21.....	".....	29.64	29.68	29.72	36	37	30	NE.	6	ENE.	6	5	19	Overcast fog and rain showers.....	3	Overcast fog and showers
22.....	".....	29.72	29.72	29.78	35	39	29	ENE.	5	NNE.	2	1	10	Overcast and moderate fog.....	7	Cloudy and clear.....
23.....	62-04N 69-22W.....	29.74	29.74	29.72	38	49	31	N.	1	NW.	2	2	5	Cloudy, Mod fog, few bergs and growlers.....	5	Fine and poor visibility few growlers and bergs
24.....	62-55N 76-54W.....	29.73	29.74	29.66	40	50	31	SW.	1	SW.	1	1	0	Fine and clear.....	5	Fine and clear.....
25.....	Southampton off Ruin Pt.....	29.54	29.38	29.17	41	48	36	SSE.	3	SE.	5	5	0	Cloudy and haze.....	5	Cloudy, rain and haze.....
26.....	Southampton, Coral Harbor.....	29.18	29.15	29.34	41	44	37	SW.	5	W.	5	6	15	Overcast, rain and fog.....	1	Overcast and haze.....
27.....	".....	29.54	29.58	29.67	37	45	36	WNW.	8	WSW.	6	3	0	Fine and clear, fresh gale	8	Fine and clear, mod. gale
28.....	".....	29.78	29.78	29.57	39	46	34	SW.	1	SW.	1	1	8	Cloudy and clear.....	8	Overcast, squally fog.....
29.....	".....	29.38	29.32	29.40	40	46	35	SW.	5	Calm	1	22	Dense fog.....	0	Thick fog.....
30.....	".....	29.63	29.74	29.78	41	52	35	NW.	2	NW.	3	2	0	Cloudy and clear.....	7	Cloudy and clear.....
31.....	".....	29.78	29.79	29.80	39	48	36	N.	2	S.	1	1	0	Cloudy and clear.....	8	Cloudy and clear.....

C.G.S. N.B. McLEAN METEOROLOGICAL REPORT

Date	Noon Position	Barometer			Temperature °F			Wind True						Fog Hour	Remarks		Vsby.		
		8 a.m.	4 p.m.	12 p.m.	Air		Sea	8 a.m.		4 p.m.		12 p.m.			a.m.	p.m.			
					Max.	Min.		Dir.	F.	Dir.	F.	Dir.	F.						
1942 Sept. 1	Southampton, Coral Harbor	29.80	29.77	29.74	43	38	36	WSW.	1	SSW.	2	WNW.	2	WNW.	2	Cloudy, clear, dense fog	0	Dense fog, cloudy, clear	8
2	"	29.67	29.61	29.52	43	38	38	WNW.	3	WNW.	3	WNW.	1	WNW.	1	Cloudy, clear	9	Cloudy, clear	9
3	"	29.44	29.40	29.45	41	35	39	NE.	1	NE.	3	NE.	3	NE.	3	Overcast and light rain.	7	Overcast, light rain, sleet	7
4	"	29.59	29.54	29.62	42	36	39	NNE.	3	N.	3	N.	4	N.	4	Cloudy and clear	8	Cloudy and clear	8
5	"	29.71	29.76	29.79	45	34	36	N.	3	S.	1	ESE.	2	ESE.	2	Cloudy and clear	9	Cloudy and clear	9
6	"	29.81	29.79	29.76	40	34	36	ESE.	2	SSW.	3	SW.	2	SW.	2	Fog, overcast, light snow	3	Overcast with light fog and rain	3
7	63.48N 83.20W	29.80	29.87	29.90	42	39	37	NW.	1	SSE.	2	SW.	1	SW.	1	Cloudy and clear	8	Cloudy and clear	8
8	62.38N 18.40W	29.83	29.55	29.50	44	37	37	SW.	3	SSW.	6	NW.	3	NW.	3	Fog overcast, rain.	4	Fog, overcast, rain	3
9	Cape Pembroke, East End	29.72	29.82	29.84	44	37	37	N.	5	N.	2	SW.	2	SW.	2	Fog and rain, cloudy and clear	6	Cloudy and clear	8
10	Digges Passage	29.83	29.96	30.08	44	34	36	NW.	3	NW.	3	N.	1	N.	1	Overcast, showers, clear	7	Overcast, snow, clear	8
11	"	30.08	29.92	29.66	47	35	35	Calm	0	E.	3	E.	6	E.	6	Fine and clear	9	Overcast, fine and clear	9
12	"	29.45	29.34	29.39	40	37	33	E.	8	E.	8	NE.	6	NE.	6	Overcast, squally	5	Overcast, squally	6
13	McLean Anchorage	29.53	29.64	29.69	38	30	34	NE.	5	NE.	4	NE.	4	NE.	4	Cloudy and haze	4	Cloudy and haze	4
14	Off Mansel Isl.	29.70	29.70	29.72	39	31	33	NNW.	3	W.	4	N.	2	N.	2	Cloudy, light snow, haze	4	Cloudy and clear	7
15	Off Coats Isl.	29.72	29.72	29.73	37	33	34	NW.	2	N.	4	NNW.	2	NNW.	2	Snow squalls, cloudy haze	4	Cloudy and clear	7
16	62.53N 79.32W	29.76	29.71	29.71	47	32	34	WNW.	3	WNW.	2	WNW.	5	WNW.	5	Fine and clear, light snow	5	Cloudy and clear	7
17	62.58N 71.29W	29.73	29.78	29.85	42	34	31	SW.	3	SW.	2	SW.	3	SW.	3	Cloudy and clear, overcast, snow	5	Cloudy and clear	4
18	59.10N 67.20W	29.96	30.05	30.06	45	34	31	SW.	2	NW.	1	SW.	1	SW.	1	Overcast and clear	8	"	8
19	25 miles off Chimo	29.99	29.78	29.62	39	31	31	SE.	1	NE.	3	NE.	4	NE.	4	Overcast and clear	7	"	4
20	62.01N 69.44W	29.54	29.51	29.58	33	30	30	N.	3	NW.	6	NW.	1	NW.	1	Overcast light snow	4	"	8
21	Ashe Inlet	29.60	29.63	29.50	48	33	30	SE.	2	S.	2	SSE.	2	SSE.	2	Cloudy and clear	8	"	5
22	62.58N 76.53W	29.42	29.48	29.55	36	31	32	NW.	4	SW.	4	SSE.	1	SSE.	1	Overcast, rain and snow squalls	4	"	7
23	Digges Passage	29.44	29.37	29.53	34	30	33	NNE.	5	N.	6	WNW.	5	WNW.	5	Cloudy and clear	8	Cloudy and clear	8
25	Digges Passage	29.65	29.84	29.86	41	34	33	WSW	2	WSW	4	W	2	W	2	Cloudy and clear	7	Cloudy and clear snow flurries	7
25	62.53N 81.20W	29.71	29.65	29.69	34	31	32	NE	3	N.	5	NNE.	5	NNE.	5	Cloudy and clear, snow squalls	5	Cloudy and clear, snow squalls	6
26	Southampton Isle	29.78	29.90	29.98	30	23	31	N.	5	N.	3	N.	2	N.	2	Overcast and clear	8	Overcast and clear	8
27	"	29.97	29.91	29.81	35	23	30	N.	3	NW.	1	NE.	2	NE.	2	Cloudy and clear	9	Cloudy and clear	9

C.G.S. N.B. McLEAN METEOROLOGICAL REPORT—Concluded

Date	Noon Position	Barometer			Temperature °F		Wind True			Fog		Remarks		Vsby.				
		8 a.m.	4 p.m.	12 p.m.	Air		Sea	8 a.m.		4 p.m.		12 p.m.	Hour		a.m.	p.m.		
					Max.	Min.		Dir.	F.	Dir.	F.						Dir.	F.
1942 Sept.																		
28	Southampton Isle	29.73	29.67	29.67	29	21	30	WNW	2	NW	2	NNW	2	0	Overcast and clear, snow flurries	7	5	
29	"	29.69	29.71	29.77	30	30	30	W	3	NW	4	WNW	3	0	Cloudy and clear, heavy snow	7	8	
30	"	29.78	29.79	29.72	30	27	30	WNW	5	W	4	W	6	0	Cloudy and clear	9	9	
1942 Oct.																		
1	Abearn Ruin Pte	29.68	29.74	29.72	32	28	28	W	5	W	5	W	4	0	Overcast, and clear	9	6	
2	62-35N 81-22W	29.72	29.72	29.69	32	27	28	SW	1	NW	4	NE	5	0	Overcast, light snow	3	3	
3	62-57N 78-15W	29.64	29.72	29.80	30	26	27	ENE	5	NE	5	NE	6	0	Overcast, light snow	6	7	
4	60-57N 86-36W	30.01	30.12	30.16	33	27	30	NNE	3	ESE	2	SSW	4	0	Cloudy and clear	7	7	
5	7 Miles off Cape Merry	29.82	29.59	29.52	42	31	38	S	6	SSE	6	SSE	2	0	Cloudy and clear	6	7	
6	Churchill	29.54	29.67	29.76	40	38	38	WNW	2	NW	4	NW	2	9	Overcast, light rain	5	0	
7	"	29.80	29.82	29.88	41	38	38	NNW	2	ENE	2	ESE	2	24	Overcast, light fog	0	3	
8	"	29.98	30.06	30.02	41	34	38	ESE	2	SW	2	SW	3	0	Overcast, light fog	7	3	
9	"	29.96	29.75	29.58	46	37	38	SSW	2	SSW	5	SSW	1	0	Cloudy, clear	8	8	
10	"	29.74	29.86	29.96	50	39	38	NNW	3	NW	1	NW	1	6	Cloudy, heavy rain	8	7	
11	60-34N 89-72W	29.98	29.94	29.84	39	37	36	SSE	3	SSE	4	SSE	5	12	Thick fog	6	3	
12	63-26N 83-20W	29.52	29.43	29.38	37	34	34	SSE	5	W	3	W	3	8	Overcast, haze	3	4	
13	63-54N 83-24W	29.29	29.21	29.23	37	30	31	WNW	4	WSW	4	WNW	6	0	Overcast, fog	6	2	
14	Southampton	29.28	29.52	29.75	32	22	29	WNW	8	NW	7	NW	6	0	Overcast, clear	4	8	
15	"	29.96	30.03	30.10	26	17	24	NNW	2	NNW	4	NW	6	0	Cloudy, clear	8	8	
16	"	30.14	30.12	30.10	30	14	28	NE	1	ESF	1	E	3	0	Fine and clear	9	9	
17	63-56N 83-20W	30.08	30.07	30.08	30	22	29	E	4	E	3	E	3	0	Fine and clear	9	9	
18	62-00N 83-21W	30.02	30.00	29.92	30	28	32	E	2	NE	2	NNE	3	0	Overcast, clear	5	6	
19	62-33N 79-33W	29.90	29.80	29.84	32	24	28	NE	1	F	1	SSE	2	0	Overcast, clear	5	4	
20	Eric Cove, 4 miles off	29.80	29.77	29.74	30	25	28	SE	1	Calm	0	S	1	0	Overcast, clear	5	4	
21	"	29.68	29.65	29.60	42	30	29	ESE	8	SSE	9	SSE	9	0	Overcast, clear	5	5	
22	"	29.40	29.51	29.43	42	38	32	S	3	NW	1	SE	4	0	Overcast, clear	5	5	
23	62-55N 77-55W	29.62	29.89	29.79	38	34	31	S	4	SSF	3	W	1	0	Overcast, clear	5	8	
24	62-55N 78-28W	29.72	29.77	29.79	39	31	31	W	4	WSW	3	WNW	2	0	Overcast, clear	9	9	
25	62-11N 70-08W	29.83	29.94	30.05	32	20	29	W	4	WSW	4	WSW	3	0	Overcast, clear	5	0	
26	Acadia Cove	30.00	29.68	29.19	35	30	29	E	4	E	6	E	9	0	Overcast, sleet	4	8	
27	"	29.40	29.39	29.54	31	29	30	SSW	3	SE	2	ENE	1	0	Overcast sleet squall	4	4	
28	Acadia Cove	28.94	28.99	28.87	37	33	29	SSW	5	ESE	5	SSW	7	0	Cloudy, clear	6	7	
29	"	29.04	29.24	29.41	32	30	29	SSW	9	SW	7	SW	6	0	Overcast, light snow	3	5	
30	"	29.53	29.58	29.54	31	31	29	SW	6	WSW	6	WSW	4	0	Overcast, light snow	7	3	
31	60-37N 63-45W	29.40	29.39	29.54	31	29	30	SSW	3	SE	2	ENE	1	0	Overcast, light snow	4	8	

RESOLUTION ISLAND METEOROLOGICAL REPORT, 1942

Date	Mean Baro- meter 900 + mb.	All Temperature		Wind				Hours of Fog	Precipitation	
		Max.	Min.	8 a.m.		8 p.m.			a.m.	p.m.
				Dir.	Vel.	Dir.	Vel.			
1942 July		°F.	°F.					Inches	Inches	
1	109.0	36.6	32.0	E.	35	E.	26	2	Trace	
2	113.0	34.0	31.0	E.	30	E.	15	13	Trace .05	
3	112.0	43.0	32.0	E.	20	NW.	18	14½	.01 .28	
4	115.0	46.6	31.5	SE.	6	E.	28	0		
5	107.0	38.0	35.0	E.	22	NNE.	8	0	.10 .26	
6	104.0	42.2	31.5	Calm		E.	15	11¼	.33	
7	098.0	38.0	32.0	ENE.	16	NE.	13	22	.07	
8	099.0	44.6	31.0	SE.	7	E.	26	6	.06	
9	104.0	38.4	34.5	E.	14	NE.	14	16¾	.17 .33	
10	112.0	38.6	31.0	WNW.	7	W.	4	12	.09 Trace	
11	114.0	40.0	32.0	WNW.	14	WNW.	6	17		
12	114.0	43.2	31.3	E.	9	E.	14	0		
13	108.0	41.8	37.0	ENE.	14	E.	28	13	Trace Trace	
14	102.0	38.2	32.0	ENE.	16	NE.	23	24	.03 Trace	
15	100.0	43.0	36.0	NE.	25	N.	22	13	Trace .02	
16	100.0	40.4	33.5	WNW	10	W.	6	0	Trace	
17	110.0	41.0	31.0	W.	8	SSW.	3	17½		
18	106.0	43.6	34.4	SE.	12	E.	2	21	Trace .05	
19	101.0	36.0	32.8	SE.	1	WSW.	9	24	.37	
20	102.0	38.3	32.0	Calm		W.	2	7	.05	
21	108.0	38.2	32.0	NW.	16	NW.	15	14½	.01	
22	116.0	46.0	34.0	W.	12	W.	14	0	.01	
23	115.0	52.0	33.0	N.	2	E.	8	0		
24	114.0	42.4	33.0	E.	7	W.	2	8		
25	119.0	40.0	35.0	W.	7	W.	15	0		
26	114.0	45.0	36.0	W.	7	WSW.	14	0		
27	109.0	48.8	35.8	W.	12	E.	4	7	.45 .04	
28	111.0	40.8	34.0	ESE.	10	W.	6	17		
29	108.0	45.0	34.2	S.	7	W.	5	0		
30	111.0	43.8	35.0	E.	4	W.	8	2		
31	113.0	50.0	33.5	W.	11	E.	22	0	Trace	
August		°F.							Inches	Inches
1	110.0	40.9	37.0	E.	24	E.	22	6	.14	.01
2	109.0	44.0	35.0	E.	26	E.	23	24		
3	107.0	44.8	37.3	E.	10	NE.	16	10¾		
4	109.0	48.2	37.0	E.	7	ESE.	8	5		
5	114.0	45.0	38.7	E.	1	S.	2			
6	113.0	42.5	34.5	W.	10	W.	14	9¼		
7	115.9	40.6	33.0	NW.	10	W.	12	6½		
8	107.9	43.4	34.9	S.	7	E.	12	8		.03
9	106.0	37.0	33.0	W.	24	W.	12	13	.01	
10	107.9	38.0	32.4	W.	8	WSW.	23	14¾	.09	
11	111.0	36.0	32.5	W.	22	W.	12	16¾	Trace	
12	114.0	38.0	31.0	WNW.	20	W.	10	7		
13	116.0	36.5	30.0	W.	12	W.	14	17		
14	111.0	37.0	33.3	W.	15	WNW.	6	6¾		
15	113.0	41.0	32.2	E.	7	SW.	2	1¼		
16	118.0	40.0	31.4	Calm		E.	10	12		
17	114.0	38.5	32.4	E.	20	E.	22	4½		
18	105.0	40.8	34.0	E.	28	NE.	24	8	.12	1.0
19	107.0	45.0	37.3	NE.	24	NE.	6		.01	
20	107.0	38.0	33.0	NE.	18	NE.	16	14		Trace
21	106.0	37.8	35.0	NE.	26	NE.	26	11	Trace	Trace
22	108.0	36.2	34.0	NE.	28	NE.	14	9½	Trace	
23	105.0	37.2	31.2	NE.	12	NE.	16			
24	101.0	42.8	34.0	NE.	16	NW.	12	6	Trace	
25	110.0	39.0	35.1	W.	4	W.	10			
26	109.0	43.0	36.4	SE.	6	SW.	12	3		.05
27	107.0	38.0	36.0	SW.	20	W.	14		Trace	
28	113.0	37.8	34.0	W.	12	W.	20			
29	115.0	42.2	34.1	W.	8	S.	5			
30	100.0	40.8	35.2	SW.	22	WNW.	26	12½	.12	.03
31	106.0	37.0	32.1	WNW.	24	NW.	14	12	Trace	

RESOLUTION ISLAND METEOROLOGICAL REPORT, 1942

Date	General Weather		Visibility—Miles		Ice Conditions
	a.m.	p.m.	a.m.	p.m.	
1942					
July					
1	Drizzle and fog.	Fog.....	1	$\frac{1}{4}$	Scattered loose ice.
2	Fog.....	Drizzle and fog.	4	$\frac{1}{16}$	Scattered ice, all directions.
3	Rain and fog....	Clearing.....	$\frac{1}{4}$	20	" "
4	Cloudy.....	Overcast.....	30	20	Scattered ice, three bergs.
5	Rain.....	Rain.....	1	2	Scattered ice, six bergs.
6	Partly cloudy..	Fog.....	20	$\frac{1}{4}$	" "
7	Light fog.....	Rain and fog...	1	1	" "
8	Light fog.....	Cloudy.....	1	20	Scattered ice, many bergs.
9	Rain and fog....	Rain and fog....	$\frac{1}{2}$	$\frac{1}{2}$	Loose ice, scattered.
10	Rain.....	Fog.....	$\frac{1}{4}$	$\frac{1}{16}$	Four bergs, growlers.
11	Fog.....	Clearing.....	$\frac{1}{4}$	30	Five bergs, growlers.
12	Cloudy.....	Overcast.....	30	30	Growlers, many bergs.
13	Overcast.....	Drizzle and fog.	20	1	
14	Rain.....	Fog.....	9	$\frac{1}{2}$	Growlers, seven bergs.
15	Rain.....	Fog.....	$\frac{1}{2}$	9	No ice.
16	Haze.....	Cloudy to clear.	20	20	Growlers, seven bergs.
17	Thick fog.....	Haze.....	$\frac{1}{4}$	9	Growlers, many bergs.
18	Fog.....	Rain and fog....	20	$\frac{1}{16}$	Growlers, four bergs.
19	Fog.....	Fog.....	$\frac{1}{16}$	$\frac{1}{4}$	
20	Fog.....	Light rain.....	9	20	Two bergs, growlers.
21	Fog.....	Overcast.....	$\frac{1}{16}$	30	Growlers.
22	Overcast.....	Partly cloudy..	20	30	No ice.
23	Cloudy.....	Cloudy.....	30	20	
24	Fog.....	Cloudy.....	1	30	Bay frozen, three bergs.
25	Haze.....	Cloudy.....	9	20	Growlers.
26	Light fog.....	Haze.....	9	4	No ice.
27	Rain.....	Cloudy.....	$\frac{1}{4}$	20	"
28	Fog.....	Cloudy.....	$\frac{1}{2}$	30	Two bergs.
29	Cloudy.....	Overcast.....	30	30	"
30	Light fog.....	Cloudy.....	20	30	"
31	Cloudy.....	Overcast.....	30	30	
Aug.					
1	Rain.....	Rain and fog....	4	$\frac{1}{4}$	
2	Fog.....	Fog.....	$\frac{1}{4}$	$\frac{1}{2}$	
3	Fog.....	Fog.....	20	$\frac{1}{16}$	No ice.
4	Fog.....	Cloudy.....	9	30	Six bergs.
5	Fog.....	Clear.....	20	30	Four bergs.
6	Fog.....	Overcast.....	$\frac{1}{4}$	20	No ice.
7	Cloudy.....	Cloudy.....	20	30	Two bergs.
8	Cloudy.....	Rain and fog....	30	$\frac{1}{2}$	No ice.
9	Fog.....	Fog.....	$\frac{1}{2}$	20	"
10	Fog.....	Fog and rain....	$\frac{1}{4}$	4	
11	Fog.....	Fog and rain....	$\frac{1}{2}$	$\frac{1}{4}$	
12	Fog.....	Cloudy.....	$\frac{1}{4}$	20	Two bergs.
13	Fog.....	Cloudy.....	$\frac{1}{4}$	20	Growlers.
14	Overcast.....	Fog.....	30	$\frac{1}{2}$	
15	Overcast.....	Overcast.....	20	20	
16	Fog.....	Fog.....	$\frac{1}{4}$	$\frac{1}{2}$	Two bergs.
17	Cloudy.....	Fog.....	20	$\frac{1}{4}$	
18	Rain.....	Rain.....	$\frac{1}{2}$	4	
19	Overcast.....	Cloudy.....	9	30	
20	Fog.....	Drizzle and fog.	4	1	
21	Fog.....	Drizzle.....	1	1	
22	Fog.....	Overcast.....	1	20	Three bergs.
23	Overcast.....	Overcast.....	9	9	No ice.
24	Fog.....	Cloudy.....	2	20	Two bergs.
25	Cloudy.....	Cloudy to clear.	20	30	
26	Cloudy.....	Overcast and rain.....	20	$\frac{1}{16}$	
27	Cloudy.....	Light fog.....	20	4	Ice to east, two bergs.
28	Overcast.....	Light fog.....	20	4	One berg.
29	Overcast.....	Overcast.....	20	20	
30	Fog.....	Light fog.....	1	4	
31	Fog.....	Partly cloudy..	$\frac{1}{16}$	20	One berg.

RESOLUTION ISLAND METEOROLOGICAL REPORT, 1942—Cont.

Date	Mean Baro- meter 900 + mb.	Air Temperature		Wind				Hours of Fog	Precipitation	
		Max.	Min.	8 a.m.		8 p.m.			a.m.	p.m.
				Dir.	Vel.	Dir.	Vel.			
1942										
September										
1	111.3	37.0	34.0	NW.	4	NW.	4			
2	99.7	40.0	33.0	S.	2	E.	3			.11
3	100.4	36.0	31.0	NW.	3	W.	3		.07	
4	100.2	37.0	32.0	SW.	3	SE.	2		.06	.04
5	97.7	39.0	34.0			E.	3			.34
6	103.9	40.0	33.0	NE.	5	NE.	5		.44	
7	105.2	39.0	32.0	WNW.	4	W.	3		Trace	
8	112.9	35.0	29.0	WNW.	4	W.	4			
9	102.0	38.0	33.0	SW.	5	NW.	3		.03	.02
10	113.2	38.0	32.0	SE.	3	NW.	5			
11	121.8	36.0	31.0	NW.	5	W.	4		Trace	
12	107.6	37.0	30.0	SSW	4	E.	8			
13	96.0	36.0	33.0	E.	7	E.	6		Trace	.05
14	97.4	37.0	33.0	N.	2	W.	4			
15	100.6	35.0	30.0	W.	4					
16	105.5	37.0	30.0	S.	4	ENE.	4			
17	110.3	35.0	30.0	NW.	6	W.	5			
18	117.3	39.0	32.0	W.	5	W.	4			
19	114.2	33.0	30.0	W.	3	E.	2			
20	99.9	35.0	30.0	E.	3	W.	6		.06	Trace
21	109.2	37.0	30.0	W.	3	SW.	4		Trace	Trace
22	106.5	42.0	32.0	S.	5	SE.	3		.08	
23	99.8	40.0	32.0	E.	5	S.	7			
24	119.6	42.0	22.0	SW.	6	SW.	3			
25	100.2	36.0	32.0	E.	7	E.	2		Trace	0.4
26	102.0	36.0	31.0	SW.	4	W.	6		.28	1.0
27	112.6	33.0	31.0	W.	5	E.	3		.01	
28	107.8	32.0	30.0	NE.	7	NW.	2		.20	.02
29	101.6	31.0	28.0	W.	6	W.	7		.22	
30	107.3	31.0	28.0	W.	6	W.	5		.01	.01
October										
1	106.9	33.0	29.0	WSW.	6	W.	6			
2	108.6	33.0	30.9	W.	5	W.	6			Trace
3	106.6	29.0	24.0	E.	5	ENE.	5		.10	
4	104.1	32.0	27.0	E.	8	NE.	7		.20	.20
5	115.8	29.0				Calm	0			
6	113.4	32.0	24.0	W.	3	SSW.	4			
7	102.6	34.0				NE.	6			
8	107.4	30.0	28.0	N.	4	NW.	2		.40	
9	113.6	27.0	27.0	NW.	2	NW.	4			
10	110.5	30.0	26.0	NW.	3	W.	7		Trace	Trace
11	107.6	31.0	23.0	W.	7	NW.	3		Trace	
12	112.4	30.0	21.0			W.	4			Trace
13	98.2	30.0	21.9	E.	3	WNW	7			.03
14	91.6	33.0	32.0	W.	7	W.	4			
15	92.2	32.0	26.0	NW.	1	NW.	3			
16	113.8	30.0	27.0	NW.	3	NW.	3			
17	119.1	30.0	25.0	NW.	1	N.	2			
18	114.2	29.0	23.0	WNW.	5	NW.	2			
19	114.5	28.0	23.0	C.	0	W.	2			.38
20	108.8	27.0	26.0	E.	1	NE.	2			
21	110.6	28.0	24.0	C.	0	C.	0			
22	114.4	31.0	26.0	E.	6	E.	8			
23	112.4	35.0	30.0	E.	7	E.	8		.04	.02
24	104.0	36.0	33.0	E.	7	ENE.	7		.20	.41
25	97.7	34.0	33.0	C.	0	W.	7		.11	.02
26	116.0	29.0	28.0	W.	6	W.	4			Trace
27	108.2	33.0	28.0	E.	3	E.	9			Trace
28	78.9	35.0	32.0	W.	6	E.	7		.39	Trace
29	88.6		26.0	SW.	7	W.	7		.05	.15
30	101.9	31.0	10.0	W.	6	NW.	5		.05	
31	95.0		29.0	SW.	3				.10	

RESOLUTION ISLAND METEOROLOGICAL REPORT, 1942—Cont.

Date	General Weather		Visibility—Miles		Ice Conditions
	a.m.	p.m.	a.m.	p.m.	
1942 Sept.					
1	Cloudy.....	Partly cloudy..	20	20	Two bergs.
2	Overcast.....	Snow.....	30	1	
3	Distant fog....	Overcast.....	9	20	
4	Distant fog....	Light rain.....	4	$\frac{1}{2}$	
5		Rain and fog....		$\frac{1}{4}$	
6	Fog.....	Partly cloudy..	4	20	
7	Fog.....	Distant fog....	$\frac{1}{16}$	2	
8	Fog.....	Overcast.....	$\frac{1}{4}$	20	
9	Moderate rain..	Fog.....	1	9	
10	Fog patches....	Cloudy.....	1	20	One berg.
11	Fine.....	Overcast.....	20	9	No ice.
12	Cloudy.....	Overcast.....	20	20	
13	Rain and fog...	Thunderstorm with hail.....	2	2	
14	Overcast.....	Overcast.....	20	4	
15	Overcast.....		9		
16	Overcast.....	Cloudy.....	30	20	
17	Partly cloudy..	Partly cloudy..	30	20	Three bergs.
18	Cloudy.....	Partly cloudy..	30	20	
19	Overcast.....	Overcast.....	20	20	
20	Snow and fog...	Light snow.....	$\frac{1}{4}$	9	
21	Partly cloudy..	Light rain.....	20	$\frac{1}{2}$	
22	Overcast.....	Cloudy.....	20	20	Three bergs.
23	Fog.....	Cloudy.....	$\frac{1}{4}$	4	
24	Partly cloudy	Haze.....	9	4	Two bergs.
25	Rain.....	Fog.....	2	$\frac{1}{4}$	
26	Snow and fog...	Light snow.....	1	2	
27	Cloudy.....	Overcast.....	9	20	
28	Snow.....	Snow.....	$\frac{1}{4}$	$\frac{1}{2}$	
29	Cloudy.....	Overcast.....	9	9	
30	Overcast.....	Cloudy.....	20	$\frac{1}{4}$	
Oct.					
1	Overcast.....	Part cloudy....	9	20	Two bergs.
2	Overcast.....	Overcast.....	20	9	
3	Snow.....	Distant fog....	1	4	
4	Snow.....	Drifting snow	$\frac{1}{4}$	0	
5		Fine.....		30	
6	Part cloudy....	Cloudy.....	30	20	Three bergs.
7		Overcast.....		9	
8	Overcast.....	Overcast.....	20	20	No ice.
9	Overcast.....	Cloudy.....	20	20	
10	Snow.....	Light rain and snow.....	2		One berg.
11	Cloudy.....	Part cloudy....	9	20	
12		Light snow.....		1	
13	Fog.....	Fog.....	$\frac{1}{4}$	$\frac{1}{2}$	
14	Cloudy.....	Distant fog....	9	4	
15	Part cloudy....	Overcast.....	20	20	Two bergs.
16	Cloudy.....	Part cloudy....	20	20	No ice.
17	Part cloudy....	Cloudy.....	30	20	One berg.
18	Cloudy.....	Cloudy.....	20	20	three bergs.
19	Overcast.....	Overcast.....	20	20	
20	Overcast.....	Overcast.....	9	9	
21	Overcast.....	Overcast.....	20	20	
22	Overcast.....	Haze.....	9	20	
23	Rain.....	Rain.....	1	$\frac{1}{4}$	One berg.
24	Rain.....	Rain.....	$\frac{1}{2}$	$\frac{1}{2}$	
25	Fog.....	Light snow.....	$\frac{1}{2}$	$\frac{1}{8}$	
26	Snow.....	Overcast.....	$\frac{1}{4}$	9	No ice.
27	Overcast.....	Rain and snow..	20	0	No ice.
28	Snow and fog...	Squally.....	9	4	Two bergs.
29	Snow.....	Snow.....	$\frac{1}{4}$	$\frac{1}{4}$	
30	Overcast.....		4		No ice.
31	Overcast.....		9		No ice.

RESOLUTION ISLAND METEOROLOGICAL REPORT, 1942—Cont.

Date	Mean Barometer 900 + mb.	Air Temperature		Wind				Hours of Fog	Precipitation	
		Max.	Min.	8 a.m.		8 p.m.			a.m.	p.m.
				Dir.	Vel.	Dir.	Vel.			
1942 November		°F.	°F.					Inches	Inches	
1	108.0	30.0	28.9	WSW	5	S.	3	Trace		
2	89.4	31.0	25.0	E.	8	N.	7	.02	.10	
3	9.72	30.0	25.0	NW.	7	SSW.	8	.10		
4	119.0	30.0	23.0	W.	6	W.	5	Trace	Trace	
5	106.0	29.0	26.0	SW.	4	W.	4		Trace	
6	102.2	13.0	10.0	N.	2	NW.	5			
7	106.8	19.0	12.0	NW.	5	N.	1		.10	
8	101.1	23.0	11.0	W.	6	NW.	2	.08		
9	101.2	22.0	16.0	NW.	1	W.	8	.10		
10	108.8	21.0	10.0	NW.	3	C.	0	Trace	Trace	
11	99.9	23.0	17.0	E.	5	N.	6	Trace	.02	
12	108.8	20.0	19.0	NW.	6	W.	3			
13	113.2	19.0	17.0	NW.	4	NE.	4	Trace		
14	118.2	27.0		E.	4			Trace		
15	98.4	22.0	20.0	NE.	7	NW.	6	.10	.10	
16	114.6	22.0	18.0	NW.	4	C.	0			
17	114.4	21.0	12.0	C.	0	WNW.	6			
18	98.2	32.0	19.0	SE.	9	S.	4		.10	
19	107.0	28.0	25.0	SW.	5	SW.	4		Trace	
20	103.0	24.0	20.0	SSW.	6	S.	3			
21	101.2	21.0	18.0	NE.	2	NW.	3		.18	
22	91.4	21.0	17.0	WSW.	5	NW.	5			
23	106.8	22.0	10.0	NW.	6	NW.	5	Trace	.05	
24	107.0	25.0	11.0	N.	4	C.	0			
25	110.4	29.9	22.0	NE.	3	E.	4			
26	116.4	29.0	26.0	ESE.	6	SE.	4		Trace	
27	114.5	30.0	26.0	E.	5	NE.	6	Trace		
28	106.2	36.0	27.0	NW.	6	NE.	6	Trace	.08	
29	101.2	31.0	30.0				3		Trace	
30	96.6	36.0	29.0	E.	7	E.	7	.10	.19	

RESOLUTION ISLAND METEOROLOGICAL REPORT, 1942—Cont.

Date	General Weather		Visibility—Miles		Ice Conditions
	a.m.	p.m.	a.m.	p.m.	
1942 Nov.					
1.....	Overcast.....	part cloudy.....		20	No ice in sight.
2.....	Snow.....	Drifting snow...	$\frac{1}{8}$	$\frac{1}{4}$	
3.....	Cloudy.....	Drifting snow...	20	0	No ice in sight.
4.....	Snow.....	Snow.....	2	$\frac{1}{8}$	" "
5.....	Overcast.....	Light snow.....	9	2	
6.....	Part cloudy...	Overcast.....	9	9	No ice in sight.
7.....	Cloudy.....	Haze.....	9	4	
8.....	Cloudy.....	Fine.....	20	20	
9.....	Overcast.....	Drifting snow...	4	9	No ice in sight.
10.....	Light snow.....	Part cloudy...	2	9	" "
11.....	Overcast.....	Light snow.....	4	$\frac{1}{8}$	
12.....	Part cloudy...	Part cloudy...	9	20	
13.....	Overcast.....	Overcast.....	9	9	Four bergs.
14.....	Overcast.....	Overcast.....	9	$\frac{1}{8}$	One berg.
15.....	Snow.....	Drifting snow...	$\frac{1}{8}$	4	
16.....	Part cloudy...	Fine.....	30	20	
17.....	Part cloudy...	Overcast.....	20	9	
18.....	Snow.....	Snow.....	$\frac{1}{8}$	20	One berg.
19.....	Overcast.....	Part cloudy...	9	9	Slob ice.
20.....	Cloudy.....	Overcast.....	9	9	
21.....	Part cloudy...	Part cloudy...	9	20	
22.....	Overcast.....	Snow.....	9	1	No ice in sight.
23.....	Light snow.....	Overcast.....	9	20	
24.....	Overcast.....	Overcast.....	4	20	No ice in sight.
26.....	Overcast.....	Overcast.....	9	4	Ice in all directions.
26.....	Haze.....	Drizzle.....	4	2	" "
27.....	Overcast.....	Distant fog.....	4	20	Slob ice all directions.
28.....	Rain and fog...	Sleet.....	1	$\frac{1}{4}$	
29.....		Drizzle.....		4	Slob ice off shore.
30.....	Light rain.....	Light rain.....	$\frac{1}{2}$	$\frac{1}{4}$	" "

CAPE HOPES ADVANCE METEOROLOGICAL REPORT, 1942

Date	Mean Barometer 900 + mb.	Air Temperature		Wind				Hours of Fog	Precipitation	
		Max.	Min.	8 a.m.		8 p.m.			a.m.	p.m.
				Dir.	Vel.	Dir.	Vel.			
		°F.	°F.					Inches	Inches	
1942 August										
1										
2										
3										
4										
5										
6										
7										
8										
9										
10										
11										
12		50.0				WNW.	12			
13		41.0	36.0	W.	16	SSE.	11			
14	110.8	42.0	34.0	W.	2	WNW.	18	6		
15	113.9	39.0	34.0	NW.	16	W.	16			Trace
16	109.5	38.0	32.0	W.	6	NE.	3	17½		
17	105.1	38.0	32.0	E.	16	E.	35	18½	.24	
18	107.8	39.9	34.0	E.	40	E.	21			.34
19	110.5	42.0	35.0	N.	9	W.	10		.02	
20	109.8	39.0	33.0	E.	10	E.	26	2		
21	107.5	38.0	53.0	E.	20	NNW.	12			
22	108.5	38.0	33.0	W.	10	W.	6	6		
23	105.1	42.0	34.0	W.	9	E.	7	6		
24	102.4	42.0	36.0	E.	24	NW.	30			
25	110.2	54.0	37.0	W.	16	S.	10			
26	104.4	53.0	42.0	S.	28	W.	30			.06
27	107.1	52.0	41.0	NW.	20	C.	0			
28	113.2	47.0	40.0	W.	24	W.	11			
29	109.8	62.0	41.0	W.	27	SW.	20			.04
30	102.0	56.0	38.0	W.	40	NNW.	18		.29	
31	107.8	40.0	32.0	NW.	26	NW.	20		.29	
September										
1	112.2	47.0	37.0	NW.	16	SE.	10			
2	96.6	42.0	38.0	S.	16	NW.	31	4½	.22	.11
3	98.6	42.0	32.0	NW.	22	SE.	12			.09
4	94.6	46.0	38.0	S.	13	S.	10		.04	.03
5	95.6	38.0	34.0	W.	20	N.	30		.01	.24
6	106.4	38.0	34.0	NE.	18	W.	4		.18	
7	111.2	48.0	32.0	W.	21	W.	8			
8	111.2	47.0	35.0	NW.	34	SW.	8			
9	103.7	46.0	33.0	W.	28	NW.	48			
10	111.2	42.0	31.0	W.	29	NW.	34		Trace	.02
11	115.9	35.0	31.0	NW.	32	SE.	7		Trace	
12	99.3	36.0	30.0	SE.	36	E.	56			
13	90.5	44.0	30.0	E.	61	NE.	34		.36	.32
14	100.7	35.0	31.0	NW.	28	NW.	35		.10	
15	105.4	40.0	30.0	W.	28	SW.	14			
16	106.1	40.0	31.0	NW.	12	NW.	24			
17	110.2	38.0	29.0	SW.	8	SW.	9			
18	117.6	36.0	32.0	W.	4	NW.	8			
19	112.2	36.0	32.0	S.	11	ESE.	18			
20	101.7	34.0	29.0	NW.	12	W.	10			Trace
21	105.1	45.0	31.0	SW.	14	SE.	8	5½	Trace	
22	99.3	45.0	35.0	S.	22	NNW.	30			.05
23	89.2	44.0	32.0	SE.	8	SW.	24	5	.02	.02
24	115.2	44.0	30.0	W.	24	SE.	15			.02
25	94.2	42.0	27.0	E.	36	ESE.	27		.18	Trace
26	100.0	38.0	32.0	W.	42	W.	48		Trace	Trace
27	110.3	32.0	28.0	NW.	24	N.	19			
28	92.9	30.0	27.0	NW.	44	WNW.	48		.03	Trace
29	103.4	31.0	26.0	W.	42	WNW.	27		Trace	
30	107.5	32.0	25.0	NW.	30	NW.	29			

CAPE HOPES ADVANCE METEOROLOGICAL REPORT, 1942

Date	General Weather		Visibility—Miles		Ice Conditions
	a.m.	p.m.	a.m.	p.m.	
1942					
Aug.					
1					
2					
3					
4					
5					
6					
7					
8					
9					
10					
11					
12		Part cloudy		20	
13	Overcast	Overcast	9	20	
14	Overcast	Overcast with fog	20	$\frac{1}{2}$	
15	Light rain	Fog	20	20	
16	Fog	Fog	$\frac{1}{2}$	$\frac{1}{4}$	
17	Fog	Fog	2	$\frac{1}{2}$	
18	Rain	Rain	4	9	
19	Overcast	Clearing	20	20	
20	Part cloudy	Overcast	9	4	
21	Overcast	Light snow flakes	4	20	
22	Fog	Fog then clearing	$\frac{1}{8}$		
23	Light fog	Clearing		20	
24	Overcast	Haze	9	9	
25	Overcast	Cloudy	20	20	
26	Overcast	Cloudy	20	20	
27	Overcast	Cloudy	20	20	
28	Overcast	Cloudy	20	1	
29	Overcast	Overcast	9	20	
30	Overcast	Cloudy	20	20	
31	Overcast	Overcast	20	20	
Sept.					
1	Overcast	Overcast	20	20	
2	Light rain	Light rain	9	4	
3	Overcast	Light rain	20	20	
4	Light rain	Light rain	20	20	
5	Fog and rain	Fog and rain	$\frac{1}{4}$	1	
6	Rain	Overcast	2	9	
7	Overcast	Cloudy	20	20	
8	Overcast	Overcast	20	20	
9	Overcast	Distant fog	20	9	
10	Overcast	Light drizzle	9	9	No ice in sight.
11	Distant fog	Cloudy	$\frac{1}{2}$	20	
12	Overcast	Overcast	4	4	
13	Fog	Mixed rain and snow	4	$\frac{1}{8}$	
14	Rain, snow and fog	Cloudy	2	9	
15	Overcast	Rain showers	30	20	
16	Cloudy	Cloudy	20	20	
17	Cloudy	Cloudy	30	20	
18	Overcast	Overcast	20	20	
19	Overcast	Light rain	30	9	No ice in sight.
20	Snow flakes	Cloudy	9	20	
21	Overcast	Fog	20	$\frac{1}{8}$	
22	Light rain	Light rain	20	20	One berg in sight.
23	Overcast	Rain	20	20	
24	Fine	Cloudy	20	20	
25	Snow	Overcast	4	9	
26	Snow flakes	Overcast	1	20	
27	Overcast	Overcast	20	20	
28	Snow	Overcast	9	20	
29	Drifting snow	Cloudy	4	20	
30	Cloudy	Overcast	20	20	

CAPE HOPES ADVANCE METEOROLOGICAL REPORT, 1942—Cont.

Date	Mean Baro- meter 900 + Mb.	Air Temperature		Wind				Hours of Fog	Precipitation	
		Max.	Min.	8 a.m.		8 p.m.			a.m.	p.m.
				Dir.	Vel.	Dir.	Vel.			
1942 October			°F.	°F.					Inches	Inches
1										0.01
2	106.6		28.0	SW.	15				Trace	
3	104.0	34.0	24.0	E.	28	E.	28		Trace	0.10
4	104.0	31.0	25.0	E.	50	NE.	21		0.10	Trace
5	116.9	30.0	27.0	N.	15	NW.	21		0.02	
6	115.2	28.0	17.0	S.	10	E.	21		0.67	
7	103.0	44.0	18.0	E.	42	NE.	35			
8	107.4	44.0	28.0	NW.	21	NW.	35			Trace
9	114.0	32.0	27.0	NW.	28	NW.	28			
10	111.6	48.0	27.0	NW.	21	NW.	15			
11	111.3	31.0	27.0	W.	21	W.	28			
12	109.8	33.0	26.0			W.	10			Trace
13	97.1	39.0	30.0	W.	21	W.	42			
14	93.6	35.0	33.0	W.	42					Trace
15	103.2	33.0	27.0	NW.	35	NW.	50			Trace
16	114.6	30.0	25.0	NW.	50	NW.	35			
17	119.2	30.0	17.0	NW.	21	W.	21			Trace
18	109.6	28.0	24.0	NW.	28	W.	28			Trace
19	109.8	28.0	25.0	NW.	28	W.	15			Trace
20	107.8	28.0	25.0	NW.	10	W.	15			Trace
21	108.4	25.0	18.0	S.	10	SE.	15			
22	104.8	33.0	18.0	E.	35	E.	50			
23	105.1	34.0	28.0			E.	35			0.26
24	102.4	34.0	28.0	E.	10	NNW	10		0.31	0.80
25	105.2	32.0	28.0	NW.	21	W.	35		0.70	
26	114.0	29.0	25.0	WSW.	28	SW.	28			
27	100.6	34.0	23.0	E.	10	E.	50		Trace	0.15
28	66.5	33.0	26.0	S.	35	SE.	42		0.45	Trace
29	89.8	34.0	28.0	SSE.	42	SW.	35		Trace	
30	97.4	31.0	29.0	SW.	28	SW.	35			
31	97.3	29.0	26.0			W.	10			
November										
1	104.6	27.0	22.0	SSW.	15	S.	2			
2	91.6	29.0	19.0	NE.	42	NW.	50		0.02	Trace
3	102.8	27.0	20.0	W.	50	W.	35			
4	116.0	27.0	17.0	NW.	15	SW.	21			
5	105.4	27.0	25.0	S.	15	NW.	28		0.10	0.01
6	102.8	25.0	11.0	NW.	15	W.	35		Trace	Trace
7	105.2	20.0	12.0	W.	35	SW.	28			
8	100.1	19.0	12.0	W.	28	SW.	15			Trace
9	101.1	13.0	5.0	W.	35	W.	35			
10	106.8	16.0	0.0	S.	15	S.	5			
11	101.2	20.0	12.0	NW.	10	NNW.	35			
12	108.2	18.0	9.0	W.	28	S.	10			
13	111.9	12.0	0.0	S.	21	S.	10			
14	113.6	18.0	5.0	S.	10	NW.	28			0.01
15	104.2	23.0	4.0	NW.	42	W.	42			
16	114.8	23.0	13.0	W.	21	W.	10			
17	107.4	21.0	16.0	W.	15	E.	35			Trace
18	90.0	30.0	10.0	SW.	21	SE.	28			Trace
19	101.0	21.0	15.0	S.	10	S.	15			
20	102.9	20.0	16.0	S.	15	S.	10		Trace	
21	100.4	20.0	9.0	S.	15	NW.	10			
22	94.6	21.0	9.0	NW.	4	NW.	50		Trace	Trace
23	98.3	21.0	15.0	WNW.	50	NW.	42			
24	196.1	21.0	12.0	NW.	42	S.	5			Trace
25	104.6	27.0	15.9	ESE.	28	SE.	35			Trace
26	111.4	28.0	22.0	S.	10	NNW.	21		Trace	
27	111.0	30.0	19.0	SE.	21	SE.	42			Trace
28	103.6	22.0	10.0	E.	21					
29	100.8	30.0				NNW.	5		Trace	0.05
30	93.6	31.0	27.0	E.	5	E.	21		Trace	0.10

CAPE HOPES ADVANCE METEOROLOGICAL REPORT, 1942—Cont.

Date	General Weather		Visibility—Miles		Ice Conditions
	a.m.	p.m.	a.m.	p.m.	
1942					
Oct.					
1		Snow pellets.....			No ice in sight.
2	Light snow.....		4		“ “
3	Drifting snow... Drifting snow...			$\frac{1}{2}$	“ “
4	Drifting snow... Cloudy.....		$\frac{1}{4}$	20	
5	Fine.....	Overcast.....	20	20	
6	Part cloudy....	Overcast.....	20	20	
7	Overcast.....	Overcast.....	9	9	No ice in sight.
8	Cloudy.....	Part cloudy....	20	9	
9	Overcast.....	Overcast.....	9	20	
10	Overcast.....	Overcast.....	20	9	Drift, eight miles.
11	Overcast.....	Cloudy.....	20	20	
12	Drizzle.....	Snow flakes.....		1	
13	Cloudy.....	Part cloudy....		20	
14	Overcast.....	Fine.....	20	2	
16	Overcast.....	Light snow.....	20	9	
16	Overcast.....	Overcast.....	9	9	One berg in sight.
17	Overcast.....	Light snow.....	20	1	No ice in sight.
18	Light fog.....	Light snow.....	4	9	“ “
19	Overcast.....	Snow flakes....	20	4	“ “
20	Overcast.....	Overcast.....	20	20	
21	Overcast.....	Overcast.....	20	9	
22	Overcast.....	Cloudy.....	20	20	
23		Rain and fog.....		4	
24	Rain and fog....	Moderate snow..	$\frac{1}{16}$	$\frac{1}{16}$	
25	Drifting snow... Overcast.....		$\frac{1}{16}$	9	
26	Cloudy.....	Fine.....	20	20	No ice in sight.
27	Part cloudy....	Drifting snow... Overcast.....	20	$\frac{1}{16}$	
28	Rain.....	Overcast.....	9	9	
29	Light snow flakes.....		2	20	
30	Overcast.....	Overcast.....	9	9	No ice in sight.
31		Cloudy.....		20	“ “
Nov.					
1	Overcast.....	Fine.....	9	20	No ice in sight.
2	Drifting snow... Light snow.....		$\frac{1}{2}$	$\frac{1}{16}$	
3	Overcast.....	Cloudy.....	20	9	
4	Overcast.....	Overcast.....	4	20	
5	Light snow.....	Light snow.....	4	$\frac{1}{2}$	
6	Light snow.....	Overcast.....	9	9	No ice in sight.
7	Overcast.....	Overcast.....	20	9	
8	Cloudy.....	Light snow.....	9	9	No ice in sight.
9	Distant snow storm.....	Cloudy.....	20	9	“ “
10	Overcast.....	Part cloudy....	20	20	“ “
11	Cloudy.....	Overcast.....	20	20	
12	Overcast.....	Part cloudy....	20	20	
13	Part cloudy....	Fine.....	9	20	Loose ice off shore.
14	Part cloudy....	Moderate snow..	20	1	“ “
15	Overcast.....	Overcast.....	9	9	
16	Overcast.....	Overcast.....	20	20	
17	Part cloudy....	Light snow flakes.....	20	$\frac{1}{2}$	Loose ice, one berg.
18	Overcast.....	Part cloudy....	20	20	No ice in sight.
19	Part cloudy....	Overcast.....	20	9	Loose ice, scattered.
20	Light snow.....	Part cloudy....	9	20	“ “
21	Part cloudy....	Overcast.....	20	20	
22	Light snow.....	Light snow.....	1	9	Close packed to horizon, all directions, one berg.
23	Overcast.....	Fine.....	20	20	
24	Cloudy.....	Overcast.....	20	9	Close packed, all directions over 8 miles.
25	Overcast.....	Light snow.....	20	$\frac{1}{16}$	
26	Overcast.....	Overcast.....	9	20	Floe ice all directions.
27	Overcast.....	Drizzle.....	9	20	
28	Fog.....				
29		Clear.....		20	
30	Snow.....	Overcast.....	$\frac{1}{16}$	9	Close packed all directions, inshore.

NOTTINGHAM ISLAND METEOROLOGICAL REPORT, 1942

Date	Mean Barometer 900 + Mb.	Air Temperature		Wind				Hours of Fog	Precipitation	
		Max.	Min.	8 a.m.		8 p.m.			a.m.	p.m.
				Dir.	Vel.	Dir.	Vel.			
1942 July		°F.	°F.					Inches	Inches	
1	98.4	38.9	30.0	E.	5	E.	4	0.02		
2	103.4	37.0	27.0	ENE.	5	E.	4			
3	106.4	37.0	30.0	E.	3	S.	3			
4	101.8	36.0	30.0	SE.	2	E.	3	0.18		
5	106.2	38.0	27.0	S.	3	E.	2			
6	104.8	43.0	29.0	ENE.	4	N.	3			
7	103.2	46.0	33.0	NE.	4	N.	4			
8	101.6	50.0	37.0	W.	3	NNE.	4			
9	107.5		35.0	W.	2					
10	111.2	39.0	27.0	SW.	2					
11	112.6	43.0	35.0	E.	4	E.	4		0.03	
12	107.6	49.0	34.0	E.	3	S.	2	0.29		
13	107.6		33.0	E.	3					
14	106.0	50.0	45.0			WNW.	3			
15	106.2	50.9	32.0	S.	2					
16	103.2	50.0	30.0	W.	2	S.	3			
17	106.0	46.0	30.0	S.	3	W.	3			
18	108.3	42.0	30.0	NW.	3	S.	2			
19	110.2	62.0	51.0	N.	3	N.	4			
20	110.2	66.9	35.0	W.	2	S.	1			
21	112.9	56.9	36.0	N.	3					
22	116.2	57.0	37.0	W.	2	W.	2			
23	116.8									
24	118.1	60.0	39.0	W.	2	WNW.	2			
25	115.2	48.0	32.0	NW.	1	S.	9			
26	106.9	47.9	42.0	W.	2	N.	3	0.31	Trace	
27	106.6	38.9	37.0			S.	4		Trace	
28	103.0	42.0	37.0	S.	5	S.	4		Trace	
29	110.3	45.0	40.0	W.	4	W.	4			
30	111.0	41.0	35.0	S.	5	S.	3			
31	113.8	44.0	32.0	S.	3	SSE.	3			
August										
1	112.6	49.0	48.9			S.	4			
2	108.4	59.0	49.0			E.	3			
3	105.9	50.0	30.0	E.	1	W.	2		0.25	
4	111.8	50.0	40.0	C.	0	SW.	2			
5	112.1	47.0	33.0	E.	3	SW.	4		0.24	
6	116.3	62.0	37.9	NNE.	3		8			
7	111.8	45.0	29.0	W.	4	W.	3			
8	105.0									
9	107.5	40.0	26.0	W.	5					
10	110.0	43.0	25.0			W.	4			
11	103.6	45.0	23.0	W.	3	W.	3			
12	117.2	49.0	27.0	W.	3	W.	3			
13	108.7	40.0	26.0	W.	4	W.	4			
14	112.8	49.0	22.0	W.	2	W.	3			
15	109.8	47.0	23.0	W.	2					
16	118.9			E.	2					
17	110.0	52.0	29.0	W.	2	E.	2			
18	110.1									
19	108.8	41.0	35.0	W.	4	W.	4			
20	108.2	51.0	31.0	NE.	3	NE.	3			
21	108.6	52.0	44.0			N.	3			
22	113.0	55.0	32.0	N.	1	W.	1			
23	109.3	53.0	27.0	N.	1	W.	3			
24	108.0	53.0	27.0	N.	1	W.	1			
25	105.1		28.0	N.	3					

NOTTINGHAM ISLAND METEOROLOGICAL REPORT, 1942

Date	General Weather		Visibility—Miles		Ice Conditions
	a.m.	p.m.	a.m.	p.m.	
1942					
July					
1	Overcast.....	Overcast.....	20	20	Loose ice to horizon.
2	Light fog.....	Overcast.....	9	20	Close packed ice inshore in channel off shore.
3	Overcast.....	Overcast.....	20	20	Loose ice in channel close packed in bay, none off shore.
4	Mixed rain and snow.....	Overcast.....	20	20	Loose ice in channel, no ice off shore.
5	Overcast.....	Overcast.....	20	20	Loose ice off shore, loose in river.
6	Overcast.....	Overcast.....	20	20	Loose ice off shore, loose in river.
7	Overcast.....	Cloudy.....	20	29	Scattered ice off shore, no ice inshore.
8	Cloudy.....	Overcast.....	20	30	Scattered off shore, close packed in bay.
9	Cloudy.....	20	Loose ice off shore. No ice in slight.
10	Cloudy.....	20	Bay frozen, no ice off shore.
11	Cloudy.....	Drizzle.....	1	20	Loose scattered ice all directions to horizon.
12	Overcast.....	Overcast.....	20	30	Close packed in bay.
13	Overcast.....	20	Loose scattered off shore to horizon. One berg.
14	Part cloudy.....	20	Scattered ice off shore. Growlers in bay.
15	Cloudy.....	20	Scattered loose ice in shore in sight.
16	Part cloudy.....	Cloudy.....	20	20	Close packed inshore. Scattered loose off shore.
17	Overcast.....	Part cloudy.....	20	20	None off shore, loose in shore in harbour.
18	Overcast.....	Part cloudy.....	20	Bay frozen, scattered loose off shore to horizon.
19	Fine.....	Fine.....	20	20	No ice off shore, loose scattered in cove.
20	Part cloudy.....	Part cloudy.....	20	9	Loose ice in bay, scattered ice off shore to horizon.
21	Light snow.....	20	Loose scattered ice in shore, no ice off shore.
22	Fine.....	Part cloudy.....	20	20	Loose ice in bay scattered south to horizon.
23	Loose ice in harbour, no ice off shore in sight.
24	Fine.....	Fine.....	20	20	Loose ice in harbour, scattered off shore to horizon.
25	Overcast.....	Dense fog.....	20	Loose ice in shore, no ice off shore.
26	Moderate rain.....	Overcast.....	9	20	Loose ice in harbour, loose ice off shore.
27	Drizzle.....	20	No ice in bay, floe off shore.
28	Overcast.....	Rain.....	4	9	
29	Fine.....	Fine.....	20	20	No ice in sight.
30	Part cloudy.....	Cloudy.....	20	20	" "
31	Fog.....	Fine.....	$\frac{1}{16}$	20	
Aug.					
1	Fine.....	20	
2	Cloudy.....	20	No ice in sight.
3	Distant fog.....	Distant fog.....	20	20	" "
4	Overcast.....	Part cloudy.....	20	20	" "
5	Fine.....	Moderate rain.....	20	20	" "
6	Fine.....	Fog.....	$\frac{1}{16}$	" "
7	Overcast.....	Fog.....	20	$\frac{1}{16}$	" "
8	" "
9	Cloudy.....	20	" "
10	Cloudy.....	20	" "
11	Haze.....	Part cloudy.....	4	20	" "
12	Part cloudy.....	Distant fog.....	20	4	" "
13	Fog.....	Fog.....	2	2	" "
14	Overcast.....	Part cloudy.....	20	20	" "
15	Fine.....	20	" "
16	Cloudy.....	20	" "
17	Part cloudy.....	Cloudy.....	20	20	
18	
19	Overcast.....	Part cloudy.....	20	
20	Cloudy.....	Fine.....	20	20	
21	Fine.....	30	No ice in sight.
22	Fine.....	Fine.....	20	20	" "
23	Part cloudy.....	Part cloudy.....	20	20	" "
24	Cloudy.....	Part cloudy.....	20	20	" "
25	Cloudy.....	

NOTTINGHAM ISLAND METEOROLOGICAL REPORT, 1942—Cont.

Date	Mean Baro- meter 900 + mb.	Air Temperature		Wind				Hours of Fog	Precipitation	
		Max.	Min.	8 a.m.		8 p.m.			a.m.	p.m.
				Dir.	Vel.	Dir.	Vel.			
1942 August		°F.	°F.					Inches	Inches	
26	94.8	41.0	29.0	N.	5	W.	5	0.01	0.01	
27	102.4	40.0	27.0	W.	5					
28	107.6	45.0	24.0	NW.	3	S.	3			
29	100.4	43.0	31.0			SE.	5		0.01	
30	103.3	44.0	28.0			W.	3			
31	111.0	40.0	27.0	C.	0					
September										
1	110.9	47.0	37.0			SW.	4		.01	
2	103.9	36.0	26.0	N.	3	NW.	3		Trace	
3	98.8	43.0	27.0	SE.	2	E.	4	.01	.02	
4	96.8	39.0	28.0	N.	3	N.	3	.02		
5	194.6	41.0	32.0			N.	3			
6	110.8	38.0	26.0			NW.	3			
7	114.4	42.0	26.0	W.	2	S.	3			
8	107.6	41.0	31.0	SW.	4	W.	5		.5	
9	108.2	41.0	30.0	N.	3	W.	3			
10	117.0	37.0	30.0	NNW.	5					
11	115.0	41.0	28.0	Calm			5			
12	110.2	29.0	25.0	W.	5	NE.	4			
13	109.2	43.0	30.0	NW.	3	NW.	3			
14	106.4	40.0	21.0	NW.	3	W.	3		Trace	
15	110.4	34.0	22.0	NW.	3	W.	4		.04	
16	107.6	37.0	21.0	NW.	2	W.	3		Trace	
17	114.0	36.0	32.0	NW.	2	W.	3	Trace	Trace	
18	111.6	34.0	32.0	W.	3	E.	3			
19	104.2	36.0	31.0	Calm	Calm	S.	1		.67	
20	102.2	39.0	25.0	N.	1	SSE.	3	Trace		
21	102.6	26.0	25.0	W.	4	E.	2			
22	100.2	36.0	22.0	NW.	1	W.	3		Trace	
23	104.8	32.0	24.0	N.	2	NW.	5		Trace	
24	116.9	29.0	23.0	SW.	4	SW.	2			
25	104.7		25.0	NE.	3				Trace	
26	107.8	40.0	27.0	NNW.	5	NW.	4	Trace		
27	114.8	30.0		NNW.	3					
28	103.4	28.0	13.0	NW.	3	NW.	4	Trace	Trace	
29	109.0	31.0	22.0	WNW.	4	S.	2			
30	109.4	31.0	24.0	NW.	3	W.	4			
October										
1	106.6	30.0	22.0	W.	5	W.	3		Trace	
2	107.8	31.0	25.0	NNW.	4	NE.	2	.02		
3	110.8		20.0	ENE.	5	N.	3			
4	112.4	27.0	15.0			NE.	6			
5	111.0	30.0	16.0	W.	2	SW.	2		.64	
6	106.4	22.0	22.0	S.	3	S.	8		.07	
7	98.4	28.0	19.0	NE.	3	NE.	2		.36	
8	115.5	32.0				N.	3			
9	117.2	32.0	21.0	WNW.	2	W.	1	Trace		
10	109.8	33.0	19.0	NW.	2					
11	111.4	30.0	20.0	NW.	4			Trace		
12	102.3	36.0		SW.	5	SW.	4		.01	
13	91.1					SW.	5		.03	
14	102.2	29.0	26.0	W.	26	NW.	5	Trace	Trace	
15	103.2	28.0	22.0	N.	4	NW.	5			
16	123.2	26.0	15.0	NNW.	3	NW.	2			
17	109.3	27.0	21.0			E.	5		Trace	
18	119.5	25.0	18.0	E.	3	N.	1		Trace	
19	112.6	27.0	16.0	N.	1	S.	1			
20	110.8	27.0	18.0	W.	1	S.	1			
21	109.9	24.0	15.0	N.	2	E.	4			
22	96.9		22.0	E.	9				Trace	

NOTTINGHAM ISLAND METEOROLOGICAL REPORT, 1942—Cont.

Date	General Weather		Visibility—Miles		Ice Conditions
	a.m.	p.m.	a.m.	p.m.	
1942					
Aug.					
26	Drizzle and fog.	Light fog.....	4	$\frac{1}{2}$	
27	Overcast.....	9	No ice in sight.
28	Fog.....	Haze.....	$\frac{1}{4}$	4	" "
29	Rain and fog.....	2	
30	Cloudy.....	20	
31	Overcast.....	20	
Sept.					
1	Light drizzle.....	0	
2	Overcast.....	Overcast.....	20	20	
3	Drizzle.....	Drizzle and fog.....	4	9	
4	Overcast.....	Overcast.....	9	20	No ice in sight.
5	Overcast.....	Overcast.....	4	
6	Cloudy.....	Overcast.....	4	20	
7	Fog.....	Part cloudy.....	$\frac{1}{2}$	20	
8	Fog.....	Fog and rain.....	$\frac{1}{4}$	2	No ice.
9	Part Cloudy.....	Cloudy.....	20	20	
10	Cloudy.....	Cloudy.....	20	No ice.
11	Part cloudy.....	Fog.....	20	20	
12	Overcast.....	Haze.....	9	4	
13	Cloudy.....	Cloudy.....	20	9	
14	Part cloudy.....	Light drizzle.....	4	9	
15	Part cloudy.....	Cloudy.....	20	20	
16	Cloudy.....	Overcast.....	20	20	
17	Overcast.....	Overcast.....	4	4	No ice.
18	Overcast.....	Overcast.....	20	20	
19	Overcast.....	Overcast			
		distant fog.....	4	4	
20	Fog.....	Overcast.....	0	20	
21	Part cloudy.....	Cloudy.....	20	20	
22	Part cloudy.....	Part cloudy.....	20	20	Scattered offshore, drift in bay.
23	Cloudy.....	Part cloudy.....	20	9	Scattered offshore.
24	Overcast.....	Cloudy.....	20	20	Scattered inshore.
25	Overcast.....	20	
26	Light snow.....	Overcast.....	4	9	Scattered offshore.
27	Part cloudy.....	Overcast.....	20	20	
28	Light fog.....	Light snow.....	4	9	
29	Overcast.....	Overcast.....	20	20	
30	Overcast.....	Light snow.....	20	9	
Oct.					
1	Light snow.....	Light snow.....	9	9	No ice offshore.
2	Rain.....	Overcast.....	9	4	Loose offshore.
3	Overcast.....	Fine.....	20	20	
4	Overcast.....	4	
5	Overcast.....	Fine.....	9	4	
6	Cloudy.....	Light fog.....	20	2	
7	Cloudy.....	Cloudy.....	9	20	No ice inshore.
8	Overcast.....	2	Loose ice, eight miles off.
9	Overcast.....	Cloudy.....	20	20	
10	Overcast.....	2	
11	Overcast.....	9	
12	Overcast.....	Overcast.....	4	
13	Light snow.....	9	
14	Light snow.....	Overcast.....	1	2	
15	Cloudy.....	Overcast.....	2	2	Close packed, inshore.
16	Overcast.....	Overcast.....	20	4	
17	Snow.....	4	
18	Haze.....	Overcast.....	9	2	
19	Cloudy.....	Overcast.....	4	20	Close packed inshore, loose offshore.
20	Haze.....	Overcast.....	1	20	
21	Overcast.....	Part cloudy.....	9	20	
22	Light snow.....	2	

NOTTINGHAM ISLAND METEOROLOGICAL REPORT, 1942—Cont.

Date	Mean Barometer 900 + mb.	All Temperature		Wind				Hours of Fog	Precipitation	
		Max.	Min.	8 a.m.		8 p.m.			a.m.	p.m.
				Dir.	Vel.	Dir.	Vel.			
		°F.	°F.					Inches	Inches	
1942 October										
23	101.6	34.0	30.0			E.	4			
24	107.4	38.0	27.0	S.	4	S.	1			
25	107.8	32.0	25.0	N.	3	E.	3	.02	.01	
26	109.9	30.0	23.0	N.	2	N.	1	.01	Trace	
27	108.8	26.0	15.0	NE.	1	ENE.	5			
28	69.2	32.0	18.0	E.	8	E.	5	.04		
29	77.8	29.0	22.0	N.	3	NW.	3			
30	94.4	29.0	24.0	W.	4	W.	3	.06		
31	96.0	27.0	19.0	N.	3	N.	3		Trace	
November										
1	104.2	30.0	25.0	NNE	2	N.	2			
2	101.4	25.0	11.0	NE.	3	N.	4			
3	108.2	19.0	11.0	N.	4	NNW.	4	.02	.02	
4	106.6	24.0	10.0	NE.	2	N.	3	.01	.08	
5	109.9	9.0	2.0	N.	4	N.	3	.04		
6	108.4	0.0	-4.0	N.	3	NW.	5			
7	107.1	10.0	0.0	N.	3	NE.	4			
8	99.8	14.0	0.0	NNW.	4	N.	4		Trace	
9	105.6	3.0	-2.0	N.	4	NW.	5	Trace	Trace	
10	106.8	-4.0	0.0	W.	3	N.	3			
11	108.0	-8.0	-5.0	N.	3	N.	2			
12	105.1	-5.0	-5.0	E.	3	N.	2	.70		
13	108.6	11.0	4.0	N.	3	N.	5	Trace	2.08	
14	119.0	4.0	-2.0	N.	4	N.	3			
15	118.2	7.0	-8.0	NE.	2	N.	3			
16	121.0	10.0	3.0	E.	3	E.	4		Trace	
17	92.6	20.0	3.0	E.	5	E.	7			
18	79.6	29.0	21.0	NE.	8	SE.	5		.05	
19	87.7	20.0	-2.0	SSE.	6	W.	6			
20	94.8		20.0	NW.	4					
21	103.2	20.0	12.0	NE.	3	NW.	5		.03	
22	105.6	17.0	10.0			NW.	4	.03		
23	106.6	5.0	3.0	NW.	4	N.	2			
24	103.8	19.0	4.0			E.	5			
25	99.8	23.0	19.0	E.	5	SE.	4		.04	
26	111.8	11.0	9.0	SE.	5	W.	4	.02		
27	109.8	30.0	13.0	ENE.	6	E.	5	.10	.03	
28	102.2	31.0	26.0			E.	4			
29	104.5									
30	101.2	26.0		Calm		S.	3	Trace	Trace	

NOTTINGHAM ISLAND METEOROLOGICAL REPORT, 1942—Cont.

Date	General Weather		Visibility—Miles		Ice Conditions
	a.m.	p.m.	a.m.	p.m.	
1942					
Oct.					
23		Cloudy		20	
24	Cloudy	Overcast	20	20	Close packed in harbour.
25	Snow	Overcast	2	20	
26	Overcast	Part cloudy	20	20	Loose inshore, no ice offshore.
27	Part cloudy	Overcast	20	20	Loose offshore in channel.
28	Drifting snow	Drifting snow	$\frac{1}{4}$	4	No ice in bay.
29	Overcast	Part cloudy	20	20	" "
30	Overcast	Overcast	4	20	" "
31	Overcast	Part cloudy	9	9	
Nov.					
1	Drizzle	Part cloudy		20	
2	Part cloudy	Overcast	9	20	
3	Light snow	Light snow	4	4	No ice in sight.
4	Snow	Part cloudy	20	20	" "
5	Cloudy	Overcast	20	20	
6	Part cloudy	Cloudy	20	20	
7	Cloudy	Overcast	20	9	Bay frozen.
8	Overcast	Light snow	9	20	
9	Overcast	Light snow	9	9	Bay frozen, close packed off shore.
10	Cloudy	Part cloudy	20	20	Bay frozen.
11	Part cloudy	Overcast	20	20	
12	Snow	Overcast	1	20	Close packed inshore, close packed off shore.
13	Snow	Snow	20	1	
14	Part cloudy	Cloudy	20	20	
15	Fine	Cloudy	20	20	
16	Cloudy	Snow showers	20	9	
17	Drifting snow	Drifting snow	9	0	
18	Drifting snow	Light snow	$\frac{1}{2}$	2	Close packed ice off shore.
19	Drifting snow	Drifting snow	4	9	
20	Part cloudy		30		
21	Overcast	Light snow	9	9	Slob off shore.
22		Part cloudy		20	Loose to horizon.
23	Part cloudy	Part cloudy	20	20	Close packed in shore. One berg. Loose to horizon.
24		Overcast		20	
25	Overcast	Light snow	20	1	
26	Light snow	Overcast	2	20	
27	Light snow	Part cloudy	4	9	
28		Overcast		9	
29					
30	Overcast	Light snow	9	20	

CHURCHILL METEOROLOGICAL REPORT, 1942

Date	Mean Barometer 900 + mb.	Air Temperature		Wind				Hours of Fog	Precipitation	
		Max.	Min.	8 a.m.		8 p.m.			a.m.	p.m.
				Dir.	Vel.	Dir.	Vel.			
1942 July		°F.	°F.					Inches	Inches	
1	111.8	47.0	37.0	NW.	20	NW.	12			
2	105.0	39.0	32.0	NW.	20	N.	7	.09	Trace	
3	108.1	45.0	34.0	N.	10	Calm		2		
4	109.6	45.0	34.0	N.	10	NW.	8			
5	108.6	48.0	36.0	NW.	18	NW.	6	.10	.34	
6	107.4	48.0	39.9	W.	12	NW.	12	Trace		
7	116.6	47.0	31.0	NE.	12	NW.	8			
8	113.0	57.0	40.0	W.	11	E.	16			
9	103.4	70.0	45.0	S.	10	S.	7			
10	106.3	48.0	38.0	N.	15	N.	12	9		
11	111.3	59.0	37.0	N.	2	S.	8	2		
12	107.4	44.0	37.0	E.	9	E.	30		.09	
13	105.2	42.0	36.0	N.	21	NW.	18		.75	
14	116.1	52.0	37.0	NW.	14	Calm		Trace		
15	113.9	73.0	43.0	W.	16	E.	2			
16	108.8	69.0	49.0	SW.	6	NE.	10			
17	111.6	58.0	47.0	N.	8	NE.	10			
18	115.7	77.0	44.0	W.	8	S.	10		Trace	
19	113.0	66.0	55.0	W.	8	E.	4			
20	110.0	78.0	50.0	S.	10	S.	10			
21	107.2	66.0	52.0	W.	18	N.	12	1 1/4		
22	116.4	61.0	40.0	N.	12	E.	11	3		
23	115.8	73.0	53.0	S.	10	E.	6			
24	114.2	74.0	60.0	SW.	16	E.	5			
25	112.2	60.0	47.0	E.	18	NW.	12	13 1/2	.14	
26	115.8	59.0	47.0	N.	18	E.	6	9		
27	114.8	79.0	52.0	W.	14	W.	8			
28	109.6	75.0	47.0	SW.	15	S.	20			
29	114.8	59.0	46.0	W.	8	SW.	10			
30	113.6	66.0	43.0	NW.	6	S.	3			
31	107.7	73.0	48.0	S.	12	SW.	28			
August										
1	105.0	68.0	48.0	NW.	14	N.	14		Trace	
2	107.4	52.0	43.0	W.	6	NNE.	12			
3	114.0	54.0	41.0	NW.	10	E.	8			
4	113.8	69.0	44.0	SE.	10	SE.	20			
5	113.8	62.0	45.0	SW.	20	NE.	24			
6	119.3	52.0	42.0	E.	14	E.	13		.10	
7	111.6	71.0	42.0	S.	11	NW.	16		.14	
8	116.7	63.0	49.0	NW.	10	E.	6			
9	117.0	58.0	52.0	NW.	10	S.	14			
10	107.8	80.0	46.0	S.	14	NE.	10		Trace	
11	112.8	52.0	44.0	ENE.	16	ESE.	14	4		
12	116.6	52.0	40.0	SE.	10	ESE.	12			
13	116.2	50.0	42.0	E.	8	E.	14			
14	117.4	51.0	40.0	ENE.	6	NE.	8			
15	114.2	61.0	40.0	NW.	5	S.	12	8		
16	110.7	53.0	46.0	S.	10	E.	12		.38	
17	115.6	53.0	43.0	NNE.	6	SE.	15			
18	96.0	56.0	42.0	SE.	22	S.	4	9	.20	
19	91.2	59.0	47.0	WNW.	12	NNW.	6	9	.37	
20	102.1	45.0	42.0	NW.	12	E.	16	3		
21	111.2	45.0	42.0	E.	15	NE.	18			
22	119.7	54.0	42.0	N.	14	NNW.	6			
23	116.9	64.0	45.0	W.	10	W.	10			
24	104.2	69.9	47.0	SSW.	15	S.	19			
25	99.2	57.0	51.0	SSW.	12	WNW.	24			
26	114.1	57.0	42.0	W.	15	WNW.	17			
27	115.7	68.0	41.0	W.	8	WSW.	16			
28	106.5	67.0	48.0	S.	13	S.	10		.18	
29	100.3	68.0	51.0	W.	18	NNW.	6		.07	
30	111.2	54.0	46.0	W.	10	NE.	16	12	.02	
31	115.8	61.0	41.0	W.	6	S.	10	6		

CHURCHILL METEOROLOGICAL REPORT, 1942

Date	General Weather		Visibility—Miles		Ice Conditions
	a.m.	p.m.	a.m.	p.m.	
1942					
July					
1	Part cloudy	Cloudy	20	9	Heavy floating ice in river.
2	Snow	Overcast	2	9	" " "
3	Fog	Overcast	$\frac{1}{2}$	20	Heavy floating ice in river, heavy strings.
4	Overcast	Overcast	9	20	Loose ice in river, strings in bay.
5	Rain	Cloudy	4	9	" " "
6	Cloudy	Cloudy	20	20	" " "
7	Cloudy, fog	Cloudy	1	9	" " "
8	Part cloudy	Part cloudy	20	20	" " "
9	Overcast	Overcast	4	4	" " "
10	Fog	Overcast	4	4	Slipway clear of ice.
11	Fog	Cloudy	$\frac{1}{4}$	4	Some ice sighted off shore, river clear.
12	Overcast	Overcast rain	20	4	" " " "
13	Rain	Rain	1	4	" " " "
14	Overcast	Overcast	4	4	No ice sighted.
15	Overcast	Fine	20	20	
16	Fine	Cloudy	20	20	
17	Part cloudy	Part cloudy	20	20	
18	Part cloudy	Thunderstorm	9	20	
19	Overcast	Part cloudy	9	20	
20	Smoky	Smoky	2	4	
21	Smoky	Smoky	1	4	
22	Fog	Overcast smoky	9	9	
23	Overcast	Smoky	4	2	
24	Smoky	Smoky	9	2	
25	Smoky	Fog	2	1	
26	Fog	Cloudy	$\frac{1}{2}$	20	
27	Cloudy	Part cloudy	9	9	
28	Cloudy	Cloudy	20	9	
29	Cloudy	Cloudy	9	20	
30	Cloudy	Cloudy	8	20	
31	Part cloudy	Part cloudy	20	20	
Aug.					
1	Light rain	Overcast	4	9	
2	Cloudy	Cloudy	9	20	
3	Part cloudy	Overcast	20	9	
4	Part cloudy	Part cloudy	20	20	
5	Overcast	Overcast and rain	9	20	
6	Rain	Overcast	20	20	
7	Rain	Overcast	9	20	
8	Part cloudy	Part cloudy	20	20	
9	Cloudy	Cloudy	20	20	
10	Rain, showers	Haze	9	4	
11	Fog	Haze	$\frac{1}{4}$	9	
12	Haze	Overcast	4	20	
13	Overcast	Overcast	20	20	
14	Part cloudy	Part cloudy	20	20	
15	Fog	Cloudy	$\frac{1}{8}$	9	
16	Rain	Clearing	1	20	
17	Overcast	Overcast	9	20	
18	Rain	Rain and haze	4	20	
19	Fog	Overcast and haze	$\frac{1}{2}$	20	
20	Fog	Overcast and haze	$\frac{1}{8}$	4	
21	Haze	Cloudy	4	9	
22	Cloudy	Part cloudy	20	20	
23	Cloudy	Cloudy	20	20	
24	Cloudy	Cloudy	20	20	
25	Light rain	Cloudy	4	20	
26	Part cloudy	Part cloudy	20	20	
27	Cloudy	Fine	20	20	
28	Part cloudy	Rain	20	4	
29	Rain	Cloudy	20	9	
30	Part cloudy	Rain and fog	9	$\frac{1}{4}$	
31	Fog	Part cloudy	9	29	

CHURCHILL METEOROLOGICAL REPORT, 1942—Cont.

Date	Mean Baro- meter 900 + mb.	Air		Wind				Hours of Fog	Precipitation	
		Temperature		8 a.m.		8 p.m.			a.m.	p.m.
		Max.	Min.	Dir.	Vel.	Dir.	Vel.		Inches	Inches
1942 September		°F.	°F.							
1	116.8	54.0	40.0	N.	6	N.	3			
2	116.4	55.0	41.0	WNW.	5	W.	2			
3	103.6	48.0	42.0	WNW.	4	NW.	6			
4	101.5	45.0	37.0	NNW.	6	WNW.	2			
5	109.4	58.0	33.0	S.	2	S.	3			
6	110.0	49.0	43.0	E.	2	NNE.	3			
7	116.2	62.0	36.0	S.	1	S.	4	2		
8	106.6	70.0	48.0	S.	3	NW.	4		.20	
9	116.5	48.0	41.0	N.	4	E.	3			
10	110.8	48.0	38.0	SE.	3	ESE.	4			
11	95.4	45.0	43.0	NE.	2	NW.	5		.15	
12	104.7	45.0	41.0	NNW.	7	NNW.	4	.02		
13	109.0	49.0	36.0	C.	0	ENE.	3		.28	
14	110.6	50.0	38.0	W.	2	C.	0	Trace		
15	109.8	42.0	38.0	NE.	4	ENE.	6			
16	113.9	45.0	35.0	NE.	6	NNE.	5		.02	
17	118.0	42.0	33.0	WNW.	3	E.	1			
18	117.0	51.0	32.0	S.	2	E.	2			
19	109.9	49.0	37.0	NW.	4	S.	2	.01		
20	106.9	43.0	34.0	N.	8	WNW.	5	.03		
21	106.2	38.0	29.0	WNW.	7	NW.	7		Trace	
22	108.9	35.0	29.0	NW.	5	N.	4			
23	113.4	31.0	26.0	NNW.	7	NW.	5	Trace	Trace	
24	114.6	33.0	23.0	WNW.	5	NW.	4			
25	113.6	34.0	27.0	NW.	4	SW.	3			
26	114.8	35.0	25.0	W.	1	N.	5	Trace		
27	119.5	30.0	28.0	N.	3	WNW.	4			
28	113.0	31.0	27.0	W.	2	NW.	5		.20	
29	118.0	29.0	24.0	NW.	5	WNW.	2	Trace		
30	116.3	38.0	26.0	N.	2	S.	3			
October										
1	102.0	52.0	32.0	S.	12	S.	16			
2	105.8	39.0	37.0	S.	14	SSW.	10			
3	119.3	38.0	33.0	NNE.	14	NE.	24	2	.04	
4	107.0	43.0	32.0	ENE.	14	SE.	8		.01	
5	107.0	43.0	36.0	S.	21	S.	18			
6	104.6	42.0	37.0	W.	7	NW.	10			
7	111.8	41.0	37.0	NW.	7	ESE.	15	4		
8	119.1	40.0	32.0	ESE.	8	SSE.	7			
9	111.0	47.0	33.0	S.	12	S.	16			
10	112.0	47.0	38.0	NNW.	19	WNW.	3		.47	
11	117.4	60.0	32.0	ESE.	11	SE.	20	2		
12	106.1	44.0	42.0	S.	12	NW.	10	Trace		
13	115.3	52.0	37.0	WSW.	25	NW.	20			
14	125.6	40.0	34.0	WNW.	19	NNW.	1			
15	120.6	41.0	29.0	ESE.	6	SE.	15	.15		
16	113.7	46.0	38.0	W.	15	W.	14		.24	
17	117.6	40.0	37.0	NW.	14	NNE.	16			
18	118.2	38.0	34.0	NE.	4	SE.	10			
19	106.7	41.0	32.0	SW.	10	NE.	9			
20	99.6	39.0	35.0	ESE.	4	NW.	30	.04		
21	93.6	34.0	29.0	NW.	36	NNE.	36	.12	Trace	
22	88.8	33.0	26.0	N.	52	NW.	49	.09	.10	
23	91.9	30.0	18.0	NW.	42	NW.	40	.06	.04	
24	102.7	20.0	16.0	WSW.	14	S.	10			
25	115.8	24.0	13.0	S.	9	NW.	5			
26	123.3	20.0	21.0	W.	6	NW.	18			
27	116.6	25.0	22.0	NNW.	24	NW.	22	Trace		
28	104.7	19.0	11.0	NW.	5	NW.	23			
29	100.0	21.0	11.0	W.	16	W.	12			
30	104.4	21.0	17.0	WNW.	12	NW.	12			
31	109.0	22.0	10.0	NW.	15	WNW.	8	.02		

CHURCHILL METEOROLOGICAL REPORT, 1942—Cont.

Date	General Weather		Visibility—Miles		Ice Conditions
	a.m.	p.m.	a.m.	p.m.	
1942 Sept.					
1	Cloudy.....	Cloudy.....	9	20	
2	Overcast.....	Overcast.....	20	20	
3	Overcast.....	Cloudy.....	20	9	
4	Overcast.....	Light rain.....	20	20	
5	Cloudy.....	Overcast.....	20	20	
6	Cloudy.....	Part cloudy....	20	20	
7	Fog.....	Cloudy.....	$\frac{1}{16}$	20	
8	Thunderstorm..	Smoky.....	9	20	
9	Overcast.....	Clearing.....	20	20	
10	Fog patches...	Light rain.....	1	9	
11	Thunderstorm..	Rain.....	4	4	
12	Rain.....	Clearing.....	9	20	
13	Cloudy.....	Rain.....	20	4	
14	Overcast.....	Overcast.....	20	20	
15	Overcast.....	Overcast.....	20	20	
16	Drizzle.....	Drizzle.....	20	20	
17	Overcast.....	Cloudy.....	20	20	
18	Cloudy.....	Cloudy.....	20	20	
19	Overcast.....	Cloudy.....	20	20	
20	Rain.....	Cloudy.....	9	20	
21	Overcast.....	Light snow.....	20	9	
22	Overcast.....	Overcast.....	20	20	
23	Overcast.....	Light snow.....	20	20	
24	Overcast.....	Overcast.....	9	20	
25	Cloudy.....	Squally.....	20	9	
26	Light snow.....	Squally.....	4	20	
27	Snow pellets...	Overcast.....	$\frac{1}{2}$	20	
28	Overcast.....	Snow.....	20	9	
29	Light drizzle...	Overcast.....	9	20	
30	Cloudy.....	Clearing.....	20	20	
1942 Oct.					
1	Overcast.....	Overcast.....	9	20	
2	Part cloudy....	Overcast.....	9	9	
3	Light fog.....	Light drizzle...	4	9	
4	Light drizzle...	Overcast.....	9	9	
5	Overcast.....	Overcast, light drizzle.....	9	9	
6	Overcast, distant fog....	20	4	
7	Light fog and drizzle.....	Overcast.....	$\frac{1}{2}$	4	
8	Overcast.....	Overcast.....	9	9	
9	Overcast.....	Overcast.....	20	20	
10	Light rain.....	Distant fog....	4	20	
11	Fog.....	Cloudy.....	$\frac{1}{2}$	9	
12	Cloudy.....	Cloudy, rain....	9	9	
13	Part cloudy....	Part cloudy....	20	20	
14	Part cloudy....	Part cloudy....	20	20	
15	Cloudy.....	Light rain.....	20	4	
16	Light rain.....	Overcast.....	20	20	
17	Overcast.....	Overcast.....	20	9	
18	Overcast.....	Overcast.....	20	9	
19	Overcast.....	Overcast.....	20	9	
20	Light drizzle...	Light drizzle...	4	4	
21	Snow.....	Snow and rain..	9	4	
22	Snow.....	Snow.....	2	$\frac{1}{2}$	
23	Snow.....	Drifting snow...	$\frac{1}{2}$	$\frac{1}{2}$	No ice sighted.
24	Cloudy.....	Smoky.....	20	9	Some loose floating ice in river.
25	Overcast.....	Overcast.....	20	20	
26	Cloudy.....	Cloudy.....	20	20	Slob ice along shore in bay. Ice in river.
27	Light drizzle...	Overcast.....	4	9	Ice in river and bay. Coves filling up.
28	Overcast.....	Clearing.....	9	20	
29	Part cloudy....	Part cloudy....	9	20	Pancake ice in river. Bay coves solid.
30	Cloudy.....	Cloudy.....	20	20	
31	Light snow.....	Light snow.....	4	4	

CHURCHILL METEOROLOGICAL REPORT, 1942—Cont.

Date	Mean Baro- meter 900 + mb.	Air Temperature		Wind				Hours of Fog	Precipitation	
		Max.	Min.	8 a.m.		8 p.m.			a.m.	p.m.
				Dir.	Vel.	Dir.	Vel.			
1942 November		°F.	°F.					Inches	Inches	
1.....	112.6	27.0	12.0	NW.	5	NW.	4	.02	Trace	
2.....	118.9	36.0	10.0	NW.	3	WNW.	3	Trace	.01	
3.....	119.8	19.0	11.0	WSW	2	S.	2	Trace	Trace	
4.....	118.8	24.0	7.0	WSW.	1	NW.	4	Trace	.07	
5.....	124.2	4.0	2.0	NW.	5	WNW.	4	Trace	Trace	
6.....	120.6	11.0	-7.0	W.	4	W.	4			
7.....	116.8	16.0	4.0	WSW.	8	NW.	4		Trace	
8.....	117.4	16.0	5.0	NW.	4	NW.	5	Trace	Trace	
9.....	121.0	11.0	6.0	NW.	6	WNW.	5	.02		
10.....	118.4	10.0	4.0	NNW.	4	NNW.	6		Trace	
11.....	118.2	0.0	-7.0	NW.	4	W.	3			
12.....	115.9	1.0	-8.0	N.	5	NNW.	6			
13.....	129.1	-5.0	-9.0	NW.	4	W.	3			
14.....	110.5	12.0	-15.0	S.	4	SSE.	5		.05	
15.....	97.2	21.0	10.0	C.	0	W.	2	.05	.06	
16.....	102.1	33.0	16.0	ENE.	6	ENE.	7	.10	.04	
17.....	98.6	26.0	2.0	NE.	6	N.	7	.20	.10	
18.....	111.5	7.0	3.0	N.	7	NW	6			
19.....	118.1	-1.0	-7.0	NW.	5	W.	4			
20.....	121.6	0.0	-11.0	W.	4	W.	3			
21.....	126.4	7.0	-5.0	N.	4	NW.	4			
22.....	119.0	8.0	0.0	SSW.	2	ESE.	3			
23.....	99.8	20.0	1.0	SE.	3	W.	3			
24.....	99.5	8.0	0.0			WNW.	5			
25.....	103.9	0.0	-8.0	WSW.	4	WSW	5			
26.....	111.2	-3.0	-9.0	WSW.	4	WSW.	4			
27.....	111.4	0.0	-7.0	NNW.	4	N.	6			
28.....	111.2	-1.0	-2.0	NNW.	7	WNW	5	.18	.28	
29.....	98.0	20.0	10.0	WNW	3	E.	5		.16	
30.....	110.9	-4.0	-13.0	E.	3	C.	0	Trace		

CHURCHILL METEOROLOGICAL REPORT, 1942—Cont.

Date	General Weather		Visibility—Miles		Ice Conditions
	a.m.	p.m.	a.m.	p.m.	
1942 Nov.					
1	Light snow.....	Light drizzle....	2	9	
2	Overcast.....	Overcast.....	9	9	
3	Light snow.....	Overcast.....	4	9	Lakes frozen hard, river full, strings in bay.
4	Thunderstorm..	Light snow.....	9	9	
5	Light snow.....	Part cloudy.....	4	20	
6	Fine.....	Overcast.....	9	9	River solid ice.
7	Cloudy.....	Cloudy.....	9	9	“ “
8	Part cloudy....	Cloudy.....	9	20	“ “
9	Light snow.....	Overcast.....	9	9	River ice moving out. Heavy pack ice in bay
10	Light snow.....	Cloudy.....	9	9	River ice solid. Ice in bay extends two miles.
11	Overcast.....	Part cloudy....	9	20	
12	Cloudy.....	Cloudy.....	9	4	
13	Part cloudy....	Part cloudy....	9	20	
14	Cloudy.....	Light snow.....	9	1	
15	Light snow.....	Light snow.....	9	9	
16	Light snow.....	Drifting snow...	9	$\frac{1}{2}$	
17	Light snow.....	Light snow.....	2	$\frac{1}{2}$	
18	Part cloudy....	Fine.....	4	20	
19	Fine.....	Fine.....	20	20	
20	Part cloudy....	Part cloudy....	20	20	Ice in bay. Heavy pack ice off shore.
21	Fine.....	Fine.....	20	20	
22	Overcast.....	Light fog.....	20	$\frac{1}{8}$	
23	Overcast.....	Overcast.....	9	9	
24	Part cloudy....	Part cloudy....	...	20	
25	Part cloudy....	Fine.....	20	20	
26	Fine.....	Fine.....	20	20	
27	Fine.....	Overcast.....	20	4	
28	Snow.....	Snow.....	$\frac{1}{4}$	1	
29	Snow.....	Snow.....	2	1	
30	Part cloudy....	Overcast.....	20	9	

CHESTERFIELD INLET METEOROLOGICAL REPORT, 1942

Date	Mean Baro- meter 900 + mb.	All Temperature		Wind				Hours of Fog	Precipitation	
		Max.	Min.	8 a.m.		8 p.m.			a.m.	p.m.
				Dir.	Vel.	Dir.	Vel.			
1942 July		°F.	°F.					Inches	Inches	
1	103.6	40.0	33.0	NW.	24	N.	20		.11	
2	105.3	37.0	32.0	N.	18	N.	16	.21	.04	
3	106.5	40.0	32.0	N.	12	N.	6	.03	.02	
4	104.6	46.0	34.0	N.	18	NE.	18		.01	
5	104.1	48.0	35.0	N.	17	N.	12	.07	.01	
6	110.3	37.0	30.0	NE.	18	NE.	8	6½		
7	114.2	54.0	33.0	NW.	15	NW.	5			
8	108.3	59.0	41.0	NW.	14	S.	10			
9	105.2	52.0	35.9	S.	5	S.	8			
10	106.6	49.0	34.0	Calm		E.	6	6		
11	110.6	50.0	36.0	N.	8	Calm				
12	109.4	54.0	38.0	N.	8	N.	14		.04	
13	108.3	45.0	35.0	NE.	18	NE.	10	5¼		
14	111.8	67.0	37.0	NW.	8	NW.	9			
15	107.6	67.0	46.0	NW.	14	S.	4			
16	105.6	69.0	46.0	NW.	9	NW.	8			
17	110.6	64.0	38.0	NW.	4	SW.	15			
18	110.8	60.0	40.0	NW.	6	S.	6			
19	113.2	53.0	37.0	NE.	4	S.	10			
20	107.6	54.0	37.0	Calm		SE.	14			
21	108.1	42.0	33.0	SE.	6	SE.	11			
22	113.3	53.0	34.0	S.	6	Calm				
23	116.6	50.0	38.0	Calm		SE.	5	2¾		
24	116.8	39.0	34.0	SE.	6	SE.	11	24		
25	110.6	51.0	35.0	NW.	2			14		
26	112.4	54.0	39.0	NW.	10	S.	12			
27	103.6	79.0	40.0	SW.	21	W.	24			
28	101.4	57.0	50.0	NW.	21	NW.	35			
29	106.8	57.0	50.0	W.	12	WNW.	21			
30	109.4	53.0	37.0	NW	18	SE.	12			
31	102.0	49.0	36.0	S.	15	S.	10		.14	
August										
1	107.5	45.0	38.0	NE.	9	N.	4	1½	.14	
2	107.9	49.0	40.0	NW.	10	S.	6	7¼	.03	
3	110.2	57.0	41.0	NW.	8	S.	9			
4	113.1	62.0	41.0	Calm		SW.	28			
5	113.3	55.0	43.0	NW.	21	N.	9			
6	118.5	56.0	41.0	NW.	8	W.	18			
7	111.7	43.0	38.0	SW.	15	NE.	17	5¾	.31	
8	110.4	54.0	37.0	NW.	14	NW.	18			
9	112.0	55.0	36.0	NW.	10	N.	11			
10	104.8	45.0	39.0	SW.	10	ENE.	14	5	.05	
11	109.5	44.0	34.0	E.	4	S.	10	4¾		
12	117.0	46.0	35.0	SW.	7	SW.	7			
13	112.4	58.0	41.0	W.	10	W.	3	4	.02	
14	115.4	51.0	40.0	NW.	11	S.	6			
15	112.6	43.0	38.0	S.	3	S.	11		.03	
16	114.8	45.0	38.0	SE.	6	Calm		.20		
17	113.6	44.0	37.0	SE.	4	SE.	8			
18	102.4	42.0	37.0	SE.	16	SE.	18			
19	100.3	42.0	39.0	ESE.	20	E.	26			
20	102.4	45.0	37.0	NE.	20	E.	10			
21	110.5	49.0	34.0	NW.	11	S.	2			
22	116.4	54.0	36.0	N.	10	S.	6			
23	114.4	57.0	39.0	W.	12	S.	9			
24	104.8	44.0	38.0	S.	6	S.	18			
25	101.7	50.0	39.0	SE.	12	W.	12	9	.31	
26	99.7	44.0	38.0	NW.	39	NW.	30		.07	
27	110.4	55.0	34.0							
28	107.8	52.0	39.0					2	.22	
29	100.2	55.0	37.0						.03	
30	108.6	50.0	41.0							
31	113.7	48.0	35.0							

CHESTERFIELD INLET METEOROLOGICAL REPORT, 1942

Date	General Weather		Visibility—Miles		Ice Conditions
	a.m.	p.m.	a.m.	p.m.	
1942					
July					
1	Overcast	Rain	9	2	Two miles ice to east in bay.
2	Rain	Drizzle	4	9	Six miles ice, all directions.
3	Drizzle	Overcast	4	9	Five bergs, ice in all directions.
4	Overcast	Rain	9	9	
5	Rain	Cloudy	4	20	Two miles ice east, four miles south.
6	Fog	Cloudy	4	9	
7	Overcast	Cloudy	9	20	Two miles of ice east, five miles ice to south.
8	Fine	Fine	20	20	Ice extends two miles east, four miles south.
9	Cloudy	Cloudy	9	9	Two miles ice to east, six miles to south.
10	Fog	Fine	0	20	Two miles ice to east, five miles south.
11	Overcast	Cloudy	4	20	Two miles ice to east, six miles ice to south.
12	Overcast	Overcast	9	9	Two miles ice to east, four miles south.
13	Fog	Overcast	$\frac{1}{4}$	9	Two miles ice to east, five miles south.
14	Cloudy	Cloudy	20	29	Two miles ice all directions offshore, close packed.
15	Fine	Fine	20	20	
16	Fine	Fine	20	20	Two miles, all directions.
17	Fine	Fine	20	20	
18	Part cloudy	Cloudy	20	20	Five miles all directions.
19	Clear	Part cloudy	20	20	No ice in harbour, close packed offshore.
20	Part cloudy	Overcast	20	9	Close packed ice in harbour, no ice offshore.
21	Overcast	Overcast	9	9	
22	Overcast	Overcast	9	20	Close packed ice in harbour, scattered seven miles.
23	Overcast	Overcast	9	9	Loose ice in harbour, scattered offshore.
24	Fog	Fog	0	0	Bay frozen, three bergs.
25	Fog	Fog	0	9	
26	Cloudy	Cloudy	20	20	Scattered ice in sight.
27	Overcast	Light haze	20	1	
28	Smoky	Fine	1	20	
29	Cloudy	Overcast	20	9	
30	Overcast	Cloudy	20	20	
31	Rain	Rain	20		
Aug.					
1	Fog, rain	Rain, fog	$\frac{1}{4}$	9	
2	Fog clearing	Cloudy	20	20	
3	Cloudy	Part cloudy	20	20	
4	Part cloudy	Cloudy	20	20	
5	Overcast	Fine	20	20	
6	Cloudy	Part cloudy	20	29	No ice.
7	Rain	Rain and fog	20	$\frac{1}{2}$	"
8	Part cloudy	Part cloudy	20	20	"
9	Fine	Fine	20	20	"
10	Rain	Overcast, fog	2	$\frac{1}{2}$	
11	Fog	Overcast	$\frac{1}{2}$	20	
12	Part cloudy	Overcast	9	9	No ice.
13	Rain	Rain	20	20	"
14	Fine	Fine	20	20	"
15	Part cloudy	Overcast, rain	20	9	"
16	Rain	Overcast	9	20	"
17	Overcast	Overcast	20	20	
18	Overcast	Overcast	20	20	
19	Overcast	Overcast	9	20	
20	Part cloudy	Part cloudy	20	20	
21	Fine	Fine	20	20	No ice.
22	Part cloudy	Part cloudy	20	20	"
23	Fine	Part cloudy	20	20	"
24	Overcast	Overcast	20	20	"
25	Rain	Rain, fog	4	9	
26	Rain	Overcast	4	20	
27	Cloudy		20		No ice.
28	Rain	Rain, fog			
29					
30					No ice.
31					"

CHESTERFIELD INLET METEOROLOGICAL REPORT, 1942—Cont.

Date	Mean Baro- meter 900 + mb.	Air Temperature		Wind				Hours of Fog	Precipitation	
		Max.	Min.	8 a.m.		8 p.m.			a.m.	p.m.
				Dir.	Vel.	Dir.	Vel.			
1942 September										
1	112.6		33.0	NW.	3	N.	4			
2	107.3	49.0	33.0	NW.	5	NW.	4			
3	99.4	42.0	37.0	NW.	3	NNE.	3	.02	.09	
4	106.2	44.0	32.0	NW.	4	W.	4	.09	.04	
5	110.0	40.0	33.0			SE.	2			
6	110.6	47.0	37.0	SW.	3	NW.	3			
7	113.0	46.0	37.0	NW.	3	S.	3			
8	101.0	54.0	38.0	SW.	3	NNW.	5	.16	.09	
9	113.6	53.0	32.0	NW.	3	W.	4			
10	119.4	39.0	34.0	SE.	3	SE.	3			
11	103.6	40.0	30.0	SE.	6	E.	5		.03	
12	104.8	45.0	35.0	S.	4	N.	3	.11		
13	108.7	47.0	30.0	NW.	2	SW.	3			
14	109.3	41.0	29.0	N.	3	N.	3	Trace	.01	
15	107.0	38.0	33.0	NNW.	5	N.	4			
16	113.8	41.0	30.0	N.	4	NNW.	4			
17	116.7									
18	115.0	44.0	32.0	W.	3	S.	3			
19	106.8	45.0	31.0	W.	1	W.	3			
20	101.4	34.0	25.0	N.	6	E.	5	Trace		
21	101.0	35.0	21.0	NW.	3	N.	4			
22	103.8	34.0	21.0	N.	4	N.	6	Trace		
23	106.6	30.0	25.0	N.	6	N.	5	Trace		
24	108.4	37.0	21.0	WNW.	3	NW.	4			
25	110.7	30.0	24.0	NW.	3	ENE.	3			
26	117.0	29.0	21.0			NW.	3			
27	115.6	31.0	21.0	NNW.	4	NW.	3		Trace	
28	110.2	28.0	21.0	NE.	3	N.	4			
29	112.8	33.0	21.0	N.	4	NW.	6			
30	114.4	30.0	24.0	WNW.	4	W.	4			
October										
1	109.9	36.0	20.0	NW.	4	W.	1			
2	106.7	33.0	29.0	E.	2	E.	6	Trace	.20	
3	112.2	29.0	23.0	E.	5	E.	3	Trace		
4	120.2	31.0	12.0	SW.	2	SSW.	4			
5	109.0	35.0	29.0	SW.	5	S.	5		Trace	
6	108.6	35.0	29.0	S.	4	SSE.	3	27.0	0.2	
7	115.4	34.0	33.0	S.	2	E.	2			
8	118.4	33.0				W.	3			
9	114.7	34.0	27.0	C.		E.	6	Trace		
10	114.8	35.0	32.0	ESE.	5	E.	5	Trace		
11	112.4	36.0	33.0	S.	3	S.	5			
12	97.8	40.0	34.0	W.	5	W.	2		Trace	
13	92.7	36.0	30.0	W.	4	W.	5			
14	114.0	28.0	24.0	W.	8	NW.	7			
15	123.6	29.0	18.0	NW.	3	N.	1			
16	117.8	32.0	21.0	E.	4	SE.	5		Trace	
17	118.4	31.0	29.0	SE.	4	E.	4	.05		
18	117.8	31.0	27.0	ENE	2	C.				
19	110.1	39.0	18.0	N.	2	SE.	3			
20	106.6	32.0	29.0	SE.	3				.10	
21	104.8	36.0	30.0	ENE.	5	SSW.	2	.08		
22	93.8	31.0	25.0	NE.	7	NNE.	5		.07	
23	90.7	34.0	25.0			SE.	6		.05	
24	101.5	33.0	26.0	SE.	4	SE.	4	Trace	.07	
25	112.8	34.0	29.0	NE.	3	NE.	3		.08	
26	118.1	26.0	22.0	NE.	4	N.	3			
27	117.8	22.0	13.0	NE.	4	NE.	5			
28	96.4	20.0	12.0	N.	6	N.	8			
29	88.0	24.0	18.0	N.	6	NNW.	5			
30	98.2	20.0	7.0	N.	4	NW.	5	.02		
31	105.8	21.0				N.	3			

CHESTERFIELD INLET METEOROLOGICAL REPORT, 1942—Cont.

Date	General Weather		Visibility—Miles		Ice Conditions
	a.m.	p.m.	a.m.	p.m.	
1942					
Sept.					
1	Cloudy.....	Overcast.....	20	20	
2	Overcast.....	Distant rain....	9	20	
3	Light rain.....	Light rain.....	9	4	
4	Overcast.....	Cloudy.....	9	20	
5	Overcast.....	20	
6	Overcast.....	Part cloudy....	20	20	
7	Part cloudy....	Cloudy.....	20	20	
8	Overcast.....	Light drizzle....	2	No ice.
9	Fine.....	Fine.....	20	20	
10	Part cloudy....	Overcast.....	20	20	
11	Overcast.....	Light rain.....	9	9	
12	Overcast.....	Fine.....	9	20	
13	Overcast.....	Overcast.....	20	20	
14	Light rain.....	Part cloudy....	9	20	
15	Overcast.....	Cloudy.....	30	20	
16	Overcast.....	Fine.....	9	20	
17	No ice.
18	Overcast.....	Cloudy.....	20	20	
19	Fog.....	Overcast.....	1	20	No ice.
20	Part cloudy....	Part cloudy....	9	$\frac{1}{2}$	
21	Part cloudy....	Cloudy.....	4	20	
22	Overcast.....	Overcast.....	4	9	
23	Light snow.....	Overcast.....	4	9	
24	Overcast.....	Overcast.....	9	20	No ice.
25	Overcast.....	Overcast.....	9	20	"
26	Overcast.....	20	"
27	Overcast.....	Snow pellets....	9	9	
28	Overcast.....	Cloudy.....	9	20	
29	Overcast.....	Overcast.....	9	20	
30	Overcast.....	Cloudy.....	9	
Oct.					
1	Overcast.....	Overcast.....	9	20	No ice.
2	Snow.....	Snow.....	9	1	"
3	Overcast.....	Overcast.....	9	20	"
4	Overcast.....	Overcast.....	20	9	
5	Overcast.....	Drizzle and fog.	9	2	
6	Light fog.....	Light fog.....	4	4	No ice.
7	Snow.....	Overcast.....	9	9	
8	Overcast.....	2	No ice.
9	Overcast.....	Overcast.....	9	20	
10	Rain, showers..	Cloudy.....	$\frac{1}{2}$	No ice.
11	Overcast.....	Overcast.....	9	9	
12	Part cloudy....	Overcast.....	20	20	
13	Light fog.....	Light snow.....	30	9	
14	Overcast.....	Overcast.....	9	20	
15	Fair.....	Part cloudy....	20	20	No ice.
16	Cloudy.....	Light snow.....	20	1	"
17	Light snow.....	Overcast.....	$\frac{1}{4}$	9	"
18	Overcast.....	Overcast.....	20	9	Ice all directions, 3 miles.
19	Part cloudy....	Overcast.....	20	9	
20
21	Light snow.....	Cloudy.....	4	30	No ice.
22	Overcast.....	Overcast.....	9	1	
23	Cloudy.....	20	
24	Light snow.....	Cloudy.....	2	9	
25	Light snow.....	Light snow.....	2	4	
26	Overcast.....	Fair.....	9	20	No ice.
27	Fine.....	Overcast.....	20	20	"
28	Cloudy.....	Drifting snow..	20	$\frac{1}{2}$	Slob in cove.
29	Overcast.....	Overcast.....	9	20	No ice.
30	Light snow.....	Overcast.....	9	20	"
31	Overcast.....	20	"

CHESTERFIELD INLET METEOROLOGICAL REPORT, 1942—Cont.

Date	Mean Barometer 900 + mb.	All Temperature		Wind				Hours of Fog	Precipitation	
		Max.	Min.	8 a.m.		8 p.m.			a.m.	p.m.
				Dir.	Vel.	Dir.	Vel.			
1942 November		°F.	°F.					Inches	Inches	
1	111.8	21.0	17.0	N.	3	NW.	4			
2	113.2	14.0	3.0			WNW.	4			
3	115.1	4.0	-1.0	N.	4	NW.	4	Trace	Trace	
4	125.0	-5.0		ESE.	2	N.	5			
5	117.1	-4.0	-18.0	WNW.	4	NNW	5			
6	112.8	-3.0	-10.0	NW.	3	NW.	4			
7	110.0	2.0	-10.0	NW.	4					
8	108.2	0.0	-5.0	W.	4	WNW.	6	.01	Trace	
9	112.6	-6.0	-19.0	NW.	6	NW.	5			
10	112.8	-5.0	-15.0	WNW.	4	WNW.	5			
11	112.2	-15.0	-20.0	WNW.	5	NW.	4			
12	111.3	-15.0	-24.0	WNW.	5	N.	4			
13	121.8	-15.0	-24.0	N.	4	WNW.	5			
14	115.7	19.0	-24.0	NW.	3	SE.	6		.03	
15	109.0	19.0	11.0	NE.	7	SE.	6	.09	.06	
16	118.4	16.0	13.0	SE.	6	E.	5	.06		
17	110.3	9.0	3.0	E.	7	N.	7		.013	
18	101.6	3.0	0.0	N.	7	N.	7	.08	0.16	
19	101.8	5.0	1.0	N.	7	N.	7	.05	.02	
20	110.0	-4.0	-8.0	NNW	5	NW.	5			
21	118.0	-5.0	-11.0	NW.	4	NW.	8			
22	116.3	-3.0	-20.0	NW.	4	N.	2			
23	104.4	16.0	-17.0	W.	2	E.	7			
24	92.2	22.0	11.0	E.	6	W.	2	0.10	0.10	
25	96.1	1.0	-11.0	S.	3	SSE.	3			
26	102.4	-6.0	-20.0	S.	2	C.				
27	111.5	9.0	-18.0	N.	2	NE.	5		.04	
28	104.8	26.0	4.0	ENE.	5	E.	5	0.16	1.02	
29	104.4	29.0	24.0			E.	3		.03	
30	106.6		16.0	NE.	3	SSE	4	.05	.10	

CHESTERFIELD INLET METEOROLOGICAL REPORT, 1942—Cont.

Date	General Weather		Visibility—Miles		Ice Conditions
	a.m.	p.m.	a.m.	p.m.	
1942 Nov.					
1	Overcast.....	Fog.....	2	$\frac{1}{2}$	
2	Overcast.....	9	Slob ice inshore.
3	Overcast.....	Light snow.....	9	4	" "
4	Haze.....	Cloudy.....	9	30	Bay frozen two miles.
5	Fine.....	Part cloudy.....	9	9	Close packed, two miles.
6	Part cloudy.....	Overcast.....	20	9	
7	Fine.....	20	
8	Light snow.....	Distant fog.....	9	9	Close packed ice extends one mile.
9	Part cloudy.....	Fog.....	20	$\frac{1}{16}$	" " " "
10	Part cloudy.....	Distant fog.....	9	4	" " " "
11	Part cloudy.....	Distant fog.....	9	9	" " " "
12	Part cloudy.....	Distant fog.....	20	9	Close packed ice extends three miles.
13	Fine.....	Fine.....	20	9	Slob ice three miles.
14	Fine.....	Light snow.....	20	$\frac{1}{2}$	Close packed two miles.
15	Light snow.....	Light snow.....	$\frac{1}{4}$	$\frac{1}{4}$	
16	Light snow.....	Overcast.....	4	9	
17	Overcast.....	Light snow.....	9	$\frac{1}{16}$	Close packed ice three miles.
18	Light snow.....	Light snow.....	$\frac{1}{2}$	$\frac{1}{2}$	Floe ice three miles.
19	Light snow.....	Drifting snow.....	$\frac{1}{16}$	1	" "
20	Fine.....	Part cloudy.....	20	20	Close packed seven miles.
21	Fine.....	Fine.....	20	20	Close packed to horizon.
22	Distant fog.....	Part cloudy.....	20	20	" "
23	Part cloudy.....	Overcast.....	20	9	" "
24	Light snow.....	Cloudy.....	$\frac{1}{4}$	9	" "
25	Cloudy.....	Fine.....	9	20	
26	Fine.....	Fine.....	20	20	Close packed to horizon.
27	Overcast.....	Light snow.....	20	1	
28	Light snow.....	Overcast.....	1	4	
29	Light snow.....	1	Close packed to horizon.
30	Light fog.....	Overcast.....	2	20	" "

PORT HARRISON METEOROLOGICAL REPORT, 1942

Date	Mean Barometer 900 + mb.	All Temperature		Wind				Hours of Fog	Precipitation	
		Max.	Min.	8 a.m.		8 p.m.			a.m.	p.m.
				Dir.	Vel.	Dir.	Vel.			
1942 July		°F.	°F.					Inches	Inches	
1	90.9	39.0	33.0	S.	18	SSE.	40	6	Trace	
2	99.0	39.0	32.0	S.	32	S.	24		.03	
3	107.0	51.0	34.0	SSE.	14	S.	8		.01	
4	104.0	42.0	34.0	N.	18	SSW.	14	6	.22	
5	105.0	54.0	33.0	S.	16	ENE.	12		Trace	
6	95.0	50.0	36.0	SE.	16	NE.	8		.10	
7	94.0	48.0	38.2	NE.	26	SSW.	8		.15	
8	99.0	48.0	36.0	W.	4	NNW.	10	1½	.14	
9	108.0	54.6	33.0	NNW.	13	NW.	13			
10	110.0	56.0	36.0	S.	24	S.	20	6		
11	106.0	62.0	49.0	SE.	13	SW.	4			
12	111.0	46.0	36.0	NW.	7	WSW.	6			
13	97.0	59.0	36.0	E.	18	E.	22		.02	
14	97.0	62.0	46.0	ENE.	24	NE.	24		.27	
15	107.0	57.0	42.0	N.	8	W.	22			
16	107.0	46.0	37.0	SW.	9	SSW.	10	6		
17	110.0	50.0	37.0	S.	21	SW.	6	6		
18	111.0	57.0	37.0	N.	18	NW.	20			
19	112.0	56.2	38.0	NW.	8	NW.	18			
20	112.0	57.4	41.0	S.	1	W.	16			
21	113.0	57.0	42.0	W.	6	S.	8			
22	110.0	58.0	50.0	E.	18	E.	30		Trace	
23	114.0	67.0	49.0	E.	24	N.	21		Trace	
24	119.0	61.0	46.0	N.	5	W.	14	7		
25	121.0	52.0	40.0	S.	20	S.	18	8		
26	111.0	53.2	48.0	S.	30	SSW.	24		.01	
27	112.0	60.0	44.0	N.	17	N.	16	6	.03	
28	113.0	49.0	38.0	W.	7	S.	18	2		
29	112.0	53.6	41.0	S.	6	N.	16	12	Trace	
30	113.0	49.0	41.0	N.	7	NE.	15		.11	
31	109.0	59.0	45.0	NE.	28	N.	28		.78	
August										
1	112.3	59.0	41.0	N.	3	W.	4			
2	104.6	61.0	39.0	S.	2	N.	4			
3	99.8	66.0	47.0	NE.	2	N.	4		Trace	
4	107.2	64.0				N.	4			
5	114.6	50.0	47.0	NE.	3	NW.	4			
6	118.8	64.0	42.0	W.	3	SW.	3		Trace	
7	117.2	59.0	44.0	E.	2				.01	
8	107.8	57.0	44.0	ENE.	3	N.	4		.14	
9	108.6	51.0	41.0	W.	3	WNW.	4		.98	
10	114.0			NW.	3					
11	112.0	54.0	39.0	E.	3	NE.	4		.15	
12	117.8	62.0	37.0	NE.	2	NE.	2		.01	
13	117.2		38.0	N.	4	W.	1			
14	112.0	63.0	38.0	NE.	2	NNE.	5			
15	111.0	58.0	44.0	NE.	5	ENE.	5			
16	108.0	64.0	46.0	ENE.	5	E.	6			
17	103.4	59.0	45.0	E.	6	NE.	5		.01	
18	105.5	51.0	39.0	N.	4				.01	
19	98.8	50.0	37.0			E.	6		Trace	
20	93.4	47.0	44.0	E.	5	NE.	5		.82	
21	106.6	47.0	41.0	NE.	5				.99	
22	108.7	55.0	35.0	ENE.	4	E.	4			
23	106.2	56.0	36.0	N.	3	N.	6			
24	111.8	56.0	41.0	N.	4	E.	3			
25	111.5	57.0	43.0	S.	4	S.	6			
26	110.9	51.0	42.0	W.	3	W.	5		.09	
27	116.6	50.0	40.0	W.	4	W.	3			
28	121.6	53.0	42.0	WSW.	3	N.	2			
29	112.2	58.0	38.0	S.	6	NW.	5		.06	
30	111.8	52.0	44.0	SW.	2	S.	2		.03	
31	111.2	53.0	45.0	N.	3	N.	3		.15	

PORT HARRISON METEOROLOGICAL REPORT, 1942

Date	General Weather		Visibility—Miles		Ice Conditions
	a.m.	p.m.	a.m.	p.m.	
1942					
July					
1	Fog and overcast.....	Snow.....	2	2	
2	Snow and fog....	Rain and fog....	2	4	
3	Light rain.....	Part cloudy....	9	9	
4	Rain and fog....	Fog.....	4	1/2	
5	Light rain.....	Overcast.....	4	9	
6	Rain.....	Rain.....	4	9	
7	Light rain.....	Overcast.....	4	9	No ice in sight.
8	Light rain.....	Light fog.....	4	9	“ “
9	Light fog, cloudy.....	Part cloudy....	9	9	No ice visible far as 20 miles north.
10	Cloudy, fog....	Overcast.....	1/4	9	No ice in sight.
11	Overcast.....	Cloudy.....	9	9	
12	Distant fog....	Light fog.....	4	9	
13	Distant fog....	Rain.....	9	4	
14	Light rain.....	Overcast.....	9	9	
15	Cloudy.....	Cloudy.....	9	9	
16	Fog in patches.	Foggy.....	2	1/4	
17	Fog.....	Cloudy.....	9	9	
18	Part cloudy....	Clear.....	9	9	
19	Clear.....	Clear.....	9	9	
20	Clear.....	Overcast.....	9	9	
21	Clear.....	Cloudy.....	9	9	
22	Light rain.....	Light rain.....	9	9	
23	Part cloudy....	Part cloudy....	9	9	
24	Cloudy.....	Clear and foggy	9	2	
25	Fog.....	Overcast.....	1/4	9	
26	Cloudy.....	Cloudy and foggy.....	9	2	
27	Fog.....	Cloudy.....	9	9	
28	Part cloudy....	Cloudy and foggy.....	9	9	
29	Fog.....	Light rain.....	1/2	9	
30	Cloudy.....	Light rain.....	9	4	
31	Light rain.....	Cloudy then clearing.....	4	9	
Aug.					
1	Fine.....	Part cloudy....	9	9	
2	Part cloudy....	Part cloudy....	9	9	
3	Cloudy.....	Overcast.....	9	9	
4	Cloudy.....	4	
5	Distant fog....	Part cloudy....	4	9	
6	Rain.....	Rain.....	9	4	
7	Overcast.....	9	
8	Light rain.....	Cloudy.....	2	9	
9	Overcast.....	Cloudy.....	9	9	
10	Part cloudy....	9	
11	Rain and fog....	Cloudy.....	4	9	
12	Part cloudy....	Part cloudy....	9	9	
13	Part cloudy....	Part cloudy....	4	9	
14	Part cloudy....	Cloudy.....	9	9	
15	Fog.....	Cloudy.....	4	9	
16	Cloudy.....	Overcast.....	9	9	
17	Overcast.....	Rain and fog....	4	4	
18	Cloudy.....	9	
19	Light drizzle....	9	
20	Rain.....	Rain.....	4	4	
21	Overcast.....	4	No ice.
22	Overcast.....	Cloudy.....	9	9	“
23	Part cloudy....	Part cloudy....	9	9	“
24	Part cloudy....	Cloudy.....	9	9	
25	Overcast.....	Overcast.....	9	9	
26	Overcast.....	Overcast.....	9	9	
27	Overcast.....	Cloudy.....	9	9	No ice.
28	Cloudy.....	Part cloudy....	9	9	
29	Cloudy.....	Rain and fog....	9	1	
30	Cloudy.....	Rain and fog....	9	2	No ice.
31	Rain and fog....	Overcast.....	2	4	“

PORT HARRISON METEOROLOGICAL REPORT, 1942—Cont.

Date	Mean Baro- meter 900 + mb.	Air Temperature		Wind				Hours of Fog	Precipitation	
		Max.	Min.	8 a.m.		8 p.m.			a.m.	p.m.
				Dir.	Vel.	Dir.	Vel.			
1942 September		°F.	°F.					Inches	Inches	
1	114.8	48.0	38.0			SW.	4		Trace	
2	109.0	47.0	34.0	NE.	5	NW.	4	.04		
3	102.7	45.0	39.0	SW.	5	SSW.	6	.04		
4	97.4	47.0	40.0	WSW.	5	N.	5	.08	.10	
5	109.2	45.0	34.0	NNE.	8	N.	4		.10	
6	113.8	47.0	36.0	NW.	2	WNW.	3	.07		
7	116.8	47.0	39.0	NW.	3	NW.	4			
8	117.9	49.0	41.0	W.	3	S.	6			
9	109.5	49.0	40.0	W.	4	N.	4	.40	.03	
10	119.9	43.0	35.0	NW.	3					
11	107.1	50.0	37.0	SSW.	5	ESE.	6	.02	.17	
12	87.9	51.0	35.0	S.	3	NW.	1	.35	Trace	
13	98.0	48.0	38.0	N.	5	N.	3	.04	Trace	
14	109.9	53.0	32.0	C.	0	W.	1	Trace		
15	110.2	45.0	30.0	NW.	1	C.	0			
16	104.8	44.0	35.0			N.	3			
17	114.6	43.0	27.0	N.	2	N.	3			
18	120.9	44.0	34.0	W.	2	S.	1	.03		
19	115.4	45.0	31.0	C.	0					
20	106.6	46.0	32.0	NW.	2	W.	4	.02	.16	
21	102.8	43.0	35.0	W.	2	N.	3		.02	
22	105.4	43.0	32.0	W.	2	N.	3	.02		
23	100.8	40.0	31.0	N.	4	SW.	3	Trace	.10	
24	112.5	40.0	33.0	NW.	3	ENE.	4	.01		
25	98.9	40.0	32.0	N.	4	WNW.	4	.03	.64	
26	116.1	41.0	31.0	NW.	2	W.	3			
27	112.6	41.0	25.0		1	NNE.	3			
28	105.8	35.0	24.0	N.	3	W.	3		Trace	
29	109.5	36.0	27.0	W.	2	NW.	2	.10	.10	
30	115.8	37.0	27.0	NW.	2	W.	2		Trace	
October										
1	114.7	38.0	30.0	W.	4	W.	4	Trace	Trace	
2	114.0	41.0	33.0	NW.		SW.	5	Trace		
3	96.8	45.0	38.0	S.	4	S.	5		.03	
4	115.6	36.0	31.0	N.	6	NE.	4	.13	Trace	
5	118.2	38.0	23.0	NE.	3	NE.	2			
6	107.5	47.0	24.0	E.	4	NE.	5			
7	102.2	35.0	27.0	N.	5	N.	4	Trace	.36	
8	112.1	32.0	31.0	NE.	5	NNE.	3	.10	.20	
9	120.7	37.0	20.0	SW.	9	S.	3			
10	109.8	38.0	27.0	S.	4			.10	.11	
11	120.4	36.0	25.0	NE.	4	NW.	2		Trace	
12	119.4	41.0	32.0	W.	3			Trace		
13	106.0	42.0	37.0	SW.	3	NW.	4		.08	
14	109.6	40.0	32.0	WNW.	5	WNW.	6	.02	.35	
15	120.4	35.0	27.0	NW.	5	N.	3	.06	Trace	
16	117.8	38.0	29.0	N.	2	NW.	3			
17	112.0	32.0	29.0	E.	5	E.	6		Trace	
18	112.0	32.0	25.0	E.	3	NE.	6			
19	111.0	33.0	20.0	NE.	4	E.	2			
20	108.0	36.0	17.0	N.	3	NE.	1			
21	97.0	35.0	22.0	ENE	4	E.	6		.01	
22	102.6	45.0	34.0	S.	4	SE.	4	.02	.08	
23	99.2	38.0	33.0			SW.	4		.15	
24	107.8	37.0	32.0	S.	2	WSW	3		Trace	
25	115.0	35.0	27.0	NW.	3	NW.	5		.01	
26	117.6	36.0	30.0	W.	3	NW.	3			
27	93.7	31.0	24.0	NE.	5	NE.	7		.95	
28	70.4	32.0	12.0	NW.	4	W.	7	.17	.10	
29	92.6	30.0	29.0	W.	8	SSW.	6	.41	.07	
30	102.6	32.0	28.0	SW.	5	W.	3	.05	Trace	
31	101.4	31.0	18.0	NE.	2	S.	2			

PORT HARRISON METEOROLOGICAL REPORT, 1942—Cont.

Date	General Weather		Visibility—Miles		Ice Conditions
	a.m.	p.m.	a.m.	p.m.	
1942					
Sept.					
1		Light drizzle....		0	No ice.
2	Haze.....	Overcast.....	2	4	
3	Fog early.....	Light fog.....	4	4	
4	Rain and fog....	Rain.....	4	9	
5	Snow.....	Overcast.....	9	9	
6	Cloudy.....	Cloudy.....	9	9	
7	Overcast.....	Part cloudy....	9	9	
8	Fog.....	Overcast.....	$\frac{1}{8}$	9	No ice.
9	Fog.....	Light rain.....	$\frac{1}{4}$	4	
10	Overcast.....		9		No ice.
11	Rain and fog....	Light drizzle....	4	4	
12	Rain and fog....	Rain and fog....	4	$\frac{1}{2}$	
13	Light drizzle....	Part cloudy....	4	9	
14	Overcast.....	Overcast.....	9	9	
15	Fine.....	Part cloudy....	9	9	
16		Cloudy.....		9	
17	Part cloudy....	Cloudy.....	9	9	No ice.
18	Light rain.....	Cloudy.....	9	9	
19	Overcast.....		9		No ice.
20	Showers.....	Overcast.....	9	9	
21	Overcast.....	Light rain.....	9	4	
22	Overcast.....	Overcast.....	9	9	
23	Light snow.....	Part cloudy....	$\frac{1}{2}$	9	
24	Part cloudy....	Cloudy.....	9	9	No ice.
25	Snow.....	Cloudy.....	2	4	"
26	Snow.....	Part cloudy....	9	9	"
27	Part cloudy....	Overcast.....	9	9	
28	Overcast.....	Showers.....	9	2	
29	Part cloudy....	Light snow.....	9	9	
30	Light snow.....	Part cloudy....	9	9	
Oct.					
1	Cloudy.....	Showers.....	9	4	No ice.
2	Rain and snow..	Cloudy.....	9	9	"
3	Distant fog....	Thunderstorm..	2	4	"
4	Cloudy.....	Fine.....	9	9	
5	Fine.....	Cloudy.....	9	20	
6	Part cloudy....	Overcast.....	9	20	
7	Light snow.....	Light snow.....	9	4	No ice.
8	Light snow.....	Cloudy.....	$\frac{1}{2}$	2	"
9	Snow.....	Overcast.....		20	
10	Rain.....	Rain.....	9		No ice.
11	Overcast.....	Light snow.....	20	9	
12	Light snow.....	Part cloudy....	4	2	
13	Overcast.....	Light snow.....	9	9	
14	Distant snow...	Snow.....	9	1	
15	Light snow.....	Cloudy.....	1	20	No ice.
16	Overcast.....	Overcast.....	20	9	
17	Cloudy.....	Light snow.....	29	20	No ice.
18	Part cloudy....	Part cloudy....	20	20	
19	Part cloudy....	Fine.....	20	20	Slob in river.
20	Fine.....	Fine.....	20	20	
21	Part cloudy....	Snow and rain..	20	9	
22	Overcast.....	Light rain.....	20	9	
23	Light rain.....			9	
24	Cloudy.....	Cloudy.....	20	20	No ice.
25	Light snow.....	Light snow.....	20	9	
26	Cloudy.....	Overcast.....	20	9	Slob in river.
27	Overcast.....	Drifting snow..	20	$\frac{1}{4}$	" "
28	Drifting snow..	Drifting snow..	$\frac{1}{2}$	$\frac{1}{4}$	" "
29	Drifting snow..	Drifting snow..	$\frac{1}{4}$	$\frac{1}{2}$	" "
30	Overcast.....	Snow.....	9	4	Slob in shore.
31	Overcast.....	Part cloudy....	20	29	Slob in river.

PORT HARRISON METEOROLOGICAL REPORT, 1942

Date	Mean Baro- meter 900 + mb.	Air Temperature		Wind				Hours of Fog	Precipitation	
		Max.	Min.	8 a.m.		8 p.m.			a.m.	p.m.
				Dir.	Vel.	Dir.	Vel.			
1942 November		°F.	°F.					Inches	Inches	
1.....	104.6	28.0	19.0	C.	0	NE.	3	.05	
2.....	99.8	27.0	17.0	N.	4	NNW.	3	
3.....	116.0	30.0	22.0	NNW.	3	W.	4	.02	Trace	
4.....	118.8	32.0	27.0	SW.	5	SW.	605	
5.....	108.5	32.0	20.0	N.	4	NE.	5	.07	.02	
6.....	111.4	20.0	9.0	N.	7	NW.	2	Trace	
7.....	111.7	24.0	14.0	W.	4	W.	5	.05	.02	
8.....	105.8	26.0	1.0	NW.	3	W.	4	.01	Trace	
9.....	110.9	23.0	14.0	NW.	4	W.	4	Trace	Trace	
10.....	108.3	22.0	9.0	N.	1	SE.	2	Trace	
11.....	107.2	5.0	0.0	N.	2	NE.	3	
12.....	107.3	20.0	-14.0	C.	0	N.	2	Trace	
13.....	109.4	22.0	1.0	W.	4	NW.	4	.10	.88	
14.....	118.4	15.0	8.0	NW.	3	NE.	2	.05	Trace	
15.....	114.2	7.0	-14.0	NNE.	1	E.	5	
16.....	106.5	12.0	0.0	E.	5	E.	4	Trace	
17.....	90.4	37.0	2.0	NE.	7	SE.	620	
18.....	87.3	34.0	21.0	SW.	8	W.	7	Trace	.22	
19.....	130.2	24.0	20.0	W.	8	W.	6	.05	.02	
20.....	106.1	24.0	18.0	W.	5	NW.	5	.05	.03	
21.....	109.0	22.0	18.0	NW.	5	NW.	5	.05	.05	
22.....	111.3	20.0	15.0	NW.	4	NW.	4	.03	.05	
23.....	113.1	21.0	14.0	N.	3	WSW	3	
24.....	100.5	27.0	14.0	E.	5	SE.	524	
25.....	98.2	31.0	19.0	SE.	3	NW.	3	.03	.10	
26.....	113.0	22.0	13.0	E.	3	NE.	5	Trace	
27.....	96.9	38.0	11.0	E.	7	SE.	1	.02	
28.....	98.2	33.0	23.0	W.	5	SW.	4	.03	.05	
29.....	105.4	27.0	18.0	SW.	3	.03	.07	
30.....	106.0	19.0	13.0	W.	3	NW.	4	.01	.03	

PORT HARRISON METEOROLOGICAL REPORT, 1942

Date	General Weather		Visibility—Miles		Ice Conditions
	a.m.	p.m.	a.m.	p.m.	
1942 Nov.					
1	Light snow	Part cloudy	2	20	Slob ice in river.
2	Overcast	Cloudy	20	20	" "
3	Snow showers	Light snow	9	9	" "
4	Overcast	Light snow	20	4	" "
5	Light snow	Drifting snow	4	4	" "
6	Drifting snow	Cloudy	20	20	
7	Light snow	Drifting snow	4	4	Slob ice in river.
8	Part cloudy	Drifting snow	20	1	" "
9	Overcast	Part cloudy	9	20	" "
10	Cloudy	Part cloudy	20	20	" "
11	Part cloudy	Part cloudy	20	20	" "
12	Part cloudy	Cloudy	20	20	" "
13	Cloudy	Light snow	20	20	" "
14	Light snow	Cloudy	9	20	
15	Fine	Cloudy	20	20	
16	Light snow	Fine	9	20	
17	Drifting snow	Light rain	4	4	Slob ice in river.
18	Snow	Drifting snow	2	2	" "
19	Drifting snow	Drifting snow	1	4	
20	Drifting snow	Light snow	9	20	
21	Light snow	Drifting snow	4	4	River frozen.
22	Drifting snow	Light snow	4	9	" "
23	Light snow	Overcast	9	20	" "
24	Overcast	Light snow	20	4	" "
25	Light snow	Light snow	2	20	" "
26	Overcast	Light snow	30	20	
27	Cloudy	Overcast	9	20	
28	Light snow	Light snow	4	4	
29	Light snow	9	
30	Light snow	Light snow	9	4	River frozen.

AIDS TO NAVIGATION IN HUDSON BAY AND STRAIT

RADIO COAST AND DIRECTION FINDING STATIONS

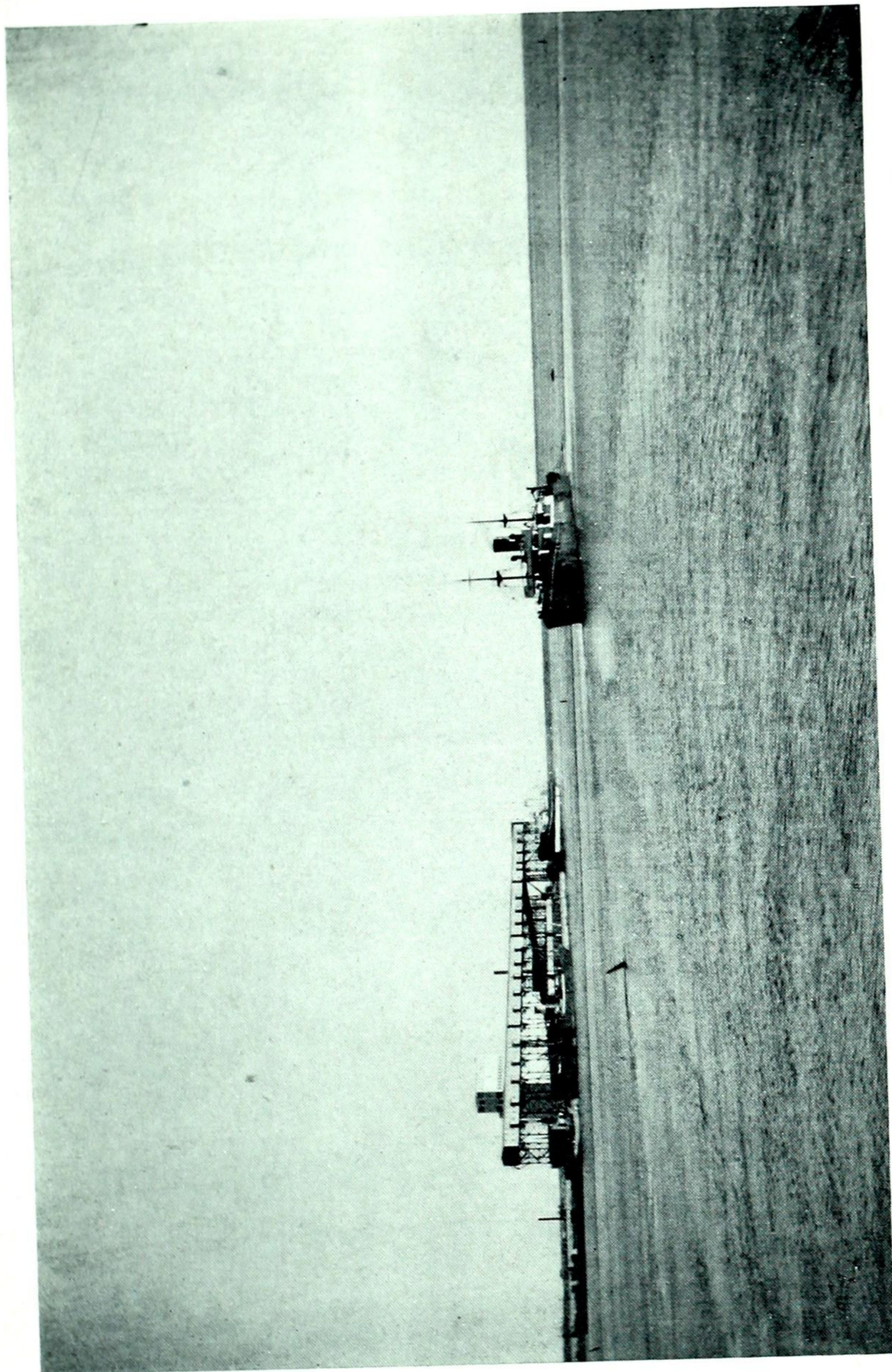
Station	Call Sign	Calling Wave		Working Wave		Position		Hours of Service	Coast Charge (a)
		K/cs.	Metres	K/cs.	Metres	Latitude N.	Longitude W.		
Churchill.....	V A P	500	600	500	600	58° 46' 32"	94° 10' 31"	Continuous during season of navigation.	6c. per word
Chesterfield Inlet.....	V B Z	500	600	500	600	63° 20' 05"	90° 42' 33"	Continuous during season of navigation.	6c. per word
Nottingham Island.....	V C B	500	600	500	600	63° 06' 48"	77° 56' 18"	Continuous during season of navigation.	6c. per word
Cape Hopes Advance.....	V A Y	500	600	500	600	61° 05' 12"	69° 33' 24"	Continuous during season of navigation.	6c. per word
Resolution Island.....	V A W	500	600	500	600	61° 18' 30"	64° 53' 24"	Continuous during season of navigation.	6c. per word

All stations maintain watch on 500 K/cs. (600 metres) and with the exception of Resolution island, take and transmit bearings on 375 K/cs. (800 metres) after communication has been established on 500 K/cs. (600 metres). Resolution island takes bearings on 500 K/cs. (600 metres) and transmits bearings on 375 K/cs. (800 metres).

(a) All messages relative to navigation are handled free of charge. The six-cent per word coast charge applies to all other traffic. For forwarding charges beyond Churchill apply to any of above stations or see Canada Rate Sheet, International List of Coast and Ship Stations.

RADIO METEOROLOGICAL REPORTING STATION

Station	Call Sign	Calling Wave		Working Wave		Position		Hours of Service	Coast Charge
		K/cs.	Metres	K/cs.	Metres	Latitude N.	Longitude W.		
Port Harrison.....	V A L	500	600	420	714	58° 27' 17"	78° 08' 29"	Keeps watch on 500 K/cs. (600 metres) for fifteen minute periods commencing at every odd hour from 7.00 a.m. to 7.00 p.m. E.S.T. inclusive, during season of navigation.	6c. per word See note (a) above.



Churchill: View from Northwest showing *Drakepool* at anchorage, *Brandon* and *Louis L.D.* at wharf.

PATROL SHIP

Station	Call Sign	Calling Wave		Working Wave		Hours of Service	Remarks
		K/cs.	Metres	K/cs.	Metres		
C.G.S. N. B. <i>McLean</i>	C G S N	500	600	425	706	Continuous during season of navigation.	Normally this vessel patrols Hudson strait during the season of navigation. Information in regard to her position may be obtained from any Radio Station in the Strait.

LIGHTS

Location	Position		Character	Elevation	Remarks
	Latitude N.	Longitude W.			
†Goodwin island, Button islands group.	60° 41' 31"	64° 40' 22"	Flashing.....	259 ft.	On unpainted wooden pole.
Resolution island.....	61° 18' 28"	64° 53' 16"	Flashing.....	129 ft.	White square, wooden lantern on wooden skeleton base. One flash every 10 seconds.
Cape Hopes Advance.....	61° 05' 14"	69° 33' 23"	Fixed.....	270 ft.	On unpainted wooden pole.
†Wales island.....	61° 51' 37"	71° 58' 19"	Flashing.....	150 ft.	On unpainted wooden pole.
†Ashe inlet.....	60° 31' 40"	70° 33' 27"	Flashing.....	191 ft.	On unpainted wooden pole.
†East end of Charles Island.....	62° 36' 40"	73° 56' 09"	Flashing.....	150 ft.	On unpainted wooden pole.
†West end of Charles island.....	62° 42' 30"	74° 40' 00"	Flashing.....	40 ft.	On unpainted wooden pole.
†Nottingham island.....	63° 05' 48"	77° 56' 55"	Flashing.....	50 ft.	On unpainted wooden pole.
†Digges island.....	62° 35' 20"	78° 06' 42"	Flashing.....	65 ft.	On unpainted wooden pole.
†Mansel island.....	62° 27' 00"	79° 38' 00"	Flashing.....	41 ft.	On unpainted wooden pole.
†Coats island.....	62° 10' 00"	83° 08' 00"	Flashing.....	40 ft.	On unpainted wooden pole, surrounded by white lattice.
†Hubbart point.....	59° 21' 00"	94° 40' 00"	Flashing.....	50 ft.	On unpainted wooden pole.

†Unwatched.

C.G.S. *N. B. McLEAN*—HUDSON STRAIT PATROL SHIP
GENERAL DIMENSIONS AND EQUIPMENT

The C.G.S. *N. B. McLean* is a twin-screw ice breaking steamer of 6,500 indicated horse-power and with the following leading dimensions:—

Length (B.P.).....	260 feet
Breadth (moulded).....	60 “
Depth (moulded).....	31 “
Gross tonnage.....	3,253 tons
Fuel oil capacity.....	1,596 “

The vessel is equipped with a patent towing winch furnished with both steel wire and manila towing hawsers, a powerful searchlight, two 7-ton derricks and two motor launches.

She also carries a diver and complete diving apparatus and the following salvage gear:—

- 1 Drake centrifugal pump, 10 inch.
- 1 Smart Turner centrifugal pump, 8 inch.
- 1 Duplex pump, 6 inch.

These pumps are completely equipped with flexible suction and discharge pipes, foot valves, syphons, etc., and all necessary auxiliaries.

One hundred and fifty feet of bronze flexible steam hose with connections, patching gear, shores, turnbuckles and all necessary tools are also provided.

The vessel is provided with a gyro compass and a recording echo sounder and radiotelegraph and radiotelephone apparatus are installed.

The *N. B. McLean* is normally in Hudson Strait from the opening to the close of navigation each year and maintains constant watch on 500 K/cs. (600 metres), call sign C.G.S.N.

GLOSSARY OF TERMS USED IN ICE NAVIGATION

- Floe.....A large mass of floating ice.
- Pan.....A small floe or piece of ice that can be forced aside or slewed.
- A field.....A large body of ice that may be seen around.
- Land floe.....Ice frozen fast to the shore.
- Packed ice.....Small pieces of ice closed together and held by the pressure of ice and currents.
- Ice blink.....A peculiar pale yellow reflection on the sky indicating the presence of ice in the distance.
- The ice pack.....A large body of solid ice extending across the whole sea and through which it is impossible to advance.
- Slack or open ice...Detached ice that can be worked through. Ice is said to be slacking when it begins to open up so as to be navigable.
- A lead.....A strip of navigable water opening into the pack.
- Hummocky ice.....Rough, uneven or thick ice.
- Slob.....Snow afloat and forming into ice.
- Water sky.....A dark or bluish appearance of the sky indicating open water beyond the ice pack.
- Rafting.....Occurs when two pans meet with force either by the action of winds or currents, the edges are broken off and either rise on top of or pass under the body of the other.
- Growler.....A more or less washed and rounded lump of ice which rolls about in the water; formed from broken-up bergs or detached pieces of heavy old Arctic floe ice.
- Collar ice.....The margin of ice frozen fast to an island or shore, presenting an abrupt wall against which the floating ice rises and falls with the tide.