



Fisheries and Environment
Canada

Pêches et Environnement
Canada

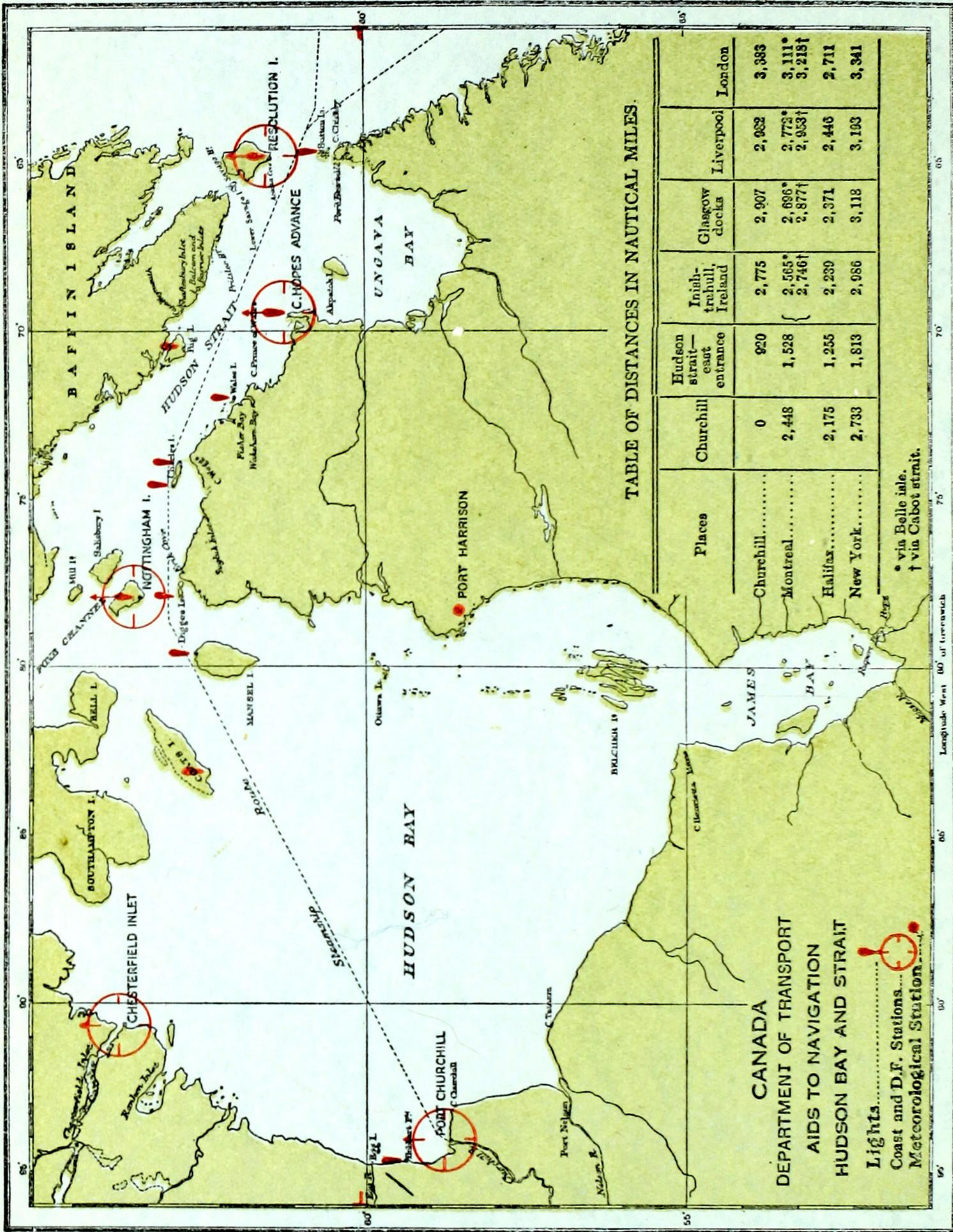
00350611

CANADA DEPARTMENT OF TRANSPORT
NSPORT

ANNUAL REPORT

REPORT

1/10



CONTENTS

Letter of Transmittal

Synopsis

Opening of Navigation

Closure of Navigation

Fast Channel Ice

Fog

Aids to Navigation

Shipping



CANADA

SIXTEENTH ANNUAL REPORT

C. G. S. N. B. McLean

R. M. L. Nason

Part of Churchill

Navigation Conditions on the Hudson Bay
Route from the Atlantic Seaboard
to the Port of Churchill

Hydro

C. G. S. N. B. McLean

Resolute Island

Cape Wager

Resolute Island

Churchill

Chesterfield Inlet

Port Harrison

Port Harrison

Aids to Navigation

Radio Services

Patrol Ship

Navigation Lights

C. G. S. N. B. McLean—Discussion and Equipment

C. G. S. N. B. McLean—Discussion and Equipment

Closure of Ice Navigation Term

SEASON OF NAVIGATION

1944

C. G. S. N. B. McLean—Discussion and Equipment

Closure of Ice Navigation Term

ILLUSTRATIONS

DEPARTMENT OF TRANSPORT

HON. J. E. MICHAUD, Minister

Chart of Resolute

Churchill, Douglas Pass

Churchill, Fort Provenant

Churchill, Fort Provenant

OTTAWA

EDMOND CLOUTIER

PRINTER TO THE KING'S MOST EXCELLENT MAJESTY

1945

SIXTEENTH ANNUAL REPORT

CONTENTS

	PAGE
Letter of Transmittal.....	4
Synopsis—	
Opening of Navigation.....	5
Close of Navigation.....	5
Foxe Channel Ice.....	6
Fog.....	6
Aids to Navigation.....	6
Shipping.....	6
Ships' Reports—	
C.G.S. <i>N. B. McLean</i>	7
R.M.S. <i>Nascopie</i>	9
Port of Churchill—	
Traffic.....	11
Hydrographic Information.....	12
Meteorological Reports—	
C.G.S. <i>N. B. McLean</i>	13
Resolution Island.....	16
Cape Hopes Advance.....	22
Nottingham Island.....	28
Churchill.....	34
Chesterfield Inlet.....	40
Port Harrison.....	46
Aids to Navigation—	
Radio Stations.....	52
Patrol Ship.....	53
Navigation Lights.....	53
C.G.S. <i>N. B. McLean</i> —Dimensions and Equipment.....	54
Glossary of Ice Navigation Terms.....	55

ILLUSTRATIONS

Chart of Hudson Bay and Strait.....	<i>Frontispiece</i>
Churchill: Dredging Plant.....	<i>Facing page</i> 11
Churchill, Fort Prince of Wales.....	<i>Facing page</i> 54

CONTENTS

C. P. EDWARDS, Esq.,
Deputy Minister,
Department of Transport,
Ottawa, Ontario.

SIR—I have the honour to submit the Sixteenth Annual Report on Navigation Conditions on the Hudson Bay Route from the Atlantic Seaboard to the Port of Churchill. This report covers the season of navigation 1944.

The report is compiled from information received from the Hudson's Bay Company Vessel R.M.S. *Nascopie*, C.G.S. *N. B. McLean*, the National Harbours Board, and the Meteorological and Radio Services of the Department of Transport.

Yours respectfully,

WALTER A. RUSH,
Controller of Radio.

DEPARTMENT OF TRANSPORT,
OTTAWA, March 6, 1945.

SIXTEENTH ANNUAL REPORT

Navigation Conditions on the Hudson Bay Route from the Atlantic Seaboard to the Port of Churchill Season of Navigation, 1944

Synopsis of Report

OPENING OF NAVIGATION

The change from winter conditions extended, as usual, over a period of several weeks and during that time the quantity and state of drifting ice varied from day to day according to the influence of winds and currents.

The dates of the final disappearance of ice from the vicinity of the reporting stations were as follows:—

Hudson Strait, East End

Resolution Island.....July 21

Hudson Strait, Central

Cape Hopes Advance.....July 28

Hudson Strait, West End

Nottingham Island.....Aug. 10

Hudson Strait, General—The R.M.S. *Nascopie* on her annual voyage into Hudson Bay and adjacent straits reported that, with the exception of some fog, fine weather prevailed throughout July and August but that bad ice conditions were encountered in the straits and bay during July.

The C.G.S. *N. B. McLean* encountered fog and numerous bergs in the Strait during July, however, the weather was fair throughout the season with the exception of some fog and poor visibility.

Hudson Bay

Churchill.....July 11

Chesterfield Inlet.....July 4

Port Harrison.....Aug. 4

CLOSE OF NAVIGATION

Hudson Bay

Chesterfield Inlet—Solid ice was first reported in the Bay on October 28.

This ice cleared from the Bay on November 1 and it was not until after several freeze-ups that the condition became permanent on November 20.

Churchill—Slob ice was first reported in the Bay on October 27; however, this condition cleared by the middle of November. On November 26 close packed ice was reported in all directions.

Hudson Strait

Nottingham Island—On November 6th, reported ice extending one mile off shore, this gradually increasing to eight miles on November 30th.

Cape Hopes Advance—Reported ice in the Strait to the horizon on November 12th.

Resolution Island—Reported no ice except for drift and bergs, until after November 30th.

FOXES CHANNEL ICE

No reports were available for ice debouched from Foxe Channel during the 1944 season.

FOG

The number of days on which fog was reported were as follows:—

—	July	Aug.	Sept.	Oct.	Nov.	Totals	
						1943	1944
Resolution.....	18	16	9	5	4	65	52
Cape Hopes Advance.....	12	14	16	4	2	57	48
Nottingham Island.....	9	16	6	2	3	39	36
Churchill.....	3	7	2	3	2	29	17
Chesterfield.....	3	4	1	1	2	18	11
Port Harrison.....	16	6	6	1	2	53	31

AIDS TO NAVIGATION

Radio

There are five radio direction finding stations on the Hudson Bay Route.

Detailed information regarding Radio Aids to Navigation will be found on page 52.

Hydrography

No survey was carried out this season. See page 12.

Lights

There were no additions to the lights, the numbers remaining at two watched and ten unwatched, a total of twelve lights, a list of which will be found on page 53.

Fog Signals

The explosive bomb signal which was installed at Resolution in 1935 is still in operation. It can be heard at a distance of between five and six miles and is fired at intervals of ten minutes on request by ships approaching Acadia Cove.

SHIPPING

Owing to war-time restrictions the movement of commercial vessels using the Hudson Bay route were not reported.

The only casualty reported in the Hudson Bay and Strait during the 1944 season was the sinking of the Roman Catholic Mission Supply Vessel, the *M. F. Therese*, mentioned in Captain C. A. Caron's Report, Page 7.

WALTER A. RUSH,
Controller of Radio.

C.G.S. *N. B. McLEAN*, CAPTAIN C. A. CARON, MASTER,
VOYAGE TO HUDSON BAY AND STRAITS, 1944

EXTRACTS FROM MASTER'S REPORT

The C.G.S. *N. B. McLean*, on this season's voyage to the Hudson Bay and Straits, passed through the Strait of Belle Isle on July 23rd, 1944. Although the weather was fair, some delay was experienced by the numerous bergs on both sides of the track from the Straits all the way up the Labrador coast; this made it necessary to reduce speed during periods of fog.

At 9 a.m., July 24th, the C.G.S. *N. B. McLean* anchored off Gready Island as visibility was poor making it dangerous to navigate the islands, however at 1.30 p.m. with improved conditions, were able to proceed to Collingham Cove, at which place we anchored at 7.00 p.m.

The fog kept us at Collingham Cove until July 28th, on which date, although visibility was still poor, the C.G.S. *N. B. McLean* proceeded to Resolution Island at reduced speed, laying a course 10 to 40 miles off the coast to avoid numerous bergs.

The time between August 1st and 8th was spent in unloading supplies at Acadia Cove, Resolution Island. At 10.30 a.m. on August 8th we left for Cape Hopes Advance, arriving there the following day at 7.00 a.m. and commenced at once to land provisions and coal.

Soon after leaving Cape Hopes Advance on August 12th a call was received from the *M. F. Therese*, a Roman Catholic Mission Supply vessel, saying that she was aground on a reef at the South East end of Salisbury Island, but that they did not require immediate assistance.

Arriving at Salisbury Island, the crew and passengers of the *M. F. Therese* were easily located and taken aboard; however, the vessel itself had slid off the reef and had sunk before we arrived.

Leaving Salisbury Island at 4.00 p.m. August 14th we proceeded to Nottingham Island arriving there at 9.30 p.m. on the same date and after unloading supplies we proceeded to Erik Cove, where fresh water was taken aboard.

August 19th proceeded to Digges Island and after servicing the light we anchored in Digges Island passage on account of fog.

August 20th we proceeded to Southampton Island servicing Mansel Island light en route. Was unable to service Coates Island due to weather conditions. Leaving Southampton Island August 23rd we proceeded to Nottingham Island and Erik Cove.

On August 24th we left Erik Cove at 2.00 p.m. and proceeded towards Charles Island. At 10.00 p.m. anchored in light fog off Charles Island west end. Could not service light on account of running swell inshore. On August 25th lights on Charles Island east end and Wales Island were serviced. August 26th proceeded into Wakeham Bay and anchored at head of bay with a strong westerly wind. A party went ashore to remove machinery from the old wireless station. With this material loaded aboard we left Wakeham Bay on August 29th and thence to Resolution Island. August 30th ship steaming slowly off Resolution Island in thick fog. August 31st anchored in Acadia Cove at 2.00 p.m. All work completed at Resolution Island we left at 6.00 p.m. proceeding towards Big Island where light was put in service at 9.00 p.m. September 1st. We then proceeded towards Charles Island west end but were still unable to service light on account of running surf inshore. From here we proceeded towards Nottingham Island arriving there September 3rd at 2.00 p.m.

September 4th left at 2.00 a.m. steaming towards Churchill, Manitoba, at an average speed of ten knots. Passed off Cary Swan's Nest in thick fog and south westerly wind which prevented servicing light. Arrived at Churchill 9.00 a.m. September 6th.

Leaving Churchill at 6.00 a.m. on September 14th we arrived at Chesterfield on the morning of September 16th. On arrival at Chesterfield unloading began at once. About sixty tons were landed during the afternoon of September 16th but during night the wind shifted to the north east and we experienced a heavy swell running inshore making it necessary to use both anchors, paying out ninety fathoms of chain on both so as to keep the ship in good water. Completed the unloading on September 19th we left September 20th at 7.00 a.m. for Southampton where provisions were landed.

Leaving Southampton proceeded to Nottingham where provisions for Cape Dorset Mission, Baffin Land Trading Company and Ivigivuk Mission were landed, thence proceeded to Erik Cove to pick up mail, left there by R.M.S. *Nascopie* for various radio stations. Left Erik Cove September 25th at 7.55 a.m. proceeded toward Sugluk Harbour entering there at 3.00 p.m. Leaving there next morning we anchored at Wakeham Bay on September 26th, staying there to await good weather conditions. Left Wakeham Bay September 30th and on way out stopped at Cape Hopes Advance to deliver provisions and mail. We anchored at Resolution Island at 9.00 a.m. on October 1st and completed all work there. Left Acadia Cove, Resolution Island, on October 2nd at 5.50 a.m. steaming towards Hamilton Inlet. October 3rd, the ship behaving badly in strong east north east wind, we altered course to 10 degrees true north steaming dead slow until 4.00 a.m. October 5th. Arriving Sister Island October 6th at 6.00 p.m. we remained at anchor over night and in the morning proceeded toward Rigolet and anchored at Collingham Cove at 4.00 p.m.

On October 18th at 6.00 a.m., having completed a successful season of navigation in the Hudson Bay and Strait, we left Collingham Cove steaming at 8 knots towards Quebec, arriving there October 22nd, and docking at King's Wharf at 4.00 p.m.

ICE CONDITIONS

The *N. B. McLean* left Quebec on July 20th and no ice was sighted until arriving at Greenly Island on July 23rd. All the way through the Belle Isle Strait were numerous bergs and growlers. From Belle Isle to Gready Island there were no ice fields but many icebergs of large size on both sides of our path.

Northward of Hamilton Inlet ice bergs were sighted on both sides of track until arrival at Acadia Cove.

Westward of Resolution Island no ice fields were seen but many bergs of various sizes were drifting in Straits as far as Nottingham Island, but no ice bergs or fields seen west of Nottingham Island.

At the close of the season, few bergs were sighted in the Straits and along the Labrador coast.

RADIO

All radio stations were in operation this season, and gave excellent service, which contributed greatly to the safe navigation of these waters.

The beacon schedules worked out well, and as most ships were fitted with Gyro compasses and direction finders, radio bearings from shore stations were reduced to a minimum.

HYDROGRAPHIC SURVEY

No survey was carried out this season.

LIGHTS AND AIDS TO NAVIGATION

All existing lights were put in operation this season with the exception of Cary's Swan Nest and Charles west end. We made two attempts to service these lights but each time were unable to land.

C. A. CARON, *Master.*

R.M.S. *NASCOPIE*, CAPTAIN T. F. SMELLIE, O.B.E., MASTER,
VOYAGE TO HUDSON BAY AND STRAIT, 1944

EXTRACTS FROM MASTER'S REPORT

We left Montreal at 10.15 a.m. on July 1st and after staying overnight at Quebec we proceeded at 10.00 a.m. the next morning for the Hudson Bay and Arctic Posts.

The usual fog was passed through in the Gulf of St. Lawrence and numerous bergs were passed in the Straits of Belle Isle. Bergs were numerous along the Labrador Coast, and, in fact more numerous between Cartwright and Rigolet than seen in any past season.

Cartwright was reached on July 6th and on July 8th we proceeded to Hebron.

We arrived at Hebron on July 10th and left on the 11th instant. Immediately after leaving Hebron we ran into very heavy field ice. This heavy ice was worked through in the Straits and Bay until 24 hours after we had left Port Harrison. The west side of the Hudson Bay appeared to be free of ice.

Cape Smith was completely blocked with heavy ice floes without any water being visible. We lay in the ice in sight of the post for 24 hours and as there was no sign of the ice moving from the land, we abandoned the call and proceeded to Port Harrison.

Fog and ice caused delays, but taking everything into consideration good progress was made and Churchill reached on August 6th.

After spending four days loading bunker coal we left Churchill and proceeded to land supplies at Chesterfield, Southampton Island, Cape Smith and Wolstenholme, meanwhile the weather in the Bay and Straits remained fine and good progress was made.

We left Wolstenholme for the Arctic on the 23rd of August. Numerous icebergs were passed and icefields passed through off Cumberland Sound and River Clyde. The icefield off Clyde was unbroken for a distance of 60 miles. It was intended to stop at Clyde northbound, but when we found the icefield off that place was so large after skirting the edge of it for the above distance, we decided to omit the call at Clyde. Fine weather continued in the Arctic Circle and we proceeded and arrived at Pond's Inlet early on the morning of the 29th August. After leaving Pond's we ran into dense fog and snow flurries in Lancaster Sound.

Huge ice floes were passed at the entrance of Prince Regent Inlet and were passed through, some open and some close packed. However, there was no frost and the new ice had not begun to form.

For 15 miles between the islands off Fort Ross, the ice floes were heavy and closely packed. We forced our way through and arrived at Fort Ross on 1st September. Heavy ice floes filled the bay during our stay at Fort Ross.

Leaving Fort Ross on 3rd September, the same ice floes were passed through and a snow storm passed over in Lancaster Sound. Very little ice was seen in Lancaster Sound and Admiralty Inlet during our passage to Arctic Bay which was reached on 4th September.

All supplies were landed at Arctic Bay, staff changes made, and we left on 6th September.

River Clyde was our next port of call, which was reached on 8th September. Fog and numerous icebergs delayed us en route. All supplies were landed, staff changes made and we left Clyde on 10th September.

Fine weather prevailed after leaving Clyde, but during the dark night we ran into a heavy ice field, where the floes were being tossed with the swell and the ship got a considerable pounding. This was the last icefield to be sighted during the voyage.

The weather the following day was fine, so a call was made at Padloping Island where we stayed two hours and then proceeded on our voyage south.

Heavy snow fall was our reception into Cumberland Sound and we arrived at Pangnirtung, still snowing, on the 13th September. All supplies were landed and we left for Cartwright on the 16th instant.

Leaving Cartwright on September 23rd we arrived Rigolet the next day and on the following day we left for the south.

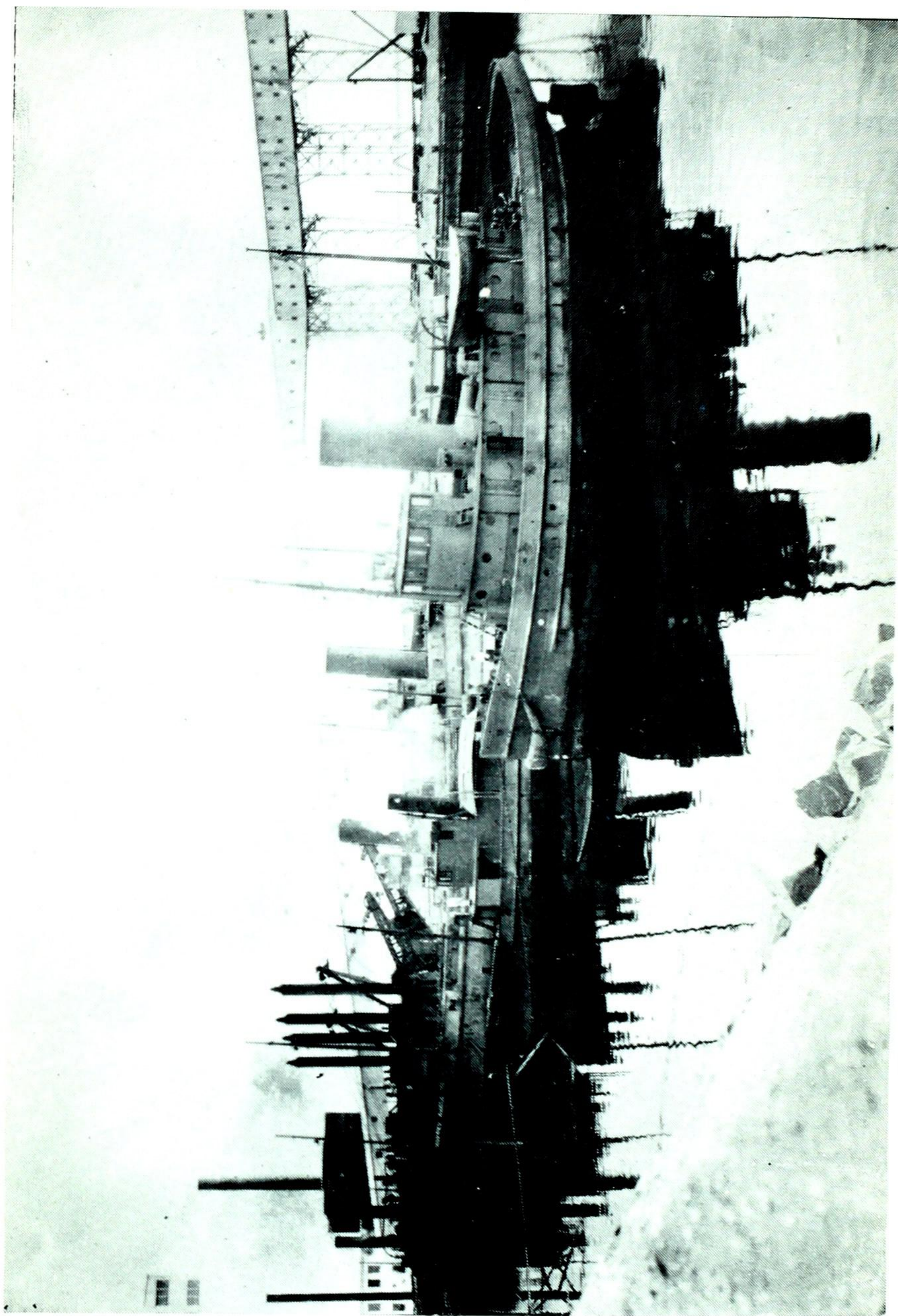
We passed Father Point on September 29th and arrived Quebec September 30th and Montreal October 1st at 11.00 a.m.

This ended the Bay Voyage 1944, having accomplished all we set out to do on the 1st July, 1944.

The months of July and August were very foggy but fine weather prevailed. Ice conditions were bad during the month of July on the Labrador, Hudson Strait and Hudson Bay. In the Arctic the huge ice floes were as numerous as in previous years. These ice floes were navigable as the new ice had not formed.

T. F. SMELLIE,

Master.



Dredging Plant in Winter Quarters at Churchill, Man.

CHURCHILL

TRAFFIC

Shipping	1943	1944
Arrivals:—		
Number of vessels.....	35	12
Net registered tonnage.....	25,026	4,109
Departures:—		
Number of vessels.....	38	12
Net registered tonnage.....	25,809	4,109
Total Arrivals and Departures:—		
Number of vessels.....	73	24
Net registered tonnage.....	50,835	8,218
Water Borne Cargo Tonnage (Tons=2,000 lbs. weight or measure)		
Inward.....	1,232	65
Outward.....	32,495	1,383
Total.....	33,727	1,448

Hydrographic Information

The Hydrographic and Map Service, Surveys and Engineering Branch, Department of Mines and Resources, publishes a series of navigation charts and also a volume of Sailing Directions covering the Hudson Bay Route. These are kept up to date and added to from time to time as new information becomes available.

The "Tide Tables for the Atlantic Coast of Canada," published by the Tidal and Current Survey Division of the same Service, contain predictions for the port of Churchill and for Moosonee in James Bay. Tables in leaflet form are available for Port Nelson. Tidal differences for fourteen localities in Hudson Strait and for eight localities in James Bay afford the times of high and low waters in these areas. The time of the turn of the tidal streams in the southern offing of Resolution and Nottingham Islands, and information on the currents in Digges Sound is also given. The automatic tide gauge is kept in operation each season at Churchill for the extension of the tidal records by which the predictions are improved.

HYDROGRAPHIC PUBLICATIONS—HUDSON BAY AND STRAIT

Charts—

401 Churchill Harbour.	409 Churchill Harbour to Hubbard Point.
403 Approaches to Nelson River.	503 Pritzler Harbour to Cape Weymouth.
404 Anchorages in Hudson Strait.	Balcom and Barrier
Sugluk Inlet.	Inlets.
Port Burwell.	Shaftsbury Inlet.
Button Islands.	P1504 Mouth of Moose River.
405 Hudson Bay and Strait.	P1505 Rupert Bay.
406 Cape Tatnam to Port Nelson.	P1506 Mouth of Rupert River.
407 Anchorages in Hudson Strait.	P1507 Lower Savage Islands to Pritzler Harbour.
Charles Inlet.	Pritzler Harbour.
Savage Harbour.	P1508 Erik Cove to Nuvuk Harbour including
Acadia Cove.	Digges Islands.
408 Cape Churchill to Churchill Harbour.	Erik Cove.
500 Cape Churchill to Egg River.	Port de Laperriere.
501 Wakeham and Fisher Bays and	Nuvuk Harbour.
Approaches.	Digges Harbour.
Wakeham Bay.	5410 Coral Harbour.
Fisher Bay.	
502 C. Prince of Wales to C. Weggs.	
Douglas Harbour.	

Sailing Directions—

Sailing Directions for the Hudson Bay Route.

Tide Tables—

Tide Tables for the Atlantic Coast of Canada.

NOTE.—Copies of the above publications are available at the office of the High Commissioner for Canada, Canada House, London, England, for reference only. Charts and Sailing Directions are issued at 50 cents and Tide Tables at 25 cents per copy and may be obtained from the Hydrographic Service, Surveys and Engineering Branch, Department of Mines and Resources, Ottawa, or from the National Harbours Board Office, Churchill, Manitoba. All orders must be accompanied by postal or express money order, for the full amount, payable to the Receiver General for Canada.

METEOROLOGICAL REPORT OF C.G.S. N. B. McLEAN

Date	Noon Position	Barometer			Temperature °F.		Wind True				Fog	Remarks		Vsby.
		8 a.m.	4 p.m.	12 p.m.	Air		8 a.m.		4 p.m.			Hour	a.m.	
					Max.	Min.	Dir.	F.	Dir.	F.	Dir.			F.
July 19	King Wharf, Quebec	30.06	29.85	29.90	80	58	S	2	Calm	0	0	Cloudy—Clear	6	6
20	Murray Bay abeam	29.82	29.77	29.72	65	55	ESE	1	NW	1	0	12 p.m.—5.40 a.m. rain Overcast and haze.	4	4
21	49.48 W 65.03W	29.66	29.66	29.63	62	54	SE	4	SE	3	0	Overcast and clear	5	Noon—8 p.m. o'cast and haze. Overcast and rain.
22	50.22N 58.58W	29.61	29.56	29.74	56	50	SE	3	SE	3	0	Overcast with rain	4	Noon—4 p.m. light rain Overcast and haze.
23	Anchor, Greenly Is.	29.70	29.72	29.74	62	48	E	4	SW	3	11	O'cast rain and fog	2	Cloudy and clear
24	Anchor, Gready Is.	29.72	29.72	29.85	48	43	S	4	NE	4	10	O'cast rain haze	4	O'cast light fog
25	Anchor, Collingham Cove	29.90	29.92	29.92	58	42	SW	2	ENE	1	2	O'cast and clear	6	O'cast and clear
26	Anchor, off Rigolet	30.00	30.00	30.02	47	43	ENE	3	E	3	24	Dense fog	0	O'cast and fog
27	Anchor, Collingham Cove	30.04	30.00	30.00	46	42	NNE	3	ENE	4	24	Dense fog	0	O'cast and foggy
28	West Sister Lab. abeam	29.96	29.92	29.92	48	39	E	2	SE	3	11	Thick fog	1	Cloudy and clear
29	55.46-30N 57.33W	29.95	29.98	29.98	56	40	SE	2	SE	2	12	Cloudy clear. 4 hrs. fog. Several bergs around.	5	Thick fog. Several bergs around.
30	58.33N 60.34W	29.86	29.88	29.92	47	39	S	3	ENE	3	5	Cloudy and fog at dist. Bergs inside.	5	Cloudy and fog at dist. Last 5 hrs. thick fog.
31	60.48N 63.09W	29.89	29.81	29.72	47	35	E	3	SE	4	24	Cloudy and fog	2	O'cast and fog
Aug. 1	Acadia Cove Res	20.70	20.82	20.82	40	34	NE	3	NW	4	16	Thick fog with rain. 4 a.m. till 8 a.m. clear vsby 5.	2	O'cast and fog
2	"	20.82	20.79	20.74	47	38	NW	2	NW	2	8	Cloudy and Clear, fog	2	Fog and fine, clear
3	"	20.73	20.73	20.74	46	35	ENE	2	E	3	5	Cloudy and Clear	6	Cloudy and clear, fog
4	"	20.70	20.68	20.68	45	35	E	1	SE	1	8	Fog, cloudy and clear	6	Cloudy and clear
5	"	20.61	20.62	20.56	42	39	NE	3	E	4	4	Fog by bank	5	Fog by bank
6	"	20.55	20.54	20.60	42	40	E	5	NE	6	0	O'cast and rain	6	O'cast and light rain
7	"	20.72	20.80	20.82	47	36	NE	5	W	3	0	O'cast with rain	6	Cloudy and clear
8	61.19N 65.08W	29.91	29.93	29.80	45	36	NW	4	W	4	2	Cloudy and clear	8	Cloudy and clear
9	Diana Bay	29.72	29.60	29.54	62	42	S	2	SSW	4	0	Cloudy with rain, haze	4	Cloudy and clear
10	"	29.53	29.53	29.56	48	42	E	1	N	1	22	Thick fog	2	O'cast and fog
11	"	29.58	29.55	29.49	47	41	NW	1	E	1	22	Thick fog	2	O'cast and fog
12	61.07N 68.50W	29.40	29.24	29.16	40	37	E	3	NE	7	12	O'cast and fog at distance	4	O'cast and thick fog
13	61.55N 69.30W	29.18	29.22	29.26	43	36	NE	6	NW	2	9	O'cast, rain and fog	3	O'cast, fog at distance
14	63.05N 76.43W	29.32	29.46	29.56	47	40	NE	3	NE	4	8	O'cast, rain and fog	3	Cloudy and clear

METEOROLOGICAL REPORT OF C.G.S. N.B. McLEAN—Continued

Date	Noon Position	Barometer			Temperature °F.			Wind True				Fog Hour	Remarks				
		8 a.m.	4 p.m.	12 p.m.	Air		Sea	8 a.m.		4 p.m.			12 p.m.		Vsby.	p.m.	Vsby.
					Max.	Min.		Dir.	F.	Dir.	F.		Dir.	F.			
Aug. 15	Nottingham Island	29.59	29.63	29.74	46	39	34	NW	4	NW	3	NW	3	Cloudy and fog by bank	3	3	
16	"	29.74	29.75	29.76	49	35	33	NW	3	W	2	W	2	Cloudy and clear	7	8	
17	62-48N 77-40W	29.78	29.72	29.82	47	40	35	SW	1	N	2	SW	2	O'cast and clear	8	8	
18	Erik Cove	29.87	29.92	29.96	49	41	37	N	3	NW	3	W	2	Cloudy and fog at distance	4	8	
19	Anchored, Digges Island	30.00	29.99	29.97	44	36	33	SSW	1	SSW	2	S	2	O'cast and fog at distance	5	5	
20	62-38N 78-30W	29.90	29.78	29.74	53	36	42	S	1	E	3	NE	2	Cloudy with fog	7	3	
21	Southampton Island	29.74	29.80	29.82	62	45	44	NE	4	SSE	2	NW	1	Fine and clear	7	8	
22	"	29.80	29.80	29.85	56	45	44	N	2	SW	1	S	3	Cloudy and clear	7	8	
23	63-24N 83-20W	29.86	29.83	29.84	45	39	44	SE	2	SE	3	SE	3	Cloudy and clear	5	9	
24	62-32N 73-28W	29.79	29.82	29.84	44	42	36	W	3	NE	3	SE	1	Cloudy and clear	5	8	
25	Erik Cove	29.86	29.84	29.79	45	40	37	ESE	2	E	3	SW	3	O'cast and clear, haze	5	5	
26	Wakeham Bay	29.72	29.58	29.58	64	53	37	W	7	W	7	WNW	7	Cloudy and clear	8	7	
27	"	29.89	29.98	29.80	49	42	37	W	5	NNW	5	SW	2	Cloudy and clear	9	8	
28	"	29.98	29.92	29.98	46	37	38	SW	2	E	3	SE	3	Fine and clear	8	8	
29	Diana Bay	29.91	29.93	29.94	48	37	36	SE	3	SE	2	E	6	Fine and clear	8	8	
30	Off Resolution	29.97	30.01	30.00	39	36	33	E	5	E	6	ESE	5	O'cast, rain and fog	3	3	
31	"	29.94	29.98	29.94	39	35	33	ESE	5	ESE	4	Calm	0	Berg in sight. Several bergs in sight.	1	1	
Sept. 1	61-41N 68-19W	29.73	29.80	29.82	47	35	33	NW	2	SW	1	SE	3	Thick fog. Several bergs in sight.	1	1	
2	62-44N 73-30W	29.70	29.60	29.67	45	36	36	SE	5	S	3	NW	2	Thick fog. Several bergs in sight.	1	1	
3	Off Nottingham	29.80	29.80	29.77	47	41	39	NE	1	E	3	E	3	Thick fog. Several bergs in sight.	1	1	
4	62-25N 81-09W	29.86	29.85	29.74	46	42	45	NW	2	SE	2	SW	2	Thick fog. Several bergs in sight.	1	1	
5	60-39N 88-41W	29.82	29.98	30.06	48	46	45	NW	1	NW	5	NW	2	Fine and clear	7	7	
6	Churchill Harbour	30.08	30.08	30.05	52	46	47	W	3	NE	2	ESE	3	Overcast and clear	5	7	
7	"	30.07	30.04	30.04	58	42	51	SE	3	S	3	SE	3	Cloudy and clear	8	7	
8	"	30.02	29.92	29.84	53	45	51	SE	3	SE	3	SE	4	Cloudy and clear	7	7	
9	"	29.82	29.85	29.92	49	46	51	SE	3	NE	3	SE	4	Cloudy and clear	7	6	
10	"	29.97	29.92	29.74	54	46	51	SW	1	SW	4	SW	6	O'cast and rain	6	6	
11	"	29.88	30.03	30.12	50	44	51	N	6	N	4	N	6	O'cast and rain	6	6	
12	"	30.16	30.11	29.94	52	42	50	W	2	SW	4	SE	4	O'cast and rain	8	6	
13	"	29.72	29.72	29.86	54	44	49	SW	3	NE	2	NE	4	Cloudy and clear	8	9	
14	"	29.94	30.02	30.08	41	39	48	NE	6	SE	2	SE	4	Cloudy and clear	7	7	
15	59-30N 93-18W	30.08	30.13	30.16	42	36	44	E	4	NE	3	NE	3	O'cast int. rain	5	6	
16	Off Chesterfield	30.13	30.02	29.89	40	35	41	E	2	SE	4	SE	4	O'cast int. rain	6	4	

METEOROLOGICAL REPORT OF C.G.S. N. B. McLEAN—Concluded

Date	Noon Position	Barometer			Temperature °F.			Wind True				Fog Hour	Remarks				
		8 a.m.	4 p.m.	12 p.m.	Air		Sea	8 a.m.		4 p.m.			12 p.m.		a.m.	p.m.	Vsby.
					Max.	Min.		Dir.	F.	Dir.	F.		Dir.	F.			
Sept. 17	Chesterfield	29.64	29.58	29.60	40	38	39	ESE	E	NE	6	0	0	O'cast haze and mist	4		
18	"	29.56	29.55	29.66	39	35	39	E	NE	ENE	5	0	0	Cloudy and clear	7		
19	"	29.78	29.95	29.92	34	33	38	NE	N	S	1	0	0	Cloudy and clear	8		
20	63.08N 89.28W	29.93	29.92	29.86	35	32	37	SE	ESE	E	3	0	0	O'cast and clear	8		
21	Southampton Island	29.82	29.80	29.82	38	32	37	N	NW	NW	2	0	0	O'cast and snow squall	7		
22	63.13N 83.04W	29.76	29.69	29.62	36	31	36	W	W	N	4	0	0	O'cast and clear	7		
23	Nottingham Island	29.52	29.40	29.39	32	28	33	NW	NW	NW	5	0	0	Cloudy and clear	8		
24	"	29.45	29.56	29.66	38	30	32	NW	W	NW	1	0	0	Cloudy and clear	8		
25	62.31N 71.06W	29.79	29.86	29.88	36	30	32	W	W	W	2	0	0	Cloudy and clear	8		
26	Abeam Cape Waggs	29.86	29.86	29.85	38	30	34	SW	SE	WSW	4	0	0	Cloudy and haze	4		
27	Wakeham Bay	29.80	29.72	29.58	45	38	35	WSW	SSW	SSW	4	0	0	O'cast and clear	7		
28	"	29.68	29.80	29.75	43	33	35	NNW	NW	SE	3	0	0	Cloudy and clear	8		
29	"	29.51	29.50	29.46	38	33	35	SSE	W	West	5	0	0	O'cast clear	7		
30	61.44N 71.06W	29.56	29.64	29.74	36	33	33	NW	SW	SSW	6	0	0	Cloudy and snow squalls	6		
											4	0	0	Cloudy and snow squalls	6		
Oct. 1	Resolution Island	29.82	29.81	29.96	36	30	31	NNW	WNW	NW	2	0	0	O'cast and clear	9		
2	60.28N 63.42W	30.02	30.08	30.08	34	30	31	WNW	SSW	NNE	4	0	0	Cloudy and clear	9		
3	56.47N 58.34W	29.94	29.73	29.54	36	32	34	N	NNE	NNE	6	0	0	Cloudy and rain shwr	6		
4	57.00N 57.10W	29.47	29.42	29.52	39	37	34	N	N	NNE	7	0	0	O'cast rain snow	6		
5	55.25N 57.00W	29.82	30.10	30.18	39	35	35	NW	W	SSW	4	0	0	Cloudy and clear	6		
6	Off Grady Island	30.15	29.94	29.84	43	38	38	SSW	SW	ENE	1	0	0	Cloudy and clear	6		
7	East Sister Island	29.88	30.00	30.08	37	31	39	NNE	NW	NW	4	0	0	O'cast and clear	6		
8	Cunningham Cove	30.20	30.28	30.34	36	30	38	WNW	NW	W	4	0	0	O'cast sleet snow	3		
9	"	30.34	30.36	30.34	36	30	38	W	W	W	3	0	0	Cloudy and clear	8		
10	"	30.22	30.06	29.86	45	33	38	W	W	W	3	0	0	Fine and clear	8		
11	53.40.10N 59.40W	29.74	29.73	29.74	45	40	41	W	W	NW	2	0	0	Fine and clear	9		
12	Terrington Basin	29.74	29.71	29.70	51	42	41	SW	SW	W	2	0	0	Cloudy and clear	8		
13	"	29.58	29.49	29.54	53	42	41	SSW	W	SW	1	0	0	Overcast and clear	8		
14	53.55N 59.09W	29.67	29.63	29.60	46	37	41	SW	W	W	1	0	0	Overcast and haze	7		
15	Cunningham Cove	29.50	29.38	29.42	38	34	41	SW	W	W	5	0	0	Cloudy and clear	8		
16	"	29.60	29.68	29.68	38	34	41	NW	NW	NW	4	0	0	O'cast and snow squalls	7		
17	"	29.58	29.52	29.62	37	33	40	SW	W	WSW	5	0	0	O'cast and clear	8		
18	54.06N 56.54W	29.66	29.54	29.62	39	32	39	N	W	NW	2	0	0	O'cast and clear	8		
19	51.41N 56.09W	29.26	20.45	29.72	42	38	38	SW	S	S	5	0	0	Cloudy, snow squalls	5		
20	50.00N 61.20W	29.56	29.78	29.86	44	38	39	W	SW	SW	6	0	0	O'cast and clear	7		
21	49.30N 66.36W	29.96	29.94	29.84	46	36	41	NW	W	W	4	0	0	Fine and clear	5		
22	Abeam Eboulmont Wharf	29.86	29.93	29.96	44	36	43	NW	W	NE	3	0	0	O'cast, rain and snow	5		

RESOLUTION ISLAND METEOROLOGICAL REPORT, 1944

Date	Mean Barometer mb.	Temperature		Wind				Hours of Fog	Precipitation	
		Max.	Min.	8.00 a.m.		8.00 p.m.			a.m.	p.m.
				Dir.	Vel.	Dir.	Vel.			
1944		°F.	°F.						Inches	Inches
July										
1	1008.6	35.0	31.0	W.	14	W.	12	19½		
2	1006.2	35.0	28.0	Calm	0	E.	16	13½		.09
3	1006.3	42.2	31.3	W.	2	ESE.	16	15½	.10	Trace
4	1012.8	43.5	32.4	W.	36	W.	18	4½	.31	
5	1016.8	48.8	33.0	W.	4	E.	10			
6	1012.4	42.8	31.0	W.	10	SE.	12			
7	991.2	44.0	35.0	E.	14	N.	6		.50	.34
8	1009.7	40.2	32.0	WNW.	22	W.	2		.12	
9	1002.1	37.0	33.0	E.	24	E.	24	10½	.04	.08
10	1005.5	36.0	32.3	NW.	14	W.	10	5	.10	
11	999.6	36.0	31.2	S.	12	W.	8	9	.14	.02
12	1003.2	37.0	30.0	W.	10	WSW.	8	10¾		
13	998.0	36.0	31.0	SW.	18	Calm	0	4½	.02	
14	1003.3	39.0	31.0	WSW.	24	W.	16			
15	1007.2	45.7	32.0	E.	6	E.	12			
16	1007.4	44.0	36.0	NE.	14	NE.	18			
17	1008.0	47.5	34.2	N.	12	W.	4			
18	1014.2	44.6	31.0	NW.	16	W.	18	4		
19	1016.2	49.0	34.2	Calm	0	E.	20	2½		
20	1011.6	39.6	32.0	E.	30	E.	28	24		
21	1012.4	41.6	34.0	E.	28	E.	32	24	.02	
22	1015.2	40.0	38.0	E.	32	E.	30	24		
23	1017.4	41.8	38.0	E.	34	E.	28	24	.03	
24	1020.6	41.0	38.0	NE.	16	E.	18	21		
25	1020.8	43.2	38.0	E.	16	E.	20	24		
26	1020.0	42.0	37.0	E.	16	E.	16	24		
27	1015.8	54.0	42.0	Calm	0	SW.	4	4½		
28	1013.0	56.0	44.6	Calm	0	E.	6			
29	1015.8	47.0	41.0	E.	12	E.	12			
30	1015.3	47.0	39.0	E.	12	E.	22			
31	1011.8	39.2	31.5	E.	26	E.	22	2		
August										
1	1001.0	39.0	34.0	E.	12	WNW.	10	21½	.33	
2	1011.6	46.0	34.0	WNW.	12	N.	4	14½		
3	1008.6	45.0	34.0	E.	6	E.	10	3½		
4	1007.3	46.0	29.0	E.	8	NE.	16	8½		
5	1004.8	42.5	34.0	NE.	12	NE.	20	3½		
6	1002.0	42.0	36.5	NE.	32	NE.	28	20	.05	.10
7	1009.7	51.0	36.0	NNE.	18	W.	8		.12	
8	1015.2	41.8	33.0	NW.	12	W.	8			
9	1008.4	49.0	35.8	Calm	0	E.	6	15	.04	
10	1003.2	47.7	38.0	E.	10	E.	4		.06	
11	1002.6	46.7	37.3	ENE.	6	E.	12			
12	996.5	41.1	37.3	E.	24	E.	24	23½		.02
13	990.3	41.8	38.0	E.	24	E.	8	21	1.07	.03
14	997.8	42.0	38.5	NE.	8	NE.	10	10		
15	1000.7	41.0	34.5	W.	2	NW.	10	13½	.05	.03
16	1005.2	44.0	35.0	NE.	10	NE.	2	8½	.03	
17	1007.0	46.0	36.0	NE.	12	Calm	0	8½		
18	1011.5	46.0	36.5	Calm	0	Calm	0		.04	
19	1012.4	45.0	36.5	N.	2	Calm	0			
20	1011.2	46.8	37.6	NW.	2	W.	6			
21	1010.7	45.2	33.8	W.	8	NW.	4			
22	1007.6	46.9	35.0	E.	6	E.	12			
23	1005.8	40.6	38.0	E.	20	NE.	26	17½		
24	1012.4	42.0	31.5	NE.	18	W.	10	3		
25	1011.4	37.1	30.6	SW.	20	NW.	18	9½		
26	1009.4	45.8	32.0	W.	4	WNW.	16	17½		.04
27	1007.0	41.3	33.7	W.	42	WSW.	6		.03	
28	1017.6	38.6	31.3	WNW	10	S.	4	9		
29	1018.6	41.0	30.6	E.	12	E.	22		.04	
30	1020.2	41.1	38.0	E.	22	E.	28	15		
31	1018.2	38.8	35.5	E.	20	SE.	14	11¾	.08	.03

RESOLUTION ISLAND METEOROLOGICAL REPORT, 1944

Date	Present Weather		Visibility		Ice Conditions
	a.m.	p.m.	a.m.	p.m.	
1944					
July					
1	Fog	Fog	$\frac{1}{4}$	$\frac{1}{4}$	
2	Fog	Rain to fog	$\frac{1}{4}$	$\frac{1}{2}$	Three bergs.
3	Overcast	Fog	4	$\frac{1}{4}$	Loose ice inshore.
4	Fog	Cloudless	$\frac{1}{2}$	20	Scattered ice in all directions. Two bergs.
5	Cloudy	Partly cloudy	20	20	Scattered ice in all directions. Three bergs.
6	Cloudy	Overcast	20	20	Scattered ice in all directions. Two bergs.
7	Overcast	Rain and fog	9	$\frac{1}{8}$	Loose ice offshore. Two bergs.
8	Partly cloudy	Overcast	9	20	Loose ice offshore. Three bergs.
9	Overcast	Drizzle and fog	9	$\frac{1}{2}$	Loose ice inshore. Two bergs.
10	Overcast	Partly cloudy	9	20	Scattered ice to West. Two bergs.
11	Overcast	Fog	4	$\frac{1}{8}$	Scattered ice inshore.
12	Partly cloudy	Cloudless	9	20	Scattered ice to south and west.
13	Overcast	Fog	9	$\frac{1}{4}$	Scattered ice offshore. Two bergs.
14	Overcast	Partly cloudy	9	20	Drift ice to west. Two bergs.
15	Cloudy	Cloudy	20	20	Scattered ice all directions. Three bergs.
16	Cloudy	Overcast	20	9	Scattered ice to west. Three bergs.
17	Overcast	Cloudy	20	20	Loose ice to west. One berg.
18	Fog	Cloudless	$\frac{1}{4}$	20	Scattered ice to West. Three bergs.
19	Partly cloudy	Cloudless	20	20	Scattered ice to south. Three bergs.
20	Fog	Distant fog	$\frac{1}{4}$	2	
21	Fog	Fog	$\frac{1}{4}$	$\frac{1}{2}$	
22	Fog	Fog	$\frac{1}{4}$	$\frac{1}{4}$	
23	Fog	Fog	$\frac{1}{2}$	$\frac{1}{8}$	
24	Fog	Fog	$\frac{1}{4}$	$\frac{1}{4}$	
25	Fog	Fog	$\frac{1}{4}$	$\frac{1}{4}$	One berg.
26	Fog	Fog	$\frac{1}{4}$	$\frac{1}{2}$	Two bergs.
27	Partly cloudy	Cloudy	20	20	One berg.
28	Partly cloudy	Cloudless	20	20	One berg.
29	Cloudy	Cloudless	20	20	One berg.
30	Fog	Partly cloudy	4	9	
31	Fog	Fog	$\frac{1}{4}$	$\frac{1}{4}$	
Aug.					
1	Overcast	Fog	4	$\frac{1}{8}$	
2	Overcast	Cloudless	9	9	
3	Cloudy	Cloudy	9	4	One berg.
4	Overcast	Overcast	9	9	One berg.
5	Cloudy	Overcast	9	9	One berg.
6	Rain and snow	Light rain	1	4	
7	Overcast	Partly cloudy	9	9	Six bergs.
8	Cloudless	Cloudless	9	20	Two bergs.
9	Drizzle and fog	Overcast	$\frac{1}{4}$	20	
10	Overcast	Fog	9	$\frac{1}{8}$	
11	Overcast	Overcast	9	9	
12	Fog	Rain and Fog	$\frac{1}{8}$	$\frac{1}{2}$	
13	Rain and fog	Distant fog	$\frac{1}{4}$	2	
14	Overcast	Distant fog	4	2	
15	Light fog	Light rain	4	1	
16	Overcast	Fog	4	$\frac{1}{2}$	
17	Distant fog	Distant fog	1	4	
18	Light rain	Overcast	9	4	
19	Overcast	Overcast	9	9	
20	Overcast	Overcast	20	20	
21	Partly cloudy	Partly cloudy	9	20	
22	Cloudy	Cloudless	9	20	
23	Overcast	Squalls	4	9	
24	Overcast	Fog	9	$\frac{1}{8}$	
25	Overcast	Fog	9	$\frac{1}{8}$	
26	Fog	Light rain	$\frac{1}{8}$	4	
27	Distant fog	Cloudless	4	9	
28	Fog	Cloudless	$\frac{1}{4}$	9	
29	Overcast	Overcast	9	4	
30	Distant fog	Fog	2	$\frac{1}{8}$	
31	Fog	Overcast	$\frac{1}{8}$	9	

RESOLUTION ISLAND METEOROLOGICAL REPORT, 1944—Cont.

Date	Mean Barometer mb.	Temperature		Wind				Hours of Fog	Precipitation	
		Max.	Min.	8.00 a.m.		8.00 p.m.			a.m.	p.m.
				Dir.	Vel.	Dir.	Vel.			
1944		°F.	°F.					Inches	Inches	
September										
1	1003.4	40	34	NW.	2	Calm	0			
2	1009.4	43	38	NE.	15	E.	21			
3	1011.0	46	38	E.	10	Calm	0			
4	1016.2	46	41	NE.	10	E.	10			
5	1014.0	47	32	E.	5	E.	15			
6	1012.2	40	35	E.	15	E.	5			
7	1011.6	40	37	E.	10	E.	5	.02		
8	1011.6	47	34	NW.	5	NE.	10			
9	1016.9	44	37	W.	2	NW.	10			
10	1015.4	37	31	W.	10	W.	5			
11	1010.1	37	28	Calm	0	SW.	21			
12	1007.4	40	33	NW.	21	SW.	15	.16		
13	1005.0	36	33	W.	27	W.	21			
14	1005.1	39	33	W.	10	NW.	15			
15	1005.2	34	30	W.	15	NW.	5			
16	1012.0	38	32	NW.	15	NW.	27			
17	1015.1	34	32	NW.	15	W.	21			
18	1002.4	36	31	E.	5					
19	993.4	37	34	NW.	15	NW.	10	.21	.01	
20	1014.2	37	32	NW.	5	W.	5			
21	1008.8	36	29	E.	15	E.	21		.09	
22	1004.4	38	32	NE.	10	NW.	5	.03		
23	1004.2	33	31	NW.	15	W.	35			
24	1004.0	34	29	W.	15	W.	15			
25	1008.8	34	29	NE.	15	NE.	15	.11		
26	1014.3	33	28	NW.	5	W.	10			
27	1016.0	34	28	NW.	10	SW.	21			
28	1008.8	36	32	Calm	0	NW.	10		.04	
29	1003.9	36	29	Calm	0	S.	15	.04	.07	
30	1006.8	34	30	SW.	15	SW.	21			
October										
1	1014.0	34	30	W.	10	NW.	10			
2	1021.0	34	29	W.	10	NW.	10			
3	1020.0	33	28	W.	5	W.	10			
4	1014.0	34				W.	10			
5	1010.4	30	29	NW.	5	NW.	5			
6	1019.4	30	28	NW.	5	NW.	21			
7	1024.0	29	24	N.	10	N.	5			
8	1025.8	28	24	NW.	15	NW.	15			
9	1021.2	34				W.	35			
10	1014.6	35	32	W.	27	S.	21			
11	998.2	35	30	Calm	0	SE.	10			
12	999.4	34	28	N.	2	S.	10			
13	992.2	35	30	E.	21	E.	21	Trace	.01	
14	997.5	34	32	NE.	5	N.	5	.01		
15	1005.8	33	30	NE.	10	N.	5			
16	1001.7	30	27	NW.	15	NW.	21			
17	1008.2	33	26	W.	10	W.	10			
18	981.8	31	29	SW.	21	SW.	42		.30	
19	981.7	33	27	NW.	15	NW.	15	.50		
20	992.9	30	23	W.	15	NW.	10			
21	1003.6	28	22	W.	21	SW.	21	.49		
22	1007.3	35	27	S.	35	W.	5	.59	.01	
23	990.8	27	24	SW.	10	W.	10			
24	1007.4	31	23	NW.	10	W.	21			
25	1006.0	28	23	W.	15	SE.	42			
26	994.8	33	26	SE.	15	NW.	27	.10		
27	1000.0	30	24	SW.	10	SW.	27		Trace	
28	996.6	30	21	NW.	10	W.	21	.06		
29	1010.4	21	17	W.	15	W.	10	Trace		
30	1000.6	21	15	NW.	10	NW.	15			
31	1006.4	24	15	NW.	27	W.	15	Trace		

RESOLUTION ISLAND METEOROLOGICAL REPORT, 1944—Cont.

Date	Present Weather		Visibility		Ice Conditions
	a.m.	p.m.	a.m.	p.m.	
1944					
Sept.					
1	Fog.....	Fog.....	$\frac{1}{16}$	$\frac{1}{2}$	
2	Fog.....	Partly cloudy...	$\frac{1}{16}$	9	
3	Overcast.....	Overcast.....	4	4	
4	Overcast.....	Overcast.....	4	4	
5	Fog.....	Overcast.....	$\frac{1}{16}$	4	
6	Fog.....	Fog.....	$\frac{1}{16}$	$\frac{1}{2}$	
7	Fog.....	Overcast.....	$\frac{1}{4}$	4	
8	Partly cloudy..	Overcast.....	4	4	
9	Clear.....	Fog.....	20	$\frac{1}{16}$	
10	Fog.....	Fog.....	$\frac{1}{4}$	$\frac{1}{16}$	
11	Mist.....	Fog.....	1	$\frac{1}{16}$	
12	Overcast.....	Partly cloudy..	9	9	
13	Overcast.....	Overcast.....	20	20	
14	Overcast.....	Overcast.....	9	9	
15	Overcast.....	Clear.....	9	9	
16	Overcast.....	Clear.....	20	9	
17	Overcast.....	Cloudy.....	20	9	
18	Overcast.....	20	
19	Drizzle and fog.	Overcast.....	1	4	
20	Cloudy.....	Clear.....	20	20	
21	Overcast.....	Rain and snow..	20	$\frac{1}{4}$	
22	Overcast.....	Overcast.....	4	4	Two bergs to the North.
23	Overcast.....	Cloudy.....	20	9	Three bergs.
24	Cloudy.....	Clear.....	20	9	Three bergs.
25	Snow.....	Cloudy.....	1	9	
26	Clear.....	Partly cloudy..	9	9	
27	Overcast.....	Overcast.....	20	9	
28	Overcast.....	Overcast.....	9	9	
29	Overcast.....	Rain.....	20	$\frac{1}{2}$	
30	Partly cloudy..	Partly cloudy..	20	9	
Oct.					
1	Overcast.....	Clear.....	9	20	
2	Partly cloudy..	Cloudy.....	20	30	Many bergs.
3	Overcast.....	Clear.....	20	20	
4	Cloudy.....	9	
5	Overcast.....	Overcast.....	9	9	
6	Partly cloudy..	Cloudy.....	9	20	
7	Clear.....	Clear.....	20	20	
8	Overcast.....	Cloudy.....	20	20	
9	Overcast.....	9	One berg.
10	Overcast.....	Clear.....	9	9	
11	Cloudy.....	Fog.....	20	1	
12	Fog.....	Cloudy.....	$\frac{1}{4}$	$\frac{1}{2}$	One berg.
13	Fog.....	Rain and snow..	$\frac{1}{2}$	$\frac{1}{2}$	One berg.
14	Overcast.....	Overcast.....	9	9	
15	Overcast.....	Partly cloudy..	9	
16	Overcast.....	Partly cloudy..	4	9	
17	Overcast.....	Cloudy.....	9	9	
18	Overcast.....	Snow.....	9	$\frac{1}{16}$	
19	Overcast.....	Overcast.....	1	9	
20	Overcast.....	Cloudy.....	9	9	
21	Fog.....	Cloudy.....	$\frac{1}{2}$	
22	Snow.....	Snow.....	$\frac{1}{2}$	1	
23	Overcast.....	Clear.....	9	9	One berg.
24	Clear.....	Cloudy.....	20	20	
25	Overcast.....	Overcast.....	9	9	
26	Snow.....	Mist.....	4	9	
27	Overcast.....	Snow.....	9	$\frac{1}{16}$	
28	Cloudy.....	Cloudy.....	4	9	
29	Cloudy.....	Fog.....	20	9	Two bergs.
30	Overcast.....	Overcast.....	20	20	
31	Snow.....	Cloudy.....	$\frac{1}{4}$	9	

RESOLUTION ISLAND METEOROLOGICAL REPORT, 1944—*Conc.*

Date	Mean Barometer mb.	Temperature		Wind				Hours of Fog	Precipitation	
		Max.	Min.	8.00 a.m.		8.00 p.m.			a.m.	p.m.
				Dir.	Vel.	Dir.	Vel.			
1944		°F.	°F.					Inches	Inches	
November										
1	1014.0	24	21	SW.	27	W.	10			
2	1008.6	27	19	W.	35	W.	35			
3	1013.7	24	17	NW.	21	NW.	10			
4	1012.3	25	15	W.	35	NW.	42			
5	1022.6	23	8	NW.	21	Calm	0			
6	1022.8	26	21	SW.	10	NW.	21		Trace	
7	1016.6	26	14	W.	21	SW.	5	.02		
8	1017.6	29	16	N.	10	NE.	21		Trace	
9	1021.2	19	15	NW.	1	NW.	21	Trace		
10	1022.0	16	11	NW.	21	NW.	15			
11	1029.1	14	10	N.	10	N.	5			
12	103.27	21	11	NE.	2	SW.				
13	1043.4	21	17	SW.	2	SE.	10			
14	1040.4	30	22	E.	21	E.	21			
15	1031.8	32	27	E.	27	SE.	21	.05	Trace	
16	1031.9	33	31	SE.	10	W.	10	.05		
17	1030.2	29	28	SW.	10	W.	10			
18	1021.7	29	21	W.	15	W.	10			
19	1015.6	29	26	W.	10	W.	15			
20	1014.9	30	28	W.	10	W.	10	Trace		
21	1015.8	29	25	SW.	2	SW.	10			
22	1013.0	25	23	W.	15	W.	2			
23	1015.1	26	20	SW.	5	SW.	5			
24	1021.0	24	20	W.	10	W.	15			
25	1019.2	26	20	W.	15	W.	21			
26	1020.8	6	3	N.	5	NE.	10			
27	1006.2	12	2	NE.	21	NE.	35	.05	.10	
28	998.9	12	3	N.	21	NW.	42			
29	1014.2		2	NW.	50					
30	1030.6	6	-2	NW.	27	NW.	27	Trace		

RESOLUTION ISLAND METEOROLOGICAL REPORT, 1944—*Conc.*

Date	Present Weather		Visibility		Ice Conditions		
	a.m.	p.m.	a.m.	p.m.			
1944							
Nov.							
1	Cloudy	Partly cloudy	9	9			
2	Overcast	Distant fog	9	4			
3	Clear	Clear	20	9			
4	Overcast	Partly cloudy	9	9			
5	Partly cloudy	Partly cloudy	20	9	One berg.		
6	Overcast	Light snow	9	1	"		
7	Snow	Overcast	1/4	4			
8	Cloudy	Snow	9	4	Several bergs in sight.		
9	Clear	Clear	9	9	"		
10	Cloudy	Partly cloudy	9	9	"		
11	Clear	Clear	9	20	"		
12	Clear	Overcast	20	9	"		
13	Overcast	Overcast	9	20			
14	Overcast	Overcast	20	9			
15	Overcast	Rain and fog	9	1			
16	Overcast	Clear	9	9			
17	Clear	Fog	20	1/4			
18	Fog	Fog	1/4	1/2			
19	Overcast	Overcast	9	9	Several bergs. No drift ice.		
20	Overcast	Overcast	4	4	"		
21	Overcast	Cloudy	9	9	"		
22	Overcast	Clear	9	9	"		
23	Overcast	Clear	9	20	"		
24	Overcast	Cloudy	9	9	"		
25	Overcast	Cloudy	9	9	"		
26	Clear	Overcast	9	9	"		
27	Overcast	Snow	4	1/8	"		
28	Snow	Cloudy	1/8	4	"		
29	Overcast		4		"		
30	Snow	Overcast	1/8	9	"		

CAPE HOPES ADVANCE METEOROLOGICAL REPORT, 1944

Date	Mean Barometer mb.	Temperature		Wind				Hours of Fog	Precipitation	
		Max.	Min.	8.00 a.m.		8.00 p.m.			a.m.	p.m.
				Dir.	Vel.	Dir.	Vel.			
1944		°F.	°F.						Inches	Inches
July										
1	1009.5	43	32	NW.	21	WNW.	13		.13	
2	1002.4	55	31	SSE.	24	NW.	21		.10	Trace
3	1001.8	65	36	SE.	18	SW.	8			
4	1015.3	59	33	WNW.	30	Calm	0			
5	1014.5	60	43	S.	15	NW.	5			
6	1009.2	61	47	SW.	19	SSW.	8			.22
7	992.4	41	31	NE.	12	NW.	54		.46	.09
8	1008.9	50	32	W.	24	E.	12			.05
9	1002.6	38	32	ENE.	8	WNW.	18		.04	.06
10	1006.2	52	32	W.	27	S.	6			.08
11	1000.6	47	40	SW.	15				.12	.15
12	1000.6	58	37	SW.	12	WSW.	24			
13	1005.6	52	40	W.	15	W.	24			
14	1004.4	48	34	NW.	20	Calm	0		.01	
15	1005.2	43	34	Calm	0	N.	3		Trace	
16	1007.8	36	32	WNW.	12	WNW.	14			
17	1009.8	49	33	WNW.	23	NNW.	6			
18	1014.2	54	39	WNW.	10	SE.	20			
19	1009.1	54	42	S.	24	SE.	42			
20	1003.9	61	38	SSE.	12	SSE.	18			.37
21	1102.0	44	35	ESE.	36	E.	36		Trace	
22	1006.4	36	33	E.	36	ESE.	36			.12
23	1011.8	37	33	E.	24	E.	30			
24	1016.5	34	33	ESE.	24	ESE.	24			
25	1016.1	38	32	ESE.	21	E.	24			
26	1017.0	41	31	Calm	0	E.	4			
27	1013.8	56	31	Calm	0	S.	6			
28	1011.3	63	43	Calm	0	S.	3			
29	1013.4	58	41	S.	6	SSE.	9			
30	1012.0	47	37	ESE.	12	ESE.	24			
31	1007.2	53	33	ESE.	18	E.	18			.02
August										
1	1010.1	58		W.	10	S.	5			
2	1010.5	60	48	W.	5	SE.	10			
3	1005.9	55	42	SE.	10	SE.	27			
4	1005.0	43	39	SE.	15	E.	10		.25	
5	1006.0	43	32	E.	10	N.	10			
6	1006.2	41	36	NE.	21	NW.	21		.08	.98
7	1012.6	47	37	NW.	21	W.	21			
8	1014.0	61	42	W.	5	SW.	15			.02
9	1004.1	65	53	SW.	10				.26	
10	1001.2		42			NW.	2			
11	1000.9	46	38	W.	5	SE.	10			
12	991.9	41	37	E.	21	E.	27			.06
13	986.4	38		E.	27	W.	5		.03	
14	994.0	41	36	NE.		SE.	21			
15	1001.6	44	36	Calm	0	W.	10			
16	1001.1	38	31	NW.	15	NW.	15			
17	1008.3	42	36	NW.	35	W.	15			
18	1012.0	46	39	W.	10	W.	15			
19	1013.6	42	38	NW.	15	NW.	15			
20	1011.6	45	36	NW.	15	NW.	10			
21	1008.7	56	50	W.	5	SE.	10			
22	1006.8	58	41	Calm	0	W.	10			
23	1007.2	42	39	NW.	21	NW.	10			
24	1012.5	44	34	NW.	21	S.	5			
25	1006.1	53	37	SW.	15	W.	21			
26	1010.8	64	44	W.	27	W.	35			
27	1009.7	38	32	NW.	35	NW.	42			
28	1016.2	43	35	NW.	10	SE.	10			
29	1014.8	55	39	SE.	10	E.	21		.04	Trace
30	1015.4	38	37	SE.	10					
31	1015.3	51				Calm	0			

CAPE HOPES ADVANCE METEOROLOGICAL REPORT, 1944

Date	Present Weather		Visibility		Ice Conditions
	a.m.	p.m.	a.m.	p.m.	
1944					
July					
1	Overcast.....	Cloudless.....	9	20	Growlers.
2	Moderate rain..	Overcast.....	9	9	
3	Rain and fog...	Thunder.....	0	9	
4	Cloudy.....	Partly cloudy..	9	20	Close packed to horizon.
5	Cloudy.....	Partly cloudy..	20	20	Loose to horizon.
6	Cloudy.....	Light rain.....	20	4	Loose, many bergs.
7	Fog.....	Cloudy.....	$\frac{1}{16}$	20	
8	Cloudy.....	Drizzle.....	20	9	Loose to horizon.
9	Overcast.....	Overcast.....	20	9	Scattered all directions.
10	Cloudy.....	Overcast.....	9	20	Loose inshore, close packed in river off shore.
11	Light rain.....	Cloudy.....	9	20	Loose to horizon.
12	Overcast.....	Cloudy.....	20	20	
13	Cloudy.....	Cloudy.....	20	20	Close packed off shore.
14	Showers.....	Partly cloudy..	20	20	"
15	Overcast.....	Overcast.....	20	20	
16	Fog.....	Overcast.....	9	20	Loose to horizon.
17	Overcast.....	Partly cloudy..	20	20	"
18	Cloudy.....	Cloudy.....	20	20	"
19	Cloudy.....	Cloudy.....	9	20	"
20	Cloudy.....	Fog.....	20	$\frac{1}{16}$	No report.
21	Cloudy.....	Overcast.....	9	9	Scattered inshore and in channel.
22	Fog.....	Rain and fog...	$\frac{1}{16}$	9	No report.
23	Fog.....	Fog.....	0	0	
24	Fog.....	Fog.....	0	0	
25	Fog.....	Fog.....	$\frac{1}{16}$	0	
26	Fog.....	Fog.....	0	4	Loose ice off shore.
27	Fog.....	Overcast.....	$\frac{1}{16}$	9	Loose ice, all directions.
28	Fog.....	Fog.....	9	$\frac{1}{16}$	
29	Overcast.....	Partly cloudy..	20	20	
30	Cloudless.....	Cloudless.....	20	20	
31	Fog.....	Haze.....	0	4	
Aug.					
1	Fog.....	Overcast.....	$\frac{1}{4}$	20	One berg.
2	Partly cloudy..	Partly cloudy..	20	20	"
3	Mist.....	Cloudy.....	2	20	"
4	Overcast.....	Overcast.....	20	20	No report.
5	Cloudy.....	Overcast.....	20	20	"
6	Overcast.....	Showers.....	4	20	Loose in sight.
7	Haze.....	Partly cloudy..	4	20	Loose ice to East, five bergs.
8	Partly cloudy..	Cloudy.....	30	20	
9	Overcast.....	Partly cloudy..	9	20	
10	Fog.....	2	
11	Fog.....	Fog.....	0	$\frac{1}{16}$	
12	Fog.....	Fog.....	$\frac{1}{16}$	0	
13	Fog.....	Fog.....	0	$\frac{1}{2}$	
14	Fog.....	Fog.....	0	4	
15	Fog.....	Fog.....	$\frac{1}{2}$	0	One berg to North.
16	Haze.....	Fog.....	4	0	
17	Overcast.....	Haze.....	4	9	
18	Cloudy.....	Overcast.....	9	9	
19	Fog.....	Fog.....	0	0	
20	Fog.....	Clear.....	4	20	
21	Cloudy.....	Partly cloudy..	20	20	
22	Overcast.....	Clear.....	20	20	
23	Haze.....	Overcast.....	4	9	
24	Cloudy.....	Fog.....	9	4	
25	Overcast.....	Overcast.....	9	9	
26	Cloudy.....	Partly cloudy..	20	20	
27	Cloudy.....	Fog.....	9	2	
28	Clear.....	Overcast.....	20	20	
29	Overcast.....	Drizzle.....	1	4	No ice in sight.
30	Fog.....	0	
31	Drizzle.....	Fog.....	2	9	

CAPE HOPES ADVANCE METEOROLOGICAL REPORT, 1944—Cont.

Date	Mean Barometer mb.	Temperature		Wind				Hours of Fog	Precipitation	
		Max.	Min.	8.00 a.m.		8.00 p.m.			a.m.	p.m.
				Dir.	Vel.	Dir.	Vel.			
1944		°F.	°F.						Inches	Inches
September										
1	1014.1	49	40	Calm	0	SE.	15			
2	1003.8	45	37	SE.	21	E.	10			
3	1009.1	45	37	S.	10	SW.	15			
4	1014.0	53	35	S.	5	SE.	21			
5	1011.8	55	37	S.	10	SW.	10			
6	1010.8	39	36	Calm	0	Calm	0			.18
7	1011.9	40	38	NE.	10	NW.	21		Trace	
8	1012.3	40	36	NW.	27	NW.	35		.01	
9	1016.6	40	35	NW.	15	NW.	5			
10	1016.0	48	35	SW.	15	W.	10		Trace	Trace
11	1006.1	49	33	SW.	21	S.	15			.28
12	998.8	43	36	SW.	21	NW.	21			
13	1005.0	37	34	Calm	0	W.	27			
14	1005.7	35	33	Calm	0	NW.	21		.04	Trace
15	1006.7	35	30	W.	27	NW.	42			Trace
16	1018.5	35	32	NW.	50	NW.	42			
17	1015.6	39	27	NW.	27	S.	10			Trace
18	1007.0	37	35	SE.	2	N.	10		.19	.12
19	1005.4	34	31	NW.	10	NW.	50			Trace
20	1015.4	35	32	NW.	27	NE.	2			
21	1006.8	35	30	SW.	5	E.	15			.03
22	1005.0	34	31	E.	15	E.	21			
23	1008.2	34	30	NW.	15	W.	21			
24	1001.8	34	29	W.	10	S.	10			
25	1010.9	33	30			NW.	27			
26	1013.8	34	29	NW.	15	SW.	15			
27	1011.6	39	29	SW.	21	S.	15		Trace	.11
28	1008.2	39	32	S.	15	NE.	5		.22	
29	1002.7	37	30	SE.	27	W.	21			
30	1004.8	36	29	W.	27	W.	21		.02	
October										
1	1013.0	33	29	W.	21	N.	2			
2	1019.7	31	27	NW.	15	SW.	15			Trace
3	1018.4	32	27	W.	10	S.	10			
4	1013.6	36	27			E.	5			
5	1015.6	28	25	NW.	10	NW.	21		.57	
6	1021.1	28	24	NW.	27	NW.	21		Trace	
7	1024.6	29	25	NW.	35	NW.	27		Trace	
8	1028.8	30	26	NW.	27	NW.	27		Trace	Trace
9	1023.0	35	30			W.	27			
10	1015.0	32	28	W.	35	SW.	10			
11	1001.6	34	28	NW.	5	SE.	15			
12	1003.9	33	28	SW.	4	SE.	15			
13	1007.2	33	32	E.	35	E.	35		Trace	Trace
14	999.4	32	30	NE.	15	NW.	15			
15	1006.3	30	28	NW.	5	NW.	27			Trace
16	1003.1	27	24	NW.	35	SW.	10			.02
17	1005.3	29	26	NW.	15	SW.	10			
18	980.4	29	24	SE.	15	N.	35			
19	982.4	30	26	NW.	50	NW.	35			.60
20	994.2	26	24	NW.	10	W.	27			
21	1000.4	26	25	W.	27	S.	27			
22	993.0	25	21	SW.	15	SW.	15			
23	989.4	25	17	NW.	15	W.	15		Trace	
24	1008.4	27	21	NW.	35	W.	21			
25	1004.1	27	20	S.	10	S.	42		Trace	
26	992.0	32	26	S.	15	W.	42		.05	Trace
27	998.3	29	21	W.	21	NE.	15		.01	
28	999.0	25	15	NW.	50	W.	42			
29	1008.9	15	9	SW.	15	W.	15			
30	1002.7	20	12	NW.	10	NW.	21			
31	1006.8	22	18	NW.	35	W.	15			

CAPE HOPES ADVANCE METEOROLOGICAL REPORT, 1944—Cont.

Date	Present Weather		Visibility		Ice Conditions
	a.m.	p.m.	a.m.	p.m.	
1944					
Sept.					
1	Overcast	Overcast	9	9	
2	Fog	Mist	$\frac{1}{16}$	$\frac{1}{4}$	
3	Haze	Fog	4	0	
4	Fog	Mist	$\frac{1}{2}$	4	
5	Fog	Fog	0	0	
6	Fog	Fog	0	$\frac{1}{16}$	
7	Fog	Fog	0	0	
8	Drizzle	Fog	0	0	
9	Distant fog	Distant fog	9	20	
10	Rain	Overcast	2	20	
11	Distant fog	Light rain	4	2	
12	Clear	Overcast	20	9	
13	Distant fog	Clear	4	20	
14	Light snow	Snow showers	4	$\frac{1}{2}$	
15	Cloudy	Snow showers	20	4	No ice in sight.
16	Overcast	Overcast	4	20	
17	Overcast	Overcast	20	20	
18	Fog	Rain and fog	$\frac{1}{2}$	0	
19	Fog	Drizzle	$\frac{1}{16}$	9	
20	Haze	Clear	9	20	
21	Overcast	Distant fog	20	4	
22	Fog	Clear	$\frac{1}{2}$	20	Two bergs North. Growlers to East.
23	Distant fog	Clear	9	20	Three bergs.
24	Cloudy	Overcast	20	20	
25	Overcast	Overcast	20	20	
26	Overcast	Overcast	20	20	
27	Overcast	Rain	9	4	
28	Overcast	Overcast	4	9	
29	Distant fog	Clear	4	20	No ice in sight.
30	Partly cloudy	Clear	20	20	
Oct.					
1	Clear	Cloudy	20	20	
2	Cloudy	Rain	20	4	No ice in sight.
3	Cloudy	Cloudy	20	20	
4	Cloudy	Partly cloudy	20	20	One berg to East.
5	Snow	Cloudy	4	9	
6	Ground fog	Overcast	20	20	
7	Overcast	Cloudy	4	20	
8	Cloudy	Snow	20	$\frac{1}{2}$	
9	Overcast	Cloudy	20	20	Two bergs North.
10	Overcast	Cloudy	20	9	
11	Overcast	Fog	9	$\frac{1}{16}$	
12	Overcast	Overcast	20	20	No ice.
13	Fog	Snow	20	$\frac{1}{16}$	No ice in sight.
14	Snow	Snow	1	$\frac{1}{4}$	
15	Snow	Snow showers	$\frac{1}{4}$	9	
16	Snow	Snow	$\frac{1}{2}$	$\frac{1}{2}$	
17	Overcast	Overcast	4	9	
18	Snow	Snow	$\frac{1}{16}$	0	
19	Overcast	Overcast	$\frac{1}{2}$	4	
20	Overcast	Overcast	9	9	Floe to North.
21	Overcast	Overcast	20	9	No ice.
22	Clear	Clear	20	9	"
23	Snow	Overcast	4	9	"
24	Overcast	Overcast	20	20	
25	Overcast	Fog	4	20	
26	Snow	Overcast	$\frac{1}{4}$	1	
27	Cloudy	Snow	20	$\frac{1}{4}$	
28	Snow	Clear	0	20	No ice.
29	Clear	Overcast	20	20	"
30	Overcast	Overcast	4	20	"
31	Overcast	Overcast	4	20	

CAPE HOPES ADVANCE METEOROLOGICAL REPORT, 1944—*Conc.*

Date	Mean Barometer mb.	Temperature		Wind				Hours of Fog	Precipitation	
		Max.	Min.	8.00 a.m.		8.00 p.m.			a.m.	p.m.
				Dir.	Vel.	Dir.	Vel.			
1944		°F.	°F.					Inches	Inches	
November										
1.....	1011.8	22	15	W.	27	SW.	27			
2.....	1008.6	25	18	Calm	0	NW.	35		Trace	
3.....	1016.0	33	17	W.	15	NW.	27			
4.....	1014.2	21	14	W.	50	NW.	42		.12	
5.....	1025.0	24	17	NW.	7	SW.	15			
6.....	1022.4	23	15	SW.	15	SW.	21			
7.....	1016.4	23	21	W.	2	NW.	21	.01	.01	
8.....	1020.2	16	10	N.	42	NW.	35	.03		
9.....	1023.9	17	12	NW.	42	NW.	27			
10.....	1024.2	20	14	NW.	27	NW.	21	Trace	Trace	
11.....	1030.4	17	11	NW.	35	SW.	15	Trace		
12.....	1036.4	16	4	SE.	5	SE.	15		Trace	
13.....	1039.8	21	10	SE.	10	SE.	15			
14.....	1034.0	29	20	SE.	35	SE.	35			
15.....	1025.0	30	26	E.	21	W.	5	.04	Trace	
16.....	1028.2	28	25	W.	10	Calm	0	.10		
17.....	1028.4	32	24	SW.	10	Calm	0			
18.....	1021.5	33	26	W.	15	W.	15			
19.....	1015.6	31	27	SW.	10	SW.	10			
20.....	1014.6	29	26	SW.	10	SW.	10			
21.....	1012.5	26	14	SW.	15	W.	15	Trace		
22.....	1012.2	24	17	Calm	0	Calm	0		Trace	
23.....	1015.7	25	20	NW.	10	W.	5	.05		
24.....	1019.0	19	13	Calm	0	SW.	10			
25.....	1020.4	22	10	NW.	10	NW.	21		Trace	
26.....	1020.5	9	7	NW.	15	NE.	10	.04	.03	
27.....	999.6	16	8	E.	27	NE.	27	.09	.04	
28.....	1000.8	5	-6	NW.	35	NW.	35	.29		
29.....	1019.3	-7	-12	NW.	35	W.	35			
30.....	1032.7	-8	-10	W.	21	SW.	15			

CAPE HOPES ADVANCE METEOROLOGICAL REPORT, 1944—*Conc.*

Date	Present Weather		Visibility		Ice Conditions
	a.m.	p.m.	a.m.	p.m.	
1944					
Nov.					
1	Clear.....	Overcast.....	20	20	
2	Overcast.....	Cloudy.....	20	20	
3	Partly cloudy..	Partly cloudy..	20	20	
4	Overcast.....	Snow.....	4	$\frac{1}{4}$	
5	Drifting snow..	Overcast.....	$\frac{1}{2}$	9	
6	Overcast.....	Overcast.....	9	9	No ice.
7	Snow.....	Snow.....	$\frac{1}{2}$	$\frac{1}{2}$	
8	Overcast.....	Overcast.....	20	20	Scattered bergs.
9	Clear.....	Partly cloudy..	20	9	"
10	Overcast.....	Snow.....	20	4	"
11	Overcast.....	Overcast.....	9	9	Scattered bergs and light drift ice.
12	Clear.....	Snow.....	30	1	Straits covered with ice to horizon.
13	Overcast.....	Overcast.....	9	9	"
14	Overcast.....	Overcast.....	9	30	"
15	Rain.....	Fog.....	$\frac{1}{2}$	0	"
16	Fog.....	Distant fog....	$\frac{1}{16}$	4	"
17	Clear.....	Clear.....	20	20	"
18	Clear.....	Partly cloudy..	20	20	"
19	Overcast.....	Overcast.....	20	20	"
20	Overcast.....	Overcast.....	20	20	"
21	Cloudy.....	Partly cloudy..	9	20	"
22	Clear.....	Snow.....	20	$\frac{1}{4}$	"
23	Snow.....	Cloudy.....	4	20	"
24	Partly cloudy..	Clear.....	9	20	"
25	Overcast.....	Snow.....	20	$\frac{1}{4}$	"
26	Snow.....	Snow.....	0	$\frac{1}{16}$	"
27	Snow.....	Snow.....	0	0	"
28	Drifting snow..	Clear.....	0	20	"
29	Clear.....	Clear.....	4	20	"
30	Partly cloudy..	Clear.....	9	20	"

NOTTINGHAM ISLAND METEOROLOGICAL REPORT, 1944

Date	Mean Baro- meter mb.	Temperature		Wind				Hours of Fog	Precipitation	
		Max.	Min.	8.00 a.m.		8.00 p.m.			a.m.	p.m.
				Dir.	Vel.	Dir.	Vel.			
1944		°F.	°F.						Inches	Inches
July										
1	1007.3	45.3	31.0	S.	5	E.	14	2 $\frac{3}{4}$.01
2	1000.8	44.7	34.0	S.	16	WSW.	3	14 $\frac{3}{4}$.01	
3	1000.8	42.1	34.0	E.	16	N.	12		.02	.01
4	1012.2	39.0	32.0	S.	15	S.	13		Trace	Trace
5	1010.4	36.0	32.0	S.	12	S.	11	10	.02	.01
6	1006.3	37.2	31.6	S.	8	SW.	4	17		
7	1001.6	48.5	29.4	NW.	2	WNW.	12	1 $\frac{1}{2}$		
8	1007.8	44.0	32.8	W.	5	S.	8			
9	1008.0	46.0	32.3	NNW.	3	SW.	6			
10	1002.2	39.2	34.0	SSW.	14	SW.	22	7 $\frac{3}{4}$.04	Trace
11	999.8	42.6	33.5	SW.	12	W.	8	2 $\frac{1}{2}$	Trace	
12	990.3	37.0	33.8	S.	20	SSW.	40		.05	.07
13	990.7	40.8	33.8	SW.	20	NW.	16		Trace	.01
14	1005.6	42.4	32.7	NW.	10	W.	7			
15	1007.6	50.8	33.8	W.	2	SE.	4			
16	1009.8	53.7	35.4	W.	2	W.	6			.01
17	1010.2	40.1	34.3	W.	8	WSW.	10		.05	.01
18	1013.3	43.0	34.0	WSW.	11	NE.	6			.03
19	1005.2	45.0	37.0	NE.	26	NW.	4	10	.07	.04
20	1001.1	39.8	34.0	NW.	10	SW.	2	5 $\frac{3}{4}$	Trace	
21	1003.2	47.2	35.0	NE.	6	SW.	4	7 $\frac{1}{2}$		Trace
22	1004.3	41.8	35.6	NE.	28	NE.	20	4 $\frac{1}{2}$.01	.02
23	1011.6	43.1	35.0	ENE.	8	ENE.	20	3 $\frac{3}{4}$		
24	1014.4	47.0	33.3	NE.	20	ENE.	18	4 $\frac{3}{4}$		Trace
25	1014.1	44.1	35.4	ENE.	20	NE.	21			
26	1014.9	44.1	35.0	NE.	16	NE.	20			Trace
27	1013.1	55.5	36.9	NE.	16	NE.	12			
28	1011.6	55.0	40.8	E.	12	ENE.	16			
29	1010.4	63.4	44.8	NE.	18	ENE.	14			
30	1008.3	63.0	48.3	NE.	6	ENE.	16		Trace	Trace
31	1003.2	55.0	38.2	ENE.	14	SW.	4		.02	.04
August										
1	1006.0	40.0	36.0	SSW.	20	SSW.	14	16 $\frac{1}{2}$.04	.03
2	1007.8	50.7	36.6	SSW.	24	E.	8	15 $\frac{1}{4}$.04	
3	1002.9	47.2	40.3	E.	8	SSW.	4	18 $\frac{1}{2}$.02	Trace
4	1004.8	52.0	37.0	NE.	10	ENE.	7	10		
5	1009.4	50.0	36.0	NNW.	2	SW.	3			
6	1012.7	59.1	37.0	NNW.	11	SW.	3			
7	1016.0	49.0	35.0	Calm	0	SW.	6			
8	1009.9	52.4	37.0	E.	8	E.	18	7 $\frac{1}{4}$.01
9	1002.2	54.0	38.2	E.	8	NE.	10	12 $\frac{1}{2}$	Trace	
10	1003.4	51.2	38.0	S.	1	SW.	2	1 $\frac{1}{2}$		Trace
11	1001.6	59.8	40.6	ENE.	12	ENE.	18	7 $\frac{3}{4}$		
12	996.6	56.0	42.4	NE.	20	NE.	14	6		
13	993.0	48.6	46.8	NE.	12	NE.	12	3		.04
14	997.2	52.4	41.2	NE.	14	NE.	18	5 $\frac{1}{2}$	Trace	
15	1004.2	54.6	41.4	NW.	10	NNW.	14			
16	1007.8	50.7	35.0	NW.	4	NW.	10			
17	1010.2	44.6	36.0	W.	12	WNW.	8	12		
18	1014.6	44.0	34.0	NW.	8	NW.	14			
19	1017.4	52.0	25.0	S.	1	NW.	6			
20	1012.8	53.0	35.0	E.	2	ENE.	14			
21	1010.2	57.0	41.0	NE.	15	NE.	14			
22	1010.2	60.2	37.5	N.	2	NNW.	14			
23	1013.0	42.8	37.0	N.	1	SE.	9			
24	1012.4	49.0	34.0	E.	7	SSW.	9			.04
25	1010.5	49.4	42.0	WNW.	9	SW.	7	9	.02	
26	1005.2	48.2	37.0	W.	24	NW.	28			
27	1016.6	51.0	32.0	NW.	7	E.	8			
28	1015.0	47.0	33.0	NE.	10	NE.	17			.03
29	1009.6	51.0	38.0	NE.	24	ESE.	18		Trace	.03
30	1011.6	50.0	45.0	NE.	6	S.	8		Trace	
31	1013.8	44.6	40.0	SW.	6	W.	6			Trace

NOTTINGHAM ISLAND METEOROLOGICAL REPORT, 1944

Date	Present Weather		Visibility		Ice Conditions
	a.m.	p.m.	a.m.	p.m.	
1944					
July					
1	Fog.....	Overcast.....	9	20	Ice extends two miles.
2	Fog.....	Overcast.....	$\frac{1}{4}$	9	
3	Overcast.....	Overcast.....	9	9	Loose ice to horizon.
4	Light rain.....	Overcast.....	9	20	Loose ice to horizon.
5	Fog.....	Light drizzle....	$\frac{1}{4}$	9	
6	Fog.....	Partly cloudy..	$\frac{1}{16}$	20	Ice to horizon.
7	Cloudy.....	Cloudy.....	20	20	Scattered ice three miles.
8	Cloudy.....	Partly cloudy..	20	20	
9	Partly cloudy..	Cloudy.....	20	20	Loose ice with long open leads.
10	Overcast.....	Overcast.....	20	9	Scattered ice offshore.
11	Fog.....	Partly cloudy..	$\frac{1}{16}$	20	
12	Moderate rain..	Heavy rain.....	1	2	Scattered ice offshore.
13	Partly cloudy..	Overcast.....	20	9	Loose ice to horizon.
14	Cloudy.....	Cloudy.....	20	20	
15	Partly cloudy..	Cloudless.....	20	20	Loose ice offshore.
16	Overcast.....	Light rain.....	20	20	Loose ice offshore.
17	Light rain.....	Rain.....	9	4	
18	Overcast.....	Light rain.....	9	9	
19	Light rain.....	Rain and fog...	4	2	No ice in sight.
20	Overcast.....	Overcast.....	9	9	"
21	Fog.....	Cloudy.....	4	20	"
22	Light fog.....	Light rain.....	1	9	"
23	Cloudy.....	Fog.....	20	1	"
24	Cloudy.....	Cloudy.....	20	20	Scattered ice in distance.
25	Overcast.....	Cloudy.....	20	20	Drift ice offshore.
26	Cloudy.....	Overcast.....	20	9	Ice close packed.
27	Overcast.....	Cloudy.....	9	20	"
28	Overcast.....	Overcast.....	20	20	
29	Overcast.....	Overcast.....	20	20	Scattered ice offshore.
30	Overcast.....	Cloudy.....	20	20	" "
31	Moderate rain..	Drizzle and fog.	9	$\frac{1}{16}$	Loose ice offshore.
Aug.					
1	Drizzle and fog.	Fog.....	$\frac{1}{4}$	9	Ice to horizon.
2	Overcast.....	Distant fog.....	9	29	
3	Fog.....	Fog.....	1	$\frac{1}{4}$	
4	Fog.....	Partly cloudy..	$\frac{1}{16}$	20	Close packed with open leads.
5	Partly cloudy..	Cloudless.....	20	20	
6	Cloudless.....	Partly cloudy..	20	20	Loose ice to horizon.
7	Cloudless.....	Partly cloudy..	20	20	Close packed offshore.
8	Overcast.....	Light rain.....	20	9	
9	Fog.....	Overcast.....	$\frac{1}{16}$	9	Loose ice offshore.
10	Fog.....	Fog.....	$\frac{1}{16}$	$\frac{1}{16}$	No ice in sight.
11	Fog.....	Fog.....	$\frac{1}{4}$	$\frac{1}{16}$	"
12	Fog.....	Overcast.....	1	9	"
13	Overcast.....	Drizzle and fog.	9	1	"
14	Drizzle and fog.	Cloudy.....	1	20	"
15	Overcast.....	Partly cloudy..	20	20	"
16	Cloudless.....	Cloudy.....	20	20	"
17	Overcast.....	Fog.....	20	$\frac{1}{4}$	"
18	Fog.....	Cloudless.....	4	20	"
19	Partly cloudy..	Cloudless.....	20	4	"
20	Cloudless.....	Cloudless.....	20	20	"
21	Cloudless.....	Cloudy.....	20	20	"
22	Partly cloudy..	Partly cloudy..	20	20	"
23	Overcast.....	Cloudy.....	9	20	"
24	Cloudy.....	Overcast.....	20	20	"
25	Overcast.....	Fog.....	4	$\frac{1}{4}$	"
26	Overcast.....	Distant fog.....	9	4	"
27	Partly cloudy..	Cloudless.....	20	20	"
28	Partly cloudy..	Overcast.....	20	20	"
29	Drizzle and fog.	Overcast.....	$\frac{1}{2}$	9	"
30	Overcast.....	Overcast.....	9	9	"
31	Drizzle and fog.	Distant fog.....	1	4	"

NOTTINGHAM ISLAND METEOROLOGICAL REPORT, 1944—Cont.

Date	Mean Baro- meter mb.	Temperature		Wind				Hours of Fog	Precipitation	
		Max.	Min.	8.00 a.m.		8.00 p.m.			a.m.	p.m.
				Dir.	Vel.	Dir.	Vel.			
1944		°F.	°F.						Inches	Inches
September										
1	1011.9	45	38	Calm	0	NE.	15			
2	1003.6	49	40	NE.	5	W.	5			
3	1008.0	49	34	Calm	0	E.	10			
4	1012.8	50	45	Calm	0	E.	10		.01	.09
5	1009.8	47	42	W.	5	NW.	5		Trace	
6	1015.0	46	33	Calm	0	NE.	10			
7	1017.4	50	40	NW.	10	Calm	0			
8	1019.4	46	32	NE.	2	NE.	5			
9	1017.3	49	34	NE.	2	E.	5			
10	1015.7	46	39	Calm	0	SW.	10			
11	1000.0	44	38	W.	27	W.	21		.12	
12	998.6	36	34	NW.	21	NW.	27			
13	1005.2	37	32	NW.	27	W.	15			
14	1007.0	44	33	NW.	10	NW.	15			Trace
15	1014.8	38	31	NW.	15	NW.	15		Trace	Trace
16	1022.0	41	30	NW.	10	NW.	10		Trace	
17	1013.4	37	30	E.	2	E.	15			.01
18	1001.9	35	33	NE.	21	NE.	10			Trace
19	1005.3	38	29	NE.	10	N.	15			
20	1016.7	32	29	NW.	5	SE.	10			
21	1010.2	35	30	NE.	10	NE.	10			
22	1007.8	33	30	NW.	15	W.	15			Trace
23	1008.3	33	27	NW.	15	NW.	15			.90
24	1000.8	34	28	W.	15	N.	5			
25	1011.2	36	22			W.	5			
26	1005.3	39	30	SW.	27	W.	5			
27	1000.6	37	34	SW.	2	W.	10			.13
28	1005.8	31	25	W.	15	SW.	21			.01
29	987.1	28	26	S.	27	W.	21		.05	Trace
30	999.6	32	26	NW.	27	NW.	21			
October										
1	1011.6	28	24	NW.	15	NW.	10			
2	1017.8	31	23	NW.	5	NW.	10			
3	1016.9	30	19	Calm	0	Calm	0			
4	1016.0	30	16	N.	5	N.	5			
5	1019.8	32	19	NE.	2	N.	2			
6	1027.1	29	20	NW.	10	NW.	15			
7	1030.6	28	19	NW.	10	NW.	10			
8	1031.5	34	24	NW.	10	W.	21			
9	1023.6	35	32	W.	35	W.	27			
10	1014.4	35	28	W.	21	NW.	5		Trace	
11	1002.2	29	22	W.	5	NE.	10			
12	992.2	32	25	NE.	10	NE.	10		.95	
13	995.4	33	25	N.	5	N.	10			Trace
14	1007.1	36	25	NE.	27	NW.	15			
15	1010.6	29	24	NE.	5	SW.	5			
16	1001.8	34	27	SW.	15	W.	10		.08	
17	997.0	37	23	NW.	21	NW.	10		Trace	
18	1003.2	28	18	N.	2	N.	21		Trace	
19	995.4	24	21	NW.	15	NE.	5			
20	999.5	26	20	N.	10	NW.	10		Trace	Trace
21	994.7	32	20	S.	10	W.	15		Trace	
22	994.6	24	15	NE.	5	N.	21			
23	1001.4	23	18	N.	10	NW.	15		Trace	
24	1006.2	27	18	SW.	15	NW.	27			Trace
25	1000.8	28	24	S.	27	E.	15			.01
26	998.9	28	24	S.	15	NW.	21		.04	
27	1000.6	21	17	NW.	15	NW.	27			.03
28	1009.0	13	8	NW.	21	NW.	21			.02
29	1005.0	21	7	W.	10	W.	10			.01
30	1006.6	20	11	N.	10	Calm	0			.01
31	1006.3	21	16	W.	2	NW.	15		.04	.01

NOTTINGHAM ISLAND METEOROLOGICAL REPORT, 1944—Cont.

Date	Present Weather		Visibility		Ice Conditions
	a.m.	p.m.	a.m.	p.m.	
1944					
Sept.					
1	Overcast.....	Mist.....	9	4	No ice in sight.
2	Overcast.....	Overcast.....	9	4	
3	Fog.....	Mist.....	1	9	
4	Drizzle and fog.	Overcast.....	$\frac{1}{16}$	4	
5	Fog.....	Overcast.....	$\frac{1}{16}$	9	
6	Fog.....	Overcast.....	$\frac{1}{4}$	9	
7	Overcast.....	Clear.....	20	20	
8	Clear.....	Clear.....	20	20	
9	Clear.....	Overcast.....	20	20	
10	Overcast.....	Overcast.....	9	20	
11	Rain.....	Partly cloudy..	2	9	
12	Overcast.....	Overcast.....	9	9	
13	Overcast.....	Overcast.....	9	9	
14	Cloudy.....	Overcast.....	9	9	
15	Snow.....	Suow.....	2	4	
16	Overcast.....	Overcast.....	4	4	
17	Fog.....	Drizzle.....	$\frac{1}{4}$	4	
18	Overcast.....	Snow.....	9	$\frac{1}{4}$	
19	Overcast.....	Overcast.....	9	9	
20	Overcast.....	Overcast.....	9	9	
21	Overcast.....	Overcast.....	9	9	
22	Overcast.....	Overcast.....	9	9	
23	Overcast.....	Rain and snow..	9	9	
24	Cloudy.....	Overcast.....	9	9	
25	Overcast.....	20	
26	Overcast.....	Overcast.....	9	2	
27	Fog.....	Rain.....	$\frac{1}{16}$	1	
28	Overcast.....	Snow.....	9	$\frac{1}{2}$	
29	Overcast.....	Overcast.....	4	9	
30	Overcast.....	Overcast.....	9	9	
Oct.					
1	Overcast.....	Overcast.....	9	9	No ice in sight.
2	Overcast.....	Fog.....	9	9	
3	Overcast.....	Overcast.....	9	20	
4	Partly cloudy..	Partly cloudy..	20	9	
5	Overcast.....	Clear.....	9	20	
6	Overcast.....	Clear.....	9	9	
7	Clear.....	Overcast.....	9	9	
8	Overcast.....	Overcast.....	9	2	
9	Overcast.....	Overcast.....	9	4	
10	Fog.....	Clear.....	1	9	
11	Overcast.....	Cloudy.....	4	9	
12	Overcast.....	Snow.....	9	2	
13	Overcast.....	Overcast.....	4	9	
14	Overcast.....	Overcast.....	9	
15	Overcast.....	Overcast.....	9	9	
16	Snow.....	Overcast.....	2	9	
17	Snow.....	Overcast.....	1	9	
18	Overcast.....	Cloudy.....	9	4	
19	Overcast.....	Overcast.....	9	9	
20	Overcast.....	Snow showers..	4	2	
21	Overcast.....	Clear.....	4	9	
22	Clear.....	Snow.....	20	4	
23	Overcast.....	Mist.....	4	9	
24	Overcast.....	Overcast.....	9	4	
25	Overcast.....	Overcast.....	4	2	
26	Overcast.....	Overcast.....	4	4	
27	Partly cloudy..	Snow.....	4	$\frac{1}{16}$	
28	Snow.....	Overcast.....	$\frac{1}{4}$	$\frac{1}{16}$	
29	Snow.....	Snow.....	4	2	
30	Clear.....	Overcast.....	9	9	
31	Overcast.....	Snow.....	9	2	

NOTTINGHAM ISLAND METEOROLOGICAL REPORT, 1944—*Cont.*

Date	Mean Barometer mb.	Temperature		Wind				Hours of Fog	Precipitation	
		Max.	Min.	8.00 a.m.		8.00 p.m.			a.m.	p.m.
				Dir.	Vel.	Dir.	Vel.			
1944		°F.	°F.					Inches	Inches	
November										
1	1005.7	21	15	W.	15	SW.	35		.10	
2	1010.5	18	14	W.	27	N.	5	.02	Trace	
3	1022.5	19	10	Calm	0	W.	21	.04		
4	1022.6	15	12	W.	21	NW.	21		.02	
5	1026.2	23	14	W.	10	N.	2		Trace	
6	1021.0	24	13	W.	15	N.	5		Trace	
7	1021.8	14	9	NE.	5	N.	5		Trace	
8	1029.2	13	9	NW.	5	NW.	10			
9	1032.6	12	10	N.	10	N.	5			
10	1030.0	12	8	NW.	10	W.	10		Trace	
11	1031.3	17	12	NW.	5	NW.	10		Trace	
12	1033.9	15	10	S.	10	E.	10			
13	1030.1	28	13	E.	27	SE.	10			
14	1033.2	24	21	S.	10	SE.	10		Trace	
15	1027.6	29	25	SE.	10	Calm	0			
16	1029.5	22	19			E.	5			
17	1027.7	27	21	Calm	0	SW.	15		Trace	
18	1017.9	28	25	SW.	15	N.	21		Trace	
19	1015.8	22	20	W.	15	Calm	0		Trace	
20	1010.8	26	19	NE.	10	NE.	15	.10	.02	
21	1012.3	27	22	NE.	27	E.	5	.02	Trace	
22	1011.4	24	20	Calm	0	Calm	0	Trace		
23	1013.1	27	20	S.	2	S.	10			
24	1016.2	24	22	S.	10	NW.	5	.04	.02	
25	1026.2	11	8	NW.	10	Calm	0			
26	1023.6	-4	-10	Calm	0	Calm	0			
27	1011.0	-3	-27	NE.	5	Calm	0			
28	1011.9	-5	-11	NW.	10	NW.	10	.01		
29	1023.5	-10	-15	NW.	15	NW.	10			
30	1033.8	-2	-15	W.	10	NW.	10			

NOTTINGHAM ISLAND METEOROLOGICAL REPORT, 1944—*Conc.*

Date	Present Weather		Visibility		Ice Conditions	
	a.m.	p.m.	a.m.	p.m.		
1944						
Nov.						
1	Cloudy	Snow	9	1/4		
2	Overcast	Clear	4	9		
3	Overcast	Clear	9	9		
4	Overcast	Overcast	9	9		
5	Cloudy	Overcast	9	9		
6	Overcast	Clear	9	9	Slob ice extended one mile offshore.	
7	Overcast	Snow	9	9	Close packed ice one to two miles.	
8	Overcast	Overcast	9	9	" " "	
9	Cloudy	Overcast	9	9	" " "	
10	Overcast	Snow	9	4	Close packed inshore, loose beyond.	
11	Overcast	Snow	9	4	Close packed one to three miles.	
12	Cloudy	Clear	9	9	" " "	
13	Partly cloudy	Cloudy	9	9	" " "	
14	Partly cloudy	Snow	9	4	Close packed five to ten miles.	
15	Cloudy	Overcast	9	9	Close packed to five miles.	
16		Distant fog		1	" " "	
17	Distant fog	Drizzle and fog	2	1/4	Close packed inshore to four miles scattered beyond to eight miles.	
18	Overcast	Distant fog	2	2	" " "	
19	Overcast	Overcast	9	9	Close packed to six miles.	
20	Snow	Snow	4	4	Close packed inshore scattered beyond to eight miles.	
21	Snow	Partly cloudy	4	4	" " "	
22	Overcast	Overcast	4	9	Loose ice extending eight miles offshore.	
23	Overcast	Overcast	4	9	" " "	
24	Snow	Snow	4	1	" " "	
25	Clear	Partly cloudy	9	9	Close packed inshore to six miles, loose beyond to horizon.	
26	Clear	Partly cloudy	9	9	" " "	
27	Partly cloudy	Clear	9	9	" " "	
28	Clear	Partly cloudy	9	9	" " "	
29	Drifting snow	Overcast	2	9	" " "	
30	Overcast	Overcast	9	4	Close packed to eight miles.	

CHURCHILL METEOROLOGICAL REPORT, 1944

Date	Mean Barometer mb.	Temperature		Wind				Hours of Fog	Precipitation	
		Max.	Min.	8.00 a.m.		8.00 p.m.			a.m.	p.m.
				Dir.	Vel.	Dir.	Vel.			
1944		°F.	°F.						Inches	Inches
July										
1	1002.5	82.5	60.3	W.	20	WNW.	33			.24
2	1004.6	47.0	38.5	NNE.	19	NE.	20		.03	.84
3	1008.5	65.2	38.0	NNE.	10	SW.	25		.23	
4	1013.6	64.0	47.3	S.	10	W.	6			
5	1011.4	67.0	41.0	W.	16	NE.	10		.07	.28
6	1010.4	47.5	41.0	NE.	18	NE.	17		.04	
7	1009.4	64.0	43.0	W.	5	E.	13	3		.02
8	1011.4	55.0	39.5	NE.	17	NE.	2	1½		
9	1013.2	68.9	48.0	WNW.		WSW.	23			
10	1007.2	62.0	48.0	Calm	0	WNW.	20	3	.03	Trace
11	1011.7	60.0	42.0	NW.	12	WNW.	20			
12	1006.6	76.0	48.5	SW.	25	NNE.	15			
13	1011.3	55.0	46.0	N.	3	ENE.	12			
14	1009.8	55.0	38.0	E.	11	ENE.	11			
15	1011.4	56.7	45.5	N.	12	N.	4		.07	
16	1014.4	68.5	47.0	WNW.	9	SSW.	23			
17	1005.3	73.0	50.5	S.	16	S.	8			.03
18	1011.8	50.0	44.0	NE.	21	N.				
19	1015.8	68.8	45.0	W.	14	NE.	15			
20	1011.3	51.1	47.0	N.		NNE.	13			
21	1010.6	53.0	47.0	WNW.	10	WNW.	10			
22	1008.0	52.0	44.0	WSW.	3	ENE.	12			
23	1008.1	57.3	37.0	NW.	6	ENE.	10			
24	1009.7	58.0	41.5	S.	3	E.	15			
25	1012.2	48.0	40.0	ENE.	2	ENE.	12	8		
26	1009.9	45.5	42.0	NE.	4	NE.	14	4		.06
27	1009.8	46.7	44.0	NE.	14	NE.	17	24	.12	.19
28	1010.1	48.5	45.0	NE.	6	ENE.	5	15	.27	.26
29	1009.6	55.0	47.0	Calm	0	E.	18			
30	1011.2	61.5	47.0	S.	4	ENE.	2			
31	1011.0	73.0	53.0	WSW.	22	W.	8			
August										
1	1006.4	73.0	55.0	SW.	12	ENE.	9			
2	1002.1	67.2	55.7	SSW.	7	NW.	16		.02	
3	1005.6	64.0	54.0	WNW.	15	WNW.	15			
4	1013.1	58.0	51.0	NW.	34	NNW.	13			
5	1019.8	59.8	52.0	NW.	10	ENE.	7			
6	1013.9	73.0	46.4	S.	13	SE.	16			.02
7	1004.1	75.0	57.0	SSW.	13	ESE.	4		.02	
8	1003.3	57.5	50.0	NW.	18	WNW.			.02	.13
9	1005.0	79.0	48.4	SSE.	3	SSW.	9			
10	995.3	78.0	58.8	SSW.	6	SE.	20			
11	991.0	51.0	48.0	ESE.	7	ENE.	15	21½		
12	998.0	49.2	45.0	NE.	18	NE.	12	16	.02	.03
13	1002.2	54.2	47.0	NNE.	15	NNE.	17	4		
14	1007.8	54.2	46.0	N.	4	NE.	19			
15	1011.0	53.6	47.5	ENE.	13	NE.	15		Trace	.02
16	1013.8	50.0	45.0	NE.	17	ENE.	3	7½	Trace	
17	1016.6	61.0	40.0	SSW.	6	ENE.	17	9		
18	1016.1	67.8	40.8	SE.	6	SSE.	10			
19	1005.0	68.4	47.0	S.	13	SE.	8			.75
20	987.9	48.0	47.0	Calm	0	N.	18		.94	.21
21	1004.5	48.6	46.0	N.	35	NNE.			.07	.07
22	1018.8	64.0	47.0	N.		NW.	5			
23	1013.6	66.0	50.2	SW.		WSW.				Trace
24	1013.6	69.0	50.9	NW.	10	SSE.	6			
25	1011.6	76.0	54.0	SSW.	7	SSW.	7			
26	1010.2	58.9	50.0	WNW.	6	NE.	24			
27	1005.8	51.3	48.0	ENE.	12	NE.	25	23	.37	.06
28	1008.4	48.0	46.0	N.	33	NNE.	15	3	.02	.03
29	1011.0	54.0	44.8	NW.	15	ENE.	7			
30	1015.2	56.0	42.0	W.		E.	10			
31	1012.4	60.0	39.0	SE.	9	SSE.	14			

CHURCHILL METEOROLOGICAL REPORT, 1944

Date	Present Weather		Visibility		Ice Conditions
	a.m.	p.m.	a.m.	p.m.	
1944					
July					
1	Overcast.....	Thunderstorm..	9	1	Scattered ice in bay and river.
2	Overcast.....	Moderate rain..	9	4	" " "
3	Moderate rain..	Cloudy.....	4	20	" " "
4	Moderate rain..	Cloudless.....	9	20	" " "
5	Cloudy.....	Overcast.....	20	20	" " "
6	Light showers..	Partly cloudy..	9	20	" " "
7	Partly cloudy..	Showers.....	20	20	Ice on horizon.
8	Partly cloudy..	Partly cloudy..	20	20	"
9	Cloudy.....	Overcast.....	20	20	"
10	Light rain.....	Overcast.....	9	4	"
11	Cloudy.....	Light rain.....	20	9	
12	Overcast.....	Cloudy.....	20	20	
13	Partly cloudy..	Partly cloudy..	20	20	
14	Cloudy.....	Cloudy.....	20	20	
15	Overcast.....	Cloudy.....	20	20	
16	Partly cloudy..	Partly cloudy..	20	20	
17	Cloudy.....	Overcast.....	20	9	
18	Overcast.....	Partly cloudy..	9	20	
19	Partly cloudy..	Light rain.....	20	4	
20	Cloudy.....	Cloudy.....	20	20	
21	Partly cloudy..	Cloudy.....	30	20	
22	Moderate rain..	Cloudy.....	20	20	
23	Cloudy.....	Partly cloudy..	20	20	
24	Partly cloudy..	Partly cloudy..	30	20	
25	Fog.....	Overcast.....	$\frac{1}{4}$	20	
26	Fog.....	Overcast.....	$\frac{1}{2}$	9	
27	Rain and fog...	Rain and fog...	$\frac{1}{16}$	4	
28	Moderate rain..	Moderate rain..	2	9	
29	Overcast.....	Overcast.....	20	20	
30	Overcast.....	Overcast.....	20	20	
31	Overcast.....	Partly cloudy..	20	20	
Aug.					
1	Cloudy.....	Partly cloudy..	20	30	
2	Cloudy.....	Partly cloudy..	20	20	
3	Partly cloudy..	Cloudy.....	20	20	
4	Overcast.....	Overcast.....	9	20	
5	Overcast.....	Partly cloudy..	20	20	
6	Cloudy.....	Overcast.....	30	9	
7	Lightning.....	Partly cloudy..	20	20	
8	Overcast.....	Overcast.....	9	20	
9	Partly cloudy..	Cloudy.....	30	20	
10	Partly cloudy..	Overcast.....	20	9	
11	Fog.....	Fog.....	$\frac{1}{2}$	$\frac{1}{2}$	
12	Rain and fog...	Overcast.....	$\frac{1}{2}$	9	
13	Overcast.....	Light fog.....	4	4	
14	Overcast.....	Overcast.....	20	20	
15	Cloudy.....	Overcast.....	20	20	No ice in sight.
16	Fog.....	Fog.....	1	$\frac{1}{2}$	
17	Fog.....	Overcast.....	4	9	
18	Partly cloudy..	Partly cloudy..	20	20	
19	Partly cloudy..	Light rain.....	9	2	
20	Fog.....	Rain and fog...	2	1	
21	Moderate rain..	Light rain.....	1	4	
22	Partly cloudy..	Cloudless.....	20	20	
23	Partly cloudy..	Light showers..	20	20	
24	Partly cloudy..	Cloudless.....	20	20	
25	Partly cloudy..	Overcast.....	20	20	
26	Overcast.....	Overcast.....	20	4	
27	Fog.....	Light rain.....	$\frac{1}{4}$	2	
28	Overcast.....	Light rain.....	9	9	
29	Cloudy.....	Cloudy.....	20	20	
30	Partly cloudy..	Cloudless.....	20	20	
31	Partly cloudy..	Partly cloudy..	20	20	No ice.

CHURCHILL METEOROLOGICAL REPORT, 1944—Cont.

Date	Mean Barometer mb.	Temperature		Wind				Hours of Fog	Precipitation	
		Max.	Min.	8.00 a.m.		8.00 p.m.			a.m.	p.m.
				Dir.	Vel.	Dir.	Vel.			
1944		°F.	°F.					Inches	Inches	
September										
1	1005.0	64.4	53.0	S.	8	SSW.	18			
2	1005.9	55.3	49.0	NE.	17	ESE.	17	.02	.01	
3	1006.5	71.0	49.0	SSW.	7	SSW.	3			
4	1011.7	60.0	51.5	NNW.	6	WNW.	17			
5	1020.6	51.0	44.0	N.	27	NE.	10			
6	1021.4	52.0	47.0	W.	3	SE.	8			
7	1020.7	58.0	39.0	SSE.	13	SE.	15			
8	1016.6	58.5	44.6	SE.	12	SE.	20		.01	
9	1013.4	49.0	45.0	SE.	12	E.	7	.26	.23	
10	1014.8	55.0	45.0	SW.	1	SW.	14	.01	Trace	
11	1017.6	48.0	44.0	N.	35	NW.	13			
12	1022.8	50.0	36.0	W.	10	SW.	13			
13	1009.6	55.0	43.0	SSW.	17	ENE.	15		.12	
14	1018.2	44.0	37.0	ENE.	25	E.	14	.06	.09	
15	1021.6	43.0	38.0	ENE.	6	SE.	26	.03	Trace	
16	1009.4	47.0	39.0	SE.	22	SSE.	18		.21	
17	999.8	52.8	43.0	W.	9	E.	14	.18	.06	
18	993.3	51.8	43.8	WSW.	7	NW.	15	.56	.03	
19	1008.2	43.0	40.0	NNE.	20	E.	13	.01	.05	
20	1010.2	45.0	39.5	E.	12	NE.	5	.07	.01	
21	1021.5	42.0	36.0	NNW.	13	NNE.	13	.04	Trace	
22	1024.1	50.8	36.0	WNW.	15	WNW.		Trace	.13	
23	1010.6	54.0	38.0	WNW.	12	ESE.	3	.16	.01	
24	1007.0	44.0	40.0	NE.	7	N.	10	.07		
25	1016.6	52.0	34.2	S.	4	W.	9	Trace		
26	1010.2	49.0	42.0	WSW.	9	WSW.	4	.01	Trace	
27	1014.0	48.5	31.0	N.	28	WNW.	16	.03		
28	1010.4	39.0	30.0	WSW.	26	N.	17	.17	Trace	
29	1017.8	35.0	29.0	NNW.	18	NW.	16			
30	1022.2	31.8	26.0	NNW.	17	NNW.	21			
October										
1	1026.4	32.5	28.0	WNW.	18	W.	12	Trace	Trace	
2	1022.4	37.8	27.0	SSE.	4	ESE.	15			
3	1009.4	38.9	33.0	E.	30	E.	19	.13	.02	
4	1009.6	41.6	36.5	E.	11	ESE.	16	Trace		
5	1012.4	41.5	39.0	ESE.	14	E.	22	Trace	Trace	
6	1019.6	40.0	35.5	ESE.	24	E.	25	Trace	.15	
7	1031.6	41.0	33.0	E.	14	SSE.	5	.15	Trace	
8	1035.6	41.8	29.0	SW.	7	SW.	20			
9	1025.9	46.0	32.0	SSW.	22	SSW.	27	.02		
10	1022.6	45.0	33.0	N.	22	W.	12	Trace	Trace	
11	1001.0	50.0	35.0	W.	15	NW.	8		Trace	
12	1003.7	38.0	35.0	NNW.	18	N.	18	.03		
13	1019.0	31.5	26.0	N.	18	NW.	25	Trace	Trace	
14	1022.6	39.0	23.0	WNW.	11	SSW.	17			
15	1011.8	44.0	33.8	SW.	18	WNW	20			
16	1012.4	57.8	33.8	SSW.	18	NW.	17	Trace		
17	1002.4	44.0	34.0	SSE.	5	N.	56		.04	
18	1017.0	40.0	23.2	NNW.	21	S.	6	Trace		
19	1000.9	42.0	32.0	WSW.	18	NNW	36	.13		
20	1019.0	37.2	26.5	NW.	22	WNW.	14			
21	1016.7	34.0	23.0	N.	12	NW.	23	.01		
22	1020.4	22.7	14.3	WNW.	21	N.	17	.01	Trace	
23	1022.4	26.0	11.0	NW.	19	SW.	8	Trace	Trace	
24	999.8	33.6	11.0	SSW.	9	W.	8	Trace		
25	1009.2	33.0	28.0	NNW.	20	WSW.	7			
26	1016.3	40.0	21.7	W.	7	WNW.	15			
27	1023.8	25.5	15.0	N.	19	N.	20	.03	Trace	
28	1027.5	19.0	11.7	WNW.	15	WNW.	14	Trace		
29	1029.9	15.0	16.8	NNW.	15	WNW.	18			
30	1021.4	21.0	10.0	WNW.	12	N.	16	.05	.05	
31	1021.4	17.0	6.0	WNW.	16	WNW.	12			

CHURCHILL METEOROLOGICAL REPORT, 1944—Cont.

Date	Present Weather		Visibility		Ice Conditions
	a.m.	p.m.	a.m.	p.m.	
1944					
Sept.					
1	Partly cloudy..	Partly cloudy..	20	20	No ice.
2	Overcast.....	Lighg rain.....	20	9	
3	Cloudy.....	Haze.....	20	4	
4	Overcast.....	Haze.....	9	4	
5	Cloudy.....	Overcast.....	20	20	
6	Cloudy.....	Cloudy.....	20	20	
7	Partly cloudy..	Cloudy.....	20	20	
8	Overcast.....	Overcast.....	20	20	
9	Light rain.....	Light rain.....	9	9	
10	Light rain.....	Cloudy.....	9	20	
11	Overcast.....	Parrly cloudy..	20	20	
12	Partly cloudy..	Overcast.....	20	20	
13	Partly cloudy..	Light rain.....	20	9	
14	Light rain.....	Light rain.....	9	4	
15	Light rain.....	Overcast.....	20	20	
16	Overcast.....	Rain and fog..	9	2	
17	Light rain.....	Fog.....	2	$\frac{1}{2}$	
18	Cloudy.....	Light rain.....	9	9	
19	Squalls.....	Light rain.....	9	1	
20	Heavy drizzle..	Light rain.....	4	9	
21	Rain.....	Showers.....	20	20	
22	Overcast.....	Cloudless.....	20	20	
23	Cloudy.....	Overcast.....	20	20	
24	Overcast.....	Partly cloudy..	20	20	
25	Light rain.....	Cloudy.....	20	20	
26	Cloudy.....	Overcast.....	20	20	
27	Light rain.....	Overcast.....	9	20	
28	Overcast.....	Overcast.....	20	20	
29	Cloudy.....	Overcast.....	20	20	
30	Partly cloudy..	Snow showers..	20	20	No ice.
Oct.					
1	Overcast.....	Overcast.....	20	20	No ice.
2	Overcast.....	Overcast.....	20	20	
3	Moderate rain..	Drizzle and fog.	4	2	
4	Overcast.....	Overcast.....	20	20	
5	Drizzle and fog.	Drizzle and fog.	4	1	
6	Fog.....	Light rain.....	2	4	
7	Light rain.....	Overcast.....	4	20	
8	Cloudless.....	Overcast.....	20	20	
9	Partly cloudy..	Overcast.....	20	20	
10	Light rain.....	Overcast.....	9	20	
11	Cloudy.....	Cloudy.....	20	20	
12	Rain.....	Overcast.....	20	20	
13	Overcast.....	Snow showers..	20	9	
14	Partly cloudy..	Overcast.....	20	20	
15	Partly cloudy..	Partly cloudy..	9	20	
16	Overcast.....	Cloudy.....	20	20	
17	Overcast.....	Rain and snow..	20	$\frac{1}{2}$	No ice.
18	Light snow.....	Overcast.....	2	20	Slob ice forming in river.
19	Overcast.....	Overcast.....	9	9	No ice.
20	Overcast.....	Partly cloudy..	9	20	Ice on lakes and river banks.
21	Overcast.....	Overcast.....	20	9	
22	Moderate snow.	Light snow.....	2	20	
23	Light snow.....	Light snow.....	2	20	
24	Overcast.....	Cloudy.....	20	20	
25	Partly cloudy..	Overcast.....	20	20	Slob ice on river.
26	Partly cloudy..	Overcast.....	20	20	Slob ice in river. Lakes freezing.
27	Light snow.....	Light snow.....	$\frac{1}{2}$	9	Slob ice in river and bay.
28	Overcast.....	Cloudy.....	9	20	Scattered fields slob ice in river and bay.
29	Overcast.....	Ugly sky.....	20	4	River full slob ice extending six miles into bay.
30	Overcast.....	Light snow.....	9	2	River full slob ice. Scattered fields in bay.
31	Light snow.....	Overcast.....	4	20	River full slob ice. Close packed in bay.

CHURCHILL METEOROLOGICAL REPORT, 1944—*Conc.*

Date	Mean Barometer mb.	Temperature		Wind				Hours of Fog	Precipitation	
		Max.	Min.	8.00 a.m.		8.00 p.m.			a.m.	p.m.
				Dir.	Vel.	Dir.	Vel.			
1944		°F.	°F.					Inches	Inches	
November										
1	1025.2	13.0	5.2	NNW.	11	WNW.	16			
2	1027.8	20.0	6.0	WNW.	16	NW.	16	Trace	.03	
3	1035.9	14.0	10.2	NNE.	18	NW.	12	.03	Trace	
4	1037.2	12.0	1.0	WSW.	12	WSW.	8			
5	1026.8	21.0	6.0	SSW.	9	SSE.	12			
6	1013.4	29.0	18.0	SW.	15	WNW.	3	.06	.01	
7	1019.8	30.0	23.5	NE.	6	E.	5			
8	1023.4	28.5	23.5	SE.	3	E.	12		Trace	
9	1024.2	29.0	23.0	E.		ESE.	10	.05		
10	1022.4	27.0	20.3	S.	7	SE.	18			
11	1015.1	26.0	20.0	SSE.	11	SSE.	16			
12	1014.4	31.0	23.0	SSE.	16	WSW.	6	.05	Trace	
13	1022.1	24.0	19.3	WNW.	15	WNW.	12			
14	1027.2	25.0	1.0	SSW.	10	SW.	16			
15	1025.1	26.0	18.0	SE.	5	SSW.	23			
16	1022.0	28.5	22.4	SW.	5	SSE.	6			
17	1019.8	29.0	23.0	S.	14	SSW.	27	Trace		
18	1018.6	31.5	26.7	SW.	17	SSW.	4			
19	1015.5	31.6	27.4	SW.	12	NW.	21	.10	Trace	
20	1021.6	15.0	11.3	NW.	25	NW.	12	.05	Trace	
21	1016.6	13.0	-2.0	WSW.	5	SSE.	8	Trace		
22	1003.4	29.0	3.0	S.	7	S.	12	.05	Trace	
23	1010.0	17.5	8.0	W.	28	NW.	25	Trace	Trace	
24	1024.7	23.4	5.0	WNW.	14	WNW.	18	Trace	.10	
25	1023.2	25.5	8.0	NE.	8	NE.	43	.15	.20	
26	1027.6	20.0	5.0	NNE.	30	NNW.	23	.15		
27	1030.0	2.0	-19.0	W.	17	W.	16			
28	1030.0	2.0	-15.0	W.	16	N.	21	Trace	Trace	
29	1038.7	-11.0	-28.0	W.	8	WSW.	6			
30	1031.4	11.0	-24.5	SSW.	10	SSE.	30			

CHURCHILL METEOROLOGICAL REPORT, 1944—*Cont.*

Date	General Weather		Visibility		Ice Conditions
	a.m.	p.m.	a.m.	p.m.	
1944					
Nov.					
1	Overcast.....	Partly cloudy..	20	20	Close packed slob in bay to horizon.
2	Cloudless.....	Light snow.....	20	4	
3	Moderate snow.	Overcast.....	1	20	
4	Overcast.....	Partly cloudy..	9	20	Close packed in river. Some slob ice in bay.
5	Overcast.....	Overcast.....	9	20	Scattered fields in river and bay.
6	Light snow.....	Overcast.....	2	9	
7	Overcast.....	Overcast.....	20	20	Slob ice inshore.
8	Overcast.....	Overcast.....	4	20	
9	Light snow.....	Partly cloudy..	20	20	Close packed drift ice to six miles offshore.
10	Overcast.....	Ugly sky.....	20	9	
11	Overcast.....	Overcast.....	9	20	Scattered in river. No ice in bay.
12	Light snow.....	Light snow.....	2	4	
13	Overcast.....	Duststorm.....	20	20	Light scattered in bay.
14	Light fog.....	Overcast.....	2	9	
15	Overcast.....	Overcast.....	9	20	Scattered ice only.
16	Overcast.....	Overcast.....	9	20	
17	Light snow.....	Overcast.....	9	20	No ice in sight.
18	Partly cloudy..	Overcast.....	20	9	
19	Overcast.....	Overcast.....	20	9	
20	Moderate snow.	Overcast.....	$\frac{1}{2}$	9	
21	Light snow.....	Fog.....	$\frac{1}{2}$	4	Scattered ice in bay and river.
22	Overcast.....	Light snow.....	20	4	
23	Light snow.....	Drifting snow...	4	1	
24	Overcast.....	Light snow.....	4	4	
25	Light snow.....	Moderate snow.	1	1	
26	Light snow.....	Drifting snow...	$\frac{1}{2}$	$\frac{1}{2}$	Close packed ice in bay and river in all directions.
27	Cloudless.....	Cloudless.....	20	20	" " " "
28	Cloudless.....	Snow grains.....	9	9	" " " "
29	Cloudless.....	Cloudless.....	20	20	" " " "
30	Partly cloudy..	Overcast.....	20	9	

CHESTERFIELD INLET METEOROLOGICAL REPORT, 1944

Date	Mean Barometer mb.	Temperature		Wind				Hours of Fog	Precipitation	
		Max.	Min.	8.00 a.m.		8.00 p.m.			a.m.	p.m.
				Dir.	Vel.	Dir.	Vel.			
1944		°F.	°F.						Inches	Inches
July										
1.....	998.0	58	34	S.	13	SW.	3		.05	.15
2.....	1003.4	51	37	N.	29	SSW.	13			
3.....	1003.8	56	33	SSW.	9	N.	18			
4.....	1006.4	60	41	W.	12	WNW.	16			.03
5.....	1006.2	55	41	WNW.	14	NNW.	18			Trace
6.....	1006.6	53	39	NNW.	18	NNW.	15			
7.....	1005.8	55	41	NNW.	12	N.	17			
8.....	1007.6	57	40	NW.	12	NNW.	11			
9.....	1005.8	63	47	W.	13	N.	11			.08
10.....	1004.8	54	41	NNW.	10	NW.	19			
11.....	1000.6	53	42	N.	11	NW.	20			.02
12.....	1003.9	52	43	NW.	19	NNW.	44		.17	Trace
13.....	1002.3	56	40	NNW.	44	NNW.	20			
14.....	1007.0	52	39	WNW.	10	S.	12		Trace	.20
15.....	1008.4	54	37	E.	6	S.	11			
16.....	1007.8	69	45	W.	18	WSW.	19			Trace
17.....	1008.1	51	40	N.	11	SE.	3		Trace	Trace
18.....	1013.5	58	38	N.	10	S.	4			
19.....	1009.0	64	38	S.	7	NW.	14			.03
20.....	1004.5	55	41	N.	17	NNE.	14			
21.....	1005.7	50	43	N.	14	S.	7			
22.....	1006.8	54	40	S.	4	N.	8			.08
23.....	1004.9	46	40	ENE.	9	SE.	7		11	
24.....	1013.0	46	39	S.	10	SE.	6			
25.....	1014.0	45	41	E.	13	E.	12		.10	
26.....	1013.6	49	42	NE.	12	E.	7			
27.....	1012.7	45	41	ENE.	12	E.	10		Trace	.08
28.....	1011.2	44	41	E.	11	E.	10		.07	.50
29.....	1008.8	46	41	ESE.	5	SE.	4		.53	.01
30.....	1007.2	56	42	Calm	0	W.	6			.09
31.....	1002.1	59	46	N.	7	NNW.	21		.01	
August										
1.....	1002.8	62	48	NW.	15	S.	12			
2.....	995.8	49	41	S.	12	SE.	7			.35
3.....	994.6	50	44	NW.	8	ENE.	18		.39	.09
4.....	1008.8	56	43	N.	13	Calm	0			
5.....	1017.0	60	46	N.	10	SW.	9			
6.....	1010.3	55	44	S.	8	S.	14			
7.....	1006.5	46	41	S.	10	S.	12		.05	.39
8.....	1000.6	55	42	S.	1	SE.	3		.09	
9.....	1001.0	62	43	NW.	9	S.	10			
10.....	1000.8	49	41	S.	10	S.	13			
11.....	1000.2	53	41	S.	5	E.	4			
12.....	1000.4	56	47	NE.	11	E.	8			
13.....	1002.0	58	45	NE.	16	NE.	11			
14.....	1006.0	63	48	N.	13	N.	12			
15.....	1010.8	55	45	N.	10	S.	11			
16.....	1010.6	63	47	WNN.	14	N.	15			
17.....	1013.9	52	41	N.	18	N.	12			
18.....	1015.2	58	43	WNW.	12	SW.	16			
19.....	1010.8	50	43	S.	18	S.	17			
20.....	1003.4	47	43	SE.	14	E.	17			
21.....	1010.8	55	44	ENE.	15	E.	3			
22.....	1014.0	62	42	NNE.	13	N.	6			
23.....	1006.8	67	44	S.	9	SW.	2			
24.....	1009.6	68	41	N.	14	WSW.	18			
25.....	1003.8	74	48	SW.	16	W.	18			
26.....	1008.6	54	40	NW.	34	SE.	14		.08	
27.....	1017.6	43	40	E.	15	ESE.	12			
28.....	1012.5	47	40	E.	14	E.	16			
29.....	1009.0	46	42	ENE.	21	NE.	18		.07	.24
30.....	1010.8	55	40	NE.	19	N.	14		.10	
31.....	1011.6	57	36	SW.	7	SW.	20			

CHESTERFIELD INLET METEOROLOGICAL REPORT, 1944

Date	Present Weather		Visibility		Ice Conditions
	a.m.	p.m.	a.m.	p.m.	
1944					
July					
1	Overcast.....	Light rain.....	4	9	Ice in harbour.
2	Overcast.....	Overcast.....	9	20	Scattered ice.
3	Partly cloudy..	Partly cloudy..	20	20	Ice in harbour.
4	Cloudy.....	Cloudy.....	20	20	No ice.
5	Cloudy.....	Cloudy.....	20	20	No ice.
6	Cloudless.....	Partly cloudy..	20	20	
7	Cloudy.....	Partly cloudy..	20	20	
8	Cloudy.....	Cloudy.....	20	20	
9	Cloudy.....	Overcast.....	20	9	
10	Cloudy.....	Cloudy.....	20	20	
11	Cloudy.....	Squalls.....	20	9	
12	Moderate rain..	Partly cloudy..	4	20	
13	Overcast.....	Partly cloudy..	20	20	
14	Overcast.....	Light rain.....	20	4	
15	Overcast.....	Cloudy.....	9	20	
16	Overcast.....	Cloudy.....	20	20	
17	Cloudy.....	Overcast.....	20	20	
18	Partly cloudy..	Partly cloudy..	20	20	
19	Partly cloudy..	Cloudy.....	20	20	
20	Cloudy.....	Cloudy.....	9	20	
21	Cloudy.....	Overcast.....	20	20	
22	Cloudy.....	Cloudy.....	20	20	
23	Light rain.....	Overcast.....	4	9	
24	Overcast.....	Overcast.....	9	9	
25	Drizzle.....	Overcast.....	9	9	
26	Cloudy.....	Overcast.....	9	20	
27	Drizzle and fog.	Fog.....	$\frac{1}{2}$	4	
28	Overcast.....	Light rain.....	9	2	
29	Rain and fog...	Fog.....	2	$\frac{1}{2}$	
30	Distant fog....	Overcast.....	2	9	
31	Overcast.....	Overcast.....	9	9	
Aug.					
1	Partly cloudy..	Cloudy.....	20	20	
2	Cloudy.....	Light rain.....	9	2	
3	Light rain.....	Drizzle and fog.	4	$\frac{1}{4}$	
4	Overcast.....	Cloudy.....	20	20	
5	Overcast.....	Cloudy.....	20	20	
6	Overcast.....	Cloudy.....	9	20	
7	Fog.....	Distant fog....	$\frac{1}{4}$	2	
8	Fog.....	Overcast.....	$\frac{1}{2}$	9	
9	Cloudy.....	Cloudless.....	20	20	
10	Partly cloudy..	Cloudy.....	20	9	
11	Fog.....	Overcast.....	$\frac{1}{4}$	9	
12	Partly cloudy..	Partly cloudy..	20	20	
13	Overcast.....	Overcast.....	20	20	
14	Cloudy.....	Overcast.....	20	20	
15	Partly cloudy..	Cloudy.....	20	20	
16	Partly cloudy..	Cloudy.....	9	20	
17	Partly cloudy..	Partly cloudy..	20	20	
18	Partly cloudy..	Partly cloudy..	20	20	
19	Cloudy.....	Overcast.....	9	4	
20	Cloudy.....	Overcast.....	9	9	
21	Partly cloudy..	Partly cloudy..	9	20	
22	Partly cloudy..	Partly cloudy..	20	20	
23	Cloudy.....	Cloudy.....	20	20	
24	Cloudy.....	Cloudless.....	20	20	
25	Cloudless.....	Cloudy.....	20	20	
26	Partly cloudy..	Cloudy.....	20	9	
27	Overcast.....	Overcast.....	20	20	
28	Partly cloudy..	Partly cloudy..	20	20	
29	Partly cloudy..	Light rain.....	20	20	
30	Overcast.....	Cloudless.....	9	20	
31	Cloudless.....	Partly cloudy..	20	20	

CHESTERFIELD INLET METEOROLOGICAL REPORT, 1944—Cont.

Date	Mean Barometer mb.	Temperature		Wind				Hours of Fog	Precipitation	
		Max.	Min.	8.00 a.m.		8.00 p.m.			a.m.	p.m.
				Dir.	Vel.	Dir.	Vel.			
1944		°F.	°F.					Inches	Inches	
September										
1	1003.0	47	43	SW.	21	SW.	21	.34	.45	
2	1004.0	54	42	N.	21	NW.	10	.06		
3	1003.7	57	40	S.	5	NW.	21			
4	1007.3	56	41	SW.	15	SW.	5			
5	1015.0	51	41	N.	21	N.	5			
6	1019.4	51	38	N.	10	NW.	10			
7	1021.6	51	41	S.	5	SW.	10			
8	1019.6	51	39	S.	10	SW.	15			
9	1016.2	48	40	NE.	10	N.	10			
10	1009.8	50	35	SW.	5	S.	27		.24	
11	1005.2	43	35	NW.	21	N.	35	.02		
12	1013.6	39	33	NW.	35	N.	27			
13	1011.7	38	34	N.	15	N.	21			
14	1017.0	35	30	N.	21	N.	21			
15	1023.0	33	31	N.	21	N.	10			
16	1019.6	39	25	W.	5	S.	15	.05	Trace	
17	1004.3	40	38	SE.	21	Calm	0			
18	1002.6	39	35	E.	27	E.	35	.13		
19	1012.2	35	33	E.	21	E.	5			
20	1015.0	46	34	NW.	10	S.	10			
21	1015.8	38	31	NW.	10	N.	21	Trace		
22	1016.2	38	33	W.	15	N.	15			
23	1005.3	32	27	NE.	10	SE.	15	.25		
24	1006.6	34	25	NE.	10	NW.	15			
25	1009.9	38	23	NW.	10	W.	15		.02	
26	1004.8	37	34	NW.	10	NW.	10	Trace		
27	1010.2	28	23	NE.	21	N.	21		.49	
28	1005.2	30	18	NW.	10	N.	21			
29	1004.8	31	27	NW.	5	N.	35	.01	.11	
30	1012.8	27	24	N.	27	N.	21		Trace	
October										
1	1017.2	24	18	N.	15	N.	27	.03		
2	1021.0	21	20	N.	15	NW.	10	.01		
3	1018.0	26	18	Calm	0	NE.	10	Trace	Trace	
4	1020.6	29	19	NE.	5	S.	15		.01	
5	1022.4	27	24	E.	15	SE.	15	Trace		
6	1029.2	32	25	SE.	15	SE.	10			
7	1031.6	35	30			SW.	5			
8	1028.2	36	11	SW.	5	S.	35			
9	1016.6	38	34	W.	21	W.	10		.10	
10	1012.5	36	31	N.	15			.20		
11	995.6	37	33	S.	21	N.	10	.09	.10	
12	996.0	34	32	N.	15	N.	15	.08		
13	1013.0	27	21	N.	21	N.	21			
14	1017.8	18	15	N.	21	NW.	10			
15	1007.0	34	27	S.	27	N.	21	.06		
16	1006.4	37	25	S.	15	N.	21	.05		
17	1003.7	23	21	N.	15	N.	27			
18	1013.9	20	10	N.	27	N.	10		.08	
19	993.0	35	21	NW.	27	NW.	21	.13	.02	
20	1006.2	26	12	N.	42	S.	10			
21	998.9	18	15	N.	35	N.	27		.03	
22	1011.8	20	10	SE.	21	N.	27			
23	1015.4	8	3	N.	27	NE.	10			
24	997.7	29	3	S.	15	S.	10		Trace	
25	1003.0	26	18	N.	21	NW.	21			
26	1012.8	14	7	N.	15	NE.	5		.98	
27	1016.6	10	1	N.	27	N.	21			
28	1016.5	8	2	N.	15	N.	21			
29	1019.5	7	-2	N.	35	N.	21			
30	1018.2	11	3	N.	21	N.	21			
31	1011.5	11	-4	N.	10	N.	10			

CHESTERFIELD INLET METEOROLOGICAL REPORT, 1944—Cont.

Date	Present Weather		Visibility		Ice Conditions
	a.m.	p.m.	a.m.	p.m.	
1944					
Sept.					
1	Rain	Overcast	4	9	
2	Overcast	Clear	9	20	
3	Overcast	Overcast	9	20	
4	Partly cloudy	Clear	20	20	
5	Cloudy	Overcast	20	20	
6	Clear	Clear	20	20	
7	Overcast	Cloudy	20	20	
8	Distant fog	Partly cloudy	9	20	
9	Overcast	Overcast		20	
10	Overcast	Rain	20	4	
11	Clear	Clear	20	9	
12	Partly cloudy	Overcast	20	20	
13	Overcast	Cloudy	20	20	
14	Overcast	Overcast	20	20	Ice on lakes.
15	Overcast	Clear	20	20	"
16	Overcast	Rain showers	9	20	"
17	Drizzle	Overcast	2	20	"
18	Drizzle	Overcast	4	9	"
19	Overcast	Overcast	30	20	"
20	Overcast	Overcast	20	20	"
21	Drizzle	Overcast	9	20	"
22	Overcast	Overcast	20	20	"
23	Overcast	Overcast	20		"
24	Overcast	Clear	20	20	"
25	Partly cloudy	Overcast	20	20	"
26	Drizzle	Overcast	9	20	"
27	Overcast	Overcast	20	20	"
28	Clear	Overcast	20	20	"
29	Overcast	Overcast	20	2	Ice on lakes four inches thick.
30	Partly cloudy	Overcast	20	9	" " "
Oct.					
1	Drifting snow	Overcast		9	Ice on lakes.
2	Overcast	Snow	20	9	
3	Overcast	Overcast	20	20	
4	Overcast	Overcast	20	20	
5	Overcast	Overcast	20	30	
6	Overcast	Overcast	20	20	
7		Overcast		9	
8	Overcast	Overcast	30	20	
9	Overcast	Overcast	20	20	
10	Overcast		9		
11	Distant fog	Fog	9	$\frac{1}{4}$	
12	Drizzle	Cloudy	4	20	
13	Clear	Partly cloudy	30	20	Slush ice along shore edge.
14	Overcast	Overcast	20	30	" " "
15	Overcast	Partly cloudy	20	30	" " "
16	Overcast	Overcast	20	20	" " "
17	Overcast	Overcast	20	30	
18	Clear	Overcast	20	20	
19	Snow	Overcast	4	20	
20	Clear	Overcast	30	20	
21	Squalls	Overcast	2	9	
22	Overcast	Overcast	20	20	
23	Clear	Overcast	20	20	
24	Overcast	Overcast	20	9	
25	Clear	Cloudy	20	20	
26	Clear	Clear	30	20	
27	Clear	Drifting snow	20	9	
28	Overcast	Overcast	9	9	Solid ice on bay.
29	Drifting snow	Clear	$\frac{1}{2}$	4	" "
30	Partly cloudy	Overcast	20	20	" "
31	Overcast	Overcast	20	9	" "

CHESTERFIELD INLET METEOROLOGICAL REPORT, 1944—*Cont.*

Date	Mean Barometer mb.	Temperature		Wind				Hours of Fog	Precipitation	
		Max.	Min.	8.00 a.m.		8.00 p.m.			a.m.	p.m.
				Dir.	Vel.	Dir.	Vel.			
1944		°F.	°F.					Inches	Inches	
November										
1.....	1017.0	8	3	Calm	0	NW.	10			
2.....	1022.6	10	4	N.	27	NE.	15			
3.....	1030.9	0	-3	N.	10	N.	21			
4.....	1033.8	1	-6	N.	15	N.	10			
5.....	1026.0	12	-4	NW.	5	W.	2			
6.....	1019.8	19	11	E.	10	NE.	21			
7.....	1026.1	12	8	NE.	21	E.	15		Trace	
8.....	1031.1	17	2	N.	10	E.	15	.11		
9.....	1031.2	20	9	SE.	15	S.	21			
10.....	1025.0	25	16	S.	10	S.	15	.41	.33	
11.....	1018.4	27	25	S.	10	S.	21	.83	1.70	
12.....	1013.4	29	27	SE.	21	S.	21			
13.....	1013.8	29	27	S.	2	N.	10	.31	Trace	
14.....	1020.8	25	11	S.	5	S.	15		.01	
15.....	1026.8	20	-14	N.	21	E.	15			
16.....	1022.2	28	16	S.	21	S.	15			
17.....	1018.0	28	26	SE.	21	S.	4		.10	
18.....	1015.6	32	-2	S.	27	N.	15	.04		
19.....	1015.6	11	5	N.	5	N.	15	Trace		
20.....	1018.2	13	-3	N.	10	N.	10			
21.....	1015.6	7	-12	N.	10	NE.	5			
22.....	1004.3	28	-6	S.	5			.35		
23.....	1007.9	27	14	E.	10	E.	27	.08	.03	
24.....	1021.5	16	-9	NE.	15	N.	15			
25.....	1028.4	-9	-15	N.	21	W.	15			
26.....	1030.6	-21	-28	N.	21	N.	21			
27.....	1022.6	-21	-32	N.	21	N.	15			
28.....	1025.6	-26	-30	N.	21	N.	21			
29.....	1032.8	-29	-31	N.	15	N.	5			
30.....	1026.4	9	-30	W.	5	S.	21			

CHESTERFIELD INLET METEOROLOGICAL REPORT, 1944—*Conc.*

Date	Present Weather		Visibility		Ice Conditions
	a.m.	p.m.	a.m.	p.m.	
1944					
Nov.					
1	Mist.....	Clear.....	$\frac{1}{2}$	20	Ice on lakes. No ice in bay.
2	Partly cloudy..	Clear.....	20	20	" " "
3	Clear.....	Clear.....	20	20	" " "
4	Clear.....	Overcast.....	20	20	" " "
5	Clear.....	Overcast.....	30	9	Ice in bay.
6	Overcast.....	Overcast.....	9	4	"
7	Cloudy.....	Overcast.....	9	9	"
8	Snow.....	Overcast.....	9	4	"
9	Cloudy.....	Overcast.....	9	4	"
10	Snow.....	Snow.....	1	2	"
11	Snow.....	Snow.....	1	1	"
12	Snow.....	Snow.....	2	1	"
13	Snow.....	Haze.....	1	4	"
14	Cloudy.....	Snow and fog..	20	1	"
15	Clear.....	Overcast.....	20	4	Ice on lakes. No ice in bay.
16	Overcast.....	Overcast.....	9	9	" " "
17	Overcast.....	Cloudy.....	20	9	" " "
18	Overcast.....	Overcast.....	4	9	" " "
19	Overcast.....	Clear.....	9	20	" " "
20	Cloudy.....	Clear.....	20	20	Bay completely frozen over.
21	Clear.....	Fog.....	20	$\frac{1}{2}$	" " "
22	Overcast.....	4	" " "
23	Snow.....	Drifting snow..	2	$\frac{1}{4}$	" " "
24	Clear.....	Cloudy.....	20	20	" " "
25	Overcast.....	Overcast.....	20	20	" " "
26	Clear.....	Haze.....	20	2	" " "
27	Clear.....	Clear.....	20	20	" " "
28	Haze.....	Drifting snow..	1	1	" " "
29	Clear.....	Clear.....	20	20	" " "
30	Partly cloudy..	Overcast.....	20	4	" " "

PORT HARRISON METEOROLOGICAL REPORT, 1944

Date	Mean Barometer mb.	Temperature		Wind				Hours of Fog	Precipitation	
		Max.	Min.	8.00 a.m.		8.00 p.m.			a.m.	p.m.
				Dir.	Vel.	Dir.	Vel.			
1944 July		°F.	°F.					Inches	Inches	
1	1014.0	44.0	34.0	S.	12	SSE.	20			
2	1005.6	49.0	38.0	SSE.	26	S.	18			
3	1005.3	46.0	39.8	S.	18	SW.	20		Trace	
4	1020.8	46.0	33.8	SW.	4	S.	14	Trace		
5	1016.8	49.8	34.0	W.	7	SW.	6			
6	1006.4	54.8	31.5	S.	27	ENE.	8	Trace	.05	
7	1000.4	51.5	39.5	N.	39	N.	16	.40		
8	1008.3	45.5	32.8	S.	18	NE.	20	.17	.23	
9	1011.2	44.3	35.0	N.	18	SW.	10	.22		
10	1012.7	40.2	30.2	S.	12	S.	16	.05	.15	
11	1005.4	50.0	33.5	S.	12	WNW.	9	.82	Trace	
12	1007.0	44.2	31.0	SW.	3	S.	15	Trace	Trace	
13	1006.0	44.0	34.0	W.	8	WNW.	18	.02		
14	1011.0	53.0	32.0	SW.	6	NE.	8		.08	
15	1003.2	59.4	42.5	NE.	20	NNE.	26	Trace		
16	1010.0	60.0	40.0	NNE.	18	N.	25			
17	1018.1	46.2	35.0	NE.	4	N.	10			
18	1012.2	57.0	36.2	S.	14	SSE.	22		.02	
19	1002.4	48.2	34.2	SSE.	28	S.	26	.13	Trace	
20	1003.4	42.8	33.0	W.	12	SSE.	24	Trace	.02	
21	999.5	39.5	35.3	S.	6	N.	9	.02	.03	
22	1004.4	38.0	31.0	SW.	14	SW.	14	.12	Trace	
23	1008.6	55.0	31.7	Calm	0	NE.	12			
24	1004.6	66.6	40.0	E.	22	E.	27			
25	1004.8	60.0	50.0	E.	24	SSE.	12		Trace	
26	1009.6	61.0	40.5	Calm	0	NW.	4			
27	1008.6	72.4	53.2	NE.	12	N.	4			
28	1006.2	75.0	54.5	NE.	12	N.	32			
29	1008.2	67.4	55.0	S.	4	Calm	0			
30	1006.2	73.1	57.0	NE.	6	W.	4			
31	1008.2	55.3	41.0	NW.	3	SW.	12			
August										
1	1015.8	49				S.	10			
2	1005.1	60	48	Calm	0	E.	10			
3	1005.6	52	34	W.	10	SW.	10	Trace		
4	1002.0	47	45	Calm	0	SW.	10			
5	1005.8	58	41	N.	15	E.	15			
6	1010.8	51	42	SW.	2	N.				
7	1023.2	47	41	N.	2	N.	15			
8	1004.4	52	41	S.	35	S.	21	.05		
9	998.4	48	41	S.	35	SW.	5			
10	1001.0		40	NW.	5					
11	992.4	62	43	E.	5	E.	21		.05	
12	988.0	60	43	Calm	0	S.	10			
13	985.8	51	43	Calm	0	N.	10			
14	994.2	45	43	W.	15	W.	15	Trace	.15	
15	1004.8	52	43	W.	10	N.	15			
16	1008.0	55	41	E.	5	N.	10			
17	1009.8	59	41	N.	15	N.	10			
18	1014.0	57	45	N.	5	N.	15			
19	1018.9	56	41	NE.	15	N.	15			
20	1006.8	60	39	SE.	10	SE.	21			
21	1001.0	53		E.	27	W.	3			
22	1004.2	51	44	N.	2	NW.	15		.06	
23	1009.2	62	46	N.	15	N.	10			
24	1015.2	53	42	Calm	0	W.	5			
25	1009.8	56	45	W.	10	W.	10			
26	1016.3	55	46	SW.	10	W.	21			
27	1012.7	63	48	W.	2	S.	15			
28	1009.1	51	46	S.	15	S.	15			
29	1011.0	57	47	SW.	21	S.	5			
30	1015.2	54	48	N.	2	N.	10			
31	1014.6	55	41	Calm	0	NE.	15			

PORT HARRISON METEOROLOGICAL REPORT, 1944

Date	Present Weather		Visibility		Ice Conditions
	a.m.	p.m.	a.m.	p.m.	
1944					
July					
1	Overcast.....	Overcast.....	20	20	No ice in river. close packed in harbour, drift offshore.
2	Overcast.....	Fog.....	20	$\frac{1}{4}$	" " " "
3	Cloudy.....	Drizzle and fog.	20	1	
4	Drizzle and fog.	Partly cloudy..	$\frac{1}{2}$	20	No ice in river or harbour, close packed off-shore.
5	Fog.....	Partly cloudy...	$\frac{1}{16}$	20	" " " "
6	Distant fog.....	Rain showers...	4	20	" " " "
7	Light rain.....	Cloudless.....	9	20	" " " "
8	Overcast.....	Rain showers...	20	20	" " " "
9	Light rain.....	Fog.....	4	$\frac{1}{2}$	" " " "
10	Cloudy.....	Rain showers...	20	20	" " " "
11	Light rain.....	Cloudy.....	9	20	" " " "
12	Fog.....	Light fog.....	20	2	" " " "
13	Drizzle and fog.	Partly cloudy..	9	20	" " " "
14	Distant fog.....	Overcast.....	9	20	" " " "
15	Cloudy.....	Cloudy.....	20	20	" " " "
16	Cloudy.....	Partly cloudy..	20	20	" " " "
17	Cloudless.....	Cloudy.....	20	20	" " " "
18	Partly cloudy..	Light rain.....	20	9	" " " "
19	Drizzle and fog.	Drizzle and fog.	$\frac{1}{2}$	$\frac{1}{4}$	" " " "
20	Drizzle and fog.	Cloudy.....	1	20	" " " "
21	Drizzle and fog.	Rain and fog....	$\frac{1}{2}$	2	
22	Rain and fog....	Low fog.....	2	1	
23	Fog.....	Cloudy.....	$\frac{1}{2}$	20	
24	Partly cloudy..	Partly cloudy..	20	20	No ice in river or harbour, slob ice offshore.
25	Overcast.....	Drizzle.....	20	20	No ice in river or harbour, close packed off-shore.
26	Distant fog.....	Overcast.....	9	20	" " " "
27	Cloudy.....	Overcast.....	20	20	
28	Cloudy.....	Partly cloudy..	20	20	
29	Cloudy.....	Cloudy.....	20	20	Scattered ice offshore.
30	Partly cloudy..	Overcast.....	20	20	" " " "
31	Fog.....	Rain and fog....	$\frac{1}{4}$	2	Growlers offshore.
Aug.					
1	Cloudy.....	$\frac{1}{16}$	Scattered offshore.
2	Partly cloudy..	Overcast.....	20	20	" " " "
3	Rain.....	Partly cloudy..	4	20	" " " "
4	Mist.....	Overcast.....	4	9	
5	Fog.....	Partly cloudy..	2	20	
6	Clear.....	Overcast.....	20	20	
7	Partly cloudy..	Clear.....	20	20	
8	Overcast.....	Clear.....	20	20	
9	Low fog.....	Fog.....	$\frac{1}{2}$	1	
10	Fog.....	Overcast.....	$\frac{1}{16}$	30	
11	Overcast.....	Light rain.....	4	2	
12	Fog.....	Overcast.....	$\frac{1}{2}$	2	
13	Overcast.....	Mist.....	4	2	
14	Drizzle.....	Drizzle.....	1	1	
15	Overcast.....	Cloudy.....	4	20	
16	Fog.....	Cloudy.....	2	20	
17	Overcast.....	Cloudy.....	20	20	
18	Mist.....	Overcast.....	4	20	
19	Overcast.....	Clear.....	20	20	
20	Mist.....	Cloudy.....	2	20	
21	Cloudy.....	Overcast.....	20	20	
22	Fog.....	Overcast.....	1	20	
23	Clear.....	Clear.....	20	20	
24	Clear.....	Clear.....	20	20	
25	Clear.....	Partly cloudy..	20	20	
26	Overcast.....	Clear.....	20	20	
27	Overcast.....	Overcast.....	20	9	
28	Overcast.....	Overcast.....	20	20	
29	Overcast.....	Overcast.....	20	20	
30	Overcast.....	Overcast.....	20	20	
31	Overcast.....	Cloudy.....	9	20	

PORT HARRISON METEOROLOGICAL REPORT, 1944—Cont.

Date	Mean Barometer mb.	Temperature		Wind				Hours of Fog	Precipitation	
		Max.	Min.	8.00 a.m.		8.00 p.m.			a.m.	p.m.
				Dir.	Vel.	Dir.	Vel.			
1944		°F.	°F.						Inches	Inches
September										
1.....	1004.8	68	43	NE.	15	Calm	0		Trace	
2.....	1002.8	49	28	SE.	2	Calm	0			
3.....	1012.9	49	47	N.	10	W.	10			
4.....	1014.4	55	48	S.	10	S.	5			
5.....	1009.8	68	47	N.	10	N.	15			
6.....	1009.2	61	48	NE.	27	NE.	21			
7.....	1010.5	64	50	E.	21	NE.	27			
8.....	1011.4	58	47	N.	27	NE.	21		.06	
9.....	1014.9	60	48	SE.	15	W.	5		.06	
10.....	1014.2	50	46	N.	10	W.	5			
11.....	1009.3	57	44	S.	21	NW.	21			.11
12.....	1011.6	47	40	NW.	21	N.	21			.01
13.....	1014.6	42	36	W.	21	S.	27		.03	.14
14.....	1012.0	44	37	N.	35	N.	21			
15.....	1019.6	44	35	NW.	15	NW.	15			Trace
16.....	1025.9	44	29	N.	5	S.	5			
17.....	1012.4	44	34	S.	21	S.	21			
18.....	998.3	48	46	S.	15	SW.	10		.03	
19.....	1001.2	47	42	W.	15	NW.	15		.16	
20.....	1010.5	43	30	E.	21	E.	10			.16
21.....	1005.0	48	39	W.	5	Calm	0		.12	.01
22.....	1010.2	40	34	N.	15	N.	21		.01	.16
23.....	1003.6	41	24	N.	15	W.	21		.09	.02
24.....	1000.2	42	34	W.	10	NE.	21		.47	.21
25.....	1010.8	39	32	N.	21	N.	21		.44	
26.....	1016.4	41	27	Calm	0	SW.	27			
27.....	1008.9	44	38	W.	21	S.	35		Trace	.22
28.....	1012.2	38	34	N.	15	SW.	15			
29.....	1004.4	39	30	N.	21	NW.	15		.12	.01
30.....	1012.7	34	31	W.	27	NW.	10		Trace	
October										
1.....	1017.9	38	30	N.	10	NW.	15		Trace	Trace
2.....	1023.9	34	28	Calm	0	NW.	5		Trace	
3.....	1018.6	39	29	SW.	10	SW.	10		Trace	
4.....	1013.8	38	29	SE.	15	SE.	10			
5.....	1014.2	36	25	NE.	10					
6.....	1021.8	33	25	NE.	35	NE.	15			
7.....	1031.2	34	22	NE.	10	NE.	10			
8.....	1036.6	37	25	NE.	2	W.	10			
9.....	1036.0	37	22	Calm	0	SW.	2			
10.....	1020.2	43	19	NE.	5	N.	15			
11.....	1002.5	36	19	N.	2	SW.	15			.04
12.....	988.4	38	33	SW.	27	Calm	0		.22	
13.....	992.2	35	32	N.	15	NE.	21		.34	Trace
14.....	1008.6	33	29	W.	27	NE.	21		.04	Trace
15.....	1013.6	32	28	NW.	10	SW.	10			
16.....	1006.1	34	29	S.	10	W.	10		Trace	.15
17.....	998.0	35	32	NE.	15	SE.	15			.09
18.....	986.3	35	31	N.	27	N.	35		.44	
19.....	996.6	33	26	NW.	21	SW.	35		Trace	.10
20.....	1000.4	38	28	NW.	27	W.	10		.14	Trace
21.....	1006.4	34	27	W.	27	W.	27			Trace
22.....	1001.9	27	24	NW.	27	NW.	15			
23.....	1005.9	25	21	NW.	15	NW.	15		Trace	
24.....	1011.5	30	20	NW.	15	SW.	15		.85	
25.....	994.4	28	25	SE.	15	NE.	10			
26.....	1008.4	30	26	NW.	21	NW.	15			Trace
27.....	1003.6	33	23	W.	21	NW.	15			Trace
28.....	1014.4	23	18	NW.	5	NW.	15		Trace	.10
29.....	1010.8	24	10	S.	10	N.	2		.11	
30.....	1010.7	23	8	NW.	15	N.	10		Trace	Trace
31.....	1013.9	20	14	Calm	0	NW.	5			Trace

PORT HARRISON METEOROLOGICAL REPORT, 1944—Cont.

Date	Present Weather		Visibility		Ice Conditions
	a.m.	p.m.	a.m.	p.m.	
1944					
Sept.					
1	Overcast.....	Overcast.....	20	20	
2	Overcast.....	Clear.....	20	9	
3	Fog.....	Partly cloudy..	1	20	
4	Overcast.....	Partly cloudy..	20	20	
5	Partly cloudy..	Clear.....	9	20	
6	Fog.....	Partly cloudy..	1	20	
7	Overcast.....	Overcast.....	20	20	
8	Overcast.....	Cloudy.....	9	20	
9	Overcast.....	Overcast.....	20	20	
10	Fog.....	Overcast.....	$\frac{1}{2}$	2	
11	Overcast.....	Rain.....	2	2	
12	Partly cloudy..	Overcast.....	20	20	
13	Overcast.....	Rain.....	20	4	
14	Overcast.....	Overcast.....	20	20	
15	Overcast.....	Overcast.....	20	20	
16	Overcast.....	Clear.....	20	20	
17	Overcast.....	Mist.....	20	1	
18	Fog.....	Overcast.....	1	4	
19	Overcast.....	Overcast.....	20	20	
20	Overcast.....	Fog.....	20	$\frac{1}{4}$	
21	Fog.....	Drizzle.....	$\frac{1}{4}$	9	
22	Overcast.....	Overcast.....	20	9	
23	Overcast.....	Rain.....	20	9	
24	Overcast.....	Rain.....	20	9	
25	Partly cloudy..	Clear.....	20	20	
26	Cloudy.....	Overcast.....	20	20	
27	Drizzle.....	Overcast.....	9	2	
28	Overcast.....	Overcast.....	20	20	
29	Snow showers..	Rain and snow..	9	9	
30	Partly cloudy..	Overcast.....	20	20	
Oct.					
1	Clear.....	Partly cloudy..	20	20	
2	Partly cloudy..	Partly cloudy..	20	20	
3	Overcast.....	Partly cloudy..	20	20	
4	Clear.....	Clear.....	20	20	
5	Clear.....	20	
6	Clear.....	Clear.....	20	20	
7	Clear.....	Clear.....	20	20	
8	Partly cloudy..	Clear.....	20	20	
9	Clear.....	Partly cloudy..	20	20	
10	Partly cloudy..	Partly cloudy..	20	20	
11	Fog.....	Overcast.....	9	20	
12	Overcast.....	Overcast.....	9	9	
13	Overcast.....	Snow.....	4	4	
14	Snow.....	Snow.....	4	1	
15	Overcast.....	Clear.....	20	20	
16	Snow.....	Snow.....	9	4	
17	Partly cloudy..	Snow.....	20	4	
18	Snow.....	Snow.....	2	4	
19	Overcast.....	Snow.....	20	2	
20	Rain.....	Overcast.....	20	20	
21	Snow.....	Clear.....	2	20	Loose ice in river.
22	Cloudy.....	Partly cloudy..	20	“
23	Snow.....	Heavy snow....	2	1	“
24	Overcast.....	Overcast.....	9	20	
25	Snow.....	Snow.....	9	20	
26	Snow.....	Overcast.....	9	20	
27	Overcast.....	Overcast.....	9	20	
28	Clear.....	Snow.....	20	4	
29	Overcast.....	Clear.....	20	20	Loose ice in shore.
30	Snow.....	Snow.....	4	20	
31	Snow.....	Clear.....	20	30	

PORT HARRISON METEOROLOGICAL REPORT, 1944—*Conc.*

Date	Mean Barometer mb.	Temperature		Wind				Hours of Fog	Precipitation	
		Max.	Min.	8.00 a.m.		8.00 p.m.			a.m.	p.m.
				Dir.	Vel.	Dir.	Vel.			
1944		°F.	°F.					Inches	Inches	
November										
1.....	1017.1	28	13	W.	27	W.	21	.04	
2.....	1017.1	28	23	SW.	21	W.	10	.01	
3.....	1024.9	14	4	NE.	10	NE.	2	
4.....	1028.4	21	0	W.	10	NW.	10	Trace	Trace	
5.....	1031.6	27	21	NW.	10	SW.	10	Trace	
6.....	1024.0	28	22	SW.	15	SE.	27	Trace	
7.....	1013.4	21	12	SE.	27	NE.	21	.05	
8.....	1027.8	9	-3	NE.	21	NE.	10	
9.....	1030.3	1	-9	NE.	15	NE.	15	
10.....	1028.4	0	-13	NE.	10	NE.	21	
11.....	1031.8	7	-7	NE.	15	NE.	5	
12.....	1031.2	20	15	E.	21	SE.	10	
13.....	1028.8	23	15	SE.	27	NE.	10	
14.....	1024.2	25	14	NE.	21	NE.	15	Trace	.05	
15.....	1022.0	28	23	NE.	10	NE.	10	
16.....	1024.0	30	14	NE.	15	Calm	0	
17.....	1028.3	31	22	N.	10	S.	10	
18.....	1028.1	31	26	SW.	2	SW.	27	Trace	
19.....	1021.5	31	28	S.	27	SW.	27	Trace	Trace	
20.....	1011.4	30	28	SW.	27	S.	2103	
21.....	1009.8	29	27	SW.	21	S.	15	
22.....	1009.8	29	24	S.	15	SW.	5	.03	
23.....	1015.6	27	20	SW.	10	SW.	15	
24.....	1018.0	29	22	S.	15	W.	21	Trace	
25.....	1023.7	28	21	W.	15	SW.	10	Trace	
26.....	1011.4	29	26	SW.	21	SW.	2	.10	.15	
27.....	1005.8	22	12	NE.	15	
28.....	1017.4	10	7	NW.	21	NE.	21	.05	Trace	
29.....	1030.6	4	-3	NE.	21	Trace	
30.....	1036.0	5	1	NE.	10	NE.	10	

PORT HARRISON METEOROLOGICAL REPORT, 1944—*Conc.*

Date	Present Weather		Visibility		Ice Conditions
	a.m.	p.m.	a.m.	p.m.	
1944					
Nov.					
1	Cloudy.....	Overcast.....	9	20	
2	Overcast.....	Overcast.....	20	20	
3	Clear.....	Clear.....	20	20	
4	Snow.....	Overcast.....	4	20	
5	Overcast.....	Overcast.....	20	20	River frozen.
6	Overcast.....	Snow.....	20	20	"
7	Cloudy.....	Clear.....	9	20	
8	Cloudy.....	Clear.....	20	20	River frozen over, loose ice on shore.
9	Clear.....	Clear.....	20	20	" " "
10	Clear.....	Clear.....	20	20	" " "
11	Clear.....	Clear.....	20	20	" " "
12	Overcast.....	Partly cloudy..	20	30	" " "
13	Cloudy.....	Overcast.....	20	20	" " "
14	Overcast.....	Snow.....	20	20	" " "
15	Cloudy.....	Clear.....	20	20	" " "
16	Clear.....	Clear.....	20	20	" " "
17	Haze.....	Fog.....	2	1	" " "
18	Fog.....	Overcast.....	$\frac{1}{4}$	20	" " "
19	Cloudy.....	Cloudy.....	20	20	" " "
20	Overcast.....	Snow.....	20	20	" " "
21	Clear.....	Overcast.....	20	20	Solid shore ice extending one mile, scattered ice floes beyond.
22	Clear.....	Cloudy.....	20	20	" " "
23	Clear.....	Cloudy.....	20	20	" " "
24	Overcast.....	Snow.....	20	20	" " "
25	Partly cloudy..	Snow.....	20	9	" " "
26	Snow.....	Snow.....	4	$\frac{1}{2}$	" " "
27	Drifting snow...	$\frac{1}{4}$	" " "
28	Drifting snow...	Drifting snow...	4	4	" " "
29	Overcast.....	20	" " "
30	Overcast.....	Overcast.....	20	20	" " "

AIDS TO NAVIGATION IN HUDSON BAY AND STRAIT

RADIO COAST AND DIRECTION FINDING STATIONS

Station	Call Sign	Calling Wave		Working Wave		Position		Hours of Service	Coast Charge (a)
		K/cs.	Metres	K/cs.	Metres	Latitude N.	Longitude W.		
Churchill.....	V A P	500	600	500	600	58° 46' 32"	94° 10' 31"	Continuous during season of navigation.	6c. per word
Chesterfield Inlet.....	V B Z	500	600	500	600	63° 20' 05"	90° 42' 33"	Continuous during season of navigation.	6c. per word
Nottingham Island.....	V C B	500	600	500	600	63° 06' 48"	77° 56' 18"	Continuous during season of navigation.	6c. per word
Cape Hopes Advance.....	V A Y	500	600	500	600	61° 05' 12"	69° 33' 24"	Continuous during season of navigation.	6c. per word
Resolution Island.....	V A W	500	600	500	600	61° 18' 30"	64° 53' 24"	Continuous during season of navigation.	6c. per word

All stations maintain watch on 500 K/cs. (600 metres) and with the exception of Resolution island, take and transmit bearings on 375 K/cs. (800 metres) after communication has been established on 500 K/cs. (600 metres). Resolution island takes bearings on 500 K/cs. (600 metres) and transmits bearings on 375 K/cs. (800 metres).

(a) All messages relative to navigation are handled free of charge. The six-cent per word coast charge applies to all other traffic. For forwarding charges beyond Churchill apply to any of above stations or see Canada Rate Sheet, International List of Coast and Ship Stations.

RADIO METEOROLOGICAL REPORTING STATION

Station	Call Sign	Calling Wave		Working Wave		Position		Hours of Service	Coast Charge
		K/cs.	Metres	K/cs.	Metres	Latitude N.	Longitude W.		
Port Harrison.....	V A L	500	600	420	714	58° 27' 17"	78° 08' 20"	Keeps watch on 500 K/cs. (600 metres) for fifteen minute periods commencing at every odd hour from 7.00 a.m. to 7.00 p.m. E.S.T. inclusive, during season of navigation.	6c. per word See note (a) above.

PATROL SHIP

Station	Call Sign	Calling Wave		Working Wave		Hours of Service	Remarks
		K/cs.	Metres	K/cs.	Metres		
C.G.S. N. B. McLean.....	C G S N	500	600	425	706	Continuous during season of navigation.	Normally this vessel patrols Hudson strait during the season of navigation. Information in regard to her position may be obtained from any Radio Station in the Strait.

LIGHTS

Location	Position		Character	Elevation	Remarks
	Latitude N.	Longitude W.			
†Goodwin island, Button islands group.	60° 41' 31"	64° 40' 22"	Flashing.....	259 ft.	On unpainted wooden pole.
Resolution island.....	61° 18' 28"	64° 53' 16"	Flashing.....	129 ft.	White square, wooden lantern on wooden skeleton base. One flash every ten seconds.
Cape Hopes Advance.....	61° 05' 14"	69° 33' 23"	Fixed.....	270 ft.	On unpainted wooden pole.
†Wales island.....	61° 51' 37"	71° 58' 19"	Flashing.....	150 ft.	On unpainted wooden pole.
†Ashe inlet.....	60° 31' 40"	70° 33' 27"	Flashing.....	191 ft.	On unpainted wooden pole.
†East end of Charles Island.....	60° 36' 40"	73° 56' 09"	Flashing.....	150 ft.	On unpainted wooden pole.
†West end of Charles island.....	62° 42' 30"	74° 40' 00"	Flashing.....	40 ft.	On unpainted wooden pole.
†Nottingham island.....	63° 05' 48"	77° 56' 55"	Flashing.....	50 ft.	On unpainted wooden pole.
†Digges island.....	62° 35' 20"	78° 06' 42"	Flashing.....	65 ft.	On unpainted wooden pole.
†Mansel island.....	62° 27' 00"	79° 38' 00"	Flashing.....	41 ft.	On unpainted wooden pole.
†Coates island.....	62° 10' 00"	83° 08' 00"	Flashing.....	40 ft.	On unpainted wooden pole, surrounded by white lattice.
†Hubbart point.....	59° 21' 00"	94° 40' 00"	Flashing.....	50 ft.	On unpainted wooden pole.

† Unwatched.

C.G.S. *N. B. McLEAN*—HUDSON STRAIT PATROL SHIP
GENERAL DIMENSIONS AND EQUIPMENT

The C.G.S. *N. B. McLean* is a twin-screw ice breaking steamer of 6,500 indicated horse-power and with the following leading dimensions:—

Length (B.P.).....	260 feet
Breadth (moulded).....	60 “
Depth (moulded).....	31 “
Gross tonnage.....	3,253 tons
Fuel oil capacity.....	1,596 “

The vessel is equipped with a patent towing winch furnished with both steel wire and manila towing hawsers, a powerful searchlight, two 7-ton derricks and two motor launches.

She also carries a diver and complete diving apparatus and the following salvage gear:—

- 1 Drake centrifugal pump, 10 inch.
- 1 Smart Turner centrifugal pump, 8 inch.
- 1 Duplex pump, 6 inch.

These pumps are completely equipped with flexible suction and discharge pipes, foot valves, syphons, etc., and all necessary auxiliaries.

One hundred and fifty feet of bronze flexible steam hose with connections, patching gear, shores, turnbuckles and all necessary tools are also provided.

The vessel is provided with a gyro compass and a recording echo sounder and radiotelegraph and radiotelephone apparatus are installed.

The *N. B. McLean* is normally in Hudson Strait from the opening to the close of navigation each year and maintains constant watch on 500 K/cs. (600 metres), call sign C.G.S.N.



Fort Prince of Wales Churchill, Man.

GLOSSARY OF TERMS USED IN ICE NAVIGATION

- Floe.....A large mass of floating ice.
- Pan.....A small floe or piece of ice that can be forced aside or slewed.
- A field.....A large body of ice that may be seen around.
- Land floe.....Ice frozen fast to the shore.
- Packed ice.....Small pieces of ice closed together and held by the pressure of ice and currents.
- Ice blink.....A peculiar pale yellow reflection on the sky indicating the presence of ice in the distance.
- The ice pack.....A large body of solid ice extending across the whole sea and through which it is impossible to advance.
- Slack or open ice... Detached ice that can be worked through. Ice is said to be slacking when it begins to open up so as to be navigable.
- A lead.....A strip of navigable water opening into the pack.
- Hummocky ice.....Rough, uneven or thick ice.
- Slob.....Snow afloat and forming into ice.
- Water sky.....A dark or bluish appearance of the sky indicating open water beyond the ice pack.
- Rafting.....Occurs when two pans meet with force either by the action of winds or currents, the edges are broken off and either rise on top of or pass under the body of the other.
- Growler.....A more or less washed and rounded lump of ice which rolls about in the water; formed from broken-up bergs or detached pieces of heavy old Arctic floe ice.
- Collar ice.....The margin of ice frozen fast to an island or shore, presenting an abrupt wall against which the floating ice rises and falls with the tide.

