

TABLE OF DISTANCES IN NAUTICAL MILES.

Places	Churchill	Hudson strait—east entrance	Inish-trahull, Ireland	Glasgow docks	Liverpool	London
Churchill.....	0	920	2,775	2,907	2,982	3,383
Montreal.....	2,448	1,528	2,565* 2,746†	2,696* 2,877†	2,773* 2,953†	3,111* 3,218†
Halifax.....	2,175	1,255	2,239	2,371	2,448	2,711
New York.....	2,733	1,813	2,980	3,118	3,193	3,341

* via Belle Isle.
† via Cabot strait.

CANADA
DEPARTMENT OF TRANSPORT
AIDS TO NAVIGATION
HUDSON BAY AND STRAIT
Lights.....
Coast and D.F. Stations.....
Meteorological Station.....

Longitude West 80° of Greenwich



CANADA

SEVENTEENTH ANNUAL REPORT

Navigation Conditions on the Hudson Bay
Route from the Atlantic Seaboard
to the Port of Churchill

SEASON OF NAVIGATION

1945

DEPARTMENT OF TRANSPORT

HON. LIONEL CHEVRIER, Minister

OTTAWA

EDMOND CLOUTIER, C.M.G., B.A., L.Ph.,
KING'S PRINTER AND CONTROLLER OF STATIONERY

1946

SEVENTEENTH ANNUAL REPORT

CONTENTS

	PAGE
Letter of Transmittal.....	4
Synopsis—	
Opening of Navigation.....	5
Close of Navigation.....	5
Foxe Channel Ice.....	6
Fog.....	6
Aids to Navigation.....	6
Shipping.....	6
Ships' Reports—	
C.G.S. <i>N.B. McLean</i>	7
R.M.S. <i>Nascopie</i>	10
Port of Churchill—	
Traffic.....	9
Hydrographic Information.....	13
Meteorological Reports—	
C.G.S. <i>N.B. McLean</i>	14
Resolution Island.....	16
Cape Hopes Advance.....	22
Nottingham Island.....	29
Churchill.....	34
Chesterfield Inlet.....	40
Port Harrison.....	46
Aids to Navigation—	
Radio Stations.....	52
Patrol Ship.....	53
Navigation Lights.....	53
C.G.S. <i>N.B. McLean</i> —Dimensions and Equipment.....	54
Glossary of Ice Navigation Terms.....	55

ILLUSTRATIONS

Chart of Hudson Bay and Strait.....	<i>Frontispiece</i>
Churchill: Harbour.....	<i>Facing page 6</i>

CONTENTS

C. P. EDWARDS, Esq.,
Deputy Minister,
Department of Transport,
Ottawa, Ont.

SIR—I have the honour to submit the Seventeenth Annual Report on Navigation Conditions on the Hudson Bay Route from the Atlantic Seaboard to the Port of Churchill. This report covers the season of navigation, 1945.

The report is compiled from information received from the Hudson's Bay Company Vessel R.M.S. *Nascopie*, the National Harbours Board, and the Meteorological and Radio Services of the Department of Transport.

Yours respectfully,

W. A. RUSH,
Controller of Radio.

DEPARTMENT OF TRANSPORT,
OTTAWA, February 18, 1946.

SEVENTEENTH ANNUAL REPORT

Navigation Conditions on the Hudson Bay Route from the Atlantic Seaboard to the Port of Churchill Season of Navigation, 1945

Synopsis of Report

OPENING OF NAVIGATION

The change from winter conditions extended, as usual, over a period of several weeks and during that time the quantity and state of drifting ice varied from day to day according to the influence of winds and currents.

The dates of the final disappearance of ice from the vicinity of the reporting stations were as follows:—

Hudson Strait, East End

Resolution Island.....July 10

Hudson Strait, Central

Cape Hopes Advance.....July 21

Hudson Strait, West End

Nottingham Island.....July 23

Hudson Strait, General—The R.M.S. *Nascopie* on her annual voyage into Hudson Bay and adjacent straits during the months of July, August and September reported that, on the whole, the weather throughout the voyage was favourable, ice conditions were heavy, but with favourable winds good progress was made.

The C.G.S. *N. B. McLean* encountered fog and numerous bergs throughout the season of navigation and also heavy snow storms in the early part of September.

Hudson Bay

Churchill.....July 16

Chesterfield Inlet.....July 18

Port Harrison.....July 3

CLOSE OF NAVIGATION

Hudson Bay

Chesterfield Inlet.—Reported the bay frozen over on November 7.

This ice moved out on the following day however, and it was not until November 12 that the bay froze over and remained frozen.

Churchill—On October 31 reported River and Bay full of drift ice and on November 26 Bay frozen to horizon.

Port Harrison—Reported December 1 that Bay was open except for small amount of shore ice.

Hudson Strait

Nottingham Island—Reported cove frozen over on November 13, scattered ice to horizon on November 19 and fields of drifting floe ice on November 24. There was still some open water visible at the end of November.

Cape Hopes Advance—On November 21 a drifting field of loose packed ice with many large patches of open water was reported. The open water was noticeably smaller on November 27 and by November 29 ice was observed to be close packed to the horizon.

Resolution Island—Reported no ice except for drift and bergs, until after November 30.

FOXES CHANNEL ICE

The R.M.S. *Nascopie*, on the way from Southampton Island to Wolstenholme August 22, mentions Foxe Channel ice to the north. This is the only mention of Foxe Channel ice as no survey was made in 1945.

FOG

The number of days on which fog was reported were as follows:—

—	July	Aug.	Sept.	Oct.	Nov.	Totals	
						1945	1944
Resolution.....	23	24	12	10	0	69	52
Cape Hopes Advance.....	18	15	6	6	4	49	48
Nottingham Island.....	4	9	5	0	2	20	36
Churchill.....	5	6	3	1	2	15	17
Chesterfield.....	1	1	1	2	1	6	11
Port Harrison.....	9	12	3	3	0	27	31

AIDS TO NAVIGATION

Radio

There are five radio direction finding stations on the Hudson Bay Route.

Detailed information regarding Radio Aids to Navigation will be found on page 52.

Hydrography

No survey was carried out this season. See page 13.

Lights

There were no additions to the lights, the numbers remaining at two watched and ten unwatched, a total of twelve lights, a list of which will be found on page 52.

Fog Signals

The explosive bomb signal which was installed at Resolution in 1935 is still in operation. It can be heard at a distance of between five and six miles and is fired at intervals of ten minutes on request by ships approaching Acadia Cove.

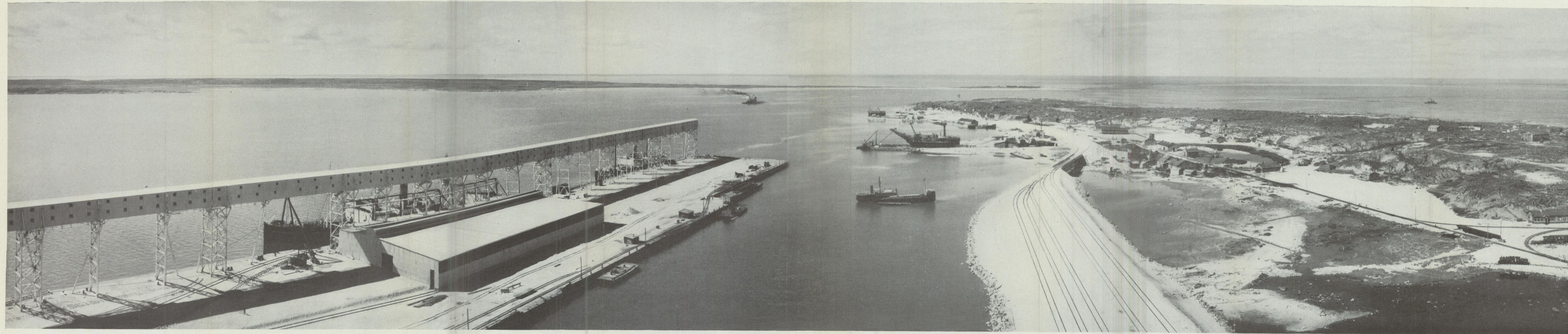
SHIPPING

Owing to war-time restrictions the movements of vessels using the Hudson Bay route were not reported.

No incident of note occurred during the season and navigation proceeded normally.

W. A. RUSH,

Controller of Radio.



PANORAMA CHURCHILL—Taken from top of Warehouse of Elevator, Aug. 14, 1933—Taken by M. Sauer, Jr.

C.G.S. *N. B. McLEAN*, CAPTAIN C. A. CARON, MASTER,
VOYAGE TO HUDSON BAY AND STRAIT, 1945

EXTRACTS FROM MASTER'S REPORT

The C.G.S. *N. B. McLean* arrived at Resolution Island on August 10 and dropped anchor in Acadia Cove at 7 p.m., after an uneventful passage from Quebec. Some fog was encountered along the coast of Labrador and again as we approached Resolution Island, aside from this, the weather in general was fair.

From August 10 to August 17 we remained at Resolution Island, landing goods, boating fresh water, painting and repairing entrance beacon.

On August 17 left Acadia Cove, Resolution Island, at 3.00 p.m. and proceeded to Cape Hopes Advance. Anchoring off the Cape we landed the radio personnel, provisions, coal and gasoline and at 9.30 a.m. on August 22 we left for Wakeham Bay.

Between August 22 and August 24 all provisions, mail and fuel were landed at Wakeham Bay mission, after which we proceeded to the head of the bay to boat fresh water.

Left Wakeham Bay on August 31 for Cape Hopes Advance, arriving there at 6.00 a.m. September 1, we commenced landing the remaining coal and gasoline we had on board for this station. By 4.00 p.m. all cargo was ashore and the crew was sent to help clear all goods from the beach.

Leaving Cape Hopes Advance at 4.00 a.m. September 2 we proceeded towards Big Island. At 11.00 a.m. we altered course for Charles Island due to thick snow. Visibility became so poor, however, that we were forced to return on course 080 true at slow ahead. On September 3 at 2.00 a.m., with snow moderating, we changed course to 300 true for Charles Island. At 10.15 a.m. we anchored inside Foreman Island using both anchors with 90 fathoms chain on each. At the time, there was a moderate north east gale blowing and the snow was increasing.

September 4 the wind decreased somewhat and at 4.00 p.m. a boat was sent ashore to light Charles Island east end. This accomplished, the boat returned back on board at 5.30 p.m.

We remained at anchor that night and at 7.00 a.m. September 5 left for Charles Island west end, where an attempt was made to light the beacon. The attempt was unsuccessful however, as there was too much surf running. Leaving Charles Island, the *N. B. McLean* proceeded to Eric Cove anchoring there at 5.00 p.m. we remained for the night taking on fresh vegetables and mail for the various stations.

September 6 left Eric Cove at 4.00 a.m. and proceeded to Nottingham Island. On arrival Nottingham Island, radio personnel, fresh provisions, coal and gasoline were landed. September 7, with all cargo landed, we remained at anchor so that Doctor Hastings could check on the health of the eskimos and on the radio station fresh water supply. At noon on September 8 a fresh south wind came up so proceeded to Eric Cove for shelter while awaiting the completion of station work. Left Eric Cove for Nottingham Island on September 11 and took on board all returning personnel.

We left Nottingham Island at 9.00 p.m. for Charles Island west end arriving there at 10.00 a.m. September 12. There was too much sea running to attempt a landing so headed for Sugluk where we anchored at noon. The *N. B. McLean* remained at Sugluk until September 30 awaiting orders. While at Sugluk all fresh water tanks were filled and minor repairs to the ship were made by the crew.

Left Sugluk at daylight on September 30 and proceeded to Wakeham Bay. We anchored at the head of the Bay at 6.30 p.m. October 1 where Brother Paradis, O.M.I., was taken aboard. While at anchor, orders were received to proceed back to Quebec. We were forced to wait for better weather conditions however, as landing conditions at Cape Hopes Advance were unfavourable at the time.

On October 4 left Wakeham Bay at 3.45 p.m. for Cape Hopes Advance arriving at 6.50 a.m. On October 5, landed goods and mail and took on returning personnel. At noon we left for Resolution Island.

October 6 at 6.10 a.m. anchored in Acadia Cove, Resolution Island, where we took on returning personnel and landed mail and fresh provisions. At 3.30 p.m., after waiting for the tide to rise, we left for Quebec. At Midnight our position was Latitude 60.16° N., Longitude 62.35° W.

October 7, ship underway, making average speed of 12 knots, weather overcast, wind south and south west, sea smooth. Midnight position was Latitude 56.21° N., Longitude 57.50° W.

At midnight on October 10 we passed Father Point, thus completing a very successful season of navigation in the Hudson Bay and Strait.

ICE CONDITIONS

On our way north to the Hudson Strait we passed our first berg when nearing Belle Isle, S.W., from then onward to Roundhill the occasional berg was sighted on either side of our track. From Roundhill to Bull-Dog Rock there were many bergs sighted. Few bergs were sighted north of Bull-Dog to 60 miles east of Cape Chidley.

On entering Hudson Strait a few bergs were seen, but we were in fog and the actual number of bergs was undetermined. The fog cleared as we neared Acadia Cove, at which time there were twelve bergs in sight.

On a track two miles south of Resolution to ten miles off Cape Hopes Advance many bergs were sighted. On August 17 while at anchor off Cape Hopes Advance, many bergs were sighted drifting by, one berg was grounded at Cape Hopes Advance landing and there were many growlers seen in the vicinity of Diana Bay.

Proceeding from Cape Hopes Advance to Wakeham Bay on August 22 many bergs and growlers were seen. One large berg was grounded Latitude 61.33° N., Longitude 70.42° W. Our soundings, at the time, were 90 fathoms.

On September 2 while proceeding from Cape Hopes Advance to Big Island many growlers and bergs of various sizes were sighted. On the following day no ice was sighted between Charles Island and Eric Cove. On September 8, while proceeding from Nottingham to Eric Cove, we passed through scattered ice and growlers while 12 miles south of Nottingham Island. This ice, presumably from Foxe Channel, extended three miles to the south and as far east and west as one could see.

On October 5 growlers were sighted drifting out of Diana Bay and as we proceeded towards Resolution Island six bergs were seen before darkness. Upon arrival at Resolution Island twelve bergs of fair size were within sight and a large one was grounded in the western entrance to Acadia Cove. Leaving Acadia Cove we passed four bergs on our way to Cape Chidley. Four other bergs were sighted on October 7 but after passing Cape Mugford no more ice was seen as we made our way south.

RADIO

All radio stations were in operation this season and rendered valuable assistance to navigation. Their service to this vessel consisted of handling messages and giving bearings. The bearings given us were very accurate.

HYDROGRAPHIC SURVEY

No survey was carried out this season.

LIGHTS AND AIDS TO NAVIGATION

Lights put in operation were Wales Island on August 28, Charles Island East End, September 4, and Nottingham Island, September 6. Resolution Island and Cape Hopes Advance lights were in operation upon our arrival at the Strait. Two attempts were made to light Charles Island West End and one attempt to light Big Island but we were unable to on account of weather and sea conditions. The other lights were cancelled by Ottawa.

C. A. CARON,
Master.

CHURCHILL

TRAFFIC

Shipping	1944	1945
Arrivals:—		
Number of vessels.....	12	9
Net registered tonnage.....	4,109	2,146
Departures:—		
Number of vessels.....	12	9
Net registered tonnage.....	4,109	2,146
Total Arrivals and Departures:—		
Number of vessels.....	24	18
Net registered tonnage.....	8,218	4,292
Water Borne Cargo Tonnage (Ton=2,000 lbs. weight or measure)		
Inward.....	65	30
Outward.....	1,383	1,077
Total.....	1,448	1,107

R.M.S. *NASCOPIE*, CAPTAIN T. F. SMELLIE, O.B.E., MASTER,
VOYAGE TO HUDSON BAY AND STRAIT, 1945

We sailed from Montreal at 10 a.m. on July 7 and passed Father Point at 2 p.m. on July 8, after a fine clear run down the St. Lawrence River.

No bergs were sighted in the Straits of Belle Isle, the weather was fine and clear, which enabled us to reach Cartwright, Lab., at 6 p.m. on July 11.

Work was carried on throughout the night and cargo scows and ship's motor-boat taken on board, sailing at 6 a.m. July 12.

Several bergs were sighted on the run down the Labrador but no floe ice was sighted until we arrived off Resolution Island at 10 p.m. July 14.

Loose open field ice was worked through from Resolution to Lake Harbour, where we arrived at 7 p.m. on July 15. Discharging was commenced as soon as the tide permitted and all supplies were landed, fur returns loaded, and we sailed from Lake Harbour at 6 a.m. July 17.

Heavy close-packed field ice was met off Big Island where the ship was locked in the ice for 3 hours; upon the turn of the tide the ice loosened up and we were able to proceed through loose ice. Passing between Charles Island and the mainland, we encountered fog, which caused a slight delay, and we arrived at Sugluk at 11.00 a.m. on July 18. Supplies were landed and returns loaded in good time which enabled us to leave at 4 a.m. on July 19.

Between Sugluk and Cape Dorset heavy field ice was passed through off Salisbury Island and Cape Dorset Post was reached at 5.30 p.m. July 19.

Fine weather favoured us at Cape Dorset, supplies were landed and returns loaded in good time, which enabled us to leave at 6 a.m. on July 21. Between Cape Dorset and Wolstenholme heavy open field ice was passed through, the weather was fine and clear, which enabled us to reach Wolstenholme at 6 p.m. July 21.

Good weather prevailed at Wolstenholme; supplies being landed and returns loaded, we left for Cape Smith at 4 p.m. July 22.

After leaving Wolstenholme, fog was encountered to Cape Smith where we arrived at 11.30 a.m. on July 23. Whilst here a strong northerly wind was blowing and the sea was smooth. All supplies were landed, returns loaded and we sailed at 8 p.m. July 24.

Between Cape Smith and Port Harrison patches of fog were passed through but no ice was sighted. Harrison was reached at 6 a.m. July 26. Fine weather prevailed during our stay at Harrison; our stay was longer than usual because no overtime was worked. According to the Post Manager the natives of Harrison will only work from 8 a.m. to 6 p.m. with one hour off for lunch. This is our first experience in not working overtime. We consider it uncalled for, when they only have to work 3 hours for 3 nights once in 365 days. However, discharging was completed and returns loaded and we left at noon on July 30.

Between Port Harrison and Churchill dense fog was encountered, and time was lost in heavy close packed ice and foggy weather. From the time we left the ice to the time of arrival at Churchill was only 4 hours, which means the ice on August 1 was only 40 miles 60 degrees from Churchill. We arrived at Churchill at 3 p.m. on August 2.

Discharging returns and loading supplies was commenced immediately upon arrival. Bunkering was commenced on August 6 and completed August 10, having loaded 823 long tons of bunker coal. Heavy rains with a S.E. gale suspended loading operations on the 11th and 12th August, which delayed our sailing until 8 p.m. August 13.

Between Churchill and Chesterfield a few ice floes were sighted but none passed through. We anchored at Chesterfield on August 15 at noon. During our stay at Chesterfield fine weather prevailed and all supplies were landed at noon on August 18, and we sailed at 3 p.m. the same day.

Between Chesterfield and Southampton Island we had a fine run and anchored off the post at 6 p.m. Sunday August 19. Supplies were landed at the air base and Company's post. Returns were loaded also from both these places and we sailed at 6 a.m. on August 21.

Between Southampton Island and Wolstenholme the weather was fine and the Fox Channel ice was sighted to the north of our track. Wolstenholme (2nd call) was reached at 5.30 a.m. on August 22. Supplies were landed, also mail for southern Baffin Island posts and we sailed at 9 p.m. the same day.

Between Wolstenholme and Pond's Inlet, fine weather prevailed. Numerous ice bergs were passed, ice fields between Cape Mercy and River Clyde were passed through and fog delayed our progress owing to numerous bergs. However, Pond's Inlet was reached at 7 a.m. on August 30. Weather fine, supplies landed and returns loaded. All completed, enabled us to sail at noon on August 31.

The weather being fine and clear I decided to pass through Navy Board Inlet where we found numerous bergs but little floe ice and entered Lancaster Sound at 10 p.m. the same day. From Navy Board Inlet to Prince Regent Inlet heavy scattered field ice was passed through and upon entering Prince Regent Inlet we found the floes of shore ice unbroken. The wind being easterly a clear passage close to shore enabled us to make good progress and later to pass over to Fury Point on the Western shore.

From Fury Point the floes were heavy and some covered an area of 5 square miles, which we continued circling and finally reached the vicinity of Fort Ross. We anchored 3 miles from Fort Ross owing to darkness. In the morning we found Fort Ross Bay clear of ice and anchored off the post at 7 a.m. on September 3. Supplies were landed and returns loaded as quickly as possible.

Leaving Fort Ross at 7 a.m. on September 4, the wind had changed to strong N.W. This wind blew the huge ice floes off the western shore which enabled us to navigate close inshore with virtually a clear passage for 150 miles.

Upon reaching Lancaster Sound and off Cape Leopold, the ship was stopped—a service held and a wreath dropped overboard—all to commemorate the 100th Anniversary of the loss of Sir John Franklin.

After this ceremony we proceeded on our voyage to Arctic Bay. Upon arriving off Admiralty Inlet, we found the entrance blocked with old and new ice. This was forced and we entered Admiralty Inlet where we found a few scattered ice fields. Arctic Bay post was reached at 10.30 a.m. on September 6 and the landing of supplies was immediately commenced. Fine weather continued during our stay.

We left Arctic Bay at 5 a.m. on September 8 and anchored off the Police Barracks at Dundas Harbour at 6 p.m. the same day.

The landing of supplies was immediately commenced and all were landed by 6 p.m. on September 9. Sailing from Dundas at 8 p.m. on September 9, we crossed Lancaster Sound during the night and entered Navy Board Inlet at 3 a.m. on September 10. Although when passing through here going north there was very little field ice, on our southern trip the Inlet was packed in places practically from shore to shore.

After leaving Navy Board Inlet we found several bergs in Pond's Inlet, but no field ice. We anchored off the post at Pond's Inlet at 2.45 p.m. on September 10.

All work being accomplished, we left Pond's Inlet at 6 a.m. on September 11 and arrived at Clyde River at 8 a.m. on September 12. Hundreds of bergs were sighted between Pond's and Clyde. Supplies now landed and returns on board, we left Clyde at 10.30 a.m. on September 13 for Pangnirtung.

No field ice was sighted until we passed Cape Mercy at the entrance to Cumberland Gulf where the ice floes were numerous and heavy until we reached a position 40 miles from Pangnirtung. We arrived at Pangnirtung at 6 p.m. September 15.

During our stay at Pangnirtung, the weather was fine which enabled both the ship's crew and natives to make good progress in handling the supplies and returns. Everything landed and returns loaded, we left Pangnirtung at 6 a.m. on September 18.

Between Pangnirtung and Clyde we had a strong N.W. gale with a heavy fall of snow, also fog when approaching the island outside of Cartwright, which was reached at 5 p.m. on September 21.

During the night of September 21 the crew were preparing for hauling out the cargo scows (2) and ship's motorboat at early morning high tide. All boats on shore were hauled out by 9 a.m. and we sailed at 10.30 a.m. for Montreal.

Between Cartwright and Montreal strong winds and fog were encountered. Father Point was not seen owing to fog and the pilot was taken on board by signals. The passage up the St. Lawrence was without incident and we arrived and berthed in Montreal at 9.30 a.m. on September 26.

On the whole, the weather throughout the voyage was favourable, ice conditions were heavy, but with favourable winds good progress was made.

T. F. SMELLIE,
Master.

METEOROLOGICAL REPORT OF C.G.S. N. B. McLEAN

Date	Noon Position	Barometer			Temperature °F.		Wind True				Hour of Fog	Remarks		Vsby.		
		8 a.m.	4 p.m.	12 p.m.	Air		8 a.m.		4 p.m.			12 p.m.			Vsby.	p.m.
					Max.	Min.	Dir.	F.	Dir.	F.		Dir.	F.			
July, 1945																
19	Off Goose Cape	30.20	30.06	30.00	71	65	SW	1	SSE	3	3	0	Fine—Clear	7	Fine and clear	
20	49-33N 66-40W	29.93	29.76	29.74	65	54	NW	1	SSW	2	2	3	Fine—fog—haze	4	Fine—haze	
21	50-02N 63-45W	29.81	29.83	29.88	64	52	NNW	4	N	2	3	0	O'cast and clear	7	Fine and clear	
22	50-52N 57-59W	29.98	29.96	29.92	57	49	ESE	4	SE	2	3	3	O'cast and Haze	4	Cloudy, haze	
23	Cape Norman	29.92	29.87	29.87	69	49	SW	1	WSW	5	2	0	Cloudy and clear	6	Cloudy and clear	
24	Cape Norman	29.90	29.86	29.80	66	54	WSW	3	ESE	3	3	0	Cloudy, fog at distance	5	Cloudy, fog at distance	
25	Cape Bauld	29.73	29.73	29.74	63	57	S	4	W	5	3	4	Cloudy and fog	2	Cloudy, fog at distance	
26	Noddy Point, Nfld	29.74	29.74	29.66	61	50	Calm	0	N	5	1	4	Cloudy, fog at distance	5	Cloudy, fog at distance	
27	SW Belle Isle	29.57	29.52	29.63	62	50	W	1	WSW	5	6	10	O'cast and fog	2	O'cast and clear	
28	SW Belle Isle	29.75	29.71	29.80	64	51	WNW	3	WSW	6	3	0	Cloudy and clear	7	O'cast and haze	
29	Off Quirpon	29.85	29.86	29.94	62	54	S	3	WSW	6	1	0	O'cast and haze	4	O'cast and shower	
30	SW Belle Isle	29.84	29.98	30.05	57	50	SW	3	NE	5	0	11	O'cast and thick fog	0	Cloudy and clear	
31	SW Belle Isle	30.08	29.99	29.94	59	48	W	1	W	5	2	0	Fine and clear	8	O'cast, clear and rain	
Aug.																
1	NE Belle Isle	29.90	30.04	30.06	52	47	NNW	5	ESE	2	3	12	O'cast, fog and rain	4	Cloudy and thick fog	
2	Lark Island	29.97	29.87	29.86	61	50	WSW	5	SW	6	7	0	O'cast and clear	6	Fine and clear	
3	Off Lark Isl.	29.87	29.85	29.81	66	54	SW	6	ENE	3	2	3	Cloudy and haze	4	Fine and haze	
4	Off Quirpon, Nfld	29.80	29.75	29.74	58	56	S	5	S	5	2	0	Cloudy and haze	4	O'cast, rain and fog	
5		29.75	29.70	29.69	61	50	Calm	0	NE	3	7	24	O'cast, fog, light rain	2	O'cast, fog and rain	
6	SW Belle Isle	29.73	29.74	29.80	50	44	N	5	N	5	0	0	O'cast and rain	5	O'cast, light rain	
7	52-53-20N 55-25 W	29.80	29.77	29.85	58	46	W	2	N	3	4	6	Cloudy, foggy, then clear	4	Cloudy, with showers	
8	56-02N 57-40W	29.82	29.52	29.52	52	41	SE	3	SE	3	5	2	Cloudy and clear	8	O'cast and Haze	
9	58-41N 59-34W	29.64	29.51	29.52	41	38	NW	5	SE	3	5	0	O'cast, poor visibility	5	Cloudy and clear	
10	61-58N 64-04W	29.66	29.67	29.69	35	33	W	6	W	6	1	4	O'cast and clear	6	O'cast, fog and clear	
11	Acadiacove, Resolution	29.80	29.82	29.82	43	35	WNW	1	W	2	2	0	Cloudy and clear	7	Cloudy and clear	
12	"	29.85	29.86	29.81	41	34	W	2	WNW	3	2	0	Cloudy and haze	4	Fine and haze	
13	"	29.76	29.73	29.74	45	38	E	4	E	5	4	4	Cloudy and clear	6	Coast rain and fog	
14	"	29.73	29.66	29.61	39	37	NE	2	E	3	6	24	O'cast, rain and fog	2	Thick fog	
15	"	29.59	29.52	29.41	38	36	E	6	NE	6	7	24	O'cast, fog and rain	0	O'cast, fog and rain	
16	"	29.28	29.28	29.36	40	37	NE	7	NE	6	2	20	O'cast, fog and rain	1	O'cast, fog and rain	
17	"	29.47	29.56	29.70	41	35	NE	4	NE	3	2	0	O'cast, light rain	8	O'cast and clear	
18	Diannabay Capehopes	29.80	29.82	29.84	54	33	W	3	SE	2	4	0	Cloudy and clear	8	Cloudy and clear	
19	"	29.83	29.77	29.76	45	39	W	1	NE	1	2	0	O'cast and clear	7	Cloudy and clear	
20	"	29.68	29.64	29.48	45	38	NW	3	N	3	5	2	Cloudy and clear	5	Cloudy and clear	
21	"	29.48	29.53	29.60	37	35	ENE	5	ENE	5	2	2	O'cast and clear	6	O'cast and rain	
22	61-23N 70-10W	29.63	29.68	29.68	49	38	NW	4	NW	3	5	0	Cloudy and clear	7	Cloudy and clear	
23	Wakeham Bay	29.70	29.72	29.71	50	45	WNW	4	WSW	3	3	0	Cloudy and clear	7	Cloudy and clear	
24	"	29.71	29.73	29.75	46	36	WNW	3	SSW	3	0	4	Cloudy and clear	7	Cloudy, clear and fog	
25	"	29.81	29.83	29.80	45	34	Calm	0	E	2	1	6	Fog, cloudy and clear	7	Cloudy and clear	
26	"	29.73	29.48	29.26	52	37	Calm	0	SSE	5	3	0	Cloudy and clear	8	Cloudy and clear	
27	"	29.23	29.18	29.26	48	42	W	1	SW	5	2	12	Cloudy and haze	5	Cloudy and clear	
28	"	29.28	29.12	28.82	49	40	SE	1	SE	2	3	0	O'cast, light rain	6	O'cast, light rain and fog	
29	"	28.79	28.73	29.03	46	42	W	3	NW	3	6	0	O'cast and clear	7	O'cast clear and rain	
30	"	29.32	29.74	29.63	51	42	W	7	W	6	4	0	O'cast and clear	7	O'cast and clear	
31	61-37N 70-39W	29.77	29.79	29.74	44	42	W	1	SW	3	2	0	O'cast and clear	8	O'cast and clear	

RESOLUTION ISLAND METEOROLOGICAL REPORT, 1945

Date	Mean Barometer mb.	Temperature		Wind				Hours of Fog	Precipitation	
		Max.	Min.	8.00 a.m.		8.00 p.m.			a.m.	p.m.
				Dir.	Vel.	Dir.	Vel.			
1945 July		°F.	°F.					Inches	Inches	
1	1011.4	39.8	30.9	W	14	W	4			
2	1002.2	41.1	34.0	E	28	E	26			
3	1005.8	35.3	32.5	E	16	E	18	19		
4	1009.6	39.4	32.5	E	14	SE	6	14½		
5	1015.4	46.8	33.1	NNW	4	SE	4			
6	1013.4	42.0	35.3	E	18	E	30	3		
7	1008.3	36.4	30.1	E	24	E	14	24	25 16	
8	1008.2	37.0	34.0	NE	24	NE	22	16½	16	
9	1011.9	40.2	32.0	NE	16	E	10	13½		
10	1006.8	37.7	31.0	E	26	E	40	24	13	
11	990.8	39.0	27.0	E	34	NE	60	24	25 28	
12	988.2	32.6	30.1	S	12	W	6	24	.06 Trace	
13	1001.0	37.3	30.9	W	8	W	14	14	.08	
14	1010.8	38.5	31.4	W	12	W	18			
15	1013.7	41.2	33.0	NW	14	WSW	18		Trace	
16	1014.0	47.8	34.9	WNW	22	SW	8		.02	
17	1012.6	43.3	36.0	W	2	NW	24		Trace	
18	1010.7	49.2	32.7	NW	4	SE	10	4	.12	
19	1010.6	43.4	32.6	NW	20	W	12	18	.08	
20	1004.4	39.4	34.1	E	20	E	12	20¼	.01	
21	1010.4	43.0	31.4	W	6	W	12	10		
22	999.4	40.4	34.0	SE	18	SW	22	7½	.07 .01	
23	1000.6	39.1	34.1	S	18	S	16	5	.01	
24	1002.6	41.0	31.3	W	10	NE	20	21¾	.11	
25	1008.6	42.0	34.8	NE	2	W	2	5¼		
26	1011.2	39.7	31.7	Calm	0	E	12	13		
27	1010.2	38.6	31.6	E	16	NE	20	17½		
28	992.8	37.7	31.8	NNE	22	N	30	18¾	.14 Trace	
29	999.7	39.0	34.1	NE	16	NW	8	13½	.01 Trace	
30	1009.4	40.5	32.8	WNW	14	NW	14	8		
31	1014.8	45.8	33.0	NW	6	WNW	20			
August										
1	1014.0	45.4	32.3	W	10	W	12			
2	1005.8	48.6	33.8	E	12	E	32		.02	
3	998.2	41.4	38.0	E	32	NE	18	14¾	46 .27	
4	1007.2	46.0	36.8	ENE	2	W	8	2	Trace	
5	1015.0	46.8	32.1	NW	6	ENE	14	7		
6	1012.7	37.9	34.0	ENE	22	NE	22	12	.12 Trace	
7	1011.8	39.0	33.6	Calm	0	W	4	6		
8	1006.8	40.2	33.0	Calm	0	W	8	4	.02 Trace	
9	1001.8	35.7	31.7	W	10	N	8	13½	.09 .14	
10	1006.1	36.0	31.2	W	12	W	10	13	.03	
11	1011.2	38.1	30.9	W	6	W	14	10		
12	1012.6	41.0	32.2	WNW	14	WNW	14			
13	1008.6	44.0	31.0	E	18	E	18	1		
14	1006.8	39.0	26.0	Calm	0	E	22	24	.08 Trace	
15	1001.0	38.0	32.5	E	30	ENE	38	24	.03	
16	992.2	40.5	32.8	NE	40	NE	28	24	.06 .04	
17	1000.8	41.0	32.0	NE	30	NNE	8	15½	.05	
18	1011.6	43.5	34.0	W	2	W	4			
19	1012.0	41.6	34.0	NE	18	S	4			
20	1004.6	41.8	36.5	NE	14	ENE	16	18	.10 Trace	
21	999.6	38.0	34.0	NE	24	NE	20	24	Trace	
22	1004.4	39.0	31.0	Calm	0	W	10	11½		
23	1007.7	39.0	34.0	SW	16	W	2			
24	1007.6	39.0	35.0	W	4	W	4	1		
25	1005.3	40.0	32.0	NNW	8	Calm	0	2		
26	1010.9	40.0	30.0	NW	10	S	15	10½		
27	996.0	40.0	36.0	S	30	SW	12	10	.24	
28	991.9	46.0	34.0	S	10	E	20	3		
29	980.7	39.5	36.5	SW	16	SSW	22	24	.34 .03	
30	988.0	38.0	34.0	SW	32	WNW	22	19	16	
31	1008.1	38.0	34.5	W	32	W	16			

RESOLUTION ISLAND METEOROLOGICAL REPORT, 1945

Date	Present Weather		Visibility		Ice Conditions
	a.m.	p.m.	a.m.	p.m.	
1945					
July					
1	Cloudy.....	Partly cloudy..	20	30	Open water with scattered ice along shore.
2	Overcast.....	Overcast.....	20	20	Open water with scattered ice along shore. Six bergs.
3	Overcast.....	Low fog.....	20	1	
4	Fog.....	Partly cloudy...	$\frac{1}{4}$	20	Scattered ice inshore. Open water beyond. Two bergs.
5	Partly cloudy...	Cloudless.....	30	30	
6	Cloudless.....	Cloudy.....	30	20	Scattered ice. Two bergs.
7	Moderate rain..	Fog.....	9	1	
8	Fog.....	Low Fog.....	1	4	
9	Distant fog....	Distant fog....	9	9	
10	Fog.....	Rain and fog...	$\frac{1}{4}$	$\frac{1}{2}$	
11	Light rain.....	Rain and fog...	$\frac{1}{2}$	$\frac{1}{2}$	
12	Fog.....	Fog.....	$\frac{1}{4}$	$\frac{1}{8}$	
13	Ligh rain.....	Cloudy.....	$\frac{1}{4}$	20	All winter ice gone from coves and inlets. Two bergs.
14	Cloudless.....	Partly cloudy...	20	20	
15	Cloudy.....	Light rain.....	30	20	
16	Overcast.....	Partly cloudy...	20	20	
17	Partly cloudy...	Moderate rain..	20	20	Several growlers.
18	Overcast.....	Light rain.....	20	4	
19	Overcast.....	Overcast.....	20	20	
20	Overcast.....	Fog.....	9	$\frac{1}{2}$	
21	Low fog.....	Overcast.....	$\frac{1}{8}$	9	One berg. Several small growlers.
22	Overcast.....	Drizzle and fog.	20	1	
23	Overcast.....	Rain and fog...	9	1	
24	Fog.....	Distant fog....	$\frac{1}{8}$	20	
25	Partly cloudy...	Cloudy.....	20	20	
26	Cloudy.....	Fog.....	20	$\frac{1}{2}$	Three bergs.
27	Light fog.....	Overcast.....	4	20	
28	Moderate snow.	Drizzle and fog.	2	2	
29	Fog.....	Overcast.....	$\frac{1}{4}$	9	
30	Fog.....	Overcast.....	$\frac{1}{4}$	20	
31	Partly cloudy...	Partly cloudy...	20	20	
Aug.					
1	Cloudless.....	Overcast.....	20	20	Three bergs.
2	Overcast.....	Moderate rain..	20	2	
3	Fog.....	Moderate rain..	$\frac{1}{8}$	4	
4	Overcast.....	Light fog.....	20	4	
5	Partly cloudy...	Cloudy.....	4	9	
6	Fog.....	Overcast.....	2	4	
7	Overcast.....	Light fog.....	20	4	Three bergs.
8	Overcast.....	Light rain.....	30	9	
9	Overcast.....	Snow and fog...	20	$\frac{1}{2}$	
10	Fog.....	Overcast.....	$\frac{1}{2}$	20	
11	Light fog.....	Cloudy.....	9	9	
12	Overcast.....	Cloudless.....	9	30	
13	Cloudy.....	Overcast.....	20	9	Three growlers.
14	Fog.....	Fog.....	$\frac{1}{4}$	$\frac{1}{4}$	
15	Fog.....	Overcast.....	$\frac{1}{4}$	4	
16	Light rain.....	Drizzle and fog.	4	$\frac{1}{2}$	
17	Fog.....	Fog.....	$\frac{1}{2}$	9	
18	Overcast.....	Cloudy.....	20	20	
19	Overcast.....	Overcast.....	20	30	
20	Light rain.....	Overcast.....	9	9	
21	Fog.....	Fog.....	$\frac{1}{2}$	1	
22	Fog.....	Cloudy.....	$\frac{1}{2}$	30	Two bergs.
23	Cloudy.....	Cloudy.....	20	20	
24	Cloudy.....	Overcast.....	20	20	
25	Cloudless.....	Partly cloudy...	20	20	
26	Fog.....	Cloudy.....	$\frac{1}{2}$	20	
27	Rain and fog...	Fog.....	$\frac{1}{4}$	$\frac{1}{8}$	
28	Fog.....	Overcast.....	$\frac{1}{4}$	9	
29	Overcast.....	Rain and fog...	1	1	
30	Fog.....	Light fog.....	$\frac{1}{2}$	9	
31	Partly cloudy...	Overcast.....	20	9	One growler.

RESOLUTION ISLAND METEOROLOGICAL REPORT, 1945—Cont.

Date	Mean Barometer mb.	Temperature		Wind				Hours of Fog	Precipitation	
		Max.	Min.	8.00 a.m.		8.00 p.m.			a.m.	p.m.
				Dir.	Vel.	Dir.	Vel.			
1945		°F.	°F.					Inches	Inches	
September										
1		42	34	W	21	W	2			
2	993.7	39	37	E	21	W	10			
3	97.99	37	32	NE	21	W	21	.15		
4	1003.2	34	30	E	27	W	21			
5	1010.4	34	34	W	21	W	10			
6	1014.1	42	30	NW	15	E	2			
7	1016.4	37	32	Calm	0	Calm	0			
8	1021.2	33	29	Calm	0	NE	5			
9	1010.2		36	NW	27	E	5			
10	998.0	43	38	NE	27	W	2		16	
11	1001.6	37	32	W	2	W	10	.08		
12	1014.4	37	31	Calm	0	E	10			
13	1012.2	36	32	E	15	E	15			
14	1010.4	34	32	E	10	E	2			
15	1007.3	38	31	NE	21	E	21	Trace	.04	
16	1010.7		27	SE	27	W	15	.06	.17	
17		34				SE	21			
18		34	30	NW	27	NW	10			
19	1009.6	29		NW	15	W	15			
20	1005.5	33	29	NW	15	W	15			
21	1001.3	33	29	W	10	NW	15	Trace		
22	1010.6	36	27	NE	27	NW	10			
23	1015.2	35	30	NW	10	W	5			
24	1005.0	33		W	10	SE	35		.03	
25	992.2	35	30	W	5	SW	15	.05		
26	1004.8	34	32	SW	15	NE	10	.07		
27	1000.4	34	31	NW	15	W	15			
28		34	31	SE	21	SW	21	Trace		
29	991.4	34	27	NW		NW	10	Trace		
30	1013.7	34	30	NW	35	W	21			
31										
October										
1	1000.8	33	28	NE	27	SW	5	.04	.01	
2	991.0	33	29	W	15	Calm	0	Trace	Trace	
3	986.9	33	31	NE	15	W	27	.05		
4	1005.1	31	30	W	35	SW	15			
5		30	26	Calm	0	SW	5			
6	1017.6	32	26	Calm	0	SW	15			
7	1012.0	35	30	SE	27	E	15			
8		43	34	W	21	E	10		.05	
9			35	E	21			.11		
10	998.0	35	33	E	2	SE	15	.19	.09	
11	998.3	38	32	SW	5	SW	21	.02		
12	1008.0	32	30	SW	10	W	10	.02		
13	1012.2	32	30	W	15	NW	21	Trace	Trace	
14	1013.1	25	25	N	5	NW	15			
15	1002.7	30	26	N	15	NW	21		Trace	
16	1007.2	32	25			E	15			
17	1007.2	32	17	NE	5					
18	1005.6	31	27			Calm	0		Trace	
19	1005.2	29	27	NW	10	NW	5		Trace	
20	998.6	30	22	SE	10	NE	35			
21	991.4	32	29	SE	15	W	42	.10	.05	
22	1000.7	32	18	S	5	NW	5	.12	Trace	
23	1006.2	29	25	W	27	S	10	.10		
24	1012.4	36	22	NW	42	NW	35			
25	1016.8	30	23	NW	27	W	15			
26	1012.8	31	27	W	10	W	21		Trace	
27	1011.4	30	22	S	10	E	10		Trace	
28	1009.8	30	26	N	15	N	10	.10		
29	1010.4	24	21	N	10	NW	10	.10		
30	1008.0	24	10	N	5	NW	10			
31	1008.0	27	23	Calm	0	E	27			

RESOLUTION ISLAND METEOROLOGICAL REPORT, 1945—Cont.

Date	Present Weather		Visibility		Ice Conditions		
	a.m.	p.m.	a.m.	p.m.	Min.	Max.	Ice
1945							
Sept.							
1	Overcast.....	Overcast.....	1	9			
2	Overcast.....	Cloudy.....	9	9			
3	Fog.....	Fog.....	$\frac{1}{2}$	$\frac{1}{16}$			
4	Overcast.....	Cloudy.....	9	9			
5	Fog.....	Cloudy.....	$\frac{1}{2}$	9			
6	Fog.....	Cloudy.....	$\frac{1}{2}$	9			
7	Cloudless.....	Distant fog.....	30	4			
8	Overcast.....	Fog.....	20	$\frac{1}{16}$			
9	Cloudy.....	Overcast.....	9	9			
10	Overcast.....	Rain and fog...	20			
11	Overcast.....	Partly cloudy...	9	20			
12	Partly cloudy...	Partly cloudy..	20	0			Three growlers.
13	Partly cloudy..	Fog.....	20				
14	Fog.....	Distant fog.....	$\frac{1}{2}$	$\frac{1}{4}$			
15	Light snow.....	Lightning.....	$\frac{1}{2}$	1			
16	Drizzle.....	Overcast.....	4	9			
17	Cloudy.....	20			
18	Thunderstorm..	Overcast.....	$\frac{1}{2}$	4			
19	Cloudy.....	Partly cloudy..	20	20			
20	Overcast.....	Moderate snow..	9	9			
21	Snow and fog...	Cloudy.....	$\frac{1}{4}$	9			
22	Partly cloudy...	Partly cloudy..	30	20			
23	Partly cloudy..	Overcast.....	30	9			
24	Overcast.....	Snow.....	30	$\frac{1}{4}$			
25	Fog.....	Cloudy.....	$\frac{1}{2}$	9			
26	Fog.....	Heavy rain.....	$\frac{1}{4}$	4			Two bergs.
27	Overcast.....	Cloudy.....	20	9			
28	Snow and fog...	Partly cloudy...	$\frac{1}{4}$	9			
29	Overcast.....	Cloudy.....	20	9			
30	Cloudy.....	Overcast.....	9	9			
Oct.							
1	Light snow.....	Fog.....	$\frac{1}{2}$	$\frac{1}{2}$			
2	Overcast.....	Snow and fog...	9	1			
3	Moderate snow..	Overcast.....	$\frac{1}{4}$	4			
4	Distant fog.....	Overcast.....	9	9			
5	Overcast.....	Overcast.....	9			
6	Cloudy.....	Overcast.....	9	9			
7	Fog.....	Distant fog.....	$\frac{1}{2}$	$\frac{1}{16}$			
8	Overcast.....	Rain and fog...	20	$\frac{1}{16}$			
9	Rain and fog...	4			
10	Fog.....	Rain and fog...	2	$\frac{1}{4}$			
11	Fog.....	Overcast.....	$\frac{1}{2}$	4			
12	Overcast.....	Overcast.....	9	9			
13	Light snow.....	Overcast.....	1	9			
14	Overcast.....	Overcast.....	9	4			
15	Cloudy.....	Partly cloudy...	9	20			
16	Overcast.....	Cloudy.....	9	20			
17	Cloudy.....	Cloudy.....	20	20			One berg.
18	Distant fog.....	Light snow.....	9	4			
19	Overcast.....	Overcast.....	9	20			
20	Partly cloudy..	Overcast.....	9	9			
21	Snow and fog...	Snow and fog...	$\frac{1}{4}$	$\frac{1}{4}$			
22	Overcast.....	Moderate snow..	9	1			
23	Overcast.....	Overcast.....	9	4			
24	Overcast.....	Overcast.....	9	9			
25	Cloudy.....	Overcast.....	9	4			
26	Overcast.....	Overcast.....	9	9			
27	Overcast.....	Overcast.....	9	4			
28	Partly cloudy..	Partly cloudy..	9	9			
29	Partly cloudy..	Overcast.....	9	9			
30	Overcast.....	Partly cloudy..	9	20			One berg.
31	Overcast.....	Overcast.....	4	9			

RESOLUTION ISLAND METEOROLOGICAL REPORT, 1945—*Conc.*

Date	Mean Barometer mb.	Temperature		Wind				Hours of Fog	Precipitation	
		Max.	Min.	8.00 a.m.		8.00 p.m.			a.m.	p.m.
				Dir.	Vel.	Dir.	Vel.			
1945		°F.	°F.					Inches	Inches	
November										
1.....	1004.6	29	26	ESE	35	N	15			
2.....	1015.7	26	23	N	10	E	10	.20		
3.....	1002.8	30	24	SE	35	SE	21		Trace	
4.....			26	E	15					
5.....	1004.8	30	29	SW	27	SW	21			
6.....	1016.6			W	15	SW	10		Trace	
7.....	1020.8	28	22	NW	10	NW	21			
8.....	1027.8	22	15	NE	2	E	10	.05		
9.....	1007.5	31	18	SE	35	SE	27	.05	.10	
10.....	992.5	35		SW	15	SW	35	.45	.05	
11.....	1004.2	29		W	35	W	42	.05	Trace	
12.....	1010.3		29	W	35	W	35			
13.....	1013.2	21	15	N	10	E	21	Trace		
14.....	1008.6	29	26	E	35	E	27		Trace	
15.....	1001.8	28	25	E	27	NE	27		.05	
16.....	985.6	28	11	NE	35	NW	27	.15	.05	
17.....	994.1	22		NW	27	NE	27		.05	
18.....	1013.4	21	15	NW	35	NW	27			
19.....	1023.7	12	8	N	10	N	10			
20.....		19	7	NE	21	NW	21	.07		
21.....	1028.8	19	15	NE	15	NW	10		.05	
22.....	1030.4	21	15	N	10	N		.06		
23.....	1011.4	22	11	NE		E	15		.10	
24.....	991.4	30		E	50	NE	42	.13	.05	
25.....	982.4	31	24	SE	15	ENE	42		.05	
26.....	993.6	26	21	N	15	N	5	.10		
27.....	998.0	24	15	WNW	15	NW	15	.10	.10	
28.....		17				N	10			
29.....	1026.2	15		NW	15	NW	10			
30.....	1024.8	23		NW	27	W	5		.03	

RESOLUTION ISLAND METEOROLOGICAL REPORT 1945—*Conc.*

Date	Present Weather		Visibility		Ice Conditions	
	a.m.	p.m.	a.m.	p.m.		
1945						
Nov.						
1	Snow.....	Overcast.....	1/4	9		
2	Overcast.....	Overcast.....	9	9		
3	Overcast.....	Overcast.....	9	9		
4	Snow.....		1/2			
5	Overcast.....	Overcast.....	9	4		
6	Overcast.....	Light snow.....	9	1/4		
7	Overcast.....	Cloudy.....	9	9		
8	Overcast.....	Overcast.....	9	9		
9	Light snow.....	Sleet.....	1	1/4		
10	Cloudy.....	Light snow.....	9	1/8		
11	Overcast.....	Light snow.....	9	1/4		
12	Overcast.....	Cloudy.....	9	9		
13	Overcast.....	Overcast.....	9	9	No ice in sight.	
14	Overcast.....	Overcast.....	9	2		
15	Overcast.....	Distorm.....	9	1/4		
16	Overcast.....	Overcast.....	4	9		
17	Light snow.....	Dust storm.....	1/4	1/4		
18	Overcast.....	Partly cloudy..	9	9		
19	Partly cloudy..	Partly cloudy..	9	9		
20	Overcast.....	Overcast.....	9	9		
21	Overcast.....	Light snow.....	9	1/2	Large floe drift ice.	
22	Overcast.....	Partly cloudy..	9	9		
23	Rain and snow..	Overcast.....	2	4		
24	Rain and snow..	Drifting snow...	2	1/4		
25	Partly cloudy...	Drifting snow...	9	1/4		
26	Squalls.....	Partly cloudy..	2	9		
27	Overcast.....	9	9		
28	Overcast.....	9		
29	Partly cloudy..	Partly cloudy..	20	9		
30	Partly cloudy..	Light snow.....	9	1/4	Loose drift ice. One berg.	

CAPE HOPES ADVANCE METEOROLOGICAL REPORT, 1945

Date	Mean Barometer mb.	Temperature		Wind				Hours of Fog	Precipitation	
		Max.	Min.	8.00 a.m.		8.00 p.m.			a.m.	p.m.
				Dir.	Vel.	Dir.	Vel.			
1945		°F.	°F.						Inches	Inches
July										
1.....	1009.3	58	36	Calm	0	S	12			
2.....	1001.6	41	32	NW	9	N	5			
3.....	1002.7	39	32	E	6	Calm	0		.15	.15
4.....	1007.5	38	32	Calm	0	ESE	3			
5.....	1012.8	50	33	E	5	SE	18			
6.....	1004.8	43	34	SE	30	E	44			
7.....	1003.4	49	32	S	6	E	27		.11	.29
8.....	1007.2	38	31	E	14	ESE	22		.04	
9.....	1011.1	35	29	E	3	E	6			
10.....	1002.9	34	30	ENE	28	E	33			
11.....	994.8	36	32	E	24	NNW	30		.14	.39
12.....	988.8	38	33	NW	7	W	20		.04	.20
13.....	1001.8	52	32	WNW	36					.02
14.....	1012.3	57	43	WNW	18	WNW	4			
15.....	1014.0	62	50	W	12	WSW	24			
16.....	1011.4	74	51	SW	27	SW	24			
17.....	1012.8	58	38	W	9	W	12			
18.....	1006.9	64	37	ESE	18	W	28		.10	.37
19.....	1011.4	46	36	W	28	SSE	18			
20.....	1004.4	47	35	N	6	W	13		.08	
21.....	1009.6	53	37	SW	18	SE	10			
22.....	991.8	51	40	SSE	24	W	30		.42	Trace
23.....	996.9	47	39	SW	22	WNW	12		.03	.02
24.....	1002.8	43	34	W	16	WNW	11			.01
25.....	1008.2	47	37	WNW	24	W	3			
26.....	1007.8	59	41	SE	9	SE	13			
27.....	1007.8	38	33	SSE	24	E	29		.02	
28.....	998.5	40	33	NW	30	NW	30		.01	.05
29.....	1002.6	44	36	NW	26	WNW	18			Trace
30.....	1011.8	53	38	W	25	NW	26			
31.....	1014.2	53	38	NW	30	WNW	25			
August										
1.....	1013.8	63	43	W	14	SE	15			
2.....	999.6	45	39	ESE	26	E	36			.69
3.....	1007.2	40	33	SE	12	E	13			.62
4.....	1008.1	47	36	WNW	15	WNW	18		.04	
5.....	1012.6	57	40	WSW	12	SSW	14			.04
6.....	1012.7	38	35	NW	24	NW	12			.06
7.....	1010.8	49	35	W	7	S	15			.14
8.....	1006.8	38	35	NW	24	NW	24		.08	.03
9.....	1001.9	39	33	W	8	NW	54		.07	.02
10.....	1008.3	38	34	NW	30	WNW	42			
11.....	1013.4	44	36	NW	42	WNW	34			
12.....	1012.8	52	38	WNW	27	SSE	15			
13.....	1004.8	46	39	SE	24	Calm	0			
14.....	1001.0	42	37	SE	25	ESE	26		.24	.13
15.....	996.8	37	34	E	36	E	35		.39	.07
16.....	1007.7	39	33	NNE	18	NE	24		.03	.01
17.....	1004.4	41	36	NW	12	W	12		.03	.03
18.....	1010.8	45	38	W	15	SSE	9			
19.....	1010.4	45	37	NW	6	Calm	0			
20.....	1004.0	39	36	NW	14	E	22			
21.....	1000.0	36	33	ENE	33	E	14		.04	
22.....	1005.2	51	34	W	24	W	8			
23.....	1007.4	53	38	NW	23	W	3			
24.....	1007.4	43	41	W	24	Calm	0			
25.....	1011.4	47	33	NW	10	NW	5			
26.....	1005.1	55	35	SW	11	SW	25			
27.....	990.8	54	42	S	15	W	16			
28.....	986.0	51	39	S	15	SSE	26			
29.....	976.2	47	40	WSW	14	W	10			.24
30.....	994.7	46	32	W	60	W	24			
31.....	1008.4	49	41	NW	30	WSW	25			.05

CAPE HOPES ADVANCE METEOROLOGICAL REPORT, 1945

Date	Present Weather		Visibility		Ice Conditions
	a.m.	p.m.	a.m.	p.m.	
1945					
July					
1	Overcast.....	Overcast.....	20	20	Loose packed ice to horizon.
2	Fog.....	Overcast.....	0	20	" " "
3	Fog.....	Fog.....	4	0	" " "
4	Fog.....	Fog.....	0	0	" " "
5	Fog.....	Partly cloudy..	0	20	" " "
6	Cloudy.....	Cloudy.....	20	20	" " "
7	Distant fog.....	Fog.....	4	0	Open water with scattered ice pans.
8	Fog.....	Distant Fog....	0	1	" " "
9	Fog.....	Distant fog.....	0	4	" " "
10	Fog.....	Light fog.....	0	2	" " "
11	Rain and fog....	Moderate rain..	0	$\frac{1}{2}$	" " "
12	Drizzle and fog.	Fog.....	2	0	Scattered drift. Ice to horizon.
13	Overcast.....	Cloudless.....	20	20	
14	Cloudless.....	Cloudless.....	20	20	
15	Overcast.....	Overcast.....	20	20	
16	Cloudless.....	Cloudy.....	20	20	Scattered ice to horizon. One berg.
17	Cloudy.....	Partly cloudy...	20	9	Scattered pans ice.
18	Rain showers...	Distant fog.....	20	2	
19	Distant fog.....	Overcast.....	2	9	No ice in sight.
20	Light rain.....	Overcast.....	4	20	"
21	Overcast.....	Overcast.....	20	20	Large field ice near horizon. Two bergs.
22	Overcast.....	Cloudy.....	4	20	
23	Overcast.....	Drizzle and fog.	20	$\frac{1}{4}$	No ice in sight.
24	Distant fog.....	Light fog.....	4	9	
25	Cloudy.....	Overcast.....	20	20	Two bergs.
26	Cloudy.....	Overcast.....	20	20	Three bergs.
27	Cloudy.....	Fog.....	20	0	
28	Distant fog.....	Moderate rain..	4	2	
29	Overcast.....	Light fog.....	20	20	
30	Partly cloudy...	Partly cloudy...	20	20	
31	Distant fog.....	Partly cloudy...	4	20	
Aug.					
1	Partly cloudy..	Overcast.....	30	20	Four bergs.
2	Overcast.....	Rain and fog....	20	$\frac{1}{8}$	
3	Fog.....	Fog.....	0	0	
4	Drizzle and fog.	Overcast.....	0	20	
5	Overcast.....	Light rain.....	20	4	Two bergs.
6	Fog.....	Distant fog.....	0	1	
7	Cloudy.....	Light rain.....	20	4	
8	Rain and fog....	Cloudy.....	0	20	
9	Light rain.....	Squalls.....	9	4	
10	Distant rain....	Haze.....	9	9	
11	Light fog.....	Light fog.....	9	9	One berg.
12	Cloudless.....	Cloudy.....	20	20	Ten bergs and five growlers.
13	Overcast.....	Light fog.....	20	1	
14	Rain and snow..	Drizzle and fog.	9	0	
15	Rain and fog....	Fog.....	0	1	
16	Light fog.....	Overcast.....	9	4	Three bergs, nine growlers.
17	Rain showers...	Cloudy.....	20	20	Four bergs, six growlers.
18	Cloudy.....	Cloudy.....	20	20	Three bergs.
19	Overcast.....	Overcast.....	20	20	
20	Cloudy.....	Light fog.....	20	9	
21	Overcast.....	Fog.....	20	$\frac{1}{4}$	
22	Partly cloudy...	Cloudy.....	20	20	One berg and numerous growlers.
23	Partly cloudy...	Overcast.....	20	20	
24	Partly cloudy...	20	
25	Fog.....	Distant fog.....	0	4	
26	Partly cloudy..	Overcast.....	20	4	Three bergs.
27	Light fog.....	Overcast.....	20	20	One berg, five growlers.
28	Overcast.....	Fog.....	20	1	One berg, one growler.
29	Partly cloudy..	Rain showers...	20	20	One berg.
30	Light drizzle...	Cloudy.....	9	20	
31	Cloudy.....	Moderate rain..	20	4	Eight growlers.

CAPE HOPES ADVANCE METEOROLOGICAL REPORT, 1945—Cont.

Date	Mean Barometer mb.	Temperature		Wind				Hours of Fog	Precipitation	
		Max.	Min.	8.00 a.m.		8.00 a.m.			a.m.	p.m.
				Dir.	Vel.	Dir.	Vel.			
1945		°F.	°F.					Inches	Inches	
September										
1	994.4	54	40	W	21	S	27			
2	981.8	41	41	S	10	NW	10		.13	.15
3			33	W	10				.10	
4	994.2	37	33	W	35	W	15			
5	1013.2	48	33	WNW	21	N	2		.02	
6	1013.3	36	34	E	21	E	2			
7	1017.4	35	31	NW	27	NW	15			.11
8	1017.8	49	38	SW	10	SW	15			
9	1006.8	51	39	SW	5	SW	15			
10	1001.4	36	34	N	10	NW	50		.10	Trace
11	1012.2	35	34	WNW	50	NW	42			
12			31	NW	21					
13		43	27	E	10					
14	1008.4	35	32	NW	5	NW	15			
15			32	E	27					
16										
17			50	SE	27				Trace	
18										
19				NW	42				Trace	
20				NW	21				Trace	
21	1004.5	33	29	NW	27	NW	27			
22			32	NW	42					
23	1018.8	33	31	W	27	NW	15			
24				NW	21					
25		41				S	21			
26		38				NW	27			
27	1001.1	36		NW	50	SE	10			
28		37	33	SE	27				.08	
29	994.4	35	30	NE	50	NW	35			
30		32	31			SW	10			
October										
1	998.0	39		SW	10	SW	21		Trace	
2	1001.2	31	31	NW	10	NW	27		Trace	
3										
4	1003.3	30	16	W	35	E	10			
5	1010.4	33	28	SW	10	E	10			
6	1014.3	31	26	SE	2	E	27			
7	1006.6	37	27	SE	42	SE	27			
8		46					15			
9	1003.9	39	35	SE	10	NW	35		.12	
10	997.9	35	33	NE	2	SE	35			
11		38				W	21			
12	1007.3	31	31	W	15	Calm	0			
13			28	NW	42				.08	
14		29	27		10				.08	
15			26	W	10					
16	1007.5	34	18	E	10	S	10			
17	1006.5	30	28	SW	5	N	5			Trace
18	1004.0	29	29	NE	35	NW	35		.06	Trace
19	1007.8	34	25			NW	10		.20	
20	992.8	37	25	SE	21	SE	50			.21
21	991.4	31	28	SE	10				.21	
22	1001.8	30	29	SE	5	N	42		Trace	Trace
23	1007.8	26	22	NW	35	NW	27		Trace	Trace
24	1014.6	29	25	W	5	W	21			
25	1016.8	31	21	SW	15	W	21			
26	1013.0	30	29	NW	15	N	27			Trace
27	1009.1	23	22	NW	42	NW	35			
28	1014.0	28	-8	NE	15	N	35			
29	1012.8	28	23	NW	27	NE	10			
30		24				N	15			
31	1004.0	24	14	WSW		E	27			Trace

CAPE HOPES ADVANCE METEOROLOGICAL REPORT, 1945—Cont.

Date	Present Weather		Visibility		Ice Conditions
	a.m.	p.m.	a.m.	p.m.	
1945					
Sept.					
1	Overcast.....	Overcast.....	20	20	No ice in sight.
2	Partly cloudy...	Overcast.....	20	20	
3	Snow.....	4	
4	Overcast.....	Light snow.....	20	4	
5	Light rain.....	Overcast.....	4	20	
6	Overcast.....	Cloudy.....	20	9	Two bergs, six growlers.
7	Overcast.....	Cloudy.....	20	20	No ice in sight.
8	Partly cloudy...	Overcast.....	20	20	Two bergs.
9	Cloudy.....	Overcast.....	30	20	
10	Rain and fog....	Lightning.....	$\frac{1}{4}$	4	
11	Fog.....	Fog.....	$\frac{1}{2}$	No ice in sight.
12	Overcast.....	20	Two bergs, three growlers.
13	Fog.....	0	
14	Fog.....	Fog.....	$\frac{1}{2}$	20	No ice in sight.
15	Snow and fog....	0	One berg, four growlers.
16	
17	Overcast.....	9	No ice in sight.
18	
19	Light snow.....	20	
20	Snow and fog....	$\frac{1}{2}$	Two growlers.
21	Cloudy.....	Overcast.....	20	20	No ice in sight.
22	Cloudy.....	20	
23	Overcast.....	Overcast.....	4	20	
24	Overcast.....	20	Five growlers.
25	Cloudy.....	9	Five growlers.
26	Overcast.....	20	One berg, seven growlers.
27	Overcast.....	Overcast.....	9	20	One berg, two growlers.
28	Light rain.....	2	
29	Overcast.....	Haze.....	9	0	Two bergs.
30	Overcast.....	20	
Oct.					
1	Low fog.....	Dust devils.....	1	0	
2	Overcast.....	Overcast.....	9	20	One berg in sight.
3	Heavy snow.....	0	0	One berg and one growler in sight.
4	Overcast.....	Cloudy.....	20	20	
5	Cloudy.....	Overcast.....	20	20	Two bergs and one growler.
6	Overcast.....	Overcast.....	9	9	One berg.
7	Low fog.....	Rain and fog....	1	$\frac{1}{2}$	
8	Overcast.....	20	Two bergs.
9	Rain and fog....	Fog.....	0	0	
10	Fog.....	Distant fog....	0	9	
11	Overcast.....	20	One berg.
12	Cloudy.....	Overcast.....	20	20	
13	Light snow.....	4	
14	Overcast.....	9	
15	Cloudy.....	20	
16	Overcast.....	Cloudy.....	20	20	
17	Overcast.....	Overcast.....	9	20	One berg, four growlers.
18	Light snow.....	Light snow.....	20	4	
19	Light snow.....	Cloudy.....	20	20	
20	Overcast.....	Moderate snow.	9	0	No ice in sight.
21	Low fog.....	Fog.....	1	0	
22	Snow and fog....	Sleet.....	0	2	
23	Moderate snow.	Overcast.....	0	9	
24	Overcast.....	Cloudy.....	9	20	
25	Partly cloudy..	Cloudy.....	20	20	
26	Overcast.....	Light snow.....	20	0	
27	Partly cloudy..	Overcast.....	9	20	One berg.
28	Overcast.....	Cloudy.....	2	9	
29	Overcast.....	Overcast.....	20	20	
30	Overcast.....	9	
31	Partly cloudy..	Drifting snow..	20	2	Three bergs.

CAPE HOPES ADVANCE METEOROLOGICAL REPORT, 1945—*Conc.*

Date	Mean Baro- meter mb.	Temperature		Wind				Hours of Fog	Precipitation	
		Max.	Min.	8.00 a.m.		8.00 a.m.			a.m.	p.m.
				Dir.	Vel.	Dir.	Vel.			
1945		°F.	°F.					Inches	Inches	
November										
1.....		28				SE	15			
2.....	1011.6	26	25	S	5	SE	42			
3.....			23	ESE	21			Trace		
4.....				SE	15					
5.....	1001.8	26	24	SW	35	SW	21			
6.....	1014.8			SW	21	W	10			
7.....	1022.6	25	24	NW	35	NW	15	Trace		
8.....		19	14	NW	15					
9.....	997.9	30	16	SE	42	S		Trace	.08	
10.....	986.8	27	27	S	27	W	27	.42		
11.....	1006.0	24	22	NW	35	W	42			
12.....	1012.4		18	NW	35	NW	42			
13.....	1011.2	21	14	W	15	E	35			
14.....		27	20	E	50	E	50			
15.....		28	23	SSE	10	E	42	Trace		
16.....	1002.6	24	24	E	42	NW	35		Trace	
17.....	993.6	20	19	W	5	E	42		2.25	
18.....			17	NW	21			Trace		
19.....	1013.3	13	12	W	10	N	15	.50		
20.....	1028.3	18	-1	N	15	SW	10		.25	
21.....			17	N	15			.56		
22.....	1030.6	17	12	NW	10	W	5			
23.....	1009.6	21	14	E	42	S	27	Trace		
24.....	991.3	21	21	E	50	NE	50	Trace	Trace	
25.....	981.6	25	19	ENE	35	ENE	50		Trace	
26.....		24	23	E	15	N	35			
27.....	1010.2		9	NW	50	NW	50			
28.....	1031.4	19		NW	27	W	10	.15		
29.....	1028.8	18	17	N	42	NW	27			
30.....	1025.8	19	15	NW	15	SW	15			

CAPE HOPES ADVANCE METEOROLOGICAL REPORT, 1945—*Conc.*

Date	Present Weather		Visibility		Ice Conditions
	a.m.	p.m.	a.m.	p.m.	
1945					
Nov.					
1		Overcast.....		9	
2	Overcast.....	Overcast.....	20	9	
3	Light snow.....		2		
4	Overcast.....		20		Three bergs, two growlers.
5	Overcast.....	Cloudy.....	9	20	
6	Partly cloudy..	Cloudy.....	4	20	
7	Drifting snow..	Overcast.....	4	9	Three bergs, one growler.
8	Overcast.....		20		
9	Drifting snow..	Rain and fog...	0	0	
10	Overcast.....	Overcast.....	20	9	One berg.
11	Overcast.....	Drifting snow..	9	4	
12	Overcast.....	Cloudy.....	9	9	
13	Overcast.....	Overcast.....	20	9	No ice in sight.
14	Overcast.....	Haze.....	9	4	
15	Light snow.....	Drifting snow..	0	0	
16	Drifting snow..	Drifting snow..	0	9	
17	Overcast.....	Drifting snow..	9	0	
18	Light snow.....		4		
19	Low fog.....	Overcast.....	9	20	
20	Overcast.....	Partly cloudy..	20	9	
21	Light fog.....		2		Drifting loose, packed ice.
22	Cloudy.....	Partly cloudy..	20	20	
23	Drifting snow..	Drifting snow..	4	4	
24	Drifting snow..	Drifting snow..	4	0	
25	Overcast.....	Drifting snow..	9	0	One berg, two growlers.
26	Low fog.....	Overcast.....	4	9	
27	Overcast.....	Heavy snow....	9	1	Loose packed ice to horizon.
28	Overcast.....	Partly cloudy..	20	20	
29	Overcast.....	Overcast.....	9	20	Close packed ice to horizon. One berg, one growler.
30	Partly cloudy..	Overcast.....	20	20	

NOTTINGHAM ISLAND METEOROLOGICAL REPORT, 1945

Date	Mean Barometer mb.	Temperature		Wind				Hours of Fog	Precipitation	
		Max.	Min.	8.00 a.m.		8.00 p.m.			a.m.	p.m.
				Dir.	Vel.	Dir.	Vel.			
1945		°F.	°F.						Inches	Inches
July										
1.....	1012.8	66	45	NE	2	W	5			
2.....	1004.5	52	35	E	2	NE	2			
3.....	1003.5	51	30	S	2	N	2			
4.....	1006.0			S	2	W	5			
5.....	1009.0	51	37	E	42	E	15			
6.....		48	39	E	15	NW	35		Trace	
7.....	995.4			NE	27	E	27		.05	Trace
8.....	1001.6	44	32	NE	27	NE	27			
9.....	1004.4	50	32	NE	15	NE	21			
10.....	1008.2	53	38	NE	15	E	10			
11.....	1006.0	56	40	N	15	NE	10			
12.....	998.6	61	39	N	10	N	21			
13.....	1004.0	54	34	W	10	NW	10			
14.....	1011.6	47	36	SE	5	N	10		.03	
15.....	1007.0	42	36	W	21	S	21		.06	
16.....	1008.2	43	38	S	10	S	35		.05	
17.....	1012.4	51	34	SW	15	W	10		.04	
18.....	1012.0		37	NE	15	N	15			
19.....	1012.1	57	35	NE	5	SSW	5			
20.....	1008.3	56	35	ENE	42	S	10			
21.....	1004.8	43	33	S	15	NNE	15			.04
22.....	1007.4	47	38	W	2	NE	5			
23.....	1000.8	54	38	N	15	NE	15			Trace
24.....	1005.4	56	38	N	5	SE	5			
25.....	1009.0	50	40	Calm	0	NW	10			
26.....	1008.7	45	35	NW	5	N	2			
27.....	1010.0	51	36	Calm	0	SE	10			
28.....	1010.0	58		NW	5	NW	15			
29.....	1009.6	60	37	NW	10	W	10			
30.....	1015.4	52	34	W	5	W	10			
31.....										
August										
1.....	1011.5	57	41	N	5	E	21			
2.....	1004.3	62	44	E	10	N	15			
3.....	1004.3	64	51	N	15	NE	15			
4.....	1010.4	51	39	W	5	N	15			
5.....	1014.4	48	36	N	21	N	15			
6.....	1014.8	45	30	SW	5	S	5		.06	
7.....	1011.8	41	36	NW	5	NW	15		.03	
8.....	1007.4	42	30	W	5	W	21		Trace	.13
9.....	1015.0	41	29	NNW	15	W	15			
10.....			32	NNW	10					
11.....	1019.8	45	32	W	10	W	10			
12.....	1009.6	54	30	NW	2	E	15			
13.....	1002.8	46	39	NE	21	NE	10		.04	
14.....	1001.3	45	37	NE	15	N	27		.01	
15.....	1000.4	43	36	E	5	SW			Trace	
16.....	1004.6	58	37	NE	5	NE	15			
17.....	1008.0	56	34	Calm	0	W	10			
18.....	1010.7	45	35	SW	2	S	10			
19.....	1011.6	50	34	Calm	0	E	5			
20.....	1005.8	51	36	E	5	NE	15			
21.....	1005.2		40	N	15	N	21			
22.....	1004.0	47	35	Calm	0	W	35			
23.....	1006.2	42	38	W	2	W	10		Trace	
24.....	1008.2	46	29	Calm	0	N	2			
25.....	1009.6	43	36	Calm	0	W	2			
26.....	1009.0	42	34	E	15	S	10		.43	.10
27.....	993.4	40	34	S	5	W	15		.80	
28.....	985.0	41	29	Calm	0	NE	21		Trace	.15
29.....	981.9	40	36	N	35	NW	10		.12	.05
30.....	998.5	43	33	NW	15	W	10			Trace
31.....	996.2	40	33	S	15	W	5			

NOTTINGHAM ISLAND METEOROLOGICAL REPORT, 1945

Date	Present Weather		Visibility		Ice Conditions
	a.m.	p.m.	a.m.	p.m.	
1945					
July					
1	Cloudless.....	Cloudless.....	20	20	Solid ice inshore, scattered ice beyond.
2	Cloudless.....	Cloudy.....	20	
3	Cloudy.....	Cloudy.....	20	9	Shore ice starting to break up.
4	Cloudy.....	Cloudy.....	9	20	
5	Partly cloudy..	Cloudy.....	20	9	
6	Overcast.....	Overcast.....	9	9	
7	Drizzle and rain	Cloudless.....	2	20	
8	Overcast.....	Cloudy.....	9	9	
9	Overcast.....	Cloudy.....	9	20	
10	Cloudless.....	Cloudless.....	20	20	
11	Partly cloudy..	Cloudy.....	9	20	Few pieces scattered ice.
12	Partly cloudy..	Cloudless.....	9	20	
13	Cloudless.....	Cloudless.....	20	20	
14	Cloudy.....	Overcast.....	9	9	
15	Rain.....	Partly cloudy..	4	4	
16	Overcast.....	Distant fog.....	4	Close packed ice inshore.
17	Partly cloudy..	Distant fog.....	20	1	
18	Overcast.....	Partly cloudy..	20	
19	Partly cloudy..	Cloudy.....	20	20	
20	Overcast.....	Overcast.....	9	$\frac{1}{4}$	
21	Cloudy.....	Cloudy.....	9	
22	Light fog.....	Cloudy.....	20	0	
23	Overcast.....	Cloudless.....	9	1	No ice in sight.
24	Overcast.....	Cloudy.....	9	4	
25	Overcast.....	Cloudy.....	20	20	
26	Distant fog.....	Dust devils.....	4	
27	Overcast.....	Overcast.....	9	4	
28	Cloudy.....	Cloudy.....	9	9	
29	Overcast.....	Partly cloudy..	20	20	
30	Partly cloudy..	Partly cloudy..	20	20	
31	
Aug.					
1	Overcast.....	Overcast.....	20	9	
2	Cloudy.....	Cloudy.....	20	20	
3	Cloudy.....	Partly cloudy..	20	9	
4	Cloudy.....	Cloudy.....	9	9	
5	Overcast.....	Cloudless.....	9	20	
6	Overcast.....	Overcast.....	4	9	
7	Cloudy.....	Overcast.....	4	9	
8	Overcast.....	Overcast.....	9	9	
9	Cloudy.....	Overcast.....	20	9	
10	Partly cloudy..	20	
11	Partly cloudy..	Cloudless.....	20	20	
12	Fog.....	Cloudy.....	$\frac{1}{2}$	20	
13	Overcast.....	Overcast.....	9	
14	Overcast.....	Overcast.....	9	9	
15	Light rain.....	Overcast.....	9	9	
16	Overcast.....	Cloudy.....	9	20	
17	Overcast.....	Cloudy.....	9	20	
18	Overcast.....	Cloudy.....	9	9	
19	Partly cloudy..	Cloudless.....	9	9	
20	Partly cloudy..	Partly cloudy..	9	9	
21	Overcast.....	Overcast.....	9	20	
22	Partly cloudy..	Distant fog.....	20	$\frac{1}{2}$	
23	Drizzle and fog.	Distant fog.....	$\frac{1}{16}$	9	
24	Fog.....	Partly cloudy..	$\frac{1}{16}$	9	
25	Cloudy.....	Light fog.....	9	4	
26	Rain and fog....	Fog.....	1	$\frac{1}{4}$	
27	Moderate drizzle	Distant fog.....	9	9	
28	Fog.....	Light rain.....	1	4	
29	Light rain.....	Light rain.....	4	4	
30	Cloudy.....	Overcast.....	9	9	Scattered ice on horizon to west and south-west.
31	Overcast.....	Drizzle and fog.	9	1/16	

NOTTINGHAM ISLAND METEOROLOGICAL REPORT, 1945—Cont.

Date	Mean Barometer mb.	Temperature		Wind				Hours of Fog	Precipitation	
		Max.	Min.	8.00 a.m.		8.00 p.m.			a.m.	p.m.
				Dir.	Vel.	Dir.	Vel.			
1945		°F.	°F.					Inches	Inches	
September										
1	994.2	42	35	E	15	N	15	.07	.12	
2	984.5	42	32	NE	2	NW	27		Trace	
3			30	W	35			.01		
4	998.4	36	30	SW	21	W	15			
5	1013.8	38	30	WNW	15	SW	5			
6	1015.0	42	29	N	5	E	5			
7	1017.4	38	29	NW	2	S	5			
8	1010.9	48	44	S	10	SW	27		.04	
9	1006.8	40	34	S	10	S	2			
10	1008.2		32	W	21	N	10			
11	1019.0	38	31	NW	10	NW	10			
12	1003.9	33	31	Calm	0	N	21			
13	1006.6	37	28	NE	10	NE	10			
14	1010.4	40	29	NE	10	NE	15			
15			31	N	10			Trace		
16										
17				SW	15					
18										
19				N	10					
20				NW	21					
21	1012.1	31	27	NW	15					
22				NW	15					
23			26	NE	5					
24	995.4		27	N	21	NE	27	.04	.03	
25		40				E	5			
26										
27	1003.8	33		NW	27	E	10			
28		33	30	N	5			Trace		
29	1003.8	32	31	NW	27	NW	10	Trace		
30	1006.6	32	23	SW	15	SW	10		Trace	
October										
1	1001.8	29		N	10	NW	10			
2	1007.4	28	24	NW	15	NW	15	Trace		
3	1005.4	29	21	NW	10	NW	15			
4	1001.8	29	23	NW	15	E	10			
5	1011.2	26	24	SW	2	N	10			
6	1011.3	30	26	E	21	E	21			
7	996.8	39	29	E	21	NE	5	.03	.12	
8		36				N	10			
9	1005.8	37	31	SE	5	NW	10			
10	1003.9	35	29	SE	2	NE	10			
11	998.8	31		W	21	NE	10			
12	1008.2	30	27	NW	15	NW	15			
13	1021.2		23	NE	15	NW	10			
14		29	22	NE	2					
15			27	SE	27			.05		
16	1003.7	31	27	S	21	S	15			
17	1004.0	27	24	S	21	W	10	Trace	Trace	
18	1006.5	31	23	SE	10	NW	10			
19	1009.8	28	21	N	5	NW	10			
20	999.0	24	21	NE	27	NE	27			
21	1000.0	24	19	NE	21	S	21			
22	1009.0	22	20	NW	15	N	5			
23	1012.2	23	19	NW	10	NW	5			
24		33		W	10	N	5			
25	1016.8	29	21	NE	10	N	5			
26	1017.8	25	18	NW	15	N	10			
27	1021.8	28	24	N	10	N	10			
28	1023.0	25	17	NE	5	Calm	0			
29	1014.0	25	20	S	15	S	15			
30		25				S	5		.02	
31	1007.9	28	21	Calm	0	N	5			

NOTTINGHAM ISLAND METEOROLOGICAL REPORT, 1945—Cont.

Date	Present Weather		Visibility		Ice Conditions
	a.m.	p.m.	a.m.	p.m.	
1945					
Sept.					
1	Light rain.....	Drizzle and fog.	2	1/16	
2	Overcast.....	Drizzle and fog.	9	4	
3	Moderate snow.....	$\frac{1}{2}$	
4	Overcast.....	Partly cloudy..	9	4	
5	Overcast.....	Partly cloudy..	9	20	
6	Overcast.....	Cloudless.....	9	20	
7	Partly cloudy..	Overcast.....	20	9	
8	Low fog.....	Light rain.....	$\frac{1}{4}$	2	
9	Fog.....	Fog.....	1	1/16	
10	Overcast.....	Cloudy.....	20	1	
11	Partly cloudy..	Cloudy.....	20	20	Ice along shore.
12	Cloudy.....	Light fog.....	20	
13	Overcast.....	Cloudy.....	20	9	
14	Cloudy.....	Overcast.....	20	20	
15	Overcast.....	9	
16	
17	Overcast.....	20	
18	
19	Overcast.....	20	
20	Overcast.....	9	
21	Overcast.....	Overcast.....	20	9	No ice in sight.
22	Overcast.....	20	
23	Light snow.....	20	
24	Overcast.....	Drifting snow..	9	$\frac{1}{4}$	No ice in sight.
25	Partly cloudy..	9	
26	
27	Drifting snow..	Overcast.....	$\frac{1}{2}$	4	
28	Light snow.....	2	
29	Light snow.....	Overcast.....	$\frac{1}{2}$	20	
30	Partly cloudy..	Light snow.....	20	1	
Oct.					
1	Overcast.....	Overcast.....	20	20	
2	Snow showers..	Overcast.....	$\frac{1}{2}$	9	
3	Overcast.....	Cloudy.....	20	4	
4	Overcast.....	Overcast.....	20	9	
5	Overcast.....	Overcast.....	9	20	
6	Partly cloudy..	Overcast.....	20	4	No ice in sight.
7	Rain and snow..	Light rain.....	$\frac{1}{2}$	1	
8	Overcast.....	9	
9	Partly cloudy..	Overcast.....	20	4	
10	Partly cloudy..	Overcast.....	9	4	
11	Drifting snow..	Overcast.....	$\frac{1}{4}$	4	
12	Overcast.....	Overcast.....	2	4	
13	Overcast.....	Overcast.....	20	30	
14	Overcast.....	4	
15	Light snow.....	$\frac{1}{4}$	
16	Overcast.....	Overcast.....	4	9	
17	Light snow.....	Cloudy.....	4	20	
18	Partly cloudy..	Partly cloudy..	20	9	No ice in sight.
19	Overcast.....	Overcast.....	9	9	
20	Overcast.....	Overcast.....	20	9	
21	Heavy drizzle..	Overcast.....	0	9	
22	Overcast.....	Overcast.....	20	9	
23	Overcast.....	Overcast.....	4	9	
24	Overcast.....	Cloudy.....	4	
25	Cloudless.....	Partly cloudy..	20	20	
26	Overcast.....	Overcast.....	4	9	
27	Overcast.....	Overcast.....	9	4	
28	Overcast.....	Overcast.....	9	9	
29	Overcast.....	Overcast.....	4	9	
30	Overcast.....	20	
31	Overcast.....	Cloudy.....	4	9	

NOTTINGHAM ISLAND METEOROLOGICAL REPORT, 1945—*Conc.*

Date	Mean Barometer mb.	Temperature		Wind				Hours of Fog	Precipitation	
		Max.	Min.	8.00 a.m.		8.00 a.m.			a.m.	p.m.
				Dir.	Vel.	Dir.	Vel.			
1945		°F.	°F.					Inches	Inches	
November										
1			19	NE	5					
2	1006.8	28	23	S	27	SE	21			
3			26	E	35			.05		
4			25	E	15					
5	993.8	28	25	W	10	NW	21			
6	1014.8			W	10	N	15	.02		
7	1024.8	18	14			N	15	.20		
8	1026.8	16	12	E	15	E	15			
9	992.0	32	16	E	35	SE	27	.05	.05	
10	973.1	33	27	SE	35	W	35			
11	1004.8	27	24	W	27	W	21	.02		
12	1012.7	22	13	W	27	W	21	.02		
13	1013.4	13	9	WNW	10	N	15			
14	1002.6	16	9	N	21	N	21	Trace		
15	1002.0	25	10	ENE	35	N	21		Trace	
16	1010.4	24	10	NE	15	NW	5			
17	1005.2	12	7	N	21	N	21		Trace	
18										
19	1027.6	7	-8	N	2	NW	5			
20	1036.2	11	3	NW	5	N	5			
21			7	N	5					
22	1031.7	15	2	ENE	5	NE	15			
23	1014.7	20	8	E	15	S	15		.05	
24	1006.0	21	15	E	15	N	5	.05	Trace	
25	1008.6	16	5	N	10	N				
26	1004.4		-9	N	21	NW	21		Trace	
27	1024.2	3	-4	NW	27	SW	15	Trace		
28	1031.1	10	-3	NW	10	NW	10			
29	1025.8	1	-2	Calm	0	N	5			
30	1020.0	21	12	SW	21	NW	10			

NOTTINGHAM ISLAND METEOROLOGICAL REPORT, 1945—*Conc.*

Date	Present Weather		Visibility		Ice Conditions	
	a.m.	p.m.	a.m.	p.m.		
1945						
Nov.						
1	Partly cloudy...		4			
2	Overcast.....	Overcast.....	4	4		
3	Drifting snow...		$\frac{1}{4}$		No ice in sight.	
4	Overcast.....		4			
5	Partly cloudy...	Overcast.....	9	2		
6	Overcast.....	Overcast.....	4	4		
7	Drifting snow...	Overcast.....	2	20		
8	Overcast.....	Overcast.....	9	4		
9	Drifting snow...	Drifting snow...	$\frac{1}{16}$	$\frac{1}{16}$		
10	Overcast.....	Drifting snow...	1	0		
11	Drifting snow...	Overcast.....	$\frac{1}{2}$	$\frac{1}{2}$		
12	Drifting snow...	Overcast.....	$\frac{1}{2}$	9	No ice in sight.	
13	Overcast.....	Overcast.....	$\frac{1}{2}$	4	Cove frozen over.	
14	Light snow.....	Cloudy.....	2	$\frac{1}{2}$		
15	Overcast.....	Drifting snow...	4	2		
16	Cloudy.....	Partly cloudy..	1	9		
17	Overcast.....	Drifting snow...	9	2		
18						
19	Overcast.....	Overcast.....	$\frac{1}{2}$	4	Three inches cove ice. Scattered patches ice to horizon.	
20	Overcast.....	Overcast.....	9	$\frac{1}{2}$		
21	Overcast.....		4			
22	Partly cloudy...	Overcast.....	2	4		
23	Drifting snow...	Overcast.....	$\frac{1}{4}$	$\frac{1}{4}$		
24	Drifting snow...	Fog.....	$\frac{1}{4}$	9	Fields of drifting floe ice with open water.	
25	Partly cloudy...	Fog.....	$\frac{1}{2}$	9		
26	Overcast.....	Drifting snow...	4	0		
27	Overcast.....	Partly cloudy..	4	9		
28	Partly cloudy...	Cloudless.....	$\frac{1}{2}$	2		
29	Cloudless.....	Overcast.....	4	$\frac{1}{4}$		
30	Overcast.....	Overcast.....	4	4		

CHURCHILL METEOROLOGICAL REPORT, 1945

Date	Mean Barometer mb.	Temperature		Wind				Hours of Fog	Precipitation	
		Max.	Min.	8.00 a.m.		8.00 a.m.			a.m.	p.m.
				Dir.	Vel.	Dir.	Vel.			
1945		°F.	°F.					Inches	Inches	
July										
1	1018.8	61.0	35.0	N	2	E	12	Trace		
2	1007.6	60.2	45.0	SW	10	E	10			
3	1006.5	44.0	36.0	NE	14	NE	8			
4	1006.5	52.0	35.0	S	12	NE	8	.03		
5	1008.9	52.5	38.0	NW	11	NW	9			
6	1006.6	52.5	44.0	NW	14	NW	12			
7	1000.6	47.2	39.0	NW	20	NW	26		.11	
8	1002.4	38.2	35.0	NW	26	N	28	.06	.12	
9	1012.7	39.3	32.0	NE	23	N	11	Trace		
10	1013.8	54.0	31.5	NE	5	E	12			
11	1006.9	72.0	41.5	S	8	W	24			
12	1010.6	52.5	40.5	NW	12	NW	13	.28		
13	1014.4	65.0	43.0	NW	12	E	9			
14	1009.6	81.0	33.7	S	10	SW	20			
15	1001.6	81.0	62.0	S	20	SW	24			
16	1009.9	62.0	46.0	W	10	E	14			
17	1011.6	44.0	37.0	E	12	N	20	Trace	.69	
18	1018.2	49.0	37.0	N	6	E	12	.01		
19	1011.4	67.0	37.0	E	5	S	13			
20	1014.0	73.0	49.0	NW	10	SW	20			
21	1012.6	74.0	42.0	N	23	E	4	.04		
22	1009.9	69.5	54.0	W	15	E	14			
23	1004.3	61.8	39.0	E	16	E	18	.17	.03	
24	1013.2	54.0	36.0	N	11	E	10	.09		
25	1018.6	58.5	41.0	W	10	E	11			
26	1013.9	78.0	45.0	S	8	E	3			
27	1008.2	64.8	46.0	SW	8	SE	16			
28	1011.9	50.2	40.0	SE	12	SE	20			
29	1012.1	50.0	39.0	E	11	E	12			
30	1013.4	39.0	36.0	NE	14	E	14	.08		
31	1007.6	44.2	35.0	E	8	E	7			
August										
1	1005.6	45.7	36.2	W	14	NW	20		Trace	
2	1011.0	56.0	37.5	NW	26	E	5			
3	1015.8	63.2	47.0	NW	12	E	13		Trace	
4	1012.9	81.0	54.0	SW	8	NW	15			
5	1021.0	54.0	37.0	NE	21	E	17			
6	1014.8	76.7		S	18	W	10			
7	1019.0	52.8	43.0	N	12	E	10	Trace		
8	1007.4	86.0	43.0	S	16	W	16			
9	1012.3	43.0	32.0	E	26	E	29		.22	
10	1018.2	41.0	37.0	E	21	E	12	.05		
11	1010.8	38.4	35.0	E	28	NE	22	.22	.40	
12	1009.9	43.0	36.0	N	28	NNW	22		Trace	
13	1012.6	54.8	40.5	W	14	NNW	6			
14	1011.9	55.0	47.0	W	12	N	8	.05	Trace	
15	1010.6	60.0	45.0	NW	8	E	6			
16	1008.4	59.0	43.4	S	8	ESE	14			
17	1007.5	59.0	38.0	SE	8	S	8			
18	1007.8	64.5	47.4	NNW	4	E	11			
19	1002.6	50.0	40.0	E	16	ESE	23			
20	995.9	43.0	39.0	E	23	N	30	.01		
21	1016.4	60.5	41.0	NW	14	NNW	6		.04	
22	1016.2	64.0	48.5	W	24	W	9		.07	
23	1012.4	56.0	45.0	W	9	N	20			
24	1013.2	58.2	44.0	W	10	NE	2			
25	1004.0	73.0	49.0	SSW	16	SSW	20			
26	1001.3	54.0	49.5	W	12	N	32	.20		
27	988.8	56.3	44.0	ESE	12	W	17		.29	
28	998.7	57.0	38.0	N	26	N	8	Trace	Trace	
29	1010.4	59.0	42.8	W	13	SW	20			
30	1014.0	65.0	47.0	W	12	W	14			
31	1010.6	65.2	47.0	WSW	20	SW	23			

CHURCHILL METEOROLOGICAL REPORT, 1945

Date	Present Weather		Visibility		Ice Conditions
	a.m.	p.m.	a.m.	p.m.	
1945					
July					
1	Cloudless.....	Partly cloudy..	20	20	Few scattered pieces ice in bay.
2	Cloudless.....	Partly cloudy..	20	20	
3	Cloudy.....	Partly cloudy..	20	20	Scattered ice fields in bay.
4	Cloudy.....	Cloudy.....	9	9	
5	Cloudy.....	Partly cloudy..	20	20	
6	Overcast.....	Partly cloudy..	20	20	Ice on horizon. Some strings in Bay.
7	Cloudy.....	Moderate rain..	20	4	
8	Overcast.....	Overcast.....	9	20	
9	Drizzle and fog.	Cloudless.....	4	9	
10	Partly cloudy..	Cloudy.....	20	20	Ice fields to north and east in bay.
11	Partly cloudy..	Overcast.....	20	9	
12	Light rain.....	Overcast.....	9	9	Mostly open water. Ice on horizon to east.
13	Cloudless.....	Partly cloudy..	20	20	
14	Cloudless.....	Partly cloudy..	20	20	Scattered ice on horizon.
15	Cloudy.....	Thunder.....	20	20	" "
16	Partly cloudy..	Partly cloudy..	20	20	
17	Fog.....	Light rain.....	$\frac{1}{8}$	4	
18	Fog.....	Cloudy.....	$\frac{1}{2}$	20	
19	Partly cloudy..	Overcast.....	$\frac{1}{4}$	20	
20	Cloudless.....		20		
21	Partly cloudy..	Partly cloudy..	20	20	
22	Partly cloudy..	Cloudy.....	20	20	
23	Light rain.....	Overcast.....	9	4	
24	Fog.....	Partly cloudy..	$\frac{1}{4}$	20	
25	Cloudless.....	Partly cloudy..	20	20	
26	Cloudy.....	Cloudy.....	20	20	
27	Cloudy.....	Cloudy.....	20	4	
28	Partly cloudy..	Overcast.....	20	20	
29	Overcast.....	Overcast.....	20	20	
30	Overcast.....	Distant fog.....	9	4	
31	Fog.....	Light fog.....	$\frac{1}{2}$	4	
Aug.					
1	Overcast.....	Drizzle and fog.	9	$\frac{1}{4}$	
2	Overcast.....	Cloudy.....	20	20	
3	Partly cloudy..	Partly cloudy..	20	20	
4	Partly cloudy..	Cloudy.....	20	20	
5	Fog.....	Partly cloudy..	$\frac{1}{2}$	9	
6	Fog.....	Cloudy.....	2	20	
7	Overcast.....	Cloudy.....	9	20	
8	Cloudy.....	Partly cloudy..	20	20	
9	Haze.....	Overcast.....	2	9	
10	Overcast.....	Overcast.....	9	9	
11	Moderate rain..	Light fog.....	1	1	
12	Overcast.....	Overcast.....	9	9	
13	Overcast.....	Cloudy.....	20	20	
14	Light drizzle..	Partly cloudy..	4	20	
15	Partly cloudy..	Cloudless.....	20	20	
16	Partly cloudy..	Cloudy.....	20	20	
17	Overcast.....	Overcast.....	20	20	
18	Partly cloudy..	Overcast.....	20	20	
19	Fog.....	Overcast.....	$\frac{1}{2}$	9	
20	Drizzle.....	Drizzle and fog.	4	1	
21	Partly cloudy..	Overcast.....	20	20	
22	Cloudy.....	Cloudy.....	20	20	
23	Partly cloudy..	Cloudy.....	20	20	
24	Partly cloudy..	Partly cloudy..	20	20	
25	Overcast.....	Cloudy.....	20	20	
26	Overcast.....	Cloudy.....	20	20	
27	Partly cloudy..	Haze.....	9	4	
28	Overcast.....	Partly cloudy..	20	20	
29	Partly cloudy..	Cloudy.....	20	20	
30	Cloudy.....	Partly cloudy..	20	20	
31	Partly cloudy..	Cloudy.....	20	20	

CHURCHILL METEOROLOGICAL REPORT, 1945—Cont.

Date	Mean Barometer mb.	Temperature		Wind				Hours of Fog	Precipitation	
		Max.	Min.	8.00 a.m.		8.00 p.m.			a.m.	p.m.
				Dir.	Vel.	Dir.	Vel.			
1945		°F.	°F.					Inches	Inches	
September										
1	1010.0	50.0	44.3	NW	15	NW	30			
2	1014.6	45.0	40.0	W	20	E	30			
3	1009.5	43.0	37.0	E	10	E	15	.04		
4	1013.6	45.3	32.0	S	4	E	18			
5	1000.4	42.2	40.0	E	26	E	20	.27	.06	
6	1014.8	43.0	39.0	NE	18	ESE	10		.01	
7	1010.4	62.5	37.0	S	16	S	14	Trace		
8	1007.4	61.4	52.2	W	9	E	8			
9	1019.0	44.3	39.0	N	32	N	14			
10	1024.0	41.0	35.6	NW	11	E	12	Trace		
11	1015.9	52.0	31.2	SSE	12	S	15			
12	1012.9	45.8	41.0	SE	16	NW	14		Trace	
13	1014.2	39.5	36.0	W	4	N	20		Trace	
14	1025.8	35.0	30.4	NNW	32	NE	28	.05	.01	
15	1024.4	36.2	30.5	N	12	W	4	Trace	Trace	
16	1021.8	53.5	26.0	S	14	SSE	16			
17	1017.2	52.5	31.0	ESE	13	E	12		Trace	
18	1018.0	41.0	37.0	NE	24	NE	31	.36	.18	
19	1025.2	37.1	33.0	E	25	NE	16	Trace	Trace	
20	1020.2	37.8	33.0	NE	26	N	12			
21	1024.8	44.0	31.0	W	9	E	6			
22	1020.9	52.0	28.7	S	9	E	8			
23	996.4	45.5	35.0	E	34	SE	12		.25	
24	980.6	41.0	36.0	SE	12	NW	20	.08	.05	
25	1005.1	39.0	29.8	NW	34	NW	12	.02	.02	
26	1011.6	42.2	32.7	S	13	NW	21		.02	
27	1012.0	33.4	30.0	N	12	NW	34	Trace	Trace	
28	1023.7	28.6	24.0	NW	30	W	15	Trace		
29	1016.0	38.5	17.0	S	8	SSE	13	Trace		
30	1005.6	38.8	33.0	SW	5	N	10	Trace		
October										
1	1016.8	36.2	30.0	NW	35	NW	30		Trace	
2	1022.3	32.4	26.0	NW	29	SW	8	Trace	Trace	
3	998.9	44.0	26.0	SSW	26	SW	12			
4	998.7	39.0	34.0	N	16	NW	7	.03		
5	1004.2	37.8	31.0	SE	8	E	16	Trace	Trace	
6	1000.7	37.0	30.0	NE	21	NNE	24	.01	Trace	
7	1010.2	33.0	26.0	NNE	32	W	30		Trace	
8	1013.8	30.0	25.2	W	30	W	17			
9	1011.4	38.0	25.0	SE	4	E	17			
10	1007.0	36.2	28.0	E	11	SE	12		Trace	
11	1012.4	32.0	23.0	E	24	W	24	.08	.10	
12	1023.1	30.0	21.0	N	20	W	12			
13	1025.4	33.0	21.0	S	8	S	12			
14	1004.8	42.0	28.0	S	26	SW	12			
15	1005.5	37.0	33.0	WNW	25	SE	2			
16	998.4	47.0	31.0	SW	20	W	32			
17	1014.6	35.0	31.5	N	12	NE	6	Trace		
18	1011.2	31.5	28.5	E	20	E	18	.01	.02	
19	1009.2	31.5	29.0	NE	22	NE	34	.08	.04	
20	1006.6	29.3	22.0	N	34	NW	25	Trace	.02	
21	1015.6	27.2	21.0	NW	17	NW	10			
22	1018.6	27.0	24.0	W	6	N	7		.08	
23	1016.5	28.0	17.0	W	7	N	1			
24	1001.7	38.0	18.0	NE	12	W	14			
25	1004.4	34.3	29.0	E	18	E	26		Trace	
26	1013.0	34.0	32.0		14	SE	7	Trace	.01	
27	1018.0	33.0	30.8	S	10	SE	3	Trace	Trace	
28	1018.9	26.2	23.0	NW	9	NW	17	Trace	.01	
29	1018.2	26.0	17.0	NW	19	SW	10	Trace	Trace	
30	1000.0	29.0	15.4	E	24	NW	36	.02	Trace	
31	1007.5	27.0	14.0	NW	17	S	14	Trace		

CHURCHILL METEOROLOGICAL REPORT, 1945—Cont.

Date	Present Weather		Visibility		Ice Conditions
	a.m.	p.m.	a.m.	p.m.	
1945					
Sept.					
1	Partly cloudy..	Cloudy.....	20	20	
2	Cloudy.....	Overcast.....	9	20	
3	Overcast.....	Cloudy.....	20	20	
4	Fog.....	Overcast.....	$\frac{1}{2}$	20	
5	Light rain.....	Drizzle and fog.	9	4	
6	Overcast.....	Overcast.....	20	9	
7	Overcast.....	Overcast.....	20	20	
8	Overcast.....	Haze.....	9	9	
9	Cloudy.....	Cloudy.....	20	20	
10	Light drizzle...	Cloudy.....	9	20	
11	Cloudy.....	Overcast.....	20	20	
12	Overcast.....	Light drizzle...	20	9	
13	Overcast.....	Light rain.....	20	20	
14	Light rain.....	Overcast.....	4	20	
15	Overcast.....	Cloudy.....	20	9	
16	Cloudy.....	Cloudy.....	20	20	
17	Partly cloudy..	Light drizzle...	20	9	
18	Moderate rain..	Overcast.....	9	20	
19	Rain and snow..	Overcast.....	4	20	
20	Overcast.....	Overcast.....	9	20	
21	Cloudless.....	Partly cloudy..	20	20	
22	Cloudy.....	Partly cloudy..	20	20	
23	Rain.....	Overcast.....	4	20	
24	Overcast.....	Light rain.....	20	4	
25	Snow.....	Partly cloudy..	4	20	
26	Cloudy.....	Light snow.....	20	2	
27	Light snow.....	Snow and fog...	4	1	
28	Overcast.....	Overcast.....	9	20	
29	Partly cloudy..	Cloudy.....	20	30	
30	Rain and snow..	Overcast.....	4	20	
Oct.					
1	Overcast.....	Moderate snow.	9	2	
2	Light snow.....	Cloudy.....	4	20	Small pond freezing.
3	Overcast.....	Cloudy.....	9	20	
4	Overcast.....	Cloudy.....	4	9	
5	Overcast.....	Overcast.....	9	20	
6	Overcast.....	Rain and snow..	4	9	
7	Overcast.....	Partly cloudy..	9	20	
8	Overcast.....	Partly cloudy..	9	20	Small ponds freezing.
9	Overcast.....	Cloudy.....	20	20	
10	Partly cloudy..	Moderate snow.	20	2	
11	Light snow.....	Overcast.....	2	20	
12	Overcast.....	Cloudy.....	9	20	Lakes freezing. Some slob ice in river.
13	Overcast.....	Cloudy.....	20	20	
14	Cloudy.....	Overcast.....	9	20	
15	Overcast.....	Overcast.....	9	20	No ice.
16	Partly cloudy..	Light fog.....	20	4	
17	Light snow.....	Overcast.....	2	9	
18	Light snow.....	Light snow.....	1	1	
19	Light snow.....	Moderate snow.	$\frac{1}{2}$	$\frac{1}{2}$	
20	Overcast.....	Overcast.....	9	9	
21	Overcast.....	Overcast.....	9	9	Lakes freezing.
22	Overcast.....	Cloudy.....	9	20	
23	Cloudy.....	Overcast.....	20	20	Some slob ice on river and bay shores.
24	Overcast.....	Overcast.....	20	20	
25	Overcast.....	Light rain.....	9	9	
26	Rain and snow..	Overcast.....	9	9	
27	Overcast.....	Light snow.....	9	4	
28	Overcast.....	Overcast.....	9	20	
29	Partly cloudy..	Cloudy.....	20	20	Slob ice in river and bay.
30	Light snow.....	Overcast.....	4	9	
31	Light snow.....	Overcast.....	4	20	

CHURCHILL METEOROLOGICAL REPORT, 1945—*Conc.*

Date	Mean Barometer mb.	Temperature		Wind				Hours of Fog	Precipitation	
		Max.	Min.	8.00 a.m.		8.00 p.m.			a.m.	p.m.
				Dir.	Vel.	Dir.	Vel.			
1945		°F.	°F.					Inches	Inches	
November										
1		28	13	SSW	21	SW	10			
2	1003.2	26	21	S	15	N	27		.05	.10
3						N	27			
4										
5	1016.4	14		N	21	NW	21		.12	.03
6	1029.8			NW	10	N	5		.11	
7	1021.4	24	5	E	5	SE	15		.03	.01
8	1017.2	18	-3	NW	5	N	21		.02	
9	1001.4	15	5	NE	42	SW	42			
10	1012.5	4	-7	NW	27	NW	35			
11	1024.7	2	-7	SW	2	SW	5			
12	1018.2	18	-8	SW	2	NW	21		.02	
13	1014.4	25	7	SE	21	E	27		.08	.03
14	1019.1	3	1	SW	21	N	27		.03	
15	1023.3	-5	-13	NW	21	NW	15			
16	1024.2	-4	-14	NW	5	SE	5			
17	1022.7	14		NW	10	NW	15		Trace	
18	1024.4	6	0	NW	5	NW	10			Trace
19			4	S	10				.01	
20	1023.1	17	14	SE	15	SE	10			
21			11	NE	5					
22	1030.2	18	16		10	W	5			
23	1108.5	18	2	NW	21	SW	5		.05	Trace
24	1014.4	18	16	NNW	21	NNW	21		.02	
25	1017.4	-2	-14	NW	15	NNW	15			
26	1026.4	1	-7	NNW	10	NE				
27		-1	-18	NW	5	SE	10			
28	1024.6	11		SE	15	S	35			.01
29	1023.6	24	10	SW	5	SE	15			
30	1009.2	29	20	SW	15	NW	5		.04	Trace

CHURCHILL METEOROLOGICAL REPORT, 1945—*Conc.*

Date	Present Weather		Visibility		Ice Conditions
	a.m.	p.m.	a.m.	p.m.	
1945					
Nov.					
1	Overcast.....	Light snow.....	20	1	Slob ice in river and bay.
2	Light snow.....	Light snow.....	1	4	
3	Cloudy.....	4	River full slob ice. Shores mostly frozen.
4	
5	Light snow.....	Light snow.....	1	1	
6	Partly cloudy...	Overcast.....	20	4	River full slob ice. Open field slob ice in bay to horizon.
7	Light snow.....	Light snow.....	$\frac{1}{2}$	1	
8	Cloudless.....	Drifting snow...	20	4	
9	Drifting snow...	Drifting snow...	$\frac{1}{16}$	$\frac{1}{16}$	
10	Cloudless.....	Partly cloudy..	20	9	
11	Cloudless.....	Cloudless.....	20	20	
12	Cloudless.....	Moderate snow.	20	$\frac{1}{4}$	River mostly frozen. Scattered field ice in bay.
13	Light snow.....	Light snow.....	$\frac{1}{2}$	$\frac{1}{2}$	
14	Partly cloudy..	Drifting snow...	2	$\frac{1}{2}$	
15	Partly cloudy..	Cloudless.....	4	20	Slob in bay cleared by winds.
16	Partly cloudy..	Overcast.....	9	9	
17	Light snow.....	Cloudless.....	4	20	
18	Cloudy.....	Overcast.....	20	9	Bay full of slob and solid ice.
19	Cloudy.....	9	Close packed in bay extending two miles off shore.
20	Overcast.....	Partly cloudy..	20	20	
21	Overcast.....	20	
22	Overcast.....	Overcast.....	20	20	
23	Light snow.....	Light snow.....	$\frac{1}{2}$	2	
24	Light snow.....	Fog.....	$\frac{1}{2}$	$\frac{1}{2}$	
25	Partly cloudy..	Fog.....	9	1	River frozen. Ice fields in bay to horizon.
26	Cloudless.....	Overcast.....	9	9	" " "
27	Overcast.....	Cloudy.....	9	9	" " "
28	Cloudless.....	Light snow.....	9	4	" " "
29	Overcast.....	Overcast.....	9	9	" " "
30	Overcast.....	Light snow.....	9	9	" " "

CHESTERFIELD INLET METEOROLOGICAL REPORT, 1945

Date	Mean Barometer mb.	Temperature		Wind				Hours of Fog	Precipitation	
		Max.	Min.	8.00 a.m.		8.00 p.m.			a.m.	p.m.
				Dir.	Vel.	Dir.	Vel.			
1945		°F.	°F.						Inches	Inches
July										
1	1012.4	64	43	NNW	15	NNW	10			
2	1005.8	49	36	E	10	SSE	5			
3	1002.6	51	41	NW	5	SSE	5			.01
4	1001.2	46	39	W	15	S	5		.04	
5	1005.5	41	33	N	10	SSE	5			
6	1002.7	49	32	N	15	NE	15		Trace	Trace
7	998.3	39	36	NE	27	NNE	10		.15	.01
8	1005.8	44	35	NNE	15	E	10			
9	1013.0	54	34	E	5	SE	5			
10	1010.8	52	39	W	5	SSW	5			
11	1004.9	40	32	S	10	S	15			
12	1002.0	50	35	NNW	21	NNE	10		.08	.09
13	1008.3	62	40	NW	15	W	15			
14	1003.6	62	37	W	10	WSW	27		.01	.03
15	994.5	66	37	SSW	10	SW	15		.63	Trace
16	1001.8	56	49	W	27	NNW	27			
17	1014.0	50	43	NNW	5	S	5			
18	1015.2	63	37	Calm	0	SW	21			
19	1008.7	59	41	SW	21	SSW	21			
20	1007.2	59	42	W	10	NNW	21			
21	1002.8	58	44	NW	15	NNW	35			
22	1003.8	56	45	N	21	NE	5			
23	1008.6	48	42	SE	2	SE	5			
24	1010.6	57	42	NW	10	E	5			
25	1013.8	62	47	NW	10	N	15			
26	1011.4	53	44	Calm	0	S	10			
27	1013.8	46	40	SSE	2	SE	5			
28	1017.0	52	36	S	2	SE	5			
29	1017.0	58	43	N	10	SW	10			
30	1019.2	56	42	NNW	5	SSW	15			
31	1018.8	44	39	W	2	S	10			
August										
1	1010.4	55	40	E	10	E	15			
2	1008.6	68	45	N	10	N	15			
3	1012.1	65	43	N	15	SSW	10			
4	1014.9	45	42	E	27	ESE	10		.03	
5	1022.1	49	35	E	5	SW	15			
6	1013.6	49	38	S	21	N	10			
7	1017.2	52	38	N	10	N	15			
8	1011.0	43	40	W	21	SE	15		.18	
9	1017.9	48	34	NNE	10	S	10			
10	1020.2	51	39	N	5	S	10			
11	1020.0	46	37	SW	10	S	10			
12	1012.2	53	36	S	5	N	15			
13	1007.4	61	42	NE	15	Calm	0			
14	1009.7	54	42	N	10	SE	10			
15	1008.6	55	40	NNW	10	SSE	10			
16	1010.8	49	40	E	12	SE	6			
17	1009.4	49	39	SE	5	S	12			
18	1008.2	47	39	S	5	S	5			
19	1011.2	47	38	S	10	SE	10			
20	1006.0	48	40	E	15	E	27			
21	1012.6	61	38	N	10	N	5			
22	1010.6	59	44	NW	15	N	15			
23	1008.8	51	36	NE	15	SW	2			
24	1008.8	58	36	N	15	S	5			
25	998.8	55	40	S	15	NW	15		.19	Trace
26	1004.2	47	39	NW	10	NE	21		Trace	
27	994.5	55		N	10	E	10			
28	993.6	48		N	15	SE	15			
29	1000.9	57		NW	15	N	15			
30	1005.2	54		N	15	W	15			
31	1005.9	49	42	NW	15	N	15			.07

CHESTERFIELD INLET METEOROLOGICAL REPORT, 1945

Date	Present Weather		Visibility		Ice Conditions
	a.m.	p.m.	a.m.	p.m.	
1945					
July					
1	Cloudy.....	Cloudy.....	20	20	Open water eight miles off shore.
2	Partly cloudy..	Cloudless.....	20	20	
3	Partly cloudy..	Cloudy.....	20	20	
4	Cloudy.....	Partly cloudy..	20	30	Floe edged two miles off shore to east. Ice rafting in bay.
5	Overcast.....	Fog.....	9	$9\frac{1}{4}$	
6	Cloudy.....	Light rain.....	9	9	
7	Heavy drizzle..	Overcast.....	9	20	
8	Cloudless.....	Cloudy.....	20	20	
9	Partly cloudy..	Cloudy.....	20	20	
10	Partly cloudy..	Cloudy.....	20	30	
11	Partly cloudy..	Partly cloudy..	20	20	
12	Overcast.....	Cloudy.....	9	20	
13	Partly cloudy..	Overcast.....	20	20	
14	Overcast.....	Overcast.....	20	9	
15	Cloudy.....	Cloudy.....	20	20	Loose ice along coast.
16	Overcast.....	Partly cloudy..	20	20	
17	Cloudless.....	Partly cloudy..	20	20	
18	Cloudy.....	Partly cloudy..	20	20	
19	Cloudy.....	Cloudy.....	20	20	
20	Cloudless.....	Partly cloudy..	20	20	
21	Cloudless.....	Cloudy.....	20	20	
22	Overcast.....	Overcast.....	20	20	
23	Overcast.....	Partly cloudy..	20	20	
24	Cloudy.....	Partly cloudy..	20	20	
25	Cloudy.....	Distant rain....	20	20	
26	Cloudy.....	Cloudless.....	20	20	
27	Cloudy.....	Cloudless.....	20	20	
28	Cloudless.....	Cloudless.....	30	30	
29	Cloudless.....	Cloudy.....	20	20	
30	Cloudless.....	Cloudless.....	30	20	
31	Cloudless.....	Overcast.....	30	30	
Aug.					
1	Cloudy.....	Cloudy.....	20	20	
2	Partly cloudy..	Partly cloudy..	20	30	
3	Cloudless.....	Cloudy.....	20	20	
4	Light rain.....	Partly cloudy..	9	20	
5	Cloudless.....	Cloudy.....	20	20	
6	Overcast.....	Fog.....	20	1	
7	Partly cloudy..	Partly cloudy..	20	30	
8	Moderate rain..	Overcast.....	4	9	
9	Cloudless.....	Partly cloudy..	30	20	
10	Cloudless.....	Cloudless.....	30	20	
11	Partly cloudy..	Cloudy.....	20	20	
12	Cloudy.....	Overcast.....	20	20	
13	Cloudy.....	Cloudless.....	20	30	
14	Cloudless.....	Cloudy.....	20	20	
15	Cloudless.....	Partly cloudy..	20	30	
16	Partly cloudy..	Cloudy.....	20	20	
17	Cloudless.....	Overcast.....	20	20	
18	Overcast.....	Partly cloudy..	20	20	
19	Overcast.....	Cloudy.....	20	20	
20	Partly cloudy..	Cloudless.....	20	30	
21	Cloudy.....	Cloudy.....	20	20	
22	Cloudy.....	Cloudless.....	20	20	
23	Cloudy.....	Cloudless.....	20	20	
24	Cloudy.....	Cloudless.....	20	20	
25	Overcast.....	Overcast.....	20	9	
26	Cloudy.....	Overcast.....	9	20	
27	Overcast.....	Partly cloudy..	20	20	
28	Cloudless.....	Overcast.....	30	20	
29	Cloudless.....	Partly cloudy..	20	20	
30	Overcast.....	Cloudy.....	20	20	
31	Cloudy.....	Cloudless.....	20	20	

CHESTERFIELD INLET METEOROLOGICAL REPORT, 1945—Cont.

Date	Mean Barometer mb.	Temperature		Wind				Hours of Fog	Precipitation	
		Max.	Min.	8.00 a.m.		8.00 p.m.			a.m.	p.m.
				Dir.	Vel.	Dir.	Vel.			
1945		°F.	°F.					Inches	Inches	
September										
1	997.0	41	32	W	15	N	21	Trace	Trace	
2	1004.6	45	31	N	35	N	27			
3	1007.2	41	30	N	27	N	24			
4	1010.7	44	29	N	27	N	15			
5	1011.4	44	28	Calm	0	SE	10			
6	1015.8	47	32	SE	10	SW	10			
7	1009.6	41		SW	21	SW	21	Trace	Trace	
8	1003.6	49		S	2	N	5	Trace	Trace	
9	1013.6	42	34	N	27	N	27			
10	1020.0	40		N	21	NNW	10			
11	1017.0	41	30	S	5	S	21	Trace	Trace	
12	1008.9	41	37	SE	27	SW	10	.08	.08	
13	1012.0	36		NE	21	NE	27	.07	.09	
14	1022.6	34		NE	27	N	27	Trace	Trace	
15	1025.0	30		NNE	10	N	10			
16	1024.1	37		NE	2	SSW	15			
17	1020.9	50	36	SW	15	N	10			
18	1029.0	34		NE	27	NE	15			
19	1024.6	36		N	15	N	21			
20	1019.2	40		N	15	NW	27			
21	1020.5	44		N	27	NW	15			
22	1022.0	42		N	5	N	2			
23	1015.2	34	30	SE	21	E	35	Trace	Trace	
24	992.4	33	32	E	42	E	50	.10	.10	
25	999.0	29		NE	27	N	20	Trace	.10	
26	1010.0	29		N	10	NE	15			
27	1013.8	28		NE	15	NE	21			
28	1012.6	26		N	27	NW	15		Trace	
29	1012.2	29	25	N	10	W	10		Trace	
30	1006.7	30	23	N	15	NE	15			
October										
1	1010.8	27		N	15	N	21			
2	1017.7	25		NW	10	NW	15			
3	1007.6	31		SW	5	SW	27			
4	1003.9	30		E	42	E	5			
5	1005.4	34	30	S	15	SE	21	.01	Trace	
6	1010.2	32	30	E	21	E	21			
7	1009.2	31		NE	27	NE	35			
8		26				N	27			
9	1011.3	25		N	5	N	10			
10	1012.0	25		E	10	NE	10			
11	1010.0		13	N	15	N	21			
12	1020.6	22			27	NW	10			
13	1024.6		10	N	10	SW	10			
14	1001.3	33	28	S	15	SW	15			
15	1000.0	28	32	N	15	N	15			
16	1002.6	28	24			N	10		.02	
17	1009.6	22	19	N	15	N	21			
18	1015.0	25	17	N	10	E	10			
19	1013.0	25	17	NE	10	NE	10			
20	1007.2	13	7	NE	10	NE	5			
21		11		SW	5					
22	1013.6	17	-2	NW	15	N	5			
23	1012.8	24	6	W	10	W	15			
24	1010.6	29	10	E	5	SE	15		.04	
25	1013.4	32	27	E	27	S	10			
26	1021.7	29	27	SE	10	E	15			
27	1022.6	30	25	SE	15	S	21			
28	1011.8	30	27	S	15	NW	10	.02	.03	
29	1008.2	16	13	NW	15	N	15	.02		
30										
31	1005.6	14	13	NW	15	NW	5			

CHESTERFIELD INLET METEOROLOGICAL REPORT, 1945—Cont.

Date	Present Weather		Visibility		Ice Conditions
	a.m.	p.m.	a.m.	p.m.	
1945					
Sept.					
1	Light rain.....	Rain and snow..	9	2	
2	Cloudy.....	Partly cloudy..	20	20	
3	Cloudless.....	Overcast.....	20	20	
4	Cloudless.....	Cloudless.....	20	20	
5	Cloudless.....	Cloudy.....	30	20	
6	Overcast.....	Cloudless.....	20	20	
7	Overcast.....	Light drizzle...	9	4	
8	Fog.....	Overcast.....	2	4	
9	Overcast.....	Partly cloudy..	20	30	
10	Light snow.....	Cloudless.....	4	20	
11	Partly cloudy..	Overcast.....	20	9	
12	Overcast.....	Light rain.....	20	9	
13	Light drizzle...	Overcast.....	2	20	
14	Overcast.....	Overcast.....	20	20	
15	Overcast.....	Overcast.....	20	20	
16	Overcast.....	Overcast.....	20	20	
17	Overcast.....	Overcast.....	20	20	
18	Overcast.....	Cloudless.....	20	20	
19	Overcast.....	Cloudless.....	20	20	
20	Cloudy.....	Overcast.....	9	20	
21	Cloudless.....	Cloudy.....	20	30	
22	Overcast.....	Cloudy.....	20	20	
23	Overcast.....	Light snow.....	20	4	
24	Heavy snow....	Light snow.....	20	$\frac{1}{4}$	
25	Overcast.....	Overcast.....	4	20	
26	Cloudy.....	Overcast.....	9	20	
27	Overcast.....	Overcast.....	9	20	
28	Overcast.....	Light snow.....	20	9	
29	Overcast.....	Overcast.....	20	9	
30	Overcast.....	Overcast.....	20	9	
Oct.					
1	Overcast.....	Overcast.....	9	9	
2	Overcast.....	Overcast.....		$\frac{1}{2}$	
3	Overcast.....	Overcast.....	20	20	
4	Overcast.....	Overcast.....	9	9	
5	Snow showers...	Overcast.....	9	9	
6	Overcast.....	Overcast.....	9	9	
7	Overcast.....	Overcast.....	4	4	
8	Cloudless.....		20	
9	Overcast.....	Overcast.....	20	20	
10	Overcast.....	Overcast.....	9	9	
11	Overcast.....	Partly cloudy..	9	9	
12	Partly cloudy..	Cloudless.....	20	20	
13	Overcast.....	Overcast.....	20	9	
14	Overcast.....	Drizzle.....	9	9	
15	Overcast.....	Overcast.....	9	9	
16	Light snow.....	Light snow.....	20	4	
17	Cloudless.....	Overcast.....	4	20	
18	Cloudy.....	Overcast.....	20	9	
19	Overcast.....	Overcast.....	9	20	
20	Fog.....	Cloudless.....	$\frac{1}{2}$	20	
21	Partly cloudy..	Overcast.....		9	
22	Cloudless.....	Overcast.....	20	9	
23	Cloudless.....	Overcast.....	20	9	
24	Overcast.....	Cloudy.....	9	4	
25	Overcast.....	Overcast.....	20	9	
26	Overcast.....	Overcast.....	9	9	
27	Overcast.....	Overcast.....	4	9	
28	Light snow.....	Light snow.....	4	4	
29	Light snow.....	Overcast.....	2	9	
30			
31	Overcast.....	Fog.....	9	$\frac{1}{4}$	

CHESTERFIELD INLET METEOROLOGICAL REPORT, 1945—*Conc.*

Date	Mean Barometer mb.	Temperature		Wind				Hours of Fog	Precipitation	
		Max.	Min.	8.00 a.m.		8.00 p.m.			a.m.	p.m.
				Dir.	Vel.	Dir.	Vel.			
1945		°F.	°F.					Inches	Inches	
November										
1.....	996.0	29	4	S	15	N	15	.05	.04	
2.....	995.6	30	28	S	15	S	5	.05		
3.....	997.5	22	22	N	21	N	21	.04		
4.....			2	N	27					
5.....	1007.2	1	-1	N	27	N	27			
6.....	1026.0			W	15	N	5			
7.....	1028.9	19	-12	N	2	SE	15			
8.....	1017.6	24	18	SE	21	SW	15	.01	Trace	
9.....	1001.2	13	-7	N	21	N	50			
10.....	988.8	11	8	NNW	42	NW	50			
11.....	1017.4	-7	-12	NW	15	NW	27			
12.....	1021.0	-14	-20	NW	15	N	10			
13.....	1017.4	-6	-19	NW	10	N	10			
14.....	1016.3	-4		NE	15	N	21			
15.....	1016.8	-3	-5	N	21	N	15	Trace		
16.....	1020.8	-6		N	10	SE	15			
17.....	1018.6	15	-20	N	5	N	15			
18.....			-25	N	15					
19.....	1024.8	12	-23	S	15	S	10	.01	Trace	
20.....	1029.4	11	8	SW	5	NE	21	.01		
21.....			-5	SW	5			.07		
22.....	1030.7	13	4	E	15	S	15	.03	.01	
23.....	1011.2	17	12	S	35	S	27	.01	Trace	
24.....	1006.9	15	15	S	2	N	21		Trace	
25.....	1014.6	0	-22	N	21	NW	21		Trace	
26.....	1022.6		-9	N	15	N	10			
27.....	1033.0	-16	-21	N	15	N	5			
28.....	1028.5	1	-21	S		SW	15			
29.....	1022.0	10	0	SW	10	Calm	0	.02		
30.....	1017.9		-1	NE	10	N	15	.05	Trace	

CHESTERFIELD INLET METEOROLOGICAL REPORT, 1945—*Conc.*

Date	Present Weather		Visibility		Ice Conditions
	a.m.	p.m.	a.m.	p.m.	
1945					
Nov.					
1	Light snow.....	Light snow.....	2	1	
2	Light snow.....	Overcast.....	1	4	
3	Light snow.....	Overcast.....	2	4	
4	Cloudless.....	20	
5	Drifting snow..	Haze.....	1	1	
6	Cloudless.....	Overcast.....	20	4	
7	Cloudless.....	Fog.....	9	1	Inlet frozen over.
8	Cloudy.....	Moderate snow.	9	1	
9	Overcast.....	Drifting snow..	2	$\frac{1}{2}$	Ice moved out of inlet and coves.
10	Drifting snow..	Lightning.....	$\frac{1}{2}$	0	
11	Cloudless.....	Drifting snow ..	20	0	
12	Cloudless.....	Cloudless.....	20	20	Bay frozen over as far as can be seen.
13	Cloudless.....	Overcast.....	9	9	
14	Overcast.....	Overcast.....	4	4	
15	Light snow.....	Overcast.....	2	9	
16	Cloudless.....	Overcast.....	20	20	
17	Cloudless.....	Overcast.....	9	9	
18	Cloudless.....	20	
19	Light snow.....	Light snow.....	4	2	
20	Moderate snow.	Heavy snow....	1	1	
21	Light snow.....	2	
22	Lightning.....	Light snow.....	2	1	
23	Light snow.....	Drifting snow..	1	$\frac{1}{2}$	
24	Light snow.....	Light snow.....	1	4	
25	Drifting snow ..	Light snow.....	$\frac{1}{2}$	4	
26	Cloudless.....	Cloudless.....	20	20	
27	Cloudless.....	Partly cloudy..	20	20	
28	Cloudless.....	Cloudless.....	20	20	
29	Light snow.....	Partly cloudy..	4	20	
30	Light snow.....	Light snow.....	1	2	

PORT HARRISON METEOROLOGICAL REPORT, 1945

Date	Mean Barometer mb.	Temperature		Wind				Hours of Fog	Precipitation	
		Max.	Min.	8.00 a.m.		8.00 p.m.			a.m.	p.m.
				Dir.	Vel.	Dir.	Vel.			
1945		°F.	°F.						Inches	Inches
July										
1.....	1004.2	66	45	E	15	NE	16			
2.....	1003.2	62	44	N	14	NW	18			
3.....	1005.8	44	40	SW	6	NW	6		.16	
4.....	1007.5	60	40	S	1	NW	9			
5.....	1005.5	66	41	NE	6	E	10			
6.....	988.8	59	38	E	24	SW	36		.50	.02
7.....	990.6	41	36	SW	42	S	36		.15	.21
8.....	999.6	53	35	S	24	S	6			Trace
9.....	1001.6	60	44	NE	8	N	8		.17	.02
10.....	1005.3	47	43	NE	30	NE	27		.20	.09
11.....	996.2	51	39	NE	18	N	22			.01
12.....	1002.4	54	43	NW	15	W	10			
13.....	1010.0	42	36	W	14	SW	12			
14.....	1018.3	56	39	NW	6	NW	18			
15.....	1020.1	51	38	SSW	10	S	24			
16.....	1015.0	53	43	S	30	S	20			
17.....	1014.3	64	43	NE	15	SE	9		Trace	
18.....	1012.2	50	39	S	18	NW	22			Trace
19.....	1008.6	57	41	E	15	SW	18		Trace	Trace
20.....	1009.8	53	35	NW	36	NW	18		Trace	
21.....	1008.8	50	41	SW	7	S	36			.34
22.....	1005.8	45	37	W	24	W	21		Trace	Trace
23.....	1007.0	45	38	W	18	SW	6		.03	
24.....	1005.3	59	39	NE	14	N	12			
25.....	1011.9	51	40	NW	12	W	14			
26.....	1013.2	48	40	NW	16	W	12			
27.....	1006.0	52	39	W	8	N	18		.08	.10
28.....	1009.3	59	41	NE	21	NW	18			
29.....	1015.0	52	42	NW	18	NW	20			
30.....	1021.0	57	40	W	18	W	4			
31.....	1020.4	66	35	NE	10	W	10			
August										
1.....	1006.0	65	48	SE	24	SE	12			
2.....	996.0	55	47	SW	1	SW	6		.10	Trace
3.....	1001.4	62	45	N	28	N	30		.19	.10
4.....	1012.9	61	46	N	21	N	18			
5.....	1016.6	51	42	SW	18	N	15			
6.....	1018.4	59	39	NE	20	NE	12			
7.....	1011.4	48	41	S	11	N	21		.19	
8.....	1015.4	47	38	N	17	SW	12		Trace	.06
9.....	1010.5	50	38	NE	30	NNE	18		.08	.54
10.....	1017.8	53	36	NNE	14	NNE	24			
11.....	1019.8	57	33	NE	8	Calm	0			
12.....	1007.0	58	39	SE	24	W	24		.02	.28
13.....	1004.0	45	39	SW	33	SW	24		.01	
14.....	998.4	46	37	SW	21	W	11		.03	.01
15.....	995.6	50	39	N	6	WNW	14			.01
16.....	1000.8	49	41	NW	8	NE	8		.06	
17.....	1009.4	52	38	NW	8	SW	10			
18.....	1013.9	47	38	SW	15	S	20		Trace	
19.....	1008.8	51	41	SW	14	Calm	0			
20.....	995.0	55	41	NE	20	SW	28		.03	.27
21.....	994.8	47	42	SW	10	NE	30		Trace	.02
22.....	1013.3	57	41	N	15	W	12			Trace
23.....	1013.4	50	38	SW	15	SW	12		.04	Trace
24.....	1009.6	58	36	NE	10	N	12		.01	Trace
25.....	1013.0	51	40	Calm	0	SW	12			
26.....	999.0	47	35	S	35	SW	28		.12	.30
27.....	996.3	47	36	W	20	SW	16		Trace	.02
28.....	981.8	46	36	SSE	28	SW	35		.65	.12
29.....	994.2	45	38	NW	40	W	40		.28	.01
30.....	1010.3	47	39	W	20	SW	18			.02
31.....	1018.2	49	37	W	18	SW	24			Trace

PORT HARRISON METEOROLOGICAL REPORT, 1945

Date	Present Weather		Visibility		Ice Conditions
	a.m.	p.m.	a.m.	p.m.	
1945					
July					
1	Overcast.....	Partly cloudy..	20	20	
2	Overcast.....	Cloudy.....	20	20	
3	Light rain.....	Overcast.....	4	20	Few scattered pieces of ice in bay.
4	Overcast.....	Cloudless.....	20	20	
5	Cloudy.....	Cloudy.....	20	20	
6	Moderate rain..	Light drizzle...	2	4	
7	Moderate rain..	Rain and fog....	4	1	
8	Light fog.....	Cloudy.....	4	20	
9	Light rain.....	Cloudless.....	4	20	
10	Light rain.....	Moderate rain..	4	2	
11	Light fog.....	Overcast.....	4	20	
12	Overcast.....	Cloudless.....	20	20	
13	Light fog.....	Overcast.....	2	20	
14	Overcast.....	Cloudless.....	20	20	
15	Cloudless.....	Cloudless.....	20	20	
16	Cloudless.....	Overcast.....	20	20	
17	Overcast.....	Overcast.....	9	20	
18	Haze.....	Overcast.....	4	20	
19	Overcast.....	Fog.....	20	$\frac{1}{2}$	
20	Light fog.....	Cloudless.....	2	20	
21	Cloudy.....	Overcast.....	20	9	
22	Cloudy.....	Cloudy.....	9	9	
23	Light fog.....	Light fog.....	2	4	
24	Fog.....	Cloudy.....	0	20	
25	Overcast.....	Overcast.....	20	20	
26	Overcast.....	Light fog.....	9	4	
27	Overcast.....	Overcast.....	20	20	
28	Overcast.....	Cloudy.....	20	20	
29	Partly cloudy..	Partly cloudy..	20	20	
30	Cloudless.....	Cloudy.....	30	20	
31	Cloudless.....	Partly cloud....	20	20	
Aug.					
1	Overcast.....	Overcast.....	20	20	
2	Fog.....	Light fog.....	0	2	
3	Light rain.....	Cloudless.....	9	20	
4	Cloudless.....	Cloudless.....	20	20	
5	Cloudy.....	Overcast.....	20	20	
6	Cloudless.....	Partly cloudy..	20	20	
7	Moderate driz'le	Overcast.....	9	20	
8	Overcast.....	Light rain.....	20	9	
9	Overcast.....	Partly cloudy..	20	20	
10	Cloudy.....	Cloudless.....	20	20	
11	Partly cloudy..	Cloudy.....	20	20	
12	Overcast.....	Overcast.....	20	20	
13	Light drizzle...	Overcast.....	9	20	
14	Drizzle and fog.	Overcast.....	9	20	
15	Overcast.....	Cloudy.....	20	20	
16	Light drizzle...	Cloudy.....	9	20	
17	Overcast.....	Cloudy.....	20	20	
18	Drizzle and fog.	Overcast.....	$\frac{1}{4}$	20	
19	Drizzle and fog.	Overcast.....	$\frac{1}{4}$	9	
20	Overcast.....	Fog.....	20	$\frac{1}{4}$	
21	Fog.....	Light rain.....	1	9	
22	Cloudy.....	Overcast.....	20	20	
23	Light rain.....	Drizzle and fog.	20	$\frac{1}{4}$	
24	Fog.....	Cloudless.....	$\frac{1}{2}$	20	
25	Cloudy.....	Fog.....	20	0	
26	Overcast.....	Light rain.....	9	9	
27	Drizzle and fog.	Overcast.....	1	20	
28	Light rain.....	Overcast.....	4	9	
29	Rain and fog....	Overcast.....	4	9	
30	Overcast.....	Drizzle and fog.	9	4	
31	Overcast.....	Cloudy.....	4	20	

PORT HARRISON METEOROLOGICAL REPORT, 1945—Cont.

Date	Mean Baro- meter mb.	Temperature		Wind				Hours of Fog	Precipitation	
		Max.	Min.	8.00 a.m.		8.00 p.m.			a.m.	p.m.
				Dir.	Vel.	Dir.	Vel.			
1945		°F.	°F.					Inches	Inches	
September										
1	1002.4	47	46	S	15	W	15		.30	
2	1001.1	43	34	N	15	NW	50	.24	.02	
3	1005.0	43	36	W	42	NW	15	.17		
4	1010.8	42	33	NW	15	NW	27	.03		
5	1017.3	40	34	W	10	SE	10		.02	
6	1007.2	46	37	E	21	NE	15	.05		
7	1017.0	45	30	Calm	0	NE	15			
8	1018.0	47	32	S	10	SE	21		Trace	
9	1009.4	49	38	E	5	N	21			
10	1005.7	43	40	NW	15	SE	21	Trace	Trace	
11	1019.2	45	30	N	10	E	15			
12	1014.4	48	30	NE	5	NE	21			
13	1010.6	43	27	NE	10	NE	5			
14	1008.6	42	36	SW	21	NW	10	.05	.06	
15				NW	5			.06		
16										
17			32	W	5			.01		
18										
19				NW	21			.01		
20			26							
21		38				NW	15			
22			31	N	10					
23	1023.0		29	NE	10	NE	10	.01	Trace	
24	991.2		36	S	27	SW	35	.05	Trace	
25	998.8	41	38	SW	21	W	35			
26		38				SW	21			
27	1009.7	41		NW	35	N	10	Trace		
28		31	30	SW	35			.18		
29			29	NW	35			Trace		
30	1011.0	41	29	SW	15	SW	27	.01	.19	
October										
1	1004.6	38		NW	10	N	15	.53	Trace	
2	1008.2	35	27	N	10	NE	15	.02	.02	
3	1009.2	36	24	S	15	NW	5			
4	1002.4	33	25	SE		E	21	.05		
5	1006.2	36	28	NE	21	E	10	.05		
6	1000.8	45	33	SE	21	SE	35	.01		
7	997.2	42	38	SE	21	SE	21	Trace		
8		40				SW	27			
9	1007.1	38	32	SE	15	SW	10	Trace		
10	1003.0	38	33	NE	5	SW	15	.01	Trace	
11	1006.7	36	31	SW	21	W	10		.03	
12	1011.8	35	29	N	21	NW	5			
13	1023.5		28	N	10	NE	10			
14	1021.7	31	27	N	5	SW	15			
15	991.8	32	31	S	27	E	21	Trace		
16	1002.6	34	21	E	5	NW	5	.01	.40	
17	1005.4	34	28	SE	10	N	10	Trace		
18	1012.3	33	29	S	5	N	5		Trace	
19	997.9	31	25	E	21	E	35			
20	980.8	37	31	SE	21	SE	15	.07	.04	
21	994.2	32	28	N	15	S	21			
22	1013.6		27	N	15	NW	10			
23	1023.8	33	25	N	15	S	5		.10	
24	1017.1	35	26	NW	10	SW	15	.10	.01	
25	1010.8	34		S	21	E	35	.02	Trace	
26	1018.4	23	18	NE	10	NE	5			
27	1020.1	24	11	E	10	N	10			
28	1023.2	16	16	NE	5	SE	10			
29	1013.4	25	23	SE	35	E	5	.05		
30		29				SE	15			
31	996.8	25	18	ESE	35	SE	42			

PORT HARRISON METEOROLOGICAL REPORT, 1945—Cont.

Date	Present Weather		Visibility		Ice Conditions
	a.m.	p.m.	a.m.	p.m.	
1945					
Sept.					
1	Overcast.....	Lightning.....	20	$\frac{1}{4}$	
2	Overcast.....	Light rain.....	20	4	
3	Rain and snow..	Cloudy.....	1	
4	Overcast.....	Overcast.....	20	9	
5	Cloudy.....	Light drizzle...	20	9	
6	Light drizzle...	Overcast.....	4	20	
7	Cloudy.....	Partly cloudy..	20	20	
8	Partly cloudy..	Fog.....	20	4	
9	Overcast.....	Overcast.....	20	
10	Light drizzle...	Light drizzle...	9	
11	Partly cloudy..	Overcast.....	20	20	
12	Cloudless.....	Cloudless.....	20	0	
13	Partly cloudy..	Distant fog....	20	
14	Light rain.....	Snow.....	9	1	
15	Overcast.....	20	
16	
17	Overcast.....	20	
18	
19	Overcast.....	20	
20	
21	Light snow.....	9	
22	Overcast.....	20	
23	Overcast.....	Overcast.....	9	20	
24	Moderate rain..	Drizzle and fog.	1	4	
25	Overcast.....	Light rain.....	9	20	
26	Overcast.....	9	
27	Overcast.....	Light rain.....	20	9	
28	Cloudy.....	20	
29	Overcast.....	20	
30	Partly cloudy..	Haze.....	20	4	
Oct.					
1	Light drizzle...	Overcast.....	9	20	
2	Partly cloudy..	Partly cloudy..	20	1	
3	Cloudy.....	Cloudy.....	20	20	
4	Light snow.....	Overcast.....	2	9	
5	Partly cloudy..	Overcast.....	20	20	
6	Light drizzle...	Light rain.....	9	9	
7	Drizzle and fog.	Overcast.....	9	20	
8	Overcast.....	20	
9	Drizzle and fog.	Overcast.....	1	20	
10	Drizzle and fog.	Light snow.....	1	20	
11	Overcast.....	Light snow.....	9	9	
12	Overcast.....	Overcast.....	20	20	
13	Overcast.....	Overcast.....	20	20	
14	Overcast.....	Overcast.....	20	20	
15	Light snow.....	Light snow.....	2	9	
16	Cloudless.....	Cloudy.....	20	20	
17	Light snow.....	Overcast.....	9	20	
18	Cloudy.....	Overcast.....	20	20	
19	Light snow.....	Cloudy.....	9	20	
20	Light ran.....	Overcast.....	9	9	
21	Overcast.....	Overcast.....	20	20	
22	Overcast.....	Overcast.....	20	9	
23	Light snow.....	Partly cloudy..	9	20	
24	Light snow.....	Overcast.....	4	9	
25	Rain and snow..	Light snow.....	9	4	
26	Cloudless.....	Cloudless.....	20	20	Thin ice forming on shore of river.
27	Overcast.....	Overcast.....	20	20	
28	Overcast.....	Light snow.....	20	9	
29	Overcast.....	Light snow.....	20	9	
30	Overcast.....	9	
31	Overcast.....	Drifting snow...	20	9	

PORT HARRISON METEOROLOGICAL REPORT, 1945—*Conc.*

Date	Mean Baro- meter mb.	Temperature		Wind				Hours of Fog	Precipitation	
		Max.	Min.	8.00 a.m.		8.00 p.m.			a.m.	p.m.
				Dir.	Vel.	Dir.	Vel.			
1945		°F.	°F.					Inches	Inches	
November										
1.....	1010.0	20	16	SW	15	NE	5			
2.....	999.0	30	15	SE	21	SE	35		.10	
3.....	982.8	35	27	SE	21	SW	27	.03	.02	
4.....			29	W	35			.24		
5.....	1004.7	27	25	W	27	SW	15			
6.....	1018.4			SE	2	N	21		.02	
7.....	1028.8	22	21	Calm	0	NE	5			
8.....	1017.6	22	18	E	10	E	27			
9.....	980.5	42	24	SE	35	W	42	.06		
10.....	988.8	28	27	NW	50	N	50	.01		
11.....	1014.1	20	20	W	42	W	27			
12.....	1011.0	21	20	W	21	E	10			
13.....	993.5	22	14	ENE	27	E	50		.04	
14.....	976.2	30	19	E	50	SW	21	Trace	Trace	
15.....	986.0	20	11	E	35	NE	35			
16.....	1008.2	22	5	N	15	N	10			
17.....		24				NE	35			
18.....			16	N	10					
19.....	1024.0	14	-8	E	5	NE	15			
20.....	1029.8	14	2	N	15	NE	15			
21.....			-1	NE	15					
22.....	1027.9		18	E	15	E	15			
23.....	998.2	15	10	NE	50	E	21	Trace		
24.....	993.0	23	11	NE	35	N	35	Trace	Trace	
25.....	991.8	22	19	N	35	N	21	.04	Trace	
26.....	1007.8	22	17	NW	21	NW	15	.02		
27.....	1026.6	14	11	NW	15	NW	21	.01		
28.....	1037.6	19	8	N	5	S	5		.01	
29.....	1036.9	23	15	SW	10	SW	21			
30.....	1027.4	27	20	S	15	S	35			

PORT HARRISON METEOROLOGICAL REPORT, 1945—*Conc.*

Date	Present Weather		Visibility		Ice Conditions
	a.m.	p.m.	a.m.	p.m.	
1945					
Nov.					
1	Cloudless.....	Cloudless.....	20	20	
2	Overcast.....	Light snow.....	9	9	
3	Overcast.....	Light snow.....	9	20	
4	Light snow.....	4	
5	Overcast.....	Overcast.....	20	9	
6	Overcast.....	Partly cloudy..	9	20	
7	Overcast.....	Cloudy.....	20	20	
8	Partly cloudy..	Overcast.....	20	20	
9	Light rain.....	Overcast.....	4	20	
10	Light snow.....	Overcast.....	$\frac{1}{4}$	9	
11	Overcast.....	Drifting snow...	9	4	
12	Overcast.....	Overcast.....	9	20	Ice along shore of bay and in river.
13	Partly cloudy..	Drifting snow...	20	$\frac{1}{2}$	
14	Light snow.....	Overcast.....	$\frac{1}{2}$	9	
15	Overcast.....	Cloudless.....	9	20	
16	Cloudless.....	Partly cloudy..	20	20	
17	Cloudless.....	20	
18	Overcast.....	20	
19	Overcast.....	Overcast.....	20	20	
20	Overcast.....	Cloudless.....	20	20	
21	Cloudless.....	20	
22	Overcast.....	Cloudless.....	20	20	
23	Light snow.....	Partly cloudy..	4	20	
24	Light snow.....	Drifting snow...	4	1	
25	Light snow.....	Drifting snow...	1	4	
26	Light snow.....	Light snow.....	9	9	
27	Overcast.....	Overcast.....	9	9	
28	Cloudless.....	Partly cloudy..	20	20	
29	Overcast.....	Overcast.....	9	4	
30	Cloudy.....	Overcast.....	20	$\frac{1}{4}$	

AIDS TO NAVIGATION IN HUDSON BAY AND STRAIT

RADIO COAST AND DIRECTION FINDING STATIONS

Station	Call Sign	Calling Wave		Working Wave		Position		Hours of Service	Coast Charge (a)
		K/cs.	Metres	K/cs.	Metres	Latitude N.	Longitude W.		
Churchill.....	V A P	500	600	500	600	58° 46' 32"	94° 10' 31"	Continuous during season of navigation.	6c. per word
Chesterfield Inlet.....	V B Z	500	600	500	600	63° 20' 05"	90° 42' 33"	Continuous during season of navigation.	6c. per word
Nottingham Island.....	V C B	500	600	500	600	63° 06' 48"	77° 56' 18"	Continuous during season of navigation.	6c. per word
Cape Hopes Advance.....	V A Y	500	600	500	600	61° 05' 12"	69° 33' 24"	Continuous during season of navigation.	6c. per word
Resolution Island.....	V A W	500	600	500	600	61° 18' 30"	64° 53' 24"	Continuous during season of navigation.	6c. per word

All stations maintain watch on 500 K/cs. (600 metres) and with the exception of Resolution island, take and transmit bearings on 375 K/cs. (800 metres) after communication has been established on 500 K/cs. (600 metres). Resolution island takes bearings on 500 K/cs. (600 metres) and transmits bearings on 375 K/cs. (800 metres).

(a) All messages relative to navigation are handled free of charge. The six-cent per word coast charge applies to all other traffic. For forwarding charges beyond Churchill apply to any of above stations or see Canada Rate Sheet, International List of Coast and Ship Stations.

RADIO METEOROLOGICAL REPORTING STATION

Station	Call Sign	Calling Wave		Working Wave		Position		Hours of Service	Coast Charge
		K/cs.	Metres	K/cs.	Metres	Latitude N.	Longitude W.		
Port Harrison.....	V A L	500	600	420	714	58° 27' 17"	78° 08' 20"	Keeps watch on 500 K/cs. (600 metres) for fifteen minute periods commencing at every odd hour from 7.00 a.m. to 7.00 p.m. E.S.T. inclusive, during season of navigation.	6c. per word See note (a) above.

PATROL SHIP

Station	Call Sign	Calling Wave		Working Wave		Hours of Service	Remarks
		K/cs.	Metres	K/cs.	Metres		
C.G.S. N. B. <i>McLean</i>	C G S N	500	600	425	706	Continuous during season of navigation.	Normally this vessel patrols Hudson strait during the season of navigation. Information in regard to her position may be obtained from any Radio Station in the Strait.

LIGHTS

Location	Position		Character	Elevation	Remarks
	Latitude N.	Longitude W.			
†Goodwin island, Button islands group.	60° 41' 31"	64° 40' 22"	Flashing.....	259 ft.	On unpainted wooden pole.
Resolution island.....	61° 18' 28"	64° 53' 16"	Flashing.....	129 ft.	White square, wooden lantern on wooden skeleton base. One flash every ten seconds.
Cape Hopes Advance.....	61° 05' 14"	69° 33' 23"	Fixed.....	270 ft.	On unpainted wooden pole.
†Wales island.....	61° 51' 37"	71° 58' 19"	Flashing.....	150 ft.	On unpainted wooden pole.
†Ashe inlet.....	60° 31' 40"	70° 33' 27"	Flashing.....	191 ft.	On unpainted wooden pole.
†East end of Charles island.....	60° 36' 40"	73° 56' 09"	Flashing.....	150 ft.	On unpainted wooden pole.
†West end of Charles island.....	62° 42' 30"	74° 40' 00"	Flashing.....	40 ft.	On unpainted wooden pole.
†Nottingham island.....	63° 05' 48"	77° 56' 55"	Flashing.....	50 ft.	On unpainted wooden pole.
†Digges island.....	62° 35' 20"	78° 06' 42"	Flashing.....	65 ft.	On unpainted wooden pole.
†Mansel island.....	62° 27' 00"	79° 38' 00"	Flashing.....	41 ft.	On unpainted wooden pole.
†Coates island.....	62° 10' 00"	83° 08' 00"	Flashing.....	40 ft.	On unpainted wooden pole, surrounded by white lattice
†Hubbart point.....	59° 21' 00"	94° 40' 00"	Flashing.....	50 ft.	On unpainted wooden pole.

† Unwatched.

C.G.S. *N. B. McLEAN*—HUDSON STRAIT PATROL SHIP
GENERAL DIMENSIONS AND EQUIPMENT

The C.G.S. *N. B. McLean* is a twin-screw ice breaking steamer of 6,500 indicated horse-power and with the following leading dimensions:—

Length (B.P.).....	260 feet
Breadth (moulded).....	60 “
Depth (moulded).....	31 “
Gross tonnage.....	3,253 tons
Fuel oil capacity.....	1,596 “

The vessel is equipped with a patent towing winch furnished with both steel wire and manila towing hawsers, a powerful search light, two 7-ton derricks and two motor launches.

She also carries a diver and complete diving apparatus and the following salvage gear:—

- 1 Drake centrifugal pump, 10 inch.
- 1 Smart Turner centrifugal pump, 8 inch.
- 1 Duplex pump, 6 inch.

These pumps are completely equipped with flexible suction and discharge pipes, foot valves, syphons, etc., and all necessary auxiliaries.

One hundred and fifty feet of bronze flexible steam hose with connections, patching gear, shores, turnbuckles and all necessary tools are also provided.

The vessel is provided with a gyro compass and a recording echo sounder and radiotelegraph and radiotelephone apparatus are installed.

The *N. B. McLean* will be in Hudson Strait from the opening to the close of navigation each year and will maintain constant watch on 500 K/cs. (600 meters), call sign CGSN.

GLOSSARY OF TERMS USED IN ICE NAVIGATION

- Floe.....A large mass of floating ice.
- Pan.....A small floe or piece of ice that can be forced aside or slewed.
- A field.....A large body of ice that may be seen around.
- Land floe.....Ice frozen fast to the shore.
- Packed ice.....Small pieces of ice closed together and held by the pressure of ice and currents.
- Ice blink.....A peculiar pale yellow reflection on the sky indicating the presence of ice in the distance.
- The ice pack.....A large body of solid ice extending across the whole sea and through which it is impossible to advance.
- Slack or open ice...Detached ice that can be worked through. Ice is said to be slacking when it begins to open up so as to be navigable.
- A lead.....A strip of navigable water opening into the pack.
- Hummocky ice.....Rough, uneven or thick ice.
- Slob.....Snow afloat and forming into ice.
- Water sky.....A dark or bluish appearance of the sky indicating open water beyond the ice pack.
- Rafting.....Occurs when two pans meet with force either by the action of winds or currents, the edges are broken off and either rise on top of or pass under the body of the other.
- Growler.....A more or less washed and rounded lump of ice which rolls about in the water; formed from broken-up bergs or detached pieces of heavy old Arctic floe ice.
- Collar ice.....The margin of ice frozen fast to an island or shore, presenting an abrupt wall against which the floating ice rises and falls with the tide.