



Fisheries and Environment
Canada

Pêches et Environnement
Canada

00350611

CANADA DEPARTMENT OF TRANSPORT

REPORT

ANNUAL REPORT



NON-CIRCULATING

NINETEENTH ANNUAL REPORT

Navigation Conditions on the Hudson Bay
Route from the Atlantic Seaboard
to the Port of Churchill

SEASON OF NAVIGATION

1947

DEPARTMENT OF TRANSPORT

HON. LIONEL CHEVRIER, Minister

OTTAWA
EDMOND CLOUTIER, C.M.G., B.A., L.Ph.,
KING'S PRINTER AND CONTROLLER OF STATIONERY
1948

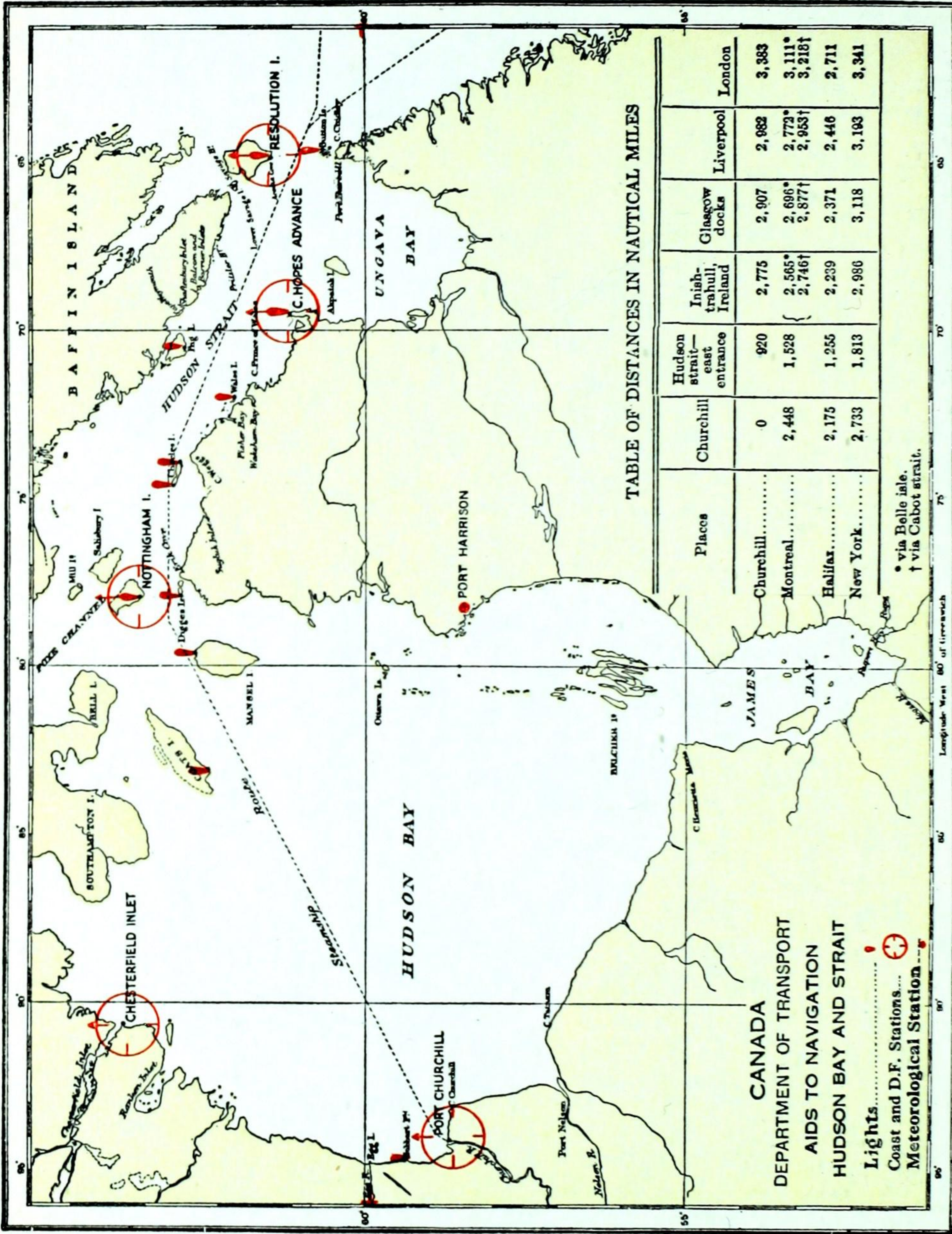


TABLE OF DISTANCES IN NAUTICAL MILES

Places	Churchill	Hudson strait—east entrance	Inish-trahull, Ireland	Glasgow docks	Liverpool	London
Churchill.....	0	920	2,775	2,907	2,982	3,383
Montreal.....	2,448	1,528	2,565* 2,746†	2,696* 2,877†	2,773* 2,953†	3,111* 3,218†
Halifax.....	2,175	1,255	2,239	2,371	2,446	2,711
New York.....	2,733	1,813	2,986	3,118	3,193	3,341

* via Belle Isle.
† via Cabot strait.

CANADA
DEPARTMENT OF TRANSPORT
AIDS TO NAVIGATION
HUDSON BAY AND STRAIT

Lights.....
Coast and D.F. Stations...
Meteorological Station...

Longitude West 80° of Liverpool



NINETEENTH ANNUAL REPORT

Navigation Conditions on the Hudson Bay
Route from the Atlantic Seaboard
to the Port of Churchill

SEASON OF NAVIGATION

1947

DEPARTMENT OF TRANSPORT

HON. LIONEL CHEVRIER, Minister

OTTAWA
EDMOND CLOUTIER, C.M.G., B.A., L.Ph.,
KING'S PRINTER AND CONTROLLER OF STATIONERY
1948

NINETEENTH ANNUAL REPORT

Navigation Conditions on the Hudson Bay Route from Atlantic Seaboard Port of Churchill Season of Navigation, 1917

CONTENTS

	PAGE
Letter of Transmittal.....	4
Synopsis—	
Opening of Navigation.....	5
Closing of Navigation.....	5
Fog.....	6
Aids to Navigation.....	6
Shipping.....	6
Ship's Reports—	
C.G.S. <i>N. B. McLean</i>	7
M.V. <i>J. H. Blackmore</i>	11
Port of Churchill—	
Traffic.....	12
Hydrographic Information.....	13
Meteorological Reports—	
C.G.S. <i>N. B. McLean</i>	14
Resolution Island.....	16
Cape Hopes Advance.....	22
Nottingham Island.....	28
Churchill.....	34
Chesterfield Inlet.....	40
Port Harrison.....	46
Aids to Navigation—	
Radio Stations.....	52
Patrol Ship.....	53
Navigation Lights.....	53
C.G.S. <i>N. B. McLean</i> —Dimensions and Equipment.....	54
Glossary of Ice Navigation Terms.....	55

ILLUSTRATIONS

Chart of Hudson Bay and Strait.....	<i>Frontispiece</i>
Restoring ruins of Fort Prince of Wales, Churchill.....	<i>Facing page 12</i>
Hudson Strait Patrol Vessel, C.G.S. <i>N. B. McLean</i>	<i>Facing page 54</i>

CONTENTS

C. P. EDWARDS, Esq.,
Deputy Minister for Air Services
Department of Transport,
Ottawa, Ont.

SIR—I have the honour to submit the Nineteenth Annual Report on Navigation Conditions on the Hudson Bay Route from the Atlantic Seaboard to the Port of Churchill. This report covers the season of navigation, 1947.

The report is compiled from information received from the Hudson Strait Patrol Vessel C.G.S. *N. B. McLean*, the Motor Vessel *J. H. Blackmore*, the Department of Mines and Resources and the Meteorological and Radio Services of the Department of Transport.

Yours respectfully,
G. C. W. BROWNE,
Controller of Radio.

DEPARTMENT OF TRANSPORT,
OTTAWA, May 15, 1948.

ILLUSTRATIONS

NINETEENTH ANNUAL REPORT

Navigation Conditions on the Hudson Bay Route from the Atlantic Seaboard to the Port of Churchill Season of Navigation, 1947

Synopsis of Report

OPENING OF NAVIGATION

The breakup of ice following the winter season extended over several weeks. Winds and currents influenced the quantity and state of drift ice but navigation in the vicinity of the reporting stations was considered safe subsequent to the following dates:—

Hudson Strait, East End

Resolution Island.....July 28

Hudson Strait, Central

Cape Hopes Advance.....July 14

Hudson Strait, West End

Nottingham Island.....July 28

Hudson Bay

Churchill.....July 4

Chesterfield Inlet.....July 16

Port Harrison.....July 9

Hudson Strait, General—

On her trip North in July, the patrol ship *N. B. McLean* sighted a considerable number of icebergs along the Labrador coast and in Hudson Strait as far as Big Island. From Big Island to Churchill and return occasional drift ice and bergs were sighted. No ice was sighted by the *N. B. McLean* during her patrol in September.

CLOSING OF NAVIGATION

Hudson Strait—

Resolution Island—Reported slob ice forming on November 21.

Cape Hopes Advance—Slob ice forming on November 30.

Nottingham Island—Reported ice forming in coves on November 27, string ice in Strait on November 30.

Hudson Bay—

Churchill—Close packed slob and new ice to horizon on November 13.

Hudson Bay—

Chesterfield Inlet—Ice forming along shore on November 5 and scattered drift ice to horizon on November 30.

Port Harrison—Reported ice forming in harbour on November 20.

FOG

The number of days on which fog was reported were as follows:—

—	July	Aug.	Sept.	Oct.	Nov.	Totals	
						1947	1946
Resolution.....	15	15	12	7	6	55	49
Cape Hopes Advance.....	5	9	8	8	0	30	35
Nottingham Island.....	19	5	4	5	0	33	21
Churchill.....	2	3	1	6	5	17	12
Chesterfield.....	3	1	2	4	3	13	9
Port Harrison.....	14	13	13	5	1	46	31

AIDS TO NAVIGATION

Radio

There are five radio direction finding stations on the Hudson Bay Route. Detailed information regarding Radio Aids to Navigation will be found on page 52.

Hydrography

No survey was carried out this season. See page 13.

Lights

There were no additions to the lights, the numbers remaining at two watched and ten unwatched, a total of twelve lights, a list of which will be found on page 53.

Fog Signals

Ships approaching Acadia Cove, Resolution Island may request the firing of an explosive bomb signal. This signal is fired at ten minute intervals by the radio personnel and has an audible range of six miles.

SHIPPING

Fourteen cargo ships traversed the Hudson Bay Route this season, two of them making a second trip. Details may be found on page 10.

No accidents to cargo ships occurred this season on the steamer route. However, two Hudson Bay Company ships were lost, the R.M.S. *Nascopie*, which ran aground at Cape Dorset, Hudson Strait, and the M.V. *Neophyte* which suffered a similar fate at the mouth of the Severn River, Hudson Bay. Fortunately all crew members and passengers were saved.

G. C. W. BROWNE,
Controller of Radio.

C.G.S. *N. B. McLEAN*, CAPTAIN C. A. CARON, MASTER,
VOYAGE TO HUDSON BAY AND STRAIT, 1947

On the morning of July 8th at 6.30 a.m. the *N. B. McLean*, loaded to her capacity, with a crew of 58 men and 16 passengers, the latter being radio personnel, left for her annual Northern trip. At 10.45 p.m. on the same day we anchored off Father Point to take on drugs and medicine needed for the trip, this at the request of Dr. Charbonneau who joined the ship only six hours before sailing. We left Father Point on July 9 at six p.m., passing 5 miles off Pointe des Monts at midnight, then altered course for West Point, Anticosti Island, and made for Mingan Passage, passing abeam of Cape Rabast, at 1.10 p.m., July 10, average speed of 10 knots. July 11, abeam of St. Mary Island at 8.15 a.m., 14 miles off, we altered course for the Strait of Belle Isle, passing Point Amour on July 11 at 8.25 p.m., then steaming for Belle Isle but, as the westerly wind was increasing, we anchored off Cape Norman until landing conditions improved at Belle Isle. The passage from Quebec to Belle Isle was made under normal conditions and with favorable weather. July 13, we proceeded to SW. Belle Isle and landing was commenced at once, staying there until July 17 when a strong SW. wind came up, so we proceeded to Cape Raven for shelter. We returned to SW. Belle Isle, finished our work there, and proceeded to NE. Belle Isle. As landing conditions were not favorable we anchored at Lark Cove July 18 at 4.00 p.m. July 21, proceeded to NE. Belle Isle, landed all supplies and returned to Lark Cove at 9.00 p.m. July 22, after having secured all deck cargo, we left for the North. While under way, orders were received to proceed to Cape Dorset where the R.M.S. *Nascopie* was aground. The trip along the Labrador Coast was made under fairly good weather conditions, the ship making an average speed of 10 knots. The Radar was used in thick weather and during the night, and gave very good results at all times. Arrived off Resolution Island July 25 and, after landing incoming personnel, mail and fresh provisions, proceeded towards Cape Hopes Advance but, as weather conditions were unfavorable for landing, we proceeded towards Cape Dorset, arriving there July 27 at midnight. July 28, took on passengers and crew of *Nascopie* to the number of 70. Made a survey of *Nascopie* and submitted report to Ottawa via Churchill. After having completed all loading of crew, passengers and their belongings, we left for Churchill, calling at Nottingham Island on our way and landing 8 men, mail and fresh provisions. We then proceeded towards Churchill. The trip from Cape Dorset to Churchill was made under very fine weather conditions at a speed of 10.5 knots, arriving at Churchill July 31 at 3.30 p.m. After landing all passengers, mail and supplies from *Nascopie*, we took on fresh water, serviced the Gyro compass and cleaned up ship. Much had to be done to return the ship to a neat condition as all available space had been used for accommodation of the *Nascopie* crew.

The *N. B. McLean* left Churchill on August 2 and, on the way to Nottingham Island, serviced the light at Carey's Swan Nest (Coats Island), investigated ice conditions to Mansel Island, and serviced the light there. We then proceeded to Nottingham Island, arriving there August 4, serviced the light and landed all supplies at the radio station, made D.F. calibration and remained off station until the Technician had completed his work. Left Nottingham Island August 9, going to Digges Island but, as landing conditions were unsuitable, proceeded to Erik Cove and landed provisions for the R.C. Mission. Leaving there August 11, we proceeded to Charles Island, serviced the East light then going to Ashe Inlet, serviced the light, and left there August 12, with the schooner *Blackmore* in tow. Her engine had broken down and we towed her to Wakeham Bay. At Wakeham Bay we landed all provisions for the R. C. Mission, serviced the light at Wales Island, and proceeded to Cape Hopes Advance. We had on board Bishop Scheffer, Father Lacasse and Father Steinman. We arrived at Cape Hopes

Advance at 7.30 p.m. and unloading was carried out at once. We remained at Cape Hopes until August 24, made D.F. calibration and completed all work, then left for Resolution Island, arriving at Acadia Cove August 25. Landed all supplies, made D.F. calibration at the radio station, and left there August 29. On the trip westward we called at Cape Hopes Advance to take on out-going personnel and service light at Charles Island, West End. We called at Nottingham Island for mail and landed supplies from other stations. Upon arrival at Southampton Island on August 4, serviced the lights at Coral Harbour and Bear Island, took on cargo from the base and 3 tons of furs for the Hudson's Bay Co., to be landed at Churchill. September 6, left for Churchill, arriving there September 8 and remained there until September 22. During our stay at Churchill the crew was kept busy cleaning and painting the ship, unloading goods for Churchill and taking on fresh provisions for radio stations in the Strait. Left Churchill September 22 at 1.30 p.m. and, on our way out, called at Nottingham Island on September 24, Erik Cove on September 25, Sugluk on September 26, Wakeham Bay on October 2, staying there to boat fresh water and await orders. Left Wakeham Bay on October 9 and called at Cape Hopes Advance, landing one man and fresh provisions, we left there October 11 and arrived at Acadia Cove October 12. We remained at Acadia Cove until the last ship was out of Hudson Strait, in this case it was the *Regina Polaris*. Left Acadia Cove on October 22 at 9.30 a.m. for return voyage to Quebec City. The trip along the Labrador Coast was made in a heavy SE. sea and quite strong NW. wind. October 24, abeam NE. Belle Isle at 8.20 p.m. October 25 abeam Point Amour at 1.52 a.m., abeam Natashquan Point at 9.46 p.m. October 26, abeam West Point Anticosti at 7.24 a.m., abeam Father Point at 10.55 p.m. October 27, abeam Red Islet at 3.30 a.m., abeam Goose Cape at 8.35 a.m., and arrived at Quebec City at 2.20 p.m., thus ending another successful trip.

Total hours at sea—926.56. Total distance steamed—8093 nautical miles. Total fuel used during trip—1669 tons.

MISCELLANEOUS

Dr. L. P. Charbonneau, medical officer for the Northern trip, has been invaluable during the trip, attending the crew and passengers and those requiring medical aid at all places of call during the trip.

I strongly recommend that the medical officer making the trip North be sent on board at least two weeks before sailing in order that he would have the time needed to check over medicine and drugs on board, and to obtain additional supplies. This work should be completed before sailing thus avoiding lost time at Father Point or at some other point. It would also be a good opportunity for the medical officer to become acquainted with conditions on board ship.

I take this opportunity to say that all the radio stations have given good service to shipping in Hudson Strait and Hudson Bay, being very prompt to render their services. Good co-operation was obtained in assisting us at any time, whether in radio communications or in manual work to be done at the stations.

Nottingham Island, Cape Hopes Advance, and Resolution Island radio stations were calibrated during the summer.

ICE CONDITIONS

The first icebergs were seen on arrival at Belle Isle on July 13. One large berg and growlers were sighted 10 miles west of Belle Isle and 5 large bergs were seen drifting north of Belle Isle at various distances, also 3 on the south side. July 20, while servicing NE. Belle Isle 6 large bergs were seen drifting between Belle Isle and the main land and 7 were aground along the north shore.

July 22, leaving Belle Isle for the North, we passed 3 miles off Double Island where 3 large bergs were seen on the ship track. Sailing north true, many bergs were seen on each side of the course until dark, most of them towards the Labrador coast.

July 23, off Bull Dog, 50 bergs of all sizes were seen, most of them towards the mainland but beyond Bull Dog some were sighted on each side of course depending on visibility. Off Cape Mugford 8 big bergs were seen inside of course about 60 miles from the main land. July 25, arrived at edge of the ice field 30 miles SE. of Resolution Island. The field consisted of heavy ice floes, well open and extending in all directions as far as could be seen. Leaving Resolution Island on the same day, the ice field extended 220 true from radio station for 20 miles then closed towards Baffin Land. At noon, fog shut in patches, and several bergs of all sizes were sighted on either side of the track, but most of them along the Baffin Land coast as far as Big Island, thenceforth no ice was sighted until our arrival between Mansel and Coats Island. The ice field extended from Cape Pembroke to the NE. tip of Mansel Island. On our return trip from Churchill only small growlers were seen, these between Coats and Mansel Islands. From August 4, sailing between Mansel Island, Nottingham Island, Charles Island and Big Island, no ice was seen until arrival at Big Island. On August 12 upon entering Ashe Inlet, 12 large size bergs were seen at a distance of ten miles south and east of Big Island and Large Island and 5 fair size bergs were aground in Ashe Inlet. Leaving Big Island on August 12, no ice was seen from a position off Wakeham Bay. August 14, enroute from Wakeham Bay to Cape Hopes Advance, 8 bergs were seen in the center of Hudson Strait. August 24, on the way from Cape Hopes Advance to Resolution Island, 20 large size bergs were seen along the ship track, 5 of them being south of the track, the rest north of it. While at anchor in Acadia Cove, many bergs were seen daily, drifting with the current. Returning westward in the Strait on August 29, 16 bergs of various sizes were seen, all of them along the Baffin Land coast as far as Big Island. Clear water was sighted west of Big Island. No ice was seen hereafter until our return to Cape Hopes Advance on October 8 where one large berg was seen 6 miles to the north. Only one berg was seen on our way from Cape Hopes Advance to Resolution Island on October 11 to 12 as the passage was mostly in snow with poor visibility.

Oct. 1,	3 bergs and growlers reported 5 miles south and west of Resolution Island.
Oct. 2,	1 " " 4 " " " " "
Oct. 7,	2 " " 10 " " " " "
Oct. 9,	1 " " 7 " " " " "
Oct. 11,	1 " " 10 " " " " "
Oct. 13,	2 " " 5 " " " " "
Oct. 14,	2 " on horizon " " " " "
Oct. 18,	1 large berg " 5 " " " " " "

Leaving Resolution Island October 22 only 3 bergs of fair size were seen east of there, and none were seen along the Labrador coast on our way to Belle Isle.

DATES ON WHICH LIGHTS IN HUDSON STRAIT WERE PUT INTO SERVICE BY C.G.S. *N. B. McLEAN*

Resolution Island, in operation on arrival, inspected	August 27.
Cape Hopes Advance, " " " "	August 17.
Coats Island, serviced and inspected	" 3.
Mansel Island, " " "	" 4.
Nottingham Island, " " "	" 4.

Charles Island East End, serviced and inspected	“	11.
Big Island,	“ “ “	“ 12.
Wales Island,	“ “ “	“ 14.
Charles Island West End,	“ “ “	September 1.
Coral Harbour,	“ “	“ 5.
Bear Island.	“ “	“ 5.

At Digges Island three attempts were made to service the light but all were unsuccessful due to bad weather and being unable to land in the strong wind.

At Button Islands, the light was not serviced due to much drifting ice in the Strait. I considered this light not needed when we arrived in October as the shipping season was over. We had been delayed in our regular work by the sinking of the *Nascopie*.

Lights serviced during the summer were still in operation when we left the Strait, and were found in good condition when inspected.

REPORT OF SHIPPING IN HUDSON BAY AND STRAIT, SUMMER 1947

Arrival Churchill	Ship's Name	Master's Name	Cargo Inward	Cargo Outward	Departure Churchill
Aug. 8	<i>Essex Trader</i>	C. Arundell	375 S. Tons	10446 Wheat Short tons	Aug. 14
“ 9	<i>Fort Mactaggami</i>	R. H. Pengelly	Nil	9,840 “ “ “	“ 14
“ 14	<i>Ingerto Exdalmore</i>	B. Birkhaug	“	8,522 “ “ “	“ 19
“ 14	<i>Leeds City</i>	J. D. Lloyd	“	8,970 “ “ “	“ 17
“ 15	<i>Savannah</i>	W. McVicar	“	10,650 “ “ “	“ 22
“ 21	<i>Empire Beatrice</i>	W. J. Cloke	“	2,314 Lumber (Standards)	Sept. 7
“ 22	<i>Atlantic City</i>	H. Paul.....	“	9,750 Wheat Short tons	Aug. 6
“ 27	<i>Fort Richelieu</i>	S. B. Davis.....	“	10,410 “ “ “	“ 31
Sept. 10	<i>Essex Trader</i>	C. Arundell	“	10,455 “ “ “	Sept. 13
“ 10	<i>Middlesex Trader</i>	J. Neale.....	“	10,410 “ “ “	“ 16
“ 16	<i>Fort Mactaggami</i>	R. H. Pengelly..	“	— “ “ “	“ 19
“ 16	<i>Fort Anne</i>	C. Jones.....	“	10,080 “ “ “	“ 22
“ 17	<i>Fort Weederburne</i>	F. C. S. Willet...	“	10,104 “ “ “	“ 26
“ 17	<i>Langlee Crag</i>	T. Orford.....	“	8,880 “ “ “	“ 24
“ 17	<i>Fort Catarauqui</i>	R. L. Barr..	“	10,260 “ “ “	“ 28
“ 17	<i>Fort Kootenay</i>	N. Tifse	“	10,080 “ “ “	“ 30

All these ships made an average passage of 4 or 5 days between Churchill and Resolution Island, contact was kept daily with them and any necessary information was passed.

OTHER VESSELS THAT THE *N. B. McLEAN* HAD CONTACT WITH

R.M.S. <i>Nascopie</i>	J. Waters, H.B. Co., Ran aground at Cape Dorset on July 21, and was a total loss.
M.V. <i>Neophyte</i>	C. Erikson, H.B. Co., Ran aground at mouth of Severn River July 31, total loss.
Schooner <i>Fort Severn</i>	H. Barbour, H.B. Co., General services on West coast Hudson Bay.
M.V. <i>Earle Trader</i>	E. G. Eude, H.B. Co., General services on East coast of Hudson Bay and Hudson Strait.
M.V. <i>J. H. Blackmore</i> ,	J. H. Blackmore, H.B. Co., General services on East coast of Hudson Bay and Hudson Strait was towed from Big Island to Wakeham Bay by <i>N. B. McLean</i> on August 12.
M.V. <i>Ice Hunter</i> —	Serviced the posts of the Baffin Land Trading Co.
M.V. <i>Mary Sweeney</i> —	Carrying gas to Baker Lake, she ran aground in Chesterfield Inlet, was refloated, and assisted by <i>Regina Polaris</i> from Chesterfield to Churchill September 30.
Auxiliary Ship <i>City of New York</i> —	Carried gasoline to Southampton Island. She left there about October 3.
<i>Regina Polaris</i>	S. V. Rodda, R.C. Mission ship for the Hudson Bay Vicariate. Some ships have entered the Chimo Bay but no contact was established with them.

(Sgd.) C. A. CARON MASTER,
C.G.S. *N. B. McLean*.

MOTOR VESSEL *J. H. BLACKMORE*, CAPTAIN J. H. BLACKMORE
VOYAGE TO HUDSON BAY AND STRAIT, 1947

EXTRACTS FROM THE MASTER'S REPORT

MONTREAL TO PORT BURWELL:

July 6. Trip down the River was uneventful, passed Quebec at 4 p.m. and Father Point at 4 p.m., July 7. When crossing Grois Water Bay on July 11 a great number of icebergs made progress difficult. Rounded Cape Chidley on July 15 in ice and arrived at Port Burwell at 6 p.m.

PORT BURWELL TO LAKE HARBOUR:

July 16. Proceeded to George's River and landed freight on July 18, then proceeded to Fort Chimo, arriving July 20. Left for Payne Bay July 24 remaining there until July 28 as a gale was blowing. Proceeded to Lake Harbour in fine weather, arriving on July 29.

LAKE HARBOUR TO WARD INLET AND RETURN:

July 30, in fine weather, left for Frobisher Bay, but encountered heavy fog and some drift ice next day. August 1 and 2, unloaded freight at Frobisher Bay base, then proceeded to Ward Inlet. After unloading cargo there we left for Lake Harbour on August 3, arriving on August 4.

LAKE HARBOUR TO CHURCHILL:

August 5. Left today and proceeded to Big Island where engine trouble developed. From August 6 to 12 we were anchored in Ashe Inlet, awaiting air-mail shipment of main engine parts. On the latter date the patrol vessel "*N.B. McLean*" took us in tow to Wakeham Bay where we anchored. On August 15 the engine parts arrived and we left for Churchill on the 17, arriving on August 22 at 8 a.m.

CHURCHILL TO CHESTERFIELD INLET AND RETURN:

August 24. Left Churchill and encountered a NW. gale the following day but did not lose any deck cargo. Discharged cargo at Chesterfield Inlet on August 27 and at Baker Lake on August 28. On September 3 we left for return to Churchill, arriving there on the 6 after running before a northerly gale.

CHURCHILL TO LAKE HARBOUR:

September 10. After loading cargo, proceeded to Chesterfield Inlet, then Baker Lake and after discharging cargo, proceeded to Southampton Island on September 19. On September 20 and 21 we anchored on the southward side of Southampton Island. On September 23 and 24 unloaded cargo at the Hudson Bay post and at the Government Meteorological Station there. September 24, in fine weather, proceeded to Lake Harbour, arriving there on the 27.

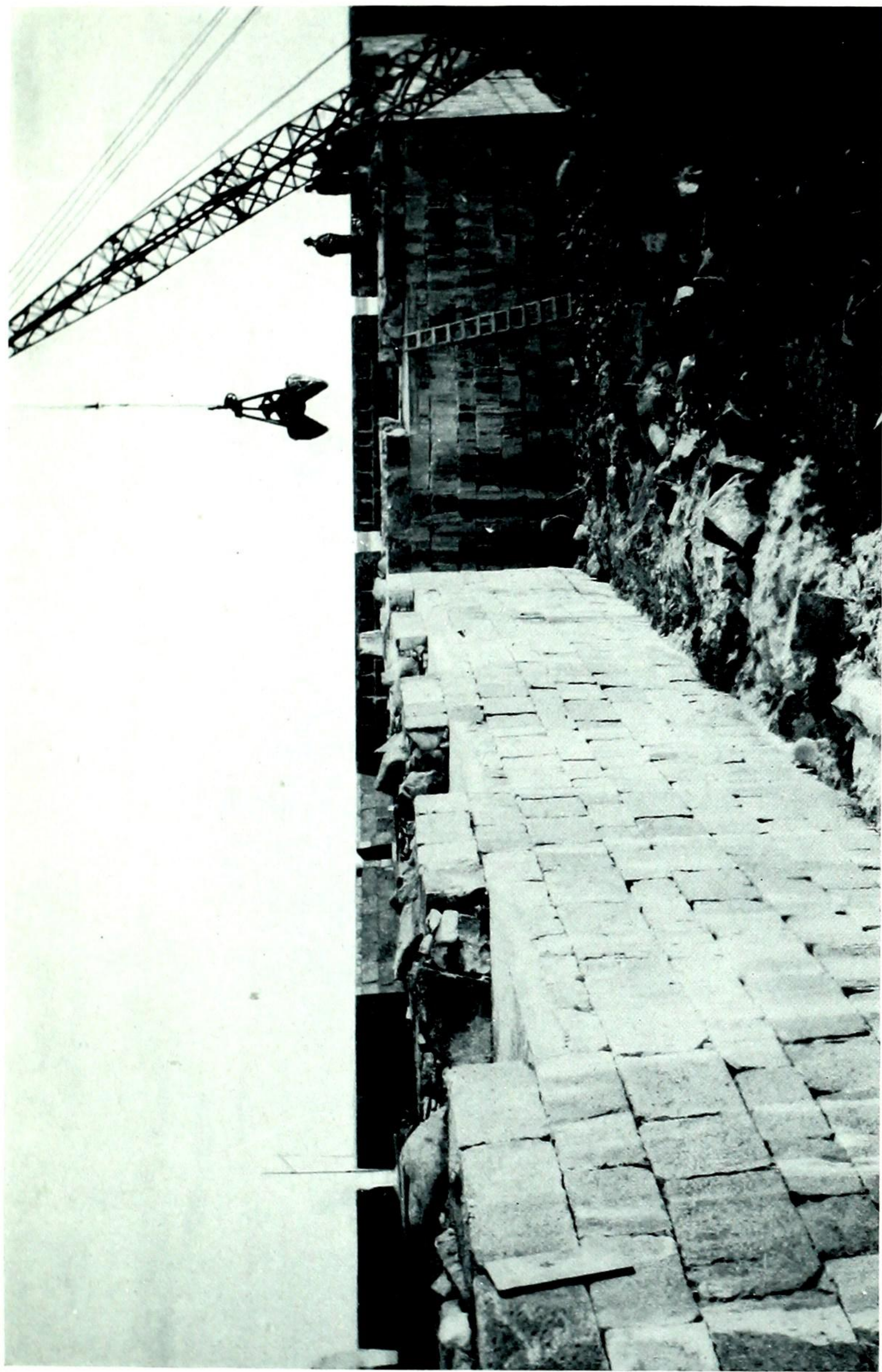
LAKE HARBOUR TO THREE RAPIDS, LABRADOR:

September 29. Left Lake Harbour in fog and a choppy sea. Passed Button Islands on September 30 in thick snow and winds of gale force. We made Hopedale, Labrador, at dusk on October 2 and Three Rapids on the evening of the 3.

CHURCHILL

TRAFFIC

Shipping	1946	1947
Arrivals:—		
Number of vessels.....	21	35
Net registered tonnage.....	40,413	63,831
Departures:—		
Number of vessels.....	22	35
Net registered tonnage.....	40,510	63,831
Total Arrivals and Departures:—		
Number of vessels.....	43	70
Net registered tonnage.....	80,923	127,662
Water Borne Cargo Tonnage (Ton=2,000 lbs. weight or measure)		
Inward.....	93	425
Outward.....	93,651	155,835
Total.....	93,744	156,260



Restoring Ruins of Fort Prince of Wales, Churchill

Hydrographic Information

The Hydrographic Service, Department of Mines and Resources, publishes a series of navigation charts also a volume of Sailing Directions covering the Hudson Bay Route. These are kept up to date and added to from time to time as new information becomes available.

The "Tide Tables for the Atlantic Coast of Canada," published by the Tidal and Current Survey Division of the same Service, contain predictions for the port of Churchill and for Moosonee in James Bay. Tables in leaflet form are available for Port Nelson. Tidal differences for fourteen localities in Hudson Strait and for eight localities in James Bay afford the times of high and low waters in these areas. The time of the turn of the tidal streams in the southern offing of Resolution and Nottingham Islands, and information on the currents in Digges Sound is also given. The automatic tide gauge is kept in operation each season at Churchill for the extension of the tidal records by which the predictions are improved.

HYDROGRAPHIC PUBLICATIONS—HUDSON BAY AND STRAIT

Charts—

- | | |
|--|---|
| 5418 Churchill Harbour. | 5409 Churchill Harbour to Hubbart Point. |
| 5417 Approaches to Nelson River. | 5403 Pritzler Harbour to Cape Weymouth. |
| 5404 Anchorages in Hudson Strait. | Balcom and Barrier Inlets. |
| | Shaftsbury Inlet. |
| | Sugluk Inlet. |
| | Port Burwell. |
| | Button Islands |
| 5000 Hudson Bay and Strait. | 5416 Mouth of Moose River. |
| 5406 Cape Tatnam to Port Nelson. | 5414 Rupert Bay. |
| 5407 Anchorages in Hudson Strait. | 5415 Mouth of Rupert River |
| | 5411 Lower Savage Islands to Pritzler Harbour. |
| | Pritzler Harbour. |
| | Charles Inlet. |
| | Savage Harbour. |
| | Acadia Cove. |
| 5408 Cape Churchill to Churchill Harbour. | 5412 Erik Cove to Nuvuk Harbour including Digges Islands. |
| 5400 Cape Churchill to Egg River. | Erik Cove. |
| 5401 Wakeham and Fisher Bays and Approaches. | Port de Laperriere. |
| | Nuvuk Harbour. |
| | Digges Harbour. |
| | Wakeham Bay. |
| | 5410 Coral Harbour. |
| | Fisher Bay. |
| 5402 C. Prince of Wales to C. Weggs. | |
| | Douglas Harbour. |

Sailing Directions—

Sailing Directions for the Hudson Bay Route.

Tide Tables—

Tide Tables for the Atlantic Coast of Canada.

Tide Tables for Port Nelson, Hudson Bay (in mimeograph form).

NOTE.—Copies of the above publications are available at the office of the High Commissioner for Canada, Canada House, London, England, for reference only. Charts and Sailing Directions are issued at 50 cents and Tide Tables at 25 cents per copy and may be obtained from the Hydrographic Service, Department of Mines and Resources, Ottawa, or from the National Harbours Board Office, Churchill, Manitoba. All orders must be accompanied by postal or express money order, for the full amount, payable to the Receiver General for Canada.

METEOROLOGICAL REPORT C.G.S. N. B. McLEAN

Date	Noon Position	Barometer			Temperature		Wind True Dir. and Force				Fog Hrs.	Remarks		Vsby.
		8 a.m.	4 p.m.	12 p.m.	Max.	Min.	Sea	8 a.m.	4 p.m.	12 p.m.		a.m.	p.m.	
July 1947														
8	Buoy 104	30.00	30.06	30.06	67	52	46	E	N	W	0	Cloudy and clear	Cloudy and clear	8
9	Off Father Pt.	30.06	29.96	29.90	62	51	48	SW	SW	SW	0	Fine and clear	Fine and clear	8
10	49-58N 64-28W	29.96	29.94	30.02	68	57	54	N	SE	ENE	0	Cloudy and clear	Cloudy and clear	9
11	50-35N 58-34W	30.06	29.94	29.67	60	50	47	NE	S	W	0	Cloudy and clear	Cloudy and clear	9
12	Cape Norman	29.56	29.56	29.57	55	50	47	SW	W	N	24	Rain and fog	Rain and fog	3
13	SW Belle Isle	29.67	29.76	29.88	55	48	38	NE	W	NE	6	Fine and clear	Fine and clear	9
14	SW "	29.88	29.75	29.63	54	48	40	NE	SW	SW	0	Cloudy and clear	Cloudy and clear	9
15	SW "	29.62	29.71	29.84	58	50	35	SW	E	NW	10	Fine and clear	Fine and clear	7
16	SW "	29.92	29.86	29.80	56	50	37	Calm	E	NE	0	Cloudy and clear	Cloudy and clear	8
17	SW "	29.67	29.62	29.71	53	48	35	W	W	E	24	Thick fog	O'cast and fog	1
18	SW "	29.74	29.71	29.59	55	48	35	NE	SE	SE	14	O'cast and fog	O'cast and fog	3
19	Lark Cove	29.49	29.71	29.54	64	50	45	S	SW	NW	24	O'cast and fog	O'cast and fog	3
20	"	29.65	29.88	29.54	44	35	32	SW	SW	SW	4	O'cast and fog	O'cast and fog	7
21	N E Belle Isle	30.10	30.14	30.09	60	46	45	N	N	N	0	Fine and clear	Fine and clear	8
22	52-10N 55-23W	30.12	30.08	30.06	55	47	43	WSW	NNE	SE	0	Cloudy and clear	Cloudy and clear	8
23	55-50N 52-10W	30.11	30.08	29.96	46	43	37	SSW	SSE	SE	0	Cloudy and clear	Cloudy and clear	8
24	59-10N 61-05W	29.94	29.87	29.84	43	35	34	NNW	NE	SW	8	O'cast rain fog	O'cast rain fog	4
25	61-10N 62-20W	29.80	29.67	29.27	44	35	32	SSE	NNW	NW	19	Thick fog	Thick fog	1
26	62-22N 56-00W	29.44	29.54	29.47	40	38	33	NW	SW	SW	0	O'cast and rain	O'cast and rain	7
27	62-52N 76-51W	29.32	29.47	29.38	40	37	33	W	W	NW	4	O'cast and clear	O'cast and clear	8
28	Off Cape Dorset	29.33	29.34	29.35	38	35	32	SW	SW	SW	0	O'cast and clear	O'cast and clear	8
29	63-08N 76-00W	29.36	29.44	29.51	40	35	32	W	W	W	1	O'cast and clear	O'cast and clear	8
30	61-45N 86-50W	29.65	29.78	29.76	47	39	35	NW	NW	SW	0	O'cast and clear	O'cast and clear	8
31	Off Churchill	29.55	29.64	29.62	69	50	59	WSW	NW	SW	0	O'cast and clear	O'cast and clear	9
Aug.														
1	Churchill Man	29.54	29.57	29.62	63	51	58	NE	SE	SE	0	Cloudy and clear	Cloudy and clear	7
2	59-19N 92-34W	29.68	29.76	29.82	60	43	54	NW	NNE	ESE	0	Cloudy and clear	Fine and clear	9
3	61-17N 85-18W	29.87	29.92	29.88	42	36	35	E	SE	SE	0	O'cast and clear	O'cast and clear	8
4	Mansel Island	28.95	29.85	29.88	45	38	34	E	NNE	NE	0	O'cast and clear	Cloudy and clear	9
5	Nottingham Island	29.94	29.94	29.88	52	43	32	W	E	E	0	Fine and clear	Cloudy and clear	7
6	"	29.80	29.74	29.68	45	40	32	E	E	SE	0	Cloudy and clear	O'cast and clear	6
7	"	29.68	29.54	29.50	43	38	32	SSE	E	SE	24	Thick fog	Thick fog	1
8	"	29.54	29.64	29.80	40	36	32	NW	NW	W	24	O'cast rain and fog	O'cast rain and fog	3
9	Erik Cove	29.94	29.96	29.86	43	35	37	WNW	NNW	W	0	Cloudy and clear	Cloudy and clear	6
10	"	29.93	29.33	29.47	50	46	37	SE	SSE	WNW	8	Cloudy fog bank	Cloudy fog bank	5
11	"	29.54	29.62	29.69	45	42	36	WNW	NNE	SW	0	Cloudy and clear	Cloudy and clear	8
12	Big Island	29.70	29.68	29.70	47	42	33	SSW	S	WNW	8	O'cast and clear	Cloudy and clear	6
13	Wakeham Bay	29.65	29.61	29.66	50	43	37	SSW	NW	W	0	Cloudy and clear	Cloudy and clear	8
14	East Wales Island	29.68	29.70	29.68	45	40	35	WNW	SE	W	0	Cloudy and clear	Cloudy and clear	9
15	Diana Bay	29.67	29.78	30.00	41	40	35	NW	NW	W	0	Cloudy and clear	Cloudy and clear	7
16	"	29.94	29.95	30.00	50	40	36	NW	NW	W	0	Cloudy and clear	Cloudy and clear	9
17	"	30.00	29.91	29.82	52	43	37	SW	NNW	NW	0	Cloudy and clear	Cloudy and clear	8
18	"	29.80	29.83	29.97	42	38	36	NW	NW	NW	3	Cloudy and clear	Cloudy and clear	7
19	Off Cape Hopes	30.12	30.15	30.10	46	38	36	NW	NW	WNW	0	Cloudy and clear	Cloudy and clear	8
20	Diana Bay	30.00	29.64	29.48	53	43	37	SW	SSE	WSW	0	Cloudy and clear	Cloudy and clear	8
21	"	29.44	29.80	29.95	43	40	37	NW	NW	WNW	0	O'cast and rain	O'cast and rain	7
22	"	29.93	29.82	29.73	48	40	37	NW	W	W	0	Cloudy and clear	O'cast and rain	7
23	61-26N 70-15W	29.74	29.80	29.89	39	37	36	NW	NW	NW	0	Cloudy and clear	Cloudy and clear	6
24	Off Cape Hopes	30.01	30.01	29.94	40	37	35	NW	NW	N	0	O'cast and clear	Cloudy and clear	6
25	61-15N 65-15W	29.82	29.64	29.52	40	37	33	ESE	ENE	NE	4	Cloudy and clear	Cloudy and light fog	9
26	Acadia Cove	29.45	29.46	29.57	40	35	32	NE	NE	WSW	0	Cloudy and clear	Cloudy and clear	8
27	"	29.64	29.72	29.70	40	35	32	WSW	SSW	S	8	Cloudy and fog patches	Cloudy and fog	4
28	"	29.56	29.45	29.37	41	36	32	NE	ENE	ESE	12	Rain and fog	Rain and fog	3

RESOLUTION ISLAND METEOROLOGICAL REPORT, 1947

Date	Mean Barometer	Temperature		Wind				Precipitation	
		Max.	Min.	8.00 a.m.		8.00 p.m.		a.m.	p.m.
				Dir.	Vel.	Dir.	Vel.		
		°F.	°F.					Inches	Inches
1947									
July									
1	1008.8	38	32	N	5	W	5		
2	1012.0	39	26	W	15	W	5		
3	1016.3		42	WNW	2				
4	1017.8		33	E					
5	1017.1	44	33	E	10	ESE	21		Trace
6	1016.3		33	E	10				
7	1009.5	37	34	E	15	SW	5	Trace	.01
8	1012.0	37	32	W	10	W	2		Trace
9	1011.0		33	NE	27	S	2	0.6	
10	1016.0	39	33	WNW	15	W	10		
11	1003.6	45	35		5	W	15	.02	
12	1004.2	45	33		10	NW	5		
13	1008.1	42	36	W	5	W	5		.56
14	1003.0	37	33	SE	5	WNW	2	.14	.14
15	1007.4	39	37	NW	2	W	5	.02	
16	1019.1	55		W	5	SW	5		.24
17	1003.4	41	36	NE	5	E	5		
18	1005.8	39	32	E	10	E	15		.12
19	1006.2	39	35	E	21	W	10	.12	
20	1007.7	38	38	Calm	0	S	5		
21	1013.8	45	34	SE	2	ESE	15	.05	.01
22	996.2	44				SE	10		
23	1016.6	40	37	SW	2	Calm	0		.07
24	1015.8	49	45	Calm	0	W	5		
25	1008.0	39	37	W	0	SW	10		.06
26	995.0	47	34	S	21	NW	10	.06	Trace
27	999.5	37	33	W	10	W	50	.03	.50
28	999.2	48	35	N	2	ESE	10	.19	.16
29	998.5	38	34			W	15	.02	
30	999.8		33	W	5				
31	1007.3	40				S	2		
Aug.									
1	1007.3		34	Calm	0				
2	1010.0	42	36	S	5	E	10		.91
3	1005.3	37	34	N	15	W	15	.19	
4	1010.2	38	34	W	15	W	10		
5	1012.8	42	34	SE	10	E	2		
6	1015.2	36	36	S	2	ESE	5		
7	1013.8	37	19	E	10	E	21		
8	1005.9	37	34	E	21	W	5	.07	Trace
9	1013.0	39	34	ENE	15	N	5		
10	1012.0	39	33	NW	10	SE	15		.15
11	998.8	40	34	W	10	NW	21	.10	
12	1008.6	39	34	W	5	W	5		
13	1006.4	39	34	W	5				
14	1005.6	35	33	WNW	10	W	10		
15	1006.4	40		NW	10	W	15		
16	1017.5	40				SW	5		
17	1016.8	41	34	W	10	W	2		
18	1009.3		34	N	2				
19	1017.9		39	NW	15				
20	1006.0	40				SW	5		
21	1005.9	43	36	W	2	ENE	15	.10	
22									
23	1008.9	39				N	27		
24									
25	1008.0	40	31	NW	5	E	15		
26	1000.8	38				NE	5		
27	1007.4	39	32	W	5	W	10		
28	999.6	39	35	E	15	E	27	.05	.20
29	1001.0	39	33	ENE	15	W	10	.10	
30	1008.5	38	31	W	10	SW	5		
31	996.8	40	35	E	21	E	27	.03	.33

RESOLUTION ISLAND METEOROLOGICAL REPORT, 1947

Date	Present Weather		Visibility		Ice Conditions
	a.m.	p.m.	a.m.	p.m.	
			Miles	Miles	
1947					
July					
1	Overcast.....	Cloudless.....	20	20	Great number of bergs.
2	Partly cloudy...	Cloudless.....	20	30	Loose packed ice.
3	Cloudless.....	30	
4	Partly cloudy...	30	20	
5	Partly cloudy...	Cloudy.....	20	30	
6	Light fog.....	4	
7	Drizzle and fog.	Partly cloudy...	$\frac{1}{16}$	9	
8	Cloudy.....	Cloudy.....	20	20	4 bergs in open water.
9	Rain and fog....	Cloudy.....	$\frac{1}{2}$	20	
10	Fog.....	Partly cloudy...	$\frac{1}{16}$	20	
11	Cont. light rain.	Fog.....	20	$\frac{1}{16}$	Scattered drift ice.
12	Light rain.....	Cloudy.....	4	20	
13	Cloudy.....	Overcast.....	20	9	
14	Overcast.....	Moderate rain...	9	4	
15	Cloudy.....	Cloudy.....	9	20	3 bergs—1 growler.
16	Fog.....	Drizzle and fog.	$\frac{1}{16}$	$\frac{1}{4}$	
17	Overcast.....	Fog patches....	9	9	
18	Light fog.....	Overcast.....	2	9	
19	Rain and fog....	Partly cloudy...	$\frac{1}{4}$	20	
20	Cloudy.....	Cloudless.....	20	20	
21	Overcast.....	Distant fog.....	20	9	Number of bergs.
22	Cloudy.....	20	
23	Overcast.....	Rain and fog....	9	$\frac{1}{4}$	
24	Cloudless.....	Cloudy.....	20	20	
25	Partly cloudy...	Cont. light rain.	20	9	
26	Rain and fog....	Rain showers...	$\frac{1}{4}$	9	
27	Light fog.....	Overcast.....	4	9	
28	Rain and fog....	Partly cloudy...	$\frac{1}{4}$	20	
29	Fog.....	Overcast.....	$\frac{1}{2}$	9	
30	Overcast.....	20	
31	Partly cloudy...	20	Ice pans off shore—no bergs.
Aug.					
1	Partly cloudy...	20	String ice inshore.
2	Partly cloudy...	Rain and fog....	20	4	
3	Light fog.....	Fog.....	9	0	
4	Fog.....	Light fog.....	1	4	4 bergs—string ice.
5	Cloudy.....	Cloudy.....	20	20	
6	Partly cloudy...	Fog.....	9	$\frac{1}{2}$	
7	Fog.....	Fog.....	$\frac{1}{16}$	$\frac{1}{16}$	
8	Rain and fog....	Partly cloudy...	$\frac{1}{2}$	9	
9	Overcast.....	Cloudy.....	20	9	3 bergs—no drift ice.
10	Partly cloudy...	Overcast.....	9	20	
11	Fog.....	Haze.....	$\frac{1}{16}$	4	
12	Partly cloudy...	Overcast.....	20	9	
13	Cloudy.....	Partly cloudy...	9	20	
14	Distant fog.....	Cloudless.....	4	9	
15	Fog.....	Cloudless.....	$\frac{1}{16}$	20	Numerous bergs.
16	Cloudy.....	20	
17	Overcast.....	9	9	
18	Partly cloudy...	20	
19	Cloudless.....	20	
20	Low fog.....	9	
21	Fog.....	Overcast.....	0	9	
22	
23	Cloudy.....	9	
24	
25	Overcast.....	Overcast.....	4	20	
26	Partly cloudy...	9	
27	Fog.....	2	4	Numerous bergs.
28	Overcast.....	Rain and fog....	20	$\frac{1}{16}$	
29	Moderate rain...	Cloudy.....	4	9	
30	Fog.....	Partly cloudy...	$\frac{1}{16}$	20	
31	Overcast.....	Rain and fog....	9	2	No bergs in sight.

RESOLUTION ISLAND METEOROLOGICAL REPORT, 1947—Cont.

Date	Mean Barometer	Temperature		Wind				Precipitation	
		Max.	Min.	8.00 a.m.		8.00 p.m.		a.m.	p.m.
				Dir.	Vel.	Dir.	Vel.		
		°F.	°F.					Inches	Inches
1947									
Sept.									
1	996.6	38	37	NE	27	W	15	.06	
2	1004.1	38	34	E	2	E	15		.07
3	996.0		34	SE	10			.20	.05
4	994.4	35	33	W	10	W	15		.11
5	997.5	35	32	NW	10	NW	15	.10	Trace
6	1014.6	36	33	W	35	SW	10		
7	1005.7	40	32	E	10	Calm	0	.02	Trace
8	1013.0	35	33	W	10	Calm	0		
9	1018.8	40	32	NW	21	NW	5		
10	1020.8	38	30	Calm	0	Calm	0	.04	
11	1010.2	37	32	E	15	E	27		
12	998.7	36	35	E	21	E	10		.16
13	1009.8	37	33	NE	15	W	10	Trace	.89
14	1001.2	37	32	E	27	E	15	.46	.08
15	992.5	40				SE	10	.06	.18
16	994.6	41	37	SW	10	S	10		Trace
17	997.6	37	36	SW	10	NW	21	Trace	Trace
18	1012.6	37	34	NW	21	WNW	42		
19	1009.4	36	32	W	27	NW	21	.03	Trace
20	1005.0	37	34	W	15	SW	10	.03	
21	986.1	40	39	S	27	SW	21	.03	.10
22	994.0	36	34	SW	15	SW	21	Trace	
23	1009.2	36	33	W	10	W	5		
24	1003.1	36	31	NW	10	W	5		
25	1009.7	35	31	Calm	0	W	10	Trace	Trace
26	1020.2	33	30	NW	15	W	27		Trace
27	1021.4	34	22	W	21	S	21		Trace
28	1005.9	36	32	SW	27	SW	21	.01	Trace
29	1009.4	34	33	WSW	10	Calm	0	Trace	.10
30	1004.2	33	32	NE	15	E	27	.10	Trace
Oct.									
1	1014.2	34	29	W	10	SW	15		
2	1015.4	40	33	SW	5	SE	5	.14	Trace
3	1008.8	33	27	SSW	5	SE	15	.02	.10
4	1007.6	35	32	Calm	0	NE	10	.10	.02
5	999.8	37	33	E	15	NE	15	.05	.14
6	1002.0	37	30	NE	35			.10	
7	1007.8	31	29	NE	15	NW	5		
8	1009.0	31	29	NW	15	NW	42		
9	1011.4	29	22	NW	27	NW	15		
10	1010.9	27	24	NW	15	NW	15		
11	1010.4	32	24	WNW	27	SW	10		.05
12	1005.6	30	28	NE	10	E	15	Trace	Trace
13	1001.8	34	27	E	15	E	27	Trace	.09
14	1011.4	35	31	NE	5	SE	15	.04	Trace
15	996.0	35	31	SE	35	S	21	.04	.02
16	999.2	33	31	SE	10	NE	10	.08	Trace
17	1011.5	35	30	NE	27	NW	10	Trace	
18	1007.1	36	31	N	10	W	15		
19	1006.8	35	31	Calm	0	SE	15	Trace	Trace
20	1002.4	34	28	E	21	E	21	Trace	Trace
21	1006.4	37	29	NE	21	E	15	.02	Trace
22	1011.4	35	34	NE	5	W	5	Trace	Trace
23	1001.6	34	27	NW	15	NW	27		
24	1005.6	29	25	NW	15	W	10	Trace	.01
25	999.1	28	25	W	10	NW	35		
26	1003.0	30	22	N	2	SE	15	Trace	Trace
27	1002.0	31	22	E	21	SE	21		Trace
28	984.7	33	31	SE	27	E	2	.19	.10
29	1007.9	33	31	NE	15	N	15	Trace	Trace
30	1005.4	26	26	N	10	NW	21		
31	1028.8	28	22	NW	10	NW	15		

RESOLUTION ISLAND METEOROLOGICAL REPORT, 1947—Cont.

Date	Present Weather		Visibility		Ice Conditions
	a.m.	p.m.	a.m.	p.m.	
			Miles	Miles	
1947					
Sept.					
1	Rain and fog....	Overcast.....	1	9	1 berg NE.
2	Fog.....	Overcast.....	$\frac{1}{16}$	9	No ice in sight.
3	Rain and fog....	2	
4	Overcast.....	Rain and snow..	9	$\frac{1}{16}$	
5	Rain and fog....	Rain and fog....	$\frac{1}{16}$	$\frac{1}{2}$	
6	Light fog.....	Cloudy.....	2	20	
7	Overcast.....	Light fog.....	20	20	
8	Fog.....	Cloudy.....	$\frac{1}{16}$	9	
9	Overcast.....	Cloudless.....	30	20	4 bergs.
10	Cloudless.....	20	
11	Overcast.....	Overcast.....	20	9	No ice in sight.
12	Overcast.....	Rain and fog....	9	2	
13	Overcast.....	Overcast.....	4	9	
14	Moderate rain..	Light drizzle...	1	2	
15	Fog.....	0	
16	Cloudy.....	Overcast.....	9	9	
17	Rain and fog....	Fog.....	0	1	
18	Cloudy.....	Overcast.....	9	9	
19	Overcast.....	Fog.....	9	$\frac{1}{16}$	
20	Light fog.....	Light fog.....	4	4	
21	Moderate rain..	Int. light rain..	2	4	
22	Overcast.....	Partly cloudy...	20	20	1 berg SE.
23	Partly cloudy...	Cloudy.....	20	20	
24	Overcast.....	Cloudy.....	20	20	
25	Overcast.....	Overcast.....	9	9	
26	Cloudy.....	Partly cloudy...	20	20	
27	Cloudy.....	Overcast.....	9	9	
28	Rain and snow..	Overcast.....	$\frac{1}{16}$	9	No ice in sight.
29	Overcast.....	Int. light snow..	9	20	
30	Cont. light snow	Cloudy.....	$\frac{1}{2}$	9	
Oct.					
1	Partly cloudy...	Overcast.....	9	9	1 berg—1 growler.
2	Fog.....	Fog.....	$\frac{1}{4}$	0	
3	Overcast.....	Rain and snow..	9	1	No ice in sight.
4	Fog.....	Drizzle and fog.	1	$\frac{1}{16}$	
5	Light drizzle...	Cont. light rain.	2	1	
6	Overcast.....	Overcast.....	2	4	
7	Cloudy.....	Overcast.....	9	9	2 bergs.
8	Cloudy.....	Partly cloudy...	20	9	No ice in sight.
9	Cloudy.....	Overcast.....	20	9	
10	Overcast.....	Cloudy.....	20	9	
11	Cloudy.....	Cont. light snow	9	$\frac{1}{2}$	
12	Overcast.....	Int. light snow..	20	4	
13	Moderate snow.	Rain and snow..	9	$\frac{1}{4}$	
14	Cloudy.....	Partly cloudy...	9	9	
15	Moderate snow.	Overcast.....	4	4	
16	Snow and fog...	Fog.....	$\frac{1}{16}$	$\frac{1}{16}$	
17	Overcast.....	Cloudless.....	20	20	
18	Partly cloudy...	Overcast.....	9	9	
19	Overcast.....	Overcast.....	20	20	
20	Int. light snow.	Overcast.....	1	9	
21	Drizzle and fog.	Rain and fog....	$\frac{1}{16}$	$\frac{1}{16}$	
22	Distant fog....	Heavy snow....	4	0	1 large berg.
23	Overcast.....	Overcast.....	20	20	
24	Partly cloudy...	Cloudy.....	20	9	No ice in sight.
25	Overcast.....	Overcast.....	30	9	
26	Overcast.....	Squally weather	20	9	
27	Overcast.....	Overcast.....	20	9	
28	Sleet.....	Snow and fog....	1	0	
29	Drizzle and fog.	Int. light snow..	0	9	
30	Overcast.....	Partly cloudy...	9	9	
31	Cloudless.....	Overcast.....	20	9	3 bergs.

RESOLUTION ISLAND METEOROLOGICAL REPORT, 1947—*Conc.*

Date	Mean Baro- meter	Temperature		Wind				Precipitation	
		Max.	Min.	8.00 a.m.		8.00 p.m.		a.m.	p.m.
				Dir.	Vel.	Dir.	Vel.		
		°F.	°F.					Inches	Inches
1947									
Nov.									
1.....	1006.4	32	25	SW	27	WNW	42	.03	Trace
2.....	1008.8	29	29	NW	35	NW	21		
3.....	1013.7	29	22	NW	10	S	27		.32
4.....	1003.8	31	22	W	10	W	27	.40	
5.....	1010.4	29	29	NW	27	NW	10		
6.....	1023.9	30				NW	15		
7.....	1024.3	25	21	N	2	Calm	0		
8.....	1021.1	30				E	27		
9.....	1020.6	31	30	E	27	E	27		
10.....	1022.9	35	30	E	15	NE	21		
11.....	1025.4	31	29	NE	15	S	10		
12.....	1031.2	34	29	E	10	E	27		
13.....	1035.4	34	30	E	27	E	10		.02
14.....	1035.5		23	NE	21				
15.....	1038.4	27	23	NE	15	E	21		
16.....	1034.6	30	28	NE	21	NE	15	.97	Trace
17.....	1031.4	22	22	NE	21	E	15	Trace	
18.....	1030.0	27	22	NE	15	E	10	Trace	
19.....	1025.8	25	20	Calm	0	NW	15		
20.....	1020.2	26	20	Calm	0	N	10		
21.....	1020.8	23	20	W	10	Calm	0		
22.....	1015.8	25	20	Calm	0	Calm	0	Trace	.03
23.....	1000.6	28	20	E	27	E	21	.20	.20
24.....	994.8	29	22	S	5	SW	15	.03	Trace
25.....	1013.6	28	25	SW	21	E	27	Trace	.22
26.....	979.6	33	24	SW	35	S	35	.18	
27.....	1000.4	27	21	SW	21	SW	21	.05	.01
28.....	1003.5	24	19	SW	21	SW	21	.01	Trace
29.....	1006.4	22	13	S	10	E	21	Trace	.22
30.....	1003.5	23	16	Calm	0	W	15	.74	.05

RESOLUTION ISLAND METEOROLOGICAL REPORT, 1947—*Conc.*

Date	Present Weather		Visibility		Ice Conditions
	a.m.	p.m.	a.m.	p.m.	
			Miles	Miles	
1947					
Nov.					
1	Int. light rain...	Int. light snow..	1	2	No ice in sight.
2	Cloudy.....	Overcast.....	9	4	2 bergs.
3	Overcast.....	Cont. light snow	9	$\frac{1}{8}$	No ice in sight.
4	Moderate snow.	Overcast.....	9	9	
5	Fog.....	Partly cloudy...	4	9	
6	Cloudless.....	20	
7	Cloudless.....	Partly cloudy...	20	20	
8	Partly cloudy...	20	2 small bergs.
9	Partly cloudy...	Cloudy.....	20	9	
10	Fog.....	Cloudless.....	0	20	No ice in sight.
11	Overcast.....	Partly cloudy...	9	20	
12	Fog.....	Cloudless.....	0	20	
13	Fog.....	Snow and fog...	$\frac{1}{8}$	$\frac{1}{8}$	
14	Fog.....	0	
15	Overcast.....	Overcast.....	9	9	
16	Fog.....	Overcast.....	0	9	
17	Sleet.....	Overcast.....	4	9	
18	Overcast.....	Cloudy.....	9	4	
19	Partly cloudy..	Cloudy.....	4	9	
20	Overcast.....	Overcast.....	20	9	
21	Overcast.....	Partly cloudy...	9	9	
22	Overcast.....	Partly cloudy..	20	20	Slob ice forming.
23	Moderate snow.	Drifting snow...	1	$\frac{1}{2}$	
24	Cont. light snow	Moderate snow.	$\frac{1}{2}$	0	Scattered ice.
25	Cloudy.....	Moderate snow.	4	$\frac{1}{2}$	
26	Sleet.....	Overcast.....	1	9	No ice in sight.
27	Moderate snow.	Moderate snow.	1	1	
28	Int. light snow..	Overcast.....	9	9	
29	Partly cloudy...	Moderate snow.	20	4	Small patches ice.
30	Heavy snow....	Overcast.....	0	4	

CAPE HOPES ADVANCE METEOROLOGICAL REPORT 1947

Date	Mean Barometer	Temperature		Wind				Precipitation	
		Max.	Min.	8.00 a.m.		8. p.m.		a.m.	p.m.
				Dir.	Vel.	Dir.	Vel.		
		°F.	°F.					Inches	Inches
1947									
July									
1	1009.0	45	32	NE	1	SE	4		
2	1011.8	41	30	NW	8	NW	10		
3	1015.6	51	35	NW	14	Calm	0		
4	1015.6	56	44	S	2	S	16		
5	1013.2	57	42	S	28	NW	8		
6	1013.0	47	44	SW	4	S	8		
7	1008.2	62	36	SW	5	Calm	0		.01
8	1010.2	53	38	NW	26	NW	10		
9	1013.5	41	32	NW	18	NW	20		
10	1015.0	60	34	NW	14	SSW	16		
11	1003.9	43	38	SW	13	NW	25		
12	1007.6	41	36	NW	26	NW	32		
13	1006.0	52	37	N	11	S	26		.10
14	994.0	37	45	W	16	NW	35	.15	
15	1008.6	54	37	W	22	Calm	0	.13	
16	998.9	52	45	NW	16	S	18		
17	1003.6	47	38	SE	8	Calm	0		
18	1002.4	43	35	Calm	0	NW	25	.10	.08
19	1000.2	49	35	W	4	Calm	0		
20	1004.6	53	40	W	6	SW	16		
21	1011.1	56	40	SW	11	S	20		
22	1010.6	56	45	W	12	SW	4		
23	1014.8	52	44	S	12	SW	20		
24	1016.0	53	43	Calm	0	Calm	0		
25	1004.8	50	42	SW	8	SW	20	.04	.87
26	997.6	45	35	NW	44	WNW	31	.11	
27	1001.5	45	39	WSW	28	NW	12	.23	
28	997.2	51	41	W	12	NE	4	.13	.20
29	997.7	50	36	W	16	NW	6	.01	
30	1000.9	43	41	NW	20	S	4		
31	1007.2	42	36	N	6	NW	4		
Aug.									
1	1005.4		38	S	15				
2	1000.2	45	40	SW	5	SE	2		
3	1008.0	44	35	NW	21	NW	5		
4	1011.0	44	38	W	27	Calm	0		
5	1013.0	42	36	W	10	NW	0		
6	1013.2	54	37	SW	10	S	15		
7	1009.6	42	38	S	21	S	15		.30
8	1004.1	48	41	W	15	Calm	0		
9	1018.5	43	38	NW	10	S	10		
10	1005.8	50	40	SW	21	SE	35		.19
11	999.4	54	38	W	27	SSW	15		
12	1007.4	55	45	NW	10	S	10		
13	1005.0	51	45	W	15	W	10		
14	1006.2	40	38	NW	10	NW	10		
15	1008.3	39	38	NW	10	W	27		
16	1017.7	40				W	15		
17	1015.6	57	40	W	10	SE	5		
18	1006.8		38	NW	10	WNW	27		
19	1021.2		36	NW	27				
20	1008.2	57		NW	10	SE	21		
21	1005.6	45	38	SSW	2	W	5	Trace	
22									
23	1011.4	37				N	27		
24									
25	1006.0	39	33	W	2	E	21		
26	1002.1	39				NW	15		
27	1006.9		38	SW	10	W	35		
28	1003.2	38	38	SE	10	E	10		.07
29	1003.7	39	31	NW		W	21		
30	1007.9	49		NW	5	SSE	21		.04
31	995.8	38	36	SE	15	NE	27	.12	.21

CAPE HOPES ADVANCE METEOROLOGICAL REPORT 1947

Date	Present Weather		Visibility		Ice Conditions
	a.m.	p.m.	a.m.	p.m.	
			Miles	Miles	
1947					
July					
1	Overcast.....	Cloudless.....	9	20	Loose ice to horizon.
2	Fog.....	Cloudless.....	$\frac{1}{2}$	20	1 berg—1 growler.
3	Cloudless.....	Cloudless.....	20	20	3 bergs—4 growlers.
4	Cloudless.....	Partly cloudy...	20	20	
5	Partly cloudy...	Cloudless.....	20	20	
6	Partly cloudy...	Overcast.....	20	20	
7	Partly cloudy...	Partly cloudy...	20	20	Open water 10 miles off shore.
8	Cloudy	Overcast.....	20	20	
9	Overcast.....	Fog.....	9	0	Dense fog.
10	Cloudless.....	Cloudy	20	20	
11	Moderate rain...	Cloudless.....	4	20	Scattered ice pans.
12	Partly cloudy...	Partly cloudy...	9	4	No ice in sight.
13	Cloudy	Cont. rain.....	20	9	
14	Overcast.....	Overcast.....	20	9	
15	Cloudy	Overcast.....	20	20	
16	Overcast.....	Partly cloudy...	20	20	6 bergs on horizon.
17	Fog patches....	Low fog.....	7	$\frac{1}{4}$	
18	Partly cloudy...	Overcast.....	20	20	
19	Cloudless.....	Partly cloudy...	20	20	
20	Partly cloudy...	Partly cloudy...	20	20	
21	Cloudless.....	Partly cloudy...	20	20	10 bergs on horizon.
22	Overcast.....	Partly cloudy...	20	20	
23	Cloudless.....	Overcast.....	20	20	
24	Overcast.....	Partly cloudy...	20	20	
25	Overcast.....	Int. light rain...	20	9	1 berg on horizon.
26	Fog.....	Cloudless.....	$\frac{1}{2}$	20	
27	Cloudy	Overcast.....	9	20	
28	Moderate rain...	Moderate rain...	9	2	No ice in sight.
29	Cloudless.....	Partly cloudy...	20	20	
30	Overcast.....	Partly cloudy...	9	20	
31	Fog.....	Cloudless.....	$\frac{1}{4}$	20	
Aug.					
1	Overcast.....	9	No ice in sight.
2	Partly cloudy...	Fog.....	20	$\frac{1}{16}$	
3	Fog.....	Partly cloudy...	$\frac{1}{16}$	20	
4	Cloudless.....	Overcast.....	20	20	
5	Cloudless.....	Cloudless.....	9	9	
6	Cloudless.....	Partly cloudy...	20	20	1 berg to eastward.
7	Cloudy	Overcast.....	20	20	
8	Cloudless.....	Partly cloudy...	9	20	
9	Fog.....	Cloudy	$\frac{1}{4}$	20	
10	Overcast.....	Rain and fog...	20	4	
11	Partly cloudy...	Partly cloudy...	9	9	No ice or bergs.
12	Partly cloudy...	Partly cloudy...	20	20	
13	Cloudless.....	Partly cloudy...	20	20	
14	Cloudy	Cloudless.....	9	20	
15	Overcast.....	Partly cloudy...	20	20	
16	Partly cloudy...	20	
17	Distant fog	Partly cloudy...	20	20	
18	Low fog.....	Cloudy	0	9	
19	Partly cloudy...	9	
20	Partly cloudy...	Overcast.....	20	4	
21	Fog.....	9	1	
22	
23	Fog.....	$\frac{1}{16}$	
24	
25	Cloudy	Fog.....	9	2	
26	Cloudy	9	1 berg to eastward.
27	Cloudy	Partly cloudy...	9	30	No ice in sight.
28	Overcast.....	Cont. light drizzle.....	9	$\frac{1}{2}$	
29	Overcast.....	Cloudy	4	9	
30	Partly cloudy...	Cont. light rain.	20	2	
31	Overcast.....	Cont. light rain.	9	2	

CAPE HOPES ADVANCE METEOROLOGICAL REPORT, 1947—Cont.

Date	Mean Barometer	Temperature		Wind				Precipitation	
		Max.	Min.	8.00 a.m.		8.00 p.m.		a.m.	p.m.
				Dir.	Vel.	Dir.	Vel.		
		°F.	°F.					Inches	Inches
1947									
Sept.									
1.....	1001.2	37	35	NW	27	NW	10		
2.....	998.0	40	34	S	15	SE	27		.22
3.....	993.0	50	34	SW	10	Calm	0	.03	
4.....	998.0	47	35	NW	15		42		
5.....	999.6	38		NW	42	NW	27		
6.....	1006.5	36		NW	15	Calm	0		
7.....	1005.5	48	33	NNE	2	W	10	Trace	
8.....	1014.8	36	34	WNW	15	NW	35		
9.....	1015.7	38	30	NW	21	NNW	15		
10.....	1019.9	40	30	NW	5	SE	10	.13	
11.....	1006.2	40	32	SW	15	E	42		
12.....	997.0	36	32	ESE	10	NW	10	.05	.15
13.....	1008.1	41	33	W	5	SE	21		.55
14.....	995.8	46	33	SW	10	E	15	.66	
15.....	988.2	48				S	10	Trace	
16.....	993.2	36	36	SW	10	S	21	.04	.02
17.....	996.0	40	35	NW	21	WNW	50	Trace	
18.....	1017.4	40	31	NW	42	NW	21		
19.....	1011.0		32	W	15	WNW	27		
20.....	1002.7	51	35	WSW	21	SW	21		
21.....	980.5	51	38	SSE	15	SSW	21	.01	
22.....	992.4	43	29	WSW	15	SW	15		
23.....	1006.4	42	29	SW	10	SW	10		
24.....	1002.8	42	29	Calm	0	SW	10		
25.....	1010.2	36	29	N	10	NW	15	.01	Trace
26.....	1020.9	35	29	NW	15	W	10	.01	
27.....	1017.0	36	30	SSW	5	S	35		
28.....	1002.4	40	31	SW	15	SW	21		
29.....	1008.0	40	38	NW	10	NW	21		
30.....	1008.0	35		NNW	35	W	5		
Oct.									
1.....	1011.4	39	29	SSW	10	SW	10		.07
2.....	1015.4	40	32	NW	10	SE	5	Trace	
3.....	1004.5	42	30	S	21	W	15	.04	
4.....	1004.2	45	40	Calm	0	Calm	0		
5.....	993.4	48	34	E	42	E	27	.11	.53
6.....	999.1	37	32	E	27	E	35	.10	Trace
7.....	1011.4	31	30	E	15	ESE	10		.07
8.....	1012.4	35	30	NW	15	NW	35	.01	
9.....	1013.8	30	25	NW	21	NW	27	.02	.01
10.....	1011.9	30	26	NW	27	NW	21	.01	
11.....	1004.6	35				S	10		Trace
12.....	1002.8	33	33	Calm	0	E	5	Trace	.07
13.....	1001.9	35	30	E	21	SE	15	.04	.03
14.....	1006.5	34	30	NE	2	ESE	27	Trace	
15.....	997.8	38	30	S	5	SW	15	Trace	.06
16.....	1000.3	37	32	NW	35	SSW	15	Trace	
17.....	1014.6	33	30	E	10	W	10		
18.....	1006.8	39	29	NW	21	SSE	15		
19.....	1002.3	30	28	SE	15	SE	10		
20.....	1001.3	34		E	15	E	21	Trace	
21.....	1007.5	34	30	N	5	NW	10		Trace
22.....	1012.6	33	31	N	10	NW	10	Trace	
23.....	1005.8	32	27	NW	21	NW	50	.01	Trace
24.....	1003.9	33	30			NW	5	Trace	Trace
25.....	1001.3	30	25			NW	27		
26.....	1003.8	30	20	Calm	0	E	35	Trace	.01
27.....	997.6	31	30	E	21	SE	21		.02
28.....	987.4	34	32	SW	10	NW	50	.29	.10
29.....	1010.2	30	26	NW	50	NW	42	.02	Trace
30.....	1027.6	25	23	NW	21	NW	10		
31.....	1025.8	20	17	SE	10	SE	27		

CAPE HOPES ADVANCE METEOROLOGICAL REPORT, 1947—Cont.

Date	Present Weather		Visibility		Ice Conditions
	a.m.	p.m.	a.m.	p.m.	
			Miles	Miles	
1947					
Sept.					
1	Fog.....	Partly cloudy...	0	20	No ice in sight.
2	Overcast.....	Cont. heavy rain	9	0	
3	Overcast.....	Cloudy.....	20	20	
4	Overcast.....	Drizzle and fog.	9	2	
5	Light fog.....	Overcast.....	2	9	
6	Cloudy.....	Partly cloudy...	20	20	1 berg NE.
7	Partly cloudy...	Overcast.....	20	4	No ice in sight.
8	Light fog.....	Cloudy.....	4	4	
9	Rain in sight...	Partly cloudy...	2	20	
10	Cloudy.....	Partly cloudy...	20	20	
11	Overcast.....	Fog patches....	20	4	
12	Snow and fog...	Drizzle and fog.	0	0	
13	Overcast.....	Light drizzle....	9	4	
14	Cont. light rain.	Fog.....	4	0	
15	Cloudy.....	9	
16	Overcast.....	Int. light rain...	20	4	
17	Fog.....	Rain in sight...	0	4	
18	Rain in sight...	Overcast.....	2	9	
19	Cloudy.....	Partly cloudy...	9	20	
20	Overcast.....	Overcast.....	20	20	
21	Overcast.....	Cloudy.....	4	20	
22	Cloudy.....	Partly cloudy...	20	20	
23	Cloudless.....	Partly cloudy...	20	20	
24	Cloudy.....	Partly cloudy...	20	20	
25	Snow showers...	Overcast.....	1	20	1 large berg NE.
26	Snow showers...	Cloudy.....	2	20	
27	Cloudy.....	Overcast.....	20	20	
28	Overcast.....	Cloudy.....	9	20	
29	Overcast.....	Overcast.....	20	20	No ice in sight.
30	Overcast.....	Cloudy.....	9	20	
Oct.					
1	Overcast.....	Heavy drizzle..	30	4	No ice in sight.
2	Heavy snow....	Fog.....	0	0	
3	Overcast.....	Overcast.....	9	9	
4	Overcast.....	Overcast.....	9	9	
5	Fog.....	Rain and fog....	0	0	
6	Drizzle and fog.	Rain and snow..	$\frac{1}{2}$	0	
7	Overcast.....	Cont. light snow	9	2	
8	Fog.....	Overcast.....	0	9	
9	Rain and snow..	Overcast.....	20	4	
10	Moderate snow.	Overcast.....	9	9	
11	Moderate snow..	2	
12	Overcast.....	Drizzle and fog.	1	0	
13	Drizzle.....	Light drizzle....	2	2	
14	Cont. light snow	Fog.....	4	$\frac{1}{2}$	
15	Overcast.....	Heavy rain.....	20	1	
16	Light fog.....	Partly cloudy...	4	20	
17	Light fog.....	Fog.....	1	0	
18	Overcast.....	Overcast.....	9	20	
19	Overcast.....	Cloudless.....	20	20	
20	Overcast.....	Overcast.....	9	9	
21	Overcast.....	Light drizzle....	20	4	
22	Cont. light snow	Cloudy.....	1	4	
23	Overcast.....	Snow showers...	20	2	
24	Cont. light snow	Overcast.....	4	20	
25	Overcast.....	Overcast.....	9	9	
26	Partly cloudy...	Squally weather	20	4	
27	Overcast.....	Overcast.....	9	2	
28	Rain and snow..	Heavy snow....	4	0	
29	Cont. light snow	Int. light snow..	2	0	
30	Overcast.....	Overcast.....	9	9	
31	Cloudy.....	Cloudy.....	20	20	1 large berg 1 growler.

CAPE HOPES ADVANCE METEOROLOGICAL REPORT, 1947—*Conc.*

Date	Mean Barometer	Temperature		Wind				Precipitation	
		Max.	Min.	8.00 a.m.		8.00 p.m.		a.m.	p.m.
				Dir.	Vel.	Dir.	Vel.		
		°F.	°F.					Inches	Inches
1947									
Nov.									
1.....	1007.0	35	22	W	27	NW	35	Trace
2.....	1014.4	30	24	NW	50	NW	42
3.....	1004.0	32	20	S	15	SW	10	Trace
4.....	1004.8	34	28	W	27	NW	27
5.....	1014.2	25	22	NW	21	NW	27	.91
6.....	1025.6	27	NW	10
7.....	1022.0	26	19	S	2	SW	21
8.....	1014.9	30	22	SW	27	SW	21
9.....	1012.1	36	30	SE	42	E	27
10.....	1018.5	34	30	SE	21	E	21
11.....	1022.0	29	26	E	10	E	15	Trace
12.....	1025.2	35	27	SE	21	E	35
13.....	1031.0	29	29	E	21	E	27	Trace
14.....	1033.0	30	27	E	35	E	27	Trace
15.....	1037.4	26	26	E	10	ENE	10	Trace
16.....	1032.8	26	24	E	27	SE	3501
17.....	1030.0	24	23	E	21	E	21	.01	Trace
18.....	1029.2	25	22	E	21	E	15	Trace
19.....	1024.3	26	23	E	5	E	5	Trace	Trace
20.....	1019.8	26	18	NE	5	N	2	Trace	Trace
21.....	1019.2	15	15	SSW	5	NW	15	Trace	Trace
22.....	1013.0	23	16	SW	15	SE	1502
23.....	996.2	27	19	ESE	27	S	27	.03	Trace
24.....	993.3	27	24	W	5	W	15	.05	.03
25.....	1005.0	24	10	S	10	E	2103
26.....	968.6	30	28	E	42	SW	21	.03	Trace
27.....	996.2	17	8	WSW	15	S	21
28.....	1015.8	-1	-4	S	10	S	15
29.....	1005.5	19	-4	S	Calm	0
30.....	1001.3	14	8	S	10	SW	10	Trace

CAPE HOPES ADVANCE METEOROLOGICAL REPORT, 1947—*Conc.*

Date	Present Weather		Visibility		Ice Conditions
	a.m.	p.m.	a.m.	p.m.	
			Miles	Miles	
1947					
Nov.					
1	Overcast.....	Snow grains.....	20	2	No ice in sight.
2	Overcast.....	Overcast.....	9	4	
3	Overcast.....	Overcast.....	20	20	
4	Overcast.....	Drizzle.....	20	9	
5	Cont. light snow	Overcast.....	2	20	
6	Cloudy.....	20	1 large berg NE.
7	Overcast.....	Overcast.....	20	20	No ice in sight.
8	Overcast.....	Overcast.....	20	20	
9	Partly cloudy...	Partly cloudy...	20	9	
10	Cloudless.....	Cloudless.....	20	20	
11	Cloudy.....	Int. light snow..	20	4	
12	Cloudless.....	Partly cloudy...	20	20	
13	Cloudless.....	Moderate snow..	9	$\frac{1}{4}$	
14	Overcast.....	Int. light snow..	1	$\frac{1}{4}$	
15	Overcast.....	Overcast.....	9	9	
16	Int. light snow..	Int. light snow..	9	4	
17	Int. light snow..	Sleet.....	$\frac{1}{2}$	$\frac{1}{4}$	
18	Sleet.....	Overcast.....	2	20	
19	Moderate snow..	Overcast.....	0	9	
20	Overcast.....	Cont. light snow	4	4	
21	Partly cloudy...	Overcast.....	20	20	
22	Cloudy.....	Overcast.....	20	2	1 small berg N.
23	Overcast.....	Cont. light snow	2	4	No ice in sight.
24	Moderate snow..	Cloudless.....	0	20	
25	Partly cloudy...	Int. light snow..	20	4	
26	Drifting snow...	Overcast.....	0	20	
27	Overcast.....	Overcast.....	20	20	
28	Cloudless.....	Cloudless.....	20	20	
29	Partly cloudy...	Cloudless.....	20	20	
30	Cloudless.....	Int. light snow..	20	2	Considerable slob ice in all directions.

NOTTINGHAM ISLAND METEOROLOGICAL REPORT, 1947

Date	Mean Baro- meter	Temperature		Wind				Precipitation	
		Max.	Min.	8.00 a.m.		8.00 p.m.		a.m.	p.m.
				Dir.	Vel.	Dir.	Vel.		
		°F.	°F.					Inches	Inches
1947									
July									
1.....	1010.5	50	28	W	2	Calm	0
2.....	1013.8	52	36	Calm	0	W	2
3.....	1015.0	54	35	Calm	0	SE	10
4.....	1008.8	48	38	ESE	12	SE	2002
5.....	1007.7	40	32	W	18	SW	23	.03
6.....	1008.0	39	34	S	24	S	8	Trace
7.....	1008.3	38	32	SW	16	W	7	Trace
8.....	1012.1	41	32	W	10	N	18	Trace
9.....	1018.5	46	29	N	6	NW	8	Trace	Trace
10.....	1011.3	47	32	Calm	0	W	801
11.....	1009.0	45	31	W	6	W	17	Trace	Trace
12.....	1013.7	48	32	Calm	0	W	7	Trace
13.....	1000.8	43	35	SE	15	S	13	.02	.01
14.....	1002.8	53	33	N	18	NW	1102
15.....	1008.6	38	30	W	5	W	4	Trace
16.....	1008.2	39	33	SW	15	W	6	Trace	.02
17.....	1002.3	46	33	W	10	W	14
18.....	1007.8	41	33	W	2	SSE	6
19.....	999.8	45	34	N	7	Calm	0
20.....	1001.3	40	32	W	2	W	6	.01	.06
21.....	1006.2	38	32	S	12	SSW	22
22.....	1001.3	39	35	SW	25	S	18	Trace	.07
23.....	1012.0	41	32	SW	14	SW	8	.04
24.....	1014.6	40	34	SW	12	S	16
25.....	1007.2	50	34	W	4	N	1203
26.....	1005.2	46	34	N	6	W	1502
27.....	997.3	41	35	W	17	W	5	.02
28.....	996.0	42	34	SW	14	W	12
29.....	996.4	45	35	W	8	W	11	Trace
30.....	1004.1	45	34	NW	7	W	12
31.....	1004.4	42	35	Calm	0	SW	23	Trace
Aug.									
1.....	996.0	35	S	15	Trace
2.....	998.2	44	W	21	N	10	Trace
3.....	1007.2	41	34	NW	10	NW	15
4.....	1013.7	49	35	N	5	SW	10
5.....	1016.8	50	35	Calm	0	Calm	0
6.....	1010.8	36	35	E	21	ESE	21
7.....	1003.8	42	32	S	5	S	10	Trace
8.....	1004.8	44	32	NW	10	N	10	Trace
9.....	1014.3	46	34	N	5	SW	5
10.....	998.8	44	37	ESE	10	W	15	Trace	Trace
11.....	1003.4	42	34	W	15	W	5
12.....	1004.0	40	33	S	15	W	15	Trace	Trace
13.....	1003.9	34	W	10	W	10
14.....	1007.3	45	Calm	0	W	10
15.....	1010.8	46	34	N	5	W	5
16.....	1015.8	46	W	10
17.....	1015.9	46	33	WSW	10	W	5
18.....	1015.8	32	E	5
19.....	1025.4	30	W	5
20.....	998.6	42	33	SSE	21	NE	10	.01	Trace
21.....	1012.3	46	35	N	21	W	15
22.....
23.....	1019.0	48	N	10
24.....
25.....	1011.7	42	31	E	21	E	21
26.....	1004.2	46	ESE	5	Trace
27.....	1003.0	41	34	SW	15	E	27	Trace
28.....	999.3	45	35	ESE	10	E	15	.01
29.....	1006.6	35	W	5	W	10	Trace
30.....	1006.8	40	35	W	10	Calm	0	Trace
31.....	1008.4	46	33	ENE	15	N	15

NOTTINGHAM ISLAND METEOROLOGICAL REPORT, 1947

Date	Present Weather		Visibility		Ice Conditions
	a.m.	p.m.	a.m.	p.m.	
			Miles	Miles	
1947					
July					
1	Cloudless.....	Cloudless.....	20	20	Heavy ice to horizon.
2	Cloudless.....	Cloudless.....	20	20	Open water in Strait.
3	Cloudless.....	Partly cloudy...	20	20	
4	Partly cloudy...	Overcast.....	20	20	
5	Int. light rain...	Overcast.....	9	20	
6	Distant fog.....	Overcast.....	4	9	
7	Fog.....	Fog.....	2	$\frac{1}{2}$	
8	Cloudy.....	Overcast.....	20	9	Close packed ice.
9	Distant fog.....	Partly cloudy...	4	20	Scattered ice.
10	Cloudy.....	Overcast.....	20	20	
11	Drizzle and fog.	Partly cloudy...	$\frac{1}{2}$	20	
12	Partly cloudy...	Overcast.....	20	20	
13	Overcast.....	Drizzle and fog.	20	$\frac{1}{2}$	
14	Distant fog.....	Cloudless.....	9	20	
15	Drizzle and fog.	Fog.....	$\frac{1}{4}$	$\frac{1}{2}$	
16	Fog.....	Fog.....	$\frac{1}{4}$	$\frac{1}{4}$	
17	Fog.....	Partly cloudy...	$\frac{1}{2}$	20	
18	Distant fog.....	Cloudy.....	9	20	
19	Distant fog.....	Overcast.....	9	9	
20	Distant fog.....	Fog.....	9	$\frac{1}{4}$	
21	Fog.....	Fog.....	$\frac{1}{4}$	4	
22	Rain and fog....	Rain and fog....	$\frac{1}{2}$	$\frac{1}{4}$	
23	Fog.....	Partly cloudy...	$\frac{1}{2}$	20	
24	Overcast.....	Drizzle and fog.	20	$\frac{1}{4}$	Ice along shore only.
25	Fog.....	Partly cloudy...	$\frac{1}{4}$	20	
26	Fog.....	Moderate rain...	$\frac{1}{2}$	9	
27	Fog.....	Overcast.....	$\frac{1}{4}$	20	
28	Overcast.....	Overcast.....	20	9	
29	Overcast.....	Overcast.....	9	20	
30	Cloudless.....	Partly cloudy...	20	20	
31	Cloudless.....	Heavy drizzle..	20	4	
Aug.					
1	Light drizzle....	2	Scattered ice.
2	Drizzle and rain	Partly cloudy...	2	20	
3	Overcast.....	Partly cloudy...	9	20	No ice in sight.
4	Overcast.....	Partly cloudy...	9	20	No ice in sight from this date until Oct. 26th.
5	Cloudless.....	Overcast.....	30	9	
6	Distant fog.....	Overcast.....	20	20	
7	Fog.....	Distant fog.....	$\frac{1}{4}$	4	
8	Drizzle.....	Overcast.....	9	20	
9	Overcast.....	Partly cloudy...	20	20	
10	Moderate rain...	Light fog.....	2	9	
11	Cloudy.....	Overcast.....	20	4	
12	Distant fog.....	Overcast.....	4	20	
13	Partly cloudy...	Partly cloudy...	20	20	
14	Cloudy.....	Partly cloudy...	20	
15	Cloudy.....	Partly cloudy...	20	20	
16	Cloudy.....	20	
17	Light fog.....	Cloudy.....	2	20	
18	Cloudy.....	20	
19	Cloudy.....	20	
20	Cloudy.....	Overcast.....	20	9	
21	Partly cloudy...	Cloudy.....	20	20	
22	
23	Cloudy.....	20	
24	
25	Cloudy.....	Cloudy.....	20	20	
26	Overcast.....	20	
27	Overcast.....	Drizzle.....	9	4	
28	Int. light rain...	Overcast.....	4	9	
29	Int. light rain...	Overcast.....	4	20	
30	Rain.....	Overcast.....	9	20	
31	Cloudy.....	Cloudless.....	20	20	

NOTTINGHAM ISLAND METEOROLOGICAL REPORT, 1947—Cont.

Date	Mean Baro- meter	Temperature		Wind				Precipitation	
		Max.	Min.	8.00 a.m.		8. p.m.		a.m.	p.m.
				Dir.	Vel.	Dir.	Vel.		
		°F.	°F.					Inches	Inches
1947									
Sept.									
1	1004.0		31	Calm	0	WSW	10		
2	993.4	39	35	E	21	E	10		Trace
3	993.8	39	34	Calm	0	N	21		.01
4	1004.4	36	33	N	27	WNW	15	Trace	
5	1007.1	39	32	SSE	15	W	10		
6	1004.8	41	32	SW	5	E	15		
7	1007.2		34	E	5				Trace
8	1019.4	38	36	N	15	NW	10	Trace	Trace
9	1023.2	34	27	Calm	0	E	5		
10	1015.1	40				E	15	.01	
11	1004.1	35	34	E	15	E	21		Trace
12	1004.4	44				N	5		
13	1004.8	35	29	E	5	E	21		.04
14	997.8	32	32			E	21	Trace	
15	982.5					E	27	Trace	Trace
16	989.2	42	34	E	10	NNE	21		Trace
17	1008.6	34	33	N	21	N	21		
18	1020.0	34	28	WNW	15	W	21		Trace
19	1008.2	33	30	W	15	W	10	.01	
20	993.9	42	34	SSW	15	S	35		Trace
21	972.8	35		S	35	NW	27	Trace	Trace
22	986.9	32	26	W	27	W	27	Trace	Trace
23	1001.4	36	28	W	21	S	2	Trace	Trace
24	1002.4	36	28	E	5	S	2	Trace	Trace
25	1014.2	34	28	Calm	0	W	2		
26	1019.2	34	23	W	15	W	15		Trace
27	1001.4	35	31	S	35	SW	35	.29	Trace
28	998.0	33	31	W	10	N	27	Trace	Trace
29	1011.2	28	26	N	15	NW	10	Trace	
30	1008.8	31	26	W	15	Calm	0		Trace
Oct.									
1	1008.8	37	30	Calm	0	E	2	Trace	
2	1011.4	34	26	E	10	S	21	Trace	.01
3	1001.1	34	34	S	5	Calm	0	Trace	Trace
4	1004.8	34	32	E	15	E	21	Trace	
5	992.8	35	33	E	35	E	21	.24	.02
6	998.7	34	34	E	21	E	27	.35	Trace
7	1008.4	31	30	Calm	0	Calm	0		.13
8	1019.5	27	26	N	42	W	10		
9	1016.8	27	25	W	15	N	15		
10	1015.4	31	27	NW	10	W	10	Trace	Trace
11	1005.0	33	29	S	15	E	5	.01	.01
12	1005.2	31	26	Calm	0	E	5	Trace	
13	1003.9	31	28	E	10	E	10		
14	1001.4	34	29	S	10	E	27		Trace
15	982.8	36	32	E	15	N	5	.05	
16	1008.1	32	32	N	15	N	5		Trace
17	1018.2	37	28	Calm	0	E	10		
18	1005.4	24	19	E	10	E	10		
19	996.6	35	29	S	15	S	10	Trace	.17
20	1000.2	37	34	S	15	W	5		
21	1009.8	28	25	S	5	W	15	Trace	
22	1014.0	25	19	W	10	W	21		
23	1010.8	30	22	N	15	W	10		.01
24	1009.4	29	26	N	5	W	10		
25	1005.8	24	19	NW	21	E	10		
26	995.8	31	24	SE	10	E	15		.03
27	996.2	31	28	E	10	E	21	.01	Trace
28	1006.0	30	25	N	21	N	10	Trace	Trace
29	1023.6	21	19	N	21	NNW	10		
30	1027.8	28	19	E	5	S	21	Trace	.10
31	1013.2	23	20	S	21	S	35	Trace	.10

NOTTINGHAM ISLAND METEOROLOGICAL REPORT, 1947—Cont.

Date	Present Weather		Visibility		Ice Conditions
	a.m.	p.m.	a.m.	p.m.	
			Miles	Miles	
1947					
Sept.					
1	Overcast.....	Fog.....	20	$\frac{1}{4}$	No ice in sight.
2	Overcast.....	Low fog.....	20	1	
3	Drizzle and fog.	Overcast.....	$\frac{1}{4}$	20	
4	Snow grains.....	Overcast.....	9	20	
5	Overcast.....	Partly cloudy...	20	20	
6	Overcast.....	Cloudy.....	9	30	
7	Partly cloudy...	20	
8	Overcast.....	Snow showers...	20	20	
9	Cloudy.....	Overcast.....	20	20	
10	Overcast.....	9	
11	Overcast.....	Cont. light rain.	20	4	
12	Partly cloudy...	20	
13	Partly cloudy...	Moderate snow.	20	$\frac{1}{16}$	
14	Light drizzle....	Overcast.....	9	9	
15	Light drizzle....	2	
16	Cloudy.....	Cont. light rain.	20	9	
17	Overcast.....	Overcast.....	9	20	
18	Overcast.....	Cloudy.....	20	20	
19	Distant fog.....	Haze.....	4	2	
20	Partly cloudy...	Cont. light rain.	20	4	
21	Cont. light rain.	Light snow.....	4	4	
22	Int. light snow.	Overcast.....	4	20	
23	Partly cloudy...	Snow showers...	20	4	
24	Overcast.....	Snow showers...	20	4	
25	Overcast.....	Overcast.....	20	20	
26	Overcast.....	Partly cloudy...	20	20	
27	Rain and snow..	Rain and snow..	2	2	
28	Moderate snow.	Light drizzle....	2	4	
29	Overcast.....	Overcast.....	9	20	
30	Overcast.....	Int. light snow..	20	2	
Oct.					
1	Distant fog.....	Partly cloudy...	4	20	Small amount ice. No ice in sight from this date until Nov. 27.
2	Fog.....	Rain and snow..	$\frac{1}{2}$	4	
3	Drizzle and fog.	Low fog.....	$\frac{1}{2}$	1	
4	Distant fog.....	Fog.....	1	$\frac{1}{4}$	
5	Drizzle.....	Int. light rain..	4	4	
6	Overcast.....	Overcast.....	4	9	
7	Distant dust storms.....	Partly cloudy...	20	20	
8	Overcast.....	Overcast.....	20	20	
9	Overcast.....	Overcast.....	20	20	
10	Cont. light snow	Rain and snow..	4	20	
11	Moderate snow.	Overcast.....	1	20	
12	Overcast.....	Overcast.....	9	20	
13	Overcast.....	Overcast.....	20	20	
14	Overcast.....	Rain and snow..	20	4	
15	Cont. light snow	Overcast.....	2	20	
16	Overcast.....	Overcast.....	20	9	
17	Partly cloudy...	Cloudless.....	20	20	
18	Cloudy.....	Cloudy.....	20	20	
19	Light drizzle....	Overcast.....	2	20	
20	Cloudy.....	Haze.....	20	9	
21	Drizzle and fog.	Overcast.....	1	20	
22	Overcast.....	Overcast.....	20	20	
23	Cloudy.....	Int. light snow..	20	4	
24	Overcast.....	Overcast.....	20	20	
25	Overcast.....	Overcast.....	20	9	
26	Overcast.....	Overcast.....	20	20	
27	Overcast.....	Overcast.....	20	20	
28	Cont. light snow	Int. light snow..	2	9	
29	Overcast.....	Int. light snow..	20	20	
30	Int. light snow..	Drifting snow...	9	$\frac{1}{2}$	
31	Cont. light snow	Rain and snow..	4	9	

NOTTINGHAM ISLAND METEOROLOGICAL REPORT, 1947—*Conc.*

Date	Mean Barometer	Temperature		Wind				Precipitation	
		Max.	Min.	8.00 a.m.		8.00 p.m.		a.m.	p.m.
				Dir.	Vel.	Dir.	Vel.		
		°F.	°F.					Inches	Inches
1947									
Nov.									
1.....	1011.5	31	28	NW	27	N	27	.05
2.....	1017.8	26	20	NW	21	S	10	.05	Trace
3.....	991.0	31	26	S	42	W	10	.20	Trace
4.....	1008.6	37	26	W	27	NW	15	Trace
5.....	1019.6	22	18	N	15	Calm	0
6.....	1024.2	25	SW	5
7.....	1015.2	30	23	E	21	S	1010
8.....	1006.1	32	27	E	5	E	21	.10	.91
9.....	1004.0	36	32	E	15	E	15
10.....	1013.9	36	31	E	15	E	10
11.....	1023.2	31	26	Calm	0	Calm	0
12.....	1020.2	31	25	SE	21	E	27
13.....	1026.0	34	31	E	21	E	15
14.....	1033.8	30	26	E	10	E	10	Trace
15.....	1037.0	30	26	E	10	E	5	Trace
16.....	1035.8	28	24	E	15	E	27
17.....	1031.4	27	26	E	35	E	21
18.....	1028.2	27	26	E	10	SE	10
19.....	1024.6	25	22	Calm	0	E	5	Trace	.10
20.....	1021.2	22	11	E	5	E	21	Trace
21.....	1019.6	24	20	E	5	S	15	Trace	.20
22.....	1007.1	28	22	W	21	S	15	.10	Trace
23.....	994.2	25	24	E	15	S	15	.06	Trace
24.....	991.0	26	24	Calm	0	W	35	Trace	.05
25.....	998.4	22	19	S	27	SSE	15
26.....	977.4	27	14	N	15	W	15	.04	Trace
27.....	980.5	25	23	SW	35	N	50	.10
28.....	990.8	23	20	S	42	S	50	Trace	Trace
29.....	993.8	22	19	S	50	W	15	.20	.10
30.....	994.3	17	15	NE	5	N	5	.20	Trace

NOTTINGHAM ISLAND METEOROLOGICAL REPORT, 1947—*Conc.*

Date	Present Weather		Visibility		Ice Conditions
	a.m.	p.m.	a.m.	p.m.	
			Miles	Miles	
1947					
Nov.					
1	Overcast.....	Overcast.....	20	20	No ice in sight.
2	Overcast.....	Partly cloudy...	20	20	
3	Moderate snow.	Overcast.....	$\frac{1}{4}$	9	
4	Overcast.....	Overcast.....	20	20	
5	Overcast.....	Overcast.....	20	20	
6	Overcast.....	20	
7	Partly cloudy...	Moderate snow.	20	1	
8	Overcast.....	20	20	
9	Overcast.....	Cloudy.....	20	20	
10	Cloudy.....	Cloudless.....	20	20	
11	Overcast.....	Overcast.....	20	20	
12	Overcast.....	Cloudless.....	20	20	
13	Overcast.....	Partly cloudy...	20	20	
14	Cloudless.....	Partly cloudy...	20	20	
15	Overcast.....	Partly cloudy...	20	20	
16	Overcast.....	Overcast.....	20	20	
17	Cloudy.....	Overcast.....	20	20	
18	Overcast.....	Overcast.....	20	20	
19	Overcast.....	Overcast.....	20	20	
20	Partly cloudy...	Overcast.....	20	20	
21	Overcast.....	Cont. light snow	20	9	
22	Cont. light snow	Overcast.....	2	1	
23	Cont. light snow	Overcast.....	$\frac{1}{4}$	20	
24	Int. light snow..	Drifting snow...	9	$\frac{1}{2}$	
25	Overcast.....	Partly cloudy...	20	20	
26	Cont. light snow	Cont. light snow	$\frac{1}{2}$	4	
27	Drifting snow...	Drifting snow...	0	4	
28	Drifting snow...	Drifting snow...	9	$\frac{1}{2}$	
29	Drifting snow...	Int. light snow..	$\frac{1}{16}$	9	
30	Moderate snow.	Overcast.....	$\frac{1}{2}$	20	Small amount string ice.

CHURCHILL METEOROLOGICAL REPORT, 1947

Date	Mean Barometer	Temperature		Wind				Precipitation	
		Max.	Min.	8.00 a.m.		8.00 p.m.		a.m.	p.m.
				Dir.	Vel.	Dir.	Vel.		
		°F.	°F.					Inches	Inches
1947									
July									
1.....	1014.6	55	41	NNE	8	E	8		
2.....	1011.0	64	43	S	13	SE	21	Trace	Trace
3.....	1001.6	63	49	S	15	N	22	.03	.17
4.....	1006.0	63	45	WNW	16	NW	7	Trace	
5.....	1011.1	69	47	W	9	WNW	18		Trace
6.....	1015.6	69	55	W	20	ESE	6	.01	
7.....	1013.8	69	50	S	13	SSW	17	.34	.01
8.....	1010.9	71	53	ENE	9	SSE	7	.01	.04
9.....	1010.0	61	49	WNW	14	NE	9	Trace	
10.....	1008.9	75	51	WSW	10	ENE	8		
11.....	1013.8	70	49	E	14	SSE	16		
12.....	1003.8	84	57	SE	20	NNW	6	.33	
13.....	1006.4	80	60	Calm	0	NW	11		
14.....	1013.2	74	51	S	4	SSW	14		.01
15.....	1009.5	82	59	N	6	NE	18		
16.....	1014.4	57	48	NE	16	ENE	12		
17.....	1015.3	65	44	WNW	11	N	6		Trace
18.....	1012.8	52	46	NW	19	NNE	6	.02	Trace
19.....	1012.0	51	45	NNW	14	NE	10	.06	
20.....	1013.4	60	47	NNW	14	W	6	.03	.01
21.....	1005.8	61	52	W	12	NNW	14	.12	.10
22.....	1012.6	55	47	NW	7	NNW	14	Trace	
23.....	1019.2	64	45	W	7	SSW	7		
24.....	1013.6	74	51	SW	5	WSW	18		
25.....	1014.6	54	49	NNE	20	ENE	10	Trace	
26.....	1012.6	80	43	SSW	15	WSW	21		
27.....	1004.1	81	51	SW	16	ENE	13		.03
28.....	1006.4	62	48	NE	18	NE	11	.04	
29.....	1012.2	54	47	NNE	4	NE	9		
30.....	1013.0	60	47	NNE	10	SSW	13		Trace
31.....	1003.8	71	50	SSW	15	NNW	10	.06	
Aug.									
1.....	1003.3	55	48	NE	16	NE	16	.02	.01
2.....	1007.6	62	40	W	1	S	20		.08
3.....	1004.3	70	48	S	16	NE	12	.10	.24
4.....	1009.0	72	50	W	4	SE	12		.42
5.....	998.2	48	42	ENE	30	NW	19	1.63	Trace
6.....	1006.2	54	42	WNW	20	WNW	24		Trace
7.....	1015.0	64	47	NW	18	WNW	12		
8.....	1017.0	72	49	WSW	6	S	13		
9.....	1001.3	74	55	SE	8	W	8	.25	.14
10.....	1009.6	64	45	WNW	10	SW	14	.01	
11.....	1009.8	67	51	WNW	12	N	8		Trace
12.....	1012.4	56	50	NNE	6	SE	10	Trace	Trace
13.....	1014.2	55	43	WNW	6	NE	6		
14.....	1015.2	60	44	NNE	6	E	1		
15.....	1017.0	64	43	SW	7	ESE	5		
16.....	1014.0	70	50	SE	6	E	12		
17.....	1007.1	50	47	ENE	17	E	22	.31	.15
18.....	1017.7	58	46	ESE	18	SE	12	.01	Trace
19.....	1010.6	64	49	SSE	14	WNW	3	Trace	.40
20.....	1018.0	56	47	NNW	24	Calm	0		
21.....	1019.4	64	44	S	12	SE	12		.03
22.....	1017.9	59	48	SSW	4	ENE	8		
23.....	1021.0	53	45	NE	10	E	14		
24.....	1015.0	46	42	E	12	NNE	6	.15	.01
25.....	1014.6	51	40	WNW	24	NW	14	.01	.04
26.....	1010.2	54	39	W	10	NNW	3		.18
27.....	1008.2	47	35	NNW	15	NW	22	.04	Trace
28.....	1012.5	57	37	W	16	ESE	11		
29.....	1006.0	70	40	S	6	E	3		
30.....	1011.8	50	44	N	8	NE	14		.03
31.....	1011.0	56	39	SSE	8	S	17		.02

CHURCHILL METEOROLOGICAL REPORT, 1947

Date	Present Weather		Visibility		Ice Conditions
	a.m.	p.m.	a.m.	p.m.	
			Miles	Miles	
1947					
July					
1	Overcast.....	Partly cloudy...	20	20	No ice in Bay.
2	Cloudy.....	Distant light- ning.....	20	20	
3	Int. rain.....	Cont. light rain.	20	9	
4	Overcast.....	Rain in sight...	20	20	No ice to horizon.
5	Partly cloudy...	Light showers..	20	20	
6	Partly cloudy...	Cloudless.....	20	20	
7	Overcast.....	Rain in sight...	20	20	
8	Overcast.....	Cloudy.....	20	20	
9	Light fog.....	Low fog.....	1	$\frac{1}{2}$	
10	Overcast.....	Partly cloudy...	20	20	
11	Rain in sight...	Partly cloudy...	20	20	No ice sighted.
12	Thunderstorm...	Rain in sight...	20	20	No ice sighted from this date to Nov. 8.
13	Partly cloudy...	Partly cloudy...	20	20	
14	Partly cloudy...	Cloudy.....	20	20	
15	Overcast.....	Cloudy.....	20	20	
16	Overcast.....	Rain in sight...	20	20	
17	Partly cloudy...	Light showers..	20	20	
18	Partly cloudy...	Partly cloudy...	20	20	
19	Overcast.....	Partly cloudy...	20	20	
20	Rain in sight...	Cloudy.....	20	20	
21	Cont. light rain.	Overcast.....	9	20	
22	Partly cloudy...	Rain in sight...	20	20	
23	Overcast.....	Rain in sight...	20	20	
24	Rain in sight...	Cloudy.....	20	20	
25	Cloudy.....	Haze.....	20	9	
26	Cloudy.....	Cloudless.....	20	20	
27	Partly cloudy...	Overcast.....	20	20	
28	Rain and thun- der.....	Overcast.....	20	20	
29	Overcast.....	Partly cloudy...	20	20	
30	Cloudless.....	Overcast.....	20	20	
31	Overcast.....	Cloudy.....	20	20	
Aug.					
1	Overcast.....	Overcast.....	20	20	No ice in sight.
2	Partly cloudy...	Cloudy.....	20	20	
3	Overcast.....	Rain and thun- der.....	20	9	
4	Partly cloudy...	Cont. light rain.	20	9	
5	Cont. light rain.	Cloudy.....	1	20	
6	Cloudy.....	Cloudy.....	20	20	
7	Partly cloudy...	Overcast.....	20	20	
8	Cloudy.....	Overcast.....	20	20	
9	Cont. light rain.	Light thunder- storm.....	4	9	
10	Partly cloudy...	Partly cloudy...	20	20	
11	Cloudless.....	Overcast.....	20	20	
12	Partly cloudy...	Cont. light rain.	20	20	
13	Distant fog.....	Overcast.....	9	20	
14	Partly cloudy...	Cloudless.....	20	20	
15	Cloudless.....	Cloudy.....	20	20	
16	Cloudy.....	Overcast.....	20	20	
17	Overcast.....	Cont. light rain.	20	2	
18	Overcast.....	Overcast.....	20	20	
19	Overcast.....	Cont. light rain.	20	9	
20	Cloudy.....	Cloudy.....	20	20	
21	Cloudy.....	Cont. light rain.	20	9	
22	Low fog.....	Overcast.....	9	20	
23	Light fog.....	Cloudy.....	2	20	
24	Cont. light rain...	Overcast.....	9	20	
25	Partly cloudy...	Rain showers...	20	20	
26	Cloudy.....	Cloudy.....	20	20	
27	Rain showers...	Rain showers...	20	20	
28	Partly cloudy...	Cloudless.....	20	20	
29	Overcast.....	Overcast.....	20	20	
30	Partly cloudy...	Overcast.....	20	20	
31	Overcast.....	Overcast.....	20	20	

CHURCHILL METEOROLOGICAL REPORT, 1947—Cont.

Date	Mean Barometer	Temperature		Wind				Precipitation	
		Max.	Min.	8.00 a.m.		8.00 p.m.		a.m.	p.m.
				Dir.	Vel.	Dir.	Vel.		
		°F.	°F.					Inches	Inches
1947									
Sept.									
1.....	997.8	57	47	N	2	SW	5	.02	.05
2.....	1001.6	56	45	N	8	NE	8		
3.....	1014.6	48	43	NE	6	ENE	4	Trace	
4.....	1014.2	57	40	S	9	SE	15		
5.....	996.2	53	45	SSE	16	SW	8	.28	.26
6.....	1002.5	46	40	N	36	NNW	15	.01	Trace
7.....	1024.7	42	36	N	18	WNW	9	Trace	
8.....	1021.2	43	33	E	4	E	40	Trace	.33
9.....	1001.4	50	35	E	32	WSW	8	.37	.02
10.....	1006.4	47	36	WSW	13	WNW	18	Trace	.01
11.....	1008.9	45	39	NW	12	ENE	6	Trace	
12.....	999.4	60	37	SE	8	SSE	22		.07
13.....	993.6	49	44	W	2	NNW	14		
14.....	995.8	41	36	N	26	NE	34	.01	.04
15.....	999.8	38	35	N	24	N	21	Trace	.01
16.....	1013.1	38	33	N	18	N	20	.01	Trace
17.....	1029.4	45	34	NW	14	Calm	0		
18.....	1031.4	50	31	WSW	12	WSW	13		
19.....	1019.6	61	37	SW	16	SW	12		
20.....	991.0	50	33	SW	10	N	56	.14	.03
21.....	1007.0	36	28	NNW	31	NW	27	.02	Trace
22.....	1007.0	39	31	W	12	WNW	16		Trace
23.....	1004.8	33	27	NW	26	NW	40	Trace	Trace
24.....	1009.6	33	24	WNW	20	W	6		Trace
25.....	1022.6	35	27	NW	10	NW	6	.02	
26.....	1019.6	53	28	SW	5	SW	24		
27.....	1014.6	43	36	WNW	8	WNW	22		
28.....	1022.8	37	32	NNW	15	WNW	20	Trace	Trace
29.....	1025.4	43	31	NNW	12	SW	12		
30.....	1007.7	46	40	WSW	16	W	6		.05
Oct.									
1.....	1011.6	54	37	N	4	SE	16		
2.....	1005.0	58	42	SW	16	SW	11		.01
3.....	999.7	52	42	SSW	9	SSE	4	Trace	Trace
4.....	987.5	50	44	E	3	WNW	7	.20	.01
5.....	984.3	39	35	WNW	34	W	32	.26	.08
6.....	996.7	38	33	N	12	NNE	28	.28	.02
7.....	1022.0	37	32	NNE	16	NNE	15	.02	Trace
8.....	1026.8	35	28	NW	7	S	5	.02	
9.....	1016.2	43	32	SE	7	ESE	16	Trace	.06
10.....	1007.2	43	38	E	2	W	10	.09	
11.....	1010.1	40	37	NW	6	NW	3		
12.....	1007.0	41	31	WNW	12	SSW	16	Trace	
13.....	991.0	54	36	S	15	SW	9	.13	
14.....	986.7	45	36	WSW	22	W	12	.29	
15.....	1007.4	42	36	W	14	NE	12		
16.....	1012.1	38	30	E	9	E	28	Trace	Trace
17.....	997.3	49	33	ESE	36	SE	28	.20	.05
18.....	992.8	48	39	W	26	SW	12	Trace	
19.....	997.1	49	33	W	12	SSW	10		
20.....	1005.0	40	32	WNW	16	WNW	14	Trace	
21.....	1020.0	40	29	W	13	SSW	4		
22.....	1024.0	42	28	W	4	SW	9		
23.....	1023.2	41	31	SW	16	SW	16		
24.....	1017.7	39	31	SSW	17	NW	9		
25.....	1007.2	47	32	SSW	14	SW	18		
26.....	995.2	46	35	W	10	SE	14		Trace
27.....	1003.4	35	25	NW	26	NW	14	.18	Trace
28.....	1015.8	40	27	SE	8	SE	14		
29.....	1010.6	47	34	SE	13	SE	10		
30.....	1006.8	44	34	SSE	10	S	16		
31.....	1020.0	36	31	WNW	30	NW	22		Trace

CHURCHILL METEOROLOGICAL REPORT, 1947—Cont.

Date	Present Weather		Visibility		Ice Conditions
	a.m.	p.m.	a.m.	p.m.	
			Miles	Miles	
1947					
Sept.					
1	Fog.....	Int. light rain...	$\frac{1}{8}$	20	No ice in sight.
2	Partly cloudy...	Rain in sight....	20	20	
3	Cloudy.....	Cloudy.....	20	20	
4	Overcast.....	Overcast.....	20	20	
5	Overcast.....	Cloudy.....	20	20	
6	Drizzle.....	Rain in sight....	20	20	
7	Overcast.....	Overcast.....	20	20	
8	Overcast.....	Overcast.....	20	20	
9	Cont. light rain.	Overcast.....	4	20	
10	Partly cloudy...	Rain in sight....	20	20	
11	Overcast.....	Partly cloudy...	20	20	
12	Cloudy.....	Int. light rain...	20	20	
13	Partly cloudy...	Overcast.....	20	20	
14	Drizzle.....	Light drizzle....	4	4	
15	Cont. light rain.	Snow showers...	4	4	
16	Overcast.....	Snow showers...	20	20	
17	Overcast.....	Cloudy.....	20	20	
18	Overcast.....	Cloudless.....	20	20	
19	Partly cloudy...	Cloudless.....	20	20	
20	Cont. light rain.	Rain and snow..	4	1	
21	Rain showers...	Snow in sight...	9	20	
22	Overcast.....	Overcast.....	20	20	
23	Overcast.....	Snow showers...	20	9	
24	Cloudy.....	Snow in sight...	20	20	
25	Cont. light snow	Overcast.....	2	20	
26	Cloudy.....	Overcast.....	20	20	
27	Partly cloudy...	Overcast.....	20	20	
28	Overcast.....	Overcast.....	20	20	
29	Overcast.....	Overcast.....	20	20	
30	Overcast.....	Overcast.....	20	20	
Oct.					
1	Partly cloudy...	Cloudless.....	20	20	No ice in sight.
2	Cloudless.....	Cloudless.....	20	20	
3	Light fog.....	Light fog.....	4	9	
4	Rain and fog....	Light fog.....	$\frac{1}{2}$	1	
5	Cont. light rain.	Cont. light rain.	9	9	
6	Rain and snow..	Light drizzle....	2	2	
7	Distant fog....	Cont. light snow	9	4	
8	Snow.....	Overcast.....	20	20	
9	Light drizzle...	Overcast.....	9	20	
10	Fog.....	Overcast.....	$\frac{1}{4}$	20	
11	Overcast.....	Overcast.....	20	20	
12	Cont. light snow	Overcast.....	1	20	
13	Drizzle and rain	Cloudy.....	4	20	
14	Rain.....	Overcast.....	9	20	
15	Partly cloudy...	Cloudy.....	20	20	
16	Light fog.....	Light drizzle....	4	9	
17	Cont. light rain.	Light fog.....	9	2	
18	Overcast.....	Partly cloudy...	20	20	
19	Partly cloudy...	Partly cloudy...	20	20	
20	Cloudy.....	Overcast.....	20	20	
21	Cloudless.....	Overcast.....	20	20	
22	Partly cloudy...	Cloudy.....	20	20	
23	Cloudless.....	Cloudy.....	20	20	
24	Overcast.....	Overcast.....	20	20	
25	Overcast.....	Cloudless.....	20	20	
26	Partly cloudy...	Cloudy.....	20	20	
27	Cont. light rain.	Overcast.....	9	20	
28	Overcast.....	Overcast.....	20	20	
29	Overcast.....	Overcast.....	20	20	
30	Cloudless.....	Overcast.....	20	20	
31	Overcast.....	Cont. light snow	20	9	

CHURCHILL METEOROLOGICAL REPORT, 1947—*Conc.*

Date	Mean Baro- meter	Temperature		Wind				Precipitation	
		Max.	Min.	8.00 a.m.		8. p.m.		a.m.	p.m.
				Dir.	Vel.	Dir.	Vel.		
		°F.	°F.					Inches	Inches
1947									
Nov.									
1.....	1026.0	36	25	NW	10	SE	12	Trace	Trace
2.....	1003.5	45	28	SE	25	W	31	Trace
3.....	1012.7	34	28	W	16	NW	12
4.....	1020.4	31	25	NNE	10	E	16
5.....	1014.4	33	28	E	14	E	26	Trace	.07
6.....	1001.4	34	31	NE	24	SE	6	.09	.02
7.....	998.4	32	20	SE	8	SW	8	.01	Trace
8.....	999.9	17	13	NW	26	NNW	46	.01	.06
9.....	990.9	25	9	NNW	40	NNW	36	.10	.04
10.....	1000.7	19	11	E	4	W	4	.01	.02
11.....	1012.0	13	1	WSW	4	SE	14	.02
12.....	1013.8	29	-7	W	9	NNE	19	.02	.05
13.....	1002.7	31	19	NNE	20	Calm	0	.16	Trace
14.....	1025.4	15	1	SE	12	SSW	6
15.....	1035.8	18	-11	WSW	2	W	4
16.....	1035.6	28	7	WNW	6	NNE	16	Trace	.01
17.....	1025.2	29	22	NW	15	NW	24	.02	.03
18.....	1018.5	31	22	NW	11	SW	5	.01
19.....	1020.3	26	20	SSW	7	SW	2
20.....	1021.2	29	19	Calm	0	W	6	Trace	Trace
21.....	1021.6	17	9	WSW	4	NW	8	Trace	.01
22.....	1011.6	15	9	W	8	NNW	16	.03	.05
23.....	1009.5	7	-2	NNW	18	NW	17	.02
24.....	1003.1	-3	-17	WNW	21	WNW	28
25.....	1005.9	-1	-10	NW	32	WNW	28
26.....	1001.2	12	-8	NW	32	WNW	27
27.....	1006.6	13	-2	NW	42	NW	40
28.....	1007.3	6	-2	NW	44	NW	36
29.....	1014.0	6	-8	NW	36	W	10
30.....	1005.6	12	-6	Calm	0	NW	18	.03	Trace

CHURCHILL METEOROLOGICAL REPORT, 1947—*Conc.*

Date	Present Weather		Visibility		Ice Conditions
	a.m.	p.m.	a.m.	p.m.	
			Miles	Miles	
1947					
Nov.					
1	Overcast.....	Overcast.....	20	20	No ice in sight.
2	Overcast.....	Overcast.....	20	20	
3	Cloudy.....	Overcast.....	20	20	
4	Overcast.....	Overcast.....	20	20	
5	Overcast.....	Cont. light snow	20	4	
6	Cont. light snow	Snow and fog...	1	1	
7	Cont. light snow	Partly cloudy...	9	20	
8	Cont. light snow	Cont. light snow	4	$\frac{1}{4}$	Slob ice in River. Bay clear.
9	Cont. light snow	Cont. light snow	0	0	
10	Cont. light snow	Int. light snow...	20	20	
11	Cont. light snow	Overcast.....	2	20	Slob ice in bay to 4 miles off shore.
12	Light fog.....	Cont. light snow	9	1	
13	Cont. light snow	Partly cloudy...	1	20	Close packed slob and new ice to horizon.
14	Overcast.....	Cloudless.....	20	20	
15	Light fog.....	Fog.....	1	$\frac{1}{4}$	
16	Cont. light snow	Drizzle.....	20	1	
17	Light drizzle....	Cont. light snow	4	4	
18	Cont. light snow	Light fog.....	4	2	
19	Overcast.....	Light fog.....	20	1	
20	Int. light snow..	Overcast.....	2	20	
21	Ice crystals....	Cont. light snow	20	20	
22	Cont. light snow	Cont. light snow	4	$\frac{1}{16}$	
23	Partly cloudy...	Cloudless.....	4	9	
24	Partly cloudy...	Drifting snow...	4	$\frac{1}{2}$	
25	Drifting snow...	Drifting snow...	$\frac{1}{16}$	$\frac{1}{4}$	
26	Drifting snow...	Drifting snow...	0	0	
27	Drifting snow...	Drifting snow...	0	0	
28	Drifting snow...	Drifting snow...	0	$\frac{1}{4}$	
29	Overcast.....	Partly cloudy...	1	20	
30	Cont. light snow	Partly cloudy...	20	20	

CHESTERFIELD INLET METEOROLOGICAL REPORT, 1947

Date	Mean Baro- meter	Temperature		Wind				Precipitation	
		Max.	Min.	8.00 a.m.		8.00 p.m.		a.m.	p.m.
				Dir.	Vel.	Dir.	Vel.		
		°F.	°F.					Inches	Inches
1947									
July									
1	1013.3	40	35	E	5	E	5		
2	1013.2	49	35	Calm	0	SSW	10		
3	1012.3	35	33	S	15	S	10	.03	.41
4	998.4	47	33	NE	5	N	10	.05	
5	994.6	44	40	W	15	NW	27	.02	.04
6	1001.1		40	NW	21			Trace	
7	1013.9		41	N	15				Trace
8	1017.4	44	37	ENE	10	SE	5		
9	1015.0	41	32		5	S	15		.34
10	1004.8	62	34	S	10	N	15	.35	
11	1014.6	59	38	NW	10	W	21		Trace
12	1003.8	38	36	S	15	S	21	.05	.20
13	1000.0	50	37	NNW	15	N	15	Trace	
14	1009.0	56	42	NW	10	S	10		
15	1004.0	60	37		10	NW	27		
16	1006.4	50	38	NW	35	N	21		
17	1006.6	46	39	N	5	NNW	21	Trace	.03
18	1006.4	51	40	N	15	N	10	Trace	
19	1008.3	56	39	N	5	N	10		
20	1005.6	59	40		15	NW	15		Trace
21	1008.9	54	45	NNW	15	N	5	.19	.01
22	1006.4	53				N	15	.02	.02
23	1012.9	52	42	NW	15	N	15		
24	1012.2	49	41	N	2	E	5		.27
25	1011.6	57	42	SE	10	N	15		
26	1001.4	68	44	W	15	WNW	27		
27	1000.1	55	46	SSW	15	NW	15	Trace	
28	999.2	52	44	NW	21	NW	27		
29	1003.1	55	41	NW	27				
30	1008.4		40	N	15				
31	998.2	54	43	W	15	NW	21	.11	
Aug.									
1	999.8		38	NW	21				
2	1005.4	49	41	N	10	SW	5		
3	1010.0	49	40	SE	15	SSE	15	.03	.33
4	1012.9	42	39	SE	15	S	10	.02	
5	1013.0	44	39	SE	15	E	15		.08
6	1000.0	41	39	E	27	E	21	.52	.06
7	1004.7	51	39	N	10	N	15	.03	
8	1015.0	55	39	NW	10	S	15		
9	1003.2	43	39	S	15		2		.68
10	998.2	57	40	NW	27	N	5		.10
11	1001.3	53	40	W	15	NW	21		.04
12	1002.4	51	38	NW	21	NW	27	.04	Trace
13	1008.0	53	41	NW	15	NW	15	.04	
14	1010.7		40	NW	10		15		
15	1011.0	62	43	W	5	S	5		
16	1014.8	58				S	10		
17	1014.7	52	39	Calm	0	S	5		
18	1019.6	51	45	NW	10	SE	10		
19	1021.2		44	SW	10				.06
20	1005.3	51	41	N	10	SW	21		
21	1012.4	61		W	21	N	10		
22									
23									
24									
25	1003.8	42	40	S	2	S	2	.03	Trace
26	999.8	43				NW	15		.04
27	1001.0	42	33	NW	5	N	10		
28	1004.2	44	36	NW	10	N	21	.04	
29	1007.6	43	31	Calm	0	SE	15		.01
30	1005.8	46	37	E	21	E	10	.02	
31	1012.0	43	32	N	5	S	21		

CHESTERFIELD INLET METEOROLOGICAL REPORT, 1947

Date	Present Weather		Visibility		Ice Conditions
	a.m.	p.m.	a.m.	p.m.	
			Miles	Miles	
1947					
July					
1	Overcast.....	Cloudy.....	20	20	
2	Overcast.....	Overcast.....	20	20	
3	Overcast.....	Cont. light rain.	9	4	
4	Drizzle and fog.	Overcast.....	4	9	Close packed drift ice 12 miles SSE extending to horizon.
5	Overcast.....	Int. light drizzle	9	2	
6	Overcast.....	9	
7	Partly cloudy...	20	
8	Partly cloudy...	Cloudy.....	9	20	
9	Overcast.....	Int. light drizzle	20	9	
10	Drizzle and fog.	Partly cloudy...	$\frac{1}{4}$	20	Ice moving out of Harbour.
11	Cloudless.....	Cloudy.....	20	20	Scattered drift ice.
12	Int. light rain...	Overcast.....	4	9	
13	Cont. light drizzle.....	Overcast.....	1	20	
14	Overcast.....	Overcast.....	20	20	Drift ice to horizon.
15	Low fog.....	Partly cloudy...	$\frac{1}{4}$	20	
16	Overcast.....	Partly cloudy...	9	20	No ice in sight from this date until Nov. 3.
17	Partly cloudy...	Rain showers...	20	9	
18	Overcast.....	Overcast.....	20	9	
19	Cloudy.....	Overcast.....	20	20	
20	Partly cloudy...	Overcast.....	20	20	
21	Overcast.....	Int. light rain...	9	4	
22	Overcast.....	9	
23	Overcast.....	Partly cloudy...	20	20	
24	Overcast.....	Overcast.....	9	9	
25	Cloudless.....	Cloudy.....	9	20	
26	Overcast.....	Overcast.....	9	20	
27	Rain and thunder.....	Overcast.....	4	9	
28	Partly cloudy...	Overcast.....	20	20	
29	Cloudless.....	Cloudy.....	20	20	
30	Partly cloudy...	20	
31	Overcast.....	Overcast.....	9	9	
Aug.					
1	Overcast.....	20	No ice in sight.
2	Cloudy.....	Partly cloudy...	20	20	"
3	Overcast.....	Cont. light rain.	20	1	
4	Drizzle and fog.	Overcast.....	4	9	
5	Cloudy.....	Overcast.....	9	9	
6	Cont. light rain.	Light drizzle...	4	2	
7	Overcast.....	9	9	
8	Cloudy.....	Cloudless.....	20	20	
9	Overcast.....	Cont. light rain.	20	2	
10	Cloudless.....	Overcast.....	9	20	
11	Cloudy.....	Cloudy.....	20	20	
12	Overcast.....	Overcast.....	9	9	
13	Overcast.....	Partly cloudy...	9	20	
14	Overcast.....	Cloudless.....	20	20	
15	Overcast.....	Cloudy.....	20	20	
16	Cloudless.....	20	
17	Cloudless.....	Cloudless.....	20	20	
18	Cloudy.....	Partly cloudy...	20	20	
19	Overcast.....	20	
20	Overcast.....	Partly cloudy...	9	20	
21	Overcast.....	Partly cloudy...	20	20	
22	
23	
24	
25	Overcast.....	Overcast.....	9	9	
26	Overcast.....	9	
27	Overcast.....	Cloudy.....	20	9	
28	Overcast.....	Partly cloudy...	9	9	
29	Overcast.....	Overcast.....	20	9	
30	Overcast.....	Partly cloudy...	9	20	
31	Cloudy.....	Overcast.....	20	20	

CHESTERFIELD INLET METEOROLOGICAL REPORT, 1947—*Cont.*

Date	Mean Barometer	Temperature		Wind				Precipitation	
		Max.	Min.	8.00 a.m.		8.00 p.m.		a.m.	p.m.
				Dir.	Vel.	Dir.	Vel.		
		°F.	°F.					Inches	Inches
1947									
Sept.									
1.....	996.0	42	37	SSE	21	SW	10	.05
2.....	995.3	45	36	E	14	NW	10	.02	.05
3.....	1011.6	45	36	N	10	N	21
4.....	1011.5	56	34	NW	15	Calm	0
5.....	1003.1	44	40	SW	15	SW	15	.08	.02
6.....	1002.4	41	38	E	10	NE	15	.05	.08
7.....	1015.3	40	29	N	15	NNW	15	.01	Trace
8.....	1023.2	44	28	WNW	10	N	2
9.....	1024.4	41	SE	27
10.....	1010.5	39	36	SE	27	E	27	Trace	Trace
11.....	1007.6	38	36	E	21	NE	15	.01
12.....	1004.0	37	33	E	10	SE	15	.01	.11
13.....	995.5	36	31	E	21	E	42	.30	.77
14.....	1003.2	37	29	E	35	E	27	.07
15.....	999.5	39	SE	27
16.....	1008.8	39	30	NE	27	N	21
17.....	1021.9	36	29	N	27	NW	15
18.....	1019.0	44	30	W	15	W	35
19.....	1001.3	50	38	W	21	WSW	10
20.....	980.7	42	40	SW	21	N	42	Trace	.68
21.....	990.8	30	23	N	42	N	50
22.....	994.8	32	25	NW	27	WNW	21	Trace
23.....	997.3	29	24	SW	10	N	27	.05
24.....	1003.8	29	21	N	21	N	27
25.....	1016.2	31	20	NE	15	N	15
26.....	1012.6	36	21	W	10	S	27
27.....	996.6	36	33	W	35	N	35	Trace
28.....	1014.8	35	28	N	35	N	35
29.....	1017.8	34	26	NNW	15	W	15
30.....	1004.1	36	29	S	10	E	15	Trace
Oct.									
1.....	1014.3	38	32	NE	5	SW	15	Trace	Trace
2.....	994.0	45	32	S	21	NE	10	Trace
3.....	1002.6	40	34	NE	15	E	21	.01	Trace
4.....	994.4	35	E	27	.02	.09
5.....	987.5	37	35	E	50	E	42	.16	.12
6.....	1002.7	34	34	E	35	E	27	Trace
7.....	1008.6	28	27	ENE	15	NNE	10
8.....	1024.2	22	21	NW	5	NW	10	Trace
9.....	1017.7	31	19	W	10	W	5	Trace	Trace
10.....	1009.9	34	28	SW	5	S	15	Trace	.13
11.....	1005.3	34	31	SE	5	SE	2	.01	Trace
12.....	1004.5	34	31	NW	10	SE	10	Trace
13.....	995.8	35	30	S	10	SW	27	.01	.02
14.....	986.0	35	32	SE	15	S	5	.01	.68
15.....	1004.0	34	32	NE	15	NE	15	.02
16.....	1017.8	30	24	NE	2	E	15
17.....	1012.7	33	27	SE	35	SE	50
18.....	990.6	35	32	SE	35	SE	35	.09	.24
19.....	985.0	32	31	W	21	W	21	.04	Trace
20.....	995.9	29	29	W	5	NW	21
21.....	1011.2	25	20	NW	15	NW	21	Trace
22.....	1019.7	25	24	NW	21	NW	5
23.....	1012.0	32	17	SW	21	Trace
24.....	1015.3	22	20	NE	10	NW	15
25.....	1005.5	28	9	Calm	0	SE	21	Trace	.20
26.....	995.8	28	E	15	E	15	1.10
27.....	1004.8	23	22	E	21	N	15
28.....	1016.3	14	8	NW	10	N	5
29.....	1018.9	32	10	ENE	15	SE	27	Trace	.20
30.....	1011.2	34	31	S	15	S	21	Trace
31.....	1006.1	32	E	1015

CHESTERFIELD INLET METEOROLOGICAL REPORT, 1947—Cont.

Date	Present Weather		Visibility		Ice Conditions
	a.m.	p.m.	a.m.	p.m.	
			Miles	Miles	
1947					
Sept.					
1	Moderatedrizzle	Fog.....	1	No ice in sight.
2	Light drizzle...	Light fog.....	4	
3	Overcast.....	Cloudy.....	20	
4	Overcast.....	Int. light rain...	20	
5	Cont. light rain.	Overcast.....	9	
6	Light drizzle...	Light drizzle...	4	
7	Light drizzle...	Light drizzle...	9	
8	Partly cloudy...	Partly cloudy...	20	
9	Overcast.....	
10	Int. light rain...	Light drizzle...	4	
11	Overcast.....	Overcast.....	9	
12	Overcast.....	Light drizzle...	20	
13	Cont. light snow	Cont. light rain.	4	
14	Overcast.....	Overcast.....	9	
15	Cloudy.....	
16	Partly cloudy...	Overcast.....	20	
17	Cloudy.....	Overcast.....	20	
18	Partly cloudy...	Cloudy.....	20	
19	Cloudy.....	Cloudy.....	20	
20	Cloudy.....	Heavy snow....	20	
21	Cloudy.....	Overcast.....	20	
22	Overcast.....	Snow showers...	20	
23	Int. light snow..	Overcast.....	4	
24	Cloudless.....	Overcast.....	20	
25	Overcast.....	Overcast.....	20	
26	Overcast.....	Overcast.....	20	
27	Overcast.....	Overcast.....	9	
28	Overcast.....	Overcast.....	20	
29	Overcast.....	Overcast.....	20	
30	Overcast.....	Overcast.....	9	
Oct.					
1	Light drizzle...	Moderate snow..	4	4	No ice in sight.
2	Overcast.....	Fog.....	20	$\frac{1}{16}$	
3	Light drizzle...	Light drizzle...	4	9	
4	Moderatedrizzle	4	
5	Light drizzle...	Cont. light rain.	4	4	
6	Overcast.....	Overcast.....	9	4	
7	Overcast.....	Partly cloudy...	20	20	
8	Overcast.....	Overcast.....	20	20	
9	Cloudy.....	Int. light snow..	20	20	
10	Int. light snow..	Cont. light snow	4	2	
11	Int. light snow..	Drizzle.....	4	4	
12	Overcast.....	Fog.....	9	2	
13	Moderatedrizzle	Overcast.....	4	9	
14	Fog.....	Cont. light rain.	1	4	
15	Cont. light snow	Overcast.....	9	20	
16	Cloudless.....	Overcast.....	20	20	
17	Overcast.....	Overcast.....	20	9	
18	Cont. light rain.	Rain and snow..	4	1	
19	Overcast.....	Overcast.....	9	20	
20	Overcast.....	Cloudy.....	9	20	
21	Overcast.....	Overcast.....	20	20	
22	Overcast.....	Overcast.....	20	20	
23	Overcast.....	Overcast.....	9	20	
24	Cloudy.....	Partly cloudy...	20	20	
25	Cloudy.....	Cont. light snow	20	2	
26	Cont. light snow	Overcast.....	9	9	
27	Overcast.....	Overcast.....	9	9	
28	Overcast.....	Overcast.....	20	20	
29	Overcast.....	Int. light snow..	9	2	
30	Fog.....	Overcast.....	$\frac{1}{4}$	4	
31	Cont. light snow	$\frac{1}{2}$	

CHESTERFIELD INLET METEOROLOGICAL REPORT, 1947—*Conc.*

Date	Mean Baro- meter	Temperature		Wind				Precipitation	
		Max.	Min.	8.00 a.m.		8.00 p.m.		a.m.	p.m.
				Dir.	Vel.	Dir.	Vel.		
		°F.	°F.					Inches	Inches
1947									
Nov.									
1.....	1024.1	11	11	N	27	NW	10		
2.....	1011.5	31	28	S	27	S	35	.05	.48
3.....	995.1	34	31	NW	27	N	35	Trace	
4.....	1019.4	-3	-3	NW	21	NW	15		
5.....	1021.5	20	-3	N	2	ESE	15	.11	.10
6.....	1015.1	18				E	27		Trace
7.....	1001.7	31	25	E	35	S	10	.56	Trace
8.....	1001.9	27	21	NW	15	ENE	27		.80
9.....	996.4	32	22	NE	15	SE	5	.10	Trace
10.....	1002.4	32	27	E	15	S	15	.05	Trace
11.....	1018.4	29	24	S	10	S	21	.02	Trace
12.....	1020.2	25	22	E	15	E	21	Trace	Trace
13.....	1013.8	32	25	E	21	S	27	Trace	.05
14.....	1028.0	30	29	SSE	21	S	5	Trace	Trace
15.....	1034.0	27	26	Calm	0	NNW	10	Trace	
16.....	1038.7	23	19	N	10	E	2		
17.....	1031.2	30	17	NE	15	E	35		Trace
18.....	1025.6	29	25	NNE	27	E	21	.70	.07
19.....	1023.8	27	25		10	E	15	.02	Trace
20.....	1020.6	27	25	E	15	E	21	Trace	.07
21.....	1016.1	25	24	E	27	NE	21	.11	.03
22.....	1008.8	17	9	WSW	21	N	21	.02	Trace
23.....	1001.2	-2	-2	N	21	NE	21	.02	Trace
24.....	992.1	2	-10	NW	27	NW	15	Trace	Trace
25.....	996.4	10	2	NW	10	N	15	Trace	.02
26.....	990.7	21	8	E	27	N	35	.10	
27.....	981.2	16	14	N	42	ENE	42		
28.....	992.4	0	0	N	42	N	42		
29.....	999.6	-2	-5	NE	35	NW	35		
30.....	1000.2	2	-4	NW	35	NW	21		

CHESTERFIELD INLET METEOROLOGICAL REPORT, 1947—*Conc.*

Date	Present Weather		Visibility		Ice Conditions
	a.m.	p.m.	a.m.	p.m.	
			Miles	Miles	
1947					
Nov.					
1	Drifting snow...	Partly cloudy...	9	9	No ice in sight.
2	Overcast.....	Moderate snow.	9	$\frac{1}{2}$	
3	Overcast.....	Overcast.....	9	20	
4	Cloudless.....	Overcast.....	20	9	
5	Cont. light snow	Cont. light snow	9	4	Ice forming along shore.
6	Overcast.....	9	
7	Cont. light snow	Overcast.....	4	9	
8	Fog.....	Cont. light snow	$\frac{1}{2}$	4	
9	Moderate snow.	Overcast.....	$\frac{1}{2}$	4	
10	Cont. light snow	Cloudy.....	2	9	
11	Int. light snow..	Int. light snow..	9	4	Close packed ice in Bay.
12	Cont. light snow	Int. light snow.	4	9	
13	Cont. light snow	Overcast.....	4	9	
14	Overcast.....	Cont. light snow	20	4	
15	Cont. light snow	Overcast.....	4	20	
16	Overcast.....	Overcast.....	9	20	
17	Overcast.....	Overcast.....	9	9	
18	Cont. light snow	Cont. light snow	4	4	
19	Overcast.....	Overcast.....	9	9	
20	Overcast.....	Cont. light snow	9	4	
21	Cont. light snow	Drifting snow...	4	4	
22	Cont. light snow	Fog.....	4	1	
23	Cont. light snow	Drifting snow...	4	$\frac{1}{4}$	
24	Cont. light snow	Overcast.....	9	9	
25	Int. light snow..	Int. light snow..	9	9	
26	Snow pellets....	Drifting snow...	0	$\frac{1}{2}$	
27	Drifting snow...	Drifting snow...	$\frac{1}{4}$	0	
28	Drifting snow...	Drifting snow...	$\frac{1}{4}$	$\frac{1}{8}$	
29	Drifting snow...	Drifting snow...	$\frac{1}{4}$	4	Harbour frozen
30	Overcast.....	Distant fog.....	9	20	Scattered drift ice to horizon.

PORT HARRISON METEOROLOGICAL REPORT, 1947

Date	Mean Barometer	Temperature		Wind				Precipitation	
		Max.	Min.	8.00 a.m.		8.00 p.m.		a.m.	p.m.
				Dir.	Vel.	Dir.	Vel.		
		°F.	°F.					Inches	Inches
1947									
July									
1.....	1008.2	50	35	E	6	NE	6	Trace
2.....	1010.1	63	45	NE	18	N	24
3.....	1014.6	63	37	E	6	NW	1017
4.....	1009.2	55	45	S	13	S	21
5.....	1015.2	44	32	W	12	SW	9
6.....	1013.9	54	37	SSW	7	SW	11
7.....	1013.9	45	37	WNW	15	W	20	.01
8.....	1018.3	55	38	S	12	N	7
9.....	1018.6	64	36	NE	10	ENE	4
10.....	1014.2	64	47	SSE	15	SSW	3
11.....	1011.2	59	44	W	1	N	21
12.....	1016.6	63	37	NE	15	WNW	18
13.....	1007.7	54	42	SSW	12	W	2006
14.....	1009.3	47	37	NW	18	NNW	16	.02
15.....	1015.1	47	37	W	6	S	1703
16.....	1007.9	50	38	W	6	WNW	13	Trace
17.....	1009.8	49	37	NW	10	NW	9	Trace
18.....	1006.3	44	37	NW	3	W	16
19.....	1004.8	45	34	W	12	NW	14	.13	.01
20.....	1009.2	41	34	SW	7	SW	18	.01	.02
21.....	1012.6	44	35	SW	15	S	18
22.....	1010.2	42	38	S	27	W	12	.03
23.....	1018.3	49	36	SW	9	NW	12	.16	.17
24.....	1021.2	50	35	Calm	0	W	8
25.....	1011.8	44	37	SW	23	NW	24
26.....	1015.7	52	34	N	13	NW	15
27.....	1012.5	47	38	SW	21	SSW	18
28.....	1001.2	48	38	S	12	NNE	915
29.....	1007.3	43	36	NW	15	W	12	Trace	Trace
30.....	1007.8	47	35	W	7	N	18	Trace
31.....	1010.0	50	34	N	9	NW	12
Aug.									
1.....	1005.5	42	37	S	21	SW	8	.04	.14
2.....	1003.6	51	35	E	6	WNW	15	.22	Trace
3.....	1017.5	44	34	N	12	SW	10	Trace	Trace
4.....	1008.8	50	39	SE	9	NW	12	.38	.01
5.....	1012.0	55	39	E	18	E	1601
6.....	1006.6	60	42	ESE	27	NW	9	.01	Trace
7.....	1010.4	44	36	SW	12	W	21	.03	Trace
8.....	1015.7	44	36	W	21	W	21	.01
9.....	1018.8	49	34	W	12	S	16
10.....	1005.4	48	37	S	25	NW	9	.09	Trace
11.....	1014.4	47	34	WNW	13	SW	12
12.....	1013.7	45	38	SW	12	SW	9
13.....	1012.0	49	35	Calm	0	NW	11	.38
14.....	1008.8	51	35	NE	12	N	18
15.....	1017.8	42	34	NW	6	W	7
16.....	1024.9	46	33	WSW	12	S	20
17.....	1012.4	51	40	NE	7	E	30	.20	.49
18.....	1009.8	59	47	NE	36	NE	18	.29
19.....	1026.9	58	36	NE	4	SW	6
20.....	1012.2	49	39	S	27	W	27	.06	.02
21.....	1017.1	52	38	NW	24	NW	15
22.....	1020.0	49	37	S	17	SW	9	.02	.01
23.....	1017.4	52	39	NE	6	NE	18
24.....	1016.1	58	38	NE	15	E	10	Trace
25.....	996.2	49	36	E	15	NW	24	.25	.51
26.....	1005.2	42	36	NW	27	NW	18	.30	.01
27.....	1006.4	49	33	S	12	SW	1019
28.....	1001.8	41	36	W	18	WNW	18	.27	.44
29.....	1013.6	42	38	NW	15	SW	13	.03	Trace
30.....	1006.2	52	35	S	18	SW	9	Trace	.02
31.....	1005.6	46	35	N	30	N	26	.02

PORT HARRISON METEOROLOGICAL REPORT, 1947

Date	Present Weather		Visibility		Ice Conditions
	a.m.	p.m.	a.m.	p.m.	
			Miles	Miles	
1947					
July					
1	Light fog.....	Overcast.....	1	8	
2	Cloudy.....	Partly cloudy...	12	12	
3	Cloudless.....	Partly cloudy...	10	10	River and Harbour clear.
4	Partly cloudy...	Overcast.....	12	10	Packed ice on horizon.
5	Fog.....	Cloudy.....	$\frac{1}{2}$	12	
6	Overcast.....	Cloudy.....	12	12	
7	Int. light rain...	Partly cloudy...	4	12	
8	Cloudy.....	Partly cloudy...	12	12	Scattered pans.
9	Partly cloudy...	Partly cloudy...	10	10	No ice in sight.
10	Overcast.....	Overcast.....	10	12	
11	Fog.....	Partly cloudy...	$\frac{1}{2}$	10	
12	Cloudy.....	Overcast.....	10	12	
13	Cloudy.....	Rain and fog....	10	$\frac{1}{2}$	
14	Int. light rain...	Overcast.....	10	8	
15	Cloudy.....	Rain showers...	10	8	
16	Drizzle and fog.	Overcast.....	$\frac{1}{10}$	12	
17	Overcast.....	Cloudless.....	4	12	
18	Light fog.....	Light fog.....	$1\frac{1}{2}$	$\frac{1}{2}$	
19	Cont. light rain.	Cloudy.....	3	8	
20	Drizzle and fog.	Overcast.....	3	5	
21	Fog.....	Cloudless.....	$\frac{1}{2}$	10	
22	Rain and fog....	Light fog.....	$2\frac{1}{2}$	$2\frac{1}{2}$	
23	Fog.....	Partly cloudy...	$\frac{1}{2}$	10	
24	Overcast.....	Cloudless.....	10	12	
25	Int. light rain...	Overcast.....	6	3	
26	Light fog.....	Partly cloudy...	$2\frac{1}{2}$	12	
27	Cloudy.....	Cloudy.....	10	8	
28	Partly cloudy...	Int. light rain...	12	6	
29	Overcast.....	Light fog.....	5	1	Large field off shore.
30	Drizzle and fog.	Overcast.....	8	12	
31	Light fog.....	Overcast.....	1	8	
Aug.					
1	Int. light rain...	Rain and fog....	3	$3\frac{1}{2}$	Heavy ice off shore.
2	Cont. light rain.	Partly cloudy...	1	8	
3	Overcast.....	Cloudy.....	4	8	
4	Cont. light rain.	Int. light drizzle	6	4	
5	Overcast.....	Overcast.....	8	10	
6	Overcast.....	Drizzle and fog.	8	8	
7	Int. light rain...	Light fog.....	8	1	
8	Drizzle and fog.	Cloudy.....	3	5	
9	Fog.....	Overcast.....	$\frac{2}{10}$	12	
10	Int. light rain...	Distant fog....	4	2	
11	Cloudless.....	Partly cloudy...	12	12	
12	Overcast.....	Partly cloudy...	8	8	
13	Int. light rain...	Partly cloudy...	10	12	
14	Light fog.....	Cloudy.....	$\frac{3}{4}$	10	
15	Light fog.....	Distant fog....	$\frac{1}{2}$	10	
16	Overcast.....	Cloudy.....	8	10	
17	Overcast.....	Overcast.....	10	8	
18	Cont. light rain.	Partly cloudy...	4	10	No ice sighted from this date until Nov. 20.
19	Cloudy.....	Cloudy.....	12	12	
20	Int. light rain...	Drizzle and fog.	6	$\frac{1}{3}$	
21	Cloudless.....	Cloudless.....	12	12	
22	Overcast.....	Overcast.....	5	8	
23	Drizzle and fog.	Cloudless.....	4	12	
24	Fog.....	Overcast.....	$\frac{1}{2}$	8	
25	Cont. light rain.	Cont. light rain.	5	5	
26	Cont. light rain.	Overcast.....	2	8	
27	Overcast.....	Cont. light rain.	10	6	
28	Overcast.....	Rain and fog....	6	1	
29	Drizzle and fog.	Int. light drizzle	5	10	
30	Cloudy.....	Cloudy.....	8	10	
31	Cont. light rain.	Cloudy.....	4	10	

PORT HARRISON METEOROLOGICAL REPORT, 1947—Cont.

Date	Mean Baro- meter	Temperature		Wind				Precipitation	
		Max.	Min.	8.00 a.m.		8.00 p.m.		a.m.	p.m.
				Dir.	Vel.	Dir.	Vel.		
		°F.	°F.					Inches	Inches
1947									
Sept.									
1	1006.8	44	35	W	15	S	27		.61
2	994.2	45	40	S	15	NW	10	.01	.05
3	1003.3	43	36	NW	10	NW	21	.02	.01
4	1013.4	42	34	NNW	15	NW	15	.02	
5	1014.2	44	36	NW	10	SW	2		
6	998.5	45	35	SSE	15	E	5	.18	.03
7	1009.2	46	39	NE	2	W	10		.05
8	1027.4	43				NNW	10	Trace	Trace
9	1018.5	42	36	ESE	10	E	21		
10	1012.5	46				S	5	Trace	Trace
11	1002.8	48	43	N	2	W	15	Trace	.02
12	1003.4	44	38	W	21	NNW	10	.03	.01
13	1004.2		35	S	15	SW	15		.03
14	993.6	43	40	S	10	SE	5		.08
15	985.7	44				SW	27	.01	
16	989.4	41	34	SW	27	NW	21	.05	Trace
17	1015.0	39	35	N	21	NW	21	Trace	.01
18	1030.3	40	33	NW	10	NW	15	Trace	.01
19	1025.0	46	36	W	15	WSW	21	.01	
20	1005.6	44	38	SW	15	S	42		.39
21	991.0	42	33	WSW	21	WSW	15	.03	.08
22	1001.2	36	25	NW	15	W	15	.02	Trace
23	1005.7	39	28	SW	21	S	15	.01	.03
24	1000.4	39	32	SW	5	S	15	.03	.01
25	1015.2	40	29	Calm	0	SW	5	Trace	
26	1027.6	40	29	Calm	0	W	15		.03
27	1017.0	40	32	SW	27	SW	35	Trace	.55
28	1011.6	34	34	W	21	NW	15	.04	Trace
29	1012.7	34	31	NW	21	N	27		Trace
30	1015.7	38	30	NW	10	SW	15	.01	.01
Oct.									
1	1011.2	39	33	S	10	Calm	0	.01	Trace
2	1016.4	38	32	S	2	S	15	Trace	.01
3	1009.0	42	35	SW	15	S	15	Trace	
4	1001.2	52	37	WNW	10	SE	15		.03
5	992.4	48		SW	10	WSW	15		.01
6	999.1	48	38		10	NE	5	.01	
7	1001.7	38	38	SW	10	NW	5	.01	.01
8	1020.8	38	33	N	21	N	10		
9	1023.6	35	31	WNW	10	WNW	10	Trace	.01
10	1018.7	38	30	N	2	SSE	15	Trace	Trace
11	1011.2	40	32	SSW	21	SW	21	.03	Trace
12	1002.8	42	36	NE	5	NE	10	.01	
13	1004.2	40	28	NE	10	W			Trace
14	998.8	48	34	S	15	SW	35	Trace	.01
15			35	W	35			Trace	.02
16	1013.2	33	32	NW	10	N	5	.02	
17	1016.2	36	25	NE	5	ESE	2	.01	
18	1001.3	39	30	E	21	SW	15	.06	.52
19	1000.6	42	34	S	10	SW	10	.52	
20	1000.8	41	32	NE	2	N	10	Trace	
21	1015.0	34	31	N	5	NW	10	.01	Trace
22	1018.0	44				N	10		Trace
23	1019.2	33	27	N	21	W	21	Trace	Trace
24	1016.0	36	29	NW	27	W	10		.03
25	1013.6	35	29	N		W	10	.01	.02
26	998.3	39	30	SW	27	NW	10	.03	Trace
27	992.0	39	34	S	15	SW	15	.01	.06
28	1011.0	37	31	NNW	35	NW	15	Trace	Trace
29	1027.1	30	26	NW	10	N	5	Trace	
30	1031.1		28	S	5				
31	1022.2	37	29	S	21	SW	21		.01

PORT HARRISON METEOROLOGICAL REPORT, 1947—Cont.

Date	Present Weather		Visibility		Ice Conditions
	a.m.	p.m.	a.m.	p.m.	
			Miles	Miles	
1947					
Sept.					
1	Overcast.....	Moderate rain...	9	$\frac{1}{2}$	No ice in sight.
2	Fog.....	Light fog.....	$\frac{1}{4}$	2	
3	Light fog.....	Showers.....	2	9	
4	Cloudy.....	Cloudy.....	9	9	
5	Overcast.....	Fog patches.....	9	$\frac{1}{2}$	
6	Int. light rain...	Overcast.....	9	9	
7	Light fog.....	Drizzle and fog.	4	2	
8	Partly cloudy...	20	
9	Cloudy.....	Overcast.....	9	9	
10	Light fog.....	4	
11	Overcast.....	Overcast.....	9	9	
12	Rain and fog....	Overcast.....	4	9	
13	Light fog.....	Overcast.....	1	4	
14	Overcast.....	Dust devils.....	9	$\frac{1}{2}$	
15	Overcast.....	9	
16	Drizzle and fog.	Fog.....	1	4	
17	Distant fog.....	Snow showers...	4	9	
18	Int. light snow..	Rain and snow..	9	4	
19	Distant fog.....	Partly cloudy...	9	20	
20	Cloudless.....	Rain and fog....	9	2	
21	Rain and fog....	Snow showers...	2	$\frac{1}{16}$	
22	Snow showers...	Snow showers...	4	4	
23	Snow showers...	Snow showers...	9	9	
24	Snow showers...	Snow showers...	9	9	
25	Distant fog.....	Rain in sight....	2	9	
26	Partly cloudy...	Cloudy.....	9	9	
27	Cloudy.....	Int. light rain...	4	4	
28	Rain and snow..	Rain and snow..	4	4	
29	Overcast.....	Overcast.....	9	9	
30	Snow showers...	Snow showers...	4	9	
Oct.					
1	Int. light snow..	Cloudy.....	4	9	No ice in sight.
2	Light drizzle....	Light drizzle....	4	4	
3	Light drizzle....	Cloudless.....	2	9	
4	Cloudy.....	Cloudy.....	9	9	
5	Fog.....	Fog.....	$\frac{1}{2}$	$\frac{1}{16}$	
6	Drizzle and fog.	Cloudy.....	2	9	
7	Drizzle and fog.	Drizzle and fog.	$\frac{1}{2}$	$\frac{1}{4}$	
8	Cloudy.....	Cloudy.....	9	20	
9	Overcast.....	Cloudy.....	9	9	
10	Snow showers...	Cloudy.....	4	9	
11	Light drizzle....	Overcast.....	2	2	
12	Moderatedrizzle	Overcast.....	4	9	
13	Fog.....	Drizzle and fog.	1	$\frac{1}{2}$	
14	Overcast.....	Int. light rain...	4	9	
15	Light drizzle....	2	
16	Cloudy.....	Partly cloudy...	9	9	
17	Partly cloudy...	Partly cloudy...	9	9	
18	Cloudy.....	Drizzle and fog.	9	$\frac{1}{2}$	
19	Overcast.....	Cloudy.....	4	9	
20	Cloudy.....	Cloudy.....	9	9	
21	Int. light snow..	Cloudy.....	2	20	
22	Cloudy.....	9	
23	Cloudy.....	Overcast.....	9	9	
24	Overcast.....	Rain and snow..	9	4	
25	Overcast.....	Overcast.....	9	9	
26	Overcast.....	Int. light rain...	2	4	
27	Int. light rain...	Int. light rain...	2	4	
28	Int. light rain...	Cloudy.....	4	9	
29	Overcast.....	Overcast.....	9	9	
30	Overcast.....	9	
31	Overcast.....	Overcast.....	9	9	

PORT HARRISON METEOROLOGICAL REPORT, 1947—*Conc.*

Date	Mean Baro- meter	Temperature		Wind				Precipitation	
		Max.	Min.	8.00 a.m.		8.00 p.m.		a.m.	p.m.
				Dir.	Vel.	Dir.	Vel.		
		°F.	°F.					Inches	Inches
1947									
Nov.									
1.....	1021.2	35	31	NW	10	N	10	.01	Trace
2.....	1023.1	32	27	N	5	S	21	Trace	Trace
3.....	1007.2	40	30	SW	27	W	27		.02
4.....	1017.0	33	30	N	10	NE	5	Trace	Trace
5.....	1020.8	30	27	NE	10	E	10		
6.....	996.0	28				ESE	21		
7.....	1012.0	35	25	SE	15	S	5	.01	
8.....	1001.9	43	34	ESE	21	SE	21	.01	.02
9.....	998.1	38	35	SE	15	SE	15	.02	.03
10.....	1012.5	36	34	S	15	SW	10	.01	Trace
11.....	1022.9	33	25	S	15	NE	10	Trace	Trace
12.....	1009.4	33	18	E	21	SE	21	Trace	.04
13.....	1020.1	33	33	S	10	NE	5	.02	.02
14.....	1026.7	33	30	E	15	E	15	Trace	
15.....	1032.2	32	27	NE	10	ENE	15		
16.....	1022.9	33	26	ENE	21	E	21	.01	Trace
17.....	1020.2	35	29	E	21	E	15	Trace	
18.....	1022.6	32	30	E	21	ESE	15		
19.....	1021.9	29	26	SE	15	NE	15		
20.....	1021.5	32	24	W	5	NE	2	Trace	.10
21.....	1024.3	30	25	W	10	SW	15		.02
22.....	1007.3	30	27	SSE	21	SE	21	.06	.04
23.....	992.2	33	24	S	10	NNW	10	.02	.01
24.....	996.8	27	24	W	21	SW	21	.01	.05
25.....	1001.1	25	17	SW	21	E	15	Trace	.01
26.....	987.8	23	0	N	15	W	21	.02	.07
27.....	994.4	20	18	SW	35	SW	21	Trace	Trace
28.....	999.8	21	16	SW	27	SW	27	.01	Trace
29.....	1001.4	25	18	SW	27	W	21	Trace	.02
30.....	1001.6	24	20	W	21	SW	27	.04	.02

PORT HARRISON METEOROLOGICAL REPORT, 1947—*Conc.*

Date	Present Weather		Visibility		Ice Conditions
	a.m.	p.m.	a.m.	p.m.	
			Miles	Miles	
1947					
Nov.					
1	Light drizzle....	Rain showers...	4	4	No ice in sight.
2	Overcast.....	Overcast.....	9	4	
3	Overcast.....	Overcast.....	4	9	
4	Overcast.....	Rain showers...	4	4	
5	Overcast.....	Cloudless.....	4	20	
6	Partly cloudy...	20	
7	Cont. light snow	Light fog.....	4	1	
8	Overcast.....	Int. light rain...	4	4	
9	Int. light rain...	Int. light rain...	4	4	
10	Cloudy.....	Int. light snow..	4	4	
11	Cloudy.....	Cloudless.....	4	20	
12	Snow grains....	Int. light snow..	4	4	
13	Int. light snow..	Int. light snow..	4	2	
14	Overcast.....	Partly cloudy...	4	20	
15	Partly cloudy...	Partly cloudy...	20	20	
16	Overcast.....	Overcast.....	9	4	
17	Overcast.....	Overcast.....	4	4	
18	Overcast.....	Overcast.....	9	9	
19	Overcast.....	Overcast.....	9	9	
20	Int. light snow..	Int. light snow..	4	4	Ice forming in Harbour.
21	Partly cloudy...	Snow showers...	4	4	
22	Int. light snow..	Int. light snow..	4	$\frac{1}{2}$	
23	Int. light snow..	Int. light snow..	4	4	
24	Heavy snow....	Snow showers...	$4\frac{1}{8}$	9	
25	Int. light snow..	Cloudy.....	4	9	
26	Cloudy.....	Cloudy.....	9	9	Slob ice off shore.
27	Moderate snow..	Cloudy.....	2	4	
28	Int. light snow..	Overcast.....	2	4	
29	Overcast.....	Overcast.....	4	9	
30	Moderate snow..	Snow showers...	$\frac{1}{2}$	4	

AIDS TO NAVIGATION IN HUDSON BAY AND STRAIT

RADIO COAST AND DIRECTION FINDING STATIONS

Station	Call Sign	Calling Wave		Working Wave		Position		Hours of Service	Coast Charge (a)
		Kc/s.	Metres	Kc/s.	Metres	Latitude N.	Longitude W.		
Churchill.....	V A P	500	600	500	600	58° 46' 32"	94° 10' 31"	Continuous during season of navigation.	6c. per word
Chesterfield Inlet.....	V B Z	500	600	500	600	63° 20' 05"	90° 42' 33"	Continuous during season of navigation.	6c. per word
Nottingham Island.....	V C B	500	600	500	600	63° 06' 18"	77° 56' 18"	Continuous during season of navigation.	6c. per word
Cape Hopes Advance.....	V A Y	500	600	500	600	61° 05' 12"	69° 33' 24"	Continuous during season of navigation.	6c. per word
Resolution Island.....	V A W	500	600	500	600	61° 18' 30"	64° 53' 24"	Continuous during season of navigation.	6c. per word

All stations maintain watch on 500 Kc/s. (600 metres) and, with the exception of Resolution Island take and transmit bearings on 375 Kc/s. (800 metres) after communication has been established on 500 Kc/s. (600 metres). Resolution Island takes bearings on 500 Kc/s. (600 metres) and transmits bearings on 375 Kc/s. (800 metres).

(a) All messages relative to navigation are handled free of charge. The six-cent per word coast charge applies to all other traffic. For forwarding charges beyond Churchill apply to any of above stations or see Canada Rate Sheet, International List of Coast and Ship Stations.

RADIO METEOROLOGICAL REPORTING STATION

Station	Call Sign	Calling Wave		Working Wave		Position		Hours of Service	Coast Charge
		Kc/s.	Metres	Kc/s.	Metres	Latitude N.	Longitude W.		
Port Harrison.....	V A L	500	600	420	714	58° 27' 17"	78° 08' 20"	Keeps watch on 500 Kc/s. (600 metres) for fifteen minute periods commencing at every odd hour from 7.00 a.m. to 7.00 p.m. E.S.T. inclusive, during season of navigation.	6c. per word See note (a) above.

PATROL SHIP

Station	Call Sign	Calling Wave		Working Wave		Hours of Service	Remarks
		Kc/s.	Metres	Kc/s.	Metres		
C.G.S. <i>N.B. McLean</i>	C G S N	500	600	425	706	Continuous during season of navigation.	Normally this vessel patrols Hudson Strait during the season of navigation. Information in regard to her position may be obtained from any Radio Station in the Strait.

LIGHTS

Location	Position		Character	Elevation	Remarks
	Latitude N.	Longitude W.			
† Goodwin Island, Button Islands group.	60° 41' 31"	64° 40' 22"	Flashing.....	259 ft.	On unpainted wooden pole.
Resolution Island.....	61° 18' 28"	64° 53' 16"	Flashing.....	129 ft.	White square, wooden lantern on wooden skeleton base. One flash every ten seconds.
Cape Hopes Advance.....	61° 05' 14"	69° 33' 23"	Fixed.....	270 ft.	On unpainted wooden pole.
† Wales Island.....	61° 51' 37"	71° 58' 19"	Flashing.....	280 ft.	On unpainted wooden pole.
† Ashe Inlet.....	62° 31' 40"	70° 33' 27"	Flashing.....	191 ft.	On unpainted wooden pole.
† East end of Charles Island.....	62° 36' 40"	73° 56' 09"	Flashing.....	200 ft.	Steel tower.
† West end of Charles Island.....	62° 42' 30"	74° 40' 00"	Flashing.....	40 ft.	On unpainted wooden pole.
† Nottingham Island.....	63° 05' 48"	77° 56' 55"	Flashing.....	50 ft.	On unpainted wooden pole.
† Digges Island.....	62° 35' 20"	78° 06' 42"	Flashing.....	65 ft.	On unpainted wooden pole.
† Mansel Island.....	62° 27' 00"	79° 38' 00"	Flashing.....	41 ft.	On unpainted wooden pole.
† Coates Island.....	62° 10' 00"	83° 08' 00"	Flashing.....	40 ft.	On unpainted wooden pole, surrounded by white lattice.
† Hubbard Point.....	59° 21' 00"	94° 40' 00"	Flashing.....	50 ft.	On unpainted wooden pole.

† Unwatched.

C.G.S. *N. B. McLEAN*—HUDSON STRAIT PATROL SHIP
GENERAL DIMENSIONS AND EQUIPMENT

The C.G.S. *N. B. McLean* is a twin-screw ice breaking steamer of 6,500 indicated horse-power and with the following leading dimensions:—

Length (B.P.).....	260 feet
Breadth (moulded).....	60 “
Depth (moulded).....	31 “
Gross tonnage.....	3,253 tons
Fuel oil capacity.....	1,596 “

The vessel is equipped with a patent towing winch furnished with both steel wire and manila towing hawsers, a searchlight, two 7-ton derricks and two motor launches.

She also carries a diver and complete diving apparatus and the following salvage gear:—

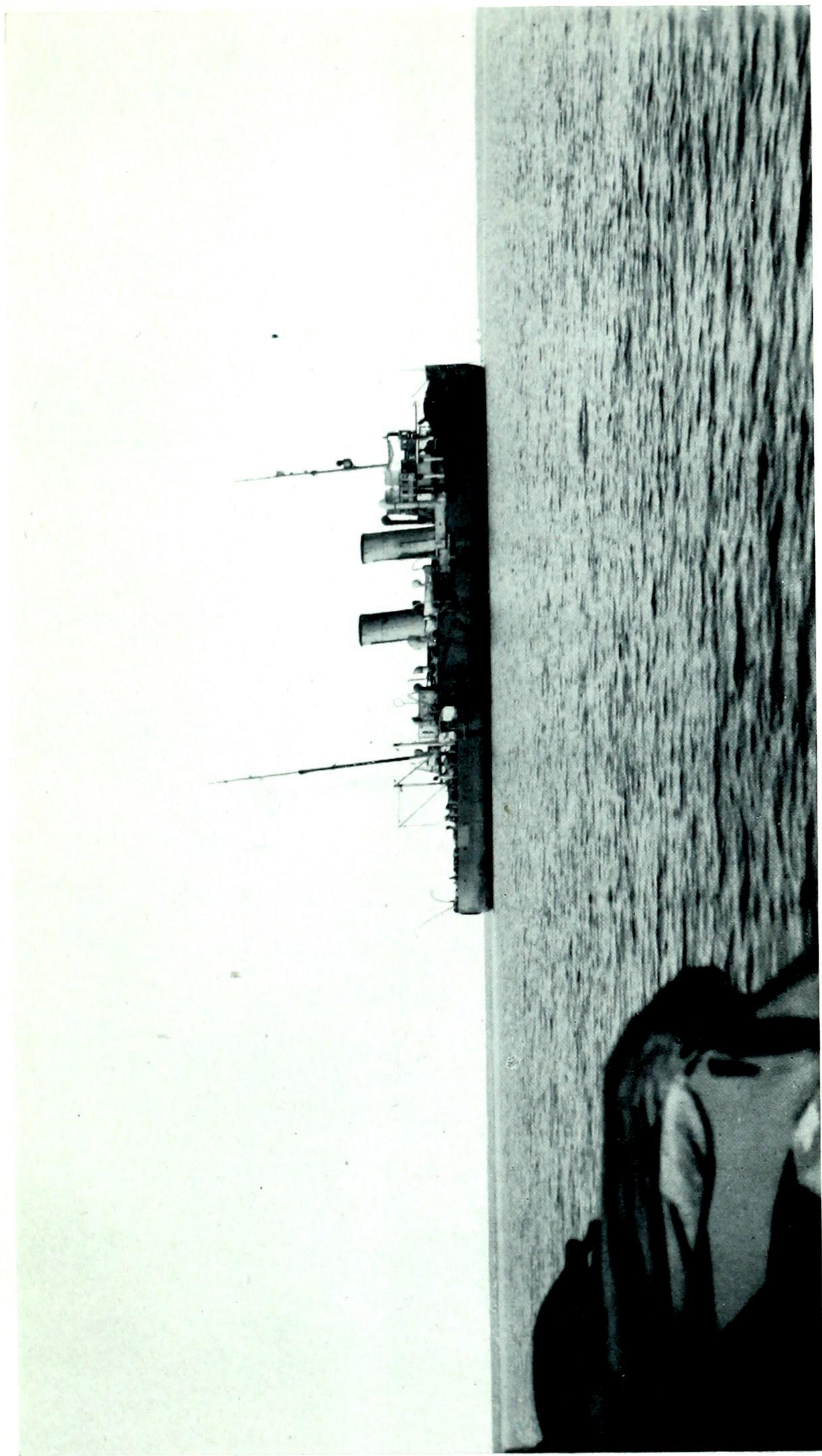
- 1 Dake centrifugal pump, 10 inch.
- 1 Smart Turner centrifugal pump, 8 inch.
- 1 Duplex pump, 6 inch.

These pumps are completely equipped with flexible suction and discharge pipes, foot valves, syphons, etc., and all necessary auxiliaries.

One hundred and fifty feet of bronze flexible steam hose with connections, patching gear, shores, turnbuckles and all necessary tools are also provided.

The vessel is provided with a gyro compass, recording echo sounder, radio-telegraph, radiotelephone and radar apparatus.

The *N. B. McLean* is normally in Hudson Strait from the opening to the close of navigation each year and maintains constant watch on 500 kc (600 metres), call sign CGSN.



Hudson Strait Patrol Ship C. G. S. N. B. *McLean*

GLOSSARY OF TERMS USED IN ICE NAVIGATION

- Floe.....A large mass of floating ice.
- Pan.....A small floe or piece of ice that can be forced aside or slewed.
- A field.....A large body of ice that may be seen around.
- Land floe.....Ice frozen fast to the shore.
- Packed ice.....Small pieces of ice closed together and held by the pressure of ice and currents.
- Ice blink.....A peculiar pale yellow reflection on the sky indicating the presence of ice in the distance.
- The ice pack.....A large body of solid ice extending across the whole sea and through which it is impossible to advance.
- Slack or open ice....Detached ice that can be worked through. Ice is said to be slacking when it begins to open up so as to be navigable.
- A lead.....A strip of navigable water opening into the pack.
- Hummocky ice.....Rough, uneven or thick ice.
- Slob.....Snow afloat and forming into ice.
- Water sky.....A dark or bluish appearance of the sky indicating open water beyond the ice pack.
- Rafting.....Occurs when two pans meet with force either by the action of winds or currents, the edges are broken off and either rise on top of or pass under the body of the other.
- Growler.....A more or less washed and rounded lump of ice which rolls about in the water; formed from broken-up bergs or detached pieces of heavy old Arctic floe ice.
- Collar ice.....The margin of ice frozen fast to an island or shore, presenting an abrupt wall against which the floating ice rises and falls with the tide.