

# Indigenous Capacity Support Program

## Supporting Indigenous Communities in Impact Assessment

### What is the ICSP?

The Indigenous Capacity Support Program (ICSP) provides funding to support the development of local and regional capacity so that Indigenous Peoples are prepared to meaningfully participate and increasingly take on leadership in:

- project environmental and impact assessments;
- regional and strategic assessments; and
- environmental and impact assessment follow-up activities.

**This program provides funding outside of specific environmental or impact assessments (project reviews).**



### Who we are

The Impact Assessment Agency of Canada delivers high-quality impact assessments that look at both positive and negative environmental, economic, social, and health impacts of potential major projects. The Agency contributes to informed decision-making in support of sustainable development in Canada.



### Who is eligible?

Indigenous communities and organizations.

### Eligible activities include:

- developing or supporting the organizational capacity of Indigenous communities or organizations to participate in, direct, and/or undertake assessments;
- strengthening awareness of environmental and impact assessment issues within Indigenous communities through outreach activities; and
- designing and delivering workshops, training programs or materials related to environmental and impact assessments for Indigenous Peoples, communities or organizations.

\*Eligible activities and criteria may change due to current priorities.

Please check [our website](#) frequently for opportunities.

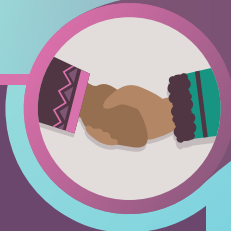


## Three funding streams

### Stream 1:

#### Program Partners

Funds long-term partnerships with Indigenous organizations or communities to conduct activities that increase the capacity of communities in regions where projects take place.



### Stream 2:

#### Community-of-Practice Events

Supports national or regional community-of-practice conferences and events where expertise and best practices on environmental and impact assessments are shared.



### Stream 3:

#### Strategic Opportunities

Provides short-term funds to respond to the needs of Indigenous communities where capacity gaps exist. Prioritization is given where:

- natural resource development is anticipated and/or taking place; and
- program partnerships (Stream 1) cannot be established or do not address the unique needs of individual Indigenous communities.



### How and when to apply

All streams follow an open application process that includes a call for proposals. Application periods including dates and criteria are indicated on the [Agency's website](#).

Where a specific capacity support has been identified, a targeted process may be used. The Agency will work with candidates directly to clarify the application process and requirements.



[Click or Scan for more information and to apply](#)



[canada.ca/iaac-indigenous](https://canada.ca/iaac-indigenous)



[IndigenousPartnerships-PartenariatsAutochtones@iaac-aeic.gc.ca](mailto:IndigenousPartnerships-PartenariatsAutochtones@iaac-aeic.gc.ca)



Indigenous Partnerships Division  
Impact Assessment Agency of Canada  
160 Elgin Street, 22nd Floor  
Ottawa, ON K1A 0H3

