

# LYME DISEASE SURVEILLANCE IN CANADA

ANNUAL EDITION | 2021

## WHAT IS LYME DISEASE?

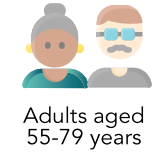
- ▶ **Lyme disease** is a bacterial infection transmitted to humans through the bite of an infected tick.
- ▶ Early **clinical manifestations** can present as flu-like symptoms including joint pain and/or bull's eye rash. If untreated, individuals may experience cardiac and neurologic manifestations and arthritis.

## WHAT IS THE RISK?

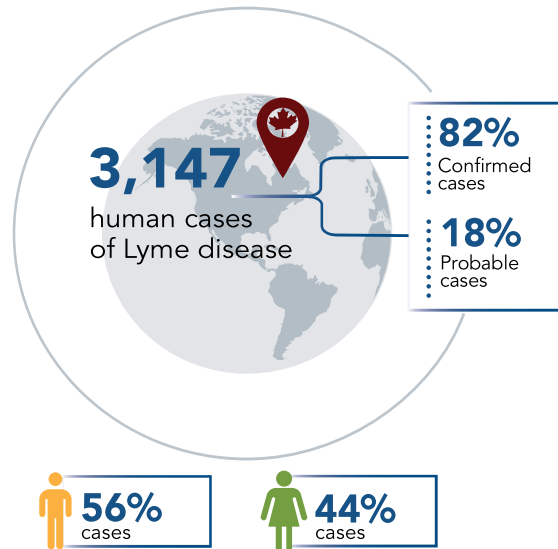
- ▶ **Lyme disease** is the most frequently reported **vector-borne disease** in Canada.
- ▶ The **greatest risk** of acquiring Lyme disease occurs in regions where populations of ticks carrying the bacteria, *Borrelia burgdorferi*, have become established.

## WHO'S AT GREATER RISK?

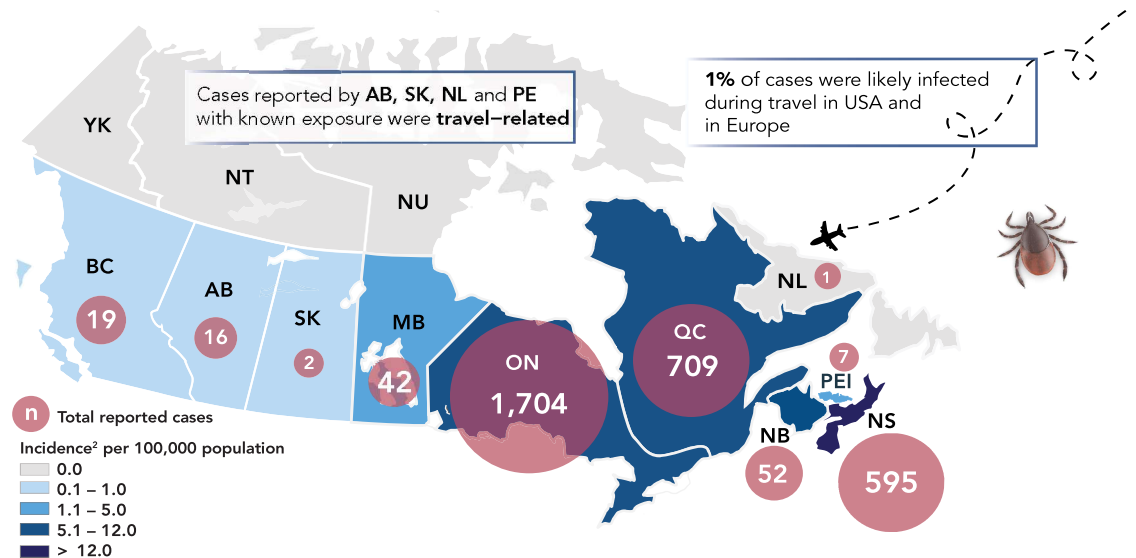
- ▶ Cases occurred in all age groups. Those at greatest risk were:



HUMAN CASES REPORTED IN 2021

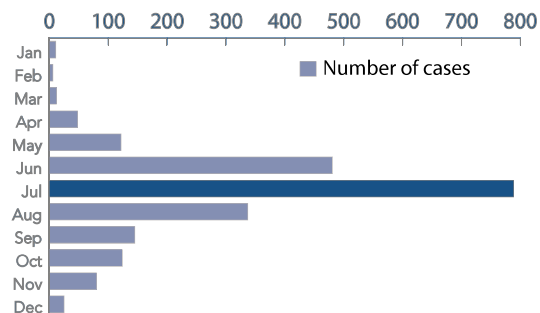


## GEOGRAPHIC DISTRIBUTION OF REPORTED CASES



## SEASONALITY

- 36% OF CASES REPORTED AN ILLNESS ONSET IN JULY
- 95% OF CASES REPORTED AN ILLNESS ONSET BETWEEN MAY AND NOVEMBER



## TIPS TO AVOID TICK BITES

Protecting yourself when doing outdoor activities



Reducing risk

