

# RESPIRATORY VIRUS DETECTION REPORT

March 17 to March 23, 2024  
(Surveillance Week 2024-12)



Please note that the Respiratory Virus Detection Surveillance System (RVDSS) is a sentinel laboratory surveillance system that does not capture all respiratory virus testing performed in Canada; differences may exist between the data presented in this report and provincial/territorial epidemiological reports. SARS-CoV-2 laboratory data is included in this report to facilitate the comparison of positivity with other respiratory viruses. Interpretation should be made with caution as testing practices differ among viruses.

For additional SARS-CoV-2 surveillance information, please refer to the [COVID-19 epidemiology update](#).

## Overall Summary

In week 12 (week ending March 23, 2024) in Canada, participating RVDSS laboratories reported 1,601 detections of SARS-CoV-2 from 30,960 tests (5.2% positive). Among non-SARS-CoV-2 respiratory viruses, where test volumes are lower (range of 7,442 to 27,562 tests), activity of influenza is highest.

- National SARS-CoV-2 percent positivity has been decreasing since mid-December 2023.
- Influenza A percent positivity has decreased in recent weeks (897 detections; 3.3% positive) and is lower than influenza B which is currently stable (1,551 detections; 5.6% positive).
- RSV percent positivity has decreased in recent weeks (581 detections; 2.4% positive).
- Percent positivity of all other non-SARS-CoV-2 respiratory viruses is within expected levels typical of this time of year.
- 35/35 sentinel laboratories reported surveillance data

## Abbreviations

ADV: Adenovirus

Atl: Atlantic Canada

BC: British Columbia

Can: Canada

EORLA: Eastern Ontario Regional Laboratory Association

EV/RV: Enterovirus/Rhinovirus

Flu: Influenza

Flu A(H1N1)pdm09: Influenza A(H1N1)pdm09

Flu A(H3): Influenza A(H3N2)

Flu A (UnS): Influenza A(Unsubtyped)

HCoV: Human coronavirus 229E/OC43/NL63/HKU1

HMPV: Human metapneumovirus

HPiV: Human parainfluenza virus

HSC: Health Sciences Centre

N.C.: Data not collected

N.R.: Data not reported for current week

ON: Ontario

PR: Prairies

P.H.O.L.: Public Health Ontario Laboratory

QC: Quebec

RSV: Respiratory syncytial virus

RVDSS: Respiratory Virus Detection Surveillance System

SARS-CoV-2: Severe acute respiratory syndrome coronavirus 2

Terr: Territories of Canada

UHN: University Health Network

© His Majesty the King in Right of Canada, as represented by the Minister of Health, 2021

ISSN: 2564-2359 | Cat.: HP38-7E-PDF | Pub.: 210284

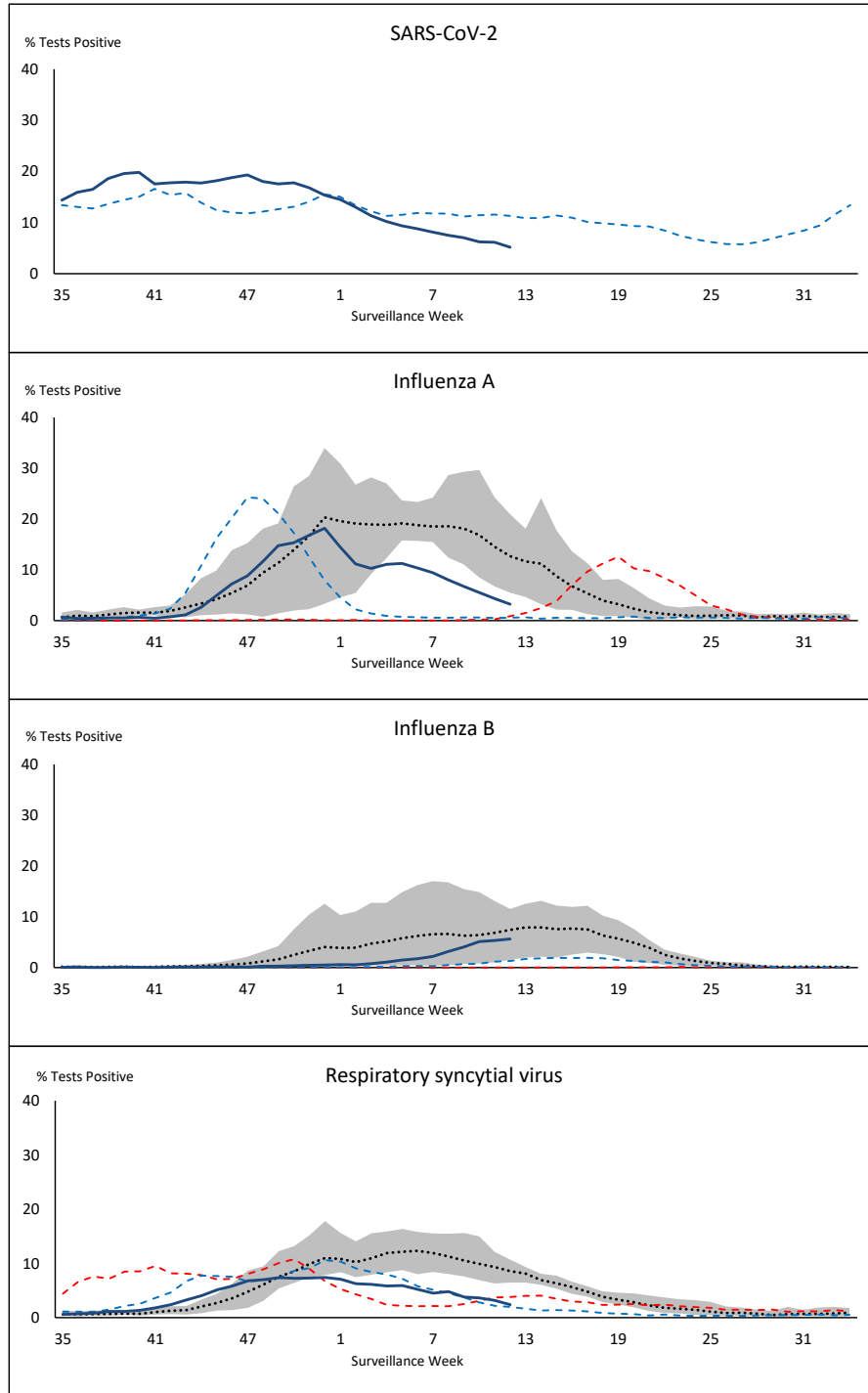


Public Health  
Agency of Canada

Agence de la santé  
publique du Canada

Canada

**Figure 1: Positive severe acute respiratory syndrome coronavirus 2 (SARS-CoV-2), influenza, and respiratory syncytial virus tests (%) reported by participating laboratories in Canada by surveillance week compared to average and range from 2014-2015 to 2019-2020 season**



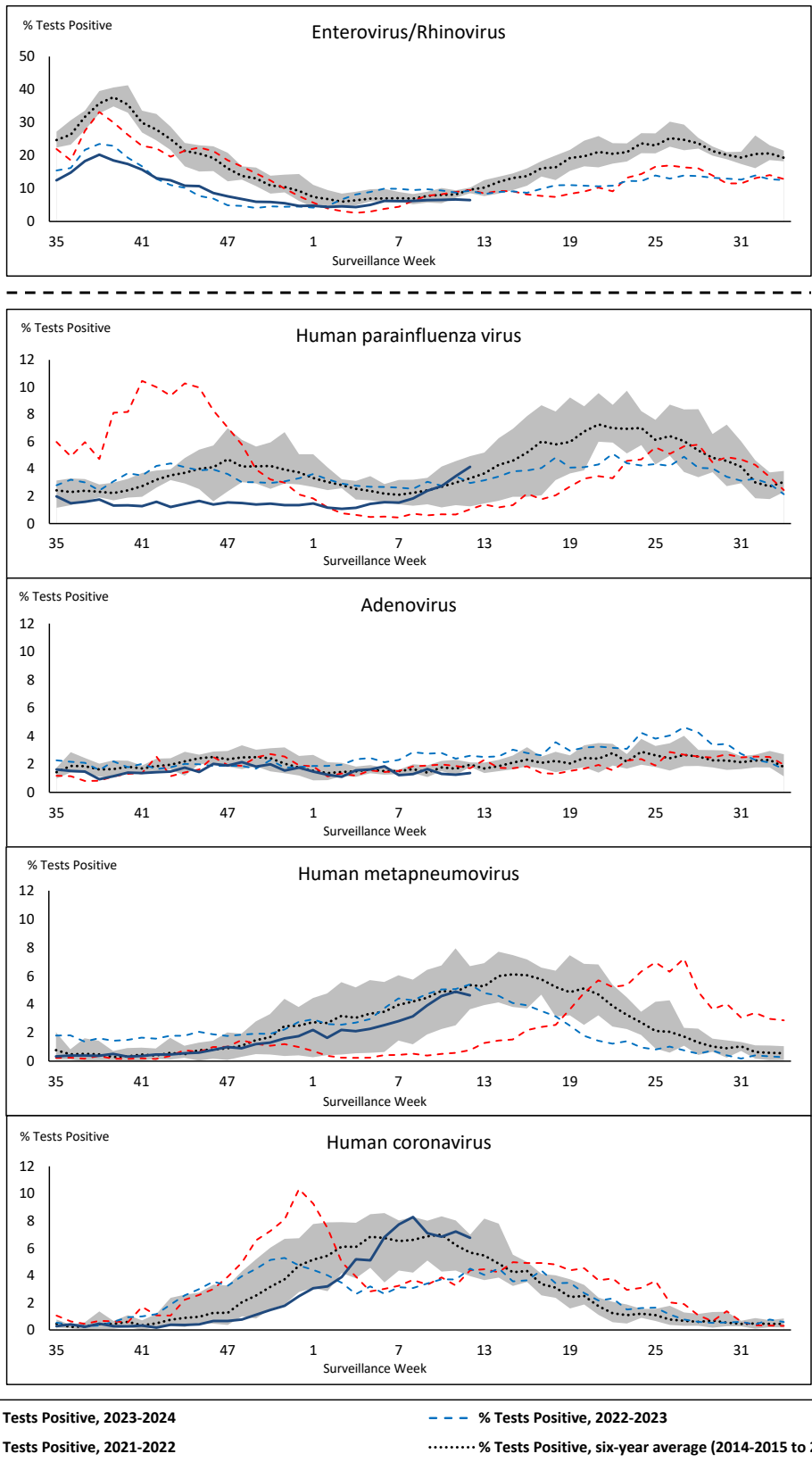
Shaded area represents the maximum and minimum % of respiratory virus tests positive reported by week from seasons 2014-2015 to 2019-2020

Note: Changes to testing practices during the COVID-19 pandemic may cause substantial changes to indicator estimates from previous years. Collection of laboratory testing practice meta-data to understand these changes is ongoing. Interpret trends with caution.

Note: SARS-CoV-2 surveillance was integrated into RVDSS at the beginning of the 2022-2023 season; no prior data is available for historical comparison.

Note: Data from week 11 of the 2019-2020 season onwards are excluded from the historical comparison due to the COVID-19 pandemic.

**Figure 2: Positive tests (%) of other respiratory viruses reported by participating laboratories in Canada by surveillance week compared to average and range from 2014-2015 to 2019-2020 season**



Shaded area represents the maximum and minimum % of respiratory virus tests positive reported by week from seasons 2014-2015 to 2019-2020

Note: Changes to testing practices during the COVID-19 pandemic may cause substantial changes to indicator estimates from previous years. Collection of laboratory testing practice meta-data to understand these changes is ongoing. Interpret trends with caution.

Note: Data from week 11 of the 2019-2020 season onwards are excluded from the historical comparison due to the COVID-19 pandemic.

Note: % Tests Positive scale changes across the dashed line

**Table 1: Respiratory virus detections for the week ending March 23, 2024 (surveillance week 2024-12)**

Reporting Laboratory	SARS-CoV-2 Tested	SARS-CoV-2 Positive	Flu Tested	A(H1)pdm09 Positive	A(H3) Positive	A(UnS) Positive	Total Flu A Positive	Total Flu B Positive	RSV Tested	RSV Positive	HPIV Tested	HPIV 1 Positive	HPIV 2 Positive	HPIV 3 Positive	HPIV 4 Positive	Other HPIV Positive	ADV Tested	ADV Positive	HMPV Tested	HMPV Positive	EV/RV Tested	EV/RV Positive	HCoV Tested	HCoV Positive
Newfoundland	523	49	421	0	0	14	14	15	421	31	421	0	1	8	0	0	421	4	421	25	421	27	421	25
Prince Edward Island	304	30	295	0	0	3	3	44	295	9	32	0	0	3	0	0	32	1	32	3	32	3	32	2
Nova Scotia	1265	108	1250	0	0	94	94	29	1097	25	52	0	1	0	0	0	52	0	52	1	52	1	52	4
New Brunswick	1114	61	1131	12	0	29	41	97	1131	39	87	0	0	6	0	0	87	3	87	4	87	12	87	5
<b>Atlantic</b>	<b>3206</b>	<b>248</b>	<b>3097</b>	<b>12</b>	<b>0</b>	<b>140</b>	<b>152</b>	<b>185</b>	<b>2944</b>	<b>104</b>	<b>592</b>	<b>0</b>	<b>2</b>	<b>17</b>	<b>0</b>	<b>0</b>	<b>592</b>	<b>8</b>	<b>592</b>	<b>33</b>	<b>592</b>	<b>43</b>	<b>592</b>	<b>36</b>
Région Nord-Est	1260	33	1152	0	0	26	26	81	606	48	71	1	0	2	0	0	71	2	69	3	N.C.	N.C.	71	14
Québec-Chaudière-Appalaches	1292	27	1068	0	0	31	31	105	1008	28	417	1	0	3	0	0	440	5	417	31	N.C.	N.C.	283	13
Centre-du-Québec	1835	34	1657	0	0	69	69	99	653	24	24	0	0	2	0	0	24	1	24	4	N.C.	N.C.	24	1
Montréal-Laval	1997	39	2363	0	0	91	91	72	1291	38	729	0	1	23	0	0	729	11	732	31	N.C.	N.C.	729	38
Ouest du Québec	1069	23	672	0	0	35	35	23	666	12	13	0	0	1	0	0	13	1	13	1	N.C.	N.C.	13	0
Montérégie	1155	38	1420	0	0	52	52	34	1416	30	8	0	0	0	0	0	8	0	8	0	N.C.	N.C.	8	0
<b>Province of Québec</b>	<b>8608</b>	<b>194</b>	<b>8332</b>	<b>0</b>	<b>0</b>	<b>304</b>	<b>304</b>	<b>414</b>	<b>5640</b>	<b>180</b>	<b>1262</b>	<b>2</b>	<b>1</b>	<b>31</b>	<b>0</b>	<b>0</b>	<b>1285</b>	<b>20</b>	<b>1263</b>	<b>70</b>	<b>N.C.</b>	<b>N.C.</b>	<b>1128</b>	<b>66</b>
P.H.O.L. - Ottawa	302	76	291	1	0	13	14	5	291	0	140	0	0	0	0	13	140	1	140	9	140	3	140	32
EORLA	855	27	524	0	0	22	22	46	524	7	36	0	0	4	0	0	36	0	36	2	36	7	36	4
P.H.O.L. - Kingston	156	10	124	3	2	2	7	0	124	0	89	0	0	0	0	15	89	0	89	8	89	2	89	16
UHN / Mount Sinai Hospital	950	22	622	0	0	5	5	5	622	5	123	0	0	4	0	0	123	1	123	4	123	8	123	2
P.H.O.L. - Toronto	330	13	894	15	5	13	30	17	894	4	862	0	0	0	0	65	862	16	862	65	862	55	862	111
Sick Kids Hospital - Toronto	111	4	109	2	1	0	3	6	109	2	109	0	0	7	2	0	109	7	109	7	109	19	109	5
Shared Hospital Laboratory	1820	33	1438	18	4	5	27	47	1439	2	1424	0	0	0	0	11	1424	10	1433	27	1433	39	1433	20
P.H.O.L. - Sault Ste. Marie	13	2	16	1	0	0	1	1	16	0	12	0	0	0	0	0	12	0	12	0	12	0	12	3
P.H.O.L. - Timmins	33	10	28	0	0	3	3	3	28	0	12	0	0	0	0	0	12	0	12	0	12	2	12	4
St. Joseph's - London	821	27	633	0	0	13	13	15	633	1	79	0	0	0	0	4	79	2	79	8	79	5	79	5
P.H.O.L. - London	233	18	216	9	0	1	10	9	216	1	204	0	0	0	0	13	204	1	204	12	204	18	204	17
P.H.O.L. - Orillia	2	0	2	0	0	0	0	0	2	0	2	0	0	0	0	1	2	1	2	0	2	0	2	0
P.H.O.L. - Thunder Bay	46	4	38	0	0	0	0	0	38	1	27	0	0	0	0	0	27	1	27	1	27	1	27	8
P.H.O.L. - Sudbury	30	1	34	1	0	1	2	0	34	1	24	0	0	0	0	5	24	0	24	6	24	1	24	6
P.H.O.L. - Hamilton	122	24	159	3	0	0	3	1	159	0	137	0	0	0	0	5	137	3	137	19	137	17	137	11
P.H.O.L. - Peterborough	61	1	77	2	0	1	3	10	77	0	56	0	0	0	0	6	56	0	56	6	56	6	56	2
St. Joseph's - Hamilton	1701	51	1633	0	0	79	79	69	1633	8	1633	0	0	48	0	0	1633	15	1633	67	1633	88	0	0
Sault Area Hospital	187	8	123	1	3	4	8	2	123	2	97	1	0	4	0	0	97	2	97	7	97	4	97	7
<b>Province of Ontario</b>	<b>7773</b>	<b>331</b>	<b>6961</b>	<b>56</b>	<b>15</b>	<b>162</b>	<b>230</b>	<b>236</b>	<b>6962</b>	<b>34</b>	<b>5066</b>	<b>1</b>	<b>0</b>	<b>67</b>	<b>2</b>	<b>138</b>	<b>5066</b>	<b>60</b>	<b>5075</b>	<b>248</b>	<b>5075</b>	<b>275</b>	<b>3442</b>	<b>253</b>
Manitoba	1380	123	905	1	1	9	11	79	905	25	112	2	0	3	0	0	112	2	105	5	112	8	105	14
Saskatchewan	1605	80	1231	0	0	43	43	175	985	52	375	0	0	17	0	0	375	7	375	20	375	26	375	22
Alberta	4524	262	4325	24	13	0	39	351	4088	100	1047	2	1	53	0	0	1046	4	984	1	1038	73	1047	68
<b>Prairies</b>	<b>7509</b>	<b>465</b>	<b>6461</b>	<b>25</b>	<b>14</b>	<b>52</b>	<b>93</b>	<b>605</b>	<b>5978</b>	<b>177</b>	<b>1534</b>	<b>4</b>	<b>1</b>	<b>73</b>	<b>0</b>	<b>0</b>	<b>1533</b>	<b>13</b>	<b>1464</b>	<b>26</b>	<b>1525</b>	<b>107</b>	<b>1527</b>	<b>104</b>
British Columbia	3559	347	2451	27	24	0	110	65	2338	70	777	1	2	37	5	0	777	25	777	50	753	90	753	44
Yukon	33	2	27	0	0	0	1	1	27	0	N.C.	N.C.	N.C.	N.C.	N.C.	N.C.	N.C.	N.C.	N.C.	N.C.	N.C.	N.C.	N.C.	N.C.
Northwest Territories	40	2	41	0	0	0	0	2	41	1	N.C.	N.C.	N.C.	N.C.	N.C.	N.C.	41	1	41	0	41	3	N.C.	N.C.
Nunavut	232	12	192	5	2	0	7	43	192	15	N.C.	N.C.	N.C.	N.C.	N.C.	N.C.	N.C.	N.C.	N.C.	N.C.	N.C.	N.C.	N.C.	N.C.
<b>Territories</b>	<b>305</b>	<b>16</b>	<b>260</b>	<b>5</b>	<b>2</b>	<b>0</b>	<b>8</b>	<b>46</b>	<b>260</b>	<b>16</b>	<b>N.C.</b>	<b>N.C.</b>	<b>N.C.</b>	<b>N.C.</b>	<b>N.C.</b>	<b>N.C.</b>	<b>41</b>	<b>1</b>	<b>41</b>	<b>0</b>	<b>41</b>	<b>3</b>	<b>N.C.</b>	<b>N.C.</b>
<b>CANADA</b>	<b>30960</b>	<b>1601</b>	<b>27562</b>	<b>125</b>	<b>55</b>	<b>658</b>	<b>897</b>	<b>1551</b>	<b>24122</b>	<b>581</b>	<b>9231</b>	<b>8</b>	<b>6</b>	<b>225</b>	<b>7</b>	<b>138</b>	<b>9294</b>	<b>127</b>	<b>9212</b>	<b>427</b>	<b>7986</b>	<b>518</b>	<b>7442</b>	<b>503</b>

The data in the RVDSS report represent surveillance data available at the time of writing. Data missing from the current week are denoted by N.R. Data not collected by reporting lab denoted by N.C.

Some specimens from Yukon (YT) are sent to reference laboratories in British Columbia and reported results reflect specimens identified as originating from YT.

Results from British Columbia comprise of specimens from the following sites: Children's and Women's Hospital Laboratory, Fraser Health Medical Microbiology Laboratory, Island Health, Providence Health Care, Vancouver Coastal Health sites, Victoria General Hospital, BCCDC Public Health Laboratory, Interior Health Authority sites and Northern Health Authority sites.

Due to different testing protocols of laboratories across Canada, influenza A subtype detection counts may not be included in total influenza A detection counts. Total influenza A and B positive counts are used to calculate percentage of tests positive.

Delays in the reporting of data may cause data to change retrospectively.

**Table 2: Cumulative respiratory virus detections from August 27, 2023 to March 23, 2024 (surveillance weeks 2023-35 to 2024-12)**

Reporting Laboratory	SARS-CoV-2 Tested	SARS-CoV-2 Positive	Flu Tested	A(H1)pdm09 Positive	A(H3) Positive	A(UnS) Positive	Total Flu A Positive	Total Flu B Positive	RSV Tested	RSV Positive	HPIV Tested	HPIV 1 Positive	HPIV 2 Positive	HPIV 3 Positive	HPIV 4 Positive	Other HPIV Positive	ADV Tested	ADV Positive	HMPV Tested	HMPV Positive	EV/RV Tested	EV/RV Positive	HCoV Tested	HCoV Positive
Newfoundland	18695	2757	13663	0	0	1313	1313	83	13663	888	13663	16	65	31	100	0	13663	230	13663	258	13663	1097	13663	332
Prince Edward Island	6996	758	4459	0	0	538	538	150	4459	359	497	3	0	4	8	0	496	28	486	16	496	123	480	24
Nova Scotia	43265	8257	29732	0	0	2525	2525	299	24587	1385	1054	16	3	4	10	0	1054	39	1047	8	1054	218	1053	15
New Brunswick	33084	3812	30685	889	25	1872	2786	557	30281	1809	2684	7	4	13	28	0	2684	100	2684	62	2684	517	2684	111
<b>Atlantic</b>	<b>102040</b>	<b>15584</b>	<b>78539</b>	<b>889</b>	<b>25</b>	<b>6248</b>	<b>7162</b>	<b>1089</b>	<b>72990</b>	<b>4441</b>	<b>17898</b>	<b>42</b>	<b>72</b>	<b>52</b>	<b>146</b>	<b>0</b>	<b>17897</b>	<b>397</b>	<b>17880</b>	<b>344</b>	<b>17897</b>	<b>1955</b>	<b>17880</b>	<b>482</b>
Région Nord-Est	51273	7009	45807	5	0	4681	4686	489	18190	1356	2302	16	12	19	16	0	2302	99	2251	83	N.C.	N.C.	2302	94
Québec-Chaudière-Appalaches	60329	9279	39392	0	0	5394	5394	951	37833	2535	15146	22	9	28	13	0	15602	479	15146	436	N.C.	N.C.	12443	403
Centre-du-Québec	74846	12348	36136	0	0	4365	4365	606	21342	1555	1109	15	8	17	7	0	1109	55	1109	49	N.C.	N.C.	1138	43
Montréal-Laval	89854	13806	72743	5	2	6453	6460	385	47118	2790	24942	94	40	191	24	0	24942	481	25012	534	N.C.	N.C.	24942	846
Ouest du Québec	49494	9990	20981	4	0	2007	2011	221	20778	1078	576	11	3	13	7	0	576	43	576	17	N.C.	N.C.	576	26
Monterégie	47861	7975	38592	0	0	3140	3140	220	37516	1733	210	1	0	0	1	0	210	7	210	3	N.C.	N.C.	210	3
<b>Province of Québec</b>	<b>373657</b>	<b>60407</b>	<b>253651</b>	<b>14</b>	<b>2</b>	<b>26040</b>	<b>26056</b>	<b>2872</b>	<b>182777</b>	<b>11047</b>	<b>44285</b>	<b>159</b>	<b>72</b>	<b>268</b>	<b>68</b>	<b>0</b>	<b>44741</b>	<b>1164</b>	<b>44304</b>	<b>1122</b>	<b>N.C.</b>	<b>N.C.</b>	<b>41611</b>	<b>1415</b>
P.H.O.L. - Ottawa	10407	3676	7187	284	54	184	399	28	7181	130	4288	0	0	0	0	102	4288	13	4286	75	4288	418	4286	228
EORLA	38474	4447	17888	0	0	1559	1559	292	17888	1115	1168	2	5	21	4	0	1143	13	1168	25	1168	214	1168	36
P.H.O.L. - Kingston	7134	2049	3992	131	19	96	220	4	3992	168	2803	0	0	0	0	63	2803	11	2803	22	2803	328	2803	95
UHN / Mount Sinai Hospital	32814	2999	20479	41	10	532	583	68	20479	219	1269	0	0	18	2	0	1269	2	1269	7	1269	60	1269	43
P.H.O.L. - Toronto	18263	5397	32882	1146	905	338	1741	215	32873	1043	30116	0	0	0	0	954	30124	354	30101	587	30116	2820	30101	1463
Sick Kids Hospital - Toronto	3843	305	3448	105	98	20	223	44	3448	309	3448	15	12	72	21	0	3448	92	3448	93	3448	607	3448	103
Shared Hospital Laboratory	52451	4508	44218	830	518	287	1635	324	44225	1335	44007	0	0	0	0	289	38353	319	44073	235	44118	1449	44095	494
P.H.O.L. - Sault Ste. Marie	436	188	530	50	3	16	63	1	530	45	372	0	0	0	0	5	372	1	372	0	372	21	372	38
P.H.O.L. - Timmins	1087	325	1070	58	10	30	87	5	1070	61	841	0	0	0	0	22	841	4	841	8	841	52	841	30
St. Joseph's - London	26680	3444	14379	0	0	961	961	194	14379	711	2007	0	0	0	0	26	2026	32	2026	31	2028	227	2026	55
P.H.O.L. - London	14037	4091	10386	482	141	161	599	85	10383	469	8321	0	0	0	0	232	8321	36	8319	95	8321	716	8319	317
P.H.O.L. - Orillia	550	144	1237	71	17	11	99	0	1234	74	1172	0	0	0	0	31	1172	16	1172	18	1172	145	1172	24
P.H.O.L. - Thunder Bay	1784	498	1109	57	0	8	37	5	1106	30	928	0	0	0	0	27	928	6	928	28	928	57	928	25
P.H.O.L. - Sudbury	701	239	832	40	1	22	63	1	830	23	579	0	0	0	0	19	580	1	579	8	579	45	579	39
P.H.O.L. - Hamilton	6935	2096	5694	142	65	87	240	34	5693	172	4281	0	0	0	0	135	4281	80	4280	96	4281	553	4280	191
P.H.O.L. - Peterborough	2214	666	2249	206	204	70	150	24	2239	221	1781	0	0	0	0	61	1781	36	1781	35	1781	285	1781	53
St. Joseph's - Hamilton	57453	5745	50985	0	0	3126	3126	583	50985	1752	50985	0	0	416	0	0	50985	322	50985	561	50985	2926	0	0
Sault Area Hospital	5683	775	3809	174	17	55	246	14	3802	198	2986	27	0	18	17	0	2937	35	2937	19	2937	251	2947	63
<b>Province of Ontario</b>	<b>280946</b>	<b>41592</b>	<b>222374</b>	<b>3817</b>	<b>2062</b>	<b>7563</b>	<b>12031</b>	<b>1921</b>	<b>222337</b>	<b>8075</b>	<b>161352</b>	<b>44</b>	<b>17</b>	<b>545</b>	<b>44</b>	<b>1966</b>	<b>155652</b>	<b>1373</b>	<b>161368</b>	<b>1943</b>	<b>161435</b>	<b>11174</b>	<b>110415</b>	<b>3297</b>
Manitoba	48854	7143	36629	143	12	1827	1982	301	36629	1329	2816	2	10	21	41	0	2816	121	3584	135	2816	519	3584	123
Saskatchewan	62658	7216	42575	117	10	5368	5495	1298	38187	1516	13755	30	9	75	23	0	13755	270	13755	743	13755	1317	13755	336
Alberta	163310	19490	141647	11742	744	582	13139	2644	132167	6003	38960	132	91	438	3	0	38949	455	37775	29	38347	3505	38959	939
<b>Prairies</b>	<b>274822</b>	<b>33849</b>	<b>220851</b>	<b>12002</b>	<b>766</b>	<b>7777</b>	<b>20616</b>	<b>4243</b>	<b>206983</b>	<b>8848</b>	<b>55531</b>	<b>164</b>	<b>110</b>	<b>534</b>	<b>67</b>	<b>0</b>	<b>55520</b>	<b>846</b>	<b>55114</b>	<b>907</b>	<b>54918</b>	<b>5341</b>	<b>56298</b>	<b>1398</b>
<b>British Columbia</b>	<b>115295</b>	<b>15574</b>	<b>115277</b>	<b>4025</b>	<b>785</b>	<b>255</b>	<b>8456</b>	<b>826</b>	<b>112518</b>	<b>5726</b>	<b>27078</b>	<b>113</b>	<b>172</b>	<b>264</b>	<b>174</b>	<b>0</b>	<b>27080</b>	<b>826</b>	<b>26965</b>	<b>1024</b>	<b>25984</b>	<b>3965</b>	<b>25961</b>	<b>760</b>
Yukon	1628	178	1064	34	15	0	60	5	1055	46	N.C.	N.C.	N.C.	N.C.	N.C.	N.C.	N.C.	N.C.	N.C.	N.C.	N.C.	N.C.	N.C.	N.C.
Northwest Territories	1147	72	1087	166	6	1	173	47	1087	168	N.C.	N.C.	N.C.	N.C.	N.C.	N.C.	888	44	888	9	1087	131	N.C.	N.C.
Nunavut	4006	341	2821	431	32	52	515	103	2821	426	N.C.	N.C.	N.C.	N.C.	N.C.	N.C.	N.C.	N.C.	N.C.	N.C.	N.C.	N.C.	N.C.	N.C.
<b>Territories</b>	<b>6781</b>	<b>591</b>	<b>4972</b>	<b>631</b>	<b>53</b>	<b>53</b>	<b>748</b>	<b>155</b>	<b>4963</b>	<b>640</b>	<b>N.C.</b>	<b>N.C.</b>	<b>N.C.</b>	<b>N.C.</b>	<b>N.C.</b>	<b>N.C.</b>	<b>888</b>	<b>44</b>	<b>888</b>	<b>9</b>	<b>1087</b>	<b>131</b>	<b>N.C.</b>	<b>N.C.</b>
<b>CANADA</b>	<b>1153541</b>	<b>167597</b>	<b>895664</b>	<b>21378</b>	<b>3693</b>	<b>47936</b>	<b>75069</b>	<b>11106</b>	<b>802568</b>	<b>38777</b>	<b>306144</b>	<b>522</b>	<b>443</b>	<b>1663</b>	<b>499</b>	<b>1966</b>	<b>301778</b>	<b>4650</b>	<b>306519</b>	<b>5349</b>	<b>261321</b>	<b>22566</b>	<b>252165</b>	<b>7352</b>

The data in the RVDSS report represent surveillance data available at the time of writing. Data not collected by reporting lab denoted by N.C.

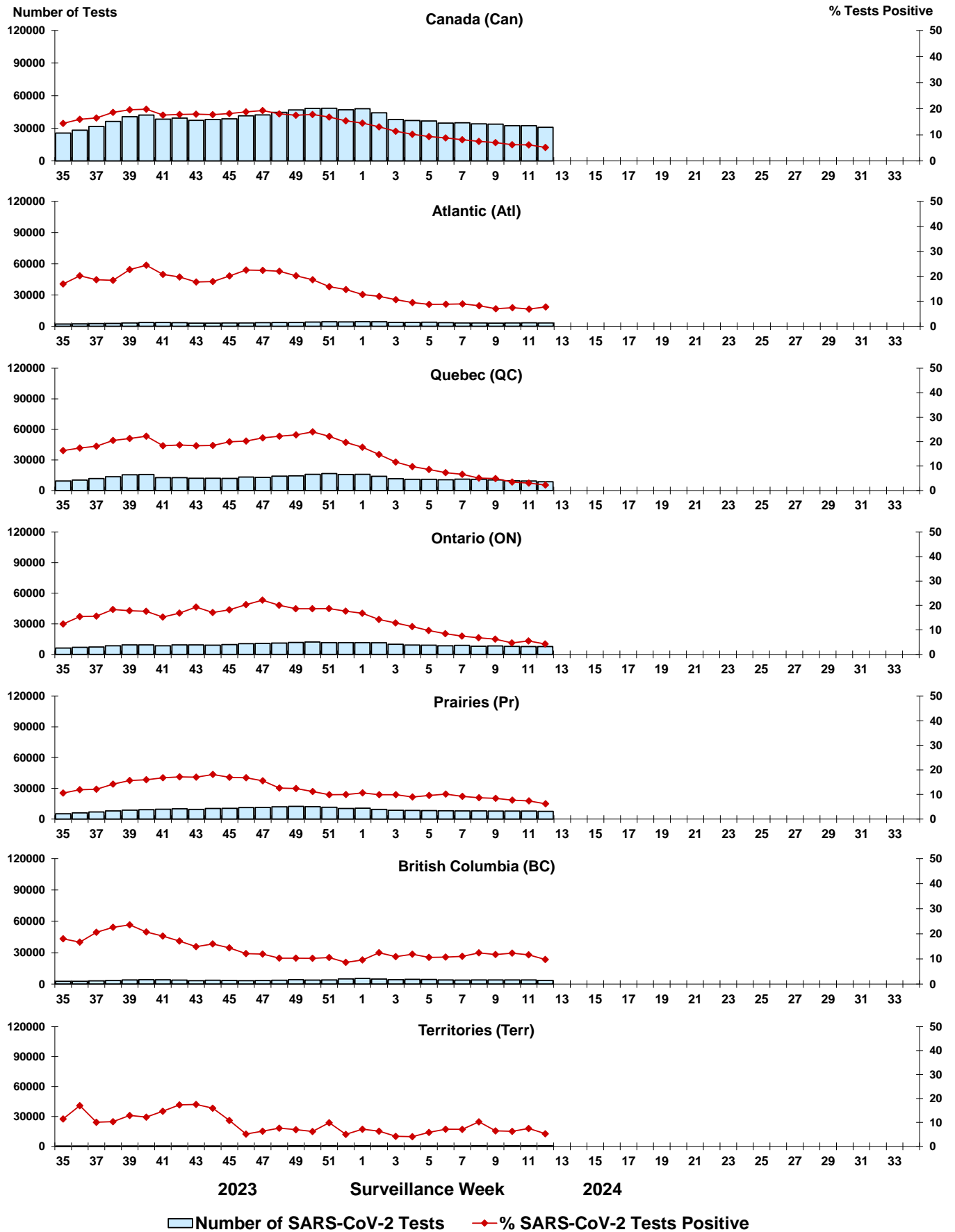
Some specimens from Yukon (YT) are sent to reference laboratories in British Columbia and reported results reflect specimens identified as originating from YT.

Results from British Columbia comprise of specimens from the following sites: Children's and Women's Hospital Laboratory, Fraser Health Medical Microbiology Laboratory, Island Health, Providence Health Care, Vancouver Coastal Health sites, Victoria General Hospital, BCCDC Public Health Laboratory, Interior Health Authority sites and Northern Health Authority sites.

Due to different testing protocols of laboratories across Canada, influenza A subtype detection counts may not be included in total influenza A detection counts. Total influenza A and B positive counts are used to calculate percentage of tests positive.

Delays in the reporting of data may cause data to change retrospectively. Due to these delays, the sum of weekly report totals do not add up to cumulative totals.

**Figure 3: Positive severe acute respiratory syndrome coronavirus 2 (SARS-CoV-2) tests (%) in Canada by region by surveillance week**



Note: Differences in positivity between jurisdictions can reflect differences in testing practices. Please interpret with caution.

Figure 4: Positive Influenza (Flu) tests (%) in Canada by region by surveillance week

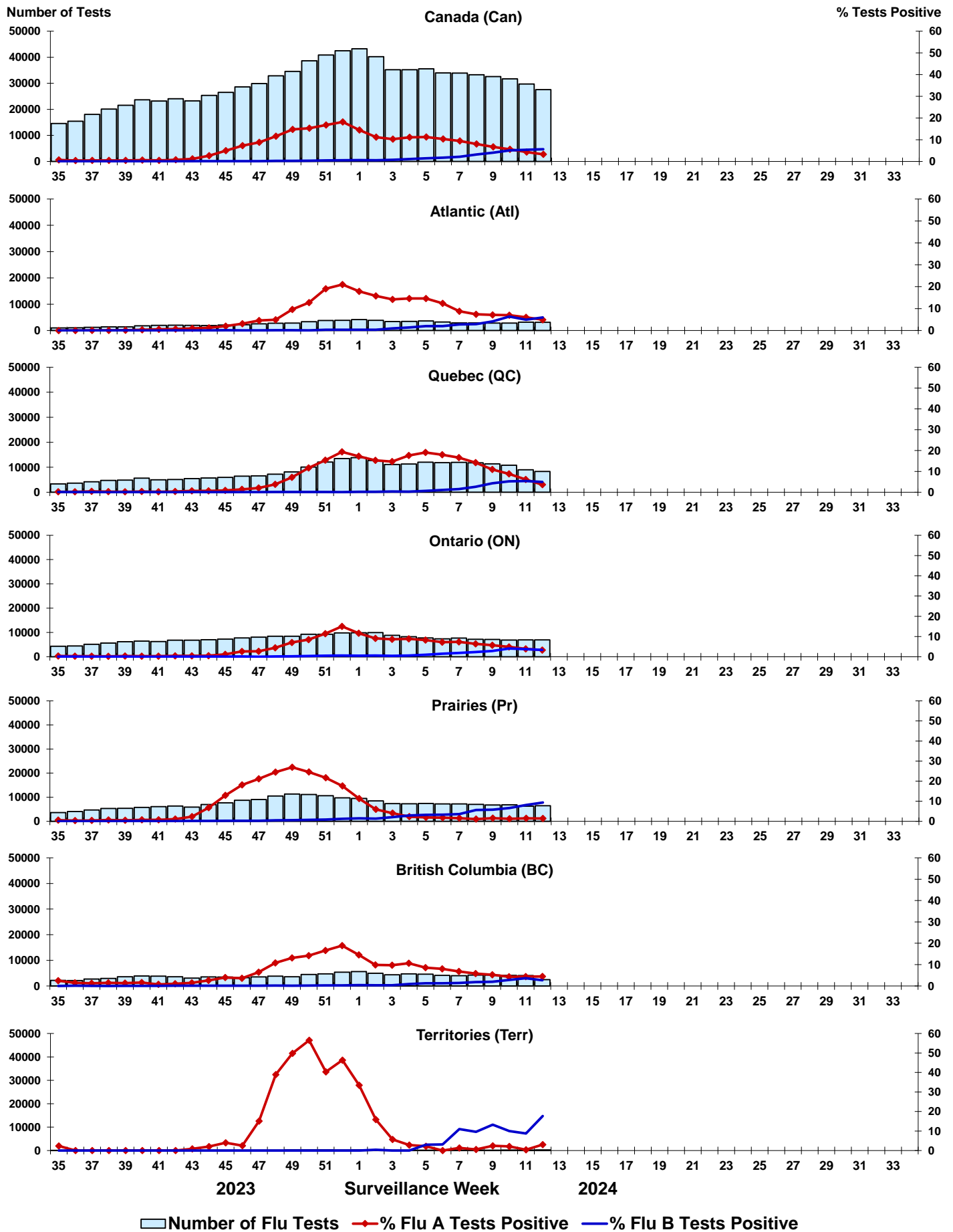


Figure 5: Positive Respiratory syncytial virus (RSV) tests (%) in Canada by region by surveillance week

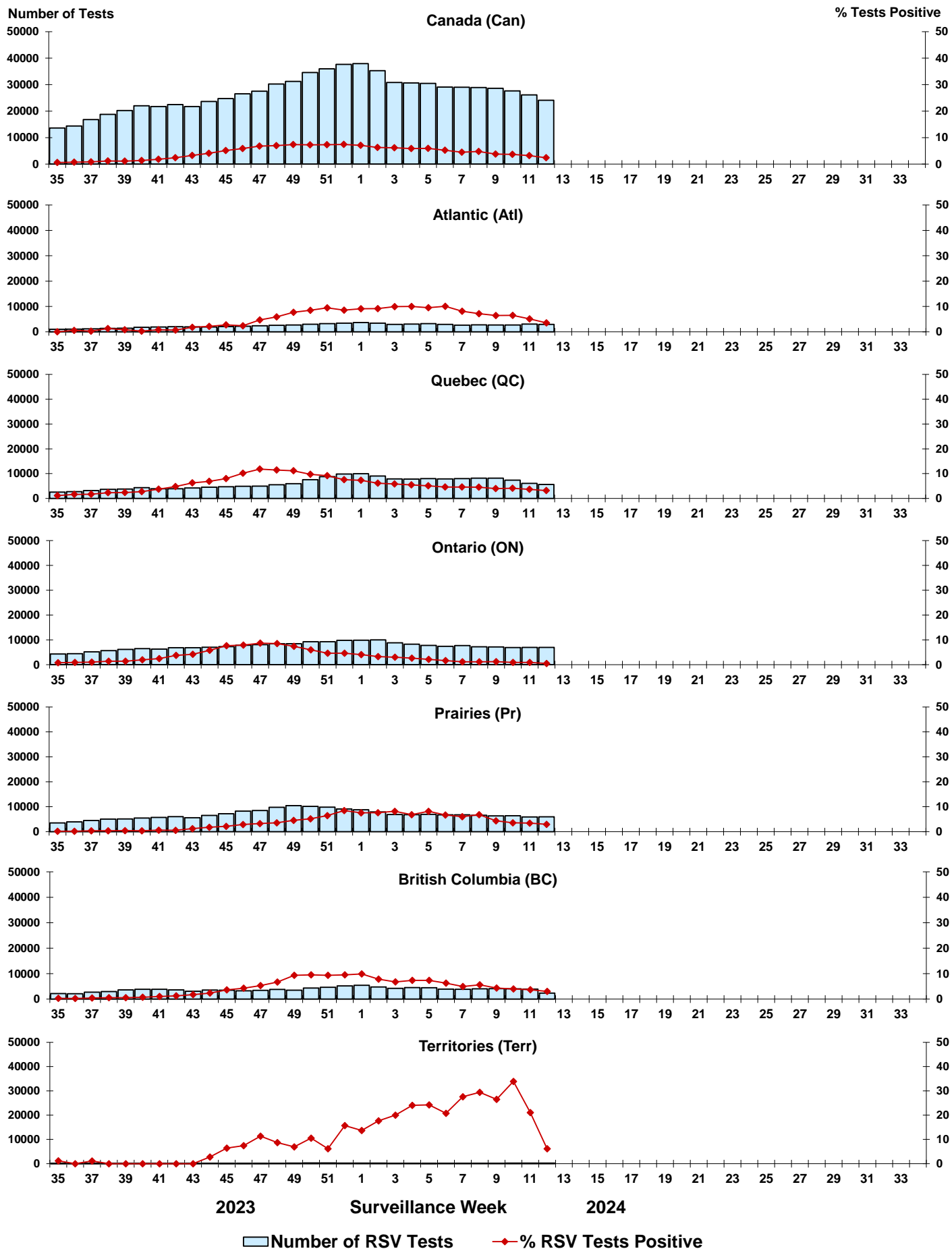




Figure 6: Positive Human parainfluenza virus (HPIV) tests (%) in Canada by region by surveillance week

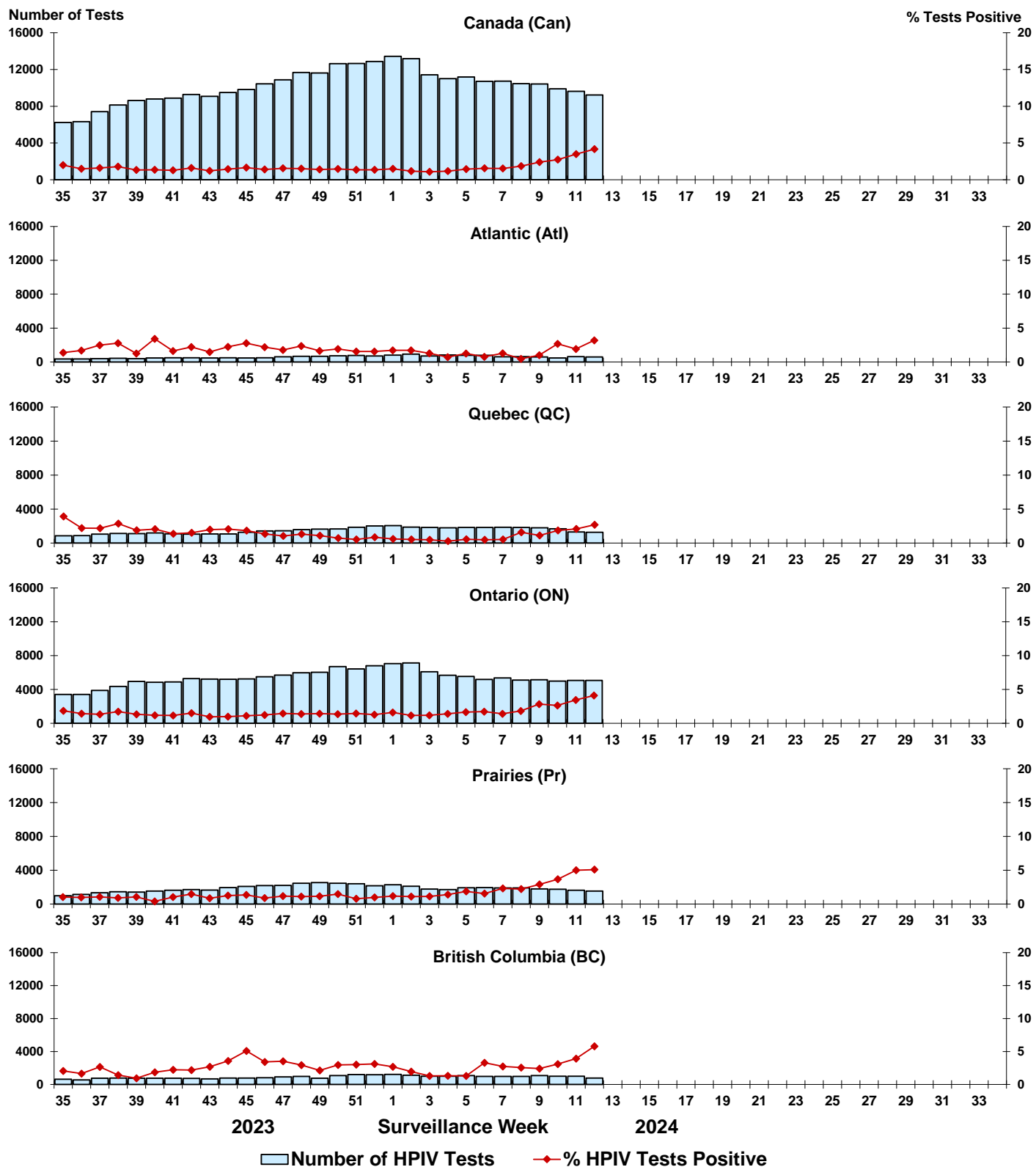


Figure 7: Positive Adenovirus (ADV) tests (%) in Canada by region by surveillance week

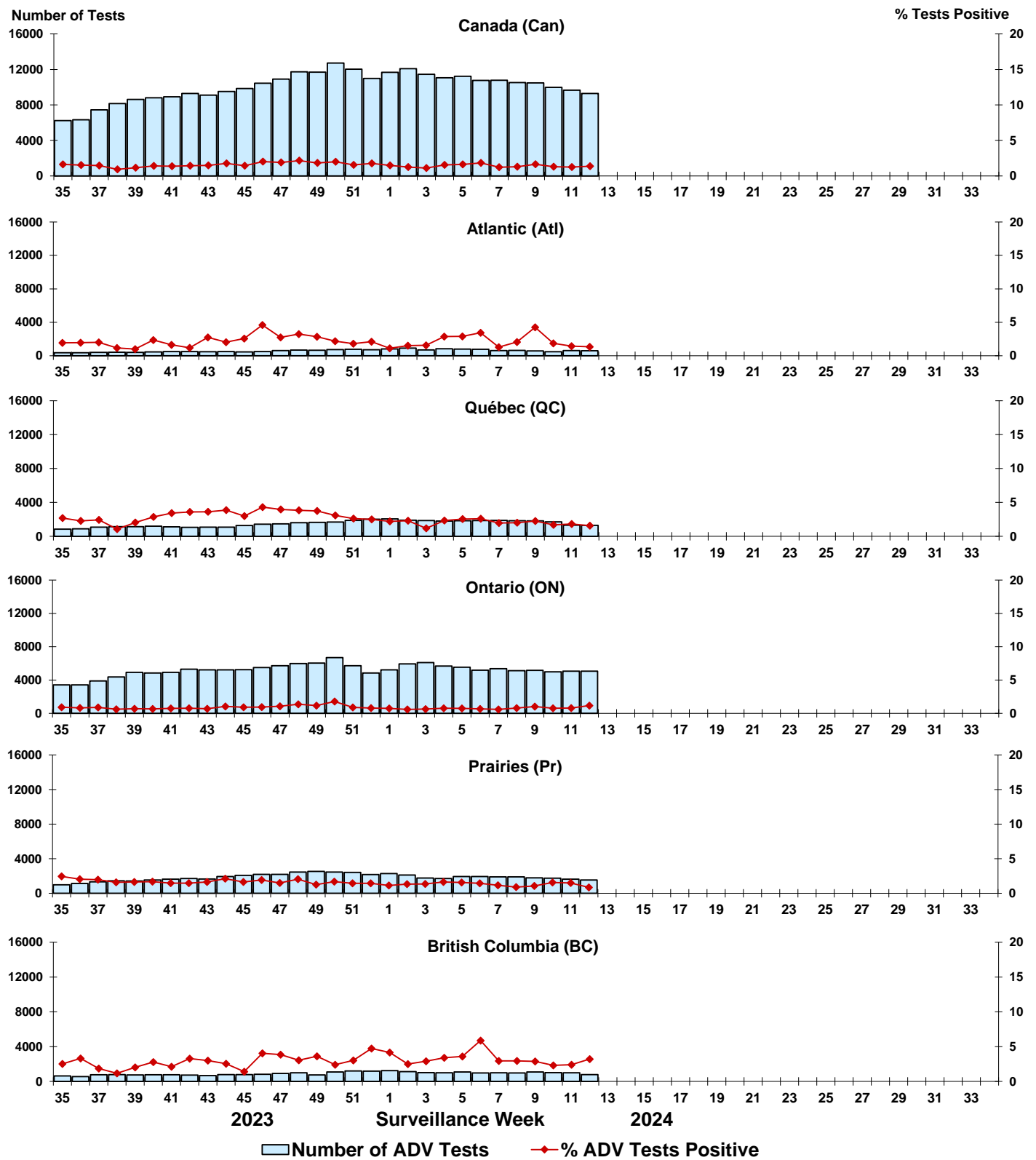


Figure 8: Positive Human metapneumovirus (HMPV) tests (%) in Canada by region by surveillance week

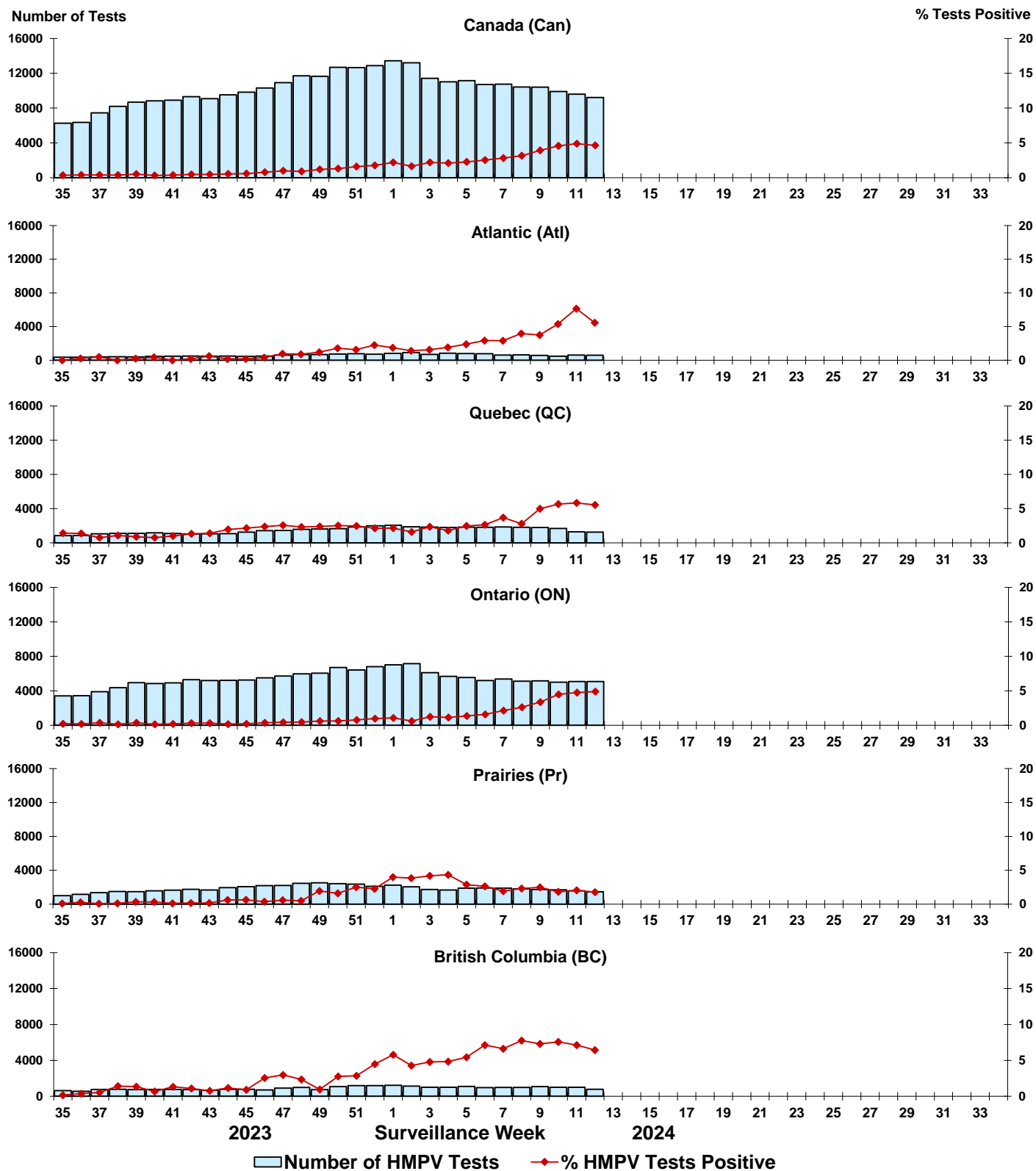


Figure 9: Positive Enterovirus/Rhinovirus (EV/RV) tests (%) in Canada by region by surveillance week

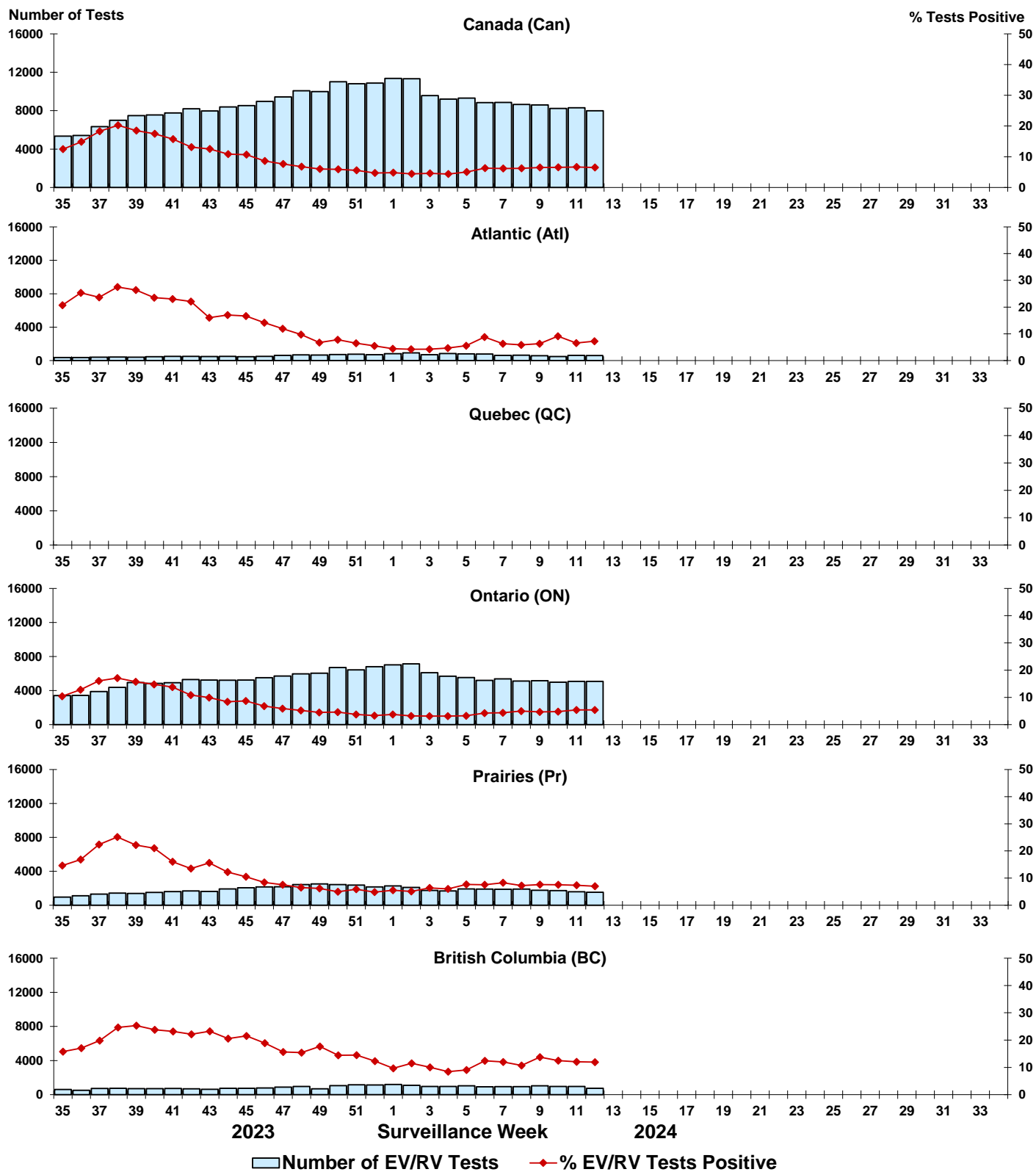


Figure 10: Positive Human coronavirus (HCoV) tests (%) in Canada by region by surveillance week

