

# RESPIRATORY VIRUS DETECTION REPORT

May 26 to June 1, 2024  
(Surveillance Week 2024-22)



Please note that the Respiratory Virus Detection Surveillance System (RVDSS) is a sentinel laboratory surveillance system that does not capture all respiratory virus testing performed in Canada; differences may exist between the data presented in this report and provincial/territorial epidemiological reports. SARS-CoV-2 laboratory data is included in this report to facilitate the comparison of positivity with other respiratory viruses. Interpretation should be made with caution as testing practices differ among viruses.

For additional SARS-CoV-2 surveillance information, please refer to the [COVID-19 epidemiology update](#).

## Overall Summary

In week 22 (week ending June 1, 2024) in Canada, percent positivity is currently highest for enterovirus/rhinovirus (11.0% positive) among respiratory viruses under surveillance. The following results were reported from RVDSS laboratories:

- National SARS-CoV-2 percent positivity continues to increase (1,934 detections; 8.5% positive), following a fluctuation seen in week 21. Trends currently vary by region.
- Influenza percent positivity remains at interseasonal levels (291 detections; 1.5% positive).
- RSV percent positivity is stable (117 detections; 0.6% positive).
- Percent positivity of all other non-SARS-CoV-2 respiratory viruses is near expected levels typical of this time of year.
- 34/35 sentinel laboratories reported surveillance data

## Abbreviations

ADV: Adenovirus

Atl: Atlantic Canada

BC: British Columbia

Can: Canada

EORLA: Eastern Ontario Regional Laboratory Association

EV/RV: Enterovirus/Rhinovirus

Flu: Influenza

Flu A(H1N1)pdm09: Influenza A(H1N1)pdm09

Flu A(H3): Influenza A(H3N2)

Flu A (UnS): Influenza A(Unsubtyped)

HCoV: Human coronavirus 229E/OC43/NL63/HKU1

HMPV: Human metapneumovirus

HPIV: Human parainfluenza virus

HSC: Health Sciences Centre

N.C.: Data not collected

N.R.: Data not reported for current week

ON: Ontario

PR: Prairies

P.H.O.L.: Public Health Ontario Laboratory

QC: Quebec

RSV: Respiratory syncytial virus

RVDSS: Respiratory Virus Detection Surveillance System

SARS-CoV-2: Severe acute respiratory syndrome coronavirus 2

Terr: Territories of Canada

UHN: University Health Network

© His Majesty the King in Right of Canada, as represented by the Minister of Health, 2021

ISSN: 2564-2359 | Cat.: HP38-7E-PDF | Pub.: 210284

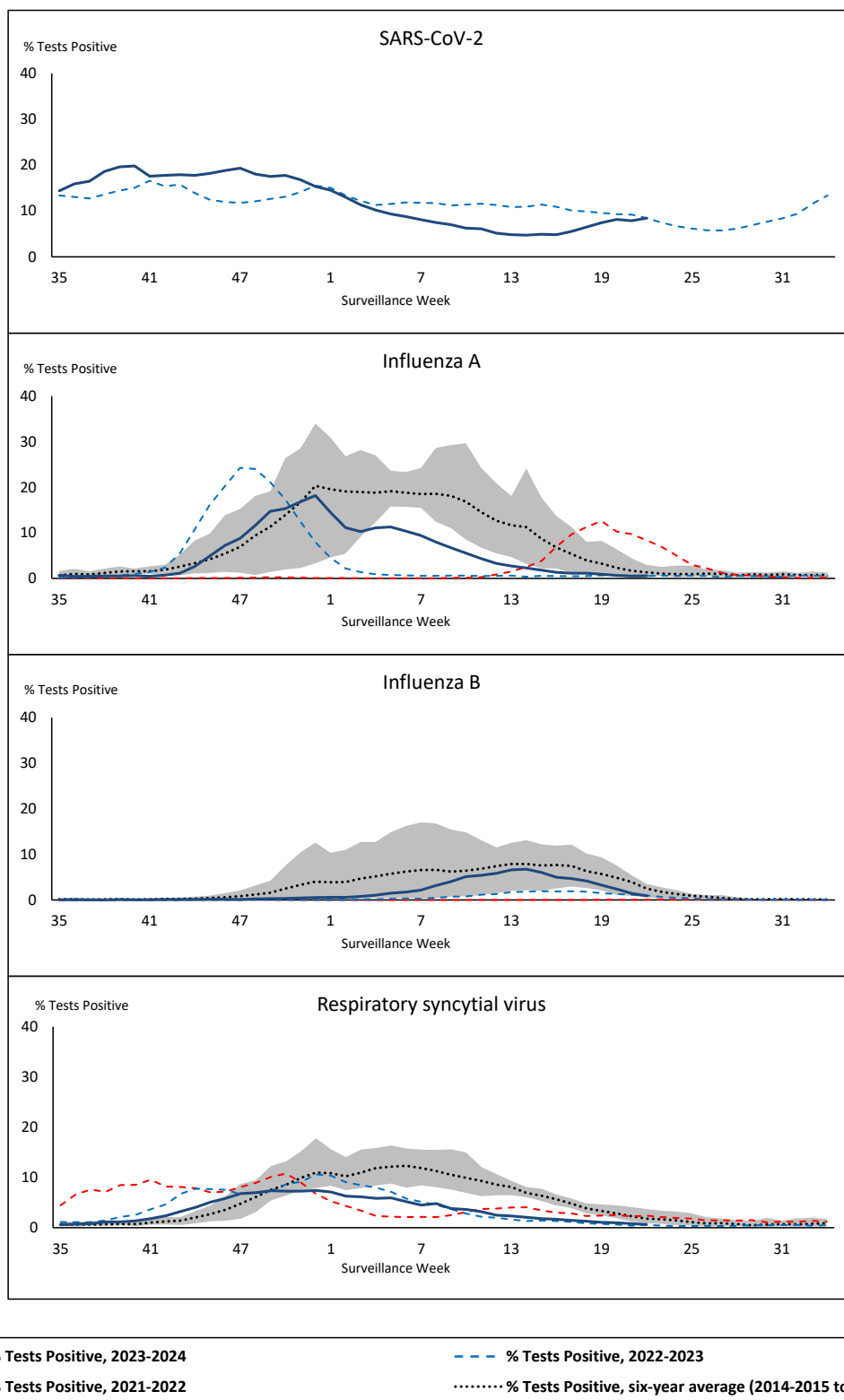


Public Health  
Agency of Canada

Agence de la santé  
publique du Canada

Canada

**Figure 1: Positive severe acute respiratory syndrome coronavirus 2 (SARS-CoV-2), influenza, and respiratory syncytial virus tests (%) reported by participating laboratories in Canada by surveillance week compared to average and range from 2014-2015 to 2019-2020 season**



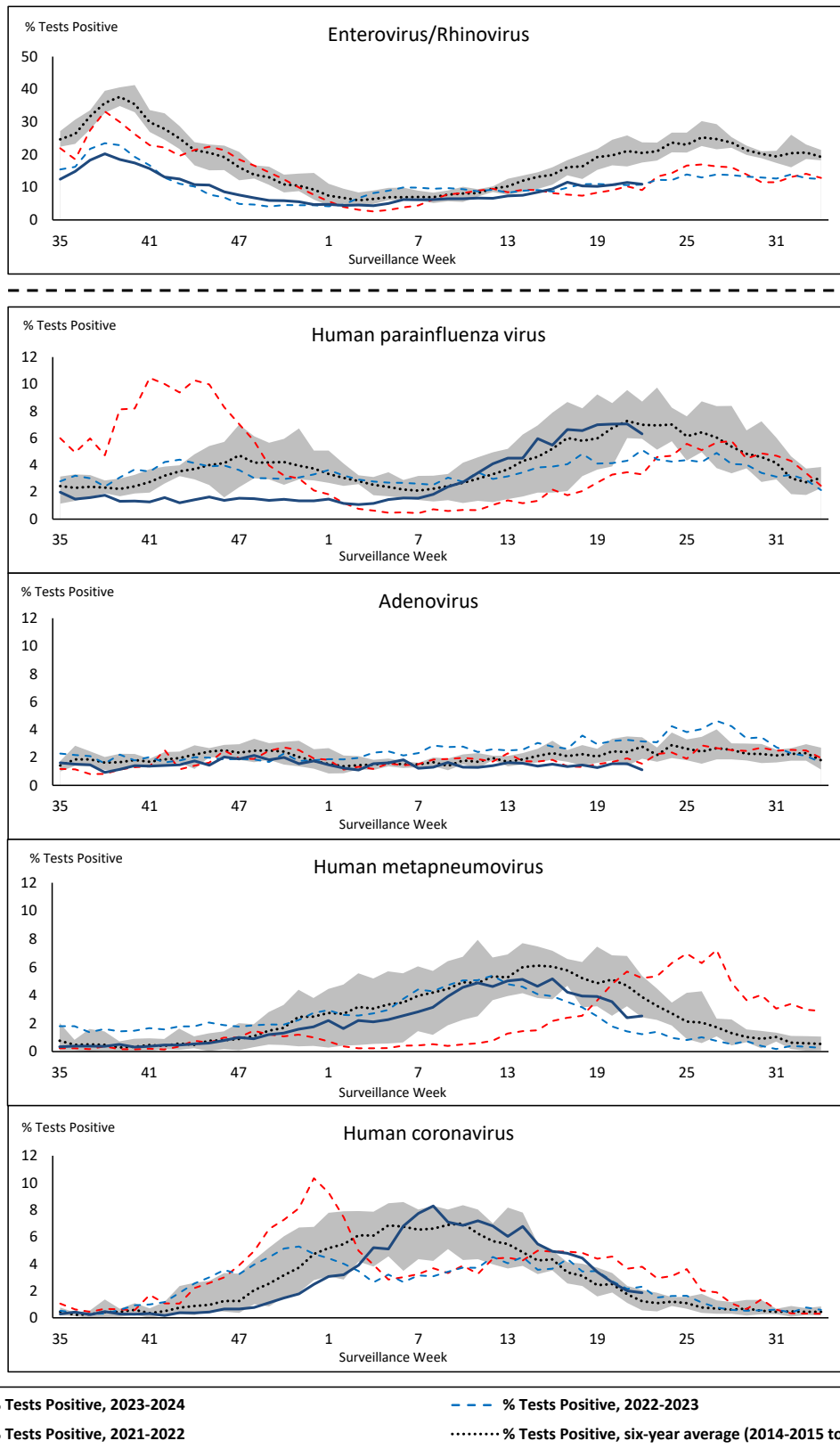
Shaded area represents the maximum and minimum % of respiratory virus tests positive reported by week from seasons 2014-2015 to 2019-2020

Note: Changes to testing practices during the COVID-19 pandemic may cause substantial changes to indicator estimates from previous years. Collection of laboratory testing practice meta-data to understand these changes is ongoing. Interpret trends with caution.

Note: SARS-CoV-2 surveillance was integrated into RVDSS at the beginning of the 2022-2023 season; no prior data is available for historical comparison.

Note: Data from week 11 of the 2019-2020 season onwards are excluded from the historical comparison due to the COVID-19 pandemic.

**Figure 2: Positive tests (%) of other respiratory viruses reported by participating laboratories in Canada by surveillance week compared to average and range from 2014-2015 to 2019-2020 season**



Shaded area represents the maximum and minimum % of respiratory virus tests positive reported by week from seasons 2014-2015 to 2019-2020

Note: Changes to testing practices during the COVID-19 pandemic may cause substantial changes to indicator estimates from previous years. Collection of laboratory testing practice meta-data to understand these changes is ongoing. Interpret trends with caution.

Note: Data from week 11 of the 2019-2020 season onwards are excluded from the historical comparison due to the COVID-19 pandemic.

Note: % Tests Positive scale changes across the dashed line

**Table 1: Respiratory virus detections for the week ending June 1, 2024 (surveillance week 2024-22)**

Reporting Laboratory	SARS-CoV-2 Tested	SARS-CoV-2 Positive	Flu Tested	A(H1)pdm09 Positive	A(H3) Positive	A(UnS) Positive	Total Flu A Positive	Total Flu B Positive	RSV Tested	RSV Positive	HPIV Tested	HPIV 1 Positive	HPIV 2 Positive	HPIV 3 Positive	HPIV 4 Positive	Other HPIV Positive	ADV Tested	ADV Positive	HMPV Tested	HMPV Positive	EV/RV Tested	EV/RV Positive	HCoV Tested	HCoV Positive
Newfoundland	700	85	621	0	0	3	3	8	621	16	621	1	3	49	1	0	621	8	621	17	621	93	621	10
Prince Edward Island	113	7	68	0	0	0	0	0	68	0	13	0	1	0	0	0	13	0	13	1	13	7	13	0
Nova Scotia	950	67	877	0	0	0	0	4	789	4	29	0	0	1	0	0	29	0	29	1	29	5	29	1
New Brunswick	814	31	800	1	1	0	2	10	800	4	117	0	3	10	0	0	117	2	117	2	117	17	117	3
<b>Atlantic</b>	<b>2577</b>	<b>190</b>	<b>2366</b>	<b>1</b>	<b>1</b>	<b>3</b>	<b>5</b>	<b>22</b>	<b>2278</b>	<b>24</b>	<b>780</b>	<b>1</b>	<b>7</b>	<b>60</b>	<b>1</b>	<b>0</b>	<b>780</b>	<b>10</b>	<b>780</b>	<b>21</b>	<b>780</b>	<b>122</b>	<b>780</b>	<b>14</b>
Région Nord-Est	881	71	835	0	0	5	5	19	448	4	101	0	0	11	0	0	101	1	101	6	N.C.	N.C.	101	0
Québec-Chaudière-Appalaches	1147	124	1217	0	0	1	1	4	1161	22	530	0	0	14	0	0	541	13	530	27	N.C.	N.C.	411	6
Centre-du-Québec	1251	93	1153	0	0	1	1	8	584	9	26	0	0	2	0	0	26	3	26	2	N.C.	N.C.	27	1
Montréal-Laval	1245	81	1174	0	0	3	3	15	941	11	694	0	1	34	0	0	694	9	695	24	N.C.	N.C.	694	10
Ouest du Québec	696	52	438	0	0	3	3	9	434	2	33	0	0	0	0	0	33	4	33	2	N.C.	N.C.	33	0
Montréal	796	71	920	0	0	2	2	6	916	12	3	0	0	0	0	0	3	0	3	0	N.C.	N.C.	3	0
<b>Province of Québec</b>	<b>6016</b>	<b>492</b>	<b>5737</b>	<b>0</b>	<b>0</b>	<b>15</b>	<b>15</b>	<b>61</b>	<b>4484</b>	<b>60</b>	<b>1387</b>	<b>0</b>	<b>1</b>	<b>61</b>	<b>0</b>	<b>0</b>	<b>1398</b>	<b>30</b>	<b>1388</b>	<b>61</b>	<b>N.C.</b>	<b>N.C.</b>	<b>1269</b>	<b>17</b>
P.H.O.L. - Ottawa	141	42	88	0	0	0	0	2	88	0	63	0	0	0	0	11	63	0	63	2	63	4	63	0
EORLA	635	29	355	0	0	0	0	0	355	4	34	0	0	0	0	0	34	0	34	1	34	8	34	1
P.H.O.L. - Kingston	108	36	113	0	0	0	0	0	113	0	86	0	0	0	0	5	86	0	86	5	86	10	86	2
UHN / Mount Sinai Hospital	849	42	567	0	0	2	2	0	567	1	77	0	0	1	0	0	77	0	77	1	77	4	77	0
P.H.O.L. - Toronto	247	69	708	6	6	0	6	1	707	0	683	0	0	0	0	62	683	14	683	34	683	85	683	17
Sick Kids Hospital - Toronto	N.R.	N.R.	N.R.	N.R.	N.R.	N.R.	N.R.	N.R.	N.R.	N.R.	N.R.	N.R.	N.R.	N.R.	N.R.	N.R.	N.R.	N.R.	N.R.	N.R.	N.R.	N.R.	N.R.	N.R.
Shared Hospital Laboratory	1213	36	936	1	1	0	2	3	936	2	940	0	0	0	0	9	940	4	943	10	943	51	943	3
P.H.O.L. - Sault Ste. Marie	8	0	18	0	0	0	0	0	18	0	15	0	0	0	0	2	15	1	15	0	15	0	15	0
P.H.O.L. - Timmins	26	9	29	0	0	0	0	0	29	0	23	0	0	0	0	0	23	0	23	3	23	5	23	0
St. Joseph's - London	373	7	211	0	0	0	0	0	211	0	64	0	0	0	0	5	64	0	64	0	64	3	64	0
P.H.O.L. - London	250	35	240	0	0	0	0	1	240	0	218	0	0	0	0	32	218	0	218	11	218	29	218	5
P.H.O.L. - Orillia	3	0	3	0	0	0	0	0	3	0	3	0	0	0	0	0	3	0	3	0	3	0	3	0
P.H.O.L. - Thunder Bay	37	7	30	0	0	0	0	0	30	0	26	0	0	0	0	2	26	0	26	0	26	3	26	0
P.H.O.L. - Sudbury	11	0	14	0	0	0	0	0	14	0	12	0	0	0	0	2	12	0	12	1	12	0	12	1
P.H.O.L. - Hamilton	24	10	35	3	4	0	3	0	33	0	33	0	0	0	0	1	33	1	33	0	33	8	33	0
P.H.O.L. - Peterborough	56	2	70	0	0	0	0	0	70	0	44	0	0	0	0	11	44	0	44	0	44	10	44	1
St. Joseph's - Hamilton	1304	50	1242	0	0	5	5	5	1242	1	1242	1	0	39	0	0	1242	4	1242	16	1242	101	0	0
Sault Area Hospital	86	6	69	1	0	0	1	0	69	0	63	1	0	3	0	0	63	1	63	0	63	5	63	0
<b>Province of Ontario</b>	<b>5371</b>	<b>380</b>	<b>4728</b>	<b>11</b>	<b>11</b>	<b>7</b>	<b>19</b>	<b>12</b>	<b>4725</b>	<b>8</b>	<b>3626</b>	<b>1</b>	<b>0</b>	<b>43</b>	<b>0</b>	<b>142</b>	<b>3626</b>	<b>25</b>	<b>3629</b>	<b>84</b>	<b>3629</b>	<b>326</b>	<b>2387</b>	<b>30</b>
Manitoba	990	84	786	1	0	7	8	6	786	1	94	1	0	12	1	0	94	0	94	0	94	24	94	1
Saskatchewan	1070	77	796	0	0	2	2	10	686	8	279	0	0	24	0	0	279	1	279	4	279	49	279	10
Alberta	3767	390	2676	8	11	0	20	39	2541	5	801	6	1	52	0	0	801	6	737	4	789	76	801	28
<b>Prairies</b>	<b>5827</b>	<b>551</b>	<b>4258</b>	<b>9</b>	<b>11</b>	<b>9</b>	<b>30</b>	<b>55</b>	<b>4013</b>	<b>14</b>	<b>1174</b>	<b>7</b>	<b>1</b>	<b>88</b>	<b>1</b>	<b>0</b>	<b>1174</b>	<b>7</b>	<b>1110</b>	<b>8</b>	<b>1162</b>	<b>149</b>	<b>1174</b>	<b>39</b>
<b>British Columbia</b>	<b>2841</b>	<b>312</b>	<b>2769</b>	<b>6</b>	<b>5</b>	<b>0</b>	<b>40</b>	<b>30</b>	<b>2768</b>	<b>9</b>	<b>688</b>	<b>2</b>	<b>1</b>	<b>63</b>	<b>3</b>	<b>0</b>	<b>688</b>	<b>14</b>	<b>688</b>	<b>19</b>	<b>656</b>	<b>83</b>	<b>656</b>	<b>16</b>
Yukon	42	1	24	0	0	0	1	0	24	0	N.C.	N.C.	N.C.	N.C.	N.C.	N.C.	N.C.	N.C.	N.C.	N.C.	N.C.	N.C.	N.C.	N.C.
Northwest Territories	21	1	21	0	0	0	0	0	21	0	N.C.	N.C.	N.C.	N.C.	N.C.	N.C.	21	0	21	0	22	5	N.C.	N.C.
Nunavut	155	7	144	0	0	0	0	1	144	2	N.C.	N.C.	N.C.	N.C.	N.C.	N.C.	N.C.	N.C.	N.C.	N.C.	N.C.	N.C.	N.C.	N.C.
<b>Territories</b>	<b>218</b>	<b>9</b>	<b>189</b>	<b>0</b>	<b>0</b>	<b>0</b>	<b>1</b>	<b>1</b>	<b>189</b>	<b>2</b>	<b>N.C.</b>	<b>N.C.</b>	<b>N.C.</b>	<b>N.C.</b>	<b>N.C.</b>	<b>N.C.</b>	<b>21</b>	<b>0</b>	<b>21</b>	<b>0</b>	<b>22</b>	<b>5</b>	<b>N.C.</b>	<b>N.C.</b>
<b>CANADA</b>	<b>22850</b>	<b>1934</b>	<b>20047</b>	<b>27</b>	<b>28</b>	<b>34</b>	<b>110</b>	<b>181</b>	<b>18457</b>	<b>117</b>	<b>7655</b>	<b>11</b>	<b>10</b>	<b>315</b>	<b>5</b>	<b>142</b>	<b>7687</b>	<b>86</b>	<b>7616</b>	<b>193</b>	<b>6249</b>	<b>685</b>	<b>6266</b>	<b>116</b>

The data in the RVDSS report represent surveillance data available at the time of writing. Data missing from the current week are denoted by N.R. Data not collected by reporting lab denoted by N.C.

Some specimens from Yukon (YT) are sent to reference laboratories in British Columbia and reported results reflect specimens identified as originating from YT.

Results from British Columbia comprise of specimens from the following sites: Children's and Women's Hospital Laboratory, Fraser Health Medical Microbiology Laboratory, Island Health, Providence Health Care, Vancouver Coastal Health sites, Victoria General Hospital, BCCDC Public Health Laboratory, Interior Health Authority sites and Northern Health Authority sites.

Due to different testing protocols of laboratories across Canada, influenza A subtype detection counts may not be included in total influenza A detection counts. Total influenza A and B positive counts are used to calculate percentage of tests positive.

Delays in the reporting of data may cause data to change retrospectively.

**Table 2: Cumulative respiratory virus detections from August 27, 2023 to June 1, 2024 (surveillance weeks 2023-35 to 2024-22)**

Reporting Laboratory	SARS-CoV-2 Tested	SARS-CoV-2 Positive	Flu Tested	A(H1)pdm09 Positive	A(H3) Positive	A(UnS) Positive	Total Flu A Positive	Total Flu B Positive	RSV Tested	RSV Positive	HPIV Tested	HPIV 1 Positive	HPIV 2 Positive	HPIV 3 Positive	HPIV 4 Positive	Other HPIV Positive	ADV Tested	ADV Positive	HMPV Tested	HMPV Positive	EV/RV Tested	EV/RV Positive	HCoV Tested	HCoV Positive
Newfoundland	25242	3494	19049	0	0	1361	1361	185	19049	1060	19049	30	94	402	115	0	19049	322	19049	520	19049	1759	19049	565
Prince Edward Island	8424	832	5687	0	0	542	542	239	5687	376	665	4	1	42	9	0	664	44	654	30	665	185	649	35
Nova Scotia	55386	9126	41441	0	0	2918	2918	686	34167	1494	1355	16	3	14	10	0	1355	47	1348	21	1355	255	1354	34
New Brunswick	41694	4147	39685	925	29	1907	2861	1053	39281	1933	3737	11	7	117	34	0	3737	129	3737	117	3737	740	3737	153
<b>Atlantic</b>	<b>130746</b>	<b>17599</b>	<b>105862</b>	<b>925</b>	<b>29</b>	<b>6728</b>	<b>7682</b>	<b>2163</b>	<b>98184</b>	<b>4863</b>	<b>24806</b>	<b>61</b>	<b>105</b>	<b>575</b>	<b>168</b>	<b>0</b>	<b>24805</b>	<b>542</b>	<b>24788</b>	<b>688</b>	<b>24806</b>	<b>2939</b>	<b>24789</b>	<b>787</b>
Région Nord-Est	63225	7470	58695	5	0	4745	4750	1708	24517	1566	3258	17	12	95	19	0	3258	131	3174	149	N.C.	N.C.	3258	151
Québec-Chaudière-Appalaches	73078	10053	54910	0	0	5624	5624	2099	52628	2995	21519	22	9	126	15	0	22156	641	21518	808	N.C.	N.C.	17594	644
Centre-du-Québec	90654	12925	51362	0	0	4643	4643	1442	28761	1752	1385	15	8	41	7	0	1384	68	1385	62	N.C.	N.C.	1419	54
Montréal-Laval	106066	14356	95943	5	2	6804	6811	1387	60915	3111	33225	98	47	650	28	0	33225	665	33311	958	N.C.	N.C.	33225	1130
Ouest du Québec	58565	10279	26929	4	0	2149	2153	525	26671	1155	779	11	4	37	7	0	779	64	779	37	N.C.	N.C.	779	29
Montréal	58220	8389	50961	0	0	3294	3294	594	49867	2006	266	1	0	3	2	0	266	8	266	5	N.C.	N.C.	266	3
<b>Province of Québec</b>	<b>449808</b>	<b>63472</b>	<b>338800</b>	<b>14</b>	<b>2</b>	<b>27259</b>	<b>27275</b>	<b>7755</b>	<b>243359</b>	<b>12585</b>	<b>60432</b>	<b>164</b>	<b>80</b>	<b>952</b>	<b>78</b>	<b>0</b>	<b>61068</b>	<b>1577</b>	<b>60433</b>	<b>2019</b>	<b>N.C.</b>	<b>N.C.</b>	<b>56541</b>	<b>2011</b>
P.H.O.L. - Ottawa	12281	4070	8781	301	56	199	430	51	8775	158	5346	0	0	0	0	195	5346	14	5344	177	5346	475	5344	329
EOURLA	45643	4756	22315	0	0	1639	1639	494	22315	1161	1561	3	5	41	5	0	1536	16	1561	42	1561	282	1561	51
P.H.O.L. - Kingston	8629	2359	5071	151	20	97	229	8	5070	168	3464	0	0	0	0	114	3464	12	3464	68	3464	380	3464	179
UHN / Mount Sinai Hospital	41517	3347	26645	41	10	583	634	96	26645	241	2083	0	0	37	2	0	2083	3	2083	27	2083	99	2083	62
P.H.O.L. - Toronto	21224	5904	41252	1229	943	366	1866	281	41239	1059	38041	0	0	0	0	1802	38050	457	38024	1145	38041	3619	38024	2046
Sick Kids Hospital - Toronto	4725	328	4330	106	102	20	228	88	4330	314	4330	16	12	121	22	0	4330	117	4330	137	4330	876	4330	142
Shared Hospital Laboratory	65817	4985	54480	883	544	297	1724	496	54487	1354	54223	0	0	0	0	423	48569	390	54321	393	54339	1822	54343	578
P.H.O.L. - Sault Ste. Marie	633	281	784	55	3	17	69	3	784	46	519	0	0	0	0	20	519	2	519	1	519	31	519	48
P.H.O.L. - Timmins	1332	343	1415	67	11	38	104	16	1415	68	1136	0	0	0	0	52	1136	8	1136	30	1136	77	1136	59
St. Joseph's - London	32195	3647	18392	0	0	1003	1003	278	18378	741	2620	0	0	0	0	63	2639	47	2639	66	2641	301	2639	83
P.H.O.L. - London	16630	4431	12855	504	149	172	631	124	12851	481	10462	0	0	0	0	458	10462	50	10457	281	10462	901	10457	456
P.H.O.L. - Orillia	679	174	1324	73	17	11	101	1	1321	74	1249	0	0	0	0	34	1249	16	1249	24	1249	147	1249	27
P.H.O.L. - Thunder Bay	2183	593	1442	64	4	9	47	15	1439	35	1204	0	0	0	0	35	1204	8	1204	37	1204	77	1204	36
P.H.O.L. - Sudbury	850	243	1036	45	1	23	69	2	1034	26	753	0	0	0	0	40	754	2	753	18	753	65	753	70
P.H.O.L. - Hamilton	7316	2137	6234	167	76	99	265	43	6226	172	4753	0	0	0	0	161	4753	98	4752	139	4753	626	4752	223
P.H.O.L. - Peterborough	2825	743	3014	214	206	75	161	38	3004	226	2259	0	0	0	0	122	2259	44	2259	69	2259	352	2259	77
St. Joseph's - Hamilton	72321	6246	65161	0	0	3314	3314	994	65161	1814	65161	0	0	1013	0	0	65161	409	65161	1052	65161	3880	0	0
Sault Area Hospital	6831	933	4801	184	26	56	266	25	4794	205	3831	29	1	60	17	0	3782	44	3782	91	3782	332	3792	78
<b>Province of Ontario</b>	<b>343631</b>	<b>45520</b>	<b>279332</b>	<b>4084</b>	<b>2168</b>	<b>8018</b>	<b>12780</b>	<b>3053</b>	<b>279268</b>	<b>8343</b>	<b>202995</b>	<b>48</b>	<b>18</b>	<b>1272</b>	<b>46</b>	<b>3519</b>	<b>197296</b>	<b>1737</b>	<b>203038</b>	<b>3797</b>	<b>203083</b>	<b>14342</b>	<b>137909</b>	<b>4544</b>
Manitoba	60865	8022	46007	147	16	1927	2090	758	46007	1424	3723	6	11	87	45	0	3723	137	4534	174	3723	660	4534	156
Saskatchewan	76344	7910	53794	150	29	5436	5615	2256	47701	1769	17803	38	9	378	31	0	17803	316	17803	844	17803	1790	17803	555
Alberta	204800	22153	182947	11892	901	594	13456	4906	171347	6417	50786	176	99	1165	5	0	50774	553	48583	50	49983	4683	50785	1477
<b>Prairies</b>	<b>342009</b>	<b>38085</b>	<b>282748</b>	<b>12189</b>	<b>946</b>	<b>7957</b>	<b>21161</b>	<b>7920</b>	<b>265055</b>	<b>9610</b>	<b>72312</b>	<b>220</b>	<b>119</b>	<b>1630</b>	<b>81</b>	<b>0</b>	<b>72300</b>	<b>1006</b>	<b>70920</b>	<b>1068</b>	<b>71509</b>	<b>7133</b>	<b>73122</b>	<b>2188</b>
<b>British Columbia</b>	<b>146079</b>	<b>18809</b>	<b>149078</b>	<b>4247</b>	<b>931</b>	<b>280</b>	<b>9207</b>	<b>1639</b>	<b>145646</b>	<b>6093</b>	<b>35661</b>	<b>131</b>	<b>203</b>	<b>839</b>	<b>223</b>	<b>0</b>	<b>35663</b>	<b>1061</b>	<b>35548</b>	<b>1434</b>	<b>34329</b>	<b>5166</b>	<b>34306</b>	<b>1061</b>
Yukon	2024	192	1339	36	16	0	66	32	1330	48	N.C.	N.C.	N.C.	N.C.	N.C.	N.C.	N.C.	N.C.	N.C.	N.C.	N.C.	N.C.	N.C.	N.C.
Northwest Territories	1378	82	1315	167	7	1	175	67	1315	176	N.C.	N.C.	N.C.	N.C.	N.C.	N.C.	N.C.	N.C.	N.C.	N.C.	N.C.	N.C.	N.C.	N.C.
Nunavut	5807	490	4366	433	34	53	520	260	4366	563	N.C.	N.C.	N.C.	N.C.	N.C.	N.C.	N.C.	N.C.	N.C.	N.C.	N.C.	N.C.	N.C.	N.C.
<b>Territories</b>	<b>9209</b>	<b>764</b>	<b>7020</b>	<b>636</b>	<b>57</b>	<b>54</b>	<b>761</b>	<b>359</b>	<b>7011</b>	<b>787</b>	<b>N.C.</b>	<b>N.C.</b>	<b>N.C.</b>	<b>N.C.</b>	<b>N.C.</b>	<b>N.C.</b>	<b>1116</b>	<b>47</b>	<b>1116</b>	<b>12</b>	<b>1316</b>	<b>170</b>	<b>N.C.</b>	<b>N.C.</b>
<b>CANADA</b>	<b>1421482</b>	<b>184249</b>	<b>1162840</b>	<b>22095</b>	<b>4133</b>	<b>50296</b>	<b>78866</b>	<b>22889</b>	<b>1038523</b>	<b>42281</b>	<b>396206</b>	<b>624</b>	<b>525</b>	<b>5268</b>	<b>596</b>	<b>3519</b>	<b>392248</b>	<b>5970</b>	<b>395843</b>	<b>9018</b>	<b>335043</b>	<b>29750</b>	<b>326667</b>	<b>10591</b>

The data in the RVDSS report represent surveillance data available at the time of writing. Data not collected by reporting lab denoted by N.C.

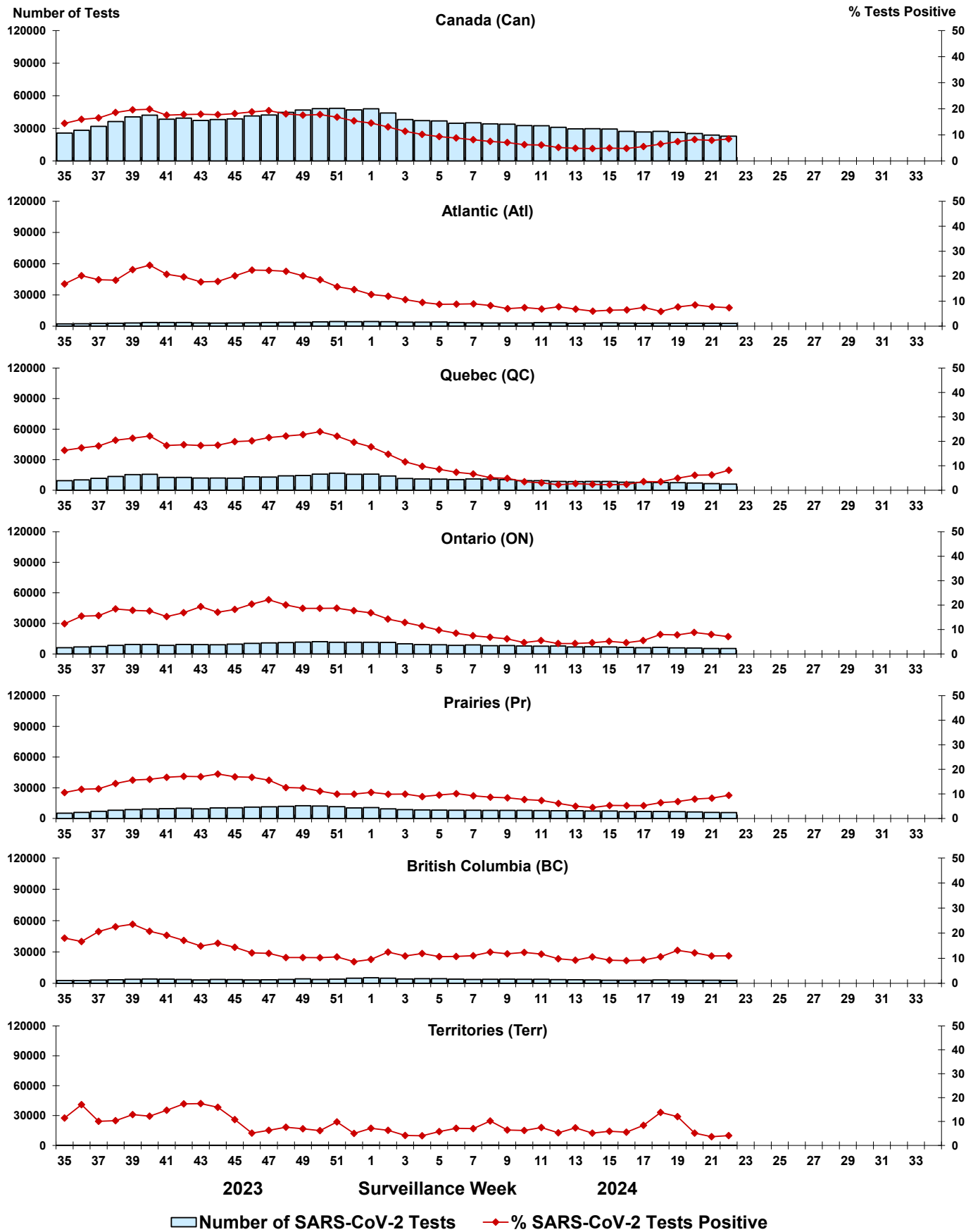
Some specimens from Yukon (YT) are sent to reference laboratories in British Columbia and reported results reflect specimens identified as originating from YT.

Results from British Columbia comprise of specimens from the following sites: Children's and Women's Hospital Laboratory, Fraser Health Medical Microbiology Laboratory, Island Health, Providence Health Care, Vancouver Coastal Health sites, Victoria General Hospital, BCCDC Public Health Laboratory, Interior Health Authority sites and Northern Health Authority sites.

Due to different testing protocols of laboratories across Canada, influenza A subtype detection counts may not be included in total influenza A detection counts. Total influenza A and B positive counts are used to calculate percentage of tests positive.

Delays in the reporting of data may cause data to change retrospectively. Due to these delays, the sum of weekly report totals do not add up to cumulative totals.

Figure 3: Positive severe acute respiratory syndrome coronavirus 2 (SARS-CoV-2) tests (%) in Canada by region by surveillance week



Note: Differences in positivity between jurisdictions can reflect differences in testing practices. Please interpret with caution.

Figure 4: Positive Influenza (Flu) tests (%) in Canada by region by surveillance week

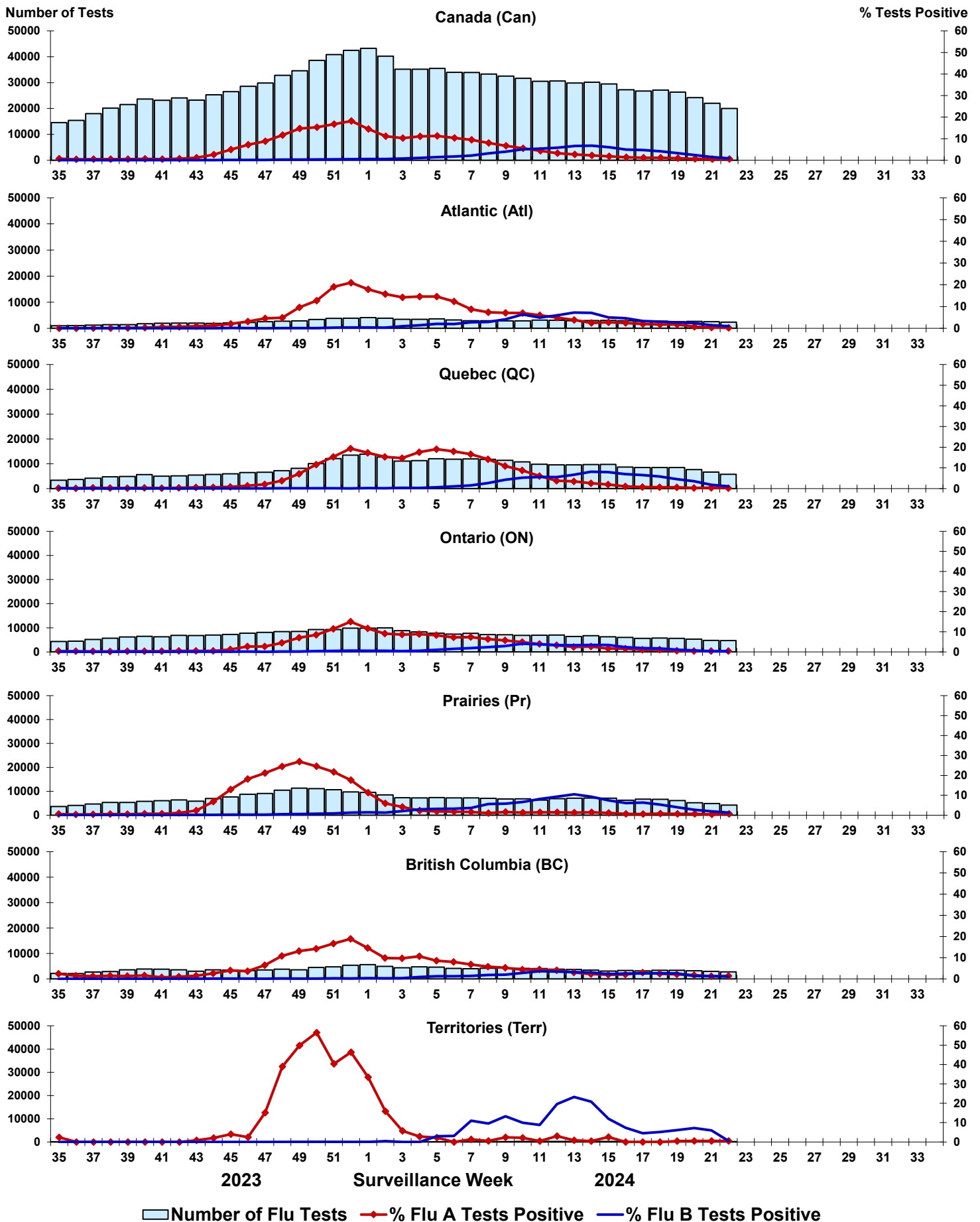


Figure 5: Positive Respiratory syncytial virus (RSV) tests (%) in Canada by region by surveillance week

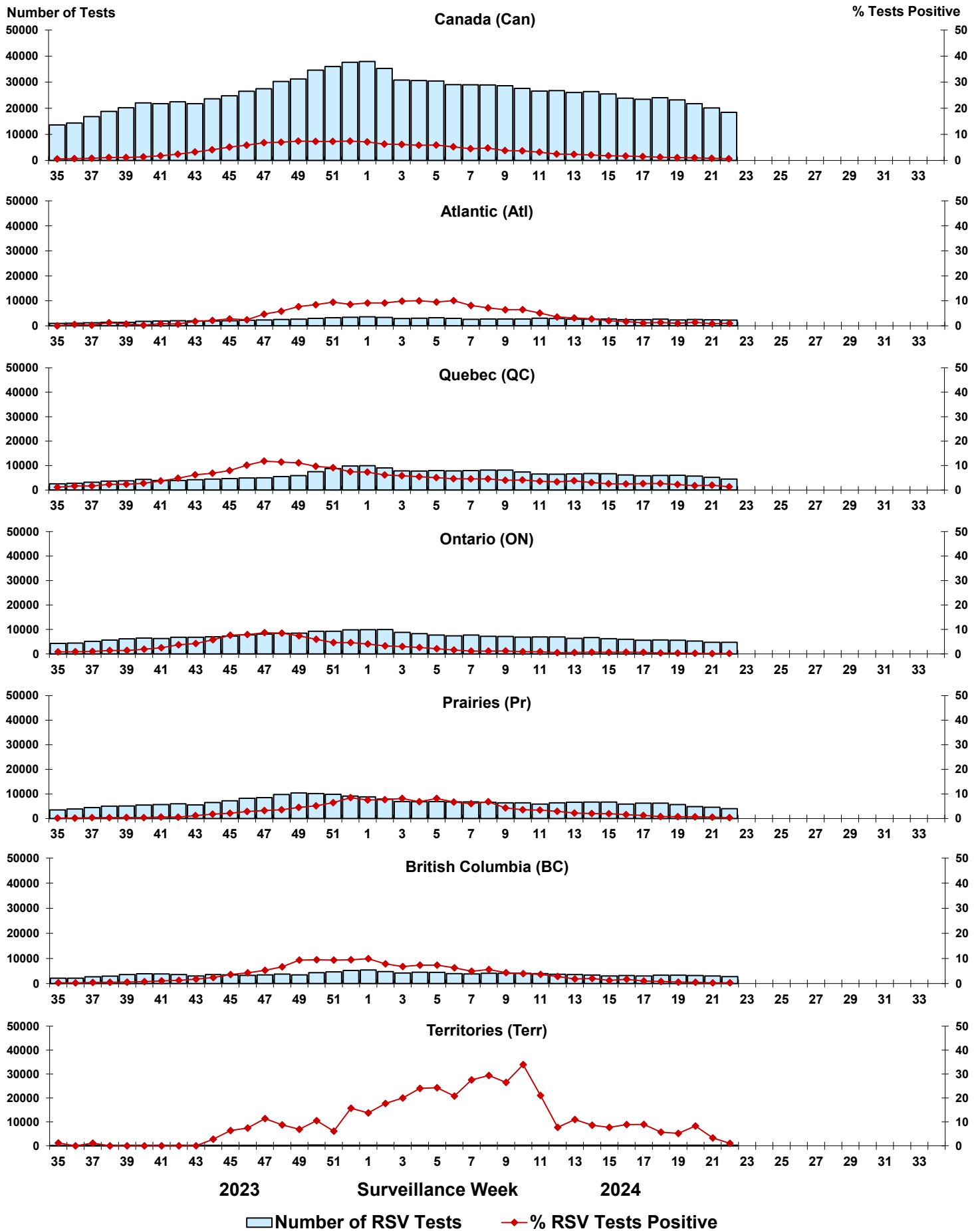




Figure 6: Positive Human parainfluenza virus (HPIV) tests (%) in Canada by region by surveillance week

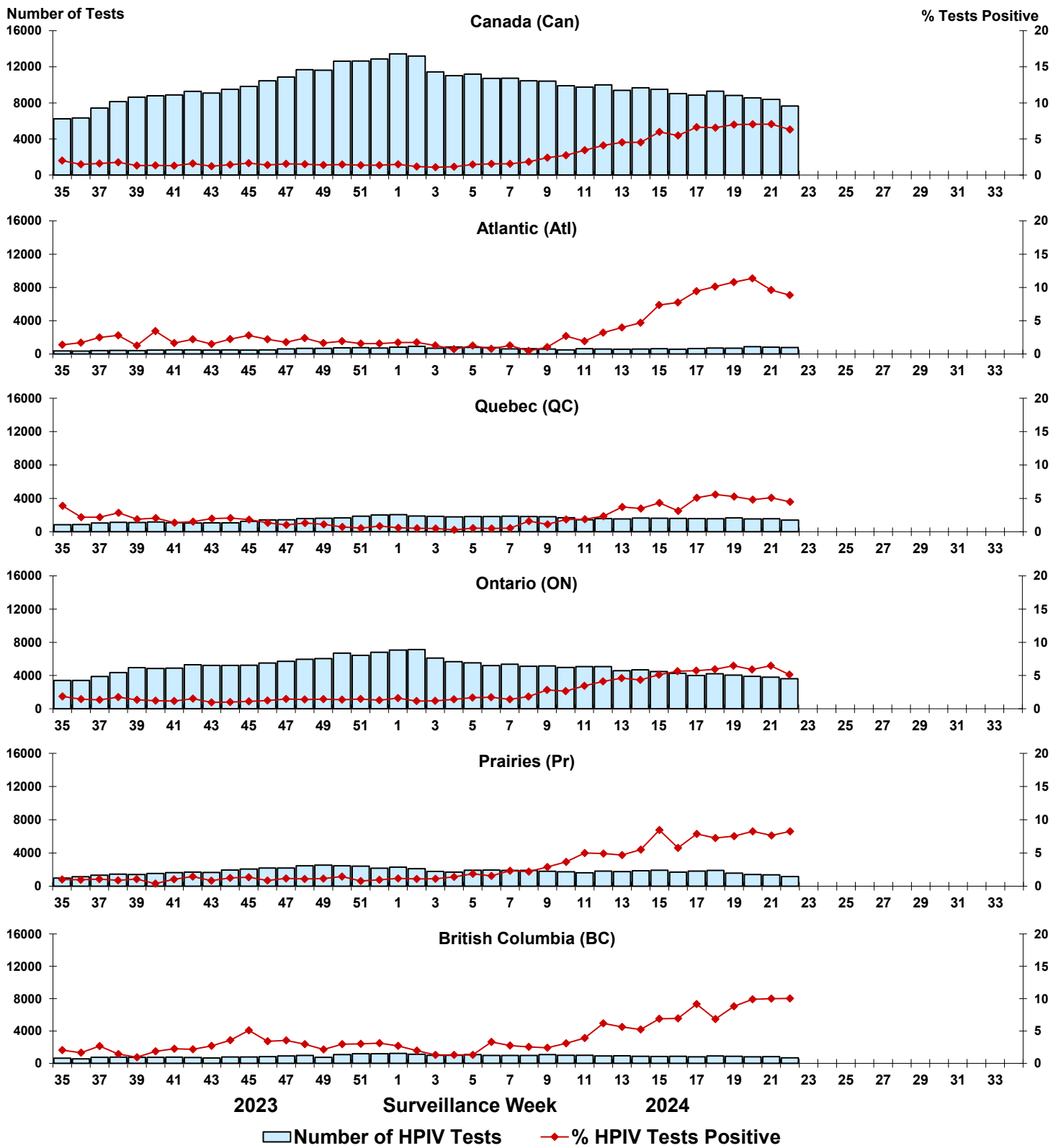


Figure 7: Positive Adenovirus (ADV) tests (%) in Canada by region by surveillance week

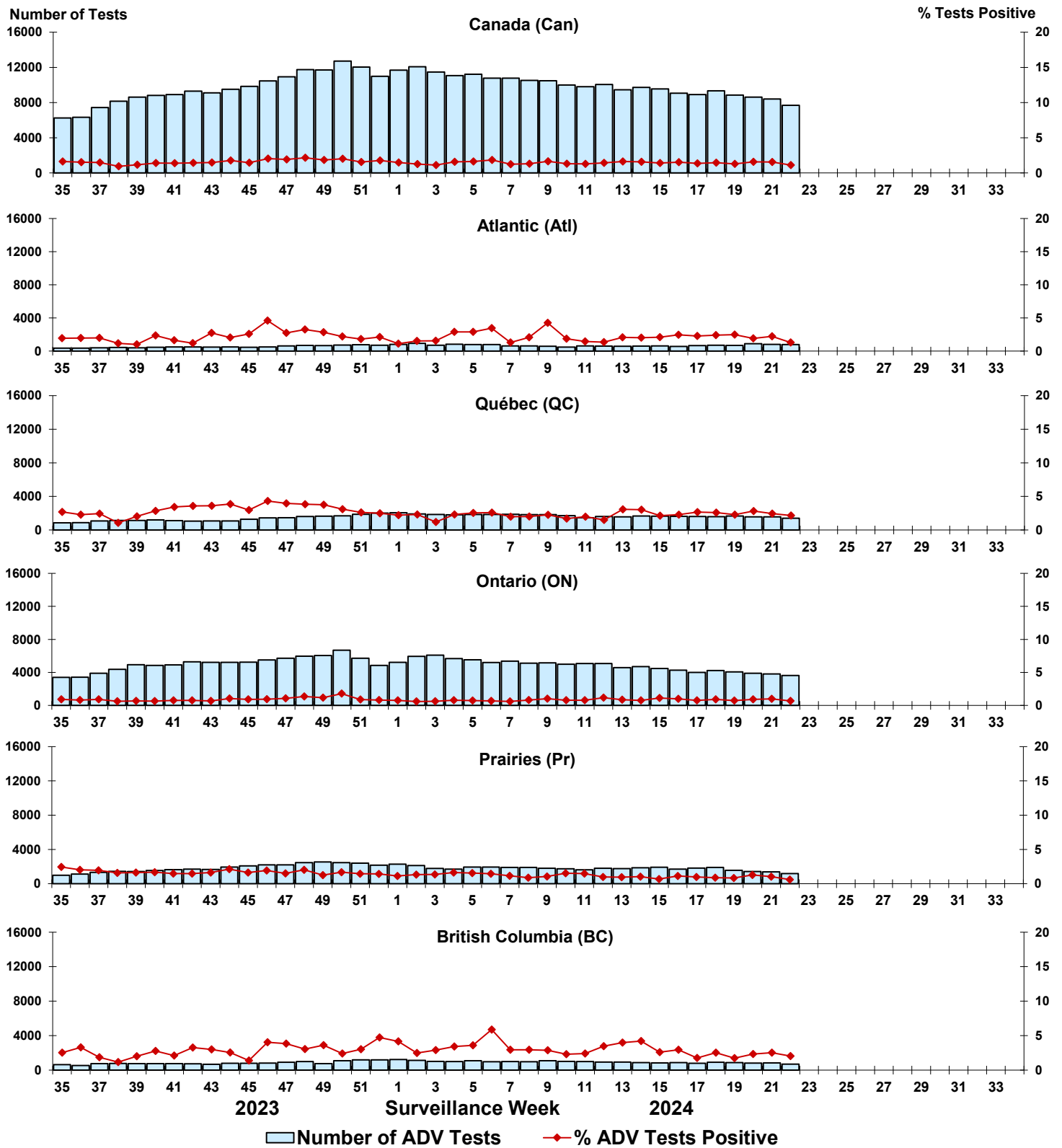


Figure 8: Positive Human metapneumovirus (HMPV) tests (%) in Canada by region by surveillance week

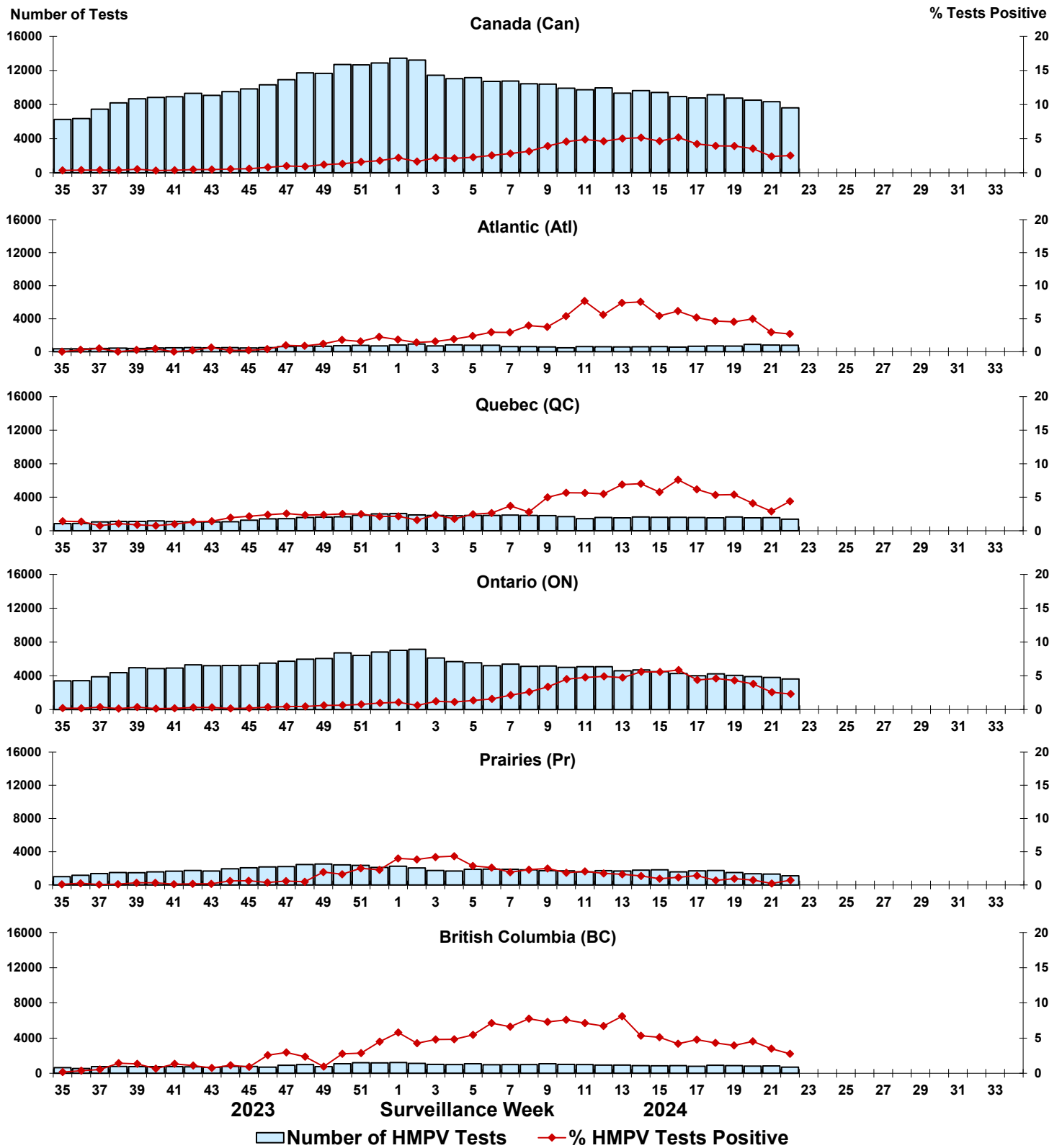


Figure 9: Positive Enterovirus/Rhinovirus (EV/RV) tests (%) in Canada by region by surveillance week

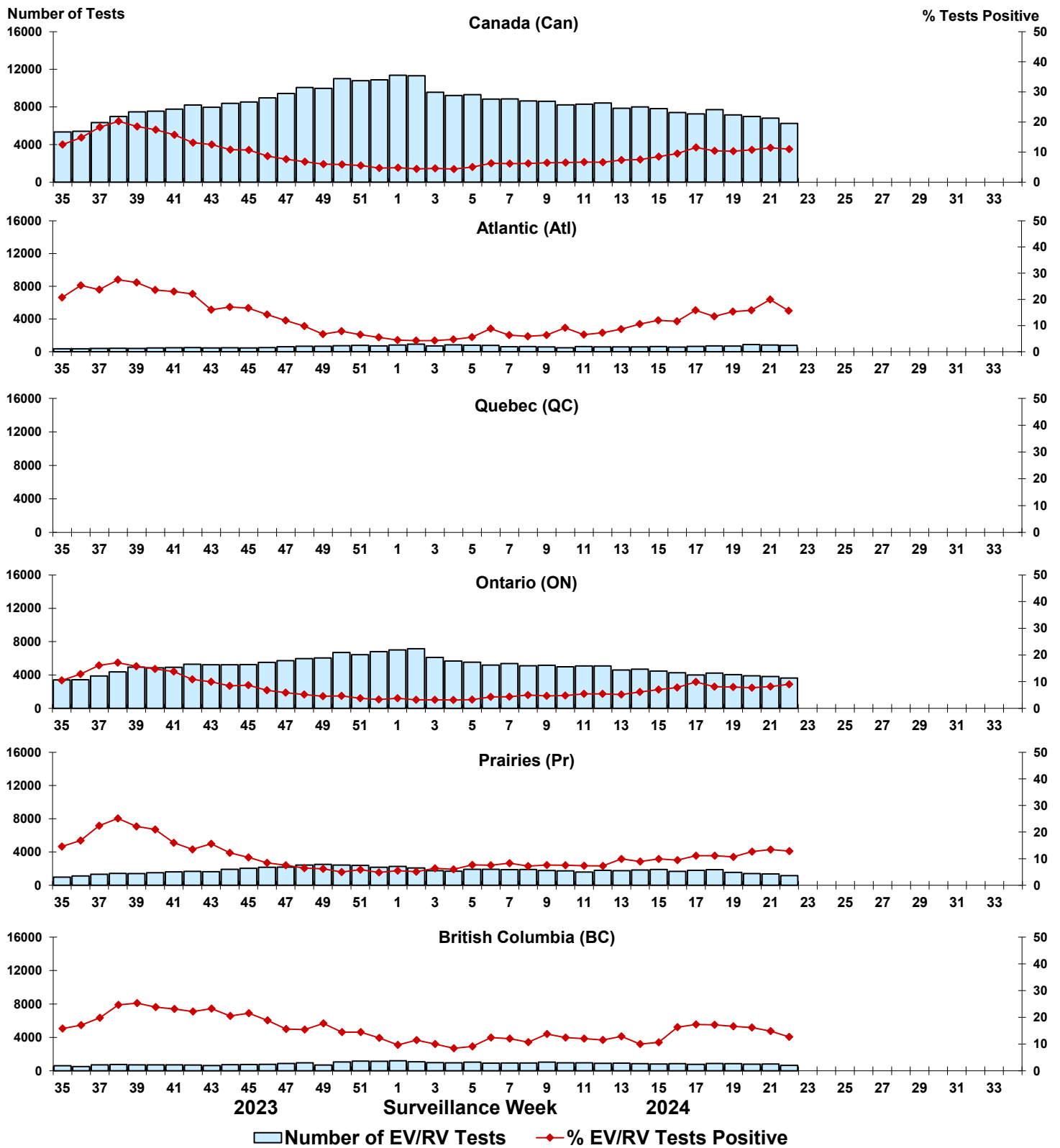


Figure 10: Positive Human coronavirus (HCoV) tests (%) in Canada by region by surveillance week

