

# RESPIRATORY VIRUS DETECTION REPORT

February 11 to February 17, 2024  
(Surveillance Week 2024-07)



Please note that the Respiratory Virus Detection Surveillance System (RVDSS) is a sentinel laboratory surveillance system that does not capture all respiratory virus testing performed in Canada; differences may exist between the data presented in this report and provincial/territorial epidemiological reports. SARS-CoV-2 laboratory data is included in this report to facilitate the comparison of positivity with other respiratory viruses. Interpretation should be made with caution as testing practices differ among viruses.

For additional SARS-CoV-2 surveillance information, please refer to the [COVID-19 epidemiology update](#).

## Overall Summary

In week 7 (week ending February 17, 2024) in Canada, participating RVDSS laboratories reported 2,759 detections of SARS-CoV-2 from 33,895 tests (8.1% positive). Among non-SARS-CoV-2 respiratory viruses, where test volumes are lower (range of 8,396 to 32,746 tests), activity of flu is highest but remains below expected levels for this time of year.

- National SARS-CoV-2 percent positivity has been decreasing since mid-December 2023.
- Activity of influenza A has been stable since mid-January and remains below expected levels for this time of year (3,099 detections; 9.5% positive). Activity of influenza B has been increasing over the past 5 weeks but remains low (685 detections; 2.1% positive).
- Activity of RSV is stable and remains below expected levels for this time of year (1,247 detections; 4.5% positive).
- Activity of all other non-SARS-CoV-2 respiratory viruses is low and near expected levels typical of this time of year.
- 34/35 sentinel laboratories reported surveillance data

## Abbreviations

ADV: Adenovirus

Atl: Atlantic Canada

BC: British Columbia

Can: Canada

EORLA: Eastern Ontario Regional Laboratory Association

EV/RV: Enterovirus/Rhinovirus

Flu: Influenza

Flu A(H1N1)pdm09: Influenza A(H1N1)pdm09

Flu A(H3): Influenza A(H3N2)

Flu A (UnS): Influenza A(Unsubtyped)

HCoV: Human coronavirus 229E/OC43/NL63/HKU1

HMPV: Human metapneumovirus

HPIV: Human parainfluenza virus

HSC: Health Sciences Centre

N.C.: Data not collected

N.R.: Data not reported for current week

ON: Ontario

PR: Prairies

P.H.O.L.: Public Health Ontario Laboratory

QC: Quebec

RSV: Respiratory syncytial virus

RVDSS: Respiratory Virus Detection Surveillance System

SARS-CoV-2: Severe acute respiratory syndrome coronavirus 2

Terr: Territories of Canada

UHN: University Health Network

© His Majesty the King in Right of Canada, as represented by the Minister of Health, 2021

ISSN: 2564-2359 | Cat.: HP38-7E-PDF | Pub.: 210284

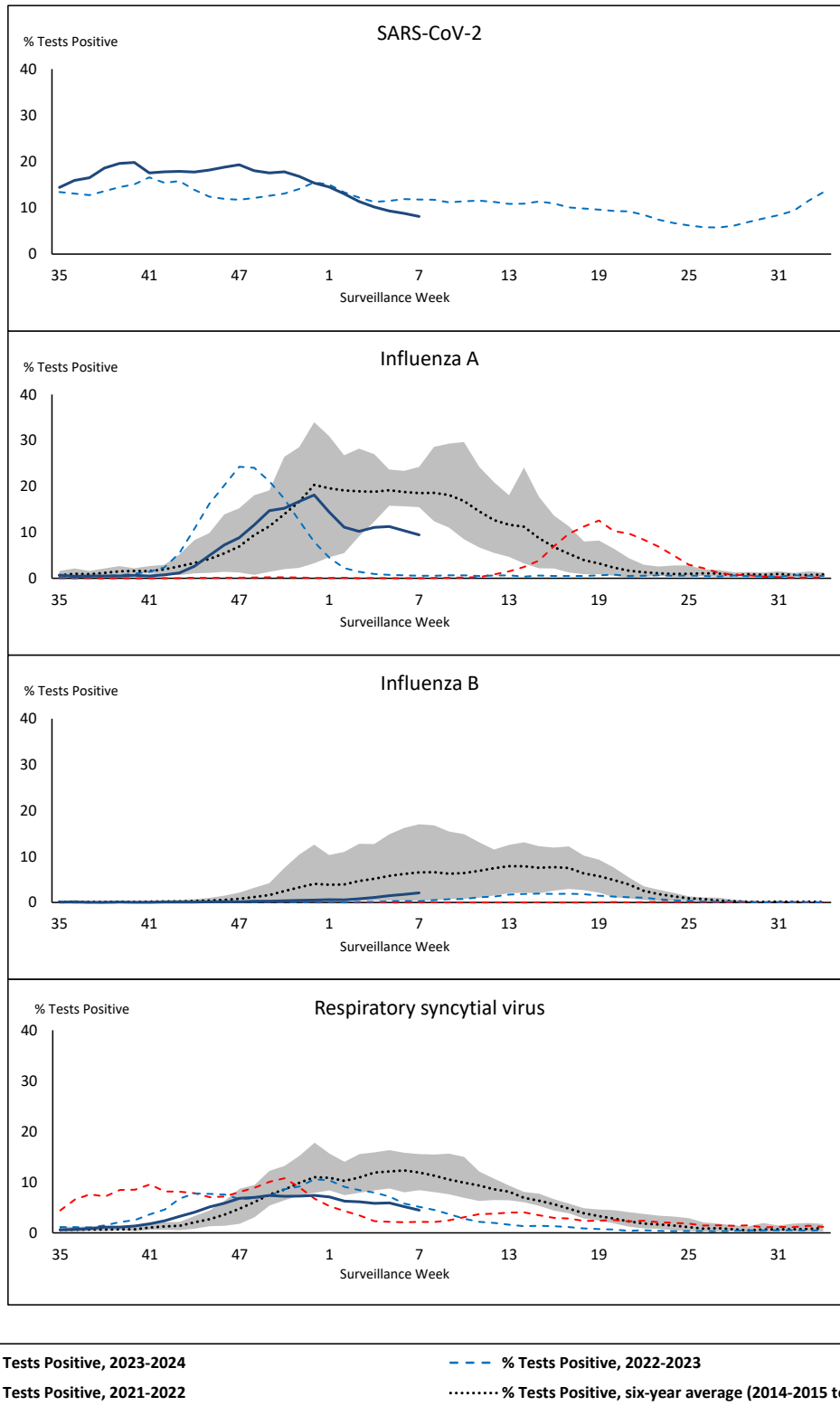


Public Health  
Agency of Canada

Agence de la santé  
publique du Canada

Canada

**Figure 1: Positive severe acute respiratory syndrome coronavirus 2 (SARS-CoV-2), influenza, and respiratory syncytial virus tests (%) reported by participating laboratories in Canada by surveillance week compared to average and range from 2014-2015 to 2019-2020 season**



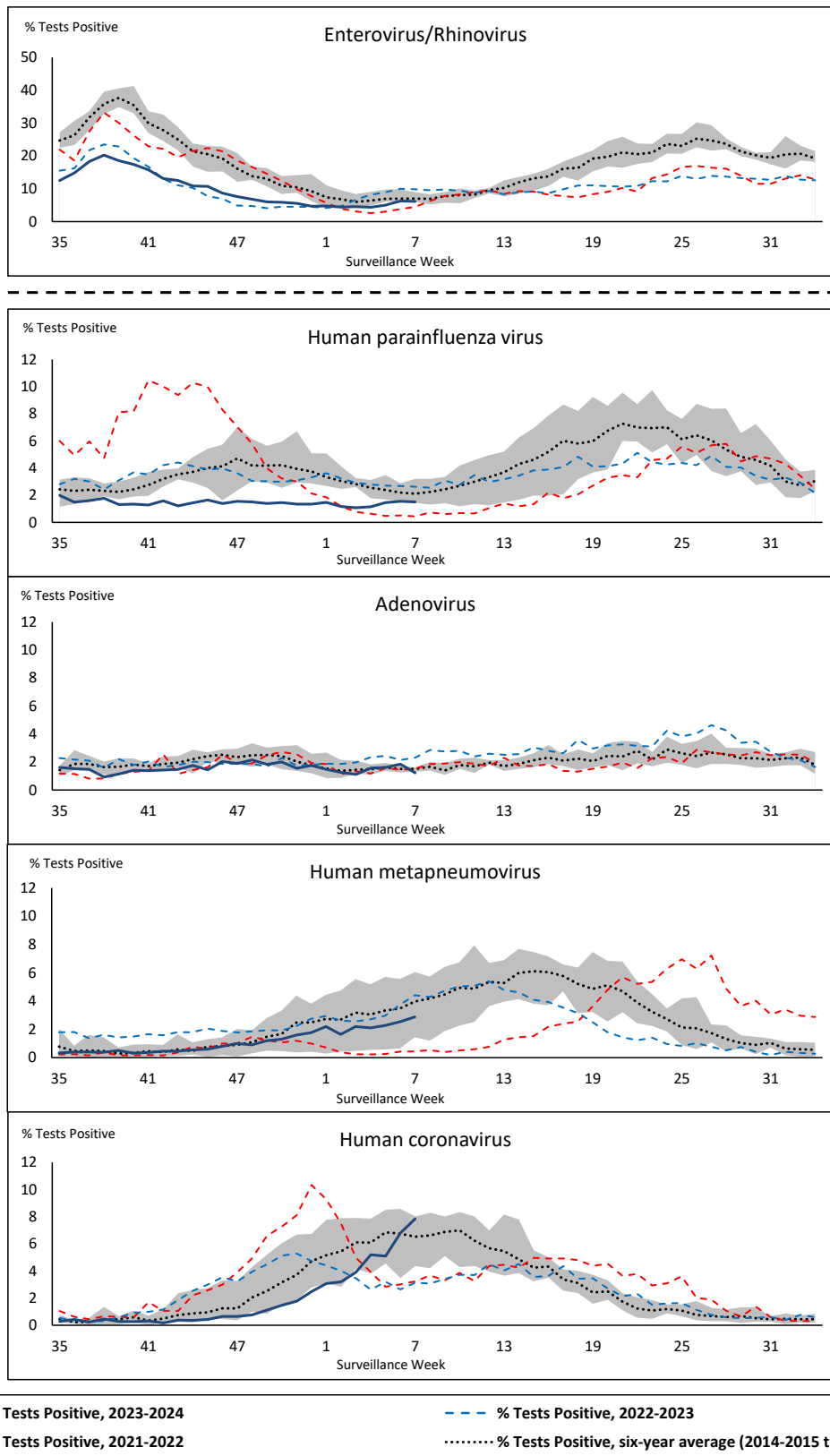
Shaded area represents the maximum and minimum % of respiratory virus tests positive reported by week from seasons 2014-2015 to 2019-2020

Note: Changes to testing practices during the COVID-19 pandemic may cause substantial changes to indicator estimates from previous years. Collection of laboratory testing practice meta-data to understand these changes is ongoing. Interpret trends with caution.

Note: SARS-CoV-2 surveillance was integrated into RVDSS at the beginning of the 2022-2023 season; no prior data is available for historical comparison.

Note: Data from week 11 of the 2019-2020 season onwards are excluded from the historical comparison due to the COVID-19 pandemic.

**Figure 2: Positive tests (%) of other respiratory viruses reported by participating laboratories in Canada by surveillance week compared to average and range from 2014-2015 to 2019-2020 season**



Shaded area represents the maximum and minimum % of respiratory virus tests positive reported by week from seasons 2014-2015 to 2019-2020

Note: Changes to testing practices during the COVID-19 pandemic may cause substantial changes to indicator estimates from previous years. Collection of laboratory testing practice meta-data to understand these changes is ongoing. Interpret trends with caution.

Note: Data from week 11 of the 2019-2020 season onwards are excluded from the historical comparison due to the COVID-19 pandemic.

Note: % Tests Positive scale changes across the dashed line

**Table 1: Respiratory virus detections for the week ending February 17, 2024 (surveillance week 2024-07)**

Reporting Laboratory	SARS-CoV-2 Tested	SARS-CoV-2 Positive	Flu Tested	A(H1)pdm09 Positive	A(H3) Positive	A(UnS) Positive	Total Flu A Positive	Total Flu B Positive	RSV Tested	RSV Positive	HPIV Tested	HPIV 1 Positive	HPIV 2 Positive	HPIV 3 Positive	HPIV 4 Positive	Other HPIV Positive	ADV Tested	ADV Positive	HMPV Tested	HMPV Positive	EV/RV Tested	EV/RV Positive	HCoV Tested	HCoV Positive	
Newfoundland	684	63	476	0	0	57	57	12	476	46	476	1	3	1	2	0	476	5	476	15	476	17	476	34	
Prince Edward Island	193	12	180	0	0	17	17	5	180	31	180	0	0	0	0	0	18	1	18	2	18	3	18	2	
Nova Scotia	1185	117	1099	0	0	132	132	15	827	30	42	0	0	1	0	0	42	0	42	0	42	3	42	1	
New Brunswick	1123	92	1127	18	2	27	47	47	1127	105	83	0	0	0	0	0	83	2	83	1	83	16	83	2	
<b>Atlantic</b>	<b>3185</b>	<b>284</b>	<b>2882</b>	<b>18</b>	<b>2</b>	<b>233</b>	<b>253</b>	<b>79</b>	<b>2610</b>	<b>212</b>	<b>619</b>	<b>1</b>	<b>3</b>	<b>2</b>	<b>2</b>	<b>0</b>	<b>619</b>	<b>8</b>	<b>619</b>	<b>18</b>	<b>619</b>	<b>39</b>	<b>619</b>	<b>39</b>	
Région Nord-Est	1585	102	1658	0	0	243	243	27	731	78	79	0	0	0	0	0	79	2	78	2	N.C.	N.C.	79	7	
Québec-Chaudière-Appalaches	1786	122	2182	0	0	471	471	70	2029	77	710	0	0	0	1	0	721	7	710	32	N.C.	N.C.	545	35	
Centre-du-Québec	2504	134	2306	0	0	500	500	42	966	48	45	0	0	0	0	0	45	3	45	6	N.C.	N.C.	45	3	
Montréal-Laval	2468	146	3483	1	0	469	470	14	1916	83	986	0	0	8	0	0	986	23	988	26	N.C.	N.C.	986	88	
Ouest du Québec	1364	135	820	0	0	117	117	15	812	30	16	0	0	1	0	0	16	1	16	1	N.C.	N.C.	16	3	
Montréal	1377	96	1520	0	0	187	187	15	1519	47	11	0	0	0	0	0	11	0	11	2	N.C.	N.C.	11	0	
<b>Province of Québec</b>	<b>11084</b>	<b>735</b>	<b>11969</b>	<b>1</b>	<b>0</b>	<b>1987</b>	<b>1988</b>	<b>183</b>	<b>7973</b>	<b>363</b>	<b>1847</b>	<b>0</b>	<b>0</b>	<b>9</b>	<b>1</b>	<b>0</b>	<b>1858</b>	<b>36</b>	<b>1848</b>	<b>69</b>	<b>N.C.</b>	<b>N.C.</b>	<b>1682</b>	<b>136</b>	
P.H.O.L. - Ottawa	197	35	169	8	0	1	9	4	167	1	107	0	0	0	0	3	107	0	107	3	107	2	107	19	
EOURLA	N.R.	N.R.	N.R.	N.R.	N.R.	N.R.	N.R.	N.R.	N.R.	N.R.	N.R.	N.R.	N.R.	N.R.	N.R.	N.R.	N.R.	N.R.	N.R.	N.R.	N.R.	N.R.	N.R.	N.R.	N.R.
P.H.O.L. - Kingston	188	14	134	13	0	12	25	1	134	2	106	0	0	0	0	0	106	0	106	4	106	4	106	13	
UHN / Mount Sinai Hospital	1080	60	747	0	1	24	25	8	747	2	71	0	0	0	0	0	71	0	71	0	71	3	71	6	
P.H.O.L. - Toronto	439	67	959	31	9	25	59	18	959	12	912	0	0	0	0	34	912	10	912	26	912	35	912	135	
Sick Kids Hospital - Toronto	128	9	126	3	6	0	9	4	126	0	126	0	0	5	0	0	126	3	126	8	126	23	126	5	
Shared Hospital Laboratory	1841	71	1467	27	17	49	93	26	1467	11	1456	0	0	0	0	11	1456	8	1463	16	1463	24	1463	37	
P.H.O.L. - Sault Ste. Marie	46	1	49	6	0	4	10	0	49	2	26	0	0	0	0	0	26	0	26	0	26	0	26	14	
P.H.O.L. - Timmins	32	5	39	2	0	2	4	0	39	1	27	0	0	0	0	3	27	0	27	0	27	1	27	2	
St. Joseph's - London	919	64	695	0	0	50	50	14	695	5	68	0	0	0	0	1	68	0	68	2	68	8	68	7	
P.H.O.L. - London	406	40	349	6	3	10	19	7	349	8	284	0	0	0	0	7	284	0	284	10	284	21	284	58	
P.H.O.L. - Orillia	23	4	41	3	0	0	3	0	41	1	39	0	0	0	0	0	39	0	39	5	39	1	39	2	
P.H.O.L. - Thunder Bay	65	20	43	0	0	0	0	0	43	2	36	0	0	0	0	0	36	0	36	1	36	0	36	2	
P.H.O.L. - Sudbury	45	18	59	4	0	2	6	0	59	0	27	0	0	0	0	0	27	0	27	0	27	0	27	0	
P.H.O.L. - Hamilton	218	42	178	2	4	12	18	2	178	1	148	0	0	0	0	6	148	1	148	2	148	6	148	15	
P.H.O.L. - Peterborough	69	10	83	1	1	18	19	1	83	2	47	0	0	0	0	0	47	0	47	1	47	6	47	1	
St. Joseph's - Hamilton	1800	84	1715	0	0	129	129	37	1715	23	1715	0	0	4	0	0	1715	10	1715	35	1715	85	0	0	
Sault Area Hospital	229	34	154	5	0	1	6	0	154	7	132	1	0	1	0	0	132	0	132	0	132	6	132	11	
<b>Province of Ontario</b>	<b>7725</b>	<b>578</b>	<b>7007</b>	<b>111</b>	<b>41</b>	<b>339</b>	<b>484</b>	<b>122</b>	<b>7005</b>	<b>80</b>	<b>5327</b>	<b>1</b>	<b>0</b>	<b>10</b>	<b>0</b>	<b>65</b>	<b>5327</b>	<b>32</b>	<b>5334</b>	<b>113</b>	<b>5334</b>	<b>225</b>	<b>3619</b>	<b>327</b>	
Manitoba	1472	160	1171	1	0	16	17	14	1171	102	75	0	0	3	0	0	75	1	102	5	75	11	102	8	
Saskatchewan	1731	147	1298	0	0	18	18	65	1054	85	424	1	0	2	0	0	424	3	424	27	424	37	424	34	
Alberta	4776	435	4421	40	24	2	75	162	4162	183	1151	2	0	25	0	0	1151	16	1119	1	1139	92	1151	62	
<b>Prairies</b>	<b>7979</b>	<b>742</b>	<b>6890</b>	<b>41</b>	<b>24</b>	<b>36</b>	<b>110</b>	<b>241</b>	<b>6387</b>	<b>370</b>	<b>1650</b>	<b>3</b>	<b>0</b>	<b>30</b>	<b>0</b>	<b>0</b>	<b>1650</b>	<b>20</b>	<b>1645</b>	<b>33</b>	<b>1638</b>	<b>140</b>	<b>1677</b>	<b>104</b>	
<b>British Columbia</b>	<b>3725</b>	<b>407</b>	<b>3853</b>	<b>45</b>	<b>24</b>	<b>6</b>	<b>262</b>	<b>50</b>	<b>3693</b>	<b>188</b>	<b>840</b>	<b>3</b>	<b>8</b>	<b>13</b>	<b>3</b>	<b>0</b>	<b>840</b>	<b>28</b>	<b>840</b>	<b>64</b>	<b>799</b>	<b>112</b>	<b>799</b>	<b>52</b>	
Yukon	52	6	34	0	0	0	0	0	34	1	N.C.	N.C.	N.C.	N.C.	N.C.	N.C.	N.C.	N.C.	N.C.	N.C.	N.C.	N.C.	N.C.	N.C.	
Northwest Territories	36	0	36	0	0	0	0	0	36	18	N.C.	N.C.	N.C.	N.C.	N.C.	N.C.	36	3	36	0	36	5	N.C.	N.C.	
Nunavut	109	7	75	1	0	1	2	3	75	15	N.C.	N.C.	N.C.	N.C.	N.C.	N.C.	N.C.	N.C.	N.C.	N.C.	N.C.	N.C.	N.C.	N.C.	
<b>Territories</b>	<b>197</b>	<b>13</b>	<b>145</b>	<b>1</b>	<b>0</b>	<b>1</b>	<b>2</b>	<b>10</b>	<b>145</b>	<b>34</b>	<b>N.C.</b>	<b>N.C.</b>	<b>N.C.</b>	<b>N.C.</b>	<b>N.C.</b>	<b>N.C.</b>	<b>36</b>	<b>3</b>	<b>36</b>	<b>0</b>	<b>36</b>	<b>5</b>	<b>N.C.</b>	<b>N.C.</b>	
<b>CANADA</b>	<b>33895</b>	<b>2759</b>	<b>32746</b>	<b>217</b>	<b>91</b>	<b>2602</b>	<b>3099</b>	<b>685</b>	<b>27813</b>	<b>1247</b>	<b>10283</b>	<b>8</b>	<b>11</b>	<b>64</b>	<b>6</b>	<b>65</b>	<b>10330</b>	<b>127</b>	<b>10322</b>	<b>297</b>	<b>8426</b>	<b>521</b>	<b>8396</b>	<b>658</b>	

The data in the RVDSS report represent surveillance data available at the time of writing. Data missing from the current week are denoted by N.R. Data not collected by reporting lab denoted by N.C.

Some specimens from Yukon (YT) are sent to reference laboratories in British Columbia and reported results reflect specimens identified as originating from YT.

Results from British Columbia comprise of specimens from the following sites: Children's and Women's Hospital Laboratory, Fraser Health Medical Microbiology Laboratory, Island Health, Providence Health Care, Vancouver Coastal Health sites, Victoria General Hospital, BCCDC Public Health Laboratory, Interior Health Authority sites and Northern Health Authority sites.

Due to different testing protocols of laboratories across Canada, influenza A subtype detection counts may not be included in total influenza A detection counts. Total influenza A and B positive counts are used to calculate percentage of tests positive.

Delays in the reporting of data may cause data to change retrospectively.

**Table 2: Cumulative respiratory virus detections from August 27, 2023 to February 17, 2024 (surveillance weeks 2023-35 to 2024-07)**

Reporting Laboratory	SARS-CoV-2 Tested	SARS-CoV-2 Positive	Flu Tested	A(H1)pdm09 Positive	A(H3) Positive	A(UnS) Positive	Total Flu A Positive	Total Flu B Positive	RSV Tested	RSV Positive	HPIV Tested	HPIV 1 Positive	HPIV 2 Positive	HPIV 3 Positive	HPIV 4 Positive	Other HPIV Positive	ADV Tested	ADV Positive	HMPV Tested	HMPV Positive	EV/RV Tested	EV/RV Positive	HCoV Tested	HCoV Positive
Newfoundland	16036	2568	11564	0	0	1188	1188	40	11564	733	11564	9	55	22	98	0	11564	190	11564	157	11564	1005	11564	227
Prince Edward Island	5793	671	3317	0	0	489	489	16	3317	258	377	2	0	0	8	0	376	19	366	5	376	108	360	6
Nova Scotia	37166	7701	24029	0	0	1947	1947	190	19635	1225	861	15	2	2	10	0	861	39	854	3	861	202	860	2
New Brunswick	27291	3469	24788	801	20	1758	2579	120	24384	1421	2176	7	4	1	24	0	2176	85	2176	25	2176	438	2176	72
<b>Atlantic</b>	<b>86286</b>	<b>14409</b>	<b>63698</b>	<b>801</b>	<b>20</b>	<b>5382</b>	<b>6203</b>	<b>366</b>	<b>58900</b>	<b>3637</b>	<b>14978</b>	<b>33</b>	<b>61</b>	<b>25</b>	<b>140</b>	<b>0</b>	<b>14977</b>	<b>333</b>	<b>14960</b>	<b>190</b>	<b>14977</b>	<b>1753</b>	<b>14960</b>	<b>307</b>
Région Nord-Est	43971	6750	38290	5	0	4166	4171	72	14589	1075	1864	14	11	10	16	0	1864	82	1824	55	N.C.	N.C.	1864	37
Québec-Chaudière-Appalaches	53031	9026	31175	0	0	4503	4503	169	30167	2220	12325	20	9	7	11	0	12676	421	12324	277	N.C.	N.C.	10398	235
Centre-du-Québec	64366	11977	26401	0	0	3250	3250	125	16979	1343	960	15	8	13	7	0	960	49	960	35	N.C.	N.C.	988	35
Montréal-Laval	79153	13430	58527	3	1	5280	5284	93	38804	2500	20597	92	38	103	24	0	20597	417	20656	360	N.C.	N.C.	20597	537
Ouest du Québec	43282	9700	17079	4	0	1629	1633	82	16930	972	493	11	3	6	6	0	493	37	493	10	N.C.	N.C.	493	17
Montréal	41011	7650	30950	0	0	2496	2496	67	29890	1535	165	1	0	0	1	0	165	6	165	3	N.C.	N.C.	165	1
<b>Province of Québec</b>	<b>324814</b>	<b>58533</b>	<b>202422</b>	<b>12</b>	<b>1</b>	<b>21324</b>	<b>21337</b>	<b>608</b>	<b>147359</b>	<b>9645</b>	<b>36404</b>	<b>153</b>	<b>69</b>	<b>139</b>	<b>65</b>	<b>0</b>	<b>36755</b>	<b>1012</b>	<b>36422</b>	<b>740</b>	<b>N.C.</b>	<b>N.C.</b>	<b>34505</b>	<b>862</b>
P.H.O.L. - Ottawa	9149	3442	6083	258	53	114	302	12	6075	125	3586	0	0	0	0	58	3586	11	3584	42	3586	382	3584	101
EORLA	32704	4117	14521	0	0	1271	1271	78	14521	1068	932	2	4	9	4	0	907	9	932	7	932	173	932	16
P.H.O.L. - Kingston	6393	2001	3477	107	16	64	161	3	3477	166	2460	0	0	0	0	40	2460	10	2460	7	2460	311	2460	26
UHN / Mount Sinai Hospital	28389	2839	17473	40	9	462	511	48	17473	188	828	0	0	7	2	0	828	1	828	0	828	35	828	26
P.H.O.L. - Toronto	16200	5255	28248	1067	873	259	1560	105	28239	992	25762	0	0	0	0	714	25769	292	25747	277	25762	2566	25747	869
Sick Kids Hospital - Toronto	3291	279	2913	97	89	20	206	16	2913	304	2913	14	12	45	18	0	2913	70	2913	51	2913	507	2913	74
Shared Hospital Laboratory	43404	4305	37069	716	481	236	1433	114	37074	1300	36902	0	0	0	0	217	31248	272	36938	116	36983	1272	36960	346
P.H.O.L. - Sault Ste. Marie	384	186	446	45	3	15	57	0	446	43	308	0	0	0	0	3	308	1	308	0	308	21	308	23
P.H.O.L. - Timmins	879	249	823	55	8	23	75	0	823	60	668	0	0	0	0	17	668	4	668	4	668	46	668	9
St. Joseph's - London	22571	3226	11025	0	0	816	816	66	11025	685	1662	0	0	0	0	18	1681	25	1681	10	1683	197	1681	36
P.H.O.L. - London	12260	3846	8806	397	125	95	442	30	8803	456	7038	0	0	0	0	177	7038	34	7036	44	7038	650	7036	186
P.H.O.L. - Orillia	494	136	1178	59	17	7	83	0	1175	74	1123	0	0	0	0	26	1123	15	1123	17	1123	144	1123	11
P.H.O.L. - Thunder Bay	1582	465	945	55	0	7	34	1	942	23	778	0	0	0	0	25	778	5	778	20	778	53	778	5
P.H.O.L. - Sudbury	595	235	694	30	1	19	50	0	692	21	469	0	0	0	0	6	470	1	469	1	469	43	469	5
P.H.O.L. - Hamilton	6257	1989	4973	125	62	75	208	17	4972	170	3665	0	0	0	0	105	3665	64	3664	50	3665	483	3664	136
P.H.O.L. - Peterborough	1989	660	1962	201	202	56	129	8	1952	216	1566	0	0	0	0	44	1566	34	1566	22	1566	258	1566	28
St. Joseph's - Hamilton	48755	5439	42752	0	0	2679	2679	240	42752	1681	42752	0	0	244	0	0	42752	262	42752	249	42752	2505	0	0
Sault Area Hospital	4739	649	3200	166	8	49	223	4	3193	168	2508	24	0	11	16	0	2459	31	2459	2	2459	235	2469	22
<b>Province of Ontario</b>	<b>240035</b>	<b>39318</b>	<b>186588</b>	<b>3418</b>	<b>1947</b>	<b>6267</b>	<b>10240</b>	<b>742</b>	<b>186547</b>	<b>7740</b>	<b>135920</b>	<b>40</b>	<b>16</b>	<b>316</b>	<b>40</b>	<b>1450</b>	<b>130219</b>	<b>1141</b>	<b>135906</b>	<b>919</b>	<b>135973</b>	<b>9881</b>	<b>93186</b>	<b>1919</b>
Manitoba	41636	6327	31562	140	11	1770	1921	108	31562	1131	2353	0	9	10	41	0	2353	103	3059	100	2353	471	3059	65
Saskatchewan	54259	6623	37307	101	8	5295	5404	584	33807	1145	11439	24	9	22	20	0	11439	239	11439	609	11439	1165	11439	187
Alberta	140015	17916	119323	11545	645	570	12832	1167	111095	5196	32892	112	81	216	3	0	32884	402	32117	22	32367	3063	32891	582
<b>Prairies</b>	<b>235910</b>	<b>30866</b>	<b>188192</b>	<b>11786</b>	<b>664</b>	<b>7635</b>	<b>20157</b>	<b>1859</b>	<b>176464</b>	<b>7472</b>	<b>46684</b>	<b>136</b>	<b>99</b>	<b>248</b>	<b>64</b>	<b>0</b>	<b>46676</b>	<b>744</b>	<b>46615</b>	<b>731</b>	<b>46159</b>	<b>4699</b>	<b>47389</b>	<b>834</b>
<b>British Columbia</b>	<b>96135</b>	<b>13345</b>	<b>95981</b>	<b>3794</b>	<b>595</b>	<b>224</b>	<b>7508</b>	<b>330</b>	<b>93896</b>	<b>4948</b>	<b>22100</b>	<b>107</b>	<b>155</b>	<b>139</b>	<b>156</b>	<b>0</b>	<b>22102</b>	<b>693</b>	<b>21987</b>	<b>671</b>	<b>21183</b>	<b>3395</b>	<b>21160</b>	<b>467</b>
Yukon	1385	158	905	30	12	0	49	1	898	42	N.C.	N.C.	N.C.	N.C.	N.C.	N.C.	N.C.	N.C.	N.C.	N.C.	N.C.	N.C.	N.C.	N.C.
Northwest Territories	905	61	846	166	6	1	173	8	846	97	N.C.	N.C.	N.C.	N.C.	N.C.	N.C.	N.C.	647	33	647	7	846	110	N.C.
Nunavut	3088	271	2148	426	30	51	507	11	2148	254	N.C.	N.C.	N.C.	N.C.	N.C.	N.C.	N.C.	N.C.	N.C.	N.C.	N.C.	N.C.	N.C.	N.C.
<b>Territories</b>	<b>5378</b>	<b>490</b>	<b>3899</b>	<b>622</b>	<b>48</b>	<b>52</b>	<b>729</b>	<b>20</b>	<b>3892</b>	<b>393</b>	<b>N.C.</b>	<b>N.C.</b>	<b>N.C.</b>	<b>N.C.</b>	<b>N.C.</b>	<b>N.C.</b>	<b>N.C.</b>	<b>647</b>	<b>33</b>	<b>647</b>	<b>7</b>	<b>846</b>	<b>110</b>	<b>N.C.</b>
<b>CANADA</b>	<b>988558</b>	<b>15961</b>	<b>740780</b>	<b>20433</b>	<b>3275</b>	<b>40884</b>	<b>66174</b>	<b>3925</b>	<b>667058</b>	<b>33835</b>	<b>256086</b>	<b>469</b>	<b>400</b>	<b>867</b>	<b>465</b>	<b>1450</b>	<b>251376</b>	<b>3956</b>	<b>256537</b>	<b>3258</b>	<b>219138</b>	<b>19838</b>	<b>211200</b>	<b>4389</b>

The data in the RVDSS report represent surveillance data available at the time of writing. Data not collected by reporting lab denoted by N.C.

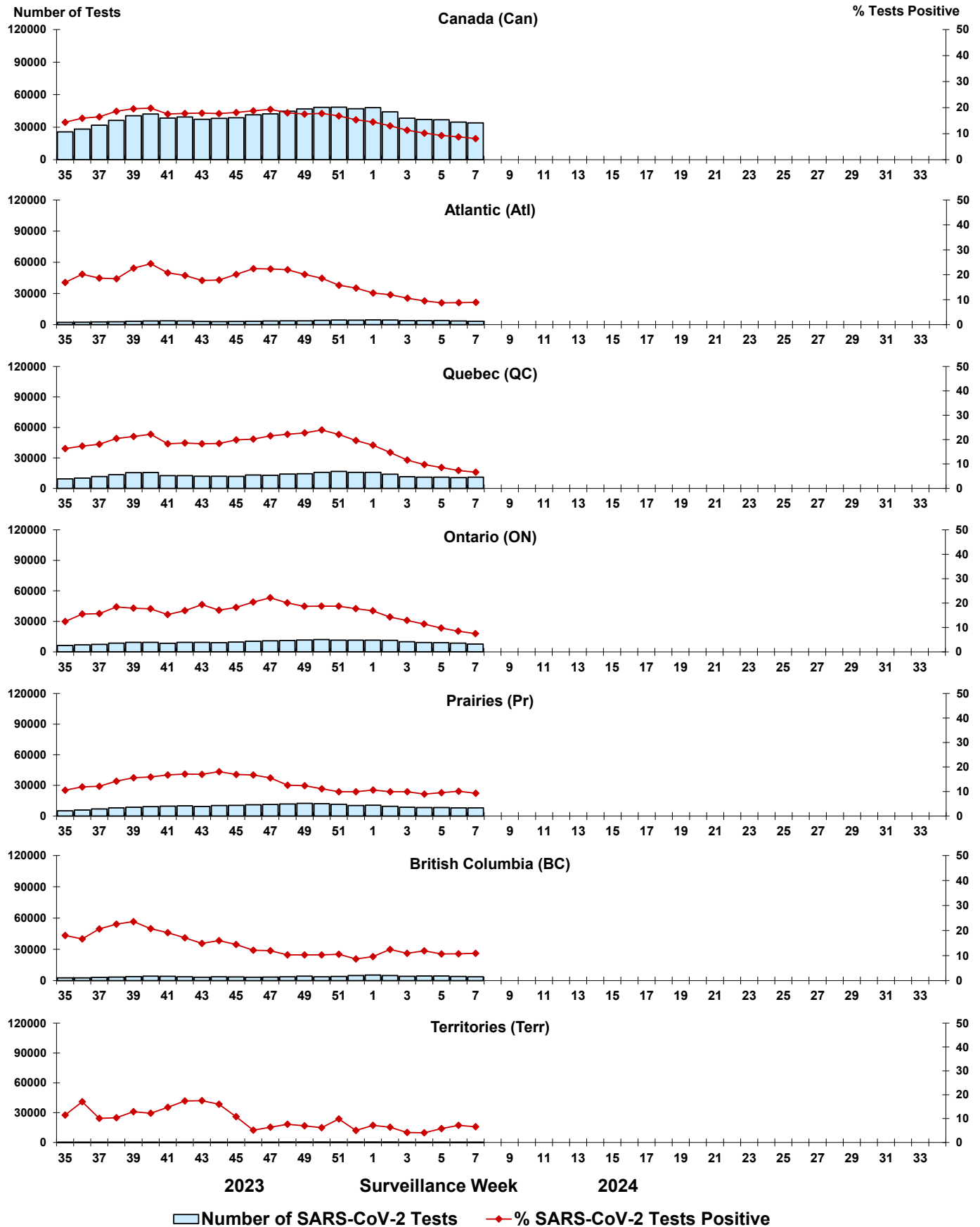
Some specimens from Yukon (YT) are sent to reference laboratories in British Columbia and reported results reflect specimens identified as originating from YT.

Results from British Columbia comprise of specimens from the following sites: Children's and Women's Hospital Laboratory, Fraser Health Medical Microbiology Laboratory, Island Health, Providence Health Care, Vancouver Coastal Health sites, Victoria General Hospital, BCCDC Public Health Laboratory, Interior Health Authority sites and Northern Health Authority sites.

Due to different testing protocols of laboratories across Canada, influenza A subtype detection counts may not be included in total influenza A detection counts. Total influenza A and B positive counts are used to calculate percentage of tests positive.

Delays in the reporting of data may cause data to change retrospectively. Due to these delays, the sum of weekly report totals do not add up to cumulative totals.

Figure 3: Positive severe acute respiratory syndrome coronavirus 2 (SARS-CoV-2) tests (%) in Canada by region by surveillance week



Note: Differences in positivity between jurisdictions can reflect differences in testing practices. Please interpret with caution.

Figure 4: Positive Influenza (Flu) tests (%) in Canada by region by surveillance week

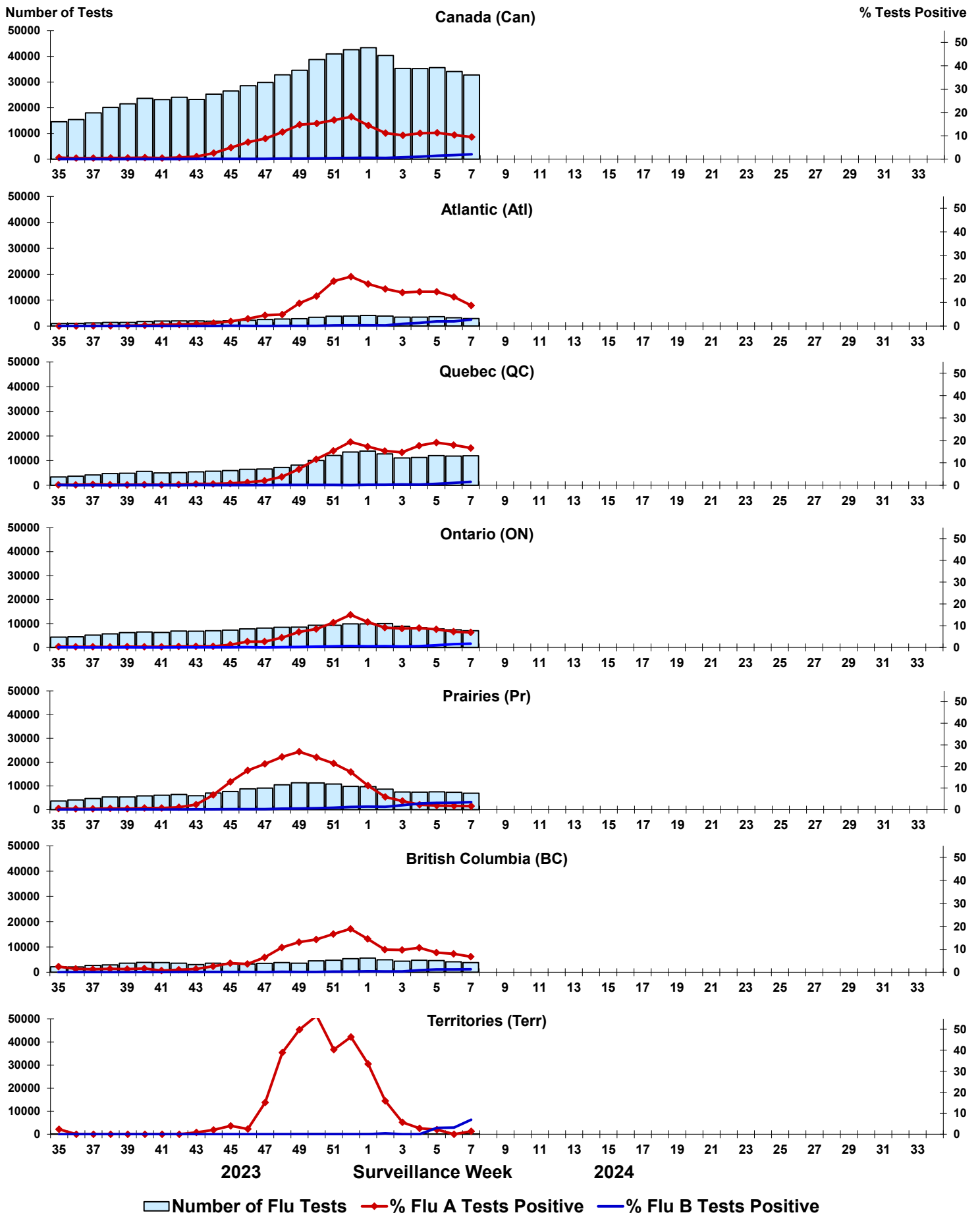


Figure 5: Positive Respiratory syncytial virus (RSV) tests (%) in Canada by region by surveillance week

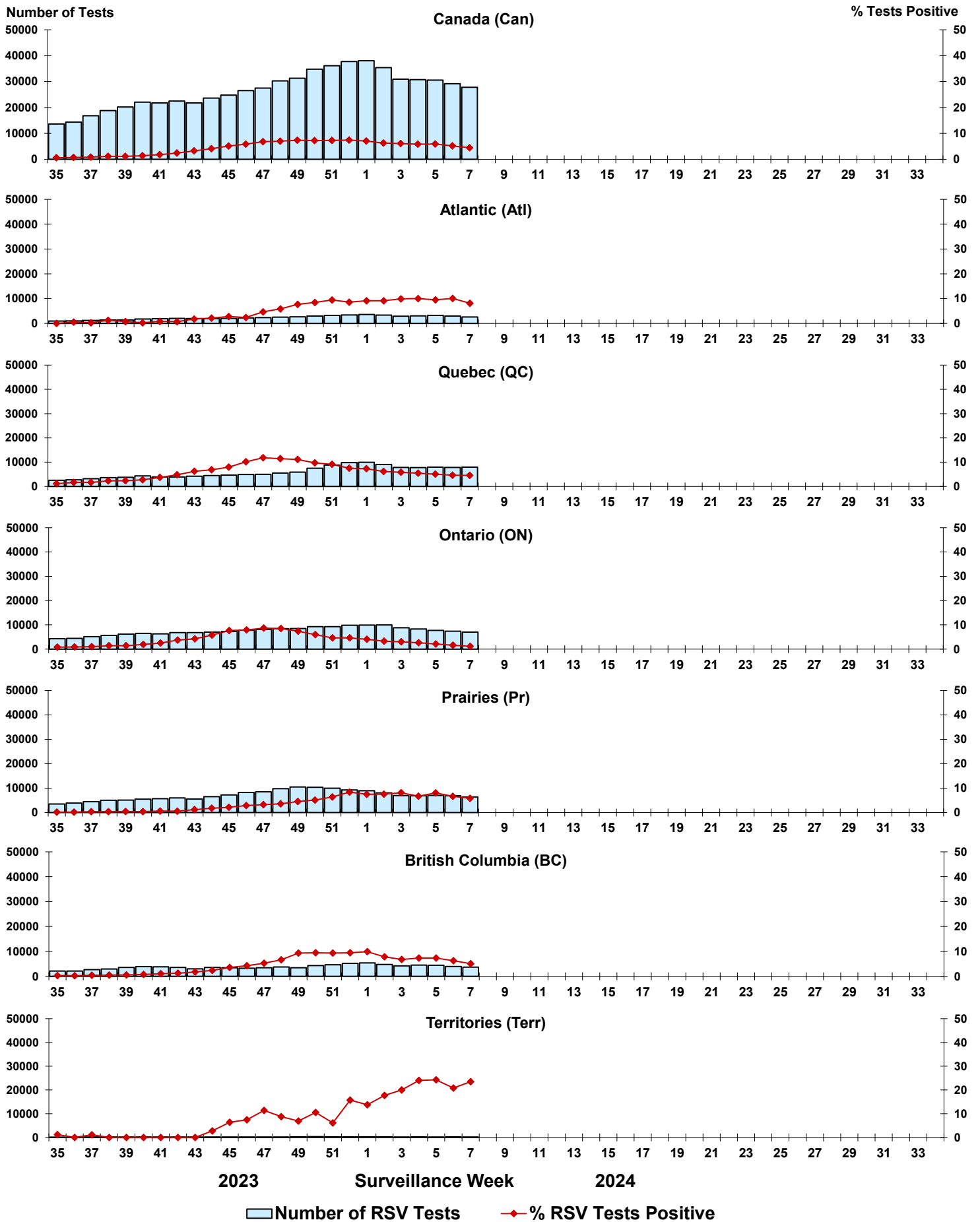




Figure 6: Positive Human parainfluenza virus (HPIV) tests (%) in Canada by region by surveillance week

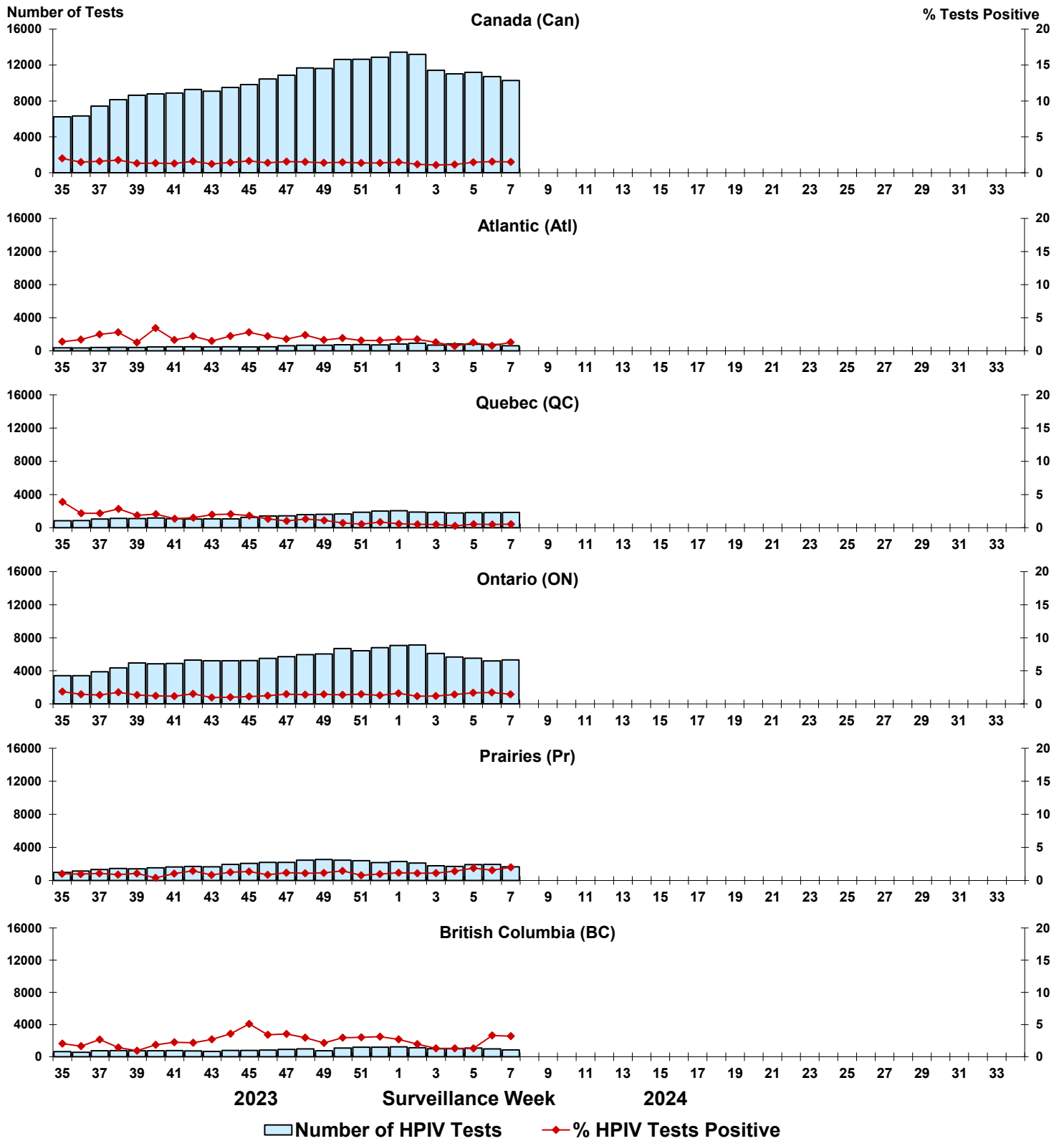


Figure 7: Positive Adenovirus (ADV) tests (%) in Canada by region by surveillance week

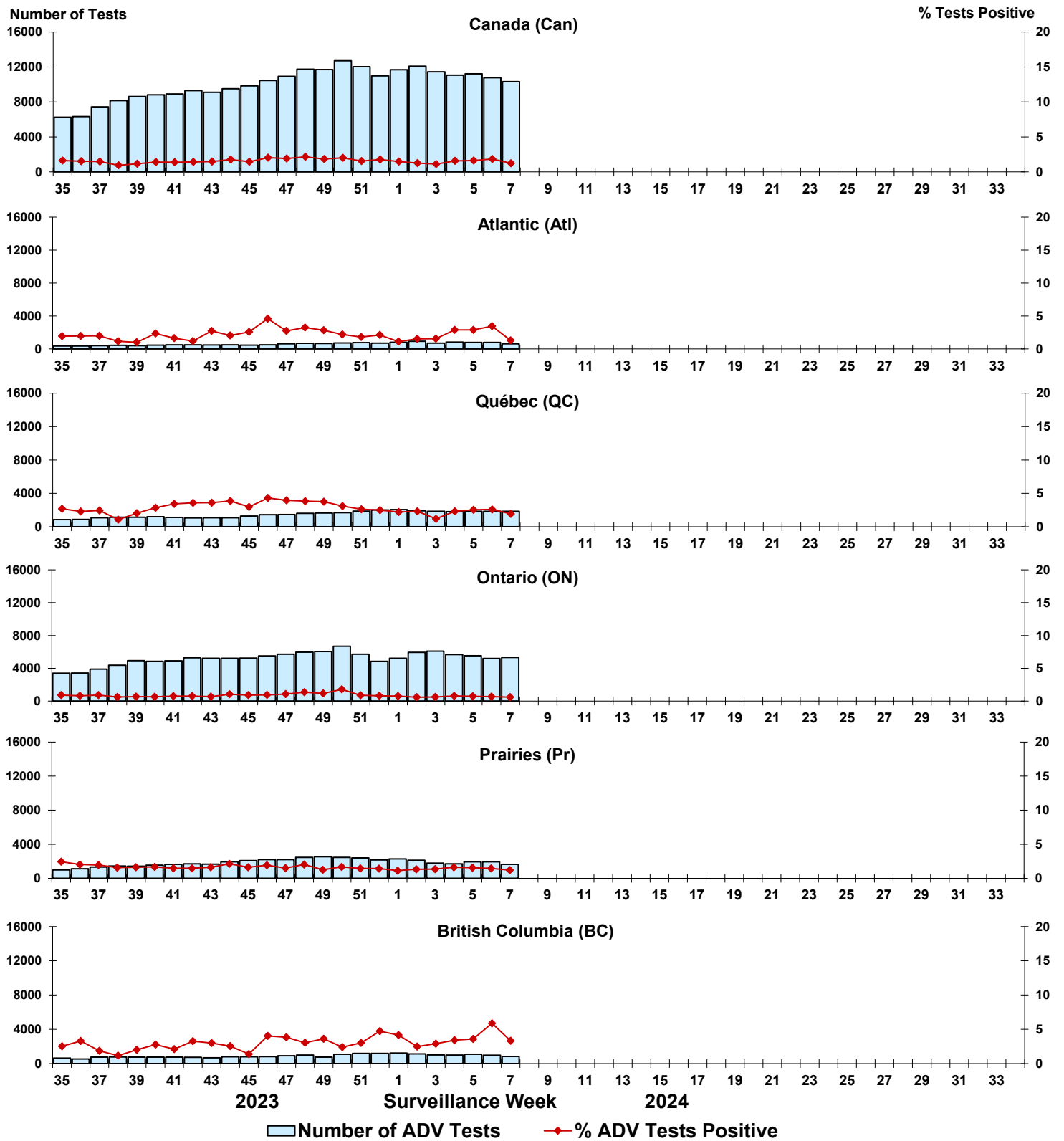


Figure 8: Positive Human metapneumovirus (HMPV) tests (%) in Canada by region by surveillance week

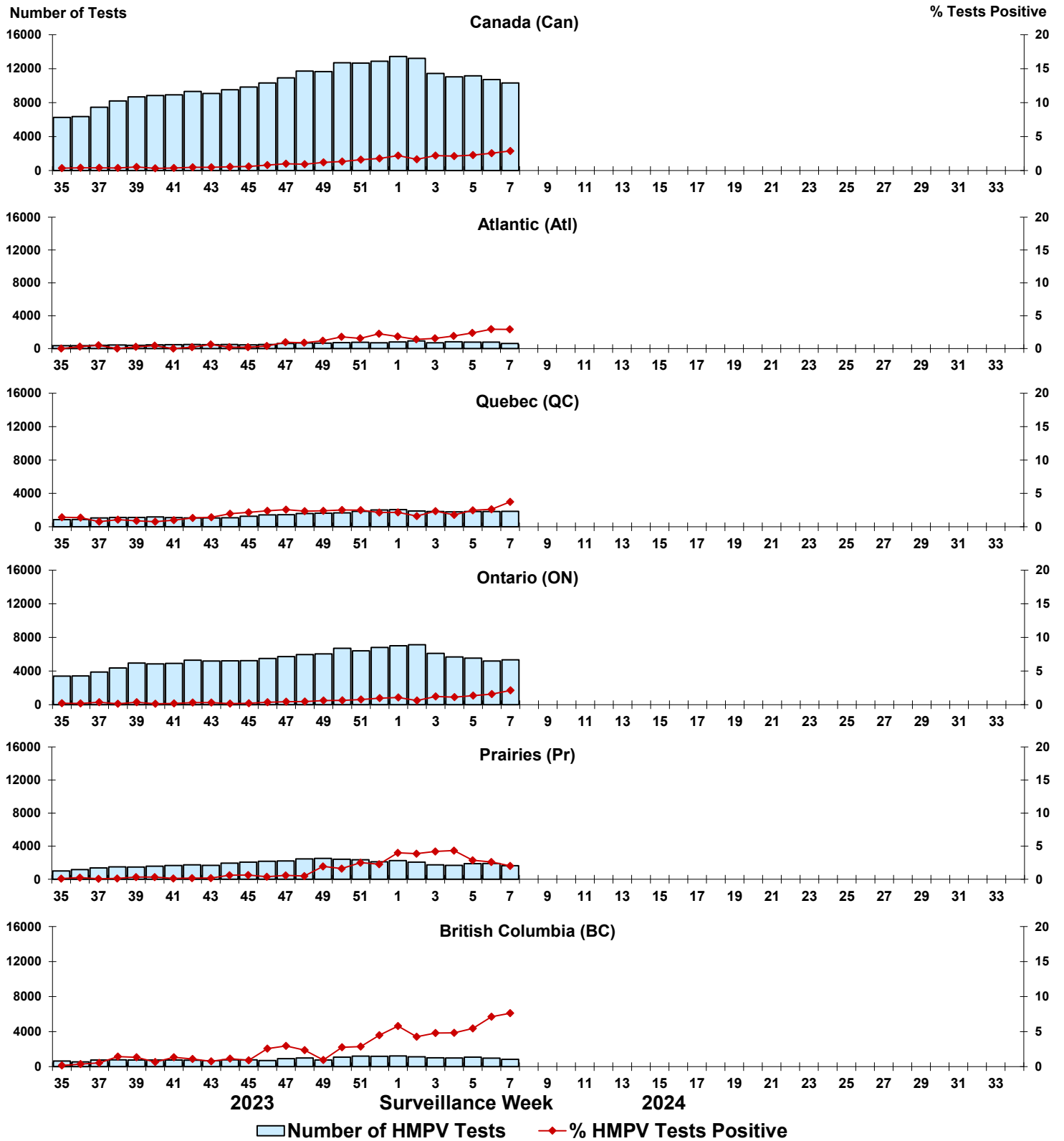


Figure 9: Positive Enterovirus/Rhinovirus (EV/RV) tests (%) in Canada by region by surveillance week

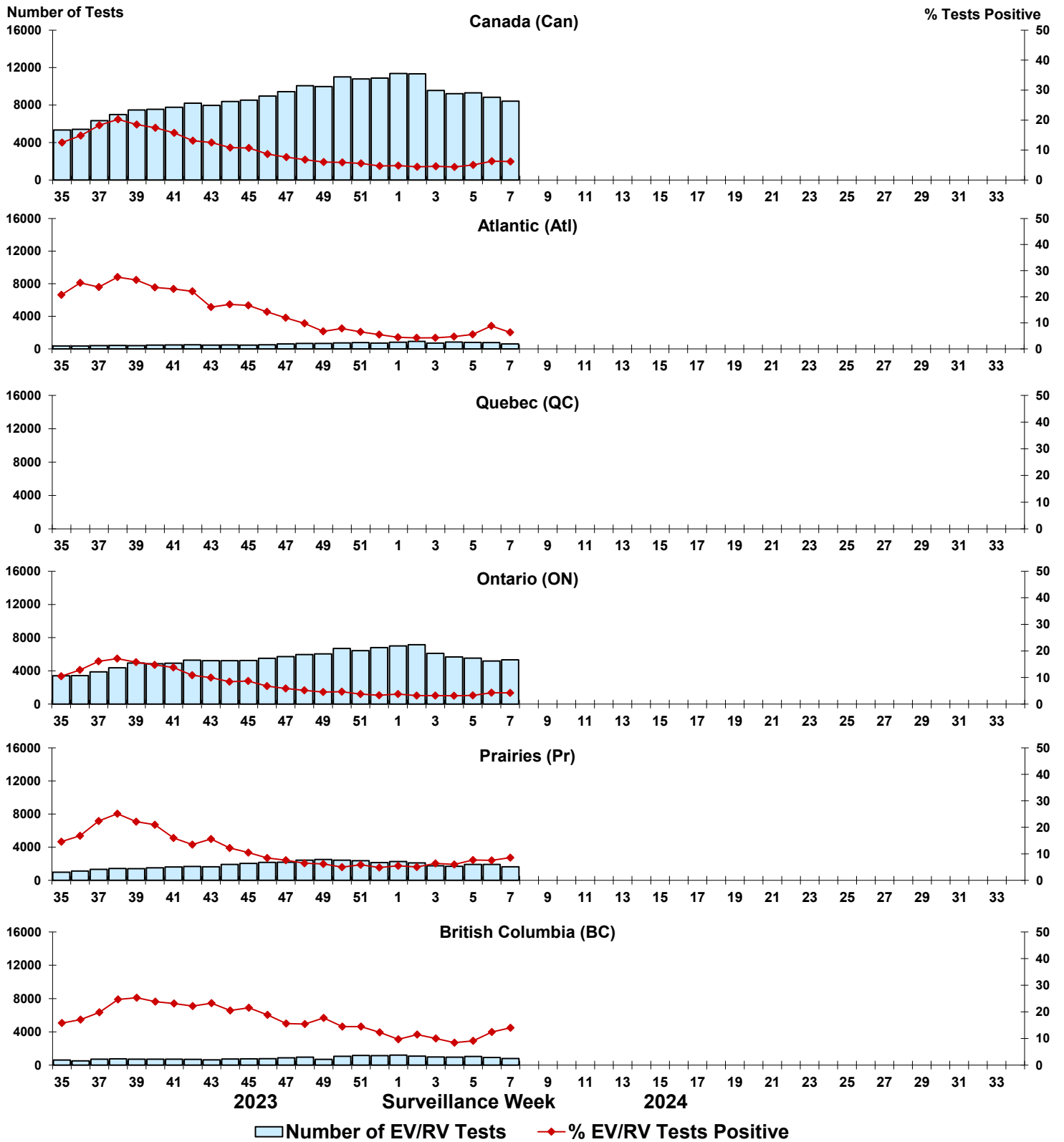


Figure 10: Positive Human coronavirus (HCoV) tests (%) in Canada by region by surveillance week

