

# RESPIRATORY VIRUS DETECTION REPORT

February 25 to March 2, 2024  
(Surveillance Week 2024-09)



Please note that the Respiratory Virus Detection Surveillance System (RVDSS) is a sentinel laboratory surveillance system that does not capture all respiratory virus testing performed in Canada; differences may exist between the data presented in this report and provincial/territorial epidemiological reports. SARS-CoV-2 laboratory data is included in this report to facilitate the comparison of positivity with other respiratory viruses. Interpretation should be made with caution as testing practices differ among viruses.

For additional SARS-CoV-2 surveillance information, please refer to the [COVID-19 epidemiology update](#).

## Overall Summary

In week 9 (weekending March 2, 2024) in Canada, participating RVDSS laboratories reported 2,319 detections of SARS-CoV-2 from 32,915 tests (7.0% positive). Among non-SARS-CoV-2 respiratory viruses, where test volumes are lower (range of 8,168 to 31,343 tests), activity of influenza is highest.

- National SARS-CoV-2 percent positivity has been decreasing since mid-December 2023.
- Influenza A percent positivity has decreased in recent weeks (2,144 detections; 6.8% positive) but remains higher than influenza B which is currently increasing (1,250 detections; 4.0% positive).
- RSV percent positivity has decreased in recent weeks (1,042 detections; 3.8% positive).
- Among other respiratory viruses, human coronavirus percent positivity is above average levels for this time of year (596 detections; 7.3% positive).
- 34/35 sentinel laboratories reported surveillance data

## Abbreviations

ADV: Adenovirus

Atl: Atlantic Canada

BC: British Columbia

Can: Canada

EORLA: Eastern Ontario Regional Laboratory Association

EV/RV: Enterovirus/Rhinovirus

Flu: Influenza

Flu A(H1N1)pdm09: Influenza A(H1N1)pdm09

Flu A(H3): Influenza A(H3N2)

Flu A (UnS): Influenza A(Unsubtyped)

HCoV: Human coronavirus 229E/OC43/NL63/HKU1

HMPV: Human metapneumovirus

HPIV: Human parainfluenza virus

HSC: Health Sciences Centre

N.C.: Data not collected

N.R.: Data not reported for current week

ON: Ontario

PR: Prairies

P.H.O.L.: Public Health Ontario Laboratory

QC: Quebec

RSV: Respiratory syncytial virus

RVDSS: Respiratory Virus Detection Surveillance System

SARS-CoV-2: Severe acute respiratory syndrome coronavirus 2

Terr: Territories of Canada

UHN: University Health Network

© His Majesty the King in Right of Canada, as represented by the Minister of Health, 2021

ISSN: 2564-2359 | Cat.: HP38-7E-PDF | Pub.: 210284

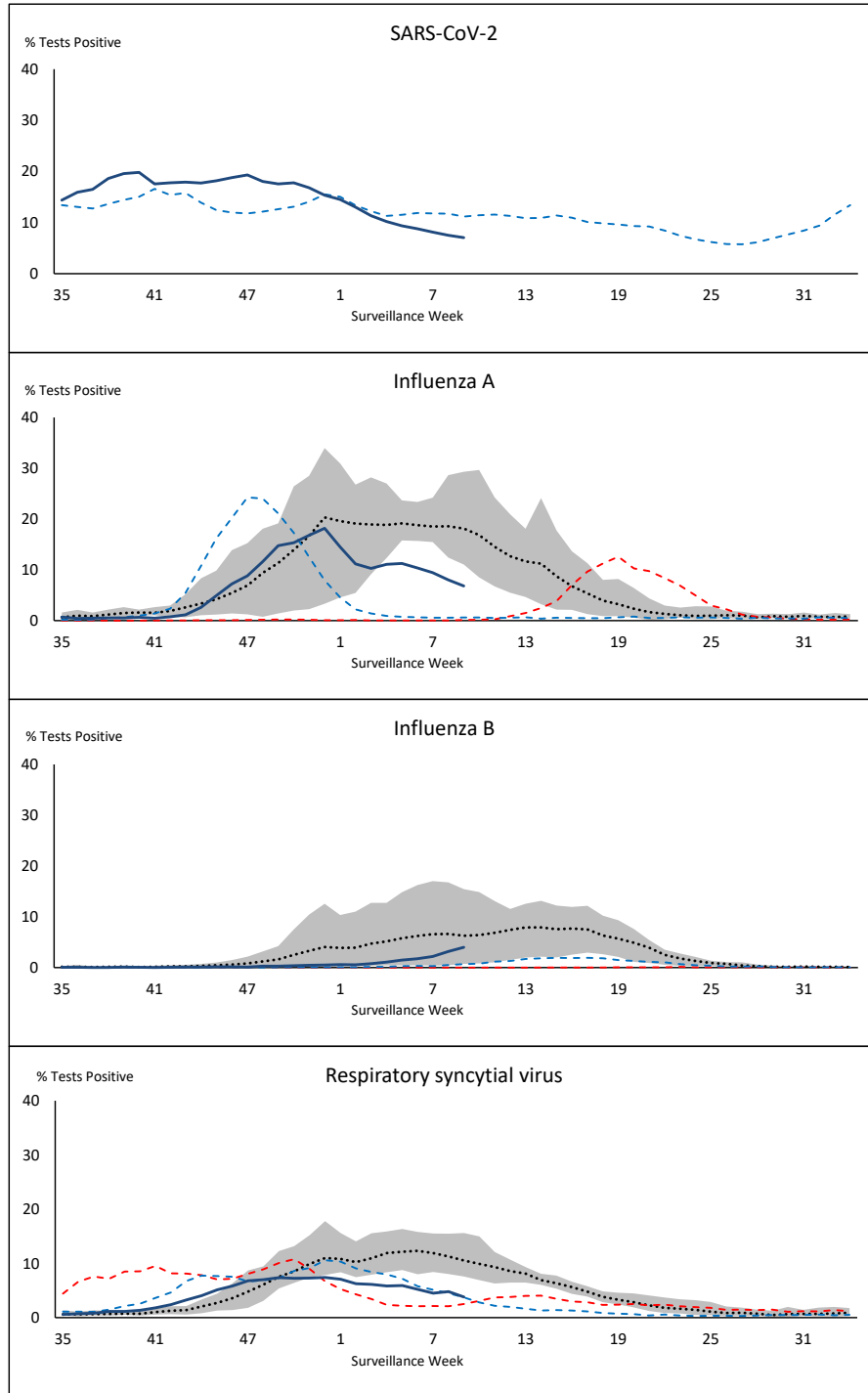


Public Health  
Agency of Canada

Agence de la santé  
publique du Canada

Canada

**Figure 1: Positive severe acute respiratory syndrome coronavirus 2 (SARS-CoV-2), influenza, and respiratory syncytial virus tests (%) reported by participating laboratories in Canada by surveillance week compared to average and range from 2014-2015 to 2019-2020 season**



— % Tests Positive, 2023-2024      - - - % Tests Positive, 2022-2023  
- - - % Tests Positive, 2021-2022      · · · · · % Tests Positive, six-year average (2014-2015 to 2019-2020)

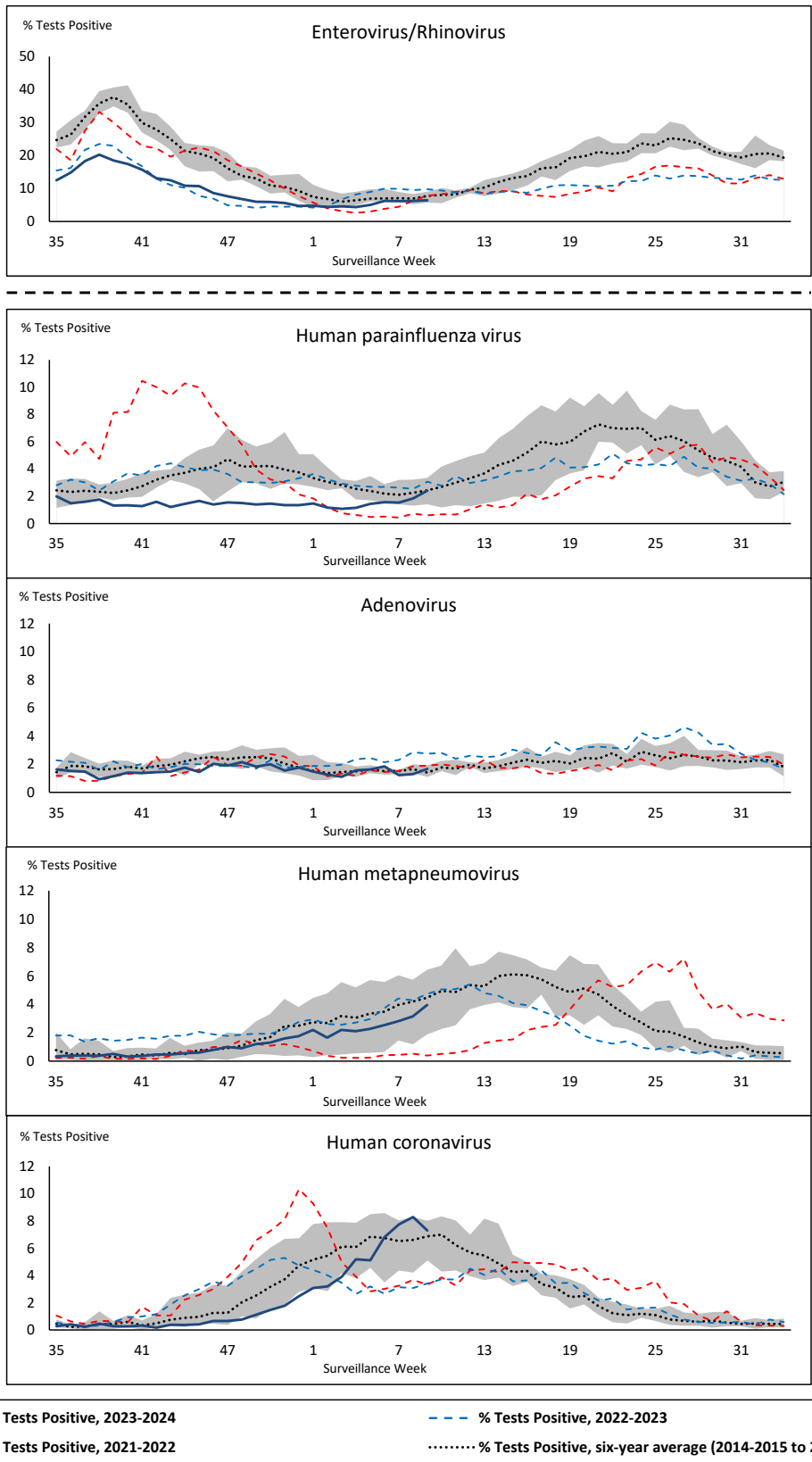
Shaded area represents the maximum and minimum % of respiratory virus tests positive reported by week from seasons 2014-2015 to 2019-2020

Note: Changes to testing practices during the COVID-19 pandemic may cause substantial changes to indicator estimates from previous years. Collection of laboratory testing practice meta-data to understand these changes is ongoing. Interpret trends with caution.

Note: SARS-CoV-2 surveillance was integrated into RVDSS at the beginning of the 2022-2023 season; no prior data is available for historical comparison.

Note: Data from week 11 of the 2019-2020 season onwards are excluded from the historical comparison due to the COVID-19 pandemic.

**Figure 2: Positive tests (%) of other respiratory viruses reported by participating laboratories in Canada by surveillance week compared to average and range from 2014-2015 to 2019-2020 season**



Shaded area represents the maximum and minimum % of respiratory virus tests positive reported by week from seasons 2014-2015 to 2019-2020

Note: Changes to testing practices during the COVID-19 pandemic may cause substantial changes to indicator estimates from previous years. Collection of laboratory testing practice meta-data to understand these changes is ongoing. Interpret trends with caution.

Note: Data from week 11 of the 2019-2020 season onwards are excluded from the historical comparison due to the COVID-19 pandemic.

Note: % Tests Positive scale changes across the dashed line

**Table 1: Respiratory virus detections for the week ending March 2, 2024 (surveillance week 2024-09)**

Reporting Laboratory	SARS-CoV-2 Tested	SARS-CoV-2 Positive	Flu Tested	A(H1)pdm09 Positive	A(H3) Positive	A(UnS) Positive	Total Flu A Positive	Total Flu B Positive	RSV Tested	RSV Positive	HPIV Tested	HPIV 1 Positive	HPIV 2 Positive	HPIV 3 Positive	HPIV 4 Positive	Other HPIV Positive	ADV Tested	ADV Positive	HMPV Tested	HMPV Positive	EV/RV Tested	EV/RV Positive	HCoV Tested	HCoV Positive	
Newfoundland	530	40	420	0	0	29	29	4	420	27	420	1	1	1	1	0	420	17	420	12	420	19	420	20	
Prince Edward Island	220	7	214	0	0	11	11	19	214	28	30	1	0	0	0	0	30	3	30	1	30	3	30	8	
Nova Scotia	1156	88	1048	0	0	114	114	13	926	38	32	0	0	0	0	0	32	0	32	0	32	3	32	3	
New Brunswick	1086	75	1152	14	0	34	48	81	1152	81	105	0	0	0	1	0	105	5	105	9	105	12	105	7	
<b>Atlantic</b>	<b>2992</b>	<b>210</b>	<b>2834</b>	<b>14</b>	<b>0</b>	<b>188</b>	<b>202</b>	<b>117</b>	<b>2712</b>	<b>174</b>	<b>587</b>	<b>2</b>	<b>1</b>	<b>1</b>	<b>2</b>	<b>0</b>	<b>587</b>	<b>25</b>	<b>587</b>	<b>22</b>	<b>587</b>	<b>37</b>	<b>587</b>	<b>38</b>	
Région Nord-Est	1536	65	1677	0	0	152	152	83	753	58	93	0	0	0	0	0	93	3	92	9	N.C.	N.C.	93	5	
Québec-Chaudière-Appalaches	1608	68	2126	0	0	261	261	217	1980	82	682	0	0	0	1	0	697	19	683	34	N.C.	N.C.	521	42	
Centre-du-Québec	2184	103	2070	0	0	284	284	89	1024	57	33	0	0	1	0	0	33	4	33	3	N.C.	N.C.	34	2	
Montréal-Laval	2205	86	3095	0	0	304	304	41	2014	66	958	1	0	16	0	0	958	14	960	43	N.C.	N.C.	958	70	
Ouest du Québec	1339	91	841	0	0	97	97	27	815	17	23	0	0	1	0	0	23	0	23	1	N.C.	N.C.	23	3	
Montérégie	1604	98	1575	0	0	144	144	32	1574	43	7	0	0	0	0	0	7	0	7	0	N.C.	N.C.	7	2	
<b>Province of Québec</b>	<b>10476</b>	<b>511</b>	<b>11384</b>	<b>0</b>	<b>0</b>	<b>1242</b>	<b>1242</b>	<b>489</b>	<b>8160</b>	<b>323</b>	<b>1796</b>	<b>1</b>	<b>0</b>	<b>18</b>	<b>1</b>	<b>0</b>	<b>1811</b>	<b>40</b>	<b>1798</b>	<b>90</b>	<b>N.C.</b>	<b>N.C.</b>	<b>1636</b>	<b>124</b>	
P.H.O.L. - Ottawa	227	59	154	10	0	3	13	2	154	0	113	0	0	0	0	3	113	1	113	5	113	4	113	19	
EORLA	1084	69	559	0	0	54	54	33	559	10	43	0	1	5	0	0	43	0	43	5	43	5	43	1	
P.H.O.L. - Kingston	137	5	100	14	0	6	20	0	100	1	70	0	0	0	0	1	70	1	70	2	70	1	70	15	
UHN / Mount Sinai Hospital	782	28	614	0	0	21	21	2	614	8	97	0	0	1	0	0	97	0	97	0	97	5	97	4	
P.H.O.L. - Toronto	470	38	948	14	10	13	35	23	948	20	895	0	0	0	0	47	895	10	895	67	895	48	895	144	
Sick Kids Hospital - Toronto	123	9	117	1	2	0	3	5	117	1	117	0	0	5	1	0	117	4	117	7	117	23	117	5	
Shared Hospital Laboratory	1838	53	1461	28	10	10	48	36	1462	10	1453	0	0	0	0	11	1453	16	1453	15	1453	32	1453	37	
P.H.O.L. - Sault Ste. Marie	7	0	12	0	0	1	1	0	12	1	11	0	0	0	0	0	11	0	11	0	11	0	11	1	
P.H.O.L. - Timmins	44	10	52	0	1	2	3	0	52	0	38	0	0	0	0	1	38	0	38	0	38	1	38	4	
St. Joseph's - London	N.R.	N.R.	N.R.	N.R.	N.R.	N.R.	N.R.	N.R.	N.R.	N.R.	N.R.	N.R.	N.R.	N.R.	N.R.	N.R.	N.R.	N.R.	N.R.	N.R.	N.R.	N.R.	N.R.	N.R.	N.R.
P.H.O.L. - London	493	79	417	21	3	40	62	8	417	3	305	0	0	0	0	10	305	0	305	7	305	10	305	29	
P.H.O.L. - Orillia	14	1	12	1	0	0	1	0	12	0	10	0	0	0	0	1	10	0	10	0	10	0	10	5	
P.H.O.L. - Thunder Bay	55	9	35	0	0	1	1	2	35	0	29	0	0	0	0	0	29	0	29	1	29	0	29	1	
P.H.O.L. - Sudbury	21	0	27	1	0	1	2	0	27	0	17	0	0	0	0	4	17	0	17	0	17	0	17	3	
P.H.O.L. - Hamilton	162	9	145	5	3	5	13	3	145	0	131	0	0	0	0	12	131	4	131	6	131	18	131	11	
P.H.O.L. - Peterborough	37	2	38	1	2	4	7	1	38	3	29	0	0	0	0	2	29	0	29	0	29	6	29	1	
St. Joseph's - Hamilton	1774	69	1646	0	0	91	91	70	1646	18	1646	0	0	39	0	0	1646	13	1646	53	1646	81	0	0	
Sault Area Hospital	197	29	116	1	0	0	1	1	116	6	85	0	1	0	1	0	85	1	85	2	85	1	85	11	
<b>Province of Ontario</b>	<b>7465</b>	<b>469</b>	<b>6453</b>	<b>97</b>	<b>31</b>	<b>252</b>	<b>376</b>	<b>186</b>	<b>6454</b>	<b>81</b>	<b>5089</b>	<b>0</b>	<b>1</b>	<b>50</b>	<b>2</b>	<b>92</b>	<b>5089</b>	<b>50</b>	<b>5089</b>	<b>170</b>	<b>5089</b>	<b>235</b>	<b>3443</b>	<b>291</b>	
Manitoba	1462	165	969	0	0	13	13	23	969	46	70	0	0	1	0	0	70	2	85	7	70	9	85	14	
Saskatchewan	1689	137	1167	0	0	8	8	112	1001	68	413	1	0	7	0	0	413	6	413	28	413	25	413	27	
Alberta	4641	356	4222	37	31	4	79	223	3993	143	1043	5	2	28	0	0	1043	10	977	3	1026	78	1043	47	
<b>Prairies</b>	<b>7792</b>	<b>658</b>	<b>6358</b>	<b>37</b>	<b>31</b>	<b>25</b>	<b>100</b>	<b>358</b>	<b>5963</b>	<b>257</b>	<b>1526</b>	<b>6</b>	<b>2</b>	<b>36</b>	<b>0</b>	<b>0</b>	<b>1526</b>	<b>18</b>	<b>1475</b>	<b>38</b>	<b>1509</b>	<b>112</b>	<b>1541</b>	<b>88</b>	
<b>British Columbia</b>	<b>3973</b>	<b>457</b>	<b>4148</b>	<b>31</b>	<b>26</b>	<b>5</b>	<b>220</b>	<b>79</b>	<b>4013</b>	<b>177</b>	<b>1002</b>	<b>1</b>	<b>7</b>	<b>15</b>	<b>3</b>	<b>0</b>	<b>1002</b>	<b>30</b>	<b>1002</b>	<b>75</b>	<b>961</b>	<b>138</b>	<b>961</b>	<b>55</b>	
Yukon	54	2	39	0	0	0	4	1	39	1	N.C.	N.C.	N.C.	N.C.	N.C.	N.C.	N.C.	N.C.	N.C.	N.C.	N.C.	N.C.	N.C.	N.C.	
Northwest Territories	44	3	43	0	0	0	0	12	43	11	N.C.	N.C.	N.C.	N.C.	N.C.	N.C.	43	5	43	0	43	2	N.C.	N.C.	
Nunavut	119	9	84	0	0	0	0	8	84	18	N.C.	N.C.	N.C.	N.C.	N.C.	N.C.	N.C.	N.C.	N.C.	N.C.	N.C.	N.C.	N.C.	N.C.	
<b>Territories</b>	<b>217</b>	<b>14</b>	<b>166</b>	<b>0</b>	<b>0</b>	<b>0</b>	<b>4</b>	<b>21</b>	<b>166</b>	<b>30</b>	<b>N.C.</b>	<b>N.C.</b>	<b>N.C.</b>	<b>N.C.</b>	<b>N.C.</b>	<b>N.C.</b>	<b>43</b>	<b>5</b>	<b>43</b>	<b>0</b>	<b>43</b>	<b>2</b>	<b>N.C.</b>	<b>N.C.</b>	
<b>CANADA</b>	<b>32915</b>	<b>2319</b>	<b>31343</b>	<b>179</b>	<b>88</b>	<b>1712</b>	<b>2144</b>	<b>1250</b>	<b>27468</b>	<b>1042</b>	<b>10000</b>	<b>10</b>	<b>11</b>	<b>120</b>	<b>8</b>	<b>92</b>	<b>10058</b>	<b>168</b>	<b>9994</b>	<b>395</b>	<b>8189</b>	<b>524</b>	<b>8168</b>	<b>596</b>	

The data in the RVDSS report represent surveillance data available at the time of writing. Data missing from the current week are denoted by N.R. Data not collected by reporting lab denoted by N.C.

Some specimens from Yukon (YT) are sent to reference laboratories in British Columbia and reported results reflect specimens identified as originating from YT.

Results from British Columbia comprise of specimens from the following sites: Children's and Women's Hospital Laboratory, Fraser Health Medical Microbiology Laboratory, Island Health, Providence Health Care, Vancouver Coastal Health sites, Victoria General Hospital, BCCDC Public Health Laboratory, Interior Health Authority sites and Northern Health Authority sites.

Due to different testing protocols of laboratories across Canada, influenza A subtype detection counts may not be included in total influenza A detection counts. Total influenza A and B positive counts are used to calculate percentage of tests positive.

Delays in the reporting of data may cause data to change retrospectively.

**Table 2: Cumulative respiratory virus detections from August 27, 2023 to March 2, 2024 (surveillance weeks 2023-35 to 2024-09)**

Reporting Laboratory	SARS-CoV-2 Tested	SARS-CoV-2 Positive	Flu Tested	A(H1)pdm09 Positive	A(H3) Positive	A(UnS) Positive	Total Flu A Positive	Total Flu B Positive	RSV Tested	RSV Positive	HPIV Tested	HPIV 1 Positive	HPIV 2 Positive	HPIV 3 Positive	HPIV 4 Positive	Other HPIV Positive	ADV Tested	ADV Positive	HMPV Tested	HMPV Positive	EV/RV Tested	EV/RV Positive	HCoV Tested	HCoV Positive
Newfoundland	17150	2642	12465	0	0	1265	1265	52	12465	801	12465	11	57	23	99	0	12465	215	12465	188	12465	1040	12465	277
Prince Edward Island	6194	697	3701	0	0	511	511	42	3701	309	416	3	0	0	8	0	415	24	405	6	415	112	399	17
Nova Scotia	39527	7904	26174	0	0	2182	2182	214	21459	1295	931	15	2	2	10	0	931	39	924	3	931	206	930	8
New Brunswick	29505	3631	27106	843	22	1798	2663	259	26702	1601	2385	7	4	1	26	0	2385	93	2385	40	2385	469	2385	89
<b>Atlantic</b>	<b>92376</b>	<b>14874</b>	<b>69446</b>	<b>843</b>	<b>22</b>	<b>5756</b>	<b>6621</b>	<b>567</b>	<b>64327</b>	<b>4006</b>	<b>16197</b>	<b>36</b>	<b>63</b>	<b>26</b>	<b>143</b>	<b>0</b>	<b>16196</b>	<b>371</b>	<b>16179</b>	<b>237</b>	<b>16196</b>	<b>1827</b>	<b>16179</b>	<b>391</b>
Région Nord-Est	47127	6873	41722	5	0	4501	4506	235	16161	1207	2060	14	12	10	16	0	2060	90	2017	66	N.C.	N.C.	2060	57
Québec-Chaudière-Appalaches	56216	9167	35244	0	0	5112	5112	479	33954	2377	13662	21	9	11	12	0	14041	454	13662	332	N.C.	N.C.	11395	330
Centre-du-Québec	68906	12186	30712	0	0	3941	3941	281	19082	1465	1036	15	8	14	7	0	1036	54	1036	39	N.C.	N.C.	1065	38
Montréal-Laval	83763	13652	64961	4	2	5951	5957	169	42825	2655	22578	94	38	139	24	0	22578	447	22641	429	N.C.	N.C.	22578	707
Ouest du Québec	46042	9883	18794	4	0	1850	1854	123	18611	1019	526	11	3	8	7	0	526	39	526	12	N.C.	N.C.	526	22
Montérégie	44146	7840	34112	0	0	2881	2881	119	33048	1617	179	1	0	0	1	0	179	6	179	3	N.C.	N.C.	179	3
<b>Province of Québec</b>	<b>346200</b>	<b>59601</b>	<b>225545</b>	<b>13</b>	<b>2</b>	<b>24236</b>	<b>24251</b>	<b>1406</b>	<b>163681</b>	<b>10340</b>	<b>40041</b>	<b>156</b>	<b>70</b>	<b>182</b>	<b>67</b>	<b>0</b>	<b>40420</b>	<b>1090</b>	<b>40061</b>	<b>881</b>	<b>N.C.</b>	<b>N.C.</b>	<b>37803</b>	<b>1157</b>
P.H.O.L. - Ottawa	9621	3532	6443	269	53	143	342	15	6437	127	3839	0	0	0	0	65	3839	12	3837	50	3839	393	3837	145
EORLA	35902	4341	16302	0	0	1465	1465	155	16302	1096	1049	2	5	15	4	0	1024	11	1049	18	1049	195	1049	25
P.H.O.L. - Kingston	6721	2014	3675	125	17	84	200	3	3675	167	2588	0	0	0	0	41	2588	11	2588	10	2588	316	2588	52
UHN / Mount Sinai Hospital	30185	2927	18725	40	10	510	560	53	18725	199	997	0	0	8	2	0	997	1	997	2	997	44	997	32
P.H.O.L. - Toronto	17045	5341	30156	1098	890	279	1624	143	30147	1024	27549	0	0	0	0	796	27556	311	27534	375	27549	2669	27534	1128
Sick Kids Hospital - Toronto	3527	292	3139	100	95	20	215	26	3139	305	3139	14	12	55	19	0	3139	77	3139	65	3139	550	3139	88
Shared Hospital Laboratory	47014	4402	39964	773	505	264	1542	189	39970	1318	39788	0	0	0	0	239	34134	293	39823	154	39868	1332	39845	420
P.H.O.L. - Sault Ste. Marie	414	186	490	48	3	16	61	0	490	44	336	0	0	0	0	4	336	1	336	0	336	21	336	29
P.H.O.L. - Timmins	970	278	935	56	9	26	80	0	935	60	751	0	0	0	0	22	751	4	751	4	751	47	751	20
St. Joseph's - London	23380	3287	11728	0	0	873	873	89	11728	693	1722	0	0	0	0	19	1741	26	1741	11	1743	208	1741	42
P.H.O.L. - London	13064	3976	9515	435	128	141	527	40	9512	461	7562	0	0	0	0	195	7562	34	7560	57	7562	669	7560	236
P.H.O.L. - Orillia	524	138	1208	71	17	11	99	0	1205	74	1144	0	0	0	0	27	1144	15	1144	18	1144	144	1144	16
P.H.O.L. - Thunder Bay	1671	480	1012	57	0	8	37	4	1009	27	843	0	0	0	0	26	843	5	843	23	843	53	843	9
P.H.O.L. - Sudbury	629	238	740	32	1	20	53	1	738	21	499	0	0	0	0	11	500	1	499	1	499	43	499	11
P.H.O.L. - Hamilton	6563	2020	5280	134	65	83	228	24	5279	170	3925	0	0	0	0	120	3925	73	3924	62	3925	511	3924	160
P.H.O.L. - Peterborough	2061	665	2046	202	204	65	141	10	2036	220	1626	0	0	0	0	48	1626	35	1626	24	1626	271	1626	33
St. Joseph's - Hamilton	52316	5581	46095	0	0	2887	2887	360	46095	1717	46095	0	0	299	0	0	46095	289	46095	344	46095	2675	0	0
Sault Area Hospital	5147	728	3460	167	10	49	226	7	3453	189	2714	24	0	11	17	0	2665	33	2665	7	2665	239	2675	44
<b>Province of Ontario</b>	<b>256754</b>	<b>40426</b>	<b>200913</b>	<b>3607</b>	<b>2007</b>	<b>6944</b>	<b>11160</b>	<b>1119</b>	<b>200875</b>	<b>7912</b>	<b>146166</b>	<b>40</b>	<b>17</b>	<b>388</b>	<b>42</b>	<b>1613</b>	<b>140465</b>	<b>1232</b>	<b>146151</b>	<b>1225</b>	<b>146218</b>	<b>10380</b>	<b>100088</b>	<b>2490</b>
Manitoba	44464	6651	33559	140	11	1797	1948	153	33559	1240	2516	0	10	13	41	0	2516	107	3241	115	2516	490	3241	86
Saskatchewan	57717	6924	38689	101	8	5309	5418	810	34946	1341	12438	26	9	38	20	0	12438	249	12438	673	12438	1235	12438	260
Alberta	149453	18629	128555	11626	696	578	12970	1671	119786	5638	35406	123	86	275	3	0	35398	425	34461	26	34851	3239	35405	729
<b>Prairies</b>	<b>251634</b>	<b>32204</b>	<b>200803</b>	<b>11867</b>	<b>715</b>	<b>7684</b>	<b>20336</b>	<b>2634</b>	<b>188291</b>	<b>8219</b>	<b>50360</b>	<b>149</b>	<b>105</b>	<b>326</b>	<b>64</b>	<b>0</b>	<b>50352</b>	<b>781</b>	<b>50140</b>	<b>814</b>	<b>49805</b>	<b>4964</b>	<b>51084</b>	<b>1075</b>
<b>British Columbia</b>	<b>103973</b>	<b>14288</b>	<b>104506</b>	<b>3915</b>	<b>672</b>	<b>239</b>	<b>7984</b>	<b>492</b>	<b>102119</b>	<b>5352</b>	<b>24223</b>	<b>111</b>	<b>164</b>	<b>171</b>	<b>162</b>	<b>0</b>	<b>24225</b>	<b>753</b>	<b>24110</b>	<b>823</b>	<b>23231</b>	<b>3635</b>	<b>23208</b>	<b>606</b>
Yukon	1511	171	975	30	12	0	54	3	967	44	N.C.	N.C.	N.C.	N.C.	N.C.	N.C.	N.C.	N.C.	N.C.	N.C.	N.C.	N.C.	N.C.	N.C.
Northwest Territories	1008	66	947	166	6	1	173	29	947	137	N.C.	N.C.	N.C.	N.C.	N.C.	N.C.	748	38	748	7	947	119	N.C.	N.C.
Nunavut	3360	297	2331	426	30	51	507	33	2331	303	N.C.	N.C.	N.C.	N.C.	N.C.	N.C.	N.C.	N.C.	N.C.	N.C.	N.C.	N.C.	N.C.	N.C.
<b>Territories</b>	<b>5879</b>	<b>534</b>	<b>4253</b>	<b>622</b>	<b>48</b>	<b>52</b>	<b>734</b>	<b>65</b>	<b>4245</b>	<b>484</b>	<b>N.C.</b>	<b>N.C.</b>	<b>N.C.</b>	<b>N.C.</b>	<b>N.C.</b>	<b>N.C.</b>	<b>748</b>	<b>38</b>	<b>748</b>	<b>7</b>	<b>947</b>	<b>119</b>	<b>N.C.</b>	<b>N.C.</b>
<b>CANADA</b>	<b>1056816</b>	<b>161927</b>	<b>805466</b>	<b>20867</b>	<b>3466</b>	<b>44911</b>	<b>71086</b>	<b>6283</b>	<b>723538</b>	<b>36313</b>	<b>276987</b>	<b>492</b>	<b>419</b>	<b>1093</b>	<b>478</b>	<b>1613</b>	<b>272406</b>	<b>4265</b>	<b>277389</b>	<b>3987</b>	<b>236397</b>	<b>20925</b>	<b>228362</b>	<b>5719</b>

The data in the RVDSS report represent surveillance data available at the time of writing. Data not collected by reporting lab denoted by N.C.

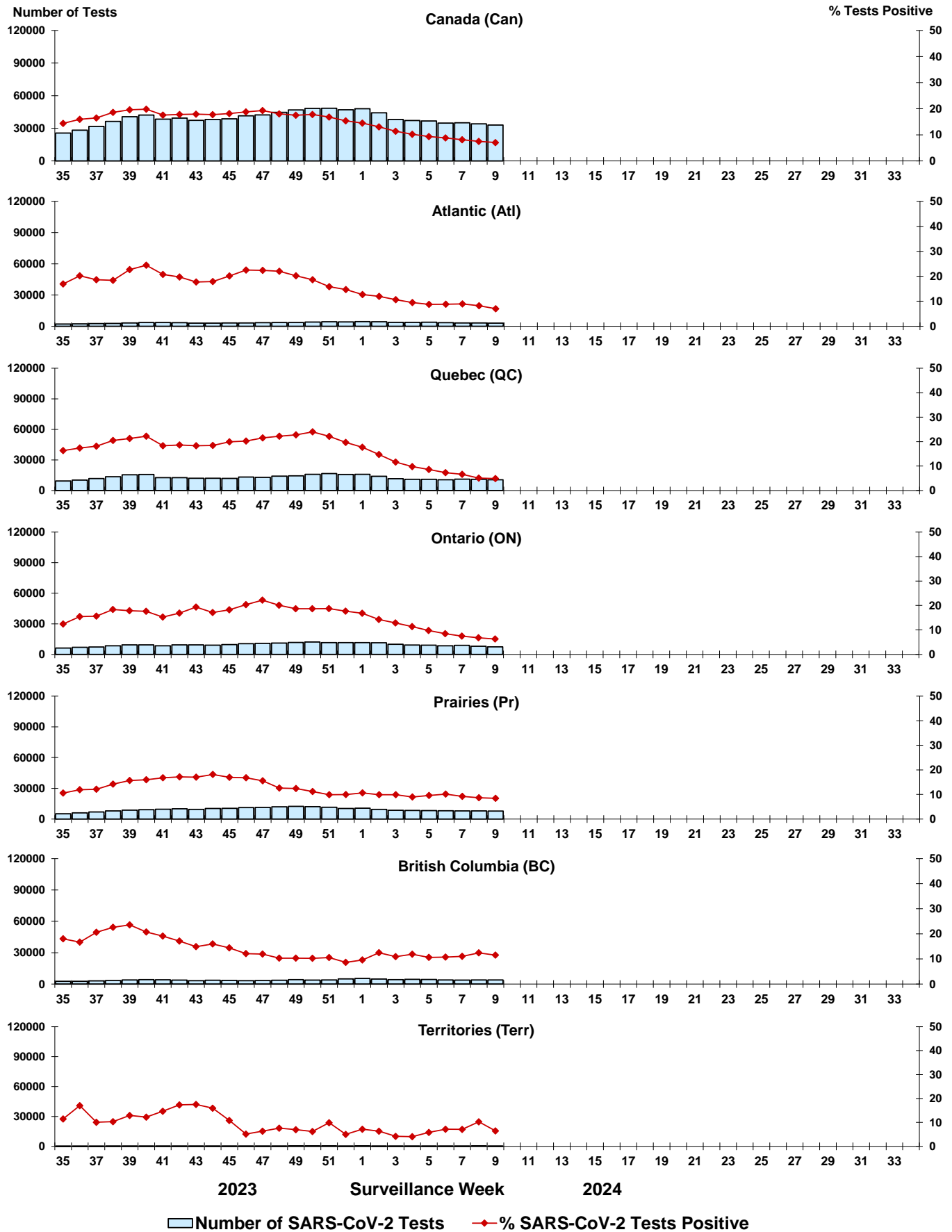
Some specimens from Yukon (YT) are sent to reference laboratories in British Columbia and reported results reflect specimens identified as originating from YT.

Results from British Columbia comprise of specimens from the following sites: Children's and Women's Hospital Laboratory, Fraser Health Medical Microbiology Laboratory, Island Health, Providence Health Care, Vancouver Coastal Health sites, Victoria General Hospital, BCCDC Public Health Laboratory, Interior Health Authority sites and Northern Health Authority sites.

Due to different testing protocols of laboratories across Canada, influenza A subtype detection counts may not be included in total influenza A detection counts. Total influenza A and B positive counts are used to calculate percentage of tests positive.

Delays in the reporting of data may cause data to change retrospectively. Due to these delays, the sum of weekly report totals do not add up to cumulative totals.

**Figure 3: Positive severe acute respiratory syndrome coronavirus 2 (SARS-CoV-2) tests (%) in Canada by region by surveillance week**



Note: Differences in positivity between jurisdictions can reflect differences in testing practices. Please interpret with caution.

Figure 4: Positive Influenza (Flu) tests (%) in Canada by region by surveillance week

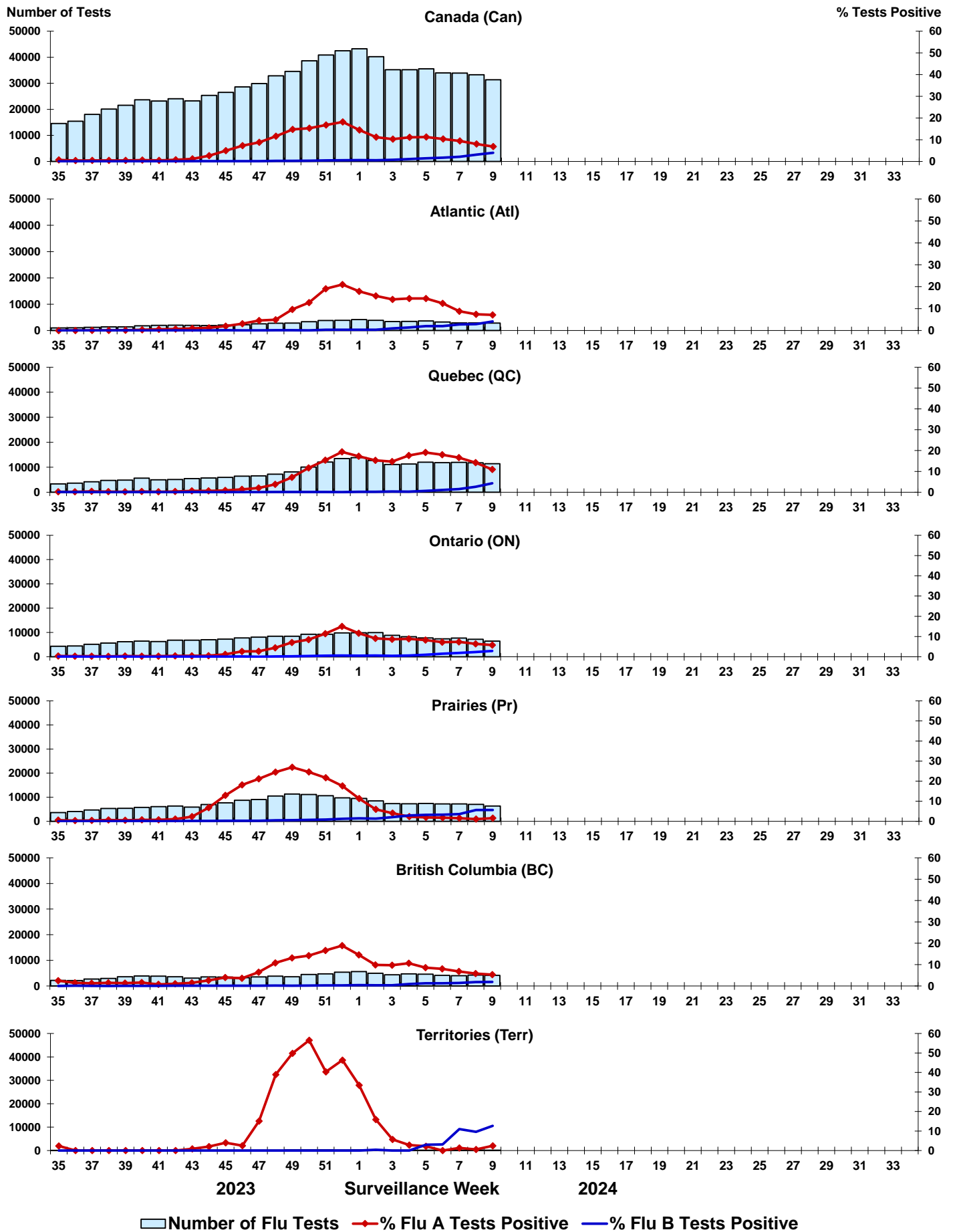


Figure 5: Positive Respiratory syncytial virus (RSV) tests (%) in Canada by region by surveillance week

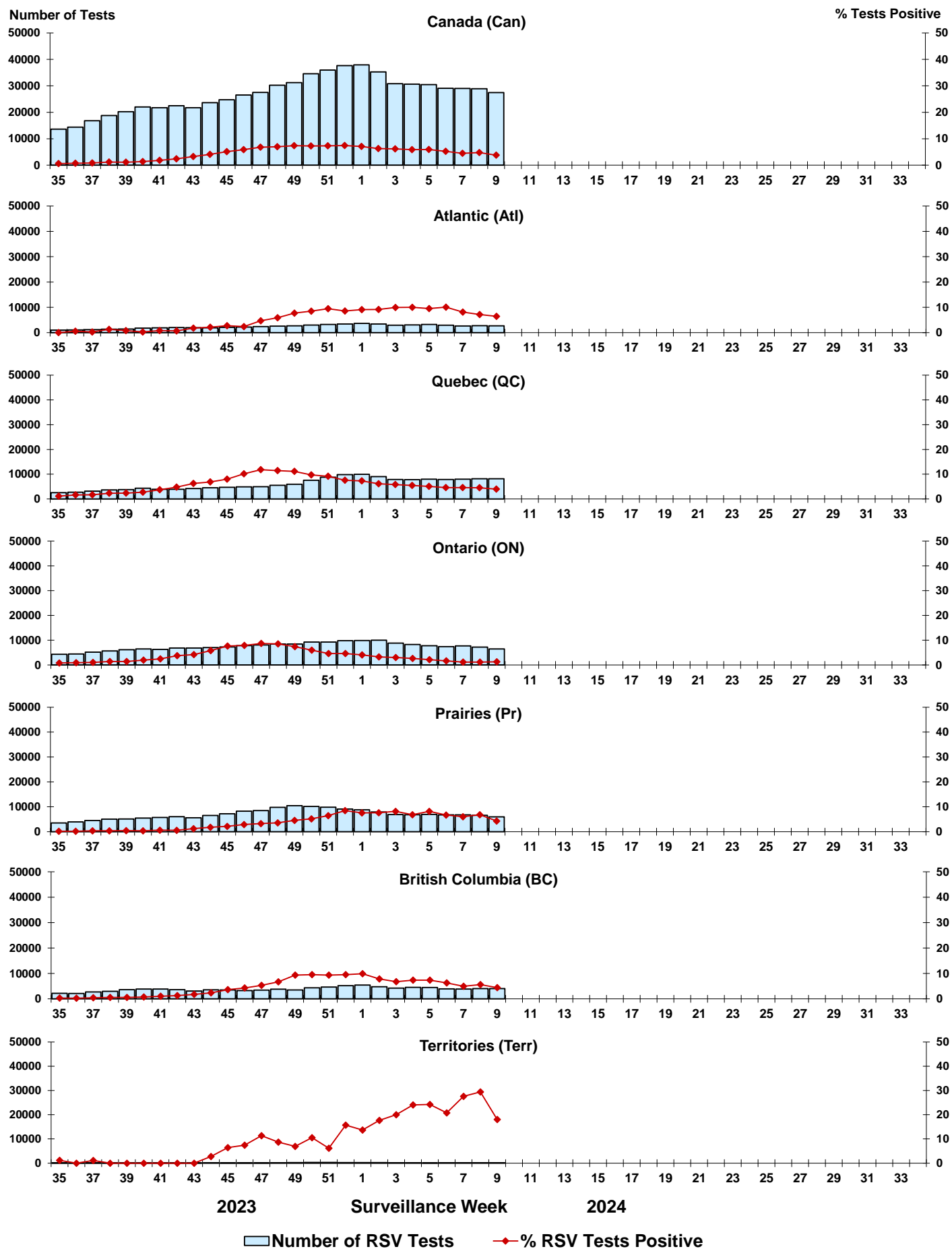




Figure 6: Positive Human parainfluenza virus (HPIV) tests (%) in Canada by region by surveillance week

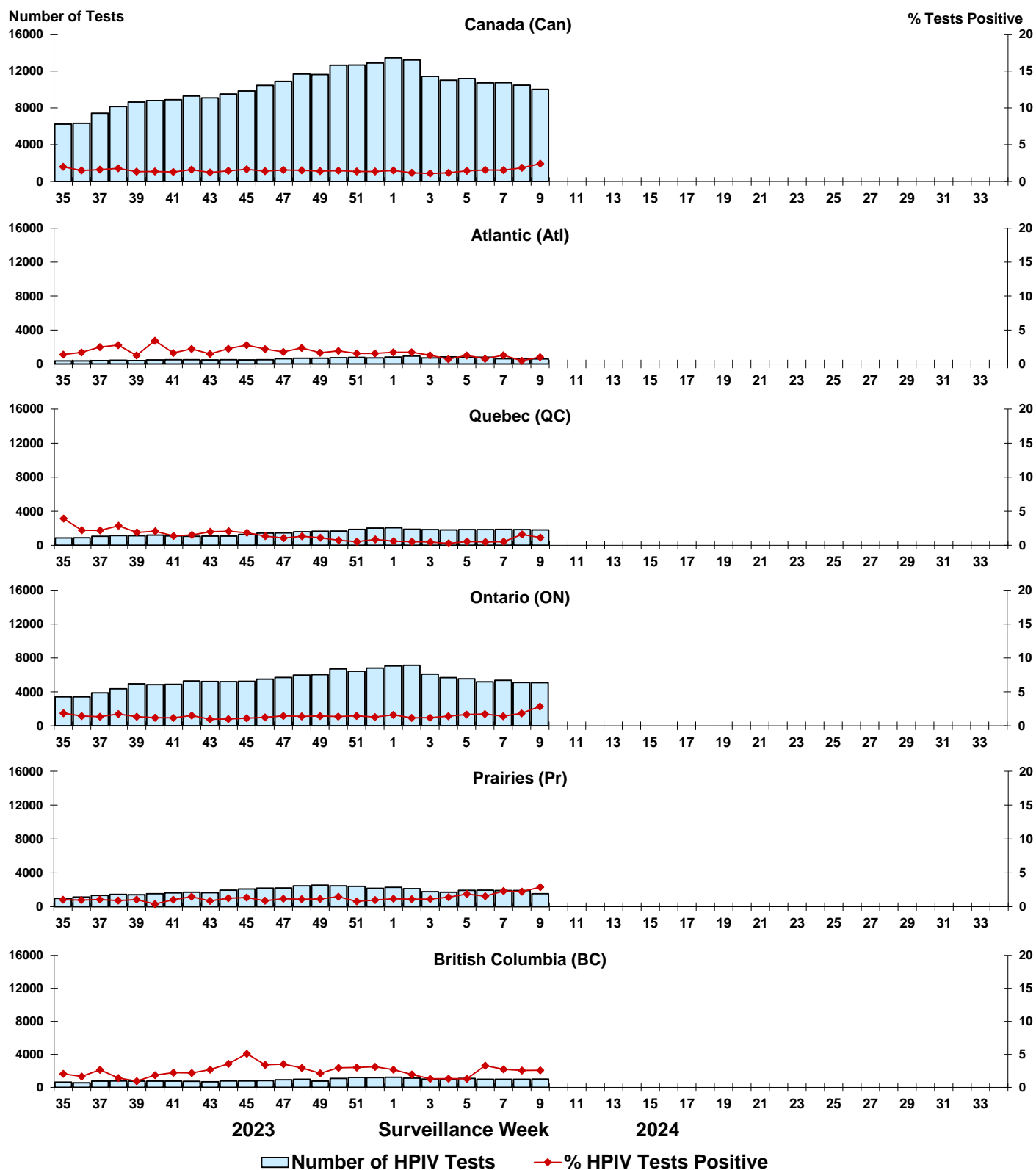


Figure 7: Positive Adenovirus (ADV) tests (%) in Canada by region by surveillance week

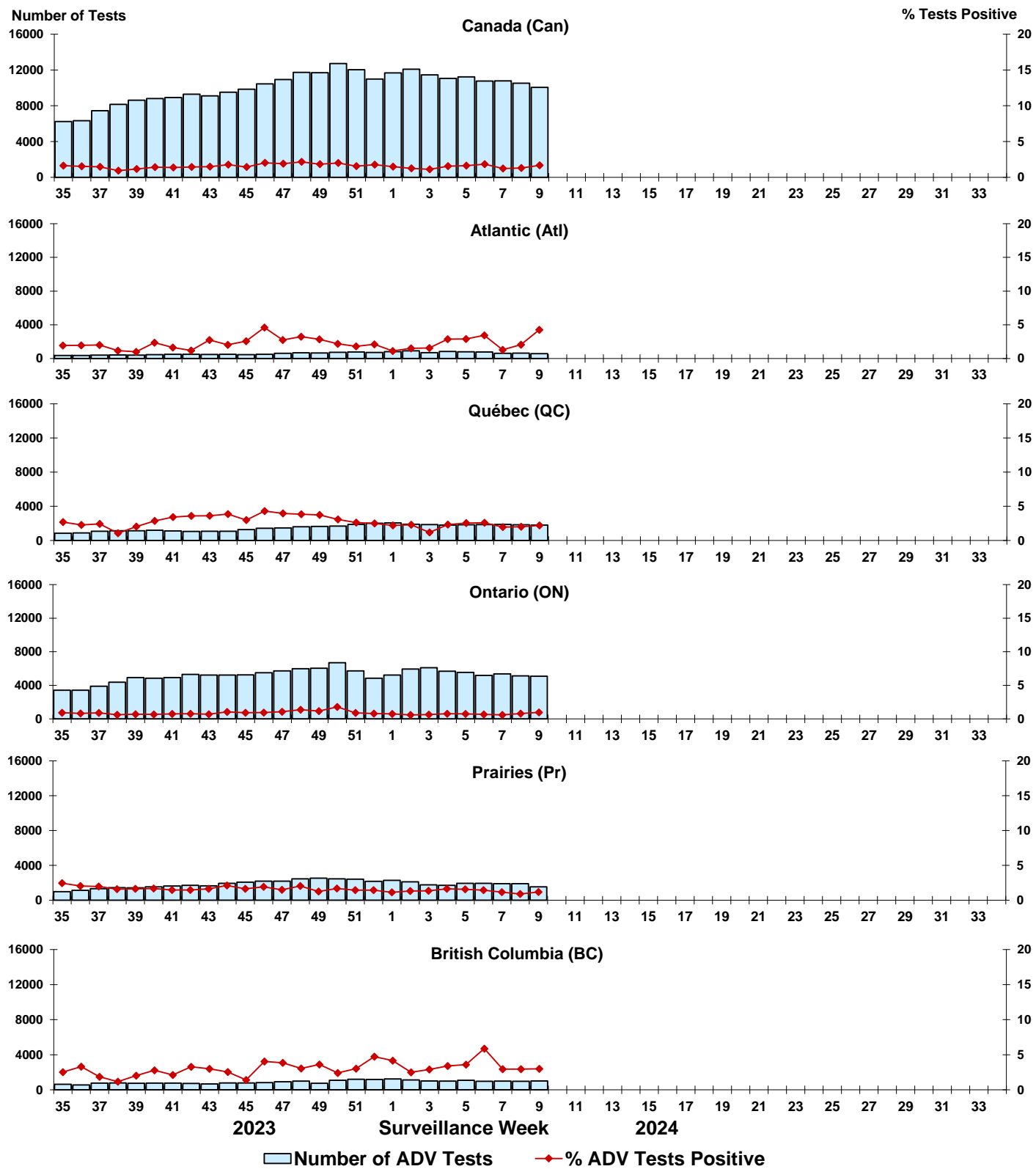


Figure 8: Positive Human metapneumovirus (HMPV) tests (%) in Canada by region by surveillance week

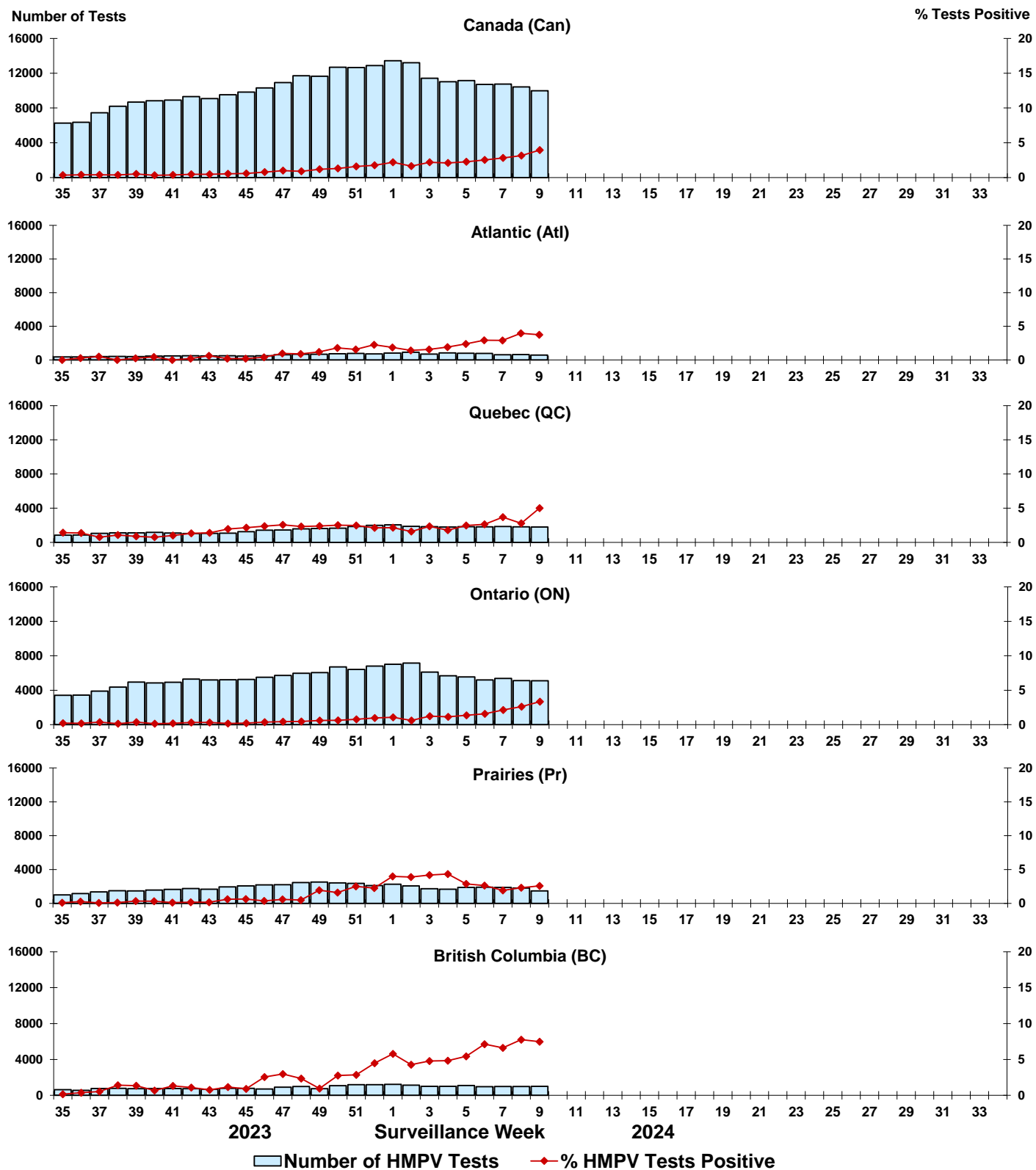


Figure 9: Positive Enterovirus/Rhinovirus (EV/RV) tests (%) in Canada by region by surveillance week

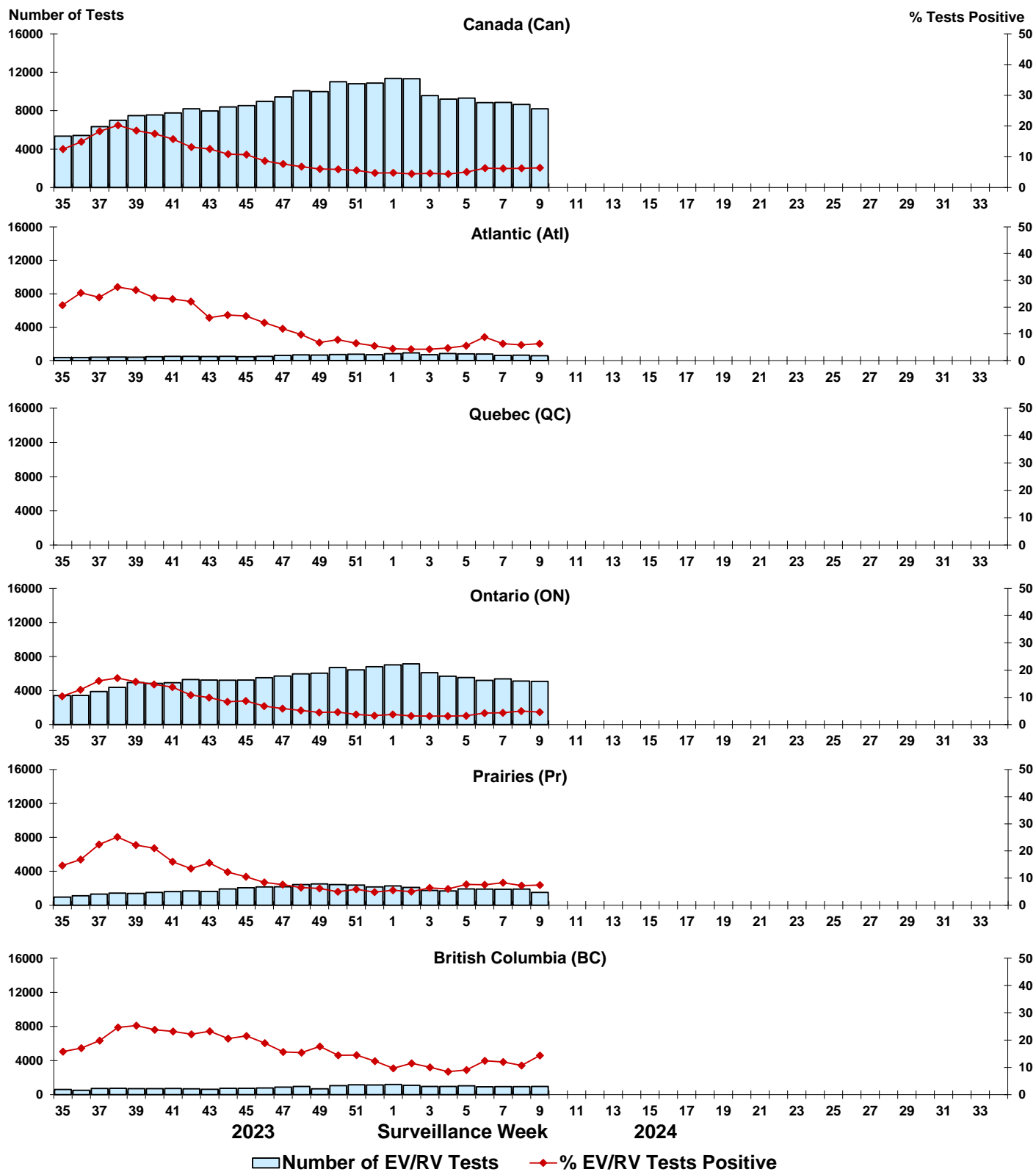


Figure 10: Positive Human coronavirus (HCoV) tests (%) in Canada by region by surveillance week

