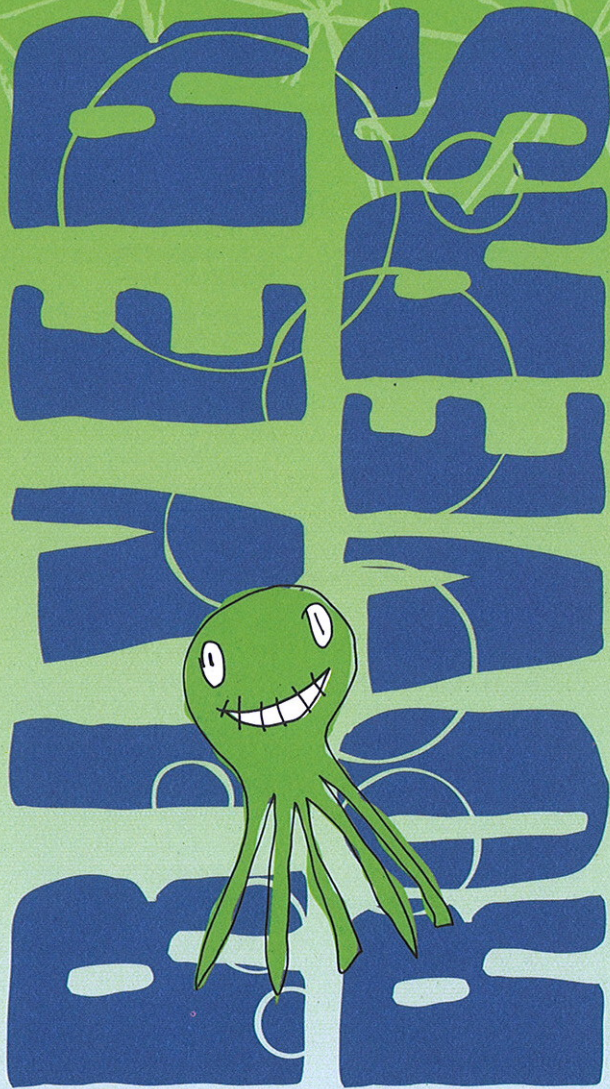


# Biosphère



2006 2007

WWW PROGRAMMING

[www.biosphere.ec.gc.ca](http://www.biosphere.ec.gc.ca)

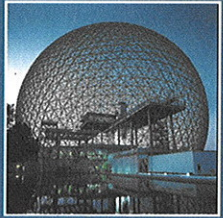


**Biosphère**  
Canada



Environnement  
Canada

Environment  
Canada



Biosphère  
St. Helen's Island  
Montreal  
(514) 283-5000

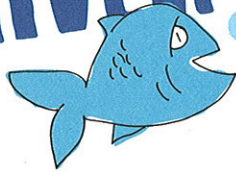
An architectural masterpiece in Montreal since Expo '67, Environment Canada's Biosphère has greeted nearly 1 million visitors since 1995.

The Biosphère raises the awareness of young people and their families, as well as the general public, about the major environmental issues related to water, climate change and the sustainable development of the Great Lakes–St. Lawrence ecosystem. The Biosphère presents permanent and temporary exhibitions, and offers interactive and guided activities that are as informative as they are amusing. It also offers a Youth Program whose educational activities may be carried out at the museum or off-site.

In its role as a national centre of environmental education, the Biosphère develops products and activities with partners across Canada and serves as a forum for environmental exchanges and events.

# exhibitions games experiments chal

## RIVER ROVERS



Summer Programming  
June 10 to September 10, 2006

The purpose of the programming is to showcase the Great Lakes–St. Lawrence River watershed, one of the largest in North America, and give participants a better understanding of certain environmental issues affecting the area.

### SPECIAL ACTIVITIES

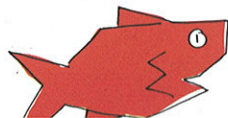
#### River Rover Sundays

July–August  
General Admission: \$2\*  
Historic characters will greet visitors and tell stories about the St. Lawrence River. Other activities include face painting for children and outdoor challenges. Outdoor activities are offered free of charge (cancelled in the event of rain).

\* Cannot be combined with any other offer or discount.

#### River Rover Rally

A family activity that is specially designed so that you won't miss any part of the *River Rovers* programming.



#### Keeping Current

A multimedia and interactive show reliving the voyage of the Sedna IV, a research vessel which sailed the St. Lawrence River in summer 2004, featuring individuals who feel passionately about the river and are worried about the impacts of climate change. A discussion follows, featuring biodiversity, human health and navigation issues.



#### Moving Giant, The Great Lakes–St. Lawrence Ecosystem

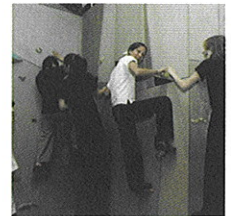
The exhibition introduces visitors to this vast area and acquaints them with the ecosystem's usefulness and richness. Have fun exploring a circuit of interactive games, models, videos and even a climbing wall in a nautical setting!

#### 2001–2005 Escale Nautique Retrospective

An exhibition showcasing 30 grand prize winning photographs of the past five years in the annual photography contest sponsored by *L'Escalé Nautique* magazine.

Until November 12, 2006

### EXHIBITIONS



#### The St. Lawrence River

*L'Escalé Nautique* magazine presents its 2006 contest winners that include 16 photographs in five categories.

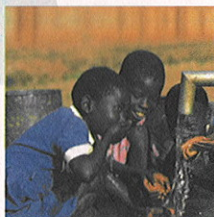
Until November 12, 2006



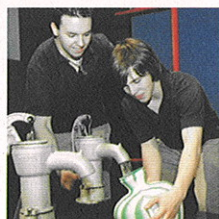
Jacques Alix, 2006 Grand Prize

# engages workshops guided activities multimedia shows

## Regular Programming



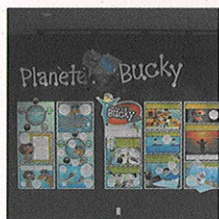
## EXHIBITIONS



### Water Wonders!

More than an exhibition with its eight interactive modules, you can play games, conduct experiments and tackle challenges such as building a ship, generating energy and even walking on water! Dive in and test your ideas by using your skills and creativity.

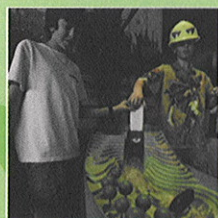
Dare to try **The Brain Shaker**; a virtual experience where you follow the frenzied route taken by a water droplet from the tap to the mixer and finally to the sewers, exposing you to the effects of climate change along the way.



### Planet Bucky

A concrete look at sustainable development showcasing contemporary innovations that follow in the footsteps of the Biosphère's creator, R. Buckminster Fuller (1895-1983), and the environmental philosophy behind his inventions.

## Youth Program



The Biosphère's youth program is tailored to school groups and day camps. It offers fascinating experiences that explore various environmental themes. The educational activities are focused on science, creativity or observation, with the goal of making children and youth between the ages of 4 and 25 more aware of the importance of water, the Great Lakes-St. Lawrence ecosystem and climate change.

**Information and reservations: (514) 496-8282.**

## FILMS

### WATER: The Drop of Life

Produced by the United Nations in conjunction with the International Decade for Action "Water for Life", 2005-2015, the film presents a touching and unique look at water availability issues around the world.

### The Beauties of the St. Lawrence

A film featuring the secrets and wonders of the St. Lawrence River through time and space, from the Great Lakes to the Atlantic Ocean.

## FAMILY ACTIVITIES



**Aqualab:** Witness the effects of greenhouse gases by conducting a scientific experiment.

**Creative workshop:** Create a mobile which evokes the St. Lawrence, using recycled materials.

**Trilogy-The Surprising Nature of Water:** Explore the theme of wetlands in Jean Drapeau Park by following an interpretative trail which includes the Biosphère's environmentally friendly wastewater treatment plant, the marsh in the Florales garden and the filter ponds at the beach.

## GENERAL INFORMATION

### How to contact us

160 Chemin Tour de l'Isle  
St. Helen's Island  
Montreal, QC, Canada  
H3C 4G8  
Tel.: (514) 283-5000  
Fax: (514) 283-5021  
E-mail:  
info.biosphere@ec.gc.ca

### Opening Hours

June 19 to September 8:  
from 10 a.m. to 6 p.m. daily.  
September 9 to June 18:  
from 12 noon to 5 p.m.\*  
Monday to Friday;  
closed Tuesdays  
Saturday, Sunday, statutory  
holidays, Christmas break  
and March spring break:  
10 a.m. to 5 p.m., including  
Tuesday. Closed December  
25 and 26, and January 1.

\* From 9:30 a.m. for groups with  
a reservation.

### How to get there

- Metro: Jean Drapeau station (yellow line)
- Bicycle: Jacques Cartier Bridge, Concorde Bridge
- Automobile: Jacques Cartier Bridge, Parc Jean Drapeau exit
- Parking: nearby, fees apply in the summer
- Old Port-St. Helen's Island water shuttle (in the summer)

### Services

Vending machines with snacks  
Rest and picnic areas  
**Entrance Fees** (taxes included)  
Adults: \$9.50  
Students and seniors (with ID): \$7.50  
Youth (7 to 17): \$5  
Children 6 and under (accompanied by an adult): free  
Family rate: \$20  
Group rates and tours available

*Biosphère-Stewart Museum*  
combined ticket  
Adults: \$15  
Children, students and seniors (with ID): \$9  
Family rate: \$32

**Save 25%**  
by using **green transportation**: walking, bicycling, in-line skating or public transit.

**Fees and opening hours are subject to change without notice.**



ISBN: 0-662-49215-3  
Catalogue number:  
En151-2/2007  
© Her Majesty the Queen in Right  
of Canada, represented by the Minister  
of the Environment, 2006.



Printed on 100% post-consumer recycled paper,  
processed chlorine free and certified by the  
*Environmental Choice Program*



Parc Jean-Drapeau