

BIOSPHERE

ENVIRONMENT MUSEUM

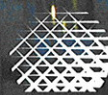
15 Years!

An architectural symbol of Montréal since Expo 67, the Biosphère is a unique and spectacular structure in the middle of Parc Jean-Drapeau on Île Sainte-Hélène.

The Biosphère offers exhibits and guided activities—and a healthy dose of fun—that will help visitors better understand major environmental issues. These include air, water, biodiversity, climate change, transportation, responsible consumption and sustainable development. Visitors also learn how to be good environmental citizens, whether they live in rural or urban areas.

As the centrepiece of an urban oasis, the Biosphère offers unimpeded views of downtown Montréal and the St. Lawrence River. The only environment museum in North America, this unique structure uses a number of green technologies: wind turbines, green roof systems, a geothermal system, wastewater treatment wetlands and solar panels.

The Biosphère is celebrating its 15th anniversary this year. So far, more than one and a half million people have visited the museum and participated in its off-site educational activities.



Biosphère
Environment Museum
Musée de l'environnement

**2010
2011**
PROGRAMMING

Free admission
for those aged
17 and under

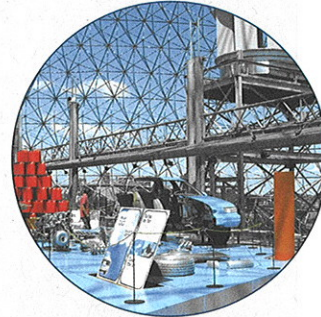
WWW.EC.GC.CA/BIOSPHERE

TEMPORARY EXHIBITS

U TURN — TOWARDS SUSTAINABLE TRANSPORTATION

JUNE 1 TO OCTOBER 31

With a dissected automobile as its centrepiece, this exclusive outdoor exhibit illustrates the history of our relationship with the automobile, shows the impact of personal motor vehicles on the environment and human health, and encourages visitors to consider more sustainable transportation solutions.



TIC TAC TOX

UNTIL OCTOBER 31

This exhibit gets people thinking about the reality of sharing their world with chemical substances. Although these products are essential to a variety of activities, it is important to draw attention to their potential risks.

WATT'S UP?

MAY 22 TO SEPTEMBER 8

You will learn everything there is to know about renewable energy in this exhibit that features stations for both children and adults. A perfect family outing for those in search of educational entertainment.



TIGHTLY KNIT

The United Nations declared 2010 to be the International Year of Biodiversity. Presented in partnership with the Canadian Wildlife Federation, this outdoor exhibit of giant photos commemorates this special year by revealing how amateur photographers see and experience nature. Visit it with a foot-rally!

ONE | OUTFITS FROM A NEW ERA STARTING DECEMBER 3

This exhibition showcases 16 outfits fashioned from mass consumer products. Local artists and craftspeople present creations that show diapers, camera film, electronic waste and other cast-offs from our society in a whole new light. The exhibition is charming, provocative and realistic. It's a must-see.



PERMANENT EXHIBITS

THE ECOLOGICAL HOUSE

The Ecological Solar House presents ways to "green" your own home, including ecological landscaping, green walls and solar panels.



PLANET BUCKY

Inspired by the work of Richard Buckminster Fuller (1895–1983), the visionary architect who designed the Biosphère, this exhibit focuses on Fuller's various inventions related to sustainable development as well as on wind power. The museum's two wind turbines are mounted on the belvedere.

WATER WONDERS!

Dive in, test your ideas and put your skills to the test! Eight interactive modules let visitors play games, conduct experiments and tackle challenges.

AS SEEN FROM SPACE

STARTING IN FALL 2010

See the earth from a different perspective and observe weather events in real time with the *Magic Planet*, an interactive digital globe that is the only one of its kind in Quebec. Travel the world in search of information on various planetary subjects, including the melting of polar ice and its impact on Inuit, in a film entitled *NANUQ*.

LEAVE NO FOOTPRINTS

STARTING IN FEBRUARY 2011

The environment is back in style. Take the mystery out of the concepts behind a slew of new terms such as ecological footprint, product life cycle ... and the list goes on.

SPECIAL EVENTS

GREEN CHRISTMAS

DECEMBER 3 TO JANUARY 2

This event will focus on responsible consumption during the holidays. The Fifth Annual Recycling-Artists Eco Fair will be held from December 3 to 5 and is a highlight not to be missed.

Check the Biosphère website for information about other future events, e.g., Fête des enfants (August), fête des Neiges (January), Spring Break (March), Earth Day (April).

OUTDOOR ACTIVITIES

GEOTOUR 67

Visitors use a hand-held global positioning system (GPS) device to rediscover the sites of former Expo 67 pavilions on Île Sainte-Hélène and Île Notre-Dame from a new environmental viewpoint. Two four-kilometre circuits have been set up and feature information and audio commentary and stories.



BIOKIT

With the Île Sainte-Hélène BioKit, you can set off on a hike and use your five senses to explore the island's flora and fauna. Tips and suggestions are provided to help you appreciate the biodiversity around you and understand the importance of protecting it. The Biosphère offers additional BioKits to help you discover nature in your own neighbourhood. Find out more!



MULTIMEDIA

Depending on the season, three exclusive films are shown on six giant moving screens in a circular theatre that is the only one of its kind in Montréal.

MAN AND HIS WORLD

This short film and its accompanying scientific animation take an impressionistic look at the richness of Canada's biodiversity.

X-TREME WEATHER

Relive great natural disasters, discover extreme weather phenomena and learn how to prepare for them.

MIGRATORY BIRDS

Follow the gripping stories of four species of migratory birds and discover the importance of a healthy habitat for these species.

GUIDED TOURS AND ANIMATED ACTIVITIES

Get together with the Biosphère's experienced guides: a perfect opportunity to ask all your questions about the greenest and most accessible consumer choices.

GREEN LIGHT FOR ECOTECHNOLOGIES

Discover green technologies at the Biosphère: two wind turbines, artificial wastewater treatment wetlands, solar panels and a geothermal system.

THE ECOLOGICAL HOUSE

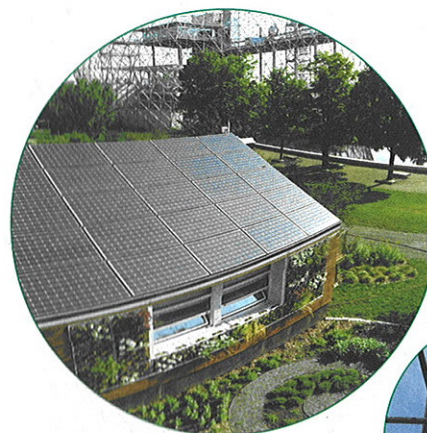
Take our guided tour to find out more about the features, construction materials and green technological innovations that make this solar house a healthy, ecologically sound and cool place to live.

ALL THE WATER IN THE WORLD

Only a very small proportion of the water in the world's oceans, glaciers, ground, lakes and rivers is fit to drink. What can we do to protect it?

POLLINATORS WANTED

Pollinators contribute to the variety of the fruits and vegetables we eat. The reduction in the number of bees, other pollinating insects and birds threatens biodiversity. What can we do to protect our pollinators?



EDUCATIONAL PROGRAM

The Biosphère's educational program offers a range of environment-related activities adapted to the needs and interests of elementary, high school and college students and teachers.

Information and reservations:

1-866-487-8282 (toll free) or 514-496-8282.

GENERAL INFORMATION

CONTACT INFORMATION

160 Chemin Tour-de-l'Isle
Île Sainte-Hélène
Montréal, Quebec H3C 4G8
Tel. : 514-283-5000
info.biosphere@ec.gc.ca

VISITING HOURS

- June 1 to October 31:
Daily from 10:00 a.m. to 6:00 p.m.
- November 1 to May 31:
Tuesday to Sunday, 10:00 a.m. to 6:00 p.m.
- Closed: December 25 and 26 and January 1.
- Closed for renovations: January 10 to 31, 2011.

HOW TO GET HERE

- Jean-Drapeau Métro station
- River shuttle from the Old Port (in summer)
- Jacques-Cartier Bridge
- Bonaventure Expressway
- Parking is available for a fee.

FEES (TAXES INCLUDED)

- Adults: \$12
- Students (18 and older) and seniors (60 and older): \$8
- Entrance to Ecological Solar House only: \$2
- Youth (17 and under): FREE*
- *Does not apply to groups of 10 or more people.
- Group rates are available.
- 25% discount for green transportation users (Métro, bicycle, etc.)

Fees, visiting hours and programming are subject to change without notice.

