

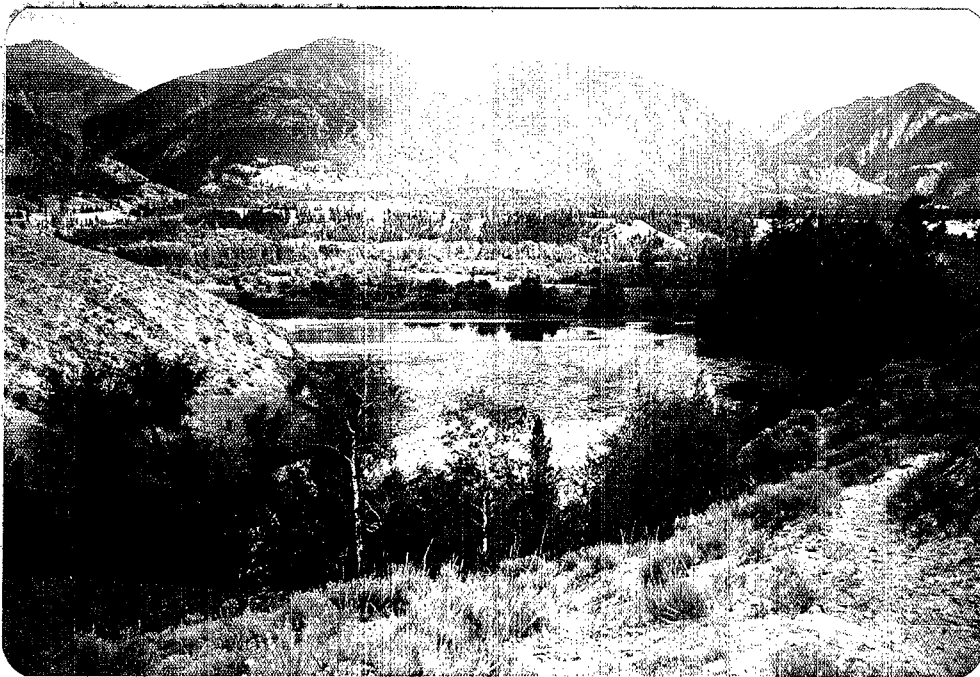
REGIONAL DIRECTOR  
Canadian Wildlife Service  
Pacific & Yukon Region



ENVIRONMENT  
CANADA

**A Bibliography of Environmental Literature  
Pertinent to the East Kootenay Region  
of British Columbia to 1976**

**February, 1980**



CANADIAN WILDLIFE SERVICE  
PACIFIC AND YUKON REGION

A BIBLIOGRAPHY OF ENVIRONMENTAL LITERATURE PERTINENT TO THE  
EAST KOOTENAY REGION OF BRITISH COLUMBIA TO 1976.

February, 1980.

Canadian Wildlife Service  
Pacific and Yukon Region.

TABLE OF CONTENTS

	<u>Page</u>
ACKNOWLEDGEMENTS .....	iii
INTRODUCTION .....	1
GEOLOGY AND MINING .....	2
CLIMATOLOGY .....	12
WATER .....	14
FISH AND WILDLIFE	
1. Fish .....	19
2. Birds .....	23
3. Mammals .....	33
4. General .....	42
FORESTRY AND FLORA .....	47
AGRICULTURE .....	51
HISTORY .....	54
ANTHROPOLOGY AND ARCHAEOLOGY .....	57
ECONOMICS .....	60
INTERNATIONAL .....	62

ACKNOWLEDGEMENTS

This report is the result of contributions of many individuals. L. Retfalvi initiated and directed the study. References were searched and assembled by C. Prescott on contract to the Canadian Wildlife Service.

J. Kelsall provided advice during preparation of the final draft and Anne Thomson typed the Manuscript. D.E.C. Trethewey edited the first draft and prepared the final report.

The following is a list of persons and agencies who contributed references to this bibliography. Agencies with which individual contributors were associated when contacted, are given.

A. Federal Agencies:1. Department of Energy, Mines and Resources:

J.J. Clague, Geological Survey of Canada, Vancouver.

2. Environment Canada:

E.M. Clark, Inland Waters directorate, Vancouver.

L. Retfalvi and D.E.C. Trethewey, Canadian Wildlife Service, Delta.

D.G. Schaefer, Atmospheric Environment Service, Vancouver.

B. Provincial Agencies:1. B.C. Fish and Wildlife Branch:

Cranbrook: R.A. Demarchi, D. Phelps and N. Ringstad.

Nelson: H. Andrusak.

Victoria: J.H. Dick, D.S. Eastman, R.L. Morley and W.T. Munro.

2. Heritage Conservation Branch, Victoria:

B. Simonsen, P. Rafferty.

3. Ministry of Economic Development, Victoria:4. Provincial Museum, Victoria:

R.W. Campbell.

5. Resource Analysis Branch:

L. Lacelle, Kelowna.

J. Ryder, Victoria.

6. Water Investigations Branch, Victoria:

P. Brady, J. McCrossan.

C. Creston Valley Wildlife Management Area, Creston.

R. Eben, D. Moore, A. Stushnoff.

D. University of British Columbia, Vancouver.

V.C. Brink, Agriculture, Plant Science.

F.L. Bunnell, Forestry/Animal Resource Ecology.

J. Rau, Geological Sciences.

D. Shackleton, Agriculture, Animal Science.

R.M. Strang, Agriculture, Plant Science/Forestry.

E. Other:

W.J. Merilees, Castlegar.

G.R. Peterson, Vancouver.

## INTRODUCTION

In 1976 the Canadian Wildlife Service began investigations of the use, by migratory birds, of wetlands in the Rocky Mountain Trench between Cranbrook and Golden. As a first step, it was decided to conduct a literature search and develop a comprehensive review and bibliography of the area. Such a document would be a valuable tool in land-use decisions and in the planning of research to fill gaps in existing knowledge.

The literature survey and first draft of the bibliography were completed early in 1977. However, due to a shift in priorities, a summarizing review document was not prepared. Regardless, the assembled bibliographic references are of potential value to those many individuals and agencies with an interest in the future of the East Kootenays.

Therefore, the purpose of this report is to make available the bibliographic references assembled to 1976 which are pertinent to the conflict between development and conservation of the wetlands of the Rocky Mountain Trench and to future planning.

GEOLOGY AND MINING

- Aalto, K.R. 1971. Glacial marine sedimentation and stratigraphy of the Toby Conglomerate (Upper Proterozoic), southeastern British Columbia, northwestern Idaho, and northeastern Washington. *Can. J. Earth Sci.* 8.
- Alden, W.C. 1953. Physiography and glacial geology of western Montana and adjacent areas. *US. Geol. Surv. Prof. Pap.* 231. 200 pp.
- Allen, A.R. 1939. The structural geology of Beltian rocks in southeastern British Columbia. *U.B.C. Geology.* B.Sc. thesis.
- Armour, B.A. 1964. Foliate leucotranite sills of the Ainsworth-Kaslo area, Kootenay Lake, British Columbia. *U.B.C. Geology.* B.Sc. thesis.
- Armstrong, J.E. 1946. Geology and mineral deposits of British Columbia west of the Rocky Mountains. *Geological Survey Bulletin No.* 5.
- Armstrong, J.E. 1959. Physiography of the Rocky Mountain Trench. *In: Proc. Symposium on the Rocky Mountain Trench.* Canadian Institute of Mining and Metallurgy.
- Baird, D.M. 1964. Kootenay National Park: wild mountains and great valleys. *Misc. Rep. Geol. Surv. Can. No.* 9.
- Bally, A. *et al.* 1966. Structure, seismic data and orogenic evolution of the southern Canadian Rocky Mountains. *Bull. Can. Petrol. Geol.* 14: 337-381.
- Bauerman, H. 1884. Report on the geology of the country near the 49th parallel of north latitude west of the Rocky Mountains. *Geol. Surv. Can. Rept. of Progress 1882-83-84.* Rept. B.
- Berdusco, R. 1974. A case study and analysis of the reclamation of three surface coal mines in the Crowsnest Pass region of British Columbia. *U.B.C. Dept. Forestry.* B.S.F. thesis.
- Berry, E.W. 1929. The age of the St. Eugene silt in the Kootenay Valley, British Columbia. *Trans. R. Soc. Can. Sect. IV. Ser. 3:* 47-48.

- Berry, M.J. et al. 1971. A review of geophysical studies in the Canadian Cordillera. *Can. J. Earth Sci.* 8: 788-801.
- Best, R.V. 1952. A lower Cambrian trilobite fauna from near Cranbrook, British Columbia. U.B.C. Geology B.Sc. thesis.
- Blussen, S.L. 1960. Tintina Valley, Yukon Territory and its relation to the Rocky Mountain Trench. U.B.C. Geology. B.Sc. thesis.
- Bostock, H.S. 1948. Physiography of the Canadian Cordillera. *Geol. Surv. Memoir*, 247.
- Bostock, H.S. 1970. Physiographic subdivisions of Canada. In: Geology and economic minerals of Canada. *Geol. Surv. Can. Econ. Geol. Rept.* No. 1: 11-30.
- Brock, R.W. 1899. West Kootenay ore bodies. *Canadian Mining Institute Journal*, Vol. 2, pp. 72-86.
- Burling, L.D. 1922. The relations between the Purcell Range and the Rocky Mountains in British Columbia. *Am. Jour. Sc.* 3(5): 254-5.
- Cairnes, C.E. 1932. Some mineral occurrences in the vicinity of Cranbrook, British Columbia. *Summary Report 1932. Part A-II.*
- Cairnes, C.E. 1940. The Shuswap rocks of southern B.C. *Sixth Pacific Science Congress, California, Vol. 1*, pp.259-272.
- Church, J. 1961. Mining Companies in the West Kootenay and Boundary regions of B.C., 1890-1900 - capital formation and financial operations. U.B.C. M.A. thesis.
- Clague, J.J. 1970. Surficial geology of the southern Rocky Mountain Trench, British Columbia. *Water Investigations Branch. B.C. Dept. Lands, Forests and Water Resources. Unpublished paper.*
- Clague, J.J. 1973. Late Cenozoic geology of the southern Rocky Mountain Trench, British Columbia. U.B.C. Ph.D. thesis.
- Clague, J.J. 1974. The St. Eugene formation and the development of the southern Rocky Mountain Trench. *Can. J. Earth Sci.* 11(7): 916-938.



- Clague, J.J. 1975. Sedimentology and paleohydrology of late Wisconsinan outwash, Rocky Mountain Trench, southeastern British Columbia. In: Glaciofluvial and glaciolacustrine sedimentation. A.V. Jopling and B.C. McDonald (Eds.) Soc. Econ. Paleontol. Min. Spec. Pub.
- Clague, J.J. 1975. Late Quaternary sediments and geomorphic history of the southern Rocky Mountain Trench, British Columbia. *Can. J. Earth Sci.* 12(4): 595-605.
- Clague, J.J. 1976. Geomorphology and late Quaternary geochronology of southeastern British Columbia. In: Geomorphology and its bearing on mineral deposits. Cordilleran Sect. Geol. Assn. Can. Vancouver. February.
- Crickmay, C.H. 1964. The Rocky Mountain Trench: a problem. *Can. J. Earth Sci.* 1: 184-205.
- Crosby, P. 1960. Structure and petrology of the central Kootenay Lake area, B.C. Harvard University. Ph.D. thesis.
- Crosby, P. 1968. Tectonic, plutonic and metamorphic history of the central Kootenay Arc, B.C. Geological Society of America, Special Paper 99.
- Daly, R.A. 1912. Geology of the North American Cordillera at the 49th parallel. *Geol. Surv. Can. Memoir* 38.
- Daly, R.A. 1915. A geological reconnaissance between Golden and Kamloops, British Columbia, along the line of the Canadian Pacific Railway. *Geol. Surv. Can. Memoir* 68.
- Davidson, Richard A. 1972. A computer-oriented analysis of metal production from Ainsworth mining camp. U.B.C. Geology. B.Sc. thesis.
- Dawson, G.M. 1891. Note on the geological structure of the Selkirk Range. *Bull. Geol. Soc. Amer.* 2: 165-176.
- Dodds, C.J. 1968. A Study of garnets and host rocks from the central Kootenay Lake area, southeastern B.C. *Bull. of Can. Petroleum Geology* 16: 417.
- Eardley, A.J. 1947. Late Cenozoic trenches of the Rocky Mountains. *Geol. Soc. Amer. Bull.* 58: 1176.

- Eastwood, G.E.P. 1953. Stratigraphy at Ainsworth, Kootenay Lake, B.C. Geol. Soc. Amer. Bull. 64: 1544.
- Ferguson, K.D. 1975. The impact of the Nelson landfill on the west arm of Kootenay Lake. U.B.C. Geology. B.Sc. thesis.
- Flucke, A.F. 1955. A history of mining in British Columbia. 8th B.C. Natural Resources Conference, Transactions, pp. 6-26.
- Frebold, H. 1959. Marine Jurassic rocks in Nelson and Salmo areas, southern British Columbia. Geol. Surv. Can. Bull. No. 49. 31 pp.
- Fulton, R.J. 1967. Deglaciation studies in Kamloops region, an area of moderate relief. Geol. Surv. Can. Bull. No. 154.
- Fulton, R.J. 1968. Olympia interglaciation, Purcell Trench, B.C. Geol. Soc. Amer. Bull. 79: 1075-1080.
- Fulton, R.J. et al. 1972. Quaternary geology of the southern Canadian Cordillera. Guidebook Field Excursion A02, 24th Int. Geol. Cong. Montreal. 49 pp.
- Fyles, J.T. 1962. Geology and exploration in the Kootenays, B.C. Can. Min. J. 83(4): 46-47.
- Fyles J.T. 1962. Two Phases of deformation in the Kootenay Arc. Western Miner and Oil Review 35: 20-26.
- Fyles, J.T. 1964. Geology of the Duncan Lake area, Lardeau district, B.C. B.C. Dept. Mines and Petroleum Resources, Bull. No. 49. 87 pp.
- Fyles, J.T. 1966. Lead-zinc deposits in British Columbia. CIMM Spec. Vol. No. 8, pp. 231-237.
- Fyles, James T. 1967. Geology of the Ainsworth-Kaslo area, B.C. B.C. Dept. of Mines and Petroleum Resources, Bull. No. 53.
- Fyles, J.T. 1971. Metamorphic settling of mineral deposits in the Kootenays (abstract). In: Metamorphism in the Canadian Cordillera. Geological Association of Canada, Cordilleran Section, Vancouver, B.C.
- Fyles, J.T. 1972. Selkirk and Monashee Mountains. In: International Geological Congress - 24th Session. Excursion A03-C03.

- Gabrielse, H. 1972. Sedimentary facies and southern Rocky Mountain Trench: Geol. Assn. Can. Cordilleran Sec. Programme and Abstracts: 15.
- Garland, G.D. 1961. Gravity measurements over the southern Rocky Mountain Trench area of British Columbia. J. Geophys. Res. 66: 2495-2505.
- Gibson, D.W. 1974. Triassic rocks of the southern Canadian Rocky Mountains. Geol. Surv. Can. Bull. No. 230.
- Graham, R. 1930. The sedimentary formations of the Kootenays. U.B.C. Geology. B.Sc. thesis.
- Harrison, J.E. 1974. Environmental geology - mountain coal mining, Alberta and British Columbia. Geol. Surv. Can. Terrain Sci. Div. 74-1, Part A. 3 pp.
- Henderson, G.G.L. 1954. Geology of the Stanford Range, Kootenay district, British Columbia. B.C. Dept. Mines. Bull. No. 35.
- Heusser, C.J. 1956. Postglacial environments in the Canadian Rocky Mountains. Ecol. Mono. 26: 263-302.
- Hillary, C.F.H. 1932. The Tertiary of British Columbia with special reference to placer deposits. U.B.C. Geology. B.A. thesis.
- Hoen, E.W. 1957. The Rocky Mountain Trench. U.B.C. Geology. B.A. thesis.
- Holland, S.S. 1964. Landforms of British Columbia: a physiographic outline. B.C. Dept. Mines & Petrol. Res. Bull. No. 48.
- Hopkins, W.S. et al. 1972. Geology, paleocology and palynology of some Oligocene rocks in the Rocky Mountain Trench of British Columbia. Can. J. Earth Sci. 9: 460-470.
- Hunt, G.H. 1961. The Purcell eruptive rocks. U. of Alta. Ph.D. thesis.
- Hunt, G.H. 1963. The Purcell eruptive rocks. Can. Min. Jour. 84(5): 97.
- International Geological Congress 1972. Cambrian and Ordovician biostratigraphy of the southern Canadian Rocky Mountains. A 19.
- Jackson, G.C.A. 1926. The geology and structure of the West Kootenay Composite Batholith. U.B.C. Geology. M.Sc. thesis.

- Jones, J.W. 1971. Zoned margarite from the Badshot Formation (Cambrian) near Kaslo, B.C. *Can. J. Earth Sci.* 8: 1145-1147.
- Lajoie, J.J. et al. 1970. Geomagnetic induction anomaly near Kootenay Lake - a strike-slip feature in the lower crust? *Can. J. Earth Sci.* 7: 1568-1579
- Lamb, A.T. et al. 1962. Refraction profiles over the southern Rocky Mountain Trench area of British Columbia. *J. Alb. Soc. Pet. Geol.* 10: 428-437.
- Larsen, D.E. 1976. Effect of agricultural activity at Creston on the water quality of Kootenay Lake. U.B.C. Geology. B.Sc. thesis.
- Leech, G.B. 1954. Canal Flats, British Columbia. *Geol. Surv. Can. Paper* 54-7. 32 pp.
- Leech, G.B. 1958. Fernie map area, west half, British Columbia. *Geol. Surv. Can. Paper.* 58-10. 48 pp.
- Leech, G.B. 1960. Fernie west half, British Columbia *Geol. Surv. Can. Map.* 11.
- Leech, G.B. 1962. Metamorphism and granite intrusions of Precambrian age in southeastern British Columbia. *Geol. Surv. Can. Paper* 62-13.
- Leech, G.B. 1966. The Rocky Mountain Trench. *Geol. Surv. Can. Paper* 66-14: 307-329.
- Little, H.W. 1960. Nelson map area, west half, B.C. *Geol. Surv. Can. Memoir No.* 308. 205 pp.
- McCrossan, R.G. et al. 1964. Geological history of western Canada: *Alb. Soc. Petrol. Geol.*
- McEachern, R.G. 1942. Cranbrook formation near Marysville, British Columbia. U.B.C. Geology. M.Sc. thesis.
- Muraro, T.W. 1956. Some diabase dykes near Ainsworth, B.C. U.B.C. Geology. B.Sc. thesis.
- Muraro, T.W. 1966. Metamorphism of zinc-lead deposits in southeastern B.C. *CIMM Spec. Vol.* 8. pp. 239-247.
- Nguyen, K.K. et al. 1968. Age of northern part of the Nelson Batholith. *Can. J. Earth Sci.* 5: 955-957.

- Newmarch, C.B. 1953. Geology of the Crowsnest coal basin: with special reference to the Fernie area. B.C. Dept. Mines Bull. No. 33. 107 pp.
- Norris, D.K. 1965. Stratigraphy of the Rocky Mountain group in the southeastern Cordillera of Canada. Geol. Surv. Bull. No. 125.
- North, F.K. et al. 1954. The Rocky Mountain Trench. In: Guidebook 4th Ann. Field Conf. Alb. Soc. Pet. Geol. J.C. Scott and F.G. Fox (eds.): 82-100.
- Pickard, E.B. 1965. Some significant physical properties of rock from Mica Creek, British Columbia. U.B.C. Geology. B.Sc. thesis.
- Pollock, J.R. 1926. The structure of the Rocky Mountain Trench, British Columbia. U.B.C. Geology. B.Sc. thesis.
- Price, R.A. 1962. Fernie map area, east half, Alberta and British Columbia. Geol. Surv. Can. Paper 61-24.
- Price, R.A. 1966. Flathead map - area, British Columbia and Alberta. Geol. Surv. Can. Memoir No. 336.
- Price, R.A. 1972. The Canadian Rockies and tectonic evolution of the southeastern Canadian Cordillera. In: International Geological Congress 24th Session. Excursion A15-C15.
- Read, P.B. 1971. Metamorphic environment and timing of deformation, plutonism and metamorphism in part of central Kootenay Arc, B.C. In: Metamorphism in the Canadian Cordillera, Geological Association of Canada, Cordilleran Section, Vancouver, B.C.
- Reesor, J.E. 1953. Findlay Creek, Kootenay district, British Columbia. Geol. Surv. Can. Prelim. Map 53-34.
- Reesor, J.E. 1957. The Proterozoic of the Canadian Cordillera in southeastern British Columbia and southwestern Alberta. Roy. Soc. Can. Special Pub. No. 2: 150-177.
- Reesor, J.E. 1965. Structural evolution and plutonism in Valhalla gneiss Complex, B.C. Geol. Surv. Can. Bull. No. 129. 128 pp.

- Reynolds, P.H. et al. 1971. Rock and ore-lead isotopes from the Nelson Batholith and the Kootenay Arc, B.C. *Economic Geology* 66: 259-266.
- Rice, H.M.A. 1936. Glacial phenomena near Cranbrook, British Columbia. *Jour. Geol.* 44: 68-73.
- Rice, H.M.A. 1937. Cranbrook map area. *Geol. Surv. Can. Memoir No. 207.* 67 pp.
- Rice, H.M.A. 1941. Nelson map area, east half, B.C. *Geol. Surv. Can. Memoir No. 228.* 86 pp.
- Rice, H.M.A. 1944. Notes on geology and mineral deposits at Ainsworth, B.C. *Geol. Surv. Can. Paper 44-13.* 5 pp.
- Richard, T.A. 1942. A history of coal mining in British Columbia. Part II The miner. July. 1942: 28-30.
- Ries, H. 1915. Clays of British Columbia and Alberta. *Geol. Surv. Can. Summary Report 1913:* 284-287.
- Robinson, M. 1951. The geologic setting and relationship of ore deposits in the West Kootenay district, British Columbia. Princeton University. Ph.D thesis.
- Schofield, S.J. 1913. Elko to Kootenay Lake. In: Transcontinental excursion C2, Guide Book No. 9. Geological Survey of Canada. pp. 46-61.
- Schofield, S.J. 1915. Geology of the Cranbrook map area. *Geol. Surv. Can. Memoir. No. 76.* 245 pp.
- Schofield, S.J. 1919. The origin of the Purcell Trench, B.C. (Kootenay Lake Valley). *Trans. Roy. Soc. Canada* 13 (sect. IV): 23-31.
- Schofield, S.J. 1920. Geology and ore deposits of Ainsworth mining camp, B.C. *Geol. Surv. Can. Memoir No. 117.* 73 pp.
- Schofield S.J. 1921. The origin of the Rocky Mountain Trench. *Trans. Roy. Soc. Canada* 14(3): 61-97.
- Schofield, S.J. 1923. The geological record of the Cordillera in Canada. *Trans. Roy. Soc. Canada* 17 (sect. IV): 79-103.
- Schofield, S.J. 1946. The origin of Kootenay Lake. *Trans. Roy. Soc. Canada* 40 (sect. IV): 93-98.

- Shepard, F.P. 1922. The structural relation of the Purcell Range and the Rocky Mountains of Canada. Jour. Geol. 30: 130-139.
- Shepard, F.P. 1922. Problems in stratigraphy along the Rocky Mountain Trench. Jour. Geol. 30: 361-376.
- Shepard, F.P. 1926. Further investigations of the Rocky Mountain Trench. Jour. Geol. 34: 623-641.
- Shepherd, A.F. 1942. The relation between the mineralization and the structure in the West Kootenay. U.B.C. Geology. B.Sc. thesis.
- Simony, P.S. et al. 1970. Structure of the Dogtooth Range and adjacent portions of the Rocky Mountain Trench. Geol. Surv. Can. Spec. Paper No. 6: 41-52.
- Sinclair, A.J. 1964. A lead isotope study of mineral deposits in the Kootenay Arc. U.B.C. Ph.D. thesis.
- Sinclair, A.J. 1966. Anomalous leads from the Kootenay Arc, B.C. CIMM Spec. Vol. 8, pp. 249-262.
- Snow, W.E. 1935. Geology and ore deposits of the Kootenay district. U.B.C. geology. B.Sc. thesis.
- Stevenson, J.B. 1930. Glaciation and its effects in the East and West Kootenays. U.B.C. Geology. B.Sc. thesis.
- Stott, D.F. 1967. The Cretaceous Smoky Group, Rocky Mountain foothills, Alberta and British Columbia. Geol. Surv. Can. Bull. No. 132.
- Tempelman, K.D.J. 1962. Phenomena at the contact of the Nelson Batholith near Ainsworth, B.C. U.B.C. Geology. B.Sc. thesis.
- Thompson, T.L. 1962. Origin of the Rocky Mountain Trench in southeastern British Columbia by Cenozoic block faulting. J. Alberta Soc. Pet. Geol. 10: 428-437.
- Thurber, J.B. 1937. General and economic geology of the West Kootenay Batholith with special reference to the Cranbrook area. U.B.C. Geology. M.A. thesis.
- Walker, J.E. 1926. Geology and mineral deposits of Windermere. Geol. Surv. Can. Memoir No. 148.
- Walker, J. 1929. Kootenay Lake area - Kootenay district, British Columbia. Geol. Surv. Can. Map 236 A.

- Warren, P.S. 1938. Age of the Selkirk and Rocky Mountains uplifts in Canada. *Am. Jour. Sc.* 36(5): 66-71.
- Wheeler, J.O. 1970. Summary and discussion: structure of the southern Canadian Cordillera. *Geol. Ass. Can. Spec. Paper No. 6*: 155-166.
- Wheeler, J.O. et al. 1972. The Cordilleran structural province. In: Variations in tectonic styles in Canada. R.A. Price and R.A. Stacey (eds.) *Geol. Ass. Can. Special Paper No. 11*: 1-81.
- Whitney, A.L. 1966. Foundation geology of the Mica Creek Dam. *U.B.C. Geology. B.Sc. thesis.*
- Williams, W.O. 1939. Geology and ore deposits of part of the West Kootenay Batholith. *U.B.C. Geology. B.Sc. thesis.*



CLIMATOLOGY

- Anonymous. 1975. Report on Williston Reservoir basin snowpack conditions. Contribution to Task A2 - Basin Studies, Williston Reservoir Study, ELUC Study. Victoria. April.
- British Columbia Department Agriculture. Every year. Climate of British Columbia. Tables of temperature, precipitation and sunshine.
- British Columbia Department Lands, Forests & Water Resources. 1971. A summary of snow survey measurements, 1935-1970. Water Investigations Branch.
- British Columbia Department Lands, Forests & Water Resources. Every year. B.C. snow survey bulletin. Water Investigations Branch.
- British Columbia Ministry of Environment. 1975. Summary of snow survey measurements 1935 - 1975. B.C. Water Investigations Branch. Victoria. November.
- Chapman, J.D. 1952. The climate of British Columbia. Presented to 5th B.C. Natural Resources Conference.
- Denike, C.C.E. 1968. A bibliography of climatology for B.C. U.B.C. Dept. Geography.
- Environment Canada. 1971. Temperature and precipitation, 1941-1970, British Columbia. Atmospheric Environment Service. 78 pp.
- Environment Canada. 1973. Canadian normals. Volume 1. Temperature 1941-1970. (Imperial Units) Atmospheric Environment Service.
- Environment Canada. 1973. Canadian normals. Volume 2. Precipitation. 1941-1970 (Imperial Units) Atmospheric Environment Service.
- Environment Canada. 1975. Canadian normals. Volume 1-SI. Temperature 1941-1970. (SI or Metric Units). Atmospheric Environment Service.
- Environment Canada. 1975. Canadian normals, Volume 2-SI. Precipitation 1941-1970. (SI or Metric Units) Atmospheric Environment Service.
- Environment Canada. 1975. Canadian normals. Volume 3. Wind 1955-1972. Atmospheric Environment Service.

- Environment Canada. 1976. Climatological station data catalogue - British Columbia. Atmospheric Environment Service.
- Farley, A.L. 1968. A bibliography of climatology for British Columbia. ELUC Secretariat. 70 pp.
- International Columbia River Engineering Board. Water resources of the Columbia River basin, report to the International Joint Commission 1959. Appendix 2 - Kootenay Basin. : 7-10.
- Kendrew, W.G. et al. 1955. The climate of British Columbia and the Yukon Territory. Queen's Printer, Ottawa. 222 pp.
- Kirk, D.W. 1940. Climates of the lower south Kootenay.
- Kirk, D.W. 1951. Moisture regions in the East Kootenay lowlands in British Columbia. Sci. Agr. 31: 15-24.
- Marshall, J.R. 1968. Correspondence and discussion regarding East Kootenay climatic transect project. Agro-climatology. Can. Land Invent.
- Powell, J.M. 1965. Annual and seasonal temperature and precipitation trends in B.C. since 1890. Canada Dept. Trans. Meteor. Branch, Circ. 4296.
- Powell, J.M. 1970. Summer climate of the upper Columbia River valley near Invermere, B.C. Can. Forest Serv. Info. Report A-X-35. Dept. Fish and Forest. Forestry Res. Lab. Calgary. 69 pp.
- Schaefer, D.G. 1976. Climatological impacts of Peace River regulation and a review of the possible effects of climatic change on agriculture in the area. A report prepared for B.C. Hydro and Power Authority. June.
- Schaefer, D.G. 1976. Report on Williston Reservoir basin, hydrometeorological factors. Contribution to Task A2 - Basin Studies, Williston Reservoir Study, ELUC Study. Victoria. March.

WATER

- Allen, J.V.J. et al. 1974. Baseline description of Elk River and its tributaries. Report No. 2. Prepared for Emkay Canada Natural Resources Ltd. B.C. Research.
- Bull, C.J. et al. 1969. Some biological and chemical conditions in Kootenay and St. Mary rivers, February 1967 to December 1968.
- Bull, C.J. et al. 1970. Density changes in periphyton communities of Kootenay and St. Mary rivers. Rish and Wildlife Branch. Unpublished.
- Buchanan, R.J. 1971. Biological aspects of water level control in Windermere Lake, B.C. Water Resources Service Report No. 1726.
- Cloern, J.E. 1976. Recent limnological changes in southern Kootenay Lake, British Columbia.
- Colebrook, J.M. 1960. Plankton and water movements in Windermere. J. Anim. Ecol. 29: 217-240.
- Crosier, R.J. 1976. The Libby pre-impoundment report. Unpublished.
- Davis, J.R. 1973. Effects of reduced inorganic phosphate income on Kootenay Lake, British Columbia. Washington State University. Zoology. M.Sc. thesis.
- Drinnan, R.W. In preparation. Carbon - 14 phytoplankton productivity in Kootenay Lake and Libby Reservoir. Water Resources Service. Victoria.
- Ennis, G.L. 1975. Distribution and abundance of benthic algae along phosphate gradients in Kootenay Lake, British Columbia. Vech. Intern. Limnol. 19: 562-570.
- Environment and Land Use Committee. In preparation Springbrook biophysical project.
- Environment Canada. 1969. Sediment data for Canadian rivers. Inland Waters Directorate. Water Survey of Canada.
- Environment Canada. 1971. Historical streamflow summary to 1970 - British Columbia. Inland Waters Directorate. Water Survey of Canada.

- Environment Canada. 1972. Water Resources Branch. British Columbia - discontinued hydrometric stations.
- Environment Canada. Every year. Surface water data - British Columbia. Inland Waters Directorate. Water Survey of Canada.
- Environment Canada. Every year. Surface water data, reference index - Canada. Inland Waters Directorate. Water Survey of Canada.
- Farquharson, K.G. 1974. Mica Reservoir region resource study - summary report. ELUC Secretariat. 22 pp.
- GEPAC Consultants Ltd. 1972. Appraisal of the Kootenay Canal project. Prepared for B.C. Dept. of Lands, Forests and Water Resources.
- Hawthorn, R.S. 1973. Aquatic plants of Windermere Lake. Part II. Water Investigations Branch Report No. 2074.
- Hinton, B.R. 1973. A preliminary chemical and biological assessment of Kootenay Lake and its tributaries. Dept. of Environment.
- Holbrook, S.H. 1956. The Columbia. New York. Rinehart and Co. Inc.
- Hooton, R. et al. 1971. Elk River report. B.C. Fish and Wildlife Branch. Unpublished.
- Hume, G.S. 1932. Waterton Lakes, Flathead Valley area Alberta and B.C. Canada Dept. of Mines. Summary Report. Part B.
- Larkin, P.A. et al. 1958. Factors in lake typology in British Columbia, Canada. Verh. Intern. Ver. Limnol. 13: 252-263.
- Mackay, Bruce. 1951. A Report on the temperature and current surveys of Kootenay Lake, conducted by the B.C. Game Dept. during June 1950 and August 1951. B.C. Game Dept., Management Publication No. 6.
- Martin, A. 1974. Partial inventory of streams tributary to the Libby Reservoir. B.C. Fish and Wildlife Report. 1-17.
- McDonald, J.D. 1960. North Kootenay Lake. B.C. Dept. of Mines and Petroleum Resources Report. pp. 72-73.

- Morse, G.H. 1974. Literature survey on selected topics, Kootenay Lake. Canada Center for Inland Waters, Inland Waters Directorate. Pacific Region.
- Nichols, R.W. 1973. East Kootenay study area. Preliminary appraisal of water resources. Water Investigations Branch. March.
- Nordin, R.N. et al 1976. General limnology of Kootenay Lake and the Canadian portion of Libby Reservoir. Water Resources Service, Victoria.
- Nordin, R.N. et al. In preparation. Plankton biology of the Canadian portion of Libby Reservoir and Kootenay Lake. B.C. Water Resources Service.
- Northcote, T.G. 1971. The carbon dioxide "crisis" in Kootenay Lake waters. Unpublished. 11 pp.
- Ogilvie, R.T. 1970. Flathead area. University of Calgary. Report No. 60.
- Pearsall, W.H. et al. 1934. Light penetration into fresh water: III. Seasonal variations in the light conditions in Windermere in relation to vegetation. J. Exp. Biol. 11(1): 89-93.
- Reid, K. 1970. The effect of the Crestbrook pulp mill on the biology and chemistry of the Kootenay River. B.C. Fish and Wildlife Branch.
- Reid, Crowther and Partners, Ltd. 1973. Regional District of East Kootenay - water quality survey. Report prepared for Regional District of East Kootenay. 65 pp.
- Schofield, S.J. 1946. The origin of Kootenay Lake. Proc. and Trans. Roy. Soc. Canada. Series 3, 40(4): 93-98.
- Sinclair, D.C. 1966. Kootenay and Elk River creel census. B.C. Fish and Game Branch. Unpublished.
- Sparrow, R.A.H. 1963. Comparative limnology of lakes in the southern Rocky Mtn. Trench. B.C. U.B.C. Zoology. M.Sc. thesis.
- Taylor, K.G. 1968. Some factors influencing zooplankton populations in Kootenay Lake, British Columbia. Washington State University. M.Sc. thesis.
- Taylor, K.G. 1972. Limnological studies on Kootenay Lake, British Columbia, Canada. Washington State University. Ph.D. thesis.

- Thomas, J.F.J. 1953. Columbia River drainage in Canada, 1949-1950. Mines Branch Report No. 839, Water Survey Report No. 4. Industrial water resources of Canada. Mines Branch. Canada Dept. of Mines and Technical Surveys.
- Water Resources Service. 1976. Kootenay air and water quality study. Phase 1. Water quality in Region 2, the Elk River basin. B.C. Ministry of Environment. February. 139 pp.
- Water Resources Service. 1976. Kootenay air and water quality study. Phase 1. Water quality in Region 1, the Flathead River basin. B.C. Ministry of Environment. March. 19 pp.
- Water Resources Service. 1976. Kootenay air and water quality study. Phase 1. Water quality in Region 4, the lower Kootenay River basin. B.C. Ministry of Environment. March. 189 pp.
- Water Resources Service. 1976. Kootenay air and water quality study. Phase 1. Air quality in Region A, the Fording-Sparwood-Fernie area. B.C. Ministry of Environment. April. 81 pp.
- Water Resources Service. 1976. Kootenay air and water quality study. Phase 1. Water quality in Region 3, the upper Kootenay River basin. B.C. Ministry of Environment. April. 19 pp.
- Water Resources Service. 1976. Kootenay air and water quality study. Phase 1. Air quality in Region B. Kimberley - Skookumchuck - Cranbrook area. B.C. Ministry of Environment. July. 135 pp.
- Water Resources Service. 1976. Kootenay air and water quality study. Phase 1. Water quality in Region 7, the upper Columbia River basin. B.C. Ministry of Environment. August. 107 pp.
- Water Resources Service. 1976. Kootenay air and water quality study. Phase 1. Water quality in Region 5, the Kootenay Lake basin. B.C. Ministry of Environment. October. 145 pp.
- Waterfield, Donald, 1970. Columbia waterboy. Toronto. Clarke, Irwin Co. Ltd.
- Williams, J.D. et al. 1970. Biological and chemical conditions in Kootenay and St. Mary rivers. B.C. Fish and Wildlife Branch. Unpublished.

- Zyblut, E.R. 1965. A limnological study of Kootenay Lake, Part I - physical and chemical. U.B.C. Zoology.
- Zyblut, E.R. 1968. Temporal and spatial changes in distribution and abundance of macro-zooplankton in a large British Columbia lake. U.B.C. Zoology. M.Sc. thesis.
- Zyblut, E.R. 1969. Long-term changes in the limnology and macro-zooplankton of a large B.C. lake. J. Fish. Res. Bd. Canada. 27: 1239-1256.
- Zyblut, E.R. 1970. Long-term changes in the limnology and macro-zooplankton of a large British Columbia lake. J. Fish Res. Board Canada 27: 1239-1250.

FISH AND WILDLIFE1. FISH

- Andrusak, H. 1970. Interim report on the massive mortality of mountain whitefish (Prosopium williamsoni) in Kootenay Lake, 1969. B.C. Fish and Wildlife Branch. Unpublished.
- Andrusak, H. 1972. Kootenay Lake sport fishery, 1970-71. B.C. Fish and Wildlife Branch. Unpublished.
- Andrusak, H. 1972. Fisheries management - Kootenay Lake. B.C. Fish and Wildlife Branch. Unpublished.
- Andrusak, H. 1974. Kootenay Lake sport fishery, 1972-73. B.C. Fish and Wildlife Branch. Unpublished.
- Andrusak, H. 1974. Initial effects of the special lakes licence on Kootenay Lake. B.C. Fish and Wildlife Branch. Unpublished.
- Andrusak, H. 1976. Kootenay Lake sport fishery 1974-1975. B.C. Fish and Wildlife Branch. Unpublished.
- Andrusak, H. et al. In preparation. Rainbow trout incubation and rearing facilities at the Meadow Creek spawning channel. B.C. Fish and Wildlife Branch.
- Bell, G.R. and G.E. Hoskins. 1971. Investigations of wild fish mortalities in B.C., 1969-1970. Fisheries Research Board Canada, Technical Report No. 245.
- British Columbia Fish and Wildlife Branch. 1965. Fish conservation studies - Duncan hydro project. 4 p.
- British Columbia Fish and Wildlife Branch. 1965. Effects on fish and game species of the development of Arrow Lakes Dam for hydroelectric purposes.
- British Columbia Fish and Wildlife Branch. 1965. Effects on fish and game species of development of Mica Dam for hydroelectric purposes.
- British Columbia Fish and Wildlife Branch. 1972. Scuba diving observations, West Arm Kootenay Lake, 1970-72. Unpublished.



- Bull, C.J. 1965. Enumeration of kokanee salmon populations on the Lardeau-Duncan River system, 1964. B.C. Fish and Game Branch, Management Report No. 46.
- Bull, C.J. et al. 1971. Quantification of flavor, odor and texture of Rocky Mountain whitefish from Kootenay River. B.C. Fish and Wildlife Branch. Unpublished.
- Cartwright, John W. 1961. Investigation of the rainbow trout of Kootenay Lake, B.C. with special reference to the Lardeau River. B.C. Fish and Game Branch, Management Publication No. 7.
- Gee, J.H. 1958. Economics and distribution of the British Columbia Kootenay sport fishing resource, 1958. B.C. Fish and Game Branch, Fisheries Management Report No. 29.
- Hartman, G.F. 1968. Reproductive biology of the Gerrard stock rainbow trout. In: Symposium on salmon and trout in streams, H.R. MacMillan Lectures in Fisheries, U.B.C. T.G. Northcote (ed.) pp. 53-67.
- Hartman, G.F. et al. 1970. The reproductive environment of the Gerrard stock rainbow trout. B.C. Fish and Wildlife Branch, Fisheries Management Publication No. 15.
- Horton, R. et al. 1971. Elk River report. Fish and Wildlife Branch. Unpublished.
- Irvine, J.R. 1973. The significance of lake-origin drift organisms as an energy source to young rainbow trout in outlet stream rearing areas. U.B.C. Biology. B.Sc. thesis.
- Langford, R.W. 1974. Data review of biological and chemical effects of the Crestbrook Pulp mill effluent on the Kootenay River. B.C. Fish and Wildlife Branch. Unpublished.
- Larkin, P.A. 1951. The Effects on fisheries of proposed West Kootenay water storage project at Trout Lake. B.C. Game Dept. Management Publication No. 1.
- Lindsay, R.A. 1976. Preliminary inventory of sportfish escapement from the Libby Reservoir to Linklater and Plumbob Creeks. B.C. Fish and Wildlife Branch Report: 1-66.

- Lindsay, R.A. 1977. Preliminary inventory of sportfish escapement from the Libby Reservoir to Kikomum Creek. B.C. Fish and Wildlife Branch Report: 1-66.
- Maher, F.P. 1961. A preliminary report on the effects on fisheries of four dams proposed for the Columbia and Kootenay Rivers in British Columbia. B.C. Fish and Game Branch.
- Northcote, T.G. 1952. An analysis of variation in quantitative sampling of bottom fauna in lakes. U.B.C. M.A. thesis.
- Northcote, T.G. 1968. Patterns and mechanisms in the lakeward migratory behavior of juvenile trout. In: Symposium on salmon and trout in streams, H.R. MacMillan Lectures in Fisheries. U.B.C. T.G. Northcote (ed.) pp. 183-203.
- Northcote, T.G. 1969. Lakeward migration of young rainbow trout in the upper Lardeau River, B.C. J. Fish Res. Board Canada. 26(1): 33-45.
- Northcote, T.G. 1972. Kootenay Lake: man's effects on the salmonoid community. J. Fish Res. Board Canada 29: 861-865.
- Northcote, T.G. 1972. Eutrophication and recreational fishes in two large lake basins in British Columbia. In: Symposium on the lakes of western Canada - proceedings. Edmonton, 1972. Univ. Alberta Water Resources Centre, Publ. No. 2.
- Northcote, T.G. 1972. Some effects of mysid introduction and nutrient enrichment on a large oligotrophic lake and its salmonoids. Verh. Internat. Limnol. 18: 1096-1106.
- Northcote, T.G. 1973. Some impacts of man on Kootenay Lake and its salmonoids. Great Lakes Fishery Commission, Technical Report No. 25. Ann Arbor, Michigan. 46 pp.
- Pearse Bowden Economic Consultants Ltd. 1971. The value of fresh water sport fishing in British Columbia. B.C. Fish and Wildlife Branch. Study Report on the Economics of Wildlife and Recreation. No. 5.
- Pearse, P. et al. 1969. The value of the Kootenay Lake sport fishery. B.C. Fish and Wildlife Branch. Study Report on the Economics of Wildlife and Recreation No. 3.

- Peterson, G.R. et al. 1965. Effects on fish and game species of development of Duncan Dam for hydro-electric purposes. B.C. Fish and Wildlife Branch. Mgmt. Report. No. 8.
- Peterson, G.R. et al. 1965. Effects on fish and game species of development of Arrow Lakes Dam for hydro-electric purposes. B.C. Fish and Wildlife Branch. Mgmt. Report No. 9.
- Sinclair, D.C. 1966. The effects on fish in the St. Mary's River of wastes from Consolidated Mining and Smelting Co. operations in the Kimberly area. B.C. Fish and Wildlife Branch. Unpublished. 11 pp.
- Sinclair, D.C. 1968. Kootenay Lake sport fishery. B.C. Fish and Wildlife Branch. Unpublished.
- Sparrow, R.A.H. et al. 1964. Successful introduction of Mysis relicta Loven into Kootenay Lake, B.C. J. Fish Res. Board Canada 21(5): 1325-1327.
- Stenton, C.E. 1960. Ecology of the Yellowstone cut-throat trout in Kiakho Lake, British Columbia. U.B.C. M.Sc. thesis.
- Vernon, E.H. 1957. Morphometric comparison of three races of kokanee within a large B.C. lake. J. Fish Res. Board Canada 14(4): 573-598.
- Whatley, M.R. 1969. Fish caging experiments - St. Mary's River, Aug. 23-25, 1969. B.C. Fish and Wildlife Branch. Unpublished.
- Whatley, M.R. 1972. Effects on fish in Kootenay River of construction of Libby Dam. B.C. Fish and Wildlife Branch, Fisheries Management Report No. 65.
- Wightman, J.C. 1975. Preliminary inventory of fish and habitat resources of Fry-Carney drainage, a tributary to Kootenay Lake, and some management considerations. B.C. Fish and Wildlife Branch.

FISH AND WILDLIFE2. BIRDS

- Anderson, D.R. 1966. A literature review on waterfowl production and habitat manipulation. Colorado Cooperative Wildlife Research Unit. Colorado State University. 15 pp.
- Balser, D.S. 1968. Effect of predator reduction on waterfowl nesting success. J. Wild. Mgmt. 32: 669-682.
- Bartonek, J.C. 1972. Summer foods of American widgeons, mallards, green-winged teal near Great Slave Lake, N.W.T. Can. Field Nat. 86: 373-376.
- Beebe, F.L. 1974. Field studies of the falconiformes. Occ. Papers B.C. Prov. Mus. No. 17. Victoria.
- Bellrose, F.C. 1976. Ducks, geese and swans of North America. Stackpole Books. Harrisburg.
- Benson, D.A. 1970. Species of waterfowl and age and sex ratios of ducks harvested in Canada during 1969-1970 season. Canadian Wildlife Service progress notes. No. 19, 16.
- Black, K.E. 1956. Drainage and its effect on duck production. Midwest Wildl. Conf. Lafayette. Indiana.
- Bond, R.M. 1943. Variation in western sparrow hawks. Condor 45: 168-185.
- Bowden, G.K. 1969. Recreational use of the Creston Flats. The case of bird hunting during 1968. Unpublished paper.
- British Columbia Fish and Wildlife Branch. 1976. Summary of the waterfowl data from the East Kootenay game checks 1971-1975. Unpublished.
- Brooks, A. 1912. Some British Columbia records. Auk 29(2): 252-253.
- Brooks, A. 1925. Winter notes from Okanagan, British Columbia. Murrelet 6(1): 3-4.
- Brooks, A. and H.S. Swarth. 1925. A distributional list of the Birds of British Columbia. Pacific Coast Avifauna No. 17. Cooper Ornithological Club. Berkeley, California. 158 pp.

- Campbell, R.W. 1972. The Franklin gull in British Columbia. *Syesis* 5: 99-106.
- Campbell, R.W. 1972. The American avocet in British Columbia. 1908-1970. *Syesis* 5: 173-178.
- Campbell, R.W. and A.L. Meugens. 1971. The summer birds of Richter Pass, British Columbia. *Syesis* 4: 93-123.
- Cannings, R.J. 1974. The indigo bunting in British Columbia. *Can. Field Nat.* 88(2): 232-233.
- Cavanagh, R.W.S. et al. 1962. Making ponds for wild ducks. New Zealand Dept. of Intern. Aff. Wildl. Pub. No. 72.
- Chapman, F.M. 1890. Birds from British Columbia. Papers on some B.C. birds: 123-158.
- Chapman, J.A., C.J. Henny and H.M. Wight. 1969. The status, population dynamics and harvest of the dusky Canada goose. *Wild. Mono.* No. 18.
- Cooch, F.G. 1969. The current state of the art 33rd Federal - Provincial Wildlife Conference. Edmonton.
- Cowan, I. McT. 1946. Notes on the distribution of Spizella breweri taverneri. *Condor* 48: 93-94.
- Cowan, I. McT. and J.A. Munro. 1946. Birds and mammals of Revelstoke National Park. Reprint from *Can. Alpine Journ.* Vol. XXIX, No. 1: 100-121.
- Cowan, I. McT. and J.A. Munro. 1946. Birds and mammals of Revelstoke National Park. *Can. Alpine Journ.* Vol. XXIX, No. 2: 237-256.
- Demarchi, R.A. 1966. Species composition of checked waterfowl kill in the Kootenays from 1962 to 1965. B.C. Fish and Wildlife Branch. Wildlife Mgmt. Division. 4 pp.
- Demarchi, R.A. 1966. Summary of 1966 Kootenay waterfowl data. B.C. Fish and Wildlife Branch. Wildlife Mgmt. Division. 5 pp.
- Demarchi, R.A. 1961. A study of the chukar partridge in the Thompson Valley. U.B.C.
- Demarchi, R.A. 1969. An appraisal of the early opening of Canada geese in the Kootenay Region from 1967 to 1969. B.C. Fish and Wildlife Branch. 9 pp.

- Demarchi, R.A. 1969. 1969 spring waterfowl survey of the Columbia River basin of the East Kootenay. B.C. Fish and Wildlife Branch. Wildlife Mgmt. Division. 11 pp.
- Demarchi, R.A. and W.G. Smith. 1968. Spring and fall waterfowl surveys in the Columbia River marshes of the East Kootenay. Fish and Wildlife Branch. Unpublished.
- Demarchi, R.A. et al. 1965. East Kootenay aerial late winter waterfowl counts. B.C. Fish and Wildlife Branch.
- Eastman, D.S. 1974. White-faced ibis photographed in British Columbia. *Can. Field. Nat.* 33(3): 354.
- Erskine, A.J. 1964. Bird migration during April in southern British Columbia. *Murrelet* 45: 15-22.
- Godfrey, W.E. 1951. A new northwest olive-backed thrush. *Can. Field Nat.* 65(5): 172-174.
- Grant, J. 1966. The barred owl in British Columbia. *Murrelet* 47(2): 39-45.
- Guiget, C.J. 1973. The birds of British Columbia (6) waterfowl. B.C. Prov. Mus. Handbook No. 15.
- Guiget, C.J. 1973. The birds of British Columbia (4) upland game birds. B.C. Prov. Mus. Handbook No. 10.
- Harris, R.D. 1972. A proposal to acquire the Wilmer Cooperative Wildlife Area in the Columbia Valley, B.C. Canadian Wildlife Service. 15 pp.
- Hatter, J. 1950. Waterfowl kill estimates for British Columbia. B.C. Game Commission.
- Hatter, J. et al. 1949. Waterfowl breeding ground survey in British Columbia. B.C. Game Commission.
- Hennan, E.G. 1975. Columbia River marshes, British Columbia Waterfowl assessment. Special Project 7104. Ducks Unlimited.
- Hilden, O. 1965. Habitat selection in birds: a review. *Ann. Zool. Fennica* 2: 53-75.
- Hochbaum, G.S. and E.F. Bossenmaier. 1972. Response of pintails to improved breeding habitat in southern Manitoba. *Can. Field Nat.* 86(1): 79-80.

- Howie, R. 1977. Checklist of birds for southeastern British Columbia.
- International Power and Engineering Consultants Ltd. 1967. Duck Lake. Waterfowl nesting habitat. Plan of development.
- Johnstone, W.B. 1949. Birds of the East Kootenay, British Columbia. B.C. Prov. Museum No. 7.
- Johnstone, W.B. 1953. Mating of the rednecked grebe. Can. Field Nat. 67(4): 181.
- Johnstone, W.B. 1964. Two interior British Columbia records for the ancient murrelet. Can. Field Nat. 78(3): 199-200.
- Kelso, J.E.H. 1926. Birds of the Arrow Lakes, West Kootenay district, British Columbia. Ibis 2(2): 689-723.
- Kemper, J.B. and D.S. Eastman. 1970. Osprey nesting survey in British Columbia, Canada. Auk 87(4): 814.
- King, D. 1968. Food habits in relation to the ecology and population dynamics of the Blue Grouse. U.B.C. Dept. Zool. M.Sc. thesis.
- Kozlik, F.M. 1959. Color marking white geese for determining migration routes. Calif. Fish & Game 45(2): 69-82.
- Laing, H. 1942. Birds of the coast of central British Columbia. Condor 44(4): 175-181.
- Langin, H.D. 1976. Wild ungulate and waterfowl competition program in Libby area-of-influence. B.C. Fish and Wildlife Branch report: 1-7.
- Langin, H.D. and R. Carswell. 1974. Effects of the Libby Dam upon waterfowl, fur bearers and upland game bird populations of the East Kootenay area of British Columbia. B.C. Fish and Wildlife Branch.
- Lee, F.B. et al. 1967. An evaluation of certain types of artificial nesting structures for ducks. Presented at 29th Midwest Fish and Wildl. Conf. Wisconsin.
- Linduska, J.P. 1964. Waterfowl tomorrow. Washington. 770 pp.
- Mailliard, J. 1932. Account of the birds. Birds and mammals from the Kootenay Valley, southeastern B.C. Calif. Acad. Sci. 269-287.

- Merilees, W.J. 1971. Observations of turkeys in British Columbia. *Blue Jay* 29(1): 25-27.
- Merilees, W.J. 1973. West Kootenay bird checklist.
- Merilees, W.J. 1974. Birding in the beautiful West Kootenay. *Fed. B.C. Naturalists Newsletter*. Dec. 1974. 12(4).
- Merilees, W.J. 1974. A glaucous-winged gull mated to a herring gull on Okanagan Lake, British Columbia. *Can. Field Nat.* 88: 485-486.
- Merilees, W.J. 1974. Ring-billed and California gull nesting colony in South Central British Columbia. *Can. Field Nat.* 88: 484-485.
- Merilees, W.J. 1976. A general report to ENTECH on the bird populations of the Columbia River Valley between Edgewater and Canal Flats, British Columbia. June.
- Merilees, W.J. 1976. A report to ENTECH on the numbers and locations of great blue heron, osprey and bald eagle nesting locations in the Columbia River Valley between Canal Flats and Edgewater, British Columbia.
- Merilees, W.J. Unpublished. A Summary of ornithological field observations made in Kootenay National Park for the period of May 13, 1976 to September 5, 1976.
- Merilees, W.J. Unpublished. A Summary of ornithological field notes made during the summer of 1976 in the Columbia River Valley between Edgewater and Canal Flats.
- Merilees, W.J. Unpublished. Notes on the winter water birds at Nelson, British Columbia.
- Merilees, W.J. Unpublished. Notes on the gull species at Nelson, British Columbia, during 1971 and 1972.
- Millican, J.A. 1969. A scissor-tailed flycatcher in British Columbia. *Can. Field Nat.* 83:62.
- Mitchell, H.B. 1966. Waterfowl pothole study in the Caribou. 3rd Ann. Fish and Wildlife Branch Meeting.
- Munro, D.A. 1949. 1948-1949 studies of birds in the upper Columbia Valley, British Columbia. *Canadian Wildlife Service Report*. 82 pp.
- Munro, D.A. 1949. Interim report on a waterfowl investigation in the upper Columbia Valley, British Columbia, in 1948. 33 pp.
- Munro, D.A. 1953. Observations of Canada geese in British Columbia and western Alberta in 1952. *U.B.C. Dept. Zool.*



- Munro, D.A. 1958. Factors affecting reproduction of the Canada goose. Proc. XIIth Int. Ornith. Cong. Helsinki: 542-556.
- Munro, D.A. 1962. Trumpeter swans. Can. Aud. May-June, 1962: 65-69.
- Munro, D.A. 1963. Ducks and the great plains wetlands. Canadian Audubon. 25(4): 105-112.
- Munro, J.A. 1919. Notes on some birds of the Okanagan Valley, British Columbia. Auk 36(1): 64-74.
- Munro, J.A. 1922. A proposed bird sanctuary in British Columbia. Okanagan Landing, Swan Lake. Can. Field Nat. 36(2): 26-30.
- Munro, J.A. 1923. Winter bird life at Okanagan Landing, B.C. Can. Field Nat. 37(4): 70-74.
- Munro, J.A. 1928. Horned owl migration in British Columbia. Auk 45(1): 99.
- Munro, J.A. 1931. An introduction to bird study in British Columbia. Victoria.
- Munro, J.A. 1938. Nesting of the western grebe in British Columbia. B.C. Prov. Mus. Rep. 16-17.
- Munro J.A. 1939. Studies of waterfowl in British Columbia: Barrows goldeneye, American goldeneye. Trans. Roy. Can. Instit. 22(2): 259-329.
- Munro, J.A. 1939. Glimpses of little known western lakes and their bird life. Can. Field Nat. 44(2): 40-45 and 44(3): 65-68.
- Munro, J.A. 1941. Cackling goose and sheep. Condor 43(4): 200.
- Munro, J.A. 1941. The grebes, studies of waterfowl in British Columbia. B.C. Prov. Mus. Occ. Papers No. 3.
- Munro, J.A. 1943. Studies of Waterfowl in British Columbia: mallard. Can. J. Research 21: 223-260.
- Munro, J.A. 1947. Observations of birds and mammals in central British Columbia. B.C. Prov. Mus. Occ. Papers 6: 44-108.
- Munro, J.A. 1949. Studies of waterfowl in British Columbia: Green-winged teal. Can. J. Research 27: 149-178.

- Munro, J.A. 1950. The birds and mammals of the Creston region. B.C. Prov. Mus. Occ. Pap. No. 8.
- Munro, J.A. 1953. Bird records from southern interior of British Columbia. Murrelet 34(2): 15-18.
- Munro, J.A. 1956. A report to the British Columbia Game Commission on waterfowl conditions at Duck Lake, British Columbia.
- Munro, J.A. 1957. The Birds and mammals of the Creston region, British Columbia. A supplement. B.C. Prov. Museum. Rep. for the Year 1957. Victoria.
- Munro, J.A. 1958. The status of nesting waterfowl in the Cariboo parklands.
- Munro, J.A. and I. McTaggart Cowan. 1944. Preliminary report on the birds and mammals of Kootenay National Park, British Columbia. Can. Field Nat. 58: 34-51.
- Munro, J.A. and I. McTaggart Cowan. 1947. A review of bird fauna of British Columbia. B.C. Prov. Mus. Special Pub. No. 2. 285 pp.
- Munro, W.T. 1976. The Kootenay diversion - some waterfowl considerations. B.C. Fish and Wildlife Branch. Mimeo.
- Nealis, V.G. 1976. Invertebrate food species of migratory waterfowl in the Columbia Valley study area. Unpublished report prepared for Canadian Wildlife Service, Pacific and Yukon Region, Delta, B.C.
- Norris, J.P. 1902. Nesting of Tennessee warbler in British Columbia. Auk 19(1): 88-89.
- Oberholser, H.C. 1902. A review of the larks of the genus Otocoris. Proc. U.S. Nat. Mus. 24: 801-883.
- Oberholser, H.C. 1905. The forms of Vermivora celata. Auk 22: 242-247.
- Peterson, R.T. 1961. A field guide to western birds. Houghton Mifflin Company. Boston.
- Racey, K. 1948. Birds of the Alta Lake region, British Columbia. Auk 65(3): 383-401.
- Rhoads, S.N. 1893. Notes on certain Washington and British Columbia birds. Auk 10(1): 16-24.

- Rhoads, S.N. 1893. The Hudsonian chickadee and its allies with remarks on the geographic distribution of bird races in boreal America. *Auk* 10(4): 321-333.
- Rhoads, S.N. 1893. The birds observed in British Columbia and Washington during spring and summer 1892. *Papers on some B.C. birds*: 21-65 & 16-24.
- Riley, J.H. 1912. Birds collected or observed on the expedition of the Alpine Club of Canada to Jasper Park, Yellowhead Pass and Mt. Robson. *Can. Alpine Reg*: 47-75.
- Ritcey, R.W. 1966. Fluctuations in fall abundance of grouse in British Columbia. 3rd Ann. Fish and Wildlife Branch Meeting.
- Ritcey, R.W. et al. 1966. Chukars: the riddle of red legs. *Wild. Rev.* June 1966.
- Robbins, C.S., R. Bruun and H.S. Zim. 1966. A guide to field identification - birds of North America. Golden Press. New York.
- Schroeder, L.D. 1973. A literature review on the role of invertebrates in waterfowl management. Colorado Division of Wildlife. Special Report No. 29.
- Smith, I. and S. Harrison. 1969. The waterfowl and fur-bearer resources of the Libby Reservoir. B.C. Dept. Recreation and Conservation. Wildlife Mgmt. Report No. 7. 11 pp.
- Smith, S.B. 1969. Critique of waterfowl management in Canada. *Trans. 33rd Federal - Provincial Wildl. Conf.* Edmonton: 51-58.
- Smith, W.G. 1970. The management and conservation of raptorial birds in British Columbia. Federal Provincial Wildlife Conf. Yellowknife.
- Snyder, L.L. 1946. Variation in Bonasa umbellus with particular reference to the species in Canada east of the Rockies. *Roy. Ont. Mus. Occ. Papers* No. 27: 118-133
- Sterling, R.T. 1968. Aspects of wetland development for waterfowl in British Columbia. Ducks Unlimited (Canada). Winnipeg. 12 pp.
- Street, L. and W. Merilees. 1974. A second sight record of the indigo bunting for British Columbia. *Can. Field Nat.* 88(1): 84.

- Stushnoff, B. 1976. Creston Valley Wildlife Management Authority 1974 and 1975 breeding pair counts by species. Unpublished report.
- Swarth, H.S. 1922. General account of the birds. Birds and mammals of the Stikine River region of northern British Columbia, and southeastern Alaska: 195-308.
- Swarth, H.S. 1931. Geographic variation in the Richardson grouse. Calif. Acad. Sci. 20(1): 1-7.
- Taverner, P.A. 1942. Canadian races of the great horned owls. Auk 59(2): 234-245.
- Todd, W.E. 1957. Acadian flycatcher, a new bird for British Columbia. Condor 59(3): 211.
- U.S. Department of the Interior. 1967. A program for waterfowl management and research. Memo to Flyway Council Technical Section members. Fish and Wildlife Service. March. Memo.
- Ulke, T. 1923. Birds observed in Yoho Park, British Columbia, in August 1922. Can. Field Nat. 37(4): 54-55.
- Vermeer, K. 1970. Breeding biology of the California ring-billed gulls. A study of ecological adaptation to the inland habitat. Canadian Wildlife Service Report Series. No. 12.
- Warburton, S. 1928. Harlequin ducks at Wapta Lake, British Columbia. Murrelet 9(3): 70.
- Webb, R. and W.G. Leitch. 1969. Roles of various agencies. 33rd Federal - Provincial Wildl. Conf., Edmonton: 60-99.
- Weller, M.W. Role of habitat in the distribution and abundance of marsh birds. Special Report No. 43.
- Whitelaw, V. 1972. On hand-rearing a rufous-humming-bird. First steps. Discovery 1(3): 80-84.
- Wilson, M., C.E. Wilson and L. Wilson. 1972. Ornithological notes from Columbia Lake, British Columbia Syesis 5: 63-65.
- Wilson, M. 1974. Pomarine jaeger at Canal Flats, British Columbia. Syesis 7: 251.
- Yocom, C.F. 1951. Waterfowl and their food plants in Washington. Seattle. Univ. Wash. Press 1957.

Yocom, C.F. 1962. History of the great basin Canada goose in the Pacific Northwest and adjacent areas. Murrelet 43(1): 1-10.

Yocom, C.F. 1965. Estimated populations of great basin Canada geese over their breeding range in western United States. Murrelet 46(2): 19-26.

FISH AND WILDLIFE3 MAMMALS

- Bailey, A.W. 1960. Whitetail deer study in the East Kootenay, a preliminary report. B.C. Game Branch.
- Bandy, P.J. 1952. A study of the fur-bearing mammals of the subalpine and Columbia forest region of British Columbia in relation to fur production from 1929 - 1949. U.B.C. B.Sc. thesis.
- Bandy, P.J. 1966. Bighorn sheep die-off in British Columbia: a complex of environmental factors. 1966 Ann. Meeting Can. Soc. Wildlife and Fish Biologists Ottawa. 6 pp.
- Bandy, P.J. 1968. Rocky Mountain bighorn sheep losses in the East Kootenay region of B.C. 1965-1967. N.E. Sect. Meeting Wildlife Soc: 1-19.
- Bandy, P.J. et al. No Date. The ecology of the Bull River bighorn sheep winter range. B.C. Fish and Wildlife Branch. Mimeo.
- Bandy, P.J. et al. In preparation. The ecology, productivity and management of big game winter ranges in the East Kootenay region of British Columbia, with particular reference to bighorn sheep. Parts 1-5. B.C. Fish and Wildlife Branch.
- Baynes, R.A. 1956. The use of aerial photographs in the identification and assessment of moose ranges in southern British Columbia. U.B.C. Zoology. M.A. thesis.
- Bergenheim, C. 1972. Trapping muskrats at Moberly. In: Kinbasket country. Golden and District Historical Society Publ. 83 pp.
- Blood, D.A. 1961. An ecological study of California bighorn sheep in southern British Columbia. U.B.C. Zoology. M.Sc. thesis.
- Blood, D.A. 1963. Parasites of California bighorn sheep in southern British Columbia. Can. J. Zool. 41: 913-918.
- Blood, D.A. 1966. Progress reports on bighorn sheep investigations in the Rocky Mountain National Parks. B.C. Fish and Wildlife Branch.

- Bowden, G. et al. 1968. Non-resident big game hunting and the guiding industry in British Columbia: an economic study. B.C. Fish and Wildlife Branch. Study report No. 2. 72 pp.
- British Columbia Fish and Wildlife Branch. 1973. Game Commission reports. Mountain goat 1915-1956.
- Churchill, B.P. 1974. Christmas tree permits and relation to ungulate forage in the Springbrook-Canal Flat area. B.C. Fish and Wildlife Branch. Careers '74 Project.
- Churchill, B.P. In progress. Kootenay elk winter habitat selection. U.B.C. Dept. Forestry. M.Sc. thesis.
- Clapp, B.E. 1966. Field work on the Rocky Mountain bighorn sheep die-off. November 1965 to April 1966. B.C. Fish and Wildlife Branch.
- Clapp, B.E. 1967. Live capture, immobilization and tagging of Rocky Mountain bighorn sheep in the East Kootenay, 1965-1967. B.C. Fish and Wildlife Branch. Wildlife Res. Division.
- Clapp, B.E. 1968. Techniques in live capture and marking of Rocky Mountain bighorn in the East Kootenay 1967-68. Suppl. Report. B.C. Fish and Wildlife Branch. Wildlife Res. Division.
- Cowan, I. McT. 1940. Distribution and variation in the native sheep of North America. *Am. Midl. Nat.* 24: 505-580.
- Cowan, I. McT. 1944. Report on game conditions in Banff, Jasper, & Kootenay national parks 1943. Ottawa. Mimeo. 72 pp.
- Cowan, I. McT. 1947. The timber wolf in the Rocky Mountain national parks of Canada. *Can. Journ. Res. Sect. D in Zool. Sci.* 25(5): 139-174.
- Cowan, I. McT. and V.C. Brink. 1949. Natural game licks in the Rocky Mountain national parks of Canada. *J. Mamm.* 30(4): 379-387.
- Cowan, I. McT. and C.J. Guiguet. 1973. The mammals of British Columbia. B.C. Prov. Mus. Handbook No. 11.
- Cowan, I. McT. and R.H. MacKay. 1950. Food habits of the marten in the Rocky Mountain region of Canada. *Can. Field Nat.* 64(3): 100-104.

- Cowan, I. McT. and W. McCrory. 1970. Variation in the mountain goat. *J. Mamm.* 51(1): 60-73.
- Cowan, I. McT. and J.A. Munro. 1946. Birds and mammals of Revelstoke National Park. Reprint from *Can. Alpine Journ.* Vol. XXIX, No. 1: 100-121.
- Cowan, I. McT. and J.A. Munro. 1946. Birds and mammals of Revelstoke National Park. *Can. Alpine Journ.* Vol. XXIX, No. 2: 237-256.
- Demarchi, D.A. 1967. An ecological study of bighorn sheep winter ranges in the East Kootenay region of British Columbia. 4th Ann. Tech. Meeting Fish and Wildlife Branch. Kamloops. 51 pp.
- Demarchi, D.A. 1967. An ecological study of Rocky Mountain bighorn sheep winter ranges in the East Kootenay region of B.C. I. Bull River Range. B.C. Fish and Wildlife Branch.
- Demarchi, D.A. 1967. The ecology of bighorn sheep winter ranges of the East Kootenays. B.C. Fish and Wildlife Branch. Wildlife Research Division report. Unpublished.
- Demarchi, D.A. 1971. Ecology of big game winter ranges in the East and West Kootenay. B.C. Fish and Wildlife Branch. Wildlife Mgmt. Division report.
- Demarchi, D.A. 1972. Livestock-bighorn competition on an overgrazed range. Symposium: Interactions between cattle and wild ungulates in southern interior of British Columbia. Kamloops. 10 pp.
- Demarchi, R.A. 1966. Facts and figures on elk from the East Kootenays. 3rd Ann. Fish and Wildlife Meeting.
- Demarchi, R.A. 1966. Deer and elk harvests in the Kootenays from 1950 to 1964. B.C. Fish and Wildlife Branch. Wildlife Mgmt. report. 15 pp.
- Demarchi, R.A. 1967. Status of the Rocky Mountain bighorn in the East Kootenay. *Wild. Rev.* 4(4):10-13.
- Demarchi, R.A. 1968. The 1967 moose season in the East Kootenay. B.C. Fish and Wildlife Branch. 11 pp.
- Demarchi, R.A. 1968. A survey of the big game resources in the coal licence area in the upper Elk and Fording River watersheds. B.C. Fish and Wildlife Branch. 5 pp.



- Demarchi, R.A. 1969. A comparison of B.C. Forest Service and B.C. Fish and Wildlife Branch estimates of carrying capacity on the Bull River power plant range. B.C. Fish and Wildlife Branch. Wildlife Mgmt. Division report.
- Demarchi, R.A. 1970. Results and effects of the moose harvests in the East Kootenay from 1950 to 1969. Pres. at 6th N.A. Moose Conf. Fish and Wildlife Branch. 7 pp.
- Demarchi, R.A. 1972. Post die-off recovery of East Kootenay bighorn sheep. Northern Wild Sheep Council. Hinton, Alberta. 7 pp.
- Demarchi, R.A. 1974. Winter and spring food habits of mule deer in the East Kootenay area. B.C. Fish and Wildlife Branch.
- Demarchi, R.A. 1974. Forest and elk management in the interior Douglas fir zone of southeast British Columbia. Presented to U.B.C. Continuing Education Programme. For. Wildl. Ec. Mgmt. Mimeo. 7 pp.
- Demarchi, R.A. et al. 1967. Winter and spring food habits of white-tailed deer in the East Kootenays. 4th Ann. Tech. Meeting Fish and Wildlife Branch.
- Eastman, D.S. 1968. The status of Rocky Mountain sheep populations of the East Kootenay region of British Columbia. B.C. Fish and Wildlife Branch. Wildlife Research Division.
- Eastman, D.S. 1969. East Kootenay bighorn sheep studies - a progress report of range studies 1968-1969. B.C. Fish and Wildlife Branch. Wildlife Research Division.
- Eastman, D.S. 1970. East Kootenay bighorn sheep study: summary of range field work May to October 1968-1969. B.C. Fish and Wildlife Branch. 14 pp.
- Eastman, D.S. 1970. Winter range studies of bighorn sheep in the East Kootenay region of British Columbia. Trans. 3rd Northern Wild Sheep Council. 10 pp.
- Eastman, D.S. In preparation. Counting Rocky Mountain bighorn sheep in southeastern B.C. B.C. Fish and Wildlife Branch.

- Eastman, D.S. et al. In preparation. Population changes of East Kootenay bighorn sheep during the die-off. B.C. Fish and Wildlife Branch.
- Edwards, R.Y. 1956. Snow depth and ungulate abundance in the mountains of western Canada. *J. Wild. Mgmt.* 20(2): 159-168.
- Flook, D.R. and J.E. Stenton. 1969. Incidence and abundance of certain parasites in wapiti in the national parks of the Canadian Rockies. *Can. J. Zool.* 47(5): 795-803.
- Foster, B.R. 1976. Exploitation and management of the mountain goat in British Columbia. U.B.C. Dept. Zool. B.Sc. thesis.
- Geist, V. 1967. On the behaviour and evolution of American mountain sheep. U.B.C. Zoology. Ph.D. thesis.
- Gibbons, T. 1976. Elk monitoring report 1975-1976, Kootenay National Park. Parks Canada. Unpublished report.
- Hagmeier, E.M. 1955. The genus Martes in North America: its distribution, variation, classification, phylogeny and relationship to Old World forms. U.B.C. Zoology. Ph.D. thesis.
- Hatter, J. 1956. Distribution of hunting pressures and utilization of big game in British Columbia. *Pres. 36th Ann. Conf. Western Assn. of State Fish and Game Commissioners.* p. 127-131.
- Hebert, D.M. 1967. Natural salt licks as a part of the ecology of the mountain goat. U.B.C. Dept. Zool. M.Sc. thesis.
- Herbert, D.M. 1970. Natural salt licks as part of the ecology of the mountain goat. *Can. J. Zool.* 49: 605-610.
- Hebert, D.M. 1973. Altitudinal migration as a factor in the nutrition of bighorn sheep. U.B.C. Dept. Zool. Ph.D. thesis.
- Holroyd, J.C. 1967. Observations of Rocky Mountain goats on Mt. Wardle, Kootenay National Park, B.C. *Can. Field Nat.* 81: 2-22.
- Hudson, R.J. 1971. Immunoglobulin response of the Rocky Mountain bighorn sheep. *J. Wildl. Dis.* 7: 171-174.

- Hudson, R.J., W.D. Kitts and P.J. Bandy. 1970. Monitoring parasite activity and disease in the Rocky Mountain bighorn by electrophoresis of seromuroids. *J. Wild. Diseases* 6: 104-106.
- Hudson, R.J. et al. 1971. Hypersensitivity mechanisms in lungworm infections of the Rocky Mountain bighorn sheep. *Can. Vet. Med. Assn. Proc.* 22nd Ann. Conv.
- Hudson, R.J. et al. 1971. In vitro detection of homocytotropic antibody in lungworm-infected Rocky Mountain bighorn sheep. *Clinical and Exp. Immun.* 8(2): 345-354.
- Hudson, R.J. et al. 1972. Cell adherence reactions in lungworm infections of the Rocky Mountain bighorn sheep. *Can. J. Comp. Med.* 36(1): 69-73.
- Hudson, R.J. et al. 1976. Occupational patterns of wildlife on a major East Kootenay winter-spring range. *J. Range Mgmt.* 29(1): 38-43.
- Johnson, D.R. 1972. Did mountain sheep occur in the Selkirk Mountains of Canada and the United States? *Murrelet* 53(2): 28-29.
- Kandall, R. et al. 1963. A report on the 1963 B.C. fur resources study. B.C. Fish and Wildlife Branch. 21 pp.
- Langin, H.D. 1976. Wild ungulate and waterfowl competition program in Libby area-of-influence. B.C. Fish and Wildlife Branch report: 1-7.
- Lloyd, K. 1975. Grizzly bear harvest. U.B.C. Dept. Zool. B.Sc. thesis.
- Logan, J. 1962. The winter ranges of big game in the East Kootenays as determined from hunter sample returns and some considerations of the changes in game kill numbers from 1955 to 1961. U.B.C. Dept. Agr. B.Sc. thesis.
- Mackay, W.A. 1966. Fur management in Utopia and its implications in British Columbia. 3rd Ann. Fish and Wildlife Meeting.
- Martin, P.W. 1963. Distribution and abundance of big game animals in British Columbia. Northwest Sect. Wildlife Society. 11 pp.
- McLaren, W.D. 1960. East Kootenay deer damage investigation. 1960. B.C. Game Commission. 22 pp.
- Mitchell, H.B. 1970. Abundance and distribution of California bighorn sheep in North America. *J. Wild. Mgmt.* 34(2): 473-475.

- Pearse, P. et al. 1966. Big game hunting in the East Kootenay: a statistical analysis. B.C. Fish and Wildlife Branch.
- Phelps, D.E. et al. 1975. Mountain goat management in the Kootenays. I. The history of goat management. II. A goat management plan, 1975-1985.
- Quenet, R.V. 1973. Growth simulation of trees, shrubs, grasses and forbs on a big game winter range. U.B.C. Dept. Zool. Ph.D. thesis.
- Reid, K.W. 1969. The ecology of certain terrestrial snails and their relationship to the lungworm of bighorn sheep. U.B.C. Dept. Zool. M.Sc. thesis.
- Ritcey, R.W. and R.V. Edwards. 1956. Live trapping mink in British Columbia. J. Mamm. 37(1): 114-116.
- Russell, L.J. 1967. Parasites of the white-tail deer (Odocoileus virginianus ochrourus) of British Columbia. U.B.C. Dept. Zool. M.Sc. thesis 70 pp.
- Saunders, B. 1976. Columbia River basin traplines returns. (Kootenay River Diversion Task Force) B.C. Fish and Wildlife Branch. Mimeo.
- Scheffler, E.G. 1965. A critical review of the methods for assessing range competition between domestic and wild ungulates. U.B.C. B.Sc. thesis.
- Shackleton, D. 1973. Population quality and bighorn sheep. Univ. Calgary. Ph.D. thesis.
- Singleton, J. 1976. Food habits of wild ungulates in British Columbia: bibliography and plant synopsis. ELUC, D.O.E. and B.C. Fish and Wildlife Branch. 51 pp.
- Smith, C. In process. Whitetailed deer habitat use, Rocky Mountain Trench. U.B.C. Dept. Zool. M.Sc. thesis.
- Smith, I. and R.A. Demarchi. 1969. The ungulate resources of the Libby Reservoir. B.C. Fish and Wildlife Branch. Wildlife Mgmt. Division Report. No. 5.
- Smith, I. and S. Harrison. 1969. The waterfowl and furbearer Resources of the Libby Reservoir. B.C. Fish and Wildlife Branch. Wildlife Management Report No. 7.

- Smith, W.G. 1955. Aerial census of big game in the East Kootenays. April 1955. B.C. Game Commission. Mimeo.
- Smith, W.G. 1955. Domestic sheep on bighorn range at Bull River. Report to the B.C. Game Dept.
- Smith, W.G. 1959. Dependence of big game upon unalienated crown lands in the East Kootenay region of British Columbia. B.C. Game Commission. 62 pp.
- Smith, W.G. et al. 1955. Report on game damage to ranching interests in the Waldo stockbreeders' area in the East Kootenays. B.C. Game Commission mimeo. 25 pp.
- Smith, W.G. et al. 1955. Big game management in the East Kootenays. 9th Ann. Game Conv. report: 78-80.
- Spalding, D.J. 1970. The cougar in British Columbia. B.C. Fish and Wildlife Branch. Info. Sheet.
- Spalding, D.J. 1971. The wildcats of B.C. Symposium on native cats of North America: their status and management. 36th N.A. Wild. and Nat. Res. Conf. Portland.
- Stanlake, E.A. et al. 1975. Ungulate use of some reclaimed strip mines in southeastern British Columbia. III. Progress report. B.C. Fish and Wildlife Branch. Wildl. Res. and Tech. Serv. Sec.
- Stanlake, M.G. et al. In preparation. Coal exploration activities and their effect on subalpine winter ranges in southeastern British Columbia. B.C. Fish and Wildlife Branch. Wildl. Res. and Tech. Serv. Sec.
- Stelfox, J.G. 1971. Bighorn sheep in the Canadian Rockies: a history. 1800-1970, Can. Field Nat. 85(2): 101-122.
- Struhsaker, T.T. 1967. Behaviour of elk during the rut. Z. Tierpsychol 24: 80-114.
- Tamsitt, J.R. 1962. Mammals of the Delta Marsh region of Lake Manitoba, Canada. Can. Field Nat. 76(2): 71-78.
- Taylor, B. et al. 1974. Ungulate use of some reclaimed strip mines in southeastern British Columbia. B.C. Fish and Wildlife Branch. Wildl. Res. and Tech. Serv. Sec.

Van Zyll de Jong, C.G. 1975. The distribution and abundance of the wolverine in Canada. Can. Field Nat. 89(4): 431-437.

Warkentin, W.J. 1972. Alfalfa - deer use studies. Bull River and Grasmere 1972. B.C. Fish and Wildlife Branch. Kootenay Region Rep. No. 4.

Warkentin, W.J. 1974. 1973/1974 classified big game counts in the East Kootenay. B.C. Fish and Wildlife Branch. 10 pp.

FISH AND WILDLIFE4. GENERAL

- Bandy, P.J. 1962. Inventory and evaluation of the wildlife resource of B.C. 15th B.C. Nat. Res. Conf.
- Bandy, P.J. 1964. A communications system for game biologists. B.C. Fish and Wildlife Branch. 16 pp.
- Bandy, P.J. 1966. A conceptual approach to ARDA and its implications in B.C. 3rd Ann. Fish and Wildlife Branch Meeting.
- Bandy, P.J. 1967. The implications of the Canada Land Inventory for the wildlife resource. Ann. Meeting B.C. Wildlife Federation. 6 pp.
- Blower, D.B. 1965. ARDA winter range field study, East Kootenay. B.C. Fish and Wildlife Branch. Unpublished.
- British Columbia Fish and Wildlife Branch. 1971. The Fish and Wildlife Branch. Its role and requirements in the 1970's.
- British Columbia Fish and Wildlife Branch. Every year. Hunter sample reports. Wildlife Mgmt. Division.
- Canadian Wildlife Service. 1963. Report of Libby Dam project planning committee on fish and wildlife resources.
- Davidson, A.T. 1962. ARDA and wildlife. Canadian Audubon 24(5): 134-138.
- Demarchi, R.A. 1967. Land-use policies in British Columbia as they relate to wildlife management. 1967 Meeting Inland Empire Reforestation Council. Fish and Wildlife Branch. 6 pp.
- Demarchi, R.A. 1967. A general wildlife capability inventory of Crowsnest Industries Limited lands in the East Kootenay region of B.C. B.C. Fish and Wildlife Branch. Mimeo. 11 pp.
- Demarchi, R.A. 1968. Report on the 1967 hunting season in the Kootenay region. Fish and Wildlife Branch. 13 pp.
- Demarchi, R.A. 1968. Wildlife of the Kootenay. Wild. Rev. 4(7): 22-23.

- Demarchi, R.A. 1974. A brief resume of the wildlife resource values associated with Kootenay Forest Products Ltd. lands in the West Kootenay. Rpt. to B.C. Lands, Forests and Water Resources. 2 pp.
- Demarchi, R.A. 1971. The 1971 hunting season in the East Kootenay. B.C. Fish and Wildlife Branch. 5 pp.
- Demarchi, R.A., I. Smith and D. Eastman. 1969. Wildlife-livestock interactions in the East Kootenay region. B.C. Fish and Wildlife Branch. Wildlife Mgmt. Division. Report No. 8. 33 pp.
- Demarchi, R.A. et al. 1965. An aerial wildlife survey of the East Kootenay. ARDA study area. 119 pp.
- Demarchi, R.A. et al. 1973. Summary of wildlife priorities, general stocking rates and proposed methods of management of range units in the Rocky Mountain Trench, East Kootenay region. B.C. Fish and Wildlife Branch.
- Entech Environmental Consultants Ltd. 1976. Kootenay River diversion project. Environmental feasibility study. Progress report. July 21, 1975 - March 31, 1976. B.C. Hydro and Power Authority. Entech Project No. 4375.
- Entech Environmental Consultants Ltd. 1976. Kootenay River diversion project. Environmental feasibility study. Working paper. First draft. Vol. I-IV. July 21, 1975 - October 15, 1976. B.C. Hydro and Power Authority Entech Project No. 4375.
- Finegan, R.P. 1969. Notes on game species. 1968. B.C. Fish and Wildlife Branch. Wildlife Mgmt. Division No. 6A. 10 pp.
- Gates, B.R. and P.A. Caverhill. 1970. Effects on wildlife of proposed increased water storage levels in the Ross reservoir. B.C. Fish and Wildlife Branch. Wildlife Mgmt. Division. 16 pp.
- Hatter, J. 1949. Research and investigations as an integral part of game management in British Columbia. 3rd Ann. Game Convention. 105-111.
- Hatter, J. 1951. Effect of flooding on wildlife populations in the Skagit Valley immediately north of the international boundary. B.C. Game Commission.



- Hatter, J. 1951. Grazing versus wildlife and hunting. Trans. 4th B.C. Natural Resources Conference.
- Hatter, J. 1951. The effect of Alcan developments on the wildlife resources within and bordering upon Tweedsmuir Park. B.C. Fish and Game Branch. Wildlife Mgmt. Division.
- Hatter, J. 1955. Survey of expenditures by hunters in British Columbia. 20th Federal-Provincial Wildlife Conference. Vancouver: 1-8.
- Hatter, J. 1955. A survey of expenditures by hunters in British Columbia. 10th Ann. Game Convention report: 108-114.
- Hatter, J. 1955. Inventory and evaluation of wildlife resources of British Columbia. Trans. 9th Nat. Resources Conference.
- Hatter, J. 1958. Wildlife versus power projects and industrialization: a view in perspective. B.C. Game Commission.
- Hatter, J. 1961. Some first thoughts on ARDA as related to wildlife conservation in British Columbia. B.C. Fish and Game Branch. 3 pp.
- Hatter, J. et al. 1954. Some economic aspects of wildlife resources. 8th Ann. Game Convention report: 83-90.
- Hatter, J. et al. 1956. Inventory and evaluation of wildlife resources of British Columbia. Pres. 9th B.C. Nat. Res. Conf. p. 472-516.
- Hatter, J. et al. 1969. Submission on grazing by the B.C. Fish and Wildlife Branch to the Select Standing Committee on Forestry and Fisheries. B.C. Fish and Wildlife Branch. Wildl. Mgmt. Division. 28 pp.
- Hudson, R.J. et al. 1973. Habitat utilization by wildlife and livestock in the southern Rocky Mountain Trench, British Columbia. U.B.C.
- Linsley, N.C. 1889. The Pend D'Oreille country. Forest and Stream 33: 227-228.
- Luckhurst, A.J., G.K. Young, J.W. Van Barneveld and R.D. Marsh. 1973. Creston wildlife pilot project. ELUC Secretariat. 83 pp.
- Martin, A. 1974. Libby stream survey. B.C. Fish and Wildlife Branch.

- Moore, D.D. 1959. Ecological changes and wildlife uses in impounded areas with emphasis on flooded forest swamps. Mass. Univ. M.Sc. thesis.
- Mumford, C. 1976. A management plan for Gold Creek-Plumbob range unit of the East Kootenays. U.B.C. Dept. Anim. Sci. B.Sc. thesis.
- Munro, D.A. 1951. An outline of the wildlife resources of the Columbia and Kootenay valleys in British Columbia. Canadian Wildlife Service report.
- Pearse Bowden Economic Consultants Ltd. 1969. Wildlife and the Libby Dam in Canada: the economic significance of wildlife losses and implications for mitigation. B.C. Fish and Wildlife Branch. Wildlife Mgmt. Division report: 1-30.
- Pendray, W.C. 1968. Land for wildlife. 12th Ann. B.C. Wildl. Fed. Conv. Kamloops. 3 pp.
- Perret, N.G. 1969. Outline of the Canadian land classification for wildlife. Canada Land Inventory. Ottawa.
- Peterson, G.R. and I.L. Withler. 1965. Effects on fish and game species of development of Duncan Dam for hydroelectric purposes. B.C. Fish and Wildlife Branch. Mgmt. Report. No. 8.
- Peterson, G.R. and I.L. Withler. 1965. Effects on fish and game species of development of Arrow Lakes Dam for hydroelectric purposes. B.C. Fish and Wildlife Branch. Mgmt. Report. No. 9.
- Peterson, G.R. and I.L. Withler. 1965. Effects on fish and game species of development of Mica Dam for hydroelectric purposes. B.C. Fish and Wildlife Branch. Mgmt. Report No. 10.
- Phelps, D.E. 1973. An initial proposal for wildlife habitat acquisition in the southern East Kootenay with special reference to the Libby Reservoir zone of influence. B.C. Fish and Wildlife Branch. Report. 1-29.
- Robinson, D.J. 1963. Inventory and evaluation of the wildlife resource of British Columbia. 15th B.C. Nat. Res. Conf.
- Scharf, J.A. 1959. A study of the wildlife use of state-owned wetlands with special reference to level ditched marshes. Minn. Univ. M.Sc. thesis.

- Smith, I. 1970. Probable effects of the Libby Dam upon wildlife resources of the East and West Kootenay, British Columbia. B.C. Fish and Wildlife Branch. Wildlife Mgmt. Division Report No. 9.
- Smith, W.G. 1955. A preliminary survey of the effects of the Mica Creek development upon wildlife. B.C. Game Commission.
- Smith, W.G. 1957. The status, requirements and management of the East Kootenay game resource. 11th Ann. Game Conv. report: 59-61.
- Smith, W.G. 1960. Report to the Fish and Game Branch on 1960 Kootenay checks. 24 pp.
- Smith, W.G. et al. 1967. A committee report to the Minister of Recreation and Conservation on the recommendations contained in the Selkirk Conservation Assn. brief of game management in the East Kootenay: 1-19.
- Walters, C.J. and F. Bunnell. 1971. A computer management game of land use in British Columbia. J. Wildl. Mgmt. 35(4): 644-657.
- Warkentin, W.J. 1973. East Kootenay game check results. B.C. Fish and Wildlife Branch. 22 pp.

FORESTRY AND FLORA

- Bell, M.A.M. 1964. Phytocoenoses in the dry subzone of the interior western hemlock zone of B.C. U.B.C. Ph. D. thesis.
- Bolen, E.G. Review of saline soils and waters in relation to marsh vegetation.
- Brayshaw, T.C. 1970. The dry forests of southern British Columbia. *Syesis* 3(1): 17-43.
- British Columbia Lands Service. 1973. The Kootenay Bulletin area. Victoria. 84 pp.
- Bull, C. 1973. Summertime recreation in the Elk River valley. B.C. Fish and Wildlife Branch.
- Canada Land Inventory. 1971. Soil capability for forestry: Cranbrook. Canada Dept. Reg. Econ. Expansion.
- Chamberlain, T.W. et al. 1968. Soil movement - water quality deterioration associated with timber harvesting in the West Kootenay area, British Columbia. U.B.C. Forestry. Unpublished.
- Chambers, A.D. 1974. Purcell Range study: integrated resource management for British Columbia's Purcell Mountains. Report to Environment and Land Use Committee, Dept. of Lands, Forests and Water Resources. 70 pp.
- Daubenmire, R.F. 1943. Vegetational zonation in the Rocky Mountains. *Bot. Rev.* 9(6): 325-393.
- Day, R.J. 1963. Spruce seedling mortality caused by adverse summer micro-climate in the Rocky Mountains. Can. Dept. Forestry and Rural Devel. Publication 1003.
- Demarchi, D.A. 1968. A guide to some of the major plant families of British Columbia. Wildlife Mgmt. Publ. No. 1. 53 pp.
- Demarchi, R.A. 1968. The plant communities of the Prophet River in the Rocky Mountain foothills. Special report for ARDA ungulate inventory. 13 pp.

- Demarchi, R.A. 1968. Seasonal variations in the production and chemical composition of bluebunch wheatgrass and needle and thread grass at Riske Creek, B.C. Fish and Wildlife Branch. Interim Report April - October.
- Dick, J.H. In preparation. A management plan for the rehabilitation of surface-mined coal lands in the East Kootenay, B.C. U.B.C. Forestry. M.Sc. thesis.
- Dick, J.H. 1976. Reserves on the Columbia. B.C. Fish and Wildlife. Mimeo.
- Eastham, J.W. 1947. Notes on plants collected in 1947, chiefly in the Rocky Mountain Trench, between the Rocky and Selkirk Mountains of British Columbia. B.C. Prov. Mus. Rep. for the year 1947: 29-32.
- Eastham, J.W. 1949. Observations on the flora of the southern Rocky Mountain Trench in British Columbia. Trans. Roy. Soc. Can. XLIII Series 3, Sec. 5: 1-9.
- Eastham, J.W. 1957. Flora of southern British Columbia. A supplement. B.C. Prov. Mus. Special Publ. No. 1.
- Errington, J.C. et al. 1973. A study of natural vegetation of disturbed sites in B.C. U.B.C. Dept. Forestry. Unpublished.
- Gram, R.H. 1970. Central Kootenay research study. ELUC Secretariat. 48 pp.
- Harcombe, A.P. 1974. Sulphur dioxide injury to vegetation in the Kimberley region. Water Resources Service. Victoria. October.
- Hollick, A. 1927. The flora of the St. Eugene silts, Kootenay Valley, British Columbia. New York Bot. Garden Mem. 7: 389-465.
- Israelson, G. et al. 1976. Recreation inventory and assessment of the southeast coal block. B.C. Parks Branch. August.
- Jeffry, W.W. 1968. Watershed management problems in British Columbia: a first appraisal. Water Resources Bulletin 4(3): 58-70.

- Krajina, V.J. 1959. Bioclimatic zones in British Columbia. U.B.C. Botanical Series No. 1. 47 pp.
- Krajina, Vladimir J. 1965. Biogeoclimatic zones and classification of British Columbia. In: Ecology of western North America, Vol. 1. Krajina (editor).
- Krajina, V.J. 1969. Ecology of forest trees in British Columbia. In: Ecology of western North America. Krajina (ed.). 2(1): 1-147.
- Leopold, E.B. et al. 1972. Development and affinities of Tertiary floras in the Rocky Mountains. In: Floristics and paleofloristics of Asia and eastern North America. A. Graham (ed.): 147-200.
- McLean, A. et al. 1958. Vegetation zones and their relationship to the soil and climate of the upper Columbia Valley. Can. J. Plant Sci. 38: 328-345.
- O'Riordan, J. 1975. Springbrook project. An approach to evaluating multiple resource use alternatives. ELUC Secretariat.
- Pearse, P.H. 1976. Timber rights and forest policy in British Columbia. Pearse Royal Commission on Forest Resources Vol. 1. Victoria. 395 pp.
- Runka, G.G. 1975. Lands of the East Kootenay, their characteristics and capability for agriculture and forestry. Report to B.C. soil capability for agriculture and forestry committee.
- Smith, Richard Barrie. 1963. Edaphic aspects of an ecological classification of the interior western hemlock dry subzone forests of British Columbia. U.B.C. Ph.D. thesis.
- Smith, Richard B. 1965. The dry subzone of the interior western hemlock zone, Part II. Edaphotopes. In: Ecology of western North America, Vol. 1. V.J. Krajina, editor.
- Tisdale, E.W. et al. 1957. The Douglas-fir zone of southern British Columbia. Ecol. Mono. 27: 247-266.

Van Barneveld, J. et al. 1974. Illustrated key to the  
Gymnosperms of British Columbia. ELUC Secretariat.

Van Barneveld, J. et al. Illustrated key to the Mono-  
cots of British Columbia. ELUC Secretariat.  
Unpublished.

Van Barneveld, J. et al. Illustrated key to some common  
grasses of British Columbia. ELUC Secretariat.  
Unpublished.

Van Barneveld, J. et al. Illustrated key to the Dicot  
families of British Columbia. ELUC Secretariat.  
Unpublished.

AGRICULTURE

- Brink, V.C. et al. 1948. The physiography of the agricultural areas of British Columbia. Sci. Agr. 29: 273-301.
- British Columbia Department of Agriculture 1968. Forage crop recommendations for southeastern British Columbia - Zone 4. Victoria.
- British Columbia Department of Agriculture 1968. Fertilizer recommendations for southeastern British Columbia - Zone 4. Victoria.
- Bustard, D. 1970. Some effects of fertilizer application on soil and plant phosphorus and on forage yields of some East Kootenay soils. U.B.C. Biology. B.Sc. thesis.
- Canada Land Inventory. 1970. Land capability analysis: East Kootenay area. Canada Dept. Reg. Econ. Expansion.
- Crossfield, D.C. 1962. Farming in the Rocky Mountain Trench in British Columbia in 1955. Can. Dept. Agriculture. Economics Division. Ottawa.
- Dalichow, F. 1972. Agricultural geography of British Columbia. Versatile Publishing Co. Ltd. Vancouver.
- Environment and Land Use Committee. In preparation. Springbrook Biophysical Project.
- Farr, A. 1974. A preliminary study of range in the vicinity of Kimberley airport. B.C. Fish and Wildlife Branch. Careers '74 Project.
- Fetterley, P.A. 1936. Report on soil conditions in Kootenay Valley, B.C. In: The Kootenay Valley - a report on certain cases involving reclamation and the development of water power in the valley of the Kootenay River, under terms of Article IV of the Treaty of Jan. 11, 1909. Heard before the International Joint Commission, Ottawa and Washington, 1935. pp. 320-359.
- Garry, R.G. 1949. Some factors affecting the availability of plant nutrients in the lower East Kootenay soils. U.B.C. Soil Sci. B.S.A. thesis .
- Hortie, H.J. et al. 1970. Soils of the upper part of the Fraser Valley in the Rocky Mountain Trench of British Columbia. B.C. Soil Survey Res. Branch Rep. No. 10.



- Howie, R.R. 1970. Quantitative influences of grazing protection on the available carbohydrate reserves of Poa compressa. U.B.C. Plant Sci. B.S.A. thesis.
- Hudson, R.J. 1974. The grazing question in British Columbia, Premier Ridge study area (East Kootenay). Final Report. Vol. 1. Summary and synthesis. U.B.C. Dept. Anim. Sci.
- Kelly, C.C. 1940. The nature of soil parent materials in southern British Columbia. *Sci. Agr.* 20: 301-307.
- Kelly, C.C. et al. 1956. Soil survey of the upper Kootenay and Elk River valleys in the East Kootenay district of British Columbia. B.C. Soil Survey Rep. No. 5. 99 pp.
- Kelly, C.C. et al. 1961. Soil survey of the upper Columbia River Valley in the East Kootenay District of British Columbia. B.C. Soil Survey Rep. No. 7.
- Kemper, J.B. 1971. Secondary autogenic succession in the southern Rocky Mountain Trench. U.B.C. Dept. Plant Sci. M.Sc. thesis.
- Krogman, K.K. et al. 1961. Consumptive use of water by forage crops in the upper Kootenay River Valley. *Can. J. Soil Sci.* 41(1).
- Lord, J.M. et al. 1969. Aerial photo interpretations on British Columbian rangelands. *J. Range Mgmt.* 22(1): 3-9.
- McLean, A. 1967. Beef production on lodgepole pine - pinegrass range in southern British Columbia, Can. Dept. Agr. Pub. 1319. Queen's Printer, Ottawa. 28 pp.
- McLean, A. et al. 1968. Grassland ranges in the southern interior of British Columbia. *Can. Dept. Agr. Pub.* 1319: 1-28,
- Paish, H. et al. 1970. Project Grassroots. A report on an examination of present and past land use policy and practice on rangeland in the East Kootenay.
- Quaedvlieg, M. 1969. Productivity, age and general ecology of bitterbrush on the Bull River and Premier Ridge ranges. U.B.C. Pl. Sci. B.S.A. thesis.

- Retzer, J.L. 1956. Alpine soils of the Rocky Mountains. J. Soil Sci. 7: 22-32.
- Rowles, C.A. 1949. Soils of British Columbia. British Columbia Natural Resources Conference, 2nd, Transactions. pp. 4-28.
- Runka, G.G. 1975. Lands of the East Kootenay: their characteristics and capability for agriculture and forestry. Report to B.C. Soil Capability for Agriculture and Forestry Committee.
- Runka, G.G. et al. 1969. Lands of the East Kootenays ELUC Secretariat. 180 pp.
- Shipley, W.C. et al. 1953. The market for farm products in the East Kootenay area of British Columbia. Can. Dept. Agr. Economics Div.
- Solman, V.E.F. 1973. Canada's Land Inventory of land-wildlife capabilities. Presented to 38th N.A. Wildl. and Nat. Res. Conf. Washington.
- Strang, R.M. 1976. Ecology of the forested rangelands of interior British Columbia. An annotated Bibliography. U.B.C. Unpublished.
- Turnbull, N.D. 1966. Beef farming in the East Kootenay area of British Columbia, 1964. Can. Farm Econ. 1(5): 26-31.
- Williams, G.P. 1949. The feasibility of irrigating portions of the lower East Kootenay Valley. U.B.C. Agr. Eng. M.Sc. thesis.
- Wittenben, U. et al. 1971. Soil survey of the Creston area. Interim Report of the Creston Valley Soil Survey. British Columbia Dept. of Agriculture.

HISTORY

- Baillie-Grohman, W.A. 1884. The Kootenay Lake district. In: Life and labour in the far, far West. Cassell & Co. Ltd. London.
- Baillie-Grohman, W.A. 1900. Fifteen years sport and life in the hunting grounds of western America and British Columbia. Horace Cox. London. 403 pp.
- Christman, M. 1974. Selected references on the Kootenay-Creston district of B.C. Creston Valley Wildlife Centre.
- Cameron, W.S. 1967. Some we have met and stories they have told. The Creston Review, Ltd. Creston, British Columbia. 154 pp.
- Constable, Guy. 1957. The history of dyking and drainage in the Kootenay Valley. In: Transactions of the Tenth B.C. Natural Resources Conference, pp. 86-108.
- Cottingham, M.E. 1947. A history of the West Kootenay district in British Columbia. U.B.C. M.A. thesis.
- Elliott, T.C. 1926. In the land of the Kootenai. Reprint from The Oregon Historical Quarterly, 27(3): 1-13.
- Fiennes, R. 1973. The headless valley. Hodder and Stoughton. London.
- Fraser, W. 1964. Historical geography of the Riondel-Gray Creek region, 1882-1940. U.B.C. B.A. thesis.
- Graham, C. 1945. Fur and gold in the Kootenays. Wrigley Printing Co. Ltd. Vancouver. 206 pp.
- Graham, C. 1963. This was the Kootenay. Evergreen Press. Vancouver. 270 pp.
- Graham, C. 1971. Kootenay mosaic. Evergreen Press. Vancouver. 112 pp.
- Hacking, N. 1952. Steamboat days on the upper Columbia and upper Kootenay. British Columbia Historical Quarterly 16: 1-51.
- House, C.L. 1969. The Galbraiths and the Kootenays. Vintage Press. New York. 103 pp.

- Howay, F.W. et al. 1914. British Columbia from the earliest times to the present. S.J. Clarke Publishing Co., Vol. II.
- Johnson, O. 1969. Flathead and Kootenay. Arthur H. Clark Co. Glendale, California.
- Kaslo, Board of Trade. 1899. Kaslo, B.C., the mining metropolis of the world.
- Kaslo, British Columbia Historical Committee. 1953. Kaslo diamond jubilee, 1893-1953. Kaslo.
- Kootenay Valleys Co. Ltd. 1888. The Kootenay valleys and Kootenay district in B.C. London. 30 pp.
- Lakes, A. 1915. Mining in lake districts of British Columbia. Mining and Engineering World. pp. 411-44.
- Lees, J.A. et al. 1888. B.C. 1887 - a ramble in British Columbia. Longmans, Green & Co. London.
- Linderman, F.B. 1926. Kootenay why stories. C. Scribner's. New York. 66 pp.
- MacDonald, D.A. 1967. Come with me to yesterday: tales retold of pioneer days in East Kootenay. Courier Press. Cranbrook, British Columbia. 88 pp.
- Morse, G.H. 1974. Literature survey on selected topics. Kootenay Lake. Canada Centre for Inland Waters. Inland Waters Directorate. Pacific Region.
- Penson, R.G. 1962. In one ear: some rambling reminiscences of Creston Valley. 1911-1936. Canyon, British Columbia. 73 pp.
- Ringheim, M. 1966. Historical Kaslo, founded in 1890. Kootenay Lake Historical Society. Kaslo, British Columbia. 52 pp.
- Scott, David and Edna H. Hanic. 1972. Nelson: queen city of the Kootenays. Vancouver. Mitchell Press.
- Smyth, F.J. 1942. Tales of the Kootenays. 2nd edition. Cranbrook, British Columbia.
- St. Barbe, C. 1895. The Kootenay mines - A sketch of their progress and condition today. The Miner Printing and Publishing Co. Ltd. Nelson. 26 pp.

St. Barbe, C. 1897. First history of Nelson, B.C. C.A.  
Rohrabacher & Son. Nelson.

Thompson, D. 1962. Narrative 1784-1812. Edited by  
Richard Glover. The Champlain Society.

Thompson, D. 1971. Travels in western North America,  
1784-1812. Edited by Victor G. Hopwood.  
Macmillan of Canada. Toronto.

Weis, C. 1972. Bluebell - a mining saga. In: Canada  
West Magazine 4(2): 5-12.

ANTHROPOLOGY AND ARCHAEOLOGYArchaeological Sites Advisory Board Reports. 1971-1976.  
Kootenay Region.

- a) Brown. 1976-6. Archaeological site inventory, East Kootenays.
- b) Choquette, W. 1971-18. Archaeological reconnaissance near Fairmont Hot Springs.
- c) Choquette, W. 1972-8. Archaeological survey Kootenay River drainage.
- d) Choquette, W. 1971-19, 1972-9, 1973-3. Archaeological salvage Libby Dam pondage.
- e) Choquette, W. 1973-4. Archaeological survey, Middle Elk River.
- f) Choquette, W. 1974-17. Kootenay archaeological survey.
- g) Choquette, W. 1975. Archaeology of Kootenay region.
- h) Choquette, W. 1975-5. Archaeological inventory Kootenay region.
- i) Mitchell D. 1971-36, 1972-42. Archaeological survey of Kootenay National Park.
- j) McKenzie. 1975-12. Archaeological inventory at the headwater of the Columbia River.

Baillie-Grohman, W.A. 1900. Fifteen years sport and life in the hunting grounds of western America and British Columbia. Horace Cox. London.

Baker, P.E. 1955. The forgotten Kutenai. Mountain States Press. Boise, Idaho. 64 pp.

Baker, P.E. 1966. Bear ceremonialism of the Kutenai Indians. Browning Montana Museum of the Plains Indian. Studies in Plains Anthropology and History. Browning, Montana. 54 pp.

Boas, F. et al. 1918. Kutenai tales. Bureau of American Ethnology. Bulletin No. 59. Smithsonian Institute, Washington.

- Borden, C. 1956. Results of two archeological surveys in the East Kootenay region of British Columbia. Wash. State College. Res. Stud. 24: 73-104.
- British Columbia Dept. of Education. 1952. Our native Peoples, Volume 8 - Kootenay. British Columbia Heritage Series.
- Chamberlain, A.F. 1892. Report on the Kutenai Indians of southeastern British Columbia. In: British Association for the Advancement of Science. Report on the northwestern tribes of Canada. 8: 5-71.
- Choquette, W. 1974. Archaeological fieldwork in the East Kootenays, 1973 Season. The Midden 6(1): 6-9.
- Cottingham, M.E. 1947. A History of the West Kootenay district in British Columbia. U.B.C. M.A. thesis.
- Driver, H. 1969. Indians of North America. University of Chicago Press. Chicago.
- Duff, W. 1973. The Indian history of British Columbia.
- Hoover, A.L. et al. 1976. A selected list of publications on the Indians of British Columbia. British Columbia Provincial Museum. Victoria. 30 pp.
- Jenness, D. 1967. The Indians of Canada. National Museum of Canada, Bulletin No. 65. Anthropological Series No. 15.
- Johnson, O. 1969. Flathead and Kootenay. Arthur H. Clark Co. Glendale, California.
- Northcote, T.G. 1973. Some impacts of man on Kootenay Lake and its salmonoids. Great Lakes Fishery Commission Technical Report No. 25.
- Reeves, B.O.K. 1974. Crowsnest Pass archaeological project. National Museum of Man, Mercury Series No. 24.
- Sprague, R. 1971. Burial pattern relationships between the Columbia and Canadian plateaus. In: Aboriginal man and environment on the plateau of north-west America: 183-195.
- Swanton, J.R. 1952. The Indian tribes of North America. Smithsonian Institution, Bureau of American Ethnology, Bulletin No. 145.

Turnbull, C.J. 1973. Some preliminary perspectives:  
the Arrow Lakes. *The Midden* 5(3): 4-13.

Turney-High, H.H. 1941. *Ethnography of the Kutenai.*  
*Memoirs of the American Anthropological Association,*  
No. 56. Menasha, Wisconsin. 202 pp.



ECONOMICS

- Bowden, Gary K. 1971. Alternatives for development of unreclaimed land in the Kootenay River floodplain, Creston, B.C.: a benefit-cost analysis. U.B.C. M.A. thesis.
- British Columbia Department of Economic Development and Canada Dept. of Regional Economic Expansion. 1976. A summary report of development possibilities in the Kootenay region of British Columbia. Interim Planning Agreement. 269 pp.
- British Columbia Department of Industrial Development, Trade and Commerce. 1963. Regional index of British Columbia - East and West Kootenays. Bureau of Economics and Statistics. Victoria.
- British Columbia Department of Industrial Development, Trade and Commerce. 1969. The Cranbrook region - an economic survey. Bureau of Economics and Statistics. Victoria.
- British Columbia Department of Industrial Development, Trade and Commerce. Economics and Statistics Branch. 1970. The central Kootenay region, B.C. Regional Economic Study.
- Dickinson, G. et al. 1969. Economic conditions in the East Kootenay. Can. Land Inventory. U.B.C. Education.
- Gee, J.H. 1958. Economics and distribution of the British Columbia Kootenay sport fishing resource, 1958. B.C. Fish and Wildlife Branch, Fisheries Management Report No. 29.
- International Columbia River Engineering Board. 1959. Water resources of the Columbia River basin. Report to the International Joint Commission. Appendix 11 - Kootenay Basin: 21-32.
- Krutilla, John V. 1967. The Columbia River Treaty - the economics of an international river basin development. Johns Hopkins Press, Baltimore.
- Pearse Bowden Economic Consultants Ltd. 1969. Wildlife and the Libby Dam in Canada: the economic significance of wildlife losses and implications for mitigation. Report submitted to the B.C. Fish and Wildlife Branch. Unpublished.

- Pearse Bowden Economic Consultants Ltd. 1971. The value of fresh water sport fishing in British Columbia. B.C. Fish and Wildlife Branch, Study Report on the Economics of Wildlife and Recreation No. 5.
- Pearse, P. 1968. A new approach to the evaluation of non-priced recreational resources. Land Econ. 64(1): 87-99.
- Pearse, P. et al. 1969. The value of the Kootenay Lake sport fishery. B.C. Fish and Wildlife Branch, Study Report on the Economics of Wildlife and Recreation No. 3.
- Pearse, P. et al. 1972. The value of resident hunting in British Columbia. Study Report 6 on the economics of wildlife and recreation. Fish and Wildlife Branch.
- Verner, C. et al. 1968. A socio-economic survey of the East Kootenay area in British Columbia Rep. No. 2. ARDA - DLI Project No. 49009. U.B.C. Education.

INTERNATIONAL

- Bardarson, G. et al. 1976. The Kootenay diversion. Grade 12 English Class at Golden Secondary School. Golden, British Columbia.
- Bloomfield, L.M. and Gerald F. Fitzgerald. 1958. Boundary waters problems of Canada and the United States (The International Joint Commission 1912-1958). Toronto. The Carswell Co. Ltd.
- Bourne, C.B. 1962. The Columbia River Treaty: another view. International Journal 17(2): 137-140. (Spring 1962).
- British Columbia Hydro and Power Authority. 1975. Kootenay River diversion. Environmental feasibility study. Terms of Reference. June.
- British Columbia Hydro and Power Authority. 1976. Status report No. 1 on Kootenay diversion project. July.
- Canada. Dept. of External Affairs and Dept of Northern Affairs and National Resources. 1964. The Columbia River Treaty protocol and related documents. Ottawa. Feb., 1964.
- Canada. Dept. of External Affairs and Dept. of Northern Affairs and National Resources. 1964. The Columbia River Treaty and protocol - a presentation. Ottawa April, 1964.
- Canadian-American Committee. 1960. Co-operative development of the Columbia River basin.
- International Columbia River Engineering Board. 1959. Water resources of the Columbia River basin. Report to the International Joint Commission. Appendix 2 - Kootenay Basin. 55 pp.
- Kootenay Valley - A Report on certain cases involving reclamation and development of water power in the valley of the Kootenay River, under terms of Article IV of the treaty of Jan. 11, 1909. Heard before the International Joint Commission, Ottawa and Washington, 1935. Ottawa, King's Printer (1936).
- United States. Congress. Senate. Committee on Interior and Insular Affairs. 1955. Study of development of upper Columbia River basin, Canada and United States. Report submitted by Senator Richard E. Neuberger of Oregon. Washington.

United States. Congress (84th). Senate. Committee on Interior and Insular Affairs and Committee on Foreign Relations Special Subcommittee. Joint Hearings. 1956. Upper Columbia River development. Washington.

United States. Congress (85th). Senate. Committee on Interior and Insular Affairs. 1958. Columbia basin problems.

United States. Congress (87th). Senate. Committee on Foreign Relations. 1961. Hearing - Columbia River Treaty.

United States. Dept. of State. 1958. Legal aspects of the use of systems of international waters.

United States. Dept. of State. 1961. Letter to the President from the Secretary of State, transmitting a treaty between the U.S. and Canada relating to co-operative development of the water resources of the Columbia River basin.

Warren, W.C. 1949. International Columbia River basin studies. Trans. 2nd Res. Conf. B.C. Lands and Forests: 51-57.