

Canso Region Aerial Survey

Date: September 29, 1973

Observer: W. B. Hughson

Conditions: Broken cloud to overcast, light wind, tide high.

Rights and West River delta marshes at Antigonish: Map 1

Black duck	226
Green-winged teal	2
Merganser	12
Total ducks	<u>240</u>
Great blue heron	7
Immature bald eagle	1

Antigonish Harbour: Williams Point to Lower South River

Black duck	51
Blue-winged teal	3
Teal	7
Merganser	<u>18</u>
Total ducks	79
Great blue heron	8
Mature bald eagle	1
Osprey	1

Aquatic vegetation throughout this area appeared to be predominantly eelgrass.

Antigonish Harbour: Main channel area

Black duck	3
Canada geese	44
Merganser	<u>30</u>
Total ducks and geese	77
Great blue heron	2
Mature bald eagle	1

There are gypsum outcrops around Antigonish Harbour.

Appears to be extensive eelgrass beds in Antigonish Harbour.

The Canada geese were observed east of Captain Island.

Captain Pond

Unidentified waterfowl	12
Canada geese	3
Great blue heron	2

Monk Pond

Black duck	17
------------	----

Morrett Island Pond

Unidentified waterfowl	8
Great blue heron	2

West Pomquet Harbour

Nil

East Pomquet Harbour

Black duck	237
Teal	5
Merganser	18
Total ducks	<u>260</u>
Immature bald eagle	1
Great blue heron	19

This is a shallow harbour with a sandy substrate. What appeared to be eelgrass grows in extensive beds. There is a vegetated dune formation on the west side of the harbour entrance.

Pomquet Station Lake: Map 2

Sedge edge on east side of the lake and floating leaf aquatics (Brasenia?) throughout.

Black duck	6
------------	---

Pomquet Lake: Map 2

Not very much marsh there but the lake could provide brood rearing habitat.

Pomquet Point: Map 2

Loon	1
Black duck	1

Duck Marshes: Map 1, between Antigonish Harbour and West Pomquet Harbour

These marshes appear to be exceptionally good waterfowl areas and biologically productive wetlands.

Inlet at Bayfield

Teal

6

Upper Afton Lake: Map 3

No waterfowl observed. Lake appeared to have good potential for waterfowl production. The upland east of that lake and immediately north of Healy Lake has been clear cut, and a border of trees remain along the edges of the lakes. The eastern side of Healy Lake has two patches which might provide breeding habitat for black ducks.

Buckland's Marsh: Map 3

That marsh may have moderate potential for waterfowl production, however, the water levels would require management. A water control structure would be required and that area is probably not sufficiently extensive to justify that investment.

Coastal Inlets west of Delory Island (Petitpas Island area: Map 4

No waterfowl observed.

Tracadie Harbour: Map 4

Unidentified waterfowl	8
Great blue heron	1
Mature bald eagle	1

Tracadie Harbour below Trans Canada: Map 4

Great blue heron	1
Shorebirds	2

Monastery Marsh: Map 5

A boggy wetland dominated by Spiraea and Ericaceous shrubs with little sedge. One beaver lodge observed.

Mattie Marsh: Map 5

Somewhat similar to Monastery Marsh but with a little more sedge. The vegetation is dominated by Ericaceous shrubs and some spruce and tamarack are present. This is not a very attractive location for waterfowl. One beaver lodge was observed there.

Grosenor Pond: Map 5

Not waterfowl habitat. A brown water pond with a thick border of Ericaceous shrubs. The presence of sparse floating leafed aquatics indicated the pond was relatively deep. A fairly sterile looking situation.

Shepherd Marsh: Map 6

Fair amount of sedge present but the marsh appeared quite sterile. Most of the water area bordered with Ericaceous shrubs (appeared to be primarily leatherleaf). One beaver lodge observed in the west end of Shepherd Marsh.

Inland Marsh: Map 6

This area may constitute waterfowl production habitat but I don't think so. The marsh should be surveyed in early June 1974.

Clam Harbour Lake Marsh: Map 6

A small lake with marshy edges west of Clam Harbour Lake. The marsh does have potential and probably is waterfowl breeding habitat.

Alder River Marsh: Map 7

Definitely not waterfowl habitat.

- choked with Ericaceous growth
- little aquatic vegetation but for small floating leafed species.

Roman Valley Marsh No. 1: Map 7

Potential waterfowl production area if water levels were raised to sufficiently flood the sedge zones.

Roman Valley Marsh No. 2: Map 7

Choked with Ericaceous species. Not waterfowl habitat.

Guysborough Intervale Marsh

Black duck	17
Teal	20
Common loon	1

Guysborough Harbour

Nil

Mouth of Guysborough Harbour

Cormorant	18
-----------	----

Stewart Pond

Teal	6
------	---

Long Pond

Black duck	2
------------	---

Clam Pond

Black duck	3
------------	---

Yellowlegs	13
------------	----

Ragged Pond

Unidentified	2
--------------	---

Loons	?
-------	---

Carr, Collins and Porter Ponds

No waterfowl observed. Ponds with gravel shores and treed perimeters.

Porter Point

Beach gravel mining there.

Oyster Ponds

Black duck	195
------------	-----

Teal	20
------	----

Heron	3
-------	---

King Point

Unidentified (probably Scoter)	3
--------------------------------	---

Inhabitants Bay

Black duck*	90
-------------	----

Merganser	18
-----------	----

Cormorant	101
-----------	-----

Grebe	1
-------	---

Heron	4
-------	---

*The black ducks were in one raft on a salt pond at one of the islands.

West Lennox Passage

Black duck	29
Teal	2
Unidentified	6
Shorebirds (unidentified)	9
Yellowlegs	6
Great blue heron	2

Arichat Survey Block

Black duck	3
Cormorant	4

Bay of Rocks Survey Block

Cormorant	1
Heron	1

Cap La Ronde

- gravel excavation of beaches here
- lagoons here should be described along with their environs

Lennox Passage East Survey Block

Black duck	27
Teal	35
Merganser	10
Cormorant	300 plus
Shorebirds	2
Heron	2

The large salt pans and barrier beach areas near River Bourgeois should be described.

St. Peter's Channel

Cormorant	2
-----------	---

St. Peter's Survey Block

Black duck	40 (On raft near Cape George)
Black duck	2
Cormorant	3

West Bay Survey Block

Black duck	2
------------	---

Mature eagleImmature eagleLocation

4	1	Between McLeod Point and Pringle Island
1		Opposite Pringle Island
1		McInnis Point
1		Point east of Dundee
1		Near Morrison in West Bay

Marble Mountain Survey Block

Nil

Denys Basin Survey Block

Big Harbour area - black duck	4
Mature eagle	2
Boom Island marshes - black duck	30
West end of Boom Island	
- mature eagle	1
North side of McLean Point	
- mature eagle	1
Lewis Island area - black duck	10

Orangedale marshes should be classified as

3 or 4 for waterfowl production.

River Denys Survey Block

Tidal marsh

Black duck	212
Blue-winged teal	42
Merganser	8
Unidentified (Pintail?)	10

Fresh water (upstream)

Black duck	2
------------	---

Note: A large quarry operation (gypsum extraction?) in head water area of River Denys.

Inhabitants River (Kingsville to Cleveland)

Black duck	5
Heron	1
Red-tailed hawk	1

River becomes tidal at Cleveland.

Inhabitants River Estuary

Common merganser	10
Shorebirds	4

Havre Boucher

Black duck	10
Teal	5

Gravel shores throughout except where vegetated and with some organic material covering the mineral substrate.

Boucher Pond: Map 4

A barrier beach pond immediately west of Havre Boucher.

Teal	1
------	---

Cape Pond

- appears to be a very productive pond
- should be a good waterfowl and wildlife pond

Beach Pond

Gravel shores like Havre Boucher but also some salt marsh vegetation present.

Green-winged teal	85
-------------------	----

Cape Blue

Shorebirds	8
------------	---

Little Tracadie Harbour

Gravel substrate like Havre Boucher.

Merganser	1
-----------	---

Cormorant	1
-----------	---

Heron	2
-------	---

Shorebirds	10
------------	----

Rubbish dump located on bank at the northwest side of Little Tracadie Harbour.

Barrios Head

Most of Barrios Head appears to be severely affected by the elements. The area was probably cleared for agriculture and has now reverted to coarse shrubs (probably blueberry and other heaths). Barrios Head differs from the surrounding headlands and should be described and contrasted on a field survey trip.



Map I

1500 ft

Pomquet State

Harbour

Monks Head

Southside

Harbour Road

William Point

Lanark

River

ANTIGONISH

CANADIAN

Southside Station

Lower South River

Captain 1

Gooseberry 1

Captain Pond

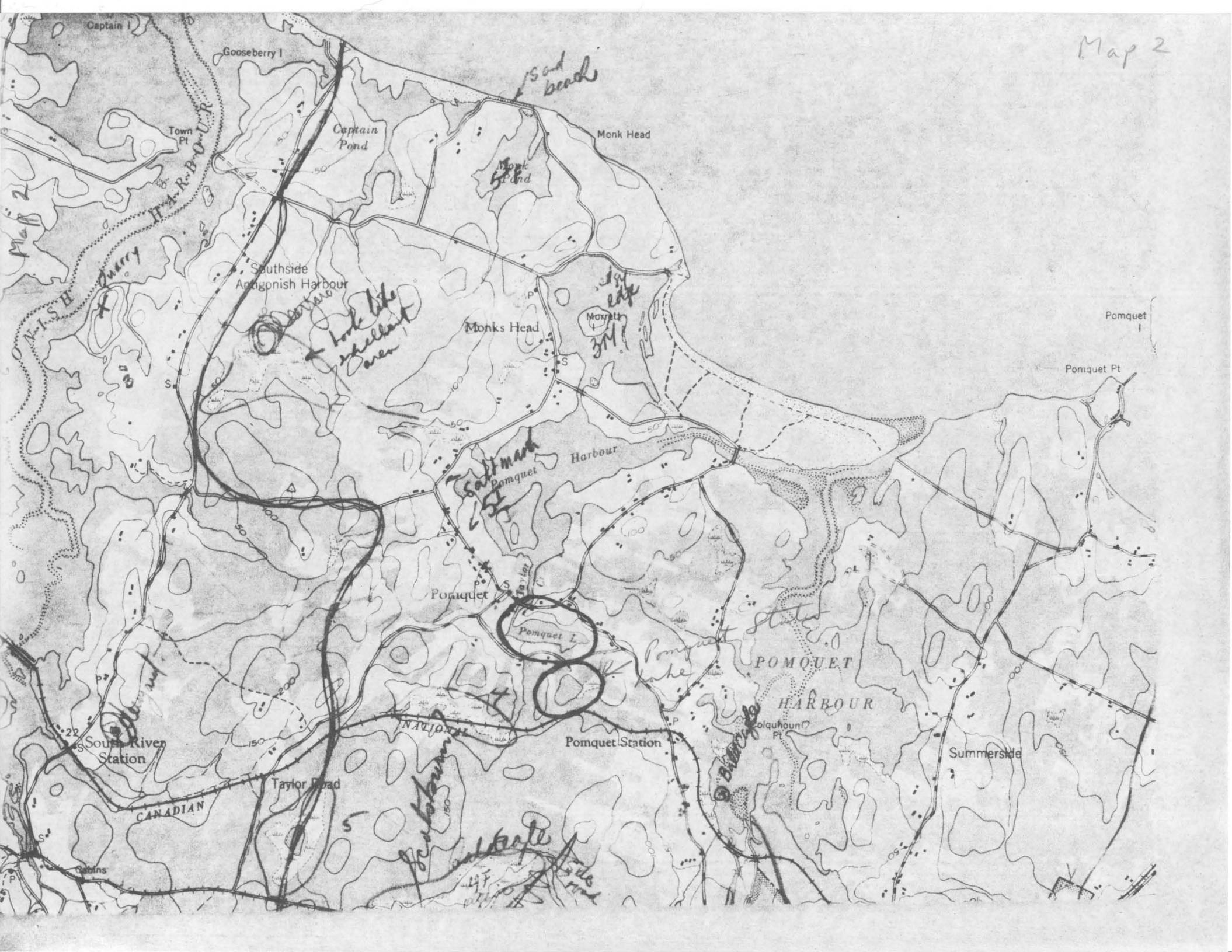
Duck Masles

150

Pomquet

Monk 1

Map 2





Map 3
HARBOUR

Bayfield

AFTON

Tracadie

Big Tracadie

Monastery

Afton Station

Bucklands

Bucklands Marsh

Meadows

Monastery

Merland

Dam

Fraser's Grant

Upper Afton

Afton Lake

New France

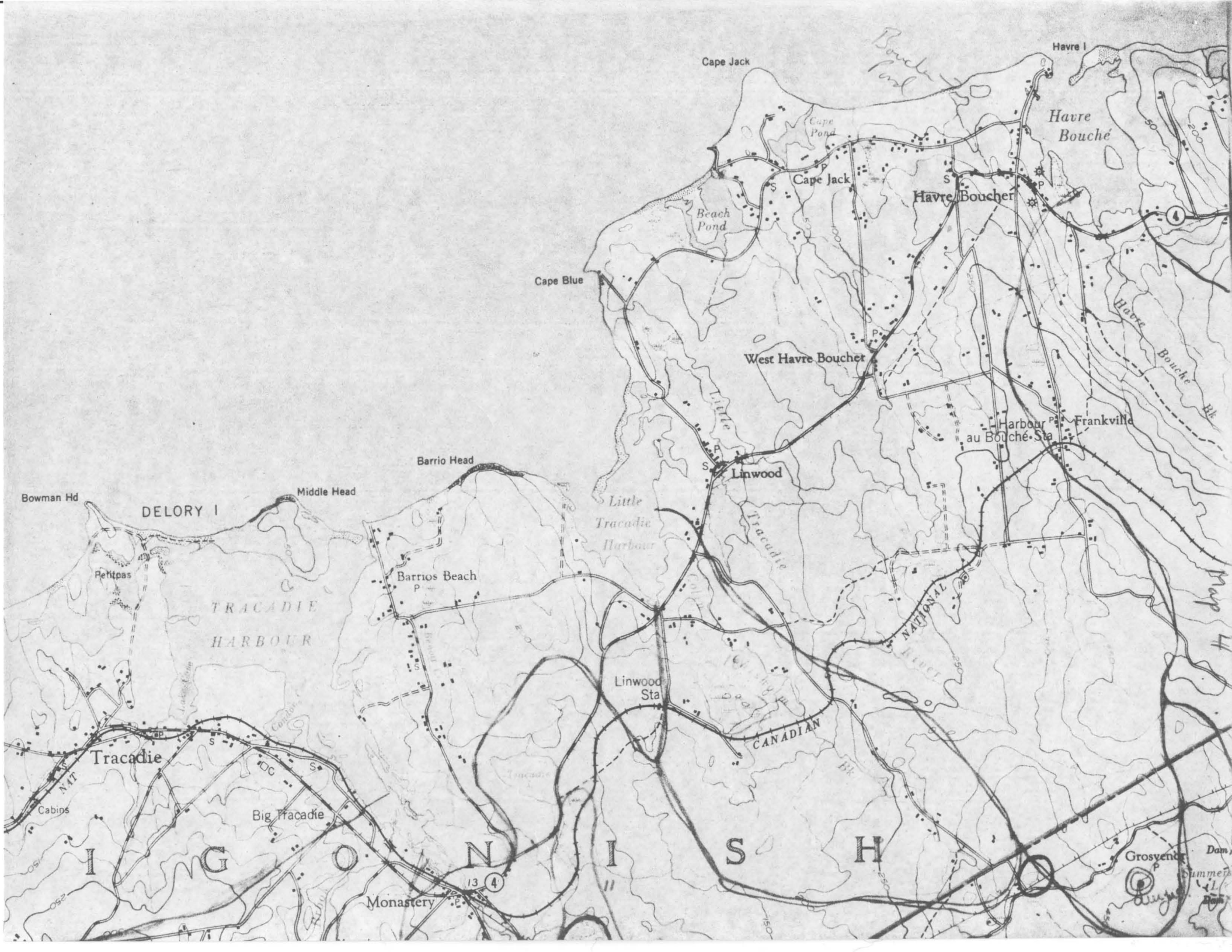
South Merland

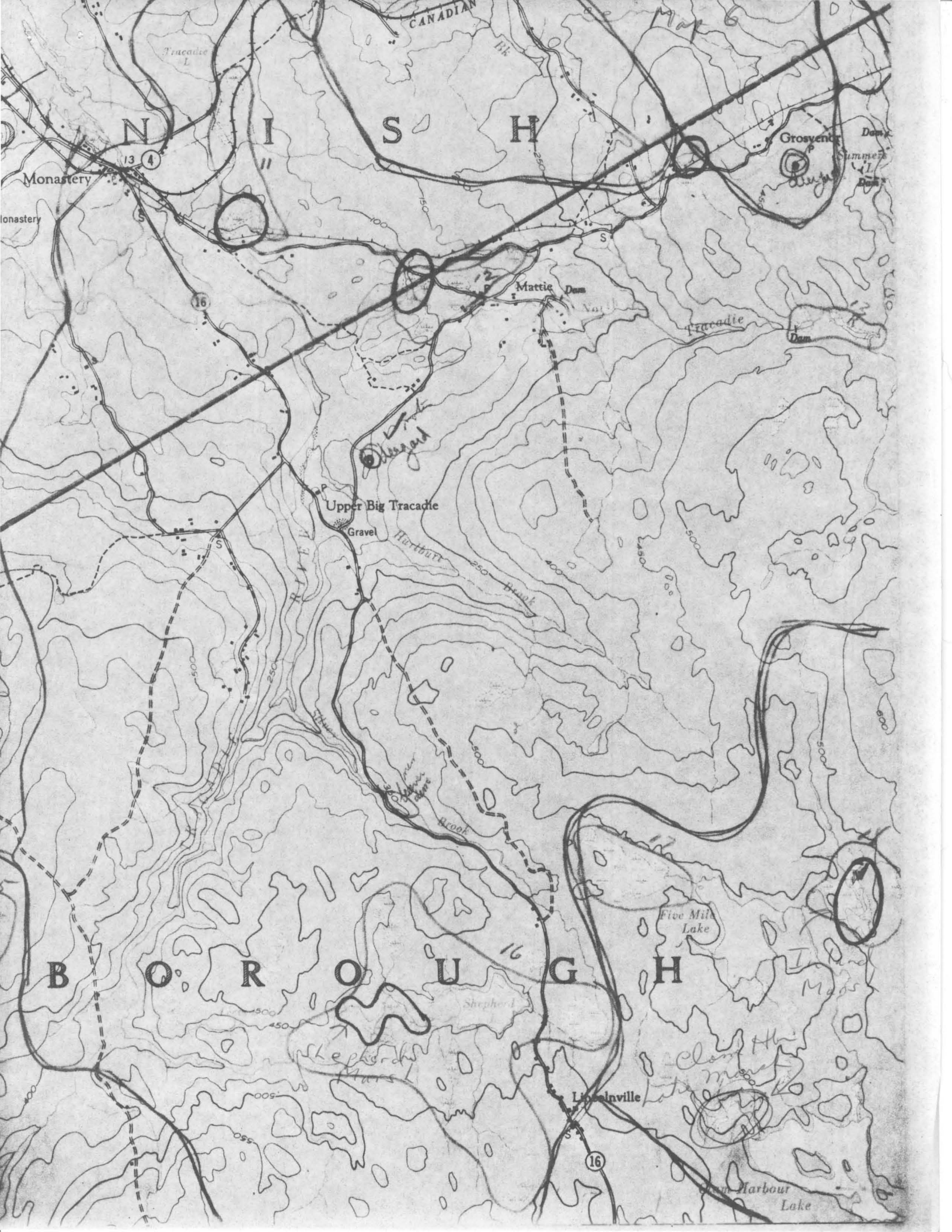
GUYAN

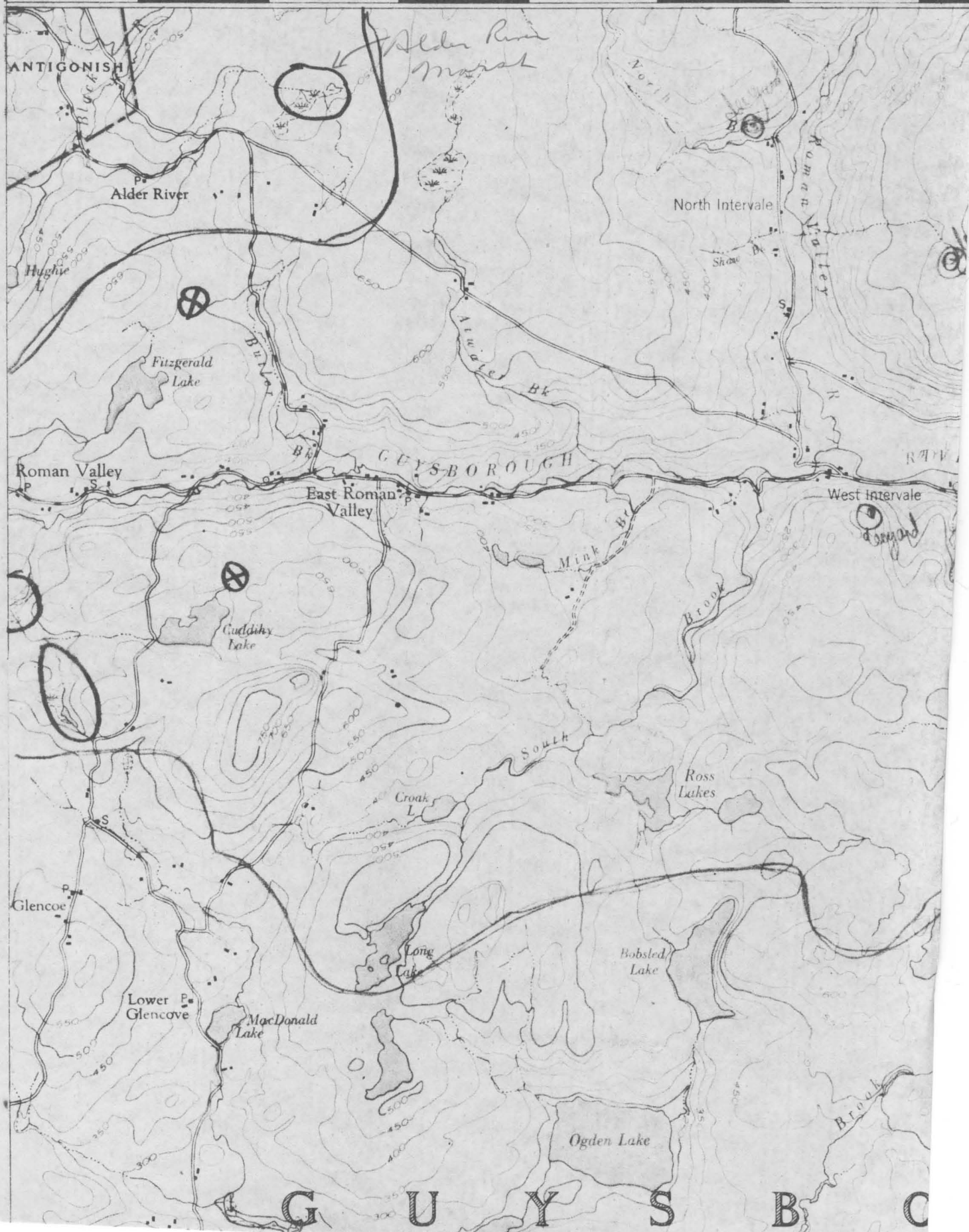
45

4

15







45'

40'

ANTIGONISH

Alder River

Fitzgerald Lake

Roman Valley

East Roman Valley

GUYSBOROUGH

North Intervale

Roman Valley

West Intervale

Cuddihy Lake

South

Ross Lakes

Glencoe

Long Lake

Bobsled Lake

Lower Glencoe

MacDonal Lake

Ogden Lake

GUYSBORO