

ISSN 0225 4328

# Financial Statistics on Canadian Telecommunication Common Carriers

1985

# Statistiques financières sur les sociétés exploitantes de télécommunications du Canada

HE **Canada**

8783  
S72  
1985



Government of Canada  
Department of Communications

Gouvernement du Canada  
Ministère des Communications

PREFACE

Requirements for financial information regarding major corporate entities arise from many sources, each with a particular interest. That of National Revenue is taxable income; that of shareholders is return on equity, growth potential and yield; that of executives and managers is cost control; and that of the public at large may bear on good corporate citizenship. Each of these requirements calls for a more or less different financial and analytical cross-section through a complex reality.

Financial Statistics on Canadian Telecommunication Common Carriers is a compilation of data taken from the annual reports to shareholders of the major Canadian telecommunications carriers. Its contents are primarily intended as reference material for use within the department; however, it is also hoped that other organizations and individuals interested in telecommunications may also find these statistics useful. This publication is complemented by Telecommunications in Canada Quick Facts - 1985 and by Canadian Telecommunications: an overview of the Canadian telecommunications carriage industry.

The data base from which the tabulations in this handbook were extracted is accessible for both retrieval and programmed analyses. All suggestions

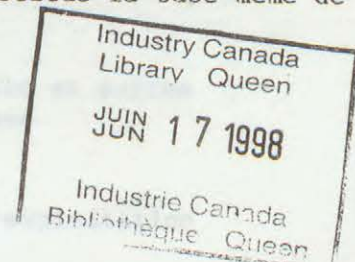
PRÉFACE

Les demandes de renseignements financiers concernant les principales sociétés industrielles et commerciales proviennent de plusieurs secteurs de la société ayant chacun des besoins particuliers. Par exemple, le ministère du Revenu s'intéresse au revenu imposable, et l'actionnaire, au rendement des actions, au potentiel de croissance et au rendement du capital. Le contrôle des coûts attire l'administrateur tandis que le public en général s'intéresse au comportement social des sociétés exploitantes. Dès lors, chaque demande, en raison de sa complexité même, exige une analyse financière plus ou moins particulière.

La présente brochure statistique intitulée "Statistiques financières sur les sociétés exploitantes de télécommunications du Canada" constitue avant tout une compilation de données extraites des rapports annuels des principales sociétés exploitantes de télécommunications au Canada. Même si le contenu de cette publication est surtout destiné à servir de document de référence au sein du Ministère, nous espérons cependant que d'autres organismes et des particuliers qui s'intéressent au domaine des télécommunications pourront en tirer profit. Pour compléter cette brochure, il existe deux autres documents publiés par le Ministère, soit "Les télécommunications au Canada-Données éclair - 1985" et "Les télécommunications au Canada: survol de l'industrie canadienne de la distribution des télécommunications".

Il est possible d'extraire certains tableaux et d'analyser mécaniquement certains postes de la banque de données qui constitue la base même de ce

HE  
8783  
S72  
1985



with respect to the improvement of this handbook and inquiries with regards to special tabulations and analyses, may be addressed to:

Chief, Economic Studies and Statistics  
Telecommunications Policy Branch  
Department of Communications  
Room 1826, Journal Tower North  
300 Slater Street  
Ottawa, Ontario  
K1A 0C8

recueil. Toute suggestion visant à l'amélioration de ce recueil ainsi que toute demande relative à des analyses et tableaux particuliers doit être envoyée à l'adresse suivante:

Chef, Études économiques et statistiques  
Direction de la politique des télécommunications  
Ministère des Communications  
Pièce 1826, immeuble Journal nord  
300, rue Slater  
Ottawa (Ontario)  
K1A 0C8

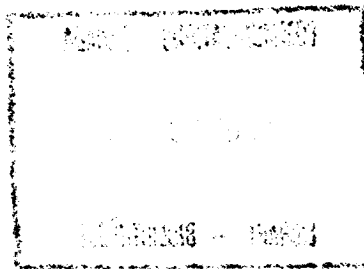


TABLE OF CONTENTS

TABLE DES MATIÈRES

1	<u>MAJOR CANADIAN TELEPHONE COMPANIES</u>	PAGE	1	PRINCIPALES COMPAGNIES CANADIENNES DE TÉLÉPHONE	PAGE
1A	ABSOLUTE VALUES, 1985	1	1A	VALEURS ABSOLUES - 1985	1
	1A.1 Income Statement	4		1A.1 Compte de profits et pertes	4
	1A.2 Items of Expense	5		1A.2 Postes de dépense	5
	1A.3 Items of Assets	6		1A.3 Actif (Bilan)	6
	1A.4 Items of Liabilities	7		1A.4 Passif (Bilan)	7
	1A.5 Items of Retained Earnings	8		1A.5 Surplus indivis	8
	1A.6 Miscellaneous Statistics	9		1A.6 Statistiques d'exploitation	9
1B	TRENDS IN ABSOLUTE VALUES, 1976 TO 1985 AND PERCENT CHANGE (1985/1984)	10	1B	TENDANCES EN VALEURS ABSOLUES - DE 1976 A 1985 ET VARIATION EN POURCENTAGE (1985-1984)	10
	1B.1 Income Statement	11		1B.1 Compte de profits et pertes	11
	1B.2 Items of Expense	24		1B.2 Postes de dépense	24
	1B.3 Items of Assets	35		1B.3 Actif (Bilan)	35
	1B.4 Items of Liabilities	45		1B.4 Passif (Bilan)	45
	1B.5 Items of Retained Earnings	58		1B.5 Surplus indivis	58
	1B.6 Miscellaneous Statistics	68		1B.6 Statistiques d'exploitation	68
2	<u>SPECIALIZED CARRIERS</u> (CNC P TELECOMMUNICATIONS, TELEGLOBE AND TELESAT)		2	ENTREPRISES SPÉCIALISÉES (TÉLÉCOMMUNICATIONS DU CNCP, TÉLÉGLOBE ET TÉLÉSAT)	
2A	ABSOLUTE VALUES, 1985	71	2A	VALEURS ABSOLUES - 1985	71
	2A.1 Income Statement	73		2A.1 Compte de profits et pertes	73
	2A.2 Items of Expense	74		2A.2 Postes de dépense	74
	2A.3 Items of Assets	75		2A.3 Actif (Bilan)	75
	2A.4 Items of Liabilities	76		2A.4 Passif (Bilan)	76
	2A.5 Miscellaneous Statistics	77		2A.5 Statistiques d'exploitation	77
2B	TRENDS IN ABSOLUTE VALUES, 1976 to 1985 AND PERCENT CHANGE (1985/1984)	78	2B	TENDANCES EN VALEURS ABSOLUES, DE 1976 A 1985 ET VARIATION EN POURCENTAGE (1985-1984)	78
	2B.1 Income Statement	79		2B.1 Compte de profits et pertes	79
	2B.2 Items of Expense	90		2B.2 Postes de dépense	90
	2B.3 Items of Assets	100		2B.3 Actif (Bilan)	100
	2B.4 Items of Liabilities	110		2B.4 Passif (Bilan)	110
	2B.5 Miscellaneous Statistics	119		2B.5 Statistiques d'exploitation	119

ANNUAL REPORTS, 1976 TO 1985

RAPPORTS ANNUELS DE 1976 A 1985

PC Alberta Government Telephones  
Bell Canada  
British Columbia Telephone Company  
CNCPC Telecommunications  
'edmonton telephones'  
The Island Telephone Company Limited  
Manitoba Telephone System  
Maritime Telegraph and Telephone Company Limited  
The New Brunswick Telephone Company Limited  
Newfoundland Telephone Company Limited  
Northern Telephone Limited  
Northwestel Inc.  
Québec-Téléphone  
SaskTel  
Télébec Ltée  
Teleglobe Canada  
Telesat Canada  
Terra Nova Telecommunications Inc.

Alberta Government Telephones  
Bell Canada  
British Columbia Telephone Company  
'edmonton telephones'  
The Island Telephone Company Limited  
Manitoba Telephone System  
Maritime Telegraph and Telephone Company Limited  
The New Brunswick Telephone Company Limited  
Newfoundland Telephone Company Limited  
Northern Telephone Limited  
Norouestel  
Québec-Téléphone  
SaskTel  
Télébec Ltée  
Télécommunications du CNCPC  
Téleglobe Canada  
Télesat Canada  
Télécommunications Terra Nova Inc.

(DOCUMENTS PROVIDED BY COMPANIES ON REQUEST)

(DOCUMENTS FOURNIS SUR DEMANDE PAR LES COMPAGNIES)

Requests for additional copies of this booklet or  
the above mentioned booklets may be addressed to:

Toute demande d'exemplaires supplémentaires de la  
présente brochure ou des documents susmentionnés  
doit être envoyée à l'adresse suivante:

Department of Communications  
Information Services  
Journal Tower North  
300 Slater Street  
Ottawa, Ontario  
K1A 0C8

Ministère des Communications  
Direction générale de l'information  
Immeuble Journal nord  
300, rue Slater  
Ottawa (Ontario)  
K1A 0C8

SECTION/PARTIE 1

MAJOR CANADIAN TELEPHONE COMPANIES

PRINCIPALES COMPAGNIES CANADIENNES DE TÉLÉPHONE

## MAJOR CANADIAN TELEPHONE COMPANIES

## PRINCIPALES COMPAGNIES CANADIENNES DE TÉLÉPHONE

## 1A ABSOLUTE VALUES, 1985

## 1A VALEURS ABSOLUES - 1985

This section sets out comparative dollar values of the various financial items sourced from the 1985 annual reports of fifteen major Canadian telephone companies.

La présente partie expose, sous forme de tableaux comparatifs, la valeur en dollars des divers postes financiers tirés des rapports annuels de 1985 des quinze principales compagnies canadiennes de téléphone.

The numerous items that were reported by the different companies have been grouped and classified into items. To ensure the attainment of this level of detail for each company, it was necessary in the case of a few companies to provide further breakouts of some of their published items.

Les nombreux postes dont font état les diverses compagnies ont été classifiés en groupes. Il a fallu demander à quelques compagnies de présenter la ventilation de certains des postes indiqués dans leurs rapports afin d'obtenir ce niveau de précision pour chacune des compagnies.

In a number of cases adjustments to the presentations and descriptions contained in the annual reports were necessary in order to present the statistics in a uniform manner. This process is further complicated by the fact that the telephone company reporting procedures are changing with time. In particular, the statement of sources and uses of funds was deleted in this report until more meaningful inter-company comparisons of internal and external sources of funds can be collected.

Dans un certain nombre de cas, on a dû faire des ajustements à la présentation et à la description de certains postes contenus dans les rapports annuels afin de préserver l'uniformité des statistiques. Ce processus est d'autant plus complexe que les rapports de gestion des compagnies de téléphone évoluent constamment. En particulier, l'état de la provenance et de l'utilisation des fonds a été supprimé du présent rapport jusqu'à ce que l'on puisse obtenir de meilleures comparaisons entre les compagnies en ce qui a trait à la provenance interne et externe des fonds.

In contrast to years before 1983, foreign exchange rate accounting is now treated in a consistent manner by all the telephone companies. Rather than treating the amortization of foreign exchange losses by netting it against other income, it has been included here with debt service charges. Net income is not affected by this rearrangement of expense items.

Contrairement aux années antérieures à 1983, toutes les compagnies de téléphone comptabilisent maintenant les taux de change de façon uniforme. Au lieu d'être déduits des autres revenus, les frais d'amortissement des pertes au change sont inclus ici dans le service de la dette. Cette modification ne touche toutefois pas le revenu net.

Two other adjustments have been made in this bulletin which are not consistent with the adjustments made in prior years, but which reflect the reporting methods now followed by the companies.

In earlier years, construction materials and supplies, sometimes referred to as inventory, was treated as a current asset, and adjustments were made where required. In 1982 and 1983, all but one of the telephone companies included this item as telephone plant. Accordingly, it was deemed a more appropriate treatment to include that item as telephone plant rather than include it with other current assets, and the one requiring adjustment was made to ensure consistency in 1982 and 1983.

In certain cases in prior years, the current portion of long term debt was removed from current liabilities and shown as a note payable. This practice has been terminated effective with the 1982 statistics. Only items referred to in the annual reports as "Notes Payable" have been reported as such.

In no cases have the adjustments changed the net income or owners' equity reported by the companies themselves, nor do they incorporate judgments as to the preferred methods of accounting. They have been made to provide for a consistent reporting scheme in order to facilitate the comparison and grouping of data provided by the individual companies.

Deux autres modifications ont été apportées aux statistiques de ce bulletin. Celles-ci ne sont pas conformes aux ajustements faits les années passées mais elles correspondent aux méthodes de présentation des rapports maintenant suivies par les compagnies.

Au cours des années précédentes, les fournitures et les matériaux de construction, que l'on appelle parfois les "stocks", étaient traités comme des disponibilités et des ajustements étaient apportés au besoin. En 1982 et 1983, toutes les compagnies de téléphone sauf une les ont inclus dans les immobilisations. Par conséquent, on a jugé préférable de faire de même ici plutôt que de les inclure dans les disponibilités, un seul ajustement étant ainsi nécessaire.

Dans certains cas, au cours des années passées, la partie exigible à court terme de la dette à longue échéance était enlevée du passif exigible et figurait au titre des billets à payer. On a mis fin à cette pratique avec les statistiques de 1982. Seuls les articles désignés dans les rapports annuels comme "billets à payer" ont été présentés comme tels.

En aucun cas les ajustements apportés n'ont modifié le revenu net ou les capitaux propres déclarés par les compagnies elles-mêmes ni introduit de jugements quant aux méthodes de comptabilité préférables. Ils ont été apportés afin d'assurer l'uniformité dans la présentation des données et de faciliter ainsi les comparaisons et les regroupements des données fournies par les compagnies.



It should be noted that in regulatory areas where terminal interconnection is permitted companies no longer have accurate record of the total telephones connected to their systems. Of those which report total telephones, only company-owned telephones are included. Accordingly, those ratios which are calculated on a per telephone basis are not comparable across all companies or, in some cases, within the time series for an individual company.

Il est à remarquer que les sociétés exploitantes situées dans les régions où le raccordement des terminaux est permis ne peuvent plus faire état du nombre total de postes téléphoniques interconnectés à leurs systèmes. Les sociétés qui font toujours état du nombre total de postes téléphoniques ne déclarent que les postes qui leur appartiennent. En conséquence, les ratios calculés par poste téléphonique diffèrent d'une compagnie à l'autre et, dans certains cas, à l'intérieur des séries chronologiques d'une même compagnie.

1A ABSOLUTE VALUES, 1985 (IN THOUSANDS OF DOLLARS)  
 1A.1 INCOME STATEMENT

	ALBERTA GOVT. TEL.	BELL CANADA	BRITISH COLUMBIA TEL.	EDMONTON TEL. CO.	ISLAND TEL.	MANITOBA TEL. SYSTEM	MARITIME TEL. & TEL.	NEW BRUNSWICK TEL. CO.
.1 LOCAL SERVICE REVENUE	331799	2254500	459000	171597	14675	118323	116402	88045
.2 TOLL SERVICE REVENUE	686806	2886900	705700	3946	17024	185332	171112	136844
.3 MISCELLANEOUS REVENUES	42443	627200	68100	30707	1217	24103	22643	20015
.4 UNCOLLECTABLES	-12117		-15800			-1428		-956
.5 TOTAL OPERATING REVENUE	1048931	5768600	1217000	206250	32916	326330	310157	243948
.6 OPERATING EXPENSES	738951	4142600	876000	162705	21790	265443	217385	170198
.7 NET OPERATING REVENUE	309980	1626000	341000	43545	11126	60887	92772	73750
.8 OTHER INCOME (NET)	29169	60800	18500	2606	409	15283	5483	2315
.9 INCOME BEFORE INCOME TAXES AND DEBT SERVICE CHARGES	339149	1686800	359500	46151	11535	76170	98255	76065
.10 INCOME TAXES		574000	109100		3850		33300	29456
.11 INCOME BEFORE DEBT SERVICE CHARGES	339149	1112800	250400	46151	7685	76170	64955	46609
.12 DEBT SERVICE CHARGES	290933	460700	134500	45336	3261	60978	30856	19104
.13 NET INCOME	48216	652100	115900	815	4424	15192	34099	27505

1A VALEURS ABSOLUES, 1985 (EN MILLIERS DE DOLLARS)  
 1A.1 COMPTE DE PROFITS ET PERTES

NEWFOUND- LAND TEL. CO.	NORTHERN TEL.	NORTH- WESTEL.	QUEBEC- TEL.	SASK TEL.	TELEBEC LTEE.	TERRA NOVA TEL.	TOTAL COMPANIES/ COMPAGNIES		
49740	14001	6957	58172	117817	35785	8634	3845447	.1	SERVICE LOCAL
81003	10705	35336	109594	271214	61995	20817	5384328	.2	SERVICE INTERURBAIN
5558	3418	18115	9224	35794	4334	12553	925424	.3	DIVERS
			-465	-1147			-31913	.4	CREANCES IRRECOURVABLES
								.5	TOTAL DES REVENUS D'EXPLOITATION
136301	28124	60408	176525	423678	102114	42004	10123286		
83737	19591	44534	130794	318194	73152	30252	7295326	.6	FRAIS D'EXPLOITATION
								.7	REVENUS NETS D'EXPLOITATION
52564	8533	15874	45731	105484	28962	11752	2827960		
2144	1930	4084	1729	4632	387	929	150400	.8	AUTRES REVENUS (NETS)
								.9	REVENU AVANT IMPOT ET DEDUCTION DU SERVICE DE LA DETTE
54708	10463	19958	47460	110116	29349	12681	2978360		
21265	3367	6537	15511		7894	3772	808052	.10	IMPOT SUR LE REVENU
								.11	REVENU AVANT DEDUCTION DU SERVICE DE LA DETTE
33443	7096	13421	31949	110116	21455	8909	2170308		
12965	2945	7436	10286	73132	9799	5891	1168122	.12	SERVICE DE LA DETTE
20478	4151	5985	21663	36984	11656	3018	1002186	.13	REVENU NET

1A  
1A.2 ABSOLUTE VALUES, 1985 (IN THOUSANDS OF DOLLARS)  
ITEMS OF EXPENSE

	ALBERTA GOVT. TEL.	BELL CANADA	BRITISH COLUMBIA TEL.	EDMONTON TEL. CO.	ISLAND TEL.	MANITOBA TEL. SYSTEM	MARITIME TEL. & TEL.	NEW BRUNSWICK TEL. CO.
.1 MAINTENANCE	196369			32831	10687	56605	89677	30460
.2 DEPRECIATION	182918	950400	250600	57098	6242	90462	54589	44395
.3 TRAFFIC	35786					15431		
.4 COMMERCIAL AND MARKETING	78799					31045		
.5 OTHER EXPENSES	221066	3192200	569300	60183	4861	64109	73119	95335
.6 TAXES OTHER THAN INCOME TAXES	24013		56100	12593		7791		
.7 OPERATING EXPENSES	738951	4142600	876000	162705	21790	265443	217385	170190
.8 DEBT SERVICE CHARGES	290933	460700	134500	45336	3261	60978	30856	19104
.9 EXPENSES BEFORE INCOME TAXES	1029884	4603300	1010500	208041	25051	326421	248241	189302
.10 INCOME TAXES		574000	109100		3850		33300	29456
.11 TOTAL EXPENSES	1029884	5177300	1119600	208041	28901	326421	281541	218758

1A VALEURS ABSOLUES, 1985 (EN MILLIERS DE DOLLARS)  
 1A.2 POSTES DE DEPENSE

NEWFOUND- LAND TEL. CO.	NORTHERN TEL.	NORTH- WESTEL.	QUEBEC- TEL.	SASK TEL.	TELEBEC LTEE.	TERRA NOVA TEL.	TOTAL COMPANIES/ COMPAGNIES		
	4616		82231	130205			633689	.1	ENTRETIEN
	4500	9276	35451	80123	18403	8232	1792689	.2	AMORTISSEMENT
							51217	.3	TRAFIC
							109844	.4	COMMERCIALISATION ET PUBLICITE
83984	8416	35258		107866	54749	22020	4592466	.5	AUTRE FRAIS
	2059		13112				115668	.6	TAXES AUTRES QUE L'IMPOT SUR LE REVENU
83984	19591	44534	130794	318194	73152	30252	7295573	.7	FRAIS D'EXPLOITATION
12965	2945	7436	10286	73132	9799	5891	1168122	.8	SERVICE DE LA DETTE
96949	22536	51970	141080	391326	82951	36143	8463695	.9	FRAIS AVANT L'IMPOT SUR LE REVENU
21265	3367	6537	15511		7894	3772	808052	.10	IMPOT SUR LE REVENU
118214	25903	58507	156591	391326	90845	39915	9271747	.11	TOTAL DES FRAIS D'EXPLOITATION

	1A ABSOLUTE VALUES, 1985 (IN THOUSANDS OF \$) 1A.3 ITEMS OF ASSETS (BALANCE SHEET)							
	ALBERTA GOVT. TEL.	BELL CANADA	BRITISH COLUMBIA TEL.	EDMONTON TEL. CO.	ISLAND TEL.	MANITOBA TEL. SYSTEM	MARITIME TEL. & TEL.	NEW BRUNSWICK TEL. CO.
.1 PLANT AT COST	3100961	15251000	3856700	605573	107530	1132271	924090	691041
.2 ACCUMULATED DEPRECIATION	-1107597	-5132800	-1168900	-198445	-34093	-501892	-307890	-256480
.3 PLANT LESS DEPRECIATION	1993364	10118200	2687800	407128	73437	630379	616200	434561
.4 INVESTMENTS	31426	249200	28100	6252	111	54485	11404	30801
.5 CURRENT ASSETS - CASH	6001	34200			266	10038	7057	181
.6 CURRENT ASSETS - ACCOUNTS RECEIVABLE	156161	780500	225400	18270	4458	38303	50722	34421
.7 OTHER CURRENT ASSETS	13882	150200	55700	4466	433	4354	6072	2601
.8 TOTAL CURRENT ASSETS	176044	964900	281100	22736	5157	52695	63851	37211
.9 DEFERRED CHARGES	108281	608600	23200	2427	631	19649	6341	6111
.10 TOTAL ASSETS	2309115	11940900	3020200	438543	79336	757208	697796	508691

1A VALEURS ABSOLUES, 1985 (EN MILLIERS DE DOLLARS)  
 1A.3 ACTIF (BILAN)

NEWFOUND- LAND TEL. CO.	NORTHERN TEL.	NORTH- WESTEL.	QUEBEC- TEL.	SASK TEL.	TELEBEC LTEE.	TERRA NOVA TEL.	TOTAL COMPANIES/ COMPAGNIES	
427248	77502	178351	506072	1260355	320743	153281	28592724	.1 IMMOBILISATIONS AU PRIX COUTANT
-140177	-25808	-54838	-199023	-463857	-112690	-61916	-9766406	.2 AMORTISSEMENT ACCUMULE
287071	51694	123513	307049	796498	208053	91365	18826318	.3 IMMOBILISATIONS MOINS AMORTISSEMENT
300	15467		600	999			429146	.4 PLACEMENTS
		113	696	2447	106		61108	.5 DISPONIBILITES - ENCAISSE
17733	5796	6292	19152	58499	13148	4671	1433528	.6 DISPONIBILITES - COMPTES A RECEVOIR
2576	1157	13262	2541	3011	189	8206	268653	.7 AUTRES DISPONIBILITES
20309	6953	19667	22389	63957	13443	12877	1763289	.8 TOTAL DES DISPONIBILITES
5166	244	1975	6595	68633	5305	334	863492	.9 FRAIS REPORTEES
312846	74358	145155	336633	930087	226801	104576	21882245	.10 ACTIF TOTAL

1A ABSOLUTE VALUES, 1985 (IN THOUSANDS OF DOLLARS)  
 1A.4 ITEMS OF LIABILITIES (BALANCE SHEET)

	ALBERTA GOVT. TEL.	BELL CANADA	BRITISH COLUMBIA TEL.	EDMONTON TEL. CO.	ISLAND TEL.	MANITOBA TEL. SYSTEM	MARITIME TEL. & TEL.	NEW BRUNSWICK TEL. CO.
.1 CAPITAL STOCK - PREFERRED		478000	242100		6250		34776	13366
.2 CAPITAL STOCK - COMMON INCLUDING PREMIUM		2894900	589200		14911		117839	107949
.3 RETAINED EARNINGS	109279	1587000	256100	42234	12646	115702	114882	79446
.4 TOTAL SHAREHOLDERS CAPITAL	109279	4959900	1087400	42234	33807	115702	267497	200761
.5 ADVANCES FROM GOVERNMENT						346410		
.6 LONG TERM DEBT	1837181	4020200	1101300	335479	28100	162173	250364	183553
.7 NOTES PAYABLE						31225		
.8 TOTAL DEBT	1837181	4020200	1101300	335479	28100	539808	250364	183553
.9 TOTAL CAPITALIZATION	1946460	8980100	2188700	377713	61907	655510	517861	384314
.10 CURRENT LIABILITIES	345118	1317500	377100	38514	6557	68598	75936	47092
.11 DEFERRED TAXES		1537200	454400		10872		103952	77285
.12 OTHER DEFERRED CREDITS	17537	106100		22316		33100	47	
.13 TOTAL LIABILITIES	2309115	11940900	3020200	438543	79336	757208	697796	508691



IA  
IA.4 VALEURS ABSOLUES, 1985 (EN MILLIERS DE DOLLARS)  
PASSIF (BILAN)

NEWFOUND- LAND TEL. CO.	NORTHERN TEL.	NORTH- WESTEL.	QUEBEC- TEL.	SASK TEL.	TELEBEC LTEE.	TERRA NOVA TEL.	TOTAL COMPANIES/ COMPAGNIES	
27032	8844		18032		18107		846507	.1 CAPITAL - ACTIONS : ACTIONS PRIVILEGIEES
73516	14935	37000	80610		53499	36000	4020359	.2 CAPITAL - ACTIONS : ACTIONS ORDINAIRES (ACTIONS A PRIME Y COMPRIS)
48553	9039	17134	60654	191485	19662	7622	2671438	.3 SURPLUS INDIVIS
149101	32818	54134	159296	191485	91268	43622	7538304	.4 AVOIR TOTAL DES ACTIONNAIRES
				661901			1008311	.5 PRET DU GOUVERNEMENT
108185	22100	58433	87441		78204	50125	8322838	.6 DETTE A LONGUE ECHEANCE
8100					10060		49385	.7 BILLETS A PAYER
116285	22100	58433	87441	661901	88264	50125	9380534	.8 DETTE TOTALE
265386	54918	112567	246737	853386	179532	93747	16918838	.9 CAPITAL TOTAL
17272	9582	5063	38849	76701	16431	6238	2446551	.10 PASSIF EXIGIBLE
30188	9766	11155	51047		30838	4591	2321294	.11 TAXES DIFFEREES
	92	16370					195562	.12 AUTRES CREDITS DIFFERES
312846	74358	145155	336633	930087	226801	104576	21882245	.13 PASSIF TOTAL

1A ABSOLUTE VALUES, 1985 (IN THOUSANDS OF DOLLARS)  
 1A.5 ITEMS OF RETAINED EARNINGS

	ALBERTA GOVT. TEL.	BELL CANADA	BRITISH COLUMBIA TEL.	EDMONTON TEL. CO.	ISLAND TEL.	MANITOBA TEL. SYSTEM	MARITIME TEL. & TEL.	NEW BRUNSWICK TEL. CO.
.1 NET INCOME	48216	652100	115900	815	4423	15192	34099	27509
.2 PREFERRED SHARE DIVIDENDS		-43400	-18400		-483		-2869	-1111
.3 NET INCOME AFTER PREFERRED DIVIDENDS	48216	608700	97500	815	3940	15192	31230	26399
.4 COMMON SHARE DIVIDENDS		-450300	-76100		-2376		-19214	-19486
.5 TRANSFER TO GOVERNMENT OWNERS				-3734				
.6 INCOME RETAINED	48216	158400	21400	-2919	1564	15192	12016	6907
.7 SHARE ISSUE EXPENSE		700			-4		-52	
.8 OTHER ADJUSTMENTS (NET)				-186	3		82	-10772
.9 BALANCE BEGINNING OF YEAR	61063	1429300	234700	45110	11083	100510	102836	83311
10 BALANCE END OF YEAR	109279	1587000	256100	42005	12646	115702	114882	79446

1A VALEURS ABSOLUES, 1985 (EN MILLIERS DE DOLLARS)  
 1A.5 SURPLUS INDIVIS

NEWFOUND- LAND TEL. CO.	NORTHERN TEL.	NORTH- WESTEL.	QUEBEC- TEL.	SASK TEL.	TELEBEC LTEE.	TERRA NOVA TEL.	TOTAL COMPANIES/ COMPAGNIES		
20478	4151	5985	21663	36984	11656	3018	1002185	.1	REVENU NET
-2865	-537		-1147		-1405		-72218	.2	DIVIDENDES DES ACTIONS PRIVILEGIEES
17613	3614	5985	20516	36984	10251	3018	929967	.3	REVENU NET APRES VERSEMENT DES DIVIDENDES RATTACHES AUX ACTIONS PRIVILEGIEES
-11073	-4900	-3591	-13908		-6159	-1811	-608918	.4	DIVIDENDES RATTACHES AUX ACTIONS ORDINAIRES
				-18492			-22226	.5	PAIEMENTS DE TRANSPERT AUX GOUVERNEMENTS PROPRIETAIRES
6540	-1286	2394	6608	18492	4092	1207	298823	.6	REVENU REINVESTI
					-507		137	.7	FRAIS D'EMISSION DES ACTIONS
259		-413					-11027	.8	AUTRES RAJUSTEMENTS (NETS)
34786	10325	15153	54046	172993	16077	6415	2377708	.9	SOLDE AU DEBUT DE L'ANNEE
41585	9039	17134	60654	191485	19662	7622	2664241	.10	SOLDE A LA FIN DE L'ANNEE

1A ABSOLUTE VALUES, 1985  
 1A.6 MISCELLANEOUS STATISTICS

	ALBERTA GOVT. TEL.	BELL CANADA	BRITISH COLUMBIA TEL.	EDMONTON TEL. CO.	ISLAND TEL.	MANITOBA TEL. SYSTEM	MARITIME TEL. & TEL.	NEW BRUNSWICK TEL. CO.
.1 NUMBER OF TELEPHONES				459480	81676	487440	583820	459076
.2 NUMBER OF EMPLOYEES	11477	50869	13079	1870	296	4660	3686	2474
.3 NETWORK ACCESS SERVICE	771714	7092200	152500	331698	52816		385378	
.4 WAGES AND SALARIES (IN THOUSANDS OF DOLLARS)								

1A VALEURS ABSOLUES, 1985  
 1A.6 STATISTIQUES D'EXPLOITATION

NEWFOUND- LAND TEL. CO.	NORTHERN TEL.	NORTH- WESTEL.	QUEBEC- TEL.	SASK TEL.	TELEBEC LTEE.	TERRA NOVA TEL.	TOTAL COMPANIES/ COMPAGNIES		
			290597	724439	177040	50091	3313659	.1	NOMBRE DE TELEPHONES
1329	290	492	1972	4458	980	386	98318	.2	NOMBRE D'EMPLOYES
146183	51496	29424	221471	508836	133660		9877376	.3	NOMBRE D'ACCES DE RESEAUX EN SERVICE
				147908			147908	.4	SALAIRES ET TRAITEMENTS (EN MILLIERS DE DOLLARS)



MAJOR CANADIAN TELEPHONE COMPANIES

PRINCIPALES COMPAGNIES CANADIENNES DE TÉLÉPHONE

TRENDS IN ABSOLUTE VALUES 1976-1985

TENDANCES EN VALEURS ABSOLUES DE 1976 A 1985

This section presents time series of the various absolute values introduced in the first section. Users of this handbook may select a technique appropriate to their requirements and examine the changes over time in a variety of data series. Data from the fifteen telephone companies are presented for the period 1976 to 1985. A column showing the percentage change in items from 1984 to 1985 has been included to provide a comparative overview of the most recent company trend.

Some anomalies may exist in the data as a result of internal changes in company accounting procedures over time, and as a result of the two changes in standardization procedures as described in Section 1A.

The ordering of the elements in Section 1B corresponds to that of Section 1A and in all cases the introduction to Section 1A apply with equal validity to this part.

Special notice should be taken of the fact that companies no longer report total telephones, and therefore item 1B.6.1 contains discontinuities.

La présente partie donne, sous forme de tableaux chronologiques, les diverses valeurs absolues utilisées dans la partie 1. Le lecteur du présent document peut choisir une technique qui convient à ses besoins et examiner les changements survenus au cours d'une période pour diverses séries de données. Les données obtenues des quinze compagnies de téléphone couvrent la période allant de 1976 à 1985. Nous avons également inclus une colonne indiquant la variation en pourcentage des postes entre 1984 et 1985 afin d'offrir une vue d'ensemble qui permettra de comparer les tendances les plus récentes au sein des compagnies.

Quelques anomalies peuvent exister dans les données, par suite de changements internes des méthodes comptables de la compagnie et par suite des deux changements des méthodes d'essai décrits à la partie 1A.

On doit noter que l'ordre des éléments de la partie 1B correspond à celui de la partie 1A. De plus, les renvois mentionnés dans l'introduction de la partie 1 s'appliquent à la présente partie.

A noter en particulier que les sociétés exploitantes ont cessé de signaler le nombre total des postes téléphoniques, ce qui explique les discontinuités constatées à l'article 1B.6.1.

1B  
1B.1  
1B.1.1

ABSOLUTE VALUES, 1976 TO 1985 AND PERCENT CHANGE (1985/1984)  
INCOME STATEMENT  
LOCAL SERVICE REVENUE (IN THOUSANDS OF DOLLARS)

YEAR	ALBERTA GOVT. TEL.	BELL CANADA	BRITISH COLUMBIA TEL.	EDMONTON TEL. CO.	ISLAND TEL.	MANITOBA TEL. SYSTEM	MARITIME TEL. & TEL.	NEW BRUNSWICK TEL. CO.
1976	90149	990259	187694	50935	5210	37207	50678	36984
1977	113227	1107640	216098	61553	6566	49026	57293	45416
1978	137901	1263096	241369	69523	7394	53991	63183	49048
1979	160400	1392707	263076	81663	8068	58006	66968	52033
1980	190507	1562498	286478	92096	8562	68840	70481	54879
1981	223759	1844100	345600	102043	9939	76528	80024	61173
1982	265510	2049700	424000	128270	11486	83728	93945	73007
1983	263807	2130400	439300	148995	12657	92301	101089	79654
1984	281640	2198500	445800	154022	13452	104350	107915	83488
1985	331799	2254500	459000	171597	14675	118323	116402	88045
PERCENT CHANGE	17.81	2.55	2.96	11.41	9.09	13.39	7.86	5.46



1B VALEURS ABSOLUES, 1976 A 1985 & VARIATIONS EN POURCENTAGE (1985/1984)  
 1B.1 COMPTE DE PROFITS ET PERTES  
 1B.1.1 SERVICE LOCAL (EN MILLIERS DE DOLLARS)

NEWFOUND- LAND TEL. CO.	NORTHERN TEL.	NORTH- WESTEL.	QUEBEC- TEL.	SASK TEL.	TELEBEC LTEE.	TERRA NOVA TEL.	TOTAL	ANNEE
19841	5705		22929	34963	12163		1544717	1976
23012	6644		28481	42706	13880		1771542	1977
26246	7434		31471	51345	15946		2017947	1978
28752	8075		37710	59833	20168		2237459	1979
31961	8911	4327	40688	67019	22364	4993	2514604	1980
36087	9929	5179	46704	76915	28190	5876	2952046	1981
41850	11131	5624	51852	85678	33301	6796	3365878	1982
45020	12501	6371	55993	97169	36189	7512	3528958	1983
47703	13022	6772	56852	112638	35461	7859	3669474	1984
49740	14001	6957	58172	117817	35785	8634	3845447	1985
4.27	7.52	2.73	2.32	4.60	0.91	9.86	4.80	VARIATION EN %

1B  
1B.1  
1B.1.2

ABSOLUTE VALUES, 1976 TO 1985 AND PERCENT CHANGE (1985/1984)  
INCOME STATEMENT  
TOLL SERVICE REVENUE (IN THOUSANDS OF DOLLARS)

YEAR	ALBERTA GOVT. TEL.	BELL CANADA	BRITISH COLUMBIA TEL.	EDMONTON TEL. CO.	ISLAND TEL.	MANITOBA TEL. SYSTEM	MARITIME TEL. & TEL.	NEW BRUNSWICK TEL. CO.
1976	208543	867679	235813		5975	69674	58376	51328
1977	243016	970453	270323	1233	7400	79055	68882	59674
1978	291869	1152507	318765	2652	8783	88210	81412	68157
1979	354046	1329670	371965	3003	10451	103661	93854	80781
1980	428443	1529014	442643	3196	11540	119201	104171	88733
1981	488746	1861100	521300	3394	13984	132584	119676	99845
1982	531545	2158000	555500	3345	14300	147341	133176	106524
1983	571905	2349400	604000	3698	14608	154024	141627	115642
1984	616456	2594100	644700	3569	15958	171112	155916	129336
1985	686806	2886900	705700	3946	17024	185332	171112	136844
PERCENT CHANGE	11.41	11.29	9.46	10.56	6.68	8.31	9.75	5.81

1B VALEURS ABSOLUES, 1976 A 1985 & VARIATIONS EN POURCENTAGE (1985/1984)  
 1B.1 COMPTE DE PROFITS ET PERTES  
 1B.1.2 SERVICE INTERURBAIN (EN MILLIERS DE DOLLARS)

NEWFOUND- LAND TEL. CO.	NORTHERN TEL.	NORTH- WESTEL.	QUEBEC- TEL.	SASK TEL.	TELEBEC LTEE.	TERRA NOVA TEL.	TOTAL	ANNEE
31504	2861		40816	77864	16301		1666734	1976
36750	3327		48080	89699	20571		1898463	1977
43557	4181		51904	108651	23049		2243697	1978
49437	4955		62710	130249	29846		2624628	1979
56528	5603	21914	70436	149668	33671	12472	3077233	1980
60038	6791	25597	83328	179080	43967	13414	3652844	1981
64615	7807	27405	87183	193706	46171	15571	4092189	1982
71121	9065	29136	94354	212163	51658	16905	4439306	1983
74379	9891	32373	101240	249659	60935	18790	4878414	1984
81003	10705	35336	109594	271214	61995	20817	5384328	1985
8.91	8.23	9.15	8.25	8.63	1.74	10.79	10.37	VARIATION EN %

1B  
1B.1  
1B.1.3

ABSOLUTE VALUES, 1976 TO 1985 AND PERCENT CHANGE (1985/1984)  
INCOME STATEMENT  
MISCELLANEOUS REVENUES (IN THOUSANDS OF DOLLARS)

YEAR	ALBERTA GOVT. TEL.	BELL CANADA	BRITISH COLUMBIA TEL.	EDMONTON TEL. CO.	ISLAND TEL.	MANITOBA TEL. SYSTEM	MARITIME TEL. & TEL.	NEW BRUNSWICK TEL. CO.
1976	11661	54791	17651	6641	296	3971	3560	4821
1977	13989	64923	21180	8091	331	4701	4498	5558
1978	17085	93457	-2349	11927	429	6627	5452	6475
1979	19447	110528	40224	13434	520	9182	6954	6958
1980	24246	111604	25369	15357	543	11473	6912	8159
1981	30525	139900	27400	18265	530	13332	7602	9597
1982	39998	151600	29900	21932	687	15678	8740	12896
1983	63883	332600	48000	27478	1002	18057	10537	15331
1984	92501	498000	70700	26729	1124	20838	18349	17442
1985	42443	627200	68100	30707	1217	24103	22643	20015
PERCENT CHANGE	-54.12	25.94	-3.68	14.88	8.27	15.67	23.40	14.75

1B VALEURS ABSOLUES, 1976 A 1985 & VARIATIONS EN POURCENTAGE (1985/1984)  
 1B.1 COMPTE DE PROFITS ET PERTES  
 1B.1.3 DIVERS (EN MILLIERS DE DOLLARS)

NEWFOUND- LAND TEL. CO.	NORTHERN TEL.	NORTH- WESTEL.	QUEBEC- TEL.	SASK TEL.	TELEBEC LTEE.	TERRA NOVA TEL.	TOTAL	ANNEE
643	852		1171	3343	1526		110927	1976
409	1251		1147	3738	1827		131643	1977
-239	1411		1094	5396	2326		149091	1978
1811	1442		1238	7183	1462		220383	1979
1250	1702	11860	1337	8473	1710	9106	239101	1980
2170	1916	12857	1652	11625	1636	10230	289237	1981
3158	2114	15890	1733	16321	1429	10823	332899	1982
4235	2043	15083	1856	18736	1511	11117	571469	1983
4961	2999	16480	6452	22714	3585	11540	814414	1984
5558	3418	18115	9224	35794	4334	12553	925424	1985
12.03	13.97	9.92	42.96	57.59	20.89	8.78	13.63	VARIATION EN %

1B  
1B.1  
1B.1.4

ABSOLUTE VALUES, 1976 TO 1985 AND PERCENT CHANGE (1985/1984)  
INCOME STATEMENT  
UNCOLLECTABLES (IN THOUSANDS OF DOLLARS)

YEAR	ALBERTA GOVT. TEL.	BELL CANADA	BRITISH COLUMBIA TEL.	EDMONTON TEL. CO.	ISLAND TEL.	MANITOBA TEL. SYSTEM	MARITIME TEL. & TEL.	NEW BRUNSWICK TEL. CO.
1976	2553	8805	5319		65	505	919	485
1977	2421	9601	6047		62	506	1018	470
1978	3384	11630	6811		72	650	841	463
1979	4875	15797			70	646	852	473
1980	6368					1124		586
1981	8568					1371		806
1982	11707					2193		959
1983	6845					2114		756
1984	11754		13400			2052		675
1985	12117		15800			1428		956
PERCENT CHANGE	3.09		17.91			-30.41		41.63

1B VALEURS ABSOLUES, 1976 A 1985 & VARIATIONS EN POURCENTAGE (1985/1984)  
 1B.1 COMPTE DE PROFITS ET PERTES  
 1B.1.4 CREANCES IRRECOURVABLES (EN MILLIERS DE DOLLARS)

NEWFOUND- LAND TEL. CO.	NORTHERN TEL.	NORTH- WESTEL.	QUEBEC- TEL.	SASK TEL.	TELEBEC LTEE.	TERRA NOVA TEL.	TOTAL	ANNEE
317	76		225	581			19850	1976
	84		517	681			21407	1977
	99		332	993			25275	1978
			355				23068	1979
			461				8539	1980
			800				11545	1981
			1181				16040	1982
			687	1983			12385	1983
			478	2287			30646	1984
			465	1147			31913	1985
			-2.72	-49.85			4.13	VARIATION EN %

1B  
1B.1  
1B.1.5

ABSOLUTE VALUES, 1976 TO 1985 AND PERCENT CHANGE (1985/1984)  
INCOME STATEMENT  
TOTAL OPERATING REVENUE (IN THOUSANDS OF DOLLARS)

YEAR	ALBERTA GOVT. TEL.	BELL CANADA	BRITISH COLUMBIA TEL.	EDMONTON TEL. CO.	ISLAND TEL.	MANITOBA TEL. SYSTEM	MARITIME TEL. & TEL.	NEW BRUNSWICK TEL. CO.
1976	307801	1903924	435839	57576	11417	110347	111695	92648
1977	367810	2133415	501554	70877	14234	132276	129655	110178
1978	443471	2497430	550974	84101	16535	148178	149206	123217
1979	529018	2817108	675265	98099	18969	170203	166924	139299
1980	636828	3203116	754490	110649	20645	198390	181564	151185
1981	734462	3845100	894300	123701	24453	221073	207302	169809
1982	825346	4359300	1009400	153547	26472	244554	235861	191468
1983	892750	4812400	1091300	180171	28266	262268	253253	209851
1984	978843	5290600	1147800	184320	30534	294248	282180	229591
1985	1048931	5768600	1217000	206250	32916	326330	310157	243948
PERCENT CHANGE	7.16	9.03	6.03	11.90	7.80	10.90	9.91	6.25



1B VALEURS ABSOLUES, 1976 A 1985 & VARIATIONS EN POURCENTAGE (1985/1984)  
 1B.1 COMPTE DE PROFITS ET PERTES  
 1B.1.5 TOTAL DES REVENUS D'EXPLOITATION (EN MILLIERS DE DOLLARS)

NEWFOUND- LAND TEL. CO.	NORTHERN TEL.	NORTH- WESTEL.	QUEBEC- TEL.	SASK TEL.	TELEBEC LTEE.	TERRA NOVA TEL.	TOTAL	ANNEE
51671	9342		64692	115589	29990		3302531	1976
60171	11138		77191	135462	36278		3780239	1977
69564	12928		84136	164399	41321		4385460	1978
80000	14473		101303	197265	51476		5059402	1979
89739	16216	38101	112000	225160	57745	26571	5822399	1980
98295	18636	43633	130884	267620	73793	29520	6882581	1981
109623	21052	48919	139587	295705	80901	33190	7774925	1982
120376	23609	50590	151516	326085	89358	35534	8527327	1983
127043	25912	55625	164066	382724	99981	38189	9331656	1984
136301	28124	60408	176525	423678	102114	42004	10123286	1985
7.29	8.54	8.60	7.59	10.70	2.13	9.99	8.48	VARIATION EN %

1B  
1B.1  
1B.1.6

ABSOLUTE VALUES, 1976 TO 1985 AND PERCENT CHANGE (1985/1984)  
INCOME STATEMENT  
OPERATING EXPENSE (IN THOUSANDS OF DOLLARS)

YEAR	ALBERTA GOVT. TEL.	BELL CANADA	BRITISH COLUMBIA TEL.	EDMONTON TEL. CO.	ISLAND TEL.	MANITOBA TEL. SYSTEM	MARITIME TEL. & TEL.	NEW BRUNSWICK TEL. CO.
1976	245002	1372123	313138	41549	7361	87741	74754	63637
1977	288117	1572495	358453	51622	9200	100234	85979	75052
1978	338838	1784497	393435	57793	10533	113240	99563	83668
1979	407616	2054466	479100	68479	12077	124186	111801	95006
1980	498153	2390316	533375	80901	13347	142961	122046	103847
1981	596546	2818100	643100	96658	15581	164616	142019	121125
1982	690577	3254200	741300	116596	16604	196807	154418	131147
1983	695642	3481500	806400	135409	18160	214728	166393	140244
1984	728498	3808200	851300	140095	19976	243496	193260	154477
1985	738951	4142600	876000	162705	21790	265443	217385	170198
PERCENT CHANGE	1.43	8.78	2.90	16.14	9.08	9.01	12.48	10.18

1B VALEURS ABSOLUES, 1976 A 1985 & VARIATIONS EN POURCENTAGE (1985/1984)  
 1B.1 COMPTE DE PROFITS ET PERTES  
 1B.1.6 FRAIS D'EXPLOITATION (EN MILLIERS DE DOLLARS)

NEWFOUND- LAND TEL. CO.	NORTHERN TEL.	NORTH- WESTEL.	QUEBEC- TEL.	SASK TEL.	TELEBEC LTEE.	TERRA NOVA TEL.	TOTAL	ANNEE
34111	7505		43298	83334	21771		2395324	1976
39349	9105		50801	98792	25128		2764327	1977
44360	9682		56761	117242	28719		3138331	1978
51413	10796		69082	139856	35591		3659469	1979
57604	12186	27787	77378	162942	39295	20893	4283031	1980
63457	13672	31119	91888	199938	49504	22899	5070222	1981
68337	15354	36494	98351	229305	55959	25256	5830705	1982
74405	16989	37639	105752	252318	64005	26648	6236232	1983
76364	18281	40511	120138	280481	71164	27944	6774185	1984
83737	19591	44534	130794	318194	73152	30252	7295326	1985
9.66	7.17	9.93	8.87	13.45	2.79	8.26	7.69	VARIATION EN %

1B  
1B.1  
1B.1.7

ABSOLUTE VALUES, 1976 TO 1985 AND PERCENT CHANGE (1985/1984)  
INCOME STATEMENT  
NET OPERATING REVENUE (IN THOUSANDS OF DOLLARS)

YEAR	ALBERTA GOVT. TEL.	BELL CANADA	BRITISH COLUMBIA TEL.	EDMONTON TEL. CO.	ISLAND TEL.	MANITOBA TEL. SYSTEM	MARITIME TEL. & TEL.	NEW BRUNSWICK TEL. CO.
1976	62799	531801	122701	16027	4055	22606	36941	29011
1977	79693	560920	143101	19255	5035	32042	43676	35126
1978	104633	712933	157539	26308	6002	34938	49643	39549
1979	121402	762642	196165	29621	6892	46017	55123	44293
1980	138675	812800	221115	29748	7298	55429	59518	47338
1981	137916	1027000	251200	27043	8873	56457	65283	48684
1982	134769	1105100	268100	36951	9869	47747	81443	60321
1983	197108	1330900	284900	44762	10106	47540	86860	69607
1984	250345	1482400	296500	44225	10558	50752	88920	75114
1985	309980	1626000	341000	43545	11126	60887	92772	73750
PERCENT CHANGE	23.82	9.69	15.01	-1.54	5.38	19.97	4.33	-1.82

1B  
1B.1  
1B.1.7

VALEURS ABSOLUES, 1976 A 1985 & VARIATIONS EN POURCENTAGE (1985/1984)  
COMPTE DE PROFITS ET PERTES  
REVENUS NETS D'EXPLOITATION (EN MILLIERS DE DOLLARS)

NEWFOUND- LAND TEL. CO.	NORTHERN TEL.	NORTH- WESTEL.	QUEBEC- TEL.	SASK TEL.	TELEBEC LTEE.	TERRA NOVA TEL.	TOTAL	ANNEE
17560	1836		21393	32255	8219		907204	1976
20822	2033		26390	36670	11150		1015913	1977
25203	3246		27375	47157	12602		1247128	1978
28587	3676		32221	57409	15885		1399933	1979
32134	4030	10314	34623	62218	18450	5678	1539368	1980
34839	4964	12514	38996	67682	24289	6621	1812361	1981
41286	5699	12425	41236	66400	24942	7934	1944222	1982
45971	6620	12951	45764	73767	25353	8886	2291095	1983
50679	7632	15114	43928	102243	28817	10245	2557472	1984
52564	8533	15874	45731	105484	28962	11752	2827960	1985
3.72	11.81	5.03	4.10	3.17	0.50	14.71	10.58	VARIATION EN %

1B  
1B.1  
1B.1.8

ABSOLUTE VALUES, 1976 TO 1985 AND PERCENT CHANGE (1985/1984)  
INCOME STATEMENT  
OTHER INCOME (NET) (IN THOUSANDS OF DOLLARS)

YEAR	ALBERTA GOVT. TEL.	BELL CANADA	BRITISH COLUMBIA TEL.	EDMONTON TEL. CO.	ISLAND TEL.	MANITOBA TEL. SYSTEM	MARITIME TEL. & TEL.	NEW BRUNSWICK TEL. CO.
1976	8072	65227	9694	1951	87	3336	1760	3533
1977	6995	52961	9880	1127	118	4793	1274	2486
1978	12984	63144	8887	425	95	6368	1008	2009
1979	17331	131962	10795	-136	136	5987	1127	3568
1980	23600	112644	16799	154	274	9064	1597	3912
1981	39688	142000	12400	1096	225	8767	2563	6435
1982	50491	165700	28600	2656	204	11832	3476	4248
1983	59796	111100	33100	2681	255	14273	3679	3392
1984	50051	85100	19700	771	270	15509	6335	2665
1985	29169	60800	18500	2606	409	15283	5483	2315
PERCENT CHANGE	-41.72	-28.55	-6.09	238.00	51.48	-1.46	-13.45	-13.13

1B  
1B.1  
1B.1.8

VALEURS ABSOLUES, 1976 A 1985 & VARIATIONS EN POURCENTAGE (1985/1984)  
COMPTE DE PROFITS ET PERTES  
AUTRES REVENUS (NET) (EN MILLIERS DE DOLLARS)

NEWFOUND- LAND TEL. CO.	NORTHERN TEL.	NORTH- WESTEL.	QUEBEC- TEL.	SASK TEL.	TELEBEC LTEE.	TERRA NOVA TEL.	TOTAL	ANNEE
675	1172		1394	3034	258		100193	1976
291	3331		839	5069	107		89271	1977
668	3035		1869	3344	386		104222	1978
1117	2943		1044	167	656		176697	1979
1901	2788	1774	1177	807	797	110	177398	1980
1706	2628	2376	1768	6462	349	370	228833	1981
2434	2565	4183	1507	1285	1317	485	280983	1982
1808	2442	3300	1402	4898	396	534	243056	1983
1733	2280	3182	1598	6066	-564	595	195291	1984
2144	1930	4084	1729	4632	387	929	150400	1985
23.72	-15.35	28.35	8.20	-23.64	-168.62	56.13	-22.99	VARIATION EN %

1B  
1B.1  
1B.1.9

ABSOLUTE VALUES, 1976 TO 1985 AND PERCENT CHANGE (1985/1984)  
INCOME STATEMENT  
INCOME BEFORE INCOME TAXES & DEBT SERVICE CHARGES (IN THOUSANDS OF DOLLARS)

YEAR	ALBERTA GOVT. TEL.	BELL CANADA	BRITISH COLUMBIA TEL.	EDMONTON TEL. CO.	ISLAND TEL.	MANITOBA TEL. SYSTEM	MARITIME TEL. & TEL.	NEW BRUNSWICK TEL. CO.
1976	70871	597028	132395	17978	4142	25942	38701	32544
1977	86688	613881	152981	20382	5152	36835	44950	37612
1978	117617	776077	166426	26733	6097	41306	50651	41558
1979	138733	894604	206960	29485	7029	52004	56250	47861
1980	162275	925444	237914	29902	7572	64493	61115	51250
1981	177604	1169000	263600	28139	9098	65224	67846	55119
1982	185260	1270800	296700	39607	10072	59579	84919	64569
1983	256904	1442000	318000	47442	10362	61813	90539	72999
1984	300396	1567500	316200	44996	10828	66261	95255	77779
1985	339149	1686800	359500	46151	11534	76170	98255	76065
PERCENT CHANGE	12.90	7.61	13.69	2.57	6.52	14.95	3.15	-2.20



1B  
 1B.1  
 1B.1.9

VALEURS ABSOLUES, 1976 A 1985 & VARIATIONS EN POURCENTAGE (1985/1984)  
 COMPTE DE PROFITS ET PERTES  
 REVENU AVANT IMPOT & DEDUCTION DU SERVICE DE LA DETTE (EN MILLIERS DE DOLLARS)

NEWFOUND- LAND TEL. CO.	NORTHERN TEL.	NORTH- WESTEL.	QUEBEC- TEL.	SASK TEL.	TELEBEC LTEE.	TERRA NOVA TEL.	TOTAL	ANNEE
18235	3008		22787	35289	8477		1007397	1976
21113	5364		27229	41739	11257		1105183	1977
25871	6282		29245	50501	12988		1351352	1978
29704	6620		33264	57576	16541		1576631	1979
34035	6818	12088	35800	63025	19247	5788	1716766	1980
36545	7592	14890	40764	74144	24638	6991	2041194	1981
43720	8263	16608	42743	67685	26259	8419	2225203	1982
47779	9062	16251	47166	78665	25749	9420	2534151	1983
52412	9912	18296	45526	108309	28253	10840	2752763	1984
54708	10463	19958	47460	110116	29349	12681	2978359	1985
4.38	5.56	9.08	4.25	1.67	3.88	16.98	8.20	VARIATION EN %

1B ABSOLUTE VALUES, 1976 TO 1985 AND PERCENT CHANGE (1985/1984)  
 1B.1 INCOME STATEMENT  
 1B.1.10 INCOME TAXES (IN THOUSANDS OF DOLLARS)

YEAR	ALBERTA GOVT. TEL.	BELL CANADA	BRITISH COLUMBIA TEL.	EDMONTON TEL. CO.	ISLAND TEL.	MANITOBA TEL. SYSTEM	MARITIME TEL. & TEL.	NEW BRUNSWICK TEL. CO.
1976		185825	35903		1110		11224	10097
1977		178593	42102		1522		14278	12780
1978		240118	46015		1924		16953	14348
1979		256370	65734		2317		19033	16217
1980		272561	76470		2337		21500	17850
1981		357800	78200		2972		21627	19717
1982		364100	83700		3349		29884	23975
1983		461200	93900		3400		32943	27517
1984		517400	82400		3579		33241	30491
1985		574000	109100		3850		33300	29456
PERCENT CHANGE		10.94	32.40		7.57		0.18	-3.39

1B  
1B.1  
1B.1.10

VALEURS ABSOLUES, 1976 A 1985 & VARIATIONS EN POURCENTAGE (1985/1984)  
COMPTE DE PROFITS ET PERTES  
IMPOT SUR LA REVENU (EN MILLIERS DE DOLLARS)

NEWFOUND- LAND TEL. CO.	NORTHERN TEL.	NORTH- WESTEL.	QUEBEC- TEL.	SASK TEL.	TELEBEC LTEE.	TERRA NOVA TEL.	TOTAL	ANNEE
3735	368		6418		2177		256857	1976
4940	548		8045		3318		266126	1977
7536	1188		8718		3725		340525	1978
9756	1510		10015		4896		385848	1979
11241	1852	4350	11517		6125	1612	427415	1980
11545	2173	4878	13821		8802	1594	523129	1981
15138	2308	5571	13182		7616	2239	551062	1982
17506	2682	5065	14707		7157	2676	668753	1983
20116	3105	6202	13812		8260	3418	722024	1984
21265	3367	6537	15511		7894	3772	808052	1985
5.71	8.44	5.40	12.30		-4.43	10.36	11.91	VARIATION EN %

1B  
1B.1  
1B.1.11

ABSOLUTE VALUES, 1976 TO 1985 AND PERCENT CHANGE (1985/1984)  
INCOME STATEMENT  
INCOME BEFORE DEBT SERVICE CHARGES (IN THOUSANDS OF DOLLARS)

YEAR	ALBERTA GOVT. TEL.	BELL CANADA	BRITISH COLUMBIA TEL.	EDMONTON TEL. CO.	ISLAND TEL.	MANITOBA TEL. SYSTEM	MARITIME TEL. & TEL.	NEW BRUNSWICK TEL. CO.
1976	70871	411203	96492	17978	3032	25942	27477	22447
1977	86688	435288	110879	20382	3630	36835	30672	24832
1978	117617	535959	120411	26733	4173	41306	33698	27210
1979	138733	638234	141226	29485	4712	52004	37217	31644
1980	162275	652883	161444	29902	5235	64493	39615	33400
1981	177604	811200	185400	28139	6126	65224	46219	35402
1982	185260	906700	213000	39607	6724	59579	55035	40594
1983	256904	980800	224100	47442	6961	61813	57596	45482
1984	300396	1050100	233800	44996	7249	66261	62014	47288
1985	339149	1112800	250400	46151	7684	76170	64955	46609
PERCENT CHANGE	12.90	5.97	7.10	2.57	6.00	14.95	4.74	-1.44

1B  
1B.1  
1B.1.11

VALEURS ABSOLUES, 1976 A 1985 & VARIATIONS EN POURCENTAGE (1985/1984)  
 COMPTE DE PROFITS ET PERTES  
 REVENU AVANT DEDUCTION DU SERVICE DE LA DETTE (EN MILLIERS DE DOLLARS)

NEWFOUND- LAND TEL. CO.	NORTHERN TEL.	NORTH- WESTEL.	QUEBEC- TEL.	SASK TEL.	TELEBEC LTEE.	TERRA NOVA TEL.	TOTAL	ANNEE
14500	2640		16369	35289	6300		750540	1976
16173	4816		19184	41739	7939		839057	1977
18335	5094		20526	50501	9263		1010826	1978
19948	5109		23249	57576	11645		1190782	1979
22794	4966	7738	24283	63025	13122	4176	1289351	1980
25000	5419	10012	26943	74144	15836	5397	1518065	1981
28582	5955	11037	29561	67685	18643	6180	1674142	1982
30273	6380	11186	32459	78665	18592	6744	1865397	1983
32296	6807	12094	31714	108309	19993	7422	2030739	1984
33443	7096	13421	31949	110116	21455	8909	2170307	1985
3.55	4.25	10.97	0.74	1.67	7.31	20.04	6.87	VARIATION EN %

1B ABSOLUTE VALUES, 1976 TO 1985 AND PERCENT CHANGE (1985/1984)  
 1B.1 INCOME STATEMENT  
 1B.1.12 DEBT SERVICE CHARGES (IN THOUSANDS OF DOLLARS)

YEAR	ALBERTA GOVT. TEL.	BELL CANADA	BRITISH COLUMBIA TEL.	EDMONTON TEL. CO.	ISLAND TEL.	MANITOBA TEL. SYSTEM	MARITIME TEL. & TEL.	NEW BRUNSWICK TEL. CO.
1976	69117	172570	55776	12869	1682	22886	14056	8679
1977	82827	202393	64163	14503	1776	27588	14432	9887
1978	101746	231020	69104	18054	1868	34428	14803	11361
1979	114351	252589	72051	20287	2032	53286	15838	13960
1980	137527	282942	81855	21908	2426	51308	17679	14900
1981	176548	335200	100100	28402	2814	51775	22690	15742
1982	241736	385300	124100	36438	3028	53397	25755	17166
1983	279818	390200	117000	41088	3068	58306	26026	18589
1984	289281	423400	131300	42220	3034	64134	27655	18642
1985	290933	460700	134500	45336	3261	60978	30856	19104
PERCENT CHANGE	0.57	8.81	2.44	7.38	7.48	-4.92	11.57	2.48

1B  
1B.1  
1B.1.12

VALEURS ABSOLUES, 1976 A 1985 & VARIATIONS EN POURCENTAGE (1985/1984)  
 COMPTE DE PROFITS ET PERTES  
 SERVICE DE LA DETTE (EN MILLIERS DE DOLLARS)

NEWFOUND- LAND TEL. CO.	NORTHERN TEL.	NORTH- WESTEL.	QUEBEC- TEL.	SASK TEL.	TELEBEC LTEE.	TERRA NOVA TEL.	TOTAL	ANNEE	VARIATION EN %
7721	2567		9450	16228	3659		397260	1976	
7592	2246		10541	23797	4242		465987	1977	
8489	2128		10936	31033	4891		539861	1978	
8878	1971		12347	32327	6048		605965	1979	
11131	1944	3104	12642	38211	6850	2736	687163	1980	
13218	2063	4936	13119	49835	7531	3971	827944	1981	
14066	2472	5408	13927	59866	9032	4257	995948	1982	
13536	2580	6072	13029	66691	8575	4361	1048939	1983	
12999	2603	5707	12369	72709	8999	4266	1119318	1984	
12965	2945	7436	10286	73132	9799	5891	1168122	1985	
-0.26	13.14	30.30	-16.84	0.58	8.89	38.09	4.36		

1B ABSOLUTE VALUES, 1976 TO 1985 AND PERCENT CHANGE (1985/1984)  
 1B.1 INCOME STATEMENT  
 1B.1.13 NET INCOME (IN THOUSANDS OF DOLLARS)

YEAR	ALBERTA GOVT. TEL.	BELL CANADA	BRITISH COLUMBIA TEL.	EDMONTON TEL. CO.	ISLAND TEL.	MANITOBA TEL. SYSTEM	MARITIME TEL. & TEL.	NEW BRUNSWICK TEL. CO.
1976	1754	238633	40716	5109	1349	3056	13421	13768
1977	3862	232895	46716	5879	1854	9247	16240	14945
1978	15871	304939	51307	8679	2305	6878	18895	15849
1979	24382	385645	69175	9198	2679	-1282	21379	17684
1980	24748	365941	79589	7994	2809	13185	21936	18500
1981	1056	476000	85300	-263	3313	13449	23529	19660
1982	-56476	521400	88900	3169	3695	6182	29280	23428
1983	-22914	590600	107100	6354	3894	3507	31570	26893
1984	11115	626700	102500	2776	4216	2127	34359	28646
1985	48216	652100	115900	815	4423	15192	34099	27505
PERCENT CHANGE	333.79	4.05	13.07	-70.64	4.91	614.25	-0.76	-3.98



1B  
1B.1  
1B.1.13

VALEURS ABSOLUES, 1976 A 1985 & VARIATIONS EN POURCENTAGE (1985/1984)  
COMpte DE PROFITS ET PERTES  
REVENU NET (EN MILLIERS DE DOLLARS)

NEWFOUND-  
LAND  
TEL. CO.

	NORTHERN TEL.	NORTH- WESTEL.	QUEBEC- TEL.	SASK TEL.	TELEBEC LTEE.	TERRA NOVA TEL.	TOTAL	ANNEE
6779	73		6919	19061	2641		353279	1976
8581	2570		8643	17942	3697		373071	1977
9847	2966		9590	19468	4372		470966	1978
11070	3138		10902	25249	5597		584816	1979
11662	3022	4634	11640	24814	6272	1440	598186	1980
11781	3356	5076	13824	24309	8305	1426	690121	1981
14516	3483	5629	15634	7819	9611	1923	678193	1982
16737	3799	5114	19430	11974	10017	2383	816458	1983
19297	4203	6387	19345	35600	10994	3156	911421	1984
20478	4151	5985	21663	36984	11656	3018	1002185	1985
6.12	-1.24	-6.29	11.98	3.89	6.02	-4.37	9.96	VARIATION EN %

1B ABSOLUTE VALUES, 1976 TO 1985 AND PERCENT CHANGE (1985/1984)  
 1B.2 ITEMS OF EXPENSE  
 1B.2.1 MAINTENANCE (IN THOUSANDS OF DOLLARS)

YEAR	ALBERTA GOVT. TEL.	BELL CANADA	BRITISH COLUMBIA TEL.	EDMONTON TEL. CO.	ISLAND TEL.	MANITOBA TEL. SYSTEM	MARITIME TEL. & TEL.	NEW BRUNSWICK TEL. CO.
1976	64449	308963	93307	11975	2158	25437	18535	14164
1977	74423	372457	101334	14483	2801	25890	19840	15208
1978	86930	420182	108960	15545	3298	29991	22940	16881
1979	101230	464132	135533	18357	3789	30403	26186	19198
1980	123816	538426	155944	21179	6412	35620	50838	20163
1981	144503	639600		24260	7962	38093	63139	23613
1982	164490	710300		27493	8389	43157	65858	23914
1983	164809			38232	9154	45919	68897	24879
1984	171097			32741	9991	52020	79432	27584
1985	196369			32831	10687	56605	89677	30468
PERCENT CHANGE	14.77			0.27	6.97	8.81	12.90	10.46

1B  
1B.2  
1B.2.1

VALEURS ABSOLUES, 1976 A 1985 & VARIATIONS EN POURCENTAGE (1985/1984)  
POSTES DE DEPENSE  
ENTRETIEN (EN MILLIERS DE DOLLARS)

NEWFOUND- LAND TEL. CO.	NORTHERN TEL.	NORTH- WESTEL.	QUEBEC- TEL.	SASK TEL.	TELEBEC LTEE.	TERRA NOVA TEL.	TOTAL	ANNEE
9181	1945		10958	21770	6021		588863	1976
10364	2305		12260		6734		658099	1977
12045	2592		14017		7602		740983	1978
13979	2762		17233				832802	1979
14188	3150		19584	65495			1054815	1980
15822	3441		23211	78210			1061854	1981
16766	3883		24738	88686			1177674	1982
17790	4042		27700	97170			498592	1983
18081	4377		74417	107261			577001	1984
	4616		82231	130205			633689	1985
	5.46		10.50	21.39			9.82	VARIATION EN %

1B ABSOLUTE VALUES, 1976 TO 1985 AND PERCENT CHANGE (1985/1984)  
 1B.2 ITEMS OF EXPENSE  
 1B.2.2 DEPRECIATION (IN THOUSANDS OF DOLLARS)

YEAR	ALBERTA GOVT. TEL.	BELL CANADA	BRITISH COLUMBIA TEL.	EDMONTON TEL. CO.	ISLAND TEL.	MANITOBA TEL. SYSTEM	MARITIME TEL. & TEL.	NEW BRUNSWICK TEL. CO.
1976	87269	381878	83195	11779	2200	25226	21139	17473
1977	106566	427853	101210	15060	2752	30030	24341	19354
1978	125068	473989	112619	15796	2971	33674	27870	21798
1979	145980	530874	146106	18407	3386	38551	29988	25724
1980	175773	586666	158507	22218	3821	44876	32502	27715
1981	198937	646300	183500	27314	4259	52919	35556	29601
1982	218137	760900	201800	32555	4521	68776	40670	32450
1983	217546	807100	221100	35711	4936	75838	42744	35547
1984	219011	879500	232500	41071	5635	86756	46442	40626
1985	182918	950400	250600	57098	6242	90462	54589	44395
PERCENT CHANGE	-16.48	8.06	7.78	39.02	10.77	4.27	17.54	9.28

1B  
1B.2  
1B.2.2

VALEURS ABSOLUES, 1976 A 1985 & VARIATIONS EN POURCENTAGE (1985/1984)  
POSTES DE DEPENSE  
AMORTISSEMENT (EN MILLIERS DE DOLLARS)

NEWFOUND- LAND TEL. CO.	NORTHERN TEL.	NORTH- WESTEL.	QUEBEC- TEL.	SASK TEL.	TELEBEC LTEE.	TERRA NOVA TEL.	TOTAL	ANNEE
10115	1824		12971	22759	6073		683901	1976
11711	2005		16240	27392	6876		791390	1977
13138	2192		18514	33895	7790		889314	1978
14799	2483		20839	43859	9662		1030658	1979
16518	2811	4291	22470	48244	10926	4858	1162196	1980
17447	3265	5760	26318	58012	13246	6507	1308941	1981
18718	3534	6359	24627	64960	15583	6977	1500567	1982
20930	3764	7432	28447	69324	17567	7432	1595418	1983
22006	3912	8036	32635	79907	17484	7735	1723256	1984
	4500	9276	35451	80123	18403	8232	1792689	1985
	15.03	15.43	8.63	0.27	5.26	6.43	4.03	VARIATION EN %

1B ABSOLUTE VALUES, 1976 TO 1985 AND PERCENT CHANGE (1985/1984)  
 1B.2 ITEMS OF EXPENSE  
 1B.2.3 TRAFFIC (IN THOUSANDS OF DOLLARS)

YEAR	ALBERTA GOVT. TEL.	BELL CANADA	BRITISH COLUMBIA TEL.	EDMONTON TEL. CO.	ISLAND TEL.	MANITOBA TEL. SYSTEM	MARITIME TEL. & TEL.	NEW BRUNSWICK TEL. CO.
1976	21317	106598	33126	2152	1186	10409	8468	
1977	22471	116178	36342	2337	1151	10309	8167	
1978	24616	127413	39461	3244	931	10191	8657	
1979	27414	135141	40652	3377	1054	10135	9452	
1980	29886		44392	3414		10876		
1981	34799			4012		12240		
1982	36516			3919		12993		
1983	34653			4153		13731		
1984	34111			3746		14752		
1985	35786					15431		
PERCENT CHANGE	4.91					4.60		

1B  
1B.2  
1B.2.3

VALEURS ABSOLUES, 1976 A 1985 & VARIATIONS EN POURCENTAGE (1985/1984)  
POSTES DE DEPENSE  
TRAFIC (EN MILLIERS DE DOLLARS)

NEWFOUND- LAND TEL. CO.	NORTHERN TEL.	NORTH- WESTEL.	QUEBEC- TEL.	SASK TEL.	TELEBEC LTEE.	TERRA NOVA TEL.	TOTAL	ANNEE
2944	115		3788	10055	2222		202380	1976
	115		3802		2497		203369	1977
	121		3941		2744		221319	1978
			3903				231128	1979
			3940				92508	1980
			4542				55593	1981
			4182				57610	1982
							52537	1983
							52609	1984
							51217	1985
							-2.65	VARIATION EN %

1B ABSOLUTE VALUES, 1976 TO 1985 AND PERCENT CHANGE (1985/1984)  
 1B.2 ITEMS OF EXPENSE  
 1B.2.4 COMMERCIAL & MARKETING (IN THOUSANDS OF DOLLARS)

YEAR	ALBERTA GOVT. TEL.	BELL CANADA	BRITISH COLUMBIA TEL.	EDMONTON TEL. CO.	ISLAND TEL.	MANITOBA TEL. SYSTEM	MARITIME TEL. & TEL.	NEW BRUNSWICK TEL. CO.
1976	21153	104745	27543	4914	524	8778	6890	
1977	24601	122526	29440	5897	684	10789	7836	
1978	29070	141307	46225	7304	882	12535	9065	
1979	34789	164617	55866	8700	1058	14185	10446	
1980	44753		63064	10364		16365		
1981	57676			13550		19492		
1982	67261			16450		22578		
1983	71060			17296		25603		
1984	68403			18293		28126		
1985	78799					31045		
PERCENT CHANGE	15.20					10.38		



1B  
1B.2  
1B.2.4

VALEURS ABSOLUES, 1976 A 1985 & VARIATIONS EN POURCENTAGE (1985/1984)  
POSTES DE DEPENSE  
COMMERCIALISATION & PUBLICITE (EN MILLIERS DE DOLLARS)

NEWFOUND- LAND TEL. CO.	NORTHERN TEL.	NORTH- WESTEL.	QUEBEC- TEL.	SASK TEL.	TELEBEC LTEE.	TERRA NOVA TEL.	TOTAL	ANNEE
2203	742		3648	8799	1652		191591	1976
	757		4150		1783		208463	1977
	861		4734		1930		253913	1978
	878		5732				296271	1979
	1033		6589				142168	1980
	1308		8072				100098	1981
	1560		8224				116073	1982
	1994						115953	1983
	2123						116945	1984
							109844	1985
							-6.07	VARIATION EN %

1B ABSOLUTE VALUES, 1976 TO 1985 AND PERCENT CHANGE (1985/1984)  
 1B.2 ITEMS OF EXPENSE  
 1B.2.5 OTHER EXPENSES (IN THOUSANDS OF DOLLARS)

YEAR	ALBERTA GOVT. TEL.	BELL CANADA	BRITISH COLUMBIA TEL.	EDMONTON TEL. CO.	ISLAND TEL.	MANITOBA TEL. SYSTEM	MARITIME TEL. & TEL.	NEW BRUNSWICK TEL. CO.
1976	44595	350712	53903	7393	1091	14981	16639	32000
1977	52577	403445	65314	8446	1589	20148	22246	40490
1978	64394	480826	57780	9716	2186	23701	26815	44989
1979	88668	585944	70639	12463	2500	27436	31166	42990
1980	111318	1058859	77974	15587	3114	31551	38706	48534
1981	141497	1284700	417900	18370	3360	38057	43324	59895
1982	180649	1494300	489100	24837	3694	44905	47890	67460
1983	186959	2674400	528300	26854	4070	47529	54752	79818
1984	213367	2928700	559000	30710	4350	54204	67386	86267
1985	221066	3192200	569300	60183	4861	64109	73119	95335
PERCENT CHANGE	3.61	9.00	1.84	95.97	11.75	18.27	8.51	10.51

1B  
1B.2  
1B.2.5

VALEURS ABSOLUES, 1976 A 1985 & VARIATIONS EN POURCENTAGE (1985/1984)  
POSTES DE DEPENSE  
AUTRES FRAIS (EN MILLIERS DE DOLLARS)

NEWFOUND- LAND TEL. CO.	NORTHERN TEL.	NORTH- WESTEL.	QUEBEC- TEL.	SASK TEL.	TELEBEC LTEE.	TERRA NOVA TEL.	TOTAL	ANNEE
8968	2228		8861	18882	5803		566056	1976
17275	3095		10944	71400	5666		722635	1977
19177	3064		11445	83347	6603		834043	1978
22634	3693		15172	95997	25929		1025231	1979
26898	4074	23496	17662	49203	28369	16035	1551380	1980
30187	4394	25359	20630	63716	36258	16392	2204039	1981
32853	4913	30135	25390	75659	40376	18279	2580440	1982
35685	5446	30207	37525	85824	46438	19216	3863023	1983
36277	5958	32475		93313	53680	20209	4185896	1984
83984	8416	35258		107866	54749	22020	4592466	1985
131.51	41.26	8.57		15.60	1.99	8.96	9.71	VARIATION EN %

1B ABSOLUTE VALUES, 1976 TO 1985 AND PERCENT CHANGE (1985/1984)  
 1B.2 ITEMS OF EXPENSE  
 1B.2.6 TAXES OTHER THAN INCOME TAXES (IN THOUSANDS OF DOLLARS)

YEAR	ALBERTA GOVT. TEL.	BELL CANADA	BRITISH COLUMBIA TEL.	EDMONTON TEL. CO.	ISLAND TEL.	MANITOBA TEL. SYSTEM	MARITIME TEL. & TEL.	NEW BRUNSWICK TEL. CO.
1976	6218	119227	22064	3335	203	2910	3083	
1977	7479	130036	24813	5399	222	3068	3549	
1978	8760	140780	28390	6187	264	3148	4216	
1979	9535	173758	30304	7175	289	3476	4563	7094
1980	12607	206365	33494	8138		3673		7435
1981	19134	247500	41700	9153		3815		8016
1982	23524	288700	50400	11343		4398		7323
1983	20615		57000	13164		6108		
1984	22509		59800	13534		7638		
1985	24013		56100	12593		7791		
PERCENT CHANGE	6.68		-6.19	-6.95		2.00		

1B  
 1B.2  
 1B.2.6

VALEURS ABSOLUES, 1976 A 1985 & VARIATIONS EN POURCENTAGE (1985/1984)  
 POSTES DE DEPENSE  
 TAXES AUTRES QUE L'IMPOT SUR LA REVENU (EN MILLIERS DE DOLLARS)

NEWFOUND- LAND TEL. CO.	NORTHERN TEL.	NORTH- WESTEL.	QUEBEC- TEL.	SASK TEL.	TELEBEC LTEE.	TERRA NOVA TEL.	TOTAL	ANNEE
700	652		3073	1069			162534	1976
	828		3405		1572		180371	1977
	851		4110		2050		198756	1978
	981		6203				243378	1979
	1118		7133				279963	1980
	1265		9115				339698	1981
	1464		11190				398342	1982
	1743		12080				110710	1983
	1911		13086				118478	1984
	2059		13112				115668	1985
	7.74		0.20				-2.37	VARIATION EN %

1B ABSOLUTE VALUES, 1976 TO 1985 AND PERCENT CHANGE (1985/1984)  
 1B.2 ITEMS OF EXPENSE  
 1B.2.7 OPERATING EXPENSES (IN THOUSANDS OF DOLLARS)

YEAR	ALBERTA GOVT. TEL.	BELL CANADA	BRITISH COLUMBIA TEL.	EDMONTON TEL. CO.	ISLAND TEL.	MANITOBA TEL. SYSTEM	MARITIME TEL. & TEL.	NEW BRUNSWICK TEL. CO.
1976	245002	1372123	313138	41549	7361	87741	74754	63637
1977	288117	1572495	358453	51622	9200	100234	85979	75052
1978	338838	1784497	393435	57793	10533	113240	99563	83668
1979	407616	2054466	479100	68479	12077	124186	111801	95006
1980	498153	2390316	533375	80901	13347	142961	122046	103847
1981	596546	2818100	643100	96658	15581	164616	142019	121125
1982	690577	3254200	741300	116596	16604	196807	154418	131147
1983	695642	3481500	806400	135409	18160	214728	166393	140244
1984	728498	3808200	851300	140095	19976	243496	193260	154477
1985	738951	4142600	876000	162705	21790	265443	217385	170198
PERCENT CHANGE	1.43	8.78	2.90	16.14	9.08	9.01	12.48	10.18

1B  
1B.2  
1B.2.7

VALEURS ABSOLUES, 1976 A 1985 & VARIATIONS EN POURCENTAGE (1985/1984)  
POSTES DE DEPENSE  
FRAIS D'EXPLOITATION (EN MILLIERS DE DOLLARS)

NEWFOUND- LAND TEL. CO.	NORTHERN TEL.	NORTH- WESTEL.	QUEBEC- TEL.	SASK TEL.	TELEBEC LTEE.	TERRA NOVA TEL.	TOTAL	ANNEE
34111	7505		43298	83334	21771		2395324	1976
39349	9105		50801	98792	25128		2764327	1977
44360	9682		56761	117242	28719		3138331	1978
51413	10796		69082	139856	35591		3659469	1979
57604	12186	27787	77378	162942	39295	20893	4283031	1980
63457	13672	31119	91888	199938	49504	22899	5070222	1981
68337	15354	36494	98351	229305	55959	25256	5830705	1982
74405	16989	37639	105752	252318	64005	26648	6236232	1983
76364	18281	40511	120138	280481	71164	27944	6774185	1984
83984	19591	44534	130794	318194	73152	30252	7295573	1985
9.98	7.17	9.93	8.87	13.45	2.79	8.26	7.70	VARIATION EN %

1B ABSOLUTE VALUES, 1976 TO 1985 AND PERCENT CHANGE (1985/1984)  
 1B.2 ITEMS OF EXPENSE  
 1B.2.8 DEBT SERVICE CHARGES (IN THOUSANDS OF DOLLARS)

YEAR	ALBERTA GOVT. TEL.	BELL CANADA	BRITISH COLUMBIA TEL.	EDMONTON TEL. CO.	ISLAND TEL.	MANITOBA TEL. SYSTEM	MARITIME TEL. & TEL.	NEW BRUNSWICK TEL. CO.
1976	69117	172570	55776	12869	1682	22886	14056	8679
1977	82827	202393	64163	14503	1776	27588	14432	9887
1978	101746	231020	69104	18054	1868	34428	14803	11361
1979	114351	252589	72051	20287	2032	53286	15838	13960
1980	137527	282942	81855	21908	2426	51308	17679	14900
1981	176548	335200	100100	28402	2814	51775	22690	15742
1982	241736	385300	124100	36438	3028	53397	25755	17166
1983	279818	390200	117000	41088	3068	58306	26026	18589
1984	289281	423400	131300	42220	3034	64134	27655	18642
1985	290933	460700	134500	45336	3261	60978	30856	19104
PERCENT CHANGE	0.57	8.81	2.44	7.38	7.48	-4.92	11.57	2.48



1B  
1B.2  
1B.2.8

VALEURS ABSOLUES, 1976 A 1985 & VARIATIONS EN POURCENTAGE (1985/1984)  
POSTES DE DEPENSE  
SERVICE DE LA DETTE (EN MILLIERS DE DOLLARS)

NEWFOUND- LAND TEL. CO.	NORTHERN TEL.	NORTH- WESTEL.	QUEBEC- TEL.	SASK TEL.	TELEBEC LTEE.	TERRA NOVA TEL.	TOTAL	ANNEE
7721	2567		9450	16228	3659		397260	1976
7592	2246		10541	23797	4242		465987	1977
8489	2128		10936	31033	4891		539861	1978
8878	1971		12347	32327	6048		605965	1979
11131	1944	3104	12642	38211	6850	2736	687163	1980
13218	2063	4936	13119	49835	7531	3971	827944	1981
14066	2472	5408	13927	59866	9032	4257	995948	1982
13536	2580	6072	13029	66691	8575	4361	1048939	1983
12999	2603	5707	12369	72709	8999	4266	1119318	1984
12965	2945	7436	10286	73132	9799	5891	1168122	1985
-0.26	13.14	30.30	-16.84	0.58	8.89	38.09	4.36	VARIATION EN %

1B ABSOLUTE VALUES, 1976 TO 1985 AND PERCENT CHANGE (1985/1984)  
 1B.2 ITEMS OF EXPENSE  
 1B.2.9 EXPENSES BEFORE INCOME TAXES (IN THOUSANDS OF DOLLARS)

YEAR	ALBERTA GOVT. TEL.	BELL CANADA	BRITISH COLUMBIA TEL.	EDMONTON TEL. CO.	ISLAND TEL.	MANITOBA TEL. SYSTEM	MARITIME TEL. & TEL.	NEW BRUNSWICK TEL. CO.
1976	314118	1544693	368914	54418	9044	110627	88810	72316
1977	370944	1774888	422616	66125	10976	127822	100411	84939
1978	440584	2015517	462539	75847	12401	147668	114366	95029
1979	521967	2307055	551151	88766	14109	177472	127639	108966
1980	635680	2677258	615230	102809	15773	194269	139725	118747
1981	773094	2482900	743200	125061	18394	216391	164709	136867
1982	932313	3639500	865400	153034	19632	250204	180173	148313
1983	975460	3871700	923400	176497	21227	273034	192419	158833
1984	1017779	4231600	982600	182315	23010	307630	220915	173119
1985	1029884	4603300	1010500	208041	25051	326421	248241	189302
PERCENT CHANGE	1.19	8.78	2.84	14.11	8.87	6.11	12.37	9.35

1B  
1B.2  
1B.2.9

VALEURS ABSOLUES, 1976 A 1985 & VARIATIONS EN POURCENTAGE (1985/1984)  
POSTES DE DEPENSE  
FRAIS AVANT L'IMPOT SUR LA REVENU (EN MILLIERS DE DOLLARS)

NEWFOUND- LAND TEL. CO.	NORTHERN TEL.	NORTH- WESTEL.	QUEBEC- TEL.	SASK TEL.	TELEBEC LTEE.	TERRA NOVA TEL.	TOTAL	ANNEE
41832	10072		52748	99562	25430		2792584	1976
46941	11351		61342	122589	29370		3230314	1977
52849	11809		67696	148275	33610		3678190	1978
60290	12768		81430	172183	41639		4265435	1979
68735	14130	30891	90020	201153	46145	23629	4974194	1980
76675	15735	36055	105007	249773	57035	26870	5227766	1981
82403	17825	41902	112278	289171	64991	29513	6826652	1982
87941	19569	43711	118781	319009	72580	31009	7285170	1983
89363	20884	46218	132507	353190	80163	32210	7893503	1984
96949	22536	51970	141080	391326	82951	36143	8463695	1985
8.49	7.91	12.45	6.47	10.80	3.48	12.21	7.22	VARIATION EN %

1B ABSOLUTE VALUES, 1976 TO 1985 AND PERCENT CHANGE (1985/1984)  
 1B.2 ITEMS OF EXPENSE  
 1B.2.10 INCOME TAXES (IN THOUSANDS OF DOLLARS)

YEAR	ALBERTA GOVT. TEL.	BELL CANADA	BRITISH COLUMBIA TEL.	EDMONTON TEL. CO.	ISLAND TEL.	MANITOBA TEL. SYSTEM	MARITIME TEL. & TEL.	NEW BRUNSWICK TEL. CO.
1976		185825	35903		1110		11224	10097
1977		178593	42102		1522		14278	12780
1978		240118	46015		1924		16953	14348
1979		256370	65734		2317		19033	16217
1980		272561	76470		2337		21500	17850
1981		357800	78200		2972		21627	19717
1982		364100	83700		3349		29884	23975
1983		461200	93900		3400		32943	27517
1984		517400	82400		3579		33241	30491
1985		574000	109100		3850		33300	29456
PERCENT CHANGE		10.94	32.40		7.57		0.18	-3.39

1B  
 1B.2  
 1B.2.10

VALEURS ABSOLUES, 1976 A 1985 & VARIATIONS EN POURCENTAGE (1985/1984)  
 POSTES DE DEPENSE  
 IMPOT SUR LA REVENU (EN MILLIERS DE DOLLARS)

NEWFOUND- LAND TEL. CO.	NORTHERN TEL.	NORTH- WESTEL.	QUEBEC- TEL.	SASK TEL.	TELEBEC LTEE.	TERRA NOVA TEL.	TOTAL	ANNEE
3735	368		6418		2177		256857	1976
4940	548		8045		3318		266126	1977
7536	1188		8718		3725		340525	1978
9756	1510		10015		4896		385848	1979
11241	1852	4350	11517		6125	1612	427415	1980
11545	2173	4878	13821		8802	1594	523129	1981
15138	2308	5571	13182		7616	2239	551062	1982
17506	2682	5065	14707		7157	2676	668753	1983
20116	3105	6202	13812		8260	3418	722024	1984
21265	3367	6537	15511		7894	3772	808052	1985
5.71	8.44	5.40	12.30		-4.43	10.36	11.91	VARIATION EN %

1B ABSOLUTE VALUES, 1976 TO 1985 AND PERCENT CHANGE (1985/1984)  
 1B.2 ITEMS OF EXPENSE  
 1B.2.11 TOTAL EXPENSES (IN THOUSANDS OF DOLLARS)

YEAR	ALBERTA GOVT. TEL.	BELL CANADA	BRITISH COLUMBIA TEL.	EDMONTON TEL. CO.	ISLAND TEL.	MANITOBA TEL. SYSTEM	MARITIME TEL. & TEL.	NEW BRUNSWICK TEL. CO.
1976	314118	1730518	404817	54418	10154	110627	100034	82413
1977	370944	1953481	464718	66125	12498	127822	114689	97719
1978	440584	2255635	508554	75847	14324	147668	131319	109377
1979	521967	2563425	616885	88766	16426	177472	146672	125183
1980	635680	2949819	691700	102809	18110	194269	161225	136597
1981	773094	2125100	821400	125061	21366	216391	186336	156584
1982	932313	4003600	949100	153034	22981	250204	210057	172288
1983	975460	4332900	1017300	176497	24627	273034	225362	186350
1984	1017779	4749000	1065000	182315	26589	307630	254156	203610
1985	1029884	5177300	1119600	208041	28901	326421	281541	218758
PERCENT CHANGE	1.19	9.02	5.13	14.11	8.70	6.11	10.77	7.44

1B VALEURS ABSOLUES, 1976 A 1985 & VARIATIONS EN POURCENTAGE (1985/1984)  
 1B.2 POSTES DE DEPENSE  
 1B.2.11 TOTAL DES FRAIS D'EXPLOITATION (EN MILLIERS DE DOLLARS)

NEWFOUND- LAND TEL. CO.	NORTHERN TEL.	NORTH- WESTEL.	QUEBEC- TEL.	SASK TEL.	TELEBEC LTEE.	TERRA NOVA TEL.	TOTAL	ANNEE
45567	10441		59166	99562	27607		3049442	1976
51881	11898		69387	122589	32688		3496439	1977
60385	12997		76415	148275	37335		4018715	1978
70047	14278		91445	172183	46535		4651284	1979
79976	15982	35241	101537	201153	52270	25241	5401609	1980
88220	17908	40933	118828	249773	65837	28464	5035295	1981
97541	20134	47473	125460	289171	72607	31752	7377715	1982
105447	22251	48776	133488	319009	79737	33685	7953923	1983
109479	23989	52420	146319	353190	88423	35628	8615527	1984
118214	25903	58507	156591	391326	90845	39915	9271747	1985
7.98	7.98	11.61	7.02	10.80	2.74	12.03	7.62	VARIATION EN %

1B ABSOLUTE VALUES, 1976 TO 1985 AND PERCENT CHANGE (1985/1984)  
 1B.3 ITEMS OF ASSETS  
 1B.3.1 PLANT AT COST (IN THOUSANDS OF DOLLARS)

YEAR	ALBERTA GOVT. TEL.	BELL CANADA	BRITISH COLUMBIA TEL.	EDMONTON TEL. CO.	ISLAND TEL.	MANITOBA TEL. SYSTEM	MARITIME TEL. & TEL.	NEW BRUNSWICK TEL. CO.
1976	1289070	7108046	1727567	245940	44400	485737	419637	341560
1977	1476011	7946661	1945637	283043	51497	542710	455010	379540
1978	1678979	8685264	2115788	321126	57232	618977	494227	411470
1979	1932576	9594638	2341190	359519	64501	670951	536476	456175
1980	2244861	10627938	2595988	398873	72309	724329	587044	489106
1981	2657077	11757000	2887300	457519	79437	786701	657470	529632
1982	3033847	12872000	3255500	519161	84555	879863	715540	571280
1983	3121119	13555800	3529000	583524	89849	977610	762489	606099
1984	3207992	14277200	3716600	617837	96161	1037519	837101	649591
1985	3100961	15251000	3856700	605573	107530	1132271	924090	691047
PERCENT CHANGE	-3.34	6.82	3.77	-1.98	11.82	9.13	10.39	6.38



1B  
1B.3  
1B.3.1

VALEURS ABSOLUES, 1976 A 1985 & VARIATIONS EN POURCENTAGE (1985/1984)  
ACTIF  
IMMOBILISATIONS AU PRIX COUTANT (EN MILLIERS DE DOLLARS)

NEWFOUND- LAND TEL. CO.	NORTHERN TEL.	NORTH- WESTEL.	QUEBEC- TEL.	SASK TEL.	TELEBEC LTEE.	TERRA NOVA TEL.	TOTAL	ANNEE
192159	35149		262041	461198	118014		12730518	1976
212817	39488		295069	557093	131420		14315996	1977
234345	43117		335539	640456	146225		15782745	1978
264462	48167		353101	711964	167864		17501584	1979
289329	52015	128135	386107	840999	188807	112007	19737847	1980
317883	57702	138206	419887	942888	220070	117462	22026234	1981
348616	64557	152823	445771	1046497	245310	126064	24361384	1982
362980	68630	159846	463385	1132965	267897	134367	25815560	1983
390650	73280	168686	477267	1192832	283458	143740	27169914	1984
427248	77502	178351	506072	1260355	320743	153281	28592724	1985
9.37	5.76	5.73	6.04	5.66	13.15	6.64	5.24	VARIATION EN %

1B ABSOLUTE VALUES, 1976 TO 1985 AND PERCENT CHANGE (1985/1984)  
 1B.3 ITEMS OF ASSETS  
 1B.3.2 ACCUMULATED DEPRECIATION (IN THOUSANDS OF DOLLARS)

YEAR	ALBERTA GOVT. TEL.	BELL CANADA	BRITISH COLUMBIA TEL.	EDMONTON TEL. CO.	ISLAND TEL.	MANITOBA TEL. SYSTEM	MARITIME TEL. & TEL.	NEW BRUNSWICK TEL. CO.
1976	290279	1999212	350700	66428	8438	152997	95453	93229
1977	344302	2266382	414595	76637	9682	169902	105948	103028
1978	420808	2496256	473982	85282	11199	186064	126793	118358
1979	516193	2815650	566871	97617	13318	205576	148231	134972
1980	638309	3114017	673242	111374	16029	230709	170964	155557
1981	786917	3478600	795300	128613	19176	263376	195235	172371
1982	884195	3828000	907900	149160	22410	313908	220083	186316
1983	1004047	4187900	1041200	180723	25215	375362	247472	204309
1984	1126483	4592200	1131400	198637	29396	429271	276989	230052
1985	1107597	5132800	1168900	198445	34093	501892	307890	256480
PERCENT CHANGE	-1.68	11.77	3.31	-0.10	15.98	16.92	11.16	11.49

1B  
1B.3  
1B.3.2

VALEURS ABSOLUES, 1976 A 1985 & VARIATIONS EN POURCENTAGE (1985/1984)  
ACTIF  
AMORTISSEMENT ACCUMULE (EN MILLIERS DE DOLLARS)

NEWFOUND- LAND TEL. CO.	NORTHERN TEL.	NORTH- WESTEL.	QUEBEC- TEL.	SASK TEL.	TELEBEC LTEE.	TERRA NOVA TEL.	TOTAL	ANNEE
49742	11041		57716	123150	32054		3330439	1976
53142	12219		69811	144862	36909		3807419	1977
63348	13807		83826	168315	40932		4288970	1978
72611	15569		93083	194636	46645		4920972	1979
80343	17026	41178	107888	228626	51435	34565	5671262	1980
92322	18852	43457	126325	258454	59026	38066	6476090	1981
105107	20861	47494	136819	302260	70512	43480	7238505	1982
105900	22570	49552	155232	352363	83713	49705	8085263	1983
123273	24420	52127	173228	411109	89952	55437	8943974	1984
140177	25808	54838	199023	463857	112690	61916	9766406	1985
13.71	5.68	5.20	14.89	12.83	25.28	11.69	9.20	VARIATION EN %

1B ABSOLUTE VALUES, 1976 TO 1985 AND PERCENT CHANGE (1985/1984)  
 1B.3 ITEMS OF ASSETS  
 1B.3.3 PLANT LESS DEPRECIATION (IN THOUSANDS OF DOLLARS)

YEAR	ALBERTA GOVT. TEL.	BELL CANADA	BRITISH COLUMBIA TEL.	EDMONTON TEL. CO.	ISLAND TEL.	MANITOBA TEL. SYSTEM	MARITIME TEL. & TEL.	NEW BRUNSWICK TEL. CO.
1976	998791	5108834	1376867	179512	35961	332740	324184	248331
1977	1131809	5680279	1531042	206406	41815	372808	349062	276512
1978	1258171	6189008	1641806	235844	46033	432913	367434	293112
1979	1416383	6778988	1774319	261903	51183	465375	388245	321203
1980	1606552	7513921	1922746	287499	56280	493620	416080	333549
1981	1870160	8278400	2092000	328907	60261	523325	462235	357261
1982	2149652	9044000	2347600	370000	62145	565955	495457	384964
1983	2117072	9367900	2487800	402801	64634	602248	515017	401790
1984	2081509	9685000	2585200	419200	66765	608248	560112	419539
1985	1993364	10118200	2687800	407128	73437	630379	616200	434567
PERCENT CHANGE	-4.23	4.47	3.97	-2.88	9.99	3.64	10.01	3.58

1B  
1B.3  
1B.3.3

VALEURS ABSOLUES, 1976 A 1985 & VARIATIONS EN POURCENTAGE (1985/1984)  
ACTIF  
IMMOBILISATIONS MOINS AMORTISSEMENT (EN MILLIERS DE DOLLARS)

NEWFOUND- LAND TEL. CO.	NORTHERN TEL.	NORTH- WESTEL.	QUEBEC- TEL.	SASK TEL.	TELEBEC LTEE.	TERRA NOVA TEL.	TOTAL	ANNEE
142418	24108		204324	338048	85960		9400078	1976
159676	27268		225259	412231	94511		10508678	1977
170997	29309		251713	472141	105293		11493774	1978
191851	32598		260017	517328	121219		12580612	1979
208986	34989	86957	278219	612373	137372	77442	14066585	1980
225561	38850	94749	293562	684434	161044	79396	15550145	1981
243509	43696	105329	308952	744237	174798	82584	17122878	1982
257080	46060	110294	308153	780602	184184	84662	17730297	1983
267377	48860	116559	304039	781723	193506	88303	18225940	1984
287071	51694	123513	307049	796498	208053	91365	18826318	1985
7.37	5.80	5.97	0.99	1.89	7.52	3.47	3.29	VARIATION EN %

1B ABSOLUTE VALUES, 1976 TO 1985 AND PERCENT CHANGE (1985/1984)  
 1B.3 ITEMS OF ASSETS  
 1B.3.4 INVESTMENTS (IN THOUSANDS OF DOLLARS)

YEAR	ALBERTA GOVT. TEL.	BELL CANADA	BRITISH COLUMBIA TEL.	EDMONTON TEL. CO.	ISLAND TEL.	MANITOBA TEL. SYSTEM	MARITIME TEL. & TEL.	NEW BRUNSWICK TEL. CO.
1976	21550	323534	3924	1485	111	4143	5149	2829
1977	28022	320402	3524	1857	111	8308	6377	2805
1978	34536	320680	3518	2248	111	14406	6921	2817
1979	51580	417585	4629	2659	111	13298	8453	2716
1980	3368	439285	4531	3090	150	19148	8996	2897
1981	3117	460900	4500	3662	111	23668	8723	5570
1982	3069	497200	4300	4263	111	29283	9117	6317
1983	4924	423700	11100	4894	111	32708	9595	6781
1984	7575	357400	24500	5557	111	36270	10218	7223
1985	31426	249200	28100	6252	111	54485	11404	30802
PERCENT CHANGE	314.86	-30.27	14.69	12.51	0.00	50.22	11.61	326.44

1B  
1B.3  
1B.3.4

VALEURS ABSOLUES, 1976 A 1985 & VARIATIONS EN POURCENTAGE (1985/1984)  
ACTIF  
PLACEMENTS (EN MILLIERS DE DOLLARS)

NEWFOUND- LAND TEL. CO.	NORTHERN TEL.	NORTH- WESTEL.	QUEBEC- TEL.	SASK TEL.	TELEBEC LTEE.	TERRA NOVA TEL.	TOTAL	ANNEE
300	36038		600	999	564		401226	1976
300	33044		600	999	585		406934	1977
300	31072		600	999	668		418876	1978
300	29101		600	999	762		532793	1979
495	25981		600	999	797		510337	1980
300	25903		600	999	254		538307	1981
300	24405		600	999	816		580780	1982
300	22905		600	999	940		519557	1983
300	21599		600	999			472352	1984
300	15467		600	999			429146	1985
0.00	-28.39		0.00	0.00			-9.15	VARIATION EN %

1B ABSOLUTE VALUES, 1976 TO 1985 AND PERCENT CHANGE (1985/1984)  
 1B.3 ITEMS OF ASSETS  
 1B.3.5 CURRENT ASSETS - CASH (IN THOUSANDS OF DOLLARS)

YEAR	ALBERTA GOVT. TEL.	BELL CANADA	BRITISH COLUMBIA TEL.	EDMONTON TEL. CO.	ISLAND TEL.	MANITOBA TEL. SYSTEM	MARITIME TEL. & TEL.	NEW BRUNSWICK TEL. CO.
1976	4172	97971	1173	5122	26	7772	78	20240
1977	169	13762		712	33	32500	362	
1978	164	298154		9518	261	10500	207	23036
1979	165	137055		2885	35	27500	854	22960
1980	4786	66450			9	9851	460	26305
1981	1230	19300			189	2750	542	22388
1982	2731	116900			621	10430	11279	14407
1983	14539	89900			440	22234	1022	19419
1984	2903	78900			872	21051	617	4776
1985	6001	34200			266	10038	7057	184
PERCENT CHANGE	106.72	-56.65			-69.50	-52.32	1043.76	-96.15



1B  
1B.3  
1B.3.5

VALEURS ABSOLUES, 1976 A 1985 & VARIATIONS EN POURCENTAGE (1985/1984)  
ACTIF  
DISPONIBILITES - ENCAISSE (EN MILLIERS DE DOLLARS)

NEWFOUND-  
LAND  
TEL. CO.

	NORTHERN TEL.	NORTH- WESTEL.	QUEBEC- TEL.	SASK TEL.	TELEBEC LTEE.	TERRA NOVA TEL.	TOTAL	ANNEE
			610	411	179		137754	1976
			842	526	1091		49997	1977
			653	11677	1472		355642	1978
			949	2637	321		195361	1979
			273	970	469	326	109899	1980
			75	2997	2120	15	51606	1981
993		245	367	2729	207	88	160997	1982
5985			465	15	158	118	154295	1983
4000		88	597	6962	391		121157	1984
		113	696	2447	106		61108	1985
		28.41	16.58	-64.85	-72.89		-49.56	VARIATION EN %

1B ABSOLUTE VALUES, 1976 TO 1985 AND PERCENT CHANGE (1985/1984)  
 1B.3 ITEMS OF ASSETS  
 1B.3.6 CURRENT ASSETS - ACCOUNTS RECEIVABLE (IN THOUSANDS OF DOLLARS)

YEAR	ALBERTA GOVT. TEL.	BELL CANADA	BRITISH COLUMBIA TEL.	EDMONTON TEL. CO.	ISLAND TEL.	MANITOBA TEL. SYSTEM	MARITIME TEL. & TEL.	NEW BRUNSWICK TEL. CO.
1976	43646	239544	57268	2738	1479	14950	16996	13143
1977	54809	264610	72816	5170	1847	15677	19258	16842
1978	65844	466584	80244	6821	2133	18613	22447	17991
1979	73612	639982	110977	7677	2735	21045	24234	19968
1980	94957		130518	8107	2746	22666	27372	22572
1981	106718		166800	9242	3369	26911	33342	24155
1982	111616		161300	10636	4101	29382	36599	26997
1983	115974	638200	197400	7984	3703	32289	41778	30144
1984	132986	724400	205600	9286	4234	33333	47150	33554
1985	156161	780500	225400	18270	4458	38303	50722	34423
PERCENT CHANGE	17.43	7.74	9.63	96.75	5.29	14.91	7.58	2.59

1B  
1B.3  
1B.3.6

VALEURS ABSOLUES, 1976 A 1985 & VARIATIONS EN POURCENTAGE (1985/1984)  
ACTIF  
DISPONIBILITES - COMPTES A RECEVOIR (EN MILLIERS DE DOLLARS)

NEWFOUND- LAND TEL. CO.	NORTHERN TEL.	NORTH- WESTEL.	QUEBEC- TEL.	SASK TEL.	TELEBEC LTEE.	TERRA NOVA TEL.	TOTAL	ANNEE
7166	2499		8677	18666	4513		431285	1976
8943	2762		9397	20457	5708		498296	1977
11063	3227		10461	26162	6892		738482	1978
11720	3261		12185	34037	8111		969544	1979
12774	3423	5755	12947	33851	9640	3415	390743	1980
13557	3748	6231	14999	40614	9774	4817	464277	1981
13968	3910	7629	15926	41644	12120	4381	480209	1982
15409	4336	7837	17580	44625	10179	4603	1172041	1983
18781	4885	7209	20369	53764	11316	4551	1311418	1984
17733	5796	6292	19152	58499	13148	4671	1433528	1985
-5.58	18.65	-12.72	-5.97	8.81	16.19	2.64	9.31	VARIATION EN %

1B ABSOLUTE VALUES, 1976 TO 1985 AND PERCENT CHANGE (1985/1984)  
 1B.3 ITEMS OF ASSETS  
 1B.3.7 OTHER CURRENT ASSETS (IN THOUSANDS OF DOLLARS)

YEAR	ALBERTA GOVT. TEL.	BELL CANADA	BRITISH COLUMBIA TEL.	EDMONTON TEL. CO.	ISLAND TEL.	MANITOBA TEL. SYSTEM	MARITIME TEL. & TEL.	NEW BRUNSWICK TEL. CO.
1976	38069	109399	21276	2391	522	5397	9023	5250
1977	35172	106728	22039	2771	554	5573	8185	5819
1978	36788	122801	32217	3105	505	7054	7628	5727
1979	43164	144322	81228	4846	584	8158	8166	5066
1980	51531	957718	99096	7195	747	8755	8186	6015
1981	62815	1031000	120700	9004	681	9298	10875	5713
1982	11655	733300	67100	8017	278	4086	6225	1664
1983	12090	93900	57700	14576	345	5859	5171	464
1984	12882	92400	86000	3295	457	4263	10433	1488
1985	13882	150200	55700	4466	433	4354	6072	2604
PERCENT CHANGE	7.76	62.55	-35.23	35.54	-5.25	2.13	-41.80	75.00

1B  
1B.3  
1B.3.7

VALEURS ABSOLUES, 1976 A 1985 & VARIATIONS EN POURCENTAGE (1985/1984)  
ACTIF  
AUTRE DISPONIBILITES (EN MILLIERS DE DOLLARS)

NEWFOUND- LAND TEL. CO.	NORTHERN TEL.	NORTH- WESTEL.	QUEBEC- TEL.	SASK TEL.	TELEBEC LTEE.	TERRA NOVA TEL.	TOTAL	ANNEE
4098	557		7043	10660	1819		215504	1976
10914	493		6452	10446	1531		216677	1977
10151	591		6862	10358	1912		245699	1978
4742	588		9016	12308	2851		325039	1979
4716	1843	1784	9230	13366	2658	2582	1175422	1980
6303	797	3644	9332	16614	1518	2503	1290797	1981
1509	1867	3920	613	1306	445	2615	844600	1982
1487	1842	3693	1254	2156	304	3494	204335	1983
1662	2514	7484	1196	1872	592	3555	230093	1984
2576	1157	13262	2541	3011	189	3505	263952	1985
54.99	-53.98	77.20	112.46	60.84	-68.07	-1.41	14.72	VARIATION EN %

1B ABSOLUTE VALUES, 1976 TO 1985 AND PERCENT CHANGE (1985/1984)  
 1B.3 ITEMS OF ASSETS  
 1B.3.8 TOTAL CURRENT ASSETS (IN THOUSANDS OF DOLLARS)

YEAR	ALBERTA GOVT. TEL.	BELL CANADA	BRITISH COLUMBIA TEL.	EDMONTON TEL. CO.	ISLAND TEL.	MANITOBA TEL. SYSTEM	MARITIME TEL. & TEL.	NEW BRUNSWICK TEL. CO.
1976	85887	446914	79717	10251	2027	28119	26097	38633
1977	90149	385100	94855	8653	2434	53750	27805	22661
1978	102796	887539	112461	19444	2899	36167	30282	46754
1979	116941	921359	192205	15407	3354	56703	33254	47994
1980	151274	1024168	229614	15302	3502	41272	36018	54892
1981	170763	1050300	287500	18245	4239	38959	44759	52256
1982	126002	850200	228400	18653	5000	43898	54103	43068
1983	142603	822000	255100	22560	4488	60382	47971	50027
1984	148771	895700	291600	12581	5563	58647	628530	39818
1985	176044	964900	281100	22736	5157	52695	691455	37211
PERCENT CHANGE	18.33	7.73	-3.60	80.72	-7.30	-10.15	10.01	-6.55

1B  
1B.3  
1B.3.8

VALEURS ABSOLUES, 1976 A 1985 & VARIATIONS EN POURCENTAGE (1985/1984)  
ACTIF  
TOTAL DES DISPONIBILITES (EN MILLIERS DE DOLLARS)

NEWFOUND- LAND TEL. CO.	NORTHERN TEL.	NORTH- WESTEL.	QUEBEC- TEL.	SASK TEL.	TELEBEC LTEE.	TERRA NOVA TEL.	TOTAL	ANNEE
11264	3056		16330	29737	6511		784543	1976
19857	3254		16691	31429	8330		764968	1977
21215	3818		17977	48197	10276		1339825	1978
16463	3849		22151	48982	11283		1489945	1979
17490	5266	7539	22450	48187	12767	6323	1676064	1980
19860	4545	9875	24406	60225	13412	7335	1806679	1981
16470	5777	11794	16906	45679	12772	7084	1485806	1982
22881	6178	11530	19299	46796	10641	8215	1530671	1983
24443	7399	14781	22162	62598	12299	8106	2232998	1984
20309	6953	19667	21693	63957	13443	8176	2385496	1985
-16.91	-6.03	33.06	-2.12	2.17	9.30	0.86	6.83	VARIATION EN %

1B ABSOLUTE VALUES, 1976 TO 1985 AND PERCENT CHANGE (1985/1984)  
 1B.3 ITEMS OF ASSETS  
 1B.3.9 DEFERRED CHARGES (IN THOUSANDS OF DOLLARS)

YEAR	ALBERTA GOVT. TEL.	BELL CANADA	BRITISH COLUMBIA TEL.	EDMONTON TEL. CO.	ISLAND TEL.	MANITOBA TEL. SYSTEM	MARITIME TEL. & TEL.	NEW BRUNSWICK TEL. CO.
1976	4979	28295	10580	2017	272	6261	3725	2247
1977	4511	37623	10481	8159	323	6884	4398	1238
1978	25405	316011	22361	9643	419	7566	4255	4868
1979	20611	262147	20986	8136	434	93402	4534	4987
1980	23501	251400	19854	6893	534	63402	4207	7614
1981	25896	215100	18100	5701	590	55203	6372	7139
1982	33154	228600	20800	5153	835	39884	6680	7466
1983	46444	267000	19400	4151	713	29136	6042	5690
1984	85668	437300	21600	3295	712	28708	6772	5890
1985	108281	608600	23200	2427	631	19649	6341	6111
PERCENT CHANGE	26.40	39.17	7.41	-26.34	-11.38	-31.56	-6.36	3.75



1B  
1B.3  
1B.3.9

VALEURS ABSOLUES, 1976 A 1985 & VARIATIONS EN POURCENTAGE (1985/1984)  
ACTIF  
FRAIS REPORTEES (EN MILLIERS DE DOLLARS)

NEWFOUND- LAND TEL. CO.	NORTHERN TEL.	NORTH- WESTEL.	QUEBEC- TEL.	SASK TEL.	TELEBEC LTEE.	TERRA NOVA TEL.	TOTAL	ANNEE
2711	316		1447	2445	748		66043	1976
2823	286		1890	3446	973		83035	1977
3898	258		2162	23207	971		421024	1978
4466	231		2000	20161	1446		443541	1979
5591	204		2516	23962	1615	480	411773	1980
6236	180	1500	4143	21560	1779	441	369940	1981
4244	212	1990	7600	34397	3252	422	394689	1982
4628	201	2087	6629	45056	2854	418	440449	1983
4240	288	2070	6635	56881	4869	367	665295	1984
5166	244	1975	6595	68633	5305	334	863492	1985
21.84	-15.28	-4.59	-0.60	20.66	8.95	-8.99	29.79	VARIATION EN %

1B  
1B.3  
1B.3.10

ABSOLUTE VALUES, 1976 TO 1985 AND PERCENT CHANGE (1985/1984)  
ITEMS OF ASSETS  
TOTAL ASSETS (IN THOUSANDS OF DOLLARS)

YEAR	ALBERTA GOVT. TEL.	BELL CANADA	BRITISH COLUMBIA TEL.	EDMONTON TEL. CO.	ISLAND TEL.	MANITOBA TEL. SYSTEM	MARITIME TEL. & TEL.	NEW BRUNSWICK TEL. CO.
1976	1111207	5907577	1471088	193264	38371	371263	359155	292040
1977	1254492	6423404	1639902	225075	44683	441750	387642	303216
1978	1420908	7713238	1780146	267179	49462	491052	408892	347551
1979	1605515	8380079	1992139	288105	55082	628778	434486	376900
1980	1784695	9228774	2176745	312784	60466	617442	465301	398952
1981	2069936	10004700	2402100	356515	65201	641155	522089	422226
1982	2311877	10620000	2601100	398069	68090	679020	565357	441815
1983	2311043	10880600	2773400	434406	69945	724474	578625	464288
1984	2323523	11375400	2922900	440633	73151	731873	635302	472470
1985	2309115	11940900	3020200	438544	79336	757208	697796	508691
PERCENT CHANGE	-0.62	4.97	3.33	-0.47	8.46	3.46	9.84	7.67

1B VALEURS ABSOLUES, 1976 A 1985 & VARIATIONS EN POURCENTAGE (1985/1984)  
 1B.3 ACTIF  
 1B.3.10 ACTIF TOTAL (EN MILLIERS DE DOLLARS)

NEWFOUND- LAND TEL. CO.	NORTHERN TEL.	NORTH- WESTEL.	QUEBEC- TEL.	SASK TEL.	TELEBEC LTEE.	TERRA NOVA TEL.	TOTAL	ANNEE
156693	63518		222702	371229	93783		10651890	1976
182656	64817		244440	448105	104399		11764581	1977
196410	64458		272452	544544	117208		13673500	1978
213080	65779		284768	587470	134710		15046891	1979
232562	66440	94496	303785	685521	152551	84245	16664759	1980
251957	69478	106124	322711	767218	176489	87172	18265071	1981
264523	74091	119113	334058	825312	191638	90090	19584153	1982
284889	75344	123911	334681	873453	198619	93295	20220973	1983
296360	78146	133410	333436	902201	210674	96776	21026255	1984
312846	74358	145155	336633	930087	226801	104576	21882246	1985
5.56	-4.85	8.80	0.96	3.09	7.65	8.06	4.07	VARIATION EN %

1B ABSOLUTE VALUES, 1976 TO 1985 AND PERCENT CHANGE (1985/1984)  
 1B.4 ITEMS OF LIABILITIES  
 1B.4.1 CAPITAL STOCK - PREFERRED (IN THOUSANDS OF DOLLARS)

YEAR	ALBERTA GOVT. TEL.	BELL CANADA	BRITISH COLUMBIA TEL.	EDMONTON TEL. CO.	ISLAND TEL.	MANITOBA TEL. SYSTEM	MARITIME TEL. & TEL.	NEW BRUNSWICK TEL. CO.
1976		376997	201689		5050		35079	21053
1977		356492	241687		6250		49734	20832
1978		404730	253517		6250		48043	19647
1979		328973	262469		6250		45925	18405
1980		454043	249567		6250		42745	16828
1981		361600	239600		6250		41161	16028
1982		522400	280700		6250		39414	15228
1983		424100	272700		6250		3772	14428
1984		376000	262900		6250		36047	13628
1985		478000	242100		6250		34776	13366
PERCENT CHANGE		27.13	-7.91		0.00		-3.53	-1.92

1B VALEURS ABSOLUES, 1976 A 1985 & VARIATIONS EN POURCENTAGE (1985/1984)  
 1B.4 PASSIF  
 1B.4.1 CAPITAL - ACTIONS : ACTIONS PRIVILEGIEES (EN MILLIERS DE DOLLARS)

NEWFOUND- LAND TEL. CO.	NORTHERN TEL.	NORTH- WESTEL.	QUEBEC- TEL.	SASK TEL.	TELEBEC LTEE.	TERRA NOVA TEL.	TOTAL	ANNEE
12981	9564		27381		19366		709160	1976
22697	9484		31682		17471		756329	1977
22223	9404		27225		15577		806616	1978
21756	9324		25790		13683		732575	1979
20535	9244		24368		11789		835369	1980
19694	9164		22549		11789		727835	1981
28737	9084		21233		11789		934835	1982
28018	9004		19745		11789		789806	1983
27549	8924		18327		11789		761414	1984
27032	8844		18032		18107		846507	1985
-1.88	-0.90		-1.61		53.59		11.18	VARIATION EN %

1B ABSOLUTE VALUES, 1976 TO 1985 AND PERCENT CHANGE (1985/1984)  
 1B.4 ITEMS OF LIABILITIES  
 1B.4.2 CAPITAL STOCK - COMMON INCLUDING PREMIUM (IN THOUSANDS OF DOLLARS)

YEAR	ALBERTA GOVT. TEL.	BELL CANADA	BRITISH COLUMBIA TEL.	EDMONTON TEL. CO.	ISLAND TEL.	MANITOBA TEL. SYSTEM	MARITIME TEL. & TEL.	NEW BRUNSWICK TEL. CO.
1976		1476387	157421		5746		76494	70071
1977		1621151	157422		8640		78270	71605
1978		1784010	230337		8768		80380	73357
1979		2128425	313489		12396		82929	76051
1980		2292287	323673		12611		86100	79461
1981		2484200	379200		12875		90384	83568
1982		2677600	383800		13163		95232	88563
1983		2831100	459100		13592		100754	94881
1984		2875500	570400		14133		107393	101521
1985		2894900	589200		14911		117839	107949
PERCENT CHANGE		0.67	3.30		5.50		9.73	6.33

1B VALEURS ABSOLUES, 1976 A 1985 & VARIATIONS EN POURCENTAGE (1985/1984)  
 1B.4 PASSIF  
 1B.4.2 CAPITAL - ACTIONS : ACTIONS ORDINARES (ACTIONS A PRIME Y COMPRIS ) (EN MILLIERS DE DOLLARS)

NEWFOUND- LAND TEL. CO.	NORTHERN TEL.	NORTH- WESTEL.	QUEBEC- TEL.	SASK TEL.	TELEBEC LTEE.	TERRA NOVA TEL.	TOTAL	ANNEE
35287	14935		19135		14230		1869706	1976
35287	14935		23551		15731		2026592	1977
47437	14935		35884		18733		2293841	1978
47437	14935		36378		22732		2734772	1979
48217	14935	37000	50604		27733	36000	3008621	1980
49924	14935	37000	52648		31733	36000	3272467	1981
51786	14935	37000	57067		35733	36000	3490879	1982
66343	14935	37000	64661		53499	36000	3771865	1983
68956	14935	37000	75465		53499	36000	3954802	1984
73516	14935	37000	80610		53499	36000	4020359	1985
6.61	0.00	0.00	6.82		0.00	0.00	1.66	VARIATION EN %

1B ABSOLUTE VALUES, 1976 TO 1985 AND PERCENT CHANGE (1985/1984)  
 1B.4 ITEMS OF LIABILITIES  
 1B.4.3 RETAINED EARNINGS (IN THOUSANDS OF DOLLARS)

YEAR	ALBERTA GOVT. TEL.	BELL CANADA	BRITISH COLUMBIA TEL.	EDMONTON TEL. CO.	ISLAND TEL.	MANITOBA TEL. SYSTEM	MARITIME TEL. & TEL.	NEW BRUNSWICK TEL. CO.
1976	59420	659912	90930	25736	3129	49559	28453	28976
1977	63281	682748	100588	29833	3525	58806	32336	32971
1978	79152	751554	110380	36617	4272	65684	38470	37639
1979	103534	861322	129463	43034	5070	62432	46023	43512
1980	128282	910875	155329	47390	5891	75245	53997	49535
1981	129338	1031600	180100	43497	6899	88694	62736	55602
1982	72862	1129900	195400	43233	8193	94876	75525	63494
1983	49948	1280800	221100	46151	9562	98383	88475	73300
1984	61063	1429300	234700	45110	11083	100510	102836	83311
1985	109279	1587000	256100	42234	12646	115702	114882	79446
PERCENT CHANGE	78.96	11.03	9.12	-6.38	14.10	15.11	11.71	-4.64



1B VALEURS ABSOLUES, 1976 A 1985 & VARIATIONS EN POURCENTAGE (1985/1984)  
 1B.4 PASSIF  
 1B.4.3 SURPLUS INDIVIS (EN MILLIERS DE DOLLARS)

NEWFOUND- LAND TEL. CO.	NORTHERN TEL.	NORTH- WESTEL.	QUEBEC- TEL.	SASK TEL.	TELEBEC LTEE.	TERRA NOVA TEL.	TOTAL	ANNEE
10293	3999		19811	91230	3645		1075093	1976
12660	5059		22117	100197	5478		1149599	1977
16825	6461		24341	109940	8184		1289519	1978
20344	7785		27486	122564	12314		1484883	1979
24117	8710	2983	30712	134978	16061	1281	1645386	1980
27214	9734	6253	34813	145287	20802	1864	1844433	1981
31195	10687	9882	40364	149206	24452	3402	1952671	1982
35232	11865	12596	48305	155193	12164	4885	2147959	1983
41237	10325	15153	54046	172993	16077	6776	2384520	1984
48553	9039	17134	60654	191485	19662	7622	2671438	1985
17.74	-12.46	13.07	12.23	10.69	22.30	12.49	12.03	VARIATION EN %

1B ABSOLUTE VALUES, 1976 TO 1985 AND PERCENT CHANGE (1985/1984)  
 1B.4 ITEMS OF LIABILITIES  
 1B.4.4 TOTAL SHAREHOLDERS CAPITAL (IN THOUSANDS OF DOLLARS)

YEAR	ALBERTA GOVT. TEL.	BELL CANADA	BRITISH COLUMBIA TEL.	EDMONTON TEL. CO.	ISLAND TEL.	MANITOBA TEL. SYSTEM	MARITIME TEL. & TEL.	NEW BRUNSWICK TEL. CO.
1976	59420	2513296	450040	25736	13924	49559	140026	120100
1977	63281	2660391	499697	29833	18415	58806	160340	125408
1978	79152	2940294	594234	36617	19290	65684	166893	130643
1979	103534	3318720	705421	43034	23716	62432	174877	137968
1980	128282	3657205	728569	47390	24752	75245	182842	145824
1981	129338	3877400	798900	43497	26024	88694	194281	155198
1982	72862	4329900	859900	43233	27606	94876	210171	167285
1983	49948	4536000	952900	46151	29405	98383	226951	182609
1984	61063	4680800	1068000	45110	31466	100510	246276	198460
1985	109279	4959900	1087400	42234	33807	115702	267497	200761
PERCENT CHANGE	78.96	5.96	1.82	-6.38	7.44	15.11	8.62	1.16

1B VALEURS ABSOLUES, 1976 A 1985 & VARIATIONS EN POURCENTAGE (1985/1984)  
 1B.4 PASSIF  
 1B.4.4 AVOIR TOTAL DES ACTIONNAIRES (EN MILLIERS DE DOLLARS)

NEWFOUND- LAND TEL. CO.	NORTHERN TEL.	NORTH- WESTEL.	QUEBEC- TEL.	SASK TEL.	TELEBEC LTEE.	TERRA NOVA TEL.	TOTAL	ANNEE
58561	28498		66326	91230	37241		3653957	1976
70644	29478		77350	100197	38680		3932520	1977
86485	30800		87450	109940	42494		4389976	1978
89537	32044		89654	122564	48729		4952230	1979
92869	32889	39983	105684	134978	55583	37281	5489376	1980
96831	33832	43253	110010	145287	64324	37864	5844733	1981
111718	34706	46882	118664	149206	71974	39402	6378385	1982
129593	35804	49596	132711	155193	77452	40885	6743581	1983
137742	34184	52153	147838	172993	81365	42776	7100736	1984
149101	32818	54134	159296	191485	91268	43622	7538304	1985
8.25	-4.00	3.80	7.75	10.69	12.17	1.98	6.16	VARIATION EN %

1B ABSOLUTE VALUES, 1976 TO 1985 AND PERCENT CHANGE (1985/1984)  
 1B.4 ITEMS OF LIABILITIES  
 1B.4.5 ADVANCES FROM GOVERNMENT (IN THOUSANDS OF DOLLARS)

YEAR	ALBERTA GOVT. TEL.	BELL CANADA	BRITISH COLUMBIA TEL.	EDMONTON TEL. CO.	ISLAND TEL.	MANITOBA TEL. SYSTEM	MARITIME TEL. & TEL.	NEW BRUNSWICK TEL. CO.
1976	13255					105654		
1977	9806					145554		
1978	6638					188251		
1979	3844					290541		
1980	1856					275117		
1981	648					271830		
1982						310833		
1983						365121		
1984						370403		
1985						346410		
PERCENT CHANGE						-6.48		

1B VALEURS ABSOLUES, 1976 A 1985 & VARIATIONS EN POURCENTAGE (1985/1984)  
 1B.4 PASSIF  
 1B.4.5 PRET DU GOUVERNEMENT (EN MILLIERS DE DOLLARS)

NEWFOUND- LAND TEL. CO.	NORTHERN TEL.	NORTH- WESTEL.	QUEBEC- TEL.	SASK TEL.	TELEBEC LTEE.	TERRA NOVA TEL.	TOTAL	ANNEE
				236199			355108	1976
				303968			459328	1977
				399057			593946	1978
				424256			718641	1979
				442072			719045	1980
				561025			833503	1981
				629325			940158	1982
				632768			997889	1983
				663463			1033866	1984
				661901			1008311	1985
				-0.24			-2.47	VARIATION EN %

1B ABSOLUTE VALUES, 1976 TO 1985 AND PERCENT CHANGE (1985/1984)  
 1B.4 ITEMS OF LIABILITIES  
 1B.4.6 LONG TERM DEBT (IN THOUSANDS OF DOLLARS)

YEAR	ALBERTA GOVT. TEL.	BELL CANADA	BRITISH COLUMBIA TEL.	EDMONTON TEL. CO.	ISLAND TEL.	MANITOBA TEL. SYSTEM	MARITIME TEL. & TEL.	NEW BRUNSWICK TEL. CO.
1976	968661	2266172	626835	159340	15750	193874	150864	110982
1977	1096264	2497159	691171	186860	18250	210810	144864	108982
1978	1240921	2968425	774926	220543	20250	208695	141364	134472
1979	1376920	3082908	733742	232725	20250	234041	166364	147853
1980	1511728	3540424	745868	237802	23750	226679	162364	147998
1981	1762314	3783200	792000	293531	23750	220943	192364	141475
1982	2052170	3870800	924000	332775	26500	204003	217364	169785
1983	2040910	3817900	1060500	358563	26500	194145	217364	162983
1984	1886479	3823900	1096500	362163	23100	180714	241120	162127
1985	1837181	4020200	1101300	335479	28100	162173	250364	183553
PERCENT CHANGE	-2.61	5.13	0.44	-7.37	21.65	-10.26	3.83	13.22

1B VALEURS ABSOLUES, 1976 A 1985 & VARIATIONS EN POURCENTAGE (1985/1984)  
 1B.4 PASSIF  
 1B.4.6 DETTE A LONGUE ECHEANCE (EN MILLIERS DE DOLLARS)

NEWFOUND- LAND TEL. CO.	NORTHERN TEL.	NORTH- WESTEL.	QUEBEC- TEL.	SASK TEL.	TELEBEC LTEE.	TERRA NOVA TEL.	TOTAL	ANNEE
71714	25972		72137		36484		4698785	1976
88868	24328		91757		47843		5207156	1977
85772	24175		116392		53873		5989808	1978
82363	24075		116019		60290		6277550	1979
103798	21732	43366	115641		64717	40415	6986282	1980
118205	21581	47752	111924		68451	41024	7618514	1981
112529	23095	49968	116465		68080	41542	8209076	1982
111110	20700	51118	85235		71583	42632	8261243	1983
109644	23475	51083	86306		76184	42618	8165413	1984
108185	22100	58433	87441		78204	50125	8322838	1985
-1.33	-5.86	14.39	1.32		2.65	17.61	1.93	VARIATION EN %

1B ABSOLUTE VALUES, 1976 TO 1985 AND PERCENT CHANGE (1985/1984)  
 1B.4 ITEMS OF LIABILITIES  
 1B.4.7 NOTES PAYABLE (IN THOUSANDS OF DOLLARS)

YEAR	ALBERTA GOVT. TEL.	BELL CANADA	BRITISH COLUMBIA TEL.	EDMONTON TEL. CO.	ISLAND TEL.	MANITOBA TEL. SYSTEM	MARITIME TEL. & TEL.	NEW BRUNSWICK TEL. CO.
1976	4183	29924	97925		2475	3880	4370	
1977	3425	68339	112784		500	3000	7850	
1978	3264	42126	8830		1300	3000	20000	
1979	11284	22979	70265		1225	3000	2400	
1980	1863		108895		2050		26800	
1981			164700		3250	15570	24940	
1982						14450		
1983						7262		
1984						5000		
1985						31225		
PERCENT CHANGE						524.50		



1B VALEURS ABSOLUES, 1976 A 1985 & VARIATIONS EN POURCENTAGE (1985/1984)  
 1B.4 PASSIF  
 1B.4.7 BILLETS A PAYER (EN MILLIERS DE DOLLARS)

NEWFOUND- LAND TEL. CO.	NORTHERN TEL.	NORTH- WESTEL.	QUEBEC- TEL.	SASK TEL.	TELEBEC LTEE.	TERRA NOVA TEL.	TOTAL	ANNEE
12287	3338		32253	10800	6425		207860	1976
4118	3087		17019	5500			225622	1977
3708	1884		7316				91428	1978
18628	775		8711				139267	1979
8602	123		6791	56000	2612		213736	1980
7753	1146		16376		3901		237636	1981
1740					15683		31873	1982
				36000	7446		50708	1983
900					5248		11148	1984
8100					10060		49385	1985
800.00					91.69		342.99	VARIATION EN %

1B ABSOLUTE VALUES, 1976 TO 1985 AND PERCENT CHANGE (1985/1984)  
 1B.4 ITEMS OF LIABILITIES  
 1B.4.8 TOTAL DEBT (IN THOUSANDS OF DOLLARS)

YEAR	ALBERTA GOVT. TEL.	BELL CANADA	BRITISH COLUMBIA TEL.	EDMONTON TEL. CO.	ISLAND TEL.	MANITOBA TEL. SYSTEM	MARITIME TEL. & TEL.	NEW BRUNSWICK TEL. CO.
1976	986099	2296096	724760	159340	18225	303408	155234	110982
1977	1109495	2565498	803955	186860	18750	359364	152714	108982
1978	1250823	3010551	783756	220543	21550	399946	161364	134472
1979	1392048	3105887	804007	232725	21475	527582	168764	147853
1980	1515447	3540424	854763	237802	25800	501796	189164	147998
1981	1762962	3783200	956700	293531	27000	508343	217304	141475
1982	2052170	3870800	924000	332775	26500	529286	217364	169785
1983	2040910	3817900	1060500	358563	26500	566528	217364	162983
1984	1886479	3823900	1096500	362163	23100	556117	241120	162127
1985	1837181	4020200	1101300	335479	28100	539808	250364	183553
PERCENT CHANGE	-2.61	5.13	0.44	-7.37	21.65	-2.93	3.83	13.22

1B VALEURS ABSOLUES, 1976 A 1985 & VARIATIONS EN POURCENTAGE (1985/1984)  
 1B.4 PASSIF  
 1B.4.8 DETTE TOTALE (EN MILLIERS DE DOLLARS)

NEWFOUND- LAND TEL. CO.	NORTHERN TEL.	NORTH- WESTEL.	QUEBEC- TEL.	SASK TEL.	TELEBEC LTEE.	TERRA NOVA TEL.	TOTAL	ANNEE
84001	29310		104390	246999	42909		5261753	1976
92986	27415		108776	309468	47843		5892106	1977
89480	26059		123707	399057	53873		6675181	1978
100991	24850		124730	424256	60290		7135458	1979
112400	21855	43366	122432	498072	67329	40415	7919063	1980
125958	22727	47752	128300	561025	72352	41024	8689653	1981
114269	23095	49968	116465	629325	83763	41542	9181107	1982
111110	20700	51118	85235	668768	79029	42632	9309840	1983
110544	23475	51083	86306	663463	81432	42618	9210427	1984
116285	22100	58433	87441	661901	88264	50125	9380534	1985
5.19	-5.86	14.39	1.32	-0.24	8.39	17.61	1.85	VARIATION EN %

1B ABSOLUTE VALUES, 1976 TO 1985 AND PERCENT CHANGE (1985/1984)  
 1B.4 ITEMS OF LIABILITIES  
 1B.4.9 TOTAL CAPITALIZATION (IN THOUSANDS OF DOLLARS)

YEAR	ALBERTA GOVT. TEL.	BELL CANADA	BRITISH COLUMBIA TEL.	EDMONTON TEL. CO.	ISLAND TEL.	MANITOBA TEL. SYSTEM	MARITIME TEL. & TEL.	NEW BRUNSWICK TEL. CO.
1976	1045519	4809392	1174800	185076	32149	352967	295260	231082
1977	1172776	5225889	1303652	216693	37165	418170	313054	234390
1978	1329975	5950845	1377990	257160	40840	465630	328257	265115
1979	1495582	6424607	1509428	275760	45191	590014	343641	285821
1980	1643729	7197629	1583332	285191	50552	577041	372006	293822
1981	1892300	7660600	1755600	337028	53024	597037	411585	296673
1982	2125032	8200700	1783900	376008	54106	624162	427535	337070
1983	2090858	8353900	2013400	404714	55905	664911	444315	345592
1984	1947542	8504700	2164500	407273	54566	656627	487396	360587
1985	1946460	8980100	2188700	377713	61907	655510	517861	384314
PERCENT CHANGE	-0.06	5.59	1.12	-7.26	13.45	-0.17	6.25	6.58

1B VALEURS ABSOLUES, 1976 A 1985 & VARIATIONS EN POURCENTAGE (1985/1984)  
 1B.4 PASSIF  
 1B.4.9 CAPITAL TOTALE (EN MILLIERS DE DOLLARS)

NEWFOUND- LAND TEL. CO.	NORTHERN TEL.	NORTH- WESTEL.	QUEBEC- TEL.	SASK TEL.	TELEBEC LTEE.	TERRA NOVA TEL.	TOTAL	ANNEE
142563	57808		170716	338229	80150		8915711	1976
163630	56893		186126	409665	86523		9824626	1977
175965	56859		211158	508997	96367		11065158	1978
190528	56893		214384	546820	109019		12087688	1979
205269	54744	83349	228116	633050	122912	77696	13408438	1980
222789	56559	91005	238310	706312	136676	78888	14534386	1981
225987	57801	96850	235129	778531	155737	80944	15559492	1982
240703	56504	100714	217946	823961	156481	83517	16053421	1983
248286	57659	103236	234144	836456	162797	85394	16311163	1984
265386	54918	112567	246737	853386	179532	93747	16918838	1985
6.89	-4.75	9.04	5.38	2.02	10.28	9.78	3.73	VARIATION EN %

1B ABSOLUTE VALUES, 1976 TO 1985 AND PERCENT CHANGE (1985/1984)  
 1B.4 ITEMS OF LIABILITIES  
 1B.4.10 CURRENT LIABILITIES (IN THOUSANDS OF DOLLARS)

YEAR	ALBERTA GOVT. TEL.	BELL CANADA	BRITISH COLUMBIA TEL.	EDMONTON TEL. CO.	ISLAND TEL.	MANITOBA TEL. SYSTEM	MARITIME TEL. & TEL.	NEW BRUNSWICK TEL. CO.
1976	65688	421281	92027	8188	1991	18296	17247	18621
1977	81715	416851	98628	8382	2486	23580	21027	19370
1978	90933	644777	135680	10020	2656	25422	21286	27429
1979	109582	684777	167299	12345	3032	32812	25679	32067
1980	139065	710312	240305	27593	2121	33968	22209	41561
1981	169870	1018400	265400	19487	3476	37031	29631	56912
1982	172429	1039300	410900	22061	4602	43952	49107	32562
1983	201604	1070600	344000	29692	4020	47049	42587	44280
1984	355677	1334800	333200	33360	8175	62496	50068	32838
1985	345118	1317500	377100	38514	6557	68598	75936	47092
PERCENT CHANGE	-2.97	-1.30	13.18	15.45	-19.79	9.76	51.67	43.41

1B VALEURS ABSOLUES, 1976 A 1985 & VARIATIONS EN POURCENTAGE (1985/1984)  
 1B.4 PASSIF  
 1B.4.10 PASSIF EXIGIBLE (EN MILLIERS DE DOLLARS)

NEWFOUND- LAND TEL. CO.	NORTHERN TEL.	NORTH- WESTEL.	QUEBEC- TEL.	SASK TEL.	TELEBEC LTEE.	TERRA NOVA TEL.	TOTAL	ANNEE
7398	3122		15071	31182	4754		704866	1976
10111	4791		15634	36854	6181		745610	1977
10881	3575		13290	34173	5209		1025331	1978
9213	4155		18302	37897	7486		1144646	1979
11292	6239	7443	19272	50232	7961	3925	1323498	1980
9015	6831	6734	24010	59168	14320	4957	1725242	1981
16916	9062	9298	35539	46781	7226	5527	1905262	1982
20056	10422	5568	55589	49492	12368	5824	1943151	1983
21548	11090	7565	42423	65745	17087	6968	2383040	1984
17272	9582	5063	38849	76701	16431	6238	2446551	1985
-19.84	-13.60	-33.07	-8.42	16.66	-3.84	-10.48	2.67	VARIATION EN %

1B ABSOLUTE VALUES, 1976 TO 1985 AND PERCENT CHANGE (1985/1984)  
 1B.4 ITEMS OF LIABILITIES  
 1B.4.11 DEFERRED TAXES (IN THOUSANDS OF DOLLARS)

YEAR	ALBERTA GOVT. TEL.	BELL CANADA	BRITISH COLUMBIA TEL.	EDMONTON TEL. CO.	ISLAND TEL.	MANITOBA TEL. SYSTEM	MARITIME TEL. & TEL.	NEW BRUNSWICK TEL. CO.
1976		657966	204261		4211		46522	41604
1977		758969	237622		4982		53394	48614
1978		827860	266476		5938		59294	54047
1979		935629	315412		6838		65109	57842
1980		1061122	353108		7792		71040	62292
1981		1193500	381100		8674		80649	66918
1982		1298200	406300		9382		88539	70098
1983		1395900	416000		10021		91595	72198
1984		1478500	425200		10408		97807	76587
1985		1537200	454400		10872		103952	77285
PERCENT CHANGE		3.97	6.87		4.46		6.28	0.91



1B VALEURS ABSOLUES, 1976 A 1985 & VARIATIONS EN POURCENTAGE (1985/1984)  
 1B.4 PASSIF  
 1B.4.11 TAXES DIFFEREES (EN MILLIERS DE DOLLARS)

NEWFOUND- LAND TEL. CO.	NORTHERN TEL.	NORTH- WESTEL.	QUEBEC- TEL.	SASK TEL.	TELEBEC LTEE.	TERRA NOVA TEL.	TOTAL	ANNEE
5713	2587		36915		8879		1008658	1976
7612	3133		42680		11695		1168701	1977
9564	4024		48004		15632		1290839	1978
13339	4731		52082		18205		1469187	1979
16001	5457	3704	56397		21678	2624	1661215	1980
20153	6088	5604	60391		25493	3327	1851897	1981
21620	7173	7176	63390		28675	3619	2004172	1982
24130	8263	8657	61146		29770	3954	2121634	1983
26526	9299	10119	56869		30790	4414	2226519	1984
30188	9766	11155	51047		30838	4591	2321294	1985
13.81	5.02	10.24	-10.24		0.16	4.01	4.26	VARIATION EN %

1B ABSOLUTE VALUES, 1976 TO 1985 AND PERCENT CHANGE (1985/1984)  
 1B.4 ITEMS OF LIABILITIES  
 1B.4.12 OTHER DEFERRED CREDITS (IN THOUSANDS OF DOLLARS)

YEAR	ALBERTA GOVT. TEL.	BELL CANADA	BRITISH COLUMBIA TEL.	EDMONTON TEL. CO.	ISLAND TEL.	MANITOBA TEL. SYSTEM	MARITIME TEL. & TEL.	NEW BRUNSWICK TEL. CO.
1976		18938			20		126	733
1977		21695			50		167	842
1978		289756			29		55	960
1979	351	335066			22	5952	57	1170
1980	1901	259711			1	6433	46	1277
1981	7766	132200			27	7087	224	1723
1982	14416	81800				10906	176	2085
1983	18581	60200				12514	128	2218
1984	20304	57400			2	12750	31	2458
1985	17537	106100		22317		33100	47	
PERCENT CHANGE	-13.63	84.84				159.61	51.61	-100.00

1B VALEURS ABSOLUES, 1976 A 1985 & VARIATIONS EN POURCENTAGE (1985/1984)  
 1B.4 PASSIF  
 1B.4.12 AUTRES CREDITS DIFFERES (EN MILLIERS DE DOLLARS)

NEWFOUND- LAND TEL. CO.	NORTHERN TEL.	NORTH- WESTEL.	QUEBEC- TEL.	SASK TEL.	TELEBEC LTEE.	TERRA NOVA TEL.	TOTAL	ANNEE
1019				1818			22654	1976
1303				1586			25643	1977
				1374			292174	1978
				2753			345371	1979
				2239			271608	1980
		2781		1738			153546	1981
	55	5789					115227	1982
	156	8972					102769	1983
	98	12490					105533	1984
	92	16370					195563	1985
	-6.12	31.06					85.31	VARIATION EN %

1B ABSOLUTE VALUES, 1976 TO 1985 AND PERCENT CHANGE (1985/1984)  
 1B.4 ITEMS OF LIABILITIES  
 1B.4.13 TOTAL LIABILITIES (IN THOUSANDS OF DOLLARS)

YEAR	ALBERTA GOVT. TEL.	BELL CANADA	BRITISH COLUMBIA TEL.	EDMONTON TEL. CO.	ISLAND TEL.	MANITOBA TEL. SYSTEM	MARITIME TEL. & TEL.	NEW BRUNSWICK TEL. CO.
1976	1111207	5907577	1471088	193264	38371	371263	359155	292040
1977	1254492	6423404	1639902	225075	44683	441750	387642	303216
1978	1420908	7713238	1780146	267179	49462	491052	408892	347551
1979	1605515	8380079	1992139	288105	55082	628778	434486	376900
1980	1784695	9228774	2176745	312784	60466	617442	465301	398952
1981	2069936	10004700	2402100	356515	65201	641155	522089	422226
1982	2311877	10620000	2601100	398069	68090	679020	565357	441815
1983	2311043	10880600	2773400	434406	69945	724474	578625	464288
1984	2323523	11375400	2922900	440633	73151	731873	635302	472470
1985	2309115	11940900	3020200	438544	79336	757208	697796	508691
PERCENT CHANGE	-0.62	4.97	3.33	-0.47	8.46	3.46	9.84	7.67

1B VALEURS ABSOLUES, 1976 A 1985 & VARIATIONS EN POURCENTAGE (1985/1984)  
 1B.4 PASSIF  
 1B.4.13 PASSIF TOTAL (EN MILLIERS DE DOLLARS)

NEWFOUND- LAND TEL. CO.	NORTHERN TEL.	NORTH- WESTEL.	QUEBEC- TEL.	SASK TEL.	TELEBEC LTEE.	TERRA NOVA TEL.	TOTAL	ANNEE
156693	63518		222702	371229	93783		10651890	1976
182656	64817		244440	448105	104399		11764581	1977
196410	64458		272452	544544	117208		13673500	1978
213080	65779		284768	587470	134710		15046891	1979
232562	66440	94496	303785	685521	152551	84245	16664759	1980
251957	69478	106124	322711	767218	176489	87172	18265071	1981
264523	74091	119113	334058	825312	191638	90090	19584153	1982
284889	75344	123911	334681	873453	198619	93295	20220973	1983
296360	78146	133410	333436	902201	210674	96776	21026255	1984
312846	74358	145155	336633	930087	226801	104576	21882246	1985
5.56	-4.85	8.80	0.96	3.09	7.65	8.06	4.07	VARIATION EN %

1B  
1B.5  
1B.5.1

ABSOLUTE VALUES, 1976 TO 1985 AND PERCENT CHANGE (1985/1984)  
ITEMS OF RETAINED EARNINGS  
NET INCOME (IN THOUSANDS OF DOLLARS)

YEAR	ALBERTA GOVT. TEL.	BELL CANADA	BRITISH COLUMBIA TEL.	EDMONTON TEL. CO.	ISLAND TEL.	MANITOBA TEL. SYSTEM	MARITIME TEL. & TEL.	NEW BRUNSWICK TEL. CO.
1976	1754	238633	40716	5109	1349	3056	13421	13768
1977	3862	232895	46716	5879	1854	9247	16240	14945
1978	15871	304939	51307	8679	2305	6878	18895	15849
1979	24382	385645	69175	9198	2679	-1282	21379	17684
1980	24748	365941	79589	7994	2809	13185	21936	18500
1981	1056	476000	85300	-263	3313	13449	23529	19660
1982	-56476	521400	88900	3169	3695	6182	29280	23428
1983	-22914	590600	107100	6354	3894	3507	31570	26893
1984	11115	626700	102500	2776	4216	2127	34359	28646
1985	48216	652100	115900	815	4423	15192	34099	27505
PERCENT CHANGE	333.79	4.05	13.07	-70.64	4.91	614.25	-0.76	-3.98

1B VALEURS ABSOLUES, 1976 A 1985 & VARIATIONS EN POURCENTAGE (1985/1984)  
 1B.5 SURPLUS INDIVIS  
 1B.5.1 REVENU NET (EN MILLIERS DE DOLLARS)

NEWFOUND- LAND TEL. CO.	NORTHERN TEL.	NORTH- WESTEL.	QUEBEC- TEL.	SASK TEL.	TELEBEC LTEE.	TERRA NOVA TEL.	TOTAL	ANNEE
6779	73		6919	19061	2641		353279	1976
8581	2570		8643	17942	3697		373071	1977
9847	2966		9590	19468	4372		470966	1978
11070	3138		10902	25249	5597		584816	1979
11662	3022	4634	11640	24814	6272	1440	598186	1980
11781	3356	5076	13824	24309	8305	1426	690121	1981
14516	3483	5629	15634	7819	9611	1923	678193	1982
16737	3799	5114	19430	11974	10017	2383	816458	1983
19297	4203	6387	19345	35600	10994	3156	911421	1984
20478	4151	5985	21663	36984	11656	3018	1002185	1985
6.12	-1.24	-6.29	11.98	3.89	6.02	-4.37	9.96	VARIATION EN %

1B ABSOLUTE VALUES, 1976 TO 1985 AND PERCENT CHANGE (1985/1984)  
 1B.5 ITEMS OF RETAINED EARNINGS  
 1B.5.2 PREFERRED SHARE DIVIDENDS (IN THOUSANDS OF DOLLARS)

YEAR	ALBERTA GOVT. TEL.	BELL CANADA	BRITISH COLUMBIA TEL.	EDMONTON TEL. CO.	ISLAND TEL.	MANITOBA TEL. SYSTEM	MARITIME TEL. & TEL.	NEW BRUNSWICK TEL. CO.
1976		28847	12931		372		3043	1807
1977		31534	17697		451		3435	1764
1978		38702	17535		483		4008	1681
1979		30521	17326		483		3848	1572
1980		38243	17674		483		3609	1445
1981		35400	16800		483		3442	1356
1982		56400	16700		483		3293	1295
1983		52300	20900		486		3130	1229
1984		46000	20400		483		2992	1159
1985		43400	18400		483		2869	1112
PERCENT CHANGE		-5.65	-9.80		0.00		-4.11	-4.06



1B VALEURS ABSOLUES, 1976 A 1985 & VARIATIONS EN POURCENTAGE (1985/1984)  
 1B.5 SURPLUS INDIVIS  
 1B.5.2 DIVIDENDES DES ACTIONS PRIVILEGIEES (EN MILLIERS DE DOLLARS)

NEWFOUND- LAND TEL. CO.	NORTHERN TEL.	NORTH- WESTEL.	QUEBEC- TEL.	SASK TEL.	TELEBEC LTEE.	TERRA NOVA TEL.	TOTAL	ANNEE
1173	440		1823				50436	1976
1741	597		2332		1864		61415	1977
1984	590		2094		1666		68743	1978
1942	582		1882		1467		59623	1979
1872	575		1765		1268		66934	1980
1765	567		1619		1219		62651	1981
2417	559		1507		1219		83873	1982
2967	552		1385		1219		84168	1983
2909	544		1270		1219		76976	1984
2865	537		1147		1405		72218	1985
-1.51	-1.29		-9.69		15.26		-6.18	VARIATION EN %

1B ABSOLUTE VALUES, 1976 TO 1985 AND PERCENT CHANGE (1985/1984)  
 1B.5 ITEMS OF RETAINED EARNINGS  
 1B.5.3 NET INCOME AFTER PREFERRED DIVIDENDS (IN THOUSANDS OF DOLLARS)

YEAR	ALBERTA GOVT. TEL.	BELL CANADA	BRITISH COLUMBIA TEL.	EDMONTON TEL. CO.	ISLAND TEL.	MANITOBA TEL. SYSTEM	MARITIME TEL. & TEL.	NEW BRUNSWICK TEL. CO.
1976	1754	209786	27785	5109	977	3056	10378	11961
1977	3862	201361	29019	5879	1403	9247	12805	13181
1978	15871	266237	33772	8679	1822	6878	14887	14168
1979	24382	355124	51849	9198	2196	-1282	17531	16112
1980	24748	327698	61915	7994	2326	13185	18327	17055
1981	1056	440600	68500	-263	2830	13449	20087	18304
1982	-56476	465000	72200	3169	3212	6182	25987	22133
1983	-22914	538300	86200	6354	3407	3507	28440	25664
1984	11115	580700	82100	2776	3733	2127	31367	27487
1985	48216	608700	97500	815	3940	15192	31230	26393
PERCENT CHANGE	333.79	4.82	18.76	-70.64	5.55	614.25	-0.44	-3.98

1B VALEURS ABSOLUES, 1976 A 1985 & VARIATIONS EN POURCENTAGE (1985/1984)								
1B.5 SURPLUS INDIVIS								
1B.5.3 REVENU NET APRES VERSEMENT DES DIVIDENDES RATTACHES (EN MILLIERS DE DOLLARS)								
AUX ACTIONS PRIVILEGIEES								
NEWFOUND- LAND TEL. CO.	NORTHERN TEL.	NORTH- WESTEL.	QUEBEC- TEL.	SASK TEL.	TELEBEC LTEE.	TERRA NOVA TEL.	TOTAL	ANNEE
5606	367		5096	19061			300936	1976
6840	1973		6311	17942	1833		311656	1977
7862	2376		7496	19468	2706		402222	1978
9128	2556		9020	25249	4130		525193	1979
9790	2447	4634	9875	24814	5004	1440	531252	1980
10017	2789	5076	12205	24309	7086	1426	627471	1981
12099	2924	5629	14127	7819	8392	1923	594320	1982
13770	3248	5114	18045	11974	8798	2383	732290	1983
16388	3659	6387	18075	35600	9775	3156	834445	1984
17613	3614	5985	20516	36984	10251	3018	929967	1985
7.47	-1.23	-6.29	13.50	3.89	4.87	-4.37	11.45	VARIATION EN %

1B ABSOLUTE VALUES, 1976 TO 1985 AND PERCENT CHANGE (1985/1984)  
 1B.5 ITEMS OF RETAINED EARNINGS  
 1B.5.4 COMMON SHARE DIVIDENDS (IN THOUSANDS OF DOLLARS)

YEAR	ALBERTA GOVT. TEL.	BELL CANADA	BRITISH COLUMBIA TEL.	EDMONTON TEL. CO.	ISLAND TEL.	MANITOBA TEL. SYSTEM	MARITIME TEL. & TEL.	NEW BRUNSWICK TEL. CO.
1976		143969	18079		580		7517	7084
1977		175626	19211		855		8487	9186
1978		193113	23510		1074		8681	9500
1979		240571	32468		1304		9984	10214
1980		274884	36401		1497		10462	11032
1981		320600	43600		1820		11808	12237
1982		363400	54800		1915		13634	14241
1983		406900	58000		2032		15700	15858
1984		432200	66100		2213		17244	17476
1985		450300	76100		2376		19214	19486
PERCENT CHANGE		4.19	15.13		7.37		11.42	11.50

1B VALEURS ABSOLUES, 1976 A 1985 & VARIATIONS EN POURCENTAGE (1985/1984)  
 1B.5 SURPLUS INDIVIS  
 1B.5.4 DIVIDENDES RATTACHES AUX ACTIONS ORDINAIRES (EN MILLIERS DE DOLLARS)

NEWFOUND- LAND TEL. CO.	NORTHERN TEL.	NORTH- WESTEL.	QUEBEC- TEL.	SASK TEL.	TELEBEC LTEE.	TERRA NOVA TEL.	TOTAL	ANNEE
3342	913		3655				185139	1976
3889	913		3957				222124	1977
4423	974		5119				246394	1978
5608	1233		5875				307257	1979
6018	1522	2838	6444		1257	861	353216	1980
6920	-1765	1806	8089		2345	843	408303	1981
7911	1971	2000	8576		4742	385	473575	1982
9380	2070	2400	10104		21086	900	544430	1983
10383	5199	3830	12334		5862	1265	574106	1984
11073	4900	3591	13908		6159	1811	608918	1985
6.65	-5.75	-6.24	12.76		5.07	43.16	6.06	VARIATION EN %

1B ABSOLUTE VALUES, 1976 TO 1985 AND PERCENT CHANGE (1985/1984)  
 1B.5 ITEMS OF RETAINED EARNINGS  
 1B.5.5 TRANSFER TO GOVERNMENT OWNERS (IN THOUSANDS OF DOLLARS)

YEAR	ALBERTA GOVT. TEL.	BELL CANADA	BRITISH COLUMBIA TEL.	EDMONTON TEL. CO.	ISLAND TEL.	MANITOBA TEL. SYSTEM	MARITIME TEL. & TEL.	NEW BRUNSWICK TEL. CO.
1976				2196				
1977				2061				
1978				2405				
1979				2969				
1980				3530				
1981				4004				
1982				3620				
1983				3579				
1984				3829				
1985				3734				
PERCENT CHANGE				-2.48				

1B VALEURS ABSOLUES, 1976 A 1985 & VARIATIONS EN POURCENTAGE (1985/1984)  
 1B.5 SURPLUS INDIVIS  
 1B.5.5 PAIEMENTS DE TRANSFERT AUX GOUVERNEMENTS PROPRIETAIRES (EN MILLIERS DE DOLLARS)

NEWFOUND- LAND TEL. CO.	NORTHERN TEL.	NORTH- WESTEL.	QUEBEC- TEL.	SASK TEL.	TELEBEC LTEE.	TERRA NOVA TEL.	TOTAL	ANNEE
				9500			11696	1976
				8975			11036	1977
				9725			12130	1978
				12625			15594	1979
				12400			15930	1980
				14000			18004	1981
				3900			7520	1982
				5987			9566	1983
				17800			21629	1984
				18492			22226	1985
				3.89			2.76	VARIATION EN %

1B ABSOLUTE VALUES, 1976 TO 1985 AND PERCENT CHANGE (1985/1984)  
 1B.5 ITEMS OF RETAINED EARNINGS  
 1B.5.6 INCOME RETAINED (IN THOUSANDS OF DOLLARS)

YEAR	ALBERTA GOVT. TEL.	BELL CANADA	BRITISH COLUMBIA TEL.	EDMONTON TEL. CO.	ISLAND TEL.	MANITOBA TEL. SYSTEM	MARITIME TEL. & TEL.	NEW BRUNSWICK TEL. CO.
1976	1754	65817	9706	2913	398	3056	2861	4877
1977	3862	25735	9808	3818	549	9247	4318	3995
1978	15871	73124	10262	6275	748	6878	6206	4668
1979	24382	114553	19381	6229	892	-1282	7547	5898
1980	24748	52814	25514	4464	829	13185	7865	6023
1981	1056	120000	24900	-4267	1010	13449	8279	6067
1982	-56476	101600	17400	-450	1297	6182	12353	7892
1983	-22914	131400	28200	2775	1376	3507	12740	9806
1984	11115	148500	16000	-1053	1520	2127	14123	10011
1985	48216	158400	21400	-2919	1564	15192	12016	6907
PERCENT CHANGE	333.79	6.67	33.75	177.21	2.89	614.25	-14.92	-31.01



1B VALEURS ABSOLUES, 1976 A 1985 & VARIATIONS EN POURCENTAGE (1985/1984)  
 1B.5 SURPLUS INDIVIS  
 1B.5.6 REVENU REINVESTI (EN MILLIERS DE DOLLARS)

NEWFOUND- LAND TEL. CO.	NORTHERN TEL.	NORTH- WESTEL.	QUEBEC- TEL.	SASK TEL.	TELEBEC LTEE.	TERRA NOVA TEL.	TOTAL	ANNEE
2264	1280		1441	9561			105928	1976
2951	1060		2354	8967	1833		78497	1977
3439	1402		2377	9743	2706		143699	1978
3519	1323		3145	12624	4130		202341	1979
3772	925	1796	3431	12414	3747	579	162106	1980
3096	1023	3270	4116	10309	4741	583	197632	1981
4188	953	3629	5551	3919	3650	1538	113226	1982
4390	1178	2714	7941	5987	-12288	1483	178295	1983
6005	-1540	2557	5741	17800	3913	1891	238710	1984
6540	-1286	2394	6608	18492	4092	1207	298823	1985
8.91	-16.49	-6.37	15.10	3.89	4.57	-36.17	25.18	VARIATION EN %

1B ABSOLUTE VALUES, 1976 TO 1985 AND PERCENT CHANGE (1985/1984)  
 1B.5 ITEMS OF RETAINED EARNINGS  
 1B.5.7 SHARE ISSUE EXPENSE (IN THOUSANDS OF DOLLARS)

YEAR	ALBERTA GOVT. TEL.	BELL CANADA	BRITISH COLUMBIA TEL.	EDMONTON TEL. CO.	ISLAND TEL.	MANITOBA TEL. SYSTEM	MARITIME TEL. & TEL.	NEW BRUNSWICK TEL. CO.
1976		1752	532		74		767	759
1977		1272	150		153		453	
1978		4322	470		1		72	
1979			298		93			25
1980			7		7			
1981			1000		2		21	
1982			900		4		18	
1983			1000		6		21	
1984			1100		6		18	
1985		700			-4		-52	
PERCENT CHANGE			-100.00		-166.67		-388.89	

1B VALEURS ABSOLUES, 1976 A 1985 & VARIATIONS EN POURCENTAGE (1985/1984)  
 1B.5 SURPLUS INDIVIS  
 1B.5.7 FRAIS D'EMISSION DES ACTIONS (EN MILLIERS DE DOLLARS)

NEWFOUND- LAND TEL. CO.	NORTHERN TEL.	NORTH- WESTEL.	QUEBEC- TEL.	SASK TEL.	TELEBEC LTEE.	TERRA NOVA TEL.	TOTAL	ANNEE
458			129				4471	1976
299			47				2374	1977
577			154				5596	1978
							416	1979
			205				219	1980
			15				1038	1981
206							1128	1982
353							1380	1983
							1124	1984
					-507		137	1985
							-87.81	VARIATION EN %

1B ABSOLUTE VALUES, 1976 TO 1985 AND PERCENT CHANGE (1985/1984)  
 1B.5 ITEMS OF RETAINED EARNINGS  
 1B.5.8 OTHER ADJUSTMENTS (NET) (IN THOUSANDS OF DOLLARS)

YEAR	ALBERTA GOVT. TEL.	BELL CANADA	BRITISH COLUMBIA TEL.	EDMONTON TEL. CO.	ISLAND TEL.	MANITOBA TEL. SYSTEM	MARITIME TEL. & TEL.	NEW BRUNSWICK TEL. CO.
1976		203		208			51	
1977		-1627		279			18	
1978		4		509				
1979		-4785		189		-1970	6	
1980		-3261		-109		-372	109	
1981		725		374			481	
1982		-3300		186			454	
1983		19500	-1500	143			231	
1984			-1300	12	7		256	
1985				-186	3		82	-10772
PERCENT CHANGE			-100.00	-1650.00	-57.14		-67.97	

1B VALEURS ABSOLUES, 1976 A 1985 & VARIATIONS EN POURCENTAGE (1985/1984)  
 1B.5 SURPLUS INDIVIS  
 1B.5.8 AUTRES RAJUSTEMENTS (EN MILLIERS DE DOLLARS)

NEWFOUND- LAND TEL. CO.	NORTHERN TEL.	NORTH- WESTEL.	QUEBEC- TEL.	SASK TEL.	TELEBEC LTEE.	TERRA NOVA TEL.	TOTAL	ANNEE
-96	-269						97	1976
-284							-1614	1977
1303							1816	1978
							-6560	1979
							-3633	1980
							1580	1981
957							-1703	1982
							18374	1983
469							-556	1984
259		-413					-11027	1985
-44.78							1883.27	VARIATION EN %

1B ABSOLUTE VALUES, 1976 TO 1985 AND PERCENT CHANGE (1985/1984)  
 1B.5 ITEMS OF RETAINED EARNINGS  
 1B.5.9 BALANCE , BEGINNING OF YEAR (IN THOUSANDS OF DOLLARS)

YEAR	ALBERTA GOVT. TEL.	BELL CANADA	BRITISH COLUMBIA TEL.	EDMONTON TEL. CO.	ISLAND TEL.	MANITOBA TEL. SYSTEM	MARITIME TEL. & TEL.	NEW BRUNSWICK TEL. CO.
1976	57666	595644	81756	22615	2805	46503	26308	24858
1977	59420	659912	90930	25736	3129	49559	28453	28976
1978	63281	682748	100588	29833	3525	58806	32336	32971
1979	79152	751554	110380	36617	4272	65684	38470	37639
1980	103534	861322	129463	43034	5070	62432	46023	43512
1981	128282	910875	155000	47390	5891	75245	53997	49535
1982	129338	1031600	178900	43497	6899	88694	62736	55602
1983	72862	1129900	195400	43233	8193	94876	75525	63494
1984	49948	1280800	221100	46151	9562	98383	88475	73300
1985	61063	1429300	234700	45110	11083	100510	102836	83311
PERCENT CHANGE	22.25	11.59	6.15	-2.26	15.91	2.16	16.23	13.66

1B VALEURS ABSOLUES, 1976 A 1985 & VARIATIONS EN POURCENTAGE (1985/1984)  
 1B.5 SURPLUS INDIVIS  
 1B.5.9 SOLDE AU DEBUT DE L'ANNEE (EN MILLIERS DE DOLLARS)

NEWFOUND- LAND TEL. CO.	NORTHERN TEL.	NORTH- WESTEL.	QUEBEC- TEL.	SASK TEL.	TELEBEC LTEE.	TERRA NOVA TEL.	TOTAL	ANNEE
8583	5548		18499	81669			972454	1976
10293	3999		19811	91230	3645		1075093	1977
12660	5059		22117	100197	5478		1149599	1978
16825	6461		24341	109940	8184		1289519	1979
20344	7785	1187	27486	122564	12314	702	1486772	1980
24117	8710	2983	30712	134978	16061	1282	1645058	1981
22907	9734	6253	34813	145287	20802	1864	1838926	1982
31195	10687	9882	40364	149206	24452	3402	1952671	1983
29250	11865	12596	48305	155193	12164	4885	2141977	1984
34786	10325	15153	54046	172993	16077	6415	2377708	1985
18.93	-12.98	20.30	11.88	11.47	32.17	31.32	11.01	VARIATION EN %

1B ABSOLUTE VALUES, 1976 TO 1985 AND PERCENT CHANGE (1985/1984)  
 1B.5 ITEMS OF RETAINED EARNINGS  
 1B.5.10 BALANCE , END OF YEAR (IN THOUSANDS OF DOLLARS)

YEAR	ALBERTA GOVT. TEL.	BELL CANADA	BRITISH COLUMBIA TEL.	EDMONTON TEL. CO.	ISLAND TEL.	MANITOBA TEL. SYSTEM	MARITIME TEL. & TEL.	NEW BRUNSWICK TEL. CO.
1976	59420	659912	90930	25736	3129	49559	28453	28976
1977	63281	682748	100588	29833	3525	58806	32336	32971
1978	79152	751554	110380	36617	4272	65684	38470	37639
1979	103534	861322	129463	43034	5070	62432	46023	43512
1980	128282	910875	154970	47390	5892	75245	53997	49535
1981	129338	1031600	178900	43497	6899	88694	62736	55602
1982	72862	1129900	195400	43233	8193	94876	75525	63494
1983	49948	1280800	221100	46151	9562	98383	88475	73300
1984	61063	1429300	234700	45110	11083	100510	102836	83311
1985	109279	1587000	256100	42005	12646	115702	114882	79446
PERCENT CHANGE	78.96	11.03	9.12	-6.88	14.10	15.11	11.71	-4.64



1B VALEURS ABSOLUES, 1976 A 1985 & VARIATIONS EN POURCENTAGE (1985/1984)  
 1B.6 STATISTIQUES D'EXPLOITATION  
 1B.6.1 NOMBRE DE TELEPHONES

NEWFOUND- LAND TEL. CO.	NORTHERN TEL.	NORTH- WESTEL.	QUEBEC- TEL.	SASK TEL.	TELEBEC LTEE.	TERRA NOVA TEL.	TOTAL	ANNEE
158614	64641		230023	451685	125006		13458543	1976
164193	66815		240982	516312	130712		14082602	1977
175312	68951		253854	551053	138535		14749079	1978
193076	71395		265337	584456	155432		15409466	1979
201835	73903	38000	276870	618614	163992	56083	16199516	1980
207078	76104	42000	281725	652009	169654	57628	15941770	1981
208554	77310	45048	284558	677963	169549	58839	15832507	1982
214575	76793	44315	290713	695964	170511		15381938	1983
219132	76505		290892	711465	172547		3505004	1984
			290597	724439	177040	50091	3313659	1985
			-0.10	1.82	2.60		-5.46	VARIATION EN %

1B ABSOLUTE VALUES, 1976 TO 1985 AND PERCENT CHANGE (1985/1984)  
 1B.6 MISCELLANEOUS STATISTICS  
 1B.6.2 NUMBER OF EMPLOYEES

YEAR	ALBERTA GOVT. TEL.	BELL CANADA	BRITISH COLUMBIA TEL.	EDMONTON TEL. CO.	ISLAND TEL.	MANITOBA TEL. SYSTEM	MARITIME TEL. & TEL.	NEW BRUNSWICK TEL. CO.
1976	9958	48133	13749	1585	288	4665	3447	2711
1977	10357	50350	13274	1696	299	4703	3448	2671
1978	10696	53328	13925	1655	293	4718	3551	2708
1979	11229	56128	14705	1731	302	4635	3621	2752
1980	12326	57267	15120	1739	300	4689	3578	2776
1981	13429	58659	14406	1825	305	4677	3597	2881
1982	12814	55761	14063	1848	293	4636	3375	2595
1983	11926	54423	13477	1797	289	4499	3322	2477
1984	11660	51167	13268	1794	299	4537	3553	2411
1985	11477	50869	13079	1870	296	4660	3686	2474
PERCENT CHANGE	-1.57	-0.58	-1.42	4.24	-1.00	2.71	3.74	2.61

1B VALEURS ABSOLUES, 1976 A 1985 & VARIATIONS EN POURCENTAGE (1985/1984)  
 1B.6 STATISTIQUES D'EXPLOITATION  
 1B.6.2 NOMBRE D'EMPLOYES

NEWFOUND- LAND TEL. CO.	NORTHERN TEL.	NORTH- WESTEL.	QUEBEC- TEL.	SASK TEL.	TELEBEC LTEE.	TERRA NOVA TEL.	TOTAL	ANNEE
1347	332		2054	3622	885		92776	1976
1349	334		2081	3820	981		95363	1977
1475	316		2199	3957	1020		99841	1978
1485	312		2209	4024	995		104128	1979
1459	314	570	2195	4339	989	478	108139	1980
1432	314	570	2166	4564	1048	458	110331	1981
1340	311	520	2036	4578	1035	440	105645	1982
1260	313	500	2023	4400	1028	394	102128	1983
1256	302	485	1993	4382	1023	391	98521	1984
1329	290	492	1972	4458	980	386	98318	1985
5.81	-3.97	1.44	-1.05	1.73	-4.20	-1.28	-0.21	VARIATION EN %

SECTION/PARTIE 2

SPECIALIZED CARRIERS

ENTREPRISES SPÉCIALISÉES

## SPECIALIZED CARRIERS

## ENTREPRISES SPÉCIALISÉES

(CNC P TELECOMMUNICATIONS, TELEGLOBE AND TELESAT)

(TÉLÉCOMMUNICATIONS DU CNC P, TÉLÉGLOBE ET TÉLÉSAT)

## 2A ABSOLUTE VALUES, 1985

## 2A VALEURS ABSOLUES - 1985

The comparative dollar values of the various financial items listed in Section 2A pertain only to CNC P Telecommunications, Teleglobe and Telesat. Section 2A, also includes financial data for Canadian National (CNR) and Canadian Pacific Telecommunications (CPR).

Les valeurs des divers postes financiers présentés dans les tableaux comparatifs de la partie 2A se rapportent exclusivement aux Télécommunications du CNC P, à Téléglobe et à Télésat. La partie 2A présente ensuite les données financières des Télécommunications du Canadien National (RCN) et du Canadien Pacifique (RCP).

Significant changes occurred in this group of telecommunication carriers during the calendar year of 1980 which involved the merger of CNR and CPR into CNC P Telecommunications.

Au cours de l'année civile 1980, d'importants changements ont eu lieu au sein de ce groupe d'entreprises de télécommunications, soit la fusion des compagnies Télécommunications du Canadien National et Télécommunications du Canadien Pacifique en une nouvelle société : les Télécommunications du CNC P.

CNC P Telecommunications is a partnership owned equally by CPR Limited and Canadian National Railways. Under the terms of the agreement each partner shares equally in the net operating revenues and out of these funds each partner pays items of income tax and debt service charges in accordance with its respective corporate accounting structure. The agreement between the two companies was signed March 13, 1980. CNC P Telecommunications offers all the former services provided by CNR and CPR with the exception of telephone services.

Les Télécommunications du CNC P forment une société dont les parts sont possédées également par le Canadien Pacifique Limité et les Chemins de fer nationaux du Canada. D'après les termes de l'entente, les deux parties reçoivent une part égale des bénéfices nets d'exploitation qu'elles utilisent pour acquitter certains impôts et assurer le service de la dette selon la structure comptable propre à chacune d'elles. L'accord conclu entre les deux entreprises a été signé le 13 mars 1980. Les Télécommunications du CNC P assurent tous les services offerts précédemment par ses deux compagnies constituantes, excepté les services du téléphone.

The CNCP Telecommunications figures shown here, for the years 1981 and 1982, were drawn from unaudited statements as provided to the CRTC. For 1983 to 1985 the CNCP figures were drawn from the annual report which provided both "combined statements" and "audited statements". It should be noted that the accounting format followed in this section diverges somewhat from the classification of telephone data in the previous sections.

The figures for all companies shown are for the year ended December 31, 1985.

Les statistiques concernant les Télécommunications du CNCP pour les années 1981 et 1982 ont été tirées des états non vérifiés mis à la disposition du CRTC; dans le cas des années 1983 à 1985, les statistiques ont été tirées du rapport annuel, duquel on a extrait les états cumulés et les états vérifiés. Il y a lieu de noter que la méthode de comptabilisation de la présente partie diffère quelque peu de celle qui a été adoptée dans les parties précédentes concernant les compagnies de téléphone.

Les chiffres indiqués pour toutes les compagnies se rapportent à l'exercice financier prenant fin le 31 décembre 1985.

2A ABSOLUTE VALUES, 1985 (IN THOUSANDS OF DOLLARS)  
 2A.1 INCOME STATEMENT

2A. VALEURS ABSOLUES, 1985 (EN MILLIERS DE DOLLARS)  
 2A.1 COMPTE DE PROFITS ET PERTES

	TELEGLOBE	TELESAT	CNCP	TOTAL	
.1 TOTAL TRANSMISSION	240456			240456	.1 TOTAL - TRANSMISSION
.2 TOTAL NON-TRANSMISSION		120630	349124	469754	.2 TOTAL - AUTRE QUE TRANSMISSION
.3 TOTAL OPERATING REVENUE	240456	120630	349124	710210	.3 TOTAL DES REVENUS D'EXPLOITATION
.4 OPERATING EXPENSES	149169	86225	296537	531931	.4 FRAIS D'EXPLOITATION
.5 NET OPERATING REVENUE	91287	34405	52587	178279	.5 REVENUS NETS D'EXPLOITATION
.6 OTHER INCOME (NET)	13717	1825		15542	.6 AUTRES REVENUS (NETS)
.7 INCOME BEFORE INCOME TAXES AND DEBT SERVICE CHARGES	105004	36230	52587	193821	.7 REVENU AVANT IMPOT ET DEDUCTION DU SERVICE DE LA DETTE
.8 INCOME TAXES	46566	12202	19534	78302	.8 IMPOT SUR LE REVENU
.9 INCOME BEFORE DEBT SERVICE CHARGES	58438	24028	33053	115519	.9 REVENU AVANT DEDUCTION DU SERVICE DE LA DETTE
.10 DEBT SERVICE CHARGES	5209	13286	16469	34964	.10 SERVICE DE LA DETTE
.11 NET INCOME	53229	10742	16584	80555	.11 REVENU NET

2A ABSOLUTE VALUES, 1985 (IN THOUSANDS OF DOLLARS)  
 2A.2 ITEMS OF EXPENSE

2A. VALEURS ABSOLUES, 1985 (EN MILLIERS DE DOLLARS)  
 2A.2 POSTES DE DEPENSE

	TELEGLOBE	TELESAT	CNCP	TOTAL	
.1 MAINTENANCE					.1 ENTRETIEN
.2 DEPRECIATION	33400	47014		80414	.2 AMORTISSEMENT
.3 OPERATION		39211		39211	.3 EXPLOITATION
.4 OTHER EXPENSES	115769		296537	412306	.4 AUTRES FRAIS
.5 TAXES OTHER THAN INCOME TAX					.5 TAXES AUTRE QUE L'IMPOT SUR LE REVENU
.6 OPERATING EXPENSES	149169	86225	296537	531931	.6 FRAIS D'EXPLOITATION
.7 DEBT SERVICE CHARGES	5209	13286	16469	34964	.7 SERVICE DE LA DETTE
.8 EXPENSES BEFORE INCOME TAXES	154378	99511	313006	566895	.8 FRAIS AVANT L'IMPOT SUR LE REVENU
.9 INCOME TAXES	46566	12202	19534	78302	.9 IMPOT SUR LE REVENU
.10 TOTAL EXPENSES	200944	111713	332540	645197	.10 TOTAL DES FRAIS D'EXPLOITATION



2A ABSOLUTE VALUES, 1985 (IN THOUSANDS OF DOLLARS)  
 2A.3 ITEMS OF ASSETS (BALANCE SHEET)

2A. VALEURS ABSOLUES, 1985 (EN MILLIERS DE DOLLARS)  
 2A.3 ACTIF (BILAN)

	TELEGLOBE	TELESAT	CNCP	TOTAL	
.1 PLANT AT COST	545095	561568	709057	1815720	.1 IMMOBILISATIONS AU PRIX COUTANT
.2 ACCUMULATED DEPRECIATION	236457	217339	331366	785162	.2 AMORTISSEMENT ACCUMULE
.3 PLANT LESS DEPRECIATION	308638	344229	377691	1030558	.3 IMMOBILISATIONS MOINS AMORTISSEMENT
.4 CURRENT ASSETS - CASH					.4 DISPONIBILITES - ENCAISSE
.5 CURRENT ASSETS - SHORT TERM NOTES	108748			108748	.5 DISPONIBILITES - BILLETS A COURT TERME
.6 CURRENT ASSETS - ACCOUNTS RECEIVABLE	93884		35318	129202	.6 DISPONIBILITES - COMPTES A RECEVOIR
.7 OTHER CURRENT ASSETS	13644	10422	20704	44770	.7 AUTRES DISPONIBILITES
.8 TOTAL CURRENT ASSETS	216276	10422	56022	282720	.8 TOTAL DES DISPONIBILITES
.9 TOTAL ASSETS	524914	354651	433713	1313278	.9 ACTIF TOTAL

2A ABSOLUTE VALUES, 1985 (IN THOUSANDS OF DOLLARS)  
 2A.4 ITEMS OF LIABILITIES (BALANCE SHEET)

2A. VALEURS ABSOLUES, 1985 (EN MILLIERS DE DOLLARS)  
 2A.4 PASSIF (BILAN)

	TELEGLOBE	TELESAT	CNCP	TOTAL	
.1 CAPITAL STOCK		60000		60000	.1 CAPITAL-ACTIONS
.2 RETAINED EARNINGS	307353	89739	199564	596656	.2 SURPLUS INDIVIS
.3 TOTAL SHAREHOLDERS CAPITAL	307353	149739	199564	656656	.3 AVOIR TOTAL DES ACTIONNAIRES
.4 ADVANCES FROM GOVERNMENT	3905			3905	.4 PRET DU GOUVERNEMENT
.5 LONG TERM DEBT	56586	92580	145044	294210	.5 DETTE A LONGUE ECHEANCE
.6 TOTAL DEBT	60491	92580	145044	298115	.6 DETTE TOTAL
.7 CAPITALIZATION	367844	242319	344608	954771	.7 CAPITAL TOTAL
.8 CURRENT LIABILITIES	107930	27156	56928	192014	.8 PASSIF EXIGIBLE
.9 DEFERRED TAXES	49140	85176	32177	166493	.9 TAXES DIFFERES
.10 TOTAL LIABILITIES	524914	354651	433713	1313278	.10 PASSIF TOTAL

2A ABSOLUTE VALUES, 1985  
 2A.5 MISCELLANEOUS STATISTICS

2A. VALEURS ABSOLUES, 1985  
 2A.5 STATISTIQUES D'EXPLOITATION

	TELEGLOBE	TELESAT	CNCP	TOTAL	
.1 NUMBER OF EMPLOYEES	1180	573	3906	5659	.1 NOMBRE D'EMPLOYES
.2 WAGES & SALARIES (IN THOUSANDS OF DOLLARS)	55273		111675	166948	.2 SALAIRES ET TRAITEMENTS (EN MILLIERS DE DOLLARS)

SECTION 2B

PARTIE 2B

CNR, CPR, CNCP TELECOMMUNICATIONS,  
TELEGLOBE AND TELESAT

RCN, RCP, TÉLÉCOMMUNICATIONS DU CNCP,  
TÉLÉGLOBE ET TÉLÉSAT

TRENDS IN ABSOLUTE VALUES 1976-1985

TENDANCES EN VALEURS ABSOLUES DE 1976 A 1985

This section presents time series of the various absolute values introduced in Section 2A, along with the percentage change in items from 1984 to 1985.

La présente partie donne, sous forme de tableaux chronologiques, les diverses valeurs absolues utilisées dans la partie 2A, ainsi que la variation en pourcentage des postes de 1984 à 1985.

It should be noted that the ordering of the elements in this section corresponds to that of Section 2A. During 1980, a significant reorganization took place within this group of carriers involving the merger of CNR and CPR into CNCP Telecommunications. For a description of this merger, please see the notes to Section 2A.

Il y a lieu de noter que l'ordre des éléments de la présente partie est le même que celui de la partie 2A. Au cours de l'année 1980, une importante réorganisation s'est produite au sein de ce groupe d'entreprises de télécommunications, soit la fusion des compagnies Télécommunications du Canadien National et Télécommunications du Canadien Pacifique, en une nouvelle société: les Télécommunications du CNCP. Pour obtenir une description de cette fusion, veuillez consulter les notes de la partie 2A.

2B ABSOLUTE VALUES, 1976 TO 1985  
(IN THOUSANDS OF DOLLARS)  
AND % CHANGE (1985/1984)  
2B.1 INCOME STATEMENT  
2B.1.1 TOTAL TRANSMISSION

2B VALEURS ABSOLUES, 1976 A 1985  
(EN MILLIERS DE DOLLARS)  
ET VARIATIONS EN % (1985/1984)  
2B.1 COMPTE DE PROFITS ET PERTES  
2B.1.1 TOTAL TRANSMISSION

YEAR	CANADIAN NATIONAL CANADIEN NATIONAL	CANADIAN PACIFIC CANADIEN PACIFIQUE	CNCP	SUB TOTAL	TELE- GLOBE	TELESAT	TOTAL	ANNEE
1976	31084	11630		42714	60218		102932	1976
1977	34435	13105		47540	73408		120948	1977
1978	40620	14259		54879	72844		127723	1978
1979	44706	15469		60175	89567		149742	1979
1980					110370		110370	1980
1981					135612		135612	1981
1982					170162		170162	1982
1983					173815		173815	1983
1984					201613		201613	1984
1985					240456		240456	1985
PERCENTAGE CHANGE					19.27		19.27	VARIATION EN %

2B ABSOLUTE VALUES, 1976 TO 1985  
(IN THOUSANDS OF DOLLARS)  
AND % CHANGE (1985/1984)  
2B.1 INCOME STATEMENT  
2B.1.2 TOTAL NON-TRANSMISSION

2B VALEURS ABSOLUES, 1976 A 1985  
(EN MILLIERS DE DOLLARS)  
ET VARIATIONS EN % (1985/1984)  
2B.1 COMPTE DE PROFITS ET PERTES  
2B.1.2 TOTAL AUTRE QUE TRANSMISSION

YEAR	CANADIAN NATIONAL CANADIEN NATIONAL	CANADIAN PACIFIC CANADIEN PACIFIQUE	CNCP	SUB TOTAL	TELE- GLOBE	TELESAT	TOTAL	ANNEE
1976	93967	50162		144129	5645	29580	179354	1976
1977	105279	57262		162541		34053	196594	1977
1978	114356	65452		179808		33745	213553	1978
1979	129378	75504		204882		49842	254724	1979
1980			237673	237673		57782	295455	1980
1981			270477	270477		51249	321726	1981
1982			302203	302203		59007	361210	1982
1983			315014	315014		116115	431129	1983
1984			338093	338093		127990	466083	1984
1985			349124	349124		120630	469754	1985
PERCENTAGE CHANGE			3.26	3.26		-5.75	0.79	VARIATION EN %

2B ABSOLUTE VALUES, 1976 TO 1985  
(IN THOUSANDS OF DOLLARS)  
AND % CHANGE (1985/1984)  
2B.1 INCOME STATEMENT  
2B.1.3 TOTAL OPERATING REVENUE

2B VALEURS ABSOLUES, 1976 A 1985  
(EN MILLIERS DE DOLLARS)  
ET VARIATIONS EN % (1985/1984)  
2B.1 COMPTE DE PROFITS ET PERTES  
2B.1.3 TOTAL DES REVENUS D'EXPLOITATION

YEAR	CANADIAN NATIONAL CANADIEN NATIONAL	CANADIAN PACIFIC CANADIEN PACIFIQUE	CNCP	SUB TOTAL	TELE- GLOBE	TELESAT	TOTAL	ANNEE
1976	125051	61792		186843	65863	29580	282286	1976
1977	139714	70367		210081	73408	34053	317542	1977
1978	154976	79711		234687	72844	33745	341276	1978
1979	174084	90973		265057	89567	49842	404466	1979
1980			237673	237673	110370	57782	405825	1980
1981			270477	270477	135612	51249	457338	1981
1982			302203	302203	170162	59007	531372	1982
1983			315014	315014	173815	116115	604944	1983
1984			338093	338093	201613	127990	667696	1984
1985			349124	349124	240456	120630	710210	1985
PERCENTAGE CHANGE			3.26	3.26	19.27	-5.75	6.37	VARIATION EN %

2B ABSOLUTE VALUES, 1976 TO 1985  
(IN THOUSANDS OF DOLLARS)  
AND % CHANGE (1985/1984)  
2B.1 INCOME STATEMENT  
2B.1.4 OPERATING EXPENSE

2B VALEURS ABSOLUES, 1976 A 1985  
(EN MILLIERS DE DOLLARS)  
ET VARIATIONS EN % (1985/1984)  
2B.1 COMPTE DE PROFITS ET PERTES  
2B.1.4 FRAIS D'EXPLOITATION

YEAR	CANADIAN NATIONAL CANADIEN NATIONAL	CANADIAN PACIFIC CANADIEN PACIFIQUE	CNCP	SUB TOTAL	TELE- GLOBE	TELESAT	TOTAL	ANNEE
1976	105431	52896		158327	42095	26433	226855	1976
1977	114691	59955		174646	46513	27410	248569	1977
1978	126048	68508		194556	45192	26880	266628	1978
1979	138737	73549		212286	57521	38397	308204	1979
1980			176574	176574	52979	43737	273290	1980
1981			235429	235429	77428	33244	346101	1981
1982			263952	263952	102108	38134	404194	1982
1983			273297	273297	97631	69836	440764	1983
1984			290651	290651	137275	76177	504103	1984
1985			296537	296537	149169	86225	531931	1985
PERCENTAGE CHANGE			2.03	2.03	8.66	13.19	5.52	VARIATION EN %



2B ABSOLUTE VALUES, 1976 TO 1985  
(IN THOUSANDS OF DOLLARS)  
AND % CHANGE (1985/1984)  
2B.1 INCOME STATEMENT  
2B.1.5 NET OPERATING REVENUE

2B VALEURS ABSOLUES, 1976 A 1985  
(EN MILLIERS DE DOLLARS)  
ET VARIATIONS EN % (1985/1984)  
2B.1 COMPTE DE PROFITS ET PERTES  
2B.1.5 REVENUS NETS D'EXPLOITATION

YEAR	CANADIAN NATIONAL CANADIEN NATIONAL	CANADIAN PACIFIC CANADIEN PACIFIQUE	CNCP	SUB TOTAL	TELE- GLOBE	TELESAT	TOTAL	ANNEE
1976	19620	8896		28516	23767	3147	55430	1976
1977	25023	10412		35435	26895	6643	68973	1977
1978	28928	11203		40131	27652	6865	74648	1978
1979	35347	17424		52771	32046	11445	96262	1979
1980			61099	61099	57391	14045	132535	1980
1981			35048	35048	58184	18005	111237	1981
1982			38251	38251	68054	20873	127178	1982
1983			41717	41717	76184	46279	164180	1983
1984			47442	47442	64338	51813	163593	1984
1985			52587	52587	91287	34405	178279	1985
PERCENTAGE CHANGE			10.84	10.84	41.89	-33.60	8.98	VARIATION EN %

2B ABSOLUTE VALUES, 1976 TO 1985  
(IN THOUSANDS OF DOLLARS)  
AND % CHANGE (1985/1984)  
2B.1 INCOME STATEMENT  
2B.1.6 OTHER INCOME (NET)

2B VALEURS ABSOLUES, 1976 A 1985  
(EN MILLIERS DE DOLLARS)  
ET VARIATIONS EN % (1985/1984)  
2B.1 COMPTE DE PROFITS ET PERTES  
2B.1.6 AUTRES REVENUS (NETS)

YEAR	CANADIAN NATIONAL CANADIEN NATIONAL	CANADIAN PACIFIC CANADIEN PACIFIQUE	CNCP	SUB TOTAL	TELE- GLOBE	TELESAT	TOTAL	ANNEE
1976	685	46		731	2363	1911	5005	1976
1977	1233	40		1273	2853	2926	7052	1977
1978	1689	41		1730	2063	6347	10140	1978
1979	2411	59		2470	6603	6636	15709	1979
1980					12571	12690	25261	1980
1981			867	867	14895	20712	36474	1981
1982			845	845	23664	23791	48300	1982
1983					28388	5226	33614	1983
1984					19914	1374	21288	1984
1985					13717	1825	15542	1985
PERCENTAGE CHANGE					-31.12	32.82	-26.99	VARIATION EN %

2B ABSOLUTE VALUES, 1976 TO 1985  
(IN THOUSANDS OF DOLLARS)  
AND % CHANGE (1985/1984)  
2B.1 INCOME STATEMENT  
2B.1.7 INCOME BEFORE INCOME TAXES  
& DEBT SERVICE CHARGES

2B VALEURS ABSOLUES, 1976 A 1985  
(EN MILLIERS DE DOLLARS)  
ET VARIATIONS EN % (1985/1984)  
2B.1 COMPTE DE PROFITS ET PERTES  
2B.1.7 REVENU AVANT IMPOT & DEDUCTION  
DU SERVICE DE LA DETTE

YEAR	CANADIAN NATIONAL CANADIEN NATIONAL	CANADIAN PACIFIC CANADIEN PACIFIQUE	CNCP	SUB TOTAL	TELE- GLOBE	TELESAT	TOTAL	ANNEE
1976	20305	8942		29247	26130	5058	60435	1976
1977	26256	10452		36708	29749	9569	76026	1977
1978	30617	11244		41861	29715	13212	84788	1978
1979	37758	17483		55241	38649	18081	111971	1979
1980			61099	61099	69962	26735	157796	1980
1981			35915	35915	73079	38717	147711	1981
1982			39096	39096	91718	44664	175478	1982
1983			41717	41717	104572	51505	197794	1983
1984			47442	47442	84252	53187	184881	1984
1985			52587	52587	105004	36230	193821	1985
PERCENTAGE CHANGE			10.84	10.84	24.63	-31.88	4.84	VARIATION EN %

2B ABSOLUTE VALUES, 1976 TO 1985  
(IN THOUSANDS OF DOLLARS)  
AND % CHANGE (1985/1984)  
2B.1 INCOME STATEMENT  
2B.1.8 INCOME TAX

2B VALEURS ABSOLUES, 1976 A 1985  
(EN MILLIERS DE DOLLARS)  
ET VARIATIONS EN % (1985/1984)  
2B.1 COMPTE DE PROFITS ET PERTES  
2B.1.8 IMPOT SUR LE REVENU

YEAR	CANADIAN NATIONAL CANADIEN NATIONAL	CANADIAN PACIFIC CANADIEN PACIFIQUE	CNCP	SUB TOTAL	TELE- GLOBE	TELESAT	TOTAL	ANNEE
1976		2196		2196	11451	2196	15843	1976
1977		2891		2891	13363	4108	20362	1977
1978		3154		3154	13701	5268	22123	1978
1979		6335		6335	17609	4362	28306	1979
1980					31107	5870	36977	1980
1981			9761	9761	35185	7318	52264	1981
1982			9572	9572	43027	6040	58639	1982
1983			12862	12862	46683	12656	72201	1983
1984			16495	16495	38175	17049	71719	1984
1985			19534	19534	46566	12202	78302	1985
PERCENTAGE CHANGE			18.42	18.42	21.98	-28.43	9.18	VARIATION EN %

2B ABSOLUTE VALUES, 1976 TO 1985  
(IN THOUSANDS OF DOLLARS)  
AND % CHANGE (1985/1984)

2B.1 INCOME STATEMENT

2B.1.9 INCOME BEFORE DEBT SERVICE CHARGES

2B VALEURS ABSOLUES, 1976 A 1985  
(EN MILLIERS DE DOLLARS)  
ET VARIATIONS EN % (1985/1984)

2B.1 COMPTE DE PROFITS ET PERTES

2B.1.9 REVENU AVANT DEDUCTION DU SERVICE DE LA DETTE

YEAR	CANADIAN NATIONAL CANADIEN NATIONAL	CANADIAN PACIFIC CANADIEN PACIFIQUE	CNCP	SUB TOTAL	TELE- GLOBE	TELESAT	TOTAL	ANNEE
1976	20305	6746		27051	14679	2862	44592	1976
1977	26256	7561		33817	16385	5461	55663	1977
1978	30617	8090		38707	16014	7944	62665	1978
1979	37758	11148		48906	21040	13719	83665	1979
1980			61099	61099	38855	20865	120819	1980
1981			26154	26154	37894	31399	95447	1981
1982			29524	29524	48691	38624	116839	1982
1983			28855	28855	57889	38849	125593	1983
1984			30947	30947	46077	36138	113162	1984
1985			33053	33053	58438	24028	115519	1985
PERCENTAGE CHANGE			6.81	6.81	26.83	-33.51	2.08	VARIATION EN %

2B ABSOLUTE VALUES, 1976 TO 1985  
(IN THOUSANDS OF DOLLARS)  
AND % CHANGE (1985/1984)  
2B.1 INCOME STATEMENT  
2B.1.10 DEBT SERVICE CHARGES

2B VALEURS ABSOLUES, 1976 A 1985  
(EN MILLIERS DE DOLLARS)  
ET VARIATIONS EN % (1985/1984)  
2B.1 COMPTE DE PROFITS ET PERTES  
2B.1.10 SERVICE DE LA DETTE

YEAR	CANADIAN NATIONAL CANADIEN NATIONAL	CANADIAN PACIFIC CANADIEN PACIFIQUE	CNCP	SUB TOTAL	TELE- GLOBE	TELESAT	TOTAL	ANNEE
1976	245	4434		4679	1613	492	6784	1976
1977	251	4564		4815	1508	939	7262	1977
1978	173	4737		4910	1530	2349	8789	1978
1979	12283	4710		16993	1176	4458	22627	1979
1980					2967	8605	11572	1980
1981			14385	14385	1274	16322	31981	1981
1982			16178	16178	1618	21914	39710	1982
1983			16349	16349	3286	23359	42994	1983
1984			14649	14649	4901	19240	38790	1984
1985			16469	16469	5209	13286	34964	1985
PERCENTAGE CHANGE			12.42	12.42	6.28	-30.95	-9.86	VARIATION EN %

2B ABSOLUTE VALUES, 1976 TO 1985  
(IN THOUSANDS OF DOLLARS)  
AND % CHANGE (1985/1984)

2B.1 INCOME STATEMENT

2B.1.11 NET INCOME

2B VALEURS ABSOLUES, 1976 A 1985  
(EN MILLIERS DE DOLLARS)  
ET VARIATIONS EN % (1985/1984)

2B.1 COMPTE DE PROFITS ET PERTES

2B.1.11 REVENU NET

YEAR	CANADIAN NATIONAL CANADIEN NATIONAL	CANADIAN PACIFIC CANADIEN PACIFIQUE	CNCP	SUB TOTAL	TELE- GLOBE	TELESAT	TOTAL	ANNEE
1976	20060	2312		22372	13066	2370	37808	1976
1977	26005	2997		29002	14877	4522	48401	1977
1978	30444	3353		33797	14484	5595	53876	1978
1979	25475	6438		31913	19864	9261	61038	1979
1980			61099	61099	35888	12260	109247	1980
1981			11769	11769	36620	15077	63466	1981
1982			13346	13346	47073	16710	77129	1982
1983			12506	12506	54603	15490	82599	1983
1984			16298	16298	41176	16898	74372	1984
1985			16584	16584	53229	10742	80555	1985
PERCENTAGE CHANGE			1.75	1.75	29.27	-36.43	8.31	VARIATION EN %

2B ABSOLUTE VALUES, 1976 TO 1985  
(IN THOUSANDS OF DOLLARS)  
AND % CHANGE (1985/1984)  
2B.2 ITEMS OF EXPENSE  
2B.2.1 MAINTENANCE

2B VALEURS ABSOLUES, 1976 A 1985  
(EN MILLIERS DE DOLLARS)  
ET VARIATIONS EN % (1985/1984)  
2B.2 POSTES DE DEPENSE  
2B.2.1 ENTRETIEN

YEAR	CANADIAN NATIONAL CANADIEN NATIONAL	CANADIAN PACIFIC CANADIEN PACIFIQUE	CNCP	SUB TOTAL	TELE- GLOBE	TELESAT	TOTAL	ANNEE
1976	52526	16708		69234	15463		84697	1976
1977	59235	19581		78816	14831		93647	1977
1978	63740	23931		87671			87671	1978
1979	71291	25071		96362			96362	1979
1980			81776	81776			81776	1980
1981					2131		2131	1981
1982					2656		2656	1982
1983								1983
1984								1984
1985								1985
PERCENTAGE CHANGE								VARIATION EN %



2B ABSOLUTE VALUES, 1976 TO 1985  
(IN THOUSANDS OF DOLLARS)  
AND % CHANGE (1985/1984)  
2B.2 ITEMS OF EXPENSE  
2B.2.2 DEPRECIATION

2B VALEURS ABSOLUES, 1976 A 1985  
(EN MILLIERS DE DOLLARS)  
ET VARIATIONS EN % (1985/1984)  
2B.2 POSTES DE DEPENSE  
2B.2.2 AMORTISSEMENT

YEAR	CANADIAN NATIONAL CANADIEN NATIONAL	CANADIAN PACIFIC CANADIEN PACIFIQUE	CNCP	SUB TOTAL	TELE- GLOBE	TELESAT	TOTAL	ANNEE
1976	16595	9194		25789	13919	18006	57714	1976
1977	18631	9557		28188	13164	18009	59361	1977
1978	20842	10043		30885	11661	17515	60061	1978
1979	22416	11064		33480	13128	26504	73112	1979
1980			124	124	13062	27691	40877	1980
1981			33407	33407	19959	15085	68451	1981
1982			40837	40837	21134	16529	78500	1982
1983					20985	42144	63129	1983
1984					30782	44099	74881	1984
1985					33400	47014	80414	1985
PERCENTAGE CHANGE					8.50	6.61	7.39	VARIATION EN %

2B ABSOLUTE VALUES, 1976 TO 1985  
(IN THOUSANDS OF DOLLARS)  
AND % CHANGE (1985/1984)  
2B.2 ITEMS OF EXPENSE  
2B.2.3 OPERATION

2B VALEURS ABSOLUES, 1976 A 1985  
(EN MILLIERS DE DOLLARS)  
ET VARIATIONS EN % (1985/1984)  
2B.2 POSTES OF DEPENSE  
2B.2.3 EXPLOITATION

YEAR	CANADIAN NATIONAL CANADIEN NATIONAL	CANADIAN PACIFIC CANADIEN PACIFIQUE	CNCP	SUB TOTAL	TELE- GLOBE	TELESAT	TOTAL	ANNEE
1976	14965	16219		31184	8644	8427	48255	1976
1977	14209	17540		31749	12590	9401	53740	1977
1978	14740	19407		34147		9365	43512	1978
1979	15384	20495		35879		11893	47772	1979
1980			14417	14417		16046	30463	1980
1981			82363	82363		18159	100522	1981
1982			86268	86268		21605	107873	1982
1983						27692	27692	1983
1984						32078	32078	1984
1985						39211	39211	1985
PERCENTAGE CHANGE						22.24	22.24	VARIATION EN %

2B ABSOLUTE VALUES, 1976 TO 1985  
(IN THOUSANDS OF DOLLARS)  
AND % CHANGE (1985/1984)  
2B.2 ITEMS OF EXPENSE  
2B.2.4 OTHER EXPENSES

2B VALEURS ABSOLUES, 1976 A 1985  
(EN MILLIERS DE DOLLARS)  
ET VARIATIONS EN % (1985/1984)  
2B.2 POSTES DE DEPENSE  
2B.2.4 AUTRES FRAIS

YEAR	CANADIAN NATIONAL CANADIEN NATIONAL	CANADIAN PACIFIC CANADIEN PACIFIQUE	CNCP	SUB TOTAL	TELE- GLOBE	TELESAT	TOTAL	ANNEE
1976	18243	9225		27468	4070		31538	1976
1977	19262	10903		30165	5928		36093	1977
1978	23089	13209		36298	33531		69829	1978
1979	25060	14822		39882	44393		84275	1979
1980			73188	73188	39917		113105	1980
1981			111440	111440	55338		166778	1981
1982			125990	125990	78318		204308	1982
1983			273297	273297	76646		349943	1983
1984			290651	290651	106493		397144	1984
1985					115769		115769	1985
PERCENTAGE CHANGE			-100.00	-100.00	8.71		9.00	VARIATION EN %

2B ABSOLUTE VALUES, 1976 TO 1985  
(IN THOUSANDS OF DOLLARS)  
AND % CHANGE (1985/1984)  
2B.2 ITEMS OF EXPENSE  
2B.2.5 TAXES OTHER THAN INCOME TAXES

2B VALEURS ABSOLUES, 1976 A 1985  
(EN MILLIERS DE DOLLARS)  
ET VARIATIONS EN % (1985/1984)  
2B.2 POSTES DE DEPENSE  
2B.2.5 TAXES AUTRES QUE L'IMPOT SUR LE REVENU

YEAR	CANADIAN NATIONAL CANADIEN NATIONAL	CANADIAN PACIFIC CANADIEN PACIFIQUE	CNCP	SUB TOTAL	TELE- GLOBE	TELESAT	TOTAL	ANNEE
1976	3102	1550		4652			4652	1976
1977	3354	2374		5728			5728	1977
1978	3637	1918		5555			5555	1978
1979	4586	2097		6683			6683	1979
1980			7069	7069			7069	1980
1981			8219	8219			8219	1981
1982			10857	10857			10857	1982
1983								1983
1984								1984
1985								1985
PERCENTAGE CHANGE								VARIATION EN %

2B ABSOLUTE VALUES, 1976 TO 1985  
(IN THOUSANDS OF DOLLARS)  
AND % CHANGE (1985/1984)  
2B.2 ITEMS OF EXPENSE  
2B.2.6 OPERATING EXPENSES

2B VALEURS ABSOLUES, 1976 A 1985  
(EN MILLIERS DE DOLLARS)  
ET VARIATIONS EN % (1985/1984)  
2B.2 POSTES DE DEPENSE  
2B.2.6 FRAIS D'EXPLOITATION

YEAR	CANADIAN NATIONAL CANADIEN NATIONAL	CANADIAN PACIFIC CANADIEN PACIFIQUE	CNCP	SUB TOTAL	TELE- GLOBE	TELESAT	TOTAL	ANNEE
1976	105431	52896		158327	42095	26433	226855	1976
1977	114691	59955		174646	46513	27410	248569	1977
1978	126048	68508		194556	45192	26880	266628	1978
1979	138737	73549		212286	57521	38397	308204	1979
1980			176574	176574	52979	43737	273290	1980
1981			235429	235429	77428	33244	346101	1981
1982			263952	263952	102108	38134	404194	1982
1983			273297	273297	97631	69836	440764	1983
1984			290651	290651	137275	76177	504103	1984
1985			296537	296537	149169	86225	531931	1985
PERCENTAGE CHANGE			2.03	2.03	8.66	13.19	5.52	VARIATION EN %

2B ABSOLUTE VALUES, 1976 TO 1985  
(IN THOUSANDS OF DOLLARS)  
AND % CHANGE (1985/1984)  
2B.2 ITEMS OF EXPENSE  
2B.2.7 DEBT SERVICE CHARGES

2B VALEURS ABSOLUES, 1976 A 1985  
(EN MILLIERS DE DOLLARS)  
ET VARIATIONS EN % (1985/1984)  
2B.2 POSTES DE DEPENSE  
2B.2.7 SERVICE DE LA DETTE

YEAR	CANADIAN NATIONAL CANADIEN NATIONAL	CANADIAN PACIFIC CANADIEN PACIFIQUE	CNCP	SUB TOTAL	TELE- GLOBE	TELESAT	TOTAL	ANNEE
1976	245	4434		4679	1613	492	6784	1976
1977	251	4564		4815	1508	939	7262	1977
1978	173	4737		4910	1530	2349	8789	1978
1979	12283	4710		16993	1176	4458	22627	1979
1980					2967	8605	11572	1980
1981			14385	14385	1274	16322	31981	1981
1982			16178	16178	1618	21914	39710	1982
1983			16349	16349	3286	23359	42994	1983
1984			14649	14649	4901	19240	38790	1984
1985			16469	16469	5209	13286	34964	1985
PERCENTAGE CHANGE			12.42	12.42	6.28	-30.95	-9.86	VARIATION EN %

2B ABSOLUTE VALUES, 1976 TO 1985  
(IN THOUSANDS OF DOLLARS)  
AND % CHANGE (1985/1984)  
2B.2 ITEMS OF EXPENSE  
2B.2.8 EXPENSES BEFORE INCOME TAX

2B VALEURS ABSOLUES, 1976 A 1985  
(EN MILLIERS DE DOLLARS)  
ET VARIATIONS EN % (1985/1984)  
2B.2 POSTES DE DEPENSE  
2B.2.8 FRAIS AVANT L'IMPOT SUR LE REVENU

YEAR	CANADIAN NATIONAL CANADIEN NATIONAL	CANADIAN PACIFIC CANADIEN PACIFIQUE	CNCP	SUB TOTAL	TELE- GLOBE	TELESAT	TOTAL	ANNEE
1976	105676	57330		163006	43709	26925	233640	1976
1977	114942	64519		179461	48021	28349	255831	1977
1978	126221	73245		199466	46722	29229	275417	1978
1979	151020	78259		229279	58697	42855	330831	1979
1980			176574	176574	55946	52342	284862	1980
1981			249814	249814	78702	49566	378082	1981
1982			280130	280130	103726	60048	443904	1982
1983			289646	289646	100917	93195	483758	1983
1984			305300	305300	142176	95417	542893	1984
1985			313006	313006	154378	99511	566895	1985
PERCENTAGE CHANGE			2.52	2.52	8.58	4.29	4.42	VARIATION EN %

2B ABSOLUTE VALUES, 1976 TO 1985  
(IN THOUSANDS OF DOLLARS)  
AND % CHANGE (1985/1984)  
2B.2 ITEMS OF EXPENSE  
2B.2.9 INCOME TAX

2B VALEURS ABSOLUES, 1976 A 1985  
(EN MILLIERS DE DOLLARS)  
ET VARIATIONS EN % (1985/1984)  
2B.2 POSTES DE DEPENSE  
2B.2.9 IMPOT SUR LE REVENU

YEAR	CANADIAN NATIONAL CANADIEN NATIONAL	CANADIAN PACIFIC CANADIEN PACIFIQUE	CNCP	SUB TOTAL	TELE- GLOBE	TELESAT	TOTAL	ANNEE
1976		2196		2196	11451	2196	15843	1976
1977		2891		2891	13363	4108	20362	1977
1978		3154		3154	13701	5268	22123	1978
1979		6335		6335	17609	4362	28306	1979
1980					31107	5870	36977	1980
1981			9761	9761	35185	7318	52264	1981
1982			9572	9572	43027	6040	58639	1982
1983			12862	12862	46683	12656	72201	1983
1984			16495	16495	38175	17049	71719	1984
1985			19534	19534	46566	12202	78302	1985
PERCENTAGE CHANGE			18.42	18.42	21.98	-28.43	9.18	VARIATION EN %



2B ABSOLUTE VALUES, 1976 TO 1985  
(IN THOUSANDS OF DOLLARS)  
AND % CHANGE (1985/1984)

2B.2 ITEMS OF EXPENSE

2B.2.10 TOTAL EXPENSES

2B VALEURS ABSOLUES, 1976 A 1985  
(EN MILLIERS DE DOLLARS)  
ET VARIATIONS EN % (1985/1984)

2B.2 POSTES DE DEPENSE

2B.2.10 TOTAL DES FRAIS D'EXPLOITATION

YEAR	CANADIAN NATIONAL CANADIEN NATIONAL	CANADIAN PACIFIC CANADIEN PACIFIQUE	CNCP	SUB TOTAL	TELE- GLOBE	TELESAT	TOTAL	ANNEE
1976	105676	59526		165202	55160	29121	249483	1976
1977	114942	67410		182352	61384	32457	276193	1977
1978	126221	76399		202620	60423	34497	297540	1978
1979	151020	84594		235614	76306	47217	359137	1979
1980			176574	176574	87053	58212	321839	1980
1981			259575	259575	113887	56884	430346	1981
1982			289702	289702	146753	66088	502543	1982
1983			302508	302508	147600	105851	555959	1983
1984			321795	321795	180351	112466	614612	1984
1985			332540	332540	200944	111713	645197	1985
PERCENTAGE CHANGE			3.34	3.34	11.42	-0.67	4.98	VARIATION EN %

2B ABSOLUTE VALUES, 1976 TO 1985  
(IN THOUSANDS OF DOLLARS)  
AND % CHANGE (1985/1984)  
2B.3 ITEMS OF ASSETS  
2B.3.1 PLANT AT COST

2B VALEURS ABSOLUES, 1976 A 1985  
(EN MILLIERS DE DOLLARS)  
ET VARIATIONS EN % (1985/1984)  
2B.3 ACTIF  
2B.3.1 IMMOBILISATIONS AU PRIX COUTANT

YEAR	CANADIAN NATIONAL CANADIEN NATIONAL	CANADIAN PACIFIC CANADIEN PACIFIQUE	CNCP	SUB TOTAL	TELE- GLOBE	TELESAT	TOTAL	ANNEE
1976	443594	164980		608574	208131	155127	971832	1976
1977	461327	165895		627222	202996	170772	1000990	1977
1978	494295	177901		672196	220571	232447	1125214	1978
1979	537946	194405		732351	253647	294000	1279998	1979
1980			9718	9718	282135	366083	657936	1980
1981			542870	542870	312026	440467	1295363	1981
1982			602805	602805	351955	497736	1452496	1982
1983			641844	641844	467421	539597	1648862	1983
1984			671024	671024	538264	543305	1752593	1984
1985			709057	709057	545095	561568	1815720	1985
PERCENTAGE CHANGE			5.67	5.67	1.27	3.36	3.60	VARIATION EN %

2B ABSOLUTE VALUES, 1976 TO 1985  
(IN THOUSANDS OF DOLLARS)  
AND % CHANGE (1985/1984)  
2B.3 ITEMS OF ASSETS  
2B.3.2 ACCUMULATED DEPRECIATION

2B VALEURS ABSOLUES, 1976 A 1985  
(EN MILLIERS DE DOLLARS)  
ET VARIATIONS EN % (1985/1984)  
2B.3 ACTIF  
2B.3.2 AMORTISSEMENT ACCUMULE

YEAR	CANADIAN NATIONAL CANADIEN NATIONAL	CANADIAN PACIFIC CANADIEN PACIFIQUE	CNCP	SUB TOTAL	TELE- GLOBE	TELESAT	TOTAL	ANNEE
1976	153205	78694		231899	89561	59956	381416	1976
1977	151345	78053		229398	85998	67967	383363	1977
1978	164065	85896		249961	96788	85404	432153	1978
1979	173729	94089		267818	107420	111693	486931	1979
1980			124	124	119056	136964	256144	1980
1981			219831	219831	137465	150542	507838	1981
1982			252610	252610	154284	118109	525003	1982
1983			282617	282617	175895	156773	615285	1983
1984			311711	311711	206071	173034	690816	1984
1985			331366	331366	236457	217339	785162	1985
PERCENTAGE CHANGE			6.31	6.31	14.75	25.60	13.66	VARIATION EN %

2B ABSOLUTE VALUES, 1976 TO 1985  
(IN THOUSANDS OF DOLLARS)  
AND % CHANGE (1985/1984)  
2B.3 ITEMS OF ASSETS  
2B.3.3 PLANT LESS DEPRECIATION

2B VALEURS ABSOLUES, 1976 A 1985  
(EN MILLIERS DE DOLLARS)  
ET VARIATIONS EN % (1985/1984)  
2B.3 ACTIF  
2B.3.3 IMMOBILISATIONS MOINS AMORTISSEMENT

YEAR	CANADIAN NATIONAL CANADIEN NATIONAL	CANADIAN PACIFIC CANADIEN PACIFIQUE	CNCP	SUB TOTAL	TELE- GLOBE	TELESAT	TOTAL	ANNEE
1976	290389	86286		376675	118569	95171	590415	1976
1977	309982	87842		397824	116998	102805	617627	1977
1978	330230	92005		422235	123783	147043	693061	1978
1979	364217	100316		464533	146227	182307	793067	1979
1980			9594	9594	163079	229119	401792	1980
1981			323039	323039	174561	289925	787525	1981
1982			350195	350195	197671	379627	927493	1982
1983			359227	359227	291526	382824	1033577	1983
1984			359313	359313	332193	370271	1061777	1984
1985			377691	377691	308638	344229	1030558	1985
PERCENTAGE CHANGE			5.11	5.11	-7.09	-7.03	-2.94	VARIATION EN %

2B ABSOLUTE VALUES, 1976 TO 1985  
 (IN THOUSANDS OF DOLLARS)  
 AND % CHANGE (1985/1984)  
 2B.3 ITEMS OF ASSETS  
 2B.3.4 CURRENT ASSETS - CASH

2B VALEURS ABSOLUES, 1976 A 1985  
 (EN MILLIERS DE DOLLARS)  
 ET VARIATIONS EN % (1985/1984)  
 2B.3 ACTIF  
 2B.3.4 DISPONIBILITES - ENCAISSE

YEAR	CANADIAN NATIONAL CANADIEN NATIONAL	CANADIAN PACIFIC CANADIEN PACIFIQUE	CNCP	SUB TOTAL	TELE- GLOBE	TELESAT	TOTAL	ANNEE
1976					975		975	1976
1977					473		473	1977
1978								1978
1979								1979
1980								1980
1981								1981
1982								1982
1983								1983
1984								1984
1985								1985
PERCENTAGE CHANGE								VARIATION EN %

2B ABSOLUTE VALUES, 1976 TO 1985  
(IN THOUSANDS OF DOLLARS)  
AND % CHANGE (1985/1984)  
2B.3 ITEMS OF ASSETS  
2B.3.5 CURRENT ASSETS - SHORT TERM NOTES

2B VALEURS ABSOLUES, 1976 A 1985  
(EN MILLIERS DE DOLLARS)  
ET VARIATIONS EN % (1985/1984)  
2B.3 ACTIF  
2B.3.5 DISPONIBILITES - BILLETS A COURT TERME

YEAR	CANADIAN NATIONAL CANADIEN NATIONAL	CANADIAN PACIFIC CANADIEN PACIFIQUE	CNCP	SUB TOTAL	TELE- GLOBE	TELESAT	TOTAL	ANNEE
1976					36000	3688	39688	1976
1977					46000	8790	54790	1977
1978					55640	2608	58248	1978
1979					67659	1082	68741	1979
1980					82382		82382	1980
1981					97547		97547	1981
1982					119571		119571	1982
1983					78399		78399	1983
1984					93838		93838	1984
1985					108748		108748	1985
PERCENTAGE CHANGE					15.89		15.89	VARIATION EN %

2B ABSOLUTE VALUES, 1976 TO 1985  
(IN THOUSANDS OF DOLLARS)  
AND % CHANGE (1985/1984)  
2B.3 ITEMS OF ASSETS  
2B.3.6 CURRENT ASSETS -  
ACCOUNTS RECEIVABLE

2B VALEURS ABSOLUES, 1976 A 1985  
(EN MILLIERS DE DOLLARS)  
ET VARIATIONS EN % (1985/1984)  
2B.3 ACTIF  
2B.3.6 DISPONIBILITES -  
COMPTES A RECEVOIR

YEAR	CANADIAN NATIONAL CANADIEN NATIONAL	CANADIAN PACIFIC CANADIEN PACIFIQUE	CNCP	SUB TOTAL	TELE- GLOBE	TELESAT	TOTAL	ANNEE
1976					21020	285	21305	1976
1977					24957	1308	26265	1977
1978					38273	491	38764	1978
1979					35039	2039	37078	1979
1980			38160	38160	41771	2295	82226	1980
1981			49504	49504	58164	8245	115913	1981
1982			45297	45297	79206		124503	1982
1983			37234	37234	76534		113768	1983
1984			38726	38726	90630		129356	1984
1985			35318	35318	93884		129202	1985
PERCENTAGE CHANGE			-8.80	-8.80	3.59		-0.12	VARIATION EN %

2B ABSOLUTE VALUES, 1976 TO 1985  
(IN THOUSANDS OF DOLLARS)  
AND % CHANGE (1985/1984)  
2B.3 ITEMS OF ASSETS  
2B.3.7 OTHER CURRENT ASSETS

2B VALEURS ABSOLUES, 1976 A 1985  
(EN MILLIERS DE DOLLARS)  
ET VARIATIONS EN % (1985/1984)  
2B.3 ACTIF  
2B.3.7 AUTRE DISPONIBILITES

YEAR	CANADIAN NATIONAL CANADIEN NATIONAL	CANADIAN PACIFIC CANADIEN PACIFIQUE	CNCP	SUB TOTAL	TELE- GLOBE	TELESAT	TOTAL	ANNEE
1976					1155	596	1751	1976
1977					1252	525	1777	1977
1978					2385	706	3091	1978
1979					10260	633	10893	1979
1980			13427	13427	12360	1329	27116	1980
1981			17612	17612	1816	1987	21415	1981
1982			14637	14637	2976	7476	25089	1982
1983			2503	2503	2220	15863	20586	1983
1984			5852	5852	3298	22495	31645	1984
1985			20704	20704	13644	10422	44770	1985
PERCENTAGE CHANGE			253.79	253.79	313.71	-53.67	41.48	VARIATION EN %



2B ABSOLUTE VALUES, 1976 TO 1985  
(IN THOUSANDS OF DOLLARS)  
AND % CHANGE (1985/1984)  
2B.3 ITEMS OF ASSETS  
2B.3.8 TOTAL CURRENT ASSETS

2B VALEURS ABSOLUES, 1976 A 1985  
(EN MILLIERS DE DOLLARS)  
ET VARIATIONS EN % (1985/1984)  
2B.3 ACTIF  
2B.3.8 TOTAL DES DISPONIBILITES

YEAR	CANADIAN NATIONAL CANADIEN NATIONAL	CANADIAN PACIFIC CANADIEN PACIFIQUE	CNCP	SUB TOTAL	TELE- GLOBE	TELESAT	TOTAL	ANNEE
1976					59150	4569	63719	1976
1977					72682	10623	83305	1977
1978					96298	3805	100103	1978
1979					112958	3754	116712	1979
1980			51587	51587	136513	3624	191724	1980
1981			67126	67126	157527	10232	234885	1981
1982			59934	59934	201753	7476	269163	1982
1983			39737	39737	157153	15863	212753	1983
1984			44578	44578	187766	22495	254839	1984
1985			56022	56022	216276	10422	282720	1985
PERCENTAGE CHANGE			25.67	25.67	15.18	-53.67	10.94	VARIATION EN %

2B ABSOLUTE VALUES, 1976 TO 1985  
(IN THOUSANDS OF DOLLARS)  
AND % CHANGE (1985/1984)  
2B.3 ITEMS OF ASSETS  
2B.3.9 TOTAL ASSETS

2B VALEURS ABSOLUES, 1976 A 1985  
(EN MILLIERS DE DOLLARS)  
ET VARIATIONS EN % (1985/1984)  
2B.3 ACTIF  
2B.3.9 ACTIF TOTAL

YEAR	CANADIAN NATIONAL CANADIEN NATIONAL	CANADIAN PACIFIC CANADIEN PACIFIQUE	CNCP	SUB TOTAL	TELE- GLOBE	TELESAT	TOTAL	ANNEE
1976					177719	99740	277459	1976
1977					189680	113428	303108	1977
1978					220081	150848	370929	1978
1979					259185	186061	445246	1979
1980			62664	62664	299592	232743	594999	1980
1981			323039	323039	332088	300157	955284	1981
1982			410129	410129	399424	387103	1196656	1982
1983			401925	401925	448679	398687	1249291	1983
1984			403891	403891	519959	392766	1316616	1984
1985			433713	433713	524914	354651	1313278	1985
PERCENTAGE CHANGE			7.38	7.38	0.95	-9.70	-0.25	VARIATION EN %

2B ABSOLUTE VALUES, 1976 TO 1985  
(IN THOUSANDS OF DOLLARS)  
AND % CHANGE (1985/1984)  
2B.4 ITEMS OF LIABILITIES  
2B.4.1 CAPITAL STOCK

2B VALEURS ABSOLUES, 1976 A 1985  
(EN MILLIERS DE DOLLARS)  
ET VARIATIONS EN % (1985/1984)  
2B.4 PASSIF  
2B.4.1 CAPITAL - ACTIONS

YEAR	CANADIAN NATIONAL CANADIEN NATIONAL	CANADIAN PACIFIC CANADIEN PACIFIQUE	CNCP	SUB TOTAL	TELE- GLOBE	TELESAT	TOTAL	ANNEE
1976						60000	60000	1976
1977						60000	60000	1977
1978						60000	60000	1978
1979						60000	60000	1979
1980						60000	60000	1980
1981			150854	150854		60000	210854	1981
1982			159026	159026		60000	219026	1982
1983						60000	60000	1983
1984						60000	60000	1984
1985						60000	60000	1985
PERCENTAGE CHANGE						0.00	0.00	VARIATION EN %

2B ABSOLUTE VALUES, 1976 TO 1985  
(IN THOUSANDS OF DOLLARS)  
AND % CHANGE (1985/1984)  
2B.4 ITEMS OF LIABILITIES  
2B.4.1 RETAINED EARNINGS

2B VALEURS ABSOLUES, 1976 A 1985  
(EN MILLIERS DE DOLLARS)  
ET VARIATIONS EN % (1985/1984)  
2B.4 PASSIF  
2B.4.2 SURPLUS INDIVIS

YEAR	CANADIAN NATIONAL CANADIEN NATIONAL	CANADIAN PACIFIC CANADIEN PACIFIQUE	CNCP	SUB TOTAL	TELE- GLOBE	TELESAT	TOTAL	ANNEE
1976					89973	13142	103115	1976
1977					103770	17706	121476	1977
1978					118254	22101	140355	1978
1979					138118	28962	167080	1979
1980			3899	3899	170206	37622	211727	1980
1981			11769	11769	199626	47899	259294	1981
1982			13346	13346	239299	58609	311254	1982
1983			175014	175014	284487	68099	527600	1983
1984			183163	183163	325663	81997	590823	1984
1985			199564	199564	307353	89739	596656	1985
PERCENTAGE CHANGE			8.95	8.95	-5.62	9.44	0.99	VARIATION EN %

2B ABSOLUTE VALUES, 1976 TO 1985  
(IN THOUSANDS OF DOLLARS)  
AND % CHANGE (1985/1984)  
2B.4 ITEMS OF LIABILITIES  
2B.4.3 TOTAL SHAREHOLDERS CAPITAL

2B VALEURS ABSOLUES, 1976 A 1985  
(EN MILLIERS DE DOLLARS)  
ET VARIATIONS EN % (1985/1984)  
2B.4 PASSIF  
2B.4.3 AVOIR TOTAL DES ACTIONNAIRES

YEAR	CANADIAN NATIONAL CANADIEN NATIONAL	CANADIAN PACIFIC CANADIEN PACIFIQUE	CNCP	SUB TOTAL	TELE- GLOBE	TELESAT	TOTAL	ANNEE
1976					89973	73142	163115	1976
1977					103770	77706	181476	1977
1978					118254	82101	200355	1978
1979					138118	88962	227080	1979
1980			3899	3899	170206	97622	271727	1980
1981			162623	162623	199626	107899	470148	1981
1982			172372	172372	239299	118609	530280	1982
1983			175014	175014	284487	128099	587600	1983
1984			183163	183163	325663	141997	650823	1984
1985			199564	199564	307353	149739	656656	1985
PERCENTAGE CHANGE			8.95	8.95	-5.62	5.45	0.90	VARIATION EN %

2B ABSOLUTE VALUES, 1976 TO 1985  
(IN THOUSANDS OF DOLLARS)  
AND % CHANGE (1985/1984)  
2B.4 ITEMS OF LIABILITIES  
2B.4.4 ADVANCES FROM GOVERNMENT

2B VALEURS ABSOLUES, 1976 A 1985  
(EN MILLIERS DE DOLLARS)  
ET VARIATIONS EN % (1985/1984)  
2B.4 PASSIF  
2B.4.4 PRET DU GOUVERNEMENT

YEAR	CANADIAN NATIONAL CANADIEN NATIONAL	CANADIAN PACIFIC CANADIEN PACIFIQUE	CNCP	SUB TOTAL	TELE- GLOBE	TELESAT	TOTAL	ANNEE
1976					29590		29590	1976
1977					23566		23566	1977
1978					20954		20954	1978
1979					18247		18247	1979
1980					15394		15394	1980
1981					12387		12387	1981
1982					15519		15519	1982
1983					5875		5875	1983
1984					5875		5875	1984
1985					3905		3905	1985
PERCENTAGE CHANGE					-33.53		-33.53	VARIATION EN %

2B ABSOLUTE VALUES, 1976 TO 1985  
(IN THOUSANDS OF DOLLARS)  
AND % CHANGE (1985/1984)  
2B.4 ITEMS OF LIABILITIES  
2B.4.5 LONG TERM DEBT

2B VALEURS ABSOLUES, 1976 A 1985  
(EN MILLIERS DE DOLLARS)  
ET VARIATIONS EN % (1985/1984)  
2B.4 PASSIF  
2B.4.5 DETTE A LONGUE ECHEANCE

YEAR	CANADIAN NATIONAL CANADIEN NATIONAL	CANADIAN PACIFIC CANADIEN PACIFIQUE	CNCP	SUB TOTAL	TELE- GLOBE	TELESAT	TOTAL	ANNEE
1976						1706	1706	1976
1977						14613	14613	1977
1978						20564	20564	1978
1979						44370	44370	1979
1980						84492	84492	1980
1981			161232	161232		139900	301132	1981
1982			169511	169511		191275	360786	1982
1983			154508	154508	41621	179507	375636	1983
1984			135292	135292	60527	141867	337686	1984
1985			145044	145044	56586	92580	294210	1985
PERCENTAGE CHANGE			7.21	7.21	-6.51	-34.74	-12.87	VARIATION EN %

2B ABSOLUTE VALUES, 1976 TO 1985  
(IN THOUSANDS OF DOLLARS)  
AND % CHANGE (1985/1984)  
2B.4 ITEMS OF LIABILITIES  
2B.4.6 TOTAL DEBT

2B VALEURS ABSOLUES, 1976 A 1985  
(EN MILLIERS DE DOLLARS)  
ET VARIATIONS EN % (1985/1984)  
2B.4 PASSIF  
2B.4.6 DETTE TOTALE

YEAR	CANADIAN NATIONAL CANADIEN NATIONAL	CANADIAN PACIFIC CANADIEN PACIFIQUE	CNCP	SUB TOTAL	TELE- GLOBE	TELESAT	TOTAL	ANNEE
1976					29590	1706	31296	1976
1977					23566	14613	38179	1977
1978					20954	20564	41518	1978
1979					18247	44370	62617	1979
1980					15394	84492	99886	1980
1981			161232	161232	12387	139900	313519	1981
1982			169511	169511	15519	191275	376305	1982
1983			154508	154508	47496	179507	381511	1983
1984			135292	135292	66402	141867	343561	1984
1985			145044	145044	60491	92580	298115	1985
PERCENTAGE CHANGE			7.21	7.21	-8.90	-34.74	-13.23	VARIATION EN %



2B ABSOLUTE VALUES, 1976 TO 1985  
(IN THOUSANDS OF DOLLARS)  
AND % CHANGE (1985/1984)  
2B.4 ITEMS OF LIABILITIES  
2B.4.7 TOTAL CAPITALIZATION

2B VALEURS ABSOLUES, 1976 A 1985  
(EN MILLIERS DE DOLLARS)  
ET VARIATIONS EN % (1985/1984)  
2B.4 PASSIF  
2B.4.7 CAPITAL TOTAL

YEAR	CANADIAN NATIONAL CANADIEN NATIONAL	CANADIAN PACIFIC CANADIEN PACIFIQUE	CNCP	SUB TOTAL	TELE- GLOBE	TELESAT	TOTAL	ANNEE
1976					119563	74848	194411	1976
1977					127336	92319	219655	1977
1978					139208	102665	241873	1978
1979					156365	133332	289697	1979
1980			3899	3899	185600	182114	371613	1980
1981			323855	323855	212013	247799	783667	1981
1982			341883	341883	254818	309884	906585	1982
1983			329522	329522	331983	307606	969111	1983
1984			318455	318455	392065	283864	994384	1984
1985			344608	344608	367844	242319	954771	1985
PERCENTAGE CHANGE			8.21	8.21	-6.18	-14.64	-3.98	VARIATION EN %

2B ABSOLUTE VALUES, 1976 TO 1985  
(IN THOUSANDS OF DOLLARS)  
AND % CHANGE (1985/1984)  
2B.4 ITEMS OF LIABILITIES  
2B.4.8 CURRENT LIABILITIES

2B VALEURS ABSOLUES, 1976 A 1985  
(EN MILLIERS DE DOLLARS)  
ET VARIATIONS EN % (1985/1984)  
2B.4 PASSIF  
2B.4.8 PASSIF EXIGIBLE

YEAR	CANADIAN NATIONAL CANADIEN NATIONAL	CANADIAN PACIFIC CANADIEN PACIFIQUE	CNCP	SUB TOTAL	TELE- GLOBE	TELESAT	TOTAL	ANNEE
1976					46391	10764	57155	1976
1977					51650	3515	55165	1977
1978					68682	25321	94003	1978
1979					87370	25505	112875	1979
1980			58765	58765	95811	17535	172111	1980
1981			40664	40664	99443	11946	152053	1981
1982			41340	41340	120297	30767	192404	1982
1983			43368	43368	83876	29665	156909	1983
1984			53486	53486	86422	30437	170345	1984
1985			56928	56928	107930	27156	192014	1985
PERCENTAGE CHANGE			6.44	6.44	24.89	-10.78	12.72	VARIATION EN %

2B ABSOLUTE VALUES, 1976 TO 1985  
(IN THOUSANDS OF DOLLARS)  
AND % CHANGE (1985/1984)  
2B.4 ITEMS OF LIABILITIES  
2B.4.9 DEFERRED TAXES

2B VALEURS ABSOLUES, 1976 A 1985  
(EN MILLIERS DE DOLLARS)  
ET VARIATIONS EN % (1985/1984)  
2B.4 PASSIF  
2B.4.9 TAXES DIFFEREES

YEAR	CANADIAN NATIONAL CANADIEN NATIONAL	CANADIAN PACIFIC CANADIEN PACIFIQUE	CNCP	SUB TOTAL	TELE- GLOBE	TELESAT	TOTAL	ANNEE
1976					11766	14128	25894	1976
1977					10694	17594	28288	1977
1978					12191	22862	35053	1978
1979					15450	27224	42674	1979
1980					18181	33094	51275	1980
1981			25636	25636	20632	40412	86680	1981
1982			26906	26906	24309	46452	97667	1982
1983			29035	29035	32820	61416	123271	1983
1984			31950	31950	41472	78465	151887	1984
1985			32177	32177	49140	85176	166493	1985
PERCENTAGE CHANGE			0.71	0.71	18.49	8.55	9.62	VARIATION EN %

2B ABSOLUTE VALUES, 1976 TO 1985  
(IN THOUSANDS OF DOLLARS)  
AND % CHANGE (1985/1984)  
2B.4 ITEMS OF LIABILITIES  
2B.4.10 TOTAL LIABILITIES

2B VALEURS ABSOLUES, 1976 A 1985  
(EN MILLIERS DE DOLLARS)  
ET VARIATIONS EN % (1985/1984)  
2B.4 PASSIF  
2B.4.10 PASSIF TOTAL

YEAR	CANADIAN NATIONAL CANADIEN NATIONAL	CANADIAN PACIFIC CANADIEN PACIFIQUE	CNCP	SUB TOTAL	TELE- GLOBE	TELESAT	TOTAL	ANNEE
1976					177719	99740	277459	1976
1977					189680	113428	303108	1977
1978					220081	150848	370929	1978
1979					259185	186061	445246	1979
1980			62664	62664	299592	232743	594999	1980
1981			390155	390155	332088	300157	1022400	1981
1982			410129	410129	399424	387103	1196656	1982
1983			401925	401925	448679	398687	1249291	1983
1984			403891	403891	519959	392766	1316616	1984
1985			433713	433713	524914	354651	1313278	1985
PERCENTAGE CHANGE			7.38	7.38	0.95	-9.70	-0.25	VARIATION EN %

2B ABSOLUTE VALUES, 1976 TO 1985

AND % CHANGE (1985/1984)  
2B.5 MISCELLANEOUS STATISTICS  
2B.5.1 NUMBER OF EMPLOYEES

2B VALEURS ABSOLUES, 1976 A 1985

ET VARIATIONS EN % (1985/1984)  
2B.5 STATISTIQUES D'EXPLOITATION  
2B.5.1 NOMBRE D'EMPLOYES

YEAR	CANADIAN NATIONAL CANADIEN NATIONAL	CANADIAN PACIFIC CANADIEN PACIFIQUE	CNCP	SUB TOTAL	TELE- GLOBE	TELESAT	TOTAL	ANNEE
1976	3970	1819		5789	1052	311	7152	1976
1977	3846	1781		5627	1121	333	7081	1977
1978	3737	1780		5517	1218	360	7095	1978
1979	3731	1840		5571	1238	387	7196	1979
1980			4084	4084	1293	407	5784	1980
1981			4191	4191	1347	430	5968	1981
1982			4154	4154	1361	482	5997	1982
1983			3969	3969	1391	513	5873	1983
1984			3937	3937	1356	520	5813	1984
1985			3906	3906	1180	573	5659	1985
PERCENTAGE CHANGE			-0.79	-0.79	-12.98	10.19	-2.65	VARIATION EN %

