

HF  
3221  
.I4  
no.  
85011-PM

---

---

# IMPORT ANALYSIS

---

---

CARBON AND ALLOY STEEL BARS  
AND BILLETS  
(INCLUDING ALLOY BLOOMS)

JULY TO SEPTEMBER 1984



Government  
of Canada

Regional Industrial  
Expansion

Gouvernement  
du Canada

Expansion industrielle  
régionale

Canada

Pub. No. 85011 - PM  
I.D. 2177  
September 17, 1985

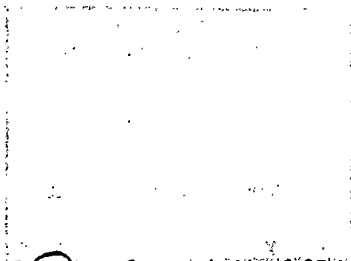
CARBON AND ALLOY STEEL BARS  
AND BILLETS  
(INCLUDING ALLOY BLOOMS)

JULY TO SEPTEMBER 1984



Further information available from:

Market Information and Analysis Division  
Market Development Branch  
Regional Industrial Expansion  
Ottawa, Canada, K1A 0H5  
Tel: (613) 995-8216



© Copyright 1984

Crown in Right of Canada. No part of this report may be reproduced without the written consent of the Minister of Regional Industrial Expansion.

C O N T E N T S

	<u>PAGE</u>
<u>SECTION I</u> - Scope of Analysis	3
<u>SECTION II</u> - Coverage of Analysis	3
<u>SECTION III</u> - Analysis of Imports	6
Table 1 - Carbon Steel Bars and Billets by Shape, Process and A.I.S.I. Type	8
Table 2 - Carbon Steel Bars and Billets by Country of Origin	9
Table 3 - Carbon Steel Bars and Billets by Region of Entry and Import Market Concentration	10
Table 4 - Alloy Steel Bars, Billets and Blooms by Shape, Process and A.I.S.I. Type	11
Table 5 - Alloy Steel Bars, Billets and Blooms by Country of Origin	13
Table 6 - Alloy Steel Bars, Billets and Blooms by Region of Entry and Import Market Concentration	15
<u>SECTION IV</u> - Canadian Importers	17
<u>SECTION V</u> - Foreign Exporters to Canada	19
<u>SECTION VI</u> - Market Overview	21
<u>SECTION VII</u> - Canadian and Foreign Tariffs	22

- 
- REFERENCES:
- (1) Customs Tariff: Items 37800-1, 37900-1, 37900-2, 37905-1, 37905-2, 37910-1, 37910-2, 43860-1 & 95002-1
  - (2) Canadian International Trade Classification (Cat. #65-502E, Statistics Canada)
  - (3) Imports by Commodities (Cat. #65-007, Statistics Canada) Commodity Codes 442-60, 442-90, 444-07, 444-27, 444-29, 444-60 and 444-90

## SECTION I

### SCOPE OF ANALYSIS

This report is based on a detailed analysis of imports of carbon and alloy steel bars and billets. Also included are alloy blooms. Only those shipments having a value of \$10,000 and over during the period July to September 1984 were examined.

The following Canadian International Trade Classification (C.I.T.C.) Import Commodity Codes were analysed:

- 442-60-39 Billets, carbon steel, not elsewhere specified
- 442-90-90 Billets, blooms, slabs, alloy steel, not elsewhere specified
- 444-07-39 Bars, carbon steel, not elsewhere specified, hot rolled, rounds, over 3" in diameter
- 444-27-10 Flat bars, alloy steel, not elsewhere specified, hot rolled
- 444-29-49 Bars, alloy steel, not elsewhere specified, hot rolled, rounds
- 444-29-59 Bars, alloy steel, not elsewhere specified, hot rolled, squares
- 444-29-89 Bars, alloy steel, not elsewhere specified, hot rolled
- 444-60-59 Bars, carbon steel, not elsewhere specified, cold drawn/cold finished, rounds
- 444-90-90 Bars, alloy steel, not elsewhere specified, cold drawn/cold finished

## SECTION II

### COVERAGE OF ANALYSIS

The quantities and values shown in Section III of this report do not correspond with published Statistics Canada data as only those shipments having a total value of \$10,000 and over were examined.

The following table indicates the percentage of values analyzed in this report in relation to published Statistics Canada data.

COVERAGE OF VALUES ANALYZED VIS-A-VIS STATISTICS CANADA PUBLISHED VALUES

JULY TO SEPTEMBER 1984

<u>Statistics Canada Import Commodity Code</u>	<u>Published Statistics Canada Data (\$,000)</u>	<u>Totals of Values \$10,000 &amp; over as Analyzed in this Report (\$,000)</u>	<u>% of Published Values Analyzed</u>
442-60-39 Billets, carbon steel, not elsewhere specified	14,112	14,059	100
442-90-90 Billets, blooms, slabs, alloy steel, not elsewhere specified	405	351	87
444-07-39 Bars, carbon steel, not elsewhere specified, hot rolled, rounds, over 3" in diameter	506	372	74
444-27-10 Flat bars, alloy steel, not elsewhere specified, hot rolled	5,882	4,824	82
444-29-49 Bars, alloy steel, not elsewhere specified, hot rolled, rounds	5,462	5,071	93
444-29-59 Bars, alloy steel, not elsewhere specified, hot rolled, squares	102	64	63
444-29-89 Bars, alloy steel, not elsewhere specified, hot rolled	1,319	937	71
444-60-59 Bars, carbon steel, not elsewhere specified, cold drawn/cold finished, rounds	1,420	1,102	78
444-90-90 Bars, alloy steel, not elsewhere specified, cold drawn/cold finished	1,403	1,081	77
TOTAL	30,611	27,861	91

The total imported value of both carbon and alloy steel products reported in Section III of this report amounted to \$26,022,350. This value does not correspond to figures shown for coverage of analyzed values over \$10,000 (\$27,861,000) as indicated in Section II, for the following reasons:

Documents (Invoices) not available for analysis	\$613,082
Documents (Invoices) misclassified	\$695,242
Products returned to U.S.A. after processing	<u>\$531,204</u>
Total	\$1,839,528

SECTION III

ANALYSIS OF IMPORTS

Imports of carbon and alloy steel bars, billets and blooms reported on documents examined during the period July to September 1984 amounted to a total quantity of 1,413,059 cwt for a value of \$26,022,350.

Carbon steel products analyzed in this report were of three main types: Bars, round, 3 inches and under, cold finished; Bars, round, over 3 inches which were 89 per cent hot rolled; Billets, hot rolled. Details of these three carbon steel products are shown in Tables 1, 2 and 3. A summary from the detailed tables showing "Percentages of Quantity" is shown below.

	<u>Bars, Round, 3" and under</u>	<u>Bars, Round, Over 3"</u>	<u>Billets</u>
Quantity (cwt)	26,339	15,176	976,363
Value ( \$ )	<u>888,544</u>	<u>450,825</u>	<u>13,779,181</u>
	( - % OF QUANTITY - )		
<u>A.I.S.I. Type</u>			
1018	30	4	*
1045	10	57	-
1144	7	-	-
12L14	38	7	42
Other	2	16	22
Not Known	<u>13</u>	<u>16</u>	<u>36</u>
	100	100	100
<u>Country of Origin</u>			
U.K.	14	8	*
France	-	54	22
West Germany	-	-	44
Italy	1	-	-
Spain	-	16	-
Sweden	2	5	33
South Africa	29	2	-
Japan	8	-	-
Brazil	2	-	-
U.S.A.	<u>44</u>	<u>15</u>	<u>1</u>
	100	100	100
<u>Region of Entry</u>			
West of Ontario	18	-	*
Ontario	49	100	43
East of Ontario	<u>33</u>	<u>-</u>	<u>57</u>
	100	100	100
<u>Import Market Concentration</u>			
Top 3 Importers	54	80	99
Top 5 Importers	73	91	100

\* - Less than one per cent



Alloy steel products analyzed in this report consisted of bars (round, flat and square), billets and blooms.

Alloy steel bars, all shapes, amounted to 387,082 cwt (=100%). Ninety-nine per cent were hot rolled. Alloy bars by A.I.S.I. type 5160-H accounted for 89 per cent. The United States was the major country of origin with 55 per cent, followed by France with 22 per cent. Imports through Ontario ports accounted for 72 per cent, followed by Quebec ports with 26 per cent. Flat bars accounted for 52 per cent, followed by round bars with 47 per cent.

Alloy steel billets and blooms amounted to 8,099 cwt (=100%). Ninety-five per cent were hot rolled with 5 per cent being cold finished. A.I.S.I. type 8620 accounted for 41 per cent. The United Kingdom was the major country of origin with 60 per cent, followed by the United States with 40 per cent. Eighty per cent were imported through ports in the province of Ontario, followed by 20 per cent in the province of Quebec.

NOTES: The following notes apply to all tables in this report.

Dollar values shown are based on selling price F.O.B. plant, in Canadian dollars. This selling price represents the value paid by the importer, excluding all freight, packing and insurance costs when specified. All trade discounts when applicable are also deducted from the selling price.

All percentage figures are rounded.

\* - Less than one per cent

\*\* - Less than five importers

A.I.S.I. - American Iron and Steel Institute

(1) - Other carbon A.I.S.I. types include: 1008, 1010, 1015, 1020, 1040, 1050, 1080, 1141, 1541

(2) - Other alloy A.I.S.I. types include: 4023, 4042, 4815, 6150, 8627, 9310-H

TABLE 1

## IMPORTS OF CARBON STEEL BARS AND BILLETS BY SHAPE, PROCESS AND A.I.S.I. TYPE

JULY TO SEPTEMBER 1984

Size (Inches)	Quantity (Cwt)	Value (\$)	PROCESS		A. I. S. I. T Y P E				Not Known	
			Hot Rolled (% of Quantity)	Cold Finished (% of Quantity)	1018	1045 ( - )	1144 % of	12L14 Quantity		Other (1) ( - )
<u>BARS - ROUND</u>										
Up to 1/2	288	6,547	-	100	85	-	-	-	-	15
Over 1/2 to 5/8	890	41,379	-	100	5	-	48	47	-	-
Over 5/8 to 3/4	980	23,454	-	100	60	-	-	-	40	-
Over 3/4 to 1	6,093	219,426	-	100	14	3	1	74	2	6
Over 1 to 1 1/8	716	40,507	-	100	40	9	3	22	-	26
Over 1 1/8 to 1 1/4	4,601	143,401	-	100	25	8	19	31	-	17
Over 1 1/4 to 1 3/8	550	15,919	-	100	51	17	-	28	-	4
Over 1 3/8 to 1 1/2	1,471	47,894	-	100	52	17	4	9	2	16
Over 1 1/2 to 1 5/8	352	10,831	-	100	-	14	5	45	-	36
Over 1 5/8 to 1 3/4	298	14,611	-	100	54	46	-	-	-	-
1 7/8	842	28,073	-	100	11	6	-	73	-	10
Over 1 7/8 to 2	3,743	127,977	-	100	17	17	1	48	-	17
Over 2 to 2 1/4	1,654	47,570	-	100	43	10	27	11	-	10
Over 2 1/4 to 2 1/2	1,744	53,300	-	100	46	22	-	21	-	11
Over 2 1/2 to 3	2,117	67,655	-	100	64	12	-	7	-	17
	26,339	888,544	-	100	30	10	7	38	2	13
Over 3 to 3 5/8	4,082	121,631	97	3	3	70	-	28	-	-
Over 3 5/8 to 4	651	24,120	21	79	66	4	-	-	21	9
Over 4 to 6	1,461	49,442	90	10	3	32	-	-	58	7
Over 6	8,103	200,629	100	-	-	65	-	-	18	17
Not Known	879	55,003	-	100	*	-	-	42	22	36
	15,176	450,825	89	11	4	57	-	7	16	16
<u>BILLETS</u>	976,363	13,779,181	100	-	*	-	-	42	22	36
TOTAL- Carbon Steel	1,017,878	15,118,550								

TABLE 2

IMPORTS OF CARBON STEEL BARS AND BILLETS BY COUNTRY OF ORIGIN

JULY TO SEPTEMBER 1984

Size (inches)	Quantity (cwt)	C O U N T R Y   O F   O R I G I N										
		U.K.	France	West			South			Japan	Brazil	U.S.A.
				Germany	Italy	Spain	Sweden	Africa				
		(   -   % of Quantity   -   )										
<u>BARS - ROUND</u>												
Up to 1/2	288	-	-	-	-	-	-	-	62	38	-	-
Over 1/2 to 5/8	890	-	-	-	-	-	-	-	5	-	47	48
Over 5/8 to 3/4	980	-	-	-	-	-	-	-	55	4	-	41
Over 3/4 to 1	6,093	-	-	-	-	-	-	1	16	47	-	79
Over 1 to 1 1/8	716	22	-	-	-	-	-	-	12	6	-	60
Over 1 1/8 to 1 1/4	4,601	38	-	-	2	-	-	-	28	2	-	30
Over 1-1/4 to 1-3/8	550	28	-	-	-	-	-	-	34	10	-	28
Over 1-3/8 to 1-1/2	1,471	9	-	-	-	-	-	7	61	7	-	16
Over 1-1/2 to 1-5/8	352	81	-	-	-	-	-	-	-	14	-	5
Over 1-5/8 to 1-3/4	298	-	-	-	-	-	-	-	54	18	-	29
1-7/8	842	10	-	-	-	-	-	-	5	6	-	78
Over 1-7/8 to 2	3,743	17	-	-	3	-	3	-	18	12	-	46
Over 2 to 2-1/4	1,654	17	-	-	-	-	-	-	39	10	-	34
Over 2-1/4 to 2-1/2	1,744	7	-	-	-	-	4	-	45	24	-	21
Over 2-1/2 to 3	2,117	7	-	-	-	-	3	-	53	14	-	23
	26,339	14	-	-	1	-	2	-	29	8	2	44
Over 3 to 3 5/8	4,082	28	-	-	-	30	20	-	3	-	-	20
Over 3 5/8 to 4	651	-	21	-	-	-	-	-	33	-	-	46
Over 4 to 6	1,461	-	74	-	-	8	-	-	3	-	-	15
Over 6	8,103	-	87	-	-	13	-	-	-	-	-	*
Not Known	879	-	-	-	-	-	-	-	-	-	-	100
	15,176	8	54	-	-	16	5	-	2	-	-	15
<u>BILLETS</u>	<u>976,363</u>	*	22	44	-	-	33	-	-	-	-	1
Total - Carbon Steel	1,017,878											

TABLE 3

IMPORTS OF CARBON STEEL BARS AND BILLETS BY REGION OF ENTRY AND IMPORT MARKET CONCENTRATION

JULY TO SEPTEMBER 1984

<u>Size</u> (inches)	<u>Quantity</u> (cwt)	<u>REGION OF ENTRY</u>			<u>IMPORT MARKET CONCENTRATION</u>	
		<u>West of Ontario</u> ( - % of Quantity - )	<u>Ontario</u> ( - % of Quantity - )	<u>East of Ontario</u> ( - % of Quantity - )	<u>Market Shares</u> <u>Top 3 Importers</u> ( - % of Quantity - )	<u>Top 5 Importers</u> ( - % of Quantity - )
<u>BARS - ROUND</u>						
Up to 1/2	288	85	-	15	100	**
Over 1/2 to 5/8	890	5	95	-	100	**
Over 5/8 to 3/4	980	15	85	-	94	100
Over 3/4 to 1	6,093	9	77	14	88	94
Over 1 to 1 1/8	716	41	27	33	74	89
Over 1 1/8 to 1 1/4	4,601	8	59	34	77	93
Over 1 1/4 to 1 3/8	550	27	-	73	83	100
Over 1 3/8 to 1 1/2	1,471	28	9	64	70	85
Over 1 1/2 to 1 5/8	352	19	36	45	100	**
Over 1-5/8 to 1 3/4	298	38	8	54	92	**
1-7/8	842	6	83	11	89	100
Over 1-7/8 to 2	3,743	19	51	30	72	85
Over 2 to 2-1/4	1,654	42	6	52	70	92
Over 2-1/4 to 2-1/2	1,744	26	20	53	73	92
Over 2-1/2 to 3	<u>2,117</u>	<u>16</u>	<u>19</u>	<u>65</u>	<u>77</u>	<u>91</u>
	26,339	18	49	33	54	73
Over 3 to 3 5/8	4,082	-	97	3	100	**
Over 3 5/8 to 4	651	54	13	33	87	100
Over 4 to 6	1,461	61	15	24	66	100
Over 6	8,103	18	1	81	99	**
Not Known	<u>879</u>	<u>-</u>	<u>100</u>	<u>-</u>	<u>100</u>	<u>**</u>
	15,176	18	34	48	80	91
<u>BILLETS</u>	<u>976,363</u>	*	43	57	99	100
Total - Carbon Steel	1,017,878					

TABLE 4

IMPORTS OF ALLOY STEEL BARS, BILLETS AND BLOOMS BY SHAPE, PROCESS AND A.I.S.I. TYPE

JULY TO SEPTEMBER 1984

Size (inches)	Quantity (cwt)	Value (\$)	PROCESS		A. I. S. I. T Y P E						
			Hot Rolled (% of Quantity)	Cold Finished	4130	4140 (	4340 - %	5160-H of Quantity	8620 - )	Other (2)	Not Known
<u>BARS - ROUND</u>											
Up to 5/8	66,801	1,933,238	100	*	*	-	*	97	-	-	3
Over 5/8 to 7/8	34,449	1,008,353	100	*	-	1	-	97	-	1	1
Over 7/8 to 1 1/2	46,803	1,261,412	100	*	-	2	*	97	*	1	-
Over 1 1/2 to 1 3/4	1,681	109,570	15	85	27	59	4	-	10	-	-
Over 1 3/4 to 2	850	47,664	99	1	1	35	24	-	9	31	-
Over 2 to 2 1/2	1,226	67,842	83	17	*	15	-	-	26	25	34
Over 2 1/2 to 3	2,270	86,849	87	13	-	15	21	-	10	31	23
Over 3 to 3 1/2	1,232	86,427	88	12	-	52	23	-	-	5	20
Over 3 1/2 to 4	1,775	68,489	97	3	-	60	23	-	-	-	17
Over 4 to 4 1/2	2,148	124,904	96	4	-	51	14	-	22	4	9
Over 4 1/2 to 5	1,679	56,601	100	-	-	40	14	-	22	-	24
Over 5 to 5 1/2	955	31,085	100	-	-	61	20	-	8	-	11
Over 5 1/2 to 6	804	28,826	100	-	-	43	28	-	10	-	19
Over 6 to 7	3,044	131,844	100	*	1	47	22	-	8	-	22
Over 7	6,141	240,179	87	13	10	42	27	-	15	-	6
Not Known	10,978	368,132	100	-	-	26	2	-	8	-	64
	182,836	5,651,415	98	2	1	8	3	78	2	1	7

TABLE 4 (Continued)

IMPORTS OF ALLOY STEEL BARS, BILLETS AND BLOOMS BY SHAPE, PROCESS AND A.I.S.I. TYPE

JULY TO SEPTEMBER 1984

Size (inches)	Quantity (cwt)	Value (\$)	PROCESS		A. I. S. I. TYPE						
			Hot Rolled (% of Quantity)	Cold Finished (% of Quantity)	4130	4140 (	4340 - %	5160-H of Quantity	8620 - )	Other (2)	Not Known
<u>BARS - FLAT</u>											
Up to 3/8	81,507	1,978,826	100	*	2	-	*	98	-	-	*
Over 3/8 to 1/2	90,389	2,120,007	100	-	-	*	-	100	-	-	-
Over 1/2 to 5/8	12,142	290,812	98	2	-	-	-	98	-	-	2
Over 5/8 to 3/4	6,702	169,029	100	-	-	2	-	92	-	-	6
Over 3/4 to 1 1/8	10,285	254,005	99	1	-	1	1	98	-	-	-
1-1/8 to 3	457	27,741	98	2	-	90	2	-	8	-	-
Not Known	<u>1,186</u>	<u>27,437</u>	<u>100</u>	<u>-</u>	<u>-</u>	<u>-</u>	<u>-</u>	<u>100</u>	<u>-</u>	<u>-</u>	<u>-</u>
	202,668	4,867,857	100	*	1	*	*	98	*	-	1
<u>BARS - SQUARE</u>											
2-1/2 to 4	338	32,517	85	15	-	85	15	-	-	-	-
<u>BARS - Not Known</u>											
	1,240	100,543	100	-	-	-	-	-	-	-	100
<u>BILLETS AND BLOOMS</u>											
	<u>8,099</u>	<u>251,468</u>	95	5	15	19	14	-	41	*	11
TOTAL - Alloy Steel	395,181	10,903,800									

TABLE 5

## IMPORTS OF ALLOY STEEL BARS, BILLETS AND BLOOMS BY COUNTRY OF ORIGIN

JULY TO SEPTEMBER 1984

Size (inches)	Quantity (cwt)	C O U N T R Y   O F   O R I G I N										
		U.K.	Austria	France	West Germany ( - % of )	Italy of	Spain Quantity	Sweden -	Czecho- slovakia	Japan	Brazil	U.S.A.
<b>BARS - ROUND</b>												
Up to 5/8	66,801	-	-	55	-	-	-	-	-	-	41	5
Over 5/8 to 7/8	34,449	-	-	93	*	-	-	-	-	-	4	3
Over 7/8 to 1 1/2	46,803	-	-	1	-	-	*	-	-	-	96	3
Over 1 1/2 to 1 3/4	1,681	-	-	-	-	-	13	-	-	-	-	87
Over 1-3/4 to 2	850	1	-	14	-	-	44	-	8	-	-	33
Over 2 to 2 1/2	1,226	-	-	9	-	-	15	26	-	-	-	50
Over 2 1/2 to 3	2,270	-	-	-	*	-	23	7	6	-	-	64
Over 3 to 3 1/2	1,232	-	-	45	2	-	20	7	9	-	-	18
Over 3 1/2 to 4	1,775	-	-	54	3	-	23	5	6	-	-	9
Over 4 to 4 1/2	2,148	-	-	27	-	-	41	9	-	-	-	23
Over 4 1/2 to 5	1,679	-	-	35	3	-	23	22	17	-	-	-
Over 5 to 5 1/2	955	-	-	30	-	-	51	11	8	-	-	-
Over 5 1/2 to 6	804	-	-	57	-	-	23	-	-	-	-	19
Over 6 to 7	3,044	1	-	56	-	-	4	-	7	-	-	32
Over 7	6,141	3	-	83	14	-	-	-	-	-	-	1
Not Known	10,978	34	-	-	-	-	-	5	-	-	-	61
TOTAL	182,836	2	-	43	1	-	2	1	1	-	40	10

TABLE 5 (Continued)

IMPORTS OF ALLOY STEEL BARS, BILLETS AND BLOOMS BY COUNTRY OF ORIGIN

JULY TO SEPTEMBER 1984

Size (inches)	Quantity (cwt)	C O U N T R Y O F O R I G I N										
		U.K.	Austria	France	West Germany ( - % of	Italy of	Spain Quantity	Sweden	Czecho- slovakia	Japan	Brazil	U.S.A.
<u>BARS - FLAT</u>												
Up to 3/8	81,507	-	-	-	-	-	-	-	-	1	-	99
Over 3/8 to 1/2	90,389	-	*	6	-	-	-	-	-	*	-	94
Over 1/2 to 5/8	12,142	-	-	-	-	-	-	-	-	1	-	99
Over 5/8 to 3/4	6,702	-	1	-	-	-	-	-	-	2	-	97
Over 3/4 to 1-1/8	10,285	-	1	12	-	-	-	-	-	-	-	87
Over 1 1/8 to 3	457	-	49	-	-	-	-	-	-	40	-	11
Not Known	1,186	-	-	-	-	-	-	-	-	-	-	100
	202,668	-	*	3	-	-	-	-	-	1	-	96
<u>BARS - SQUARE</u>												
2-1/2 to 4	338	-	27	-	-	-	-	-	-	-	-	73
<u>BARS - Not Known</u>	1,240	-	-	-	-	80	-	-	-	-	-	20
<u>BILLETS AND BLOOMS</u>	8,099	60	-	-	-	-	-	-	-	-	-	40
TOTAL - Alloy Steel	395,181											



TABLE 6

## IMPORTS OF ALLOY STEEL BARS, BILLETS AND BLOOMS BY REGION OF ENTRY AND IMPORT MARKET CONCENTRATION

JULY TO SEPTEMBER 1984

Size (inches)	Quantity (cwt)	REGION OF ENTRY			IMPORT MARKET CONCENTRATION	
		West of Ontario ( - % of Quantity - )	Ontario of Quantity	East of Ontario ( - )	Market Shares	
					Top 3 Importers ( - % of Quantity - )	Top 5 Importers ( - % of Quantity - )
<u>BARS - ROUND</u>						
Up to 5/8	66,801	-	77	23	100	**
Over 5/8 to 7/8	34,449	1	6	93	99	99
Over 7/8 to 1 1/2	46,803	*	22	78	99	100
Over 1 1/2 to 1-3/4	1,681	10	90	-	90	100
Over 1-3/4 to 2	850	32	52	15	99	**
Over 2 to 2 1/2	1,226	42	49	9	76	100
Over 2 1/2 to 3	2,270	-	100	-	73	100
Over 3 to 3 1/2	1,232	19	46	35	78	93
Over 3 1/2 to 4	1,775	39	34	28	83	97
Over 4 to 4 1/2	2,148	28	50	21	68	96
Over 4 1/2 to 5	1,679	10	55	35	87	100
Over 5 to 5 1/2	955	12	58	30	89	**
Over 5 1/2 to 6	804	15	43	43	100	**
Over 6 to 7	3,044	13	37	50	82	93
Over 7	6,141	22	14	64	97	**
Not Known	<u>10,978</u>	<u>34</u>	<u>66</u>	<u>-</u>	<u>100</u>	<u>**</u>
	182,836	5	45	50	55	60

TABLE 6 (Continued)

IMPORTS OF ALLOY STEEL BARS, BILLETS AND BLOOMS BY REGION OF ENTRY AND IMPORT MARKET CONCENTRATION

JULY TO SEPTEMBER 1984

Size (inches)	Quantity (cwt)	REGION OF ENTRY			IMPORT MARKET CONCENTRATION	
		West of Ontario ( - % of Quantity - )	Ontario of Quantity	East of Ontario ( - )	Market Shares Top 3 Importers ( - % of Quantity - )	Top 5 Importers
<u>BARS - FLAT</u>						
Up to 3/8	81,507	1	99	*	99	100
Over 3/8 to 1/2	90,389	*	94	6	100	100
Over 1/2 to 5/8	12,142	1	99	-	99	**
Over 5/8 to 3/4	6,702	8	90	1	96	100
Over 3/4 to 1 1/8	10,285	-	87	13	99	**
Over 1 1/8 to 3	457	40	11	49	98	**
Not Known	<u>1,186</u>	-	<u>100</u>	-	<u>100</u>	<u>**</u>
	202,668	1	95	4	98	99
<u>BARS - SQUARE</u>						
2-1/2 to 4	338	-	73	27	100	**
<u>BARS - Not Known</u>	1,240	-	100	-	100	**
<u>BILLETS AND BLOOMS</u>	<u>8,099</u>	-	80	20	89	100
TOTAL- Alloy Steel	395,181					

SECTION IV

CANADIAN IMPORTERS

Importers of carbon and alloy steel bars and billets and alloy blooms during the period July to September 1984, as indicated in Section III, are listed below in alphabetical order.

<u>NAME</u>	<u>ADDRESS</u>
A.J. Forsyth & Co. Ltd.	New Westminster, B.C.
Accurpress Mfg. Ltd.	Richmond, B.C.
Acier Solac Ltée	Montréal, Québec
Acme Highway Products Corp.	Oakville, Ontario
Alberta Forge Products Ltd.	Edmonton, Alberta
Allwynn Steel Marketing Inc.	Regina, Saskatchewan
Atlas Steels, Div. of Rio Algom Ltd.	Welland, Ontario
B.S.C. Canada Alloys, Div. of British Steel Canada Ltd.	Edmonton, Alberta
	Richmond, B.C.
	Montréal, Québec
Balfour Guthrie Ltd.	Vancouver, B.C.
Besser Canada Ltd.	Rexdale, Ontario
Bombardier Inc.	Valcourt, Québec
CTS of Canada Ltd.	Streetsville, Ontario
Canada Forging, Div. Toromont Ind. Ltd.	Welland, Ontario
Canadian ASE Ltd.	Downsview, Ontario
Canadian Kloeckner Ltd.	Toronto, Ontario
Canadian Racing Plate	Niagara Falls, Ontario
Drummond McCall Inc.	Hamilton, Ontario
	Winnipeg, Manitoba
Dura Products Ltd.	Swift Current, Sask.
Eaton Yale Ltd. (Suspension Div.)	Chatham, Ontario
	Wallaceburg, Ontario
Faultless Doerner Mfg. Co. Ltd.	Waterloo, Ontario
Galt British Forging Specialists Co.	Cambridge, Ontario
General Motors of Canada Ltd.	London, Ontario
Grey Forgings & Stampings Ltd.	Brampton, Ontario
H.J. Skelton Canada Ltd.	London, Ontario
Hendrickson Mfg. (Canada) Ltd.	Stratford, Ontario
Holland Hitch of Canada Ltd.	Woodstock, Ontario
International Harvester Co. Ltd.	Hamilton, Ontario
Ivaco Inc.	Montréal, Québec
KMW Systems Inc.	London, Ontario
Kanematsu-Gosho (Canada) Ltd.	Toronto, Ontario
Kendan Mfg. Ltd.	Windsor, Ontario
Laurel Steel Products Ltd.	Burlington, Ontario
Lister Bolt & Chain Ltd.	Richmond, B.C.
McRobert Spring Co.	Montréal, Québec
Midland Steel Ltd.	Montréal, Québec
Omnitrade Ltd.	Toronto, Ontario

CANADIAN IMPORTERS (Continued)

NAME

ADDRESS

P.C. Drop Forgings Ltd.	Port Colborne, Ontario
Pacal Blades of Canada Ltd.	Edmonton, Alberta
Peelco Mfg. Ltd.	Oakville, Ontario
Poulson Ind.	Rexdale, Ontario
Pratt & Whitney Canada Inc.	Longueuil, Québec
Rockwell Int'l of Canada Ltd.	Lacolle, Québec
	Chatham, Ontario
Russel Steel Inc.	Downsview, Ontario
S.K.F. Steel Ltd.	Agincourt, Ontario
Spar Aerospace Ltd.	Toronto, Ontario
St. Catharines Screw Machine Prod. Ltd.	St. Catharines, Ontario
Teledyne Canada Vascan Alloys	Rexdale, Ontario
The De Havilland Aircraft of Canada Ltd.	Downsview, Ontario
Thyssen Canada Ltd.	Rexdale, Ontario
Thyssen Marathon Canada Ltd.	Mississauga, Ontario
Treco Machine & Tool Ltd.	Scarborough, Ontario
Triplex Engineering Ltd.	Pointe-Claire, Québec
Union Drawn Steel Co.	Hamilton, Ontario
Vittforge	St. Hyacinthe, Québec
Weatherhead Div. Dana Corp.	St. Thomas, Ontario
Welland Forge Co.	Welland, Ontario
Western Rock Bit Co.	Calgary, Alberta
Wilkinson Co. Ltd.	Saskatoon, Sask.
Wirth Ltd.	Montréal, Québec

SECTION V

FOREIGN EXPORTERS TO CANADA

Major exporters to Canada with total shipments of \$25,000 and over are listed below in descending order of dollar value. These exporters accounted for 99 per cent of the total value of imports.

<u>NAME</u>	<u>ADDRESS</u>	
Svenskt Stal	Lulea, Sweden	
Thyssen-Stahlunion GmbH	Dusseldorf, W. Germany	
Kentucky Electric Steel Co.	Coalton, KY	USA
Aciers d'Allevard	Goncelin, France	
Cia Acos Especiais	Belo Horizonte, Brazil	
Cie Francaise des aciers spéciaux	Paris, France	
	Dunkerque, France	
Bayou Steel Corp.	La Place, LA	USA
GMC	Detroit, MI	USA
Krupp Handel GmbH	Dusseldorf, W. Germany	
British Steel Corp. (Exports) Ltd.	Rotherham,	UK
Sharon Steel Corp.	Sharon, PA	USA
Bliss & Laughlin Steel (Div. of Axia Inc.)	Medina, OH	USA
United States Steel International Inc.	Pittsburg, PA	USA
Lasalle Steel Co.	Griffith, IN	USA
	Hammond, IN	USA
Aceros de Llodio S.A.	Llodio (Alava)	SPAIN
Brymbo Steel Works Ltd.	Wrexham	UK
LTV Steel Co.	Cleveland, OH	USA
SKF Steel Hellefors AB	Hellefors, Sweden	
Okaya & Co.	Tokyo, Japan	
Laurel Steel of New England Inc.	Mansfield, MA	USA
Cavexsa (USA) Inc.	Pennsauken, NJ	USA
Carpenter Technology Corp.	Reading,	UK
Bargos Steel Inc.	Holland, OH	USA
Namascor (PTY) Ltd.	Alrode, Rep. S. Africa	
Siderval	Talamona, Italy	
Eaton Steel Corp.	Oak Park, MI	USA
Ampco Pittsburg Corp.	Plymouth, MI	USA
Summerville Steel Co.	Kent, WA	USA
H.J. Skelton & Co. Ltd.	Reading,	UK
Metals Unlimited Inc.	Deer Park, NY	USA
National Cold Drawn Inc.	Schaumburg, IL	USA
Green River Steel	Owensboro, KY	USA
Buck & Lloyd (Sheffield) Ltd.	Sheffield,	UK
Aerospace Specification Metals	Los Angeles, CA	USA

FOREIGN EXPORTERS TO CANADA (Continued)

<u>NAME</u>	<u>ADDRESS</u>
Thyssen Edelstahlwerke AG	Krefeld, W. Germany
Turret Steel Corp.	Leetsdale, PA USA
Holland Hitch Co.	Holland, MI USA
Merriell & Kreher	Franklin Park, IL USA
Vereinigte Edel-Stahlwerke AG	Vienna, Austria
Flather Bright Steels (PTY) Ltd.	Transvaal, Rep. S. Africa
Villares Ind.	Sao Paulo, Brazil
Mono-Die Engineers (PTY) Ltd.	Dunswart, Rep. S. Africa
Ferromet Foreign Trade Corp.	Prague, Czechoslovakia
Standard Steel	Burnham, PA USA
Mac Steel Div. Quanex Corp.	Jackson, MI USA

SECTION VI

MARKET OVERVIEW

TABLE 1 - Carbon and Alloy Steel Bars-Hot Rolled and Cold-Finished

<u>Year</u>	<u>Domestic Shipments</u>	+	<u>Imports</u>	=	<u>Apparent Supply</u>	<u>Imports as % of Apparent Supply</u>
			( - 000 Metric Tons - )			
1979	1,188	+	134	=	1,322	10.1
1980	951	+	83	=	1,034	8.0
1981	943	+	146	=	1,089	13.4
1982	672	+	107	=	779	13.7
1983	753	+	140	=	893	15.7
1984	958	+	175	=	1,133	15.4

1. The apparent supply of domestic shipments of carbon and alloy bar has declined since the peak year of 1979 while import penetration has increased. The apparent supply has been calculated in the above manner because there are no specific export statistics for carbon and alloy bar.
2. The Canadian producers of these products are located in Quebec, Ontario, Manitoba, Alberta and British Columbia. Their capacity to produce carbon and alloy bar as well as bar-size shapes and reinforcing bar is approximately 2.4 million tonnes.

TABLE 2 - The apparent consumption of bars (carbon and alloy), shapes and cold-finished bars

<u>Year</u>	<u>Total Shipments</u>	<u>Exports</u>	<u>Imports</u>	<u>Apparent Consumption</u>
		( - 000 Metric Tons - )		
1979	2,150	166	188	2,172
1980	2,106	306	127	1,927
1981	2,032	286	217	1,963
1982	1,537	223	148	1,462
1983	1,645	303	199	1,541
1984	1,928	300	241	1,869

The existing capacity in Canada has been and is expected to be, sufficient to meet domestic demands in the near future since forecasts by the International Iron and Steel Institute indicate the demand for steel products in North America will increase at the rate of 1 per cent per year from 1984 to 1990.

3. It appears that a majority of the imports of carbon and alloy bars are grades or sizes of steel not currently being produced in Canada. Therefore, the potential for import substitution could be limited since the volume, grade and size of products being imported may not justify the production in Canada.

SOURCE: Resource Processing Industries  
Department of Regional Industrial Expansion

SECTION VII

CANADIAN AND FOREIGN TARIFFS

CANADA

Carbon and alloy steel bars, billets and alloy blooms included in this analysis were dutiable under the following most commonly applied tariff items.

<u>Tariff Item</u>	<u>Description</u>	<u>British Preferential Tariff</u>	<u>Most Favoured Nation Tariff</u>	<u>General Tariff</u>	<u>General Preferential Tariff</u>	<u>U.K. &amp; Ireland</u>
37800-1	Iron or steel, semi-finished, namely: blooms, slabs, billets or sheet bars.					
	.....1984	Free	4.5%	10%	Free	4%
	.....1985	Free	4.3%	10%	Free	4%
	Bars or rods of iron or steel, hot-rolled, plain or deformed, namely: rounds, half-rounds, ovals, half-ovals, squares, round-cornered squares, hexagons, octagons or other multisided bars or rods; flats, 13/64 inch or more in thickness and eight inches or less in width:					
37900-1	Alloy .....					
	.....1984	5%	10%	20%	5%	10%
	.....1985	5%	10%	20%	5%	10%
37900-2	Other .....					
	.....1984	5%	8.4%	20%	Free	6.8%
	.....1985	5%	7.9%	20%	Free	6.8%
	Bars or rods of iron or steel, as described in tariff items 37900-1 and 37900-2, cold-rolled or cold-drawn:					
37905-1	Alloy .....					
	.....1984	5%	12.5%	25%	5%	12.5%
	.....1985	5%	12.5%	25%	5%	12.5%
37905-2	Other .....					
	.....1984	5%	10.3%	25%	Free	8%
	.....1985	5%	9.5%	25%	Free	8%



CANADIAN AND FOREIGN TARIFFS (Continued)

<u>Tariff Item</u>	<u>Description</u>	<u>British Preferential Tariff</u>	<u>Most Favoured Nation Tariff</u>	<u>General Tariff</u>	<u>General Preferential Tariff</u>	<u>U.K. &amp; Ireland</u>
	Bars or rods of iron or steel, as described in tariff items 37900-1 and 37900-2, further processed than hot- or cold-rolled or cold-drawn, or otherwise processed:					
37910-1	Alloy .....1984	5%	12.5%	25%	5%	12.5%
	.....1985	5%	12.5%	25%	5%	12.5%
37910-2	Other .....1984	5%	10.3%	25%	Free	8%
	.....1985	5%	9.5%	25%	Free	8%
43860-1	Bars of iron or steel, hot-rolled, coated or not, round, not less than 1-7/16 inches in diameter, in the coil, for use in the manufacture of front wheel spindles for motor vehicles....1984	Free	Free	20%	Free	Free
	.....1985	Free	Free	20%	Free	Free
95002-1	All parts and accessories and parts thereof, except tires and tubes, when imported for use as original equipment in automobiles to be produced in Canada by a manufacturer of automobiles.....1984	Free	Free	-	-	-
	.....1985	Free	Free	-	-	-

The two principal countries of export and their tariff arrangement included in this analysis were:

West Germany - Most Favoured Nation

United States - Most Favoured Nation

Tariff items and rates of duty are subject to change, and need to be verified by direct reference to:

Tariff Programs  
Revenue Canada  
Customs and Excise  
Ottawa, Ontario  
K1A 0L5  
Tel: (613) 992-8589

FOREIGN COUNTRIES

Inquiries concerning tariffs and other government trade regulations in foreign countries should be directed to:

Trade Information Centre  
International Bureaux  
External Affairs Canada  
Ottawa, Ontario  
K1A 0G2  
Tel: (613) 993-6435

