



Fisheries and Oceans
Canada

Pêches et Océans
Canada

Canadian
Coast Guard

Garde côtière
canadienne

Notices to Mariners

Edition No. 09/2024
September 27, 2024



Safety First, Service Always

Monthly Summary of Temporary and Preliminary Notices

Canada 

Notices to Mariners – Monthly Summary of Temporary and Preliminary Notices
Edition No. 09-2024

Aussi disponible en français :
Avis aux navigateurs – Sommaire mensuel des avis temporaires et préliminaires
Édition n° 09-2024

Published under the Authority of:

Canadian Coast Guard Programs
Aids to Navigation and Waterways
Fisheries and Oceans Canada
Montreal, QC H2Y 2E7

For more information, contact DFO.Notmar-Notmar.MPO@dfo-mpo.gc.ca.

© His Majesty the King in Right of Canada,
as represented by the Minister of Fisheries, Oceans
and the Canadian Coast Guard, 2024.

Cat. No. Fs151-19E-PDF (Electronic PDF, English)
ISSN 2561-5106

Cat. No. Fs151-19F-PDF (Electronic PDF, French)
ISSN 2561-5114

A web version is available here:

<https://www.notmar.gc.ca/temp-pre-monthly> (English)

<https://www.notmar.gc.ca/temp-pre-mensuel> (French)

Explanatory Notes

Geographical positions refer directly to the graduations of the largest scale Canadian Hydrographic Service chart (unless otherwise indicated).

Bearings refer to the true compass and are measured clockwise from 000° (North) clockwise to 359°; those relating to lights are from seaward.

Visibility of lights is that in clear weather.

Depths - The units used for soundings (metres, fathoms or feet) are stated in the title of each chart.

Elevations are normally given above Higher High Water, Large Tide (unless otherwise indicated).

Explanation of Temporary and Preliminary Notices to Mariners

Certain Notices to Mariners appearing in the monthly editions have a (T) or (P) appended to the regular number. These letters indicate that the information contained in the notice is of a temporary or preliminary nature, respectively.

Temporary (T) Notices

If a temporary change in conditions affecting navigation exists and if the change will be effective for a period of over three months, a temporary (T) notice will be published. Temporary changes which are effective for periods of less than three months will not normally be published (unless it is of exceptional interest). Otherwise, information will be promulgated as a Navigational Warning (NAVWARN) by the Canadian Coast Guard Marine Communications and Traffic Services (MCTS) Centre(s) in the affected area. (T) notices will be cancelled as necessary.

Please note that (T) notices with an end date will be automatically cancelled once the end date has passed. In the event of a change to these notices, a new Notice to Mariners will be issued.

Preliminary (P) Notices

- a. When important changes affecting navigation are to take place in the near future, a Notice to Mariners describing the change will be published, so that mariners will have advance information on the change. Such notices will be designated (P).
- b. When a change in conditions affecting navigation has taken place but full information is not available, a preliminary (P) notice giving available information will be published. This notice will be followed by a regular notice when complete information becomes available. The regular notice will cancel the (P) notice.
- c. When a change has taken place which is too complex to describe in a written notice, a (P) notice giving general information will be published. This notice will explain that follow up action will be taken to update charts by publishing patch corrections, new editions or new charts.

Please note that following the expiry of the 90-day comment or objection period, (P) notices describing proposed changes or intention to discontinue will be automatically cancelled. In the event of a change to these notices, a new Notice to Mariners will be issued.

Action Required on Receipt Of (T) & (P) Notices

It is not customary to make permanent corrections to charts and publications from (T) & (P) notices. On receipt of such notices, the information they contain should be noted in pencil on the affected charts and/or publications.

Caution

Mariners are reminded that charts and publications are not corrected from (T) & (P) notices when purchased from suppliers. For the list of charts affected by (T) & (P) notices, please refer to the index on page ii of this publication.

Table of Contents

Newfoundland and Labrador Coast **1**

Temporary Notices

*306(T)/24	Larkin Point to / à Cape Anguille – Marine Works: Wharf Construction	1
*611(T)/24	Great St. Lawrence Harbour and / et Lamaline Harbour – Aid to Navigation Temporarily Discontinued	1
*719(T)/24	Burin Peninsula to / à Saint-Pierre – Waterway information	1
*808(T)/24	Cape St Mary's to / à Argentinia – Marine Works – Dredging Operations	2

Preliminary Notices

*720(P)/24	Hamilton Sound: Eastern Portion / Partie-est– Notice of Proposed Changes.....	3
*907(P)/24	Hamilton Sound: Eastern Portion / Partie-est – Rear Range to be Discontinued	3

Atlantic Coast **4**

Temporary Notices

*111(T)/21	Rivière des Prairies – Construction Operations	4
*207(T)/22	Port de Québec – Obstruction	4
*411(T)/22	Lac Saint-Pierre – Obstruction: Floating and Falling Debris	4
*809(T)/22	Port de Montréal – Waterway Information: Calculation of Under-Keel Clearance	4
*1214(T)/22	Cap des Rosiers à/to Chandler – Obstruction: Sunken Barge and Excavator	5
*314(T)/23	Approches to / Approches à Bay of Fundy / Baie de Fundy – Obstruction : Scientific Moorings	5
*315(T)/23	Georges Bank / Banc de Georges: Eastern Portion / Partie Est – Obstruction : Scientific Moorings	5
*316(T)/23	Havre de Gaspé – Caution Concerning Aquaculture Sites	6
*317(T)/23	Baie des Chaleurs / Chaleur Bay – Caution Concerning Aquaculture Sites	7
*318(T)/23	Plans, Baie des Chaleurs/Chaleur Bay (côte nord/North Shore) – Caution Concerning Aquaculture Sites	7
*509(T)/23	St. Marys Bay – Obstruction : Wreck.....	8
*710(T)/23	Port de Montréal – Waterway information – Mooring prohibited	8
*711(T)/23	Cap des Rosiers à/to Chandler – Obstruction : Scientific Moorings	8
*214(T)/24	Batiscan au/to Lac Saint-Pierre – Waterway Information: Shallow Depths Reported.....	9
*309(T)/24	Mouillages et Installations Portuaires/Anchorages and Harbour Installations - Haute Côte-Nord – Obstruction: Anchors.....	9
*310(T)/24	Mouillages et Installations Portuaires/Anchorages and Harbour Installations - Haute Côte-Nord – Marine Works: Wharf Construction	10
*721(T)/24	Cap Éternité à/to Saint Fulgence – Obstruction: Submerged Object	10
*722(T)/24	Baie des Sept-Îles – Obstruction: Submerged Object	10
*723(T)/24	Mouillages et Installations Portuaires/Anchorages and Harbour Installations - Haute Côte-Nord – Obstruction: Submerged Object	10
*724(T)/24	Cap aux Oies à/to Sault-au-Cochon – Obstruction: Lost Anchor.....	10
*725(T)/24	Port de Montréal – Obstruction: Lost Anchors	11
*726(T)/24	Sorel-Tracy à/to Otterburn-Park – Obstruction: Lost Anchors	11

*811(T)/24	Sorel-Tracy à/to Varennes – Obstruction – Submerged Object.....	11
------------	---	----

Preliminary Notices

No notices applicable for this edition.....		11
---	--	----

Inland Waters	12
----------------------	-----------

Temporary Notices

*909(T)/14	Kingston Harbour and Approaches/et les approches – Dock Unserviceable.....	12
*814(T)/16	Main Duck Island to/à Scotch Bonnet Island – Partially Submerged Fixed Steel Barges	12
*1219(T)/16	Toronto to/à Hamilton – Construction Operations.....	12
*108(T)/17	Harbours in Lake Erie/Havres dans le lac Érié – Unlit Buoys Temporarily Repositioned.	12
*309(T)/17	Pelee Passage to/à la Detroit River – Low Water Levels Reported.....	13
*1206(T)/17	Lake Rosseau and/et Lake Joseph – Unlit Buoy Temporary Established.....	13
*709(T)/18	Kingston Harbour and Approaches/et les approches – Information Regarding Mooring and Anchoring.....	13
*1210(T)/20	Demarcation Bay to/à Philips Bay – Mobile Offshore Drilling Unit Temporarily Established	13
*112(T)/21	Upper Gap to/à Telegraph Narrows – Construction Operations	14
*413(T)/21	Kingston Harbour and Approaches/et les approches – Aid to Navigation Temporarily Unlit	14
*810(T)/21	Fort Frances to/à Hostess Island and/et Sandpoint Island – Aids to Navigation Temporarily Discontinued	14
*907(T)/21	Lac des Deux Montagnes – Missing Unlit Buoy.....	14
*108(T)/22	Lower Gap to/à Adolphus Reach – Construction Operations Frontenac II Ferry Dock	14
*413(T)/22	Detroit River – Waterway Information: Bridge Construction.....	15
*614(T)/22	Canal de la Rive Sud – Bridge Repair Work	15
*617(T)/22	Lac Saint-Louis – Aids to Navigation Temporarily Established.....	15
*618(T)/22	Point Clark to/à Southampton – Aids to Navigation Established.....	16
*109(T)/23	Port Hope Harbour – Dredging Operations.....	16
*512(T)/23	Toronto Harbour – Construction Operations.....	17
*917(T)/23	Hamilton Harbour – Waterway information - Procedure Changes.....	18
*216(T)/24	Canadian Coast Guard – Obstruction : Scientific Moorings.....	18
*311(T)/24	Canal de la Rive Sud – Marine Works: Bridge Demolition	18
*313(T)/24	Havres et Mouillages - Harbours and Anchorages - Côte-Nord/North Shore – Waterway Information: Reduction of Capacity at Mooring Bollards	18
*413(T)/24	Lac Saint-Louis – Marine works : Construction and Drilling Operations.....	19
*727(T)/24	Cobourg to/à Oshawa – Marine Works – Dredging Operations.....	19
*728(T)/24	Toronto Harbour – Marine Works - Overhead Construction	19
*814(T)/24	Hamilton Harbour – Waterway Information – Shallow Depth Reported	19
*815(T)/24	Port of Thunder Bay – Obstruction – Lost Anchor	19
*910(T)/24	Kingston Harbour and Approaches/et les approches – Construction Operations.....	20

Preliminary Notices

*729(P)/24	Port Severn to/à Christian Island – Rear Range to be Discontinued.....	20
*816(P)/24	Chats Falls à/to Chenaux – Aid to Navigation to be Discontinued.....	20

Pacific Coast **22**

Temporary Notices

No notices applicable for this edition..... 22

Preliminary Notices

*817(P)/24 Milbanke Sound and Approaches/et les approches – Paper Chart to be Discontinued . 22

*911(P)/24 Baynes Sound – Aids to Navigation to be Discontinued 22

Other (T) & (P) Notices **23**

Temporary Notices

*1105(T)/15 Canada – Safety of Offshore Exploration and Exploitation Vessels 23

*111(T)/23 Canadian Coast Guard – Automatic Identification System (AIS) 23

*217(T)/24 Canadian Coast Guard – Obstruction : Scientific Mooring 24

Preliminary Notices

No notices applicable for this edition..... 24

List of Charts Affected by (T) & (P) Notices

Chart No.	Pages	Chart No.	Pages	Chart No.	Pages
1202	10	2018	14	4416	6
1220	10	2053	16	4452	18
1226	9, 10	2058	19	4485	5, 8
1233	10	2060	12	4486	7
1310	4, 8, 11	2067	18, 19	4530	3
1311	11	2085	17, 19	4625	1
1312	4, 11	2086	12	4642	1
1313	9	2123	13	4682	1
1316	4	2181	12	4841	2
1350	11	2241	20	4921	7
1429	15, 18	2291	16	6022	13
1430	15, 19	2314	19	6108	14
1509	4	3527	22	7661	13
1510	14	3728	22	14853 (U.S.)	15
1551	20	4011	5		
2006	14	4118	8		
2017	12, 13, 14, 20	4255	5		

Newfoundland and Labrador Coast

Temporary Notices

***306(T)/24 Larkin Point to / à Cape Anguille – Marine Works: Wharf Construction**

Reference chart: 4682

Wharf demolition and breakwater reconstruction operations underway in Codroy, NL at the following coordinates:

47° 52' 50.0"N 59° 23' 49.0"W

47° 52' 46.0"N 59° 23' 52.0"W

47° 52' 53.0"N 59° 24' 11.0"W

Caution.

(NW-N-0161-24)

***611(T)/24 Great St. Lawrence Harbour and / et Lamaline Harbour – Aid to Navigation Temporarily Discontinued**

Reference chart: 4642

The following aid to navigation is temporarily discontinued:

Aid Name	LL #	Position
St. Lawrence Wharf	73.1	46° 54' 59.1"N 55° 23' 20.8"W

(N2024-093T)

***719(T)/24 Burin Peninsula to / à Saint-Pierre – Waterway information**

Reference chart: 4625

The Canadian Armed Forces has confirmed the presence of high explosive containing aerial bombs of varying sizes at the sites of the shipwrecks of the USS Truxtun, near Lawn Point, and the USS Pollux, near Chambers Cove.

Positions: 46° 52' 42.1"N 055° 26' 26.2"W and 46° 52' 49.2"N 055° 29' 24.7"W

At this time the Canadian Armed Forces have determined that the health and safety risks associated with removal of these munitions are too great and in place detonation is not advisable.

Mariners are advised to keep a safe distance from these shipwrecks.

Caution.

(NW-N-0665-24)

***808(T)/24 Cape St Mary's to / à Argentia – Marine Works – Dredging Operations**

Reference chart: 4841

Debris removal, boulder removal, and dredging operations are underway in the areas bounded by the following coordinates:

Exit Channel:	Inner Channel:	Outer Channel:
47° 18.795'N 053° 58.168'W	47° 19.659'N 053° 57.518'W	47° 20.965'N 053° 58.704'W
47° 18.655'N 053° 57.852'W	47° 19.699'N 053° 57.007'W	47° 20.583'N 053° 57.292'W
47° 18.422'N 053° 58.067'W	47° 19.059'N 053° 56.972'W	47° 20.269'N 053° 57.533'W
47° 18.597'N 053° 58.448'W	47° 19.045'N 053° 57.484'W	47° 20.657'N 053° 58.975'W

Environmental monitoring buoys equipped with lights and radar reflectors deployed in:

47° 19.969'N 053° 59.099'W
47° 20.917'N 053° 57.840'W
47° 19.686'N 053° 56.798'W

Removed boulders are to be relocated to the areas bounded by the following coordinates:

Inner Channel Boulder Relocation Area:	Outer Channel Boulder Relocation Area:
47° 19.089'N 053° 57.115'W	47° 20.543'N 053° 57.405'W
47° 19.092'N 053° 57.036'W	47° 20.594'N 053° 57.376'W
47° 19.653'N 053° 57.067'W	47° 20.945'N 053° 58.703'W
47° 19.651'N 053° 57.147'W	47° 20.894'N 053° 58.732'W

Vessels will move to transit dredged material to offshore disposal areas in the vicinity of:

Placentia Sound Offshore Disposal Site:	The Pond Offshore Disposal Site:
47° 18.393'N 053° 55.372'W	47° 18.990'N 053° 59.576'W

Multiple vessels, barges and dredges will be involved in the operations, all will be monitoring VHF channel 16 and are requesting a wide berth of at least 100 meters.

Caution.

(NW-N-0870-24)

Preliminary Notices

Atlantic Region

Comment Submission

Comments on proposed changes in preliminary (P) notices are solicited from mariners and other interested parties within three months of the initial publication date. Following this date, the notices will be cancelled. Any objections raised must state the facts on which they are based and should include supporting information on safety, commerce and public benefit.

Comments should be directed to the following:

Superintendent,
Aids to Navigation & Waterways
Canadian Coast Guard, Atlantic Region
P.O. Box 1000
50 Discovery Drive
Dartmouth, NS B2Y 3Z8
Telephone: (506) 636-4708
Email: DFO.CCGATLaidstoNavDiscont-AidesalanavSupprATLGCC.MPO@dfo-mpo.gc.ca

***720(P)/24 Hamilton Sound: Eastern Portion / Partie-est– Notice of Proposed Changes**

Reference chart: 4530

The Canadian Coast Guard proposes to permanently change the following aids to navigation:

Aid Name	LL #	Position	Proposed Changes
Fixed Aids			
Burnt Point	378	49° 36' 03.6"N 054° 09' 29.3"W	Discontinue the fog signal.
Cann Island (Seldom Cove)	380	49° 35' 03.9"N 054° 11' 14.6"W	Discontinue aid to navigation.

Initial publication date: Friday, July 26, 2024

[Comment submission deadline](#): Thursday, October 24, 2024

(N2024-140)

***907(P)/24 Hamilton Sound: Eastern Portion / Partie-est – Rear Range to be Discontinued**

Reference chart: 4530

The Canadian Coast Guard proposes to permanently discontinue the following aid to navigation:

Aid Name	LL #	Position
Carmanville rear range	393	49° 23' 19.4"N 054° 17' 16.8"W

Initial publication date: Friday, September 27, 2024

[Comment submission deadline](#): Thursday, December 26, 2024

(N2024-151)

Atlantic Coast

Temporary Notices

***111(T)/21 Rivière des Prairies – Construction Operations**

Reference chart: 1509

Repair work is taking place 24 hours a day at the Pie-IX bridge as of August 17th, 2020.

Buoys, jetties, and a turbidity curtain are in place.

(NW-Q-1112-20)

***207(T)/22 Port de Québec – Obstruction**

Reference chart: 1316

Power boat 6 metres in length reported sunk at 46° 43.830'N 071° 20.000'W.

(NW-Q-1348-21)

***411(T)/22 Lac Saint-Pierre – Obstruction: Floating and Falling Debris**

Reference chart: 1312

Floating and falling debris reported beneath the bridge located at 46° 04.783'N 073° 09.205'W. The bridge is marked with yellow buoys suspended at mid-height between the deck and the water level. Warning signs installed above.

(NW-Q-1266-19)

***809(T)/22 Port de Montréal – Waterway Information: Calculation of Under-Keel Clearance**

Reference chart: 1310

Canadian Coast Guard Marine Communications and Traffic Services has been using all Canadian Hydrographic Service water-level stations for the calculation of passage authorizations in the Sorel–Montreal sector of the navigational waterway, namely Sorel, Contrecoeur, Varennes, Montreal-Frontenac and Montreal-Jetty No. 1.

In light of the particular features of the navigational waterway in the portion between buoys M84 (downstream of the municipality of Verchères) and M157 (opposite to the Port of Montreal, section 109) as well as the No. 1 Anchorage Pointe-aux-Tremble, it was agreed to adjust upward the available water column by 10 cm in this portion.

The minimum water column in this portion of the navigational waterway as per the Varennes hydrographic station, obtained after adjustment, will be used for the calculation of under-keel clearance.

(NW-Q-0776-22)

***1214(T)/22 Cap des Rosiers à/to Chandler – Obstruction: Sunken Barge and Excavator**

Reference chart: 4485

Sunken barge and excavator reported at 48° 35.1'N 064° 08.1'W. Barge is 18 metres by 7 metres.

(NW-Q-1709-22)

***314(T)/23 Approaches to / Approches à Bay of Fundy / Baie de Fundy – Obstruction :
Scientific Moorings**

Reference chart: 4011

Subsurface scientific equipment deployed in 42° 50.437'N 066° 43.862'W. Top of equipment is at 214 metres water depth.

(NW-M-0285-23)

***315(T)/23 Georges Bank / Banc de Georges: Eastern Portion / Partie Est – Obstruction :
Scientific Moorings**

Reference chart: 4255

Subsurface scientific equipment deployed in 42° 18.196'N 065° 59.250'W. Top of equipment is at 234 metres water depth.

(NW-M-0284-23)

***316(T)/23 Havre de Gaspé – Caution Concerning Aquaculture Sites**

Reference chart: 4416

Vicinity	Positions	Description
L'Anse-aux-Cousins	48° 51' 21.2"N 064° 30' 02.6"W 48° 51' 06.2"N 064° 29' 25.6"W 48° 51' 00.2"N 064° 30' 02.6"W 48° 51' 00.2"N 064° 29' 30.6"W	Unmarked aquaculture site with submerged equipment.
Havre de Gaspé	48° 51' 50.2"N 064° 29' 02.5"W 48° 51' 20.2"N 064° 28' 37.5"W 48° 51' 20.2"N 064° 28' 16.5"W 48° 50' 47.2"N 064° 28' 16.5"W 48° 51' 23.2"N 064° 29' 40.5"W 48° 51' 23.2"N 064° 29' 20.5"W 48° 51' 30.2"N 064° 29' 02.5"W	Unmarked aquaculture site with submerged equipment.
Havre de Gaspé	48° 51' 18.5"N 064° 27' 02.5"W 48° 51' 08.8"N 064° 26' 34.6"W 48° 50' 51.1"N 064° 26' 35.4"W 48° 50' 47.2"N 064° 26' 45.5"W 48° 50' 47.2"N 064° 27' 02.5"W	Unmarked aquaculture site with submerged equipment, some of which is located outside the defined area.
Havre de Gaspé	48° 50' 25.7"N 064° 28' 24.5"W 48° 50' 51.2"N 064° 29' 28.7"W 48° 51' 03.8"N 064° 29' 16.1"W 48° 50' 37.7"N 064° 28' 12.6"W	Unmarked aquaculture site with submerged equipment.
Havre de Gaspé	48° 50' 47.2"N 064° 27' 07.5"W 48° 50' 38.6"N 064° 27' 07.5"W 48° 50' 29.4"N 064° 27' 34.1"W 48° 50' 44.9"N 064° 28' 11.5"W 48° 50' 47.1"N 064° 28' 11.3"W	Aquaculture site with non-compliant buoyage and equipment at the surface.
Havre de Gaspé	48° 51' 17.6"N 064° 28' 11.6"W 48° 51' 00.2"N 064° 28' 11.6"W 48° 51' 17.6"N 064° 27' 07.6"W 48° 51' 00.2"N 064° 27' 07.6"W	Aquaculture site with non-compliant buoyage with surface and submerged equipment.
Baie de Gaspé	48° 51' 21.2"N 064° 30' 02.6"W 48° 51' 06.2"N 064° 29' 25.6"W 48° 51' 00.2"N 064° 30' 02.6"W 48° 51' 00.2"N 064° 29' 30.6"W	Unmarked aquaculture site with submerged equipment.

(NW-Q-0732-16, NW-Q-0735-16, NW-Q-0737-16, NW-Q-0758-16,
NW-Q-0761-16, NW-Q-0794-16, NW-Q-1719-18)

***317(T)/23 Baie des Chaleurs / Chaleur Bay – Caution Concerning Aquaculture Sites**

Reference chart: 4486

Vicinity	Positions	Description
Cascapedia Bay	48° 07' 10.7"N 066° 01' 18.2"W 48° 07' 31.1"N 066° 00' 30.8"W 48° 07' 00.8"N 065° 59' 59.9"W 48° 06' 39.7"N 066° 00' 47.0"W	Aquaculture site with non-compliant buoyage with surface and submerged equipment.
Cascapedia Bay	48° 07' 22.0"N 065° 55' 12.0"W 48° 07' 22.0"N 065° 53' 14.0"W 48° 06' 33.0"N 065° 53' 14.0"W 48° 06' 33.0"N 065° 55' 12.0"W	Aquaculture site with non-compliant buoyage with submerged equipment.
Cascapedia Bay	48° 05' 24.2"N 066° 01' 42.8"W 48° 06' 11.2"N 066° 00' 07.8"W 48° 05' 36.2"N 065° 59' 29.8"W 48° 04' 49.2"N 066° 01' 04.8"W	Aquaculture site marked with non-compliant buoyage with surface and submerged equipment.
Tracadigache Bay	48° 05' 12.0"N 066° 12' 02.6"W 48° 05' 12.0"N 066° 11' 00.0"W 48° 04' 30.0"N 066° 11' 00.0"W 48° 04' 30.0"N 066° 12' 02.6"W	Aquaculture site with temporarily non-compliant buoyage.

(NW-Q-0769-16, NW-Q-0770-16, NW-Q-0783-16, NW-Q-0789-16)

***318(T)/23 Plans, Baie des Chaleurs/Chaleur Bay (côte nord/North Shore) – Caution Concerning Aquaculture Sites**

Reference chart: 4921

Vicinity	Positions	Description
Carleton-sur-Mer	48° 05' 21.9"N 066° 01' 55.5"W 48° 04' 45.0"N 066° 01' 15.3"W 48° 04' 21.7"N 066° 02' 11.5"W 48° 04' 56.2"N 066° 02' 51.2"W	Unmarked aquaculture site with submerged equipment.
Carleton-sur-Mer	48° 05' 50.6"N 066° 02' 27.5"W 48° 05' 29.7"N 066° 02' 04.7"W 48° 05' 04.8"N 066° 03' 00.7"W 48° 05' 25.6"N 066° 03' 23.5"W	Unmarked aquaculture site with submerged equipment.
Carleton-sur-Mer	48° 06' 14.9"N 066° 00' 02.5"W 48° 05' 39.1"N 065° 59' 22.1"W 48° 06' 28.1"N 065° 57' 41.7"W 48° 07' 02.8"N 065° 58' 21.3"W	Unmarked aquaculture site with submerged equipment.

(NW-Q-1716-18, NW-Q-1717-18, NW-Q-1718-18)

***509(T)/23 St. Marys Bay – Obstruction : Wreck**

Reference chart: 4118

Sunken 30 by 90 feet barge with 500 feet of tow line still attached at the following position:
44° 16' 24.9"N 066° 28' 44.9"W Caution.

(NW-M-0529-23)

***710(T)/23 Port de Montréal – Waterway information – Mooring prohibited**

Reference chart: 1310

Mooring indefinitely prohibited at section 31 of the Port of Montreal.

(NW-Q-0476-23)

***711(T)/23 Cap des Rosiers à/to Chandler – Obstruction : Scientific Moorings**

Reference chart: 4485

Six sub-surface scientific moorings established at:

48 37.390N 064 07.734W

48 43.925N 064 08.099W

48 41.868N 064 04.632W

48 39.987N 064 00.959W

48 38.023N 063 57.919W

48 36.274N 063 54.923W

Top float 24 metres below the surface.

(NW-Q-0662-23)

***214(T)/24 Batiscan au/to Lac Saint-Pierre – Waterway Information: Shallow Depths Reported**

Reference: Notice 313(T)/23 is cancelled (Chart 1313).

Reference chart: 1313

A shallower depth of 10.4 metres is located at the following positions:

46° 19.997' N	072° 32.698' W
46° 19.993' N	072° 32.675' W
46° 19.983' N	072° 32.682' W
46° 19.980' N	072° 32.703' W
46° 19.985' N	072° 32.718' W

A shallower depth of 10.6 metres is located at the following positions:

46° 19.978' N	072° 32.731' W
46° 19.979' N	072° 32.701' W
46° 19.970' N	072° 32.703' W
46° 19.971' N	072° 32.732' W

A shallower depth of 10.4 metres is located at the following positions:

46° 19.983' N	072° 32.785' W
46° 19.982' N	072° 32.747' W
46° 19.973' N	072° 32.752' W
46° 19.972' N	072° 32.768' W
46° 19.971' N	072° 32.792' W

(NW-Q-1338-23)

***309(T)/24 Mouillages et Installations Portuaires/Anchages and Harbour Installations - Haute Côte-Nord – Obstruction: Anchors**

Reference chart: 1226

Lost anchors at the following coordinates:

49° 59' 53.4"N	66° 48' 45.0"W
50° 00' 04.3"N	66° 48' 38.4"W
50° 00' 55.2"N	66° 46' 06.0"W

(NW-Q-0166-20, 0580-23, 0870-23)

***310(T)/24 Mouillages et Installations Portuaires/Anchorages and Harbour Installations -
Haute Côte-Nord – Marine Works: Wharf Construction**

Reference chart: 1226

Wharf repair works are taking place daily between 1100 UTC and 2100 UTC at wharves 1, 2 and 3 of the Port-Cartier Harbour.

Barge and safety boat on site.

(NW-C-0316-24)

***721(T)/24 Cap Éternité à/to Saint Fulgence – Obstruction: Submerged Object**

Reference chart: 1202

Anchor with 4 shackles of chain reported in the vicinity of:

48° 20' 00.0"N 070° 51' 48.6"W

(NW-Q-1097-22)

***722(T)/24 Baie des Sept-Îles – Obstruction: Submerged Object**

Reference chart: 1220

Anchor and chain lost in position at the following coordinates:

50° 11' 04.8"N 066° 28' 01.8"W

Caution.

(NW-Q-0592-19)

***723(T)/24 Mouillages et Installations Portuaires/Anchorages and Harbour Installations -
Haute Côte-Nord – Obstruction: Submerged Object**

Reference chart: 1226

Anchor with 11 shackles of chain reported in the vicinity of:

49° 14' 42.0"N 068° 06' 00.0"W

Anchoring is prohibited in the zone until further notice. For more information, contact Mr. Martin Roy at 418-297-6164.

(NW-Q-0032-22)

***724(T)/24 Cap aux Oies à/to Sault-au-Cochon – Obstruction: Lost Anchor**

Reference chart: 1233

Anchor reported lost at the following coordinates:

47° 25' 09.5"N 070° 24' 31.8"W

Anchor is marked with a buoy.

(NW-Q-1190-22)

***725(T)/24 Port de Montréal – Obstruction: Lost Anchors**

Reference chart: 1310

Anchors and chains reported lost at the following coordinates:

45° 33' 27.0"N 073° 30' 50.4"W

45° 38' 07.8"N 073° 28' 58.2"W

(NW-Q-0808-22, 1646-23)

***726(T)/24 Sorel-Tracy à/fo Otterburn-Park – Obstruction: Lost Anchors**

Reference chart: 1350

Anchors and chains reported lost at the following coordinates:

46° 00' 14.0"N 073° 10' 17.0"W

46° 03' 08.5"N 073° 08' 35.2"W

(NW-Q-1024-22, 1701-23)

***811(T)/24 Sorel-Tracy à/fo Varennes – Obstruction – Submerged Object**

Reference chart: 1311, 1312

Submerged steel cable at the following coordinates:

46° 03' 06.1"N 073° 08' 24.5"W

(NW-C-1869-24)

Preliminary Notices

Atlantic Region

Comment Submission

Comments on proposed changes in preliminary (P) notices are solicited from mariners and other interested parties within three months of the initial publication date. Following this date, the notices will be cancelled. Any objections raised must state the facts on which they are based and should include supporting information on safety, commerce and public benefit.

Comments should be directed to the following:

Superintendent,
Aids to Navigation & Waterways
Canadian Coast Guard, Atlantic Region
P.O. Box 1000
50 Discovery Drive
Dartmouth, NS B2Y 3Z8
Telephone: (506) 636-4708
Email: [DFO.CCGATLaidstoNavDiscont-
AidesalanavSupprATLGCC.MPO@dfo-mpo.gc.ca](mailto:DFO.CCGATLaidstoNavDiscont-AidesalanavSupprATLGCC.MPO@dfo-mpo.gc.ca)

No notices applicable for this edition.

Inland Waters

Temporary Notices

***909(T)/14 Kingston Harbour and Approaches/et les approches – Dock Unserviceable**

Reference chart: 2017

The Kingston psychiatric hospital dock is unserviceable and out of bounds for use as dockage until further notice.

(NOTSHIP C2409/10)

***814(T)/16 Main Duck Island to/à Scotch Bonnet Island – Partially Submerged Fixed Steel Barges**

Reference chart: 2060

There are 3 partially submerged fixed steel barges in North end of West Lake (43° 57' 02.3"N 077° 20' 12.8"W), which have been reported just below the water line.

Barges are marked with cautionary buoys.

(NOTSHIP C1641/14)

***1219(T)/16 Toronto to/à Hamilton – Construction Operations**

Reference chart: 2086

Construction operations taking place from November 14, 2016 until approximately 2026 at Lakeview Water Treatment Plant between Marie Curtis Park and Serson Creek. A variety of equipment will be used to expand the land mass along the shoreline. Landfill and 3 islands will be lit and marked.

(NOTSHIP C2533/16)

***108(T)/17 Harbours in Lake Erie/Havres dans le lac Érié – Unlit Buoys Temporarily Repositioned**

Reference chart: 2181

The following unlit spar buoys have been temporarily repositioned due to silting:

Aid Name	LL #	Temporary Changes
ES2	7169	Reposition to 42° 39' 10.0"N 081° 12' 32.0"W
ES3	7170	Reposition to 42° 39' 15.4"N 081° 12' 40.7"W
ES4	7171	Reposition to 42° 39' 16.8"N 081° 12' 37.7"W

The shallowest depth to 3.5M occurs between ES3 and ES4 with the deepest water off the red side of the channel. Mariners are requested to use caution in the area.

(B2017-003)

***309(T)/17 Pelee Passage to/à la Detroit River – Low Water Levels Reported**

Reference chart: 2123

Low water levels have been reported from the south end of the entrance to Sturgeon Creek Harbour northward.

Annette Winter
Project and Divestiture Officer
Small Craft Harbours
Fisheries and Oceans Canada

Canada Centre for Inland Waters (CCIW)
867 Lakeshore Road
Burlington, ON L7S 1A1
Telephone: (905) 315-5286
Email: annette.winter@dfo-mpo.gc.ca

(NOTSHIP C58/13)

***1206(T)/17 Lake Rosseau and/et Lake Joseph – Unlit Buoy Temporary Established**

Reference chart: 6022

The following unlit buoy has been temporary established:

Aid Name	LL #	Position
P3/1	9089.1	45° 08' 09.0"N 079° 40' 36.0"W

(D2017-006)

***709(T)/18 Kingston Harbour and Approaches/et les approches – Information Regarding Mooring and Anchoring**

Reference: Notice 309(T)/14 is cancelled.

Reference chart: 2017

All mooring or anchoring within the public port of Kingston is prohibited outside of designated marina areas until further notice without authorization from the port official.

Inquiries are to be directed to Transport Canada at (416) 952-0475.

***1210(T)/20 Demarcation Bay to/à Philips Bay – Mobile Offshore Drilling Unit Temporarily Established**

Reference: Notice 616(T)/07 is cancelled.

Reference chart: 7661

The unmanned mobile offshore drilling unit “SDC” continues to be temporarily established at 69° 24.71'N 138° 53.76'W. The structure is 202.4 metres long and 53 metres wide.

For information, contact Captain Connelly at 1-250-598-4513 or 1-250-744-9818 or e-mail at doncon@islandnet.com or dcmarine@shaw.ca.

***112(T)/21 Upper Gap to/à Telegraph Narrows – Construction Operations**

Reference chart: 2006

Construction operations are currently underway on the Bay of Quinte Skyway Bridge.
During these operations, lit barges are on site and the bridge clearance is 19 metres.

(NW-C-2834-19)

***413(T)/21 Kingston Harbour and Approaches/et les approches – Aid to Navigation
Temporarily Unlit**

Reference chart: 2017

The following aid to navigation is temporarily unlit:

Marysville Wharf light (LL 399.3): 44° 11' 42.4"N 076° 26' 27.3"W

(NW-C-1802-20)

***810(T)/21 Fort Frances to/à Hostess Island and/et Sandpoint Island – Aids to Navigation
Temporarily Discontinued**

Reference chart: 6108

The following aids to navigation are temporarily discontinued:

Aid Name	LL #	Position
Noden Causeway East	1465	48° 39' 08.5"N 093° 18' 47.6"W
Noden Causeway West	1466	48° 39' 08.5"N 093° 18' 49.1"W

(D2021-026T, 027T)

***907(T)/21 Lac des Deux Montagnes – Missing Unlit Buoy**

Reference chart: 1510

The following unlit buoy is currently missing and will not be replaced before the 2022 navigation season:

Aid Name	LL #	Position
Chenal Saint-Placide buoy HJ17	6251.68	45° 31' 20.7"N 074° 12' 25.1"W

(NW-Q-1526-20)

***108(T)/22 Lower Gap to/à Adolphus Reach – Construction Operations Frontenac II Ferry
Dock**

Reference chart: 2018

Construction operations are taking place daily during daylight hours at the Millhaven and Stella ferry docks.
Temporary docks will be installed in the vicinity of the ferry docks. Docks will be marked with buoys and lit
with amber lights.

(NW-C-2916-17)

***413(T)/22 Detroit River – Waterway Information: Bridge Construction**

Reference chart: 14853 (U.S.)

Bridge construction operations taking place in an area bounded by:

42° 17.200'N 083° 05.633'W

42° 17.183'N 083° 05.600'W

42° 17.067'N 083° 05.667'W

42° 17.000'N 083° 05.717'W

42° 17.017'N 083° 05.750'W

42° 17.100'N 083° 05.667'W

Unauthorized entry prohibited.

(NW-C-0151-22)

***614(T)/22 Canal de la Rive Sud – Bridge Repair Work**

Reference chart: 1429

Repair work in progress at the Honoré-Mercier Bridge (upstream) between Lasalle and Kahnawake. Bridge deck installed under the bridge span.

(NW-Q-1810-19)

***617(T)/22 Lac Saint-Louis – Aids to Navigation Temporarily Established**

Reference chart: 1430

Six yellow lighted buoys marking a 400 metres breakwater awash temporarily established at the following coordinates:

45° 20' 44.5"N 073° 50' 32.9"W 45° 21' 00.3"N 073° 50' 11.6"W

45° 20' 47.7"N 073° 50' 29.4"W 45° 21' 05.4"N 073° 50' 07.6"W

45° 20' 50.0"N 073° 50' 24.1"W 45° 21' 11.8"N 073° 50' 04.6"W

(NW-Q-0579-22)

***618(T)/22 Point Clark to à Southampton – Aids to Navigation Established**

Reference: Notice 1212(T)/21 is cancelled.

Reference chart: 2291

Twenty-two sub-surface moorings have been removed and replaced by spar buoys at the following coordinates:

44° 13.912'N 081° 37.060'W	44° 22.719'N 081° 32.404'W
44° 13.970'N 081° 37.379'W	44° 22.933'N 081° 33.992'W
44° 13.981'N 081° 38.188'W	44° 23.512'N 081° 31.893'W
44° 15.862'N 081° 36.683'W	44° 23.953'N 081° 32.850'W
44° 15.894'N 081° 37.028'W	44° 25.270'N 081° 29.521'W
44° 15.885'N 081° 37.468'W	44° 25.576'N 081° 30.070'W
44° 19.834'N 081° 36.316'W	44° 26.041'N 081° 30.817'W
44° 19.867'N 081° 36.618'W	44° 33.449'N 081° 19.640'W
44° 21.668'N 081° 34.609'W	44° 33.525'N 081° 19.847'W
44° 22.055'N 081° 34.987'W	44° 34.184'N 081° 21.275'W

(NW-C-0708-22)

***109(T)/23 Port Hope Harbour – Dredging Operations**

Reference: Notice 809(T)/18 is cancelled.

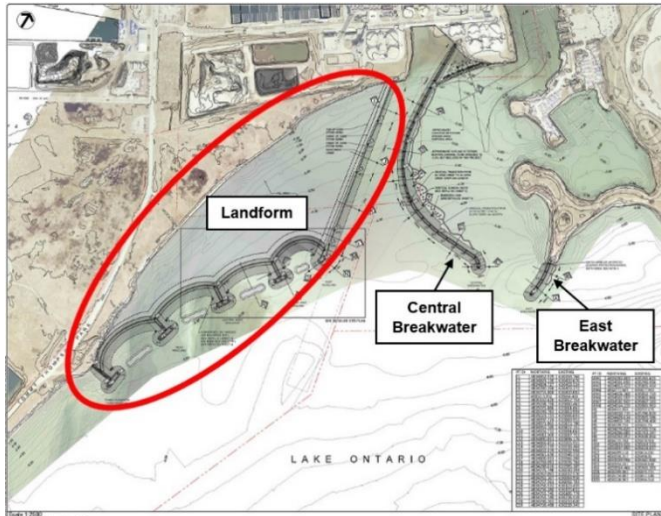
Reference chart: 2053

Dredging and wall repair operations in Port Hope Harbour. Entrance to the western basin is blocked. Caution.

***512(T)/23 Toronto Harbour – Construction Operations**

Reference chart: 2085

Construction is taking place at Ashbridge's Bay and consists of the construction of two breakwaters and of a landform. A variety of equipment are being used, including tug boats and barges. Temporary aids to navigation are on site during construction. The operations are scheduled to take at the following positions:.



Breakwater construction operations

43° 39' 20.7"N 079° 18' 48.1"W

Phase 1: Completed

Phase 2: 2021-04-01 through 2024-12-31

Phase 3: 2021-04-01 through 2024-12-31

Landform construction operations

43° 39' 01.4"N 079° 19' 01.9"W

Implementation of the shoreline infill area is expected to take approximately five years.

Mariners are requested to keep out of the construction zone.

***917(T)/23 Hamilton Harbour – Waterway information - Procedure Changes**

Reference: Notice *713(T)/23 is cancelled.

Reference chart: 2067

Since July 1st 2023, commercial vessels exiting the Hamilton Harbour are to provide advanced notice. Public Service and Procurement Canada is requesting four calls to the Bridge Master on VHF Channel 16:

A call 2 hours in advance of departure;

A call 1 hour in advance of departure;

A call when departing the pier;

A call when lining up in the canal.

(NW-C-1600-23)

***216(T)/24 Canadian Coast Guard – Obstruction : Scientific Moorings**

Scientific moorings established at position 71° 58' 01.2"N 095° 03' 52.8"W. Least depth 122.8 metres.

(NAVAREA XVIII 32/2011)

***311(T)/24 Canal de la Rive Sud – Marine Works: Bridge Demolition**

Reference chart: 1429

Demolition operations taking place at the bypass bridge of Île des Sœurs from Monday to Thursday between 1000 UTC and 2100 UTC. Navigation channel is marked and reduced with a minimum width of 10 metres.

Two barges are on site.

(NW-C-0297-24)

***313(T)/24 Havres et Mouillages - Harbours and Anchorages - Côte-Nord/North Shore –
Waterway Information: Reduction of Capacity at Mooring Bollards**

Reference chart: 4452

Capacity reduced to 10 metric tons for bollards B01, B10, B12, B14 and B17 and 20 metric tons for bollards B03 to B09, B11, B13, B15, B16 and B18 at Natashquan public wharf. Bollard B02 is still out of order.

(NW-C-0292-24)

***413(T)/24 Lac Saint-Louis – Marine works : Construction and Drilling Operations**

Reference: Notice 312(T)/24 is cancelled (Chart 1430).

Reference chart: 1430

Ongoing construction and drilling operations are taking place in the vicinity of the Île aux Tourtes bridge. Barges and boats are on site.

Lit steel pile installed at 45° 25' 15.4"N 73° 58' 58.0"W showing 2 meters above the surface.

Suspended platform installed at 45° 25' 14.0"N 73° 58' 44.0"W, reducing bridge clearance by 4 meters.

Minimum wake.

(NW-C-0336-24)

***727(T)/24 Cobourg to/à Oshawa – Marine Works – Dredging Operations**

Reference chart: 2058

Dredging operations and shoreline repairs taking place at St. Mary's Cement dock at the following coordinates: 43° 52' 22.1"N 078° 41' 01.7"W. Tug and two barges on site.

(NW-C-1797-24)

***728(T)/24 Toronto Harbour – Marine Works - Overhead Construction**

Reference: Notice 415(T)/23 is cancelled (Chart 2085).

Position : 43° 37' 44.3"N 079° 25' 04.3"W

Overhead construction taking place in the North Marina of Ontario Place between West Island and East Island. Waterway closed to marine traffic.

***814(T)/24 Hamilton Harbour – Waterway Information – Shallow Depth Reported**

Reference chart: 2067

The southern section of the Pier 10 slip south of 43° 16' 26.1"N 079° 51' 01.9"W does not have the minimum seaway draft.

Mariners are to contact the Hamilton Harbour Master's office at 1 (905) 525-3412 to obtain soundings.

(NW-C-2395-23)

***815(T)/24 Port of Thunder Bay – Obstruction – Lost Anchor**

Reference chart: 2314

Anchor and chain lost at the following coordinates:

48° 19' 24.0"N 089° 09' 30.0"W

(NW-C-1623-24)

***910(T)/24 Kingston Harbour and Approaches/et les approches – Construction Operations**

Reference: Notice 1012(T)/20 is cancelled (Chart 2017).

Reference chart: 2017

Wharf construction is taking place daily from 1100 UTC to 2300 UTC at the Kingston-Wolfe Island ferry terminal. The ferry remains operational. Vessels are not permitted to dock on the south side. The construction area is marked by yellow buoys equipped with yellow flashing lights.

Preliminary Notices

Central Region

Comment Submission

Comments on proposed changes in preliminary (P) notices are solicited from mariners and other interested parties within three months of the initial publication date. Following this date, the notices will be cancelled. Any objections raised must state the facts on which they are based and should include supporting information on safety, commerce and public benefit.

Comments should be directed to the following:

Superintendent
Aids to Navigation & Waterways
Canadian Coast Guard, Central Region
1550 D'Estimauville Avenue
Québec, QC G1J 5E9
Telephone: (418) 648-7450
Emails:
St. Lawrence Region: DFO.AtoNStLawrence-StLaurentAalaN.MPO@dfo-mpo.gc.ca
Great Lakes Region:
DFO.CCGCentralAtoNGreatLakes-GrandsLacsAalaNCentreGCC.MPO@dfo-mpo.gc.ca

***729(P)/24 Port Severn to/à Christian Island – Rear Range to be Discontinued**

Reference chart: 2241

The Canadian Coast Guard proposes to permanently discontinue the following aid to navigation:

Aid Name	LL #	Position
Brébeuf rear range	5000.1	44° 52' 36.8"N 079° 52' 29.1"W

Initial publication date: Friday, July 26, 2024

[Comment submission deadline](#): Thursday, October 24, 2024

(D2024-082)

***816(P)/24 Chats Falls à/to Chenaux – Aid to Navigation to be Discontinued**

Reference chart: 1551

The Canadian Coast Guard proposes to permanently discontinue the following aid to navigation:

Aid Name	LL #	Position
Sand Point	1305	45° 29' 19.7"N 076° 26' 03.9"W

Initial publication date: Friday, August 30, 2024

[Comment submission deadline](#): Thursday, November 28, 2024

(D2024-083)

Arctic Region

Comment Submission

Comments on proposed changes in preliminary (P) notices are solicited from mariners and other interested parties within three months of the initial publication date. Following this date, the notices will be cancelled. Any objections raised must state the facts on which they are based and should include supporting information on safety, commerce and public benefit.

Comments should be directed to the following:

Superintendent,
Aids to Navigation & Waterways
Canadian Coast Guard, Arctic Region
5120 49th Street
Yellowknife NT. X1A 1P8
Telephone: (867) 444-0109
Email: [DFO.CCGArcticAidstoNavigation-
AidesalanavigationArctiqueGCC.MPO@dfo-
mpo.gc.ca](mailto:DFO.CCGArcticAidstoNavigation-AidesalanavigationArctiqueGCC.MPO@dfo-mpo.gc.ca)

No notices applicable for this edition.

Pacific Coast

Temporary Notices

No notices applicable for this edition.

Preliminary Notices

Western Region

Comment Submission

Comments on proposed changes in preliminary (P) notices are solicited from mariners and other interested parties within three months of the initial publication date. Following this date, the notices will be cancelled. Any objections raised must state the facts on which they are based and should include supporting information on safety, commerce and public benefit.

Comments should be directed to the following:

A/Superintendent, Marc Jourdenais
Aids to Navigation & Waterways
Canadian Coast Guard, Western Region
25 Huron Street
Victoria, BC V8V 4V9
Telephone: (250) 480-2602
Fax: (250) 480-2702
Email: marc.jourdenais@dfo-mpo.gc.ca

***817(P)/24 Milbanke Sound and Approaches/et les approches - Paper Chart to be Discontinued**

Reference chart: 3728

The Canadian Hydrographic Service proposes to permanently discontinue paper chart 3728 called Milbanke Sound and Approaches/et les approches.

Mariners and other interested parties are invited to comment on this action until October 31, 2024.

Comments should be directed to the following email address: chsinfo@dfo-mpo.gc.ca.

Any objections raised must state the facts on which they are based and should include supporting information on safety, commerce and public benefit. No notices applicable for this edition.

***911(P)/24 Baynes Sound – Aids to Navigation to be Discontinued**

Reference chart: 3527

The Canadian Coast Guard proposes to permanently discontinue the following aids to navigation:

Aid Name	LL #	Position
Courtenay River front range #1	5305.4	49° 40' 31.5"N 124° 57' 19.8"W
Courtenay River rear range #1	5305.5	49° 40' 30.4"N 124° 57' 15.9"W
Courtenay River starboard daybeacon #2	5306.3	49° 40' 51.7"N 124° 58' 36.4"W
Courtenay River front range #3	5306.4	49° 40' 52.3"N 124° 58' 33.6"W
Courtenay River rear range #3	5306.5	49° 40' 53.9"N 124° 58' 39.2"W
Courtenay River front range #4	5306.6	49° 40' 49.0"N 124° 58' 37.3"W
Courtenay River rear range #4	5306.7	49° 40' 48.1"N 124° 58' 34.7"W

Initial publication date: Friday, September 27, 2024

[Comment submission deadline](#): Thursday, December 26, 2024

(P2024-071 to 074)

Other (T) & (P) Notices

Temporary Notices

***1105(T)/15 Canada – Safety of Offshore Exploration and Exploitation Vessels**

Reference: Notice 410(T)/2007 is cancelled.

2015 Annual Edition of Notices to Mariners, Notice No. 20, pages A20-1 to A20-4.

Mariners are advised that offshore exploration and exploitation vessels may be conducting drilling operations in the following areas:

Gulf of St. Lawrence

NIL

Mainland NWT

NIL

Mackenzie Delta NWT/Beaufort Sea

NIL

Arctic Islands of the NWT/Arctic Islands of Nunavut

NIL

Eastern Arctic Offshore

NIL

Davis Strait

NIL

NOTE: Mariners are advised to obtain up-to-date position reports on drilling vessels and production installations before entering an area of exploration and exploitation. This information is available by contacting, as appropriate, ECAREG CANADA, NORDREG CANADA or CVTS OFFSHORE via any Marine Communications and Traffic Services Centre (MCTS).

(NOTSHIP M2215/15) (NEB)

***111(T)/23 Canadian Coast Guard – Automatic Identification System (AIS)**

Reference: Notice *208(T)/21 is cancelled.

AIS Aids to Navigation (AtoNs)

Mariners are advised that the Canadian Coast Guard (CCG) is continuing to conduct supervised test beds of AIS AtoNs, with the objective of bringing AIS AtoNs to Full Operational Capability (FOC). Specific information on AIS AtoN test bed sites can be found on the CCG e-Navigation Maritime Information Portal at <https://e-navigation.canada.ca/topics/aids/docs/ais-aton/locations-en>.

Although AIS was originally developed as a collision avoidance tool for vessels, it also allows for the broadcasting of other types of data, such as the AIS AtoN “Message 21” (AIS AtoN Report).

Ships need to be equipped with standard shipborne AIS equipment for the display of AIS messages. The IMO mandatory carriage requirement for the Class “A” AIS display is the Minimum Keyboard Display (MKD), however, the display and use of the AtoN information may require additional hardware and/or software such as an AIS-connected Electronic Chart Display and Information System (ECDIS), Electronic Chart System (ECS), Radar or Portable Pilot Unit (PPU).

As the AIS information available to mariners will be dependent on their display system and its compliance with the latest IMO and IALA standards, some transmitted information may not be displayed or may have a different symbol. Mariners are encouraged to install and upgrade systems that provide AIS overlay on ECDIS, ECS and/or Radar. Mariners should be familiar with the display settings on their vessel's shipborne equipment.

All geographical positions (latitude and longitude) are based on the WGS 84 datum; time is displayed in Coordinated Universal Time (UTC).

CCG is making every effort to broadcast quality information; however, as with any navigational tool, mariners should not rely on this information as their sole means of navigation.

Mariners are advised to consult the CCG e-Navigation web page on AIS AtoN, accessible at <https://e-navigation.canada.ca/topics/aids/docs/ais-aton/index-en> for pertinent information, including examples of AIS AtoN display and symbology.

Individual NAVWARNs and/or NOTMARs are rarely issued for AIS AtoN trials.

Mariners are requested to provide feedback on the AIS AtoN test beds to the CCG e-Navigation Team at ccg.enav.gcc@dfo-mpo.gc.ca. In addition, mariners who wish to participate in CCG's questionnaire on AIS AtoN are invited to access it at <https://e-navigation.canada.ca/docs/surveys/asm-aton-en>. The collected results will guide the CCG in further developing this information service.

***217(T)/24 Canadian Coast Guard – Obstruction : Scientific Mooring**

Scientific mooring established at position 75° 06' 01.1"N 168° 00' 02.5"W. Top float 42 metres.

(NAVAREA XVII 30/2011)

Preliminary Notices

No notices applicable for this edition.