



Fisheries and Oceans
Canada

Pêches et Océans
Canada

Canadian
Coast Guard

Garde côtière
canadienne

Notices to Mariners

Edition No. 10/2024
October 25, 2024



Safety First, Service Always

Monthly Eastern Edition

Canada 

Notices to Mariners – Monthly Eastern Edition
Edition No. 10/2024

Aussi disponible en français :
Avis aux navigateurs – Édition mensuelle de l'Est
Édition n° 10/2024

Published under the Authority of:

Canadian Coast Guard Programs
Aids to Navigation and Waterways
Fisheries and Oceans Canada
Montreal, QC H2Y 2E7

For more information, contact DFO.Notmar-Notmar.MPO@dfo-mpo.gc.ca.

© His Majesty the King in Right of Canada,
as represented by the Minister of Fisheries, Oceans
and the Canadian Coast Guard, 2024.

Cat. No. Fs152-8E-PDF (Electronic PDF, English)
ISSN 2817-0075

Cat. No. Fs152-8F-PDF (Electronic PDF, French)
ISSN 2817-0083

A web version is available here:

[Notices to Mariners – Monthly Editions](#) (English)

[Avis aux navigateurs – Publications mensuelles](#) (French)

Explanatory Notes – Notices to Mariners (NOTMAR)

Geographical positions refer directly to the graduations of the largest scale Canadian Hydrographic Service chart (unless otherwise indicated).

Bearings refer to the true compass and are measured clockwise from 000° (North) clockwise to 359°; those relating to lights are from seaward.

Visibility of lights is that in clear weather.

Depths - The units used for soundings (metres, fathoms or feet) are stated in the title of each chart.

Elevations are normally given above Higher High Water, Large Tide (unless otherwise indicated).

Distances may be calculated as follows:

- 1 nautical mile = 1,852 metres (6,076.1 feet)
- 1 statute mile = 1,609.3 metres (5,280 feet)
- 1 metre = 3.28 feet

Temporary and Preliminary Notices to Mariners – Section 1A of *Notices to Mariners*

These notices are indicated by a (T) or a (P), respectively. Please note that nautical charts are not amended by the Canadian Hydrographic Service for temporary (T) and preliminary (P) notices. It is recommended that mariners chart these corrections in pencil. For the list of charts affected by (T) & (P) notices, please refer to the current [Notices to Mariners - Monthly Summary of Temporary and Preliminary Notices](#) publication.

Suggestions and Corrections Form

This form is specifically for suggestions and corrections to Notices to Mariners publications. It is available [online](#) and also in [fillable PDF format](#) included with the monthly publication ZIP file.

To submit comments and suggestions on possible improvements to the various publications and services: DFO.Notmar-Notmar.MPO@dfo-mpo.gc.ca.

To report chart discrepancies and/or corrections to the *Canadian Sailing Directions* booklets: Fill out the [Marine Information Reporting Form](#) and/or email chsinfo@dfo-mpo.gc.ca.

To report emergencies or navigational hazards: [Contact your nearest MCTS centre](#)

- VHF channel 16 (156.8 MHz)
- MF/HF frequency 2182 kHz/4125 kHz (where available)
- *16 on a cellphone (where available)

NOTMAR Website – Monthly Editions, Chart Corrections and Chart Patches

The NOTMAR website allows users to access the [monthly publications](#), [chart corrections](#), and [chart patches](#).

Users can subscribe for free to the [email notification service](#) to receive notifications when charts of interest are updated, including their patches, as well as when a new Monthly Edition of *Notices to Mariners* is published.

In addition, the monthly publication and related files to download, such as chart patches, can be obtained all together through the download of a single ZIP file.

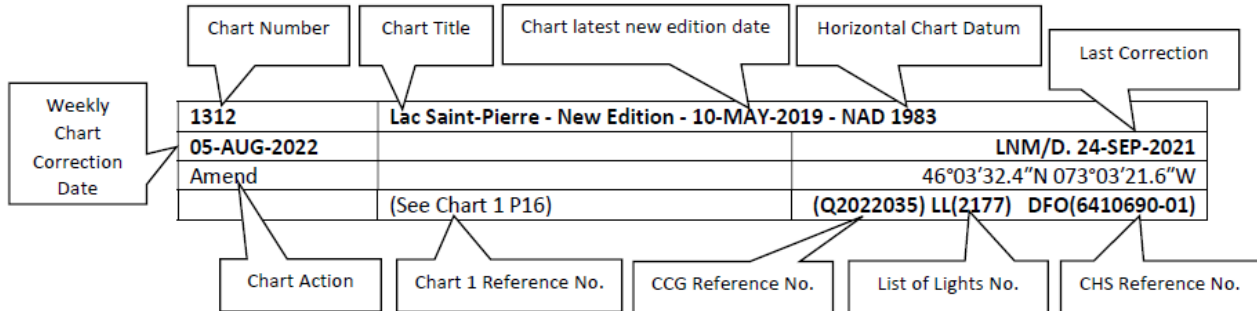
Explanatory Notes – Canadian Hydrographic Service (CHS)

Chart Corrections – Section 2 of *Notices to Mariners*

Corrections to nautical charts will be listed in numerical order by chart number. Each chart correction listed applies only to that particular chart. Related charts, if any, will have their own specific correction listed separately.

Users should also refer to CHS *Chart 1: Symbols, Abbreviations and Terms* for additional information pertaining to the correction of charts.

The illustration below describes the elements that will comprise a typical Section 2 chart correction:



The last correction number is identified with the **LN/D** or **Last Notice to Mariners Number / Date**.

Mariners are advised that only the most critical changes that directly affect safety to navigation are issued in “Section 2 – Chart Corrections.” This limitation is required to ensure that charts remain as clear and easy to read as possible. As a result, mariners may see minor discrepancies of a non-critical nature between information in official publications. For example, a small change in the nominal range or focal height of a light may not result in the production of a chart correction in *Notices to Mariners*, but may result in a correction in the [List of Lights, Buoys and Fog Signals](#) publication.

Note: In the case of a discrepancy between information provided on CHS charts relating to aids to navigation, and the *List of Lights, Buoys and Fog Signals* publication, the latter shall be deemed as containing the most up-to-date information.

Canadian Nautical Charts & Publications

A source list of Canadian nautical charts and publications is published in Notice No. 14 of the *Notices to Mariners Annual Edition 2024*. The source supply and the prices effective at the time of printing are listed. For current chart edition dates, please refer to the [Canadian Hydrographic Service – List of Charts](#).

Explanatory Notes – Marine Communications and Traffic Services (MCTS)

Navigational Warnings / Notices to Shipping

The Canadian Coast Guard (CCG) is implementing a number of changes to the aids to navigation system in Canada.

These changes are advertised as Navigational Warnings, formerly called Notices to Shipping¹, that are broadcast by the CCG, and are then followed up with Notices to Mariners, then charts are updated by hand correction, reprints or new editions.

Mariners are advised that all relevant Navigational Warnings (NAVWARN) should be kept until superseded by Notices to Mariners or through revised charts issued by the Canadian Hydrographic Service (CHS).

NAVWARN are accessible on the applicable regional page on the [CCG Navigational Warnings](#).

CHS is reviewing the impact of these changes with CCG and together are preparing an action plan on the issuing of chart revisions.

For further information, contact your regional NAVWARN Issuing Desk.

| | |
|--|--|
| <p>Atlantic Region (North) *Port aux Basques MCTS Centre</p> <p>“N” Series NAVWARN</p> <p>Canadian Coast Guard 49 Stadium Rd. P.O. Box 99 Port aux Basques, NL A0M 1C0</p> <p>Telephone: 709-695-2168 or 1-800-563-9089 Facsimile: 709-695-7784</p> <p>Email: NAVWARN.MCTSPortAuxBasques@innav.gc.ca</p> | <p>Central Region *Prescott MCTS Centre</p> <p>“Q” and “C” Series NAVWARN</p> <p>Canadian Coast Guard 401 King Street West P.O. Box 1000 Prescott, ON K0E 1T0</p> <p>Telephone: 613-925-0666 Facsimile: 613-925-4519</p> <p>Email: NAVWARN.MCTSPrescott@innav.gc.ca</p> |
| <p>Atlantic Region (South) *Sydney MCTS Centre</p> <p>“M” Series NAVWARN</p> <p>Canadian Coast Guard 1190 Westmount Road Sydney, NS B1R 2J6</p> <p>Telephone: 902-564-7751 or 1-800-686-8676 Facsimile: 902-564-7662</p> <p>Email: NAVWARN.MCTSSydney@innav.gc.ca</p> | <p>Arctic Region *Iqaluit MCTS Centre</p> <p><i>Operational from approximately mid-May until late December.</i></p> <p>“A” Series NAVWARN</p> <p>Canadian Coast Guard P.O. Box 189 Iqaluit, NU X0A 0H0</p> <p>Telephone: 867-979-5269 Facsimile: 867-979-4264</p> <p>Email: NAVWARN.MCTSIqaluit@innav.gc.ca</p> |

*Service available in English and in French.

¹ The expression “Notice to Shipping” was changed to “Navigational Warning” in January 2019.

Table of Contents

| | |
|--|-----------|
| Section 1: General and Safety Information | 1 |
| *505/23 Canadian Hydrographic Service – Magnetic Declination Calculations | 1 |
| *1207/23 Canadian Hydrographic Service – Inappropriate Geographical Names Review Process..... | 1 |
| *401/24 Protecting the North Atlantic Right Whale: Speed Restriction Measures in the Gulf of St. Lawrence | 1 |
| *406/24 Saguenay–St. Lawrence Marine Park - Beluga Whale Protection: Slowdown Area at the Mouth of the Saguenay Fjord and Area Closure at Baie Sainte-Marguerite | 9 |
| *407/24 Saguenay – St. Lawrence Marine Park and Surrounding Waters – Whale Protection | 12 |
| *1001/24 Canadian Hydrographic Service – Electronic Navigational Charts..... | 13 |
| *1002/24 Transport Canada – Ship Safety Bulletins #24 and #25/2024 | 14 |
| *1003/24 Canadian Coast Guard Publication - Amendments to the Notices to Mariners Annual Edition 2024 - Section A, Notice 2: Cautions in the Use of Aids to Navigation | 14 |
| *1004/24 St. Margaret's Bay – Unlit Buoys Permanently Discontinued | 15 |
| *1005/24 Harbours on the North Shore / Hâvres sur la Côte Nord – Unlit Buoys Name Change | 15 |
| *1006/24 Rivière Ristigouche / Restigouche River – Unlit Buoys Repositioned | 15 |
| *1007/24 Port Hood and/et Mabou Harbour – Unlit Buoys Permanently Changed | 16 |
| *1008/24 Chéticamp Harbour / Grand Étang Harbour / Margaree Harbours – Unlit Buoy Repositioned | 16 |
| *1009/24 Charlottetown Harbour – Unlit Buoy Repositioned | 16 |
| *1010/24 Hillsborough Bay – Unlit Buoys Aid Designators Changed | 16 |
| *1011/24 Rustico Bay and / et New London Bay – Unlit Buoys Repositioned..... | 17 |
| *1012/24 Malpeque Bay – Unlit Buoys Repositioned | 17 |
| *1013/24 West Point à / to Baie de Tracadie – Unlit Buoys Repositioned | 18 |
| *1014/24 West Point à / to Baie de Tracadie – Unlit Buoys Permanently Established | 19 |
| *1015/24 Miramichi – Unlit Buoys Repositioned..... | 19 |
| *1016/24 Caraquet Harbour, Baie de Shippegan and / et Miscou Harbour – Unlit Buoys Permanently Changed | 20 |
| *1017/24 Plans Baie des Chaleurs / Chaleur Bay - Côte sud / South Shore – Unlit Buoys Repositioned..... | 21 |
| *1018/24 Murray Harbour to/à Boughton Bay – Unlit Buoys Repositioned..... | 21 |
| *1019/24 Pugwash Harbour, Wallace Harbour, Amet Sound and Approaches / et les Approches – Unlit Buoys Repositioned | 21 |
| Section 1A: Temporary and Preliminary Notices | 22 |
| Reminder – Comment Period for Active Preliminary Notices | 22 |
| *1020(T)/24 Cape St Mary's to / à Argentia – Marine Works – Dredging Operations | 22 |
| *1021(T)/24 Batiscan au/to Lac Saint-Pierre – Waterway Information : Shallow Depth | 23 |
| *1022(P)/24 Liverpool Harbour to / à Lockeport Harbour – Fog Horn to be Discontinued..... | 24 |
| *1023(T)/24 Hamilton Harbour – Aid to Navigation | 25 |

| | | |
|-------------|---|----|
| *1024(T)/24 | Georgian Bay / Baie Georgienne – Aids to Navigation Temporarily Established | 25 |
| *1025(P)/24 | Adolphus Reach to/à Big Bay – Aids to Navigation to be Discontinued..... | 26 |
| *1027(T)/24 | Canadian Coast Guard – Automatic Identification System (AIS) | 26 |

Section 2: Chart Corrections **27**

Section 3: Radio Aids to Marine Navigation Corrections **36**

| | | |
|----------|---|----|
| *1028/24 | Radio Aids to Marine Navigation 2024 (Atlantic, St. Lawrence, Great Lakes, Lake Winnipeg, Arctic and Pacific)..... | 36 |
|----------|---|----|

Section 4: Canadian Sailing Directions Corrections **37**

Section 5: List of Lights, Buoys and Fog Signals Corrections **38**

Numerical Index of Canadian Charts Affected

This numerical index lists all nautical charts mentioned in this monthly edition of Notices to Mariners. Only charts appearing in Section 2 of this publication require a chart correction. The appearance of charts in all other sections, particularly those related to the correction of other nautical publications, is included here for reference.

| Chart No. | Pages | Chart No. | Pages | Chart No. | Pages |
|-----------|--------------------------------|-----------|------------------------------------|-----------|-------|
| 1223 | 27 | 4466 | 16 | | |
| 1233 | 28 | 4467 | 17, 41, 42 | | |
| 1310 | 28 | 4485 | 34 | | |
| 1311 | 29, 30 | 4486 | 44, 47 | | |
| 1312 | 30 | 4491 | 17, 42, 43 | | |
| 1313 | 23, 24, 30, 31 | 4497 | 38 | | |
| 1314 | 31, 32, 48 | 4530 | 22 | | |
| 1317 | 32 | 4622 | 38 | | |
| 1320 | 32 | 4841 | 22, 23 | | |
| 1551 | 22 | 4886 | 34 | | |
| 2018 | 48 | 4906 | 18, 19, 43 | | |
| 2019 | 26 | 4911 | 44 | | |
| 2067 | 25 | 4912 | 19, 44 | | |
| 2201 | 25 | 4913 | 20, 45, 46, 47 | | |
| 2261 | 25 | 4920 | 21, 44, 45, 46, 48 | | |
| 2282 | 25 | 4921 | 34 | | |
| 2291 | 25 | 4935 | 21, 39 | | |
| 4013 | 32 | 4937 | 21 | | |
| 4026 | 33 | 5023 | 34 | | |
| 4114 | 33 | 5045 | 34 | | |
| 4115 | 33 | 6035 | 48 | | |
| 4142 | 33 | 7573 | 34 | | |
| 4203 | 33 | 7575 | 35 | | |
| 4240 | 24 | 7710 | 35 | | |
| 4266 | 38 | 7777 | 35 | | |
| 4275 | 38 | 7940 | 35 | | |
| 4374 | 34 | | | | |
| 4386 | 15 | | | | |
| 4425 | 15, 40 | | | | |
| 4426 | 15 | | | | |
| 4430 | 34 | | | | |
| 4448 | 16 | | | | |
| 4449 | 16 | | | | |
| 4460 | 16 | | | | |

Section 1: General and Safety Information

***505/23 Canadian Hydrographic Service – Magnetic Declination Calculations**

(Recurrent publication of notice *505/23, originally published in the *Notices to Mariners – Monthly Eastern Edition 05/2023* publication.)

Mariners are advised that CHS has adopted the harmonized World Magnetic Model (WMM), as found on the NCEI/NOAA website. Old compass rose declination information on CHS navigational products can be updated using this website: <https://www.ngdc.noaa.gov/geomag/calculators/magcalc.shtml#declination>. While the differences in the model declinations are small each year, they can become more significant over a large period of time.

***1207/23 Canadian Hydrographic Service – Inappropriate Geographical Names Review Process**

(Recurrent publication of notice *1207/23, originally published in the *Notices to Mariners – Monthly Eastern Edition 12/2023* publication.)

The records of the Canadian Hydrographic Service could contain geographical names that may be considered inappropriate, offensive and derogatory. Geographical naming authorities are in the process of addressing many offensive place names, the review process is underway. For more information, about inappropriate geographical names, please see the [following announcement](#).

***401/24 Protecting the North Atlantic Right Whale: Speed Restriction Measures in the Gulf of St. Lawrence**

(Recurrent publication of notice *401/24, originally published in the *Notices to Mariners – Monthly Eastern Edition 04/2024* publication.)

Purpose

This bulletin describes the speed restriction zones that vessels must follow in the Gulf of St. Lawrence.

The Government of Canada has established these zones to reduce the risk of vessel colliding with North Atlantic right whales (NARW).

Background

Due to changing migration patterns of North Atlantic right whales and their increased presence in the Gulf of St. Lawrence, the Government of Canada has set seasonal speed restrictions in specific zones. These speed restrictions zones are defined as “static zones”, “dynamic shipping zones”, “seasonal management areas”, a “voluntary seasonal slowdown zone” and a “restricted area”. [See the map below for details](#).

Note: Vessels **must follow** Navigational Warnings outlining the speed restrictions. The *Interim Order for the Protection of North Atlantic Right Whales (Eubalaena Glacialis) in the Gulf of St. Lawrence, 2024* enables the issuance of Navigational Warnings (NAVWARNs) imposing speed restrictions and navigation restrictions.

Speed restriction zones are described in monthly Notices to Mariners (NOTMARs), which are published by the Canadian Coast Guard. The status of these zones is broadcasted through NAVWARNs, which are published by the Coast Guard’s Marine Communications and Traffic Services Centres.

Changes to speed restriction zones and measures

Based on consultations with industry and on scientific data, changes to the speed restriction zones will be effective from April 17th, 2024, while the restricted area will be implemented based on whale presence.

A voluntary seasonal slowdown of 10.0 knots over the ground spanning from Cabot Strait (a line running from Cape North NS to Cape Ray NL) to the eastern edge of dynamic shipping zone E will be implemented at the beginning and end of the North Atlantic right whale season (Spring and fall).

Please check the latest NAVWARN for all speed restrictions currently in effect.

Speed Restriction Measures for 2024

These restrictions will be in effect from **April 17 to November 15, 2024**.

Exceptions

The following exception will apply to **all** measures:

- a) a vessel in distress or providing assistance to a person or a vessel in distress;
- b) a government vessel being used
 - i. for law enforcement activities;
 - ii. for search and rescue operations; or
 - iii. to ensure the competency of the crew or the operational readiness of the vessel or crew with respect to such activities or operations.

Static zones

In the static zones, **all** vessels above **13 m** in length overall (LOA) must proceed at a speed of not more than 10.0 knots over the ground.

Exclusions

Air cushion vessels operated by or on behalf of the Government of Canada that are engaged in ice-clearing activities from April to June in and around Chaleur Bay are exempted when in operation.

36.57 m (20-fathom) shallow water protocol exclusion

Vessels engaged in any commercial fishing activity may proceed at a safe operational speed in waters not more than 36.57 m (20 fathom) deep within the static zones.

If a notice to fish harvesters and a NAVWARN state that at least one North Atlantic right whale has been detected in waters within a static zone or its associated buffer zone that are not more than 36.57m deep, the speed limit of 10.0 knot over the ground will apply in the concerned zone(s) to all vessels above 13m in length overall (LOA). The speed restriction will be in effect for 15 days after the day on which the whale was detected. The buffer zones associated with the static zones are located 5 miles north and south of their adjacent border in waters less than 36.57m deep.

Coordinates for the northern static zone:

- 50° 20' N 065° 00' W
- 49° 13' N 065° 00' W
- 48° 40' N 064° 13' W
- 48° 40' N 062° 40' W
- 48° 03' N 061° 07.5' W
- 47° 58.1' N 061° 03.5' W
- 48° 00' N 061° 00' W
- 49° 04' N 061° 00' W
- 49° 04' N 062° 00' W
- 49° 43' N 063° 00' W
- 50° 20' N 063° 00' W

Coordinates for the southern static zone:

- 48° 40' N 065° 00' W
- 48° 40' N 062° 40' W
- 48° 03' N 061° 07.5' W
- 47° 58.1' N 061° 03.5' W
- 47° 10' N 062° 30' W
- 47° 10' N 065° 00' W

Dynamic shipping zones

There are five dynamic shipping zones (DSZ) located in the routing systems north and south of Anticosti Island: A, B, C, D and E

Coordinates for the dynamic shipping zones:

Zone A

- 49° 41' N, 065° 00' W
- 49° 20' N, 065° 00' W
- 49° 11' N, 064° 00' W
- 49° 22' N, 064° 00' W

Zone B

- 49° 22' N, 064° 00' W
- 49° 11' N, 064° 00' W
- 48° 48' N, 063° 00' W
- 49° 00' N, 063° 00' W

Zone C

- 49° 00' N, 063° 00' W
- 48° 48' N, 063° 00' W
- 48° 24' N, 062° 00' W
- 48° 35' N, 062° 00' W

Zone D

- 50° 16' N, 064° 00' W
- 50° 00' N, 064° 00' W
- 49° 56' N, 063° 00' W
- 50° 16' N, 063° 00' W

Zone E

- 48° 35' N 062° 00' W
- 48° 24' N 062° 00' W
- 48° 03' N 061° 07.5' W
- 47° 58.1' N 061° 03.5' W
- 48° 00' N 061° 00' W
- 48° 10.5' N 061° 00' W

When a North Atlantic right whale is detected in a dynamic shipping zone or in the buffer zones, located 5 nautical miles south or 2.5 nautical miles from the eastern and western edges of the dynamic shipping zones:

- All vessels will be notified via a NAVWARN; and
- Vessels above **13 m** in length overall (LOA) must proceed at a speed of not more than 10.0 knots over the ground within that zone.

Even though dynamic shipping zones overlap with static zones, vessels can travel at a safe operational speed in dynamic shipping zones when they are not under speed restriction. Mariners must also keep in mind that North Atlantic right whales may be nearby.

Speed restrictions in the dynamic shipping zones

The detection of North Atlantic right whales in one or more dynamic shipping zone(s), or in their buffer zones, will trigger a speed restriction in the concerned zone(s). The speed restriction in the dynamic shipping zone(s) will be in effect for 15 days from the date of detection. In the event of a new North Atlantic right whale detection occurring in the last 7 days of the 15-day slowdown period, the speed restriction will be extended for an additional 15 days from the date of the new detection. This would continue until no NARW are detected.

When a NAVWARN is issued implementing a speed restriction in one or more dynamic shipping zone(s), vessels above **13 m** in length (LOA) must not exceed a speed of 10.0 knots over the ground. Within any dynamic zone that is not subject to a speed restriction, mariners may proceed at a safe operational speed. Mariners are encouraged to take into consideration the potential for their vessel striking North Atlantic right whales when considering a “safe operational speed” during navigation.

Seasonal management areas

Seasonal management area 1 (SMA-1) and seasonal management area 2 (SMA-2) are speed restriction areas located north and south of dynamic shipping zone E, respectively.

Within seasonal management areas, vessels above **13 m** in length (LOA):

- must restrict their speed so as not to exceed 10.0 knots over the ground from April 17th to June 25th, 2024; **and**
- are allowed to proceed at a safe operational speed from June 26th to November 15th, 2024, unless a North Atlantic right whale is detected. If a whale is detected, a speed restriction of 10.0 knots over the ground will be triggered for 15 days from the date of detection. In the event of a new North Atlantic right whale detection occurring in the last 7 days of the 15-day slowdown period, the speed restriction will be extended for an additional 15 days from the date of the new detection. This would continue until no North Atlantic right whales are detected.

Coordinates for the SMA-1:

- 49° 04' N 062° 00' W
- 49° 04' N 061° 00' W
- 48° 10.5' N 061° 00' W
- 48° 35' N 062° 00' W

Coordinates for the SMA-2:

- 48° 24' N 062° 00' W
- 48° 03' N 061° 07.5' W
- 47° 58.1' N 061° 03.5' W
- 47° 26.69' N 062° 00' W

Restricted area

In the summer months, an important proportion of the total North Atlantic right whale population gathers for feeding and surface activity near the [Shediac Valley](#). Since this makes the North Atlantic right whale more susceptible to vessel collisions, a mandatory restricted area will be implemented in and near the [Shediac Valley](#) and will come into force once 80% of the restricted area is closed to fishing for the season as per the [Department of Fisheries and Oceans' right whale closure protocol](#) or at the latest on June 19th, 2024. The restricted area will be lifted once the North Atlantic right whale detections decrease in the restricted area or at the latest on September 25th, 2024.

The size and location of the area are determined based on historical detection data of North Atlantic right whales. All necessary details can be found in the *Interim Order for the Protection of North Atlantic Right Whales (Eubalaena Glacialis) in the Gulf of St. Lawrence, 2024*. Triggering and lifting of the restricted area will be communicated to mariners through NAVWARNs and notices to fish harvesters.

Vessels above **13 m** in length (LOA) will be required to:

- avoid the area unless they are part of the exceptions listed in the Interim Order for the Protection of North Atlantic Right Whales (*Eubalaena Glacialis*) in the Gulf of St. Lawrence, 2024;
- transit the area at a speed not exceeding 8.0 knots over the ground if they are part of the exceptions.

The following exceptions will apply to the restricted area. The following listed vessels can travel through the area at not more than 8.0 knots over the ground:

- A vessel being used for commercial fishing;
- A vessel being used for fishing under the authority of a licence issued under the *Aboriginal Communal Fishing Licences Regulations*;
- A vessel being used for research purposes on behalf of the Government of Canada
- A vessel being used as part of the Department of Fisheries and Oceans' Marine Mammal Response Program to assist a marine mammal or sea turtle in distress or to access or retrieve a deceased marine mammal or sea turtle;
- A vessel authorized by the Government of Canada to retrieve or identify the location of abandoned or lost fishing gear;
- A vessel involved in pollution response operations;
- A vessel avoiding immediate or unforeseen danger;
- A vessel involved in research relating to right whales as part of a project that has received funding from the Government of Canada.

The following vessels can travel through the restricted area at a speed over 8.0 knots, but below 10.0 knots over the ground as required by the static speed restriction zone:

- A vessel being used by an employee of the Government of Canada or peace officer who is performing their duties.

Coordinates for the restricted area:

- 48°31.8' N 063°39.6' W
- 48°24.72' N 063°17.88' W
- 47°18.84' N 064°10.8' W
- 47°27.18' N 064°30.72' W

Inclement weather exception

Mariners will be notified in advance via a NAVWARN should the speed restriction status change in any zone or area, due to inclement weather.

Within any zone or area that is no longer subject to a speed restriction due to adverse weather conditions, mariners may proceed at a safe operational speed. Mariners are however encouraged to take into consideration the potential for their vessel striking North Atlantic right whales when considering a “safe operational speed” during navigation.

*Non-expected vessels are still prohibited from transiting through the restricted area.

Voluntary seasonal slowdown in Cabot Strait

To coincide with the North Atlantic right whales entering and exiting the Gulf of St. Lawrence in large numbers, a voluntary seasonal slowdown is being put in place in Cabot Strait from April 17th to June 25th, 2024, and from September 25th to November 15th, 2024.

- During these periods, vessels above 13 m in length (LOA) are requested to voluntarily reduce their speed as to not exceed 10.0 knots over the ground.

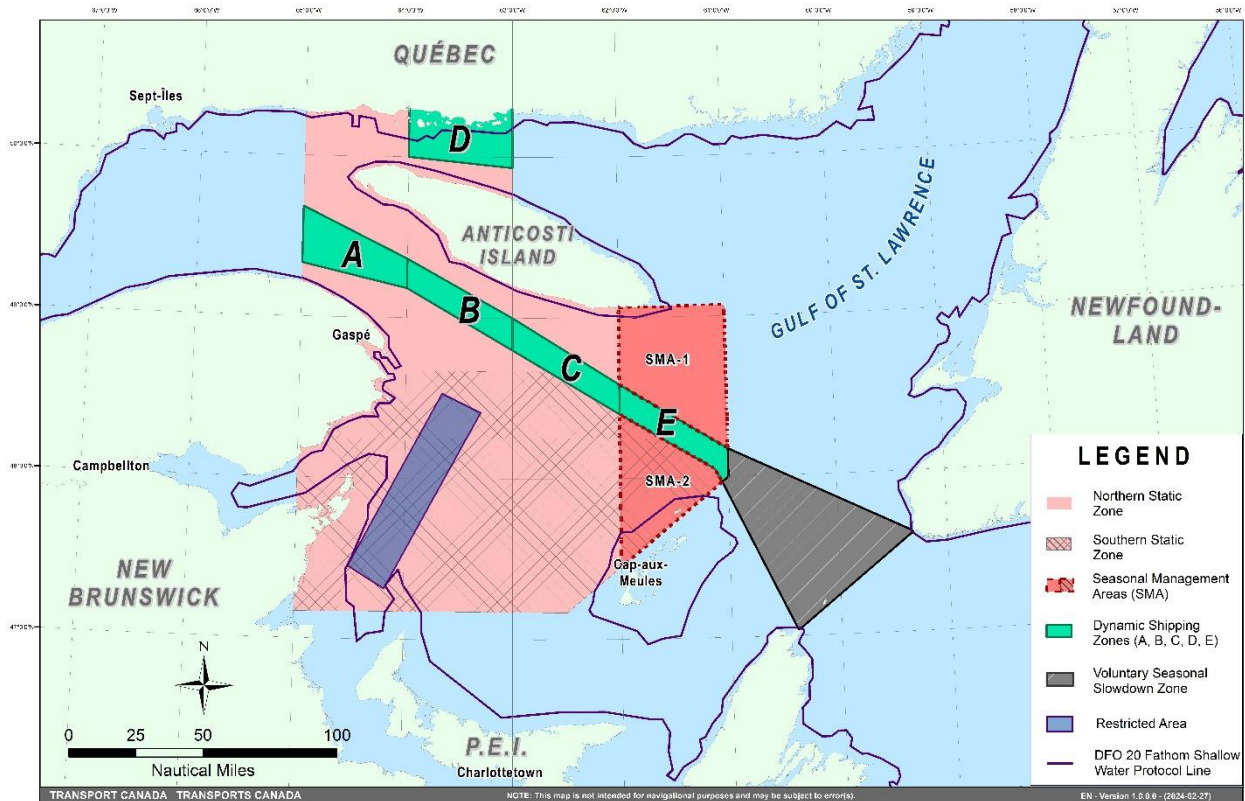
Voluntary seasonal slowdown zone coordinates:

- 48° 10.5' N 061° 00' W
- 47° 37.2' N 059° 18.5' W
- 47° 02' N 060° 23.7' W
- 47° 58.1' N 061° 03.5' W
- 48° 00' N 061° 00' W

Map of the Gulf of St. Lawrence

The following map shows

- the static zones (north and south), in pink;
- the dynamic shipping zones (A, B, C, D and E), in green;
- the seasonal management areas, in dark pink;
- the voluntary seasonal slowdown zone, in grey;
- the restricted area, in dark blue; and
- the 36.57 m (20 fathom) shallow water protocol line.



This map is for visual representation only and is not to be used for navigation or enforcement.

Roseway Basin – Area to be Avoided

The Roseway Basin, located approximately 20 nautical miles south of Cape Sable Island, Nova Scotia, is a critical habitat for North Atlantic right whales, which have been observed to gather in the area on a seasonal basis in Canadian waters. This critical habitat is also located near key shipping routes. In 2007, Canada, with the support of many groups with varied interests, proposed to the International Maritime Organization (IMO) the establishment of a seasonal Area to be Avoided in the Roseway Basin to protect North Atlantic right whales, which IMO accepted and adopted.

To reduce the risk of vessels colliding with North Atlantic right whales, it is recommended that vessels of 300 gross tonnages and more, in transit during the period of June 1 through December 31, avoid the Roseway Basin area. Smaller vessels are also encouraged to avoid passage through this area. If passage is necessary within the Area to be Avoided, it is recommended that all mariners decrease their vessel speed to no more than 10 knots, when safe to do so.

Roseway Basin coordinates:

- 43° 16' N 064° 55' W
- 42° 47' N 064° 59' W
- 42° 39' N 065° 31' W
- 42° 52' N 066° 05' W

NAVWARN broadcasts

The Canadian Coast Guard issues NAVWARNs:

- by radio broadcast; and
- online at [Canada's Maritime Information Portal](#) and its [Navigational Warnings](#) site.

Mariners must ensure they have accurate and up-to-date information about the protection of the North Atlantic right whale, as in all applicable NOTMARs and NAVWARNs.

For the North Atlantic right whale speed restrictions, the NAVWARN(s) currently in effect will be provided to vessels subject to the Vessel Traffic Services Zone Regulations or the Eastern Canada Vessel Traffic Services Zone Regulations:

Outbound vessels will receive NAVWARNs

- at Calling-in-Point 10 (St-Laurent); or
- upon a departure downstream from the Quebec pilot station (including the Saguenay River, Chaleur Bay, Miramichi Bay, etc.)

Inbound vessels will receive NAVWARNs

- when a clearance to enter Canadian waters is granted

Vessels in transit will receive NAVWARNs

- at the last reporting point prior to entering the mandatory speed restriction zones; and/or
- at 10 nautical miles before they enter the mandatory speed restriction zones

For those vessels not subject to the above-mentioned regulations, vessel operators are required to monitor broadcasts by the Canadian Coast Guard's Marine Communications and Traffic Services network for the most up to date information. For marine radio frequencies and broadcast times, information may be found in the [Radio Aids to Marine Navigation](#) publication.

Aids to navigation

The Canadian Coast Guard is currently testing virtual Automatic Identification System (AIS) aids to navigation (AIS AtoN) in specific areas. These aids notify mariners of a dynamic shipping zone and/or a seasonal management area subject to a speed restriction.

Each zone is delimited by four to six virtual AIS AtoN, which can be displayed on a ship's navigation equipment, such as

- Electronic Chart Display and Information System (ECDIS);
- Electronic Chart System (ECS);
- RADAR;
- Minimum Keyboard Display (MKD); and
- Electronic Nautical Chart (ENC).

The Canadian Coast Guard broadcasts the virtual AIS AtoN only when a speed restriction is in effect in one or more testing zones.

Mariners must select the virtual AIS AtoN symbol to view a message such as "SectA1 Spd Lim 10 kt." This message refers to a speed restriction in effect for a specific zone.

Note: This system is not the primary method of communicating this information.

Compliance and enforcement

Vessels must comply with the Interim Orders made pursuant to the *Canada Shipping Act, 2001*, and any NAVWARNs broadcasted and published by the Canadian Coast Guard relating to the Interim Orders, aimed at regulating the navigation for the purposes of protecting the North Atlantic right whales.

If a vessel does not comply with the Interim Orders or instructions in the NAVWARNs related to the Interim Orders, the vessel could face:

- administrative monetary penalties up to a maximum of CAN \$250,000; and/or
- penal sanctions under the *Canada Shipping Act, 2001* is liable on summary conviction to a fine of not more than CAN \$1,000,000 or to imprisonment for a term of not more than 18 months, or to both.

If a vessel appears to have violated the speed restriction, Transport Canada Marine Safety inspectors will review all information provided through AIS and seek an explanation from the master.

No exemptions to the speed restriction will be granted in advance. However, if a deviation from the speed restrictions is necessary for safety reasons, the following information must be entered into the bridge logbook:

- reason(s) for deviation;
- speed at which vessel is operated;
- latitude and longitude at time of deviation;
- time and duration of deviation; and
- master of the vessel shall sign and date the bridge logbook entry.

For any deviation, Transport Canada will review and consider reasons such as:

- navigating to ensure vessel safety;
- weather conditions;
- force majeure (unforeseeable circumstances); and
- responding to emergencies.

Report a North Atlantic right whale sighting

If you see live, free-swimming whales:

- Email: DFO.GLFWhales-BaleinesGLF.MPO@dfo-mpo.gc.ca
- When reporting sightings of North Atlantic right whales, you must include: GPS location (latitude and longitude), date and time of sighting, number of marine mammals, photograph(s)/video(s) collected and if possible, behavior of marine mammals observed (ex., feeding, travelling, diving).

If you see a North Atlantic right whale (and all other marine mammals) **entangled, injured or dead**, please document and report it immediately to the regional Response Network.

- When documenting you should collect: GPS location (latitude and longitude), date and time of sighting, number of marine mammals, photograph(s)/video(s), and description of the incident to provide to the Response Network.

Southern part of the Gulf of St. Lawrence (New Brunswick, Nova Scotia & Prince Edward Island):

Marine Animal Response Society
Telephone: 1-866-567-6277

Newfoundland and Labrador:

Whale Release and Strandings Newfoundland and Labrador (Tangly Whales Inc.)
Telephone: 1-888-895-3003 or 1-709-895-3003

Quebec:

Baleines en direct (GREMM)
Telephone: 1-877-722-5346

REPORT A MARINE MAMMAL OR SEA TURTLE INCIDENT OR SIGHTING:

For more information on reporting other marine mammal or sea turtle sighting and incidents:

<https://www.dfo-mpo.gc.ca/species-especes/mammals-mammiferes/report-rapport/page01-eng.html>

Please consult Whale Insight for the latest right whale observations:

<https://gisp.dfo-mpo.gc.ca/apps/WhaleInsight/eng/?locale=en>

***406/24 Saguenay–St. Lawrence Marine Park - Beluga Whale Protection: Slowdown Area at the Mouth of the Saguenay Fjord and Area Closure at Baie Sainte-Marguerite**

(Recurrent publication of notice *406/24, originally published in the *Notices to Mariners – Monthly Eastern Edition 04/2024* publication.)

The Saguenay–St. Lawrence Marine Park and its surrounding area are at the heart of endangered beluga whale critical summer habitat. Marine mammal protection measures have been put in place in accordance with the *Marine Activities in the Saguenay–St. Lawrence Marine Park Regulations* within the limits of the Marine Park.

However, important feeding, calving and rearing areas for beluga whales require greater protection to ensure the recovery of the species. The portion of the Saguenay situated between the mouth of the Fjord and Baie Sainte-Marguerite is one of the areas most used by females and their young from May to October. The mouth of the Saguenay is known as a feeding ground and Baie Sainte-Marguerite as a calving and rearing area.

In order to prevent collisions with beluga whales, a compulsory 15-knot slowdown area is in effect from May 1st to October 31st at the mouth of the Saguenay. To ensure tranquility for female belugas and their young during the critical calving period, access to Baie Sainte-Marguerite is prohibited to all vessels from June 21st to September 21st, except for special authorizations (see description below).

For safety reasons, *the slowdown area measure at the mouth of the Saguenay Fjord does not apply* to cargo ships (see the monthly edition of *Notice to Mariners* from May to October for voluntary protection measures in the St. Lawrence Estuary). An enhanced vigilance is, however, recommended to all navigators between the mouth of the Saguenay Fjord and Baie Sainte-Marguerite for the protection of beluga whales.

For more information on the Saguenay–St. Lawrence Marine Park, see notice 5C of the *Notices to Mariners Annual Edition 2024* or visit marinepark.gc.ca.

REGULATORY PROTECTION MEASURES — BELUGA WHALE

Entire Marine Park Territory:

- When beluga whales are less than half a nautical mile (926 metres) from a motorized vessel, the vessel must maintain a steady speed of between 5 and 10 knots.
- All vessels, including human-powered vessels (kayaks and canoes), must continue to move forward and maintain their heading.
- All vessels must maintain a minimum distance of 400 metres from beluga whales at all times.

For more information concerning the regulations, consult: marinepark.ca.

Mouth of the Saguenay Fjord (Figure 1) — Slowdown Area (area crosshatched in red):

- Maximum speed at the mouth of the Saguenay between buoys S7 and S8 and the ferry docks between Baie-Sainte-Catherine and Tadoussac is 15 knots from May 1st to October 31st.

Baie Sainte-Marguerite (Figure 2) — Area Closure (red area):

- From June 21st to September 21st, vessels must not enter the red area, which follows a line between Cap Nord-Ouest and Cap Sainte-Marguerite.
- Special authorizations are granted only for kayaks, canoes and recreational fishermen who must travel without stopping along a corridor within 10 metres of the shore or in shallow areas.

VOLUNTARY PROTECTION MEASURES

Baie Sainte-Marguerite sector (Figure 2) — Transit Area (area crosshatched in yellow):

- From June 21st to September 21st, navigation in this area is recommended at a speed of between 5 and 10 knots without stopping.

The purpose of this transit area is to favour respect of the *Marine Activities in the Saguenay–St. Lawrence Marine Park Regulations*, since beluga whales are often present in the Baie Sainte-Marguerite sector.

Information

All incidents, including collisions with whales, must be reported without delay by calling 1-866-508-9888. For any other situation concerning a marine mammal that is either dead or in trouble, contact the Marine Mammal Emergency Response Network at 1-877-722-5346, or use VHF channel 16.

Figure 1

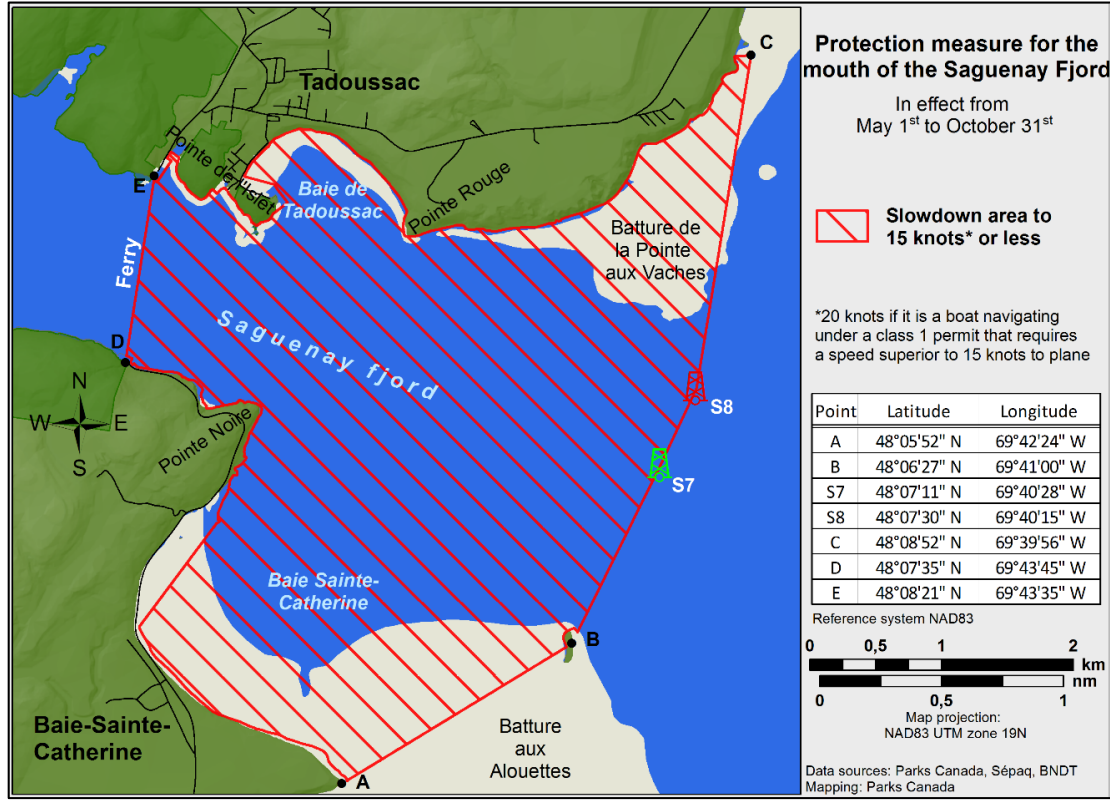
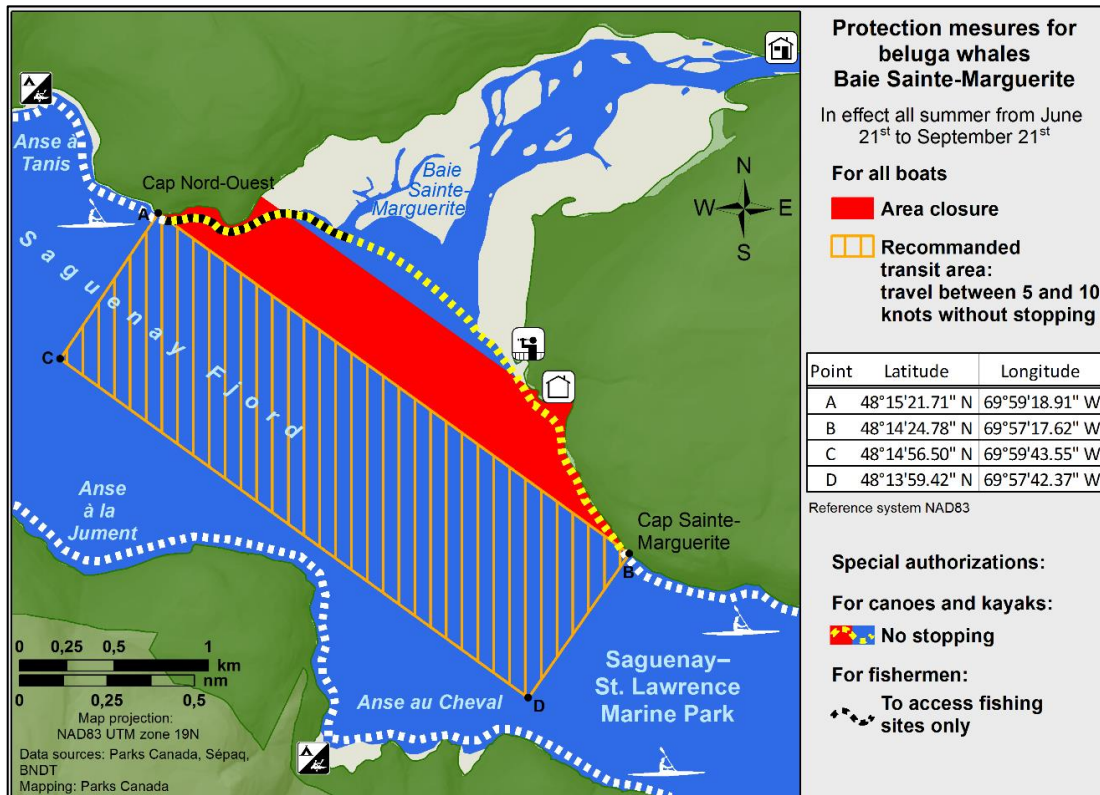


Figure 2



***407/24 Saguenay – St. Lawrence Marine Park and Surrounding Waters – Whale Protection**

(Recurrent publication of notice *407/24, originally published in the *Notices to Mariners – Monthly Eastern Edition 04/2024* publication.)

The waters in and around the Saguenay–St. Lawrence Marine Park are well known for the resident endangered beluga population and the wide diversity of whales that migrate there to feed, particularly between April and November.

REGULATORY PROTECTION MEASURES

All whale species that are found in the St. Lawrence are protected under the *Marine Mammal Regulations*, pursuant to the *Fisheries Act*. Within the boundaries of the Marine Park, specific measures are set out in the *Marine Activities in the Saguenay–St. Lawrence Marine Park Regulations*, pursuant to the establishment of the *Saguenay–St. Lawrence Marine Park Act*. Any collision with a marine mammal within the Marine Park must immediately be reported to a park warden at 1-866-508-9888. For collisions that occur outside the Marine Park or for any situation involving a marine mammal that is dead or in trouble, contact the emergency network at 1-877-722-5346 or on VHF channel 16.

For more information on the Saguenay–St. Lawrence Marine Park, see notice 5C of the *Notices to Mariners Annual Edition 2024*.

VOLUNTARY PROTECTION MEASURES

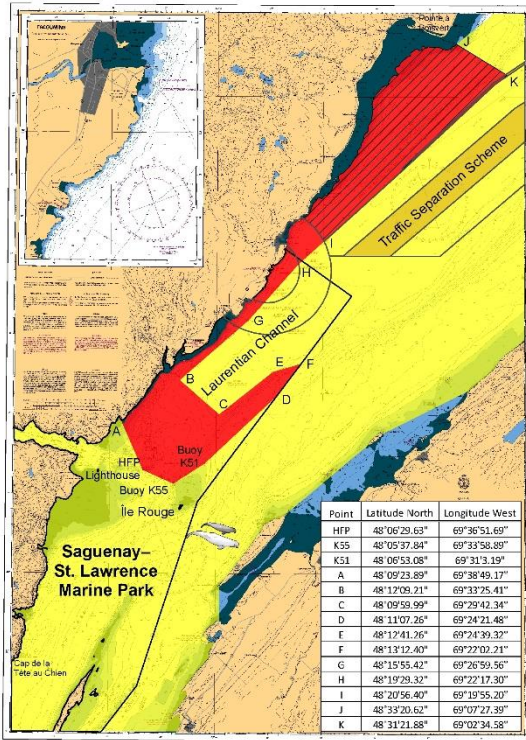
Provisional measures in effect from May 1 to October 31, 2024. See map at the end of this notice.

These measures apply to merchant vessels and cruise ships between Pointe à Boisvert and Cap de la Tête au Chien to prevent collisions with whales. These measures should only be taken when they will not jeopardize navigational safety.

Caution area (yellow area): To reduce the risk of collisions with whales that can be present anywhere in this area, heightened vigilance of navigators is critical. Posting a lookout is recommended in order to increase the chances of seeing the whales and thus taking necessary measures to avoid them. If bypassing the whales is not possible, slow down and wait for the animals to move away to a distance greater than 400 metres (0.215 nautical miles) before resuming original speed. It is more difficult to see the animals at night therefore increased caution is recommended.

Slow down to 10 knots or less area (red area): To reduce the risk of collisions with whales in this feeding area, it is recommended that vessels slow down to a maximum speed through the water of 10 knots and post a lookout. It is further recommended to remain in the Laurentian Channel to the north of Île Rouge to minimize the impact of noise in a sensitive area south of this island, which is highly frequented by herds of beluga whales composed of females and young.

Area to be avoided (hatched red area): To reduce noise and the risk of collisions with whales, vessels should avoid transiting through this area which is highly frequented by blue whales, an endangered species. If the area cannot be avoided, slow down to a speed through the water of 10 knots or less.

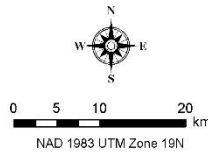


Voluntary protection measures to reduce the risk of ship strikes with whales and to minimize the impact of noise on beluga whale

Provisional measures in effect from May 1st to October 31st 2024

- Caution area**
presence of whales
 - Slow down to 10 knots* or less area**
Important whale feeding area
 - Area to be avoided; if impossible, slow down to 10 knots* or less**
Important blue whale area
- Sensitive area highly used by beluga herds composed of females and young
It is recommended to navigate in the Laurentian Channel north of Île Rouge

* 10 knots refers to speed through water



***1001/24 Canadian Hydrographic Service – Electronic Navigational Charts**

| S-57 ENC Number | Chart Title | ENC Compilation Scale | Published |
|----------------------|-------------|-----------------------|------------|
| New Charts | | | |
| CA5B1E5A (Edn 1.000) | CA5B1E5A | 1:11 000 | 2024-10-25 |
| CA5B1E6A (Edn 1.000) | CA5B1E6A | 1:11 000 | 2024-10-25 |
| CA5B1E7A (Edn 1.000) | CA5B1E7A | 1:11 000 | 2024-10-25 |
| CA5B2DXA (Edn 1.000) | CA5B2DXA | 1:11 000 | 2024-10-25 |
| CA5B2DYA (Edn 1.000) | CA5B2DYA | 1:11 000 | 2024-10-25 |
| CA5B2E0A (Edn 1.000) | CA5B2E0A | 1:11 000 | 2024-10-25 |
| CA5B2E1A (Edn 1.000) | CA5B2E1A | 1:11 000 | 2024-10-25 |
| CA5B2E2A (Edn 1.000) | CA5B2E2A | 1:11 000 | 2024-10-25 |
| CA5B2E3A (Edn 1.000) | CA5B2E3A | 1:11 000 | 2024-10-25 |
| CA5B2E4A (Edn 1.000) | CA5B2E4A | 1:11 000 | 2024-10-25 |
| CA5B2E5A (Edn 1.000) | CA5B2E5A | 1:11 000 | 2024-10-25 |
| CA5B2E6A (Edn 1.000) | CA5B2E6A | 1:11 000 | 2024-10-25 |
| CA5B2E7A (Edn 1.000) | CA5B2E7A | 1:11 000 | 2024-10-25 |
| CA5B3DXA (Edn 1.000) | CA5B3DXA | 1:11 000 | 2024-10-25 |
| CA5B3DYA (Edn 1.000) | CA5B3DYA | 1:11 000 | 2024-10-25 |
| CA5B3E0A (Edn 1.000) | CA5B3E0A | 1:11 000 | 2024-10-25 |
| CA5B3E1A (Edn 1.000) | CA5B3E1A | 1:11 000 | 2024-10-25 |

| S-57 ENC Number | Chart Title | ENC Compilation Scale | Published |
|-------------------------------------|---------------------|-----------------------|------------|
| New Editions | | | |
| CA24UQ8A (Edn 2.000) | Overview4800N06400W | 1:90 000 | 2024-10-11 |
| CA271032 (Edn 4.000) | Hecate Strait | 1:350 000 | 2024-10-11 |
| CA271060 (Edn 3.000) | CA271060 | 1:750 000 | 2024-10-11 |
| CA44UNQA (Edn 2.000) | Transit4800N06900W | 1:22 500 | 2024-10-25 |
| CA471020 (Edn 5.000) | Selwyn Inlet | 1:22 500 | 2024-10-25 |
| CA471021 (Edn 6.000) | Atli Inlet | 1:90 000 | 2024-10-25 |
| CA570226 (Edn 4.000) | Ucluelet Inlet | 1:7 500 | 2024-10-25 |
| Charts Permanently Withdrawn | | | |
| CA473317 | Simpson Strait | | |
| CA476547 | Grand Harbour | Cancelled by CA43MPBA | |
| CA573318 | M'Clintock Bay | | |

***1002/24 Transport Canada - Ship Safety Bulletins #24 and #25/2024**

New **Ship Safety Bulletins** have recently been posted on the [Transport Canada website](#).

To view or download these bulletins, please click on the links below:

[SSB#24/2024](#) – New Simplified Grain Form (82-0579B) for Type II vessels loading grain
RDIMS# 20551111

[SSB#25/2024](#) – Archival of expired Ship Safety Bulletins
RDIMS# 20470753

Sign up for [e-Bulletin](#) to receive an e-mail notice each time a new Ship Safety Bulletin is published on our website.

Contact us at marinesafety-securitemaritime@tc.gc.ca or 1-855-859-3123 (Toll Free).

***1003/24 Canadian Coast Guard Publication - Amendments to the Notices to Mariners
Annual Edition 2024 - Section A, Notice 2: Cautions in the Use of Aids to
Navigation**

Page 1:

ADD AS FOLLOWS:

- Mariners are cautioned that aids to navigation may fail to exhibit their advertised characteristics. Lights may be extinguished or aural signals may not function due to ice, collisions, mechanical failure and, in the case of bell and whistle buoys, calm water. The shape of an aid to navigation may be altered by ice formation or damage. The colour of an aid to navigation may be altered by freezing spray, marine growth or fouling by birds. **AIS aids, transponders, or shore-based systems may fail, and errors may be introduced by some electronic navigation systems.**

Page 2:

ADD AS FOLLOWS:

18. Mariners should be aware of the type of AIS aid to navigation they are using. Physical AIS aids are broadcast from a traditional aid, so their actual positions are reported, and they may be flagged as off position. Virtual AIS aids are broadcast from remote stations, and there are no associated traditional aids at their broadcast position. A Synthetic (Predicted) AIS aid is broadcast from a remote station as a signal placed over the position of a traditional fixed aid and its position will remain static if the associated aid is moved, damaged, or destroyed. AIS aid to navigation types may be differentiated by their information displays.

***1004/24 St. Margaret's Bay – Unlit Buoys Permanently Discontinued**

Reference chart: 4386

The following unlit buoys have been permanently discontinued:

| Aid Name | LL # | Position |
|----------------------|---------|--------------------------------|
| West Dover buoy AT68 | 5491.09 | 44° 29' 48.3"N 063° 51' 50.8"W |
| West Dover buoy AT72 | 5491.11 | 44° 30' 00.3"N 063° 52' 03.7"W |
| West Dover buoy AT73 | 5491.12 | 44° 30' 05.3"N 063° 52' 03.7"W |

(F2024-052, 054, 055)

***1005/24 Harbours on the North Shore / Hâvres sur la Côte Nord – Unlit Buoys Name Change**

Reference chart: 4425

The names of the following unlit buoys have been changed:

| Aid Name | LL # | Position |
|---------------------------------|---------|--------------------------------|
| Crowbush Cove Wharf buoy JE13/5 | 6046.95 | 46° 25' 44.3"N 062° 50' 09.9"W |
| Crowbush Cove Wharf buoy JE19 | 6046.97 | 46° 25' 35.2"N 062° 50' 20.5"W |

(G2024-505, 510)

***1006/24 Rivière Ristigouche / Restigouche River – Unlit Buoys Repositioned**

Reference chart: 4426

The following unlit buoys have been repositioned to the following coordinates:

| Aid Name | LL # | Position |
|-----------------------------|--------|--------------------------------|
| Restigouche River buoy EV8 | 6349.1 | 48° 05' 09.4"N 066° 26' 58.6"W |
| Restigouche River buoy EV42 | 6354.2 | 48° 01' 02.5"N 066° 39' 29.3"W |
| Restigouche buoy EV30 | 6357.5 | 48° 02' 23.1"N 066° 36' 09.8"W |
| Anse Busted buoy EV20 | 6359 | 48° 03' 01.9"N 066° 33' 59.5"W |

(G2024-340, 410, 411, 415)

***1007/24 Port Hood and/et Mabou Harbour – Unlit Buoys Permanently Changed**

Reference chart: 4448

The following unlit buoys have been permanently changed:

| Aid Name | LL # | Position | Changes |
|-------------------------------|--------|-----------------------------------|-----------------------------------|
| Port Hood Causeway buoy PLAS1 | 5876.2 | 46° 01' 06.8"N 061° 32' 59.8"W | Repositioned. |
| Port Hood Range buoy VK14 | 5880.3 | 46° 00' 31.1"N 061° 32' 30.6"W | Unlit starboard buoy established. |

(G2024-489, 490)

***1008/24 Chéticamp Harbour / Grand Étang Harbour / Margaree Harbours – Unlit Buoy Repositioned**

Reference chart: 4449

The following unlit buoy has been repositioned to the following coordinates:

| Aid Name | LL # | Position |
|----------------------------|---------|--------------------------------|
| Margaree Harbour buoy VH16 | 5873.55 | 46° 26' 25.2"N 061° 06' 25.1"W |

(G2024-298)

***1009/24 Charlottetown Harbour – Unlit Buoy Repositioned**

Reference chart: 4460

The following unlit buoy has been repositioned to the following coordinates:

| Aid Name | LL # | Position |
|-----------------------------------|---------|--------------------------------|
| Railway Wharf East Flats buoy C19 | 6003.15 | 46° 14' 01.1"N 063° 06' 51.9"W |

(G2024-513)

***1010/24 Hillsborough Bay – Unlit Buoys Aid Designators Changed**

Reference chart: 4466

The designators of the following unlit buoys have been permanently changed:

| Aid Name | LL # | Position | Changes |
|-------------------|---------|-----------------------------------|--|
| Pinette buoy NV14 | 5980.33 | 46° 03' 21.8"N 062° 56' 05.3"W | Aid designator changed from NV6 to NV14. |
| Pinette buoy NV17 | 5980.34 | 46° 03' 24.4"N 062° 55' 44.9"W | Aid designator changed from NV7 to NV17. |
| Pinette buoy NV18 | 5980.35 | 46° 03' 27.4"N 062° 55' 24.8"W | Aid designator changed from NV8 to NV18. |
| Pinette buoy NV21 | 5980.36 | 46° 03' 14.3"N 062° 54' 47.6"W | Aid designator changed from NV9 to NV21. |

(G2024-326 to 329)

***1011/24 Rustico Bay and / et New London Bay – Unlit Buoys Repositioned**

Reference chart: 4467

The following unlit buoys have been repositioned to the following coordinates:

| Aid Name | LL # | Position |
|------------------------------|---------|--------------------------------|
| New London Harbour buoy JM5 | 6060.35 | 46° 31' 11.8"N 063° 28' 45.8"W |
| New London buoy JN2 | 6060.5 | 46° 30' 26.6"N 063° 28' 55.3"W |
| New London Bay buoy JN2/2 | 6060.52 | 46° 30' 22.3"N 063° 28' 46.0"W |
| New London Harbour buoy JM13 | 6060.56 | 46° 30' 27.8"N 063° 29' 17.2"W |
| New London Bay buoy JN7 | 6060.61 | 46° 29' 58.9"N 063° 28' 17.6"W |
| New London Bay buoy JN11 | 6060.65 | 46° 29' 53.9"N 063° 27' 56.0"W |
| New London Bay buoy JN14 | 6060.7 | 46° 29' 50.6"N 063° 27' 51.2"W |
| New London Bay buoy JN5 | 6060.85 | 46° 30' 16.1"N 063° 28' 19.1"W |
| Stanley Bridge buoy JN23 | 6060.94 | 46° 27' 56.5"N 063° 27' 31.1"W |

(G2024-349, 352, 357, 358, 363 to 367)

***1012/24 Malpeque Bay – Unlit Buoys Repositioned**

Reference chart: 4491

The following unlit buoys have been repositioned to the following coordinates:

| Aid Name | LL # | Position |
|------------------------------|----------|--------------------------------|
| Malpeque Harbour buoy JP10 | 6065.7 | 46° 33' 37.7"N 063° 43' 40.3"W |
| Horseshoe Shoals buoy JP12 | 6065.8 | 46° 33' 16.6"N 063° 44' 35.4"W |
| Grover Island buoy JP15 | 6065.9 | 46° 32' 48.3"N 063° 45' 25.2"W |
| Malpeque, Darnley buoy PLAS1 | 6069.84 | 46° 33' 49.7"N 063° 41' 51.5"W |
| Malpeque, Darnley buoy PLAS1 | 6069.865 | 46° 33' 27.6"N 063° 41' 28.6"W |
| Malpeque, Darnley buoy PLAS1 | 6069.885 | 46° 33' 39.5"N 063° 41' 55.0"W |
| Darnley Basin buoy JT6 | 6071 | 46° 32' 00.7"N 063° 40' 12.1"W |
| Malpeque, Darnley buoy PLAS1 | 6071.6 | 46° 32' 20.5"N 063° 40' 11.4"W |
| Hardys Channel buoy JS20 | 6072.46 | 46° 39' 02.3"N 063° 52' 10.1"W |
| Port Hill buoy JY19 | 6074.27 | 46° 36' 21.6"N 063° 53' 23.9"W |
| Port Hill buoy JY2 | 6075.1 | 46° 33' 22.6"N 063° 46' 51.1"W |
| Port Hill buoy JY4 | 6075.11 | 46° 33' 59.1"N 063° 47' 35.6"W |
| Port Hill buoy JY8 | 6075.13 | 46° 35' 26.3"N 063° 50' 02.3"W |

(G2024-345 to 348, 351, 373 to 376, 379 to 382)

***1013/24 West Point à / to Baie de Tracadie – Unlit Buoys Repositioned**

Reference chart: 4906

The following unlit buoys have been repositioned to the following coordinates:

| Aid Name | LL # | Position |
|----------------------------------|----------|--------------------------------|
| Goulet de Terre-noire buoy XX7 | 6154.13 | 46° 46' 03.2"N 064° 50' 58.2"W |
| Goulet de Terre-noire buoy XX8 | 6154.14 | 46° 46' 04.1"N 064° 51' 00.2"W |
| Goulet de Terre-noire buoy XX11 | 6154.15 | 46° 46' 00.9"N 064° 51' 10.1"W |
| Goulet de Terre-noire buoy XX10 | 6154.16 | 46° 46' 02.4"N 064° 51' 09.5"W |
| Goulet de Terre-noire buoy XX6 | 6154.162 | 46° 46' 04.3"N 064° 50' 58.4"W |
| Goulet de Terre-noire buoy XX18 | 6154.17 | 46° 45' 57.2"N 064° 51' 38.3"W |
| Goulet de Terre-noire buoy XX15 | 6154.18 | 46° 45' 56.0"N 064° 51' 29.5"W |
| Goulet de Terre-noire buoy XX16 | 6154.23 | 46° 45' 55.9"N 064° 51' 30.3"W |
| Kouchibouguacis River buoy PLAS1 | 6154.6 | 46° 46' 52.1"N 064° 53' 52.0"W |
| Kouchibouguac Gully buoy XY1 | 6157.1 | 46° 49' 55.9"N 064° 53' 46.4"W |
| Kouchibouguac Gully buoy XY2/2 | 6157.111 | 46° 49' 57.2"N 064° 53' 54.1"W |
| Kouchibouguac Gully buoy XY6 | 6157.13 | 46° 49' 56.1"N 064° 54' 08.3"W |
| Kouchibouguac Gully buoy XY7 | 6157.14 | 46° 49' 54.4"N 064° 53' 59.5"W |
| Kouchibouguac buoy XY11 | 6157.2 | 46° 49' 55.2"N 064° 54' 11.9"W |
| Kouchibouguac buoy XY14 | 6157.23 | 46° 49' 58.3"N 064° 54' 25.1"W |
| Kouchibouguac buoy XY31 | 6157.31 | 46° 50' 33.1"N 064° 55' 00.1"W |
| Kouchibouguac buoy XY5 | 6157.32 | 46° 49' 54.8"N 064° 53' 53.7"W |
| Kouchibouguac buoy XY10 | 6157.34 | 46° 49' 56.8"N 064° 54' 16.0"W |
| Kouchibouguac buoy XY23 | 6157.35 | 46° 50' 11.6"N 064° 54' 44.6"W |
| Kouchibouguac buoy XY30 | 6157.41 | 46° 50' 34.1"N 064° 54' 57.2"W |
| Kouchibouguac buoy XY28 | 6157.42 | 46° 50' 32.0"N 064° 54' 50.4"W |
| Kouchibouguac buoy XY35 | 6157.44 | 46° 50' 30.5"N 064° 55' 11.9"W |
| Kouchibouguac buoy XY33 | 6157.47 | 46° 50' 32.4"N 064° 55' 06.3"W |
| Kouchibouguac buoy XY12 | 6157.6 | 46° 49' 57.6"N 064° 54' 20.5"W |
| Kouchibouguac Gully buoy XY29 | 6157.72 | 46° 50' 31.7"N 064° 54' 54.5"W |
| Kouchibouguac Gully buoy XY27 | 6157.73 | 46° 50' 28.7"N 064° 54' 48.0"W |
| Kouchibouguac Gully buoy XY26 | 6157.83 | 46° 50' 28.7"N 064° 54' 44.5"W |
| South Tracadie buoy TC5 | 6238.89 | 47° 28' 48.1"N 064° 51' 53.1"W |
| South Tracadie buoy TC8 | 6238.91 | 47° 28' 28.8"N 064° 54' 58.8"W |
| South Tracadie buoy TC10 | 6238.92 | 47° 28' 52.7"N 064° 51' 56.2"W |

(G2024-225, 228, 232, 400 to 402, 447, 450, 452 to 454, 456 to 458, 460, 462 to 469, 476, 478, 479, 481 to 484)

***1014/24 West Point à / to Baie de Tracadie – Unlit Buoys Permanently Established**

Reference chart: 4906

The following unlit buoys have been permanently established at the following coordinates:

| Aid Name | LL # | Position |
|---------------------------------|-------------|--------------------------------|
| Goulet de Terre-noire buoy XX20 | 6154.2 | 46° 46' 07.9"N 064° 51' 53.9"W |
| Kouchibouguac buoy XY36 | 6157.445 | 46° 50' 27.2"N 064° 55' 21.7"W |

(G2024-485, 486)

***1015/24 Miramichi – Unlit Buoys Repositioned**

Reference chart: 4912

The following unlit buoys have been repositioned to the following coordinates:

| Aid Name | LL # | Position |
|------------------------|-------------|--------------------------------|
| SW Miramichi buoy MD20 | 6174.3 | 46° 57' 58.2"N 065° 35' 10.7"W |
| NW Miramichi buoy MC24 | 6224.05 | 46° 58' 53.6"N 065° 34' 47.6"W |

(G2024-406, 407)

***1016/24 Caraquet Harbour, Baie de Shippegan and / et Miscou Harbour – Unlit Buoys Permanently Changed**

Reference chart: 4913

The following unlit buoys have been permanently changed:

| Aid Name | LL # | Position | Changes |
|--------------------------|-----------|-----------------------------------|--|
| Miscou Harbour buoy TK20 | 6272.183 | 47° 53' 02.3"N 064° 30' 36.5"W | Unlit starboard buoy established. |
| Miscou Harbour buoy TK21 | 6272.184 | 47° 52' 58.9"N 064° 30' 38.3"W | Unlit port buoy established. |
| Miscou Harbour buoy TK23 | 6272.186 | 47° 52' 57.0"N 064° 30' 50.5"W | Unlit port buoy established. |
| Miscou Harbour buoy TK24 | 6272.187 | 47° 52' 58.1"N 064° 30' 50.6"W | Unlit starboard buoy established. |
| Miscou Harbour buoy TK27 | 6272.189 | 47° 52' 55.4"N 064° 31' 05.1"W | Unlit port buoy established. |
| Miscou Harbour buoy EA22 | 6272.19 | 47° 53' 02.2"N 064° 33' 14.6"W | Unlit starboard buoy discontinued. |
| Miscou Harbour buoy TK28 | 6272.1911 | 47° 52' 56.6"N 064° 31' 05.5"W | Unlit starboard buoy established. |
| Miscou Harbour buoy TK32 | 6272.194 | 47° 52' 54.1"N 064° 31' 20.8"W | Period of service changed to "seasonal". |
| Miscou Harbour buoy EA23 | 6272.21 | 47° 53' 12.8"N 064° 32' 54.8"W | Unlit port buoy discontinued. |
| Miscou Harbour buoy EA26 | 6272.22 | 47° 53' 00.2"N 064° 32' 39.0"W | Unlit starboard buoy discontinued. |
| Miscou Harbour buoy EA27 | 6272.23 | 47° 53' 08.2"N 064° 32' 31.6"W | Unlit port buoy discontinued. |
| Miscou Harbour buoy EA28 | 6272.24 | 47° 52' 55.5"N 064° 32' 08.8"W | Unlit starboard buoy discontinued. |
| Miscou Harbour buoy EA29 | 6272.25 | 47° 52' 58.3"N 064° 31' 56.7"W | Unlit port buoy discontinued. |
| Miscou Harbour buoy EA32 | 6272.275 | 47° 52' 52.7"N 064° 31' 24.5"W | Unlit starboard buoy discontinued. |
| Miscou Harbour buoy EA35 | 6272.28 | 47° 52' 55.9"N 064° 31' 08.7"W | Unlit port buoy discontinued. |
| Miscou Channel buoy EA38 | 6272.31 | 47° 52' 57.5"N 064° 30' 44.0"W | Unlit starboard buoy discontinued. |
| Miscou Channel buoy EA41 | 6272.35 | 47° 53' 02.8"N 064° 30' 36.1"W | Unlit port buoy discontinued. |

(G2024-240 to 243, 255, 299, 428 to 437, 444, 446, 474)

***1017/24 Plans Baie des Chaleurs / Chaleur Bay - Côte sud / South Shore – Unlit Buoys Repositioned**

Reference chart: 4920

The following unlit buoys have been repositioned to the following coordinates:

| Aid Name | LL # | Position |
|----------------------------|---------|--------------------------------|
| Shippegan Gully buoy TJ39 | 6260.1 | 47° 43' 23.6"N 064° 40' 13.6"W |
| Shippegan Gully buoy TJ44 | 6261.2 | 47° 44' 04.6"N 064° 40' 32.8"W |
| Shippegan Gully buoy TJ54 | 6261.8 | 47° 44' 01.7"N 064° 40' 24.5"W |
| Shippegan Gully buoy TJ63 | 6261.82 | 47° 44' 47.9"N 064° 41' 32.3"W |
| Bathurst Harbour buoy EP32 | 6332.2 | 47° 39' 12.2"N 065° 37' 25.7"W |

(G2024-286 to 288, 292, 414)

***1018/24 Murray Harbour to/à Boughton Bay – Unlit Buoys Repositioned**

Reference chart: 4935

The following unlit buoys have been repositioned to the following coordinates:

| Aid Name | LL # | Position |
|--------------------------|----------|--------------------------------|
| Cardigan River buoy NJ19 | 5957.89 | 46° 13' 33.6"N 062° 35' 50.4"W |
| Murray Harbour buoy NM26 | 5969.4 | 46° 01' 40.2"N 062° 31' 19.8"W |
| Murray Harbour buoy NM17 | 5970.902 | 46° 00' 59.4"N 062° 30' 13.2"W |
| Murray Harbour buoy NM18 | 5970.903 | 46° 01' 01.2"N 062° 30' 15.0"W |

(G2024-294 to 297)

***1019/24 Pugwash Harbour, Wallace Harbour, Amet Sound and Approaches / et les Approches – Unlit Buoys Repositioned**

Reference chart: 4937

The following unlit buoys have been repositioned to the following coordinates:

| Aid Name | LL # | Position |
|----------------------------|---------|--------------------------------|
| Washball Reef buoy UE4 | 5920.2 | 45° 49' 07.2"N 063° 13' 07.8"W |
| Tatamagouche buoy UE10 | 5920.51 | 45° 44' 30.0"N 063° 18' 25.2"W |
| Barachois Harbour buoy UD5 | 5921.21 | 45° 44' 16.8"N 063° 15' 07.2"W |

(G2024-300, 308, 316)

Section 1A: Temporary and Preliminary Notices

Reminder – Comment Period for Active Preliminary Notices

This is a reminder that the comment period is still open for the following active Preliminary notices:

| Notice # | Reference Chart # | Aids Affected (LL #) | Intent of Notice |
|--|-------------------|----------------------|--------------------------------------|
| Newfoundland and Labrador Coast | | | |
| 907(P)/24 | 4530 | 393 | Rear Range to be Discontinued |
| Inland Waters | | | |
| 816(P)/24 | 1551 | 1305 | Aid to Navigation to be Discontinued |

Please refer to the [Notices to Mariners - Monthly Summary of Temporary and Preliminary Notices](#) publication for details.

Newfoundland and Labrador Coast

Temporary Notices

*1020(T)/24 Cape St Mary's to / à Argentia – Marine Works – Dredging Operations

Reference: Notice 808(T)/24 is cancelled.

Reference chart: 4841

Debris removal, boulder removal, and dredging operations are underway in the areas bounded by the following coordinates:

Floating dredging pipeline assembly and deployment operations are underway within the area bounded by the following "Exit Channel" coordinates:

47° 18.680'N 053° 58.223'W
47° 18.540'N 053° 57.907'W
47° 18.307'N 053° 58.122'W
47° 18.482'N 053° 58.503'W

The pipeline are fitted with lights and radar reflectors with combined total length measuring approximately 596 meters. Pipeline anchor positions are individually marked by yellow cautionary buoys.

| | |
|----------------------------|----------------------------|
| Inner Channel: | Outer Channel: |
| 47° 19.659'N 053° 57.518'W | 47° 20.965'N 053° 58.704'W |
| 47° 19.699'N 053° 57.007'W | 47° 20.583'N 053° 57.292'W |
| 47° 19.059'N 053° 56.972'W | 47° 20.269'N 053° 57.533'W |
| 47° 19.045'N 053° 57.484'W | 47° 20.657'N 053° 58.975'W |

Environmental monitoring buoys equipped with lights and radar reflectors deployed in:

47° 19.969'N 053° 59.099'W
47° 20.917'N 053° 57.840'W
47° 19.686'N 053° 56.798'W

Removed boulders are relocated to the areas bounded by the following coordinates:

| Inner Channel Boulder Relocation Area: | Outer Channel Boulder Relocation Area: |
|--|--|
| 47° 19.089'N 053° 57.115'W | 47° 20.543'N 053° 57.405'W |
| 47° 19.092'N 053° 57.036'W | 47° 20.594'N 053° 57.376'W |
| 47° 19.653'N 053° 57.067'W | 47° 20.945'N 053° 58.703'W |
| 47° 19.651'N 053° 57.147'W | 47° 20.894'N 053° 58.732'W |

Vessels are moving to transit dredged material to offshore disposal areas in the vicinity of:

| Placentia Sound Offshore Disposal Site: | The Pond Offshore Disposal Site: |
|---|----------------------------------|
| 47° 18.393'N 053° 55.372'W | 47° 18.990'N 053° 59.576'W |

Multiple vessels, barges and dredges are involved in the operations, all are monitoring VHF channel 16 and are requesting a wide berth of at least 100 meters.

Caution.

(NW-N-1086-24)

Preliminary Notices

No notices applicable for this edition.

Atlantic Coast

Temporary Notices

*1021(T)/24 Batiscan au/to Lac Saint-Pierre – Waterway Information : Shallow Depth

Reference chart: 1313

Shallow depths reported in the port of Trois-Rivières at the following coordinates:

| | |
|---|--|
| Shallow depth of 10.4 metres located at Section 13: | Shallow depth of 10.0 metres located at Section 14 and a portion of Section 15: |
| <ul style="list-style-type: none">• 46° 20.027'N 072° 32.614'W• 46° 20.025'N 072° 32.608'W• 46° 20.034'N 072° 32.597'W• 46° 20.037'N 072° 32.603'W | <ul style="list-style-type: none">• 46° 19.990'N 072° 32.795'W• 46° 19.990'N 072° 32.738'W• 46° 20.004'N 072° 32.672'W• 46° 20.013'N 072° 32.648'W• 46° 20.017'N 072° 32.765'W |
| Shallow depth of 10.3 metres located at Section 16: | Shallow depth of 10.2 metres located at Section 16: |
| <ul style="list-style-type: none">• 46° 19.964'N 072° 32.795'W• 46° 19.976'N 072° 32.785'W• 46° 19.987'N 072° 32.738'W• 46° 19.973'N 072° 32.740'W | <ul style="list-style-type: none">• 46° 19.997'N 072° 32.789'W• 46° 19.996'N 072° 32.766'W• 46° 19.964'N 072° 32.795'W• 46° 19.965'N 072° 32.821'W |
| Shallow depth of 10.5 metres located at Section 16: | Shallow depth of 10.2 metres located at Section 16: |
| <ul style="list-style-type: none">• 46° 19.968'N 072° 32.704'W• 46° 19.970'N 072° 32.745'W• 46° 19.976'N 072° 32.741'W• 46° 19.978'N 072° 32.695'W | <ul style="list-style-type: none">• 46° 19.985'N 072° 32.706'W• 46° 19.979'N 072° 32.699'W• 46° 19.979'N 072° 32.677'W• 46° 19.993'N 072° 32.660'W• 46° 20.000'N 072° 32.688'W |

Shallow depth of 10.2 metres located at Section 17:

- 46° 19.852'N 072° 32.772'W
- 46° 19.851'N 072° 32.768'W
- 46° 19.845'N 072° 32.774'W
- 46° 19.846'N 072° 32.775'W

Shallow depth of 10.5 metres located at Section 19:

- 46° 19.830'N 072° 32.785'W
- 46° 19.831'N 072° 32.787'W
- 46° 19.840'N 072° 32.780'W
- 46° 19.839'N 072° 32.778'W

Shallow depth of 10.6 metres located at Section 19:

- 46° 19.786'N 072° 32.824'W
- 46° 19.801'N 072° 32.813'W
- 46° 19.798'N 072° 32.809'W
- 46° 19.782'N 072° 32.819'W

Shallow depth of 10.5 metres located at Section 20:

- 46° 19.728'N 072° 32.874'W
- 46° 19.727'N 072° 32.870'W
- 46° 19.738'N 072° 32.859'W
- 46° 19.739'N 072° 32.864'W

(NW-C-1191, 1342, 1871, 1872-24)

Preliminary Notices

Atlantic Region

Comment Submission

Comments on proposed changes in preliminary (P) notices are solicited from mariners and other interested parties within three months of the initial publication date. Following this date, the notices will be cancelled. Any objections raised must state the facts on which they are based and should include supporting information on safety, commerce and public benefit.

Comments should be directed to the following:

Superintendent,
Aids to Navigation & Waterways
Canadian Coast Guard, Atlantic Region
P.O. Box 1000
50 Discovery Drive
Dartmouth, NS B2Y 3Z8
Telephone: (506) 636-4708
Email: DFO.CCGATLaidstoNavDiscont-AidesalanavSupprATLGCC.MPO@dfo-mpo.gc.ca

***1022(P)/24 Liverpool Harbour to / à Lockeport Harbour – Fog Horn to be Discontinued**

Reference chart: 4240

The Canadian Coast Guard proposes to permanently discontinue the fog horn from the following aid to navigation:

| Aid Name | LL # | Position |
|--------------|------|--------------------------------|
| Western Head | 405 | 43° 59' 20.8"N 064° 39' 44.5"W |

Initial publication date: Friday, October 25, 2024

[Comment submission deadline](#): Thursday, January 30, 2025

(F2024-053)

Inland Waters

Temporary Notices

*1023(T)/24 Hamilton Harbour – Aid to Navigation

Reference chart: 2067

Light permanently established in 43° 16.443'N 079° 50.568'W to mark difference in alignment between east and west sections of Pier 12 North. Light is flashing yellow with elevation of 5.15 metres.

(NW-C-2379-20)

*1024(T)/24 Georgian Bay / Baie Georgienne – Aids to Navigation Temporarily Established

Reference: Notice 618(T)/22 is cancelled.

Reference chart: 2201, 2261, 2282 and 2291

Sixteen sub-surface moorings have been temporarily established at the following coordinates:

| | | | |
|------|----------------------------|-------|----------------------------|
| (1) | 44° 25.853'N 081° 31.280'W | (41) | 44° 15.853'N 081° 37.019'W |
| (7) | 44° 22.940'N 081° 33.904'W | (43) | 44° 19.819'N 081° 36.611'W |
| (8) | 44° 22.071'N 081° 34.958'W | (45) | 44° 25.255'N 081° 29.432'W |
| (9) | 44° 22.827'N 081° 32.396'W | (46) | 44° 20.833'N 081° 33.944'W |
| (12) | 44° 21.706'N 081° 34.456'W | (47) | 44° 20.568'N 081° 34.039'W |
| (29) | 44° 15.856'N 081° 37.465'W | (B) | 44° 13.921'N 081° 37.367'W |
| (30) | 44° 15.800'N 081° 36.698'W | (F) | 44° 34.038'N 081° 21.418'W |
| (39) | 44° 25.572'N 081° 30.102'W | (ol3) | 44° 45.321'N 081° 18.556'W |

(NW-C-2824-24)

Preliminary Notices

Central Region

Comment Submission

Comments on proposed changes in preliminary (P) notices are solicited from mariners and other interested parties within three months of the initial publication date. Following this date, the notices will be cancelled. Any objections raised must state the facts on which they are based and should include supporting information on safety, commerce and public benefit.

Comments should be directed to the following:

Superintendent
Aids to Navigation & Waterways
Canadian Coast Guard, Central Region
1550 D'Estimauville Avenue
Québec, QC G1J 5E9
Telephone: (418) 648-7450

Emails:

St. Lawrence Region: DFO.AtoNStLawrence-StLaurentAalaN.MPO@dfo-mpo.gc.ca

Great Lakes Region:

DFO.CCGCentralAtoNGreatLakes-GrandsLacsAalaNCentreGCC.MPO@dfo-mpo.gc.ca

***1025(P)/24 Adolphus Reach to/à Big Bay – Aids to Navigation to be Discontinued**

Reference chart: 2019

The Canadian Coast Guard proposes to permanently discontinue the following aids to navigation:

| Aid Name | LL # | Position |
|------------------|------|--------------------------------|
| Shermans Point | 450 | 44° 06' 21.0"N 077° 04' 04.2"W |
| Telegraph Island | 459 | 44° 09' 47.8"N 077° 07' 19.2"W |

Initial publication date: Friday, October 25, 2024

[Comment submission deadline](#): Thursday, January 30, 2025

(B2024-016, 017)

Other (T) & (P) Notices

Temporary Notices

***1027(T)/24 Canadian Coast Guard – Automatic Identification System (AIS)**

Reference: Notice *111(T)/23 is cancelled.

Mariners are advised that the Canadian Coast Guard (CCG) has brought AIS aids to navigation (AIS AtoN) to full operational capability.

Some AIS AtoN that were deployed in a testing capacity may either be maintained or discontinued at the discretion of CCG Regions, while those deployed outside established CCG levels of service may continue to be maintained in an experimental capacity. Changes to CCG aids to navigation are communicated via Notices to Mariners.

General information on AIS and AIS AtoN is available on the [CCG e-Navigation Maritime Information Portal](#) and in the [Canadian Aids to Navigation System](#). Specific information on deployed AIS AtoN is available on the [e-Navigation](#) website.

Section 2: Chart Corrections

1223 - Chenal du Bic et les approches/and approches - New Edition - 21-MAR-2008 - NAD 1983
11-OCT-2024

LNMD. 26-NOV-2021

| | | |
|--------|--|--|
| Delete | depth of 7,0 metres (See Chart 1, I10) | 48°22'25.7"N 068°47'02.4"W <i>DFO(6411156-01)</i> |
| Add | depth of 6,1 metres (See Chart 1, I10) | 48°22'25.7"N 068°47'02.5"W <i>DFO(6411156-02)</i> |
| Add | depth of 5,6 metres (See Chart 1, I10) | 48°22'26.4"N 068°46'54.5"W <i>DFO(6411156-03)</i> |
| Add | depth of 0,8 metres (See Chart 1, I10) | 48°22'21.1"N 068°46'02.1"W <i>DFO(6411156-04)</i> |
| Delete | depth of 10,4 metres (See Chart 1, I10) | 48°23'04.5"N 068°45'58.4"W <i>DFO(6411156-05)</i> |
| Add | depth of 9,4 metres (See Chart 1, I10) | 48°23'04.0"N 068°46'00.4"W <i>DFO(6411156-06)</i> |
| Add | depth of 8,8 metres (See Chart 1, I10) | 48°23'04.2"N 068°45'44.8"W <i>DFO(6411156-07)</i> |
| Delete | depth of 2,7 metres (See Chart 1, I10) | 48°22'35.1"N 068°45'11.5"W <i>DFO(6411156-08)</i> |
| Add | depth of 0,7 metres (See Chart 1, I10) | 48°22'34.8"N 068°45'11.6"W <i>DFO(6411156-09)</i> |
| Add | depth of 4,1 metres (See Chart 1, I10) | 48°22'35.8"N 068°44'55.7"W <i>DFO(6411156-10)</i> |
| Delete | depth of 4,3 metres (See Chart 1, I10) | 48°22'28.7"N 068°44'56.0"W <i>DFO(6411156-11)</i> |
| Add | depth of 3,9 metres (See Chart 1, I10) | 48°22'30.6"N 068°44'53.8"W <i>DFO(6411156-12)</i> |
| Add | depth of 4,3 metres (See Chart 1, I10) | 48°22'39.8"N 068°44'40.1"W <i>DFO(6411156-13)</i> |
| Add | depth of 5,0 metres (See Chart 1, I10) | 48°22'47.5"N 068°44'29.7"W <i>DFO(6411156-14)</i> |

1233 - Cap aux Oies à/to Sault-au-Cochon - New Edition - 21-OCT-2022 - NAD 1983

11-OCT-2024

LNMD. 03-MAY-2024

| | | |
|--------|------------------------------------|--|
| Delete | beacon Bn Or (See Chart 1, Q81) | 47°09'42.4"N 070°36'27.7"W (Q2024196) DFO(6411200-01) |
| Delete | beacon Bn Or (See Chart 1, Q81) | 47°15'30.7"N 070°35'06.2"W (Q2024198) DFO(6411202-01) |

1310 - Section A-B - New Edition - 07-JUN-2019 - NAD 1983

25-OCT-2024

LNMD. 28-JUN-2024

| | | |
|---------|--|--|
| Replace | green port hand can buoy, marked MT3 with green port hand lighted can buoy Fl G, marked MT3 (See Chart 1, Q21, Qc, Q7) | 45°41'03.1"N 073°26'55.5"W (Q2024073) LL(2365.53) DFO(6411049-01) |
| Delete | depth of 6,2 metres (See Chart 1, I10) | 45°38'13.7"N 073°29'10.6"W DFO(6411169-03) |
| Add | depth of 5,9 metres (See Chart 1, I10) | 45°38'13.2"N 073°29'11.2"W DFO(6411169-04) |
| Delete | depth of 2,7 metres (See Chart 1, I10) | 45°38'38.7"N 073°28'54.5"W DFO(6411169-05) |
| Add | depth of 2,3 metres (See Chart 1, I10) | 45°38'38.5"N 073°28'54.6"W DFO(6411169-06) |
| Delete | depth of 3,8 metres (See Chart 1, I10) | 45°43'07.5"N 073°25'47.7"W DFO(6411169-07) |
| Add | depth of 2,6 metres (See Chart 1, I10) | 45°43'06.4"N 073°25'48.6"W DFO(6411169-08) |
| Delete | depth of 8,1 metres (See Chart 1, I10) | 45°39'01.1"N 073°28'39.4"W DFO(6411169-16) |
| Add | depth of 7,7 metres (See Chart 1, I10) | 45°39'01.7"N 073°28'39.7"W DFO(6411169-17) |

1310 - Section B-C - New Edition - 07-JUN-2019 - NAD 1983

25-OCT-2024

LNMD. 28-JUN-2024

| | | |
|--------|---|---|
| Delete | depth of 7,1 metres (See Chart 1, I10) | 45°35'30.4"N 073°30'01.8"W DFO(6411169-01) |
| Add | depth of 6,8 metres (See Chart 1, I10) | 45°35'30.4"N 073°30'01.8"W DFO(6411169-02) |

1311 - Sorel-Tracy à/to Varennes - New Edition - 17-MAY-2019 - NAD 1983

25-OCT-2024

LNMD. 13-OCT-2023

Replace green port hand can buoy, marked MT3 with green port hand lighted can buoy Fl G, marked MT3
(See Chart 1, Q21, Qc, Q7) 45°41'03.1"N 073°26'55.5"W
(Q2024073) LL(2365.53) DFO(6411049-01)

Delete depth of 12,5 metres
(See Chart 1, I10) 45°58'56.2"N 073°11'04.9"W
DFO(6411169-13)

Add depth of 11,4 metres
(See Chart 1, I10) 45°58'57.7"N 073°11'02.2"W
DFO(6411169-14)

1311 - Terminal de Contrecoeur - New Edition - 17-MAY-2019 - NAD 1983

25-OCT-2024

LNMD. 13-OCT-2023

Add depth of 10 metres
(See Chart 1, I10) 45°49'23.1"N 073°17'59.8"W
DFO(6411137-03)

Delete depth of 9,2 metres
(See Chart 1, I10) 45°49'25.4"N 073°17'53.1"W
DFO(6411137-04)

Add depth of 8,8 metres
(See Chart 1, I10) 45°49'25.2"N 073°17'52.8"W
DFO(6411137-05)

Delete depth of 4 metres
(See Chart 1, I10) 45°49'36.3"N 073°17'29.3"W
DFO(6411137-06)

Add depth of 3,3 metres
(See Chart 1, I10) 45°49'36.3"N 073°17'29.3"W
DFO(6411137-07)

Delete depth of 0,9 metres
(See Chart 1, I10) 45°49'37.6"N 073°17'25.8"W
DFO(6411137-08)

Add depth of 0,6 metres
(See Chart 1, I10) 45°49'37.8"N 073°17'25.9"W
DFO(6411137-09)

Delete depth of 3,8 metres
(See Chart 1, I10) 45°49'42.7"N 073°17'20.4"W
DFO(6411137-10)

Add depth of 3,4 metres
(See Chart 1, I10) 45°49'42.7"N 073°17'20.5"W
DFO(6411137-11)

Delete depth of 6,7 metres
(See Chart 1, I10) 45°49'48.6"N 073°17'10.2"W
DFO(6411137-12)

| | | |
|--------|--|--|
| Add | depth of 6,4 metres (See Chart 1, I10) | 45°49'48.5"N 073°17'10.1"W <i>DFO(6411137-13)</i> |
| Add | depth of 5 metres (See Chart 1, I10) | 45°49'47.0"N 073°17'06.6"W <i>DFO(6411137-14)</i> |
| Delete | depth of 10,7 metres (See Chart 1, I10) | 45°49'03.0"N 073°18'27.6"W <i>DFO(6411169-09)</i> |
| Add | depth of 10,4 metres (See Chart 1, I10) | 45°49'02.4"N 073°18'27.7"W <i>DFO(6411169-10)</i> |
| Delete | depth of 7,0 metres (See Chart 1, I10) | 45°50'21.7"N 073°17'09.0"W <i>DFO(6411169-11)</i> |
| Add | depth of 6,3 metres (See Chart 1, I10) | 45°50'21.8"N 073°17'09.4"W <i>DFO(6411169-12)</i> |

1312 - Port de Sorel-Tracy - New Edition - 10-MAY-2019 - NAD 1983
18-OCT-2024

LNMD. 07-JUN-2024

| | | |
|-----|--|--|
| Add | depth of 13,2 metres (See Chart 1, I10) | 46°03'06.0"N 073°08'12.1"W <i>DFO(6411171-02)</i> |
| Add | depth of 13,0 metres (See Chart 1, I10) | 46°03'07.9"N 073°08'05.1"W <i>DFO(6411171-04)</i> |
| Add | depth of 9,1 metres (See Chart 1, I10) | 46°03'29.8"N 073°05'28.9"W <i>DFO(6411171-07)</i> |

1313 - Batiscan au/to Lac Saint-Pierre - New Edition - 08-MAR-2019 - NAD 1983
18-OCT-2024

LNMD. 15-MAR-2024

| | | |
|--------|--|--|
| Delete | depth of 14.3 metres (See Chart 1, I10) | 46°16'44.5"N 072°36'39.3"W <i>DFO(6411203-01)</i> |
| Add | depth of 13.0 metres (See Chart 1, I10) | 46°16'43.1"N 072°36'40.2"W <i>DFO(6411203-02)</i> |
| Add | depth of 8.8 metres (See Chart 1, I10) | 46°25'23.7"N 072°21'45.8"W <i>DFO(6411203-05)</i> |
| Add | depth of 8.6 metres (See Chart 1, I10) | 46°30'18.7"N 072°14'06.0"W <i>DFO(6411203-06)</i> |

1313 - Port de Bécancour - New Edition - 08-MAR-2019 - NAD 1983
18-OCT-2024

LN/M/D. 15-MAR-2024

Add depth of 8,8 metres
(See Chart 1, I10) 46°25'23.7"N 072°21'45.8"W
DFO(6411203-05)

1313 - Port de Trois-Rivières - New Edition - 08-MAR-2019 - NAD 1983
18-OCT-2024

LN/M/D. 15-MAR-2024

Delete depth of 1,6 metres
(See Chart 1, I10) 46°20'11.3"N 072°31'03.5"W
DFO(6411093-01)

Add depth of 0,9 metres
(See Chart 1, I10) 46°20'11.3"N 072°31'03.5"W
DFO(6411093-02)

Add depth of 1,6 metres
(See Chart 1, I10) 46°20'10.7"N 072°31'06.2"W
DFO(6411093-03)

Add depth of 1,4 metres
(See Chart 1, I10) 46°20'09.7"N 072°31'08.3"W
DFO(6411093-04)

Add depth of 2,2 metres
(See Chart 1, I11) 46°20'10.4"N 072°31'07.1"W
DFO(6411093-05)

Add depth of 8,6 metres
(See Chart 1, I10) 46°20'37.7"N 072°32'00.6"W
DFO(6411127-01)

Delete depth of 8,1 metres
(See Chart 1, I10) 46°20'41.4"N 072°31'54.0"W
DFO(6411127-03)

Add depth of 7,1 metres
(See Chart 1, I10) 46°20'41.2"N 072°31'55.2"W
DFO(6411127-04)

Delete depth of 5,7 metres
(See Chart 1, I10) 46°20'42.9"N 072°31'51.6"W
DFO(6411127-05)

Add depth of 5,1 metres
(See Chart 1, I10) 46°20'43.2"N 072°31'52.3"W
DFO(6411127-06)

1314 - Donnacona à/to Batiscan - New Edition - 15-MAR-2019 - NAD 1983
18-OCT-2024

LN/M/D. 05-JAN-2024

Add depth of 8,6 metres
(See Chart 1, I10) 46°30'18.7"N 072°14'06.0"W
DFO(6411203-06)

Add depth of 5 metres
(See Chart 1, I10) 46°34'43.5"N 072°02'22.7"W
DFO(6411203-08)

| | | |
|---|--|---|
| Add | depth of 10 metres (See Chart 1, I10) | 46°34'50.2"N 072°02'10.8"W <i>DFO(6411203-09)</i> |
| Add | depth of 10.9 metres (See Chart 1, I10) | 46°34'47.0"N 072°02'02.6"W <i>DFO(6411203-10)</i> |
| 1317 - Sault-au-Cochon à/to Québec - New Edition - 03-APR-2020 - NAD 1983 | | |
| 11-OCT-2024 | | LNМ/D. 12-JAN-2024 |
| Add | depth of 14,7 metres (See Chart 1, I10) | 47°08'45.5"N 070°40'27.6"W <i>DFO(6411139-01)</i> |
| Add | depth of 15,0 metres (See Chart 1, I10) | 47°09'32.2"N 070°39'45.0"W <i>DFO(6411139-02)</i> |
| Add | depth of 2,1 metres (See Chart 1, I10) | 47°03'35.6"N 070°42'20.6"W <i>DFO(6411139-03)</i> |
| Add | depth of 4,3 metres (See Chart 1, I10) | 47°10'22.3"N 070°36'30.2"W <i>DFO(6411139-04)</i> |
| Delete | beacon Bn Or (See Chart1, Q81) | 47°09'42.4"N 070°36'27.7"W (Q2024196) <i>DFO(6411200-01)</i> |
| Delete | beacon Bn Or (See Chart 1, Q81) | 47°06'16.2"N 070°40'19.9"W (Q2024197) <i>DFO(6411201-01)</i> |
| 1320 - Île du Bic au/to Cap de la Tête au Chien - New Chart - 26-AUG-2011 - NAD 1983 | | |
| 11-OCT-2024 | | LNМ/D. 03-MAY-2024 |
| Add | depth of 0,8 metres (See Chart 1, I10) | 48°22'21.1"N 068°46'02.1"W <i>DFO(6411156-04)</i> |
| Add | depth of 0,7 metres (See Chart 1, I10) | 48°22'34.8"N 068°45'11.6"W <i>DFO(6411156-09)</i> |
| Add | depth of 4,3 metres (See Chart 1, I10) | 48°22'39.8"N 068°44'40.1"W <i>DFO(6411156-13)</i> |
| Add | depth of 5,0 metres (See Chart 1, I10) | 48°22'47.5"N 068°44'29.7"W <i>DFO(6411156-14)</i> |
| 4013 - Halifax to / à Sydney - New Edition - 06-SEP-2002 - NAD 1983 | | |
| 11-OCT-2024 | | LNМ/D. 16-AUG-2024 |
| Add | non-dangerous wreck, depth unknown PA Rep (2022) (See Chart 1, K29, B7, I3) | 45°26'24.0"N 059°59'54.0"W <i>DFO(6311474-01)</i> |

4026 - Havre Saint-Pierre et/and Cap des Rosiers à/to Pointe des Monts - New Edition - 23-MAY-2014 - NAD 1983

11-OCT-2024

LNMD. 23-FEB-2024

Add legend Bell against red and white fairway lighted pillar buoy Mo (A) , 49°46'13.5"N 064°20'37.3"W
marked MENIER
(See Chart 1, R14)
(Q2024139) LL(1516) DFO(6411128-01)

4114 - Campobello Island - New Edition - 24-APR-2015 - NAD 1983

11-OCT-2024

LNMD. 16-FEB-2024

Amend F R to read Iso G against light 44°58'17.3"N 066°57'09.3"W
(See Chart 1, P16)
This notice affects Electronic Navigational Chart: CA476035
(F2024002) LL(47) DFO(6311061-01)

Add light FI G 44°58'13.3"N 066°57'11.3"W
(See Chart 1, P1)
This notice affects Electronic Navigational Chart: CA476035
(F2024003) LL(47.5) DFO(6311062-01)

Add breakwater, with legend Bkw 44°58'13.7"N 066°57'14.1"W
(See Chart 1, F4.1) and 44°58'13.1"N 066°57'11.2"W
This notice affects Electronic Navigational Chart: CA476035
DFO(6311062-02)

Add breakwater, with legend Bkw 44°58'09.5"N 066°57'09.5"W
(See Chart 1, F4.1) and 44°58'08.0"N 066°57'11.0"W
This notice affects Electronic Navigational Chart: CA476035
DFO(6311062-03)

4115 - Passamaquoddy Bay and / et St. Croix River - New Edition - 24-FEB-2012 - World Geodetic System 1984

11-OCT-2024

LNMD. 13-SEP-2024

Add breakwater, with legend Bkw 44°58'13.7"N 066°57'14.1"W
(See Chart 1, F4.1) and 44°58'13.1"N 066°57'11.2"W
This notice affects Electronic Navigational Chart: CA476035
DFO(6311062-02)

Add breakwater, with legend Bkw 44°58'11.4"N 066°57'07.0"W
(See Chart 1, F4.1) and 44°58'08.0"N 066°57'11.0"W
This notice affects Electronic Navigational Chart: CA476035
DFO(6311062-03)

4142 - Evandale to / à Ram Island - Sheet/Feuille 1 - New Edition - 01-NOV-1996 - NAD 1983

11-OCT-2024

LNMD. 30-JUL-2021

Add dangerous underwater rock of unknown depth, with legend PA Rep (2024) 45°39'24.4"N 066°04'34.8"W
(See Chart 1, K13, B7, I3)
DFO(6311473-01)

4203 - Halifax Harbour: Black Point to / à Point Pleasant - New Edition - 28-DEC-2018 - NAD 1983

04-OCT-2024

LNMD. 23-FEB-2024

Add obstruction, depth unknown, with legend PA Rep (2024) 44°34'17.9"N 063°33'25.0"W
(See Chart 1, K40, B7, I3)
This notice affects Electronic Navigational Chart: CA576002
DFO(6311469-01)

4374 - Red Point to / à Guyon Island - New Edition - 08-NOV-2002 - NAD 1983

11-OCT-2024

LNMD. 02-APR-2021

Add non-dangerous wreck, depth unknown PA Rep (2022)
(See Chart 1, K29, B7, I3)

45°26'24.0"N 059°59'54.0"W

DFO(6311474-01)

4430 - Port-Menier - New Edition - 22-MAY-2015 - NAD 1983

11-OCT-2024

LNMD. 30-JUL-2021

Add legend Bell against red and white fairway lighted pillar buoy Mo (A) ,
marked MENIER
(See Chart 1, R14)

49°46'13.5"N 064°20'37.3"W

(Q2024139) LL(1516) DFO(6411128-01)

4485 - Cap des Rosiers à/to Chandler - New Edition - 17-JUN-2011 - NAD 1983

18-OCT-2024

LNMD. 17-MAY-2024

Add depth of 3 metres
(See Chart 1, I10)

48°37'10.9"N 064°12'25.4"W

DFO(6411035-03)

4886 - Fish Plant Wharf / Quai de l'usine de transformation de poisson - New Chart - 26-DEC-1997 - NAD 1983

18-OCT-2024

LNMD. 14-APR-2023

Add red starboard hand lighted spar buoy FI R, marked D12
(See Chart 1, Qb)

49°39'00.1"N 054°46'02.0"W

(N2024144) LL(358.44) DFO(6311480-01)

4921 - Mal- Bay - New Edition - 02-DEC-2016 - NAD 1983

18-OCT-2024

LNMD. 28-JUN-2024

Affix patch

48°37'15.2"N 064°12'16.9"W

Download Patch - https://www.notmar.gc.ca/chsftp/patches/4921_6411035_1_202409191410.pdf

DFO(6411035-01)

Affix patch

48°37'15.2"N 064°11'43.8"W

Download Patch - https://www.notmar.gc.ca/chsftp/patches/4921_6411035_2_202409191409.pdf

DFO(6411035-02)

5023 - Cape Harrison to / à Nunaksaluk Island - New Edition - 30-APR-2004 - NAD 1983

04-OCT-2024

LNMD. 22-SEP-2023

Add depth of 33 metres
(See Chart 1, I10)

55°21'26.9"N 058°56'58.3"W

DFO(6311472-01)

5045 - Dog Islands to / à Cape Makkovik - New Edition - 01-MAR-2002 - NAD 1983

04-OCT-2024

LNMD. 31-MAR-2023

Add depth of 33 metres
(See Chart 1, I10)

55°21'26.9"N 058°56'58.3"W

DFO(6311472-01)

7573 - M'Clintock Channel, Larsen Sound and/et Franklin Strait - New Chart - 25-FEB-2000 - NAD 1983

25-OCT-2024

LNMD. 17-NOV-2023

Add depth of 8.9 metres Rep (2024)
(See Chart 1, I10)

72°38'03.9"N 095°26'54.2"W

DFO(6605355-01)

7575 - Peel Sound and/et Prince Regent Inlet - New Edition - 14-OCT-2022 - World Geodetic System 1984
25-OCT-2024

Add depth of 8.9 metres Rep (2024) 72°38'03.9"N 095°26'54.2"W
(See Chart 1, I10) *DFO(6605355-01)*

7710 - Lambert Channel and/et Cache Point Channel - New Edition - 15-JUL-2016 - World Geodetic System 1984
04-OCT-2024

Delete depth of 15 metres 68°24'13.1"N 113°02'47.6"W
(See Chart 1, I10) *DFO(6605349-01)*

Add depth of 177 metres 68°24'13.1"N 113°02'47.6"W
(See Chart 1, I10) *DFO(6605349-02)*

7777 - Coronation Gulf Western Portion/Partie Ouest - New Edition - 15-MAY-2015 - World Geodetic System 1984
04-OCT-2024

Delete depth of 15 metres 68°24'13.1"N 113°02'47.6"W
(See Chart 1, I10) *DFO(6605349-01)*

Add depth of 177 metres 68°24'13.1"N 113°02'47.6"W
(See Chart 1, I10) *DFO(6605349-02)*

7940 - Eureka South and Southern Approaches/et Les Approches Du Sud Including/y Compris Baumann Fiord - New Edition - 27-APR-1979 - NAD 1927
25-OCT-2024

Delete depth of 43 metres 78°54'19.0"N 086°35'08.5"W
(See Chart 1, I10) *DFO(6605356-01)*

Add depth of 5.9 metres 78°54'14.9"N 086°35'49.6"W
(See Chart 1, I10) *DFO(6605356-02)*

Delete depth of 3 metres 78°54'47.4"N 086°37'28.1"W
(See Chart 1, I10) *DFO(6605356-03)*

Add depth of 2.3 metres 78°55'00.4"N 086°37'10.7"W
(See Chart 1, I10) *DFO(6605356-04)*

Section 3: Radio Aids to Marine Navigation Corrections

***1028/24 Radio Aids to Marine Navigation 2024 (Atlantic, St. Lawrence, Great Lakes, Lake Winnipeg, Arctic and Pacific)**

Page 5-51

DELETE THE FOLLOWING SECTION:

5.15.7 Daily Ice Charts Broadcast

REPLACE WITH THE FOLLOWING:

5.15.7 Daily Ice Charts Broadcast

The daily radio facsimile broadcast of the CIS ice charts from MCTS Sydney has been discontinued as of October 1 2024. Questions or further information regarding this service change should be directed to the Canadian Coast Guard.

These ice charts are still available from [the CIS webpage](#).

They may also be obtained from the CIS [via email request](#).

Section 4: Canadian Sailing Directions Corrections

The following **Canadian Sailing Directions** volumes have recently been updated on the [Canadian Hydrographic Service website](#).

| No. | Title |
|-----------------------|--------------------------------|
| Atlantic Coast | |
| ATL 106 | Gulf of Maine and Bay of Fundy |

Each volume includes a section entitled “Record of Changes” which lists all updates that are incorporated during the current calendar year.

Section 5: List of Lights, Buoys and Fog Signals Corrections

The amendments are highlighted and deletions are crossed out. For general and region-specific information on the List of Lights, click on the following links: [Newfoundland and Labrador Coast](#), [Atlantic Coast](#), [Inland Waters](#) and [Pacific Coast](#).

| No. | Name | Position ----- Latitude N. Longitude W. | Light Characteristics | Focal Height in m. above water | Nomi- nal Range | Description ----- Height in meters above ground | Remarks ----- Fog Signals |
|-----|------|--|--------------------------|--|-----------------------|--|---------------------------------|
|-----|------|--|--------------------------|--|-----------------------|--|---------------------------------|

ATLANTIC COAST

CAPE BRETON ISLAND, N.S. (LL 704.85 – 882.5)

| | | | | | | | | |
|----------------|-----------------------------------|---|---------|-------|-------|---------------------------|---|--|
| 737.05 | Lower L'Ardoise light buoy NN5 | Isle Madame. 45 35 14.0 060 46 15.3 | Fl G 4s | | | Green spar, marked "NN5". | Seasonal. Chart:4275 Edn 10/24 (G24-491) | |
| 774.5 | Lingan Harbour light buoy KQ7 | 46 13 45.5 060 02 04.7 | Fl G 4s | | | Green, marked "KQ7". | Seasonal. Chart:N/A Edn 10/24 (G24-492) | |
| 784 H0764 | Sydney South Arm range | Near N. extremity of point. 46 09 26.5 060 12 13.3 | F G | | 14.7 | | Triangular skeleton tower, white daymark with red vertical stripe. 6.7 | Visible in line of range. Operates 24 h. Year round. |
| 785 H0764.1 | | 160°32' 140.4 m from front. | Oc G | 10s | 21.5 | 16 | Triangular skeleton tower, white daymark with red vertical stripe. | Flash 9 s; eclipse 1 s. Visible in line of range. Operates 24 h. Year round. Chart:4266 Edn 10/24 (G24-494) |
| 789.3 | Sydney Harbour light buoy S6 | 46 14 32.4 060 11 31.0 | Fl R 4s | | | Red spar, marked "S6". | Operates 24 h. Year round. Chart:4622 Edn 10/24 (G24-279) | |

NORTHUMBERLAND STRAIT – EAST (LL 883.2 – 940.3)

| | | | | | | | |
|-------|--|---|---------|-------|-------|-------------------------------|---|
| 920.6 | Jollimore Reef light buoy UD3 | Barrachois Harbour. 45 46 09.6 063 13 10.8 | Q G 1s | | | Green spar, marked "UD3". | Seasonal. Chart:4497 Edn 10/24 (G24-304) |
| 920.7 | Chambers Point light buoy UD4 | Barrachois Harbour. 45 45 27.6 063 14 14.4 | Q R 1s | | | Red spar, marked "UD4". | Seasonal. Chart:4497 Edn 10/24 (G24-305) |
| 920.8 | Barrachois Harbour light buoy UD4/2 | 45 44 20.4 063 15 16.2 | Fl R 4s | | | Red spar, marked "UD4/2". | Seasonal. Chart:4497 Edn 10/24 (G24-302) |
| 920.9 | Malagash Point light buoy UE6 | SW. of point. 45 47 45.0 063 14 27.0 | Fl R 4s | | | Red spar, marked "UE6". | Seasonal. Chart:4497 Edn 10/24 (G24-306) |
| 930 | Pugwash Channel light buoy UK13 | 45 51 52.5 063 40 31.5 | Q G 1s | | | Green spar, marked "UK13". | Seasonal (in place year round). Chart:N/A Edn 10/24 (G24-487) |

Notices to Mariners – Monthly Eastern Edition
Section 5: List of Lights, Buoys and Fog Signals Corrections

| No. | Name | Position ----- Latitude N. Longitude W. | Light Characteristics | Focal Height in m. above water | Nomi- nal Range | Description ----- Height in meters above ground | Remarks ----- Fog Signals |
|---|------------------------------------|--|--------------------------|--|-----------------------|--|---|
| 938.5 | Page Point East light buoy UK32 | NE. of point. 45 51 00.2 063 39 56.1 | Q R 1s | | | Red, marked "UK32". | (Winter spar.) Seasonal. Chart:N/A Edn 10/24 (G24-488) |
| PRINCE EDWARD ISLAND (LL 942 – 1084.7) | | | | | | | |
| 966 | Sable Point light buoy NM8 | 46 01 13.2 062 28 54.0 | Fl R 4s | | | Red, marked "NM8". | Seasonal. Chart:4935 Edn 10/24 (G24-285) |
| 1049.09 | Grand Tracadie light buoy JH5 | 46 25 08.3 063 00 46.1 | Fl G 4s | | | Green, marked "JH5". | Buoy may be repositioned due to shifting channel. Seasonal. Chart:N/A Edn 10/24 (G24-390) |
| 1049.1 | Grand Tracadie light buoy JH6 | 46 25 06.8 063 00 49.4 | Fl R 4s | | | Red, marked "JH6". | Buoy may be repositioned due to shifting channel. Seasonal. Chart:N/A Edn 10/24 (G24-388) |
| 1049.11 | Grand Tracadie light buoy JH1 | 46 25 21.2 063 00 47.3 | Fl G 4s | | | Green, marked "JH1". | Buoy may be repositioned due to shifting channel. Seasonal. Chart:N/A Edn 10/24 (G24-399) |
| 1049.121 | Grand Tracadie light buoy JH2 | 46 25 21.2 063 00 54.5 | Fl R 4s | | | Red, marked "JH2". | Buoy may be repositioned due to shifting channel. Seasonal. Chart:N/A Edn 10/24 (G24-391) |
| 1049.131 | Grand Tracadie light buoy JH3 | 46 25 14.6 063 00 46.7 | Fl G 4s | | | Green, marked "JH3". | Buoy may be repositioned due to shifting channel. Seasonal. Chart:N/A Edn 10/24 (G24-397) |
| 1049.14 | Grand Tracadie light buoy JH4 | 46 25 12.9 063 00 51.9 | Fl R 4s | | | Red, marked "JH4". | Buoy may be repositioned due to shifting channel. Seasonal. Chart:N/A Edn 10/24 (G24-398) |
| 1049.15 | Grand Tracadie light buoy JH7 | 46 25 03.9 063 00 42.8 | Fl G 4s | | | Green, marked "JH7". | Buoy may be repositioned due to shifting channel. Seasonal. Chart:N/A Edn 10/24 (G24-394) |
| 1049.16 | Grand Tracadie light buoy JH8 | 46 25 02.8 063 00 47.0 | Fl R 4s | | | Red, marked "JH8". | Buoy may be repositioned due to shifting channel. Seasonal. Chart:N/A Edn 10/24 (G24-393) |

Notices to Mariners – Monthly Eastern Edition
Section 5: List of Lights, Buoys and Fog Signals Corrections

| No. | Name | Position ----- Latitude N. Longitude W. | Light Characteristics | Focal Height in m. above water | Nomi- nal Range | Description ----- Height in meters above ground | Remarks ----- Fog Signals |
|----------|------------------------------------|--|--------------------------|--|-----------------------|--|---|
| 1049.2 | Grand Tracadie light buoy JH9 | 46 24 51.3 063 00 36.5 | Fl G 4s | | | Green, marked "JH9". | Buoy may be repositioned due to shifting channel. Seasonal. Chart:N/A Edn 10/24 (G24-386) |
| 1049.21 | Grand Tracadie light buoy JH10 | 46 24 56.6 063 00 43.6 | Fl R 4s | | | Red, marked "JH10". | Buoy may be repositioned due to shifting channel. Seasonal. Chart:N/A Edn 10/24 (G24-389) |
| 1049.211 | Grand Tracadie light buoy JH11 | 46 24 36.1 063 00 29.7 | Fl G 4s | | | Green, marked "JH11". | Buoy may be repositioned due to shifting channel. Seasonal. Chart:N/A Edn 10/24 (G24-493) |
| 1049.22 | Grand Tracadie light buoy JH12 | 46 24 36.5 063 00 21.0 | Q R 1s | | | Red, marked "JH12". | Buoy may be repositioned due to shifting channel. Seasonal. Chart:N/A Edn 10/24 (G24-392) |
| 1049.24 | Grand Tracadie light buoy JH19 | 46 24 22.4 062 59 59.2 | Fl G 4s | | | Green spar, marked "JH19". | Buoy may be repositioned due to shifting channel. Seasonal. Chart:N/A Edn 10/24 (G24-405) |
| 1049.26 | Grand Tracadie light buoy JH22 | 46 24 04.9 063 00 17.8 | Q R 1s | | | Red spar, marked "JH22". | Buoy may be repositioned due to shifting channel. Seasonal. Chart:4425 Edn 10/24 (G24-404) |
| 1049.27 | Grand Tracadie light buoy JH26 | 46 24 04.5 063 01 04.6 | Fl R 4s | | | Red, marked "JH26". | Buoy may be repositioned due to shifting channel. Seasonal. Chart:N/A Edn 10/24 (G24-395) |
| 1049.28 | Grand Tracadie light buoy JH30 | 46 24 07.5 063 01 42.2 | Q R 1s | | | Red, marked "JH30". | Buoy may be repositioned due to shifting channel. Seasonal. Chart:N/A Edn 10/24 (G24-403) |
| 1049.6 | Grand Tracadie light buoy JH21 | 46 24 02.2 063 00 18.8 | Fl G 4s | | | Green spar, marked "JH21". | Buoy may be repositioned due to shifting channel. Seasonal. Chart:N/A Edn 10/24 (G24-387) |
| 1050.1 | Covehead Harbour light buoy JJ3 | 46 26 05.4 063 08 33.0 | Q G 1s | | | Green, marked "JJ3". | Buoy may be repositioned due to shifting channel. Seasonal. Chart:N/A Edn 10/24 (G24-321) |

Notices to Mariners – Monthly Eastern Edition
Section 5: List of Lights, Buoys and Fog Signals Corrections

| No. | Name | Position ----- Latitude N. Longitude W. | Light Characteristics | Focal Height in m. above water | Nomi- nal Range | Description ----- Height in meters above ground | Remarks ----- Fog Signals |
|---------|--|--|--------------------------|--|-----------------------|--|---|
| 1050.12 | Covehead Harbour light buoy JJ4 | 46 26 05.8 063 08 36.0 | Fl R 4s | | | Red, marked "JJ4". | Buoy may be repositioned due to shifting channel. Seasonal. Chart:N/A Edn 10/24 (G24-323) |
| 1050.13 | Covehead Harbour light buoy JJ5 | 46 26 01.6 063 08 31.2 | Fl G 4s | | | Green spar, marked "JJ5". | Buoy may be repositioned due to shifting channel. Seasonal. Chart:N/A Edn 10/24 (G24-318) |
| 1050.2 | Covehead Harbour light buoy JJ6 | 46 26 04.9 063 08 31.9 | Q R 1s | | | Red spar, marked "JJ6". | Buoy may be repositioned due to shifting channel. Seasonal. Chart:N/A Edn 10/24 (G24-324) |
| 1050.3 | Covehead Harbour light buoy JJ7 | 46 25 54.1 063 08 40.9 | Q G 1s | | | Green spar, marked "JJ7". | Buoy may be repositioned due to shifting channel. Seasonal. Chart:N/A Edn 10/24 (G24-317) |
| 1050.5 | Covehead Harbour light buoy JJ8 | 46 25 57.6 063 08 43.8 | Fl R 4s | | | Red, marked "JJ8". | Buoy may be repositioned due to shifting channel. Seasonal. Chart:N/A Edn 10/24 (G24-322) |
| 1050.91 | Covehead Harbour light buoy JJ10 | 46 25 49.8 063 08 45.1 | Fl R 4s | | | Red, marked "JJ10". | Buoy may be repositioned due to shifting channel. Seasonal. Chart:N/A Edn 10/24 (G24-319) |
| 1060.1 | Southwest River Outer light buoy JM7 | 46 30 55.2 063 28 56.9 | Fl G 4s | | | Green, marked "JM7". | Buoy may be repositioned due to shifting channel. Seasonal. Chart:4467 Edn 10/24 (G24-359) |
| 1060.15 | New London light buoy JM11 | 46 30 31.6 063 29 09.5 | Q G 1s | | | Green, marked "JM11". | Buoy may be repositioned due to shifting channel. Operates 24 h. Seasonal. Chart:4467 Edn 10/24 (G24-356) |
| 1060.2 | Southwest River light buoy JN | 46 30 33.3 063 29 05.9 | Fl G (2+1) | | | Green, red and green, marked "JN". | Buoy may be repositioned due to shifting channel. Seasonal. Chart:4467 Edn 10/24 (G24-360) |
| 1060.3 | Southwest River light buoy JMA | 46 30 24.2 063 29 29.8 | Fl R (2+1) | | | Red, green and red, marked "JMA". | Buoy may be repositioned due to shifting channel. Seasonal. Chart:4467 Edn 10/24 (G24-361) |

Notices to Mariners – Monthly Eastern Edition
Section 5: List of Lights, Buoys and Fog Signals Corrections

| No. | Name | Position ----- Latitude N. Longitude W. | Light Characteristics | Focal Height in m. above water | Nomi- nal Range | Description ----- Height in meters above ground | Remarks ----- Fog Signals |
|---------|---|---|--------------------------|--|-----------------------|--|--|
| 1060.5 | Southwest River light buoy JM25 | 46 29 05.8 063 29 52.0 | Fl G 4s | | | Green boat type , marked "JM25". | Buoy may be repositioned due to shifting channel. Seasonal. Chart:4467 Edn 10/24 (G24-362) |
| 1060.55 | Southwest River light buoy JN1 | 46 30 29.5 063 28 53.8 | Fl G 4s | | | Green, marked "JN1". | Buoy may be repositioned due to shifting channel. Seasonal. Chart:4467 Edn 10/24 (G24-355) |
| 1065.1 | Malpeque Harbour light buoy JP1 | Malpeque and Darnley. 46 34 09.7 063 38 25.1 | Fl G 4s | | | Green, marked "JP1". | Seasonal. Chart:4491 Edn 10/24 (G24-385) |
| 1065.2 | Malpeque West cautionary light buoy JPA | 46 34 23.3 063 40 39.5 | Fl Y 4s | | | Yellow spar , marked "JPA". | Seasonal. Chart:4491 Edn 10/24 (G24-383) |
| 1065.3 | Malpeque Harbour light buoy JP4 | Malpeque and Darnley. 46 34 13.6 063 39 27.7 | Q R 1s | | | Red, marked "JP4". | Seasonal. Chart:4491 Edn 10/24 (G24-378) |
| 1065.6 | Royalty Point light buoy JP9 | Malpeque and Darnley. 46 33 47.7 063 43 04.3 | Fl G 4s | | | Green spar, marked "JP9". | Buoy may be repositioned due to shifting channel. Seasonal. Chart:4491 Edn 10/24 (G24-377) |
| 1069.5 | Darnley Basin Outer light buoy JU3 | Basin entrance. 46 33 55.9 063 41 48.2 | Q G 1s | | | Green spar, marked "JU3". | Buoy may be repositioned due to shifting channel. Seasonal. Chart:4491 Edn 10/24 (G24-368) |
| 1069.65 | Darnley Basin light buoy JU5 | 46 33 24.2 063 41 28.9 | Q G 1s | | | Green, marked "JU5". | Buoy may be repositioned due to shifting channel. Seasonal. Chart:4491 Edn 10/24 (G24-369) |
| 1069.66 | Darnley Basin light buoy JU6 | 46 33 22.1 063 41 31.9 | Fl R 4s | | | Red, marked "JU6". | Buoy may be repositioned due to shifting channel. Seasonal. Chart:4491 Edn 10/24 (G24-384) |
| 1069.7 | Darnley Basin light buoy JU7 | 46 33 18.7 063 41 36.7 | Fl G 4s | | | Green, marked "JU7". | Buoy may be repositioned due to shifting channel. Seasonal. Chart:4491 Edn 10/24 (G24-370) |
| 1069.8 | Darnley Basin light buoy JU8 | 46 33 17.0 063 41 43.7 | Q R 1s | | | Red, marked "JU8". | Buoy may be repositioned due to shifting channel. Seasonal. Chart:4491 Edn 10/24 (G24-371) |

Notices to Mariners – Monthly Eastern Edition
Section 5: List of Lights, Buoys and Fog Signals Corrections

| No. | Name | Position ----- Latitude N. Longitude W. | Light Characteristics | Focal Height in m. above water | Nomi- nal Range | Description ----- Height in meters above ground | Remarks ----- Fog Signals |
|---|---|--|--------------------------|--|-----------------------|--|---|
| 1071.1 | Darnley Basin light buoy JT4 | 46 32 28.7 063 40 03.3 | Fl R 4s | | | Red spar, marked "JT4". | Buoy may be repositioned due to shifting channel. Seasonal. Chart:4491 Edn 10/24 (G24-372) |
| 1071.42 | Hardys Channel light buoy JS4 | 46 39 10.5 063 51 31.7 | Fl R 4s | | | Red spar, marked "JS4". | Buoy may be repositioned due to shifting channel. Seasonal. Chart:4491 Edn 10/24 (G24-342) |
| 1071.45 | Hardys Channel light buoy JS5 | 46 39 09.5 063 51 30.8 | Fl G 4s | | | Green spar, marked "JS5". | Buoy may be repositioned due to shifting channel. Seasonal. Chart:4491 Edn 10/24 (G24-341) |
| <u>NORTHUMBERLAND STRAIT – WEST (LL 1085 – 1165.9)</u> | | | | | | | |
| 1154.1 | Kouchibouguac River light buoy XX9 | 46 46 01.2 064 51 06.7 | Fl G 4s | | | Green, marked "XX9". | Buoy may be repositioned due to shifting channel. Seasonal. Chart:N/A Edn 10/24 (G24-226) |
| 1154.2 | Kouchibouguac River light buoy XX19 | 46 45 54.1 064 51 32.8 | Q G 1s | | | Green, marked "XX19". | Buoy may be repositioned due to shifting channel. Seasonal. Chart:N/A Edn 10/24 (G24-231, 477) |
| 1154.4 | Goulet de Terre- noire light buoy XX14 | 46 45 59.3 064 51 21.2 | Q R 1s | | | Red, marked "XX14". | Buoy may be repositioned due to shifting channel. Seasonal. Chart:N/A Edn 10/24 (G24-480) |
| 1157 | Kouchibouguac Gully light buoy XY2 | 46 49 58.3 064 53 48.1 | Fl R 4s | | | Red spar, marked "XY2". | Buoy may be repositioned due to shifting channel. Seasonal. Chart:4906 Edn 10/24 (G24-449) |
| 1157.33 | Kouchibouguac light buoy XY4 | 46 49 56.5 064 53 59.9 | Fl R 4s | | | Red, marked "XY4". | Buoy may be repositioned due to shifting channel. Seasonal. Chart:4906 Edn 10/24 (G24-451) |
| 1158.5 | Kouchibouguac Gully light buoy XY9 | 46 49 54.4 064 54 04.9 | Fl G 4s | | | Green, marked "XY9". | Buoy may be repositioned due to shifting channel. Seasonal. Chart:4906 Edn 10/24 (G24-455) |
| 1159 | Kouchibouguac Gully Inner light buoy XY21 | 46 50 26.0 064 54 44.5 | Q G 1s | | | Green, marked "XY21". | Buoy may be repositioned due to shifting channel. Seasonal. Chart:N/A Edn 10/24 (G24-461) |

Notices to Mariners – Monthly Eastern Edition
Section 5: List of Lights, Buoys and Fog Signals Corrections

| No. | Name | Position ----- Latitude N. Longitude W. | Light Characteristics | Focal Height in m. above water | Nomi- nal Range | Description ----- Height in meters above ground | Remarks ----- Fog Signals |
|---|-------------------------------------|---|--------------------------|--|-----------------------|--|--|
| GASPÉ – CHALEUR BAY (LL 1169.1 – 1426) | | | | | | | |
| 1170.7 | The Lump light buoy M3 | 47 06 13.3 064 57 43.1 | Fl G 4s | | | Green spar, marked "M3". | Seasonal (in place year round). Chart:N/A Edn 10/24 (G24-313) |
| 1172 | The Lump light buoy M5 | 47 06 20.4 064 58 15.4 | Q G 1s | | | Green spar, marked "M5". | Seasonal (in place year round). Chart:4911 Edn 10/24 (G24-314) |
| 1172.5 | The Lump light buoy M6 | 47 03 23.8 064 58 09.8 | Q R 1s | | | Red spar, marked "M6". | Seasonal (in place year round). Chart:4911 Edn 10/24 (G24-330) |
| 1172.51 | The Lump light buoy M7 | 47 06 20.8 064 58 15.4 | Fl G 4s | | | Green spar, marked "M7". | Seasonal (in place year round). Chart:N/A Edn 10/24 (G24-315) |
| 1199 | The Willows light buoy M37 | 47 06 31.0 065 18 03.8 | Q G 1s | | | Green spar, marked "M37". | Seasonal (in place year round). Chart:4912 Edn 10/24 (G24-409) |
| 1215.5 H1505 | Chatham Bridge Pier North | On bridge pier, N. side of channel. 47 01 39.5 065 28 46.5 | Iso R 2s | 4.5 | 5 | Pipe swing pole. 5.2 | Operates at night only. Year round. Chart:4912 Edn 10/24 (G24-470) |
| 1215.6 H1505.2 | Chatham Bridge Pier South | On bridge pier, S. side of channel. 47 01 35.4 065 28 41.6 | Iso G 2s | 4.5 | 5 | Pipe swing pole. 4.5 | Operates at night only. Year round. Chart:4912 Edn 10/24 (G24-471) |
| 1246.5 | Pokemouche Gully light buoy TH2 | 47 38 59.3 064 46 09.3 | Fl R 4s | | | Red, marked "TH2". | Buoy may be repositioned due to shifting channel. Seasonal. Chart:4486 Edn 10/24 (G24-291) |
| 1246.72 | Pokemouche Gully light buoy TH11 | 47 39 24.0 064 47 01.1 | Q G 1s | | | Green, marked "TH11". | Buoy may be repositioned due to shifting channel. Seasonal. Chart:4486 Edn 10/24 (G24-325) |
| 1246.77 | Pokemouche Gully light buoy TH15 | 47 39 35.2 064 47 10.7 | Q G 1s | | | Green, marked "TH15". | Buoy may be repositioned due to shifting channel. Seasonal. Chart:N/A Edn 10/24 (G24-283) |
| 1248 | Shippegan Fairway light buoy TJ | S. entrance to Shippegan Gully. 47 42 30.4 064 39 51.1 | Mo(A) W 6s | | | Red and white vertical stripes spar, marked "TJ". | Buoy may be repositioned due to shifting channel. Seasonal. Chart:4920 Edn 10/24 (G24-416) |
| 1248.11 | Shippegan Gully light buoy TJ4 | 47 42 30.4 064 39 57.0 | Fl R 4s | | | Red spar, marked "TJ4". | Operates 24 h. Seasonal. Chart:N/A Edn 10/24 (G24-417) |

Notices to Mariners – Monthly Eastern Edition
Section 5: List of Lights, Buoys and Fog Signals Corrections

| No. | Name | Position ----- Latitude N. Longitude W. | Light Characteristics | Focal Height in m. above water | Nomi- nal Range | Description ----- Height in meters above ground | Remarks ----- Fog Signals |
|----------|-----------------------------------|--|--------------------------|--|-----------------------|--|--|
| 1248.12 | Shippegan Gully light buoy TJ5 | 47 42 37.4 064 39 58.9 | Q G 1s | | | Green spar, marked "TJ5". | Buoy may be repositioned due to shifting channel. Seasonal. Chart:4920 Edn 10/24 (G24-413) |
| 1248.13 | Shippegan Gully light buoy TJ6 | 47 42 45.3 064 39 53.2 | Q R 1s | | | Red spar, marked "TJ6". | Buoy may be repositioned due to shifting channel. Seasonal. Chart:4920 Edn 10/24 (G24-344) |
| 1248.133 | Shippegan Gully light buoy TJ7 | 47 42 45.3 064 38 55.7 | Q G 1s | | | Green spar, marked "TJ7". | Buoy may be repositioned due to shifting channel. Operates 24 h. Seasonal. Chart:N/A Edn 10/24 (G24-343) |
| 1248.51 | Shippegan Gully light buoy TJ9 | 47 42 53.6 064 39 53.3 | Fl G 4s | | | Green spar, marked "TJ9". | Operates 24 h. Seasonal. Chart:4920 Edn 10/24 (G24-331) |
| 1262.11 | Fox Dens Gully light buoy TK4 | 47 53 04.0 064 29 49.1 | Fl R 4s | | | Red spar, marked "TK4". | Seasonal. Chart:4913 Edn 10/24 (G24-332) |
| 1262.12 | Fox Dens Gully light buoy TK5 | Inside gully entrance. 47 53 03.4 064 29 57.0 | Fl G 4s | | | Green, marked "TK5". | Seasonal. Chart:4913 Edn 10/24 (G24-336) |
| 1262.121 | Fox Dens Gully light buoy TK6 | 47 53 11.4 064 29 55.8 | Fl R 4s | | | Red, marked "TK6". | Seasonal. Chart:4913 Edn 10/24 (G24-337) |
| 1262.14 | Fox Dens Gully light buoy TK8 | 47 53 05.0 064 30 01.3 | Q R 1s | | | Red, marked "TK8". | Operates 24 h. Seasonal. Chart:4913 Edn 10/24 (G24-333) |
| 1262.16 | Fox Dens Gully light buoy TK10 | 47 53 08.9 064 30 19.9 | Fl R 4s | | | Red, marked "TK10". | Operates 24 h. Seasonal. Chart:4920 Edn 10/24 (G24-334) |
| 1262.5 | Fox Dens Gully light buoy TK2 | Île Lamèque. 47 53 14.9 064 29 44.5 | Fl R 4s | | | Red spar, marked "TK2". | Buoy may be repositioned due to shifting channel. Seasonal. Chart:4913 Edn 10/24 (G24-338) |
| 1262.6 | Fox Dens Gully light buoy TK3 | At gully entrance. 47 53 02.2 064 29 53.5 | Fl G 4s | | | Green spar, marked "TK3". | Buoy may be repositioned due to shifting channel. Seasonal. Chart:4913 Edn 10/24 (G24-335) |

Notices to Mariners – Monthly Eastern Edition
Section 5: List of Lights, Buoys and Fog Signals Corrections

| No. | Name | Position ----- Latitude N. Longitude W. | Light Characteristics | Focal Height in m. above water | Nomi- nal Range | Description ----- Height in meters above ground | Remarks ----- Fog Signals |
|----------|--|--|--------------------------|--|-----------------------|--|---|
| 1262.75 | Fox Dens Gully light buoy TK15 | 47 53 05.0 064 30 27.1 | Q G 1s | | | Green, marked "TK15". | Buoy may be repositioned due to shifting channel. Seasonal. Chart:4920 Edn 10/24 (G24-290) |
| 1263.2 | Fox Dens Gully light buoy EA21 | | | | | | Delete from list. Chart:4913 Edn 10/24 (G24-419) |
| 1264 | Fox Dens Gully light buoy EA24 | | | | | | Delete from list. Chart:4913 Edn 10/24 (G24-420) |
| 1264.1 | Fox Dens Gully light buoy EA30 | | | | | | Delete from list. Chart:N/A Edn 10/24 (G24-421) |
| 1264.271 | Miscou Harbour light buoy TK41 | 47 53 02.1 064 33 03.9 | Fl G 4s | | | Green, marked "TK41". | Operates 24 h. Seasonal. Chart:4913 Edn 10/24 (G24-257) |
| 1264.77 | Miscou Harbour light buoy TK25 | 47 52 56.3 064 30 59.5 | Fl G 4s | | | Green, marked "TK25". | Operates 24 h. Seasonal. Chart:4913 Edn 10/24 (G24-307) |
| 1264.88 | Miscou Harbour light buoy TK26 | 47 52 57.4 064 30 58.6 | Fl R 4s | | | Red, marked "TK26". | Operates 24 h. Seasonal. Chart:4913 Edn 10/24 (G24-248) |
| 1272.1 | Miscou Harbour light buoy EA36 | | | | | | Delete from list. Chart:4913 Edn 10/24 (G24-281) |
| 1272.11 | Miscou Channel light buoy EA17 | 47 53 18.4 064 35 12.4 | Fl G 4s | | | Green spar, marked "EA17". | Operates 24 h. Seasonal. Chart:4913 Edn 10/24 (G24-282) |
| 1272.12 | Miscou Channel light buoy EA40 | | | | | | Delete from list. Chart:4913 Edn 10/24 (G24-422P) |
| 1272.13 | Miscou Channel South cardinal light spar EAB | | | | | | Delete from list. Chart:4913 Edn 10/24 (G24-423) |
| 1272.14 | Miscou Channel North cardinal light EAA | | | | | | Delete from list. Chart:4913 Edn 10/24 (G24-424) |
| 1272.26 | Miscou harbour light buoy EA31 | | | | | | Delete from list. Chart:4913 Edn 10/24 (G24-425) |

Notices to Mariners – Monthly Eastern Edition
Section 5: List of Lights, Buoys and Fog Signals Corrections

| No. | Name | Position ----- Latitude N. Longitude W. | Light Characteristics | Focal Height in m. above water | Nomi- nal Range | Description ----- Height in meters above ground | Remarks ----- Fog Signals |
|-------------------|---|--|--------------------------|--|-----------------------|---|--|
| 1272.272 | Miscou Harbour light buoy TK42 | 47 53 12.4 064 33 01.7 | Fl R 4s | | | Red spar, marked "TK42". | Operates 24 h. Seasonal. Chart:4913 Edn 10/24 (G24-256) |
| 1272.29 | Miscou harbour light buoy EA37 | | | | | | Delete from list. Chart:4913 Edn 10/24 (G24-426) |
| 1272.3 | Miscou Channel light buoy EA39 | | | | | | Delete from list. Chart:4913 Edn 10/24 (G24-427) |
| 1273 | Miscou Channel light buoy EA20 | | | | | | Delete from list. Chart:4913 Edn 10/24 (G24-418) |
| 1273.4 | Miscou Channel light buoy ED1 | | | | | | Delete from list. Chart:4913 Edn 10/24 (G24-353) |
| 1286 | Shippegan Channel light buoy EG14 | 47 48 50.0 064 43 27.2 | Fl R 4s | | | Red spar, marked "EG14". | Buoy may be repositioned due to shifting channel. Seasonal (in place year round). Chart:4913 Edn 10/24 (G24-293) |
| 1289 | Shippegan Channel light buoy EG21 | 47 46 06.7 064 42 00.0 | Fl G 4s | | | Green spar, marked "EG21". | Buoy may be repositioned due to shifting channel. Seasonal (in place year round). Chart:4913 Edn 10/24 (G24-320) |
| 1298 | Baie de Lamèque light buoy EJ10 | S. side of channel leading to wharf. 47 47 43.1 064 39 44.5 | Fl R 4s | | | Red spar, marked "EJ10". | Buoy may be repositioned due to shifting channel. Seasonal (in place year round). Chart:4913 Edn 10/24 (G24-311) |
| 1310.5 | Caraquet Channel light buoy EM12 | 47 48 47.6 064 51 03.0 | Fl R 4s | | | Red spar, marked "EM12". | Seasonal (in place year round). Chart:4913 Edn 10/24 (G24-289) |
| 1322.5 | Maisonnette Ledge light buoy EN | NE. of Maisonnette ledge. 47 50 47.5 064 54 58.3 | Mo(A) W 6s | | | Spar. Red and white vertical stripes spar, marked "EN". | Buoy may be repositioned due to shifting channel. (Winter spar.) Seasonal (in place year round). Chart:4913 Edn 10/24 (G24-284) |
| 1325.4 H1591.8 | Blue Cove (Anse Bleue) Breakwater Light | On outer end of breakwater. 47 49 55.8 065 04 50.8 | Fl R 6s | 7.8 | 8 | Square skeleton tower. 3.7 | Flash 1 s; eclipse 5 s. Operates at night only. Year round. Chart:4486 Edn 10/24 (G24-442) |
| 1325.5 | Blue Cove (Anse- Bleue) Wharf | | | | | | Delete from list. Chart:4486 Edn 10/24 (G24-443) |

Notices to Mariners – Monthly Eastern Edition
Section 5: List of Lights, Buoys and Fog Signals Corrections

| No. | Name | Position ----- Latitude N. Longitude W. | Light Characteristics | Focal Height in m. above water | Nomi- nal Range | Description ----- Height in meters above ground | Remarks ----- Fog Signals |
|-----|------|--|--------------------------|--|-----------------------|--|---------------------------------|
|-----|------|--|--------------------------|--|-----------------------|--|---------------------------------|

1332.35 Bathurst Harbour light buoy EP33 47 39 07.1 065 37 51.2 Fl G 4s Green, marked "EP33". Seasonal.

Chart:4920
Edn 10/24 (G24-412)

ST. LAWRENCE RIVER, RIVIÈRE DU LOUP – SOREL (LL 1823.8 – 2185.1)

2015 H2358 On S. shore. 46 33 44.6 072 00 49.0 F G 37.0 17 Square skeleton tower, orange daymark with black vertical stripe. 9.9 Visible in line of range. Operates 24 h. Emergency light. Year round.

2016 H2358.1 Leclercville (Sainte-Emmélie) range 092°42' 1041.8 m from front. F G 57.2 17 White Square skeleton tower, orange daymark with black vertical stripe. 12.4 Visible in line of range. Operates 24 h. Emergency light. Year round.

2016.1 F G 57.2 6 12.5 Visible 360°. Operates 24 h. Year round.

Chart:1314
Edn 10/24 (Q24-202, 205, 206)

INLAND WATERS

LAKE ONTARIO (LL 403.4 – 551)

431 Nicholson's Point On point. 44 12 22.0 076 41 07.1 Fl R 4s 8.1 5 Mast, red and white rectangular daymark. 9.7 Seasonal.

Chart:2018
Edn 10/24 (B24-015)

LAKE NIPISSING (LL 1420 – 1441.4)

1424.5 Farquhar Island Lighthouse On island. 46 13 09.5 079 22 06.7 Iso R 4s 15.8 4 White tower with red top. Private aid. Obscured from 135° SE. through to 045° NE. Year round.

Chart:6035
Edn 10/24 (D24-085)