



Fisheries and Oceans  
Canada

Pêches et Océans  
Canada

Canadian  
Coast Guard

Garde côtière  
canadienne

# Notices to Mariners

**Edition No. 06/2024**  
June 28, 2024



Safety First, Service Always

## Monthly Eastern Edition

Canada 

Notices to Mariners – Monthly Eastern Edition  
Edition No. 06/2024

Aussi disponible en français :  
Avis aux navigateurs – Édition mensuelle de l'Est  
Édition n° 06/2024

**Published under the Authority of:**

Canadian Coast Guard Programs  
Aids to Navigation and Waterways  
Fisheries and Oceans Canada  
Montreal, QC H2Y 2E7

For more information, contact [DFO.Notmar-Notmar.MPO@dfo-mpo.gc.ca](mailto:DFO.Notmar-Notmar.MPO@dfo-mpo.gc.ca).

© His Majesty the King in Right of Canada,  
as represented by the Minister of Fisheries, Oceans  
and the Canadian Coast Guard, 2024.

Cat. No. Fs152-8E-PDF (Electronic PDF, English)  
ISSN 2817-0075

Cat. No. Fs152-8F-PDF (Electronic PDF, French)  
ISSN 2817-0083

A web version is available here:

[Notices to Mariners – Monthly Editions](#) (English)

[Avis aux navigateurs – Publications mensuelles](#) (French)

## Explanatory Notes – Notices to Mariners (NOTMAR)

**Geographical positions** refer directly to the graduations of the largest scale Canadian Hydrographic Service chart (unless otherwise indicated).

**Bearings** refer to the true compass and are measured clockwise from 000° (North) clockwise to 359°; those relating to lights are from seaward.

**Visibility** of lights is that in clear weather.

**Depths** - The units used for soundings (metres, fathoms or feet) are stated in the title of each chart.

**Elevations** are normally given above Higher High Water, Large Tide (unless otherwise indicated).

**Distances** may be calculated as follows:

- 1 nautical mile = 1,852 metres (6,076.1 feet)
- 1 statute mile = 1,609.3 metres (5,280 feet)
- 1 metre = 3.28 feet

### Temporary and Preliminary Notices to Mariners – Section 1A of *Notices to Mariners*

These notices are indicated by a (T) or a (P), respectively. Please note that nautical charts are not amended by the Canadian Hydrographic Service for temporary (T) and preliminary (P) notices. It is recommended that mariners chart these corrections in pencil. For the list of charts affected by (T) & (P) notices, please refer to the current [Notices to Mariners - Monthly Summary of Temporary and Preliminary Notices](#) publication.

### Suggestions and Corrections Form

This form is specifically for suggestions and corrections to Notices to Mariners publications. It is available [online](#) and also in [fillable PDF format](#) included with the monthly publication ZIP file.

To submit comments and suggestions on possible improvements to the various publications and services: [DFO.Notmar-Notmar.MPO@dfo-mpo.gc.ca](mailto:DFO.Notmar-Notmar.MPO@dfo-mpo.gc.ca).

To report chart discrepancies and/or corrections to the *Canadian Sailing Directions* booklets: Fill out the [Marine Information Reporting Form](#) and/or email [chsinfo@dfo-mpo.gc.ca](mailto:chsinfo@dfo-mpo.gc.ca).

To report emergencies or navigational hazards: [Contact your nearest MCTS centre](#)

- VHF channel 16 (156.8 MHz)
- MF/HF frequency 2182 kHz/4125 kHz (where available)
- \*16 on a cellphone (where available)

### NOTMAR Website – Monthly Editions, Chart Corrections and Chart Patches

The NOTMAR website allows users to access the [monthly publications](#), [chart corrections](#), and [chart patches](#).

Users can subscribe for free to the [email notification service](#) to receive notifications when charts of interest are updated, including their patches, as well as when a new Monthly Edition of *Notices to Mariners* is published.

In addition, the monthly publication and related files to download, such as chart patches, can be obtained all together through the download of a single ZIP file.

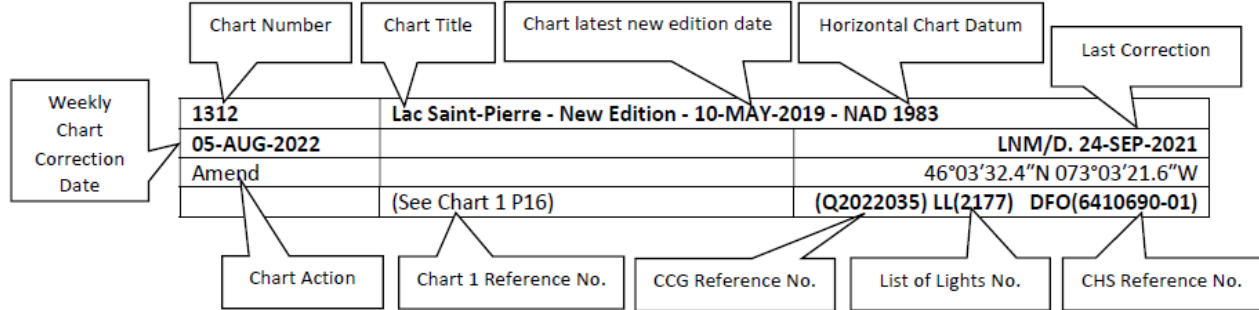
## Explanatory Notes – Canadian Hydrographic Service (CHS)

### Chart Corrections – Section 2 of *Notices to Mariners*

Corrections to nautical charts will be listed in numerical order by chart number. Each chart correction listed applies only to that particular chart. Related charts, if any, will have their own specific correction listed separately.

Users should also refer to CHS *Chart 1: Symbols, Abbreviations and Terms* for additional information pertaining to the correction of charts.

The illustration below describes the elements that will comprise a typical Section 2 chart correction:



The last correction number is identified with the **LN/D** or **Last Notice to Mariners Number / Date**.

Mariners are advised that only the most critical changes that directly affect safety to navigation are issued in “Section 2 – Chart Corrections.” This limitation is required to ensure that charts remain as clear and easy to read as possible. As a result, mariners may see minor discrepancies of a non-critical nature between information in official publications. For example, a small change in the nominal range or focal height of a light may not result in the production of a chart correction in *Notices to Mariners*, but may result in a correction in the [List of Lights, Buoys and Fog Signals](#) publication.

Note: In the case of a discrepancy between information provided on CHS charts relating to aids to navigation, and the *List of Lights, Buoys and Fog Signals* publication, the latter shall be deemed as containing the most up-to-date information.

### Canadian Nautical Charts & Publications

A source list of Canadian nautical charts and publications is published in Notice No. 14 of the *Notices to Mariners Annual Edition 2024*. The source supply and the prices effective at the time of printing are listed. For current chart edition dates, please refer to the [Canadian Hydrographic Service – List of Charts](#).

## Explanatory Notes – Marine Communications and Traffic Services (MCTS)

### Navigational Warnings / Notices to Shipping

The Canadian Coast Guard (CCG) is implementing a number of changes to the aids to navigation system in Canada.

These changes are advertised as Navigational Warnings, formerly called Notices to Shipping<sup>1</sup>, that are broadcast by the CCG, and are then followed up with Notices to Mariners, then charts are updated by hand correction, reprints or new editions.

Mariners are advised that all relevant Navigational Warnings (NAVWARN) should be kept until superseded by Notices to Mariners or through revised charts issued by the Canadian Hydrographic Service (CHS).

NAVWARN are accessible on the applicable regional page on the [CCG Navigational Warnings](#).

CHS is reviewing the impact of these changes with CCG and together are preparing an action plan on the issuing of chart revisions.

For further information, contact your regional NAVWARN Issuing Desk.

<p><b>Atlantic Region (North)</b> <b>*Port aux Basques MCTS Centre</b></p> <p>“N” Series NAVWARN</p> <p>Canadian Coast Guard 49 Stadium Rd. P.O. Box 99 Port aux Basques, NL A0M 1C0</p> <p>Telephone: 709-695-2168 or 1-800-563-9089 Facsimile: 709-695-7784</p> <p>Email: <a href="mailto:NAVWARN.MCTSPortAuxBasques@innav.gc.ca">NAVWARN.MCTSPortAuxBasques@innav.gc.ca</a></p>	<p><b>Central Region</b> <b>*Prescott MCTS Centre</b></p> <p>“Q” and “C” Series NAVWARN</p> <p>Canadian Coast Guard 401 King Street West P.O. Box 1000 Prescott, ON K0E 1T0</p> <p>Telephone: 613-925-0666 Facsimile: 613-925-4519</p> <p>Email: <a href="mailto:NAVWARN.MCTSPrescott@innav.gc.ca">NAVWARN.MCTSPrescott@innav.gc.ca</a></p>
<p><b>Atlantic Region (South)</b> <b>*Sydney MCTS Centre</b></p> <p>“M” Series NAVWARN</p> <p>Canadian Coast Guard 1190 Westmount Road Sydney, NS B1R 2J6</p> <p>Telephone: 902-564-7751 or 1-800-686-8676 Facsimile: 902-564-7662</p> <p>Email: <a href="mailto:NAVWARN.MCTSSydney@innav.gc.ca">NAVWARN.MCTSSydney@innav.gc.ca</a></p>	<p><b>Arctic Region</b> <b>*Iqaluit MCTS Centre</b></p> <p><i>Operational from approximately mid-May until late December.</i></p> <p>“A” Series NAVWARN</p> <p>Canadian Coast Guard P.O. Box 189 Iqaluit, NU X0A 0H0</p> <p>Telephone: 867-979-5269 Facsimile: 867-979-4264</p> <p>Email: <a href="mailto:NAVWARN.MCTSIqaluit@innav.gc.ca">NAVWARN.MCTSIqaluit@innav.gc.ca</a></p>

\*Service available in English and in French.

<sup>1</sup> The expression “Notice to Shipping” was changed to “Navigational Warning” in January 2019.

## Table of Contents

<b>Section 1: General and Safety Information</b>	<b>1</b>
*505/23 Canadian Hydrographic Service – Magnetic Declination Calculations .....	1
*1207/23 Canadian Hydrographic Service – Inappropriate Geographical Names Review Process.....	1
*401/24 Protecting the North Atlantic Right Whale: Speed Restriction Measures in the Gulf of St. Lawrence .....	1
*406/24 Saguenay–St. Lawrence Marine Park - Beluga Whale Protection: Slowdown Area at the Mouth of the Saguenay Fjord and Area Closure at Baie Sainte-Marguerite .....	9
*407/24 Saguenay – St. Lawrence Marine Park and Surrounding Waters – Whale Protection .....	12
*601/24 Canadian Hydrographic Service – Nautical Charts.....	13
*602/24 Canadian Hydrographic Service – Electronic Navigational Charts.....	13
*603/24 Canadian Hydrographic Service – Raster Digital Charts (BSB V3).....	14
*604/24 Transport Canada – Ship Safety Bulletin #12, #13, #14 and #15/2024 .....	14
*605/24 Canadian Coast Guard Publication - Amendments to the <i>Notices to Mariners Annual Edition 2024</i> - Section C, Notice 27A: Guidelines for the Transit of Wide-Beam Vessels and Long Vessels .....	15
*606/24 Port of Thunder Bay – Unlit Buoys Permanently Changed.....	15
*607/24 Sydney Harbour – Unlit Buoys Aid Designators Changed.....	16
*608/24 Harbours on the North Shore / Hâvres sur la Côte Nord – Unlit Buoys Repositioned .....	16
*609/24 Détroit de Northumberland / Northumberland Strait: Partie Ouest / Western Portion: Ports / Harbours – Unlit Buoys Permanently Changed .....	17
*610/24 Lac Saint-Jean – Unlit Buoys Repositioned .....	17
<b>Section 1A: Temporary and Preliminary Notices</b>	<b>18</b>
Reminder – Comment Period for Active Preliminary Notices .....	18
*611(T)/24 Great St. Lawrence Harbour and / et Lamaline Harbour – Aid to Navigation Temporarily Discontinued.....	18
*612/24 Ottawa to/à Smiths Falls – Marine Works – Bridge Repair Completed .....	19
<b>Section 2: Chart Corrections</b>	<b>20</b>
<b>Section 3: Radio Aids to Marine Navigation Corrections</b>	<b>31</b>
*613/24 Radio Aids to Marine Navigation 2024 (Atlantic, St. Lawrence, Great Lakes, Lake Winnipeg, Arctic and Pacific).....	31
<b>Section 4: Canadian Sailing Directions Corrections</b>	<b>37</b>
<b>Section 5: List of Lights, Buoys and Fog Signals Corrections</b>	<b>38</b>

## Numerical Index of Canadian Charts Affected

This numerical index lists all nautical charts mentioned in this monthly edition of Notices to Mariners. Only charts appearing in Section 2 of this publication require a chart correction. The appearance of charts in all other sections, particularly those related to the correction of other nautical publications, is included here for reference.

Chart No.	Pages	Chart No.	Pages	Chart No.	Pages
1230	<a href="#">47</a>	4320	<a href="#">24</a>	4935	<a href="#">29</a>
1234	<a href="#">47</a>	4321	<a href="#">24</a>	4967	<a href="#">45, 46, 47</a>
1236	<a href="#">47</a>	4376	<a href="#">25</a>	4969	<a href="#">45</a>
1310	<a href="#">20</a>	4381	<a href="#">25</a>	5052	<a href="#">40</a>
1312	<a href="#">20</a>	4386	<a href="#">25</a>	6035	<a href="#">29, 30</a>
1313	<a href="#">47</a>	4425	<a href="#">16</a>	6100	<a href="#">17</a>
1320	<a href="#">47</a>	4483	<a href="#">42</a>	6432	<a href="#">30</a>
1512	<a href="#">19</a>	4486	<a href="#">26</a>	7664	<a href="#">30</a>
1515	<a href="#">19</a>	4521	<a href="#">39</a>	8007	<a href="#">30</a>
1552	<a href="#">48</a>	4522	<a href="#">26, 39</a>		
2044	<a href="#">48</a>	4523	<a href="#">40</a>		
2050	<a href="#">20</a>	4530	<a href="#">40</a>		
2202	<a href="#">20</a>	4538	<a href="#">39</a>		
2224	<a href="#">48</a>	4585	<a href="#">40</a>		
2235	<a href="#">21</a>	4617	<a href="#">26</a>		
2241	<a href="#">21</a>	4639	<a href="#">38</a>		
2251	<a href="#">21</a>	4642	<a href="#">18, 38</a>		
2273	<a href="#">21</a>	4659	<a href="#">39</a>		
2297	<a href="#">22</a>	4667	<a href="#">39</a>		
2314	<a href="#">15, 16, 48</a>	4679	<a href="#">18</a>		
2326	<a href="#">22</a>	4821	<a href="#">39</a>		
3811	<a href="#">13</a>	4825	<a href="#">38</a>		
4003	<a href="#">22</a>	4831	<a href="#">38</a>		
4012	<a href="#">22</a>	4841	<a href="#">26</a>		
4013	<a href="#">22</a>	4850	<a href="#">41</a>		
4022	<a href="#">39</a>	4851	<a href="#">41</a>		
4024	<a href="#">44</a>	4853	<a href="#">40</a>		
4116	<a href="#">23</a>	4855	<a href="#">40</a>		
4141	<a href="#">23</a>	4885	<a href="#">39</a>		
4227	<a href="#">23</a>	4909	<a href="#">17, 44</a>		
4233	<a href="#">23</a>	4912	<a href="#">26, 27, 28</a>		
4236	<a href="#">23, 24</a>	4920	<a href="#">44</a>		
4237	<a href="#">24</a>	4921	<a href="#">28, 29, 44</a>		
4266	<a href="#">16, 24, 41, 42</a>	4934	<a href="#">29</a>		

## Section 1: General and Safety Information

---

### **\*505/23 Canadian Hydrographic Service – Magnetic Declination Calculations**

(Recurrent publication of notice \*505/23, originally published in the *Notices to Mariners – Monthly Eastern Edition 05/2023* publication.)

Mariners are advised that CHS has adopted the harmonized World Magnetic Model (WMM), as found on the NCEI/NOAA website. Old compass rose declination information on CHS navigational products can be updated using this website: <https://www.ngdc.noaa.gov/geomag/calculators/magcalc.shtml#declination>. While the differences in the model declinations are small each year, they can become more significant over a large period of time.

### **\*1207/23 Canadian Hydrographic Service – Inappropriate Geographical Names Review Process**

(Recurrent publication of notice \*1207/23, originally published in the *Notices to Mariners – Monthly Eastern Edition 12/2023* publication.)

The records of the Canadian Hydrographic Service could contain geographical names that may be considered inappropriate, offensive and derogatory. Geographical naming authorities are in the process of addressing many offensive place names, the review process is underway. For more information, about inappropriate geographical names, please see the [following announcement](#).

### **\*401/24 Protecting the North Atlantic Right Whale: Speed Restriction Measures in the Gulf of St. Lawrence**

(Recurrent publication of notice \*401/24, originally published in the *Notices to Mariners – Monthly Eastern Edition 04/2024* publication.)

#### **Purpose**

This bulletin describes the speed restriction zones that vessels must follow in the Gulf of St. Lawrence.

The Government of Canada has established these zones to reduce the risk of vessel colliding with North Atlantic right whales (NARW).

#### **Background**

Due to changing migration patterns of North Atlantic right whales and their increased presence in the Gulf of St. Lawrence, the Government of Canada has set seasonal speed restrictions in specific zones. These speed restrictions zones are defined as “static zones”, “dynamic shipping zones”, “seasonal management areas”, a “voluntary seasonal slowdown zone” and a “restricted area”. [See the map below for details](#).

Note: Vessels **must follow** Navigational Warnings outlining the speed restrictions. The *Interim Order for the Protection of North Atlantic Right Whales (Eubalaena Glacialis) in the Gulf of St. Lawrence, 2024* enables the issuance of Navigational Warnings (NAVWARNs) imposing speed restrictions and navigation restrictions.

Speed restriction zones are described in monthly Notices to Mariners (NOTMARs), which are published by the Canadian Coast Guard. The status of these zones is broadcasted through NAVWARNs, which are published by the Coast Guard’s Marine Communications and Traffic Services Centres.



### **Changes to speed restriction zones and measures**

Based on consultations with industry and on scientific data, changes to the speed restriction zones will be effective from April 17th, 2024, while the restricted area will be implemented based on whale presence.

A voluntary seasonal slowdown of 10.0 knots over the ground spanning from Cabot Strait (a line running from Cape North NS to Cape Ray NL) to the eastern edge of dynamic shipping zone E will be implemented at the beginning and end of the North Atlantic right whale season (Spring and fall).

Please check the latest NAVWARN for all speed restrictions currently in effect.

### **Speed Restriction Measures for 2024**

These restrictions will be in effect from **April 17 to November 15, 2024**.

### **Exceptions**

The following exception will apply to **all** measures:

- a) a vessel in distress or providing assistance to a person or a vessel in distress;
- b) a government vessel being used
  - i. for law enforcement activities;
  - ii. for search and rescue operations; or
  - iii. to ensure the competency of the crew or the operational readiness of the vessel or crew with respect to such activities or operations.

### **Static zones**

In the static zones, **all** vessels above **13 m** in length overall (LOA) must proceed at a speed of not more than 10.0 knots over the ground.

### **Exclusions**

Air cushion vessels operated by or on behalf of the Government of Canada that are engaged in ice-clearing activities from April to June in and around Chaleur Bay are exempted when in operation.

### **36.57 m (20-fathom) shallow water protocol exclusion**

Vessels engaged in any commercial fishing activity may proceed at a safe operational speed in waters not more than 36.57 m (20 fathom) deep within the static zones.

If a notice to fish harvesters and a NAVWARN state that at least one North Atlantic right whale has been detected in waters within a static zone or its associated buffer zone that are not more than 36.57m deep, the speed limit of 10.0 knot over the ground will apply in the concerned zone(s) to all vessels above 13m in length overall (LOA). The speed restriction will be in effect for 15 days after the day on which the whale was detected. The buffer zones associated with the static zones are located 5 miles north and south of their adjacent border in waters less than 36.57m deep.

**Coordinates for the northern static zone:**

- 50° 20' N 065° 00' W
- 49° 13' N 065° 00' W
- 48° 40' N 064° 13' W
- 48° 40' N 062° 40' W
- 48° 03' N 061° 07.5' W
- 47° 58.1' N 061° 03.5' W
- 48° 00' N 061° 00' W
- 49° 04' N 061° 00' W
- 49° 04' N 062° 00' W
- 49° 43' N 063° 00' W
- 50° 20' N 063° 00' W

**Coordinates for the southern static zone:**

- 48° 40' N 065° 00' W
- 48° 40' N 062° 40' W
- 48° 03' N 061° 07.5' W
- 47° 58.1' N 061° 03.5' W
- 47° 10' N 062° 30' W
- 47° 10' N 065° 00' W

**Dynamic shipping zones**

There are five dynamic shipping zones (DSZ) located in the routing systems north and south of Anticosti Island: A, B, C, D and E

**Coordinates for the dynamic shipping zones:**

**Zone A**

- 49° 41' N, 065° 00' W
- 49° 20' N, 065° 00' W
- 49° 11' N, 064° 00' W
- 49° 22' N, 064° 00' W

**Zone B**

- 49° 22' N, 064° 00' W
- 49° 11' N, 064° 00' W
- 48° 48' N, 063° 00' W
- 49° 00' N, 063° 00' W

**Zone C**

- 49° 00' N, 063° 00' W
- 48° 48' N, 063° 00' W
- 48° 24' N, 062° 00' W
- 48° 35' N, 062° 00' W

**Zone D**

- 50° 16' N, 064° 00' W
- 50° 00' N, 064° 00' W
- 49° 56' N, 063° 00' W
- 50° 16' N, 063° 00' W

**Zone E**

- 48° 35' N 062° 00' W
- 48° 24' N 062° 00' W
- 48° 03' N 061° 07.5' W
- 47° 58.1' N 061° 03.5' W
- 48° 00' N 061° 00' W
- 48° 10.5' N 061° 00' W

When a North Atlantic right whale is detected in a dynamic shipping zone or in the buffer zones, located 5 nautical miles south or 2.5 nautical miles from the eastern and western edges of the dynamic shipping zones:

- All vessels will be notified via a NAVWARN; and
- Vessels above **13 m** in length overall (LOA) must proceed at a speed of not more than 10.0 knots over the ground within that zone.

Even though dynamic shipping zones overlap with static zones, vessels can travel at a safe operational speed in dynamic shipping zones when they are not under speed restriction. Mariners must also keep in mind that North Atlantic right whales may be nearby.

### Speed restrictions in the dynamic shipping zones

The detection of North Atlantic right whales in one or more dynamic shipping zone(s), or in their buffer zones, will trigger a speed restriction in the concerned zone(s). The speed restriction in the dynamic shipping zone(s) will be in effect for 15 days from the date of detection. In the event of a new North Atlantic right whale detection occurring in the last 7 days of the 15-day slowdown period, the speed restriction will be extended for an additional 15 days from the date of the new detection. This would continue until no NARW are detected.

When a NAVWARN is issued implementing a speed restriction in one or more dynamic shipping zone(s), vessels above **13 m** in length (LOA) must not exceed a speed of 10.0 knots over the ground. Within any dynamic zone that is not subject to a speed restriction, mariners may proceed at a safe operational speed. Mariners are encouraged to take into consideration the potential for their vessel striking North Atlantic right whales when considering a “safe operational speed” during navigation.

### Seasonal management areas

Seasonal management area 1 (SMA-1) and seasonal management area 2 (SMA-2) are speed restriction areas located north and south of dynamic shipping zone E, respectively.

Within seasonal management areas, vessels above **13 m** in length (LOA):

- must restrict their speed so as not to exceed 10.0 knots over the ground from April 17<sup>th</sup> to June 25<sup>th</sup>, 2024; **and**
- are allowed to proceed at a safe operational speed from June 26<sup>th</sup> to November 15<sup>th</sup>, 2024, unless a North Atlantic right whale is detected. If a whale is detected, a speed restriction of 10.0 knots over the ground will be triggered for 15 days from the date of detection. In the event of a new North Atlantic right whale detection occurring in the last 7 days of the 15-day slowdown period, the speed restriction will be extended for an additional 15 days from the date of the new detection. This would continue until no North Atlantic right whales are detected.

#### Coordinates for the SMA-1:

- 49° 04' N 062° 00' W
- 49° 04' N 061° 00' W
- 48° 10.5' N 061° 00' W
- 48° 35' N 062° 00' W

#### Coordinates for the SMA-2:

- 48° 24' N 062° 00' W
- 48° 03' N 061° 07.5' W
- 47° 58.1' N 061° 03.5' W
- 47° 26.69' N 062° 00' W

### Restricted area

In the summer months, an important proportion of the total North Atlantic right whale population gathers for feeding and surface activity near the [Shediac Valley](#). Since this makes the North Atlantic right whale more susceptible to vessel collisions, a mandatory restricted area will be implemented in and near the [Shediac Valley](#) and will come into force once 80% of the restricted area is closed to fishing for the season as per the [Department of Fisheries and Oceans' right whale closure protocol](#) or at the latest on June 19<sup>th</sup>, 2024. The restricted area will be lifted once the North Atlantic right whale detections decrease in the restricted area or at the latest on September 25<sup>th</sup>, 2024.

The size and location of the area are determined based on historical detection data of North Atlantic right whales. All necessary details can be found in the *Interim Order for the Protection of North Atlantic Right Whales (Eubalaena Glacialis) in the Gulf of St. Lawrence, 2024*. Triggering and lifting of the restricted area will be communicated to mariners through NAVWARNs and notices to fish harvesters.

Vessels above **13 m** in length (LOA) will be required to:

- avoid the area unless they are part of the exceptions listed in the Interim Order for the Protection of North Atlantic Right Whales (*Eubalaena Glacialis*) in the Gulf of St. Lawrence, 2024;
- transit the area at a speed not exceeding 8.0 knots over the ground if they are part of the exceptions.

The following exceptions will apply to the restricted area. The following listed vessels can travel through the area at not more than 8.0 knots over the ground:

- A vessel being used for commercial fishing;
- A vessel being used for fishing under the authority of a licence issued under the *Aboriginal Communal Fishing Licences Regulations*;
- A vessel being used for research purposes on behalf of the Government of Canada
- A vessel being used as part of the Department of Fisheries and Oceans' Marine Mammal Response Program to assist a marine mammal or sea turtle in distress or to access or retrieve a deceased marine mammal or sea turtle;
- A vessel authorized by the Government of Canada to retrieve or identify the location of abandoned or lost fishing gear;
- A vessel involved in pollution response operations;
- A vessel avoiding immediate or unforeseen danger;
- A vessel involved in research relating to right whales as part of a project that has received funding from the Government of Canada.

The following vessels can travel through the restricted area at a speed over 8.0 knots, but below 10.0 knots over the ground as required by the static speed restriction zone:

- A vessel being used by an employee of the Government of Canada or peace officer who is performing their duties.

**Coordinates for the restricted area:**

- 48°31.8' N 063°39.6' W
- 48°24.72' N 063°17.88' W
- 47°18.84' N 064°10.8' W
- 47°27.18' N 064°30.72' W

**Inclement weather exception**

Mariners will be notified in advance via a NAVWARN should the speed restriction status change in any zone or area, due to inclement weather.

Within any zone or area that is no longer subject to a speed restriction due to adverse weather conditions, mariners may proceed at a safe operational speed. Mariners are however encouraged to take into consideration the potential for their vessel striking North Atlantic right whales when considering a “safe operational speed” during navigation.

\*Non-expected vessels are still prohibited from transiting through the restricted area.

**Voluntary seasonal slowdown in Cabot Strait**

To coincide with the North Atlantic right whales entering and exiting the Gulf of St. Lawrence in large numbers, a voluntary seasonal slowdown is being put in place in Cabot Strait from April 17<sup>th</sup> to June 25<sup>th</sup>, 2024, and from September 25<sup>th</sup> to November 15<sup>th</sup>, 2024.

- During these periods, vessels above 13 m in length (LOA) are requested to voluntarily reduce their speed as to not exceed 10.0 knots over the ground.

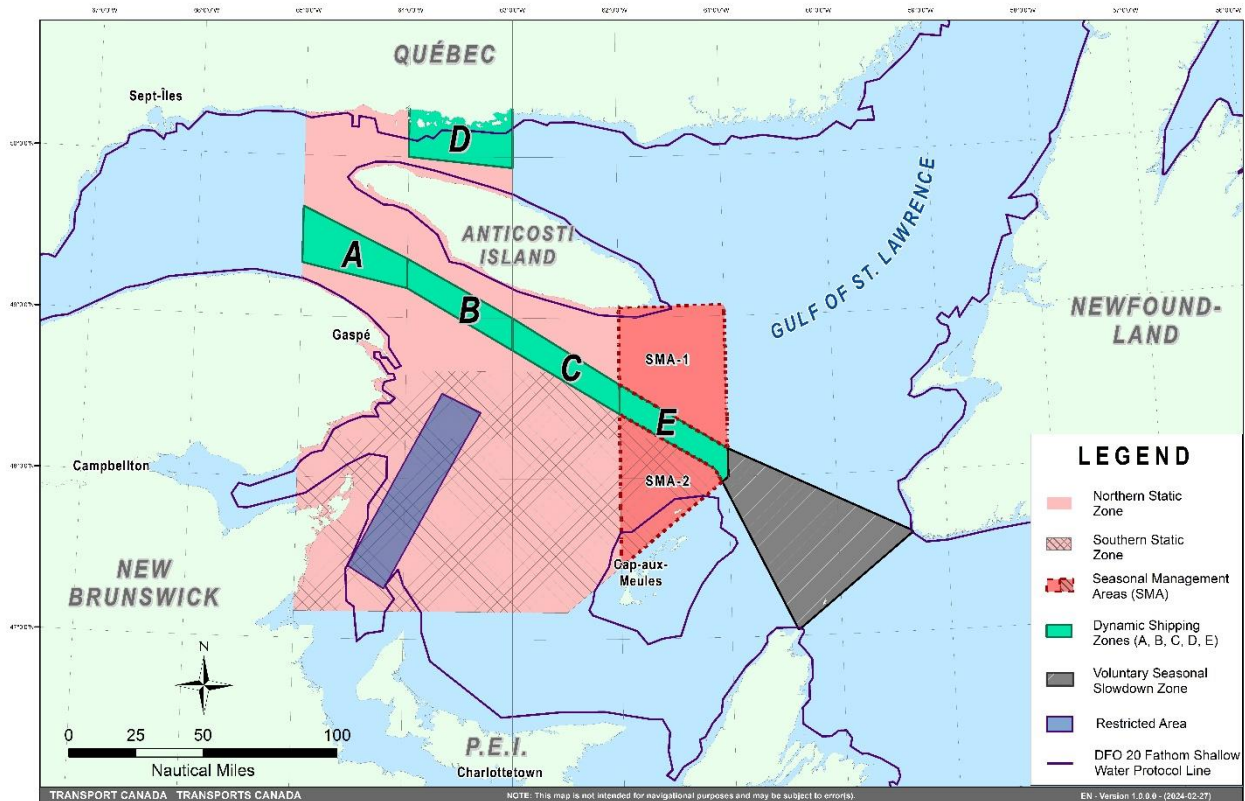
**Voluntary seasonal slowdown zone coordinates:**

- 48° 10.5' N 061° 00' W
- 47° 37.2' N 059° 18.5' W
- 47° 02' N 060° 23.7' W
- 47° 58.1' N 061° 03.5' W
- 48° 00' N 061° 00' W

**Map of the Gulf of St. Lawrence**

The following map shows

- the static zones (north and south), in pink;
- the dynamic shipping zones (A, B, C, D and E), in green;
- the seasonal management areas, in dark pink;
- the voluntary seasonal slowdown zone, in grey;
- the restricted area, in dark blue; and
- the 36.57 m (20 fathom) shallow water protocol line.



This map is for visual representation only and is not to be used for navigation or enforcement.

### **Roseway Basin – Area to be Avoided**

The Roseway Basin, located approximately 20 nautical miles south of Cape Sable Island, Nova Scotia, is a critical habitat for North Atlantic right whales, which have been observed to gather in the area on a seasonal basis in Canadian waters. This critical habitat is also located near key shipping routes. In 2007, Canada, with the support of many groups with varied interests, proposed to the International Maritime Organization (IMO) the establishment of a seasonal Area to be Avoided in the Roseway Basin to protect North Atlantic right whales, which IMO accepted and adopted.

To reduce the risk of vessels colliding with North Atlantic right whales, it is recommended that vessels of 300 gross tonnages and more, in transit during the period of June 1 through December 31, avoid the Roseway Basin area. Smaller vessels are also encouraged to avoid passage through this area. If passage is necessary within the Area to be Avoided, it is recommended that all mariners decrease their vessel speed to no more than 10 knots, when safe to do so.

#### **Roseway Basin coordinates:**

- 43° 16' N 064° 55' W
- 42° 47' N 064° 59' W
- 42° 39' N 065° 31' W
- 42° 52' N 066° 05' W

#### **NAVWARN broadcasts**

The Canadian Coast Guard issues NAVWARNs:

- by radio broadcast; and
- online at [Canada's Maritime Information Portal](#) and its [Navigational Warnings](#) site.

Mariners must ensure they have accurate and up-to-date information about the protection of the North Atlantic right whale, as in all applicable NOTMARs and NAVWARNs.

For the North Atlantic right whale speed restrictions, the NAVWARN(s) currently in effect will be provided to vessels subject to the Vessel Traffic Services Zone Regulations or the Eastern Canada Vessel Traffic Services Zone Regulations:

#### **Outbound vessels will receive NAVWARNs**

- at Calling-in-Point 10 (St-Laurent); or
- upon a departure downstream from the Quebec pilot station (including the Saguenay River, Chaleur Bay, Miramichi Bay, etc.)

#### **Inbound vessels will receive NAVWARNs**

- when a clearance to enter Canadian waters is granted

#### **Vessels in transit will receive NAVWARNs**

- at the last reporting point prior to entering the mandatory speed restriction zones; and/or
- at 10 nautical miles before they enter the mandatory speed restriction zones

For those vessels not subject to the above-mentioned regulations, vessel operators are required to monitor broadcasts by the Canadian Coast Guard's Marine Communications and Traffic Services network for the most up to date information. For marine radio frequencies and broadcast times, information may be found in the [Radio Aids to Marine Navigation](#) publication.

## Aids to navigation

The Canadian Coast Guard is currently testing virtual Automatic Identification System (AIS) aids to navigation (AIS AtoN) in specific areas. These aids notify mariners of a dynamic shipping zone and/or a seasonal management area subject to a speed restriction.

Each zone is delimited by four to six virtual AIS AtoN, which can be displayed on a ship's navigation equipment, such as

- Electronic Chart Display and Information System (ECDIS);
- Electronic Chart System (ECS);
- RADAR;
- Minimum Keyboard Display (MKD); and
- Electronic Nautical Chart (ENC).

The Canadian Coast Guard broadcasts the virtual AIS AtoN only when a speed restriction is in effect in one or more testing zones.

Mariners must select the virtual AIS AtoN symbol to view a message such as "SectA1 Spd Lim 10 kt." This message refers to a speed restriction in effect for a specific zone.

Note: This system is not the primary method of communicating this information.

## Compliance and enforcement

Vessels must comply with the Interim Orders made pursuant to the *Canada Shipping Act, 2001*, and any NAVWARNs broadcasted and published by the Canadian Coast Guard relating to the Interim Orders, aimed at regulating the navigation for the purposes of protecting the North Atlantic right whales.

If a vessel does not comply with the Interim Orders or instructions in the NAVWARNs related to the Interim Orders, the vessel could face:

- administrative monetary penalties up to a maximum of CAN \$250,000; and/or
- penal sanctions under the *Canada Shipping Act, 2001* is liable on summary conviction to a fine of not more than CAN \$1,000,000 or to imprisonment for a term of not more than 18 months, or to both.

If a vessel appears to have violated the speed restriction, Transport Canada Marine Safety inspectors will review all information provided through AIS and seek an explanation from the master.

No exemptions to the speed restriction will be granted in advance. However, if a deviation from the speed restrictions is necessary for safety reasons, the following information must be entered into the bridge logbook:

- reason(s) for deviation;
- speed at which vessel is operated;
- latitude and longitude at time of deviation;
- time and duration of deviation; and
- master of the vessel shall sign and date the bridge logbook entry.

For any deviation, Transport Canada will review and consider reasons such as:

- navigating to ensure vessel safety;
- weather conditions;
- force majeure (unforeseeable circumstances); and
- responding to emergencies.

### Report a North Atlantic right whale sighting

If you see live, free-swimming whales:

- Email: [DFO.GLFWhales-BaleinesGLF.MPO@dfo-mpo.gc.ca](mailto:DFO.GLFWhales-BaleinesGLF.MPO@dfo-mpo.gc.ca)
- When reporting sightings of North Atlantic right whales, you must include: GPS location (latitude and longitude), date and time of sighting, number of marine mammals, photograph(s)/video(s) collected and if possible, behavior of marine mammals observed (ex., feeding, travelling, diving).

If you see a North Atlantic right whale (and all other marine mammals) **entangled, injured or dead**, please document and report it immediately to the regional Response Network.

- When documenting you should collect: GPS location (latitude and longitude), date and time of sighting, number of marine mammals, photograph(s)/video(s), and description of the incident to provide to the Response Network.

### **Southern part of the Gulf of St. Lawrence (New Brunswick, Nova Scotia & Prince Edward Island):**

Marine Animal Response Society  
Telephone: 1-866-567-6277

### **Newfoundland and Labrador:**

Whale Release and Strandings Newfoundland and Labrador (Tangly Whales Inc.)  
Telephone: 1-888-895-3003 or 1-709-895-3003

### **Quebec:**

Baleines en direct (GREMM)  
Telephone: 1-877-722-5346

### **REPORT A MARINE MAMMAL OR SEA TURTLE INCIDENT OR SIGHTING:**

For more information on reporting other marine mammal or sea turtle sighting and incidents:

<https://www.dfo-mpo.gc.ca/species-especes/mammals-mammiferes/report-rapport/page01-eng.html>

Please consult Whale Insight for the latest right whale observations:

<https://gisp.dfo-mpo.gc.ca/apps/WhaleInsight/eng/?locale=en>

### **\*406/24 Saguenay–St. Lawrence Marine Park - Beluga Whale Protection: Slowdown Area at the Mouth of the Saguenay Fjord and Area Closure at Baie Sainte-Marguerite**

(Recurrent publication of notice \*406/24, originally published in the *Notices to Mariners – Monthly Eastern Edition 04/2024* publication.)

The Saguenay–St. Lawrence Marine Park and its surrounding area are at the heart of endangered beluga whale critical summer habitat. Marine mammal protection measures have been put in place in accordance with the *Marine Activities in the Saguenay–St. Lawrence Marine Park Regulations* within the limits of the Marine Park.

However, important feeding, calving and rearing areas for beluga whales require greater protection to ensure the recovery of the species. The portion of the Saguenay situated between the mouth of the Fjord and Baie Sainte-Marguerite is one of the areas most used by females and their young from May to October. The mouth of the Saguenay is known as a feeding ground and Baie Sainte-Marguerite as a calving and rearing area.

In order to prevent collisions with beluga whales, a compulsory 15-knot slowdown area is in effect from May 1<sup>st</sup> to October 31<sup>st</sup> at the mouth of the Saguenay. To ensure tranquility for female belugas and their young during the critical calving period, access to Baie Sainte-Marguerite is prohibited to all vessels from June 21<sup>st</sup> to September 21<sup>st</sup>, except for special authorizations (see description below).



For safety reasons, *the slowdown area measure at the mouth of the Saguenay Fjord does not apply* to cargo ships (see the monthly edition of *Notice to Mariners* from May to October for voluntary protection measures in the St. Lawrence Estuary). An enhanced vigilance is, however, recommended to all navigators between the mouth of the Saguenay Fjord and Baie Sainte-Marguerite for the protection of beluga whales.

For more information on the Saguenay–St. Lawrence Marine Park, see notice 5C of the *Notices to Mariners Annual Edition 2024* or visit [marinepark.gc.ca](http://marinepark.gc.ca).

## REGULATORY PROTECTION MEASURES — BELUGA WHALE

### Entire Marine Park Territory:

- When beluga whales are less than half a nautical mile (926 metres) from a motorized vessel, the vessel must maintain a steady speed of between 5 and 10 knots.
- All vessels, including human-powered vessels (kayaks and canoes), must continue to move forward and maintain their heading.
- All vessels must maintain a minimum distance of 400 metres from beluga whales at all times.

For more information concerning the regulations, consult: [marinepark.ca](http://marinepark.ca).

### Mouth of the Saguenay Fjord (Figure 1) — Slowdown Area (area crosshatched in red):

- Maximum speed at the mouth of the Saguenay between buoys S7 and S8 and the ferry docks between Baie-Sainte-Catherine and Tadoussac is 15 knots from May 1<sup>st</sup> to October 31<sup>st</sup>.

### Baie Sainte-Marguerite (Figure 2) — Area Closure (red area):

- From June 21<sup>st</sup> to September 21<sup>st</sup>, vessels must not enter the red area, which follows a line between Cap Nord-Ouest and Cap Sainte-Marguerite.
- Special authorizations are granted only for kayaks, canoes and recreational fishermen who must travel without stopping along a corridor within 10 metres of the shore or in shallow areas.

## VOLUNTARY PROTECTION MEASURES

### Baie Sainte-Marguerite sector (Figure 2) — Transit Area (area crosshatched in yellow):

- From June 21<sup>st</sup> to September 21<sup>st</sup>, navigation in this area is recommended at a speed of between 5 and 10 knots without stopping.

The purpose of this transit area is to favour respect of the *Marine Activities in the Saguenay–St. Lawrence Marine Park Regulations*, since beluga whales are often present in the Baie Sainte-Marguerite sector.

### Information

All incidents, including collisions with whales, must be reported without delay by calling 1-866-508-9888. For any other situation concerning a marine mammal that is either dead or in trouble, contact the Marine Mammal Emergency Response Network at 1-877-722-5346, or use VHF channel 16.

Figure 1

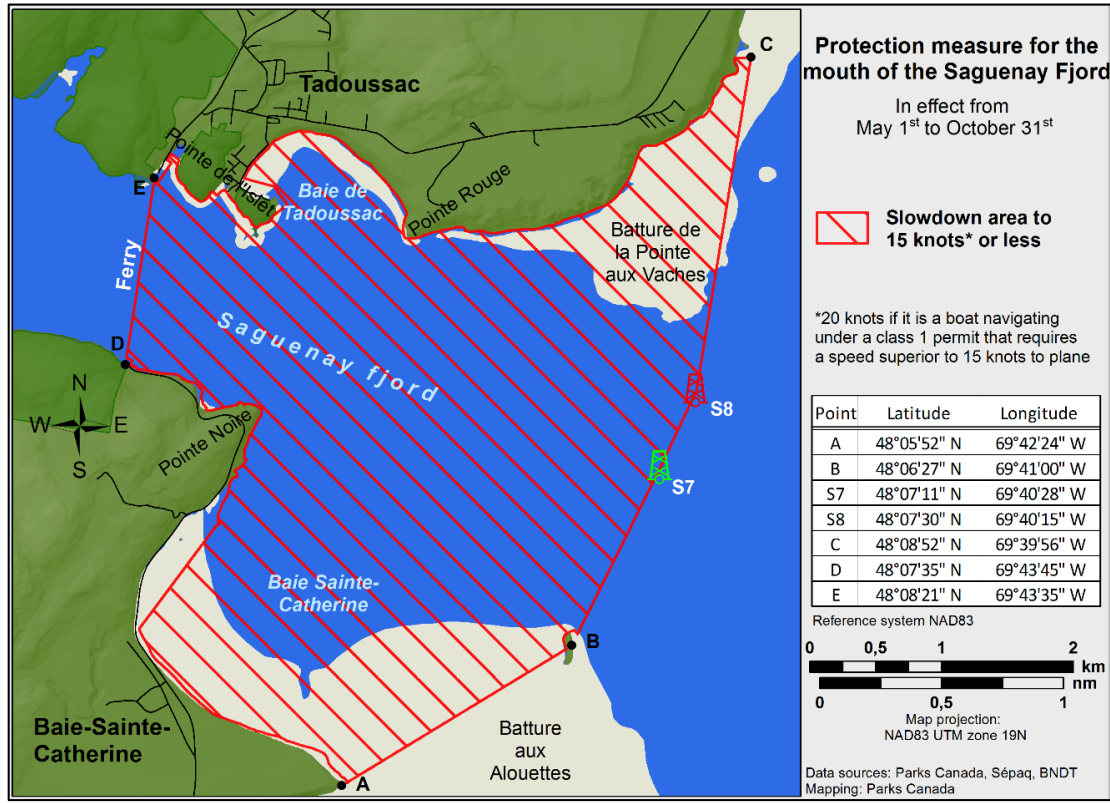
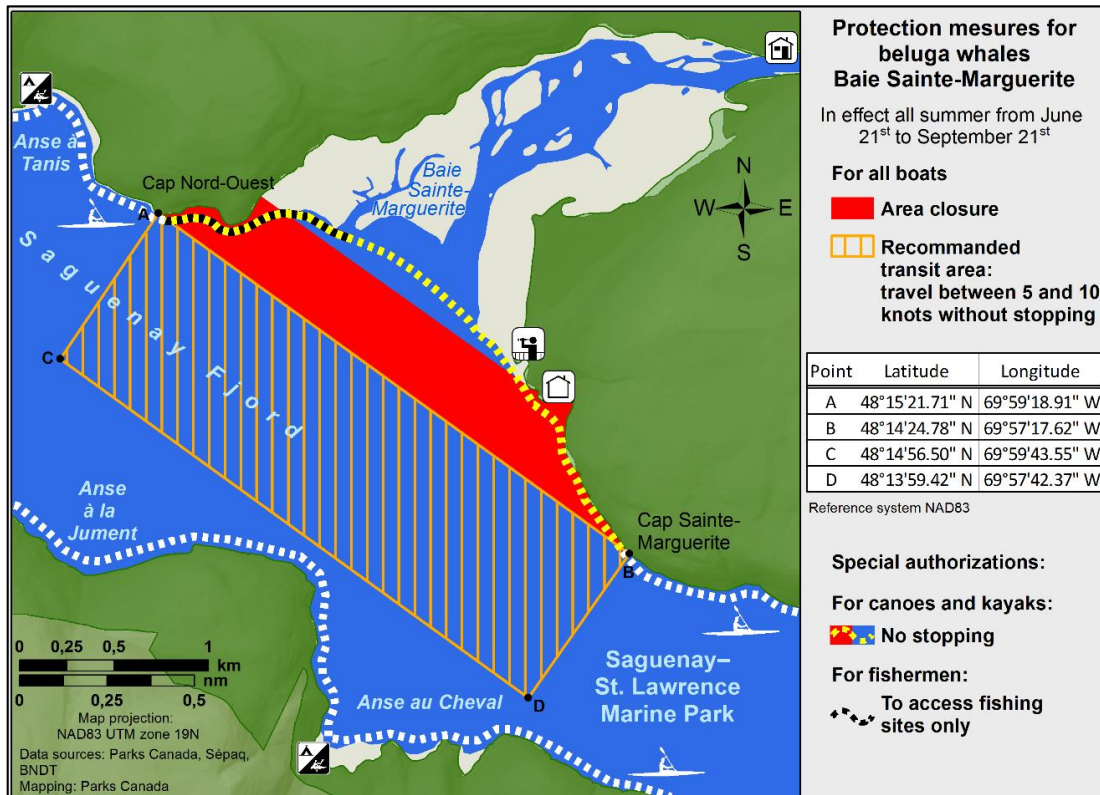


Figure 2



## **\*407/24 Saguenay – St. Lawrence Marine Park and Surrounding Waters – Whale Protection**

(Recurrent publication of notice \*407/24, originally published in the *Notices to Mariners – Monthly Eastern Edition 04/2024* publication.)

The waters in and around the Saguenay–St. Lawrence Marine Park are well known for the resident endangered beluga population and the wide diversity of whales that migrate there to feed, particularly between April and November.

### **REGULATORY PROTECTION MEASURES**

All whale species that are found in the St. Lawrence are protected under the *Marine Mammal Regulations*, pursuant to the *Fisheries Act*. Within the boundaries of the Marine Park, specific measures are set out in the *Marine Activities in the Saguenay–St. Lawrence Marine Park Regulations*, pursuant to the establishment of the *Saguenay–St. Lawrence Marine Park Act*. Any collision with a marine mammal within the Marine Park must immediately be reported to a park warden at 1-866-508-9888. For collisions that occur outside the Marine Park or for any situation involving a marine mammal that is dead or in trouble, contact the emergency network at 1-877-722-5346 or on VHF channel 16.

For more information on the Saguenay–St. Lawrence Marine Park, see notice 5C of the *Notices to Mariners Annual Edition 2024*.

### **VOLUNTARY PROTECTION MEASURES**

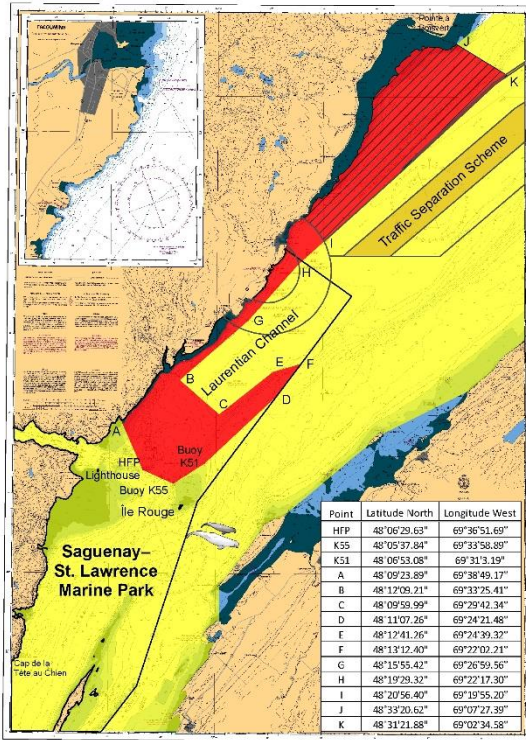
Provisional measures in effect from May 1 to October 31, 2024. See map at the end of this notice.

These measures apply to merchant vessels and cruise ships between Pointe à Boisvert and Cap de la Tête au Chien to prevent collisions with whales. These measures should only be taken when they will not jeopardize navigational safety.

**Caution area (yellow area):** To reduce the risk of collisions with whales that can be present anywhere in this area, heightened vigilance of navigators is critical. Posting a lookout is recommended in order to increase the chances of seeing the whales and thus taking necessary measures to avoid them. If bypassing the whales is not possible, slow down and wait for the animals to move away to a distance greater than 400 metres (0.215 nautical miles) before resuming original speed. It is more difficult to see the animals at night therefore increased caution is recommended.

**Slow down to 10 knots or less area (red area):** To reduce the risk of collisions with whales in this feeding area, it is recommended that vessels slow down to a maximum speed through the water of 10 knots and post a lookout. It is further recommended to remain in the Laurentian Channel to the north of Île Rouge to minimize the impact of noise in a sensitive area south of this island, which is highly frequented by herds of beluga whales composed of females and young.

**Area to be avoided (hatched red area):** To reduce noise and the risk of collisions with whales, vessels should avoid transiting through this area which is highly frequented by blue whales, an endangered species. If the area cannot be avoided, slow down to a speed through the water of 10 knots or less.

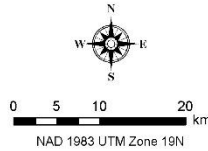


**Voluntary protection measures to reduce the risk of ship strikes with whales and to minimize the impact of noise on beluga whale**

Provisional measures in effect from May 1<sup>st</sup> to October 31<sup>st</sup> 2024

- Caution area**  
presence of whales
  - Slow down to 10 knots\* or less area**  
Important whale feeding area
  - Area to be avoided; if impossible, slow down to 10 knots\* or less**  
Important blue whale area
- Sensitive area highly used by beluga herds composed of females and young  
**It is recommended to navigate in the Laurentian Channel north of Île Rouge**

\* 10 knots refers to speed through water



**\*601/24 Canadian Hydrographic Service – Nautical Charts**

Charts	Main Title	Scale	Edition Date	Published	Cat#	Price
<b>Charts Permanently Withdrawn</b>						
3811	Harbours in Queen Charlotte Islands/Havres dans Îles de la Reine-Charlotte					

**\*602/24 Canadian Hydrographic Service – Electronic Navigational Charts**

S-57 ENC Number	Chart Title	ENC Compilation Scale	Published
<b>New Charts</b>			
CA56PRWA (Edn 1.000)	CA56PRWA	1:4 000	2024-06-07
CA56SSAA (Edn 1.000)	CA56SSAA	1:6 000	2024-06-07
CA56XRHA (Edn 1.000)	CA56XRHA	1:2 000	2024-06-07
CA56YRPA (Edn 1.000)	CA56YRPA	1:2 000	2024-06-07
CA573RCA (Edn 1.000)	CA573RCA	1:11 000	2024-06-07
CA573RDA (Edn 1.000)	CA573RDA	1:11 000	2024-06-07
CA578R4A (Edn 1.000)	CA578R4A	1:2 000	2024-06-07
CA57DQTA (Edn 1.000)	CA57DQTA	1:4 000	2024-06-07
CA57EQXA (Edn 1.000)	CA57EQXA	1:2 000	2024-06-07
CA580QMA (Edn 1.000)	CA580QMA	1:2 000	2024-06-07

S-57 ENC Number	Chart Title	ENC Compilation Scale	Published
<b>Charts Permanently Withdrawn</b>			
CA576054	Hopedale Harbour		
CA576364	Cut Throat Harbour and/et East Harbour	Cancelled by CA56SSAA	
CA576531	Nain	Cancelled by CA57EQXA	
CA576602	Postville	Cancelled by CA56XRHA	
CA576605	Natuashish	Cancelled by CA578R4A	
CA576654	Voisey Bay Wharf	Cancelled by CA57DQTA	
CA576667	Landing Beach, Saglek Bay	Cancelled by CA580QMA	
CA576737	Rigolet	Cancelled by CA56PRWA	
CA676476	Makkovik	Cancelled by CA56YRPA	

**\*603/24 Canadian Hydrographic Service – Raster Digital Charts (BSB V3)**

Charts	Main Title	Scale	Edition Date	Published
<b>Charts Permanently Withdrawn</b>				
RM-3811	Harbours in Queen Charlotte Islands/Havres dans îles de la Reine-Charlotte			

**\*604/24 Transport Canada - Ship Safety Bulletin #12, #13, #14 and #15/2024**

New **Ship Safety Bulletins** have recently been posted on the [Transport Canada website](#).

To view or download these bulletins, please click on the links below:

[SSB#12/2024](#) – Guidance on Safe Lay-up and on Relocating Retired Single-Hulled Oil Barges  
RDIMS# 20313916

[SSB#13/2024](#) – Risky Practice of Partially Beaching Barges  
RDIMS# 20313895

[SSB#14/2024](#) – Fishing vessels safety procedures and crew familiarization  
RDIMS# 20162422

[SSB#15/2024](#) – Now in force: Discharge requirements for cruise ships  
RDIMS# 20360748

Sign up for [e-Bulletin](#) to receive an e-mail notice each time a new Ship Safety Bulletin is published on our website.

Contact us at [marinesafety-securitemaritime@tc.gc.ca](mailto:marinesafety-securitemaritime@tc.gc.ca) or 1-855-859-3123 (Toll Free).



**\*605/24 Canadian Coast Guard Publication - Amendments to the *Notices to Mariners Annual Edition 2024* - Section C, Notice 27A: Guidelines for the Transit of Wide-Beam Vessels and Long Vessels**

Several amendments have been made throughout Notice 27A, Guidelines for the Transit of Wide-Beam Vessels and Long Vessels.

The latest version of this notice is available on the [Notices to Mariners website](#).

**\*606/24 Port of Thunder Bay – Unlit Buoys Permanently Changed**

Reference chart: 2314

The following unlit buoys have been permanently changed:

Aid Name	LL #	Position	Changes
Burke Shoal buoy A7	9914	48° 20' 42.8"N 089° 11' 16.3"W	Aid designator changed from AA3 to A7.
Kaministiquia River Entrance buoy D4	9920	48° 23' 50.0"N 089° 12' 00.6"W	Aid designator changed from D2 to D4.
Buoy D2	9920.5	48° 23' 55.1"N 089° 11' 45.1"W	Aid designator changed from D2/2 to D2.
Main Harbour buoy E2	9926	48° 26' 06.8"N 089° 12' 00.0"W	Aid designator changed from E4 to E2.
Main Harbour buoy E4	9928	48° 26' 00.7"N 089° 12' 38.0"W	Aid designator changed from E8 to E4.
Main Harbour buoy E3	9929	48° 25' 42.7"N 089° 12' 26.1"W	Aid designator changed from E7 to E3.
Main Harbour buoy E6	9930	48° 25' 37.8"N 089° 12' 52.8"W	Aid designator changed from E10 to E6.
Main Harbour buoy E7	9931	48° 25' 13.3"N 089° 12' 43.7"W	Aid designator changed from E13 to E7.
Main Harbour buoy E9	9932	48° 24' 47.3"N 089° 12' 32.7"W	Aid designator changed from E15 to E9.
Main Harbour buoy E11	9933	48° 24' 32.3"N 089° 12' 42.1"W	Aid designator changed from E17 to E11.
Main Harbour buoy E13	9935	48° 24' 16.2"N 089° 12' 45.0"W	Aid designator changed from E23 to E13.
Main Harbour buoy E5	9936	48° 25' 28.5"N 089° 12' 41.0"W	Aid designator changed from E9 to E5.
Main Harbour buoy H2	9941	48° 26' 52.8"N 089° 10' 47.2"W	Aid designator changed from H4 to H2.
Main Harbour buoy H4	9942	48° 27' 03.2"N 089° 10' 43.9"W	Aid designator changed from H6 to H4.
McKellar River Entrance buoy P4	9967	48° 22' 44.2"N 089° 10' 55.3"W	Unlit buoy permanently discontinued.
Mutton Shoal East Cardinal buoy TB	9967.1	48° 22' 18.1"N 089° 10' 55.0"W	East Cardinal unlit buoy established.
McKellar River Entrance buoy P7	9968	48° 22' 38.6"N 089° 12' 21.2"W	Unlit buoy permanently discontinued.

Buoy P7/1	9968.1	48° 22' 38.7"N 089° 12' 26.1"W	Unlit buoy permanently discontinued.
Buoy P7/3	9968.15	48° 22' 38.5"N 089° 12' 31.2"W	Unlit buoy permanently discontinued.
McKellar River Entrance buoy P8	9969	48° 22' 40.6"N 089° 12' 22.1"W	Unlit buoy permanently discontinued.
Buoy P8/2	9969.2	48° 22' 39.3"N 089° 12' 26.1"W	Unlit buoy permanently discontinued.
Buoy P8/4	9969.22	48° 22' 38.8"N 089° 12' 30.9"W	Unlit buoy permanently discontinued.
McKellar River Entrance buoy P9	9970	48° 22' 38.6"N 089° 12' 37.8"W	Unlit buoy permanently discontinued.
McKellar River Entrance buoy P10	9971	48° 22' 39.5"N 089° 12' 37.9"W	Unlit buoy permanently discontinued.

(D2024-052 to 062, 064, 066, 067, 069 to 078)

**\*607/24 Sydney Harbour – Unlit Buoys Aid Designators Changed**

Reference chart: 4266

The designators of the following unlit buoys have been permanently changed:

Aid Name	LL #	Position	Changes
Sydney River buoy S25	5777.04	46° 07' 18.5"N 060° 12' 38.0"W	Aid designator changed from S23 to S25.
Sydney River buoy S26	5777.05	46° 07' 21.5"N 060° 12' 51.5"W	Aid designator changed from S24 to S26.
Sydney River buoy S21	5777.1	46° 08' 10.0"N 060° 11' 53.0"W	Aid designator changed from S19 to S21.

(G2024-006, 007, 008)

**\*608/24 Harbours on the North Shore / Hâvres sur la Côte Nord – Unlit Buoys Repositioned**

Reference chart: 4425

The following unlit buoys have been repositioned to the following coordinates:

Aid Name	LL #	Position
Savage Harbour buoy JE13/5	6046.95	46° 25' 44.3"N 062° 50' 09.9"W
Savage Harbour buoy JE19	6046.97	46° 25' 35.2"N 062° 50' 20.5"W

(G2024-086, 092)

**\*609/24 Détroit de Northumberland / Northumberland Strait: Partie Ouest / Western  
Portion: Ports / Harbours – Unlit Buoys Permanently Changed**

Reference chart: 4909

The following unlit buoys have been permanently changed:

Aid Name	LL #	Position	Changes
Richibucto Harbour Approach buoy Q4	6132.1	46° 42' 43.6"N 064° 44' 58.3"W	Unlit buoy has been repositioned.
Richibucto NW. Branch buoy QA4	6148.1	46° 41' 58.0"N 064° 50' 34.0"W	Size of the buoy reduced.
Richibucto buoy Q14	6150.64	46° 42' 36.1"N 064° 45' 53.5"W	Unlit buoy has been repositioned.

(G2024-100, 101, 126)

**\*610/24 Lac Saint-Jean – Unlit Buoys Repositioned**

Reference chart: 6100

The following unlit buoys have been repositioned to the following coordinates:

Aid Name	LL #	Position
La Belle Rivière buoy	12905	48° 29' 11.9"N 71° 47' 47.4"W
La Belle Rivière buoy	12917	48° 29' 03.7"N 71° 47' 32.5"W

(Q2024-173, 174)



## Section 1A: Temporary and Preliminary Notices

### Reminder – Comment Period for Active Preliminary Notices

This is a reminder that the comment period is still open for the following active Preliminary notices:

Notice #	Reference Chart #	Aids Affected (LL #)	Intent of Notice
<b>Newfoundland and Labrador Coast</b>			
<a href="#">512(P)/24</a>	4679	208	Fog Signal to be Discontinued

Please refer to the [Notices to Mariners - Monthly Summary of Temporary and Preliminary Notices](#) publication for details.

### Newfoundland and Labrador Coast

#### Temporary Notices

#### \*611(T)/24 Great St. Lawrence Harbour and / et Lamaline Harbour – Aid to Navigation Temporarily Discontinued

Reference chart: 4642

The following aid to navigation is temporarily discontinued:

Aid Name	LL #	Position
St. Lawrence Wharf	73.1	46° 54' 59.1"N 55° 23' 20.8"W

(N2024-093T)

#### Preliminary Notices

No notices applicable for this edition.

### Atlantic Coast

#### Temporary Notices

No notices applicable for this edition.

#### Preliminary Notices

No notices applicable for this edition.

## Inland Waters

### Temporary Notices

#### **\*612/24 Ottawa to/à Smiths Falls – Marine Works – Bridge Repair Completed**

Reference: Notice 613(T)/23 is cancelled (Chart 1512, 1515).

Repair work on the pillars of the MacDonald Cartier Bridge are now completed.

### Preliminary Notices

No notices applicable for this edition.

## Section 2: Chart Corrections

### 1310 - Section B-C - New Edition - 07-JUN-2019 - NAD 1983

28-JUN-2024

LNMD. 22-DEC-2023

Amend Iso 2s10m15M to read F 10m11M against front leading light  
(See Chart 1, P20.2) 45°35'42.3"N 073°29'34.2"W

(Q2024041) LL(2363) DFO(6411015-01)

Amend Iso 2s24m15M to read F 24m11M against rear leading light  
(See Chart 1, P20.2) 45°35'56.5"N 073°29'25.8"W

(Q2024042) LL(2364) DFO(6411016-01)

### 1312 - Lac Saint-Pierre - New Edition - 10-MAY-2019 - NAD 1983

07-JUN-2024

LNMD. 13-OCT-2023

Add depth of 1,3 metres  
(See Chart 1, I10) 46°14'57.1"N 072°47'56.4"W

DFO(6410976-01)

### 2050 - Oshawa Harbour - New Edition - 04-OCT-2019 - World Geodetic System 1984

07-JUN-2024

LNMD. 04-AUG-2023

Reposition red starboard hand lighted spar buoy FI R, marked MV4  
(See Chart 1, Qb) from 43°51'44.1"N 078°49'09.0"W  
This notice affects Electronic Navigational Chart: CA573013 to 43°51'44.9"N 078°49'07.1"W

LL(501.2) DFO(6605159-01)

Reposition red starboard hand spar buoy, marked MV6  
(See Chart 1, Qb) from 43°51'49.1"N 078°49'14.7"W  
This notice affects Electronic Navigational Chart: CA573013 to 43°51'49.9"N 078°49'12.5"W

(B2023031) DFO(6605160-01)

### 2202 - Port Severn to/à Penetang Harbour - Sheet/Feuille 1 - New Edition - 05-JAN-2007 - NAD 1983

07-JUN-2024

LNMD. 12-JAN-2024

Amend red starboard hand spar buoy M14 to read red starboard hand lighted  
spar buoy FI R, marked M14 44°49'22.7"N 079°52'44.3"W  
(See Chart 1, Qb)

This notice affects Electronic Navigational Chart: CA473297

(D2024040) LL(862.1) DFO(6605265-01)

Reposition red starboard hand lighted spar buoy FI R, marked M14  
(See Chart 1, Qb) from 44°49'22.7"N 079°52'44.3"W  
This notice affects Electronic Navigational Chart: CA473297 to 44°49'22.0"N 079°52'44.1"W

DFO(6605265-02)

Amend green port hand spar buoy M15 to read green port hand lighted spar  
buoy FI G, marked M15 44°48'24.9"N 079°51'52.7"W  
(See Chart 1, Qc)

This notice affects Electronic Navigational Chart: CA473297

(D2024041) LL(863.5) DFO(6605266-01)

Reposition green port hand lighted spar buoy FI G, marked M15  
(See Chart 1, Qc) from 44°48'24.8"N 079°51'52.7"W  
This notice affects Electronic Navigational Chart: CA473297 to 44°48'24.7"N 079°51'54.7"W

DFO(6605266-02)

**2235 - Cape Hurd to à Lonely Island - New Edition - 01-OCT-2021 - World Geodetic System 1984**

14-JUN-2024

LN/M/D. 17-NOV-2023

Amend red starboard hand spar buoy JS6 to read red starboard hand lighted spar buoy FI R, marked JS6 45°33'08.5"N 082°00'58.0"W  
(See Chart 1, Qb)  
This notice affects Electronic Navigational Chart: CA573461  
(D2024049) LL(806.6) DFO(6605276-01)

**2241 - Port Severn to à Christian Island - New Chart - 30-JUL-1999 - NAD 1983**

07-JUN-2024

LN/M/D. 12-JAN-2024

Amend red starboard hand spar buoy M14 to read red starboard hand lighted spar buoy FI R, marked M14 44°49'22.7"N 079°52'44.3"W  
(See Chart 1, Qb)  
This notice affects Electronic Navigational Chart: CA473297  
(D2024040) LL(862.1) DFO(6605265-01)

Reposition red starboard hand lighted spar buoy FI R, marked M14 from 44°49'22.7"N 079°52'44.3"W  
(See Chart 1, Qb) to 44°49'22.0"N 079°52'44.1"W  
This notice affects Electronic Navigational Chart: CA473297  
DFO(6605265-02)

Amend green port hand spar buoy M15 to read green port hand lighted spar buoy FI G, marked M15 44°48'24.9"N 079°51'52.7"W  
(See Chart 1, Qc)  
This notice affects Electronic Navigational Chart: CA473297  
(D2024041) LL(863.5) DFO(6605266-01)

Reposition green port hand lighted spar buoy FI G, marked M15 from 44°48'24.8"N 079°51'52.7"W  
(See Chart 1, Qc) to 44°48'24.7"N 079°51'54.7"W  
This notice affects Electronic Navigational Chart: CA473297  
DFO(6605266-02)

**2251 - Meldrum Bay to à St. Joseph Island - New Chart - 11-APR-1986 - NAD 1927**

21-JUN-2024

LN/M/D. 09-FEB-2024

Delete rear range beacon and legend 'Bns' with leading line and bearing 196° 45°57'37.0"N 083°18'54.8"W  
(See Chart 1, Q80, Q81)  
DFO(6605264-01)

**2273 - South Baymouth Harbour and Approaches - New Edition - 28-AUG-2015 - World Geodetic System 1984**

14-JUN-2024

LN/M/D. 05-AUG-2022

Amend red starboard hand spar buoy JS6 to read red starboard hand lighted spar buoy FI R, marked JS6 45°33'08.5"N 082°00'58.0"W  
(See Chart 1, Qb)  
This notice affects Electronic Navigational Chart: CA573461  
(D2024049) LL(806.6) DFO(6605276-01)

Amend green port hand spar buoy JS9 to read green port hand lighted spar buoy FI G, marked JS9 45°33'25.0"N 082°00'44.0"W  
(See Chart 1, Qc)  
This notice affects Electronic Navigational Chart: CA573461  
(D2024050) LL(806.9) DFO(6605277-01)

**2297 - Duck Islands to DeTour Passage - New Edition - 25-MAR-2016 - Unknown**

21-JUN-2024

LNMD. 09-FEB-2024

Delete rear range beacon and legend 'Bns' with leading line and bearing 169° /  
349°  
(See Chart 1, Q80, Q81)

45°57'36.5"N 083°18'54.7"W

DFO(6605264-02)

**2326 - Middlebrun Bay to à Washington Island - New Chart - 24-JUL-2020 - NAD 1983**

07-JUN-2024

LNMD. 22-DEC-2023

Amend FI 10s16m9M to read FI 10s25m9M against light  
(See Chart 1, P16)

48°14'07.9"N 089°00'26.7"W

(D2024003) LL(1130) DFO(6605217-01)

**4003 - Cape Breton to / à Cape Cod - New Edition - 21-MAR-2003 - NAD 1983**

07-JUN-2024

LNMD. 31-MAY-2024

Delete yellow ODAS/SADO lighted pillar buoy FI(5) Y 20s  
(See Chart 1, Q58)  
This notice affects Electronic Navigational Chart: CA476009

44°20'50.1"N 063°18'20.7"W

DFO(6311131-01)

**4012 - Yarmouth to / à Halifax - New Edition - 14-FEB-2003 - NAD 1983**

07-JUN-2024

LNMD. 12-APR-2024

Delete yellow ODAS/SADO lighted pillar buoy FI(5) Y 20s  
(See Chart 1, Q58)  
This notice affects Electronic Navigational Chart: CA476009

44°20'51.6"N 063°18'20.9"W

DFO(6311131-01)

21-JUN-2024

LNMD. 07-JUN-2024

Amend FI 4s 26m 8M to read LFI 6s26m6M against light  
(See Chart 1, P16)  
This notice affects Electronic Navigational Chart: CA476084

44°43'14.7"N 062°48'00.0"W

(F2024019) LL(583) DFO(6311135-01)

**4013 - Halifax to / à Sydney - New Edition - 06-SEP-2002 - NAD 1983**

07-JUN-2024

LNMD. 15-MAR-2024

Delete yellow ODAS/SADO lighted pillar buoy FI(5) Y 20s  
(See Chart 1, Q58)  
This notice affects Electronic Navigational Chart: CA476009

44°20'52.4"N 063°18'22.5"W

DFO(6311131-01)

21-JUN-2024

LNMD. 07-JUN-2024

Add wreck, least depth unknown, with legend PA Rep (2024)  
(See Chart 1, K29, B7, I3)

44°24'25.2"N 061°19'18.6"W

DFO(6311134-01)

Amend FI4s84ft8M to read LFI 6s84ft6M against light  
(See Chart 1, P16)  
This notice affects Electronic Navigational Chart: CA476084

44°43'14.7"N 062°48'00.0"W

(F2024019) LL(583) DFO(6311135-01)

Amend F12m to read LFI 6s12m against light  
(See Chart 1, P16)  
This notice affects Electronic Navigational Chart: CA476068

45°11'28.7"N 061°18'51.7"W

(G2024055) LL(646) DFO(6311169-01)

**4116 - Approaches to / Approches à Saint John - New Edition - 31-AUG-2007 - NAD 1983**

14-JUN-2024

LNMD. 16-FEB-2024

Add yellow and black South cardinal lighted spar buoy VQ(6)+LFI 15s,  
marked JN  
(See Chart 1, Q130.3)  
This notice affects Electronic Navigational Chart: CA376011  
*(F2023026,F2024001) LL(119.5) DFO(6311011-01)*

45°19'41.4"N 066°06'27.0"W

**4141 - Saint John to / à Grand Bay including / y compris Kennebecasis River - Sheet / Feuille A-B - New Edition - 30-OCT-2009 - NAD 1983**

14-JUN-2024

LNMD. 28-OCT-2022

Add yellow and black South cardinal lighted spar buoy VQ(6)+LFI 15s,  
marked JN  
(See Chart 1, Q130.3)  
This notice affects Electronic Navigational Chart: CA376011  
*(F2023026,F2024001) LL(119.5) DFO(6311011-01)*

45°19'41.4"N 066°06'27.0"W

Delete green port hand can buoy, marked AD1  
(See Chart 1, Qc)  
*(F2024017) DFO(6311079-02)*

45°20'02.4"N 066°02'18.4"W

Delete red starboard hand conical buoy, marked AD2  
(See Chart 1, Qb)  
*(F2024018) DFO(6311080-02)*

45°20'00.8"N 066°02'19.2"W

**4227 - Country Harbour to / au Ship Harbour - New Chart - 24-MAY-1991 - NAD 1983**

21-JUN-2024

LNMD. 21-JUL-2023

Amend FI26m8M to read LFI 6s26m6M against light  
(See Chart 1, P16)  
This notice affects Electronic Navigational Chart: CA476084  
*(F2024019) LL(583) DFO(6311135-01)*

44°43'14.7"N 062°48'00.0"W

**4233 - Cape Canso to / à Country Island - New Chart - 11-JAN-1991 - NAD 1983**

21-JUN-2024

LNMD. 15-APR-2022

Amend F12m to read LFI 6s12m against light  
(See Chart 1, P16)  
This notice affects Electronic Navigational Chart: CA476068  
*(G2024055) LL(646) DFO(6311169-01)*

45°11'28.8"N 061°18'39.9"W

**4233 - TOR BAY - NEW CHART - 11-JAN-1991 - NAD 1983**

21-JUN-2024

LNMD. 15-APR-2022

Amend F12m to read LFI 6s12m against light  
(See Chart 1, P16)  
This notice affects Electronic Navigational Chart: CA476068  
*(G2024055) LL(646) DFO(6311169-01)*

45°11'28.8"N 061°18'39.9"W

**4236 - Ship Harbour and Approaches / et les approches - New Edition - 13-JUL-2001 - NAD 1983**

21-JUN-2024

LNMD. 16-JUL-2021

Amend FI 4s26m6M to read LFI 6s26m6M against light  
(See Chart 1, P16)  
This notice affects Electronic Navigational Chart: CA476084  
*(F2024019) LL(583) DFO(6311135-01)*

44°43'14.7"N 062°48'00.0"W

**4236 - Taylors Head to / à Shut-in Island - New Edition - 13-JUL-2001 - NAD 1983**

21-JUN-2024

LNMD. 16-JUL-2021

Amend FI 4s 26m 6M to read LFI 6s26m6M against light  
(See Chart 1, P16)  
This notice affects Electronic Navigational Chart: CA476084

44°43'14.6"N 062°47'59.5"W

(F2024019) LL(583) DFO(6311135-01)

**4237 - Approaches to / Approches de Halifax Harbour - New Edition - 28-MAY-2021 - World Geodetic System 1984**

07-JUN-2024

LNMD. 10-MAY-2024

Delete yellow ODAS/SADO lighted pillar buoy FI(5) Y 20s  
(See Chart 1, Q58)  
This notice affects Electronic Navigational Chart: CA476009

44°20'52.1"N 063°18'21.0"W

DFO(6311131-01)

**4266 - North Sydney - New Edition - 28-FEB-2014 - NAD 1983**

28-JUN-2024

LNMD. 29-SEP-2023

Replace red starboard hand lighted pillar buoy Q R, marked SD2 with  
red starboard hand lighted spar buoy Q R, marked SD2  
(See Chart 1, Qb)  
This notice affects Electronic Navigational Chart: CA576095

46°12'27.0"N 060°14'04.4"W

(G2024047) LL(778.5) DFO(6311120-01)

**4266 - Sydney Harbour - New Edition - 28-FEB-2014 - NAD 1983**

28-JUN-2024

LNMD. 29-SEP-2023

Replace red starboard hand lighted pillar buoy Q R, marked SD2 with  
red starboard hand lighted spar buoy Q R, marked SD2  
(See Chart 1, Qb)  
This notice affects Electronic Navigational Chart: CA576095

46°12'27.0"N 060°14'04.4"W

(G2024047) LL(778.5) DFO(6311120-01)

**4320 - Egg Island to / à West Ironbound Island - New Edition - 26-SEP-1997 - NAD 1983**

07-JUN-2024

LNMD. 10-MAY-2024

Add wreck, least depth unknown, with legend PA Rep (2024)  
(See Chart 1, K29, B7, I3)  
This notice affects Electronic Navigational Chart: CA476199

44°30'05.9"N 063°59'38.0"W

DFO(6311127-01)

Delete yellow ODAS/SADO lighted pillar buoy FI(5) Y 20s  
(See Chart 1, Q58)  
This notice affects Electronic Navigational Chart: CA476009

44°20'51.7"N 063°18'18.1"W

DFO(6311131-01)

21-JUN-2024

LNMD. 07-JUN-2024

Amend FI 4s 84ft 8M to read LFI 6s84ft6M against light  
(See Chart 1, P16)  
This notice affects Electronic Navigational Chart: CA476084

44°43'14.7"N 062°48'00.0"W

(F2024019) LL(583) DFO(6311135-01)

**4321 - Cape Canso to / à Liscomb Island - New Edition - 08-OCT-2004 - NAD 1983**

21-JUN-2024

LNMD. 22-JUL-2022

Amend F12m to read LFI 6s12m against light  
(See Chart 1, P16)  
This notice affects Electronic Navigational Chart: CA476068

45°11'28.8"N 061°18'39.9"W

(G2024055) LL(646) DFO(6311169-01)

**4376 - Louisbourg Harbour - New Edition - 14-JUN-2002 - NAD 1983**  
28-JUN-2024

LN/D. 17-DEC-2021

Add See/Voir note WARNING  
(See Chart 1, A14) 45°54'20.9"N 059°58'24.2"W  
DFO(6311322-01)

Add WARNING Recent bathymetric surveys show the presence of shallower depths compared to what is presently charted. Mariners are advised to exercise extreme caution.  
(See Chart 1, A14) 45°54'50.6"N 059°57'20.2"W  
DFO(6311322-02)

Add See/Voir note WARNING  
(See Chart 1, A14) 45°54'04.5"N 059°57'08.6"W  
DFO(6311322-03)

**4381 - Chester Harbour - New Edition - 28-APR-2023 - World Geodetic System 1984**  
07-JUN-2024

LN/D. 01-MAR-2024

Amend FI R 31m to read FI 6s31m against light  
(See Chart 1, P16) 44°30'53.7"N 064°13'57.2"W  
This notice affects Electronic Navigational Chart: CA476199, CA576200  
(F2024004) LL(456) DFO(6311063-01)

**4381 - Mahone Bay - New Edition - 28-APR-2023 - World Geodetic System 1984**  
07-JUN-2024

LN/D. 01-MAR-2024

Amend FI R 31m4M to read FI 6s31m4M against light  
(See Chart 1, P16) 44°30'53.7"N 064°13'57.2"W  
This notice affects Electronic Navigational Chart: CA476199, CA576200  
(F2024004) LL(456) DFO(6311063-01)

Amend FI 10m7M to read FI 5s10m7M against light  
(See Chart 1, P16) 44°26'09.8"N 064°20'15.2"W  
This notice affects Electronic Navigational Chart: CA476199, CA576201  
(F2024005) LL(451) DFO(6311064-01)

Add wreck, least depth unknown, with legend PA Rep (2024)  
(See Chart 1, K29, B7, I3) 44°30'05.9"N 063°59'38.0"W  
This notice affects Electronic Navigational Chart: CA476199  
DFO(6311127-01)

**4381 - Mahone Harbour - New Edition - 28-APR-2023 - World Geodetic System 1984**  
07-JUN-2024

LN/D. 01-MAR-2024

Amend FI to read FI 5s against light  
(See Chart 1, P16) 44°26'09.8"N 064°20'15.3"W  
This notice affects Electronic Navigational Chart: CA476199, CA576201  
(F2024005) LL(451) DFO(6311064-01)

**4386 - St. Margaret's Bay - New Edition - 16-JUL-2004 - NAD 1983**  
07-JUN-2024

LN/D. 26-AUG-2022

Add wreck, least depth unknown, with legend PA Rep (2024)  
(See Chart 1, K29, B7, I3) 44°30'05.9"N 063°59'38.0"W  
This notice affects Electronic Navigational Chart: CA476199  
DFO(6311127-01)



**4486 - Baie des Chaleurs / Chaleur Bay - New Edition - 19-FEB-1999 - NAD 1983**

07-JUN-2024

LNMD. 09-FEB-2024

Add private light FI R (Priv)  
(See Chart 1, P1)

48°04'40.6"N 065°36'49.0"W

*DFO(6311130-01)*

**4522 - Approches to / Approches À La Scie Harbour - New Edition - 10-OCT-2003 - NAD 1983**

28-JUN-2024

LNMD. 02-OCT-2015

Delete light FI R  
(See Chart 1, P1)

49°57'35.4"N 055°36'05.6"W

*(N2024041) LL(267.2) DFO(6311173-01)*

**4522 - La Scie Harbour - New Edition - 10-OCT-2003 - NAD 1983**

28-JUN-2024

LNMD. 02-OCT-2015

Delete light FI R  
(See Chart 1, P1)

49°57'35.4"N 055°36'05.6"W

*(N2024041) LL(267.2) DFO(6311173-01)*

**4617 - Red Island to / à Pinchgut Point - New Edition - 30-APR-2010 - NAD 1983**

14-JUN-2024

LNMD. 12-APR-2024

Add green port hand lighted spar buoy Q G, marked PFH3  
(See Chart 1, Qc)  
This notice affects Electronic Navigational Chart: CA476300

47°31'18.8"N 053°54'43.0"W

*(N2024054) LL(37.53) DFO(6311140-01)*

**4841 - Argentia - New Edition - 29-MAY-2015 - NAD 1983**

21-JUN-2024

LNMD. 20-OCT-2023

Add green port hand lighted pillar buoy FI G, marked A11  
(See Chart 1, Qc)  
This notice affects Electronic Navigational Chart: CA576298

47°17'41.4"N 053°58'33.5"W

*(N2024029) LL(28.3) DFO(6311157-01)*

**4912 - Miramichi - New Edition - 27-JAN-2006 - NAD 1983**

28-JUN-2024

LNMD. 03-NOV-2023

Add depth of 4.6 metres  
(See Chart 1, I10)

47°04'45.5"N 065°23'26.4"W

*DFO(6311235-05)*

Add depth of 4.1 metres  
(See Chart 1, I10)

47°04'46.8"N 065°23'19.0"W

*DFO(6311235-06)*

Replace depth of 11.5 metres with depth of 9.7 metres  
(See Chart 1, I10)

47°04'48.5"N 065°22'55.9"W

*DFO(6311235-07)*

Add depth of 8.4 metres  
(See Chart 1, I10)

47°04'48.8"N 065°22'45.4"W

*DFO(6311235-08)*

Replace depth of 7.2 metres with depth of 5.6 metres  
(See Chart 1, I10)

47°04'49.5"N 065°22'34.3"W

*DFO(6311235-09)*

Add	depth of 5 metres (See Chart 1, I10)	47°04'55.7"N 065°22'23.7"W <i>DFO(6311235-10)</i>
Replace	depth of 9.1 metres with depth of 8.5 metres (See Chart 1, I10)	47°04'56.1"N 065°20'39.6"W <i>DFO(6311235-11)</i>
Add	depth of 10.4 metres (See Chart 1, I10)	47°04'43.5"N 065°18'45.8"W <i>DFO(6311235-12)</i>
Replace	depth of 11.1 metres with depth of 10.6 metres (See Chart 1, I10)	47°04'47.6"N 065°18'19.0"W <i>DFO(6311235-13)</i>
Replace	depth of 8.5 metres with depth of 7.7 metres (See Chart 1, I10)	47°04'59.5"N 065°17'52.4"W <i>DFO(6311235-14)</i>
Add	depth of 4.8 metres (See Chart 1, I10)	47°05'03.2"N 065°17'54.9"W <i>DFO(6311235-15)</i>
Replace	depth of 8.3 metres with depth of 7.3 metres (See Chart 1, I10)	47°05'05.5"N 065°17'44.7"W <i>DFO(6311235-16)</i>
Replace	depth of 7.8 metres with depth of 7.3 metres (See Chart 1, I10)	47°05'11.2"N 065°17'38.8"W <i>DFO(6311235-17)</i>
Add	depth of 6 metres (See Chart 1, I10)	47°05'11.4"N 065°17'29.5"W <i>DFO(6311235-18)</i>
Replace	depth of 7.8 metres with depth of 7.3 metres (See Chart 1, I10)	47°05'31.6"N 065°17'17.4"W <i>DFO(6311235-19)</i>
Add	depth of 8.8 metres (See Chart 1, I10)	47°05'51.4"N 065°17'08.0"W <i>DFO(6311235-20)</i>
Replace	depth of 11 metres with depth of 10.3 metres (See Chart 1, I10)	47°06'05.2"N 065°16'47.8"W <i>DFO(6311235-21)</i>
Add	depth of 9.7 metres (See Chart 1, I10)	47°06'25.6"N 065°16'22.3"W <i>DFO(6311235-22)</i>
Add	depth of 9 metres (See Chart 1, I10)	47°06'31.9"N 065°16'12.5"W <i>DFO(6311235-23)</i>
Replace	depth of 11 metres with depth of 7.2 metres (See Chart 1, I10)	47°06'34.0"N 065°16'07.9"W <i>DFO(6311235-24)</i>

Delete	depth of 3.1 metres (See Chart 1, I10)	47°04'57.0"N 065°22'24.1"W <i>DFO(6311235-25)</i>
Delete	depth of 7.1 metres (See Chart 1, I10)	47°06'26.6"N 065°16'24.5"W <i>DFO(6311235-26)</i>
<b>4912 - Continuation A - New Edition - 27-JAN-2006 - NAD 1983</b> 28-JUN-2024		LNMD. 03-NOV-2023
Add	depth of 8.6 metres (See Chart 1, I10)	47°02'09.9"N 065°28'07.9"W <i>DFO(6311235-01)</i>
Delete	depth of 9.7 metres (See Chart 1, I10)	47°02'14.1"N 065°28'04.4"W <i>DFO(6311235-02)</i>
Add	depth of 9.3 metres (See Chart 1, I10)	47°02'22.5"N 065°28'00.1"W <i>DFO(6311235-03)</i>
Add	depth of 5.2 metres (See Chart 1, I10)	47°03'01.2"N 065°27'54.0"W <i>DFO(6311235-04)</i>
<b>4921 - Bonaventure - New Edition - 02-DEC-2016 - NAD 1983</b> 28-JUN-2024		LNMD. 20-OCT-2023
Add	depth of 1,4 metres (See Chart 1, I10)	48°01'54.6"N 065°29'01.2"W <i>DFO(6411095-01)</i>
Add	depth of 1,9 metres (See Chart 1, I10)	48°01'51.0"N 065°28'59.7"W <i>DFO(6411095-02)</i>
Replace	the crib with depth of 0,8 metres by crib with depth of 0,5 metres (See Chart 1, Ka, Fb)	48°02'17.5"N 065°28'51.6"W <i>DFO(6411095-03)</i>
<b>4921 - Port-Daniel-Gascons - New Edition - 02-DEC-2016 - NAD 1983</b> 28-JUN-2024		LNMD. 20-OCT-2023
Amend	legend 1,8m to read 1,5m (2023) (See Chart 1, I22)	48°10'48.3"N 064°57'41.4"W <i>DFO(6411092-01)</i>
<b>4921 - Quai / Wharf Grande-Rivière - New Edition - 02-DEC-2016 - NAD 1983</b> 28-JUN-2024		LNMD. 20-OCT-2023
Add	depth of 2,8 metres (See Chart 1, I10)	48°23'39.5"N 064°29'42.1"W <i>DFO(6411064-01)</i>
Add	depth of 1,8 metres (See Chart 1, I10)	48°23'32.3"N 064°29'41.1"W <i>DFO(6411064-02)</i>

Add depth of 1,2 metres  
(See Chart 1, I10) 48°23'35.6"N 064°29'40.3"W  
DFO(6411064-03)

**4921 - Sainte-Thérèse-de-Gaspé - New Edition - 02-DEC-2016 - NAD 1983**  
28-JUN-2024

LNMD. 20-OCT-2023

Amend legend 3,1m (2022) to read 3,3m (2023)  
(See Chart 1, I22) 48°24'51.3"N 064°23'34.0"W  
DFO(6411106-01)

Amend legend 2,6m (2022) to read 2,7m (2023)  
(See Chart 1, I22) 48°24'53.0"N 064°23'38.7"W  
DFO(6411106-02)

Amend legend 2,5m (2022) to read 2,3m (2023)  
(See Chart 1, I22) 48°24'56.9"N 064°23'44.5"W  
DFO(6411106-03)

Add depth of 2,4 metres  
(See Chart 1, I10) 48°24'51.3"N 064°23'38.9"W  
DFO(6411106-04)

Add depth of 1,3 metres  
(See Chart 1, I10) 48°24'56.3"N 064°23'45.4"W  
DFO(6411106-05)

Add depth of 1,9 metres  
(See Chart 1, I10) 48°24'56.8"N 064°23'44.4"W  
DFO(6411106-06)

**4934 - Boughton Bay to Basin Head Harbour - New Chart - 30-JUN-2023 - World Geodetic System 1984**  
28-JUN-2024

Replace red starboard hand lighted pillar buoy FI R, marked NE2 with  
red starboard hand lighted conical buoy FI R, marked NE2  
(See Chart 1, Qb)  
This notice affects Electronic Navigational Chart: CA476490  
46°14'55.8"N 062°23'54.1"W  
(G2024036) LL(948.6) DFO(6311104-01)

**4935 - Murray Harbour to/à Boughton Bay - New Chart - 18-JAN-2019 - NAD 1983**  
28-JUN-2024

LNMD. 06-OCT-2023

Replace red starboard hand lighted pillar buoy FI R, marked NE2 with  
red starboard hand lighted conical buoy FI R, marked NE2  
(See Chart 1, Qb)  
This notice affects Electronic Navigational Chart: CA476490  
46°14'55.8"N 062°23'54.1"W  
(G2024036) LL(948.6) DFO(6311104-01)

**6035 - Lake Nipissing / Lac Nipissing(Eastern Portion / Partie est) - New Edition - 28-DEC-2001 - NAD 1983**  
07-JUN-2024

LNMD. 29-DEC-2023

Add green port hand lighted spar buoy FI G, marked J11/1  
(See Chart 1, Qc) 46°11'57.1"N 079°25'43.4"W  
(D2024046) LL(1422.5) DFO(6605274-01)

Delete green port hand lighted spar buoy FI G, marked J5  
(See Chart 1, Qc) 46°12'52.0"N 079°28'52.4"W  
(D2024047) LL(1422) DFO(6605275-01)

Add red and white fairway lighted spar buoy Mo(A) W 6s, marked JC  
(See Chart 1, Qd) 46°12'51.7"N 079°28'51.5"W  
(D2024047) LL(1422) DFO(6605275-02)

**6432 - Kilometre/Kilomètre 1500 to/à Inuvik East Channel - New Edition - 27-APR-2018 - NAD 1983**

07-JUN-2024 LNM/D. 10-FEB-2023

Delete depth of 6.3 metres  
(See Chart 1, I10) 67°49'20.3"N 134°12'08.7"W  
DFO(6605211-01)

Reposition red starboard hand conical buoy  
(See Chart 1, Qb) from 67°49'19.7"N 134°12'18.2"W  
to 67°49'19.1"N 134°12'11.8"W  
DFO(6605211-02)

Add red starboard hand conical buoy  
(See Chart 1, Qb) 67°49'40.9"N 134°12'14.4"W  
DFO(6605211-03)

Reposition red starboard hand conical buoy  
(See Chart 1, Qb) from 67°50'01.2"N 134°12'39.1"W  
to 67°50'02.5"N 134°12'33.4"W  
DFO(6605211-04)

**7664 - Liverpool Bay - New Chart - 28-FEB-1986 - NAD 1927**

07-JUN-2024 LNM/D. 12-NOV-2004

Affix patch  
Download Patch - [https://www.notmar.gc.ca/chsftp/patches/7664\\_6605246\\_1\\_202405091058.pdf](https://www.notmar.gc.ca/chsftp/patches/7664_6605246_1_202405091058.pdf)  
This notice affects Electronic Navigational Chart: CA273344  
DFO(6605246-01)

**8007 - Halifax to / à Sable Island / Île de Sable, Including / y compris Emerald Bank / Banc d'Émeraude and / et Sable Island Bank / Banc de l'Île de Sable - New Edition - 30-AUG-2002 - NAD 1983**

07-JUN-2024 LNM/D. 01-MAR-2024

Delete yellow ODAS/SADO lighted pillar buoy Fl(5) Y 20s  
(See Chart 1, Q58) 44°20'51.6"N 063°18'20.9"W  
This notice affects Electronic Navigational Chart: CA476009  
DFO(6311131-01)

21-JUN-2024 LNM/D. 07-JUN-2024

Add wreck, least depth unknown, with legend PA Rep (2024)  
(See Chart 1, K29, B7, I3) 44°24'25.2"N 061°19'18.6"W  
DFO(6311134-01)

Amend Fl4s84ft8M to read LFl 6s84ft6M against light  
(See Chart 1, P16) 44°43'14.7"N 062°48'00.0"W  
This notice affects Electronic Navigational Chart: CA476084  
(F2024019) LL(583) DFO(6311135-01)

## Section 3: Radio Aids to Marine Navigation Corrections

### \*613/24 Radio Aids to Marine Navigation 2024 (Atlantic, St. Lawrence, Great Lakes, Lake Winnipeg, Arctic and Pacific)

#### Page 1-1

#### AMEND AS FOLLOWS:

##### 1.1.1.1 Southern Resident Killer Whale

- a) Speed Restricted Zone NAVWARN (Effective June 1, ~~2023~~ 2024 until November 30, ~~2023~~ 2024) information is available in the ~~SRZ Navigational Warning~~ SRZ Navigational Warning.
- b) Interim Sanctuary Zone NAVWARN (Effective June 1, ~~2023~~ 2024 until November 30, ~~2023~~ 2024) information is available in the ~~ISZ Navigational Warning~~ ISZ Navigational Warning.
- c) 400 Metres Approach Distance and Ban Against Positioning Vessel in Path of a Killer Whale remain in effect until May 31, ~~2024~~ 2025.

Note: Roseway Basin Seasonal Area is to be avoided. In order to significantly reduce the risk of ship strikes of the highly endangered North Atlantic Right Whale, it is recommended that ships of 300 tons gross tonnage and upwards in transit during the period of June 1<sup>st</sup> through December 31<sup>st</sup> should avoid this area. Any sightings are to be reported to Halifax MCTS.

#### Page 2-6

#### ADD AS FOLLOWS:

##### 2.1.2 Iqaluit, Nunavut

MMSI: 003160023

Call Sign: VFF

Hours: H24

*Services in English and in French.*

All communications with Canadian Coast Guard Marine Communications and Traffic Services Centres are recorded.

Open from approximately mid-May until mid-December.

Opening and closing will be announced by Navigational Warning.

For Radio Services, call Iqaluit Coast Guard Radio.

Marine Safety Information can also be received via email upon request.

#### Coordinates

Mailing Address:

Fisheries and Oceans Canada

Canadian Coast Guard

Officer-in-Charge – MCTS Operations

Iqaluit MCTS Centre / NORDREG CANADA

1063 Niuraivik Lane  
Iqaluit, NU X0A 3H0

Telephone: 867-979-5269 MCTS Operations (East)  
867-979-0310 MCTS Operations (West)  
867-979-5724 NORDREG Operations

Facsimile: 867-979-4264 MCTS/NORDREG Operations

Telex (Telefax): 063-15529 NORDREG CDA

Email: [IQANORDREG@INNAV.GC.CA](mailto:IQANORDREG@INNAV.GC.CA) (operations)

[NAVWARN.MCTS@innav.gc.ca](mailto:NAVWARN.MCTS@innav.gc.ca)

[navarea17.18@innav.gc.ca](mailto:navarea17.18@innav.gc.ca) NAVAREA XVII and XVIII

**Pages 2-8 and 2-9**

**AMEND AS FOLLOWS:**

**Table 2-4 - Iqaluit MCTS/VFF – Broadcasts**

Time UTC	Site	Frequency or Channel	Contents
01:10	Coral Harbour	2514J3E	Radiotelephony <ul style="list-style-type: none"> <li>• Technical marine synopsis and forecasts on request for marine forecast areas : 151, 152, 153, 154, 155, 156, 157, 158, 159, 160, 161, 162, 163, 164, 310, 311 and 312.</li> <li>• Navigational warnings “Series A” for all NORDREG waters bound by Shipping Safety Control Zones 8, 14 and 16, including Southern Hudson Bay, James Bay, Chesterfield Inlet and Baker Lake.</li> </ul>
	Coral Harbour	6507J3E	
01:15	Inuvik	6218.6J3E	Radiotelephony <ul style="list-style-type: none"> <li>• Technical marine synopsis and forecasts on request for marine forecast areas: 180, 190, 191, 192, 193, 194, 195, 112, and 113</li> <li>• Navigational warnings “Series A” for Great Slave Lake, Hay River, Mackenzie River and Mackenzie Delta bound by forecast areas 112 and 113.</li> </ul>
	Hay River	4363J3E	
	Parson’s Lake and Enterprise	Ch26	
	Yellowknife	Ch85	
02:35	Cambridge Bay	4363J3E	Radiotelephony <ul style="list-style-type: none"> <li>• Technical marine synopsis and weather on request for marine forecast areas: 111 to 122 inclusive <del>and the Northwestern part of METAREA IV.</del></li> <li>• Navigational warnings “Series A” for all NORDREG waters west of Taloyoak.</li> </ul>
	Inuvik	6218.6J3E	
03:00	Iqaluit	490F1B	NAVTEX: (S) French <ul style="list-style-type: none"> <li>• Weather for marine forecast areas 143, 144, 145, 147, 148, 149 and 150.</li> </ul>

Time UTC	Site	Frequency or Channel	Contents
03:10	Iqaluit	518F1B	NAVTEX: (T) English <ul style="list-style-type: none"> <li>Weather for marine forecast areas 143, 144, 145, 147, 148, 149 and 150.</li> </ul>
03:30	Iqaluit	8416.5F1B	HF NBDP <ul style="list-style-type: none"> <li>METAREA bulletins for METAREAS XVII and XVIII <b>and the Northwestern part of METAREA IV</b> within Canadian waters.</li> <li>NAVAREA warnings for NAVAREAs XVII and XVIII.</li> </ul>
...	...	...	...
23:10	Resolute	2582J3E	Radiotelephony <ul style="list-style-type: none"> <li>Technical marine synopsis and forecasts on request for marine forecast areas 125 to 138.</li> <li>Navigational warnings "A Series" for all NORDREG waters bound by Shipping Safety Control Zones 1, 2, 3, 5, 6, 9 and 13.</li> </ul>

**Page 2-28**

**DELETE AS FOLLOWS:**

**2.1.7 Prescott, Ontario**

MMSI: 003160029

Call Sign: VBR

Hours: H24

*Services in English and in French.*

All communications with Canadian Coast Guard Marine Communications and Traffic Services Centres are recorded.

For Radio Services, call Prescott Coast Guard Radio.

**Coordinates**

Mailing Address:

Fisheries and Oceans Canada  
 Canadian Coast Guard  
 Officer-in-Charge – MCTS Operations  
 Prescott MCTS Centre  
 P.O. Box 1000  
 401 King Street West  
 Prescott, ON K0E 1T0

Telephone: 613-925-4471  
 613-925-0666

MCTS Operations  
 NAVWARN Desk / NAVAREA XVII and XVIII

Facsimile: 613-925-4519

Email: [Safety.Prescott@innav.gc.ca](mailto:Safety.Prescott@innav.gc.ca) Prescott MCTS  
~~[navarea17.18@innav.gc.ca](mailto:navarea17.18@innav.gc.ca)~~ — NAVAREA XVII and XVIII  
[NAVWARN.MCTSPrescott@innav.gc.ca](mailto:NAVWARN.MCTSPrescott@innav.gc.ca)



**Page 3-20**

**AMEND AS FOLLOWS:**

**3.8.4 Pre-Arrival Information Report (PAIR)**

The Canadian *Marine Transportation Security Regulations* (MTSR) requires a Pre-Arrival Information Report (PAIR) to be filed prior to entry into Canadian waters. Message format and contact information are found in Part 4.2.9 **Error! Reference source not found.**

**Page 4-76**

**DELETE AS FOLLOWS:**

**4.3.11 Inspection of Radio Apparatus**

**~~Vessels Inspected under the Agreement Between Canada and the United States of America for Promotion of Safety on the Great Lakes by Means of Radio, 1973 (GLA 1973).~~**

~~As of November 2, 2023, the GLA 1973 will be terminated. After this, vessels that were previously inspected under the GLA 1973 will no longer need a radio inspection every 13 months. Instead, these vessels will need to follow the radio inspection timeline set out in the policy on the Validity period of a Radio Inspection Certificate issued under the Navigation Safety Regulations, 2020~~

~~After November 2, 2023, Canadian vessels operating in the Great Lakes, that are subject to radio inspections, will be eligible for a radio inspection certificate with a validity of up to 4 years.~~

~~This is outlined in section 240 of the Navigation Safety Regulations, 2020 (NSR 2020) and the Policy on the Validity period of a Radio Inspection Certificate issued under the Navigation Safety Regulations, 2020~~

~~Carriage requirements are not changing. Vessels must still comply with Sections 205 and 253 (5) of the NSR 2020.~~

~~The new certificates will be phased in according to the table below.~~

~~Any inspection conducted on or after June 1, 2024, will be subject to a new certificate with a validity of up to 4 years.~~

~~Great Lakes radio inspection certificates issued before November 2, 2023, will remain valid until their expiration dates.~~

**~~Timeline for implementing new validity period~~**

<del>Inspection conducted between</del>	<del>Certificate valid for up to</del>
<del>November 2 to December 31, 2023</del>	<del>13 Months</del>
<del>January 1 to March 31, 2024</del>	<del>2 years</del>
<del>April 1 to May 31, 2024</del>	<del>3 years</del>
<del>On or after June 1, 2024</del>	<del>4 years</del>

**Pages 4-77 and 4-78**

**ADD AS FOLLOWS:**

**4.3.11.1 Ship Radio Inspection Contacts**

**CCG Newfoundland and Labrador**

Fisheries and Oceans Canada  
Telephone and Fax: 1-888-454-3177

Outside Canada  
Telephone Facsimile: 709-772-3467

Email: [xnftsc@dfo-mpo.gc.ca](mailto:xnftsc@dfo-mpo.gc.ca)

<https://e-nav.ccg-gcc.gc.ca/sri>

**Charlottetown, Prince Edward Island**

Senior Technologist  
Fisheries and Oceans Canada  
Canadian Coast Guard  
Unit 2 – 184 John YEO Drive  
Charlottetown, PE C1C 3J3

Telephone: 902-407-7521  
Facsimile: 902-407-7435

Email: [xmartsc@dfo-mpo.gc.ca](mailto:xmartsc@dfo-mpo.gc.ca)

<https://e-nav.ccg-gcc.gc.ca/sri>

**Saint John, New Brunswick**

Senior Technologist  
Fisheries and Oceans Canada  
Canadian Coast Guard  
175 McIlveen Drive  
Saint John, NB E2J 4Y6

Telephone: 506-636-4743  
Facsimile: 506-636-5000

Email: [xmartsc@dfo-mpo.gc.ca](mailto:xmartsc@dfo-mpo.gc.ca)

<https://e-nav.ccg-gcc.gc.ca/sri>

### **Dartmouth, Nova Scotia**

Senior Technologist  
Fisheries and Oceans Canada  
Canadian Coast Guard  
P.O. Box 1006  
Dartmouth, NS B2Y 4A2  
Telephone: 902-407-7521  
Facsimile: 902-407-7435  
Email: [xmartsc@dfo-mpo.gc.ca](mailto:xmartsc@dfo-mpo.gc.ca)  
<https://e-nav.ccg-gcc.gc.ca/sri>

### **Sydney, Nova Scotia**

Senior Technologist  
Fisheries and Oceans Canada  
Canadian Coast Guard Ships  
1190 Westmount Road  
Sydney, NS B1R 2J6  
Telephone: 902-407-7521  
Facsimile: 902-407-7435  
Email: [xmartsc@dfo-mpo.gc.ca](mailto:xmartsc@dfo-mpo.gc.ca)  
<https://e-nav.ccg-gcc.gc.ca/sri>

### **Yarmouth, Nova Scotia**

Senior Technologist  
Fisheries and Oceans Canada  
Canadian Coast Guard  
215 Main Street  
Yarmouth, NS B5A 1C6  
Telephone: 902-407-7521  
Facsimile: 902-407-7435  
Email: [xmartsc@dfo-mpo.gc.ca](mailto:xmartsc@dfo-mpo.gc.ca)  
<https://e-nav.ccg-gcc.gc.ca/sri>

## Section 4: Canadian Sailing Directions Corrections

---

The following **Canadian Sailing Directions** volumes have recently been updated on the [Canadian Hydrographic Service website](#).

No.	Title
<b>Atlantic Coast</b>	
<b>ATL 106</b>	Gulf of Maine and Bay of Fundy
<b>ATL 107</b>	Saint John River
<b>Pacific Coast</b>	
<b>PAC 201</b>	Juan de Fuca Strait and Strait of Georgia

Each volume includes a section entitled “Record of Changes” which lists all updates that are incorporated during the current calendar year.

## Section 5: List of Lights, Buoys and Fog Signals Corrections

The amendments are highlighted and deletions are crossed out. For general and region-specific information on the List of Lights, click on the following links: [Newfoundland and Labrador Coast](#), [Atlantic Coast](#), [Inland Waters](#) and [Pacific Coast](#).

No.	Name	Position ----- Latitude N. Longitude W.	Light Characteristics	Focal Height in m. above water	Nomi- nal Range	Description ----- Height in meters above ground	Remarks ----- Fog Signals
-----	------	--	--------------------------	--	-----------------------	--	---------------------------------

### NEWFOUNDLAND AND LABRADOR COAST

#### PLACENTIA BAY (LL 14.4 – 79)

78.3	Lamaline light buoy PG4											<i>Delete from list.</i>						Chart:4642 Edn 06/24 (N24-118)
------	----------------------------	--	--	--	--	--	--	--	--	--	--	--------------------------	--	--	--	--	--	-----------------------------------

#### FORTUNE BAY (LL 100 – 120.1)

113 H0314	Ragged Point Light	Bay L'Argent. 47 33 28.0 054 52 34.0	Fl W	5s	62.2	9	Rectangular skeleton tower, red and white rectangular daymark. 3.8					Flash 1 s; eclipse 4 s. Year round.						Chart:4831 Edn 06/24 (N24-088)
--------------	--------------------	--	------	----	------	---	---	--	--	--	--	--	--	--	--	--	--	-----------------------------------

118.1	St. Jacques Harbour Wharf Light	47 29 16.5 055 25 15.4	Fl Y	5s	.....	2	Mast.					Flash 1 s; eclipse 4 s. Operates 24 h. Year round.						Chart:4831 Edn 06/24 (N24-106)
-------	---------------------------------	---------------------------	------	----	-------	---	-------	--	--	--	--	--	--	--	--	--	--	-----------------------------------

119.5 H0301	Boxey Breakwater Light	47 27 05.2 055 33 28.2	Fl G	5s	3.5	4	Mast.	2.6				Flash 1 s; eclipse 4 s. Seasonal.						Chart:4831 Edn 06/24 (N24-107)
----------------	------------------------	---------------------------	------	----	-----	---	-------	-----	--	--	--	--------------------------------------	--	--	--	--	--	-----------------------------------

#### SOUTHWEST COAST (LL 121 – 172)

140.51	Turnip Island Rock light buoy QR2	47 30 46.1 057 22 36.6	Fl R	4s	.....	.....	Red spar, marked "QR2".					Year round.						Chart:4825 Edn 06/24 (N24-116)
--------	-----------------------------------	---------------------------	------	----	-------	-------	-------------------------	--	--	--	--	-------------	--	--	--	--	--	-----------------------------------

149.2 H0243	Harbour Le Cou Breakwater Light	47 37 28.0 058 40 55.0	Fl G	5s	3.5	2	Mast.	2.3				Flash 1 s; eclipse 4 s. Seasonal.						Chart:4639 Edn 06/24 (N24-098)
----------------	---------------------------------	---------------------------	------	----	-----	---	-------	-----	--	--	--	--------------------------------------	--	--	--	--	--	-----------------------------------

150 H0242.1	Rose Blanche East Wharf Light	47 36 35.0 058 41 37.2	Fl R	5s	3.2	4	Mast.	2.6				Flash 1 s; eclipse 4 s. Seasonal.						Chart:4639 Edn 06/24 (N24-099)
----------------	-------------------------------	---------------------------	------	----	-----	---	-------	-----	--	--	--	--------------------------------------	--	--	--	--	--	-----------------------------------

150.1 H0242.2	Rose Blanche Ferry Wharf Light	47 36 53.0 058 41 58.5	Fl Y	5s	4.2	2	Cylindrical Mast.	2.4				Flash 1 s; eclipse 4 s. Year round.						Chart:4639 Edn 06/24 (N24-097)
------------------	--------------------------------	---------------------------	------	----	-----	---	-------------------	-----	--	--	--	--	--	--	--	--	--	-----------------------------------

Notices to Mariners – Monthly Eastern Edition  
Section 5: List of Lights, Buoys and Fog Signals Corrections

No.	Name	Position ----- Latitude N. Longitude W.	Light Characteristics	Focal Height in m. above water	Nomi- nal Range	Description ----- Height in meters above ground	Remarks ----- Fog Signals
<b>WEST COAST (LL 173 – 208.06)</b>							
176.35	Crabbes River Light	48 13 08.5 058 51 47.5	Fl W 5s	.....	3	Pipe tower.	Flash 1 s; eclipse 4 s. Operates 24 h. Year round.  Chart:4022 Edn 06/24 (N24-096)
178.14	St. George's Harbour Inner light buoy XG3	48 25 57.4 058 29 17.6	Q G 1s	.....	.....	Green spar, marked "XG3".	Seasonal.  Chart:4885 Edn 06/24 (N24-113)
178.15	St. George's Harbour Inner light buoy XG4	48 26 00.5 058 29 20.0	Fl R 4s	.....	.....	Red spar, marked "XG4".	Seasonal.  Chart:4885 Edn 06/24 (N24-114)
185.8 H0201.5	Fox Brook South Wharf Light	48 41 42.7 058 40 56.6	Fl R 3s	3.1	2	Cylindrical mast.	Flash 0.5 s; eclipse 2.5 s. Operates 24 h. Seasonal.  Chart:4659 Edn 06/24 (N24-087)
<b>STRAIT OF BELLE ISLE (LL 211 – 234)</b>							
216.55	Black Duck Cove Inner light buoy XK4	51 11 51.0 056 47 56.4	Fl R 4s	.....	.....	Red spar, marked "XK4".	Seasonal.  Chart:4667 Edn 06/24 (N24-117)
<b>WHITE BAY (LL 235 – 269.2)</b>							
253 H0719	Bad Rock Light	Chimney Channel. 50 46 58.7 056 09 35.9	Fl G 4s	4.6	6	Square skeleton tower, green and white rectangular daymark facing on 3 sides. 4.3	Seasonal.  Chart:4538 Edn 06/24 (N24-076)
265 H0694.5	Pacquet Wharf Light	NW. end of Pacquet Harbour. 49 59 25.5 055 52 27.0	Fl R 5s	3.5	2	Mast. 2.4	Flash 1 s; eclipse 4 s. Seasonal.  Chart:4821 Edn 06/24 (N24-100)
267 H0692.4	La Scie Harbour Breakwater Light	49 57 42.5 055 36 10.3	Fl R 5s	5.0	3	Cylindrical Mast. 2.4	Flash 1 s; eclipse 4 s. Seasonal.  Chart:4522 Edn 06/24 (N24-101)
267.3 H0692.55	La Scie Harbour Wharf Light	49 57 46.2 055 36 13.8	Fl G 5s	4.3	3	Cylindrical Mast.	Flash 1 s; eclipse 4 s. Seasonal.  Chart:4522 Edn 06/24 (N24-102)
268.5 H0696.5	Coachman's Cove Wharf Light	50 03 01.1 056 06 35.3	Fl G 5s	.....	2	Cylindrical Mast.	Flash 1 s; eclipse 4 s. Operates 24 h. Seasonal.  Chart:4521 Edn 06/24 (N24-103)



Notices to Mariners – Monthly Eastern Edition  
Section 5: List of Lights, Buoys and Fog Signals Corrections

No.	Name	Position ----- Latitude N. Longitude W.	Light Characteristics	Focal Height in m. above water	Nomi- nal Range	Description ----- Height in meters above ground	Remarks ----- Fog Signals
467.45	Islington Wharf Light	47 45 45.2 053 28 50.5	Fl G 5s	.....	2	Pipe tower.	Flash 1 s; eclipse 4 s. Operates 24 h. Seasonal.  Chart:4851 Edn 06/24 (N24-085)
467.506	Heart's Delight North Wharf Light	47 46 39.4 053 28 17.3	Fl G 5s	.....	2	Pipe tower.	Flash 1 s; eclipse 4 s. Operates 24 h. Seasonal.  Chart:4851 Edn 06/24 (N24-086)
467.51 H0510.8	Heart's Delight Breakwater Light	47 46 19.9 053 28 00.5	Fl R 5s	.....	2	Cylindrical mast.	Flash 1 s; eclipse 4 s. Operates 24 h. Seasonal.  Chart:4851 Edn 06/24 (N24-094)
<b>CONCEPTION BAY (LL 471.7 – 498.2)</b>							
475 H0494	Western Bay Head Light	47 53 11.9 053 03 23.6	Fl W 5s	28.8	10	Rectangular skeleton tower, red rectangular daymark with white horizontal band. 6.6	Flash 1 s; eclipse 4 s. Year round.  Chart:4850 Edn 06/24 (N24-095)

ATLANTIC COAST

CAPE BRETON ISLAND, N.S. (LL 704.85 – 882.5)

782 H0761	Sydney range	On point, E. side of North West Arm. 46 10 39.7 060 15 30.0	F G	.....	26.4	.....	White octagonal tower with red upper portion and red vertical stripe. 15.1	Flash 9 s; eclipse 1 s. Visible in line of range. Operates 24 h. Year round.
783 H0761.1		216°35' 3352.8 m from front.	F G	.....	63.4	.....	Square skeleton tower, white daymark with red stripe. 9.6	Flash 9 s; eclipse 1 s. Visible in line of range. Operates 24 h. Year round.  Chart:4266 Edn 06/24 (G24-108, 109, 149, 151)
784 H0764	Sydney South Arm range	Near N. extremity of point. 46 09 26.5 060 12 13.3	F G	.....	14.7	.....	Triangular skeleton tower, white daymark with red vertical stripe. 6.7	Flash 9 s; eclipse 1 s. Visible in line of range. Operates 24 h. Year round.
785 H0764.1		160°34' 140.4 m from front.	F G	.....	21.5	16	Triangular skeleton tower, white daymark with red vertical stripe.	Visible in line of range. Operates 24 h. Year round.  Chart:4266 Edn 06/24 (G24-105, 107, 152, 160)
785.5	Barachois light buoy S18	At entrance to creek. 46 09 32.8 060 12 53.0	Fl R 4s	.....	.....	Red spar, marked "S18".	Year round.  Chart:4266 Edn 06/24 (G24-009)	



Notices to Mariners – Monthly Eastern Edition  
Section 5: List of Lights, Buoys and Fog Signals Corrections

No.	Name	Position ----- Latitude N. Longitude W.	Light Characteristics	Focal Height in m. above water	Nomi- nal Range	Description ----- Height in meters above ground	Remarks ----- Fog Signals
786	Battery Point light buoy <b>S19</b>	Off point. 46 08 53.5 060 12 26.5	Fl G 4s	.....	.....	Green spar, marked " <b>S19</b> ".	Year round.  Chart:4266 Edn 06/24 (G24-010)
787	Dobsons Point light buoy <b>S20</b>	On edge of shoal. 46 08 27.7 060 12 13.7	Fl R 4s	.....	.....	Red spar, marked " <b>S20</b> ".	Year round.  Chart:4266 Edn 06/24 (G24-011)
788	Sydney Harbour South Arm light buoy <b>S23</b>	46 07 49.0 060 12 11.5	Fl G 4s	.....	.....	Green spar, marked " <b>S23</b> ".	Seasonal.  Chart:4266 Edn 06/24 (G24-005)
<b>789.11</b>	<b>Sydney Harbour light buoy S13</b>	<b>46 12 03.3 060 13 20.7</b>	<b>Q G 1s</b>	<b>.....</b>	<b>.....</b>	<b>Green spar, marked "S13".</b>	<b>Operates 24 h. Year round.</b>  Chart:4266 Edn 06/24 (G24-111, 145)
<b>789.12</b>	<b>Sydney Harbour light buoy S14</b>	<b>46 11 36.9 060 13 26.2</b>	<b>Fl R 4s</b>	<b>.....</b>	<b>.....</b>	<b>Red spar, marked "S14".</b>	<b>Operates 24 h. Year round.</b>  Chart:4266 Edn 06/24 (G24-113, 146)
<b>789.14</b>	<b>Sydney Harbour light buoy S16</b>	<b>46 10 57.4 060 13 05.4</b>	<b>Fl R 4s</b>	<b>.....</b>	<b>.....</b>	<b>Red spar, marked "S16".</b>	<b>Operates 24 h. Year round.</b>  Chart:4266 Edn 06/24 (G24-114, 147)
<b>789.2</b>	<b>Sydney Harbour light buoy S4</b>	<b>46 15 26.1 060 10 35.3</b>	<b>Fl R 4s</b>	<b>.....</b>	<b>.....</b>	<b>Red spar, marked "S4".</b>	<b>Operates 24 h. Year round.</b>  Chart:4266 Edn 06/24 (G24-120, 140)
<b>789.3</b>	<b>Sydney Harbour light buoy S6</b>	<b>46 14 32.4 060 11 31.0</b>	<b>Fl R 4s</b>	<b>.....</b>	<b>.....</b>	<b>Red spar, marked "S6".</b>	<b>Operates 24 h. Year round.</b>  Chart:4266 Edn 06/24 (G24-118, 141)
<b>789.6</b>	<b>Sydney Harbour light buoy S8</b>	<b>46 13 38.2 060 12 27.1</b>	<b>Fl R 4s</b>	<b>.....</b>	<b>.....</b>	<b>Red spar, marked "S8".</b>	<b>Operates 24 h. Year round.</b>  Chart:4266 Edn 06/24 (G24-121, 142)
<b>789.9</b>	<b>Sydney Harbour light buoy S11</b>	<b>46 12 30.2 060 13 15.7</b>	<b>Q G 1s</b>	<b>.....</b>	<b>.....</b>	<b>Green spar, marked "S11".</b>	<b>Operates 24 h. Year round.</b>  Chart:4266 Edn 06/24 (G24-117, 144)

**NORTHUMBERLAND STRAIT – EAST (LL 883.2 – 940.3)**

918 H1272	Caribou Light	On Gull Point, NE. end of Caribou Island. 45 45 52.2 062 40 50.4	Fl(3) W 5s	10.8	9	White square tower with red upper portion. 12.6	Flash 1 s; eclipse 4 s. flash 1 s; eclipse 1 s; flash 1 s; eclipse 15 s. Emergency light. Year round.  Chart:4483 Edn 06/24 (G24-125)
--------------	---------------	--	------------	------	---	---	--

Notices to Mariners – Monthly Eastern Edition  
Section 5: List of Lights, Buoys and Fog Signals Corrections

No.	Name	Position ----- Latitude N. Longitude W.	Light Characteristics	Focal Height in m. above water	Nomi- nal Range	Description ----- Height in meters above ground	Remarks ----- Fog Signals
<b>PRINCE EDWARD ISLAND (LL 942 – 1084.7)</b>							
1047.01	Savage Harbour light buoy JE6	46 26 08.5 062 49 54.9	Fl R 4s	.....	.....	Red spar, marked "JE6".	Buoy may be repositioned due to shifting channel. Seasonal.  Chart: N/A Edn 06/24 (G24-091)
1047.011	Savage Harbour light buoy JE7/1	46 25 50.1 062 50 00.7	Q G 1s	.....	.....	Green, marked "JE7/1".	Buoy may be repositioned due to shifting channel. Seasonal.  Chart: N/A Edn 06/24 (G24-096)
1047.02	Savage Harbour light buoy JE8	46 26 01.1 062 49 59.0	Fl R 4s	.....	.....	Red, marked "JE8".	Buoy may be repositioned due to shifting channel. Seasonal.  Chart: N/A Edn 06/24 (G24-094)
1047.021	Savage Harbour light buoy JE8/2	46 25 47.6 062 50 01.7	Q R 1s	.....	.....	Red, marked "JE8/2".	Buoy may be repositioned due to shifting channel. Seasonal.  Chart: N/A Edn 06/24 (G24-089)
1047.028	Savage Harbour light buoy JE9	46 25 44.4 062 50 02.5	Fl G 4s	.....	.....	Green, marked "JE9".	Buoy may be repositioned due to shifting channel. Seasonal.  Chart: N/A Edn 06/24 (G24-087)
1047.03	Savage Harbour Entrance light buoy JE10	46 25 45.7 062 50 02.9	Q R 1s	.....	.....	Red, marked "JE10".	Buoy may be repositioned due to shifting channel. Seasonal.  Chart: N/A Edn 06/24 (G24-088)
1047.04	Savage Harbour light buoy JE12	46 25 44.6 062 50 07.0	Fl R 4s	.....	.....	Red spar, marked "JE12".	Buoy may be repositioned due to shifting channel. Seasonal.  Chart: N/A Edn 06/24 (G24-093)
1047.051	Savage Harbour light buoy JE14	46 25 43.6 062 50 13.6	Fl R 4s	.....	.....	Red, marked "JE14".	Buoy may be repositioned due to shifting channel. Seasonal.  Chart: N/A Edn 06/24 (G24-082)
1047.06	Savage Harbour light buoy JE17	46 25 44.0 062 50 12.7	Fl G 4s	.....	.....	Green spar, marked "JE17".	Buoy may be repositioned due to shifting channel. Seasonal.  Chart: N/A Edn 06/24 (G24-084)
1047.1	Savage Harbour light buoy JE15	46 25 44.5 062 50 11.5	Q G 1s	.....	.....	Green, marked "JE15".	Buoy may be repositioned due to shifting channel. Seasonal.  Chart: N/A Edn 06/24 (G24-085)

Notices to Mariners – Monthly Eastern Edition  
Section 5: List of Lights, Buoys and Fog Signals Corrections

No.	Name	Position ----- Latitude N. Longitude W.	Light Characteristics	Focal Height in m. above water	Nomi- nal Range	Description ----- Height in meters above ground	Remarks ----- Fog Signals
1047.15	Savage Harbour light buoy JE7	46 26 08.4 062 49 53.2	Fl G 4s	.....	.....	Green spar, marked "JE7".	Seasonal.  Chart: N/A Edn 06/24 (G24-090)
1047.2	Savage Harbour light buoy JE16	46 25 43.6 062 50 13.6	Q R 1s	.....	.....	Red, marked "JE16".	Buoy may be repositioned due to shifting channel. Seasonal.  Chart: N/A Edn 06/24 (G24-083)
1050.13	Covehead Harbour light buoy JJ5	46 26 06.0 063 08 39.6	Fl G 4s	.....	.....	Green spar, marked "JJ5".	Buoy may be repositioned due to shifting channel. Seasonal.  Chart: N/A Edn 06/24 (G24-097)
1050.3	Covehead Harbour light buoy JJ7	46 25 56.4 063 08 42.0	Q G 1s	.....	.....	Green spar, marked "JJ7".	Buoy may be repositioned due to shifting channel. Seasonal.  Chart: N/A Edn 06/24 (G24-081)
<b><u>NORTHUMBERLAND STRAIT – WEST (LL 1085 – 1165.9)</u></b>							
1133.1	Richibucto light buoy Q5	46 42 32.7 064 44 50.3	Fl G 4s	.....	.....	Green, marked "Q5".	Buoy may be repositioned due to shifting channel. Seasonal.  Chart: 4909 Edn 06/24 (G24-102)
1133.6	Richibucto Gully Outer light buoy Q10	46 42 24.8 064 45 09.1	Q R 1s	.....	.....	Red, marked "Q10".	Buoy may be repositioned due to shifting channel. Seasonal.  Chart: 4909 Edn 06/24 (G24-103)
1150.1	Richibucto River light buoy Q39	Richibucto Harbour. 46 41 18.3 064 50 55.7	Fl G 4s	.....	.....	Green spar, marked "Q39".	Operates 24 h. Seasonal.  Chart: 4909 Edn 06/24 (G24-099)
<b><u>GASPÉ – CHALEUR BAY (LL 1169.1 – 1426)</u></b>							
1262.18	Fox Dens Gully light buoy TK12	47 53 07.7 064 30 20.2	Fl R 4s	.....	.....	Red, marked "TK12".	Seasonal.  Chart: 4920 Edn 06/24 (G24-098)
1364	Carleton-sur-Mer	Carleton-sur-Mer wharf. 48 05 59.5 066 07 49.1	Iso G 2s	7.4	5	Square skeleton tower. 5.1	Omnidirectional. Seasonal.  Chart: 4921 Edn 06/24 (Q24-165)
<b><u>GULF OF ST. LAWRENCE (LL 1477.5 – 1617)</u></b>							
1512.6	Scientific light buoy IML-14	Banc de l'Orphelin. 48 12 30.0 062 48 33.0	Fl(5) Y 20s	.....	.....	Yellow ODAS, marked "IML-14".	Seasonal.  Chart: 4024 Edn 06/24 (Q24-159)

Notices to Mariners – Monthly Eastern Edition  
Section 5: List of Lights, Buoys and Fog Signals Corrections

No.	Name	Position ----- Latitude N. Longitude W.	Light Characteristics	Focal Height in m. above water	Nomi- nal Range	Description ----- Height in meters above ground	Remarks ----- Fog Signals
1539.6 H1890.6	Île Tickle range	SE. end of island. 51 10 22.1 058 31 24.8	Iso G 2s	10.6	4	Square skeleton tower, orange daymark with black vertical stripe. 3.4	Visible 360°. Year round.
1539.7 H1890.61		271°32' 624.1 m from front.	F G .....	37.3	14	Square skeleton tower, orange daymark with black vertical stripe. 6.3	Visible in line of range. Year round.  Chart:4969 Edn 06/24 (Q24-170)
1542.5 H1890.8	Île du Guet	W. extremity of island. 50 55 48.7 058 52 44.7	Iso W 2s	32.0	6	Square skeleton tower. 6.5	Operates at night only. Omnidirectional. Year round.  Chart:4967 Edn 06/24 (Q24-169)
1543 H1894	Île Plate	On S. summit of island. 50 45 12.4 058 45 20.9	Fl W 15s	22.6	13	Cylindrical Mast. 7.9	Flash 1 s; eclipse 14 s. Operates at night only. Omnidirectional. Seasonal.  Chart:4967 Edn 06/24 (Q24-169)
1544 H1892	Île de la Boule	On summit of island. 50 50 10.5 058 52 31.2	Fl W 6s	74.3	8	Square skeleton tower. 5.2	Flash 1 s; eclipse 5 s. Omnidirectional. Year round.  Chart:4967 Edn 06/24 (Q24-169)
1545 H1891	Île Cormandière	On summit of island. 50 51 31.7 058 55 52.5	Fl R 6s	16.4	6	Square skeleton tower. 4.6	Flash 1 s; eclipse 5 s. Omnidirectional. Year round.  Chart:4967 Edn 06/24 (Q24-169)
1545.5	Haut-fond Percey Outer light buoy CT7	Baie de La Tabatière. 50 51 12.2 058 57 00.8	Fl G 4s	.....	.....	Green, marked "CT7".	Seasonal.  Chart:4967 Edn 06/24 (Q24-169)
1546 H1891.2	Baie de La Tabatière Outer range	On shore line. 50 50 36.1 058 58 28.7	F G .....	43.9	14	Skeleton tower, orange daymark with black vertical stripe. 31.2	Visible in line of range. Operates at night only. Year round.
1547 H1891.3		234°46' 143.5 m from front.	F G .....	51.6	14	Square skeleton tower, orange daymark with black vertical stripe. 4.8	Visible in line of range. Operates at night only. Year round.  Chart:4967 Edn 06/24 (Q24-169)
1547.5	Rocher du Lac Charles light buoy CT11	Baie de La Tabatière. 50 50 41.9 058 58 06.3	Fl G 4s	.....	.....	Green, marked "CT11".	Seasonal.  Chart:4967 Edn 06/24 (Q24-169)

Notices to Mariners – Monthly Eastern Edition  
Section 5: List of Lights, Buoys and Fog Signals Corrections

No.	Name	Position ----- Latitude N. Longitude W.	Light Characteristics	Focal Height in m. above water	Nomi- nal Range	Description ----- Height in meters above ground	Remarks ----- Fog Signals
1548 H1891.5	Baie de La Tabatière Inner range	Near shore line. 50 50 10.6 058 58 22.7	F R .....	17.3	14	Square skeleton tower, orange daymark with black vertical stripe. 15.5	Visible in line of range. <del>Operates at night only.</del> Year round.
1549 H1891.6		193°31' 75.6 m from front.	F R .....	24.0	14	Square skeleton tower, orange daymark with black vertical stripe. 4.8	Visible in line of range. <del>Operates at night only.</del> Year round.  Chart:4967 Edn 06/24 (Q24-169)
1550 H1898	Île Entrance	On summit of island. 50 44 04.0 059 00 24.3	Fl W 6s	18.0	8	Square skeleton tower. 6.5	Flash 1 s; eclipse 5 s. <del>Operates at night only.</del> Omnidirectional. Year round.  Chart:4967 Edn 06/24 (Q24-169)
1551 H1896	Baie des Moutons range	On W. side of entrance. 50 46 10.6 059 01 59.6	F G .....	13.3	16	Square skeleton tower, orange daymark with black vertical stripe. 12.5	Visible in line of range. <del>Operates at night only.</del> Seasonal.
1552 H1896.1		322°31' 338.2 m from front.	F G .....	22.8	16	Square skeleton tower, orange daymark with black vertical stripe. 6.4	Visible in line of range. <del>Operates at night only.</del> Seasonal.  Chart:4967 Edn 06/24 (Q24-169)
1552.5	Baie des Moutons light buoy MB1	50 46 20.2 059 01 52.5	Fl G 4s	.....	.....	Green, marked "MB1".	<del>Privately maintained.</del> Seasonal.  Chart:4967 Edn 06/24 (Q24-169)
1553 H1899.4	Tête-à-la-Baleine Inner range	On S. end of Île du Grand Rigolet. 50 40 46.1 059 14 32.4	F G .....	8.4	13	Square skeleton tower, orange daymark with black vertical stripe. 6.4	Visible in line of range. <del>Operates at night only.</del> Year round.
1554 H1899.5		330°04' 96.4 m from front.	F G .....	20.1	13	Square skeleton tower, orange daymark with black vertical stripe. 3.3	Visible in line of range. <del>Operates at night only.</del> Year round.  Chart:4967 Edn 06/24 (Q24-169)
1554.3 H1899.9	Tête-à-la-Baleine Wharf	On seaward end of wharf. 50 40 47.2 059 14 20.9	Fl Y 3s	8.2	6	Square skeleton tower. 6.4	Flash 1 s; eclipse 2 s. <del>Operates at night only.</del> Omnidirectional. Year round.  Chart:4967 Edn 06/24 (Q24-169)
1555 H1899.7	Tête-à-la-Baleine Centre range	On small island, W. of Île Beaulieu. 50 39 43.7 059 14 06.0	F R .....	4.5	13	Square skeleton tower, orange daymark with black vertical stripe. 3.3	Visible in line of range. <del>Operates at night only.</del> Year round.
1556 H1899.8		293°34' 422 m from front.	F R .....	11.8	13	Square skeleton tower, orange daymark with black vertical stripe. 6.4	Visible in line of range. <del>Operates at night only.</del> Year round.  Chart:4967 Edn 06/24 (Q24-169)

Notices to Mariners – Monthly Eastern Edition  
Section 5: List of Lights, Buoys and Fog Signals Corrections

No.	Name	Position ----- Latitude N. Longitude W.	Light Characteristics	Focal Height in m. above water	Nomi- nal Range	Description ----- Height in meters above ground	Remarks ----- Fog Signals
1557 H1899	Tête-à-la-Baleine range	NW. end of Ile Vatcher Island. 50 39 38.8 059 11 58.7	F W .....	8.7	15	Square skeleton tower, orange daymark with black vertical stripe. 6.4	Visible in line of range. Operates at night only. Year round.
1558 H1899.1		001°09' 110.4 m from front.	F W .....	14.3	15	Square skeleton tower, orange daymark with black vertical stripe. 4.9	Visible in line of range. Operates at night only. Year round.
Chart:4967 Edn 06/24 (Q24-169)							

**ST. LAWRENCE ESTUARY, GULF OF ST. LAWRENCE – RIVIÈRE DU LOUP (LL 1620 – 1772)**

1649 H1826	Grande-Vallée Wharf	On outer end of wharf. 49 13 47.2 065 08 00.0	Fl G 6s	10.0	7	Square skeleton tower. 8.0	Flash 1 s; eclipse 5 s. Omnidirectional. Operates at night only. Year round.
Chart:1230 Edn 06/24 (Q24-164)							
1652.5	Mont-Louis Sector Light	49 13 44.9 065 43 56.7	Iso R W G 4s	6.7	12	Skeleton tower, red and white rectangular daymark. 3.2	Visible over an arc of 015°; red from 168.5° to 174°; white from 174° to 178°; green from 178° to 183.5°. Operates 24 h. Seasonal (in place year round).
Chart:1230 Edn 06/24 (Q24-166)							
1685 H1860	Cap-Chat	NE. point of cap, Gaspésie. 49 05 20.4 066 44 28.0	Fl W 6s	41.4	15	White square tower with red upper portion. 9.5	Private aid. Flash 1 s; eclipse 5 s. Omnidirectional. Operates 24 h. Emergency light. Year round.
Chart:1236 Edn 06/24							
1762 H2148	Île Verte (East Wharf)	On S. corner of wharf. 48 02 22.4 069 24 22.7	F G .....	5.4	7	Square skeleton tower. 5.0	Omnidirectional. Operates 24 h. Seasonal.
Chart:1320 Edn 06/24 (Q24-158)							

**ST. LAWRENCE RIVER, RIVIÈRE DU LOUP – SOREL (LL 1823.8 – 2185.1)**

1827 H2164	Îles du Pot à l'Eau- de-Vie	E. end of Le Pot du Phare island. 47 52 20.5 069 40 52.7	Iso Y 2s	36.3	8	Square skeleton tower. 12.6	Operates at night only. Omnidirectional. Year round.
Chart:1234 Edn 06/24 (Q24-163)							
2068.1	Port de Bécancour, East Limit range	46 23 58.6 072 22 19.7	F Y .....	.....	.....	.....	Private aid. Visible in line of range. Year round.
2068.2		162°33' 125.0 m from front.	F Y .....	.....	.....	.....	Private aid. Visible in line of range. Year round.
Chart:1313 Edn 06/24 (Q24-167, 168)							

Notices to Mariners – Monthly Eastern Edition  
Section 5: List of Lights, Buoys and Fog Signals Corrections

No.	Name	Position ----- Latitude N. Longitude W.	Light Characteristics	Focal Height in m. above water	Nomi- nal Range	Description ----- Height in meters above ground	Remarks ----- Fog Signals
-----	------	--	--------------------------	--	-----------------------	--	---------------------------------

**INLAND WATERS**

**LAKE ONTARIO (LL 403.4 – 551)**

539	Port Dalhousie	Near outer end of E. pier. 43 12 39.8 079 15 48.3	Iso G 4s	13.3	6	White square tower with green upper and lower portions.  13.0	Operates 24 h. Seasonal.  Chart:2044 Edn 06/24 (B24-009)
-----	----------------	---	----------	------	---	---	--

**GEORGIAN BAY (LL 814 – 982)**

933	Rose Point Swing Bridge						Delete from list.  Chart:2224 Edn 06/24 (D06-019)
-----	-------------------------	--	--	--	--	--	--

**LAKE SUPERIOR (LL 1082 – 1161)**

1137	Mission Channel light buoy A8	On N. side of channel at entrance. 48 21 05.2 089 12 01.2	Iso R 4s	.....	.....	Red spar, marked "A8".	Year round.  Chart:2314 Edn 06/24 (D24-081)
1143.3	Kaministiquia River Entrance light buoy D3	E. side of river entrance. 48 23 45.5 089 11 57.2	Fl G 4s	.....	.....	Green spar, marked "D3".	Seasonal (in place year round).  Chart:2314 Edn 06/24 (D24-063)
1144.1	Kaministiquia River Terminal Entrance light buoy D5	48 23 35.5 089 12 39.2	Q G 1s	.....	.....	Green spar, marked "D5".	Seasonal (in place year round).  Chart:2314 Edn 06/24 (D24-065)
1146	Kaministiquia River Water Mains Crossing North						Delete from list.  Chart:2314 Edn 06/24 (D24-079)
1147	Kaministiquia River Water Mains Crossing South						Delete from list.  Chart:2314 Edn 06/24 (D24-080)
1153	Thunder Bay light buoy E1	W. of main entrance. 48 25 56.0 089 12 14.3	Q G 1s	.....	.....	Green spar, marked "E1".	Seasonal (in place year round).  Chart:2314 Edn 06/24 (D24-068)

**OTTAWA RIVER (LL 1255 – 1322)**

1308.5	Lower Narrows light buoy K42/2	45 52 17.9 077 11 44.6	Fl R 4s	.....	.....	Red spar, marked "K42/2".	Seasonal (in place year round).  Chart:1552 Edn 06/24 (B24-010)
--------	--------------------------------	---------------------------	---------	-------	-------	---------------------------	--