



Fisheries and Oceans  
Canada

Pêches et Océans  
Canada

Canadian  
Coast Guard

Garde côtière  
canadienne

# Notices to Mariners

**Edition No. 07/2024**  
July 26, 2024



Safety First, Service Always

## Monthly Eastern Edition

Canada 

Notices to Mariners – Monthly Eastern Edition  
Edition No. 07/2024

Aussi disponible en français :  
Avis aux navigateurs – Édition mensuelle de l'Est  
Édition n° 07/2024

**Published under the Authority of:**

Canadian Coast Guard Programs  
Aids to Navigation and Waterways  
Fisheries and Oceans Canada  
Montreal, QC H2Y 2E7

For more information, contact [DFO.Notmar-Notmar.MPO@dfo-mpo.gc.ca](mailto:DFO.Notmar-Notmar.MPO@dfo-mpo.gc.ca).

© His Majesty the King in Right of Canada,  
as represented by the Minister of Fisheries, Oceans  
and the Canadian Coast Guard, 2024.

Cat. No. Fs152-8E-PDF (Electronic PDF, English)  
ISSN 2817-0075

Cat. No. Fs152-8F-PDF (Electronic PDF, French)  
ISSN 2817-0083

A web version is available here:

[Notices to Mariners – Monthly Editions](#) (English)

[Avis aux navigateurs – Publications mensuelles](#) (French)

## Explanatory Notes – Notices to Mariners (NOTMAR)

**Geographical positions** refer directly to the graduations of the largest scale Canadian Hydrographic Service chart (unless otherwise indicated).

**Bearings** refer to the true compass and are measured clockwise from 000° (North) clockwise to 359°; those relating to lights are from seaward.

**Visibility** of lights is that in clear weather.

**Depths** - The units used for soundings (metres, fathoms or feet) are stated in the title of each chart.

**Elevations** are normally given above Higher High Water, Large Tide (unless otherwise indicated).

**Distances** may be calculated as follows:

- 1 nautical mile = 1,852 metres (6,076.1 feet)
- 1 statute mile = 1,609.3 metres (5,280 feet)
- 1 metre = 3.28 feet

### Temporary and Preliminary Notices to Mariners – Section 1A of *Notices to Mariners*

These notices are indicated by a (T) or a (P), respectively. Please note that nautical charts are not amended by the Canadian Hydrographic Service for temporary (T) and preliminary (P) notices. It is recommended that mariners chart these corrections in pencil. For the list of charts affected by (T) & (P) notices, please refer to the current [Notices to Mariners - Monthly Summary of Temporary and Preliminary Notices](#) publication.

### Suggestions and Corrections Form

This form is specifically for suggestions and corrections to Notices to Mariners publications. It is available [online](#) and also in [fillable PDF format](#) included with the monthly publication ZIP file.

To submit comments and suggestions on possible improvements to the various publications and services: [DFO.Notmar-Notmar.MPO@dfo-mpo.gc.ca](mailto:DFO.Notmar-Notmar.MPO@dfo-mpo.gc.ca).

To report chart discrepancies and/or corrections to the *Canadian Sailing Directions* booklets: Fill out the [Marine Information Reporting Form](#) and/or email [chsinfo@dfo-mpo.gc.ca](mailto:chsinfo@dfo-mpo.gc.ca).

To report emergencies or navigational hazards: [Contact your nearest MCTS centre](#)

- VHF channel 16 (156.8 MHz)
- MF/HF frequency 2182 kHz/4125 kHz (where available)
- \*16 on a cellphone (where available)

### NOTMAR Website – Monthly Editions, Chart Corrections and Chart Patches

The NOTMAR website allows users to access the [monthly publications](#), [chart corrections](#), and [chart patches](#).

Users can subscribe for free to the [email notification service](#) to receive notifications when charts of interest are updated, including their patches, as well as when a new Monthly Edition of *Notices to Mariners* is published.

In addition, the monthly publication and related files to download, such as chart patches, can be obtained all together through the download of a single ZIP file.

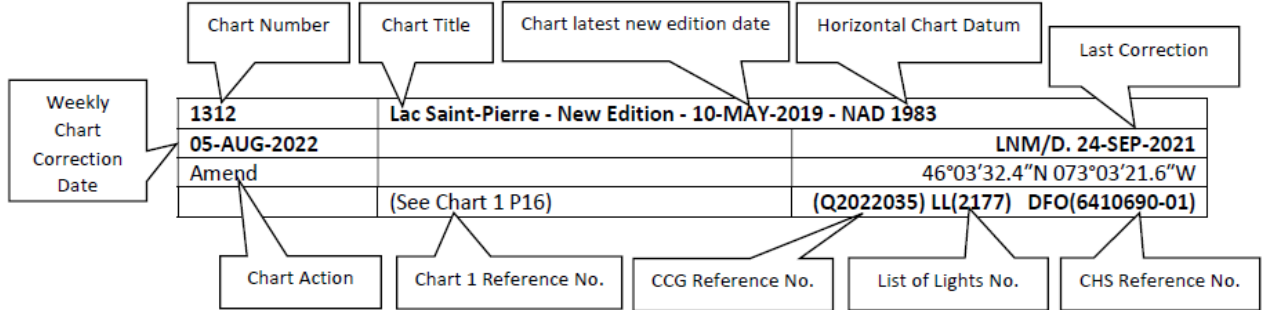
## Explanatory Notes – Canadian Hydrographic Service (CHS)

### Chart Corrections – Section 2 of *Notices to Mariners*

Corrections to nautical charts will be listed in numerical order by chart number. Each chart correction listed applies only to that particular chart. Related charts, if any, will have their own specific correction listed separately.

Users should also refer to CHS *Chart 1: Symbols, Abbreviations and Terms* for additional information pertaining to the correction of charts.

The illustration below describes the elements that will comprise a typical Section 2 chart correction:



The last correction number is identified with the **LNMD** or **Last Notice to Mariners Number / Date**.

Mariners are advised that only the most critical changes that directly affect safety to navigation are issued in “Section 2 – Chart Corrections.” This limitation is required to ensure that charts remain as clear and easy to read as possible. As a result, mariners may see minor discrepancies of a non-critical nature between information in official publications. For example, a small change in the nominal range or focal height of a light may not result in the production of a chart correction in *Notices to Mariners*, but may result in a correction in the [List of Lights, Buoys and Fog Signals](#) publication.

Note: In the case of a discrepancy between information provided on CHS charts relating to aids to navigation, and the *List of Lights, Buoys and Fog Signals* publication, the latter shall be deemed as containing the most up-to-date information.

### Canadian Nautical Charts & Publications

A source list of Canadian nautical charts and publications is published in Notice No. 14 of the *Notices to Mariners Annual Edition 2024*. The source supply and the prices effective at the time of printing are listed. For current chart edition dates, please refer to the [Canadian Hydrographic Service – List of Charts](#).

## Explanatory Notes – Marine Communications and Traffic Services (MCTS)

### Navigational Warnings / Notices to Shipping

The Canadian Coast Guard (CCG) is implementing a number of changes to the aids to navigation system in Canada.

These changes are advertised as Navigational Warnings, formerly called Notices to Shipping<sup>1</sup>, that are broadcast by the CCG, and are then followed up with Notices to Mariners, then charts are updated by hand correction, reprints or new editions.

Mariners are advised that all relevant Navigational Warnings (NAVWARN) should be kept until superseded by Notices to Mariners or through revised charts issued by the Canadian Hydrographic Service (CHS).

NAVWARN are accessible on the applicable regional page on the [CCG Navigational Warnings](#).

CHS is reviewing the impact of these changes with CCG and together are preparing an action plan on the issuing of chart revisions.

For further information, contact your regional NAVWARN Issuing Desk.

<p><b>Atlantic Region (North)</b> <b>*Port aux Basques MCTS Centre</b></p> <p>“N” Series NAVWARN</p> <p>Canadian Coast Guard 49 Stadium Rd. P.O. Box 99 Port aux Basques, NL A0M 1C0</p> <p>Telephone: 709-695-2168 or 1-800-563-9089 Facsimile: 709-695-7784</p> <p>Email: <a href="mailto:NAVWARN.MCTSPortAuxBasques@innav.gc.ca">NAVWARN.MCTSPortAuxBasques@innav.gc.ca</a></p>	<p><b>Central Region</b> <b>*Prescott MCTS Centre</b></p> <p>“Q” and “C” Series NAVWARN</p> <p>Canadian Coast Guard 401 King Street West P.O. Box 1000 Prescott, ON K0E 1T0</p> <p>Telephone: 613-925-0666 Facsimile: 613-925-4519</p> <p>Email: <a href="mailto:NAVWARN.MCTSPrescott@innav.gc.ca">NAVWARN.MCTSPrescott@innav.gc.ca</a></p>
<p><b>Atlantic Region (South)</b> <b>*Sydney MCTS Centre</b></p> <p>“M” Series NAVWARN</p> <p>Canadian Coast Guard 1190 Westmount Road Sydney, NS B1R 2J6</p> <p>Telephone: 902-564-7751 or 1-800-686-8676 Facsimile: 902-564-7662</p> <p>Email: <a href="mailto:NAVWARN.MCTSSydney@innav.gc.ca">NAVWARN.MCTSSydney@innav.gc.ca</a></p>	<p><b>Arctic Region</b> <b>*Iqaluit MCTS Centre</b> <i>Operational from approximately mid-May until late December.</i></p> <p>“A” Series NAVWARN</p> <p>Canadian Coast Guard P.O. Box 189 Iqaluit, NU X0A 0H0</p> <p>Telephone: 867-979-5269 Facsimile: 867-979-4264</p> <p>Email: <a href="mailto:NAVWARN.MCTSIqaluit@innav.gc.ca">NAVWARN.MCTSIqaluit@innav.gc.ca</a></p>

\*Service available in English and in French.

<sup>1</sup> The expression “Notice to Shipping” was changed to “Navigational Warning” in January 2019.

## Table of Contents

<b>Section 1: General and Safety Information</b>	<b>1</b>
*505/23 Canadian Hydrographic Service – Magnetic Declination Calculations .....	1
*1207/23 Canadian Hydrographic Service – Inappropriate Geographical Names Review Process.....	1
*401/24 Protecting the North Atlantic Right Whale: Speed Restriction Measures in the Gulf of St. Lawrence .....	1
*406/24 Saguenay–St. Lawrence Marine Park - Beluga Whale Protection: Slowdown Area at the Mouth of the Saguenay Fjord and Area Closure at Baie Sainte-Marguerite .....	9
*407/24 Saguenay – St. Lawrence Marine Park and Surrounding Waters – Whale Protection .....	12
*701/24 Canadian Hydrographic Service – Nautical Charts.....	13
*702/24 Canadian Hydrographic Service – Electronic Navigational Charts.....	14
*703/24 Transport Canada – Ship Safety Bulletin #16, #17 and #18/2024.....	15
*704/24 Canadian Coast Guard – Automatic Identification System Application Specific Messages (AIS ASM) Trial.....	15
*705/24 Canadian Coast Guard Publication - Amendments to the <i>Notices to Mariners Annual Edition 2024</i> - Section B, Notice 23: General Information on Pilotage Service .....	16
*706/24 Cape Canso to / à Country Island – Unlit Buoy Repositioned .....	16
*707/24 Country Island to / à Barren Island – Unlit Buoys Repositioned .....	17
*708/24 Guyon Island to / à Flint Island – Unlit Buoy Repositioned .....	17
*709/24 Port Hood and/et Mabou Harbour – Unlit Buoys Repositioned .....	18
*710/24 Chéticamp to / à Cape Mabou – Unlit Buoy Repositioned.....	18
*711/24 Cape Tormentine à / to West Point – Unlit Buoys Repositioned .....	18
*712/24 Entrée à / Entrance to Miramichi River – Unlit Buoys Permanently Changed.....	19
*713/24 Caraquet Harbour, Baie de Shippegan and / et Miscou Harbou – Unlit Buoys Permanently Established .....	19
*714/24 Northumberland Strait Central Portion - Ports/Harbours – Unlit Buoy Repositioned .....	20
*715/24 Winnipeg River/Rivière Winnipeg and Approaches/et les Approches – Unlit Buoy Repositioned.....	20
*716/24 Kettle Island to/à Martin Point – Unlit Buoys Repositioned.....	20
*717/24 Covehead Bay – Unlit Buoys Permanently Established .....	20
*718/24 Tidnish – Unlit Buoy Repositioned .....	21
<b>Section 1A: Temporary and Preliminary Notices</b>	<b>22</b>
Reminder – Comment Period for Active Preliminary Notices .....	22
*719(T)/24 Burin Peninsula to / à Saint-Pierre – Waterway information .....	22
*720(P)/24 Hamilton Sound: Eastern Portion / Partie-est– Notice of Proposed Changes .....	23
*721(T)/24 Cap Éternité à/to Saint Fulgence – Obstruction: Submerged Object.....	23
*722(T)/24 Baie des Sept-Îles – Obstruction: Submerged Object .....	23

*723(T)/24	Mouillages et Installations Portuaires/Anchorages and Harbour Installations - Haute Côte-Nord – Obstruction: Submerged Object.....	23
*724(T)/24	Cap aux Oies à/to Sault-au-Cochon – Obstruction: Lost Anchor .....	24
*725(T)/24	Port de Montréal – Obstruction: Lost Anchors.....	24
*726(T)/24	Sorel-Tracy à/to Otterburn-Park – Obstruction: Lost Anchors.....	24
*727(T)/24	Cobourg to/à Oshawa – Marine Works – Dredging Operations .....	24
*728(T)/24	Toronto Harbour – Marine Works - Overhead Construction.....	25
*729(P)/24	Port Severn to/à Christian Island – Rear Range to be Discontinued .....	25

---

**Section 2: Chart Corrections** **26**

---

**Section 3: Radio Aids to Marine Navigation Corrections** **44**

---

*730/24	Radio Aids to Marine Navigation 2024 (Atlantic, St. Lawrence, Great Lakes, Lake Winnipeg, Arctic and Pacific).....	44
---------	--	----

---

**Section 4: Canadian Sailing Directions Corrections** **47**

---

---

**Section 5: List of Lights, Buoys and Fog Signals Corrections** **48**

---

## Numerical Index of Canadian Charts Affected

This numerical index lists all nautical charts mentioned in this monthly edition of Notices to Mariners. Only charts appearing in Section 2 of this publication require a chart correction. The appearance of charts in all other sections, particularly those related to the correction of other nautical publications, is included here for reference.

Chart No.	Pages	Chart No.	Pages	Chart No.	Pages
1202	<a href="#">23, 54</a>	4375	<a href="#">17, 51</a>	4862	<a href="#">50</a>
1220	<a href="#">23</a>	4379	<a href="#">35</a>	4885	<a href="#">42</a>
1226	<a href="#">23</a>	4416	<a href="#">13</a>	4905	<a href="#">18</a>
1233	<a href="#">24</a>	4426	<a href="#">35, 36, 37, 38</a>	4911	<a href="#">19, 52</a>
1310	<a href="#">24</a>	4448	<a href="#">18</a>	4913	<a href="#">19</a>
1350	<a href="#">24</a>	4463	<a href="#">18</a>	4938	<a href="#">51</a>
2016	<a href="#">26</a>	4466	<a href="#">51</a>	4940	<a href="#">20</a>
2058	<a href="#">24</a>	4468	<a href="#">54</a>	4969	<a href="#">52, 53, 54</a>
2085	<a href="#">25</a>	4473	<a href="#">54</a>	5033	<a href="#">49</a>
2086	<a href="#">26</a>	4505	<a href="#">49</a>	5048	<a href="#">50</a>
2120	<a href="#">26</a>	4518	<a href="#">48</a>	5080	<a href="#">49</a>
2241	<a href="#">25</a>	4530	<a href="#">23</a>	6243	<a href="#">20</a>
2300	<a href="#">26</a>	4538	<a href="#">49</a>	6259	<a href="#">20</a>
2312	<a href="#">26</a>	4583	<a href="#">38, 48, 49</a>	6425	<a href="#">13</a>
2314	<a href="#">26, 27, 28, 29</a>	4592	<a href="#">50</a>	6427	<a href="#">13</a>
3808	<a href="#">13</a>	4593	<a href="#">50</a>	6453	<a href="#">42, 43</a>
3887	<a href="#">13</a>	4619	<a href="#">38</a>	7565	<a href="#">43</a>
4011	<a href="#">29</a>	4624	<a href="#">39</a>	8014	<a href="#">43</a>
4012	<a href="#">29</a>	4625	<a href="#">22, 39</a>		
4016	<a href="#">29</a>	4639	<a href="#">39, 40</a>		
4017	<a href="#">29</a>	4641	<a href="#">48</a>		
4024	<a href="#">29</a>	4642	<a href="#">40</a>		
4116	<a href="#">29</a>	4658	<a href="#">48</a>		
4117	<a href="#">30, 31</a>	4659	<a href="#">48</a>		
4118	<a href="#">31</a>	4679	<a href="#">22</a>		
4170	<a href="#">51</a>	4821	<a href="#">49</a>		
4211	<a href="#">31</a>	4831	<a href="#">40</a>		
4233	<a href="#">16</a>	4847	<a href="#">40, 50</a>		
4234	<a href="#">17</a>	4848	<a href="#">50</a>		
4240	<a href="#">31</a>	4849	<a href="#">41, 50</a>		
4266	<a href="#">32, 33, 34, 35, 51</a>	4850	<a href="#">41</a>		
4308	<a href="#">51</a>	4851	<a href="#">41</a>		
4365	<a href="#">51</a>	4852	<a href="#">42</a>		
4367	<a href="#">35</a>	4853	<a href="#">42, 50</a>		



## Section 1: General and Safety Information

---

### **\*505/23 Canadian Hydrographic Service – Magnetic Declination Calculations**

(Recurrent publication of notice \*505/23, originally published in the *Notices to Mariners – Monthly Eastern Edition 05/2023* publication.)

Mariners are advised that CHS has adopted the harmonized World Magnetic Model (WMM), as found on the NCEI/NOAA website. Old compass rose declination information on CHS navigational products can be updated using this website: <https://www.ngdc.noaa.gov/geomag/calculators/magcalc.shtml#declination>. While the differences in the model declinations are small each year, they can become more significant over a large period of time.

### **\*1207/23 Canadian Hydrographic Service – Inappropriate Geographical Names Review Process**

(Recurrent publication of notice \*1207/23, originally published in the *Notices to Mariners – Monthly Eastern Edition 12/2023* publication.)

The records of the Canadian Hydrographic Service could contain geographical names that may be considered inappropriate, offensive and derogatory. Geographical naming authorities are in the process of addressing many offensive place names, the review process is underway. For more information, about inappropriate geographical names, please see the [following announcement](#).

### **\*401/24 Protecting the North Atlantic Right Whale: Speed Restriction Measures in the Gulf of St. Lawrence**

(Recurrent publication of notice \*401/24, originally published in the *Notices to Mariners – Monthly Eastern Edition 04/2024* publication.)

#### **Purpose**

This bulletin describes the speed restriction zones that vessels must follow in the Gulf of St. Lawrence.

The Government of Canada has established these zones to reduce the risk of vessel colliding with North Atlantic right whales (NARW).

#### **Background**

Due to changing migration patterns of North Atlantic right whales and their increased presence in the Gulf of St. Lawrence, the Government of Canada has set seasonal speed restrictions in specific zones. These speed restrictions zones are defined as “static zones”, “dynamic shipping zones”, “seasonal management areas”, a “voluntary seasonal slowdown zone” and a “restricted area”. [See the map below for details](#).

Note: Vessels **must follow** Navigational Warnings outlining the speed restrictions. The *Interim Order for the Protection of North Atlantic Right Whales (Eubalaena Glacialis) in the Gulf of St. Lawrence, 2024* enables the issuance of Navigational Warnings (NAVWARNs) imposing speed restrictions and navigation restrictions.

Speed restriction zones are described in monthly Notices to Mariners (NOTMARs), which are published by the Canadian Coast Guard. The status of these zones is broadcasted through NAVWARNs, which are published by the Coast Guard’s Marine Communications and Traffic Services Centres.

### **Changes to speed restriction zones and measures**

Based on consultations with industry and on scientific data, changes to the speed restriction zones will be effective from April 17th, 2024, while the restricted area will be implemented based on whale presence.

A voluntary seasonal slowdown of 10.0 knots over the ground spanning from Cabot Strait (a line running from Cape North NS to Cape Ray NL) to the eastern edge of dynamic shipping zone E will be implemented at the beginning and end of the North Atlantic right whale season (Spring and fall).

Please check the latest NAVWARN for all speed restrictions currently in effect.

### **Speed Restriction Measures for 2024**

These restrictions will be in effect from **April 17 to November 15, 2024**.

### **Exceptions**

The following exception will apply to **all** measures:

- a) a vessel in distress or providing assistance to a person or a vessel in distress;
- b) a government vessel being used
  - i. for law enforcement activities;
  - ii. for search and rescue operations; or
  - iii. to ensure the competency of the crew or the operational readiness of the vessel or crew with respect to such activities or operations.

### **Static zones**

In the static zones, **all** vessels above **13 m** in length overall (LOA) must proceed at a speed of not more than 10.0 knots over the ground.

### **Exclusions**

Air cushion vessels operated by or on behalf of the Government of Canada that are engaged in ice-clearing activities from April to June in and around Chaleur Bay are exempted when in operation.

### **36.57 m (20-fathom) shallow water protocol exclusion**

Vessels engaged in any commercial fishing activity may proceed at a safe operational speed in waters not more than 36.57 m (20 fathom) deep within the static zones.

If a notice to fish harvesters and a NAVWARN state that at least one North Atlantic right whale has been detected in waters within a static zone or its associated buffer zone that are not more than 36.57m deep, the speed limit of 10.0 knot over the ground will apply in the concerned zone(s) to all vessels above 13m in length overall (LOA). The speed restriction will be in effect for 15 days after the day on which the whale was detected. The buffer zones associated with the static zones are located 5 miles north and south of their adjacent border in waters less than 36.57m deep.

**Coordinates for the northern static zone:**

- 50° 20' N 065° 00' W
- 49° 13' N 065° 00' W
- 48° 40' N 064° 13' W
- 48° 40' N 062° 40' W
- 48° 03' N 061° 07.5' W
- 47° 58.1' N 061° 03.5' W
- 48° 00' N 061° 00' W
- 49° 04' N 061° 00' W
- 49° 04' N 062° 00' W
- 49° 43' N 063° 00' W
- 50° 20' N 063° 00' W

**Coordinates for the southern static zone:**

- 48° 40' N 065° 00' W
- 48° 40' N 062° 40' W
- 48° 03' N 061° 07.5' W
- 47° 58.1' N 061° 03.5' W
- 47° 10' N 062° 30' W
- 47° 10' N 065° 00' W

**Dynamic shipping zones**

There are five dynamic shipping zones (DSZ) located in the routing systems north and south of Anticosti Island: A, B, C, D and E

**Coordinates for the dynamic shipping zones:**

**Zone A**

- 49° 41' N, 065° 00' W
- 49° 20' N, 065° 00' W
- 49° 11' N, 064° 00' W
- 49° 22' N, 064° 00' W

**Zone B**

- 49° 22' N, 064° 00' W
- 49° 11' N, 064° 00' W
- 48° 48' N, 063° 00' W
- 49° 00' N, 063° 00' W

**Zone C**

- 49° 00' N, 063° 00' W
- 48° 48' N, 063° 00' W
- 48° 24' N, 062° 00' W
- 48° 35' N, 062° 00' W

**Zone D**

- 50° 16' N, 064° 00' W
- 50° 00' N, 064° 00' W
- 49° 56' N, 063° 00' W
- 50° 16' N, 063° 00' W

**Zone E**

- 48° 35' N 062° 00' W
- 48° 24' N 062° 00' W
- 48° 03' N 061° 07.5' W
- 47° 58.1' N 061° 03.5' W
- 48° 00' N 061° 00' W
- 48° 10.5' N 061° 00' W

When a North Atlantic right whale is detected in a dynamic shipping zone or in the buffer zones, located 5 nautical miles south or 2.5 nautical miles from the eastern and western edges of the dynamic shipping zones:

- All vessels will be notified via a NAVWARN; and
- Vessels above **13 m** in length overall (LOA) must proceed at a speed of not more than 10.0 knots over the ground within that zone.

Even though dynamic shipping zones overlap with static zones, vessels can travel at a safe operational speed in dynamic shipping zones when they are not under speed restriction. Mariners must also keep in mind that North Atlantic right whales may be nearby.

### Speed restrictions in the dynamic shipping zones

The detection of North Atlantic right whales in one or more dynamic shipping zone(s), or in their buffer zones, will trigger a speed restriction in the concerned zone(s). The speed restriction in the dynamic shipping zone(s) will be in effect for 15 days from the date of detection. In the event of a new North Atlantic right whale detection occurring in the last 7 days of the 15-day slowdown period, the speed restriction will be extended for an additional 15 days from the date of the new detection. This would continue until no NARW are detected.

When a NAVWARN is issued implementing a speed restriction in one or more dynamic shipping zone(s), vessels above **13 m** in length (LOA) must not exceed a speed of 10.0 knots over the ground. Within any dynamic zone that is not subject to a speed restriction, mariners may proceed at a safe operational speed. Mariners are encouraged to take into consideration the potential for their vessel striking North Atlantic right whales when considering a “safe operational speed” during navigation.

### Seasonal management areas

Seasonal management area 1 (SMA-1) and seasonal management area 2 (SMA-2) are speed restriction areas located north and south of dynamic shipping zone E, respectively.

Within seasonal management areas, vessels above **13 m** in length (LOA):

- must restrict their speed so as not to exceed 10.0 knots over the ground from April 17<sup>th</sup> to June 25<sup>th</sup>, 2024; **and**
- are allowed to proceed at a safe operational speed from June 26<sup>th</sup> to November 15<sup>th</sup>, 2024, unless a North Atlantic right whale is detected. If a whale is detected, a speed restriction of 10.0 knots over the ground will be triggered for 15 days from the date of detection. In the event of a new North Atlantic right whale detection occurring in the last 7 days of the 15-day slowdown period, the speed restriction will be extended for an additional 15 days from the date of the new detection. This would continue until no North Atlantic right whales are detected.

#### Coordinates for the SMA-1:

- 49° 04' N 062° 00' W
- 49° 04' N 061° 00' W
- 48° 10.5' N 061° 00' W
- 48° 35' N 062° 00' W

#### Coordinates for the SMA-2:

- 48° 24' N 062° 00' W
- 48° 03' N 061° 07.5' W
- 47° 58.1' N 061° 03.5' W
- 47° 26.69' N 062° 00' W

### Restricted area

In the summer months, an important proportion of the total North Atlantic right whale population gathers for feeding and surface activity near the [Shediac Valley](#). Since this makes the North Atlantic right whale more susceptible to vessel collisions, a mandatory restricted area will be implemented in and near the [Shediac Valley](#) and will come into force once 80% of the restricted area is closed to fishing for the season as per the [Department of Fisheries and Oceans' right whale closure protocol](#) or at the latest on June 19<sup>th</sup>, 2024. The restricted area will be lifted once the North Atlantic right whale detections decrease in the restricted area or at the latest on September 25<sup>th</sup>, 2024.

The size and location of the area are determined based on historical detection data of North Atlantic right whales. All necessary details can be found in the *Interim Order for the Protection of North Atlantic Right Whales (Eubalaena Glacialis) in the Gulf of St. Lawrence, 2024*. Triggering and lifting of the restricted area will be communicated to mariners through NAVWARNs and notices to fish harvesters.

Vessels above **13 m** in length (LOA) will be required to:

- avoid the area unless they are part of the exceptions listed in the Interim Order for the Protection of North Atlantic Right Whales (*Eubalaena Glacialis*) in the Gulf of St. Lawrence, 2024;
- transit the area at a speed not exceeding 8.0 knots over the ground if they are part of the exceptions.

The following exceptions will apply to the restricted area. The following listed vessels can travel through the area at not more than 8.0 knots over the ground:

- A vessel being used for commercial fishing;
- A vessel being used for fishing under the authority of a licence issued under the *Aboriginal Communal Fishing Licences Regulations*;
- A vessel being used for research purposes on behalf of the Government of Canada
- A vessel being used as part of the Department of Fisheries and Oceans' Marine Mammal Response Program to assist a marine mammal or sea turtle in distress or to access or retrieve a deceased marine mammal or sea turtle;
- A vessel authorized by the Government of Canada to retrieve or identify the location of abandoned or lost fishing gear;
- A vessel involved in pollution response operations;
- A vessel avoiding immediate or unforeseen danger;
- A vessel involved in research relating to right whales as part of a project that has received funding from the Government of Canada.

The following vessels can travel through the restricted area at a speed over 8.0 knots, but below 10.0 knots over the ground as required by the static speed restriction zone:

- A vessel being used by an employee of the Government of Canada or peace officer who is performing their duties.

**Coordinates for the restricted area:**

- 48°31.8' N 063°39.6' W
- 48°24.72' N 063°17.88' W
- 47°18.84' N 064°10.8' W
- 47°27.18' N 064°30.72' W

**Inclement weather exception**

Mariners will be notified in advance via a NAVWARN should the speed restriction status change in any zone or area, due to inclement weather.

Within any zone or area that is no longer subject to a speed restriction due to adverse weather conditions, mariners may proceed at a safe operational speed. Mariners are however encouraged to take into consideration the potential for their vessel striking North Atlantic right whales when considering a "safe operational speed" during navigation.

\*Non-expected vessels are still prohibited from transiting through the restricted area.

**Voluntary seasonal slowdown in Cabot Strait**

To coincide with the North Atlantic right whales entering and exiting the Gulf of St. Lawrence in large numbers, a voluntary seasonal slowdown is being put in place in Cabot Strait from April 17<sup>th</sup> to June 25<sup>th</sup>, 2024, and from September 25<sup>th</sup> to November 15<sup>th</sup>, 2024.

- During these periods, vessels above 13 m in length (LOA) are requested to voluntarily reduce their speed as to not exceed 10.0 knots over the ground.

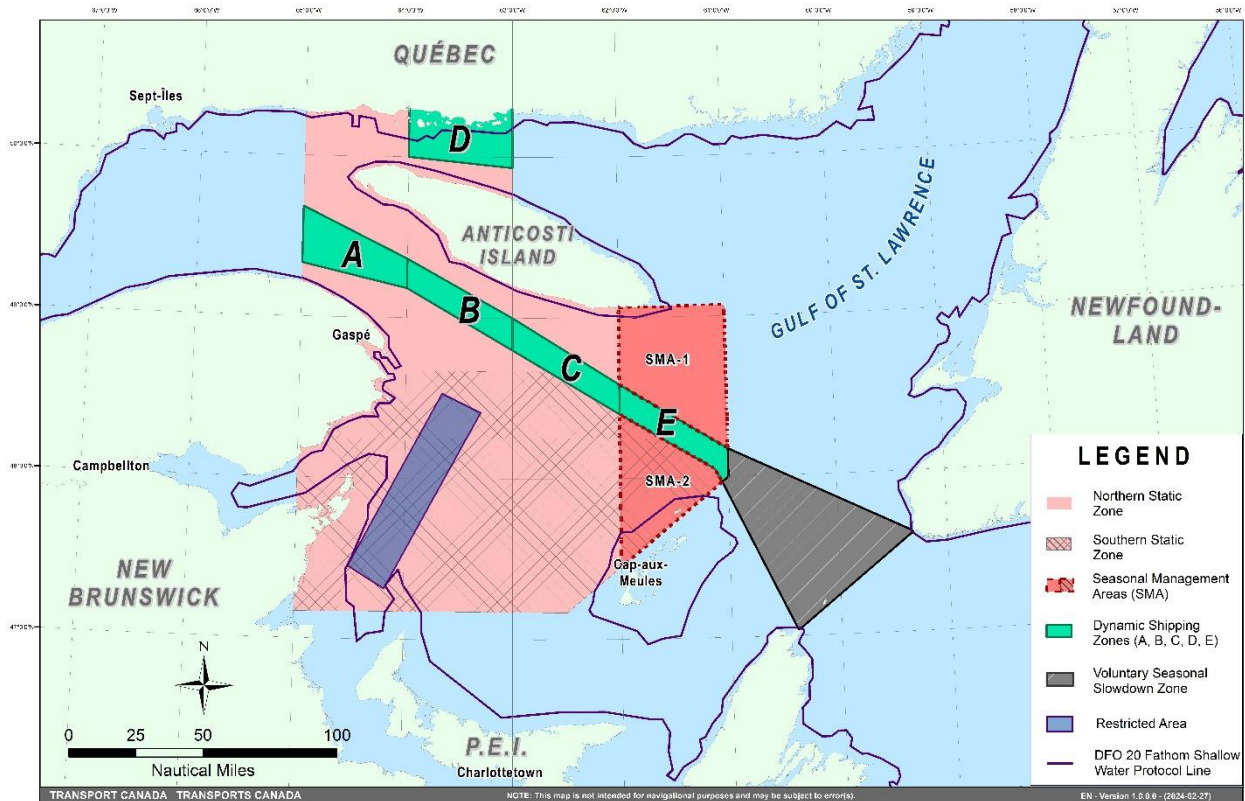
**Voluntary seasonal slowdown zone coordinates:**

- 48° 10.5' N 061° 00' W
- 47° 37.2' N 059° 18.5' W
- 47° 02' N 060° 23.7' W
- 47° 58.1' N 061° 03.5' W
- 48° 00' N 061° 00' W

**Map of the Gulf of St. Lawrence**

The following map shows

- the static zones (north and south), in pink;
- the dynamic shipping zones (A, B, C, D and E), in green;
- the seasonal management areas, in dark pink;
- the voluntary seasonal slowdown zone, in grey;
- the restricted area, in dark blue; and
- the 36.57 m (20 fathom) shallow water protocol line.



This map is for visual representation only and is not to be used for navigation or enforcement.

### **Roseway Basin – Area to be Avoided**

The Roseway Basin, located approximately 20 nautical miles south of Cape Sable Island, Nova Scotia, is a critical habitat for North Atlantic right whales, which have been observed to gather in the area on a seasonal basis in Canadian waters. This critical habitat is also located near key shipping routes. In 2007, Canada, with the support of many groups with varied interests, proposed to the International Maritime Organization (IMO) the establishment of a seasonal Area to be Avoided in the Roseway Basin to protect North Atlantic right whales, which IMO accepted and adopted.

To reduce the risk of vessels colliding with North Atlantic right whales, it is recommended that vessels of 300 gross tonnages and more, in transit during the period of June 1 through December 31, avoid the Roseway Basin area. Smaller vessels are also encouraged to avoid passage through this area. If passage is necessary within the Area to be Avoided, it is recommended that all mariners decrease their vessel speed to no more than 10 knots, when safe to do so.

#### **Roseway Basin coordinates:**

- 43° 16' N 064° 55' W
- 42° 47' N 064° 59' W
- 42° 39' N 065° 31' W
- 42° 52' N 066° 05' W

#### **NAVWARN broadcasts**

The Canadian Coast Guard issues NAVWARNs:

- by radio broadcast; and
- online at [Canada's Maritime Information Portal](#) and its [Navigational Warnings](#) site.

Mariners must ensure they have accurate and up-to-date information about the protection of the North Atlantic right whale, as in all applicable NOTMARs and NAVWARNs.

For the North Atlantic right whale speed restrictions, the NAVWARN(s) currently in effect will be provided to vessels subject to the Vessel Traffic Services Zone Regulations or the Eastern Canada Vessel Traffic Services Zone Regulations:

#### **Outbound vessels will receive NAVWARNs**

- at Calling-in-Point 10 (St-Laurent); or
- upon a departure downstream from the Quebec pilot station (including the Saguenay River, Chaleur Bay, Miramichi Bay, etc.)

#### **Inbound vessels will receive NAVWARNs**

- when a clearance to enter Canadian waters is granted

#### **Vessels in transit will receive NAVWARNs**

- at the last reporting point prior to entering the mandatory speed restriction zones; and/or
- at 10 nautical miles before they enter the mandatory speed restriction zones

For those vessels not subject to the above-mentioned regulations, vessel operators are required to monitor broadcasts by the Canadian Coast Guard's Marine Communications and Traffic Services network for the most up to date information. For marine radio frequencies and broadcast times, information may be found in the [Radio Aids to Marine Navigation](#) publication.

## Aids to navigation

The Canadian Coast Guard is currently testing virtual Automatic Identification System (AIS) aids to navigation (AIS AtoN) in specific areas. These aids notify mariners of a dynamic shipping zone and/or a seasonal management area subject to a speed restriction.

Each zone is delimited by four to six virtual AIS AtoN, which can be displayed on a ship's navigation equipment, such as

- Electronic Chart Display and Information System (ECDIS);
- Electronic Chart System (ECS);
- RADAR;
- Minimum Keyboard Display (MKD); and
- Electronic Nautical Chart (ENC).

The Canadian Coast Guard broadcasts the virtual AIS AtoN only when a speed restriction is in effect in one or more testing zones.

Mariners must select the virtual AIS AtoN symbol to view a message such as "SectA1 Spd Lim 10 kt." This message refers to a speed restriction in effect for a specific zone.

Note: This system is not the primary method of communicating this information.

## Compliance and enforcement

Vessels must comply with the Interim Orders made pursuant to the *Canada Shipping Act, 2001*, and any NAVWARNs broadcasted and published by the Canadian Coast Guard relating to the Interim Orders, aimed at regulating the navigation for the purposes of protecting the North Atlantic right whales.

If a vessel does not comply with the Interim Orders or instructions in the NAVWARNs related to the Interim Orders, the vessel could face:

- administrative monetary penalties up to a maximum of CAN \$250,000; and/or
- penal sanctions under the *Canada Shipping Act, 2001* is liable on summary conviction to a fine of not more than CAN \$1,000,000 or to imprisonment for a term of not more than 18 months, or to both.

If a vessel appears to have violated the speed restriction, Transport Canada Marine Safety inspectors will review all information provided through AIS and seek an explanation from the master.

No exemptions to the speed restriction will be granted in advance. However, if a deviation from the speed restrictions is necessary for safety reasons, the following information must be entered into the bridge logbook:

- reason(s) for deviation;
- speed at which vessel is operated;
- latitude and longitude at time of deviation;
- time and duration of deviation; and
- master of the vessel shall sign and date the bridge logbook entry.

For any deviation, Transport Canada will review and consider reasons such as:

- navigating to ensure vessel safety;
- weather conditions;
- force majeure (unforeseeable circumstances); and
- responding to emergencies.



### Report a North Atlantic right whale sighting

If you see live, free-swimming whales:

- Email: [DFO.GLFWhales-BaleinesGLF.MPO@dfo-mpo.gc.ca](mailto:DFO.GLFWhales-BaleinesGLF.MPO@dfo-mpo.gc.ca)
- When reporting sightings of North Atlantic right whales, you must include: GPS location (latitude and longitude), date and time of sighting, number of marine mammals, photograph(s)/video(s) collected and if possible, behavior of marine mammals observed (ex., feeding, travelling, diving).

If you see a North Atlantic right whale (and all other marine mammals) **entangled, injured or dead**, please document and report it immediately to the regional Response Network.

- When documenting you should collect: GPS location (latitude and longitude), date and time of sighting, number of marine mammals, photograph(s)/video(s), and description of the incident to provide to the Response Network.

### **Southern part of the Gulf of St. Lawrence (New Brunswick, Nova Scotia & Prince Edward Island):**

Marine Animal Response Society  
Telephone: 1-866-567-6277

### **Newfoundland and Labrador:**

Whale Release and Strandings Newfoundland and Labrador (Tangly Whales Inc.)  
Telephone: 1-888-895-3003 or 1-709-895-3003

### **Quebec:**

Baleines en direct (GREMM)  
Telephone: 1-877-722-5346

### **REPORT A MARINE MAMMAL OR SEA TURTLE INCIDENT OR SIGHTING:**

For more information on reporting other marine mammal or sea turtle sighting and incidents:

<https://www.dfo-mpo.gc.ca/species-especes/mammals-mammiferes/report-rapport/page01-eng.html>

Please consult Whale Insight for the latest right whale observations:

<https://gisp.dfo-mpo.gc.ca/apps/WhaleInsight/eng/?locale=en>

### **\*406/24 Saguenay–St. Lawrence Marine Park - Beluga Whale Protection: Slowdown Area at the Mouth of the Saguenay Fjord and Area Closure at Baie Sainte-Marguerite**

(Recurrent publication of notice \*406/24, originally published in the *Notices to Mariners – Monthly Eastern Edition 04/2024* publication.)

The Saguenay–St. Lawrence Marine Park and its surrounding area are at the heart of endangered beluga whale critical summer habitat. Marine mammal protection measures have been put in place in accordance with the *Marine Activities in the Saguenay–St. Lawrence Marine Park Regulations* within the limits of the Marine Park.

However, important feeding, calving and rearing areas for beluga whales require greater protection to ensure the recovery of the species. The portion of the Saguenay situated between the mouth of the Fjord and Baie Sainte-Marguerite is one of the areas most used by females and their young from May to October. The mouth of the Saguenay is known as a feeding ground and Baie Sainte-Marguerite as a calving and rearing area.

In order to prevent collisions with beluga whales, a compulsory 15-knot slowdown area is in effect from May 1<sup>st</sup> to October 31<sup>st</sup> at the mouth of the Saguenay. To ensure tranquility for female belugas and their young during the critical calving period, access to Baie Sainte-Marguerite is prohibited to all vessels from June 21<sup>st</sup> to September 21<sup>st</sup>, except for special authorizations (see description below).

For safety reasons, *the slowdown area measure at the mouth of the Saguenay Fjord does not apply* to cargo ships (see the monthly edition of *Notice to Mariners* from May to October for voluntary protection measures in the St. Lawrence Estuary). An enhanced vigilance is, however, recommended to all navigators between the mouth of the Saguenay Fjord and Baie Sainte-Marguerite for the protection of beluga whales.

For more information on the Saguenay–St. Lawrence Marine Park, see notice 5C of the *Notices to Mariners Annual Edition 2024* or visit [marinepark.gc.ca](http://marinepark.gc.ca).

## REGULATORY PROTECTION MEASURES — BELUGA WHALE

### Entire Marine Park Territory:

- When beluga whales are less than half a nautical mile (926 metres) from a motorized vessel, the vessel must maintain a steady speed of between 5 and 10 knots.
- All vessels, including human-powered vessels (kayaks and canoes), must continue to move forward and maintain their heading.
- All vessels must maintain a minimum distance of 400 metres from beluga whales at all times.

For more information concerning the regulations, consult: [marinepark.ca](http://marinepark.ca).

### Mouth of the Saguenay Fjord (Figure 1) — Slowdown Area (area crosshatched in red):

- Maximum speed at the mouth of the Saguenay between buoys S7 and S8 and the ferry docks between Baie-Sainte-Catherine and Tadoussac is 15 knots from May 1<sup>st</sup> to October 31<sup>st</sup>.

### Baie Sainte-Marguerite (Figure 2) — Area Closure (red area):

- From June 21<sup>st</sup> to September 21<sup>st</sup>, vessels must not enter the red area, which follows a line between Cap Nord-Ouest and Cap Sainte-Marguerite.
- Special authorizations are granted only for kayaks, canoes and recreational fishermen who must travel without stopping along a corridor within 10 metres of the shore or in shallow areas.

## VOLUNTARY PROTECTION MEASURES

### Baie Sainte-Marguerite sector (Figure 2) — Transit Area (area crosshatched in yellow):

- From June 21<sup>st</sup> to September 21<sup>st</sup>, navigation in this area is recommended at a speed of between 5 and 10 knots without stopping.

The purpose of this transit area is to favour respect of the *Marine Activities in the Saguenay–St. Lawrence Marine Park Regulations*, since beluga whales are often present in the Baie Sainte-Marguerite sector.

### Information

All incidents, including collisions with whales, must be reported without delay by calling 1-866-508-9888. For any other situation concerning a marine mammal that is either dead or in trouble, contact the Marine Mammal Emergency Response Network at 1-877-722-5346, or use VHF channel 16.

Figure 1

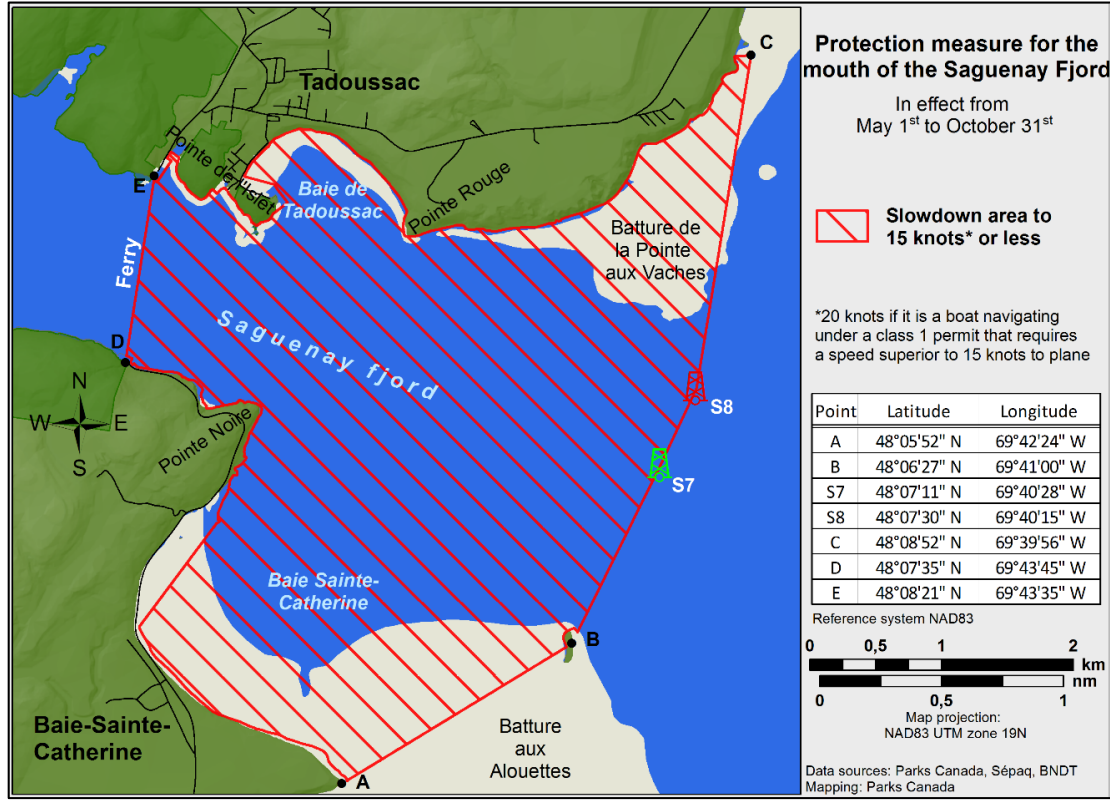
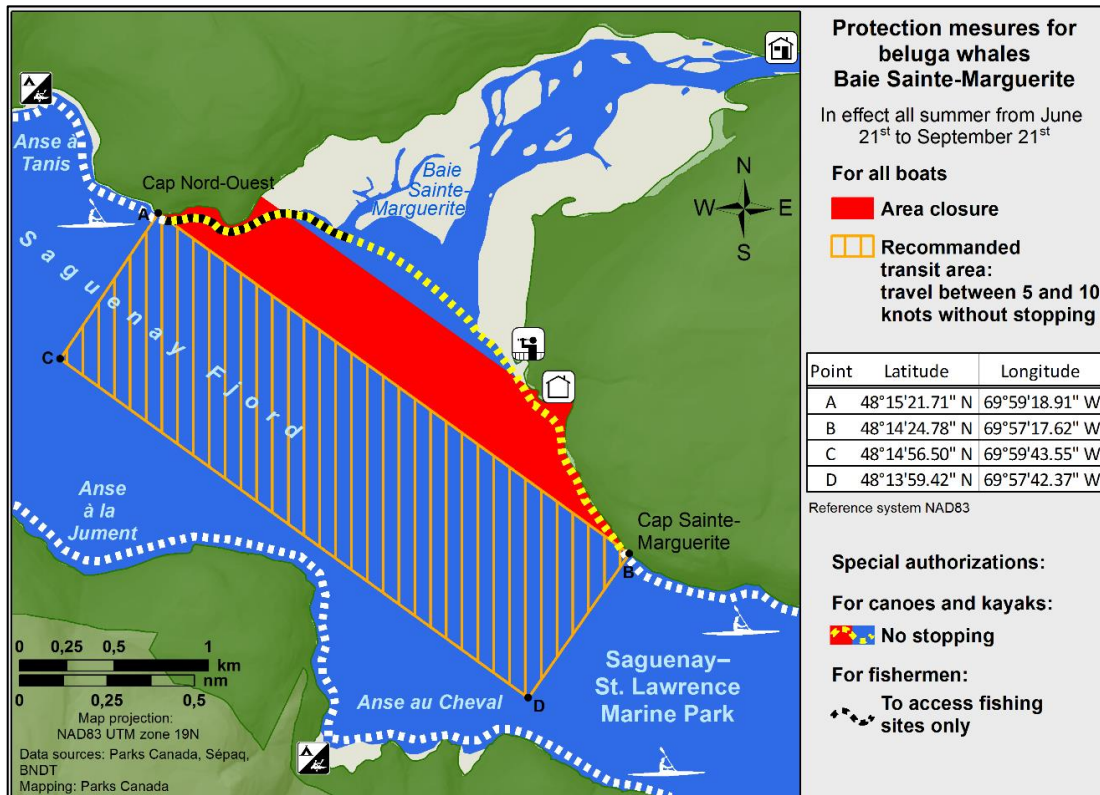


Figure 2



**\*407/24 Saguenay – St. Lawrence Marine Park and Surrounding Waters – Whale Protection**

(Recurrent publication of notice \*407/24, originally published in the *Notices to Mariners – Monthly Eastern Edition 04/2024* publication.)

The waters in and around the Saguenay–St. Lawrence Marine Park are well known for the resident endangered beluga population and the wide diversity of whales that migrate there to feed, particularly between April and November.

**REGULATORY PROTECTION MEASURES**

All whale species that are found in the St. Lawrence are protected under the *Marine Mammal Regulations*, pursuant to the *Fisheries Act*. Within the boundaries of the Marine Park, specific measures are set out in the *Marine Activities in the Saguenay–St. Lawrence Marine Park Regulations*, pursuant to the establishment of the *Saguenay–St. Lawrence Marine Park Act*. Any collision with a marine mammal within the Marine Park must immediately be reported to a park warden at 1-866-508-9888. For collisions that occur outside the Marine Park or for any situation involving a marine mammal that is dead or in trouble, contact the emergency network at 1-877-722-5346 or on VHF channel 16.

For more information on the Saguenay–St. Lawrence Marine Park, see notice 5C of the *Notices to Mariners Annual Edition 2024*.

**VOLUNTARY PROTECTION MEASURES**

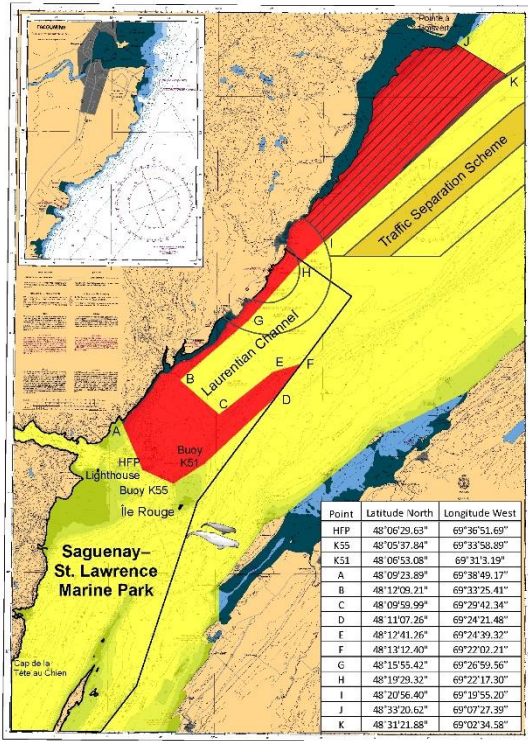
Provisional measures in effect from May 1 to October 31, 2024. See map at the end of this notice.

These measures apply to merchant vessels and cruise ships between Pointe à Boisvert and Cap de la Tête au Chien to prevent collisions with whales. These measures should only be taken when they will not jeopardize navigational safety.

**Caution area (yellow area):** To reduce the risk of collisions with whales that can be present anywhere in this area, heightened vigilance of navigators is critical. Posting a lookout is recommended in order to increase the chances of seeing the whales and thus taking necessary measures to avoid them. If bypassing the whales is not possible, slow down and wait for the animals to move away to a distance greater than 400 metres (0.215 nautical miles) before resuming original speed. It is more difficult to see the animals at night therefore increased caution is recommended.

**Slow down to 10 knots or less area (red area):** To reduce the risk of collisions with whales in this feeding area, it is recommended that vessels slow down to a maximum speed through the water of 10 knots and post a lookout. It is further recommended to remain in the Laurentian Channel to the north of Île Rouge to minimize the impact of noise in a sensitive area south of this island, which is highly frequented by herds of beluga whales composed of females and young.

**Area to be avoided (hatched red area):** To reduce noise and the risk of collisions with whales, vessels should avoid transiting through this area which is highly frequented by blue whales, an endangered species. If the area cannot be avoided, slow down to a speed through the water of 10 knots or less.

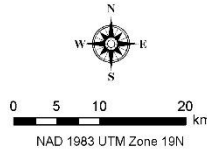


**Voluntary protection measures to reduce the risk of ship strikes with whales and to minimize the impact of noise on beluga whale**

Provisional measures in effect from May 1<sup>st</sup> to October 31<sup>st</sup> 2024

- Caution area**  
presence of whales
- Slow down to 10 knots\* or less area**  
Important whale feeding area
- Area to be avoided; if impossible, slow down to 10 knots\* or less**  
Important blue whale area
- Sensitive area highly used by beluga herds composed of females and young  
**It is recommended to navigate in the Laurentian Channel north of île Rouge**

\* 10 knots refers to speed through water



**\*701/24 Canadian Hydrographic Service – Nautical Charts**

Charts	Main Title	Scale	Edition Date	Published	Cat#	Price
<b>New Charts</b>						
3887	Juan Perez Sound	1:45 000	2024-05-31	2024-07-12	2	\$20.00
<b>New Editions</b>						
4416	Havre de Gaspé	1:12 000	2024-04-26	2024-07-12	1	\$20.00
6425	Travaillant River to/à Adam Cabin Creek Kilometre 1325 / Kilomètre 1400	1:50 000	2024-06-10	2024-07-12	4	\$12.00
6427	Point Separation to/au Aklavik Channel Kilometre 1480 / Kilomètre 1540	1:50 000	2024-06-10	2024-07-12	4	\$12.00
<b>Charts Permanently Withdrawn</b>						
3808	Juan Perez Sound					



**\*702/24 Canadian Hydrographic Service – Electronic Navigational Charts**

S-57 ENC Number	Chart Title	ENC Compilation Scale	Published
<b>New Charts</b>			
CA53MQ0A (Edn 1.000)	Liverpool Harbour	1:4 000	2024-07-19
CA549RFA (Edn 1.000)	CA549RFA	1:4 000	2024-07-19
CA54ARFA (Edn 1.000)	CA54ARFA	1:4 000	2024-07-19
CA568SPA (Edn 1.000)	CA568SPA	1:4 000	2024-07-19
CA569SNA (Edn 1.000)	CA569SNA	1:6 000	2024-07-19
CA569SPA (Edn 1.000)	CA569SPA	1:6 000	2024-07-19
CA56CSPA (Edn 1.000)	CA56CSPA	1:6 000	2024-07-19
CA56DSPA (Edn 1.000)	CA56DSPA	1:11 000	2024-07-19
CA56DSQA (Edn 1.000)	CA56DSQA	1:6 000	2024-07-19
CA56ESQA (Edn 1.000)	CA56ESQA	1:4 000	2024-07-19
CA56GSQA (Edn 1.000)	CA56GSQA	1:2 000	2024-07-19
<b>New Editions</b>			
CA54SNJA (Edn 2.000)	Port4780N06960W	1:2 000	2024-07-05
CA570127 (Edn 12.000)	Vancouver Harbour Eastern Portion/Partie Est	1:5 000	2024-07-19
<b>Charts Permanently Withdrawn</b>			
CA576211	Terrington Basin		
CA576424	Punchbowl	Cancelled by CA56ESQA	
CA576497	Paradise River		
CA576498	Cartwright Harbour		
CA576632	Northern Entrance to Squasho Run		
CA576633	Northern Entrance to/a Caplin Bay	Cancelled by CA56DSQA	
CA576636	St. Michael's Bay		
CA576637	Shoal Tickle		
CA576638	Pensons Arm	Cancelled by CA568SPA	
CA576740	Goose Bay Narrows		
CA576847	Charlottetown	Cancelled by CA569SLA	
CA576849	Salmon Bight - Settlement of Black Tickle	Cancelled by CA56GSQA	

**\*703/24 Transport Canada - Ship Safety Bulletin #16, #17 and #18/2024**

New **Ship Safety Bulletins** have recently been posted on the [Transport Canada website](#).

To view or download these bulletins, please click on the links below:

[SSB#16/2024](#) – Fishing vessels: 2024 concentrated inspection campaign

RDIMS# 20258823

[SSB#17/2024](#) – Implementation of the International Maritime Organization’s (IMO) Prohibition on the use and carriage for use as fuel of heavy fuel oil (HFO) by ships in Canadian Arctic waters

RDIMS# 20390277

[SSB#18/2024](#) – Oil price cap (OPC) compliance and enforcement

RDIMS# 20329461

Sign up for [e-Bulletin](#) to receive an e-mail notice each time a new Ship Safety Bulletin is published on our website.

Contact us at [marinesafety-securitemaritime@tc.gc.ca](mailto:marinesafety-securitemaritime@tc.gc.ca) or 1-855-859-3123 (Toll Free).

**\*704/24 Canadian Coast Guard – Automatic Identification System Application Specific Messages (AIS ASM) Trial**

The Canadian Coast Guard (CCG) is testing Automatic Identification System Application Specific Messages (AIS ASM) nationwide. These broadcasts provide mariners on vessels with properly configured shipborne equipment with dynamic information such as water levels, weather, air gap, and a specific area or line displayed as a digitalized signal. A detailed listing of currently broadcasted Coast Guard AIS ASM is contained in the [interactive map](#) on the Canadian e-Navigation Portal. Additional information on AIS ASM may be found in IMO SN.1 Circ 289 [Guidance on the Use of AIS Application-Specific-Messages](#).

Please contact the manufacturer of your specific equipment for instructions on how to receive AIS ASM. Any questions or concerns related to the broadcast may be directed to the Coast Guard [e-Navigation Team](#) or any Canadian Coast Guard Marine Communications and Traffic Services (MCTS) Centre.

**\*705/24 Canadian Coast Guard Publication - Amendments to the *Notices to Mariners Annual Edition 2024* - Section B, Notice 23: General Information on Pilotage Service**

**Page 7:**

**AMEND AS FOLLOWS:**

#	Area	Pilots	Pilot Boarding Station	Tentative ETA (hrs)	Confirm ETA (hrs)	Move / Departure (hrs)	VHF Ch
<b>New Brunswick</b>							
1.	Miramichi Apr. 16 - Dec. 10	Pilots Miramichi	47 07 30 N 64 47 00 W	24	4	4	16
1(a)	Miramichi Dec. 11 - Apr. 15	Pilots Miramichi	45 24 00 N 61 01 00 W	24	12	4	14
	<b>Miramichi Note:</b>	<i>All vessel transits at Miramichi will be subject to risk assessment prior to being accepted for pilotage</i>					
2.	Restigouche (a) Dalhousie (b) Campbellton	Pilots Dalhousie	48 03 12 N 66 15 00 W	12	4	4	16
3.	Saint John  For Tankers and Liquid Natural Gas Carriers, the Compulsory Pilotage Area is extended:	Pilots Saint John  Inbound  Outbound	45 10 48 N 66 03 42 W  45 09.5 N 66 05.8W  45 10 48 N 66 03 42 W	12	4	4	16 12
4.	Belledune	Pilots Belledune	47 56 00 N 65 48 00 W	12	6	12 Tentative 6 Confirm (see Note 1)	16
		<i>Note 1: A departure time within 12hrs of arrival time must be confirmed within one hour of vessel being secured on arrival</i>					

**\*706/24 Cape Canso to / à Country Island – Unlit Buoy Repositioned**

Reference chart: 4233

The following unlit buoy has been repositioned to the following coordinates:

Aid Name	LL #	Position
Port Felix buoy TC4	5655.045	45° 13' 55.8"N 061° 13' 55.8"W

(G2024-197)



**\*707/24 Country Island to / à Barren Island – Unlit Buoys Repositioned**

Reference chart: 4234

The following unlit buoys have been repositioned to the following coordinates:

Aid Name	LL #	Position
St. Mary's River buoy VK10	5621.03	45° 02' 58.2"N 061° 53' 33.6"W
St. Mary's River buoy VK14	5621.05	45° 03' 09.6"N 061° 53' 45.0"W
St. Mary's River buoy VK15	5621.06	45° 03' 10.8"N 061° 53' 52.8"W
St. Mary's River buoy VK18	5621.07	45° 03' 15.6"N 061° 53' 58.8"W
St. Mary's River buoy VK30	5621.12	45° 04' 14.4"N 061° 55' 34.8"W
St. Mary's River buoy VK33	5621.14	45° 04' 34.8"N 061° 56' 00.6"W
St. Mary's River buoy VK44	5621.17	45° 05' 52.2"N 061° 57' 42.0"W
St. Mary's River buoy VK45	5621.18	45° 06' 10.8"N 061° 57' 52.2"W
St. Mary's River buoy VK46	5621.19	45° 06' 17.4"N 061° 57' 49.2"W
St. Mary's River buoy VK47	5621.2	45° 06' 16.2"N 061° 57' 56.4"W
St. Mary's River buoy VK50	5621.21	45° 06' 21.0"N 061° 57' 57.6"W
St. Mary's River buoy VK58	5621.26	45° 07' 01.2"N 061° 58' 07.2"W
St. Mary's River buoy VK62	5621.28	45° 07' 22.8"N 061° 58' 32.4"W
St. Mary's River buoy VK63	5621.29	45° 07' 27.0"N 061° 58' 42.6"W
St. Mary's River buoy VK64	5621.3	45° 07' 28.8"N 061° 58' 39.0"W

(F2024-028 to 042)

**\*708/24 Guyon Island to / à Flint Island – Unlit Buoy Repositioned**

Reference chart: 4375

The following unlit buoy has been repositioned to the following coordinates:

Aid Name	LL #	Position
Port Morien buoy JA8	5768.53	46° 07' 45.6"N 059° 52' 04.1"W

(G2024-198)

**\*709/24 Port Hood and/et Mabou Harbour – Unlit Buoys Repositioned**

Reference chart: 4448

The following unlit buoys have been repositioned to the following coordinates:

Aid Name	LL #	Position
Mabou buoy VJ12	5874.54	46° 05' 06.1"N 061° 27' 55.6"W
Mabou buoy VJ14	5874.551	46° 05' 00.8"N 061° 27' 41.3"W
Mabou buoy VJ16	5874.57	46° 04' 55.0"N 061° 27' 27.1"W
Mabou buoy VJ17	5874.58	46° 04' 54.8"N 061° 27' 17.0"W
Mabou buoy VJ18	5874.59	46° 04' 49.9"N 061° 27' 13.2"W
Mabou buoy VJ25	5874.64	46° 04' 21.7"N 061° 24' 17.0"W
Mabou buoy VJ26	5874.65	46° 04' 20.8"N 061° 24' 17.3"W

(G2024-174, 189 to 193, 195)

**\*710/24 Chéticamp to / à Cape Mabou – Unlit Buoy Repositioned**

Reference chart: 4463

The following unlit buoy has been repositioned to the following coordinates:

Aid Name	LL #	Position
Inverness Inner buoy VL4	5874.33	46° 13' 38.8"N 061° 19' 16.1"W

(G2024-161)

**\*711/24 Cape Tormentine à / to West Point – Unlit Buoys Repositioned**

Reference chart: 4905

The following unlit buoys have been repositioned to the following coordinates:

Aid Name	LL #	Position
Abram-Village buoy DH12	6023.14	46° 27' 00.4"N 064° 07' 10.3"W
Abram-Village buoy DH11	6023.16	46° 26' 58.4"N 064° 07' 08.0"W
Abram-Village buoy DH13	6023.17	46° 26' 55.9"N 064° 07' 04.3"W
Abram-Village buoy DH9/3	6023.45	46° 26' 59.3"N 064° 07' 08.8"W
Abram-Village buoy DH10/2	6023.515	46° 27' 01.9"N 064° 07' 10.5"W
Abram-Village buoy DH17	6023.55	46° 26' 32.0"N 064° 06' 53.5"W
Abram-Village buoy DH20	6023.57	46° 26' 30.2"N 064° 06' 51.6"W
Abram-Village buoy DH14	6023.6	46° 26' 50.6"N 064° 06' 58.8"W

(G2024-175, 176, 181, 183, 184, 186 to 188)

**\*712/24 Entrée à / Entrance to Miramichi River – Unlit Buoys Permanently Changed**

Reference chart: 4911

The following unlit buoys have been permanently changed:

Aid Name	LL #	Position	Changes
Portage Gully buoy MJ4	6232.2	47° 13' 14.2"N 065° 02' 39.7"W	Unlit buoy has been repositioned.
Portage Gully buoy MH8	6235.95	47° 10' 56.5"N 065° 02' 08.0"W	Unlit buoy has been repositioned. The shape of the buoy has been changed from spar to conical.
Portage Gully buoy MH12	6236.1	47° 11' 56.9"N 065° 02' 16.2"W	Unlit buoy has been repositioned.
Portage Gully buoy MH15	6236.2	47° 12' 27.7"N 065° 02' 46.3"W	Unlit buoy has been repositioned.
Portage Gully buoy MH4	6236.55	47° 09' 58.7"N 065° 01' 03.9"W	Unlit buoy has been repositioned.

(G2024-159, 166, 168 to 171)

**\*713/24 Caraquet Harbour, Baie de Shippegan and / et Miscou Harbou – Unlit Buoys Permanently Established**

Reference chart: 4913

The following unlit buoys have been permanently established at the following coordinates:

Aid Name	LL #	Position
Miscou Harbour buoy TK29	6272.191	47° 52' 54.3"N 064° 31' 12.7"W
Miscou Harbour buoy TK30	6272.192	47° 52' 55.3"N 064° 31' 12.8"W
Miscou Harbour buoy TK31	6272.193	47° 52' 53.1"N 064° 31' 20.6"W
Miscou Harbour buoy TK32	6272.194	47° 52' 54.1"N 064° 31' 20.8"W
Miscou Harbour buoy TK33	6272.195	47° 52' 51.8"N 064° 31' 28.4"W
Miscou Harbour buoy TK34	6272.196	47° 52' 53.0"N 064° 31' 28.8"W
Miscou Harbour buoy TK37	6272.198	47° 52' 53.5"N 064° 32' 03.1"W
Miscou Harbour buoy TK38	6272.199	47° 52' 59.2"N 064° 32' 00.2"W
Miscou Harbour buoy TK39	6272.211	47° 52' 58.7"N 064° 32' 34.9"W
Miscou Harbour buoy TK40	6272.212	47° 53' 07.0"N 064° 32' 31.3"W

(G2024-244 to 247, 249 to 254)

**\*714/24 Northumberland Strait Central Portion - Ports/Harbours – Unlit Buoy Repositioned**

Reference chart: 4940

The following unlit buoy has been repositioned to the following coordinates:

Aid Name	LL #	Position
Merigomish Harbour buoy SA12	5900.16	45° 38' 35.2"N 062° 28' 11.7"W

(G2024-196)

**\*715/24 Winnipeg River/Rivière Winnipeg and Approaches/et les Approches – Unlit Buoy Repositioned**

Reference chart: 6243

The following unlit buoy has been repositioned to the following coordinates:

Aid Name	LL #	Position
Winnipeg River buoy T11	9839	50° 37' 26.2"N 096° 18' 45.8"W

(P2024-054)

**\*716/24 Kettle Island to/à Martin Point – Unlit Buoys Repositioned**

Reference chart: 6259

The following unlit buoys have been repositioned to the following coordinates:

Aid Name	LL #	Position
Playgreen Lake buoy P27	9698	53° 51' 29.8"N 097° 59' 36.5"W
Playgreen Lake buoy P69	9723	53° 45' 40.1"N 097° 54' 17.3"W

(P2024-052, 053)

**\*717/24 Covehead Bay – Unlit Buoys Permanently Established**

Reference chart: N/A

The following unlit buoys have been permanently established at the following coordinates:

Aid Name	LL #	Position
Covehead Bay Entrance buoy JJ16	5050.96	46° 25' 11.9"N 063° 07' 48.1"W
Covehead Bay Entrance buoy JJ18	5050.98	46° 25' 04.1"N 063° 08' 50.0"W
Covehead Bay Entrance buoy JJ19	5050.99	46° 25' 05.4"N 063° 08' 50.4"W

(G2024-163 to 165)

**\*718/24 Tidnish – Unlit Buoy Repositioned**

Reference chart: N/A

The following unlit buoy has been repositioned to the following coordinates:

Aid Name	LL #	Position
Tidnish buoy XA9	6084.915	45° 59' 56.9"N 064° 02' 52.1"W

(G2024-200)

## Section 1A: Temporary and Preliminary Notices

### Reminder – Comment Period for Active Preliminary Notices

This is a reminder that the comment period is still open for the following active Preliminary notices:

Notice #	Reference Chart #	Aids Affected (LL #)	Intent of Notice
<b>Newfoundland and Labrador Coast</b>			
<a href="#">512(P)/24</a>	4679	208	Fog Signal to be Discontinued

Please refer to the [Notices to Mariners - Monthly Summary of Temporary and Preliminary Notices](#) publication for details.

### Newfoundland and Labrador Coast

#### Temporary Notices

#### \*719(T)/24 Burin Peninsula to / à Saint-Pierre – Waterway information

Reference chart: 4625

The Canadian Armed Forces has confirmed the presence of high explosive containing aerial bombs of varying sizes at the sites of the shipwrecks of the USS Truxtun, near Lawn Point, and the USS Pollux, near Chambers Cove.

Positions: 46° 52' 42.1"N 055° 26' 26.2"W and 46° 52' 49.2"N 055° 29' 24.7"W

At this time the Canadian Armed Forces have determined that the health and safety risks associated with removal of these munitions are too great and in place detonation is not advisable.

Mariners are advised to keep a safe distance from these shipwrecks.

Caution.

(NW-N-0665-24)

#### Preliminary Notices

##### Atlantic Region

##### Comment Submission

Comments on proposed changes in preliminary (P) notices are solicited from mariners and other interested parties within three months of the initial publication date. Following this date, the notices will be cancelled. Any objections raised must state the facts on which they are based and should include supporting information on safety, commerce and public benefit.

Comments should be directed to the following:

Superintendent,  
Aids to Navigation & Waterways  
Canadian Coast Guard, Atlantic Region  
P.O. Box 1000  
50 Discovery Drive  
Dartmouth, NS B2Y 3Z8  
Telephone: (506) 636-4708  
Email: [DFO.CCGATLaidstoNavDiscont-AidesalanavSupprATLGCC.MPO@dfo-mpo.gc.ca](mailto:DFO.CCGATLaidstoNavDiscont-AidesalanavSupprATLGCC.MPO@dfo-mpo.gc.ca)

**\*720(P)/24 Hamilton Sound: Eastern Portion / Partie-est – Notice of Proposed Changes**

Reference chart: 4530

The Canadian Coast Guard proposes to permanently change the following aids to navigation:

Aid Name	LL #	Position	Proposed Changes
<b>Fixed Aids</b>			
Burnt Point	378	49° 36' 03.6"N 054° 09' 29.3"W	Discontinue the fog signal.
Cann Island (Seldom Cove)	380	49° 35' 03.9"N 054° 11' 14.6"W	Discontinue aid to navigation.

Initial publication date: Friday, July 26, 2024

[Comment submission deadline](#): Thursday, October 24, 2024

(N2024-140)

**Atlantic Coast**

**Temporary Notices**

**\*721(T)/24 Cap Éternité à/to Saint Fulgence – Obstruction: Submerged Object**

Reference chart: 1202

Anchor with 4 shackles of chain reported in the vicinity of:

48° 20' 00.0"N 070° 51' 48.6"W

(NW-Q-1097-22)

**\*722(T)/24 Baie des Sept-Îles – Obstruction: Submerged Object**

Reference chart: 1220

Anchor and chain lost in position at the following coordinates:

50° 11' 04.8"N 066° 28' 01.8"W

Caution.

(NW-Q-0592-19)

**\*723(T)/24 Mouillages et Installations Portuaires/Anchages and Harbour Installations - Haute Côte-Nord – Obstruction: Submerged Object**

Reference chart: 1226

Anchor with 11 shackles of chain reported in the vicinity of:

49° 14' 42.0"N 068° 06' 00.0"W

Anchoring is prohibited in the zone until further notice. For more information, contact Mr. Martin Roy at 418-297-6164.

(NW-Q-0032-22)

**\*724(T)/24 Cap aux Oies à/to Sault-au-Cochon – Obstruction: Lost Anchor**

Reference chart: 1233

Anchor reported lost at the following coordinates:

47° 25' 09.5"N 070° 24' 31.8"W

Anchor is marked with a buoy.

(NW-Q-1190-22)

**\*725(T)/24 Port de Montréal – Obstruction: Lost Anchors**

Reference chart: 1310

Anchors and chains reported lost at the following coordinates:

45° 33' 27.0"N 073° 30' 50.4"W

45° 38' 07.8"N 073° 28' 58.2"W

(NW-Q-0808-22, 1646-23)

**\*726(T)/24 Sorel-Tracy à/to Otterburn-Park – Obstruction: Lost Anchors**

Reference chart: 1350

Anchors and chains reported lost at the following coordinates:

46° 00' 14.0"N 073° 10' 17.0"W

46° 03' 08.5"N 073° 08' 35.2"W

(NW-Q-1024-22, 1701-23)

---

**Preliminary Notices**

No notices applicable for this edition.

---

**Inland Waters**

---

**Temporary Notices**

**\*727(T)/24 Cobourg to/à Oshawa – Marine Works – Dredging Operations**

Reference chart: 2058

Dredging operations and shoreline repairs taking place at St. Mary's Cement dock at the following coordinates: 43° 52' 22.1"N 078° 41' 01.7"W. Tug and two barges on site.

(NW-C-1797-24)



**\*728(T)/24 Toronto Harbour – Marine Works - Overhead Construction**

Reference: Notice 415(T)/23 is cancelled (Chart 2085).

Position : 43° 37' 44.3"N 079° 25' 04.3"W

Overhead construction taking place in the North Marina of Ontario Place between West Island and East Island. Waterway closed to marine traffic.

**Preliminary Notices**

**Central Region**

Comment Submission

Comments on proposed changes in preliminary (P) notices are solicited from mariners and other interested parties within three months of the initial publication date. Following this date, the notices will be cancelled. Any objections raised must state the facts on which they are based and should include supporting information on safety, commerce and public benefit.

Comments should be directed to the following:

Superintendent, Mathieu Roy  
Aids to Navigation & Waterways  
Canadian Coast Guard, Central Region  
1550 D'Estimauville Avenue  
Québec, QC G1J 5E9  
Telephone: (418) 648-7450

Emails:

St. Lawrence Region: [DFO.AtoNStLawrence-StLaurentAalaN.MPO@dfo-mpo.gc.ca](mailto:DFO.AtoNStLawrence-StLaurentAalaN.MPO@dfo-mpo.gc.ca)

Great Lakes Region:

[DFO.CCGCentralAtoNGreatLakes-GrandsLacsAalaNCentreGCC.MPO@dfo-mpo.gc.ca](mailto:DFO.CCGCentralAtoNGreatLakes-GrandsLacsAalaNCentreGCC.MPO@dfo-mpo.gc.ca)

**\*729(P)/24 Port Severn to/à Christian Island – Rear Range to be Discontinued**

Reference chart: 2241

The Canadian Coast Guard proposes to permanently discontinue the following aid to navigation:

Aid Name	LL #	Position
Brébeuf rear range	5000.1	44° 52' 36.8"N 079° 52' 29.1"W

Initial publication date: Friday, July 26, 2024

[Comment submission deadline](#): Thursday, October 24, 2024

(D2024-082)

## Section 2: Chart Corrections

- 2016 - Charity Shoal to/à Gull Bar including / y compris Long Point - New Chart - 04-MAR-2022 - World Geodetic System 1984**  
19-JUL-2024
- Add wreck WK with known depth of 19.9 metres 43°57'56.0"N 076°48'05.9"W  
(See Chart 1, K26)  
This notice affects Electronic Navigational Chart: CA373496  
*DFO(6605318-01)*
- 2086 - Toronto to/à Hamilton - Sheet/Feuille 1 - New Edition - 24-MAY-2019 - World Geodetic System 1984**  
12-JUL-2024 LNM/D. 28-OCT-2022
- Add rock awash at chart datum, Rep (2024) 43°19'38.7"N 079°47'13.1"W  
(See Chart 1, K12)  
This notice affects Electronic Navigational Chart: CA473519  
*DFO(6605311-01)*
- 2120 - Niagara River to/à Long Point - New Edition - 15-APR-2005 - NAD 1983**  
12-JUL-2024 LNM/D. 08-OCT-2021
- Add obstruction, depth unknown, Rep (2024) 42°48'53.9"N 079°39'00.0"W  
(See Chart 1, K43.2)  
This notice affects Electronic Navigational Chart: CA373093  
*DFO(6605280-01)*
- 2300 - Lake Superior/Lac Supérieur - New Edition - 25-FEB-2022 - NAD 1983**  
12-JUL-2024
- Add green port hand spar buoy, marked XA7 46°55'26.8"N 084°48'20.0"W  
(See Chart 1, Qg)  
*DFO(6605312-01)*
- 2312 - Nipigon Bay and Approches/et les approches - New Edition - 31-MAY-2002 - NAD 1983**  
12-JUL-2024 LNM/D. 04-AUG-2023
- Add depth of 6 fathoms 48°52'24.7"N 088°11'58.3"W  
(See Chart 1, I10)  
This notice affects Electronic Navigational Chart: CA373291  
*DFO(6605313-01)*
- 2314 - North Harbour Facilities / Installations Portuaires - New Edition - 02-NOV-2018 - World Geodetic System 1984**  
26-JUL-2024 LNM/D. 11-AUG-2023
- Amend red starboard hand spar buoy, marked H4 to read red starboard hand 48°26'52.8"N 089°10'47.2"W  
spar buoy, marked H2  
(See Chart 1, Qb)  
This notice affects Electronic Navigational Chart: CA573253  
*(D2024066) DFO(6605286-01)*
- 2314 - Port of Thunder Bay - New Edition - 02-NOV-2018 - World Geodetic System 1984**  
26-JUL-2024 LNM/D. 11-AUG-2023
- Add black, yellow and black East Cardinal spar buoy, marked TB 48°22'18.1"N 089°10'55.0"W  
(See Chart 1, Q130.3)  
This notice affects Electronic Navigational Chart: CA573253  
*(D2024052) DFO(6605281-01)*

Amend	red starboard hand spar buoy, marked D2/2 to read red starboard hand spar buoy, marked D2 (See Chart 1, Qb) This notice affects Electronic Navigational Chart: CA573253	48°23'55.1"N 089°11'45.1"W  (D2024062) DFO(6605282-01)
Amend	green port hand lighted spar buoy D1, marked FI G to read green port hand lighted spar buoy D3, marked FI G (See Chart 1, Qb) This notice affects Electronic Navigational Chart: CA573253	48°23'55.1"N 089°11'45.1"W  (D2024063) LL(1143.3) DFO(6605283-01)
Amend	red starboard hand spar buoy, marked D2 to read red starboard hand spar buoy, marked D4 (See Chart 1, Qb) This notice affects Electronic Navigational Chart: CA573253	48°23'50.0"N 089°12'00.6"W  (D2024064) DFO(6605284-01)
Amend	green port hand lighted spar buoy D7, marked Q G to read green port hand lighted spar buoy D5, marked Q G (See Chart 1, Qb) This notice affects Electronic Navigational Chart: CA573253	48°23'35.5"N 089°12'39.2"W  (D2024065) LL(1144.1) DFO(6605285-01)
Amend	red starboard hand spar buoy, marked H4 to read red starboard hand spar buoy, marked H2 (See Chart 1, Qb) This notice affects Electronic Navigational Chart: CA573253	48°26'52.8"N 089°10'47.2"W  (D2024066) DFO(6605286-01)
Amend	red starboard hand spar buoy, marked H6 to read red starboard hand spar buoy, marked H4 (See Chart 1, Qb) This notice affects Electronic Navigational Chart: CA573253	48°27'03.2"N 089°10'43.9"W  (D2024067) DFO(6605287-01)
Amend	green port hand lighted spar buoy E3, marked Q G to read green port hand lighted spar buoy E1, marked Q G (See Chart 1, Qb) This notice affects Electronic Navigational Chart: CA573253	48°25'56.0"N 089°12'14.3"W  (D2024068) LL(1153) DFO(6605288-01)
Amend	red starboard hand spar buoy, marked E4 to read red starboard hand spar buoy, marked E2 (See Chart 1, Qb) This notice affects Electronic Navigational Chart: CA573253	48°26'06.9"N 089°12'00.3"W  (D2024069) DFO(6605289-01)
Amend	green port hand spar buoy, marked E7 to read green port hand spar buoy, marked E3 (See Chart 1, Qb) This notice affects Electronic Navigational Chart: CA573253	48°25'42.7"N 089°12'26.1"W  (D2024070) DFO(6605290-01)
Amend	red starboard hand spar buoy, marked E8 to read red starboard hand spar buoy, marked E4 (See Chart 1, Qb) This notice affects Electronic Navigational Chart: CA573253	48°26'00.7"N 089°12'38.0"W  (D2024071) DFO(6605291-01)

Amend	green port hand spar buoy, marked E9 to read green port hand spar buoy, marked E5 (See Chart 1, Qb) This notice affects Electronic Navigational Chart: CA573253	48°25'28.5"N 089°12'41.0"W  (D2024072) DFO(6605292-01)
Amend	red starboard hand spar buoy, marked E10 to read red starboard hand spar buoy, marked E6 (See Chart 1, Qb) This notice affects Electronic Navigational Chart: CA573253	48°25'37.8"N 089°12'52.8"W  (D2024073) DFO(6605293-01)
Amend	green port hand spar buoy, marked E13 to read green port hand spar buoy, marked E7 (See Chart 1, Qb) This notice affects Electronic Navigational Chart: CA573253	48°25'13.3"N 089°12'43.7"W  (D2024074) DFO(6605294-01)
Amend	green port hand spar buoy, marked E15 to read green port hand spar buoy, marked E9 (See Chart 1, Qb) This notice affects Electronic Navigational Chart: CA573253	48°24'47.3"N 089°12'32.7"W  (D2024075) DFO(6605295-01)
Amend	green port hand spar buoy, marked E17 to read green port hand spar buoy, marked E11 (See Chart 1, Qb) This notice affects Electronic Navigational Chart: CA573253	48°24'32.3"N 089°12'42.1"W  (D2024076) DFO(6605296-01)
Amend	green port hand spar buoy, marked E23 to read green port hand spar buoy, marked E13 (See Chart 1, Qb) This notice affects Electronic Navigational Chart: CA573253	48°24'16.2"N 089°12'44.9"W  (D2024077) DFO(6605297-01)
Amend	green port hand spar buoy, marked AA3 to read green port hand spar buoy, marked A7 (See Chart 1, Qb) This notice affects Electronic Navigational Chart: CA573253	48°20'42.8"N 089°11'16.3"W  (D2024078) DFO(6605298-01)
Delete	red starboard hand spar buoy, marked P4 (See Chart 1, Qb) This notice affects Electronic Navigational Chart: CA573253	48°22'44.2"N 089°10'55.3"W  (D2024053) DFO(6605299-01)
Delete	light, marked Iso R 8s (See Chart 1, P1, P16) This notice affects Electronic Navigational Chart: CA573253	48°21'47.9"N 089°15'31.7"W  (D2024079) LL(1146) DFO(6605309-01)
Delete	light, marked Iso G 8s (See Chart 1, P1, P16) This notice affects Electronic Navigational Chart: CA573253	48°21'43.3"N 089°15'35.4"W  (D2024080) LL(1147) DFO(6605310-01)

Amend FI R to read Iso R against red starboard hand lighted spar buoy, marked A8 48°21'05.2"N 089°12'01.2"W  
(See Chart 1, Qb)  
This notice affects Electronic Navigational Chart: CA573253  
(D2024081) LL(1137) DFO(6605315-01)

Delete 'Channel Buoyed' 48°22'32.7"N 089°12'28.7"W  
DFO(6605316-01)

**4011 - Approaches to / Approches à Bay of Fundy / Baie de Fundy - New Edition - 03-JAN-2003 - NAD 1983**

19-JUL-2024 LNM/D. 31-MAY-2024

Delete light FIG 44°26'08.5"N 066°10'19.9"W  
(See Chart 1, P1)  
(F2024021) LL(215) DFO(6311183-01)

**4012 - Yarmouth to / à Halifax - New Edition - 14-FEB-2003 - NAD 1983**

19-JUL-2024 LNM/D. 21-JUN-2024

Delete light FIG 44°26'08.5"N 066°10'19.9"W  
(See Chart 1, P1)  
(F2024021) LL(215) DFO(6311183-01)

**4016 - Saint-Pierre to / à St. John's - New Edition - 06-JUN-2003 - NAD 1983**

26-JUL-2024 LNM/D. 11-AUG-2023

Amend light FI to read FI 5s against light 47°33'28.6"N 054°52'33.3"W  
(See Chart 1, P16)  
(N2024088) LL(113) DFO(6311259-01)

Amend Oc11s94ft11M to read FI 5s94ft10M against light 47°53'16.8"N 053°03'25.4"W  
(See Chart 1, P16)  
(N2024095) LL(475) DFO(6311289-01)

**4017 - Cape Race to / à Cape Freels - New Edition - 07-MAR-2003 - NAD 1983**

26-JUL-2024 LNM/D. 19-JAN-2024

Delete fog signal Fog Sig 48°21'01.3"N 053°12'23.0"W  
(See Chart 1, R1)  
(N2024092) DFO(6311285-01)

Amend Oc11s94ft11M to read FI 5s94ft10M against light 47°53'09.5"N 053°03'20.7"W  
(See Chart 1, P16)  
(N2024095) LL(475) DFO(6311289-01)

**4024 - Baie des Chaleurs/Chaleur Bay aux/to Îles de la Madeleine - New Edition - 06-MAR-2015 - NAD 1983**

19-JUL-2024 LNM/D. 29-SEP-2023

Replace FI 2.5s to read LFI 6s against light 47°50'15.0"N 065°00'13.0"W  
(See Chart 1, P10.5 and P12)  
(G2023156) LL(1324) DFO(6411168-01)

**4116 - Approaches to / Approches à Saint John - New Edition - 31-AUG-2007 - NAD 1983**

05-JUL-2024 LNM/D. 14-JUN-2024

Affix patch 45°16'00.0"N 066°04'00.0"W  
Download Patch - [https://www.notmar.gc.ca/chsftp/patches/4116\\_6311075\\_2\\_202406040909.pdf](https://www.notmar.gc.ca/chsftp/patches/4116_6311075_2_202406040909.pdf)  
This notice affects Electronic Navigational Chart: CA376011  
DFO(6311075-02)

**4117 - Saint John Harbour and Approaches / et les approches - New Edition - 29-MAY-2009 - NAD 1983**

05-JUL-2024

LNM/D. 17-NOV-2023

Affix	patch Download Patch - <a href="https://www.notmar.gc.ca/chsftp/patches/4117_6311075_1_202406040908.pdf">https://www.notmar.gc.ca/chsftp/patches/4117_6311075_1_202406040908.pdf</a> This notice affects Electronic Navigational Chart: CA576005	45°16'00.0"N 066°04'00.0"W  <i>DFO(6311075-01)</i>
Delete	dredged channel with maintained depth of 8,4m (See Chart 1, I21)  This notice affects Electronic Navigational Chart: CA376011, CA576005	joining 45°14'12.2"N 066°02'40.5"W 45°14'14.3"N 066°02'34.1"W 45°15'31.3"N 066°03'28.0"W 45°15'29.0"N 066°03'34.2"W and 45°14'12.2"N 066°02'40.5"W  <i>DFO(6311075-03)</i>
Delete	depth of 9.5 metres (See Chart 1, I10)	45°15'22.4"N 066°03'30.6"W  <i>DFO(6311075-04)</i>
Add	dredged channel with maintained depth of 9,5m (See Chart 1, I21)  This notice affects Electronic Navigational Chart: CA376011, CA576005	joining 45°14'11.8"N 066°02'41.2"W 45°14'14.3"N 066°02'34.2"W 45°15'31.2"N 066°03'27.9"W 45°15'28.8"N 066°03'34.9"W and 45°14'11.8"N 066°02'41.2"W  <i>DFO(6311075-05)</i>
Reposition	green port hand lighted pillar bell buoy Q G, marked J1 (See Chart 1, Qc) This notice affects Electronic Navigational Chart: CA576005	from 45°14'12.1"N 066°02'40.5"W to 45°14'12.0"N 066°02'41.3"W  <i>LL(101) DFO(6311075-06)</i>
Reposition	green port hand lighted pillar buoy FI G, marked J3 (See Chart 1, Qc) This notice affects Electronic Navigational Chart: CA576005	from 45°14'24.1"N 066°02'48.9"W to 45°14'19.9"N 066°02'46.9"W  <i>LL(101.3) DFO(6311075-07)</i>
Delete	green port hand can buoy, marked J5 (See Chart 1, Qc) This notice affects Electronic Navigational Chart: CA576005	45°14'28.4"N 066°02'51.8"W  <i>DFO(6311075-08)</i>
Add	green port hand lighted can buoy FI G, marked J5 (See Chart 1, Qc) This notice affects Electronic Navigational Chart: CA576005	45°14'28.0"N 066°02'52.6"W  <i>LL(101.35) DFO(6311075-09)</i>
Reposition	green port hand lighted pillar buoy FI G, marked J7 (See Chart 1, Qc) This notice affects Electronic Navigational Chart: CA576005	from 45°14'34.7"N 066°02'56.3"W to 45°14'35.8"N 066°02'58.0"W  <i>LL(101.4) DFO(6311075-10)</i>
Reposition	green port hand lighted pillar buoy FI G, marked J9 (See Chart 1, Qc) This notice affects Electronic Navigational Chart: CA576005	from 45°14'44.1"N 066°03'02.9"W to 45°14'44.0"N 066°03'03.7"W  <i>LL(102) DFO(6311075-11)</i>

Reposition	red starboard hand conical buoy, marked J16 (See Chart 1, Qb)	from 45°15'27.8"N 066°03'18.9"W to 45°15'28.0"N 066°03'20.0"W
	This notice affects Electronic Navigational Chart: CA576005	<i>DFO(6311075-12)</i>
Add	depth of 9.4 metres (See Chart 1, I10) This notice affects Electronic Navigational Chart: CA376011, CA576005	45°15'00.8"N 066°03'13.4"W  <i>DFO(6311075-15)</i>
Add	depth of 9.4 metres (See Chart 1, I10) This notice affects Electronic Navigational Chart: CA376011, CA576005	45°14'45.2"N 066°02'59.8"W  <i>DFO(6311075-18)</i>
Add	depth of 9.4 metres (See Chart 1, I10) This notice affects Electronic Navigational Chart: CA576005	45°14'42.5"N 066°02'55.0"W  <i>DFO(6311075-19)</i>
Add	depth of 9.4 metres (See Chart 1, I10) This notice affects Electronic Navigational Chart: CA376011, CA576005	45°14'38.1"N 066°02'54.3"W  <i>DFO(6311075-20)</i>
Add	depth of 9.4 metres (See Chart 1, I10) This notice affects Electronic Navigational Chart: CA576005	45°14'34.8"N 066°02'55.7"W  <i>DFO(6311075-21)</i>
 <b>4118 - St. Marys Bay - New Edition - 13-NOV-1998 - NAD 1983</b>		
	19-JUL-2024	LNМ/D. 10-MAY-2024
Delete	light Fl G (See Chart 1, P1)	44°26'08.1"N 066°10'29.9"W  <i>(F2024021) LL(215) DFO(6311183-01)</i>
Delete	private light (Priv) Iso (See Chart 1, P1)	44°23'20.3"N 066°03'49.1"W  <i>(F2024025) LL(234) DFO(6311193-01)</i>
 <b>4211 - Cape Lahave to / à Liverpool Bay - New Edition - 20-JUN-2003 - NAD 1983</b>		
	19-JUL-2024	LNМ/D. 20-JAN-2023
Amend	LFl to read Fl R against light (See Chart 1, P16)	44°02'40.4"N 064°41'30.3"W  <i>(F2024022) LL(409) DFO(6311185-01)</i>
 <b>4240 - Liverpool Harbour to / à Lockeport Harbour - New Chart - 06-OCT-1989 - NAD 1983</b>		
	19-JUL-2024	LNМ/D. 12-APR-2024
Amend	LFl to read Fl R against light (See Chart 1, P16)	44°02'40.4"N 064°41'30.3"W  <i>(F2024022) LL(409) DFO(6311185-01)</i>

**4266 - International Piers - New Edition - 28-FEB-2014 - NAD 1983**

19-JUL-2024

LNMD. 28-JUN-2024

Reposition	front range/leading light Oc G 8m (See Chart 1, P20.2) This notice affects Electronic Navigational Chart: CA576095	from 46°09'26.8"N 060°12'12.4"W to 46°09'26.5"N 060°12'13.3"W  (G2024105) LL(784) DFO(6311267-01)
Amend	Oc G 8m to read F G 15m against light (See Chart 1, P16) This notice affects Electronic Navigational Chart: CA576095	46°09'26.5"N 060°12'13.3"W  DFO(6311267-02)
Amend	bearing 342½° to read 340½° (See Chart 1, M1) This notice affects Electronic Navigational Chart: CA576095	46°09'46.4"N 060°12'23.3"W  DFO(6311267-03)
Reposition	rear range/leading light F G 16m (See Chart 1, P20.2) This notice affects Electronic Navigational Chart: CA576095	from 46°09'22.1"N 060°12'10.3"W to 46°09'22.2"N 060°12'11.1"W  (G2024107) LL(785) DFO(6311268-01)
Amend	F G 16m to read F G 22m against light (See Chart 1, P16) This notice affects Electronic Navigational Chart: CA576095	46°09'22.2"N 060°12'11.1"W  DFO(6311268-02)

**4266 - Sydney Harbour - New Edition - 28-FEB-2014 - NAD 1983**

19-JUL-2024

LNMD. 28-JUN-2024

Amend	S21 to read S23 against green port hand lighted spar buoy FI G, marked S21 (See Chart 1, Qc) This notice affects Electronic Navigational Chart: CA576095	46°07'49.0"N 060°12'11.5"W  (G2024005) LL(788) DFO(6311238-01)
Amend	S23 to read S25 against green port hand spar buoy, marked S23 (See Chart 1, Qc) This notice affects Electronic Navigational Chart: CA576095	46°07'18.5"N 060°12'38.0"W  (G2024006) DFO(6311239-01)
Amend	S24 to read S26 against red starboard hand spar buoy, marked S24 (See Chart 1, Qb) This notice affects Electronic Navigational Chart: CA576095	46°07'21.5"N 060°12'51.5"W  (G2024007) DFO(6311240-01)
Amend	S19 to read S21 against green port hand spar buoy, marked S19 (See Chart 1, Qc) This notice affects Electronic Navigational Chart: CA576095	46°08'10.0"N 060°11'53.0"W  (G2024008) DFO(6311241-01)
Amend	S14 to read S18 against red starboard hand lighted spar buoy FI R, marked S14 (See Chart 1, Qb) This notice affects Electronic Navigational Chart: CA576095	46°09'32.8"N 060°12'53.0"W  (G2024009) LL(785.5) DFO(6311242-01)



Amend	S15 to read S19 against green port hand lighted spar buoy FI G, marked S15 (See Chart 1, Qc) This notice affects Electronic Navigational Chart: CA576095	46°08'53.5"N 060°12'26.5"W  (G2024010) LL(786) DFO(6311243-01)
Reposition	front range/leading light Oc G 8m16M (See Chart 1, P20.2) This notice affects Electronic Navigational Chart: CA576095	from 46°09'26.8"N 060°12'12.4"W to 46°09'26.5"N 060°12'13.3"W  (G2024105) LL(784) DFO(6311267-01)
Amend	Oc G 8m16M to read F G 15m against light (See Chart 1, P16) This notice affects Electronic Navigational Chart: CA576095	46°09'26.5"N 060°12'13.3"W  DFO(6311267-02)
Amend	bearing 342½° to read 340½° (See Chart 1, M1) This notice affects Electronic Navigational Chart: CA576095	46°10'15.2"N 060°12'37.6"W  DFO(6311267-03)
Reposition	rear range/leading light F G 16m15M (See Chart 1, P20.2) This notice affects Electronic Navigational Chart: CA576095	from 46°09'22.1"N 060°12'10.3"W to 46°09'22.2"N 060°12'11.1"W  (G2024107) LL(785) DFO(6311268-01)
Amend	F G 16m15M to read F G 22m16M against light (See Chart 1, P16) This notice affects Electronic Navigational Chart: CA576095	46°09'22.2"N 060°12'11.1"W  DFO(6311268-02)
Reposition	front range/leading light OC G 10s17m17M (See Chart 1, P20.2) This notice affects Electronic Navigational Chart: CA576095	from 46°10'48.4"N 060°15'01.1"W to 46°10'39.7"N 060°15'30.0"W  (G2024108) LL(782) DFO(6311269-01)
Amend	OC G 10s17m17M to read F G 26m against light (See Chart 1, P16) This notice affects Electronic Navigational Chart: CA576095	46°10'39.7"N 060°15'30.0"W  DFO(6311269-02)
Amend	bearing 033½° to read 036½° (See Chart 1, M1) This notice affects Electronic Navigational Chart: CA576095	46°12'12.2"N 060°13'55.3"W  DFO(6311269-03)
Amend	bearing 213½° to read 216½° (See Chart 1, M1) This notice affects Electronic Navigational Chart: CA576095	46°14'25.3"N 060°11'35.6"W  DFO(6311269-04)
Reposition	rear range/leading light F G 37m19M (See Chart 1, P20.2) This notice affects Electronic Navigational Chart: CA576095	from 46°10'27.8"N 060°15'20.6"W to 46°09'11.6"N 060°17'01.5"W  (G2024149) LL(783) DFO(6311270-01)
Amend	F G 37m19M to read F G 63m against light (See Chart 1, P16) This notice affects Electronic Navigational Chart: CA576095	46°09'11.6"N 060°17'01.5"W  DFO(6311270-02)

Add	green port hand lighted spar buoy Q G, marked S13 (See Chart 1, Qc) This notice affects Electronic Navigational Chart: CA576095	46°12'03.3"N 060°13'20.7"W  (G2024111) LL(789.11) DFO(6311271-01)
Add	red starboard hand lighted spar buoy Q R, marked S14 (See Chart 1, Qb) This notice affects Electronic Navigational Chart: CA576095	46°11'36.9"N 060°13'26.2"W  (G2024113) LL(789.12) DFO(6311273-01)
Add	red starboard hand lighted spar buoy Q R, marked S16 (See Chart 1, Qb) This notice affects Electronic Navigational Chart: CA576095	46°10'57.4"N 060°13'05.4"W  (G2024114) LL(789.14) DFO(6311274-01)
Add	green port hand lighted spar buoy Q G, marked S11 (See Chart 1, Qc) This notice affects Electronic Navigational Chart: CA576095	46°12'30.2"N 060°13'15.7"W  (G2024117) LL(789.9) DFO(6311277-01)
Add	red starboard hand lighted spar buoy FI R, marked S6 (See Chart 1, Qb) This notice affects Electronic Navigational Chart: CA576095	46°14'32.4"N 060°11'31.0"W  (G2024118) LL(789.3) DFO(6311278-01)
Add	red starboard hand lighted spar buoy FI R, marked S4 (See Chart 1, Qb) This notice affects Electronic Navigational Chart: CA576095	46°15'26.1"N 060°10'35.3"W  (G2024120) LL(789.2) DFO(6311280-01)
Add	red starboard hand lighted spar buoy FI R, marked S8 (See Chart 1, Qb) This notice affects Electronic Navigational Chart: CA576095	46°13'38.2"N 060°12'27.1"W  (G2024121) LL(789.6) DFO(6311281-01)
Add	black, yellow and black East cardinal lighted spar buoy Q(3) 10s, marked SE (See Chart 1, Q130.3) This notice affects Electronic Navigational Chart: CA576095	46°13'03.6"N 060°13'19.5"W  (G2024154) LL(789.16) DFO(6311283-01)
Add	yellow, black and yellow West cardinal lighted spar buoy Q(9) 15s, marked SW (See Chart 1, Q130.3) This notice affects Electronic Navigational Chart: CA576095	46°14'03.9"N 060°11'33.1"W  (G2024153) LL(789.15) DFO(6311284-01)
Amend	S18 to read S20 against red starboard hand lighted spar buoy FI R, marked S18 (See Chart 1, Qb) This notice affects Electronic Navigational Chart: CA576095	46°08'27.7"N 060°12'13.7"W  (G2024011) LL(787) DFO(6311295-01)
<b>4266 - Sydney Wharves / Quais - New Edition - 28-FEB-2014 - NAD 1983</b>		
19-JUL-2024		LNMD. 28-JUN-2024
Amend	S19 to read S21 against green port hand spar buoy, marked S19 (See Chart 1, Qc) This notice affects Electronic Navigational Chart: CA576095	46°08'10.0"N 060°11'53.0"W  (G2024008) DFO(6311241-01)

Amend S18 to read S20 against red starboard hand lighted spar buoy FI R, 46°08'27.7"N 060°12'13.7"W  
marked S18  
(See Chart 1, Qb)  
This notice affects Electronic Navigational Chart: CA576095  
(G2024011) LL(787) DFO(6311295-01)

**4266 - Sydport - New Edition - 28-FEB-2014 - NAD 1983**

19-JUL-2024

LNMD. 28-JUN-2024

Amend S14 to read S18 against red starboard hand lighted spar buoy FI R, 46°09'32.8"N 060°12'53.0"W  
marked S14  
(See Chart 1, Qb)  
This notice affects Electronic Navigational Chart: CA576095  
(G2024009) LL(785.5) DFO(6311242-01)

**4367 - Flint Island to / à Cape Smokey - New Edition - 03-APR-2003 - NAD 1983**

19-JUL-2024

LNMD. 07-JUL-2023

Reposition front range/leading light Oc G 10s56ft17M from 46°10'50.3"N 060°15'07.0"W  
(See Chart 1, P20.2) to 46°10'39.7"N 060°15'30.0"W  
This notice affects Electronic Navigational Chart: CA576095  
(G2024108) LL(782) DFO(6311269-01)

Amend OC G 10s56ft17M to read F G 26m against light 46°10'39.7"N 060°15'30.0"W  
(See Chart 1, P16)  
This notice affects Electronic Navigational Chart: CA576095  
DFO(6311269-02)

Amend bearing 033 ½° to read 036 ½ 46°13'16.5"N 060°12'54.7"W  
(See Chart 1, M1)  
This notice affects Electronic Navigational Chart: CA576095  
DFO(6311269-03)

Delete leading line and bearing 213 ½° between 46°14'35.3"N 060°11'31.1"W  
(See Chart 1, M1) and 46°19'20.5"N 060°06'56.7"W  
This notice affects Electronic Navigational Chart: CA576095  
DFO(6311269-05)

Delete rear range/leading light F G 122ft19M with leading line 46°10'30.1"N 060°15'26.6"W  
(See Chart 1, P20.2)  
(G2024109) LL(783) DFO(6311270-03)

**4379 - Liverpool Harbour - New Edition - 18-JUL-2003 - NAD 1983**

19-JUL-2024

LNMD. 20-JAN-2023

Amend LFI to read FI R against light 44°02'40.4"N 064°41'30.3"W  
(See Chart 1, P16)  
(F2024022) LL(409) DFO(6311185-01)

**4426 - Dalhousie Harbour - New Edition - 02-AUG-2002 - NAD 1983**

05-JUL-2024

LNMD. 01-SEP-2023

Delete depth of 3 feet 48°04'19.9"N 066°22'46.4"W  
(See Chart 1, I10)  
DFO(6311186-01)

Add depth of 2 feet 48°04'20.1"N 066°22'46.9"W  
(See Chart 1, I10)  
DFO(6311186-02)

Replace	depth of 12 feet with depth of 4 feet (See Chart 1, I10)	48°04'20.3"N 066°22'48.3"W  <i>DFO(6311186-03)</i>
Delete	limits of dredged area (See Chart 1, I20)	joining 48°04'21.4"N 066°22'56.1"W 48°04'24.5"N 066°22'55.2"W 48°04'26.8"N 066°22'45.1"W 48°04'23.3"N 066°22'19.4"W 48°04'19.8"N 066°22'33.4"W 48°04'21.4"N 066°22'51.8"W 48°04'21.1"N 066°22'53.8"W and 48°04'21.4"N 066°22'56.1"W <i>DFO(6311186-04)</i>
Delete	35ft (2013) (See Chart 1, I22)	48°04'21.9"N 066°22'42.0"W  <i>DFO(6311186-05)</i>
Delete	30ft (2013) (See Chart 1, I22)	48°04'25.0"N 066°22'38.3"W  <i>DFO(6311186-06)</i>
Delete	Voir ATTENTION N° 1 / See CAUTION NO. 1 (See Chart 1, A14)	48°04'23.8"N 066°22'45.8"W  <i>DFO(6311186-07)</i>
Replace	depth of 17 feet with depth of 15 feet (See Chart 1, I10)	48°04'21.1"N 066°22'53.3"W  <i>DFO(6311186-09)</i>
Replace	depth of 22 feet with depth of 20 feet (See Chart 1, I10)	48°04'21.3"N 066°22'54.6"W  <i>DFO(6311186-10)</i>
Replace	depth of 26 feet with depth of 24 feet (See Chart 1, I10)	48°04'21.8"N 066°22'53.3"W  <i>DFO(6311186-11)</i>
Replace	depth of 32 feet with depth of 29 feet (See Chart 1, I10)	48°04'22.6"N 066°22'54.4"W  <i>DFO(6311186-12)</i>
Add	depth of 33 feet (See Chart 1, I10)	48°04'24.8"N 066°22'49.2"W  <i>DFO(6311186-13)</i>
Add	depth of 32 feet (See Chart 1, I10)	48°04'24.8"N 066°22'44.1"W  <i>DFO(6311186-14)</i>
Replace	depth of 33 feet with depth of 29 feet (See Chart 1, I10)	48°04'22.7"N 066°22'45.2"W  <i>DFO(6311186-15)</i>
Add	depth of 21 feet (See Chart 1, I10)	48°04'21.4"N 066°22'46.0"W  <i>DFO(6311186-16)</i>

Notices to Mariners – Monthly Eastern Edition  
Section 2: Chart Corrections

Delete	depth of 26 feet (See Chart 1, I10)	48°04'21.5"N 066°22'44.1"W <i>DFO(6311186-17)</i>
Add	depth of 19 feet (See Chart 1, I10)	48°04'21.1"N 066°22'42.4"W <i>DFO(6311186-18)</i>
Replace	depth of 23 feet with depth of 16 feet (See Chart 1, I10)	48°04'20.7"N 066°22'40.0"W <i>DFO(6311186-19)</i>
Replace	depth of 26 feet with depth of 21 feet (See Chart 1, I10)	48°04'21.7"N 066°22'39.7"W <i>DFO(6311186-20)</i>
Replace	depth of 28 feet with depth of 26 feet (See Chart 1, I10)	48°04'23.2"N 066°22'39.9"W <i>DFO(6311186-21)</i>
Add	depth of 31 feet (See Chart 1, I10)	48°04'26.6"N 066°22'40.1"W <i>DFO(6311186-22)</i>
Delete	depth of 32 feet (See Chart 1, I10)	48°04'25.7"N 066°22'36.0"W <i>DFO(6311186-23)</i>
Add	depth of 31 feet (See Chart 1, I10)	48°04'26.3"N 066°22'33.9"W <i>DFO(6311186-24)</i>
Add	depth of 29 feet (See Chart 1, I10)	48°04'25.1"N 066°22'34.5"W <i>DFO(6311186-25)</i>
Replace	depth of 25 feet with depth of 23 feet (See Chart 1, I10)	48°04'22.9"N 066°22'35.8"W <i>DFO(6311186-26)</i>
Replace	depth of 22 feet with depth of 18 feet (See Chart 1, I10)	48°04'21.6"N 066°22'36.3"W <i>DFO(6311186-27)</i>
Replace	depth of 15 feet with depth of 11 feet (See Chart 1, I10)	48°04'20.6"N 066°22'35.2"W <i>DFO(6311186-28)</i>
Replace	depth of 13 feet with depth of 10 feet (See Chart 1, I10)	48°04'21.0"N 066°22'33.5"W <i>DFO(6311186-29)</i>
Replace	depth of 19 feet with depth of 16 feet (See Chart 1, I10)	48°04'21.9"N 066°22'33.0"W <i>DFO(6311186-30)</i>
Add	depth of 6 feet (See Chart 1, I10)	48°04'19.9"N 066°22'33.3"W <i>DFO(6311186-31)</i>

Replace	depth of 10 feet with depth of 7 feet (See Chart 1, I10)	48°04'20.4"N 066°22'32.1"W <i>DFO(6311186-32)</i>
Add	depth of 6 feet (See Chart 1, I10)	48°04'20.1"N 066°22'30.0"W <i>DFO(6311186-33)</i>
Replace	depth of 15 feet with depth of 13 feet (See Chart 1, I10)	48°04'21.8"N 066°22'27.9"W <i>DFO(6311186-34)</i>
Replace	depth of 25 feet with depth of 22 feet (See Chart 1, I10)	48°04'23.2"N 066°22'29.3"W <i>DFO(6311186-35)</i>
Replace	depth of 33 feet with depth of 30 feet (See Chart 1, I10)	48°04'24.3"N 066°22'26.6"W <i>DFO(6311186-36)</i>

**4426 - Rivière Ristigouche / Restigouche River - New Edition - 02-AUG-2002 - NAD 1983**

05-JUL-2024

LNMD. 01-SEP-2023

Delete	limits of dredged area (See Chart 1, I20)	joining 48°04'21.3"N 066°22'55.9"W 48°04'24.5"N 066°22'55.2"W 48°04'26.8"N 066°22'45.9"W 48°04'23.2"N 066°22'18.9"W 48°04'19.3"N 066°22'34.1"W and 48°04'21.3"N 066°22'55.9"W <i>DFO(6311186-04)</i>
Add	depth of 1 fathom and 4 feet (See Chart 1, I10)	48°04'21.0"N 066°22'33.5"W <i>DFO(6311186-37)</i>
Add	depth of 4 fathoms 2 feet (See Chart 1, I10)	48°04'23.2"N 066°22'39.9"W <i>DFO(6311186-38)</i>

**4583 - St. Julien Island to / à Hooping Harbour including / y compris Canada Bay - New Edition - 31-MAY-2002 -**

**Unknown**

26-JUL-2024

LNMD. 27-MAR-2020

Add	black, yellow and black East cardinal lighted pillar buoy Q(3) 10s, marked KEN (See Chart 1, Q130.3)	50°42'59.0"N 056°06'13.0"W <i>(N2024011) LL(249.9) DFO(6311188-01)</i>
-----	--	---

**4619 - Continuation A - New Edition - 20-NOV-1998 - NAD 1983**

19-JUL-2024

LNMD. 23-DEC-2022

Add	marine farm limits (See Chart 1, K48.1)	joining 47°25'15.4"N 054°35'07.6"W 47°25'02.6"N 054°34'47.2"W 47°25'12.5"N 054°34'11.7"W 47°25'48.1"N 054°33'27.5"W 47°26'08.7"N 054°33'32.9"W 47°26'13.4"N 054°33'47.0"W and 47°26'13.0"N 054°33'52.2"W <i>DFO(6311325-01)</i>
-----	--	--

**4624 - Long Island to / à St. Lawrence Harbours - New Edition - 07-JAN-2000 - NAD 1983**

19-JUL-2024

LNMD. 05-MAY-2023

Add marine farm (See Chart 1, K48.2) 47°16'43.8"N 054°47'46.6"W  
DFO(6311237-01)

**4625 - Burin Peninsula to / à Saint-Pierre - New Edition - 24-JAN-2003 - NAD 1983**

05-JUL-2024

LNMD. 15-SEP-2023

Delete red starboard hand lighted spar buoy FIR, marked PG2 (See Chart 1, Qb) 46°51'07.7"N 055°50'11.7"W  
(N2024063) LL(78.5) DFO(6311207-01)

**4639 - Garia Bay and / et Le Moine Bay - New Edition - 10-MAY-2002 - NAD 1983**

26-JUL-2024

LNMD. 18-FEB-2022

Add rock which covers and uncovers with drying height unknown (See Chart 1, K11) 47°36'06.7"N 058°41'45.9"W  
DFO(6311184-01)

Add rock which covers and uncovers with drying height unknown (See Chart 1, K11) 47°36'08.2"N 058°41'48.5"W  
DFO(6311184-02)

Add rock which covers and uncovers with drying height unknown (See Chart 1, K11) 47°36'03.2"N 058°41'53.9"W  
DFO(6311184-03)

Amend FI R to read FI Y 5s against light (See Chart 1, P16) 47°36'53.0"N 058°41'58.5"W  
(N2024097) LL(150.1) DFO(6311290-01)

Amend FI G to read FI G 5s against light (See Chart 1, P16) 47°37'28.1"N 058°40'55.0"W  
(N2024098) LL(149.2) DFO(6311291-01)

Amend FI R to read FI R 5s against light (See Chart 1, P16) 47°36'35.0"N 058°41'37.2"W  
(N2024099) LL(150) DFO(6311292-01)

**4639 - Rose Blanche - New Edition - 10-MAY-2002 - NAD 1983**

26-JUL-2024

LNMD. 18-FEB-2022

Add rock which covers and uncovers with drying height unknown (See Chart 1, K11) 47°36'06.7"N 058°41'45.9"W  
DFO(6311184-01)

Add rock which covers and uncovers with drying height unknown (See Chart 1, K11) 47°36'08.2"N 058°41'48.5"W  
DFO(6311184-02)

Add rock which covers and uncovers with drying height unknown (See Chart 1, K11) 47°36'03.2"N 058°41'53.9"W  
DFO(6311184-03)

Add legend 'Uncharted dangerous underwater rocks exist in this area. Cette zone comporte des rochers sous-marins dangereux et non cartographiés.' (See Chart 1, A14) 47°36'01.1"N 058°41'39.7"W  
DFO(6311184-04)

Amend	FI R to read FI Y 5s against light (See Chart 1, P16)	47°36'53.0"N 058°41'58.5"W  (N2024097) LL(150.1) DFO(6311290-01)
Amend	FI R to read FI R 5s against light (See Chart 1, P16)	47°36'35.0"N 058°41'37.2"W  (N2024099) LL(150) DFO(6311292-01)
<b>4642 - Great St. Lawrence Harbour - New Edition - 08-NOV-2002 - NAD 1983</b>		
05-JUL-2024		LNMD. 15-SEP-2023
Delete	light FI R (See Chart 1, P1)	46°55'39.8"N 055°21'46.0"W  (N2024056) LL(73.3) DFO(6311182-01)
<b>4642 - Lamaline Harbour - New Edition - 08-NOV-2002 - NAD 1983</b>		
05-JUL-2024		LNMD. 15-SEP-2023
Delete	green port hand lighted spar buoy FI G, marked PG3 (See Chart 1, Qc)	46°51'24.3"N 055°50'00.3"W  (N2024061) LL(78.35) DFO(6311206-01)
Delete	red starboard hand lighted spar buoy FI R, marked PG2 (See Chart 1, Qb)	46°51'03.8"N 055°50'13.9"W  (N2024063) LL(78.5) DFO(6311207-01)
<b>4831 - Fortune Bay: Northern Portion / Partie Nord - New Chart - 26-DEC-1986 - NAD 1983</b>		
26-JUL-2024		LNMD. 28-APR-2023
Amend	light FI 4s62m to read FI 5s62m against light (See Chart 1, P16)	47°33'28.6"N 054°52'33.3"W  (N2024088) LL(113) DFO(6311259-01)
<b>4847 - Conception Bay - New Edition - 03-AUG-2001 - NAD 1983</b>		
26-JUL-2024		LNMD. 24-MAY-2024
Delete	black, yellow and black East cardinal lighted spar buoy Q (3) 10s, marked CCV (See Chart 1, Q130.3)	47°33'02.0"N 053°00'09.0"W  (N2024036) LL(498.5) DFO(6311164-01)
Delete	black, red and black isolated danger lighted pillar buoy FI, marked CC (See Chart 1, Q130.4)	47°30'01.7"N 053°11'29.3"W  (N2024040) LL(488.5) DFO(6311172-01)
Add	red starboard hand lighted pillar buoy FI R, marked CH2 (See Chart 1, Qb)	47°30'00.0"N 053°11'21.6"W  LL(488.5) DFO(6311172-02)
Amend	FI 41m5M to read FI 5s41m7M against light (See Chart 1, P16)	47°42'42.4"N 053°08'30.5"W  (N2024073) LL(479) DFO(6311219-01)
Amend	Oc 11s29m11M to read FI 5s29m10M against light (See Chart 1, P16)	47°53'11.3"N 053°03'23.8"W  (N2024095) LL(475) DFO(6311289-01)



**4849 - Harbour Grace and / et Carbonear - New Chart - 30-DEC-1988 - NAD 1983**

26-JUL-2024

LNMD. 01-MAR-2024

Amend FI4s42m5M to read FI 5s41m7M against light  
(See Chart 1, P16) 47°42'42.4"N 053°08'30.8"W  
(N2024073) LL(479) DFO(6311219-01)

**4850 - Cape St Francis to / à Baccalieu Island and / et Heart's Content - New Chart - 11-MAY-1990 - NAD 1983**

26-JUL-2024

LNMD. 06-OCT-2023

Amend FI R to read FI R 5s against light  
(See Chart 1, P16) 47°54'53.8"N 053°21'34.0"W  
(N2024072) LL(468.7) DFO(6311218-01)

Amend FI3s38m to read FI 5s38m against light  
(See Chart 1, P16) 48°05'21.9"N 053°01'33.8"W  
This notice affects Electronic Navigational Chart: CA576147  
(N2024074) LL(471) DFO(6311220-01)

Amend FI 3s 38m 5M to read FI 5s38m5M against light  
(See Chart 1, P16) 48°05'40.9"N 053°32'42.0"W  
(N2024075) LL(465) DFO(6311221-01)

Amend Oc 11s29m11M to read FI 5s29m10M against light  
(See Chart 1, P16) 47°53'10.9"N 053°03'23.3"W  
(N2024095) LL(475) DFO(6311289-01)

**4850 - Old Perlican - New Chart - 11-MAY-1990 - NAD 1983**

26-JUL-2024

LNMD. 06-OCT-2023

Amend FI3s38m to read FI 5s38m against light  
(See Chart 1, P16) 48°05'22.4"N 053°01'34.2"W  
This notice affects Electronic Navigational Chart: CA576147  
(N2024074) LL(471) DFO(6311220-01)

**4851 - Trinity Bay: Southern Portion / Partie Sud - New Edition - 30-SEP-2016 - World Geodetic System 1984**

26-JUL-2024

LNMD. 24-NOV-2023

Delete red starboard hand lighted spar buoy FI R, marked TS2  
(See Chart 1, Qb) 47°36'27.8"N 053°42'35.2"W  
(N2024066) LL(470.91) DFO(6311210-01)

Delete legend Channel buoyed/Chenal balisé 47°36'09.6"N 053°42'01.0"W  
DFO(6311210-02)

Amend FI 4s38m5M to read FI 5s38m5M against light  
(See Chart 1, P16) 48°05'41.1"N 053°32'43.1"W  
(N2024075) LL(465) DFO(6311221-01)

Amend FI R to read FI R 5s against light  
(See Chart 1, P16) 47°46'19.9"N 053°28'00.5"W  
(N2024094) LL(467.51) DFO(6311288-01)

Add light FI G 5s  
(See Chart 1, P1) 47°45'45.2"N 053°28'50.5"W  
(N2024085) LL(467.45) DFO(6311299-01)

Add light FI G 5s  
(See Chart 1, P1) 47°46'39.4"N 053°28'17.3"W  
(N2024086) LL(467.506) DFO(6311300-01)

**4852 - Clarenville - New Chart - 02-DEC-1994 - NAD 1983**

26-JUL-2024

LNMD. 15-SEP-2023

Delete light FI R 48°10'11.1"N 053°57'29.9"W  
(See Chart 1, P1)  
This notice affects Electronic Navigational Chart: CA576052  
(N2024045) LL(466.3) DFO(6311176-01)

Delete light FI R 48°10'10.3"N 053°57'30.9"W  
(See Chart 1, P1)  
This notice affects Electronic Navigational Chart: CA576052  
(N2024047) LL(466.4) DFO(6311177-01)

**4852 - Smith Sound and / et Random Sound - New Chart - 02-DEC-1994 - NAD 1983**

26-JUL-2024

LNMD. 15-SEP-2023

Delete light FI R 48°10'11.1"N 053°57'29.9"W  
(See Chart 1, P1)  
This notice affects Electronic Navigational Chart: CA576052  
(N2024045) LL(466.3) DFO(6311176-01)

Delete light FI R 48°10'10.3"N 053°57'30.9"W  
(See Chart 1, P1)  
This notice affects Electronic Navigational Chart: CA576052  
(N2024047) LL(466.4) DFO(6311177-01)

Amend FI 4s38m5M to read FI 5s38m5M against light 48°05'41.2"N 053°32'43.0"W  
(See Chart 1, P16)  
(N2024075) LL(465) DFO(6311221-01)

**4853 - Trinity Bay: Northern Portion / Partie Nord - New Edition - 30-JUL-1999 - NAD 1983**

26-JUL-2024

LNMD. 29-SEP-2023

Delete fog signal Fog Sig 60 s 48°21'00.5"N 053°12'27.6"W  
(See Chart 1, R20)  
(N2024092) DFO(6311285-01)

**4885 - Port Harmon and Approaches / et les approches - New Edition - 08-MAR-2002 - NAD 1983**

26-JUL-2024

LNMD. 26-AUG-2022

Delete green port hand lighted spar buoy FI G, marked XG3 48°25'53.9"N 058°29'17.3"W  
(See Chart 1, Qc)  
(N2024113) LL(178.14) DFO(6311317-01)

Add green port hand lighted spar buoy Q G, marked XG3 48°25'57.4"N 058°29'17.6"W  
(See Chart 1, Qc)  
(N2024113) LL(178.14) DFO(6311317-02)

Reposition red starboard hand spar lighted buoy FI R, marked XG4 from 48°25'54.0"N 058°29'20.9"W  
(See Chart 1, Qb) to 48°26'00.5"N 058°29'20.0"W  
(N2024114) LL(178.15) DFO(6311318-01)

**6453 - Mackenzie River / Fleuve Mackenzie (Kilometre / Kilomètre 58-90) - New Edition - 25-JAN-2008 - NAD 1983**

26-JUL-2024

LNMD. 23-JUL-2010

Delete ferry route 61°15'33.9"N 117°31'41.3"W  
(See Chart 1, M50) 61°15'53.7"N 117°31'49.8"W  
and 61°16'07.4"N 117°41'34.7"W  
DFO(6605317-01)

Delete	depth of 5.2 metres (See Chart 1, I10)	61°15'51.9"N 117°31'33.4"W <i>DFO(6605317-02)</i>
Delete	depth of 2.7 metres (See Chart 1, I10)	61°15'55.1"N 117°31'29.4"W <i>DFO(6605317-03)</i>
Add	fixed bridge with a vertical clearance of 22 metres (See Chart 1, D20.1, D22)	61°16'09.6"N 117°31'26.3"W <i>DFO(6605317-04)</i>
Add	tower with an elevation of 54 metres (See Chart 1, E20)	61°15'49.6"N 117°31'33.2"W <i>DFO(6605317-05)</i>
Add	air obstruction light marked, RLts (See Chart 1, P61.1)	61°15'49.6"N 117°31'33.2"W <i>DFO(6605317-06)</i>
Add	tower with an elevation of 54 metres (See Chart 1, E20)	61°15'55.7"N 117°31'31.1"W <i>DFO(6605317-07)</i>
Add	air obstruction light marked, RLts (See Chart 1, P61.1)	61°15'55.7"N 117°31'31.1"W <i>DFO(6605317-08)</i>
Add	light, marked FI G (See Chart 1, P1)	61°15'54.5"N 117°31'31.5"W <i>DFO(6605317-09)</i>
Add	light, marked FI R (See Chart 1, P1)	61°15'50.8"N 117°31'32.8"W <i>DFO(6605317-10)</i>

**7565 - Clyde Inlet - New Edition - 03-JUN-2022 - World Geodetic System 1984**  
19-JUL-2024

LNm/D. 11-NOV-2022

Delete	depth of 75 metres (See Chart 1, I10) This notice affects Electronic Navigational Chart: CA373512	70°23'10.7"N 068°23'50.4"W <i>DFO(6605320-01)</i>
Add	obstruction, depth unknown Rep (2024) (See Chart 1, K40) This notice affects Electronic Navigational Chart: CA273511, CA373512	70°23'10.9"N 068°23'50.4"W <i>DFO(6605320-02)</i>

**8014 - Grand Bank / Grand Banc: Northeast Portion / Partie nord-est - New Edition - 25-JUL-2003 - NAD 1983**  
26-JUL-2024

LNm/D. 14-APR-2023

Amend	FI 4s126ft to read FI 5s126ft against light (See Chart 1, P16) This notice affects Electronic Navigational Chart: CA576147	48°05'22.9"N 053°01'31.5"W <i>(N2024074) LL(471) DFO(6311220-01)</i>
Amend	Oc11s94ft11M to read FI 5s94ft10M against light (See Chart 1, P16)	47°53'08.5"N 053°03'30.5"W <i>(N2024095) LL(475) DFO(6311289-01)</i>

## Section 3: Radio Aids to Marine Navigation Corrections

### \*730/24 Radio Aids to Marine Navigation 2024 (Atlantic, St. Lawrence, Great Lakes, Lake Winnipeg, Arctic and Pacific)

#### Page 2-64

DELETE AS FOLLOWS:

#### 2.6.1 Atlantic Coast, Gulf and St. Lawrence River (East of Montréal)

Table 2-31 - Radar Beacons Located in Newfoundland

Name and Location	Identifier	Remarks
Cape Harrigan Light 55°50'34.0"N 060°18'56.8"W	— • — (K)	Navigation season only.
Channel Head Lightstation 47°33'57"N 059°07'24.6"W	— • — • (C)	Open year round.
...	...	...
Hens and Chickens 56°30'39.5"N 060°38'37.5"W	• — — (W)	Open year round.
...	...	...

#### Page 2-72

DELETE AS FOLLOWS:

#### 2.6.4 Arctic Coast and Archipelago

Table 2-39 - Radar Beacons Located in Yukon

Name and Location	Identifier	Remarks
Calton Point 69°30'08"N 139°06'40"W <del>(NAD27)</del>	— — • (G)	Navigation season only.
Collinson Head 69°34'30"N 138°51'41"W <del>(NAD27)</del>	— • (N)	Navigation season only.
Kay Point 69°17'25"N 138°22'52"W <del>(NAD27)</del>	— • — (K)	Navigation season only.
Shingle Point 69°00'29"N 137°34'22"W	— • — — (Y)	Navigation season only.

**Pages 2-72 and 2-73**

**DELETE AS FOLLOWS:**

**2.6.4 Arctic Coast and Archipelago**

**Table 2-41 - Radar Beacons Located in Northwest Territories**

Name and Location	Identifier	Remarks
Atkinson Point 69°56'46.7"N 131°26'59.3"W	— • — — (Y)	Navigation season only.
Baillie Islands 70°37'38.7"N 128°15'24.8"W	— • — (K)	Navigation season only.
Cape Dalhousie 70°16'05"N 129°42'45"W (NAD27)	— — • • (Z)	Navigation season only.
Hardisty Island 61°43'52.6"N 114°35'00.2"W	— — • (G)	Navigation season only.
...	...	...
Relief Islet 70°08'45"N 130°49'40"W (NAD27)	— — • (G)	Navigation season only.
Tuktoyaktuk Island 69°27'21.2"N 132°59'58.8"W	— • — • (C)	Navigation season only.
Warren Point 69°45'00"N 132°21'30"W	— • — • (C)	Navigation season only.

**Page 2-73 and 2-74**

**AMEND AS FOLLOWS:**

**2.6.4 Arctic Coast and Archipelago**

**Table 2-42 - Radar Beacons Located in Nunavut**

Name and Location	Identifier	Remarks
Beacon Island 58°54'07.9"N 066°20'30.3"W	— — • (G)	Navigation season only.
Broomfield Island 55°40'25.08"N 079°14'17.338"W (NAD2783)	— • (N)	Navigation season only.

Notices to Mariners – Monthly Eastern Edition  
Section 3: Radio Aids to Marine Navigation Corrections

Name and Location	Identifier	Remarks
Cache Point 68°39'26.2"N 113°25'11.7"W	--• (G)	Navigation season only.
Cape Bexley 69°00'47"N 115°55'24.1"W	-•-- (Y)	Navigation season only.
Coats Island 62°10'25.7"N 083°07'42.2"W <del>(NAD27)</del>	-•-• (C)	Navigation season only.
Delta Island 68°35'15.3"N 100°01'51.9"W	--• (G)	Navigation season only.
Kitdliat Island 59°58'34.5"N 069°37'30.6"W	-•- (K)	Navigation season only.
Mansel Island 62°24'52.2"N 079°36'18.3"W <del>(NAD27)</del>	-•- (K)	Navigation season only.
McClintock Point 69°18'34.2"N 099°53'48.9"W	-•-• (C)	Navigation season only.
Nipper Island 59°00'26.5"N 068°53'18.0"W	--• (G)	Navigation season only.
Nordenskiöld Islands 68°21'01.5"N 100°47'22.1"W	-•- (K)	Navigation season only.
Nottingham Island 63°05'35.5"N 077°56'54.6" <del>(NAD27)</del>	-• (N)	Navigation season only.
...	...	...

## Section 4: Canadian Sailing Directions Corrections

---

The following **Canadian Sailing Directions** volumes have recently been updated on the [Canadian Hydrographic Service website](#).

No.	Title
<b>Atlantic Coast</b>	
<b>ATL 108</b>	Gulf of St. Lawrence (Southwest Portion)
<b>Central Canada</b>	
<b>CEN 307</b>	North Channel of Lake Huron
<b>Pacific Coast</b>	
<b>PAC 202</b>	Discovery Passage to Queen Charlotte Strait and West Coast of Vancouver Island
<b>PAC 205</b>	Inner Passage - Queen Charlotte Sound to Chatham Sound

Each volume includes a section entitled “Record of Changes” which lists all updates that are incorporated during the current calendar year.





Notices to Mariners – Monthly Eastern Edition  
Section 5: List of Lights, Buoys and Fog Signals Corrections

No.	Name	Position ----- Latitude N. Longitude W.	Light Characteristics	Focal Height in m. above water	Nomi- nal Range	Description ----- Height in meters above ground	Remarks ----- Fog Signals
252 253 H0719	Bad Rock Light	Chimney Channel. 50 46 58.7 056 09 35.9	Fl G 5s	4.6	6	Square skeleton tower, green and white rectangular daymark. 4.3	Flash 1 s; eclipse 4 s. Seasonal.  Chart:4538 Edn 07/24 (N24-131)
253 252 H0720	Roddickton-Bide Arm Breakwater Light	Entrance to harbour. 50 51 46.4 056 07 54.5	Fl G 4s	3.7	4	Mast. 2.1	Seasonal.  Chart:4538 Edn 07/24 (N24-134)
254 H0712	Duckbill Point	Entrance to N. arm. 50 35 48.2 056 12 08.2	Fl W 5s	21.6	5	Rectangular skeleton tower, red and white rectangular daymark. 4.3	Flash 1 s; eclipse 4 s. Seasonal.  Chart:4583 Edn 07/24 (N24-132)
255 H0710	Fourché Harbour Light	On Granite Point. 50 30 44.5 056 16 32.5	LFl W 6s	24.7	5	Rectangular skeleton tower, red and white rectangular daymark. 4.3	Flash 2 s; eclipse 4 s. Seasonal.  Chart:4583 Edn 07/24 (N24-124)
256 H0708	Great Harbour Deep Light (Orange Bay)	N. side of entrance. 50 22 38.9 056 24 40.8	Fl W 6s	18.6	5	Square skeleton tower, red and white rectangular daymark. 4.3	Flash 1 s; eclipse 5 s. Seasonal.  Chart:4505 Edn 07/24 (N24-123)
257 H0698	Partridge Point Light	N. end of point. 50 09 10.8 056 08 34.4	Fl W 5s	45.7	7	Rectangular skeleton tower, red and white rectangular daymark. 4.3	Flash 1 s; eclipse 4 s. Year round.  Chart:4821 Edn 07/24 (N24-125)
257.2 H0697.7	Fleur de Lys Entrance Light	Fleur de Lys Harbour. 50 06 52.9 056 07 12.9	Fl W 5s	4.0	5	Cylindrical Mast. 2.4	Flash 1 s; eclipse 4 s. Year round.  Chart:4821 Edn 07/24 (N24-122)
257.5 H0693	St. Barbe Islands Light (Herse Island)	SE. entrance to W. cove. 50 11 57.1 055 44 40.7	Fl W 5s	21.3	3	Rectangular skeleton tower, red and white rectangular daymark on 3 sides. 4.7	Flash 1 s; eclipse 4 s. Seasonal.  Chart:4821 Edn 07/24 (N24-121)
264	Pacquet Harbour Entrance Light	49 58 41.1 055 51 20.6	Fl W 5s	30.2	7	Rectangular skeleton tower, red and white rectangular daymark. 4.3	Flash 1 s; eclipse 4 s. Seasonal.  Chart:4821 Edn 07/24 (N24-120)
<b>NEWFOUNDLAND AND LABRADOR COAST (LL 269.99 – 325.23)</b>							
280.015	Locks Rock West Cardinal light buoy NKK	53 07 01.6 055 46 33.8	Q(9) W 15s	.....	.....	Yellow, black and yellow, marked "NKK".	Operates 24 h. Seasonal.  Chart:5033 Edn 07/24 (N24-139)
280.4	Punchbowl Channel light buoy NL5	53 15 09.7 055 45 06.8	Fl G 4s	.....	.....	Green spar, marked "NL5".	Seasonal.  Chart:5080 Edn 07/24 (N24-135)

Notices to Mariners – Monthly Eastern Edition  
Section 5: List of Lights, Buoys and Fog Signals Corrections

No.	Name	Position ----- Latitude N. Longitude W.	Light Characteristics	Focal Height in m. above water	Nomi- nal Range	Description ----- Height in meters above ground	Remarks ----- Fog Signals
323.6 <b>H0062.15</b>	The Horses Light	56 03 41.7 060 44 18.2	Fl W 3s	16.9	5	Square skeleton tower, red and white rectangular daymark.  4.7	Flash 0.5 s; eclipse 2.5 s. Seasonal.  <b>Chart:5048 Edn 07/24</b>
<b>NOTRE DAME BAY (LL 326 – 395)</b>							
332.7 <b>H0674.2</b>	Pilley's Island Ferry Wharf <b>Light</b>	49 33 41.9 055 44 18.5	Fl R 4s	4.0	<b>3</b>	<b>Cylindrical</b> Mast, yellow and black daymark. 2.4	<b>Privately maintained.</b> Year round.  <b>Chart:4593 Edn 07/24</b>
332.9 <b>H0676</b>	Long Island Ferry Wharf <b>Light</b>	49 34 03.0 055 44 10.8	Fl R 4s	4.0	2	<b>Cylindrical</b> Mast. 2.6	Year round.  <b>Chart:4592 Edn 07/24</b>
374.5 <b>H0625</b>	Farewell Harbour Ferry Wharf <b>Light</b>	49 33 <b>24.2</b> 054 28 <b>31.2</b>	Fl R 4s	3.1	4	<b>Cylindrical</b> Mast. 2.6	Year round.  <b>Chart:4862 Edn 07/24</b>
<b>TRINITY BAY (LL 450.1 – 471.51)</b>							
<b>463.51</b>	<b>Pinchgut Island Light</b>	<b>48 22 58.4</b> <b>053 17 45.1</b>	<b>Fl G 5s</b>	<b>.....</b>	<b>4</b>	<b>Mast.</b>	<b>Flash 1 s; eclipse 4 s.</b> <b>Operates 24 h.</b> <b>Seasonal.</b>  <b>Chart:4853 Edn 07/24 (N24-136)</b>
<b>CONCEPTION BAY (LL 471.7 – 498.2)</b>							
478.5	Harbour Grace Channel <b>Fairway</b> light buoy CG	47 44 06.0 053 07 42.0	Mo(A) W 6s	.....	.....	Red and white vertical stripes, marked "CG".	Seasonal.  <b>Chart:4849 Edn 07/24</b>
484.3	Bay Roberts Inner Channel light buoy CB5	47 35 <b>32.7</b> 053 15 <b>00.3</b>	Fl G 4s	.....	.....	Green spar, marked "CB5".	Year round.  <b>Chart:4847 Edn 07/24</b>
491.5 <b>H0474.4</b>	Holyrood Generating Plant <b>Light</b>	47 26 <b>37.5</b> 053 06 <b>27.0</b>	F R .....	9.6	.....	Mast.	<b>Floodlit.</b> <b>Private aid.</b> <b>Operates 24 h.</b> Year round.  <b>Chart:4848 Edn 07/24</b>
491.6 <b>H0474.42</b>	Holyrood Generating Plant Wharf <b>Light</b>	47 26 <b>35.4</b> 053 06 <b>28.0</b>	F R .....	<b>.....</b>	.....	Mast.	<b>Floodlit.</b> <b>Private aid.</b> <b>Operates 24 h.</b> Year round.  <b>Chart:4848 Edn 07/24</b>

Notices to Mariners – Monthly Eastern Edition  
Section 5: List of Lights, Buoys and Fog Signals Corrections

No.	Name	Position ----- Latitude N. Longitude W.	Light Characteristics	Focal Height in m. above water	Nomi- nal Range	Description ----- Height in meters above ground	Remarks ----- Fog Signals
-----	------	--	--------------------------	--	-----------------------	--	---------------------------------

ATLANTIC COAST

**CAPE BRETON ISLAND, N.S. (LL 704.85 – 882.5)**

732 H3386	River Bourgeois	On point, E. side of entrance. 45 37 32.8 060 56 51.1	Iso R 4s	7.1	.....	White square tower with red top. 7.7	Privately maintained. Operates at night only. Seasonal.  Chart:4308 Edn 07/24 (G24-130)
752.7	Gabarus light buoy JX10	45 50 34.8 060 08 14.2	Fl R 4s	.....	.....	Red, marked "JX10".	Year round.  Chart:4375 Edn 07/24 (G24-202)
772 H0752	Glance Bay range	On S. side of entrance to Glace Cove. 46 11 47.7 059 56 56.5	F R .....	8.4	11	Triangular skeleton tower, white daymark with red vertical stripe. 5.5	Visible in line of range. Operates 24 h. Year round.
773 H0752.1		208°17' 101.7 m from front.	F R .....	13.0	11	Triangular skeleton tower, white daymark, red vertical stripe. 9.5	Visible in line of range. Operates 24 h. Year round.  Chart:4170 Edn 07/24 (G24-194)
789.15	Sydney Harbour West Cardinal light buoy SW	46 14 03.9 060 11 33.1	Q(9) W 15s	.....	.....	Yellow, black and yellow spar, marked "SW".	Operates 24 h. Year round.  Chart:4266 Edn 07/24 (G24-124, 153)
789.16	Sydney Harbour East Cardinal light buoy SE	46 13 03.6 060 13 19.5	Q(3) W 10s	.....	.....	Black, yellow and black spar, marked "SE".	Operates 24 h. Year round.  Chart:4266 Edn 07/24 (G24-123, 154)
789.8	Sydney Harbour light buoy S10	46 13 02.9 060 13 07.2	Fl R 4s	.....	.....	Red spar, marked "S10".	Operates 24 h. Year round.  Chart:4266 Edn 07/24 (G24-133, 143)
847.3	Ingonish Harbour light buoy KM6	46 37 59.9 060 23 20.7	Fl R 4s	.....	.....	Red spar, marked "KM6".	Seasonal.  Chart:N/A Edn 07/24 (G24-201)
857.2	Dingwall Harbour North light buoy KA6	46 54 14.1 060 27 11.5	Fl R 4s	.....	.....	Red, marked "KA6".	Seasonal.  Chart:4365 Edn 07/24 (G24-205)

**NORTHUMBERLAND STRAIT – EAST (LL 883.2 – 940.3)**

905.3	Pictou Landing light buoy SJ15	45 40 38.5 062 41 04.7	Q G 1s	.....	.....	Green spar, marked "SJ15".	Seasonal.  Chart:4938 Edn 07/24 (G24-185)
-------	-----------------------------------	---------------------------	--------	-------	-------	-------------------------------	--

**PRINCE EDWARD ISLAND (LL 942 – 1084.7)**

980.5	Pinette Harbour light buoy NV4	46 02 42.2 062 57 15.5	Q R 1s	.....	.....	Red spar, marked "NV4".	Seasonal.  Chart:4466 Edn 07/24 (G24-131)
-------	-----------------------------------	---------------------------	--------	-------	-------	-------------------------	--

Notices to Mariners – Monthly Eastern Edition  
Section 5: List of Lights, Buoys and Fog Signals Corrections

No.	Name	Position ----- Latitude N. Longitude W.	Light Characteristics	Focal Height in m. above water	Nomi- nal Range	Description ----- Height in meters above ground	Remarks ----- Fog Signals
1023.2	Abram-Village light buoy DH6	46 27 45.8 064 06 53.5	Fl R 4s	.....	.....	Red spar, marked "DH6".	Seasonal.  Chart:N/A Edn 07/24 (G24-180)
1023.3	Abram-Village light buoy DH8	Baie-Egmont Bay South. 46 27 04.6 064 07 12.2	Q R 1s	.....	.....	Red spar, marked "DH8".	Seasonal.  Chart:N/A Edn 07/24 (G24-179)
1023.4	Abram-Village light buoy DH9	46 27 02.4 064 07 11.2	Fl G 4s	.....	.....	Green spar, marked "DH9".	Seasonal.  Chart:N/A Edn 07/24 (G24-178)
1023.5	Abram-Village light buoy DH10	46 27 02.6 064 07 12.0	Fl R 4s	.....	.....	Red spar, marked "DH10".	Seasonal.  Chart:N/A Edn 07/24 (G24-177)
1023.52	Abram-Village light buoy DH16	Baie-Egmont Bay South. 46 26 47.6 064 06 55.1	Q R 1s	.....	.....	Red spar, marked "DH16".	Seasonal.  Chart:N/A Edn 07/24 (G24-182)
1023.7	Abram-Village light buoy DH5	Baie-Egmont Bay South. 46 27 08.0 064 07 22.6	Fl G 4s	.....	.....	Green spar, marked "DH5".	Seasonal.  Chart:N/A Edn 07/24 (G24-162)
<b><u>GASPÉ – CHALEUR BAY (LL 1169.1 – 1426)</u></b>							
1236.1	Portage Gully light buoy MH6.2	47 10 04.9 065 02 00.6	Q R 1s	.....	.....	Red, marked "MH6.2".	Seasonal.  Chart:4911 Edn 07/24 (G24-158)
1236.5	Portage Gully light buoy MH3	47 09 54.6 065 01 02.3	Fl G 4s	.....	.....	Green, marked "MH3".	Seasonal.  Chart:4911 Edn 07/24 (G24-173)
1236.6	Portage Gully light buoy MH2	47 10 18.2 064 59 53.5	Q R 1s	.....	.....	Red spar, marked "MH2".	Seasonal.  Chart:4911 Edn 07/24 (G24-172)
<b><u>GULF OF ST. LAWRENCE (LL 1477.5 – 1617)</u></b>							
1540	Saint-Augustin light buoy CUS2	In Baie Saint- Augustin, at entrance of the river. 51 12 34.4 058 35 39.7	Fl R 4s	.....	.....	Red, marked "CUS2".	Seasonal.  Chart:4969 Edn 07/24 (Q24-175)
1541	Saint-Augustin light buoy CUS3	In Baie Saint- Augustin, at entrance of the river. 51 12 41.1 058 35 51.6	Fl G 4s	.....	.....	Green, marked "CUS3".	Seasonal.  Chart:4969 Edn 07/24 (Q24-176)

Notices to Mariners – Monthly Eastern Edition  
Section 5: List of Lights, Buoys and Fog Signals Corrections

No.	Name	Position ----- Latitude N. Longitude W.	Light Characteristics	Focal Height in m. above water	Nomi- nal Range	Description ----- Height in meters above ground	Remarks ----- Fog Signals
1542	Saint-Augustin light buoy CUS4	In Baie Saint- Augustin, at entrance of the river. 51 12 48.8 058 36 00.2	Fl R 4s	.....	.....	Red, marked "CUS4".	Seasonal.  Chart:4969 Edn 07/24 (Q24-177)
1542.05	Saint-Augustin light buoy CUS5	In Baie Saint- Augustin, at entrance of the river. 51 12 54.9 058 36 11.6	Fl G 4s	.....	.....	Green, marked "CUS5".	Seasonal.  Chart:4969 Edn 07/24 (Q24-178)
1542.051	Saint-Augustin light buoy CUS7	In Baie Saint- Augustin, at entrance of the river. 51 12 48.8 058 36 23.0	Fl G 4s	.....	.....	Green, marked "CUS7".	Seasonal.  Chart:4969 Edn 07/24 (Q24-179)
1542.052	Saint-Augustin light buoy CUS9	In Baie Saint- Augustin, at entrance of the river. 51 12 46.8 058 36 32.9	Fl G 4s	.....	.....	Green, marked "CUS9".	Seasonal.  Chart:4969 Edn 07/24 (Q24-180)
1542.053	Saint-Augustin light buoy CUS10	In Baie Saint- Augustin, at entrance of the river. 51 12 47.1 058 36 54.7	Q R 1s	.....	.....	Red, marked "CUS10".	Seasonal.  Chart:4969 Edn 07/24 (Q24-181)
1542.054	Saint-Augustin light buoy CUS11	In Baie Saint- Augustin, at entrance of the river. 51 12 50.7 058 37 15.9	Q G 1s	.....	.....	Green, marked "CUS11".	Seasonal.  Chart:4969 Edn 07/24 (Q24-182)
1542.055	Saint-Augustin light buoy CUS13	In Baie Saint- Augustin, at entrance of the river. 51 12 43.9 058 37 30.7	Q G 1s	.....	.....	Green, marked "CUS13".	Seasonal.  Chart:4969 Edn 07/24 (Q24-183)
1542.056	Saint-Augustin light buoy CUS14	In Baie Saint- Augustin, at entrance of the river. 51 12 51.4 058 37 49.9	Fl R 4s	.....	.....	Red, marked "CUS14".	Seasonal.  Chart:4969 Edn 07/24 (Q24-184)
1542.057	Saint-Augustin light buoy CUS15	In Baie Saint- Augustin, at entrance of the river. 51 12 58.4 058 38 05.5	Fl G 4s	.....	.....	Green, marked "CUS15".	Seasonal.  Chart:4969 Edn 07/24 (Q24-185)

Notices to Mariners – Monthly Eastern Edition  
Section 5: List of Lights, Buoys and Fog Signals Corrections

No.	Name	Position ----- Latitude N. Longitude W.	Light Characteristics	Focal Height in m. above water	Nomi- nal Range	Description ----- Height in meters above ground	Remarks ----- Fog Signals
1542.058	Saint-Augustin light buoy CUS17	In Baie Saint- Augustin, at entrance of the river. 51 13 06.7 058 38 19.1	Fl G 4s	.....	.....	Green, marked "CUS17".	Seasonal.  Chart:4969 Edn 07/24 (Q24-186)
1542.059	Rivière Saint- Augustin light buoy CUS19						Delete from list.  Chart:4473 Edn 07/24 (Q24-187)
1561.74	Chevery light buoy CS4	Entrance of Rivière Nétagamiou. 50 27 20.2 059 37 45.5	Fl R 4s	.....	.....	Red, marked "CS4".	Seasonal.  Chart:4468 Edn 07/24 (Q24-188)
1561.76	Chevery light buoy CS6	Entrance of Rivière Nétagamiou. 50 27 30.8 059 37 35.9	Fl R 4s	.....	.....	Red, marked "CS6".	Seasonal.  Chart:4468 Edn 07/24 (Q24-189)

**SAGUENAY RIVER (LL 1773 – 1823.4)**

1795 H2140	Pointe Rouge	48 22 28.2 070 32 06.7	Fl W 6s	14.8	5	Square skeleton tower. 8.0	Flash 1 s; eclipse 5 s. Omnidirectional. Operates at night only. Year round.  Chart:1202 Edn 07/24 (Q24-190)
---------------	--------------	---------------------------	---------	------	---	-------------------------------	--