



Fisheries and Oceans
Canada

Pêches et Océans
Canada

Canadian
Coast Guard

Garde côtière
canadienne

Notices to Mariners

Edition No. 09/2024
September 27, 2024



Safety First, Service Always

Monthly Eastern Edition

Canada 

Notices to Mariners – Monthly Eastern Edition
Edition No. 09/2024

Aussi disponible en français :
Avis aux navigateurs – Édition mensuelle de l'Est
Édition n° 09/2024

Published under the Authority of:

Canadian Coast Guard Programs
Aids to Navigation and Waterways
Fisheries and Oceans Canada
Montreal, QC H2Y 2E7

For more information, contact DFO.Notmar-Notmar.MPO@dfo-mpo.gc.ca.

© His Majesty the King in Right of Canada,
as represented by the Minister of Fisheries, Oceans
and the Canadian Coast Guard, 2024.

Cat. No. Fs152-8E-PDF (Electronic PDF, English)
ISSN 2817-0075

Cat. No. Fs152-8F-PDF (Electronic PDF, French)
ISSN 2817-0083

A web version is available here:

[Notices to Mariners – Monthly Editions](#) (English)

[Avis aux navigateurs – Publications mensuelles](#) (French)

Explanatory Notes – Notices to Mariners (NOTMAR)

Geographical positions refer directly to the graduations of the largest scale Canadian Hydrographic Service chart (unless otherwise indicated).

Bearings refer to the true compass and are measured clockwise from 000° (North) clockwise to 359°; those relating to lights are from seaward.

Visibility of lights is that in clear weather.

Depths - The units used for soundings (metres, fathoms or feet) are stated in the title of each chart.

Elevations are normally given above Higher High Water, Large Tide (unless otherwise indicated).

Distances may be calculated as follows:

- 1 nautical mile = 1,852 metres (6,076.1 feet)
- 1 statute mile = 1,609.3 metres (5,280 feet)
- 1 metre = 3.28 feet

Temporary and Preliminary Notices to Mariners – Section 1A of *Notices to Mariners*

These notices are indicated by a (T) or a (P), respectively. Please note that nautical charts are not amended by the Canadian Hydrographic Service for temporary (T) and preliminary (P) notices. It is recommended that mariners chart these corrections in pencil. For the list of charts affected by (T) & (P) notices, please refer to the current [Notices to Mariners - Monthly Summary of Temporary and Preliminary Notices](#) publication.

Suggestions and Corrections Form

This form is specifically for suggestions and corrections to Notices to Mariners publications. It is available [online](#) and also in [fillable PDF format](#) included with the monthly publication ZIP file.

To submit comments and suggestions on possible improvements to the various publications and services: DFO.Notmar-Notmar.MPO@dfo-mpo.gc.ca.

To report chart discrepancies and/or corrections to the *Canadian Sailing Directions* booklets: Fill out the [Marine Information Reporting Form](#) and/or email chsinfo@dfo-mpo.gc.ca.

To report emergencies or navigational hazards: [Contact your nearest MCTS centre](#)

- VHF channel 16 (156.8 MHz)
- MF/HF frequency 2182 kHz/4125 kHz (where available)
- *16 on a cellphone (where available)

NOTMAR Website – Monthly Editions, Chart Corrections and Chart Patches

The NOTMAR website allows users to access the [monthly publications](#), [chart corrections](#), and [chart patches](#).

Users can subscribe for free to the [email notification service](#) to receive notifications when charts of interest are updated, including their patches, as well as when a new Monthly Edition of *Notices to Mariners* is published.

In addition, the monthly publication and related files to download, such as chart patches, can be obtained all together through the download of a single ZIP file.

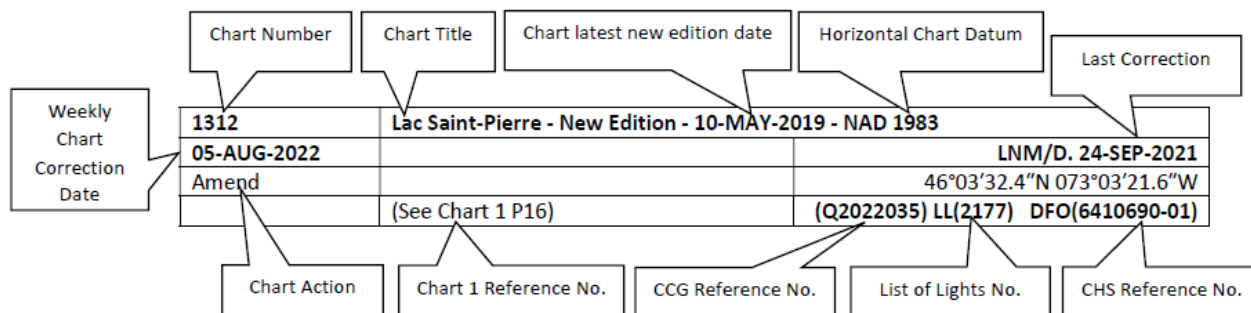
Explanatory Notes – Canadian Hydrographic Service (CHS)

Chart Corrections – Section 2 of *Notices to Mariners*

Corrections to nautical charts will be listed in numerical order by chart number. Each chart correction listed applies only to that particular chart. Related charts, if any, will have their own specific correction listed separately.

Users should also refer to CHS *Chart 1: Symbols, Abbreviations and Terms* for additional information pertaining to the correction of charts.

The illustration below describes the elements that will comprise a typical Section 2 chart correction:



The last correction number is identified with the **LNMD** or **Last Notice to Mariners Number / Date**.

Mariners are advised that only the most critical changes that directly affect safety to navigation are issued in “Section 2 – Chart Corrections.” This limitation is required to ensure that charts remain as clear and easy to read as possible. As a result, mariners may see minor discrepancies of a non-critical nature between information in official publications. For example, a small change in the nominal range or focal height of a light may not result in the production of a chart correction in *Notices to Mariners*, but may result in a correction in the [List of Lights, Buoys and Fog Signals](#) publication.

Note: In the case of a discrepancy between information provided on CHS charts relating to aids to navigation, and the *List of Lights, Buoys and Fog Signals* publication, the latter shall be deemed as containing the most up-to-date information.

Canadian Nautical Charts & Publications

A source list of Canadian nautical charts and publications is published in Notice No. 14 of the *Notices to Mariners Annual Edition 2024*. The source supply and the prices effective at the time of printing are listed. For current chart edition dates, please refer to the [Canadian Hydrographic Service – List of Charts](#).

Explanatory Notes – Marine Communications and Traffic Services (MCTS)

Navigational Warnings / Notices to Shipping

The Canadian Coast Guard (CCG) is implementing a number of changes to the aids to navigation system in Canada.

These changes are advertised as Navigational Warnings, formerly called Notices to Shipping¹, that are broadcast by the CCG, and are then followed up with Notices to Mariners, then charts are updated by hand correction, reprints or new editions.

Mariners are advised that all relevant Navigational Warnings (NAVWARN) should be kept until superseded by Notices to Mariners or through revised charts issued by the Canadian Hydrographic Service (CHS).

NAVWARN are accessible on the applicable regional page on the [CCG Navigational Warnings](#).

CHS is reviewing the impact of these changes with CCG and together are preparing an action plan on the issuing of chart revisions.

For further information, contact your regional NAVWARN Issuing Desk.

<p>Atlantic Region (North) *Port aux Basques MCTS Centre</p> <p>“N” Series NAVWARN</p> <p>Canadian Coast Guard 49 Stadium Rd. P.O. Box 99 Port aux Basques, NL A0M 1C0</p> <p>Telephone: 709-695-2168 or 1-800-563-9089 Facsimile: 709-695-7784</p> <p>Email: NAVWARN.MCTSPortAuxBasques@innav.gc.ca</p>	<p>Central Region *Prescott MCTS Centre</p> <p>“Q” and “C” Series NAVWARN</p> <p>Canadian Coast Guard 401 King Street West P.O. Box 1000 Prescott, ON K0E 1T0</p> <p>Telephone: 613-925-0666 Facsimile: 613-925-4519</p> <p>Email: NAVWARN.MCTSPrescott@innav.gc.ca</p>
<p>Atlantic Region (South) *Sydney MCTS Centre</p> <p>“M” Series NAVWARN</p> <p>Canadian Coast Guard 1190 Westmount Road Sydney, NS B1R 2J6</p> <p>Telephone: 902-564-7751 or 1-800-686-8676 Facsimile: 902-564-7662</p> <p>Email: NAVWARN.MCTSSydney@innav.gc.ca</p>	<p>Arctic Region *Iqaluit MCTS Centre</p> <p><i>Operational from approximately mid-May until late December.</i></p> <p>“A” Series NAVWARN</p> <p>Canadian Coast Guard P.O. Box 189 Iqaluit, NU X0A 0H0</p> <p>Telephone: 867-979-5269 Facsimile: 867-979-4264</p> <p>Email: NAVWARN.MCTSIqaluit@innav.gc.ca</p>

*Service available in English and in French.

¹ The expression “Notice to Shipping” was changed to “Navigational Warning” in January 2019.

Table of Contents

Section 1: General and Safety Information	1
*505/23 Canadian Hydrographic Service – Magnetic Declination Calculations.....	1
*1207/23 Canadian Hydrographic Service – Inappropriate Geographical Names Review Process.....	1
*401/24 Protecting the North Atlantic Right Whale: Speed Restriction Measures in the Gulf of St. Lawrence	1
*406/24 Saguenay–St. Lawrence Marine Park - Beluga Whale Protection: Slowdown Area at the Mouth of the Saguenay Fjord and Area Closure at Baie Sainte-Marguerite	9
*407/24 Saguenay – St. Lawrence Marine Park and Surrounding Waters – Whale Protection	12
*901/24 Canadian Hydrographic Service – Electronic Navigational Charts.....	13
*902/24 Transport Canada – Ship Safety Bulletins #20, #21, #22 and #23/2024.....	17
*903/24 Canadian Coast Guard Publication – <i>The Canadian Aids to Navigation System 2023</i>	17
*904/24 Canadian Hydrographic Service – Raster Navigational Charts Discontinued.....	17
*905/24 Britannia Bay à/to Chats Falls – Unlit Buoys Permanently Established	22
Section 1A: Temporary and Preliminary Notices	23
Reminder – Comment Period for Active Preliminary Notices	23
*906/24 Flemish Pass / Passe Flamande – Offshore Works Completed.....	23
*907(P)/24 Hamilton Sound: Eastern Portion / Partie-est – Rear Range to be Discontinued	24
*908/24 Port de Montréal – Anchor Retrieved.....	24
*909/24 Sable Island Bank / Banc de l'Île de Sable to / au St. Pierre Bank / Banc de Saint-Pierre – ODAS Buoy Relit	24
*910(T)/24 Kingston Harbour and Approaches/et les approches – Construction Operations.....	24
Section 2: Chart Corrections	26
Section 3: Radio Aids to Marine Navigation Corrections	35
*912/24 Radio Aids to Marine Navigation 2024 (Atlantic, St. Lawrence, Great Lakes, Lake Winnipeg, Arctic and Pacific).....	35
Section 4: Canadian Sailing Directions Corrections	40
Section 5: List of Lights, Buoys and Fog Signals Corrections	41

Numerical Index of Canadian Charts Affected

This numerical index lists all nautical charts mentioned in this monthly edition of Notices to Mariners. Only charts appearing in Section 2 of this publication require a chart correction. The appearance of charts in all other sections, particularly those related to the correction of other nautical publications, is included here for reference.

Chart No.	Pages	Chart No.	Pages	Chart No.	Pages
1226	26	4667	45, 46		
1310	24	4668	46		
1314	49	4679	45		
1320	49	4680	46		
1550	22, 26	4823	44, 45		
1551	23	4825	43		
2017	24	4826	43		
2085	26	4830	43		
2241	23	4831	43		
4020	46	4841	41		
4022	45	4844	41		
4024	26	4845	48		
4045	24	4851	48		
4115	27	4852	48		
4237	27	4853	48		
4277	27, 28, 29	4857	47		
4278	29, 30	4858	47		
4375	30	4863	47		
4404	30	4864	47		
4509	46	4886	47		
4523	46	5625	30, 31, 32		
4530	23, 24, 47	7600	32		
4538	46	7620	33		
4583	46	7661	33, 34		
4615	42	8012	23		
4617	41				
4619	41				
4624	42				
4625	42				
4639	43, 44				
4640	44, 45				
4641	45				
4642	42, 43				
4644	30				
4658	45				

Section 1: General and Safety Information

***505/23 Canadian Hydrographic Service – Magnetic Declination Calculations**

(Recurrent publication of notice *505/23, originally published in the *Notices to Mariners – Monthly Eastern Edition 05/2023* publication.)

Mariners are advised that CHS has adopted the harmonized World Magnetic Model (WMM), as found on the NCEI/NOAA website. Old compass rose declination information on CHS navigational products can be updated using this website: <https://www.ngdc.noaa.gov/geomag/calculators/magcalc.shtml#declination>. While the differences in the model declinations are small each year, they can become more significant over a large period of time.

***1207/23 Canadian Hydrographic Service – Inappropriate Geographical Names Review Process**

(Recurrent publication of notice *1207/23, originally published in the *Notices to Mariners – Monthly Eastern Edition 12/2023* publication.)

The records of the Canadian Hydrographic Service could contain geographical names that may be considered inappropriate, offensive and derogatory. Geographical naming authorities are in the process of addressing many offensive place names, the review process is underway. For more information, about inappropriate geographical names, please see the [following announcement](#).

***401/24 Protecting the North Atlantic Right Whale: Speed Restriction Measures in the Gulf of St. Lawrence**

(Recurrent publication of notice *401/24, originally published in the *Notices to Mariners – Monthly Eastern Edition 04/2024* publication.)

Purpose

This bulletin describes the speed restriction zones that vessels must follow in the Gulf of St. Lawrence.

The Government of Canada has established these zones to reduce the risk of vessel colliding with North Atlantic right whales (NARW).

Background

Due to changing migration patterns of North Atlantic right whales and their increased presence in the Gulf of St. Lawrence, the Government of Canada has set seasonal speed restrictions in specific zones. These speed restrictions zones are defined as “static zones”, “dynamic shipping zones”, “seasonal management areas”, a “voluntary seasonal slowdown zone” and a “restricted area”. [See the map below for details](#).

Note: Vessels **must follow** Navigational Warnings outlining the speed restrictions. The *Interim Order for the Protection of North Atlantic Right Whales (Eubalaena Glacialis) in the Gulf of St. Lawrence, 2024* enables the issuance of Navigational Warnings (NAVWARNs) imposing speed restrictions and navigation restrictions.

Speed restriction zones are described in monthly Notices to Mariners (NOTMARs), which are published by the Canadian Coast Guard. The status of these zones is broadcasted through NAVWARNs, which are published by the Coast Guard’s Marine Communications and Traffic Services Centres.

Changes to speed restriction zones and measures

Based on consultations with industry and on scientific data, changes to the speed restriction zones will be effective from April 17th, 2024, while the restricted area will be implemented based on whale presence.

A voluntary seasonal slowdown of 10.0 knots over the ground spanning from Cabot Strait (a line running from Cape North NS to Cape Ray NL) to the eastern edge of dynamic shipping zone E will be implemented at the beginning and end of the North Atlantic right whale season (Spring and fall).

Please check the latest NAVWARN for all speed restrictions currently in effect.

Speed Restriction Measures for 2024

These restrictions will be in effect from **April 17 to November 15, 2024**.

Exceptions

The following exception will apply to **all** measures:

- a) a vessel in distress or providing assistance to a person or a vessel in distress;
- b) a government vessel being used
 - i. for law enforcement activities;
 - ii. for search and rescue operations; or
 - iii. to ensure the competency of the crew or the operational readiness of the vessel or crew with respect to such activities or operations.

Static zones

In the static zones, **all** vessels above **13 m** in length overall (LOA) must proceed at a speed of not more than 10.0 knots over the ground.

Exclusions

Air cushion vessels operated by or on behalf of the Government of Canada that are engaged in ice-clearing activities from April to June in and around Chaleur Bay are exempted when in operation.

36.57 m (20-fathom) shallow water protocol exclusion

Vessels engaged in any commercial fishing activity may proceed at a safe operational speed in waters not more than 36.57 m (20 fathom) deep within the static zones.

If a notice to fish harvesters and a NAVWARN state that at least one North Atlantic right whale has been detected in waters within a static zone or its associated buffer zone that are not more than 36.57m deep, the speed limit of 10.0 knot over the ground will apply in the concerned zone(s) to all vessels above 13m in length overall (LOA). The speed restriction will be in effect for 15 days after the day on which the whale was detected. The buffer zones associated with the static zones are located 5 miles north and south of their adjacent border in waters less than 36.57m deep.

Coordinates for the northern static zone:

- 50° 20' N 065° 00' W
- 49° 13' N 065° 00' W
- 48° 40' N 064° 13' W
- 48° 40' N 062° 40' W
- 48° 03' N 061° 07.5' W
- 47° 58.1' N 061° 03.5' W
- 48° 00' N 061° 00' W
- 49° 04' N 061° 00' W
- 49° 04' N 062° 00' W
- 49° 43' N 063° 00' W
- 50° 20' N 063° 00' W

Coordinates for the southern static zone:

- 48° 40' N 065° 00' W
- 48° 40' N 062° 40' W
- 48° 03' N 061° 07.5' W
- 47° 58.1' N 061° 03.5' W
- 47° 10' N 062° 30' W
- 47° 10' N 065° 00' W

Dynamic shipping zones

There are five dynamic shipping zones (DSZ) located in the routing systems north and south of Anticosti Island: A, B, C, D and E

Coordinates for the dynamic shipping zones:

Zone A

- 49° 41' N, 065° 00' W
- 49° 20' N, 065° 00' W
- 49° 11' N, 064° 00' W
- 49° 22' N, 064° 00' W

Zone B

- 49° 22' N, 064° 00' W
- 49° 11' N, 064° 00' W
- 48° 48' N, 063° 00' W
- 49° 00' N, 063° 00' W

Zone C

- 49° 00' N, 063° 00' W
- 48° 48' N, 063° 00' W
- 48° 24' N, 062° 00' W
- 48° 35' N, 062° 00' W

Zone D

- 50° 16' N, 064° 00' W
- 50° 00' N, 064° 00' W
- 49° 56' N, 063° 00' W
- 50° 16' N, 063° 00' W

Zone E

- 48° 35' N 062° 00' W
- 48° 24' N 062° 00' W
- 48° 03' N 061° 07.5' W
- 47° 58.1' N 061° 03.5' W
- 48° 00' N 061° 00' W
- 48° 10.5' N 061° 00' W

When a North Atlantic right whale is detected in a dynamic shipping zone or in the buffer zones, located 5 nautical miles south or 2.5 nautical miles from the eastern and western edges of the dynamic shipping zones:

- All vessels will be notified via a NAVWARN; and
- Vessels above **13 m** in length overall (LOA) must proceed at a speed of not more than 10.0 knots over the ground within that zone.

Even though dynamic shipping zones overlap with static zones, vessels can travel at a safe operational speed in dynamic shipping zones when they are not under speed restriction. Mariners must also keep in mind that North Atlantic right whales may be nearby.

Speed restrictions in the dynamic shipping zones

The detection of North Atlantic right whales in one or more dynamic shipping zone(s), or in their buffer zones, will trigger a speed restriction in the concerned zone(s). The speed restriction in the dynamic shipping zone(s) will be in effect for 15 days from the date of detection. In the event of a new North Atlantic right whale detection occurring in the last 7 days of the 15-day slowdown period, the speed restriction will be extended for an additional 15 days from the date of the new detection. This would continue until no NARW are detected.

When a NAVWARN is issued implementing a speed restriction in one or more dynamic shipping zone(s), vessels above **13 m** in length (LOA) must not exceed a speed of 10.0 knots over the ground. Within any dynamic zone that is not subject to a speed restriction, mariners may proceed at a safe operational speed. Mariners are encouraged to take into consideration the potential for their vessel striking North Atlantic right whales when considering a “safe operational speed” during navigation.

Seasonal management areas

Seasonal management area 1 (SMA-1) and seasonal management area 2 (SMA-2) are speed restriction areas located north and south of dynamic shipping zone E, respectively.

Within seasonal management areas, vessels above **13 m** in length (LOA):

- must restrict their speed so as not to exceed 10.0 knots over the ground from April 17th to June 25th, 2024; **and**
- are allowed to proceed at a safe operational speed from June 26th to November 15th, 2024, unless a North Atlantic right whale is detected. If a whale is detected, a speed restriction of 10.0 knots over the ground will be triggered for 15 days from the date of detection. In the event of a new North Atlantic right whale detection occurring in the last 7 days of the 15-day slowdown period, the speed restriction will be extended for an additional 15 days from the date of the new detection. This would continue until no North Atlantic right whales are detected.

Coordinates for the SMA-1:

- 49° 04' N 062° 00' W
- 49° 04' N 061° 00' W
- 48° 10.5' N 061° 00' W
- 48° 35' N 062° 00' W

Coordinates for the SMA-2:

- 48° 24' N 062° 00' W
- 48° 03' N 061° 07.5' W
- 47° 58.1' N 061° 03.5' W
- 47° 26.69' N 062° 00' W

Restricted area

In the summer months, an important proportion of the total North Atlantic right whale population gathers for feeding and surface activity near the [Shediac Valley](#). Since this makes the North Atlantic right whale more susceptible to vessel collisions, a mandatory restricted area will be implemented in and near the [Shediac Valley](#) and will come into force once 80% of the restricted area is closed to fishing for the season as per the [Department of Fisheries and Oceans' right whale closure protocol](#) or at the latest on June 19th, 2024. The restricted area will be lifted once the North Atlantic right whale detections decrease in the restricted area or at the latest on September 25th, 2024.

The size and location of the area are determined based on historical detection data of North Atlantic right whales. All necessary details can be found in the *Interim Order for the Protection of North Atlantic Right Whales (Eubalaena Glacialis) in the Gulf of St. Lawrence, 2024*. Triggering and lifting of the restricted area will be communicated to mariners through NAVWARNs and notices to fish harvesters.

Vessels above **13 m** in length (LOA) will be required to:

- avoid the area unless they are part of the exceptions listed in the Interim Order for the Protection of North Atlantic Right Whales (*Eubalaena Glacialis*) in the Gulf of St. Lawrence, 2024;
- transit the area at a speed not exceeding 8.0 knots over the ground if they are part of the exceptions.

The following exceptions will apply to the restricted area. The following listed vessels can travel through the area at not more than 8.0 knots over the ground:

- A vessel being used for commercial fishing;
- A vessel being used for fishing under the authority of a licence issued under the *Aboriginal Communal Fishing Licences Regulations*;
- A vessel being used for research purposes on behalf of the Government of Canada
- A vessel being used as part of the Department of Fisheries and Oceans' Marine Mammal Response Program to assist a marine mammal or sea turtle in distress or to access or retrieve a deceased marine mammal or sea turtle;
- A vessel authorized by the Government of Canada to retrieve or identify the location of abandoned or lost fishing gear;
- A vessel involved in pollution response operations;
- A vessel avoiding immediate or unforeseen danger;
- A vessel involved in research relating to right whales as part of a project that has received funding from the Government of Canada.

The following vessels can travel through the restricted area at a speed over 8.0 knots, but below 10.0 knots over the ground as required by the static speed restriction zone:

- A vessel being used by an employee of the Government of Canada or peace officer who is performing their duties.

Coordinates for the restricted area:

- 48°31.8' N 063°39.6' W
- 48°24.72' N 063°17.88' W
- 47°18.84' N 064°10.8' W
- 47°27.18' N 064°30.72' W

Inclement weather exception

Mariners will be notified in advance via a NAVWARN should the speed restriction status change in any zone or area, due to inclement weather.

Within any zone or area that is no longer subject to a speed restriction due to adverse weather conditions, mariners may proceed at a safe operational speed. Mariners are however encouraged to take into consideration the potential for their vessel striking North Atlantic right whales when considering a “safe operational speed” during navigation.

*Non-expected vessels are still prohibited from transiting through the restricted area.

Voluntary seasonal slowdown in Cabot Strait

To coincide with the North Atlantic right whales entering and exiting the Gulf of St. Lawrence in large numbers, a voluntary seasonal slowdown is being put in place in Cabot Strait from April 17th to June 25th, 2024, and from September 25th to November 15th, 2024.

- During these periods, vessels above 13 m in length (LOA) are requested to voluntarily reduce their speed as to not exceed 10.0 knots over the ground.

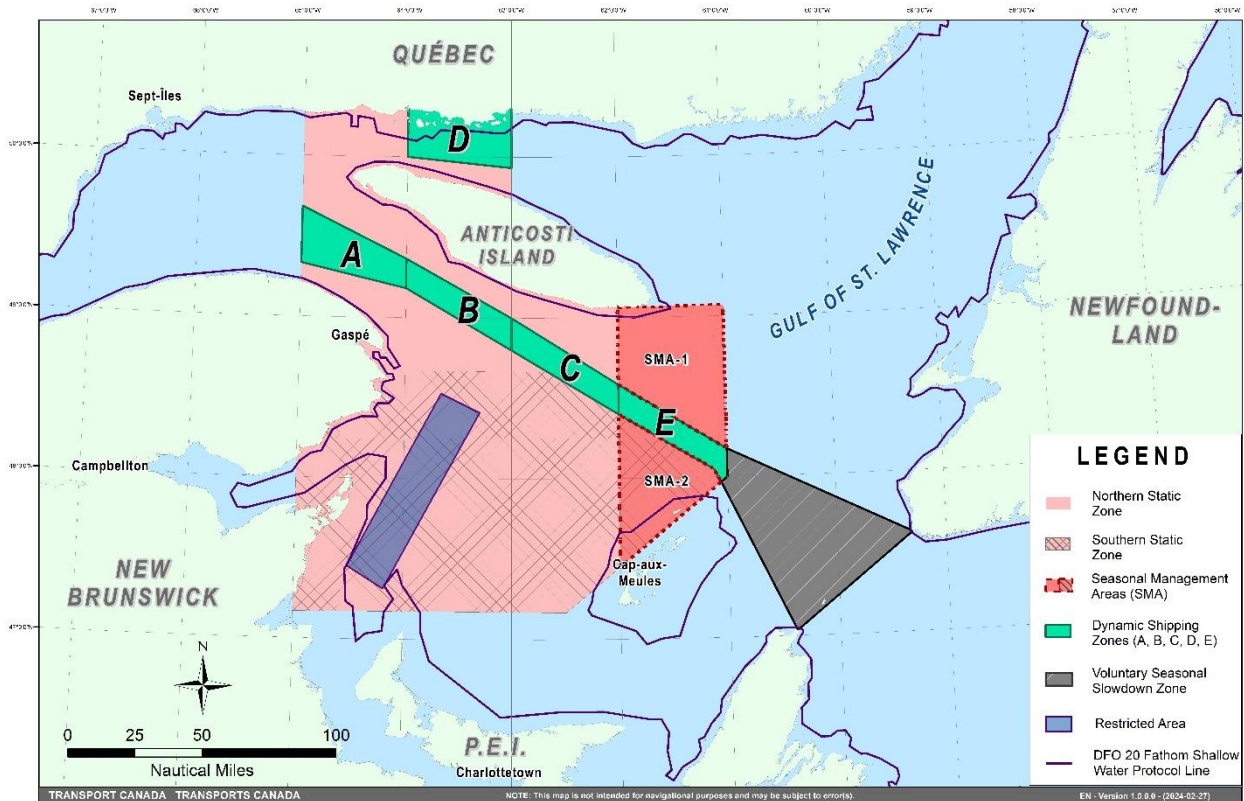
Voluntary seasonal slowdown zone coordinates:

- 48° 10.5' N 061° 00' W
- 47° 37.2' N 059° 18.5' W
- 47° 02' N 060° 23.7' W
- 47° 58.1' N 061° 03.5' W
- 48° 00' N 061° 00' W

Map of the Gulf of St. Lawrence

The following map shows

- the static zones (north and south), in pink;
- the dynamic shipping zones (A, B, C, D and E), in green;
- the seasonal management areas, in dark pink;
- the voluntary seasonal slowdown zone, in grey;
- the restricted area, in dark blue; and
- the 36.57 m (20 fathom) shallow water protocol line.



This map is for visual representation only and is not to be used for navigation or enforcement.

Roseway Basin – Area to be Avoided

The Roseway Basin, located approximately 20 nautical miles south of Cape Sable Island, Nova Scotia, is a critical habitat for North Atlantic right whales, which have been observed to gather in the area on a seasonal basis in Canadian waters. This critical habitat is also located near key shipping routes. In 2007, Canada, with the support of many groups with varied interests, proposed to the International Maritime Organization (IMO) the establishment of a seasonal Area to be Avoided in the Roseway Basin to protect North Atlantic right whales, which IMO accepted and adopted.

To reduce the risk of vessels colliding with North Atlantic right whales, it is recommended that vessels of 300 gross tonnages and more, in transit during the period of June 1 through December 31, avoid the Roseway Basin area. Smaller vessels are also encouraged to avoid passage through this area. If passage is necessary within the Area to be Avoided, it is recommended that all mariners decrease their vessel speed to no more than 10 knots, when safe to do so.

Roseway Basin coordinates:

- 43° 16' N 064° 55' W
- 42° 47' N 064° 59' W
- 42° 39' N 065° 31' W
- 42° 52' N 066° 05' W

NAVWARN broadcasts

The Canadian Coast Guard issues NAVWARNs:

- by radio broadcast; and
- online at [Canada's Maritime Information Portal](#) and its [Navigational Warnings](#) site.

Mariners must ensure they have accurate and up-to-date information about the protection of the North Atlantic right whale, as in all applicable NOTMARs and NAVWARNs.

For the North Atlantic right whale speed restrictions, the NAVWARN(s) currently in effect will be provided to vessels subject to the Vessel Traffic Services Zone Regulations or the Eastern Canada Vessel Traffic Services Zone Regulations:

Outbound vessels will receive NAVWARNs

- at Calling-in-Point 10 (St-Laurent); or
- upon a departure downstream from the Quebec pilot station (including the Saguenay River, Chaleur Bay, Miramichi Bay, etc.)

Inbound vessels will receive NAVWARNs

- when a clearance to enter Canadian waters is granted

Vessels in transit will receive NAVWARNs

- at the last reporting point prior to entering the mandatory speed restriction zones; and/or
- at 10 nautical miles before they enter the mandatory speed restriction zones

For those vessels not subject to the above-mentioned regulations, vessel operators are required to monitor broadcasts by the Canadian Coast Guard's Marine Communications and Traffic Services network for the most up to date information. For marine radio frequencies and broadcast times, information may be found in the [Radio Aids to Marine Navigation](#) publication.

Aids to navigation

The Canadian Coast Guard is currently testing virtual Automatic Identification System (AIS) aids to navigation (AIS AtoN) in specific areas. These aids notify mariners of a dynamic shipping zone and/or a seasonal management area subject to a speed restriction.

Each zone is delimited by four to six virtual AIS AtoN, which can be displayed on a ship's navigation equipment, such as

- Electronic Chart Display and Information System (ECDIS);
- Electronic Chart System (ECS);
- RADAR;
- Minimum Keyboard Display (MKD); and
- Electronic Nautical Chart (ENC).

The Canadian Coast Guard broadcasts the virtual AIS AtoN only when a speed restriction is in effect in one or more testing zones.

Mariners must select the virtual AIS AtoN symbol to view a message such as "SectA1 Spd Lim 10 kt." This message refers to a speed restriction in effect for a specific zone.

Note: This system is not the primary method of communicating this information.

Compliance and enforcement

Vessels must comply with the Interim Orders made pursuant to the *Canada Shipping Act, 2001*, and any NAVWARNs broadcasted and published by the Canadian Coast Guard relating to the Interim Orders, aimed at regulating the navigation for the purposes of protecting the North Atlantic right whales.

If a vessel does not comply with the Interim Orders or instructions in the NAVWARNs related to the Interim Orders, the vessel could face:

- administrative monetary penalties up to a maximum of CAN \$250,000; and/or
- penal sanctions under the *Canada Shipping Act, 2001* is liable on summary conviction to a fine of not more than CAN \$1,000,000 or to imprisonment for a term of not more than 18 months, or to both.

If a vessel appears to have violated the speed restriction, Transport Canada Marine Safety inspectors will review all information provided through AIS and seek an explanation from the master.

No exemptions to the speed restriction will be granted in advance. However, if a deviation from the speed restrictions is necessary for safety reasons, the following information must be entered into the bridge logbook:

- reason(s) for deviation;
- speed at which vessel is operated;
- latitude and longitude at time of deviation;
- time and duration of deviation; and
- master of the vessel shall sign and date the bridge logbook entry.

For any deviation, Transport Canada will review and consider reasons such as:

- navigating to ensure vessel safety;
- weather conditions;
- force majeure (unforeseeable circumstances); and
- responding to emergencies.

Report a North Atlantic right whale sighting

If you see live, free-swimming whales:

- Email: DFO.GLFWhales-BaleinesGLF.MPO@dfo-mpo.gc.ca
- When reporting sightings of North Atlantic right whales, you must include: GPS location (latitude and longitude), date and time of sighting, number of marine mammals, photograph(s)/video(s) collected and if possible, behavior of marine mammals observed (ex., feeding, travelling, diving).

If you see a North Atlantic right whale (and all other marine mammals) **entangled, injured or dead**, please document and report it immediately to the regional Response Network.

- When documenting you should collect: GPS location (latitude and longitude), date and time of sighting, number of marine mammals, photograph(s)/video(s), and description of the incident to provide to the Response Network.

Southern part of the Gulf of St. Lawrence (New Brunswick, Nova Scotia & Prince Edward Island):

Marine Animal Response Society
Telephone: 1-866-567-6277

Newfoundland and Labrador:

Whale Release and Strandings Newfoundland and Labrador (Tangly Whales Inc.)
Telephone: 1-888-895-3003 or 1-709-895-3003

Quebec:

Baleines en direct (GREMM)
Telephone: 1-877-722-5346

REPORT A MARINE MAMMAL OR SEA TURTLE INCIDENT OR SIGHTING:

For more information on reporting other marine mammal or sea turtle sighting and incidents:

<https://www.dfo-mpo.gc.ca/species-especes/mammals-mammiferes/report-rapport/page01-eng.html>

Please consult Whale Insight for the latest right whale observations:

<https://gisp.dfo-mpo.gc.ca/apps/WhaleInsight/eng/?locale=en>

***406/24 Saguenay–St. Lawrence Marine Park - Beluga Whale Protection: Slowdown Area at the Mouth of the Saguenay Fjord and Area Closure at Baie Sainte-Marguerite**

(Recurrent publication of notice *406/24, originally published in the *Notices to Mariners – Monthly Eastern Edition 04/2024* publication.)

The Saguenay–St. Lawrence Marine Park and its surrounding area are at the heart of endangered beluga whale critical summer habitat. Marine mammal protection measures have been put in place in accordance with the *Marine Activities in the Saguenay–St. Lawrence Marine Park Regulations* within the limits of the Marine Park.

However, important feeding, calving and rearing areas for beluga whales require greater protection to ensure the recovery of the species. The portion of the Saguenay situated between the mouth of the Fjord and Baie Sainte-Marguerite is one of the areas most used by females and their young from May to October. The mouth of the Saguenay is known as a feeding ground and Baie Sainte-Marguerite as a calving and rearing area.

In order to prevent collisions with beluga whales, a compulsory 15-knot slowdown area is in effect from May 1st to October 31st at the mouth of the Saguenay. To ensure tranquility for female belugas and their young during the critical calving period, access to Baie Sainte-Marguerite is prohibited to all vessels from June 21st to September 21st, except for special authorizations (see description below).

For safety reasons, *the slowdown area measure at the mouth of the Saguenay Fjord does not apply* to cargo ships (see the monthly edition of *Notice to Mariners* from May to October for voluntary protection measures in the St. Lawrence Estuary). An enhanced vigilance is, however, recommended to all navigators between the mouth of the Saguenay Fjord and Baie Sainte-Marguerite for the protection of beluga whales.

For more information on the Saguenay–St. Lawrence Marine Park, see notice 5C of the *Notices to Mariners Annual Edition 2024* or visit marinepark.gc.ca.

REGULATORY PROTECTION MEASURES — BELUGA WHALE

Entire Marine Park Territory:

- When beluga whales are less than half a nautical mile (926 metres) from a motorized vessel, the vessel must maintain a steady speed of between 5 and 10 knots.
- All vessels, including human-powered vessels (kayaks and canoes), must continue to move forward and maintain their heading.
- All vessels must maintain a minimum distance of 400 metres from beluga whales at all times.

For more information concerning the regulations, consult: marinepark.ca.

Mouth of the Saguenay Fjord (Figure 1) — Slowdown Area (area crosshatched in red):

- Maximum speed at the mouth of the Saguenay between buoys S7 and S8 and the ferry docks between Baie-Sainte-Catherine and Tadoussac is 15 knots from May 1st to October 31st.

Baie Sainte-Marguerite (Figure 2) — Area Closure (red area):

- From June 21st to September 21st, vessels must not enter the red area, which follows a line between Cap Nord-Ouest and Cap Sainte-Marguerite.
- Special authorizations are granted only for kayaks, canoes and recreational fishermen who must travel without stopping along a corridor within 10 metres of the shore or in shallow areas.

VOLUNTARY PROTECTION MEASURES

Baie Sainte-Marguerite sector (Figure 2) — Transit Area (area crosshatched in yellow):

- From June 21st to September 21st, navigation in this area is recommended at a speed of between 5 and 10 knots without stopping.

The purpose of this transit area is to favour respect of the *Marine Activities in the Saguenay–St. Lawrence Marine Park Regulations*, since beluga whales are often present in the Baie Sainte-Marguerite sector.

Information

All incidents, including collisions with whales, must be reported without delay by calling 1-866-508-9888. For any other situation concerning a marine mammal that is either dead or in trouble, contact the Marine Mammal Emergency Response Network at 1-877-722-5346, or use VHF channel 16.

Figure 1

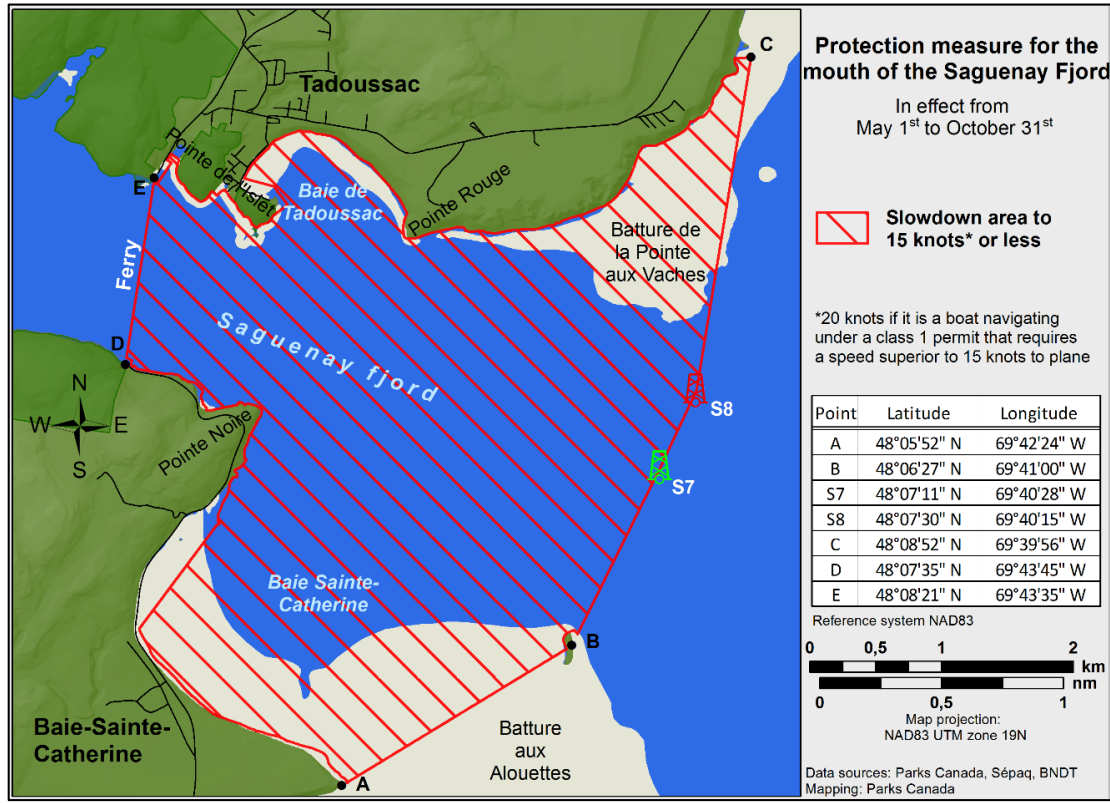
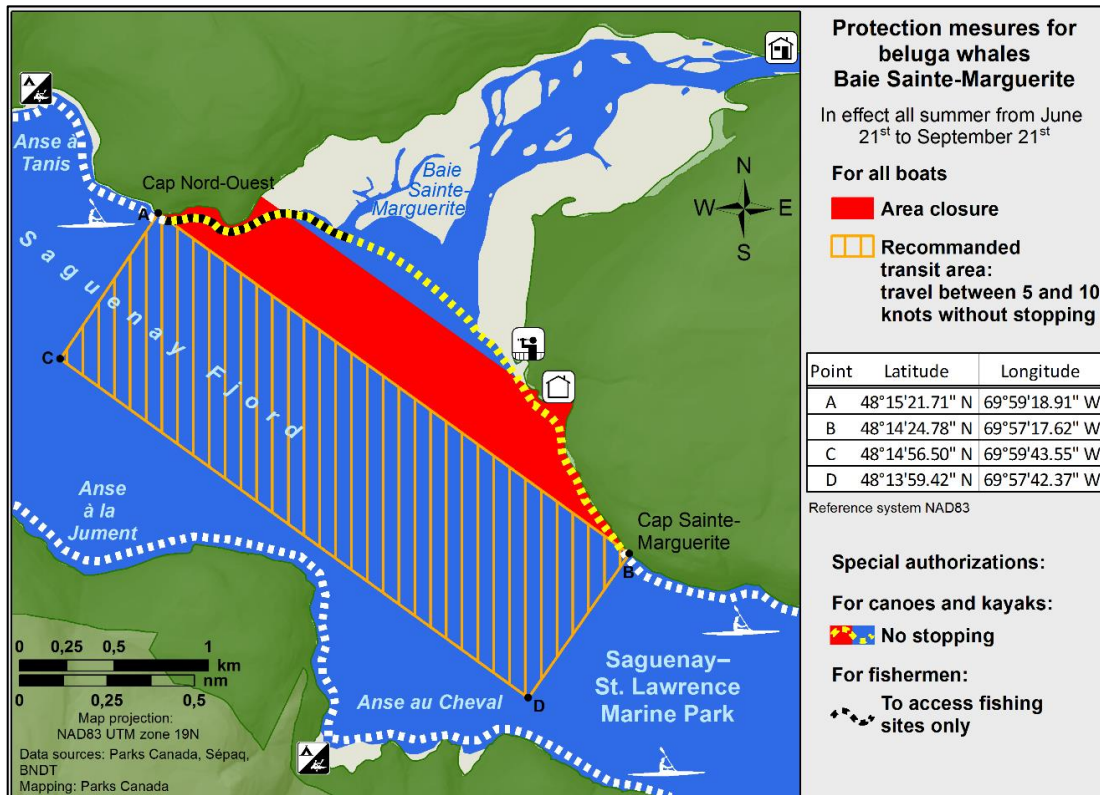


Figure 2



***407/24 Saguenay – St. Lawrence Marine Park and Surrounding Waters – Whale Protection**

(Recurrent publication of notice *407/24, originally published in the *Notices to Mariners – Monthly Eastern Edition 04/2024* publication.)

The waters in and around the Saguenay–St. Lawrence Marine Park are well known for the resident endangered beluga population and the wide diversity of whales that migrate there to feed, particularly between April and November.

REGULATORY PROTECTION MEASURES

All whale species that are found in the St. Lawrence are protected under the *Marine Mammal Regulations*, pursuant to the *Fisheries Act*. Within the boundaries of the Marine Park, specific measures are set out in the *Marine Activities in the Saguenay–St. Lawrence Marine Park Regulations*, pursuant to the establishment of the *Saguenay–St. Lawrence Marine Park Act*. Any collision with a marine mammal within the Marine Park must immediately be reported to a park warden at 1-866-508-9888. For collisions that occur outside the Marine Park or for any situation involving a marine mammal that is dead or in trouble, contact the emergency network at 1-877-722-5346 or on VHF channel 16.

For more information on the Saguenay–St. Lawrence Marine Park, see notice 5C of the *Notices to Mariners Annual Edition 2024*.

VOLUNTARY PROTECTION MEASURES

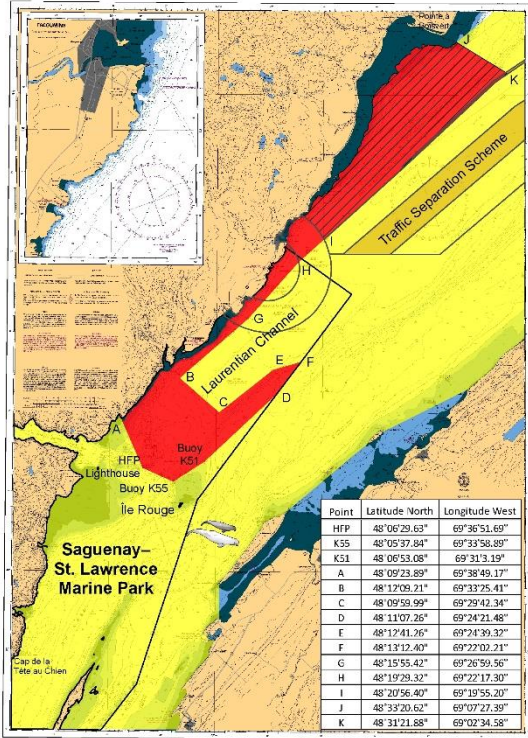
Provisional measures in effect from May 1 to October 31, 2024. See map at the end of this notice.

These measures apply to merchant vessels and cruise ships between Pointe à Boisvert and Cap de la Tête au Chien to prevent collisions with whales. These measures should only be taken when they will not jeopardize navigational safety.

Caution area (yellow area): To reduce the risk of collisions with whales that can be present anywhere in this area, heightened vigilance of navigators is critical. Posting a lookout is recommended in order to increase the chances of seeing the whales and thus taking necessary measures to avoid them. If bypassing the whales is not possible, slow down and wait for the animals to move away to a distance greater than 400 metres (0.215 nautical miles) before resuming original speed. It is more difficult to see the animals at night therefore increased caution is recommended.

Slow down to 10 knots or less area (red area): To reduce the risk of collisions with whales in this feeding area, it is recommended that vessels slow down to a maximum speed through the water of 10 knots and post a lookout. It is further recommended to remain in the Laurentian Channel to the north of Île Rouge to minimize the impact of noise in a sensitive area south of this island, which is highly frequented by herds of beluga whales composed of females and young.

Area to be avoided (hatched red area): To reduce noise and the risk of collisions with whales, vessels should avoid transiting through this area which is highly frequented by blue whales, an endangered species. If the area cannot be avoided, slow down to a speed through the water of 10 knots or less.

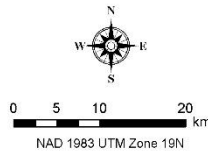


Voluntary protection measures to reduce the risk of ship strikes with whales and to minimize the impact of noise on beluga whale

Provisional measures in effect from May 1st to October 31st 2024

- Caution area**
presence of whales
 - Slow down to 10 knots* or less area**
Important whale feeding area
 - Area to be avoided; if impossible, slow down to 10 knots* or less**
Important blue whale area
- Sensitive area highly used by beluga herds composed of females and young
It is recommended to navigate in the Laurentian Channel north of Île Rouge

* 10 knots refers to speed through water



***901/24 Canadian Hydrographic Service – Electronic Navigational Charts**

S-57 ENC Number	Chart Title	ENC Compilation Scale	Published
New Charts			
CA43BPBA (Edn 1.000)	CA43BPBA	1:45 000	2024-09-06
CA43BPMA (Edn 1.000)	CA43BPMA	1:22 500	2024-09-06
CA43BPMB (Edn 1.000)	CA43BPMB	1:45 000	2024-09-06
CA43BPXA (Edn 1.000)	CA43BPXA	1:45 000	2024-09-06
CA43BR5A (Edn 1.000)	CA43BR5A	1:90 000	2024-09-06
CA43BRFA (Edn 1.000)	CA43BRFA	1:90 000	2024-09-06
CA43BRRA (Edn 1.000)	CA43BRRA	1:90 000	2024-09-06
CA43MP1A (Edn 1.000)	CA43MP1A	1:22 500	2024-09-06
CA43MPBA (Edn 1.000)	CA43MPBA	1:22 500	2024-09-06
CA43MPBB (Edn 1.000)	CA43MPBB	1:45 000	2024-09-06
CA43MPMA (Edn 1.000)	CA43MPMA	1:22 500	2024-09-06
CA43MPXA (Edn 1.000)	CA43MPXA	1:22 500	2024-09-06
CA43MPXB (Edn 1.000)	CA43MPXB	1:22 500	2024-09-06
CA43MQ8A (Edn 1.000)	CA43MQ8A	1:22 500	2024-09-06
CA43MQ8B (Edn 1.000)	CA43MQ8B	1:22 500	2024-09-06
CA43MQJA (Edn 1.000)	CA43MQJA	1:45 000	2024-09-06

S-57 ENC Number	Chart Title	ENC Compilation Scale	Published
CA43MQJB (Edn 1.000)	CA43MQJB	1:90 000	2024-09-06
CA43MQUA (Edn 1.000)	CA43MQUA	1:90 000	2024-09-06
CA43MR5A (Edn 1.000)	CA43MR5A	1:90 000	2024-09-06
CA43MRFA (Edn 1.000)	CA43MRFA	1:90 000	2024-09-06
CA43MRRA (Edn 1.000)	CA43MRRA	1:90 000	2024-09-06
CA43XP1A (Edn 1.000)	CA43XP1A	1:45 000	2024-09-06
CA43XPBA (Edn 1.000)	CA43XPBA	1:45 000	2024-09-06
CA43XPMA (Edn 1.000)	CA43XPMA	1:45 000	2024-09-06
CA43XPXA (Edn 1.000)	CA43XPXA	1:22 500	2024-09-06
CA43XQ8A (Edn 1.000)	CA43XQ8A	1:45 000	2024-09-06
CA43XQJA (Edn 1.000)	CA43XQJA	1:45 000	2024-09-06
CA43XQUA (Edn 1.000)	CA43XQUA	1:45 000	2024-09-06
CA43XQUB (Edn 1.000)	CA43XQUB	1:22 500	2024-09-06
CA43XQUC (Edn 1.000)	CA43XQUC	1:45 000	2024-09-06
CA43XR5A (Edn 1.000)	CA43XR5A	1:45 000	2024-09-06
CA43XR5B (Edn 1.000)	CA43XR5B	1:45 000	2024-09-06
CA43XRFA (Edn 1.000)	CA43XRFA	1:45 000	2024-09-06
CA448P1A (Edn 1.000)	CA448P1A	1:22 500	2024-09-06
CA448PXA (Edn 1.000)	CA448PXA	1:90 000	2024-09-06
CA448Q8A (Edn 1.000)	CA448Q8A	1:45 000	2024-09-06
CA448QJA (Edn 1.000)	CA448QJA	1:45 000	2024-09-06
CA448QUA (Edn 1.000)	CA448QUA	1:45 000	2024-09-06
CA448R5A (Edn 1.000)	CA448R5A	1:45 000	2024-09-06
CA448RFA (Edn 1.000)	CA448RFA	1:45 000	2024-09-06
CA571510 (Edn 1.000)	CA571510	1:11 000	2024-09-27
CA571511 (Edn 1.000)	CA571511	1:11 000	2024-09-27
CA571512 (Edn 1.000)	CA571512	1:11 000	2024-09-27
CA571513 (Edn 1.000)	CA571513	1:11 000	2024-09-27
CA571514 (Edn 1.000)	CA571514	1:11 000	2024-09-27
CA571515 (Edn 1.000)	CA571515	1:11 000	2024-09-27
New Editions			
CA462SNA (Edn 2.000)	CA462SNA	1:22 500	2024-09-27
CA570015 (Edn 10.000)	Fraser River/Fleuve Fraser, Sand Heads to/à Douglas Island	1:10 000	2024-09-27
Charts Permanently Withdrawn			
CA376011	Approaches to Saint John / Approches à Saint John		
CA376014	Cape Sable Island to/aux Tusket Islands		

S-57 ENC Number	Chart Title	ENC Compilation Scale	Published
CA376018	Tusket Islands to/à Cape St. Marys		
CA376024	St. Marys Bay		
CA376032	Traffic Zone into Halifax		
CA376044	Little Hope Island to/à Cape St Marys		
CA376045	Liverpool Harbour to/à Lockeport Harbour		
CA376047	Lockeport to/à Cape Sable		
CA376061	Country Harbour to/à Ship Harbour		
CA376062	West Point à/to Baie de Tracadie		
CA376067	Cape Canso to/à Country Island		
CA376076	Cape Tormentine à/to West Point		
CA376083	Taylor's Head to/à Shut-in Island		
CA376093	Flint Island to Cape Smoky		
CA376102	Barren Island to/à Taylor's Head		
CA376109	Country Island to/à Barren Island		
CA376137	Sable Island/Île de Sable, Western Portion/Partie Ouest		
CA376161	Pictou Island to Tryon Shoals		
CA376167	Cape Smoky to St. Paul Island		
CA376178	Tryon Shoals to Cape Egmont		
CA376230	Cape Canso to Liscomb Island		
CA376242	St. George's Bay		
CA376248	East Point to Cape Bear		
CA376249	Chetcamp to/à Cape Mabou		
CA376272	Bras D'Or Lake		
CA376278	Bras D'Or Lake-East Bay		
CA376289	Sable Island/Île de Sable		
CA376295	Red Point to Guyon Island		
CA376303	Guyon Island to Flint Island		
CA376308	Chéticamp to/à Cape St. Lawrence		
CA376309	St. Mary's Bay (Continuation A)		
CA376330	Grand Manan		
CA376691	Cape George to/à Pictou		
CA476006	Annapolis Basin	Cancelled by CA43MPMA	
CA476009	Approaches to/Approches au Halifax Harbour		
CA476035	Passamaquoddy Bay and/et St. Croix River		
CA476043	Cape Sable to/à Pubnico Harbour	Cancelled by CA43BPMA	
CA476048	Wedgeport and Vicinity/et les abords		
CA476063	Great Bras D'Or, St. Andrews Channel and/et St. Anns Bay		

S-57 ENC Number	Chart Title	ENC Compilation Scale	Published
CA476068	Tor Bay	Cancelled by CA43XQUC	
CA476069	Whitehead Harbour	Cancelled by CA43XQUC	
CA476084	Approaches to/à Approches a Ship Harbour	Cancelled by CA43MQJA	
CA476089	Ship Harbour and Approaches	Cancelled by CA43MQJA	
CA476104	Ecum Secum		
CA476105	Pubnico Harbour (Northern Portion/partie nord)	Cancelled by CA43BPMA	
CA476131	Richibucto Harbour		
CA476141	Great Bras D'Or and/et St. Patricks Channel		
CA476183	Pugwash Harbour and Approaches	Cancelled by CA43XQ8A	
CA476189	Chebucto Head to Betty Island	Cancelled by CA43MQ8A	
CA476195	St. Margaret's Bay		
CA476199	Mahone Bay		
CA476202	Cape Lahave to/à Liverpool Bay		
CA476273	Lennox Passage		
CA476490	Murray Harbour to/à Boughton Bay		
CA476610	Northumberland Strait Central Portion - Ports/Harbours	Cancelled by CA43XQJA	
CA476613	Northumberland Strait Central Portion - Ports/Harbours	Cancelled by CA43XQJA	
CA476664	Pearl Island to/à Cape La Have		
CA476675	Canso Harbour to/à Strait of Canso		
CA476678	Strait of Canso		
CA476858	Wallace Harbour and Approaches	Cancelled by CA43XQ8A	
CA476859	Amet Sound and Approaches	Cancelled by CA43XQ8A	

***902/24 Transport Canada - Ship Safety Bulletins #20, #21, #22 and #23/2024**

New **Ship Safety Bulletins** have recently been posted on the [Transport Canada website](#).

To view or download these bulletins, please click on the links below:

[SSB#20/2024](#) – Coming into force of the Marine Safety Management System Regulations (SOR/2024-133)
RDIMS# 20414736

[SSB#21/2024](#) – September 08, 2024, deadline to be met to comply with the International Ballast Water Performance Standard
RDIMS# 20486487

[SSB#22/2024](#) – Guidance to Masters of Vessels Loading Grain or Concentrates in Bulk, or timber on deck cargoes
RDIMS# 20494425

[SSB#23/2024](#) – National trial of remote inspections for grain and concentrates in bulk
RDIMS# 20495028

Sign up for [e-Bulletin](#) to receive an e-mail notice each time a new Ship Safety Bulletin is published on our website.

Contact us at marinesafety-securitemaritime@tc.gc.ca or 1-855-859-3123 (Toll Free).

903/24 Canadian Coast Guard Publication – *The Canadian Aids to Navigation System 2023

The Canadian Aids to Navigation System 2023 is now available for free download, on the Canadian Coast Guard website.

- [Canadian Aids to Navigation System 2023 \(PDF\) / HTML](#)
- [Quick Reference Guide to Canada's Navigational Aids \(2022 horizontal view\) \(PDF\)](#)
- [Quick Reference Guide to Canada's Navigational Aids \(2022 vertical view\) \(PDF\)](#)
- [Video: The Canadian Aids to Navigation System](#)

The 2023 edition supersedes the 2011 edition.

***904/24 Canadian Hydrographic Service – Raster Navigational Charts Discontinued**

The Canadian Hydrographic Service (CHS) commenced the discontinuation of its digital Raster Navigational Charts (RNC) offered in BSB format in March 2022.

Charts to be cancelled effective immediately as part of this ongoing initiative are listed below.

CHS will support Global Navigation Satellite System (GNSS) users by offering Electronic Navigational Charts (ENC) in S-57 format, as well as non-GNSS users by continuing to offer Paper Charts. To learn more about the advantages of ENC over RNC, please visit the [What is the difference between a raster chart and a vector chart](#) page.

BSB Chart	Title	BSB Chart	Title
RM-2058	Cobourg to/à Oshawa	RM-3456	Halibut Bank to/à Ballenas Channel
RM-2059	Scotch Bonnet Island to/à Cobourg	RM-3458	Approaches to/approches à Nanaimo Harbour
RM-2221	Midland Harbour	RM-3459	Approaches to/approches à Nanoose Harbour
RM-2225	Approaches to approches à Parry Sound	RM-3463	Strait of Georgia - Southern portion/partie sud
RM-2244	Alexander Passage to/à Beaverstone Bay	RM-3473	Active Pass
RM-2293	Byng Inlet and approaches / et les approches	RM-3490	Fraser River/Fleuve Fraser - Sand Heads to/à Douglas Island
RM-2299	Clapperton island to/à Meldrum Bay	RM-3491	Fraser River/Fleuve Fraser - North Arm
RM-2301	Passage Island to/à Thunder Bay	RM-3492	Roberts Bank
RM-2303	Jackfish Bay to St. Ignace Island	RM-3493	Vancouver Harbour - Western portion/partie ouest
RM-2304	Oiseau Bay to/à Jackfish Bay	RM-3495	Vancouver Harbour - Eastern portion/partie est
RM-2307	Coppermine Point / à Cape Gargantua	RM-3496	Approaches to / approches à Vancouver Harbour
RM-2308	Michipicoten Island to / à Oiseau Bay	RM-3497	Vancouver Harbour Central portion / partie centrale
RM-2309	Cape Gargantua to/à Otter Head	RM-3512	Strait of Georgia - Central portion/partie centrale
RM-2310	Caribou Island to/a Michipicoten Island	RM-3513	Strait of Georgia - Northern portion/partie nord
RM-2312	Nipigon Bay and approaches / et les approches	RM-3514	Jervis Inlet
RM-2318	Heron Bay	RM-3515	Knight Inlet
RM-2326	Middlebrun Bay to/à Washington Island	RM-3526	Howe Sound
RM-3000	Juan de Fuca Strait to/a Dixon Entrance	RM-3527	Baynes Sound
RM-3001	Vancouver Island/Île de Vancouver - Juan de Fuca Strait to/à Queen Charlotte Sound	RM-3533	Plans Strait of Georgia
RM-3002	Queen Charlotte Sound to/à Dixon Entrance	RM-3534	Plans Howe Sound
RM-3050	Kootenay Lake and / et River	RM-3535	Plans - Malaspina Strait
RM-3410	Sooke Inlet to/à Parry Bay	RM-3537	Okisollo Channel
RM-3411	Sooke	RM-3538	Desolation Sound and/et Sutil Channel
RM-3412	Victoria Harbour	RM-3539	Discovery Passage
RM-3419	Esquimalt Harbour	RM-3540	Approaches to / approches à Campbell River
RM-3424	Approaches to/approches à Oak Bay	RM-3541	Approaches to / approches à Toba Inlet
RM-3440	Race Rocks to/à D'arcy Island	RM-3542	Bute Inlet
RM-3441	Haro Strait	RM-3543	Cordero Channel
RM-3442	North Pender Island to/à Thetis Island	RM-3544	Johnstone Strait - Race Passage and/et Current Passage
RM-3443	Thetis Island to/à Nanaimo	RM-3545	Johnstone Strait - Port Neville to/à Robson Bight
RM-3447	Nanaimo Harbour and/et Departure Bay	RM-3546	Broughton Strait

RM-3547	Queen Charlotte Strait - Eastern portion/partie est	RM-3947	Grenville Channel to/à Chatham Sound
RM-3548	Queen Charlotte Strait - Central portion/partie centrale	RM-3955	Plans Prince Rupert Harbour
RM-3549	Queen Charlotte Strait - Western portion/partie ouest	RM-3956	Malacca Passage to/à Bell Passage
RM-3550	Approaches to/approches à Seymour Inlet and/et Belize Inlet	RM-3957	Approaches to / approches à Prince Rupert Harbour
RM-3559	Malaspina Inlet Okeover Inlet and/et Lancelot Inlet	RM-3958	Prince Rupert Harbour
RM-3564	Plans - Johnstone Strait	RM-3959	Hudson Bay Passage
RM-3598	Cape Scott to / à Cape Calvert	RM-3964	Tuck Inlet
RM-3603	Ucluelet Inlet to / à Nootka Sound	RM-3974	Dean Channel
RM-3604	Nootka Sound to/à Quatsino Sound	RM-3975	Caamaño Sound and approaches / et les approches
RM-3605	Quatsino Sound to/à Queen Charlotte Strait	RM-3976	Principe Channel to / à Douglas Channel
RM-3646	Plans - Barkley Sound	RM-3977	Douglas Channel
RM-3647	Port San Juan and/et Nitinat Narrows	RM-3978	Bonilla Island to / à Edey Passage
RM-3668	Alberni Inlet	RM-3980	Laredo Sound
RM-3671	Barkley Sound	RM-3981	Laredo Channel
RM-3728	Milbanke Sound and approaches / et les approches	RM-3982	Caamaño Sound to / à Whale Channel
RM-3733	Catala Passage	RM-3983	Caamano Sound to / a Principe Channel
RM-3744	Queen Charlotte Sound	RM-3984	Principe Channel Southern portion/partie sud
RM-3853	Cape St. James to / à Cumshewa Inlet and/et Tasu Sound	RM-3985	Principe Channel Central portion / partie centrale and / et Petrel Channel
RM-3893	Masset Inlet	RM-3986	Browning Entrance
RM-3894	Selwyn Inlet to/à Lawn Point	RM-3987	Kitkatla Channel and/et Porcher Inlet
RM-3908	Kitimat Harbour	RM-4011	Approaches to / approches à Bay of Fundy / Baie de Fundy
RM-3935	Hakai Passage and vicinity/et environs	RM-4013	Halifax to / à Sydney
RM-3936	Fitz Hugh Sound to/à Lama Passage	RM-4015	Sydney to / à Saint-Pierre
RM-3937	Queens Sound	RM-4016	Saint-Pierre to / à St John's
RM-3938	Queens Sound to/à Seaforth Channel	RM-4017	Cape Race to / à Cape Freels
RM-3939	Fisher Channel to / à Seaforth Channel and / et Dean Channel	RM-4020	Strait of Belle Isle / Détroit de Belle Isle
RM-3940	Spiller Channel and/et Roscoe Inlet	RM-4021	Pointe Amour à / to Cape Whittle et / and Cape George
RM-3941	Channels/chenaux vicinity of / proximité de Milbanke Sound	RM-4045	Sable Island Bank/Banc de l'Île de Sable to/au St. Pierre Bank/Banc
RM-3942	Mathieson Channel Northern portion/partie nord	RM-4047	Saint Pierre Bank / Banc to / au Whale Bank / Banc de la Baleine
RM-3943	Finlayson Channel and/et Tolmie Channel	RM-4049	Grand Bank Northern portion/Grand Banc partie nord to/à Flemish Pass
RM-3945	Approaches to/approches à Douglas Channel	RM-4098	Sable Island / Île de Sable
RM-3946	Grenville Channel	RM-4099	Sable Island / Île de Sable: Western portion / partie ouest

RM-4117	Saint John Harbour and approaches / et les approches	RM-4626	Saint-Pierre and / et Miquelon (France)
RM-4140	Avon River and approaches / et les approches	RM-4641	Port aux Basques
RM-4170	Glace Bay Harbour	RM-4643	Île Saint-Pierre (France)
RM-4201	Halifax Harbour: Bedford Basin	RM-4652	Humber Arm: Meadows to / à Humber River
RM-4202	Halifax Harbour: Point Pleasant to / à Bedford Basin	RM-4654	Lark Harbour and / et York Harbour
RM-4203	Halifax Harbour: Black Point to / à Point Pleasant	RM-4667	Savage Cove to / à St Barbe Bay
RM-4211	Cape LaHave to / à Liverpool Bay	RM-4670	Forteau Bay
RM-4227	Country Harbour to / au Ship Harbour	RM-4679	Hawkes Bay, Port Saunders, Back Arm
RM-4230	Little Hope Island to / à Cape St Marys	RM-4702	Corbet Island to / à Ship Harbour Head
RM-4241	Lockeport to / à Cape Sable	RM-4712	Plans on the Coast of Labrador / Plans sur la côte du Labrado
RM-4242	Cape Sable Island to / aux Tusket Islands	RM-4744	Approaches to / approches à Spotted Island Harbour
RM-4244	Wedgeport and Vicinity / et les abords	RM-4817	Bay Bulls to / à St Mary's Bay
RM-4245	Yarmouth Harbour and approaches / et les approches	RM-4820	Cape Freels to/à Exploits Islands
RM-4255	Georges Bank / Banc de Georges: Eastern portion / partie est	RM-4821	White Bay and / et Notre Dame Bay
RM-4266	Sydney Harbour	RM-4822	Cape St John to / à St Anthony
RM-4281	Canso Harbour and approaches	RM-4823	Cape Ray to / à Garia Bay
RM-4321	Cape Canso to / à Liscomb Island	RM-4824	Garia Bay to / à Burgeo
RM-4340	Grand Manan	RM-4825	Burgeo and/et Ramea Islands
RM-4374	Red Point to / à Guyon Island	RM-4826	Burgeo to / à François
RM-4375	Guyon Island to / à Flint Island	RM-4845	Renews Harbour to / à Motion Bay
RM-4379	Liverpool Harbour	RM-4858	Greenspond Harbour to / à Pound Cove
RM-4384	Pearl Island to / à Cape La Have	RM-4864	Black Island to / à Little Denier Island
RM-4385	Chebucto Head to / à Betty Island	RM-4885	Port Harmon and approaches / et les approches
RM-4386	St Margaret's Bay	RM-5001	Labrador Sea / Mer du Labrador
RM-4514	St. Anthony Bight and Harbour	RM-5023	Cape Harrison to / à Nunaksaluk Island
RM-4515	Hare Bay	RM-5024	Nunaksaluk Island to / à Cape Kiglapait
RM-4519	Maiden Arm	RM-5027	Murphy Head to/aux Button Islands
RM-4521	Baie Verte	RM-5054	South Aulatsivik Island to/à Fenstone Tickle Island
RM-4587	Mortier Bay	RM-5060	Cape Daly to/à Amiktok Island
RM-4619	Presque Harbour to / à Bar Heaven Island and / et Paradise Sound	RM-5061	Amiktok Island to/à Osborne Point
RM-4622	Cape St Mary's to / à Argentia Harbour and / et Jude Island	RM-5080	Punchbowl and approaches / et les approches
RM-4624	Long Island to / à St. Lawrence Harbours	RM-5335	Riviere George
RM-4625	Burin Peninsula to / à Saint-Pierre	RM-5338	Rivière Koksoak

RM-5351	Baie Payne/Payne Bay et les approches/and approaches	RM-7487	Fury and Hecla Strait
RM-5373	Approches à/approaches to Rivière George	RM-7511	Resolute Passage
RM-5374	Beacon Island à/to Qikirtaaluk Islands	RM-7513	Milne Inlet Southern Portion
RM-5375	Qikirtaaluk Islands à/to Point Qirniraujaq	RM-7527	Erebus and Terror Bay and/et Radstock Bay
RM-5376	Approches à / approaches to Rivière Koksoak	RM-7552	Bellot Strait and approaches/et les approches
RM-5410	Coral Harbour and approaches / et les approches	RM-7565	Clyde Inlet to / à Cape Jameson
RM-5429	Plans du Déroit d'Hudson / Plans of Hudson Strait- Kangiqsujuaq	RM-7566	Cape Jameson to / à Cape Fanshawe
RM-5457	Deception Bay	RM-7571	Viscount Melville Sound
RM-5458	Sugluk Inlet	RM-7572	Viscount Melville Sound and / et M'Clure Strait
RM-5471	Inukjuak et les approches / and approaches	RM-7575	Peel Sound and/et Prince Regent Inlet
RM-5510	Puvirnituaq et les approches/and approches	RM-7578	Pelly Bay
RM-5620	Entrance to Chesterfield Inlet	RM-7646	Putulik (Hat Island) and / et Wilkins Point
RM-5621	Rockhouse Island to Centre Island	RM-7661	Demarcation Bay to/à Phillips Bay
RM-5622	Centre Island to Farther Hope Point	RM-7685	Tuktoyaktuk Harbour and approaches/et les approches
RM-5623	Farther Hope Point to Terror Point	RM-7710	Lambert Channel and/et Cache Point Channel
RM-5624	Terror Point to/à Schooner Harbour	RM-7736	Simpson Strait
RM-5625	Schooner Harbour to/à Baker Lake	RM-7737	Storis Passage to/à Requisite Channel
RM-5626	Baker Lake	RM-7738	Simpson Strait to/à Storis Passage
RM-5640	Churchill Harbour	RM-7739	James Ross Strait
RM-7121	Cape Mills to/à Cape Rammelsberg	RM-7750	Cambridge Bay
RM-7122	Culbertson Island to/à Koojesse Inlet	RM-7770	Spence Bay and approaches / et les approches
RM-7125	Pike-Resor Channel	RM-7776	Dolphin and Union Strait
RM-7126	Culbertson Island to/à Frobisher's Farthest	RM-7777	Coronation Gulf Western Portion
RM-7127	Koojesse Inlet and approaches/et les approches	RM-7779	Dease Strait
RM-7150	Pangnirtung and approaches / et les approches	RM-7782	Queen Maud Gulf Western portion/partie ouest
RM-7184	Broughton Island and approaches / et les approches	RM-7784	Victoria Strait
RM-7195	Kangok Fiord and approaches / et les approches	RM-7787	St. Roch and/et Rasmussen Basins
RM-7212	Bylot Island and Adjacent Channels / et Chenaux Adjacent	RM-7788	Simpson Strait to/à Rasmussen Basin
RM-7371	Alexandra Fiord	RM-7920	Tanquary
RM-7485	Parry Bay to / au Navy Channel	RM-7935	Crozier Strait and/et Pullen Strait
RM-7486	Navy Channel to / à Fury and Hecla Strait	RM-8048	Cape Harrison to / à St Michael Bay

***905/24 Britannia Bay à/to Chats Falls – Unlit Buoys Permanently Established**

Reference chart: 1550

The following unlit buoys have been permanently established at the following coordinates:

Aid Name	LL #	Position
Deschênes Rapids Information Buoy 4	7592.11	45° 22' 38.4"N 075° 48' 40.1"W
Deschênes Rapids Information Buoy 1	7592.5	45° 22' 24.4"N 075° 48' 22.7"W
Deschênes Rapids Information Buoy 2	7592.7	45° 22' 29.0"N 075° 48' 28.5"W
Deschênes Rapids Information Buoy 3	7592.9	45° 22' 33.7"N 075° 48' 34.3"W

(B2024-011 to 014)

Section 1A: Temporary and Preliminary Notices

Reminder – Comment Period for Active Preliminary Notices

This is a reminder that the comment period is still open for the following active Preliminary notices:

Notice #	Reference Chart #	Aids Affected (LL #)	Intent of Notice
Newfoundland and Labrador Coast			
720(P)/24	4530	378, 380	Notice of Proposed Changes
Inland Waters			
729(P)/24	2241	5000.1	Rear Range to be Discontinued
816(P)/24	1551	1305	Aid to Navigation to be Discontinued

Please refer to the [Notices to Mariners - Monthly Summary of Temporary and Preliminary Notices](#) publication for details.

Newfoundland and Labrador Coast

Temporary Notices

*906/24 Flemish Pass / Passe Flamande – Offshore Works Completed

Reference: Notice 809(T)/24 is cancelled (Chart 8012).

Subsea rock installation operations completed.

Preliminary Notices

Atlantic Region

Comment Submission

Comments on proposed changes in preliminary (P) notices are solicited from mariners and other interested parties within three months of the initial publication date. Following this date, the notices will be cancelled. Any objections raised must state the facts on which they are based and should include supporting information on safety, commerce and public benefit.

Comments should be directed to the following:

Superintendent,
Aids to Navigation & Waterways
Canadian Coast Guard, Atlantic Region
P.O. Box 1000
50 Discovery Drive
Dartmouth, NS B2Y 3Z8
Telephone: (506) 636-4708
Email: DFO.CCGATLaidstoNavDiscont-AidesalanavSupprATLGCC.MPO@dfo-mpo.gc.ca

***907(P)/24 Hamilton Sound: Eastern Portion / Partie-est – Rear Range to be Discontinued**

Reference chart: 4530

The Canadian Coast Guard proposes to permanently discontinue the following aid to navigation:

Aid Name	LL #	Position
Carmanville rear range	393	49° 23' 19.4"N 054° 17' 16.8"W

Initial publication date: Friday, September 27, 2024

[Comment submission deadline](#): Thursday, December 26, 2024

(N2024-151)

Atlantic Coast

Temporary Notices

***908/24 Port de Montréal – Anchor Retrieved**

Reference: Notice 810(T)/24 is cancelled (Chart 1310).

The lost anchor has been retrieved.

***909/24 Sable Island Bank / Banc de l'Île de Sable to / au St. Pierre Bank / Banc de Saint-Pierre – ODAS Buoy Relit**

Reference: Notice 107(T)/23 is cancelled (Chart 4045).

ODAS buoy marked "44139" is now relit.

Preliminary Notices

No notices applicable for this edition.

Inland Waters

Temporary Notices

***910(T)/24 Kingston Harbour and Approaches/et les approches – Construction Operations**

Reference: Notice 1012(T)/20 is cancelled (Chart 2017).

Reference chart: 2017

Wharf construction is taking place daily from 1100 UTC to 2300 UTC at the Kingston-Wolfe Island ferry terminal. The ferry remains operational. Vessels are not permitted to dock on the south side. The construction area is marked by yellow buoys equipped with yellow flashing lights.

Preliminary Notices

No notices applicable for this edition.

Section 2: Chart Corrections

1226 - Quai public/Public Wharf - New Edition - 12-JAN-2024 - NAD 1983 27-SEP-2024

Add	depth of 1,6 metres (See Chart 1, I10)	49°13'41.2"N 068°07'54.7"W <i>DFO(6411144-06)</i>
Add	depth of 4,4 metres (See Chart 1, I10)	49°13'39.6"N 068°07'48.3"W <i>DFO(6411144-07)</i>
Delete	depth of 3 metres (See Chart 1, I10)	49°13'41.8"N 068°07'53.5"W <i>DFO(6411144-09)</i>
Add	depth of 2,1 metres (See Chart 1, I10)	49°13'41.8"N 068°07'53.4"W <i>DFO(6411144-10)</i>

1550 - Britannia Bay - Sheet/Feuille 1 - New Edition - 27-MAY-2011 - NAD 1983 27-SEP-2024

Add	white and orange information spar buoy, marked 1 (See Chart 1, QI)	LNMD. 09-FEB-2024 45°22'24.4"N 075°48'22.7"W <i>(B2024011) DFO(6605351-01)</i>
Add	white and orange information spar buoy, marked 2 (See Chart 1, QI)	45°22'29.0"N 075°48'28.5"W <i>(B2024012) DFO(6605352-01)</i>
Add	white and orange information spar buoy, marked 3 (See Chart 1, QI)	45°22'33.7"N 075°48'34.3"W <i>(B2024013) DFO(6605353-01)</i>
Add	white and orange information spar buoy, marked 4 (See Chart 1, QI)	45°22'38.4"N 075°48'40.1"W <i>(B2024014) DFO(6605354-01)</i>

2085 - Toronto Harbour - New Edition - 04-MAR-2011 - NAD 1983 27-SEP-2024

Add	white and orange hazard spar buoy, marked Priv (See Chart 1, Qo) This notice affects Electronic Navigational Chart: CA573008	LNMD. 02-FEB-2024 43°39'07.0"N 079°20'04.1"W <i>DFO(6605343-01)</i>
Add	white and orange hazard spar buoy, marked Priv (See Chart 1, Qo) This notice affects Electronic Navigational Chart: CA573008	43°39'05.9"N 079°20'03.3"W <i>DFO(6605343-02)</i>

4024 - Baie des Chaleurs/Chaleur Bay aux/to Îles de la Madeleine - New Edition - 06-MAR-2015 - NAD 1983 27-SEP-2024

Reposition	yellow SADO/ODAS lighted super-buoy FI(5)Y, marked IML-14 (See Chart 1, Q58)	LNMD. 19-JUL-2024 from 48°08'00.0"N 062°42'00.0"W to 48°12'30.0"N 062°48'33.0"W <i>(Q2024159) LL(1512.6) DFO(6411152-01)</i>
------------	---	---

4115 - Passamaquoddy Bay and / et St. Croix River - New Edition - 24-FEB-2012 - World Geodetic System 1984

13-SEP-2024

LNMD. 16-FEB-2024

Add black, yellow and black East cardinal spar buoy, marked UVB
(See Chart 1, Q130.3) 44°59'45.3"N 066°55'23.9"W
LL(5052.7) DFO(6311466-01)

4237 - Approaches to / Approches de Halifax Harbour - New Edition - 28-MAY-2021 - World Geodetic System 1984

13-SEP-2024

LNMD. 07-JUN-2024

Add red starboard hand spar buoy, marked H16
(See Chart 1, Qb) 44°36'14.4"N 063°32'12.4"W
LL(5526.01) DFO(6311465-01)

4277 - Entrance to/Entrée à Great Bras D'Or - New Edition - 29-DEC-2017 - NAD 1983

13-SEP-2024

LNMD. 22-SEP-2023

Add depth of 10.8 metres
(See Chart 1, I10) 46°16'21.7"N 060°26'25.0"W
DFO(6311324-19)

Delete depth of 23.7 metres
(See Chart 1, I10) 46°17'05.9"N 060°25'30.6"W
DFO(6311324-20)

Add depth of 20.6 metres
(See Chart 1, I10) 46°17'06.4"N 060°25'33.0"W
DFO(6311324-21)

Replace depth of 10.7 metres with depth of 10.5 metres
(See Chart 1, I10) 46°17'14.6"N 060°25'14.8"W
DFO(6311324-22)

Delete depth of 29.1 metres
(See Chart 1, I10) 46°17'25.7"N 060°25'04.5"W
DFO(6311324-23)

Add depth of 24.3 metres
(See Chart 1, I10) 46°17'23.3"N 060°25'03.8"W
DFO(6311324-24)

Delete depth of 15 metres
(See Chart 1, I10) 46°17'30.4"N 060°25'06.2"W
DFO(6311324-25)

Add depth of 2 metres
(See Chart 1, I10) 46°17'30.5"N 060°25'03.0"W
DFO(6311324-26)

Replace depth of 8.8 metres with depth of 8.3 metres
(See Chart 1, I10) 46°17'28.3"N 060°24'51.1"W
DFO(6311324-27)

Replace depth of 19.4 metres with depth of 18.8 metres
(See Chart 1, I10) 46°17'32.1"N 060°24'50.1"W
DFO(6311324-28)

Delete depth of 16.4 metres
(See Chart 1, I10) 46°17'35.8"N 060°24'44.0"W
DFO(6311324-29)

Add	depth of 14 metres (See Chart 1, I10)	46°17'35.8"N 060°24'46.2"W <i>DFO(6311324-30)</i>
Replace	depth of 7.7 metres with depth of 7.4 metres (See Chart 1, I10)	46°17'49.8"N 060°24'28.3"W <i>DFO(6311324-31)</i>
Replace	depth of 6.5 metres with depth of 6.3 metres (See Chart 1, I10)	46°17'52.3"N 060°24'18.0"W <i>DFO(6311324-32)</i>
Delete	depth of 10.8 metres (See Chart 1, I10)	46°18'50.9"N 060°23'29.9"W <i>DFO(6311324-33)</i>
Add	depth of 10.4 metres (See Chart 1, I10)	46°18'49.8"N 060°23'30.1"W <i>DFO(6311324-34)</i>
4277 - Great Bras D'Or, St. Andrews Channel and/et St. Anns Bay - New Edition - 29-DEC-2017 - NAD 1983		
13-SEP-2024		LNM/D. 22-SEP-2023
Replace	depth of 26 metres with depth of 24.9 metres (See Chart 1, I10)	46°14'01.4"N 060°29'19.3"W <i>DFO(6311324-11)</i>
Delete	depth of 27.8 metres (See Chart 1, I10)	46°14'32.1"N 060°28'46.8"W <i>DFO(6311324-16)</i>
Add	depth of 23.2 metres (See Chart 1, I10)	46°14'31.3"N 060°28'42.8"W <i>DFO(6311324-17)</i>
Replace	depth of 14.2 metres with depth of 13.2 metres (See Chart 1, I10)	46°15'50.6"N 060°27'26.4"W <i>DFO(6311324-18)</i>
Add	depth of 10.8 metres (See Chart 1, I10)	46°16'21.7"N 060°26'25.0"W <i>DFO(6311324-19)</i>
Delete	depth of 15 metres (See Chart 1, I10)	46°17'30.4"N 060°25'06.2"W <i>DFO(6311324-25)</i>
Add	depth of 2 metres (See Chart 1, I10)	46°17'30.5"N 060°25'03.0"W <i>DFO(6311324-26)</i>
Replace	depth of 8.8 metres with depth of 8.3 metres (See Chart 1, I10)	46°17'28.3"N 060°24'51.1"W <i>DFO(6311324-27)</i>
Replace	depth of 7.7 metres with depth of 7.4 metres (See Chart 1, I10)	46°17'49.8"N 060°24'28.3"W <i>DFO(6311324-31)</i>

Replace	depth of 6.5 metres with depth of 6.3 metres (See Chart 1, I10)	46°17'52.3"N 060°24'18.0"W <i>DFO(6311324-32)</i>
Delete	depth of 10.8 metres (See Chart 1, I10)	46°18'50.9"N 060°23'29.9"W <i>DFO(6311324-33)</i>
Add	depth of 10.4 metres (See Chart 1, I10)	46°18'49.8"N 060°23'30.1"W <i>DFO(6311324-34)</i>
4277 - Otter Harbour - New Edition - 29-DEC-2017 - NAD 1983 13-SEP-2024		LNMD. 22-SEP-2023
Replace	depth of 10.5 metres with depth of 10.2 metres (See Chart 1, I10)	46°13'41.4"N 060°29'36.1"W <i>DFO(6311324-10)</i>
Replace	depth of 26 metres with depth of 24.9 metres (See Chart 1, I10)	46°14'01.4"N 060°29'19.3"W <i>DFO(6311324-11)</i>
Delete	depth of 28.8 metres (See Chart 1, I10)	46°14'13.3"N 060°29'14.1"W <i>DFO(6311324-12)</i>
Add	depth of 26.9 metres (See Chart 1, I10)	46°14'11.3"N 060°29'13.5"W <i>DFO(6311324-13)</i>
Delete	depth of 23 metres (See Chart 1, I10)	46°14'25.0"N 060°28'50.2"W <i>DFO(6311324-14)</i>
Add	depth of 21.4 metres (See Chart 1, I10)	46°14'23.9"N 060°28'49.6"W <i>DFO(6311324-15)</i>
4278 - Great Bras D'Or and / et St Patricks Channel - New Edition - 26-AUG-2016 - NAD 1983 13-SEP-2024		LNMD. 28-JUL-2017
Replace	depth of 6 metres with depth of 5.5 metres (See Chart 1, I10)	46°03'34.2"N 060°50'57.8"W <i>DFO(6311324-04)</i>
Add	depth of 15.7 metres (See Chart 1, I10)	46°03'49.0"N 060°49'06.8"W <i>DFO(6311324-05)</i>
Replace	depth of 16.2 metres with depth of 15.9 metres (See Chart 1, I10)	46°04'03.7"N 060°48'33.0"W <i>DFO(6311324-06)</i>
Replace	depth of 12.1 metres with depth of 11.8 metres (See Chart 1, I10)	46°05'30.4"N 060°42'58.7"W <i>DFO(6311324-07)</i>
Delete	depth of 7.9 metres (See Chart 1, I10)	46°06'13.4"N 060°40'45.1"W <i>DFO(6311324-08)</i>

Add depth of 7.6 metres (See Chart 1, I10) 46°06'12.5"N 060°40'48.8"W
DFO(6311324-09)

4278 - MacIvers Pt to / à Little Narrows - New Edition - 26-AUG-2016 - NAD 1983
13-SEP-2024

Delete depth of 12.6 metres (See Chart 1, I10) 46°02'38.9"N 060°55'17.5"W
DFO(6311324-01)

Add depth of 11.7 metres (See Chart 1, I10) 46°02'39.0"N 060°55'10.6"W
DFO(6311324-03)

4375 - Guyon Island to / à Flint Island - New Edition - 11-OCT-2002 - NAD 1983
13-SEP-2024

Add green port hand can buoy, marked JM7 (See Chart 1, Qc) 45°57'11.5"N 059°49'56.9"W
LL(5762.05) DFO(6311467-01)

4404 - Cape George to / à Pictou - New Edition - 28-FEB-2014 - NAD 1983
13-SEP-2024

Add underwater rock of unknown depth, dangerous to surface navigation with legend Rep (2024), PA (See Chart 1, K13, I3.2, B7) 45°45'46.9"N 062°10'25.4"W
This notice affects Electronic Navigational Chart: CA376691
DFO(6311464-01)

4644 - Bay D'Espoir and / et Hermitage Bay - New Edition - 25-JUN-1999 - NAD 1983
13-SEP-2024

Delete marine farm limits (See Chart 1, K48.1) joining 47°52'07.9"N 055°47'46.2"W
47°52'17.5"N 055°47'59.2"W
47°52'25.9"N 055°47'44.5"W
47°52'17.6"N 055°47'30.1"W
and 47°52'07.9"N 055°47'46.2"W
DFO(6311441-01)

Delete marine farm limits (See Chart 1, K48.1) joining 47°51'43.0"N 055°47'46.7"W
47°51'48.1"N 055°47'28.8"W
47°51'39.2"N 055°47'24.3"W
47°51'33.8"N 055°47'42.3"W
and 47°51'43.0"N 055°47'46.7"W
DFO(6311441-02)

5625 - Ice Hunter Rock to/à Chesterfield Narrows - New Edition - 28-DEC-2018 - World Geodetic System 1984
20-SEP-2024

Delete depth of 5.7 metres (See Chart 1, I10) 63°59'29.8"N 094°19'06.3"W
This notice affects Electronic Navigational Chart: CA573452
DFO(6605348-01)

Add depth of 4.7 metres (See Chart 1, I10) 63°59'29.8"N 094°19'06.3"W
This notice affects Electronic Navigational Chart: CA573452
DFO(6605348-02)

Delete	depth of 3.6 metres (See Chart 1, I10) This notice affects Electronic Navigational Chart: CA573452	63°59'29.7"N 094°18'23.2"W <i>DFO(6605348-03)</i>
Add	depth of 2.9 metres (See Chart 1, I10) This notice affects Electronic Navigational Chart: CA573452	63°59'29.8"N 094°18'23.2"W <i>DFO(6605348-04)</i>
Delete	depth of 10 metres (See Chart 1, I10) This notice affects Electronic Navigational Chart: CA573452	63°59'31.5"N 094°18'16.6"W <i>DFO(6605348-05)</i>
Add	depth of 9 metres (See Chart 1, I10) This notice affects Electronic Navigational Chart: CA573452	63°59'31.3"N 094°18'16.4"W <i>DFO(6605348-06)</i>
Delete	depth of 4.8 metres (See Chart 1, I10) This notice affects Electronic Navigational Chart: CA573452	63°59'32.5"N 094°17'36.4"W <i>DFO(6605348-07)</i>
Add	depth of 4.7 metres (See Chart 1, I10) This notice affects Electronic Navigational Chart: CA573452	63°59'32.9"N 094°17'35.4"W <i>DFO(6605348-08)</i>
Delete	depth of 9.6 metres (See Chart 1, I10) This notice affects Electronic Navigational Chart: CA573452	63°59'34.1"N 094°18'35.0"W <i>DFO(6605348-09)</i>
Add	depth of 8.6 metres (See Chart 1, I10) This notice affects Electronic Navigational Chart: CA573452	63°59'34.1"N 094°18'34.8"W <i>DFO(6605348-10)</i>
Delete	depth of 7.9 metres (See Chart 1, I10) This notice affects Electronic Navigational Chart: CA573452	63°59'38.6"N 094°18'35.5"W <i>DFO(6605348-11)</i>
Add	depth of 7.2 metres (See Chart 1, I10) This notice affects Electronic Navigational Chart: CA573452	63°59'38.8"N 094°18'35.9"W <i>DFO(6605348-12)</i>
Delete	depth of 4.8 metres (See Chart 1, I10) This notice affects Electronic Navigational Chart: CA573452	63°59'28.7"N 094°18'34.5"W <i>DFO(6605348-13)</i>
Add	depth of 3.6 metres (See Chart 1, I10) This notice affects Electronic Navigational Chart: CA573452	63°59'28.9"N 094°18'33.6"W <i>DFO(6605348-14)</i>

Delete	depth of 11.9 metres (See Chart 1, I10) This notice affects Electronic Navigational Chart: CA573452	63°59'31.0"N 094°16'54.0"W <i>DFO(6605348-15)</i>
Add	depth of 11.1 metres (See Chart 1, I10) This notice affects Electronic Navigational Chart: CA573452	63°59'31.2"N 094°16'54.2"W <i>DFO(6605348-16)</i>
Delete	depth of 5.1 metres (See Chart 1, I10) This notice affects Electronic Navigational Chart: CA573452	63°59'36.8"N 094°18'04.9"W <i>DFO(6605348-17)</i>
Add	depth of 5.1 metres (See Chart 1, I10) This notice affects Electronic Navigational Chart: CA573452	63°59'35.3"N 094°18'05.2"W <i>DFO(6605348-18)</i>
Delete	depth of 2.8 metres (See Chart 1, I10) This notice affects Electronic Navigational Chart: CA573452	63°59'41.8"N 094°18'31.5"W <i>DFO(6605348-19)</i>
Add	depth of 1.5 metres (See Chart 1, I10) This notice affects Electronic Navigational Chart: CA573452	63°59'41.8"N 094°18'32.3"W <i>DFO(6605348-20)</i>
Delete	depth of 5.1 metres (See Chart 1, I10) This notice affects Electronic Navigational Chart: CA573452	63°59'35.8"N 094°18'45.3"W <i>DFO(6605348-21)</i>
Add	depth of 4.9 metres (See Chart 1, I10) This notice affects Electronic Navigational Chart: CA573452	63°59'35.8"N 094°18'45.5"W <i>DFO(6605348-22)</i>
Delete	depth of 5.1 metres (See Chart 1, I10) This notice affects Electronic Navigational Chart: CA573452	63°59'36.4"N 094°18'44.4"W <i>DFO(6605348-23)</i>
Add	depth of 5.1 metres (See Chart 1, I10) This notice affects Electronic Navigational Chart: CA573452	63°59'35.3"N 094°18'05.5"W <i>DFO(6605348-24)</i>
7600 - Beaufort Sea/ Mer de Beaufort - New Chart - 26-JUL-1985 - Unknown		
27-SEP-2024		LNM/D. 10-MAR-2017
Delete	radar transponder beacon marked Racon (See Chart 1, S3.1/S3.4)	69°30'01.0"N 139°05'50.0"W <i>(A2024007) DFO(6605329-01)</i>

7620 - Demarcation Bay to/à Liverpool Bay - New Chart - 02-MAY-1997 - NAD 1983
27-SEP-2024

LNMD. 14-DEC-2018

Delete	radar transponder beacon marked Racon (See Chart 1, S3.1/S3.4)	69°30'09.0"N 139°06'40.9"W (A2024007) DFO(6605329-01)
Add	M (See Chart 1, J2)	69°30'32.1"N 138°53'19.0"W DFO(6605347-01)

7661 - Demarcation Bay to/à Philips Bay - New Chart - 14-MAR-1986 - NAD 1927
27-SEP-2024

LNMD. 20-OCT-2023

Delete	radar transponder beacon marked Racon (See Chart 1, S3.1/S3.4)	69°30'10.2"N 139°06'39.0"W (A2024007) DFO(6605329-01)
Delete	radar reflector against beacon BnR (See Chart 1, S4)	69°33'14.0"N 139°18'48.1"W (A2024009) DFO(6605331-01)
Delete	BnR beacon (See Chart 1, Q80, Q81)	69°33'14.0"N 139°18'48.1"W DFO(6605331-02)
Delete	BnR beacon (See Chart 1, Q80, Q81)	69°33'00.2"N 139°19'09.0"W (A2024010) DFO(6605332-01)
Delete	radar reflector [against beacon BnR (See Chart 1, S4)	69°33'00.2"N 139°19'09.0"W DFO(6605332-02)
Delete	BnR beacon (See Chart 1, Q80, Q81)	69°30'10.2"N 139°06'39.0"W DFO(6605345-01)
Add	M (See Chart 1, J2)	69°30'26.6"N 138°53'30.9"W DFO(6605347-01)

7661 - Workboat Passage - New Chart - 14-MAR-1986 - NAD 1927
27-SEP-2024

LNMD. 20-OCT-2023

Delete	radar transponder beacon marked Racon (See Chart 1, S3.1/S3.4)	69°30'13.1"N 139°06'41.0"W (A2024007) DFO(6605329-01)
Delete	BnR beacon (See Chart 1, Q80,Q81)	69°34'10.3"N 139°16'22.7"W (A2024008) DFO(6605330-01)
Delete	radar reflector against beacon BnR (See Chart 1, S4)	69°33'14.0"N 139°18'49.0"W (A2024009) DFO(6605331-01)
Delete	BnR beacon (See Chart 1, Q80, Q81)	69°33'14.0"N 139°18'49.0"W DFO(6605331-02)

Delete	BnR beacon (See Chart 1, Q80, Q81)	69°32'58.3"N 139°19'13.1"W <i>(A2024010) DFO(6605332-01)</i>
Delete	radar reflector against beacon BnR (See Chart 1, S4)	69°32'58.3"N 139°19'13.1"W <i>DFO(6605332-02)</i>
Delete	BnR beacon (See Chart 1, Q80, Q81)	69°30'05.2"N 139°07'07.4"W <i>(A2024011) DFO(6605333-01)</i>
Delete	front leading beacon (See Chart 1, Q120)	69°32'14.7"N 139°09'06.9"W <i>(A2024012) DFO(6605334-01)</i>
Delete	rear leading beacon with leading line and bearing 342° (See Chart 1, Q120)	69°32'26.9"N 139°09'17.7"W <i>(A2024013) DFO(6605335-01)</i>
Delete	front leading beacon (See Chart 1, Q120)	69°31'50.4"N 139°08'10.3"W <i>(A2024014) DFO(6605336-01)</i>
Delete	rear leading beacon with leading line and bearing 110° (See Chart 1, Q120)	69°31'34.2"N 139°06'05.4"W <i>(A2024015) DFO(6605337-01)</i>
Delete	front leading beacon (See Chart 1, Q120)	69°33'55.5"N 139°13'28.8"W <i>(A2024016) DFO(6605338-01)</i>
Delete	rear leading beacon with leading line and bearing 355° (See Chart 1, Q120)	69°34'00.0"N 139°13'29.5"W <i>(A2024018) DFO(6605339-01)</i>
Delete	front leading beacon (See Chart 1, Q120)	69°33'45.0"N 139°13'03.9"W <i>(A2024019) DFO(6605340-01)</i>
Delete	rear leading beacon with leading line and bearing 110° (See Chart 1, Q120)	69°33'44.0"N 139°12'58.3"W <i>(A2024020) DFO(6605341-01)</i>
Delete	BnR beacon (See Chart 1, Q80, Q81)	69°30'11.5"N 139°06'40.0"W <i>DFO(6605345-01)</i>
Reposition	private orange and white mooring can buoy (See Chart 1, Q40)	from 69°34'08.7"N 139°15'44.8"W to 69°34'00.4"N 139°14'53.4"W <i>DFO(6605346-01)</i>
Delete	BnR beacon (See Chart 1, Q80, Q81)	69°30'05.2"N 139°07'07.6"W <i>(A2024027) DFO(6605350-01)</i>

Section 3: Radio Aids to Marine Navigation Corrections

*912/24 Radio Aids to Marine Navigation 2024 (Atlantic, St. Lawrence, Great Lakes, Lake Winnipeg, Arctic and Pacific)

Page 2-7

MODIFY AS FOLLOWS:

Table 2-3 - Iqaluit MCTS/VFF - Ship/Shore Communications

Sites located at	Channels	Frequencies		Remarks
		Transmit	Receive	
Iqaluit 63°43'52"N 068°32'32"W	Ch16 Ch26	-	-	This site is operational approximately mid-May to mid-December.
	403 603 812 1201	2182J3E	2182	
		2582J3E	2206	
		4363J3E	4071	
		6507J3E	6206	
-	8752J3E	8228		
	13077J3E	12230		
	4207.5F1B	4207.5		
	6312.0F1B	6312.0		
-	8414.5F1B	8414.5		
	12577.0F1 B	12577.0 16804.5		
	16804.5F1 B			
	-	4177.5F1B	4177.5	
6268F1B		6268		
8376.5F1B		8376.5		
12520F1B		12520		
1621	16695F1B	16695		
	4125J3E	4125		
	6215J3E	6215		
	8291J3E	8291		
1621	12290J3E	12290		
	16420J3E	16420		
	Ch16 Ch26	-	-	This site is operational approximately mid-July to late October.
	Churchill 58°46'29"N 094°11'22"W			
Killinek Killiniq 60°25'27"N 064°50'30"W	403	2182J3E	2182	This site is operational approximately early July to mid-December.
		2514J3E	2118	
		2582J3E	2206	
		4363J3E	4071	
...

Page 2-10

MODIFY AS FOLLOWS:

Table 2-4 - Iqaluit MCTS/VFF – Broadcasts

Time UTC	Site	Frequency or Channel	Contents
...
13:20	Coral Harbour	2514J3E	Radiotelephony <ul style="list-style-type: none"> • Technical marine synopsis and forecasts on request for marine forecast areas 151, 152, 153, 154, 155, 156, 157, 158, 159, 160, 161, 162, 163, 164, 310, 311 and 312. • Navigational warnings “A Series” for all NORDREG waters bound by Shipping Safety Control Zones 8, 14, 16 and including, Southern Hudson Bay, James Bay, Chesterfield Inlet and Baker Lake.
14:10	Killinek Killiniq	2514J3E	Radiotelephony <ul style="list-style-type: none"> • Technical marine synopsis and forecasts on request for marine forecast areas: 137 to 150, 228, 229 and 230. • Navigational warnings “A Series” and “N Series” for all NORDREG waters bound by Shipping Safety Control Zones 9, 10 and 15, including Ungava Bay and along the Labrador coast southward to 58N.
	Iqaluit	2582J3E	
	Iqaluit	4363J3E	
14:35	Cambridge Bay	2558J3E	Radiotelephony <ul style="list-style-type: none"> • Technical marine synopsis and forecasts for marine forecast areas 111 to 122 inclusive. • Navigational warnings “A Series” for all NORDREG waters west of Taloyoak.
	Inuvik	6218.6J3E	
15:00	Iqaluit	490F1B	NAVTEX: (S) French <ul style="list-style-type: none"> • Weather for marine forecast areas 143, 144, 145, 147, 148, 149 and 150.
15:10	Iqaluit	518F1B	NAVTEX: (T) English <ul style="list-style-type: none"> • Weather for marine forecast areas 143, 144, 145, 147, 148, 149 and 150.
15:30	Iqaluit	8416.5F1B	HF NBDP <ul style="list-style-type: none"> • METAREA bulletins for METAREAS XVII and XVIII and Northwestern part of METAREA IV within Canadian waters. • NAVAREA warnings for NAVAREAS XVII and XVIII.
17:05	Cambridge Bay	4363J3E	Radiotelephony <ul style="list-style-type: none"> • Ice boundary information and ice forecasts on request for marine forecast areas 111 to 125, 135 to 163, 228, 229, 230, 310, 311 and 312.
	Inuvik	6218.6J3E	
	Coral Harbour / Killinek Killiniq	2514J3E	
	Iqaluit / Resolute	2582J3E	
19:00	Iqaluit	490F1B	NAVTEX: (S) French <ul style="list-style-type: none"> • Navigational warnings “A Series” for NORDREG waters bound by marine forecast areas 143, 144, 145, 147, 148, 149 and 150. • Ice hazard bulletin for marine forecast areas 143, 144, 145, 147, 148, 149, 150 and 229.

19:10	Iqaluit	518F1B	NAVTEX: (T) English <ul style="list-style-type: none"> • Navigational warnings “A Series” for NORDREG waters bound by marine forecast areas 143, 144, 145, 147, 148, 149 and 150. • Ice hazard bulletin for marine forecast areas 143, 144, 145, 147, 148, 149, 150 and 229.
22:35	Killinek Killiniq	2514J3E	Radiotelephony <ul style="list-style-type: none"> • Technical marine synopsis and forecasts on request for marine forecast areas 137 to 150, 228, 229 and 230. • Navigational warnings “A Series” and “N Series” for all NORDREG waters bound by Shipping Safety Control Zones 9, 10 and 15, including Ungava Bay and along the Labrador coast southward to 58N.
	Iqaluit	2582J3E	
...

Page 2-47, 2-48

DELETE AS FOLLOWS:

Table 2-24 - Sydney MCTS/VCO - Broadcasts

Time UTC	Site	Frequency or Channel	Contents
00:40	Port Caledonia	2749J3E	Radiotelephony (English followed by French) <ul style="list-style-type: none"> • Technical marine synopsis and forecasts for marine forecast areas 209, 210, 211, 212, 213, 214, 215, 216, 217, 218, 231 and 232. • Wave height forecast for marine forecast areas 209, 210, 211, 212, 213, 214, 215 and 217. • Navigational warnings in areas Cape Breton Shore (covering Cabot Strait to Banquereau Bank), Eastern Shore of the Gulf of St. Lawrence, Newfoundland South Coast, P.E.I. and Miramichi Bay. • Navigational warnings revising the position of every reported offshore exploration and exploitation vessel.
01:30	Port Caledonia	490F1B	NAVTEX: (J) French <ul style="list-style-type: none"> • Weather for marine forecast areas 209, 210, 211, 212, 213, 214, 215, 216, 220 and 221 / (Ice only in winter).
02:40	Port Caledonia	518F1B	NAVTEX: (Q) English <ul style="list-style-type: none"> • Navigational warnings.
05:30	Port Caledonia	490F1B	NAVTEX: (J) French <ul style="list-style-type: none"> • Weather for marine forecast areas 209, 210, 211, 212, 213, 214, 215, 216, 220 and 221.
06:40	Port Caledonia	518F1B	NAVTEX: (Q) English <ul style="list-style-type: none"> • Weather for marine forecast areas 209, 210, 211, 212, 213, 214, 215, 216, 220 and 221.
07:40	Port Caledonia	2749J3E	Radiotelephony (English followed by French) <ul style="list-style-type: none"> • Technical marine synopsis and forecasts for marine forecast areas 209, 210, 211, 212, 213, 214, 215, 216, 217, 218, 231 and 232. • Wave height forecast for marine forecast areas 209, 210, 211, 212, 213, 214, 215 and 217. • Notices to Fish Harvesters (when available).

Notices to Mariners – Monthly Eastern Edition
Section 3: Radio Aids to Marine Navigation Corrections

Time UTC	Site	Frequency or Channel	Contents
09:30	Port Caledonia	490F1B	NAVTEX: (J) French • Weather for marine forecast areas 209, 210, 211, 212, 213, 214, 215, 216, 220 and 221.
10:40	Port Caledonia	518F1B	NAVTEX: (Q) English • Weather for marine forecast areas 209, 210, 211, 212, 213, 214, 215, 216, 220 and 221.
11:21	Sambre	6915.10J3C	Radiofacsimile: Ice Charts • Ice Analysis Gulf of St. Lawrence.
11:42	Sambre	6915.10J3C	Radiofacsimile: Ice Charts • Ice Analysis East or Southeast Newfoundland waters.
13:30	Port Caledonia	490F1B	NAVTEX: (J) French • Navigational warnings.
14:40	Port Caledonia	2749J3E	Radiotelephony (English followed by French) • Technical marine synopsis and forecasts for marine forecast areas 209, 210, 211, 212, 213, 214, 215, 216, 217, 218, 231 and 232. • Wave height forecast for marine forecast areas 209, 210, 211, 212, 213, 214, 215 and 217. • Navigational warnings in areas Cape Breton Shore (covering Cabot Strait to Banquereau Bank), Eastern Shore of the Gulf of St. Lawrence, Newfoundland South Coast, P.E.I. and Miramichi Bay. • Navigational warnings revising the position of every reported offshore exploration and exploitation vessel.
14:40	Port Caledonia	518F1B	NAVTEX: (Q) English • Navigational warnings.
17:30	Port Caledonia	490F1B	NAVTEX: (J) French • Weather for marine forecast areas 209, 210, 211, 212, 213, 214, 215, 216, 220 and 221.
17:41	Sambre	6915.10J3C	Radiofacsimile: Ice Charts • Ice Analysis Iceberg limit.
18:40	Port Caledonia	518F1B	NAVTEX: (Q) English • Weather for marine forecast areas 209, 210, 211, 212, 213, 214, 215, 216, 220 and 221.
20:10	Port Caledonia	2749J3E	Radiotelephony (English followed by French) • Technical marine synopsis and forecasts for marine forecast areas 209, 210, 211, 212, 213, 214, 215, 216, 217, 218, 231 and 232. • Wave height forecast for marine forecast areas 209, 210, 211, 212, 213, 214, 215 and 217. • Notices to Fish Harvesters (when available).
21:30	Port Caledonia	490F1B	NAVTEX: (J) French • Navigational warnings.
22:00	Sambre	4416J3C	Radiofacsimile: Ice Charts • Ice Analysis Gulf of St. Lawrence.
22:40	Port Caledonia	518F1B	NAVTEX: (Q) English • Weather for marine forecast areas 209, 210, 211, 212, 213, 214, 215, 216, 220 and 221 / (Ice only in winter).
23:31	Sambre	4416J3C	Radiofacsimile: Ice Charts • Ice Analysis East or Southeast Newfoundland waters.

Time UTC	Site	Frequency or Channel	Contents
Continuous	Port Caledonia Point Escuminac Montague Fox Island	Ch21B (2021)	Radiotelephony (English followed by French) <ul style="list-style-type: none"> • Technical marine synopsis and forecasts for marine forecast areas 209, 210, 211, 212, 213, 214, 215, 216, 217, 218, 231 and 232. • Wave height forecast for marine forecast areas 209, 210, 211, 212, 213, 214, 215 and 217. • Navigational warnings in areas Cape Breton Shore (covering Cabot Strait to Banquereau Bank), Eastern Shore of the Gulf of St. Lawrence, Newfoundland South Coast, P.E.I. and Miramichi Bay. • Navigational warnings revising the position of every reported offshore exploration and exploitation vessel. • Notices to Fish Harvesters (when available). • Ice forecasts for P.E.I. fish harvesters.

Section 4: Canadian Sailing Directions Corrections

The following **Canadian Sailing Directions** volumes have recently been updated on the [Canadian Hydrographic Service website](#).

No.	Title
Atlantic Coast	
ATL 105	Cape Canso to Cape Sable (including Sable Island)
ATL 108	Gulf of St. Lawrence (Southwest Portion)

Each volume includes a section entitled “Record of Changes” which lists all updates that are incorporated during the current calendar year.

Section 5: List of Lights, Buoys and Fog Signals Corrections

The amendments are highlighted and deletions are crossed out. For general and region-specific information on the List of Lights, click on the following links: [Newfoundland and Labrador Coast](#), [Atlantic Coast](#), [Inland Waters](#) and [Pacific Coast](#).

No.	Name	Position ----- Latitude N. Longitude W.	Light Characteristics	Focal Height in m. above water	Nomi- nal Range	Description ----- Height in meters above ground	Remarks ----- Fog Signals
-----	------	--	--------------------------	--	-----------------------	--	---------------------------------

NEWFOUNDLAND AND LABRADOR COAST

CAPE RACE TO ST. SHOTT'S (LL 1 – 7.4)

1.91	Portugal Cove South light buoy MPS1	46 42 16.3 053 15 40.4	Fl G 4s	Green, marked "MPS1".	Seasonal (in place year round). Chart:4844 Edn 09/24 (N24-191)
2 H0443.4	Portugal Cove South Light and Fog Signal	46 42 16.3 053 15 37.3	Fl R 5s	9.1	6	Square skeleton tower. 4.3	Flash 1 s; eclipse 4 s. Seasonal. Horn - Blast 5 s; sil. 55 s. Chart:4844 Edn 09/24 (N24-185)

PLACENTIA BAY (LL 14.4 – 79)

14.4	St. Bride's light buoy PSB2	46 54 52.0 054 11 04.0	Fl R 4s	Red spar, marked "PSB2".	Seasonal (in place year round). Chart:4841 Edn 09/24 (N24-193)
14.41	St. Bride's Entrance light buoy PSB4	46 55 05.9 054 10 44.3	Q R 1s	Red spar, marked "PSB4".	Operates 24 h. Seasonal (in place year round). Chart:4841 Edn 09/24 (N24-194)
14.5	St. Bride's Port Entrance light buoy PSB3	Port Entrance. 46 55 07.2 054 10 41.2	Fl G 4s	Green spar, marked "PSB3".	Seasonal (in place year round). Chart:4841 Edn 09/24 (N24-195)
37.509 H0400.6	Mount Arlington Heights Wharf Light	47 25 39.3 053 51 44.0	Fl Y 4s	2	Cylindrical mast.	Flash 1 s; eclipse 3 s. Operates 24 h. Year round. Chart:4617 Edn 09/24 (N24-184)
49.4	Merasheen Harbour Outer light buoy PH2	Merasheen Island. 47 24 22.2 054 21 23.0	Fl R 4s	Red spar, marked "PH2".	Seasonal (in place year round). Chart:4619 Edn 09/24 (N24-197)
49.41	Isle Valen light buoy PV1	47 28 21.0 054 23 33.6	Fl G 4s	Green spar, marked "PV1".	Seasonal (in place year round). Chart:4619 Edn 09/24 (N24-198)
49.42	Isle Valen light buoy PV2	47 28 18.9 054 23 28.8	Fl R 4s	Red spar, marked "PV2".	Seasonal (in place year round). Chart:4619 Edn 09/24 (N24-199)
49.44	Merasheen Harbour Inner light buoy PH4	47 24 28.3 054 21 21.2	Fl R 4s	Red spar, marked "PH4".	Seasonal (in place year round). Chart:4619 Edn 09/24 (N24-200)

Notices to Mariners – Monthly Eastern Edition
Section 5: List of Lights, Buoys and Fog Signals Corrections

No.	Name	Position ----- Latitude N. Longitude W.	Light Characteristics	Focal Height in m. above water	Nomi- nal Range	Description ----- Height in meters above ground	Remarks ----- Fog Signals
53.93	Washball Rock light buoy PD8	NW. of Emberleys Island. 47 18 41.8 054 47 45.5	Fl R 4s	Red spar, marked "PD8".	Seasonal (in place year round). Chart:4615 Edn 09/24 (N24-202)
55.11	Lance Cove Outer light buoy PJL1	47 17 59.6 054 48 01.4	Fl G 4s	Green spar, marked "PJL1".	Seasonal (in place year round). Chart:4615 Edn 09/24 (N24-203)
55.12	Lance Cove Inner light buoy PJL2	47 18 03.7 054 48 02.6	Fl R 4s	Red spar, marked "PJL2".	Seasonal (in place year round). Chart:4615 Edn 09/24 (N24-204)
55.16	Fish Rock light buoy PJF2	W. of Jude Island. 47 15 54.0 054 50 47.9	Fl R 4s	Red spar, marked "PJF2".	Seasonal (in place year round). Chart:4624 Edn 09/24 (N24-205)
73.6	Ragged Rock light buoy PK1	Ragged Head Point. 46 53 58.8 055 33 33.9	Fl G 4s	Green, marked "PK1".	Seasonal (in place year round). Chart:4625 Edn 09/24 (N24-207)
73.7	Drunkards Point light buoy PK2	46 54 09.0 055 31 15.1	Fl R 4s	Red, marked "PK2".	Seasonal (in place year round). Chart:4625 Edn 09/24 (N24-206)
73.8	Vestal Rock light and bell buoy PK4	Great Lawn Harbour. 46 54 32.9 055 32 38.0	Fl R 4s	Red, marked "PK4".	Seasonal (in place year round). Chart:4625 Edn 09/24 (N24-208)
73.81	2 Fathom Shoal light buoy PK3	Great Lawn. 46 56 12.5 055 32 35.2	Fl G 4s	Green spar, marked "PK3".	Seasonal (in place year round). Chart:4625 Edn 09/24 (N24-209)
73.82	Murphy Rock light buoy PK6	Little Lawn Harbour. 46 56 12.5 055 32 32.7	Fl R 4s	Red spar, marked "PK6".	Seasonal (in place year round). Chart:4625 Edn 09/24 (N24-210)
74.4	Southwest Rock light buoy PSW2	Lord's Cove. 46 50 52.9 055 38 15.5	Fl R 4s	Red spar, marked "PSW2".	Seasonal (in place year round). Chart:4625 Edn 09/24 (N24-211)
75.53	Sally Rock light buoy PAG3						Delete from list. Chart:4642 Edn 09/24 (N24-153)
75.54	East Sunker light buoy PAG1						Delete from list. Chart:4642 Edn 09/24 (N24-152)
76.1	Allan Rock light buoy PL7	Lamaline. 46 51 35.1 055 48 13.3	Fl G 4s	Green spar, marked "PL7".	Seasonal (in place year round). Chart:4642 Edn 09/24 (N24-212)
78.1	East Mark Rock light buoy PL2	Lamaline. 46 51 07.8 055 47 25.2	Q R 1s	Red spar, marked "PL2".	Seasonal (in place year round). Chart:4642 Edn 09/24 (N24-213)

Notices to Mariners – Monthly Eastern Edition
Section 5: List of Lights, Buoys and Fog Signals Corrections

No.	Name	Position ----- Latitude N. Longitude W.	Light Characteristics	Focal Height in m. above water	Nomi- nal Range	Description ----- Height in meters above ground	Remarks ----- Fog Signals
78.12	West Mark Rock light buoy PL1	46 51 07.9 055 47 31.8	Q G 1s	Green spar, marked "PL1".	Seasonal (in place year round). Chart:4642 Edn 09/24 (N24-214)
78.13	Lamaline Inner light buoy PL5	46 51 42.5 055 47 53.1	Q G 1s	Green spar, marked "PL5".	Seasonal (in place year round). Chart:4642 Edn 09/24 (N24-215)
78.18	East Black Rock light buoy PL4	46 51 32.3 055 47 39.9	Fl R 4s	Red spar, marked "PL4".	Seasonal (in place year round). Chart:4642 Edn 09/24 (N24-216)
78.19	Pigeon Island light buoy PL3	Lamaline. 46 51 27.8 055 47 41.1	Fl G 4s	Green spar, marked "PL3".	Seasonal (in place year round). Chart:4642 Edn 09/24 (N24-217)
FORTUNE BAY (LL 100 – 120.1)							
113.07	Western Head light buoy VJK1	47 37 38.0 054 52 55.4	Fl G 4s	Green spar, marked "VJK1".	Operates 24 h. Seasonal (in place year round). Chart:4831 Edn 09/24 (N24-219)
120 H0300	Boxey Point Light	47 24 13.8 055 35 02.5	Fl W 5s	16.8	5	Square skeleton tower, red and white rectangular daymark. 4.3	Flash 1 s; eclipse 4 s. Year round. Chart:4830 Edn 09/24 (N24-158)
SOUTHWEST COAST (LL 121 – 172)							
137.1	François West Wharf Light	47 34 41.5 056 44 39.9	Fl G 5s	4	Pipe tower. 2.1	Flash 1 s; eclipse 4 s. Operates 24 h. Year round. Chart:4826 Edn 09/24 (N24-172)
137.15	François North Wharf Light	47 34 50.7 056 44 37.1	Fl G 4s	2	Pipe tower.	Operates 24 h. Year round. Chart:4826 Edn 09/24 (N24-171)
139.5 H0265	Grey River Point Light	W. side of entrance. 47 34 24.9 057 06 47.4	LFl G 6s	27.1	4	Square skeleton tower, green and white rectangular daymark. 4.3	Flash 2 s; eclipse 4 s. Year round. Chart:4826 Edn 09/24 (N24-156)
139.51 H0265.5	Grey River Wharf Light	47 35 20.0 057 06 05.7	Fl G 5s	4	Mast. 2.6	Flash 1 s; eclipse 4 s. Year round. Chart:4826 Edn 09/24 (N24-157)
143.74	Harbour Shoal light buoy QG5/3	Burgee. 47 36 49.4 057 36 25.5	Fl G 4s	Green spar, marked "QG5/3".	Operates 24 h. Seasonal (in place year round). Chart:4825 Edn 09/24 (N24-220)
149.3	Calapoose Rocks light buoy QT8	Harbour Le Cou. 47 37 24.2 058 40 29.3	Fl R 4s	Red spar, marked "QT8".	Seasonal (in place year round). Chart:4639 Edn 09/24 (N24-221)

Notices to Mariners – Monthly Eastern Edition
Section 5: List of Lights, Buoys and Fog Signals Corrections

No.	Name	Position ----- Latitude N. Longitude W.	Light Characteristics	Focal Height in m. above water	Nomi- nal Range	Description ----- Height in meters above ground	Remarks ----- Fog Signals
151.07	Cains Island Light	47 36 08.1 058 42 05.4	Fl R 5s	1.9	4	Mast.	Flash 1 s; eclipse 4 s. Year round. Chart:4639 Edn 09/24 (N24-155)
151.2	Rose Blanche light buoy QR6	47 36 33.3 058 41 38.5	Fl R 4s	Red spar, marked "QR6".	Seasonal (in place year round). Chart:4639 Edn 09/24 (N24-222)
151.4	North Shoal Shag Rocks light buoy QH2	SW. of Rose Blanche. 47 35 46.7 058 43 57.1	Fl R 4s	Red spar, marked "QH2".	Seasonal (in place year round). Chart:4639 Edn 09/24 (N24-223)
151.5	Green Island Sunkers light buoy QH1	SW. of Rose Blanche. 47 35 35.8 058 44 24.4	Fl G 4s	Green spar, marked "QH1".	Seasonal (in place year round). Chart:4823 Edn 09/24 (N24-224)
156.2	Burnt Islands light buoy QB3	47 35 40.9 058 53 27.9	Fl G 4s	Green spar, marked "QB3".	Seasonal (in place year round). Chart:4823 Edn 09/24 (N24-225)
158.71	Two Foot Shoal light buoy QW4	Isle aux Morts. 47 34 37.0 059 00 24.6	Fl R 4s	Red spar, marked "QW4".	Seasonal (in place year round). Chart:4640 Edn 09/24 (N24-226)
158.72	Five Foot Shoal light buoy QW2	Isle aux Morts. 47 34 02.5 059 01 57.4	Fl R 4s	Red, marked "QW2".	Seasonal (in place year round). Chart:4640 Edn 09/24 (N24-227)
158.721	Dead Head Shoal light buoy QW3	Isle aux Morts. 47 34 32.6 059 00 46.2	Fl G 4s	Green spar, marked "QW3".	Seasonal (in place year round). Chart:4640 Edn 09/24 (N24-228)
158.74	Little Grave Island Rock light buoy QW5	Isle aux Morts. 47 34 43.4 059 00 12.9	Fl G 4s	Green spar, marked "QW5".	Seasonal (in place year round). Chart:4640 Edn 09/24 (N24-229)
159.12	Shag Rock light buoy QM2.4	Margaree. 47 34 13.8 059 03 51.5	Q R 1s	Red spar, marked "QM2.4".	Seasonal (in place year round). Chart:4640 Edn 09/24 (N24-230)
159.13	Margaree Harbour light buoy QM4	47 34 17.2 059 03 49.3	Fl R 4s	Red spar, marked "QM4".	Seasonal (in place year round). Chart:4640 Edn 09/24 (N24-231)
159.2	Flat Islands light buoy QM2	Margaree. 47 34 07.0 059 04 00.5	Fl R 4s	Red spar, marked "QM2".	Seasonal (in place year round). Chart:4640 Edn 09/24 (N24-232)
159.3	Western Island light buoy QM3	SSE. of island, Margaree Harbour. 47 34 15.7 059 03 50.2	Q G 1s	Green spar, marked "QM3".	Seasonal (in place year round). Chart:4640 Edn 09/24 (N24-233)

Notices to Mariners – Monthly Eastern Edition
Section 5: List of Lights, Buoys and Fog Signals Corrections

No.	Name	Position ----- Latitude N. Longitude W.	Light Characteristics	Focal Height in m. above water	Nomi- nal Range	Description ----- Height in meters above ground	Remarks ----- Fog Signals
159.42	Margaree Ruin light buoy QM6	47 34 23.6 059 03 49.1	Fl R 4s	Red spar, marked "QM6".	Seasonal (in place year round). Chart:4640 Edn 09/24 (N24-234)
160.1	Motherlake Bay West light buoy QK2	W. of Port aux Basques. 47 33 42.9 059 08 36.9	Fl R 4s	Red spar, marked "QK2".	Seasonal (in place year round). Chart:4641 Edn 09/24 (N24-235)
160.2	Channel Gut Five Foot Rock light buoy QG1	Port aux Basques. 47 33 51.6 059 08 15.0	Fl G 4s	Green spar, marked "QG1".	Seasonal (in place year round). Chart:4641 Edn 09/24 (N24-236)
160.3	4 Foot Shoal light buoy QK4	Motherlake Bay. 47 33 50.0 059 08 36.8	Fl R 4s	Red spar, marked "QK4".	Seasonal (in place year round). Chart:4641 Edn 09/24 (N24-237)
WEST COAST (LL 173 – 208.06)							
173.1	Brandies Rock West Cardinal light buoy QBR	W. of Cape Ray. 47 37 12.2 059 20 11.8	Q(9) W 15s	Yellow, black and yellow, marked "QBR".	Seasonal (in place year round). Chart:4823 Edn 09/24 (N24-238)
173.12	Halibut Rock West Cardinal light buoy QHR	SE. of Cape Ray. 47 34 59.5 059 15 39.6	VQ(9) W 10s	Yellow, black and yellow, marked "QHR".	Seasonal (in place year round). Chart:4823 Edn 09/24 (N24-240)
176.35	Crabbes River Light	48 13 08.5 058 51 47.5	Fl W 5s	3	Pipe tower.	Flash 1 s; eclipse 4 s. Operates 24 h. Seasonal. Chart:4022 Edn 09/24 (N24-173)
204 H0169	Norris Point Light	49 30 55.2 057 52 39.8	Fl G 5s	7.6	4	Square skeleton tower, green and white rectangular daymark, red vertical stripe. 5.6	Flash 1 s; eclipse 4 s. Seasonal. Chart:4658 Edn 09/24 (N24-159)
205.2	Neddy Harbour Breakwater Light	49 31 38.3 057 52 21.7	Fl R 5s	2	Mast.	Flash 1 s; eclipse 4 s. Operates 24 h. Seasonal. Chart:4658 Edn 09/24 (N24-150)
STRAIT OF BELLE ISLE (LL 211 – 234)							
211 H0154	Pointe Riche Light	50 41 54.6 057 24 36.8	Fl W 5s	29.3	10	White octagonal tower with red upper portion. 19.8	Flash 1 s; eclipse 4 s. Operates 24 h. Seasonal. Chart:4679 Edn 09/24 (N24-161)
216 H0145	Harbour Point Light	N. of St Barbe wharf. 51 12 22.8 056 46 33.2	Fl R 5s	6.1	4	Square skeleton tower, red and white rectangular daymark. 5.9	Flash 1 s; eclipse 4 s. Year round. Chart:4667 Edn 09/24 (N24-170)

Notices to Mariners – Monthly Eastern Edition
Section 5: List of Lights, Buoys and Fog Signals Corrections

No.	Name	Position ----- Latitude N. Longitude W.	Light Characteristics	Focal Height in m. above water	Nomi- nal Range	Description ----- Height in meters above ground	Remarks ----- Fog Signals
219.5 H0137	Raleigh Breakwater Light	Raleigh harbour. 51 33 51.1 055 43 59.2	Fl G 4s	4.5	2	Mast. 2.4	Flash 1 s; eclipse 3 s. Seasonal. Chart:4509 Edn 09/24 (N24-148)
221.32 H0151	Castor River North Wharf Light	50 55 54.0 056 56 36.0	Fl G 5s	4.0	2	Mast. 2.3	Flash 1 s; eclipse 4 s. Seasonal. Chart:4680 Edn 09/24 (N24-160)
222.1 H0140.5	Sandy Cove Wharf Light	On wharf. 51 20 35.8 056 40 36.8	Fl R 5s	3.6	4	Mast. 2.6	Flash 1 s; eclipse 4 s. Seasonal. Chart:4667 Edn 09/24 (N24-166)
222.13 245.4 H0141.7	Savage Cove Wharf Light	Savage Cove Harbour. 51 19 52.0 056 42 08.6	Fl G 5s	3.6	4	Mast. 2.6	Flash 1 s; eclipse 4 s. Seasonal. Chart:4667 Edn 09/24 (N24-169)
226.3 H0141.2	Green Island Cove Wharf Light	51 23 03.0 056 34 44.2	Fl R 5s	3.4	4	Cylindrical tower. 2.6	Flash 1 s; eclipse 4 s. Seasonal. Chart:4668 Edn 09/24 (N24-165)
226.8 H0141	Green Island Brook Wharf Light	51 24 01.8 056 31 27.7	Fl R 5s	5.5	4	Cylindrical Mast. 3.1	Flash 1 s; eclipse 4 s. Seasonal. Chart:4020 Edn 09/24 (N24-167)
WHITE BAY (LL 235 – 269.2)							
247 H0722	Conche Light	Conche Harbour entrance. 50 53 09.9 055 53 50.2	Fl R 5s	7.2	4	Square skeleton tower, red and white rectangular daymark. 6.7	Flash 1 s; eclipse 4 s. Seasonal. Chart:4583 Edn 09/24 (N24-162)
247.1 H0723	Conche Wharf Light	50 53 09.9 055 53 40.9	Q R 1s	2	Cylindrical Mast. 2.6	Seasonal. Chart:4583 Edn 09/24 (N24-163)
250.1	Barred Island Light	50 43 20.5 056 06 23.5	Fl G 5s	3	Mast.	Flash 1 s; eclipse 4 s. Operates 24 h. Seasonal. Chart:4583 Edn 09/24 (N24-149)
253 H0720	Roddickton-Bide Arm Breakwater Light	50 51 46.6 056 07 54.7	Fl G 5s	3.7	4	Mast. 2.1	Flash 1 s; eclipse 4 s. Seasonal. Chart:4538 Edn 09/24 (N24-164)
NOTRE DAME BAY (LL 326 – 395)							
336.27	Little Bay Arm light buoy DB5						Delete from list. Chart:4523 Edn 09/24 (N24-154)

Notices to Mariners – Monthly Eastern Edition
Section 5: List of Lights, Buoys and Fog Signals Corrections

No.	Name	Position ----- Latitude N. Longitude W.	Light Characteristics	Focal Height in m. above water	Nomi- nal Range	Description ----- Height in meters above ground	Remarks ----- Fog Signals
347.11 361.04	Exploits Outer light buoy DE4	49 30 58.2 055 04 04.8	Fl R 4s	Red spar, marked "DE4".	Seasonal. Chart:4864 Edn 09/24 (N24-145)
355.123	Joe Island Shoal light buoy DA1	49 30 38.5 054 52 38.4	Q G 1s	Green spar, marked "DA1".	Operates 24 h. Seasonal. Chart:4863 Edn 09/24 (N24-141)
356.05	Cross Cove light buoy DM2	49 34 40.6 054 51 57.4	Q R 1s	Red spar, marked "DM2".	Operates 24 h. Seasonal. Chart:4863 Edn 09/24 (N24-142)
358.44	Twillingate light buoy DT12	49 39 00.1 054 46 02.0	Fl R 4s	Red spar, marked "DT12".	Operates 24 h. Seasonal. Chart:4886 Edn 09/24 (N24-144)
379 H0608	Tinker Rock Light	S. of Seldom, Fogo Island. 49 35 00.9 054 10 31.6	Fl W 4s	10.4	6	White cylindrical tower with red and white horizontal bands. 4.3	Year round. Chart:4530 Edn 09/24 (N24-146)
393.62	Ladle Cove light buoy JA3	49 28 27.7 054 03 14.7	Fl R 4s	Red spar, marked "JA3".	Operates 24 h. Seasonal. Chart:4530 Edn 09/24 (N24-143)
BONAVISTA BAY (LL 396 – 449.5)							
396.75	Musgrave Harbour Outer Breakwater Light	49 27 36.2 053 57 19.7	Fl W 4s	2	Cylindrical mast. 2.4	Flash 1 s; eclipse 3 s. Seasonal. Chart:4530 Edn 09/24 (N24-186)
397.1	Musgrave Harbour Inner Breakwater Light	49 27 32.3 053 57 24.7	Fl Y 4s	3	Cylindrical mast.	Flash 1 s; eclipse 3 s. Seasonal. Chart:4530 Edn 09/24 (N24-187)
399 H0594	Muddy Hole Point Light	49 27 23.1 053 56 28.5	Fl G 4s	7.9	2	Square skeleton tower, green and white rectangular daymark. 4.3	Flash 1 s; eclipse 3 s. Operates 24 h. Seasonal. Chart:4530 Edn 09/24 (N24-189)
419 H0563.4	Candle Cove Rocks Light	NE. of the rocks. 49 05 46.9 053 35 55.2	Fl W 3s	6.1	6	Square skeleton tower, red and white rectangular daymark. 4.3	Flash 0.5 s; eclipse 2.5 s. Seasonal. Chart:4858 Edn 09/24 (N24-181)
420 H0563.6	Valleyfield Wharf Light	49 07 14.8 053 36 26.3	Fl Y 4s	3.4	2	Mast. 2.4	Seasonal. Chart:4858 Edn 09/24 (N24-188)
426 H0560.2	Seine Rock Light	W. of Ship Island, Greenspond. 49 03 56.1 053 34 18.4	Fl R 5s	5.5	4	Square skeleton tower, red and white square daymark. 4.3	Flash 1 s; eclipse 4 s. Seasonal. Chart:4857 Edn 09/24 (N24-179)

Notices to Mariners – Monthly Eastern Edition
Section 5: List of Lights, Buoys and Fog Signals Corrections

No.	Name	Position ----- Latitude N. Longitude W.	Light Characteristics	Focal Height in m. above water	Nomi- nal Range	Description ----- Height in meters above ground	Remarks ----- Fog Signals
TRINITY BAY (LL 450.1 – 471.51)							
465.6 H0515	Little Heart's Ease Wharf Light	48 00 53.8 053 41 22.1	Fl Y 5s	3.0	4	Mast. 2.6	Flash 1 s; eclipse 4 s. Seasonal. Chart:4852 Edn 09/24 (N24-190)
467.08 H0511.55	South Dildo Wharf Light	47 31 56.2 053 33 09.1	Fl G 4s	3.0	2	Mast. 2.4	Seasonal. Chart:4851 Edn 09/24 (N24-183)
CONCEPTION BAY (LL 471.7 – 498.2)							
471.7 H0500.5	Grates Cove Light	48 10 11.8 052 56 09.1	Fl W 5s	46.6	4	Square skeleton tower, red and white rectangular daymark. 4.7	Flash 1 s; eclipse 4 s. Year round. Chart:4853 Edn 09/24 (N24-174)
473.1 H0501	Grates Cove Wharf Light	48 09 52.9 052 56 15.8	Fl R 5s	5.7	3	Mast. 3.0	Flash 1 s; eclipse 4 s. Seasonal. Chart:4853 Edn 09/24 (N24-147)
CAPE ST. FRANCIS TO RENEWS (LL 499 – 516)							
509.51	Aquaforte Wharf Light	Seaward side of the public wharf. 47 00 22.1 052 57 23.3	Fl Y 4s	2	Pipe tower.	Flash 1 s; eclipse 3 s. Operates 24 h. Year round. Chart:4845 Edn 09/24 (N24-177)
509.53	Aquaforte Inner Wharf Light	On outside corner of inner wharf. 47 00 22.3 052 57 44.7	Fl R 4s	2	Mast.	Flash 1 s; eclipse 3 s. Operates 24 h. Year round. Chart:4845 Edn 09/24 (N24-176)
510 H0449	Northern Head Light	Fermeuse Harbour entrance. 46 57 47.2 052 54 03.5	Fl W 4s	27.4	7	Cylindrical Mast. 2.5	Flash 1 s; eclipse 3 s. Year round. Chart:4845 Edn 09/24 (N24-180)
510.5 H0449.5	Port Kirwan Wharf Light	46 58 10.1 052 54 43.1	Fl G 4s	2	Cylindrical Mast. 2.6	Flash 1 s; eclipse 3 s. Year round. Chart:4845 Edn 09/24 (N24-182)
511.25 H0448.3	Fermeuse Wharf Light	46 58 13.9 052 56 42.9	Fl G 4s	2	Cylindrical Mast. 2.1	Flash 1 s; eclipse 3 s. Operates 24 h. Year round. Chart:4845 Edn 09/24 (N24-175)
511.3 H0448.5	Fermeuse Harbour Inner Wharf Light	Sheeps Head Cove. 46 58 20.9 052 56 58.4	Fl Y 4s	2	Mast. 2.6	Flash 1 s; eclipse 3 s. Year round. Chart:4845 Edn 09/24 (N24-178)

Notices to Mariners – Monthly Eastern Edition
Section 5: List of Lights, Buoys and Fog Signals Corrections

No.	Name	Position ----- Latitude N. Longitude W.	Light Characteristics	Focal Height in m. above water	Nomi- nal Range	Description ----- Height in meters above ground	Remarks ----- Fog Signals
-----	------	--	--------------------------	--	-----------------------	--	---------------------------------

ATLANTIC COAST

ST. LAWRENCE ESTUARY, GULF OF ST. LAWRENCE – RIVIÈRE DU LOUP (LL 1620 – 1772)

1754.4	Anse aux Basques Wharf Sector Light	Wharf. 48 19 04.9 069 24 56.2	F R W G	7.4	10	Square skeleton tower, red and white rectangular daymark.	Red from 274.04° to 281.04°; white from 281.04° to 302.04°; green from 302.04° to 309.04°. Operates 24 h. Year round.
--------	---	--	---------------------	-----	----	---	---

Chart:1320
Edn 09/24 (Q24-201)

ST. LAWRENCE RIVER, RIVIÈRE DU LOUP – SOREL (LL 1823.8 – 2185.1)

2019 H2356	Route du Cap Charles range	W. of Cap Charles. 46 33 22.0 072 05 10.9	F G W G	39.8	14	Square skeleton tower, fluorescent orange daymark with black vertical stripe. 9.1	Visible in line of range. Operates 24 h. Emergency mode. Year round.
---------------	-------------------------------	---	---------------------	------	----	--	--

2020 H2356.1		238°29' 615.8 m from front.	F G W G	54.2	14	Square skeleton tower, fluorescent orange daymark with black vertical stripe. 20.5	Visible in line of range. Operates 24 h. Emergency mode. Year round.
-----------------	--	--------------------------------	---------------------	------	----	---	--

Chart:1314
Edn 09/24 (Q24-203, 204)

2025 H2364	Route de l'Anse- des-Grondines range	Upstream of Pointe des Grondines. 46 35 06.4 072 05 52.0	Iso W 2s W G	9.0	16	White Square skeleton tower, fluorescent orange daymark with black vertical stripe. 8.0	Visible in line of range. Operates 24 h. Emergency mode. Year round.
---------------	--	---	--------------------	-----	----	--	--

2026 H2364.1		047°15' 1996.8 m from front.	Iso W 2s W G	38.4	16	Trapezoidal skeleton tower, fluorescent red daymark with black vertical stripe. 23.2	Visible in line of range. Operates 24 h. Emergency mode. Year round.
-----------------	--	---------------------------------	--------------------	------	----	---	--

Chart:1314
Edn 09/24 (Q24-199)