



Fisheries and Oceans
Canada

Pêches et Océans
Canada

Canadian
Coast Guard

Garde côtière
canadienne

Notices to Mariners

Edition No. 05/2024
May 31, 2024



Safety First, Service Always

Monthly Western Edition

Canada 

Notices to Mariners – Monthly Western Edition
Edition No. 05/2024

Aussi disponible en français :
Avis aux navigateurs – Édition mensuelle de l'Ouest
Édition n° 05/2024

Published under the Authority of:

Canadian Coast Guard Programs
Aids to Navigation and Waterways
Fisheries and Oceans Canada
Montreal, QC H2Y 2E7

For more information, contact DFO.Notmar-Notmar.MPO@dfo-mpo.gc.ca.

© His Majesty the King in Right of Canada,
as represented by the Minister of Fisheries, Oceans
and the Canadian Coast Guard, 2024.

Cat. No. Fs152-9E-PDF (Electronic PDF, English)
ISSN 2817-0253

Cat. No. Fs152-9F-PDF (Electronic PDF, French)
ISSN 2817-0261

A web version is available here:

[Notices to Mariners – Monthly Editions](#) (English)

[Avis aux navigateurs – Publications mensuelles](#) (French)

Explanatory Notes – Notices to Mariners (NOTMAR)

Geographical positions refer directly to the graduations of the largest scale Canadian Hydrographic Service chart (unless otherwise indicated).

Bearings refer to the true compass and are measured clockwise from 000° (North) clockwise to 359°; those relating to lights are from seaward.

Visibility of lights is that in clear weather.

Depths - The units used for soundings (metres, fathoms or feet) are stated in the title of each chart.

Elevations are normally given above Higher High Water, Large Tide (unless otherwise indicated).

Distances may be calculated as follows:

- 1 nautical mile = 1,852 metres (6,076.1 feet)
- 1 statute mile = 1,609.3 metres (5,280 feet)
- 1 metre = 3.28 feet

Temporary and Preliminary Notices to Mariners – Section 1A of *Notices to Mariners*

These notices are indicated by a (T) or a (P), respectively. Please note that nautical charts are not amended by the Canadian Hydrographic Service for temporary (T) and preliminary (P) notices. It is recommended that mariners chart these corrections in pencil. For the list of charts affected by (T) & (P) notices, please refer to the current [Notices to Mariners - Monthly Summary of Temporary and Preliminary Notices](#) publication.

Suggestions and Corrections Form

This form is specifically for suggestions and corrections to Notices to Mariners publications. It is available [online](#) and also in [fillable PDF format](#) included with the monthly publication ZIP file.

To submit comments and suggestions on possible improvements to the various publications and services: DFO.Notmar-Notmar.MPO@dfo-mpo.gc.ca.

To report chart discrepancies and/or corrections to the *Canadian Sailing Directions* booklets: Fill out the [Marine Information Reporting Form](#) and/or email chsinfo@dfo-mpo.gc.ca.

To report emergencies or navigational hazards: [Contact your nearest MCTS centre](#)

- VHF channel 16 (156.8 MHz)
- MF/HF frequency 2182 kHz/4125 kHz (where available)
- *16 on a cellphone (where available)

NOTMAR Website – Monthly Editions, Chart Corrections and Chart Patches

The NOTMAR website allows users to access the [monthly publications](#), [chart corrections](#), and [chart patches](#).

Users can subscribe for free to the [email notification service](#) to receive notifications when charts of interest are updated, including their patches, as well as when a new Monthly Edition of *Notices to Mariners* is published.

In addition, the monthly publication and related files to download, such as chart patches, can be obtained all together through the download of a single ZIP file.

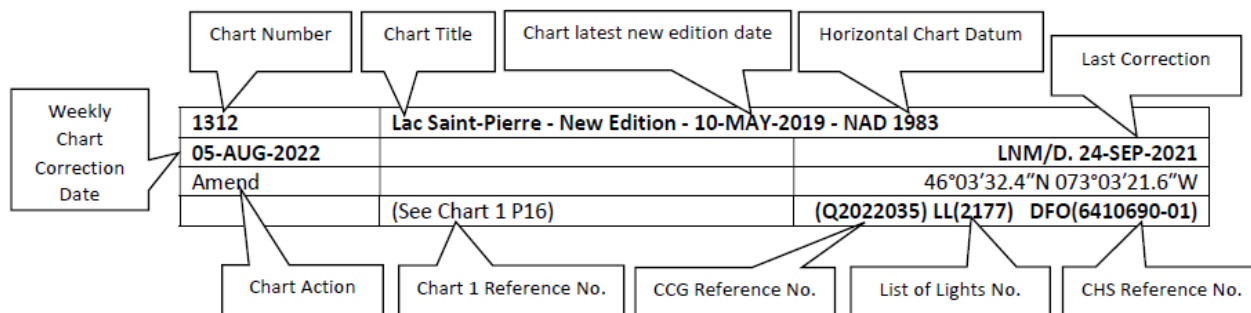
Explanatory Notes – Canadian Hydrographic Service (CHS)

Chart Corrections – Section 2 of *Notices to Mariners*

Corrections to nautical charts will be listed in numerical order by chart number. Each chart correction listed applies only to that particular chart. Related charts, if any, will have their own specific correction listed separately.

Users should also refer to CHS *Chart 1: Symbols, Abbreviations and Terms* for additional information pertaining to the correction of charts.

The illustration below describes the elements that will comprise a typical Section 2 chart correction:



The last correction number is identified with the **LNMD** or **Last Notice to Mariners Number / Date**.

Mariners are advised that only the most critical changes that directly affect safety to navigation are issued in “Section 2 – Chart Corrections.” This limitation is required to ensure that charts remain as clear and easy to read as possible. As a result, mariners may see minor discrepancies of a non-critical nature between information in official publications. For example, a small change in the nominal range or focal height of a light may not result in the production of a chart correction in *Notices to Mariners*, but may result in a correction in the [List of Lights, Buoys and Fog Signals](#) publication.

Note: In the case of a discrepancy between information provided on CHS charts relating to aids to navigation, and the *List of Lights, Buoys and Fog Signals* publication, the latter shall be deemed as containing the most up-to-date information.

Canadian Nautical Charts & Publications

A source list of Canadian nautical charts and publications is published in Notice No. 14 of the *Notices to Mariners Annual Edition 2024*. The source supply and the prices effective at the time of printing are listed. For current chart edition dates, please refer to the [Canadian Hydrographic Service – List of Charts](#).

Explanatory Notes – Marine Communications and Traffic Services (MCTS)

Navigational Warnings / Notices to Shipping

The Canadian Coast Guard (CCG) is implementing a number of changes to the aids to navigation system in Canada.

These changes are advertised as Navigational Warnings, formerly called Notices to Shipping¹, that are broadcast by the CCG, and are then followed up with Notices to Mariners, then charts are updated by hand correction, reprints or new editions.

Mariners are advised that all relevant Navigational Warnings (NAVWARN) should be kept until superseded by Notices to Mariners or through revised charts issued by the Canadian Hydrographic Service (CHS).

NAVWARN are accessible on the applicable regional page on the [CCG Navigational Warnings](#).

CHS is reviewing the impact of these changes with CCG and together are preparing an action plan on the issuing of chart revisions.

For further information, contact your regional NAVWARN Issuing Desk.

<p>Western Region Prince Rupert MCTS Centre</p> <p>“P” Series NAVWARN</p> <p>Canadian Coast Guard Bag 4444 Prince Rupert, BC V8J 4K2</p> <p>Telephone: 250-627-3070</p> <p>Email: NAVWARN.MCTSPrinceRupert@innav.gc.ca</p>	<p>Arctic Region *Iqaluit MCTS Centre</p> <p><i>Operational from approximately mid-May until late December.</i></p> <p>“A” Series NAVWARN</p> <p>Canadian Coast Guard P.O. Box 189 Iqaluit, NU X0A 0H0</p> <p>Telephone: 867-979-5269 Facsimile: 867-979-4264</p> <p>Email: NAVWARN.MCTSIqaluit@innav.gc.ca</p>
--	--

*Service available in English and in French.

¹ The expression “Notice to Shipping” was changed to “Navigational Warning” in January 2019.

Table of Contents

Section 1: General and Safety Information	1
*505/23 Canadian Hydrographic Service – Magnetic Declination Calculations	1
*1004/23 Transport Canada – British Columbia North Coast Waterway Management Guidelines	1
*1207/23 Canadian Hydrographic Service – Inappropriate Geographical Names Review Process	2
*208/24 West Coast Haida Gwaii – Voluntary Protection Zone for Shipping	3
*409/24 Canadian Hydrographic Service – Chart 3811 Permanently Withdrawn	4
*501/24 Canadian Hydrographic Service – Electronic Navigational Charts	4
*502/24 Transport Canada - Ship Safety Bulletin #11/2024	10
*503/24 Canadian Coast Guard Publication - Amendments to the <i>Notices to Mariners Annual Edition 2024</i> - Section A, Notice 5: General Guidelines for Aquatic Species at Risk and Important Marine Mammal Areas	10
*504/24 Canadian Coast Guard Publication - Amendments to the <i>Notices to Mariners Annual Edition 2024</i> - Section A, Notice 5A: General Regulatory Requirements for all <i>Oceans Act</i> Marine Protected Areas	10
*505/24 Voluntary Avoidance of Anguniaqvia Niqiyuam Marine Protected AreaS (ANMPA) and Tarium Nirytutait Marine Protected Areas (TNMPA) and Voluntary Slowdown in Beluga and Bowhead Whale Areas	11
*511/24 Millhaven Bay – Bennet Lake – Unlit Buoy Permanently Discontinued	13
Section 1A: Temporary and Preliminary Notices	14
Reminder – Comment Period for Active Preliminary Notices	14
*514(P)/24 Fraser River/Fleuve Fraser, Crescent Island to/à Harrison Mills – Unlit Buoy to be Discontinued	14
*515(P)/24 Fraser River/Fleuve Fraser, Sand Heads to/à Douglas Island – Unlit Buoy to be Discontinued	15
Section 2: Chart Corrections	16
Section 3: Radio Aids to Marine Navigation Corrections	30
No corrections for this section.	30
Section 4: Canadian Sailing Directions Corrections	31
Section 5: List of Lights, Buoys and Fog Signals Corrections	32

Numerical Index of Canadian Charts Affected

This numerical index lists all nautical charts mentioned in this monthly edition of Notices to Mariners. Only charts appearing in Section 2 of this publication require a chart correction. The appearance of charts in all other sections, particularly those related to the correction of other nautical publications, is included here for reference.

Chart No.	Pages	Chart No.	Pages	Chart No.	Pages
3000	16	6251	28		
3002	16, 17	6416	29		
3057	32				
3062	17				
3419	17, 18				
3440	32				
3441	32				
3442	18, 19				
3443	19				
3456	19				
3458	19				
3459	19, 20				
3461	20				
3462	20				
3463	20, 21				
3473	21				
3478	21				
3479	22				
3488	14				
3489	22				
3490	15, 22, 32				
3491	23				
3526	23				
3527	23, 32				
3564	33				
3601	23				
3606	24				
3668	32				
3670	24, 25, 26				
3671	26, 27				
3674	27, 28				
3811	4				
6021	28				
6240	28				
6241	28				

Section 1: General and Safety Information

***505/23 Canadian Hydrographic Service – Magnetic Declination Calculations**

(Recurrent publication of notice *505/23, originally published in the *Notices to Mariners – Monthly Western Edition 05/2023* publication.)

Mariners are advised that CHS has adopted the harmonized World Magnetic Model (WMM), as found on the NCEI/NOAA website. Old compass rose declination information on CHS navigational products can be updated using the [Magnetic Declination Estimated Value](#) website. While the differences in the model declinations are small each year, they can become more significant over a large period of time.

***1004/23 Transport Canada – British Columbia North Coast Waterway Management Guidelines**

(Recurrent publication of notice *1004/23, originally published in the *Notices to Mariners – Monthly Western Edition 10/2023* publication.)

Reference: Notice *905/22 is cancelled.

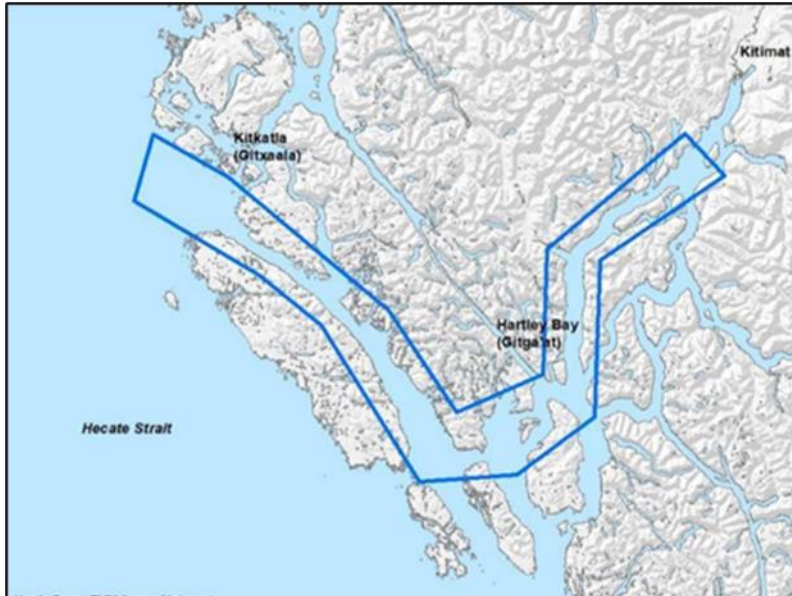
The North Coast Waterway Management Guidelines are voluntary guidelines that aim to improve safety on the water by reducing conflicts between First Nations' marine use activities, such as fishing and shoreline harvesting, and commercial vessels on the shipping route between Kitimat and Browning Entrance. The guidelines came into effect on September 1, 2022, and will be reviewed from time to time.

The guidelines apply to all vessels navigating on the route between Kitimat and Browning Entrance, on the north coast of British Columbia. This area includes:

- Douglas Channel
- Wright Sound
- Lewis Passage
- Otter Channel
- Nepean Sound, and
- Principe Channel

The complete guidelines document is available at [British Columbia North Coast Waterway Management Guidelines](#).

Nothing in these guidelines replaces or changes how we apply any Canadian or international laws or regulations, including the Collision Regulations. Furthermore, nothing in these guidelines prevents or limits the master or pilot of a ship from making any decisions to protect the vessel, the crew, or the marine environment.



The guidelines include information for:

- all vessels that covers:
 - inshore safety zones
 - routing measures
 - speed reductions
 - guidelines for meeting and passing
 - a special operating area in Wright Sound, and
 - guidelines in case of a mechanical or electrical breakdown
- large commercial ships, including bulk carriers, general cargo vessels, liquid bulk vessels, and passenger vessels
- tugs and barges, and
- vessels operating in First Nations Areas of Concern where you must pay special attention to make sure local community users can transit and use the area safely.

***1207/23 Canadian Hydrographic Service – Inappropriate Geographical Names Review Process**

(Recurrent publication of notice *1207/23, originally published in the *Notices to Mariners – Monthly Western Edition 12/2023* publication.)

The records of the Canadian Hydrographic Service could contain geographical names that may be considered inappropriate, offensive and derogatory. Geographical naming authorities are in the process of addressing many offensive place names, the review process is underway. For more information, about inappropriate geographical names, please see the [following announcement](#).

***208/24 West Coast Haida Gwaii – Voluntary Protection Zone for Shipping**

(Recurrent publication of notice *208/24, originally published in the *Notices to Mariners – Monthly Western Edition 02/2024* publication.)

Reference: Notice *1105/21 is cancelled.

**Voluntary Protection Zone for Shipping, western shore of Haida Gwaii
(formerly Queen Charlotte Islands)**

Haida Gwaii's remote location, rugged coastline, variable sea and weather conditions, and rich ecological and cultural heritage make it vulnerable to the potential for pollution from shipping breakdowns and accidents. Increasing the distance vessels travel offshore can increase the amount of time available to address propulsion, steering or other issues, and the likelihood of a towing vessel being able to respond to a vessel in distress or drifting. This in turn reduces the risk of grounding and oil spills.

A Voluntary Protection Zone for Shipping on the western shore of Haida Gwaii is currently in effect. In the Voluntary Protection Zone, commercial vessels of 500 gross tonnage or greater are requested to observe a minimum distance of 50 nautical miles from the western shore of Haida Gwaii with the following exemptions:

Exemptions from requested 50 nm distance:

- Cruise vessels, which are asked to observe a minimum 12 nm distance from shore;
- Vessels transiting from Alaska to British Columbia or Washington State, or vice versa, through the Voluntary Protection Zone are asked to observe a distance of at least 25 nm from shore
- No minimum distance is requested for tugs and barges (including pushing and towing alongside) or vessels engaged in commercial fishing.
- Vessels to which this bulletin applies are not required to observe requested minimum distances if doing so may compromise navigational, vessel, passenger or cargo safety.

The Voluntary Protection Zone for Shipping coordinates are:

54° 15.436' N	133° 04.788' W
54° 17.572' N	134° 02.484' W
54° 13.614' N	134° 19.427' W
54° 11.786' N	134° 30.841' W
53° 44.036' N	134° 32.677' W
53° 11.118' N	134° 16.412' W
52° 18.483' N	133° 20.917' W
51° 24.590' N	132° 04.081' W
51° 56.158' N	131° 01.830' W

Vessels are requested to adhere to these distances on a voluntary basis and only when it does not jeopardize the safety of navigation, the vessel, the persons onboard, and the cargo.



***409/24 Canadian Hydrographic Service – Chart 3811 Permanently Withdrawn**

(Recurrent publication of notice *409/24, originally published in the *Notices to Mariners – Monthly Western Edition 05/2024* publication.)

Chart 3811, Harbours in Queen Charlotte Islands/Havres dans Îles de la Reine-Charlotte, has been permanently cancelled.

***501/24 Canadian Hydrographic Service – Electronic Navigational Charts**

S-57 ENC Number	Chart Title	ENC Compilation Scale	Published
New Charts			
CA448PMA (Edn 1.000)	CA448PMA	1:22 500	2024-05-10
CA448SCA (Edn 1.000)	CA448SCA	1:45 000	2024-05-24
CA448SNA (Edn 1.000)	CA448SNA	1:45 000	2024-05-24
CA448SYA (Edn 1.000)	CA448SYA	1:45 000	2024-05-24
CA448T9A (Edn 1.000)	CA448T9A	1:45 000	2024-05-24
CA448TKA (Edn 1.000)	CA448TKA	1:90 000	2024-05-24
CA44JPBA (Edn 1.000)	CA44JPBA	1:90 000	2024-05-10
CA44JPMA (Edn 1.000)	CA44JPMA	1:90 000	2024-05-10
CA44JPXA (Edn 1.000)	CA44JPXA	1:90 000	2024-05-10
CA44JQ8A (Edn 1.000)	CA44JQ8A	1:90 000	2024-05-10

S-57 ENC Number	Chart Title	ENC Compilation Scale	Published
CA44JQUB (Edn 1.000)	CA44JQUB	1:45 000	2024-05-10
CA44JR5A (Edn 1.000)	CA44JR5A	1:45 000	2024-05-10
CA44JRFA (Edn 1.000)	CA44JRFA	1:45 000	2024-05-24
CA44JS2A (Edn 1.000)	CA44JS2A	1:45 000	2024-05-24
CA44JS2B (Edn 1.000)	CA44JS2B	1:45 000	2024-05-24
CA44JSCA (Edn 1.000)	CA44JSCA	1:45 000	2024-05-24
CA44JSCB (Edn 1.000)	CA44JSCB	1:45 000	2024-05-24
CA44JSNA (Edn 1.000)	CA44JSNA	1:45 000	2024-05-24
CA44JSNB (Edn 1.000)	CA44JSNB	1:45 000	2024-05-24
CA44JSNC (Edn 1.000)	CA44JSNC	1:45 000	2024-05-24
CA44JSYA (Edn 1.000)	CA44JSYA	1:45 000	2024-05-24
CA44JSYB (Edn 1.000)	CA44JSYB	1:22 500	2024-05-17
CA44JSYC (Edn 1.000)	CA44JSYC	1:45 000	2024-05-24
CA44JSYD (Edn 1.000)	CA44JSYD	1:45 000	2024-05-24
CA44JT9A (Edn 1.000)	CA44JT9A	1:45 000	2024-05-24
CA44JT9B (Edn 1.000)	CA44JT9B	1:45 000	2024-05-24
CA44JT9C (Edn 1.000)	CA44JT9C	1:45 000	2024-05-24
CA44JTKA (Edn 1.000)	CA44JTKA	1:45 000	2024-05-24
CA44UPBA (Edn 1.000)	CA44UPBA	1:90 000	2024-05-10
CA44UPMB (Edn 1.000)	CA44UPMB	1:90 000	2024-05-10
CA44UPXB (Edn 1.000)	CA44UPXB	1:90 000	2024-05-10
CA44URRA (Edn 1.000)	CA44URRA	1:22 500	2024-05-10
CA44USYA (Edn 1.000)	CA44USYA	1:45 000	2024-05-24
CA44UT9A (Edn 1.000)	CA44UT9A	1:45 000	2024-05-24
CA44UT9B (Edn 1.000)	CA44UT9B	1:45 000	2024-05-24
CA44UT9C (Edn 1.000)	CA44UT9C	1:45 000	2024-05-24
CA44UT9D (Edn 1.000)	CA44UT9D	1:45 000	2024-05-24
CA44UTKA (Edn 1.000)	CA44UTKA	1:45 000	2024-05-24
CA455RRA (Edn 1.000)	CA455RRA	1:45 000	2024-05-10
CA455S2A (Edn 1.000)	CA455S2A	1:45 000	2024-05-10
CA455SCA (Edn 1.000)	CA455SCA	1:90 000	2024-05-10
CA455SNA (Edn 1.000)	CA455SNA	1:90 000	2024-05-10
CA455SNB (Edn 1.000)	CA455SNB	1:90 000	2024-05-10
CA455SNC (Edn 1.000)	CA455SNC	1:22 500	2024-05-10
CA455SYA (Edn 1.000)	CA455SYA	1:22 500	2024-05-10
CA455SYB (Edn 1.000)	CA455SYB	1:22 500	2024-05-10
CA455SYC (Edn 1.000)	CA455SYC	1:22 500	2024-05-10
CA455SYD (Edn 1.000)	CA455SYD	1:22 500	2024-05-10

S-57 ENC Number	Chart Title	ENC Compilation Scale	Published
CA455SYE (Edn 1.000)	CA455SYE	1:22 500	2024-05-10
CA455T9A (Edn 1.000)	CA455T9A	1:90 000	2024-05-10
CA455TKA (Edn 1.000)	CA455TKA	1:90 000	2024-05-10
CA45FSCA (Edn 1.000)	CA45FSCA	1:90 000	2024-05-10
CA45FSNA (Edn 1.000)	CA45FSNA	1:90 000	2024-05-10
CA45FSYA (Edn 1.000)	CA45FSYA	1:90 000	2024-05-10
CA45FT9A (Edn 1.000)	CA45FT9A	1:90 000	2024-05-10
CA45FTKA (Edn 1.000)	CA45FTKA	1:90 000	2024-05-10
CA471206 (Edn 1.000)	CA471206	1:22 500	2024-05-24
CA471207 (Edn 1.000)	CA471207	1:90 000	2024-05-24
CA471208 (Edn 1.000)	CA471208	1:45 000	2024-05-24
CA471210 (Edn 1.000)	CA471210	1:90 000	2024-05-24
CA471219 (Edn 1.000)	CA471219	1:45 000	2024-05-24
CA471220 (Edn 1.000)	CA471220	1:22 500	2024-05-24
CA486EUA (Edn 1.000)	CA486EUA	1:90 000	2024-05-03
CA486F5A (Edn 1.000)	CA486F5A	1:90 000	2024-05-03
CA48GEUA (Edn 1.000)	CA48GEUA	1:90 000	2024-05-03
CA48GF5A (Edn 1.000)	CA48GF5A	1:90 000	2024-05-03
CA4AAAWA (Edn 1.000)	Transit6600N10800W	1:22 500	2024-05-03
CA4AAB7A (Edn 1.000)	Transit6600N10900W	1:22 500	2024-05-03
CA4AL9PA (Edn 1.000)	Transit6700N11200W	1:90 000	2024-05-03
CA4ALA0A (Edn 1.000)	Transit6700N11100W	1:90 000	2024-05-03
CA4ALAAA (Edn 1.000)	Transit6700N11000W	1:90 000	2024-05-03
CA4ALALA (Edn 1.000)	Transit6700N10900W	1:45 000	2024-05-03
CA4ALAWA (Edn 1.000)	Transit6700N10800W	1:45 000	2024-05-03
CA4AW9PA (Edn 1.000)	Transit6800N11200W	1:90 000	2024-05-03
CA4AWA0A (Edn 1.000)	Transit6800N11100W	1:90 000	2024-05-03
CA4AWAAA (Edn 1.000)	Transit6800N11000W	1:90 000	2024-05-03
CA4AWALA (Edn 1.000)	Transit6800N10900W	1:90 000	2024-05-03
CA4AWAWA (Edn 1.000)	Transit6800N10800W	1:90 000	2024-05-03
CA4B7AWA (Edn 1.000)	Transit6900N10800W	1:90 000	2024-05-03
CA55FSLA (Edn 1.000)	CA55FSLA	1:11 000	2024-05-10
CA55FSMA (Edn 1.000)	CA55FSMA	1:11 000	2024-05-10
New Editions			
CA24URFB (Edn 2.000)	CA24URFB	1:175 000	2024-05-24
CA262SNA (Edn 2.000)	CA262SNA	1:350 000	2024-05-03
CA370203 (Edn 7.000)	Approaches to/Approches à Juan de Fuca Strait	1:75 000	2024-05-24
CA370208 (Edn 4.000)	Ucluelet Inlet to/à Nootka Sound	1:75 000	2024-05-24

S-57 ENC Number	Chart Title	ENC Compilation Scale	Published
CA376062 (Edn 14.000)	West Point à/to Baie de Tracadie	1:50 000	2024-05-17
CA376167 (Edn 9.000)	Cape Smoky to St. Paul Island	1:37 500	2024-05-17
CA376308 (Edn 3.000)	Chéticamp to/à Cape St. Lawrence	1:37 500	2024-05-17
CA376336 (Edn 4.000)	Bonavista Bay, Western Portion/Partie ouest	1:30 000	2024-05-17
CA46CS2A (Edn 2.000)	CA46CS2A	1:45 000	2024-05-03
CA470333 (Edn 6.000)	Tofino Inlet to/à Millar Channel (Part 1 of 2)	1:20 000	2024-05-24
CA470342 (Edn 6.000)	Millar Channel to/à Estevan Point (Part 2 of 2)	1:20 000	2024-05-24
CA54MQVA (Edn 3.000)	Port4730N06190W	1:4 000	2024-05-31
CA54NQVA (Edn 2.000)	Port4740N06190W	1:4 000	2024-05-31
CA576001 (Edn 14.000)	Halifax Harbour - Bedford Basin	1:5 000	2024-05-10
Charts Permanently Withdrawn			
CA370016	Strait of Georgia, Northern Portion/Partie Nord	Cancelled by CA471210,CA471208,CA47 1207	
CA370381	Strait of Georgia, Central Portion/Partie Centrale (Part 1 of 2)	Cancelled by CA471211,CA471208	
CA373302	Bathurst Inlet - Southern Portion/Partie sud		
CA373336	Coronation Gulf Eastern Portion/Partie Est		
CA373337	Johansen Bay and/et Edinburgh Channel		
CA373349	Bathurst Inlet - Northern Portion/Partie nord		
CA373351	Bathurst Inlet - Central Portion/Partie Centrale		
CA376015	Motion Bay to/à Cape St Francis		
CA376070	Renews Harbour to/à Motion Bay		
CA376075	Bay Bulls to/à St. Mary's Bay		
CA376106	Cape Pine to/à Renews Harbour		
CA376120	Conception Bay		
CA376134	Neguac Bay (Continuation A)		
CA376135	Cape Pine to/au Cape St. Mary's		
CA376146	Cape St. Francis to/à Baccalieu Island and/et Heart's Content		
CA376153	Trinity Bay - Southern Portion/Partie Sud		
CA376164	Burin Peninsula to Saint-Pierre		
CA376166	Saint-Pierre and Miquelon (France)		
CA376173	Cape St. Mary's to Argentia Harbour and Jude Island		
CA376176	Long Island to St. Lawrence Harbours		
CA376187	Baie des Chaleurs / Chaleur Bay		
CA376233	Fortune Bay Southern Portion/Partie Sud		
CA376243	Trinity Bay - Northern Portion/Partie Nord		

S-57 ENC Number	Chart Title	ENC Compilation Scale	Published
CA376293	Head of / Fond de St Mary's Bay		
CA376296	Cape St Mary's to/à Argentia		
CA376316	Fortune Bay Northern Portion/Partie Nord		
CA376336	Bonavista Bay, Western Portion/Partie ouest		
CA376337	Continuation A		
CA376339	Bonavista Bay, Southern Portion - Continuation A		
CA376340	Catalina Harbour to/à Inner Gooseberry Island		
CA376371	Indian Bay to/à Wadham Islands		
CA376616	Garia Bay to/à Burgeo		
CA376619	Burgeo to/à François		
CA376625	Cape Ray to/à Garia Bay		
CA376627	Hare Bay to/à Fortune Head		
CA376655	Cape Freels to/à Exploits Islands		
CA376656	White Bay and/et Notre Dame Bay		
CA376660	Cape St. John to/à St. Anthony		
CA376807	Bonavista Bay, Southern Portion		
CA376808	Bonavista Bay, Southern Portion		
CA470017	Discovery Passage		
CA470095	Jervis Inlet	Cancelled by CA471208	
CA470103	Desolation Sound and/et Sutil Channel	Cancelled by CA471208,CA471207	
CA470167	Alberni Inlet	Cancelled by CA471220,CA471219,CA471210,CA471207	
CA470218	Baynes Sound		
CA470334	Tofino Inlet to/à Millar Channel (Part 2 of 2)	Cancelled by CA471206	
CA470337	Barkley Sound (Part 1 of 2)	Cancelled by CA471219,CA471207,CA471206	
CA470338	Barkley Sound (Part 2 of 2)	Cancelled by CA471219,CA471207	
CA470725	Lasqueti Island	Cancelled by CA471210,CA471208	
CA470756	Halibut Bank to/à Ballenas Channel	Cancelled by CA471210	
CA476051	Smith Sound and/et Random Sound		
CA476079	Head of/Fond de Placentia Bay		
CA476080	Head of/Fond de Placentia Bay - Continuation A		
CA476081	Head of/Fond de Placentia Bay - Continuation B		
CA476085	Port Harmon and Approaches/et les approches		
CA476125	Miramichi		

S-57 ENC Number	Chart Title	ENC Compilation Scale	Published
CA476126	Miramichi River - Chatham to/à Newcastle		
CA476133	Entrée à/Entrance to Miramichi River		
CA476168	Lewisporte and Approaches and Loon Bay		
CA476190	Bay of Islands		
CA476244	Trinity Harbour		
CA476279	Hamilton Sound, Eastern Portion / Partie est		
CA476294	St. Mary's Harbour and Adjacent Anchorages/et mouillages adjacents		
CA476300	Red Island to Pinchgut Point		
CA476323	Great Bay de l'Eau and Approaches/et les approches		
CA476479	Bay D'Espoir and/et Hermitage Bay		
CA476480	Hermitage Bay, Continuation	Cancelled by CA44JSNA	
CA476520	Paradise Sound		
CA476622	Burgeo and/et Ramea Islands		
CA476639	Black Island to/à Little Denier Island		
CA476657	Botwood and Approaches/et les approches	Cancelled by CA455SNC	
CA476658	Continuation A:Northern Arm	Cancelled by CA455SNC	
CA476708	Gregory Harbour to Rocky Harbour		
CA476719	Fogo Island Northern Portion		
CA476802	Bacalhao Island to Black Island		
CA476803	Bacalhao Island to Black Island	Cancelled by CA455SYC	
CA476804	Bacalhao Island to Black Island		
CA476805	Presque Harbour to Bar Haven Island and Paradise Sound		
CA476806	Presque Harbour to Bar Haven Island and Paradise Sound		
CA476813	Carmanville to Bacalhoa Island and Fogo (Southern Portion)		
CA476814	Carmanville to Bacalhoa Island and Fogo (Northern Portion)		

***502/24 Transport Canada - Ship Safety Bulletin #11/2024**

A new **Ship Safety Bulletin** has recently been posted on the [Transport Canada website](#).

To view or download this bulletin, please click on the link below:

**[SSB#11/2024](#) – New safe manning webpage and revised application forms to obtain a safe manning document (Updated in April 2024)
RDIMS# 20087849**

Sign up for [e-Bulletin](#) to receive an e-mail notice each time a new Ship Safety Bulletin is published on our website.

Contact us at marinesafety-securitemaritime@tc.gc.ca or 1-855-859-3123 (Toll Free).

***503/24 Canadian Coast Guard Publication - Amendments to the *Notices to Mariners Annual Edition 2024* - Section A, Notice 5: General Guidelines for Aquatic Species at Risk and Important Marine Mammal Areas**

Several amendments have been made throughout Notice 5, General Guidelines for Aquatic Species at Risk and Important Marine Mammal Areas.

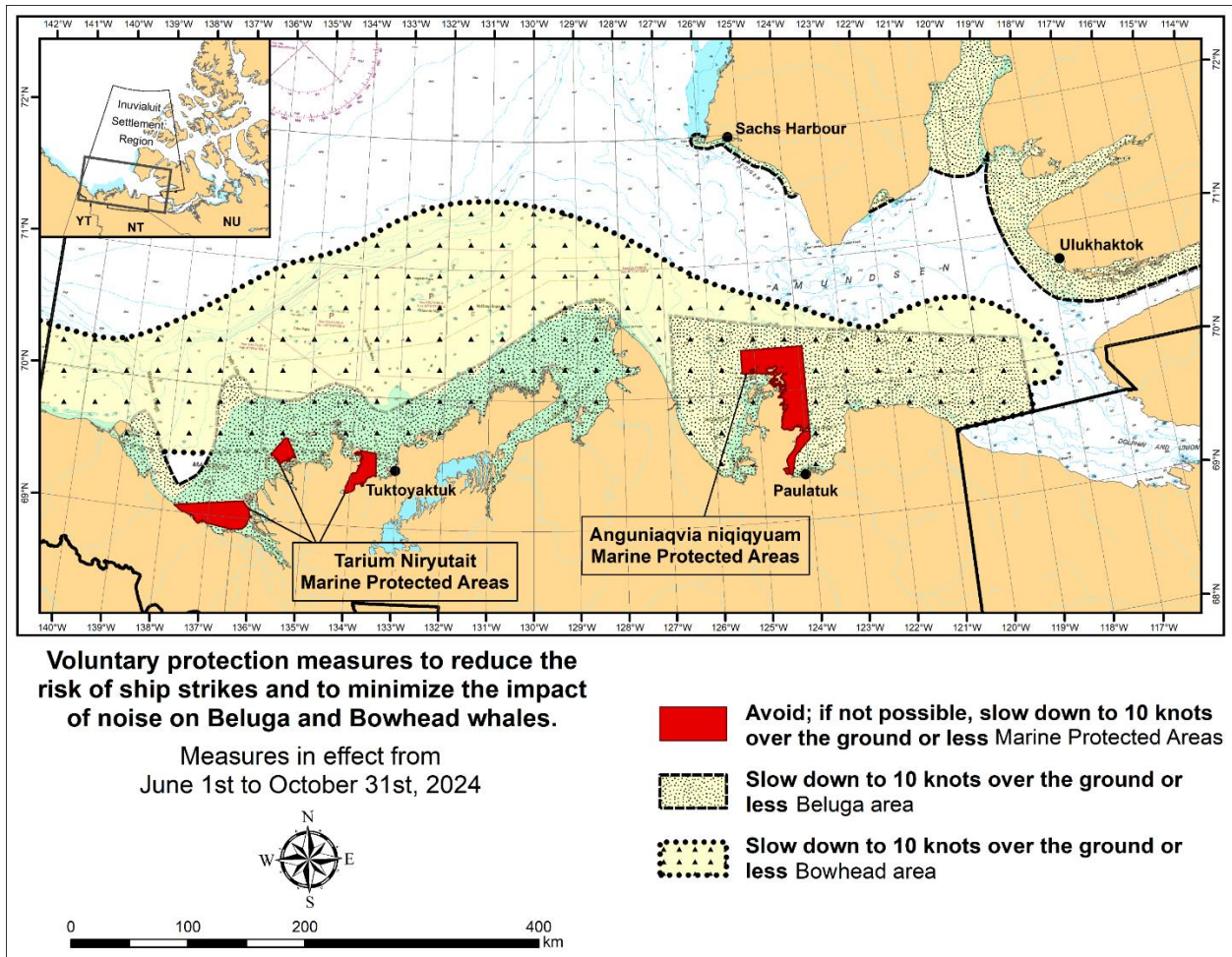
The latest version of this notice is available on the [Notices to Mariners website](#).

***504/24 Canadian Coast Guard Publication - Amendments to the *Notices to Mariners Annual Edition 2024* - Section A, Notice 5A: General Regulatory Requirements for all *Oceans Act* Marine Protected Areas**

Several amendments have been made throughout Notice 5A, General Regulatory Requirements for all *Oceans Act* Marine Protected Areas from pages 25 to 33.

The latest version of this notice is available on the [Notices to Mariners website](#).

***505/24 Voluntary Avoidance of Anguniaqvia Niqiqyuam Marine Protected AreaS (ANMPA) and Tarium Niryutait Marine Protected Areas (TNMPA) and Voluntary Slowdown in Beluga and Bowhead Whale Areas**



The two established Marine Protected Areas (MPAs) in Canada’s Western Arctic are located within the Inuvialuit Settlement Region, as such all activities must comply with the [Inuvialuit Final Agreement](#). Protection and preservation of Arctic wildlife, the environment and biological productivity is one of the principles of the Inuvialuit Final Agreement and it is this principle that led the Inuvialuit Regional Corporation and the Inuvialuit Game Council to initiate establishment of the Western Arctic MPAs. The waters in and near the MPAs, and the offshore marine habitats of the Beaufort Sea and Amundsen Gulf, are important summer foraging habitats used seasonally (May-October) by the Eastern Beaufort Sea beluga stock, and the Bering-Chukchi-Beaufort bowhead population.

REGULATORY PROTECTION MEASURES

All whale species are protected under the Marine Mammal Regulations, pursuant to the *Fisheries Act*. Within the boundaries of the MPAs, a general prohibition is set out in the Regulations, pursuant to the *Oceans Act*. Any incident with a marine mammal within the MPAs must be reported within two hours after its occurrence, to the Canadian Coast Guard. For marine wildlife sightings and incidents such as collisions that occur outside the MPAs or for any situation involving a marine mammal that is dead or in trouble, contact Fisheries and Oceans Canada, Inuvik office at (867) 777-7500.

For more information on the ANMPA and TNMPA, including local contacts and species specific minimum distances, see Section A2 - Notices 5 and 5A of the *Notices to Mariners Annual Edition 2024*.

VOLUNTARY PROTECTION MEASURES

Voluntary measures are in effect from June 1st to October 31st, 2024. See map above.

These measures apply to merchant vessels, cruise ships, small vessels and adventure craft within the boundaries of the MPAs and the additional identified areas to prevent collisions with whales and to mitigate the underwater noise generated by the vessels. These measures should only be taken when they will not jeopardize navigational safety.

Avoid (red area): To reduce the risk of underwater noise disturbance and collisions with whales within the MPAs, vessels should avoid transiting through the MPAs if possible. If passage through this area is required, vessels should slow down to a maximum of 10 knots over the ground and post a lookout such as a marine mammal observer in order to increase the chances of seeing the whales and thus taking necessary measures to avoid them. If bypassing the whales is not possible, slow down and wait for the animals to move away to a distance greater than 400 metres (0.215 nautical miles) before resuming original speed up to 10 knots over the ground. It is more difficult to see the animals in rain, fog, or in rough sea states, therefore increased caution is recommended.

Slow down to 10 knots over the ground or less (yellow area): To reduce the risk of underwater noise disturbance and collisions with whales within this area, it is recommended that vessels should slow down to a maximum speed of 10 knots over the ground, remain in the navigation and marked community supply channels and post a lookout.

These voluntary measures are secondary to rights under the Inuvialuit Final Agreement.

MPA Coordinates

The Tarium Niryutait Marine Protected Areas consist of three areas of the Mackenzie Bay: Okeevik, Kittigaryuit and Niaqunnaq. The three areas are bounded by rhumb lines connecting the following geographical coordinates [North America Datum 1983 (NAD 83)/World Geodetic System (WGS 84)].

Okeevik Sub Area		
Point	Latitude (North)	Longitude (West)
1	69° 38' 19"	135° 25' 09"
2	69° 38' 03"	135° 25' 11"
3	69° 37' 46"	135° 24' 52"
4	69° 29' 49"	135° 12' 49"
5	69° 30' 45"	135° 16' 56"
6	69° 29' 26"	135° 18' 53"
7	69° 29' 23"	135° 19' 06"
8	69° 28' 07"	135° 20' 25"
9	69° 27' 36"	135° 24' 25"
10	69° 25' 51"	135° 32' 27"
11	69° 26' 32"	135° 34' 54"
12	69° 28' 21"	135° 35' 24"
13	69° 28' 35"	135° 36' 40"
14	69° 28' 39"	135° 37' 58"
15	69° 30' 34"	135° 45' 54"
16	69° 35' 18"	135° 35' 42"
17	69° 36' 00"	135° 22' 10"
18	69° 34' 40"	135° 20' 09"
19	69° 34' 00"	135° 20' 09"
20	69° 34' 00"	135° 27' 39"
21	69° 36' 00"	135° 27' 39"
22	69° 27' 00"	135° 31' 11"
23	69° 27' 00"	135° 34' 45"

Kittigaryuit Sub Area		
Point	Latitude (North)	Longitude (West)
1	69° 35' 10"	133° 48' 26"
2	69° 34' 00"	133° 28' 00"
3	69° 23' 37"	133° 26' 40"
4	69° 20' 34"	133° 40' 37"
5	69° 19' 05"	133° 42' 21"
6	69° 19' 01"	133° 42' 31"
7	69° 20' 39"	133° 43' 20"
8	69° 16' 42"	133° 54' 54"
9	69° 15' 20"	134° 06' 53"
10	69° 16' 33"	134° 05' 56"
11	69° 20' 42"	134° 02' 44"
12	69° 24' 00"	133° 59' 10"
13	69° 24' 34"	133° 53' 49"
14	69° 28' 21"	133° 48' 15"
15	69° 28' 02"	133° 50' 59"
16	69° 33' 20"	133° 47' 29"
17	69° 34' 33"	133° 47' 42"
18	69° 32' 55"	133° 51' 09"
19	69° 32' 56"	133° 51' 54"
20	69° 33' 46"	133° 55' 48"
21	69° 33' 46"	133° 55' 31"

Niaqunnaq Sub Area		
Point	Latitude (North)	Longitude (West)
1	69° 08' 00"	136° 16' 44"
2	69° 04' 25"	136° 07' 45"
3	69° 03' 43"	136° 07' 08"
4	69° 01' 19"	136° 04' 45"
5	69° 01' 14"	136° 04' 45"
6	69° 00' 57"	136° 05' 42"
7	69° 00' 12"	136° 07' 08"
8	68° 57' 00"	136° 10' 00"
9	68° 55' 00"	136° 15' 00"
10	68° 54' 22"	136° 31' 50"
11	68° 55' 00"	136° 38' 33"
12	68° 56' 15"	137° 00' 41"
13	68° 56' 29"	137° 03' 03"
14	68° 55' 48"	137° 11' 00"
15	68° 57' 50"	137° 16' 40"
16	68° 59' 20"	137° 21' 30"
17	69° 03' 09"	137° 44' 54"

The Anguniaqvia niqiyuam Marine Protected Areas consist of two areas in Darnley Bay and Amundsen Gulf in the Beaufort Sea: Zone 1 and Zone 2. The areas consist of the seabed, the subsoil to a depth of five metres and the water column, including the sea ice. The two areas are bounded by straight lines connecting the following geographical coordinates [North America Datum 1983 (NAD 83)].

Zone 1		
Point	Latitude (North)	Longitude (West)
A	69° 21' 07.8"	124° 21' 32.0" approx
B	70° 12' 00.0" approx	124° 31' 55.2"
C	70° 08' 22.0"	124° 41' 45.0" approx
D	70° 09' 09.9"	124° 57' 42.0" approx
E	70° 09' 13.0" approx	125° 05' 28.6"
F	70° 09' 13.2"	125° 17' 53.0"
G	70° 20' 00.0"	125° 17' 53.0"
H	70° 20' 00.0"	123° 54' 17.5"
I	69° 37' 20.6"	123° 54' 17.5"
J	69° 30' 00.0"	124° 15' 34.7"

Zone 2		
Point	Latitude (North)	Longitude (West)
K	70° 04' 15.8"	124° 41' 51.0" approx
L	70° 04' 48.6"	124° 41' 54.0" approx
M	70° 02' 12.9"	124° 35' 23.0" approx
N	70° 02' 12.9"	124° 35' 29.0" approx

***511/24 Millhaven Bay – Bennet Lake – Unlit Buoy Permanently Discontinued**

Reference chart: N/A

The following unlit buoy has been permanently discontinued:

Aid Name	LL #	Position
Wedge Rock buoy Y43	6515	60° 05' 11.2"N 134° 56' 23.9"W

(P2024-034)

Section 1A: Temporary and Preliminary Notices

Reminder – Comment Period for Active Preliminary Notices

No notices applicable for this edition.

Inland Waters

Temporary Notices

No notices applicable for this edition.

Preliminary Notices

No notices applicable for this edition.

Pacific Coast

Temporary Notices

No notices applicable for this edition.

Preliminary Notices

Western Region

Comment Submission

Comments on proposed changes in preliminary (P) notices are solicited from mariners and other interested parties within three months of the initial publication date. Following this date, the notices will be cancelled. Any objections raised must state the facts on which they are based and should include supporting information on safety, commerce and public benefit.

Comments should be directed to the following:

Superintendent, Marc Jourdenais
Aids to Navigation & Waterways
Canadian Coast Guard, Western Region
25 Huron Street
Victoria, BC V8V 4V9
Telephone: (250) 480-2602
Fax: (250) 480-2702
Email: marc.jourdenais@dfo-mpo.gc.ca

***514(P)/24 Fraser River/Fleuve Fraser, Crescent Island to à Harrison Mills – Unlit Buoy to be Discontinued**

Reference chart: 3488

The Canadian Coast Guard proposes to permanently discontinue the following aid to navigation:

Aid Name	LL #	Position
Crescent Island buoy S60	5238	49° 09' 33.2"N 122° 24' 45.7"W

Initial publication date: Friday, May 31st, 2024

Comment submission deadline: Thursday, August 29, 2024

(P2024-027)

***515(P)/24 Fraser River/Fleuve Fraser, Sand Heads to/à Douglas Island – Unlit Buoy to be Discontinued**

Reference chart: 3490

The Canadian Coast Guard proposes to permanently discontinue the following aid to navigation:

Aid Name	LL #	Position
Fraser River buoy S38	5237	49° 12' 35.4"N 122° 53' 24.7"W

Initial publication date: Friday, May 31st, 2024

[Comment submission deadline](#): Thursday, August 29, 2024

(P2024-026)

Section 2: Chart Corrections

3000 - Juan de Fuca Strait to/à Dixon Entrance - New Edition - 20-JAN-1989 - NAD 1927 10-MAY-2024

LNMD. 12-APR-2024

Delete note VOLUNTARY PROTECTION ZONE A Voluntary Protection Zone for shipping is in effect on the West Coast of Haida Gwaii. Within this zone, commercial vessels of 500 gross tons or greater shall observe a minimum distance of 50 nautical miles offshore when transiting, with a few exceptions. For additional information, see monthly notice to mariners or haidagwaii-vpz.ca.

54°00'01.0"N 126°42'54.5"W

ZONE DE PROTECTION VOLONTAIRE Une zone de protection volontaire pour la navigation est en vigueur sur la côte ouest de Haida Gwaii. Dans cette zone, les navires commerciaux de 500 tonnes brutes ou plus doivent observer une distance minimale de 50 milles marins de la côte lorsqu'ils transitent, à quelques exceptions. Pour en savoir plus, consultez l'Avis aux navigateurs mensuel ou le site web haidagwaii-vpz.ca.
(See Chart 1, A14)

DFO(6204930-01)

Add note VOLUNTARY PROTECTION ZONE Voluntary Protection Zone for Shipping on the western shore of Haida Gwaii has been in effect since September 1 2020. Commercial vessels of 500 gross tonnage or greater are requested to observe a minimum distance of 50 nautical miles offshore when transiting with a few exemptions. For additional information see notice to mariners or haidagwaii-vpz.ca

54°00'00.0"N 126°43'00.0"W

ZONE DE PROTECTION VOLONTAIRE Une zone de protection volontaire pour le transport maritime sur la rive ouest de Haida Gwaii est en vigueur depuis le 1er septembre 2020. Dans la zone de protection volontaire, on demande aux bâtiments commerciaux d'une jauge brute de 500 ou plus de respecter une distance minimale de 50 milles marins de la rive ouest de la côte ouest de Haida Gwaii, avec quelques exemptions. Pour de plus amples renseignements, visitez haidagwaii vpz.ca ou consultez l'avis aux navigateurs.
(See Chart 1, A14)

DFO(6204930-02)

3002 - Queen Charlotte Sound to/à Dixon Entrance - New Edition - 16-DEC-1994 - NAD 1927 10-MAY-2024

LNMD. 17-NOV-2023

Delete note VOLUNTARY PROTECTION ZONE A Voluntary Protection Zone for shipping is in effect on the West Coast of Haida Gwaii. Within this zone, commercial vessels of 500 gross tons or greater shall observe a minimum distance of 50 nautical miles offshore when transiting, with a few exceptions. For additional information, see monthly notice to mariners or haidagwaii-vpz.ca.

53°08'15.0"N 127°57'42.0"W

ZONE DE PROTECTION VOLONTAIRE Une zone de protection volontaire pour la navigation est en vigueur sur la côte ouest de Haida Gwaii. Dans cette zone, les navires commerciaux de 500 tonnes brutes ou plus doivent observer une distance minimale de 50 milles marins de la côte lorsqu'ils transitent, à quelques exceptions. Pour en savoir plus, consultez l'Avis aux navigateurs mensuel ou le site web haidagwaii-vpz.ca.
(See Chart 1, A14)

DFO(6204930-01)

Add	<p>note VOLUNTARY PROTECTION ZONE Voluntary Protection Zone for Shipping on the western shore of Haida Gwaii has been in effect since September 1 2020. Commercial vessels of 500 gross tonnage or greater are requested to observe a minimum distance of 50 nautical miles offshore when transiting with a few exemptions. For additional information see notice to mariners or haidagwaii-vpz.ca</p> <p>ZONE DE PROTECTION VOLONTAIRE Une zone de protection volontaire pour le transport maritime sur la rive ouest de Haida Gwaii est en vigueur depuis le 1er septembre 2020. Dans la zone de protection volontaire, on demande aux bâtiments commerciaux d'une jauge brute de 500 ou plus de respecter une distance minimale de 50 milles marins de la rive ouest de la côte ouest de Haida Gwaii, avec quelques exemptions. Pour de plus amples renseignements, visitez haidagwaii vpz.ca ou consultez l'avis aux navigateurs. (See Chart 1, A14)</p>	53°08'18.9"N 127°59'12.1"W
		<i>DFO(6204930-02)</i>
3062 - Pitt River - Sheet/Feuille 1 - New Chart - 24-MAY-1985 - NAD 1927		
03-MAY-2024		
Add	depth of 1.9 metres (See Chart 1, I10)	49°12'36.2"N 122°43'38.3"W
		<i>DFO(6204927-01)</i>
3419 - Esquimalt Harbour - New Edition - 13-DEC-2013 - World Geodetic System 1984		
03-MAY-2024		
Delete	slipway (See Chart 1, F23)	between 48°25'52.0"N 123°25'54.8"W and 48°25'54.2"N 123°25'49.6"W
		<i>DFO(6204926-01)</i>
Delete	pile (See Chart 1, F22)	48°25'57.5"N 123°25'44.5"W
		<i>DFO(6204926-02)</i>
Delete	pile (See Chart 1, F22)	48°25'57.5"N 123°25'44.6"W
		<i>DFO(6204926-03)</i>
Delete	pile (See Chart 1, F22)	48°25'57.4"N 123°25'44.7"W
		<i>DFO(6204926-04)</i>
Delete	pile (See Chart 1, F22)	48°25'57.4"N 123°25'44.8"W
		<i>DFO(6204926-05)</i>
Delete	label Piles/Pieux This notice affects Electronic Navigational Chart: CA570138	48°25'57.4"N 123°25'43.1"W
		<i>DFO(6204926-06)</i>
Delete	pile (See Chart 1, F22)	48°25'53.6"N 123°25'40.0"W
		<i>DFO(6204926-07)</i>
Delete	pile (See Chart 1, F22)	48°25'53.6"N 123°25'40.0"W
		<i>DFO(6204926-08)</i>

Notices to Mariners – Monthly Western Edition
Section 2: Chart Corrections

Delete	pile (See Chart 1, F22)	48°25'53.5"N 123°25'40.2"W <i>DFO(6204926-09)</i>
Delete	pile (See Chart 1, F22)	48°25'53.5"N 123°25'40.3"W <i>DFO(6204926-10)</i>
Delete	label Piles/Pieux	48°25'53.6"N 123°25'39.2"W <i>DFO(6204926-11)</i>
Delete	pontoon (See Chart 1, F16)	joining 48°25'52.7"N 123°25'39.2"W 48°25'52.8"N 123°25'39.0"W 48°25'52.9"N 123°25'39.2"W 48°25'52.8"N 123°25'39.4"W and 48°25'52.7"N 123°25'39.2"W <i>DFO(6204926-12)</i>
Add	pontoon (See Chart 1, F16)	joining 48°25'52.6"N 123°25'38.6"W 48°25'52.7"N 123°25'39.0"W 48°25'52.8"N 123°25'39.0"W 48°25'52.9"N 123°25'39.1"W 48°25'52.8"N 123°25'39.2"W 48°25'53.5"N 123°25'40.0"W 48°25'53.6"N 123°25'39.9"W 48°25'57.5"N 123°25'44.4"W 48°25'57.4"N 123°25'44.6"W 48°25'57.3"N 123°25'44.7"W 48°25'53.5"N 123°25'40.2"W 48°25'53.5"N 123°25'40.1"W 48°25'52.8"N 123°25'39.3"W 48°25'52.7"N 123°25'39.3"W 48°25'52.6"N 123°25'39.2"W 48°25'52.6"N 123°25'39.1"W and 48°25'52.5"N 123°25'38.7"W <i>DFO(6204926-13)</i>

3442 - North Pender Island to à Thetis Island - New Edition - 01-JUL-2005 - NAD 1983
03-MAY-2024

		LN/D. 16-FEB-2024
Delete	port bifurcation daybeacon (See Chart 1, Qp)	48°58'39.3"N 123°42'15.7"W <i>LL(5176) DFO(6204852-01)</i>
Add	starboard bifurcation daybeacon (See Chart 1, Qp)	48°58'39.4"N 123°42'15.8"W <i>LL(5176) DFO(6204852-02)</i>
17-MAY-2024		LN/D. 03-MAY-2024
Delete	radar reflector (See Chart 1, S4) This notice affects Electronic Navigational Chart: CA570239	48°50'12.5"N 123°27'12.8"W <i>(P2023103) LL(261) DFO(6204863-01)</i>
Delete	radar reflector (See Chart 1, S4) This notice affects Electronic Navigational Chart: CA570239	48°50'59.8"N 123°24'18.8"W <i>(P2023106) LL(268) DFO(6204864-01)</i>

24-MAY-2024		LNMD. 17-MAY-2024
Delete	radar reflector (See Chart 1, S4) This notice affects Electronic Navigational Chart: CA570239	48°50'33.1"N 123°25'10.5"W (P2023102) LL(259) DFO(6204865-01)
Amend	Q R to read FI R against light (See Chart 1, P16) This notice affects Electronic Navigational Chart: CA570008	48°52'18.7"N 123°23'31.8"W (P2023107) LL(269) DFO(6204866-01)
Add	radar reflector (See Chart 1, S4) This notice affects Electronic Navigational Chart: CA570008	48°52'18.7"N 123°23'31.8"W DFO(6204866-02)
Delete	radar reflector (See Chart 1, S4) This notice affects Electronic Navigational Chart: CA570239	48°51'05.5"N 123°29'34.9"W (P2023104) LL(262) DFO(6204869-01)
3443 - Thetis Island to/à Nanaimo - New Edition - 20-DEC-2002 - NAD 1983		
03-MAY-2024		LNMD. 22-DEC-2023
Delete	port bifurcation daybeacon (See Chart 1, Qp)	48°58'39.3"N 123°42'15.7"W LL(5176) DFO(6204852-01)
Add	starboard bifurcation daybeacon (See Chart 1, Qp)	48°58'39.4"N 123°42'15.8"W LL(5176) DFO(6204852-02)
Add	private yellow ODAS/SADO lighted super-buoy FI (5) Y (See Chart 1, Q58)	49°12'40.1"N 123°48'13.8"W DFO(6204923-01)
3456 - Halibut Bank to/à Ballenas Channel - New Chart - 01-JUL-2011 - NAD 1983		
03-MAY-2024		LNMD. 22-DEC-2023
Add	private yellow ODAS/SADO lighted super-buoy FI (5) Y (See Chart 1, Q58)	49°12'40.1"N 123°48'13.8"W DFO(6204923-01)
3458 - Approaches to/Approches à Nanaimo Harbour - New Edition - 10-MAR-1995 - NAD 1983		
03-MAY-2024		LNMD. 22-DEC-2023
Add	private yellow ODAS/SADO lighted super-buoy FI (5) Y (See Chart 1, Q58)	49°12'40.1"N 123°48'13.8"W DFO(6204923-01)
3459 - Approaches to/Approches à Nanoose Harbour - New Edition - 24-OCT-1997 - NAD 1983		
10-MAY-2024		LNMD. 22-DEC-2023
Add	depth of 1.5 metres (See Chart 1, I10)	49°16'33.2"N 124°06'25.8"W DFO(6204928-01)
Delete	depth of 4.6 metres (See Chart 1, I10)	49°16'31.5"N 124°06'20.8"W DFO(6204928-02)

Add	depth of 0.1 metres (See Chart 1, I10)	49°16'30.9"N 124°06'19.5"W DFO(6204928-03)
Add	depth of 2.0 metres (See Chart 1, I10)	49°16'42.1"N 124°06'12.4"W DFO(6204928-04)
Add	rock which covers and uncovers with drying height of 0.6 metres (See Chart 1, K11)	49°16'35.7"N 124°06'28.5"W DFO(6204928-05)

3461 - Juan de Fuca Strait, Eastern Portion/Partie Est - New Edition - 01-JUL-2005 - NAD 1983
31-MAY-2024

LNMD. 15-SEP-2023

Delete	radar transponder beacon against buoy (See Chart 1, S3.6)	48°22'01.4"N 123°02'11.2"W DFO(6204954-01)
--------	--	---

3462 - Juan de Fuca Strait to/à Strait of Georgia - New Edition - 01-JUL-2005 - NAD 1983
17-MAY-2024

LNMD. 12-APR-2024

Delete	radar reflector (See Chart 1, S4) This notice affects Electronic Navigational Chart: CA570239	48°50'13.1"N 123°27'11.5"W (P2023103) LL(261) DFO(6204863-01)
--------	---	--

Delete	radar reflector (See Chart 1, S4) This notice affects Electronic Navigational Chart: CA570239	48°50'59.8"N 123°24'18.8"W (P2023106) LL(268) DFO(6204864-01)
--------	---	--

24-MAY-2024

LNMD. 17-MAY-2024

Delete	radar reflector (See Chart 1, S4) This notice affects Electronic Navigational Chart: CA570239	48°50'33.1"N 123°25'10.5"W (P2023102) LL(259) DFO(6204865-01)
--------	---	--

Amend	Q R to read FI R against light (See Chart 1, P16) This notice affects Electronic Navigational Chart: CA570008	48°52'17.3"N 123°23'30.3"W (P2023107) LL(269) DFO(6204866-01)
-------	---	--

Add	radar reflector (See Chart 1, S4) This notice affects Electronic Navigational Chart: CA570008	48°52'17.3"N 123°23'30.3"W DFO(6204866-02)
-----	---	---

3463 - Strait of Georgia, Southern Portion/Partie Sud - New Edition - 01-JUL-2005 - NAD 1983
17-MAY-2024

LNMD. 09-JUN-2023

Delete	radar reflector (See Chart 1, S4) This notice affects Electronic Navigational Chart: CA570239	48°50'12.5"N 123°27'12.8"W (P2023103) LL(261) DFO(6204863-01)
--------	---	--

24-MAY-2024		LNMD. 17-MAY-2024
Delete	radar reflector (See Chart 1, S4) This notice affects Electronic Navigational Chart: CA570239	48°50'33.1"N 123°25'10.5"W (P2023102) LL(259) DFO(6204865-01)
Amend	Q R to read FI R against light (See Chart 1, P16) This notice affects Electronic Navigational Chart: CA570008	48°52'17.5"N 123°23'31.0"W (P2023107) LL(269) DFO(6204866-01)
Add	radar reflector (See Chart 1, S4) This notice affects Electronic Navigational Chart: CA570008	48°52'17.5"N 123°23'31.0"W DFO(6204866-02)
 3473 - Active Pass - New Edition - 10-JAN-2020 - World Geodetic System 1984		
17-MAY-2024		
Delete	radar reflector (See Chart 1, S4) This notice affects Electronic Navigational Chart: CA570006	48°51'27.6"N 123°20'42.0"W (P2023108) LL(272) DFO(6204868-01)
 3473 - Montague Harbour - New Edition - 10-JAN-2020 - World Geodetic System 1984		
24-MAY-2024		LNMD. 17-MAY-2024
Amend	Q R to read FI R against light (See Chart 1, P16) This notice affects Electronic Navigational Chart: CA570008	48°52'18.6"N 123°23'31.4"W (P2023107) LL(269) DFO(6204866-01)
 3478 - Ganges Harbour and/et Long Harbour - New Edition - 12-JUL-2013 - NAD 1983		
17-MAY-2024		LNMD. 16-FEB-2024
Delete	radar reflector (See Chart 1, S4) This notice affects Electronic Navigational Chart: CA570239	48°50'12.4"N 123°27'12.5"W (P2023103) LL(261) DFO(6204863-01)
Delete	radar reflector (See Chart 1, S4) This notice affects Electronic Navigational Chart: CA570239	48°50'59.7"N 123°24'18.4"W (P2023106) LL(268) DFO(6204864-01)
24-MAY-2024		LNMD. 17-MAY-2024
Delete	radar reflector (See Chart 1, S4) This notice affects Electronic Navigational Chart: CA570239	48°50'33.1"N 123°25'10.5"W (P2023102) LL(259) DFO(6204865-01)
Delete	radar reflector (See Chart 1, S4) This notice affects Electronic Navigational Chart: CA570239	48°51'05.5"N 123°29'34.9"W (P2023104) LL(262) DFO(6204869-01)

3479 - Approaches to/Approches à Sidney - New Chart - 18-MAY-2007 - NAD 1983

10-MAY-2024

LNMD. 12-APR-2024

Add radar reflector
(See Chart 1, S4)
This notice affects Electronic Navigational Chart: CA570567
48°41'50.4"N 123°25'33.0"W
(P2023098) LL(248.1) DFO(6204862-01)

3489 - Pattullo Bridge to/à Barnston Island - Sheet/Feuille 1 - New Chart - 21-OCT-1994 - NAD 1983

03-MAY-2024

LNMD. 12-APR-2024

Add depth of 1.9 metres
(See Chart 1, I10)
49°12'35.6"N 122°43'43.0"W
DFO(6204927-01)

3490 - Fraser River/Fleuve Fraser, Sand Heads to/à Douglas Island, Compartment A-B - New Edition - 02-NOV-2012 - World Geodetic System 1984

10-MAY-2024

LNMD. 15-MAR-2024

Amend F Y 8m to read Oc Y 5s8m against light
(See Chart 1, P16)
This notice affects Electronic Navigational Chart: CA570015
49°08'37.3"N 123°03'04.2"W
(P2023121) LL(351) DFO(6204858-01)

Amend F Y 15m to read Oc (2) 5s18m against light
(See Chart 1, P16)
This notice affects Electronic Navigational Chart: CA570015
49°08'34.4"N 123°03'17.0"W
(P2023122) LL(352) DFO(6204859-01)

3490 - Fraser River/Fleuve Fraser, Sand Heads to/à Douglas Island, Compartment B-C - New Edition - 02-NOV-2012 - World Geodetic System 1984

10-MAY-2024

LNMD. 15-MAR-2024

Amend F Y 8m to read Oc Y 5s8m against light
(See Chart 1, P16)
This notice affects Electronic Navigational Chart: CA570015
49°08'37.3"N 123°03'04.2"W
(P2023121) LL(351) DFO(6204858-01)

Amend F Y 15m to read Oc (2) 5s18m against light
(See Chart 1, P16)
This notice affects Electronic Navigational Chart: CA570015
49°08'37.3"N 123°03'12.1"W
DFO(6204859-02)

24-MAY-2024

LNMD. 10-MAY-2024

Delete obstruction, depth unknown
(See Chart 1, K40)
This notice affects Electronic Navigational Chart: CA570015
49°09'32.2"N 122°56'50.5"W
DFO(6204953-01)

Add pipeline
(See Chart 1, L41.1)
This notice affects Electronic Navigational Chart: CA570015
joining 49°09'34.9"N 122°56'56.3"W
49°09'31.0"N 122°56'51.4"W
and 49°09'33.7"N 122°56'46.1"W
DFO(6204953-02)

Add pipeline
(See Chart 1, L41.1)
This notice affects Electronic Navigational Chart: CA570015
between 49°09'31.0"N 122°56'51.4"W
and 49°09'28.9"N 122°56'57.1"W
DFO(6204953-03)

3491 - Compartment B-C - New Edition - 19-OCT-2012 - World Geodetic System 1984
24-MAY-2024

LNMD. 23-SEP-2022

Delete obstruction, depth unknown 49°09'32.2"N 122°56'50.5"W
(See Chart 1, K40)
This notice affects Electronic Navigational Chart: CA570015

DFO(6204953-01)

Add pipeline joining 49°09'34.9"N 122°56'56.3"W
(See Chart 1, L41.1) 49°09'31.0"N 122°56'51.4"W
and 49°09'33.7"N 122°56'46.1"W
This notice affects Electronic Navigational Chart: CA570015

DFO(6204953-02)

Add pipeline between 49°09'31.0"N 122°56'51.4"W
(See Chart 1, L41.1) and 49°09'28.9"N 122°56'57.1"W
This notice affects Electronic Navigational Chart: CA570015

DFO(6204953-03)

3526 - Howe Sound - New Edition - 01-JUL-2005 - NAD 1983
03-MAY-2024

LNMD. 01-MAR-2024

Delete port bifurcation daybeacon 49°23'20.3"N 123°24'37.2"W
(See Chart 1, Qp)

LL(5278) DFO(6204925-01)

Add starboard bifurcation daybeacon 49°23'19.6"N 123°24'36.7"W
(See Chart 1, Qp)

LL(5278) DFO(6204925-02)

Delete port bifurcation daybeacon 49°24'11.6"N 123°23'21.9"W
(See Chart 1, Qp)

LL(5279) DFO(6204925-03)

Add starboard bifurcation daybeacon 49°24'11.3"N 123°23'21.8"W
(See Chart 1, Qp)

LL(5279) DFO(6204925-04)

3527 - Baynes Sound - New Edition - 06-APR-2001 - NAD 1983
10-MAY-2024

LNMD. 22-DEC-2023

Add marine farm 49°28'10.7"N 124°46'17.5"W
(See Chart 1, K48.2)
This notice affects Electronic Navigational Chart: CA470218

DFO(6204941-01)

Add marine farm 49°30'44.5"N 124°49'37.6"W
(See Chart 1, K48.2)
This notice affects Electronic Navigational Chart: CA470218

DFO(6204941-02)

3601 - Juan de Fuca Strait to Vancouver Harbour - New Edition - 01-JUL-2005 - NAD 1983
31-MAY-2024

LNMD. 12-APR-2024

Delete radar transponder beacon against buoy 48°21'55.7"N 123°02'09.1"W
(See Chart 1, S3.6)

DFO(6204954-01)

3606 - Juan de Fuca Strait - New Edition - 29-NOV-2002 - NAD 1983

31-MAY-2024

LNMD. 05-JAN-2024

Delete private yellow ODAS/SADO lighted can buoy FI (5) Y 20s
(See Chart 1, Q58) 48°22'18.4"N 123°51'50.1"W
DFO(6204906-01)

3670 - Broken Group - New Edition - 21-OCT-1994 - NAD 1983

10-MAY-2024

LNMD. 29-MAR-2024

Add depth of 2.0 metres
(See Chart 1, I10) 48°55'20.6"N 125°18'46.8"W
This notice affects Electronic Navigational Chart: CA470338, CA570336
DFO(6204920-01)

Delete depth of 6.2 metres
(See Chart 1, I10) 48°54'46.4"N 125°21'37.3"W
This notice affects Electronic Navigational Chart: CA470338, CA570336
DFO(6204920-02)

Add depth of 5.8 metres
(See Chart 1, I10) 48°54'46.2"N 125°21'38.3"W
This notice affects Electronic Navigational Chart: CA470338, CA570336
DFO(6204920-03)

Delete depth of 3.5 metres
(See Chart 1, I10) 48°55'18.7"N 125°17'52.6"W
This notice affects Electronic Navigational Chart: CA470338, CA570336
DFO(6204920-04)

Add depth of 3.2 metres
(See Chart 1, I10) 48°55'18.8"N 125°17'53.5"W
This notice affects Electronic Navigational Chart: CA470338, CA570336
DFO(6204920-05)

Add depth of 3.3 metres
(See Chart 1, I10) 48°54'41.9"N 125°18'29.9"W
This notice affects Electronic Navigational Chart: CA470338, CA570336
DFO(6204920-06)

Delete depth of 4.7 metres
(See Chart 1, I10) 48°55'01.6"N 125°21'18.5"W
This notice affects Electronic Navigational Chart: CA470338, CA570336
DFO(6204920-07)

Add depth of 4.5 metres
(See Chart 1, I10) 48°55'01.7"N 125°21'19.8"W
This notice affects Electronic Navigational Chart: CA470338, CA570336
DFO(6204920-08)

Delete depth of 3.1 metres
(See Chart 1, I10) 48°54'42.7"N 125°18'17.5"W
This notice affects Electronic Navigational Chart: CA470338, CA570336
DFO(6204920-09)

Add depth of 2.6 metres
(See Chart 1, I10) 48°54'43.0"N 125°18'17.5"W
This notice affects Electronic Navigational Chart: CA470338, CA570336
DFO(6204920-10)

Add	depth of 0.1 metres (See Chart 1, I10) This notice affects Electronic Navigational Chart: CA570336	48°54'41.7"N 125°20'13.7"W <i>DFO(6204920-11)</i>
Add	depth of 0.8 metres (See Chart 1, I10) This notice affects Electronic Navigational Chart: CA570336	48°54'57.4"N 125°18'32.8"W <i>DFO(6204920-12)</i>
Add	depth of 1.0 metre (See Chart 1, I10) This notice affects Electronic Navigational Chart: CA570336	48°55'08.3"N 125°20'36.4"W <i>DFO(6204920-13)</i>
Add	depth of 1.3 metres (See Chart 1, I10) This notice affects Electronic Navigational Chart: CA570336	48°55'31.5"N 125°19'39.7"W <i>DFO(6204920-14)</i>
Add	depth of 1.3 metres (See Chart 1, I10) This notice affects Electronic Navigational Chart: CA570336	48°55'05.4"N 125°18'04.5"W <i>DFO(6204920-15)</i>
Add	depth of 2.0 metres (See Chart 1, I10) This notice affects Electronic Navigational Chart: CA570336	48°55'06.0"N 125°20'54.5"W <i>DFO(6204920-16)</i>
Add	depth of 2.0 metres (See Chart 1, I10) This notice affects Electronic Navigational Chart: CA570336	48°54'57.9"N 125°19'09.9"W <i>DFO(6204920-17)</i>
Add	depth of 2.3 metres (See Chart 1, I10) This notice affects Electronic Navigational Chart: CA570336	48°55'36.5"N 125°20'27.6"W <i>DFO(6204920-18)</i>
Add	depth of 2.5 metres (See Chart 1, I10) This notice affects Electronic Navigational Chart: CA570336	48°54'38.3"N 125°20'07.1"W <i>DFO(6204920-19)</i>
Add	depth of 2.8 metres (See Chart 1, I10) This notice affects Electronic Navigational Chart: CA570336	48°55'05.4"N 125°18'29.5"W <i>DFO(6204920-20)</i>
Add	depth of 3.7 metres (See Chart 1, I10) This notice affects Electronic Navigational Chart: CA570336	48°55'18.4"N 125°17'27.4"W <i>DFO(6204920-21)</i>
Delete	depth of 4.4 metres (See Chart 1, I10) This notice affects Electronic Navigational Chart: CA570336	48°55'15.3"N 125°17'49.3"W <i>DFO(6204920-22)</i>

Add	depth of 4.1 metres (See Chart 1, I10) This notice affects Electronic Navigational Chart: CA570336	48°55'15.2"N 125°17'48.6"W <i>DFO(6204920-23)</i>
Add	rock which covers and uncovers with drying height of 0.1 metres (See Chart 1, K11) This notice affects Electronic Navigational Chart: CA570336	48°55'13.1"N 125°18'12.0"W <i>DFO(6204920-24)</i>
Delete	depth of 4.9 metres (See Chart 1, I10) This notice affects Electronic Navigational Chart: CA570336	48°55'20.8"N 125°18'46.6"W <i>DFO(6204920-25)</i>
3671 - Barkley Sound - New Edition - 04-NOV-2005 - NAD 1983		
10-MAY-2024		LNM/D. 29-MAR-2024
Add	depth of 2.0 metres (See Chart 1, I10) This notice affects Electronic Navigational Chart: CA470338, CA570336	48°55'20.6"N 125°18'46.8"W <i>DFO(6204920-01)</i>
Delete	depth of 6.2 metres (See Chart 1, I10) This notice affects Electronic Navigational Chart: CA470338, CA570336	48°54'46.4"N 125°21'37.3"W <i>DFO(6204920-02)</i>
Add	depth of 5.8 metres (See Chart 1, I10) This notice affects Electronic Navigational Chart: CA470338, CA570336	48°54'46.2"N 125°21'38.3"W <i>DFO(6204920-03)</i>
Delete	depth of 3.5 metres (See Chart 1, I10) This notice affects Electronic Navigational Chart: CA470338, CA570336	48°55'18.1"N 125°17'52.0"W <i>DFO(6204920-04)</i>
Add	depth of 3.2 metres (See Chart 1, I10) This notice affects Electronic Navigational Chart: CA470338, CA570336	48°55'18.8"N 125°17'53.5"W <i>DFO(6204920-05)</i>
Add	depth of 3.3 metres (See Chart 1, I10) This notice affects Electronic Navigational Chart: CA470338, CA570336	48°54'41.9"N 125°18'29.9"W <i>DFO(6204920-06)</i>
Delete	depth of 4.7 metres (See Chart 1, I10) This notice affects Electronic Navigational Chart: CA470338, CA570336	48°55'01.6"N 125°21'18.9"W <i>DFO(6204920-07)</i>
Add	depth of 4.5 metres (See Chart 1, I10) This notice affects Electronic Navigational Chart: CA470338, CA570336	48°55'01.7"N 125°21'19.8"W <i>DFO(6204920-08)</i>
Delete	depth of 3.1 metres (See Chart 1, I10) This notice affects Electronic Navigational Chart: CA470338, CA570336	48°54'42.7"N 125°18'18.1"W <i>DFO(6204920-09)</i>

Add	depth of 2.6 metres (See Chart 1, I10) This notice affects Electronic Navigational Chart: CA470338, CA570336	48°54'43.0"N 125°18'17.5"W <i>DFO(6204920-10)</i>
31-MAY-2024		LNM/D. 10-MAY-2024
Delete	abandoned spoil ground (See Chart 1, N62.2) This notice affects Electronic Navigational Chart: CA470337	48°53'35.6"N 125°32'34.5"W <i>DFO(6204942-01)</i>
3674 - Marktosis - New Chart - 01-DEC-1995 - NAD 1983		
10-MAY-2024		LNM/D. 17-MAR-2023
Delete	depth of 4.4 metres (See Chart 1, I10)	49°16'27.4"N 126°04'18.9"W <i>DFO(6204929-01)</i>
Add	depth of 1.1 metres (See Chart 1, I10)	49°16'27.1"N 126°04'19.0"W <i>DFO(6204929-02)</i>
Delete	depth of 1 metre (See Chart 1, I10)	49°16'32.3"N 126°04'23.7"W <i>DFO(6204929-03)</i>
Add	depth of 0.1 metres (See Chart 1, I10)	49°16'32.2"N 126°04'23.7"W <i>DFO(6204929-04)</i>
Delete	depth of 4.9 metres (See Chart 1, I10)	49°16'33.2"N 126°04'14.5"W <i>DFO(6204929-05)</i>
Add	depth of 0.8 metres (See Chart 1, I10)	49°16'33.1"N 126°04'14.6"W <i>DFO(6204929-06)</i>
Delete	depth of 0.6 metres (See Chart 1, I10)	49°16'45.4"N 126°03'41.9"W <i>DFO(6204929-07)</i>
Add	depth of 0.1 metres (See Chart 1, I10)	49°16'45.4"N 126°03'41.7"W <i>DFO(6204929-08)</i>
Delete	depth of 3.7 metres (See Chart 1, I10)	49°16'22.6"N 126°04'21.0"W <i>DFO(6204929-09)</i>
Add	rock awash at chart datum (See Chart 1, K12)	49°16'22.3"N 126°04'21.5"W <i>DFO(6204929-10)</i>
Delete	depth of 1.8 metres (See Chart 1, I10)	49°16'47.3"N 126°03'40.6"W <i>DFO(6204929-11)</i>
Add	rock which covers and uncovers with drying height of 0.9 metres (See Chart 1, K11)	49°16'47.4"N 126°03'40.5"W <i>DFO(6204929-12)</i>

Add rock which covers and uncovers with drying height of 0.1 metres
(See Chart 1, K11) 49°16'30.8"N 126°03'59.7"W
DFO(6204929-13)

6021 - Lake Muskoka - Sheet/Feuille 1 - New Edition - 30-JUL-2004 - NAD 1983
17-MAY-2024

LN/D. 23-SEP-2022

Amend EH12/2 to read EH12/4 against red starboard conical buoy
(See Chart 1, Qb) 45°01'24.3"N 079°23'25.8"W
(D2024042) DFO(6605267-01)

Add green port hand spar buoy, marked EH11/1
(See Chart 1, Qc) 45°01'21.5"N 079°23'24.3"W
(D2024043) DFO(6605268-01)

Add green port hand spar buoy, marked EH11/3
(See Chart 1, Qc) 45°01'23.8"N 079°23'26.6"W
(D2024044) DFO(6605269-01)

Add red starboard hand spar buoy, marked EH12/2
(See Chart 1, Qb) 45°01'22.4"N 079°23'23.2"W
(D2024045) DFO(6605270-01)

6240 - Red River / Rivière Rouge to/à Berens River - Sheet/Feuille 1 - New Edition - 16-JUL-2004 - Unknown
17-MAY-2024

LN/D. 30-JUN-2023

Delete light, marked FI R
(See Chart 1, P1) 50°42'01.2"N 096°33'50.0"W
(P2024017) LL(1574) DFO(6605251-01)

Add light, marked FI G
(See Chart 1, P1) 50°42'01.2"N 096°33'50.0"W
(P2024017) LL(1574) DFO(6605251-02)

6241 - Berens River to/à Nelson River - Sheet/Feuille 1 - New Edition - 27-MAY-2005 - Unknown
10-MAY-2024

LN/D. 29-DEC-2017

Delete light with radar reflector, marked FI
(See Chart 1, P1, S4) 53°00'05.0"N 097°40'29.0"W
(P2024014) LL(1611) DFO(6605245-01)

Add light with radar reflector, marked FI
(See Chart 1, P1, S4) 53°00'07.8"N 097°39'02.3"W
LL(1611) DFO(6605245-02)

6251 - Red River / Rivière Rouge to/à Gull Harbour - Sheet/Feuille 1 - New Edition - 26-MAY-2000 - NAD 1927
17-MAY-2024

LN/D. 28-JUL-2023

Delete light, marked FI R
(See Chart 1, P1) 50°41'43.0"N 096°33'37.0"W
(P2024017) LL(1574) DFO(6605251-01)

Add light, marked FI G
(See Chart 1, P1) 50°41'43.0"N 096°33'37.0"W
(P2024017) LL(1574) DFO(6605251-02)

6416 - Saline Island to/à Police Island Kilometre 730 / Kilomètre 810 - New Edition - 25-JAN-2008 - NAD 1983

24-MAY-2024

Delete	depth of 12 metres (See Chart 1, I10)	64°31'17.4"N 124°56'39.9"W <i>DFO(6605215-01)</i>
Reposition	green port hand can buoy (See Chart 1, Qc)	from 64°31'07.6"N 124°56'40.9"W to 64°31'17.8"N 124°56'36.1"W <i>DFO(6605215-02)</i>

Section 3: Radio Aids to Marine Navigation Corrections

No corrections for this section.

Section 4: Canadian Sailing Directions Corrections

The following **Canadian Sailing Directions** volumes have recently been updated on the [Canadian Hydrographic Service website](#).

No.	Title
Atlantic Coast	
ATL 104	Cape North to Cape Canso (including Bras d'Or Lake)
ATL 105	Cape Canso to Cape Sable (including Sable Island)
Central Canada	
CEN 302	Lake Ontario
CEN 305	Lake Huron, St. Marys River, Lake Superior
CEN 308	Rideau Canal and Ottawa River

Each volume includes a section entitled "Record of Changes" which lists all updates that are incorporated during the current calendar year.

Section 5: List of Lights, Buoys and Fog Signals Corrections

The amendments are highlighted and deletions are crossed out. For general and region-specific information on the List of Lights, click on the following links: [Newfoundland and Labrador Coast](#), [Atlantic Coast](#), [Inland Waters](#) and [Pacific Coast](#).

No.	Name	Position ----- Latitude N. Longitude W.	Light Characteristics	Focal Height in m. above water	Nomi- nal Range	Description ----- Height in meters above ground	Remarks ----- Fog Signals
-----	------	--	--------------------------	--	-----------------------	--	---------------------------------

PACIFIC COAST

UPPER AND LOWER ARROW LAKE – COLUMBIA RIVER (LL 26 – 41)

33	Burton West	W. side of channel. 49 59 27.2 117 54 24.1	Fl W R	4s	16.0	4	Square skeleton tower, white rectangular daymark.	Red from 178° to 180°18'; white from 180°18' to 24°27'. Year round.	Chart:3057 Edn 05/24 (P24-022)
----	-------------	---	--------	----	-------------	---	--	---	-----------------------------------

WEST COAST, VANCOUVER ISLAND (LL 66 – 179.1)

167 G5275.8	Maritime Discovery Centre							Delete from list.	Chart:3668 Edn 05/24
----------------	------------------------------	--	--	--	--	--	--	-------------------	-------------------------

HARO STRAIT (LL 222.8 – 265)

222.8	Little Zero Rock light buoy V30	W. of Little Zero rock, Cordova Bay. 48 31 54.3 123 19 47.6	Q R	1s	Red, marked "V30".	Year round.	Chart:3440 Edn 05/24 (P24-032)
255.1	Haro Strait light Junction buoy A (U.S.)	SW. of Danger Shoal. 48 38 18.2 123 11 01.2	Fl (2+1)	G	6s	Green, red and green, marked "A".	Year round.	Chart:3441 Edn 05/24 (P24-023)

FRASER RIVER – SOUTH ARM (LL 310 – 371)

361 G5413.36	City Reach Inbound range	On S. bank of river. 49 09 17.9 122 56 41.0	Oc	Y	5s	13.8	15	Pipe tower, red daymark with white vertical stripe.	Flash 4.7 s; eclipse 0.3 s. Visible in line of range. Operates 24 h. Year round.
362 G5413.37		095° 17' 219.9 m from front.	Oc(2)	Y	5s	25.1	15	Pipe tower, red daymark with white vertical stripe.	Flash 3.7 s; eclipse 0.3 s; flash 0.7 s; eclipse 0.3 s. Visible in line of range. Operates 24 h. Year round.

NORTHERN STRAIT OF GEORGIA (LL 447.5 – 510)

501 G5542	Comox Bar range	On the W. shore of Baynes Sound. 49 37 23.1 124 54 31.9	Iso	Y	1.5s	7.9	17	Square skeleton tower, white daymark with red vertical stripe.	Flash 0.75 s; eclipse 0.75 s. Operates 24 h. Year round.
502 G5542.1		222° 05' 284.8 m from front.	Iso	Y	2s	19.7	17	Square skeleton tower, white daymark with red vertical stripe.	Operates 24 h. Year round.

Notices to Mariners – Monthly Western Edition
Section 5: List of Lights, Buoys and Fog Signals Corrections

No.	Name	Position ----- Latitude N. Longitude W.	Light Characteristics	Focal Height in m. above water	Nomi- nal Range	Description ----- Height in meters above ground	Remarks ----- Fog Signals
-----	------	--	--------------------------	--	-----------------------	--	---------------------------------

JOHNSTONE STRAIT (LL 518 – 544.6)

538 G5616	Ray Point range	On the point. 50 34 49.0 126 12 00.8	F Y	7.8	5	Square skeleton tower, red daymark with white vertical stripe.	Year round.
539 G5616.1		087°48' 23.1 m from front.	F Y	11.8	5	Square skeleton tower, red daymark with white vertical stripe.	Year round. Chart:3564 Edn 05/24 (P24-029)
540 G5617	East Cracroft Island range	On northeastern side of island. 50 34 47.0 126 14 28.1	F Y	5.6	5	Square skeleton tower, red daymark with white vertical stripe.	Year round.
541 G5617.1		270°55' 27.3 m from front.	F Y	13.7	5	Square skeleton tower, red daymark with white vertical stripe.	Year round. Chart:3564 Edn 05/24 (P24-028)