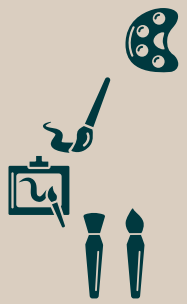




# SUMMARY OF THE EVALUATION OF THE CANADA ARTS TRAINING FUND

## 2018-19 to 2022-23



### Overview

- The Canada Arts Training Fund (CATF) provides financial support to the highest level arts training organizations in Canada.
- The CATF contributes to the development of artists in their various artistic disciplines, helping them prepare for a national or international career in the arts.
- The evaluation examined the program's relevance, equity, effectiveness and efficiency from 2018-19 to 2022-23, with a focus on access for equity groups and the effects of the COVID-19 pandemic.

### Findings

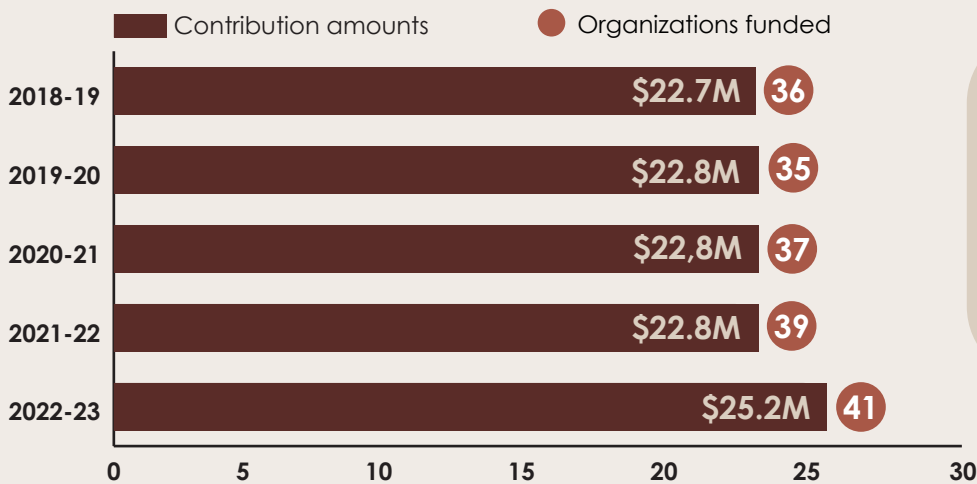
#### Relevance

The evaluation found that the CATF remains relevant and essential to the arts and culture ecosystem by ensuring that artists have access to high-quality training.



- The main need of recipient organizations is the development of student entrepreneurial and digital skills.
- The number of organizations funded and the amount of funding for the CATF increased over the evaluation period.

#### Contribution amounts (\$ millions) and number of organizations funded



The CATF ensured that recipient organizations continued to operate during the COVID-19 pandemic by providing specific funding.

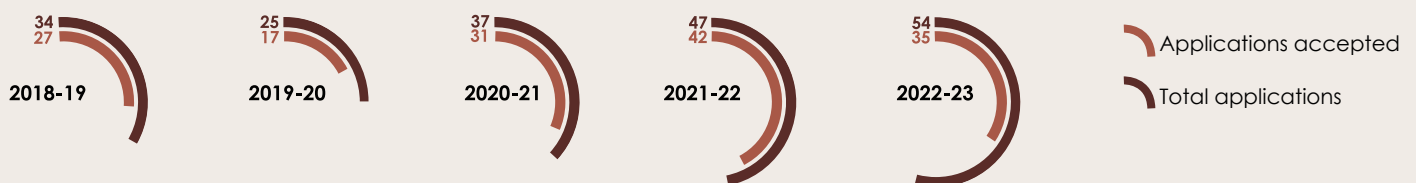
**33 organizations received \$7.7 million.**

The longer-term effects of the COVID-19 pandemic are still present for some recipient organizations.

Source: Grants and Contribution Information Management System data and internal administrative data from the CATF  
 Note: Does not include funds in response to the COVID-19 pandemic

- Demand for CATF funding was strong and increased throughout the evaluation period.

#### Number of funding applications by fiscal year



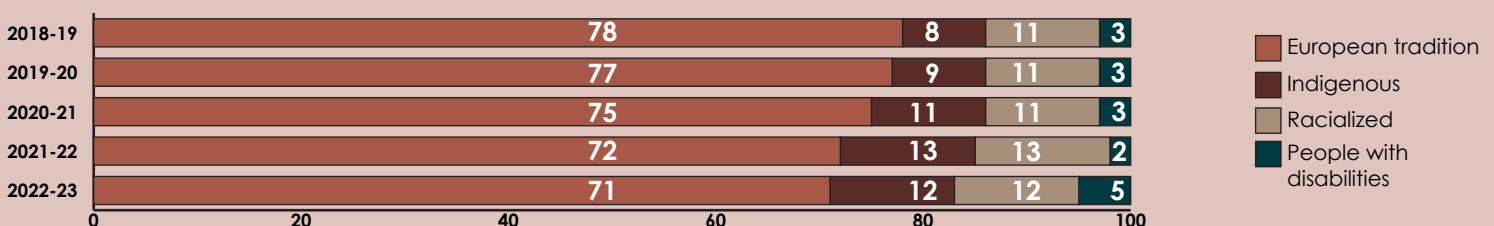
Source: Grants and Contribution Information Management System data  
 Note: Does not include applications for funds in response to the COVID-19 pandemic. The number of applications accepted does not equal the number of organizations funded by fiscal year due to the multi-year funding contribution agreements.

#### Equity

The mandate of the CATF to fund high-calibre organizations is rooted in a Eurocentric paradigm that continues to limit access for equity groups.

- The CATF increased both funding levels and the number of equity group organizations funded by waiving certain eligibility criteria.

#### Proportion of organizations funded (%)



Source: Grants and Contribution Information Management System data and internal administrative data from the CATF

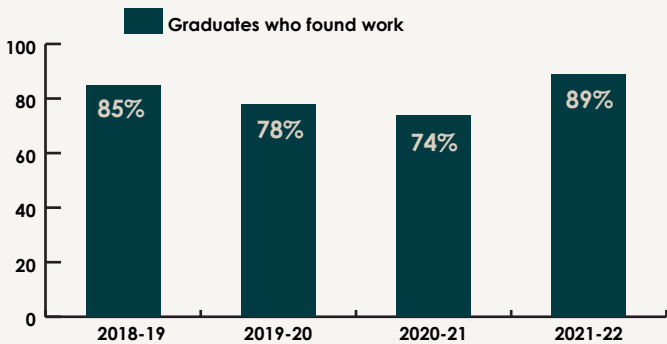
## Effectiveness

The CATF generally achieved its desired results over the short, medium and long term.

- CATF recipient organizations provide high-quality training due, in particular, to the quality of their staff, the selective admission of their students and the recognition of their students and graduates.
- Most graduates from CATF recipient organizations obtained work in their field.



### Percentage of graduates who found work (%)



Source: Internal CATF data

- The satisfaction rate among employers of artists trained by CATF organizations is:

93%  
in  
2015

90%  
in  
2019

Source: Survey of Training of Professional Artists in Canada: Perceptions of Employers (2015, 2019)

- CATF funding allowed recipient organizations to be viable and develop better programming.
- The Program contributes to Canadians recognizing and benefiting from the work of professional Canadian artists.



**7** OUT OF **10** CANADIANS

feel that artistic and cultural events are important to their quality of life.

Source: Survey on Access and Availability of Arts and Heritage in Canada (2020-2021)

### The evaluation identified some performance measurement issues

- These issues impacted the ability to measure and report certain results.

## Efficiency

In general, the CATF is delivered efficiently:

- The process for allocating funds is clear and rigorous.
- Communication from program staff to recipient organizations is appreciated.
- Funds in response to the COVID-19 pandemic were delivered efficiently.
- The contribution's administrative ratio of 3.91% is lower than the two previous evaluations (3.93% in 2019 and 5.79% in 2014).



Issues remain for some CATF administrative processes:

- The admission criteria are not flexible enough, particularly for equity groups.
- Reporting and funding application are cumbersome processes.
- The service standard for funding decisions was not met due to the particularly demanding context: the COVID-19 pandemic and the additional funding in 2022–23.



## Recommendations

Considering the findings, the evaluation recommends that the Senior Assistant Deputy Minister, Cultural Affairs:

1

Continue the work undertaken since the last evaluation to ensure better access for equity groups, by reviewing:

- a. the Program's structure, to reconcile the CATF mandate and the priority of supporting training organizations for equity groups;
- b. the logic model and indicators related to expected results, taking into account the realities of equity groups.

2

Review the funding application and reporting processes to reduce the administrative burden and improve the client experience and the quality of the data collected.

