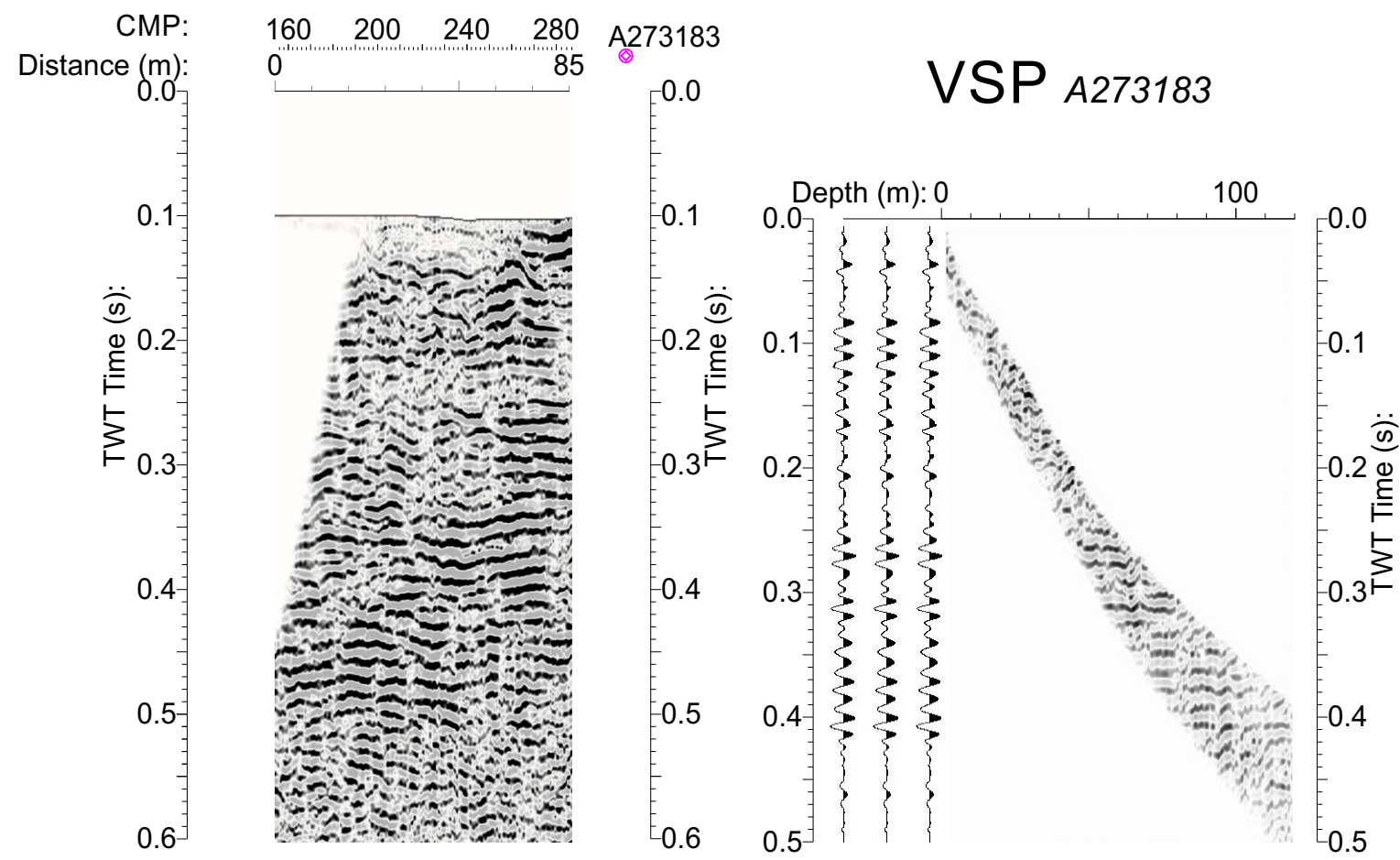
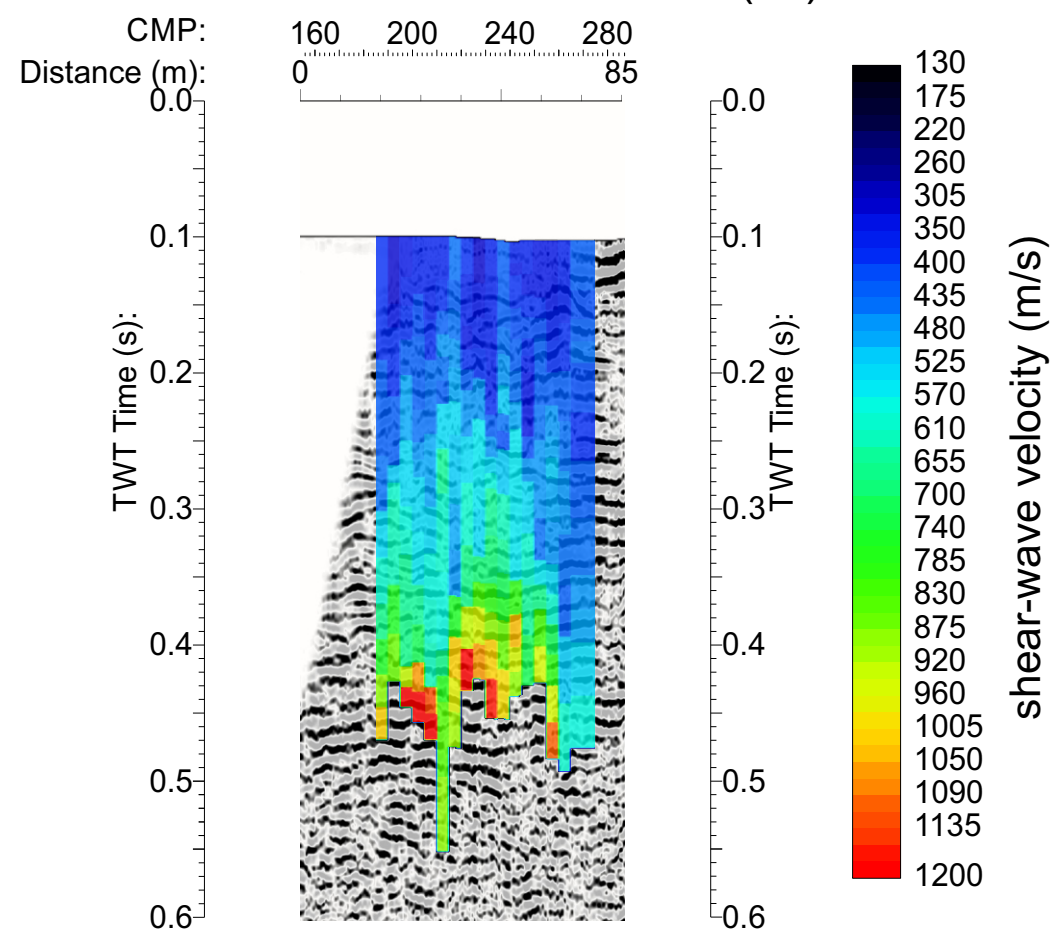


Tennis Canada

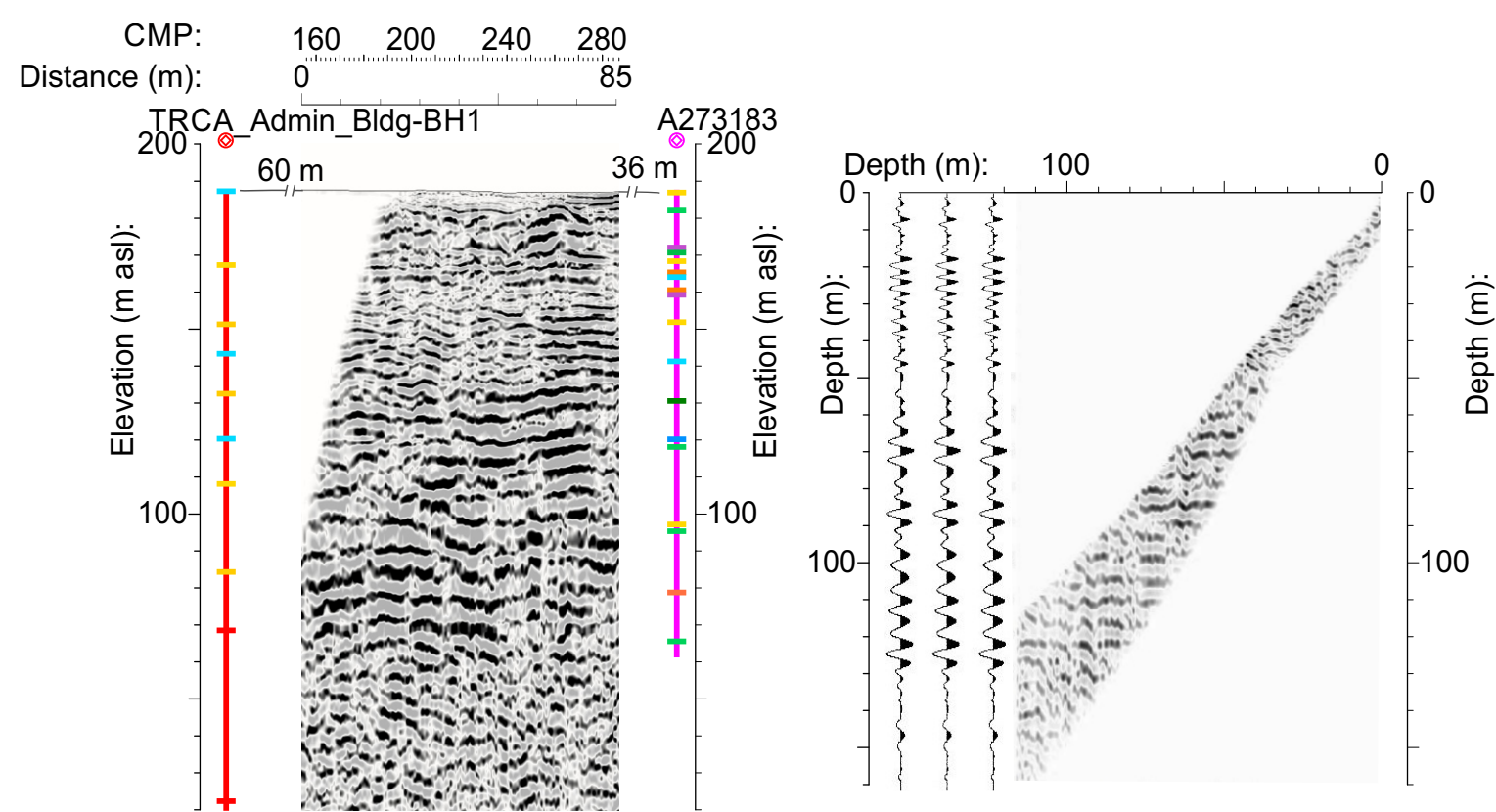
NW SE
S-wave time



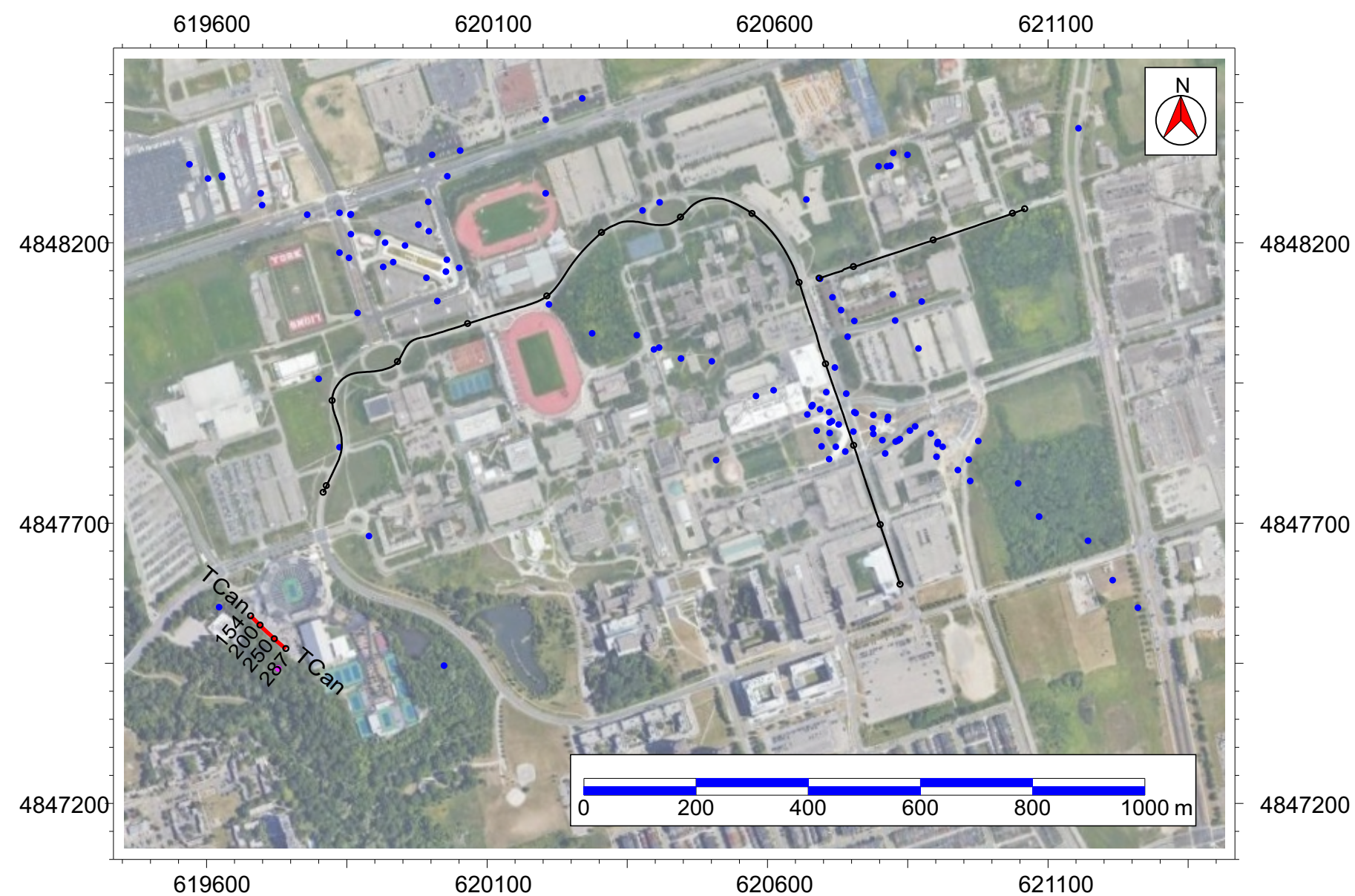
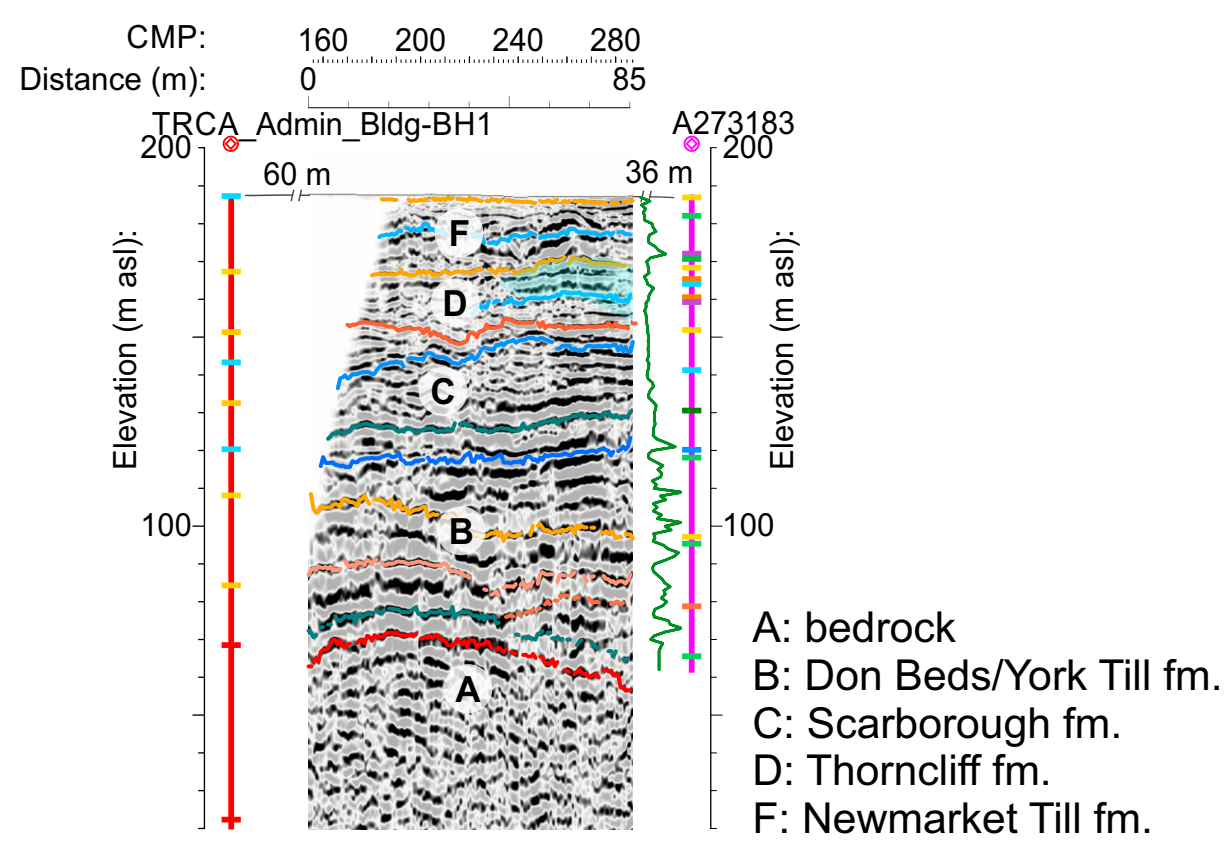
S-velocity time ($V_{S(int)}$)



S-wave depth



S-wave depth with interpretation



GSC Ottawa, ON

Project: York University ATES study

Project Location: **Tennis Canada**

Group: Universal Transverse Mercator for USA
System: Zone 17N (84 W to 78 W)
Datum: NAD83

Results, September 2022