



**Geological Survey of Canada  
Scientific Presentation 168**

# **Thorncliffe Formation: conceptual model of a buried channel-fan aquifer system, greater Toronto region, Ontario**

**D.R. Sharpe, C.E. Logan, and A.-M. Pugin**

**2024**

# Presented at the Ontario Groundwater Geoscience Open House presented by the Ontario Geological Survey, the Geological Survey of Canada, and Conservation Ontario

Date presented: February 2024

For information regarding reproduction rights, contact Natural Resources Canada at [copyright-droitdauteur@nrcan-rncan.gc.ca](mailto:copyright-droitdauteur@nrcan-rncan.gc.ca).

This publication is available for free download through the NRCan Open Science and Technology Repository (<https://ostrnrcan-dostrncan.canada.ca>).

## Recommended citation

Sharpe, D.R., Logan, C.E., and Pugin, A.-M., 2024. Thorncliffe Formation: conceptual model of a buried channel-fan aquifer system, greater Toronto region, Ontario; Geological Survey of Canada, Scientific Presentation 168, 1 .pdf file. <https://doi.org/10.4095/py2ycka1c3>

ISBN 978-0-660-71360-1  
Catalogue No. M41-11/168-2024E-PDF  
<https://doi.org/10.4095/py2ycka1c3>

*Publications in this series have not been edited; they are released as submitted by the author.*

© His Majesty the King in Right of Canada, as represented by the Minister of Natural Resources, 2024



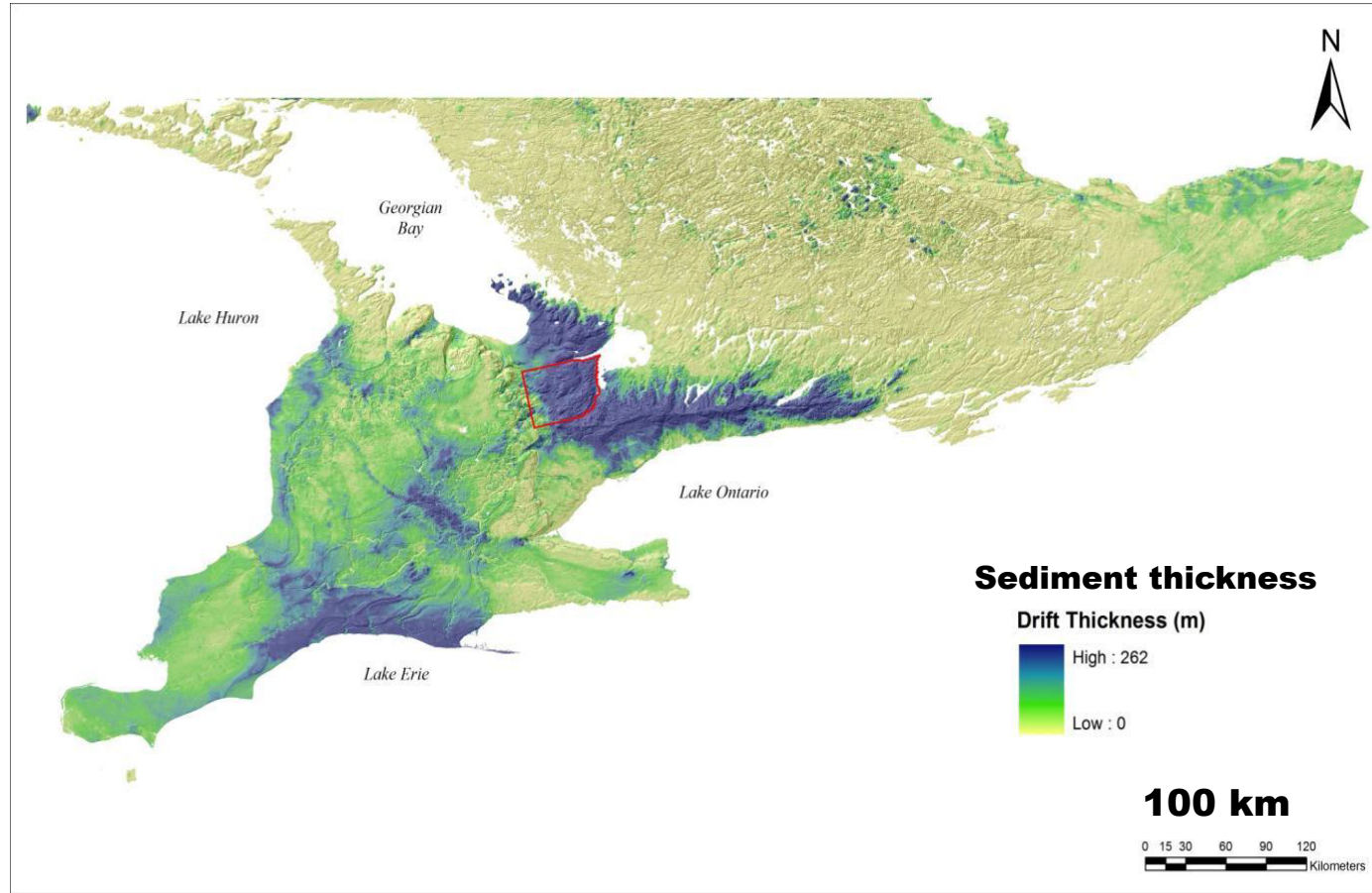
Natural Resources  
Canada

Ressources naturelles  
Canada

Canada



# Thorncliffe Formation: conceptual model of a buried channel-fan aquifer system



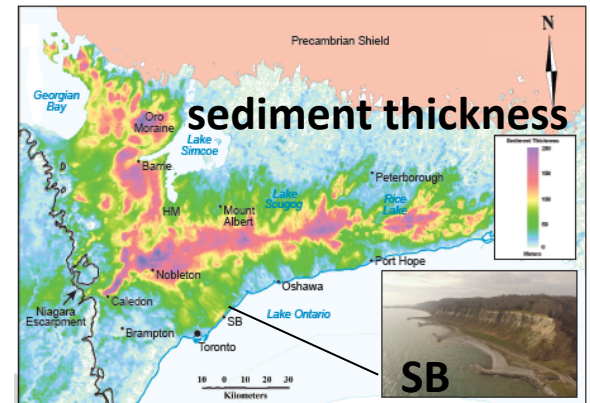
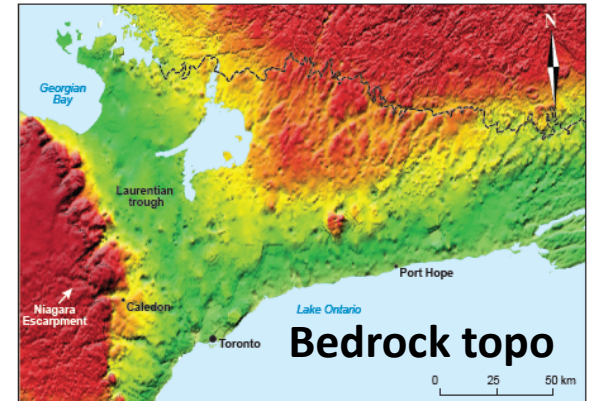
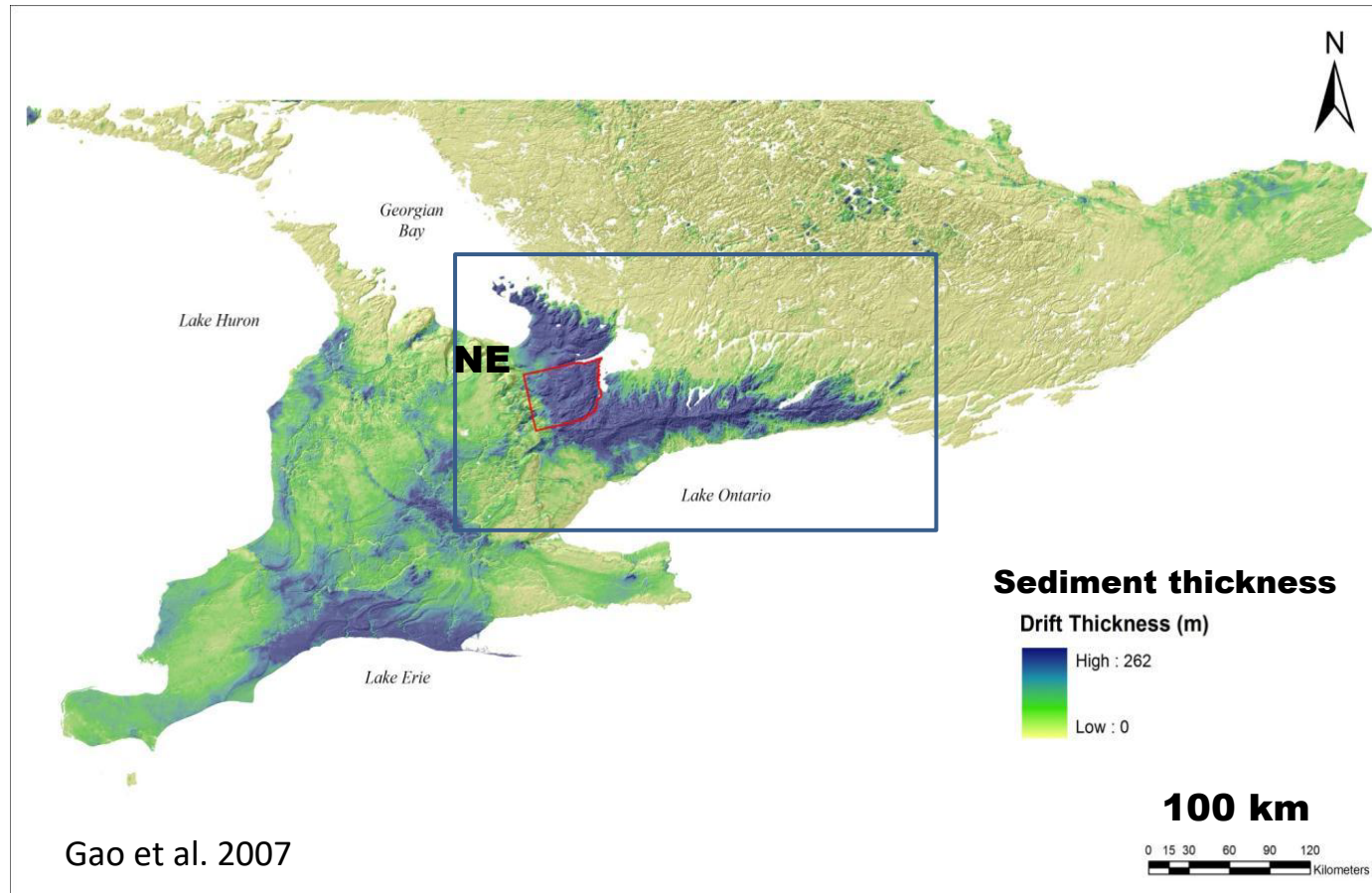
**David Sharpe  
Charles Logan  
Andre Pugin**

**Geological Survey of Canada**

**Feb. 29 2024**

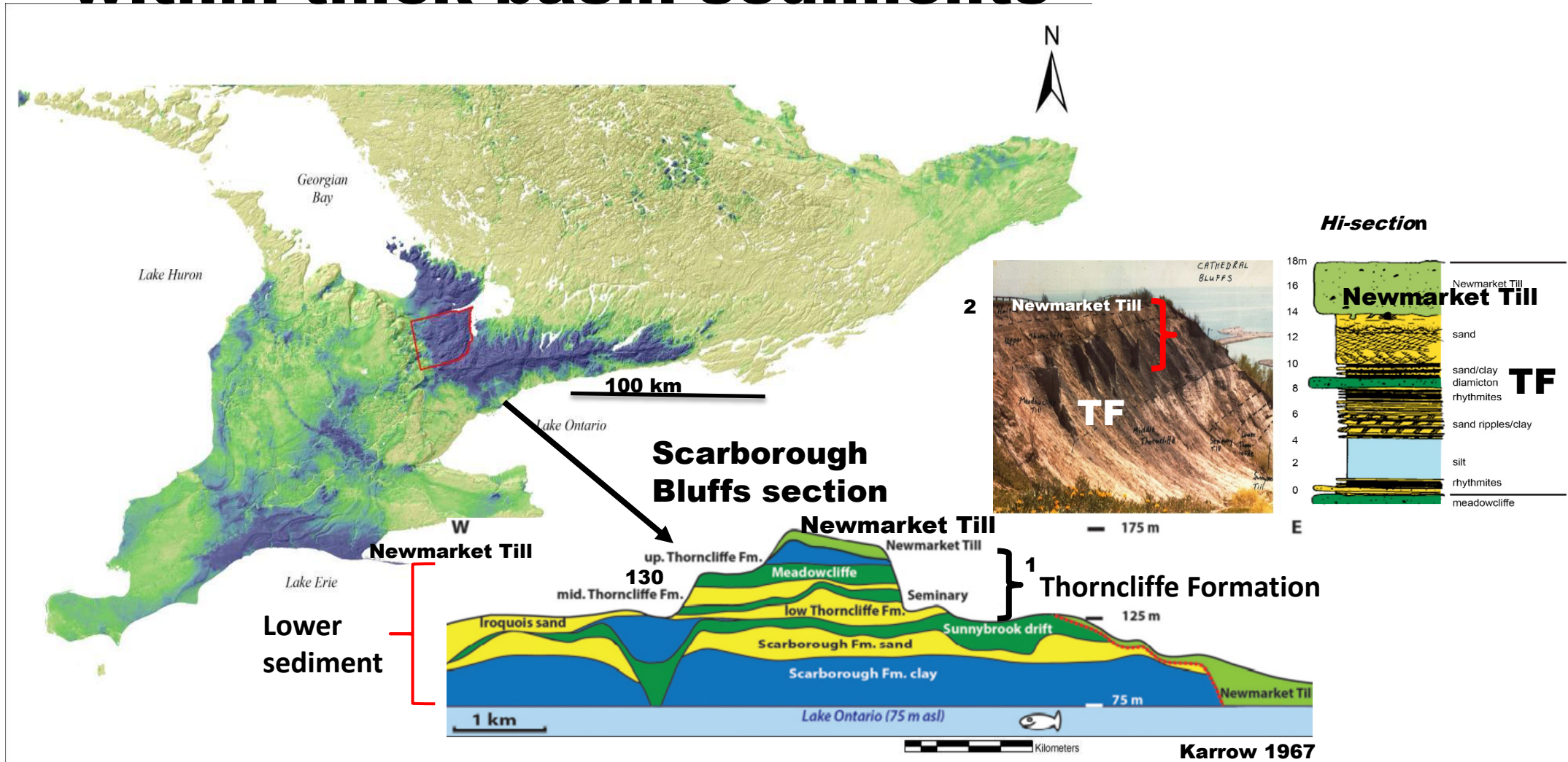
© His Majesty the King in Right of Canada, as represented by the Minister of Natural Resources, 2024

# Regional context



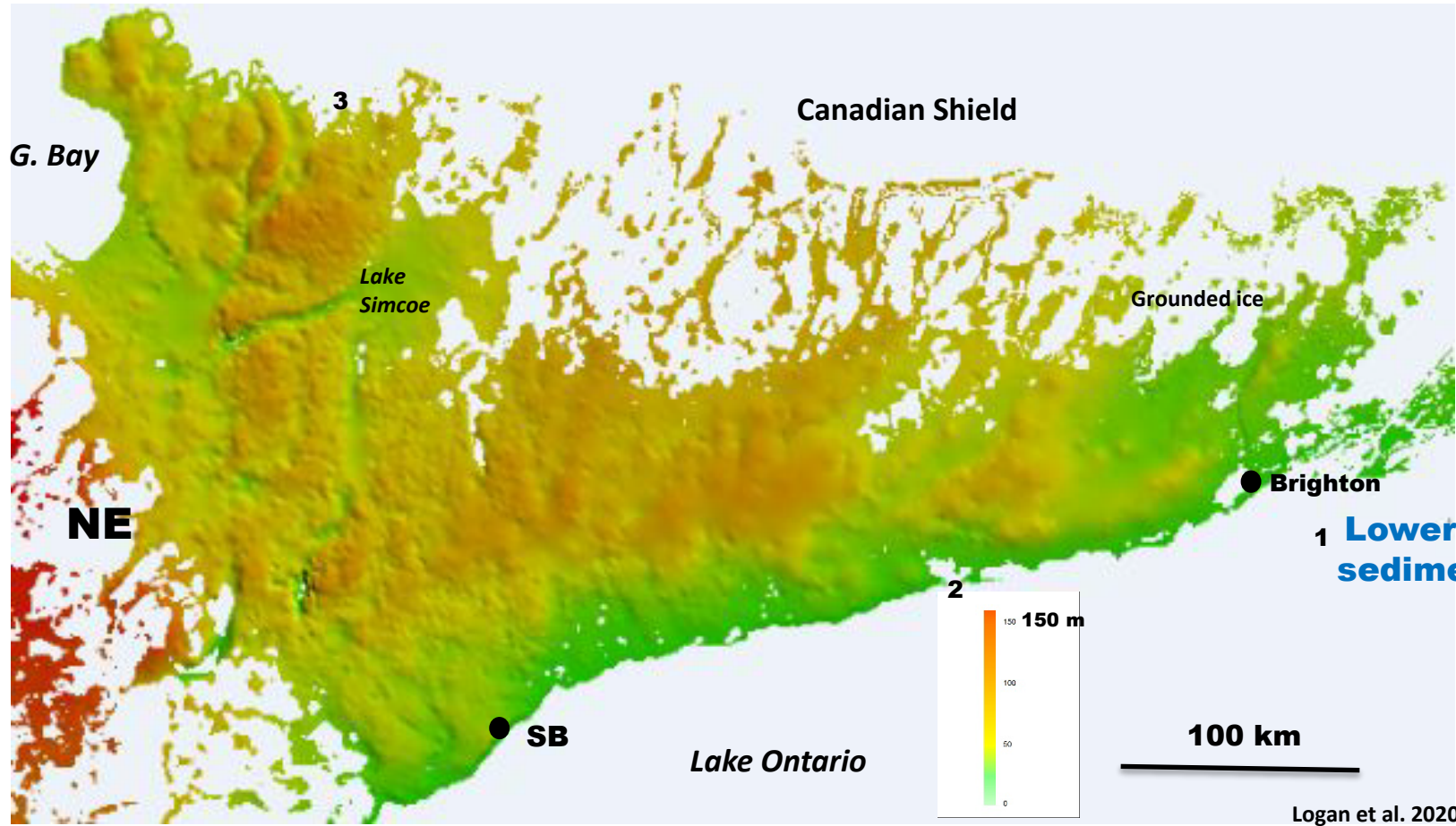
© His Majesty the King in Right of Canada, as represented by the Minister of Natural Resources, 2024

# Thorncliffe Formation within thick basin sediments



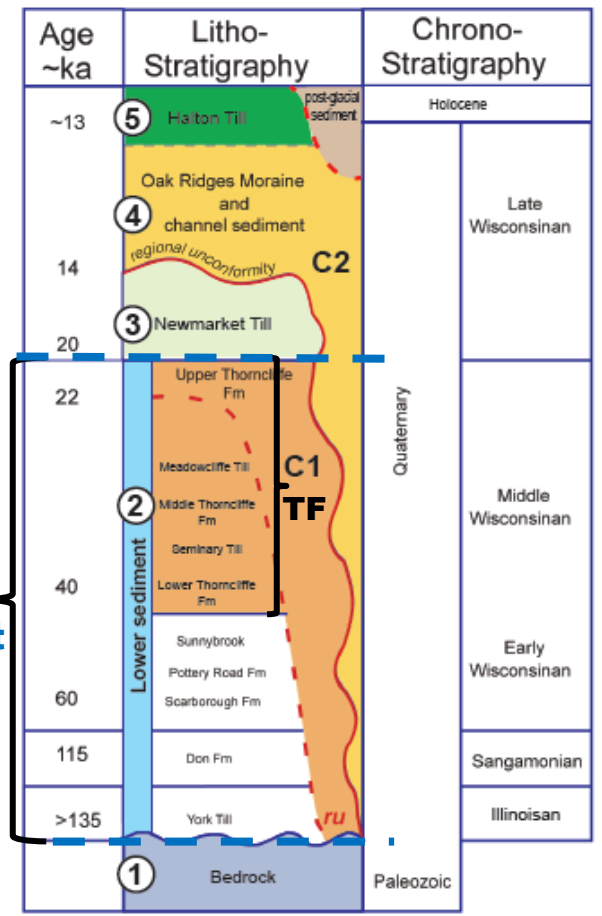
© His Majesty the King in Right of Canada, as represented by the Minister of Natural Resources, 2024

# Lower sediment thickness (includes Thorncliffe Fm)



Lower sediment isopach map (<NT)

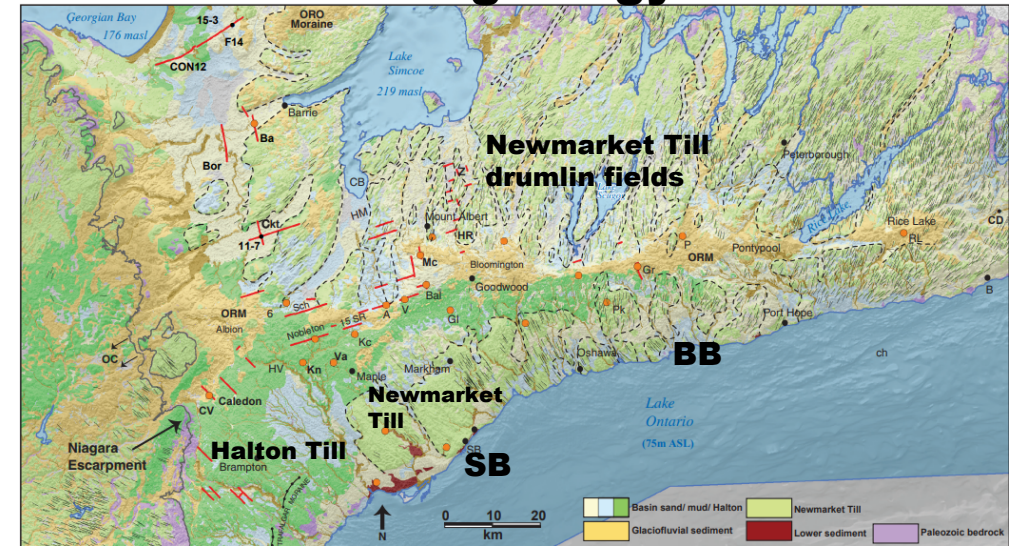
## Stratigraphy



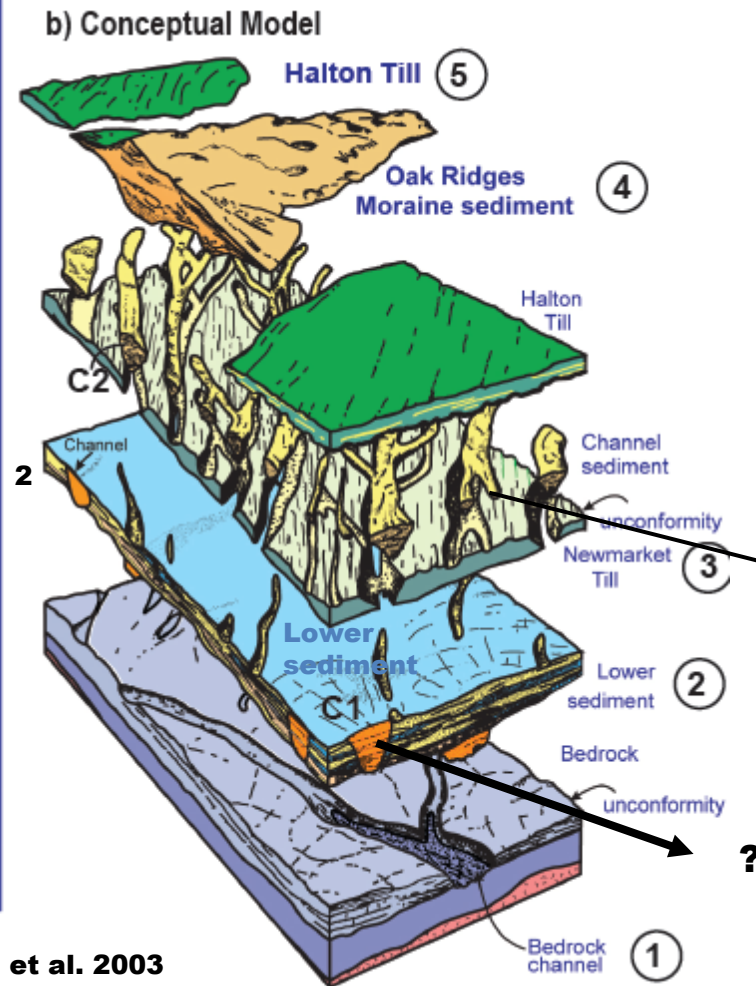
© His Majesty the King in Right of Canada, as represented by the Minister of Natural Resources, 2024

# Regional Stratigraphic Framework

## Surface geology

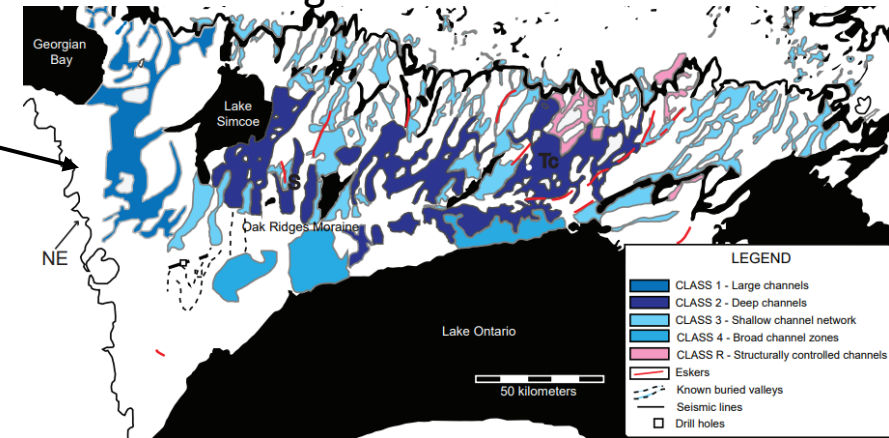


Age ~ka	Litho-Stratigraphy	Chrono-Stratigraphy	
~13	5 Halton Till (post-glacial sediment)	Holocene	
14	4 Oak Ridges Moraine and channel sediment (regional unconformity C2)	Late Wisconsinan	
20	3 Newmarket Till	Quaternary	
22	2 Upper Thorncliffe Fm, Meadowcliffe Till, Middle Thorncliffe Fm, Seminary Till, Lower Thorncliffe Fm (C1) <b>Thorncliffe Formation</b>		Middle Wisconsinan
40	Lower sediment (Sunnybrook, Pottery Road Fm, Scarborough Fm) (C1)		Early Wisconsinan
60	1 Don Fm		Sangamonian
115	1 Don Fm	Illinoian	
>135	1 York Till		
	1 Bedrock	Paleozoic	



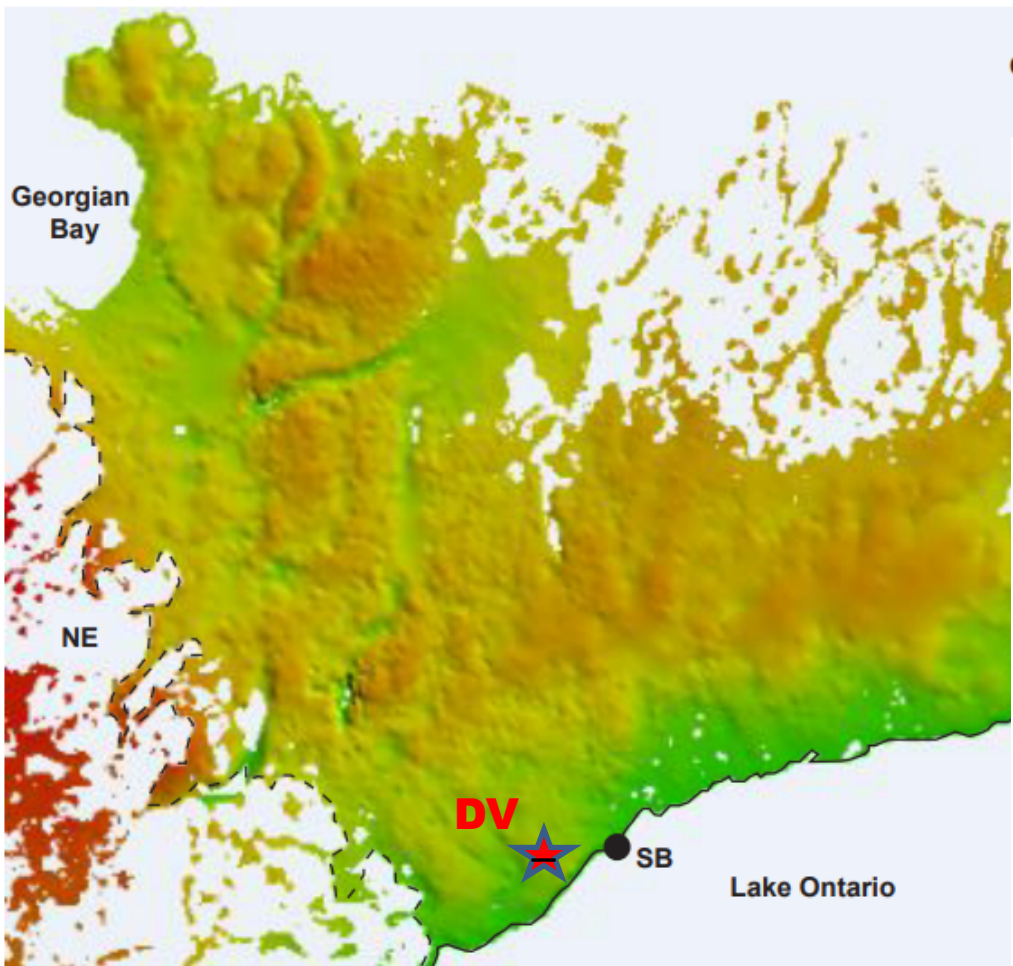
Russell et al. 2003

## ORM age channels

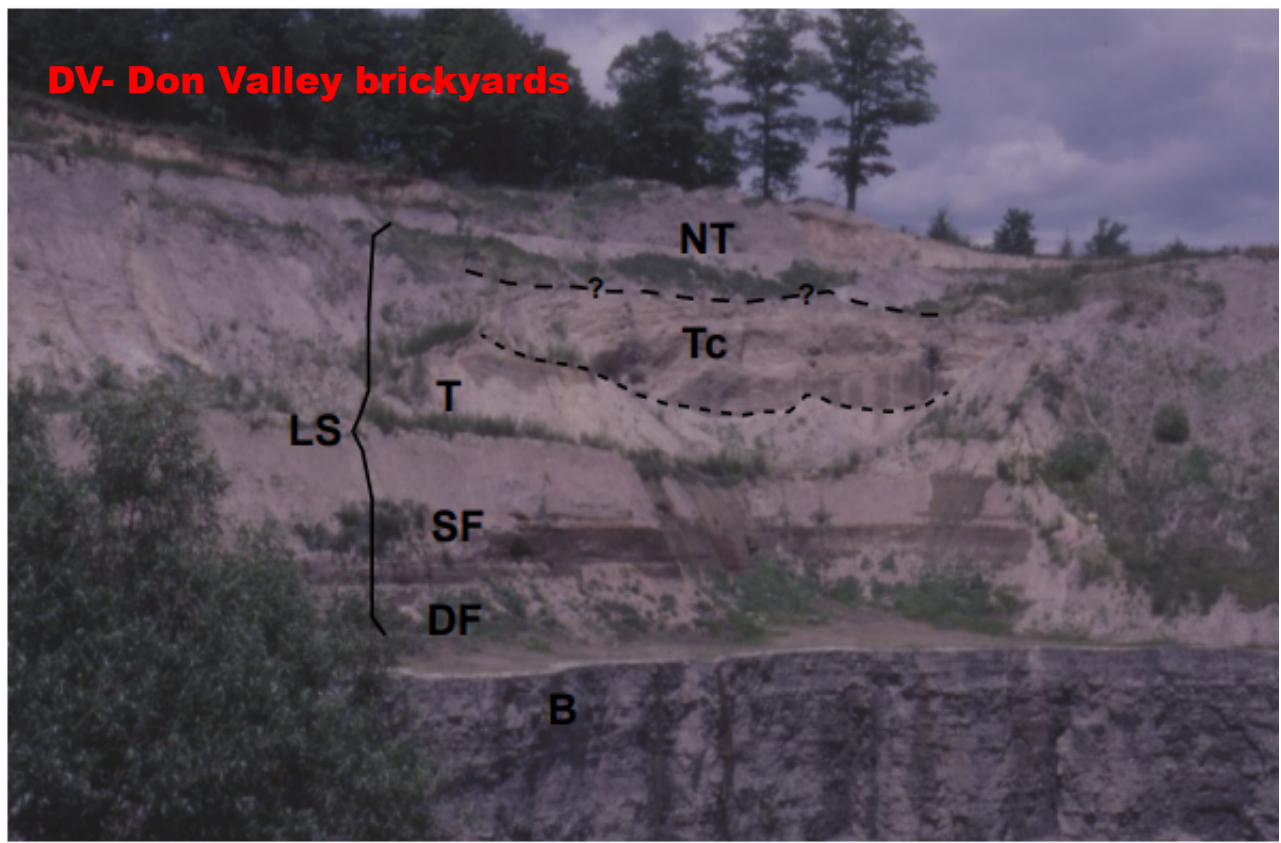


Brennand et al. 2006

# Thorncliffe Formation –what is observed record?



Canadian Shield

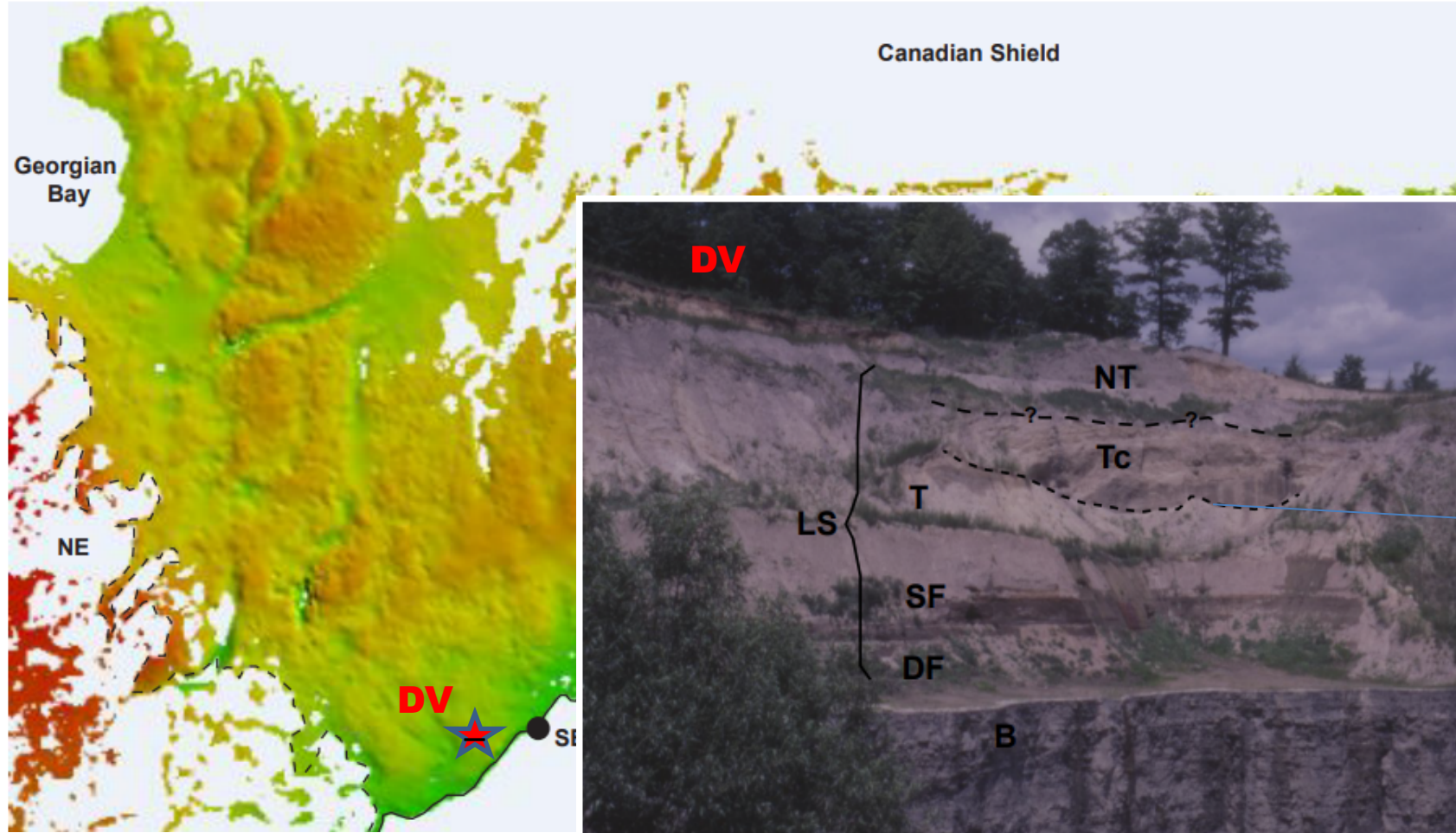


Lower sediment isopach map (< NT)

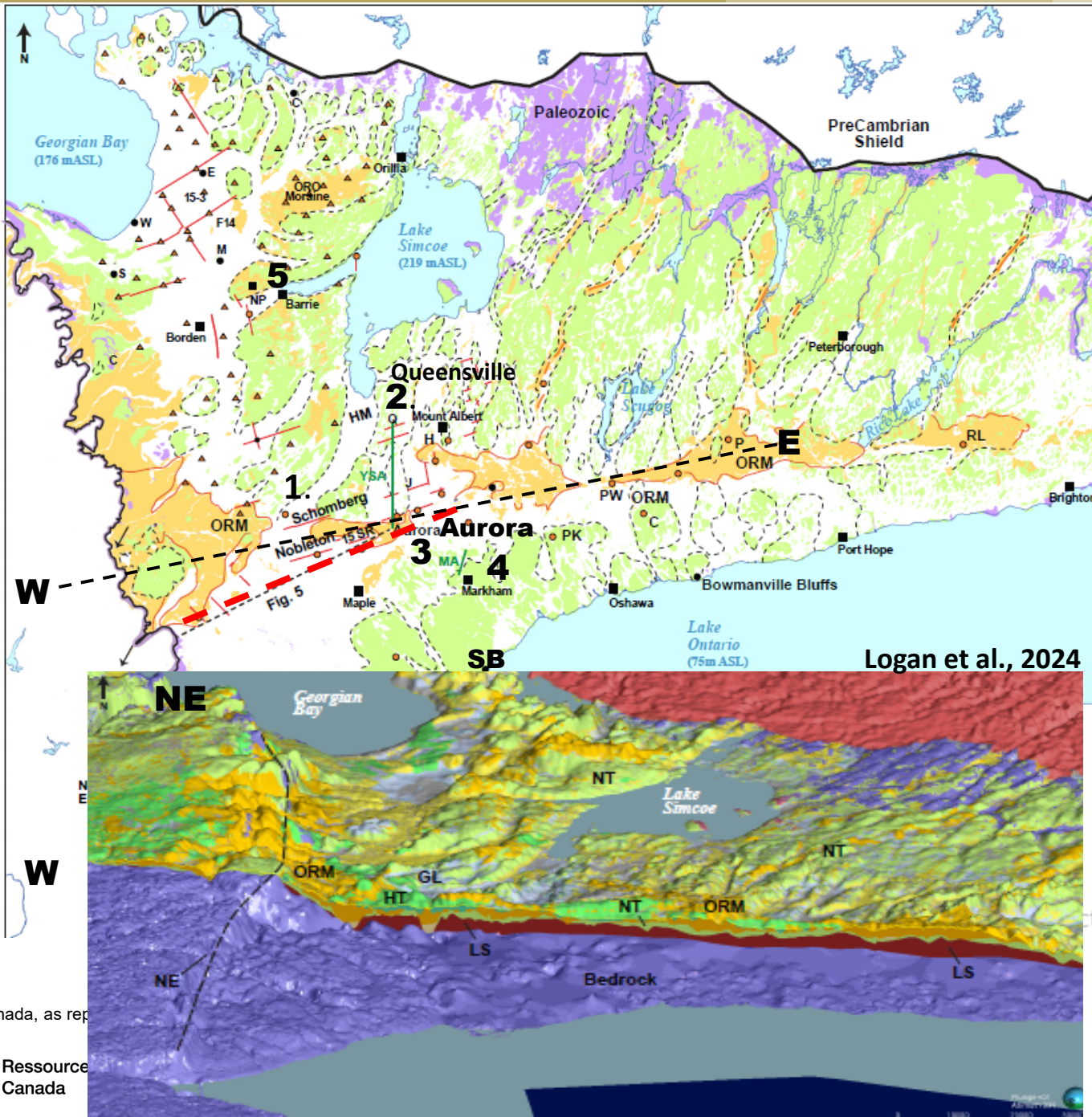
© His Majesty the King in Right of Canada, as represented by the Minister of Natural Resources, 2024



# Thorncliffe Formation sediment thickness



© His Majesty the King in Right of Canada, as represented by the Minister of Natural Resources, 2024



Logan et al., 2024

## High-Quality data sites

### Data sources

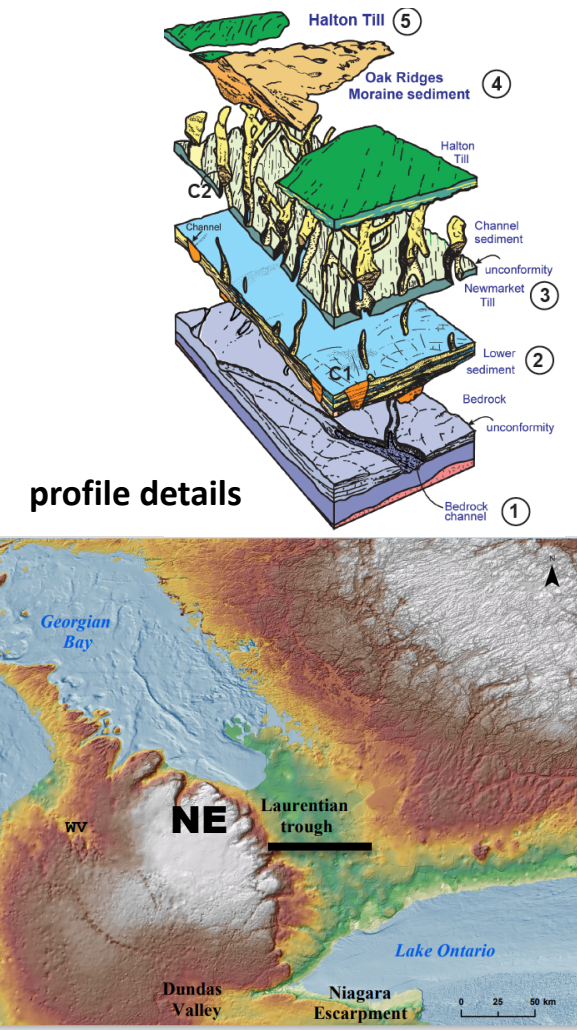
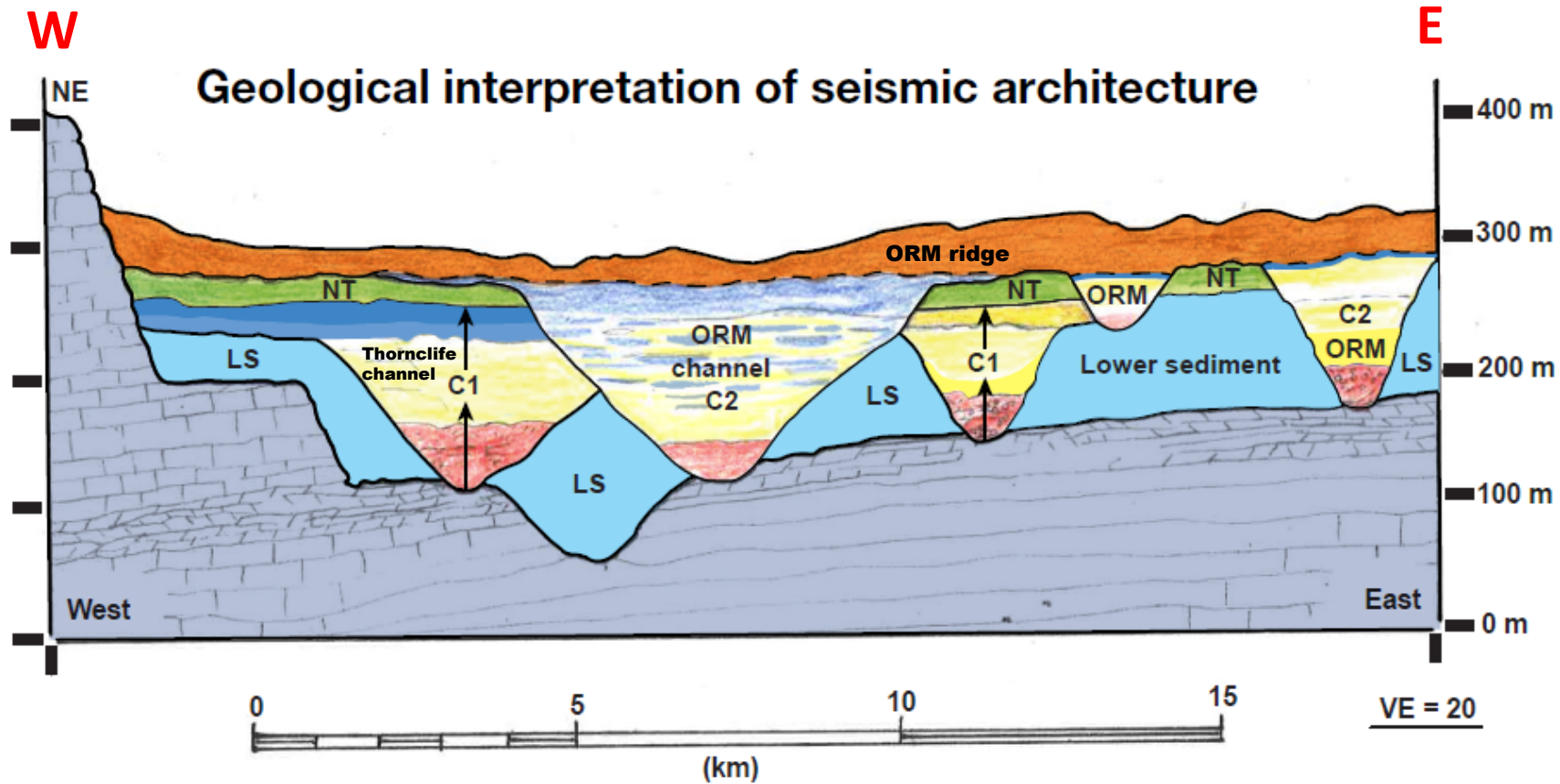
- geological mapping
- geological sections
- seismic profiles
- continuous cores
- core images
- hydraulic data

**Schematic seismic summary**

### 3D model - perspective view

WW = 147K  
 HQ coded = 10K (8K uncoded)

# Schematic X-section of seismic surveys across Laurentian trough

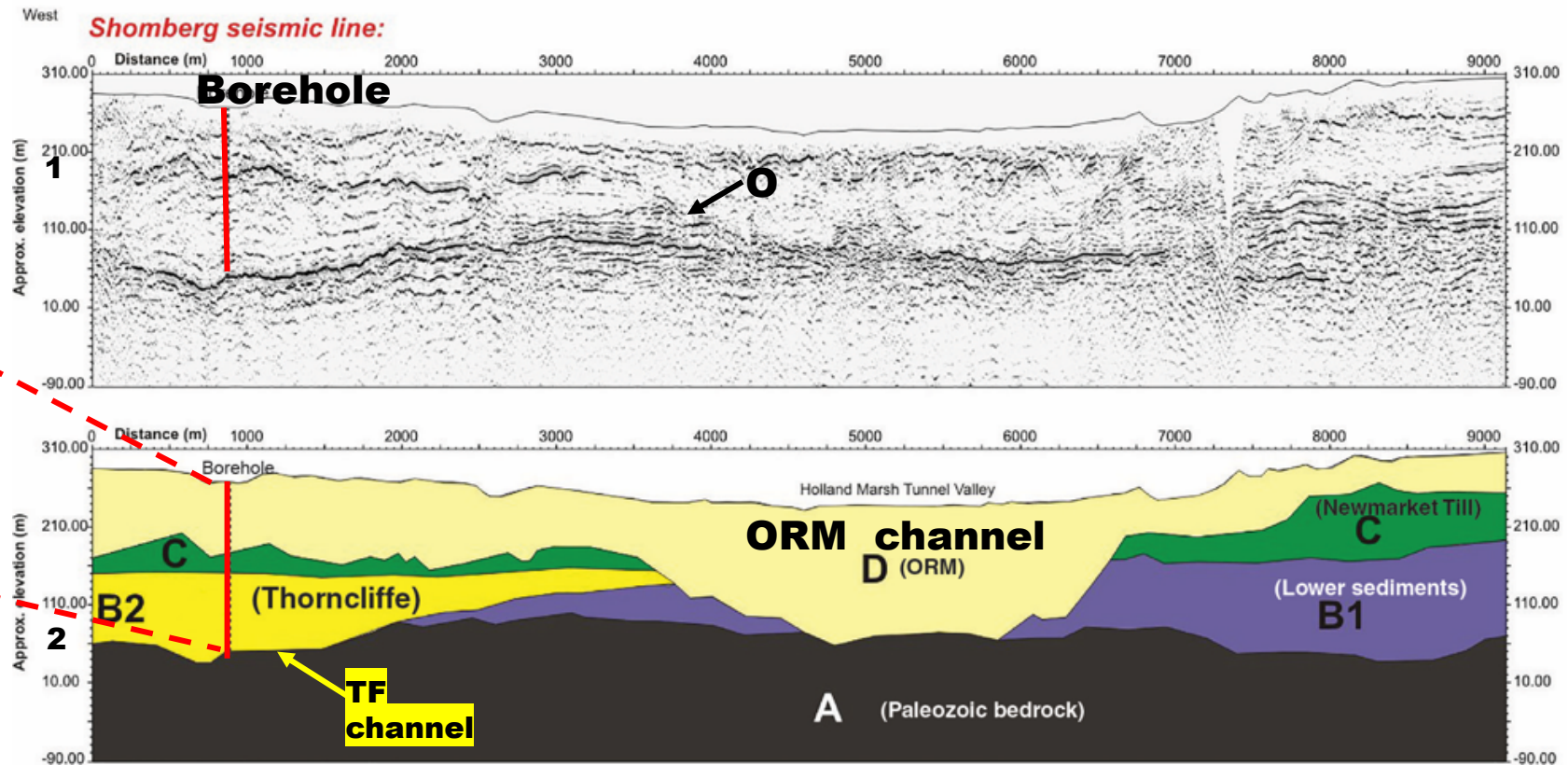
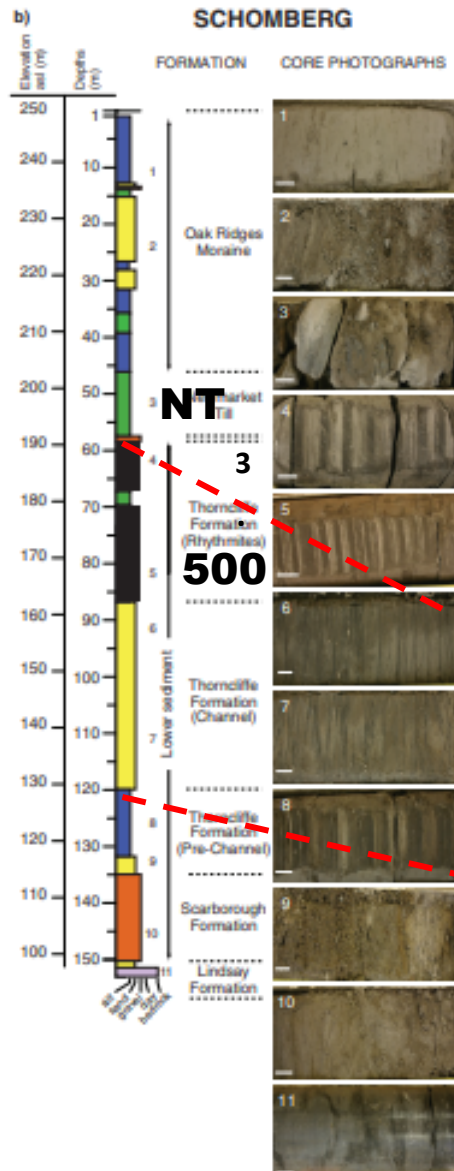


Sharpe et al. 2018; 2023

© His Majesty the King in Right of Canada, as represented by the Minister of Natural Resources, 2024



# Schomberg seismic profile & continuous core



Sharpe et al. 2018

presented by the Minister of Natural Resources, 2024

©

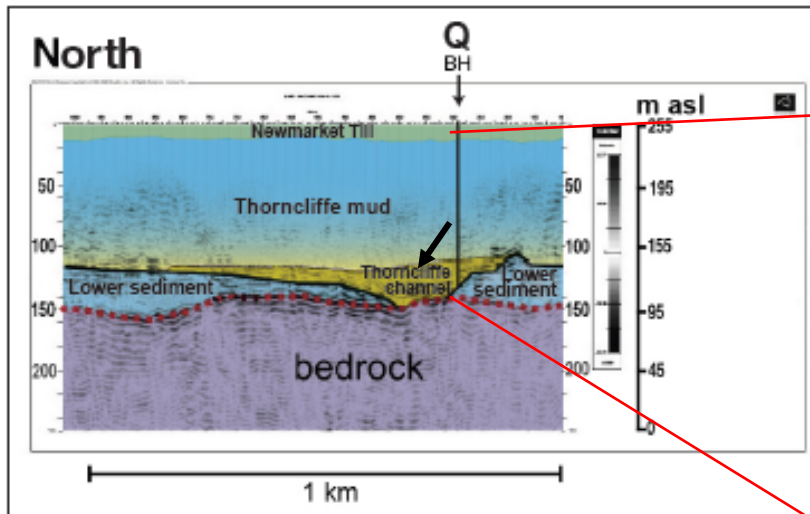


Natural Resources  
Canada

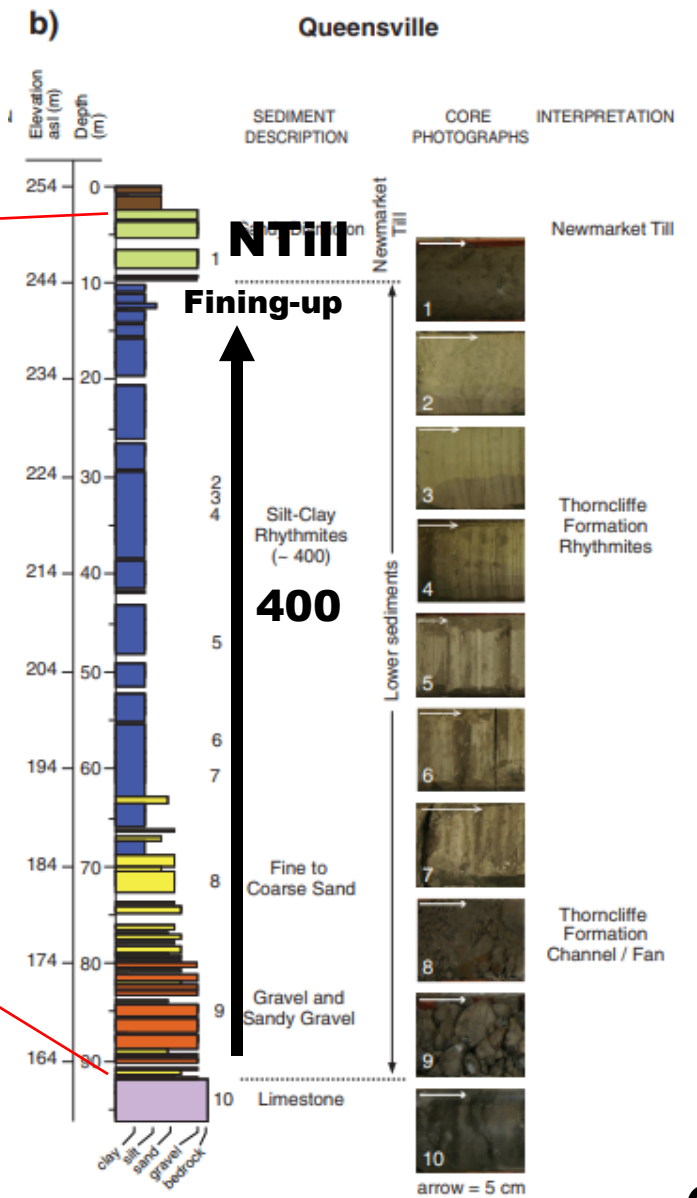
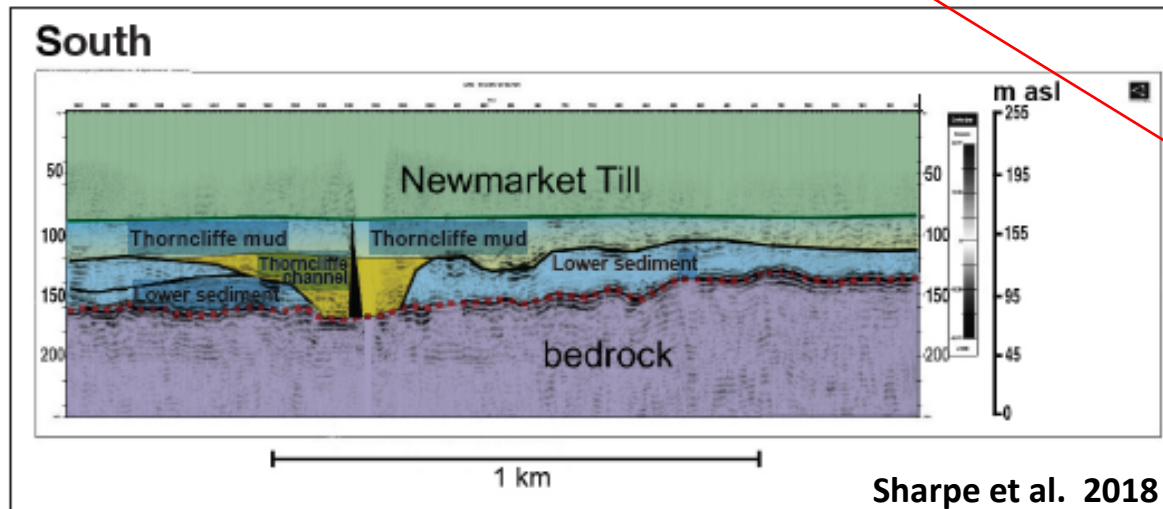
Ressources naturelles  
Canada



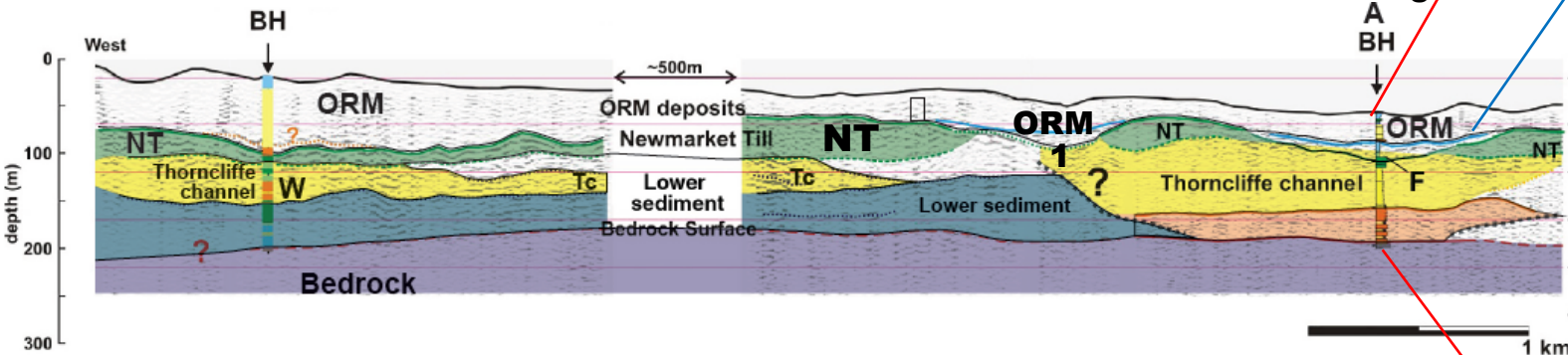
# Queensville seismic profile & continuous core



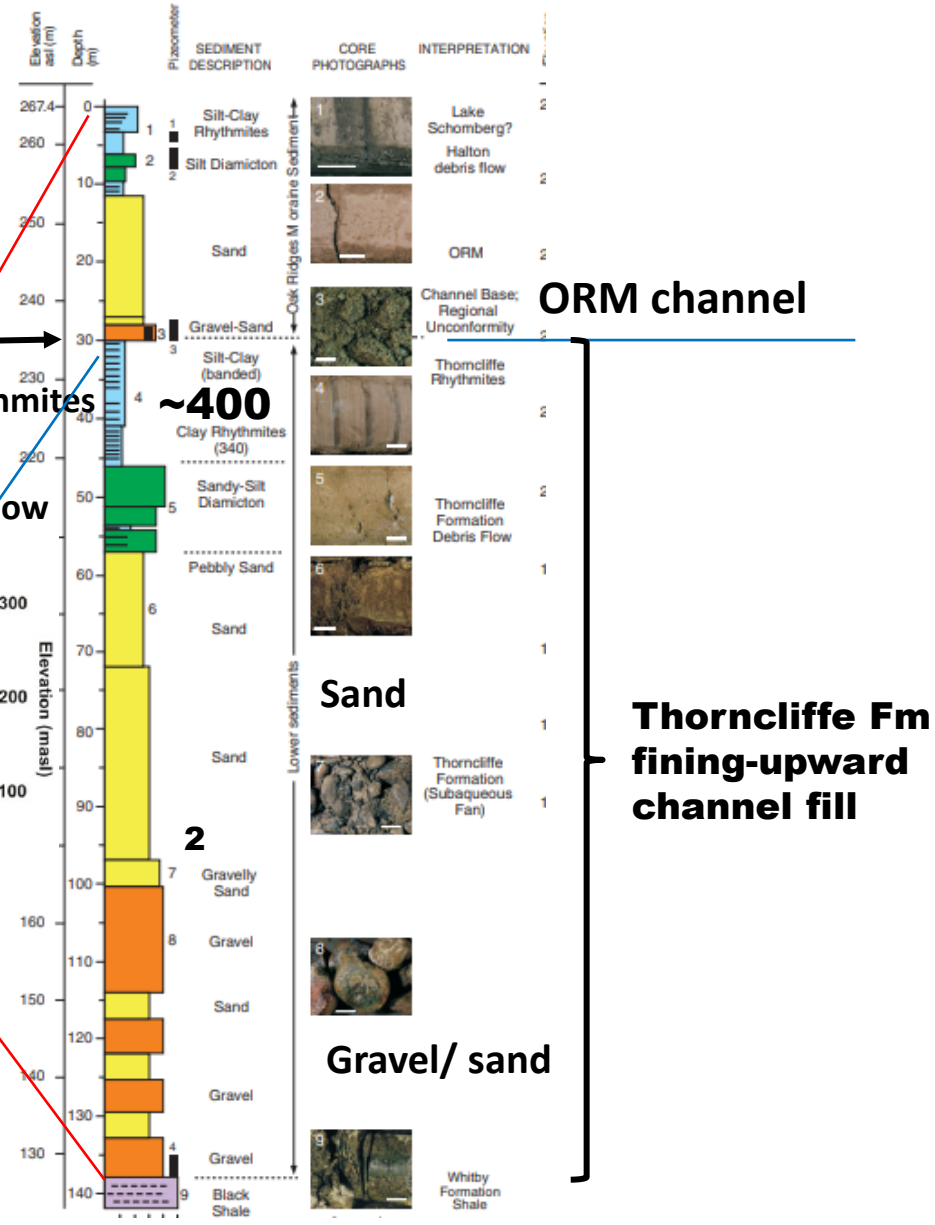
↕ 5 km apart



# Aurora seismic profile & continuous core



NT eroded  
Mud rhythmites  
3 debris flow

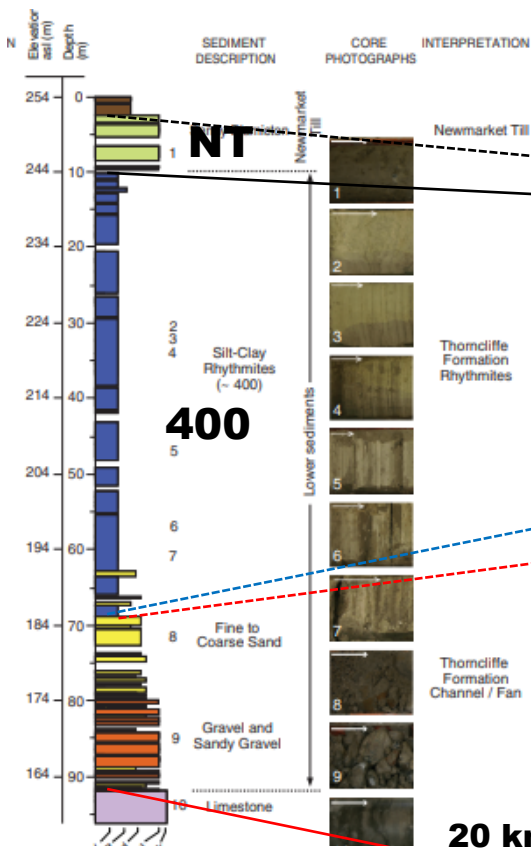


Sharpe et al. 2011; Gerber et al. 2018

© His Majesty the King in Right of Canada, as represented by the Minister of Natural Resources, 2024

# Queensville / Aurora in channel cores

## N Queensville

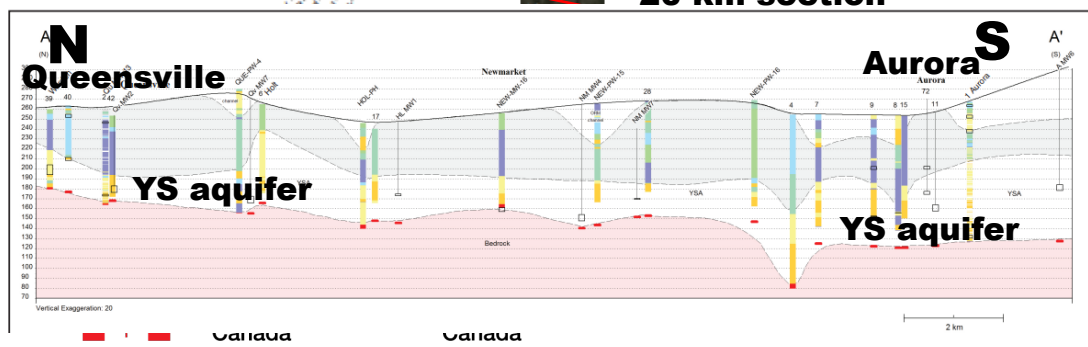
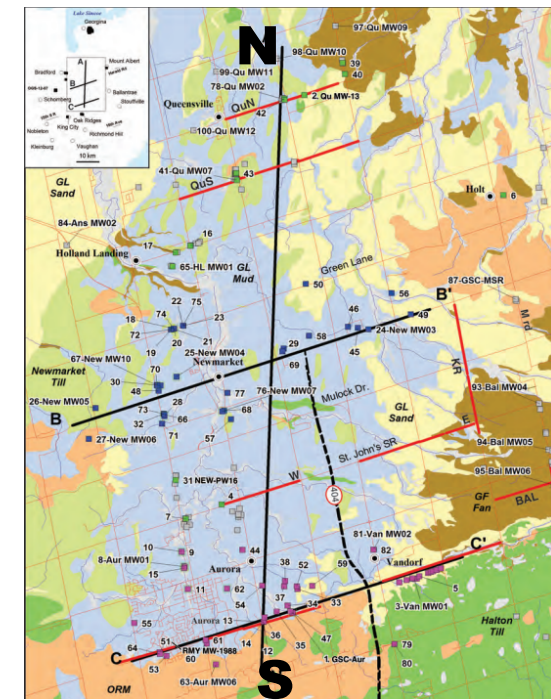
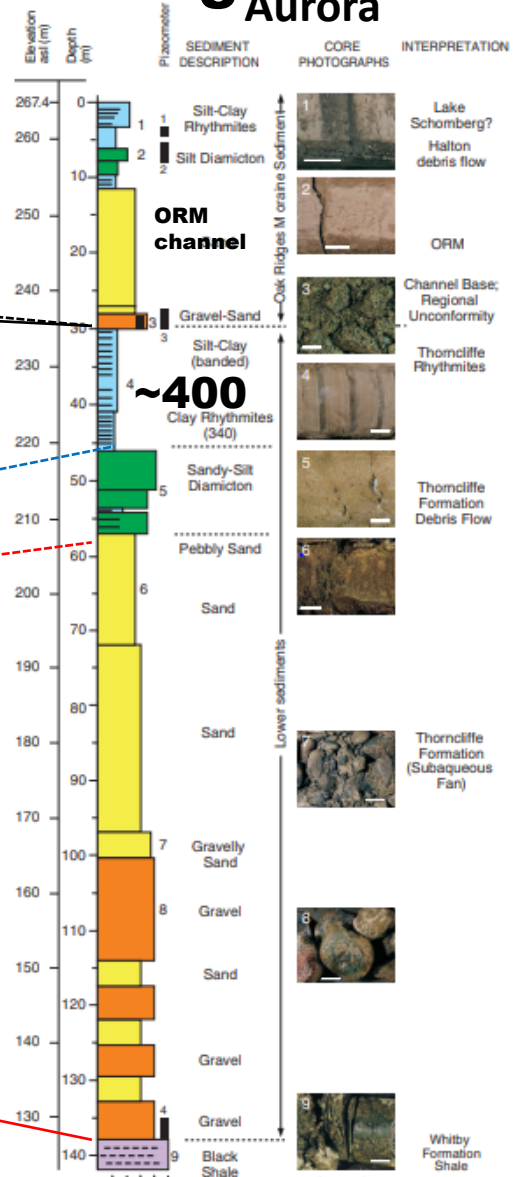


20 km section

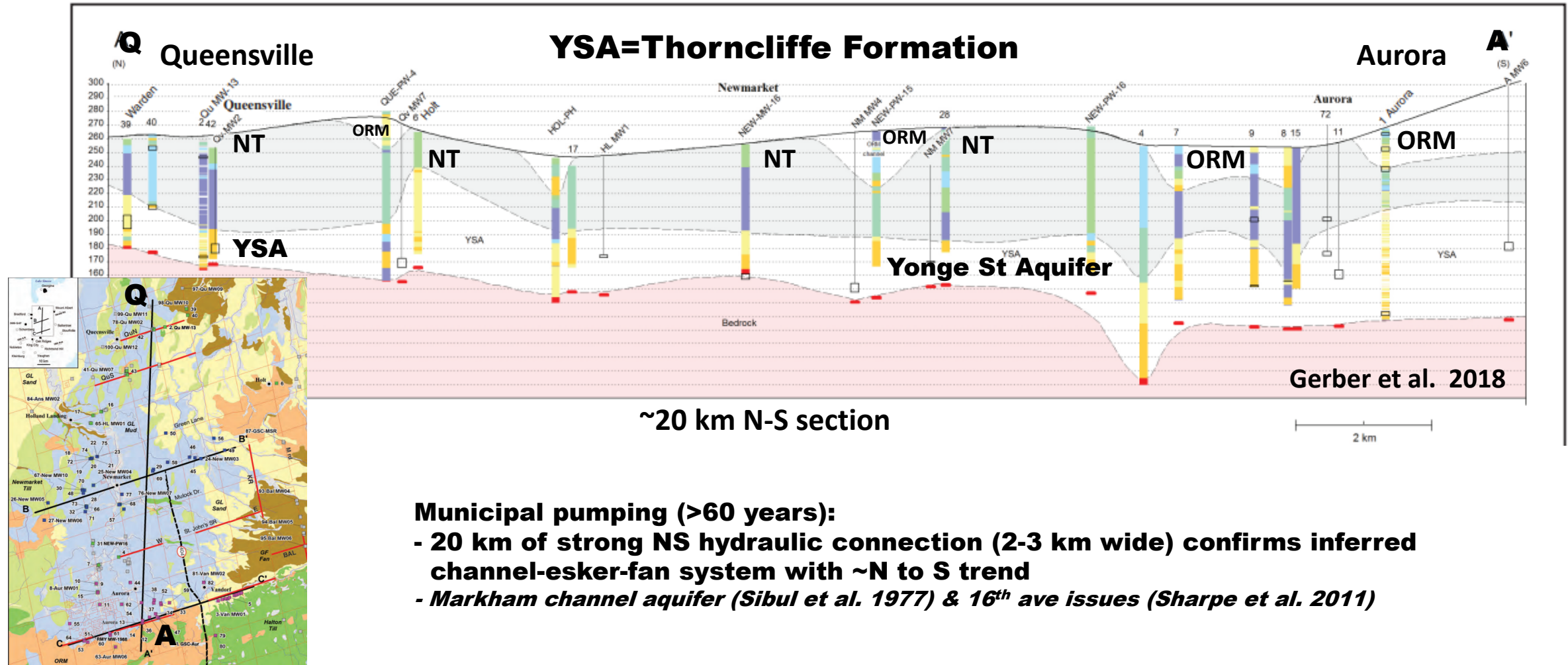
**Thorncliffe Formation Rhythmites (~400)**

**Thorncliffe Formation Channel (YS aquifer)**

## S Aurora



# N-S Queensville/ Aurora X-section: Yonge Street Aquifer (YSA)



© His Majesty the King in Right of Canada, as represented by the Minister of Natural Resources, 2024



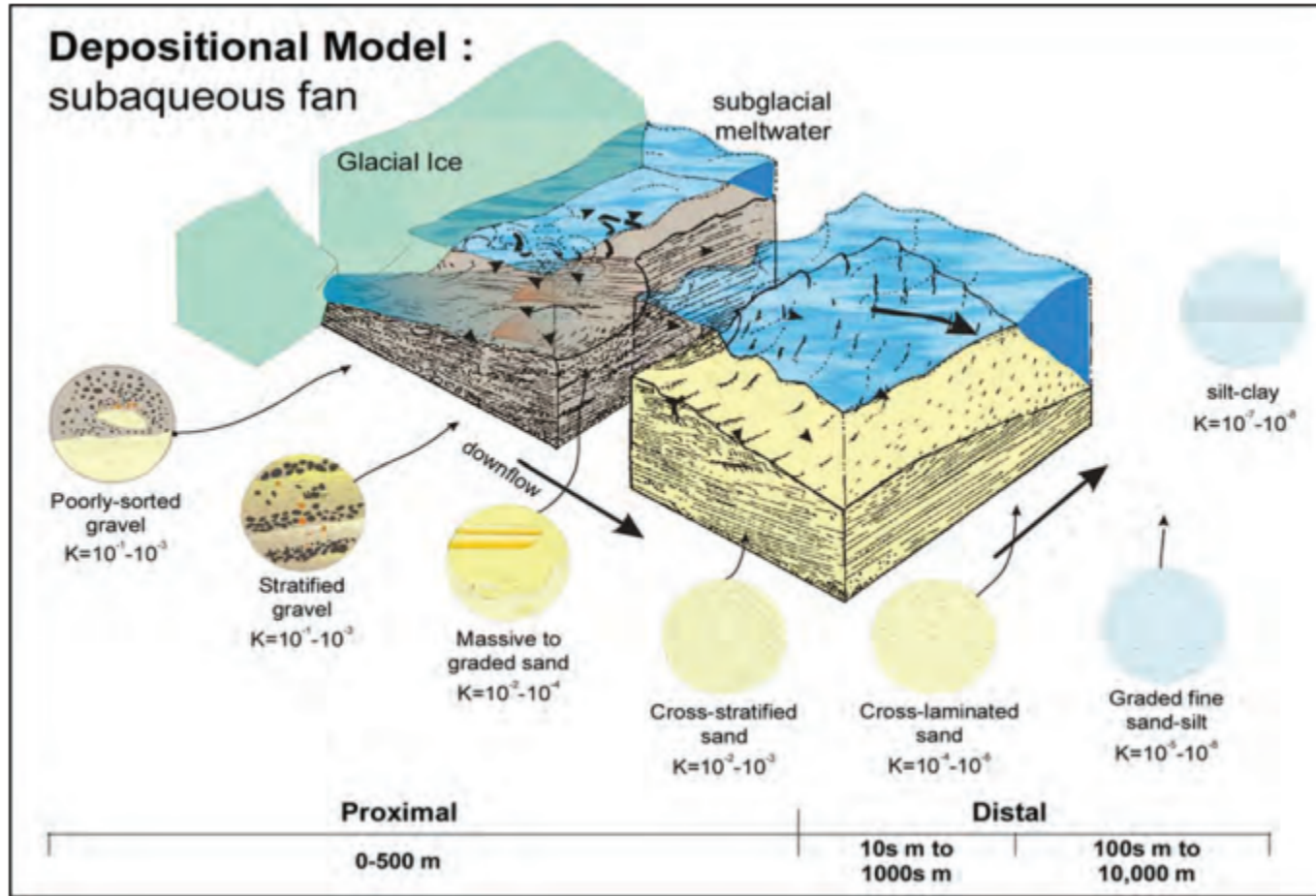
Natural Resources  
Canada

Ressources naturelles  
Canada

Canada



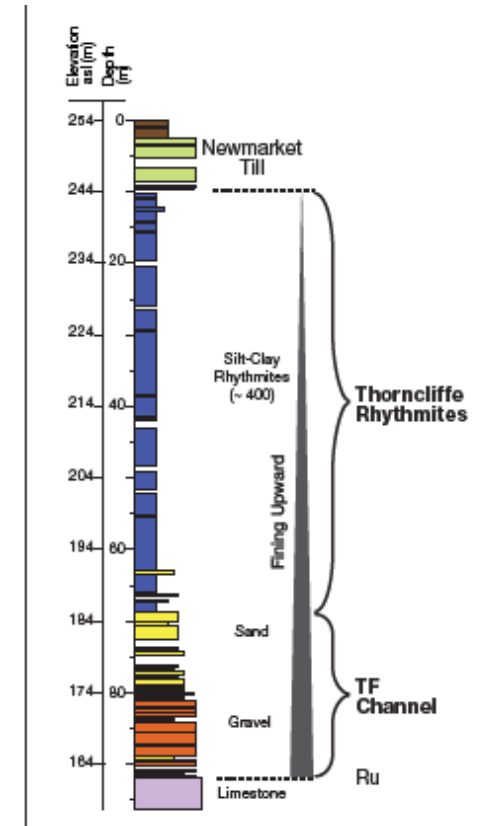
# Subaqueous Fan Depositional Model



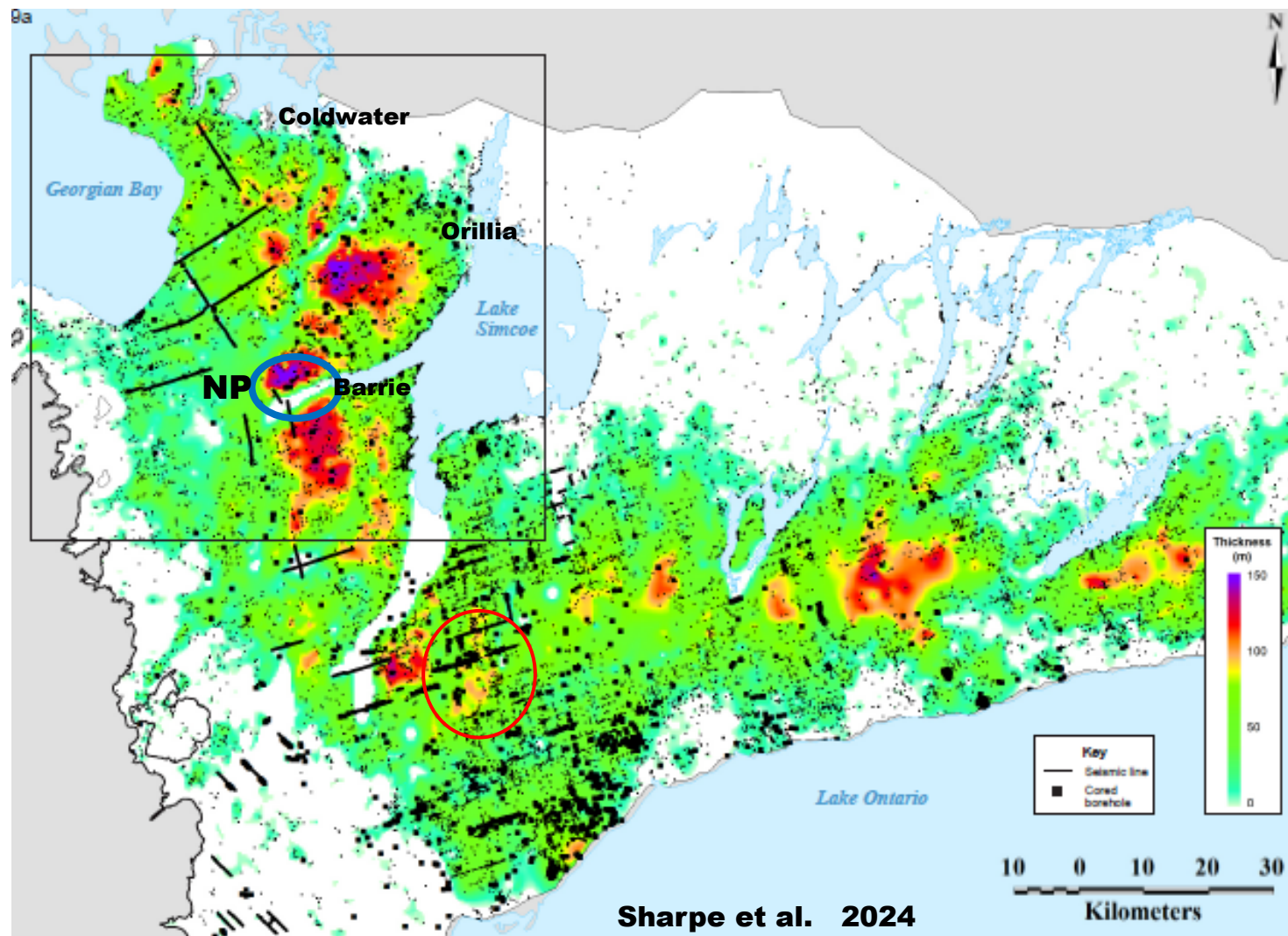
Conceptual prospecting model

Russell & Arnott 2003

## TF Fining upward sequence



# Thorncliffe Formation thickness map



## Modelled Thorncliffe sediment thickness

**308 HQ data points**  
**~10,000 ww records**

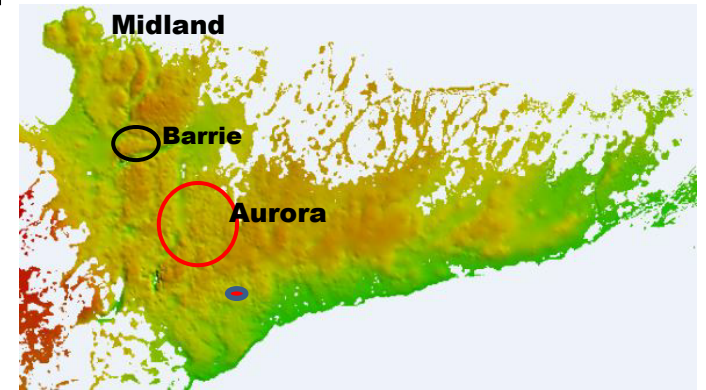
**TF > 100 m thick**

- 1. Areas of high sedimentation**
- 2. Elevation of high TF mud**

# Thorncliffe Formation outcrops



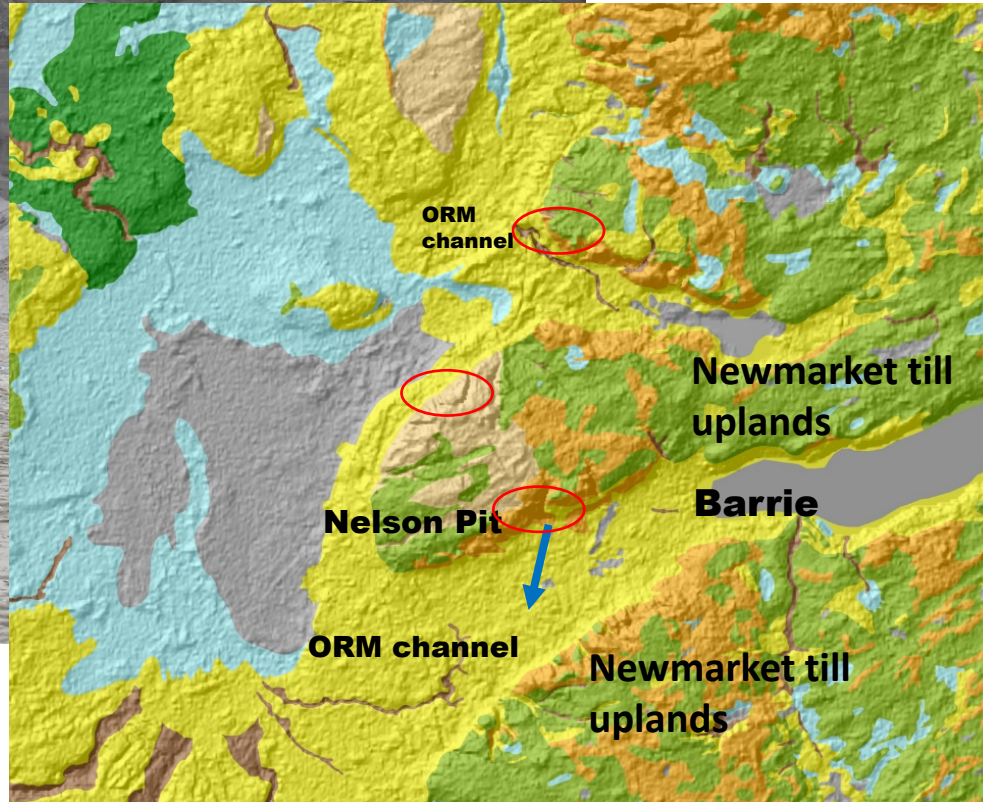
NT



**Nelson Pit  
West of Barrie**

Sharpe et al 2013  
Slattery & Sharpe 2024

**~35 m of exposed sand/ gravel  
~25 m borehole sand/ gravel**



© His Majesty the King in Right of Canada, as represented by the Minister of Natural Resources, 2024

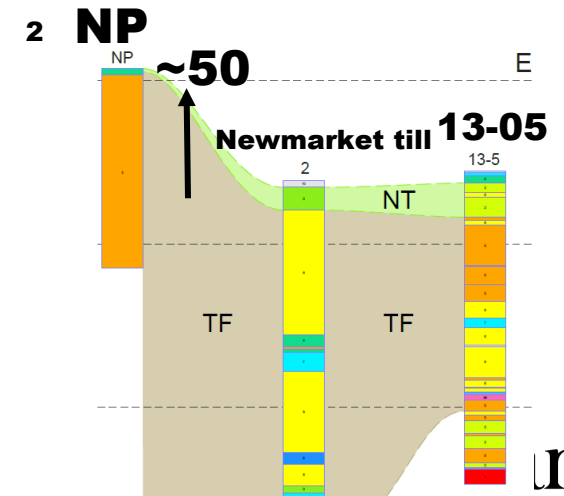
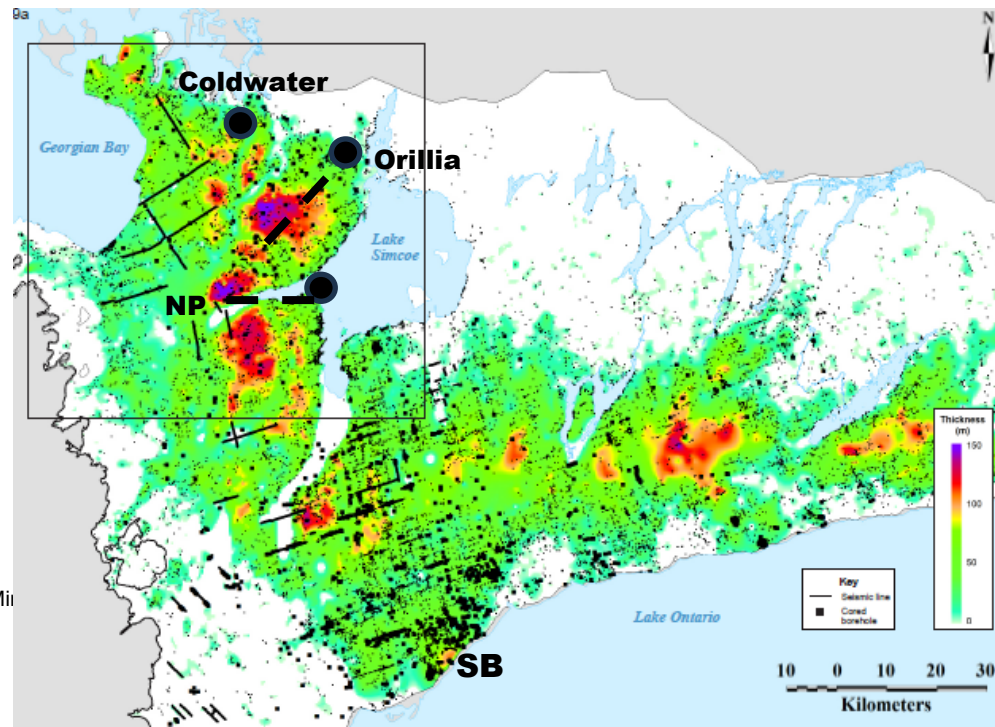
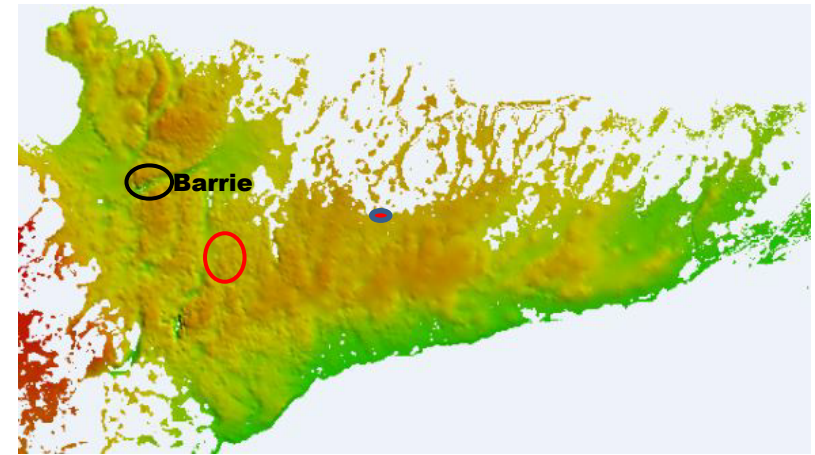
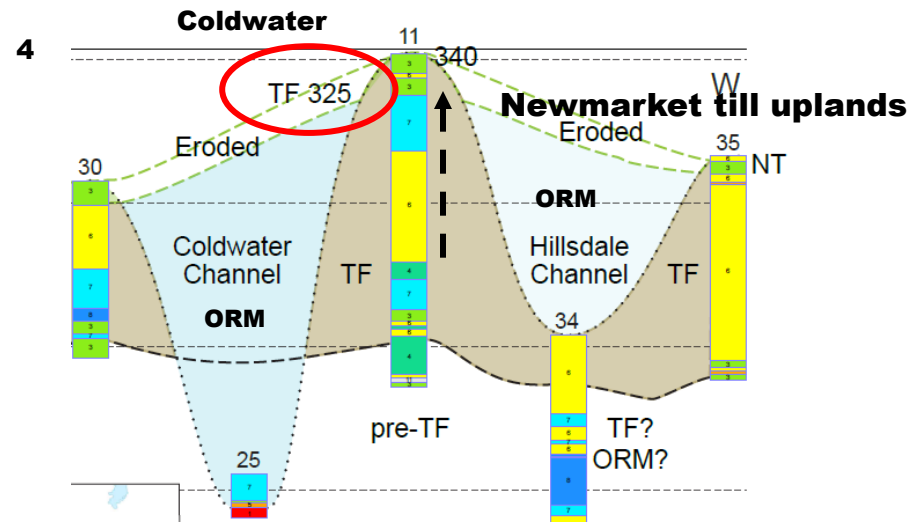
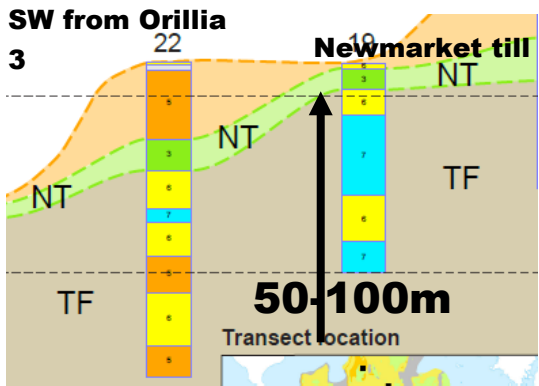


Natural Resources  
Canada

Ressources naturelles  
Canada



# Thorncliffe north of Barrie



© His Majesty the King in Right of Canada, as represented by the Minister of Natural Resources Canada



Natural Resources Canada

Ressources naturelles Canada



# Summary

## Thorncliffe Formation: large, thick glacial basin sequence

- TF:  $\sim 400 \text{ km}^3$  of glacio-lacustrine basin sediment
- Mud with a network of channel-fan feeders (fan mounds)
- Channel-fan sediments show a diagnostic (gravel-sand-mud) fining upward sequence
- Two prolific, tested aquifer systems (Markham, YSA) inform the geological model
- Combined geological and hydrogeological data support a channel-fan depositional model
- Deltaic and fluctuating lake level models not supported by acquired high-quality data
- High-quality data (e.g., seismic, core) help ensure discovery of new productive (TF) aquifers
- The channel-fan prospecting model predicts the sedimentary nature of TF aquifers: architecture, facies character and trends, orientation, and geometry

