

# new products bulletin

UNIVERSITY OF  
WINNIPEG CANADA  
LIBRARY  
AUG 1 1996  
BIBLIOTHÈQUE  
INDUSTRIELLE SOURCE ET  
COMMERCIALE

# bulletin de produits nouveaux

This monthly bulletin is published to promote additional manufacturing in Canada. Information on offers included in the bulletin is for circulation to established or prospective Canadian manufacturers only. No responsibility is assumed for claims or statements made. Address enquiries concerning the following items to:

Department of Industry, Trade and Commerce  
Ottawa, Canada K1A 0H5

Attention: Industrial and Trade Enquiries Division  
(Telephone 613 593-4963)

Le présent bulletin est publié mensuellement en vue de stimuler au Canada l'accroissement du secteur manufacturier. Les renseignements concernant les offres publiées dans le bulletin ne sont destinés qu'aux manufacturiers canadiens établis ou projetant de s'établir. Nous ne sommes pas responsables de la teneur des demandes ou des annonces publiées. Pour tous renseignements à ce sujet, s'adresser à:

Ministère de l'Industrie et du Commerce  
Ottawa (Canada) K1A 0H5

Aux soins de: Division des renseignements industriels  
et commerciaux

(Téléphone 613 593-4963)

## BULLETIN 255

MARCH 1977

### Waste Water Treatment Plant

Item 3476

Finnish firm offers under license the Canadian manufacturing rights to a process for treating waste waters of dairies, stockyards, beet and potato industries, etc. The operation of the treatment plant is based on a modified biological process and batch type extended aeration. The plant is especially designed for treating waste water that flows during a part of the day and which fluctuates greatly in quality and quantity. It is claimed that due to the uncomplicated design, construction costs are lower than for conventional treatment plants. Literature available. See illustration.

### Prefabricated Metal Buildings

Item 3477

American company is seeking a licensing arrangement with a Canadian firm for the manufacture of its prefabricated metal panel building system. The panels are roll-formed and have interlocking seal-tight edges for easy assembly, requiring no tools or fasteners. Special anchor clips of high tensile steel have been designed to fasten the panels to metal or wooden frame structures. Prospective licensees should have some experience in roll forming of sheet steel or aluminum. Literature available. See illustration.

### Adhesives and Sealants

Item 3478

German firm seeks a licensing arrangement or a joint venture with a Canadian company for the production of its line of industrial adhesives and sealants. Products include water-proof, heat resistant, elastic special adhesives for industrial

## BULLETIN 255

MARS 1977

### Système de traitement des eaux résiduaires

Article 3476

Une firme finlandaise offre les droits de fabrication au Canada sous licence d'un procédé de traitement des eaux résiduaires des laiteries, chantiers de construction, industries de la betterave et des pommes de terre, etc. Le fonctionnement du système se base sur un procédé biologique modifié avec cuves d'aération. L'installation est spécialement conçue pour traiter les effluents déversés durant une partie de la journée et dont la qualité et la quantité varient considérablement. Le procédé est, semble-t-il, si simple qu'il nécessite une installation moins onéreuse par rapport aux systèmes de traitement classiques. Documentation sur demande. Voir l'illustration.

### Bâtiments préfabriqués en métal

Article 3477

Une société américaine désire conclure un accord de licence avec une société canadienne pour la fabrication de son système de panneaux métalliques pour bâtiments préfabriqués. Les panneaux sont façonnés aux rouleaux et ont des arrêtes de scellement serré permettant de les encaster les uns aux autres et de les assembler facilement sans outil ou attache. Des attaches spéciales, de style grappin, faites d'acier de haute tension, ont été conçues pour fixer les panneaux aux charpentes métalliques ou de bois. Les intéressés à conclure cet accord de licence doivent avoir de l'expérience dans le façonnage aux rouleaux de tôles d'acier ou d'aluminium. Documentation sur demande. Voir l'illustration.

### Colles et adhésifs

Article 3478

Une société allemande désire conclure un accord de licence ou former une entreprise conjointe avec une société canadienne pour la production de sa gamme de colles et adhésifs industriels. Les produits comprennent des adhésifs spéciaux étanches à l'eau, résistants à la chaleur et élastiques pour



Industry, Trade  
and Commerce

Industrie  
et Commerce



Industrie  
et Commerce

Industry, Trade  
and Commerce

applications, sound deadening compounds, underbody coatings, sealing compounds, plastic sealing strips and strings, etc. Literature available.

**Travel Trailer**

**Item 3479**

Canadian company is offering the rights for manufacturing under license in Canada its travel trailer of telescopic design. The lifting mechanism raises and lowers the all-fiberglass wall unit from an approximate five foot folded height to a six foot four inch height living area. The trailers are available in 13½ foot and 17 foot models with optional floor plans. Claimed advantages are low centre of gravity, less wind resistance and less fuel consumption. Literature available. See illustration.

**Plastic articles**

**Item 3480**

French company is offering the rights for manufacturing under license in Canada its line of plastic articles intended for handling heavy material and for performing hard work. These articles are made of polyamide and of polyurethane elastomer. They consist of wheels, casters, rollers for pallet trucks, and solid tires for fork lift trucks. It is claimed that these articles last from 5 to 12 times longer than the traditional articles at only twice the cost. Literature available. See illustration.

**Farm Bale Handling Equipment**

**Item 3481**

British firm seeks a Canadian licensee to manufacture its equipment for collecting, stacking and transporting bales of hay, straw and similar crops. The equipment consists of an accumulator, a stacker and a trailer which are claimed to be simple, cheap to manufacture, easy to operate, and to save considerable time in harvesting crops. Literature available. See illustration.

**Faceting Machine**

**Item 3482**

Swiss firm seeks licensing arrangement with a Canadian company for the production of its faceting machine which is used for the mechanical decoration of small sized flat workpieces in the jewellery field. The machine works by removing material with a cutting depth of a few hundredths of a millimetre. A milling cutter with special teeth permits the operator to give the surface of the workpiece a hammered appearance. Literature available.

**Jewellery Casting System**

**Item 3483**

American company offers under license the Canadian manufacturing rights to its jewellery casting system. This system is used for making jewellery items such as rings and broaches in

application industrielles, ainsi que des mastics servant à assourdir le bruit, des revêtements de dessous de carrosseries, des mastics pour sceller, des bandes et des cordes à sceller à base de plastique. Documentation sur demande.

**Caravane télescopique**

**Article 3479**

Une société canadienne offre sous licence les droits de fabrication au Canada de sa caravane télescopique. Les murs tout fibre de verre se referment et forment une remorque d'environ cinq pieds de hauteur; lorsque les murs sont remontés, le dégagement intérieur est de 6'4". Les remorques sont disponibles en modèles de 13½ pieds et de 17 pieds avec options sur la division intérieure. Les caravanes offrent comme avantages un centre de gravité très bas, une résistance moindre au vent et une consommation moins élevée d'essence. Documentation sur demande. Voir l'illustration.

**Articles de plastique**

**Article 3480**

Une société française offre, sous licence, les droits de fabrication au Canada de sa gamme d'articles de plastique destinés aux manutentions lourdes et aux travaux intensifs. Ces articles sont fabriqués en polyamide et en élastomère de polyurethane. Ces articles consistent en des roues, roulettes, galets pour transpalettes, bandages de chariots élévateurs et autres. On soutient que ces articles durent de 5 à 12 fois plus longtemps que les produits traditionnels comparables et qu'ils ne coûtent que deux fois plus cher. Documentation sur demande. Voir l'illustration.

**Equipement de mise en balles pour l'agriculture Article 3481**

Une firme britannique désire conclure un accord de licence avec une société canadienne pour la fabrication de son équipement servant à recueillir, à empiler et à transporter des balles de foin, de paille et d'autres produits semblables. Cet équipement comporte un accumulateur, une empileuse et une remorque. Le matériel est, semble-t-il, simple et peu coûteux, facile à actionner et fait épargner beaucoup de temps lors des récoltes. Documentation sur demande. Voir l'illustration.

**Machine à facetter**

**Article 3482**

Une firme suisse désire en venir à un accord de licence avec une société canadienne pour la production de sa machine à facetter qui est utilisée pour la décoration mécanique de pièces métalliques plates de petite dimension dans le domaine de la bijouterie. Elle travaille par enlèvement de matière avec une profondeur de passe de quelques centièmes de mm. La composition du mouvement circulaire d'une fraise à denture spéciale permet de donner à la surface de la pièce un aspect martelé. Documentation sur demande.

**Système de moulage de bijoux**

**Article 3483**

Une société américaine offre les droits d'exploitation sous licence au Canada de son système de moulage pour bijoux. Ce système sert à fabriquer des bijoux comme des bagues et

precious metal, including alloys of platinum, gold and silver, as well as in stainless steel. The company claims that its system is a major advancement over the previous state of the art, known as Lost Wax Casting. The Canadian licensee will be provided with the necessary equipment, materials, know-how, technical assistance and training. Literature available.

**Dental Casting System**

**Item 3484**

American company is offering the manufacturing rights to its system for high volume production of metallic dentures. This system provides one-piece metallic denture castings in cobalt-chromium, nickel, titanium and precious metal alloys; simultaneous casting of several dentures for economical high volume production; hollow sprue type mould; segmented wax sprue construction; vacuum precoating and vacuum investment moulding. Casting method is vacuum assist on mould. The licensing package includes engineering, detailed technical assistance and training plus materials and specially designed equipment. Literature available.

**Wheels for Suitcases**

**Item 3485**

Danish company offers under license the Canadian manufacturing rights to a wheel arrangement for suitcases. The wheels are lightweight and concealed inside the suitcase where they take up very little space. By pulling a handle bar the wheels are released and automatically locked into position. Wheels are rubber padded for quiet operation and are of sturdy construction. Literature available. See illustration.

**INVENTIONS**

The following manufacturing opportunities represent products and processes that have not been commercially proven. In some cases, prototypes have been developed.

**Method of Spark-Erosion Machining**

**Item 3486**

European Communities Commission agency offers for license in Canada a new method of spark-erosion machining for the production of cavities inside solid workpieces. This method makes it possible to produce a cavity of any desired shape inside a solid metal workpiece after boring an initial cylindrical hole of small diameter. The degree of roughness of the machined surface depends upon the speed with which the work is carried out and on the characteristics of the electrode used. The tool may be miniaturized and controlled either by a computer or by a cam-type arrangement. The principal field of application of the method is the machining of very hard metals and alloys, particularly where any form of welding or casting is prohibited or impossible. Literature available.

des broches en métal précieux, y compris les alliages de platine, d'or et d'argent et d'acier inoxydable. La société affirme que son système possède des avantages considérables par rapport à l'ancien procédé de moulage à la cire perdue. La société fournira à l'exploitant tout le matériel nécessaire, l'aide technique et lui donnera la formation qui s'impose. Documentation sur demande.

**Système de moules pour dentiers**

**Article 3484**

Une société américaine offre les droits de fabrication de son système pour la production en quantité de dentiers de métal. Ce système sert à produire des moules pour dentiers de métal en cobalt-chrome, en nickel, en titane et en alliages de métaux précieux. Il permet de réaliser le moulage simultané de plusieurs dentiers qui s'avèrera plus économique à l'aide de moules creux, et d'une carotte segmentée de cire. Il s'agit d'une méthode de moulage sous vide. L'accord de licence offert porte sur l'ingénierie, l'aide technique détaillée, la formation du personnel et la fourniture des matériaux et de l'équipement spécial. Documentation sur demande.

**Roulettes pour valises**

**Article 3485**

Une société danoise offre sous licence les droits de fabrication au Canada de son dispositif de roulettes pour valises. Ces roulettes légères sont escamotables à l'intérieur de la valise où elles n'occupent que très peu d'espace. En tirant une poignée, les roulettes apparaissent et s'enclenchent automatiquement. Elles sont coussinées de caoutchouc, donc silencieuses, et de construction solide. Documentation sur demande. Voir l'illustration.

**INVENTIONS**

Les possibilités de fabrication suivantes concernent des produits et procédés qui n'ont pas été éprouvés commercialement. Dans certains cas, des prototypes ont été mis au point.

**Procédé d'usinage par électro-érosion**

**Article 3486**

Une agence de la CEE offre le brevet d'exploitation au Canada de son nouveau procédé d'usinage par électro-érosion de cavités à l'intérieur de pièces massives. Le procédé permet de créer une cavité de forme quelconque à l'intérieur d'une pièce métallique massive après le perçage d'un avant-trou cylindrique de faible dimension. La rugosité obtenue est fonction de la vitesse de travail et des caractéristiques de l'électrode utilisée. L'outil peut être miniaturisé et commandé soit par un calculateur soit par une came de programme. L'application se situe surtout dans le domaine de l'usinage des métaux et alliages très durs et particulièrement là où toute soudure ou procédé de moulage est interdit ou impossible. Documentation sur demande.

**Automatic Door System****Item 3487**

Irish research institute offers under license the Canadian manufacturing rights to its automatic door equipment for swing doors. The equipment works on the principle of a change in cross-section of a piece of fire hose when inflated. This change is translated into rotational movement. Large effective surface area means low pressure operation. There is no need for dry, filtered or lubricated air. Holding members are made from aluminum extrusions. This system is claimed to be cheaper than other pneumatic systems, of simple design and easy to install. Literature available. See illustration.

**Separator for Farm or Factory Inspection Lines****Item 3488**

British research and development corporation is offering the Canadian manufacturing rights to a separator for farm or factory inspection lines. The sorting of potatoes, egg candling, fruit and vegetable grading is performed by an operator with a hand-held selector wand which controls a mechanical ejector at the discharge point allowing the operator to concentrate on recognition, thereby achieving a faster throughput with greater accuracy. Literature available.

**Screen Repair Machine****Item 3489**

American inventor seeks a licensing arrangement with a Canadian firm for the manufacture of his screen repair machine. The machine installs screening into the frame of a window or door which, it is claimed, gives an improved seal between the screen and the frame, as well as increasing the production efficiency of the installation. The machine consists of a wheel, manually driven by a handle mounted on a frame fitted with rollers, with the wheel serving to roll screening into a groove in the screen frame as the device is rolled along the frame. Literature available.

**Sailing Dinghies and Catamarans****Item 3490**

Danish inventor is offering the rights to manufacture under license in Canada his device for uprighting sailing dinghies and catamarans following a capsize. The device consists of a mast pivot at deck level which can be locked in a number of angular positions and an aerodynamically shaped float at the top of the sail. After a capsize, the pivot is released to rotate, and the hull is easily turned to the upright position, while the mast is still lying in a horizontal position supported by the float. Then the hull is bailed and the mast is raised again by means of a worm gear permanently attached to the pivot. Literature available.

**Boat Protective Envelope****Item 3491**

American inventor offers under license the Canadian manufacturing rights to his safety device for sealing cracks,

**Système de porte automatique****Article 3487**

Un institut de recherche irlandais offre sous licence les droits de fabrication au Canada de son dispositif de porte automatique pour portes pivotantes. Le dispositif fonctionne par le gonflage d'un bout de tuyau à incendie. Ce changement se traduit en un mouvement de rotation. Une large superficie n'a besoin que d'une opération à basse pression. Aucun besoin d'air sec, filtré ou lubrifié. Les fixations sont faites d'aluminium refoulé. Ce système est censé être moins dispendieux que les autres systèmes pneumatiques, étant de conception simple et d'installation facile. Documentation sur demande. Voir l'illustration.

**Séparateur pour produits agricoles ou chaîne de production****Article 3488**

Une société britannique de recherche et de développement offre les droits de fabrication au Canada d'un séparateur pour produits agricoles ou chaîne de production. Le tri des pommes de terre, le mirage des oeufs, la catégorisation des fruits et des légumes sont exécutés par un opérateur à l'aide d'un sélecteur manuel qui actionne un éjecteur mécanique au point de décharge. Ce procédé permet à l'opérateur de se concentrer sur la reconnaissance et lui aide à atteindre un meilleur rendement, avec une exactitude accrue. Documentation sur demande.

**Machine à réparer les grilles****Article 3489**

Un inventeur américain désire conclure un accord de licence avec une firme canadienne pour la fabrication de sa machine à réparer les grilles. La machine monte la grille sur le cadre d'une fenêtre ou d'une porte. Ce procédé permet, semble-t-il, une meilleure fixation de la grille au cadre et accroît l'efficacité des opérations. La machine se compose d'une roue actionnée à la main par une manette sur un cadre comportant des rouleaux; la roue sert à amener la grille dans une rainure dans le cadre avec le roulement du dispositif le long du cadre. Documentation sur demande.

**Youyous et catamarans à voile****Article 3490**

Un inventeur danois offre sous licence les droits de fabrication au Canada de son dispositif de redressement des youyous et des catamarans à voile après chavirement. Le dispositif se compose d'un pivot pour le mât qui se trouve à la hauteur du pont et qu'on peut barrer à plusieurs angles, ainsi que d'un ballon de forme aérodynamique au sommet de la voile. Après avoir chaviré, on dégage le pivot et on peut ainsi facilement ramener la coque à la verticale, alors que le mât se trouve encore à l'horizontale, supporté par le ballon. On vide ensuite la coque de son eau et on redresse le mât au moyen d'un engrenage fixé de façon permanente au pivot. Documentation sur demande.

**Enveloppe protectrice pour bateaux****Article 3491**

Un inventeur américain offre les droits de fabrication sous licence au Canada de son matériel pour la sécurité des

ruptures and small holes in the hull of a boat, thereby allowing the boat to reach a safe harbour for repairs. This emergency safety device consists of a strong, light-weight nylon fabric sheet which can be deployed under the boat's hull and attached to forward, side and stern cleats. It provides a temporary patch to keep the boat from sinking. It can also be used to protect the hull of a boat from developing barnacles or moss while in the water. Literature available. See illustration.

#### **Structured Wall Covering**

**Item 3492**

French inventor is offering the rights for manufacturing under license in Canada his decorative structured relief wall covering. It consists of a new material with a base of flexible synthetic resins on a paper backing, and is obtained by what is claimed to be a new and original manufacturing technique but one which could be adapted from a PVC coating technique. It is claimed that this wall covering, which comes in rolls, is a good alternative for paint or tiling. Literature available.

embarcations. Il sert à couvrir les fissures, les ruptures et les petits trous sur la coque d'un bateau, lui permettant ainsi de se rendre au port en toute sécurité pour qu'on y effectue les réparations nécessaires. Ce matériel d'urgence comporte une feuille de nylon légère et solide qui peut être déployée autour de la coque du bateau et attachée à l'avant, sur les côtés et au taquet arrière. Il s'agit d'un rapiécage temporaire qui empêche le bateau de couler. On peut également l'utiliser pour protéger la coque du bateau de la moisissure et des anatifes quand il est à l'eau. Documentation sur demande. Voir l'illustration.

#### **Revêtement mural structuré**

**Article 3492**

Un inventeur français offre sous licence les droits de fabrication au Canada de son revêtement mural structuré en relief avec des effets décoratifs. Il est constitué par un matériau nouveau à base de résines synthétiques souples avec dessous en papier. Il est obtenu par une technique de fabrication qu'on dit nouvelle et originale mais qui pourrait s'adapter sur un métier à enduire du PVC, après certaines modifications. On prétend que ce revêtement en rouleau peut avantageusement remplacer la peinture ou le carrelage. Documentation sur demande.

### **LICENSES OFFERED FROM THE GERMAN DEMOCRATIC REPUBLIC**

Eighth listing of licenses offered, in selected fields of application, by factories and institutions of the German Democratic Republic. It is claimed that all techniques, products and devices have been extensively tried and are in use at various works in the GDR and elsewhere. Details of the Metallurgy listed below are available from:

Department of Industry Trade and Commerce  
Industrial and Trade Enquiries Division (98/3)  
Ottawa, Canada K1A 0H5

### **OFFRE DE FABRICATION SOUS LICENCE DE LA RÉPUBLIQUE DÉMOCRATIQUE D'ALLEMAGNE**

Voici une huitième liste d'offres de fabrication sous licence d'usines et d'institutions de la République démocratique d'Allemagne, dans des champs d'application choisis du domaine de la métallurgie. On prétend que toutes les techniques et que tous les produits et mécanismes ont fait l'objet d'essais très poussés et qu'ils sont utilisés dans différentes usines de la RDA et d'ailleurs. On peut se procurer les détails de ces offres en s'adressant au :

Ministère de l'Industrie et du Commerce  
Division des renseignements industriels et commerciaux (98/3)  
Ottawa (Canada) K1A 0H5

#### **Method for Producing Bimetallic Seamless Hollow Bodies by Extruding**

**GDR-1/255**

This method serves especially for producing seamless tubes plated inside with high-grade steel. The connection between the outside cylindrical or conical hollow body preferably made of high-quality steel with the material of the surrounding metallic outside layer is only then secured by the pressing operation when the hollow body on its outside surface prior to the pressing into the massive ingot is either worked mechanically and chemically, or mechanically or chemically. During this process, the resultant new inside boundary surface of the ingot is apt to form a connection with the intruded hollow body.

#### **Méthode de production par extrusion de corps creux, bimétalliques, sans joint**

**RDA-1/255**

Cette méthode sert particulièrement à la production de tubes sans joint, plaqués intérieurement d'acier affiné. Le raccord entre le corps creux cylindrique ou conique extérieur, fabriqué de préférence d'acier affiné de la même matière que la couche métallique extérieure, est tout simplement obtenu par compression lorsque le corps creux repose sur sa surface extérieure, antérieurement à son enfoncement dans le lingot solide par procédé mécanique et chimique ou mécanique ou chimique. Au cours du procédé, la nouvelle surface intérieure du lingot, obtenue lors de l'intrusion, est apte à former un raccord avec le corps creux.

**Process of Manufacturing High-Purity  
Tellurium**

**GDR-2/255**

Highly pure tellurium is mainly used for manufacturing thermo-electric semiconductors. For this purpose, it has to be warranted that the sum of the concentrations of the most important metallic contamination elements is smaller than 10 ppm  $\cong 10^{-3}\%$ . Until now, it was particularly difficult and expensive to sufficiently separate the contamination caused by lead.

**Method of Producing Stable Aluminium  
Paste as Pore Forming Material with  
Water as Liquid Component for Use  
in the Building Material Industry**

**GDR-3/255**

Aluminium is the gas generating component of concrete paste for gas concrete preparation. A method of safer and more economical production of aluminum paste has been developed which can be controlled during the manufacturing process. It requires a very small range of apparatuses, increases labour productivity and permits production at a cost price far below the usual one.

**Method of Producing Gallium**

**GDR-4/255**

This method is founded on the preparation of concentrated aluminate liquor on the basis of the Bayer method of winning alumina. According to this method, gallium is enriched during the first stage of the process by a substitute reaction with sodium in sodium amalgam produced continuously in a separator. The sodium-gallium-amalgam won in such a way is then decomposed by hot water to sodium gallate lye. Subsequently, gallium is separated electrolytically from the gallate lye and then refined for acid washing. The plant operating according to this process has a capacity of up to 1,000 kg/a and permits economical extraction of gallium from bauxite. Compared with other conventional methods, this method offers considerable advantages and is particularly favourable because of the low mercury consumption.

**RECENTLY ISSUED CANADIAN PATENTS AVAILABLE  
FOR LICENSING OR SALE**

Résumés of these patents are published in the language of application, English or French. Only patent titles are published in both official languages. Parties interested in discussing the rights to license any patent listed hereunder should contact the owner of each patent directly. The patent owner's name and address follows a brief summary of his

**Procédé de fabrication du tellure très pur**

**RDA-2/255**

Le tellure très pur entre principalement dans la fabrication de semi-conducteurs thermo-électriques. Dans ce but, on doit s'assurer que la somme des concentrations des contaminants métalliques les plus importants est inférieure à 10 ppm ( $10^{-3}\%$ ). Jusqu'à maintenant, il était particulièrement difficile et coûteux d'éliminer la contamination causée par le plomb.

**Méthode de production d'une pâte  
d'aluminium stable comme matière  
génératrice de pores où l'eau est le  
constituant liquide, pour utilisation  
dans l'industrie des matériaux de  
construction**

**RDA-3/255**

L'aluminium est le générateur de gaz de la pâte de béton utilisée pour la préparation au gaz du béton. Une méthode de production de la pâte d'aluminium, pouvant être contrôlée au cours du processus de fabrication, a été mise au point. Elle n'exige qu'un petit nombre d'appareils, augmente la productivité de la main-d'oeuvre et permet la production à un coût de beaucoup inférieur au coût habituel.

**Méthode de production du gallium**

**RDA-4/255**

Ce procédé est basé sur la préparation de la liqueur concentrée d'aluminate obtenue selon la méthode Bayer d'extraction de l'alumine. Selon cette méthode, le gallium est enrichi au cours du premier stade du processus par une réaction intérimaire du sodium dans un amalgame de sodium produit en continu, dans un centrifuge. L'amalgame sodium-gallium obtenu de cette façon est alors décomposé avec de l'eau chaude dans une lessive de sodium-gallate. Subséquentement, le gallium est isolé électrolytiquement de la lessive de gallate et ensuite, raffiné pour le lavage à l'acide. L'usine exploitée selon ce procédé a une capacité de production qui peut atteindre 1 000 kg/a et permet l'extraction économique du gallium de la bauxite. Comparativement à d'autres méthodes conventionnelles, ce procédé offre des avantages considérables et tout particulièrement une consommation peu élevée de mercure.

**BREVETS CANADIENS RÉCEMMENT ÉMIS  
À VENDRE OU OFFERTS SOUS LICENCE**

Un résumé de l'invention est publié dans la langue de la demande de brevet, soit en anglais, soit en français. Seuls les titres sont publiés dans les deux langues officielles. Toute personne désireuse de discuter des droits d'exploitation sous licence de ces brevets doit s'adresser directement au détenteur du brevet dont le nom et l'adresse figurent à la suite du bref

patent. If a copy of the full patent is required it may be obtained for \$1.00 from the Commissioner of Patents, Ottawa-Hull, Canada K1A 0E1.

exposé. Les intéressés peuvent se procurer des exemplaires de brevets au prix de \$1.00 en écrivant au Commissaire des brevets, Ottawa-Hull, Canada K1A 0E1.

**Elevator Device**

**1,000,878 Dispositif d'ascenseur**

This device is designed to cancel instructions from the cab floor-selector panel of a semi-automatic elevator in the absence of a passenger in the elevator. A mat on the floor of the elevator cab electronically senses the weight of a passenger standing on it and provides a signal when a passenger is present in the elevator cab. When this signal ceases to be transmitted to the apparatus, a time delay unit in the apparatus is energized, and after the pre-set time delay period, passes a signal to the floor selector panel control in the elevator to cancel any remaining selections from the cab floor selector panel.

Donald Frail, #12, 24330 Fraser Hwy., R. R. 3, Langley, British Columbia VOX 1A0, Canada

**Portable Bidet**

**1,000,901 Bidet portatif**

This portable bidet is adapted to be supported in a conventional bathtub having a bottom and an outer sidewall. The bidet comprises an enclosure-forming body having an open bottom and a top, and means at said top defining a seat for a user. A support bracket attached to the body is set on the top of the bathtub sidewall. A support leg is hingedly connected at one end to the body on a side-opposite the support bracket and adapted to rest by the other end on the bottom of the bathtub. The leg is of a size so as completely to close, in put-away position, the open bottom of the body.

Benoit Ducharme, 7393 18th, Avenue, Montreal, Quebec, H2A 2N4, Canada

**Bathtub Shower**

**1,000,902 Bain-douche**

This bathtub shower permits an elderly person to sit and take a shower, providing easy access through sliding doors, convenient location of the water faucets and a chain to quickly drain the water if necessary through the water drain.

Alice M. Lassiter, P.O. Box 187, Bassano, Alberta, T0J 0B0, Canada

**Device for Holding a Book Open**

**1,001,037 Dispositif pour garder un livre ouvert**

This book holder consists of a base member having an upstanding apertured post at each side with a transparent and resilient page retainer member engaged between the posts. The page retainer member is of a greater width than the post spacing so that when engaging the pages of an open book on the base member it is bowed downwardly to retain them. The page retainer member may be snapped upwardly to permit the pages to be turned.

John A. Grant, Suite 102, 1321 Foster Street, White Rock, British Columbia, Canada

**Collapsible Tent**

**1,001,043 Tente démontable**

This invention discloses a new collapsible tent which is designed to reduce the humidity and which utilizes new ground-holding means to hold it securely to the ground when erected. The tent covering comprises separate inflatable sections and is suspended over a triangular tent-type configuration of tubular support pieces. The tent is secured to the ground by expandable plugs and a tapering casing with an expandable ring on its lower section. The casing is inserted into the ground and a screw-type device is inserted therein. This causes the casing to expand and to apply radial pressure to the ground thus providing a secure connection to the ground. The tent also utilizes new eave troughs designed to be used as a carrying case for the tubular support pieces once disassembled.

Salvatore Denaro, 45 Ludstone Drive, Weston, Ontario, Canada

**Temperature Compensation Circuit for a Multi-Frequency Receiver**

**1,001,238 Compensateur thermique pour récepteur à fréquence multiple**

A frequency detection circuit is driven by an input signal limiter circuit, which is temperature compensated by a zener diode having a negative temperature coefficient, and includes a threshold detection circuit, which is temperature compensated by a zener diode having a positive temperature coefficient.

TIE/communications, Inc., 40 Warshaw Place, Stamford, Connecticut, U.S.A.; Nippon Tsu Shin Kogyo K.K., 260 Kitamikata, Takatsu-ku, Kawasaki, Kanagawa-ken, Japan

**Automobile Warning-Buzzer Suppressor** **1,001,254 Éliminateur de ronfleur d'alarme d'automobile**

A device that suppresses the warning buzzer circuit of an automobile and maintains warning circuit in the off condition by means of a solenoid until the driver's door opens or until all other doors are closed, at which time a buzzer circuit returns to its normal state. The invention employs electronic means to hold the circuit open.

Edward Keating, 17517 Catalina Avenue, Gardena, California 90258, U.S.A.

**Apparatus and Method for Transferring Relief Onto Paper** **1,001,414 Appareil et méthode d'impression en relief**

This is a method of transferring onto paper relief having raised portions. Paper is moistened and forced onto relief to conform paper to relief, while preventing movement between paper and relief. Paper is dried and carbon composition crayon is stroked against paper in an orbit about relief, transferring composition on paper outlining relief. Lead composition crayon can then be stroked against paper to add metallic lustre to outline. Crayons have essentially flat working, polished faces with chamfered peripheries and areas of same order of magnitude as area of relief.

Cecil C. Hyndman, Featherland Bird Research Farm, 1848 Burnside Road West, R.R. 3, Victoria, British Columbia, Canada

**Electronic Keyboard for Single Print Element Typewriter** **1,001,558 Clavier électronique pour machine à écrire à élément d'impression simple**

This electronic keyboard for a single print element typewriter comprises a matrix of electronic keys adapted for being manually contacted. Each key includes four conductive areas adjacent a surface thereof. The conductive areas present a coupling capacitance changeable by manually contacting a key. Two rotary switches and electronic sensing circuits are provided for locating manually contacted keys.

Karel Havel, P.O. Box 66, Station "M", Toronto 21, Ontario, Canada

**Rotary Compressing, Displacing or Expanding Machine** **1,001,596 Machine rotative de compression, déplacement ou dilatation**

This is a rotary fluid compressing displacing or expanding machine of the type in which lobes on a rotor rotate within a casing relative to blades mounted on the casing. The blades form a barrier to the passage of fluid and by their rotation permit passing of the lobes to cause a continuous delivery of fluid in front of the lobes and intake of fluid behind the lobes.

Sir W.G. Armstrong Whitworth & Company (Engineers) Limited, Aberdeen Avenue, Trading Estate, Slough, Buckinghamshire, U.K.

**Testing Device for Pressure Safety Switches** **1,001,715 Dispositif de vérification d'interrupteur de pression de sûreté**

This pressure switch testing device consists of a fully sealed hydraulic cylinder fitted with a pressure-applying piston so that hydraulic pressure in the cylinder may be increased in infinitely variable increments by manually screwing the threaded piston rod in or out of the cylinder, as required. The pressure switch or other device to be tested is connected to the output end of the cylinder in which a flexible diaphragm is mounted to seal the hydraulic fluid of the cylinder. As pressure is applied by the threaded piston, to the fluid in the piston, the diaphragm expands, and applies pressure to the device to be tested.

Harold F. Watson, Box 997, Olds, Alberta, Canada

**Remote Controlled System for Operating a Device** **1,001,741 Télécommande de dispositif**

This is a remote controlled system for operating a solenoid actuated device. The system comprises a first switching means adapted to operate a device to be actuated, a timing circuit adapted to operate the first switching means after a predetermined time interval, a second switching means for connecting the first switching means and the timing circuit to a power supply, and

means located at a remote location, for applying a potential of a predetermined value higher than the normal potential of the power supply to the second switching means for causing it to operate the timing circuit which, in turn, will operate the first switching means to energize the device. If no timing is required, the timing circuit and the first switching means may be omitted. In such a case, the device is operated directly by the second switching means.

Denis Simard, 7510 Roi René Boulevard, Ville d'Anjou, Québec, Canada

**Instantaneous Adaptive Delta Modulation System**                      **1,001,763**    **Système de modulation Delta à adaptation instantanée**

This instantaneous adaptive delta modulator comprises a comparator having a first input connected to receive an analog signal, a second input adapted for connection to an integrator located in the conventional feedback loop of the delta modulator, and a shift register connected to the output of the comparator and adapted to store the digits generated at the output of the comparator at sampling time  $T_0$  and the digits generated at sampling time  $T_{-1}$  and  $T_{-2}$ .

Université de Sherbrooke, Bureau des Recherches et des Bourses, Sherbrooke, Québec, Canada

**Method of Treating Cellulose Pulp**                                      **1,001,803**    **Méthode de traitement de la pâte cellulosique**

When bleaching wood pulp with oxygen the result can be improved if formaldehyde, methanol or a mixture of formic acid and methanol, ethanol, isopropanol, glycerol, sorbitol, or acetone is added to the pulp.

Billeruds Aktiebolag, Billerud, Sweden

**Memorial Flower Vase Receptacle in Two Sections**                      **1,001,844**    **Porte-vase à fleurs, en deux parties, de monument**

This consists of a two sectional grave memorial flower vase receptacle where the top section is first attached to the underside of a memorial plate and the cementitious mixture poured around to make a base. The memorial as a unit may be installed temporarily or permanently. The unit is easier to handle, stack, place on grave, pending the mounting of the second lower section onto the first top one, when a decision is made to have a memorial with a flower vase.

William Greenhalgh, 441 Athol Street, East, P.O. 521, Oshawa, Ontario, Canada

**Baggage and Cargo Container Door Mechanism**                                      **1,001,900**    **Mécanisme de porte de conteneur (marchandises et bagage)**

This door mechanism forms an openable side of a cargo container. The door consists of upper and lower sections jointed by a horizontal hinge. The door sections are supported by means of brackets at the upper corners of the upper door section which carry rollers running in tracks extending along the top of the container ends. Pins projecting from the lower edge of the lower door section engage suitable recesses in the container base when the door sections are closed. A latch mechanism is provided for holding the door securely in its closed position.

Brooks & Perkins, Incorporated, 17515 W. Nine Mile Road, Southfield, Michigan, 48075, U.S.A.

**Buoyancy Apparatus**    **1,001,905**    **Appareil de flottaison**

A number of buoyancy tanks are connected at spaced intervals to a pipeline, each having an opening in its bottom. A remotely-controlled pressure air line is connected to a normally closed water-controlled air inlet valve and an outlet valve of each tank which is closed by the air. Water entering the tank opens the inlet valve and then shuts off the air pressure in the air line permitting the outlet valve to open.

H.B. Contracting Ltd., 16211-84th Avenue, Surrey, British Columbia, Canada V3S 2P3

**Clamping Conveyor**    **1,001,979**    **Convoyeur à attaches**

This clamping conveyor is designed to transport containers of various sizes and to invert the containers during transportation. The containers are conveyed on a movable flexible endless support member to which are fixed a series of spaced clamping assemblies. The support member is mounted on a stationary track allowing it to pivot axially by substantially  $180^\circ$  so that the containers being conveyed can move from upright to fully inverted position and vice versa.

Newmapak Ltd., 668 Victoria Avenue, P.O. Box 38, St. Lambert, P.Q. Canada

**Method and Apparatus for Trapping Combustion  
Gas of an Open Burner**

**1,002,020 Méthode et appareil pour récupérer le gaz de combustion  
dans un brûleur ouvert**

Combustion gas flowing alongside a surface of an open burner, such as over the upright catalytic bed of a space heater, is trapped by flowing into an opening in the path of flow of the effluent combustion gas, instead of being dissipated into the room space heated and mixed with the air. The effluent combustion gas thus trapped is withdrawn by suction through a discharge duct. The opening through this discharge duct can be regulated by a shutter or damper, to enlarge it as the temperature rises and to restrict it as the temperature decreases.

Fred H. Jensen, 17400-76th Avenue West, Edmonds, Washington, 98020, U.S.A.

**Journal binaire**

**1,002,083 Binary Journal**

L'invention se rapporte à un journal constitué d'un nombre déterminé de feuilles empilées les unes sur les autres et pliées en feuillets en leur centre selon la verticale, le tout de façon conventionnelle.

Jacques Rivet, Département de Journalisme, Facultés des Arts, Université Laval, Québec 10, Québec, Canada

**Ultrasonic Transducers**

**1,002,174 Transducteurs ultrasoniques**

Ultrasonic transducers are constructed to have an outer shell surrounding a portion of the acoustic transformer to serve as a vibration damper and also as part of the transducer structure. The shell is attached at a region near the node of the transformer to reduce the quantity of energy transmitted thereto. In many of the embodiments, the outer shell is attached without the necessity of a resilient support. The transducer is also constituted to accept a housing and form a sealing relationship to fluid. In some embodiments a portion of the sealing means is located on the outer shell, and in other embodiments on another portion of the transformer.

Surgical Design Corp., 23-08 Jackson Avenue, Long Island City, New York, 11101, U.S.A.

**Process and Apparatus for Recovering Feed  
Products from Animal Manure**

**1,002,373 Procédé et appareil de récupération de produits alimen-  
taires dans l'engrais d'animal**

This invention deals with a process and an apparatus for recovering valuable feed products from animal manure by adding water to the manure to form a slurry from which mineral matter, grain and fiber particles, proteineous material and water are recovered by successive slurry-forming and liquid/solid separation stages. The recovered water is reused in the forming of the initial manure slurry and in subsequent steps of the process. The recovered grain and fiber particles and proteineous material are useful as feed products which can be refed to the animals from which the manure is collected or other animals.

Ceres Ecology Corporation, 7500 W. Mississippi, Suite 236, Denver, Colorado 80226, U.S.A.

**Protection for Glass Panel Edges**

**1,002,396 Dispositif de protection pour arêtes de panneaux de verre**

The invention relates to a method of providing protection means for an edge of a panel. The panel normally consists of at least one sheet of vitreous material which comprises at least part of that panel edge. The method involves providing the panel with a protector channel form covering that edge and contiguous marginal zones of opposed phases of the panel. The method is characterized in that the protector is formed in situ from a fluid coating material which sets to form a solid body which undergoes shrinkage before setting is complete.

Glaverbel-Mécaniver, Chaussée de la Hulpe, 166, Watermael-Boitsford, Belgium

**Waveguide Support Method and System**

**1,002,620 Méthode et système de support de guide d'ondes**

A waveguide is supported in a duct by hydrostatic pressure. The mean density of the waveguide may be matched to the fluid used to support it and then slightly denser supports attached to the waveguide so that it rests on the support on the bottom of the duct. The duct may include two fluids of different densities intermediate between those of the fluids so that it is supported at the common surface between the fluids.

The Post Office, 23 Howland Street, London W1P 6HQ, U.K.

**Low Leakage Current Electrical Isolation System**      **1,002,621**    **Système d'isolement de courant à faible fuite**

This invention presents an isolated electrical distribution system which includes a pair of power lines for providing a source of alternating voltage. One of the lines is connected to electrical ground, which are connected across the primary winding of an isolation power transformer, and a second pair of lines, wired to an electrical outlet or load and connected across the secondary winding of the transformer.

Litton Industries, Inc., 360 North Crescent Drive, Beverly Hills, California, 90210, U.S.A.

**Memory Device**      **1,002,635**    **Dispositif de mémoire**

This invention relates to devices used for controlling the processing of articles in an automated machine performing a sequence of processing steps as the articles are moved through successive stations. The present invention resides in an improved memory device including a number of discrete memory elements held at equally spaced positions around an endless conveyor which is indexed one position at a time in unison with the movement of the articles through the successive stations.

Anja Engineering Corp., 1017 South Mountain Avenue, Monrovia, California, U.S.A.

**Automatic Exclusion Circuit for a Key Telephone Set**      **1,002,637**    **Circuit de déviation automatique pour appareil téléphonique**

This exclusion circuit for a key telephone set has means for preventing a key telephone set from being connected to either an intercom line circuit or a central office line circuit which is being used by at least one other key telephone. Means are also provided to permit a user of either an intercom or central office line to temporarily remove the guarded condition permitting other key telephone sets to connect to the line circuit in use. After the connection of the additional key telephone set or sets, the guarded condition is restored, thereby preventing other unwanted key telephone sets from connecting to the occupied line circuit.

Nippon Tsu Shin Kogyo K.K., 260 Kitamikata, Takatsuku, Kawasaki-shi, Kanagawa-ken, Japan; TIE/communications, Inc., 40 Warsaw Place, Stamford, Connecticut, U.S.A.

**Demountable Frame and Panel Assembly**      **1,002,766**    **Cadre et panneau démontables**

This consists of an economical, lightweight, easily assembled and disassembled frame and panel assembly for use in a solid base. The elements of the assembly comprise a number of anchor posts with connectors secured to each of the anchor posts at a predetermined height.

Blanchard S. Parks, 311 Bunting Rd., Unit 22, St. Catharines, Ontario, Canada; Bernette F. Parks, 35 Whyte Ave., Thorold, Ontario, Canada

**Tapping Screw Straight Start Bore**      **1,002,796**    **Alésoir pour vis auto-taraudeuse**

This is a fastening element and a production method which is susceptible of forming a fastener assembly by engagement with a self-tapping screw. The method involves forming an oblique rib within a bore through a blank, so that the rib will be oriented at an angle with respect to the axis of the bore. The result is an elliptical rib which may have voids in the form of interruptions of the otherwise elliptical annulus formed by the rib. In addition, the invention provides a forming tool in the form of a cylindrical shank having an elliptical forming surface as the front surface.

Litton Industries, Inc., 360 North Crescent Drive, Beverly Hills, California 90210, U.S.A.

**Pavement Slabs and a Method of Their Manufacture**      **1,002,803**    **Dalles et méthode de fabrication**

This pavement slab intended for insertion in roadway surfaces to serve as an indicator. The slab is made from a wear-metal of considerable hardness and has cavities formed in the shape of inverted cones. A mixture consisting of a particulate ceramic material as the filler and a synthetic resin as the binder is introduced into the cavities at a high pressure and the mixture is heat-treated for hardening purposes. The desired colour of the mixture is obtained through the choice of material of said mixture.

Erik A. Sabel, Box 41, S-531 01 Lidköping, Sweden

**Multipurpose Hall****1,002,847 Abri pour usages divers**

A building construction is disclosed, which includes a lattice-like network of support elements connected together at junctures to form a three-dimensional frame for the support of a fabric-like canopy laid as an enclosure secured along its bottom edge. A number of hollow and resilient ball-like buffers, each of which supported by the frame at a point of juncture of some of the support elements engage the canopy and prevent it from direct engagement with the frame, specially at the juncture point. At least one of the support elements at each juncture of the elements comprises a conduit connected to the buffer at the juncture point and also connected with a source of gas under pressure, whereby all of the buffers are gas filled at the pressure of the source.

Wilfried Hamm, Lutherstrasse 33, 4330 Mulheim/Ruhr, Federal Republic of Germany

**Method of Guiding a Portable Power-Saw and Apparatus therefor****1,002,858 Appareil et méthode pour guider une scie électrique portative**

The invention provides a method of guiding a portable power-saw across a workpiece being sawn. The apparatus comprises a guide member with a flat surface which may be placed on the flat surface of the workpiece. The guide member with a straight edge located on the flat surface of the guide member is a rod-holder orientated at a right angle or any other desired angle to the straight edge. A rod of material is inserted in the rod holder so that the rod extends therefrom for a few inches. The power-saw is run along the straight edge of the guide member, with the sole plate of the saw maintained in snug contact, until the rod is severed. The guide member is then transferred to the workpiece and the rod end is aligned with the line of cut to be made, with the straight edge of the guide member parallel to it. This technique eliminates the unstable method of guiding the saw solely by hand and also obviates the need for relatively unstable or complex devices.

G. Keith Patterson, 322 Boler Road, London, Ontario, N6K 2K2 Canada

**Mechanical Boat Loading Device****1,002,910 Dispositif de chargement mécanique de bateau**

The present device is securable to the frame of the vehicle and is fully adjustable as to size. It includes a hinged boat platform, which can be held level with the top of the boat for ease in securing the boat to the platform by the gunwales of the boat, and includes means to secure the outboard motor also. Winch means are provided to elevate the attached boat onto the top of the vehicle and to lower same to the ground when it is desired to unload the boat from the vehicle.

James D. Killer, 4480 Wilson Road N., Yarrow, British Columbia, Canada

**Furniture Leg Holder****1,002,925 Support de patte de meuble**

This is a device for securing a leg of a piece of furniture to the floor of a trailer or other movable vehicle subject to movement or vibrations. The device comprises a base adapted to be permanently secured to that support, leg receiving means fixed to that base, and clamp means operatively associated with the base and leg receiving means.

Bernard Landry, Wahnapiatae, Ontario P0M 3C0, Canada

**Process for Dimerization, Codimerization, Polymerization and Copolymerization of Mono-olefines****1,002,970 Procédé de dimérisation, de codimérisation, de polymérisation et de copolymérisation des mono-oléfines.**

A process is disclosed for the preparation of mono-olefins having a high content of B-olefins in the range C4-C50 by conversion of olefins in the range C2-C15 in the presence of catalytic mixtures which may be of six different types. The high catalytic activity depends on the presence of soluble transition metal complexes, the metal in the catalyst not being substantially reduced to metallic form. The catalyst systems may be used under mild conditions and at low catalyst concentrations. The catalytic components are certain stable transition metal compounds together with Lewis acids.

Sentrallinstitutt for industriell forskning, Forskningsveien 1, Oslo 3, Norway

**Device for Transferring a Plate-Like Product from One Station to Another****1,002,977 Dispositif de transport d'un produit en plaque d'un poste à l'autre.**

This device transfers a plate-like product from one station to another and is particularly suitable for transferring an anode plate from a casting table into a cooling tank. The device has a base with two vertical pillars located between the stations. A horizontal shaft extends between the pillars and a lifting frame with gripping members is connected to this shaft and pivots about the axis.

Outokumpu Oy, Toolonkatu 4, 00 100 Helsinki 10, Finland

**Pneumatic Seal****1,002,983 Joint étanche pneumatique.**

This pneumatic seal consists of a flattened casing forming a base onto which are folded back symmetrically two lateral walls. The seal has, in the rest position, a cross-section having a very slight height and, in the inflated position, a cross-section in height greater than that of known seals. This seal is intended to provide sealing between mobile elements belonging to sealed enclosures.

Le Joint Français, 10 rue de la Baume, 75008 Paris, France

**Vehicle Occupant Restraint Device****1,002,990 Dispositif de retenue de passager**

The device comprises a resilient pad for restraining the passenger, a rigid transverse crossmember, an upright rotatable arm, a transverse pivot shaft and an orientation maintenance means operably coacting between the transverse pivot shaft and the crossmember which preserves the orientation of the pad throughout its operating movement. During an accident the apparatus responds to an accident signal and the pad is brought into contact with the torso of a passenger, initially at a low force to avoid injury and then at a progressively greater force to restrain the passenger from movement. After a time delay the pad is retracted to enable the passenger to exit the vehicle.

James Monaghan, 11849 Clifton Blvd., Apt. 204-A, Lakewood, Ohio 44107, U.S.A.

**Motorized Snow Vehicle Stand****1,003,009 Support de motoneige**

This motorized snow vehicle stand is designed to support the rear of a vehicle in a raised parking position so that the endless drive track is elevated above the ground. It includes a bail carried on a transverse horizontal pivot bar extending across the rear of the vehicle and rotatable through an arc of more than 180 degrees from a raised still position. There it is held against the rear of the vehicle by a manually releasable hook to a fully operative vehicle supporting position in engagement with the ground under the raised rear end of the vehicle where it is disposed in inclined position forward of dead center. On release of the holding hook, the bail swings in two stages under action of the spring, first through an arc of less than 180 degrees to engage the ground behind the vehicle and subsequently through a further arc when the vehicle is lifted allowing the bail to swing under the vehicle into an inclined position beyond or forward of dead center.

Lorenzo Moreau, Box 331, Site 10, RR2, Val Caron, Ontario, P0M 3A0, Canada

**Method and Apparatus for Semi-Continuous  
Preparation of an Explosive Composition****1,003,220 Méthode et appareil pour préparation semi-continue  
d'une composition explosive.**

The invention relates to a method for semi-continuous mixing of an explosive composition containing a premixed powder component and gelatine component. The components from the respective containers are blown out from nozzle-shaped outlet orifices by means of pressure media controlled by weight impulses. These jets meet to cause a premixing in a predetermined ratio whereafter the composition resulting from the mixing of the jets is postmixed more thoroughly by kneading, subdivided into lumps and transported away. The novel method and apparatus may be used for mixing plastic explosives in a rapid manner thus reducing the quantities of explosives being mixed in the apparatus at any given time.

Dyno Industrier A.S., Tollbodgaten 22, Oslo 1, Norway

**Self-Attaching, Inflatable, Pool Cover****1,003,296 Couverture auto-fixatrice gonflable pour piscine**

A clear, flexible, plastic sheet, corresponding in size and shape to the surface of the pool, is provided with two annular flaps at the peripheral edge. The uppermost flap extends over the edge of the pool, and the lower flap extends downwards into the pool against the side walls, below the surface of the water, in such manner as to form an air-tight seal against the side walls of the pool. The lower annular flap contains a series of reinforcing plastic strips to act as stiffeners. During inflation of the cover, these strips act in conjunction with the flap and cover to engage the coping or over-hanging rim of the pool, and thereby to form a secure attachment of the cover to the pool.

Denis G. Dun, 169 Tweedsdale Crescent, Oakville, Ontario L6L 4P6, Canada

**Ensemble convertisseur de bicyclette en véhicule  
glissant****1,003,464 Assembly for Converting a Bicycle into a Sliding Vehicle**

Il s'agit d'un ensemble convertisseur pour transformer une bicyclette en véhicule glissant. Il s'adapte à la fourche du châssis. L'ensemble convertisseur comprend, une bande métallique disposée de façon arquée au dessus du ski, une lame en forme de U montée solidairement sur ladite bande, et une tige montée transversalement aux deux pattes de la lame en forme de U. La tige est fixée aux fourches du châssis. La lame en U est suspendue de façon à pivoter sur la tige. Un ressort extensible est disposé

entre la partie avant de la lame en forme de U et une partie supérieure de la fourche afin que le bout avant de chaque ski ait une tendance à monter lorsque ce dernier n'est pas en contact avec le sol.

Bernard Charest, 2215 rue Valois, Montréal, P. Québec, Canada

**Display Arrangements**

**1,003,525 Montage d'étagères**

This is a display arrangement composed of light-emitting diodes arranged in a wiring matrix and driven by a pair of registers. A register enables the columns of light-emitting diodes and a row register operates to energize the light-emitting diodes of each column, one after the other, in accordance with a pattern to be displayed. A color control circuit and a brightness control circuit may be included in connection with the row register to control the magnitude of currents to the light-emitting diodes to select a desired color hue, and to adjust the duration of "on" time to select apparent brightness of the display.

Litton Industries, Inc., 360 North Crescent Drive, Beverly Hills, California 90210, U.S.A.

**Current-Controlled Light Emitting Diode Color Display**

**1,003,526 Affichage couleurs à diodes électroluminescentes à réglage par intensité au courant**

The invention consists of driving circuits for energizing light-emitting diodes which emit predominantly different color hues when driven by respectively different currents. A circuit of the invention includes current sources, adapted to provide three different predetermined current magnitudes. The current sources can be connected to the diodes, and decoding circuitry which is responsive to a binary input code is used for selectively applying one of the current magnitudes to one or more of the diodes, so that the diode, or diodes, will emit light of a selected color.

Litton Industries, Inc., 360 North Crescent Drive, Beverly Hills, California 90210, U.S.A.

**Diffraction Smoothing Aperture for an Optical Beam**

**1,003,670 Ouverture à filtre de diffraction pour faisceau optique**

The disclosure is directed to an aperture for an optical beam having an irregular periphery or having perturbations imposed upon the periphery to decrease the diffraction effect caused by the beam passing through the aperture. These apertures are particularly useful with high power solid state laser systems because they minimize the problem of self-focusing which frequently destroys expensive components in these systems.

United States Energy Research and Development Administration, Washington, District of Columbia 20545, U.S.A.

**Method of Making a Food Product Having a High Protein Efficiency Ratio and the Product Derived Therefrom**

**1,003,684 Méthode de fabrication de produits alimentaires à teneur protéinique élevée et produits dérivés**

Skim milk is heated at a temperature between 70 and 150°C and a non-toxic calcium salt is added to form a precipitate. Whey is removed until the precipitate reaches a moisture content of about 55 to 80% by weight. The unwashed precipitate which comprises, besides water, proteins, lactose and mineral salts, may be incorporated in a food composition or may be lyophilized and the resulting product may be incorporated in a food composition.

Ogilvy, Cope, Porteous, Montgomery, Renault, Clarke & Kirkpatrick, Suite 700, 1 Place Ville Marie, Montréal, Québec, Canada, H3B 1Z7

**Device for Moving Packs Along Several Paths and at Various Levels**

**1,003,766 Dispositif pour déplacer des paquets sur différentes voies et à divers niveaux**

This device for carrying packs comprises parallel horizontal paths in the level entirely filled with banks of packs, conveyor means consisting of at least two independent endless conveyors which serve the extremities of the parallel horizontal paths, each pack traversing all of the parallel horizontal paths in the level prior to any change in levels. It also comprises vehicle means of at least two independent vehicles, driven by each of the conveyor means, and carried along the extremities. There are also means for moving the packs onto and off of the independent vehicles; these means act in a direction parallel to the horizontal paths.

Commissariat à l'Énergie Atomique, 29, rue de la Fédération, Paris 15, France

**Dispositif de sécurité à absorbant solide pour réacteur nucléaire**

**1,003,976 Solid Absorbant Safety Device for Atomic Reactor**

Ce dispositif de sécurité pour réacteur nucléaire comporte un absorbant solide sous forme de bloc ou de poudre stocké juste au-dessus du coeur du réacteur dans un réservoir dont la partie inférieure est située dans le coeur. Le réservoir est rempli de gaz

sous pression et comporte à sa partie inférieure un organe de fermeture (membrane, pastille d'uranium, . . .). En cas de mauvais fonctionnement du réacteur cet organe est détruit et la partie inférieure du réservoir se dépressurise entraînant par détente du gaz situé au-dessus de l'absorbant.

Groupement Atomique Alsacienne Atlantique, 20 avenue Edouard Herriot, 92350 Le Plessis Robinson, France

**Arrangement in Cargo Hatches on Ship Weather Decks**

**1,004,089 Mode d'arrimage des panneaux de chargement sur les ponts découverts.**

This arrangement permits cargo hatches consisting of one or several sections moveable in the transverse or longitudinal direction of the ship to be stowed alongside the frame surrounding the hatchway so as to be out of the way during loading and unloading operations. The arrangement includes a ramp on which the hatch sections are supported while being moved. This ramp can be swung so as to position the hatch sections vertically adjacent the external face of the frame.

von Tell Trading Co. AB, Goteborgsvagen 97, S-431 37 Molndal, Sweden

**Device for Releasably Securing a Carburetor Adjusting Screw**

**1,004,098 Dispositif pour fixer une vis de réglage de carburateur**

This permanent safety adjustment device is attached to a carburetor with a fuel adjusting screw. It includes an arm having at one end a hexagonal socket fitting the carburetor screw head, and another end having a slot concentric with the socket. The carburetor carrying a filter screw passes through the concentric slot and a thumb nut threaded on the filter screw and serves to clamp the arm in any one of a number of positions of adjustment.

David Shackleton, Kirkfield, Ontario, KOM 2B0, Canada

**Convertible Container-Pallet**

**1,004,163 Conteneur transformable en palette et vice-versa**

This article may be converted from a container to a pallet, and vice versa. The article comprises a bottom wall and side and end walls hinged to the bottom wall which when upright provide a stackable container. The container may be converted to a pallet by swinging the side and end walls inwardly so that they extend substantially flush with the top surface of the bottom wall.

Pinckney Molded Plastics, Inc., Pinckney, Michigan, U.S.A.

**Electromagnetic Door Lock**

**1,004,253 Verrou de porte électromagnétique**

This electrically operated door lock comprises a housing for mounting and a bore on one side and a lock operating mechanism mounted in the housing. The mechanism includes a first electromagnetic means for driving a locking pin through the bore into a "lock" position and a second electromagnetic means for driving the pin into an "unlock" position. A guiding member extends through the locking pin and is adapted upon actuation of the first and second electromagnetic means to lead the pin into the "lock" and "unlock" position respectively.

Esdra Boule, 1160 Armand Street, Drummondville, Québec, Canada

**Outside Loop Adaptive Delta Modulation System**

**1,004,365 Système de modulation delta à itinéraire en boucle extérieur**

The transmission side of the system includes a detector for detecting the envelope of an analog input signal and a divider for dividing the analog input signal by the envelope signal detected in order to produce a normalized analog signal. An adder is provided for adding the envelope signal and the normalized analog signal and the output of such adder is fed to a non-adaptive delta modulator for modulating the output signal of the adder.

Université de Sherbrooke, Bureau de la Recherche et des Bourses, Sherbrooke, Québec, Canada

**Power Thyristor Having a High Triggering Speed**

**1,004,372 Thyristor de puissance à déclenchement rapide**

This power thyristor is equipped with rapid triggering and comprises a triggering emitter. On the cathode face, the separation line between an intermediate zone of the base and the main emitter, a line from which the firing of the thyristor is effected, has a symmetrical corrugated shape allowing an interdigitation which is also symmetrical. The triggering speed of power thyristors is increased without any noticeable reduction in the maximum value of the intensity.

Société Générale de Constructions Électriques et Mécaniques ALSTHOM, 38 Avenue Kléber, 75784 Paris Cedex 16, France

## Digital Compression-Expander

1,004,364 Expanseur-compresseur numérique

This consists of a compressor=expander for converting m digit coded signals into n digit coded signals according to a desired input- output continuous characteristic.

Université de Sherbrooke, Bureau des Recherches et des Bourses, Sherbrooke, Québec, Canada

### MANUFACTURING OPPORTUNITY ABROAD

Danish company specialized in the design and construction of water treatment plants, waterworks, water supply systems, waste water treatment, and sludge dewatering and re-use systems is interested in manufacturing under license in Denmark equipment for water treatment to complement its existing lines. Interested Canadian companies should contact: Mr. P. Vermehren, 1 Kruger A/S, Rymarksvej 108, DK 210, Copenhagen, Denmark.

### LES-AMA OFFER LICENSING COURSES

The Licensing Executives Society U.S.A. and the American Management Association are collaborating in offering two training courses on licensing and technology transfer at AMA Headquarters in New York City:

**An Introduction to Licensing and Technology Transfer (May 2-3, 1977)** – Topics include organizing a licensing department; principal elements of licensing agreements; how to handle know-how and trade secrets; major antitrust considerations; and trade marts.

**An Advanced Course on Licensing and Technology Transfer (May 4-6, 1977)** – Topics include technology transfer within the U.S. and to and from foreign countries, various licensing techniques; joint ventures; outright purchase or sale of knowhow, patent rights and trademarks; and use of subsidiary companies, agents, and distributorships.

For additional information, including the fees for each course and reduced fee for both taken together, contact Mr. John Cunningham, International Division Manager, American Management Associations Building, 135 West 50th Street, New York, N.Y. 10020. Phone (212) 586-8100 (TWX710-581-6530) (WUI Telex 620872).

### INOVA 77

The third international exhibition of innovation is to be held at the Porte Maillot Conference Building, Centre International de Paris, Paris, France, June 13-17, 1977. The exhibition will be supported by a program of conferences dealing with questions concerning the detection of patents and licenses, research into new methods, the design of

### OFFRE DE FABRICATION À L'ÉTRANGER

Une société danoise, spécialisée dans la conception et la construction d'usines de traitement d'eau, de distribution d'eau, de systèmes d'adduction d'eau, du traitement des eaux usées et des systèmes de déshydratation et de réutilisation des eaux-vannes, aimerait détenir une licence pour fabriquer au Danemark du matériel de traitement d'eau pour compléter sa gamme de produits. Les sociétés canadiennes intéressées doivent communiquer avec M. P. Vermehren, 1 Kruger A/S, Rymarksvej 108, DK 210, Copenhagen, Danemark.

### COURS SUR LES LICENCES DONNÉES PAR "LES-AMA"

La "Licensing Executives Society" des É.-U. (LES) et l'"American Management Association" (AMA) offrent en collaboration deux cours de formation sur les licences et le transfert de technologie au siège de l'AMA à New York:

**Introduction aux licences et au transfert de technologie – (Les 2 et 3 mai 1977)** – Les sujets à l'étude sont l'organisation d'un département d'accord de licences, les principaux aspects des accords de licences, la façon de traiter les secrets technologiques et commerciaux, les considérations anti-monopole de base et les marques de commerce.

**Cours spécialisé sur les licences et le transfert de technologie – (Du 4 au 6 mai 1977)** – Les sujets à l'étude sont le transfert de technologie à l'intérieur des États-Unis et avec des pays étrangers, et diverses techniques d'accord de licence, les entreprises en commun, l'achat ou la vente à forfait de procédés techniques, les droits de fabrication et les marques de commerce, et le recours à des filiales, des agents et des réseaux de distribution.

Pour de plus amples renseignements à ce sujet et sur les frais de chaque cours et sur la réduction de frais pour une personne qui prend les deux cours, veuillez communiquer avec M. John Cunningham, International Division Manager, American Management Associations Building, 135 West 50th Street, New York, N.Y. 10020. Téléphone (212) 586-8100 (TWX710-581-6530) (WUI Telex 620872).

### INOVA 77

La troisième exposition internationale des innovations se tiendra à l'Édifice des Conférences de la Porte Maillot, Centre international de Paris (France) du 13 au 17 juin 1977. Un programme de conférences est prévu concernant les brevets d'invention et les licences, la recherche de nouvelles méthodes de mise au point de produits à l'intention des pays en voie de développement, les possibilités de financement, la

products for developing countries, financing possibilities, industrial conversion and diversification, etc. In addition, the utilization of new energy forms will be featured by the joining of the international ENERGIE 77 exhibition with INOVA 77. The minimum fee for booking nine square meters of exhibition space is 450F plus 20% T.V.A. Interested exhibitors or visitors to this exhibition can obtain additional information from: S.A. TECHNOEXPO, 8 rue de la Michodière, 75002 Paris, France Phone: 742.55.71 Telex: 210.550 Systele Paris, Extension 135.

**ADDRESS ENQUIRIES CONCERNING  
THE FOLLOWING CASES TO:**

Canadian Patents and Development Limited,  
275 Slater Street,  
Ottawa, Canada  
K1A 0R3

**Impact Sensitive Pulse Generator**

**Case 5074**

An electro-magnetic device consisting of acceleration sensing, signal processing and high current low-voltage electrical pulse generating elements. Its power source is a magnet and keeper and no external power or connections are required. It has a response time in milliseconds and can be designed to discriminate against accelerations below any chosen threshold or in any direction other than that desired. Some possible applications are as a crash detector and trigger for inflating air bags in vehicles, a shock severity indicator on trains carrying fragile cargo or a virtually indestructible power source for short emergency radio transmissions.

**Liquid Fluidic Device**

**Case 5471**

A liquid fluidic device employing a free jet. In contrast to fluidic devices of the submerged jet type, this device offers high efficiency and low noise and operates at much lower pressures. The working fluid may be used as the control fluid. It is suitable for both process control applications and logic control circuitry.

**Frequency Selective Waveguide Coupler**

**Case 5716**

Optical waveguides may be coupled so as to permit certain selected frequencies to be transmitted. A length of waveguide material of greater refractive index than the two waveguides to be coupled is inserted between them. Controlled electro-optic or acousto-optic perturbation of the intermediate waveguide enables preselected frequencies to be transmitted. Selected fixed frequencies may also be transmitted by giving the intermediate waveguide a particular surface relief.

transformation et la diversification des industries, etc. De plus, il y aura des exposés sur l'utilisation de nouvelles formes d'énergie dans le cadre de l'exposition ENERGIE 77 qui aura lieu en même temps qu'INOVA 77. Les frais minimum pour réserver une surface d'exposition de neuf mètres carrés: 450 francs plus 20% de T.V.A. Les personnes désireuses d'exposer et les visiteurs peuvent obtenir des renseignements supplémentaires en s'adressant à: S.A. TECHNOEXPO, 8, rue de la Michodière, 75002 Paris, France. Téléphone: 742.55.71 Telex: 210.550 Systele Paris, local 135.

**PRIÈRE D'ADRESSER TOUTE DEMANDE DE  
RENSEIGNEMENTS AU SUJET DES CAS CI-APRÈS À LA:**

Société canadienne des brevets et d'exploitation Limitée  
275, rue Slater  
Ottawa, Canada  
K1A 0R3

**Générateur d'impulsions détecteur de chocs**

**Cas 5074**

Ce dispositif électro-magnétique se compose d'éléments servant à analyser l'accélération, à traiter les signaux et à produire une impulsion électrique de faible voltage à courant élevé. Sa source d'énergie est un aimant et une armature. Nul besoin de courant extérieur ou de connexion. Son temps de réaction se calcule en millisecondes et peut être ajusté de façon à éliminer toute accélération en deçà d'un seuil choisi ou dans toute direction non désirée. On peut s'en servir comme détecteur d'accident et déclencheur de poches d'air dans un véhicule, comme indicateur de précision des chocs dans les trains transportant de la marchandise fragile ou comme source pratiquement inépuisable de courant pour les transmissions-radio d'urgence de courte durée.

**Dispositif à fluide liquide**

**Cas 5471**

Un dispositif à fluide liquide utilisant un gicleur à air ouvert. Différemment des appareils à fluide de type gicleur submergé, ce dispositif permet une très haute efficacité à un bruit très réduit et fonctionne à des pressions beaucoup plus faibles. Le fluide de travail peut servir de fluide de contrôle. On peut s'en servir aussi bien dans le contrôle du traitement que dans des circuits de logique à fluide.

**Connecteur de guides d'ondes sélecteurs  
de fréquences**

**Cas 5716**

On peut coupler des guides d'ondes optiques de façon à permettre la transmission de fréquences sélectionnées. Il s'agit d'insérer, entre les deux guides d'ondes couplés, du matériel guideur d'ondes ayant un indice de réfraction plus élevé que ceux-ci. Grâce au contrôle de l'interférence électro-optique ou acousto-optique qui se produit dans le guide d'onde du milieu, on peut transmettre des fréquences sélectionnées à l'avance. Il est possible aussi de transmettre des fréquences fixes sélectionnées en donnant au guide d'ondes du milieu un relief particulier de surface.

**Acousto-Optic Light Beam Scanner****Case 5717**

Travelling ultra-sonic waves in a transparent medium create the equivalent of a moving phase grating of alternating density regions in the medium. Light passing through the medium is diffracted and by varying the ultrasonic frequency, the light beam may be scanned. Continuous and random scanning is possible with a small acoustic frequency sweep.

**Exhaust Gas Heating of Greenhouses****Case 6017**

Previously wasted exhaust gases of large turbines burning clean fuels e.g., pumping stations on natural gas pipelines may be used to heat and enrich the atmosphere of greenhouses with carbon dioxide. The greenhouses are double-walled, the inner wall being of a permeable membrane that selectively filters the toxic components of the exhaust.

**Voice Processing System for A.M. Radio Telephones****Case 6280**

This low-cost, reliable voice processing system will increase the signal-to-noise ratio of speech without increasing the peak power requirement of the transmitter. It incorporates very effective automatic gain control circuitry and the receiver frequency is stabilized by phase locking the demodulating oscillator to the frequency reference of the transmitter. It is designed to be retro-fitted to existing radio telephones.

**Subtitling of Films****Case 6350**

Subtitles are presently put on film by burning them into a master and then making copies. A much cheaper and more flexible process developed at the National Film Board of Canada is to project the subtitles onto the screen in synchronization with the film. This enables subtitles in any number of languages to be used with the same film. (No patent coverage – Will refer to inventor.)

**Satellite Communications System for Remote Stations****Case 6400**

This system enables small portable transceivers to communicate with each other through a satellite and one or more ground stations. The system may also be connected to a telephone network to provide access to any telephone subscriber in the network. In this particular system, automatic channel assignment is provided without employing a dedicated signalling channel.

**Dispositif d'exploration acousto-optique de faisceau lumineux****Cas 5717**

Le déplacement d'ondes ultra-son dans un milieu transparent produit l'équivalent du champ mobile de phases des régions de densité variable du milieu. La lumière, traversant le milieu, est réfractée et on peut explorer le faisceau lumineux en variant la fréquence ultra-son. On peut faire l'exploration au hasard et de façon continue en faisant un petit balayage de fréquences acoustiques.

**Chauffage des serres au gaz d'échappement****Cas 6017**

On peut maintenant utiliser les gaz d'échappement auparavant perdus des grosses turbines brûlant du mazout raffiné, p. ex. les postes de pompage des gazoducs, pour chauffer les serres et en enrichir l'atmosphère d'anhydride carbonique. Les serres sont munies d'un double mur dont le mur intérieur sert de membrane-filtre des éléments toxiques des gaz d'échappement.

**Système de traitement de la voix pour téléphones de stations de radio AM****Cas 6280**

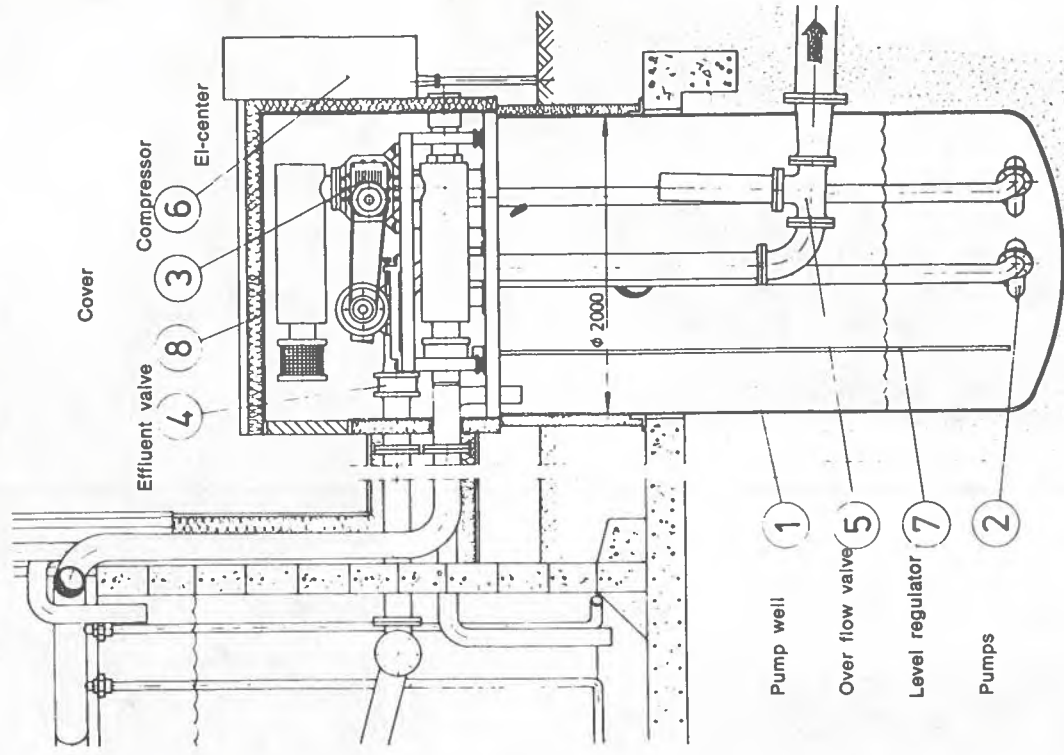
Ce système fiable et peu dispendieux de traitement de la voix permet d'accroître le ratio signal-bruit dans le discours sans augmenter la puissance de pointe du transmetteur. Il comprend un dispositif automatique très efficace de contrôle du débit et permet de stabiliser par phases la fréquence du récepteur en bloquant l'oscillateur du démodulateur à la fréquence-référence du transmetteur. Il est destiné à être ajusté aux téléphones déjà posés dans les stations de radio.

**Sous-titrage des films****Cas 6350**

Actuellement on sous-titre un film par le procédé de brûlage d'une copie-maîtresse à partir de laquelle on peut faire des copies. L'Office national du film du Canada (ONF) a mis au point un procédé beaucoup moins dispendieux et beaucoup plus souple qui consiste à projeter les sous-titres sur l'écran de façon synchronisée avec le film. Ce procédé permet de sous-titrer un même film dans n'importe quelle langue. (Aucune précision sur le brevet – Communiquer avec l'inventeur.)

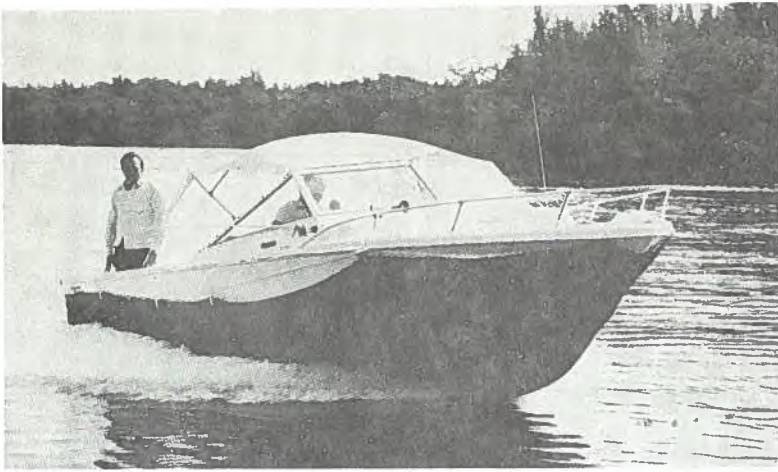
**Système de communication par satellite pour stations éloignées****Cas 6400**

Ce système permet à de petits émetteurs-récepteurs portatifs de communiquer les uns avec les autres et avec une ou plusieurs stations terrestres grâce à un satellite. Le système peut aussi être relié à un réseau téléphonique, permettant ainsi de communiquer avec tous les abonnés du réseau. Dans ce système, l'assignation d'un canal se fait de façon automatique sans avoir à utiliser un canal destiné à l'identification.

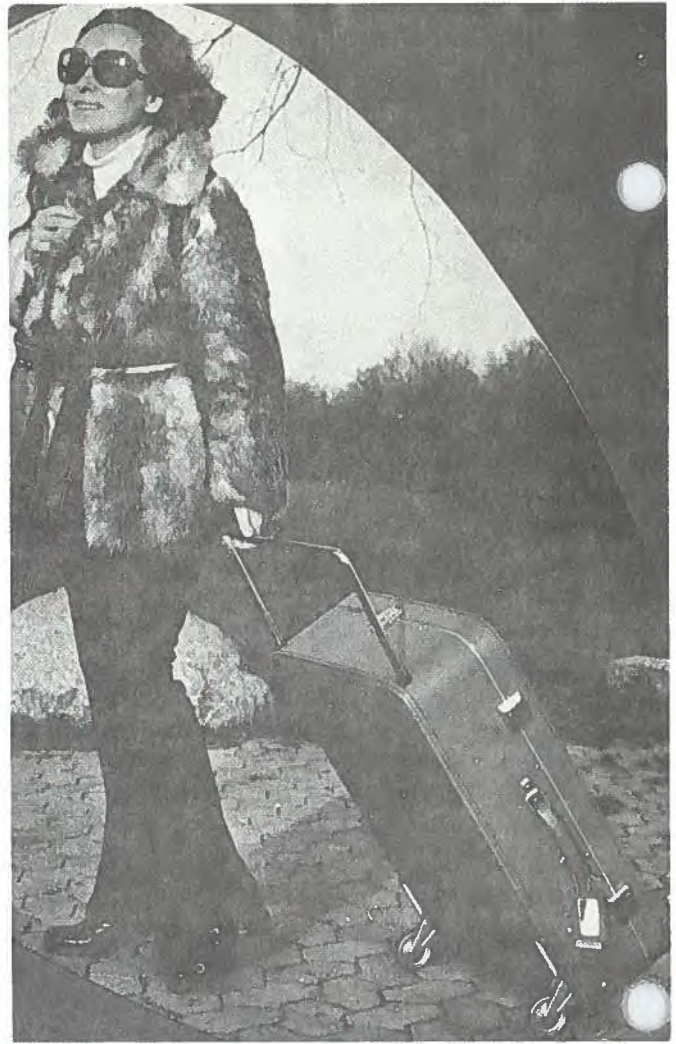


Item 3476 — Waste Water Treatment Plant  
 Article 3476 — Système de traitement des eaux résiduaires

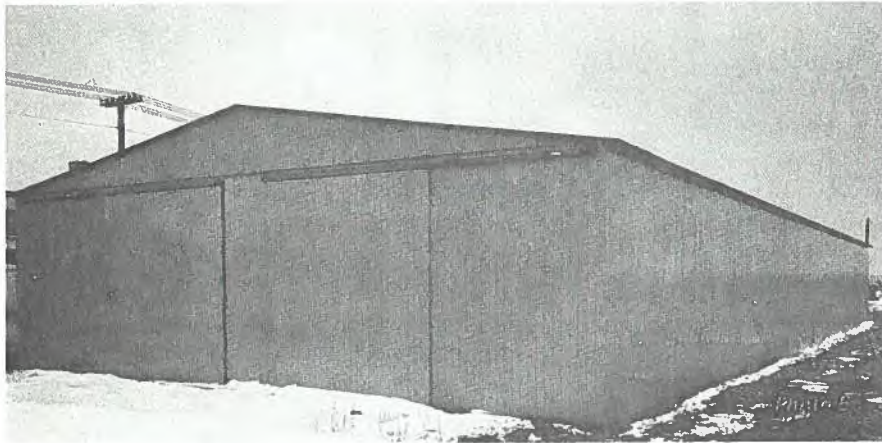
Item 3481 — Farm Bale Handling Equipment  
 Article 3481 — Equipement de mise en balles pour l'agriculture



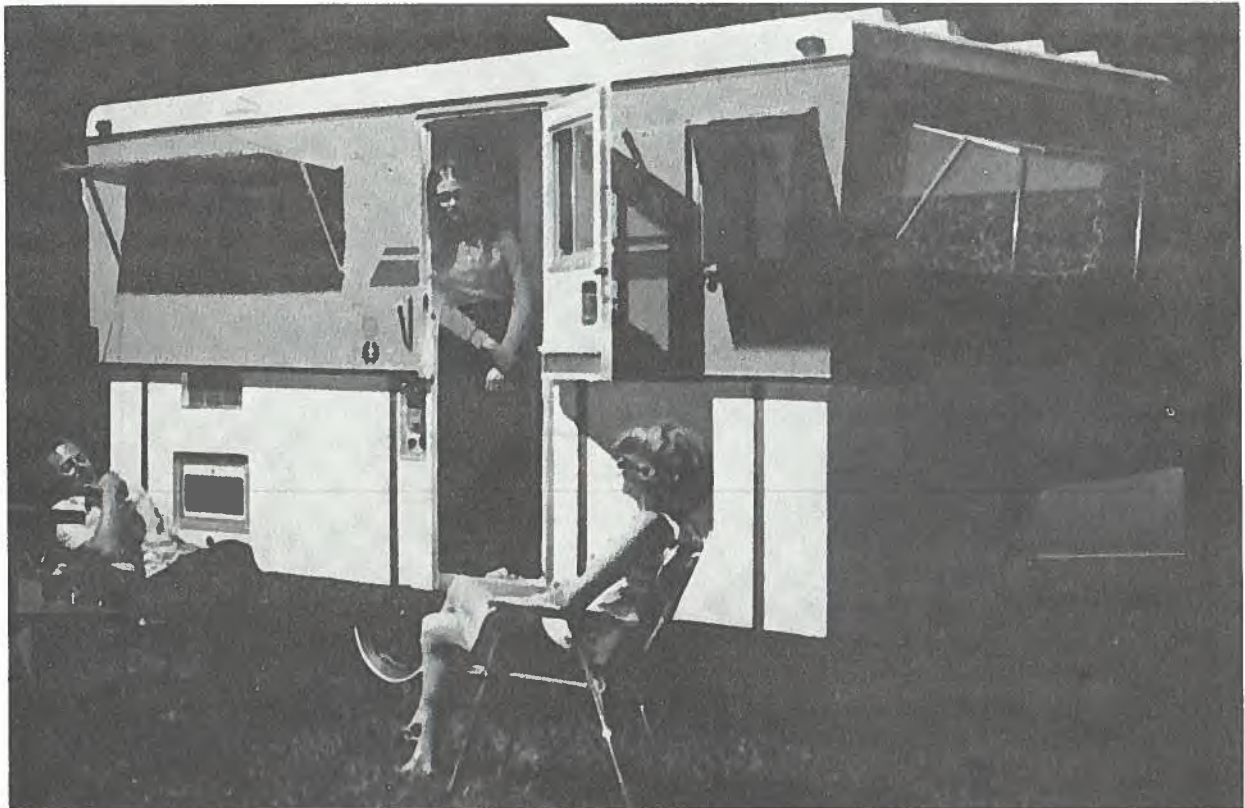
Item 3491 — Boat Protective Envelope  
Article 3491 — Enveloppe protectrice pour bateaux



Item 3485 — Wheels for Suitcases  
Article 3485 — Roulettes pour valises



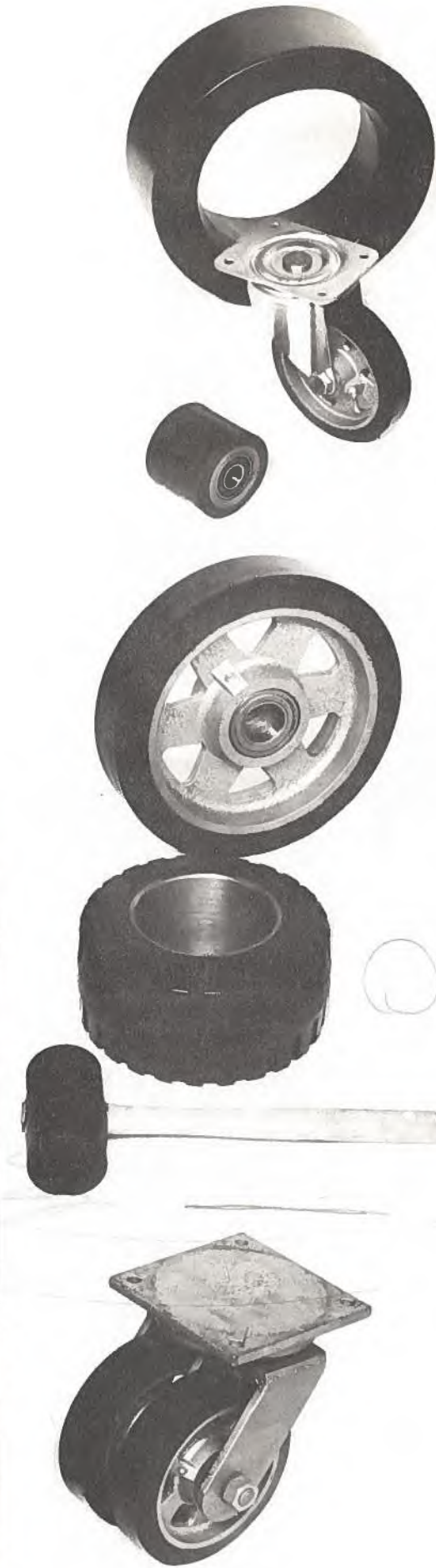
Item 3477 — Prefabricated Metal Buildings  
Article 3477 — Bâtiments préfabriqués en métal



Item 3479 — Travel Trailer  
Article 3479 — Caravane télescopique



Item 3487 — Automatic Door System  
Article 3487 — Système de porte automatique



Item 3480 — Plastic Articles  
Article 3480 — Articles de plastique

