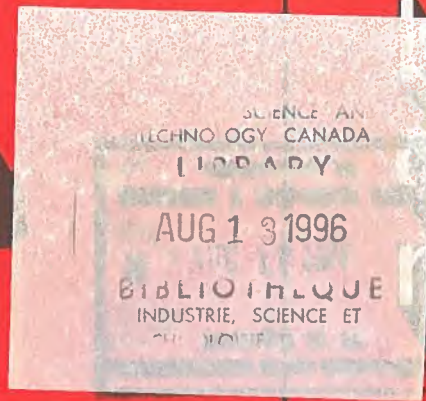


new products bulletin

bulletin de produits nouveaux



This monthly bulletin is published to promote additional manufacturing in Canada. Information on offers included in the bulletin is for circulation to established or prospective Canadian manufacturers only. No responsibility is assumed for claims or statements made. Address enquiries concerning the following items to:

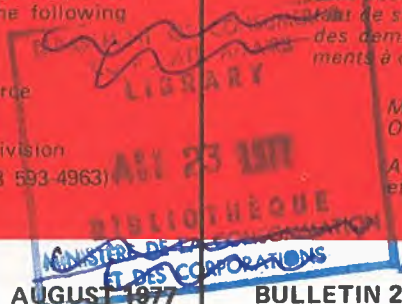
Department of Industry, Trade and Commerce
Ottawa, Canada K1A 0H5

Attention: Industrial and Trade Enquiries Division
(Telephone 613 593-4963)

Le présent bulletin est publié mensuellement en vue de stimuler au Canada l'accroissement du secteur manufacturier. Les renseignements concernant les offres publiées dans le bulletin sont destinés qu'aux manufacturiers canadiens établis ou prospectifs. Nous ne sommes pas responsables de la tenue des demandes ou des annonces publiées. Pour tous renseignements à ce sujet, s'adresser à:

Ministère de l'Industrie et du Commerce
Ottawa (Canada) K1A 0H5

Aux soins de: Division des renseignements industrie et commerciaux
(Téléphone 613 593-4963)



BULLETIN 260

AUGUST 1977

BULLETIN 260

AOÛT 1977

Composite Construction Panel

Item 3553

Canadian firm offers under license the Canadian manufacturing rights in all provinces except Quebec and Ontario to its composite construction panel of urethane foam and concrete. This composite panel provides insulation and a decorative finish in one operation. Several choices of finish are available — stucco, brick, stone, etc. Moulded in any dimension required, the panel's interlocking tongue and groove design makes it simple to install by non-professionals. The panels are claimed to be easy to handle due to their light weight and to have high thermic resistance. Literature available.

Panneau composite de construction

Article 3553

Une société canadienne offre, sous licence, les droits de fabrication canadienne dans toutes les provinces, à l'exception du Québec et de l'Ontario, de son panneau composite de construction à base de mousse d'uréthane et de béton. Ce panneau isole et décore en une seule opération. Il existe plusieurs choix de revêtements — stuc, brique, etc. Moulé à la dimension voulue, le panneau de conception languette et rainure facilite l'installation par les amateurs. Puisque les panneaux sont légers, ils sont, paraît-il, de manutention facile. Ils auraient aussi une résistance thermique élevée. Documentation sur demande.

Doors and Grilles

Item 3554

British firm offers under license the Canadian manufacturing rights to its line of industrial and commercial doors, grilles, and partitions. Line includes galvanized folding shutters, roller shutters, metal sliding and hinged doors, collapsible gates, PVC roller grilles, PVC shutters, internal partitions, etc. Literature available. See illustration.

Portes et grillages

Article 3554

Une société britannique offre, sous licence, les droits de fabrication au Canada de sa série de portes cloisons et grillages industriels et commerciaux. La série comprend des persiennes-accordéon, des persiennes à rouleaux, des portes coulissantes et à pentures et des barrières repliables métalliques galvanisées ainsi que des grillages et des persiennes en chlorure de polyvinyle, des cloisons intérieures, etc. Documentation sur demande. Voir l'illustration.

Conduit System

Item 3555

Dutch firm is offering the rights for manufacturing under license in Canada its lighting and ventilation conduit system. Using a basic profile, the system permits the simultaneous incorporation of such features as wall and ceiling attachment, wiring, ventilation, and waste and exhaust disposal. In addition, it is claimed to be movable and re-usable while offering increased flexibility in the division of floor space. Literature available.

Système de canalisation

Article 3555

Une société néerlandaise offre, sous licence, les droits de fabrication au Canada de son système de canalisation pour l'éclairage et la ventilation. Faisant appel à un profil de base, le système permet d'intégrer des articles comme les fixations de murs et de plafonds ainsi que la filerie, la ventilation, l'élimination des rebuts et l'échappement de l'air vicié. On prétend, en outre, que le système peut être déplacé et ré-utilisé, offrant ainsi plus de souplesse pour la division des surfaces. Documentation sur demande.



Industry, Trade
and Commerce

Industrie
et Commerce



Industrie
et Commerce

Industry, Trade
and Commerce

Radio Communications Equipment**Item 3556****Équipement de radiocommunications****Article 3556**

American firm offers under license the Canadian manufacturing rights to its marine and mobile communications equipment. The marine products operate within the VHF/FM and HF/SSB bands. The land-mobile equipment consists of mobile radiotelephones and base stations that operate in selected ranges of H.F., V.H.F. and U.H.F. Literature available. See illustration.

Une société américaine offre, sous licence, les droits de fabrication canadienne de son équipement de communications maritime, mobile. Le matériel maritime fonctionne sur les bandes THF/MF et HF/BLU. L'équipement mobile au sol se compose de radiotéléphones mobiles et de stations de base qui fonctionnent sur les bandes choisies de H.F., T.H.F. et hyperfréquences. Documentation sur demande. Voir l'illustration.

Magnetic Induction Cooking System**Item 3557****Système de cuisson à induction magnétique****Article 3557**

American firm is offering the Canadian manufacturing rights to a new magnetic induction method of cooking which eliminates all heated surfaces. The energy is magnetically transferred from below the surface into the cookware. This method is claimed to result in cooler, faster and cleaner cooking with infinite control, advanced cooking safety and ease of cleaning. Applications include household and restaurant cooking equipment. Industrial applications are possible for high speed heating of most ferrous and non ferrous metals. Literature available.

Une société américaine offre les droits de fabrication au Canada d'une nouvelle méthode de cuisson à réaction magnétique, qui élimine toutes les surfaces chauffées. L'énergie est transmise magnétiquement du dessous de l'ustensile à l'intérieur. On prétend que cette méthode permet une cuisson moins chaude, plus rapide et plus propre, un contrôle infini, une sécurité sans précédent de cuisson et facilite le nettoyage. On peut l'utiliser avec les ustensiles ménagers et de restaurant. Dans l'industrie, on peut l'utiliser pour le chauffage très rapide et de la plupart des métaux ferreux et non ferreux. Documentation sur demande.

Fast-firing Kilns**Item 3558****Four à cuisson rapide****Article 3558**

French firm offers under license the Canadian manufacturing rights for its fast-firing continuous kilns. Of ultra-modern design and continuous operation, these entirely automatic kilns are especially designed for the firing of ceramic products at temperatures between 800 and 1450°C. The licensee should be knowledgeable in ceramics and have good technical expertise, especially in the industrial thermal field. Literature available. See illustration.

Une société française offre sous licence les droits de fabrication canadienne de ses fours à passage à cuisson rapide. De conception très moderne, à marche continue, et entièrement automatiques, ces fours sont spécialement adaptés pour la cuisson de produits céramiques à des températures entre 800 et 1450°C. Le licencié devra être bien introduit dans le milieu de la céramique avec une bonne expérience technique, en particulier dans la thermique industrielle. Documentation sur demande. Voir l'illustration.

Stretcher System**Item 3559****Civière****Article 3559**

Australian firm seeks a licensing arrangement with a Canadian company for the manufacture of its patient transfer device. This device is designed to allow the patient to be carried in various forms of transport and admitted to hospital without being removed from the stretcher. The aluminum alloy stretcher is equipped with an adjustable back rest and extendable handles. It fits onto a collapsible trolley which in its extended position closely matches both ambulance loading height and hospital bed height. It is claimed that a single attendant can easily handle a patient on the stretcher. Literature available. See illustration.

Une société australienne offre, sous licence, les droits de fabrication au Canada de son dispositif de transport des patients. Ce dispositif permet le déplacement du patient par divers moyens de transport et son admission à l'hôpital sans qu'on doive l'enlever de la civière. La civière en alliage d'aluminium est munie d'un dossier réglable et de poignées extensibles. Elle s'adapt à un chariot repliable qui, lorsqu'il est déplié, peut atteindre la hauteur du plancher de l'ambulance et du lit d'hôpital. On prétend qu'un seul préposé peut facilement transporter le patient sur la civière. Documentation sur demande. Voir l'illustration.

Securing Cleats**Item 3560****Attaches de fixation****Article 3560**

Swiss inventor offers under license the Canadian manufacturing rights to his accessory designed primarily for securing loads in and on top of cars and trucks. The cleat is made of high density polyethylene and will resist weather,

Un inventeur suisse offre, sous licence, les droits de fabrication au Canada de son dispositif destiné principalement à fixer les charges dans les camions et les automobiles ou sur le toit de ces véhicules. Fabriquée de polyéthylène à haute

cold, and heat up to 70°C. The cleats are attached with screws or adhesive. In addition to providing a replacement for car luggage racks, the cleats have many other applications. Literature available. See illustration.

Suspension Hook

Item 3561

Swedish inventor offers the Canadian manufacturing rights to his stainless steel suspension hook for use when cutting up carcasses in butcher shops. The hook is attached to an arm which is adjustable in three angles. The hook can be turned 360 degrees, is adjustable vertically to three levels to fit users of different heights, and is easily removed for cleaning. The device can be folded up when not in use. Literature available. See illustration.

INVENTIONS

The following manufacturing opportunities represent products and processes that have not been commercially proven. In some cases, prototypes have been developed.

Silver Recovery From Photographic Wastes

Item 3562

Israeli inventor is offering the Canadian manufacturing rights to his process for the recovery of silver as iodide or bromide of high purity directly from photographic wastes. The waste materials may be either undeveloped or developed. In the first case, the paper or film base may also be recovered. In all cases, most of the reagent used is recovered, making the process economical. The products obtained may be used for cloud seeding, photography, etc. The process is not dangerous and does not require a special furnace. Literature available.

Bathtub Seat

Item 3563

Canadian inventor is offering the outright sale of the rights to his industrial design for a bathtub seat. This rectangular seat with smoothly rounded corners is designed for attachment to the side of a bathtub for use by children or the elderly in need of assistance while bathing. Literature available. See illustration.

LICENSES OFFERED FROM THE GERMAN DEMOCRATIC REPUBLIC

Thirteenth listing of licenses offered, in selected fields of application, by factories and institutions of the German Democratic Republic. It is claimed that all techniques, products and devices have been extensively tried and are in use at various works in the GDR and elsewhere. Details of

densité, l'attache résistera aux intempéries, au froid et à la chaleur allant jusqu'à 70°C. Les attaches sont maintenues en place au moyen de vis ou d'adhésif. En plus de remplacer avantageusement les porte-bagages de véhicules automobiles, les attaches peuvent servir à plusieurs autres fins. Documentation sur demande. Voir l'illustration.

Crochet de suspension

Article 3561

Un inventeur suédois offre les droits de fabrication au Canada de son crochet de suspension, en acier inoxydable, destiné à être utilisé lors du débitage des carcasses dans les étals de boucher. Le crochet est attaché à un bras ajustable sur trois plans. Il peut pivoter à 360°, est réglable verticalement à trois niveaux pour satisfaire aux besoins de personnes de différentes tailles et peut être facilement enlevé pour nettoyage. Le dispositif peut être replié lorsqu'il ne sert pas. Documentation sur demande. Voir l'illustration.

INVENTIONS

Les possibilités de fabrication suivantes concernent des produits et procédés qui n'ont pas été éprouvés commercialement. Dans certains cas, des prototypes ont été mis au point.

Récupération de l'argent des rebuts de la photographie

Article 3562

Un inventeur israélien offre les droits d'utilisation au Canada de son procédé de récupération de l'argent, sous forme d'iodure ou de bromure très purs, directement des rebuts de la photographie. Les produits récupérés peuvent être développés ou non. S'ils ne sont pas développés, le papier ou la pellicule de base peut aussi être récupéré. Dans tous les cas, la plus grande partie du réactif utilisé est aussi récupéré, ce qui rend le procédé économique. Les produits obtenus peuvent être utilisés pour l'ensemencement des nuages, la photographie, etc. Le procédé ne comporte aucun risque et n'exige pas de four particulier. Documentation sur demande.

Siège de baignoire

Article 3563

Un inventeur canadien offre la vente à forfait de son dessin industriel d'un siège de baignoire. Ce siège rectangulaire aux angles arrondis et polis, peut être fixé à la paroi d'une baignoire à l'intention des enfants ou des personnes âgées qui ont besoin d'aide lorsqu'ils prennent un bain. Documentation sur demande. Voir l'illustration.

LICENCES OFFERTES PAR LA RÉPUBLIQUE DÉMOCRATIQUE DE L'ALLEMAGNE

Voici la treizième liste de licences offertes, dans des domaines d'application choisis, par des manufacturiers et des institutions de la République démocratique de l'Allemagne. Toutes ces techniques, produits et appareils ont, semble-t-il, été largement mis à l'essai et sont utilisés dans divers établissements de la RDA et dans d'autres pays. On peut

the Agricultural and Foodstuff Industry listed below are available from:

Department of Industry, Trade and Commerce
Industrial and Trade Enquiries Division (98/3)
Ottawa, Canada K1A 0H5

Method for the Optional Determination of the Sex of the Progeny by Separating the x from the y Chromosome-carrying Sperms in Cattle GDR-1/260

By sex determination it also becomes possible: to increase the percentage of potential insemination bulls from pedigree cows of a high performance record; to accelerate the breeding value test of aspirants to the stock of insemination bulls; to reduce the number of female animals required for mating in the tests; to speed up measures of specialisation and reorganisation with a view to increasing profitability.

Method for Increasing the Fertilisation Ability of Cattle Sperms GDR-2/260

Artificial insemination as an important tool of animal breeding is used especially with a view to taking full advantage of all possibilities of increasing the productivity of livestock by reducing the calving age and the period between calving. The method for increasing the fertilisation ability of cattle sperms serves for the solution of this problem. Increase of the NR results with the help of this method by 5 per cent on an average, means that about 3 calvings per 100 cows more can be expected per annum.

Method for the Production of Spread Fats with Reduced Fat Content GDR-3/260

The new method is designed for the production of spread fats, especially butter, with a reduced fat content; a method that lends itself to the production of a spread fat avoiding the use of emulsifying agents. The characteristic butter taste is retained in this manufacturing process.

Method for the Production of Protein Concentrates GDR-4/260

The new method serves for the production of protein concentrates; it lends itself to the preparation of thermostable protein concentrates on a casein basis which are durable for a prolonged period of time and indifferent to the taste. This is a new way of utilising the proteins contained in skimmed milk and whey in order to add practically new preparations to the overall range of human food.

Method for the Production of Starch Hydrolysis Products and Their Use as Carrier Substance and Additive in Foodstuffs GDR-5/260

This method produces a completely new, powdered, tasteless product of a comparatively low degree of peptonisation. This

obtenir des renseignements sur l'Industrie de l'Agriculture et des produits alimentaires en s'adressant au:

Ministère de l'Industrie et du Commerce
Division des renseignements industriels et commerciaux (98/3)
Ottawa (Canada) K1A 0H5

Méthode pour choisir le sexe de la progéniture en séparant le chromosome x du chromosome y porteur de sperme chez les bovins RDA-1/260

En déterminant le sexe de l'animal, il est également possible: d'accroître le pourcentage de taureaux au potentiel génétique élevé issus de vaches de race dont la production est supérieure; d'identifier plus rapidement les taureaux pouvant servir à l'insémination; de réduire le nombre de femelles requises pour les tests d'accouplement; d'accélérer les mesures de spécialisation et de réorganisation en vue d'accroître la rentabilité.

Méthode pour accroître le pouvoir fécondant du sperme des taureaux RDA-2/260

L'insémination artificielle, un important moyen de fécondation animale, vise particulièrement à profiter au maximum de toutes les possibilités d'accroissement de la productivité des bestiaux en réduisant l'âge de vêlage et la période entre les vêlages. La méthode visant à accroître le pouvoir fécondant du sperme des taureaux solutionne ce problème. Grâce à cette méthode, le pourcentage des NR est accru de 5% en moyenne, c'est-à-dire, que pour un groupe de 100 vaches, on peut prévoir 3 vêlages de plus par an.

Méthode pour la production de graisses à teneur en gras réduite RDA-3/260

Cette nouvelle méthode a été conçue pour la production de graisses, surtout de beurre, avec une teneur réduite en gras. Il s'agit d'une méthode qui se prête bien à la production de graisses en évitant l'utilisation d'agents émulsifiants. Grâce à ce procédé de fabrication, le goût du beurre est conservé.

Méthode de production de concentrés de protéines RDA-4/260

Cette nouvelle méthode sert à la production de concentrés de protéines; elle se prête bien à la préparation de concentrés de protéines thermostables à base de caséine qui se conservent longtemps et dont le goût ne s'altère pas. Ce nouveau procédé permet d'utiliser les protéines contenues dans le lait écrémé et le petit lait afin de pouvoir offrir à l'être humain de nouvelles variétés d'aliments.

Méthode de production par hydrolyse de produits d'amidon et de son utilisation en tant qu'agent porteur et additif dans les produits alimentaires RDA-5/260

Cette méthode permet la fabrication d'un produit totalement nouveau, en poudre, sans goût et ayant un degré relativement

is effected by partial enzymatic peptonisation of starch by heat-resistant amylases according to a certain temperature time programme. This is differentiated from other known starch hydrolysis products of a low degree of peptonisation especially by properties which effect that it forms, together with water, thermoreversible, jellies of a glossy white and of a consistency that ranges from pasty to a form capable of being readily cut and which can be subjected to reversible freezing and thawing processes.

Equipment for the Production of Beer GDR-6/260
According to a Continuous Process

For this process, apparatuses are required which have not been used in breweries so far. Thus, disintegration of raw fruit is effected under pressure in a tubular reactor, wort is mashed horizontally arranged cylindrical reactors, boiling of wort and addition of prepared hop extracts; clarifying is achieved by centrifugal filtration. Continuous fermentation and ripening takes place according to the principle of pressure fermentation in a five-step cascade in newly developed fermenting chamber vessels which are erected in the open. Cleaning and disinfection of the whole plant is effected according to the CIP system.

Continuous Operating Still Processes for the GDR-7/260
Processing of Starch-containing Raw Materials

The equipment is a complete automated still plant for a distilling process, continuously operating in all process stages, for the production of fine spirits of starch-containing raw materials.

Method for the Production of Glucoamylase GDR-8/260

On the basis of the process of the production of glucoamylase, an enzyme preparation is obtained which is free from transglucosidase and almost free from protease. Due to a special composition of culture media of commercial, relatively cheap raw materials which do not require any special preparation, high enzyme exploitation at shorter fermentation periods, as compared to the known level of technology, are achieved. The process excels in a reduced formation of foam so that the fermenting tanks can be operated with high liquid levels.

Method for the Production of a Brewery Enzyme GDR-9/260

By submersed cultivation of a highly efficient bacterial strain, a brewery enzyme is produced with high enzyme activity at beta glucanase and neutral protease, with side activities at alpha amylase and hemicellulases. Commercial and inexpensive raw materials are used as culture media. The inoculum contains several propagation steps of the production strain. Under optimum cultivation conditions, the maximum beta glucanase activity is achieved after 38 hours of fermentation.

peu élevé de peptone. Ce produit est le résultat de la peptonisation enzymatique partielle de l'amidon par l'action d'amylases résistantes à la chaleur, selon certains programmes de températures. Ce produit diffère surtout des autres produits d'amidon par hydrolyse à faible degré de peptonisation par ses propriétés. En effet, mélangé à l'eau, il forme une gelée thermoréversible, d'un blanc luisant et allant d'une consistance pâteuse à une forme que l'on peut couper facilement. De plus, il peut être congelé et décongelé sans perdre ses caractéristiques.

Équipement pour la production de bière selon RDA-6/260
un procédé en continu

Les appareils que nécessitent ce procédé n'ont jamais été utilisés dans des brasseries jusqu'ici. Les matières premières sont désintégrées sous pression dans un réacteur tubulaire. Le moût est brassé horizontalement dans des réacteurs cylindriques; on porte ensuite à ébullition le moût après adjonction des extraits de houblon; on le filtre ensuite au moyen d'une centrifugeuse. A la filtration fait suite la fermentation en continu, c'est-à-dire la fermentation sous pression dans des chambres de fermentation en cinq étapes récemment mises au point et construites à l'extérieur. Le nettoyage et le désinfectage de toute l'usine se fait selon le système NSP (CIP system).

Utilisation d'une colonne à distiller en continu RDA-7/260
pour la transformation des matières premières
contenant de l'amidon.

Il s'agit d'une usine de distillation totalement automatisée, fonctionnant sans arrêt pendant toutes les étapes de la transformation et de la production d'alcool raffiné à base de matières premières contenant de l'amidon.

Méthode de production de glucoamylase RDA-8/260

En utilisant ce procédé de production de glucoamylase, on obtient une préparation enzymatique exempte de transglucosidase et presque exempte de protéase. La composition spéciale de la culture permet l'utilisation de matières premières en vente sur le marché et relativement peu coûteuses, qui ne nécessite aucune préparation particulière. Ainsi, l'exploitation enzymique ne nécessite qu'une courte période de fermentation, comparativement à la technologie connue. Le procédé ne forme guère de mousse, ce qui permet de remplir les cuves de fermentation.

Méthode de production d'une enzyme pour RDA-9/260
l'industrie de la bière

En cultivant sous immersion une chaîne de bactéries très puissante, on a produit un enzyme de bière à grande activité enzymique formée de glucanase beta et de protéase neutre, à activité mineure d'amylase alpha et d'hémicellulases. Des matières premières commerciales et peu coûteuses sont utilisées pour la culture. L'inoculum est le support de plusieurs étapes de propagation de la chaîne de transformation. Dans les meilleures conditions de fermentation, l'activité maximale de la glucanase beta est atteinte après 38 heures.

**RECENTLY ISSUED CANADIAN PATENTS AVAILABLE
FOR LICENSING OR SALE**

**BREVETS CANADIENS RÉCEMMENT ÉMIS
À VENDRE OU OFFERTS SOUS LICENCE**

Résumés of these patents are published in the language of application, English or French. Only patent titles are published in both official languages. Parties interested in discussing the rights to license any patent listed hereunder should contact the owner of each patent directly. The patent owner's name and address follows a brief summary of his patent. If a copy of the full patent is required it may be obtained for \$1.00 from the Commissioner of Patents, Ottawa-Hull, Canada K1A 0E1.

Un résumé de l'invention est publié dans la langue de la demande de brevet, soit en anglais, soit en français. Seuls les titres sont publiés dans les deux langues officielles. Toute personne désireuse de discuter des droits d'exploitation sous licence de ces brevets doit s'adresser directement au détenteur du brevet dont le nom et l'adresse figurent à la suite du bref exposé. Les intéressés peuvent se procurer des exemplaires de brevets au prix de \$1.00 en écrivant au Commissaire des brevets, Ottawa-Hull, Canada K1A 0E1.

Defensive Glove or Mitten

1,011,502

Gant de défense

This consists of a defensive glove or mitten which may be worn on a user's hand as a defense weapon. The defensive glove is composed of an inner layer of cloth, an outer layer of material and a number of pointed metal pieces extending outward from the outer layer to form pointed external projections on the glove.

Emanuel Liebelt, Main and Second Avenue East Beulah, North Dakota 58523, U.S.A.

**Structure of Coordinated Modular Building
Construction**

1,011,523

Structure à construction modulaire

In this structure made of reinforced concrete, building modules of the form of rectangular tubular section are assembled into a modular cluster by "wall to wall" and, or "floor panel to ceiling panel" fashion. The doubled structure of bearing walls and, or structure of doubled floors are assuming the shape of a ribbed slab so that when combined, they create a cellular structure reducing the weight and space which is advantageously utilized for the distribution of the mechanical equipment such as electrical-signal raceways etc. Floor and ceiling panels are combined by means of an epoxy grout during the process of the assembly of the modular cluster into the form of a laminated slab.

Miroslav Fencl, 59-28; 57th Drive, Flushing, New York City, New York 11378, U.S.A.

Connector

1,011,529

Connecteur

This connector member for connecting hollow structural elements is made inexpensively by aluminum extrusion and comprises three or more fastening formations extending in different directions from a body portion for stable engagement within the hollow structural elements. Each fastening formation comprises a pair of spaced, elongate, relatively flexible limbs. One of the limbs of each fastening formation has a threaded hole, the limbs being substantially flat but including gripping formations for engagement with the interiors of the structural elements. Each limb has a cross-sectional area, in a plane facing the body portion. At least two of the fastening formations are extruded integrally with the body portion and at least one is separately extruded and secured to the body portion.

Joe R. Cassel, 20 Bessemer Road, Heriotdale, Johannesburg, Transvaal, République of South Africa

**Palladium Compositions Suitable as Oxidation
Catalysts**

1,011,531

**Compositions de palladium servant de catalyseur
d'oxydation**

These new homogeneous catalyst systems contain certain palladium salts and copper salts. A specified balance of a copper halide and of a non-halide copper salt is maintained. The catalysts are effective for oxidizing CO to CO₂ and SO₂ to SO₃.

Larox Research Corporation, 1419 Woodhurst Drive, Bowling Green, Warren County, Kentucky, U.S.A.

Palladium Compositions Suitable as Oxidation

1,011,532

Composition de palladium servant d'agent d'oxydation

These heterogeneous catalyst systems contain certain palladium salts and copper salts. A specified balance of a copper halide and of a non-halide copper salt is maintained. These novel and superior catalysts are especially effective for oxidizing CO to CO₂ and SO₂ to SO₃.

Larox Research Corporation, 1419 Woodhurst Drive, Bowling Green, Warren County, Kentucky, U.S.A.

Double Pronged Lead Jig Hook with Centre Bait Hook **1,011,553** **Hameçon double plombé avec crochet central pour leurre**

Conventional jigs consist of a single hook embedded in a lead body and extending towards the rear and having a line attaching eye on the underside. The present device comprises a double pronged hook having a downturned eye formed integrally on the inner end of the shank. The shank is embedded in the lead body with the double hook extending towards the rear and the eye depends below the jig body so that it can be attached to the fish line or leader. A third hook extending centrally between the two hooks is used to hold bait, and this hook is smaller than the other two.

Douglas L.W. Slater, 3-16 North Avenue, Flin Flon, Manitoba, Canada

Dispositif de commande sans contrepoids d'une croisée à guillotine **1,011,599** **Control Device for Double Hung Window Without Counter Weights**

Le dispositif comprend, montée sur une pièce d'appui inférieure dans chaque montant vertical, une transmission constituée par un engrenage d'angle à deux pignons. Le premier est solidaire d'un axe horizontal à entraînement en rotation par une manivelle de commande et logé dans une rosace appropriée sur la face intérieure du montant. Le deuxième pignon est solidaire d'une barre verticale passant dans le caisson de chaque montant. Chaque barre est associée à un mécanisme transformant sa rotation en un mouvement de coulissement vertical descendant ou ascendant d'un organe solidaire d'un serre-câble qui enserre deux extrémités des câbles de transmission. Les câbles associés à chaque organe sont fixés sous une tension déterminée à l'un des panneaux de glace.

René F. Dorgambide, "Le Solymar", Route de la Badine, Antibes (Alpes Maritimes), France

Process for the Production of Petroleum Sulfonate **1,011,759** **Procédé de production de sulfonate de pétrole**

Petroleum sulfonates useful to impart micellar characteristics to mixtures of hydrocarbon and aqueous medium are obtained by reacting a hydrocarbon gas oil feedstock. The reaction takes place in a back-mix tubular reactor where about 4 parts of reaction product is recycled per 1 part of reaction products withdrawn. The gas oil feedstock plus recycled reaction products and the SO₃/EDC streams entering the reaction zone are in turbulent flow. The withdrawn reaction products are neutralized with a basic aqueous liquid. Ethylene dichloride is recovered from the neutralized reaction products to obtain unextracted sulfonate mix which is extracted with water to obtain a raffinate phase or vehicle oil phase and a petroleum sulfonate phase. The petroleum sulfonate phase can be used as is or it can be further processed to remove water.

Marathon Oil Company, 539 South Main Street, Findlay, Ohio 45840, U.S.A.

All Terrain Vehicle **1,011,786** **Véhicule tout-terrain**

This power driven vehicle has a set of wheels mounted on each side and endless tracks suspended between the two sets of wheels in an arrangement that substantially covers the whole underside of the vehicle and thereby renders the vehicle bellyless. The endless tracks are individually powered and engage with the ground whenever the wheels mounted along the sides of the vehicle sink into the ground to a predetermined depth.

Paul Kehler, 17305 Fergus Drive, South Bend, Indiana 46635, U.S.A.

Digital Compressor-expander **1,011,878** **Extenseur-condenseur numérique**

An expander for converting n digit coded signals into m digit coded signals according to a desired input-output continuous characteristic. The expander comprises first means for converting the n digit coded signals into p digit coded signals, and second means for converting the p digit coded signals into m signals so that when the corresponding analog values x of the p digit coded signals are plotted on the X axis and the corresponding analog values y of the m digit coded signals plotted on the Y axis of a Cartesian coordinate system, they produce an input-output discontinuous characteristic composed of a plurality of successive line segments of different slopes.

Université de Sherbrooke, Bureau des Recherches et des Bourses, Sherbrooke, Quebec, Canada

Instrument for Viewing and Interpreting Images **1,011,971** **Appareil pour visionner et interpréter les images**

This relates to an image interpretation instrument including a viewing head, a carriage for supporting imagery with a table providing support for a base. The head and the carriage are movable from a first position where an observer views both the base

Glass Polymer Composites**1,012,278****Composés de polymères de verre**

This glass polymer composite and a method of preparing it consists of crushed glass with a mixture of sizes to obtain minimum void volume impregnated with monomer which is polymerized in situ. Certain construction materials such as sewer pipe and exterior wall facings made from this material are illustrative.

The United States Energy Research and Development Administration, Washington, District of Columbia 20545, U.S.A.

Convertible Crib**1,012,308****Berceau transformable**

This convertible crib comprises a bed part for accommodating a mattress. The bed part has a protective wall therearound with a clear plastic section hingedly mounted therein for providing a view of an infant in the bed part and for facilitating access. A number of legs are provided. Each of a number of affixing devices removably affixes a corresponding leg to the bed part. Each affixing device is removably affixed to the corresponding leg at one end and to the bed part at the other end in a manner whereby the bed part is adjustable in height relative to the leg.

Lester J. Burbidge; Miriam E. Burbidge, 542 Cuesta Drive, Aptos, California 95003, U.S.A.

Pipe Cleaning Device with Detachable Collar and Rotating Brushes**1,012,311****Dispositif de nettoyage des tuyaux avec collier amovible et brosses rotatives**

This cleaning device for the outside surface of a pipe comprises a pair of semi-annular members each having a pair of opposite free ends 180° apart, and a semi-circular inner and outer surface. A hinge device at a corresponding free end of each of the members joins the members to each other. A releasable fastener at the other corresponding free end of each of the members affixes the members to each other in substantially O-shaped configuration. A number of wire brush bristles are affixed to the inner surface of each of the members and extend substantially radially inward. A housing encloses part of the semi-annular members. A driving device in the housing is coupled to the semi-annular members for rotating the members about their common axis.

John F. Stone, Box 275A, Rd. #1, Elizabethtown, Pa. 17022, U.S.A.

Process for Producing a Raw Material Suitable for Iron Production, from a Precipitate from an Electrolytic Zinc Process**1,012,362****Procédé de production de matériau brut pour la production du fer à partir d'un précipité obtenu par électrolyse du zinc**

This is a process for producing a raw material suitable for iron production from the precipitate resulting after the roasting of a sulfidic zinc material in the electrolytic zinc process. The precipitate which contains zinc ferrite and hydroxides and alkaline sulfates of iron is slurried in water or a mild sulfuric acid solution. The resulting slurry is treated hydrothermally at an elevated temperature after which the haematite-containing solid suitable for iron production is separated. The solution remaining contains valuable metals which may be recovered. The process, which effectively deals with the large iron precipitate resulting from the electrolytic zinc process, is advantageous in that it may be carried out with moderate equipment costs.

Outokumpu Oy, Outokumpu, Finland

Composite Structural Assembly**1,012,376****Ensemble structural composite**

This a composite structural assembly comprising a number of metallic support members disposed in side-by-side relationship and a layer of cementitious material disposed on the support members. For the securement of the support members to the layer of cementitious material there are provided spaced lugs which project from each side edge portion of each of the members. According to one aspect of the invention the lugs presented by one of adjacent side edge portions of adjacent support members alternate in interfitted relationship with the lugs presented by the other adjacent side edge portions of the adjacent support members with the lugs embedded within the layer of cementitious material.

Westeel-Rosco Limited, 1 Atlantic Avenue, Toronto, Ontario, M6K 1X7, Canada

Vacuum and Freeze-Drying Method and Apparatus**1,012,454****Méthode d'appareillage pour la congélation à sec sous vide**

The present invention provides a vacuum and freeze-drying method and apparatus for substantially eliminating the need to supply heat from an external heat source for freeze-drying. The system comprises in combination, a drying chamber, a heat pump system, an evacuation means and a heat exchange means for supplying heat. In consequence the need to supply heat from

an external heat source is substantially eliminated by recycling the heat between the judiciously selected heat sources and main heat sinks found within the freeze-drying system. The freeze-drying system of the present invention can also be used for vacuum drying, including concentration of material by partial removal of the liquid phase.

Chand A. Passey, 3760 Gattingen St. Apt. B-201, Halifax, Nova Scotia, B3K 5K5, Canada

Electrolytic Extraction of Copper from Bath of Sulphurous Acid **1,012,485** **Extraction du cuivre d'un bain d'acide sulfureux par électrolyse**

This is a process of precipitating Chevreul salt from a solution comprising copper dissolved in sulphurous acid including the steps of contacting the solution with a pair of electrodes, the anode preferably being copper, and applying a potential difference across the electrodes effective to cause precipitation of the Chevreul salt. The potential difference is preferably such that the cathode potential is between a few millivolts and about 250 millivolts. The copper containing solution is preferably a copper rich leach solution resulting from the sulphurous acid leaching of a copper-containing oxidic ore.

Anglo American Corporation of South Africa Limited, 44 Main Street, Johannesburg, Transvaal, Republic of South Africa

Detachable Harness for Containers **1,012,507** **Harnais détachable pour conteneur**

This detachable harness for a larger container is made of flexible and resilient strips attached together to form two criss-cross continuous loops. The harness may be mounted on a large container such that one continuous loop is snugly fitted over the longitudinal periphery of the container while the other continuous loop circumscribes the periphery of the lower portion of the container. One portion of the other continuous loop is loosely disposed on the container so as to provide a convenient handle for lifting and tilting the container. The harness may be mounted or dismounted from the container easily.

Alexander Smith, 48 Aileen Avenue, Toronto, Ontario, Canada

Method of Extraction of Nodular Sediments or the Like from the Sea Floor and an Installation for Carrying Out Said Method **1,012,566** **Méthode d'extraction de sédiments nodulaires ou similaires du sol marin et installation**

A mixture of nodular sediments and sea water is collected by dredging along the sea bed and lifted into the separation compartment of an underwater control and storage station connected by tubing to a carrier ship. A volume of air corresponding to the pressure of the compartment at the immersion depth is sucked from the mixture and re-injected into the dredging tube by means of a booster compressor. Then the nodules separated from the air are sucked to the surface and collected.

Commissariat à l'Énergie Atomique, 29 rue de la Fédération, 75752 Paris, France

Method and Apparatus for Forming Tires **1,012,723** **Méthode et appareillage pour le moulage des pneus**

Separable mold sections of a tire forming machine are brought together to form a tire cavity within which an inflatable shaping mechanism or bladder is axially carried in the lower mold section. During the initial tire shaping operation air is exhausted from the cavity through valve controlled air passages, opened in the cavity side wall, to produce a sub-atmospheric pressure in the cavity. Concurrently with the initiation of a second or final stage tire shaping operation the air passages are closed flush with the surface of the cavity side wall so that the tire is finally shaped under a sub-atmospheric pressure into conformance with a cavity side wall having a continuous smooth surface.

Corn States Metal Fabricators, Inc., 1323 Maple St. W., Des Moines, Iowa, U.S.A.

Process for Preparing a Non-woven Web of Fibrous Material **1,012,744** **Procédé de fabrication d'une toile fibreuse non tissée**

In a non-woven web of fibrous material from a needle loom, the density or closeness of fibres and consequently strength, is low. In this invention the density of the non-woven web is increased by subjecting the fibres to a heat treatment by mechanical pressure of various forms which deforms the surface of the fibres and forces them into intimate contact to thereby increase the strength characteristics of the web without detriment to other properties such as flexibility.

J.W. Suominen Oy, 29250 Nakkila, Finland

Electrically Conductive Cement**1,012,752****Adhésif électro-conductible**

This high voltage stabilized porcelain insulator assembly has a surface layer of conducting glaze connected electrically with the metal components used in the assembly, or the glazed layers of sprayed porcelain components are connected together, whereby a current is enabled to flow through the layer or layers. A jointing material provides an electrical connection between the conducting glazed surfaces by electronic conduction and consists essentially of an electrically conductive cement which comprises from 95 to 46 percent by weight of sulphur, from 0 to 30 percent by weight of an inert filler effective to reduce contraction on setting, and over 5 and up to 25 percent by weight of powdered graphite.

Doulton & Co. Ltd., 46 Pall Mall, London, SW1Y5LW, U.K.

Seed Treating Magnet Assemblies for Seeder Boxes**1,012,767****Aimants de traitement des graines pour semoirs**

In this device, a small horseshoe type magnet is secured adjacent each seed cup in a seeder box. This treats seed flowing through the individual seed cups just prior to the seed being planted thus avoiding unnecessary jarring and movement and reducing the amount of seed being treated by any one magnet. The magnets may be attached to the seed cup to allow ready access to the cup for clean out purposes or may be attached along a strip which is then laid in the bottom of a seed box with a magnet engaging within the entrance to each seed cup.

Allan R. McConnell, Box 178, Elrose, Saskatchewan, Canada

Technetium Bone Scanning Medium**1,012,886****Solution d'analyse des os à base de technétium**

An aqueous solution of ethane-1-hydroxy-1, 1-diphosphonate is added to an acidic solution of stannous chloride and mixed. $^{99m}\text{TcO}_4$ in isotonic saline solution is then added and the mixture is again mixed. The solution is adjusted to a pH of about 6-7 yielding a preparation appropriate for injection into a subject. The medium is highly specific with respect to deposition in the skeleton while troublesome and undesired effects such as colloid formation, binding to blood proteins, localization in the kidneys, are avoided.

The United States Energy Research and Development Administration, Washington, District of Columbia 20545, U.S.A.

Single Suction Type Air Inlet Casing of an Axial-flow Compressor**1,012,890****Carter d'admission d'air à aspiration unique pour compresseur axial**

This axial flow compressor comprises a tubular compressor casing and a compressor shaft rotatably supported in the casing with a movable blade affixed thereto for rotation. A fixed blade in the casing cooperates with said movable blades and defines with the housing and the movable blades an annular axially extending gas flow path. The casing includes a compressor inlet part having an inner cylindrical portion of uniform diameter secured centrally within the casing in axial alignment and concentrically disposed in respect to the shaft. An outer inlet casing portion of cylindrical form is positioned over the inner part and is concentrically arranged therewith and defines with the inner part an annular inlet flow path connecting with the gas flow path.

Mitsubishi Jukogyo Kabushiki Kaisha, 5-1, Marunouchi 2-chome, Chiyoda-ku, Tokyo, Japan

Sound Damping Curtain Wall with Parallel Tubular Elements**1,012,896****Cloison insonorisée constituée d'éléments tubulaires parallèles**

This sound damping curtain wall has a number of generally parallel tubular damping elements arranged in side by side fashion. Each damping element is fabricated from thin flexible material and may include longitudinally extending corrugations. Each end of each damping element is provided with a recess having a cross-section that conforms to the cross-section of horizontally extending beams which are received therein. The beams are attached to vertical posts set in a suitable foundation. Each vertical post may be arranged inside a corresponding damping element. With the damping elements disposed between the horizontal beams and the vertical posts, each damping element is resiliently pressed against each adjacent damping element.

Ake J.H.C. Weimar, Larsbergsvagen 51, S-181 38 Lidingo; Hans H. Gustafson, Tradgardsgatan 22, S-17238 Sundbyberg, Sweden

Variable Gas Leak Rate Valve**1,012,951****Soupape réglable pour la mesure des fuites de gaz**

This variable gas leak rate valve utilizes a poled piezoelectric element to control its opening and closing. The gas flow may be around a cylindrical rod with a tubular piezoelectric member encircling the rod for seating thereagainst to block passage of gas

and for reopening upon application of suitable electrical fields.

The United States Energy Research and Development Administration, Washington, District of Columbia 20545, U.S.A.

Tank for a Storage Cell Battery and Process for Injection Moulding of Same **1,013,025** **Bac d'accumulateur et son procédé de moulage par injection**

This is a tank for a storage cell battery made of an injected plastic substance. The tank comprises a bottom, lateral walls and internal partitions forming compartments and is characterized in that the bottom has at least one balancing groove arranged facing an internal partition. In the tank moulding process, before injecting the plastic substance, at least one rule is fixed in relief onto the bottom of the hollow body, the thickness of the rule being adjusted with a view to balance the distribution of the plastic substance injected between the core and the hollow body.

Compagnie Européenne d'Accumulateurs, 16 rue de la Baume, 75008 Paris, France; Société Fulmen, 18 Quai de Clichy, 92111 Clichy, France

CANADA PATENT OFFICE RECORD

The Canada Patent Office Record lists weekly the patents issued in Canada, those that are available for licensing or sale, the latest patent number to fall into public use, and other patent information. Typical of the information contained is the following:

- paper copy of any Canadian patent issued subsequent to number 445,930. 1.00
- full patent on microfiche of Canadian patents issued subsequent to April 5, 1976 0.25
- annual subscription for abstracts on microfiche of Canadian patents commencing at any date after April 5, 1976 20.00
- annual subscription for claims and drawings on microfiche of Canadian patents commencing at any date after April 5, 1976. 150.00
- a list of titles and classification numbers designating the subject matter of Canadian patents free
- lists of sub-classes in a class (Schedules) and the type of subject matter to be found in each class (Definition). Cost on request. varies

Cheques or money orders should be made payable to the Receiver General of Canada and forwarded to the Commissioner of Patents, Hull, Quebec, K1A 0E1. A Deposit Account (minimum \$100.00) may be opened to pay for microfiche and paper copies of patent documents.

The weekly Canada Patent Office Record is available for \$1.00 per single issue or \$26.00 per annum. Copies and subscriptions are available from: Publishing Centre, Supply & Services Canada, Ottawa, K1A 0S9.

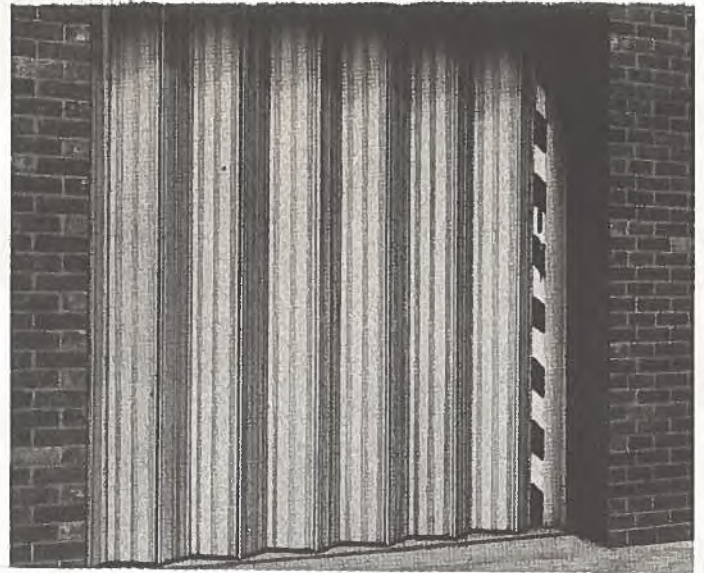
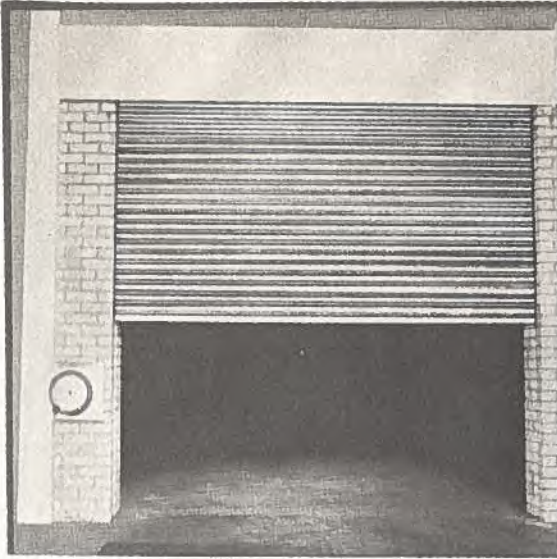
GAZETTE DU BUREAU DES BREVETS

La Gazette du Bureau des brevets, une publication hebdomadaire, renferme la liste des brevets émis au Canada ainsi que ceux qui sont à vendre ou disponibles pour fabrication sous licence; elle indique aussi le numéro des derniers brevets qui sont devenu d'usage public et d'autres renseignements relatifs aux brevets. Voici certains renseignements pertinents:

- Copie, sur papier, de tout brevet canadien délivré subséquemment au numéro 445 930 1.00
- Microfiche du texte intégral de tout brevet canadien publié après le 5 avril 1976 0.25
- Souscription annuelle pour des abrégés sur microfiches, de brevets canadiens publiés après le 5 avril 1976 20.00
- Abonnement annuel aux microfiches des revendications et dessins relatifs aux brevets canadiens délivrés après le 5 avril 1976. 150.00
- Liste des titres et de la classification numérique relatifs aux sujets visés par les brevets canadiens gratuit
- Liste des sous-classes, selon la classe (annexe) et du type des sujets faisant l'objet de chaque classe (définitions). Prix sur demande. variable

Les chèques ou les mandats-poste doivent être libellés à l'ordre du Receveur général du Canada et transmis au Commissaire des brevets, Hull, Québec, K1A 0E1. Un compte provision (minimum de \$100.00) peut être ouvert pour l'achat de microfiches et de copies de documents concernant les brevets.

La Gazette hebdomadaire du Bureau des Brevets est disponible à \$1.00 la copie ou \$26.00 par année. On peut obtenir des copies individuelles ou s'abonner à l'adresse suivante: Centre de l'Édition, Approvisionnements et Services Canada, Ottawa, Canada, K1A 0S9.



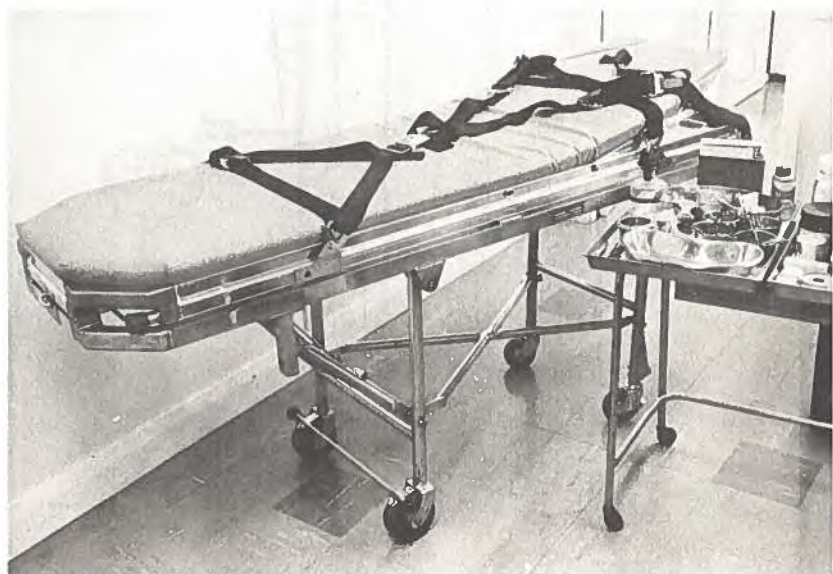
Item 3554 — Doors and Grilles
Article 3554 — Portes et grillages



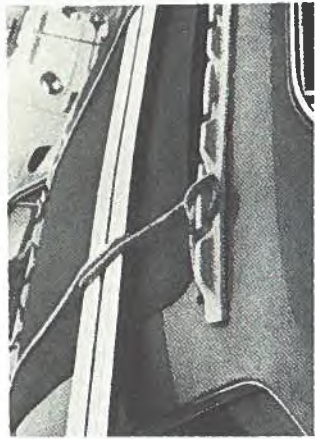
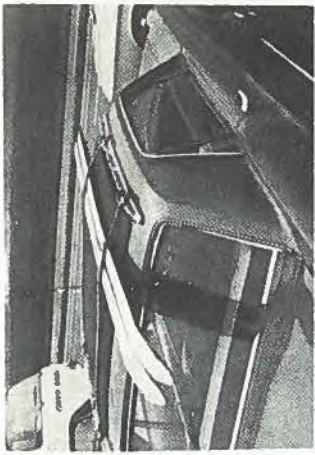
Item 3556 — Radio Communications Equipment
Article 3556 — Equipement de radiocommunications



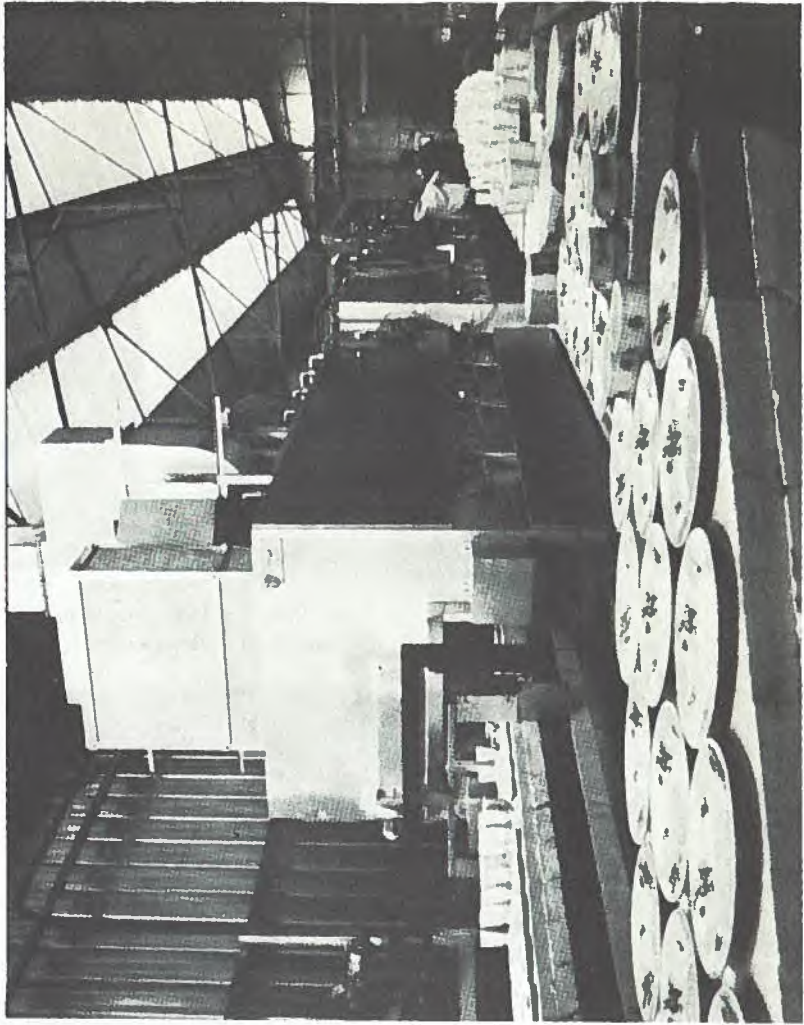
Item 3561 — Suspension Hook
Article 3561 — Crochet de suspension



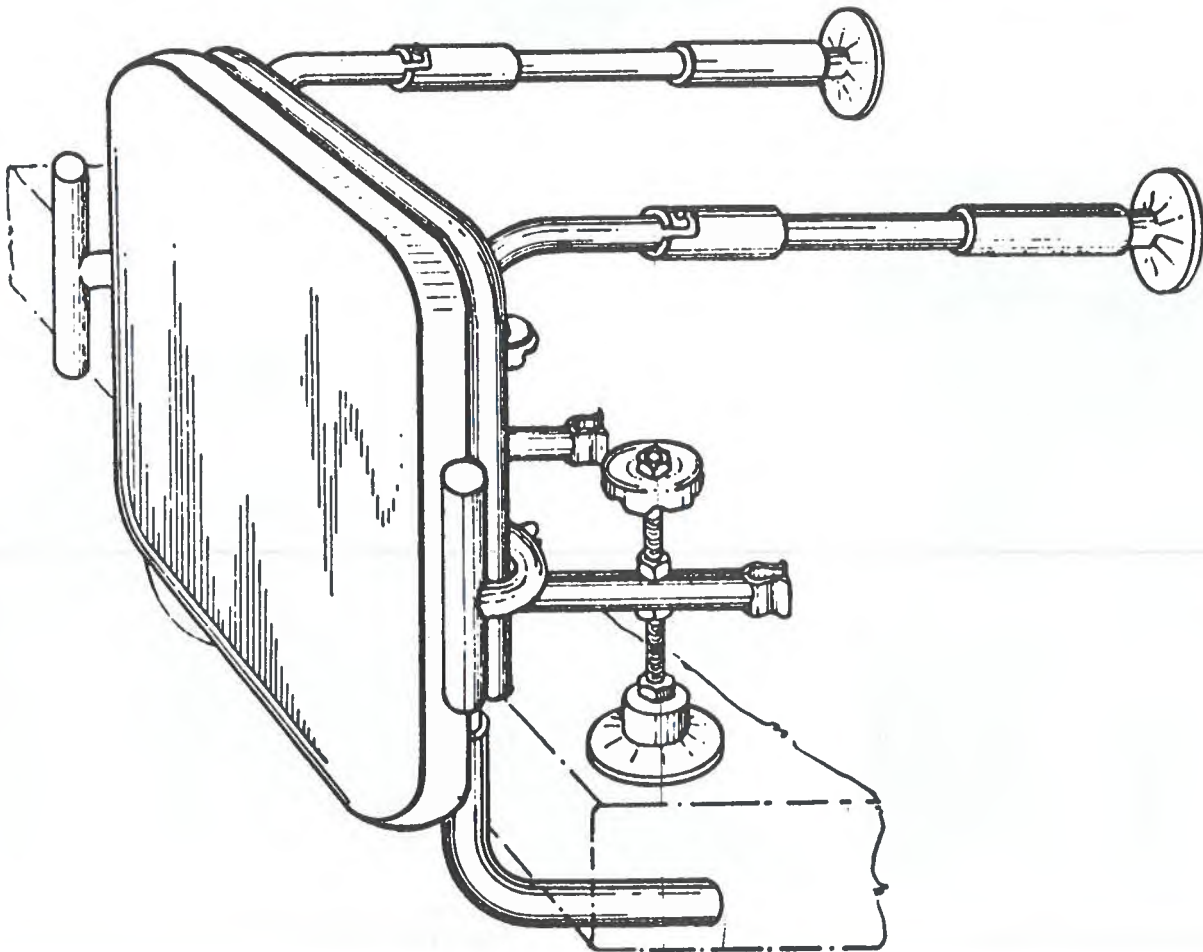
Item 3559 — Stretcher System
Article 3559 — Civière



Item 3560 — Securing Cleats
Article 3560 — Attaches de fixation



Item 3558 — Fast-Firing Kilns
Article 3558 — Four à cuisson rapide



Item 3564 — Bathtub Seat
Article 3564 — Siège de baignoire