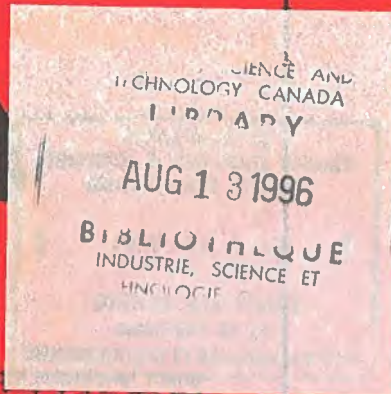


new products bulletin



bulletin de produits nouveaux

This monthly bulletin is published to promote manufacturing in Canada. Information on offers included in the bulletin is for circulation to established or prospective Canadian manufacturers only. No responsibility is assumed for claims or statements made. Address enquiries concerning the following items to:

Department of Industry, Trade and Commerce
Ottawa, Canada K1A 0H5

Attention: Industrial and Trade Enquiries Division
(Telephone 613 593-4963)

Le présent bulletin est publié mensuellement en vue de stimuler au Canada l'accroissement du secteur manufacturier. Les renseignements concernant les offres publiées dans le bulletin ne sont destinés qu'aux manufacturiers canadiens établis ou projetant de s'établir. Nous ne sommes pas responsables de la teneur des demandes ou des annonces publiées. Pour tous renseignements à ce sujet, s'adresser à:

Ministère de l'Industrie et du Commerce
Ottawa (Canada) K1A 0H5

Aux soins de: Division des renseignements industriels
et commerciaux

(Téléphone 613 593-4963)

BULLETIN 262

OCTOBRE 1977

Office Furniture

Item 3578

French firm offers under license the Canadian manufacturing rights to its integrated modular metal office furniture system, and its line of steel cabinets with plastic doors which retract completely to allow free access to cabinet contents without interfering with passage space around the cabinets. Interested firms should have expertise in metal fabricating. Literature available. See illustration.

Flagstone Laying Machine

Item 3579

Danish company offers under license the Canadian manufacturing rights to its hydraulic device for transporting and laying heavy flagstones. This device can be quickly and easily adjusted to the most suitable working height and for various sizes of flagstones. Flagstones to a maximum weight of 100 kg can be handled. Literature available. See illustration.

Protective Wall Treatment

Item 3580

Australian manufacturer of building construction and maintenance aids is offering a license for the manufacture in Canada of its line of paint-repellent synthetic tri-polymers. These liquid materials can be applied by brush, roller or airless spray on masonry, and most other surfaces subject to graffiti attack. The treated surface permits easy removal of aerosol paint, dye markers, crayons, ballpoint ink, lipstick, etc., by normal cleaning processes. Literature available.

BULLETIN 262

OCTOBRE 1977

Ameublement de bureau

Article 3578

Une société française offre, sous licence, les droits de fabrication au Canada de son système d'ameublement de bureau modulaire et intégré ainsi que sa gamme de classeurs métalliques avec portes plastiques complètement escamotables permettant le libre accès au contenu du meuble sans nuire à la circulation autour des meubles. Les sociétés intéressées devraient avoir de l'expérience dans le traitement du métal en feuilles. Documentation sur demande. Voir l'illustration.

Machine pour lever les dalles

Article 3579

Une société danoise offre, sous licence, les droits de fabrication au Canada de son dispositif hydraulique pour soulever et transporter des dalles lourdes. Ce dispositif est rapidement et facilement ajustable à toute hauteur et aux diverses dimensions de dalles. Il peut lever des dalles pesant jusqu'à 100 kg. Documentation sur demande. Voir l'illustration.

Traitement de protection des murs

Article 3580

Un fabricant australien de matériel de construction et d'entretien offre, sous licence, les droits de fabrication au Canada de sa gamme de tri-polymères synthétiques auxquels la peinture n'adhère pas facilement. Ces matériaux liquides peuvent être appliqués au moyen d'un pinceau, d'un rouleau ou d'un vaporisateur à vide sur la maçonnerie et la plupart des autres surfaces attirant les graffiti. Le traitement de la surface permet, en utilisant les procédés habituels de nettoyage, l'enlèvement facile de la peinture en aérosol, des crayons colorés, du fusain, de l'encre de stylos à bille, de crayons de rouge à lèvres, etc. Documentation sur demande.



Industry, Trade
and Commerce

Industrie
et Commerce



Industrie
et Commerce

Industry, Trade
and Commerce

Vehicle Wheel Washer**Item 3581**

British firm seeks a Canadian licensee for manufacturing its vehicle wheel washing system. Included is a range of models designed to clean the wheels and under chassis of vehicles before they leave the site. These units are claimed to remove mud, stones and toxic wastes, and to recover valuable ores and minerals. They can be located anywhere since no power source is needed, the units being operated by power provided by the vehicle being cleaned. Literature available. See illustration.

Counter Balanced Tower**Item 3582**

American company offers under license the Canadian manufacturing rights to its counter balanced hinged tower. The tower is of welded steel pipe construction and can be used as an antenna for television, AM-FM radio, and CB broadcasting, as a flagpole or birdhouse pole, or as a hinged lighting standard for parking lots, etc. This new concept in tower design is claimed to allow for faster and simpler erection without climbing, and to provide inexpensive manufacture and maintenance. Literature available. See illustration.

Folding and Stacking Machines**Item 3583**

Dutch firm offers under license the Canadian manufacturing rights to its line of folding and stacking machines for sheets and small articles used in laundries, textile industries, hospitals, hotels, etc. The machines available include an electronic sheetfolding machine, a lengthwise folding machine, a cross-fold and stacking machine for sheets, a multi-lane, small piece stack-and-fold machine, and a complete folding and stacking line for sheets and small pieces. Literature available. See illustration.

INVENTIONS

The following manufacturing opportunities represent products and processes that have not been commercially proven. In some cases, prototypes have been developed.

Scale Protection Device**Item 3584**

British inventor seeks a licensing arrangement with a Canadian firm for the manufacture of his device to prevent hard water scale damage and energy wastage in the home. This self-contained, low cost electronic unit is inserted into the supply pipe at the point of entry into the house. The device promotes the growth of innumerable minute scale crystals in suspension so that they leave the system with the water when it is drawn off for use. It is claimed to set up a protective system which extends the operational life of washers,

Dispositif de nettoyage de roues de véhicules Article 3581

Une firme britannique aimerait conclure une entente avec une entreprise canadienne licenciée pour la fabrication de son système de nettoyage de roues de véhicules. Vous trouverez ci-joint une gamme de modèles conçus pour nettoyer les roues et le dessous des châssis des véhicules avant qu'ils quittent un chantier. Ce dispositif permet d'enlever la boue, les cailloux et les déchets toxiques et de récupérer du minerai et des minéraux de valeur. Il peut être installé n'importe où, aucune source d'énergie n'étant nécessaire; il est actionné par les roues du véhicule qui est nettoyé. Documentation sur demande. Voir l'illustration.

Tour équilibrée à charnière**Article 3582**

Une société américaine offre, sous licence, les droits de fabrication au Canada de sa tour équilibrée à charnière. La tour est faite d'acier de tuyau soudé et peut servir d'antenne de télévision, de radio, de diffusion d'ondes du SRG, de porte-drapeau, de poteau pour maisonnette d'oiseau, de poteau d'éclairage à charnière dans les terrains de stationnement, etc. Ce concept nouveau permet d'installer les tours plus rapidement et plus facilement sans avoir à y grimper; les frais d'installation et de maintenance sont également peu élevés. Documentation sur demande. Voir l'illustration.

Machines à plier et empiler**Article 3583**

Une société néerlandaise offre, sous licence, les droits de fabrication au Canada, de sa gamme de machines à plier et empiler les draps et les menus articles utilisés dans les buanderies, industries du textile, hôpitaux, hôtels, etc. Parmi les machines disponibles, on note une plieuse électronique de draps, une plieuse longitudinale, une machine pour pliage en largeur et empilage pour les draps, une plieuse et empileuse multi-voie, une plieuse avec empileuse pour petites pièces et une gamme complète de machines à plier et empiler les draps et petites pièces. Documentation sur demande. Voir l'illustration.

INVENTIONS

Les possibilités de fabrication suivantes concernent des produits et procédés qui n'ont pas été éprouvés commercialement. Dans certains cas, des prototypes ont été mis au point.

Dispositif de protection contre l'entartrage**Article 3584**

Un inventeur britannique offre, sous licence, les droits de fabrication, par une société canadienne, de son dispositif destiné à prévenir les dommages causés par l'entartrage et le gaspillage d'énergie dans les résidences, dûs à l'eau dure. Ce dispositif électronique, autonome et peu coûteux est inséré dans le tuyau d'amenée, à son entrée dans la maison. Le dispositif favorise le développement d'innombrables cristaux minuscules de tartre en suspension dans l'eau afin qu'ils soient évacués du système lorsque l'on utilise l'eau. On

kettles, heat exchangers, boilers, etc. The appearance and taste of the treated water are not affected. Literature available. See illustration.

Industrial Robot

Item 3585

American company is offering the rights for manufacturing under license in Canada a robot designed to automatically remove stamped pieces from a press machine. By installing a magazine feeder on a die, a press can be fully automated in combination with the robot. It is claimed that the robot can be easily installed on any type of press. The driving system is operated by compressed air, the control system by electrical sequence. Set-up time is usually less than 5 minutes, making it practical for short runs. Literature available.

Stepped Piston Engines

Item 3586

British inventor is offering under license the Canadian manufacturing rights to his stepped piston engines based on the two-stroke cycle and making use of a step or two diameter piston. Fresh charges of fuel and air, or air only, are induced into the working cylinder without using the crankcase as a pump. The engine incorporates a simple, pressure lubricated crankshaft and connecting rod assembly, with a combustion chamber and cylinder porting of conventional two-stroke design. No valves, valve gear camshafts or driving gears are required. The stepped piston concept is claimed to combine the best features of current 4 cycle and 2 cycle engines while eliminating the traditional drawbacks of 2 cycle engines. Literature available.

Hard Coating Process for Aluminum

Item 3587

American company offers under license the Canadian manufacturing rights to a hard coating process for aluminum. The process utilizes a photo-chemical etching technique wherein photographs on metals are electro-chemically hardened and coloured. The resulting product has good heat transfer qualities and a flint hard surface which is unaffected by extended exposure to saline humidity, rain, snow, sunlight or temperature variations. Main uses include sign making and for coating solar collector panels. Literature available.

Surface Treatment Device

Item 3588

Austrian inventor is offering the rights to manufacture under license in Canada his device for treating and improving various surfaces by imparting a velvet effect on same. The device is portable, operated by ac or dc, with a consumption

prétend qu'il constitue un système de protection qui prolonge la vie utile des laveuses, bouilloires, échangeurs de chaleur, chaudières, etc. L'apparence et le goût de l'eau traitée ne sont pas affectés. Documentation sur demande. Voir l'illustration.

Robot industriel

Article 3585

Une société américaine offre, sous licence, les droits de fabrication au Canada, d'un robot destiné à enlever automatiquement d'une presse, les pièces embouties. Une presse, combinée avec le robot, peut être complètement automatisée par l'installation d'un chargeur d'alimentation sur une matrice. On prétend que le robot peut être installé facilement sur tout genre de presse. Le système d'entraînement fonctionne à l'air comprimé et le système de commande, par séquences électriques. La mise en place exige habituellement moins de cinq minutes, ce qui est pratique dans le cas de petites séries de produits. Documentation sur demande.

Moteurs à pistons en gradins

Article 3586

Un inventeur britannique offre, sous licence, les droits de fabrication au Canada, de ses moteurs à pistons en gradins fondés sur le cycle à deux temps, utilisant un piston à gradins ou de deux diamètres. Le cylindre est alimenté en carburant et air frais ou en air seulement sans que le carter agisse comme pompe. Le moteur comprend un ensemble de vilebrequin et de bielle simple, lubrifié sous pression ainsi qu'une chambre de compression et une portée cylindrique de design conventionnel du moteur à deux temps. Les valves, les arbres à cames de soupapes ou les pignons d'entraînement ne sont pas nécessaires. On prétend que le piston en gradins réunit les meilleures caractéristiques des moteurs à 4 et 2 temps tout en éliminant les inconvénients traditionnels des moteurs à 2 temps. Documentation sur demande.

Procédé de revêtement dur pour l'aluminium

Article 3587

Une société américaine offre, sous licence, les droits de fabrication au Canada, d'un procédé de revêtement dur pour l'aluminium. Le procédé fait appel à une technique d'attaque photo-chimique à l'acide grâce à laquelle les photographies sur les métaux sont durcies et colorées électro-chimiquement. Le produit fini a de bonnes qualités de transfert de la chaleur et offre une surface aussi dure que la silice qui n'est pas affectée par de longues expositions à l'humidité saline, à la pluie, à la neige, au soleil et aux écarts de température. Parmi les principaux usages, on remarque la fabrication d'enseignes et le revêtement de panneaux collecteurs d'énergie solaire. Documentation sur demande.

Dispositif de traitement de surfaces

Article 3588

Un inventeur autrichien offre, sous licence, les droits de fabrication au Canada de son dispositif de traitement et d'amélioration de surfaces diverses qui leur imprègne un fini velours. Il s'agit d'un appareil portatif, qui fonctionne sur le courant alternatif ou continu et consomme 250 milliam-pères pour 12 volts. Il peut traiter des surfaces qui doivent

of 250 milliamperes at 12 V. Its range of applications includes surfaces which require to be sound-absorbing, water-repellent, fire-retarding or mothproof. The treated surface can be sponged clean. The Canadian licensee should have some knowledge of the flocking process. Literature available.

Chemical Syringe

Item 3589

American inventor is seeking a licensing arrangement with a Canadian firm for the manufacture of his chemical syringe or fluid handling automatic pipette. This instrument is suitable for taking samples such as blood in a separate compartment and holding it for mixing purposes. The sample taking and diluent suction is done on the upstroke during the withdrawal of the plunger from its mating cylindrical housing; discharging and diluting are done on the downstroke of the plunger. The design is claimed to be unique in that it does not use conventional check valves. Inventor also offers for licensing his patent on a compressed gas valve with constant flow for use with oxygen emergency kit. Literature available.

être insonorisées, hydrofugées, ignifugées ou rendues à l'épreuve des mites. La surface traitée peut être nettoyée à l'aide d'une éponge. Le fabricant canadien doit avoir une certaine connaissance du procédé de flockage. Documentation sur demande.

Seringue chimique

Article 3589

Un inventeur américain cherche à conclure un accord de licence avec une société canadienne pour la fabrication de sa seringue chimique ou pipette automatique pour liquides. Cet instrument sert à prendre des échantillons de sang par exemple, et à les retenir dans un compartiment séparé aux fins de mélange. La prise d'échantillon et la succion du liquide diluant se font au mouvement ascendant, pendant le retrait du piston de l'enveloppe cylindrique appareillée; la décharge et la dilution se font au mouvement descendant du piston. La seringue est, semble-t-il, de conception unique puisqu'elle ne se sert pas des soupapes d'arrêt traditionnelles. Cet inventeur offre également, sous licence, le brevet de sa soupape de gaz comprimé à débit constant qu'on utilise avec les trousseaux à oxygène d'urgence. Documentation sur demande.

RECENTLY ISSUED CANADIAN PATENTS AVAILABLE FOR LICENSING OR SALE

Résumés of these patents are published in the language of application. English or French. Only patent titles are published in both official languages. Parties interested in discussing the rights to license any patent listed hereunder should contact the owner of each patent directly. The patent owner's name and address follows a brief summary of his patent. If a copy of the full patent is required it may be obtained for \$1.00 from the Commissioner of Patents, Ottawa-Hull, Canada K1A 0E1.

BREVETS CANADIENS RÉCEMMENT ÉMIS À VENDRE OU OFFERTS SOUS LICENCE

Un résumé de l'invention est publié dans la langue de la demande de brevet, soit en anglais, soit en français. Seuls les titres sont publiés dans les deux langues officielles. Toute personne désireuse de discuter des droits d'exploitation sous licence de ces brevets doit s'adresser directement au détenteur du brevet dont le nom et l'adresse figurent à la suite du bref exposé. Les intéressés peuvent se procurer des exemplaires de brevets au prix de \$1.00 en écrivant au Commissaire des brevets, Ottawa-Hull, Canada K1A 0E1.

Method for Separation of Selenium from Mercury at Their Recovery from Raw Materials Containing metals

1,014,751

Méthode de séparation du sélénium du mercure extraits de matériaux bruts contenant des métaux.

In this method selenium is separated from mercury at their recovery from raw materials containing metals. This operation is done by heating the raw material in oxidizing conditions admixed with a basic alkaline earth metal compound which in the thermic treatment carried out in these conditions binds selenium into an easily dissolvable form while mercury is distilled. After dissolution, treatment is effected with dilute acid and the dissolution residue separated from the solution from which selenium is recovered.

Outokumpu Oy, Outokumpu, Finland

Device for Applying a Parallel Bar Code to a Document

1,014,792

Dispositif pour appliquer un code à batonnets parallèle sur un document

The invention relates to a device for applying a parallel bar code to a document such as a postal article. The device comprises an apertured plate, a second plate to hold the document against the apertured plate and styli each movable towards and into contact with one side of the document and subsequently along the document to write a bar of the code. The action is one of scribing rather than printing. A mechanism is arranged to move the styli in closed loop writing paths. Stops associated with the styli prevent full movement of the styli into contact with the document unless respective electromagnets are energized to remove the stops.

De Staat der Nederlanden, te dezen vertegenwoordigd door de directeur-generaal der Posterijen, Telegrafie en Telefonie, 12 Kortenaerkade, The Hague, Netherlands

No Till Seed Drill**1,014,799****Semoir à grain sans charrue**

This seed drill comprises a number of pairs of discs wherein each pair includes a forward coulter disc tangentially engaging a rearward furrow opening disc held by clevis members to a wheel supported framework. Seeds are directed between the disc pairs to fall to a point of convergence between the two discs. Forward rotation of the discs cause the seeds to be separated and evenly spaced apart as the seed drill is moved along a forward path of travel.

Morton C. Swanson, P.O. Box 214, Palouse, Washington 99161, U.S.A.

Process for Forming a Metallic Oxide Coating**1,014,803****Procédé pour former un revêtement d'oxyde métallique**

A metallic oxide coating is formed on a substrate which may be vitreous, partially vitreous or nonvitreous by applying to the substrate a solution of one or more metallic salts selected from the group of the acetates, halides and nitrates in an aprotic solvent having a dielectric constant greater than 15 and a dipolar moment greater than 3D. The substrate and applied solution are then subjected to heat to convert *in situ* the metallic salt to form a coating comprising at least one metallic oxide.

Glaverbel-Mecaniver, Chaussée de la Hulpe, 166 Watermael-Boitsfort, Belgium

Lyophilic Waste Disposal**1,014,845****Élimination des déchets lyophiles**

Wet sewage, which may contain or be mainly composed of human waste, is treated to remove readily separable liquid components and is then comminuted. The wet comminuted waste material is then compressed into a relatively thin layer, frozen, and then subjected to a vacuum to remove by sublimation all of the liquid components, leaving the solid material in a completely dry form. The foregoing is accomplished in a continuous process and the material is subjected to different stages of vacuum, with or without controlled heating, so as to perform a selective removal of frozen liquid components by sublimation.

Matthews Donnell R. (Jr.), 957 Barclay Lane, E. Lansing, Michigan, 48823, U.S.A.

Manutention de charges unitaires**1,014,883****Handling of Unit Loads**

Ce convoyeur de charges est caractérisé par le fait qu'il comprend un tapis pneumatique comportant des premiers éléments et des seconds éléments gonflables respectivement par un premier et un second circuit de gonflage, ces éléments présentent des extrémités fixes par rapport à une face du tapis et des extrémités libres susceptibles d'être amenées au moyen des circuits de gonflage, par un mouvement pivotant, d'une position de repos à une position de travail. Les éléments d'une même parité sont toujours parallèles entre eux et situés d'un même côté par rapport à leurs extrémités fixes, les premiers éléments étant parallèles aux seconds, mais de sens opposés.

Jean Guigan, 9 rue Jean Mermoz, 75008 Paris, France

Tape Transport Apparatus and Selective Driving Means**1,014,926****Appareil de transport de ruban et mode d'entraînement sélectif**

This tape transport apparatus employs an elongate pliable record tape wrapped to form supply and take-up rolls and a capstan engaging the tape to feed tape from one roll to the other and return. It also employs a rotating flywheel for driving the capstan and means for selectively coupling the flywheel in driving relation to the capstan to feed tape at different speeds in one direction. Means are also used for selectively decoupling the flywheel from the capstan to remove its momentum for rapid deceleration.

American Videonetics Corporation, 795 Kifer Road, Sunnyvale, CA 94086, U.S.A.

Magnetically Controlled Obturator**1,014,997****Obturbateur à commande magnétique**

This obturator for the rotor of a machine such as a compressor for special or toxic fluids consists of an annular seal clamped in the active position between stationary knife-edge elements provided on the rotor and movable knife-edge elements carried by an annular supporting member. The member is capable of moving along the axis of the machine under the action of magnetic means between an inactive position at a distance from the rotor and an active position in which it is coupled with the rotor as a result of magnetic attraction forces. The movable knife-edge elements are joined to the movable supporting member by resilient means whereby an obturation force of lower value than the magnetic attraction force is exerted in the direction of the stationary knife-edge elements.

Société Nationale d'Étude et de Construction de Moteurs d'Aviation, 150, boul. Haussmann, 75008 Paris, France

Food Service Cart with Thermoelectric and Infrared Heating 1,015,034 **Chariot de distribution d'aliments à chauffage thermoélectrique et infrarouge**

A food reheating and reconstitution apparatus and method is presented employing thermoelectric devices, infrared heaters, and moisturizing for a vertically stacked array of food trays. The hot junctions of the thermoelectric device heat the bottom of a food tray; the cold junctions of that device provide a cooling effect for the surface of the food at the next lower tray to prevent scorching from the infrared heaters which heat the upper surface of food in that tray. The hot junctions of the thermoelectric device heat a water supply to provide moisturizing vapor for the food.

Meyers Systems and Technology, Inc., 379 Wetherell Street, Manchester, Connecticut, 06040, U.S.A.

Gaseous Flux Laser Oscillator 1,015,052 **Oscillateur à laser à écoulement gazeux**

This is a gaseous flux laser oscillator of the type in which a gaseous mixture is excited actually within the optical resonant cavity by an electrical discharge. A hole drilled in one of the mirrors of the optical cavity enables both the leaving of the light beam produced and the inserting of the gas in the discharge tube in the form of a high-speed jet causing a swirling flow.

Compagnie Générale d'Électricité, 54 rue La Boétie, 75382 Paris Cedex 08, France

Process, Structure and Composition Relating to Master Alloys in Wire or Rod Form 1,015,106 **Procédé, structure et composition portant sur les alliages-mères sous forme de fil ou de tige**

The invention contemplates a filled tube master alloy wire or rod, where the desired alloy element or elements may typically comprise the tube material itself as all or part of a desired alloy element, and granular filler material in the form of a pure metal or suitable alloy, or a blend of pure metals or suitable alloys. The master alloys in wire or rod form may contain or enclose all or part of the desired grain refining, inoculating, deoxidizing or alloy constituent or constituents as pulverized metal within a tube of aluminum, mild steel, or other suitable metal or alloy.

Robert T.C. Rasmussen, 1296 Randy Drive, Pottstown, Pennsylvania, 19464, U.S.A.

Portable Angling Assembly 1,015,163 **Ensemble portatif de pêche à la ligne**

The present device comprises a moulded casing having a reel assembly enclosed therein and having a handle portion formed integrally therewith and extending rearwardly from the reel portion. A telescopic rod assembly is carried within the upper portion of the casing and can be extended therefrom for providing a flexible rod when extended. Means are provided in the upper rear portion of the casing and handle to store the hook and other elements of the fishing equipment which are attached to the reel and extend through the rod ferrules. The rod carrying portion can be detached from the casing if desired to provide access to the storage part of the handle.

Kerry Yuen, 17 Crowson Bay, Winnipeg, Manitoba, Canada

Animal Trap 1,015,164 **Piège d'animal**

This animal trap has a wire frame enclosed by a hood to provide an entrance opening. The wire frame provides a striker jaw and a fixed jaw disposed on opposite sides of the entrance opening when the trap is set and baited. Means are provided for suspending the trap at a suitable distance above the surface of the ground so that an animal standing upright beneath the trap can reach the bait only by entering its head into the entrance. The bait is attached by a trigger assembly mounted within the frame above the entrance opening and, when the bait is touched, the trigger assembly is actuated to release one spring-powered striker jaw whereby to break the animal's neck against the fixed jaw thus killing quickly and humanely.

William Gabry, Box 10, Javenby, British Columbia, Canada

Expanded Guitar 1,015,181 **Guitare électrique améliorée**

This electric guitar is equipped with a number of strings and circuitry for adjustably attenuating the input signals from the strings not played, circuitry for adjustably varying the attack of the output signals representing notes and chords, gain control circuitry utilizing a photo-conductor, and a mechanically coupled feedback path for applying output signals back to the strings to sustain vibrations.

254803 Investments Limited, c/o 101 Richmond Street West, Toronto, Ontario, Canada

Adjustable Ladder 1,015,336 **Échelle réglable**

This ladder has adjustable extensions secured to the lower ends of the ladder legs so that it can seat upon an inclined surface or steps on different elevations; each extension has a row of openings along its length, a selective one of the openings being

engaged by a transverse bolt extending through the ladder leg.

Anthony G. Basile, c/o George Spector, 3615 Woolworth Building, New York, N.Y. 10007, U.S.A.

Dough Mixer Having Paddles with Thickened Edges **1,015,353** **Malaxeur de pâte à palettes à bords épais**

This continuous dough mixer has an elongated trough-like body portion with a discharge outlet adjacent one end and means for continuously feeding dough ingredients into it near the other end. A pair of parallel shafts extend lengthwise in the body portion and rotate in the same direction. Paddles extend from the shafts at such oblique angles to the shafts axes as to advance the mixer contents lengthwise of the body portion toward the outlet and include dough developing paddles that have ribs extending lengthwise of the paddles provided by a round rod embracing a marginal edge of each paddle.

Marion Corporation, 1150 Southwest Boulevard, Kansas City, Kansas 66103, U.S.A.

Acoustic Transducer and Method of Fabrication **1,015,446** **Transducteur acoustique, méthode de fabrication**

This ultrasonic transducer is specifically suited to high temperature sodium applications. A piezoelectric active element is joined to the transducer faceplate by coating the faceplate and juxtaposed active element face with wetting agents specifically compatible with the bonding procedure employed to achieve the joint. The opposite face of the active element is fitted with a backing member designed to assure continued electrical continuity during adverse operating conditions which can result in the fracturing of the active element.

United States Energy Research and Development Administration, Washington, District of Columbia 20545, U.S.A.

Sterilizable Connector for Use in Processing Frozen Blood **1,015,635** **Raccord pouvant être stérilisé destiné à être employé dans le traitement du sang gelé**

This is a two-stage, heat-sterilizable connector for use in processing frozen blood. The connector assures sterility when entering a blood bag to add agents required in processing blood for freezing, and is designed to comprise a male and female body element. In a first stage, both elements are partially joined in an extended engagement without breaking the sterile seal into the blood bag system. In the extended or separated stage, the connector is sterilizable and, after sterilization, the male and female body elements are joined to effect the puncturing of the sealing male and female septa thus providing a fluid passageway therethrough in the engaged position and avoiding contamination of the sterile mating surfaces.

Abcor, Inc., 341 Vassar St., Cambridge, Massachusetts, U.S.A.

Tire Chain for Tractors and the Like **1,015,646** **Chaînes pour pneus de tracteurs et véhicules analogues**

This tire chain for tractors and the like, comprising a number of relatively large longitudinally aligned annular elements which are retained in the chain by means of laterally extending chain parts, and on which are welded a number of plate members protruding in radial planes normal to the general plane of the annular element. The plate members serve both as claw means for the chain and as means for connecting the lateral chain parts for the annular elements.

Norsk Kjettingindustri A-S Alf Nøstet, P.O. Box 38, 4501 Mandal, Norway

Pine Tar Ointment Composition **1,015,664** **Onguent composé de résine de pin**

The pine tar ointment herein described comprises a composition of pharmaceutically acceptable pine tar, pine resin, olive oil, soap and beeswax in which the proportion of pine tar to total composition is at least 1:3. The ointment may be topically applied in the treatment of psoriasis as well as a variety of other skin conditions such as eczema and baby diaper rash. In the latter case no rubefacient such as camphor should be present. It is also desirable that ingredients such as chrysarobin or tar which tend to stain clothing not be present in the composition.

Helen Simon, 69 Claver Avenue, Toronto 395, Ontario, Canada

Device for the Insulation of the Wall of a Standing, Cylindrical Steel Tank, which Permits Inspection of the Lower Portion Thereof **1,015,674** **Dispositif pour isoler les parois d'un réservoir d'acier cylindrique vertical et permettant d'en vérifier la partie inférieure**

This is a device for facilitating inspection of the lower portion of the sheet-steel wall of an insulated standing cylindrical tank and the protruding edge thereof. The device constitutes an inspection zone in the lower portion of the tank, the insulation of the tank including insulation material and an outer protection plate. The inspection zone is removable from the tank and delimited

from the above-lying insulation by means of a horizontal supporting surface attached to the tank wall by means of a circumferential tightening device.

International Testing and Consulting Company, Vaduz, Liechtenstein

Snow Shoe Harness

1,015,788

Fixations pour raquettes à neige

This harness is adapted to secure the boot of a user to a snow shoe in such manner that the toe of the boot is pivotally secured to the shoe and the heel of the boot is free to move vertically relatively to the shoe. Increased mobility is then attained and less effort is required for use.

Jule B. Frye, Cedarside, Valemount, B.C., Canada, V0E 2Z0

Massive Calf Developer

1,015,790

Exerciseur intensif de mollet

This exercising apparatus is designed to aid in the development of the muscles of the lower legs. It is made in the form of a harness which extends from the shoulders to between the legs. Its construction consists of two loops that extend from the shoulders to between the legs. The loops are held together by three pairs of straps, one pair front and back about the chest high to hold the loops on the shoulders, another pair about waist high and another pair on the outside of the thighs on the side of the loops to prevent the loops from going into the groin. The loops and straps can be made of nylon reinforced canvas webbing or similar material about an inch and a half wide.

Gerard R. Reid, 1209 Huron Street, Apt. 105, London, Ontario, Canada N5Y 4L1

Face Mask

1,015,902

Masque protecteur

This is a face mask for use with a protective helmet. The mask comprises a main support member adapted to be attached to the helmet at each of its upper ends and shaped to extend down each side of the face of a wearer and under his chin. A cage extends outwardly from the main support member and across the lower face and under the chin of the wearer to protect the lower face. Lower attachment means attach the face mask to the helmet at a point remote from its attachment to the main support member. A transparent, break-resistant screen to protect the eyes and upper face is attached to the main support member. The bottom edge of the screen is close to the upper edge of the cage.

Gregory P. Neeld; Norman G. Neeld, 1210 Taylor Way, West Vancouver, British Columbia, V7T 2K3, Canada

Escalier sectionnel auto-ajustable

1,015,921

Self-Adjusting Sectional Stairway

Il s'agit d'un escalier sectionnel auto-ajustable dont les composantes sont reliées structurellement selon les principes des parallélogrammes à joint-rotule. Il assure, sans ajustement aucun et simultanément, le nivellement des marches, la division de la hauteur totale en contremarches strictement égales et la dimension correspondante de giron qui satisfasse les rapports de proportion établis par les normes de construction. Il peut être allongé ou raccourci d'une ou plusieurs marches en tout temps et facilement. L'escalier peut être assemblé sur le site ou préassemblé en atelier, en entier ou en partie.

Gilles Bilodeau; Marcel Paquet, 1155 avenue des Érables, Québec, Québec, G1R 2N4, Canada

Clamping Device for a Beach Blanket

1,015,922

Dispositif de fixation pour couverture de plage

This is a clamping device for a beach blanket adapted to hold onto a portion of an edge of a beach blanket and to prevent it from moving over a sandy surface. This device comprises a spring actuated clamp with two superposed members pivotally connected to each other about an intermediate portion, one end of the members constituting a pair of handles and the other end a pair of jaws. A spring interconnects both members and is mounted so as to normally and resiliently urge the handles apart from each other and to urge the jaws in contact with each other.

Lisette Dufresne, 5355 – 17ième Ave., App. 3, Rosemont, Montréal, P. Qué., H1X 2R4, Canada

Inner and Outer Pulling Device

1,015,932

Extracteur utilisable de l'intérieur ou de l'extérieur

This puller is manufactured from four parts and includes a pair of jaws which are pivotally supported within a central mounting block and held in position by the engagement of the actuator bolt with cut out portions of the jaw mounting bosses. The jaws

are cut away in thickness on the lower ends so that they will cross over one another thus making it relatively easy to use the puller with the part engaging distal ends positioned for inside or outside engagement of the parts being pulled.

Michael Brodie, P.O. Box 64, Vilna, Alberta, Canada

Forage Harvester

1,016,047

Moissonneuse à fourrage

This chopping and propelling machine for forage harvester is equipped with a casing with a discharge chute at one end and a rotary forage chopper rotor at the other end. The casing defines a housing for the rotor with an inlet and an outlet, a conveyor being provided to feed forage to the chopper rotor through its inlet. A booster impeller is rotatably mounted in the casing between the forage chopper rotor and the discharge chute, the casing defining a housing for the impeller having an inlet in communication with the chopper rotor outlet to receive chopped forage and defining an outlet in communication with the discharge chute to propel chopped forage into the chute.

B & R Choinière Ltée, Casier Postal 230, Ste-Thérèse Ouest, Qué., J7E 4K3 Canada

Activated Red Mud and its Preparing Method

1,016,152

Boues rouges activées et méthode de préparation

Activated red mud for allowing its use as absorbent, catalyst, clarification agent, desulfurization agent and ion-exchange agent is made from red mud of Bayer process by method comprising the digestion of red mud and finally dispersion of residual metallic oxide compound particles of digested red mud and finally dispersion of residual metallic oxide compound particles of digested red mud in the compound of metallic hydroxides and silica gel.

Shing-Jen Shiao, 48-18, 2-Chome Eifuku, Suginami-ku, Todyo, Japan

**Cooling of Power Cables by a Closed Cycle Evaporation-
Condensation Process**

1,016,247

**Refroidissement des câbles électriques par évapora-
tion et condensation en circuit fermé**

The apparatus comprises an enclosed chamber adapted to extend along a portion of a length of the underground cables and adapted to be partially filled with volatile liquid. An enclosed heat exchanger is connected to the enclosed chamber, the connection and the enclosed heat exchanger being located above a level of the volatile liquid heat exchanger being located above a level of the volatile liquid within the enclosed chamber, whereby the volatile liquid is evaporated within the enclosed chamber by heat generated within the power cables. The evaporated liquid is transferred by virtue of a pressure differential from the enclosed chamber to the enclosed heat exchanger, wherein the evaporated volatile liquid is condensed and from which it flows by gravity back to the enclosed chamber.

Institut de Recherche de l'Hydro-Québec (IREQ), 1800 Montée Ste-Julie, Varennes, Québec, Canada

**Cooling of Power Cables Utilizing an Open Cycle
Cooling System**

1,016,248

**Refroidissement des câbles électriques par circuit
de refroidissement ouvert**

The apparatus comprises an enclosed chamber adapted to enclose a portion of a length of underground power cables. A liquid supply inlet is provided to the enclosed chamber, as well as an evaporated liquid outlet from the enclosed chamber. Means are provided to distribute liquid entering the enclosed chamber through the inlet within the enclosed chamber whereby evaporation of the liquid by heat generated within the underground power cables effects the cooling thereof. Means are also provided to initiate removal of evaporated liquid through the evaporated liquid outlet.

Institut de Recherche de l'Hydro-Québec (IREQ), 1800 Montée Ste-Julie, Québec, Canada

Ductile Iron and Method of Making it

1,016,372

Fer ductile et méthode d'élaboration

Ductile iron of this type has been heated, after casting, to its austenization temperature and austenitized and subsequently heat-treated isothermally by cooling in a hot bath to start a bainite reaction which is continued until a desired fraction of the austenite has changed into bainite. Improved properties are achieved by adding as alloying elements molybdenum 0.10-0.26% and manganese 0.3-1.4% by weight and preferably also an additional alloying element which prevents the formation of a pearlitic micro structure during casting. The ductile iron of this invention is useful for making machine elements exposed to fatigue stress loads, such as gear wheels, shafts, sprockets, rolls and cams.

Kymin Osakeyhtio - Kymmene Aktiebolag, Kuusankoski, Finland

Lock-up for Thin Printing Plate**1,016,403****Dispositif de verrouillage pour plaque d'impression mince**

This is a lock-up structure for mounting a thin flexible printing plate to a semi-cylindrical saddle under tension. The saddle is attached to a roll member of a rotary printing press. The lock-up structure comprises a bar at a first straight edge of the saddle to which one end of the printing plate is fixed. A second bar is pivoted to the saddle adjacent its second straight edge by a number of arms having ends pivoted to said saddle spaced from its second straight edge. The second bar has a groove for fixing the other end of the plate. When the second bar is swung against the saddle and latched in position, the plate is tensioned around the saddle and retained in printing position.

Brooks & Perkins, Incorporated, 17515 West Nine Mile Road, Southfield, Michigan 48075 U.S.A.

Construction Panel and Method of Making the Same**1,016,428****Panneau de construction et méthode de fabrication**

This is a construction panel and a method of fabrication wherein a layer of concrete is bound to a layer of a urethane or a polyurethane through a blanket of dry cement mixture. It is set in situ in a mold of a wet cement mixture and an unset foaming plastic composition. The latter includes a urethane or a polyurethane, a catalyst, and a blowing agent, the dry cement mixture includes white cement, silica, a coloring agent, and an aggregate, and the concrete is formed from the same dry cement mixture with water.

Henri Crepeau, 3844 Rachel St. East, Montreal, Quebec, Canada; Roger Labrecque, 4667 Garnier Street, Montreal, Quebec, Canada

Tree Step**1,016,577****Repose-pieds pour fixation sur un arbre**

This is a tree step for securing to a tree trunk without damage. The tree step comprises an "L" shaped plate member provided with a spur at its heel portion. Anchor means are provided on the upstanding leg to secure a tree trunk girdling strap or chain.

Charles L. Zane, 442 Ackerman Drive, Chesterton, Indiana 46304, U.S.A.

Remote Disconnect-Connect Tap for Cable Television Systems**1,016,646****Conjoncteur/Disjoncteur à télécommande pour mises de ligne de systèmes de télévision par câble**

This is a remotely controlled disconnect-reconnect tap for a cable television system having a head end feeding a cable distribution system. The tap comprises means for receiving and detecting a number of pairs of tones modulated on a carrier and sent over the cable distribution system from the head end, means responsive to a predetermined sequence of said pairs of tones for developing a control signal, and switch means responsive to the control signal which turns off if already on or on if already off to disconnect or reconnect, respectively, a subscriber to the cable distribution system.

Premier Cablevision Limited, 110 - 1015 Burrard Street, Vancouver, British Columbia, Canada; National Cablevision Limited, 325 - 2055 Peel Street, Montreal, Quebec, Canada

MANUFACTURING OPPORTUNITIES ABROAD

British company engaged in manufacturing dump trucks, industrial gas turbines and special purpose machine tools is interested in some form of cooperation with a Canadian firm to enable it to manufacture gear boxes, power and mechanical transmissions, pumps and small hydraulic units. The company has approximately 10,000 square feet of vacant factory space with ample room for expansion. Its equipment includes a wide range of light engineering machine tools and test facilities. Interested Canadian firms should contact: Mr. J. White, Senior Project Engineer, Centrax Limited, Shaldon Road, Newton Abbott, Devon, TQ12 4SQ, England.

POSSIBILITÉS DE FABRICATION À L'ÉTRANGER

Un fabricant britannique de camions à benne basculante, de turbines industrielles à gaz et de machines-outils destinées à des fins particulières est intéressé à conclure une certaine entente de collaboration avec une entreprise canadienne qui lui permettrait de fabriquer des boîtes de vitesses, des transmissions automatiques et manuelles, des pompes et des petits mécanismes hydrauliques. La société dispose de quelque 10 000 pieds carrés d'espace vacant de fabrication et elle a amplement d'espace pour l'expansion. Son matériel comprend une vaste gamme de machines-outils légères et d'installations d'essai. Les firmes canadiennes intéressées devraient communiquer avec M. J. White, Premier ingénieur de projet, Centrax Limited, Shaldon Road, Newton Abbot, Devon, TQ12 4SQ (Grande-Bretagne).

British company engaged in the production of pressure vessels, pipework, machine baseplates, crane booms and cabs, and a wide variety of other items is interested in obtaining a manufacturing license from a Canadian company for the production of a hydraulic lifting platform. The company is also interested in products allied to its cable drum trailers. Interested Canadian companies should contact: Mr. L.A. Quelch, Manager, Dorset Welding Co. Ltd., Sterte Avenue, Sterte, Poole, Dorset, BH15 2AL, England.

TECHNOLOGY TRANSFER: CANADA/JAPAN

The Foundation of Osaka Science and Technology Centre publicizes licensing and joint venture proposals covering business opportunities for the exchange of technologies offered and sought by Japanese companies. The Centre also introduces overseas companies to Japanese enterprises, or assists them in finding appropriate Japanese licensees/licensors and joint venture partners, arranges meetings between Japanese enterprises and foreign businessmen and holds technology exchange missions, seminars and courses on international technology transfer, the investment climate and international economic trends. Canadian businessmen interested in forming licensing or joint venture manufacturing arrangements with Japanese enterprises should contact:

The Office of International Affairs
The Foundation of Osaka Science and Technology Centre
1-8-4, Utsubo Hommachi
Nishi-ku, Osaka, Japan

ADDRESS ENQUIRIES CONCERNING THE FOLLOWING CASES TO:

Canadian Patents and Development Limited,
275 Slater Street,
Ottawa, Canada
K1A 0R3

Chlorophyl Fluorometer

Case 6016

A compact Kautsky apparatus for measuring a plant's chlorophyl-fluorescence activity which in turn gives information related to the effects on the plant of frost, water stress, heat, nutrient deficiency, pollution, etc. Instruments of this kind have previously been custom built; the design of the present instrument makes it portable and relatively inexpensive.

Une entreprise britannique s'adonnant à la production de réservoirs à pression, de tuyauterie, de plaques d'appui pour machines, de volées et cabines de grues, ainsi que d'une variété d'autres articles, désire obtenir une licence de fabrication d'une entreprise canadienne pour la production d'une plate-forme élévatrice hydraulique. En outre, elle s'intéresse aux produits connexes à ses tambours de câble pour remorque. Les entreprises canadiennes intéressées sont priées de communiquer avec M. L.A. Quelch, gérant, Dorset Welding Co. Ltd., Sterte Avenue, Sterte, Poole, Dorset, BH15 2AL, Angleterre.

ECHANGES TECHNOLOGIQUES ENTRE LE CANADA ET LE JAPON

Le Centre des sciences et de la technologie d'Osaka offre des accords de licence et d'entreprise en participation, y compris des possibilités de commerce, pour participer à des échanges technologiques avec des sociétés japonaises. Le Centre fait connaître aussi les sociétés étrangères aux entreprises japonaises ou plus particulièrement, les aident à trouver un cocontractant japonais pour un accord de licence ou un projet en coparticipation. Il organise aussi des rencontres entre des entreprises japonaises et des gens d'affaires étrangers ainsi que des missions et des colloques technologiques; il offre en outre des cours sur les échanges technologiques internationaux, les perspectives d'investissement ainsi que les tendances économiques internationales. Les hommes d'affaires canadiens désireux de conclure des accords de licence ou des ententes de fabrication en coparticipation avec des entreprises japonaises doivent communiquer avec:

Le Bureau des affaires internationales
Centre des sciences et de la technologie d'Osaka
1-8-4, Utsubo Hommachi
Nishi-ku, Osaka, Japon

PRIÈRE D'ADDRESSER TOUTE DEMANDE DE RENSEIGNEMENTS AU SUJET DES CAS CI-APRÈS À LA:

Société canadienne des brevets et d'exploitation Limitée
275, rue Slater
Ottawa, Canada
K1A 0R3

Fluoremètre de chlorophylle

Cas 6016

Un appareil Kautsky compact destiné à mesurer l'activité chlorophyllo-fluorescente d'une plante, ce qui permet d'obtenir des renseignements sur les effets sur la plante, du gel, de l'humidité, de la chaleur, de l'insuffisance des substances nutritives, de la pollution, etc. Auparavant, les instruments de ce genre étaient fabriqués sur commande; étant donné son design, le présent instrument est portable et relativement peu coûteux.

**Thin-film Resistance Temperature
Detector (RTD)**

Case 6060

Vacuum-deposited platinum RTDs (platinum being the resistive element) have greater structural strength, shorter response time, and better tip sensitivity than would platinum-wire RTDs. Automation of steps such as film deposition mean lower production costs.

Microwave Sterilization

Case 6336

A microwave apparatus for destroying the anti-trypsin enzyme in beans, seeds, nuts, etc. It comprises a waveguide located coaxially within a vertical cylinder, the material passing downward through the cylindrical annulus thus defined. Moisture-laden air is drawn out through perforations in the cylinder, heated, and then pumped through the waveguide into the material to assist in drying. The sterilized material is removed from the bottom of the cylinder.

Optical-Fiber Coupler

Case 6552

A low-loss access coupler for multimode optical-fiber distribution systems. Two glass fibers are fused to each other at biconical taper sections formed before or during the fusing step. The result is an efficient, simple method of joining fibers in a two-way optical link.

**Détecteur à pellicule mince de résistance
à la température (RTD)**

Cas 6060

Les RTD à platine déposé à vide (le platine étant l'élément résistant) offre une force structurale plus élevée, un temps de réaction moins long et une meilleure sensibilité aux extrémités que les RTD à fil de platine bobiné. L'automatisation des étapes comme le dépôt sur la pellicule, réduit les coûts de production.

Stérilisation par micro-ondes

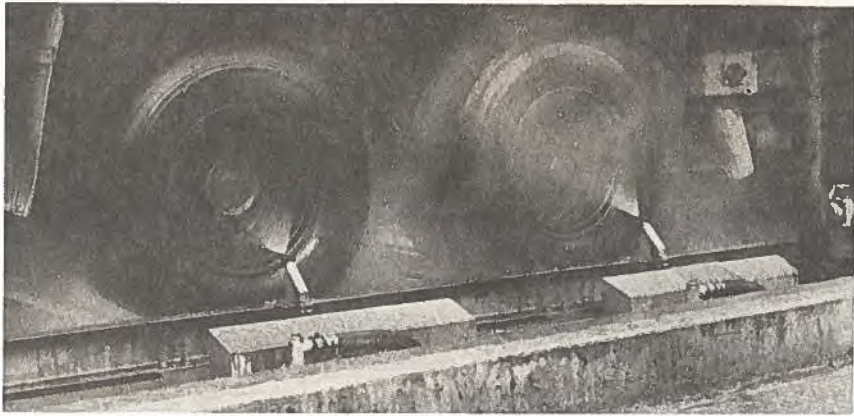
Cas 6336

Il s'agit d'un appareil à micro-ondes destiné à détruire les enzymes antitrypsines dans les fèves, les graines, les noix, etc. Il comprend un guide d'ondes situé coaxialement dans un cylindre vertical, le matériel descendant à travers l'anneau ainsi formé. L'air humide est retiré au moyen de perforations dans le cylindre, chauffé et pompé à travers le guide d'ondes, dans le matériel afin d'aider au séchage. On retire le matériel stérilisé du fond du cylindre.

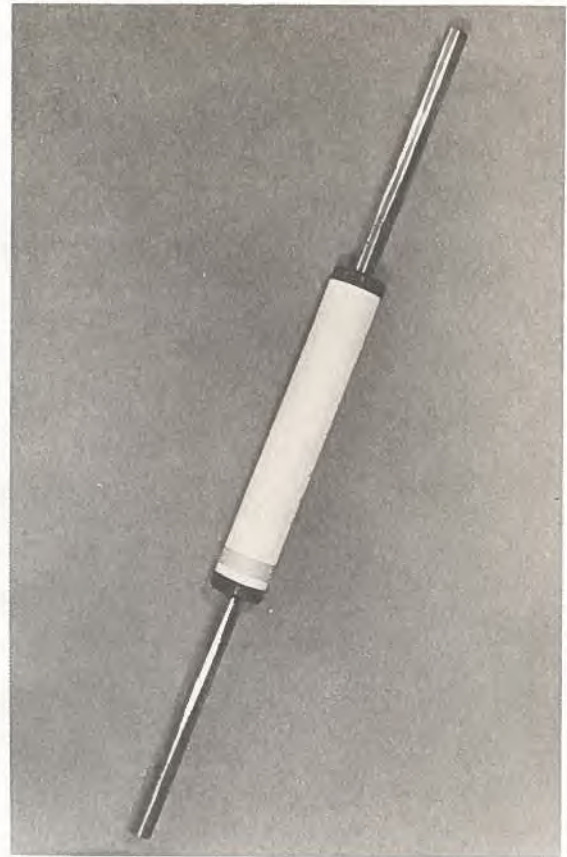
Raccordement de fibres optiques

Cas 6552

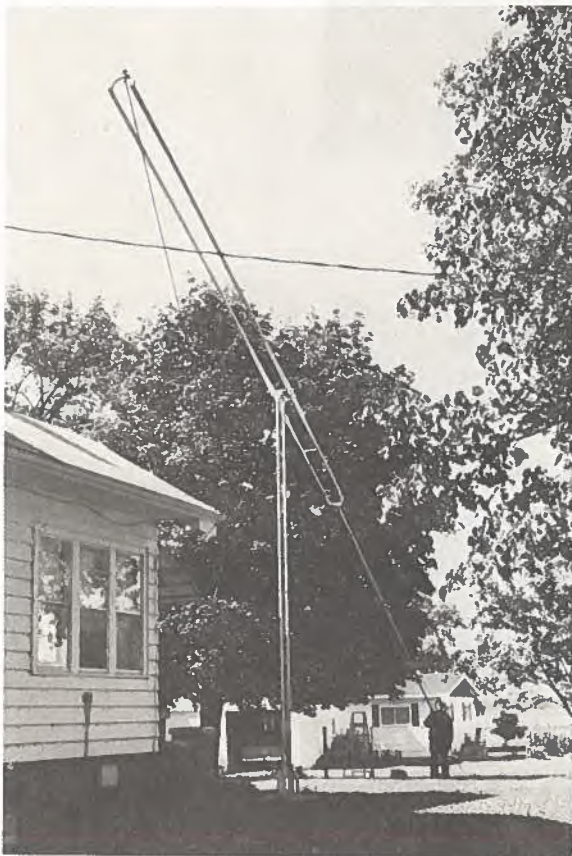
Un raccordement d'accès, à faible perte, pour les systèmes multi-modaux de distribution de fibres optiques. Deux fibres de verre sont fusionnées l'une à l'autre à des sections biconiques formées avant ou pendant la fusion. En somme, c'est une méthode simple et efficace de relier des fibres afin de former une liaison à deux sens.



Item 3581 — Vehicle Wheel Washer
Article 3581 — Dispositif de nettoyage de roues de véhicules



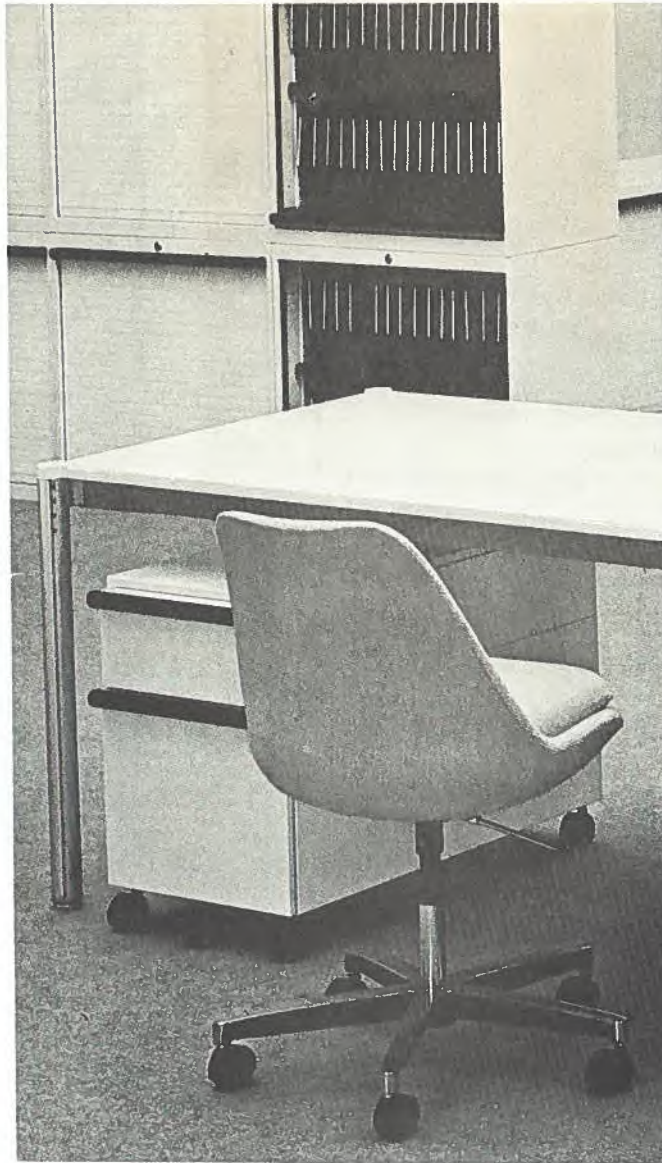
Item 3584 — Scale Protection Device
Article 3584 — Dispositif de protection contre l'entartrage



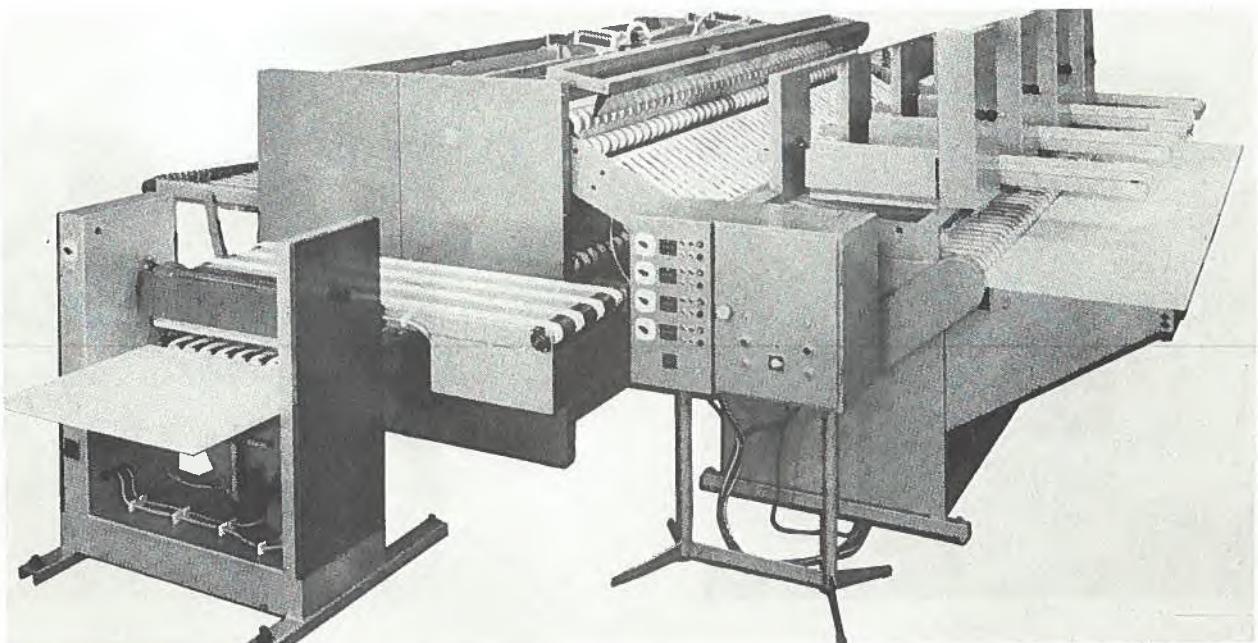
Item 3582 — Counter Balanced Tower
Article 3582 — Tour équilibrée à charnière



Item 3579 — Flagstone Laying Machine
Article 3579 — Machine pour lever les dalles



Item 3578 — Office Furniture
Article 3578 — Ameublement de bureau



Item 3583 — Folding and Stacking Machines
Article 3583 — Machines à plier et empiler